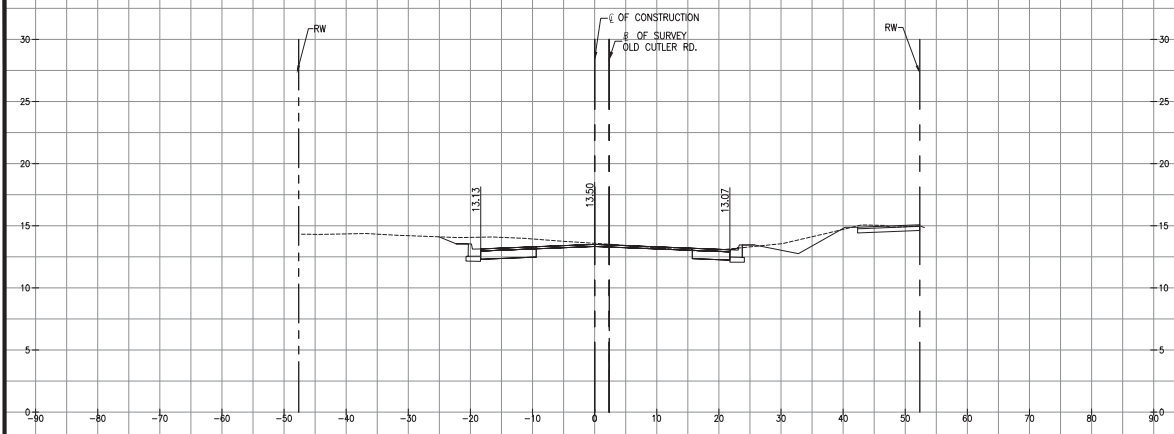


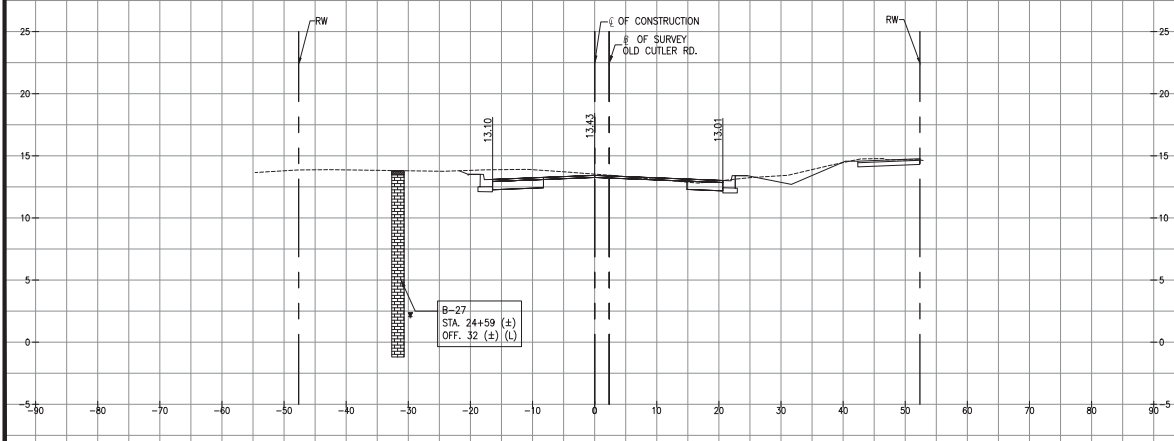
K:\DESIGN\2020\10.000_EDP_07202001\1\000\2020-12-18- Old Cutler Roundabouts\SW 184 ST\W\0\Sections\SW 184 ST\W\0\Sections\SW 152 ST North Corridor.dwg Nov 04, 2021 - 01:19pm JFD/ER

MIAMI-DADE COUNTY DEPARTMENT OF TRANSPORTATION AND PUBLIC WORKS
HIGHWAY DIVISION
OLD CUTLER RD. ROUNDABOUTS AT SW 152 ST & SW 184 ST
PROJECT NO. 20200119 SHEET 47 OF 183



STA 24+00.00

Station	Fill Area	Cut Area	Fill Volume	Cut Volume
24+00.00	0.01	30.38	0.27	55.23



STA 24+50.00

OLD CUTLER RD.
OLD CUTLER RD. &
SW 152 ST (CORAL REEF)

Station	Fill Area	Cut Area	Fill Volume	Cut Volume
24+50.00	0.14	24.76	0.13	51.26

	TOPSOIL
	SAND
	LIMESTONE FRAGMENT
	LIMESTONE
	GROUNDWATER LEVEL

SCALE
1"=10' HORIZONTAL
1"=5' VERTICAL

REVISIONS					
DATE	BY	DESCRIPTION	DATE	BY	DESCRIPTION

MARLIN
ENGINEERING
AYOEL ABIN PREDA | P.E. No.: 77550
3363 W. COMMERCIAL BLVD. SU. 115 | FT. LAUDERDALE, FL 33309
P: 954.870.5070 | C.A. No. 6104

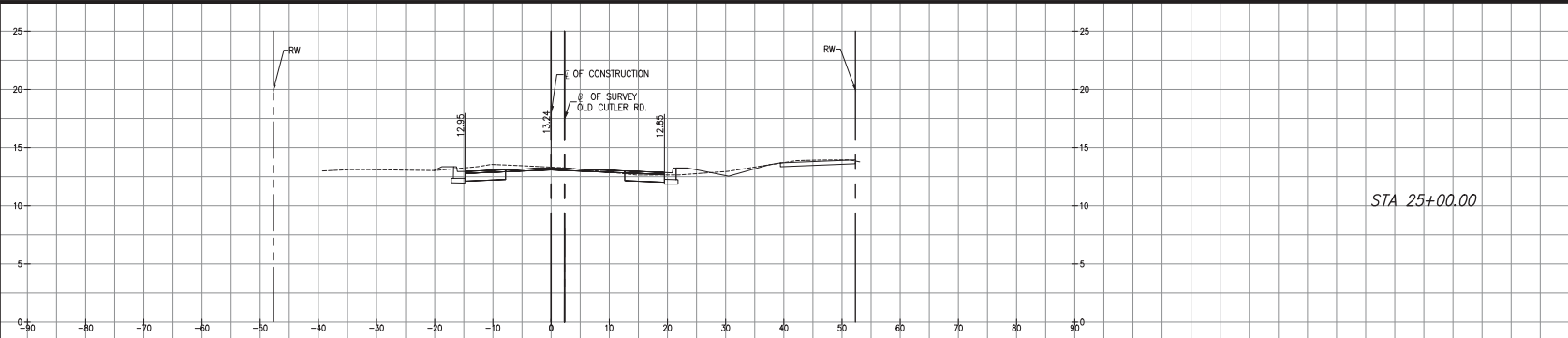
DESIGNED BY	NAME	DATE	CHECKED BY	NAME	DATE

DEPARTMENT OF TRANSPORTATION AND PUBLIC WORKS
HIGHWAY DIVISION
MIAMI-DADE COUNTY
STEPHEN P. CLARK, CHIEF ENGINEER
185 NW 1 ST.
MIAMI, FLORIDA 33128

CROSS SECTIONS

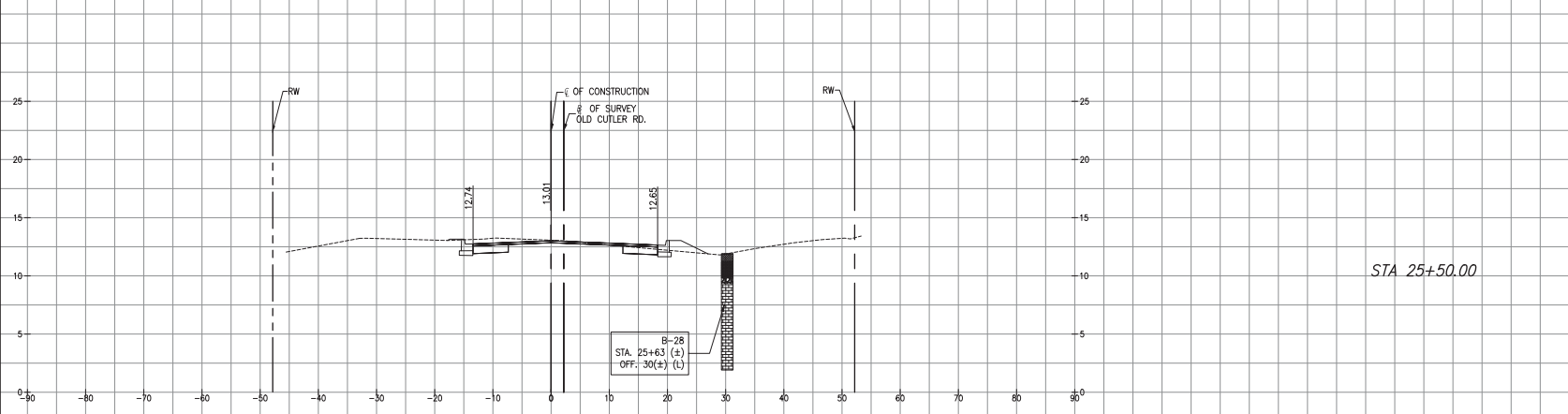
K:\DESIGN\202001\006_LDP_#20200119\0405\020-12-18- Old Cutler Roundabouts\SW 152 ST\SW152\Sections\SW 152 ST Horiz CrossSection_26 184 ST\SW152\Sections\SW 152 ST Horiz CrossSection_26 184 ST\SW152\Sections\SW 152 ST Horiz CrossSection_26 184 ST.dwg - 01/19/2021 - 01/19/2021

MIAMI-DADE COUNTY DEPARTMENT OF TRANSPORTATION AND PUBLIC WORKS
HIGHWAY DIVISION
OLD CUTLER RD. ROUNDABOUTS AT SW 152 ST & SW 184 ST
PROJECT NO. 20200119 SHEET 48 OF 183



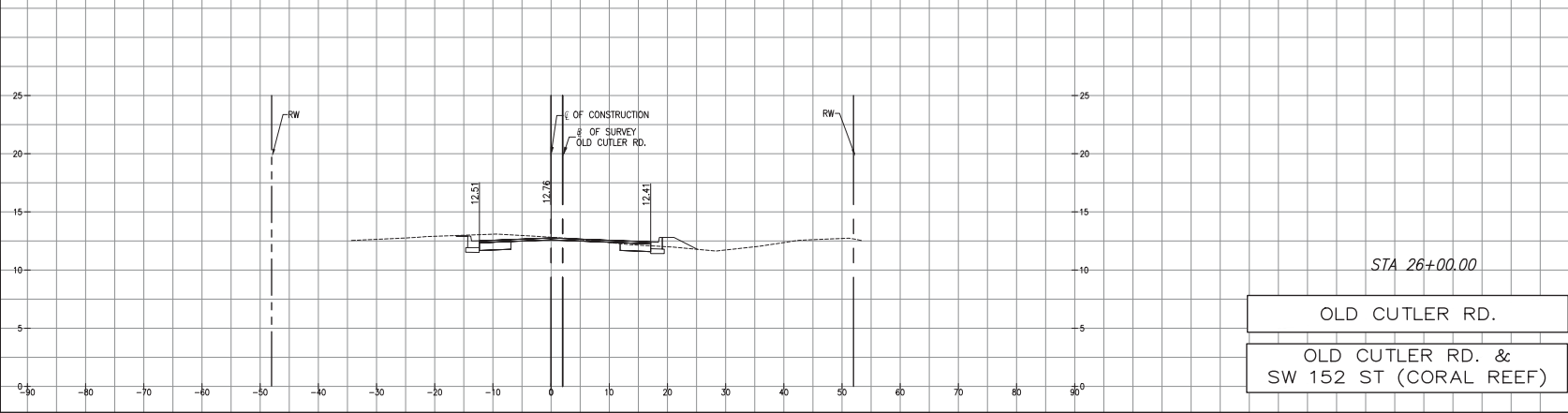
Total Volume Table

Station	Fill Area	Cut Area	Fill Volume	Cut Volume
25+00.00	0.31	17.62	0.41	39.34



Total Volume Table

Station	Fill Area	Cut Area	Fill Volume	Cut Volume
25+50.00	1.28	15.26	1.46	30.49



Total Volume Table

Station	Fill Area	Cut Area	Fill Volume	Cut Volume
26+00.00	0.90	15.16	2.00	28.22

LEGEND

- TOPSOIL
- SAND
- LIMESTONE FRAGMENT
- LIMESTONE
- GROUNDWATER LEVEL

SCALE
1"=10' HORIZONTAL
1"=5' VERTICAL

REVISIONS					
DATE	BY	DESCRIPTION	DATE	BY	DESCRIPTION

MARLIN
ENGINEERING
ANGEL ABIN FREDA | P.E. No.: 77500
3363 W. COMMERCIAL BLVD. SU. 115 | FT. LAUDERDALE, FL 33309
P: 954.870.5070 | C.A. No. 6104

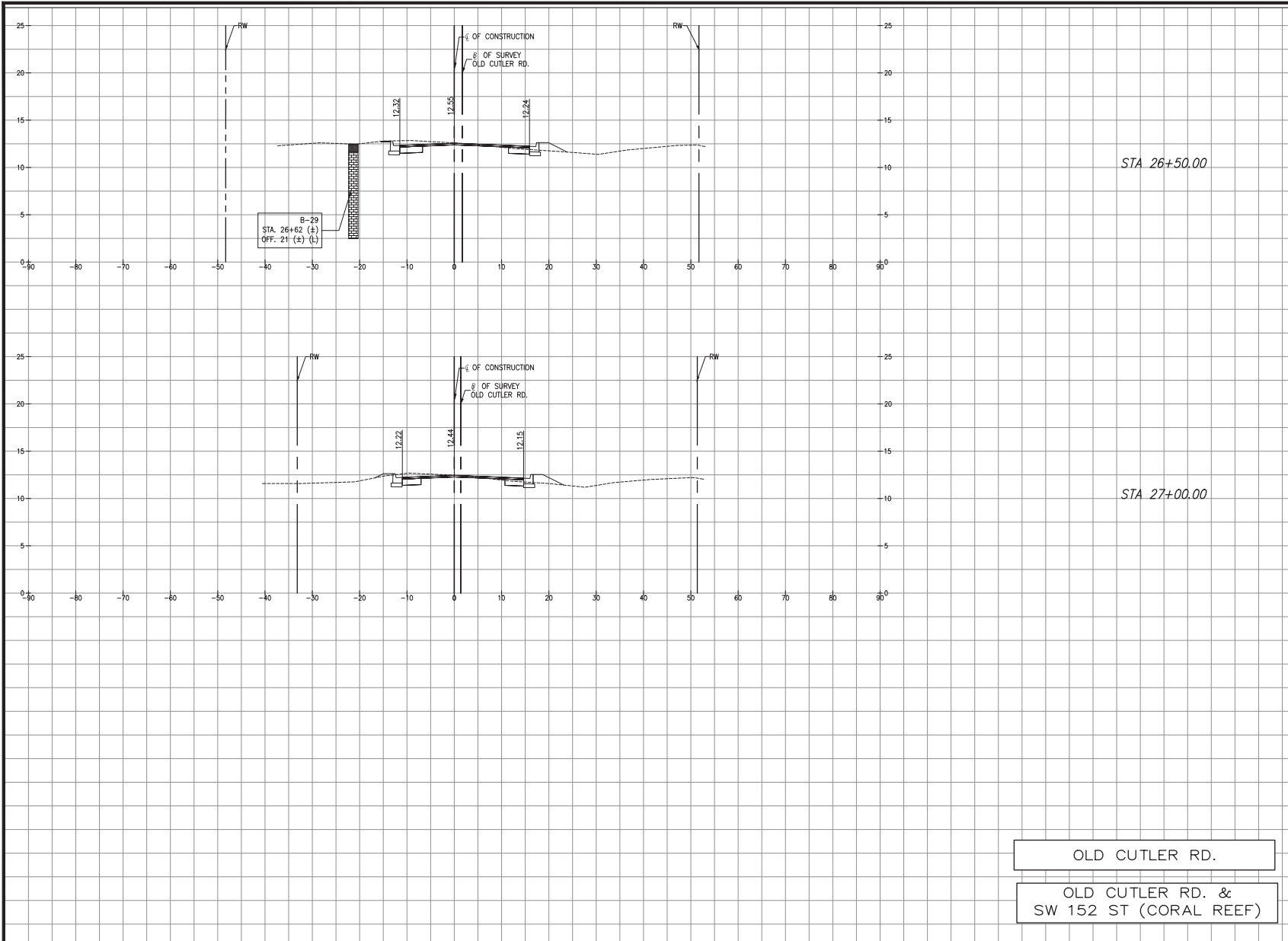
DESIGNED BY	NAME	DATE	DRAWN BY	NAME	DATE
	RL			M.P.	
CHECKED BY	AF		CHECKED BY	AF	
SUPERVISED BY					

DEPARTMENT OF TRANSPORTATION AND PUBLIC WORKS
MIAMI-DADE COUNTY
HIGHWAY DIVISION
STEPHEN P. CLARK, CHIEF
151 NW 1 ST.
MIAMI, FLORIDA 33128

CROSS SECTIONS

K:\DESIGN\202001\0001\EDP_#17020001\1\0405\2020-12-18 - Old Cutler Roundabouts\SW 152 ST VME\Sections\SW 152 ST North Corridor.dwg Nov 04, 2021 - 10:18pm JFERBER

MIAMI-DADE COUNTY DEPARTMENT OF TRANSPORTATION AND PUBLIC WORKS
HIGHWAY DIVISION
OLD CUTLER RD. ROUNDABOUTS AT SW 152 ST & SW 184 ST
PROJECT NO. 20200119 SHEET 49 OF 183



Total Volume Table

Station	Fill Area	Cut Area	Fill Volume	Cut Volume
26+50.00	1.04	13.06	1.77	26.18

Total Volume Table

Station	Fill Area	Cut Area	Fill Volume	Cut Volume
27+00.00	1.46	10.45	2.29	21.81

LEGEND

	TOPSOIL
	SAND
	LIMESTONE FRAGMENT
	LIMESTONE
	GROUNDWATER LEVEL

OLD CUTLER RD.
OLD CUTLER RD. &
SW 152 ST (CORAL REEF)

SCALE
1"=10' HORIZONTAL
1"=5' VERTICAL

REVISIONS

DATE	BY	DESCRIPTION	DATE	BY	DESCRIPTION

MARLIN
ENGINEERING
AYCEL ABIN FREDA | P.E. No.: 77500
3363 W. COMMERCIAL BLVD. SU. 115 | FT. LAUDERDALE, FL 33309
P: 954.870.5070 | C.A. No. 6104

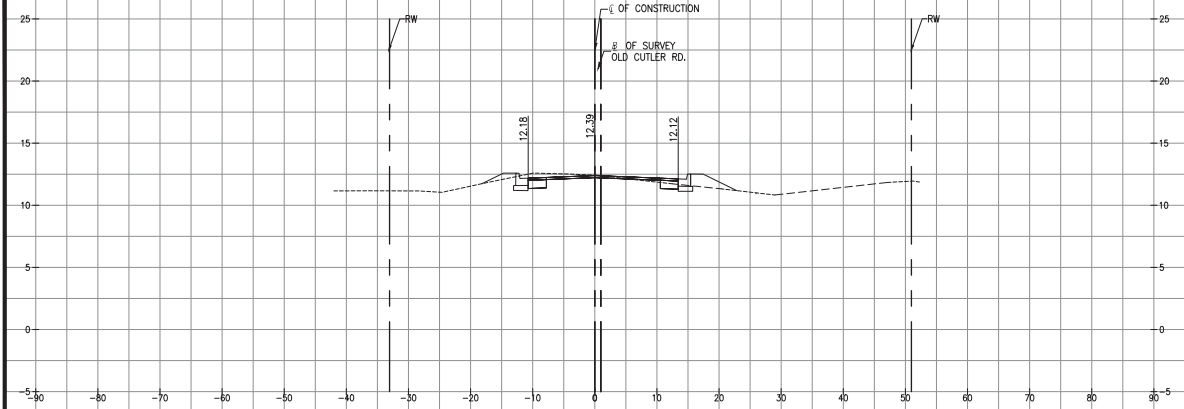
DESIGNED BY	NAME	DATE	DRAWN BY	NAME	DATE
	RL			M.P.	
CHECKED BY	AF		CHECKED BY	AF	
SUPERVISED BY:					

MIAMI-DADE COUNTY DEPARTMENT OF TRANSPORTATION AND PUBLIC WORKS HIGHWAY DIVISION
STEPHEN P. CLARK, COVER
15188 ST.
MIAMI, FLORIDA 33128

CROSS SECTIONS

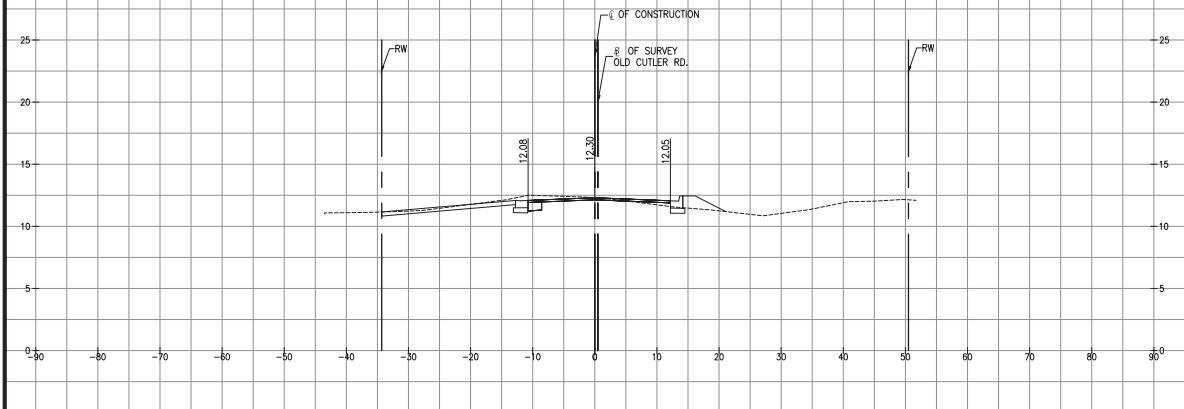
K:\DESIGN\202001\006_LDP_17202001\19\0405\2020-12-16- Old Cutler Roundabouts\3W 152 ST\WV\Sections\3W 152 ST Horiz CrossSection Nov 04, 2021 - 01:19pm JFERBER

MIAMI-DADE COUNTY DEPARTMENT OF TRANSPORTATION AND PUBLIC WORKS
HIGHWAY DIVISION
OLD CUTLER RD. ROUNDABOUTS AT SW 152 ST & SW 164 ST
PROJECT NO. 20200119 SHEET 50 OF 183



STA 27+50.00

Total Volume Table				
Station	Fill Area	Cut Area	Fill Volume	Cut Volume
27+50.00	0.45	8.41	1.75	17.50



STA 28+00.00

Total Volume Table				
Station	Fill Area	Cut Area	Fill Volume	Cut Volume
28+00.00	2.93	8.85	3.11	16.04

OLD CUTLER RD.
OLD CUTLER RD. &
SW 152 ST (CORAL REEF)

SCALE
1"=10' HORIZONTAL
1"=5' VERTICAL

REVISIONS					
DATE	BY	DESCRIPTION	DATE	BY	DESCRIPTION

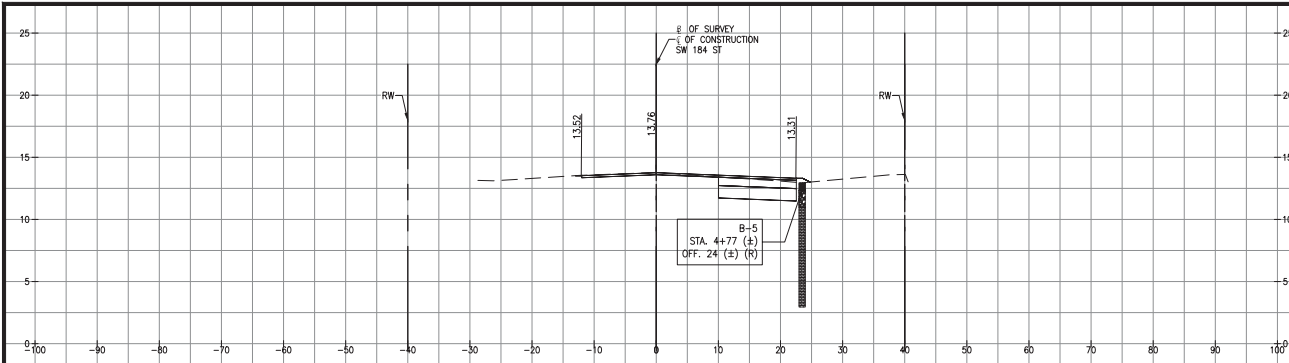
MARLIN
ENGINEERING
AYCEL ABIN FREDA | P.E. No.: 77500
3363 W. COMMERCIAL BLVD. SU. 115 | FT. LAUDERDALE, FL 33309
P: 954.870.5070 | C.A. No. 6104

DESIGNED BY:	NAME	DATE	DRAWN BY:	NAME	DATE
CHECKED BY:			CHECKED BY:		
SUPERVISED BY:					

MIAMI-DADE COUNTY DEPARTMENT OF TRANSPORTATION AND PUBLIC WORKS HIGHWAY DIVISION
STEPHEN P. CLARK, CHIEF ENGINEER
150 NW 25th Ave, Suite 100
Miami, Florida 33128

CROSS SECTIONS

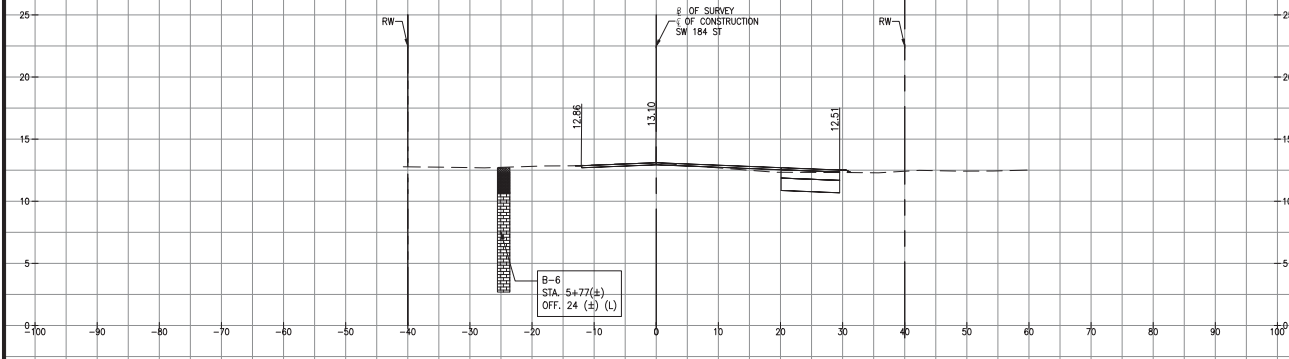
K:\ISSUES\20200119\005_EDP_MF20200119\005\002-12-16-04\Culter Roundabouts\SW 184 ST\WWS\CrossSections\SW 184 ST SW Corner.dwg Nov 04, 2021 - 5:02pm JEFFREY



STA 5+50.00

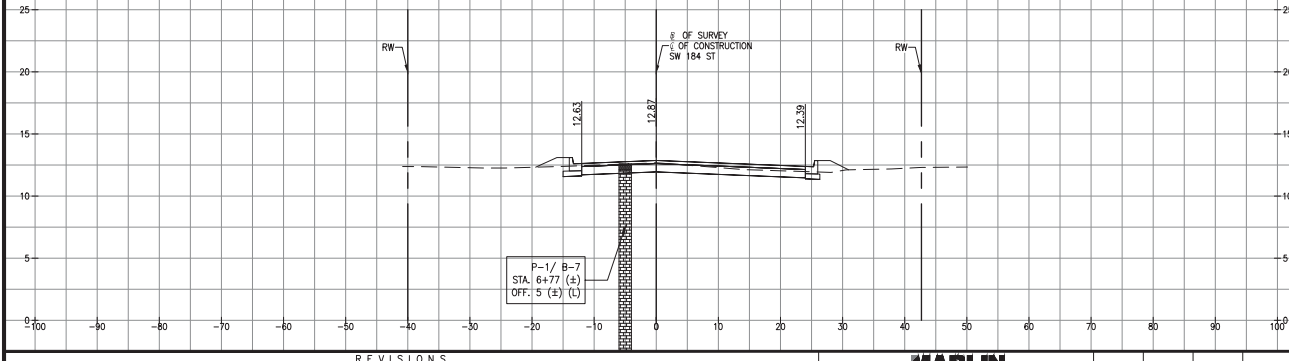
Total Volume Table				
Station	Fill Area	Cut Area	Fill Volume	Cut Volume
5+50.00	0.55	23.32	0.51	21.59

SW 184 ST



STA 6+00.00

Total Volume Table				
Station	Fill Area	Cut Area	Fill Volume	Cut Volume
6+00.00	1.92	15.34	2.29	35.80



STA 6+50.00

OLD CUTLER RD. &
SW 184 ST (EUREKA DR.)

Total Volume Table				
Station	Fill Area	Cut Area	Fill Volume	Cut Volume
6+50.00	3.27	25.93	4.80	38.21

LEGEND	
	TOPSOIL
	SAND
	LIMESTONE FRAGMENT
	LIMESTONE
	GROUNDWATER LEVEL

SCALE
1"=10' HORIZONTAL
1"=5' VERTICAL

REVISIONS					
DATE	BY	DESCRIPTION	DATE	BY	DESCRIPTION

MARLIN
ENGINEERING
ANGEL AHN FREDA | P.E. No.: 77550
3363 W. COMMERCIAL BLVD. Ste. 115 | FT. LAUDERDALE, FL 33309
P: 954.870.5070 | C.A. No. 6104

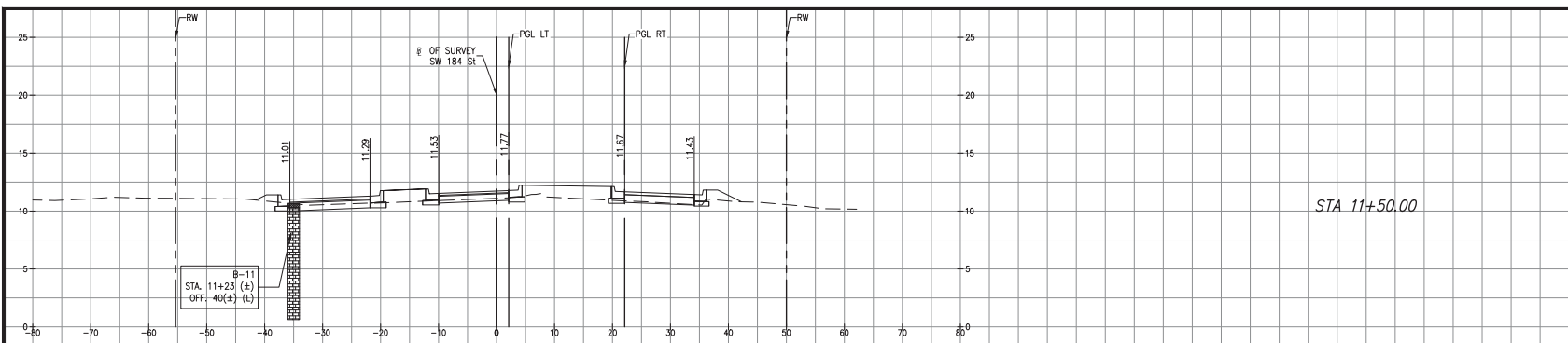
DESIGNED BY	NAME	DATE	DRAWN BY	NAME	DATE
	R.L.			M.P.	
CHECKED BY	A.F.		CHECKED BY	A.F.	
SUPERVISED BY:					

DEPARTMENT OF TRANSPORTATION AND PUBLIC WORKS
HIGHWAY DIVISION
MIAMI-DADE COUNTY
STEPHEN F. CLARK, CHIEF
115 NW 1ST ST.
MIAMI, FLORIDA 33138

CROSS SECTIONS

K:\ISSUES\20200119\0405\020-12-16-04\Culer Roundabouts\SW 184 ST\WV\Sections - SW 184 ST East Corridor\Nov 04, 2021 - 5:21pm #15868

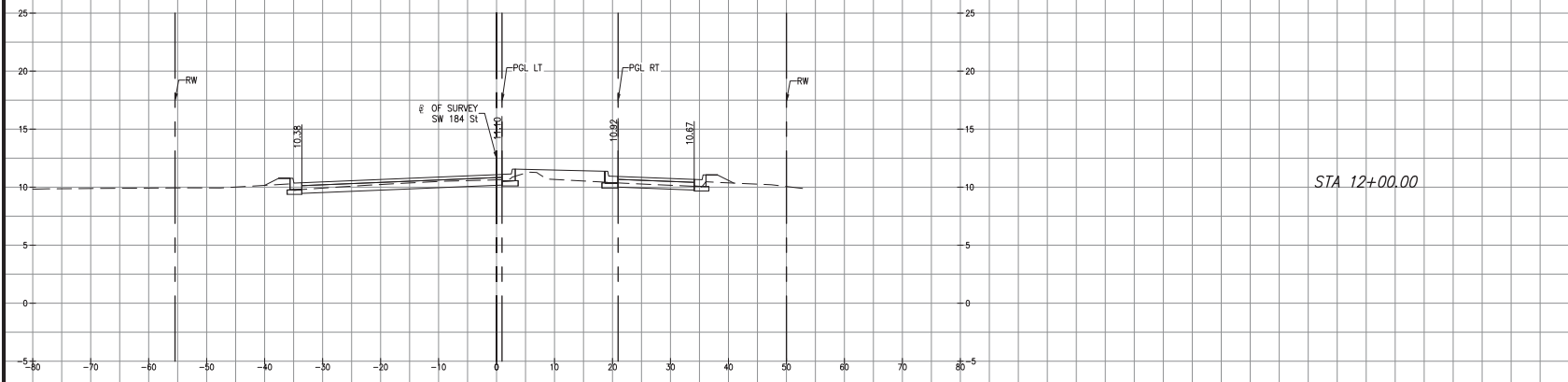
MIAMI-DADE COUNTY DEPARTMENT OF TRANSPORTATION AND PUBLIC WORKS
HIGHWAY DIVISION
OLD CUTLER RD. ROUNDABOUTS AT SW 152 ST & SW 184 ST
PROJECT NO. 20200119 SHEET 54 OF 183



STA 11+50.00

Station	Fill Area	Cut Area	Fill Volume	Cut Volume
11+50.00	12.70	17.61	38.29	56.12

SW 184 ST



STA 12+00.00

Station	Fill Area	Cut Area	Fill Volume	Cut Volume
12+00.00	8.41	22.42	19.55	37.06

	TOPSOIL
	SAND
	LIMESTONE FRAGMENT
	LIMESTONE
	GROUNDWATER LEVEL

OLD CUTLER RD. &
SW 184 ST (EUREKA DR.)

SCALE
1"=10' HORIZONTAL
1"=5' VERTICAL

REVISIONS					
DATE	BY	DESCRIPTION	DATE	BY	DESCRIPTION

MARLIN
ENGINEERING
ARCIL ABN FREDA | P.E. No.: 77550
3363 W. COMMERCIAL Blvd. Ste. 115 | FT. LAUDERDALE, FL 33309
P: 954.870.5070 | C.A. No. 6104

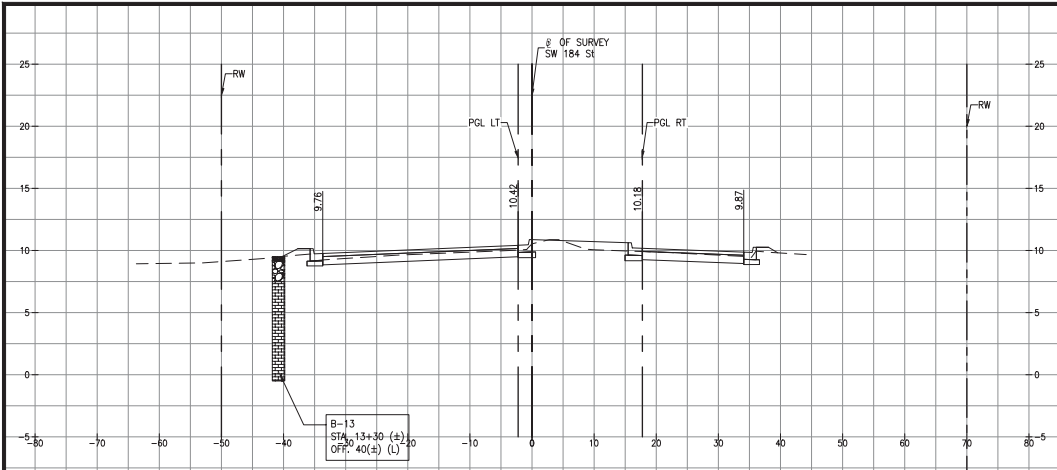
DESIGNED BY	NAME	DATE	DRAWN BY	NAME	DATE
	R.L.			M.P.	
CHECKED BY	A.F.		CHECKED BY	A.F.	
SUPERVISED BY					

DEPARTMENT OF TRANSPORTATION AND PUBLIC WORKS
HIGHWAY DIVISION
MIAMI-DADE COUNTY
STEPHEN F. CLARK, CHIEF
150 N.W. 1ST ST.
MIAMI, FLORIDA 33138

CROSS SECTIONS

K:\ISSUES\20200115\EDP_MF20200115\DADE\2020-12-16- Old Cutler Roundabouts\SW 184 ST\WMS\Sections - SW 184 ST East Corridor\New 04, 2021 - 52.dwg - #18888

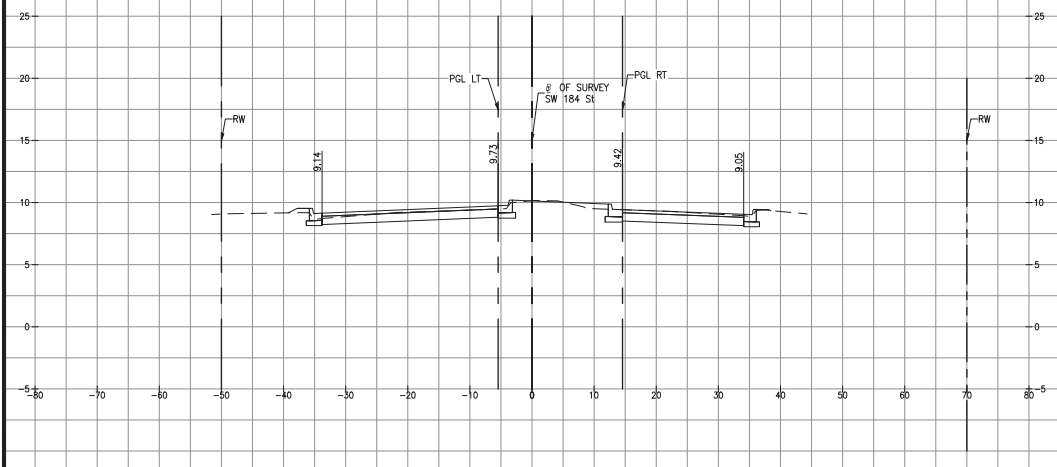
MIAMI-DADE COUNTY DEPARTMENT OF TRANSPORTATION AND PUBLIC WORKS
HIGHWAY DIVISION
OLD CUTLER RD. ROUNDABOUTS AT SW 152 ST & SW 184 ST
PROJECT NO. 20200119 SHEET 56 OF 183



STA 12+50.00

Total Volume Table				
Station	Fill Area	Cut Area	Fill Volume	Cut Volume
12+50.00	0.93	35.15	8.66	53.31

SW 184 ST



STA 13+00.00

Total Volume Table				
Station	Fill Area	Cut Area	Fill Volume	Cut Volume
13+00.00	0.24	47.04	1.09	76.10

OLD CUTLER RD. &
SW 184 ST (EUREKA DR.)

LEGEND	
	TOPSOIL
	SAND
	LIMESTONE FRAGMENT
	LIMESTONE
	GROUNDWATER LEVEL

SCALE
1"=10' HORIZONTAL
1"=5' VERTICAL

REVISIONS					
DATE	BY	DESCRIPTION	DATE	BY	DESCRIPTION

MARLIN
ENGINEERING
ANGEL ABIN FREDA | P.E. No.: 77550
3363 W. COMMERCIAL BLVD. SU. 115 | FT. LAUDERDALE, FL 33309
P: 954.870.5070 | C.A. No. 6104

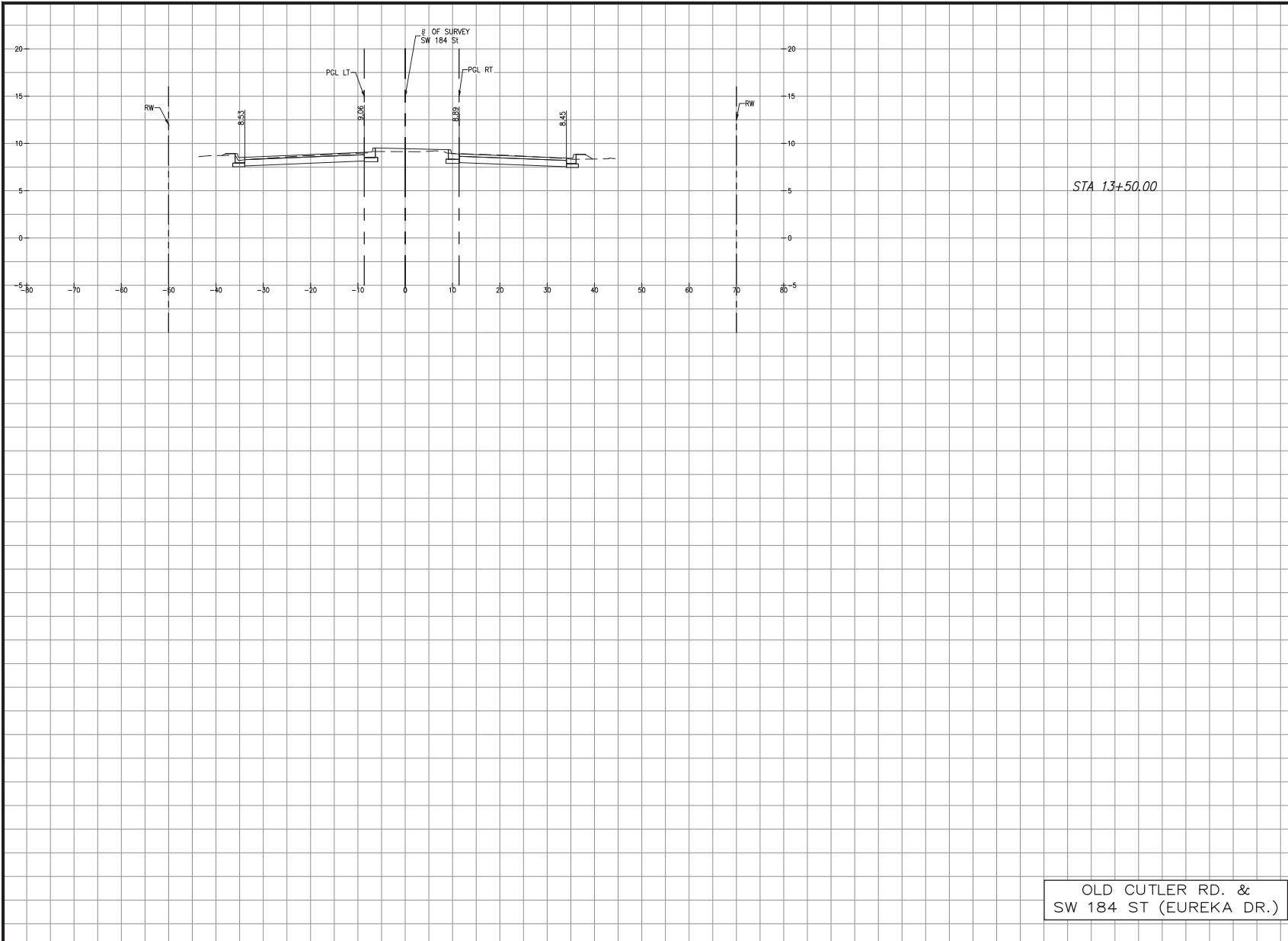
DESIGNED BY	NAME	DATE	DRAWN BY	NAME	DATE

DEPARTMENT OF TRANSPORTATION AND PUBLIC WORKS
HIGHWAY DIVISION
MIAMI-DADE COUNTY
STEPHEN P. CLARK, CHIEF
1818 N.W. 1ST ST.
MIAMI, FLORIDA 33138

CROSS SECTIONS

K:\ISSUES\20200119\0405\020-12-16-04\Culer Roundabouts\SW 184 ST\W02\Sections - SW 184 ST East Corridor.dwg Nov 04, 2021 - 5:22pm #15168

MIAMI-DADE COUNTY DEPARTMENT OF TRANSPORTATION AND PUBLIC WORKS
HIGHWAY DIVISION
OLD CUTLER RD. ROUNDABOUTS AT SW 152 ST & SW 184 ST
PROJECT NO. 20200119 SHEET 56 OF 183



STA 13+50.00

Total Volume Table				
Station	Fill Area	Cut Area	Fill Volume	Cut Volume
13+50.00	0.32	52.04	0.52	91.74

SW 184 ST

OLD CUTLER RD. &
SW 184 ST (EUREKA DR.)

SCALE
1"=10' HORIZONTAL
1"=5' VERTICAL

REVISIONS					
DATE	BY	DESCRIPTION	DATE	BY	DESCRIPTION

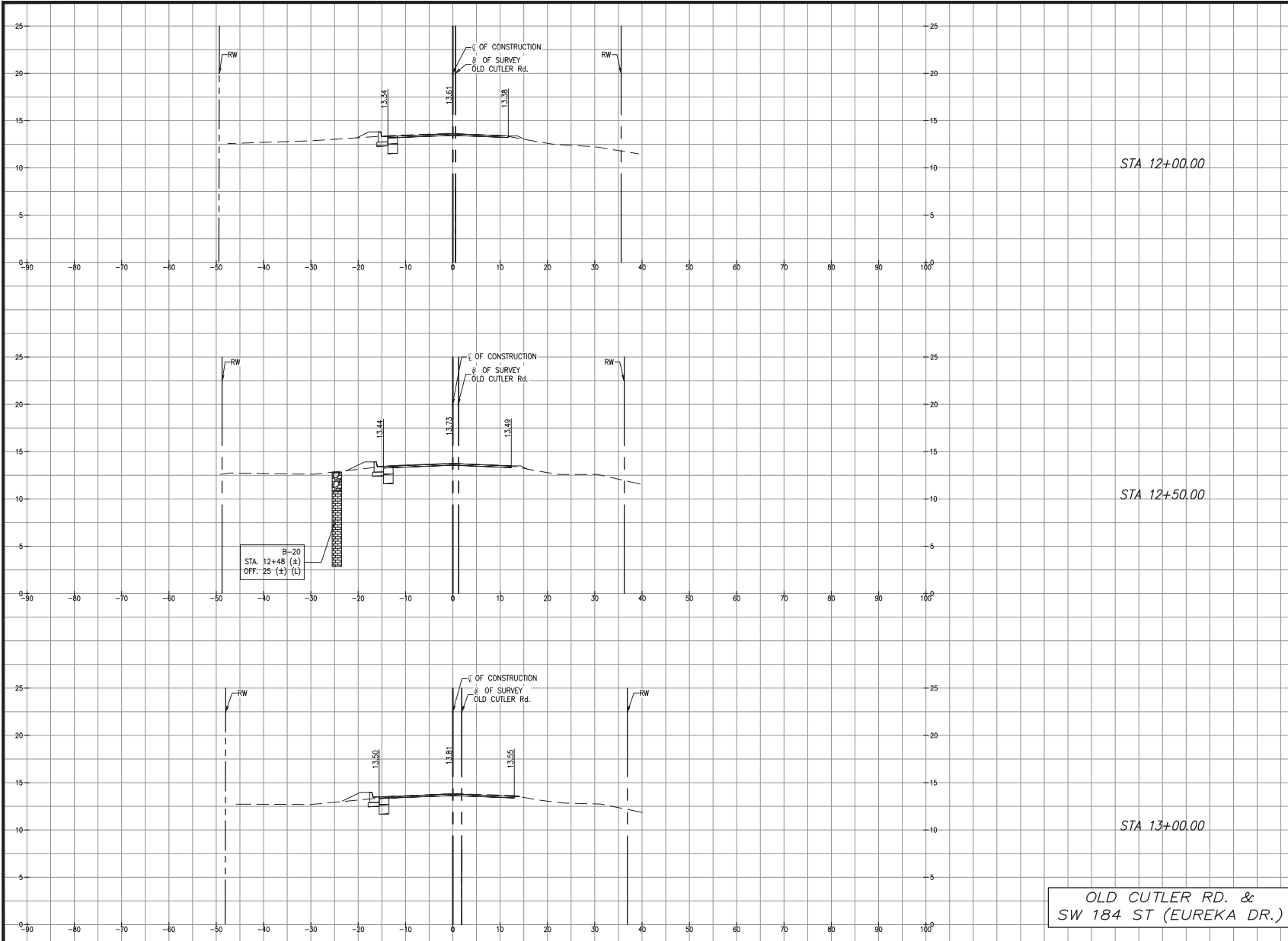
MARLIN
ENGINEERING
ANGEL ABIN FREDA | P.E. No.: 77550
3363 W. COMMERCIAL BLVD. SUITE 115 | FT. LAUDERDALE, FL 33309
P: 954.870.5070 | C.A. No. 6104

DESIGNED BY	NAME	DATE	DRAWN BY	NAME	DATE

MIAMI-DADE COUNTY DEPARTMENT OF TRANSPORTATION AND PUBLIC WORKS HIGHWAY DIVISION
STEPHEN F. CLARK, CIVIL ENGINEER
15184 SW 152 ST
MIAMI, FLORIDA 33185

CROSS SECTIONS

K:\DESIGN\202001\0000_EDP_MF202001\14\0403\000-12-18-04\Cutler Roundabouts\SW 184 ST\Utility Sections\SW 184 ST SW Cornering Nov 04, 2021 - 522m.dwg



MIAMI-DADE COUNTY DEPARTMENT OF TRANSPORTATION AND PUBLIC WORKS
HIGHWAY DIVISION
OLD CUTLER RD. ROUNDABOUTS AT SW 152 ST & SW 184 ST
PROJECT NO. 20200119 SHEET 52 OF 153

Total Volume Table

Station	Fill Area	Cut Area	Fill Volume	Cut Volume
12+00.00	0.14	8.31	0.13	7.69

OLD CUTLER RD.

Total Volume Table

Station	Fill Area	Cut Area	Fill Volume	Cut Volume
12+50.00	0.11	8.69	0.23	15.74

Total Volume Table

Station	Fill Area	Cut Area	Fill Volume	Cut Volume
13+00.00	0.22	8.56	0.30	15.99

LEGEND

	TOPSOIL
	SAND
	LIMESTONE FRAGMENT
	LIMESTONE
	GROUNDWATER LEVEL

OLD CUTLER RD. &
SW 184 ST (EUREKA DR.)

SCALE
1"=10' HORIZONTAL
1"=5' VERTICAL

CROSS SECTIONS

REVISIONS

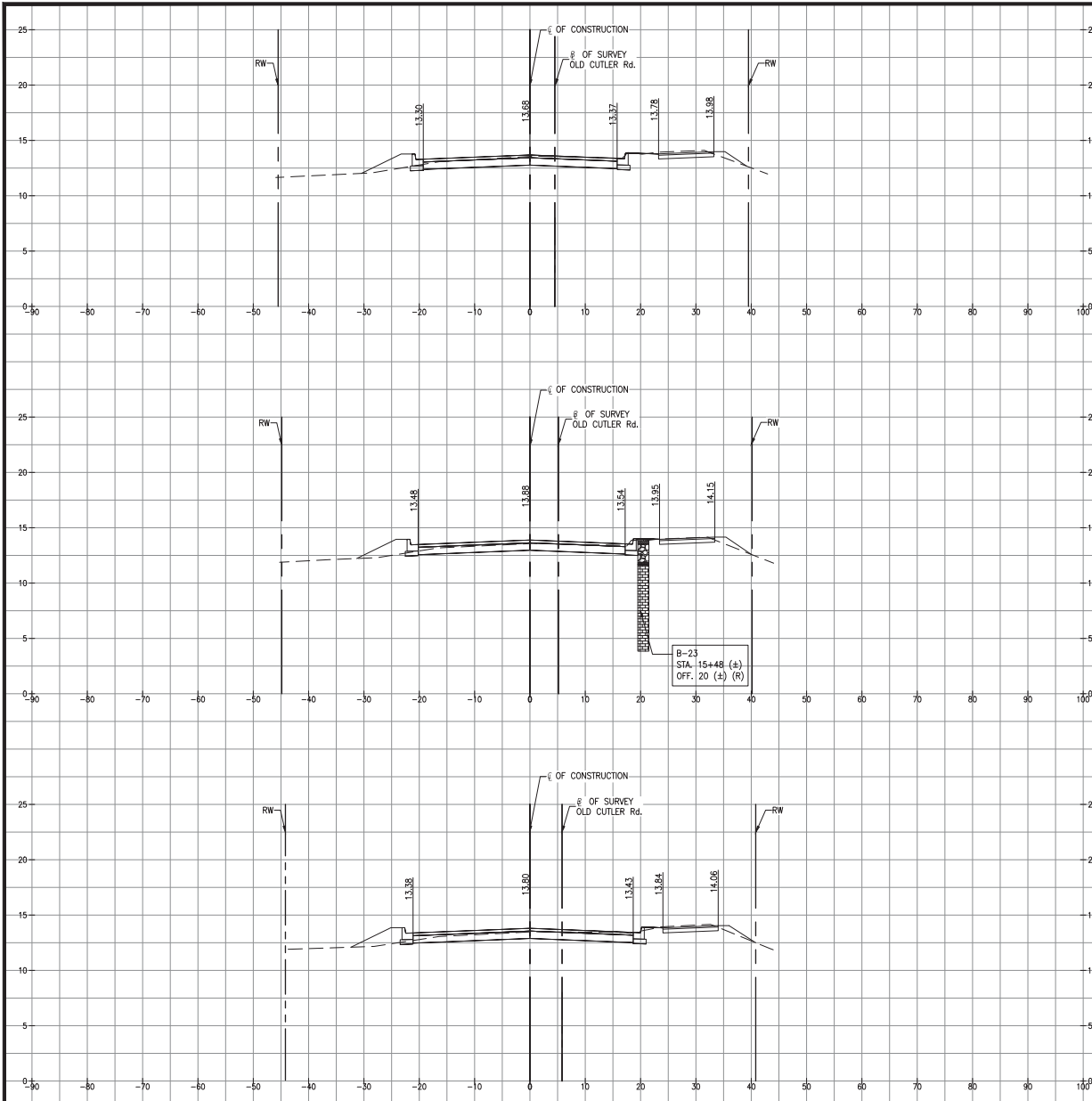
DATE	BY	DESCRIPTION	DATE	BY	DESCRIPTION	DATE	BY	DESCRIPTION

MARLIN
ENGINEERING
ANGEL ABIN PREDIA I P.E. No. 77550
3363 W. COMMERCIAL BLVD. Ste. 115 FT. LAUDERDALE, FL 33309
P: 954.870.5070 C.A. No. 6104

DESIGNED BY	NAME	DATE	DRAWN BY	NAME	DATE

DEPARTMENT OF TRANSPORTATION
AND PUBLIC WORKS
HIGHWAY DIVISION
MIAMI-DADE COUNTY
STEPHEN P. CLARK, CENTER
115 N.W. ST.
MIAMI, FLORIDA 33138

K:\DESIGN\202001\19\20200119\20200119\2020-12-18-18-Old Cutler Roundabouts\SW 184 ST\WV\Sections\SW 184 ST SW\Sections\SW 184 ST SW\Corridor.dwg Nov 04, 2021 - 5:29pm #FERRIS



OLD CUTLER RD. & SW 184 ST (EUREKA DR.)

MIAMI-DADE COUNTY DEPARTMENT OF TRANSPORTATION AND PUBLIC WORKS
HIGHWAY DIVISION
OLD CUTLER RD. ROUNDABOUTS AT SW 152 ST & SW 184 ST
PROJECT NO. 20200119 SHEET 59 OF 183

Total Volume Table

Station	Fill Area	Cut Area	Fill Volume	Cut Volume
15+00.00	4.88	33.39	5.44	39.27

Total Volume Table

Station	Fill Area	Cut Area	Fill Volume	Cut Volume
15+50.00	6.69	27.55	10.71	56.42

Total Volume Table

Station	Fill Area	Cut Area	Fill Volume	Cut Volume
16+00.00	7.29	29.93	12.94	53.23

LEGEND

- TOPSOIL
- SAND
- LIMESTONE FRAGMENT
- LIMESTONE
- GROUNDWATER LEVEL

SCALE
1"=10' HORIZONTAL
1"=5' VERTICAL

REVISIONS

DATE	BY	DESCRIPTION	DATE	BY	DESCRIPTION

MARLIN ENGINEERING
AYCEL ABIN FREDA | P.E. No.: 77550
3363 W. COMMERCIAL BLVD. SU. 110 FT. LAUDERDALE, FL 33309
P: 954.870.5070 | C.A. No. 6104

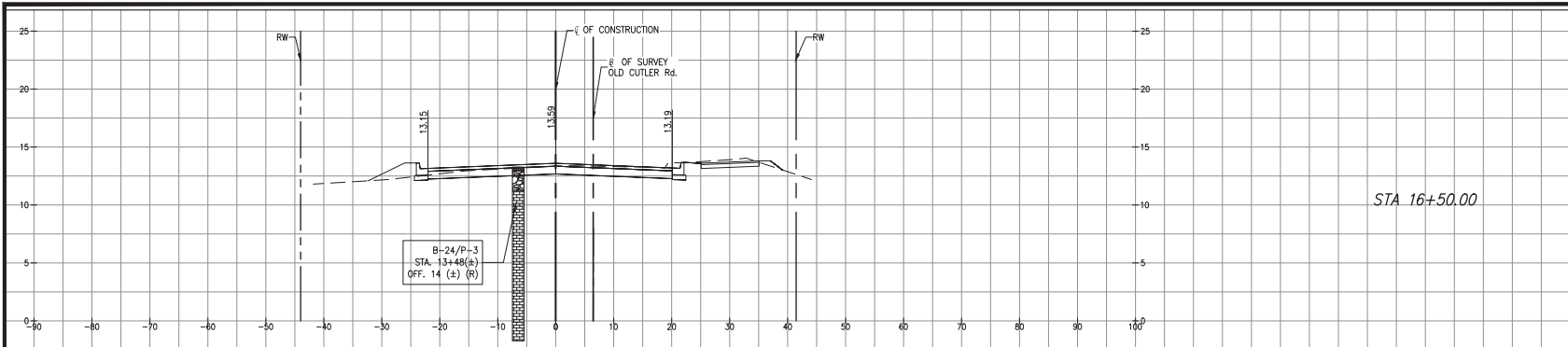
DESIGNED BY	NAME	DATE	DRAWN BY	NAME	DATE

DEPARTMENT OF TRANSPORTATION AND PUBLIC WORKS
MIAMI-DADE COUNTY
HIGHWAY DIVISION
STEPHEN P. CLAW, CHIEF
1800 SW 1ST ST
MIAMI, FLORIDA 33138

CROSS SECTIONS

K:\DESIGN\202001\0001_LED\1720200119\0405\2020-12-18-18-Old Cutler Roundabouts\SW 184 ST\WMS\Sections\SW 184 ST SW Corridor.dwg Nov 04, 2021 - 5:29pm #FERRER

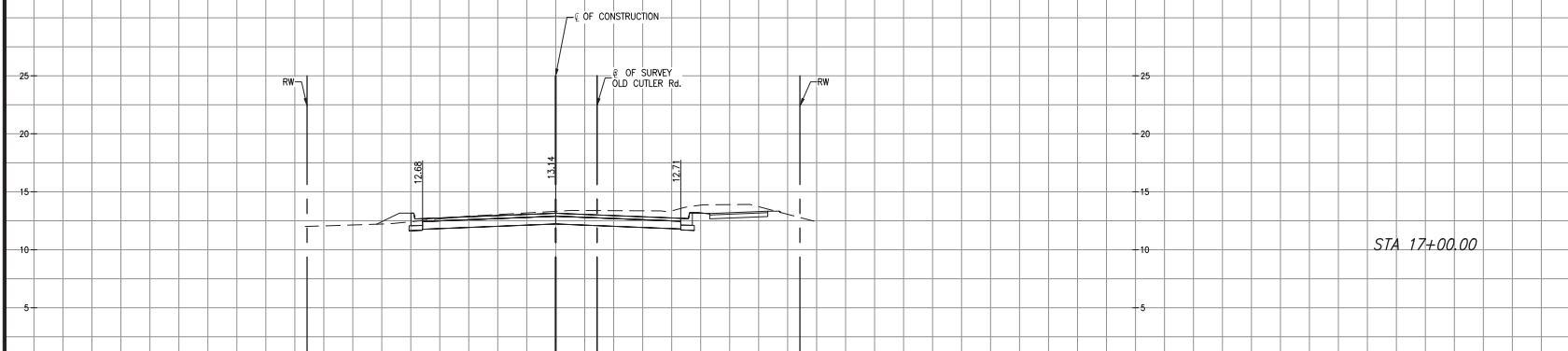
MIAMI-DADE COUNTY DEPARTMENT OF TRANSPORTATION AND PUBLIC WORKS
HIGHWAY DIVISION
OLD CUTLER RD. ROUNDABOUTS AT SW 152 ST & SW 184 ST
PROJECT NO. 20200119 SHEET 60 OF 183



STA 16+50.00

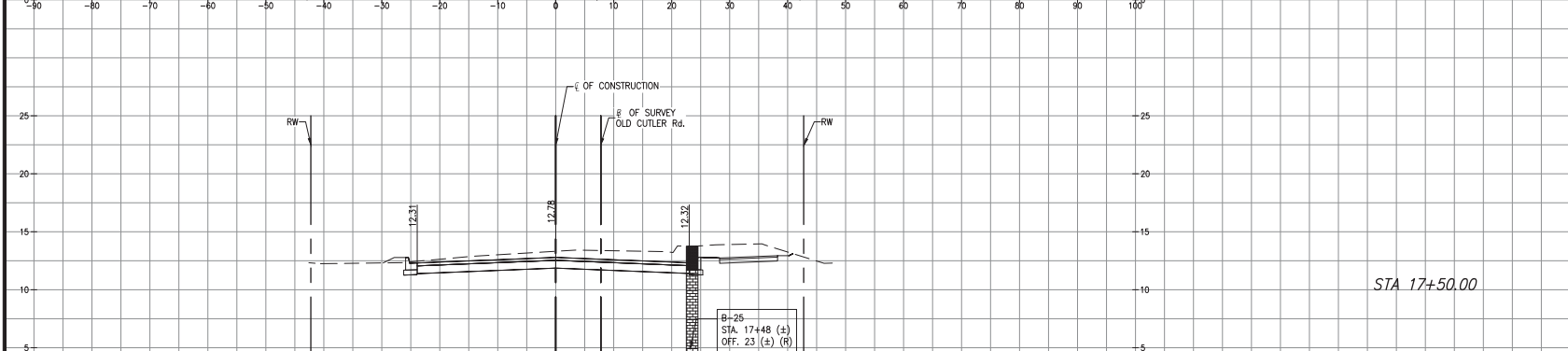
Total Volume Table				
Station	Fill Area	Cut Area	Fill Volume	Cut Volume
16+50.00	4.97	36.96	11.35	61.94

OLD CUTLER RD.



STA 17+00.00

Total Volume Table				
Station	Fill Area	Cut Area	Fill Volume	Cut Volume
17+00.00	1.97	67.15	6.42	96.40



STA 17+50.00

OLD CUTLER RD. &
SW 184 ST (EUREKA DR.)

Total Volume Table				
Station	Fill Area	Cut Area	Fill Volume	Cut Volume
17+50.00	0.66	94.56	2.43	149.74

LEGEND	
	TOPSOIL
	SAND
	LIMESTONE FRAGMENT
	LIMESTONE
	GROUNDWATER LEVEL

SCALE
1"=10' HORIZONTAL
1"=5' VERTICAL

REVISIONS					
DATE	BY	DESCRIPTION	DATE	BY	DESCRIPTION

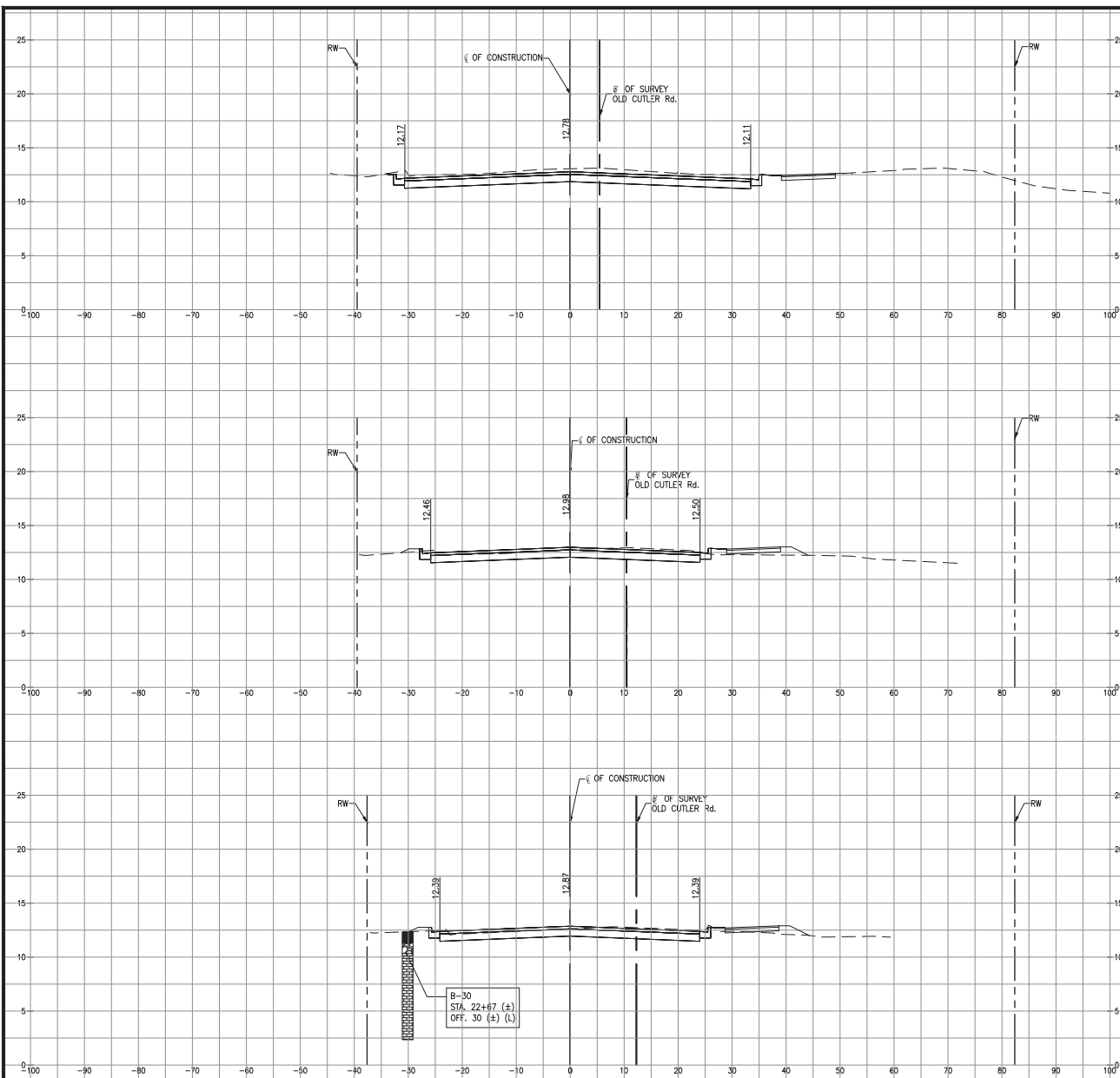
MARLIN
ENGINEERING
AYCEL ABIN FREDA | P.E. No.: 77550
3363 W. COMMERCIAL Blvd, Ste. 110 | Ft. Lauderdale, FL 33309
P: 954.870.5070 | C.A. No. 6104

DESIGNED BY	NAME	DATE	DRAWN BY	NAME	DATE
	R.L.			M.P.	
CHECKED BY	A.F.		CHECKED BY	A.F.	
SUPERVISED BY:					

DEPARTMENT OF TRANSPORTATION AND PUBLIC WORKS
HIGHWAY DIVISION
MIAMI-DADE COUNTY
STEPHEN P. CLAW, CHIEF
1800 N.W. 25th St.
MIAMI, FLORIDA 33128

CROSS SECTIONS

K:\ISSUES\20200119\0405\0405\020-12-18- Old Cutler Roundabouts\SW 184 ST\Plan\Sections\SW 184 ST North Corridor.dwg New 04, 2021 - 5:54pm JFB/BER



STA 21+50.00

STA 22+00.00

STA 22+50.00

OLD CUTLER RD. &
SW 184 ST (EUREKA DR.)

Total Volume Table

Station	Fill Area	Cut Area	Fill Volume	Cut Volume
21+50.00	1.53	88.64	1.26	81.72

OLD CUTLER RD.

Total Volume Table

Station	Fill Area	Cut Area	Fill Volume	Cut Volume
22+00.00	8.87	48.61	9.17	126.79

Total Volume Table

Station	Fill Area	Cut Area	Fill Volume	Cut Volume
22+50.00	8.75	38.78	15.65	80.75

LEGEND

- TOPSOIL
- SAND
- LIMESTONE FRAGMENT
- LIMESTONE
- GROUNDWATER LEVEL

REVISIONS

DATE	BY	DESCRIPTION	DATE	BY	DESCRIPTION

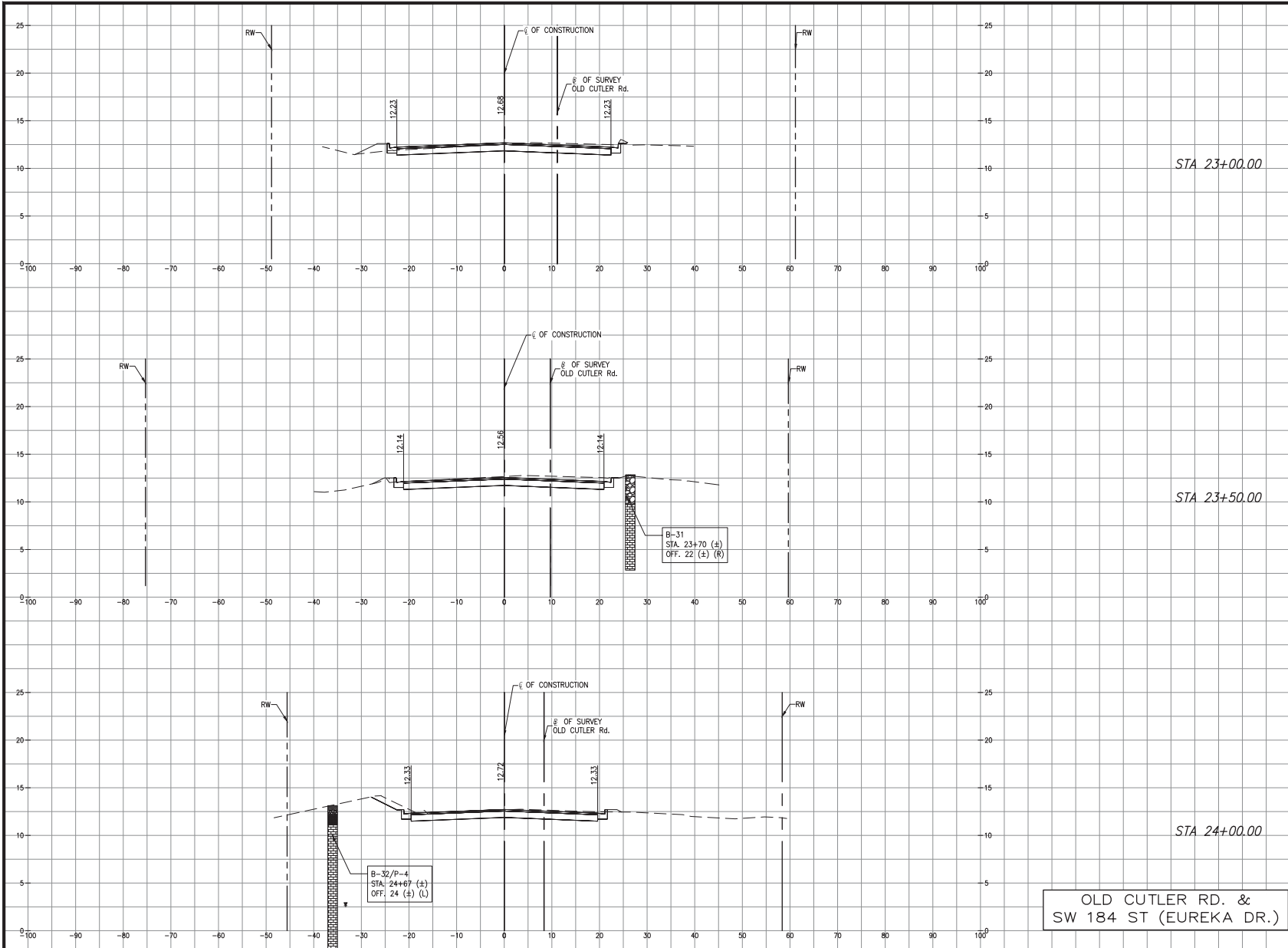
MARLIN
ENGINEERING
ARCEL AMN FREDA | P.E. No.: 77550
3363 W. COMMERCIAL Blvd. Ste. 115 | Ft. Lauderdale, FL 33309
P: 954.870.5070 | C.A. No. 6104

DESIGNED BY	NAME	DATE	DRAWN BY	NAME	DATE
CHECKED BY	R.L.		M.F.		
	A.F.		A.F.		
SUPERVISED BY					

DEPARTMENT OF TRANSPORTATION AND PUBLIC WORKS
HIGHWAY DIVISION
MIAMI-DADE COUNTY
STEPHEN F. CLARK, CHIEF
150 N.W. 1ST ST.
MIAMI, FLORIDA 33138

CROSS SECTIONS

K:\DESIGN\202001\0001\EDP\JF20200119\0405\2020-12-18 - Old Cutler Roundabouts\SW 184 ST\WMC\Sections\SW 184 ST\WMC\Sections -SW 184 ST North -Contributing New 04, 2021 - 5/24/2021 - JFEINER



MIAMI-DADE COUNTY DEPARTMENT OF TRANSPORTATION AND PUBLIC WORKS
HIGHWAY DIVISION
OLD CUTLER RD. ROUNDABOUTS AT SW 152 ST & SW 184 ST
PROJECT NO. 20200119 SHEET 63 OF 183

Total Volume Table

Station	Fill Area	Cut Area	Fill Volume	Cut Volume
23+00.00	4.18	34.73	11.71	67.77

OLD CUTLER RD.

Total Volume Table

Station	Fill Area	Cut Area	Fill Volume	Cut Volume
23+50.00	0.88	43.68	4.67	72.72

Total Volume Table

Station	Fill Area	Cut Area	Fill Volume	Cut Volume
24+00.00	0.50	36.97	1.28	74.68

LEGEND

- TOPSOIL
- SAND
- LIMESTONE FRAGMENT
- LIMESTONE
- GROUNDWATER LEVEL

OLD CUTLER RD. &
SW 184 ST (EUREKA DR.)

REVISIONS					
DATE	BY	DESCRIPTION	DATE	BY	DESCRIPTION

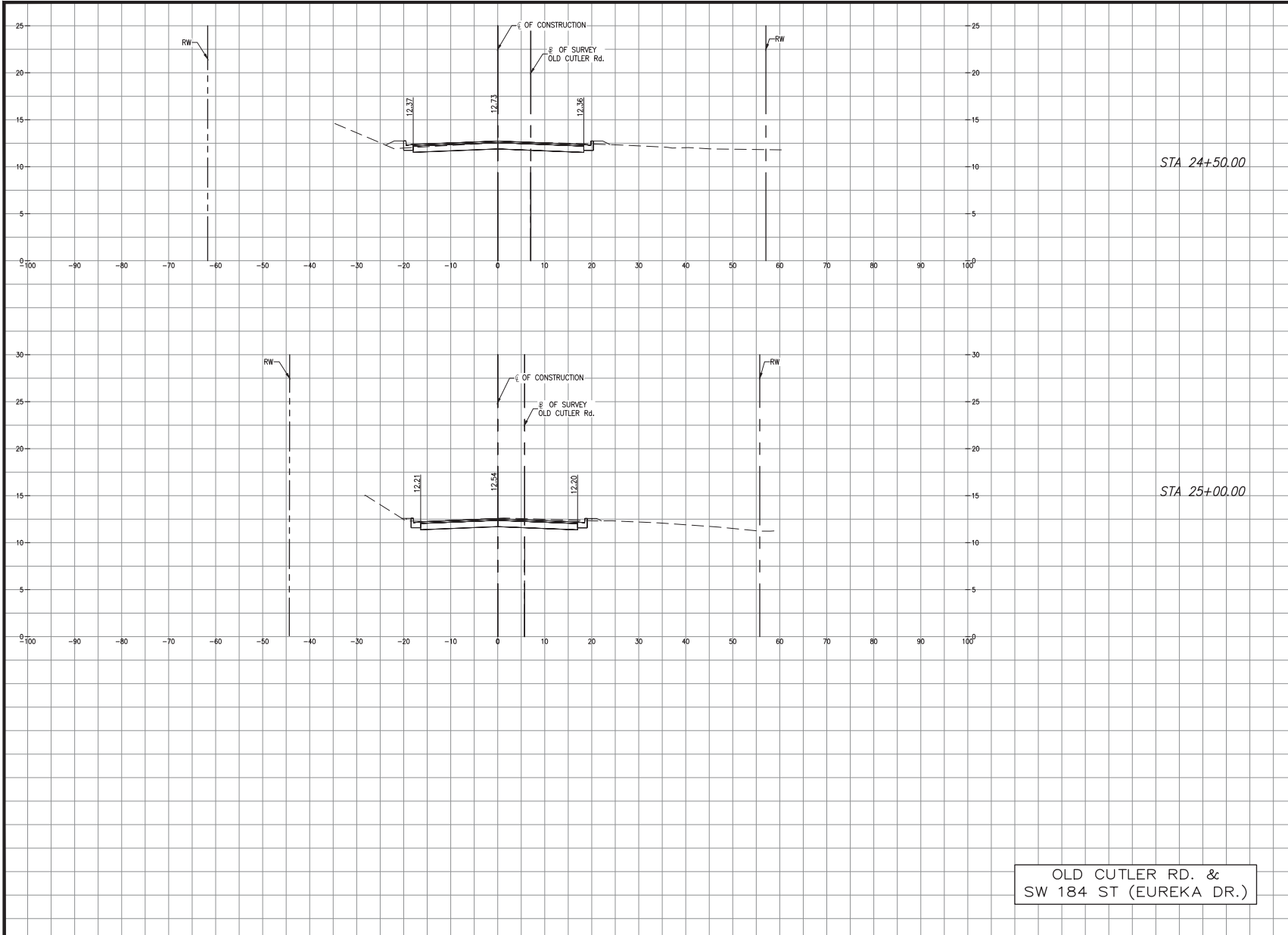
MARLIN
ENGINEERING
ANGEL ABRIN FREDA | P.E. No.: 77550
3343 W. COMMERCIAL BLVD. SU. 115 | FT. LAUDERDALE, FL 33309
P: 954.870.0070 | C.A. No. 6104

DESIGNED BY	NAME	DATE	DRAWN BY	NAME	DATE
CHECKED BY	R.L.			M.P.	
	A.F.			A.F.	

DEPARTMENT OF TRANSPORTATION AND PUBLIC WORKS
MIAMI-DADE COUNTY
HIGHWAY DIVISION
STEPHEN P. CLARK, CHIEF
18184 ST.
MIAMI, FLORIDA 33188

CROSS SECTIONS

K:\DESIGN\202001\0000_EDP_MF202001\F\0400\0200-12-18-04_Cutler Roundabouts\SW 184 ST\WVC\CrossSections_SW 184 ST North Corridor.dwg New 04, 2021 - 5:54pm JFEISER



MIAMI-DADE COUNTY DEPARTMENT OF TRANSPORTATION AND PUBLIC WORKS
HIGHWAY DIVISION
OLD CUTLER RD. ROUNDABOUTS AT SW 152 ST & SW 184 ST
PROJECT NO. 20200119 SHEET 64 OF 183

Total Volume Table

Station	Fill Area	Cut Area	Fill Volume	Cut Volume
24+50.00	3.66	24.97	3.85	57.35

OLD CUTLER RD.

Total Volume Table

Station	Fill Area	Cut Area	Fill Volume	Cut Volume
25+00.00	0.95	31.30	4.27	52.10

OLD CUTLER RD. &
SW 184 ST (EUREKA DR.)

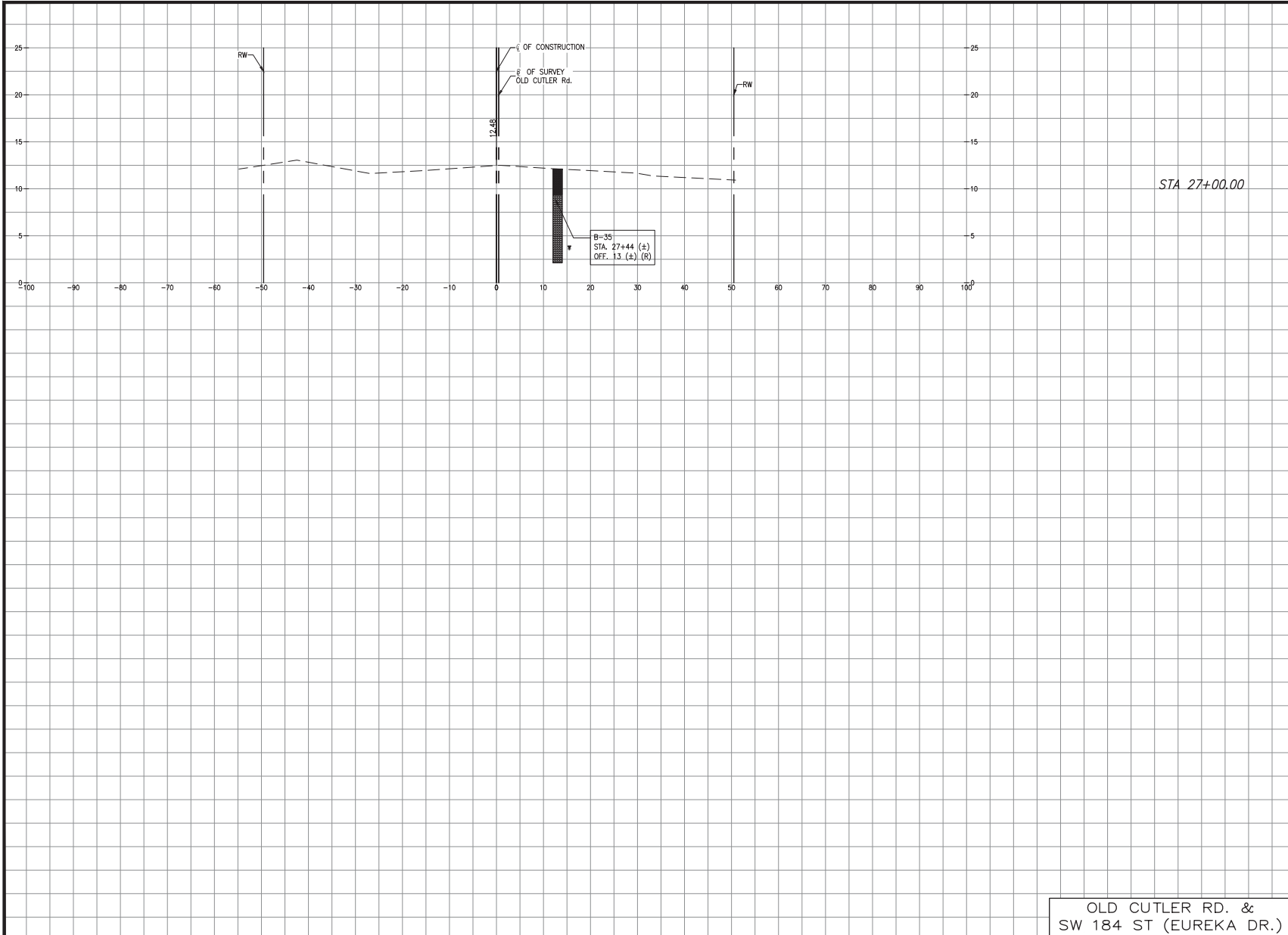
R E V I S I O N S					
DATE	BY	DESCRIPTION	DATE	BY	DESCRIPTION

MARLIN
ENGINEERING
ANSEL ABRIN FREDA | P.E. No.: 77500
3363 W. COMMERCIAL BLVD, Ste. 112 | FT. LAUDERDALE, FL 33309
P: 954.870.5070 | C.A. No. 6104

NAME	DATE	NAME	DATE
DESIGNED BY: RL		DRAWN BY: M.P.	
CHECKED BY: A.F.		CHECKED BY: A.F.	
SUPERVISED BY:			

MIAMI-DADE COUNTY
DEPARTMENT OF TRANSPORTATION AND PUBLIC WORKS
HIGHWAY DIVISION
STEPHEN P. CLARK CENTER
17184 ST
MIAMI, FLORIDA 33188

CROSS SECTIONS



Total Volume Table

Station	Fill Area	Cut Area	Fill Volume	Cut Volume
27+00.00	0.00	0.00	0.00	0.00

OLD CUTLER RD.

OLD CUTLER RD. &
SW 184 ST (EUREKA DR.)

LEGEND

- TOPSOIL
- SAND
- LIMESTONE FRAGMENT
- LIMESTONE
- GROUNDWATER LEVEL

K:\DESIGN\20200119\0405\0405\2020-12-18-04 Cutler Roundabout\SW 184 ST\DWG\CrossSections_SW 184 ST North Corridor.dwg New 04_2021 - 5:55pm JFERBER

REVISIONS

DATE	BY	DESCRIPTION	DATE	BY	DESCRIPTION

MARLIN
ENGINEERING
ANGEL ABIN PIEDA | P.E. No. 77500
3363 W. COMMERCIAL BLVD, Ste. 115 | FT. LAUDERDALE, FL 33309
P: 954.870.5070 | C.A. No. 6104

DESIGNED BY	NAME	DATE	DRAWN BY	NAME	DATE
	RL			M.P.	
CHECKED BY	AF		CHECKED BY	AF	
SUPERVISED BY:					

MIAMI-DADE COUNTY DEPARTMENT OF TRANSPORTATION AND PUBLIC WORKS HIGHWAY DIVISION
STEPHEN P. CLARK CENTER
17188 ST.
MIAMI, FLORIDA 33188

CROSS SECTIONS

GENERAL NOTES

1. TRAFFIC CONTROLS SHALL BE IN ACCORDANCE WITH THE PROJECT PLANS, THE MIAMI-DADE COUNTY PUBLIC WORKS MANUAL AS PERTAINS TO MAINTENANCE OF TRAFFIC, THE CURRENT EDITION OF THE FLORIDA DOT DESIGN STANDARDS (102-600 SERIES), THE STANDARD SPECIFICATION FOR ROAD AND BRIDGE CONSTRUCTION, AND THE MANUAL ON UNIFORM TRAFFIC CONTROL DEVICES AS MINIMUM CRITERIA.
2. THE CONTRACTOR SHALL DEVELOP MAINTENANCE OF TRAFFIC PLAN OF HIS OWN, MEETING THE REQUIREMENTS SPECIFIED IN THE MANUAL ON UNIFORM TRAFFIC CONTROL DEVICES LATEST EDITION AND THE FDOT STANDARD PLANS INDEX 102-600 SERIES. THE CONTRACTOR'S MAINTENANCE OF TRAFFIC PLANS SHALL BE SUBMITTED TO THE ENGINEER FOR REVIEW AND APPROVAL PRIOR TO START OF CONSTRUCTION. THE PLANS SHALL BE SIGNED AND SEALED BY A PROFESSIONAL ENGINEER REGISTERED IN THE STATE OF FLORIDA.
3. TEMPORARY PAVEMENT SHALL CONSIST OF A MINIMUM OF 6 INCH LIMEROCK BASE, PRIME COAT AND 1-1/2 INCHES TYPE S ASPHALTIC CONCRETE. THE BASE LAYER SHALL BE PLACED OVER A FIRM, UNYIELDING, WELL-COMPACTED SUBGRADE. COST OF CONSTRUCTION AND REMOVAL OF TEMPORARY PAVEMENT TO BE INCLUDED IN PAY ITEM 102-1, MAINTENANCE OF TRAFFIC.
4. THE CONTRACTOR SHALL IMMEDIATELY REPAIR ALL POTHoles THAT DEVELOP WITHIN THE PROJECT LIMITS AND WILL MAINTAIN A SUPPLY OF COLD MIX ON THE PROJECT SITE TO EXPEDITE THOSE REPAIRS. COST OF REPAIR TO BE INCLUDED IN PAY ITEM 102-1, MAINTENANCE OF TRAFFIC.
5. NOTIFICATION OF LANE CLOSURES OR TEMPORARY DETOURS SHALL BE ACCOMPLISHED 14 WORKING DAYS PRIOR TO CLOSURE OR DETOUR BY COORDINATING WITH DADE COUNTY PUBLIC WORKS DEPARTMENT AND DADE COUNTY TRAFFIC OPERATIONS.
6. THE CONTRACTOR SHALL NOTIFY LAW ENFORCEMENT AND FIRE PROTECTION SERVICES TWENTY-FOUR (24) HOURS IN ADVANCE OF A DETOUR IN ACCORDANCE WITH SECTION 336.07 OF THE FLORIDA STATUTES.
7. AT THE DISCRETION OF THE ENGINEER, IF A LANE CLOSURE CAUSES EXTENDED CONGESTION OR DELAY, THE CONTRACTOR SHALL BE DIRECTED TO REOPEN THE CLOSED LANE(S) UNTIL SUCH TIME THAT THE TRAFFIC FLOW HAS RETURNED TO AN ACCEPTABLE LEVEL.
8. THE TRAFFIC AND TRAVEL WAYS SHALL NOT BE ALTERED BY THE CONTRACTOR TO CREATE A WORK ZONE UNTIL ALL LABOR AND MATERIAL ARE AVAILABLE FOR THE CONSTRUCTION IN THAT AREA.
9. LANE CLOSURE SHALL OCCUR ONLY DURING NON-PEAK HOURS ON NONEVENT DAYS/NIGHTS. NO INTERRUPTION TO TRAFFIC IS PERMITTED FROM MONDAY-FRIDAY 7-9 A.M. AND 4-6 P.M. OR ON WEEKENDS AND HOLIDAYS.
10. REGULATORY SPEED ESTABLISHED WITHIN THE WORK ZONE TRAVEL WAYS SHALL BE 30 M.P.H. REDUCED SPEED AND REGULATORY SPEED SIGNS SHALL BE INSTALLED ON SEPARATE POSTS IN ACCORDANCE WITH THE STANDARD INDEXES.
11. CONTRACTOR SHALL MAINTAIN ACCESS TO PRIVATE PROPERTY DURING ALL PHASES OF CONSTRUCTION. LOCAL RESIDENTS WITHIN THE AREA OF CONSTRUCTION SHALL BE GIVEN ACCESS TO THEIR PROPERTY DURING ALL PHASES OF CONSTRUCTION. LOCAL RESIDENTS INCLUDE ALL COMMERCIAL ESTABLISHMENTS AND BUSINESSES.
12. SIGNS ARE TO BE LOCATED BEFORE EACH BUSINESS OR SHOPPING PLAZA ENTRANCE WHERE CONSTRUCTION NEGATIVELY IMPACTS THE ACCESS TO THE BUSINESS OR SHOPPING PLAZA OR AS DIRECTED BY THE ENGINEER. TWO SIGNS WILL TYPICALLY BE REQUIRED AT EACH ENTRANCE. SIGNS ARE TO BE DISPLAYED AS DESCRIBED IN INDEX 600 OF THE ROADWAY AND TRAFFIC DESIGN STANDARDS.
13. AS DETERMINED BY THE ENGINEER, THE CONTRACTOR SHALL COVER WORK ZONE SIGNS WHEN CONDITIONS NO LONGER WARRANT THEIR USE. COST OF COVERING AND UNCOVERING THE SIGNS SHALL BE INCLUDED IN PAY ITEM 102-1, MAINTENANCE OF TRAFFIC.
14. CONTRACTOR SHALL REMOVE, RELOCATE, OR COVER ANY EXISTING OR PROPOSED SIGNS THAT CONFLICT WITH THE TRAFFIC CONTROL PLANS. WHEN THE CONFLICT NO LONGER EXISTS, THE CONTRACTOR SHALL RESTORE THE SIGNS TO THEIR ORIGINAL POSITION. COST OF TEMPORARILY REMOVING, RELOCATING, COVERING, AND RESTORING THE SIGNS SHALL BE INCLUDED IN THE PAY ITEM 102-1, MAINTENANCE OF TRAFFIC.
15. EACH EXISTING STREET NAME AND TRAFFIC SIGN AFFECTED BY CONSTRUCTION SHALL BE RELOCATED AND MAINTAINED IN AN APPROPRIATE LOCATION FOR THE DURATION OF THE PROJECT. WHEN NO LONGER AFFECTED BY CONSTRUCTION, THESE SIGNS SHALL BE RESTORED IN THEIR ORIGINAL POSITION. COST OF TEMPORARILY RELOCATING AND RESTORING THE SIGNS SHALL BE INCLUDED IN PAY ITEM 102-1, MAINTENANCE OF TRAFFIC.
16. THE CONTRACTOR SHALL NOT PROPOSE ANY ALTERNATIVE TRAFFIC CONTROL PLAN THAT REDUCES THE NUMBER OF TRAVEL LANES SHOWN ON THE CONTRACT TRAFFIC CONTROL PLANS.
17. ARROWS ON THE TRAFFIC CONTROL PLAN DENOTE THE DIRECTION OF TRAFFIC ONLY AND DO NOT REFLECT PAVEMENT MARKINGS UNLESS SPECIFICALLY NOTED.
18. CONTRACTOR SHALL BE RESPONSIBLE FOR THE IMMEDIATE REMOVAL OF STORM WATER FROM ROADWAYS UTILIZED FOR MAINTAINING TRAFFIC IN A MANNER APPROVED BY THE ENGINEER. COST FOR REMOVING THE WATER SHALL BE INCLUDED IN PAY ITEM 102-1, MAINTENANCE OF TRAFFIC.
19. FOR DROP-OFF, THE CONTRACTOR'S ATTENTION IS DIRECTED TO FDOT STANDARD INDEX NO. 102-600, SHEET 7 OF 10. THE CONTRACTOR SHALL USE SHOULDER TREATMENT DETAIL WHEN NO BARRIERS ARE REQUIRED IN THE PLANS.
20. DURING ASPHALT CONSTRUCTION OPERATIONS, NO MORE THAN 1/4" DROP-OFF BETWEEN ADJACENT TRAVEL LANES OR AT TRANSVERSE JOINTS SHALL BE ALLOWED WHEN LANES ARE OPEN TO TRAFFIC. WHERE DROP OFF CONDITIONS EXIST, THE SIGNING FOR UNEVEN PAVEMENT SHALL BE INSTALLED FOR THE DURATION OF THE CONDITION (WB-9AP).
21. THE CONTRACTOR IS TO PLACE TEMPORARY OR REMOVABLE PAVEMENT MARKINGS BETWEEN EACH LAYER OF PAVEMENT, AND IS RESPONSIBLE FOR THE TEMPORARY RELOCATION OF STOP BARS & STOP SIGNS AS APPLICABLE. PAVEMENT MARKINGS AND BARRICADES PLACEMENT SHALL BE APPROPRIATELY COORDINATED.
22. THE CONTRACTOR SHALL REMOVE ANY EXISTING OR TEMPORARY PAVEMENT MARKINGS THAT CONFLICT WITH THE TRAFFIC CONTROL PLANS. GRINDING OR MILLING SHALL ONLY BE PERMITTED IN NON-TRAFFIC AREAS. COST OF REMOVAL OF TEMPORARY PAVEMENT MARKINGS, REGARDLESS OF METHOD, IS INCLUDED IN THE RELATED PAY ITEMS. USE OF BLACK PAINT TO COVER EXISTING AND/OR TEMPORARY PAVEMENT MARKINGS IS PROHIBITED.
23. TEMPORARY LANE TRANSITIONS, SHIFTS, AND CROSSOVERS SHALL HAVE SOLID LANE AND EDGE LINES FOR THE LENGTH OF THE TRANSITION, SHIFT OR CROSSOVER. IN ADDITION, SOLID LANE AND EDGE LINES SHALL EXTEND 100 FT. ON THE TANGENT SECTION BEYOND EACH END OF THESE CROSSOVERS OR TRANSITION AREAS. COST OF THE TEMPORARY RPMs SHALL BE INCLUDED IN PAY ITEM 102-1, MAINTENANCE OF TRAFFIC.
24. TEMPORARY RAISED PAVEMENT MARKERS (RPMs) SHALL BE INSTALLED ON THE EDGE, CENTER, AND LANE LINES OF ALL CROSS-OVERS, TRANSITIONS, AND TANGENT SECTIONS WITHIN THE WORK ZONE WHERE THE VEHICLE PATHS ARE ALTERED. THE SPACING FOR THESE RPMs SHALL BE 40 FT. ON CENTERS FOR TANGENT SECTIONS AND 5 FT. FOR TRANSITIONS, CURVES, AND CROSSOVERS. THE RPMs SHALL EXTEND 100 FT. ON THE TANGENT SECTION BEYOND EACH END OF THESE CROSSOVERS OR TRANSITION AREAS. COST OF THE TEMPORARY RPMs SHALL BE INCLUDED IN THE PAY ITEM 102-1, MAINTENANCE OF TRAFFIC.
25. CONTRACTOR SHALL NOTIFY MIAMI-DADE COUNTY TRAFFIC SIGNS AND SIGNALS DIVISION LOCATED AT 7100 NW 36 STREET, MIAMI, FLORIDA 33166 AND PHONE NO. (305) 592-3470, 48 HOURS PRIOR TO ANY MODIFICATION OF AN EXISTING TRAFFIC SIGNAL SYSTEM. THE CONTRACTOR SHALL HAVE FULL RESPONSIBILITY FOR THE MAINTENANCE OF THE EXISTING OR TEMPORARY TRAFFIC SIGNAL(S) WITHIN THE PROJECT LIMITS. COST OF RELOCATING TRAFFIC SIGNAL HEADS, PROVIDING AND REMOVING TEMPORARY SIGNALS, AND MAINTAINING THE EXISTING TEMPORARY TRAFFIC SIGNAL SHALL BE INCLUDED IN PAY ITEM 102-1, MAINTENANCE OF TRAFFIC.
26. OMITTED.
27. THE CONTRACTOR SHALL MAINTAIN ON-LINE COMMUNICATION OF EXISTING OR TEMPORARY SIGNALIZATION VIA INTERCONNECT OR PHONE LINE CONSTRUCTION. CONTRACTORS SHALL PROVIDE TEMPORARY LINES AND CONNECTIONS IF NECESSARY. COST OF MAINTAINING COMMUNICATION, INCLUDING TEMPORARY LINES AND CONNECTIONS SHALL BE INCLUDED IN PAY ITEM 102-1, MAINTENANCE OF TRAFFIC.
28. INTERSECTIONS SHALL BE RECONSTRUCTED WORKING ON A CONTINUOUS DAILY BASIS UNTIL COMPLETE AND UNTIL STRUCTURAL COURSE IS IN PLACE.
29. AT ALL INTERSECTING STREETS, NO LESS THAN ONE "ROAD CONSTRUCTION AHEAD" SIGN AND ONE "END CONSTRUCTION" SIGN MUST BE INSTALLED. (TWO EACH FOR STREETS WITH MEDIAN).
30. ADJACENT INTERSECTIONS SHALL NOT BE CONSTRUCTED SIMULTANEOUSLY UNLESS DIRECTED BY THE ENGINEER. FOR EVERY BLOCK, CONSTRUCTION OF DRAINAGE AND SIDEWALK SHOULD BE CONCURRENT WITH ROADWAY CONSTRUCTION.
31. MOT TRANSITIONS AND TEMPORARY INTERSECTION CROSSOVERS WHERE CONSTRUCTION HAS CAUSED GRADE DIFFERENCES BETWEEN THE EXISTING AND NEW ROADWAYS SHALL BE CONSTRUCTED USING A 1:20 TYPE S ASPHALT CONCRETE SLOPE TO ACCOMMODATE VEHICULAR TRAFFIC FROM ANY DIRECTION. ALL MATERIAL, WORK, INCLUDING ITS REMOVAL, SHALL BE INCLUDED IN PAY ITEM 102-1, MAINTENANCE OF TRAFFIC.
32. COORDINATION WITH DADE COUNTY PUBLIC WORKS DEPARTMENT WILL BE REQUIRED.
33. PAVED TEMPORARY CONNECTIONS SHALL BE PROVIDED AT INTERSECTIONS AS DIRECTED BY THE ENGINEER.
34. TRAFFIC SHALL BE MAINTAINED ON A PAVED, DUST-FREE SURFACE AT ALL TIMES.
35. THE CONTRACTOR MUST MAINTAIN TWO LANES OF TRAFFIC AT ALL TIMES. ALL LANES TO BE A MINIMUM OF 10 FT. IN WIDTH.
36. PLANS INDICATE ONLY THE PHASES FOR CONSTRUCTION. MILLING AND RESURFACING OPERATIONS MUST FOLLOW THE SAME FDOT 102-600 INDEX SERIES, AND MUST BE ACCOMPLISHED AT HOURS APPROVED BY THE ENGINEER.
37. CONTRACTOR SHALL BE RESPONSIBLE FOR MAINTAINING ROADWAY LIGHTING ILLUMINATION LEVELS DURING CONSTRUCTION. THE CONTRACTOR SHALL MAINTAIN EXISTING LIGHTING OR SUPPLY TEMPORARY LIGHTING UNTIL THE PROPOSED SYSTEM IS IN OPERATION. THE CONTRACTOR SHALL SUBMIT A COMPLETE PROPOSED METHOD OF MAINTAINING LIGHTING FOR APPROVAL BY COUNTY ENGINEER PRIOR TO BEGINNING WORK. REFER TO ROADWAY LIGHTING PLANS AND OTHER APPLICABLE DRAWINGS FOR INFORMATION ON EXISTING AND PROPOSED ROADWAY LIGHTING AND DETAIL OF ROADWAY CONSTRUCTION. IF ANY PART OF THE SYSTEM IS OWNED BY F.P.&L, COORDINATE CLOSELY WITH F.P.&L.
38. CONTRACTOR SHALL BE RESPONSIBLE TO PROVIDE EROSION CONTROL MEASURES TO PREVENT CLOG OF PROPOSED DRAINAGE STRUCTURES AND SEDIMENT INTRUSION ON WATERWAYS DURING CONSTRUCTION. THESE MEASURES SHALL BE APPROVED BY THE ENGINEER AND CONFORM WITH CURRENT EDITION OF THE FDOT DESIGN STANDARDS FOR EROSION CONTROL (570 SERIES).
39. CONTRACTOR MUST MAINTAIN DRAINAGE AT ALL TIMES. THE EXISTING DRAINAGE SYSTEM SHALL BE KEPT OPERATIONAL OR TEMPORARY DRAINAGE PROVIDED WHILE THE PROPOSED DRAINAGE SYSTEM IS BEING CONSTRUCTED. THE CONTRACTOR SHALL PROVIDE THE NECESSARY TEMPORARY DRAINAGE AS APPROVED BY THE ENGINEER. ALL COSTS SHALL BE INCLUDED IN THE PAY ITEM 102-1, MAINTENANCE OF TRAFFIC.
40. AT THE END OF EACH WORK DAY OR WHENEVER THE WORK ZONE BECOMES INACTIVE, ANY DROP OFF GREATER THAN 6 INCHES (150 MM) ADJACENT TO THE PEDESTRIAN, BICYCLE, AND WHEELCHAIR TRAVEL PATHS SHALL BE BACKFILLED FLUSH WITH SAID PATHS OR PROTECTED WITH TEMPORARY FENCE, CONCRETE BARRIER WALL OR APPROVED HANDRAIL. COST SHALL BE INCLUDED IN THE PAY ITEM 102-1, MAINTENANCE OF TRAFFIC.
41. PEDESTRIAN, BICYCLE, AND WHEELCHAIR TRAFFIC SHALL BE MAINTAINED AND GUIDED USING APPROVED WARNING LIGHTS, SIGNING, AND DELINEATION DEVICES ON AT LEAST ONE SIDE OF THE PROJECT AT ALL TIMES THROUGHOUT THE PROJECT LIMITS. THE TRAVEL PATH SHALL BE A MINIMUM OF 4 FT. WIDE WITH A SMOOTH SURFACE THAT IS NOT SLICK AND IT SHOULD BE RAMPED AS NECESSARY FOR CONTINUITY. COST SHALL BE INCLUDED IN THE PAY ITEM 102-1, MAINTENANCE OF TRAFFIC.
42. THE CONTRACTOR SHALL FURNISH AND MAINTAIN VARIABLE MESSAGE SIGNS AS DIRECTED BY THE ENGINEER. MESSAGES FOR THE VMS SHALL BE AS DIRECTED BY THE ENGINEER. THE VMS SHALL BE IN PLACE ONE WEEK BEFORE THE START OF ANY WORK ITEMS AFFECTING THE EXISTING VEHICULAR AND PEDESTRIAN TRAFFIC. VMS INSTALLATION, OPERATION, AND REMOVAL TO BE INCLUDED IN THE PAY ITEM 102-1, MAINTENANCE OF TRAFFIC.
43. THE CONTRACTOR MUST PROVIDE FLASHING ARROW BOARD FOR ANY LANE THAT IS CLOSED OR DIVERTED.

K:\DESIGN\2020019\000_EBP_072020019\0001\19\0001\2020-12-16 - Old Cutler Roundabouts\184 ST\W\W\W\PLAN\Draw New 04. 2021 - 5:25pm JFBREB

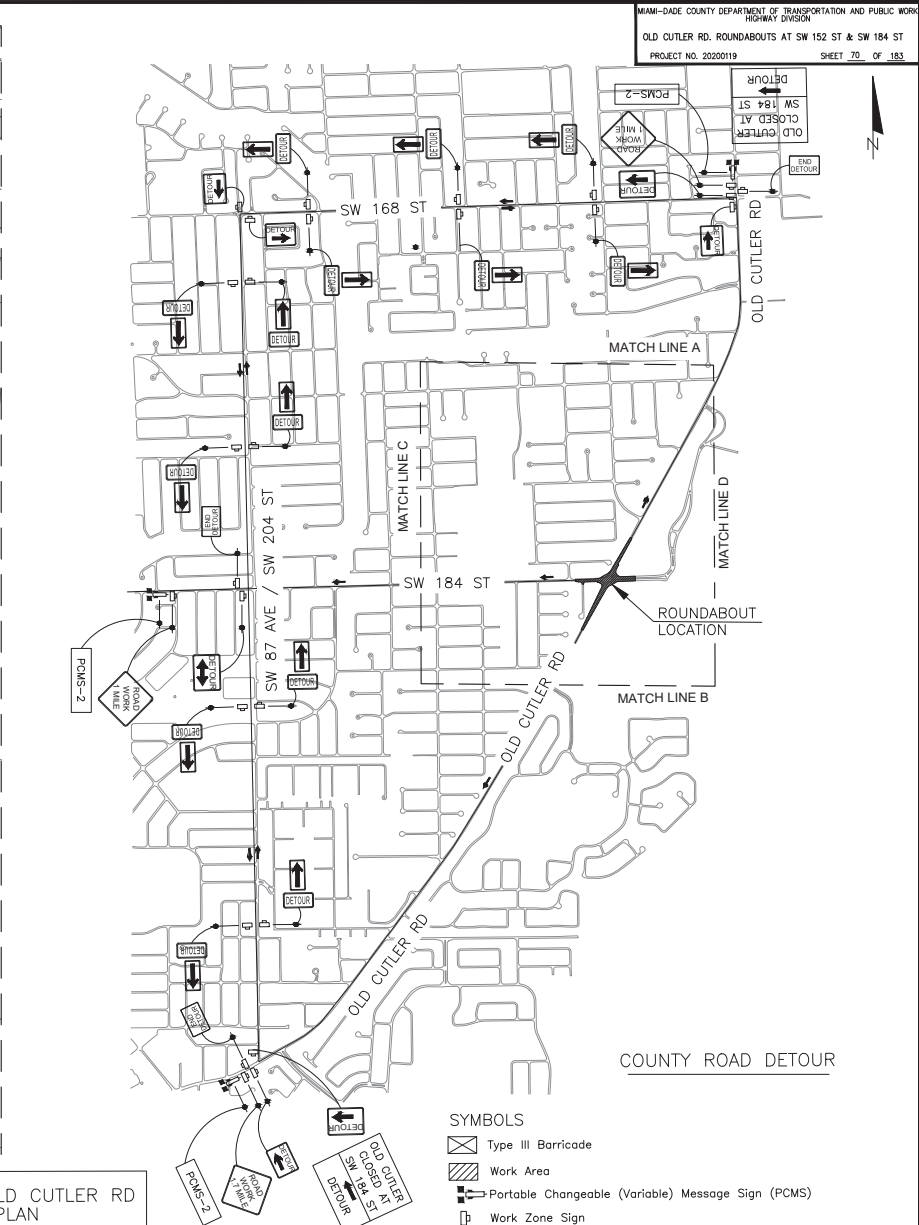
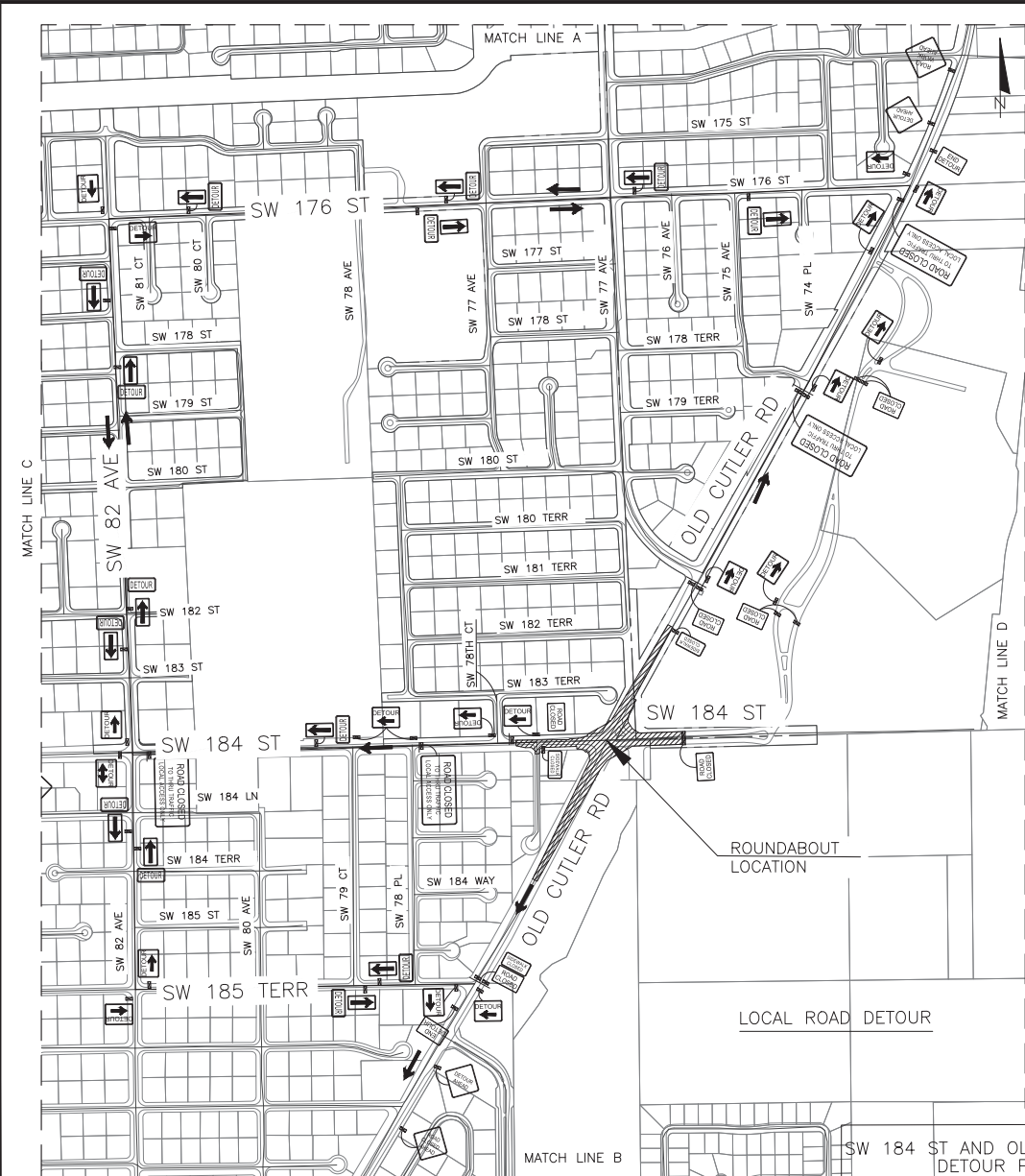
REVISIONS								
DATE	BY	DESCRIPTION	DATE	BY	DESCRIPTION	DATE	BY	DESCRIPTION

MARLIN
ENGINEERING
ARCEL ABRN PREDA | P.E. No.: 77550
3363 W. COMMERCIAL Blvd. Ste. 113 | Ft. Lauderdale, FL 33309
P: 954.870.5070 | C.A. No. 6104

DESIGNED BY	NAME	DATE	DRAWN BY	NAME	DATE

MIAMI-DADE COUNTY
DEPARTMENT OF TRANSPORTATION AND PUBLIC WORKS
HIGHWAY DIVISION
STEPHEN P. CLARK, CHIEF ENGINEER
MIAMI, FLORIDA 33138

MAINTENANCE OF TRAFFIC
GENERAL NOTES



REVISIONS					
DATE	BY	DESCRIPTION	DATE	BY	DESCRIPTION

MARLIN
ENGINEERING
ANGEL ABRIL FREDA | P.E. No.: 77550
3363 W. COMMERCIAL BLVD. Ste. 113 | Ft. Lauderdale, FL 33309
P: 954.870.5070 | C.A. No. 6104

DESIGNED BY	NAME	DATE	DRAWN BY	NAME	DATE
CHECKED BY	NAME	DATE	CHECKED BY	NAME	DATE

MIAMI-DADE COUNTY
DEPARTMENT OF TRANSPORTATION AND PUBLIC WORKS
HIGHWAY DIVISION
STEPHEN P. CLARK, DIVISION MANAGER
100 N.W. 25th St.
MIAMI, FLORIDA 33128

MAINTENANCE OF TRAFFIC

K:\2022\20220119\000_EBP_192200119\000\2020-12-16 - Old Cutler Roundabouts\SW 184 ST\WORK\MP_FINAL.dwg New 04. 2021 - 5:25pm JFRBER

NOTES

1. ALL SIGNING AND PAVEMENT MARKINGS SHALL CONFORM WITH THE CURRENT EDITION OF THE MANUAL OF UNIFORM TRAFFIC CONTROL DEVICES FOR STREETS AND HIGHWAYS AND THE FLORIDA DEPARTMENT OF TRANSPORTATION STANDARD PLANS.
2. ALL EXISTING SIGNS ARE TO REMAIN UNLESS OTHERWISE SPECIFIED. BEFORE STARTING THE PROJECT, THE CONTRACTOR WILL REVIEW EXISTING SIGNS SHOWN ON THE PLANS TO BE RELOCATED OR TO REMAIN. THE CONTRACTOR WILL NOTIFY IN WRITING TO THE PROJECT ENGINEER OF ANY MISSING SIGNS BEFORE CONSTRUCTION STARTS. SIGNS DAMAGED BY THE CONTRACTOR'S OPERATIONS WILL BE REPLACED AT NO COST TO THE DEPARTMENT. IF EXISTING SIGNS TO BE RELOCATED HAVE A DAMAGED POLE OR A POLE NOT MEETING HEIGHT SPECIFICATION REQUIREMENTS, THE COST OF A NEW POLE WILL BE INCLUDED IN THE RELOCATION BID ITEM.
3. ALL PAVEMENT MARKINGS, MESSAGES, AND ARROWS SHALL BE THERMOPLASTIC UNLESS OTHERWISE NOTED.
4. REFLECTIVE PAVEMENT MARKERS ARE TO BE PLACED ALONG THE ENTIRE LENGTH OF THE PROJECT.
5. MATCH EXISTING PAVEMENT MARKINGS AT THE BEGINNING AND AT THE END OF THE PROJECT AND AT ALL SIDE STREETS WITHOUT JOGS OR OFFSETS.
6. THE CONTRACTOR SHALL REMOVE EXISTING MARKINGS BY FDOT APPROVED METHOD WITHOUT DAMAGE TO THE FRICTION COURSE.
7. SIGN ASSEMBLY LOCATIONS SHOWN ON PLANS WHICH ARE IN CONFLICT WITH LIGHTING, UTILITIES, DRIVEWAYS, WHEELCHAIR RAMPS, ETC. MAY BE ADJUSTED SLIGHTLY AS DIRECTED BY THE ENGINEER. EXTREME LOCATION CHANGES MUST BE APPROVED BY MIAMI-DADE SIGNALS AND SIGNS DIVISION.
8. THE CONTRACTOR SHALL RELOCATE ALL EXISTING POST-MOUNTED STREET NAME AND STOP SIGNS TO A VISIBLE AREA UNDISTURBED BY THE CONSTRUCTION SO AS TO MINIMIZE DAMAGE TO THE SIGNS. NEW STREET NAME SIGNS WILL BE ATTACHED AT THE TOP OF THE NEW STOP SIGNS ON MINOR SIDE STREETS AT THE END OF CONSTRUCTION.
9. EXTRUDED ALUMINUM SIGN SUPPORT CLAMPS ARE NOT ACCEPTABLE. ALL RELOCATED SIGNS MUST COMPLY WITH THE FLORIDA DEPARTMENT OF TRANSPORTATION STANDARD PLANS AS IF THEY WERE NEW SIGNS. IF EXISTING CLAMPS, BRACKETS, POLES, ETC. NEED TO BE REPLACED THE COST SHALL BE INCLUDED IN THE RELOCATION PAY ITEM.
10. ANY SIGNING MATERIALS, INCLUDING SUPPORTS, TO BE REMOVED AS NOTED ON PLAN SHEETS, SHALL BE DELIVERED BY THE CONTRACTOR IN EXISTING CONDITION, IN CARE OF THE STOREKEEPER AT THE MIAMI-DADE COUNTY MAINTENANCE YARD, 7100 NW 36 STREET, MIAMI, FL 33166.
11. REFLECTIVE PAVEMENT MARKERS AS PER FDOT STANDARD PLANS INDEX NO 711-001.

TABULATION OF QUANTITIES - OLD CUTLER ROAD AT SW 152 ST																
PAY ITEM NO.	DESCRIPTION	UNIT	72		73		74		75		76		TOTAL THIS SHEET		GRAND TOTAL	
			PLAN	FINAL	PLAN	FINAL	PLAN	FINAL	PLAN	FINAL	PLAN	FINAL	PLAN	FINAL		
700-1-50	SINGLE POST SIGN, RELOCATE	AS		2									2		2	
700-2-50	MULTI-POST SIGN, GROUND MOUNT, RELOCATE	AS		2									2		2	
700-3-601	SIGN PANEL, REMOVE, UP TO 12 SF	EA		12									15		15	
700-1-11B	SINGLE POST SIGN, F&I GROUND MOUNT, UP TO 12 SF	AS	3	30			3		3		2		41		41	
700-40-02	ROADSIDE SIGNS (SINGLE POST) (12 TO 25 S.F.)	AS	1	2			1		1		1		6		6	
706-3	REFLECTIVE PAVEMENT MARKERS	EA	30	30			664		36		22		782		782	
706-3B	REFLECTIVE PAVEMENT MARKERS (BLUE/BLUE)	EA		1									1		1	
710-90	PAINTED PAVEMENT MARKINGS, FINAL SURFACE	LS											1		1	
711-11-121	THERMOPLASTIC, (WHITE), (SOLID), (6")	LF	1088		2833		1131		592		265		5909		5909	
711-11-123	THERMOPLASTIC, WHITE, SOLID, 12"	LF			346						123		469		469	
711-11-133A	THERMOPLASTIC, STANDARD, WHITE, 12", (SKIP/DOTTED 10-30 OR 3-9) LONGITUDINAL LINES	LF			240								240		240	
711-11-160	THERMOPLASTIC, WHITE, MESSAGE	EA			10				1				11		11	
711-11-170	THERMOPLASTIC, WHITE, ARROW	EA	2		25		2		2				31		31	
711-11-221	THERMOPLASTIC, (YELLOW), (SOLID), (6")	LF	1087		1933		1131		622		473		5246		5246	
711-11-224	THERMOPLASTIC, YELLOW, SOLID, 18"	LF			141				39		14		194		194	
711-11-241	THERMOPLASTIC, (YELLOW), (SKIP), (6")	LF	211		375		18						604		604	
711-14-125	THERMOPLASTIC, PREFORMED, WHITE, SOLID, 24" FOR CROSSWALK	LF			375								375		375	
711-5	GUIDELINES (6" DOTTED) (2'-4' WHITE) (THERMOPLASTIC)	LF			90								90		90	

TABULATION OF QUANTITIES - OLD CUTLER ROAD AT SW 184 ST																
PAY ITEM NO.	DESCRIPTION	UNIT	77		78		79		80		81		TOTAL THIS SHEET		GRAND TOTAL	
			PLAN	FINAL	PLAN	FINAL	PLAN	FINAL	PLAN	FINAL	PLAN	FINAL	PLAN	FINAL		
700-1-50	SINGLE POST SIGN, RELOCATE	AS		2					1				3		3	
700-2-50	MULTI-POST SIGN, GROUND MOUNT, RELOCATE	AS		2									2		2	
700-3-601	SIGN PANEL, REMOVE, UP TO 12 SF	EA		8				1					9		9	
700-1-11B	SINGLE POST SIGN, F&I GROUND MOUNT, UP TO 12 SF	AS	3	33			2		4		8		50		50	
700-40-02	ROADSIDE SIGNS (SINGLE POST) (12 TO 25 S.F.)	AS	1				1		1		2		5		5	
706-3	REFLECTIVE PAVEMENT MARKERS	EA	26	504			72		16		30		650		650	
706-3B	REFLECTIVE PAVEMENT MARKERS (BLUE/BLUE)	EA		1									1		1	
710-90	PAINTED PAVEMENT MARKINGS, FINAL SURFACE	LS											1		1	
711-11-121	THERMOPLASTIC, (WHITE), (SOLID), (6")	LF	1010		2560		1023		770		412		5775		5775	
711-11-122	THERMOPLASTIC, (WHITE), (SOLID), (8")	LF			121						405		526		526	
711-11-123	THERMOPLASTIC, WHITE, SOLID, 12"	LF			431								431		431	
711-11-124	THERMOPLASTIC, STANDARD, WHITE, SOLID, 18"	LF			25						130		155		155	
711-11-125	THERMOPLASTIC, STANDARD, WHITE, SOLID, 24"	LF							13				13		13	
711-11-133A	THERMOPLASTIC, STANDARD, WHITE, 12", (SKIP/DOTTED 10-30 OR 3-9) LONGITUDINAL LINES	LF			180								180		180	
711-11-160	THERMOPLASTIC, WHITE, MESSAGE	EA		9			1				2		12		12	
711-11-170	THERMOPLASTIC, WHITE, ARROW	EA	2		23		3		6		10		44		44	
711-11-221	THERMOPLASTIC, (YELLOW), (SOLID), (6")	LF	1010		2400		1278		652		412		5752		5752	
711-11-224	THERMOPLASTIC, YELLOW, SOLID, 18"	LF			115		60						175		175	
711-11-241	THERMOPLASTIC, (YELLOW), (SKIP), (6")	LF	174		211		30						415		415	
711-14-125	THERMOPLASTIC, PREFORMED, WHITE, SOLID, 24" FOR CROSSWALK	LF			420								420		420	
711-5	GUIDELINES (6" DOTTED) (2'-4' WHITE) (THERMOPLASTIC)	LF			378				142				520		520	

REVISIONS

DATE	BY	DESCRIPTION	DATE	BY	DESCRIPTION	DATE	BY	DESCRIPTION

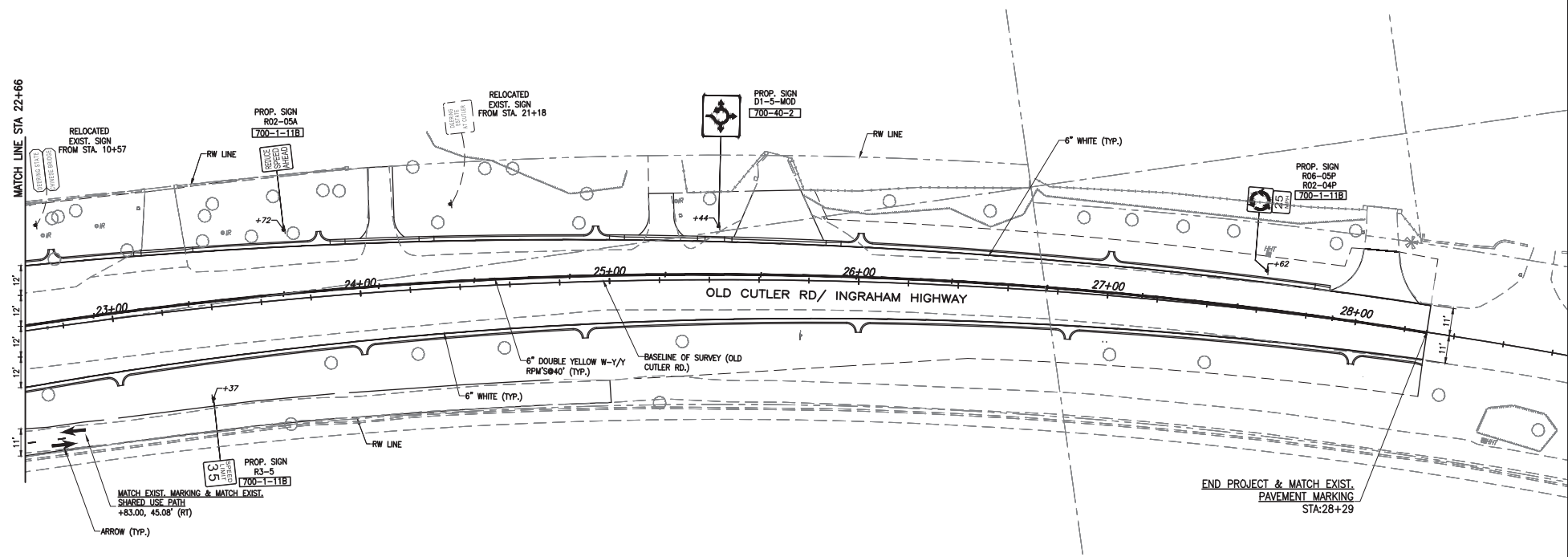
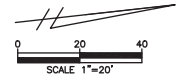
MARLIN
 ENGINEERING
 MICHEL ARN FRED | P.E. No.: 77050
 3363 W. COMMERCIAL, Bldg. 304, 115 | FT. LAUDERDALE, FL 33309
 P: 954.870.9070 | CA. No. 6104

DESIGNED BY	CHECKED BY	NAME	DATE	DRAWN BY	CHECKED BY	NAME	DATE

MIAMI-DADE COUNTY
 DEPARTMENT OF TRANSPORTATION AND PUBLIC WORKS
 HIGHWAY DIVISION
 STEVEN P. CLARK, CHIEF
 MIAMI, FLORIDA 33128

SIGNING & PAVEMENT MARKINGS SUMMARY OF QUANTITIES

K:\DESIGN\2020\16.000_LDP_JT20200119\CAD\2020-12-18- Old Cutler Roundabout\SW 184 ST\DWG\04-SUM-QNTS.dwg Nov 04, 2021 - 5:26pm JFERRE



OLD CUTLER RD. &
SW 152 ST (CORAL REEF DR.)

REVISIONS

DATE	BY	DESCRIPTION	DATE	BY	DESCRIPTION

MARLIN
ENGINEERING
ANGEL ABIN FREDA | P.E. No.: 77550
3343 W. COMMERCIAL BLVD. STE. 115 | FT. LAUDERDALE, FL 33309
P: 954.870.5070 | C.A. No. 6104

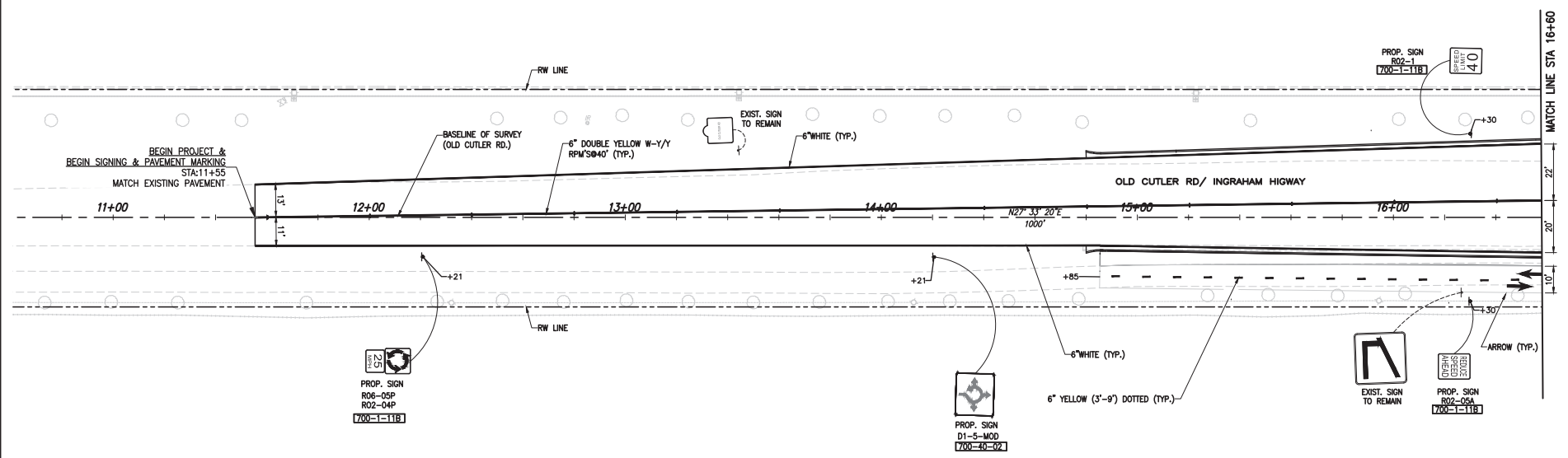
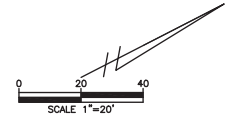
DESIGNED BY	NAME	DATE	DRAWN BY	NAME	DATE
	R.L.			M.P.	
CHECKED BY	A.F.		CHECKED BY	A.F.	

SUPERVISED BY:

MIAMI-DADE COUNTY
DEPARTMENT OF TRANSPORTATION AND PUBLIC WORKS
HIGHWAY DIVISION
STEPHEN P. CLARK, CHIEF
100 N.W. 1ST ST.
MIAMI, FLORIDA 33138

SIGNING & PAVEMENT MARKING PLAN

K:\DESIGN\20220119\0405\2020-12-16-01-Cutler Roundabout\SPR 152 ST\DWG\15-SPKING & PAVEMENT MARKING PLAN.dwg Nov 04, 2021 - 5:27pm JFREBER



OLD CUTLER RD. &
SW 184 ST (EUREKA DR.)

REVISIONS

DATE	BY	DESCRIPTION	DATE	BY	DESCRIPTION

MARLIN
ENGINEERING
ANGEL ABRIN FREDA | P.E. No.: 77550
3363 W. COMMERCIAL BLVD. SUITE 113 | FT. LAUDERDALE, FL 33309
P: 954.870.5070 | C.A. No. 6104

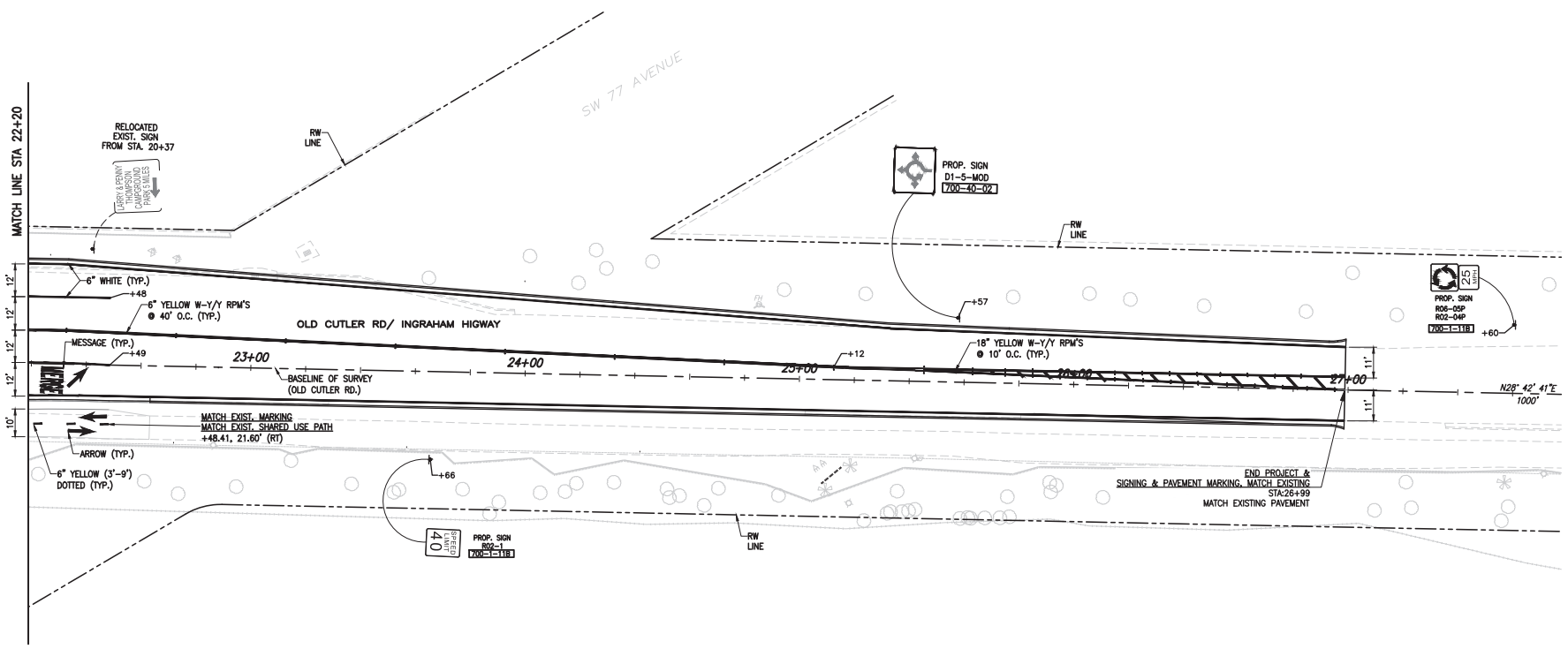
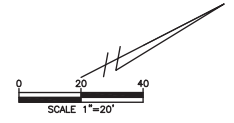
DESIGNED BY	NAME	DATE	DRAWN BY	NAME	DATE
	R.L.			M.P.	
CHECKED BY	A.F.		CHECKED BY	A.F.	

SUPERVISED BY:

MIAMI-DADE COUNTY
DEPARTMENT OF TRANSPORTATION AND PUBLIC WORKS
HIGHWAY DIVISION
STEPHEN S. CLARK, CENTER
100 N.W. 11TH ST.
MIAMI, FLORIDA 33138

SIGNING & PAVEMENT MARKING PLAN

K:\DESIGN\20220119\0405\2020-12-16-Old Cutler Roundabouts\SW 184 ST\SW184-SPRING & PAVEMENT MARKING PLAN.dwg Nov 04, 2021 - 5:28pm JFREIER



OLD CUTLER RD. &
SW 184 ST (EUREKA DR.)

K:\DESIGN\20220119\0405\2020-12-16-04-Cutler Roundabouts\SW 184 ST\SW184-14-SIGNING & PAVEMENT MARKING PLAN.dwg Nov 04, 2021 - 5:28pm JFERBER

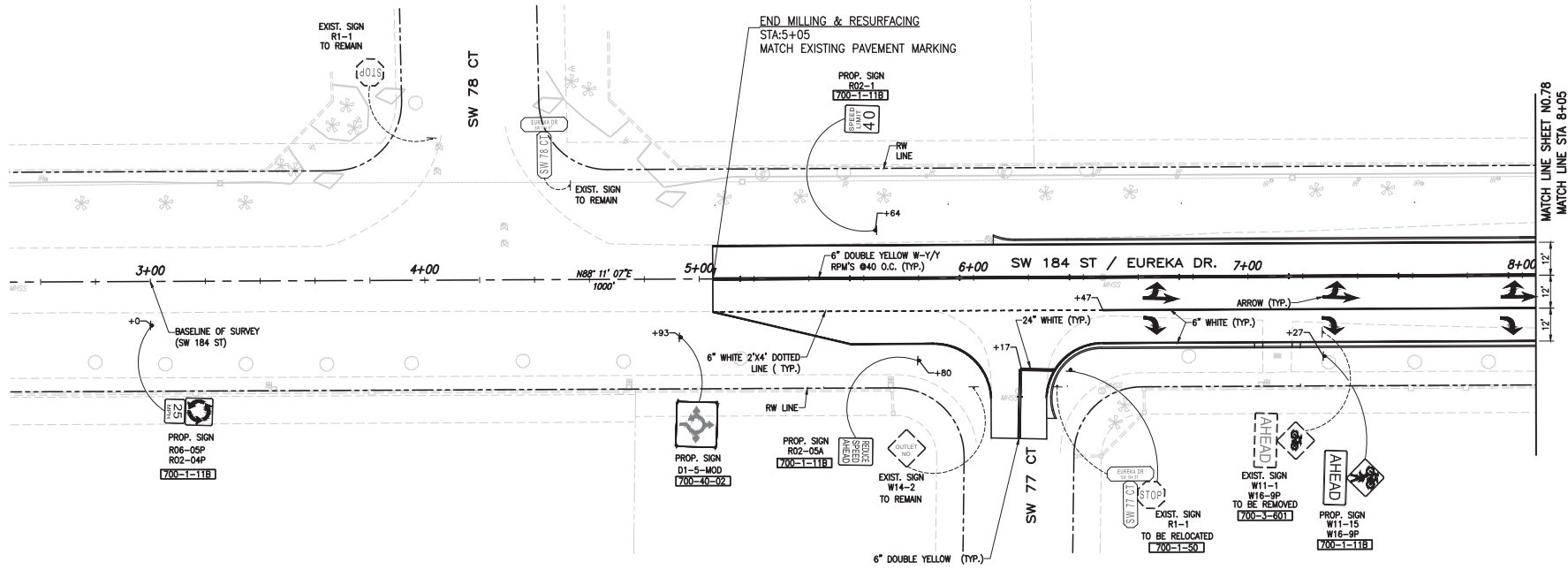
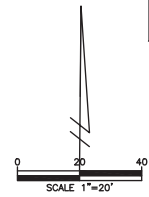
REVISIONS					
DATE	BY	DESCRIPTION	DATE	BY	DESCRIPTION

MARLIN
ENGINEERING
ANGEL ABIN FREDA | P.E. No.: 77550
3363 W. COMMERCIAL BLVD. SUITE 113 | FT. LAUDERDALE, FL 33309
P: 954.870.5070 | C.A. No. 6104

DESIGNED BY	NAME	DATE	DRAWN BY	NAME	DATE
CHECKED BY	A.F.		CHECKED BY	A.F.	
SUPERVISED BY:					

MIAMI-DADE COUNTY
DEPARTMENT OF TRANSPORTATION AND PUBLIC WORKS
HIGHWAY DIVISION
STEPHEN P. CLARK, CENTER
100 N.W. 11TH ST.
MIAMI, FLORIDA 33138

SIGNING & PAVEMENT MARKING PLAN



OLD CUTLER RD. &
SW 184 ST (EUREKA DR.)

K:\DESIGN\20220119\2022\2022-12-16 - Old Cutler Roundabouts\SW 184 ST\SW184-1-50\DWG & PAVEMENT MARKING PLAN.dwg Nov 04, 2021 - 5:28pm JFRSBR

REVISIONS					
DATE	BY	DESCRIPTION	DATE	BY	DESCRIPTION

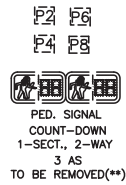
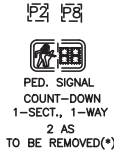
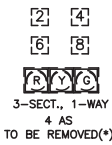
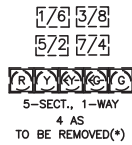
MARLIN
ENGINEERING
ANGEL ABRIL FREDA | P.E. No.: 77550
3363 W. COMMERCIAL BLVD. STE. 113 | FT. LAUDERDALE, FL 33309
P: 954.870.5070 | C.A. No. 6104

DESIGNED BY	NAME	DATE	DRAWN BY	NAME	DATE

MIAMI-DADE COUNTY
DEPARTMENT OF TRANSPORTATION AND PUBLIC WORKS
HIGHWAY DIVISION
STEPHEN P. CLARK CENTER
100 N.W. 1ST ST.
MIAMI, FLORIDA 33138

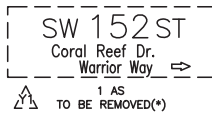
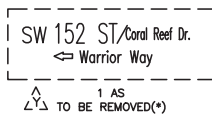
SIGNING & PAVEMENT MARKING PLAN

SIGNAL HEAD DETAILS

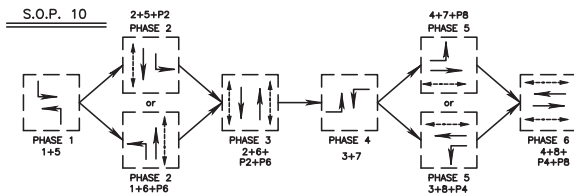


(*) INCLUDED IN COST OF 649-26-3
(**) INCLUDED IN COST OF 646-1-60

INTERNALLY ILLUMINATED STREET NAME SIGN DETAILS



(*) INCLUDED IN COST OF 649-26-3

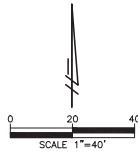
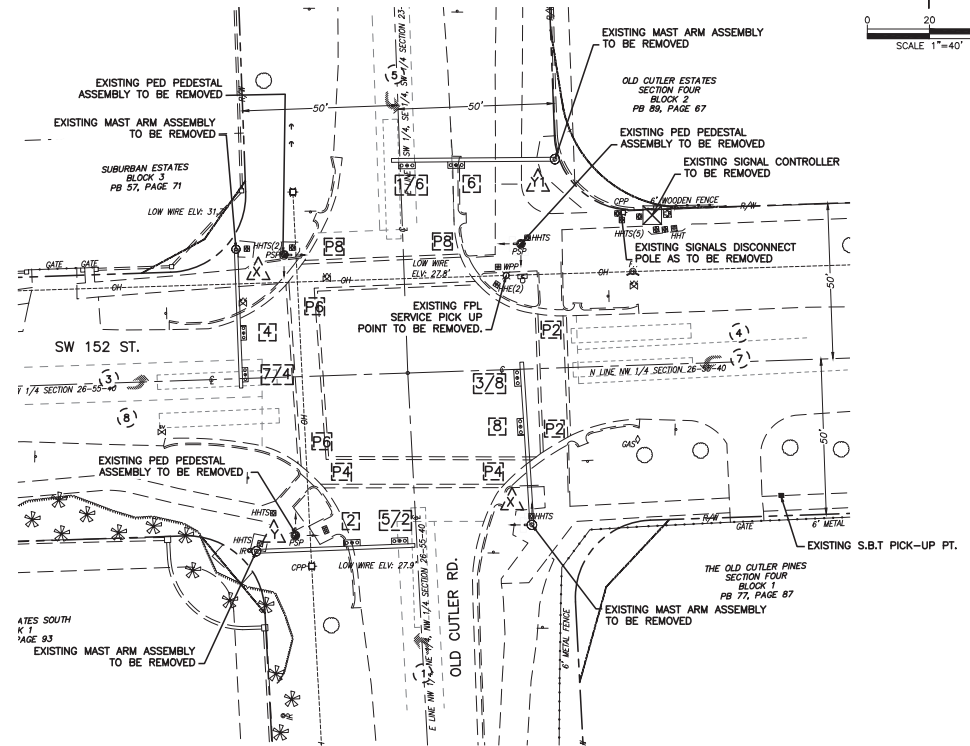


CONTROLLER OPERATIONS:

MAJOR STREET: OLD CUTLER ROAD
MINOR STREET: SW 152 ST
FLASHING OPERATIONS: OLD CUTLER RD: YELLOW
SW 152 ST.: RED
PHASE(S) 1, 2, 4, 5, 7 IS/ARE PROTECTED PERMISSIVE
SIGNAL COORDINATION PHASE IS 3
CONTROLLER IS WIRED/PROGRAMED TO SKIP MOVEMENT(S) 1, 3, 5, 7

DETECTOR FOR LOOPS (TO BE REMOVED)		
M/M/T	# OF LOOPS	# OF DETS.
1	1	1
3	1	1
4	1	1
5	1	1
7	1	1
8	1	1

Vehicle Movement	1	2	3	4	5	6	7	8
Accession to West	181	511	1081	328	181	181		
Accession to East	40	40	40	40	40	40		
A Road to West	121	121	110	10	10	110		
A Road to East	40	40	40	40	40	40		
A Road	20	20	20	20	20	20		
Pedestrian Movement		2	2	2	2	2		2
Red Cross to West				60				
Pedestrian to East					2			
Pedestrian to West				12				



OLD CUTLER RD. & SW 152 ST.
INTERSECTION ID. 3716

REVISIONS					
DATE	BY	DESCRIPTION	DATE	BY	DESCRIPTION

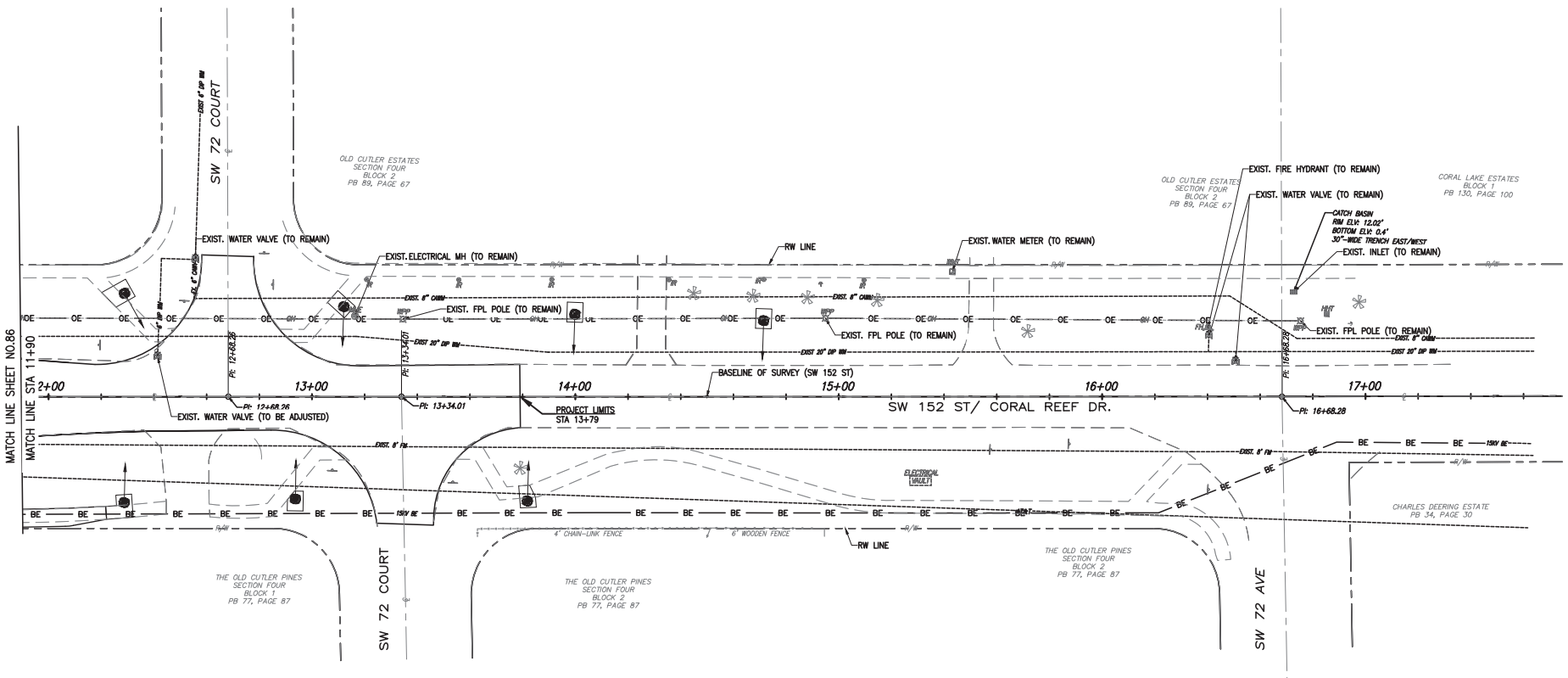
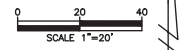
MARLIN
ENGINEERING
ANGEL ABIN FREDA | P.E. No.: 77550
3343 N. COMMERCIAL BLVD. SUITE 115 | FT. LAUDERDALE, FL 33309
P: 954.870.5070 | C.A. No. 6104

DESIGNED BY	NAME	DATE	DRAWN BY	NAME	DATE

DEPARTMENT OF TRANSPORTATION
AND PUBLIC WORKS
HIGHWAY DIVISION
MIAMI-DADE COUNTY
STEPHEN P. CLARK, CHIEF
100 N.W. 11th St.
MIAMI, FLORIDA 33138

SIGNALIZATION PLAN

K:\DESIGN\20220119\0001\EDP\02200119\0001\SIGNALS\PLAN\8322_152.dwg, Nov 04, 2021 - 5:59pm JFREIER



OLD CUTLER RD. &
SW 152 ST (CORAL REEF DR.)

REVISIONS

DATE	BY	DESCRIPTION	DATE	BY	DESCRIPTION

MARLIN
ENGINEERING
ANGEL ABRIN FREDA | P.E. No.: 77550
3363 W. COMMERCIAL BLVD. SUITE 113 | FT. LAUDERDALE, FL 33309
P: 954.870.5070 | C.A. No. 6104

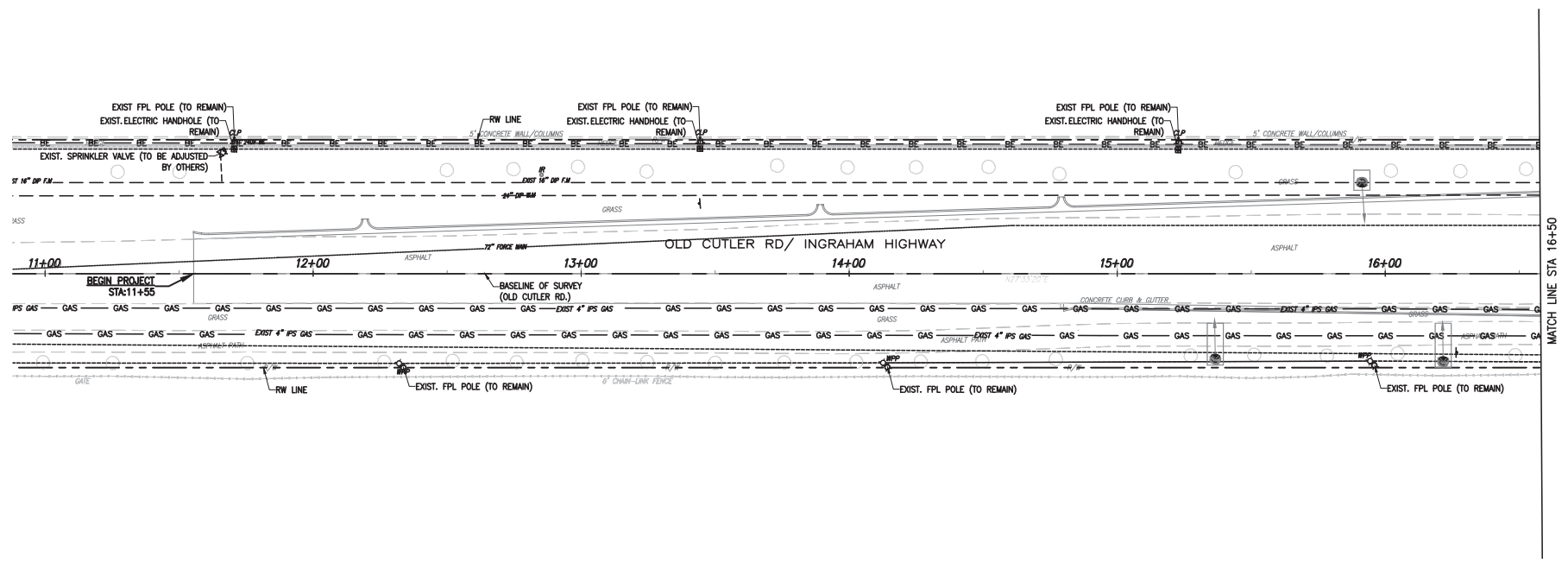
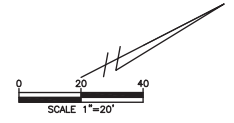
DESIGNED BY	NAME	DATE	DRAWN BY	NAME	DATE
	R.L.			M.P.	
CHECKED BY	A.F.		CHECKED BY	A.F.	

SUPERVISED BY:

MIAMI-DADE COUNTY
DEPARTMENT OF TRANSPORTATION AND PUBLIC WORKS
HIGHWAY DIVISION
STEPHEN P. CLARK, CENTER
1800 N.W. 11TH ST.
MIAMI, FLORIDA 33138

UTILITY ADJUSTMENT SHEET

K:\DESIGN\20220119\04051\04051\2020-12-16-04 - Old Cutler Roundabouts\SW 152 ST\SW152-UTILITY-P\Kwdwg Nov 04, 2021 - 5:31pm JFERBER



OLD CUTLER RD. &
SW 184 ST (EUREKA DR.)

K:\DESIGN\20220119\0405\2020-12-16-04-Cutler Roundabouts\384-Old Cutler Roundabouts\384-Old Cutler Roundabouts.dwg Nov 04, 2021 - 5:31pm JFREIER

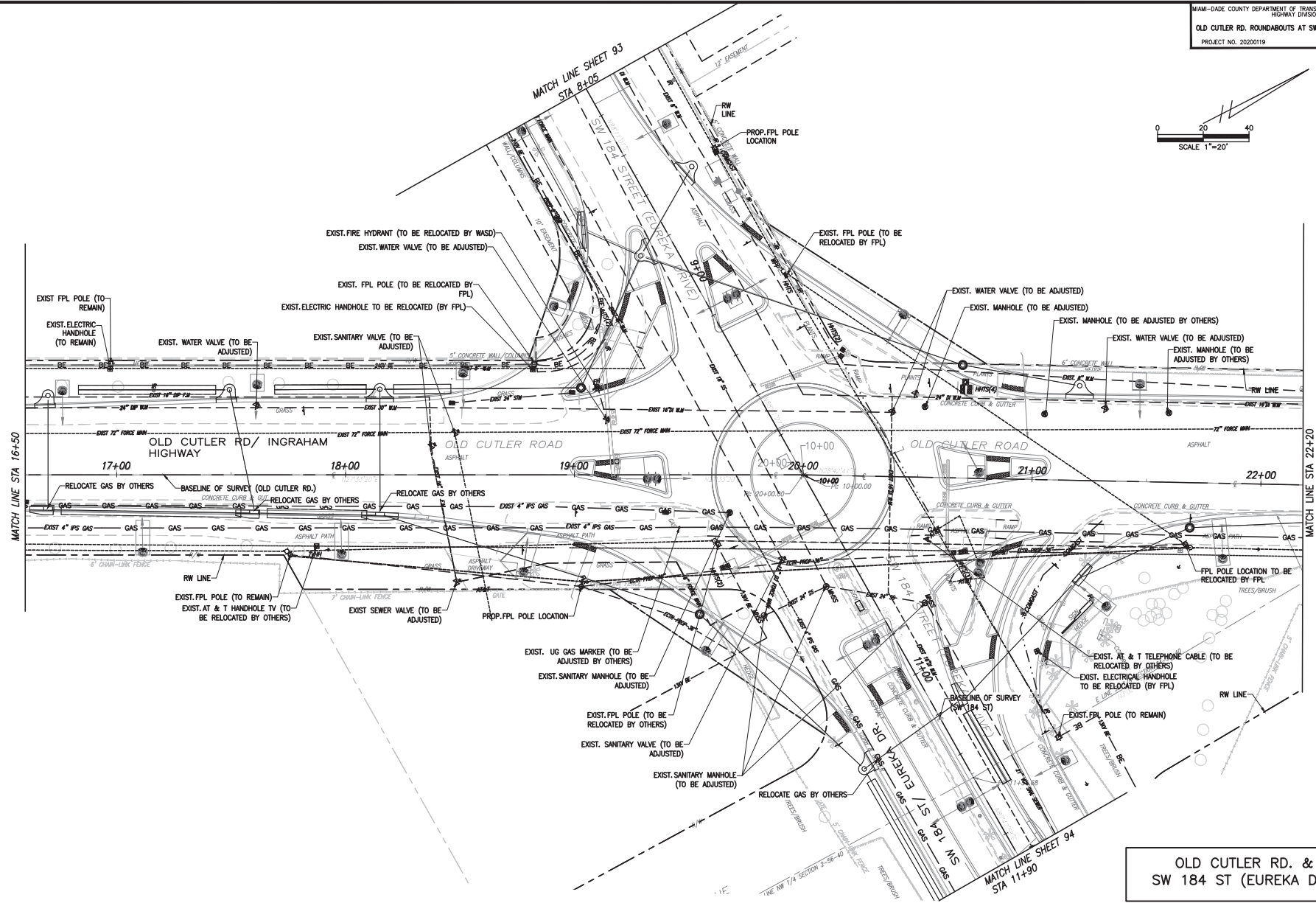
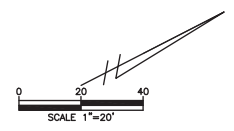
REVISIONS					
DATE	BY	DESCRIPTION	DATE	BY	DESCRIPTION

MARLIN
ENGINEERING
ANGEL ABRIL FREDA | P.E. No.: 77550
3363 W. COMMERCIAL BLVD. SUITE 115 | FT. LAUDERDALE, FL 33309
P: 954.870.5070 | C.A. No. 6104

DESIGNED BY	NAME	DATE	DRAWN BY	NAME	DATE
	R.L.			M.P.	
CHECKED BY	A.F.		CHECKED BY	A.F.	
SUPERVISED BY:					

MIAMI-DADE COUNTY
DEPARTMENT OF TRANSPORTATION AND PUBLIC WORKS
HIGHWAY DIVISION
STEPHEN P. CLARK, CENTER
1800 N.W. 25th St.
MIAMI, FLORIDA 33128

UTILITY ADJUSTMENT SHEET



OLD CUTLER RD. &
SW 184 ST (EUREKA DR.)

P:\DESIGN\2020\19\000_LDP_MF20200119\040\2020-12-16-16-Old Cutler Roundabouts\DWG 184_ST\DWG\04-UTILITY_C00RD\04\04-01.dwg Rev. 04, 2021 - 3:30pm JFEINER

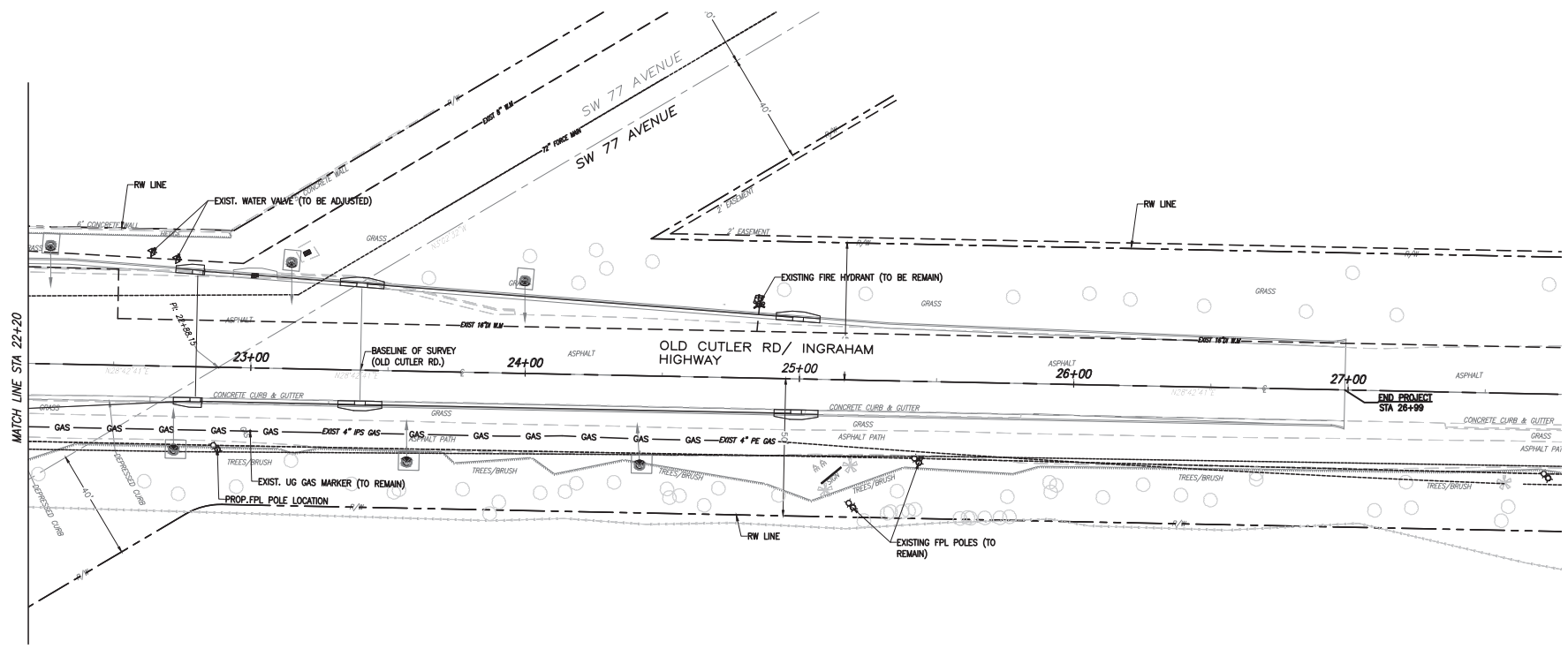
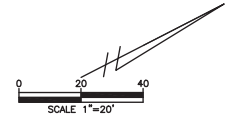
REVISIONS					
DATE	BY	DESCRIPTION	DATE	BY	DESCRIPTION

MARLIN
ENGINEERING
AYCEL ABIN FREJA | P.E. No: 77250
3363 W. COMMERCIAL BLVD. SUITE 116 | FT. LAUDERDALE, FL 33309
P: 954.870.5070 | C.A. No. 8104

DESIGNED BY	NAME	DATE	DRAWN BY	NAME	DATE

MIAMI-DADE COUNTY
DEPARTMENT OF TRANSPORTATION AND PUBLIC WORKS
HIGHWAY DIVISION
STEPHEN S. CLARK, CENTER
MIAMI, FLORIDA 33128

UTILITY ADJUSTMENT SHEET



**OLD CUTLER RD. &
 SW 184 ST (EUREKA DR.)**

K:\DESIGN\2020\18.000_LDP_M720200119\CAD\2020-12-18-184_SWING\04-UTILITY_COORDINATION.dwg Nov 04, 2021 - 4:37pm - JFERRE

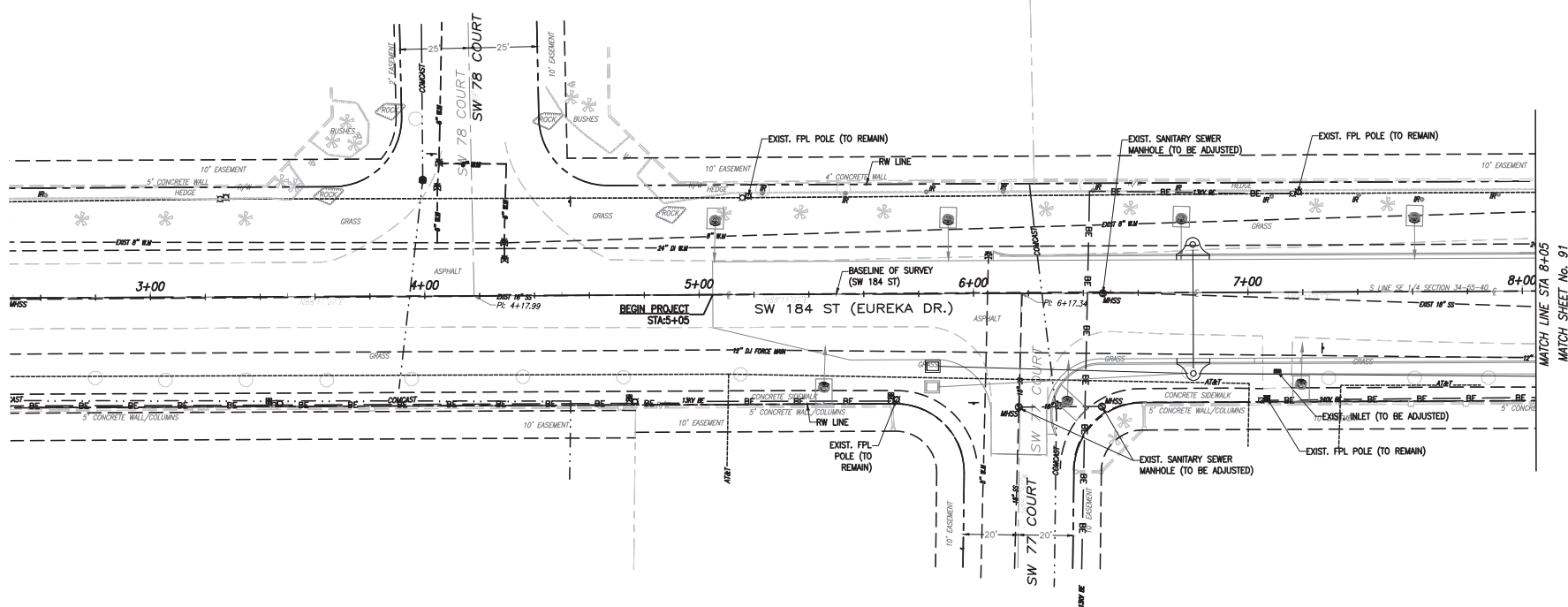
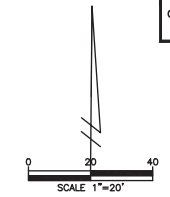
REVISIONS					
DATE	BY	DESCRIPTION	DATE	BY	DESCRIPTION

MARLIN
 ENGINEERING
 ANSEL ABN FREDIA | P.E. No.: 77550
 3363 W. COMMERCIAL Blvd. Ste. 115 | FT. LAUDERDALE, FL 33309
 P: 954.870.5070 | C.A. No. 6104

DESIGNED BY	NAME	DATE	DRAWN BY	NAME	DATE
	RL			M.P.	
CHECKED BY	A.F.		CHECKED BY	A.F.	
SUPERVISED BY					

MIAMI-DADE COUNTY
 DEPARTMENT OF TRANSPORTATION AND PUBLIC WORKS
 HIGHWAY DIVISION
 STEPHEN A. CLARK, CHIEF ENGINEER
 MIAMI, FLORIDA 33138

UTILITY ADJUSTMENT SHEET



MATCH LINE STA 8+05
MATCH SHEET No. 91

OLD CUTLER RD. &
SW 184 ST (EUREKA DR.)

P:\2022\202200119\000_183_182\202200119\000_183_182\2022-12-16 - Old Cutler Roundabouts\SW 184 ST\Utility\Utility_CAD\DWG\183_182.dwg Nov 04, 2021 - 5:32pm JFERNER

REVISIONS					
DATE	BY	DESCRIPTION	DATE	BY	DESCRIPTION

MARLIN
ENGINEERING

ARCEL AHN FREDA | P.E. No.: 77650
 3343 N. COMMERCIAL BLVD. 200, 115 | FT. LAUDERDALE, FL 33309
 P: 954.870.5070 | C.A. No. 6104

DESIGNED BY	NAME	DATE	DRAWN BY	NAME	DATE
	R.L.			M.P.	
	A.F.			A.F.	

SUPERVISED BY:

MIAMI-DADE COUNTY

**DEPARTMENT OF TRANSPORTATION AND PUBLIC WORKS
HIGHWAY DIVISION**

SEYMEN S. CLAY CENTER
100 N.W. 11
MIAMI, FLORIDA 33138

UTILITY ADJUSTMENT SHEET