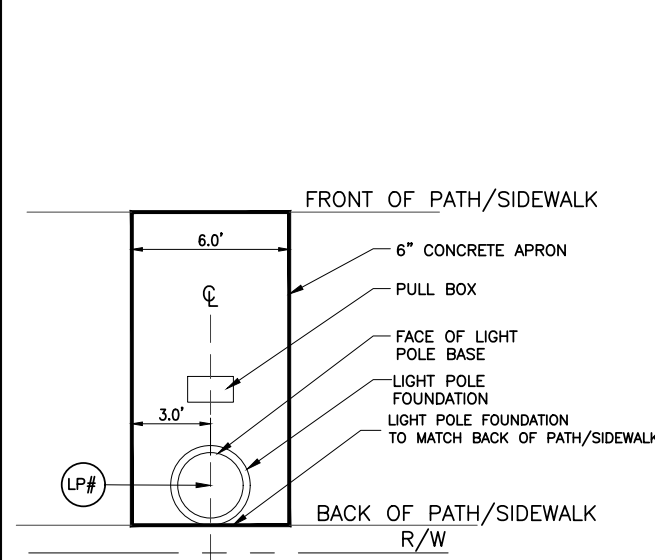
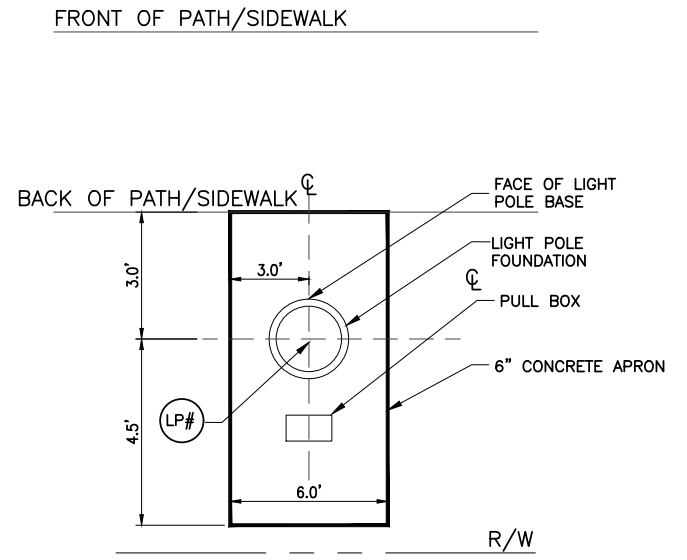


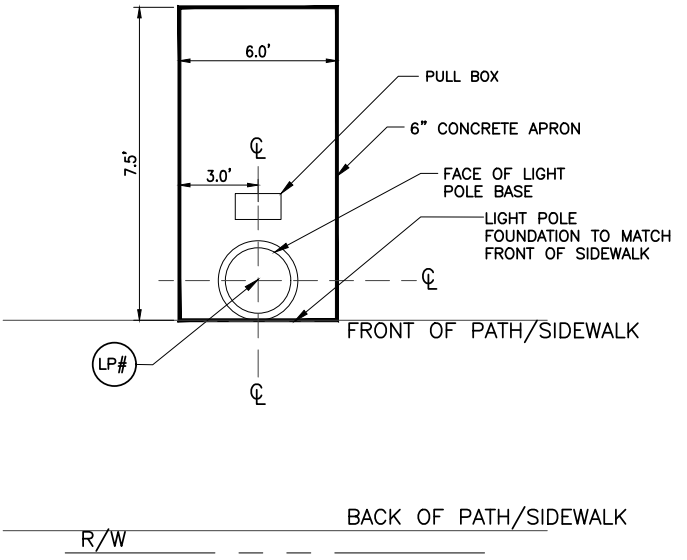
REVISED PLANS FOR ADDENDUM No. 2



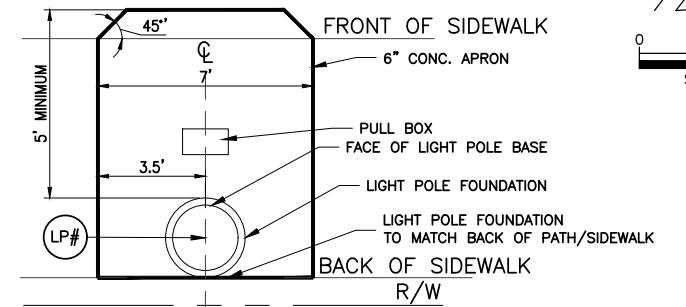
CONC. APRON LAYOUT DETAIL 1
N.T.S.



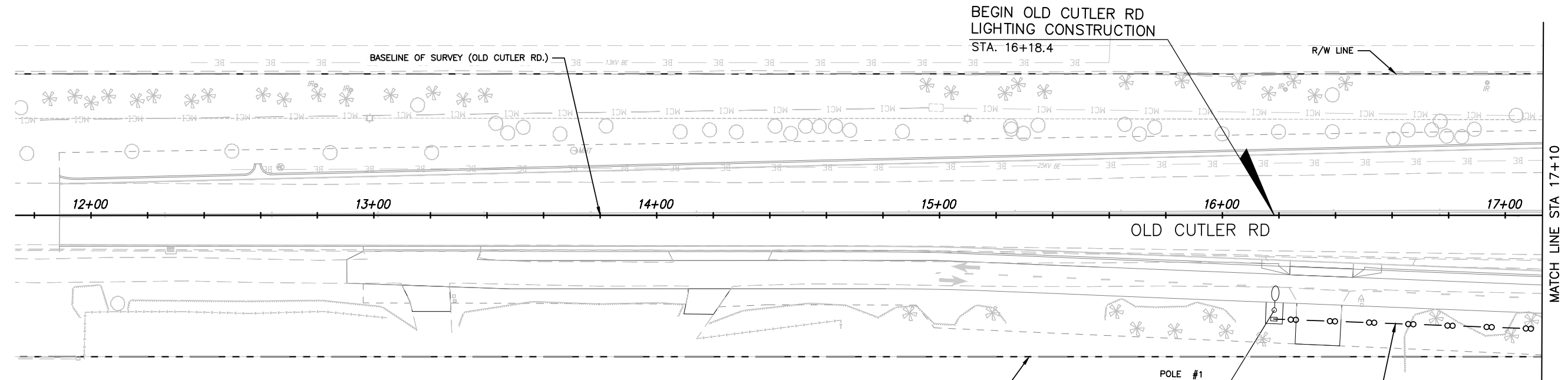
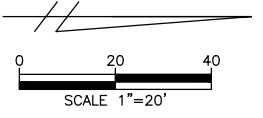
CONC. APRON LAYOUT DETAIL 2
N.T.S.



CONC. APRON LAYOUT DETAIL 3
N.T.S.



CONC. APRON LAYOUT DETAIL 4
N.T.S.



LEGEND:
LP# FOR LIGHT POLE LIGHT POLE # AND LOCATION, SEE PLAN SHEET AND POLE DATA SHEET

NOTE:
- ALL LIGHT POLE APRONS SHALL BE AS PER DETAIL ON THIS SHEET. REFER TO SHEETS 129 AND 130 FOR SIMM CONST. DETAIL AND REINFORCING.
- LIGHTING AND ROADWAY CONTRACTOR SHALL COORDINATE PRIOR TO APRON CONSTRUCTION.
- COST AND CONSTRUCTION SHALL BE BY ROADWAY CONTRACTOR UNDER 6" CONCRETE PAY-ITEM.
- ALL APRONS THAT FALL WITHIN SHARE-USE PATH OR SIDEWALK SHALL BE 6' WIDE. CONST. SHALL EXTEND TO FAR EDGE. REFER TO THIS SHEET FOR LAYOUT DETAILS, 129 AND 130 FOR SIMM CONST. DETAIL AND REINFORCING.

SW 152ND ST. AND OLD CUTLER RD.

K:\DESIGN\20200119\Redesign Lighting_Old Cutler Rd\CADD or FPD\LIGHTING\152nd\Lighting_Plans_SW_152.dwg Mar 24, 2022 - 10:58am JFERRER

| REVISIONS | | | | | |
|-----------|------|---------------|------|----|-------------|
| DATE | BY | DESCRIPTION | DATE | BY | DESCRIPTION |
| 3-23-22 | R.L. | SHEET UPDATED | | | |

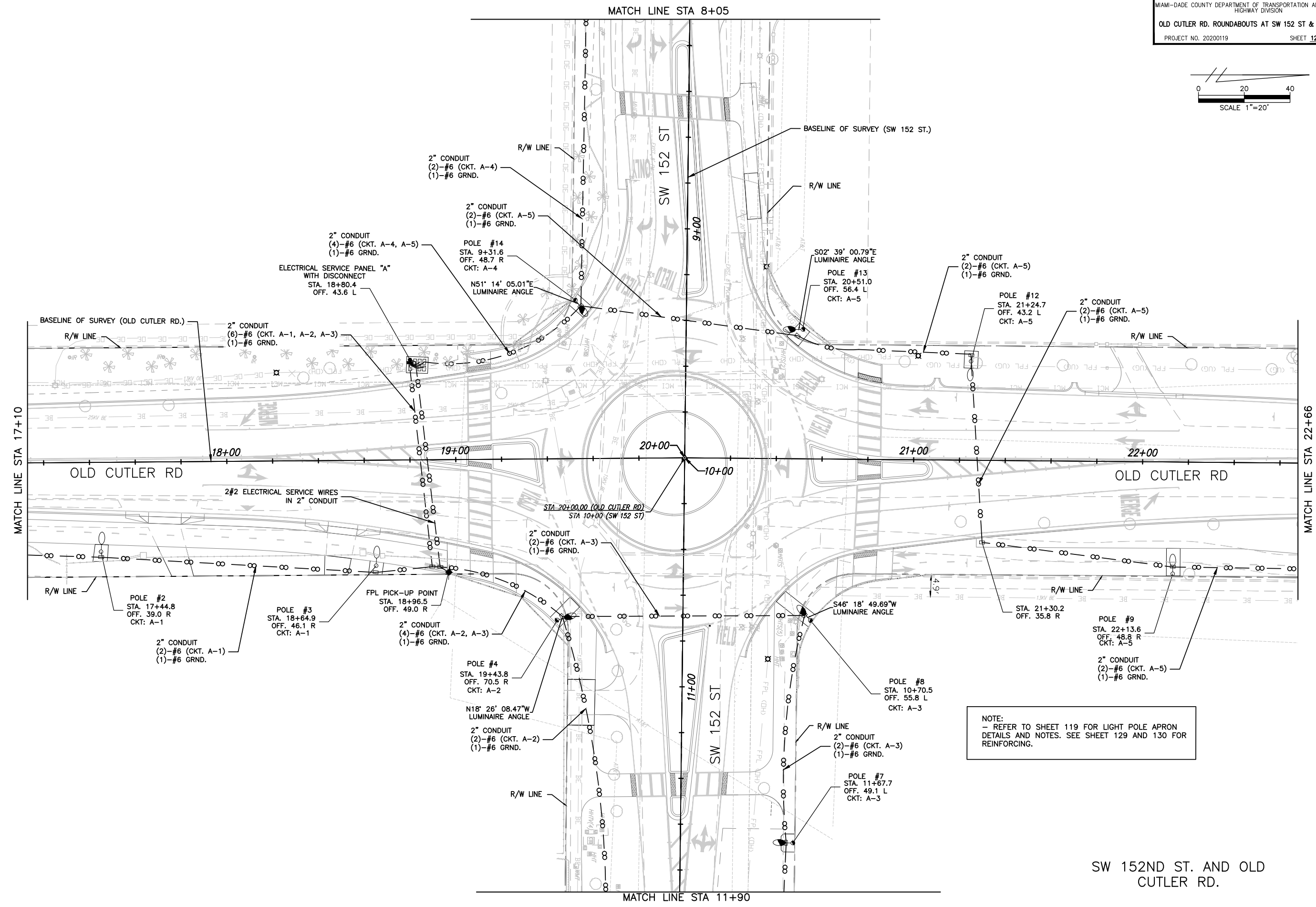
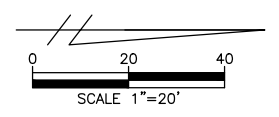
MARLIN
ENGINEERING
RAFAEL LAGOS | P.E. No.: 51412
3363 W. COMMERCIAL Blvd, Ste. 115 | FT Lauderdale, FL 33309
P: 954.870.5070 | C.A. No. 6104

| DESIGNED BY | NAME | DATE | DRAWN BY | NAME | DATE |
|-------------|------|------|------------|------|------|
| J.F. | J.F. | | J.F. | J.F. | |
| CHECKED BY | A.G. | | CHECKED BY | A.G. | |

MIAMI-DADE COUNTY
DEPARTMENT OF TRANSPORTATION AND PUBLIC WORKS
HIGHWAY DIVISION
STEPHEN P. CLARK, CENTER
111 NW 1 ST
MIAMI, FLORIDA 33128

LIGHTING PLAN

REVISED PLANS FOR ADDENDUM No. 2



K:\DESIGN\20200119\Redesign Lighting_Old Cutler Rd\CADD or FPID\Lighting\152nd\Lighting_Plans_SW_152.dwg Mar 24, 2022 - 10:58am JFERRER



| REVISIONS | | | | | |
|-----------|------|-----------------|------|----|-------------|
| DATE | BY | DESCRIPTION | DATE | BY | DESCRIPTION |
| 3-23-22 | R.L. | △ SHEET UPDATED | | | |

MARLIN
ENGINEERING
RAFAEL LAGOS | P.E. No.: 51412
3363 W. COMMERCIAL Blvd, Ste. 115 | FT Lauderdale, FL 33309
P: 954.870.5070 | CA. No. 6104

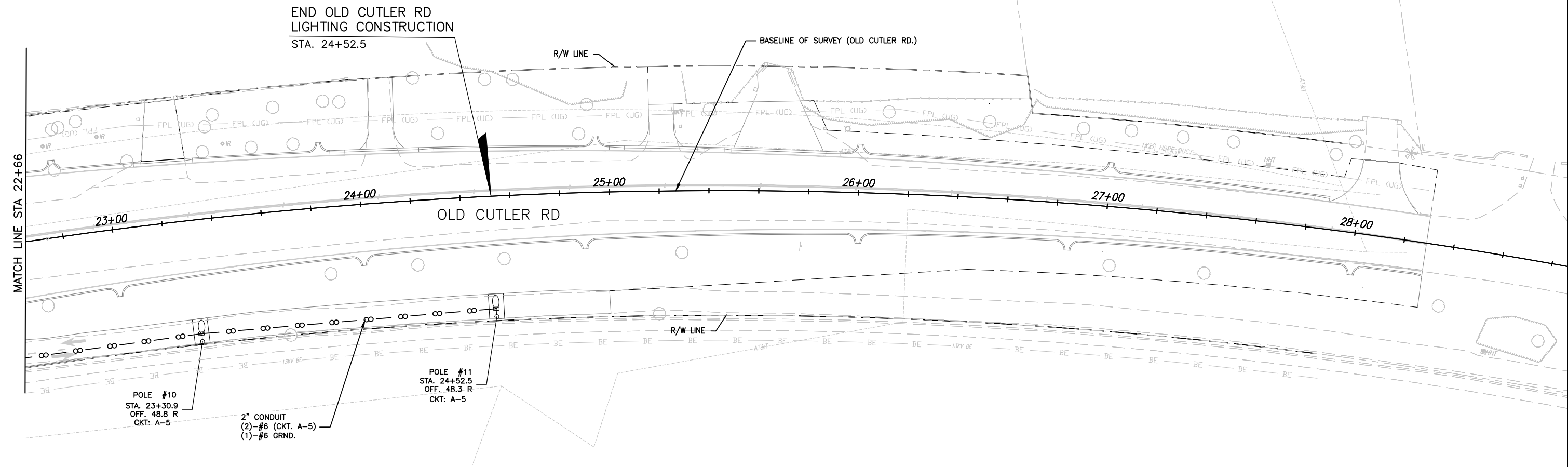
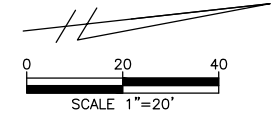
| DESIGNED BY | NAME | DATE | DRAWN BY | NAME | DATE |
|-------------|------|------|----------|------|------|
| J.F. | J.F. | | J.F. | J.F. | |
| A.G. | A.G. | | A.G. | A.G. | |

SUPERVISED BY:

MIAMI-DADE COUNTY
DEPARTMENT OF TRANSPORTATION AND PUBLIC WORKS
HIGHWAY DIVISION
STEPHEN P. CLARK, CENTER
111 NW 1 ST
MIAMI, FLORIDA 33128

SW 152ND ST. AND OLD CUTLER RD.
LIGHTING PLAN

REVISED PLANS FOR ADDENDUM No. 2



NOTE:
- REFER TO SHEET 119 FOR LIGHT POLE APRON
DETAILS AND NOTES. SEE SHEET 129 AND 130 FOR
REINFORCING.

K:\DESIGN\20200119\Redesign Lighting_Old Cutler Rd\CADD or FPD\LIGHTING\152nd\Lighting_SW_152.dwg Mar 24, 2022 - 10:58am JFERRER

1

SW 152ND ST. AND OLD CUTLER RD.

| REVISIONS | | | | | |
|-----------|------|---------------|------|----|-------------|
| DATE | BY | DESCRIPTION | DATE | BY | DESCRIPTION |
| 3-23-22 | R.L. | SHEET UPDATED | | | |

MARLIN
ENGINEERING
RAFAEL LAGOS | P.E. No.: 51412
3363 W. COMMERCIAL Blvd, Ste. 115 | FT Lauderdale, FL 33309
P: 954.870.5070 | CA. No. 6104

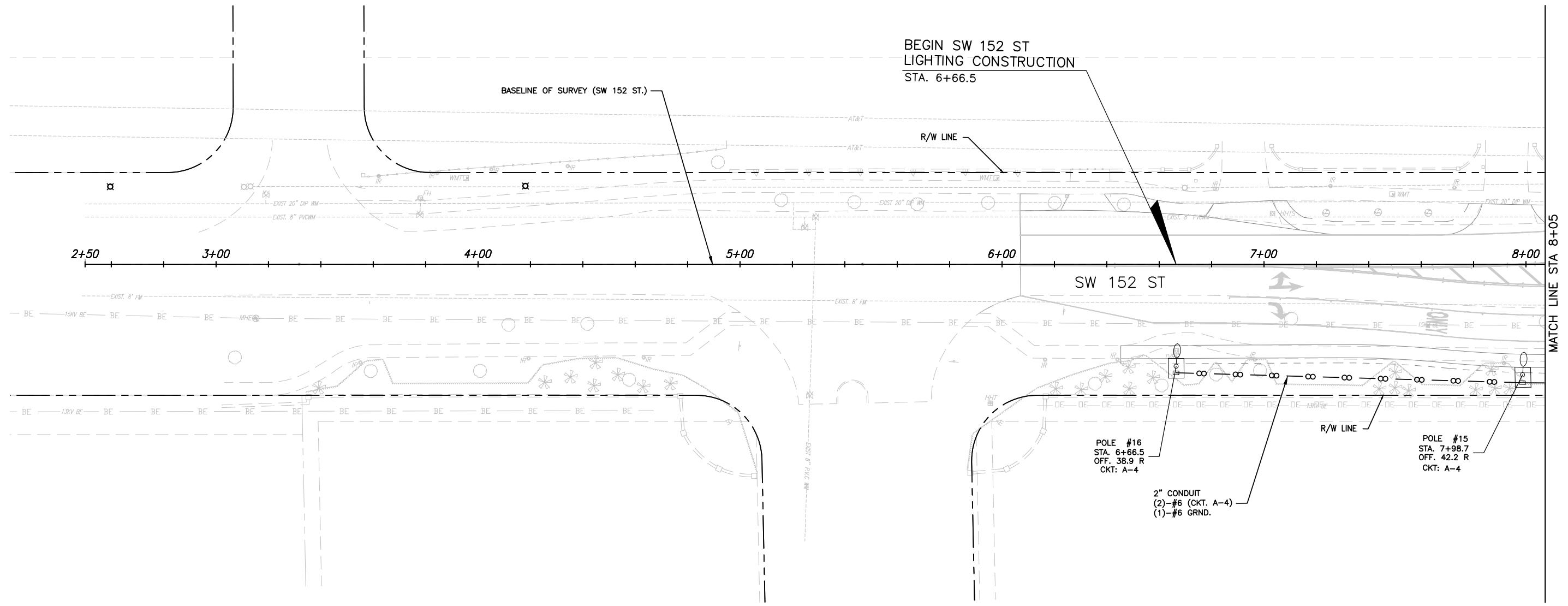
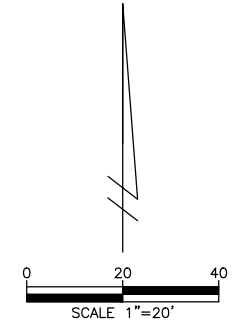
| DESIGNED BY | NAME | DATE | DRAWN BY | NAME | DATE |
|-------------|------|------|------------|------|------|
| J.F. | J.F. | | J.F. | J.F. | |
| CHECKED BY | NAME | DATE | CHECKED BY | NAME | DATE |
| A.G. | A.G. | | A.G. | A.G. | |

SUPERVISED BY:

MIAMI-DADE COUNTY
DEPARTMENT OF TRANSPORTATION AND PUBLIC WORKS
HIGHWAY DIVISION
STEPHEN P. CLARK, CENTER
111 NW 1 ST
MIAMI, FLORIDA 33128

LIGHTING PLAN

REVISED PLANS FOR ADDENDUM No. 2



NOTE:
- REFER TO SHEET 119 FOR LIGHT POLE APRON
DETAILS AND NOTES. SEE SHEET 129 AND 130 FOR
REINFORCING.

SW 152ND ST. AND OLD
CUTLER RD.

1

| REVISIONS | | | | | |
|-----------|------|---------------|------|----|-------------|
| DATE | BY | DESCRIPTION | DATE | BY | DESCRIPTION |
| 3-23-22 | R.L. | SHEET UPDATED | | | |

MARLIN
ENGINEERING
RAFAEL LAGOS | P.E. No.: 51412
3363 W. COMMERCIAL Blvd, Ste. 115 | FT Lauderdale, FL 33309
P: 954.870.5070 | C.A. No. 6104

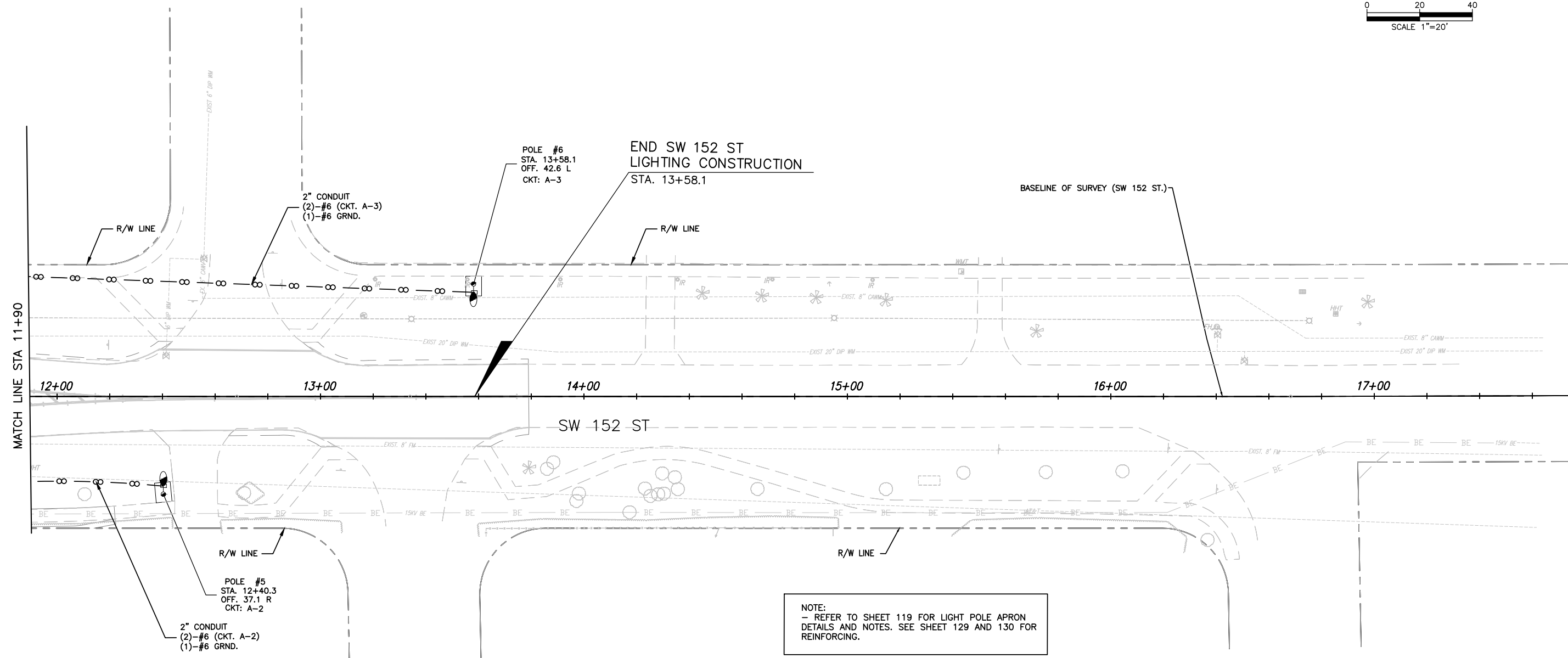
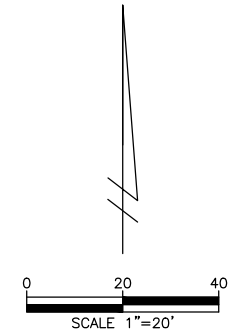
| DESIGNED BY | NAME | DATE | DRAWN BY | NAME | DATE |
|----------------|------|------|------------|------|------|
| J.F. | J.F. | | J.F. | J.F. | |
| CHECKED BY | A.G. | | CHECKED BY | A.G. | |
| SUPERVISED BY: | | | | | |

MIAMI-DADE COUNTY
DEPARTMENT OF TRANSPORTATION AND PUBLIC WORKS
HIGHWAY DIVISION
STEPHEN P. CLARK, CENTER
111 NW 1 ST
MIAMI, FLORIDA 33128

LIGHTING PLAN

K:\DESIGN\20200119\Redesign Lighting_Old Cutler Rd\CADD or FPID\LIGHTING\152nd\Lighting_Plans_SW_152.dwg Mar 24, 2022 - 10:58am JFERRER

REVISED PLANS FOR ADDENDUM No. 2



NOTE:
- REFER TO SHEET 119 FOR LIGHT POLE APRON
DETAILS AND NOTES. SEE SHEET 129 AND 130 FOR
REINFORCING.

K:\DESIGN\20200119\Redesign Lighting_Old Cutler Rd\CADD or FPID\Lighting_152nd\Lighting_Plans_SW_152.dwg Mar 24, 2022 - 10:59am JFERRER

1

SW 152ND ST. AND OLD CUTLER RD.

| REVISIONS | | | | | |
|-----------|------|-----------------|------|----|-------------|
| DATE | BY | DESCRIPTION | DATE | BY | DESCRIPTION |
| 3-23-22 | R.L. | △ SHEET UPDATED | | | |

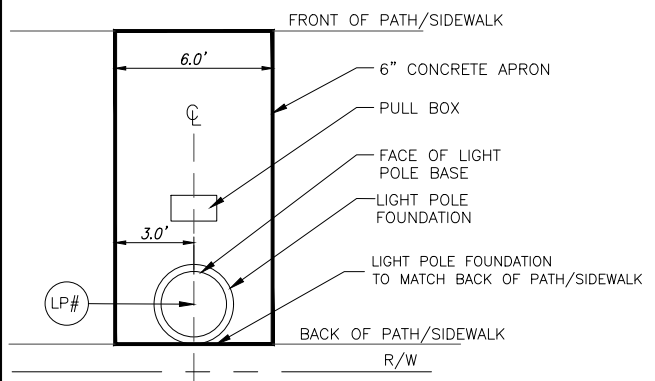
MARLIN
ENGINEERING
RAFAEL LAGOS | P.E. No.: 51412
3363 W. COMMERCIAL Blvd, Ste. 115 | FT Lauderdale, FL 33309
P: 954.870.5070 | C.A. No. 6104

| DESIGNED BY | NAME | DATE | DRAWN BY | NAME | DATE |
|----------------|------|------|------------|------|------|
| J.F. | J.F. | | J.F. | J.F. | |
| CHECKED BY | NAME | DATE | CHECKED BY | NAME | DATE |
| A.G. | A.G. | | A.G. | A.G. | |
| SUPERVISED BY: | | | | | |

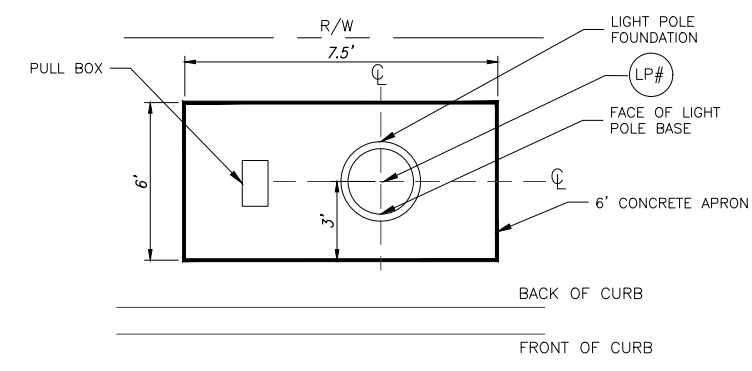
MIAMI-DADE COUNTY
DEPARTMENT OF TRANSPORTATION AND PUBLIC WORKS
HIGHWAY DIVISION
STEPHEN P. CLARK, CENTER
111 NW 1 ST
MIAMI, FLORIDA 33128

LIGHTING PLAN

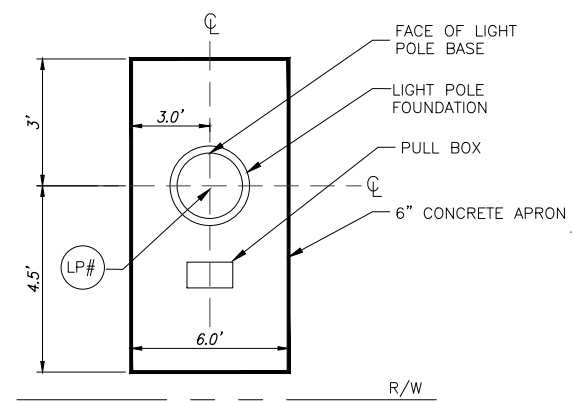
REVISED PLANS FOR ADDENDUM No. 2



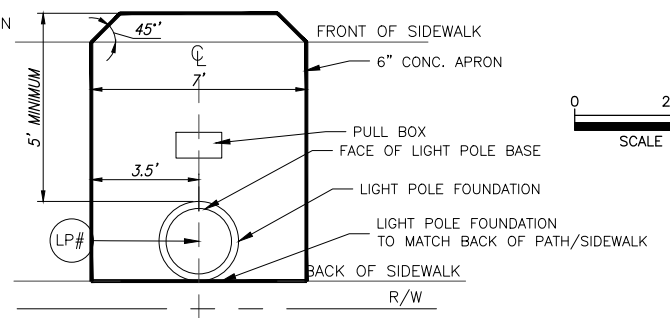
CONC. APRON LAYOUT DETAIL 1
N.T.S.



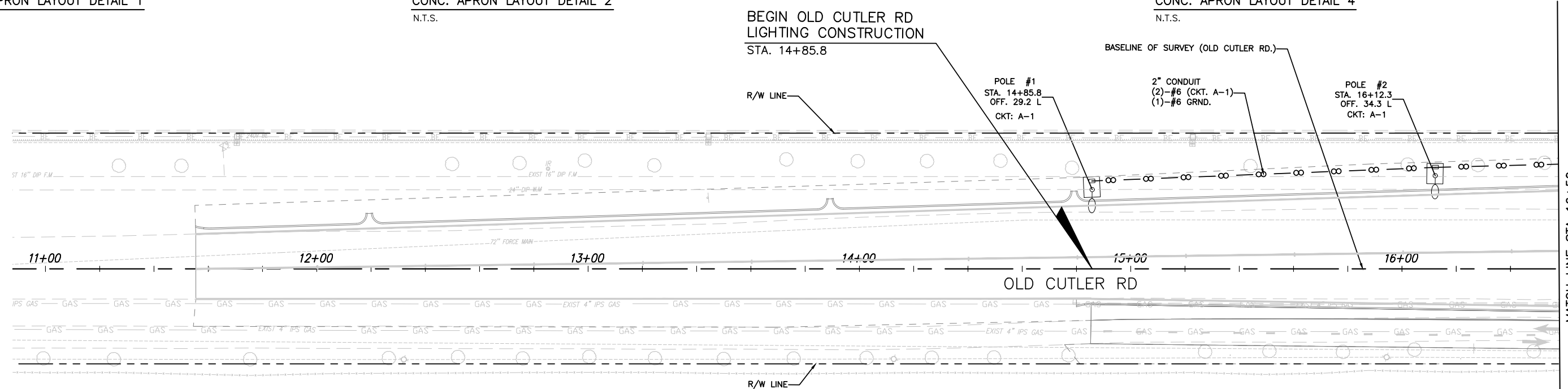
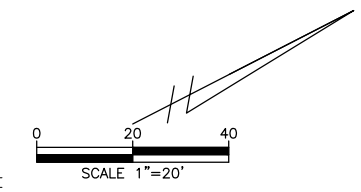
CONC. APRON LAYOUT DETAIL 2
N.T.S.



CONC. APRON LAYOUT DETAIL 3
N.T.S.



CONC. APRON LAYOUT DETAIL 4
N.T.S.



LEGEND:
LP# FOR LIGHT POLE LIGHT POLE # AND LOCATION, SEE PLAN SHEET AND POLE DATA SHEET

NOTE:
- ALL LIGHT POLE APRONS SHALL BE AS PER DETAIL ON THIS SHEET. REFER TO SHEETS 129 AND 130 FOR SIMM CONST. DETAIL AND REINFORCING.
- LIGHTING AND ROADWAY CONTRACTOR SHALL COORDINATE PRIOR TO APRON CONSTRUCTION.
- COST AND CONSTRUCTION SHALL BE BY ROADWAY CONTRACTOR UNDER 6\"/>

1

SW 184TH ST. AND OLD CUTLER RD.

| REVISIONS | | | | | |
|-----------|------|---------------|------|----|-------------|
| DATE | BY | DESCRIPTION | DATE | BY | DESCRIPTION |
| 3-23-22 | R.L. | SHEET UPDATED | | | |

MARLIN
ENGINEERING
RAFAEL LAGOS | P.E. No.: 51412
3363 W. COMMERCIAL Blvd, Ste. 115 | FT Lauderdale, FL 33309
P: 954.870.5070 | C.A. No. 6104

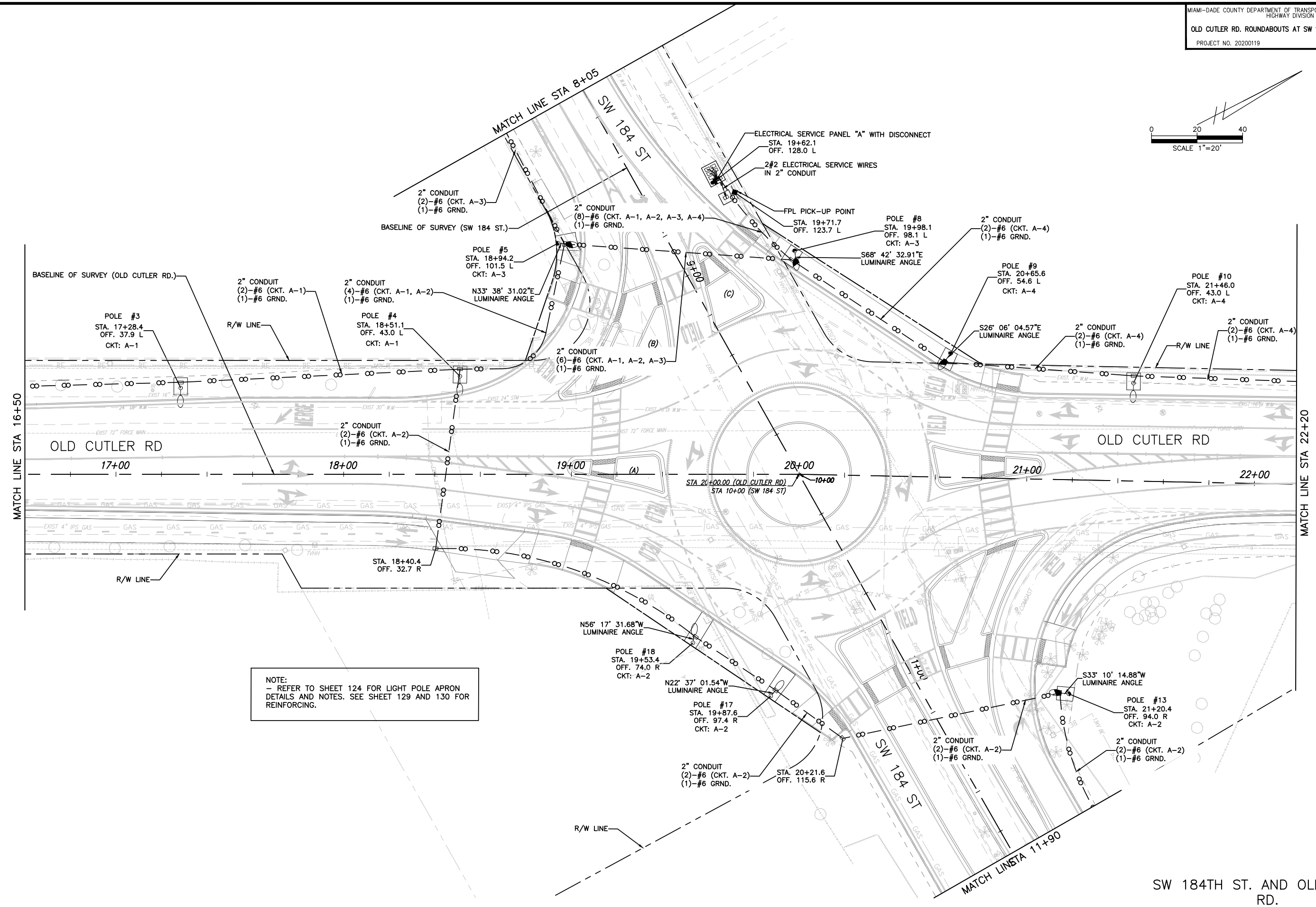
| DESIGNED BY | NAME | DATE | DRAWN BY | NAME | DATE |
|----------------|------|------|------------|------|------|
| J.F. | J.F. | | J.F. | J.F. | |
| CHECKED BY | A.G. | | CHECKED BY | A.G. | |
| SUPERVISED BY: | | | | | |

MIAMI-DADE COUNTY
DEPARTMENT OF TRANSPORTATION AND PUBLIC WORKS
HIGHWAY DIVISION
STEPHEN P. CLARK, CENTER
111 NW 1 ST
MIAMI, FLORIDA 33128

LIGHTING PLAN

K:\DESIGN\20200116_000_EDP_MF20200119\Redesign Lighting_Old Cutler Rd\CADD or FPI\Lighting\184th\Lighting_Plans_SW_184.dwg Mar 24, 2022 - 10:59am JFERRER

REVISED PLANS FOR ADDENDUM No. 2



NOTE:
- REFER TO SHEET 124 FOR LIGHT POLE APRON
DETAILS AND NOTES. SEE SHEET 129 AND 130 FOR
REINFORCING.



K:\DESIGN\20200119\EDP_MF20200119\Redesign_Lighting_Old_Cutler_Rd\CADD or FPID\LIGHTING\184th\Lighting_Plans_SW_184.dwg Mar 24, 2022 - 10:59am JFERRER

| REVISIONS | | | | | | | | |
|-----------|------|---------------|------|----|-------------|------|----|-------------|
| DATE | BY | DESCRIPTION | DATE | BY | DESCRIPTION | DATE | BY | DESCRIPTION |
| 3-23-22 | R.L. | SHEET UPDATED | | | | | | |

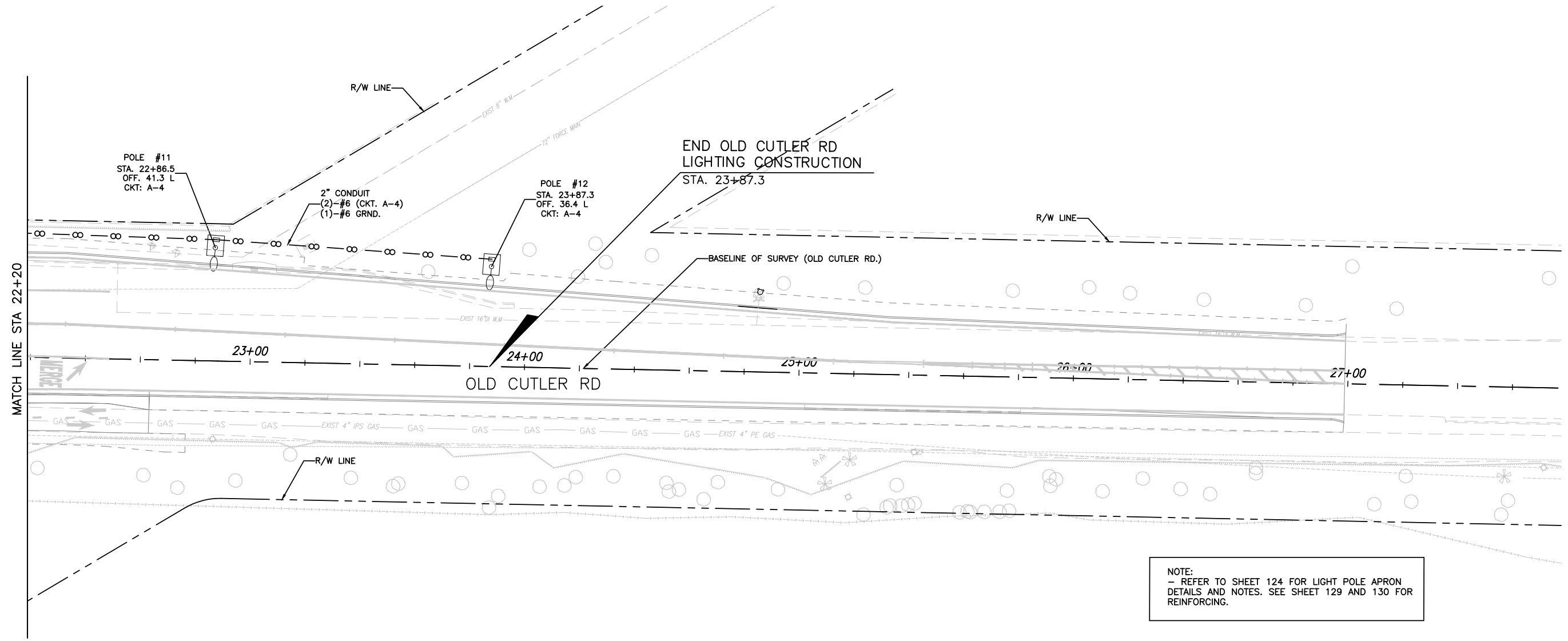
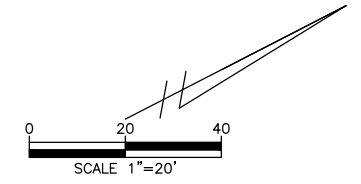
MARLIN
ENGINEERING
RAFAEL LAGOS | P.E. No.: 51412
3363 W. COMMERCIAL Blvd, Ste. 115 | FT Lauderdale, FL 33309
P: 954.870.5070 | C.A. No. 6104

| DESIGNED BY | NAME | DATE | DRAWN BY | NAME | DATE |
|----------------|------|------|------------|------|------|
| J.F. | J.F. | | J.F. | J.F. | |
| CHECKED BY | A.G. | | CHECKED BY | A.G. | |
| SUPERVISED BY: | | | | | |

MIAMI-DADE COUNTY
DEPARTMENT OF TRANSPORTATION AND PUBLIC WORKS
HIGHWAY DIVISION
STEPHEN P. CLARK, CENTER
111 NW 1 ST
MIAMI, FLORIDA 33128

SW 184TH ST. AND OLD CUTLER RD.
LIGHTING PLAN

REVISED PLANS FOR ADDENDUM No. 2



NOTE:
- REFER TO SHEET 124 FOR LIGHT POLE APRON
DETAILS AND NOTES. SEE SHEET 129 AND 130 FOR
REINFORCING.

K:\DESIGN\20200119\Redesign Lighting_Old Cutler Rd\CADD or FPD\LIGHTING\184th\Lighting_Plans_SW_184.dwg Mar 24, 2022 - 10:59am JFERRER



SW 184TH ST. AND OLD CUTLER RD.

| REVISIONS | | | | | |
|-----------|------|---------------|------|----|-------------|
| DATE | BY | DESCRIPTION | DATE | BY | DESCRIPTION |
| 3-23-22 | R.L. | SHEET UPDATED | | | |

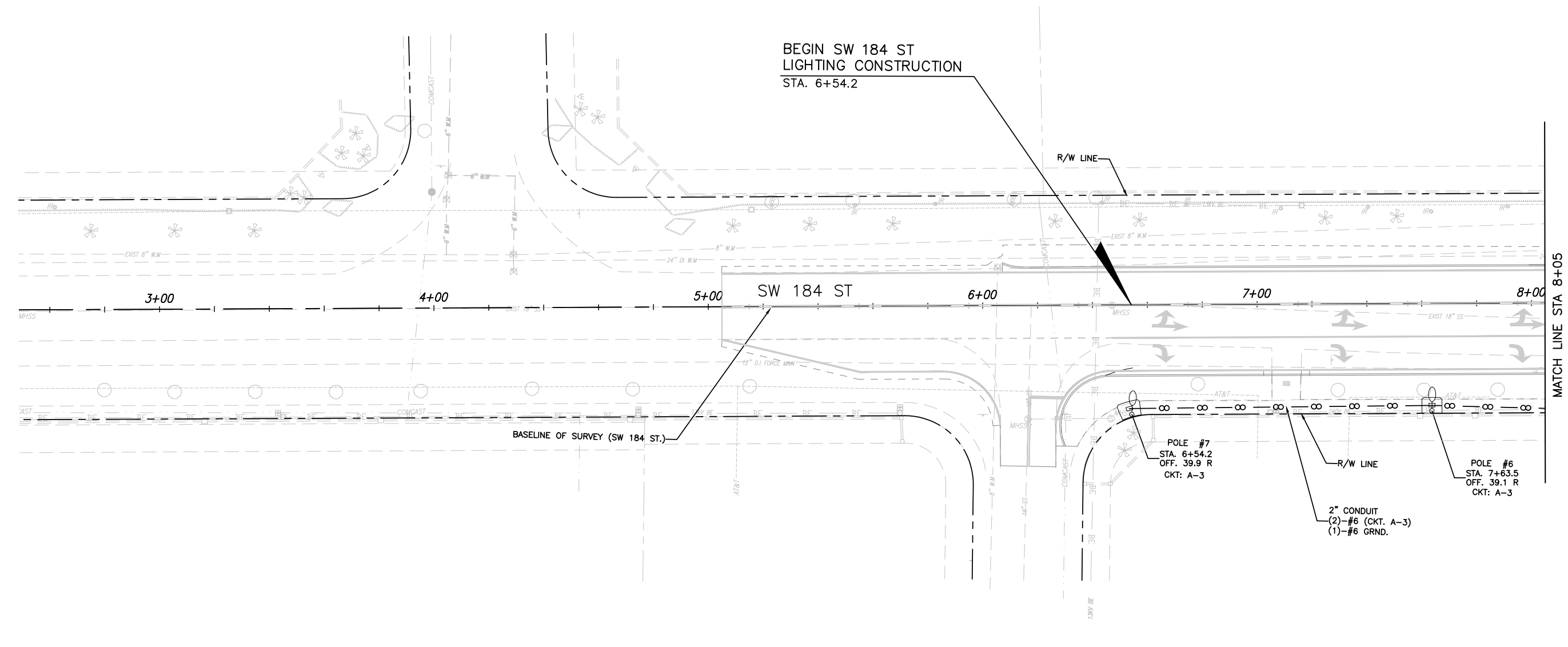
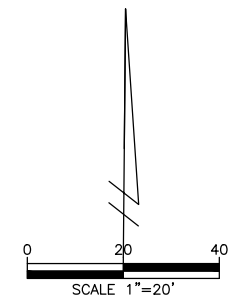
MARLIN
ENGINEERING
RAFAEL LAGOS | P.E. No.: 51412
3363 W. COMMERCIAL Blvd, Ste. 115 | FT Lauderdale, FL 33309
P: 954.870.5070 | C.A. No. 6104

| | | | | | | | |
|----------------|------|------|--|------------|------|------|--|
| DESIGNED BY | J.F. | DATE | | DRAWN BY | J.F. | DATE | |
| CHECKED BY | A.G. | | | CHECKED BY | A.G. | | |
| SUPERVISED BY: | | | | | | | |

MIAMI-DADE COUNTY
DEPARTMENT OF TRANSPORTATION AND PUBLIC WORKS
HIGHWAY DIVISION
STEPHEN P. CLARK, CENTER
111 NW 1 ST
MIAMI, FLORIDA 33128

LIGHTING PLAN

REVISED PLANS FOR ADDENDUM No. 2



NOTE:
- REFER TO SHEET 124 FOR LIGHT POLE APRON
DETAILS AND NOTES. SEE SHEET 129 AND 130 FOR
REINFORCING.

K:\DESIGN\20200119\Redesign Lighting_Old Cutler Rd\CADD or FPD\LIGHTING\184th\Lighting_Plans_SW_184.dwg Mar 24, 2022 - 10:59am JFERRE



SW 184TH ST. AND OLD CUTLER RD.

| REVISIONS | | | | | |
|-----------|------|---------------|------|----|-------------|
| DATE | BY | DESCRIPTION | DATE | BY | DESCRIPTION |
| 3-23-22 | R.L. | SHEET UPDATED | | | |

MARLIN
ENGINEERING
RAFAEL LAGOS | P.E. No.: 51412
3363 W. COMMERCIAL Blvd, Ste. 115 | FT Lauderdale, FL 33309
P: 954.870.5070 | C.A. No. 6104

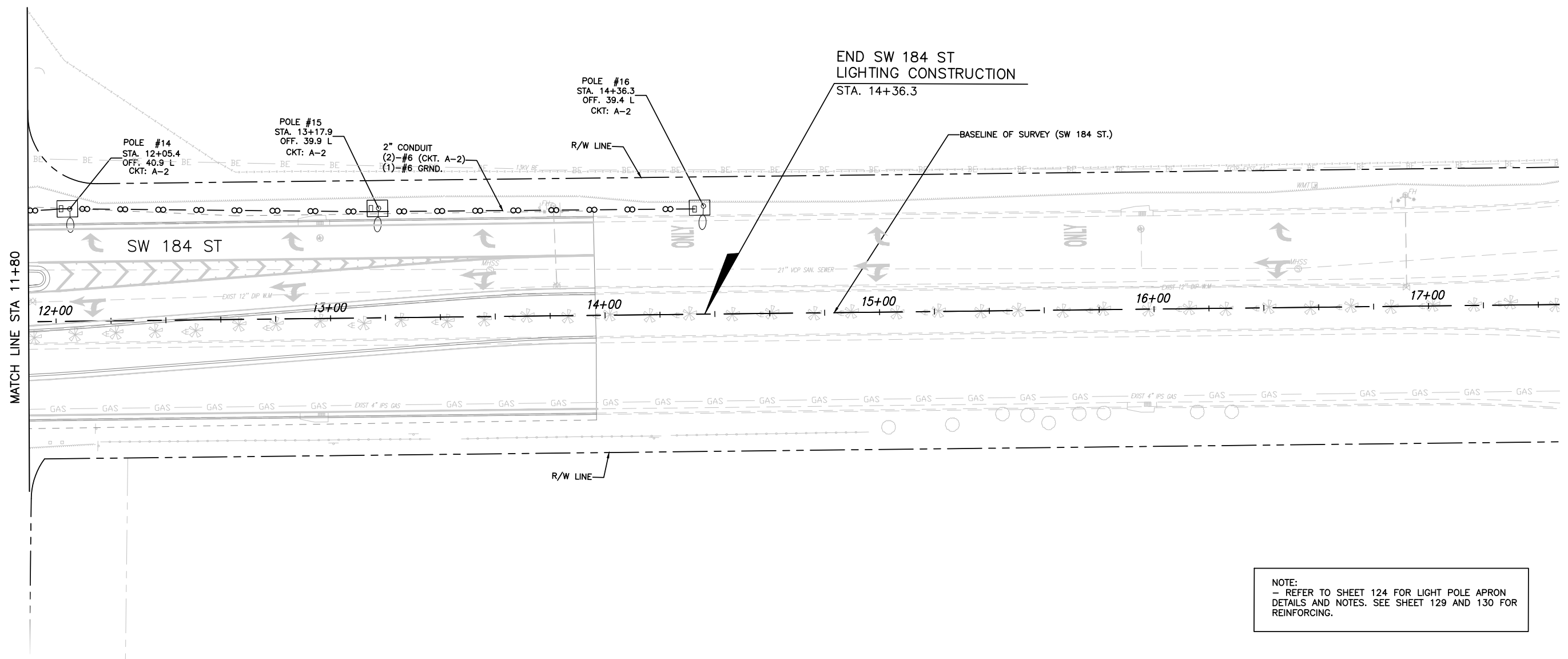
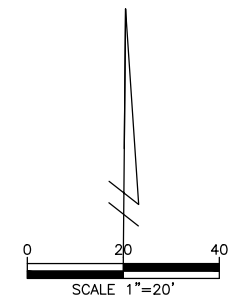
| DESIGNED BY | NAME | DATE | DRAWN BY | NAME | DATE |
|-------------|------|------|------------|------|------|
| J.F. | J.F. | | J.F. | J.F. | |
| CHECKED BY | NAME | DATE | CHECKED BY | NAME | DATE |
| A.G. | A.G. | | A.G. | A.G. | |

SUPERVISED BY:

MIAMI-DADE COUNTY
DEPARTMENT OF TRANSPORTATION AND PUBLIC WORKS
HIGHWAY DIVISION
STEPHEN P. CLARK, CENTER
111 NW 1 ST
MIAMI, FLORIDA 33128

LIGHTING PLAN

REVISED PLANS FOR ADDENDUM No. 2



NOTE:
- REFER TO SHEET 124 FOR LIGHT POLE APRON DETAILS AND NOTES. SEE SHEET 129 AND 130 FOR REINFORCING.

SW 184TH ST. AND OLD CUTLER RD.



K:\DESIGN\20200119\Redesign Lighting_Old Cutler Rd\CADD or FPD\LIGHTING\184th\Lighting_Plans_SW_184.dwg Mar 24, 2022 - 10:59am JFERRER

| REVISIONS | | | | | | | | |
|-----------|------|---------------|------|----|-------------|------|----|-------------|
| DATE | BY | DESCRIPTION | DATE | BY | DESCRIPTION | DATE | BY | DESCRIPTION |
| 3-23-22 | R.L. | SHEET UPDATED | | | | | | |

MARLIN
ENGINEERING
RAFAEL LAGOS | P.E. No.: 51412
3363 W. COMMERCIAL Blvd, Ste. 115 | FT Lauderdale, FL 33309
P: 954.870.5070 | C.A. No. 6104

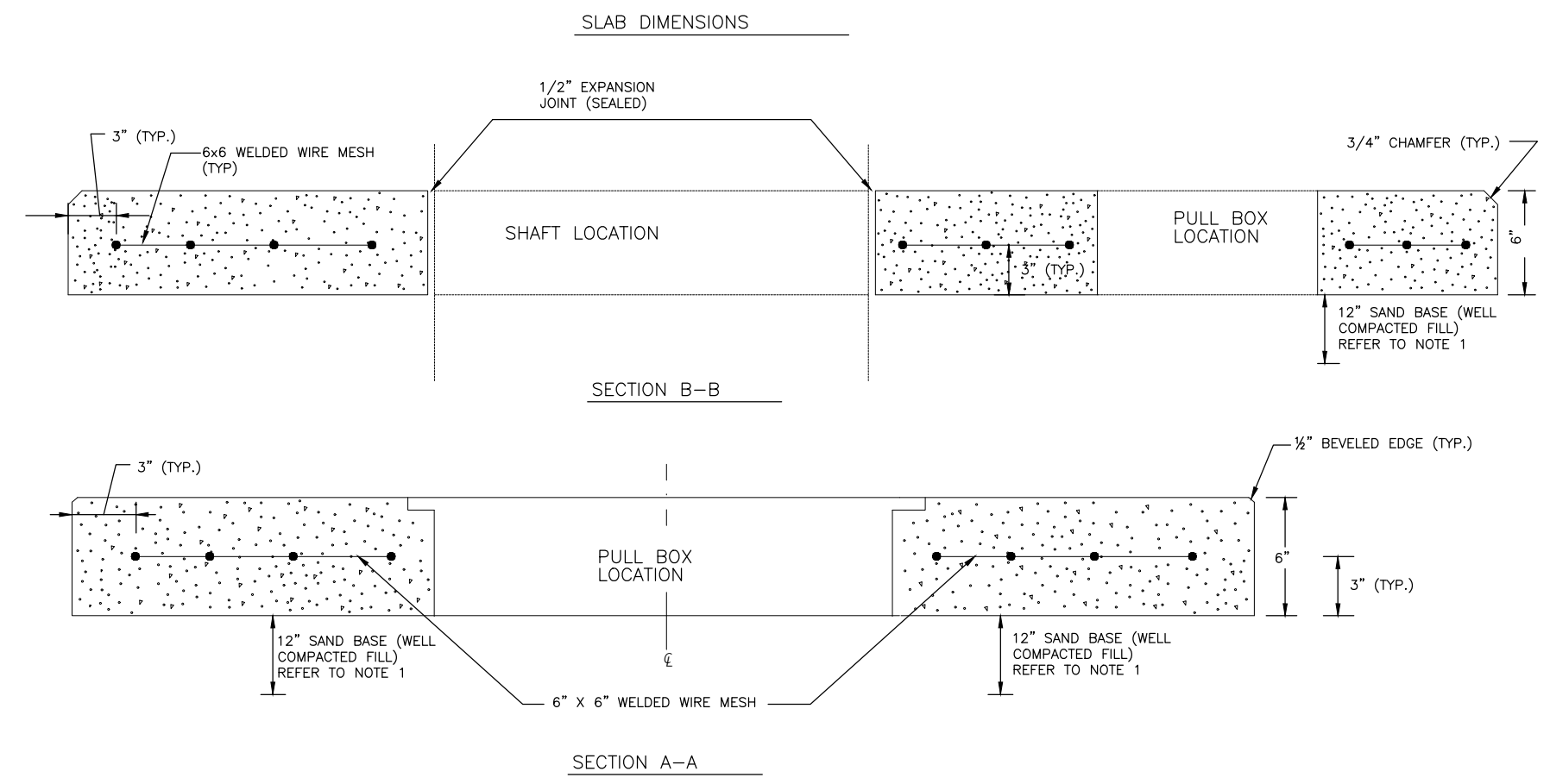
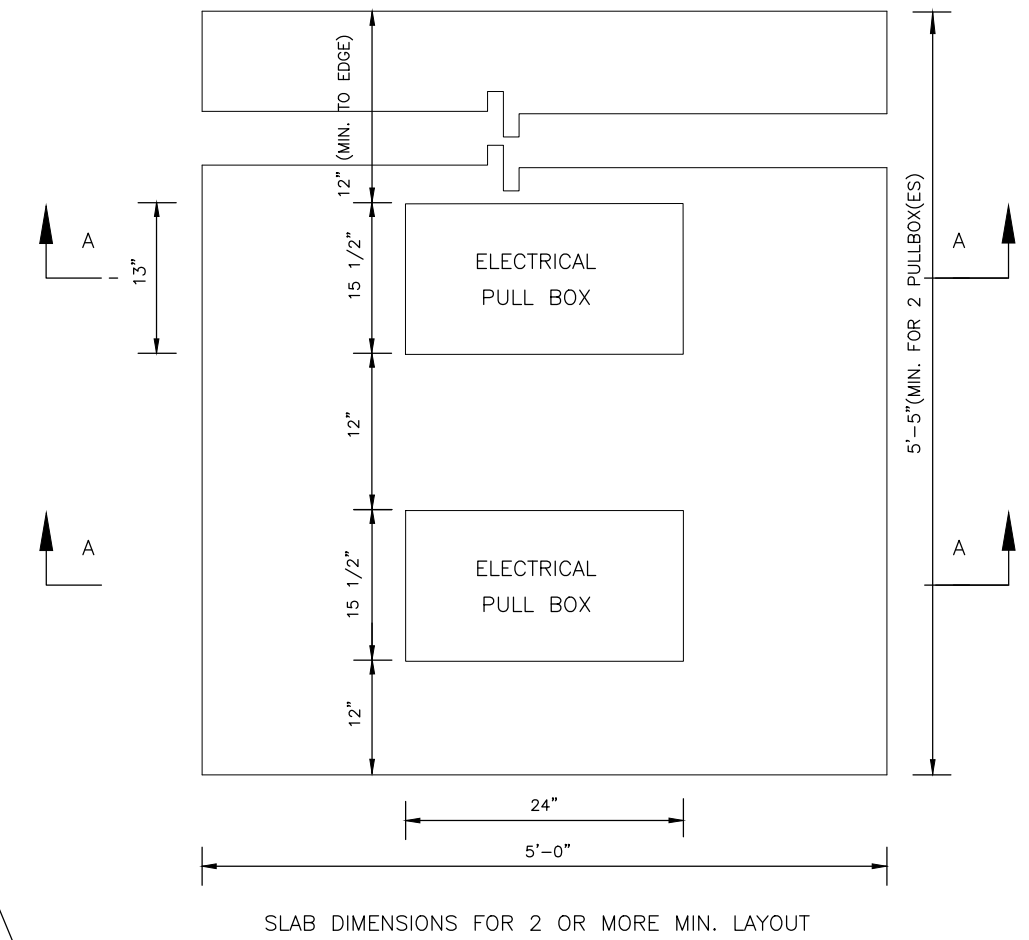
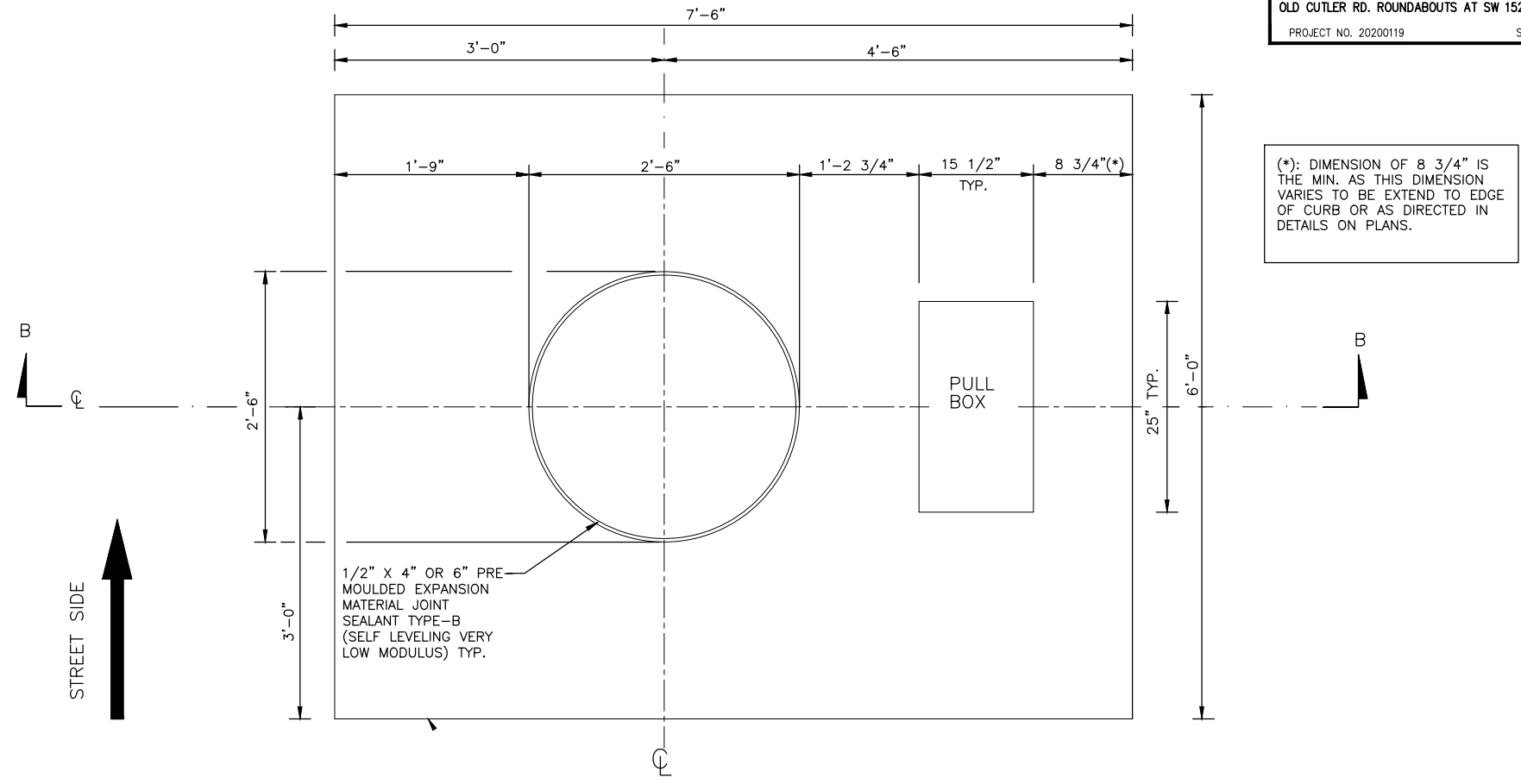
| | | | | | | | |
|----------------|------|------|--|------------|------|------|--|
| DESIGNED BY | J.F. | DATE | | DRAWN BY | J.F. | DATE | |
| CHECKED BY | A.G. | | | CHECKED BY | A.G. | | |
| SUPERVISED BY: | | | | | | | |

MIAMI-DADE COUNTY
DEPARTMENT OF TRANSPORTATION AND PUBLIC WORKS
HIGHWAY DIVISION
STEPHEN P. CLARK, CENTER
115 NW 1 ST
MIAMI, FLORIDA 33128

LIGHTING PLAN

REVISED PLANS FOR ADDENDUM No. 2

- NOTES:
- 1- THIS DETAIL IS APPLICABLE FOR INSTALLATION IN SOD AREA AND NOT FOR SIDEWALK.
 - 2- USE COMPACTED SELECT MATERIAL IN ACCORDANCE WITH FDOT STANDARD INDEX 120-001.
 - 3- CONCRETE SHALL BE CLASS NS WITH A MINIMUM STRENGTH AT 28 DAYS OF F'C=2.5 KSI.
 - 4- OUTSIDE EDGE OF SLAB SHALL BE CAST AGAINST FORMWORK.
 - 5- THE PULL BOX SHOWN IS 13" X 24" (INTERIOR DIMENSIONS) & 15 1/2" X 25" (EXTERIOR DIMENSIONS); OTHERS APPROVED UNDER SECTION 635 OF THE STANDARD SPECIFICATIONS MAY BE USED.
 - 6- SLABS TO BE PLACED AROUND ALL POLES AND PULL BOXES. IN URBAN AREAS OR WHERE SPACE IS LIMITED SLAB DIMENSIONS MAY BE ADJUSTED AS SHOWN IN THE PLANS.
 - 7- WHERE CONCRETE SLAB IS UP AGAINST EXISTING OR PROPOSED SIDEWALK, TOP OF SLAB SHALL MATCH EXISTING ELEVATION. TOP OF ALL OTHER SLABS SHALL MEET THE TOP ELEVATION OF PERPENDICULAR CURB N GUTTER OR EDGE OF PAVEMENT. SEE PLAN FOR LOCATION.
 - 8- CONCRETE FOR SLABS AROUND POLES AND PULL BOXES SHALL BE INCLUDED IN THE PRICE OF POLE OR PULL BOX.
 - 9- THE EXPANSION JOINT SHALL CONSIST OF 1/2" OF CLOSED-CELL POLYETHYLENE FOAM EXPANSION MATERIAL. THE TOP 1/2" OF EXPANSION MATERIAL SHALL BE REMOVED AFTER POURING THE SLAB AND SEALED WITH AN APL APPROVED TYPE A SEALANT MEETING THE REQUIREMENTS OF SECTION 932.



K:\DESIGN\20200119\Redesign Lighting_Old Cutler Rd\CADD or FPD\LIGHTING\184th\Details.dwg Mar 24, 2022 - 10:59am JFERRER

| REVISIONS | | | | | |
|-----------|------|---------------|------|----|-------------|
| DATE | BY | DESCRIPTION | DATE | BY | DESCRIPTION |
| 3-23-22 | R.L. | SHEET UPDATED | | | |

MARLIN
ENGINEERING
RAFAEL LAGOS | P.E. No.: 51412
3363 W. COMMERCIAL Blvd, Ste. 115 | FT Lauderdale, FL 33309
P: 954.870.5070 | C.A. No. 6104

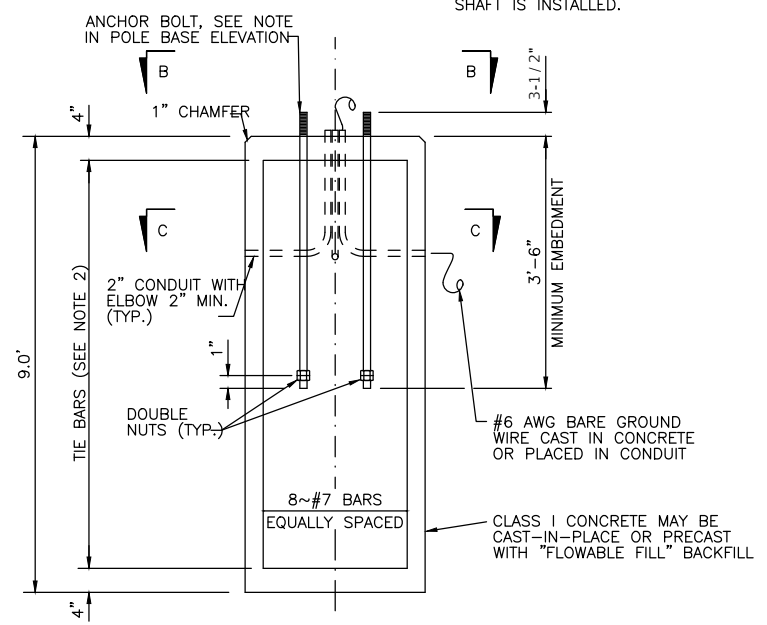
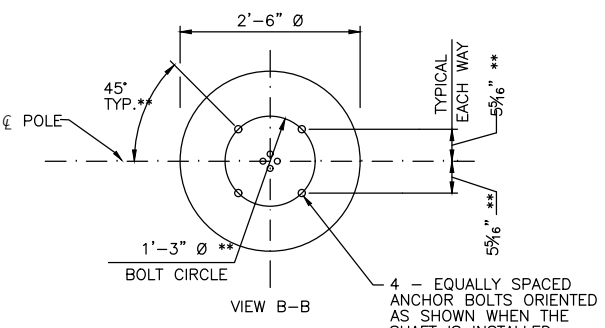
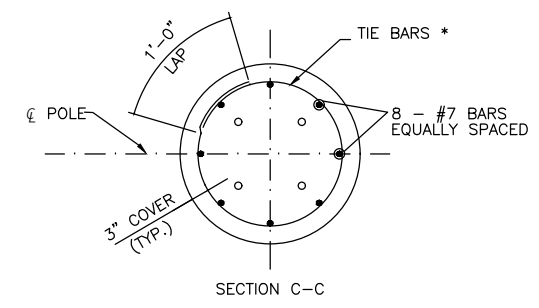
| DESIGNED BY | NAME | DATE | DRAWN BY | NAME | DATE |
|-------------|------|------|------------|------|------|
| J.F. | J.F. | | J.F. | J.F. | |
| CHECKED BY | NAME | DATE | CHECKED BY | NAME | DATE |
| A.G. | A.G. | | A.G. | A.G. | |

SUPERVISED BY:

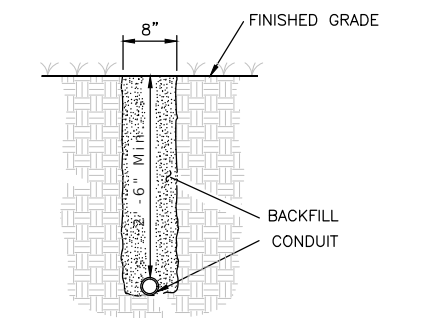
MIAMI-DADE COUNTY
DEPARTMENT OF TRANSPORTATION AND PUBLIC WORKS
HIGHWAY DIVISION
STEPHEN P. CLARK, CENTER
111 NW 1 ST
MIAMI, FLORIDA 33128

DETAILS SHEET

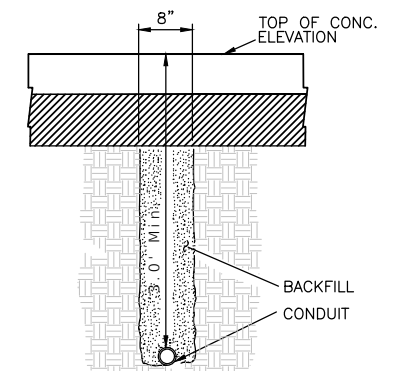
REVISED PLANS FOR ADDENDUM No. 2



- FOUNDATION NOTES:
1. DEPTHS SHOWN ARE FOR SLOPES FLATTER THAN 1:4, FOR SLOPES 1:2 OR FLATTER, ADD 2'-6" TO FOUNDATION DEPTHS SHOWN.
 2. FOUNDATION TIE BARS: #4 TIE BARS @ 12" CENTERS (MAX.) OR D10 (OR W10) SPIRAL @ 6" PITCH, 3 FLAT TURNS TOP AND 1 FLAT TURN BOTTOM.
 3. FOUNDATION SHALL BE AS PER FDOT STANDARDS INDEX 715-002. CONTRACTOR SHALL COORDINATE TO APPLY MANUFACTURERS BOLT CIRCLE TEMPLATE AT TIME OR ORDERING AND PLACING FOOTINGS FOR CONCRETE SLABS AT SOD/ LANDSCAPE LOCATIONS.

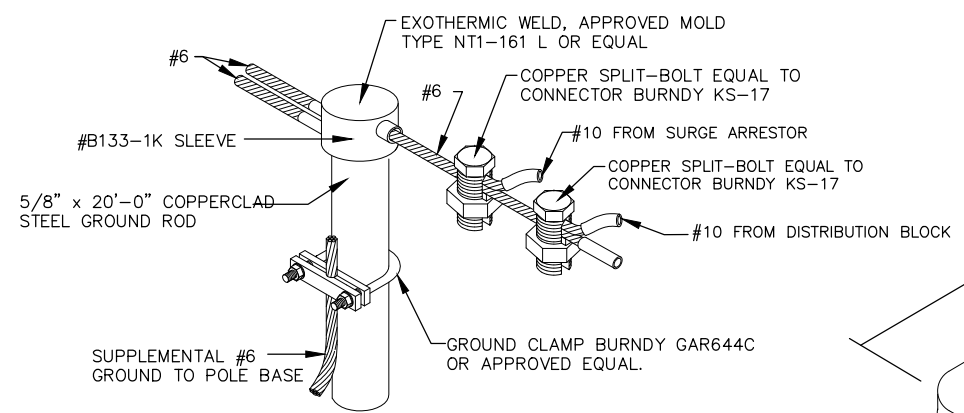


PLACEMENT NOT EXPOSED TO VEHICULAR TRAFFIC



PLACEMENT UNDER NEW CONCRETE PRIOR TO INSTALLATION OF STABILIZATION AND 6" CONC. PAVEMENT

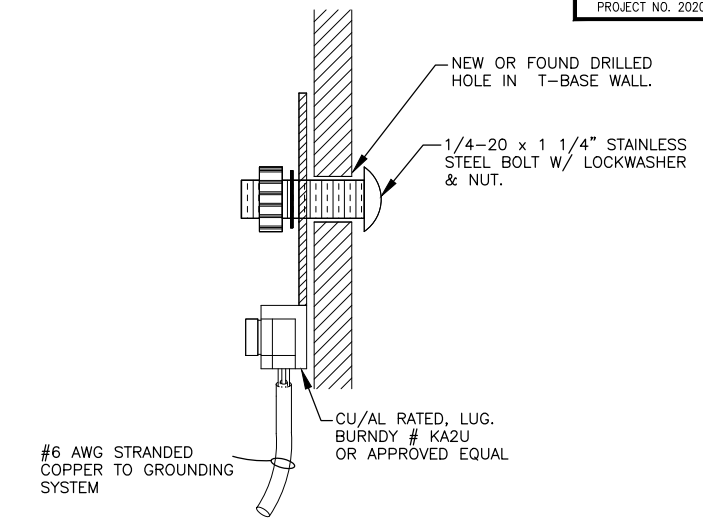
CONDUIT PLACEMENT NOTE:
MAINTAIN 1'-0" MINIMUM VERTICAL CLEARANCE WHEN CROSSING OVER PIPE AND OR OTHER UTILITIES. IF MINIMUM VERTICAL CLEARANCE CANNOT BE MAINTAINED, CONDUIT IS TO BE ROUTED UNDER PIPE MAINTAINING 1'-0" MINIMUM VERTICAL CLEARANCE.



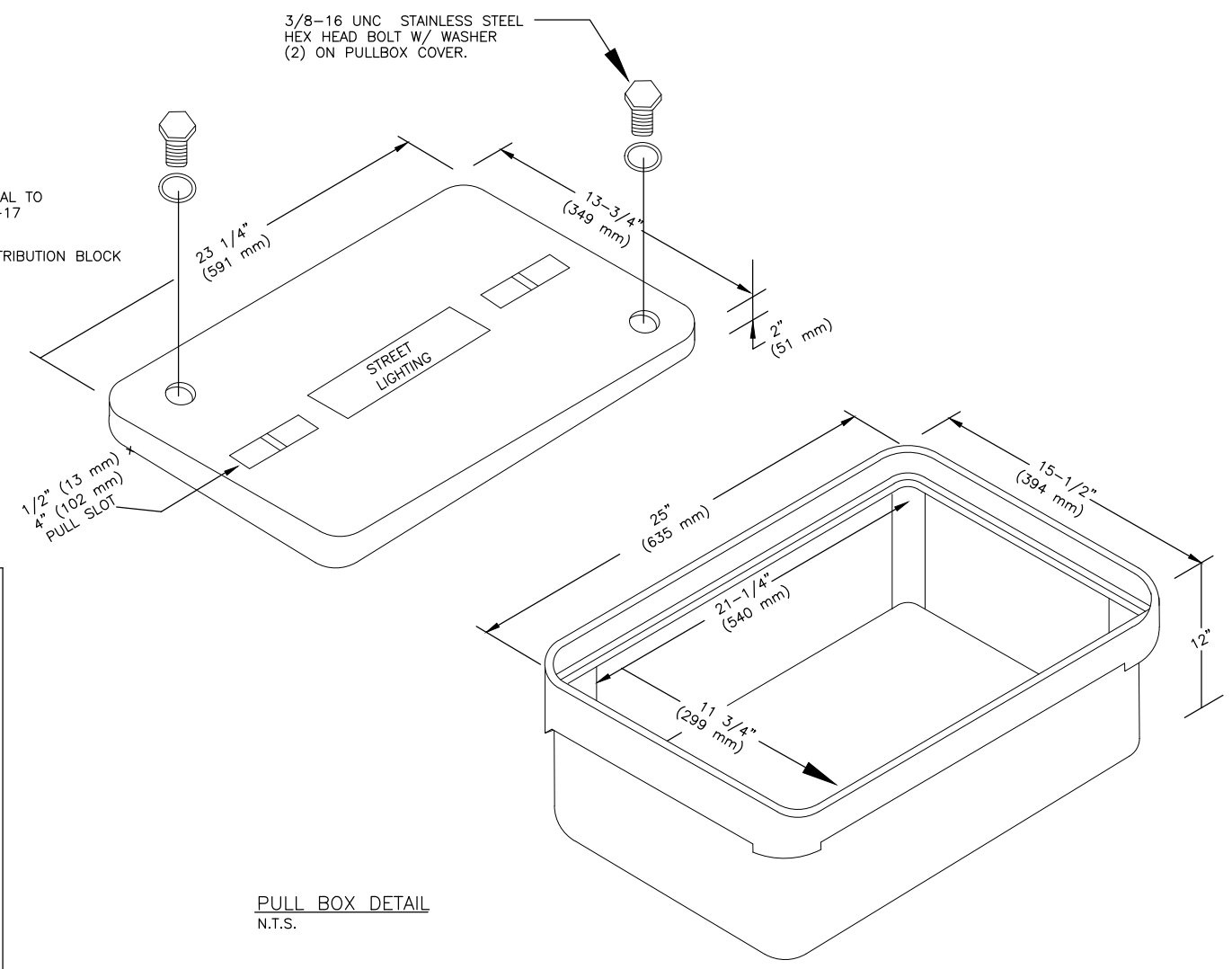
CABLE TO GROUND ROD DETAIL
(COPPER WIRE FOR GROUNDING)
N.T.S.

PULL BOX SPECIFICATION.

1. ALL STREET LIGHT PULLBOXES SHALL HAVE AN OPEN-BOTTOM, QUAZITE POLYMER CONCRETE DESIGN OR PRECAST CONCRETE DESIGN CONSTRUCTED OF CLASS I CONCRETE HAVING A MINIMUM COMPRESSIVE STRENGTH OF 2,500 PSI AT TWENTY- EIGHT (28) DAYS. POLYMER CONCRETE PULLBOX SHALL BE QUAZITE PRODUCT NO. PG1324BA12 OR APPROVED EQUIVALENT. CONCRETE PULLBOX SHALL BE BROOKS 38 SERIES OR APPROVED EQUIVALENT. IN EITHER CASE, BOTH PULLBOXES SHALL BE CONSTRUCTED PER ABOVE SPECIFIED MANUFACTURERS SIZE, MATERIALS AND PERFORMANCE SPECIFICATIONS. THEREFORE, BELOW SPECIFIED PULLBOX COVER SHALL BE FULLY INTER- CHANGEABLE WITH EITHER PULLBOX. ALL PULLBOX COVERS FURNISHED AND INSTALLED SHALL BE POLYMER CONCRETE QUAZITE PRODUCT NO. PG1324HA00 OR APPROVED EQUIVALENT. NO OTHER DESIGN, SIZE, MODIFICATION OR MATERIALS SHALL BE ACCEPTABLE. PULLBOX COVERS SHALL BE MARKED "STREET LIGHTING" OR "ELECTRIC/ MIAMI-DADE HD" .
2. IN SITUATIONS WHERE PULLBOX IS LOCATED OUTSIDE OF SIDEWALK, I.E. SWALE AREA. THE PULLBOX IS TO HAVE A 6'x5' MIN CONCRETE APRON (6" THICK) PLACED AROUND IT. COST OF CONCRETE APRON IS TO BE INCLUDED IN THE PULLBOX INSTALLATION COST.



GROUND LUG DETAIL
(COPPER WIRE FOR GROUNDING)
N.T.S.



PULL BOX DETAIL
N.T.S.

K:\DESIGN\20200119\EDP_M720200119\Redesign Lighting_Old Cutler Rd\CADD or FPID\LIGHTING\1841A\Details.dwg Mar. 24, 2022 - 10:59am JFERRER



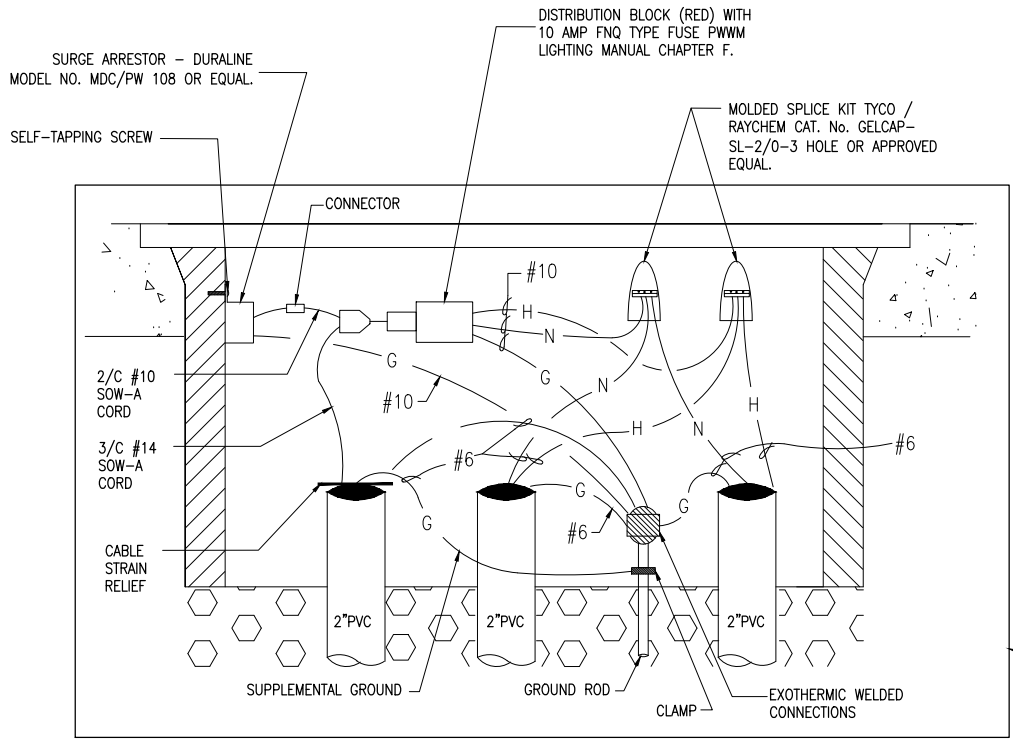
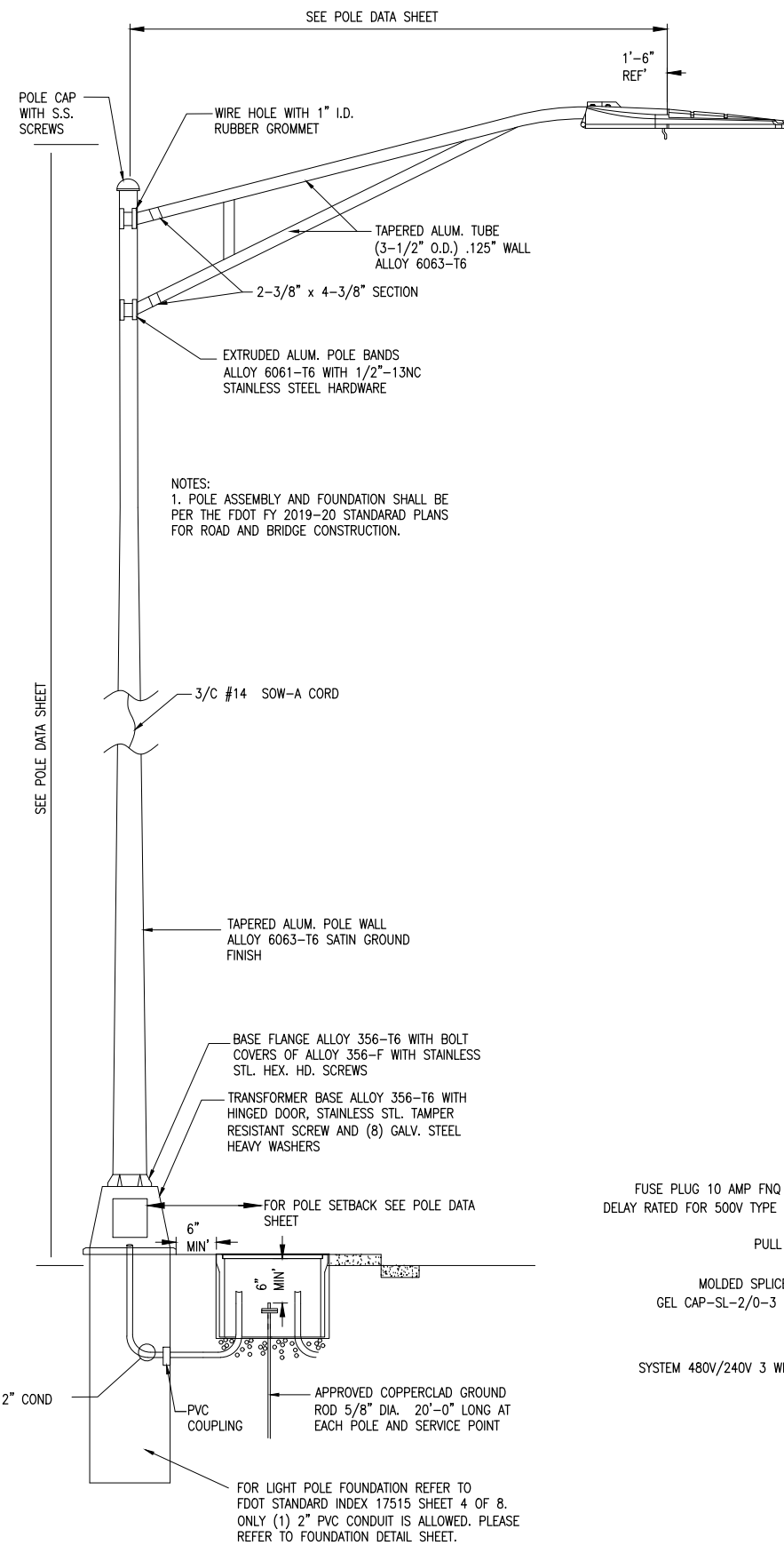
| REVISIONS | | | | | |
|-----------|------|---------------|------|----|-------------|
| DATE | BY | DESCRIPTION | DATE | BY | DESCRIPTION |
| 3-23-22 | R.L. | SHEET UPDATED | | | |

MARLIN
ENGINEERING
RAFAEL LAGOS | P.E. No.: 51412
3363 W. COMMERCIAL Blvd, Ste. 115 | FT Lauderdale, FL 33309
P: 954.870.5070 | CA. No. 6104

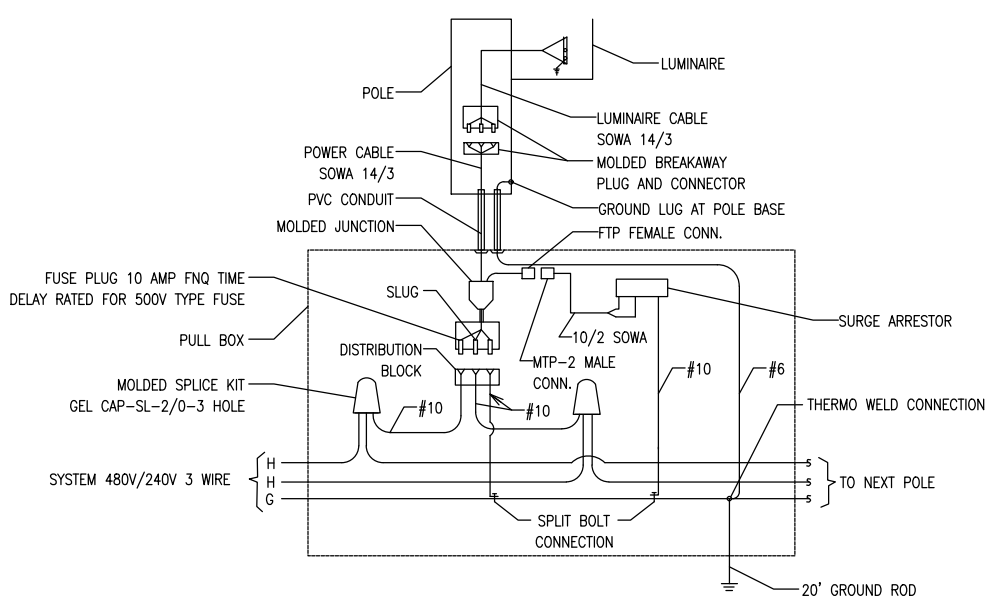
| DESIGNED BY | NAME | DATE | DRAWN BY | NAME | DATE |
|----------------|------|------|------------|------|------|
| J.F. | J.F. | | J.F. | J.F. | |
| CHECKED BY | A.G. | | CHECKED BY | A.G. | |
| SUPERVISED BY: | | | | | |

MIAMI-DADE COUNTY
DEPARTMENT OF TRANSPORTATION AND PUBLIC WORKS
HIGHWAY DIVISION
STEPHEN P. CLARK CENTER
111 NW 1 ST
MIAMI, FLORIDA 33128

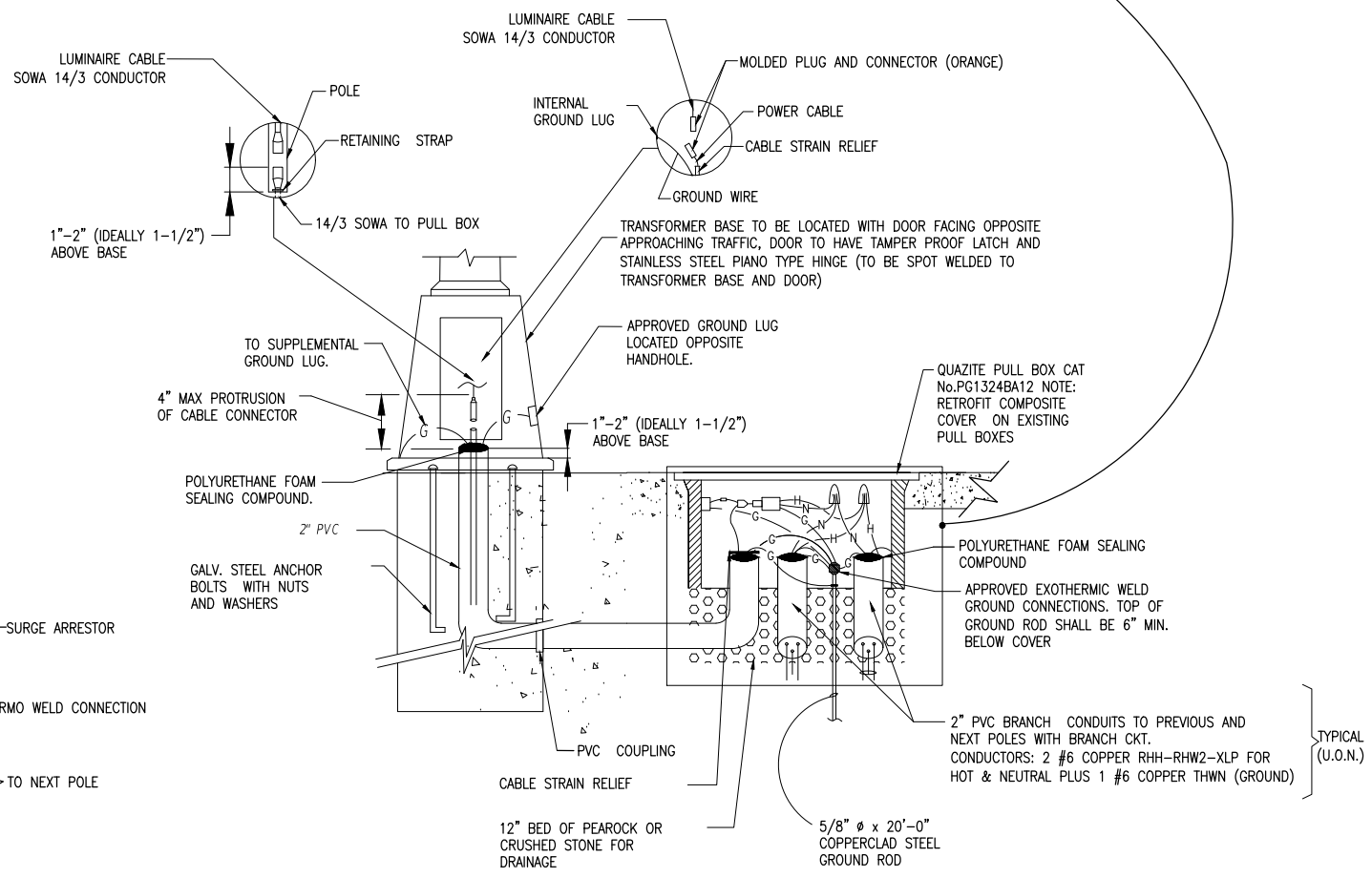
REVISED PLANS FOR ADDENDUM No. 2



THESE DRAWINGS DEPICT PREFERRED INSTALLATION METHODS OR SOLUTION FOR STANDARD JOB CONDITIONS. PROJECT ENGINEER SHALL EVALUATE SPECIFIC JOB REQUIREMENTS BEFORE APPLYING ANY OF THESE DETAILS, AND SHALL PROVIDE ADDITIONAL DETAILS ON SEPARATE SHEETS TO SUIT JOB CONDITIONS



WIRING DIAGRAM (POLE CABLE DISTRIBUTION)
N.T.S.



POLE WIRING DETAIL WITH PULL BOX
N.T.S.

TYPICAL METAL POLE INSTALLATION DETAIL
N.T.S.

| REVISIONS | | | | | |
|-----------|------|---------------|------|----|-------------|
| DATE | BY | DESCRIPTION | DATE | BY | DESCRIPTION |
| 3-23-22 | R.L. | SHEET UPDATED | | | |

MARLIN
ENGINEERING
RAFAEL LAGOS | P.E. No.: 51412
3363 W. COMMERCIAL Blvd, Ste. 115 | FT Lauderdale, FL 33309
P: 954.870.5070 | CA. No. 6104

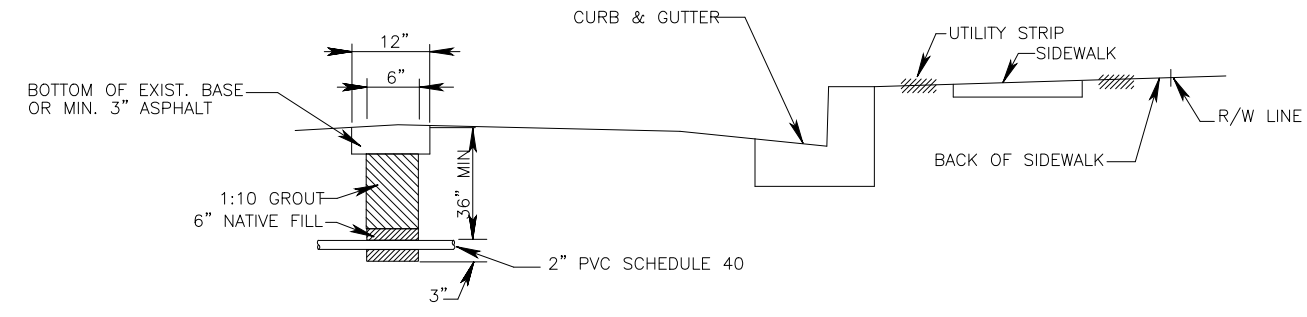
| DESIGNED BY | NAME | DATE | DRAWN BY | NAME | DATE |
|----------------|------|------|------------|------|------|
| J.F. | J.F. | | J.F. | J.F. | |
| CHECKED BY | A.G. | | CHECKED BY | A.G. | |
| SUPERVISED BY: | | | | | |

DEPARTMENT OF TRANSPORTATION AND PUBLIC WORKS
HIGHWAY DIVISION
STEPHEN P. CLARK CENTER
111 NW 1 ST
MIAMI, FLORIDA 33128

K:\DESIGN\20200119\Redesign Lighting\Old Cutler Rd\CADD or FPI\LD\LIGHTING\1841\Details.dwg Mar 24, 2022 - 10:59am JFERRER

① OPTION

CONDUIT BURIED WHEN CROSSING ROAD

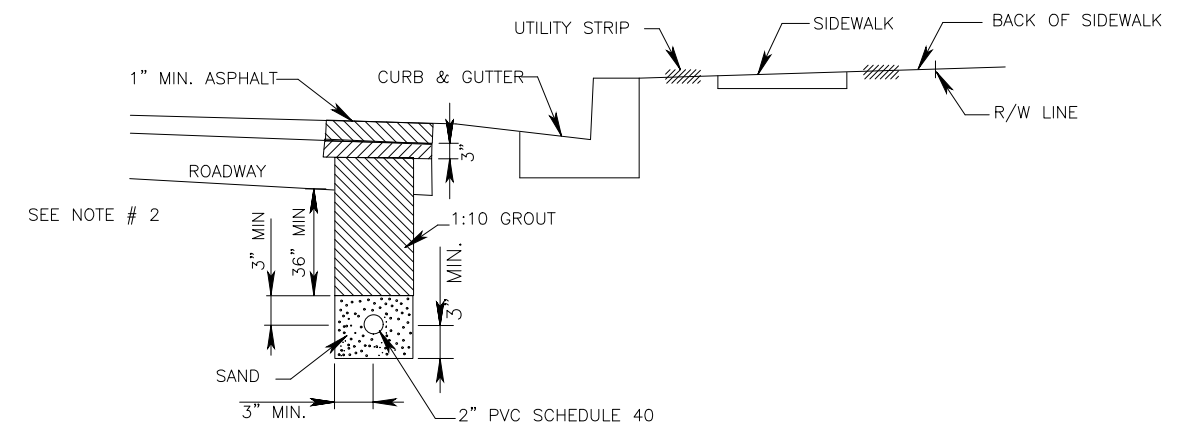


NOTE:
TRENCH NOT TO BE OPENED MORE THAN 250' AT A TIME

* MAY BE ADJUSTED IN FIELD DUE TO FIELD CONDITIONS AS DIRECTED BY THE ENGINEER.

② OPTION

CONDUIT BURIAL IN ROADWAY



NOTE:

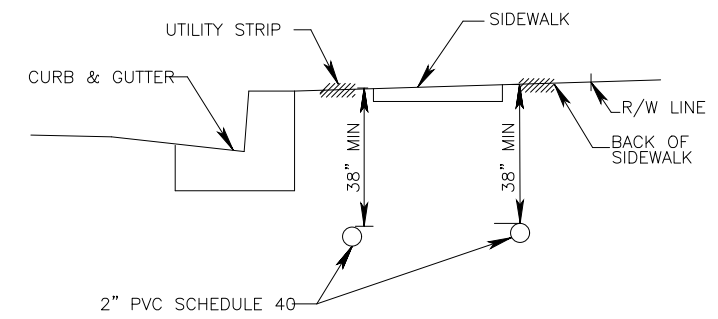
1. TRENCH NOT TO BE OPENED MORE THAN 250' AT A TIME.

2. THIS AREA SHALL BE BACKFILLED WITH TYPE S-1 ASPHALTIC CONCRETE TO WITHIN 1 INCH OF FINISHED GRADE.

* MAY BE ADJUSTED IN FIELD DUE TO FIELD CONDITIONS AS DIRECTED BY THE ENGINEER.

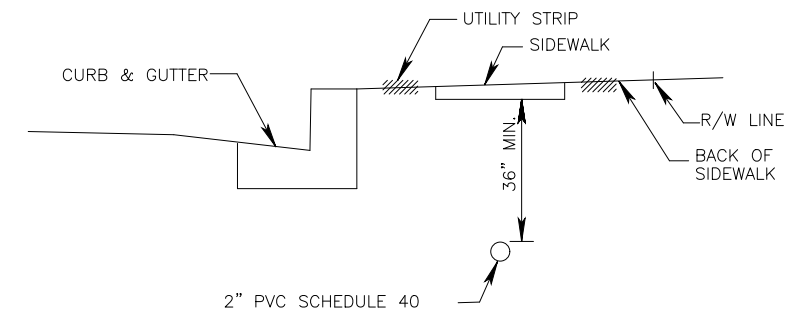
③ OPTION

CONDUIT IN UTILITY AND BACK OF SIDEWALK



④ OPTION

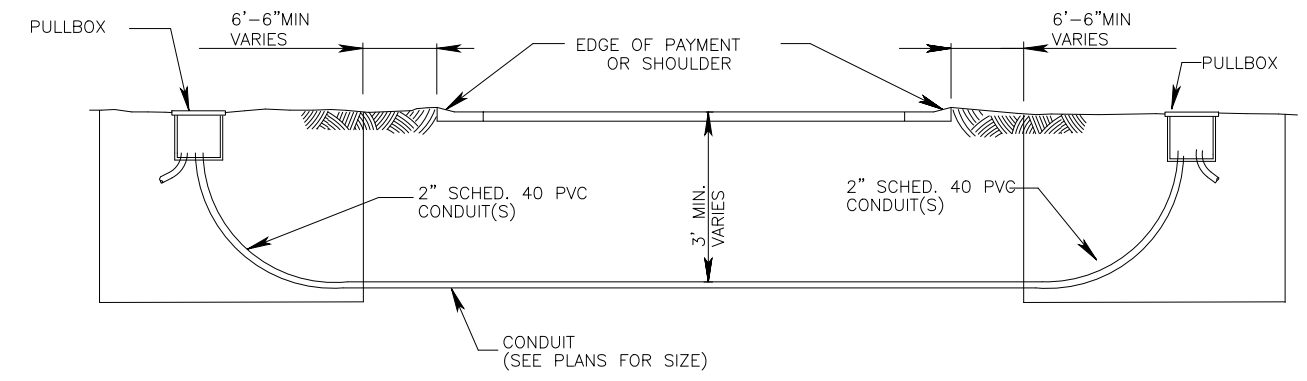
CONDUIT UNDER SIDEWALK



NOTE:
IN PLACING CONDUIT UNDER SIDEWALK REPLACEMENT OF ENTIRE SIDEWALK SECTION SHALL BE NECESSARY.

⑤ OPTION

CONDUIT DIRECTIONAL BORE



NOTES:
1. DIRECTIONAL BORING OPERATIONS SHALL BE DONE IN ACCORDANCE WITH THE F.D.O.T. UTILITY ACCOMMODATION MANUAL.

K:\DESIGN\20200119\Redesign Lighting_Old Cutler Rd\CADD or FPD\LIGHTING\184th\Conduit_Buried_Details.dwg Mar 24, 2022 - 10:59am JFERRER

1

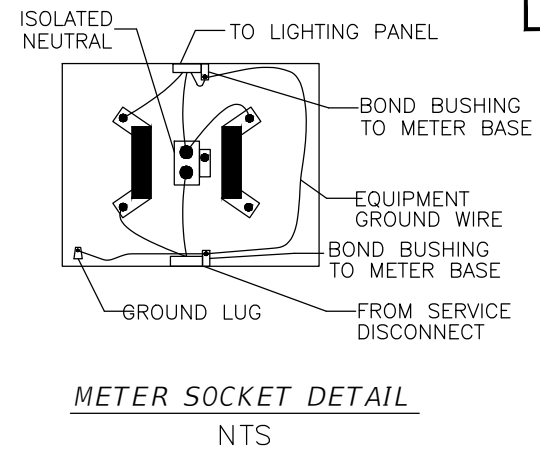
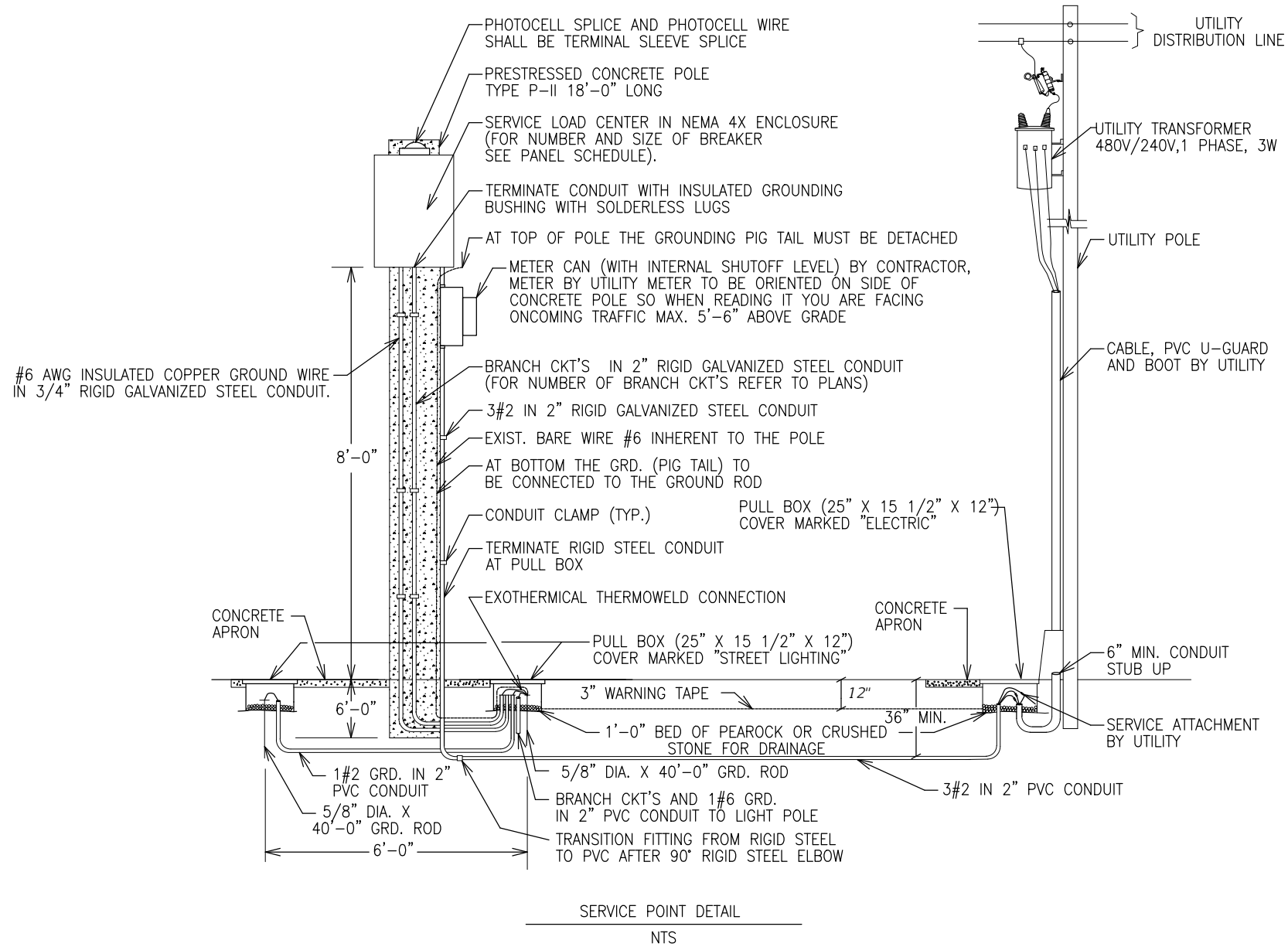
| REVISIONS | | | | | |
|-----------|------|---------------|------|----|-------------|
| DATE | BY | DESCRIPTION | DATE | BY | DESCRIPTION |
| 3-23-22 | R.L. | SHEET UPDATED | | | |

MARLIN
ENGINEERING
RAFAEL LAGOS | P.E. No.: 51412
3363 W. COMMERCIAL Blvd, Ste. 115 | FT Lauderdale, FL 33309
P: 954.870.5070 | C.A. No. 6104

| NAME | DATE | NAME | DATE |
|-------------------|------|------------------|------|
| DESIGNED BY: J.F. | | DRAWN BY: J.F. | |
| CHECKED BY: A.G. | | CHECKED BY: A.G. | |
| SUPERVISED BY: | | | |

MIAMI-DADE COUNTY
DEPARTMENT OF TRANSPORTATION AND PUBLIC WORKS
HIGHWAY DIVISION
STEPHEN P. CLARK CENTER
111 NW 1 ST
MIAMI, FLORIDA 33128

CONDUIT BURIAL DETAILS



NOTES

1. CONTRACTOR MUST COORDINATE WITH ELECTRICAL POWER COMPANY (UTILITY) ENGINEERS FOR THE INSTALLATION OF THE UTILITY RISER.
2. STRUCTURAL CALCULATIONS OF THE POLE INSTALLATION, SIGNED AND SEALED BY A FLORIDA LICENSED PROFESSIONAL ENGINEER, MAY BE REQUIRED.
3. INTERCONNECT ALL GROUNDING ELECTRODES USING #6 GROUNDING CONDUCTOR.
4. PROVIDE SUPPLEMENTARY GROUNDING ELECTRODE SPACED AT A MINIMUM OF 6FT APART.
5. SERVICE DISCONNECT MUST BE RATED FOR SERVICE ENTRANCE. LABEL MUST BE FACTORY INSTALLED.
6. SERVICE DISCONNECT TO BE ORIENTED ON CONCRETE POLE SO ITS FACING THE SIDEWALK.
7. METER TO BE ORIENTED ON SIDE OF CONCRETE POLE SO WHEN READING IT YOU ARE FACING ON-COMING TRAFFIC.
8. PROVIDE 2 FEET OF COILED TERMINATION OF CONDUCTOR IN THE PULLBOX MARKED "ELECTRIC".
9. TERMINATE CONDUITS IN METER SOCKET AND SERVICE DISCONNECT WITH INSULATED GROUNDING BUSHING WITH SOLDERLESS LUG.

K:\DESIGN\20200119\Redesign Lighting_Old Cutler Rd\CADD or FPI\Lighting\184th\Details.dwg Mar 24, 2022 - 10:59am JFERRER

1

| REVISIONS | | | | | |
|-----------|------|---------------|------|----|-------------|
| DATE | BY | DESCRIPTION | DATE | BY | DESCRIPTION |
| 3-23-22 | R.L. | SHEET UPDATED | | | |

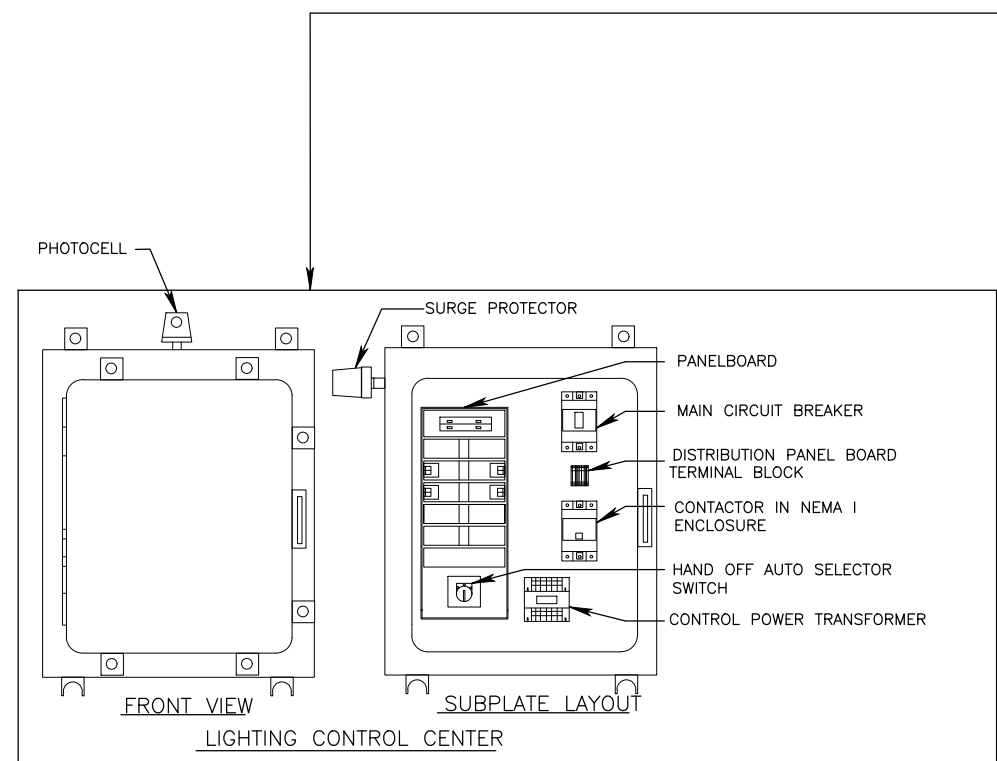
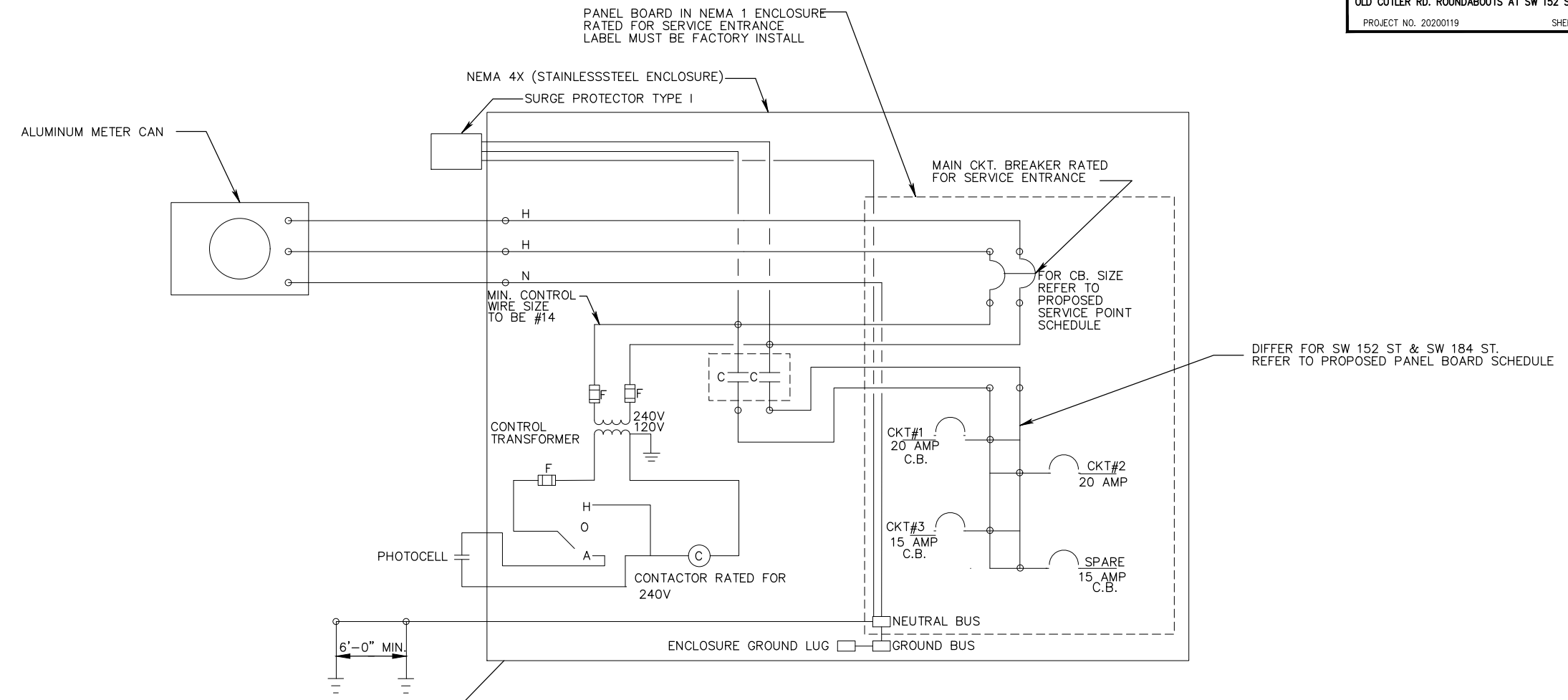
MARLIN
ENGINEERING
RAFAEL LAGOS | P.E. No.: 51412
3363 W. COMMERCIAL Blvd, Ste. 115 | FT Lauderdale, FL 33309
P: 954.870.5070 | C.A. No. 6104

| DESIGNED BY | NAME | DATE | DRAWN BY | NAME | DATE |
|-------------|------|------|------------|------|------|
| J.F. | J.F. | | J.F. | J.F. | |
| CHECKED BY | NAME | DATE | CHECKED BY | NAME | DATE |
| A.G. | A.G. | | A.G. | A.G. | |

SUPERVISED BY:

MIAMI-DADE COUNTY
DEPARTMENT OF TRANSPORTATION AND PUBLIC WORKS
HIGHWAY DIVISION
STEPHEN P. CLARK, CENTER
111 NW 1 ST
MIAMI, FLORIDA 33128

ELECTRICAL SERVICE DETAILS



SW 152nd ST & OLD CUTLER

| PANEL BOARD SCHEDULE | | | | | |
|---|---------|-----|------|--------|--------------|
| NEMA-1 1Ø,3W,240/120 V, (2P - 60 A MCB) | | | | | |
| 25,000 RMS SYMETRICAL SURF-MTD | | | | | |
| CKT NO | SERVING | KVA | AMPS | C. BKR | WIRE/CONDUCT |
| A-1 | 1 - 3 | 1.2 | 4.85 | 10 | #6 / 2" |
| A-2 | 4 & 5 | 0.8 | 3.23 | 10 | #6 / 2" |
| A-3 | 6 - 8 | 1.2 | 4.9 | 10 | #6 / 2" |
| A-4 | 14 - 16 | 1.2 | 4.9 | 10 | #6 / 2" |
| A-5 | 9 - 13 | 1.9 | 8.1 | 10 | #6 / 2" |

NUMBERS OF BRANCH CKT. BREAKERS AS REQUIRED

LOAD CENTER LOAD CALCULATION:

CONTINUOUS LOADS= 6206.4 VA
25% CONT. LOAD= 1551.6 VA
TOTAL= 7758.0 VA

Amp = $\frac{VA}{V}$

VOLTAGE DROP

| | |
|-----|-------|
| A-1 | 0.35% |
| A-2 | 0.23% |
| A-3 | 0.59% |
| A-4 | 0.32% |
| A-5 | 0.82% |

SW 184th ST & OLD CUTLER

| PANEL BOARD SCHEDULE | | | | | |
|---|---------|-----|------|--------|--------------|
| NEMA-1 1Ø,3W,240/120 V, (2P - 60 A MCB) | | | | | |
| 25,000 RMS SYMETRICAL SURF-MTD | | | | | |
| CKT NO | SERVING | KVA | AMPS | C. BKR | WIRE/CONDUCT |
| A-1 | 1 - 4 | 1.6 | 6.46 | 10 | #6 / 2" |
| A-2 | 13 - 18 | 2.3 | 9.69 | 10 | #6 / 2" |
| A-3 | 5-8 | 1.6 | 6.5 | 10 | #6 / 2" |
| A-4 | 9-12 | 1.6 | 6.5 | 10 | #6 / 2" |

NUMBERS OF BRANCH CKT. BREAKERS AS REQUIRED

LOAD CENTER LOAD CALCULATION:

CONTINUOUS LOADS= 6976.8 VA
25% CONT. LOAD= 1744.2 VA
TOTAL= 8721.0 VA

Amp = $\frac{VA}{V}$

VOLTAGE DROP

| | |
|-----|-------|
| A-1 | 0.83% |
| A-2 | 1.81% |
| A-3 | 0.41% |
| A-4 | 0.57% |

1

K:\DESIGN\20200119\EDP_MF20200119\Redesign Lighting_Old Cutler Rd\CADD or FPI\Lighting\184th\Details.dwg Mar 24, 2022 - 10:59am JFERRER

| REVISIONS | | | | | |
|-----------|------|---------------|------|----|-------------|
| DATE | BY | DESCRIPTION | DATE | BY | DESCRIPTION |
| 3-23-22 | R.L. | SHEET UPDATED | | | |

MARLIN
ENGINEERING
RAFAEL LAGOS | P.E. No.: 51412
3363 W. COMMERCIAL Blvd, Ste. 115 | FT Lauderdale, FL 33309
P: 954.870.5070 | C.A. No. 6104

| NAME | DATE | NAME | DATE |
|------------------|------|-----------------|------|
| DESIGNED BY J.F. | | DRAWN BY J.F. | |
| CHECKED BY A.G. | | CHECKED BY A.G. | |
| SUPERVISED BY: | | | |

MIAMI-DADE COUNTY
DEPARTMENT OF TRANSPORTATION AND PUBLIC WORKS
HIGHWAY DIVISION
STEPHEN P. CLARK CENTER
115 NW 1 ST
MIAMI, FLORIDA 33128

ELECTRICAL SERVICE DETAILS