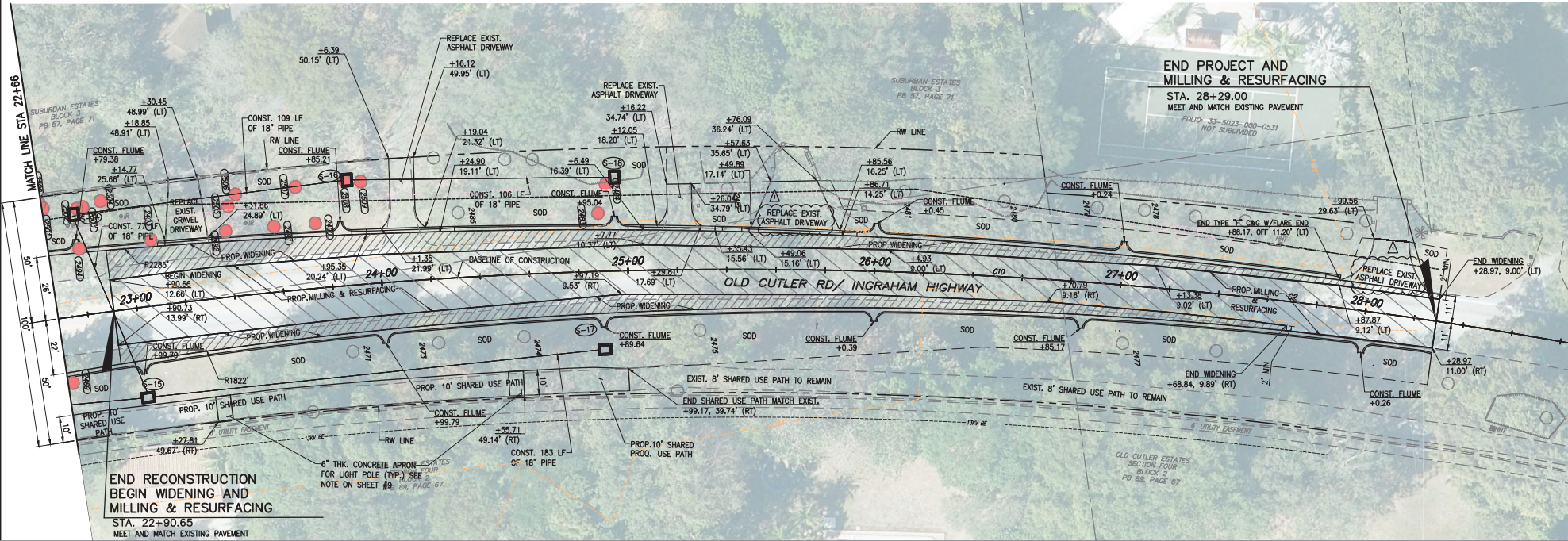
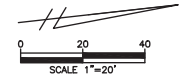


REVISED PLANS FOR ADDENDUM No. 2

MIAMI-DADE COUNTY DEPARTMENT OF TRANSPORTATION AND PUBLIC WORKS
HIGHWAY DIVISION
OLD CUTLER RD. ROUNDABOUTS AT SW 152 ST & SW 184 ST
PROJECT NO. 20200119 SHEET 10 OF 183



- NOTES:
- 1- ALL HORIZONTAL CONTROL STATIONS AND OFFSETS INFORMATION ARE BASED IN THE SURVEY BASE LINE.
 - 2- (XXX) DENOTES EXISTING TREE TO BE REMOVED

CURVE DATA							
CURVE	RADIUS (FT)	LENGTH (FT)	DEGREE OF CURVATURE	PC	PT	DELTA (°)	CHORD LENGTH (FT)
C2	1910	754	2° 59' 59"	22+73.64	30+27.39	22° 36' 36"	749

OLD CUTLER RD. &
SW 152 ST (CORAL REEF DR.)

K:\DESIGN\20200119\000_EBP_0720200119\Old Cutler Rd Roundabout\CAD\2020-10-10-10- Old Cutler Roundabout\DWG 102 ST W/152 ST PLAN-SHEET - REV.dwg Mar 24, 2022 - 11:10am - JF9852R

REVISIONS					
DATE	BY	DESCRIPTION	DATE	BY	DESCRIPTION
3-23-22	AF	TEXT LABELS REVISED			

MARLIN
ENGINEERING
ANGEL ABRIL FREDA | P.E. No.: 77550
3363 W. COMMERCIAL Blvd. Ste. 113 | Ft. Lauderdale, FL 33309
P: 954.870.5070 | C.A. No. 6104

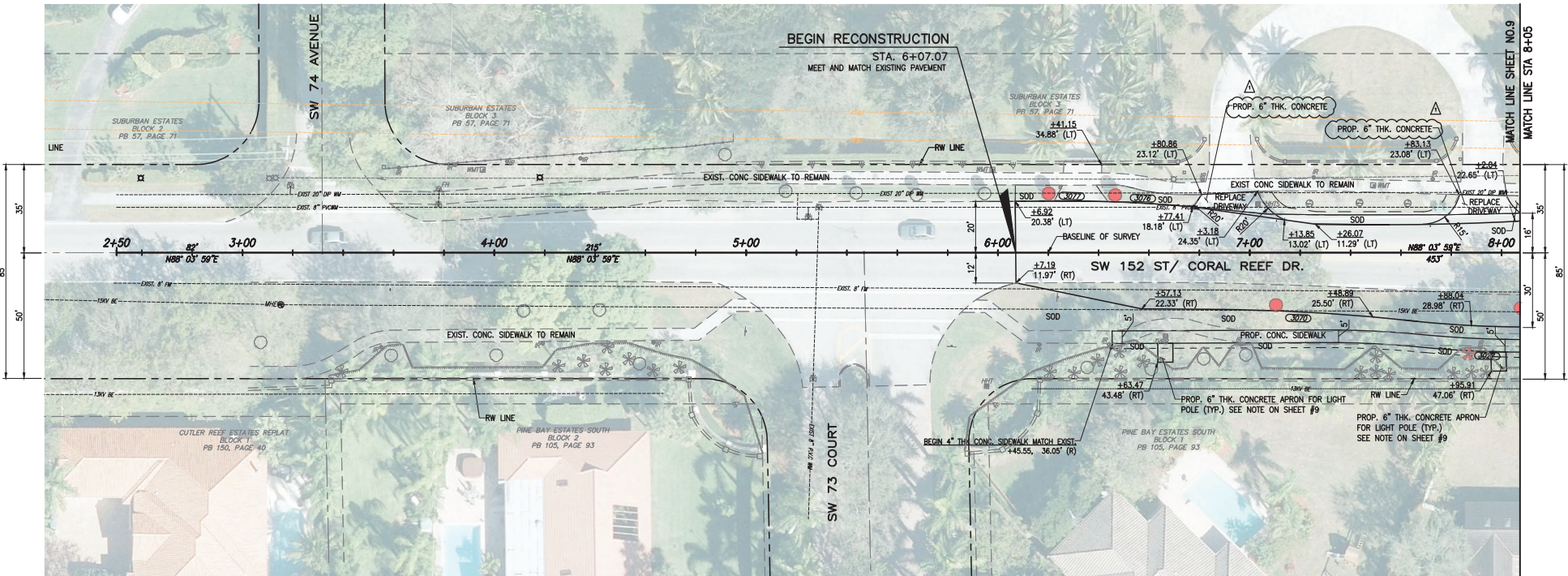
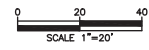
DESIGNED BY	NAME	DATE	DRAWN BY	NAME	DATE
RL			M.P.		
AF			AF		

MIAMI-DADE COUNTY
DEPARTMENT OF TRANSPORTATION AND PUBLIC WORKS
HIGHWAY DIVISION
STEPHEN P. CLARK, CENTER
100 N.W. 11th St.
MIAMI, FLORIDA 33138

ROADWAY PLAN

REVISED PLANS FOR ADDENDUM No. 2

MIAMI-DADE COUNTY DEPARTMENT OF TRANSPORTATION AND PUBLIC WORKS
HIGHWAY DIVISION
OLD CUTLER RD. ROUNDABOUTS AT SW 152 ST & SW 184 ST
PROJECT NO. 20220119 SHEET 11 OF 183



NOTES:
1- ALL HORIZONTAL CONTROL STATIONS AND OFFSETS INFORMATION ARE BASED IN THE SURVEY BASE LINE.
2- ● XXX DENOTES EXISTING TREE TO BE REMOVED

OLD CUTLER RD. &
SW 152 ST (CORAL REEF DR.)

K:\2022\20220119\000_EBP_072020119\Old Cutler Rd Roundabout\CAD\2022-12-15-18 - Old Cutler Roundabout\SW 152 ST\SW152-08-PLAN-SHEET - REV.dwg Mar 24, 2022 - 11:10am JF9582R

REVISIONS					
DATE	BY	DESCRIPTION	DATE	BY	DESCRIPTION
3-23-22	AF	TEXT LABELS REVISED			

MARLIN
ENGINEERING
ANGEL ABRIN FREDA | P.E. No.: 77550
3363 W. COMMERCIAL BLVD. SUITE 113 | FT. LAUDERDALE, FL 33309
P: 954.870.5070 | C.A. No. 6104

DESIGNED BY	NAME	DATE	DRAWN BY	NAME	DATE
RL			M.P.		
CHECKED BY	A.F.		CHECKED BY	A.F.	

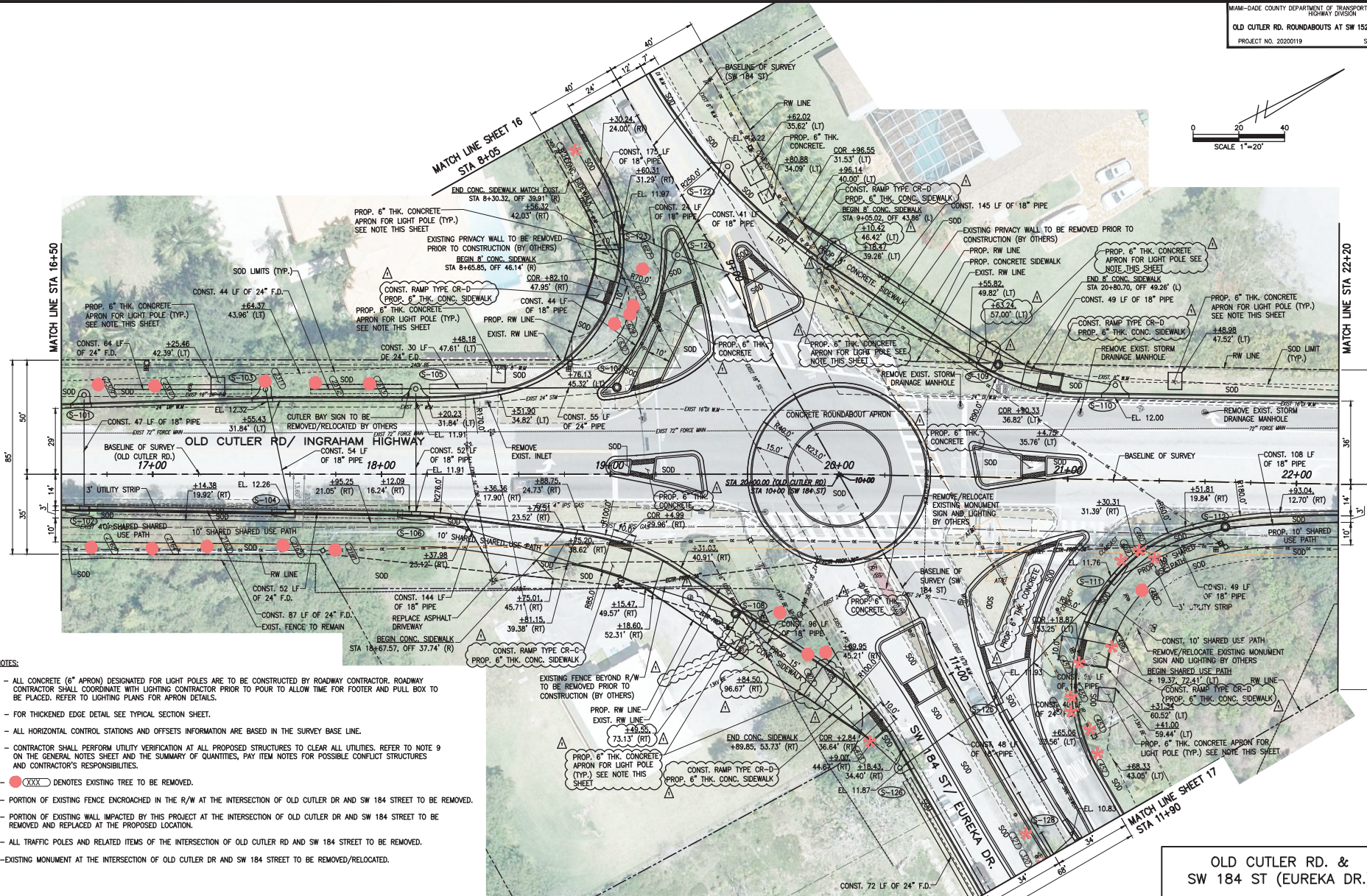
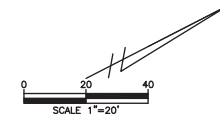
SUPERVISED BY:

MIAMI-DADE COUNTY
DEPARTMENT OF TRANSPORTATION AND PUBLIC WORKS
HIGHWAY DIVISION
STEPHEN P. CLARK, DIVISION MANAGER
100 N.W. 1ST AVENUE
MIAMI, FLORIDA 33138

ROADWAY PLAN

REVISED PLANS FOR ADDENDUM No. 2

MIAMI-DADE COUNTY DEPARTMENT OF TRANSPORTATION AND PUBLIC WORKS
HIGHWAY DIVISION
OLD CUTLER RD. ROUNDABOUTS AT SW 152 ST & SW 184 ST
PROJECT NO. 20220119 SHEET 14 OF 183



- NOTES:**
- 1 - ALL CONCRETE (6" APRON) DESIGNATED FOR LIGHT POLES ARE TO BE CONSTRUCTED BY ROADWAY CONTRACTOR. ROADWAY CONTRACTOR SHALL COORDINATE WITH LIGHTING CONTRACTOR PRIOR TO POUR TO ALLOW TIME FOR FOOTER AND PULL BOX TO BE PLACED. REFER TO LIGHTING PLANS FOR APRON DETAILS.
 - 2 - FOR THICKENED EDGE DETAIL SEE TYPICAL SECTION SHEET.
 - 3 - ALL HORIZONTAL CONTROL STATIONS AND OFFSETS INFORMATION ARE BASED IN THE SURVEY BASE LINE.
 - 4 - CONTRACTOR SHALL PERFORM UTILITY VERIFICATION AT ALL PROPOSED STRUCTURES TO CLEAR ALL UTILITIES. REFER TO NOTE 9 ON THE GENERAL NOTES SHEET AND THE SUMMARY OF QUANTITIES, PAY ITEM NOTES FOR POSSIBLE CONFLICT STRUCTURES AND CONTRACTOR'S RESPONSIBILITIES.
 - 5 - **(XXX)** DENOTES EXISTING TREE TO BE REMOVED.
 - 6 - PORTION OF EXISTING FENCE ENCRoACHED IN THE R/W AT THE INTERSECTION OF OLD CUTLER DR AND SW 184 STREET TO BE REMOVED.
 - 7 - PORTION OF EXISTING WALL IMPACTED BY THIS PROJECT AT THE INTERSECTION OF OLD CUTLER DR AND SW 184 STREET TO BE REMOVED AND REPLACED AT THE PROPOSED LOCATION.
 - 8 - ALL TRAFFIC POLES AND RELATED ITEMS OF THE INTERSECTION OF OLD CUTLER RD AND SW 184 STREET TO BE REMOVED.
 - 9 - EXISTING MONUMENT AT THE INTERSECTION OF OLD CUTLER DR AND SW 184 STREET TO BE REMOVED/RELOCATED.

OLD CUTLER RD. &
SW 184 ST (EUREKA DR.)

REVISIONS					
DATE	BY	DESCRIPTION	DATE	BY	DESCRIPTION
3-23-22	AF	TEXT LABELS REVISED STA. OFF UPDATES CONC. APRON RELOCATED ADDED CONC. APRON			

MARLIN
ENGINEERING
ANGEL ABRN PREDA | P.E. No.: 77550
3363 W. COMMERCIAL BLVD. #201 113 FT. LAUDERDALE, FL 33309
P: 954.870.5070 C.A. No. 6104

DESIGNED BY	NAME	DATE	DRAWN BY	NAME	DATE
RL			AF		
CHECKED BY	AF		CHECKED BY	AF	

SUPERVISED BY:

DEPARTMENT OF TRANSPORTATION AND PUBLIC WORKS
HIGHWAY DIVISION
MIAMI-DADE COUNTY
STEPHEN P. CLARK, CHIEF
MIAMI, FLORIDA 33138

ROADWAY PLAN

REVISED PLANS FOR ADDENDUM No. 2

MIAMI-DADE COUNTY DEPARTMENT OF TRANSPORTATION AND PUBLIC WORKS
HIGHWAY DIVISION
OLD CUTLER RD. ROUNDABOUTS AT SW 152 ST & SW 184 ST
PROJECT NO. 202200119 SHEET 115 OF 183

NOTES:

1. CONTRACTOR TO PROVIDE TO THE COUNTY AT THE TIME OF THE PROJECT COMPLETION AN EXTRA NUMBER OF COMPLETE LIGHTING ASSEMBLIES, THEY SHALL BE FACTORY PACKAGED AND DELIVERED TO DESIGNATED COUNTY FACILITY . NUMBER OF EXTRA LIGHTING ASSEMBLIES TO BE CALCULATED AS 20% OF THE NUMBER OF LIGHT POLES LUMINARIES INSTALLED.

PAY ITEM NOTES:

- INSTALLATION SHALL COMPLY WITH MIAMI-DADE COUNTY, STATE OF FLORIDA DEPARTMENT OF TRANSPORTATION TRAFFIC DESIGN STANDARD AND THE NATIONAL ELECTRIC CODE.
- INCIDENTAL ITEMS OR ACCESSORIES REQUIRED TO COMPLETE THE WORK FOR EACH ITEM BID SHALL BE INCLUDED IN THE CONTRACT UNIT PRICE BID FOR THAT SPECIFIC ITEM AS INDICATED IN THE BID FORM; SUCH AS, BUT NOT LIMITED TO: ELBOWS, SPLIT BOLT CONNECTORS, FUSES & FUSE HOLDER, ELECTRICAL TAPE, SCOTCHKOTE, P.V.C. GLUE, TRENCHING, BACKFILLING, PAVEMENT RESTORATION, CONCRETE SLAB REPLACEMENT, ETC.
- PAY ITEM 639-1-121 PAYMENT FOR ELECTRICAL SERVICE INCLUDES FURNISHING AND INSTALLING ALL ITEMS AS DEPICTED ON SERVICE POINT POINT DETAIL THIS PLANS AND MIAMI-DADE COUNTY SERVICE POINT DETAILS FROM PICK-UP POINT TO LOAD CENTER.
- PAY ITEM NO. 715-1-113E FOR CONDUCTOR SHALL BE BASED ON THE LINEAR FEET OF THREE CONDUCTORS IN CONDUIT, 2-#6 RHW AND 1-#6 THW GND IN HORIZONTAL MEASUREMENT. NO ALLOWANCE SHALL BE MADE FOR CONNECTION IN PULL BOXES AND CABINETS. ALL CONDUCTOR USE/ RHW-XLP AS SPECIFIED IN FDOT SECTION 992 AND AS PER MIAMI-DADE COUNTY MAINTENANCE AGENCY SPECIFICATIONS. OTHER TYPE OF CABLE SHALL NOT BE ALLOWED (EXCEPT GROUND WIRE WHICH SHALL BE THIN).
- PAY ITEM NO. 630-2-12 FOR CONDUIT SHALL BE BASED ON THE HORIZONTAL PATH OF THE INSTALLED CONDUIT AS MEASURED BETWEEN THE CENTER OF PULL BOXES, CABINETS, ETC., NO ALLOWANCE SHALL BE MADE FOR SWEEPS OR VERTICAL DISTANCES ABOVE OR BELOW GROUND. INCLUDES CONDUIT, ELBOWS, SWEEPS, CONNECTING HARDWARE, TRENCHING AND BACKFILLING AS PER THE PLANS AND STANDARD INDEXES. ALSO INCLUDES THE COST OR RESTORING CUT PAVEMENT, SIDEWALKS, SOD, AND ETC. TO ITS ORIGINAL CONDITION.

- PAY ITEM 715-7-11 PAYMENT FOR LOAD CENTER SHALL INCLUDE FURNISHING AND INSTALLING ALL ITEMS AS DEPICTED ON MIAMI-DADE COUNTY SERVICE POINT DETAILS.
- PAY ITEM 635-2-11 INCLUDES GROUND ROD, GROUND WIRE, ROCKS AND CLAMPS.
- TRANSFORMER CONNECTION AND ALL WORK RELATED TO ELECTRICAL POWER SERVICE SHALL BE COORDINATED WITH F.P.&L. REPRESENTATIVE MR. TOM HODGDON TELEPHONE NO. (305) 442-5128.
- PAY ITEM 715-61-300 AND 715-61-321 HAVE 3 AND 5 ADDITIONAL LIGHT POLES, RESPECTIVELY, THAT ARE TO BE DELIVERED TO THE TSS YARD AND/OR WAREHOUSE. A TOTAL OF 42 LIGHT POLES ARE REQUIRED.

TABULATION OF LIGHTING
QUANTITIES
SW 152nd ST. AND OLD CUTLER RD.

PAY ITEM NO.	DESCRIPTION	UNIT	SHEET NUMBER										TOTAL THIS SHEET		GRAND TOTAL	
			119		120		121		122		123		ORIG.	FINAL	ORIG.	FINAL
			ORIG.	FINAL	ORIG.	FINAL	ORIG.	FINAL	ORIG.	FINAL	ORIG.	FINAL				
102-30-13	TEMPORARY HIGHWAY LIGHTING (ILLUMINATING ROADWAY)	LS	0		1		0		0		0		1		2	
630-2-12	CONDUIT, FURNISH & INSTALL, DIRECTIONAL BORE	LF	95		1351		191		141		220		1998		3882	
635-2-11	PULL & SPLICE BOX, FURNISH & INSTALL, 13"x24" COVER SIZE	EA	1		18		2		2		2		25		52	
639-1-121	ELECTRIC POWER SERVICE UNDERGROUND, METER, FURNISHED BY POWER COMPANY	AS	0		1		0		0		0		1		2	
715-1-113E	CONDUCTOR - FURNISH AND INSTALL THREE CONDUCTOR SET OF 2-#6 RHW-XLP STRANDED BLACK AND WHITE WITH 1-#6 THWN GREEN	LF	285		4716		573		423		660		6657		13527	
715-7-11	LOAD CENTER (INCLUDES SWITCH, WEATHERHEAD & WIRE AT SERVICE POINT)	EA	0		1		0		0		0		1		2	
715-4-13	LIGHT POLE COMPLETE, F&I, STANDARD POLE STANDARD FOUNDATION, 40' M.H. TOP MOUNT	EA	0		5		0		0		2		7		11	
715-4-13	LIGHT POLE COMPLETE, F&I, STANDARD POLE STANDARD FOUNDATION, 40' M.H. 10' ARM LENGTH	EA	1		4		2		2		0		9		23	
715-500-1	POLE CABLE DISTRIBUTION SYSTEM (CONVENTIONAL) FURNISH & INSTALL	EA	1		9		2		2		2		16		34	

*SEE NOTE 9
*SEE NOTE 9



SW 152ND ST. AND OLD CUTLER RD.

REVISIONS					
DATE	BY	DESCRIPTION	DATE	BY	DESCRIPTION
3-23-22	RL	SHEET UPDATED			

MARLIN
ENGINEERING
RAFAEL LAGOS | P.E. No.: 51412
3343 W. COMMERCE BLVD, SUITE 115 | FT. LAUDERDALE, FL 33309
P: 954.870.5070 | C.A. No. 6104

DESIGNED BY	NAME	DATE	DRAWN BY	NAME	DATE
J.F.			J.F.		
CHECKED BY	A.G.		CHECKED BY	A.G.	

SUPERVISED BY:

MIAMI-DADE COUNTY DEPARTMENT OF TRANSPORTATION AND PUBLIC WORKS HIGHWAY DIVISION
STEPHEN P. GALE CENTER
1500 N.W. 57th ST.
MIAMI, FLORIDA 33158

TABULATION OF LIGHTING QUANTITIES

REVISED PLANS FOR ADDENDUM No. 2

MIAMI-DADE COUNTY DEPARTMENT OF TRANSPORTATION AND PUBLIC WORKS
HIGHWAY DIVISION
OLD CUTLER RD. ROUNDABOUTS AT SW 152 ST & SW 184 ST
PROJECT NO. 20220119 SHEET 116 OF 183

TABULATION OF LIGHTING
QUANTITIES
SW 184th ST. AND OLD CUTLER RD.

PAY ITEM NO.	DESCRIPTION	UNIT	SHEET NUMBER										TOTAL THIS SHEET		GRAND TOTAL		
			124		125		126		127		128		ORIG.	FINAL	ORIG.	FINAL	
			ORIG.	FINAL	ORIG.	FINAL	ORIG.	FINAL	ORIG.	FINAL	ORIG.	FINAL					
102-30-13	TEMPORARY HIGHWAY LIGHTING (ILLUMINATING ROADWAY)	LS	0		1		0		0		0		1		2		
630-2-12	CONDUIT, FURNISH & INSTALL, DIRECTIONAL BORE	LF	173		1145		170		153		243		1884		3882		
635-2-11	PULL & SPLICE BOX, FURNISH & INSTALL, 12"X24" COVER SIZE	EA	2		18		2		2		3		27		52		
639-1-121	ELECTRIC POWER SERVICE UNDERGROUND, METER FURNISHED BY POWER COMPANY	AS	0		1		0		0		0		1		2		
715-1-113E	CONDUCTOR - FURNISH AND INSTALL THREE CONDUCTOR SET OF 2-#6 RHW-XLP STRANDED BLACK AND WHITE WITH 1-#6 THWN GREEN	LF	519		4653		510		459		729		6870		13527		
715-7-11	LOAD CENTER (INCLUDES SWITCH, WEATHERHEAD & WIRE AT SERVICE POINT)	EA	0		1		0		0		0		1		2		
715-4-13	LIGHT POLE COMPLETE, F&I STANDARD POLE STANDARD FOUNDATION, 40' M.H, TOP MOUNT	EA	0		4		0		0		0		4		11		
715-4-13	LIGHT POLE COMPLETE, F&I STANDARD POLE STANDARD FOUNDATION, 40' M.H, 10' ARM LENGTH	EA	2		5		2		2		3		14		23		
715-500-1	POLE CABLE DISTRIBUTION SYSTEM (CONVENTIONAL) FURNISH & INSTALL	EA	2		9		2		2		3		18		34		

*SEE NOTE 9 (SHEET 115 OF 183)
*SEE NOTE 9 (SHEET 115 OF 183)



SW 184TH ST. AND OLD CUTLER RD.

REVISIONS					
DATE	BY	DESCRIPTION	DATE	BY	DESCRIPTION
3-23-22	RL	SHEET UPDATED			

MARLIN
ENGINEERING
RAFAEL LAGOS | P.E. No.: 51412
3363 W. COMMERCE BLVD, Ste. 115 | FT. LAUDERDALE, FL 33309
P: 954.870.5070 | C.A. No. 6104

DESIGNED BY	NAME	DATE	DRAWN BY	NAME	DATE
DESIGNED BY	J.F.		DRAWN BY	J.F.	
CHECKED BY	A.G.		CHECKED BY	A.G.	

MIAMI-DADE COUNTY DEPARTMENT OF TRANSPORTATION AND PUBLIC WORKS HIGHWAY DIVISION
STEPHEN P. GAMBINO
P.E. No. 12
MIAMI, FLORIDA 33138

TABULATION OF LIGHTING
QUANTITIES

