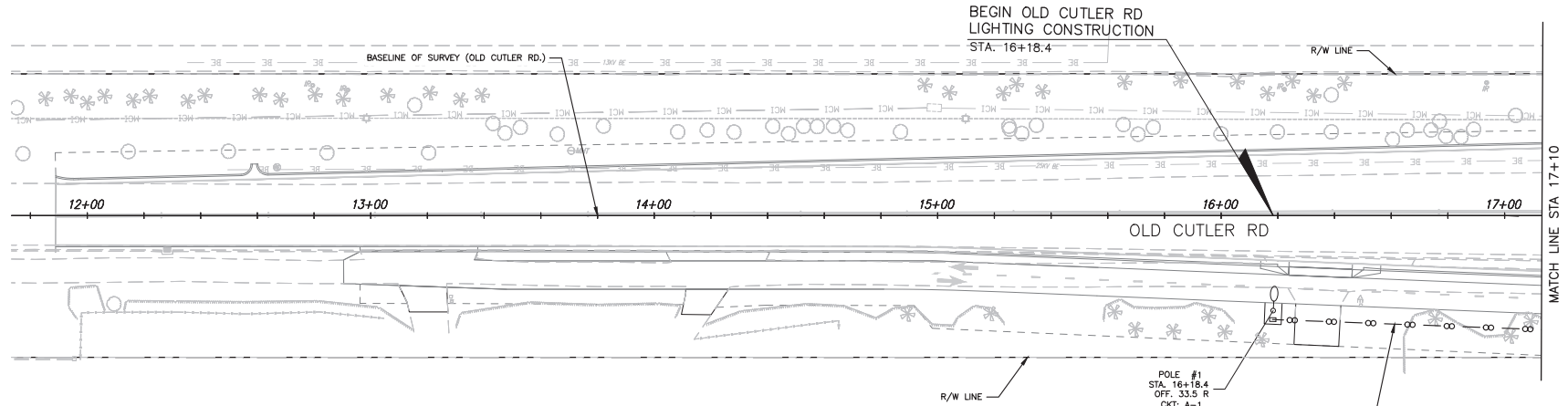
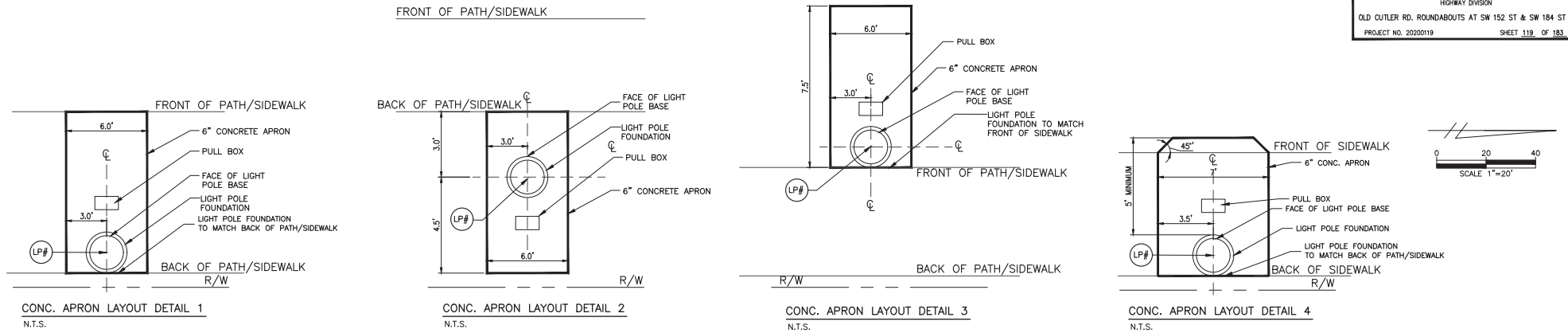


REVISED PLANS FOR ADDENDUM No. 2

MIAMI-DADE COUNTY DEPARTMENT OF TRANSPORTATION AND PUBLIC WORKS  
HIGHWAY DIVISION  
OLD CUTLER RD. ROUNDABOUTS AT SW 152 ST & SW 184 ST  
PROJECT NO. 202200119 SHEET 119 OF 183



LEGEND:  
LP# FOR LIGHT POLE LIGHT POLE # AND LOCATION, SEE PLAN SHEET AND POLE DATA SHEET

NOTE:  
- ALL LIGHT POLE APRONS SHALL BE AS PER DETAIL ON THIS SHEET. REFER TO SHEETS 129 AND 130 FOR SIMM CONST. DETAIL AND REINFORCING.  
- LIGHTING AND ROADWAY CONTRACTOR SHALL COORDINATE PRIOR TO APRON CONSTRUCTION.  
- COST AND CONSTRUCTION SHALL BE BY ROADWAY CONTRACTOR UNDER 6" CONCRETE PAY-ITEM.  
- ALL APRONS THAT FALL WITHIN SHARE-USE PATH OR SIDEWALK SHALL BE 6' WIDE. CONST. SHALL EXTEND TO FAR EDGE. REFER TO THIS SHEET FOR LAYOUT DETAILS, 129 AND 130 FOR SIMM CONST. DETAIL AND REINFORCING.

REVISIONS					
DATE	BY	DESCRIPTION	DATE	BY	DESCRIPTION
3-23-22	RL	SHEET UPDATED			

**MARLIN**  
ENGINEERING  
RAFAEL LAGOS | P.E. No.: 51412  
3363 W. COMMERCE BLVD. SU. 115 | FT. LAUDERDALE, FL 33309  
P: 954.870.5070 | C.A. No. 6104

DESIGNED BY	NAME	DATE	DRAWN BY	NAME	DATE
DESIGNED BY	J.F.		DRAWN BY	J.F.	
CHECKED BY	A.G.		CHECKED BY	A.G.	

MIAMI-DADE COUNTY  
DEPARTMENT OF TRANSPORTATION AND PUBLIC WORKS  
HIGHWAY DIVISION  
STEPHEN P. CLARK CENTER  
1000 P.F. SHAW BLVD.  
MIAMI, FLORIDA 33138

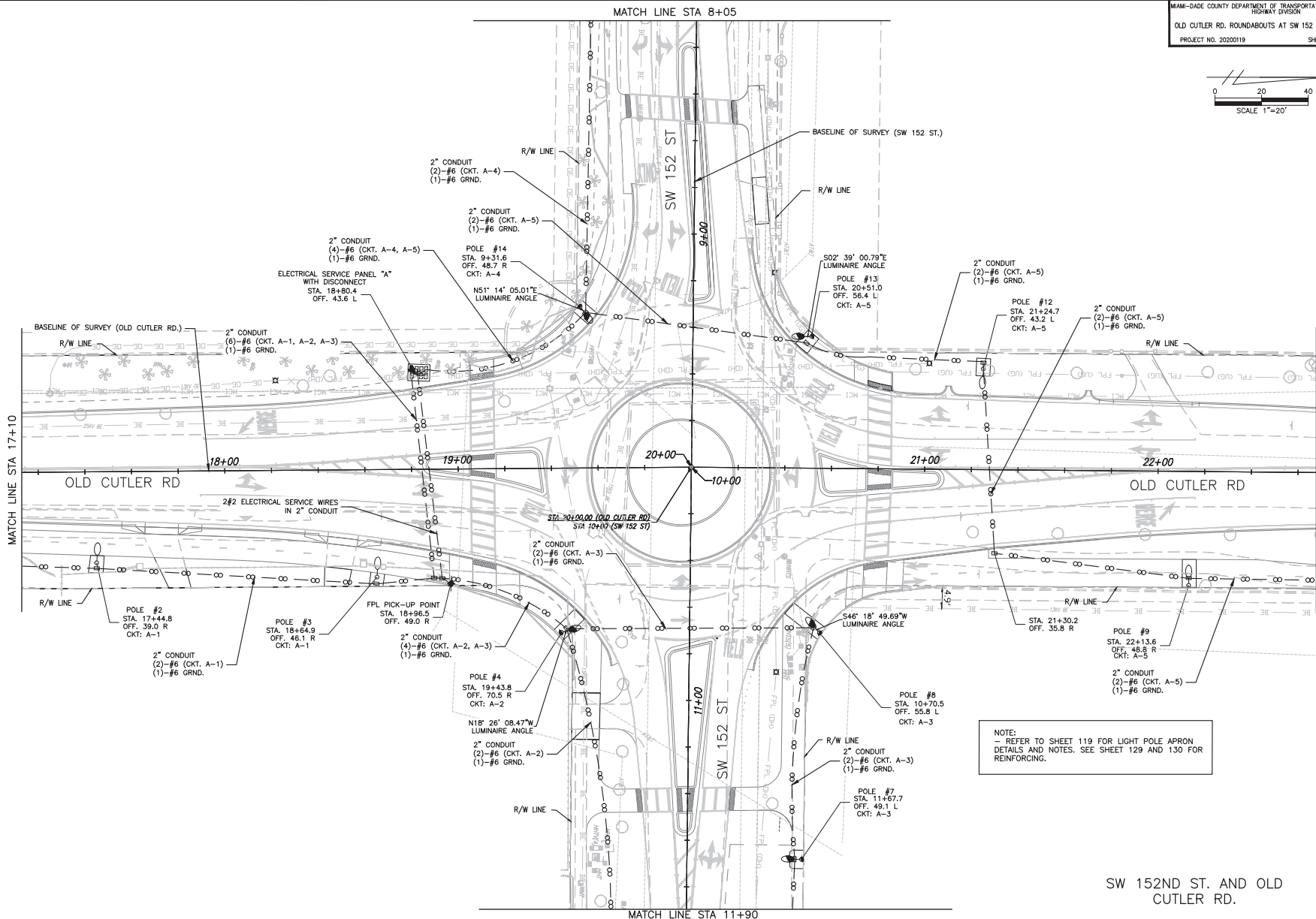
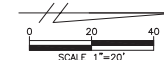
SW 152ND ST. AND OLD CUTLER RD.

LIGHTING PLAN

K:\2022\202200119\000\_EDP\_107200119\Design\_Lighting\_Old Cutler Rd\0405 or PFD\Lighting\129e\Lighting\_Plan\_119.dwg Mar 24, 2022 - 10:58am JFERNER

# REVISED PLANS FOR ADDENDUM No. 2

MIAMI-DADE COUNTY DEPARTMENT OF TRANSPORTATION AND PUBLIC WORKS  
HIGHWAY DIVISION  
OLD CUTLER RD. ROUNDABOUTS AT SW 152 ST & SW 184 ST  
PROJECT NO. 20220119 SHEET 120 OF 183



NOTE:  
- REFER TO SHEET 119 FOR LIGHT POLE APRON DETAILS AND NOTES. SEE SHEET 129 AND 130 FOR REINFORCING.

SW 152ND ST. AND OLD CUTLER RD.

K:\2022\20220119\000\_EBP\_172020119\Design\_Lighting\_04\_Cutler\_Rd\0405 or PFD\Lighting\120\Lighting\_Plan\_SW\_152nd\_Mar\_24\_2022 - 10:58am JFERNER



REVISIONS					
DATE	BY	DESCRIPTION	DATE	BY	DESCRIPTION
3-23-22	RL	SHEET UPDATED			

**MARLIN**  
ENGINEERING  
RAFAEL LAGOS | P.E. No.: 51412  
3363 W. COMMERCIAL Blvd, Ste. 115 | Ft. Lauderdale, FL 33309  
P: 954.870.5070 | C.A. No. 6104

DESIGNED BY	NAME	DATE	DRAWN BY	NAME	DATE
J.F.			J.F.		
CHECKED BY	A.G.		CHECKED BY	A.G.	

SUPERVISED BY:

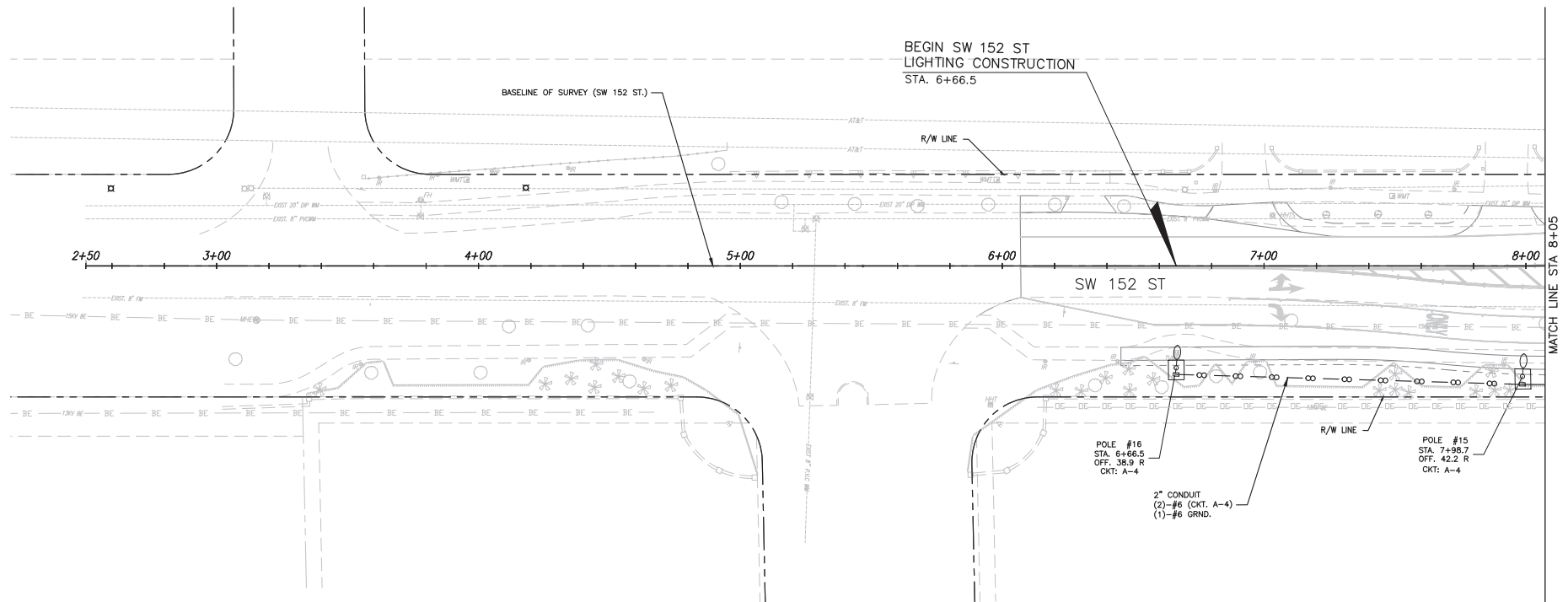
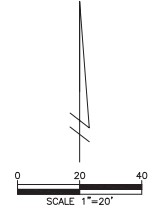
MIAMI-DADE COUNTY  
DEPARTMENT OF TRANSPORTATION AND PUBLIC WORKS  
HIGHWAY DIVISION  
STEPHEN P. CLARK CENTER  
100 N.W. 107 ST.  
MIAMI, FLORIDA 33138

LIGHTING PLAN



REVISED PLANS FOR ADDENDUM No. 2

MIAMI-DADE COUNTY DEPARTMENT OF TRANSPORTATION AND PUBLIC WORKS  
HIGHWAY DIVISION  
OLD CUTLER RD. ROUNDABOUTS AT SW 152 ST & SW 184 ST  
PROJECT NO. 20200119 SHEET 122 OF 183



NOTE:  
REFER TO SHEET 119 FOR LIGHT POLE APRON  
DETAILS AND NOTES. SEE SHEET 129 AND 130 FOR  
REINFORCING.

SW 152ND ST. AND OLD CUTLER RD.

LIGHTING PLAN

K:\2020\20200119\000\_EBP\_0720200119\Design\_Lighting\_04\_Cutler Rd\0405 or PFD\Lighting\_122.dwg Mar 24, 2022 - 10:58am JFERNER



REVISIONS					
DATE	BY	DESCRIPTION	DATE	BY	DESCRIPTION
3-23-22	RL	SHEET UPDATED			

**MARLIN**  
ENGINEERING  
RAFAEL LAGOS | P.E. No.: 51412  
3343 W. COMMERCIAL BLVD. SU. 115 | FT. LAUDERDALE, FL 33309  
P: 954.870.5070 | C.A. No. 6104

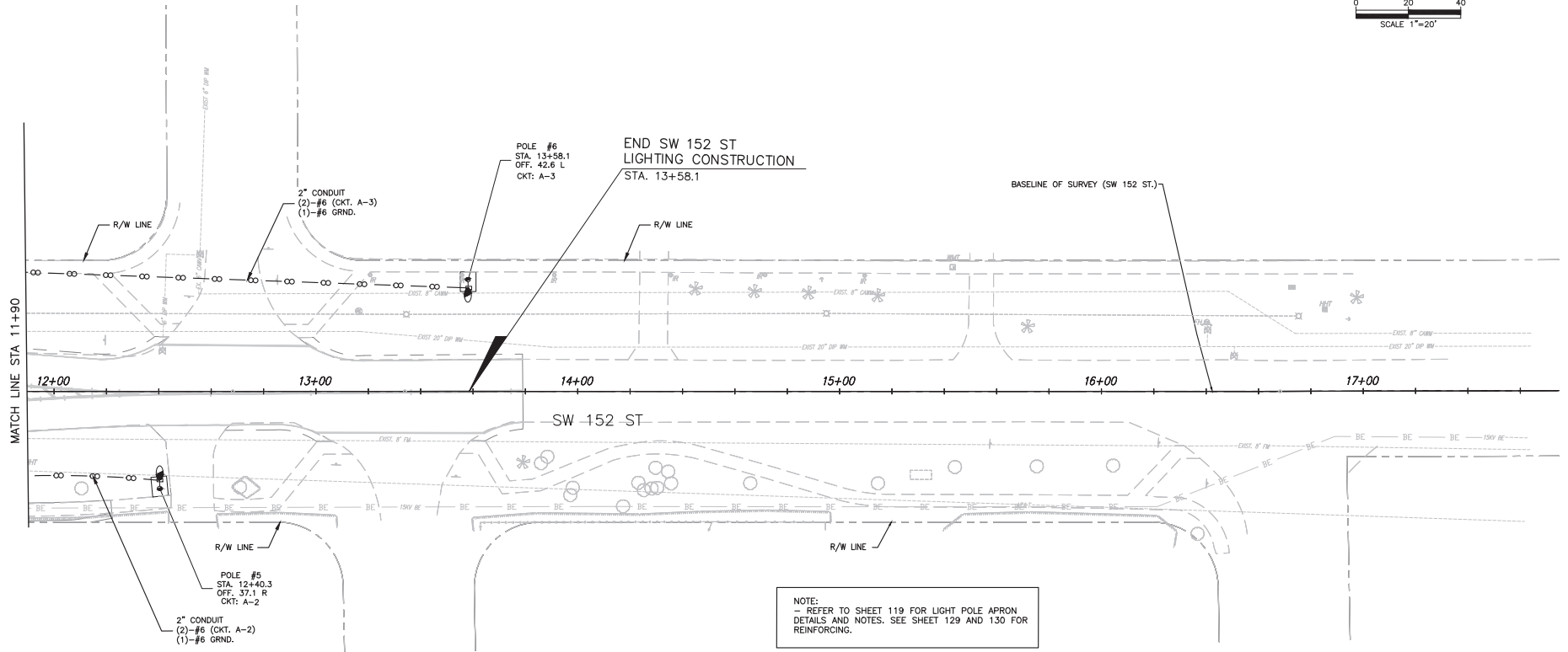
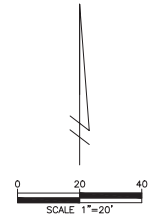
DESIGNED BY	NAME	DATE	DRAWN BY	NAME	DATE
DESIGNED BY	J.F.		DRAWN BY	J.F.	
CHECKED BY	A.G.		CHECKED BY	A.G.	

SUPERVISED BY:

**MIAMI-DADE COUNTY**  
DEPARTMENT OF TRANSPORTATION AND PUBLIC WORKS  
HIGHWAY DIVISION  
STEPHEN P. CLARK, CENTER  
100 N.W. 1<sup>ST</sup> ST.  
MIAMI, FLORIDA 33138

REVISED PLANS FOR ADDENDUM No. 2

MIAMI-DADE COUNTY DEPARTMENT OF TRANSPORTATION AND PUBLIC WORKS  
HIGHWAY DIVISION  
OLD CUTLER RD. ROUNDABOUTS AT SW 152 ST & SW 184 ST  
PROJECT NO. 20220119 SHEET 123 OF 183



K:\25220119\20220119\EDP\_172020119\Design\_Lighting\_04\_Cutler\_Rd\2022\_03\_15\2022\_03\_15.dwg Mar 24, 2022 - 10:58am JFERNER



SW 152ND ST. AND OLD CUTLER RD.

LIGHTING PLAN

REVISIONS					
DATE	BY	DESCRIPTION	DATE	BY	DESCRIPTION
3-23-22	RL	SHEET UPDATED			

**MARLIN**  
ENGINEERING  
RAFAEL LAGOS | P.E. No.: 51412  
3343 W. COMMERCIAL BLVD. SUITE 115 | FT. LAUDERDALE, FL 33309  
P: 954.870.5070 | C.A. No. 6104

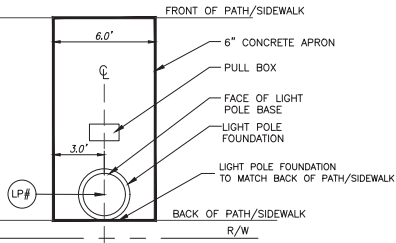
DESIGNED BY	NAME	DATE	DRAWN BY	NAME	DATE
DESIGNED BY	A.G.		DRAWN BY	A.G.	

**MIAMI-DADE COUNTY**  
DEPARTMENT OF TRANSPORTATION AND PUBLIC WORKS  
HIGHWAY DIVISION  
STEPHEN P. CLARK, CENTER  
1500 N.W. 25th ST.  
MIAMI, FLORIDA 33125

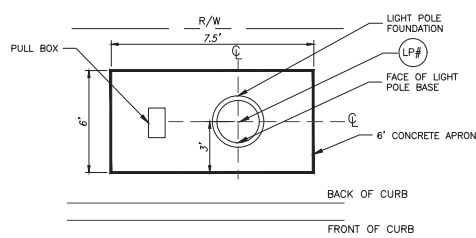


# REVISED PLANS FOR ADDENDUM No. 2

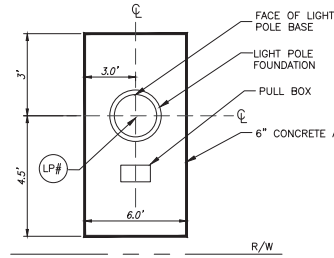
MIAMI-DADE COUNTY DEPARTMENT OF TRANSPORTATION AND PUBLIC WORKS  
HIGHWAY DIVISION  
OLD CUTLER RD. ROUNDABOUTS AT SW 152 ST & SW 184 ST  
PROJECT NO. 20200119 SHEET 124 OF 183



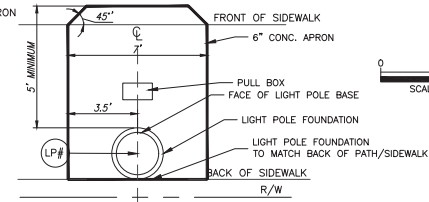
CONC. APRON LAYOUT DETAIL 1  
N.T.S.



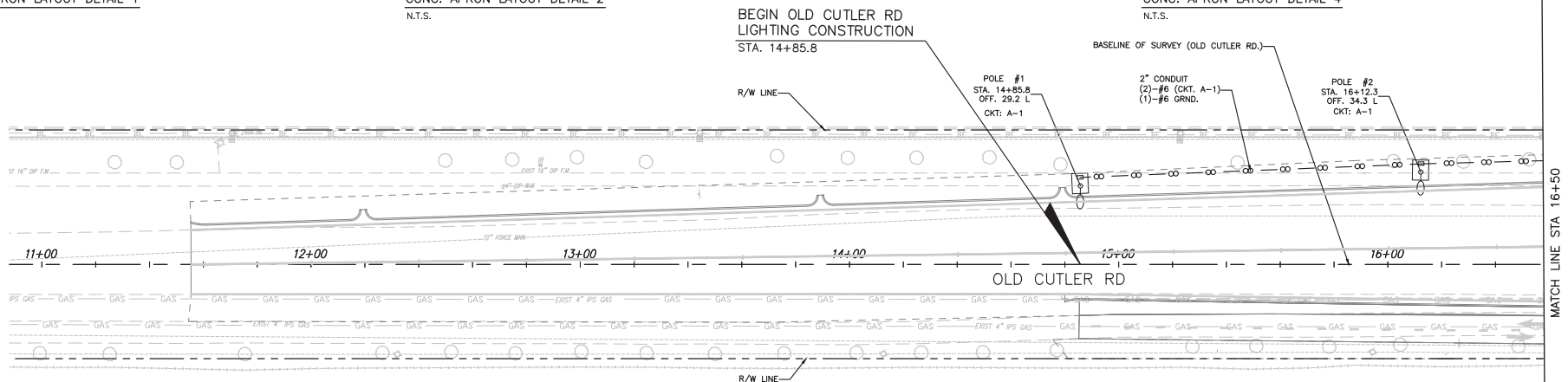
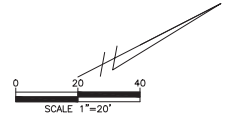
CONC. APRON LAYOUT DETAIL 2  
N.T.S.



CONC. APRON LAYOUT DETAIL 3  
N.T.S.



CONC. APRON LAYOUT DETAIL 4  
N.T.S.



LEGEND:  
LP# FOR LIGHT POLE LIGHT POLE # AND LOCATION, SEE PLAN SHEET AND POLE DATA SHEET

NOTE:  
- ALL LIGHT POLE APRONS SHALL BE AS PER DETAIL ON THIS SHEET. REFER TO SHEETS 129 AND 130 FOR SIMM CONST. DETAIL AND REINFORCING.  
- LIGHTING AND ROADWAY CONTRACTOR SHALL COORDINATE PRIOR TO APRON CONSTRUCTION.  
- COST AND CONSTRUCTION SHALL BE BY ROADWAY CONTRACTOR UNDER 6\"/>

SW 184TH ST. AND OLD CUTLER RD.

LIGHTING PLAN

REVISIONS					
DATE	BY	DESCRIPTION	DATE	BY	DESCRIPTION
3-23-22	RL	SHEET UPDATED			

**MARLIN**  
ENGINEERING  
RAFAEL LAGOS | P.E. No.: 51412  
3363 W. COMMERCIAL Blvd. Ste. 115 | Ft. Lauderdale, FL 33309  
P: 954.870.5070 | C.A. No. 6104

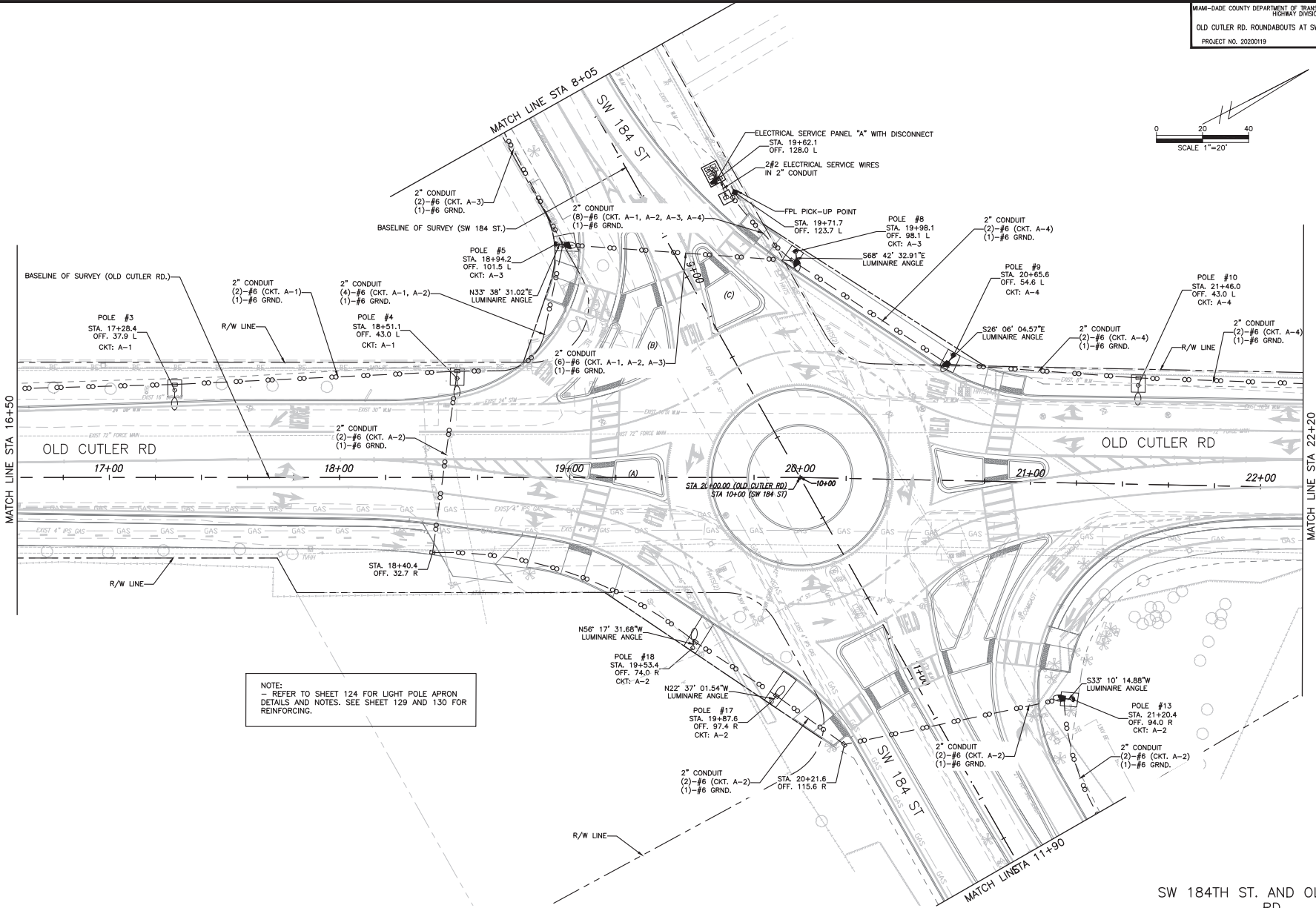
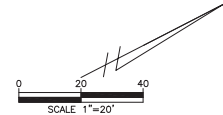
DESIGNED BY	NAME	DATE	DRAWN BY	NAME	DATE
J.F.	J.F.		J.F.	J.F.	
A.G.	A.G.		A.G.	A.G.	

MIAMI-DADE COUNTY  
DEPARTMENT OF TRANSPORTATION AND PUBLIC WORKS  
HIGHWAY DIVISION  
STEPHEN P. CLARK CENTER  
1800 N. W. 25th St.  
MIAMI, FLORIDA 33128

K:\DESIGN\20200119\Design\_Lighting\_08a\_Cutler\_Rd\0405 or PPS\Lighting\184th\Lighting\_Plan\_SW 184th.dwg Mar 24, 2022 - 10:58am JFERBER

REVISED PLANS FOR ADDENDUM No. 2

MIAMI-DADE COUNTY DEPARTMENT OF TRANSPORTATION AND PUBLIC WORKS  
HIGHWAY DIVISION  
OLD CUTLER RD. ROUNDABOUTS AT SW 152 ST & SW 184 ST  
PROJECT NO. 20200119 SHEET 125 OF 183



NOTE:  
- REFER TO SHEET 124 FOR LIGHT POLE APRON  
DETAILS AND NOTES. SEE SHEET 129 AND 130 FOR  
REINFORCING.

K:\25200119\20200119\EDP\_1920200119\Design\_Lighting\_08 Cutler Rd\2020\_03\_24\_2022 - 1035pm.dwg



REVISIONS					
DATE	BY	DESCRIPTION	DATE	BY	DESCRIPTION
3-23-22	RL	SHEET UPDATED			

**MARLIN**  
ENGINEERING  
RAFAEL LAGOS | P.E. No.: 51412  
3363 W. COMMERCE BLVD. SU. 115 | FT. LAUDERDALE, FL 33309  
P: 954.870.5070 | C.A. No. 6104

DESIGNED BY	NAME	DATE	DRAWN BY	NAME	DATE
J.F.			J.F.		
A.G.			A.G.		

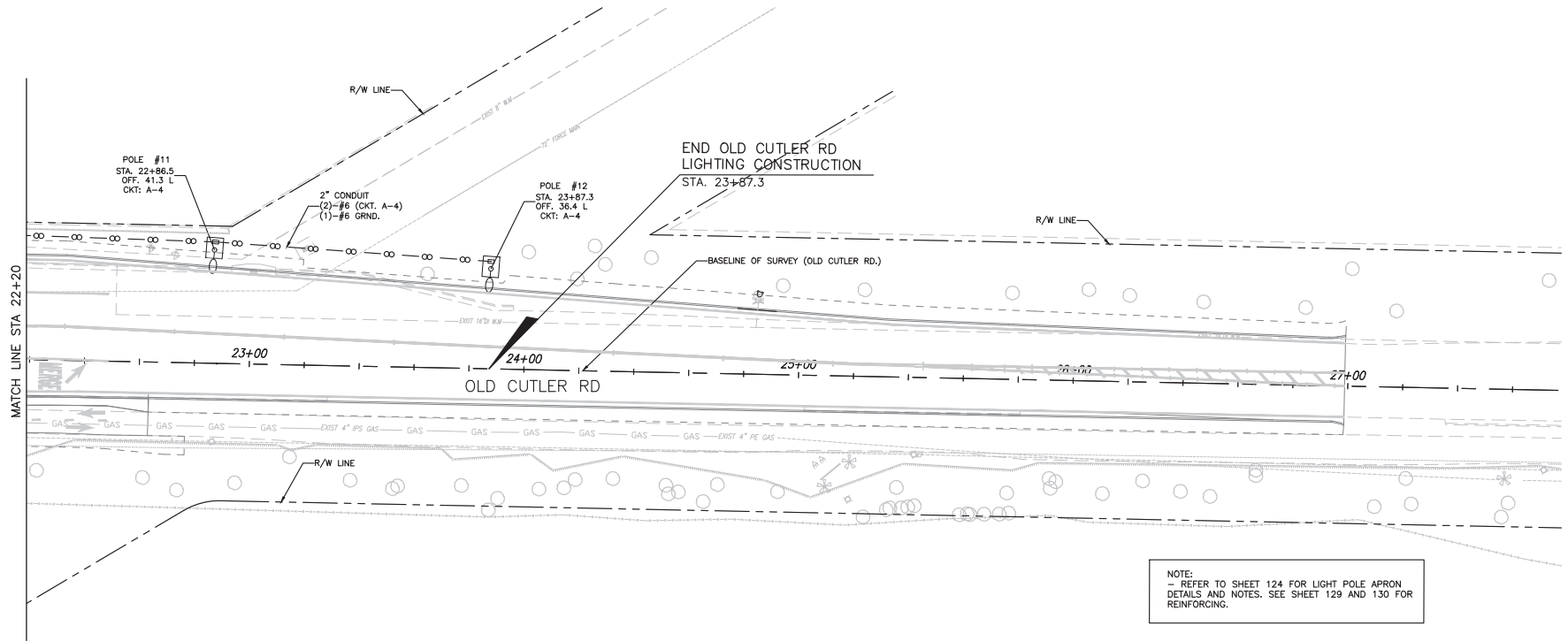
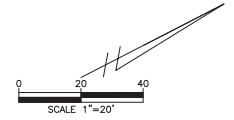
MIAMI-DADE COUNTY  
DEPARTMENT OF TRANSPORTATION AND PUBLIC WORKS  
HIGHWAY DIVISION  
STEPHEN P. CLARK CENTER  
MIAMI, FLORIDA 33138

SW 184TH ST. AND OLD CUTLER RD.

LIGHTING PLAN

REVISED PLANS FOR ADDENDUM No. 2

MIAMI-DADE COUNTY DEPARTMENT OF TRANSPORTATION AND PUBLIC WORKS  
HIGHWAY DIVISION  
OLD CUTLER RD. ROUNDABOUTS AT SW 152 ST & SW 184 ST  
PROJECT NO. 20220119 SHEET 126 OF 183



NOTE:  
- REFER TO SHEET 124 FOR LIGHT POLE APRON  
DETAILS AND NOTES. SEE SHEET 129 AND 130 FOR  
REINFORCING.

SW 184TH ST. AND OLD CUTLER RD.

LIGHTING PLAN

K:\25250119\25250119\000\_EBP\_1725250119\Design\_Lighting\_08\_Cutler\_Rd\2022 or PFD\Lighting\_184th\Lighting\_Plan\_SW\_184th.dwg Mar 24, 2022 - 10:58am JFB/ER



REVISIONS

DATE	BY	DESCRIPTION	DATE	BY	DESCRIPTION
3-23-22	RL	△ SHEET UPDATED			

**MARLIN**  
ENGINEERING  
RAFAEL LAGOS | P.E. No.: 51412  
3343 W. COMMERCIAL Blvd. Ste. 115 | Ft. Lauderdale, FL 33309  
P: 954.870.5070 | C.A. No. 6104

DESIGNED BY	NAME	DATE	DRAWN BY	NAME	DATE
J.F.	J.F.		J.F.	J.F.	
CHECKED BY	A.G.		CHECKED BY	A.G.	

SUPERVISED BY:

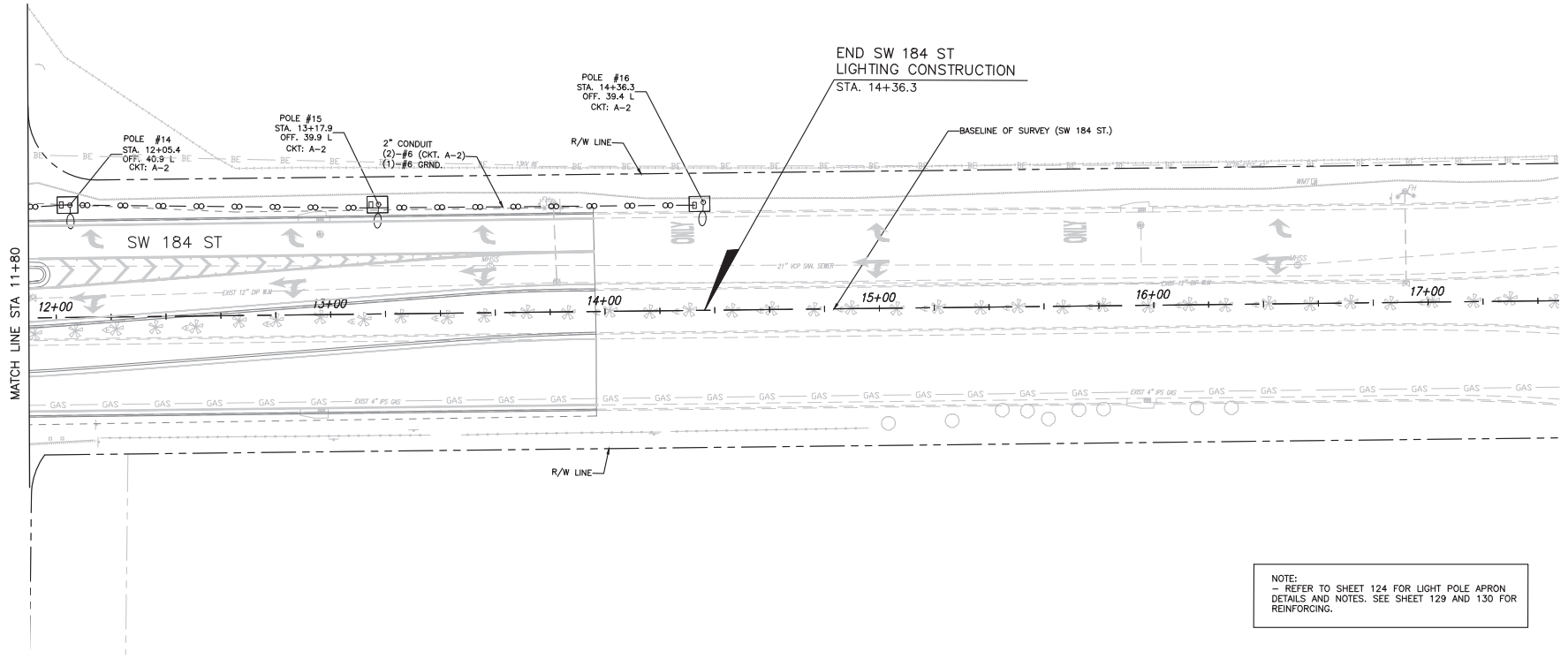
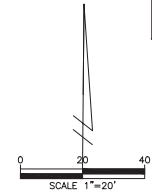
**MIAMI-DADE COUNTY**  
DEPARTMENT OF TRANSPORTATION AND PUBLIC WORKS  
HIGHWAY DIVISION  
STEPHEN P. CLARK CENTER  
100 W. W. P. BLVD.  
MIAMI, FLORIDA 33138





REVISED PLANS FOR ADDENDUM No. 2

MIAMI-DADE COUNTY DEPARTMENT OF TRANSPORTATION AND PUBLIC WORKS  
HIGHWAY DIVISION  
OLD CUTLER RD. ROUNDABOUTS AT SW 152 ST & SW 184 ST  
PROJECT NO. 20220119 SHEET 128 OF 183



NOTE:  
- REFER TO SHEET 124 FOR LIGHT POLE APRON  
DETAILS AND NOTES. SEE SHEET 129 AND 130 FOR  
REINFORCING.

SW 184TH ST. AND OLD CUTLER RD.

LIGHTING PLAN



REVISIONS					
DATE	BY	DESCRIPTION	DATE	BY	DESCRIPTION
3-23-22	RL	SHEET UPDATED			

**MARLIN**  
ENGINEERING  
RAFAEL LAGOS | P.E. No.: 51412  
3343 W. COMMERCIAL BLVD. SUITE 115 | FT. LAUDERDALE, FL 33309  
P: 954.870.5070 | C.A. No. 6104

DESIGNED BY	NAME	DATE	DRAWN BY	NAME	DATE
J.F.	J.F.		J.F.	J.F.	
CHECKED BY	A.G.		CHECKED BY	A.G.	

SUPERVISED BY:

**MIAMI-DADE COUNTY**  
DEPARTMENT OF TRANSPORTATION AND PUBLIC WORKS  
HIGHWAY DIVISION  
STEPHEN P. CLARK CENTER  
100 W. W. ST.  
MIAMI, FLORIDA 33138

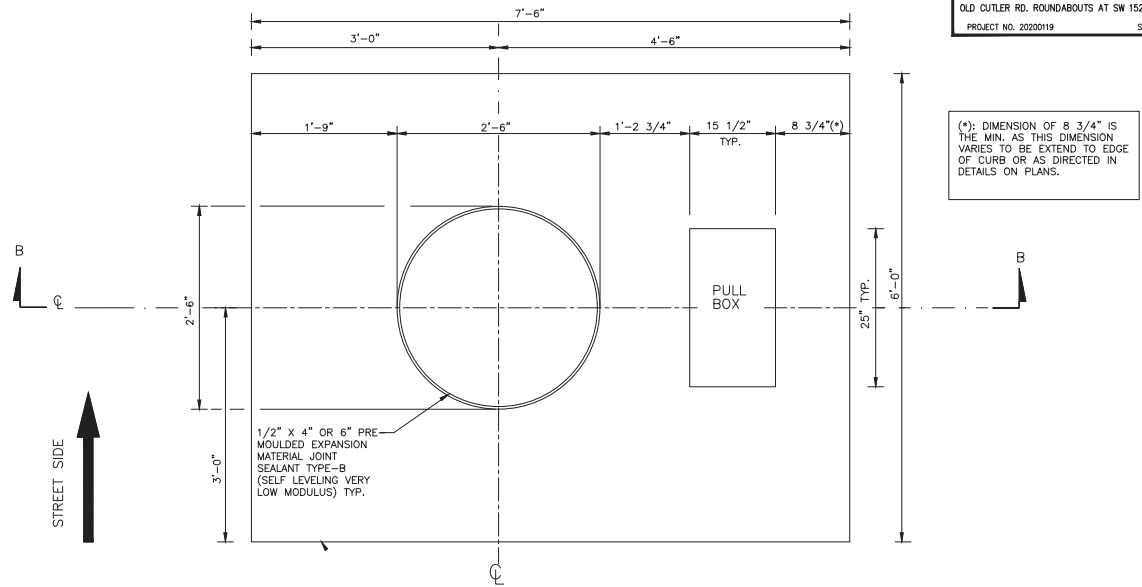
K:\33520\20220119\000\_EDP\_1922020119\Design\_Lighting\_04 Cutler Rd\0405 or PFD\Lighting\184th\Lighting\_Plan\_SW\_184.stw Mar 24, 2022 - 10:58am JFBNER

REVISED PLANS FOR ADDENDUM No. 2

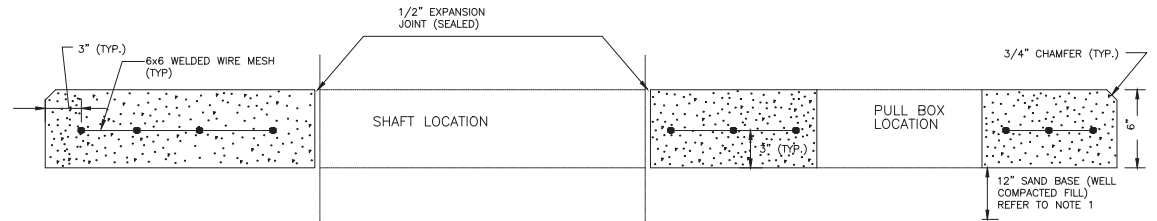
MIAMI-DADE COUNTY DEPARTMENT OF TRANSPORTATION AND PUBLIC WORKS  
HIGHWAY DIVISION  
OLD CUTLER RD. ROUNDABOUTS AT SW 152 ST & SW 184 ST  
PROJECT NO. 20220119 SHEET 129 OF 183

NOTES:

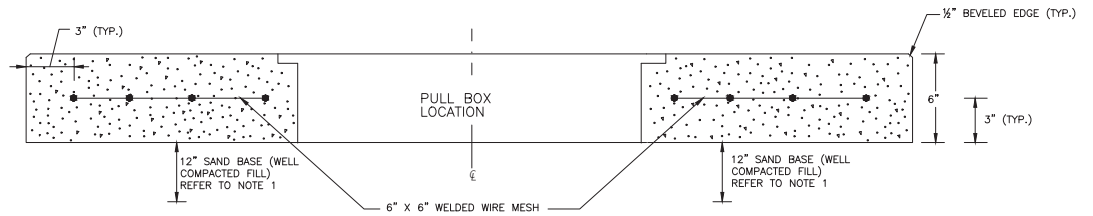
- 1- THIS DETAIL IS APPLICABLE FOR INSTALLATION IN SOD AREA AND NOT FOR SIDEWALK.
- 2- USE COMPACTED SELECT MATERIAL IN ACCORDANCE WITH FDOT STANDARD INDEX 120-001.
- 3- CONCRETE SHALL BE CLASS NS WITH A MINIMUM STRENGTH AT 28 DAYS OF F'C=2.5 KSI.
- 4- OUTSIDE EDGE OF SLAB SHALL BE CAST AGAINST FORMWORK.
- 5- THE PULL BOX SHOWN IS 13" X 24" (INTERIOR DIMENSIONS) & 15 1/2" X 25" (EXTERIOR DIMENSIONS); OTHERS APPROVED UNDER SECTION 635 OF THE STANDARD SPECIFICATIONS MAY BE USED.
- 6- SLABS TO BE PLACED AROUND ALL POLES AND PULL BOXES. IN URBAN AREAS OR WHERE SPACE IS LIMITED SLAB DIMENSIONS MAY BE ADJUSTED AS SHOWN IN THE PLANS.
- 7- WHERE CONCRETE SLAB IS UP AGAINST EXISTING OR PROPOSED SIDEWALK, TOP OF SLAB SHALL MATCH EXISTING ELEVATION. TOP OF ALL OTHER SLABS SHALL MEET THE TOP ELEVATION OF PERPENDICULAR CURB N GUTTER OR EDGE OF PAVEMENT. SEE PLAN FOR LOCATION.
- 8- CONCRETE FOR SLABS AROUND POLES AND PULL BOXES SHALL BE INCLUDED IN THE PRICE OF POLE OR PULL BOX.
- 9- THE EXPANSION JOINT SHALL CONSIST OF 1/2" OF CLOSED-CELL POLYETHYLENE FOAM EXPANSION MATERIAL. THE TOP 1/2" OF EXPANSION MATERIAL SHALL BE REMOVED AFTER POURING THE SLAB AND SEALED WITH AN APL APPROVED TYPE A SEALANT MEETING THE REQUIREMENTS OF SECTION 932.



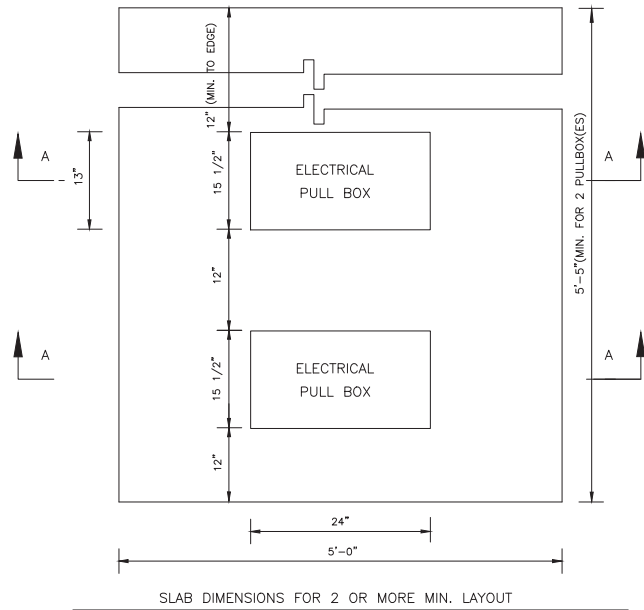
SLAB DIMENSIONS



SECTION B-B



SECTION A-A



SLAB DIMENSIONS FOR 2 OR MORE MIN. LAYOUT

REVISIONS

DATE	BY	DESCRIPTION	DATE	BY	DESCRIPTION
3-23-22	RL	SHEET UPDATED			

**MARLIN**  
ENGINEERING  
RAFAEL LAGOS | P.E. No.: 51412  
3363 W. COMMERCE Blvd. Ste. 115 | Ft. Lauderdale, FL 33309  
P: 954.870.5070 | C.A. No. 6104

DESIGNED BY	NAME	DATE	DRAWN BY	NAME	DATE
J.F.			J.F.		
CHECKED BY	NAME	DATE	CHECKED BY	NAME	DATE
A.G.			A.G.		

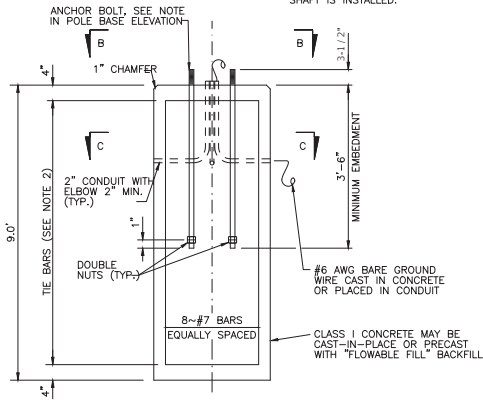
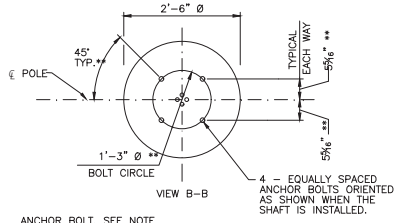
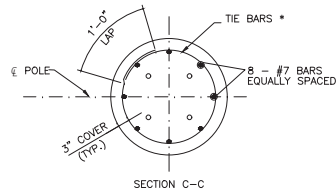
MIAMI-DADE COUNTY  
DEPARTMENT OF TRANSPORTATION AND PUBLIC WORKS  
HIGHWAY DIVISION  
STEPHEN P. CLARK CENTER  
100 N.W. 25th St.  
MIAMI, FLORIDA 33138

DETAILS SHEET

K:\252526\20220119\_000\_EBP\_#20220119\Design\_Lighting\_08a\_Cutler Rd\0405 or #P50\0405\144\0405.dwg Mar 24, 2022 - 1:58pm JFERBER

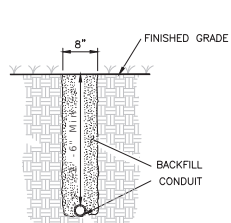
REVISED PLANS FOR ADDENDUM No. 2

MIAMI-DADE COUNTY DEPARTMENT OF TRANSPORTATION AND PUBLIC WORKS  
HIGHWAY DIVISION  
OLD CUTLER RD. ROUNDABOUTS AT SW 152 ST & SW 184 ST  
PROJECT NO. 202200119 SHEET 130 OF 183

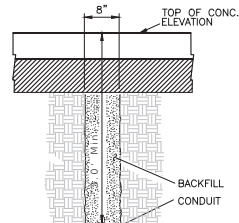


FOUNDATION NOTES:

1. DEPTHS SHOWN ARE FOR SLOPES FLATTER THAN 1:4; FOR SLOPES 1:2 OR FLATTER, ADD 2'-6" TO FOUNDATION DEPTHS SHOWN.
2. FOUNDATION TIE BARS: #4 TIE BARS @ 12" CENTERS (MAX.) OR D10 (OR W10) SPIRAL @ 6" PITCH, 3 FLAT TURNS TOP AND 1 FLAT TURN BOTTOM.
3. FOUNDATION SHALL BE AS PER FDOT STANDARDS INDEX 715-002. CONTRACTOR SHALL COORDINATE TO APPLY MANUFACTURERS BOLT CIRCLE TEMPLATE AT TIME OF ORDERING AND PLACING FOOTINGS FOR CONCRETE SLABS AT SOD/ LANDSCAPE LOCATIONS.



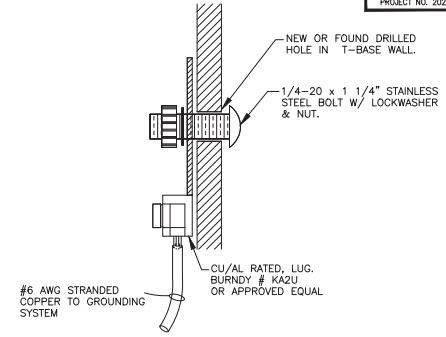
PLACEMENT NOT EXPOSED TO VEHICULAR TRAFFIC



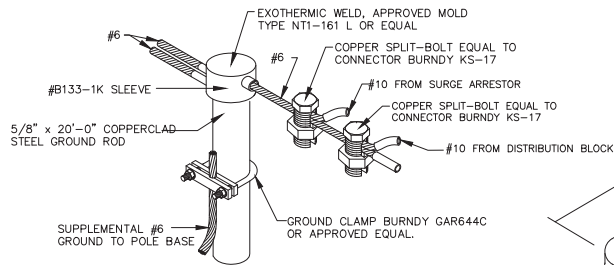
PLACEMENT UNDER NEW CONCRETE PRIOR TO INSTALLATION OF STABILIZATION AND 6" CONC. PAVEMENT

CONDUIT PLACEMENT NOTE:

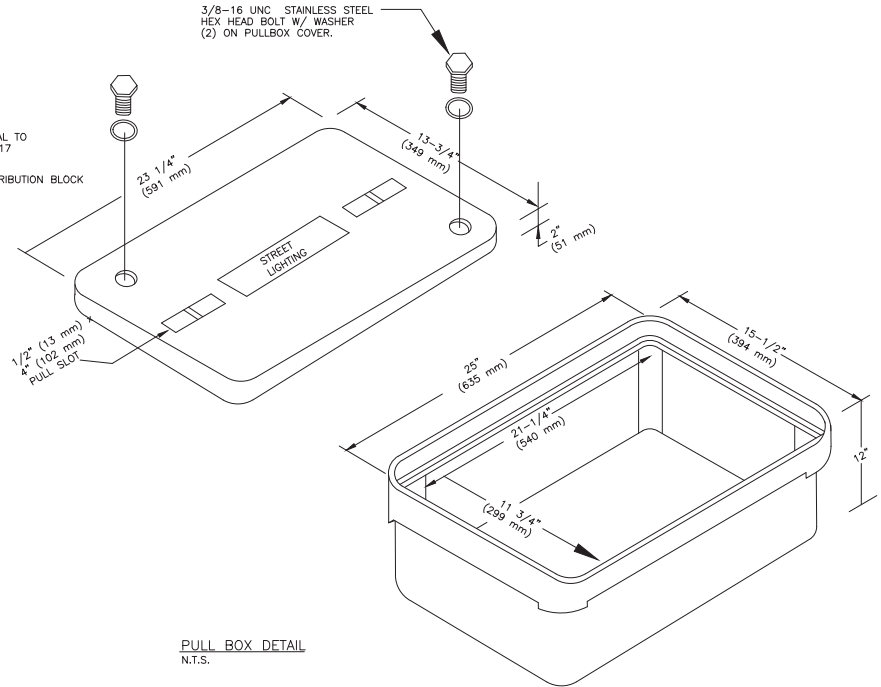
MAINTAIN 1'-0" MINIMUM VERTICAL CLEARANCE WHEN CROSSING OVER PIPE AND OTHER UTILITIES. IF MINIMUM VERTICAL CLEARANCE CANNOT BE MAINTAINED, CONDUIT IS TO BE ROUTED UNDER PIPE MAINTAINING 1'-0" MINIMUM VERTICAL CLEARANCE.



GROUND LUG DETAIL (COPPER WIRE FOR GROUNDING)  
N.T.S.



CABLE TO GROUND ROD DETAIL (COPPER WIRE FOR GROUNDING)  
N.T.S.



PULL BOX DETAIL  
N.T.S.

PULL BOX SPECIFICATION.

1. ALL STREET LIGHT PULLBOXES SHALL HAVE AN OPEN-BOTTOM, QUAZITE POLYMER CONCRETE DESIGN OR PRECAST CONCRETE DESIGN CONSTRUCTED OF CLASS I CONCRETE HAVING A MINIMUM COMPRESSIVE STRENGTH OF 2,500 PSI AT TWENTY- EIGHT (28) DAYS. POLYMER CONCRETE PULLBOX SHALL BE QUAZITE PRODUCT NO. PG1324BA12 OR APPROVED EQUIVALENT. CONCRETE PULLBOX SHALL BE BROOKS 38 SERIES OR APPROVED EQUIVALENT. IN EITHER CASE, BOTH PULLBOXES SHALL BE CONSTRUCTED PER ABOVE SPECIFIED MANUFACTURERS SIZE, MATERIALS AND PERFORMANCE SPECIFICATIONS. THEREFORE, BELOW SPECIFIED PULLBOX COVER SHALL BE FULLY INTER- CHANGEABLE WITH EITHER PULLBOX. ALL PULLBOX COVERS FURNISHED AND INSTALLED SHALL BE POLYMER CONCRETE QUAZITE PRODUCT NO. PG1324HA00 OR APPROVED EQUIVALENT. NO OTHER DESIGN, SIZE, MODIFICATION OR MATERIALS SHALL BE ACCEPTABLE. PULLBOX COVERS SHALL BE MARKED "STREET LIGHTING" OR "ELECTRIC/ MIAMI-DADE HD".
2. IN SITUATIONS WHERE PULLBOX IS LOCATED OUTSIDE OF SIDEWALK, I.E. SWALE AREA, THE PULLBOX IS TO HAVE A 6'x5' MIN CONCRETE APRON (6" THICK) PLACED AROUND IT. COST OF CONCRETE APRON IS TO BE INCLUDED IN THE PULLBOX INSTALLATION COST.

REVISIONS

DATE	BY	DESCRIPTION	DATE	BY	DESCRIPTION	DATE	BY	DESCRIPTION
3-23-22	RL	SHEET UPDATED						

**MARLIN**  
ENGINEERING  
RAFAEL LAGOS | P.E. No.: 51412  
3363 W. COMMERCIAL, Blvd. 506, 115 11 Ft. Lauderdale, FL 33309  
P: 954.870.5070 | C.A. No. 6104

DESIGNED BY	NAME	DATE	DRAWN BY	NAME	DATE
J.F.	J.F.		J.F.	J.F.	
A.G.	A.G.		A.G.	A.G.	

DEPARTMENT OF TRANSPORTATION AND PUBLIC WORKS  
HIGHWAY DIVISION  
**MIAMI-DADE COUNTY**  
STEVEN P. CLARK, CENTER  
100 W. W. W. MIAMI, FLORIDA 33138

DETAILS SHEET

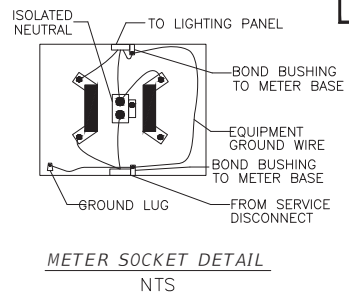
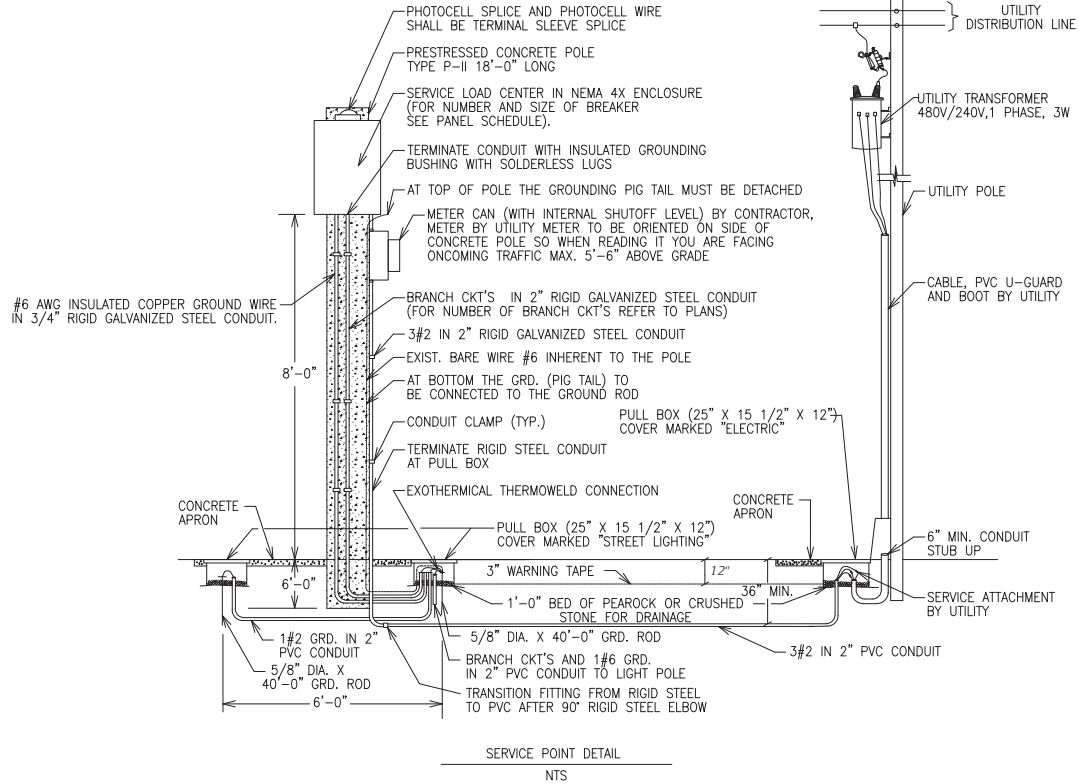
K:\33520A\20220119\000\_EBP\_19725200119\Design\_Lighting\_DWG\_Culter\_Rd\0405 or 19725200119\0405\Drawings.dwg Mar 24, 2022 - 1:55pm JFERBER





REVISED PLANS FOR ADDENDUM No. 2

MIAMI-DADE COUNTY DEPARTMENT OF TRANSPORTATION AND PUBLIC WORKS  
HIGHWAY DIVISION  
OLD CUTLER RD. ROUNDABOUTS AT SW 152 ST & SW 184 ST  
PROJECT NO. 20220119 SHEET 133 OF 183



METER SOCKET DETAIL  
NTS

NOTES

1. CONTRACTOR MUST COORDINATE WITH ELECTRICAL POWER COMPANY (UTILITY) ENGINEERS FOR THE INSTALLATION OF THE UTILITY RISER.
2. STRUCTURAL CALCULATIONS OF THE POLE INSTALLATION, SIGNED AND SEALED BY A FLORIDA LICENSED PROFESSIONAL ENGINEER, MAY BE REQUIRED.
3. INTERCONNECT ALL GROUNDING ELECTRODES USING #6 GROUNDING CONDUCTOR.
4. PROVIDE SUPPLEMENTARY GROUNDING ELECTRODE SPACED AT A MINIMUM OF 6FT APART.
5. SERVICE DISCONNECT MUST BE RATED FOR SERVICE ENTRANCE. LABEL MUST BE FACTORY INSTALLED.
6. SERVICE DISCONNECT TO BE ORIENTED ON CONCRETE POLE SO ITS FACING THE SIDEWALK.
7. METER TO BE ORIENTED ON SIDE OF CONCRETE POLE SO WHEN READING IT YOU ARE FACING ON-COMING TRAFFIC.
8. PROVIDE 2 FEET OF COILED TERMINATION OF CONDUCTOR IN THE PULLBOX MARKED "ELECTRIC".
9. TERMINATE CONDUITS IN METER SOCKET AND SERVICE DISCONNECT WITH INSULATED GROUNDING BUSHING WITH SOLDERLESS LUG.

K:\335204\20220119\000\_EBP\_072020119\Design\_Lighting\_08a\_Cutler\_Rd\0405 or P192\Utilities\184\Drawings.dwg Mar 24, 2022 - 10:58am JFERBER



REVISIONS

DATE	BY	DESCRIPTION	DATE	BY	DESCRIPTION
3-23-22	RL	△ SHEET UPDATED			

**MARLIN**  
ENGINEERING  
RAFAEL LAGOS | P.E. No.: 51412  
3363 W. COMMERCIAL BLVD. SUITE 115 | FT. LAUDERDALE, FL 33309  
P: 954.870.5070 | C.A. No. 6104

DESIGNED BY	NAME	DATE	DRAWN BY	NAME	DATE
	J.F.		J.F.		
CHECKED BY	NAME	DATE	CHECKED BY	NAME	DATE
	A.G.		A.G.		

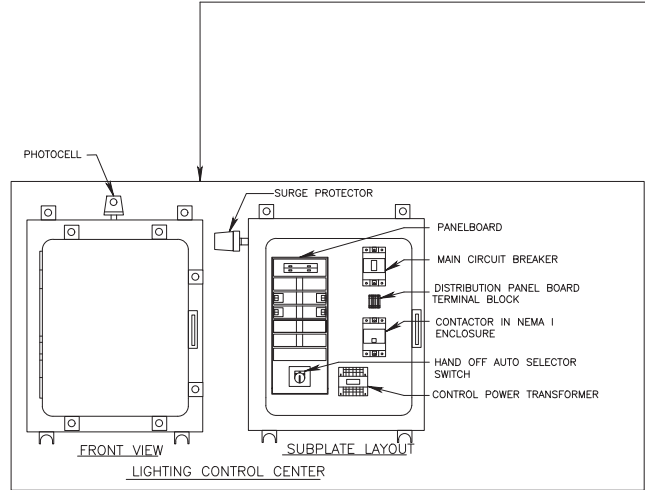
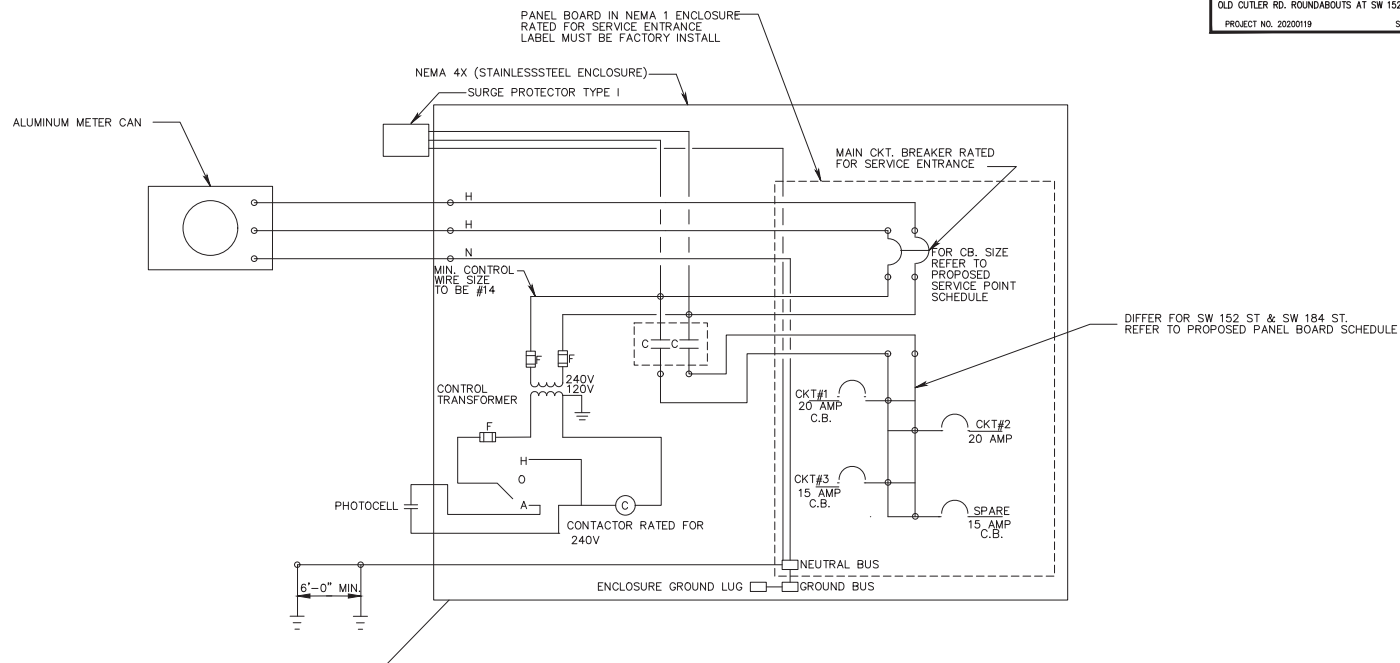
SUPERVISED BY:

MIAMI-DADE COUNTY  
DEPARTMENT OF TRANSPORTATION AND PUBLIC WORKS  
HIGHWAY DIVISION  
STEPHEN P. CLARK CENTER  
100 N.W. 1<sup>ST</sup> ST.  
MIAMI, FLORIDA 33138

ELECTRICAL SERVICE DETAILS

REVISED PLANS FOR ADDENDUM No. 2

MIAMI-DADE COUNTY DEPARTMENT OF TRANSPORTATION AND PUBLIC WORKS  
HIGHWAY DIVISION  
OLD CUTLER RD. ROUNDABOUTS AT SW 152 ST & SW 184 ST  
PROJECT NO. 20200119 SHEET 134 OF 183



SW 152nd ST & OLD CUTLER

PANEL BOARD SCHEDULE						
NEMA-1 1Ø, 3W, 240/120 V, (2P - 60 A MCB)						
25,000 RMS SYMMETRICAL SURF-MTD						
CKT NO	SERVING	KVA	AMPS	C. BKR	WIRE/CONDUCT	
A-1	1 - 3	1.2	4.85	10	#6 / 2"	
A-2	4 & 5	0.8	3.23	10	#6 / 2"	
A-3	6 - 8	1.2	4.9	10	#6 / 2"	
A-4	14 - 16	1.2	4.9	10	#6 / 2"	
A-5	9 - 13	1.9	8.1	10	#6 / 2"	

SW 184th ST & OLD CUTLER

PANEL BOARD SCHEDULE						
NEMA-1 1Ø, 3W, 240/120 V, (2P - 60 A MCB)						
25,000 RMS SYMMETRICAL SURF-MTD						
CKT NO	SERVING	KVA	AMPS	C. BKR	WIRE/CONDUCT	
A-1	1 - 4	1.6	6.46	10	#6 / 2"	
A-2	13 - 18	2.3	9.69	10	#6 / 2"	
A-3	5-8	1.6	6.5	10	#6 / 2"	
A-4	9-12	1.6	6.5	10	#6 / 2"	

NUMBERS OF BRANCH CKT. BREAKERS AS REQUIRED

LOAD CENTER LOAD CALCULATION:

CONTINUOUS LOADS= 6206.4 VA      Amp=  $\frac{VA}{V}$

25% CONT. LOAD= 1551.6 VA

TOTAL= 7758.0 VA

VOLTAGE DROP

A-1	0.35%
A-2	0.23%
A-3	0.59%
A-4	0.32%
A-5	0.82%

NUMBERS OF BRANCH CKT. BREAKERS AS REQUIRED

LOAD CENTER LOAD CALCULATION:

CONTINUOUS LOADS= 6976.8 VA      Amp=  $\frac{VA}{V}$

25% CONT. LOAD= 1744.2 VA

TOTAL= 8721.0 VA

VOLTAGE DROP

A-1	0.83%
A-2	1.81%
A-3	0.41%
A-4	0.57%

1

REVISIONS					
DATE	BY	DESCRIPTION	DATE	BY	DESCRIPTION
3-23-22	RL	SHEET UPDATED			

**MARLIN**  
ENGINEERING  
RAFAEL LAGOS | P.E. No.: 51412  
3363 W. COMMERCIAL BLVD. SU. 115 | FT. LAUDERDALE, FL 33309  
P: 954.870.5070 | C.A. No. 6104

DESIGNED BY	NAME	DATE	DRAWN BY	NAME	DATE
J.F.			J.F.		
A.G.			A.G.		

DEPARTMENT OF TRANSPORTATION AND PUBLIC WORKS  
HIGHWAY DIVISION  
MIAMI-DADE COUNTY  
STEPHEN P. CLARK CENTER  
1000 N.W. 25th St.  
MIAMI, FLORIDA 33128

ELECTRICAL SERVICE DETAILS

K:\2020\20200119\Design\_Lighting\_Old Cutler\184th\184th\184th.dwg Mar 24, 2022 - 1:58pm JFERBER