

MIAMI-DADE COUNTY
 DEPARTMENT OF TRANSPORTATION AND PUBLIC WORKS
 CONTRACT PLANS

SHOP DRAWINGS
 TO BE SUBMITTED TO:

KIMLEY-HORN AND ASSOCIATES, INC.
 355 ALHAMBRA CIRCLE, SUITE 1400
 CORAL GABLES, FL 33134
 PHONE (305) 673-2025

PLANS PREPARED BY:

KIMLEY-HORN AND ASSOCIATES, INC.
 KIMLEY-HORN AND ASSOCIATES, INC.
 355 ALHAMBRA CIRCLE, SUITE 1400
 CORAL GABLES, FL 33134
 PHONE (305) 673-2025

VENDOR NUMBER: F560885615-001

INDEX OF PLANS

FOR

SAFE ROUTES TO SCHOOL LOCATIONS

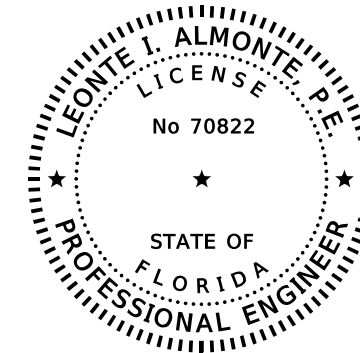
(4 SCHOOLS, AS LISTED BELOW) MIAMI-DADE COUNTY

PROJECT No. 20180143, FPID No. 439894-1

SHT. No. SHEET DESCRIPTION

1	COVER SHEET
2	SUMMARY OF PAY ITEMS
3	GENERAL NOTES
4	SPECIAL DETAILS
FE-SQ	FLAGAMI ELEMENTARY SCHOOL SUMMARY OF QUANTITIES
FE-PL	FLAGAMI ELEMENTARY SCHOOL PROJECT LAYOUT SHEET
FE-1 TO FE-7	FLAGAMI ELEMENTARY SCHOOL PLANS
FE-GS 1 TO FE-GS 2	FLAGAMI ELEMENTARY SCHOOL GUIDE SIGN WORKSHEET
CM-SQ	CARRIE P. MEEK/WESTVIEW ELEMENTARY SCHOOL SUMMARY OF QUANTITIES
CM-PL	CARRIE P. MEEK/WESTVIEW ELEMENTARY SCHOOL PROJECT LAYOUT SHEET
CM-1 TO CM-12	CARRIE P. MEEK/WESTVIEW ELEMENTARY SCHOOL PLANS
CM-GS	CARRIE P. MEEK/WESTVIEW ELEMENTARY SCHOOL GUIDE SIGN WORKSHEET
SE-SQ	SHADOWLAWN ELEMENTARY SCHOOL SUMMARY OF QUANTITIES
SE-PL	SHADOWLAWN ELEMENTARY SCHOOL PROJECT LAYOUT SHEET
SE-1 TO SE-6	SHADOWLAWN ELEMENTARY SCHOOL PLANS
SE-GS 1	SHADOWLAWN ELEMENTARY SCHOOL GUIDE SIGN WORKSHEET
HS-SQ	HUBERT O. SIBLEY ELEMENTARY SCHOOL SUMMARY OF QUANTITIES
HS-PL	HUBERT O. SIBLEY ELEMENTARY SCHOOL PROJECT LAYOUT SHEET
HS-1 TO HS-5	HUBERT O. SIBLEY ELEMENTARY SCHOOL PLANS

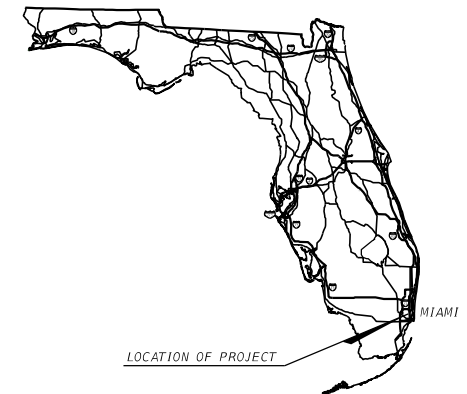
<u>SCHOOL NO #</u>	<u>NAME OF SCHOOL</u>
1.	FLAGAMI ELEMENTARY
2.	CARRIE P. MEEK/WESTVIEW ELEMENTARY
3.	SHADOWLAWN ELEMENTARY
4.	HUBERT O. SIBLEY ELEMENTARY



THIS ITEM HAS BEEN DIGITALLY
 SIGNED AND SEALED BY

ON THE DATE ADJACENT TO THE SEAL

PRINTED COPIES OF THIS DOCUMENT ARE
 NOT CONSIDERED SIGNED AND SEALED
 AND THE SIGNATURE MUST BE VERIFIED
 ON ANY ELECTRONIC COPIES.



GOVERNING STANDARD PLANS:

Florida Department of Transportation, FY 2019-2020 Standard Plans for Road and Bridge Construction and applicable Interim Revisions (IRs).

Standard Plans for Road Construction and associated IRs are available at the following website: <http://www.fdot.gov/design/standardplans>

The Manual Of Uniform Minimum Standards For Design, Construction And Maintenance For Street And Highways (2016).

Manual On Uniform Traffic Control Devices (2009).

GOVERNING STANDARD SPECIFICATIONS:

Miami-Dade County Transportation and Public Works Department Standards and Specifications, Florida Department of Transportation, July 2019
 Standard Specifications for Road and Bridge Construction at the following website: <http://www.fdot.gov/programmanagement/Implemented/SpecBooks>

PREPARED FOR



MIAMI-DADE COUNTY DEPARTMENT OF
 TRANSPORTATION AND PUBLIC WORKS

STEPHEN P. CLARK CENTER
 111 NW 1 ST
 MIAMI, FLORIDA 33128

BY

KIMLEY-HORN AND ASSOCIATES, INC.
 355 ALHAMBRA CIRCLE, SUITE 1400
 CORAL GABLES, FL 33134
 PHONE (305) 673-2025



ENGINEER OF RECORD:

Leonte I. Almonte

FLORIDA REGISTRATION P.E. No. 70822

SUMMARY OF PAY ITEMS

PAY ITEM NO.	DESCRIPTION	UNIT	FLAGAMI ELEMENTARY	CARRIE MEEK /WESTVIEW ELEMENTARY	SHADOWLAWN ELEMENTARY	HUBERT O. SIBLEY ELEMENTARY	SUMMARY OF ALL SCHOOLS
			QUANTITY	QUANTITY	QUANTITY	QUANTITY	QUANTITY SUMMARY OF ALL SCHOOLS
101-1-A	MOBILIZATION	LS					1
102-1A	MAINTENANCE OF TRAFFIC	LS					1
104-18	INLET PROTECTION SYSTEM	EA	2	8	2	4	16
110-1-1	CLEARING AND GRUBBING	LS	0.133	0.294	0.079	0.194	0.700
110-4-10	REMOVE AND DISPOSE OF EXISTING CURB AND GUTTER, SIDEWALKS INCLUDING RAMPS AND MISCELLANEOUS CONCRETE IN AREAS NOT INCLUDED IN THE CLEARING AND GRUBBING ITEM	SY	19	1	144		164
110-7-1A	INSTALL NEW MAILBOX	EA	3	3			6
200-2-1	BASE PREPARATION FOR NEW SIDEWALK CONSTRUCTION	SY	44	98	120	92	354
422-6-1F	ADJUST WATER METER BOX - Single or Dual Services	EA	6				6
520-2A	CONCRETE CURB AND/OR GUTTER	LF	67	108	252	80	507
522-1-1	CONCRETE SIDEWALK (4" THICK) CATEGORY 1	SY	466	1060	52	758	2336
522-2-3	CONCRETE SIDEWALK (6" THICK) CATEGORY 1	SY	194	442	224	192	1052
527-2	DETECTABLE WARNING ON WALKING SURFACE	SF	90	160	346	100	696
570-1-2	PERFORMANCE TURF, SOD	SY	19	1	144		164
580-3	TREE PROTECTION BARRICADES	LF	383		362	75	820
580-322-2A	TREE REMOVAL AND DISPOSAL (6" to 12" Dia.)	EA	3				3
635-2-11	PULL & SPLICE BOX, F&I, 13" x 24" COVER SIZE	EA	1				1
700-40-01	ROADSIDE SIGNS {(SINGLE POST) (LESS THAN 12 S.F.)}	AS	6	13	12	22	53
700-46-01	REMOVAL SIGN AND POST	AS	3	1	1	4	9
700-48-18	SIGN PANEL (LESS THAN 15 S.F.)	EA	14	24	26	35	99
700-48-60B	REMOVE SIGN PANEL	EA	9	4	2	5	20
706-1-12	REFLECTIVE PAVEMENT MARKERS (CLASS B, MONO OR BI-DIRECTED, ALL COLORS)	EA	60	76	114	18	268
711-7	REMOVE EXISTING PAVEMENT MARKINGS	SF	1265	2300	1380	1535	6480
711-11-121	THERMOPLASTIC (WHITE) (SOLID) (6")	LF				597	597
711-11-123	THERMOPLASTIC (WHITE) (SOLID) (12")	LF	723	1412	1450	710	4295
711-11-125	THERMOPLASTIC (WHITE) (SOLID) (24")	LF	395	956	531	682	2564
711-11-221	THERMOPLASTIC (YELLOW) (SOLID) (6")	LF	1000	1308	1900	300	4508

PAY ITEM NOTES

- 102-1 TO BE ACCOMPLISHED IN ACCORDANCE WITH THE FLORIDA DEPARTMENT OF TRANSPORTATION INDEX 102-600 SERIES, THE MANUAL OF UNIFORM TRAFFIC CONTROL DEVICES FOR STREETS AND HIGHWAYS, AND THE LATEST REVISIONS OF THE AFORE MENTIONED MANUALS. INCLUDES THE COST OF FURNISHING, INSTALLING, MAINTAINING, AND REMOVING ALL ITEMS OF MAINTENANCE OF TRAFFIC NOT PAID FOR UNDER SEPARATE ITEMS INCLUDING BUT NOT LIMITED TO SIGNS, BARRICADES, FLASHING LIGHTS, TEMPORARY PAVEMENT, TEMPORARY PAVEMENT MARKINGS, TRAFFIC SIGNAL MODIFICATION FOR TRAFFIC CONTROL, ETC.
- 520-2A INCLUDES COST OF DROP CURB AT DRIVEWAYS AND 3 FT OF CURB ENDING AS DIRECTED BY THE ENGINEER.
- 522-1-1 INCLUDES COST OF REMOVING EXISTING HEDGES/SHRUBS AS NEEDED FOR ITS CONSTRUCTION.
- 522-2-3 INCLUDES THE COST OF PEDESTRIAN RAMPS.
- 422-6-1F INCLUDES THE COST FOR COORDINATION WITH MIAMI-DADE WATER AND SEWER DEPARTMENT WHEN NEW BOXES/COVERS ARE REQUIRED TO BE REPLACED. THE COST OF THE INSTALLATION OF THE BOXES/COVERS PROCURED FROM MIAMI-DADE WATER AND SEWER DEPARTMENT.

REVISIONS

DATE	BY	DESCRIPTION	DATE	BY	DESCRIPTION	DATE	BY	DESCRIPTION

Kimley»Horn
 Corporate Registration
 No. CA 0000696
 355 Alhambra Circle, Suite 1400
 Coral Gables, FL 33134

ENGINEER OF RECORD	NAME	DRAWN BY	NAME
	LEONTE I. ALMONTE		ELICIEL GONZALEZ
DESIGNED BY	NAME	CHECKED BY	NAME
	ALEXANDER BARAHICA		LEONTE I. ALMONTE



SUMMARY OF PAY ITEMS

THE OFFICIAL RECORD OF THIS SHEET IS THE ELECTRONIC FILE DIGITALLY SIGNED AND SEALED UNDER RULE 61G1-16.005, F.A.C.

GENERAL NOTES

- ALL CONSTRUCTION SHALL BE IN STRICT ACCORDANCE WITH THE REQUIREMENTS OF THE MIAMI-DADE COUNTY PUBLIC WORKS DEPARTMENT, AND ANY OTHER STATE OR LOCAL AGENCY WITH JURISDICTION. IT IS THE INTENT OF THESE PLANS TO BE IN ACCORDANCE WITH APPLICABLE CODES AND AUTHORITIES HAVING JURISDICTION. ANY DISCREPANCIES BETWEEN THESE PLANS AND APPLICABLE CODES SHALL BE IMMEDIATELY BROUGHT TO THE ATTENTION OF THE ENGINEER.
- CONTRACTOR SHALL CONTACT SUNSHINE STATE ONE-CALL AT LEAST 48 HOURS PRIOR TO PERFORMING ANY DIGGING TO VERIFY THE EXACT LOCATION OF EXISTING UTILITIES. A CONTRACTOR'S REPRESENTATIVE MUST BE PRESENT WHEN UTILITY COMPANIES LOCATE THEIR FACILITIES.
- CONTRACTOR IS TO USE CAUTION WHEN WORKING IN OR AROUND AREAS OF OVERHEAD AND UNDERGROUND UTILITIES.
- KNOWN UTILITY COMPANIES IN THE PROJECT LIMITS INCLUDE, BUT ARE NOT LIMITED TO:

AT&T	NDCI GROUP	(800)252-1133
ATLANTIC BROADBAND	USIC DISPATCH OFFICE (CLS)	(800)778-9140
AT&T DISTRIBUTION	USIC DISPATCH OFFICE (CLS)	(800)778-9140
CENTURY LINK	JULIO MARQUES	(877)366-8344
COMCAST CABLE	USIC DISPATCH	(800)778-9140
CROWN CASTLE FIBER	STAKE CENTER LOCATING DISPATCHER	(801)364-1063
CROWN CASTLE NG	STAKE CENTER LOCATING DISPATCHER	(801)364-1063
DADE COUNTY PUBLIC WORKS AND TRAFFIC	CATHIA NORIEGA	(305)412-0891
FLORIDA CITY GAS	FCG LINE LOCATING SERVICES	(305)835-3603
FLORIDA DEPARTMENT OF TRANSPORTATION VI ITS	ANTONIO VALLADARES	(561)703-1113
FLORIDA GAS	SERVICES HELP DESK	(305)835-3603
FLORIDA GAS TRANSMISSION	MOLLY CARRIERE	(713)989-7079
FLORIDA POWER & LIGHT	USIC DISPATCH OFFICE (CLS)	(800)778-9140
MASTEC INC	JULIO MARQUES	(305)431-6014
MCI	VICTOR WOOD	(919)414-2782
MIAMI DADE WATER & SEWER	HENRY CUIK	(786)268-5369
TECO PEOPLE GAS	SHARON BECK	(813)228-1351
WINDSTREAM COMMUNICATION	LOCATE DESK	(800)289-1901

FDOT LIGHTING CONDUIT LOCATIONS FOR ROADWAYS IN MIAMI-DADE COUNTY (305)640-7160

- ANY DAMAGE TO PUBLIC OR PRIVATE PROPERTY SHALL BE RESTORED BY THE CONTRACTOR AT NO ADDITIONAL COST TO THE OWNER.
- ALL GRASS AREAS AFFECTED BY CONSTRUCTION SHALL BE RE-SODDED AT NO ADDITIONAL COST TO THE OWNER.
- ALL DISPOSAL OF MATERIALS, RUBBISH, AND DEBRIS SHALL BE MADE AT A LEGAL DISPOSAL SITE OR BY OTHER PRIOR APPROVED MANNER. MATERIAL CLEARED FROM THE SITE AND DEPOSITED ON ADJACENT OR NEARBY PROPERTY WILL NOT BE CONSIDERED AS HAVING BEEN DISPOSED OF SATISFACTORILY.
- EXISTING ABOVE GROUND FEATURES ARE SHOWN ACCORDING TO THE BEST AVAILABLE DATA AND MAY NOT ACCURATELY REFLECT PRESENT CONDITIONS. CONTRACTOR SHALL BE RESPONSIBLE FOR FAMILIARIZING HIMSELF WITH CURRENT SITE CONDITIONS, AND SHALL REPORT DISCREPANCIES TO THE ENGINEER PRIOR TO STARTING WORK.
- CONTRACTOR SHALL BE RESPONSIBLE FOR THE PROVISION, INSTALLATION, AND MAINTENANCE OF ALL TRAFFIC CONTROL AND SAFETY DEVICES, IN ACCORDANCE WITH SPECIFICATIONS OUTLINED IN THE PUBLIC WORKS DEPARTMENT MANUAL, THE MANUAL OF UNIFORM TRAFFIC CONTROL DEVICES, AND THE FDOT STANDARD PLANS.
- THE INFORMATION PROVIDED IN THESE DRAWINGS IS SOLELY TO ASSIST THE CONTRACTOR IN ASSESSING THE NATURE AND EXTENT OF CONDITIONS WHICH WILL BE ENCOUNTERED DURING THE COURSE OF WORK. THE CONTRACTORS ARE DIRECTED, PRIOR TO BIDDING, TO CONDUCT WHATEVER INVESTIGATIONS THEY DEEM NECESSARY TO ARRIVE AT THEIR OWN CONCLUSION REGARDING THE ACTUAL CONDITIONS THAT WILL BE ENCOUNTERED, AND UPON WHICH BIDS WILL BE BASED.
- CONTRACTOR TO INSTALL 1/2" PREFORMED EXPANSION JOINT WHEN PROPOSED SIDEWALK IMPROVEMENTS IS IMMEDIATELY ADJACENT TO EXISTING CONCRETE SLAB AND/OR BUILDING. COST TO BE INCLUDED IN PAY ITEM 522-I-1.
- CONTRACTOR SHALL UTILIZE SAWCUTS TO MAKE THE NECESSARY CONNECTIONS TO EXISTING PAVEMENT, CURB AND GUTTER, AND SIDEWALKS.
- COST OF PULL BOXES REPLACEMENT AS A RESULT OF THE WORK TO BE DONE ARE TO BE INCLUDED IN 635-2-11.
- WHERE CONNECTIONS TO EXISTING SIDEWALKS AND DRIVEWAYS ARE NOT INDICATED ON PLANS, PROPER CONNECTIONS ARE TO BE MADE AS DIRECTED BY THE ENGINEER. DROP CURB AND DRIVEWAY CONNECTIONS SHALL BE PROVIDED FOR ACCESS TO ALL PRIVATE PROPERTIES ADJACENT TO THE PROJECT. PAYMENT SHALL BE INCLUDED IN THE COST RELATED BID ITEMS.
- ALL IMPROVEMENTS ARE TO BE CONSTRUCTED AND/OR INSTALLED WITHIN EXISTING STATE AND/OR LOCAL RIGHT-OF-WAY. ALL IMPROVEMENTS MUST OCCUR BETWEEN THE EXISTING BACK OF SIDEWALK AND ROADWAY CROWN. AT LOCATIONS WHERE NO SIDEWALK EXISTS ADJACENT TO THE ROADSIDE, ALL WORK PROPOSED MUST BE INSTALLED WITHIN 13 FEET FROM THE EXISTING ROADWAY EDGE OF PAVEMENT. ALL QUESTIONS REGARDING LOCATION OF THE PUBLIC RIGHT-OF-WAY MUST BE VERIFIED BY DTPW RIGHT-OF-WAY OFFICE.
- TREE PROTECTION SHALL BE INSTALLED AROUND TREES ADJACENT TO CONSTRUCTION ACTIVITIES. NO RELOCATIONS ARE FORESEEN FOR THIS PROJECT. COST TO BE INCLUDED IN PAY ITEM 580-3, TREE PROTECTION BARRICADES.
- ANY MATERIAL TO BE STOCKPILED FOR PERIODS GREATER THAN 24 HOURS SHALL BE PROTECTED BY APPROPRIATE EROSION CONTROL DEVICES.
- PLEASE KEEP NEW AND EXISTING INLETS CLEAN OF ANY MATERIAL AND DEBRIS. INLETS LOCATED NEAR CONSTRUCTION ACTIVITIES SHOULD BE PROTECTED BY APPROPRIATE EROSION CONTROL DEVICES. COST TO BE INCLUDED IN PAY ITEM 104-18, INLET PROTECTION SYSTEM.
- CONTRACTOR SHALL REVIEW ENVIRONMENTAL REQUIREMENTS OF ANY PROPOSED STAGING AREAS WITH THE PROJECT ENGINEER AT LEAST SEVENTY-TWO (72) HOURS PRIOR TO USE.
- ALL LANDSCAPE IS DESIGNATED TO REMAIN UNLESS OTHERWISE NOTED IN PLANS. ALL LANDSCAPE WITHIN 5 FEET OF CONSTRUCTION ACTIVITIES SHALL BE PROTECTED AS PER FDOT STANDAD PLANS INDEX 110-100. COST OF TREE PROTECTION TO BE INCLUDED IN 580-3, TREE PROTECTION BARRICADES.
- CONTRACTOR SHALL NOT STAGE OR OPERATE EQUIPMENT WITHIN THE DRIP LINE OF TREES. CONTRACTOR SHALL NOT PARK VEHICLES WHITIN THE DRIP LINES OF TREES.
- FOR PAVEMENT MARKING INCLUDING REFLECTIVE PAVEMENT MARKERS (R.P.M.) REFER TO FDOT STANDARD PLANS INDEX 706-001 AND 711-001 WHERE APPLICABLE. ALL PAVEMENT MARKINGS LABELED ON PLANS TO BE "RESTRIPED" ARE PROPOSED IN THE FIELD AS PER ILLUSTRATION AND SCALE SHOWN, UNLESS OTHERWISE NOTED.
- ALL NEW CROSSWALKS (STANDARD AND SPECIAL EMPHASIS) SHALL BE STRIPED ACCORDING TO FDOT STANDARD PLANS INDEX 711-001.
- THE FOLLOWING FEDERAL AND STATE LISTED ANIMAL SPECIES COULD INHABIT OR MIGRATE THROUGH THE CONSTRUCTION AREA: FLORIDA BONNETED BAT (E), SNAIL KITE (E), AND THE WOOD STORK (T). THE CONTRACTOR SHALL COMPLY WITH ALL FEDERAL AND STATE REQUIREMENTS REGARDING ENDANGERED AND THREATENED SPECIES AND STATE-LISTED SPECIES OF SPECIAL CONCERN. SHOULD THE SPECIES BE ENCOUNTERED, THE CONTRACTOR SHALL CONTACT THE PROJECT ENGINEER, MR. JON O'RIE, 305-375-2030, MIAMI-DADE COUNTY DEPARTMENT OF TRANSPORTATION AND PUBLIC WORKS, WITHIN 24 HOURS OF EACH ENCOUNTER.

- EXISTING SIDEWALKS ARE REPRESENTED IN THE PLANS BASED ON FIELD VISIT OBSERVATIONS. THE CONTRACTOR SHALL VERIFY THE LOCATIONS OF THE EXISTING SIDEWALKS.
- ALL EXISTING SIGNS AND EXISTING PAVEMENT MARKINGS ARE TO REMAIN UNLESS OTHERWISE NOTED IN THE PLANS.
- THE FOLLOWING FEDERAL AND STATE LISTED ANIMALS SPECIES COULD INHABIT OR MIGRATE THROUGH THE CONSTRUCTION AREA: FLORIDA BONNETED BAT (ENDANGERED), EVERGLADE SNAIL KITE (ENDANGERED), WOOD STORK (THREATENED), AMERICAN CROCODILE (THREATENED), PIPING PLOVER (THREATENED), EASTERN INDIGO SNAKE (THREATENED).
- NO STAGING OR OTHER ACTIVITIES FOR THIS PROJECT WILL BE ALLOWED WITHIN OR ADJACENT TO FLAGAMI ELEMENTARY SCHOOL LOCATED AT 920 NW 76TH AVENUE, CARRIE P. MEEK/WESTVIEW K-8 CENTER LOCATED AT 2101 NW 127TH STREET, SHADOWLAWN ELEMENTARY SCHOOL LOCATED AT 149 NW 49TH STREET, HUBERT O. SIBLEY ELEMENTARY SCHOOL LOCATED AT 244 NW 115TH STREET, OR PULLMAN MINI PARK LOCATED ON THE SOUTH SIDE OF NW 49TH STREET BETWEEN NW 1ST AVENUE AND N MIAMI AVENUE.
- NO STAGING OR ADDITIONAL ACTIVITIES FOR THIS PROJECT NOT DEPICTED ON THE CURRENT PLAN SUBMITTAL WILL BE ALLOWED WITHIN OR ADJACENT TO THE NATIONAL REGISTER-ELIGIBLE BAY VISTA PARK HISTORIC DISTRICT, WHICH IS ROUGHLY BOUND BY NW 54TH STREET TO THE NORTH, NW 39TH STREET TO THE SOUTH, 200 FEET EAST OF NW 2ND AVENUE TO THE EAST, AND I-95 TO THE WEST.
- CONTRACTOR SHALL COORDINATE WITH FDOT DISTRICT MAINTENANCE OFFICE FINAL INSPECTION FOR WORK PERFORMED WITHIN FDOT RIGHT OF WAY. COST TO BE INCLUDED IN PAY ITEM 101-I-A, MOBILIZATION.
- ALL EXISTING DRAINAGE STRUCTURES ARE TO REMAIN UNLESS OTHERWISE NOTED IN THE PLANS.

MAINTENANCE OF TRAFFIC NOTES

- TRAFFIC CONTROLS SHALL BE IN ACCORDANCE WITH THE PROJECT PLANS, THE MIAMI-DADE COUNTY PUBLIC WORKS MANUAL AS PERTAINS TO MAINTENANCE OF TRAFFIC, THE CURRENT EDITION OF THE FDOT STANDARD PLANS (102-600 SERIES), THE STANDARD SPECIFICATION FOR ROAD AND BRIDGE CONSTRUCTION, AND THE MANUAL ON UNIFORM TRAFFIC CONTROL DEVICES AS MINIMUM CRITERIA
- THE CONTRACTOR SHALL DEVELOP MAINTENANCE OF TRAFFIC PLAN OF HIS OWN, MEETING THE REQUIREMENTS SPECIFIED IN THE MANUAL OF UNIFORM TRAFFIC CONTROL DEVICES LATEST EDITION AND THE FDOT STANDARD PLANS INDEX 102-600 SERIES. THE CONTRACTOR'S MAINTENANCE OF TRAFFIC PLANS SHALL BE SUBMITTED TO THE ENGINEER FOR REVIEW AND APPROVAL PRIOR TO START OF CONSTRUCTION. THE PLANS SHALL BE SIGNED AND SEALED BY A PROFESSIONAL ENGINEER REGISTERED IN THE STATE OF FLORIDA.
- TEMPORARY PAVEMENT SHALL CONSIST OF A MINIMUM OF 6 INCH LIMEROCK BASE, PRIME COAT AND 1-1/2 INCHES TYPE SP 9.5 ASPHALTIC CONCRETE. THE BASE LAYER SHALL BE PLACED OVER A FIRM, UNYIELDING, WELL-COMPACTED SUBGRADE. COST OF CONSTRUCTION, REMOVAL, AND DISPOSAL OF TEMPORARY PAVEMENT TO BE INCLUDED IN PAY ITEM 102-1A, MAINTENANCE OF TRAFFIC.
- THE CONTRACTOR SHALL IMMEDIATELY REPAIR ALL POTHoles THAT DEVELOP WITHIN THE PROJECT LIMITS AND WILL MAINTAIN A SUPPLY OF COLD MIX ON THE PROJECT SITE TO EXPEDITE THOSE REPAIRS. COST OF REPAIR TO BE INCLUDED IN PAY ITEM 102-1A, MAINTENANCE OF TRAFFIC.
- NOTIFICATION OF LANE CLOSURES OR TEMPORARY DETOURS SHALL BE ACCOMPLISHED 14 WORKING DAYS PRIOR TO CLOSURE OR DETOUR BY COORDINATING WITH MIAMI-DADE COUNTY PUBLIC WORKS DEPARTMENT AND MIAMI-DADE COUNTY TRAFFIC OPERATIONS.
- THE CONTRACTOR SHALL NOTIFY LAW ENFORCEMENT AND FIRE PROTECTION SERVICES TWENTY-FOUR (24) HOURS IN ADVANCE OF A DETOUR.
- AT THE DISCRETION OF THE ENGINEER, IF A LANE CLOSURE CAUSES EXTENDED CONGESTION OR DELAY, THE CONTRACTOR SHALL BE DIRECTED TO REOPEN THE CLOSED LANE(S) UNTIL SUCH TIME THAT THE TRAFFIC FLOW HAS RETURNED TO AN ACCEPTABLE LEVEL.
- THE TRAFFIC AND TRAVEL WAYS SHALL NOT BE ALTERED BY THE CONTRACTOR TO CREATE A WORK ZONE UNTIL ALL LABOR AND MATERIAL ARE AVAILABLE FOR THE CONSTRUCTION IN THAT AREA.
- LANE CLOSURE SHALL OCCUR ONLY DURING NON-PEAK HOURS ON NONEVENT DAYS/NIGHTS. NO INTERRUPTION TO TRAFFIC IS PERMITTED FROM MONDAY-FRIDAY 7-9 AM, AND 4-6 P.M. OR ON WEEKENDS AND HOLIDAYS.
- CONTRACTOR SHALL MAINTAIN ACCESS TO PRIVATE PROPERTY DURING ALL PHASES OF CONSTRUCTION. LOCAL RESIDENTS WITHIN THE AREA OF CONSTRUCTION SHALL BE GIVEN ACCESS TO THEIR PROPERTY DURING ALL PHASES OF CONSTRUCTION. LOCAL RESIDENTS INCLUDE ALL COMMERCIAL ESTABLISHMENTS AND BUSINESSES.
- SIGNS ARE TO BE LOCATED BEFORE EACH BUSINESS OR SHOPPING PLAZA ENTRANCE WHERE CONSTRUCTION NEGATIVELY IMPACTS THE ACCESS TO THE BUSINESS OR SHOPPING PLAZA OR AS DIRECTED BY THE ENGINEER. TWO SIGNS WILL TYPICALLY BE REQUIRED AT EACH ENTRANCE. SIGNS ARE TO BE DISPLAYED AS DESCRIBED IN INDEX 102-600 OF THE ROADWAY AND TRAFFIC DESIGN STANDARDS. COST OF THE SIGNS ARE TO BE INCLUDED IN PAY ITEM 102-1A, MAINTENANCE OF TRAFFIC.
- AS DETERMINED BY THE ENGINEER, THE CONTRACTOR SHALL COVER WORK ZONE SIGNS WHEN CONDITIONS NO LONGER WARRANT THEIR USE. COST OF COVERING AND UNCOVERING THE SIGNS SHALL BE INCLUDED IN PAY ITEM 102-1A, MAINTENANCE OF TRAFFIC.
- CONTRACTOR SHALL REMOVE, RELOCATE, OR COVER ANY EXISTING OR PROPOSED SIGNS THAT CONFLICT WITH THE TRAFFIC CONTROL PLANS. WHEN THE CONFLICT NO LONGER EXISTS, THE CONTRACTOR SHALL RESTORE THE SIGNS TO THEIR ORIGINAL POSITION. COST OF TEMPORARILY REMOVING, RELOCATING, COVERING, AND RESTORING THE SIGNS SHALL BE INCLUDED IN THE PAY ITEM 102-1A, MAINTENANCE OF TRAFFIC.
- EACH EXISTING STREET NAME AND TRAFFIC SIGN AFFECTED BY CONSTRUCTION SHALL BE RELOCATED AND MAINTAINED IN AN APPROPRIATE LOCATION FOR THE DURATION OF THE PROJECT. WHEN NO LONGER AFFECTED BY CONSTRUCTION, THESE SIGNS SHALL BE RESTORED IN THEIR ORIGINAL POSITION. COST OF TEMPORARILY RELOCATING AND RESTORING THE SIGNS SHALL BE INCLUDED IN PAY ITEM 102-1A, MAINTENANCE OF TRAFFIC.
- THE CONTRACTOR SHALL NOT PROPOSE ANY ALTERNATIVE TRAFFIC CONTROL PLAN THAT REDUCES THE NUMBER OF TRAVEL LANES EXISTING UNLESS APPROVED BY THE ENGINEER.
- CONTRACTOR SHALL BE RESPONSIBLE FOR THE IMMEDIATE REMOVAL OF STORM WATER FROM ROADWAYS UTILIZED FOR MAINTAINING TRAFFIC IN A MANNER APPROVED BY THE ENGINEER. COST FOR REMOVING THE WATER SHALL BE INCLUDED IN PAY ITEM 102-1A, MAINTENANCE OF TRAFFIC.
- FOR DROP-OFF, THE CONTRACTOR'S ATTENTION IS DIRECTED TO FDOT STANDARD PLANS INDEX NO. 102-600. THE CONTRACTOR SHALL USE SHOULDER TREATMENT DETAIL WHEN NO BARRIERS ARE REQUIRED.
- THE CONTRACTOR SHALL REMOVE ANY EXISTING OR TEMPORARY PAVEMENT MARKINGS THAT CONFLICT WITH THE TRAFFIC CONTROL PLANS. GRINDING OR MILLING SHALL ONLY BE PERMITTED IN NON-TRAFFIC AREAS. COST OF REMOVAL OF TEMPORARY PAVEMENT MARKINGS, REGARDLESS OF METHOD, IS INCLUDED IN THE RELATED PAY ITEMS. USE OF BLACK PAINT TO COVER EXISTING AND/OR TEMPORARY PAVEMENT MARKINGS IS PROHIBITED.

- TEMPORARY LANE TRANSITIONS, SHIFTS, AND CROSSOVERS SHALL HAVE SOLID LANE AND EDGE LINES FOR THE LENGTH OF THE TRANSITION, SHIFT OR CROSSOVER. IN ADDITION, SOLID LANE AND EDGE LINES SHALL EXTEND 100 FT. ON THE TANGENT SECTION BEYOND EACH END OF THESE CROSSOVERS OR TRANSITION AREAS. COST OF THE TEMPORARY RPMs SHALL BE INCLUDED IN PAY ITEM 102-1A, MAINTENANCE OF TRAFFIC.
- CONTRACTOR SHALL NOTIFY MIAMI-DADE COUNTY TRAFFIC SIGNALS AND SIGNS DIVISION LOCATED AT 7100 NW 36 STREET, MIAMI, FLORIDA 33166 AND PHONE NO. (305) 592-3470, 48 HOURS PRIOR TO ANY MODIFICATION OF AN EXISTING TRAFFIC SIGNAL SYSTEM. THE CONTRACTOR SHALL HAVE FULL RESPONSIBILITY FOR THE MAINTENANCE OF THE EXISTING OR TEMPORARY TRAFFIC SIGNAL(S) WITHIN THE PROJECT LIMITS. COST OF RELOCATING TRAFFIC SIGNAL HEADS, PROVIDING AND REMOVING TEMPORARY SIGNALS, AND MAINTAINING THE EXISTING TEMPORARY TRAFFIC SIGNAL SHALL BE INCLUDED IN PAY ITEM 102-1A, MAINTENANCE OF TRAFFIC.
- THE PROPOSED SIGNALS SHALL BE INSTALLED AND OPERATIONAL PRIOR TO THE REMOVAL OF THE EXISTING SYSTEM AND SHALL BE ADJUSTED TO THE TRAFFIC NEEDS FOR EACH CONSTRUCTION PHASE.
- THE CONTRACTOR SHALL MAINTAIN ON-LINE COMMUNICATION OF EXISTING OR TEMPORARY SIGNALIZATION. CONTRACTORS SHALL PROVIDE TEMPORARY LINES AND CONNECTIONS IF NECESSARY. COST OF MAINTAINING COMMUNICATION, INCLUDING TEMPORARY LINES AND CONNECTIONS SHALL BE INCLUDED IN PAY ITEM 102-1A, MAINTENANCE OF TRAFFIC.
- ADJACENT INTERSECTIONS SHALL NOT BE CONSTRUCTED SIMULTANEOUSLY UNLESS DIRECTED BY THE ENGINEER. FOR EVERY BLOCK, CONSTRUCTION OF DRAINAGE AND SIDEWALK SHOULD BE CONCURRENT WITH ROADWAY CONSTRUCTION.
- COORDINATION WITH MIAMI-DADE COUNTY PUBLIC WORKS DEPARTMENT WILL BE REQUIRED.
- PAVED TEMPORARY CONNECTIONS SHALL BE PROVIDED AT INTERSECTIONS AS DIRECTED BY THE ENGINEER.
- TRAFFIC SHALL BE MAINTAINED ON A PAVED, DUST-FREE SURFACE AT ALL TIMES.
- CONTRACTOR SHALL BE RESPONSIBLE FOR MAINTAINING ROADWAY LIGHTING ILLUMINATION LEVELS DURING CONSTRUCTION. THE CONTRACTOR SHALL MAINTAIN EXISTING LIGHTING OR SUPPLY TEMPORARY LIGHTING UNTIL THE PROPOSED SYSTEM IS IN OPERATION. THE CONTRACTOR SHALL SUBMIT A COMPLETE PROPOSED METHOD OF MAINTAINING LIGHTING FOR APPROVAL BY COUNTY ENGINEER PRIOR TO BEGINNING WORK. COST TO BE INCLUDED IN PAY ITEM 102-1A, MAINTENANCE OF TRAFFIC.
- CONTRACTOR SHALL BE RESPONSIBLE TO PROVIDE EROSION CONTROL MEASURES TO PREVENT CLOG OF PROPOSED DRAINAGE STRUCTURES AND SEDIMENT INTRUSION ON WATERWAYS DURING CONSTRUCTION. THESE MEASURES SHALL BE APPROVED BY THE ENGINEER. COST TO BE INCLUDED IN PAY ITEM 104-18, INLET PROTECTION SYSTEM.
- CONTRACTOR MUST MAINTAIN DRAINAGE AT ALL TIMES. THE EXISTING DRAINAGE SYSTEM SHALL BE KEPT OPERATIONAL OR TEMPORARY DRAINAGE PROVIDED WHILE THE PROPOSED DRAINAGE SYSTEM (IF NEEDED) IS BEING CONSTRUCTED. THE CONTRACTOR SHALL PROVIDE THE NECESSARY TEMPORARY DRAINAGE AS APPROVED BY THE ENGINEER. ALL COSTS SHALL BE INCLUDED IN THE PAY ITEM 102-1A, MAINTENANCE OF TRAFFIC.
- AT THE END OF EACH WORK DAY OR WHENEVER THE WORK ZONE BECOMES INACTIVE, ANY DROP OFF GREATER THAN 6 INCHES ADJACENT TO THE PEDESTRIAN, BICYCLE, AND WHEELCHAIR TRAVEL PATHS SHALL BE BACKFILLED FLUSH WITH SAID PATHS OR PROTECTED WITH TEMPORARY FENCE, CONCRETE BARRIER WALL OR APPROVED HANDRAIL. COST SHALL BE INCLUDED IN THE PAY ITEM 102-1A, MAINTENANCE OF TRAFFIC.
- PEDESTRIAN, BICYCLE, AND WHEELCHAIR TRAFFIC SHALL BE MAINTAINED AND GUIDED USING APPROVED WARNING LIGHTS, SIGNING, AND DELINEATION DEVICES ON AT LEAST ONE SIDE OF THE PROJECT AT ALL TIMES THROUGHOUT THE PROJECT LIMITS. THE TRAVEL PATH SHALL BE A MINIMUM OF 4 FT. WIDE WITH A SMOOTH SURFACE THAT IS NOT SLICK AND IT SHOULD BE RAMPED AS NECESSARY FOR CONTINUITY. COST SHALL BE INCLUDED IN THE PAY ITEM 102-1A, MAINTENANCE OF TRAFFIC.
- THE CONTRACTOR SHALL FURNISH AND MAINTAIN VARIABLE MESSAGE SIGNS (VMS) AS DIRECTED BY THE ENGINEER. MESSAGES FOR THE VMS SHALL BE AS DIRECTED BY THE ENGINEER. THE VMS SHALL BE IN PLACE ONE WEEK BEFORE THE START OF ANY WORK ITEMS AFFECTING THE EXISTING VEHICULAR AND PEDESTRIAN TRAFFIC. VMS INSTALLATION, OPERATION, AND REMOVAL TO BE INCLUDED IN THE PAY ITEM 102-1A, MAINTENANCE OF TRAFFIC.
- THE CONTRACTOR MUST PROVIDE FLASHING ARROW BOARD FOR ANY LANE THAT IS CLOSED OR DIVERTED. COST TO BE INCLUDED IN PAY ITEM 102-1A, MAINTENANCE OF TRAFFIC.
- RIGHT OF WAY (R/W) LINES SHOWN ARE APPROXIMATE. THE CONTRACTOR SHALL HAVE A SURVEYOR VERIFY THE R/W LINE LOCATION WHERE NEW SIDEWALK IS BEING PROPOSED. COST TO BE INCLUDED IN PAY ITEMS 522-1-1 AND 522-2-3.
- THE CONTRACTOR SHALL PERFORM EXPLORATORY EXCAVATION AT THE PROPOSED SIGNS/POLES LOCATIONS SEVEN BUSINESS DAYS IN ADVANCE OF ITS CONSTRUCTION. PROVIDE UNDERGROUND UTILITY OWNERS AND THE DTPW SEVEN DAYS ADVANCE NOTICE OF ANY CONFLICT WITH PROPOSED CONSTRUCTION. PROVIDE SURVEY INFORMATION ABOUT EXISTING UTILITY ALIGNMENT, GRADE AND POSSIBLE CONFLICTS. PAYMENT FOR THE PRE-TRENCHING, SURVEY AND BACKFILLING SHALL BE INCLUDED IN THE COST OF THE RELATED BID ITEM FOR THE PROPOSED INSTALLATION.
- THE CONTRACTOR SHALL VERIFY THE PROPOSED SIDEWALK LAYOUTS AT LEAST SEVEN BUSINESS DAYS IN ADVANCE OF POURING CONCRETE. PROVIDE THE ENGINEER NOTICE OF ANY CONFLICT WITH EXISTING FEATURES SEVEN BUSINESS DAYS BEFORE POURING CONCRETE. COST TO BE INCLUDED IN THE RELATED BID ITEM.

REVISIONS

DATE	BY	DESCRIPTION	DATE	BY	DESCRIPTION	DATE	BY	DESCRIPTION

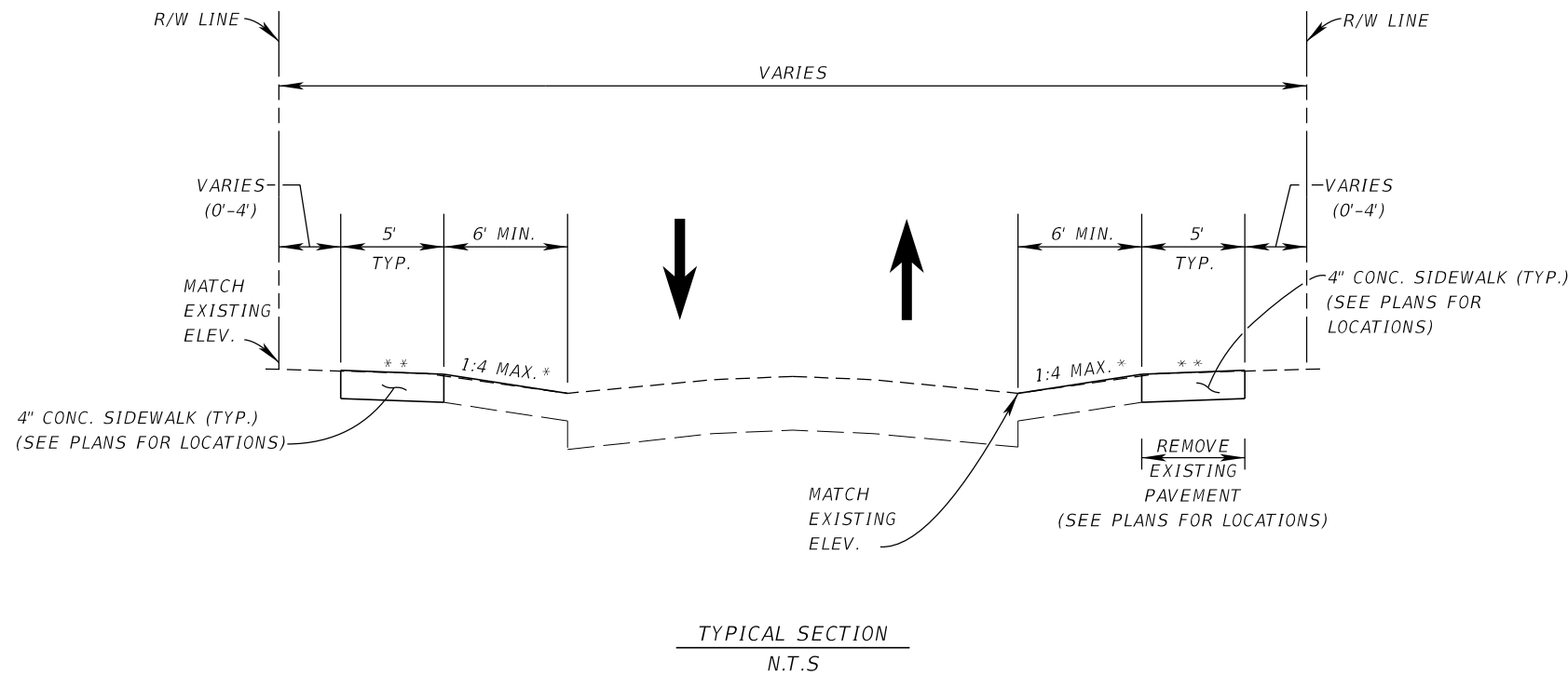
Kimley»Horn
Corporate Registration
No. CA 0000696
355 Alhambra Circle, Suite 1400
Coral Gables, FL 33134

NAME	NAME
ENGINEER OF RECORD LEONTE I. ALMONTE	DRAWN BY ELICIEL GONZALEZ
DESIGNED BY ALEXANDER BARAMIDICA	CHECKED BY LEONTE I. ALMONTE

DEPARTMENT OF TRANSPORTATION AND PUBLIC WORKS
MIAMI-DADE
HIGHWAY DIVISION
STEPHEN P. CLARK CENTER
111 NW 15 ST
MIAMI, FLORIDA 33128

GENERAL NOTES

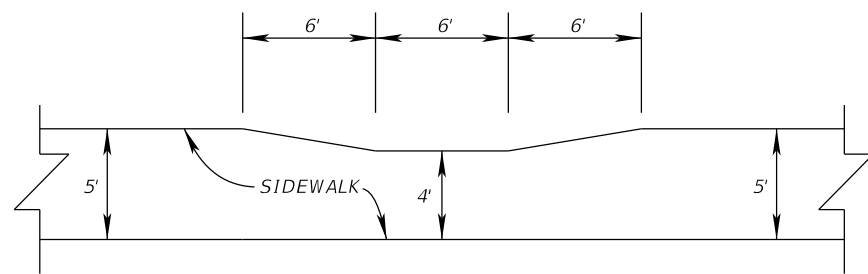
THE OFFICIAL RECORD OF THIS SHEET IS THE ELECTRONIC FILE DIGITALLY SIGNED AND SEALED UNDER RULE 61G1-16.005, F.A.C.



* SLOPE/FILL AND TURF/SOD INSTALLATION TO BE PROVIDED WHEN DROP OFF EXISTS. TREATMENT TO BE PROVIDED PER FDOT STANDARD PLANS. SLOPE/FILL AND TURF/SOD MATERIAL TO MATCH EXISTING ADJACENT MATERIAL. COST TO BE INCLUDED IN COST OF SIDEWALK, PAY-ITEM 522-1. THIS APPLICATION APPLIES TO BOTH SIDES OF THE ROAD.

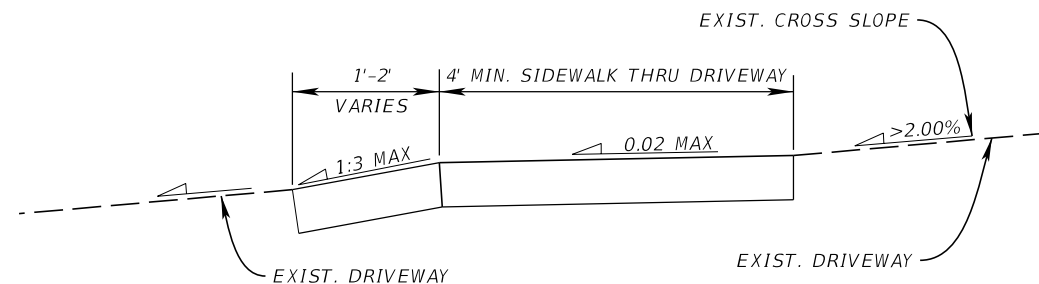
** MATCH EXISTING ELEVATION AT BACK OF SIDEWALK. SLOPE VARIES (0.3% TO 2% MAX).

NOTE: SIDEWALK SHOWN AT THE RIGHT OF WAY LINE IS FOR ILLUSTRATION PURPOSES ONLY, SEE PLANS FOR LOCATIONS.

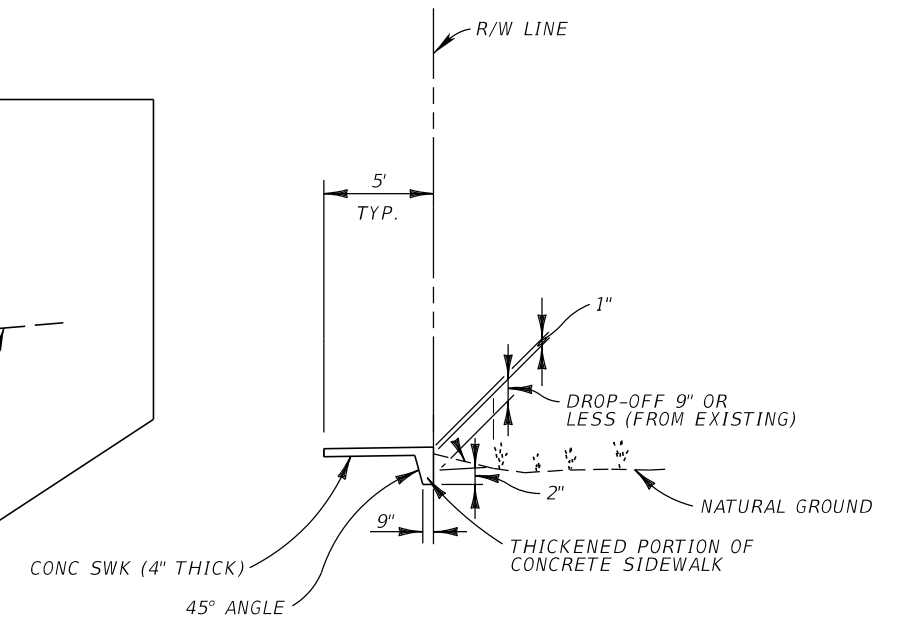


DETAIL FOR SIDEWALK CONSTRUCTION (N.T.S)
 AT LOCATIONS WHERE SIDEWALK IS CLOSER THAN 3' FROM EXISTING TREE TRUNK, OR TO AVOID IMPACTS TO LIGHT/POWER POLES, FOUNTAINS, MAIL BOXES, OR ANY OTHER OBJECT AS APPROVED BY THE ENGINEER.

NOT ALL LOCATIONS WHERE THIS TREATMENT IS NEEDED ARE SHOWN ON THE PLANS. CONTRACTOR SHALL VERIFY THE SIDEWALK LAYOUTS SEVEN BUSINESS DAYS IN ADVANCE OF POURING CONCRETE AND NOTIFY THE ENGINEER OF ANY POSSIBLE CONFLICTS OR IMPACTS TO EXISTING FEATURES.



DETAIL FOR SIDEWALK AT DRIVEWAYS (N.T.S)
 AT LOCATIONS WHERE EXISTING DRIVEWAY CROSS SLOPES ARE STEEPER THAN 2%



DETAIL FOR SIDEWALK CONSTRUCTION (N.T.S)
 AT LOCATIONS WHERE SIDEWALK IS CLOSER TO THE RIGHT OF WAY LINE (TO BE USED WHERE DROP OFF IS >1" AND ≤9")

COST TO BE INCLUDED IN PAY ITEM 522-1-1.

REVISIONS							
DATE	BY	DESCRIPTION	DATE	BY	DESCRIPTION	DATE	BY

Kimley»Horn
 Corporate Registration
 No. CA 0000696
 355 Alhambra Circle, Suite 1400
 Coral Gables, FL 33134

NAME	NAME
ENGINEER OF RECORD LEONTE I. ALMONTE	DRAWN BY ELICIEL GONZALEZ
DESIGNED BY ALEXANDER BARRADICA	CHECKED BY LEONTE I. ALMONTE

DEPARTMENT OF TRANSPORTATION AND PUBLIC WORKS
MIAMI-DADE
 HIGHWAY DIVISION
 STEPHEN P. CLARK CENTER
 311 NW 1 ST.
 MIAMI, FLORIDA 33128

SPECIAL DETAILS

TABULATION OF QUANTITIES

PAY ITEM NO.	DESCRIPTION	UNIT	FLAGAMI ELEMENTARY							SUMMARY OF QUANTITIES
			SHEET FE-1	SHEET FE-2	SHEET FE-3	SHEET FE-4	SHEET FE-5	SHEET FE-6	SHEET FE-7	
			QUANTITY	QUANTITY	QUANTITY	QUANTITY	QUANTITY	QUANTITY	QUANTITY	
104-18	INLET PROTECTION SYSTEM	EA		2						2
110-1-1	CLEARING AND GRUBBING	AC	0.038	0.050				0.035	0.010	0.133
110-4-10	REMOVE AND DISPOSE OF EXISTING CURB AND GUTTER, SIDEWALKS INCLUDING RAMPS AND MISCELLANEOUS CONCRETE IN AREAS NOT INCLUDED IN THE CLEARING AND GRUBBING ITEM	SY	19							19
110-7-1A	INSTALL NEW MAILBOX	EA	3							3
200-2-1	BASE PREPARATION FOR NEW SIDEWALK CONSTRUCTION	SY	24	20						44
422-6-1F	ADJUST WATER METER BOX - Single or Dual Services	EA	4						2	6
520-2A	CONCRETE CURB AND/OR GUTTER	LF	31	36						67
522-1-1	CONCRETE SIDEWALK (4" thick) Category 1	SY	138	168				123	37	466
522-2-3	CONCRETE SIDEWALK (6" thick) Category 1	SY	56	83				52	3	194
527-2	DETECTABLE WARNING ON WALKING SURFACE	SF	60	30						90
570-1-2	PERFORMANCE TURF, SOD	SY	19							19
580-3	TREE PROTECTION BARRICADES	LF	101	181					101	383
580-322-2A	TREE REMOVAL AND DISPOSAL (6" to 12" Dia.)	EA	1	2						3
635-2-11	PULL & SPLICE BOX, F&I, 13" x 24" COVER SIZE	EA		1						1
700-40-01	ROADSIDE SIGNS (SINGLE POST) (LESS THAN 12 S.F.)	AS		1				1	3	6
700-46-01	REMOVAL SIGN AND POST	AS		1				1		3
700-48-18	SIGN PANEL (LESS THAN 15 S.F.)	EA		3				4	3	14
700-48-60B	REMOVE SIGN PANEL	AS		3				4		9
706-1-12	REFLECTIVE PAVEMENT MARKERS (class B, mono or bi-direct, all colors)	EA	30	6	6	6	6	6	6	60
711-7	REMOVE EXISTING PAVEMENT MARKINGS	SF	675	115	115	115	115	115	130	1265
711-11-123	THERMOPLASTIC (White) (Solid) (12")	LF	338	77	87	76	96		49	723
711-11-125	THERMOPLASTIC (White) (Solid) (24")	LF	298	12	12	12	12		49	395
711-11-221	THERMOPLASTIC (Yellow) (Solid) (6")	LF	500	100	100	100	100		100	1000

THE OFFICIAL RECORD OF THIS SHEET IS THE ELECTRONIC FILE DIGITALLY SIGNED AND SEALED UNDER RULE 61G1-16.005, F.A.C.

REVISIONS							
DATE	BY	DESCRIPTION	DATE	BY	DESCRIPTION	DATE	BY

Kimley»Horn
 Corporate Registration
 No. CA 00000696
 355 Alhambra Circle, Suite 1400
 Coral Gables, FL 33134

NAME	NAME
ENGINEER OF RECORD LEONTE I. ALMONTE	DRAWN BY ELICIEL GONZALEZ
DESIGNED BY ALEXANDER BARRADICA	CHECKED BY LEONTE I. ALMONTE



FLAGAMI ELEMENTARY SCHOOL
 (SUMMARY OF QUANTITIES)



N.T.S.



REVISIONS

DATE	BY	DESCRIPTION	DATE	BY	DESCRIPTION

Kimley»Horn
 Corporate Registration
 No. CA 0000696
 355 Alhambra Circle, Suite 1400
 Coral Gables, FL 33134

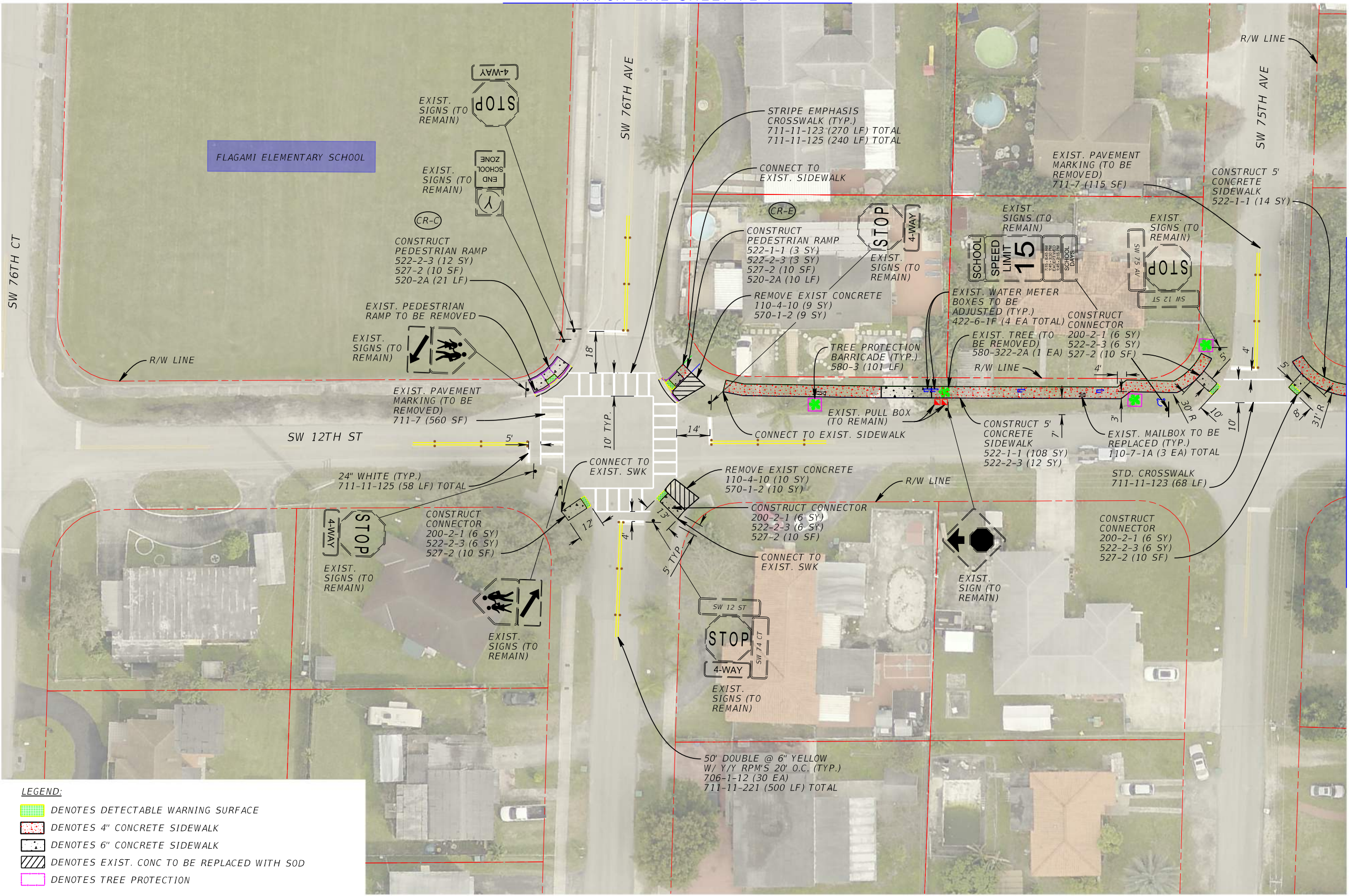
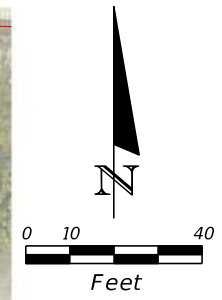
NAME	NAME
ENGINEER OF RECORD LEONTE I. ALMONTE	DRAWN BY ELICIEL GONZALEZ
DESIGNED BY ALEXANDER BARAHICA	CHECKED BY LEONTE I. ALMONTE



DEPARTMENT OF TRANSPORTATION
 AND PUBLIC WORKS
 HIGHWAY DIVISION
 STEPHEN P. CLARK CENTER
 311 SW 1 ST
 MIAMI, FLORIDA 33128

FLAGAMI ELEMENTARY SCHOOL
 (PROJECT LAYOUT SHEET)

MATCH LINE SHEET FE-7



FLAGAMI ELEMENTARY SCHOOL

MATCH LINE SHEET FE-2

- LEGEND:**
- DENOTES DETECTABLE WARNING SURFACE
 - DENOTES 4" CONCRETE SIDEWALK
 - DENOTES 6" CONCRETE SIDEWALK
 - DENOTES EXIST. CONC TO BE REPLACED WITH SOD
 - DENOTES TREE PROTECTION

REVISIONS					
DATE	BY	DESCRIPTION	DATE	BY	DESCRIPTION

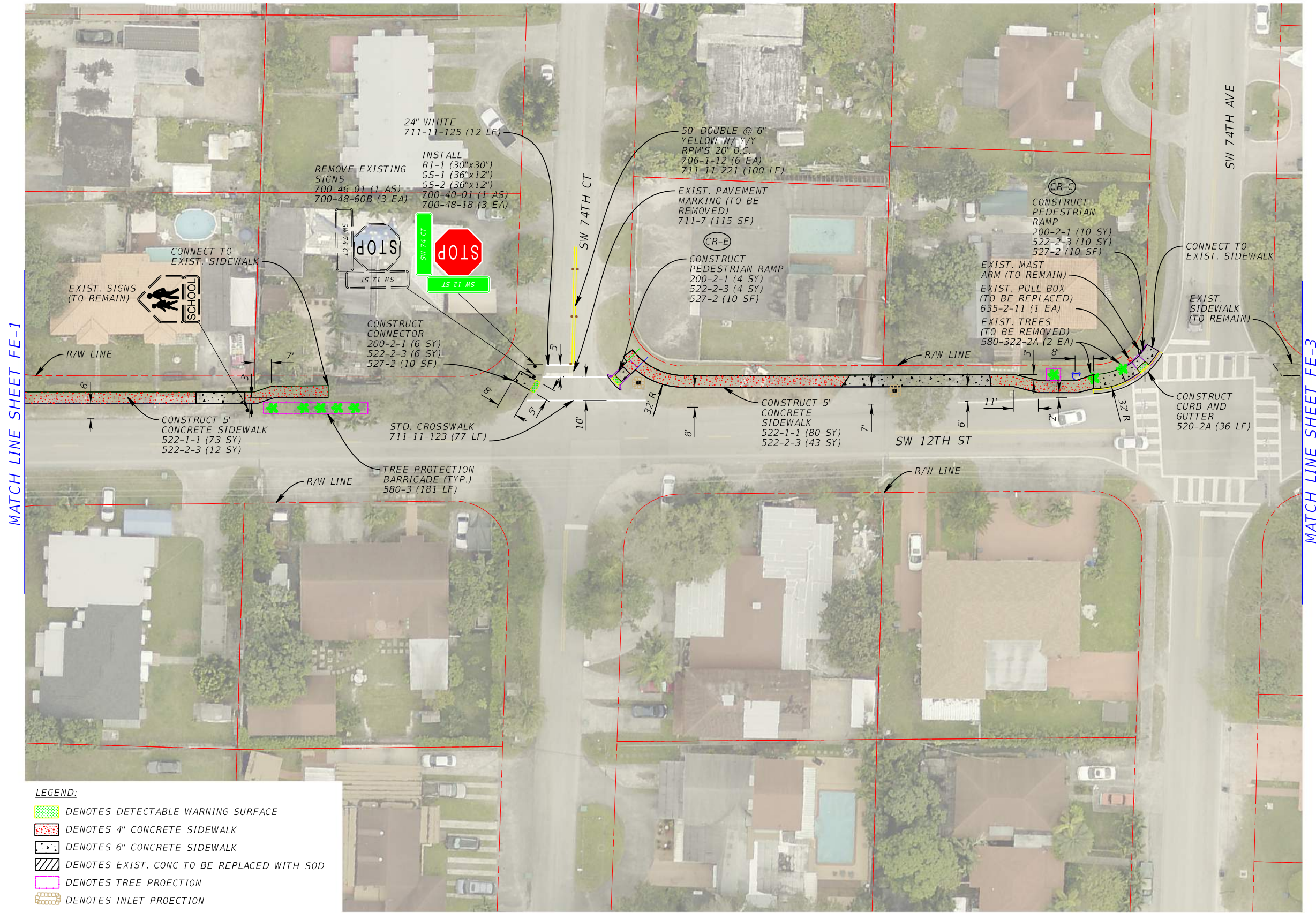
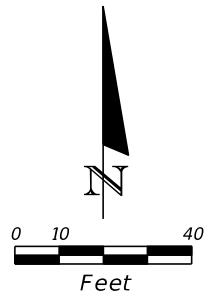
Kimley»Horn
 Corporate Registration
 No. CA 0000696
 355 Alhambra Circle, Suite 1400
 Coral Gables, FL 33134

NAME	NAME
ENGINEER OF RECORD LEONTE I. ALMONTE	DRAWN BY ELICIEL GONZALEZ
DESIGNED BY ALEXANDER BARAHIDICA	CHECKED BY LEONTE I. ALMONTE

MIAMI-DADE
 DEPARTMENT OF TRANSPORTATION
 AND PUBLIC WORKS
 HIGHWAY DIVISION
 STEPHEN P. CLARK CENTER
 311 SW 3 ST
 MIAMI, FLORIDA 33128

FLAGAMI ELEMENTARY SCHOOL
 (PLANS)

THE OFFICIAL RECORD OF THIS SHEET IS THE ELECTRONIC FILE DIGITALLY SIGNED AND SEALED UNDER RULE 61G1-16.005, F.A.C.



MATCH LINE SHEET FE-1

MATCH LINE SHEET FE-3

LEGEND:

- DENOTES DETECTABLE WARNING SURFACE
- DENOTES 4" CONCRETE SIDEWALK
- DENOTES 6" CONCRETE SIDEWALK
- DENOTES EXIST. CONC TO BE REPLACED WITH SOD
- DENOTES TREE PROTECTION
- DENOTES INLET PROTECTION

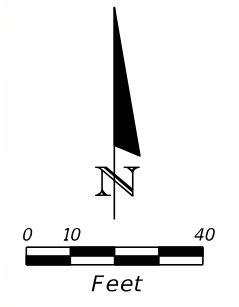
REVISIONS					
DATE	BY	DESCRIPTION	DATE	BY	DESCRIPTION

Kimley»Horn
 Corporate Registration
 No. CA 0000696
 355 Alhambra Circle, Suite 1400
 Coral Gables, FL 33134

ENGINEER OF RECORD	NAME	DRAWN BY	NAME
	LEONTE I. ALMONTE		ELICIEL GONZALEZ
DESIGNED BY	ALEXANDER BARANIDICA	CHECKED BY	LEONTE I. ALMONTE



**FLAGAMI ELEMENTARY SCHOOL
 (PLANS)**



MATCH LINE SHEET FE-2

MATCH LINE SHEET FE-4

REVISIONS							
DATE	BY	DESCRIPTION	DATE	BY	DESCRIPTION	DATE	BY

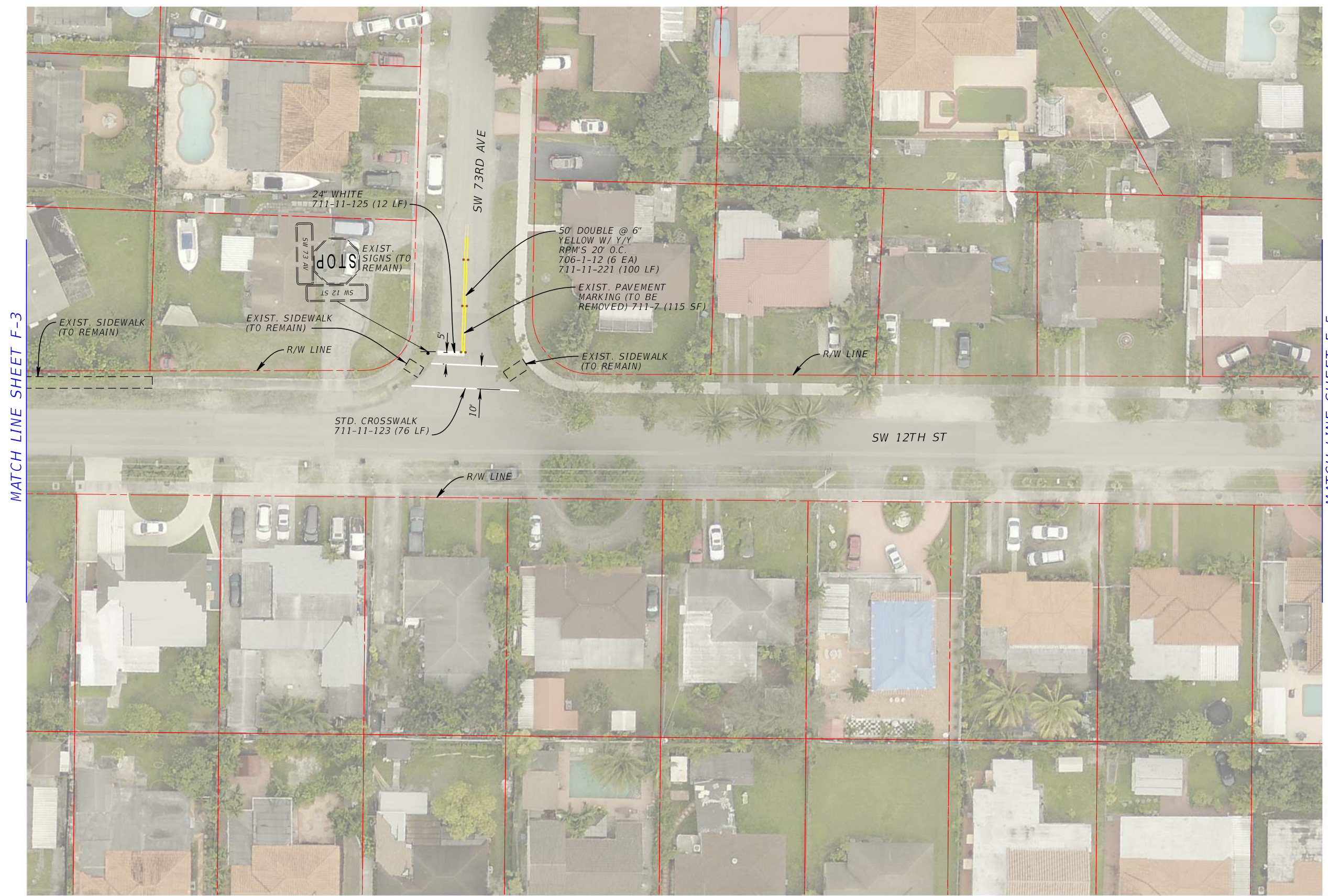
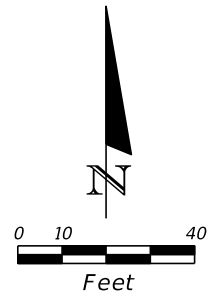
Kimley»Horn
 Corporate Registration
 No. CA 00000696
 355 Alhambra Circle, Suite 1400
 Coral Gables, FL 33134

NAME	NAME
ENGINEER OF RECORD LEONTE I. ALMONTE	DRAWN BY ELICIEL GONZALEZ
DESIGNED BY ALEXANDER BARAHICA	CHECKED BY LEONTE I. ALMONTE

MIAMI-DADE DEPARTMENT OF TRANSPORTATION AND PUBLIC WORKS
 HIGHWAY DIVISION
 STEPHEN P. CLARK CENTER
 311 NW 1 ST
 MIAMI, FLORIDA 33128

FLAGAMI ELEMENTARY SCHOOL
 (PLANS)

THE OFFICIAL RECORD OF THIS SHEET IS THE ELECTRONIC FILE DIGITALLY SIGNED AND SEALED UNDER RULE 61G1-16.005, F.A.C.



MATCH LINE SHEET F-3

MATCH LINE SHEET F-5

REVISIONS							
DATE	BY	DESCRIPTION	DATE	BY	DESCRIPTION	DATE	BY

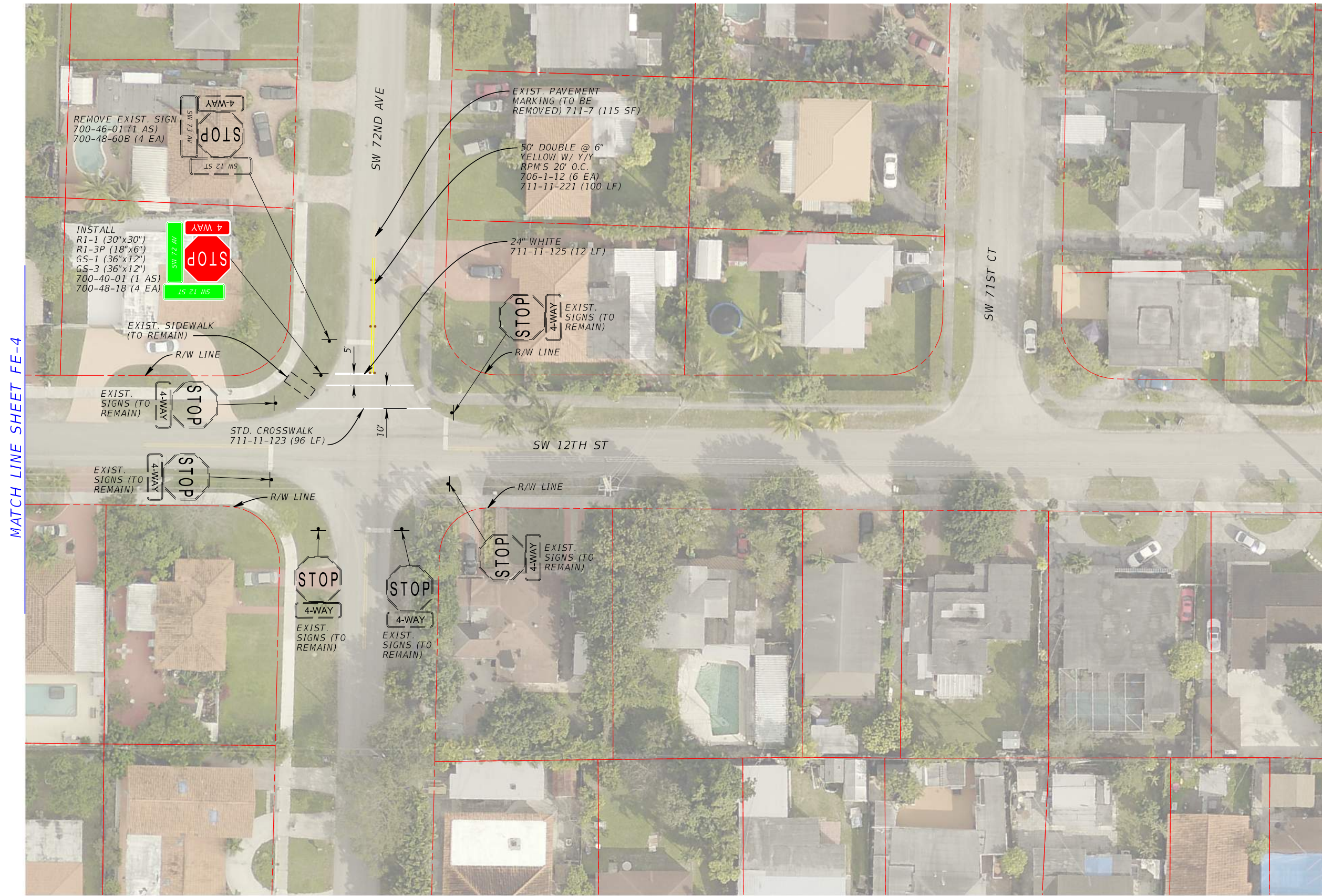
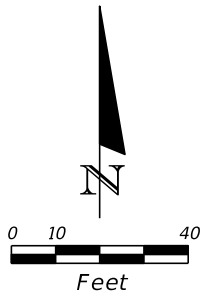
Kimley»Horn
 Corporate Registration
 No. CA 00000696
 355 Alhambra Circle, Suite 1400
 Coral Gables, FL 33134

	NAME		NAME
ENGINEER OF RECORD	LEONTE I. ALMONTE	DRAWN BY	ELICIEL GONZALEZ
DESIGNED BY	ALEXANDER BARRADICA	CHECKED BY	LEONTE I. ALMONTE

MIAMI-DADE DEPARTMENT OF TRANSPORTATION AND PUBLIC WORKS
 HIGHWAY DIVISION
 STEPHEN P. CLARK CENTER
 111 NW 1 ST
 MIAMI, FLORIDA 33128

FLAGAMI ELEMENTARY SCHOOL
 (PLANS)

THE OFFICIAL RECORD OF THIS SHEET IS THE ELECTRONIC FILE DIGITALLY SIGNED AND SEALED UNDER RULE 61G1-16.005, F.A.C.



MATCH LINE SHEET FE-4

THE OFFICIAL RECORD OF THIS SHEET IS THE ELECTRONIC FILE DIGITALLY SIGNED AND SEALED UNDER RULE 61G1-16.005, F.A.C.

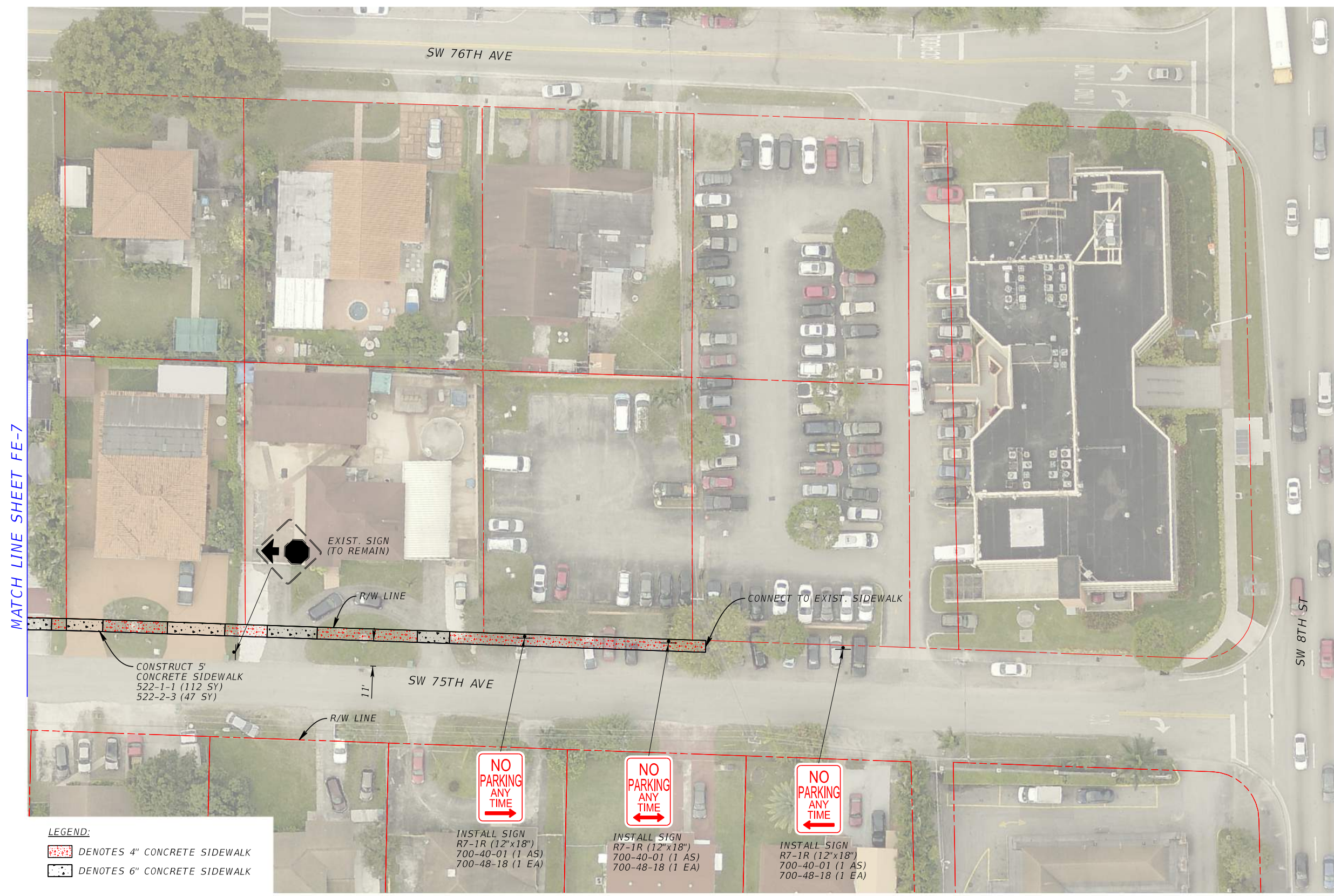
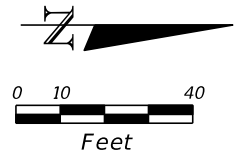
REVISIONS					
DATE	BY	DESCRIPTION	DATE	BY	DESCRIPTION

Kimley»Horn
 Corporate Registration
 No. CA 00000696
 355 Alhambra Circle, Suite 1400
 Coral Gables, FL 33134

NAME	NAME
ENGINEER OF RECORD LEONTE I. ALMONTE	DRAWN BY ELICIEL GONZALEZ
DESIGNED BY ALEXANDER BARRADICA	CHECKED BY LEONTE I. ALMONTE

MIAMI-DADE DEPARTMENT OF TRANSPORTATION AND PUBLIC WORKS
 HIGHWAY DIVISION
 STEPHEN P. CLARK CENTER
 111 NW 1 ST
 MIAMI, FLORIDA 33128

FLAGAMI ELEMENTARY SCHOOL
 (PLANS)



MATCH LINE SHEET FE-7

CONSTRUCT 5'
 CONCRETE SIDEWALK
 522-1-1 (112 SY)
 522-2-3 (47 SY)

EXIST. SIGN
 (TO REMAIN)

R/W LINE

CONNECT TO EXIST. SIDEWALK

R/W LINE

SW 75TH AVE



INSTALL SIGN
 R7-1R (12"x18")
 700-40-01 (1 AS)
 700-48-18 (1 EA)



INSTALL SIGN
 R7-1R (12"x18")
 700-40-01 (1 AS)
 700-48-18 (1 EA)



INSTALL SIGN
 R7-1R (12"x18")
 700-40-01 (1 AS)
 700-48-18 (1 EA)

LEGEND:

- DENOTES 4" CONCRETE SIDEWALK
- DENOTES 6" CONCRETE SIDEWALK

REVISIONS

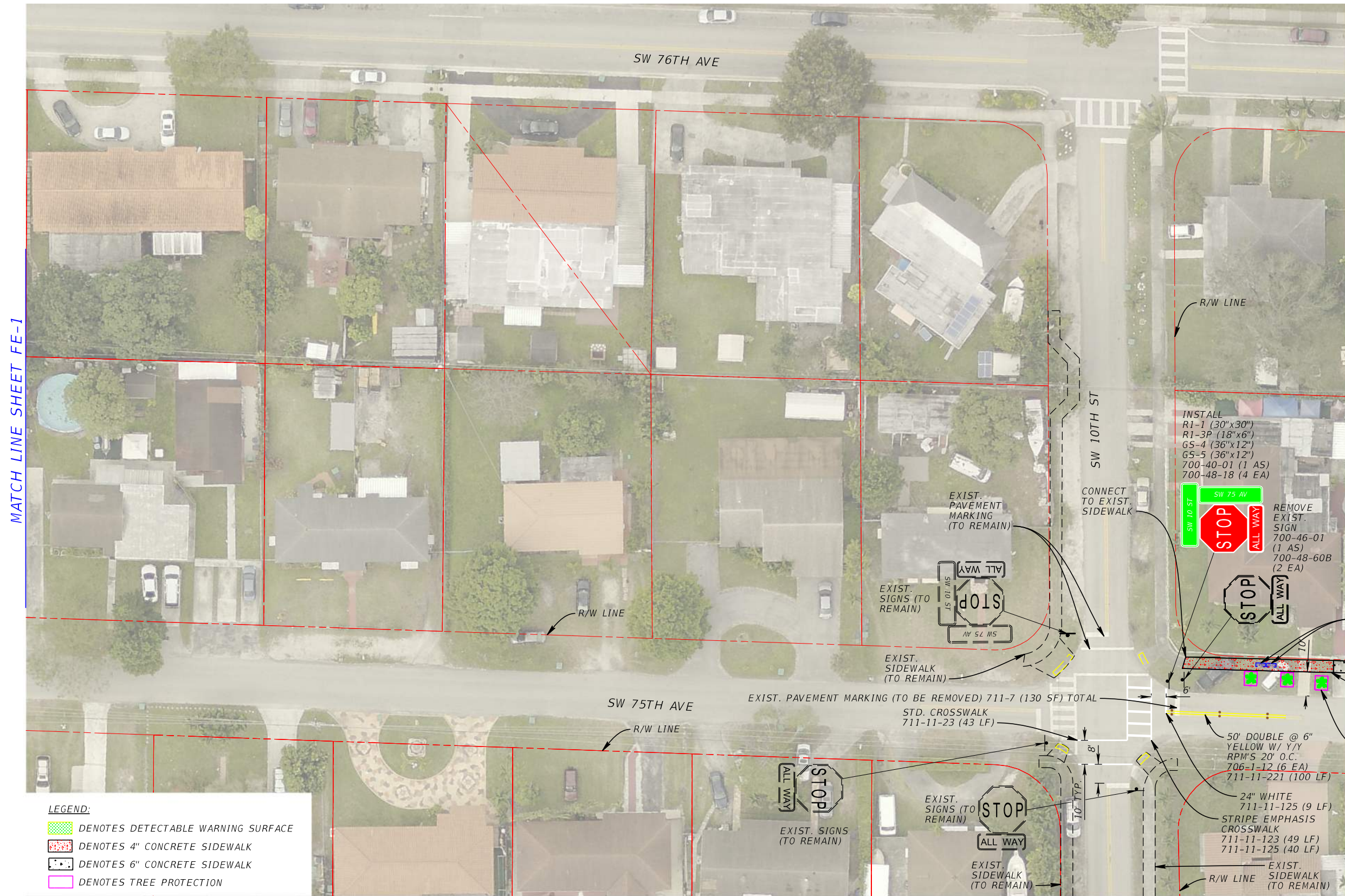
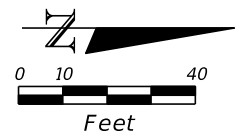
DATE	BY	DESCRIPTION	DATE	BY	DESCRIPTION

Kimley»Horn
 Corporate Registration
 No. CA 0000696
 355 Alhambra Circle, Suite 1400
 Coral Gables, FL 33134

ENGINEER OF RECORD	NAME	DRAWN BY	NAME
	LEONTE I. ALMONTE		ELICIEL GONZALEZ
DESIGNED BY	NAME	CHECKED BY	NAME
	ALEXANDER BARRADICA		LEONTE I. ALMONTE

MIAMI-DADE DEPARTMENT OF TRANSPORTATION AND PUBLIC WORKS
 HIGHWAY DIVISION
 STEPHEN P. CLARK CENTER
 311 NW 1 ST.
 MIAMI, FLORIDA 33128



FLAGAMI ELEMENTARY SCHOOL
 (PLANS)



MATCH LINE SHEET FE-1

MATCH LINE SHEET FE-6

LEGEND:

	DENOTES DETECTABLE WARNING SURFACE
	DENOTES 4\"/>

REVISIONS							
DATE	BY	DESCRIPTION	DATE	BY	DESCRIPTION	DATE	BY

Kimley»Horn
 Corporate Registration
 No. CA 0000696
 355 Alhambra Circle, Suite 1400
 Coral Gables, FL 33134

ENGINEER OF RECORD	NAME	DRAWN BY	NAME
	LEONTE I. ALMONTE		ELICIEL GONZALEZ
DESIGNED BY	ALEXANDER BARANJICA	CHECKED BY	LEONTE I. ALMONTE

MIAMI-DADE
 DEPARTMENT OF TRANSPORTATION
 AND PUBLIC WORKS
 HIGHWAY DIVISION
 STEPHEN P. CLARK CENTER
 311 NW 1 ST.
 MIAMI, FLORIDA 33128

**FLAGAMI ELEMENTARY SCHOOL
 (PLANS)**

THE OFFICIAL RECORD OF THIS SHEET IS THE ELECTRONIC FILE DIGITALLY SIGNED AND SEALED UNDER RULE 61G1-16.005, F.A.C.

TABULATION OF QUANTITIES

PAY ITEM NO.	DESCRIPTION	UNIT	CARRIE P. MEEK/WESTVIEW ELEMENTARY												SUMMARY OF QUANTITIES		
			SHEET CM-1	SHEET CM-2	SHEET CM-3	SHEET CM-4	SHEET CM-5	SHEET CM-6	SHEET CM-7	SHEET CM-8	SHEET CM-9	SHEET CM-10	SHEET CM-11	SHEET CM-12			
			QUANTITY	QUANTITY	QUANTITY	QUANTITY	QUANTITY	QUANTITY	QUANTITY	QUANTITY	QUANTITY	QUANTITY	QUANTITY	QUANTITY			
104-18	INLET PROTECTION SYSTEM	EA	3	1	2		2										8
110-1-1	CLEARING AND GRUBBING	AC	0.051	0.055	0.064	0.065	0.045					0.005	0.005	0.002	0.002		0.294
110-4-10	REMOVE AND DISPOSE OF EXISTING CURB AND GUTTER, SIDEWALKS INCLUDING RAMPS AND MISCELLANEOUS CONCRETE IN AREAS NOT INCLUDED IN THE CLEARING AND GRUBBING ITEM	SY											1				1
110-7-1A	INSTALL NEW MAILBOX	EA		2	1												3
200-2-1	BASE PREPARATION FOR NEW SIDEWALK CONSTRUCTION	SY	11	16	22	20							3	13	13		98
520-2A	CONCRETE CURB AND/OR GUTTER	LF	45									42	21				108
522-1-1	CONCRETE SIDEWALK (4" thick) Category 1	SY	232	197	216	225	190										1060
522-2-3	CONCRETE SIDEWALK (6" thick) Category 1	SY	30	88	105	96	41					26	28	14	14		442
527-2	DETECTABLE WARNING ON WALKING SURFACE	SY	10	20	20	20						20	30	20	20		160
570-1-2	PERFORMANCE TURF, SOD	SY											1				1
700-40-01	ROADSIDE SIGNS (SINGLE POST) (LESS THAN 12 S.F.)	AS											1	6	6		13
700-46-01	REMOVAL SIGN AND POST	AS											1				1
700-48-18	SIGN PANEL (LESS THAN 15 S.F.)	EA											4	10	10		24
700-48-60B	REMOVE SIGN PANEL	AS											4				4
706-1-12	REFLECTIVE PAVEMENT MARKERS (class B, mono or bi-direct, all colors)	EA	6	6	6	6		24	6			6	16				76
711-7	REMOVE EXISTING PAVEMENT MARKINGS	SF	280					960		330	126	576					2272
711-11-123	THERMOPLASTIC (White) (Solid) (12")	LF	96	90	103	103		244	64	247	131	210	62	62			1412
711-11-125	THERMOPLASTIC (White) (Solid) (24")	LF	12	15	15	15		290	12	237	142	42	88	88			956
711-11-221	THERMOPLASTIC (Yellow) (Solid) (6")	LF	100	100	100	100		400	100		100	308					1308

THE OFFICIAL RECORD OF THIS SHEET IS THE ELECTRONIC FILE DIGITALLY SIGNED AND SEALED UNDER RULE 61G1-16.005, F.A.C.

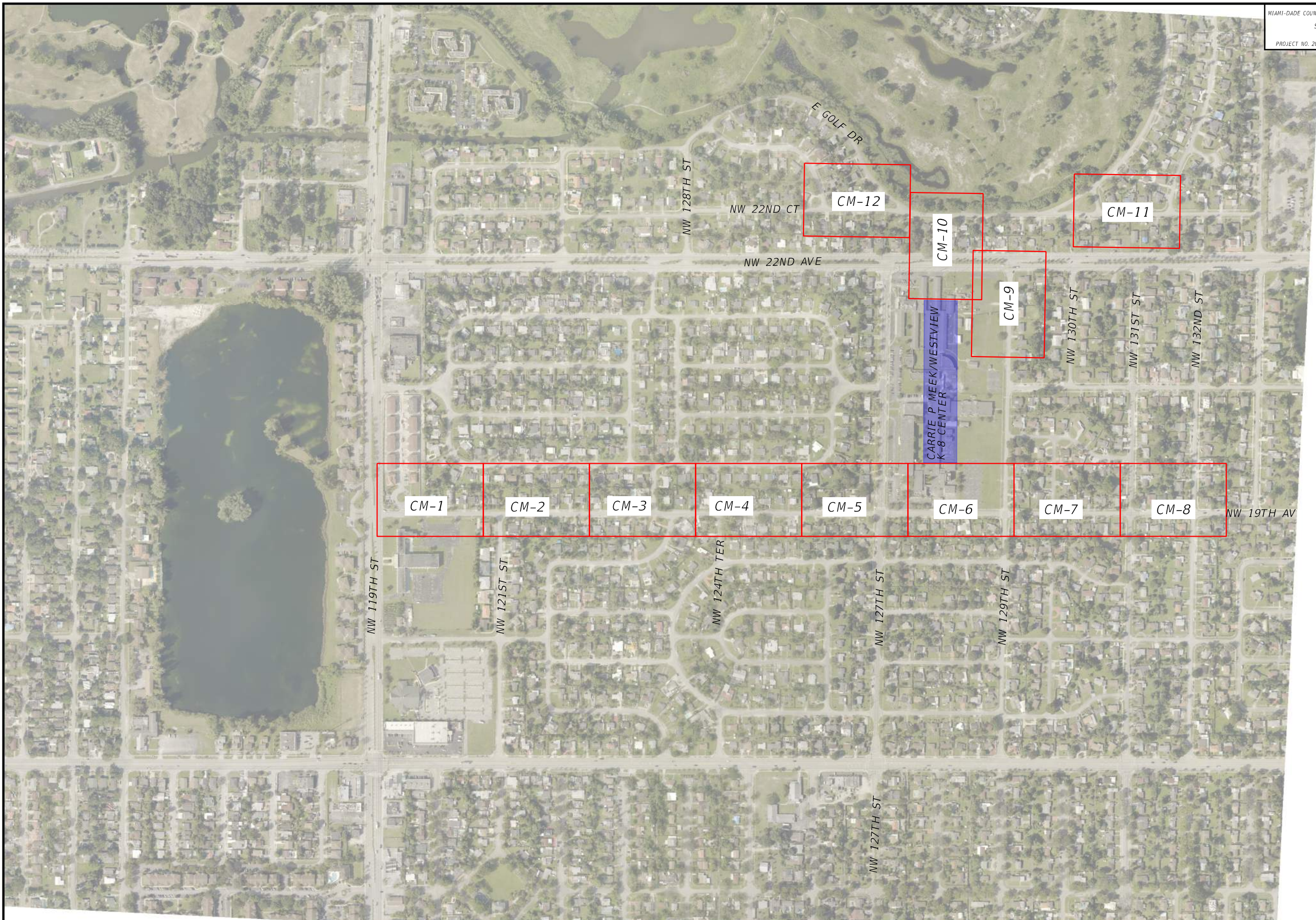
REVISIONS								
DATE	BY	DESCRIPTION	DATE	BY	DESCRIPTION	DATE	BY	DESCRIPTION

Kimley»Horn
 Corporate Registration
 No. CA 0000696
 355 Alhambra Circle, Suite 1400
 Coral Gables, FL 33134

ENGINEER OF RECORD	NAME	DRAWN BY	NAME
	LEONTE I. ALMONTE		ELICIEL GONZALEZ
DESIGNED BY	ALEXANDER BARRADICA	CHECKED BY	LEONTE I. ALMONTE



CARRIE P. MEEK/WESTVIEW ELEMENTARY SCHOOL (SUMMARY OF QUANTITIES)



REVISIONS								
DATE	BY	DESCRIPTION	DATE	BY	DESCRIPTION	DATE	BY	DESCRIPTION

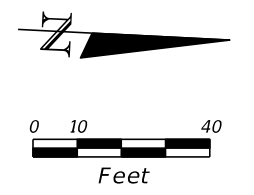
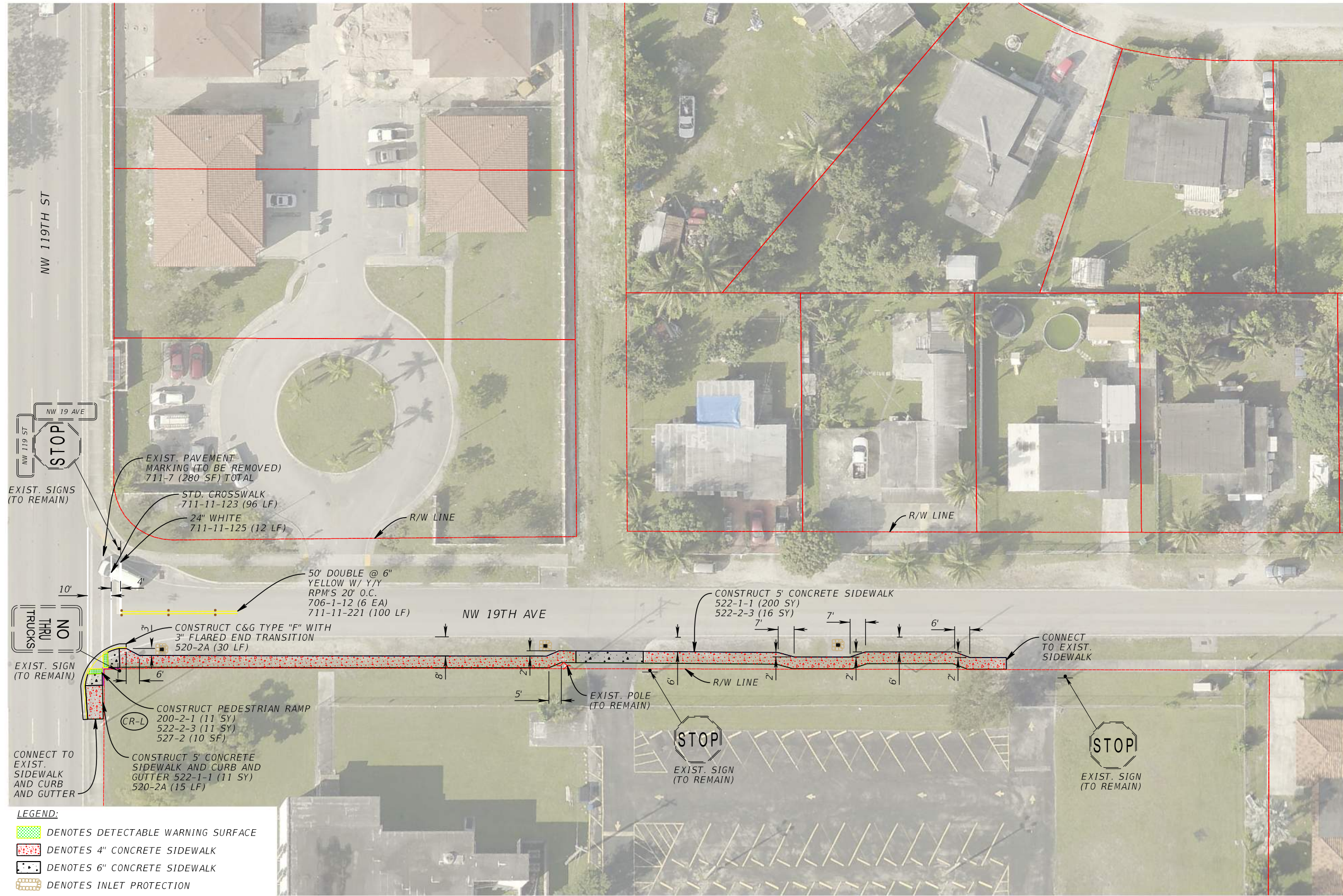
Kimley»Horn
 Corporate Registration
 No. CA 0000696
 355 Alhambra Circle, Suite 1400
 Coral Gables, FL 33134

	NAME		NAME
ENGINEER OF RECORD	LEONTE I. ALMONTE	DRAWN BY	ELICIEL GONZALEZ
DESIGNED BY	ALEXANDER BARAHICA	CHECKED BY	LEONTE I. ALMONTE

MIAMI-DADE
 DEPARTMENT OF TRANSPORTATION AND PUBLIC WORKS
 HIGHWAY DIVISION
 STEPHEN P. CLARK CENTER
 111 NW 1st St
 MIAMI, FLORIDA 33128

CARRIE P. MEEK/WESTVIEW
 ELEMENTARY SCHOOL
 (PROJECT LAYOUT SHEET)

THE OFFICIAL RECORD OF THIS SHEET IS THE ELECTRONIC FILE DIGITALLY SIGNED AND SEALED UNDER RULE 61G1-16.005, F.A.C.



MATCH LINE SHEET CM-2

- LEGEND:**
- DENOTES DETECTABLE WARNING SURFACE
 - DENOTES 4" CONCRETE SIDEWALK
 - DENOTES 6" CONCRETE SIDEWALK
 - DENOTES INLET PROTECTION

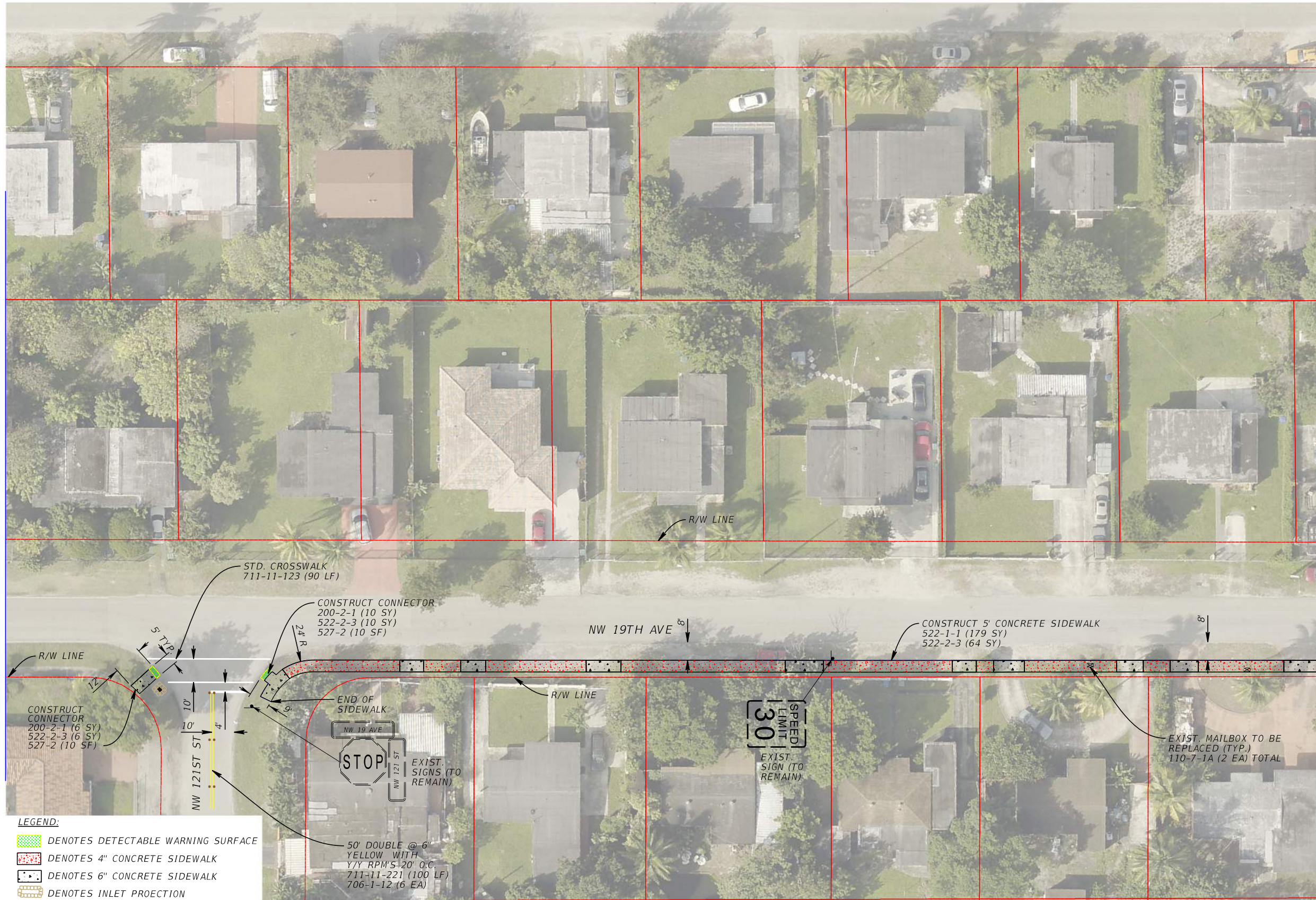
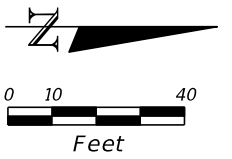
REVISIONS					
DATE	BY	DESCRIPTION	DATE	BY	DESCRIPTION

Kimley»Horn
 Corporate Registration
 No. CA 0000696
 355 Alhambra Circle, Suite 1400
 Coral Gables, FL 33134

NAME	NAME
ENGINEER OF RECORD LEONTE I. ALMONTE	DRAWN BY ELICIEL GONZALEZ
DESIGNED BY ALEXANDER BARRANCA	CHECKED BY LEONTE I. ALMONTE

MIAMI-DADE DEPARTMENT OF TRANSPORTATION AND PUBLIC WORKS
 HIGHWAY DIVISION
 STEPHEN P. CLARK CENTER
 311 NW 1 ST
 MIAMI, FLORIDA 33128

CARRIE P. MEEK / WESTVIEW
 ELEMENTARY SCHOOL (PLANS)



MATCH LINE SHEET CM-1

MATCH LINE SHEET CM-3

STD. CROSSWALK
711-11-123 (90 LF)

CONSTRUCT CONNECTOR
200-2-1 (10 SY)
522-2-3 (10 SY)
527-2 (10 SF)

NW 19TH AVE

CONSTRUCT 5' CONCRETE SIDEWALK
522-1-1 (179 SY)
522-2-3 (64 SY)

R/W LINE

CONSTRUCT CONNECTOR
200-2-1 (6 SY)
522-2-3 (6 SY)
527-2 (10 SF)

NW 121ST ST

END OF SIDEWALK

STOP

EXIST. SIGNS (TO REMAIN)

50' DOUBLE @ 6" YELLOW WITH Y/Y RPM'S 20' O.C.
711-11-221 (100 LF)
706-1-12 (6 EA)

EXIST. SIGN (TO REMAIN)

EXIST. MAILBOX TO BE REPLACED (TYP.)
110-7-1A (2 EA) TOTAL

- LEGEND:**
- DENOTES DETECTABLE WARNING SURFACE
 - DENOTES 4" CONCRETE SIDEWALK
 - DENOTES 6" CONCRETE SIDEWALK
 - DENOTES INLET PROJECTION

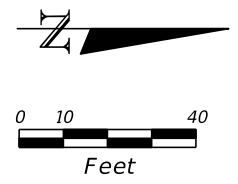
REVISIONS					
DATE	BY	DESCRIPTION	DATE	BY	DESCRIPTION

Kimley»Horn
 Corporate Registration
 No. CA 0000696
 355 Alhambra Circle, Suite 1400
 Coral Gables, FL 33134

ENGINEER OF RECORD	NAME	DRAWN BY	NAME
	LEONTE I. ALMONTE		ELICIEL GONZALEZ
DESIGNED BY	NAME	CHECKED BY	NAME
	ALEXANDER BARAHIDICA		LEONTE I. ALMONTE

MIAMI-DADE DEPARTMENT OF TRANSPORTATION AND PUBLIC WORKS
 HIGHWAY DIVISION
 STEPHEN P. CLARK CENTER
 111 NW 1 ST
 MIAMI, FLORIDA 33128

CARRIE P. MEEK / WESTVIEW
 ELEMENTARY SCHOOL (PLANS)



MATCH LINE SHEET CM-2

MATCH LINE SHEET CM-4

- LEGEND:**
- DENOTES DETECTABLE WARNING SURFACE
 - DENOTES 4" CONCRETE SIDEWALK
 - DENOTES 6" CONCRETE SIDEWALK
 - DENOTES INLET PROJECTION

REVISIONS					
DATE	BY	DESCRIPTION	DATE	BY	DESCRIPTION

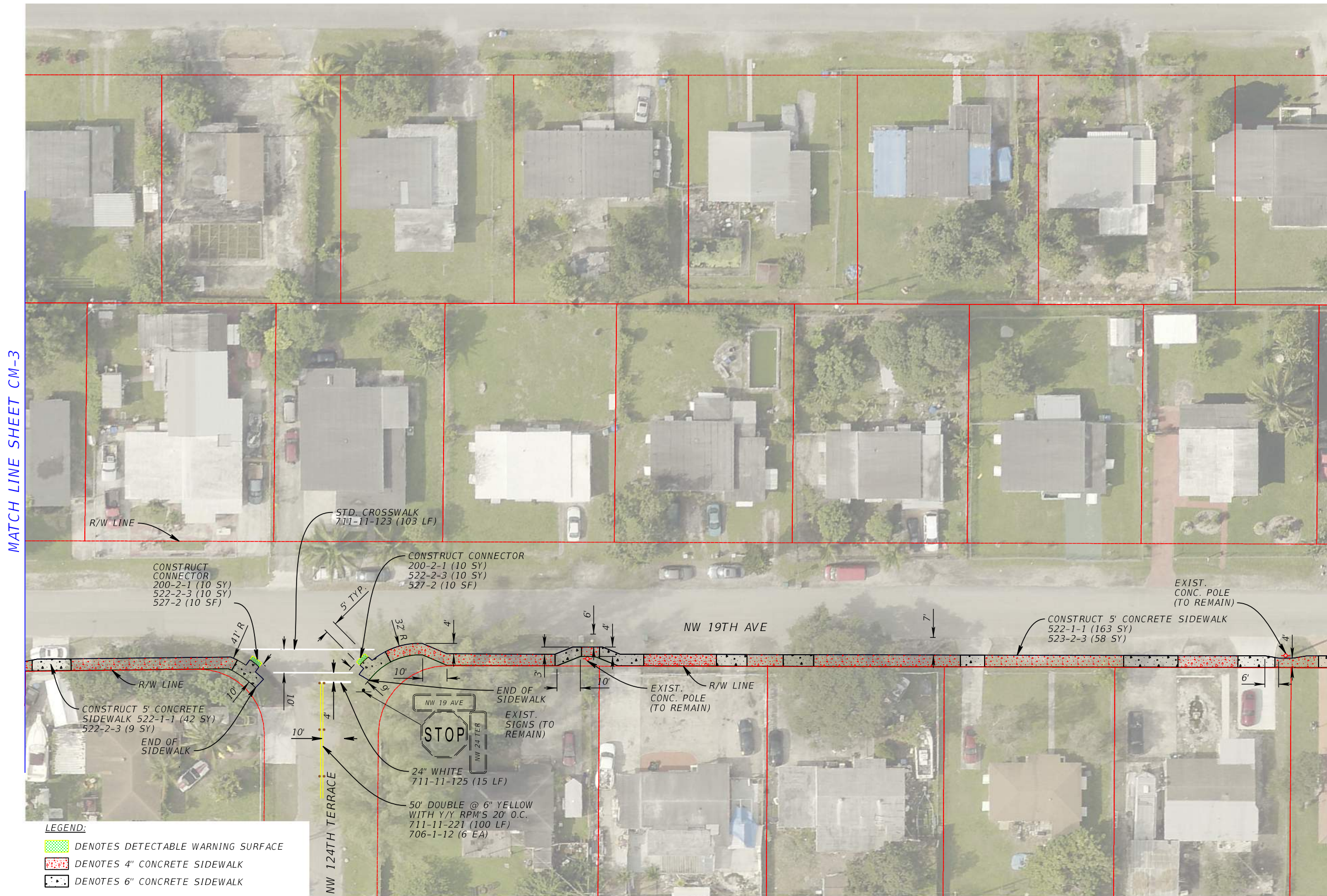
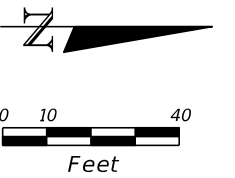
Kimley»Horn
 Corporate Registration
 No. CA 0000696
 355 Alhambra Circle, Suite 1400
 Coral Gables, FL 33134

NAME	NAME
ENGINEER OF RECORD LEONTE I. ALMONTE	DRAWN BY ELICIEL GONZALEZ
DESIGNED BY ALEXANDER BARAHIDICA	CHECKED BY LEONTE I. ALMONTE

MIAMI-DADE DEPARTMENT OF TRANSPORTATION AND PUBLIC WORKS
 HIGHWAY DIVISION
 STEPHEN P. CLARK CENTER
 111 NW 1 ST.
 MIAMI, FLORIDA 33128

CARRIE P. MEEK / WESTVIEW
 ELEMENTARY SCHOOL (PLANS)

THE OFFICIAL RECORD OF THIS SHEET IS THE ELECTRONIC FILE DIGITALLY SIGNED AND SEALED UNDER RULE 61G1-16.005, F.A.C.



MATCH LINE SHEET CM-3

MATCH LINE SHEET CM-5

- LEGEND:**
- DENOTES DETECTABLE WARNING SURFACE
 - DENOTES 4" CONCRETE SIDEWALK
 - DENOTES 6" CONCRETE SIDEWALK

REVISIONS

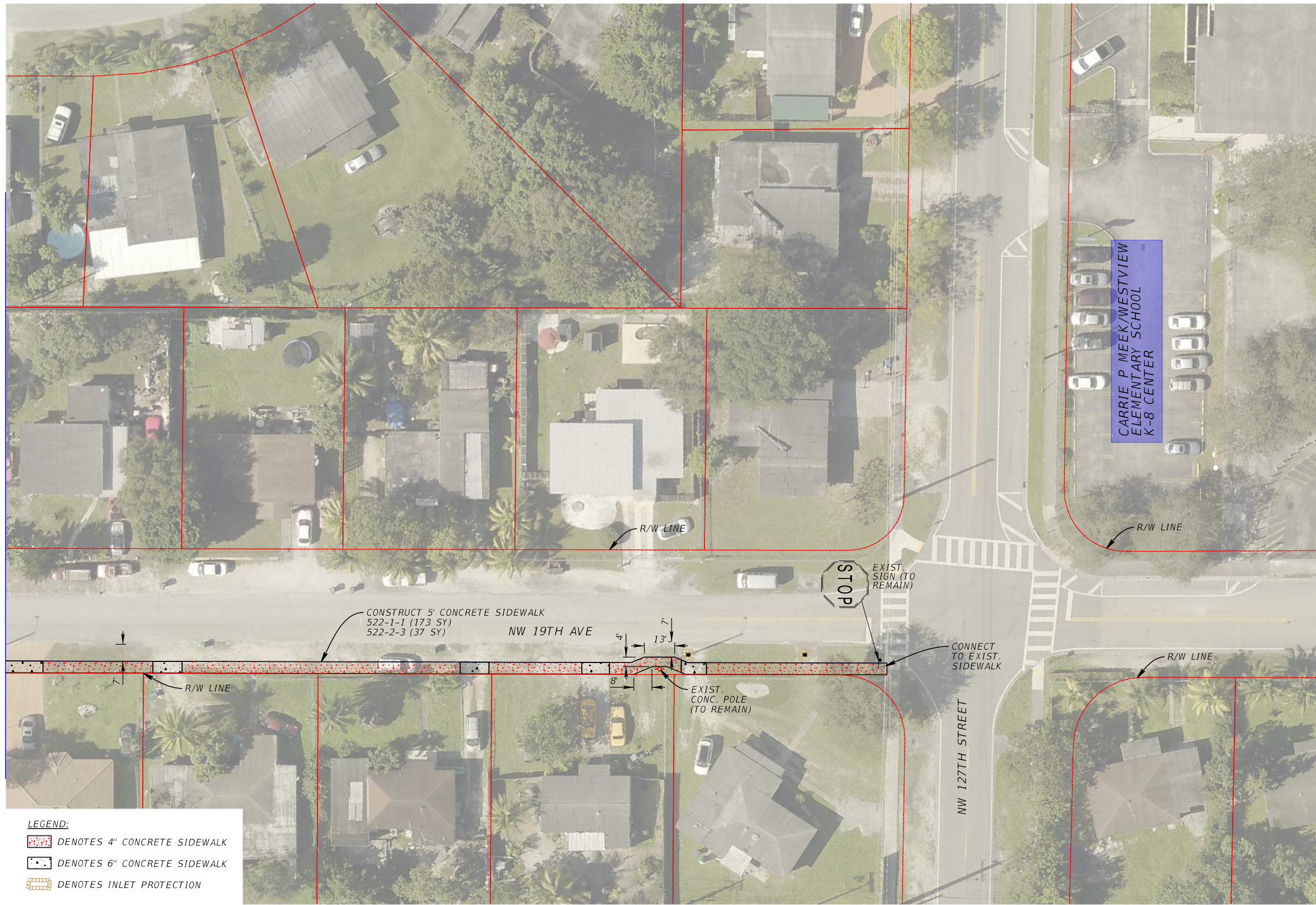
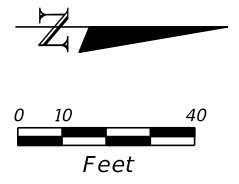
DATE	BY	DESCRIPTION	DATE	BY	DESCRIPTION

Kimley»Horn
 Corporate Registration
 No. CA 0000696
 355 Alhambra Circle, Suite 1400
 Coral Gables, FL 33134

NAME	NAME
ENGINEER OF RECORD LEONTE I. ALMONTE	DRAWN BY ELICIEL GONZALEZ
DESIGNED BY ALEXANDER BARAHICA	CHECKED BY LEONTE I. ALMONTE



CARRIE P. MEEK / WESTVIEW
 ELEMENTARY SCHOOL (PLANS)



MATCH LINE SHEET CM-4

MATCH LINE SHEET CM-6

LEGEND:

	DENOTES 4" CONCRETE SIDEWALK
	DENOTES 6" CONCRETE SIDEWALK
	DENOTES INLET PROTECTION

REVISIONS					
DATE	BY	DESCRIPTION	DATE	BY	DESCRIPTION

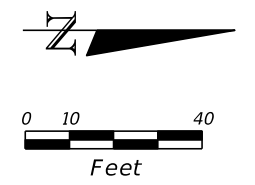
Kimley»Horn
 Corporate Registration
 No. CA 0000696
 355 Alhambra Circle, Suite 1400
 Coral Gables, FL 33134

NAME	NAME
ENGINEER OF RECORD LEONTE I. ALMONTE	DRAWN BY ELICIEL GONZALEZ
DESIGNED BY ALEXANDER BARAHIDICA	CHECKED BY LEONTE I. ALMONTE

MIAMI-DADE DEPARTMENT OF TRANSPORTATION AND PUBLIC WORKS
 HIGHWAY DIVISION
 STEPHEN P. CLARK CENTER
 311 NW 1 ST
 MIAMI, FLORIDA 33128

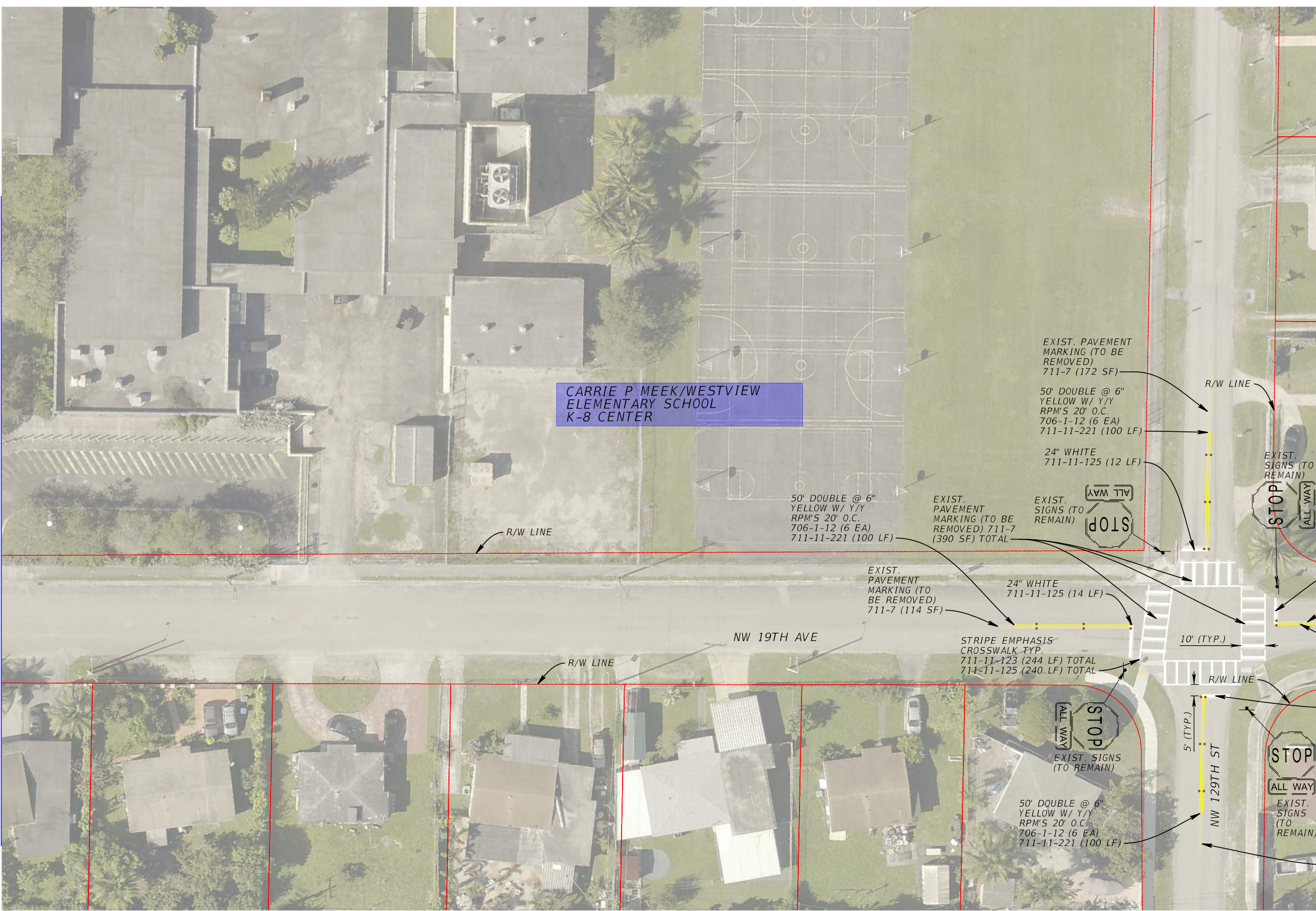
CARRIE P. MEEK / WESTVIEW
 ELEMENTARY SCHOOL (PLANS)

THE OFFICIAL RECORD OF THIS SHEET IS THE ELECTRONIC FILE DIGITALLY SIGNED AND SEALED UNDER RULE 61G1-16.005, F.A.C.



MATCH LINE SHEET CM-5

MATCH LINE SHEET CM-7



**CARRIE P MEEK/WESTVIEW
 ELEMENTARY SCHOOL
 K-8 CENTER**

- EXIST. PAVEMENT MARKING (TO BE REMOVED) 711-7 (172 SF)
- 50' DOUBLE @ 6" YELLOW W/ Y/Y RPM'S 20' O.C. 706-1-12 (6 EA) 711-11-221 (100 LF)
- 24" WHITE 711-11-125 (12 LF)
- EXIST. SIGNS (TO REMAIN)
- EXIST. PAVEMENT MARKING (TO BE REMOVED) 711-7 (390 SF) TOTAL
- 24" WHITE 711-11-125 (14 LF)
- EXIST. PAVEMENT MARKING (TO BE REMOVED) 711-7 (114 SF)
- 24" WHITE 711-11-125 (12 LF)
- EXIST. PAVEMENT MARKING (TO BE REMOVED) 711-7 (142 SF)
- 50' DOUBLE @ 6" YELLOW W/ Y/Y RPM'S 20' O.C. 706-1-12 (6 EA) 711-11-221 (100 LF)
- 24" WHITE 711-11-125 (12 LF)
- EXIST. PAVEMENT MARKING (TO BE REMOVED) 711-7 (142 SF)
- 50' DOUBLE @ 6" YELLOW W/ Y/Y RPM'S 20' O.C. 706-1-12 (6 EA) 711-11-221 (100 LF)
- EXIST. PAVEMENT MARKING (TO BE REMOVED) 711-7 (142 SF)

REVISIONS							
DATE	BY	DESCRIPTION	DATE	BY	DESCRIPTION	DATE	BY

Kimley»Horn
 Corporate Registration
 No. CA 0000696
 355 Alhambra Circle, Suite 1400
 Coral Gables, FL 33134

ENGINEER OF RECORD	NAME	DRAWN BY	NAME
	LEONTE I. ALMONTE		ELICIEL GONZALEZ
DESIGNED BY	NAME	CHECKED BY	NAME
	ALEXANDER BARAHICA		LEONTE I. ALMONTE

MIAMI-DADE DEPARTMENT OF TRANSPORTATION AND PUBLIC WORKS
 HIGHWAY DIVISION
 STEPHEN P. CLARK CENTER
 311 NW 1 ST
 MIAMI, FLORIDA 33128

CARRIE P. MEEK / WESTVIEW
 ELEMENTARY SCHOOL (PLANS)