

MATCH LINE SHEET CM-6

MATCH LINE SHEET CM-8

REVISIONS							
DATE	BY	DESCRIPTION	DATE	BY	DESCRIPTION	DATE	BY

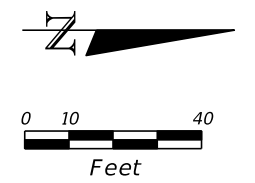
Kimley»Horn
 Corporate Registration
 No. CA 0000696
 355 Alhambra Circle, Suite 1400
 Coral Gables, FL 33134

	NAME		NAME
ENGINEER OF RECORD	LEONTE I. ALMONTE	DRAWN BY	ELICIEL GONZALEZ
DESIGNED BY	ALEXANDER BARAHICA	CHECKED BY	LEONTE I. ALMONTE

MIAMI-DADE DEPARTMENT OF TRANSPORTATION AND PUBLIC WORKS
 HIGHWAY DIVISION
STEPHEN P. CLARK CENTER
 111 NW 1 ST
 MIAMI, FLORIDA 33128

CARRIE P. MEEK / WESTVIEW
 ELEMENTARY SCHOOL (PLANS)

THE OFFICIAL RECORD OF THIS SHEET IS THE ELECTRONIC FILE DIGITALLY SIGNED AND SEALED UNDER RULE 61G1-16.005, F.A.C.



REVISIONS					
DATE	BY	DESCRIPTION	DATE	BY	DESCRIPTION

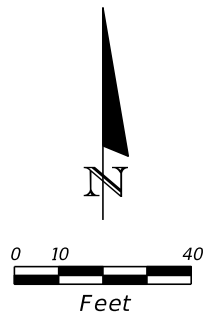
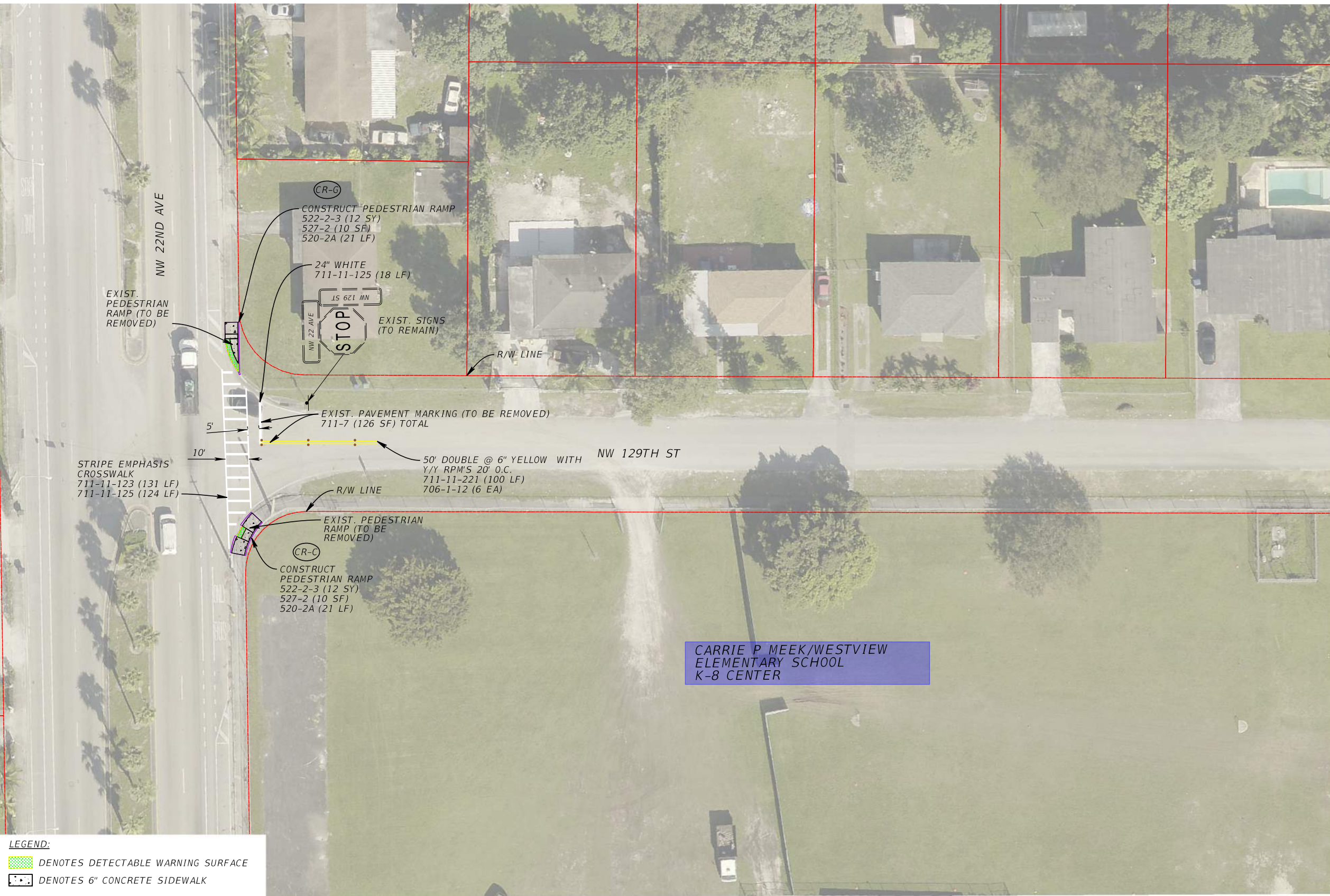
Kimley»Horn
 Corporate Registration
 No. CA 0000696
 355 Alhambra Circle, Suite 1400
 Coral Gables, FL 33134

	NAME		NAME
ENGINEER OF RECORD	LEONTE I. ALMONTE	DRAWN BY	ELICIEL GONZALEZ
DESIGNED BY	ALEXANDER BARAHIDICA	CHECKED BY	LEONTE I. ALMONTE



CARRIE P. MEEK / WESTVIEW
 ELEMENTARY SCHOOL (PLANS)

THE OFFICIAL RECORD OF THIS SHEET IS THE ELECTRONIC FILE DIGITALLY SIGNED AND SEALED UNDER RULE 61G1-16.005, F.A.C.



- LEGEND:**
- DENOTES DETECTABLE WARNING SURFACE
 - DENOTES 6" CONCRETE SIDEWALK

REVISIONS					
DATE	BY	DESCRIPTION	DATE	BY	DESCRIPTION

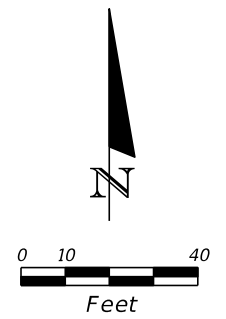
Kimley»Horn
 Corporate Registration
 No. CA 00000696
 355 Alhambra Circle, Suite 1400
 Coral Gables, FL 33134

	NAME		NAME
ENGINEER OF RECORD	LEONTE I. ALMONTE	DRAWN BY	ELICIEL GONZALEZ
DESIGNED BY	ALEXANDER BARRADICA	CHECKED BY	LEONTE I. ALMONTE

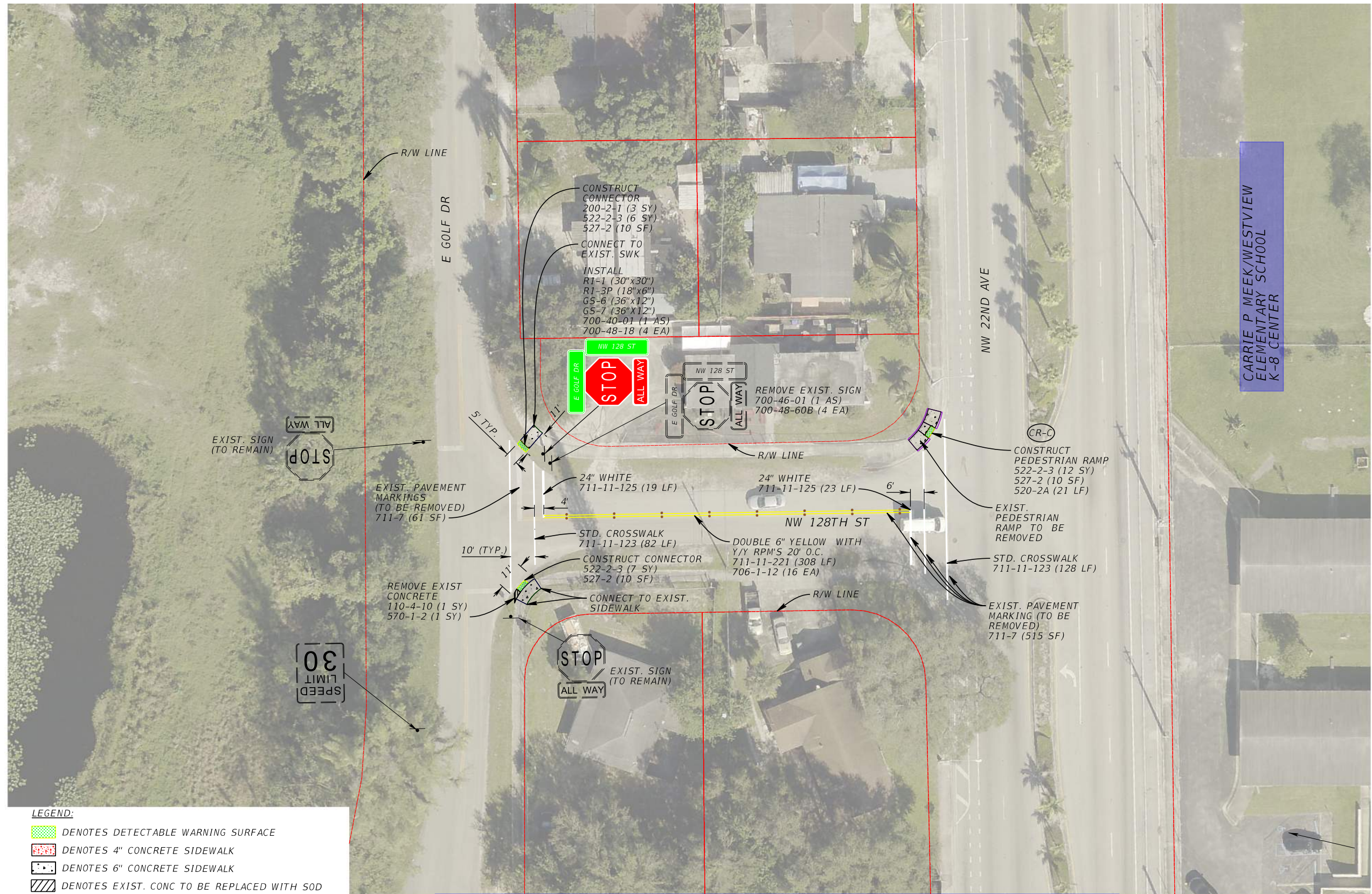
MIAMI-DADE
 DEPARTMENT OF TRANSPORTATION AND PUBLIC WORKS
 HIGHWAY DIVISION
 STEPHEN P. CLARK CENTER
 111 NW 1 ST
 MIAMI, FLORIDA 33128

CARRIE P. MEEK /WESTVIEW
 ELEMENTARY SCHOOL (PLANS)

THE OFFICIAL RECORD OF THIS SHEET IS THE ELECTRONIC FILE DIGITALLY SIGNED AND SEALED UNDER RULE 61G1-16.005, F.A.C.



CARRIE P MEEK/WESTVIEW
 ELEMENTARY SCHOOL
 K-8 CENTER



LEGEND:

- DENOTES DETECTABLE WARNING SURFACE
- DENOTES 4" CONCRETE SIDEWALK
- DENOTES 6" CONCRETE SIDEWALK
- DENOTES EXIST. CONC TO BE REPLACED WITH SOD

MATCH LINE SHEET CM-12

REVISIONS							
DATE	BY	DESCRIPTION	DATE	BY	DESCRIPTION	DATE	BY

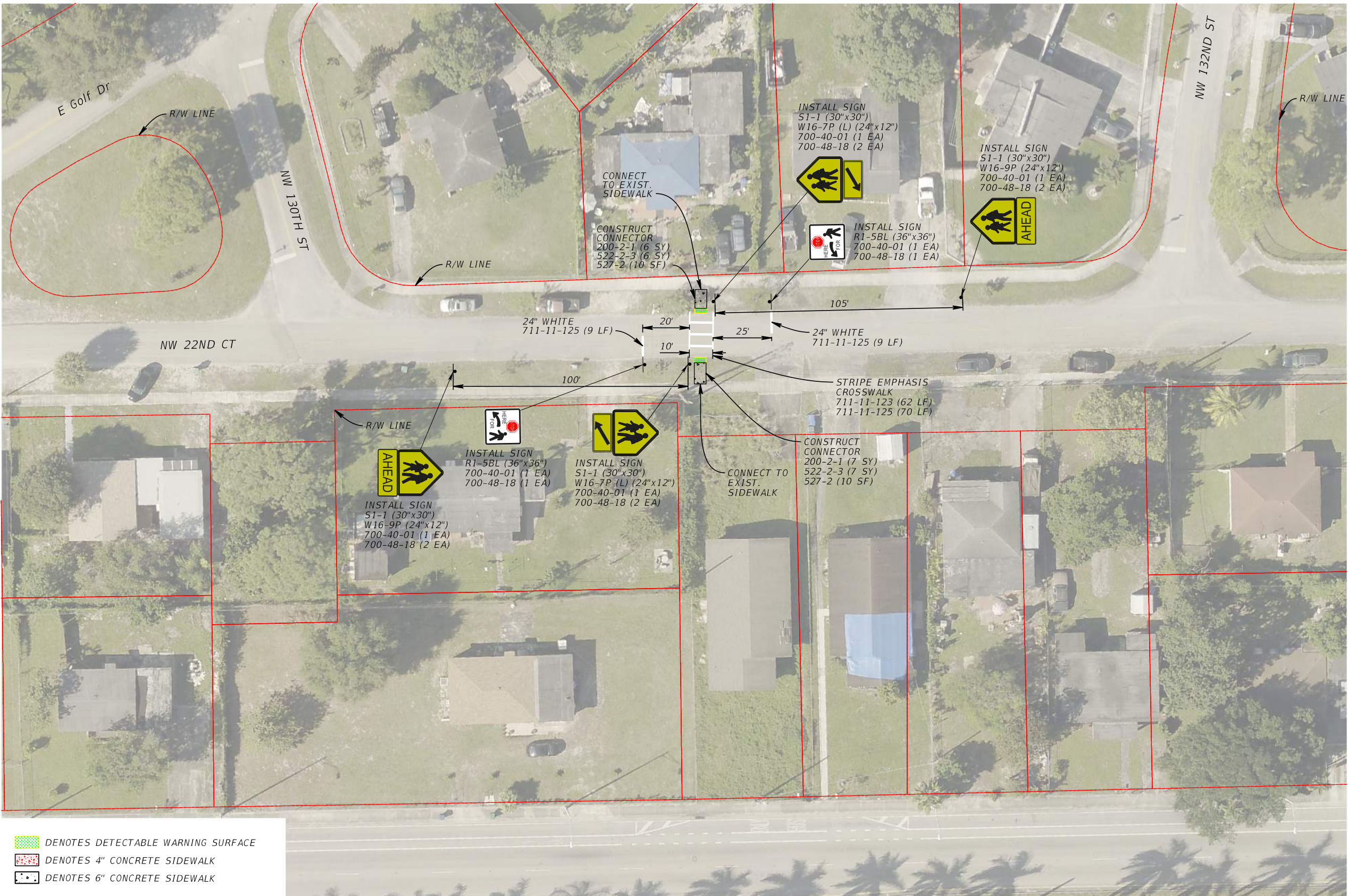
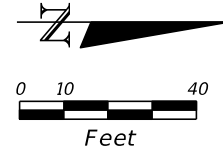
Kimley»Horn
 Corporate Registration
 No. CA 0000696
 355 Alhambra Circle, Suite 1400
 Coral Gables, FL 33134

ENGINEER OF RECORD	NAME	DRAWN BY	NAME
	LEONTE I. ALMONTE		ELICIEL GONZALEZ
DESIGNED BY	CHECKED BY		
ALEXANDER BARAHICA	LEONTE I. ALMONTE		

MIAMI-DADE DEPARTMENT OF TRANSPORTATION AND PUBLIC WORKS
 HIGHWAY DIVISION
 STEPHEN P. CLARK CENTER
 111 NW 1 ST
 MIAMI, FLORIDA 33128

CARRIE P. MEEK / WESTVIEW
 ELEMENTARY SCHOOL (PLANS)

THE OFFICIAL RECORD OF THIS SHEET IS THE ELECTRONIC FILE DIGITALLY SIGNED AND SEALED UNDER RULE 61G1-16.005, F.A.C.



- DENOTES DETECTABLE WARNING SURFACE
- DENOTES 4" CONCRETE SIDEWALK
- DENOTES 6" CONCRETE SIDEWALK

REVISIONS					
DATE	BY	DESCRIPTION	DATE	BY	DESCRIPTION

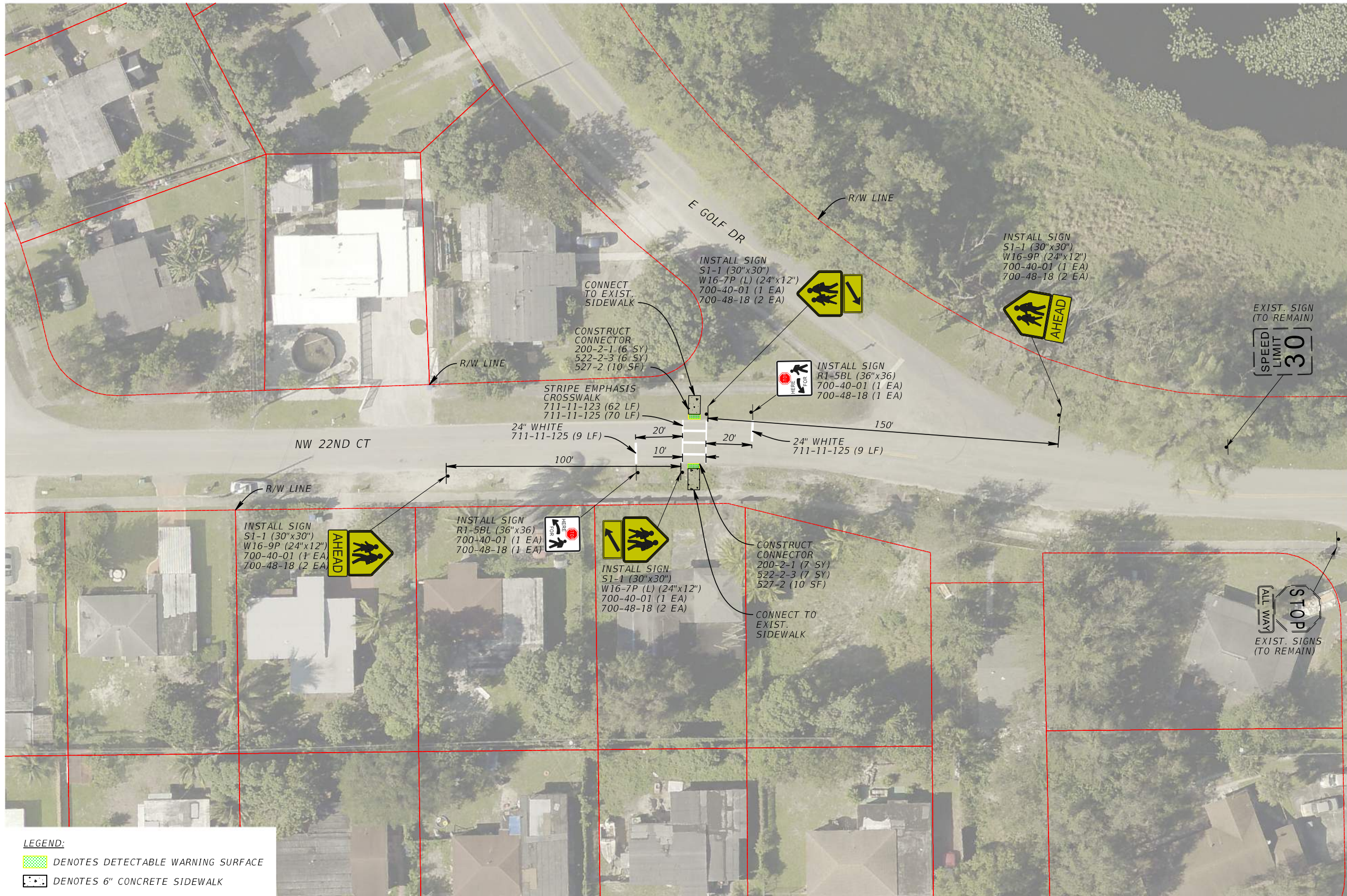
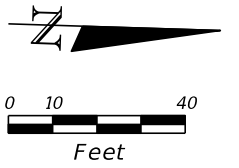
Kimley»Horn
 Corporate Registration
 No. CA 0000696
 355 Alhambra Circle, Suite 1400
 Coral Gables, FL 33134

NAME	NAME
ENGINEER OF RECORD LEONTE I. ALMONTE	DRAWN BY ELICIEL GONZALEZ
DESIGNED BY ALEXANDER BARRADICA	CHECKED BY LEONTE I. ALMONTE

MIAMI-DADE DEPARTMENT OF TRANSPORTATION AND PUBLIC WORKS
 HIGHWAY DIVISION
 STEPHEN P. CLARK CENTER
 111 NW 1 ST
 MIAMI, FLORIDA 33128

CARRIE P. MEEK / WESTVIEW
 ELEMENTARY SCHOOL (PLANS)

THE OFFICIAL RECORD OF THIS SHEET IS THE ELECTRONIC FILE DIGITALLY SIGNED AND SEALED UNDER RULE 61G1-16.005, F.A.C.



LEGEND:
 DENOTES DETECTABLE WARNING SURFACE
 DENOTES 6" CONCRETE SIDEWALK

REVISIONS							
DATE	BY	DESCRIPTION	DATE	BY	DESCRIPTION	DATE	BY

Kimley»Horn
 Corporate Registration
 No. CA 0000696
 355 Alhambra Circle, Suite 1400
 Coral Gables, FL 33134

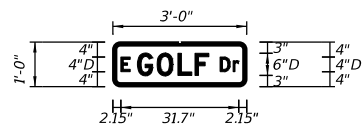
NAME	NAME
ENGINEER OF RECORD LEONTE I. ALMONTE	DRAWN BY ELICIEL GONZALEZ
DESIGNED BY ALEXANDER BARRADICA	CHECKED BY LEONTE I. ALMONTE

MIAMI-DADE DEPARTMENT OF TRANSPORTATION AND PUBLIC WORKS
 HIGHWAY DIVISION
 STEPHEN P. CLARK CENTER
 111 NW 1 ST.
 MIAMI, FLORIDA 33128

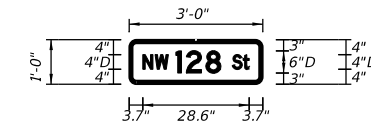
CARRIE P. MEEK / WESTVIEW
 ELEMENTARY SCHOOL (PLANS)

THE OFFICIAL RECORD OF THIS SHEET IS THE ELECTRONIC FILE DIGITALLY SIGNED AND SEALED UNDER RULE 61G1-16.005, F.A.C.

SIGN NAME		GS-6		QTY		2		STGN NUMBER		STATION(S)		
PANEL				BORDER								
WIDTH			3'-0"		WIDTH			1"				
HEIGHT			1'-0"		RADIUS			2"				
LEGEND		White		COLOR		White						
COLOR		Green										
SYMBOL(S)	ANGLE	X	Y	WID	HT							
SIGN NUMBER		NUMBER OF POSTS		CLEARANCE Edge Of Land		COLUMN SIZE		AVERAGE LENGTH				
NO. OF LIGHT FIXTURES		FIXTURE SPACING		WATT								
PHOTOMETRIC CURVE				VOLTAGE								



SIGN NAME		GS-7		QTY		2		STGN NUMBER		STATION(S)		
PANEL				BORDER								
WIDTH			3'-0"		WIDTH			1"				
HEIGHT			1'-0"		RADIUS			2"				
LEGEND		White		COLOR		White						
COLOR		Green										
SYMBOL(S)	ANGLE	X	Y	WID	HT							
SIGN NUMBER		NUMBER OF POSTS		CLEARANCE Edge Of Land		COLUMN SIZE		AVERAGE LENGTH				
NO. OF LIGHT FIXTURES		FIXTURE SPACING		WATT								
PHOTOMETRIC CURVE				VOLTAGE								



COPY	E	G	O	L	F	D	r	L						
SPACE	2.1	4.6	6.6	11.9	17.5	22.1	25.8	28.8	32.3	31.7				
COPY														
SPACE														
COPY														
SPACE														
COPY														
SPACE														
COPY														
SPACE														
COPY														
SPACE														
COPY														
SPACE														
COPY														
SPACE														
COPY														
SPACE														
COPY														
SPACE														
COPY														
SPACE														

COPY	N	W	1	2	8	S	t	L						
SPACE	3.7	7	10.6	12.6	15.4	20.7	24.8	27.8	30.7	28.6				
COPY														
SPACE														
COPY														
SPACE														
COPY														
SPACE														
COPY														
SPACE														
COPY														
SPACE														
COPY														
SPACE														
COPY														
SPACE														
COPY														
SPACE														
COPY														
SPACE														
COPY														
SPACE														
COPY														
SPACE														

THE OFFICIAL RECORD OF THIS SHEET IS THE ELECTRONIC FILE DIGITALLY SIGNED AND SEALED UNDER RULE 61G1-16.005, F.A.C.

REVISIONS												
DATE	BY	DESCRIPTION			DATE	BY	DESCRIPTION			DATE	BY	DESCRIPTION

Kimley»Horn
Corporate Registration
No. CA 0000696
355 Alhambra Circle, Suite 1400
Coral Gables, FL 33134

ENGINEER OF RECORD	LEONTE I. ALMONTE	DRAWN BY	ELICIEL GONZALEZ
DESIGNED BY	ALEXANDER BARRADICA	CHECKED BY	LEONTE I. ALMONTE

DEPARTMENT OF TRANSPORTATION AND PUBLIC WORKS
MIAMI-DADE HIGHWAY DIVISION
STEPHEN P. CLARK CENTER
311 NW 3 ST
MIAMI, FLORIDA 33128

CARRIE P. MEEK/WESTVIEW ELEMENTARY SCHOOL (GUIDE SIGN WORKSHEET)

TABULATION OF QUANTITIES

PAY ITEM NO.	DESCRIPTION	UNIT	SHADOWLAWN ELEMENTARY						SUMMARY OF QUANTITIES
			SHEET SE-1	SHEET SE-2	SHEET SE-3	SHEET SE-4	SHEET SE-5	SHEET SE-6	
			QUANTITY	QUANTITY	QUANTITY	QUANTITY	QUANTITY	QUANTITY	
104-18	INLET PROTECTION SYSTEM	EA	2						2
110-1-1	CLEARING AND GRUBBING	AC	0.007	0.010	0.005	0.022	0.009	0.026	0.079
110-4-10	REMOVE AND DISPOSE OF EXISTING CURB AND GUTTER, SIDEWALKS INCLUDING RAMPS AND MISCELLANEOUS CONCRETE IN AREAS NOT INCLUDED IN THE CLEARING AND GRUBBING ITEM	SY	39	79	26				144
200-2-1	BASE PREPARATION FOR NEW SIDEWALK CONSTRUCTION	SY	11			109			120
520-2A	CONCRETE CURB AND/OR GUTTER	LF				212	40		252
522-1-1	CONCRETE SIDEWALK (4" thick) Category 1	SY	15	27	10				52
522-2-3	CONCRETE SIDEWALK (6" thick) Category 1	SY	25	26	20	120	33		224
527-2	DETECTABLE WARNING ON WALKING SURFACE	SF	60	80	55	131	20		346
570-1-2	PERFORMANCE TURF, SOD	SY	39	79	26				144
580-3	TREE PROTECTION BARRICADES	LF	69	153	86	54			362
700-40-01	ROADSIDE SIGNS (SINGLE POST) (LESS THAN 12 S.F.)	AS	2				2	8	12
700-46-01	REMOVAL SIGN AND POST	AS					1		1
700-48-18	SIGN PANEL (LESS THAN 15 S.F.)	EA	6				4	16	26
700-48-60B	REMOVE SIGN PANEL	AS					2		2
706-1-12	REFLECTIVE PAVEMENT MARKERS (class B, mono or bi-direct, all colors)	EA	36	24	24	24	6		114
711-7	REMOVE EXISTING PAVEMENT MARKINGS	SF	473		672		235		1380
711-11-123	THERMOPLASTIC (White) (Solid) (12")	LF	473	369	227	300	81		1450
711-11-125	THERMOPLASTIC (White) (Solid) (24")	LF	89	59	248	51	84		531
711-11-221	THERMOPLASTIC (Yellow) (Solid) (6")	LF	600	400	400	400	100		1900

THE OFFICIAL RECORD OF THIS SHEET IS THE ELECTRONIC FILE DIGITALLY SIGNED AND SEALED UNDER RULE 61G1-16.005, F.A.C.

REVISIONS							
DATE	BY	DESCRIPTION	DATE	BY	DESCRIPTION	DATE	BY

Kimley»Horn
 Corporate Registration
 No. CA 0000696
 355 Alhambra Circle, Suite 1400
 Coral Gables, FL 33134

ENGINEER OF RECORD	NAME	DRAWN BY	NAME
	LEONTE I. ALMONTE		ELICIEL GONZALEZ
DESIGNED BY	NAME	CHECKED BY	NAME
	ALEXANDER BARRADICA		LEONTE I. ALMONTE

MIAMI-DADE DEPARTMENT OF TRANSPORTATION AND PUBLIC WORKS
 HIGHWAY DIVISION
 STEPHEN P. CLARK CENTER
 311 NW 1 ST.
 MIAMI, FLORIDA 33128

SHADOWLAWN ELEMENTARY
 (SUMMARY OF QUANTITIES)



REVISIONS								
DATE	BY	DESCRIPTION	DATE	BY	DESCRIPTION	DATE	BY	DESCRIPTION

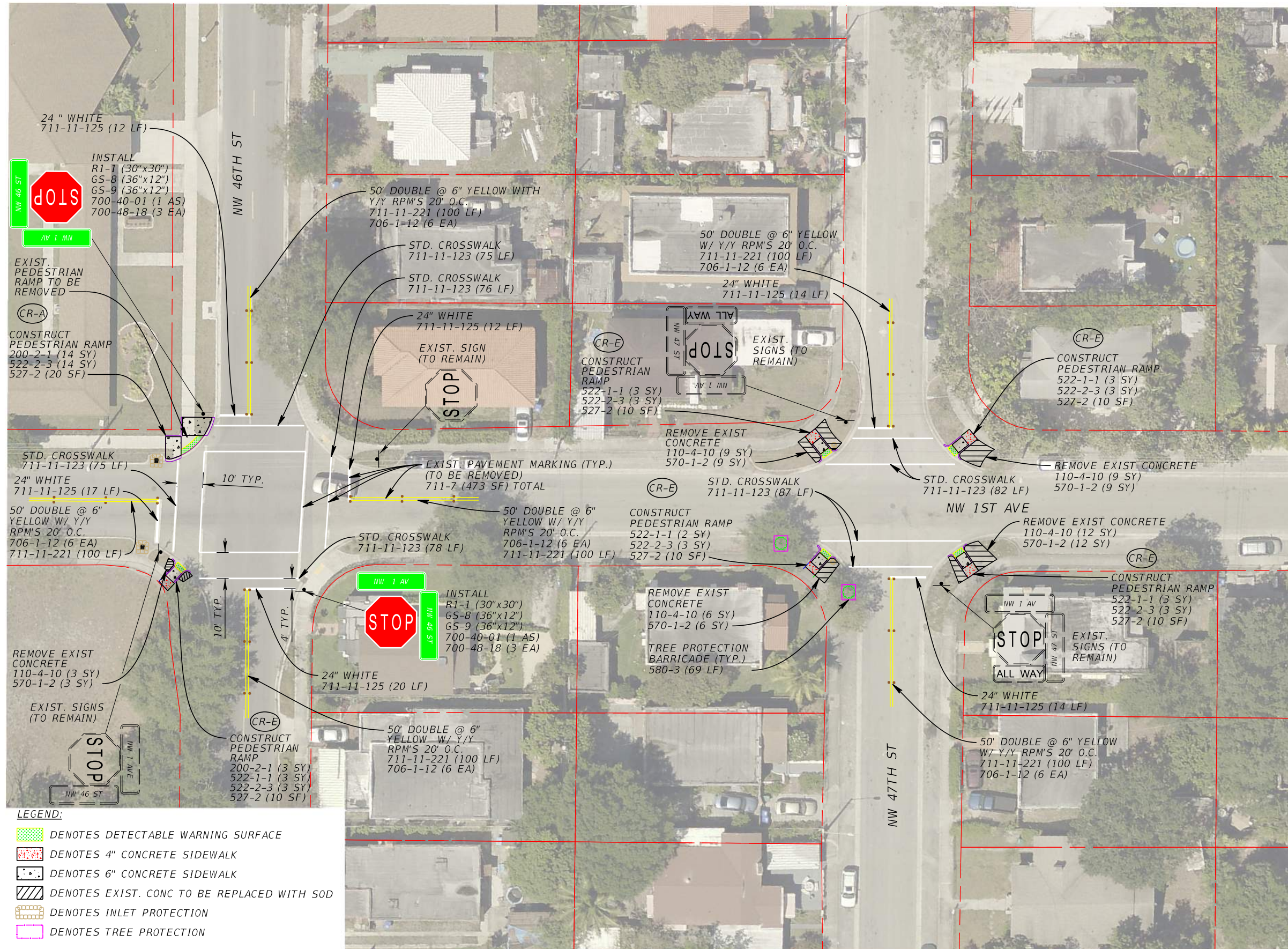
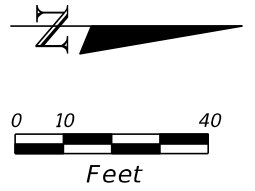
Kimley»Horn
 Corporate Registration
 No. CA 00000696
 355 Alhambra Circle, Suite 1400
 Coral Gables, FL 33134

	NAME		NAME
ENGINEER OF RECORD	LEONTE I. ALMONTE	DRAWN BY	ELICIEL GONZALEZ
DESIGNED BY	ALEXANDER BARRADICA	CHECKED BY	LEONTE I. ALMONTE



DEPARTMENT OF TRANSPORTATION
 AND PUBLIC WORKS
 HIGHWAY DIVISION
 STEPHEN P. CLARK CENTER
 311 NW 1 ST
 MIAMI, FLORIDA 33128

SHADOWLAWN ELEMENTARY
 SCHOOL (PROJECT LAYOUT
 SHEET)



MATCH LINE SHEET SE-2

LEGEND:

	DENOTES DETECTABLE WARNING SURFACE
	DENOTES 4" CONCRETE SIDEWALK
	DENOTES 6" CONCRETE SIDEWALK
	DENOTES EXIST. CONC TO BE REPLACED WITH SOD
	DENOTES INLET PROTECTION
	DENOTES TREE PROTECTION

REVISIONS					
DATE	BY	DESCRIPTION	DATE	BY	DESCRIPTION

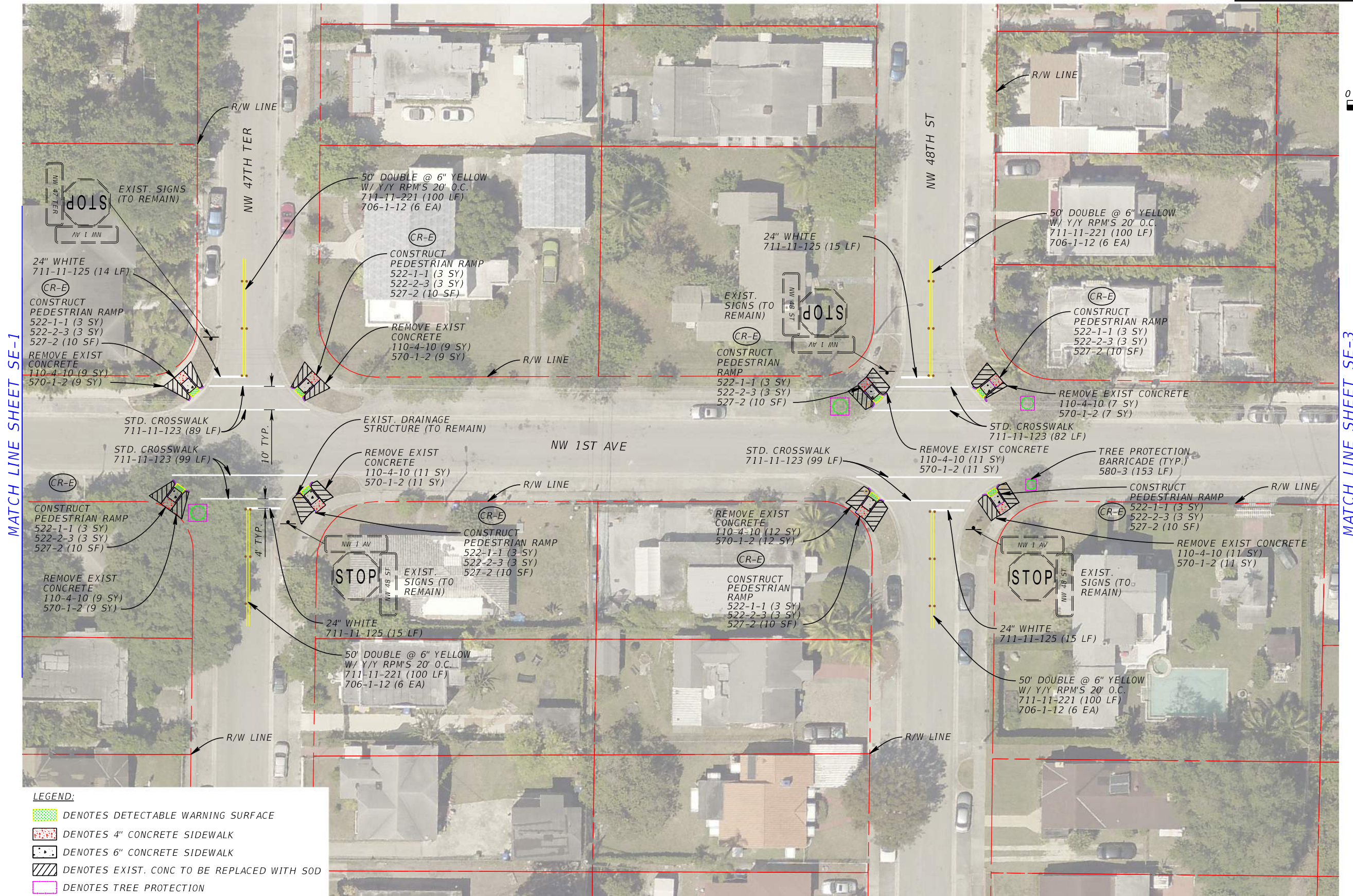
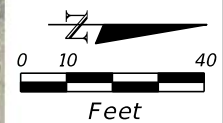
Kimley»Horn
 Corporate Registration
 No. CA 0000696
 355 Alhambra Circle, Suite 1400
 Coral Gables, FL 33134

ENGINEER OF RECORD	NAME	DRAWN BY	NAME
	LEONTE I. ALMONTE		ELICIEL GONZALEZ
DESIGNED BY	NAME	CHECKED BY	NAME
	ALEXANDER BARAHICA		LEONTE I. ALMONTE

MIAMI-DADE DEPARTMENT OF TRANSPORTATION AND PUBLIC WORKS
 HIGHWAY DIVISION
 STEPHEN P. CLARK CENTER
 111 NW 1 ST
 MIAMI, FLORIDA 33128

SHADOWLAWN ELEMENTARY SCHOOL (PLANS)

THE OFFICIAL RECORD OF THIS SHEET IS THE ELECTRONIC FILE DIGITALLY SIGNED AND SEALED UNDER RULE 61G1-16.005, F.A.C.



MATCH LINE SHEET SE-1

MATCH LINE SHEET SE-3

LEGEND:

- DENOTES DETECTABLE WARNING SURFACE
- DENOTES 4" CONCRETE SIDEWALK
- DENOTES 6" CONCRETE SIDEWALK
- DENOTES EXIST. CONC TO BE REPLACED WITH SOD
- DENOTES TREE PROTECTION

REVISIONS					
DATE	BY	DESCRIPTION	DATE	BY	DESCRIPTION

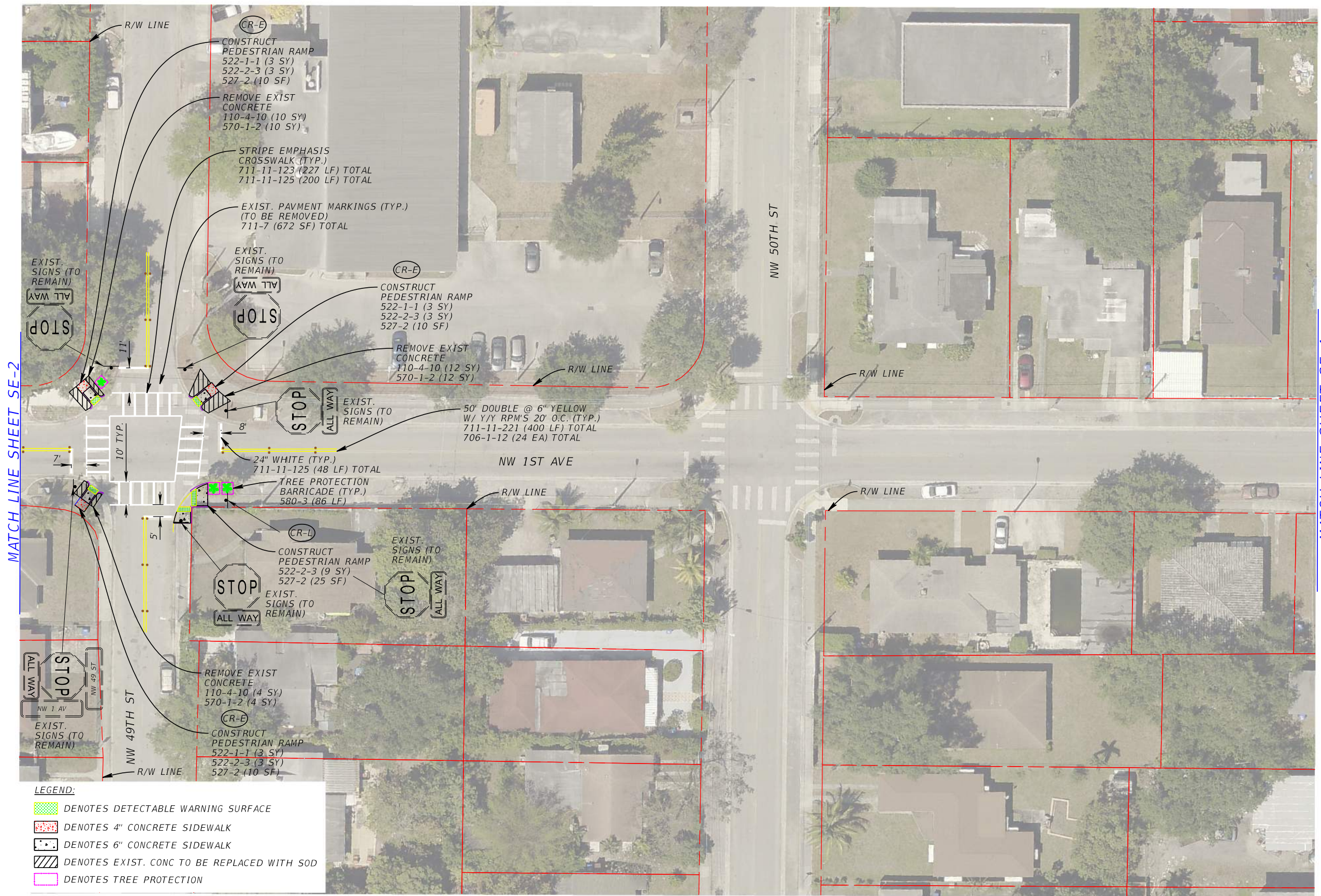
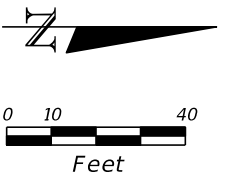
Kimley»Horn
 Corporate Registration
 No. CA 0000696
 355 Alhambra Circle, Suite 1400
 Coral Gables, FL 33134

ENGINEER OF RECORD	NAME	DRAWN BY	NAME
	LEONTE I. ALMONTE		ELICIEL GONZALEZ
DESIGNED BY	NAME	CHECKED BY	NAME
	ALEXANDER BARRADICA		LEONTE I. ALMONTE

MIAMI-DADE DEPARTMENT OF TRANSPORTATION AND PUBLIC WORKS
 HIGHWAY DIVISION
 STEPHEN P. CLARK CENTER
 110 NW 1 ST
 MIAMI, FLORIDA 33128

SHADOWLAWN ELEMENTARY
 (PLANS)

THE OFFICIAL RECORD OF THIS SHEET IS THE ELECTRONIC FILE DIGITALLY SIGNED AND SEALED UNDER RULE 61G16.005, F.A.C.



MATCH LINE SHEET SE-2

MATCH LINE SHEET SE-4

LEGEND:

- DENOTES DETECTABLE WARNING SURFACE
- DENOTES 4" CONCRETE SIDEWALK
- DENOTES 6" CONCRETE SIDEWALK
- DENOTES EXIST. CONC TO BE REPLACED WITH SOD
- DENOTES TREE PROTECTION

REVISIONS					
DATE	BY	DESCRIPTION	DATE	BY	DESCRIPTION

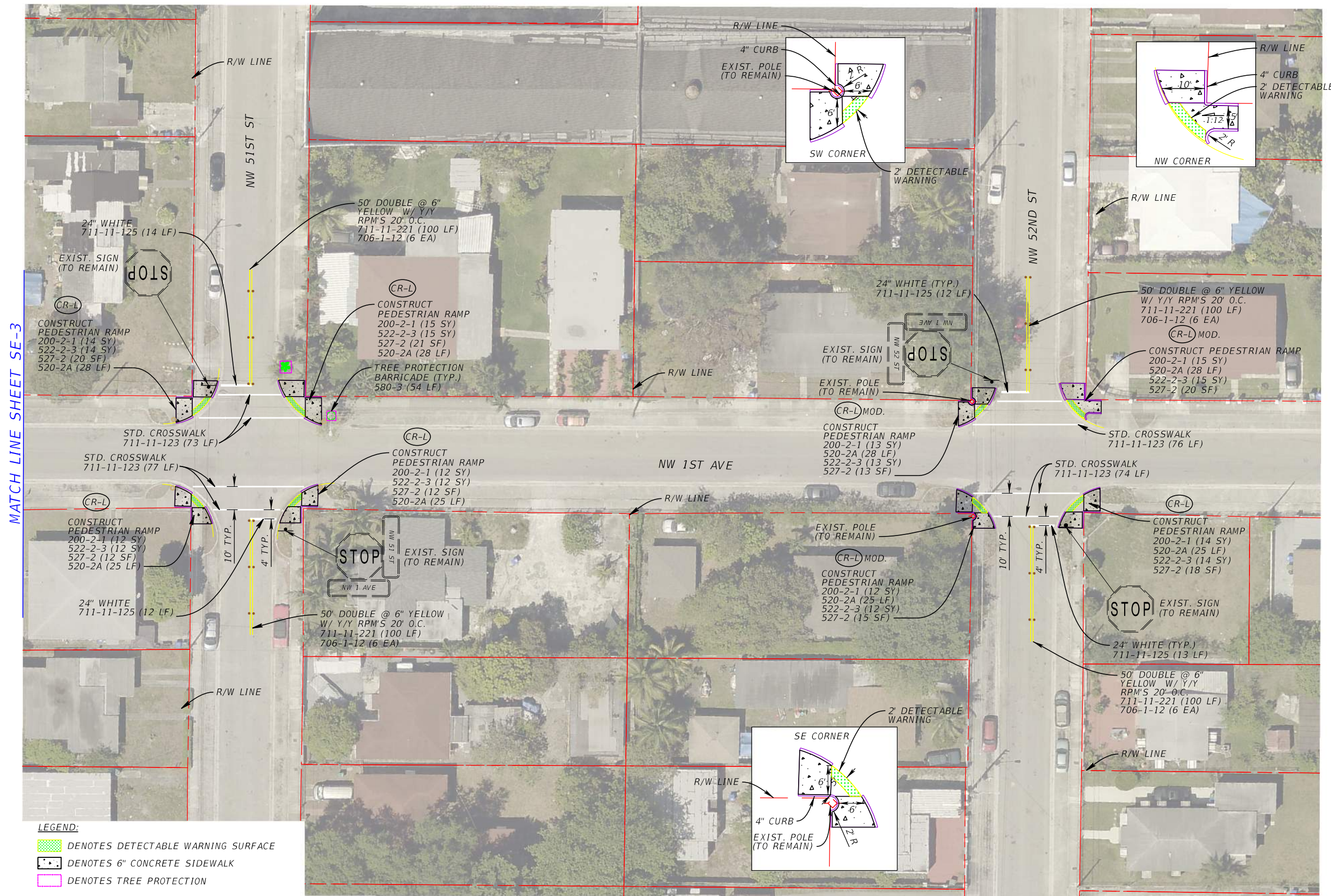
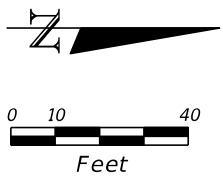
Kimley»Horn
 Corporate Registration
 No. CA 0000696
 355 Alhambra Circle, Suite 1400
 Coral Gables, FL 33134

ENGINEER OF RECORD	LEONTE I. ALMONTE	DRAWN BY	ELICIEL GONZALEZ
DESIGNED BY	ALEXANDER BARAHICA	CHECKED BY	LEONTE I. ALMONTE

MIAMI-DADE
 DEPARTMENT OF TRANSPORTATION AND PUBLIC WORKS
 HIGHWAY DIVISION
STEPHEN P. CLARK CENTER
 111 NW 1 ST
 MIAMI, FLORIDA 33128

SHADOWLAWN ELEMENTARY
 SCHOOL (PLANS)

THE OFFICIAL RECORD OF THIS SHEET IS THE ELECTRONIC FILE DIGITALLY SIGNED AND SEALED UNDER RULE 61G16.005, F.A.C.



MATCH LINE SHEET SE-3

LEGEND:

- DENOTES DETECTABLE WARNING SURFACE
- DENOTES 6" CONCRETE SIDEWALK
- DENOTES TREE PROTECTION

REVISIONS					
DATE	BY	DESCRIPTION	DATE	BY	DESCRIPTION

Kimley»Horn
 Corporate Registration
 No. CA 0000696
 355 Alhambra Circle, Suite 1400
 Coral Gables, FL 33134

NAME	NAME
ENGINEER OF RECORD LEONTE I. ALMONTE	DRAWN BY ELICIEL GONZALEZ
DESIGNED BY ALEXANDER BARAHICA	CHECKED BY LEONTE I. ALMONTE

MIAMI-DADE DEPARTMENT OF TRANSPORTATION AND PUBLIC WORKS
 HIGHWAY DIVISION
 STEPHEN P. CLARK CENTER
 111 NW 1 ST
 MIAMI, FLORIDA 33128

SHADOWLAWN ELEMENTARY SCHOOL (PLANS)

THE OFFICIAL RECORD OF THIS SHEET IS THE ELECTRONIC FILE DIGITALLY SIGNED AND SEALED UNDER RULE 61G1-16.005, F.A.C.



LEGEND:

- DENOTES DETECTABLE WARNING SURFACE
- DENOTES 6" CONCRETE SIDEWALK

INTERSECTION IDENTIFICATION NO. 4561
 N MIAMI AVE / NW 49TH ST

THE OFFICIAL RECORD OF THIS SHEET IS THE ELECTRONIC FILE DIGITALLY SIGNED AND SEALED UNDER RULE 61G1-16.005, F.A.C.

REVISIONS					
DATE	BY	DESCRIPTION	DATE	BY	DESCRIPTION

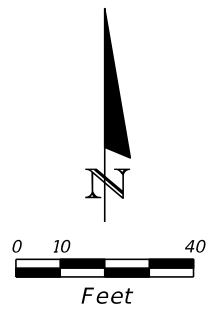
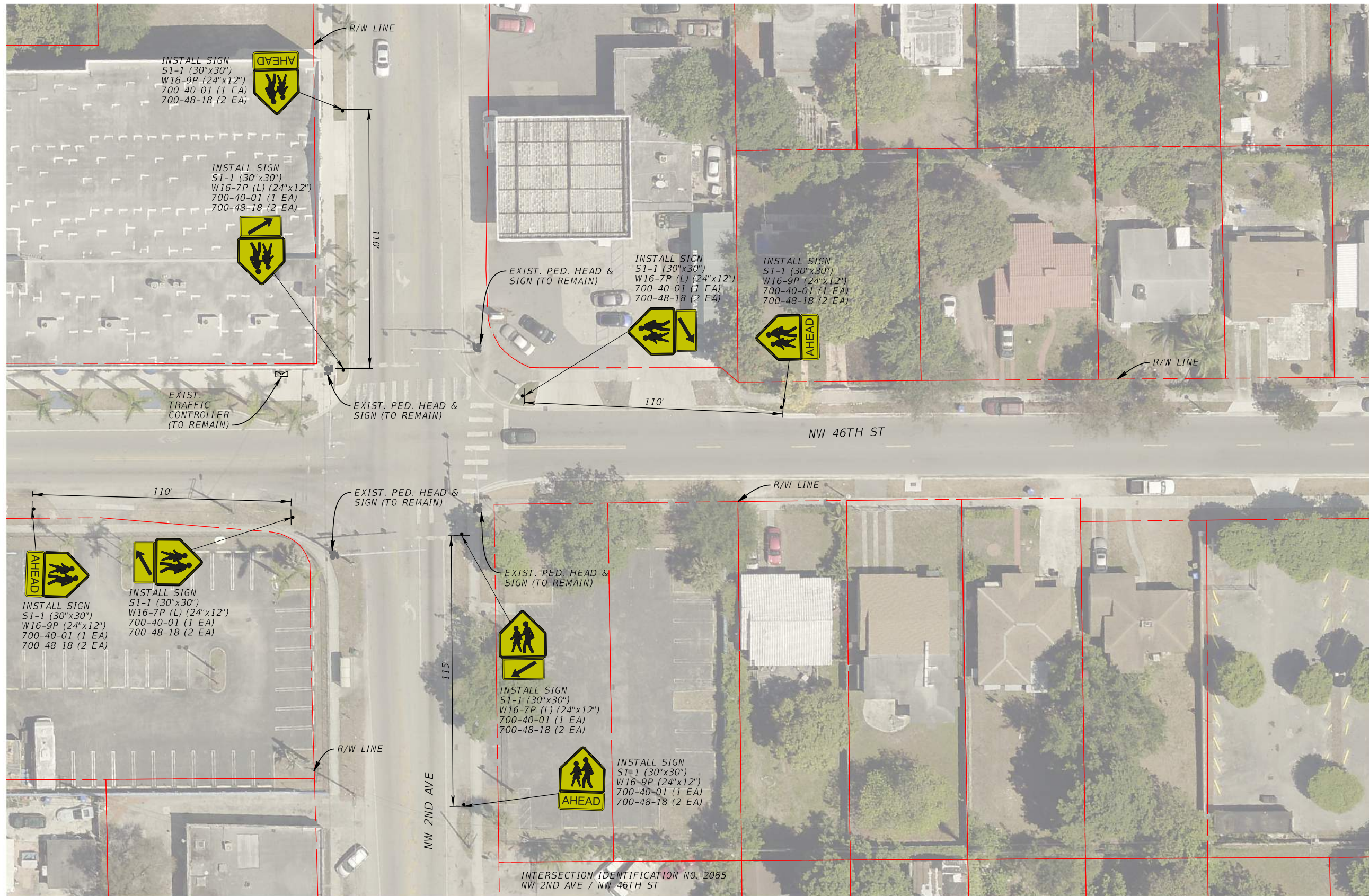
Kimley»Horn
 Corporate Registration
 No. CA 0000696
 355 Alhambra Circle, Suite 1400
 Coral Gables, FL 33134

NAME	NAME
ENGINEER OF RECORD LEONTE I. ALMONTE	DRAWN BY ELICIEL GONZALEZ
DESIGNED BY ALEXANDER BARRADICA	CHECKED BY LEONTE I. ALMONTE



DEPARTMENT OF TRANSPORTATION
 AND PUBLIC WORKS
 HIGHWAY DIVISION
 STEPHEN P. CLARK CENTER
 311 NW 1 ST
 MIAMI, FLORIDA 33128

SHADOWLAWN ELEMENTARY
 (PLANS)



REVISIONS					
DATE	BY	DESCRIPTION	DATE	BY	DESCRIPTION

Kimley»Horn
 Corporate Registration
 No. CA 0000696
 355 Alhambra Circle, Suite 1400
 Coral Gables, FL 33134

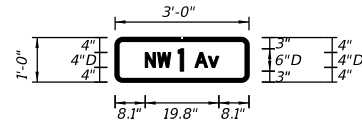
ENGINEER OF RECORD	NAME	DRAWN BY	NAME
	LEONTE I. ALMONTE		ELICIEL GONZALEZ
DESIGNED BY	NAME	CHECKED BY	NAME
	ALEXANDER BARRADICA		LEONTE I. ALMONTE

MIAMI-DADE DEPARTMENT OF TRANSPORTATION AND PUBLIC WORKS
 HIGHWAY DIVISION
 STEPHEN P. CLARK CENTER
 111 NW 1 ST
 MIAMI, FLORIDA 33128

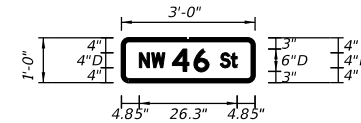
SHADOWLAWN ELEMENTARY SCHOOL (PLANS)

THE OFFICIAL RECORD OF THIS SHEET IS THE ELECTRONIC FILE DIGITALLY SIGNED AND SEALED UNDER RULE 61G1-16.005, F.A.C.

SIGN NAME		GS-8	QTY		4	SIGN NUMBER		STATION(S)
PANEL			BORDER					
WIDTH	3'-0"	WIDTH	1"					
HEIGHT	1'-0"	RADII	2"					
LEGEND	White	COLOR	White					
COLOR	Green							
SYMBOL(S)	ANGLE	X	Y	WID	HT			
SIGN NUMBER	NUMBER OF POSTS	CLEARANCE Edge of Lane	COLUMN SIZE		AVERAGE LENGTH			
NO. OF LIGHT FIXTURES	FIXTURE SPACING		WATT					
PHOTOMETRIC CURVE			VOLTAGE					



SIGN NAME		GS-9	QTY		4	SIGN NUMBER		STATION(S)
PANEL			BORDER					
WIDTH	3'-0"	WIDTH	1"					
HEIGHT	1'-0"	RADII	2"					
LEGEND	White	COLOR	White					
COLOR	Green							
SYMBOL(S)	ANGLE	X	Y	WID	HT			
SIGN NUMBER	NUMBER OF POSTS	CLEARANCE Edge of Lane	COLUMN SIZE		AVERAGE LENGTH			
NO. OF LIGHT FIXTURES	FIXTURE SPACING		WATT					
PHOTOMETRIC CURVE			VOLTAGE					



COPY	N	W																			
SPACE	8.1	11.4	15	17	18.5	21.5	25.1			19.8											
COPY																					
SPACE																					
COPY																					
SPACE																					
COPY																					
SPACE																					
COPY																					
SPACE																					
COPY																					
SPACE																					
COPY																					
SPACE																					
COPY																					
SPACE																					
COPY																					
SPACE																					
COPY																					
SPACE																					
COPY																					
SPACE																					
COPY																					
SPACE																					
COPY																					
SPACE																					

COPY	N	W																			
SPACE	4.8	8.2	11.7	13.7	19.5	23.6	26.6	29.6		26.3											
COPY																					
SPACE																					
COPY																					
SPACE																					
COPY																					
SPACE																					
COPY																					
SPACE																					
COPY																					
SPACE																					
COPY																					
SPACE																					
COPY																					
SPACE																					
COPY																					
SPACE																					
COPY																					
SPACE																					
COPY																					
SPACE																					
COPY																					
SPACE																					
COPY																					
SPACE																					

REVISIONS								
DATE	BY	DESCRIPTION	DATE	BY	DESCRIPTION	DATE	BY	DESCRIPTION

Kimley»Horn
 Corporate Registration
 No. CA 0000696
 355 Alhambra Circle, Suite 1400
 Coral Gables, FL 33134

ENGINEER OF RECORD	NAME	LEONTE I. ALMONTE	DRAWN BY	NAME	ELICIEL GONZALEZ
DESIGNED BY	NAME	ALEXANDER BARRADICA	CHECKED BY	NAME	LEONTE I. ALMONTE

MIAMI-DADE DEPARTMENT OF TRANSPORTATION AND PUBLIC WORKS HIGHWAY DIVISION
 311 NW 1 ST MIAMI, FLORIDA 33128

SHADOWLAWN ELEMENTARY SCHOOL
 (GUIDE SIGN WORKSHEET)

THE OFFICIAL RECORD OF THIS SHEET IS THE ELECTRONIC FILE DIGITALLY SIGNED AND SEALED UNDER RULE 61G1-16.005, F.A.C.

TABULATION OF QUANTITIES

PAY ITEM NO.	DESCRIPTION	UNIT	HUBERT O. SIBLEY ELEMENTARY					SUMMARY OF QUANTITIES
			SHEET HS-1	SHEET HS-2	SHEET HS-3	SHEET HS-4	SHEET HS-5	
			QUANTITY	QUANTITY	QUANTITY	QUANTITY	QUANTITY	
104-18	INLET PROTECTION SYSTEM	EA					4	4
110-1-1	CLEARING AND GRUBBING	AC	0.060	0.020	0.030	0.055	0.029	0.194
200-2-1	BASE PREPARATION FOR NEW SIDEWALK CONSTRUCTION	SY	19	4	11	18	40	92
520-2A	CONCRETE CURB AND/OR GUTTER	LF					80	80
522-1-1	CONCRETE SIDEWALK (4" thick) Category 1	SY	266	99	141	252		758
522-2-3	CONCRETE SIDEWALK (6" thick) Category 1	SY	47	11	23	45	66	192
527-2	DETECTABLE WARNING ON WALKING SURFACE	SF	20	20	10	10	40	100
580-3	TREE PROTRCTION BARRICADES	LF					75	75
700-40-01	ROADSIDE SIGNS (SINGLE POST) (LESS THAN 12 S.F.)	AS	8	3	2	1	8	22
700-46-01	REMOVAL SIGN AND POST	AS	1		1	1	1	4
700-48-18	SIGN PANEL (LESS THAN 15 S.F.)	EA	13	3	2	1	16	35
700-48-60B	REMOVE SIGN PANEL	EA	2		1	1	1	5
706-1-12	REFLECTIVE PAVEMENT MARKERS (class B, mono or bi-direct, all colors)	EA	6	6		6		18
711-7	REMOVE EXISTING PAVEMENT MARKINGS	SF		406	360	149	620	1535
711-11-121	THEMOPLASTIC (White) (Solid) (6")	LF	423	174				597
711-11-123	THEMOPLASTIC (White) (Solid) (12")	LF	42	79	92	78	419	710
711-11-125	THEMOPLASTIC (White) (Solid) (24")	LF	52	90	101	26	413	682
711-11-221	THEMOPLASTIC (Yellow) (Solid) (6")	LF	100	100		100		300

REVISIONS

DATE	BY	DESCRIPTION	DATE	BY	DESCRIPTION	DATE	BY	DESCRIPTION

Kimley»Horn
 Corporate Registration
 No. CA 0000696
 355 Alhambra Circle, Suite 1400
 Coral Gables, FL 33134

ENGINEER OF RECORD	NAME	DRAWN BY	NAME
	LEONTE I. ALMONTE		ELICIEL GONZALEZ
DESIGNED BY	CHECKED BY	NAME	
ALEXANDER BARRADICA		LEONTE I. ALMONTE	



DEPARTMENT OF TRANSPORTATION AND PUBLIC WORKS
 HIGHWAY DIVISION
 STEPHEN P. CLARK CENTER
 311 NW 1 ST.
 MIAMI, FLORIDA 33128

HUBERT O. SIBLEY ELEMENTARY
 SCHOOL (SUMMARY OF QUANTITIES)



I-95 EXPRESS

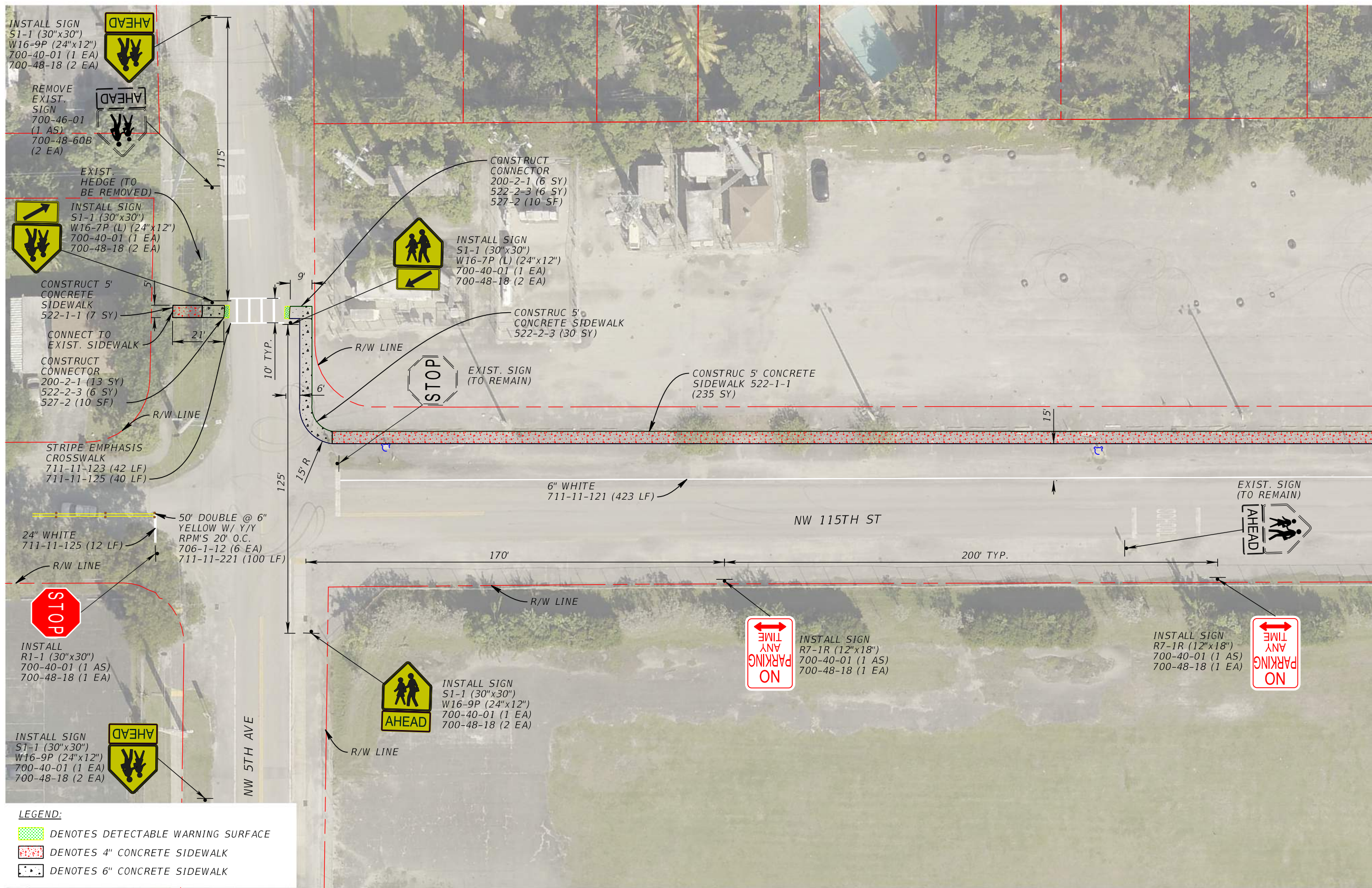
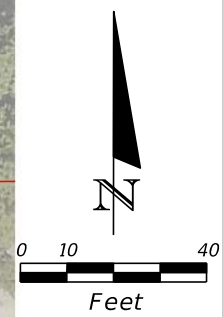
REVISIONS							
DATE	BY	DESCRIPTION	DATE	BY	DESCRIPTION	DATE	BY

Kimley»Horn
 Corporate Registration
 No. CA 0000696
 355 Alhambra Circle, Suite 1400
 Coral Gables, FL 33134

	NAME		NAME
ENGINEER OF RECORD	LEONTE I. ALMONTE	DRAWN BY	ELICIEL GONZALEZ
DESIGNED BY	ALEXANDER BARAHICA	CHECKED BY	LEONTE I. ALMONTE

MIAMI-DADE DEPARTMENT OF TRANSPORTATION AND PUBLIC WORKS
 HIGHWAY DIVISION
 STEPHEN P. CLARK CENTER
 111 NW 7TH ST
 MIAMI, FLORIDA 33128

HUBERT O. SIBLEY ELEMENTARY SCHOOL (PROJECT LAYOUT SHEET)



MATCH LINE SHEET HS-2

LEGEND:

	DENOTES DETECTABLE WARNING SURFACE
	DENOTES 4\"/>
	DENOTES 6\"/>

REVISIONS					
DATE	BY	DESCRIPTION	DATE	BY	DESCRIPTION

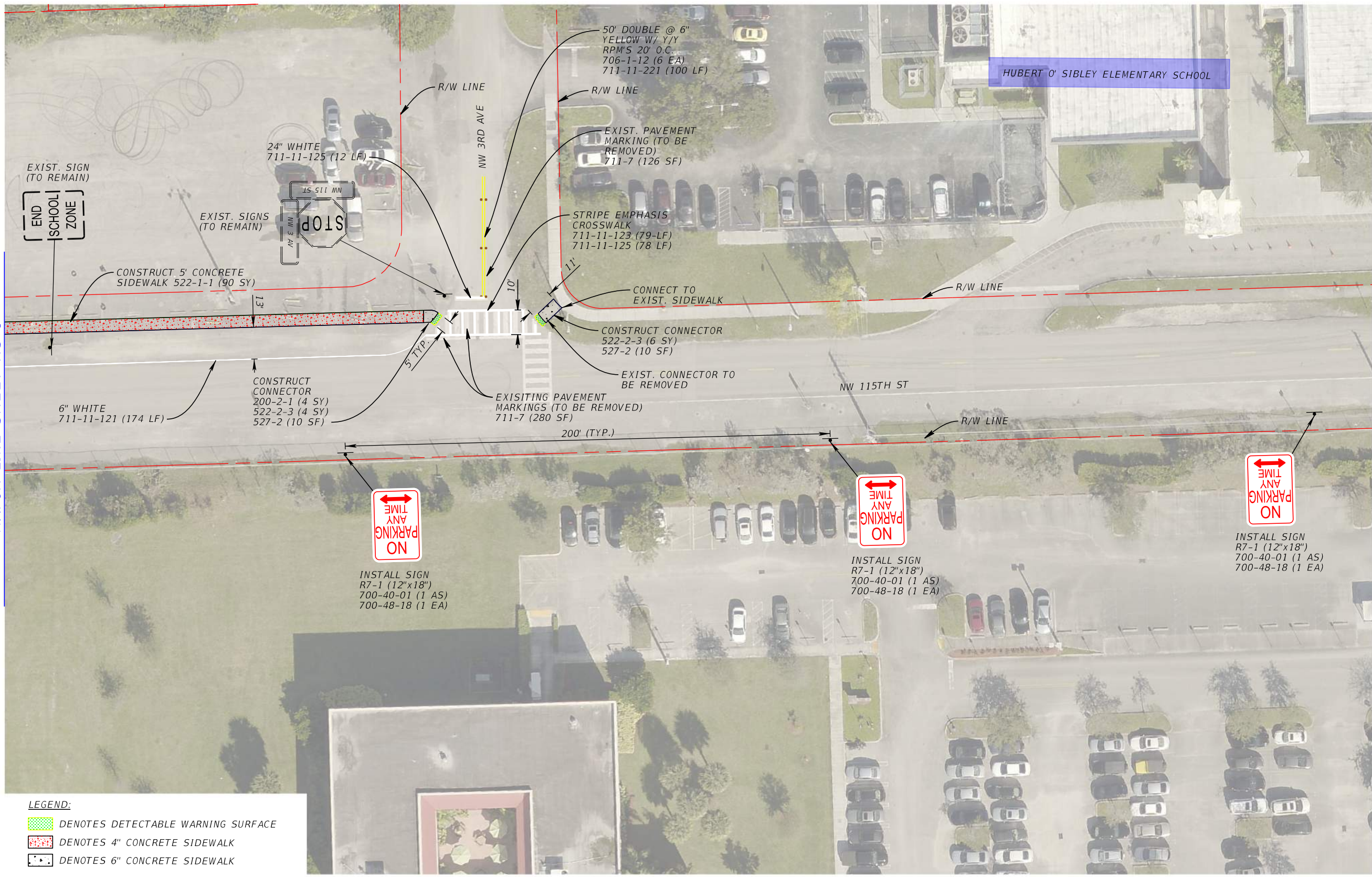
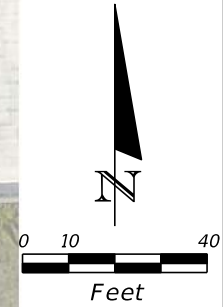
Kimley»Horn
 Corporate Registration
 No. CA 0000696
 355 Alhambra Circle, Suite 1400
 Coral Gables, FL 33134

NAME	NAME
ENGINEER OF RECORD LEONTE I. ALMONTE	DRAWN BY ELICIEL GONZALEZ
DESIGNED BY ALEXANDER BARAHICA	CHECKED BY LEONTE I. ALMONTE

MIAMI-DADE
 DEPARTMENT OF TRANSPORTATION
 AND PUBLIC WORKS
 HIGHWAY DIVISION
 STEPHEN P. CLARK CENTER
 311 NW 1 ST
 MIAMI, FLORIDA 33128

HUBERT O. SIBLEY
 ELEMENTARY SCHOOL (PLANS)

THE OFFICIAL RECORD OF THIS SHEET IS THE ELECTRONIC FILE DIGITALLY SIGNED AND SEALED UNDER RULE 61G16.005, F.A.C.



MATCH LINE SHEET HS-1

MATCH LINE SHEET HS-3

LEGEND:

	DENOTES DETECTABLE WARNING SURFACE
	DENOTES 4\"/>

REVISIONS					
DATE	BY	DESCRIPTION	DATE	BY	DESCRIPTION

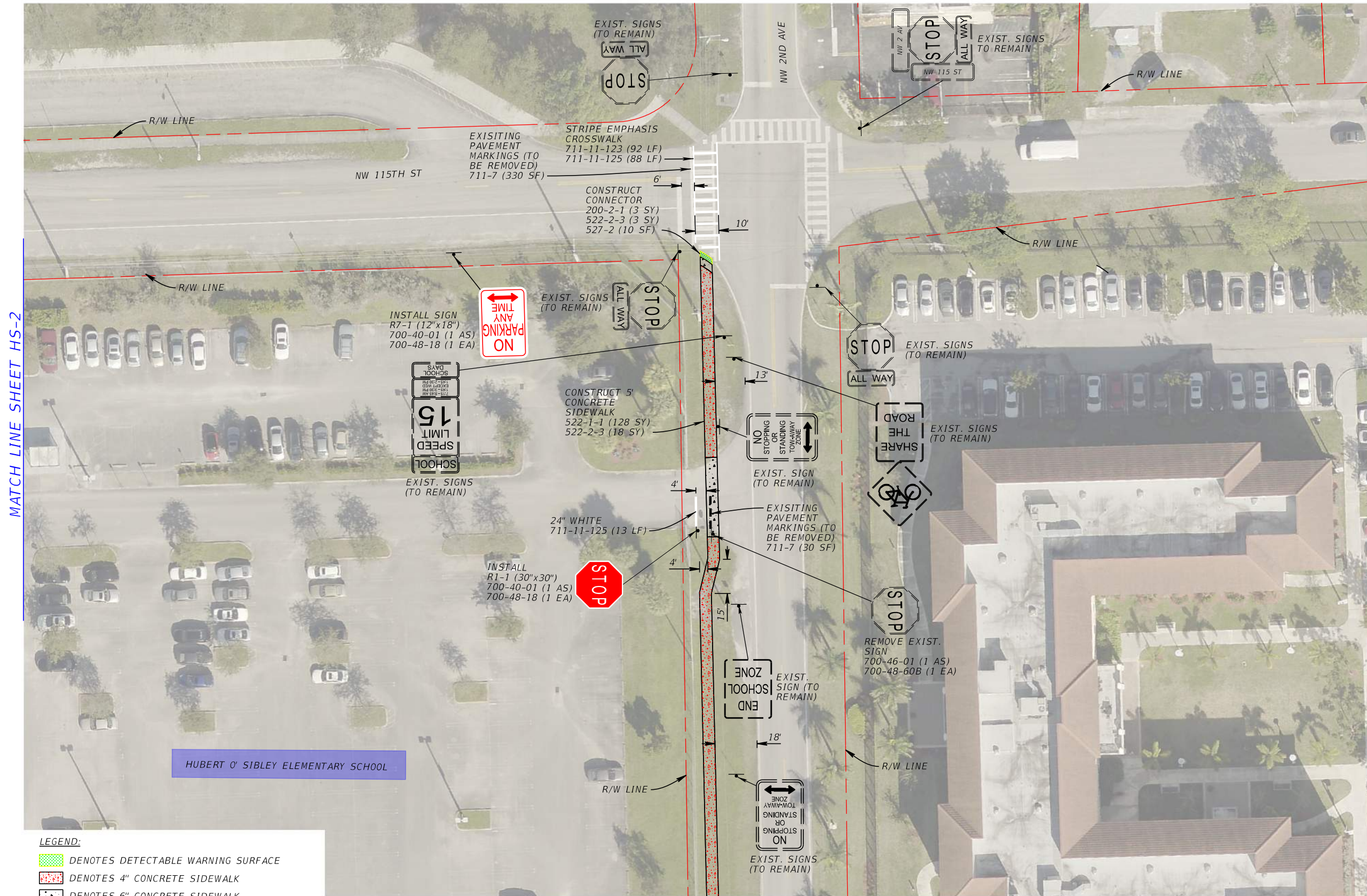
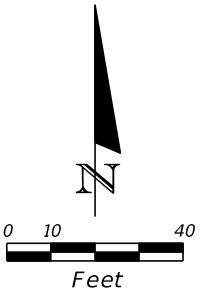
Kimley»Horn
 Corporate Registration
 No. CA 0000696
 355 Alhambra Circle, Suite 1400
 Coral Gables, FL 33134

ENGINEER OF RECORD	LEONTE I. ALMONTE	DRAWN BY	ELICIEL GONZALEZ
DESIGNED BY	ALEXANDER BARRADICA	CHECKED BY	LEONTE I. ALMONTE



HUBERT O. SIBLEY
 ELEMENTARY SCHOOL (PLANS)

THE OFFICIAL RECORD OF THIS SHEET IS THE ELECTRONIC FILE DIGITALLY SIGNED AND SEALED UNDER RULE 61G16.005, F.A.C.



MATCH LINE SHEET HS-2

MATCH LINE SHEET HS-4

- LEGEND:**
- DENOTES DETECTABLE WARNING SURFACE
 - DENOTES 4" CONCRETE SIDEWALK
 - DENOTES 6" CONCRETE SIDEWALK

REVISIONS					
DATE	BY	DESCRIPTION	DATE	BY	DESCRIPTION

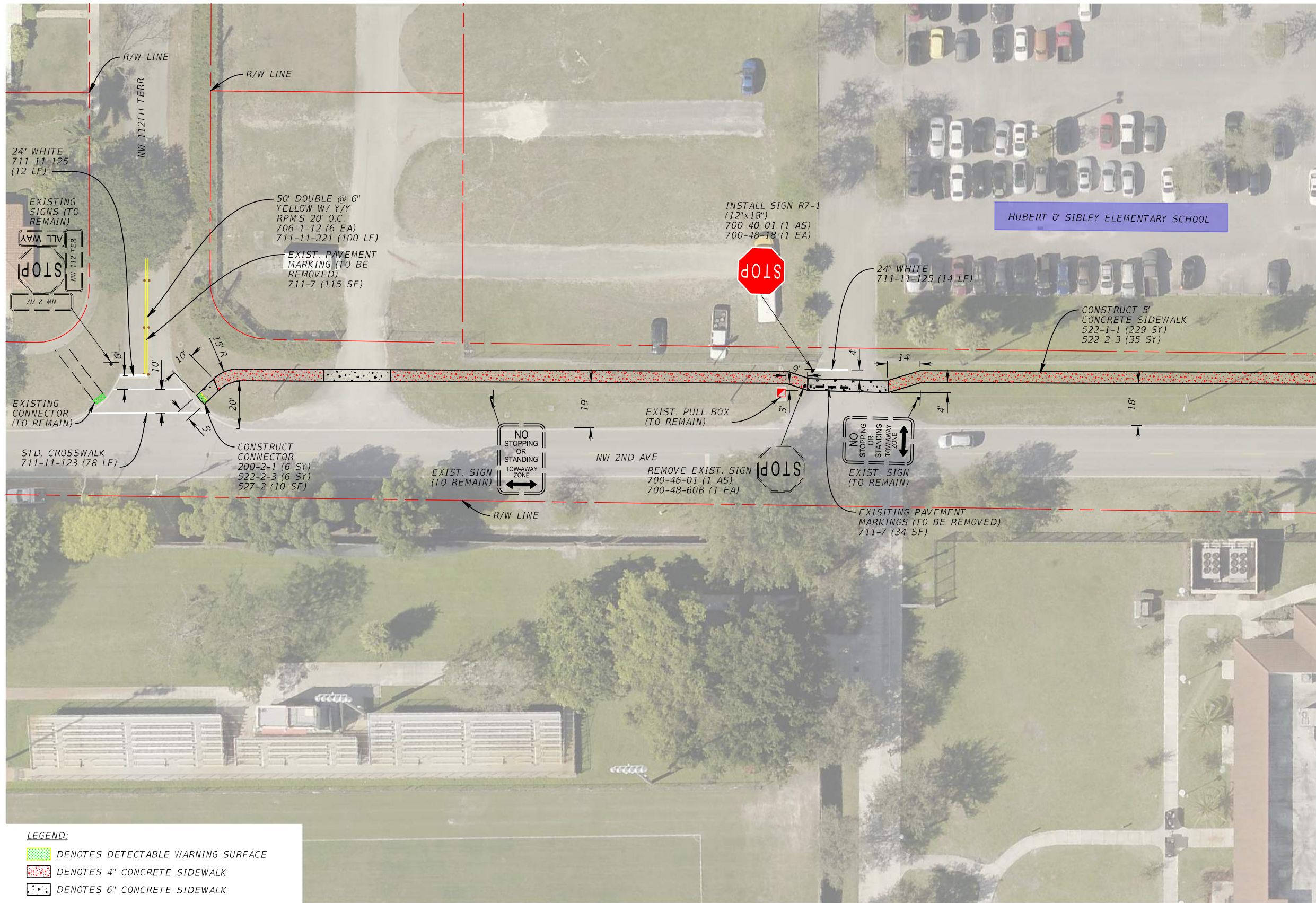
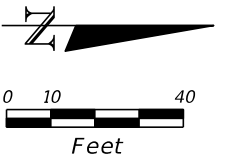
Kimley»Horn
 Corporate Registration
 No. CA 00000696
 355 Alhambra Circle, Suite 1400
 Coral Gables, FL 33134

NAME	NAME
ENGINEER OF RECORD LEONTE I. ALMONTE	DRAWN BY ELICIEL GONZALEZ
DESIGNED BY ALEXANDER BARRADICA	CHECKED BY LEONTE I. ALMONTE

MIAMI-DADE
 DEPARTMENT OF TRANSPORTATION
 AND PUBLIC WORKS
 HIGHWAY DIVISION
 STEPHEN P. CLARK CENTER
 311 NW 1 ST
 MIAMI, FLORIDA 33128

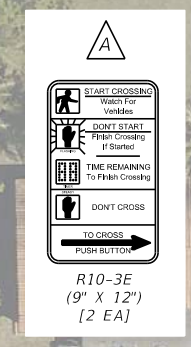
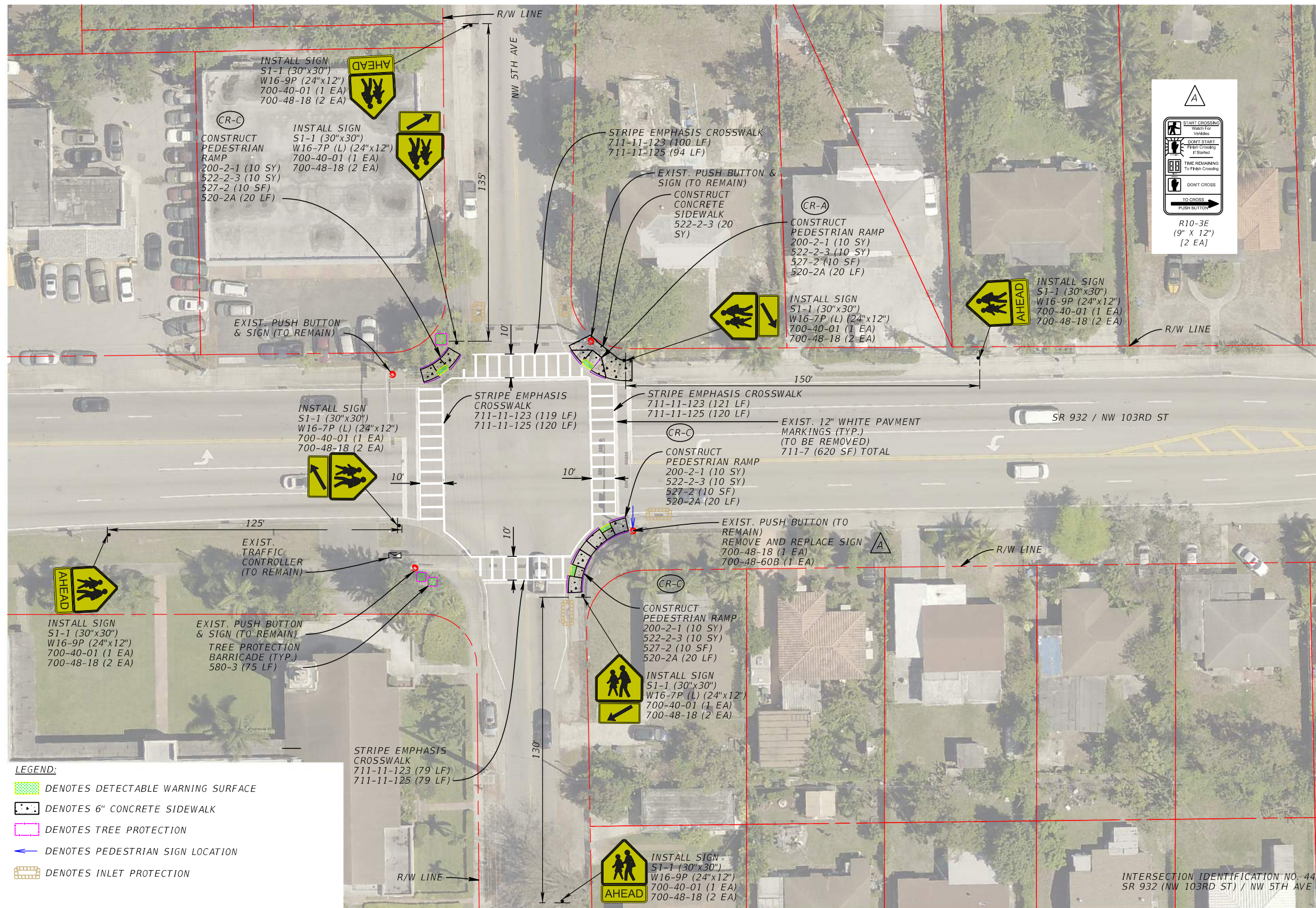
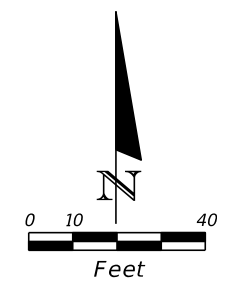
HUBERT O. SIBLEY
 ELEMENTARY SCHOOL (PLANS)

THE OFFICIAL RECORD OF THIS SHEET IS THE ELECTRONIC FILE DIGITALLY SIGNED AND SEALED UNDER RULE 61G16.005, F.A.C.



MATCH LINE SHEET HS-3

THE OFFICIAL RECORD OF THIS SHEET IS THE ELECTRONIC FILE DIGITALLY SIGNED AND SEALED UNDER RULE 61G1-16.005, F.A.C.



- LEGEND:**
- DENOTES DETECTABLE WARNING SURFACE
 - DENOTES 6" CONCRETE SIDEWALK
 - DENOTES TREE PROTECTION
 - DENOTES PEDESTRIAN SIGN LOCATION
 - DENOTES INLET PROTECTION

INTERSECTION IDENTIFICATION NO. 4409
 SR 932 (NW 103RD ST) / NW 5TH AVE

REVISIONS					
DATE	BY	DESCRIPTION	DATE	BY	DESCRIPTION

KimleyHorn
 Corporate Registration
 No. CA 0000696
 355 Alhambra Circle, Suite 1400
 Coral Gables, FL 33134

ENGINEER OF RECORD	NAME	DRAWN BY	NAME
	LEONTE I. ALMONTE		ELICIEL GONZALEZ
DESIGNED BY	NAME	CHECKED BY	NAME
	ALEXANDER BARAHICA		LEONTE I. ALMONTE

MIAMI-DADE
 DEPARTMENT OF TRANSPORTATION
 AND PUBLIC WORKS
 HIGHWAY DIVISION
 STEPHEN P. CLARK CENTER
 111 NW 1 ST
 MIAMI, FLORIDA 33128

HUBERT O. SIBLEY
 ELEMENTARY SCHOOL (PLANS)