

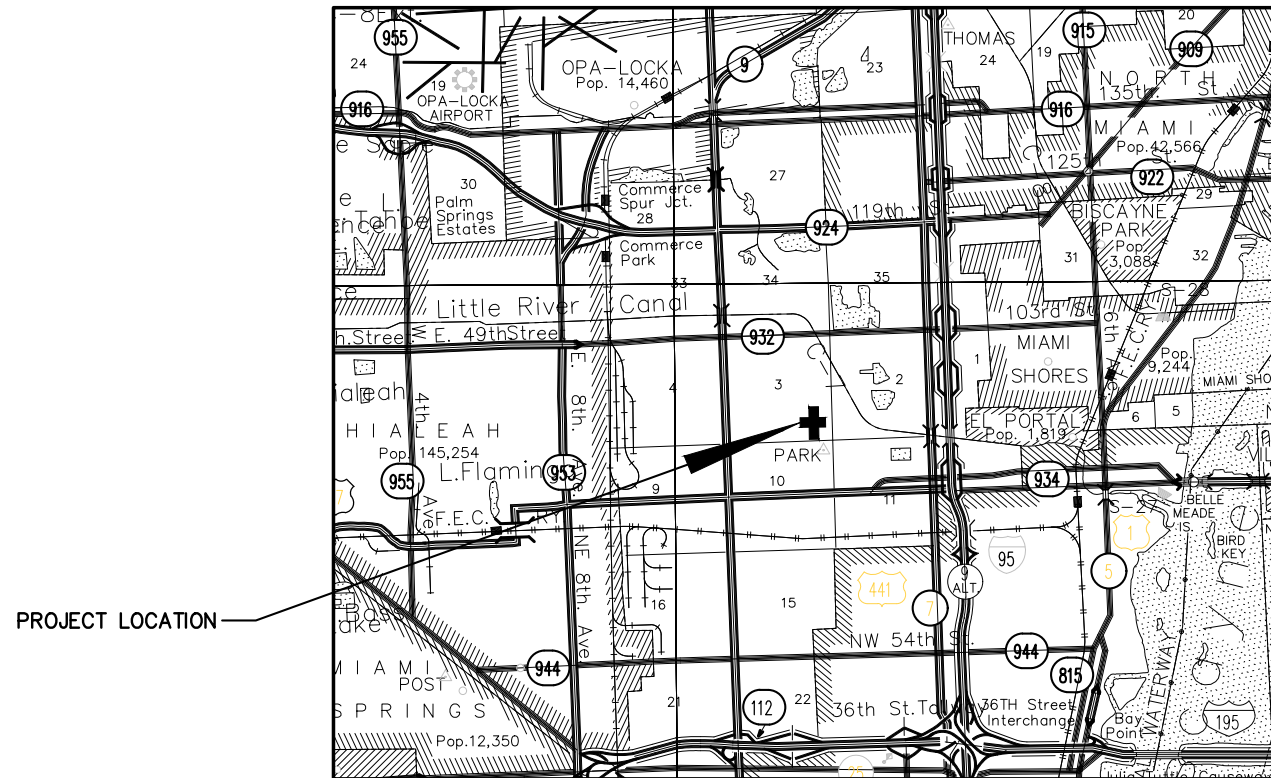
PLANS FOR PROPOSED
INTERSECTION IMPROVEMENTS TO
NW 18 AVE BTWN NW 62 ST TO 71 ST
MIAMI-DADE COUNTY PROJECT NO.
COMMISSION DISTRICT 3

INDEX OF SHEETS

SHT. No.	SHEET DESCRIPTION
1	COVER SHEET
2	GENERAL NOTES
3	SUMMARY OF QUANTITIES
4-6	ROADWAY PLANS
7-9	PAVEMENT MARKINGS AND SIGNING PLANS
10	DETAILS PLAN
11-13	LANDSCAPING PLAN

NOTE:

ATTENTION IS DIRECTED TO THE FACT THAT THESE PLANS MAY HAVE BEEN REDUCED IN SIZE BY REPRODUCTION. THIS MUST BE CONSIDERED WHEN OBTAINING SCALED DATA.



PROJECT LOCATION

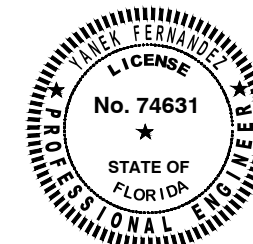
PREPARED FOR



MIAMI-DADE COUNTY
DEPARTMENT OF TRANSPORTATION AND PUBLIC WORKS
HIGHWAY ENGINEERING DIVISION

STEPHEN P. CLARK CENTER
111 NW 1 ST
MIAMI, FLORIDA 33128

THESE PLANS HAVE BEEN PREPARED IN ACCORDANCE WITH AND ARE GOVERNED BY THE MIAMI-DADE COUNTY PUBLIC WORKS DEPARTMENT STANDARDS AND SPECIFICATIONS PARTS 1, 2 AND 3. THE MANUAL OF UNIFORM MINIMUM STANDARDS FOR DESIGN, CONSTRUCTION AND MAINTENANCE FOR STREETS AND HIGHWAYS. THE FLORIDA DEPARTMENT OF TRANSPORTATION ROADWAY AND TRAFFIC DESIGN STANDARDS, AND THE FLORIDA DEPARTMENT OF TRANSPORTATION STANDARD SPECIFICATIONS, AS AMENDED BY CONTRACT DOCUMENTS.



THIS ITEM HAS BEEN DIGITALLY SIGNED AND SEALED BY YANEK FERNANDEZ, P.E. ON THE DATE ADJACENT TO THE SEAL.
PRINTED COPIES OF THIS DOCUMENT ARE NOT CONSIDERED SIGNED AND SEALED AND THE SIGNATURE MUST BE VERIFIED ON ANY ELECTRONIC COPIES.
MIAMI-DADE COUNTY
111 NW 1 STREET, SUITE 1510
MIAMI, FL 33128

APPROVED	_____	COUNTY ENGINEER
RECOMMENDED	_____	ASSISTANT DIRECTOR
SUBMITTED	_____	HIGHWAY ENGINEERING DIVISION
DESIGN	Y.F.	DRAWN G.T.
DATE	5-16-2023	SHEET 1 OF 13

GENERAL NOTES:

1. ALL ELEVATIONS REFER TO THE MSL, 1929 NATIONAL GEODETIC VERTICAL DATUM (NGVD)
2. IT IS THE INTENT THESE PLANS TO BE IN ACCORDANCE WITH APPLICABLE CODES AND AUTHORITIES HAVING JURISDICTION. ANY DISCREPANCIES BETWEEN THESE PLANS AND APPLICABLE CODES SHALL BE IMMEDIATELY BROUGHT TO THE ATTENTION OF THE ENGINEER.
3. WHERE NEW PAVEMENT MEETS EXISTING, CONNECTION SHALL BE MADE IN A NEAT STRAIGHT LINE AND FLUSH WITH EXISTING PAVEMENT.
4. CONTRACTOR IS TO VERIFY THE EXACT LOCATION OF ALL EXISTING TREES, STRUCTURES, AND UTILITIES WITH MAY NOT BE SHOWN ON PLANS. ANY EXISTING STRUCTURE, PAVEMENT, TREES OR OTHER EXISTING IMPROVEMENT NOT SPECIFIED FOR REMOVAL WHICH IS TEMPORARILY DAMAGED, EXPOSED OR IN ANY WAY DISTURBED BY CONSTRUCTION PERFORMED UNDER THIS CONTRACT, SHALL BE REPAIRED, PATCHED OR REPLACED AT NO ADDITIONAL COST TO THE OWNER.
5. THE LOCATION AND SIZE OF ALL EXISTING UTILITIES SHOWN ON THESE DRAWINGS ARE APPROXIMATE; ADDITIONAL UTILITIES MAY EXIST WHICH ARE NOT SHOWN ON THESE DRAWINGS. THE CONTRACTOR SHALL BE RESPONSIBLE FOR THE LOCATION OF ALL EXISTING UTILITIES. THE CONTRACTOR SHALL VERIFY ALL UTILITIES BY ELECTRONIC METHODS AND BY HAND EXCAVATION IN COORDINATION WITH ALL UTILITY COMPANIES; PRIOR TO BEGINNING ANY CONSTRUCTION OPERATION, ANY AND ALL CONFLICTS OF EXISTING UTILITIES WITH PROPOSED IMPROVEMENTS MUST BE RESOLVED BY THE ENGINEER AND THE OWNER. THIS WORK BY THE CONTRACTOR SHALL BE CONSIDERED INCIDENTAL TO THE CONTRACT AND NO ADDITIONAL COMPENSATION SHALL BE ALLOWED.
6. CONTRACTOR SHALL CONTACT THE SUNSHINE STATE ONE CALL OF FLORIDA, INC. AT 1 (800) 432-4770 AT LEAST 48 HOURS PRIOR TO PERFORMING ANY DIGGING TO VERIFY THE EXACT LOCATION OF EXISTING UTILITIES.
7. EXISTING TREES SHALL BE REMOVED ONLY IF REQUIRED FOR CONSTRUCTION. THOSE TREES NOT INTERFERING WITH CONSTRUCTION SHALL BE PROTECTED IN PLACE. THE CONTRACTOR IS ADVISED THAT A TREE PERMIT MAY BE REQUIRED FOR TREE REMOVAL. CONTRACTOR SHALL NOTIFY REGULATORY AND ECONOMIC RESOURCES DEPARTEMENT AND MUNICIPALITIES WITH JURIDICION PRIOR TO REMOVING ANY TREES.
8. EXISTING GRADES WERE TAKEN FROM THE BEST AVAILABLE DATA AND MAY NOT ACCURATELY REFLECT PRESENT CONDITIONS. CONTRACTOR SHALL BE RESPONSIBLE FOR FAMILIARIZING HIMSELF WITH CURRENT SITE CONDITIONS, AND SHALL REPORT ANY DISCREPANCIES TO THE ENGINEER PRIOR TO STARTING WORK.
9. THE CONTRACTOR SHALL PREPARE AND SUBMIT SHOP DRAWINGS FOR ALL ITEMS LISTED IN PROJECT SPECIFICATION.
10. THE CONTRACTOR SHALL MAINTAIN ACCESS TO ALL ADJACENT PROPERTIES AT ALL TIMES.
11. ALL EXCAVATED MATERIAL REMOVED FROM THIS PROJECT SHALL BE DISPOSED OF PROPERLY BY THE CONTRACTOR AT THE CONTRACTOR'S EXPENSE.
12. ALL GRASS AREAS AFFECTED BY CONSTRUCTION SHALL BE RE-SODDED.
13. THE CONTRACTOR SHALL BE RESPONSIBLE FOR THE PROVISION, INSTALLATION AND MAINTENANCE OF ALL TRAFFIC CONTROL AND SAFETY DEVICES, IN ACCORDANCE WITH SPECIFICATIONS OUTLINED IN SECTION C2 AND SECTION R19 OF THE PUBLIC WORKS DEPARTMENT MANUAL. IN ADDITION, THE CONTRACTOR IS RESPONSIBLE FOR THE RESETTING OF ALL TRAFFIC CONTROL AND INFORMATION SIGNING REMOVED DURING CONSTRUCTION PERIOD.
14. EXCAVATED OR OTHER MATERIAL STORED ADJACENT TO OR PARTIALLY UPON A ROADWAY PAVEMENT SHALL BE ADEQUATELY MARKED FOR TRAFFIC SAFETY AT ALL TIMES.
15. TEMPORARY PATCH MATERIAL MUST BE ON THE JOB SITE WHENEVER PAVEMENT IS CUT, OR THE INSPECTOR WILL SHUT THE JOB DOWN.
16. CONTRACTOR SHALL MAINTAIN TRAFFIC ACCORDING TO CORRESPONDING TYPICAL CONTROL DETAIL AS OUTLINED IN MIAMI-DADE COUNTY PUBLIC WORKS MANUAL.
17. CONTRACTOR SHALL MAINTAIN AT LEAST THE FOLLOWING NUMBER OF TRAFFIC LANES FOR CORRESPONDING TIME PERIODS: MONDAY - FRIDAY 7-9 A.M. AND 4-6 P.M.; NO INTERRUPTION TO TRAFFIC IS PERMITTED. ALL OTHER TIMES:
 - A) MAINTAIN ONE LANE FOR TWO-WAY OPERATION WITH FLAGMEN.
 - B) MAINTAIN ONE LANE IN EACH DIRECTION FOR TRAFFIC.
18. CONTRACTOR MUST PROVIDE FLASHER ARROW BOARD FOR ANY LANE THAT IS CLOSED OR DIVERTED.
19. CONTRACTOR SHALL NOTIFY LAW ENFORCEMENT AND FIRE PROTECTION SERVICES TWENTY-FOUR (24) HOURS IN ADVANCE OF THE DETOUR IN ACCORDANCE WITH SECTION 336.07 OF FLORIDA STATUTES.
20. IT IS RESPONSIBILITY OF THE CONTRACTOR TO SELECT AND OBTAIN THE APPROPRIATE PERMISSION FROM MIAMI-DADE COUNTY OR APPLICABLE AGENCY THAT HAS JURISDICTION ON THE "PROPOSED" STAGING AREAS.
21. ALL STATIONS AND OFFSETS REFER TO [CENTERLINE]/ [BASELINE] OF CONSTRUCTION, UNLESS OTHERWISE STATED.
22. CONTRACTOR SHALL COMPLY WITH THE REQUIREMENTS OF THE EPA AND THE NATIONAL POLLUTION DISCHARGE ELIMINATION SYSTEM (NPDES).
23. MIAMI-DADE WATER AND SEWER DEPARTMENT REQUIRES THAT ACCESS TO ALL WATER AND SEWER VALVES, SANITARY MANHOLES, AND OTHER CONTROL MECHANISMS BE MAINTAINED THROUGHOUT CONSTRUCTION IN THE EVENT OF AN EMERGENCY TO ENSURE THE PUBLIC HEALTH AND SAFETY. COVERING VALVE BOXES AND MANHOLES CAN BE CONSIDERED UNAUTHORIZED CONSTRUCTION OF AND TAMPERING WITH DEPARTMENT UTILITIES. ALL REQUESTS FOR UTILITY ADJUSTMENTS MUST BE MADE IN WRITING AT LEAST TWO (2) WEEKS IN ADVANCE. FOR MANHOLE AND VALVES, CONTACT UTILITY COORDINATOR PATRICK CHONG AT 786-268-5255. THE DEPARTMENT WILL MAKE ONE FINAL AND PERMANENT ADJUSTMENT AT NO COST TO THE REQUESTING AGENCY. FOR THE ADJUSTMENT OF WATER METERS, CONTACT THE CHIEF OF METER OPERATIONS AND MAINTENANCE: 786-268-5469. FOR ANY FIRE HYDRANTS THAT ARE DAMAGED OR BUMPED DURING CONSTRUCTION, CONTACT THE MDWASD HYDRANT SHOP AT 305-552-4926, BEFORE POURING CONCRETE FOR THE SIDEWALK. IN THE EVENT OF A WATER OR SEWER EMERGENCY, WASD EMERGENCY NUMBER 305-552-8901. THIS LINE IS OPEN 24 HOURS, 7 DAYS A WEEK.
23. THE CONTRACTOR IS ADVISED THAT PROPERTIES ADJACENT TO THE PROJECT HAVE ELECTRIC, TELEPHONE, GAS, WATER AND/OR SEWER SERVICE LATERALS WHICH MAY NOT BE SHOWN IN PLANS. THE CONTRACTOR MUST REQUEST THE LOCATION OF THESE LATERAL SERVICES FROM THE UTILITY COMPANIES. THE ADDITIONAL COST OF EXCAVATING, INSTALLING, BACKFILLING, AND COMPACTING AROUND THESE SERVICES MUST BE INCLUDED IN THE BID RELATED ITEM FOR THE WORK BEING DONE.
24. THE CONTRACTOR SHOULD TAKE SPECIAL NOTE OF SOIL CONDITIONS THROUGHOUT THIS PROJECT. ANY SPECIAL SHORING, SHEETING OR 1. OTHER PROCEDURES NECESSARY TO PROTECT ADJACENT PROPERTY, PUBLIC OR PRIVATE, DURING THE EXCAVATION OF SUBSOIL MATERIAL AND EXFILTRATION TRENCH, OR FILLING OF ANY AREA, OR FOR ANY OPERATION DURING CONSTRUCTION, SHALL BE THE SOLE RESPONSIBILITY OF THE CONTRACTOR.
25. ANY KNOWN OR SUSPECTED HAZARDOUS MATERIAL FOUND ON THE PROJECT BY THE CONTRACTOR SHALL BE IMMEDIATELY REPORTED TO THE PROJECT ENGINEER, WHO SHALL DIRECT THE CONTRACTOR TO PROTECT THE AREA OF KNOWN OR SUSPECTED CONTAMINATION FROM FURTHER ACCESS. THE ENGINEER WILL ARRANGE FOR INVESTIGATION, IDENTIFICATION, AND REMEDIATION OF THE HAZARDOUS MATERIAL. THE CONTRACTOR SHALL NOT RETURN TO THE AREA OF CONTAMINATION UNTIL APPROVAL IS PROVIDED BY THE PROJECT ENGINEER.
26. THE CONTRACTOR SHALL USE A STREET SWEEPER (USING WATER) OR OTHER EQUIPMENT CAPABLE OF CONTROLLING AND REMOVING DUST. APPROVAL OF THE USE OF SUCH EQUIPMENT IS CONTINGENT UPON ITS DEMONSTRATED ABILITY TO DO THE WORK.
27. WHEN DISSIMILAR MATERIAL CONNECTIONS ARE MADE, SUCH AS CONCRETE TO METAL, THE DISSIMILAR MATERIAL SHALL BE SEPARATED BY COATING THE CONTACT SURFACE WITH BITUMASTIC MATERIAL.
28. PRIOR TO CONSTRUCTION THE CONTRACTOR WILL INSPECT ALL EXISTING STRUCTURES WHICH ARE TO REMAIN AND NOTIFY THE ENGINEER OF ANY OBVIOUS STRUCTURAL DEFICIENCIES.
29. CLEAN EXIST. DRAINAGE STRUCTURES.
30. REGRADE AND/OR OVERBUILD AS NECESSARY TO DRAIN PROPERLY.
31. MILL EXISTING ASPHALT PAVEMENT (1.0" AVG. DEPTH). RESURFACE USING FRICTION COURSE FC-9.5 (1.0")
32. WHERE CONNECTIONS TO EXISTING SIDEWALKS AND DRIVEWAYS ARE NOT INDICATED ON PLANS, PROPER CONNECTIONS ARE TO BE MADE AS DIRECTED BY THE ENGINEER. DROP CURB AND DRIVEWAY CONNECTIONS SHALL BE PROVIDED FOR ACCESS TO ALL PRIVATE PROPERTIES ADJACENT TO THE PROJECT. PAYMENT SHALL BE INCLUDED IN THE COST OF RELATED BID ITEMS.
33. CONTRACTOR TO INSTALL ½" PERFORMED EXPANSION JOINT WHEN PROPOSED SIDEWALK IMPROVEMENTS IS IMMEDIATELY ADJACENT TO EXISTING CONCRETE SLAB AND/OR BUILDING.
34. THE SIDEWALK AT DRIVEWAY TURNOUTS SHALL BE 6" CONCRETE.
35. THE INFORMATION PROVIDED IN THESE DRAWINGS IS SOLELY TO ASSIST THE CONTRACTOR IN ASSESSING THE NATURE AND EXTENT OF CONDITIONS WHICH WILL BE ENCOUNTERED DURING THE COURSE OF WORK. THE CONTRACTORS ARE DIRECTED, PRIOR TO BIDDING, TO CONDUCT WHATEVER INVESTIGATIONS THEY DEEM NECESSARY TO ARRIVE AT THEIR OWN CONCLUSION REGARDING THE ACTUAL CONDITIONS THAT WILL BE ENCOUNTERED AND UPON WHICH BIDS WILL BE BASED.
36. ANY SURVEY MONUMENT, BENCH MARK, ETC., FOUND DURING CONSTRUCTION ACTIVITIES ARE TO BE RESTORED TO IT IS ORIGINAL LOCATION AND COORDINATES AS DEPICTED IN COUNTY RECORDS PLAT AND BOOK. RESTORATION WILL BE AT NO ADDITIONAL COST AND MUST BE SHOWN ON AS-BUILT PLANS.
37. FOR THE INSTALLATION OF SOD IN SWALE AREAS ADJACENT TO ROADWAYS, SIDEWALKS, DRIVEWAY APPROACHES OR ANY OTHER PAVED SURFACES, THE SWALE MUST BE RESTORED TO FORM A "V" SHAPE AS PER THE DETAILS INCLUDED IN THE MIAMI DADE COUNTY PUBLIC WORKS MANUAL. SPECIFICALLY, THE ELEVATION OF THE TOP OF THE SOD MUST MATCH THE ABUTTING AREAS (EDGE OF PAVEMENT, SIDEWALK OR DRIVEWAY APPROACH) AND THE CENTERLINE OF THE SWALE SHALL BE ON AVERAGE 3 INCHES BELOW THE ROADWAY EDGE OF PAVEMENT ELEVATION UNLESS OTHERWISE DIRECTED BY THE ENGINEER.
38. ALL PAVEMENT MARKING IN CONFLICT WITH PROPOSED DESIGN SHALL BE REMOVED.
39. MATCH EXISTING PAVEMENT MARKINGS AT THE BEGINNING, AND AT THE END OF THE PROJECT, AND AT ALL SIDE STREETS.
40. EXTEND STRIPING AT PROJECT END TO CORRECT STRIPING OBLITERATED BY CONSTRUCTION DUE TO TRACK AND BITUMINOUS TRACKING.
41. FOR PAVEMENT MARKINGS INCLUDING RPM'S, REFER TO FDOT STANDARD INDEX 706-001 AND 711-001 AS APPLICABLE.
42. ALL SIGNS IN CONFLICT WITH PROPOSED DESIGN SHALL BE REMOVED.
43. EXISTING SIGN TO REMAIN U.N.O.

\\vesaf3.miamidade.gov\DT\PM\3\PW\PMW12\TE-DESIGN\TRANSPORTATION DESIGN\PROJECTS\ROADWAYS\NW SECTION\NW 18 Ave from NW 62 St. to NW 71 St\ROAD\NW 18 AVE BTWN NW 62 TO 71 ST-SECOND CONTRACT 5 16 23.dwg May 17, 2023 - 1:51pm E324622

REVISIONS							
DATE	BY	DESCRIPTION	DATE	BY	DESCRIPTION	DATE	BY

MIAMI-DADE COUNTY
HIGHWAY DIVISION

DESIGNED BY	NAME	DATE	DRAWN BY	NAME	DATE
	YF		GT		5-16-2023
CHECKED BY	NAME	DATE	CHECKED BY	NAME	DATE
	YF				

SUPERVISED BY: YANEK FERNANDEZ, PE.



GENERAL NOTES

SUMMARY OF QUANTITIES

PAY ITEM NO.	DESCRIPTION	UNIT	QUANTITY
102-91-1A	PAVEMENT MARKING TEMPORARY (Solid) (Any width) (Yellow or White) (Pair	L.F.	12,320
104-18	Inlet Protection System	EA	37
110-4-1-1	REMOVAL AND DISPOSAL OF EXISTING CURB AND GUTTER	L.F.	170
110-4-8	REMOVAL AND DISPOSAL OF EXISTING ASPHALT (without base preparation)	S.Y.	1,528
110-4-10B	REMOVE AND DISPOSE EXISTING SIDEWALK	S.Y.	740
120-1	REGULAR EXCAVATION	C.Y.	560
160-4	TYPE "B" STABILIZATION (12" Thick) (Min. C.B.R. 30)	S.Y.	55
162-5	FINISH SOIL LAYER (Landscaping)	C.Y.	528
327-70	MILLING EXISTING PAVEMENT [(1") (Payment for greater cuts will be paid proportionally)]	S.Y.	13,160
337-8-42	Hot Mix Asphalt Friction Course, Traffic C, FC-9.5, PG 76-22	TON	724
350-2	CONC PAVEMENT REINFORCED (STAMPED)	CY	173
350-30-13	APRON FOR CIRCLE 12" DEPTH	SY	41
425-1-909A	INLET (Special) (Modify)	EA	1
520-2	CONCRETE CURB AND/OR GUTTER(Any type , including base preparation)	L.F.	3,765
522-1(1)	CONCRETE SIDEWALK [4" THICK, 3,000 P.S.I. concrete at 28 days (includes the cost of pedestrian ramps and sidewalks curbs)	S.Y.	318
522-2	CONCRETE SIDEWALK (6" THICK, 3,000 P.S.I. concrete at 28 days (includes p	S.Y.	64
527-2	DETECTABLE WARNING ON WALKING SURFACE	S.F.	245
	SILVA CELL (to include all items and work depicted in the SILVA CELL plan deta	EA	84
575-1-1	SODDING (Pensacola Bahia or match existing) (includes watering)	S.Y.	792
580-322-3	TREE REMOVAL (including stump removal) 12-36"	E.A.	10
580-322-6	TREE REMOVAL (including stump removal) 36"-55"	E.A.	7
630-2-12	CONDUIT, F&I, DIRECTIONAL BORE	LF	3,176
635-2-11	PULL & SPLICE BOX, F&I, 13" X 24" COVER SIZE	EA	23
639-1-13B	ELECTRIC POWER SERVICE	AS	1
641-2-12	PRESTRESSED CONCRETE POLE, F&I, TYPE P-II SERVICE POLE	EA	1
715-1-12	LIGHTING CONDUCTORS, F&I, INSULATED, NO. 8 - 6	LF	9,125
715-1-13	LIGHTING CONDUCTORS, F&I, INSULATED, NO. 4 - 2	LF	500
715-5-51	LUMINARE AND BRACKET REMOVAL	EA	16
715-7-11	LOAD CENTER, F&I	EA	1
715-7-41	LOAD CENTER, REMOVE	EA	1
715-61-311 715-41-340	LIGHT POLE COMPLETE, F&I, PENDANT DECORATIVE LIGHT,(40' high?)	EA	24
715-95-2	ELECTRIC SERVICE AND COORDINATION	AS.	1
715-500-1 C	POLE CABLE DISTRIBUTION SYSTEM, MG Square (to be F&I by contractor)	EA	20
700-40-01	ROADSIDE SIGNS {(SINGLE POST) (LESS THAN 12 S.F.)}	AS.	18
700-46-22	RESET EXISTING POST AND SIGN	EA.	27
700-48-18	SIGN PANEL (LESS THAN 15 SF.)	EA.	6
700-48-60A	REMOVE EXISTING SIGNS & POSTS	AS.	19
710-11-170	PAINTED PAVEMENT MARKINGS (Standard) (White) (Arrows)	EA	2
711-11-121	THERMOPLASTIC (White) (Solid) (6")	L.F.	6,600
711-11-122	THERMOPLASTIC (White) (Solid) (8")	L.F.	50
711-11-123	THERMOPLASTIC (White) (Solid) (12")	L.F.	2,050
711-11-124	THERMOPLASTIC (White) (Solid) (18")	L.F.	3,240
711-11-125	THERMOPLASTIC (White) (Solid) (24")	L.F.	305
711-11-170	THERMOPLASTIC (White) (Arrows)	EA	2
711-11-221	THERMOPLASTIC (Yellow) (Solid) (6")	L.F.	3,475

NOTES:

- TREE REMOVAL TO INCLUDE REMOVAL OF TREE STUMP. INCLUDE EXCAVATION OF THE ROOT BALL.
- SILVA CELL ITEMS AND RELATED WORK TO BE UNDER PAY ITEM XXX

\\vesia3.miamidade.gov\OTPMW3\PM\PMW2\TE-DESIGN\TRANSPORTATION DESIGN\PROJECTS\ROADWAYS\NW SECTION\NW 18 Ave from NW 62 St. to NW 71 St\CADD\NW 18 AVE BTWN NW 62 TO 71 ST-SECOND CONTRACT 5 16 23.dwg May 17, 2023 - 3:37pm E324622

REVISIONS							
DATE	BY	DESCRIPTION	DATE	BY	DESCRIPTION	DATE	BY

MIAMI-DADE COUNTY
HIGHWAY DIVISION



DESIGNED BY	NAME	DATE	DRAWN BY	NAME	DATE
YF			GT		5-16-2023
CHECKED BY	YF		CHECKED BY	YF	

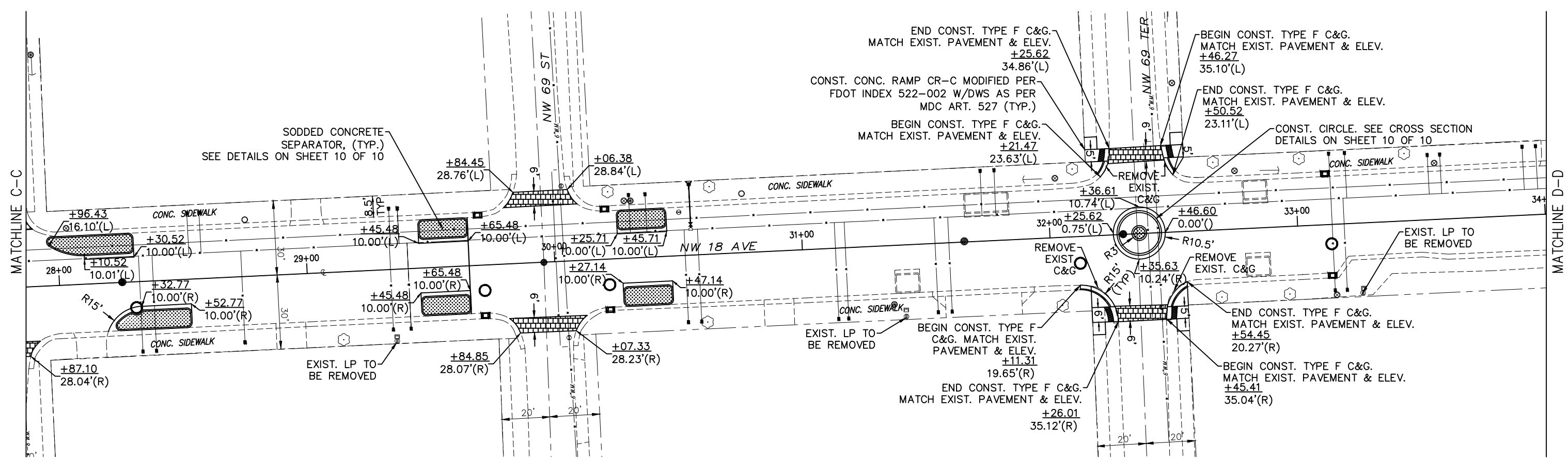
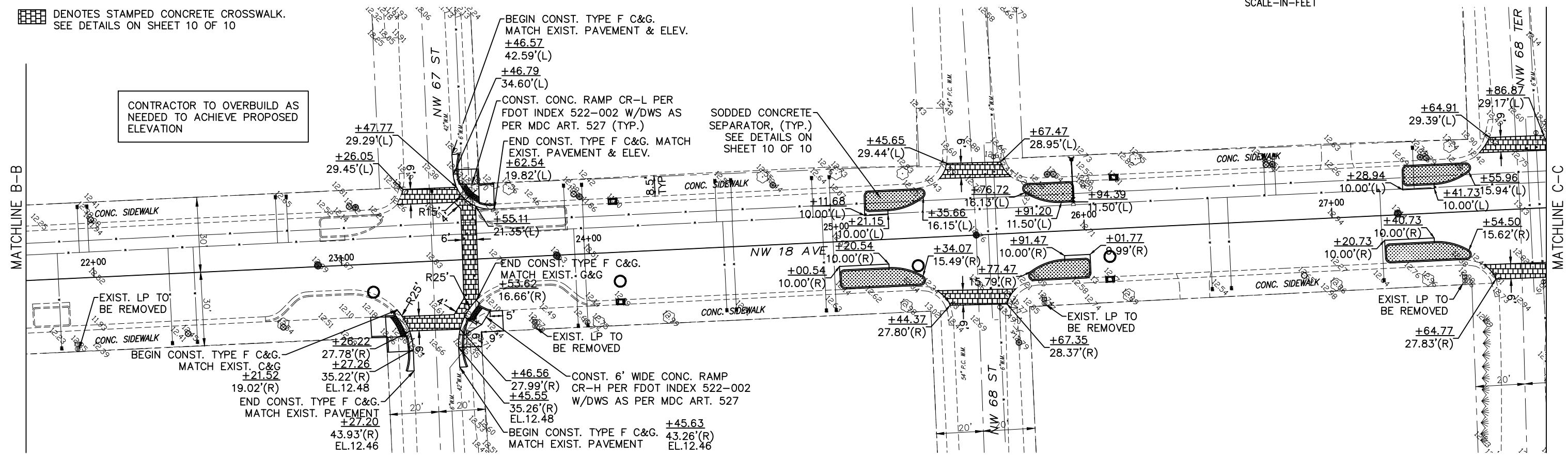
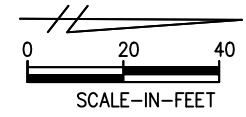
SUPERVISED BY: YANEK FERNANDEZ, PE.



SUMMARY OF QUANTITIES

LEGEND:

-  DENOTES SODDED AREA TO MATCH EXISTING
-  DENOTES STAMPED CONCRETE CROSSWALK. SEE DETAILS ON SHEET 10 OF 10




\\vesia3.miamidade.gov\DT\PM\3\PW\PM\2\TE-DESIGN\TRANSPORTATION DESIGN\PROJECTS\ROADWAYS\NW SECTION\NW 18 Ave from NW 62 St to NW 71 St\DWG\NW 18 AVE BTWN NW 62 TO 71 ST-SECOND CONTRACT 5 16 23.dwg May 17, 2023 - 1:51pm E324622

REVISIONS					
DATE	BY	DESCRIPTION	DATE	BY	DESCRIPTION



MIAMI-DADE COUNTY HIGHWAY DIVISION

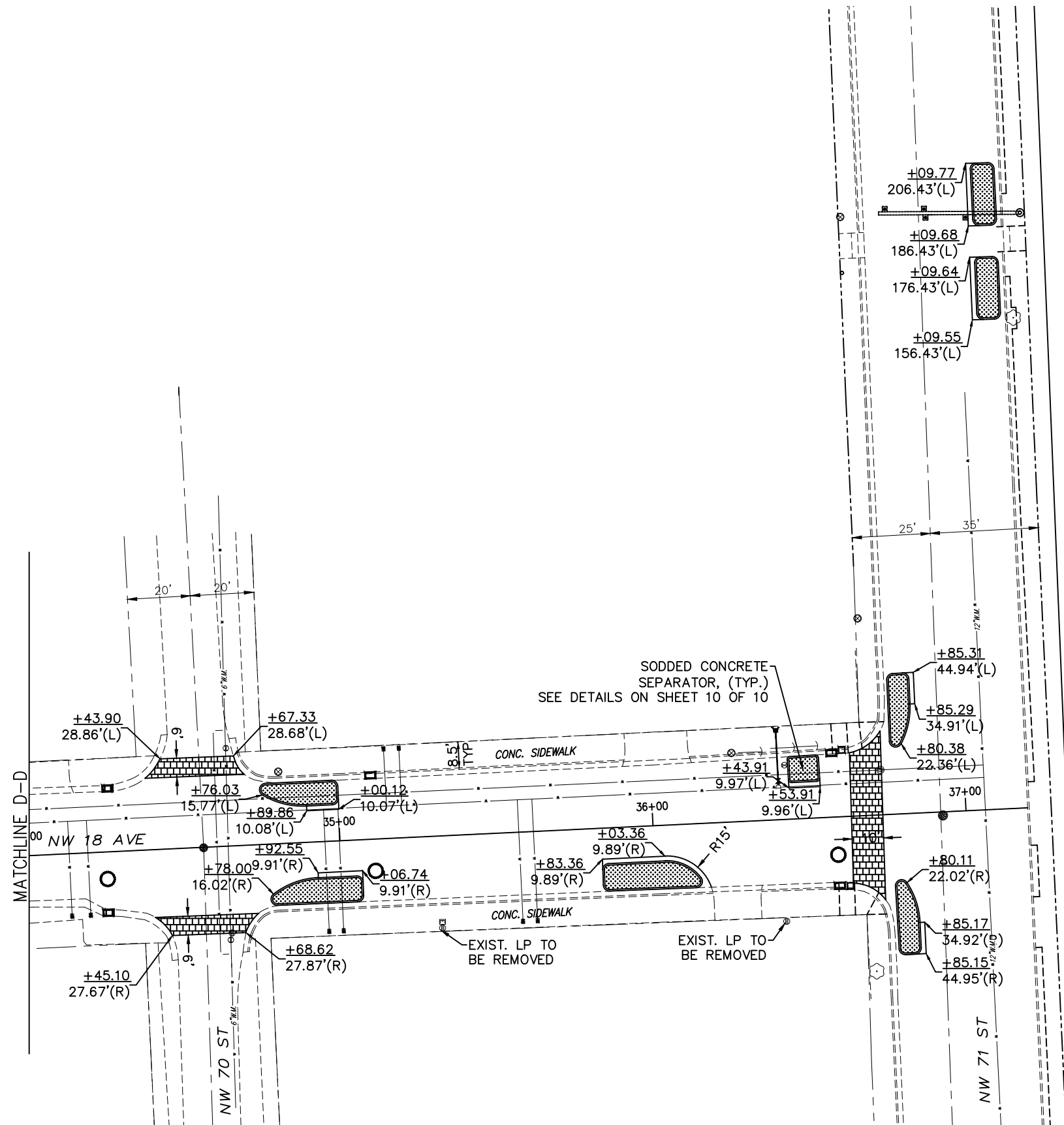
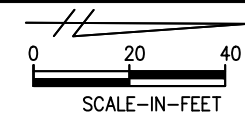
DESIGNED BY: YF	DATE: 5-16-2023	DRAWN BY: GT	DATE: 5-16-2023
CHECKED BY: YF		CHECKED BY: YF	


DEPARTMENT OF TRANSPORTATION AND PUBLIC WORKS HIGHWAY DIVISION
 STEPHEN P. CLARK CENTER
 111 NW 1 ST
 MIAMI, FLORIDA 33128

ROADWAY PLAN

LEGEND:

-  DENOTES SODDED AREA TO MATCH EXISTING
-  DENOTES STAMPED CONCRETE CROSSWALK. SEE DETAILS ON SHEET 10 OF 10



\\ves163.miamidade.gov\OTPM3\PM\PMW2\TE-DESIGN\TRANSPORTATION DESIGN\PROJECTS\ROADWAYS\NW SECTION\NW 18 Ave from NW 62 St to NW 71 St\CADD\NW 18 AVE BTWN NW 62 TO 71 ST-SECOND CONTRACT 5 16 23.dwg May 17, 2023 - 1:52pm E324622

REVISIONS							
DATE	BY	DESCRIPTION	DATE	BY	DESCRIPTION	DATE	BY

MIAMI-DADE COUNTY
 HIGHWAY DIVISION

DESIGNED BY	NAME	DATE	DRAWN BY	NAME	DATE
	YF		GT		5-16-2023
CHECKED BY	YF		CHECKED BY	YF	

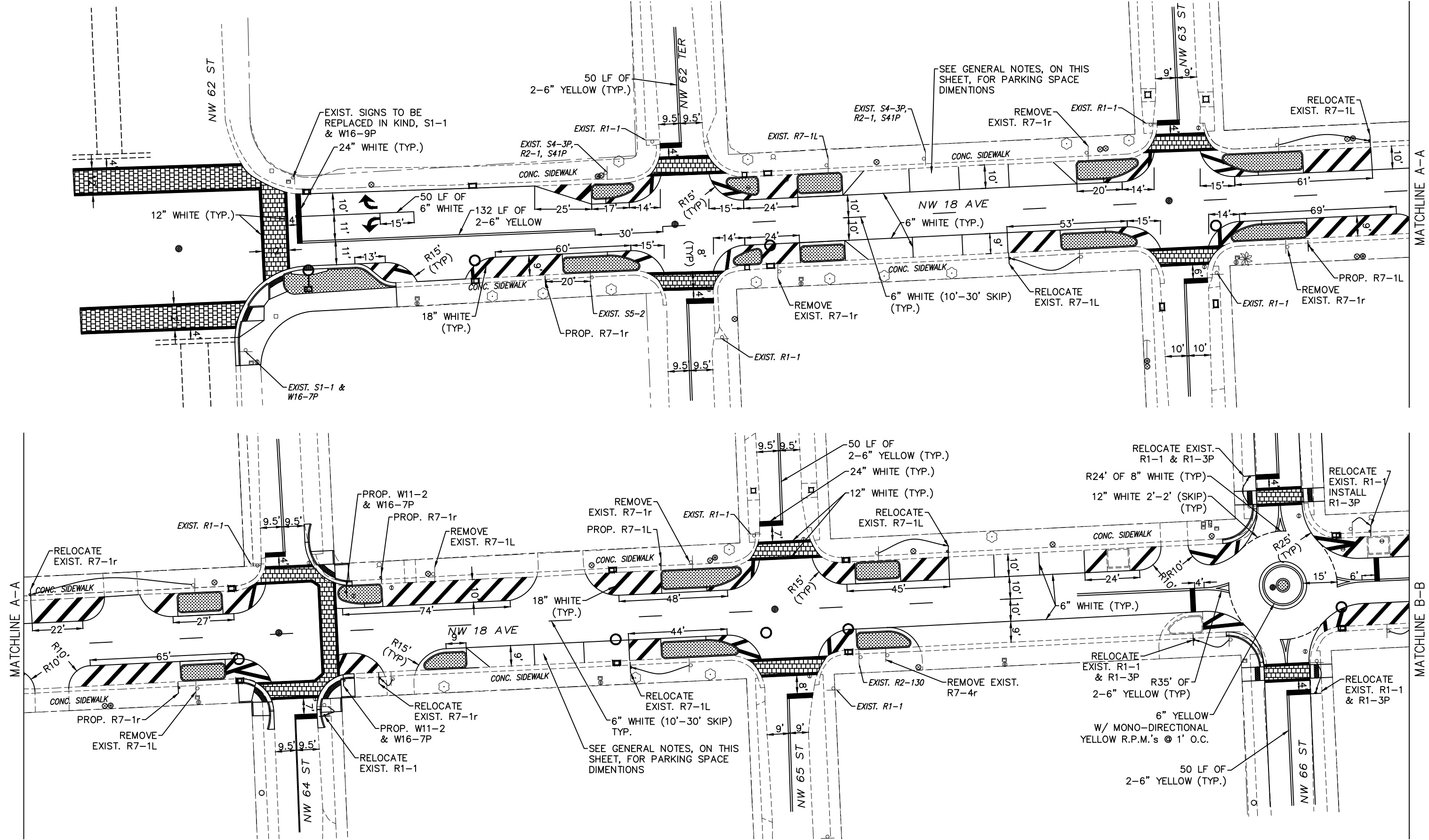
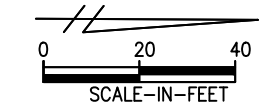
SUPERVISED BY: YANEX FERNANDEZ, PE.



ROADWAY PLAN

GENERAL NOTE:

ON-STREET PARKING SPACES SHALL BE 22' TYPICAL AND 20' FOR END SPACES.



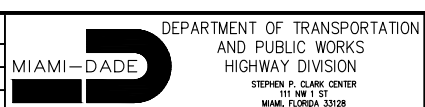
\\vesia3.miamidade.gov\OTPM3\PM\PMW2\TE-DESIGN\TRANSPORTATION DESIGN\PROJECTS\ROADWAYS\NW SECTION\NW 18 AVE from NW 62 St to NW 71 St\CADD\NW 18 AVE BTWN NW 62 TO 71 ST-SECOND CONTRACT 5 16 23.dwg May 17, 2023 - 1:52pm E324622

REVISIONS					
DATE	BY	DESCRIPTION	DATE	BY	DESCRIPTION

MIAMI-DADE COUNTY
 HIGHWAY DIVISION

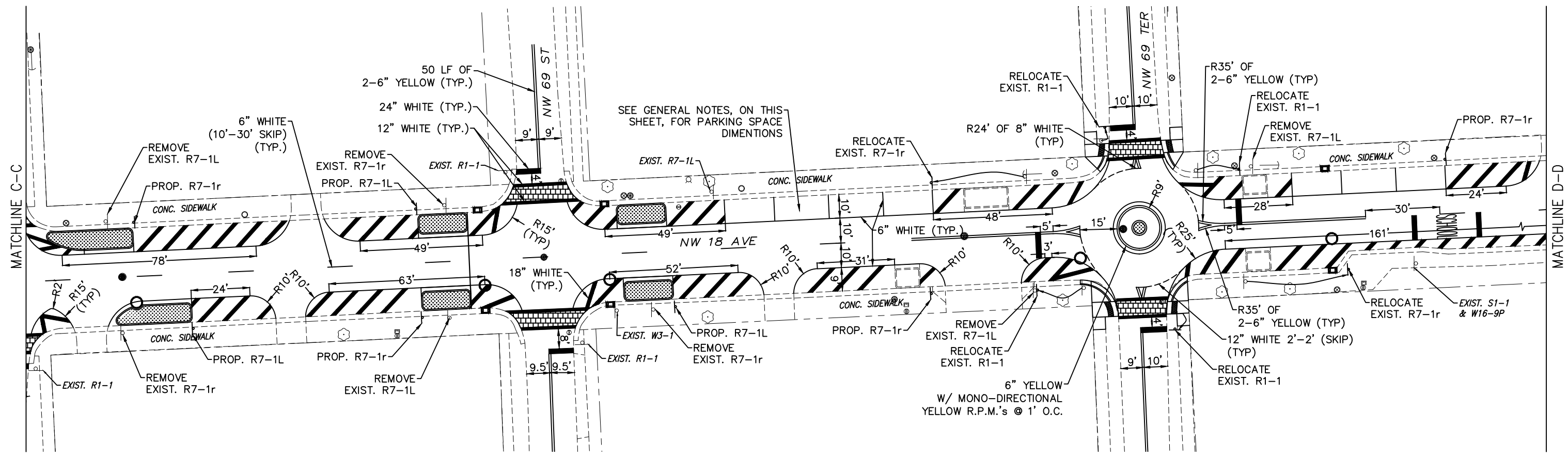
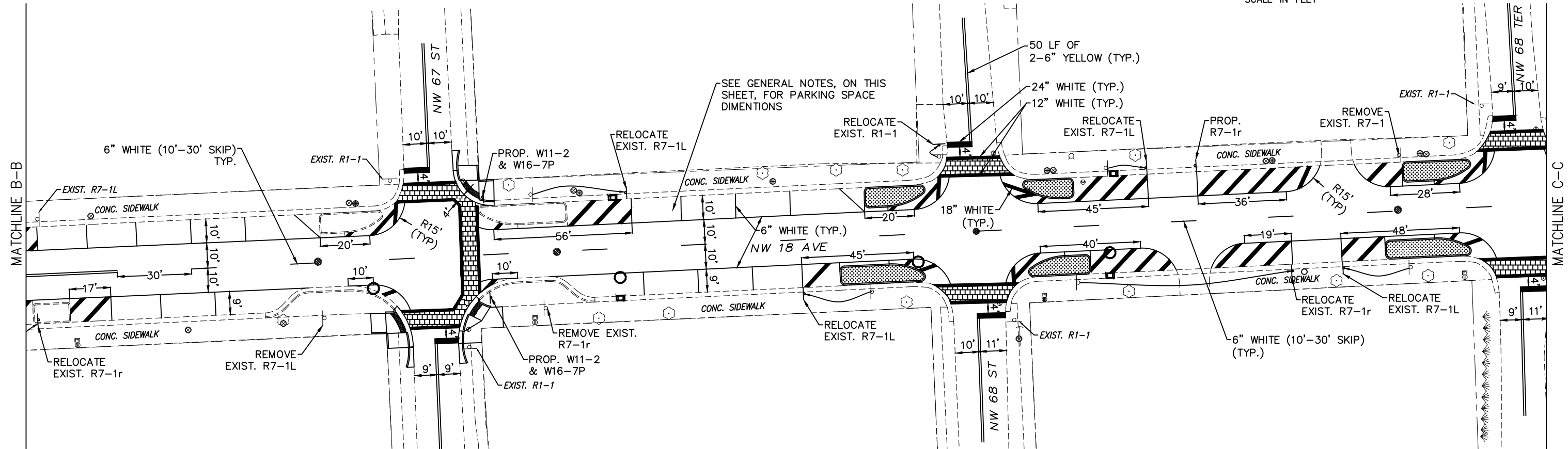
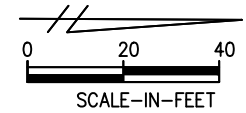
DESIGNED BY	NAME	DATE	DRAWN BY	NAME	DATE
	YF		GT		5-16-2023
CHECKED BY	YF		CHECKED BY	YF	

SUPERVISED BY: YANEK FERNANDEZ, PE.



PAVEMENT MARKINGS AND SIGNING PLAN

GENERAL NOTE:
ON-STREET PARKING SPACES SHALL BE 22' TYPICAL AND 20' FOR END SPACES.

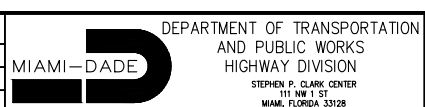


\\vesia3.miamidade.gov\OTPMW3\PW\PMW2\TE-DESIGN\TRANSPORTATION DESIGN\PROJECTS\ROADWAYS\NW SECTION\NW 18 Ave from NW 62 St to NW 71 St\CADD\NW 18 AVE BTWN NW 62 TO 71 ST-SECOND CONTRACT 5 16 23.dwg May 17, 2023 - 1:52pm E324622

REVISIONS					
DATE	BY	DESCRIPTION	DATE	BY	DESCRIPTION

MIAMI-DADE COUNTY
HIGHWAY DIVISION

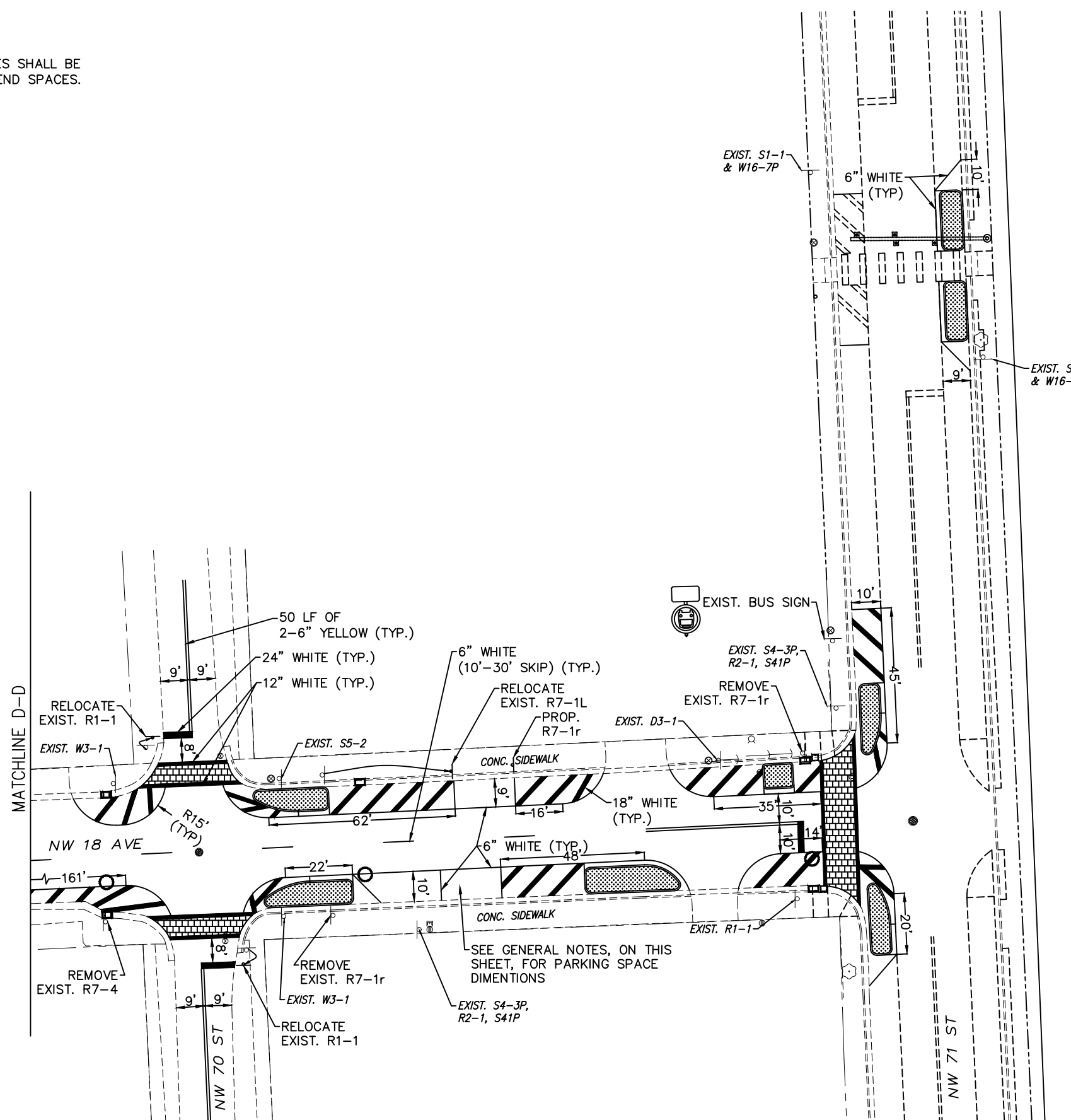
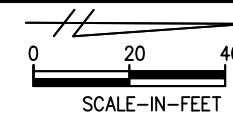
NAME	DATE	NAME	DATE
DESIGNED BY: YF		DRAWN BY: GT	5-16-2023
CHECKED BY: YF		CHECKED BY: YF	
SUPERVISED BY: YANEX FERNANDEZ, PE.			



PAVEMENT MARKINGS AND SIGNING PLAN

GENERAL NOTE:

ON-STREET PARKING SPACES SHALL BE 22' TYPICAL AND 20' FOR END SPACES.



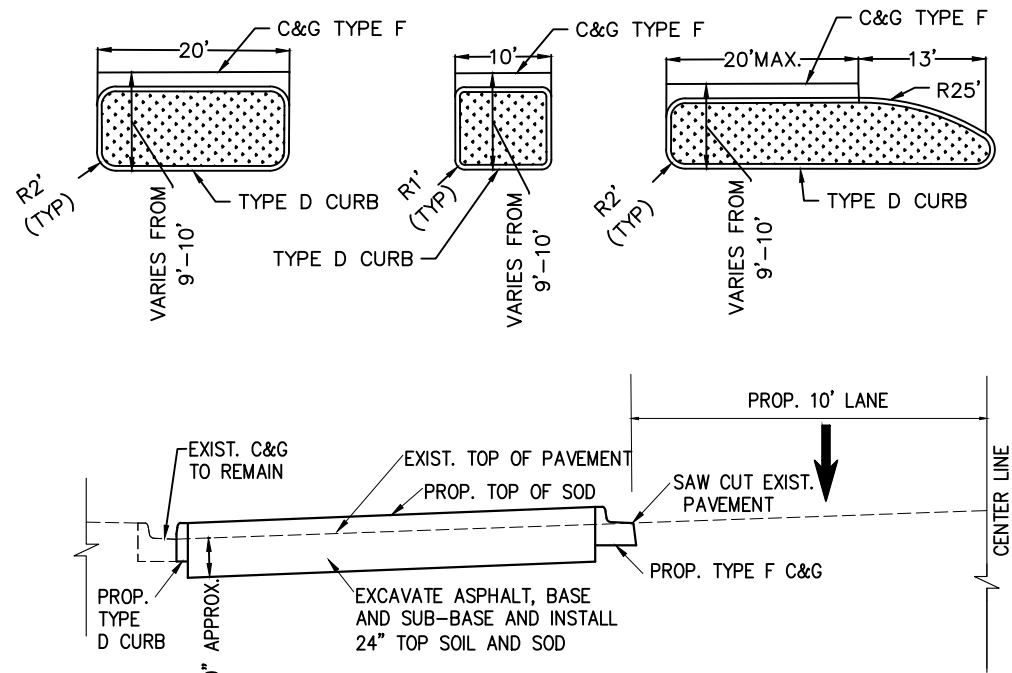
\\vesia3.miamidade.gov\OTPM\3\PM\PMW2\TE-DESIGN\TRANSPORTATION DESIGN\PROJECTS\ROADWAYS\NW SECTION\NW 18 Ave from NW 62 St to NW 71 St\CADD\NW 18 AVE BTWN NW 62 TO 71 ST-SECOND CONTRACT 5 16 23.dwg May 17, 2023 - 1:52pm E324622

REVISIONS					
DATE	BY	DESCRIPTION	DATE	BY	DESCRIPTION

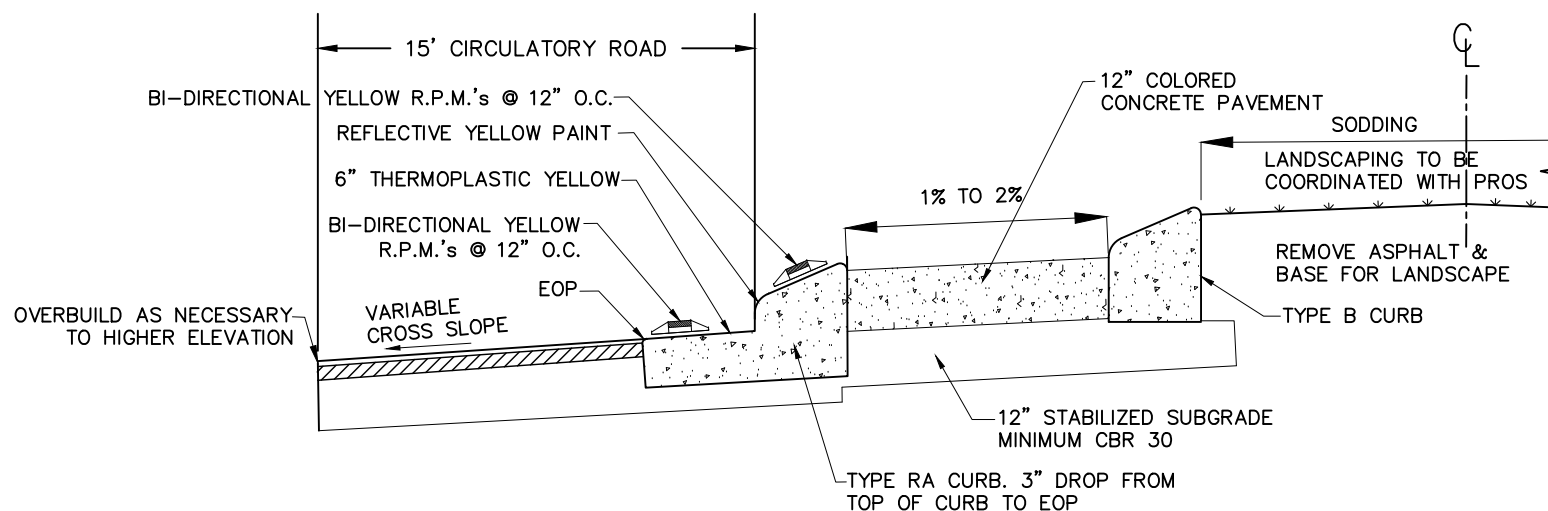
MIAMI-DADE COUNTY
 HIGHWAY DIVISION

NAME	DATE	NAME	DATE
DESIGNED BY	YF	DRAWN BY	GT
CHECKED BY	YF	CHECKED BY	YF
SUPERVISED BY: YANEK FERNANDEZ, PE.			

PAVEMENT MARKINGS AND SIGNING PLAN

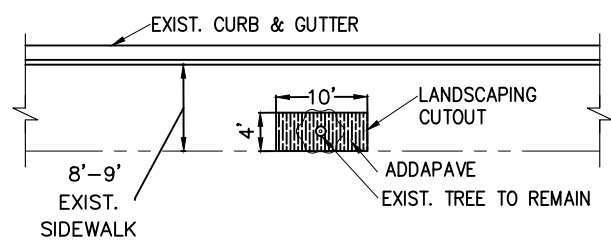


SODDED CONC. SEPARATOR DETAILS
 N.T.S



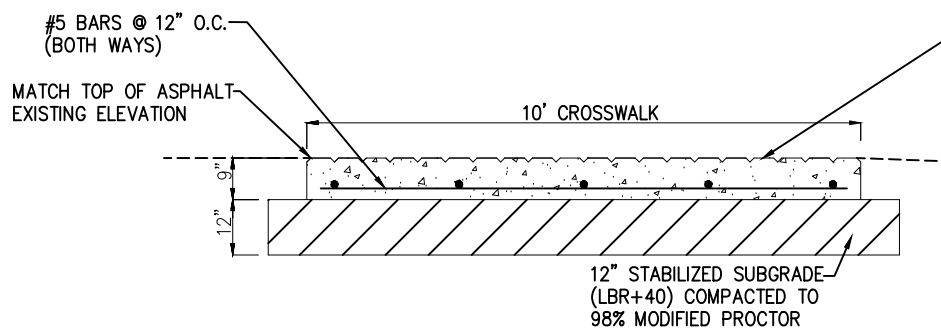
-THE R.P.M.'s MOUNTED ON THE CURB SHALL BE PLACED FACING THE ONCOMING TRAFFIC FROM THE APPROACHES.
 -THE R.P.M.'s MOUNTED ON THE CURB SHALL BE PLACED FACING THE ONCOMING TRAFFIC WITHIN THE CIRCLE.

CROSS SECTION OF CIRCLE
 N.T.S.

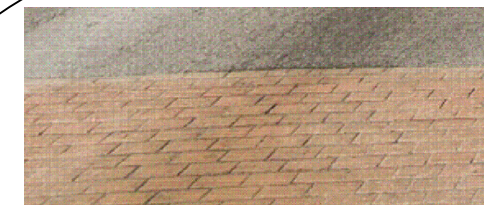


NOTE:
 BASED ON FIELD EVALUATION AND IN COORDINATION WITH PROS-RAAM, CONTRACTOR TO ENLARGE EXISTING CUTOUTS TO 4'X10' ON LOCATIONS WHERE SIDEWALK TREES WILL REMAIN AND PLACE 2\"/>

CUTOUT DETAIL FOR EXIST.
 SIDEWALK TREES TO REMAIN
 N.T.S



STAMPED CONCRETE CROSSWALK STANDARD DETAIL
 N.T.S



PLACE STAMPED CONCRETE CROSSWALK (CONTRACTOR TO USE SAME PATTERN AND COLOR AS THE ONE EXIST. ON NW 62 ST AND NW 18 AVE) DEPTH OF STAMPED PATTERN IMPRESSION SHALL BE 1/4\"/>

\\vesitas1.miamidade.gov\OTPM33\PW\PMW2\TE-DESIGN\TRANSPORTATION DESIGN\PROJECTS\ROADWAYS\NW SECTION\NW 18 AVE from NW 62 St to NW 71 St\CADD\NW 18 AVE BTWN NW 62 TO 71 ST-SECOND CONTRACT 5 16 23.dwg May 17, 2023 - 1:52pm E324622

REVISIONS					
DATE	BY	DESCRIPTION	DATE	BY	DESCRIPTION

MIAMI-DADE COUNTY
 HIGHWAY DIVISION

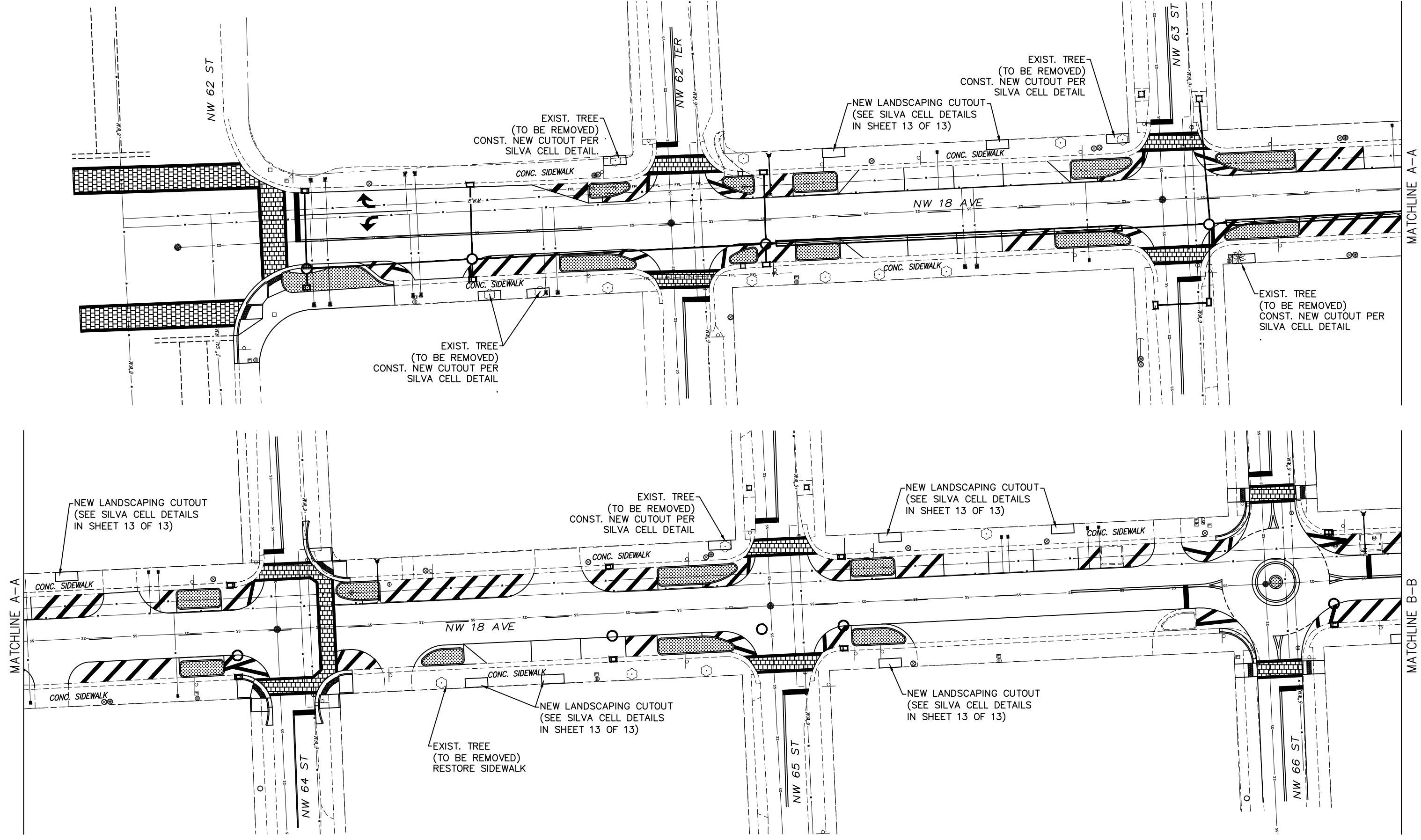
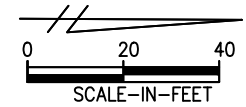
NAME	DATE	NAME	DATE
DESIGNED BY YF		DRAWN BY GT	5-16-2023
CHECKED BY YF		CHECKED BY YF	

SUPERVISED BY: YANEK FERNANDEZ, PE.

DEPARTMENT OF TRANSPORTATION AND PUBLIC WORKS HIGHWAY DIVISION
 MIAMI-DADE
 STEPHEN P. CLARK, CENTER
 111 NW 1 ST
 MIAMI, FLORIDA 33128

DETAILS PLAN

\\vesitas.miamidade.gov\DT\PM\3\PM\PMW2\TE-DESIGN\TRANSPORTATION DESIGN\PROJECTS\ROADWAYS\NW SECTION\NW 18 AVE from NW 62 ST to NW 71 ST\DWG\NW 18 AVE BTWN NW 62 TO 71 ST-SECOND CONTRACT 5 16 23.dwg May 17, 2023 - 1:52pm E324622



REVISIONS

DATE	BY	DESCRIPTION	DATE	BY	DESCRIPTION

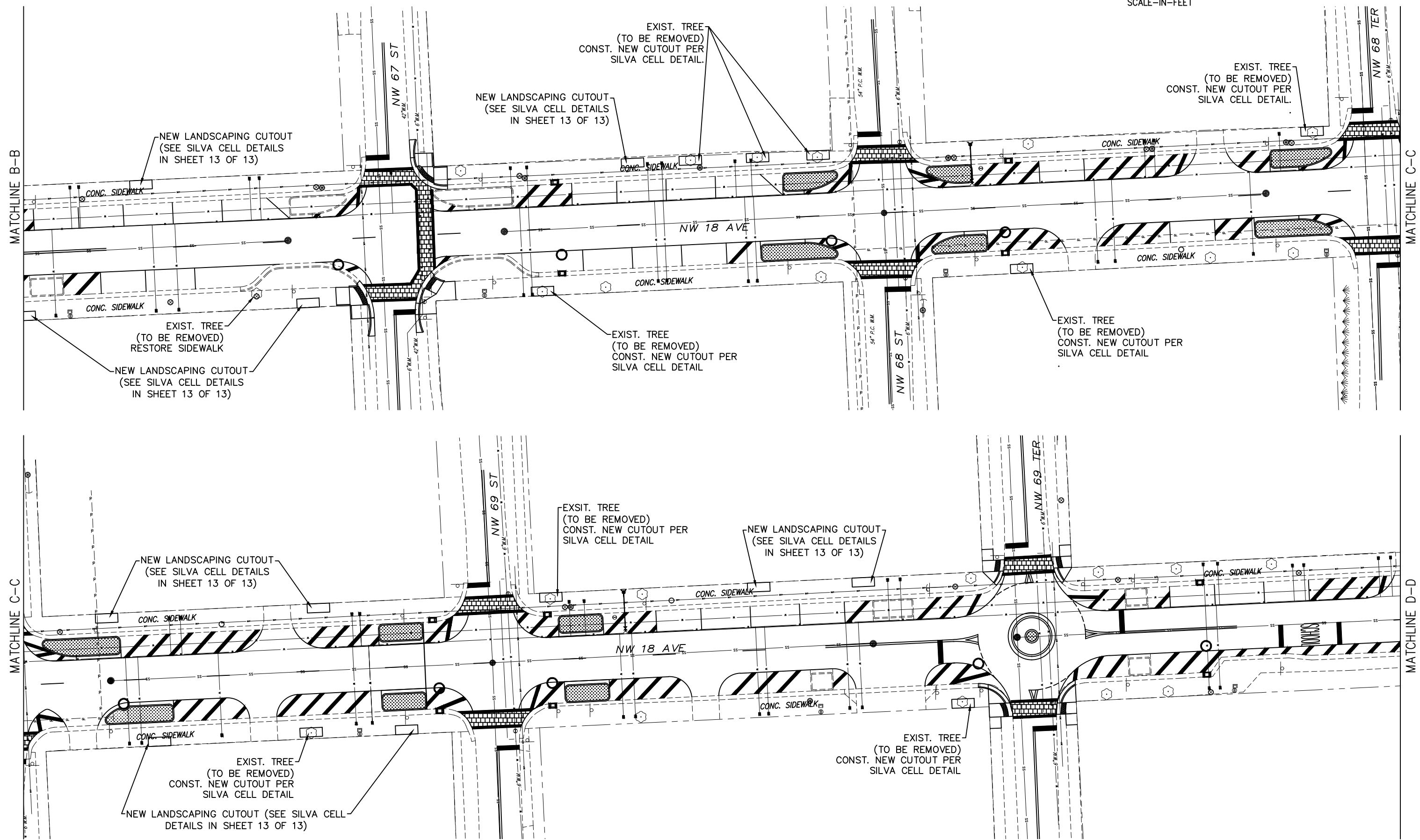
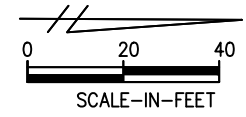
MIAMI-DADE COUNTY
 HIGHWAY DIVISION

DESIGNED BY	NAME	DATE	DRAWN BY	NAME	DATE
	YF		GT		5-16-2023
CHECKED BY	YF		CHECKED BY	YF	

SUPERVISED BY: YANEX FERNANDEZ, PE.

DEPARTMENT OF TRANSPORTATION AND PUBLIC WORKS
 HIGHWAY DIVISION
 MIAMI-DADE
 STEPHEN P. CLARK, CENTER
 111 NW 1 ST
 MIAMI, FLORIDA 33128

LANDSCAPING PLAN



\\vesia3.miamidade.gov\OTPM3\PW\PMW2\TE-DESIGN\TRANSPORTATION DESIGN\PROJECTS\ROADWAYS\NW SECTION\NW 18 Ave from NW 62 St to NW 71 St\DWG\NW 18 AVE BTWN NW 62 TO 71 ST-SECOND CONTRACT 5 16 23.dwg May 17, 2023 - 1:52pm E324622

REVISIONS					
DATE	BY	DESCRIPTION	DATE	BY	DESCRIPTION

MIAMI-DADE COUNTY
 HIGHWAY DIVISION

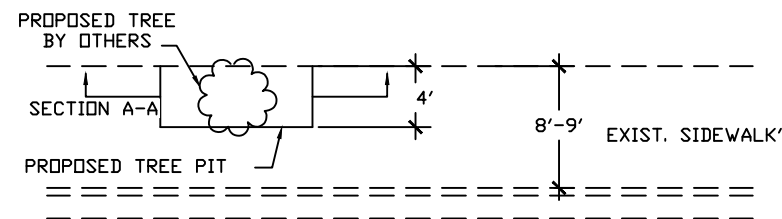
NAME	DATE	NAME	DATE
DESIGNED BY	YF	DRAWN BY	GT
CHECKED BY	YF	CHECKED BY	YF

5-16-2023

SUPERVISED BY: YANEX FERNANDEZ, PE.

DEPARTMENT OF TRANSPORTATION AND PUBLIC WORKS HIGHWAY DIVISION
 MIAMI-DADE
 STEPHEN P. CLARK CENTER
 111 NW 1 ST
 MIAMI, FLORIDA 33128

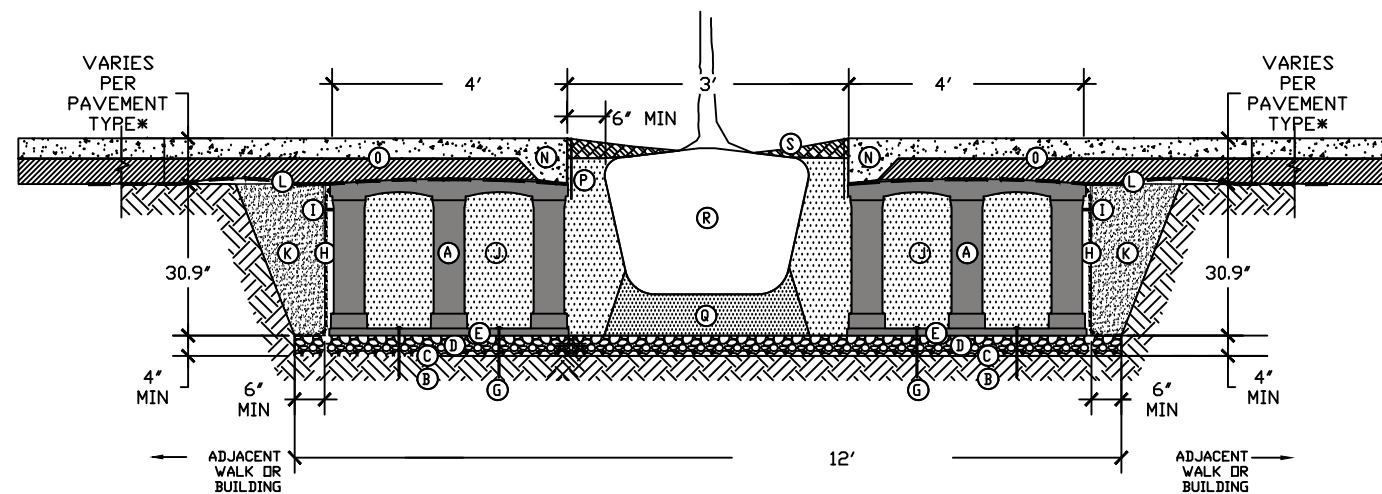
LANDSCAPING PLAN



NOTE:
 -LANDSCAPING TO BE COORDINATED WITH PROS AND PROJECT ENGINEER ON FIELD.

-SILVA CELL ITEMS AND RELATED WORK TO BE UNDER PAY ITEM XXX

NEW LANDSCAPING CUTOUT SILVA CELL DETAIL
 N.T.S.



SILVA CELL SYSTEM 2X SECTION A-A
 NOT TO SCALE

KEY PLAN

- (A) SILVA CELL SYSTEM (DECK, BASE, AND POSTS)
- (B) SUBGRADE, COMPACTED
- (C) GEOTEXTILE FABRIC, PLACED ABOVE SUBGRADE
- (D) 4" MIN AGGREGATE SUB BASE, COMPACTED TO 95% PROCTOR
- (E) SILVA CELL BASE SLOPE, 10% MAX
- (F) 1' TO 6" SPACING BETWEEN SILVA CELLS AT BASE
- (G) ANCHORING SPIKES, CONTACT DEEPROOT FOR ALTERNATIVE
- (H) GEODRID, WRAPPED AROUND PERIMETER OF SYSTEM, WITH 6" TDE (OUTWARD FROM BASE) AND 12" EXCESS (OVER TOP OF DECK)
- (I) CABLE TIE, ATTACHING GEODRID TO SILVA CELL AT BASE OF UPPER LEG FLARE, AS NEEDED

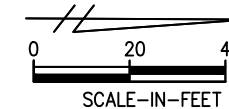
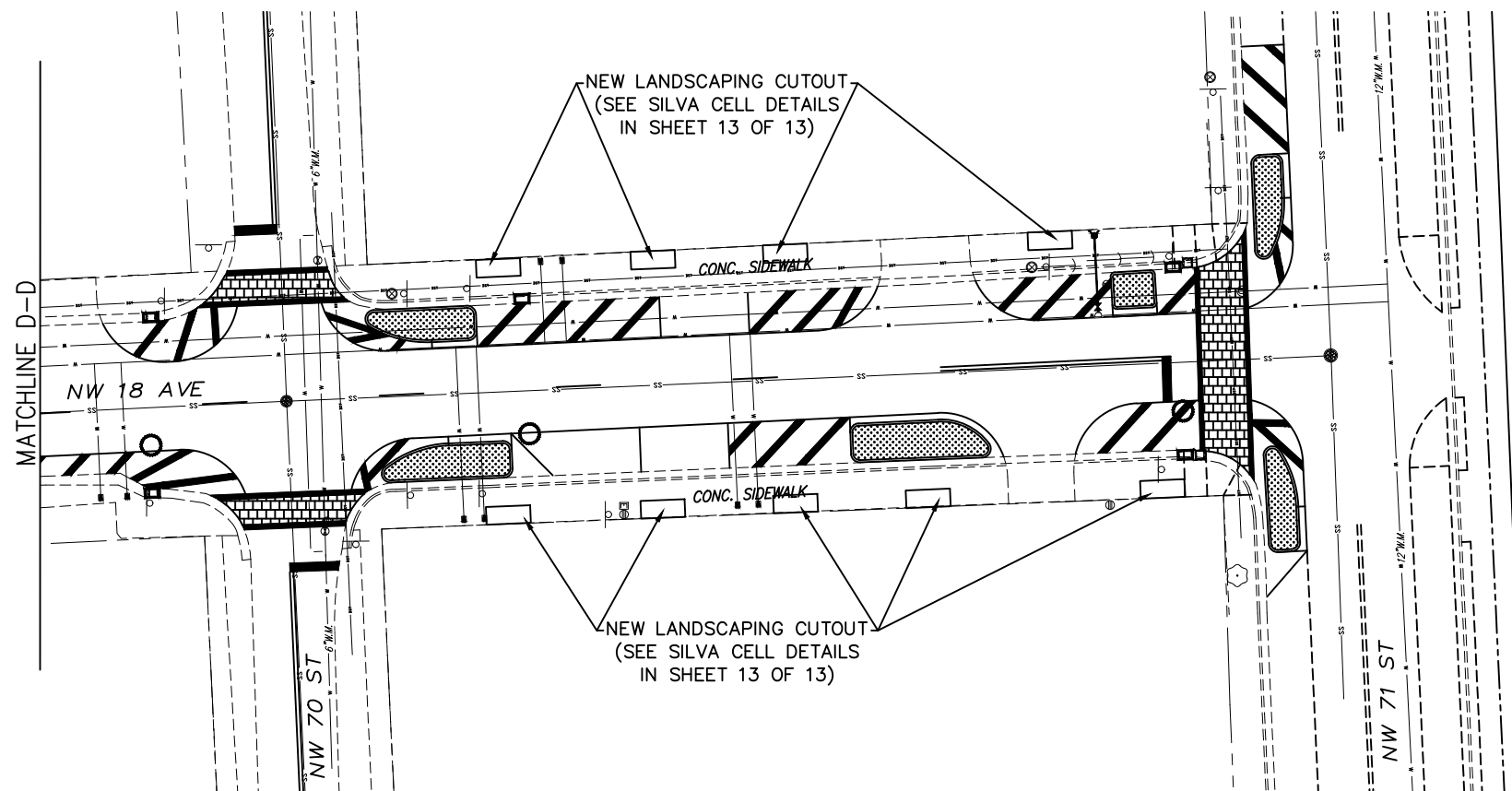
- (J) PLANTING SOIL, PER PROJECT SPECIFICATIONS, PLACED IN LIFTS AND WALK-IN COMPACTED TO 75-85% PROCTOR
- (K) COMPACTED BACKFILL, PER PROJECT SPECIFICATIONS
- (L) GEOTEXTILE FABRIC TO EDGE OF EXCAVATION
- (N) THICKENED EDGE AT TREE OPENING (TO BE USED WITH CONCRETE)
- (I) PAVEMENT AND AGGREGATE BASE PER PROJECT *

- (P) DEEPROOT ROOT BARRIER, 12" OR 18", DEPTH DETERMINED BY THICKNESS OF PAVEMENT SECTION, INSTALL DIRECTLY ADJACENT TO CONCRETE EDGE RESTRAINT
- (Q) PLANTING SOIL BELOW ROOT BALL, COMPACTED WELL TO PREVENT SETTLING
- (R) ROOT BALL
- (S) ADDAPAVE (PER PRODUCT SPECIFICATIONS)
- (T) DEEPROOT WATER AND AIR VENT, ROOTBALL, WHEN REQUIRED

***MINIMUM PAVEMENT PROFILE OPTIONS TO MEET H-20 LOADING**

PAVEMENT	+AGGREGATE BASE COURSE
4" CONCRETE	+ 4" AGGREGATE
3" PAVER	+ 12" AGGREGATE
4" ASPHALT	+ 12" AGGREGATE
2.6" PAVER	+ 5" CONCRETE

- NOTES:**
- EXCAVATION SHALL BE DONE IN ACCORDANCE WITH ALL APPLICABLE HEALTH AND SAFETY REGULATIONS
 - INSTALLATION TO BE COMPLETED IN ACCORDANCE WITH MANUFACTURER'S SPECIFICATIONS



\\vesista3.miamidade.gov\DT\PM\3\PW\PMW2\TE-DESIGN\TRANSPORTATION DESIGN\PROJECTS\ROADWAYS\NW SECTION\NW 18 AVE BTWN NW 62 TO 71 ST\CADD\NW 18 AVE BTWN NW 62 TO 71 ST-SECOND CONTRACT 5 16 23.dwg May 17, 2023 - 1:52pm E324622

REVISIONS					
DATE	BY	DESCRIPTION	DATE	BY	DESCRIPTION

MIAMI-DADE COUNTY
 HIGHWAY DIVISION

DESIGNED BY	NAME	DATE	DRAWN BY	NAME	DATE
CHECKED BY			CHECKED BY		

SUPERVISED BY: YANEK FERNANDEZ, PE.

MIAMI-DADE DEPARTMENT OF TRANSPORTATION AND PUBLIC WORKS HIGHWAY DIVISION
 STEPHEN P. CLARK, CENTER
 111 NW 1 ST
 MIAMI, FLORIDA 33128

LANDSCAPING PLAN