

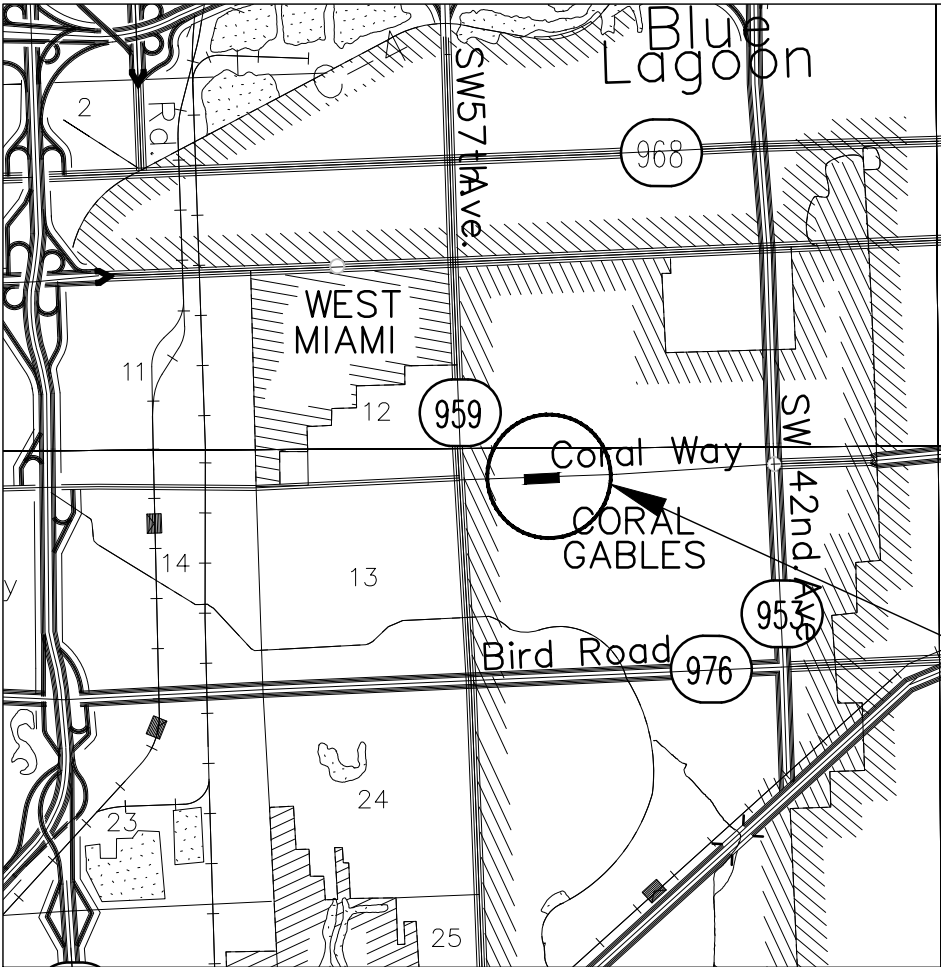
E:\01-ProjectFiles\MDOT\TPWD - Coral Way\220040- Coral Way Drainage Improvements\11-Drawings\01-Engineering\220040101 (pg 1) COVER-SHEET.dwg Jul 06, 2023 - 3:35pm GILBERT

INDEX OF SHEETS

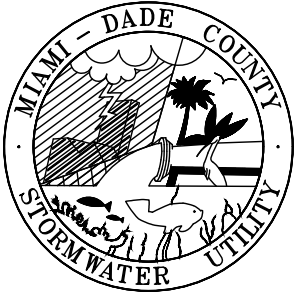
SHT. No.	SHEET DESCRIPTION
1	COVER SHEET
2	GENERAL NOTES
3	SURVEY NOTES, KEY SHEET, LEGEND AND ABBREVIATIONS
4	DRAINAGE PLAN
5	PROPOSED DRAINAGE STRUCTURE TABLE, CONFLICT TABLE AND SUMMARY OF QUANTITIES
6	STANDARD DETAILS
7	SEDIMENT BARRIERS DETAILS
8	INLET PROTECTION SYSTEMS DETAILS
9	STORMWATER POLLUTION PREVENTION PLAN
10	SIGNING & PAVEMENT MARKING PLAN

PLANS FOR PROPOSED
DRAINAGE IMPROVEMENTS TO
CORAL WAY
FROM MADRID ST. TO COLUMBUS BLVD
MIAMI-DADE COUNTY PROJECT NO. 20210108
FUNDING SOURCE: STORMWATER UTILITY
100% PLANS

NOTE:
ATTENTION IS DIRECTED TO THE FACT THAT THESE PLANS MAY HAVE BEEN
REDUCED IN SIZE BY REPRODUCTION. THIS MUST BE CONSIDERED WHEN OBTAINING
SCALED DATA.



PROJECT LOCATION



THESE PLANS HAVE BEEN PREPARED IN ACCORDANCE WITH AND ARE GOVERNED BY THE MIAMI-DADE COUNTY PUBLIC WORKS DEPARTMENT STANDARDS AND SPECIFICATIONS PARTS 1, 2 AND 3. THE MANUAL OF UNIFORM MINIMUM STANDARDS FOR DESIGN, CONSTRUCTION AND MAINTENANCE FOR STREETS AND HIGHWAYS. THE FLORIDA DEPARTMENT OF TRANSPORTATION ROADWAY AND TRAFFIC DESIGN STANDARDS, AND THE FLORIDA DEPARTMENT OF TRANSPORTATION STANDARD SPECIFICATIONS, AS AMENDED BY CONTRACT DOCUMENTS.



PREPARED FOR



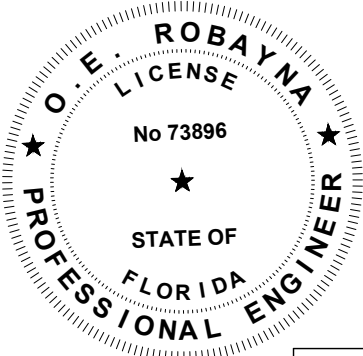
MIAMI-DADE COUNTY DEPARTMENT OF
TRANSPORTATION AND PUBLIC WORKS
ROADWAY ENGINEERING AND
RIGHT OF WAY DIVISION
STORMWATER DRAINAGE DESIGN SECTION

STEPHEN P. CLARK CENTER
111 NW 1 ST, SUITE 1510
MIAMI, FLORIDA 33128

PREPARED BY



ROBAYNA AND ASSOCIATES INC.
5723 NW 158TH STREET
MIAMI LAKES, FLORIDA 33014



ENGINEER OF RECORD:

ROBAYNA AND ASSOCIATES, INC.
OSCAR E ROBAYNA, P.E.
FLORIDA REGISTRATION P.E. No. 73896
CIVIL ENGINEER

DESIGN	OER	CHECK	OER
		DRAWN	VET
DATE	06-26-2023	SHEET	1 OF 10

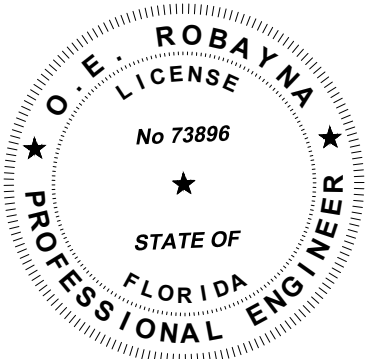
GENERAL NOTES

1. ALL ELEVATIONS REFER TO THE MSL, 1929 NATIONAL GEODETIC VERTICAL DATUM (NGVD)
2. ALL DRAINAGE CONSTRUCTION SHALL BE IN STRICT ACCORDANCE WITH THE PERMITTING REQUIREMENTS OF MIAMI DADE COUNTY REGULATORY AND ECONOMIC RESOURCES AND THE MIAMI-DADE COUNTY DEPARTMENT OF TRANSPORTATION AND PUBLIC WORKS.
3. IT IS THE INTENT THESE PLANS TO BE IN ACCORDANCE WITH APPLICABLE CODES AND AUTHORITIES HAVING JURISDICTION. ANY DISCREPANCIES BETWEEN THERE PLANS AND APPLICABLE CODES SHALL BE IMMEDIATELY BROUGHT TO THE ATTENTION OF THE ENGINEER.
4. CATCH BASINS, SEEPAGE DRAINS, PAVEMENT RESTORATION AND PAVEMENT AROUND CATCH BASINS TO BE ACCORDING TO THE DETAILS AND APPLICABLE REQUIREMENTS OF THE MIAMI-DADE COUNTY DEPARTMENT OF TRANSPORTATION AND PUBLIC WORKS.
5. WHERE NEW PAVEMENT MEETS EXISTING, CONNECTION SHALL BE MADE IN A NEAT STRAIGHT LINE AND FLUSH WITH EXISTING PAVEMENT.
6. CONTRACTOR IS TO VERIFY THE EXACT LOCATION OF ALL EXISTING TREES. STRUCTURES, AND UTILITIES WITH MAY NOT BE SHOWN ON PLANS. ANY EXISTING STRUCTURE, PAVEMENT, TREES OR OTHER EXISTING IMPROVEMENT NOT SPECIFIED FOR REMOVAL WHICH IS TEMPORARLY DAMAGED, EXPOSED OR IN ANY WAY DISTURBED BY CONSTRUCTION PERFORMED UNDER THIS CONTRACT, SHALL BE REPAIRED, PATCHED OR REPLACED AT NO ADDITIONAL COST TO THE OWNER.
7. THE LOCATION AND SIZE OF ALL EXISTING UTILITIES SHOWN ON THESE DRAWNGS ARE APPROXIMATE; ADDITIONAL UTILITIES MAY EXIST WHICH ARE NOT SHOWN ON THESE DRAWINGS. THE CONTRACTOR SHALL BE RESPONSIBLE FOR THE LOCATION OF ALL EXISTING UTILITIES. THE CONTRACTOR SHALL VERIFY ALL UTILITIES BY ELECTRONIC METHODS AND BY HAND EXCAVATION IN COORDINATION WITH ALL UTILITY COMPANIES; PRIOR TO BEGINNING ANY CONSTRUCTION OPERATION, ANY AND ALL CONFLICTS OF EXISTING UTILITIES WITH PROPOSED IMPROVEMENTS MUST BE RESOLVED BY THE ENGINEER AND THE OWNER. THIS WORK BY THE CONTRACTOR SHALL BE CONSIDERED INCIDENTAL TO THE CONTRACT AND NO ADDITIONAL COMPENSATION SHALL BE ALLOWED.
8. CONTRACTOR SHALL CONTACT THE SUNSHINE STATE ONE CALL OF FLORIDA, INC. AT 1 (800) 432-4770 AT LEAST 48 HOURS PRIOR TO PERFORMING ANY DIGGING TO VERIFY THE EXACT LOCATION OF EXISTING UTILITIES.
9. EXISTING TREES SHALL BE REMOVED ONLY IF REQUIRED FOR CONSTRUCTION. THOSE TREES NOT INTERFERING WITH CONSTRUCTION SHALL BE PROTECTED IN PLACE. THE CONTRACTOR IS ADVISED THAT A TREE PERMIT MAY BE REQUIRED FOR TREE REMOVAL. CONTRACTOR SHALL NOTIFY REGULATORY AND ECONOMIC RESOURCES DEPARTEMENT AND MUNICIPALITIES WITH JURIDICITION PRIOR TO REMOVING ANY TREES.
10. EXISTING GRADES WERE TAKEN FROM THE BEST AVAILABLE DATA AND MAY NOT ACCURATELY REFLECT PRESENT CONDITIONS. CONTRACTOR SHALL BE RESPONSIBLE FOR FAMILIARIZING HIMSELF WITH CURRENT SITE CONDITIONS, AND SHALL REPORT ANY DISCREPANCIES TO THE ENGINEER PRIOR TO STARTING WORK.
11. THE CONTRACTOR SHALL PREPARE AND SUBMIT SHOP DRAWNGS FOR ALL ITEMS LISTED IN PROJECT SPECIFICATION.
12. UNDER NO CIRCUMSTANCES SHALL THE CONTRACTOR LEAVE EXCAVATED TRENCHES, OR PARTS OF, EXPOSED OR OPEN AT THE END OF THE WORKING DAY, WEEKENDS, HOLIDAYS OR OTHER TIMES. WHEN THE CONTRACTOR IS NOT WORKING, UNLESS OTHERWISE DETERMINED, ANY TRENCH SHALL BE COVERED, FIRMLY SECURED AND MARKED ACCORDINGLY FOR PEDESTRIAN TRAFFIC.
13. THE CONTRACTOR SHALL MAINTAIN ACCESS TO ALL ADJACENT PROPERTIES AT ALL TIMES.
14. ALL EXCAVATED MATERIAL REMOVED FROM THIS PROJECT SHALL BE DISPOSED OF PROPERLY BY THE CONTRACTOR AT THE CONTRACTOR'S EXPENSE.
15. CAST IRON PRODUCTS: HEAVY-DUTY CLASSIFICATION SUITABLE FOR HIGHWAY TRAFFIC LOADS, OR 16,000 LB. WHEEL LOADS.
16. STEEL GRATING AND COVERS: TRAFFIC CLASSIFICATION H-20 AASHTO H20: 16,000 LBS. OVER 8' X 20" AREA.
17. ALL STRUCTURES MUST BE CAPABLE OF SUSTAINING HEAVY TRAFFIC LOADS.
18. ALL GRASS AREAS AFFECTED BY CONSTRUCTION SHALL BE RE-SODDED.
19. THE CONTRACTOR SHALL BE RESPONSIBLE FOR THE PROVISION, INSTALLATION AND MAINTENANCE OF ALL TRAFFIC CONTROL AND SAFETY DEVICES, IN ACCORDANCE WITH SPECIFICATIONS OUTLINED IN SECTION C2 AND SECTION R19 OF THE PUBLIC WORKS DEPARTMENT MANUAL. IN ADDITION, THE CONTRACTOR IS RESPONSIBLE FOR THE RESETTNG OF ALL TRAFFIC CONTROL AND INFORMATION SIGNING REMOVED DURING CONSTRUCTION PERIOD.
20. EXCAVATED OR OTHER MATERIAL STORED ADJACENT TO OR PARTIALLY UPON A ROADWAY PAVEMENT SHALL BE ADEQUATELY MARKED FOR TRAFFIC SAFETY AT ALL TIMES.
21. TEMPORARY PATCH MATERIAL MUST BE ON THE JOB SITE WHENEVER PAVEMENT IS CUT, OR THE INSPECTOR WILL SHUT THE JOB DOWN.
22. CONTRACTOR SHALL MAINTAIN TRAFFIC ACCORDING TO CORRESPONDING TYPICAL CONTROL DETAIL AS OUTLINED IN MIAMI-DADE COUNTY PUBLIC WORKS MANUAL.
23. CONTRACTOR SHALL MAINTAIN AT LEAST THE FOLLOWING NUMBER OF TRAFFIC LANES FOR CORRESPONDING TIME PERIODS: MONDAY - FRIDAY 7-9 A.M. AND 4-6 P.M.; NO INTERRUPTION TO TRAFFIC IS PERMITTED. ALL OTHER TIMES:
A) MAINTAIN ONE LANE FOR TWO-WAY OPERATION WITH FLAGMEN.
B) MAINTAIN ONE LANE IN EACH DIRECTION FOR TRAFFIC.
24. CONTRACTOR MUST PROVIDE FLASHER ARROW BOARD FOR ANY LANE THAT IS CLOSED OR DIVERTED.
25. CONTRACTOR SHALL NOTIFY LAW ENFORCEMENT AND FIRE PROTECTION SERVICES TWENTY-FOUR (24) HOURS IN ADVANCE OF THE DETOUR IN ACCORDANCE WITH SECTION 336.07 OF FLORIDA STATUTES.
26. COMPLETE AS-BUILT INFORMATION RELATIVE TO LOCATION AND DEPTH OF PIPES, MANHOLES, ETC. SHALL BE ACCURATELY RECORDED BY THE CONTRACTOR. THREE (3) SETS LABELED "AS-BUILT" MUST BE SUBMITTED, SIGNED AND SEALED BY A PROFESSIONAL ENGINEER REGISTERED IN THE STATE OF FLORIDA, TO THE ENGINEER OF RECORD PRIOR TO FINAL ACCEPTANCE OF THE WORK.
27. IT IS RESPONSIBILITY OF THE CONTRACTOR TO SELECT AND OBTAIN THE APPROPRIATE PERMISSION FROM MIAMI-DADE COUNTY OR APPLICABLE AGENCY THAT HAS JURISDICTION ON THE "PROPOSED" STAGING AREAS.

28. DRAINAGE/UTILITY TRENCHES SHALL NOT BE LEFT OPEN OVERNIGHT. A TEMPORARY COVER WITH A CAPACITY OF H-20 LOADING SHALL BE PLACED AS DIRECTED BY THE ENGINEER AT NO EXTRA COST TO MIAMI-DADE COUNTY.
29. PROVIDE FLOWABLE FILL OVER PIPE AS COVER WHERE MINIMUM PIPE COVER OF 2 FEET CANNOT BE ACCOMPLISHED UNDER PAVED AREAS. HOWEVER, THE COVER WITH FLOWABLE FILL SHALL BE NO LESS THAN 12 INCHES.
30. ALL STATIONS AND OFFSETS REFER TO [CENTERLINE]/ [BASELINE] OF CONSTRUCTION, UNLESS OTHERWISE STATED.
31. CONTRACTOR SHALL COMPLY WITH THE REQUIREMENTS OF THE EPA AND THE NATIONAL POLLUTION DISCHARGE ELIMINATION SYSTEM (NPDES).
32. MIAMI-DADE WATER AND SEWER DEPARTMENT REQUIRES THAT ACCESS TO ALL WATER AND SEWER VALVES, SANITARY MANHOLES, AND OTHER CONTROL MECHANISMS BE MAINTAINED THROUGHOUT CONSTRUCTION IN THE EVENT OF AN EMERGENCY TO ENSURE THE PUBLIC HEALTH AND SAFETY. COVERING VALVE BOXES AND MANHOLES CAN BE CONSIDERED UNAUTHORIZED CONSTRUCTION OF AND TAMPERING WITH DEPARTMENT UTILITIES. ALL REQUESTS FOR UTILITY ADJUSTMENTS MUST BE MADE IN WRITING AT LEAST TWO (2) WEEKS IN ADVANCE. FOR MANHOLE AND VALVES, CONTACT UTILITY COORDINATOR PATRICK CHONG AT 786-268-5255. THE DEPARTMENT WILL MAKE ONE FINAL AND PERMANENT ADJUSTMENT AT NO COST TO THE REQUESTING AGENCY. FOR THE ADJUSTMENT OF WATER METERS, CONTACT THE CHIEF OF METER OPERATIONS AND MAINTENANCE: 786-268-5469. FOR ANY FIRE HYDRANTS THAT ARE DAMAGED OR BUMPED DURING CONSTRUCTION, CONTACT THE MDWASD HYDRANT SHOP AT 305-552-4926, BEFORE POURING CONCRETE FOR THE SIDEWALK. IN THE EVENT OF A WATER OR SEWER EMERGENCY, WASD EMERGENCY NUMBER 305-552-8901. THIS LINE IS OPEN 24 HOURS, 7 DAYS A WEEK.
33. THE CONTRACTOR IS ADVISED THAT PROPERTIES ADJACENT TO THE PROJECT HAVE ELECTRIC, TELEPHONE, GAS, WATER AND/OR SEWER SERVICE LATERALS WHICH MAY NOT BE SHOWN IN PLANS. THE CONTRACTOR MUST REQUEST THE LOCATION OF THESE LATERAL SERVICES FROM THE UTILITY COMPANIES. THE ADDITIONAL COST OF EXCAVATING, INSTALLING, BACKFILLING, AND COMPACTING AROUND THESE SERVICES MUST BE INCLUDED IN THE BID RELATED ITEM FOR THE WORK BEING DONE.
34. THE CONTRACTOR SHOULD TAKE SPECIAL NOTE OF SOIL CONDITIONS THROUGHOUT THIS PROJECT. ANY SPECIAL SHORING, SHEETING OR OTHER PROCEDURES NECESSARY TO PROTECT ADJACENT PROPERTY, PUBLIC OR PRIVATE, DURING THE EXCAVATION OF SUBSOIL MATERIAL AND EXFILTRATION TRENCH, OR FILLING OF ANY AREA, OR FOR ANY OPERATION DURING CONSTRUCTION, SHALL BE THE SOLE RESPONSIBILITY OF THE CONTRACTOR.
35. IF SHEETING, SHORING OR DEWATERING, INCLUDING WELL POINTS ARE NECESSARY, THE CONTRACTOR MUST MONITOR AND CONTROL ALL WORK THAT MAY CAUSE CRACKING TO ANY ADJACENT BUILDING, STRUCTURE, OR PROPERTY AREA. THE CONTRACTOR SHALL BE RESPONSIBLE FOR ANY DAMAGES CAUSED BY THESE OPERATIONS. COST OF SHEETING, SHORING, OR DEWATERING, SHALL BE INCLUDED IN THE RELATED BID ITEM FOR THE WORK BEING DONE.
36. ALL DITCH EXCAVATIONS SHALL BE PERFORMED IN FULL COMPLIANCE WITH THE PROVISIONS OF THE TRENCH SAFETY ACT.
37. ANY KNOWN OR SUSPECTED HAZARDOUS MATERIAL FOUND ON THE PROJECT BY THE CONTRACTOR SHALL BE IMMEDIATELY REPORTED TO THE PROJECT ENGINEER, WHO SHALL DIRECT THE CONTRACTOR TO PROTECT THE AREA OF KNOWN OR SUSPECTED CONTAMINATION FROM FURTHER ACCESS. THE ENGINEER WILL ARRANGE FOR INVESTIGATION, IDENTIFICATION, AND REMEDIATION OF THE HAZARDOUS MATERIAL. THE CONTRACTOR SHALL NOT RETURN TO THE AREA OF CONTAMINATION UNTIL APPROVAL IS PROVIDED BY THE PROJECT ENGINEER.
38. THE CONTRACTOR SHALL USE A STREET SWEEPER (USING WATER) OR OTHER EQUIPMENT CAPABLE OF CONTROLLING AND REMOVING DUST. APPROVAL OF THE USE OF SUCH EQUIPMENT IS CONTINGENT UPON ITS DEMONSTRATED ABILITY TO DO THE WORK.
39. WHEN DISSIMILAR MATERIAL CONNECTIONS ARE MADE, SUCH AS CONCRETE TO METAL, THE DISSIMILAR MATERIAL SHALL BE SEPARATED BY COATING THE CONTACT SURFACE WITH BITUMASTIC MATERIAL.
40. PRIOR TO CONSTRUCTION THE CONTRACTOR WILL INSPECT ALL EXISTING STRUCTURES WHICH ARE TO REMAIN AND NOTIFY THE ENGINEER OF ANY OBVIOUS STRUCTURAL DEFICIENCIES.
41. WHERE CONNECTIONS TO EXISTING SIDEWALKS AND DRIVEWAYS ARE NOT INDICATED ON PLANS, PROPER CONNECTIONS ARE TO BE MADE AS DIRECTED BY THE ENGINEER. DRIVEWAY CONNECTIONS SHALL BE PROVIDED FOR ACCESS TO ALL PRIVATE PROPERTIES ADJACENT TO THE PROJECT. PAYMENT SHALL BE INCLUDED IN THE COST OF RELATED BID ITEMS.
42. CONTRACTOR TO INSTALL ½" PERFORMED EXPANSION JOINT WHEN PROPOSED SIDEWALK IMPROVEMENTS IS IMMEDIATELY ADJACENT TO EXISTING CONCRETE SLAB AND/OR BUILDING.
43. THE SIDEWALK AT DRIVEWAY TURNOUTS SHALL BE 6" CONCRETE.
44. ALL BUS STOP SIGNS TO BE FURNISHED BY MIAMI-DADE TRANSPORTATION AND PUBLIC WORKS DEPARTMENT. ENGINEER TO CONTACT MIAMI-DADE COUNTY TRANSPORTATION AND PUBLIC WORKS DEPARTMENT AT (305) 637-3753 ONE (1) WEEK PRIOR TO POURING SIDEWALKS AND COORDINATE THE REMOVAL AND REPLACEMENT OF BUS STOP SIGNS AND BENCHES.
45. THE INFORMATION PROVIDED IN THESE DRAWINGS IS SOLELY TO ASSIST THE CONTRACTOR IN ASSESSING THE NATURE AND EXTENT OF CONDITIONS WHICH WILL BE ENCOUNTERED DURING THE COURSE OF WORK. THE CONTRACTORS ARE DIRECTED, PRIOR TO BIDDING, TO CONDUCT WHATEVER INVESTIGATIONS THEY DEEM NECESSARY TO ARRIVE AT THEIR OWN CONCLUSION REGARDING THE ACTUAL CONDITIONS THAT WILL BE ENCOUNTERED AND UPON WHICH BIDS WILL BE BASED.
46. ANY SURVEY MONUMENT, BENCH MARK, ETC., FOUND DURING CONSTRUCTION ACTIVITIES ARE TO BE RESTORED TO IT IS ORIGINAL LOCATION AND COORDINATES AS DEPICTED IN COUNTY RECORDS PLAT AND BOOK. RESTORATION WILL BE AT NO ADDITIONAL COST AND MUST BE SHOWN ON AS-BUILT PLANS.
47. FOR THE INSTALLATION OF SOD IN SWALE AREAS ADJACENT TO ROADWAYS, SIDEWALKS, DRIVEWAY APPROACHES OR ANY OTHER PAVED SURFACES, THE SWALE MUST BE RESTORED TO FORM A "V" SHAPE AS PER THE DETAILS INCLUDED IN THE MIAMI DADE COUNTY PUBLIC WORKS MANUAL. SPECIFICALLY, THE ELEVATION OF THE TOP OF THE SOD MUST MATCH THE ABUTTING AREAS (EDGE OF PAVEMENT, SIDEWALK OR DRIVEWAY APPROACH) AND THE CENTERLINE OF THE SWALE SHALL BE ON AVERAGE 3 INCHES BELOW THE ROADWAY EDGE OF PAVEMENT ELEVATION UNLESS OTHERWISE DIRECTED BY THE ENGINEER.

CORAL WAY, FROM MADRID ST. TO COLUMBUS BLVD
DRAINAGE IMPROVEMENT PROJECT

PROJECT NO. 20210108 SHEET 2 OF 10



PRINTED COPIES OF THIS DOCUMENT ARE NOT CONSIDERED SIGNED AND SEALED AND THE SIGNATURE MUST BE VERIFIED ON ANY ELECTRONIC COPIES.

REVISIONS

DATE	BY	DESCRIPTION	DATE	BY	DESCRIPTION

CORAL WAY
FROM MADRID ST TO COLUMBUS BLVD

NAME	DATE	NAME	DATE
DESIGNED AC/GC	06/26/2023	DRAWN VET/GC	06/26/2023
CHECKED OER	06/26/2023	CHECKED OER	06/26/2023
SUPERVISED BY: OER			

MIAMI-DADE COUNTY	DEPARTMENT OF TRANSPORTATION AND PUBLIC WORKS HIGHWAY DIVISION	
	STEPHEN P. CLARK, CENTER 111 NW 1 ST MIAMI, FLORIDA 33128	

GENERAL NOTES

SURVEY NOTES:

-SURVEY PERFORMED BY DTPW SURVEY SECTION.
-SURVEY DATE: 12-08-2020 -SURVEY AS PER
F.B. 2980 PAGE 39- 42
-CORAL WAY FROM MADRID ST TO COLUMBUS BLVD
-THE ELEVATIONS ARE BASED ON NGVD 1929, MIAMI DADE COUNTY
BM NAME 1 =P-510-M.D.C.B.M
BM ELEV 1= 11.78'
BM NAME 2 =P-401-M.D.C.B.M
BM ELEV 2= 16.34'
-US C&G BRASS DISC (TRIANGULATION STA.)
-SECTION 07 & 18, TOWNSHIP 54, RANGE 41.
-BENCHMARK FOR VERTICAL CONTROL INFORMATION WAS RECORDED
BY DTPW SURVEY SECTION.
-RIGHT-OF-WAY LINES SHOWN HEREON AS PER EXISTING PLATS.

LOCATION MAP
& KEY MAP



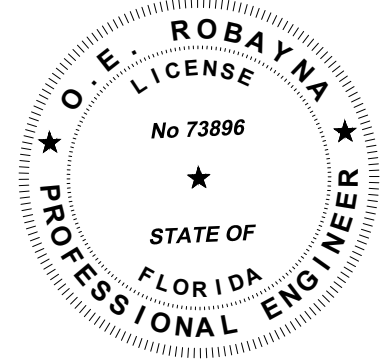
KEY SHEET
TRS 54-41-07/18

LEGEND AND ABBREVIATIONS:

- (M) = MEASURES
(P) = By PLAT
F; Fd = FOUND
CND = CONCRETE NAIL & DISK
PKF = PK NAIL FOUND
CNDP = CONCRETE NAIL & DISK FOUND
CNF = CONCRETE NAIL & DISK FOUND
CNC = CONCRETE NAIL CUT
DHF = DRILL HOLE FOUND
NF = NAIL FOUND
PKDF = PK NAIL & DISK FOUND
R/W = RIGHT OF WAY
RBAC = ROCK BASE ASPHALT COMPOUND
B = BASE LINE
C = CENTER LINE
R = RADIUS
L = LENGTH OF CURVE
C&G = CURB & GUTTER
VG = VALLEY GUTTER
E/P = EDGE OF PAVEMENT
T/B = TOP OF BANK
E/W = EDGE OF WATER
PCP = PERMANENT CONTROL POINT
RLS = REGISTERED LAND SURVEYOR
PLS = PROFESSIONAL LAND SURVEYOR
P = STREET SIGN
P = ALUM. FLASHING SCHOOL LIGHT
= MAILBOX
= DECORATIVE LIGHT POLE
= METAL LIGHT POLE
= METAL TRAFFIC LIGHT POLE
= METAL POWER POLE
= CONCRETE LIGHT POLE
= CONCRETE POWER POLE
= WOOD LIGHT POLE
= WOOD POWER POLE
= WOOD TELEPHONE POLE
= FIBERGLASS LIGHT POLE
= WATER MANHOLE
= SANITARY MANHOLE
= SANITARY SEWER VALVE (FM)
= CABLE TV PEDESTRIAN
= TV CABLE RISER BOX
= TV CONTROL BOX
= CABLE BOX
= TELEPHONE HANDHOLE
= TELEPHONE MANHOLE
= TELEPHONE UTILITY BOX
= TELEPHONE RISER BOX
= TELEPHONE RISER CONTROL BOX
= TELEPHONE CONTROL BOX
= BOX
= CROSSING SIGN
= POST
= INTERCOM
= GAS VALVE
= PVC POST
= GUY WIRE
= SPRINKLE HEAD
= CENTRAL ANGLE OF CURVE
= MONITORING WELL
= PETROLEUM PIPELINE
= ELECTRIC HANDHOLE
= ELECTRIC MANHOLE
= FIRE HYDRANT
= WATER VALVE
= WATER METER
= TRAFFIC SIGH MANHOLE
= TRAFFIC SIGH HANDHOLE
= TRAFFIC CONTROL BOX
= TRAFFIC SIGNAL BOX
= ELECTRICAL CONTROL BOX
= RAIL ROAD CROSSING (LIGHT)

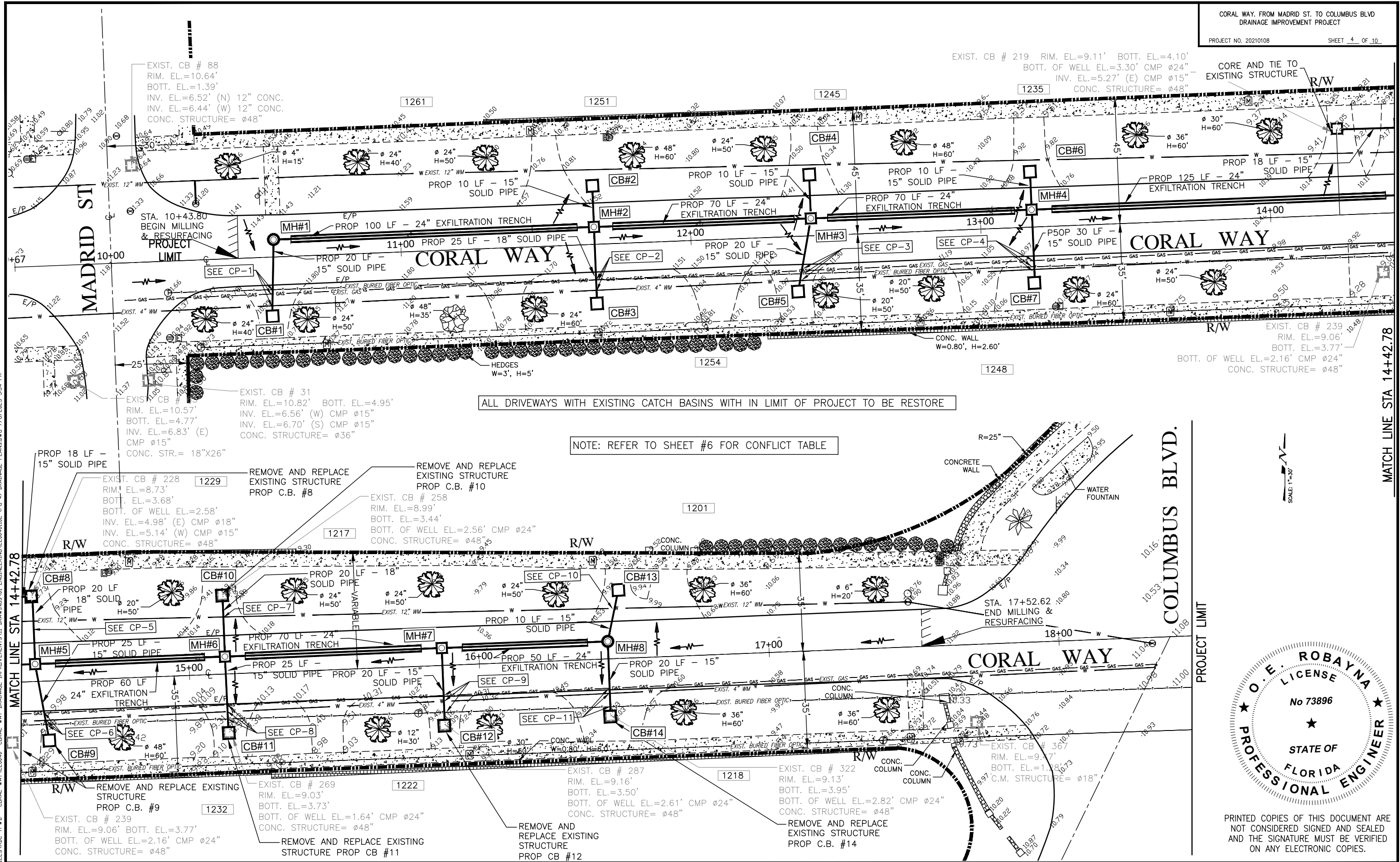
- = CONCRETE
= ASPHALT
= UNIMPROVED DRIVEWAY
= GRAVEL
= BRICK
= STAMPED CONCRETE
= CONCRETE BLOCK FENCE
= TREE DIAMETER
= EXISTING CATCH BASIN
= EXISTING STORMWATER MANHOLE
= PROPOSED CATCH BASIN
= PROPOSED STORMWATER MANHOLE
= EXISTING SOLID PIPE
= EXISTING FRENCH DRAIN
= PROPOSED SOLID PIPE
= PROPOSED FRENCH DRAIN
= RIGHT-OF-WAY LINE
= WOOD FENCE
= CHAIN LINK FENCE
= IRON FENCE
= EXISTING SIDEWALK
= F.P.L. UNDERGROUND
= F.P.L. OVERHEAD
= WATER LINE MAIN
= GAS MAIN
= FORCE MAIN
= CABLE TV
= BELL SOUTH TELEPHONE CONDUIT
= BASELINE
= SANITARY SEWER

- AVOCADO TREE
ARECA TREE
AUST. PINE TREE
ALMOND TREE
BLACK OLIVE TREE
BOTTLE BRUSH TREE
BISMARCK PALM
BUSH TREE
BISCHOFIA TREE
BOTTLE PALM
BANANA TREE
BANYAN TREE
BRAZILIAN PEPPER
CABBAGE TREE
COCONUT TREE
CLUSTER PALM
CYPRESS TREE
CANARY PALM
COCOS PLUMOSA
CACTUS
DATE PALM
FICUS TREE
FLORIDA ORCHID TREE
FOX TAIL TREE
GUMBO LIMBO TREE
HIBISCUS TREE
IXORA TREE
JUNIPER TREE
JARACANDA TREE
KAPOK TREE
LIVE OAK TREE
MAMEY TREE
MULBERRY TREE
MAHOGANY TREE
MANGO TREE
MANGROVE TREE
NISPERO TREE
NORFOLK TREE
OAK TREE
ORANGE GEIGER
PINE TREE
PALM TREE
PHILODENDRON/RUBBER TREE
QUEEN PALM TREE
RHOBOLINI TREE
ROYAL POINCIANA TREE
ROSEWOOD TREE
ROYAL PALM
SOUR ORANGE TREE
SEA GRAPE TREE
SOLITARY PALM
SILVER BUTTONWOOD TREE
TABEBULA TREE
TRAVELER CLUSTER
TAMARIND TREE
UNKNOWN TREE
UMBRELLA TREE
WASHINGTON PALM
ZAPODILLA TREE
HEDGES



PRINTED COPIES OF THIS DOCUMENT ARE
NOT CONSIDERED SIGNED AND SEALED
AND THE SIGNATURE MUST BE VERIFIED
ON ANY ELECTRONIC COPIES.

E:\01-PROJECTFILES\WDC.TPVD - CORAL WAY DRAINAGE IMPROVEMENTS\11-DRAWINGS\01-ENGINEERING\2200-40102.PG 3) SURVEYOR'S NOTES, KEY SHEET, LEGEND AND ABBREVIATIONS.DWG 5/3/2023 11:52 AM



E:\01-PROJECTS\FILES\WDC TPVD - CORAL WAY DRAINAGE IMPROVEMENTS\1-DRAWINGS\01-ENGINEERING\2020\40102 (PG 4) DRAINAGE PLANS.DWG 7/6/2023 3:34 PM

REVISIONS					
DATE	BY	DESCRIPTION	DATE	BY	DESCRIPTION

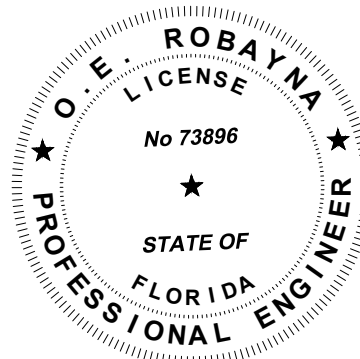
CORAL WAY
FROM MADRID ST TO COLUMBUS BLVD

NAME	DATE	NAME	DATE
DESIGNED	AC/GC 06/26/2023	DRAWN	BY VET/GC 06/26/2023
CHECKED	BY OER 06/26/2023	CHECKED	BY OER 06/26/2023
SUPERVISED	BY OER		

DEPARTMENT OF TRANSPORTATION
AND PUBLIC WORKS
HIGHWAY DIVISION
STEPHEN P. CLARK, CENTER
111 NW 1 ST
MIAMI, FLORIDA 33128

MIAMI-DADE
COUNTY

DRAINAGE PLAN



PRINTED COPIES OF THIS DOCUMENT ARE NOT CONSIDERED SIGNED AND SEALED AND THE SIGNATURE MUST BE VERIFIED ON ANY ELECTRONIC COPIES.

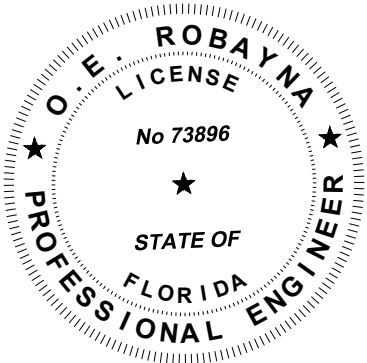
E:\01-PROJECTFILES\WDC.TPJ\DWG - CORAL WAY DRAINAGE IMPROVEMENT\SV11-DRAWINGS\01-ENGINEERING\220040102.DWG 53 DRAINAGE STR. TABLE, CONFLICT TABLE & SUMM OF QUANTITIES.DWG 7/6/2023 3:34 PM

SUMMARY OF QUANTITIES			
ITEM NO.	DESCRIPTION	UNIT	QUANTITY
102-71-12	TEMPORARY BARRIER WALL (FURNISH & INSTALL) (WATER FILLED)	L.F.	200
102-74-1	BARRICADES (TEMPORARY - TYPES I, II, VP AND DRUM)	E.A./DAY	9600
102-74-2	BARRICADES (TEMPORARY -TYPE III, 6')	E.A./DAY	9600
102-76A	ADVANCE WARNING ARROW PANEL	E.A./DAY	600
102-91-1A	PAVEMENT MARKING TEMPORARY (SOLID) (ANY WIDTH) (YELLOW OR WHITE) (PAINT)	L.F.	3060
102-77	HIGH INTENSITY FLASHING (TEMPORARY, TYPE"B")	E.A./DAY	2400
102-99	VARIABLE MESSAGE SIGN (TEMPORARY)	E.A./DAY	40
104-10-3	SEDIMENT BARRIER	L.F.	500
104-18	INLET PROTECTION SYSTEM	EACH	17
125-8	BACKFILLING EXISTING TRENCH	C.Y.	34
327-70-01	MILLING 1" AVERAGE DEPTH	S.Y.	1249
331-72-10A-HMA	ROADWAY PAVEMENT RESTORATION (REPLACE AND MATCH EXISTING BASE THICKNESS AND ASPHALT COURSE WITH 8" MINIMUM, PRIMED LIMEROCK BASE AND 1" THICK OF HMA, ASPHALT WORK CATEGORY 3)	S.Y.	619
331-72-10B-HMA	INLET PAVEMENT (INCLUDES 6" LIMEROCK BASE AND 1" THICK OF HMA, ASPHALT WORK CATEGORY 2)	S.Y.	130
334-2-13-1	HOT MIX ASPHALT , TRAFFIC C, SP-9.5	TON	104
334-2-13-1A	DRIVEWAY PAVEMENT ASPHALT	SY	409
400-1-15	CLASS I CONCRETE [(MISCELLANEOUS)(TRENCH BUILD-UP, COLLARS, PIPE PLUGS, STRUCTURE PLUGS ETC.) (THIS ITEM IS CONTINGENT UPON FIELD CONDITIONS AND MAY INCREASED, DECREASED OR ELIMINATED BY THE ENGINEER)]	CY	5
425-1-1	SWALE INLET TYPE D-3 (36" DIA.) (LESS THAN 10' DEEP)	E.A.	13
425-1-2A	SWALE INLET TYPE D-3 (36"X36" DIA.) (LESS THAN 10' DEEP)	E.A.	1
425-2-41	MANHOLE (TYPE P-7T, ANY DIMENSION, MAXIMUM 15' DEEP)	E.A.	8
425-82	MODIFY STRUCTURE-CUT TO ENLARGE OPENING AS NEEDED IN ORDER TO ACCOMMODATE PIPE DUE TO UTILITY CONFLICTS, BRICK AND MORTAR AS NEEDED	E.A.	4
430-171-115	PIPE CULVERT (15" DIAMETER)	L.F.	283
430-171-124	PIPE CULVERT (24" DIAMETER ROUND)	L.F.	50
430-94-1-1	DESILTING PIPE, 0-48"	L.F.	100
430-95-2	DESILTING DRAINAGE STRUCTURE	E.A.	5
443-70-4-3	FRENCH DRAIN (24" DIAMETER PIPE, TRENCH DEPTH 15 FT BLS)	L.F.	545
522-1(1)	CONCRETE SIDEWALK(4" THICK)(CLASS I CONCRETE, 3000 P.S.I.)(INCLUDING PEDESTRIAN RAMPS AND SIDEWALK CURBS)	S.Y	20
575-2A	SODDING- ST AUGUSTINE, OR MATCH EXISTING, INCLUDES WATERING AND MAINTENANCE. CONTINGENT ITEM BASED ON FIELD CONDITIONS, MAY BE INCREASED, OR DECREASED BY THE ENGINEER.	S.Y.	778
580-3	TREE PROTECTION BARRICADES	L.F.	1120
706-1-12	REFLECTIVE PAVEMENT MARKERS, (CLASS B, MONO OR BI-DIRECTIONAL, ALL COLORS)	E.A.	36
711-11-121	THERMOPLASTIC (WHITE) (SOLID 6")	L.F.	1560
711-11-221	THERMOPLASTIC (YELLOW) (SOLID 6")	L.F.	1500

PROPOSED STRUCTURES SCHEDULE											REMARKS	
STRUCTURE	TYPE OF STRUCTURE	STATION	INSIDE DIMENSIONS	RIM EL. FT	BOTTOM EL. FT	PIPE INVERT ELEVATION						
						N	S	E	W	SW	NE	
MH- 1	P-7T	10 + 60.00	48"	11.90	1.20		4.62	3.20				
CB-1	D-3	10+60.50 (27' RT)	36"	10.40	2.62	4.62						
CB-3	D-3	11+58.00 (21' RT)	36"	10.20	2.50						4.50	
MH- 2	P-7T	11+58.00	42"x42"	11.77	1.20	3.70		3.20	3.20	4.50		
CB- 2	D-3	11+58.00 (21' LT)	36"	10.30	1.70		3.70					
CB-5	D-3	11 +42.50 (21' RT)	36"	10.40	2.50						4.50	
CB-4	D-3	12+47.00 (21' LT)	36"	9.70	0.70		2.70					
MH-3	P-7T	12+47.50	42"x42"	11.48	0.70	2.70		3.20	3.20	4.50		
CB-7	D-3	13+22.50 (21' RT)	36"	10.00	1.50						3.50	
MH-4	P-7T	13+22.50	42"x42"	11.10	0.70	2.70		3.20	3.20	3.50		
CB-6	D-3	13+22.50(21' LT)	36"	9.20	0.70		2.70					
CB-9	D-3	14 + 50.80 (21' RT)	36"	9.00	3.00						5.00	
CB-219		14+23.85(30' LT)	48"	9.11	3.30			EXIST.				REMOVE AND REPLACE EXIST. CATCH BASIN
CB-8	D-3	14+45.74 (30' LT)	36"x36"	8.73	0.70		2.70		EXIST.			EXIST. CATCH BASIN TO REMAIN
MH-5	P-7T	14+47.74	42"x42"	10.34	0.70	2.70		3.20	3.20	3.50		REMOVE AND REPLACE EXIST. CATCH BASIN
CB-10	D-3	15+17.50 (28' LT)	36"	9.00	0.70		2.70					REMOVE AND REPLACE EXIST. CATCH BASIN
MH-6	P-7T	15+17.50	42"x42"	10.30	0.70	2.70	3.50	3.20	3.20			
CB-11	D-3	15+17.50(21' RT)	36"	9.00	1.50	3.50						REMOVE AND REPLACE EXIST. CATCH BASIN
CB-12	D-3	15+92.50 (21' RT)	36"	9.00	1.00	3.00						REMOVE AND REPLACE EXIST. CATCH BASIN
MH-7	P-7T	15 + 92.50	42"x42"	10.60	1.00		3.00	3.20	3.20			
MH-8	P-7T	16+50.00	48"	10.71	1.00		4.00		3.20		3.00	
CB-14	D-3	16+51.00 (20' RT)	36"	9.15	2.00	4.00						REMOVE AND REPLACE EXIST. CATCH BASIN
CB-13	D-3	16 + 55.00 (24' LT)	36"	9.40	1.00					3.00		

CONFLICT TABLE								
CONFLICT POINT	DRAINAGE		WATER		GAS		FIBER OPTIC	
	INVERT EL.	PIPE DIAMETER	TOP EL.	PIPE DIAMETER	TOP EL.	PIPE DIAMETER	TOP EL.	PIPE DIAMETER
CP-1	4.62	15"	(A)+6.95	4"	(A)+8.5	4"	(A)+8.00	3"
CP-2	4.50	15"	(A)+6.96	4"	(A)+8.00	4"	(A)+7.5	3"
CP-3	4.50	15"	(A)+6.98	4"	(A)+7.98	4"	(A)+8.48	3"
CP-4	3.50	15"	(A)+6.70	4"	(A)+8.00	4"	(A)+7.9	3"
CP-5	2.70	15"	(A)+6.00	12"				
CP-6	5.00	15"	(A)+5.92	4"	(A)+6.92	4"	(A)+7.42	3"
CP-7	2.70	15"	(A)+5.70	12"				
CP-8	3.50	15"	(A)+5.30	4"	(A)+6.4	4"	(A)+2.82	3"
CP-9	3.00	15"	(A)+5.35	4"	(A)+6.45	4"	(A)+2.85	3"
CP-10	3.00	15"	(A)+6.25	12"				
CP-11	4.00	15"	(A)+6.50	4"	(A)+7.5	4"	(A)+6.63	3"

ELEVATIONS OF PIPES WERE NOT PROVIDED BY UTILITY COMPANY. THEREFORE STANDARD COVER WERE ASSUMED. ASSUMED TOP AND PIPE DIAMETER ARE PRECEDED BY AN "A". ELEVATION ON TABLE ARE IN N.G.V.D.



PRINTED COPIES OF THIS DOCUMENT ARE NOT CONSIDERED SIGNED AND SEALED AND THE SIGNATURE MUST BE VERIFIED ON ANY ELECTRONIC COPIES.

R E V I S I O N S										CORAL WAY FROM MADRID ST TO COLUMBUS BLVD	DESIGNED BY AC/GC 06/26/2023 CHECKED BY OER 06/26/2023 SUPERVISED BY: OER	NAME AC/GC 06/26/2023 DRAWN BY VET/GC 06/26/2023 CHECKED BY OER 06/26/2023	NAME VET/GC 06/26/2023 OER 06/26/2023	DATE 06/26/2023	DATE 06/26/2023	DATE 06/26/2023	DEPARTMENT OF TRANSPORTATION AND PUBLIC WORKS HIGHWAY DIVISION STEPHEN P. CLARK CENTER 111 NW 1 ST MIAMI, FLORIDA 33128	MIAMI-DADE COUNTY
DATE	BY	DESCRIPTION	DATE	BY	DESCRIPTION	DATE	BY	DESCRIPTION	DESCRIPTION									

PROP. DRAINAGE STR. TABLE,
CONFLICT TABLE & SUMM OF
QUANTITIES



2'-0" MINIMUM NON-ROADWAY SURFACE

2'-10" FOR TRENCHES UNDER ROADWAY



NOTE

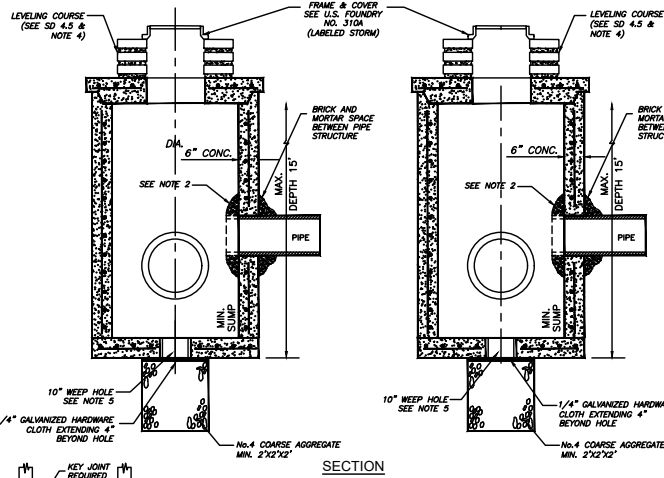
- | | | | | |
|----------------------|-----------------------|---|---|---|
| MIAMI-DADE
COUNTY | APPROVED

_____ | REVISED
<u>2/8/2011</u>
<u>9/26/2012</u>
<u>10/19/2012</u> | STANDARD STORM DRAINAGE DETAIL

EXFILTRATION TRENCH
(FRENCH DRAIN) | SD

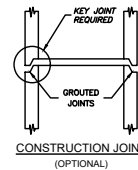
1.1

SHEET <u>1</u> OF <u>2</u> |
|----------------------|-----------------------|---|---|---|



SECTION

- NOTES:**
- 1.- CAST TOP SLAB TO FIT WALL USED.
 - 2.- PIPES MAY EXTEND INTO CATCH BASIN A MAXIMUM OF 4".
 - 3.- USE 4,000 psi CONCRETE (MINIMUM), MAXIMUM W/C=0.53, GRADE 60 STEEL FOR REINFORCING BARS AND GRADE 65 FOR WIRE.
 - 4.- A SMOOTH LAYER OF MORTAR 1/2" THICK INSIDE AND OUTSIDE.
 - 5.- WEEP HOLES ARE TO BE USED WHEN THE YEARLY LOWEST WATER ELEVATION IS ABOVE THE TOP OF THE BOTTOM SLAB OF THE STRUCTURE.

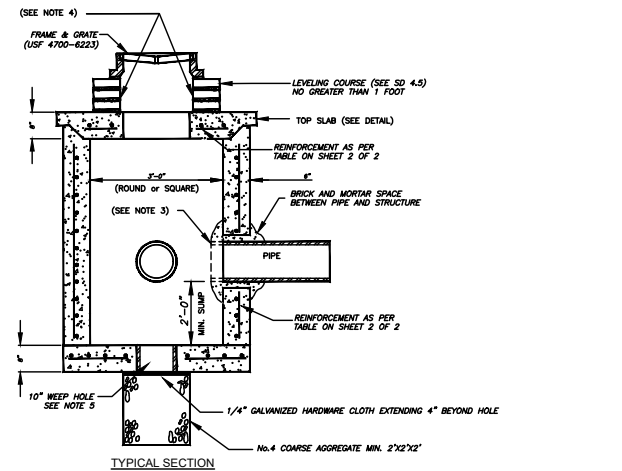


CONSTRUCTION JOIN
(OPTIONAL)

MIAMI-DADE COUNTY	APPROVED <u>5/8/2018</u>	REVISED <u>5/8/2018</u>	STANDARD STORM DRAINAGE DETAIL MANHOLE AND INLET (TYPE P)	SD 2.7
DEPARTMENT OF TRANSPORTATION AND PUBLIC WORKS				SHEET 1 OF

ROUND STRUCTURE									
Standard Detail	Dia. (ft.) Min.	Dia. (ft.) Max.	Height (ft.)	Wall Thickness (in)	Wall Steel	Top Slab Thickness (in)	Top Slab Steel	Bottom Slab Thickness (in)	Bottom Slab Steel
2.7	3.5	4.0	0.0 - 5.0	6.0	8 x 8 W20 or #4@10"E.W	8.0	#4@7"E.W.	8.0	#4@10"E.W.
2.7	3.5	4.0	5.1 - 10.0	6.0	8 x 8 W20 or #4@10"E.W	8.0	#4@6"E.W.	8.0	#4@10"E.W.
2.7	3.5	4.0	10.1 - 15.0	6.0	8 x 8 W20 or #4@10"E.W	8.0	#4@6.5"E.W.	8.0	#4@10"E.W.

MIAMI-DADE COUNTY DEPARTMENT OF TRANSPORTATION AND PUBLIC WORKS	APPROVED 5/9/2018	REVISED 5/9/2018 _____ _____ _____ _____	STANDARD STORM DRAINAGE DETAIL MANHOLE AND INLET (TYPE P)	SD 2.7 SHEET 4 OF 4
---	----------------------	---	--	---------------------------



TYPICAL SECTION

- NOTES:
- 1.- CAST TOP SLAB TO FIT WALL USED.
 - 2.-USE 4,000 psi CONCRETE. (MINIMUM), MAXIMUM W/C=0.53, GRADE 60 STEEL FOR REBAR AND GRADE 65 FOR WWF.
 - 3.-PIPES MAY EXTEND INTO CATCH BASIN A MAXIMUM OF 4".
 - 4.-APPLY A SMOOTH LINE OF MORTAR 1/2" THICK INSIDE AND OUTSIDE.
 - 5.-WEEP HOLES ARE TO BE USED WHEN THE YEARLY LOWEST WATER ELEVATION IS ABOVE THE TOP OF THE BOTTOM SLAB OF THE STRUCTURE.

MIAMI-DADE <u>COUNTY</u> DEPARTMENT OF TRANSPORTATION AND PUBLIC WORKS	APPROVED <u>5/8/2018</u>	REVISED <u>5/8/2018</u> <u>9/16/2013</u> <u>8/26/2012</u> <u>2/8/2011</u> <u>3/7/1981</u>	STANDARD STORM DRAINAGE DETAIL PRECAST CATCH BASIN (D-3)	SD 2.4 SHEET 1
--	-----------------------------	--	--	----------------------

ROUND STRUCTURE								
Standard Detail	Dia. (ft)	Height (ft)	Wall Thickness (in)	Wall Steel	Top Slab Thickness (in)	Top Slab Steel	Bottom Slab Thickness (in)	Bottom Slab Steel
2.2	3	0.0 - 5.0	6	8 X 8 W20 #4@10"E.W.	8	#4@5" E.W.	8	#4@10" E.W.
2.2	3	5.1 - 15.0	6	8 X 8 W20 #4@10"E.W.	8	#4@5" E.W.	8	#4@10" E.W.

MIAMI-DADE COUNTY DEPARTMENT OF TRANSPORTATION AND PUBLIC WORKS	APPROVED <u>5/8/2018</u>	REVISED <u>5/8/2018</u>	STANDARD STORM DRAINAGE DETAIL PRECAST CATH BASIN (TYPE D-3)	SD 2. SHEET 2
---	---------------------------------	----------------------------	--	-------------------------



- NOTES:**
- 1.- PAVEMENT RESTORATION FOR LONGITUDINAL CUTS SHALL INCLUDE FULL LANE WIDTH RESURFACING FOR EACH LANE WITHIN WHICH THE CUT EXTENDS.
 - 2.- IN SOME CASES IT WILL BE NECESSARY TO OVERLAY MORE THAN ONE (1) LANE WITH ASPHALTIC CONCRETE TO SATISFY PAVEMENT SLOPE.
 - 3.- CONTRACTOR MAY ELECT TO BACKFILL WITH 1:10 SAND-CEMENT MIX.

CATCH BASIN PVMT.	SD-2.5	
CATCH BASIN CONST.		SEC.35
CATCH BASIN FR. & GR.	SD-2.3	
ITEM	CROSS REF.	SPEC. REF.

MIAMI-DADE
COUNTY
DEPARTMENT OF
TRANSPORTATION
AND PUBLIC WORKS

APPROV
6/5/61

REVISED
5/17/72
7/14/80
8/4/86

STANDARD STORM DRAINAGE DETAIL PAVEMENT RESTORATION FOR TRENCHES CUT IN PUBLIC RIGHTS-OF-WAY

R
21.1

MINIMUM NUMBER OF PERFORATION IN PIPE CULVERTS		
PIPE DIAMETER (Inches)	OUTER SHELL	LINER
	No. of $\frac{3}{8}$ " Dia. Holes (PER LIN. FT. OF PIPE)	No. of $\frac{3}{8}$ " Dia. Holes (PER LIN. FT. OF PIPE)
15	100	50
18	120	60
24	160	80
30	200	100
36	240	120
42	275	140
48	315	150
54	355	180
60	395	200
72	470	235
84	550	275

NOTE:

APPROVED <u>5-2-81</u>	REVISED <u>6-4-86</u> <u>10-22-13</u>	STANDARD STORM DRAINAGE DETAIL EXFILTRATION TRENCH (PIPE CULVERT NOTES)	SD 1.1 SHEET 2 OF 2
---------------------------	---	---	---------------------------

MIAMI-DADE COUNTY	APPROVED 5/9/2018	REVISED 5/9/2018	STANDARD STORM DRAINAGE DETAIL MANHOLE AND INLET (TYPE P)	SD 2.7
DEPARTMENT OF TRANSPORTATION AND PUBLIC WORKS	5/9/2018			SHEET 4 OF 4

MIAMI-DADE COUNTY DEPARTMENT OF TRANSPORTATION AND PUBLIC WORKS	APPROVED <u>5/8/2018</u>	REVISED <u>5/8/2018</u>	STANDARD STORM DRAINAGE DETAIL PRECAST CATH BASIN (TYPE D-3)	SD 2. SHEET 2
---	---------------------------------	----------------------------	--	-------------------------

[illegible]

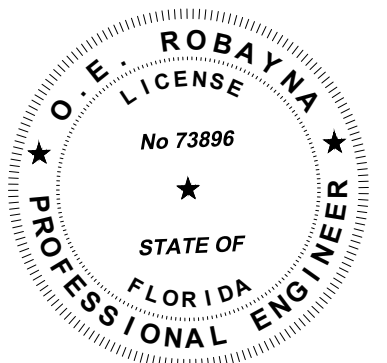
CORAL WAY
FROM MADRID ST TO COLUMBUS BLVD

	NAME	DATE		NAME	DATE
DESIGNED BY	AC/GC	06/26/2023	DRAWN BY	VET/GC	06/26/2023
CHECKED BY	OER	06/26/2023	CHECKED BY	OER	06/26/2023
SUPERVISED BY:		OER			

MIAMI-DADE COUNTY	DEPARTMENT OF TRANSPORTATION AND PUBLIC WORKS HIGHWAY DIVISION STEPHEN P. CLARK CENTER 111 NW 1 ST MIAMI, FLORIDA 33128

STANDARD DETAILS

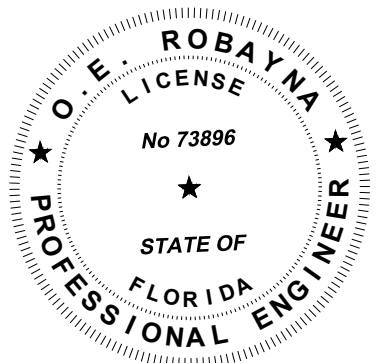
PRINTED COPIES OF THIS DOCUMENT ARE
NOT CONSIDERED SIGNED AND SEALED
AND THE SIGNATURE MUST BE VERIFIED
ON ANY ELECTRONIC COPIES.





-
- POST
- FLOW
- POST
- FLOW
- PLACE THE END POST OF ONE FENCE BEHIND THE END POST OF THE OTHER FENCE AS SHOWN.
- ROTATE BOTH POSTS AT LEAST 180 DEGREES IN A CLOCKWISE DIRECTION TO CREATE A TIGHT SEAL WITH THE FABRIC MATERIAL.
- DIRECTION OF RUNOFF WATER
- DRIVE BOTH POSTS INTO THE GROUND AND BURY FLAP
- PLAN VIEW
- JOINING TWO SILT FENCES (TYP.)
- ROE
O.E.
LICENS

- 3- DO NOT CONSTRUCT SILT FENCES ACROSS PERMANENT FLOWING WATERCOURSES. SILT FENCES ARE TO BE AT UPLAND LOCATIONS AND TURBIDITY BARRIERS USED AT PERMANENT BODIES OF WATER.
- 4- WHERE USED AS SLOPE PROTECTION, SILT FENCE IS TO BE CONSTRUCTED ON 0% LONGITUDINAL GRADE TO AVOID CHANNELIZING RUNOFF ALONG THE LENGTH OF THE FENCE.



SEDIMENT BARRIERS (TYP.)
OR APPROVED ALTERNATIVE

REVISIONS									CORAL WAY FROM MADRID ST TO COLUMBUS BLVD	<table><tr><td></td><td>NAME</td><td>DATE</td><td></td><td>NAME</td><td>DATE</td></tr><tr><td>DESIGNED BY</td><td>AC/GC</td><td>06/26/2023</td><td>DRAWN BY</td><td>VET/GC</td><td>06/26/2023</td></tr><tr><td>CHECKED BY</td><td>OER</td><td>06/26/2023</td><td>CHECKED BY</td><td>OER</td><td>06/26/2023</td></tr><tr><td colspan="6">SUPERVISED BY: OER</td></tr></table>							NAME	DATE		NAME	DATE	DESIGNED BY	AC/GC	06/26/2023	DRAWN BY	VET/GC	06/26/2023	CHECKED BY	OER	06/26/2023	CHECKED BY	OER	06/26/2023	SUPERVISED BY: OER						<div><div><div><div>MIAMI-DADE COUNTY</div><div></div></div><div><div>DEPARTMENT OF TRANSPORTATION AND PUBLIC WORKS HIGHWAY DIVISION</div><div>STEPHEN P. CLARK CENTER 111 NW 1 ST MIAMI, FLORIDA 33128</div></div></div><div>SEDIMENTAL BARRIER</div></div>					
	NAME	DATE		NAME	DATE																																								
DESIGNED BY	AC/GC	06/26/2023	DRAWN BY	VET/GC	06/26/2023																																								
CHECKED BY	OER	06/26/2023	CHECKED BY	OER	06/26/2023																																								
SUPERVISED BY: OER																																													
DATE	BY	DESCRIPTION	DATE	BY	DESCRIPTION	DATE	BY	DESCRIPTION																																					

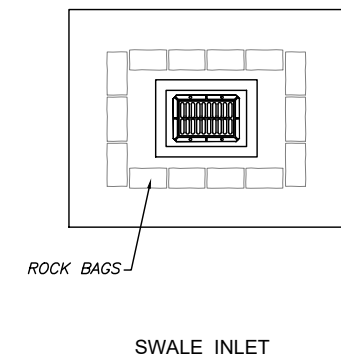
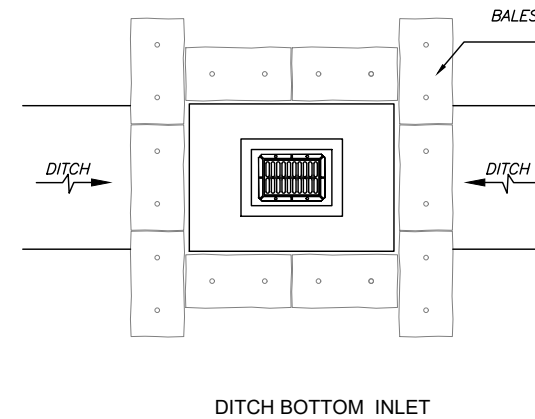


NOTES FOR INLET PROTECTION GRAVEL:

- PLACE WIRE MESH (WITH $\frac{1}{2}$ INCH OPENINGS) OVER THE INLET GRATE EXTENDING ONE FOOT PAST THE GRATE IN ALL DIRECTIONS.
- PLACE FILTER FABRIC OVER THE MESH. FILTER FABRIC SHOULD BE SELECTED BASED ON SOIL TYPE.
- PLACE GRADED GRAVEL, TO A MINIMUM DEPTH OF 12 INCHES, OVER THE FILTER FABRIC AND EXTENDING 18 INCHES PAST THE GRATE IN ALL DIRECTIONS.

- INSPECT INLET PROTECTION AFTER EVERY LARGE STORM EVENT AND AT A MINIMUM OF ONCE MONTHLY.
- REMOVE SEDIMENT ACCUMULATED WHEN IT REACHES 4 INCHES IN DEPTH.
- REPLACE FILTER FABRIC AND CLEAN OR REPLACE GRAVEL IF CLOGGING IS APPARENT.

- RECOMMENDED FOR MAXIMUM DRAINAGE AREA OF ONE ACRE.
- EXCESS FLOWS MAY BYPASS THE INLET REQUIRING DOWN GRADIENT CONTROLS.
- PONDING WILL OCCUR AT INLET.



NOTES FOR SYNTHETIC BALES OR BALE TYPE BARRIERS:


2- BALES SHALL BE ANCHORED WITH TWO (2) 1"x2" (or 1" dia.) x 4' WOOD STAKES. STAKES OF OTHER MATERIAL OR SHAPE PROVIDING EQUIVALENT STRENGTH MAY BE USED IF APPROVED BY THE ENGINEER. STAKES OTHER THAN WOOD SHALL BE REMOVED UPON COMPLETION OF THE PROJECT.

4-ADJACENT BALES SHALL BE BUTTED FIRMLY TOGETHER.

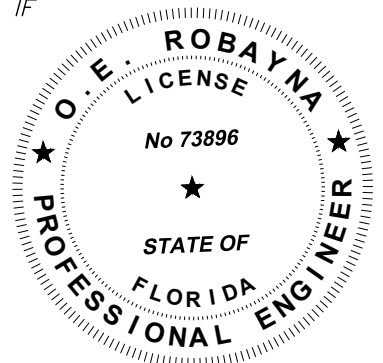
INLET PROTECTION SYSTEM (TYP.)
OR APPROVED ALTERNATIVE

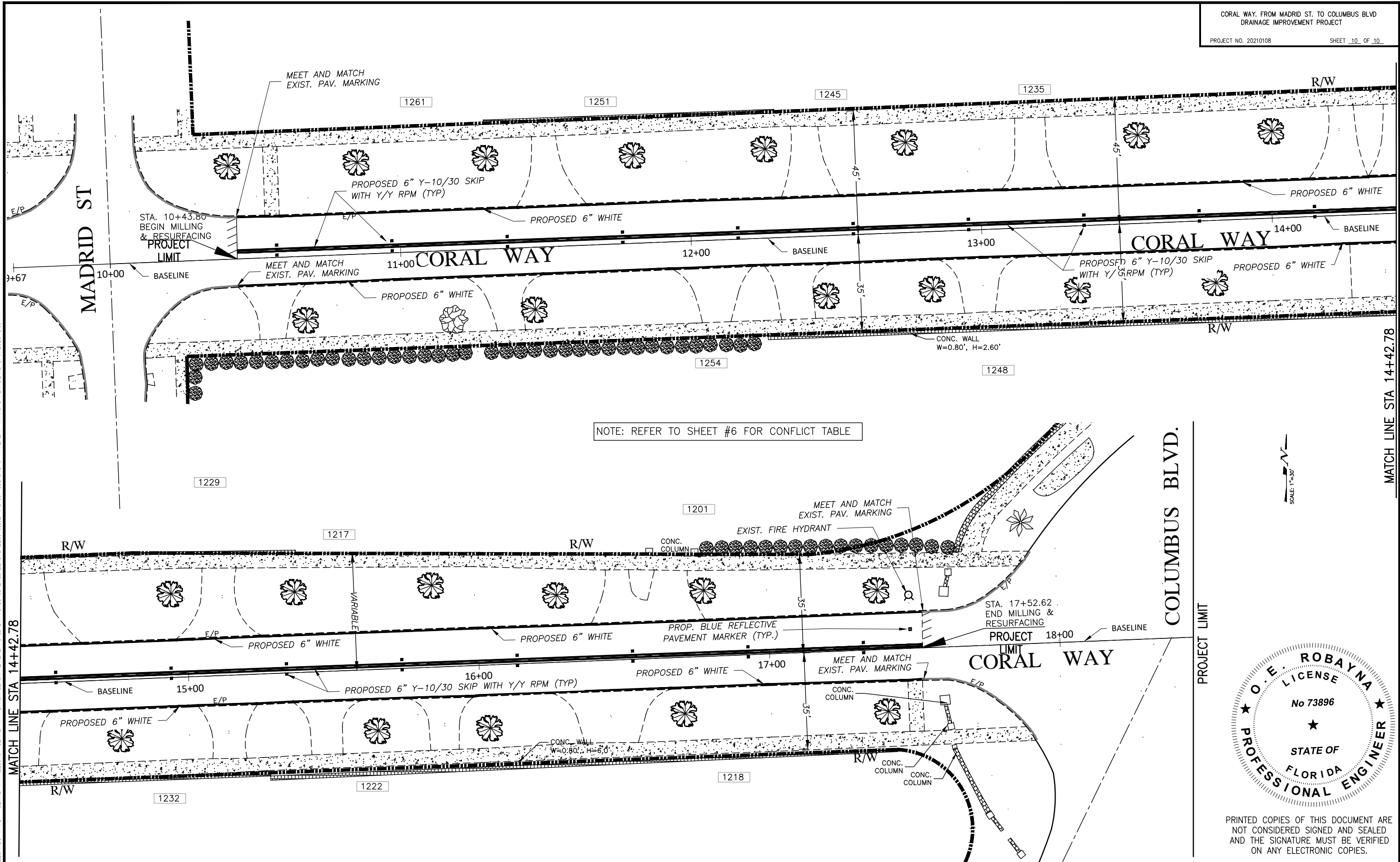
CORAL WAY
FROM MADRID ST TO COLUMBUS BLVD

	NAME	DATE		NAME	DATE
DESIGNED BY	AC/GC	06/26/2023	DRAWN BY	VET/GC	06/26/2023
CHECKED BY	OER	06/26/2023	CHECKED BY	OER	06/26/2023
SUPERVISED BY:		OER			

23		DEPARTMENT OF TRANSPORTATION AND PUBLIC WORKS HIGHWAY DIVISION STEPHEN P. CLARK CENTER 111 NW 1 ST MIAMI, FLORIDA 33128
23		MIAMI-DADE COUNTY

INLET PROTECTION SYSTEM

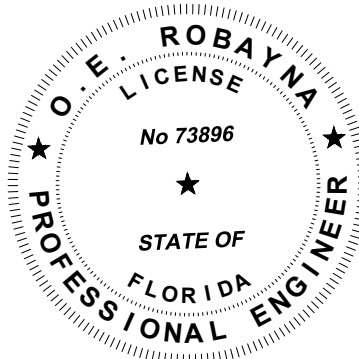




NOTE: REFER TO SHEET #6 FOR CONFLICT TABLE

COLUMBUS BLVD.

PROJECT LIMIT



PRINTED COPIES OF THIS DOCUMENT ARE NOT CONSIDERED SIGNED AND SEALED AND THE SIGNATURE MUST BE VERIFIED ON ANY ELECTRONIC COPIES.

REVISIONS					
DATE	BY	DESCRIPTION	DATE	BY	DESCRIPTION

CORAL WAY
FROM MADRID ST TO COLUMBUS BLVD

NAME	DATE	NAME	DATE
DESIGNED BY: AC/GC	06/26/2023	DRAWN BY: VET/GC	06/26/2023
CHECKED BY: OER	06/26/2023	CHECKED BY: OER	06/26/2023
SUPERVISED BY: OER			

DEPARTMENT OF TRANSPORTATION AND PUBLIC WORKS
HIGHWAY DIVISION
STEPHEN P. CLARK CENTER
111 NW 1 ST
MIAMI, FLORIDA 33128

MIAMI-DADE COUNTY

SIGNING & PAVEMENT MARKING
PLAN

E:\01-PROJECTFILES\WDC_TPWD - CORAL WAY DRAINAGE IMPROVEMENTS\11-BRAVINGS\01-ENGINEERING\2200-40102 (PG 10) SIGNING & PAVEMENT MARKING PLANS.DWG 5/9/2023 5:00 PM