

MIAMI-DADE COUNTY  
DEPARTMENT OF TRANSPORTATION AND PUBLIC WORKS (DTPW)

---

ADDENDUM NO. 1  
March 20, 2025

---

PROJECT: Roadway Improvements to NE 151st Street - Phase 1.  
Project No. 20240269  
MCC 7360 Plan- CICC 7360-08/8

BID DUE DATE: 04-02-2025; 02:00 P.M.

FROM: Miami-Dade County DTPW  
Capital Improvements Section  
111 NW First Street, 14<sup>th</sup> Floor  
Miami, FL 33128  
305.375.2930

TO: Prospective Bidders and Interested Parties

This Addendum forms part of the project solicitation documents and will be incorporated into the Contract Documents, as applicable. Insofar as the Original Contract Documents, Drawings and Specifications are inconsistent, this Addendum shall govern. Please acknowledge receipt of this Addendum, at the time of bid submittal to Miami-Dade County, in the space provided on the "Acknowledgement of Addenda Form" provided with the project solicitation documents. Failure to acknowledge receipt of all addenda may be cause for disqualification.

**A. CHANGES TO ENGINEERING DRAWING & PLANS:**

1. The following Table (Table no.1) below describes the changes made to Engineering Plans. Also, see attached pages at the end of document.

Table No.1:

Sheet Number	Revision Date	Description
32	3/13/25	Added Pre-Phase Note
41	3/13/25	Added Pre-Phase title. Temporary Pedestrian Path and plan note
42	3/13/25	Added Pre-Phase title, update pavement design and labels, removed sod
43	3/13/25	Added Pre-Phase title
44	3/13/25	Added Pre-Phase title, updated gore area, removed pay item call outs

**END OF ADDENDUM NO. 1**

MIAMI-DADE COUNTY  
DEPARTMENT OF TRANSPORTATION AND PUBLIC WORKS (DTPW)

---

ADDENDUM NO. 1  
March 20, 2025

---



---

Tiondra Wright, Division Chief.  
Capital Improvements Division  
Department of Transportation and Public Works (DTPW)

AM:tw

cc: Marco Movilla, DTPW  
Leandro Ona, Chief, DTPW  
Alejandro Sauleda, DTPW

Katherine Fernandez, DTPW  
Barbara Mesa Valdes, DTPW  
Maylin Torres, SBD  
Project File

Laurie Johnson, SBD  
Caesar Suarez, SBD  
Eric Perez, SBD  
Clerk of the Board

DEPARTMENT OF TRANSPORTATION AND PUBLIC WORKS

Roadway Improvements to NE 151st Street - Phase 1

RPQ NO. 20240269

ADDENDUM NO.1

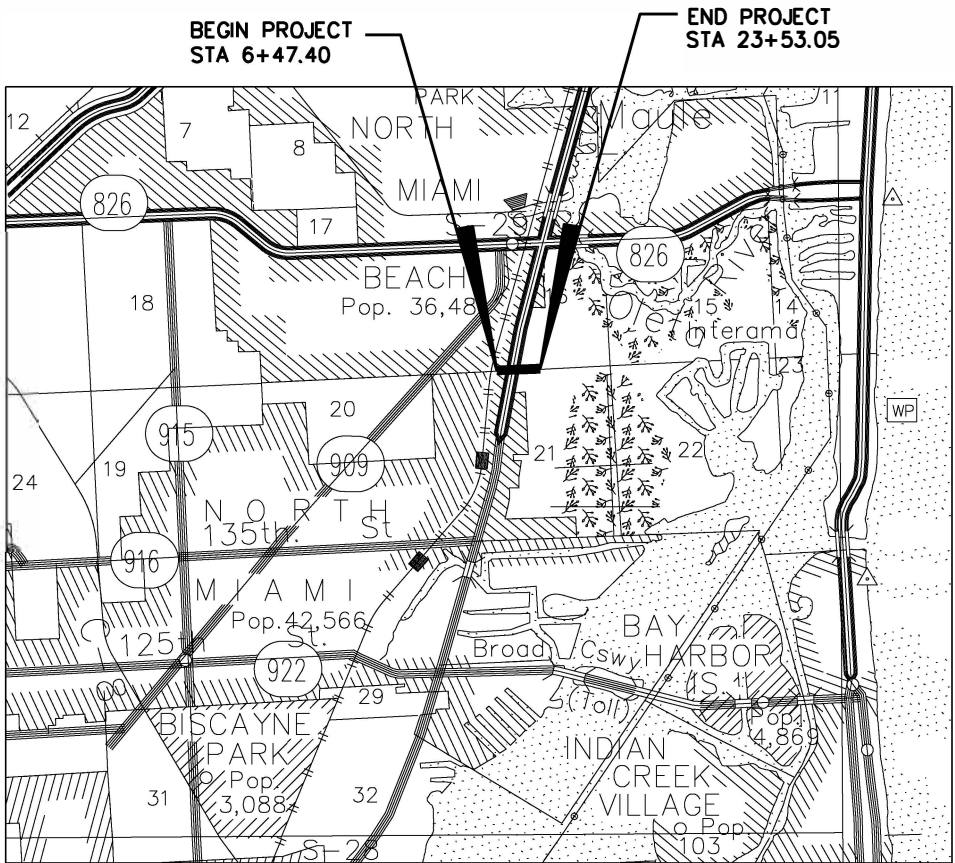
ENGINEERING DRAWINGS/PLANS

INDEX OF SHEETS

SHT. No.	SHEET DESCRIPTION
1	KEY SHEET
2	TYPICAL SECTION
3	SUMMARY OF QUANTITIES AND PAY ITEM NOTES
4	SUMMARY OF DRAINAGE STRUCTURES
5	PROJECT LAYOUT
6	GENERAL NOTES
7-9	PLAN
10-12	PROFILE
13	DRIVEWAY/SIDESTREET PROFILES
14	INTERSECTION DETAIL
15-18	DRAINAGE CROSS SECTIONS
19-22	DRAINAGE DETAILS
23-28	CROSS SECTIONS
29	SPECIAL GRAVITY WALL DETAIL
30	STORMWATER POLLUTION PREVENTION PLAN
31-40	TEMPORARY TRAFFIC CONTROL PLAN
41	WARREN HENRY AUTO GROUP TEMPORARY PAVEMENT DETAIL
42	PLAN NE 146 ST TEMPORARY ROAD
43	PROFILE NE 146 ST TEMPORARY ROAD
44	SIGNING AND PAVEMENT MARKING PLAN NE 146 ST TEMPORARY ROAD
45	SIGNING AND PAVEMENT MARKING QUANTITIES
46	SIGNING AND PAVEMENT MARKING GENERAL NOTES & DETAILS
47-49	SIGNING AND PAVEMENT MARKING PLANS
50	SIGNALIZATION QUANTITIES
51	SIGNALIZATION GENERAL NOTES
52	SIGNALIZATION PLANS
53	MAST ARM TABULATION
54	STANDARD MAST ARM ASSEMBLIES DATA TABLE
55	SPECIAL MAST ARM ASSEMBLIES DATA TABLE
56	CONTROLLER CABINET INSTALLATION DETAIL
57	ELECTRICAL POWER SERVICE DETAIL
58	SUMMARY OF LIGHTING QUANTITIES
59	POLE DATA AND LEGEND
60	LIGHTING GENERAL NOTES
61-63	LIGHTING PLAN
64	SERVICE POINT DETAIL
65	LIGHT POLE PEDESTAL
66	CONVENTIONAL POLE DETAIL
67	SLAB DETAILS FOR INTERMEDIATE PULL BOX LOCATIONS 1
68	SLAB DETAILS FOR INTERMEDIATE PULL BOX LOCATIONS 2
69	MISCELLANEOUS DETAILS 1
70	CONDUIT BURIAL DETAILS
71	GROUND TEST CLAMP-ON METHOD
72	TREE DISPOSITION TABULATION
73-76	TREE DISPOSITION PLAN
SS-1	STANDARD DETAILS
UTV-1 - UTV-2	UTILITY VERIFIED LOCATE

PLANS FOR PROPOSED  
IMPROVEMENTS TO  
NE 151st STREET

FROM EAST OF RAILROAD TRACKS  
TO SOLE MIA WAY  
MIAMI-DADE COUNTY PROJECT NO. 20150052



**NOTE:**  
ATTENTION IS DIRECTED TO THE FACT THAT THESE PLANS MAY HAVE BEEN REDUCED IN SIZE BY REPRODUCTION. THIS MUST BE CONSIDERED WHEN OBTAINING SCALED DATA.

**REVISIONS:**  
ROADWAY SHEETS 3 (12/4/24)  
ROADWAY SHEETS 32, 41, 42, 43 & 44. (3/13/25)

THIS ITEM HAS BEEN DIGITALLY  
SIGNED AND SEALED BY  
  
PRINTED COPIES OF THIS DOCUMENT ARE  
NOT CONSIDERED SIGNED AND SEALED  
AND THE SIGNATURE MUST BE VERIFIED  
ON ANY ELECTRONIC COPIES.

ENGINEER OF RECORD:  
  
Robert J. Behar, P.E.  
FLORIDA REGISTRATION P.E. No. 21755

STANDARD INDEX DRAWINGS

INDEX No.	SHEET DESCRIPTION
120-001	EMBANKMENT UTILIZATION
400-011	GRAVITY WALL
425-001	SUPPLEMENTARY DETAILS FOR DRAINAGE STRUCTURES
425-010	STRUCTURE BOTTOMS - TYPE J AND P
425-021	CURB INLET TOPS - TYPES 5 AND 6
430-001	MISCELLANEOUS DRAINAGE DETAILS
443-001	FRENCH DRAIN
443-002	SKIMMERS FOR FRENCH DRAIN OUTLETS
444-T01	DEEP WELL INJECTION BOX
515-070	PIPE GUIDERAIL (ALUMINUM)
520-001	CURB AND GUTTER
522-001	CONCRETE SIDEWALK
522-002	DETECTABLE WARNINGS AND SIDEWALK CURB RAMPS
570-001	PERMANENT EROSION CONTROL

THESE PLANS HAVE BEEN PREPARED IN ACCORDANCE WITH AND ARE GOVERNED BY THE MIAMI-DADE COUNTY PUBLIC WORKS DEPARTMENT STANDARDS AND SPECIFICATIONS PARTS 1, 2 AND 3, THE MANUAL OF UNIFORM MINIMUM STANDARDS FOR DESIGN, CONSTRUCTION AND MAINTENANCE FOR STREETS AND HIGHWAYS, THE FLORIDA DEPARTMENT OF TRANSPORTATION ROADWAY AND TRAFFIC STANDARD PLANS, AND THE FLORIDA DEPARTMENT OF TRANSPORTATION STANDARD SPECIFICATIONS, AS AMENDED BY CONTRACT DOCUMENTS.



PREPARED FOR  
**MIAMI-DADE COUNTY**  
**MIAMI-DADE COUNTY**  
DEPARTMENT OF TRANSPORTATION AND PUBLIC WORKS  
HIGHWAY DIVISION

STEPHEN P. CLARK CENTER  
111 NW 1 ST  
MIAMI, FLORIDA 33128

BY

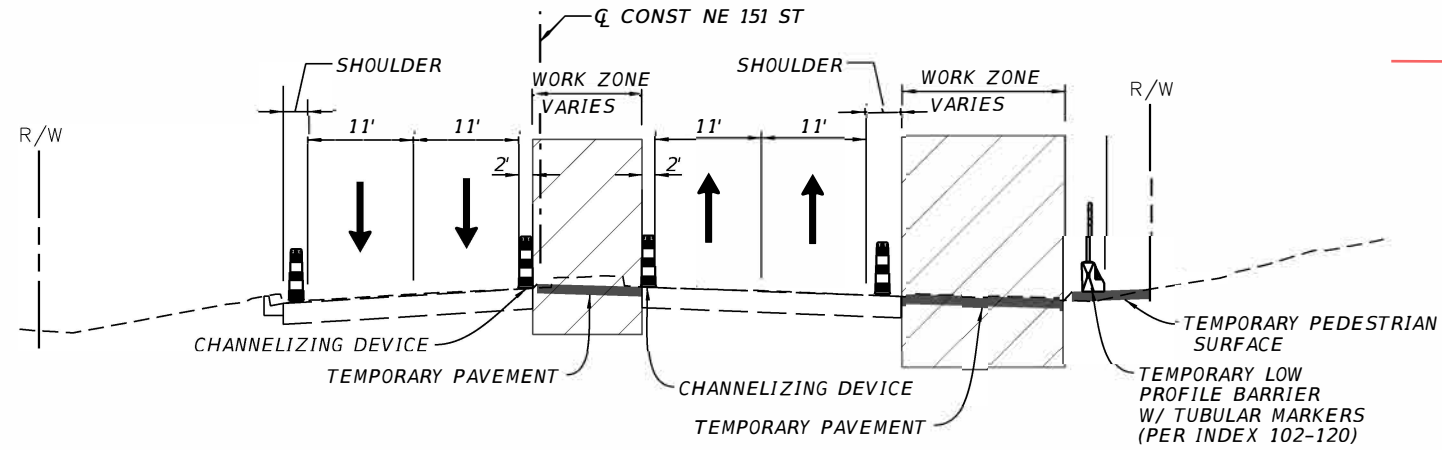


**R.J. Behar & Company, Inc.**  
Engineers • Planners  
6861 SW 196 AV., SUITE 302  
PEMBROKE PINE, FLORIDA 33332  
CERTIFICATE OF AUTHORIZATION NO. 00008365  
Phone: (954) 680-7771

LENGTH OF JOB		
	LIN. FT.	MILES
ROADWAY	1,705.7	0.323
BRIDGE	N/A	N/A
GROSS LENGTH OF JOB	1,705.7	0.323
EXCEPTIONS	N/A	N/A
NET LENGTH OF JOB	1,705.7	0.323

APPROVED	COUNTY ENGINEER
RECOMMENDED	ASSISTANT DIRECTOR
SUBMITTED	HIGHWAY DIVISION
PROPOSED	CHECK
DESIGN	DRAWN
DATE	SHEET 1 OF 76

F:\24006\_NE 151 Street Phasing Plans\CADD\Segment 1\Roadway\TCTYRD01.DGN jdelgado 3/16/2025 2:29:26 PM

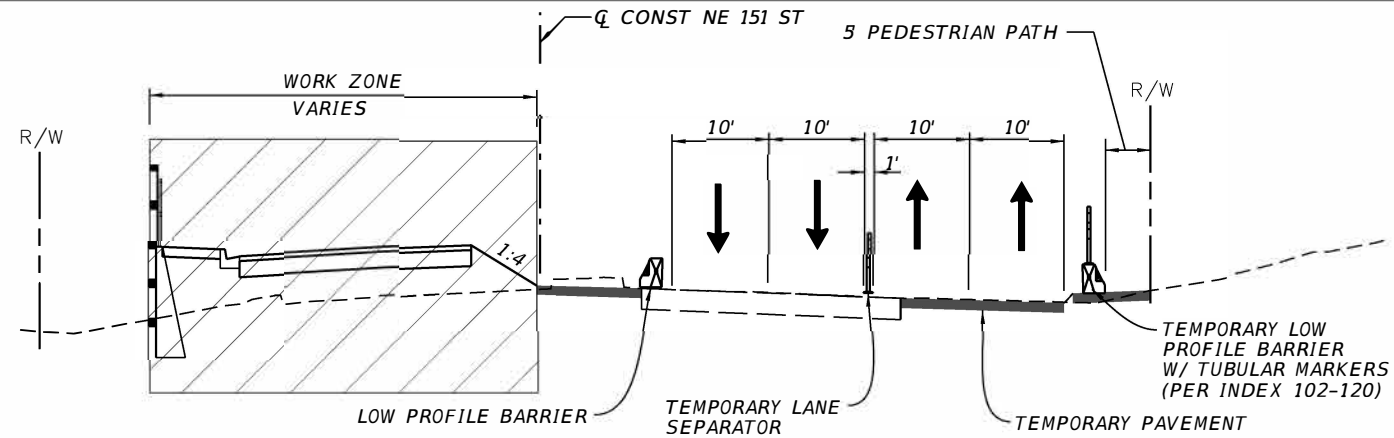


**PRE-PHASE:**

1. AT THE BEGINNING OF OFF-PEAK HOURS, INSTALL TRAFFIC CONTROL DEVICES IN ACCORDANCE WITH INDEX 102-602.
2. CONSTRUCT TEMPORARY DRIVEWAY ACCESS TO WARREN HENRY DEALERSHIP.
3. CONSTRUCT NE 146TH STREET, TEMPORARY ROAD.

**PHASE I:**

1. AT THE BEGINNING OF OFF-PEAK HOURS, INSTALL TRAFFIC CONTROL DEVICES IN ACCORDANCE WITH TEMPORARY TRAFFIC CONTROL PLAN AND INDEX 102-602.
2. FOR TEMPORARY LANE CLOSURES REFER TO INDEX 102-613.
3. REMOVE CURB & GUTTER IN MEDIAN. CONSTRUCT TEMPORARY PAVEMENT, INCLUDING ANY TEMPORARY PAVEMENT NEEDED FOR THE INSTALLATION OF TEMPORARY LANE SEPARATORS. CONSTRUCT TEMPORARY PEDESTRIAN SURFACE.
4. PROVIDE TEMPORARY SIGNALS FOR WESTBOUND TRAFFIC AT SOUTHEAST CORNER OF BISCAYNE BLVD AND NE 151 STREET INTERSECTION.

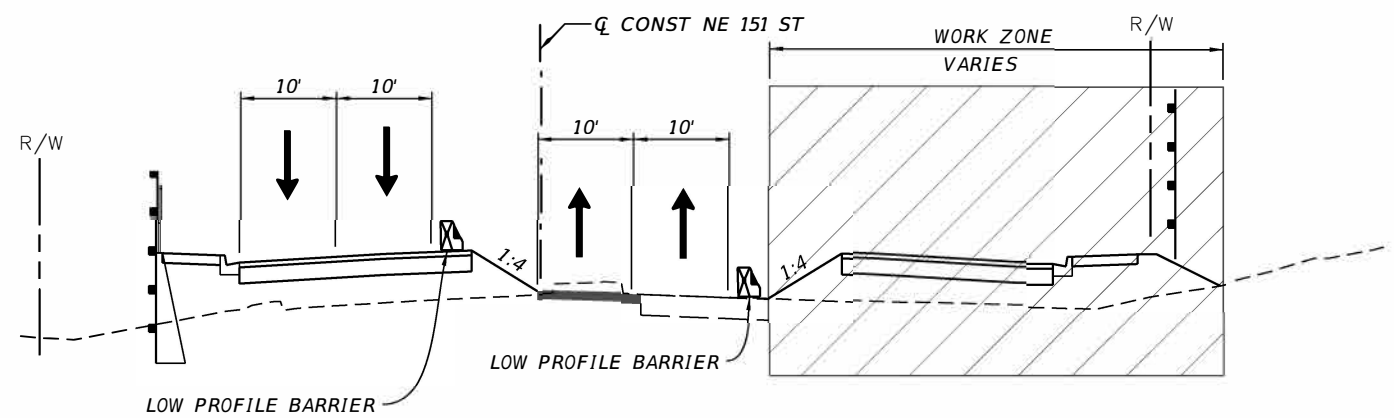


**PHASE II:**

1. SET UP WORK ZONE IN ACCORDANCE WITH TEMPORARY TRAFFIC CONTROL PLAN.
2. SHIFT WESTBOUND TRAFFIC SOUTH.
3. DIVERT EASTBOUND TRAFFIC TO TEMPORARY PAVEMENT.
4. DIVERT PEDESTRIANS TO TEMPORARY PEDESTRIAN PATH.
5. CONSTRUCT THE WEST SIDE OF THE CORRIDOR INCLUDING CURB & GUTTER, GRAVITY WALL, GUIDERAIL, SIDEWALK, SOD, DRAINAGE, SIGNALS, LIGHTING AND RECONSTRUCTION.

**PHASE II-A:**

1. SET UP WORK ZONE IN ACCORDANCE WITH TEMPORARY TRAFFIC CONTROL PLAN.
2. DIVERT PEDESTRIANS TO TEMPORARY PEDESTRIAN PATH.
5. CONSTRUCT THE NORTHWEST QUADRANT OF US-1/BISCAYNE BLVD. INCLUDING CURB & GUTTER, SIDEWALK, SOD & SIGNALS.



**PHASE III:**

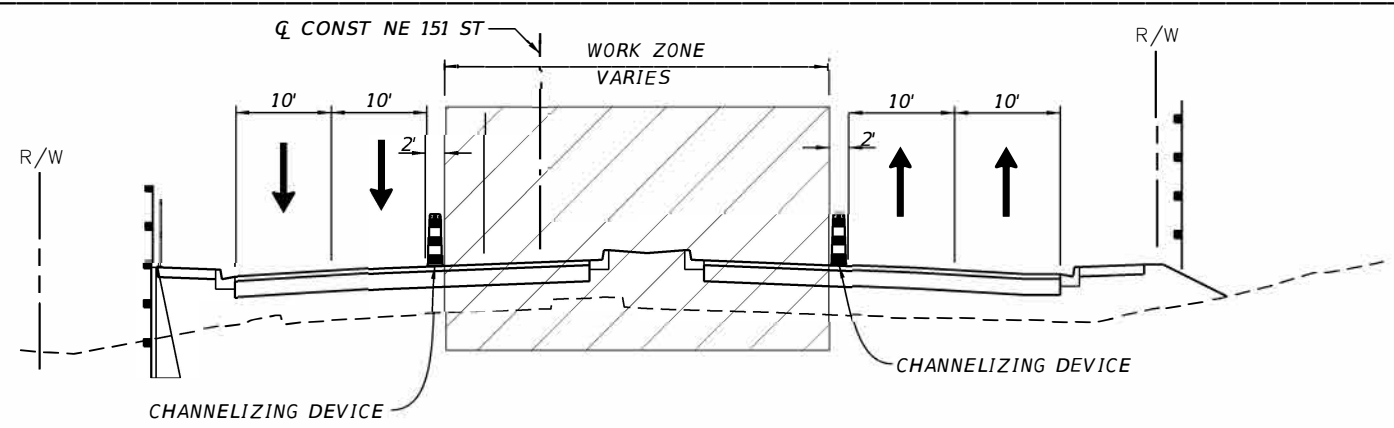
1. SET UP WORK ZONE IN ACCORDANCE WITH TEMPORARY TRAFFIC CONTROL PLAN.
2. REDIRECT WESTBOUND TRAFFIC, AS WELL AS PEDESTRIANS TO THE NEWLY CONSTRUCTED NORTH SIDE OF THE CORRIDOR.
3. SHIFT EASTBOUND TRAFFIC NORTH.
4. CONSTRUCT THE SOUTH SIDE OF THE CORRIDOR, INCLUDING CURB & GUTTER, GUIDERAIL, SOD, DRAINAGE, SIGNALS, LIGHTING AND RECONSTRUCTION.

**PHASE III-A:**

1. SET UP WORK ZONE IN ACCORDANCE WITH TEMPORARY TRAFFIC CONTROL PLAN.
2. DIVERT PEDESTRIANS TO TEMPORARY PEDESTRIAN PATH.
5. CONSTRUCT THE SOUTHWEST QUADRANT OF US-1/BISCAYNE BLVD. INCLUDING CURB & GUTTER, SIDEWALK AND SIGNALS.

**PHASE III-B:**

1. CONSTRUCT DRIVEWAYS.



**PHASE IV:**

1. SET UP WORK ZONE IN ACCORDANCE WITH TEMPORARY TRAFFIC CONTROL PLAN.
2. REDIRECT EASTBOUND TRAFFIC TO THE NEWLY CONSTRUCTED SOUTH SIDE OF THE CORRIDOR.
3. CONSTRUCT MEDIAN INCLUDING RECONSTRUCTION, CURB & GUTTER, LANDSCAPING AND TRAFFIC SEPARATOR.

**PHASE IV-A:**

1. CONSTRUCT CROSSOVER.

**PHASE V:**

1. SET UP WORK ZONE IN ACCORDANCE WITH STANDARD PLANS INDEX 102-613 AND 615.
2. PERFORM MILLING AND PLACE FINAL FRICTION COURSE, PAVEMENT MARKINGS AND SIGNS.

REVISIONS				REVISIONS			
DATE	BY	DESCRIPTION	DATE	BY	DESCRIPTION	DATE	BY
3/13/25	NG	ADDED PRE-PHASE NOTES.					

**R.J. Behar & Company, Inc.**  
Engineers • Planners  
6861 SW 196 Avenue, Suite 302  
Pembroke Pines, Florida 33332  
ROBERT J. BEHAR, P.E. LICENSE NO. 21756  
CERTIFICATE OF AUTHORIZATION NO. 00008365

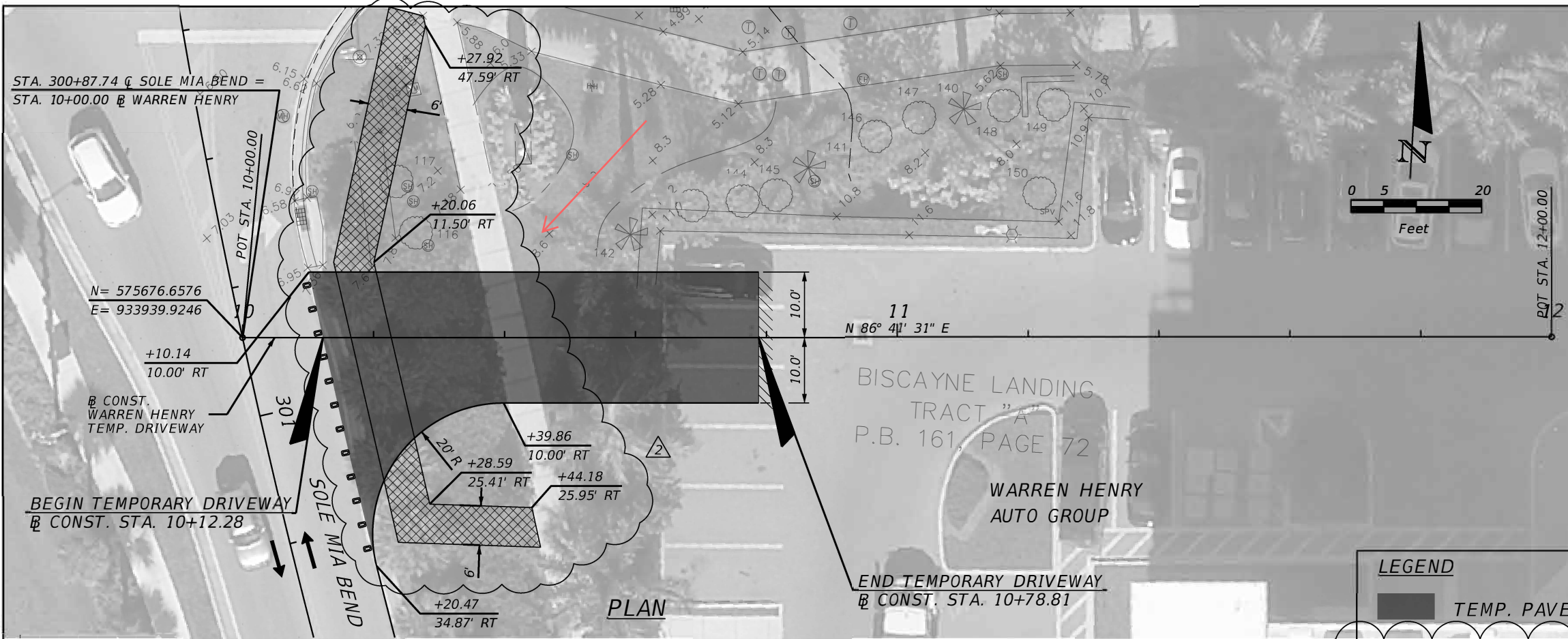
DESIGNED BY	NAME	DATE	DRAWN BY	NAME	DATE
CHECKED BY			CHECKED BY		
SUPERVISED BY					

MIAMI-DADE COUNTY  
DEPARTMENT OF TRANSPORTATION AND PUBLIC WORKS  
HIGHWAY DIVISION  
STEPHEN P. CLARK CENTER  
111 NW 1 ST  
MIAMI, FLORIDA 33128



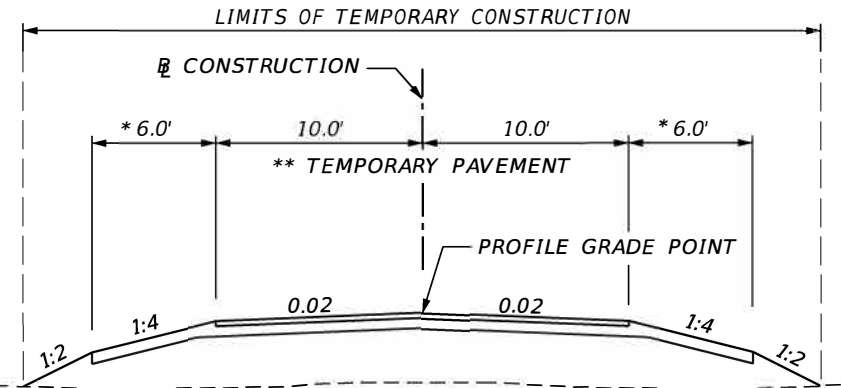
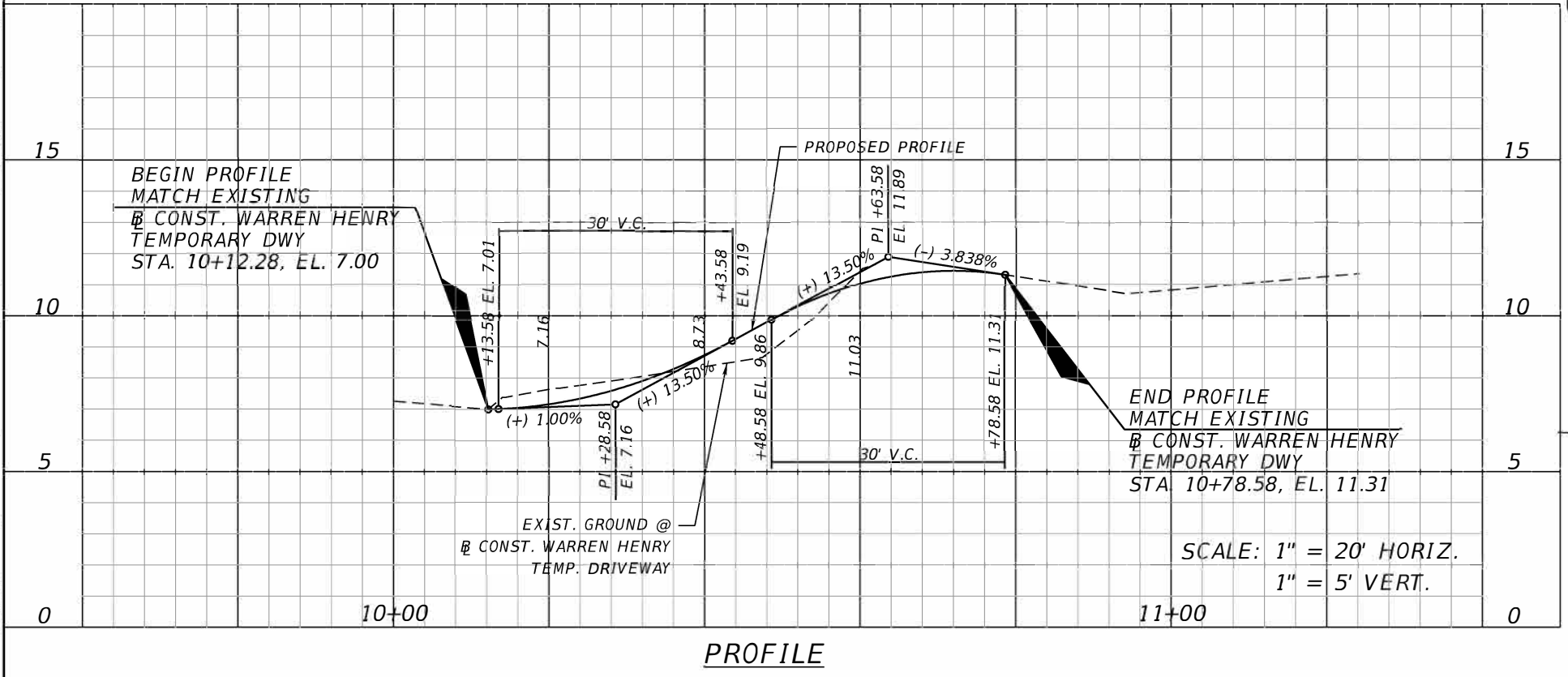
ADDENDUM NO.1

F:\22039\_NE 151 St Post Design Services\Temporary Roadway\Warren Henry Driveway\PIPRD01.dgn 6:53:07 PM 3/14/2025



**LEGEND**

- TEMP. PAVEMENT
- TEMP. PEDESTRIAN PATH
- CHANNELIZING DEVICE



PRE-PHASE

PAGE#41

REVISIONS					
DATE	BY	DESCRIPTION	DATE	BY	DESCRIPTION
03/13/2025		2 ADDED PHASE TITLE & TEMP. PEDESTRIAN PATH			

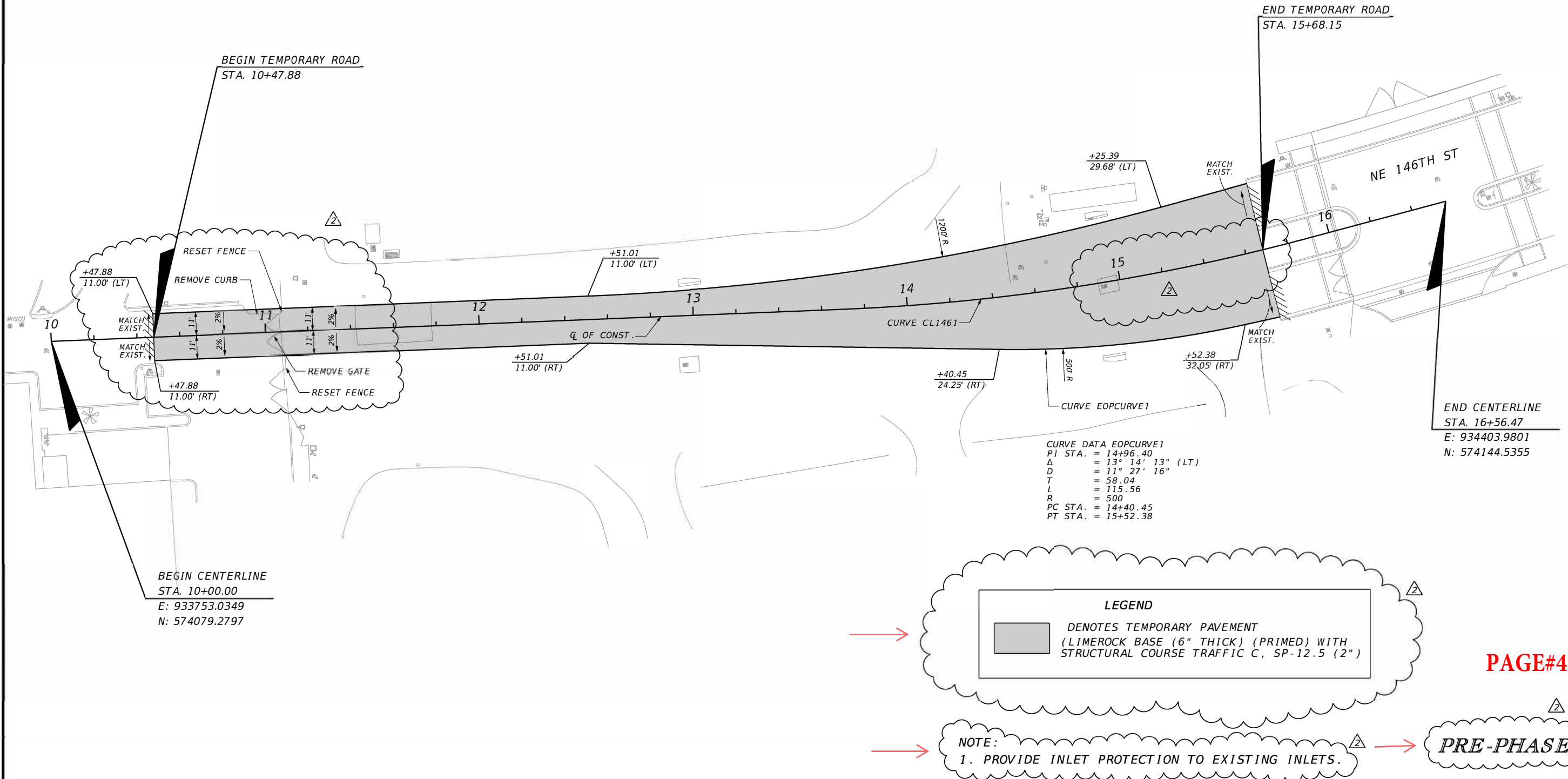
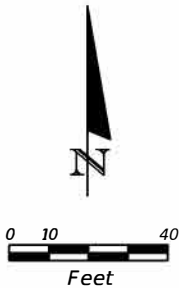
**R.J. Behar & Company, Inc.**  
Engineers • Planners  
6861 SW 196 Avenue, Suite 302  
Pembroke Pines, Florida 33332  
ROBERT J. BEHAR, P.E. LICENSE NO. 21756  
CERTIFICATE OF AUTHORIZATION NO. 00008366

DESIGNED BY	NAME	DATE	DRAWN BY	NAME	DATE
CHECKED BY			CHECKED BY		
SUPERVISED BY					

DEPARTMENT OF TRANSPORTATION AND PUBLIC WORKS HIGHWAY DIVISION  
STEPHEN P. CLARK CENTER  
111 NW 1 ST  
MIAMI, FLORIDA 33128

WARREN HENRY AUTO GROUP  
TEMPORARY DRIVEWAY DETAIL

3/18/2025 2:16:38 PM F:\22039\_NE 151 St Post Design Services\Temporary Roads\NW 146 Street\Roadway\TCPLRD01.dgn jdelgado



REVISIONS							
DATE	BY	DESCRIPTION	DATE	BY	DESCRIPTION	DATE	BY
03/13/2025		ADDED PHASE TITLE, UPDATED PAVEMENT DESIGN & LABELS REMOVED SOD, ADDED NOTE TO PLAN.					

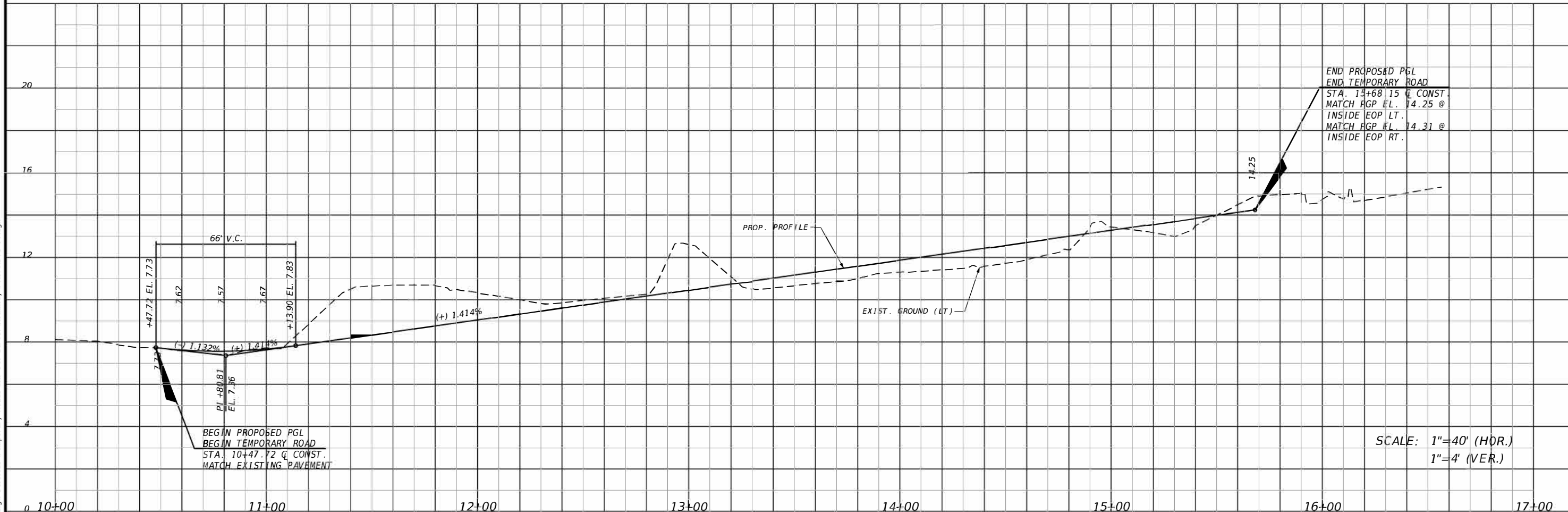
**R.J. Behar & Company, Inc.**  
Engineers • Planners  
6861 SW 196 Avenue, Suite 302  
Pembroke Pines, Florida 33332  
VAMSEE TIRUNAGARI, P.E. LICENSE NO. 90864

DESIGNED BY	NAME	DATE	DRAWN BY	NAME	DATE
CHECKED BY			CHECKED BY		
SUPERVISED BY					

MIAMI-DADE COUNTY  
DEPARTMENT OF TRANSPORTATION AND PUBLIC WORKS  
HIGHWAY DIVISION  
STEPHEN P. BLANK CENTER  
111 NW 1 ST  
MIAMI, FLORIDA 33128

PLAN  
NE 146 ST  
TEMPORARY ROAD

# ADDENDUM NO.1



*PGL*

SCALE:	1"=40' (HOR.)
	1"=4' (VER.)

**PAGE#43**

2\

**PRE-PHASEE**

R E V I S I O N S								
DATE	BY	DESCRIPTION	DATE	BY	DESCRIPTION	DATE	BY	DESCRIPTION
03/13/2025		<div>2</div> ADDED PHASE TITLE						



**R.J. Behar & Company, Inc.**  
Engineers • Planners  
6861 SW 196 Avenue, Suite 302  
Pembroke Pines, Florida 33332  
VAMSEE TIRUNAGARI, P.E. LICENSE NO. 90864

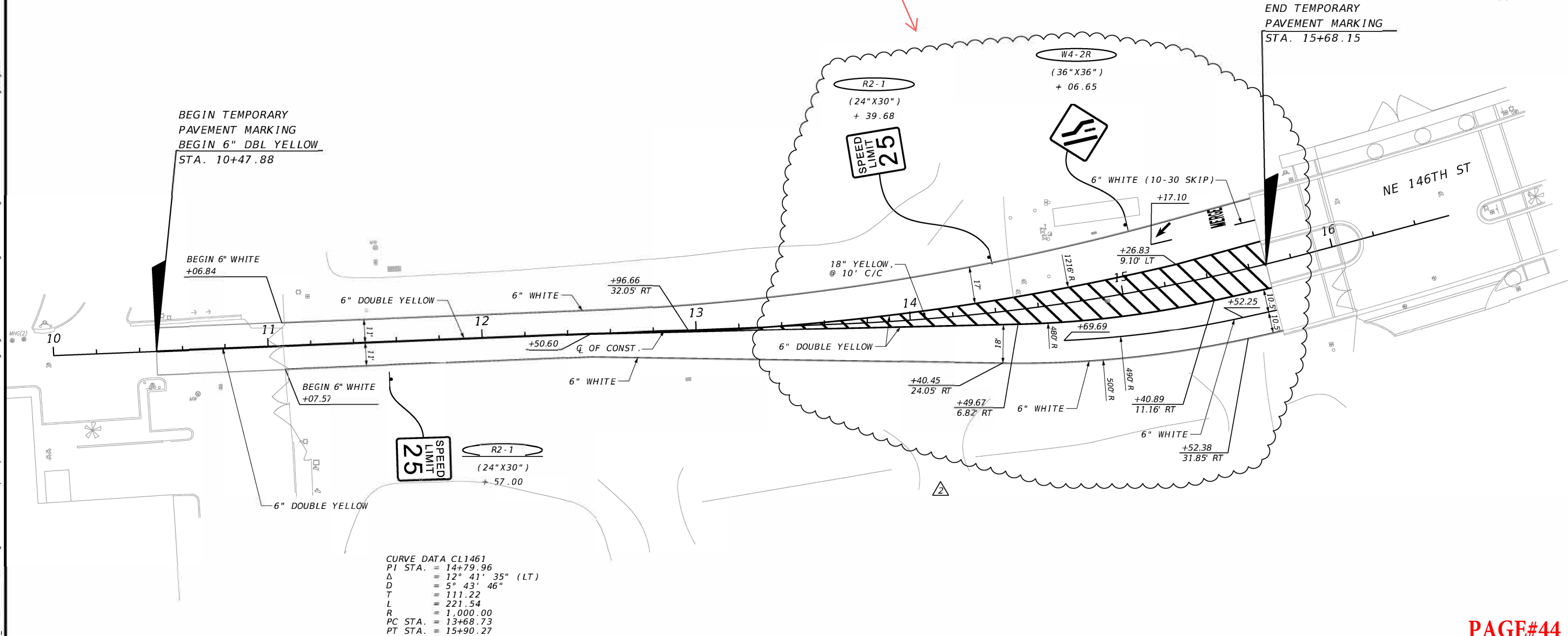
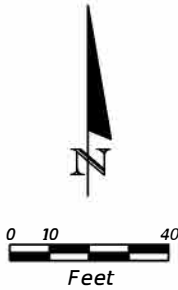
	NAME	DATE		NAME	DATE
DESIGNED BY			DRAWN BY		
CHECKED BY			CHECKED BY		
SUPERVISED BY:					



DEPARTMENT OF TRANSPORTATION  
AND PUBLIC WORKS  
HIGHWAY DIVISION  
STEPHEN P. CLARK CENTER  
111 NW 1 ST  
MIAMI, FLORIDA 33128

PROFILE  
NE 146 ST  
TEMPORARY ROAD





PAGE#44

PRE-PHASE

REVISIONS							
DATE	BY	DESCRIPTION	DATE	BY	DESCRIPTION	DATE	BY
03/13/2025		2. ADDED PHASE TITLE, UPDATED GORE AREA, REMOVED PAY ITEMS CALLOUTS					



**R.J. Behar & Company, Inc.**  
Engineers • Planners  
6861 SW 196 Avenue, Suite 302  
Pembroke Pines, Florida 33332  
VAMSEE TIRUNAGARI, P.E. LICENSE NO. 90864

DESIGNED BY	NAME	DATE	DRAWN BY	NAME	DATE
CHECKED BY			CHECKED BY		
SUPERVISED BY:					



DEPARTMENT OF TRANSPORTATION  
AND PUBLIC WORKS  
HIGHWAY DIVISION  
STEPHEN P. CLARK CENTER  
111 NW 1 ST  
MIAMI, FLORIDA 33128

SIGNING & PAVEMENT  
MARKING PLAN  
NE 146 ST TEMPORARY ROAD