

THIS ITEM HAS BEEN DIGITALLY SIGNED AND SEALED BY

ON THE DATE ADJACENT TO THE SEAL

PRINTED COPIES OF THIS DOCUMENT ARE NOT CONSIDERED SIGNED AND SEALED AND THE SIGNATURE MUST BE VERIFIED ON ANY ELECTRONIC COPIES.

INDEX OF SHEETS

SHT. No. SHEET DESCRIPTION

STRUCTURE PLANS:

- B-1 COVER SHEET
- B-2 GENERAL NOTES
- B-3 SUMMARY OF QUANTITIES
- B-4 PLAN AND ELEVATION
- B-5 ROTATION RESTRAINER BLOCK DETAILS (1 OF 3)
- B-6 ROTATION RESTRAINER BLOCK DETAILS (2 OF 3)
- B-7 ROTATION RESTRAINER BLOCK DETAILS (3 OF 3)
- BX-1 - BX-7 EXISTING BRIDGE PLANS

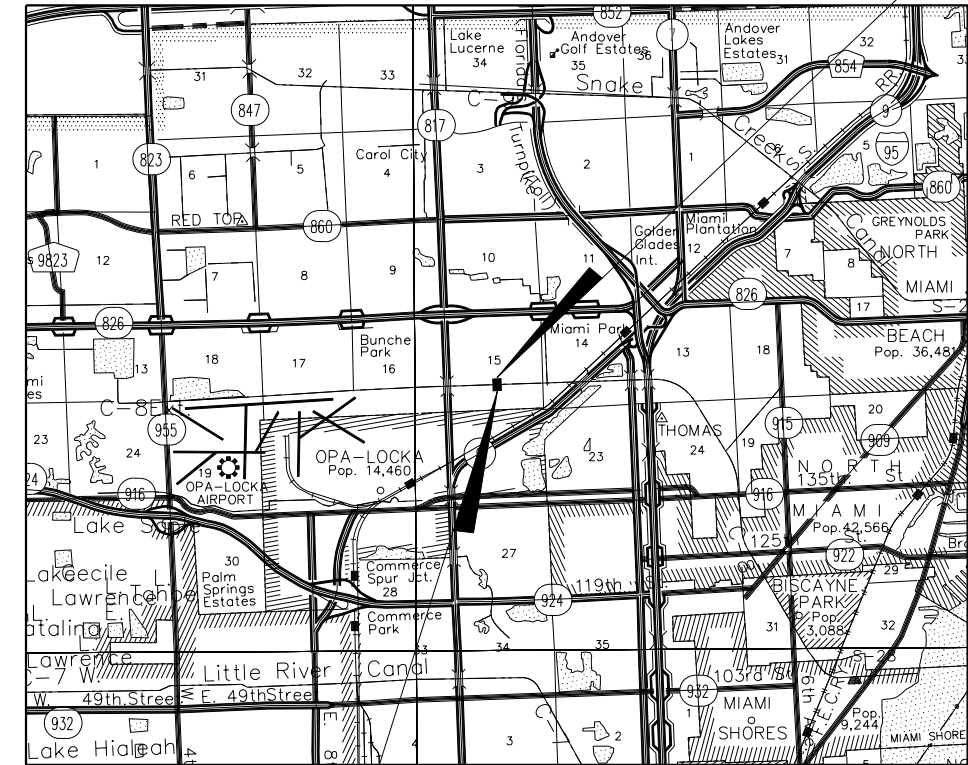
MIAMI-DADE STANDARD INDEX DRAWINGS AND FDOT DESIGN PLANS

- 10-20 GENERAL INFORMATION FOR TRAFFIC CONTROL THROUGH WORK ZONES, FDOT 102-600
- 22 SIDEWALK CLOSURE, FDOT 102-660
- 23 BAR BENDING DETAILS (STEEL), FDOT 415-001

PLANS FOR PROPOSED
IMPROVEMENTS TO
NW 22nd AVENUE BRIDGE NO. 874030
OVER BISCAYNE CANAL (C-8)
MIAMI-DADE COUNTY PROJECT NO. 3002700
ROAD IMPACT FEES

NOTE:

ATTENTION IS DIRECTED TO THE FACT THAT THESE PLANS MAY HAVE BEEN REDUCED IN SIZE BY REPRODUCTION. THIS MUST BE CONSIDERED WHEN OBTAINING SCALED DATA.



END CONSTRUCTION

BEGIN CONSTRUCTION

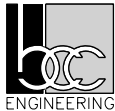
PREPARED FOR



MIAMI-DADE COUNTY
DEPARTMENT OF TRANSPORTATION AND PUBLIC WORKS
HIGHWAY DIVISION

STEPHEN P. CLARK CENTER
111 NW 1 ST
MIAMI, FLORIDA 33128

BY



6401 S.W. 87th Avenue, Suite 200
Miami, Florida 33173

Phone: (305) 670-2350

Fax: (305) 670-2351

Certificate of Authorization No. 7184

THESE PLANS HAVE BEEN PREPARED IN ACCORDANCE WITH AND ARE GOVERNED BY THE MIAMI-DADE COUNTY PUBLIC WORKS DEPARTMENT STANDARDS AND SPECIFICATIONS PARTS 1, 2 AND 3. THE MANUAL OF UNIFORM MINIMUM STANDARDS FOR DESIGN, CONSTRUCTION AND MAINTENANCE FOR STREETS AND HIGHWAYS. THE FLORIDA DEPARTMENT OF TRANSPORTATION DESIGN PLANS, AND THE FLORIDA DEPARTMENT OF TRANSPORTATION STANDARD SPECIFICATIONS 2020, AS AMENDED BY CONTRACT DOCUMENTS.

Always call 811 two full business days before you dig



100% PLANS
SUBMITTAL
APRIL 5, 2024

APPROVED _____ COUNTY ENGINEER
RECOMMENDED _____ ASSISTANT DIRECTOR
SUBMITTED _____ HIGHWAY DIVISION

PROPOSED	BCC	CHECK	BCC
DESIGN	BCC	DRAWN	BCC
DATE		SHEET	B-1 OF 6

H:\Projects\1020238.02 NW 22nd Ave Sonovoid Rotation Blockers\09.00_CAD\B1GeneralNotes01.dgn

NOTES:

1. DESIGN SPECIFICATIONS:

- AASHTO LRFD BRIDGE DESIGN SPECIFICATIONS, 9TH EDITION WITH 2015-2016 INTERIMS.

- FDOT STRUCTURES MANUAL DATED JANUARY 2023 AND SUBSEQUENT STRUCTURES TEMPORARY DESIGN BULLETINS.

- FDOT DESIGN MANUAL, JANUARY 2023.
2. GOVERNING STANDARDS AND CONSTRUCTION SPECIFICATIONS:

FDOT STANDARD SPECIFICATIONS FOR ROAD AND BRIDGE CONSTRUCTION, 2023 EDITION AND SUPPLEMENTS THERETO.
3. VERIFICATION:

BRIDGE PLAN AND ELEVATION SHOWN IN THIS DRAWING ARE SCHEMATICALLY REPRESENTED FOR THE PURPOSE OF INDICATING THE REPAIR WORK TO BE PERFORMED IN THIS BRIDGE. THE DIMENSIONS, ELEVATIONS AND INTERSECTION ANGLES SHOWN IN THESE PLANS ARE BASED ON INFORMATION SHOWN IN THE EXISTING BRIDGE PLANS AND/OR OTHER DOCUMENTS, AND MAY NOT REPRESENT ACTUAL AS-BUILT CONDITIONS. IT IS THE CONTRACTOR'S RESPONSIBILITY TO VERIFY THIS DATA, PRIOR TO PROCURING SHOP DRAWINGS OR MATERIALS AND BEFORE BEGINNING CONSTRUCTION. THE CONTRACTOR SHALL NOTIFY THE ENGINEER OF ANY FIELD CONDITIONS THAT MAY BE DIFFERENT FROM THOSE SHOWN ON THESE PLANS PRIOR TO INITIATE WORK.
4. MATERIALS:

A. CONCRETE:

ALL CONCRETE SHALL BE IN ACCORDANCE WITH SECTION 346 OF THE STANDARD SPECIFICATIONS. CLASS IV, F'C = 5,500 PSI.

PROVIDE 3/4 INCH CHAMFERS ON ALL EXPOSED EDGES AND CORNERS UNLESS OTHERWISE SPECIFIED.

B. REINFORCING STEEL:

ALL REINFORCING STEEL SHALL BE ASTM A615, GRADE 60. ALL DIMENSIONS PERTAINING TO THE LOCATION OF REINFORCING STEEL ARE TO CENTER OF BARS (UNLESS OTHERWISE NOTED). REINFORCING STEEL DETAIL DIMENSIONS ARE OUT TO OUT. ALL REINFORCEMENT TO BE EXPOSED DURING DEMOLITION SHALL BE PRESERVED, PROTECTED AND THOROUGHLY CLEANED PRIOR TO POURING NEW CONCRETE. UNDER NO CIRCUMSTANCE SHALL THE CONTRACTOR CUT THE EXISTING STEEL UNLESS IT IS APPROVED BY ENGINEER.

C. NEOPRENE PAD TO BE PER FOOT SPECIFICATION, SECTION 932. SHEAR MODULUS OF 130 PSI.

D. ADHESIVE BONDING MATERIAL FOR DOWELS TO BE TYPE HV COMPLYING WITH SECTION 937 OF SPECIFICATIONS.

E. ADHESIVE BONDING MATERIAL FOR NEOPRENE PAD ATTACHMENT TO BE TYPE AB COMPLYING WITH SECTION 926 OF SPECIFICATIONS.

5. UTILITIES:

CONTRACTOR IS TO VERIFY LOCATION OF ALL EXISTING UTILITIES AND STRUCTURES PRIOR TO BEGINNING ANY CONSTRUCTION. ALL CONFLICTS SHALL BE IMMEDIATELY REPORTED TO THE ENGINEER. THE CONTRACTOR SHALL PERFORM THE WORK IN A MANNER WHICH DOES NOT IMPACT OR REQUIRE THE REMOVAL OF ADJACENT UTILITIES. THE CONTRACTOR SHALL NOTIFY THE UAOs OF MINOR BRIDGE MAINTAINENCE WORK BEING PERFORMED AT THE BRIDGE LOCATION.

6. ENVIRONMENTAL CONSIDERATIONS

A).THE CONTRACTOR SHALL COMPLY WITH THE CONDITIONS OF ANY ENVIRONMENTAL PERMITS NEEDED FOR THE PROJECT.

7. MAINTENANCE OF TRAFFIC:

1) REGULATORY SPEED WITHIN THE ACTIVE WORK ZONE SHALL MATCH THE EXISTING POSTED SPEED = 35 MPH.

2) THERE ARE NO RESTRICTIONS ON LANE CLOSURE TIMES.

3) CONTRACTOR SHALL WORK ON ONE SIDE OF THE BRIDGE AT A TIME, UTILIZING FDOT STANDARD INDEX 102-615 TO CLOSE THE OUTSIDE LANE, INDEX 102-661 TO SHIFT THE BICYCLE LANE, AND INDEX 102-660 TO CLOSE THE SIDEWALK ADJACENT TO THE WORK ZONE, DIRECTING PEDESTRIANS TO THE NEAREST CROSS-WALKS JUST SOUTH OF NW 153RD STREET AND ON BUNCHE PARK DRIVE TO THE NORTH.

4) THE EXISTING CLEAR TRAVELED WAY WIDTH ON EACH SIDE CONSISTS OF TWO 12 FT LANES AND ONE 4 FT BICYCLE LANE FOR A TOTAL OF 28 FT. WHEN WORK ZONE IS ACTIVE, USE THE FOLLOWING DISTRIBUTION FROM MEDIAN TO THE OUTSIDE: ONE 10 FT OPEN LANE FOR TRAFFIC, 2 FT FOR CHANNELIZING DEVICES, 4 FT FOR SHIFTED BYCICLE LANE, 2 FT FOR CHANNELIZING DEVICES, 10 FT FOR WORK VEHICLES AND EQUIPMENT. THE WORK ZONE EXTENDS OVER THE EXISTING 4 FT SIDEWALK, RAILING AND CANAL SURFACE AS NEEDED TO ACCESS THE END BENT CAPS.

5) THESE TEMPORARY TRAFFIC CONTROL PLANS ARE PRELIMINARY AND TO BE USED AS REFERENCE AND/OR GUIDANCE ONLY. THE CONTRACTOR IS RESPONSIBLE TO PROVIDE THE FINAL TEMPORARY TRAFFIC CONTROL DESING AND OBTAIN APPROVAL BY MIAMI-DADE COUNTY.

6) CONTRACTOR SHALL NOTIFY MIAMI-DADE COUNTY DTPW TRANSIT DEPARTMENT 14 DAYS IN ADVANCE OF SETTING UP MOT TO COORDINATE BUS STOP RELOCATION ONE BLOCK TO THE NORTH WHEN WORKING ON THE NORTHBOUND SIDE OF THE BRIDGE.

BRIDGE NO. 874030
NW 22ND AVENUE BRIDGE OVER BISCAYNE CANAL (C-8)

REVISIONS							
DATE	BY	DESCRIPTION	DATE	BY	DESCRIPTION	DATE	BY



Joan De La Rosa, P.E.
P.E. License No. 74705
6401 SW 87th Avenue, Suite 200
Miami, Florida 33173
Phone: (305) 670-2350
Fax: (305) 670-2351
Certificate of Authorization No. 7184

	NAME	DATE		NAME	DATE
DESIGNED BY	HA	02/15/24	DRAWN BY	HHS	02/15/24
CHECKED BY	JDLR	02/15/24	CHECKED BY	HA	02/15/24
SUPERVISED BY: ROBERT FORAND, P.E. NO. 58611					

MIAMI-DADE
COUNTY

DEPARTMENT OF TRANSPORTATION
AND PUBLIC WORKS
HIGHWAY DIVISION
STEPHEN P. CLARK CENTER
111 NW 1ST
MIAMI, FLORIDA 33128

GENERAL NOTES

SUMMARY OF STRUCTURE QUANTITIES - BRIDGE 874030										
SECTION	PAY ITEM NO.	PAY ITEM DESCRIPTION	LOCATION	UNIT	QUANTITY		TOTAL		DESIGN NOTES	CONSTRUCTION REMARKS
					P	F	P	F		
LUMP SUM ITEMS	101 1	MOBILIZATION	BRIDGE	LS	1		1			
	101 3	REMOVAL OF EXISTING STRUCTURE	BENTS	SF	26.39		26.39			
SUBSTRUCTURE	400 4 5	CLASS IV CONCRETE (SUBSTRUCTURE)	BENTS	CY	3.13		3.13			
	415 1 5	REINFORCING STEEL (SUBSTRUCTURE)	BENTS	LBS	554.48		554.48			
SUPERSTRUCTURE	400 148	PLAIN NEOPRENE BEARING PADS	BRIDGE	CF	2.42		2.42			

BRIDGE PAY ITEM NOTES:
A).COST OF ALL WORK, MATERIALS, LABOR AND EQUIPMENT ASSOCIATED TO THE INSTALLATION OF DOWELS SHALL BE INCLUDED IN PAY ITEM 400-4-5
B).COST OF OF ALL WORK, MATERIALS, LABOR AND EQUIPMENT ASSOCIATED TO INSTALLATION AND ATTACHMENT OF NEOPRENE PADS SHALL BE PAID FOR UNDER PAY ITEM 400-148
C).COST OF VERIFICATION SHALL BE INCIDENTAL TO COST OF PAY ITEM 400-4-5.
D).INCIDENTAL ITEMS NOT COVERED BY SPECIFIC PAY ITEMS SHALL BE INCLUDED IN THE PAY ITEM BID UNIT PRICES PROVIDED IN THE CONTRACT.

SUMMARY OF ROADWAY QUANTITIES - BRIDGE 874030					
PAY ITEM NO.	PAY ITEM DESCRIPTION	UNIT	DURATION	QUANTITY	TOTAL
102-1	MAINTENANCE OF TRAFFIC	L.S.	10	1	1
102-60	WORK ZONE SIGN	E.A./DAY	10	29	290
102-74-8	CHANNELIZING DEVICE- PEDESTRIAN LCD (LONGITUDINAL CHANNELIZING DEVICE)	E.A./DAY	10	4	40
102-76	ARROW BOARD/ADVANCE WARNING PANEL	E.A./DAY	10	1	10

ROADWAY PAY ITEM NOTES:
PAY ITEM NO. 102-1
TO BE ACCOMPLISHED IN ACCORDANCE WITH THE FLORIDA DEPARTMENT OF TRANSPORTATION INDEX 600 SERIES, THE MANUAL OF UNIFORM TRAFFIC CONTROL DEVICES FOR STREETS AND HIGHWAYS, U.S. DEPARTMENT OF TRANSPORTATION FEDERAL HIGHWAY ADMINISTRATION (ANSI D6 1-1978), PUBLIC WORKS MANUAL OF METROPOLITAN DADE COUNTY, AND THE LATEST REVISIONS OF THE AFORE MENTIONED MANUALS. INCLUDES THE COST OF FURNISHING, INSTALLING, MAINTAINING, AND REMOVING ALL ITEMS OF MAINTENANCE OF TRAFFIC NOT PAID FOR UNDER SEPARATE ITEMS INCLUDING BUT NOT LIMITED TO SIGNS, BARRICADES, FLASHING LIGHTS, TEMPORARY PAVEMENT, TEMPORARY PAVEMENT MARKINGS, TRAFFIC SIGNAL MODIFICATION FOR TRAFFIC CONTROL, ETC.

BRIDGE NO. 874030
NW 22ND AVENUE BRIDGE OVER BISCAYNE CANAL (C-8)

REVISIONS							
DATE	BY	DESCRIPTION	DATE	BY	DESCRIPTION	DATE	BY



Joan De La Rosa, P.E.
P.E. License No. 74705
6401 SW 87th Avenue, Suite 200
Miami, Florida 33173
Phone: (305) 670-2350
Fax: (305) 670-2351
Certificate of Authorization No. 7184

DESIGNED BY	HA	DATE	02/15/24	DRAWN BY	HHS	DATE	02/15/24
CHECKED BY	JDLR	DATE	02/15/24	CHECKED BY	HA	DATE	02/15/24
SUPERVISED BY: ROBERT FORAND, P.E. NO. 58611							



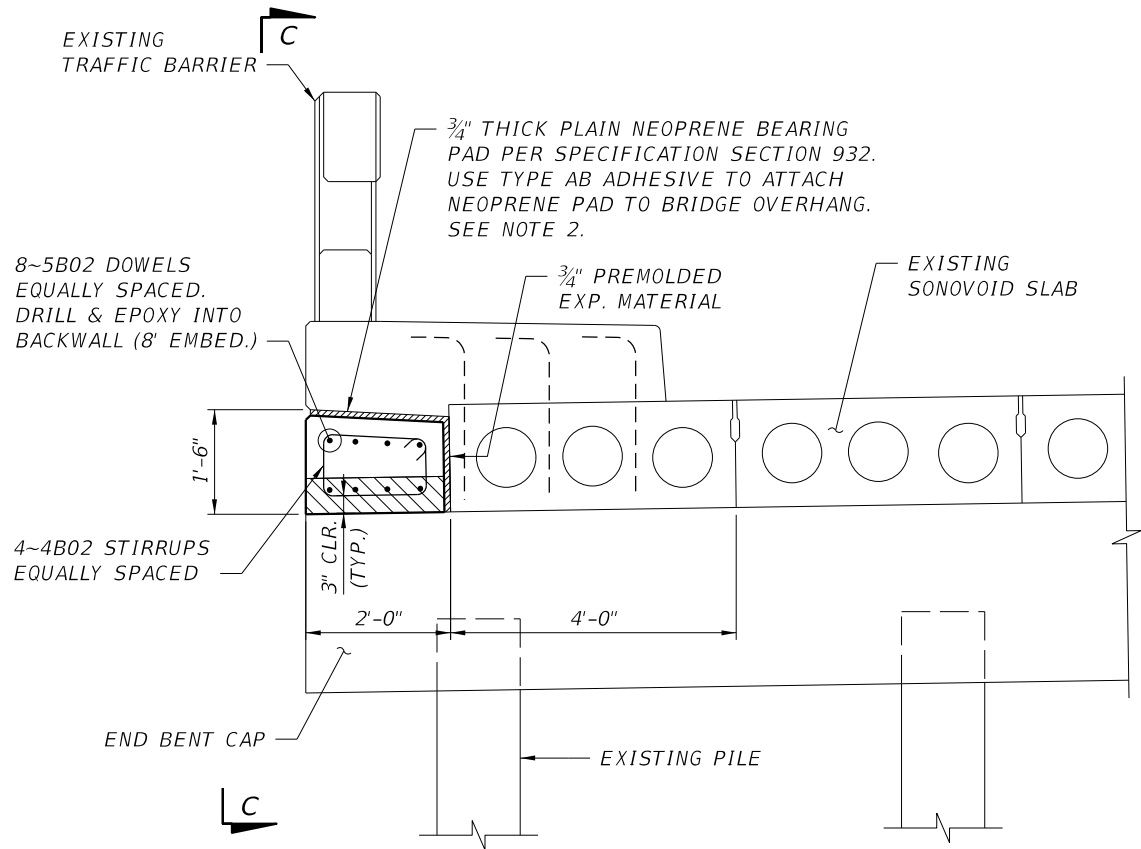
DEPARTMENT OF TRANSPORTATION AND PUBLIC WORKS
HIGHWAY DIVISION
STEPHEN P. CLARK CENTER
111 NW 1ST ST
MIAMI, FLORIDA 33128

SUMMARY OF STRUCTURES
QUANTITIES

H:\Projects\1020238.02 NW 22nd Ave Sonovoid Rotation Blockers\09.00_CAD\B1SumOfQuantities01.dgn

THE OFFICIAL RECORD OF THIS SHEET IS THE ELECTRONIC FILE DIGITALLY SIGNED AND SEALED UNDER RULE 61G15-23.004, F.A.C.

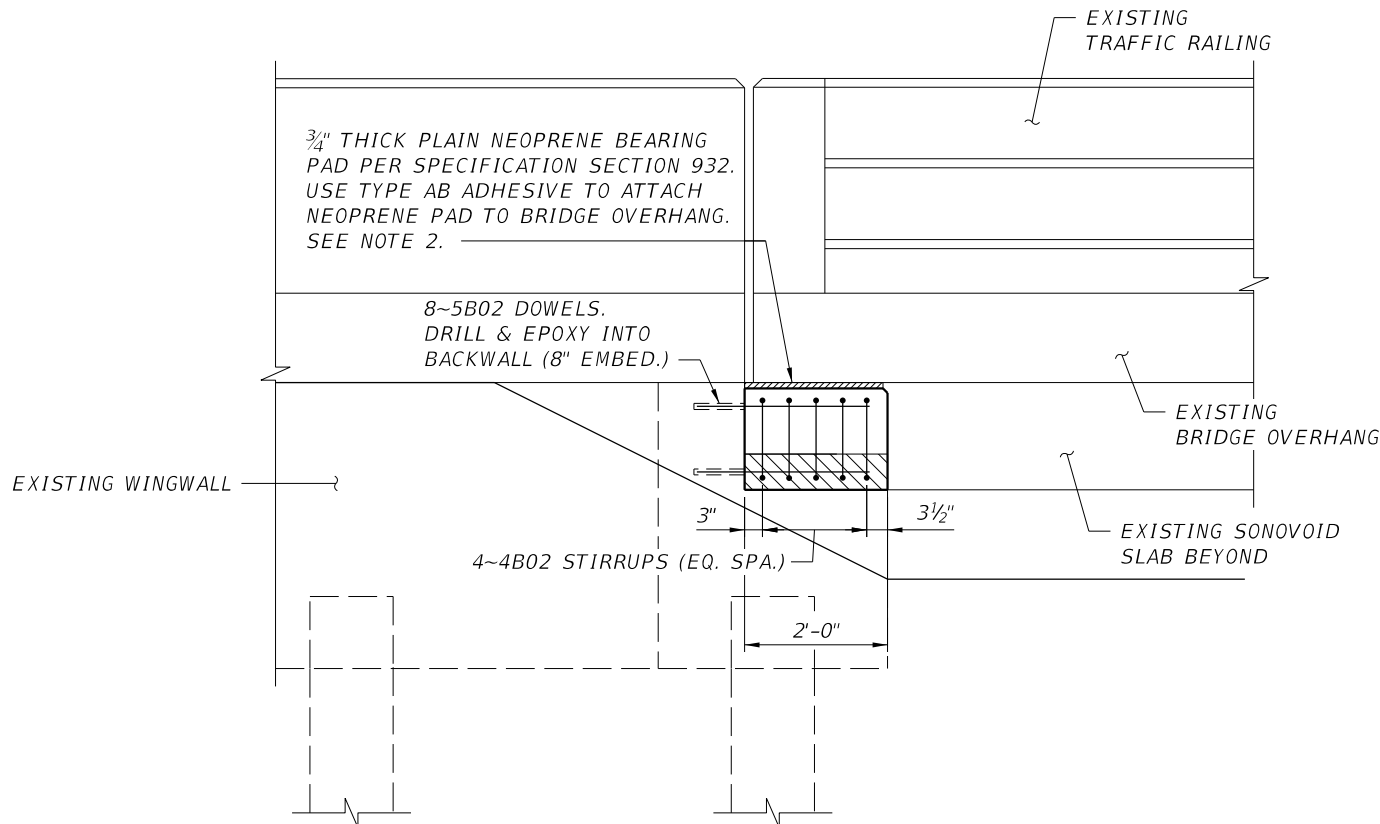
PLAN AND ELEVATION



SECTION A-A

BLOCK AT SE CORNER SHOWN. NW AND NE CORNER BLOCKS SIMILAR
(3 REQUIRED)

(FOR SW CORNER BLOCK DETAILS SEE SHEET B-7)



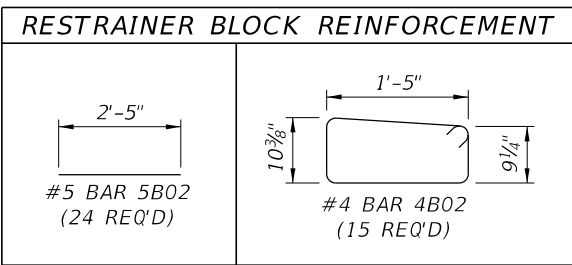
VIEW C-C

NOTES:

- SEE NOTES ON SHEET B-2 FOR ADDITIONAL INFORMATION.
- SIZE OF NEOPRENE PAD TO MATCH SIZE OF ROTATION RESTRAINER BLOCK. CONTRACTOR TO VERIFY DIMENSIONS PRIOR TO FABRICATION.
- ONLY ROTATION RESTRAINER BLOCK REINFORCEMENT HAS BEEN SHOWN FOR CLARITY. REFER TO EXISTING PLANS FOR OTHER MEMBERS REINFORCEMENT AND DETAILS.
- REINFORCEMENT DIMENSIONS ARE BASED ON THE RESTRAINER BLOCK DIMENSIONS SHOWN IN PLAN. CONTRACTOR MUST VERIFY RESTRAINER BLOCK DIMENSIONS PRIOR TO FABRICATION OF REINFORCEMENT AND ADJUST ALL BARS DIMENSIONS ACCORDINGLY.
- EXISTING REINFORCEMENT TO BE EXPOSED DURING DEMOLITION OF THE EXISTING SHEAR BLOCKS SHALL BE PRESERVED, PROTECTED AND THOROUGHLY CLEANED PRIOR TO POURING NEW CONCRETE. UNDER NO CIRCUMSTANCE SHALL THE CONTRACTOR CUT THE EXISTING STEEL UNLESS IT IS APPROVED BY ENGINEER.

LEGEND:

 EXISTING CONSTRUCTION TO BE REMOVED



BRIDGE NO. 874030
NW 22ND AVENUE BRIDGE OVER BISCAYNE CANAL (C-8)

REVISIONS							
DATE	BY	DESCRIPTION	DATE	BY	DESCRIPTION	DATE	BY



Joan De La Rosa, P.E.
P.E. License No. 74705
6401 SW 87th Avenue, Suite 200
Miami, Florida 33173
Phone: (305) 670-2350
Fax: (305) 670-2351
Certificate of Authorization No. 7184

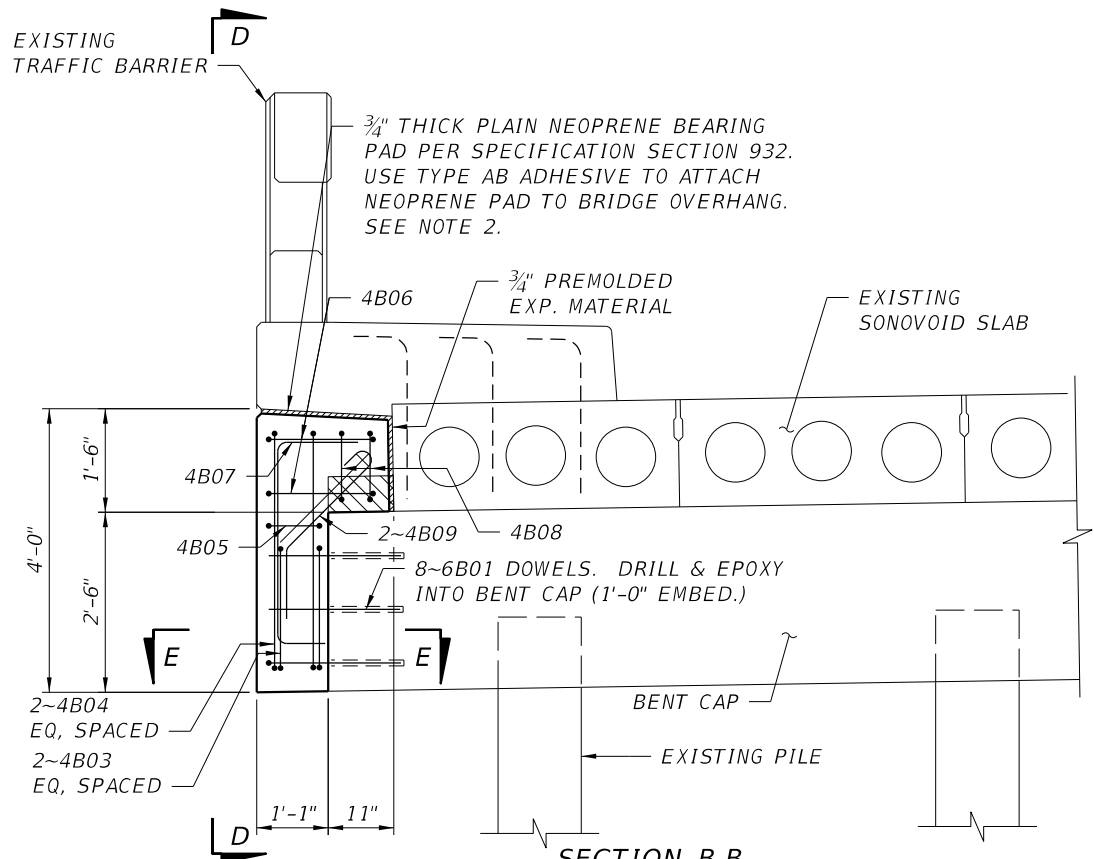
	NAME	DATE		NAME	DATE
DESIGNED BY	HA	02/15/24	DRAWN BY	HHS	02/15/24
CHECKED BY	JDLR	02/15/24	CHECKED BY	HA	02/15/24
SUPERVISED BY:	ROBERT FORAND, P.E. NO. 58611				



ROTATION RESTRAINER BLOCK
DETAILS (1 OF 3)

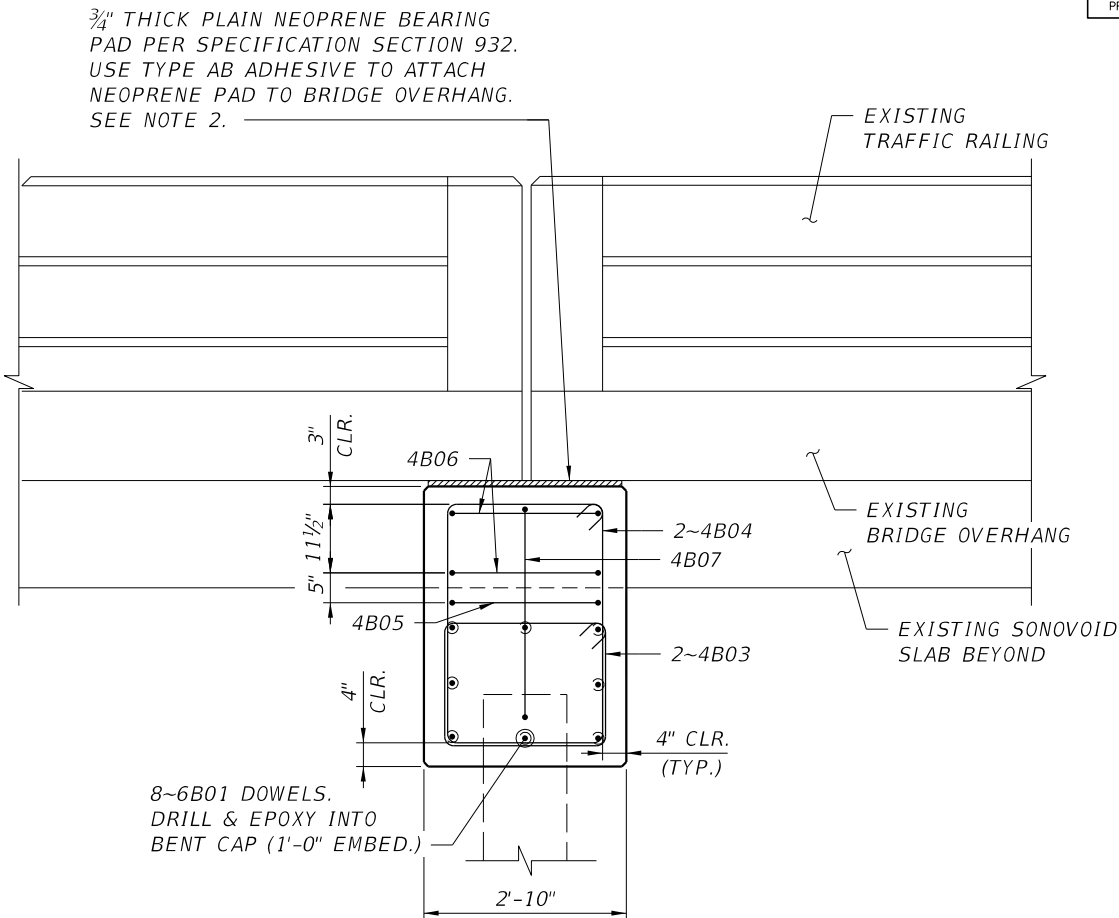
4/5/2024

4:00:29 PM



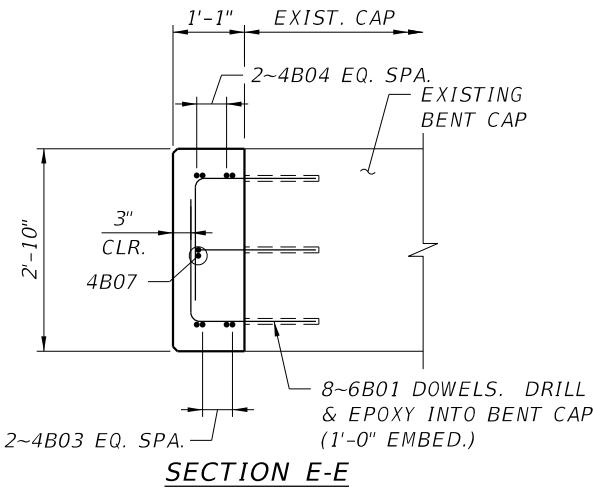
SECTION B-B

(BLOCK AT EAST END OF INT. BENT 2 SHOWN. OTHER INT. BENT BLOCKS SIMILAR)
4 REQUIRED



VIEW D-D

RESTRAINER BLOCK REINFORCEMENT		



NOTES:

- SEE NOTES ON SHEET B-2 FOR ADDITIONAL INFORMATION.
- SIZE OF NEOPRENE PAD TO MATCH SIZE OF ROTATION RESTRAINER BLOCK. CONTRACTOR TO VERIFY DIMENSIONS PRIOR TO FABRICATION.
- ONLY ROTATION RESTRAINER BLOCK REINFORCEMENT HAS BEEN SHOWN FOR CLARITY. REFER TO EXISTING PLANS FOR OTHER MEMBERS REINFORCEMENT AND DETAILS.
- REINFORCEMENT DIMENSIONS ARE BASED ON THE RESTRAINER BLOCK DIMENSIONS SHOWN IN PLAN. CONTRACTOR MUST VERIFY RESTRAINER BLOCK DIMENSIONS PRIOR TO FABRICATION OF REINFORCEMENT AND ADJUST ALL BARS DIMENSIONS ACCORDINGLY.
- EXISTING REINFORCEMENT TO BE EXPOSED DURING DEMOLITION OF THE EXISTING SHEAR BLOCKS SHALL BE PRESERVED, PROTECTED AND THOROUGHLY CLEANED PRIOR TO POURING NEW CONCRETE. UNDER NO CIRCUMSTANCE SHALL THE CONTRACTOR CUT THE EXISTING STEEL UNLESS IT IS APPROVED BY ENGINEER.

LEGEND:

EXISTING CONSTRUCTION TO BE REMOVED

BRIDGE NO. 874030
NW 22ND AVENUE BRIDGE OVER BISCAYNE CANAL (C-8)

R E V I S I O N S								
DATE	BY	DESCRIPTION	DATE	BY	DESCRIPTION	DATE	BY	DESCRIPTION



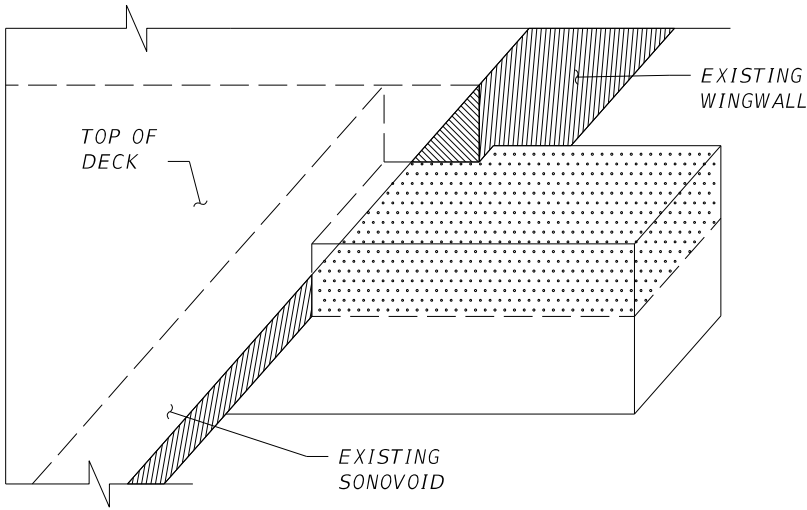
Joan De La Rosa, P.E.
P.E. License No. 74705
6401 SW 87th Avenue, Suite 200
Miami, Florida 33173
Phone: (305) 670-2350
Fax: (305) 670-2351
Certificate of Authorization No. 7184

DESIGNED BY	NAME	DATE	DRAWN BY	NAME	DATE
HA	HA	02/15/24	HHS	HHS	02/15/24
CHECKED BY	NAME	DATE	CHECKED BY	NAME	DATE
JDLR	JDLR	02/15/24	HA	HA	02/15/24
SUPERVISED BY: ROBERT FORAND, P.E. NO. 58611					

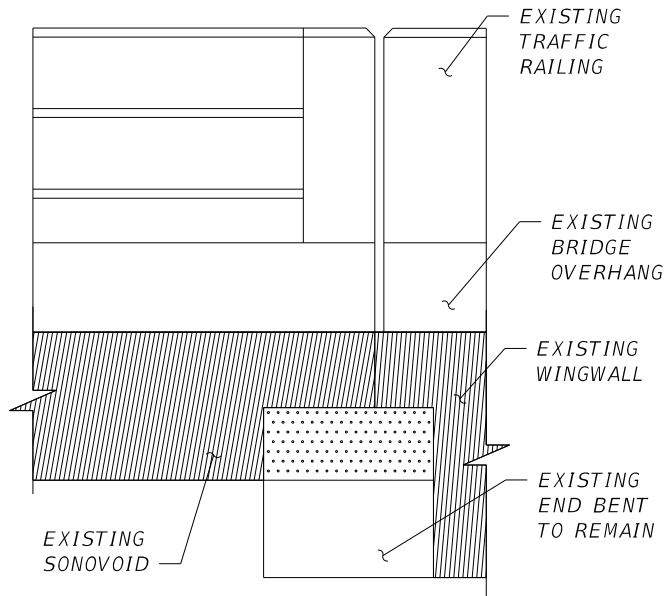
MIAMI-DADE COUNTY		DEPARTMENT OF TRANSPORTATION AND PUBLIC WORKS HIGHWAY DIVISION STEPHEN P. CLARK CENTER 111 NW 1 ST MIAMI, FLORIDA 33128

ROTATION RESTRAINER BLOCK
DETAILS (2 OF 3)

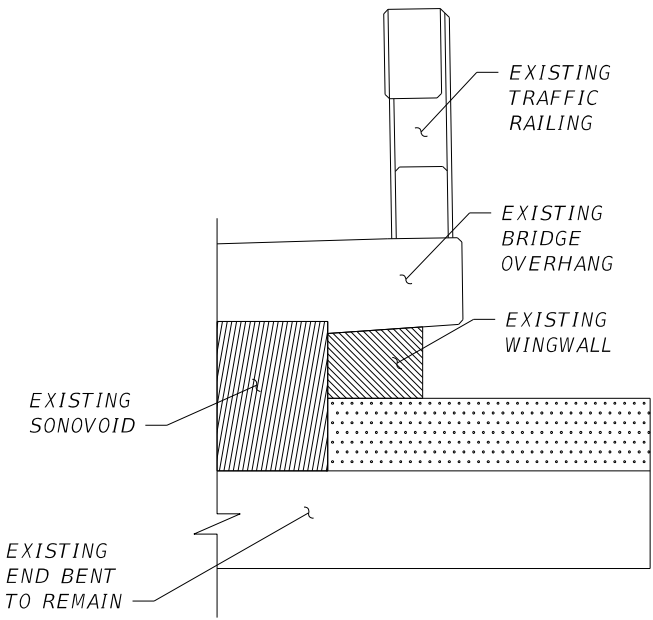
H:\Projects\1020238.02 NW 22nd Ave Sonovoid Rotation Blockers\09.00_CAD\BIM\Detail\is03.dgn



ISOMETRIC VIEW EXISTING SW END BENT

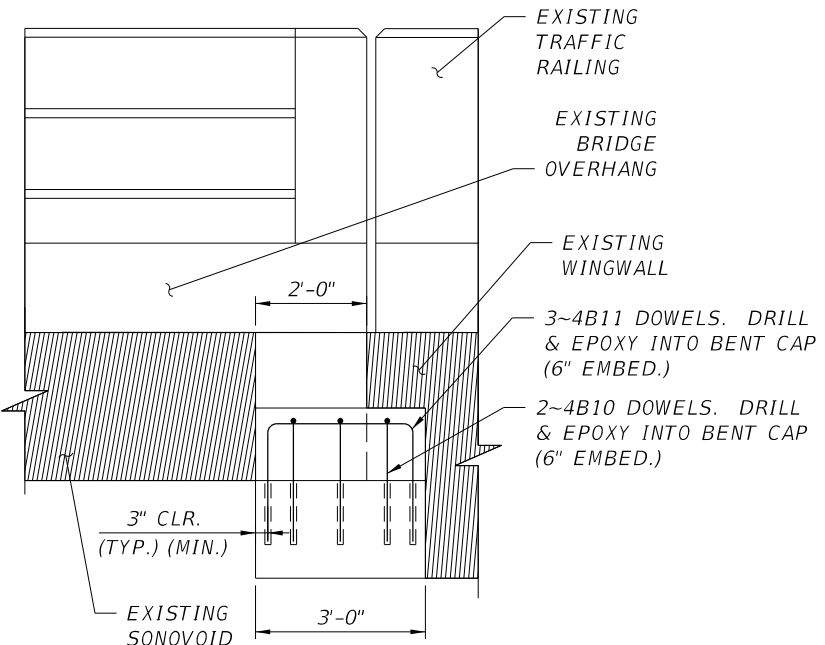
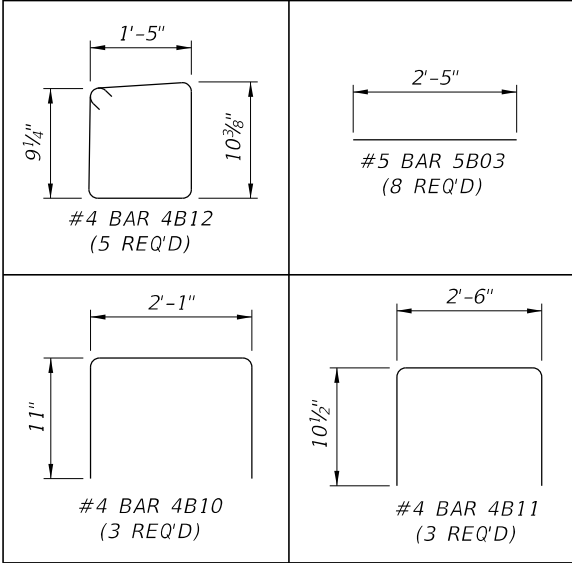


EXISTING SIDE VIEW

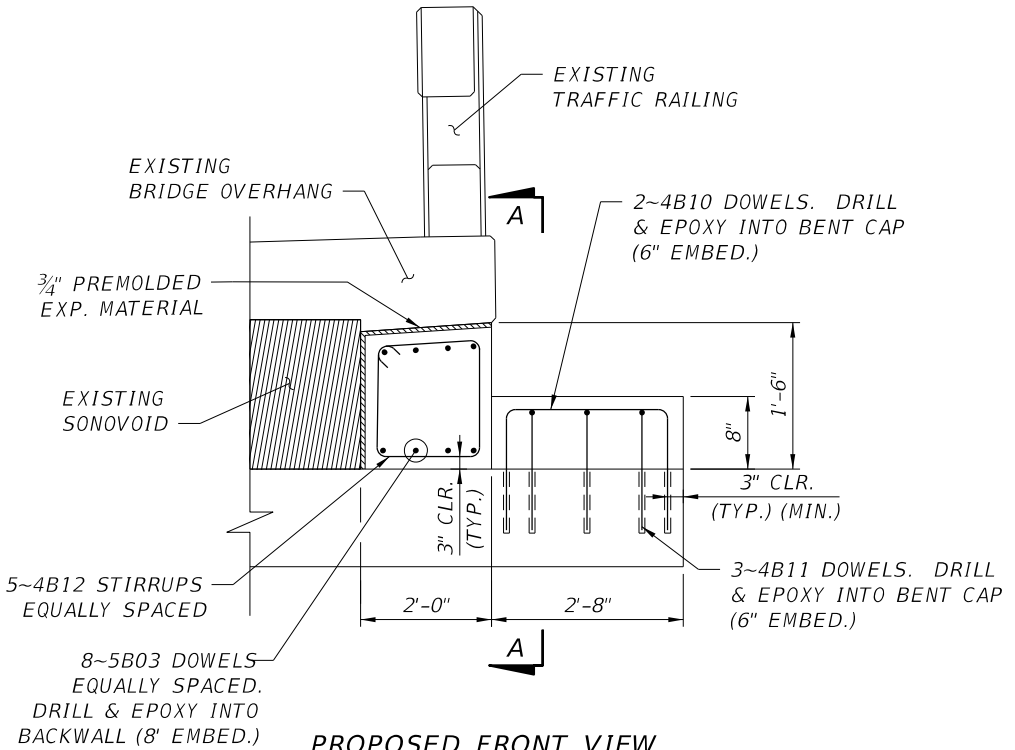


EXISTING FRONT VIEW

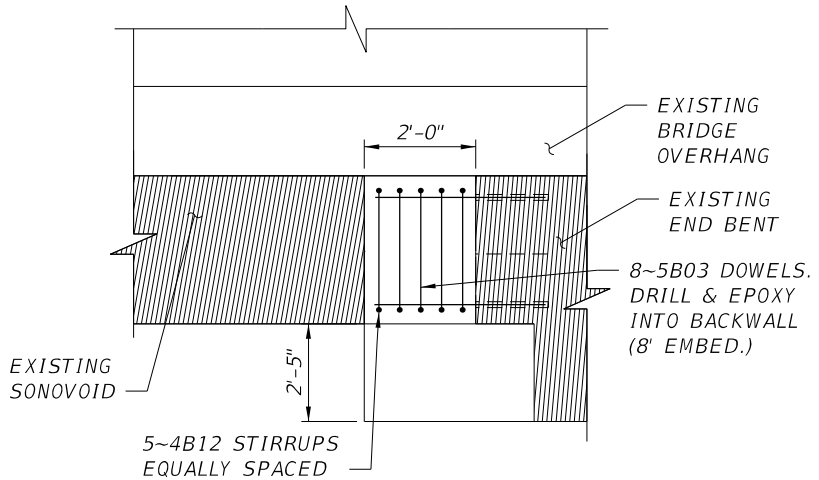
RESTRAINER BLOCK REINFORCEMENT



PROPOSED SIDE VIEW



PROPOSED FRONT VIEW



SECTION A-A

BRIDGE NO. 874030
NW 22ND AVENUE BRIDGE OVER BISCAYNE CANAL (C-8)

REVISIONS							
DATE	BY	DESCRIPTION	DATE	BY	DESCRIPTION	DATE	BY



Joan De La Rosa, P.E.
P.E. License No. 74705
6401 SW 87th Avenue, Suite 200
Miami, Florida 33173
Phone: (305) 670-2350
Fax: (305) 670-2351
Certificate of Authorization No. 7184

NAME	DATE	NAME	DATE
DESIGNED BY: HA	02/15/24	DRAWN BY: HHS	02/15/24
CHECKED BY: JDLR	02/15/24	CHECKED BY: HA	02/15/24
SUPERVISED BY: ROBERT FORAND, P.E. NO. 58611			



ROTATION RESTRAINER BLOCK
DETAILS (3 OF 3)