

INDEX OF SHEETS

SHT. No.	SHEET DESCRIPTION
ROADWAY PLANS:	
1	COVER SHEET
1A	SIGNATURE SHEET
2	SUMMARY OF QUANTITIES
3	ROADWAY PLAN
4-8	MAINTENANCE OF TRAFFIC PLANS
9	SIGNING AND PAVEMENT MARKINGS PLAN

STRUCTURE PLANS:	
B-1	BRIDGE GENERAL NOTES
B-2	SUMMARY OF STRUCTURES QUANTITIES
B-3	PLAN AND ELEVATION
B-4	SUPERSTRUCTURE REPAIRS
B-5	DECK & DIAPHRAGM DETAILS
B-6	EXPANSION JOINT DETAILS (1 OF 2)
B-7	EXPANSION JOINT DETAILS (2 OF 2)
B-8	REINFORCING BAR LIST
BX-1 - BX-6	EXISTING BRIDGE PLANS

MIAMI-DADE STANDARD INDEX DRAWINGS  
AND FDOT DESIGN PLANS

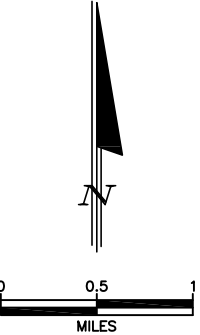
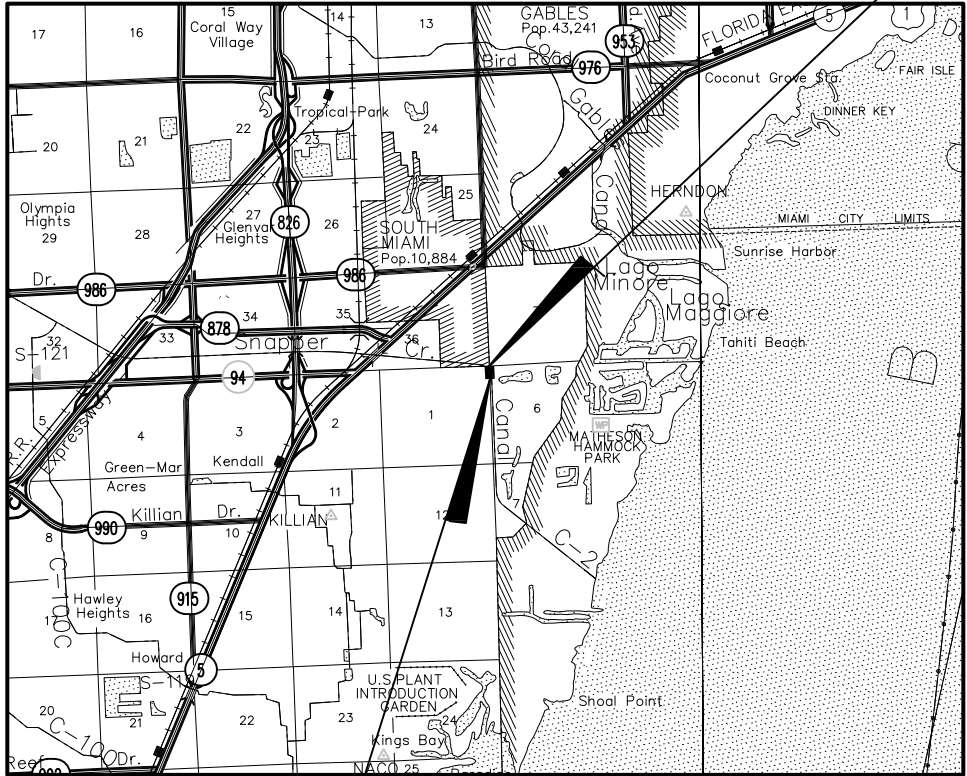
10-20	GENERAL INFORMATION FOR TRAFFIC CONTROL THROUGH WORK ZONES, FDOT 102-600
21	TWO-LANE, TWO-WAY, INTERSECTION WORK, FDOT 102-604
22	SIDEWALK CLOSURE, FDOT 102-660
23	BAR BENDING DETAILS (STEEL), FDOT 415-001
24-26	TYPICAL PLACEMENT OF RAISED PAVEMENT MARKINGS, FDOT 706-001
27-36	PAVEMENT MARKINGS, FDOT 711-001

THESE PLANS HAVE BEEN PREPARED IN ACCORDANCE WITH AND ARE GOVERNED BY THE MIAMI-DADE COUNTY PUBLIC WORKS DEPARTMENT STANDARDS AND SPECIFICATIONS PARTS 1, 2 AND 3. THE MANUAL OF UNIFORM MINIMUM STANDARDS FOR DESIGN, CONSTRUCTION AND MAINTENANCE FOR STREETS AND HIGHWAYS. THE FLORIDA DEPARTMENT OF TRANSPORTATION DESIGN PLANS, AND THE FLORIDA DEPARTMENT OF TRANSPORTATION STANDARD SPECIFICATIONS 2020, AS AMENDED BY CONTRACT DOCUMENTS.



PLANS FOR PROPOSED  
IMPROVEMENTS TO  
SW 57th AVENUE BRIDGE NO. 874251  
AT N. KENDALL DRIVE/SW 88th STREET OVER SNAPPER CREEK CANAL  
MIAMI-DADE COUNTY PROJECT NO. 20210226  
ROAD IMPACT FEES

NOTE:  
ATTENTION IS DIRECTED TO THE FACT THAT THESE PLANS MAY HAVE BEEN REDUCED IN SIZE BY REPRODUCTION. THIS MUST BE CONSIDERED WHEN OBTAINING SCALED DATA.



LENGTH OF JOB		
	LIN. FT.	MILES
ROADWAY	90	0.017
BRIDGE	120	0.023
GROSS LENGTH OF JOB	210	0.040
EXCEPTIONS	-	-
NET LENGTH OF JOB	210	0.040

BEGIN CONSTRUCTION

PREPARED FOR

**MIAMI-DADE  
COUNTY**

MIAMI-DADE COUNTY  
DEPARTMENT OF TRANSPORTATION AND PUBLIC WORKS  
HIGHWAY DIVISION

STEPHEN P. CLARK CENTER  
111 NW 1 ST  
MIAMI, FLORIDA 33128

BY

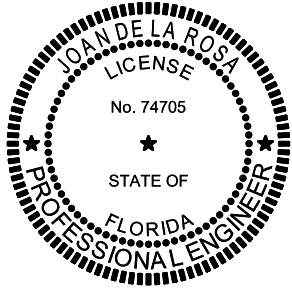


6401 S.W. 87th Avenue, Suite 200  
Miami, Florida 33173  
Phone: (305) 670-2350  
Fax: (305) 670-2351  
Certificate of Authorization No. 7184

FINAL PLANS  
SUBMITTAL  
DECEMBER 30, 2022

APPROVED	_____	COUNTY ENGINEER	
RECOMMENDED	_____	ASSISTANT DIRECTOR	
SUBMITTED	_____	HIGHWAY DIVISION	
PROPOSED	BCC	CHECK	BCC
DESIGN	BCC	DRAWN	BCC
DATE	_____	SHEET	1 OF 9

H:\Projects\02000555.XX SW 57th Ave Bridge Urgent Repair\9.00 CAD\roadway\Temporary Traffic Control\SIGNATURE SHEET01.dwg Dec 20, 2022 - 5:21pm MSTAHVEC

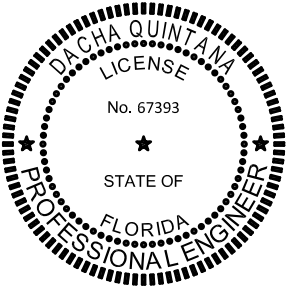


THIS ITEM HAS BEEN DIGITALLY SIGNED AND SEALED BY

ON THE DATE ADJACENT TO THE SEAL

PRINTED COPIES OF THIS DOCUMENT ARE NOT CONSIDERED SIGNED AND SEALED AND THE SIGNATURE MUST BE VERIFIED ON ANY ELECTRONIC COPIES.

<u>SHEET NO.</u>	<u>SHEET DESCRIPTION</u>
1A	SIGNATURE SHEET
B-1	BRIDGE GENERAL NOTES
B-2	SUMMARY OF STRUCTURES QUANTITIES
B-3	PLAN AND ELEVATION
B-4	SUPERSTRUCTURE REPAIRS
B-5	DECK & DIAPHRAGM DETAILS
B-6	EXPANSION JOINT DETAILS (1 OF 2)
B-7	EXPANSION JOINT DETAILS (2 OF 2)
B-8	REINFORCING BAR LIST

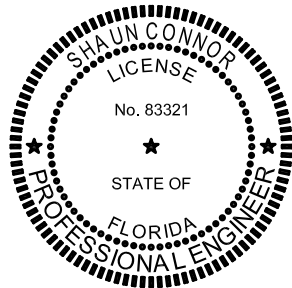


THIS ITEM HAS BEEN DIGITALLY SIGNED AND SEALED BY

ON THE DATE ADJACENT TO THE SEAL

PRINTED COPIES OF THIS DOCUMENT ARE NOT CONSIDERED SIGNED AND SEALED AND THE SIGNATURE MUST BE VERIFIED ON ANY ELECTRONIC COPIES.

<u>SHEET NO.</u>	<u>SHEET DESCRIPTION</u>
1A	SIGNATURE SHEET
9	SIGNING AND PAVEMENT MARKINGS PLAN



THIS ITEM HAS BEEN DIGITALLY SIGNED AND SEALED BY

ON THE DATE ADJACENT TO THE SEAL

PRINTED COPIES OF THIS DOCUMENT ARE NOT CONSIDERED SIGNED AND SEALED AND THE SIGNATURE MUST BE VERIFIED ON ANY ELECTRONIC COPIES.

<u>SHEET NO.</u>	<u>SHEET DESCRIPTION</u>
1	COVER SHEET
1A	SIGNATURE SHEET
2	SUMMARY OF QUANTITIES
3	ROADWAY PLAN
4-8	MAINTENANCE OF TRAFFIC PLANS

REVISIONS							
DATE	BY	DESCRIPTION	DATE	BY	DESCRIPTION	DATE	BY



6401 SW 87th Avenue, Suite 200  
Miami, Florida 33173  
Phone: (305) 670-2350  
Fax: (305) 670-2351  
Certificate of Authorization No. 7184

	NAME	DATE		NAME	DATE
DESIGNED BY	XX	XX/XX/XX	DRAWN BY	XX	XX/XX/XX
CHECKED BY	XX	XX/XX/XX	CHECKED BY	XX	XX/XX/XX

MIAMI-DADE  
COUNTY

DEPARTMENT OF TRANSPORTATION  
AND PUBLIC WORKS  
HIGHWAY DIVISION  
STEPHEN P. CLARK, CENTER  
111 NW 1 ST  
MIAMI, FLORIDA 33128

SIGNATURE SHEET

H:\Projects\02000555.XX SW 57th Ave Bridge Urgent Repair\9.00 CAD\roadway\SUMMARY OF QUANTITIES.dwg Apr 13, 2023 - 5:19pm MSTAHOVEC

SUMMARY OF QUANTITIES

PAY ITEM NO.	ITEM	UNIT	TOTAL QUANTITY	* ADDITIONAL QUANTITY
102-1A	MAINTENANCE OF TRAFFIC	L.S.	1	
102-14	TRAFFIC CONTROL OFFICER – FLAGGERS	HR	540	
102-60A	WORK ZONE SIGNS	E.A./DAY	800	
102-74-1	BARRICADES (TEMPORARY – TYPE I, II, VP, DRUM)	E.A./DAY	800	
102-74-2	BARRICADES (TEMPORARY, TYPE III, 6")	E.A./DAY	260	
102-74-6	CHANNELIZING DEVICE – PEDESTRIAN LCD (LONGITUDINAL CHANNELIZING DEVICE)	E.A./DAY	120	
102-99	VARIABLE MESSAGE SIGN (TEMPORARY)	E.A./DAY	128	
700-40-01	ROADSIDE SIGN (SINGLE POST) (LESS THAN 12 S.F.)	A.S.	3	
706-1-12	REFLECTIVE PAVEMENT MARKERS (CLASS B, MONO OR BI-DIRECTIONAL, ALL COLORS)	EA	68	
711-11-121	THERMOPLASTIC (WHITE) (SOLID) (6")	L.F.	560	
711-11-124	THERMOPLASTIC (WHITE) (SOLID) (18")	L.F.	168	
711-11-125	THERMOPLASTIC (WHITE) (SOLID) (24")	L.F.	21	
711-11-170	THERMOPLASTIC (WHITE) (ARROWS)	EA	4	
711-11-221	THERMOPLASTIC (YELLOW) (SOLID) (6")	L.F.	491	
711-11-224	THERMOPLASTIC (YELLOW) (SOLID) (18")	L.F.	30	

PAY ITEM NOTES

- 102-1
- TO BE ACCOMPLISHED IN ACCORDANCE WITH THE FLORIDA DEPARTMENT OF TRANSPORTATION DESIGN PLANS 102-600 SERIES, THE MANUAL OF UNIFORM TRAFFIC CONTROL DEVICES FOR STREETS AND HIGHWAYS, U.S. DEPARTMENT OF TRANSPORTATION FEDERAL HIGHWAY ADMINISTRATION (ANSI D6 1-1978), PUBLIC WORKS MANUAL OF METROPOLITAN DADE COUNTY, AND THE LATEST REVISIONS OF THE AFORE MENTIONED MANUALS. INCLUDES THE COST OF FURNISHING, INSTALLING, MAINTAINING, AND REMOVING ALL ITEMS OF MAINTENANCE OF TRAFFIC NOT PAID FOR UNDER SEPARATE ITEMS INCLUDING BUT NOT LIMITED TO SIGNS, BARRICADES, FLASHING LIGHTS, TEMPORARY PAVEMENT, TEMPORARY PAVEMENT MARKINGS, TRAFFIC SIGNAL MODIFICATION FOR TRAFFIC CONTROL, ETC.
- 711-11-XXX
- INCLUDES THE COST OF PAINTED PAVEMENT MARKINGS (FINAL SURFACE) APPLICATION. REFER TO FDOT SPECIFICATIONS 710 FOR THE NUMBER OF APPLICATIONS REQUIRED

REVISIONS							
DATE	BY	DESCRIPTION	DATE	BY	DESCRIPTION	DATE	BY



Shaun Connor, P.E.  
P.E. License No. 83321  
6401 SW 87th Avenue, Suite 200  
Miami, Florida 33173  
Phone: (305) 670-2350  
Fax: (305) 670-2351  
Certificate of Authorization No. 7184

	NAME	DATE		NAME	DATE
DESIGNED BY	WS	12/19/22	DRAWN BY	WS	12/19/22
CHECKED BY	JB	12/22/22	CHECKED BY	JB	12/22/22
SUPERVISED BY: SHAWN CONNOR, P.E. NO. 83321					

MIAMI-DADE  
COUNTY

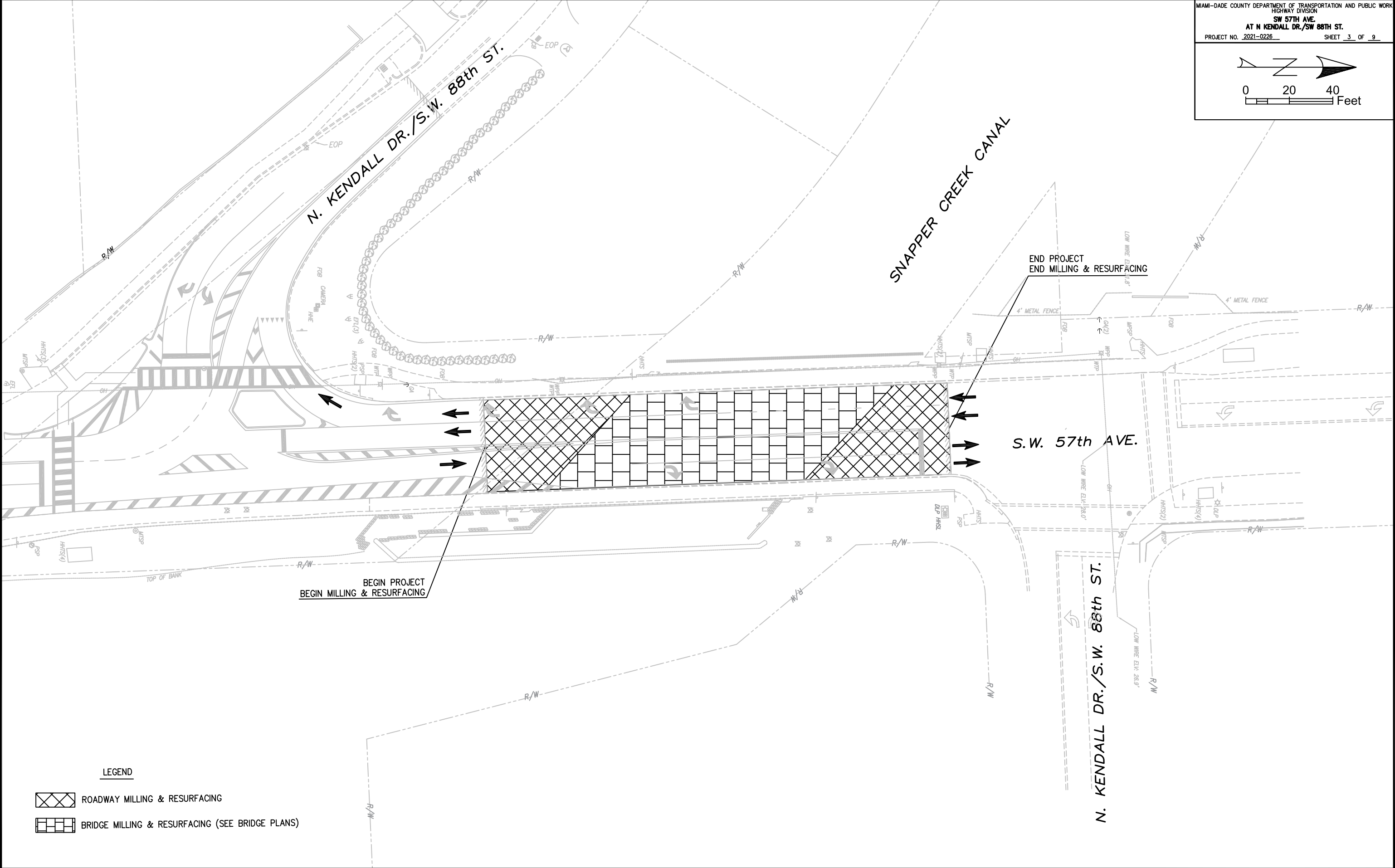
DEPARTMENT OF TRANSPORTATION  
AND PUBLIC WORKS  
HIGHWAY DIVISION  
STEPHEN P. CLARK CENTER  
111 NW 1 ST  
MIAMI, FLORIDA 33128

SUMMARY OF QUANTITIES

THE OFFICIAL RECORD OF THIS SHEET IS THE ELECTRONIC FILE DIGITALLY SIGNED AND SEALED UNDER RULE 61G15-23.004, F.A.C.

MIAMI-DADE COUNTY DEPARTMENT OF TRANSPORTATION AND PUBLIC WORKS  
HIGHWAY DIVISION  
SW 57th Ave.  
AT N KENDALL DR./SW 88th St.  
PROJECT NO. 2021-0226 SHEET 3 OF 9

0 20 40 Feet



LEGEND

- ROADWAY MILLING & RESURFACING
- BRIDGE MILLING & RESURFACING (SEE BRIDGE PLANS)

REVISIONS							
DATE	BY	DESCRIPTION	DATE	BY	DESCRIPTION	DATE	BY



Shaun Connor, P.E.  
P.E. License No. 83321  
6401 SW 87th Avenue, Suite 200  
Miami, Florida 33173  
Phone: (305) 670-2350  
Fax: (305) 670-2351  
Certificate of Authorization No. 7184

DESIGNED BY	NAME	DATE	DRAWN BY	NAME	DATE
	WS	12/19/22		WS	12/19/22
CHECKED BY	JB	12/22/22	CHECKED BY	JB	12/22/22
SUPERVISED BY: SHAUN CONNOR, P.E. NO. 83321					

MIAMI-DADE COUNTY

DEPARTMENT OF TRANSPORTATION AND PUBLIC WORKS  
HIGHWAY DIVISION  
STEPHEN P. CLARK, CENTER  
111 NW 1 ST  
MIAMI, FLORIDA 33128

ROADWAY PLAN

H:\Projects\02000555.XX SW 57th Ave Bridge Urgent Repair\9.00 CAD\roadway\PLAN SHEET - Survey.dwg Dec 20, 2022 - 1:44pm WSTAHOMEC

THE OFFICIAL RECORD OF THIS SHEET IS THE ELECTRONIC FILE DIGITALLY SIGNED AND SEALED UNDER RULE 61G15-23.004, F.A.C.

TEMPORARY TRAFFIC CONTROL PLAN NOTES

1. LANE CLOSURE SHALL OCCUR ONLY DURING DAYTIME HOURS ON NON-EVENT DAYS/WEEKENDS. DAYTIME HOURS ARE:
- FROM 8:00 AM TO 8:00 PM – WEEKDAYS AND WEEKENDS
2. REGULATORY SPEED ESTABLISHED WITHIN WORK ZONE TRAVEL WAYS SHALL BE MAINTAINED AT 30 MPH.
3. WORK ZONE LENGTH SHALL NOT EXCEED ¼ MILE AT A TIME TO MINIMIZE IMPACTS TO FLAGGING OPERATIONS.
4. PLACE A PORTABLE CHANGEABLE MESSAGE SIGN (PCMS) 1000 FEET PRIOR TO THE CONSTRUCTION WORK ZONE IN EACH DIRECTIONAL APPROACH. PLACE A PCMS 14 DAYS IN ADVANCE OF ANY WORK AFFECTING THE EXISTING TRAFFIC.

PCMS DISPLAY

	MESSAGE 1	MESSAGE 2
14 DAYS PRIOR TO CONSTRUCTION	SW 57 AV ROAD WORK	BEGINS MM/DD
DURING FLAGGING OPERATION	1 LANE ROAD AHEAD	PREPARE TO STOP
DURING NON-FLAGGING OPERATION	ROAD WORK AHEAD	USE CAUTION

5. ALL TRAVEL LANES SHALL BE REOPENED AT THE END OF EACH WORK PERIOD.
6. THESE TEMPORARY TRAFFIC CONTROL PLANS ARE PRELIMINARY AND TO BE USED AS REFERENCE AND/OR GUIDANCE ONLY. THE CONTRACTOR IS RESPONSIBLE TO PROVIDE THE FINAL TEMPORARY TRAFFIC CONTROL DESIGN AND OBTAIN APPROVAL BY MIAMI-DADE COUNTY.
7. IN CASE THERE IS AN EXISTING MOT IN THE FIELD, PROPER COORDINATION SHALL BE MADE BETWEEN CONTRACTORS TO FIND THE BEST TIME TO START. IF TWO MOTS NEED TO MATCH, THEY SHALL MATCH SAFELY.

REVISIONS							
DATE	BY	DESCRIPTION	DATE	BY	DESCRIPTION	DATE	BY



Shaun Connor, P.E.  
P.E. License No. 83321  
6401 SW 87th Avenue, Suite 200  
Miami, Florida 33173  
Phone: (305) 670-2350  
Fax: (305) 670-2351  
Certificate of Authorization No. 7184

	NAME	DATE		NAME	DATE
DESIGNED BY	WS	12/19/22	DRAWN BY	WS	12/19/22
CHECKED BY	JB	12/22/22	CHECKED BY	JB	12/22/22
SUPERVISED BY: SHAUN CONNOR, P.E. NO. 83321					

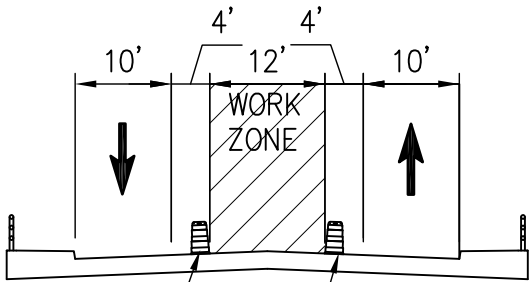
MIAMI-DADE  
COUNTY

DEPARTMENT OF TRANSPORTATION  
AND PUBLIC WORKS  
HIGHWAY DIVISION  
STEPHEN P. CLARK CENTER  
111 NW 1 ST  
MIAMI, FLORIDA 33128

MAINTENANCE OF TRAFFIC  
PLANS

H:\Projects\02000555.XX SW 57th Ave Bridge Urgent Repair\9.00 CAD\roadway\Temporary Traffic Control\MOT TYPICAL SECTIONS.dwg Apr 13, 2023 - 5:24pm WSTAHOVEC

THE OFFICIAL RECORD OF THIS SHEET IS THE ELECTRONIC FILE DIGITALLY SIGNED AND SEALED UNDER RULE 61G15-23.004, F.A.C.

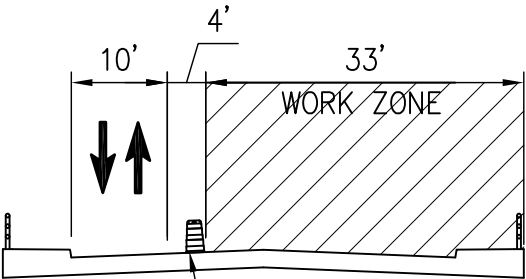


TEMP. CHANNELIZING DEVICE  
TEMP. CHANNELIZING DEVICE

PHASE I

INSTALL TEMPORARY TRAFFIC CONTROL DEVICES FOLLOWING FDOT STANDARD PLANS INDEX 102-600 SERIES.

PERFORM WORK ON ACUTE DECK SLABS DURING DAYTIME HOURS. COVER EXPOSED DECK AREAS WITH METAL PLATE BEFORE OPENING UP TO TRAFFIC IN THE MORNING.



TEMP. CHANNELIZING DEVICE

PHASE II

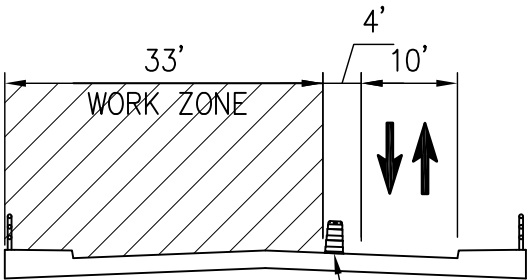
INSTALL TEMPORARY TRAFFIC CONTROL DEVICES FOLLOWING FDOT STANDARD PLANS INDEX 102-604 FOR FLAGGING OPERATIONS.

USING FDOT STANDARD PLANS INDEX 102-660 FOR MAINTENANCE OF PEDESTRIAN ACCESSIBILITY, REROUTE PEDESTRIANS TO THE SB SIDEWALK.

PLACE TRAFFIC CONTROL OFFICER AT BOTH SIGNALIZED INTERSECTIONS WITHIN PROJECT LIMITS.

MILL EXISTING NB LANES (1"). RESURFACE WITH 1" HMA FRICTION COURSE, TRAFFIC C, FC-9.5.

REPLACE PORTION OF TRANSVERSE JOINTS IN NB LANES.



TEMP. CHANNELIZING DEVICE

PHASE III

INSTALL TEMPORARY TRAFFIC CONTROL DEVICES FOLLOWING FDOT STANDARD PLANS INDEX 102-604 FOR FLAGGING OPERATIONS.

USING FDOT STANDARD PLANS INDEX 102-660 FOR MAINTENANCE OF PEDESTRIAN ACCESSIBILITY, REROUTE PEDESTRIANS TO THE NB SIDEWALK.

PLACE TRAFFIC CONTROL OFFICER AT BOTH SIGNALIZED INTERSECTIONS WITHIN PROJECT LIMITS.

MILL EXISTING SB LANES (1"). RESURFACE WITH 1" HMA FRICTION COURSE, TRAFFIC C, FC-9.5.

REPLACE PORTION OF TRANSVERSE JOINTS IN SB LANES AND LONGITUDINAL JOINT IN MEDIAN.

INSTALL FINAL PAVEMENT MARKINGS

REVISIONS							
DATE	BY	DESCRIPTION	DATE	BY	DESCRIPTION	DATE	BY



Shaun Connor, P.E.  
P.E. License No. 83321  
6401 SW 87th Avenue, Suite 200  
Miami, Florida 33173  
Phone: (305) 670-2350  
Fax: (305) 670-2351  
Certificate of Authorization No. 7184

	NAME	DATE		NAME	DATE
DESIGNED BY	WS	12/19/22	DRAWN BY	WS	12/19/22
CHECKED BY	JB	12/22/22	CHECKED BY	JB	12/22/22
SUPERVISED BY: SHAUN CONNOR, P.E. NO. 83321					

MIAMI-DADE  
COUNTY

DEPARTMENT OF TRANSPORTATION  
AND PUBLIC WORKS  
HIGHWAY DIVISION  
STEPHEN P. CLARK CENTER  
111 NW 1 ST  
MIAMI, FLORIDA 33128

MAINTENANCE OF TRAFFIC  
PLANS

H:\Projects\02000555.XX SW 57th Ave Bridge Urgent Repair\9.00 CAD\roadway\Temporary Traffic Control\TYPICAL SECTIONS.dwg Apr 13, 2023 - 5:28pm WSTAHOVEC

THE OFFICIAL RECORD OF THIS SHEET IS THE ELECTRONIC FILE DIGITALLY SIGNED AND SEALED UNDER RULE 61G15-23.004, F.A.C.



H:\Projects\02000555.XX SW 57th Ave Bridge Urgent Repair\9.00 CAD\roadway\Temporary Traffic Control\MOT PHASE 1.dwg Dec 20, 2022 - 1:35pm WSTAHOVEC



MIAMI-DADE COUNTY DEPARTMENT OF TRANSPORTATION AND PUBLIC WORKS  
HIGHWAY DIVISION  
SW 57TH AVE.  
AT N KENDALL DR./SW 88TH ST.  
PROJECT NO. 2021-0226 SHEET 6 OF 9

0 20 40 Feet

REVISIONS							
DATE	BY	DESCRIPTION	DATE	BY	DESCRIPTION	DATE	BY

Shaun Connor, P.E.  
P.E. License No. 83321  
6401 SW 87th Avenue, Suite 200  
Miami, Florida 33173  
Phone: (305) 670-2350  
Fax: (305) 670-2351  
Certificate of Authorization No. 7184

DESIGNED BY	WS	DATE	12/19/22	DRAWN BY	WS	DATE	12/19/22
CHECKED BY	JB	DATE	12/22/22	CHECKED BY	JB	DATE	12/22/22

SUPERVISED BY: SHAUN CONNOR, P.E. NO. 83321

DEPARTMENT OF TRANSPORTATION AND PUBLIC WORKS  
HIGHWAY DIVISION  
STEPHEN P. CLARK, CENTER  
111 NW 1 ST  
MIAMI, FLORIDA 33128

PHASE 1

MAINTENANCE OF TRAFFIC PLANS

THE OFFICIAL RECORD OF THIS SHEET IS THE ELECTRONIC FILE DIGITALLY SIGNED AND SEALED UNDER RULE 61G15-23.004, F.A.C.



H:\Projects\02000555.XX SW 57th Ave Bridge Urgent Repair\9.00 CAD\roadway\Temporary Traffic Control\MOT PHASE II.dwg Dec 20, 2022 - 1:39pm WSTAHOVEC



MIAMI-DADE COUNTY DEPARTMENT OF TRANSPORTATION AND PUBLIC WORKS  
HIGHWAY DIVISION  
AT N KENDALL DR./SW 88TH ST.  
PROJECT NO. 2021-0226 SHEET 7 OF 9

0 20 40 Feet

REVISIONS							
DATE	BY	DESCRIPTION	DATE	BY	DESCRIPTION	DATE	BY

Shaun Connor, P.E.  
P.E. License No. 83321  
6401 SW 87th Avenue, Suite 200  
Miami, Florida 33173  
Phone: (305) 670-2350  
Fax: (305) 670-2351  
Certificate of Authorization No. 7184

DESIGNED BY	WS	DATE	12/19/22	DRAWN BY	WS	DATE	12/19/22
CHECKED BY	JB	DATE	12/22/22	CHECKED BY	JB	DATE	12/22/22

SUPERVISED BY: SHAUN CONNOR, P.E. NO. 83321

DEPARTMENT OF TRANSPORTATION AND PUBLIC WORKS  
HIGHWAY DIVISION  
STEPHEN P. CLARK, CENTER  
111 NW 1 ST  
MIAMI, FLORIDA 33128

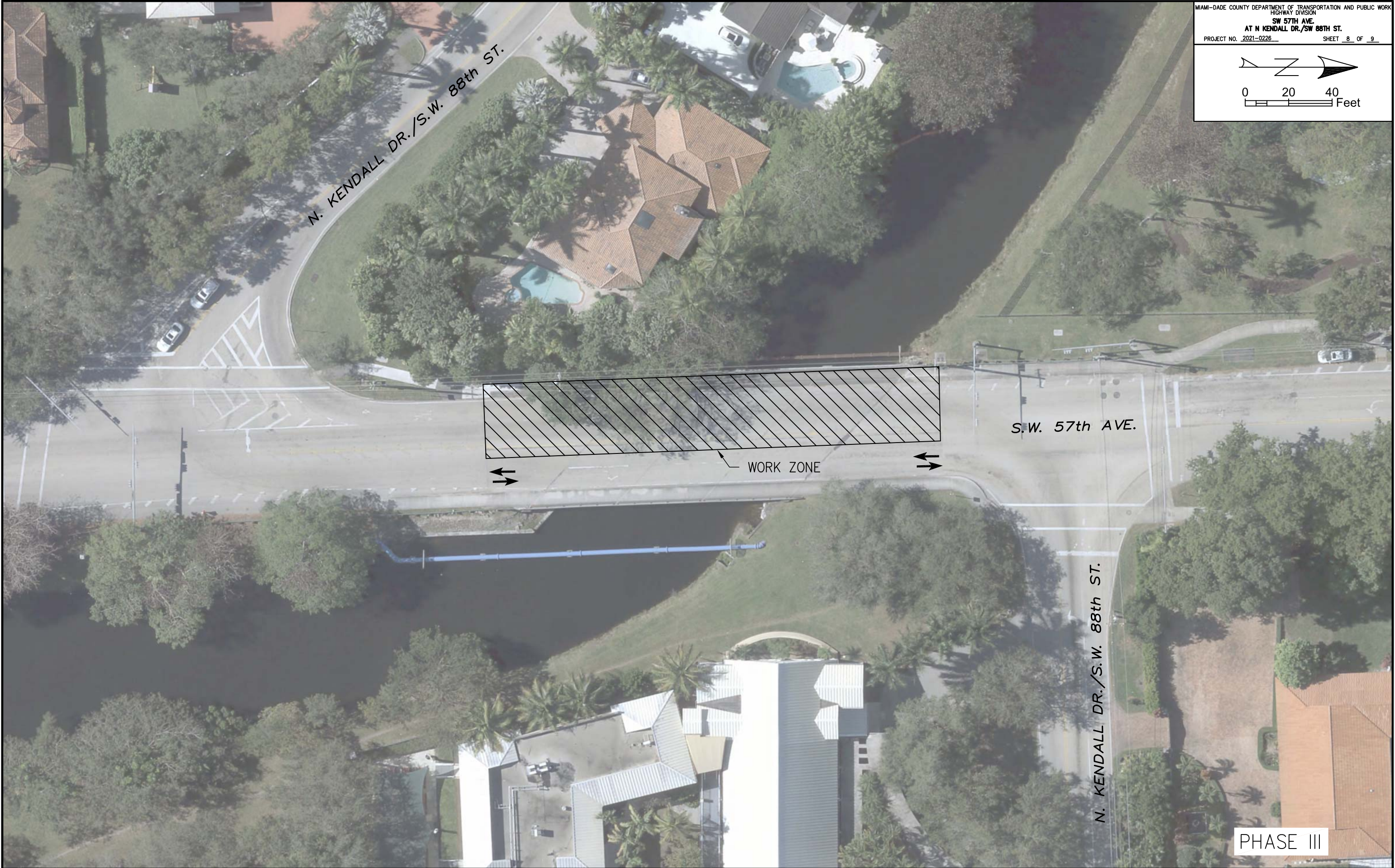
PHASE II

MAINTENANCE OF TRAFFIC PLANS

THE OFFICIAL RECORD OF THIS SHEET IS THE ELECTRONIC FILE DIGITALLY SIGNED AND SEALED UNDER RULE 61G15-23.004, F.A.C.



H:\Projects\02000555.XX SW 57th Ave Bridge Urgent Repair\9.00 CAD\roadway\Temporary Traffic Control\MOT PHASE III.dwg Dec 20, 2022 - 1:41pm WSTAHOVEC



MIAMI-DADE COUNTY DEPARTMENT OF TRANSPORTATION AND PUBLIC WORKS  
HIGHWAY DIVISION  
SW 57TH AVE.  
AT N KENDALL DR./SW 88TH ST.  
PROJECT NO. 2021-0226 SHEET 8 OF 9

0 20 40 Feet

REVISIONS							
DATE	BY	DESCRIPTION	DATE	BY	DESCRIPTION	DATE	BY



Shaun Connor, P.E.  
P.E. License No. 83321  
6401 SW 87th Avenue, Suite 200  
Miami, Florida 33173  
Phone: (305) 670-2350  
Fax: (305) 670-2351  
Certificate of Authorization No. 7184

NAME	DATE	NAME	DATE
DESIGNED BY WS	12/19/22	DRAWN BY WS	12/19/22
CHECKED BY JB	12/22/22	CHECKED BY JB	12/22/22
SUPERVISED BY: SHAUN CONNOR, P.E. NO. 83321			

MIAMI-DADE COUNTY

DEPARTMENT OF TRANSPORTATION  
AND PUBLIC WORKS  
HIGHWAY DIVISION  
STEPHEN P. CLARK CENTER  
111 NW 1 ST  
MIAMI, FLORIDA 33128

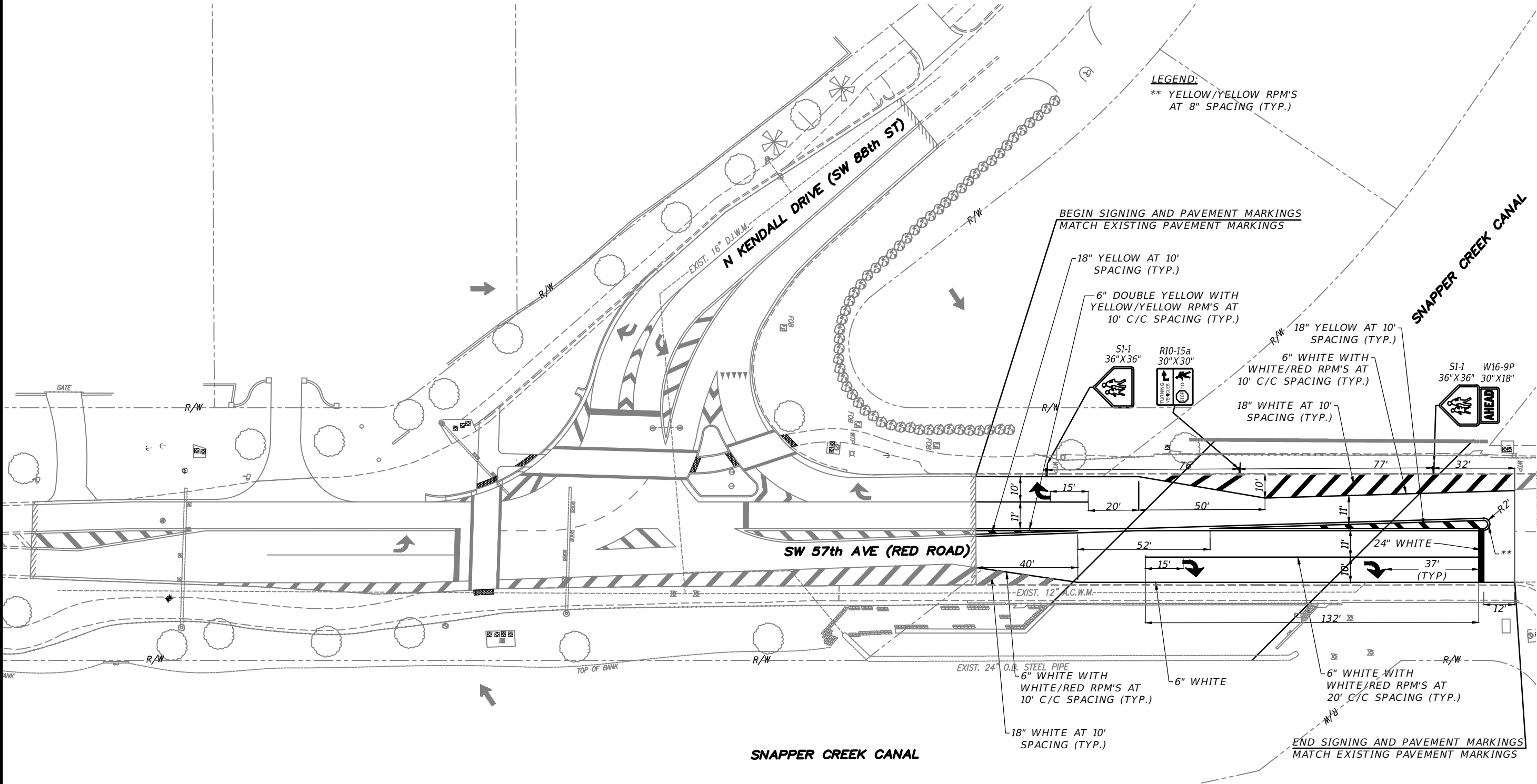
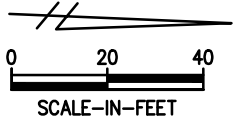
MAINTENANCE OF TRAFFIC  
PLANS

PHASE III



NOTES:

1. ALL PAVEMENT MARKINGS IN CONFLICT WITH PROPOSED DESIGN SHALL BE REMOVED.
2. EXISTING SIGNS TO REMAIN UNLESS OTHERWISE NOTED IN THE PLANS.



REVISIONS					
DATE	BY	DESCRIPTION	DATE	BY	DESCRIPTION



Daoha Quintana, P.E.  
P.E. License No. 67393  
6401 SW 87th Avenue, Suite 200  
Miami, Florida 33173  
Phone: (305) 670-2350  
Fax: (305) 670-2351  
Certificate of Authorization No. 7184

NAME	DATE	NAME	DATE
DESIGNED BY: AN	10/3/22	DRAWN BY: AN	10/6/22
CHECKED BY: DQ	10/4/22	CHECKED BY: DQ	10/7/22
SUPERVISED BY: DACHA QUINTANA, P.E. NO. 67393			



**SIGNING AND PAVEMENT MARKINGS PLAN**

H:\Projects\02000555.XX SW 57th Ave Bridge Urgent Repair\9.00 CAD\signing\SW 57 Ave & SW 88 St 9 19 22-Coco.dwg May 13, 2025 - 10:21am ANUNEZ

THE OFFICIAL RECORD OF THIS SHEET IS THE ELECTRONIC FILE DIGITALLY SIGNED AND SEALED UNDER RULE 61G15-23.004, F.A.C.



H:\Projects\0200059.XX SW 57th Ave Bridge Urgent Repair\9.00 CAD\struct\B\GeneralNotes01.dgn

BRIDGE GENERAL NOTES

DESIGN AND SPECIFICATIONS:

PURPOSE

THE INTENT OF THE PROJECT IS TO COMPLETE REPAIRS ON BRIDGE NO. 874251 AS PRESENTED IN THE PLANS, INCLUDING STRENGTHENING OF ACUTE CORNERS OF THE BRIDGE DECK, REHABILITATION OF THE EXPANSION JOINTS, AND MILLING & RESURFACING. REFER 'SUPERSTRUCTURE REPAIRS' SHEET FOR A MORE DETAILED SUMMARY OF THE SCOPE OF WORK.

GENERAL SPECIFICATIONS

FLORIDA DEPARTMENT OF TRANSPORTATION STANDARD SPECIFICATIONS FOR ROAD AND BRIDGE CONSTRUCTION (DATED JULY 2022), AS AMENDED BY CONTRACT DOCUMENTS.

DESIGN SPECIFICATION

AMERICAN ASSOCIATION OF STATE HIGHWAY AND TRANSPORTATION OFFICIALS (AASHTO) LRFD BRIDGE DESIGN SPECIFICATIONS (9th EDITION) WITH INTERIM REVISIONS TO DATE. THE DESIGN SPECIFICATIONS ARE SUPPLEMENTED BY THE JANUARY 2022 EDITION OF THE FDOT STRUCTURES MANUAL.

CONCRETE CLASSES

CLASS	MIN. 28-DAY COMP. STRENGTH	LOCATION
POLYMER MODIFIED II (DECK)	f'c = 5500 psi f'c = 4500 psi	JOINT NOSINGS DECK, DIAPHRAGM

REINFORCED CONCRETE MATERIALS SHALL BE IN ACCORDANCE WITH THE FDOT STD SPECIFICATIONS SECTION 346 AS APPLICABLE. EXISTING COVERS WILL BE MAINTAINED UNLESS OTHERWISE NOTED.

REINFORCING STEEL

ALL REINFORCING STEEL SHALL BE ASTM A615, GRADE 60, CARBON STEEL PER FDOT STD SPECIFICATION SECTION 931.

PLAN DIMENSIONS

THE CONTRACTOR SHALL FIELD VERIFY PLAN DIMENSIONS AND ELEVATIONS OF WORK PRIOR TO COMMENCING WORK. THE DETAILS ON THE DRAWINGS INDICATE THE LIMITS OF REMOVAL AND REPAIR BASED ON THE BRIDGE FIELD OBSERVATIONS PERFORMED BY BCC ENGINEERING, LLC, IN AUGUST, 2022. THE REMOVAL AND REPAIR UNITS SHOWN ON THE CONTRACT DRAWINGS THE REPAIR LIMITS BASED ON THE CONDITION OF THE STRUCTURE AT THE TIME OF THE INSPECTIONS. THE CONTRACTOR SHALL TAKE ALL SUCH FIELD MEASUREMENTS AS ARE NECESSARY TO ENSURE PROPER FIT OF THE FINISHED WORK AND THE CONTRACTOR SHALL ASSUME FULL RESPONSIBILITY FOR THEIR ACCURACY. WHEN SHOP DRAWINGS BASED ON FIELD MEASUREMENTS ARE SUBMITTED FOR APPROVAL, THE FIELD MEASUREMENTS MADE SHALL BE INCLUDED IN THE SHOP DRAWINGS AND SUBMITTED TO THE ENGINEER.

THE ENGINEER WILL REQUIRE THE CONTRACTOR TO CORE THE PAVEMENT ON THE BRIDGE. THE ENGINEER MAY DIRECT THE LOCATIONS OF THE CORES AS NEEDED. THE CONTRACTOR SHALL PERFORM THESE CORES AND PROVIDE THE ENGINEER WITH THE CORRESPONDING PAVEMENT THICKNESSES A MINIMUM OF 2 MONTHS PRIOR TO BEGINNING THE MILLING AND RESURFACING WORK. THE CONTRACTOR SHALL PATCH THE CORE HOLES THE SAME DAY THAT THE CORES ARE TAKEN WITH A PATCH MATERIAL COMPLYING WITH FDOT SPECIFICATIONS SECTION 234 AT A MINIMUM. THE RESURFACED ASPHALT THICKNESS SHALL MATCH THE EXISTING ASPHALT OVERLAY THICKNESS. CONTRACTOR SHALL PROVIDE FDOT-APPROVED ASPHALT MIX DESIGN FOR PROJECT RECORDS.

SITE INFORMATION:

SITE INSPECTION

THE CONTRACTOR SHALL VISIT THE SITE BEFORE BIDDING TO BECOME FAMILIAR WITH THE PRESENT CONDITION AND TO JUDGE THE EXTENT AND NATURE OF THE WORK TO BE DONE UNDER THIS CONTRACT. NO EXTRA COMPENSATION WILL BE ALLOWED BECAUSE OF FAILURE TO INCLUDE IN BID ALL ITEMS AND MATERIALS WHICH ARE REQUIRED TO BE FURNISHED IN ACCORDANCE WITH THE CONTRACT DOCUMENTS.

EXISTING FEATURES

UNLESS OTHERWISE NOTED, ALL EXISTING PROJECT FEATURES, STRUCTURES, AND BRIDGE APPURTENANCES ARE TO REMAIN, INCLUDING BUT NOT LIMITED TO UTILITIES, GUARDRAIL, WALLS, SIGNING, DRAINAGE, ETC. THE AVAILABLE EXISTING PLAN SHEETS ARE PROVIDED IN THIS PLAN SET.

SITE RESTRICTIONS

THE CONTRACTOR SHALL REVIEW AND COMPLY WITH ALL APPLICABLE NOISE REGULATIONS, INCLUDING COUNTY ORDINANCES PROHIBITING THE OPERATION OF NOISE-PRODUCING CONSTRUCTION EQUIPMENT AND MACHINERY AT NIGHT. THE CONTRACTOR IS ALSO ADVISED THAT THIS PROJECT SITE INVOLVES LIMITED AREA FOR STAGING, PARKING, ETC.

ENVIRONMENTAL

- THE CONTRACTOR SHALL REVIEW ENVIRONMENTAL REQUIREMENTS OF ANY PROPOSED STAGING AREAS WITH THE APPROPRIATE ENVIRONMENTAL PERMITS COORDINATOR AT LEAST SEVENTY TWO (72) HOURS PRIOR TO USE.
- ANY MATERIAL TO BE STOCKPILED FOR PERIODS GREATER THAN 24 HOURS SHALL BE PROTECTED BY APPROPRIATE EROSION CONTROL DEVICES. COST TO BE INCLUDED IN PAY ITEM 101-1 "MOBILIZATION."
- THIS PROJECT CROSSES THE SNAPPER CREEK CANAL. THE DISCHARGE OF ANY FOREIGN MATERIAL INTO THE WATER SHALL NOT BE PERMITTED. THE CONTRACTOR SHALL ERECT AND MAINTAIN FUNCTIONAL CONTROL MEASURES TO ISOLATE THE WORK AREA AT ALL TIMES, INCLUDING FLOATING TURBIDITY BARRIERS. ALL COSTS SHALL BE INCLUDED IN PAY ITEM 101-1 MOBILIZATION.
- THE CONTRACTOR SHALL COMPLY WITH ALL FEDERAL AND STATE REQUIREMENTS REGARDING ENDANGERED AND THREATENED SPECIES AND STATE LISTED SPECIES OF SPECIAL CONCERN.

CONSTRUCTION:

REPAIRS TO EXISTING BRIDGE

DURING ALL CONSTRUCTION OPERATIONS, THE CONTRACTOR SHALL NOT BE ALLOWED TO DROP WASTE CONCRETE, DEBRIS, OR OTHER MATERIAL TO THE CANAL BELOW THE BRIDGE. PLATFORMS, NETS, SCREENS, OR OTHER PROTECTIVE DEVICES SHALL BE USED TO CATCH THE MATERIAL. PROVIDE VACUUMING EQUIPMENT TO COLLECT WATER/SLURRY FOR HYDRO-DEMOLITION. IF THE ENGINEER DETERMINES THAT ADEQUATE PROTECTIVE DEVICES ARE NOT BEING EMPLOYED, THE WORK SHALL BE SUSPENDED UNTIL ADEQUATE PROTECTION IS PROVIDED. THE COST OF PROVIDING SUCH PROTECTIVE DEVICES SHALL BE INCIDENTAL TO PAY ITEM 101-1 MOBILIZATION.

THE CONTRACTOR SHOULD BE AWARE THAT NO SPOIL AREA IS AVAILABLE FOR THIS CONTRACT WITHIN THE DEPARTMENT'S RIGHT-OF-WAY. THEREFORE, ALL SPOIL MATERIAL (STRUCTURAL CONCRETE, REINFORCING STEEL, ETC.) REMOVED FROM THE JOB SITE SHALL BE DISPOSED OF BY THE CONTRACTOR OFF OF THE DEPARTMENT'S PROPERTY. THE CONTRACTOR SHALL COMPLY WITH THE LOCAL AND STATE REGULATIONS THAT APPLY TO THE AREA CHOSEN FOR DISPOSAL OF THIS SPOIL MATERIAL. THE COST OF THIS WORK SHALL BE INCLUDED IN OTHER RELATED ITEMS. NO SEPARATE PAYMENT WILL BE ALLOWED.

ALL EXCESS MATERIAL, AS DESIGNATED BY THE ENGINEER, IS TO BE DISPOSED OF BY THE CONTRACTOR IN AREAS PROVIDED BY HIM, WITHIN 72 HOURS OF BEING DEPOSITED IN THE CONSTRUCTION AREA AND AT THE CONTRACTOR'S EXPENSE.

CONSTRUCTION SEQUENCE

REPAIRS TO THE BRIDGE SHALL COINCIDE WITH THE TRAFFIC CONTROL SEQUENCE SHOWN IN THE TRAFFIC CONTROL PLANS. DAILY PLACING AND REMOVING OF MAINTENANCE OF TRAFFIC DEVICES MAY BE REQUIRED DURING CONSTRUCTION.

ALL DECK AND DIAPHRAGM REPAIRS SHALL BE COMPLETED (CURED FOR A MINIMUM OF 7 DAYS, FORMS REMOVED, REPAIR ACCEPTED BY ENGINEER) BEFORE PROCEEDING WITH ASPHALT RESURFACING AND EXPANSION JOINT REHABILITATION.

POLYMER CONCRETE NOSING USED AT REHABILITATED EXPANSION JOINTS SHALL BE ALLOWED TO CURE FOR A MINIMUM OF 2 DAYS PRIOR TO OPENING TO TRAFFIC.

SHOULD IT BE NECESSARY TO ALLOW TRAFFIC OVER THE DECK/EXPANSION JOINTS PRIOR TO THE CONCRETE CURE TIME STATED ABOVE OR BEFORE THE CONCRETE IS POURED, THE DECK/NOSING SHALL BE PROTECTED USING A STEEL PLATE (½" MIN. THICKNESS) OR OTHER APPROVED METHODS. THE PLATE SHALL NOT BEAR DIRECTLY ON THE FRESH CONCRETE. THE COST OF STEEL PLATE OR OTHER, IF NECESSARY, SHALL BE INCIDENTAL TO PAY ITEM 101-1 MOBILIZATION.

DECK DEMOLITION

THE CONTRACTOR SHALL DEMOLISH THE EXISTING DECK PER THE LIMITS SHOWN IN THESE PLANS. DEMOLITION SHALL BE DONE USING HYDRO-DEMOLITION OR OTHER ACCEPTABLE MECHANICAL METHODS (IF CHIPPING GUN IS USED, IT SHALL BE LIMITED TO 15 LBS MAX. AND IT SHALL NOT BE PLACED ON THE REINFORCING STEEL).

CONTRACTOR SHALL USE EXTREME CAUTION NOT TO DAMAGE EXISTING STEEL. IF ANY STEEL IS DAMAGED, THE CONTRACTOR SHALL NOTIFY THE ENGINEER FOR ADDITIONAL INSTRUCTIONS ON THE APPLICABLE REPAIR. ANY STEEL THAT IS DAMAGED BY THE CONTRACTOR IS TO BE REPAIRED AT NO COST TO THE DEPARTMENT. REMAINING STEEL MUST DISPLAY ACCEPTABLE BONDING WITH EXISTING CONCRETE, IF BONDING IS LOST OR DAMAGED, ADDITIONAL STEEL SHALL BE EXPOSED UNTIL BONDED UNDAMAGED STEEL IS REACHED. IF IT IS DETERMINED THAT DAMAGE BY THE CONTRACTOR HAS ADVERSELY AFFECTED THE CAPACITY OF THE BEAM, THE CONTRACTOR SHALL PROVIDE A LOAD RATING SIGNED AND SEALED BY A PROFESSIONAL ENGINEER LICENSED IN THE STATE OF FLORIDA AT NO COST TO THE DEPARTMENT.

CONCRETE SURFACE PREPARATION

CONTRACTOR SHALL ROUGHEN THE EXISTING DECK SLAB AND PRESTRESSED BEAM AT THE CONTACT SURFACE WITH THE NEW DECK AND NEW DIAPHRAGM TO A ¼" AMPLITUDE.

USE BONDING AGENT BETWEEN FRESH AND HARDENED CONCRETE MEETING THE REQUIREMENTS OF SPECIFICATIONS SECTION 926. ONLY BONDING AGENTS LISTED IN THE FDOT'S APPROVED PRODUCT LIST (APL) SHALL BE USED.

SATURATE THE EXISTING CONCRETE WITH WATER PRIOR TO POURING NEW CONCRETE.

EXPANSION JOINTS

EXPANSION JOINTS ARE TO BE REHABILITATED AND INCLUDES NEW POLYMER CONCRETE NOSING. FOR EXPANSION JOINT REPAIR NOTES, REFER TO 'EXPANSION JOINT DETAILS', SHEET 1 OF 2.

INSPECTION

THE CONTRACTOR SHALL PROVIDE THE ENGINEER SAFE ACCESS FOR INSPECTION OF THE PROJECT AT ALL TIMES. THIS INCLUDES, BUT IS NOT LIMITED TO INSPECTION BOAT WITH OPERATOR. ACCESS SHALL REMAIN IN PLACE UNTIL THE ENGINEER COMPLETES ALL NECESSARY INSPECTIONS. ALL COSTS ASSOCIATED WITH PROVIDING SAFE ACCESS TO THE ENGINEER, INCLUDING BUT NOT LIMITED TO, EQUIPMENT, PERSONNEL, ETC. SHALL BE INCLUDED UNDER PAY ITEM NO. 101-1 MOBILIZATION.

BRIDGE NO. 874251  
57TH AVENUE BRIDGE OVER SNAPPER CREEK CANAL

REVISIONS								
DATE	BY	DESCRIPTION	DATE	BY	DESCRIPTION	DATE	BY	DESCRIPTION



Juan De La Rosa, P.E.  
P.E. License No. 74705  
6401 SW 87th Avenue, Suite 200  
Miami, Florida 33173  
Phone: (305) 670-2350  
Fax: (305) 670-2351  
Certificate of Authorization No. 7184

	NAME	DATE		NAME	DATE
DESIGNED BY	FC	09/12/22	DRAWN BY	CA	08/20/22
CHECKED BY	JDLR	09/13/22	CHECKED BY	FC	09/12/22
SUPERVISED BY:	ROBERT FORAND, P.E. NO. 58611				



BRIDGE GENERAL NOTES

THE OFFICIAL RECORD OF THIS SHEET IS THE ELECTRONIC FILE DIGITALLY SIGNED AND SEALED UNDER RULE 61G15-23.004, F.A.C.

H:\Projects\0200059.XX SW 57th Ave Bridge Urgent Repair\9.00 CAD\struct\B1SumOfQuantities01.dgn

SUMMARY OF STRUCTURE QUANTITIES - BRIDGE 874251										
SECTION	PAY ITEM NO.	PAY ITEM DESCRIPTION	LOCATION	UNIT	QUANTITY		TOTAL		DESIGN NOTES	CONSTRUCT. REMARKS
					P	F	P	F		
LUMP SUM ITEMS	101 1	MOBILIZATION		LS	1		1			
EARTHWORK										
FOUNDATION										
SUBSTRUCTURE										
SUPERSTRUCTURE	110 3A	REMOVAL OF EXISTING STRUCTURE		SF	35		35		BRIDGE DECK	
	400 2 4	CONCRETE CLASS 11 (BRIDGE SUPERSTRUCTURE)		CY	1.5		1.5			
	415 1 4	REINFORCING STEEL (BRIDGE SUPERSTRUCTURE)		LB	599		599			
	458 1 11	BRIDGE DECK EXPANSION JOINT (NEW CONSTRUCTION, F&I), POURED JOINT W/ BACKER ROD		LF	547		547			
	458 2	POLYMER NOSING FOR BRIDGE DECK EXPANSION JOINT		CF	90		90			
ROADWAY	327 70 01	MILLING, 1" AVERAGE DEPTH		SY	1033.5		1033.5		ASSUMED 1" THICK	
	337 8 42	HMA, FRICTION COURSE, TRAFFIC C, FC-9.5 (1")		TN	56.8		56.8		ASSUMED 1" THICK	

PAY ITEM NOTES:

PWS PAY ITEM NUMBERS USED IN THE TABLE ABOVE.

PAYMENT FOR INCIDENTAL ITEMS NOT SPECIFICALLY COVERED IN THE INDIVIDUAL BID ITEMS SHALL BE INCLUDED IN THE CONTRACT UNIT PRICE FOR BID ITEMS.

PAY ITEM NO. 101-1

MOBILIZATION SHALL INCLUDE, BUT NOT BE LIMITED TO, THE COST OF INSPECTION VESSELS AND OPERATORS, AND OTHER EQUIPMENT REQUIRED TO PROVIDE SAFE ACCESS FOR INSPECTION OR TESTING. INCLUDE ALL COSTS OF PROVIDING PROTECTION DEVICES FOR CATCHING DEBRIS AND FLOATING TURBIDITY BARRIERS. INCLUDE ALL COSTS OF PROVIDING EROSION CONTROL, INCLUDING MEASURES REQUIRED TO PROTECT STOCKPILED MATERIAL. ALSO INCLUDES COST TO MONITOR, PROTECT, AND DOCUMENT PROTECTED SPECIES.

PAY ITEM NO. 327-70-01

QUANTITY GIVEN IS BASED ON A 1" THICK ASSUMED EXISTING ASPHALT THICKNESS. ACTUAL THICKNESS TO BE CONFIRMED BY CONTRACTOR.

PAY ITEM NO. 337-8-42

ASPHALTIC CONCRETE FRICTION COURSE. ASPHALT MIX SHALL BE FDOT-APPROVED AND SHALL MEET COUNTY STANDARDS. THIS PAY ITEM INCLUDES ALL COSTS ASSOCIATED WITH THE LONGITUDINAL JOINT REQUIRED BETWEEN PHASES. THIS PAY ITEM INCLUDES ALL COSTS ASSOCIATED WITH PERFORMING ASPHALT CORES, INCLUDING BUT NOT LIMITED TO CORING, MOT, MEASUREMENTS, PATCHING, ETC. QUANTITY GIVEN IS BASED ON A 1" THICK ASSUMED EXISTING ASPHALT THICKNESS.

PAY ITEM NO. 400-2-4

THIS PAY ITEM INCLUDES THE COST OF ROUGHENING THE EXISTING CONCRETE WHERE SPECIFIED AND PROVIDING FRESH-TO-HARDENED BONDING AGENT PER FDOT APPROVED PRODUCT LIST.

PAY ITEM NO. 415-1-4

THIS PAY ITEM INCLUDES THE COST OF PROVIDING ADHESIVE DOWELS.

PAY ITEM NO. 458-2

POLYMER NOSING FOR BRIDGE DECK EXPANSION JOINT. THE QUANTITIES DEPICTED FOR THE PAY ITEM INCLUDE REMOVAL OF NEW ASPHALT OVERLAY AT THE LOCATION OF EXPANSION JOINTS AND SUPPLEMENTARY NOSING REINFORCEMENT. REFER TO EXPANSION JOINT DETAILS, SHEET 1 OF 2, FOR ADDITIONAL NOTES.

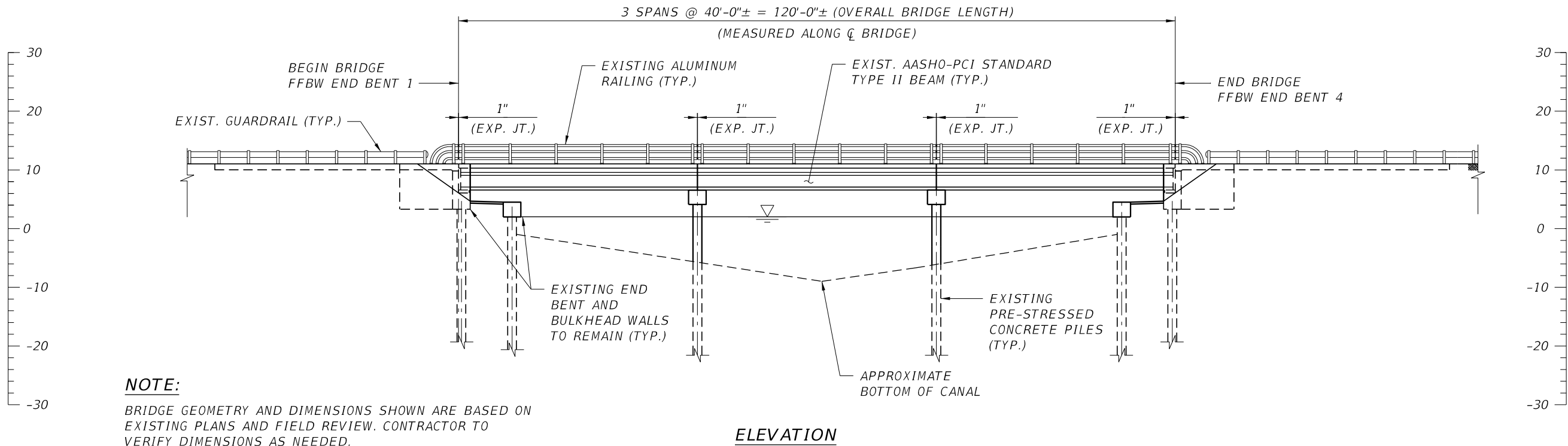
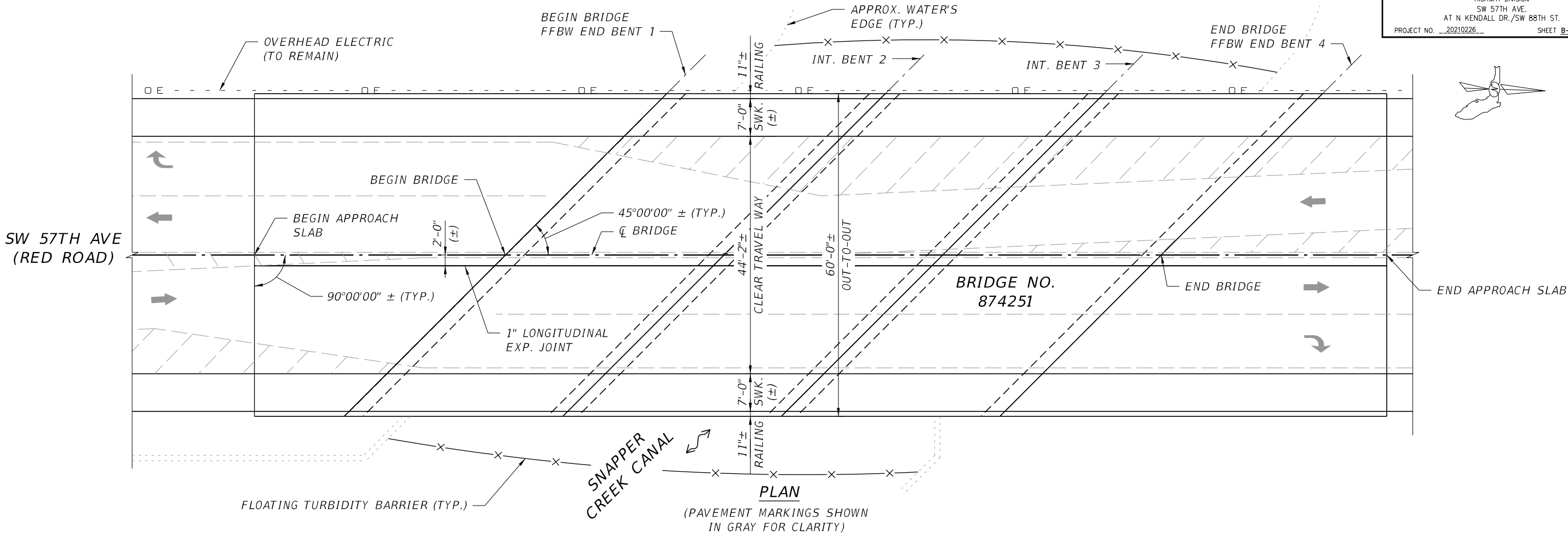
BRIDGE NO. 874251  
57TH AVENUE BRIDGE OVER SNAPPER CREEK CANAL

R E V I S I O N S								 <p>Joan De La Rosa, P.E. P.E. License No. 74705 6401 SW 87th Avenue, Suite 200 Miami, Florida 33173 Phone: (305) 670-2350 Fax: (305) 670-2351 Certificate of Authorization No. 7184</p>					 <p>DEPARTMENT OF TRANSPORTATION AND PUBLIC WORKS HIGHWAY DIVISION STEPHEN P. CLARK CENTER 111 NW 1 ST MIAMI, FLORIDA 33128</p>	SUMMARY OF STRUCTURES QUANTITIES
DATE	BY	DESCRIPTION	DATE	BY	DESCRIPTION	NAME	DATE		NAME	DATE				
						DESIGNED BY	FC		09/12/22	DRAWN BY	CA	08/20/22		
						CHECKED BY	JDLR		09/13/22	CHECKED BY	FC	09/12/22		
							SUPERVISED BY: ROBERT FORAND, P.E. NO. 58611							

THE OFFICIAL RECORD OF THIS SHEET IS THE ELECTRONIC FILE DIGITALLY SIGNED AND SEALED UNDER RULE 61G15-23.004, F.A.C.



H:\Projects\0200059.XX SW 57th Ave Bridge Urgent Repair\9.00 CAD\struct\B1PlanElev01.dgn



**NOTE:**  
BRIDGE GEOMETRY AND DIMENSIONS SHOWN ARE BASED ON EXISTING PLANS AND FIELD REVIEW. CONTRACTOR TO VERIFY DIMENSIONS AS NEEDED.

BRIDGE NO. 874251  
57TH AVENUE BRIDGE OVER SNAPPER CREEK CANAL

REVISIONS							
DATE	BY	DESCRIPTION	DATE	BY	DESCRIPTION	DATE	BY



Joan De La Rosa, P.E.  
P.E. License No. 74705  
6401 SW 87th Avenue, Suite 200  
Miami, Florida 33173  
Phone: (305) 670-2350  
Fax: (305) 670-2351  
Certificate of Authorization No. 7184

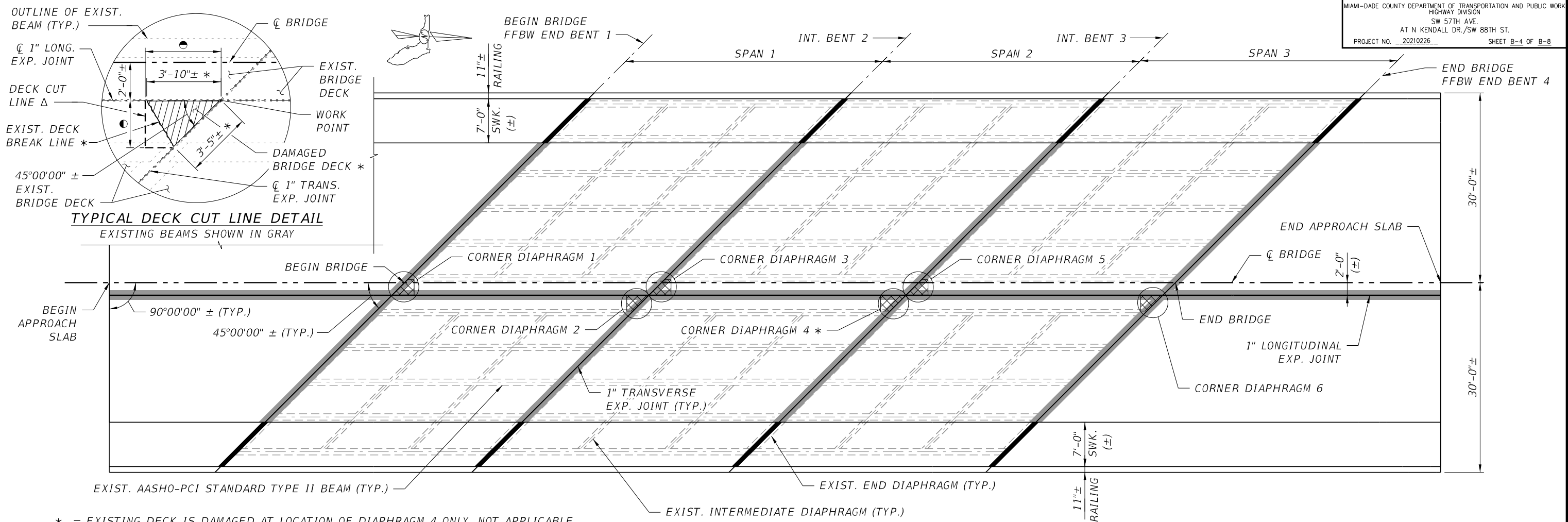
DESIGNED BY	NAME	DATE	DRAWN BY	NAME	DATE
FC	FC	09/12/22	CA	CA	08/20/22
CHECKED BY	JDLR	09/13/22	CHECKED BY	FC	09/12/22
SUPERVISED BY:	ROBERT FORAND, P.E. NO. 58611				



DEPARTMENT OF TRANSPORTATION AND PUBLIC WORKS  
HIGHWAY DIVISION  
STEPHEN P. CLARK CENTER  
111 NW 1 ST  
MIAMI, FLORIDA 33128

PLAN AND ELEVATION

H:\Projects\0200059.XX SW 57th Ave Bridge Urgent Repair\9.00 CAD\struct\B1PlanElev02.DGN



- \* = EXISTING DECK IS DAMAGED AT LOCATION OF DIAPHRAGM 4 ONLY. NOT APPLICABLE TO OTHER LOCATIONS.  
● = REFER TO SHEET B-5 FOR DECK DEMOLITION LIMITS  
Δ = SAW CUT DECK TO A DEPTH OF 3/4" (MAX.) FOLLOWING THE DECK CUT LINE LIMITS PRIOR TO HYDRO-DEMOLITION (OR OTHER METHOD)

SUPERSTRUCTURE PLAN

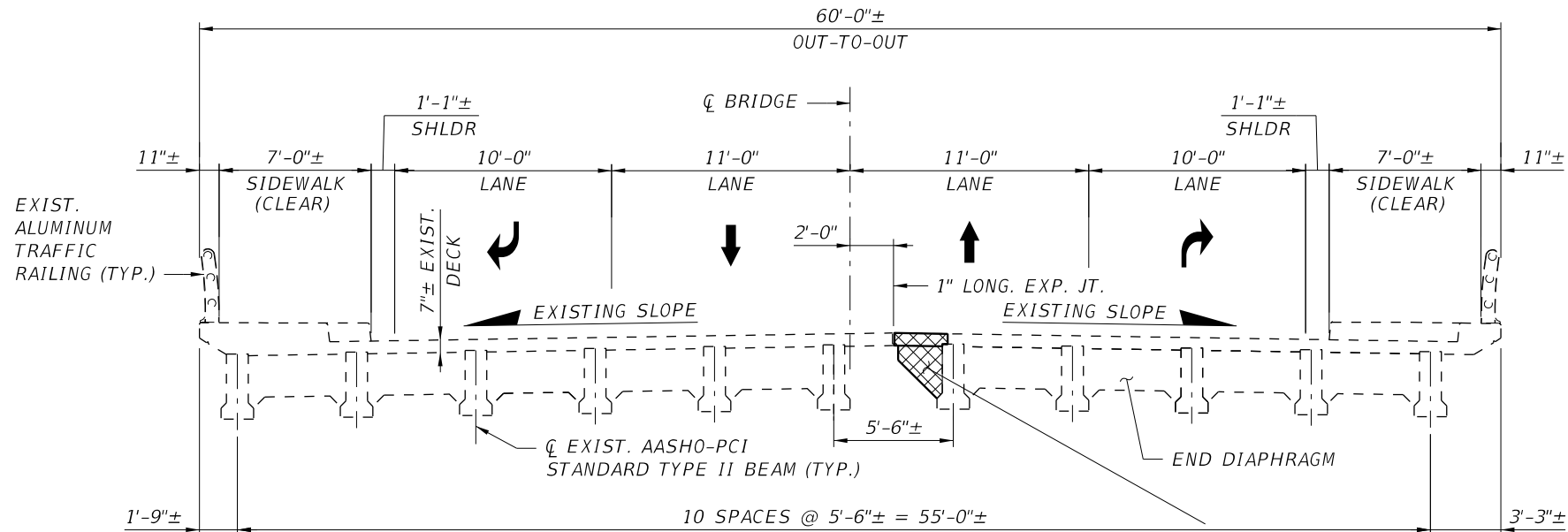
LEGEND:

- EXPANSION JOINT REHABILITATION/REPLACEMENT OVER TRAVEL WAY (INCL. POLYMER NOSING)  
■ EXPANSION JOINT REPLACEMENT OVER SIDEWALKS  
☒ DECK DEMOLITION AND RETROFIT (INCLUDING NEW CORNER DIAPHRAGMS) ●

SUMMARY OF SCOPE OF WORK FOR BRIDGE REPAIRS

(REFER TO ROADWAY PLANS FOR MILLING AND RESURFACING DETAILS AND TRAFFIC CONTROL & WORK PHASING SCHEME)  
(ORDER OF WORK TASKS SHOWN BELOW REPRESENTS THE GENERAL SEQUENCE OF CONSTRUCTION)

1. REMOVE ASPHALT OVERLAY OVER ENTIRE LENGTH OF BRIDGE/APPROACH SLABS.
2. REMOVE PORTION OF BRIDGE DECK AT THE LOCATIONS AND LIMITS SHOWN ABOVE AND IN SHEET B-5 BY FIRST SAW CUTTING TO A MAX. DEPTH OF 3/4" THEN USING HYDRO-DEMOLITION OR OTHER ACCEPTABLE MECHANICAL METHOD, TAKING CARE NOT TO DAMAGE EXISTING DECK REINFORCEMENT.
3. CAST NEW CORNER DIAPHRAGMS USING THE DETAILS PROVIDED IN SHEET B-5.
4. RECAST DEMOLISHED BRIDGE DECK AS PER SHEET B-5.
5. RESURFACE ASPHALT OVERLAY OVER ENTIRE LENGTH OF BRIDGE/APPROACH SLAB TRAVEL WAY (EXCLUDING SIDEWALKS). ASPHALT OVERLAY TO MATCH EXISTING ASPHALT OVERLAY THICKNESS.
6. REMOVE ASPHALT OVERLAY OVER TRAVEL WAY JOINTS AT THE LOCATIONS SHOWN ABOVE AND USING THE DETAILS ON SHEET B-6.
7. REMOVE EXIST. EXPANSION JOINT MATERIAL (IF PRESENT) AND CLEAN AREA.
8. PLACE NEW EXPANSION JOINT SYSTEM INCLUDING POLYMER NOSING AND POURED JOINT WITH BACKER ROD AS PER SHEETS B-6 & B-7.
9. REMOVE, CLEAN, AND REPLACE POURED JOINTS WITH BACKER ROD OVER SIDEWALKS.
10. CLEAN EXISTING DECK DRAINS.



EXISTING TYPICAL SECTION - AT SPAN ENDS

(LANES SHOWN CORRESPOND TO FINAL CONDITION; TAKEN AT MIDDLE OF BRIDGE)

NEW CORNER DIAPHRAGMS (ON ACUTE CORNERS ONLY; SEE PLAN VIEW ABOVE FOR LOCATIONS)

BRIDGE NO. 874251  
57TH AVENUE BRIDGE OVER SNAPPER CREEK CANAL

REVISIONS							
DATE	BY	DESCRIPTION	DATE	BY	DESCRIPTION	DATE	BY



Joan De La Rosa, P.E.  
P.E. License No. 74705  
6401 SW 87th Avenue, Suite 200  
Miami, Florida 33173  
Phone: (305) 670-2350  
Fax: (305) 670-2351  
Certificate of Authorization No. 7184

DESIGNED BY	NAME	DATE	DRAWN BY	NAME	DATE
FC	FC	09/12/22	CA	CA	08/20/22
CHECKED BY	JDLR	09/13/22	CHECKED BY	FC	09/12/22
SUPERVISED BY:	ROBERT FORAND, P.E. NO. 58611				

MIAMI-DADE COUNTY	DEPARTMENT OF TRANSPORTATION AND PUBLIC WORKS HIGHWAY DIVISION STEPHEN P. CLARK CENTER 111 NW 1 ST MIAMI, FLORIDA 33128
-------------------	---

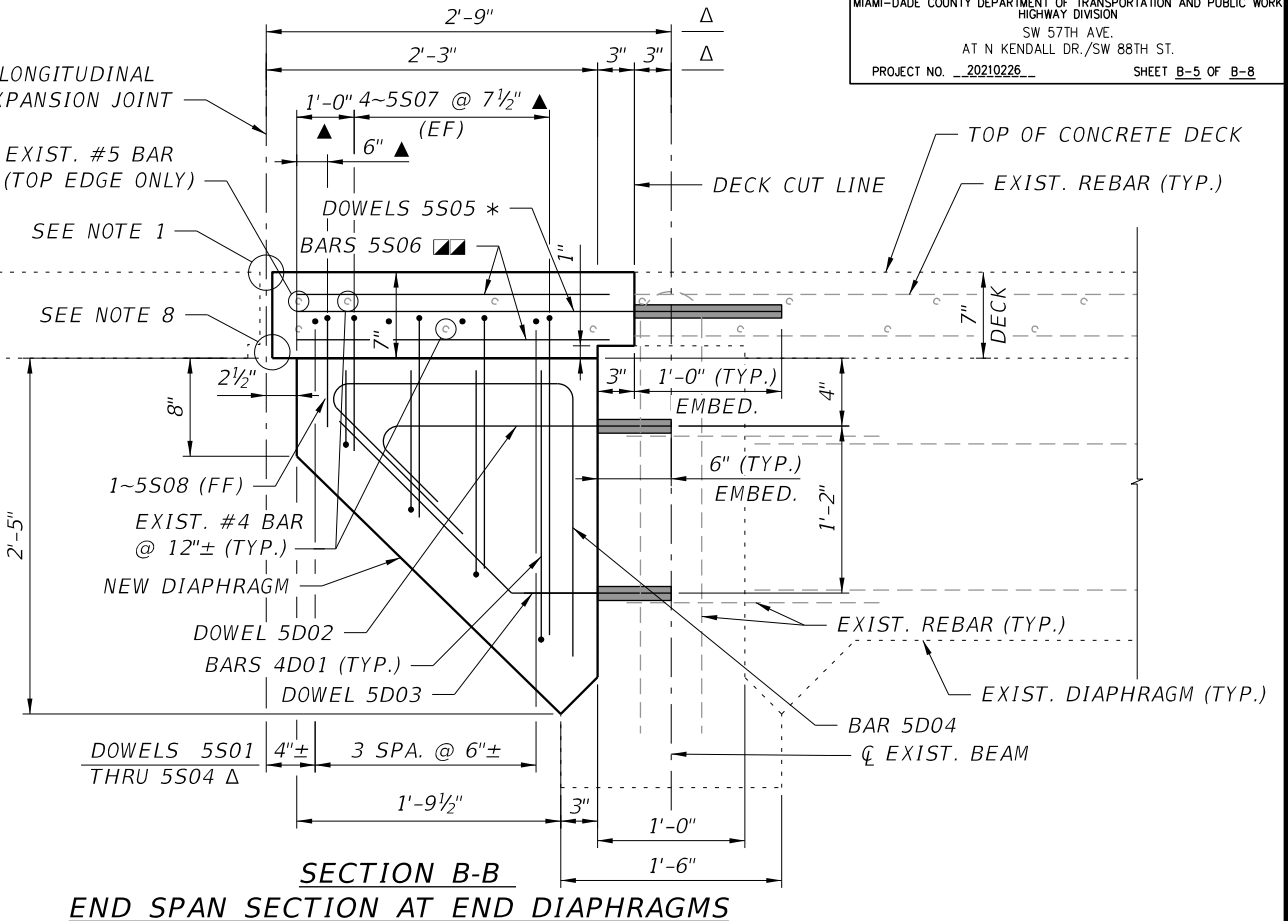
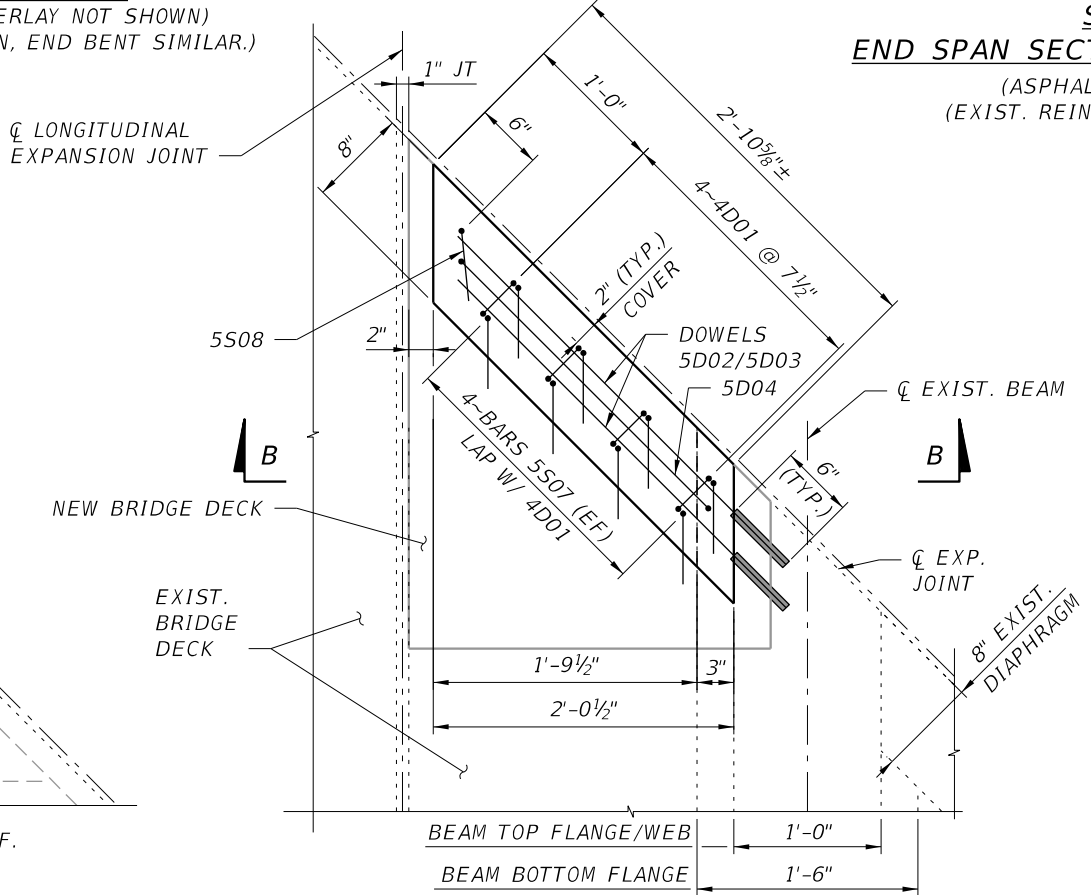
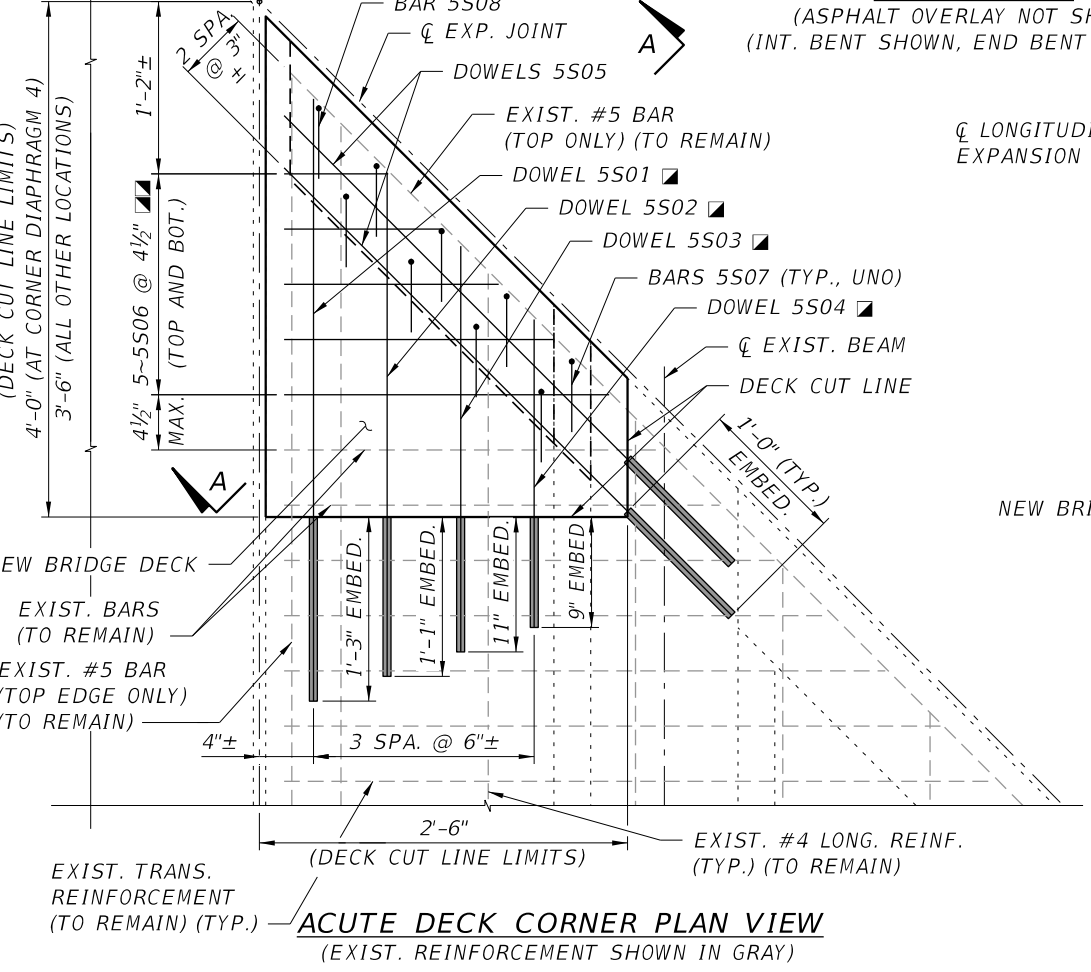
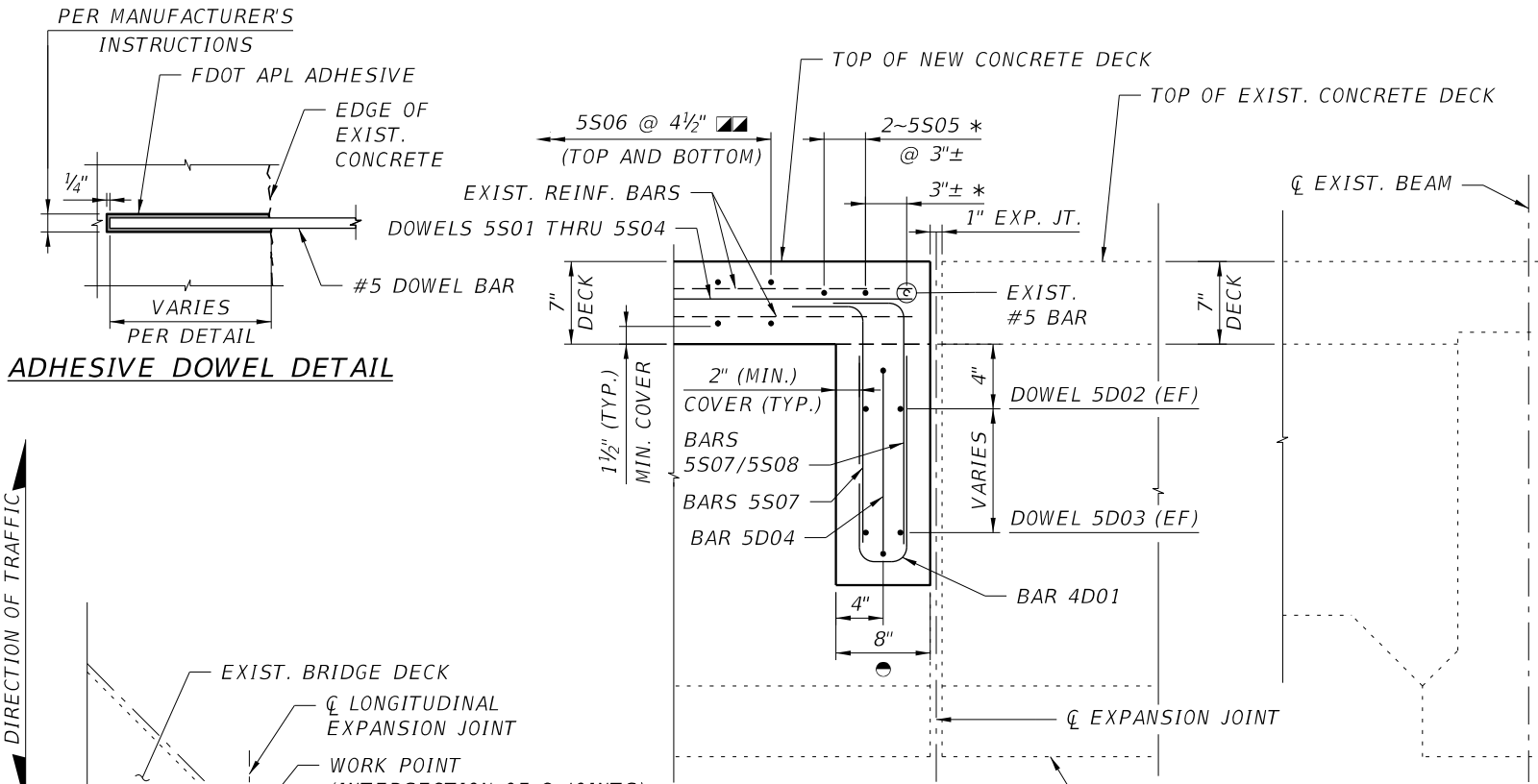
11/2/2022

7:00:38 PM

SUPERSTRUCTURE  
REPAIRS

THE OFFICIAL RECORD OF THIS SHEET IS THE ELECTRONIC FILE DIGITALLY SIGNED AND SEALED UNDER RULE 61G15-23.004, F.A.C.





- NOTES:**
- FOR DECK EXPANSION JOINT REHABILITATION DETAILS, SEE SHEET B-6.
  - EXTREME CARE SHALL BE TAKEN NOT TO DAMAGE EXISTING REINFORCEMENT DURING DECK DEMOLITION. IN THE EVENT OF DAMAGE, SUBMIT A REPAIR PROCEDURE TO ENGINEER FOR APPROVAL.
  - UNLESS NOTED OTHERWISE, MINIMUM CONCRETE COVER FOR DECK REINFORCEMENT IS 1 1/2". MINIMUM CONCRETE COVER FOR DIAPHRAGM REINFORCEMENT IS 2".
  - LONGITUDINAL & CROSS SLOPE FOR NEW DECK PORTION SHALL MATCH EXISTING SLOPE.
  - ADHESIVE DOWEL BONDING MATERIAL SHALL BE PER FDOT STANDARD SPECIFICATIONS SECTION 931. ADHESIVE MATERIAL SHALL BE TYPE HV AND BE LISTED IN THE FDOT APPROVED PRODUCT LIST.
  - INSTALL DOWELS PER MANUFACTURER'S RECOMMENDATIONS USING THE EMBEDMENT LENGTH SHOWN IN THIS SHEET (SEE ADHESIVE DOWEL DETAIL).
  - NEW REINFORCEMENT MAY BE SLIGHTLY ADJUSTED AS NEEDED TO CLEAR EXISTING REINFORCEMENT AND TO MEET ALL CONCRETE COVERS.
  - WHERE EXISTING DECK LIP LOCATED ALONG EXP. JOINT IS IN CONFLICT WITH THE NEW DECK, REMOVE THE EXISTING DECK LIP FROM THE ADJACENT EXISTING DECK (ONLY WITHIN THE LIMITS OF THE NEW DECK CASTING).

- LEGEND:**
- ▲ = MEASURED PARALLEL TO DECK SKEW
  - = MEASURED PERPENDICULAR TO DECK SKEW
  - Δ = MEASURED PERPENDICULAR TO EXP. JOINT
  - \* = ALONG SKEW
  - = MECHANICAL COUPLER MAY BE USED FOR THIS DOWEL IF NECESSARY (COUPLER SHALL BE LISTED IN THE FDOT APL)
  - ▨ = FIELD CUT BARS AS NEEDED TO MEET COVER AND SPACING
  - FF = FAR FACE

BRIDGE NO. 874251  
57TH AVENUE BRIDGE OVER SNAPPER CREEK CANAL

REVISIONS					
DATE	BY	DESCRIPTION	DATE	BY	DESCRIPTION

**engineering**  
Joan De La Rosa, P.E.  
P.E. License No. 74705  
6401 SW 87th Avenue, Suite 200  
Miami, Florida 33173  
Phone: (305) 670-2350  
Fax: (305) 670-2351  
Certificate of Authorization No. 7184

DESIGNED BY	NAME	DATE	DRAWN BY	NAME	DATE
FC	FC	09/12/22	CA	CA	08/20/22
CHECKED BY	JDLR	09/13/22	CHECKED BY	FC	09/12/22
SUPERVISED BY	ROBERT FORAND, P.E. NO. 58611				

**MIAMI-DADE COUNTY**  
DEPARTMENT OF TRANSPORTATION AND PUBLIC WORKS  
HIGHWAY DIVISION  
STEPHEN P. CLARK CENTER  
111 NW 1 ST.  
MIAMI, FLORIDA 33128

DECK & DIAPHRAGM  
DETAILS

H:\Projects\0200059\XX SW 57th Ave Bridge Urgent Repair\9.00 CAD\struct\BID\DiaphragmDet01.dgn

THE OFFICIAL RECORD OF THIS SHEET IS THE ELECTRONIC FILE DIGITALLY SIGNED AND SEALED UNDER RULE 61G15-23.004, F.A.C.

EXPANSION JOINT REPAIR NOTES:

1. THE EXPANSION JOINT SYSTEM SHALL BE COMPRISED OF:

A. POURED JOINT WITH BACKER ROD EXPANSION JOINT SYSTEM PER DETAILS SHOWN IN THESE PLANS.

B. POLYMER CONCRETE HEADERS AS SHOWN IN THESE PLANS. THE POLYMER CONCRETE HEADER MATERIAL SHALL BE A TWO-COMPONENT, RAPID CURING, FLEXIBLE EPOXY WITH AGGREGATE, THAT CURES TO A DENSE, SEMI-FLEXIBLE, WEATHER, ABRASION, AND IMPACT RESISTANT EPOXY CONCRETE. THE MATERIAL SHALL HAVE THE FOLLOWING PHYSICAL PROPERTIES:

MIXED EPOXY WITHOUT AGGREGATE:

TENSILE STRENGTH

900 PSI (MIN.)

ASTM D 638\*

ELONGATION AT BREAK

45% (MIN.)

ASTM D 638\*

SHORE D HARDNESS

45-75

ASTM D 2240

GEL TIME

20-60 MINUTES

AASHTO M200

\*MOLDED SPECIMENS, .25M THICKNESS

MIXED EPOXY WITH AGGREGATE:

COMPRESSIVE STRENGTH AT 24 HOURS

2500 PSI (MIN.)

ASTM D C 579 METHOD B

SHEAR STRENGTH

750\* PSI (MIN.)

ASTM C 882

ABRASION RESISTANCE

1.5 (MAX.)

ASTM C 501, TABER H22

RESILIENCE

70% (MIN.)

OKLA TEST PROCEDURE OHD L6

THERMAL COMPATIBILITY

PASS

ASTM C 884

\*OR CONCRETE FAILURE

POLYMER CONCRETE SHALL HAVE A FINAL COLOR RANGING FROM MEDIUM TO DARK GRAY.

2. SHOP DRAWINGS SHALL BE SUBMITTED TO THE ENGINEER FOR THE EXPANSION JOINT SYSTEM (INCLUDING THE JOINT SEALS). THE JOINT SYSTEM SHALL NOT BE INSTALLED UNTIL THE ENGINEER APPROVES THE SHOP DRAWINGS. THE SHOP DRAWING SUBMITTAL SHALL CONTAIN AT A MINIMUM:

A. COMPLETE MANUFACTURER'S RECOMMENDATIONS FOR JOINT INSTALLATION INCLUDING JOINT CLEANING PREPARATION, INSPECTION, COMPONENTS, CURE TIME, INSTALLATION SEQUENCE AND TESTING.

B. MANUFACTURER'S TYPE, MODEL NUMBERS AND OTHER PERTINENT DATA TO SPECIFICALLY IDENTIFY ALL MATERIALS APPLICABLE TO THIS INSTALLATION.

C. ALL DECK JOINT MATERIALS WITH SPECIFIC SIZES AND DIMENSIONS SHOWN.

3. ALL MATERIALS AND INSTALLATION PROCEDURES SHALL COMPLY WITH THE JOINT MANUFACTURER'S WRITTEN RECOMMENDATIONS AND FDOT SPECIFICATIONS SECTION 458 AND 932. USE TYPE D SILICONE SEALANT MATERIAL.

4. THE PRICE AND PAYMENT FOR THE EXPANSION JOINTS SHALL BE FULL COMPENSATION FOR ALL EQUIPMENT, LABOR, MATERIALS, AND SUBMITTALS NECESSARY TO COMPLETE THE REMOVAL OF THE ASPHALT PAVEMENT AND INSTALLATION OF THE NEW EXPANSION JOINTS (INCLUDING POLYMER NOSING) AS SHOWN. PAYMENT SHALL BE MADE UNDER PAY ITEM NO. 458-2 "POLYMER NOSING FOR BRIDGE DECK EXPANSION JOINT" AND 458-1-21 "BRIDGE DECK EXPANSION JOINT, REHABILITATION, POURED JOINT WITH BACKER ROD".

5. THE EXPANSION JOINTS SHALL BE INSTALLED AFTER THE MILLING AND RESURFACING AND DECK/DIAPHRAGM RETROFIT HAS BEEN COMPLETED.

6. INSTALLATION: THE JOINT SYSTEM INSTALLER SHALL BE LICENSED BY THE MANUFACTURER. A COPY OF THE LICENSING CONTRACT SHALL BE SUBMITTED TO THE ENGINEER FOR APPROVAL. INSTALLATION OF THE JOINT SYSTEM SHALL BE IN STRICT ACCORDANCE WITH THE MANUFACTURER'S RECOMMENDATIONS.

7. WARRANTY: THE CONTRACTOR SHALL PROVIDE MIAMI-DADE COUNTY PUBLIC WORKS DEPARTMENT, HIGHWAY DIVISION WITH A WRITTEN WARRANTY OF THE INSTALLED JOINT SYSTEM AGAINST LEAKAGE, ADHESIVE FAILURE, AND JOINT SYSTEM FAILURE. THE WARRANTY SHALL EXTEND FOR A PERIOD OF FIVE (5) YEARS AFTER THE DATE OF FINAL ACCEPTANCE.

8. THE CONTRACTOR SHALL VERIFY THE JOINT OPENINGS AND ASPHALT THICKNESS PRIOR TO SUBMITTING THE BID TO THE DEPARTMENT.

9. FOR ADDITIONAL NOTES AND DETAILS REFERENCE SHEET B-7.

JOINT REPAIR PROCEDURE NOTES:

1. STEP 1: COMPLETE DECK/DIAPHRAGM RETROFIT AND MILL/RESURFACE THE BRIDGE DECK.

2. STEP 2: AFTER MILLING AND RESURFACING IS COMPLETE, REMOVE THE ASPHALT OVER THE JOINTS FOR A MINIMUM WIDTH OF 1'-6" (OR AS RECOMMENDED BY THE MANUFACTURER) CENTERED OVER THE JOINTS AS SHOWN. DO NOT DAMAGE THE BRIDGE DECK OR APPROACH SLAB, EXCEPT AS ALLOWED IN THESE PLANS.

3. STEP 3: PLACE NEW EXPANSION JOINT SYSTEM ACCORDING TO FOLLOWING GENERAL SEQUENCE:

A. ROUGHEN THE EXISTING CONCRETE SURFACE TO A MINIMUM 1/4" AMPLITUDE.

B. INSTALL GALVANIZED SELF DRILLING SCREWS.

C. FORM JOINT WIDTH.

D. PREPARE SURFACES TO RECEIVE THE POLYMER NOSING MATERIAL PER THE FDOT SPECIFICATIONS AND MANUFACTURER'S RECOMMENDATIONS.

E. INSTALLED GALVANIZED WELDED WIRE REINFORCEMENT.

F. POUR POLYMER NOSING MATERIAL.

NOTE:FOR SECTION A-A, REFERENCE SHEET B-7.

EXPANSION JOINT REPAIR PROCEDURE OVER TRAVEL WAY

EXP. JOINT SECTION THRU INT. BENT OR LONGITUDINAL JOINT  
EXISTING CONDITION

EXP. JOINT SECTION THRU INT. BENT OR LONGITUDINAL JOINT  
STEP 1

EXP. JOINT SECTION THRU INT. BENT OR LONGITUDINAL JOINT  
STEP 2

EXP. JOINT SECTION THRU INT. BENT OR LONGITUDINAL JOINT  
STEP 3

EXP. JOINT SECTION THRU END BENT  
EXISTING CONDITION

EXP. JOINT SECTION THRU END BENT  
STEP 1

EXP. JOINT SECTION THRU END BENT  
STEP 2

EXP. JOINT SECTION THRU END BENT  
STEP 3

BRIDGE NO. 874251  
57TH AVENUE BRIDGE OVER SNAPPER CREEK CANAL

REVISIONS							
DATE	BY	DESCRIPTION	DATE	BY	DESCRIPTION	DATE	BY

Juan De La Rosa, P.E.  
P.E. License No. 74705  
6401 SW 87th Avenue, Suite 200  
Miami, Florida 33173  
Phone: (305) 870-2350  
Fax: (305) 870-2351  
Certificate of Authorization No. 7184

DESIGNED BY	NAME	DATE	DRAWN BY	NAME	DATE
FC	FC	09/12/22	CA	CA	08/20/22
CHECKED BY	NAME	DATE	CHECKED BY	NAME	DATE
JLR	JLR	09/13/22	FC	FC	09/12/22
SUPERVISED BY: ROBERT FORAND, P.E. NO. 58611					

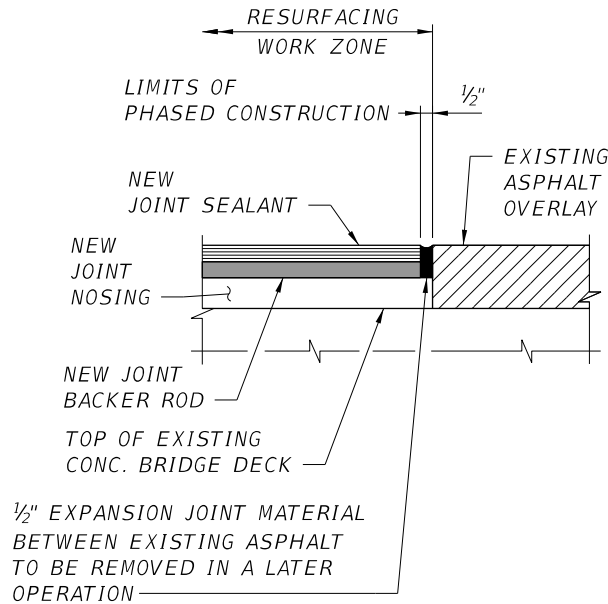
EXPANSION JOINT  
DETAILS (1 OF 2)

11/2/2022 7:00:40 PM

H:\Projects\0200059.XX SW 57th Ave Bridge Urgent Repair\9.00 CAD\struct\BIMiscDet01.dgn

THE OFFICIAL RECORD OF THIS SHEET IS THE ELECTRONIC FILE DIGITALLY SIGNED AND SEALED UNDER RULE 61G15-23.004, F.A.C.



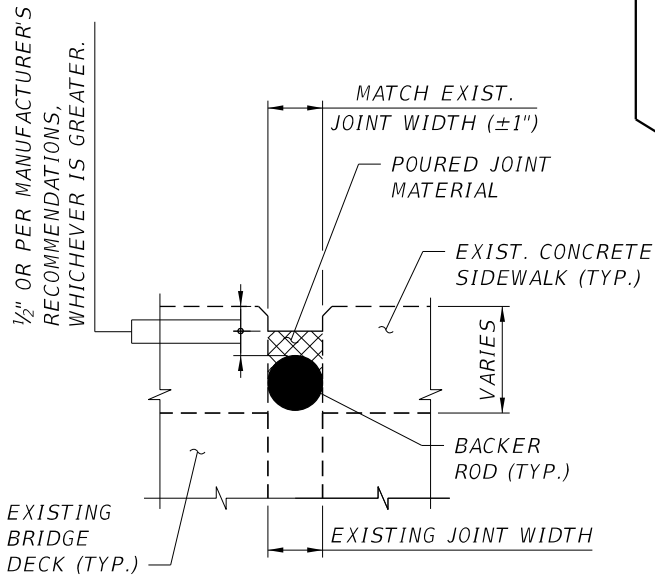


PHASED CONSTRUCTION  
SECTION THRU JOINT

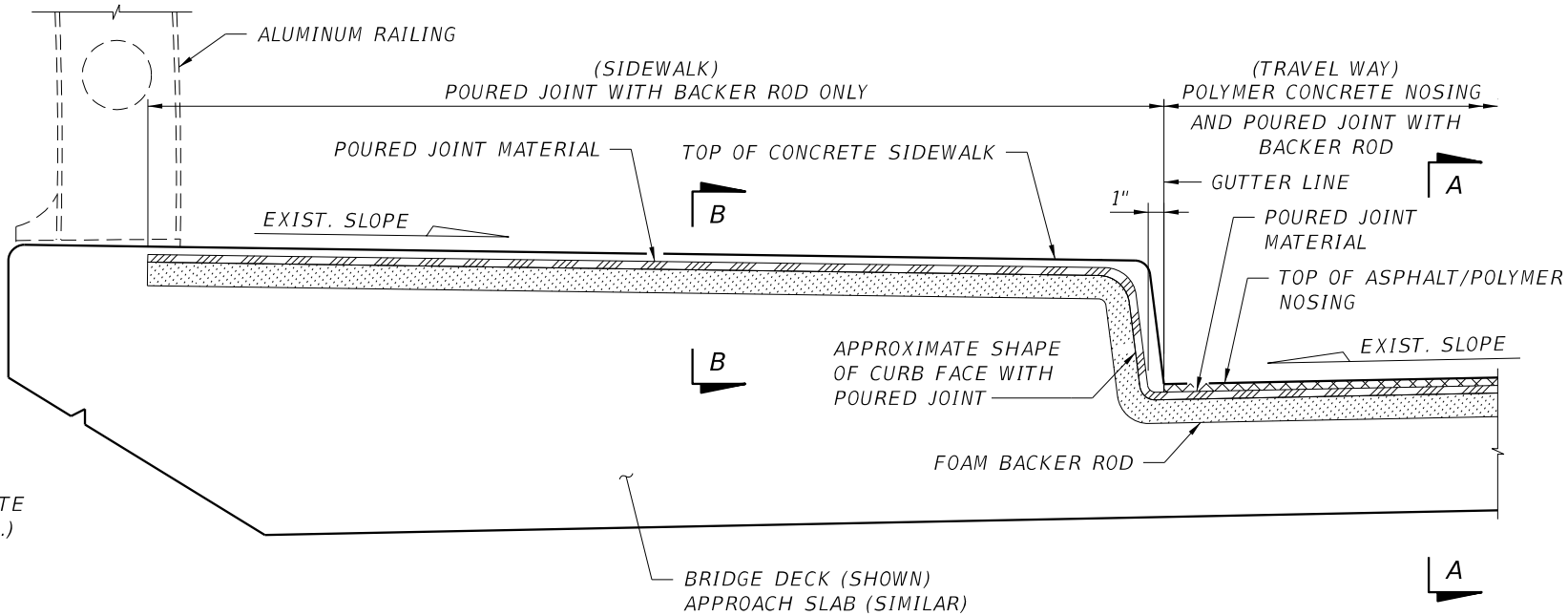
(BRIDGE JOINT AT INTERFACE OF CONSTRUCTION PHASES)  
(REFERENCE MAINT. OF TRAFFIC SHEETS FOR APPROX. LOCATIONS)

- \* TOOL POLYMER NOSING TO 1/4" BEVEL (TYP.)
- IF EXISTING ASPHALT OVERLAY (TO BE MILLED AND RESURFACED) IS LESS THAN 1 1/2", NOTCH THE TOP PORTION OF EXISTING CONCRETE DECK UNTIL THE FINAL THICKNESS OF THE CONCRETE NOSING IS AT LEAST 1 1/2". DO NOT NOTCH EXISTING DECK CONCRETE MORE THAN 1/2". THE EXISTING ASPHALT OVERLAY THICKNESS TO BE CONFIRMED PRIOR TO COMMENCING WORK. CONTACT EOR FOR ANY DISCREPANCY.

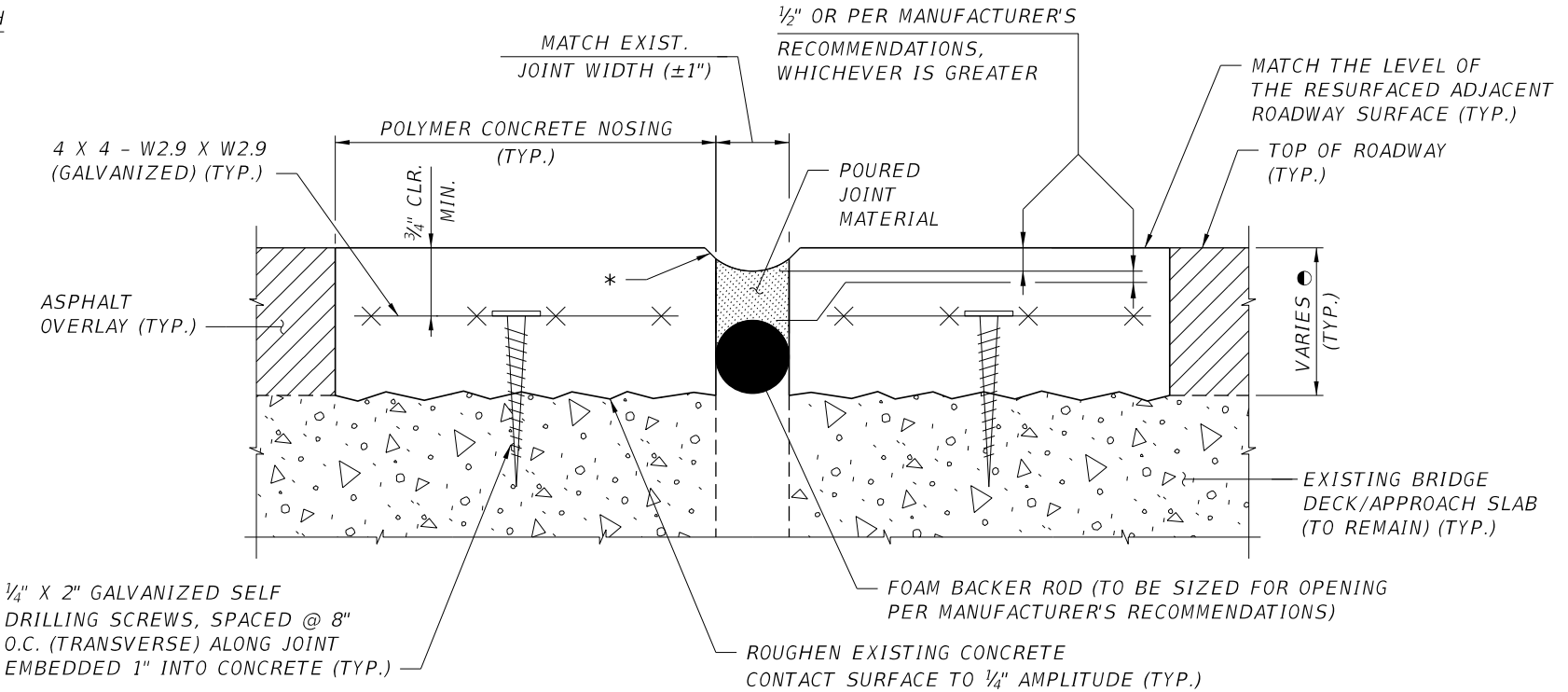
POURED EXPANSION JOINT DATA TABLE				Table Date 1-01-09
LOCATION	JOINT WIDTH	TOTAL DESIGN MOVEMENT	DIM. "A" ADJUSTMENT PER 10°F	
END BENT 1	1"	1/4"	1/32"	
INT. BENT 2	1"	1/2"	1/16"	
INT. BENT 3	1"	1/2"	1/16"	
END BENT 4	1"	1/4"	1/32"	
NOTE: JOINT WIDTH IS BASED ON EXISTING PLANS AND MAY VARY. CONTRACTOR TO CONFIRM THIS DIMENSION.				



SECTION B-B



PARTIAL TYPICAL SECTION ALONG Q JOINT



SECTION A-A  
SECTION THRU TRAVEL WAY AT LONGITUDINAL  
AND TRANSVERSE EXPANSION JOINTS

BRIDGE NO. 874251  
57TH AVENUE BRIDGE OVER SNAPPER CREEK CANAL

REVISIONS							
DATE	BY	DESCRIPTION	DATE	BY	DESCRIPTION	DATE	BY



Juan De La Rosa, P.E.  
P.E. License No. 74705  
6401 SW 87th Avenue, Suite 200  
Miami, Florida 33173  
Phone: (305) 670-2350  
Fax: (305) 670-2351  
Certificate of Authorization No. 7184

DESIGNED BY	NAME	DATE	DRAWN BY	NAME	DATE
FC	FC	09/12/22	CA	CA	08/20/22
CHECKED BY	JDLR	09/13/22	CHECKED BY	FC	09/12/22
SUPERVISED BY: ROBERT FORAND, P.E. NO. 58611					



EXPANSION JOINT  
DETAILS (2 OF 2)

NOTE:  
FOR BAR BENDING DETAILS, REFER TO FDOT STANDARD PLANS INDEX NO. 415-001.

THE OFFICIAL RECORD OF THIS SHEET IS THE ELECTRONIC FILE DIGITALLY SIGNED AND SEALED UNDER RULE 61G15-23.004, F.A.C.

R E V I S I O N S								
DATE	BY	DESCRIPTION	DATE	BY	DESCRIPTION	DATE	BY	DESCRIPTION

Joan De La Rosa, P.E.  
P.E. License No. 74705

6401 SW 87th Avenue, Suite 200  
Miami, Florida 33173  
Phone: (305) 670-2350  
Fax: (305) 670-2351  
Certificate of Authorization No. 7184

	NAME	DATE		NAME	DATE
DESIGNED BY	FC	09/12/22	DRAWN BY	CA	08/20/22
CHECKED BY	JDLR	09/13/22	CHECKED BY	FC	09/12/22
SUPERVISED BY: ROBERT FORAND, P.E. NO. 58611					

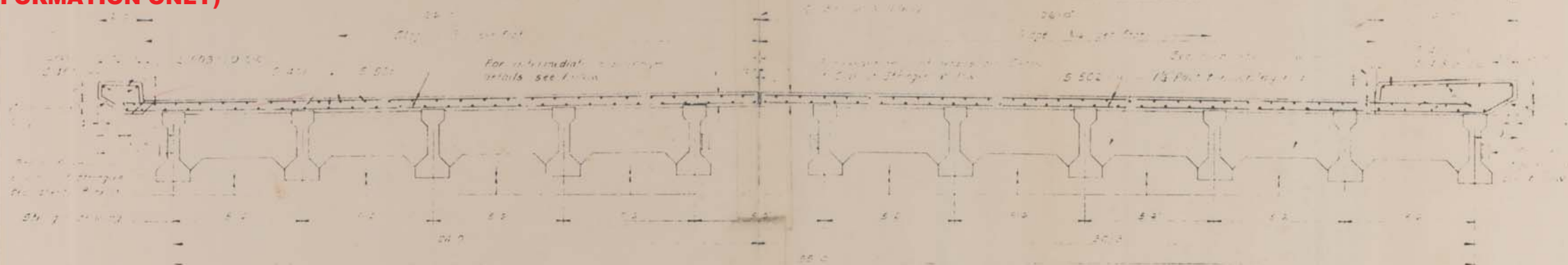
DEPARTMENT OF TRANSPORTATION  
AND PUBLIC WORKS  
HIGHWAY DIVISION

STEPHEN P. CLARK, CENTER  
115 NW 1 ST  
MIAMI, FLORIDA 33128

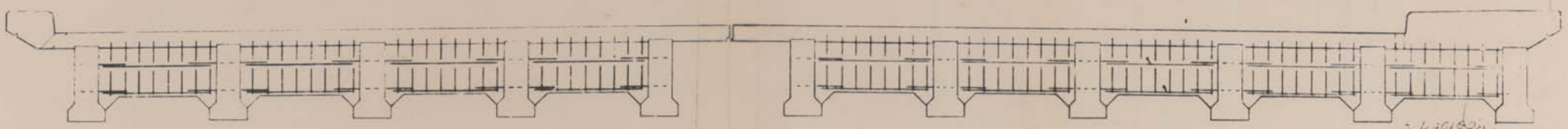
REINFORCING  
BAR LIST

11/2/2022 7:00:41 PM

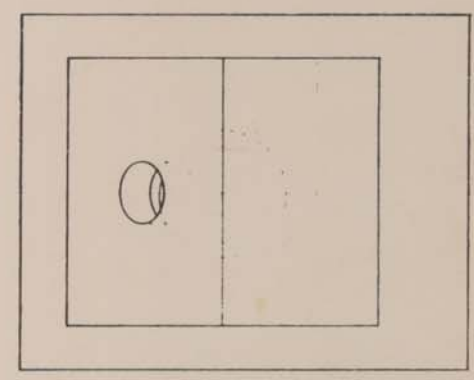
EXISTING PLANS  
(FOR INFORMATION ONLY)



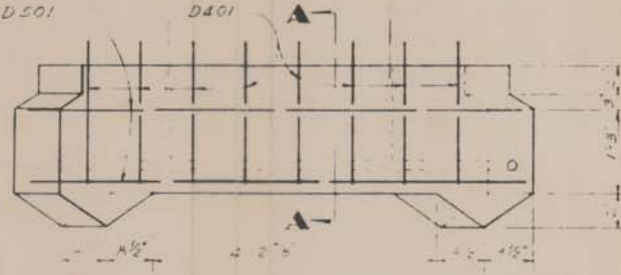
TRANSVERSE SECTION THROUGH ROADWAY AT MIDSPAN



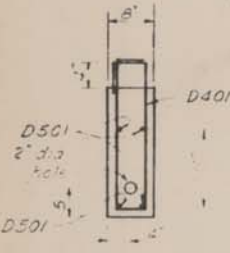
END ELEVATION



ELEVATION



INTERMEDIATE DIAPHRAGM DETAILS



SECTION AA

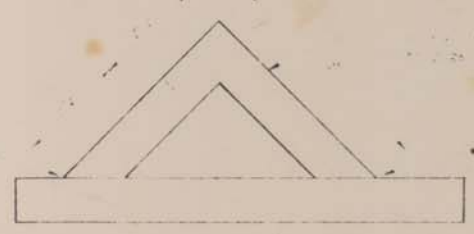
DETAIL OF SLAB AT STRINGER

NOTES

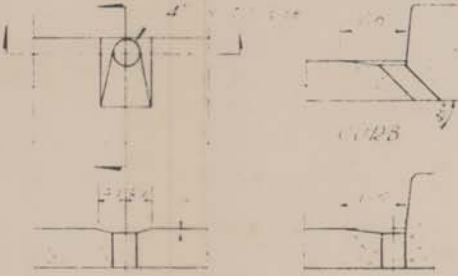
- 1. Bridge structure is shown.
- 2. All dimensions are in feet and inches.
- 3. The bridge is to be constructed of concrete.
- 4. The bridge is to be constructed of concrete.
- 5. The bridge is to be constructed of concrete.
- 6. The bridge is to be constructed of concrete.
- 7. The bridge is to be constructed of concrete.
- 8. The bridge is to be constructed of concrete.
- 9. The bridge is to be constructed of concrete.

ESTIMATED QUANTITIES FOR ONE SPAN

ITEM	ITEM	UNIT	QUAN.
70.4	Concrete, Deck & Deck Slab	C.Y.	60
70.8	Concrete, Base & String	C.Y.	11.0
77	Reinforcing Steel	L.B.	14
201	Precasted Bridge Type II	L.F.	440



EXISTING PLANS  
(FOR INFORMATION ONLY)



CURB DETAIL

SECTION THRU END DIAPHRAGM

CURB DETAIL

DADE COUNTY PUBLIC WORKS DEPARTMENT

BRIDGE STRUCTURE DETAILS

RED ROAD BRIDGE

OVER

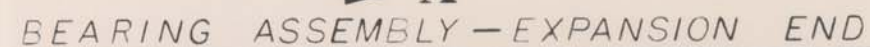
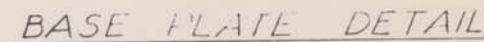
SNAPPER CREEK CANAL

DATE 5-1-50

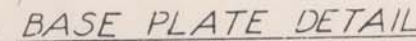
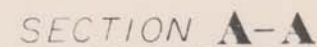
SHEET 11



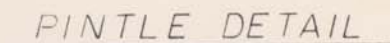
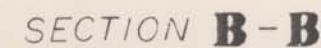
## EXISTING PLANS (FOR INFORMATION ONLY)



Scale: 3" = 1'-0"



Scale: 3" = 1'-0"



Scale-Full Size

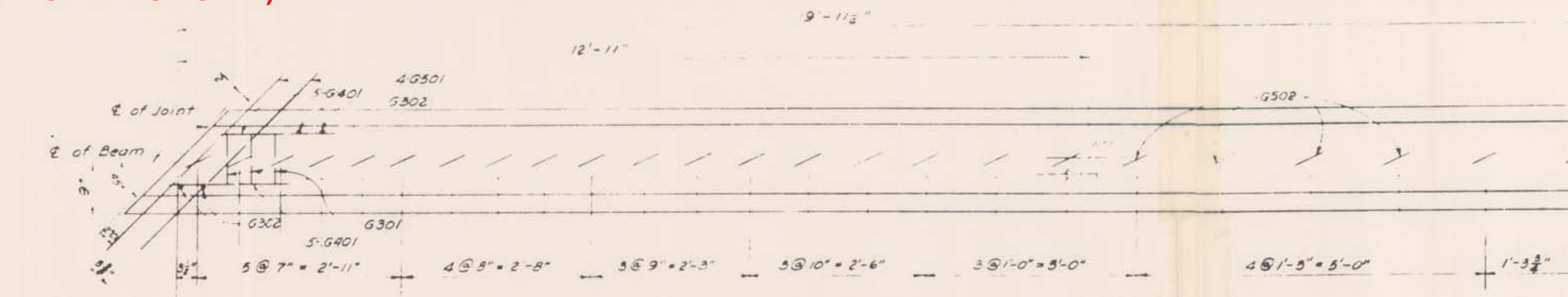
ESTIMATED QUANTITIES FOR ONE (1) BEAM		
ITEM No.	ITEM	UNIT QUANTITIES
79A	BEARING ASSY. Exp End	Ea 1
79B	BEARING ASSY. Fixed End	Ea 1

Notes: (Unless otherwise noted)  
1. Finished surfaces are indicated thus: V  
The class of finish will be: A A 125

[illegible]

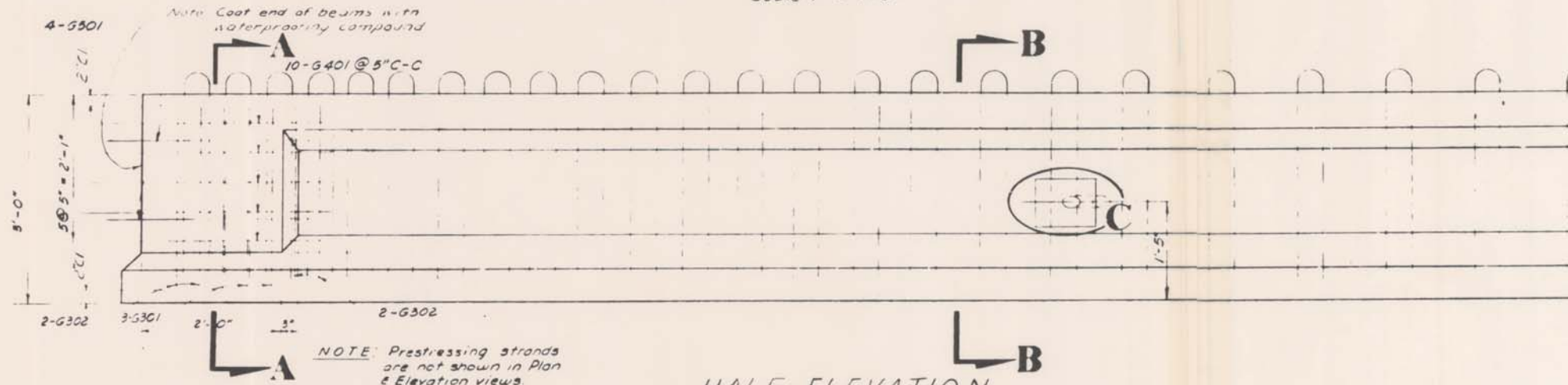


**EXISTING PLANS  
(FOR INFORMATION ONLY)**



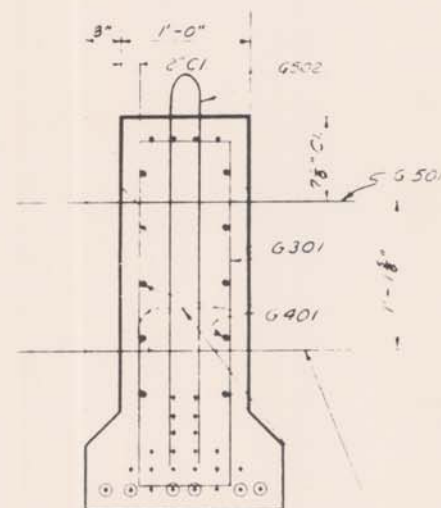
**HALF PLAN**

Scale 1" = 1'-0"



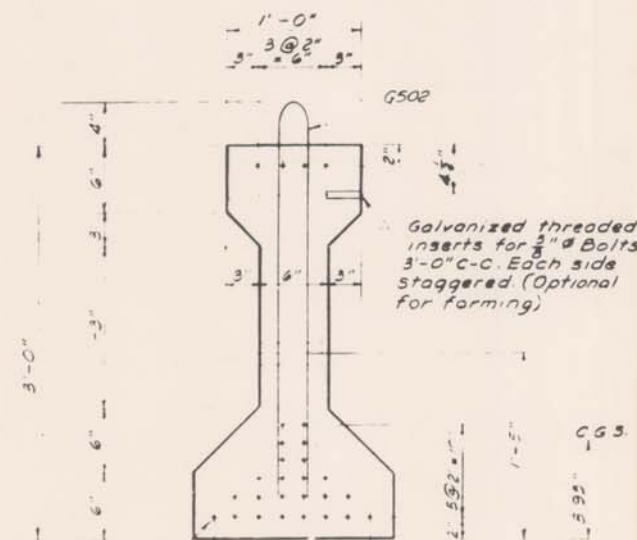
**HALF ELEVATION  
AASHTO-PCI STANDARD BEAM  
TYPE II**

Scale 1" = 1'-0"



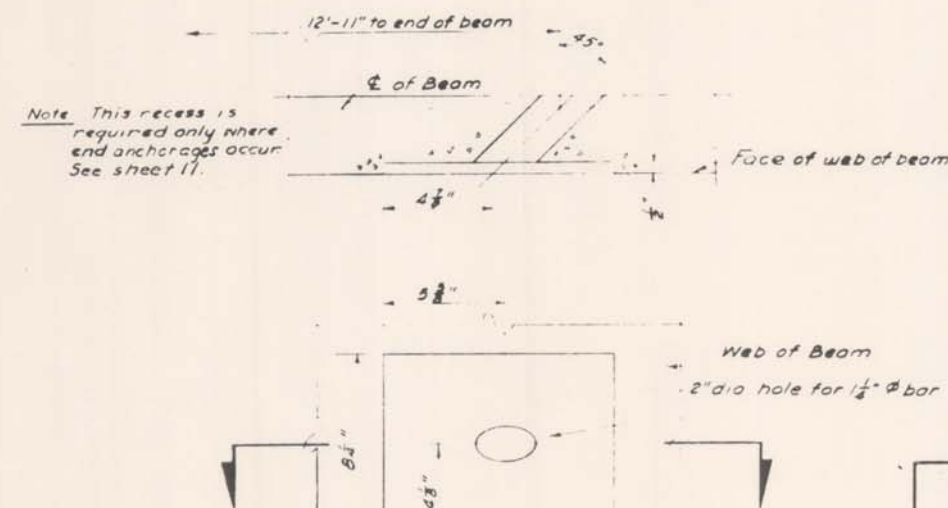
**SECTION A-A**

Scale 1/2" = 1'-0"



**SECTION B-B**

Scale 1/2" = 1'-0"

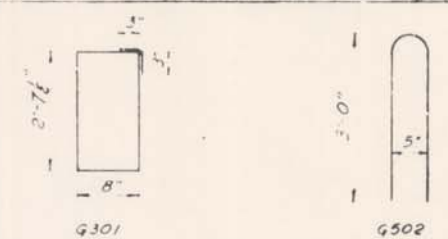


**DETAIL C**

**BILL OF REINFORCING STEEL  
FOR ONE BEAM**

MARK	LENGTH	NO REQD	BENDING
G301	7'-1"	6	See Diagram
G302	2'-8"	8	Straght
G401	1'-7"	20	"
G501	3'-6"	8	"
G502	6'-11"	47	See Diagram

**BENDING DIAGRAM**



**NOTES: (Unless otherwise noted)**

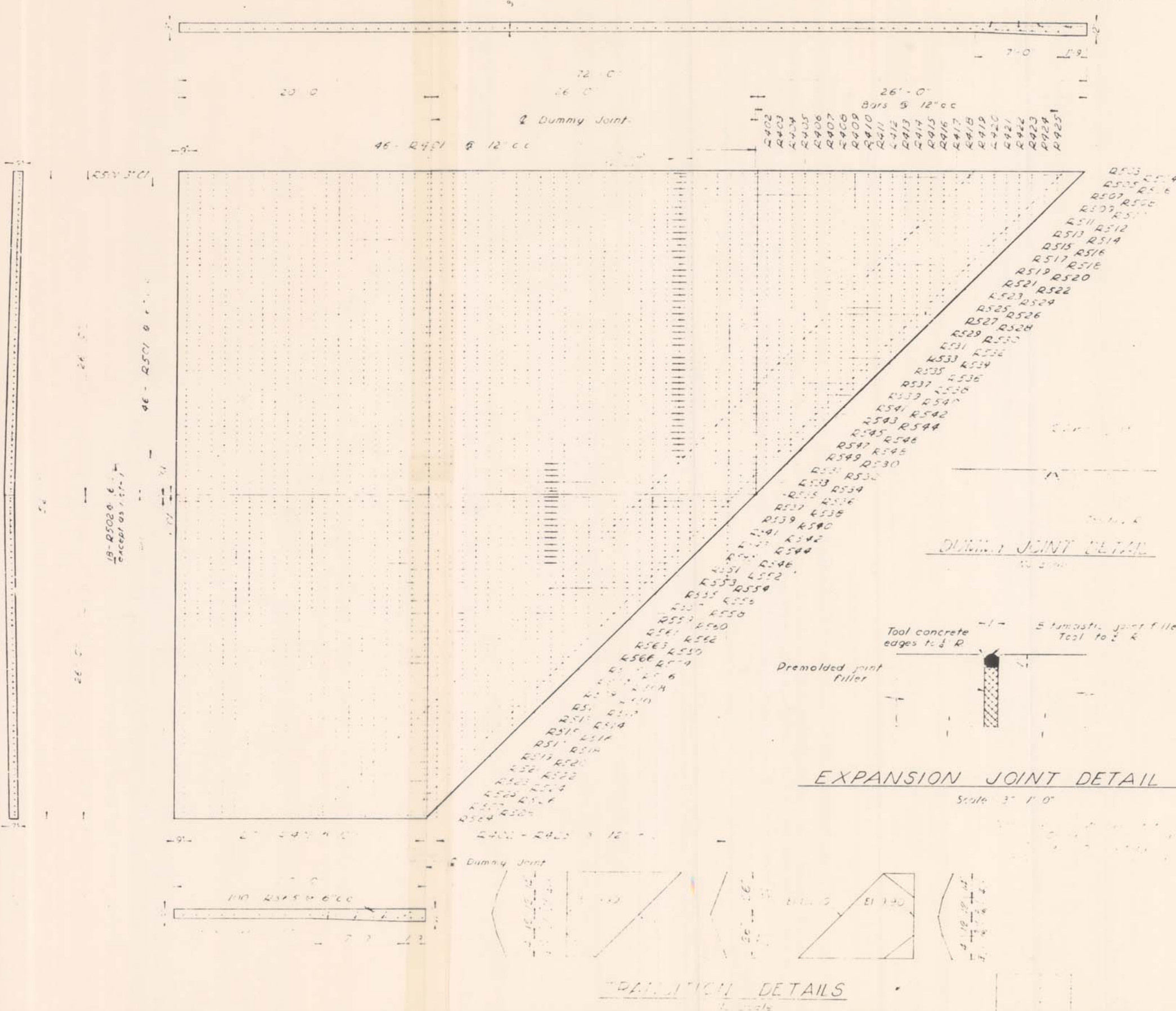
1. For GENERAL NOTES see sheet 6
2. All beams shall be cast on concrete floored pallets and in metal forms.
3. Tops of beams to be rough floated. At approximately the time of initial set, entire top of beam shall be scrubbed transversely with coarse wire brush to remove all laitance and to produce a roughened surface for bonding slab.
4. Bridge seats shall be finished to a line parallel with finished grade by rubbing with a carborundum block.
5. Concrete for beams shall be Class P.
6. At transfer of the tensioning load, the cylinder strength of concrete shall be 4,000 p.s.i. and the concrete shall be at least 5 days old.
7. In handling, beams must be maintained in an upright position at all times and must be picked up from points within the solid bearing blocks at the beam ends. The contractor shall be responsible for replacement of any members damaged due to improper handling.
8. Ends of all beams shall be coated with an approved waterproofing compound.
9. Strands indicated thus  $\Phi$  are to be enclosed in tubes to prevent bond for a length of 3' from each end. After release of strands fill tubes with cup grease and plug ends.

**PRESTRESSED BEAMS**

RED ROAD BRIDGE  
OVER  
SNAPPER CREEK CANAL



EXISTING PLANS  
(FOR INFORMATION ONLY)



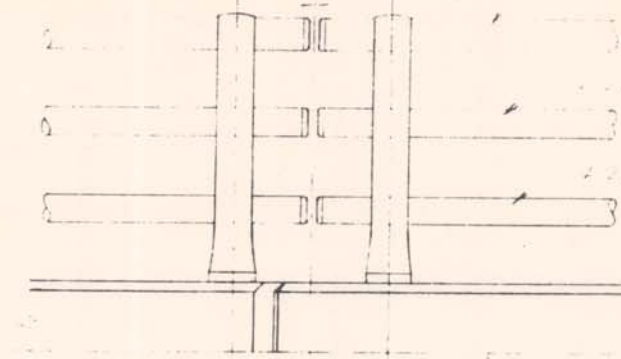
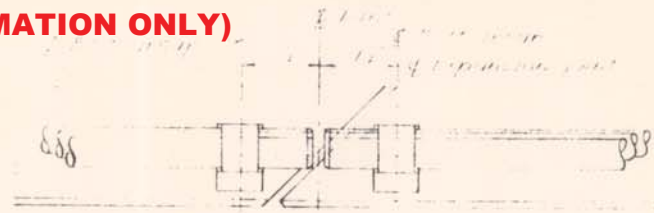
BENDING				DIAGRAM			
BILL OF REINFORCING STEEL FOR ONE SLAB				BILL OF REINFORCING STEEL FOR ONE SLAB			
MARK	SIZE	NO.	LENGTH BENDING	MARK	SIZE	NO.	LENGTH BENDING
R401	4	66	25' 6" Straight	R521	5	2	23' 6" Straight
R402	2	29	6"	R522			23' 6"
R403			23' 6"	R523			22' 6"
R404			22' 6"	R524			22' 0"
R405			21' 6"	R525			21' 6"
R406			21' 0"	R526			21' 0"
R407			20' 6"	R527			20' 6"
R408			20' 0"	R528			20' 0"
R409			19' 6"	R529			19' 6"
R410			19' 0"	R530			19' 0"
R411			18' 6"	R531			18' 6"
R412			18' 0"	R532			18' 0"
R413			17' 6"	R533			17' 6"
R414			17' 0"	R534			17' 0"
R415			16' 6"	R535			16' 6"
R416			16' 0"	R536			16' 0"
R417			15' 6"	R537			15' 6"
R418			15' 0"	R538			15' 0"
R419			14' 6"	R539			14' 6"
R420			14' 0"	R540			14' 0"
R421			13' 6"	R541			13' 6"
R422			13' 0"	R542			13' 0"
R423			12' 6"	R543			12' 6"
R424			12' 0"	R544			12' 0"
R425			11' 6"	R545			11' 6"
R501	5	27	4' 0"	R546			11' 0"
R502	18	3	2' 0"	R547			10' 6"
R503	32	3	2' 0"	R548			10' 0"
R504	2	32	2' 0"	R549			9' 6"
R505			31' 6"	R550			39' 6"
R506			31' 0"	R551			39' 0"
R507			30' 6"	R552			38' 6"
R508			30' 0"	R553			38' 0"
R509			29' 6"	R554			37' 6"
R510			29' 0"	R555			37' 0"
R511			28' 6"	R556			36' 6"
R512			28' 0"	R557			36' 0"
R513			27' 6"	R558			35' 6"
R514			27' 0"	R559			35' 0"
R515			26' 6"	R560			34' 6"
R516			26' 0"	R561			34' 0"
R517			25' 6"	R562			33' 6"
R518			25' 0"	R563			33' 0"
R519			24' 6"	R564			32' 6"
R520			24' 0"	R565			32' 0"
				R566			32' 0"

ESTIMATED QUANTITIES FOR ONE SLAB			
ITEM No	ITEM	UNIT	QUANTITY
66	Concrete Paving - 9" Thick	Sq Yds	266

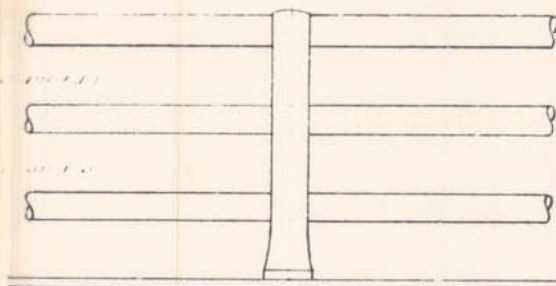
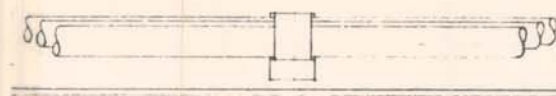
BASE DATA			
SLAB	APPROACH SLAB		
BRIDGE	RED RIVER BRIDGE		
OVER	SNAPPER CREEK CANAL		
NO	50		



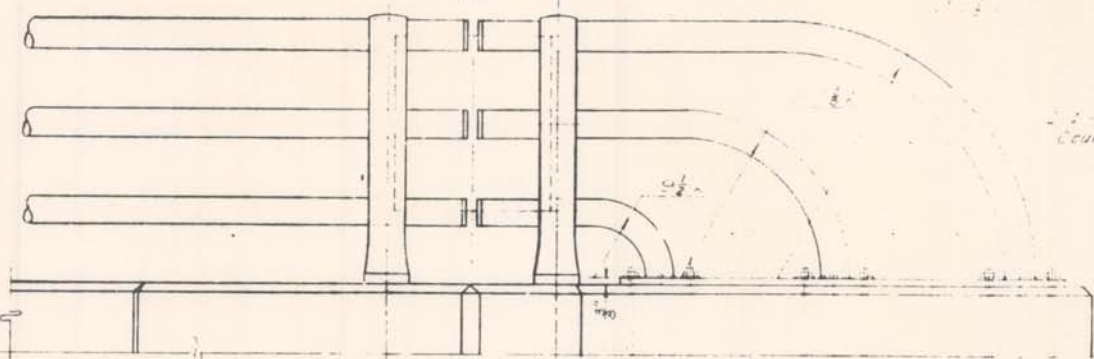
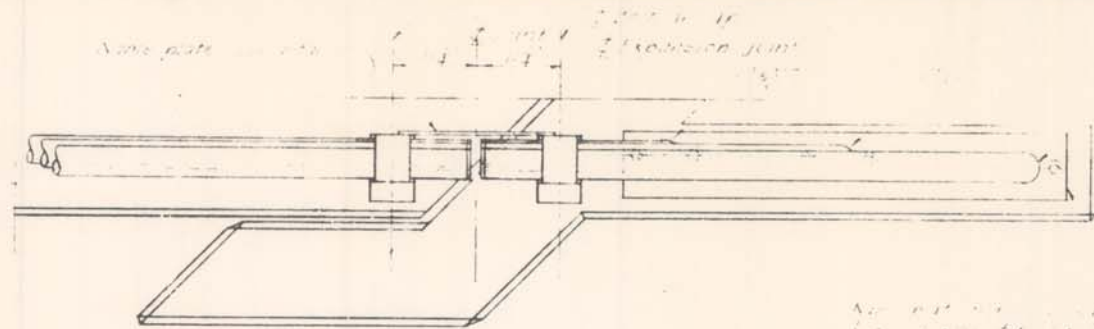
**EXISTING PLANS  
(FOR INFORMATION ONLY)**



DETAIL AT INTERMEDIATE BENT  
Scale 1"=10'



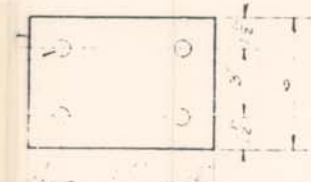
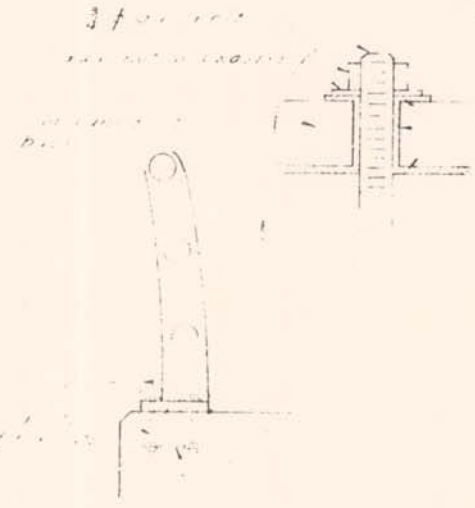
TYPICAL INTERIOR POST  
Scale 1"=10'



DETAIL AT END BENT  
Scale 1"=10'

DADE COUNTY  
BRIDGE OVER  
SNAPPER CREEK  
CANAL  
DESIGNED BY  
DADE COUNTY  
ENGINEERS  
1953  
REVISED 1954

DETAIL OF NAME PLATE  
1"=10'  
2"=10'



ANCHOR PLATE  
Scale 1"=10'

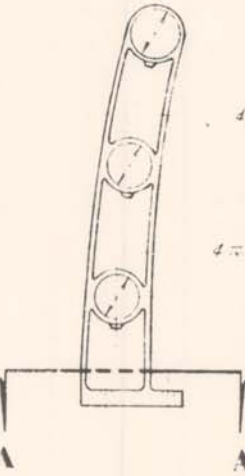


DETAIL AA  
Scale 1"=10'

Aluminum handrail  
NOTE:  
Aluminum end caps shall be placed in pipe handrail at all ends.



END CAP DETAIL  
Scale 3"=1-0'



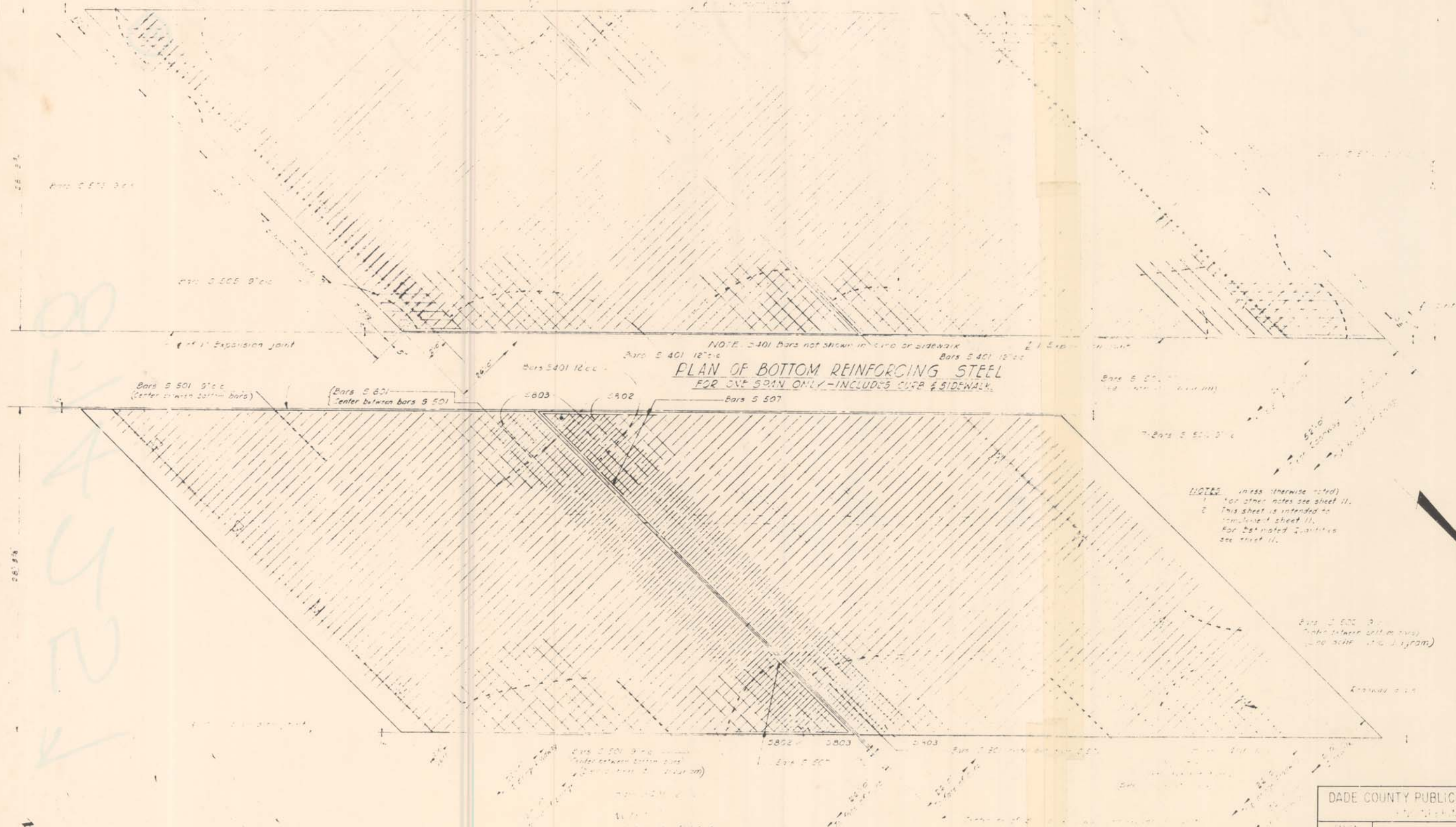
DETAIL OF CAST POST  
Scale 1 1/2"=1-0'

1. All pipe handrails shall be made of 4" diameter galvanized steel pipe.  
2. The end caps shall be made of aluminum and shall fit snugly over the end of the pipe.  
3. The handrails shall be attached to the bridge structure with 1/2" diameter bolts.  
4. The handrails shall be painted with a durable paint.  
5. The handrails shall be installed in accordance with the following specifications:  
a. The handrails shall be installed on both sides of the bridge.  
b. The handrails shall be installed at a height of 42" from the top of the bridge deck.  
c. The handrails shall be installed in a straight line, except where necessary to follow the curve of the bridge.  
d. The handrails shall be installed in a manner that will not interfere with the operation of the bridge.

DADE COUNTY PUBLIC WORKS DEPARTMENT ENGINEERING DIVISION			
DESIGN	FILE	HANDRAIL DETAILS	
DRAWN	DATE	RED ROAD BRIDGE	
CHECKED	DATE	OVER	
ENGINEER	DATE	SNAPPER CREEK CANAL	
SUBMITTED	RECOMMENDED	APPROVED	
DATE DEC 58	FILE 59	SHEET 12 OF 15	



EXISTING PLANS  
(FOR INFORMATION ONLY)



PLAN OF BOTTOM REINFORCING STEEL  
FOR ONE SPAN ONLY - INCLUDES CURB & SIDEWALK

NOTES: (unless otherwise noted)  
1. For other notes see sheet II.  
2. This sheet is intended to supplement sheet II.  
For estimated quantities see sheet II.

PLAN OF TOP REINFORCING STEEL  
FOR ONE SPAN ONLY

NOTE: (unless otherwise noted)  
1. For other notes see sheet II.  
2. This sheet is intended to supplement sheet II.  
For estimated quantities see sheet II.

DADE COUNTY PUBLIC WORKS DEPARTMENT		
DESIGN	SUPERSTRUCTURE DETAILS	
DRAWN	RED ROAD BRIDGE	
CHECK	OVER	
ENGINEER	SNAPPER CREEK CANAL	
SUBMITTED	RECOMMENDED	APPROVED
DATE	FILE	SHEET NO. OF

874251-9

BX-6