



Tuesday, June 3, 2025

### RESPONSE LETTER NO. 3 TO REQUEST FOR INFORMATION

Project Title: **Roadway Improvements NW 107 Ave from NW 138 St to NW 170 St.**  
Project No.: **20250046 (Capital)**

**RFI from Santiago Lopez, H&R Paving; dated 6/3/2025. (attached)**

**Question:** 1) Upon completing the review of the entire drainage system for this project, we were unable to find the locations and necessary details for the structures included in the bid item 425-100-39. Could you please provide that information? We understand that the deadline for requesting information is over, but considering the number of structures included (12), we understand that this clarification is essential to provide an accurate price for this item."

**Response:** 1) The 12 items refer to "skimmers for French drain outlets" as detailed in FDOT Index 443-002 (attached and also included on Sheets SW-38 and 39 of the Drainage Plan Set). These baffle structures are to be installed at the invert and directly connected to the exfiltration trench system. Per the design plans, skimmers are specified for the following structures:

- S-4 (1 Baffle)
- S-5 (2 Baffles)
- S-6 (1 Baffle)
- S-8 (1 Baffle)
- S-9 (1 Baffle)
- S-15 (1 Baffle)
- S-17 (2 Baffles)
- S-18 (2 Baffles)
- S-19 (2 Baffles)
- S-20 (2 Baffles)
- S-21 (2 Baffles)
- S-22 (1 Baffle)

### END OF REQUEST FOR INFORMATION No. 3

Sincerely,

Orlando Martinez,  
Manager, Project Control Section,  
On behalf of Tiondra Wright  
06/03/2025

Tiondra Wright  
Chief, Capital Improvements Division  
Department of Transportation and Public Works (DTPW)



Tw:kf

C:

Katherine Fernandez, DTPW  
Alejandro Saucedo, P.E, DTPW  
Laurie Johnson, SBD

Leandro Ona, P.E. DTPW  
Miguel Soria, P.E. DTPW  
Eric Perez, SBD

Caesar Suarez, SBD  
Project File  
Clerk of the Board

## **Fernandez, Katherine (DTPW)**

---

**From:** Santiago Lopez <santiago@hrpaving.com>  
**Sent:** Tuesday, June 3, 2025 8:10 AM  
**To:** Fernandez, Katherine (DTPW)  
**Cc:** Clerk of the Board (COC); Abe Rodriguez; Wright, Tiondra (DTPW)  
**Subject:** 20250046 Roadway Improvements to NW 107 Ave from NW 138 St to NW 170 St - RFI No 8

### **EMAIL RECEIVED FROM EXTERNAL SOURCE**

Good morning Katherine,

Upon completing the review of the entire drainage system for this project, we were unable to find the locations and necessary details for the structures included in the bid item 425-100-39. Could you please provide that information? We understand that the deadline for requesting information is over, but considering the number of structures included (12), we understand that this clarification is essential to provide an accurate price for this item.

Santiago Lopez



1955 N.W. 110 Avenue  
Miami, FL 33172

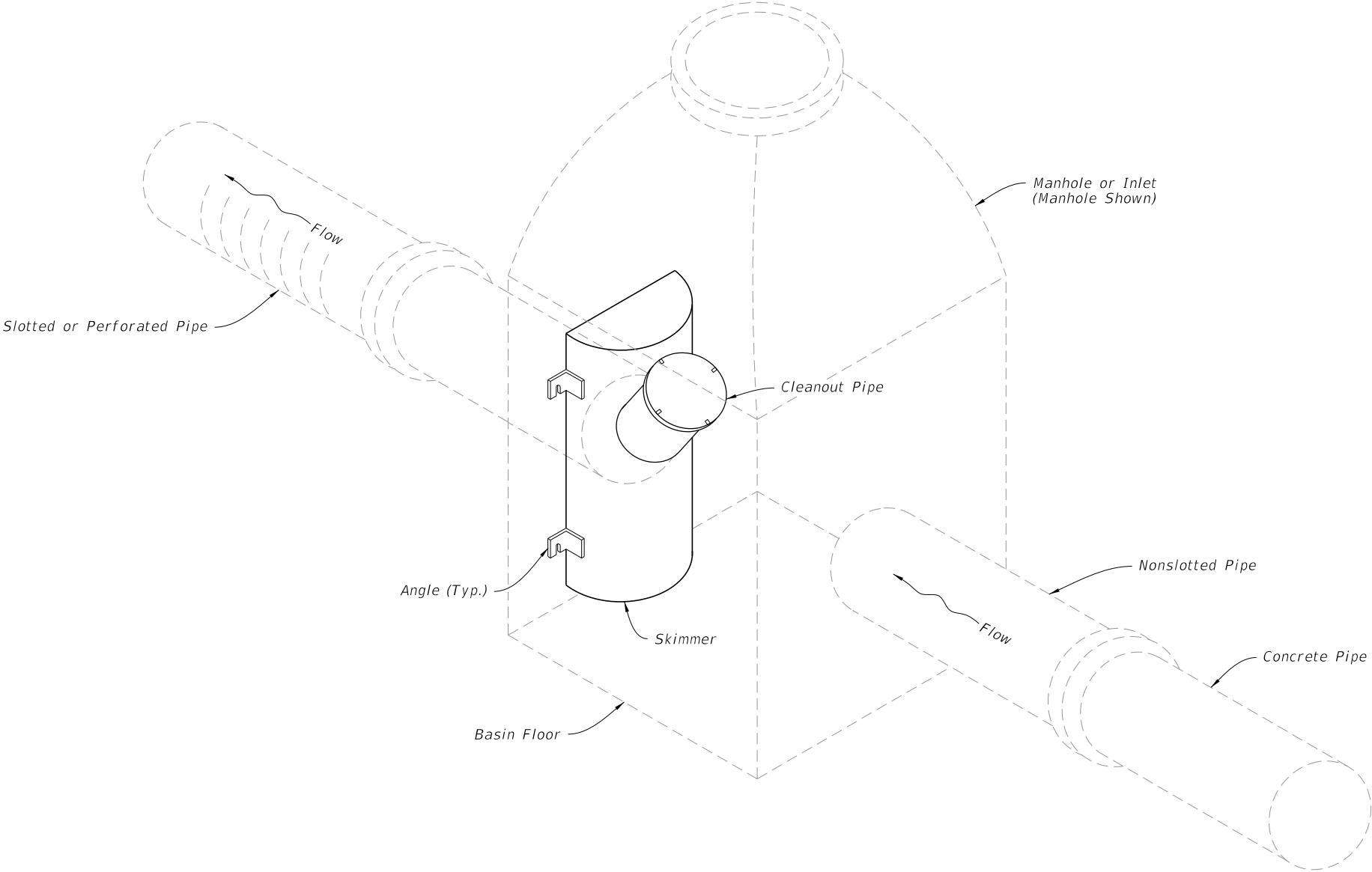
**OFFICE: (305)261-3005**  
**FAX: (305)592-6079**

***"35 YEARS SERVING OUR COMMUNITY"***

GENERAL NOTES:

- 1. The French Drain Skimmer is a hooded cover, mounted over an outlet in a catchbasin, that prevents oil and floating debris from exiting the basin.
- 2. Place neoprene gasket material between the skimmer and the catchbasin at all points of contact. Trim the gasket to extend 1/2 inch beyond the joint on all sides.
- 3. Provide skimmer baffle, cleanout pipe and angles constructed of either galvanized steel, aluminum, polyvinyl chloride, polyethylene, fiberglass or acrylonitrile butadiene styrene. Provide hot-dip galvanized steel components, unless stainless.
- 4. Use Mounting hardware, hinges and latches made of stainless steel. Loss prevention device can use either stainless steel chain or riveted nylon strap.
- 5. Provide skimmer bodies (baffles) and cleanout pipe meeting Specification 943 for steel, 945 for aluminum or 948 for plastics.
- 6. Work this Index in accordance with Specification 425.

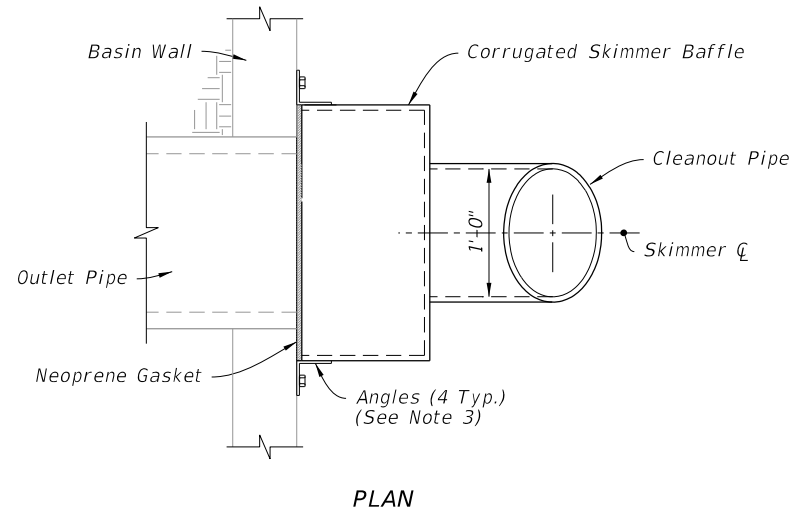
TABLE OF CONTENTS:	
Sheet	Description
1	General Notes and Contents
2	Type I Skimmers
3	Type II Skimmers



SKIMMER FOR FRENCH DRAIN OUTLETS ASSEMBLY

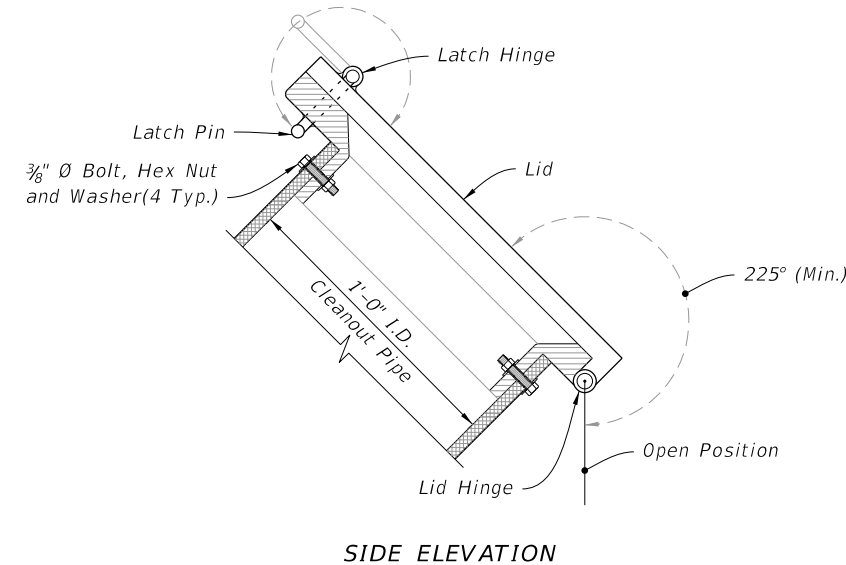
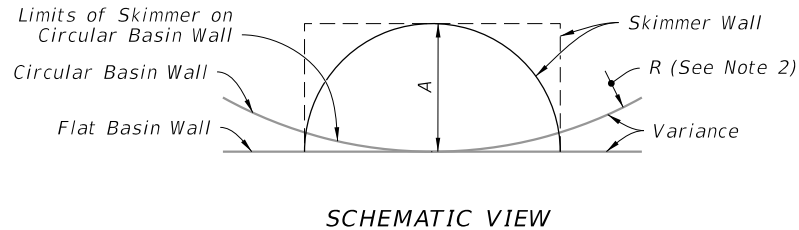
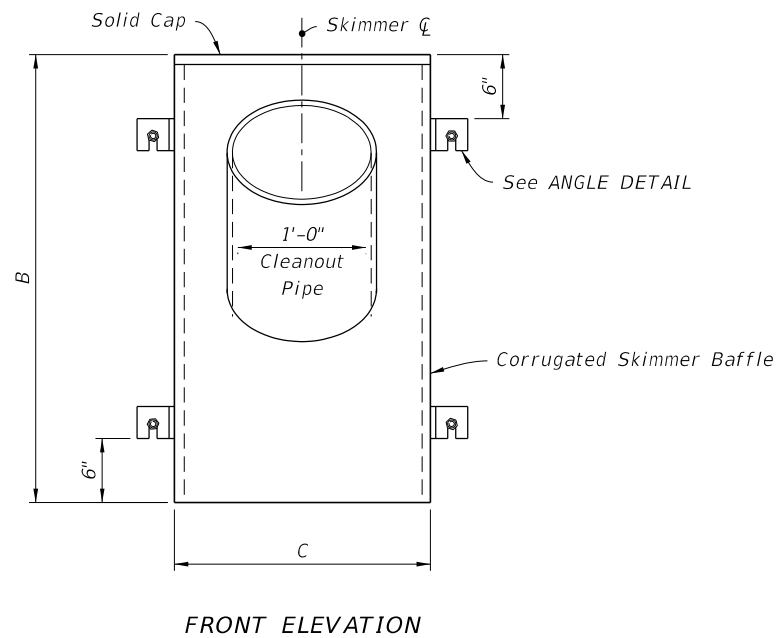
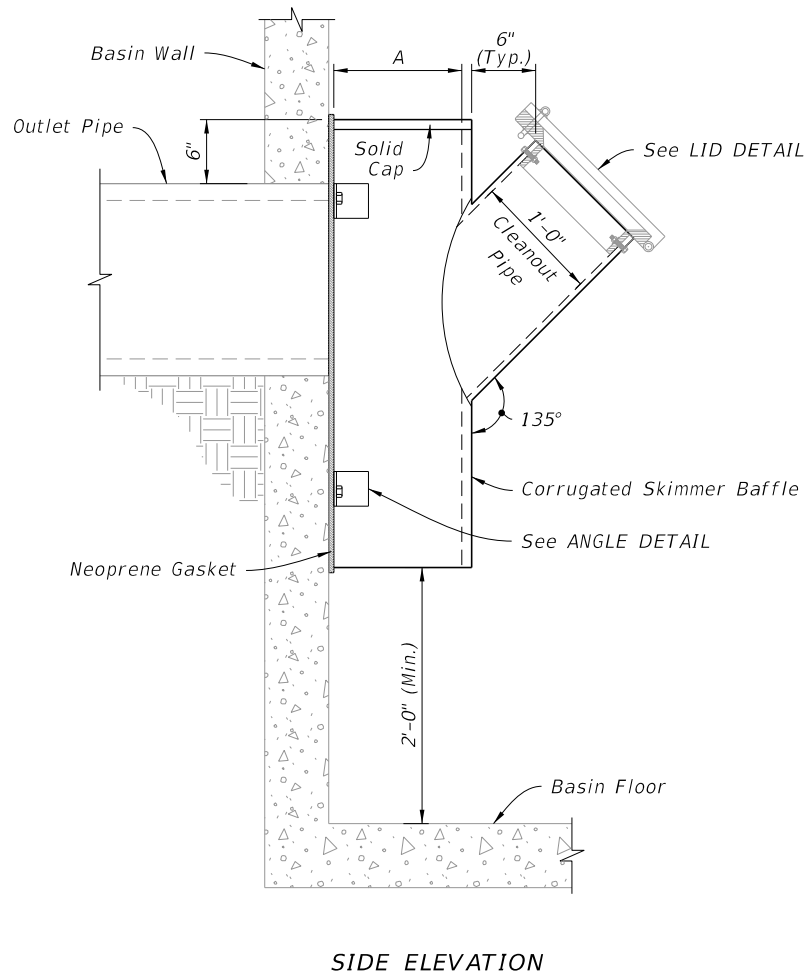
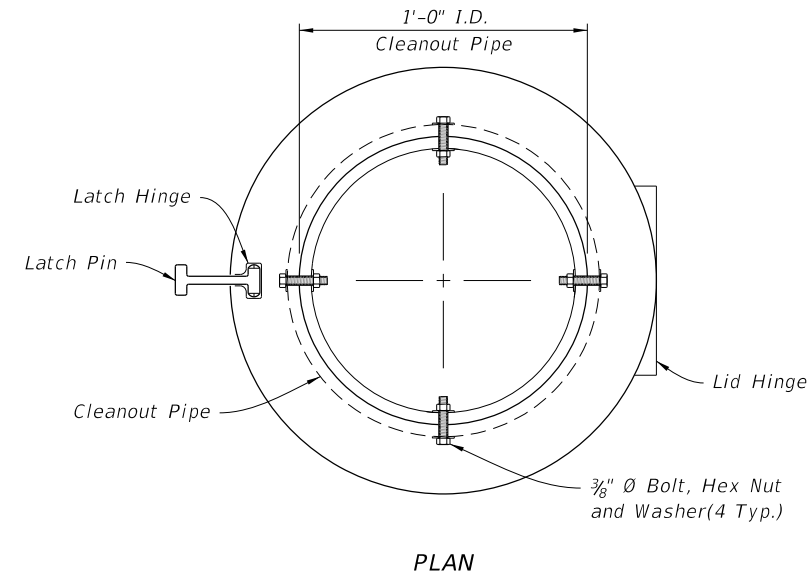
10/14/2019 10:07:39 AM

10/14/2019 10:07:40 AM

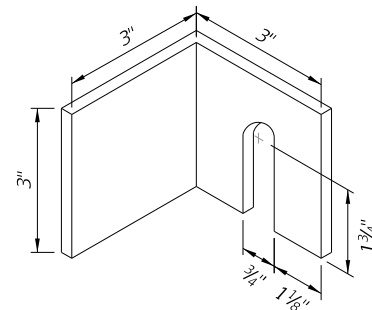


- NOTES:**
1. Conform the backs of skimmers to the shape of the basin walls on which they are mounted.
  2. "R" is the radii required for curved back skimmers. Applies to both skimmer types. See Plans.
  3. Weld Angles at all points of contact with skimmer.

DIMENSION TABLE			
OUTLET PIPE	A	B	C
18"	12"	42"	24"
24"	15"	48"	30"
30"	18"	54"	36"
36"	21"	60"	42"



LID DETAIL

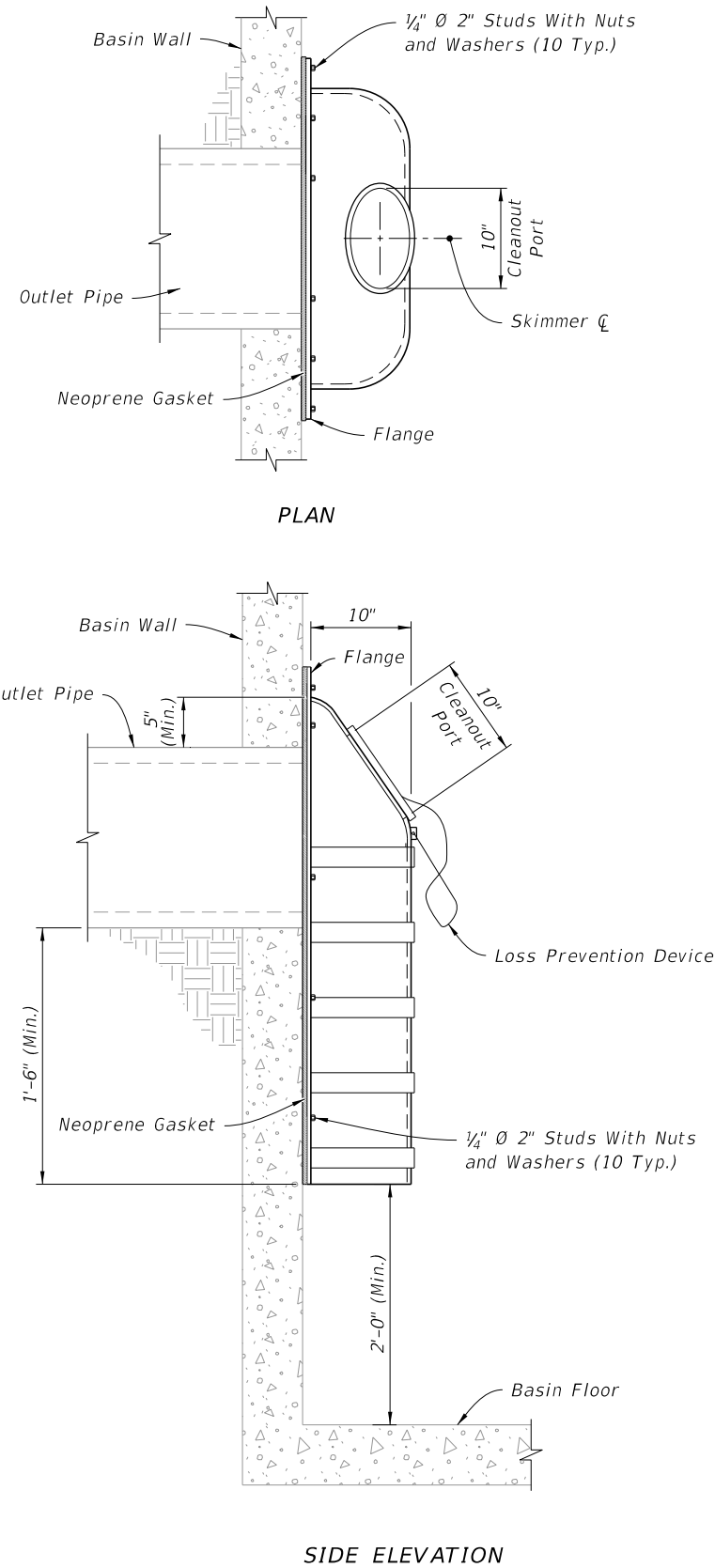


TYPE I DETAILS

ANGLE DETAIL

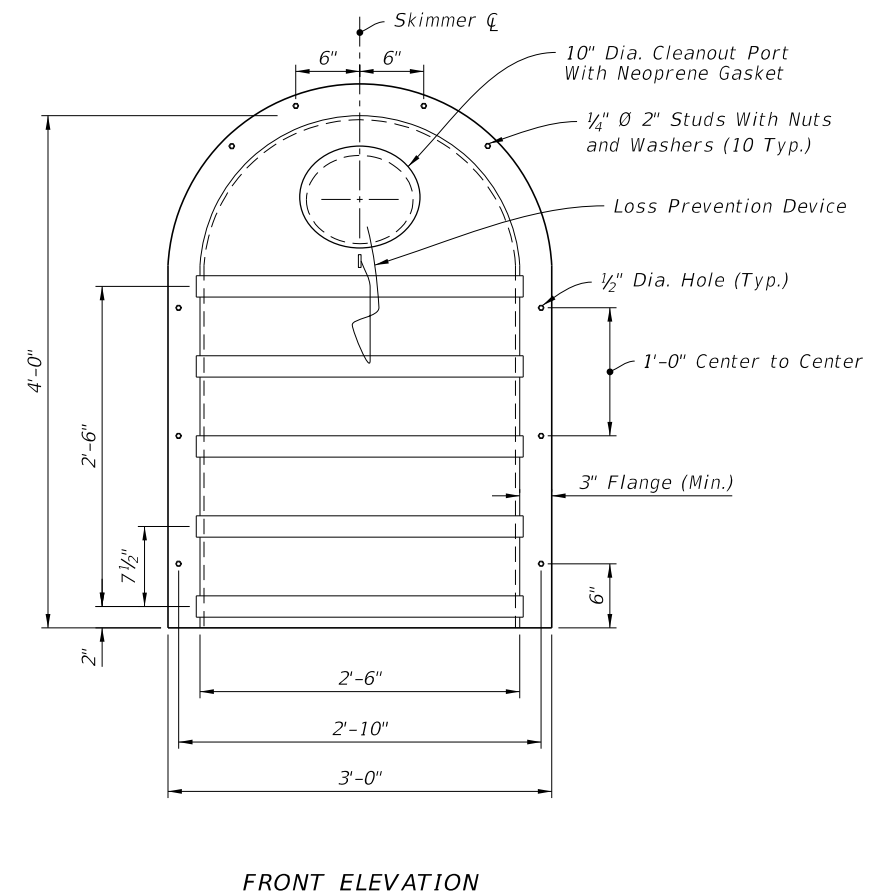
TYPE I SKIMMERS

11/18/2019 9:51:39 AM



**NOTE:**

1. Install a gasket for the cleanout with either a threaded screw-in lid or a lid secured by four stainless steel quick-release latches.



TYPE II DETAILS

**TYPE II SKIMMERS**

LAST REVISION	DESCRIPTION:	FY 2020-21 STANDARD PLANS	SKIMMERS FOR FRENCH DRAIN OUTLETS	INDEX	SHEET
11/01/19				443-002	3 of 3