

ELECTRONIC DOCUMENTS DISCLAIMER

1. Electronic copies of the solicitation documents are made available on this website solely for the convenience of prospective bidders (whether as a prime contractor or sub-contractor) on the Project, and are not considered part of the Contract Documents. No representation or warranty is made, either expressed or implied, with regard to the accuracy or suitability of these electronic copies for any purpose whatsoever. In the event of discrepancies or conflicts between the County's originally published document(s) and any other version distributed or submitted by other parties, the County's original hard copy version shall prevail.
2. Miami-Dade County Department of Transportation and Public Works (DTPW) does not track or monitor downloads of Project documents from this website. Therefore, prospective bidders who choose to use this method of distribution shall also be responsible for monitoring the site and downloading any applicable addenda or supplemental information. DTPW will distribute hard copy addenda or supplemental information only to those persons or firms who we have purchased a hard copy of the original solicitation documents.
3. Miami-Dade County shall not be responsible for errors and omissions occurring in the transmission or downloading of any documents or specifications from this website. In the event of any discrepancy between information obtained from this website and the DTPW hard copy solicitation documents and specifications, the terms of the hard copy documents will prevail.
4. Miami-Dade County does not guarantee continuous, uninterrupted or secure access to this or other related websites. Operation of this website may be affected from time to time by numerous factors outside of our control. In the event that we are notified of any problems in a timely manner we will do our best to assist with those problems that fall within our control. For assistance, contact us at 305-375-2930. Solicitation documents are removed from this website as soon as possible after the due date.
5. DTPW does not accept facsimile or electronic bid responses of any kind. All bids must be submitted in writing, on the forms provided by the County, to the address designated in the bid package. It is the bidder's responsibility to ensure that their submittals are received at the designated location, complete and on time. Bids received after the due date will be rejected, even if the solicitation is still appearing on this site.
6. These documents shall not be altered in any manner. Utilization or viewing of these electronic documents shall constitute implicit acknowledgement and acceptance of these provisions. Failure to comply with these provisions may result in rejection of your bid.



Bicycle Green Paint along SW 160th Street and along SW 142nd Avenue

SW 160th Street, from SW 147th Ct. to SW 137th Ave. &
SW 142nd Avenue, from SW 160th St. to SW 168th St.

[Miami-Dade County](#)

Engineering Drawings

[Volume II of II](#)

Small Business Enterprise-Good & Services Program (SBE-G&S):

N/A

Community Workforce Program:

N/A

DTPW Capital Improvements Engineer:

Marco Movilla

RPQ Issue Date:

November 20th, 2025

TABLE OF CONTENTS
2 of 2

SECTION 8: ENGINEERING DRAWINGS

SECTION 8: ENGINEERING DRAWINGS

PLANS FOR PROPOSED
IMPROVEMENTS TO
SW 160 STREET
FROM SW 147 AVE TO SW 137 AVE
AND
SW 142 AVENUE
FROM SW 168 ST TO SW 160 ST
MIAMI-DADE COUNTY PROJECT NO. 20240281 (SW 142 AVE)
MOBILITY IMPACT FEE (MIF)

NOTE:
ATTENTION IS DIRECTED TO THE FACT THAT THESE PLANS MAY HAVE BEEN REDUCED IN SIZE BY REPRODUCTION. THIS MUST BE CONSIDERED WHEN OBTAINING SCALED DATA.

INDEX OF SHEETS

SHT. No.	SHEET DESCRIPTION
1	COVER SHEET
2	TYPICAL SECTION
3	GENERAL NOTES
4	SUMMARY OF QUANTITIES
5-11	SIGNING & PAVEMENT MARKING PLANS



LENGTH OF JOB		
	LIN. FT.	MILES
ROADWAY	7715	1.46
BRIDGE		
GROSS LENGTH OF JOB	7715	1.46
EXCEPTIONS		
NET LENGTH OF JOB	7715	1.46

BY

MIAMI-DADE COUNTY
DEPARTMENT OF TRANSPORTATION AND PUBLIC WORKS
HIGHWAY DIVISION

STEPHEN P. CLARK CENTER
111 NW 1 ST
MIAMI, FLORIDA 33128

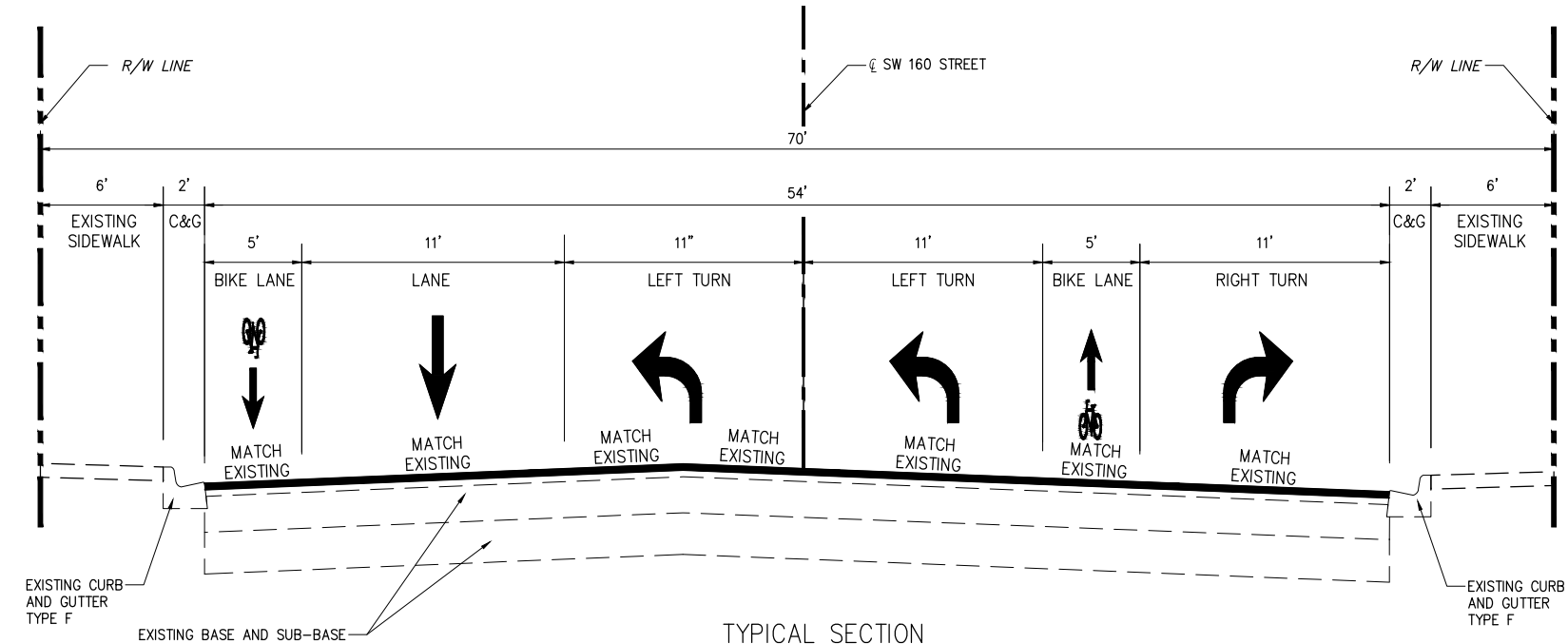
THESE PLANS HAVE BEEN PREPARED IN ACCORDANCE WITH AND ARE GOVERNED BY THE OCT. 1990 MIAMI-DADE COUNTY PUBLIC WORKS DEPARTMENT STANDARDS AND SPECIFICATIONS PARTS 1, 2 AND 3. THE 2023 MANUAL OF UNIFORM MINIMUM STANDARDS FOR DESIGN, CONSTRUCTION AND MAINTENANCE FOR STREETS AND HIGHWAYS. THE FY 2025-26 FLORIDA DEPARTMENT OF TRANSPORTATION ROADWAY AND TRAFFIC DESIGN STANDARDS, AND THE FY 2025-26 FLORIDA DEPARTMENT OF TRANSPORTATION STANDARD SPECIFICATIONS, AS AMENDED BY CONTRACT DOCUMENTS.



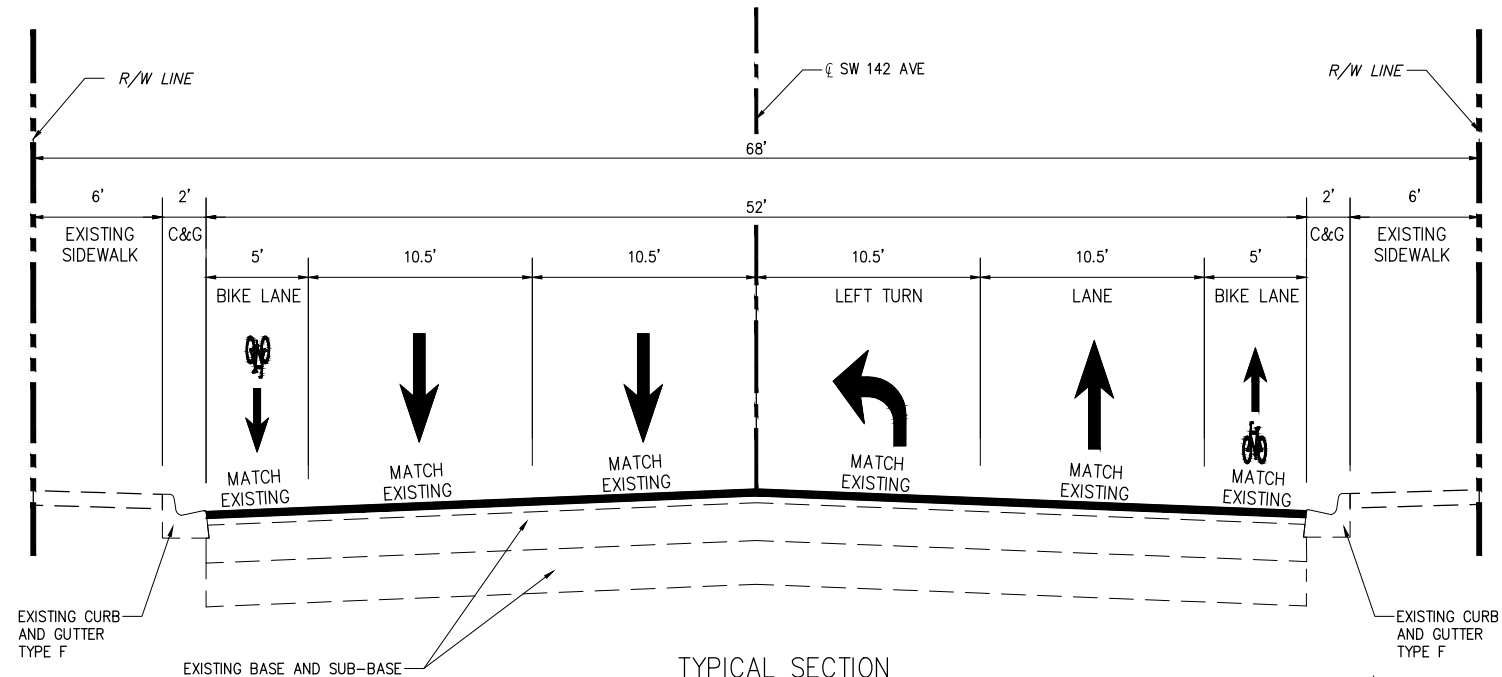
ENGINEER OF RECORD:

JOLIE CERVERA, P.E.
FLORIDA REGISTRATION P.E. No. 86966

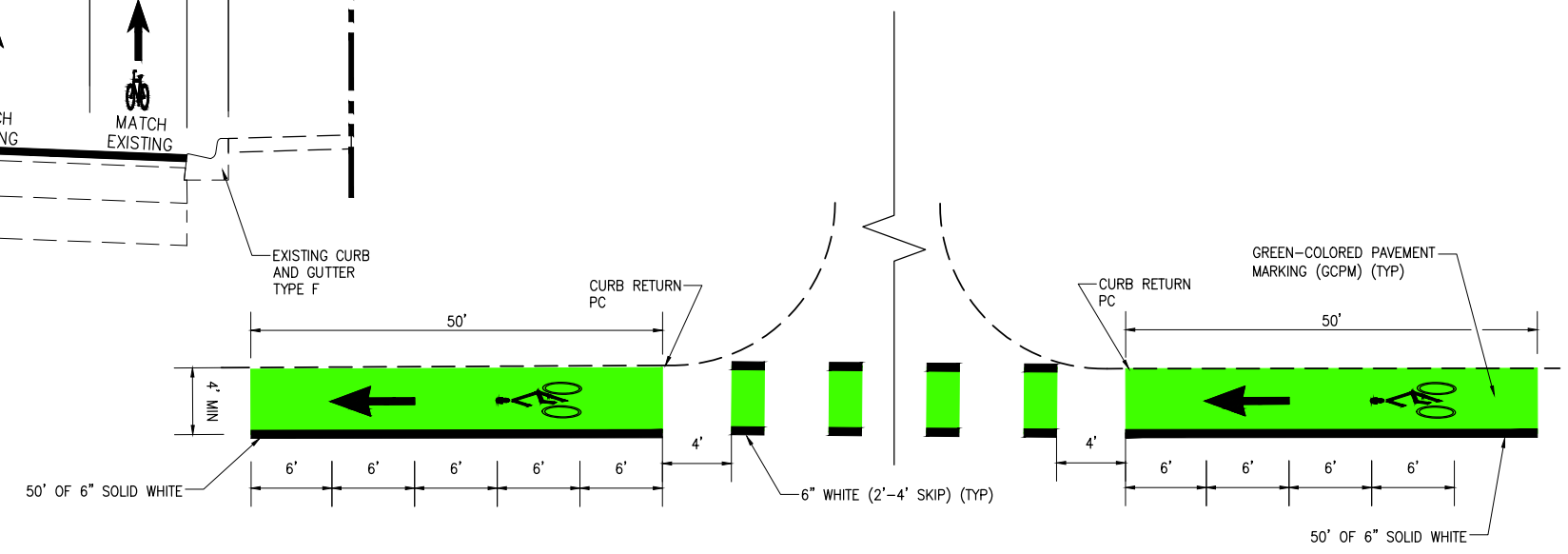
APPROVED	_____	COUNTY ENGINEER
RECOMMENDED	_____	ASSISTANT DIRECTOR
SUBMITTED	_____	HIGHWAY DIVISION
PROPOSED	_____	CHECK
DESIGN	_____	DRAWN
DATE	_____	SHEET 1 OF 11



TYPICAL SECTION
SW 160 STREET
STA: 59+82.10 TO 62+19.93
MILLING & RESURFACING
MILL EXISTING ASPHALT PAVEMENT (1" AVG. DEPTH)
RESURFACE WITH HMA, FRICTION COURSE, TRAFFIC C, FC-9.5 (1")



TYPICAL SECTION
SW 142 AVE
STA: 100+27.95 TO 105+17.45
MILLING & RESURFACING
MILL EXISTING ASPHALT PAVEMENT (1" AVG. DEPTH)
RESURFACE WITH HMA, FRICTION COURSE, TRAFFIC C, FC-9.5 (1")



CONFLICT ZONE DETAIL
N.T.S

C:\ACAD Projects\2021044.014-Colonial Green Bike Lane Markings\CADD\roadway\TYP-SEC.dwg Jun 10, 2025 - 2:11pm JALMEYDA

REVISIONS					
DATE	BY	DESCRIPTION	DATE	BY	DESCRIPTION

MARLIN
ENGINEERING
JULIE CERVERA, P.E. | P.E. No.: 86966
3363 W. COMMERCIAL Blvd, Ste. 115 | FT Lauderdale, FL 33309
P: 954.870.5070 | C.A. No. 6104

DESIGNED BY	NAME	DATE	DRAWN BY	NAME	DATE
J.A.	J.A.				
CHECKED BY	A.A.		CHECKED BY		

SUPERVISED BY:

MIAMI-DADE COUNTY
DEPARTMENT OF TRANSPORTATION AND PUBLIC WORKS
HIGHWAY DIVISION
STEPHEN P. CLARK, CENTER
111 NW 1 ST
MIAMI, FLORIDA 33128

TYPICAL SECTION

GENERAL NOTES

- ALL CONSTRUCTION SHALL BE IN STRICT ACCORDANCE WITH THE REQUIREMENTS OF THE MIAMI-DADE COUNTY PUBLIC WORKS DEPARTMENT, AND ANY OTHER STATE OR LOCAL AGENCY WITH JURISDICTION. IT IS THE INTENT OF THESE PLANS TO BE IN ACCORDANCE WITH APPLICABLE CODES AND AUTHORITIES HAVING JURISDICTION. ANY DISCREPANCIES BETWEEN THESE PLANS AND APPLICABLE CODES SHALL BE IMMEDIATELY BROUGHT TO THE ATTENTION OF THE ENGINEER.
- ALL STATIONS AND OFFSETS REFER TO CENTERLINE OF CONSTRUCTION (SW 160 STREET, SW 142 AVE), UNLESS OTHERWISE STATED.
- CONTRACTOR SHALL COMPLY WITH THE REQUIREMENTS OF THE EPA AND THE NATIONAL POLLUTION DISCHARGE ELIMINATION SYSTEM (NPDES).
- THE CONTRACTOR IS TO USE CAUTION WHEN WORKING IN OR AROUND AREAS OF OVERHEAD AND UNDERGROUND UTILITIES.
- MIAMI-DADE WATER AND SEWER DEPARTMENT REQUIRES THAT ACCESS TO ALL WATER AND SEWER VALVES, SANITARY MANHOLES, AND OTHER CONTROL MECHANISMS BE MAINTAINED THROUGHOUT CONSTRUCTION IN THE EVENT OF AN EMERGENCY TO ENSURE THE PUBLIC HEALTH AND SAFETY. COVERING VALVE BOXES AND MANHOLES CAN BE CONSIDERED UNAUTHORIZED OBSTRUCTION OF AND TAMPERING WITH DEPARTMENT UTILITIES. ALL REQUESTS FOR UTILITY ADJUSTMENTS MUST BE MADE IN WRITING AT LEAST TWO (2) WEEKS IN ADVANCE. FOR MANHOLE AND VALVES, CONTACT THE CONSTRUCTION MANAGEMENT SECTION, PUMP STATIONS UNIT, 3071 SW 38 AVENUE, FAX NO. 305-668-3626. THE DEPARTMENT WILL MAKE ONE FINAL AND PERMANENT ADJUSTMENT AT NO COST TO THE REQUESTING AGENCY. FOR THE ADJUSTMENT OF WATER METERS, CONTACT THE CHIEF OF METER OPERATIONS AND MAINTENANCE, FAX NO. 305-545-3482. FOR ANY FIRE HYDRANTS THAT ARE DAMAGED OR BUMPED DURING CONSTRUCTION, CONTACT THE MDWASD HYDRANT SHOP AT 305-805-4575 BEFORE POURING CONCRETE FOR THE SIDEWALK. IN THE EVENT OF A WATER OR SEWER EMERGENCY, CONTACT MIAMI DADE WATER AND SEWER DEPARTMENT AT 305-274-9272. THIS LINE IS OPEN 24 HOURS, 7 DAYS A WEEK.
- THE CONTRACTOR IS ADVISED THAT PROPERTIES ADJACENT TO THE PROJECT HAVE ELECTRIC, TELEPHONE, GAS, WATER, AND/OR SEWER SERVICE LATERALS WHICH ARE NOT SHOWN IN PLANS. THE CONTRACTOR MUST REQUEST THE LOCATION OF THESE LATERAL SERVICES FROM THE UTILITY COMPANIES. THE ADDITIONAL COST OF EXCAVATING, INSTALLING, BACKFILLING, AND COMPACTING AROUND THESE LATERAL SERVICES MUST BE INCLUDED IN THE BID RELATED ITEM FOR THE WORK BEING DONE.
- ANY DAMAGE TO PUBLIC OR PRIVATE PROPERTY SHALL BE RESTORED BY THE CONTRACTOR AT NO ADDITIONAL COST TO THE OWNER.
- ANY ENCROACHMENT WITHIN THE LIMITS OF CONSTRUCTION SHALL BE RELOCATED OR PROTECTED BY THE ADJACENT PROPERTY OWNER AT THEIR EXPENSE.
- CLEARING AND GRUBBING, GRADING AND OTHER INCIDENTAL WORK NECESSARY FOR HARMONIZATION OUTSIDE R/W SHALL BE INCLUDED IN RELATED BID ITEMS.
- ALL GRASS AREAS AFFECTED BY CONSTRUCTION SHALL BE RE-SODDED. COST TO BE INCLUDED IN RELATED BID ITEMS.
- ALL DISPOSAL OF MATERIALS, RUBBISH, AND DEBRIS SHALL BE MADE AT A LEGAL DISPOSAL SITE OR BY OTHER PRIOR APPROVED MANNER. MATERIAL CLEARED FROM THE SITE AND DEPOSITED ON ADJACENT OR NEARBY PROPERTY WILL NOT BE CONSIDERED AS HAVING BEEN DISPOSED OF SATISFACTORILY.
- ANY KNOWN OR SUSPECTED HAZARDOUS MATERIAL FOUND ON THE PROJECT BY THE CONTRACTOR SHALL BE IMMEDIATELY REPORTED TO THE PROJECT ENGINEER, WHO SHALL DIRECT THE CONTRACTOR TO PROTECT THE AREA OF KNOWN OR SUSPECTED CONTAMINATION FROM FURTHER ACCESS. THE ENGINEER WILL ARRANGE FOR INVESTIGATION, IDENTIFICATION, AND REMEDIATION OF THE HAZARDOUS MATERIAL. THE CONTRACTOR SHALL NOT RETURN TO THE AREA OF CONTAMINATION UNTIL APPROVAL IS PROVIDED BY THE PROJECT ENGINEER.
- CONTRACTOR IS TO VERIFY THE EXACT LOCATION OF ALL EXISTING TREES, STRUCTURES AND UTILITIES, WHICH ARE NOT SHOWN ON PLANS. ANY STRUCTURE, PAVEMENT, TREES OR OTHER EXISTING IMPROVEMENT NOT SPECIFIED FOR REMOVAL WHICH IS TEMPORARILY DAMAGED, EXPOSED OR IN ANY WAY DISTURBED BY CONSTRUCTION PERFORMED UNDER THIS CONTRACT, SHALL BE REPAIRED, PATCHED OR REPLACED AT NO ADDITIONAL COST TO THE OWNER.
- THE CONTRACTOR SHALL USE A STREET SWEEPER (USING WATER) OR OTHER EQUIPMENT CAPABLE OF CONTROLLING AND REMOVING DUST. APPROVAL OF THE USE OF SUCH EQUIPMENT IS CONTINGENT UPON ITS DEMONSTRATED ABILITY TO DO THE WORK.
- THE CONTRACTOR SHALL PREPARE AND SUBMIT SHOP DRAWINGS FOR ALL ITEMS USED IN THIS PROJECT.
- WHEN DISSIMILAR MATERIAL CONNECTIONS ARE MADE, SUCH AS CONCRETE TO METAL, THE DISSIMILAR MATERIAL SHALL BE SEPARATED BY COATING THE CONTACT SURFACE WITH BITUMASTIC MATERIAL.
- THE CONTRACTOR IS RESPONSIBLE FOR KEEPING EXISTING INLETS CLEAN OF MILLING MATERIAL, LIMEROCK, DEBRIS, ETC. DURING THE CONSTRUCTION AT NO ADDITIONAL COST TO THE OWNER.
- CONTRACTOR SHALL ADJUST ALL EXISTING CATCH BASINS, GRATES, AND STORM MANHOLE COVERS TO MEET NEW GRADES WHERE APPLICABLE.
- WHERE NEW PAVEMENT MEETS EXISTING, CONNECTION SHALL BE MADE IN A NEAT STRAIGHT LINE AND FLUSH WITH THE EXISTING PAVEMENT.

SIGNING & PAVEMENT MARKING NOTES

- ALL SIGNING AND PAVEMENT MARKINGS SHALL CONFORM TO THE CURRENT EDITION OF THE MANUAL OF UNIFORM TRAFFIC CONTROL DEVICES FOR STREETS AND HIGHWAYS AND THE FLORIDA DEPARTMENT OF TRANSPORTATION DESIGN STANDARDS.
- ALL EXISTING SIGNS ARE TO REMAIN UNLESS OTHERWISE SPECIFIED. BEFORE STARTING THE PROJECT, THE CONTRACTOR WILL REVIEW EXISTING SIGNS SHOWN ON THE PLANS TO BE RELOCATED OR TO REMAIN. THE CONTRACTOR WILL NOTIFY IN WRITING TO THE PROJECT ENGINEER OF ANY MISSING SIGNS BEFORE CONSTRUCTION STARTS. SIGNS DAMAGED BY THE CONTRACTOR'S OPERATIONS WILL BE REPLACED AT NO COST TO THE COUNTY. IF EXISTING SIGNS TO BE RELOCATED HAVE A DAMAGED POLE OR A POLE NOT MEETING HEIGHT SPECIFICATION REQUIREMENTS, THE COST OF A NEW POLE WILL BE INCLUDED IN THE RELOCATION BID ITEM.
- ALL PAVEMENT MARKINGS, MESSAGES, AND ARROWS SHALL BE THERMOPLASTIC UNLESS OTHERWISE NOTED.
- THE CONTRACTOR SHALL REMOVE EXISTING MARKINGS BY COUNTY APPROVED METHOD WITHOUT DAMAGE TO THE FRICTION COURSE.
- SIGN ASSEMBLY LOCATIONS SHOWN ON PLANS WHICH ARE IN CONFLICT WITH LIGHTING, UTILITIES, DRIVEWAYS, WHEELCHAIR RAMPS, ETC. MAY BE ADJUSTED SLIGHTLY AS DIRECTED BY THE ENGINEER. EXTREME LOCATION CHANGES MUST BE APPROVED BY MIAMI-DADE SIGNALS AND SIGNS DIVISION.
- ANY SIGNING MATERIALS, INCLUDING SUPPORTS, TO BE REMOVED AS NOTED ON PLAN SHEETS, SHALL BE DELIVERED BY THE CONTRACTOR IN EXISTING CONDITION, IN CARE OF THE STOREKEEPER AT THE MIAMI-DADE COUNTY MAINTENANCE YARD, 9301 NW 58TH ST, DORAL, FL 33178.
- REFLECTIVE PAVEMENT MARKERS AS PER FDOT STANDARD INDEX NO. 706-001.

MAINTENANCE OF TRAFFIC NOTES

- THE CONTRACTOR SHALL BE RESPONSIBLE FOR THE PROVISION, INSTALLATION, AND MAINTENANCE OF ALL TRAFFIC CONTROL AND SAFETY DEVICES, IN ACCORDANCE WITH SPECIFICATIONS OUTLINED IN THE PUBLIC WORKS DEPARTMENT MANUAL, THE MANUAL OF UNIFORM TRAFFIC CONTROL DEVICES, AND THE FDOT DESIGN STANDARDS.
- ALL MAINTENANCE OF TRAFFIC (MOT) OPERATIONS SHALL COMPLY WITH THE LATEST EDITIONS OF THE FLORIDA DEPARTMENT OF TRANSPORTATION (FDOT) STANDARD PLANS, INDEX 102-600 SERIES, THE MANUAL ON UNIFORM TRAFFIC CONTROL DEVICES (MUTCD), AND MIAMI-DADE COUNTY PUBLIC WORKS MANUAL.
- IF THE BICYCLE LANE MUST BE TEMPORARILY CLOSED DURING PAVEMENT MARKING INSTALLATION, THE CONTRACTOR SHALL PROVIDE APPROPRIATE DETOUR SIGNAGE AND WARNING DEVICES PER FDOT STANDARD PLANS INDEX 102-661 (BICYCLE FACILITY CLOSURE).
- CONTRACTOR SHALL MAINTAIN AT LEAST THE FOLLOWING NUMBER OF TRAFFIC LANES FOR CORRESPONDING TIME PERIODS:
MONDAY-FRIDAY 7-10 A.M. AND 4-7 P.M.; NO INTERRUPTION TO TRAFFIC IS PERMITTED.
ALL OTHER TIMES:
MAINTAIN ONE LANE FOR TWO-WAY OPERATION WITH FLAG MEN.
MAINTAIN ONE LANE IN EACH DIRECTION FOR TRAFFIC.
- TEMPORARY LANE CLOSURES SHALL FOLLOW FDOT STANDARD PLANS INDEX 102-603 (TWO-LANE, TWO-WAY, WORK WITHIN THE TRAVEL WAY)
- CONTRACTOR MUST PROVIDE FLASHER ARROW BOARD FOR ANY LANE THAT IS CLOSED OR DIVERTED PER FDOT STANDARD PLANS INDEX 102-603 (TWO-LANE, TWO-WAY, WORK WITHIN THE TRAVEL WAY)
- CONTRACTOR SHALL NOTIFY LAW ENFORCEMENT AND FIRE PROTECTION SERVICES TWENTY-FOUR (24) HOURS IN ADVANCE OF THE DETOUR IN ACCORDANCE WITH SECTION 3363.07 OF FLORIDA STATUTES.
- A TRAFFIC CONTROL OFFICER (TCO) MAY BE REQUIRED WHEREVER A LANE CLOSURE/CONSTRUCTION IS LOCATED ADJACENT TO A SIGNALIZED INTERSECTION.
- IT IS THE RESPONSIBILITY OF THE CONTRACTOR TO SELECT AND OBTAIN THE APPROPRIATE PERMISSION FROM MIAMI-DADE COUNTY OR APPLICABLE AGENCY THAT HAS JURISDICTION ON THE "PROPOSED" STAGING AREAS.
- ALL PAVEMENT MARKING WORK, INCLUDING THE APPLICATION OF GREEN THERMOPLASTIC IN BICYCLE LANES, SHALL CONFORM TO FDOT STANDARD SPECIFICATION SECTION 711 AND THE FDM 223.
- TEMPORARY MARKINGS SHALL BE INSTALLED IF FINAL MARKINGS CANNOT BE APPLIED IMMEDIATELY AFTER RESURFACING.
- TEMPORARY PAVEMENT TRANSITIONS SHALL BE MAINTAINED AT TIE-IN LOCATIONS TO PREVENT HAZARDS TO VEHICLES AND CYCLISTS.
- ALL RESURFACED AREAS SHALL BE REOPENED TO TRAFFIC AS SOON AS PRACTICAL.
- WORK ZONES MUST BE MAINTAINED FREE OF LOOSE DEBRIS TO ENSURE SAFE TRAVEL CONDITIONS.
- THE CONTRACTOR SHALL MAINTAIN ACCESS TO ALL ADJACENT PROPERTIES AT ALL TIMES.
- ANY SIDEWALK OR CROSSWALK AFFECTED BY CONSTRUCTION SHALL HAVE APPROPRIATE DETOURS AND ACCESSIBLE PATHWAYS PER FDOT STANDARD PLANS INDEX 102-660 (SIDEWALK CLOSURE) AND ADA REQUIREMENTS.
- THE CONTRACTOR SHALL ENSURE ALL TRAFFIC CONTROL DEVICES ARE PROPERLY INSTALLED, MAINTAINED, AND REMOVED PROMPTLY ONCE WORK IS COMPLETE. ANY DEFICIENCIES SHALL BE CORRECTED IMMEDIATELY UPON NOTICE.
- ADVANCED WARNING SIGNS SHALL BE INSTALLED AT LEAST 7 DAYS BEFORE MAJOR WORK BEGINS TO INFORM THE PUBLIC OF UPCOMING TRAFFIC PATTERN CHANGES.

REVISIONS

DATE	BY	DESCRIPTION	DATE	BY	DESCRIPTION

MARLIN
ENGINEERING
JOLIE CERVERA, P.E. | P.E. No.: 86966
3363 W. COMMERCIAL Blvd, Ste. 115 | FT Lauderdale, FL 33309
P: 954.870.5070 | C.A. No. 6104

DESIGNED BY	NAME	DATE	DRAWN BY	NAME	DATE
	J.A.				
CHECKED BY	A.A.		CHECKED BY		

SUPERVISED BY:

MIAMI-DADE COUNTY
DEPARTMENT OF TRANSPORTATION AND PUBLIC WORKS
HIGHWAY DIVISION
STEPHEN P. CLARK, CENTER
111 NW 1 ST
MIAMI, FLORIDA 33128

C:\ACAD Projects\2021044.014-Colonial Green Bike Lane Markings\CADD\roadway\GNRL-NOTES.dwg Jul 07, 2025 - 3:29pm JALMEYDA

SUMMARY OF QUANTITIES

PAY ITEM NO.	DESCRIPTION	UNIT	SHEET NUMBERS														TOTAL THIS SHEET		GRAND TOTAL	
			5		6		7		8		9		10		11		PLAN	FINAL	PLAN	FINAL
			PLAN	FINAL	PLAN	FINAL	PLAN	FINAL	PLAN	FINAL	PLAN	FINAL	PLAN	FINAL						
101-1-A	MOBILIZATION	LS															1		1	
102-1A	MAINTENANCE OF TRAFFIC	LS															1		1	
104-18	INLET PROTECTION SYSTEM	EA															9		9	
107-1	LITTER REMOVAL	AC															2		2	
107-2	MOWING	AC															2		2	
425-5B	ADJUST MANHOLE (MIAMI-DADE COUNTY ONLY)	EA															5		5	
425-6	ADJUST EXISTING VALVE BOXES (MIAMI-DADE ONLY)	EA															5		5	
327-70-01	MILLING EXISTING ASPHALT (1" AVG. DEPTH)	SY															4845		4845	
337-7-82	ASPHALT CONCRETE FRICTION COURSE, TRAFFIC C, FC 9.5, PG 76-22	TN															266.5		267	
700-1-11B	SINGLE POST SIGN, F&I GROUND MOUNT, UP TO 12 SF	AS																		
	R3-17 (BIKE LANE)	AS	5		5		5		4		4		9		7		39		39	
	R3-9CP (BEGIN PLAQUE)	AS									1				1		2		2	
	R3-17BP (ENDS PLAQUE)	AS									1				1		2		2	
	R4-4 (BEGIN RIGHT TURN LANE, YIELD TO BIKES)	AS									1						1		1	
	W11-1 (BIKE)	AS													1		1		1	
	W16-1P (SHARE THE ROAD)	AS													1		1		1	
700-1-60	SINGLE POST SIGN, REMOVE	AS	5		5		5		4		3		9		6		37		37	
706-3	REFLECTIVE PAVEMENT MARKER (See plan sheet for details)	EA															92		92	
710-90	PAINTED PAVEMENT MARKINGS- FINAL SURFACE	LS															1		1	
711-11-121	THERMOPLASTIC (WHITE) (SOLID) (6")	LF	500		400		500		600		1,795		850		583		5228		5228	
711-11-124	THERMOPLASTIC (WHITE) (SOLID) (18")	LF									26						26		26	
711-11-125	THERMOPLASTIC (WHITE) (SOLID) (24")	LF									68						68		68	
711-11-141	THERMOPLASTIC, (WHITE) (24) (SKIP) (6")	LF	490		160		564		912		1,036		1,048		902		5112		5112	
711-11-141B	THERMOPLASTIC, STD (WHITE) (10/30) (SKIP) (6")	LF									203						203		203	
711-11-160	THERMOPLASTIC (WHITE) (MESSAGE)	EA									2				1		3		3	
711-11-170	THERMOPLASTIC (WHITE) (ARROWS)	EA									13						13		13	
711-11-221	THERMOPLASTIC (YELLOW) (SOLID) (6")	LF									1,669						1669		1669	
711-11-224	THERMOPLASTIC (YELLOW) (SOLID) (18")	LF									140						140		140	
711-14-123	THERMOPLASTIC, PREFORMED, WHITE, SOLID, 12" FOR CROSSWALK	LF									256						256		256	
711-14-160-Bike	THERMOPLASTIC, PREFORMED, WHITE, BICYCLE MESSAGE AND ARROW	EA	20		16		22		24		26		34		20		162		162	
711-14-670	THERMOPLASTIC, PREFORMED, GREEN BIKE LANE	SY	271		190		251		338		403		465		323		2241		2241	

C:\CAD Projects\202104\013-MDC SW 160 St from 147 Ave to SW 137 Ave\CAD\signing\SIGN-PMT-MRKG-QNTS-2.dwg Oct 22, 2025 - 9:44am MTORES

REVISIONS					
DATE	BY	DESCRIPTION	DATE	BY	DESCRIPTION

MARLIN
ENGINEERING
JULIE CERVERA, P.E. | P.E. No.: 86966
3363 W. COMMERCIAL Blvd, Ste. 115 | FT Lauderdale, FL 33309
P: 954.870.5070 | C.A. No. 6104

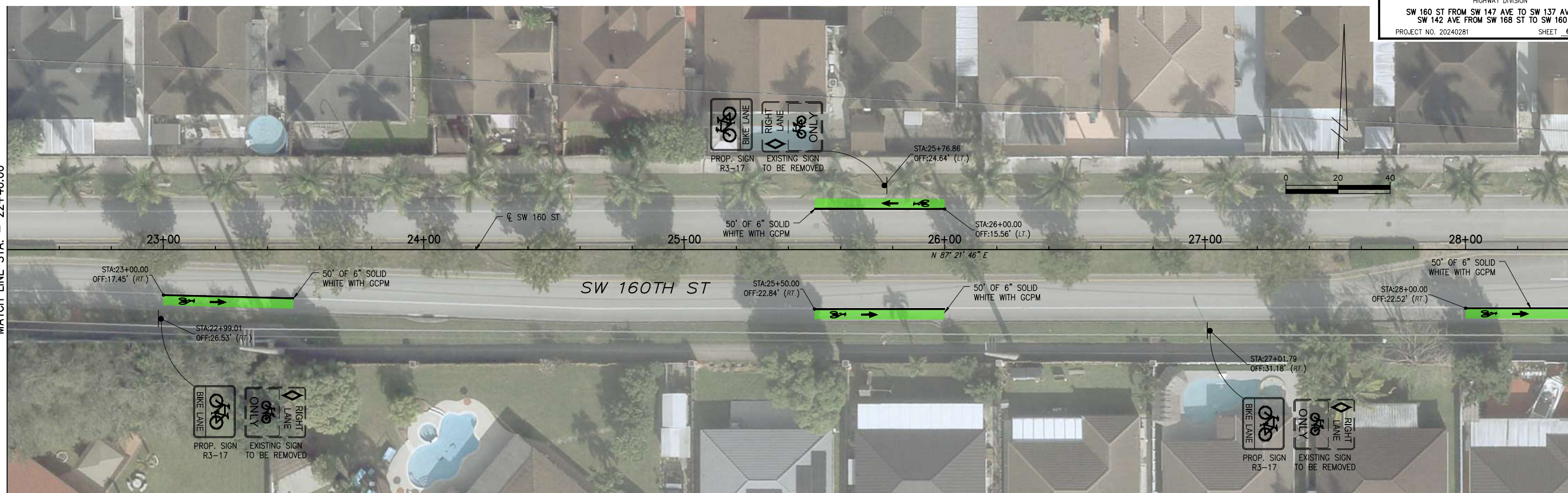
DESIGNED BY	J.A.	NAME	DATE	DRAWN BY	NAME	DATE
CHECKED BY	A.A.	CHECKED BY				
SUPERVISED BY:						

MIAMI-DADE COUNTY
DEPARTMENT OF TRANSPORTATION AND PUBLIC WORKS
HIGHWAY DIVISION
STEPHEN P. CLARK, CENTER
111 NW 1 ST
MIAMI, FLORIDA 33128

SUMMARY OF QUANTITIES

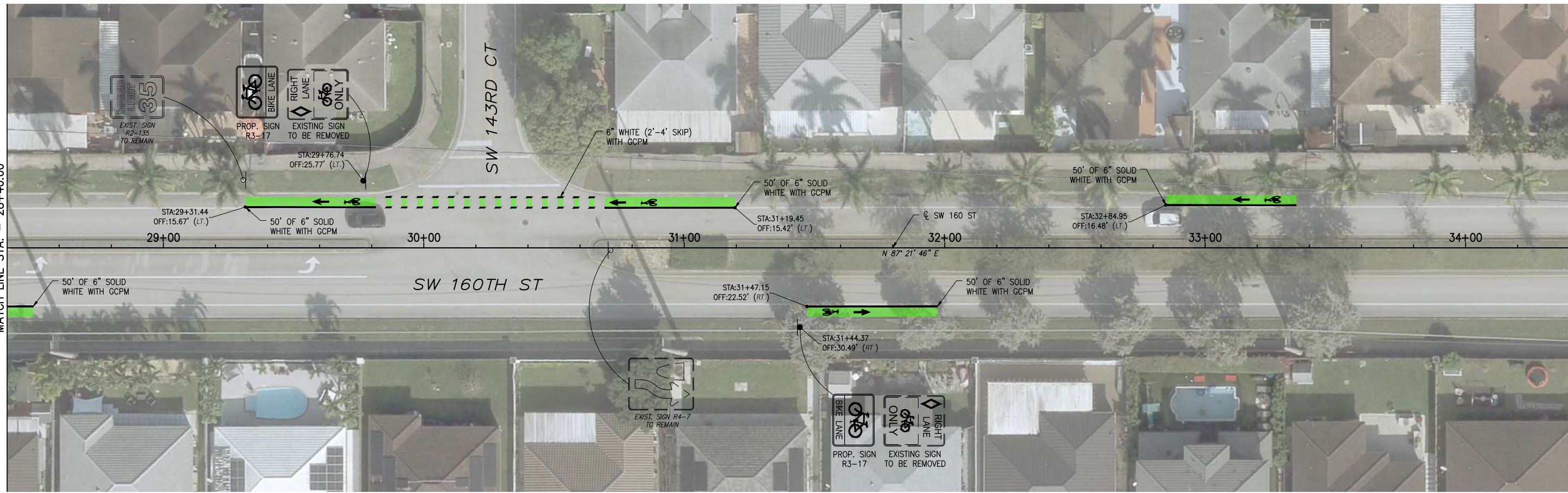
MATCH LINE STA. - 22+40.00

MATCH LINE STA. - 28+40.00



MATCH LINE STA. - 28+40.00

MATCH LINE STA. - 34+40.00



C:\ACAD Projects\2021044.014-Colonial Green Bike Lane Markings\CADD\signing\SIGN-PWNT-MRKGS.dwg Jun 10, 2025 - 2:11pm JALMEYDA

REVISIONS					
DATE	BY	DESCRIPTION	DATE	BY	DESCRIPTION

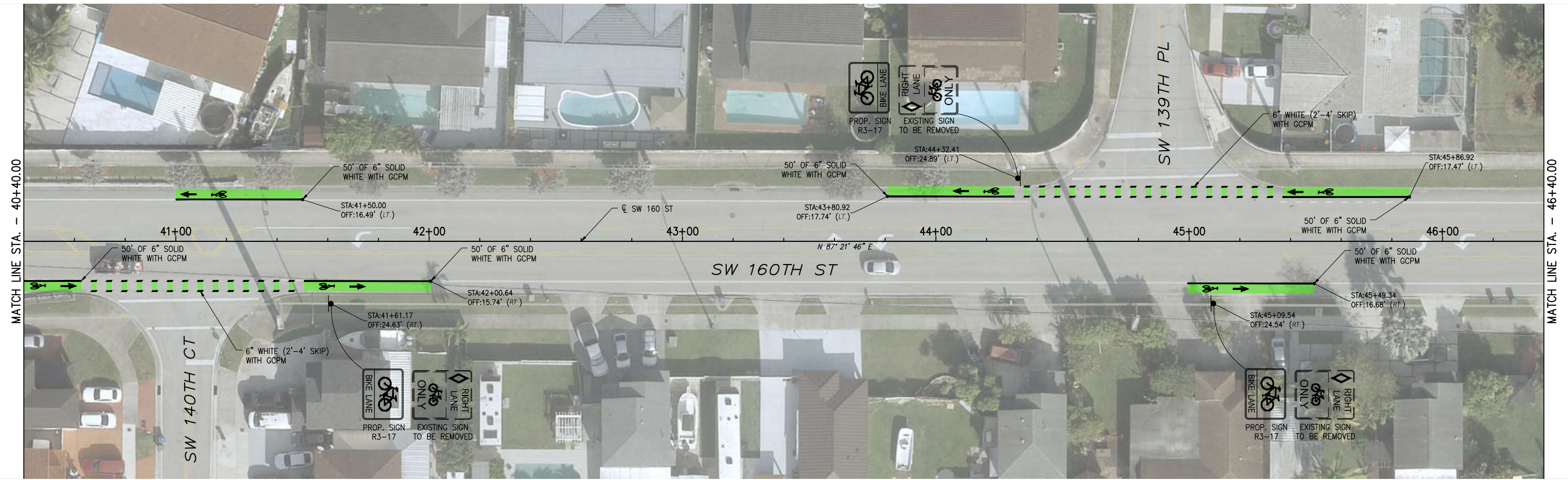
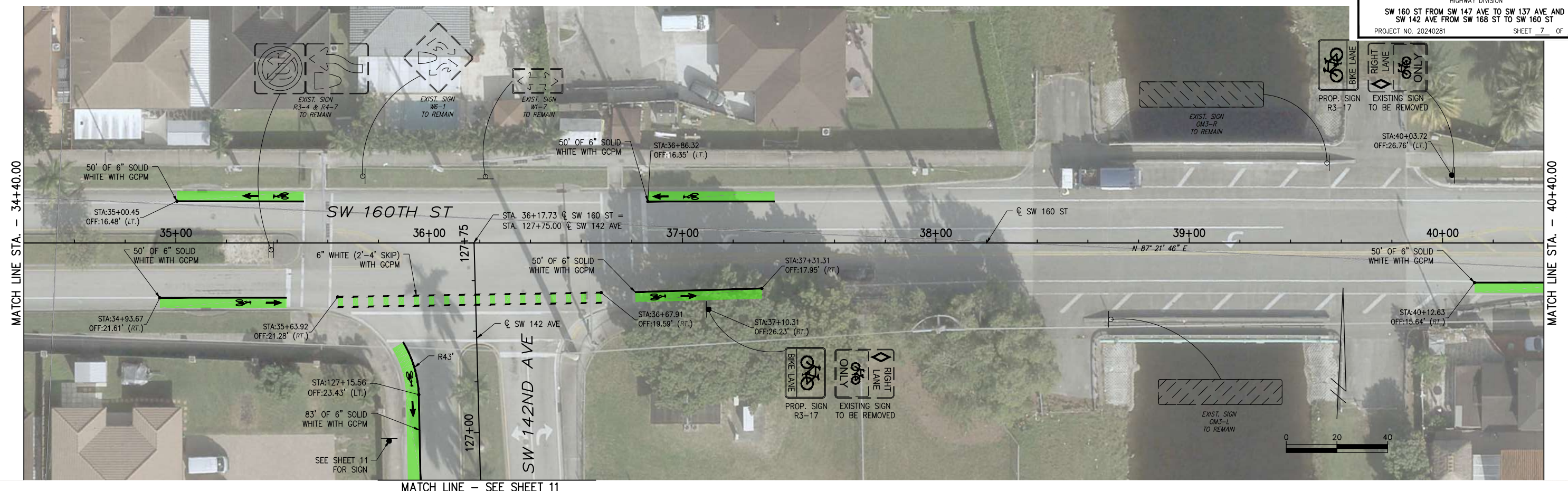
MARLIN
ENGINEERING
JOLIE CERVERA, P.E. | P.E. No.: 86966
3363 W. COMMERCIAL Blvd, Ste. 115 | FT Lauderdale, FL 33309
P: 954.870.5070 | C.A. No. 6104

DESIGNED BY	NAME	DATE	DRAWN BY	NAME	DATE
	J.A.				
CHECKED BY	A.A.		CHECKED BY		

SUPERVISED BY:

DEPARTMENT OF TRANSPORTATION AND PUBLIC WORKS
HIGHWAY DIVISION
MIAMI-DADE COUNTY
STEPHEN P. CLARK, CENTER
111 NW 1 ST
MIAMI, FLORIDA 33128

SIGNING & PAVEMENT MARKING PLANS



C:\ACAD Projects\2021044.014-Colonial Green Bike Lane Markings\CADD\signing\SIGN-PWNT-MRKGD.dwg Jun 10, 2025 - 2:11pm JALMEYDA

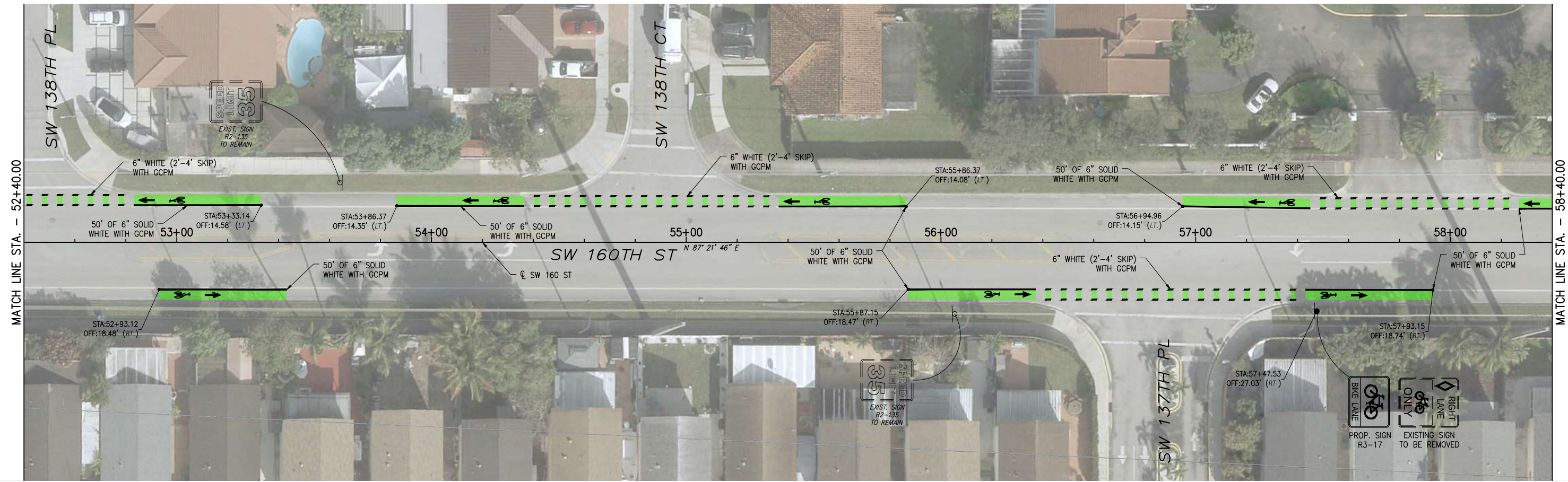
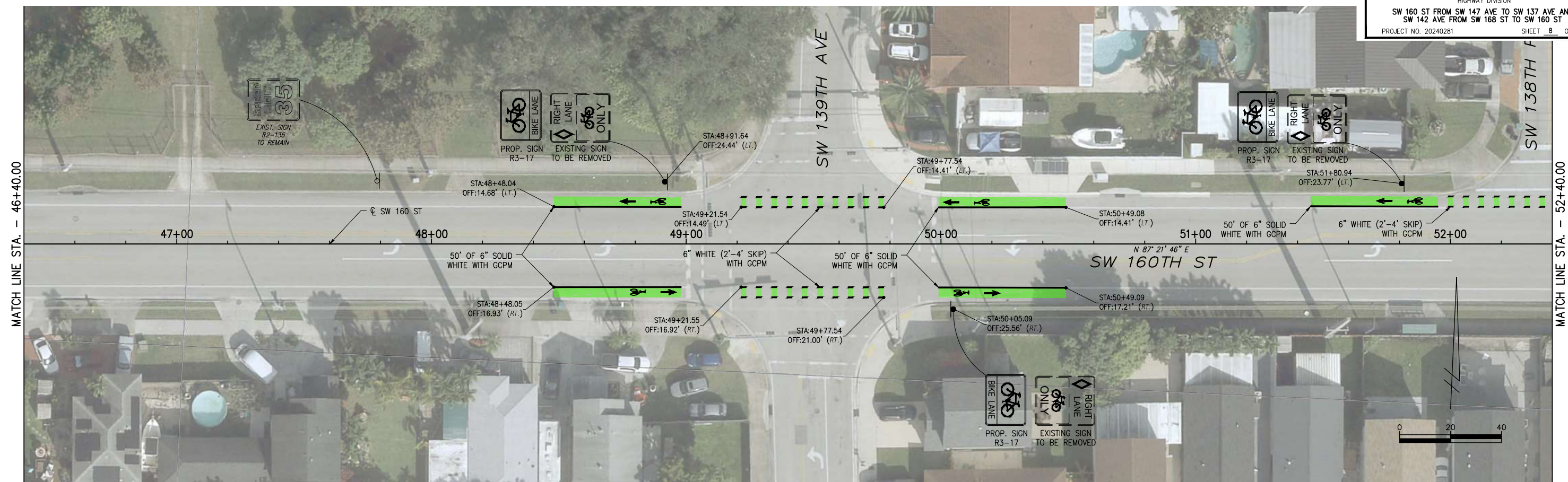
REVISIONS					
DATE	BY	DESCRIPTION	DATE	BY	DESCRIPTION

MARLIN
ENGINEERING
JOLIE CERVERA, P.E. | P.E. No.: 86966
3363 W. COMMERCIAL Blvd, Ste. 115 | FT Lauderdale, FL 33309
P: 954.870.5070 | CA. No. 6104

DESIGNED BY	NAME	DATE	DRAWN BY	NAME	DATE
J.A.	J.A.				
CHECKED BY	A.A.		CHECKED BY		
SUPERVISED BY:					

MIAMI-DADE COUNTY
DEPARTMENT OF TRANSPORTATION AND PUBLIC WORKS
HIGHWAY DIVISION
STEPHEN P. CLARK, CENTER
111 NW 1 ST
MIAMI, FLORIDA 33128

SIGNING & PAVEMENT MARKING PLANS



C:\ACAD Projects\2021044.014-Colonial Green Bike Lane Markings\CADD\signing\SIGN-PWNT-MRKGS.dwg Jun 10, 2025 - 2:11pm JALMEYDA

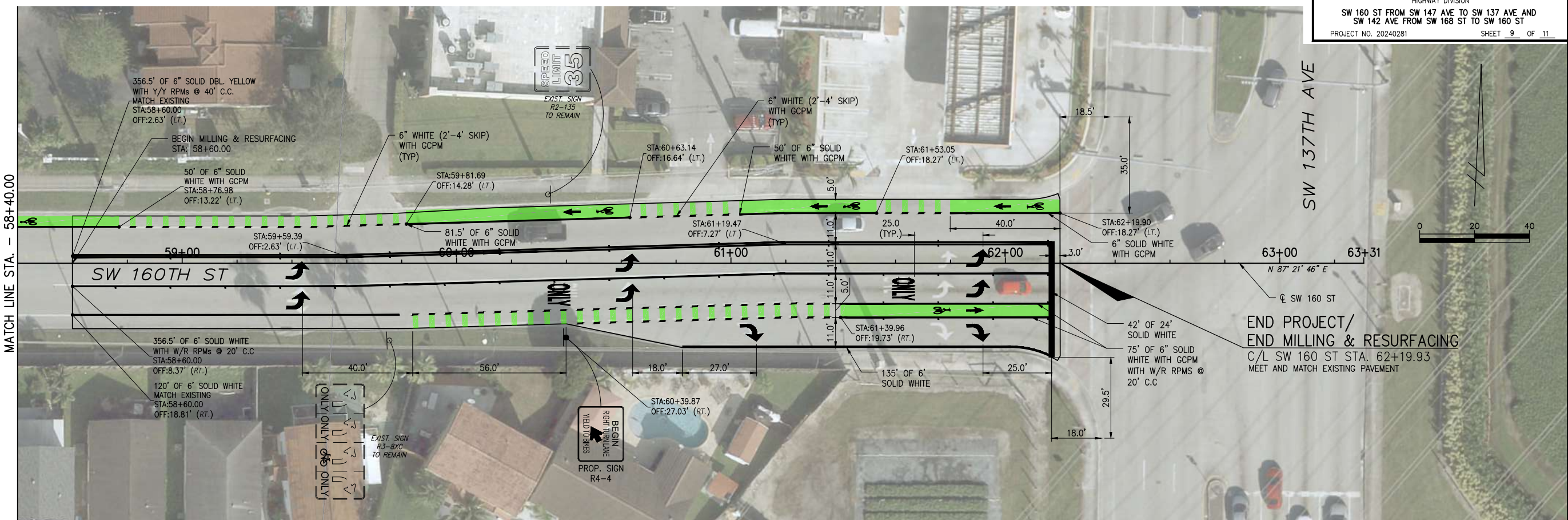
REVISIONS					
DATE	BY	DESCRIPTION	DATE	BY	DESCRIPTION

MARLIN
ENGINEERING
JULIE CERVERA, P.E. | P.E. No.: 86966
3363 W. COMMERCIAL Blvd, Ste. 115 | FT Lauderdale, FL 33309
P: 954.870.5070 | CA. No. 6104

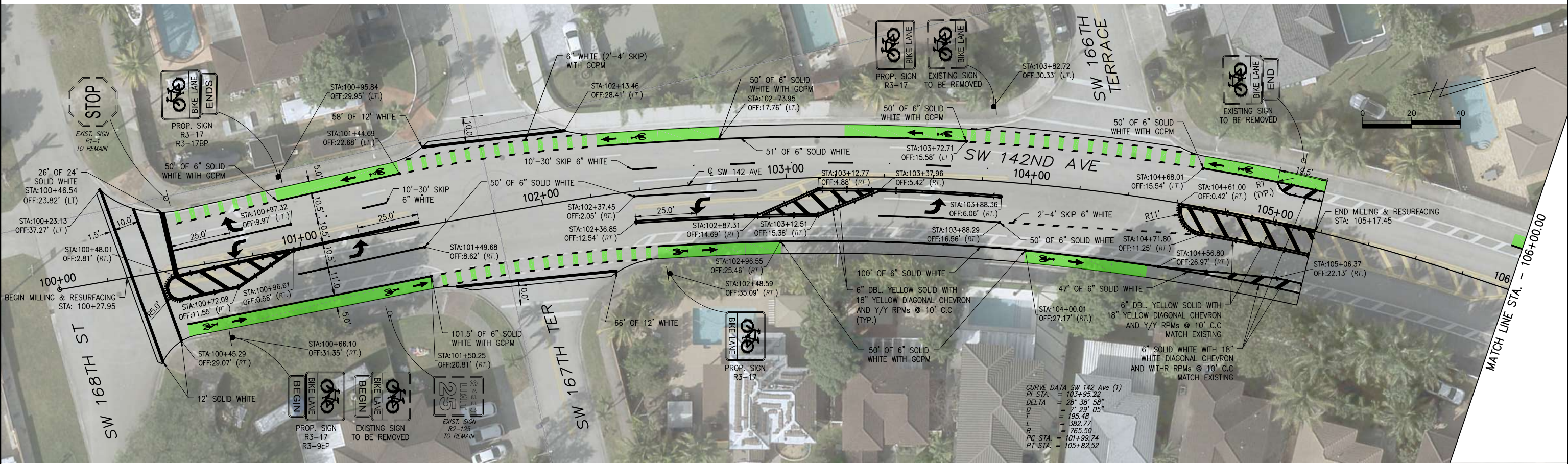
DESIGNED BY	NAME	DATE	DRAWN BY	NAME	DATE
J.A.	J.A.				
CHECKED BY	A.A.		CHECKED BY		
SUPERVISED BY:					

MIAMI-DADE COUNTY
DEPARTMENT OF TRANSPORTATION AND PUBLIC WORKS
HIGHWAY DIVISION
STEPHEN P. CLARK, CENTER
111 NW 1 ST
MIAMI, FLORIDA 33128

SIGNING & PAVEMENT MARKING PLANS



LEGEND
 MILLING & RESURFACING



REVISIONS

DATE	BY	DESCRIPTION	DATE	BY	DESCRIPTION

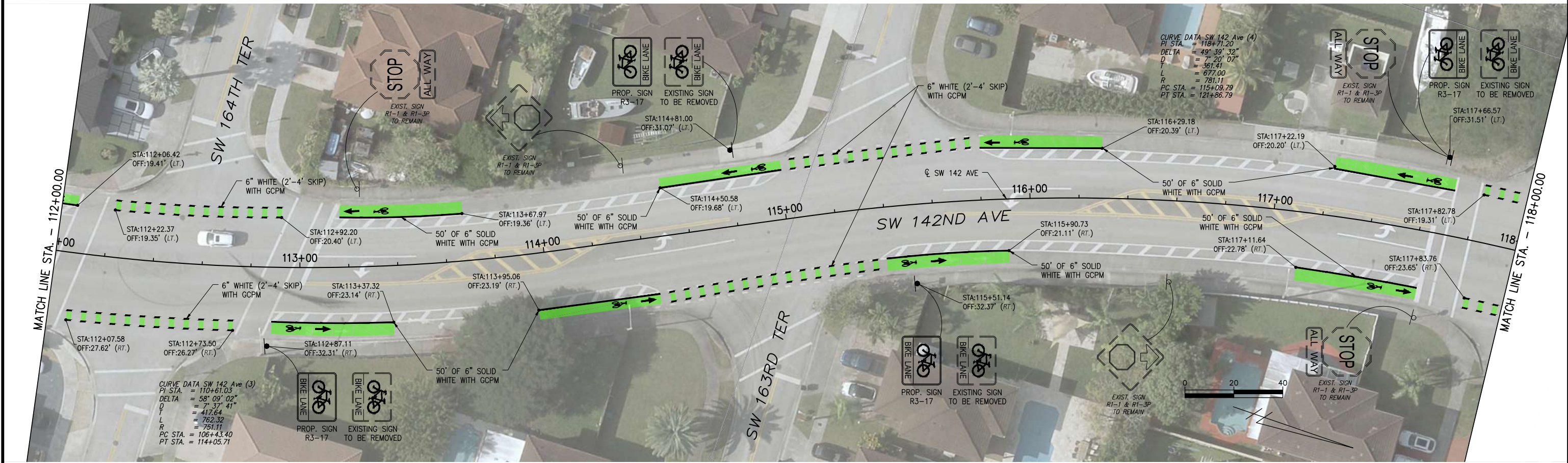
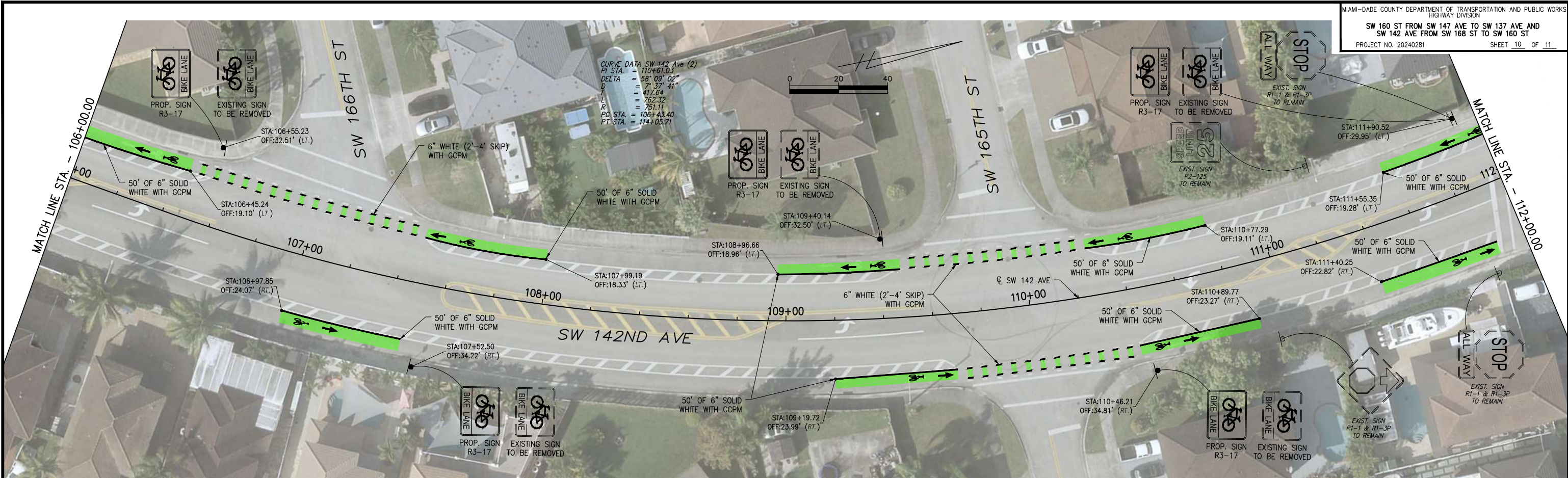
MARLIN
ENGINEERING
 JULIE CERVERA, P.E. | P.E. No.: 86966
 3363 W. COMMERCIAL Blvd, Ste. 115 | Ft Lauderdale, FL 33309
 P: 954.870.5070 | CA. No. 6104

DESIGNED BY	NAME	DATE	DRAWN BY	NAME	DATE
	J.A.				
CHECKED BY	A.A.		CHECKED BY		
SUPERVISED BY:					

MIAMI-DADE COUNTY
 DEPARTMENT OF TRANSPORTATION AND PUBLIC WORKS
 HIGHWAY DIVISION
 STEPHEN P. CLARK CENTER
 111 NW 1 ST
 MIAMI, FLORIDA 33128

SIGNING & PAVEMENT MARKING PLANS

C:\ACAD Projects\2024\04\014-Colonial Green Bike Lane Markings\CADD\signing\SIGN-MRKGS.dwg Jul 07, 2025 - 3:14pm JALMEYDA



REVISIONS					
DATE	BY	DESCRIPTION	DATE	BY	DESCRIPTION

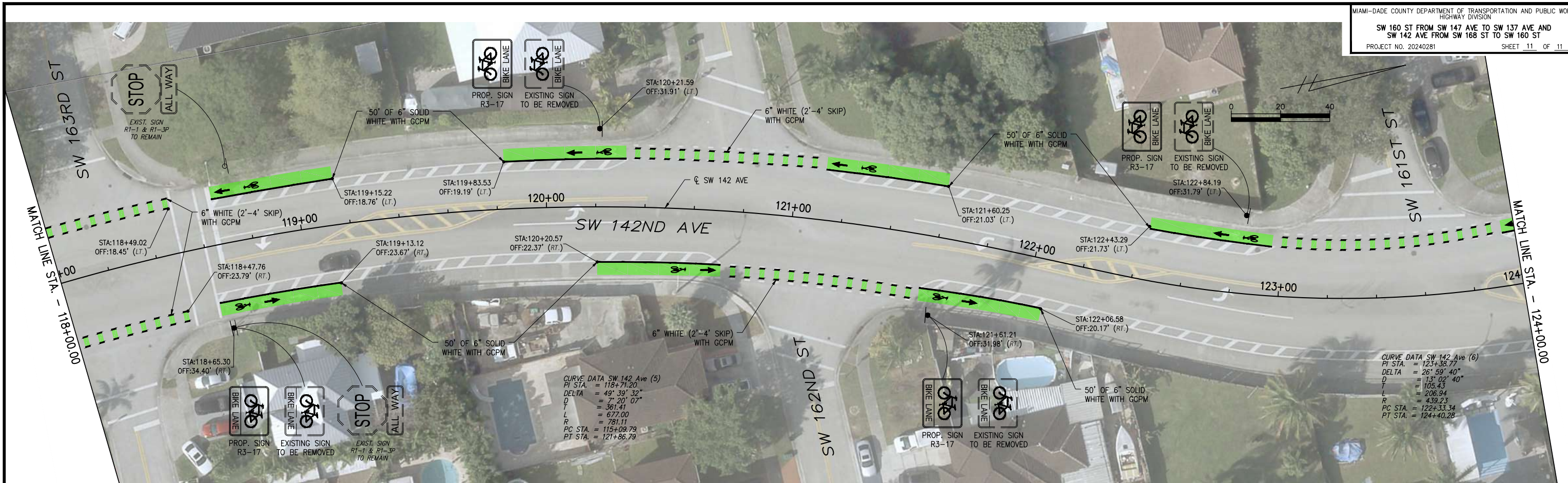
MARLIN ENGINEERING
 JOLIE CERVERA, P.E. | P.E. No.: 86966
 3363 W. COMMERCIAL Blvd, Ste. 115 | FT Lauderdale, FL 33309
 P: 954.870.5070 | CA. No. 6104

DESIGNED BY	J.A.	DATE		DRAWN BY	
CHECKED BY	A.A.			CHECKED BY	
SUPERVISED BY:					

MIAMI-DADE COUNTY
 DEPARTMENT OF TRANSPORTATION AND PUBLIC WORKS
 HIGHWAY DIVISION
 STEPHEN P. CLARK CENTER
 111 NW 1 ST
 MIAMI, FLORIDA 33128

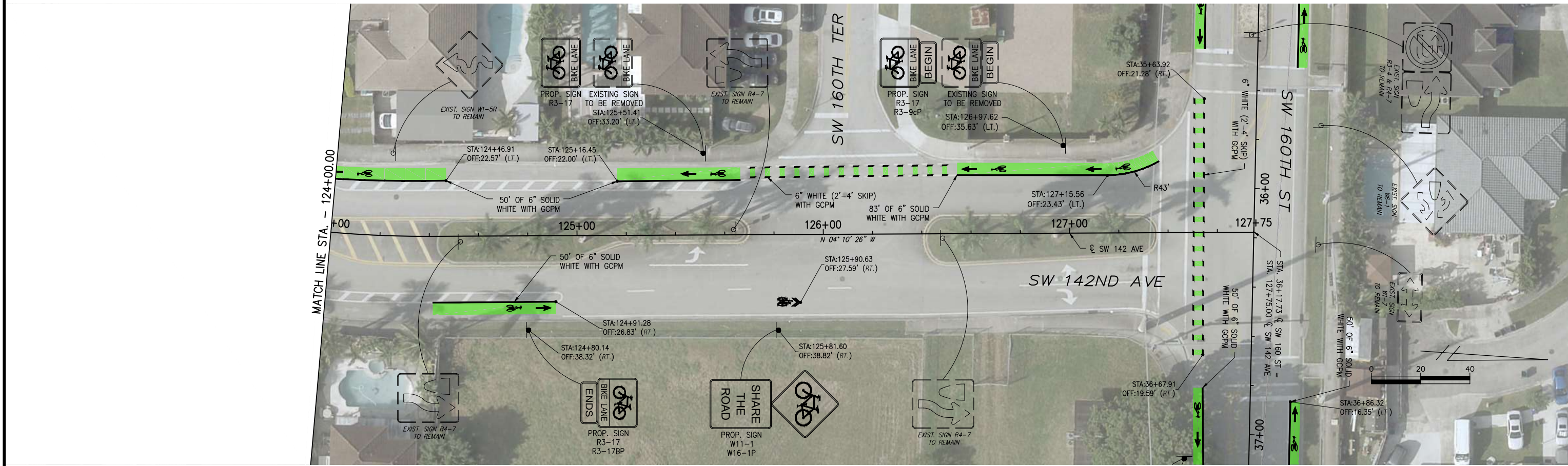
SIGNING & PAVEMENT MARKING PLANS

C:\ACAD Projects\2021044.014-Colonial Green Bike Lane Markings\CADD\signing\SIGN-PWNT-MRKG.dwg Jun 10, 2025 - 2:11pm JALMEYDA



CURVE DATA SW 142 Ave (5)
PI STA. = 118+71.20
DELTA = 49° 39' 32"
D = 7' 20' 07"
T = 361.41
L = 677.00
R = 781.11
PC STA. = 115+09.79
PT STA. = 121+86.79

CURVE DATA SW 142 Ave (6)
PI STA. = 123+38.77
DELTA = 26° 59' 40"
D = 13' 02' 40"
T = 105.43
L = 206.94
R = 439.23
PC STA. = 122+33.34
PT STA. = 124+40.28



C:\ACAD Projects\2021044.014--Colonial Green Bike Lane Markings\CADD\signing\SIGN-PWNT-MRKGD.dwg Jun 10, 2025 - 2:12pm JALMEYDA

REVISIONS					
DATE	BY	DESCRIPTION	DATE	BY	DESCRIPTION

MARLIN
ENGINEERING
JULIE CERVERA, P.E. | P.E. No.: 86966
3363 W. COMMERCIAL Blvd, Ste. 115 | FT Lauderdale, FL 33309
P: 954.870.5070 | CA. No. 6104

DESIGNED BY	NAME	DATE	DRAWN BY	NAME	DATE
	J.A.				
CHECKED BY	A.A.		CHECKED BY		
SUPERVISED BY:					

MIAMI-DADE COUNTY
DEPARTMENT OF TRANSPORTATION AND PUBLIC WORKS
HIGHWAY DIVISION
STEPHEN P. CLARK, CENTER
111 NW 1 ST
MIAMI, FLORIDA 33128

SIGNING & PAVEMENT MARKING PLANS