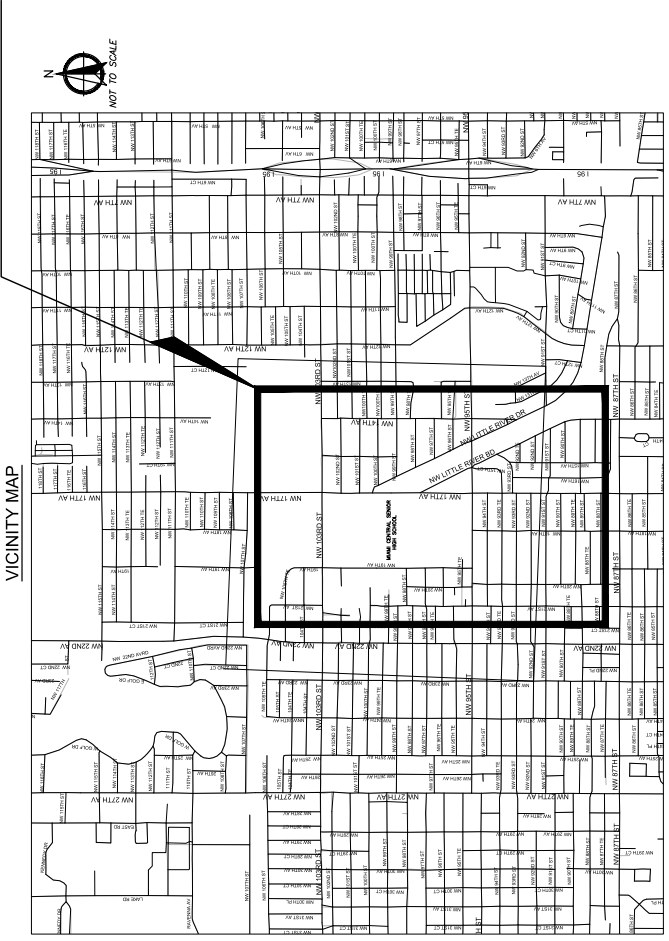


Signed and Sealed Plans

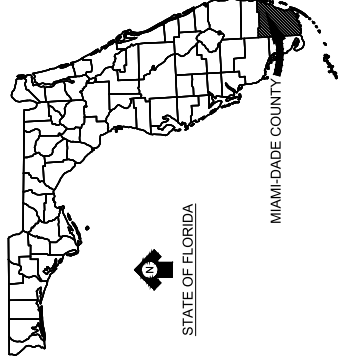
ROADWAY IMPROVEMENTS FOR MIAMI CENTRAL SENIOR HIGH SCHOOL

MIAMI-DADE COUNTY, FLORIDA
DTPW PROJECT NO.: 20240167, FPID NO.: 445743-1

PROJECT LOCATION



PLANS PREPARED BY:
KIMLEY-HORN AND ASSOCIATES, INC.
CONSULTING ENGINEERS AND PLANNERS
2 ALHAMBRA PLAZA, SUITE 500
CORAL GABLES, FL 33134



SHEET LIST

SHEET NO.	SHEET DESCRIPTION
R-1	KEY SHEET
R-2	SIGNATURE SHEET
R-3 - R-4	GENERAL NOTES
R-5	SUMMARY OF QUANTITIES
R-6	PROJECT LAYOUT
R-7	SPECIAL DETAILS
R-8 - R-30	ROADWAY & SIGNING AND PAVEMENT MARKING PLAN
R-31	SPECIAL DETAILS
T-1 - T-5	SIGNALIZATION PLAN
T-6	MAST ARM TABULATION
T-7	STANDARD MAST ARM ASSEMBLY DATA TABLE
T-8	ECCENTRIC MAST ARM FOUNDATION MODIFICATIONS TO INDEX 649-031
T-9	ELECTRICAL POWER SERVICE DETAIL
T-10	SCHOOL FLASHER ASSEMBLY DETAIL

FDOT STANDARD PLANS

INDEX NO.	INDEX DESCRIPTION
D659-049	DAMPING DEVICE FOR MISCELLANEOUS STRUCTURES

GOVERNING DESIGN STANDARDS:
Florida Department of Transportation, FY2025-26 Standard Plans for Road and Bridge Construction and applicable Interim Revisions (IRs).
Standard Plans for Road Construction and IRs are available at the following website: <http://www.fdot.gov/design/standardplans>
Manual on Uniform Traffic Control Devices (11th Edition)
FDOT Speed Zoning for Highways, Roads and Streets in Florida Manual
Manual of Uniform Minimum Standards for Design, Construction and Maintenance for Streets and Highways "Florida Greenbook" 2023 Edition.

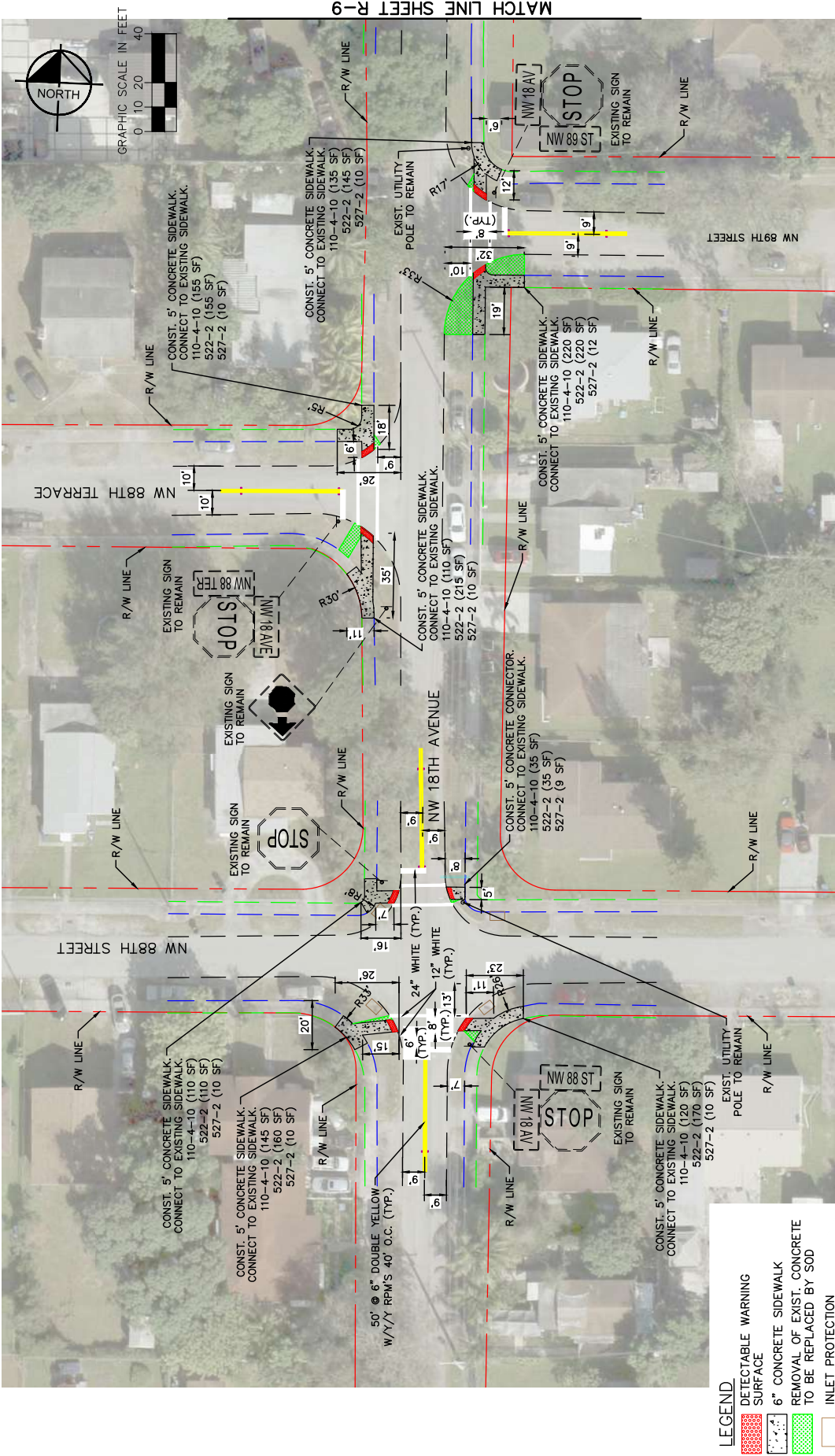
GOVERNING STANDARD SPECIFICATIONS:
Florida Department of Transportation, FY2025-26 Standard Specifications for Road and Bridge Construction at the following website: <http://www.dot.state.fl.us/programmanagement/implemented/SpecBooks>



**PREPARED FOR:
MIAMI-DADE COUNTY**

**PREPARED BY:
Kimley»Horn**

Sunshine811
Call 811 or www.sunshine811.com two full business days before digging to have utilities located and marked.
Check positive response codes before you dig!



MATCH LINE SHEET R-9

- LEGEND**
- DETECTABLE WARNING SURFACE
 - 6" CONCRETE SIDEWALK
 - REMOVAL OF EXIST. CONCRETE TO BE REPLACED BY SOD
 - INLET PROTECTION

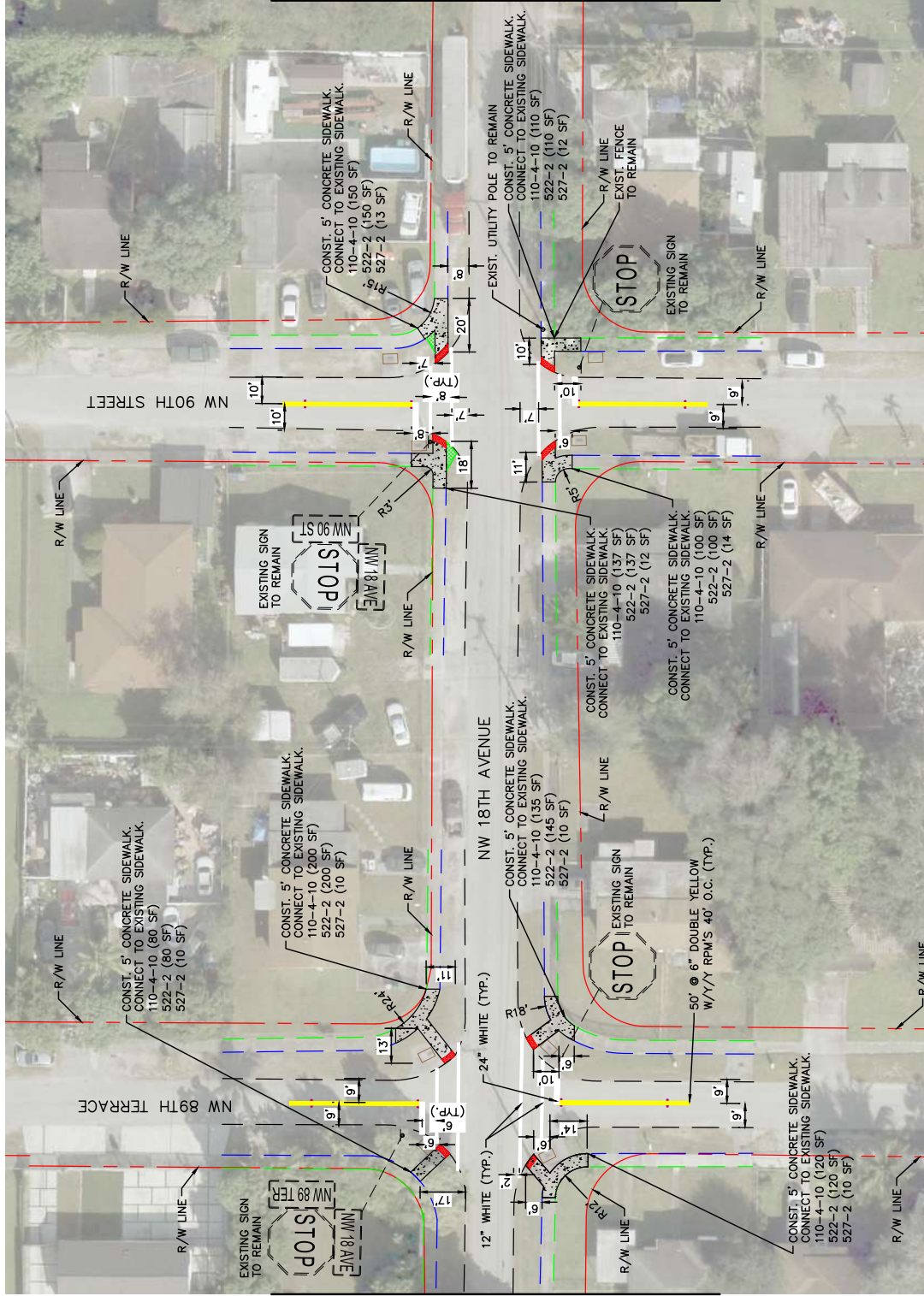


<p>© 2025 KIMLEY-HORN AND ASSOCIATES, INC. 2 ALHAMBRA PARKWAY, SUITE 300, GAITHERSBURG, MD 20878 WWW.KIMLEY-HORN.COM REGISTRY 35106</p>	<p>MIAMI CENTRAL SENIOR HIGH SCHOOL PREPARED FOR MIAMI DADE COUNTY</p>	<p>ROADWAY & SIGNING AND PAVEMENT MARKING PLAN</p>	<p>SHEET NUMBER R-8</p>
<p>KHA PROJECT 202410167 NOVEMBER, 2025 SCALE AS SHOWN DESIGNED BY KHA DRAWN BY KHA CHECKED BY KHA</p>	<p>LICENSING PROFESSIONAL LEONIE T. ALMONTE, P.E. P.E. LICENSE NO. 70822 FL DATE: 11/12/25</p>		
<p>This document, together with the contracts and design presentation herein, is an instrument of service. It is intended only for the specific project and district for which it was prepared. Reuse of this document without written authorization and approval by Kimley-Horn and Associates, Inc. shall be without liability to Kimley-Horn and Associates, Inc.</p>			
INC.	DATE	BY	
REVISIONS			



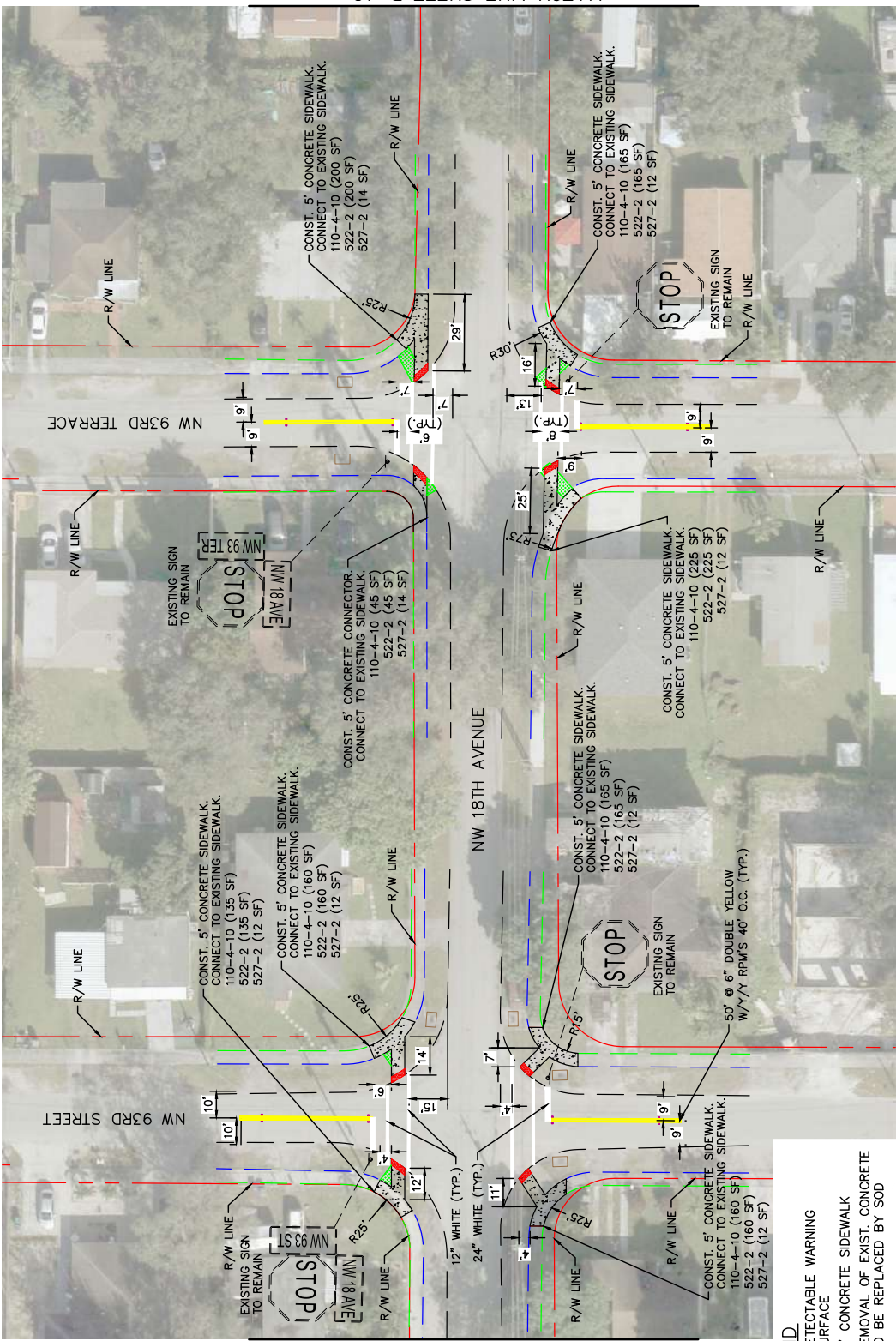
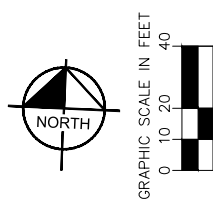
GRAPHIC SCALE IN FEET
0 10 20 40

- LEGEND**
- DETECTABLE WARNING SURFACE
 - 6" CONCRETE SIDEWALK
 - REMOVAL OF EXIST. CONCRETE TO BE REPLACED BY SOD
 - INLET PROTECTION



<p>MIAMI CENTRAL SENIOR HIGH SCHOOL PREPARED FOR MIAMI DADE COUNTY</p>		<p>LICENSED PROFESSIONAL LEONIE L. ALMONTE, P.E. P.E. LICENSE NO. 70822 FL. DATE: 11/12/25</p>		<p>SHEET NUMBER R-9</p>	
<p>KHA PROJECT 20240167 NOVEMBER, 2025 SCALE: AS SHOWN DESIGNED BY: KHA DRAWN BY: KHA CHECKED BY: KHA</p>		<p>Kimley-Horn © 2025 KIMLEY-HORN AND ASSOCIATES, INC. 2 ALHAMBRA PARKWAY, SUITE 100, AUBURN, AL 36834 PHONE: 305-673-2025 WWW.KIMLEY-HORN.COM REGISTRY 35106</p>		<p>ROADWAY & SIGNING AND PAVEMENT MARKING PLAN</p>	
INC.	DATE	BY			
REVISIONS					

This document, together with the concepts and designs presented herein, is prepared only for the specific project and client for which it was prepared. It is intended only for the specific project and client for which it was prepared. It is not to be used for any other project or client without the written consent of Kimley-Horn and Associates, Inc. All rights reserved. Kimley-Horn and Associates, Inc. is not responsible for any errors or omissions in this document. The user assumes all liability for any use of this document for any purpose other than that intended by Kimley-Horn and Associates, Inc.



LEGEND

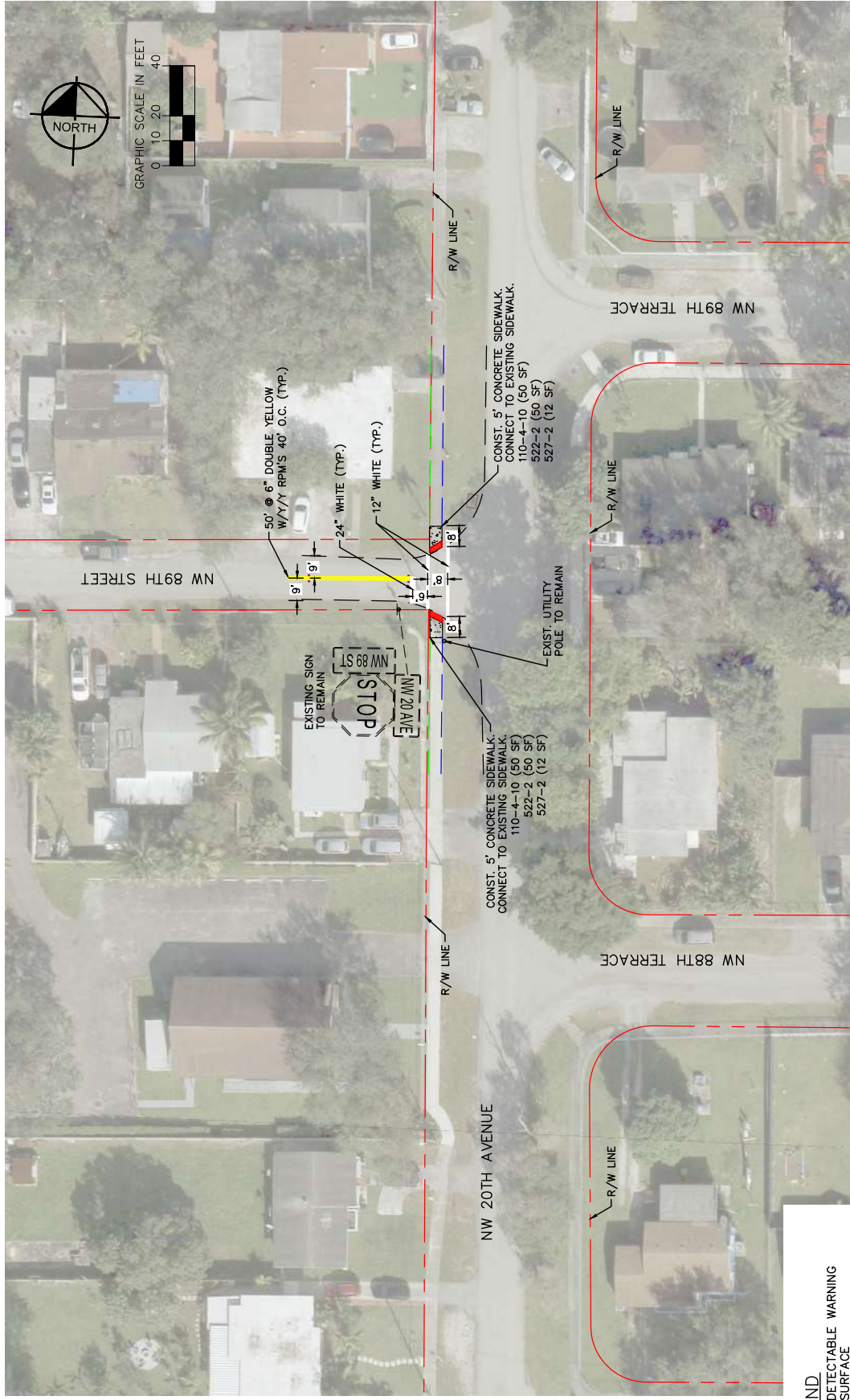
	DETECTABLE WARNING SURFACE
	6" CONCRETE SIDEWALK
	REMOVAL OF EXIST. CONCRETE TO BE REPLACED BY SOD
	INLET PROTECTION

MATCH LINE SHEET R-10

MATCH LINE SHEET R-12

Plotting By: Pwz, Ymlt Sheet Set: Miami Central Senior High School Roadway & Signing and Pavement Marking Plan November 12, 2025 09:20:10am K:\MB\Roadway\2024\167\SR15.Mxd (Miami Central Senior High School Roadway & Signing and Pavement Marking Plan) User: Pwz Date: 11/12/25

 © 2025 KIMLEY-HORN AND ASSOCIATES, INC. 2 ALHAMBRA PARKWAY, SUITE 300, GAITHERSBURG, MD 20878 WWW.KIMLEY-HORN.COM REGISTRY 35106	KHA PROJECT 2024167	KHA PROJECT 2024167	MIAMI CENTRAL SENIOR HIGH SCHOOL PREPARED FOR MIAMI DADE COUNTY	LICENSED PROFESSIONAL LEONIE L. ALMONTE, P.E. P.E. LICENSE NO. 70822 FL DATE: 11/12/25	ROADWAY & SIGNING AND PAVEMENT MARKING PLAN R-11	SHEET NUMBER R-11
	SCALE: AS SHOWN DESIGNED BY: KHA DRAWN BY: KHA CHECKED BY: KHA	NOVEMBER, 2025 SCALE: AS SHOWN DESIGNED BY: KHA DRAWN BY: KHA CHECKED BY: KHA	NOVEMBER, 2025 SCALE: AS SHOWN DESIGNED BY: KHA DRAWN BY: KHA CHECKED BY: KHA	MIAMI CENTRAL SENIOR HIGH SCHOOL PREPARED FOR MIAMI DADE COUNTY	LICENSED PROFESSIONAL LEONIE L. ALMONTE, P.E. P.E. LICENSE NO. 70822 FL DATE: 11/12/25	ROADWAY & SIGNING AND PAVEMENT MARKING PLAN R-11



GRAPHIC SCALE IN FEET
0 10 20 40

- LEGEND**
- DETECTABLE WARNING SURFACE
 - 6" CONCRETE SIDEWALK
 - INLET PROTECTION

NO.	REVISIONS	DATE	BY

Kimley-Horn
 © 2025 KIMLEY-HORN AND ASSOCIATES, INC.
 2 ALHAMBRA PARKWAY, SUITE 300, GAITHERSBURG, MD 20878
 PHONE: 301-983-2025
 WWW.KIMLEY-HORN.COM REGISTRY 35106

KHA PROJECT 20240167
 NOVEMBER, 2025
 SCALE AS SHOWN
 DESIGNED BY KHA
 DRAWN BY KHA
 CHECKED BY KHA

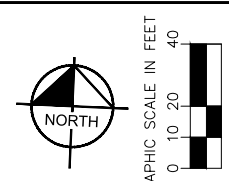
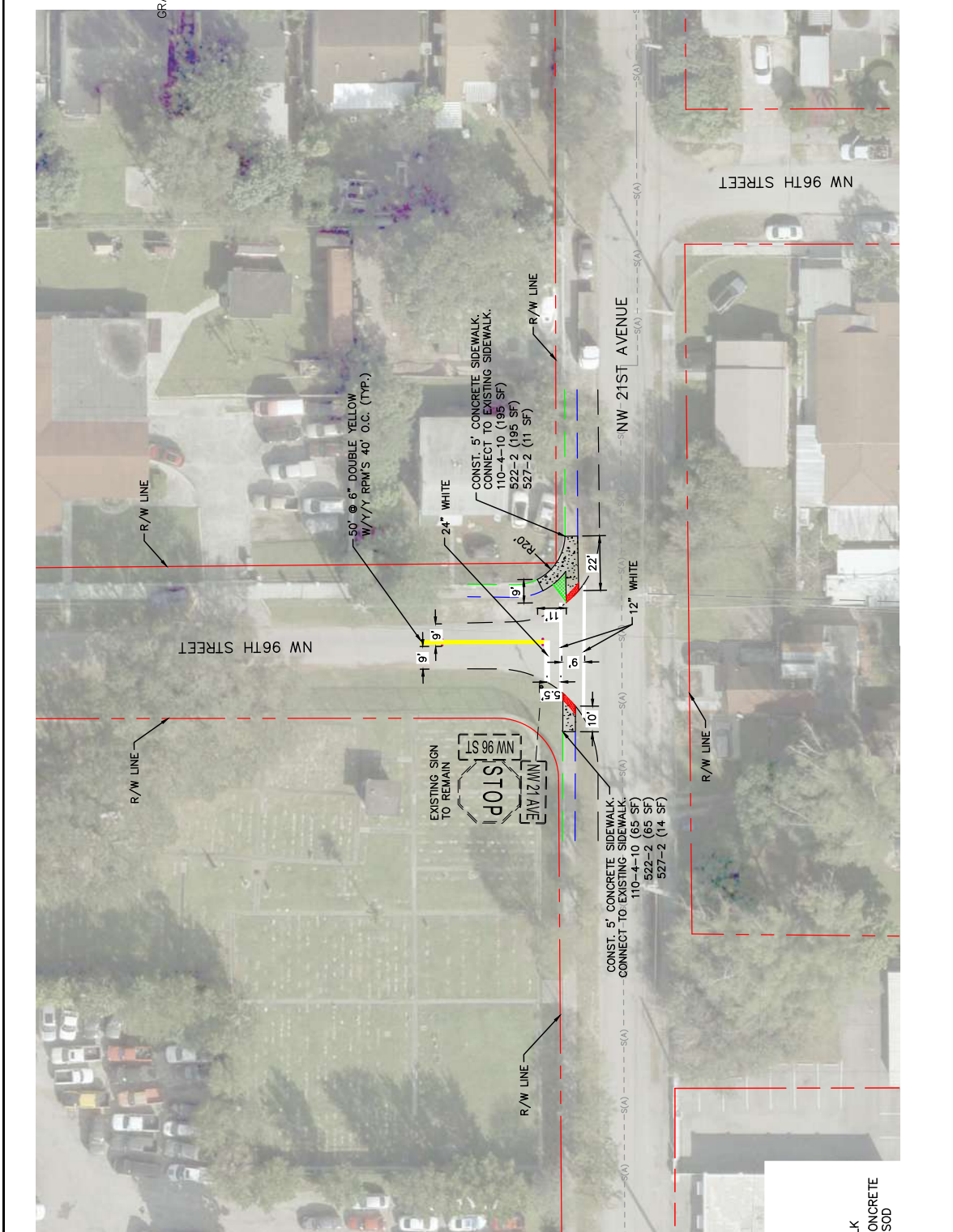
MIAMI CENTRAL SENIOR HIGH SCHOOL
 PREPARED FOR MIAMI DADE COUNTY
 MIAMI DADE COUNTY

LICENSED PROFESSIONAL
 LEONIE L. ALMONTE, P.E.
 P.E. LICENSE NO. 70822
 FL DATE: 11/12/25

SHEET NUMBER
R-13

ROADWAY & SIGNING AND PAVEMENT MARKING PLAN

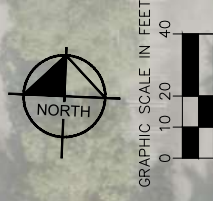
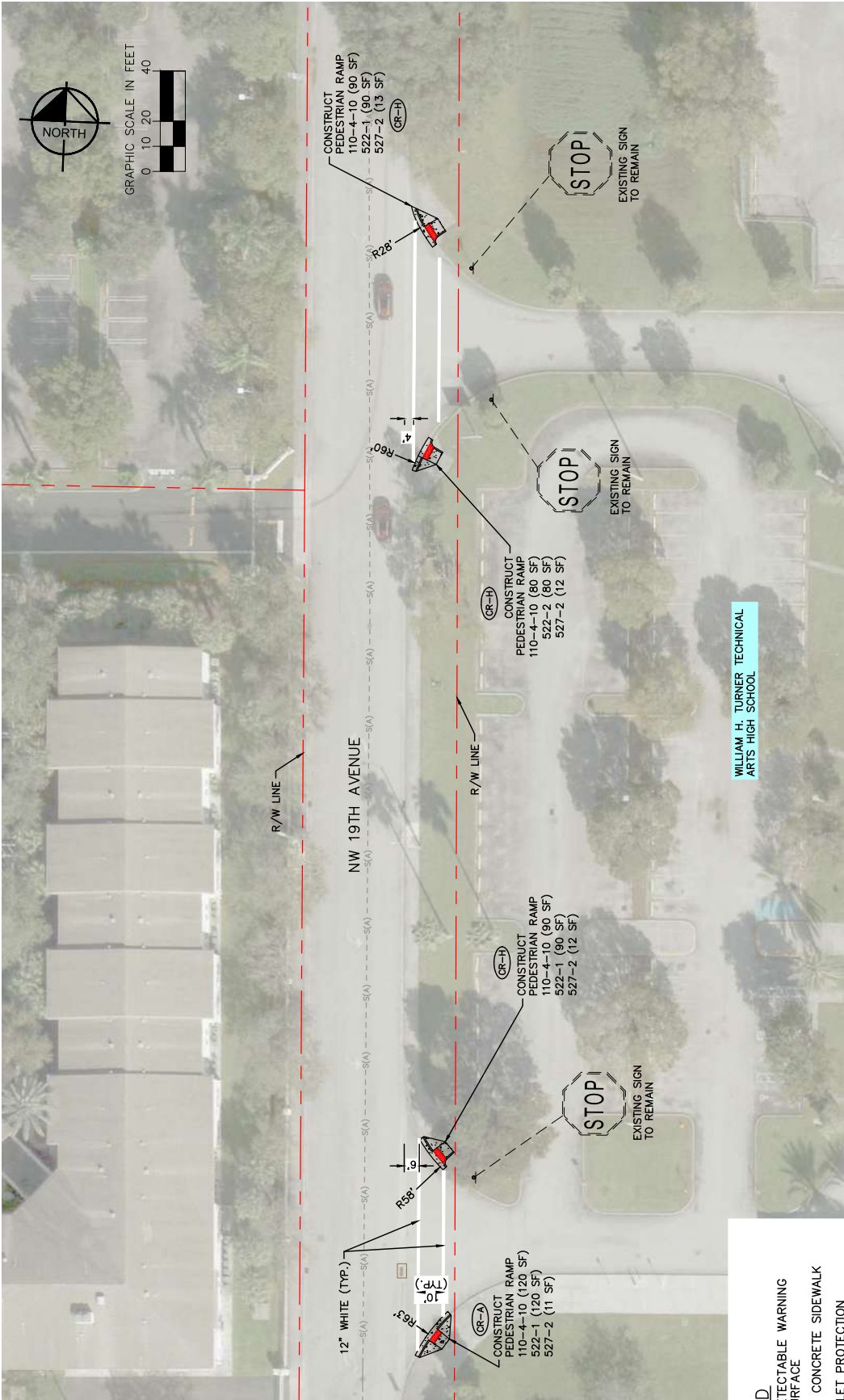
This document, together with the concepts and designs presented herein, is an instrument of service. It is intended only for the specific project and client for which it was prepared. KHA and its personnel shall not be held liable for any errors or omissions in this document without written authorization and approval by KHA. KHA and its personnel shall not be held liable for any errors or omissions in this document without written authorization and approval by KHA.



- LEGEND**
- DETECTABLE WARNING SURFACE
 - 6" CONCRETE SIDEWALK
 - REMOVAL OF EXIST. CONCRETE TO BE REPLACED BY SOD

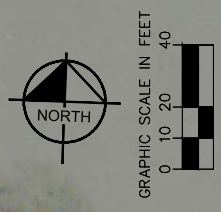
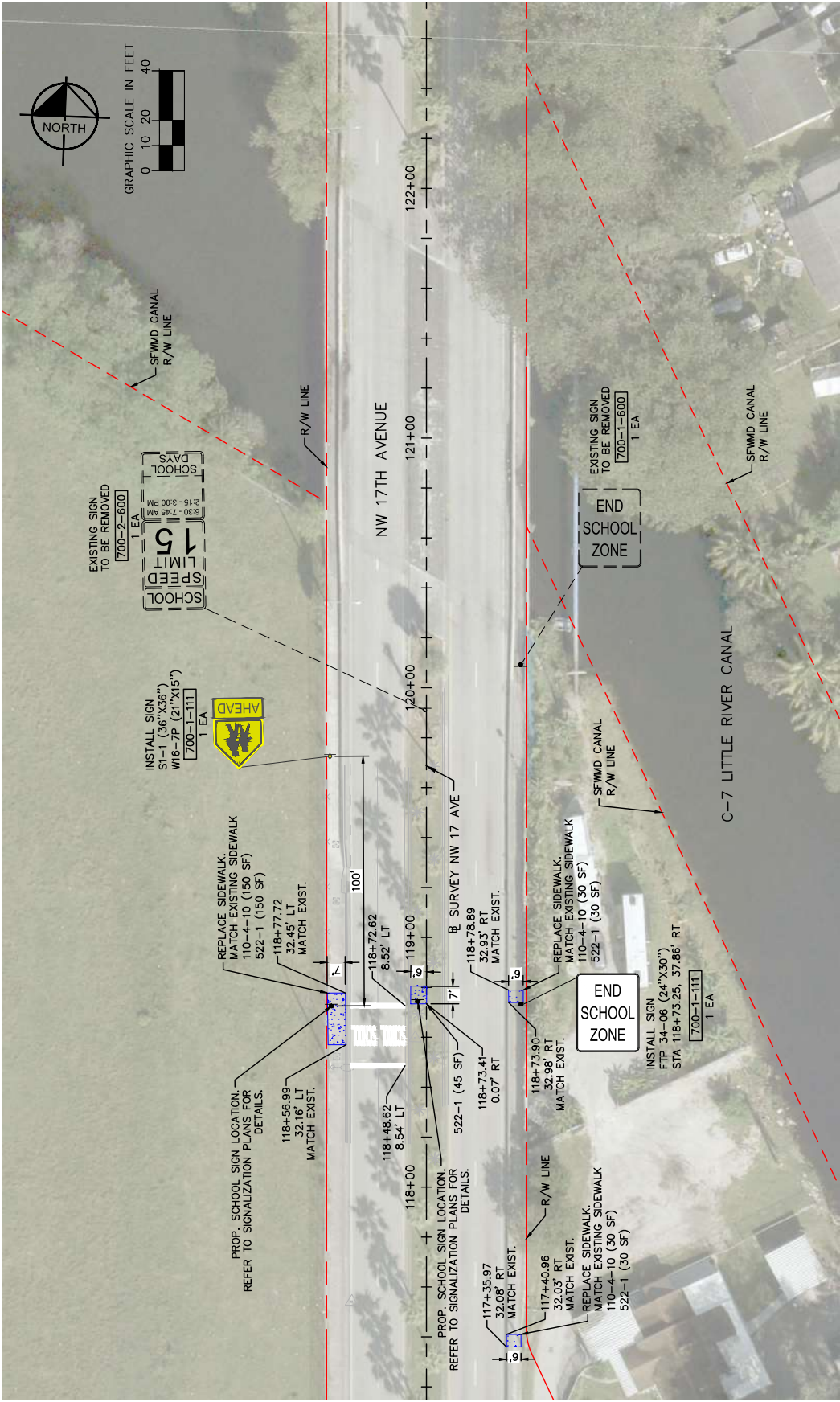
This document, together with the concepts and design presented herein, is prepared only for the specific project and client for which it was prepared. It is intended only as an instrument of service. It is intended only for the specific project and client for which it was prepared. It is intended only for the specific project and client for which it was prepared. It is intended only for the specific project and client for which it was prepared.

 <small>© 2025 KIMLEY-HORN AND ASSOCIATES, INC. 2 ALHAMBRA PARKWAY, GAITHERSBURG, MD 20878 PHONE: 301-981-9300 WWW.KIMLEY-HORN.COM</small>	KIMLEY-HORN <small>ASSOCIATES, INC.</small>	KHA PROJECT 2024-0167 NOVEMBER, 2025 SCALE AS SHOWN DESIGNED BY: KHA DRAWN BY: KHA CHECKED BY: KHA	MIAMI CENTRAL SENIOR HIGH SCHOOL PREPARED FOR MIAMI DADE COUNTY <small>MIAMI DADE COUNTY</small>	LICENSED PROFESSIONAL LEONIE T. ALMONTE, P.E. P.E. LICENSE NO. 70822 FL DATE: 11/12/25	ROADWAY & SIGNING AND PAVEMENT MARKING PLAN	SHEET NUMBER R-17	
INC.	REVISIONS	DATE	BY				



- LEGEND**
- DETECTABLE WARNING SURFACE
 - 6" CONCRETE SIDEWALK
 - INLET PROTECTION

KHA PROJECT 2024-0167 NOVEMBER, 2025 SCALE: AS SHOWN DESIGNED BY: KHA DRAWN BY: KHA CHECKED BY: KHA	MIAMI CENTRAL SENIOR HIGH SCHOOL PREPARED FOR MIAMI DADE COUNTY	LICENSED PROFESSIONAL LEONIE T. ALMONTE, P.E. P.E. LICENSE NO. 70822 FL DATE: 11/12/25	SHEET NUMBER R-22
	© 2025 KIMLEY-HORN AND ASSOCIATES, INC. 2 ALHAMBRA PARK AVENUE, SUITE 100, AUSTIN, TX 78704 PHONE: 512-424-2222 WWW.KIMLEY-HORN.COM	MIAMI DADE COUNTY MIAMI DADE COUNTY	MIAMI DADE COUNTY MIAMI DADE COUNTY
INC.	REVISIONS	DATE	BY



LEGEND

4" CONCRETE SIDEWALK

R/W LINE

SFWRM CANAL R/W LINE

SCHOOL ZONE

EXISTING SIGN TO BE REMOVED

INSTALL SIGN

NO.	REVISIONS	DATE	BY

MIAMI CENTRAL SENIOR HIGH SCHOOL
 PREPARED FOR
MIAMI DADE COUNTY

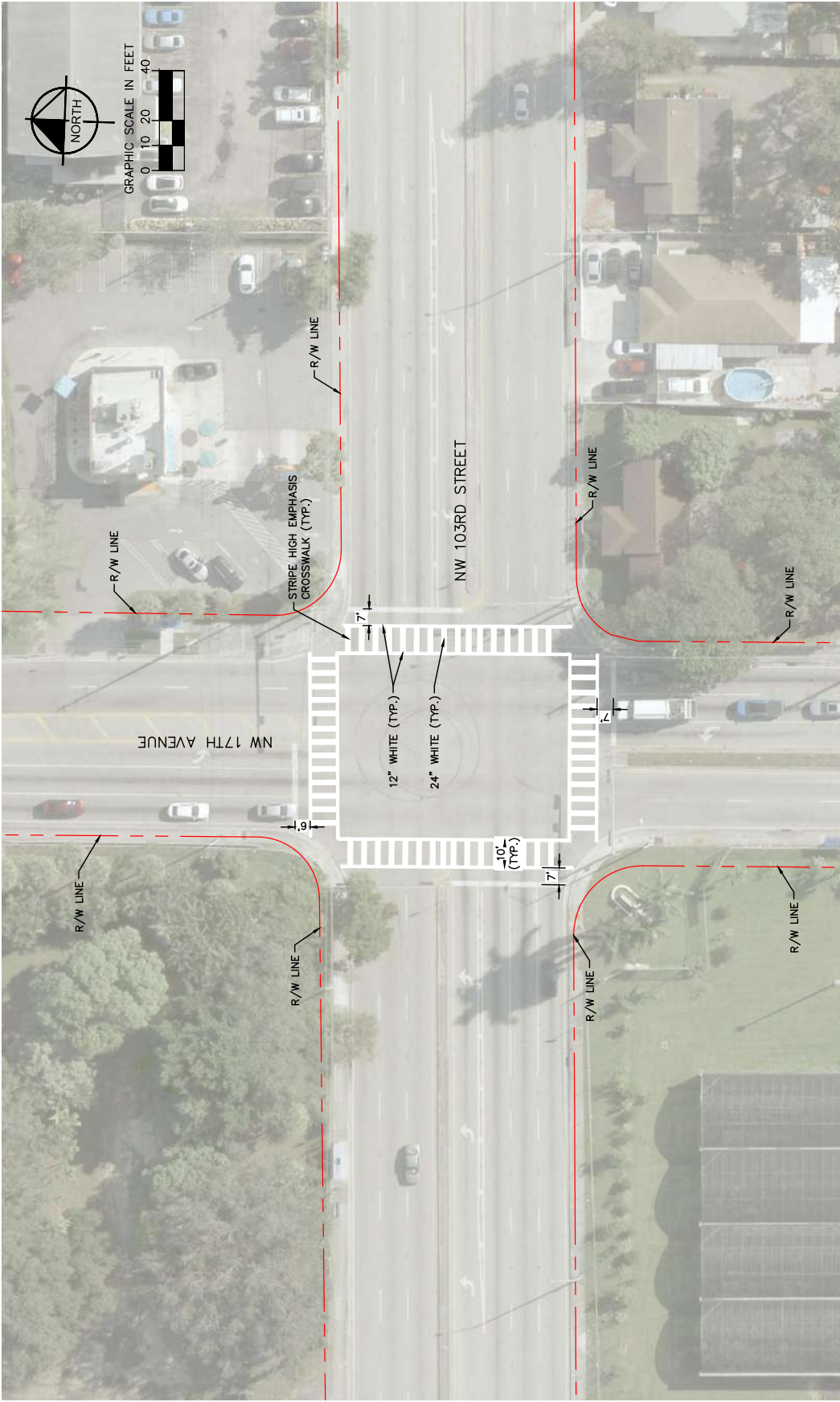
ROADWAY & SIGNING AND PAVEMENT MARKING PLAN

KIMLEY-HORN AND ASSOCIATES, INC.
 2 ALHAMBRA PARKWAY, SUITE 300, MIAMI GARDENS, FL 33134
 WWW.KIMLEY-HORN.COM REGISTRY 35106

LEONIE L. ALMONTE, P.E.
 P.E. LICENSE NO. 70822
 FL DATE: 11/12/25

KHA PROJECT 20240167
 NOVEMBER, 2025
 SCALE AS SHOWN
 DESIGNED BY: KHA
 DRAWN BY: KHA
 CHECKED BY: KHA

SHEET NUMBER R-25



Plotting By: PRR, YHSL Sheet 581121.Mnt Central Senior High School Roadway & Signing and Pavement Marking Plan November 12, 2025 09:24:25M K:\MB_Roadway\20240167_SRTS_Mnt Central Senior High School Roadway & Signing and Pavement Marking Plan.dwg

NO.	REVISIONS	DATE	BY

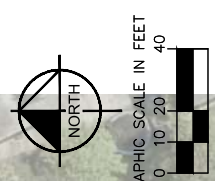
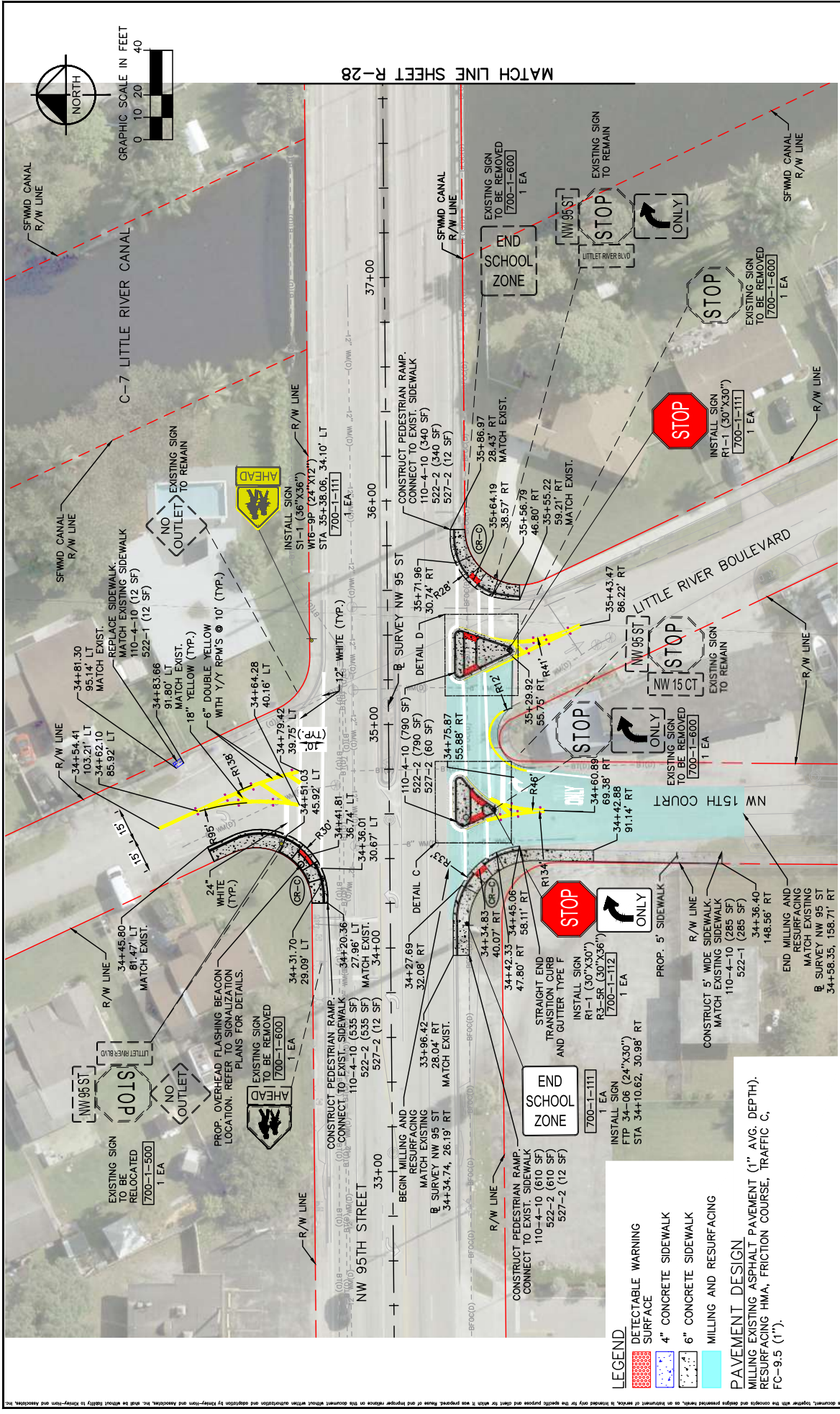
Kimley-Horn
 © 2025 KIMLEY-HORN AND ASSOCIATES, INC.
 2 ALHAMBRA PARKWAY, GAITHERSBURG, MD 20878
 PHONE: 301-951-2025
 WWW.KIMLEY-HORN.COM REGISTRY 35106

KHA PROJECT
 20240167
 NOVEMBER, 2025
 SCALE AS SHOWN
 DESIGNED BY KHA
 DRAWN BY KHA
 CHECKED BY KHA

MIAMI CENTRAL SENIOR HIGH SCHOOL
 PREPARED FOR
 MIAMI DADE COUNTY
 MIAMI DADE COUNTY

LICENSED PROFESSIONAL
 LEONIE T. ALMONTE, P.E.
 P.E. LICENSE NO. 70822
 FL DATE: 11/12/25

ROADWAY & SIGNING AND PAVEMENT MARKING PLAN
 SHEET NUMBER R-26



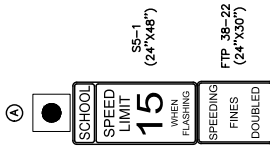
MATCH LINE SHEET R-28

- LEGEND**
- DETECTABLE WARNING SURFACE
 - 4" CONCRETE SIDEWALK
 - 6" CONCRETE SIDEWALK
 - MILLING AND RESURFACING
- PAVEMENT DESIGN**
- MILLING EXISTING ASPHALT PAVEMENT (1" AVG. DEPTH).
 - RESURFACING HMA, FRICTION COURSE, TRAFFIC C.
 - FC-9.5 (1").

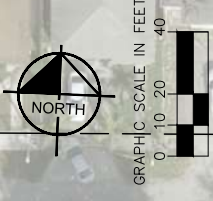
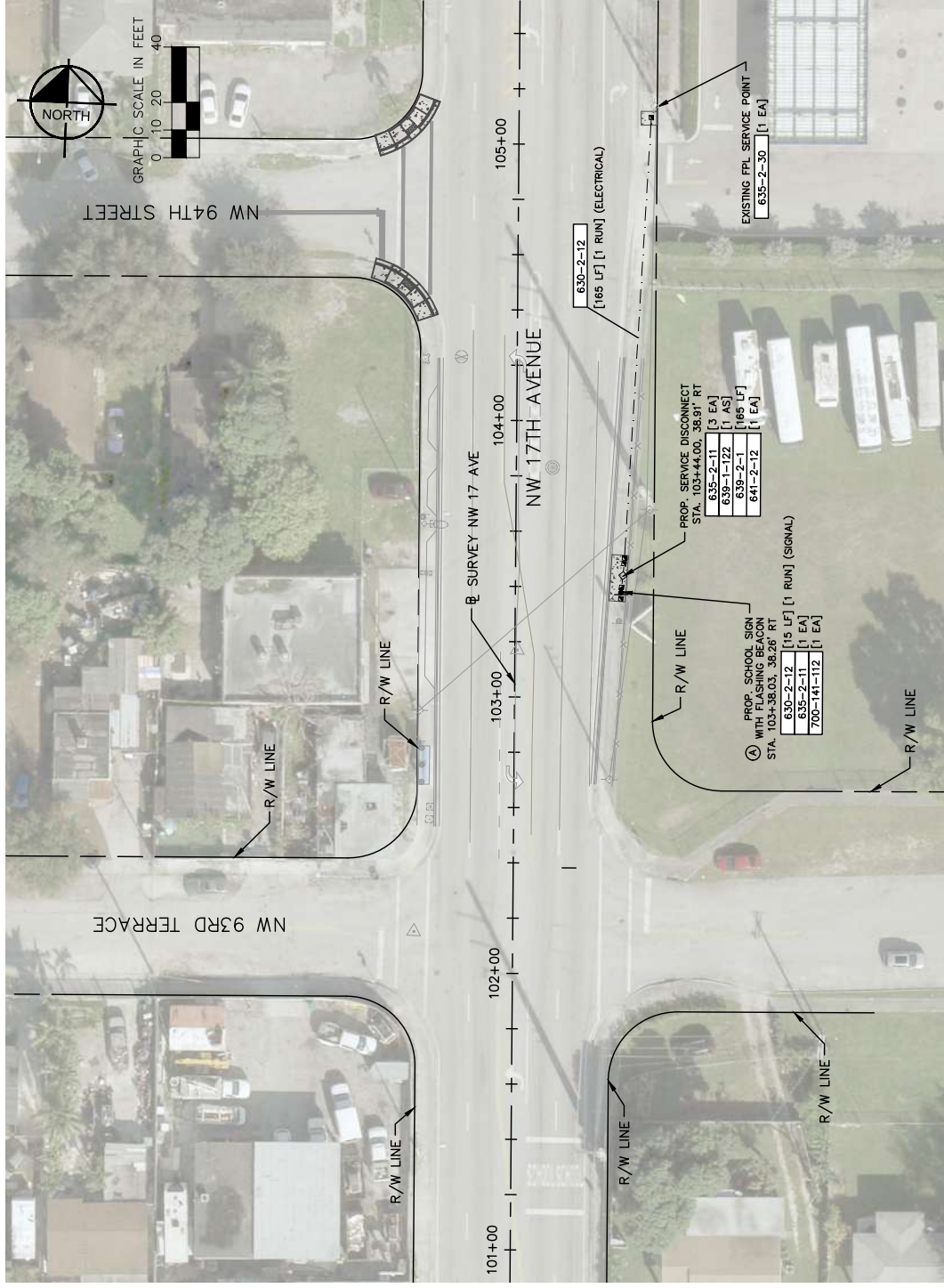
INC.	DATE	BY
REVISIONS		
© 2025 KIMLEY-HORN AND ASSOCIATES, INC. 2 ALHAMBRA PARKWAY, SUITE 200, GAITHERSBURG, MD 20878 PHONE: 301-983-2025 WWW.KIMLEY-HORN.COM REGISTRY 35106		
MIAMI CENTRAL SENIOR HIGH SCHOOL PREPARED FOR MIAMI DADE COUNTY MIAMI DADE COUNTY		
LICENSED PROFESSIONAL LEONIE L. ALMONTE, P.E. P.E. LICENSE NO. 70822 FL. DATE: 11/12/25		
ROADWAY & SIGNING AND PAVEMENT MARKING PLAN		
SHEET NUMBER R-27		

This document, together with the contracts and design presented herein, is an instrument of service. It is intended only for the specific project and client for which it was prepared. It is not to be used for any other project or client without the express written consent of Kimley-Horn and Associates, Inc. and without liability to Kimley-Horn and Associates, Inc.

SIGN DETAILS



- SIGNAL OPERATION NOTES:**
- SCHOOL ZONE FLASHER TO OPERATE DURING ARRIVAL AND DISMISSAL HOURS



NW 17TH AVE BETWEEN NW 93RD TERR AND NW 94TH ST
 ASSET ID: 8558

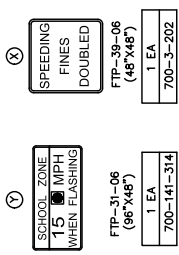
SIGNALIZATION PLAN		SHEET NUMBER
MIAMI CENTRAL SENIOR HIGH SCHOOL		T-1
PREPARED FOR MIAMI DADE COUNTY		
LICENSED PROFESSIONAL	LEONIE T. ALMONTE, P.E.	FL DATE: 11/12/25
	P.E. LICENSE NO. 70822	

KHA PROJECT 20240167	NOVEMBER, 2025	SCALE AS SHOWN
DESIGNED BY KHA	DRAWN BY KHA	CHECKED BY KHA
MIAMI CENTRAL SENIOR HIGH SCHOOL		
MIAMI DADE COUNTY		

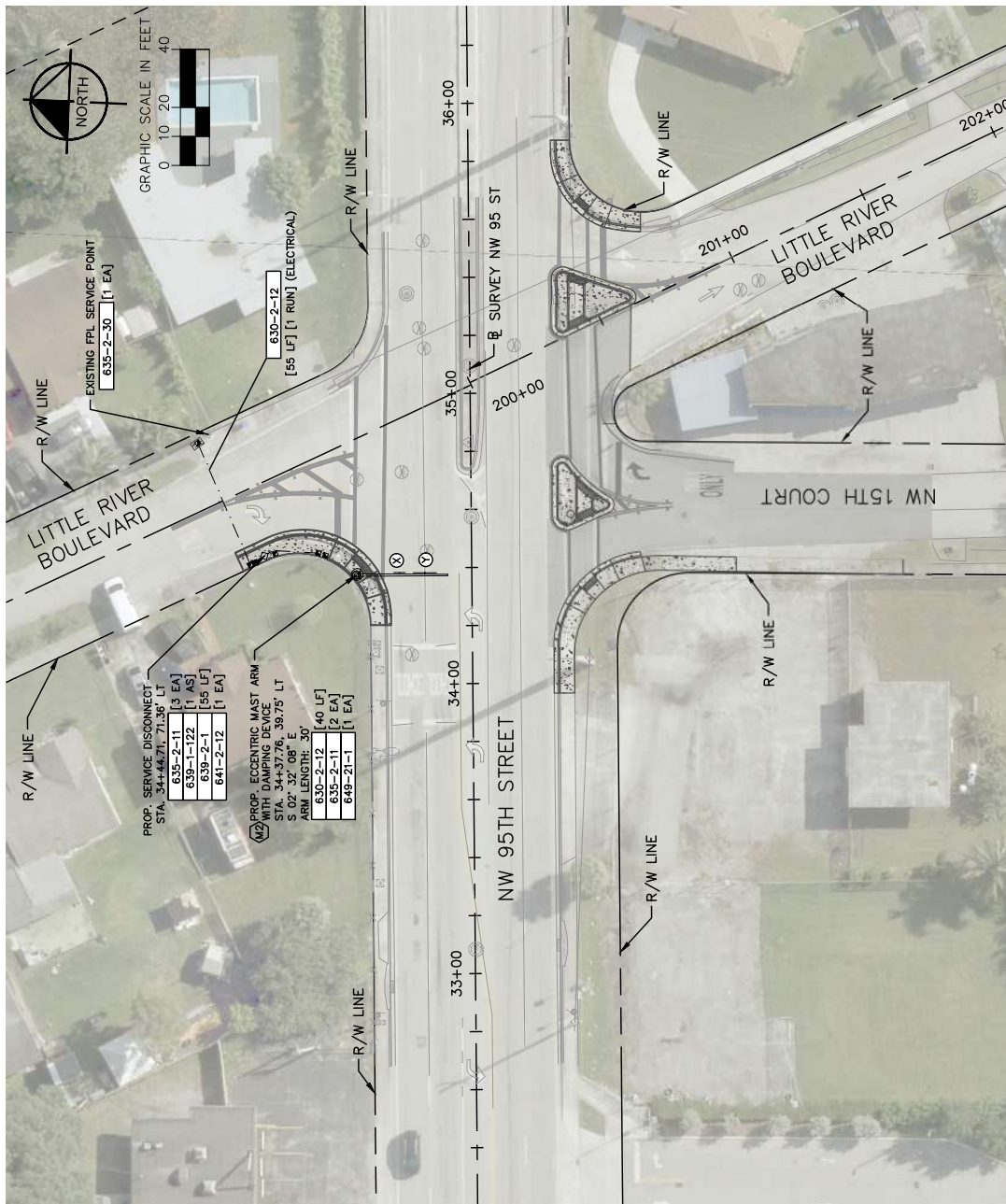
Kimley-Horn
 © 2025 KIMLEY-HORN AND ASSOCIATES, INC.
 2 ALHAMBRA PARKWAY, SUITE 300, MIAMI GARDENS, FL 33134
 PHONE: 305-473-2025
 WWW.KIMLEY-HORN.COM REGISTRY 35106

NO.	REVISIONS	DATE	BY

SIGN DETAILS



SIGNAL OPERATION NOTES:
 1. SCHOOL ZONE FLASHER TO OPERATE DURING ARRIVAL AND DISMISSAL HOURS



Kimley-Horn
 © 2025 KIMLEY-HORN AND ASSOCIATES, INC.
 2 ALHAMBRA PARKWAY, PALM BEACH, FL 33434
 WWW.KIMLEY-HORN.COM REGISTRY 35106

KHA PROJECT	20250167
DATE	NOVEMBER, 2025
SCALE	AS SHOWN
DESIGNED BY	KHA
DRAWN BY	KHA
CHECKED BY	KHA

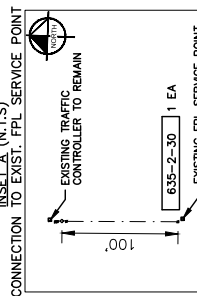
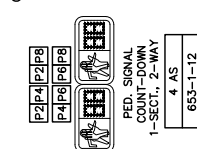
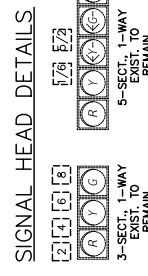
MIAMI CENTRAL SENIOR HIGH SCHOOL
 PREPARED FOR
MIAMI DADE COUNTY
 MIAMI DADE COUNTY

LICENSED PROFESSIONAL
LEONIE T. ALMONTE, P.E.
 P.E. LICENSE NO. 70822
 FL DATE: 11/12/25

SIGNALIZATION PLAN

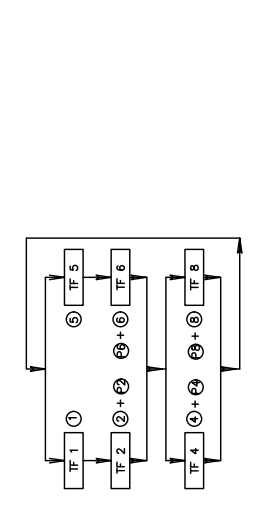
SHEET NUMBER
T-4

NW 95TH ST AND LITTLE RIVER BLVD
 ASSET ID: 8561



DETECTORS FOR LOOPS

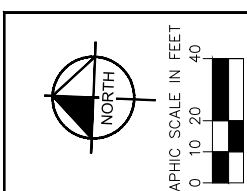
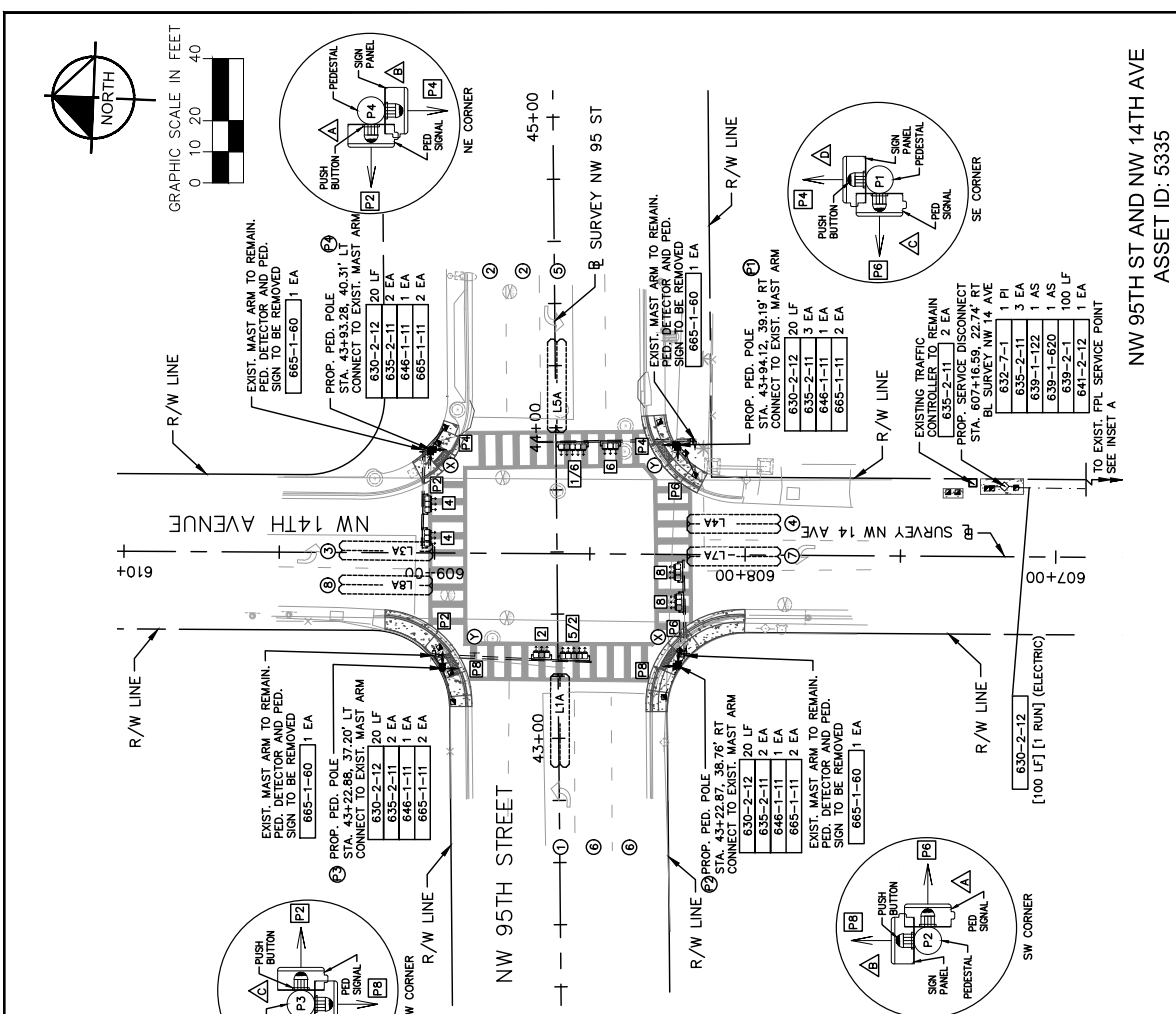
LOOP	NO. OF NEW DETS.	NO. OF EXIST. DETS.
L1A	1	1
L2A	1	1
L3A	1	1
L4A	1	1



CONTROLLER TIMING REFERENCE TABLE ASSET ID 5335

VEHICLE MOVEMENT	1	2	3	4	5	6	7	8
APPROACH DIRECTION	EBL	NBT	SEB	NBT	WBL	EBT	NBL	SBT
APPROACH POSTED SPEED (MPH)	40	40	30	30	40	40	30	30
RED CLEARANCE DISTANCE (FEET)	66	62	63	75	66	62	64	74
YELLOW CHANGE INTERVAL (SECONDS)	4.4	4.4	3.7	4.0	4.4	4.4	3.7	4.0
RED CLEARANCE INTERVAL	2.0	2.0	2.0	2.2	2.0	2.0	2.0	2.2
PEDESTRIAN MOVEMENT	-	P2	-	P4	-	P6	-	P8
PEDESTRIAN WALK INTERVAL (SECONDS)	-	65	-	71	-	65	-	68
PEDESTRIAN CHANGE INTERVAL (SECONDS)	-	19	-	21	-	19	-	20

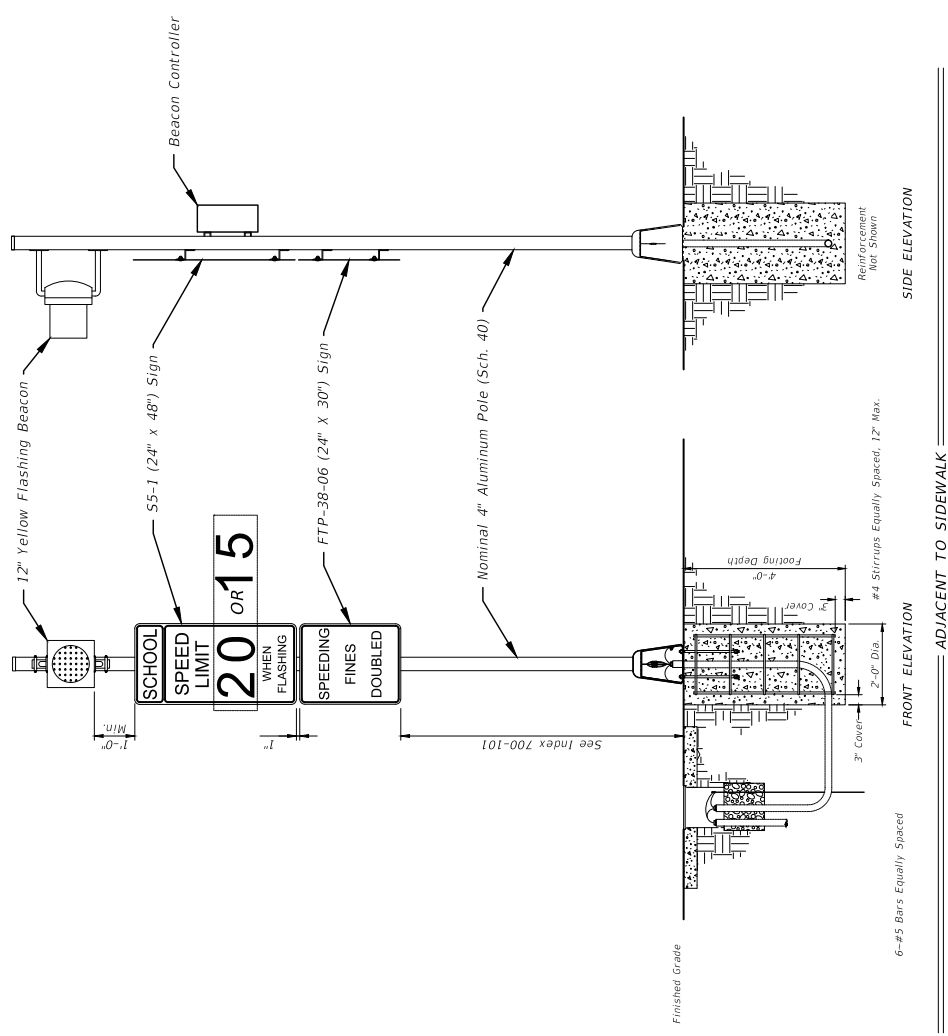
- ### LEGEND:
- 1. MAJOR STREET: NW 95TH ST
 - 2. MINOR STREET: NW 14TH AV
 - 3. PROPOSED PEDESTRIAN MOVEMENTS
 - 4. PROPOSED SIGNAL PULL BOX
 - 5. RED: NW 95TH ST (MOVEMENTS 2 AND 6)
 - 6. RED: NW 14TH AV (MOVEMENTS 4 AND 8)
 - 7. PROTECTED/PERMISSIVE: MOVEMENTS 1 AND 5
 - 8. COORDINATION PHASE: PHASE 3
 - 9. PROPOSED TRAFFIC CONTROLLER TO REMAIN
 - 10. EXIST. SIGNALS UPON ACTUATION ONLY
 - 11. EXIST. CONTROLLER CABINET MD-552X AND CONTROLLER MODEL 170 TO REMAIN



KHA PROJECT 20240167 NOVEMBER, 2025 SCALE: AS SHOWN DESIGNED BY: KHA DRAWN BY: KHA CHECKED BY: KHA	MIAMI CENTRAL SENIOR HIGH SCHOOL PREPARED FOR MIAMI DADE COUNTY	REGISTERED PROFESSIONAL LEONIE L. ALMONTE, P.E. P.E. LICENSE NO. 70822 FL. DATE: 11/12/25	SHEET NUMBER T-5
		<h2>SIGNALIZATION PLAN</h2> <p>NW 95TH ST AND NW 14TH AV ASSET ID: 5335</p>	

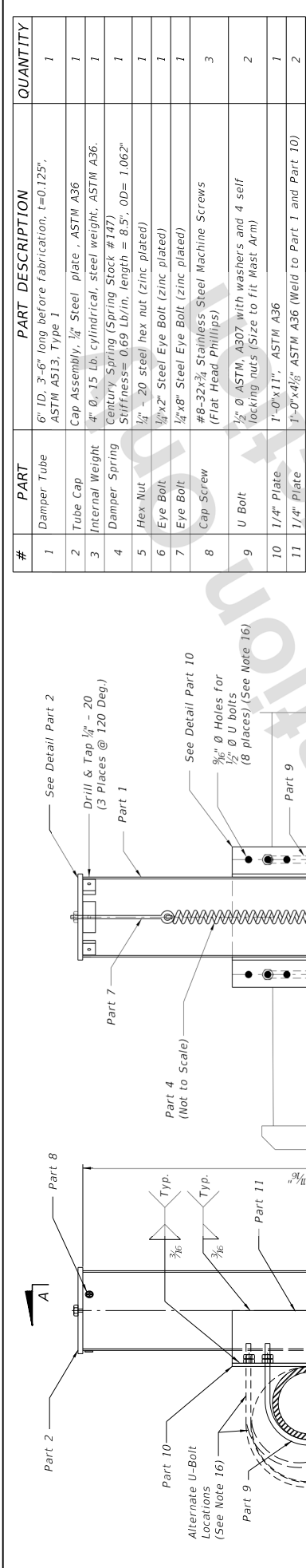
Kimley-Horn
© 2025 KIMLEY-HORN AND ASSOCIATES, INC.
2 ALHAMBRA PARKWAY, SUITE 100, GAITHERSBURG, MD 20878
PHONE: 301-932-2025
WWW.KIMLEY-HORN.COM REGISTRY 35106

NO.	REVISIONS	DATE	BY

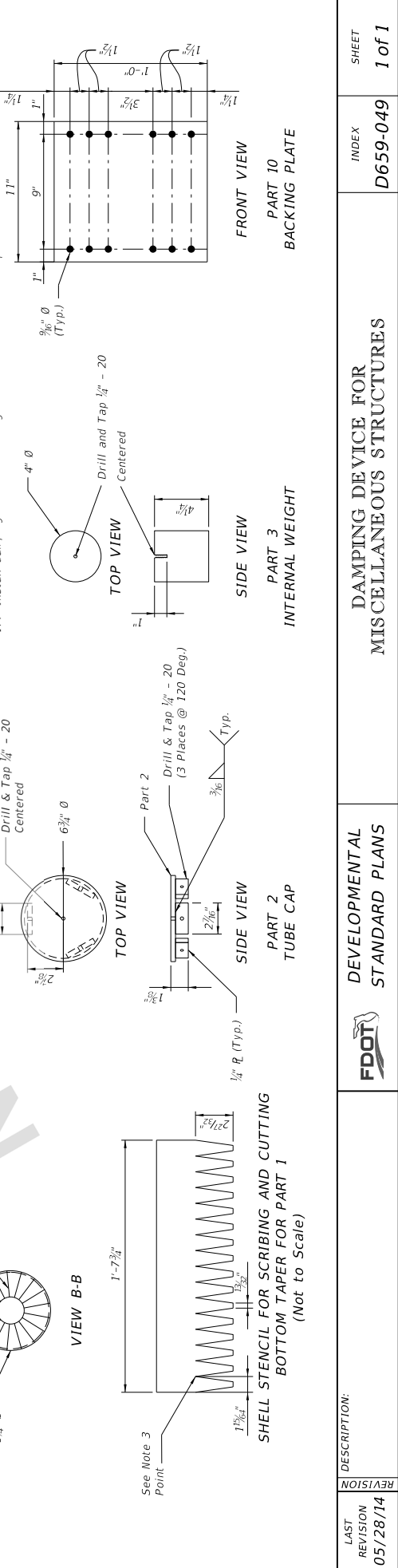


NOTES:
 1. Type A2 Assembly (conventionally powered) is shown.
 Type B2 Assemblies (solar powered) similar.

	© 2025 KIMLEY-HORN AND ASSOCIATES, INC. 2 ALHAMBRA PARKWAY, SUITE 300, GAITHERSBURG, MD 20878 PHONE: 301-973-2025 WWW.KIMLEY-HORN.COM REGISTRY 35106		KHA PROJECT 20240167 NOVEMBER, 2025 SCALE AS SHOWN DESIGNED BY KHA DRAWN BY KHA CHECKED BY KHA		MIAMI CENTRAL SENIOR HIGH SCHOOL PREPARED FOR MIAMI DADE COUNTY		LICENSED PROFESSIONAL LEONIE T. ALMONTE, P.E. P.E. LICENSE NO. 70822 FL DATE: 11/12/25	
REVISIONS	DATE	BY	SCHOOL FLASHER ASSEMBLY DETAIL					SHEET NUMBER T-10



- FABRICATION AND INSTALLATION NOTES:**
1. Verify all clearances, tolerances and dimensions before fabrication.
 2. Cut part 1 to 3" - 6".
 3. Wrap the Shell Stencil around the bottom of part 1. Provide 2" - 9 5/8" between the top of part 1 and the points of the stencil.
 4. Scribe and cut the steel below the stencil.
 5. Create the tapered portion of the shell by heating the area at the base of each flap and bend each flap inward. Each adjacent flap should be touching.
 6. Weld the flaps together and grind the tapered surface smooth.
 7. After welding, hot dip galvanize all steel items except screws, bolts, and nuts noted to be stainless steel or zinc plated, and the spring (Part 4). Galvanize bolts, nuts and washers in accordance with ASTM A153. Galvanize all other items in accordance with ASTM A123.
 8. Create the weight assembly by inserting part 6 into the threaded hole of part 3.
 9. Create the cap assembly by inserting part 7 through the threaded hole of part 2 to where part 5 can be attached to part 7.
 10. Create the cap/spring/weight/assembly by attaching one end of part 4 to part 7 and the other end of part 4 to part 6.
 11. Lower the cap/spring/weight assembly into part 1.
 12. Through the hole at the bottom of part 1, adjust part 7 on the cap assembly until the bottom of part 3 is 2" from the bottom of part 1. (Note: part 1 must be vertical when making the 2" measurement and the weight and spring combination needs to be at rest).
 13. Match the holes in part 1 with those from part 2.
 14. Tighten part 5 against part 2.
 15. Cut off portion of part 7 remaining above part 5.
 16. Choose the appropriate diameter U-bolt (Part 9) based on the structure's pipe arm diameter.
 17. Install damping device within eight feet of the Mast Arm tip.



#	PART	PART DESCRIPTION	QUANTITY
1	Damper Tube	6" ID, 3"-6" long before fabrication, ±0.125", ASTM A513, Type 1	1
2	Tube Cap	Cap Assembly, 1/4" Steel plate, ASTM A36	1
3	Internal Weight	4" Ø, 15 Lb. cylindrical, steel weight, ASTM A36.	1
4	Damper Spring	Century Spring (Spring Stock #147) Stiffness = 0.69 Lb/in, length = 8.5", OD = 1.062"	1
5	Hex Nut	1/2" - 20 steel hex nut (zinc plated)	1
6	Eye Bolt	1/4"x2" Steel Eye Bolt (zinc plated)	1
7	Eye Bolt	1/4"x8" Steel Eye Bolt (zinc plated)	1
8	Cap Screw	#8-32x3/4 Stainless Steel Machine Screws (Flat Head Phillips)	3
9	U Bolt	1/2" Ø ASTM, A307 with washers and 4 self locking nuts (Size to fit Mast Arm)	2
10	1/4" Plate	1'-0"x11", ASTM A36	1
11	1/4" Plate	1'-0"x4 1/2", ASTM A36 (Weld to Part 1 and Part 10)	2