





Signalization Plans

SIGN DETAILS

- 

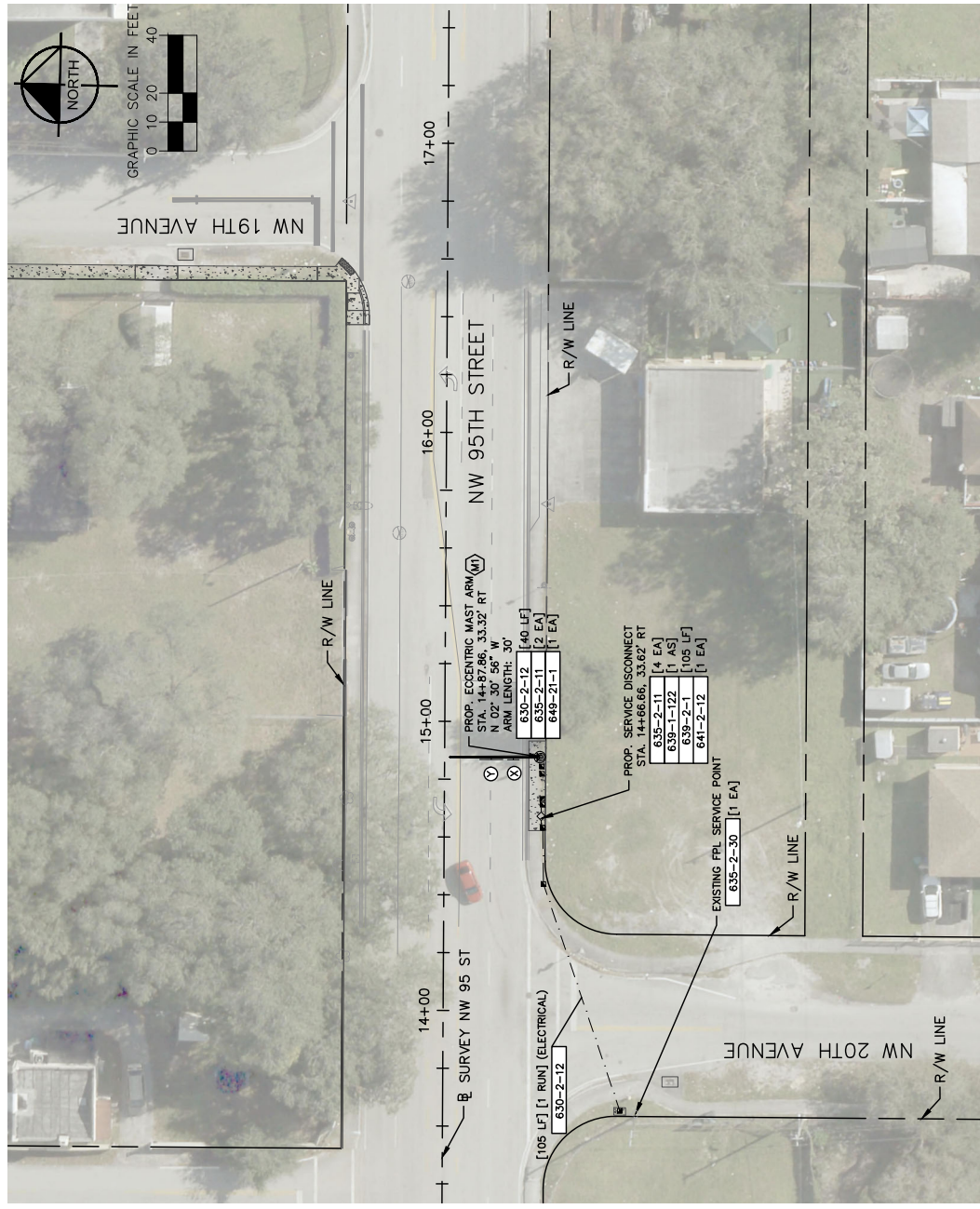
SCHOOL ZONE
15 MPH
WHEN FLASHING

FTP-31-06
(96"x46")
1 EA
700-141-314
- 

SPEEDING
FINES
DOUBLED

FTP-39-06
(48"x48")
1 EA
700-3-202

SIGNAL OPERATION NOTES:
 1. SCHOOL ZONE FLASHER TO OPERATE DURING ARRIVAL AND DISMISSAL HOURS



NW 95TH ST AND NW 20TH AVE
 ASSET ID: TBD

SIGNALIZATION PLAN
 SHEET NUMBER
 T-3

MIAMI CENTRAL SENIOR HIGH SCHOOL
 PREPARED FOR
 MIAMI DADE COUNTY

MIAMI CENTRAL SENIOR HIGH SCHOOL
 PREPARED FOR
 MIAMI DADE COUNTY

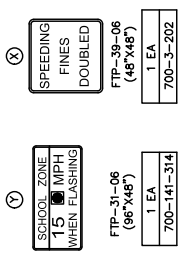
© 2025 KIMLEY-HORN AND ASSOCIATES, INC.
 2 ALHAMBRA PARKWAY, SUITE 300, MIAMI GARDENS, FL 33154
 WWW.KIMLEY-HORN.COM REGISTRY 35106

NO.	REVISIONS	DATE	BY

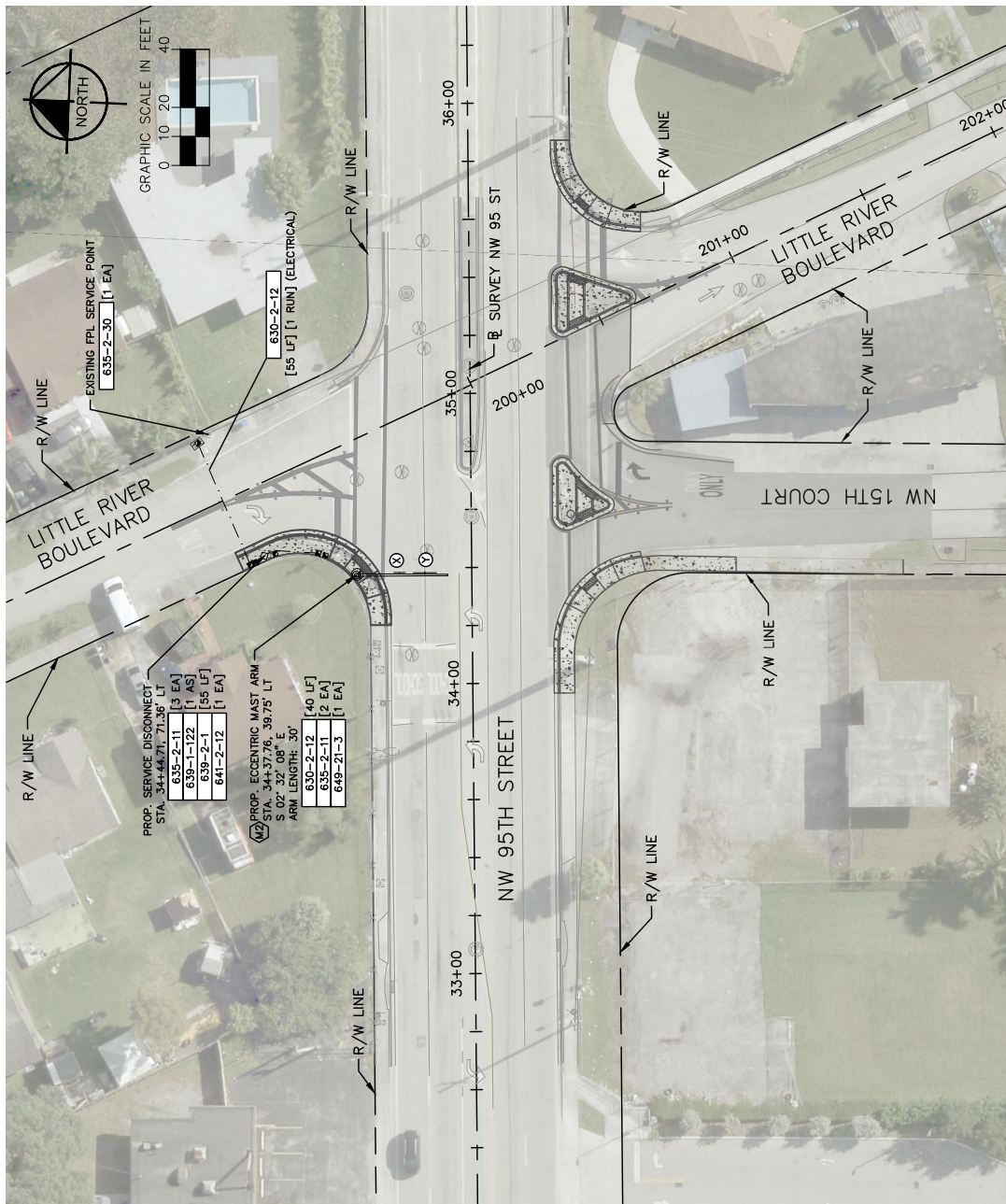
KHA PROJECT
 202410167
 SCALE AS SHOWN
 JULY, 2025
 DESIGNED BY KHA
 DRAWN BY KHA
 CHECKED BY KHA

LICENSED PROFESSIONAL
 LEONIE T. ALMONTE, P.E.
 P.E. LICENSE NO. 70822
 FL DATE: 7/7/25

SIGN DETAILS



SIGNAL OPERATION NOTES:
 1. SCHOOL ZONE FLASHER TO OPERATE DURING ARRIVAL AND DISMISSAL HOURS



NW 95TH ST AND LITTLE RIVER BLVD
 ASSET ID: TBD

 © 2025 KIMLEY-HORN AND ASSOCIATES, INC. 2 ALHAMBRA PARKWAY, GAITHERSBURG, MD 20878 PHONE: 301-973-2025 WWW.KIMLEY-HORN.COM REGISTRY 35106		KHA PROJECT 20240167 SCALE AS SHOWN JULY, 2025 DESIGNED BY KHA DRAWN BY KHA CHECKED BY KHA	MIAMI CENTRAL SENIOR HIGH SCHOOL PREPARED FOR MIAMI DADE COUNTY MIAMI DADE COUNTY	LICENSED PROFESSIONAL LEONIE T. ALMONTE, P.E. P.E. LICENSE NO. 70822 FL DATE: 7/7/25	SIGNALIZATION PLAN T-4	SHEET NUMBER T-4
INC.	REVISIONS	DATE	BY			



Mast Arm Data Table

STANDARD MAST ARM ASSEMBLIES DATA TABLE

STRUCTURE ID NUMBERS	DESIGNATION	FIRST ARM		SECOND ARM		UF (deg)	LL (deg)	POLE		DRILLED SHAFT ID	
		ARM ID	FAA (ft.)	ARM ID	SAA (ft.)			POLE ID	UAA (ft.)		UB (ft.)
INTERSECTION NW 95th St and NW 20th Ave.											
M1	A30/S-P1/S-DS/12/40	A30/S	-	-	-	-	0	P1/S	24.0	21.0	DS/12/40
INTERSECTION NW 95th St and Little River Blvd.											
M2	A30/S-P1/S-DS/12/40	A30/S	-	-	-	-	0	P1/S	24.0	21.0	DS/12/40


FOUNDATION NOTES:

- FOUNDATION DESIGN IS BASED ON SUBSURFACE SOIL EXPLORATION AND GEOTECHNICAL ENGINEERING GEOTECHNICAL REPORT PROVIDED BY GEOSOL, INC. DATED SEPTEMBER 2, 2025 (PROJECT #225148)
- MAST ARM POLE AND DRILLED SHAFT ECCENTRICITY PER THE SIGNALIZATION PLAN, MAST ARM POLE ECCENTRICITY SHALL FOLLOW ECCENTRIC MAST ARM FOUNDATION MODIFICATIONS TO FOOT STANDARD INDEX 649-031.
- VALUES USED IN DESIGN:
 MAST ARM M1: BORING MA-1
 SOIL FRICTION ANGLE = 31°
 SOIL WEIGHT = 50 PCF (SUBMERGED)
 SPT "N" VALUE = 11
- VALUES USED IN DESIGN:
 MAST ARM M2: BORING MA-2
 SOIL FRICTION ANGLE = 32°
 SOIL WEIGHT = 52 PCF (SUBMERGED)
 SPT "N" VALUE = 13
- GEOTECHNICAL RECOMMENDATIONS
 - THE CONTRACTOR IS ADVISED THAT VERY LOOSE/SOFT SOIL CONDITIONS WERE ENCOUNTERED AND SHOULD BE PREPARED FOR DIFFICULT DRILLING CONDITIONS.
 - THE BORINGS ENCOUNTERED VERY DENSE AND/OR A HARD EMBANKMENT FILL AND LIMESTONE FORMATION. DEWATERING, PENETRATING AND/OR EXCAVATING THROUGH THE DENSE EMBANKMENT FILL AND LIMESTONE FORMATION MAY BE NECESSARY TO FACILITATE PROPER MATERIAL PLACEMENT AND TEMPORARY DEWATERING MAY BE NECESSARY TO FACILITATE PROPER MATERIAL PLACEMENT AND COMPACTION IN ACCORDANCE WITH FOOT STANDARD SPECIFICATIONS. IT IS RECOMMENDED THAT THE CONTRACTOR REVIEW THE BORING LOG FOR ENCOUNTERED AND ESTIMATED SEASONAL HIGH GROUNDWATER DEPTH. THE CONTRACTOR SHALL DETERMINE THE ACTUAL GROUNDWATER TABLE AT THE TIME OF CONSTRUCTION.
 - THE CONTRACTOR SHALL PROTECT EXISTING STRUCTURES IN ACCORDANCE WITH FOOT STANDARD SPECIFICATIONS SECTION 455-1.1 AND SECTION 108.

NOTES (NOTES DATE 110-30-25):

- IF AN ENTRY APPEARS IN COLUMN FAA, A SHORTER ARM IS REQUIRED. THIS IS OBTAINED BY REMOVING LENGTH FROM THE ARM TIP AND THE ARM LENGTH SHORTENED FROM FAA TO FAA. SAA SIMILAR.
- IF AN ENTRY APPEARS IN COLUMN UAA, A SHORTER POLE IS REQUIRED. THIS IS OBTAINED BY REMOVING LENGTH FROM THE POLE TIP AND THE POLE HEIGHT SHORTENED FROM UAA TO UAA.
- WORK THIS SHEET WITH THE SIGNAL DESIGNERS "MAST ARM TABULATION". SEE "MAST ARM TABULATION" FOR SPECIAL INSTRUCTIONS THAT INCLUDE NON-STANDARD HANDHOLE LOCATION, PAINT COLOR, TERMINAL COMPARTMENT REQUIREMENT, AND PEDESTRIAN FEATURES.
- WORK WITH INDEX 649-030 AND 649-031.

DATE	BY	DESCRIPTION	REV	DATE	BY	DESCRIPTION



 ALEXANDER HILBURN, P.E.
 445 24TH STREET, SUITE 200
 FORT LAUDERDALE, FL 33308
 (772) 984-4100
 REGISTRATION NO. 35106

STANDARD MAST ARM ASSEMBLIES DATA TABLE

SHEET NO.