

MIAMI-DADE COUNTY

MIAMI-DADE PUBLIC LIBRARY SYSTEM



ADDENDUM 4

Miami Lakes Library Branch

EXTERIOR IMPROVEMENTS AND COMPREHENSIVE INTERIOR RENOVATIONS

C23-MDPLS-02-ESP

2025

ADDENDUM NO. 4

30-JUN-2025

PROJECT: **Miami Lakes Library Branch
Exterior Improvements and Comprehensive
Interior Renovations
6699 Windmill Gate Rd.,
Miami, Florida 33014**

BID DUE DATE: **16-JUL-2025 - Wednesday**

FROM: Miami-Dade Public Library System (MDPLS)
Capital Program Division 101 West Flager
Miami, FL 33130

TO: Prospective Bidders and Interested Parties

This Addendum forms part of the project solicitation documents and will be incorporated into the Contract Documents, as applicable. Insofar as the Original Contract Documents, Drawings and Specifications are inconsistent, this Addendum shall govern. Please acknowledge receipt of this Addendum, at the time of bid submittal to Miami-Dade County, in the space provided on the "Acknowledgement of Addenda Form" provided with the project solicitation documents. Failure to acknowledge receipt of all addenda may be cause for disqualification.

Miami-Dade County's "Cone of Silence", Section 2-11.1(t) of the Code of Miami-Dade County, approved by the Board of County Commissioners, specifically prohibits communication in regard to this bid solicitation with County staff except as allowed by the Code. The period covered by the "Cone of Silence" is defined in the Code.

Bidders must file a copy of any written communication with the Clerk of the Board, which shall be available to any person upon request. Miami-Dade Public Library System (MDPLS) shall respond in writing and file a copy with the Clerk of the Board, which shall be made available to any person upon request. Written communications for questions, Request for Information (RFI) and addendums may also be in the form of e-mail addressed to Malka Rodriguez at CGA@MDPLS.ORG with copy to the Clerk of the Board at clerk.board@miamidade.gov.

ADDENDUM 4

Please be reminded that access to back of house and restricted areas are not allowed after the mandatory site visit held on 11-JUN-2025. Contractors can visit the Branch without impacting normal operations, requesting access to restricted areas, or damaging the building or any areas.

RFI-02:

On 23-JUN-2025 – TGSV Enterprises, Inc. submitted the questions below:

Please refrain from using the contract RFI form for RFIs during bidding. RFIs must be submitted via email with company information.

Q.13 Could you include in the RFI clarification regarding the dimensions of the automatic doors (#1 and #2)? The dimensions shown on Sheet A7.0 are not correct. Door #1 is adjacent to Storefront Mark A, which has a height of 96". Also, each automatic door consists of 4 panels, but the width shown on Sheet A7.0 corresponds to only 2 panels. Could you include in the RFI clarification regarding the height of Doors 17 and 18? These doors are aligned with the elevation where Mark K will be installed. On sheet A6.0, the height calculation adds up to 88", but the door schedule indicates a height of 84". Please confirm which height is correct.

A13. *The masonry opening is 8'-0" to bottom of beam, which corresponds with Glazing Elevation for Storefront Mark 'A'. The automatic door assembly shall also correspond to this masonry opening. Per 4/A7.1, the controller shroud is approximately 8" deep, which would result in a door height of 7'-4", as indicated on the door schedule.*

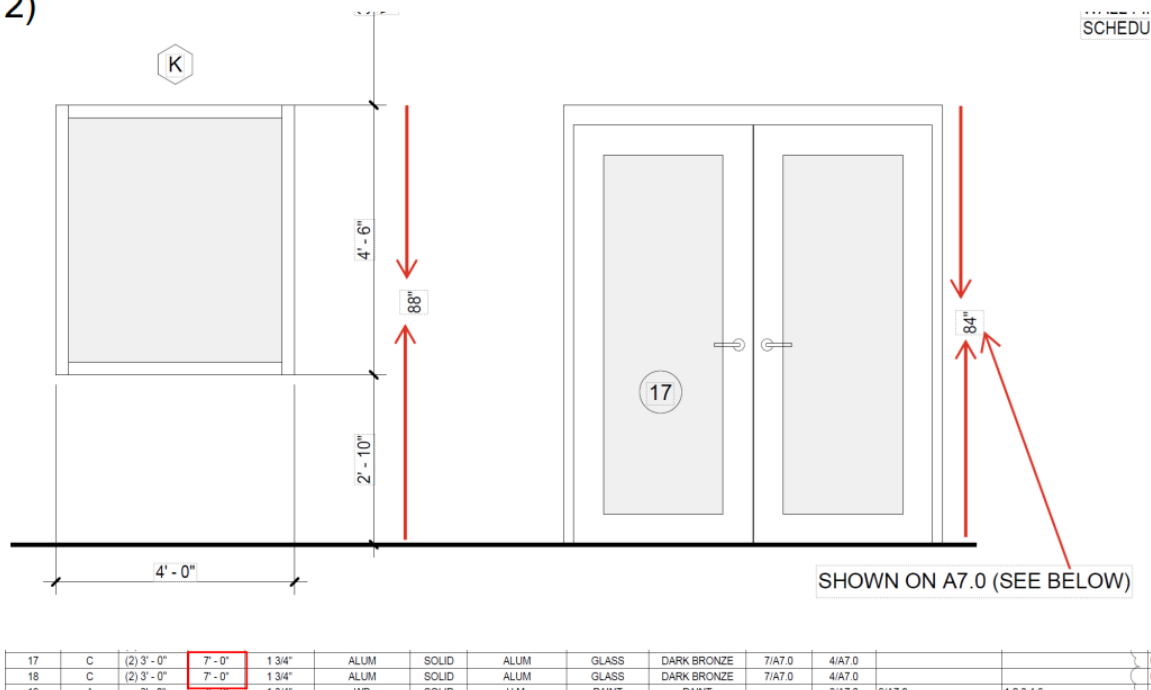
The door panels within the assembly shall be two 3'-0" leaves and indicated on the door schedule. The total assembly shall include 4 panels; two fixed and two sliding doors.

The doors panels within the assembly shall be 7'-0" high with the frame. The total height of the assembly will be approximately 86" high. Windows Mark 'K' shall be provided as dimensioned, 4'-0" wide x 4'-6" high; however, the top of the window shall align with the top of the door at 86", not 88".

1)

DOOR		DOOR SIZES			MATERIAL			FINISH		DETAILS		THRESHOLD	DOOR COMMENTS	HARDWARE SE
NUMBER	DOOR TYPE	WIDTH	HEIGHT	THICKNESS	DOOR MATERIAL	CORE	FRAME MATERIAL	DOOR FINISH	FRAME FINISH	JAMB	HEAD			
1		(2) 3'-0"	7'-4"	1 3/4"	ALUM	GLASS	DARK BRONZE		4/A7.1	NOA	NOA	NOA	4.6B	17
2		(2) 3'-0"	7'-4"	1 3/4"	ALUM	GLASS	DARK BRONZE		4/A7.1	NOA	NOA	NOA	4.6B/1	17

2)



Q14. Regarding the existing Air-Cooled Chiller that needs to be replaced, does the owner intend to keep it, or should it be discarded by the Mechanical Contractor? If the owner wants to keep the equipment, is it required to transport it to a designated facility location?

A14. *The contractor must dispose of all existing Chiller/HVAC equipment to be removed as shown on the plans.*

Q15. Division 23 of the Specs were not provided with the Bid documents for this project. Kindly confirm if there is a list of approved alternate manufacturers that can be considered for the new equipment specified in the schedules shown on drawings M5.0 & M5.1. **Please provide the information at the earliest convenience to request prices from suppliers.**

A15. *The project does not have Specs. Please refer to M-0.0*

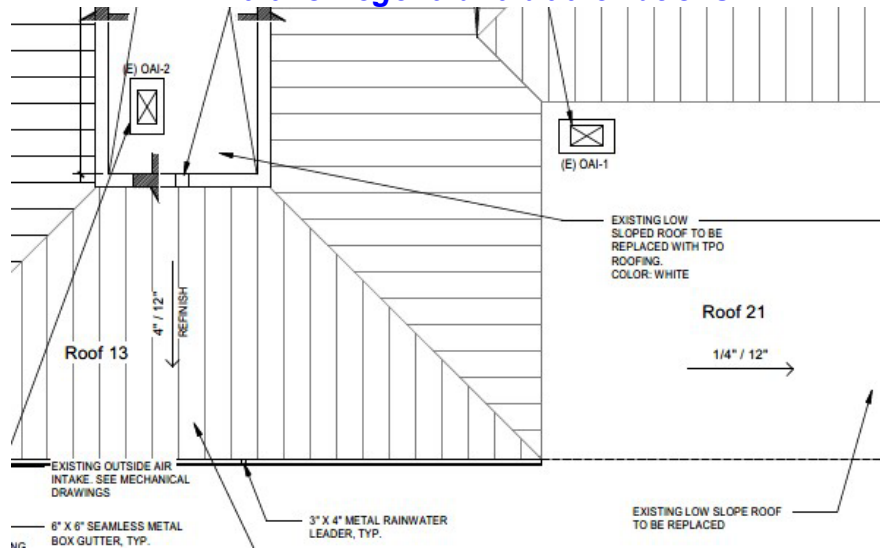
All specifications are included in the drawings. The new equipment specified was verified by the MEP Engineer to fit within the existing enclosure and work with the existing equipment scheduled to remain. Alternate/substitutions of products will be reviewed after NTP and not during the bidding process; however, per Division 1, 016000 Products, there is a specific approval process, and the Contractor will be responsible for all changes, permitting and costs due to the alternate/substitution. MDPLS reserves the right to request credit.

Q16. According to Architectural Drawing A3.0, we have (2) existing OA Intake Ventilators (OAI-1 & OAI-2) on existing roofs that to be replaced (see below). Question: Should we

CONTRACT NO: C23-MDPLS-02-ESP

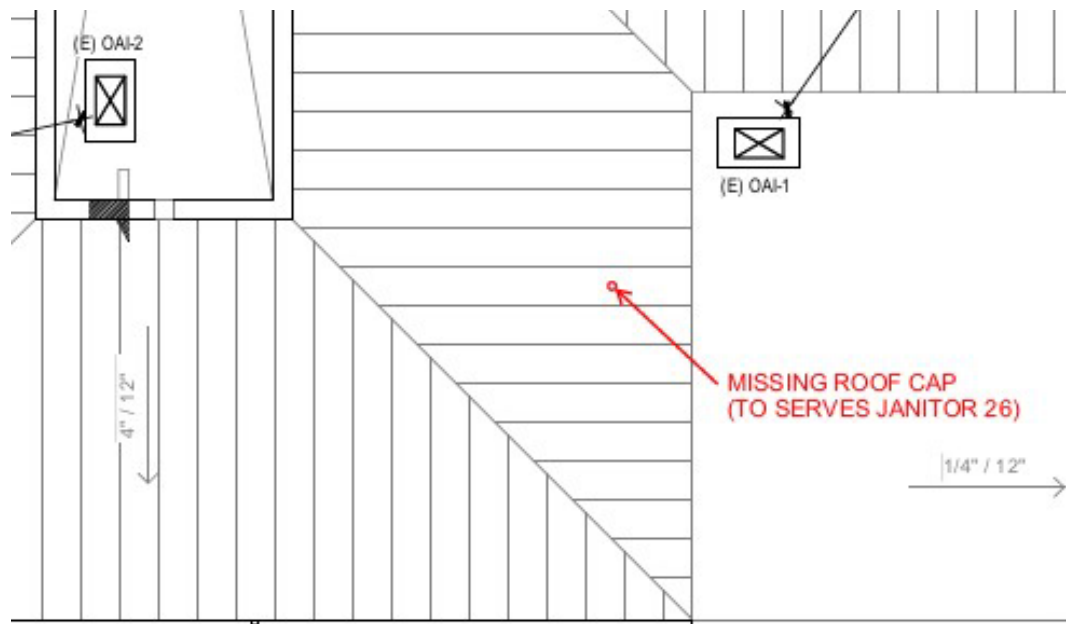
consider temporarily remove the (2) OAI Ventilators to replace the associated existing curbs or these existing curbs will remain in place? **Please advise how to proceed since Drawing M3.1 does not list any Keyed Notes**

A.16 (E) OAI-1 & (E) OAI-2 and their curbs are existing to remain. Refer to M-0.0 for legend and abbreviations



Q17. Janitor area 26 (M3.0) shows a (N) Ceiling EF with an extraction duct to be connected to a roof cap on the roof. This roof cap is not shown on plan M3.1 (see below).

A17. General Contractor is responsible for providing all roof caps.



Q18. Please confirm the following glazing requirements:

CONTRACT NO: C23-MDPLS-02-ESP

1. Glass type: is the glass laminated, insulated laminated, or other?
2. Tint and finish: is a specific color or tint required?
3. Low-E coating: should we include Low-E coating in the glass system?
4. Energy performance criteria: Please confirm if there are any required U-values, SHGC ratings, or other thermal performance standards.
5. Please provide the Glass Specs.

A18. The basis of design is:

Trulite, Series 3100, Aluminum Storefront, with Glazing: ¼" CLR SB70XL (#2) +090PVB + ¼" CLR GLASSU-Factor 0.93, SHGC 0.32, VLT 0.53, Condensation Resistance 17. No Low-E is required.

Q19. Regarding the warranty, Mechanical General Note 15 in sheet M0.0 states the following: 15. Contractor shall warranty all work to be free of defects in workmanship and materials for a period of five year after acceptance of the installation. However, in Section 01 78 36, Part 1: WARRANTY, states:

1.01 Description of work:

A. The warranties provided by the Contractor shall be for the longest period, starting on the date of final acceptance, of those specified as follows:

1. Two (2) year from final acceptance on all the work as specified in the Contract.

Please confirm what is the warranty period to consider for this project.

A19. The required warranty for the mechanical work is as described in the Mechanical plans:

- 1. Please, follow Mechanical General Note 15 on Sheet M0.0 for Warranty information.***

MDPLS requires the following warranties to be provided:

1. Chiller, AHUs, and all mechanical equipment shall be provided with 5 years warranty parts and labor.

2. Chiller Coating shall be provided with 5 years warranty.

3. The BMS system shall be provided with 5 years warranty parts and labor.

4. Maintenance and Ongoing Support: The Contractor must offer onsite maintenance support and call support for their product solutions and provide onsite engineering support to provide hands-on training for a period of 3 years extending beyond the 1-year warranty period.

5. UV Light:

a. 2- 5 Year Limited Warranty.

b. 3- 6+ Year Lamp Life (55, 200 Hours).

Q20. Please confirm if Davis Bacon Wages applied to the project. According to Volume 1 Project Manual 00800 Supplemental General Conditions – Special Provisions indicates: 1.6 Applicable Wage Rates (not applicable).

A20. *Please review addendum #3, response to question 11.*

Q21. Who is the existing Controls Vendor in this facility?

A21. *The existing vendor is:*

South Florida Controls

Gustavo Corvalan – Service Account Manager

13393 SW 131 Street

Office: 786-293-3272

Cell: 786-483-0196

Email: gcorvalan@sfc-miam.com

Sfc-miami.com

Q22. Please provide MEP Specs for this project.

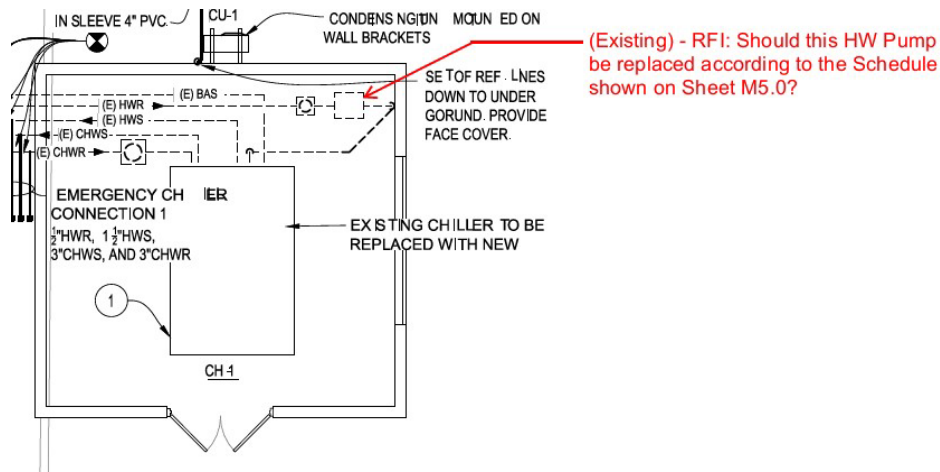
A22. *There is no specification book on the project. All specifications are included in the drawings. The new equipment specified was verified by the MEP Engineer to fit within the existing enclosure and work with the existing equipment scheduled to remain. Alternate/substitutions of products will be reviewed after NTP and not during the bidding process; however, per Division 1, 016000 Products, there is a specific approval process, and the Contractor will be responsible for all changes, permitting and costs due to the alternate/substitution. MDPLS reserves the right to request credit.*

Q23. Demolition Plan MD3.0 indicates that the existing air-cooled chiller remains, however, Plan M3.0 indicates that the existing chiller must be replaced with a new one. *Please confirm whether the cost of replacing the existing chiller should be included in the base proposal or should be considered as an Add Alternate Price.*

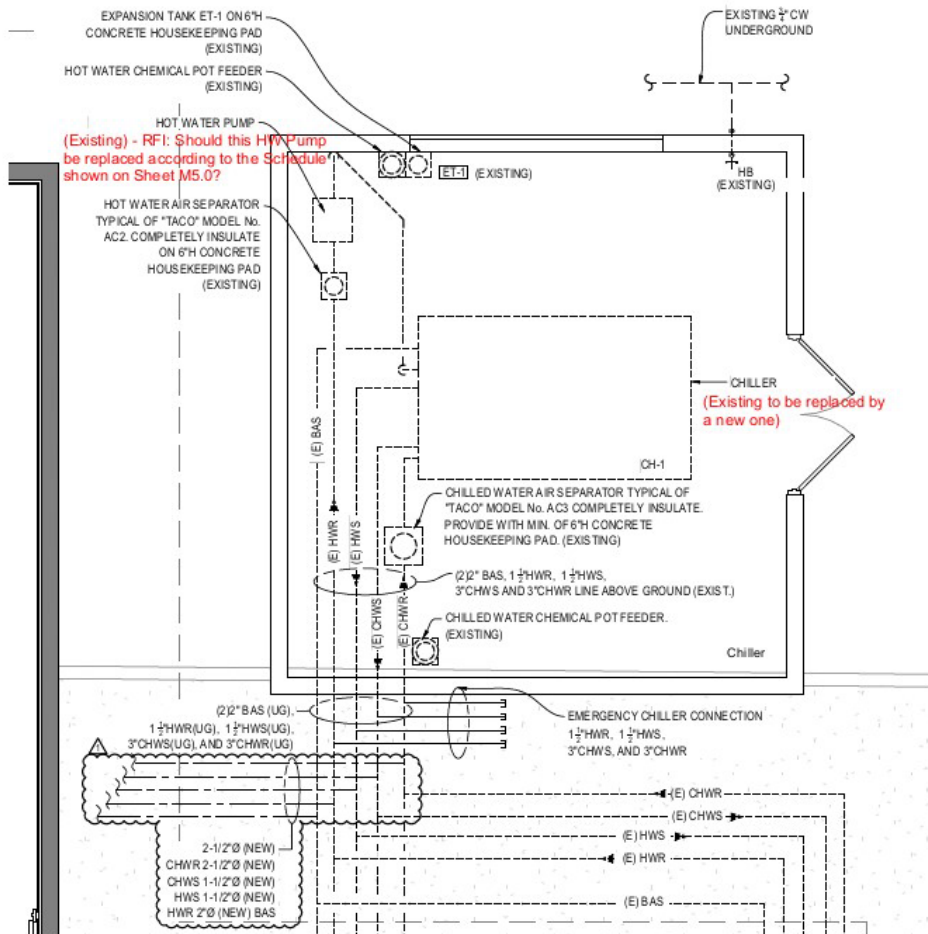
A23. *The existing chiller shall be replaced with a new one as shown on M-3.0*

Q24. Drawing M5.0 shows a schedule for HW pump (HWP-1). Detail 3 – Enlarged Chiller Yard Floor Plan on Drawing M4.0 shows the location of a HW Pump (see below) but does not indicate whether this pump is an existing pump to be replaced according to the schedule on Drawing M5.0. *Please confirm whether, along with the scope of replacing the existing Air-Cooled Chiller, we should include the replacement of the HW pump with its associated triple duty valve and strainer.*

A24. *The HWP-1 pump is existing to be replaced with a new one. Provide a 45 GPM pump.*



1 Floor Plan - HVAC
Scale: 1/8" = 1'-0"



NEW WORK
3 Enlarged Chiller Yard Floor Plan - HVAC
Scale: 1/4" = 1'-0"



WATER PUMP SCHEDULE		
Unit Designation		HWP – 1
Location		Chiller Yard
Pump Service		Hot Water Reheat
Pump Type		Inline
PERFORMANCE	Water Flow, GPM	21.4
	Total Dynamic Head, Ft. of Water	55
	Pump Speed, RPM (Max)	3450
	Design Efficiency, % (Min.)	48.3
	Design Pressure, PSIG	125
	Impeller Diameter, In.	3.875
	Absorbed Power, BHP	0.647
MOTOR	Motor Type	T.E.F.C.- HI-EFF. (VFD)
	Motor Size, HP	1.5
	Electrical Service Available	208V/3ø/60 Hz
Frame Size		-
Vibration Isolator Type		-
Min. Static Deflection, In.		-
Design Manufacturer & Model Number		B & G E-90 IAAB
Note: 1. Pump to be bronze fitted. 2. Pump absorbed brake horsepower shall not exceed 85% of the 3. Pump shall be provided with steel drip rim base plate. 4. Variable frequency drives to be provided with integral disconnect and starter. (Pump VFDs are to be used for balancing purposes only). Pump are to run in constant volume mode.		

RFI#3:

ON 23-JUN-2025, Bradley Gallager wrote:

Q25. Can we please receive the bid document set for the project noted below?

Miami Lakes Library Branch
Exterior Improvements and Comprehensive Interior Renovations
6699 Windmill Gate Rd., Miami Lakes, Florida 33014- C23-MDPLS-02-ML-ESP
MDPLS2000001227 - 2025

A25. Please use the link below to download the contract documents: contract volume 1, drawings and addendums:

<https://www.miamidade.gov/apps/isd/StratProc/Home/CurrentSolicitations>

ON 24-JUN-2025, Cosugas LLC wrote:

Q26. In your responses A1, A2, and A8 of the Addendum #3, you refer to Appendices E and F, but these appendices are not included in the Project Manual Volume I. Could you please provide these appendices?

A26. *Please review the contract documents in the following link for C23-MDPLS-02 ML-ESP, contract volume 1:*
<https://www.miamidade.gov/apps/isd/StratProc/Home/CurrentSolicitations>

On 24-JUN-2025, Michael Engemann wrote:

Q27. We received addendum 1 today. I have reviewed and could not find the pre-construction meeting sign in sheet, which the addendum says it has 2 sheet. How can we get this list of contractor who attended the meeting? Please advise or send us the sign in sheets

A26. *Please review the documents in the following link C23-MDPLS-02-ML-ESP:*
<https://www.miamidade.gov/apps/isd/StratProc/Home/CurrentSolicitations>

ON 24-JUN-2025, Bradley Gallager wrote:

Q28. Is there a sign-in sheet or list of Pre-Bid attendees that you can forward or we can download from that June 11th meeting?

A28. *Please review addendum 1 for further information.*

ON 27-JUN-2025, Pam Exton wrote:

Q29. May I get a list of the attendees to the pre-bid meeting that took place on 06/11/2025?

A29. *Please review addendum 1 for further information.*

REMINDER:

Solicitation remains under the Cone of Silence. Please request information via email to: Cga@mdpls.org and copy the Clerk of the Board at clerkbcc@miamidade.gov.

END OF ADDENDUM NO. 4

Cc: Lisa Thompson
Erik Myers