

MIAMI-DADE COUNTY
DEPARTMENT OF TRANSPORTATION AND PUBLIC WORKS (DTPW)

ADDENDUM No. 6
NOVEMBER 28, 2023

PROJECT: South Dade Transit Operations Center (SD TOC)
Project No. CIP227A-DTPW22-CT

BID DUE DATE: December 4, 2023; 2:00 PM.

FROM: Miami-Dade County DTPW
Contract Services Division
111 NW First Street, 14th Floor
Miami, FL 33128
305.375.2930

TO: Prospective Bidders and Interested Parties

This Addendum forms part of the project solicitation documents and will be incorporated into the Contract Documents, as applicable. Insofar as the Original Contract Documents, Drawings and Specifications are inconsistent, this Addendum shall govern. Please acknowledge receipt of this Addendum, at the time of bid submittal to Miami-Dade County, in the space provided on the "Acknowledgement of Addenda Form" provided with the project solicitation documents. Failure to acknowledge receipt of all addenda may be cause for disqualification.

CHANGES TO DRAWINGS:

- A. Please find attached, and under the link below, Sheet BM-0-RLN-200 - Lighting Plan General Notes (SW 127 Ave) for clarification and two additional drawings that were missing from the previously provided set under Addendum No. 4, BM-0-CDT-104 - Monument Details and BM-0-CDT-103 - Civil Details.

Link: [CIP227A-DTPW-CT South Dade TOC Addendum no. 6](#)

END OF ADDENDUM NO. 6



Alfredo E. Munoz, P.E.
Department of Transportation and Public Works (DTPW)
Chief, Capital Improvements Division

AM:kf

c:

Marco Movilla, DTPW	Katherine Fernandez, DTPW	Alejandro Martinez-Esteve, DTPW
Eric Perez, ISD	Caesar Suarez, ISD	Laurie Johnson SBD
Laurie Johnson, ISD	Ahmed Rasheed, DTPW	Basam Moubayed, DTPW
Isabel Padron, DTPW	Javier Bustamante, DTPW	Clerk of the Board
Rakeshpal Gill, DTPW	Alejandro Barrios, DTPW	File
Maria Perdomo, DTPW		

GENERAL NOTES

1. POWER COMPANY SHALL PROVIDE INCOMING SERVICE AT LOCATION SPECIFIED IN ACCORDANCE WITH THE PLANS. THE DATE REQUIRED FOR INCOMING SERVICE TO BE COMPLETED MUST BE COORDINATED BY THE CONTRACTOR WITH THE POWER COMPANY AT THE PRE CONSTRUCTION MEETING.
2. ALL EXPOSED CONDUIT OR SURFACE MOUNTED CONDUIT SHALL BE GALVANIZED STEEL AND GROUNDED.
3. CONTRACTOR SHALL BE RESPONSIBLE FOR LOCATING AND AVOIDING ALL UNDERGROUND AND STRUCTURAL CONFLICTS IN COOPERATION WITH THE UTILITY COMPANY(S).
4. STATIONING MAY BE ADJUSTED AS DIRECTED TO AVOID UTILITY OR STRUCTURAL CONFLICTS NOT INDICATED IN THE PLANS.
5. SIDEWALK SLABS DAMAGED DURING CONSTRUCTION SHALL BE REPLACED IN FULL AND COLORED WHEN NECESSARY TO MATCH THE EXISTING SIDEWALK.
6. CONTRACTOR MUST MAINTAIN THE EXISTING LIGHTING SYSTEM IN OPERATION OR SUPPLY A TEMPORARY ONE UNTIL THE NEW LIGHTING SYSTEM CAN BE ACTIVATED. IF THE EXISTING LIGHTING SYSTEM IS OWNED BY F.P.&L, SEE FDOT SPECIFICATION FOR ROADWAY LIGHTING SPECIAL PROVISIONS, SECTION 715. THIS ITEM SHALL BE INCLUDED IN PAY ITEM # XX-XX-XX MAINTENANCE OF TRAFFIC.
7. ALL MATERIAL, UNLESS OTHERWISE SPECIFIED, SHALL BE UNDERWRITERS LABORATORY APPROVED.
8. POLES, BRACKET ARMS, AND TRANSFORMER BASES SHALL BE ALUMINUM AND DESIGNED IN ACCORDANCE WITH LOCAL DESIGN CRITERIA USING THE APPLICABLE EQUATIONS FOUND IN THE AASHTO PUBLICATION "STANDARD SPECIFICATIONS FOR HIGHWAY, SIGNS, LUMINAIRES, AND TRAFFIC SIGNALS," CURRENT EDITION.
9. THE WIRES AT THE POLE, AND HANDHOLE SHALL BE LOOPED AS INDICATED IN THE PLAN DETAIL WITH SUFFICIENT LENGTH TO COMPLETELY REMOVE CONNECTORS TO THE OUTSIDE, TO MAKE THEM ACCESSIBLE FOR CHANGING FUSES AND TROUBLE SHOOTING THE SYSTEM.
10. THE LUMINAIRE MANUFACTURER SHALL PLACE A PERMANENT TAG ON THE LUMINAIRE HOUSING ON WHICH IS IMPRINTED THE FOLLOWING INFORMATION: WATTAGE, BALLAST TYPE, LAMP SHOWN ON DESIGN PLANS, LAMP SETTING (POSITION IN LUMINAIRE), I.E.S., LIGHT DISTRIBUTION WITH THIS LAMP IN THE POSITION SPECIFIED, INPUT VOLTAGE AND POWER FACTOR, LUMINAIRE PHOTOMETRIC SUBMITTALS REQUIRED.
11. GROUND RODS SHALL HAVE A RESISTANCE TO GROUND NOT TO EXCEED 25 OHMS. WHERE THE RESISTANCE IS NOT AS LOW AS 25 OHMS, TWO OR MORE GROUND RODS CONNECTED IN PARALLEL SHALL BE USED.
12. CONTRACTOR WILL INCLUDE IN THE COST OF THE LIGHTING POLE ANY LEVELING AND GRADING REQUIRED TO ENSURE THAT ALL POLES ARE INSTALLED AT THE PROPER ELEVATION.
13. ALL SALVAGEABLE MATERIALS AND ALL MATERIALS TO BE FURNISHED BY THE CONTRACTOR SHALL BE TRANSPORTED AND OFF LOADED TO THE FOLLOWING LOCATION FOR INSPECTION AND ACCEPTANCE BY THE COUNTY:
14. MIAMI-DADE COUNTY MAINTENANCE YARD FDOT POLE IDENTIFICATION TAG DETAIL
15. (SEE NOTES BELOW)
16. 7100 NW 36th STREET
17. MIAMI, FL 33166
18. TELEPHONE: (305) 592-3580
19. CONTRACTOR MUST CONTACT AT&T, FP&L, AND OTHER UTILITY COMPANIES PRIOR TO THE COMMENCEMENT OF CONSTRUCTION AND MUST NOTIFY ENGINEER AND MIAMI-DADE COUNTY IF FIELD CONDITIONS DIFFER FROM CONDITIONS INDICATED ON THESE DRAWINGS.
20. IN ACCORDANCE WITH THE NATIONAL ELECTRIC CODE (N.E.C.) OR WITH THE MIAMI-DADE COUNTY STANDARDS, THE CONTRACTOR MUST IDENTIFY ALL CIRCUITS AND EQUIPMENT INCLUDING THE PROPOSED LIGHT POLE ASSEMBLIES.
21. PULL BOXES, JUNCTION BOXES, AND ALL ELECTRICAL WORK MUST CONFORM TO N.E.C. (LATEST REQUIREMENTS), THE NATIONAL ELECTRICAL SAFETY CODE AND MIAMI-DADE COUNTY STANDARDS.
22. USE PVC SCHEDULE 40 CONDUIT THROUGHOUT THE ENTIRE UNDERGROUND SYSTEM, AT STREET CROSSINGS THE CONDUIT SHOULD BE EMBEDDED IN 1:10 CONCRETE MIXTURE.
23. ANY INCIDENTAL ITEMS OR ACCESSORIES REQUIRED TO COMPLETE THE WORK FOR A GIVEN BID ITEM, SHALL BE INCLUDED IN THE CONTRACT UNIT PRICE BID FOR THAT SPECIFIC ITEM AS INDICATED IN THE BID FORM. INCIDENTAL ITEMS MAY INCLUDE, BUT ARE NOT LIMITED TO: ELBOWS, FUSES AND FUSE HOLDERS, ELECTRICAL TAPE, SCOTCHKOTE, PVC GLUE, TRENCHING, BACKFILLING, PAVEMENT RESTORATION, CONCRETE SLAB REPLACEMENT, ETC.
24. POLES SHALL HAVE A FRANGIBLE TRANSFORMER BASE.
25. ALL GROUNDING CONNECTIONS SHALL BE EXOTHERMICALLY WELDED FOLLOWING THE MANUFACTURER'S GUIDELINES.
26. CONTRACTOR MUST MINIMIZE TRENCHING ACROSS STREETS BY COORDINATING THE LIGHT PLANS WITH THE SIGNALIZATION INTERCONNECT CONDUIT/WIRING AS DEPICTED ON THESE DRAWINGS.
27. MAINTAINING AGENCY FOR LIGHTING IS MIAMI-DADE COUNTY. CONTRACTOR MUST CONTACT/COORDINATE WITH APPLICABLE COUNTY OFFICIALS AND INSPECTORS PRIOR TO CONSTRUCTION.
28. CONTRACTOR SHALL MAINTAIN SAFE ACCESS TO SIDE STREETS, PRIVATE, AND COMMERCIAL DRIVEWAYS AT ALL TIMES DURING CONSTRUCTION.
29. ALL CONDUIT TRENCHING MUST BE PROPERLY BACKFILLED TO PROVIDE SAFE CROSSING AT THE END OF EACH WORK DAY OR WHENEVER THE WORK ONE BECOMES INACTIVE.
30. THE CONTRACTOR MUST EXERCISE EXTREME CAUTION WHEN WORKING THE VICINITY OF EXISTING AND PROPOSED UNDERGROUND AND OVERHEAD UTILITIES.
31. ALL UNDERGROUND CONDUCTORS SHALL BE RHH- RHW-XLP.
32. ALL CONDUITS THAT WILL REMAIN EMPTY AS SPARES SHALL BE CLEANED INSIDE AND BOTH ENDS CAPPED. PLACE PULLBOXES AT THE ENDS OF THE CONDUITS.

		Designed By	FJR
		Drawn By	XAF
		Checked By	EPA
		Scale	AS SHOWN
11/22/2023	UPDATED BIDDING PLANS		
08/29/2023	PERMIT PLANS SUBMITTAL		
No.	Date	Description	



SOUTH DADE TRANSIT OPERATIONS CENTER
12805 Biscayne Drive, Homestead, Florida 33033

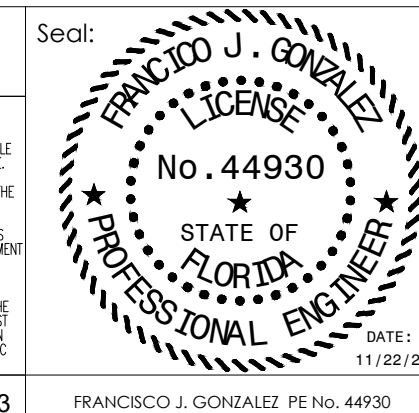


APPROVED A. CHAVARRIA DATE 08/29/2023

CONTRACT NO. CIP227A-DTPW22-CT

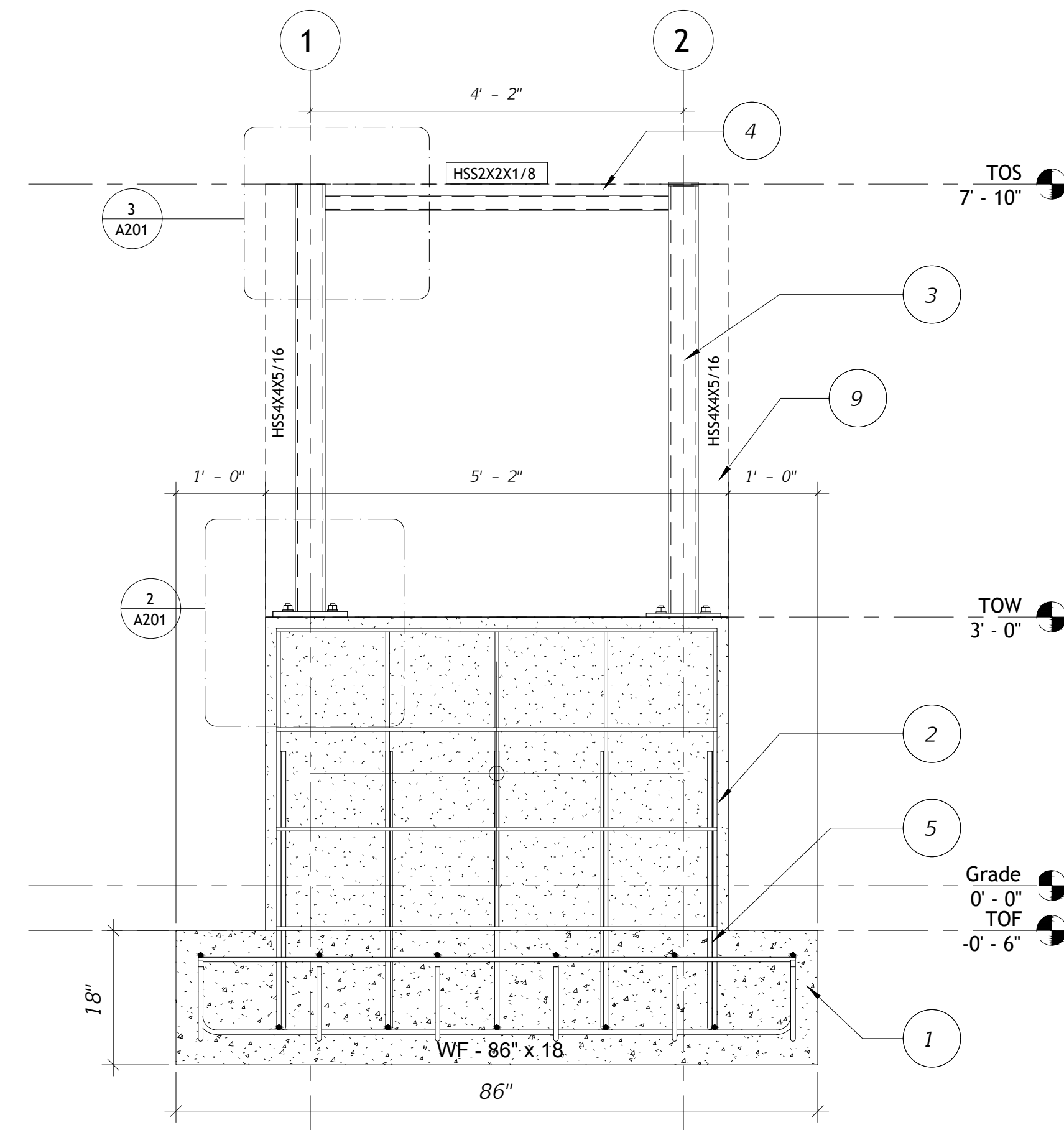


APPROVED EPA DATE 08/29/2023

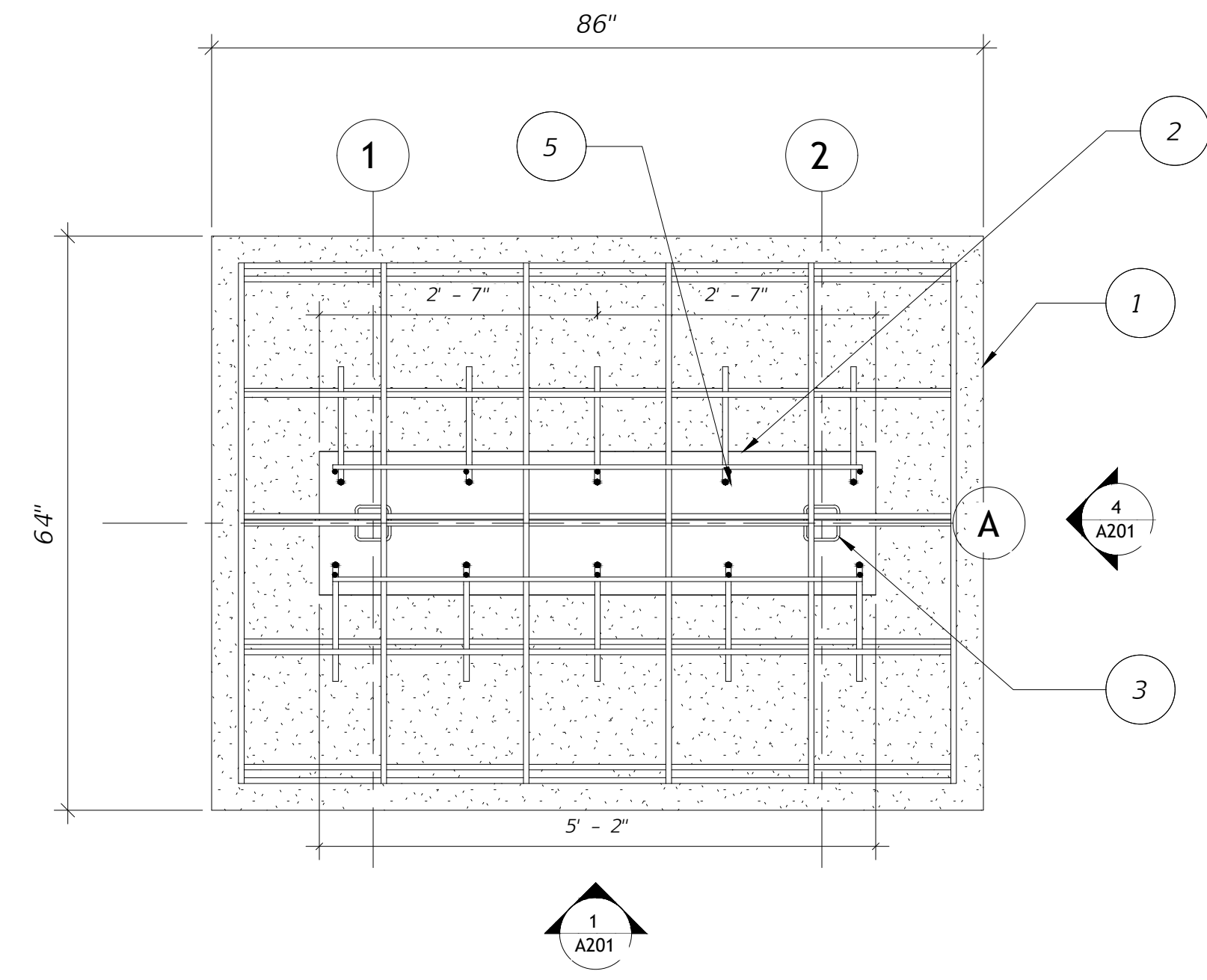


LIGHTING PLAN GENERAL NOTES (SW 127 AVE)

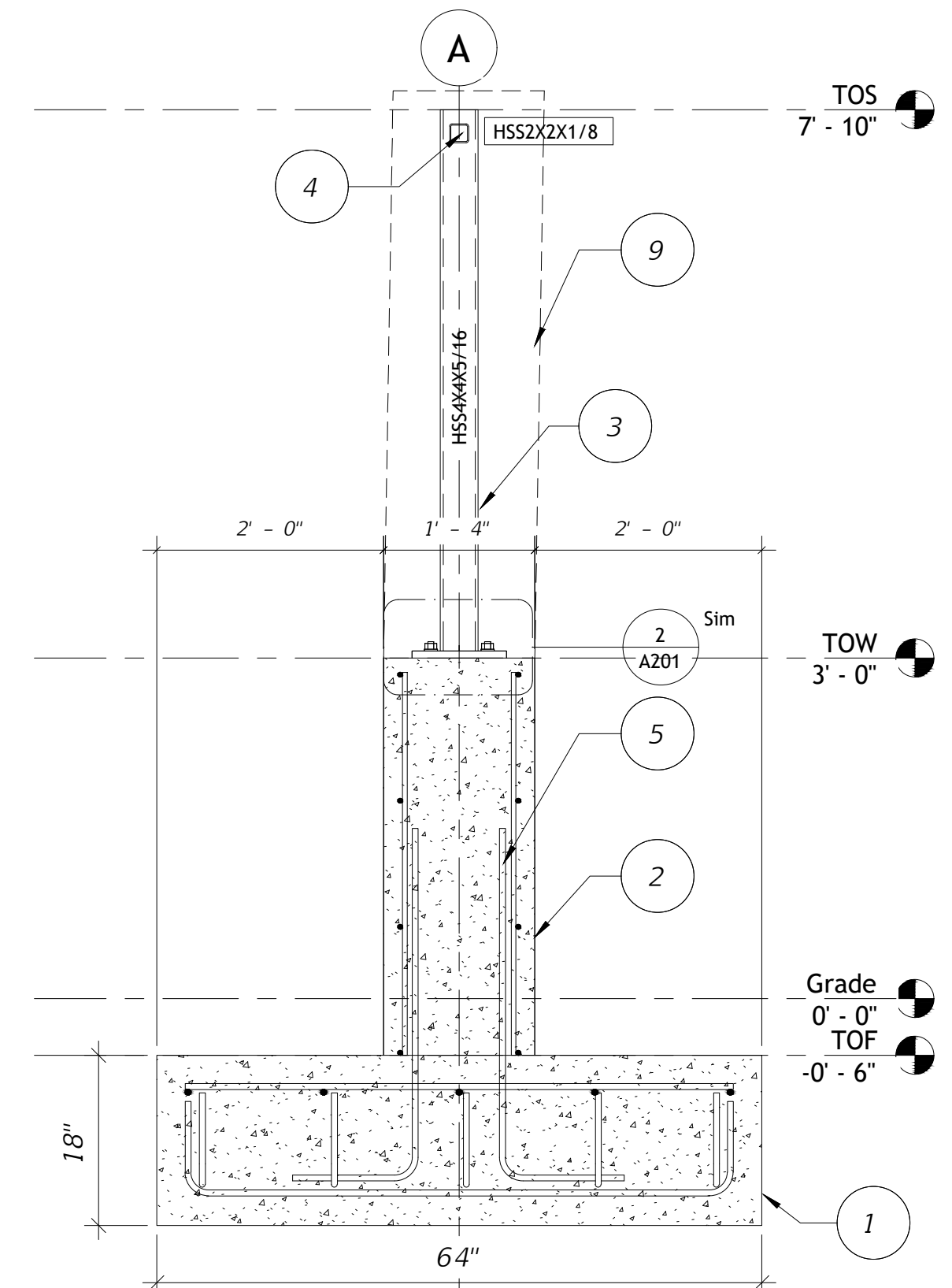
DRAWING NO. **BM-0-RLN-200** SHEET NO.



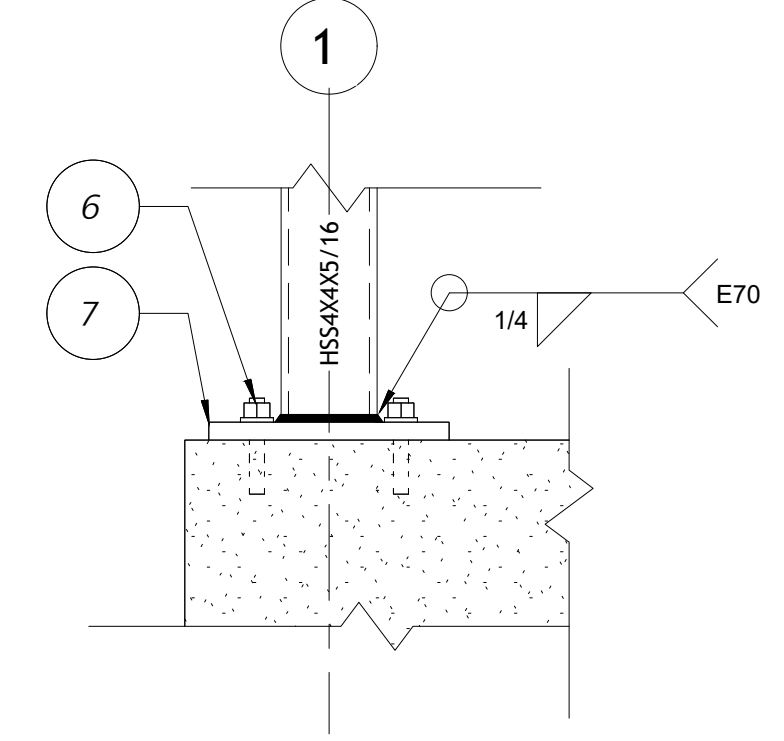
1
A201 FRONT ELEVATION-MONUMENT SIGN
3/4" = 1'-0"



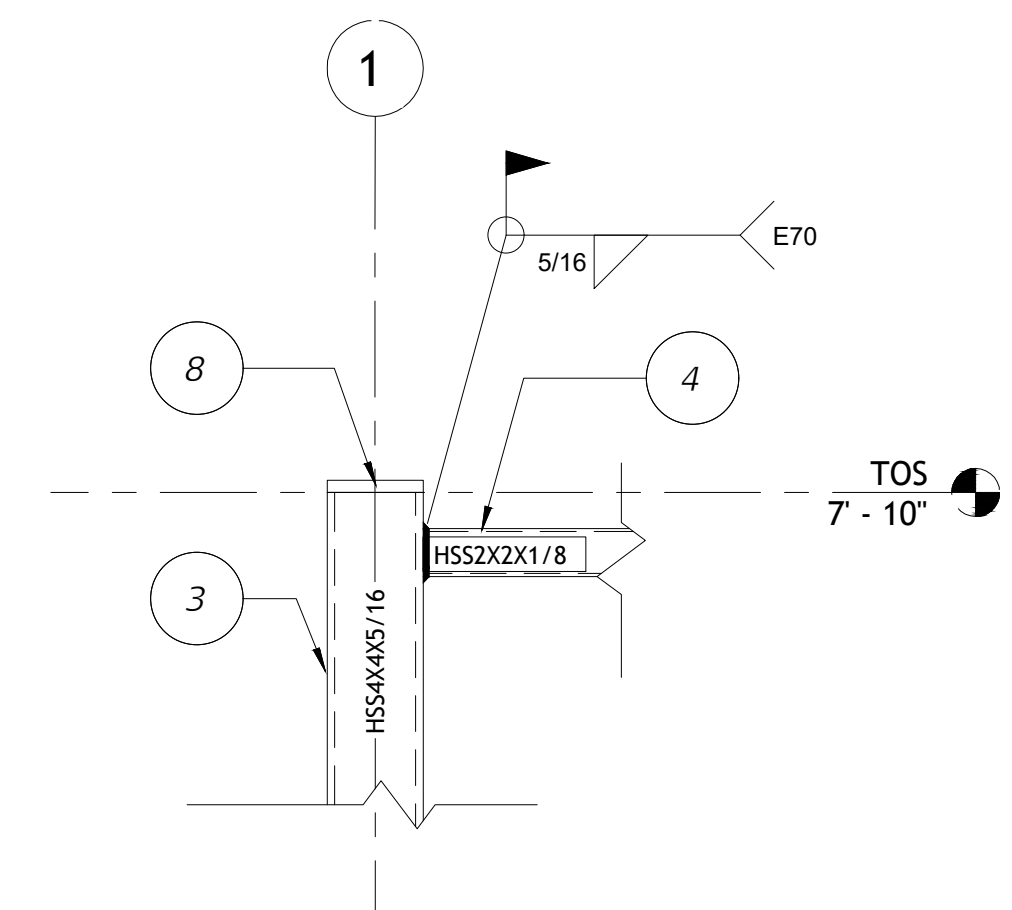
5
A201 TOP VIEW - MONUMENT SIGN
3/4" = 1'-0"



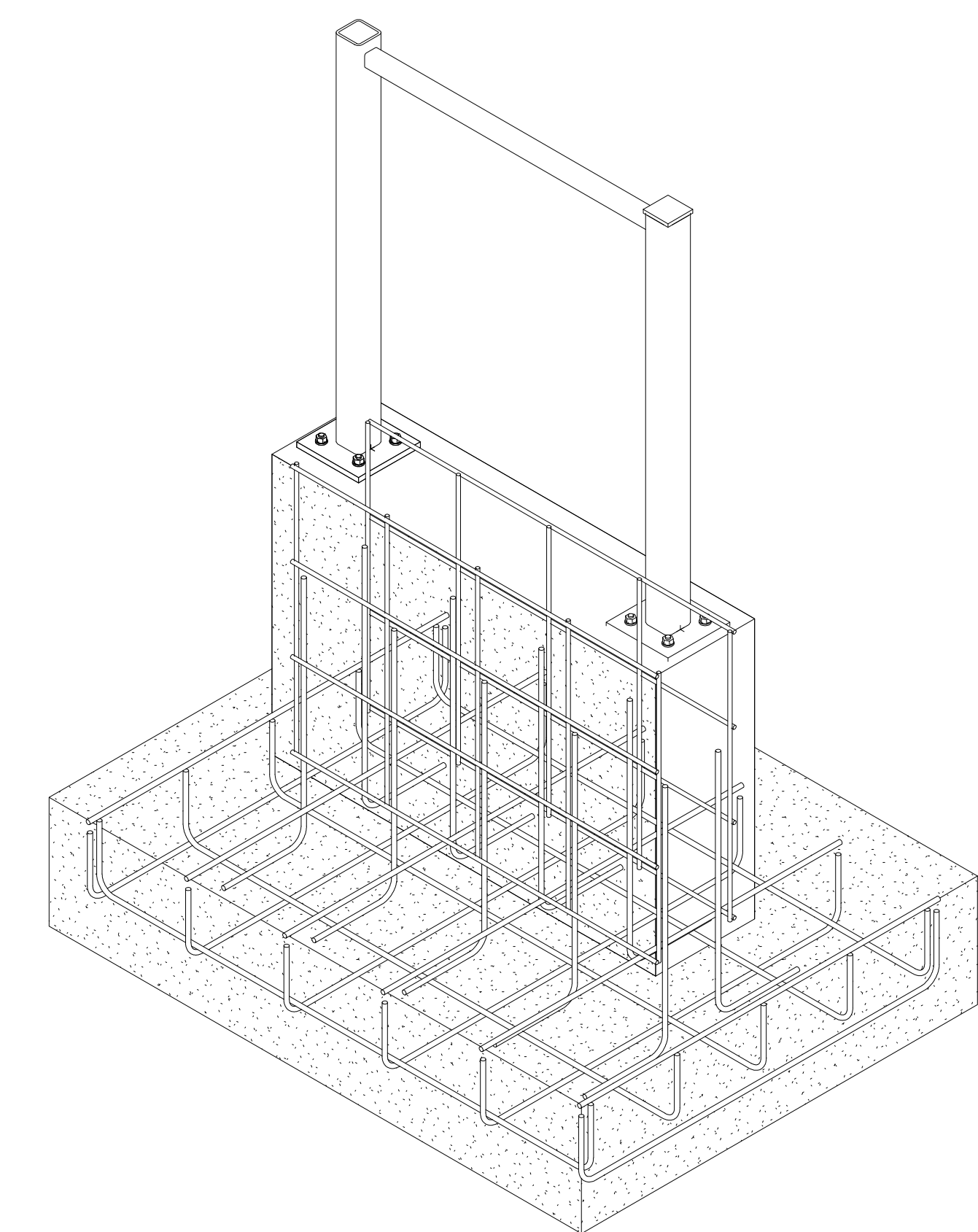
4
A201 SIDE ELEVATION MONUMENT SIGN
3/4" = 1'-0"



2
A201 CONNECTION DETAIL BASE PLATE
1 1/2" = 1'-0"



3
A201 CONNECTION DETAIL HSS FRAMING
1 1/2" = 1'-0"




6
A201 ISOMETRIC VIEW

- SHEET KEYNOTES.**
- | KEY | DESCRIPTION |
|-----|--|
| 1 | FOUNDATION REINFORCEMENT -#5@18" MAX SPACING E.W WITH BOTTOM BARS TO INCLUDE STANDARD HOOKS. CONCRETE COMPRESSIVE STRENGTH IS 4000 PSI. PROVIDE 3" COVER |
| 2 | CONCRETE WALL -REINFORCEMENT #4 E.W -TWO LAYERS WITH MAX SPACING 18". CONCRETE COMPRESSIVE STRENGTH OF 4000 PSI. |
| 3 | STEEL HSS COLUMN SIZED AS INDICATED. |
| 4 | STEEL HSS BEAMS SIZED AS INDICATED. |
| 5 | #5 DOWELS LAP SPLICE WITH WALL REINFORCEMENT . PROVIDE MINIMUM OF 24" LAP LENGTH. |
| 6 | HILTI HIT-HY-200 V3+ HIT Z 1/2 EMBEDDED MINIMUM 2.75 IN |
| 7 | BASE PLATE 10X10 - 3/4 " THICK-STEEL A36 FY=36 KSI FU=58.0 KSI |
| 8 | STEEL PLATE CAP |
| 9 | NEW SIGN BY OTHERS. INDICATED BY DASHED LINES |

Designed By	FJR	
Drawn By	XAF	
Checked By	EPA	
Scale	AS SHOWN	
No.	Date	Description
	08/29/2023	PERMIT PLANS SUBMITTAL


DEPARTMENT OF TRANSPORTATION AND PUBLIC WORKS

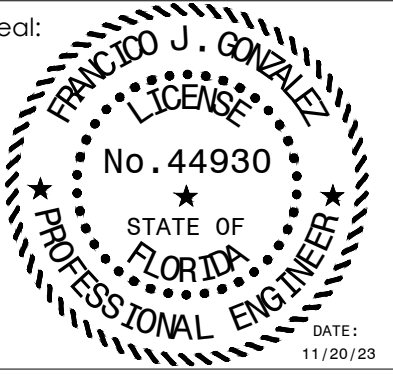
SOUTH DADE TRANSIT OPERATIONS CENTER
 12805 Biscayne Drive Homestead, Florida 33033


 7650 Corporate Center Dr #300, Miami, FL 33126
 Tel. 305.514.3100 Fax. 305.261.5735
 https://www.wsp.com
 CERTIFICATE OF AUTHORIZATION: 1462
All reproduction & intellectual property rights reserved ©2022

CONTRACT NO. CIP227A-DTPW22-CT

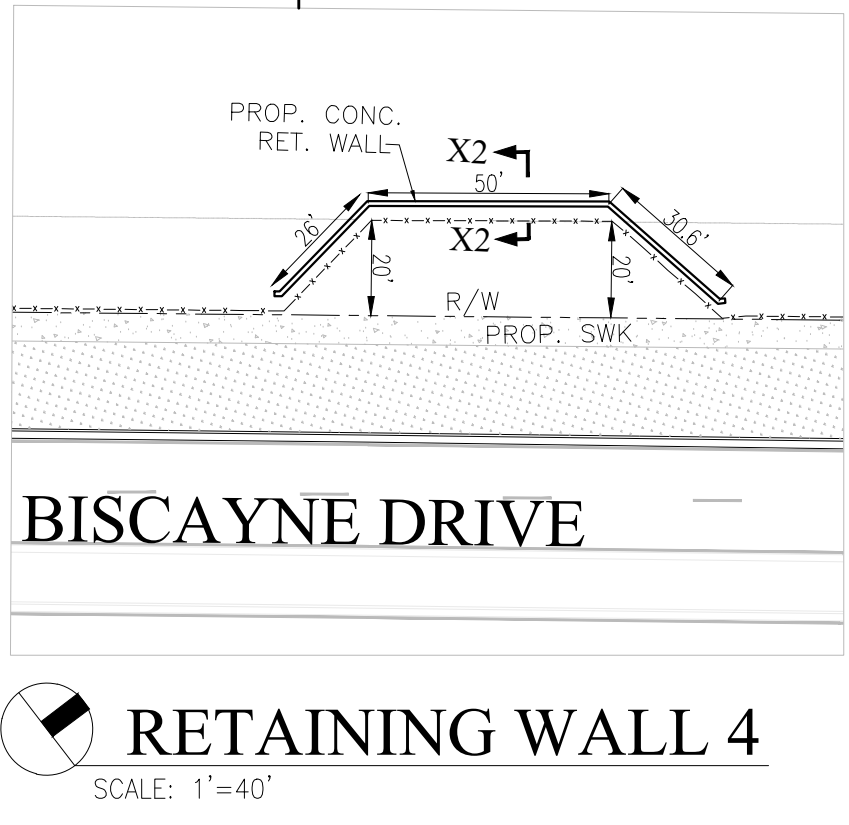
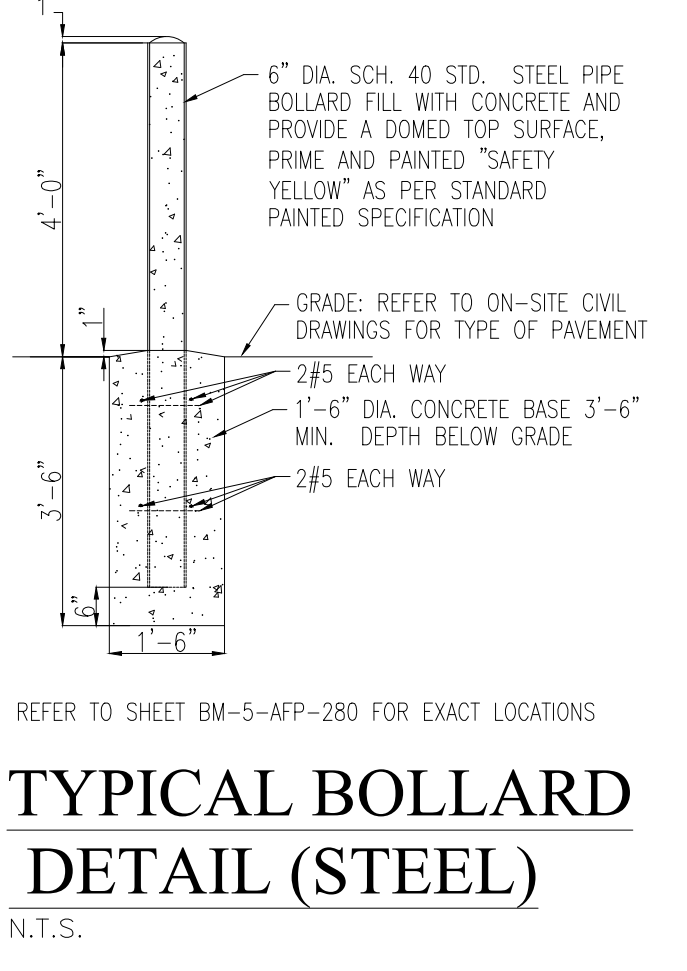
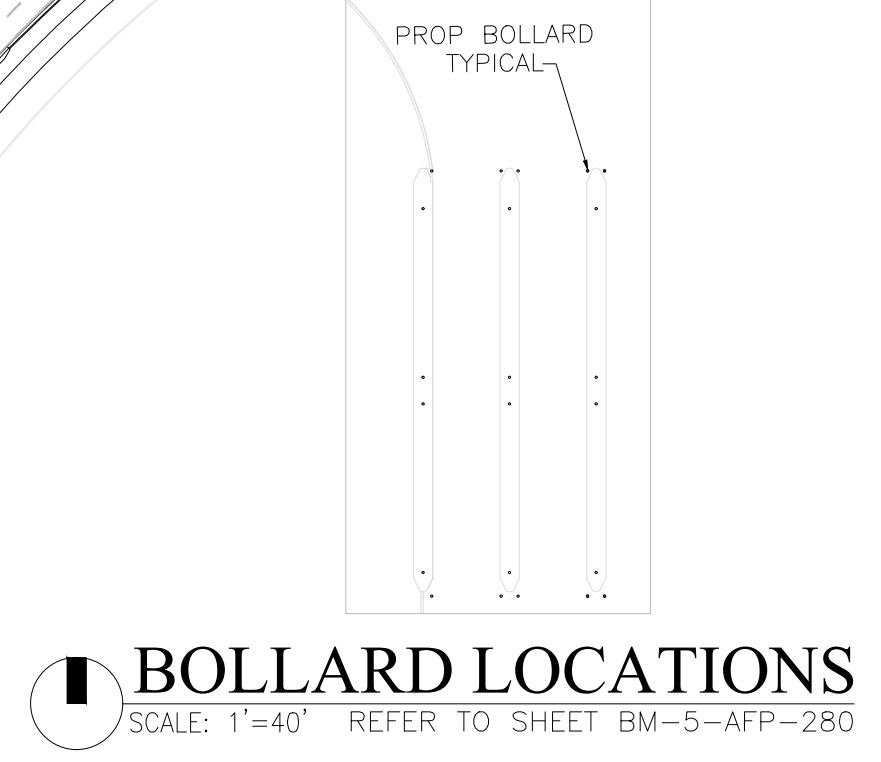
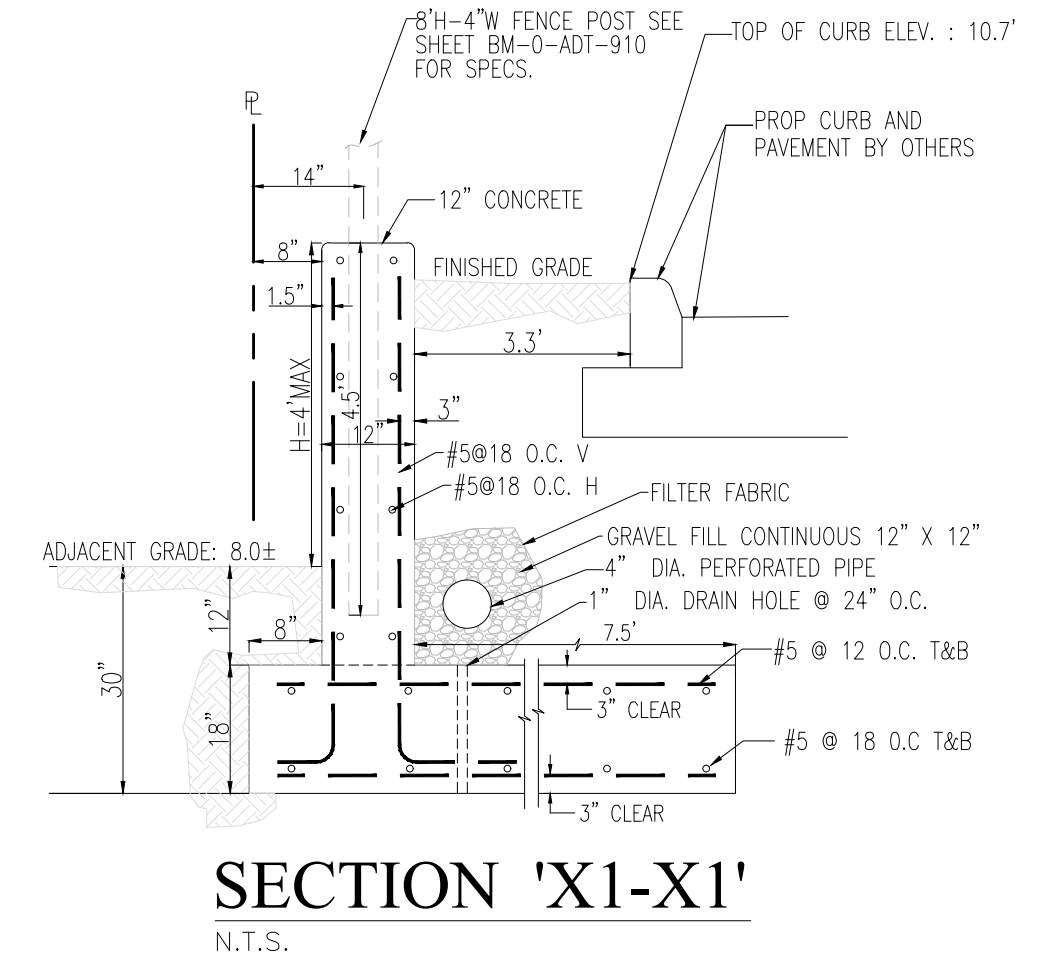
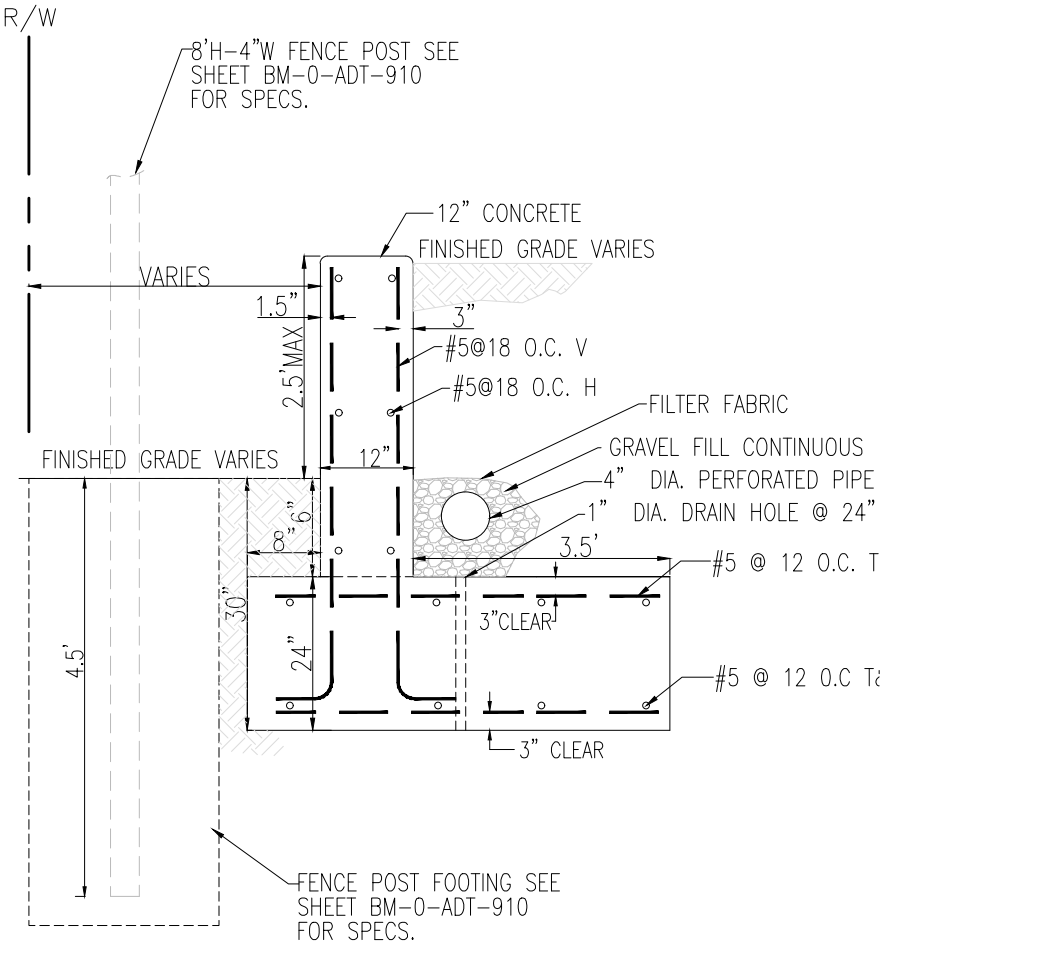
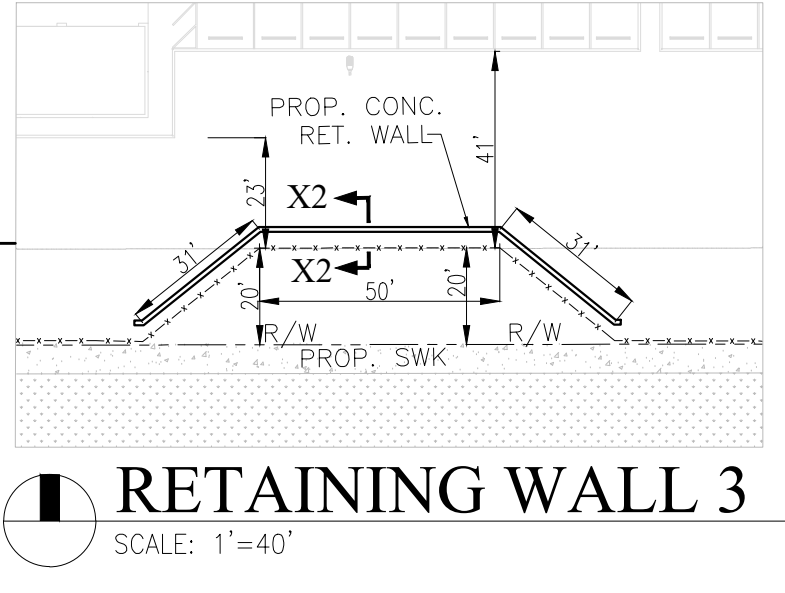
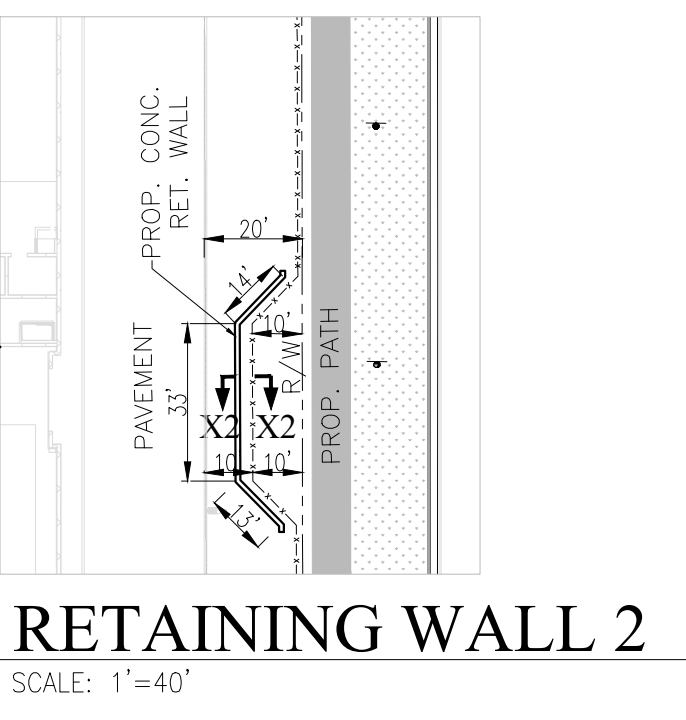
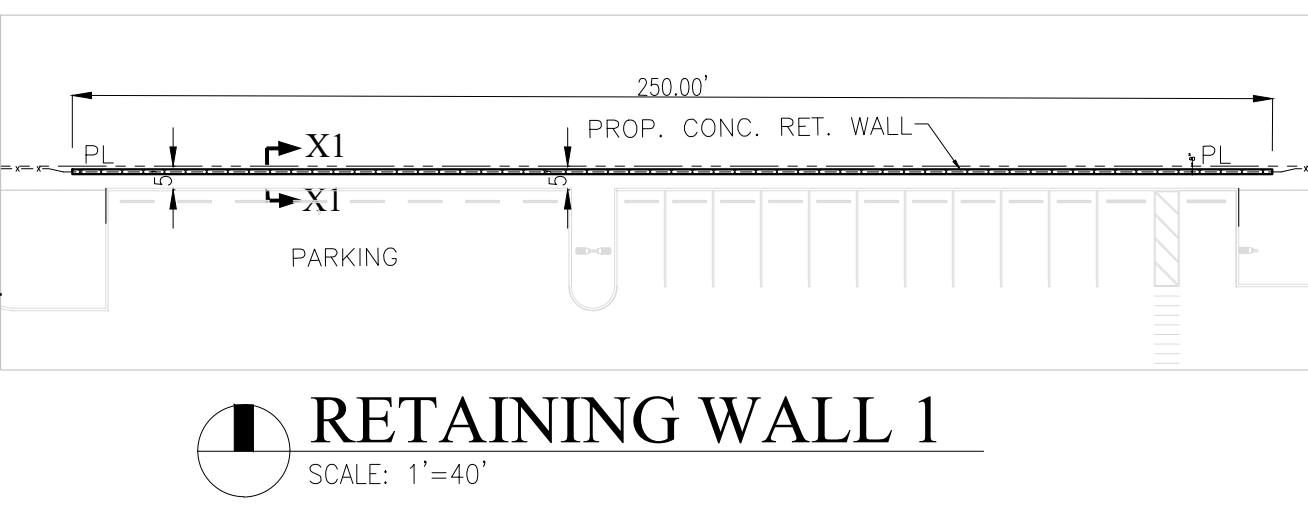
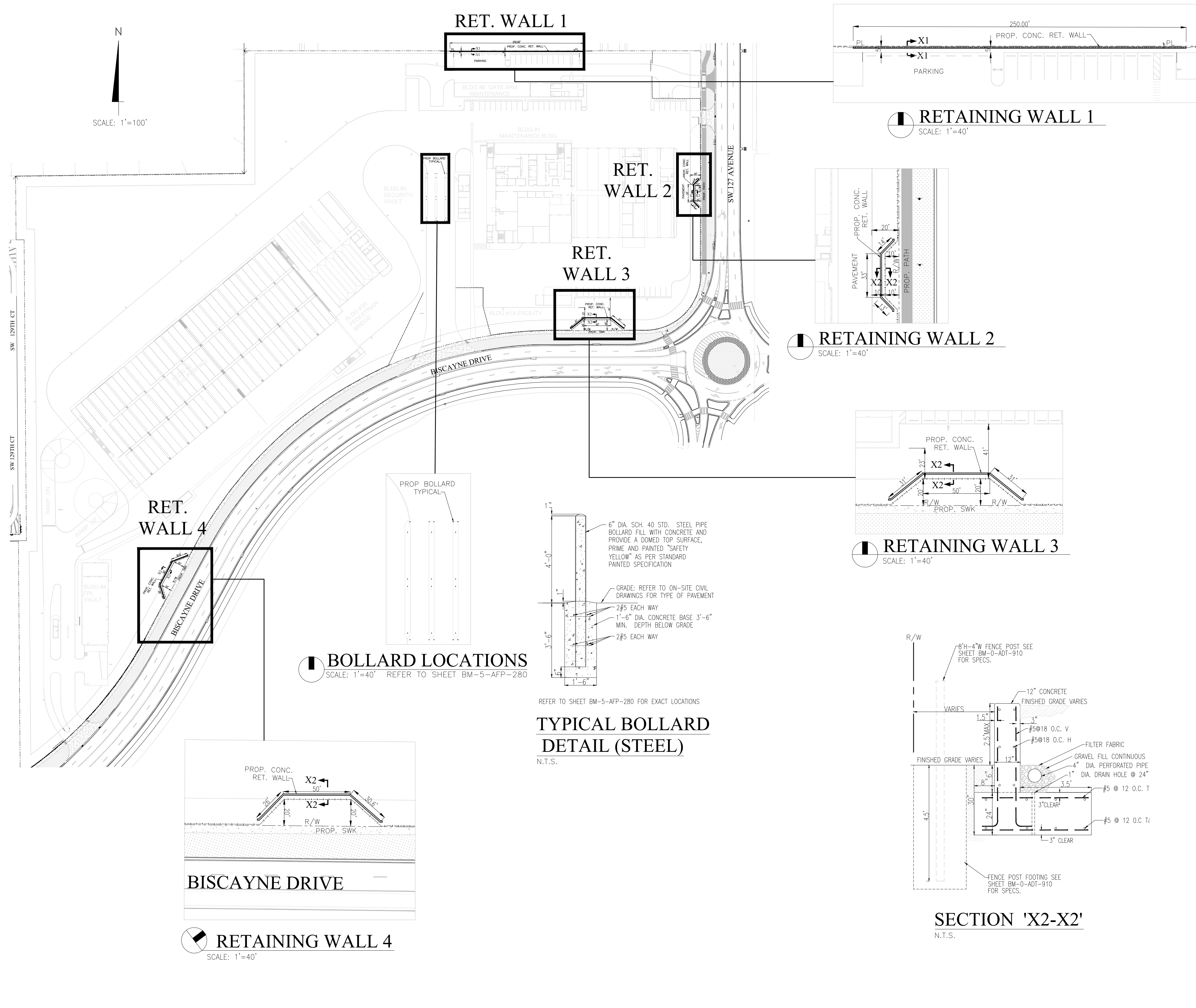

 13335 SW 124 STREET, SUITE 111
 MIAMI, FL. 33186
 TEL: (305) 234-7424
 www.ambroeng.com

All reproduction & intellectual property rights reserved ©2022

Seal:


MONUMENT DETAILS

DRAWING NO. **BM-0-CDT-104** SHEET NO.



ENGINEER'S NOTES:

- 1.) All underground information shall be verified with the different utility companies before the start of any construction or excavation, neither the engineer or owner/developer shall be responsible for this item.
- 2.) All underground installations shall be protected at all times during construction and excavation.
- 3.) All elevations refer TO N.G.V.D.
- 4.) Should field conditions conflict with this plan notify the engineer immediately.

GENERAL SPECIFICATIONS

- 1.) FLORIDA DEPARTMENT OF TRANSPORTATION STANDARD SPECIFICATIONS FOR ROAD AND BRIDGE CONSTRUCTION (1991 EDITION AND SUPPLEMENTS THERETO).

CONCRETE

- 1.) MINIMUM 28-DAYS COMPRESSIVE STRENGTH f'c 4000 PSI.

CONCRETE DETAILS

- 1.) PROVIDE 3/4" CHAMFERS ON ALL EXPOSED EDGES.
- 2.) EXPANSION JOINTS TO BE PLACED A MINIMUM OF 100 FEET.

REINFORCING STEEL

- 1.) ALL REINFORCING STEEL SHALL BE ASTM A615 GRADE 60.

Designed By	FJR	
Drawn By	XAF	
Checked By	EPA	
Scale	AS SHOWN	
No.	Date	Description
	08/29/2023	PERMIT PLANS SUBMITTAL

MIAMI-DADE COUNTY DEPARTMENT OF TRANSPORTATION AND PUBLIC WORKS

SOUTH DADE TRANSIT OPERATIONS CENTER
12805 Biscayne Drive, Homestead, Florida 33033

wsp 7650 Corporate Center Dr #300, Miami, FL 33126
Tel: 305.514.3100 Fax: 305.261.5735
https://www.wsp.com
CERTIFICATE OF AUTHORIZATION: 1462
All reproduction & intellectual property rights reserved ©2022

AMBRO INC. Consulting Engineers and Planners
13335 SW 124 STREET, SUITE 111 MIAMI, FL. 33186
TEL: (305) 234-7424 www.ambroeng.com
All reproduction & intellectual property rights reserved ©2022

Seal: FRANCISCO J. GONZALEZ
LICENSE No. 44930
STATE OF FLORIDA
PROFESSIONAL ENGINEER
DATE: 11/29/23

CIVIL DETAILS

DRAWING NO. **BM-0-CDT-103** SHEET NO.

APPROVED A. CHAVARRIA DATE 08/29/2023 APPROVED EPA DATE 08/29/2023