

FY 2016 - 17 Adopted Budget and Multi-Year Capital Plan

Regulatory and Economic Resources

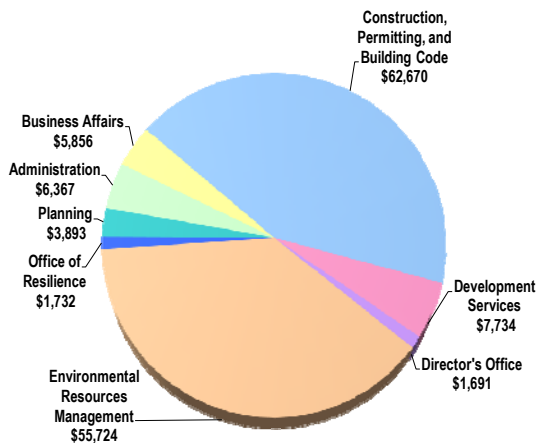
The Regulatory and Economic Resources (RER) Department mission is to enable sustainable economic development through smart regulatory, planning, and resiliency strategies and business expansion initiatives. In fulfilling this mission, the Department is challenged to weigh regulatory efforts and policies, planning, economic development, and resilience objectives, in order to ensure overall health of the community now and in the future. RER provides a broad portfolio of services in order to support its mission, including: permitting, licensing, and code enforcement activities related to compliance with applicable building, zoning, planning, environmental, platting, traffic, and industry-specific codes and regulations; resilience planning and countywide initiative coordination and implementation; land use and community planning and policy; environmental, historic resource, and consumer protection and education; economic research; and the development and implementation of countywide and industry/neighborhood-specific economic development strategies.

RER performs activities that are related to both the Neighborhood and Infrastructure and Economic Development strategic areas. As part of the Neighborhood and Infrastructure strategic area, RER provides services related to contractor licensing, construction products evaluation, training, education, and certification of building code enforcement personnel countywide; reviews applications, issues building permits, and performs inspections to verify compliance with the applicable construction codes and regulations; investigates complaints, enforces the correction of building code violations related to new and existing buildings, enforces local regulations related to unsafe buildings and structures, and provides code compliance services; and provides administrative and technical support to boards and panels. The Department oversees protection of our air, water, and soil resources, including protection of the Biscayne Aquifer, our sole source of drinking water; responds to complaints regarding pollution; oversees clean-up of contaminated soil; protects, restores, and enhances natural areas and monitors environmental resources; and manages capital programs, including beach renourishment, as well as acquisition and protection of environmentally endangered lands. RER prepares zoning recommendations, coordinates all concurrency management activities, reviews development plans for compliance with zoning regulations, issues certificates of use, administers impact fee programs, and provides technical support at zoning meetings of the Board of County Commissioners (BCC) and Community Zoning Appeals Board meetings. RER administers and enforces growth management through the Comprehensive Development Master Plan (CDMP) and the Historic Preservation ordinance. Finally, the Department is responsible for proactively engaging all County departments, as well as other jurisdictions and stakeholders, to plan and execute strategies to address the most pressing threats to the resiliency of Miami-Dade County.

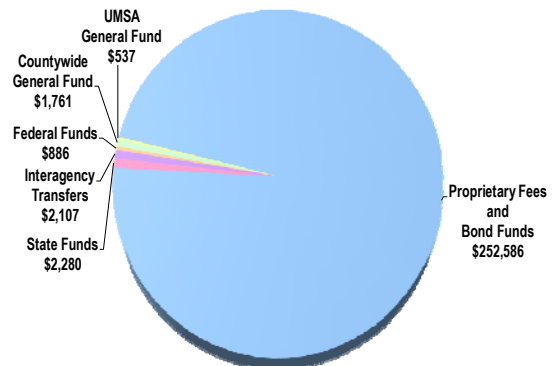
As part of the Economic Development strategic area, RER promotes film and television related industries; promotes economic growth through administration of local economic development programs including the Qualified Target Industry (QTI) and the Targeted Jobs Incentive Fund (TJIF) programs; and enforces consumer laws and licensing requirements that protect purchasers of goods and services. Other functions include international trade coordination, and coordination with the County's agricultural industry.

FY 2016-17 Adopted Budget

Expenditures by Activity
(dollars in thousands)

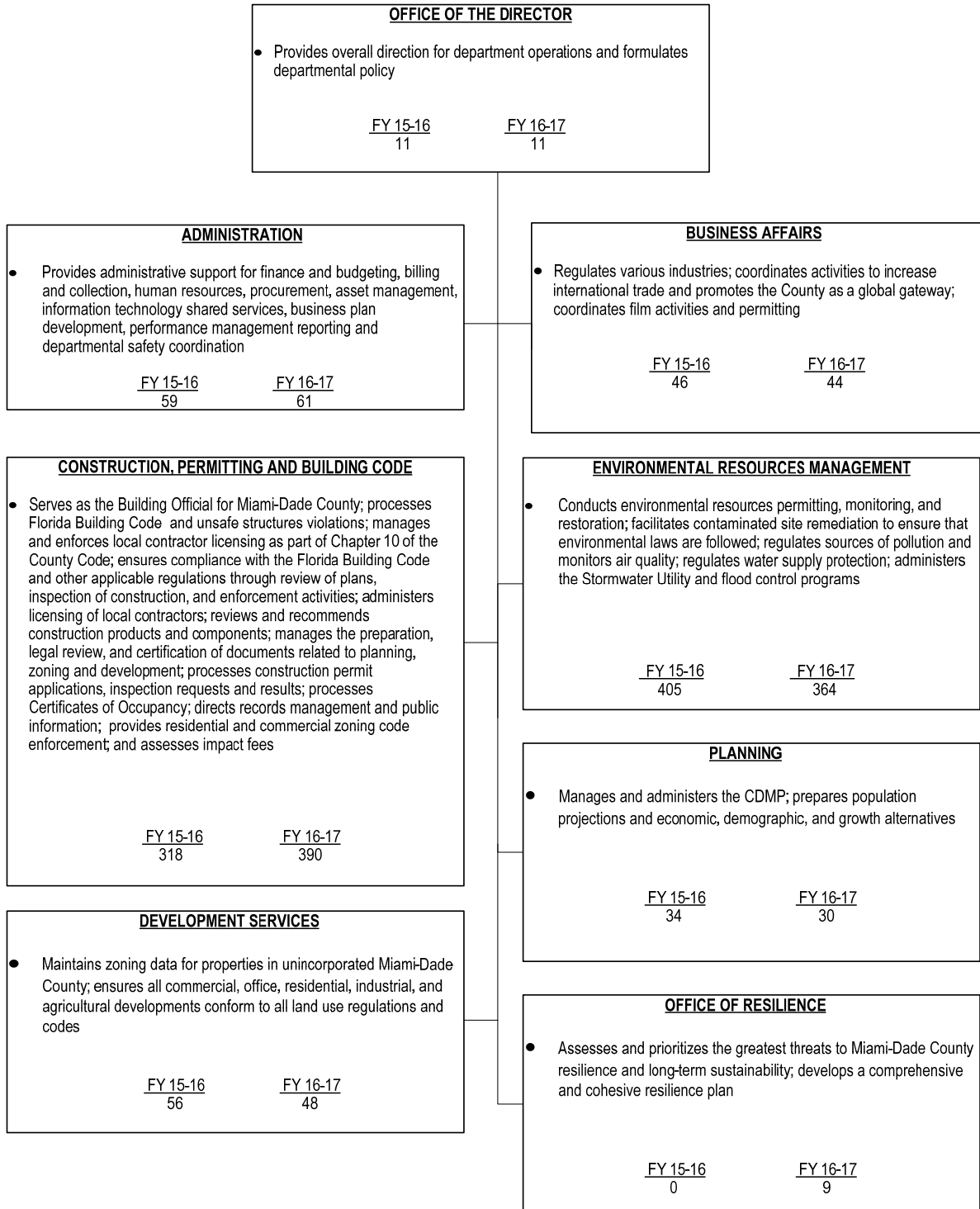


Revenues by Source
(dollars in thousands)



FY 2016 - 17 Adopted Budget and Multi-Year Capital Plan

TABLE OF ORGANIZATION



The FY 2016-17 total number of full-time equivalent positions is 968.25

FY 2016 - 17 Adopted Budget and Multi-Year Capital Plan

FINANCIAL SUMMARY

| (dollars in thousands) | Actual FY 13-14 | Actual FY 14-15 | Budget FY 15-16 | Adopted FY 16-17 |
|---|--------------------|--------------------|--------------------|---------------------|
| Revenue Summary | | | | |
| General Fund Countywide | 2,082 | 1,383 | 1,781 | 1,761 |
| General Fund UMSA | 553 | 486 | 537 | 537 |
| Auto Tag Fees | 1,739 | 1,889 | 1,600 | 1,800 |
| Building Administrative Fees | 551 | 626 | 630 | 779 |
| Carryover | 63,057 | 79,814 | 100,959 | 111,388 |
| Code Compliance Fees | 3,045 | 3,735 | 2,477 | 3,556 |
| Code Fines / Lien Collections | 9,304 | 9,848 | 7,011 | 7,369 |
| Construction / Plat Fees | 2,712 | 2,751 | 2,054 | 2,286 |
| Contract Monitoring Fees | -165 | 0 | 0 | 0 |
| Contractor's Licensing and Enforcement Fees | 1,620 | 1,459 | 1,293 | 1,269 |
| Environmentally Endangered Land Fees | 592 | 601 | 650 | 650 |
| Fees and Charges | 7,888 | 7,701 | 2,600 | 2,571 |
| Foreclosure Registry | 1,999 | 1,580 | 1,900 | 1,126 |
| Impact Fee Administration | 2,680 | 3,573 | 1,802 | 2,175 |
| Local Business Tax Receipt | 471 | 471 | 471 | 471 |
| Miscellaneous Revenues | 221 | 231 | 210 | 213 |
| Operating Permit Fee | 7,725 | 8,085 | 7,502 | 7,522 |
| Other Revenues | 2,199 | 2,033 | 2,007 | 2,089 |
| Permitting Trades Fees | 26,954 | 31,489 | 25,011 | 27,898 |
| Plan Review Fee | 9,262 | 9,654 | 8,265 | 8,817 |
| Planning Revenue | 812 | 1,924 | 713 | 749 |
| Product Control Certification Fees | 2,701 | 2,889 | 2,483 | 2,279 |
| Stormwater Utility Fees (County) | 0 | 0 | 30,392 | 31,900 |
| Utility Service Fee | 27,262 | 28,249 | 26,840 | 28,500 |
| Zoning Revenue | 8,118 | 8,310 | 6,934 | 7,179 |
| State Grants | 3,812 | 2,108 | 1,849 | 2,280 |
| Federal Grants | 765 | 780 | 890 | 886 |
| Airport Project Fees | 428 | 386 | 560 | 500 |
| Interagency Transfers | 1,401 | 675 | 61 | 1,607 |
| Transfer From Other Funds | 1,336 | 1,294 | 0 | 0 |
| Total Revenues | 191,124 | 214,024 | 239,482 | 260,157 |

Operating Expenditures

Summary

| | | | | |
|-------------------------------------|----------------|----------------|----------------|----------------|
| Salary | 59,240 | 63,099 | 64,801 | 70,287 |
| Fringe Benefits | 16,082 | 18,229 | 20,017 | 23,455 |
| Court Costs | 18 | 3 | 59 | 53 |
| Contractual Services | 2,826 | 3,537 | 10,265 | 10,671 |
| Other Operating | 11,702 | 10,514 | 11,988 | 12,265 |
| Charges for County Services | 19,274 | 19,577 | 20,241 | 24,609 |
| Grants to Outside Organizations | 406 | 414 | 430 | 430 |
| Capital | 1,762 | 412 | 1,329 | 4,126 |
| Total Operating Expenditures | 111,310 | 115,785 | 129,130 | 145,896 |

Non-Operating Expenditures

Summary

| | | | | |
|---|----------|----------|----------------|----------------|
| Transfers | 0 | 0 | 28,221 | 26,853 |
| Distribution of Funds In Trust | 0 | 0 | 0 | 0 |
| Debt Service | 0 | 0 | 7,232 | 7,252 |
| Depreciation, Amortizations and Depletion | 0 | 0 | 0 | 0 |
| Reserve | 0 | 0 | 74,899 | 80,156 |
| Total Non-Operating Expenditures | 0 | 0 | 110,352 | 114,261 |

| (dollars in thousands) Expenditure By Program | Total Funding | | Total Positions | |
|--|--------------------|---------------------|--------------------|---------------------|
| | Budget FY 15-16 | Adopted FY 16-17 | Budget FY 15-16 | Adopted FY 16-17 |
| Strategic Area: Neighborhood and Infrastructure | | | | |
| Administration | 7,039 | 6,367 | 59 | 61 |
| Construction, Permitting, and Building Code | 47,955 | 62,844 | 318 | 390 |
| Development Services | 7,823 | 7,734 | 56 | 48 |
| Director's Office | 1,534 | 1,691 | 11 | 11 |
| Environmental Resources Management | 55,128 | 55,779 | 405 | 364 |
| Office of Resilience | 0 | 1,732 | 0 | 9 |
| Planning | 4,570 | 3,893 | 34 | 30 |
| Strategic Area: Economic Development | | | | |
| Business Affairs | 5,081 | 5,856 | 46 | 44 |
| Total Operating Expenditures | 129,130 | 145,896 | 929 | 957 |

FY 2016 - 17 Adopted Budget and Multi-Year Capital Plan

SELECTED ITEM HIGHLIGHTS AND DETAILS

| Line Item Highlights | (dollars in thousands) | | | | |
|-------------------------|------------------------|--------------------|--------------------|--------------------|--------------------|
| | Actual FY 13-14 | Actual FY 14-15 | Budget FY 15-16 | Actual FY 15-16 | Budget FY 16-17 |
| Advertising | 306 | 308 | 295 | 274 | 332 |
| Fuel | 380 | 291 | 370 | 256 | 286 |
| Overtime | 428 | 804 | 613 | 1,036 | 975 |
| Rent | 7,939 | 8,000 | 8,444 | 7,687 | 8,489 |
| Security Services | 17 | 21 | 34 | 25 | 36 |
| Temporary Services | 269 | 500 | 232 | 188 | 421 |
| Travel and Registration | 132 | 145 | 172 | 150 | 182 |
| Utilities | 964 | 914 | 1,108 | 834 | 1,125 |

DIVISION: DIRECTOR'S OFFICE

The Office of the Director is responsible for overseeing policies and procedures; coordinating intergovernmental and communications activities, providing long-term vision and overall direction and coordination for all divisions; and representing the interests of the Department at the local, national and international levels.

DIVISION COMMENTS

- The FY 2016-17 Adopted Budget includes the addition of one position (\$100,000) for the Director's Office to assist with intergovernmental and communications activities, and the transfer of one Graphic Designer position to the Communications Department

DIVISION: CONSTRUCTION, PERMITTING, AND BUILDING CODE

The Construction, Permitting, and Building Code Division serves as the Building Official for Miami-Dade County and enforces the Florida Building Code (FBC) and other applicable construction regulations through the review of plans, inspection of construction, and other enforcement activities.

- Processes construction permit applications
- Inspects structures to ensure building compliance with the Florida Building Code (FBC) and issues permits
- Provides support to inspections and plans processing activities
- Processes violations of the FBC, Chapters 8 and 10 of the County Code, and unsafe structures regulations; directs all enforcement activities
- Provides residential and commercial code enforcement to enhance the safety and aesthetics of the community through residential education and promotion of voluntary compliance
- Oversees nuisance abatement, zoning violations, and other maintenance regulations
- Provides administrative and clerical support for the Board of Rules and Appeals, the Construction Trades Qualifying Board, and the Unsafe Structures Board
- Provides technical information and assistance to 36 unincorporated and municipal building departments to ensure uniformity in the enforcement and interpretation of the Florida Building Code
- Reviews and makes recommendations on construction products and components to be used throughout Miami-Dade County
- Issues contractor licenses

FY 2016 - 17 Adopted Budget and Multi-Year Capital Plan

| Strategic Objectives - Measures | | | | | | | | |
|--|--|----|---|----------|----------|----------|----------|----------|
| <ul style="list-style-type: none"> NI4-1: Ensure buildings are safer | | | | | | | | |
| Objectives | Measures | | | FY 13-14 | FY 14-15 | FY 15-16 | FY 15-16 | FY 16-17 |
| | | | | Actual | Actual | Budget | Actual | Target |
| Receive and process construction permit applications and provide support to inspections and plans processing | Permits issued | OP | ↔ | 46,524 | 49,466 | 48,000 | 48,961 | 48,000 |
| Ensure building compliance with the FBC and other codes through inspections, plans processing, enforcement, and educational outreach | Percentage of field inspections rejected | EF | ↓ | 20% | 18% | 25% | 14% | 25% |
| | Average business days to process residential permit applications* | EF | ↓ | 9 | 12 | 12 | 12 | 15 |
| | Average business days to process commercial permit applications* | EF | ↓ | 18 | 23 | 20 | 23 | 25 |
| Improve response time for reviewing property maintenance and zoning complaints | Average calendar days from zoning complaint to first inspection** | EF | ↓ | 46 | 47 | 15 | 5 | 5 |
| | Average calendar days from first zoning (Chapter 33) inspection to compliance with warning letter* | EF | ↓ | 63 | 65 | 60 | N/A | N/A |
| | Average calendar days from receipt of exterior property maintenance (Chapter 19) complaint to first inspection** | EF | ↓ | 56 | 43 | 10 | 5 | 5 |
| | Average calendar days from property maintenance (Chapter 19) inspection to compliance with warning letter* | EF | ↓ | 51 | 55 | 40 | N/A | N/A |

* These measures capture timeframes for plans reviewed concurrently by all disciplines.

** Performance for these measures is no longer tracked in this manner by the department. The FY 2017-18 Proposed Budget will include measures replacing these.

DIVISION COMMENTS

- The FY 2016-17 Adopted Budget includes the addition of 18 positions (\$1,659,000), the transfer of six positions from the Development Services Division to meet the increased demand of permitting activities and to implement permit customer improvement efforts, and the transfer of one position from Business Affairs Division
- The FY 2016-17 Adopted Budget includes the transfer of 47 positions from the Environmental Resources Management Division to consolidate plan review and construction permitting functions and to better reflect the organizational reporting structure and enhance the focus on resilience

FY 2016 - 17 Adopted Budget and Multi-Year Capital Plan

DIVISION: ENVIRONMENTAL RESOURCES MANAGEMENT

The Environmental Resources Management Division protects air, water, soils, and natural systems that are vital to human health and safety and provide habitat for unique plant and animal communities that occur nowhere else in the world.

- Oversees countywide environmental regulatory functions including air and water quality monitoring, endangered lands acquisition, restoration and remediation of contaminated sites
- Manages, coordinates, and administers environmental education programs
- Enforces federal, state, and local laws to prevent water and air pollution, protects vulnerable drinking water supply and water infrastructure, and minimizes flooding
- Investigates complaints received from the public
- Administers the Stormwater Utility and flood control programs
- Supports the Environmental Quality Control Board in review and action upon appeals or requests for variances

Strategic Objectives - Measures

- NI3-1: Maintain air quality

| Objectives | Measures | | | FY 13-14 | FY 14-15 | FY 15-16 | FY 15-16 | FY 16-17 |
|---|---|----|---|----------|----------|----------|----------|----------|
| | | | | Actual | Actual | Budget | Actual | Target |
| Ensure timely processing of air quality inspections and permits | Percentage of state air quality permits issued on time | EF | ↑ | 100% | 100% | 100% | 91% | 100% |
| | Percentage of County air quality permits issued on time | EF | ↑ | 98% | 99% | 100% | 99% | 100% |

- NI3-3: Protect groundwater and drinking water wellfield areas





| Objectives | Measures | | | FY 13-14 | FY 14-15 | FY 15-16 | FY 15-16 | FY 16-17 |
|---|---|----|---|----------|----------|----------|----------|----------|
| | | | | Actual | Actual | Budget | Actual | Target |
| Ensure, through efficient review of plans, that land use and development within Miami-Dade County is in accordance with the Miami-Dade County Environmental Protection Code (EPC) | Percentage of building permit plans reviewed within four to eight business days* | EF | ↑ | 86% | 78% | 95% | 93% | 95% |
| Facilitate prompt resolution of citizen environmental complaints | Percentage of sanitary nuisance complaints responded to within 24 hours | EF | ↑ | 94% | 92% | 92% | 91% | 90% |
| Minimize the impact of development on environmental resources | Percentage of Resource Protection Permit applications reviewed on time (Class I - VI Permits) | EF | ↑ | 99% | 99% | 95% | 100% | 95% |
| | Percentage of wetland acres reviewed for unauthorized impacts | EF | ↑ | 50% | 46% | 50% | 52% | 50% |

*FY 2013-14 Actual and FY 2014-15 Actual is below current figures due to increased volume of permit applications received overall, and a large influx of applications received prior to the change to the Florida Building Code effective July 1, 2015.

FY 2016 - 17 Adopted Budget and Multi-Year Capital Plan

| <ul style="list-style-type: none"> NI3-3: Protect groundwater and drinking water wellfield areas | | | | | | | | |
|---|--|----|---|----------|----------|----------|----------|----------|
| Objectives | Measures | | | FY 13-14 | FY 14-15 | FY 15-16 | FY 15-16 | FY 16-17 |
| | | | | Actual | Actual | Budget | Actual | Target |
| Conduct long-term groundwater sampling to document the environmental health and status of the Biscayne Aquifer | Percentage of samples from Biscayne Bay surface water in compliance with County bacterial standard | OC | ↑ | 100% | 97% | 97% | 98% | 95% |
| | Percentage of surface water monitoring samples collected on schedule | EF | ↑ | 99% | 100% | 97% | 100% | 97% |
| Conduct long-term surface and groundwater sampling to document the environmental health and status of Biscayne Bay, its tributaries, and the Biscayne Aquifer | Percentage of contaminated site rehabilitation documents reviewed on-time | EF | ↑ | 97% | 96% | 90% | 91% | 90% |
| | Percentage of wellfield monitoring samples collected on schedule | EF | ↑ | 99% | 99% | 95% | 99% | 95% |

DIVISION COMMENTS

-  The FY 2016-17 Adopted Budget includes budgeted reimbursements of \$500,000 from the Miami-Dade Aviation Department for personnel and operating expenses; activities include the oversight of environmental aspects of construction activities, assessment and oversight of the cleanup of contaminated sites, and inspections of permitted facilities
-  In FY 2016-17, the Parks, Recreation and Open Spaces Department will continue land management for the Environmentally Endangered Lands (EEL) Program, with funding support from the EEL Program (\$3 million)
-  In FY 2016-17, the Environmental Resources Management Division will continue to support a sustainable environment by offering free trees to plant in the community through the Adopt-a-Tree Program funded by donations and operating funds (\$208,000)
-  In FY 2016-17, the Environmental Resources Management Division will provide funding for Environment Protection and Education grant programs administered by the Office of Management and Budget's Grants Coordination Division (\$430,000)
- In FY 2015-16, as part of the Department's ongoing reorganization efforts, 35 positions were transferred from the Department of Transportation and Public Works to the Environmental Resources Management Division to administer County stormwater management activities
 - The FY 2016-17 Adopted Budget includes the addition of three positions (\$254,000) for the Environmental Resources Management Division to meet increased demand for environmental activities, the converting of three part-time to full-time positions, and the transfer of 47 permitting positions to the Construction, Permitting, and Building Code Division to consolidate plan review and construction permitting functions and to better reflect the organizational reporting structure and enhance the focus on resilience

FY 2016 - 17 Adopted Budget and Multi-Year Capital Plan

DIVISION: PLANNING

The Planning Division provides policies for sound growth management, historic preservation, urban planning, and transportation development through the Comprehensive Development Master Plan (CDMP) and related activities.

- Conducts long and short range planning activities relating to the social, economic and physical development, and growth management of the County
- Administers and implements the County's CDMP and its policies
- Conducts studies promoting smart growth
- Conducts demographic, economic, and geographic research
- Provides support to County departments, the Board of County Commissioners, and advisory committees and boards, and outside local agencies and governments
- Administers the Concurrency Management Program, Agricultural Practices Board and Historic Preservation Board
- Coordinates countywide historic preservation activities and implements the requirements of Miami-Dade County's Historic Preservation ordinance
- Conducts economic analysis to assist the administration and the BCC in evaluating policy options, and administers state and local economic incentives, including the Qualified Target Industry (QTI) and County Targeted Jobs Incentive Fund (TJIF)

DIVISION COMMENTS

- The FY 2016-17 Adopted Budget includes the addition of two positions for the Planning Division to assist with historical preservation functions (\$73,000) and to reestablish the Chief of Metropolitan Planning (\$75,000)
- The FY 2016-17 Adopted Budget includes budget reimbursements of \$70,000 from the Metropolitan Planning Organization for personnel and operating expenses

DIVISION: DEVELOPMENT SERVICES

The Development Services Division maintains zoning data and implements the zoning code, including the permitted uses, for properties in unincorporated Miami-Dade County.

- Reviews and evaluates zoning public hearing applications and land platting
- Prepares community-based development plans and implementing ordinances
- Provides technical assistance to developers and the public
- Provides support to various boards and committees including the Development Impact Committee (DIC) Executive Council, Community Zoning Appeals Board, and the Board of County Commissioners

DIVISION COMMENTS

- As a result of process improvements, the FY 2016-17 Adopted Budget includes the transfer of eight positions from the Development Services Division, including six positions to the Construction, Permitting, and Building Code Division, one position to the Administration Division, and one position to the Department of Transportation and Public Works

FY 2016 - 17 Adopted Budget and Multi-Year Capital Plan

DIVISION: ADMINISTRATION

The Administration Division provides coordination of personnel, finance, budget, planning, procurement, information systems, and customer service functions department-wide.

- Prepares and monitors the Department's operating and capital budgets
- Coordinates the departmental business plan and performance management reports
- Oversees revenue collection, billing, grant management, accounts payable, financial reporting, procurement, capital and material inventory control, and fleet management
- Coordinates information technology shared services for the Department
- Manages personnel functions including payroll, labor management, recruitment, compensation, personnel reporting, employee safety, emergency management, and performance evaluation
- Pursues opportunities for technology improvements to improve customer service, increase efficiency, and provide greater information access and exchange department-wide

DIVISION COMMENTS

- The FY 2016-17 Adopted Budget includes \$6 million to replace the Permitting/Code Enforcement and Content Management systems of the Department, which have reached the end of their life cycle, and to transition to newer solutions that should improve the customer experience and reduce regulatory complexities
- In FY 2015-16, as part of the Department's ongoing reorganization efforts, five positions were transferred to the Administration Division from the Department of Transportation and Public Works to manage fiscal functions for County stormwater management activities; the FY 2016-17 Adopted Budget includes the transfer of two positions from other divisions

DIVISION: BUSINESS AFFAIRS

The Business Affairs Division incorporates functions related to regulation, agriculture, consumer protection, economic development, international trade and film and entertainment activities.

- Licenses and regulates the locksmith, towing, motor vehicle, moving, vehicle immobilization, motor vehicle title loan and water re-metering industries; registers telecommunication companies; and issues domestic partnership certificates
- Promotes international trade through various initiatives, including trade missions, local workshops, protocol support, and administration of the Sister City program
- Promotes the film and entertainment industry through various initiatives, including business attraction and industry development, policy formation efforts at the state and local levels, the issuing of film permits, and coordination of support between production companies and County departments

Strategic Objectives - Measures

- ED1-1: Reduce income disparity by increasing per capita income

| Objectives | Measures | | | FY 13-14 | FY 14-15 | FY 15-16 | FY 15-16 | FY 16-17 |
|---|----------------------------|----|---|----------|----------|----------|----------|----------|
| | | | | Actual | Actual | Budget | Actual | Target |
| Identify opportunities for film industry growth | Film Industry Jobs created | OC | ↑ | 11,869 | 16,816 | 13,000 | 11,803 | 12,500 |

- ED3-1: Attract and increase foreign direct investments and international trade from targeted countries

| Objectives | Measures | | | FY 13-14 | FY 14-15 | FY 15-16 | FY 15-16 | FY 16-17 |
|--|--|----|---|----------|----------|----------|----------|----------|
| | | | | Actual | Actual | Budget | Actual | Target |
| Increase opportunities for international trade | Business matchmaking meetings arranged | OP | ↔ | 200 | 165 | 200 | 200 | 165 |
| | Inbound missions supported | OP | ↔ | 6 | 14 | 6 | 58 | 10 |

FY 2016 - 17 Adopted Budget and Multi-Year Capital Plan

DIVISION COMMENTS

- The FY 2016-17 Adopted Budget includes support from the Greater Miami Convention and Visitors Bureau (\$175,000) towards economic development and film and entertainment activities
- *In FY 2015-16, as a part of the Department's ongoing reorganization efforts, all Passenger Transportation activities and 43 positions in the Business Affairs Division were transferred to the Department of Transportation and Public Works*
- The FY 2016-17 Adopted Budget includes the transfer of one position from the Business Affairs Division to the Administration Division and the transfer of one position to the Construction, Permitting, and Building Code Division due to consolidation of collection efforts within the Department
- The Department is formalizing grant agreements based on the \$90 million in Economic Development Fund (EDF) allocations approved by the Board of County Commission (BCC); to date, grant agreements valued at \$15.5 million have been approved, and subsequent agreements valued at \$1.1 million are currently under consideration for BCC approval
- To address the continuing Laurel Wilt epidemic in South Dade, \$150,000 of new funding from the General Fund will be provided in FY 2016-17

DIVISION: OFFICE OF RESILIENCE

The Office of Resilience is responsible for assessing and prioritizing the greatest threats to Miami-Dade County's resilience and long-term sustainability, and developing a comprehensive and cohesive Resilience Plan.

- Engages and works with diverse leaders and stakeholders from within County government and throughout the community to insure inclusive input in determining and addressing the most pressing threats to Miami-Dade County
- Works closely with Rockefeller 100 Resilient Cities and partners to develop a Resilience Plan that ensures resilience strategies are integrated within all of the County's planning and operations
- Develops, coordinates, and facilitates an enhanced capital plan to begin preparing existing and future infrastructure for current and future impacts of flooding, sea level rise, storm surge and other climate change related threats and impacts
- Implements the Sustainable Buildings Program, and facilitates other efforts to decrease greenhouse gas emissions by increasing the use of renewables and improving fuel and energy efficiency, both County and community-wide
- Facilitates education and outreach on climate change, sea level rise, energy and water efficiency and other resilience issues, and efforts being undertaken by the County and its local and regional partners, to internal and external entities
- Works with strategic partners to utilize innovative research and solutions to create jobs and economic opportunities in the community while building resilience

Strategic Objectives - Measures

- GG6-2: Lead community sustainability efforts

| Objectives | Measures | | | FY 13-14 | FY 14-15 | FY 15-16 | FY 15-16 | FY 16-17 |
|---|--|----|---|----------|----------|----------|----------|----------|
| | | | | Actual | Actual | Budget | Actual | Target |
| Coordinate internal County sustainability initiatives | Number of activities implemented to decrease Countywide energy consumption | OP | ↑ | 29 | 30 | 22 | 33 | 31 |
| | Number of GreenPrint initiatives in progress or completed | OP | ↑ | 110 | 110 | 85 | 110 | 50 |
| | Number of adaptation/resiliency activities in progress or completed | OP | ↑ | N/A | N/A | N/A | 14 | 2 |

FY 2016 - 17 Adopted Budget and Multi-Year Capital Plan

DIVISION COMMENTS

- In FY 2015-16, the Office of Sustainability was restructured into the Office of Resilience, including the transfer of six positions from the Planning Division; the Office was charged with an expanded role and will coordinate with all County departments and community stakeholders to address climate change, sea level rise, and a variety of resiliency issues
- The FY 2016-17 Adopted Budget continues the Internal Revolving Energy and Water Investment Fund, which funds energy and efficiency projects in several Miami-Dade County Departments and reinvests those savings for similar projects in future years
- The FY 2015-16 Budget includes \$300,000 funded by the General Fund to implement enhanced resiliency planning for current County capital projects
- The FY 2016-17 Adopted Budget includes the addition of three positions (\$280,000) to enhance resiliency planning, policy development, coordination, measurement, and implementation

ADDITIONAL INFORMATION

- In FY 2016-17, the Department will continue to review its staffing and organizational structure to identify opportunities for streamlining operations in the near-term and long-term
- The FY 2016-17 Adopted Budget includes payments in the amount of \$125,000 for services provided to: Audit and Management Services (\$75,000); Human Resources (\$42,000) and Finance (\$8,000) for Purchase Card Industry (PCI) compliance

CAPITAL BUDGET SUMMARY

| (dollars in thousands) | PRIOR | FY 16-17 | FY 17-18 | FY 18-19 | FY 19-20 | FY 20-21 | FY 21-22 | FUTURE | TOTAL |
|--|----------------|---------------|---------------|---------------|---------------|---------------|---------------|---------------|----------------|
| Revenue | | | | | | | | | |
| BBC GOB Series 2005A | 19,138 | 0 | 0 | 0 | 0 | 0 | 0 | 0 | 19,138 |
| BBC GOB Series 2008B | 7,740 | 0 | 0 | 0 | 0 | 0 | 0 | 0 | 7,740 |
| Comm. Dev. Block Grant | 430 | 90 | 0 | 0 | 0 | 0 | 0 | 0 | 520 |
| Capital Outlay Reserve | 0 | 710 | 0 | 0 | 0 | 0 | 0 | 0 | 710 |
| Endangered Lands Voted Millage | 64,246 | 0 | 0 | 0 | 0 | 0 | 0 | 0 | 64,246 |
| Florida Inland Navigational District | 100 | 200 | 0 | 0 | 0 | 0 | 0 | 0 | 300 |
| BBC GOB Series 2008B-1 | 2,088 | 0 | 0 | 0 | 0 | 0 | 0 | 0 | 2,088 |
| BBC GOB Financing | 7,700 | 16,807 | 23,155 | 21,489 | 10,000 | 15,000 | 15,000 | 12,000 | 121,151 |
| US Department of Agriculture | 2,190 | 0 | 0 | 0 | 0 | 0 | 0 | 0 | 2,190 |
| BBC GOB Series 2014A | 5,560 | 0 | 0 | 0 | 0 | 0 | 0 | 0 | 5,560 |
| Biscayne Bay Envir. Trust Fund | 1,050 | 1,250 | 0 | 0 | 0 | 0 | 0 | 0 | 2,300 |
| Army Corps of Engineers | 10,000 | 6,400 | 2,500 | 0 | 0 | 0 | 0 | 0 | 18,900 |
| Florida Department of Environmental Protection | 18,563 | 2,400 | 1,400 | 1,200 | 200 | 200 | 200 | 1,000 | 25,163 |
| Future Financing | 0 | 0 | 0 | 0 | 0 | 0 | 0 | 10,000 | 10,000 |
| BBC GOB Series 2013A | 70 | 0 | 0 | 0 | 0 | 0 | 0 | 0 | 70 |
| Total: | 138,875 | 27,857 | 27,055 | 22,689 | 10,200 | 15,200 | 15,200 | 23,000 | 280,076 |
| Expenditures | | | | | | | | | |
| Strategic Area: RC | | | | | | | | | |
| Historic Preservation | 430 | 90 | 0 | 0 | 0 | 0 | 0 | 0 | 520 |
| Strategic Area: NI | | | | | | | | | |
| Beach Projects | 20,000 | 11,000 | 5,000 | 2,100 | 0 | 0 | 0 | 0 | 38,100 |
| Environmental Projects | 10,198 | 4,450 | 3,000 | 2,889 | 0 | 0 | 0 | 10,000 | 30,537 |
| Environmentally Endangered Lands Projects | 102,947 | 5,407 | 6,355 | 500 | 1,000 | 1,000 | 1,000 | 2,000 | 120,209 |
| Nuisance Control | 0 | 710 | 0 | 0 | 0 | 0 | 0 | 0 | 710 |
| Strategic Area: ED | | | | | | | | | |
| Community Development Projects | 1,000 | 6,500 | 13,000 | 17,500 | 10,000 | 15,000 | 15,000 | 12,000 | 90,000 |
| Total: | 134,575 | 28,157 | 27,355 | 22,989 | 11,000 | 16,000 | 16,000 | 24,000 | 280,076 |

FY 2016 - 17 Adopted Budget and Multi-Year Capital Plan

CAPITAL HIGHLIGHTS AND OPERATIONAL IMPACTS

- The Department's FY 2016-17 Adopted Budget and Multi-Year Capital Plan includes the continuation of unsafe structures inspections and demolitions funded from the Capital Outlay Reserve (COR) (\$500,000)
- In FY 2016-17, unsafe structures board-up will continue to be funded from COR to board-up abandoned buildings that facilitate potential criminal activity (\$200,000); the Department will continue to contract board-up services with the Greater Miami Service Corps
- In FY 2016-17, the Department will ensure that environmentally endangered lands are protected and continue to thrive as native habitats through the Environmentally Endangered Lands (EEL) Program by purchasing land (\$5.407 million); funding will be provided from Building Better Communities General Obligation Bond proceeds (\$4.907 million), EEL voted millage (\$300,000), and state grants (\$200,000)
- In FY 2016-17, the Department will continue restoring and stabilizing the wetlands, shoreline, and islands in and adjacent to Biscayne Bay and its tributaries (\$1.45 million), funded from the Biscayne Bay Environmental Trust Fund (\$1.25 million) and Florida Inland Navigational District grant proceeds (\$200,000)
- In FY 2016-17, the Department will maintain and improve beaches, which will enhance quality of life and increase tourism through the Miami-Dade County Beach Erosion and Renourishment Program (\$11 million), funded from the Army Corps of Engineers (\$6.4 million), State Beach Erosion Control Funds (\$2.2 million) and Building Better Communities General Obligation proceeds (\$2.4 million)

FUNDED CAPITAL PROJECTS

(dollars in thousands)

HISTORIC PRESERVATION FOR CDBG ELIGIBLE PROJECTS

PROJECT #: 434340

DESCRIPTION: Restore local and national designated historic properties including Cauley Square, Minderman House, and the McFarlane Houses

LOCATION: Various Sites
Throughout Miami-Dade County

District Located: Countywide
District(s) Served: Countywide



| REVENUE SCHEDULE: | PRIOR | 2016-17 | 2017-18 | 2018-19 | 2019-20 | 2020-21 | 2021-22 | FUTURE | TOTAL |
|----------------------------|------------|-----------|----------|----------|----------|----------|----------|----------|------------|
| Comm. Dev. Block Grant | 430 | 90 | 0 | 0 | 0 | 0 | 0 | 0 | 520 |
| TOTAL REVENUES: | 430 | 90 | 0 | 0 | 0 | 0 | 0 | 0 | 520 |
| EXPENDITURE SCHEDULE: | PRIOR | 2016-17 | 2017-18 | 2018-19 | 2019-20 | 2020-21 | 2021-22 | FUTURE | TOTAL |
| Construction | 430 | 90 | 0 | 0 | 0 | 0 | 0 | 0 | 520 |
| TOTAL EXPENDITURES: | 430 | 90 | 0 | 0 | 0 | 0 | 0 | 0 | 520 |

ECONOMIC DEVELOPMENT IN TARGETED URBAN AREAS (TUA) - BUILDING BETTER COMMUNITIES BOND PROGRAM

PROJECT #: 981999

DESCRIPTION: Provide funding for economic development in TUAs from Building Better Communities General Obligation Bond Program Project Number 320

LOCATION: Countywide
Various Sites

District Located: Countywide
District(s) Served: Countywide



| REVENUE SCHEDULE: | PRIOR | 2016-17 | 2017-18 | 2018-19 | 2019-20 | 2020-21 | 2021-22 | FUTURE | TOTAL |
|----------------------------|------------|--------------|--------------|--------------|----------|----------|----------|----------|---------------|
| BBC GOB Financing | 0 | 2,000 | 5,000 | 7,500 | 0 | 0 | 0 | 0 | 14,500 |
| BBC GOB Series 2014A | 500 | 0 | 0 | 0 | 0 | 0 | 0 | 0 | 500 |
| TOTAL REVENUES: | 500 | 2,000 | 5,000 | 7,500 | 0 | 0 | 0 | 0 | 15,000 |
| EXPENDITURE SCHEDULE: | PRIOR | 2016-17 | 2017-18 | 2018-19 | 2019-20 | 2020-21 | 2021-22 | FUTURE | TOTAL |
| Construction | 500 | 2,000 | 5,000 | 7,500 | 0 | 0 | 0 | 0 | 15,000 |
| TOTAL EXPENDITURES: | 500 | 2,000 | 5,000 | 7,500 | 0 | 0 | 0 | 0 | 15,000 |

FY 2016 - 17 Adopted Budget and Multi-Year Capital Plan

PURCHASE DEVELOPMENT RIGHTS FUND - BUILDING BETTER COMMUNITIES BOND PROGRAM

PROJECT #: 986940



DESCRIPTION: Provide funding for a program to purchase development rights of appropriate properties
 LOCATION: Countywide District Located: Countywide
 Throughout Miami-Dade County District(s) Served: Countywide

| REVENUE SCHEDULE: | PRIOR | 2016-17 | 2017-18 | 2018-19 | 2019-20 | 2020-21 | 2021-22 | FUTURE | TOTAL |
|-------------------------------|--------------|--------------|--------------|--------------|----------|----------|----------|---------------|---------------|
| BBC GOB Financing | 0 | 3,000 | 3,000 | 2,889 | 0 | 0 | 0 | 0 | 8,889 |
| BBC GOB Series 2005A | 9 | 0 | 0 | 0 | 0 | 0 | 0 | 0 | 9 |
| BBC GOB Series 2008B | 20 | 0 | 0 | 0 | 0 | 0 | 0 | 0 | 20 |
| BBC GOB Series 2008B-1 | 2,043 | 0 | 0 | 0 | 0 | 0 | 0 | 0 | 2,043 |
| BBC GOB Series 2013A | 70 | 0 | 0 | 0 | 0 | 0 | 0 | 0 | 70 |
| BBC GOB Series 2014A | 4,716 | 0 | 0 | 0 | 0 | 0 | 0 | 0 | 4,716 |
| Future Financing | 0 | 0 | 0 | 0 | 0 | 0 | 0 | 10,000 | 10,000 |
| US Department of Agriculture | 2,190 | 0 | 0 | 0 | 0 | 0 | 0 | 0 | 2,190 |
| TOTAL REVENUES: | 9,048 | 3,000 | 3,000 | 2,889 | 0 | 0 | 0 | 10,000 | 27,937 |
| EXPENDITURE SCHEDULE: | PRIOR | 2016-17 | 2017-18 | 2018-19 | 2019-20 | 2020-21 | 2021-22 | FUTURE | TOTAL |
| Land Acquisition/Improvements | 9,048 | 3,000 | 3,000 | 2,889 | 0 | 0 | 0 | 10,000 | 27,937 |
| TOTAL EXPENDITURES: | 9,048 | 3,000 | 3,000 | 2,889 | 0 | 0 | 0 | 10,000 | 27,937 |

ECONOMIC DEVELOPMENT FUND - BUILDING BETTER COMMUNITIES BOND PROGRAM

PROJECT #: 988925



DESCRIPTION: Provide funding for a Countywide economic development fund from Building Better Communities General Obligation Bond Program Project Number 124
 LOCATION: Countywide District Located: Countywide
 Throughout Miami-Dade County District(s) Served: Countywide

| REVENUE SCHEDULE: | PRIOR | 2016-17 | 2017-18 | 2018-19 | 2019-20 | 2020-21 | 2021-22 | FUTURE | TOTAL |
|----------------------------|------------|--------------|--------------|---------------|---------------|---------------|---------------|---------------|---------------|
| BBC GOB Financing | 500 | 4,500 | 8,000 | 10,000 | 10,000 | 15,000 | 15,000 | 12,000 | 75,000 |
| TOTAL REVENUES: | 500 | 4,500 | 8,000 | 10,000 | 10,000 | 15,000 | 15,000 | 12,000 | 75,000 |
| EXPENDITURE SCHEDULE: | PRIOR | 2016-17 | 2017-18 | 2018-19 | 2019-20 | 2020-21 | 2021-22 | FUTURE | TOTAL |
| Construction | 500 | 4,500 | 8,000 | 10,000 | 10,000 | 15,000 | 15,000 | 12,000 | 75,000 |
| TOTAL EXPENDITURES: | 500 | 4,500 | 8,000 | 10,000 | 10,000 | 15,000 | 15,000 | 12,000 | 75,000 |

ABANDONED VEHICLE REMOVAL IN THE UNINCORPORATED MUNICIPAL SERVICE AREA

PROJECT #: 1003970



DESCRIPTION: Remove abandoned vehicles from private and public properties
 LOCATION: Unincorporated Miami-Dade County District Located: Unincorporated Municipal Service Area
 Unincorporated Miami-Dade County District(s) Served: Unincorporated Municipal Service Area

| REVENUE SCHEDULE: | PRIOR | 2016-17 | 2017-18 | 2018-19 | 2019-20 | 2020-21 | 2021-22 | FUTURE | TOTAL |
|----------------------------|----------|-----------|----------|----------|----------|----------|----------|----------|-----------|
| Capital Outlay Reserve | 0 | 10 | 0 | 0 | 0 | 0 | 0 | 0 | 10 |
| TOTAL REVENUES: | 0 | 10 | 0 | 0 | 0 | 0 | 0 | 0 | 10 |
| EXPENDITURE SCHEDULE: | PRIOR | 2016-17 | 2017-18 | 2018-19 | 2019-20 | 2020-21 | 2021-22 | FUTURE | TOTAL |
| Project Administration | 0 | 10 | 0 | 0 | 0 | 0 | 0 | 0 | 10 |
| TOTAL EXPENDITURES: | 0 | 10 | 0 | 0 | 0 | 0 | 0 | 0 | 10 |

FY 2016 - 17 Adopted Budget and Multi-Year Capital Plan

UNSAFE STRUCTURES BOARD-UP

PROJECT #: 1008920

DESCRIPTION: Brick-up abandoned buildings that facilitate unsafe environments
 LOCATION: Unincorporated Miami-Dade County District Located: Unincorporated Municipal Service Area
 Unincorporated Miami-Dade County District(s) Served: Unincorporated Municipal Service Area

| REVENUE SCHEDULE: | PRIOR | 2016-17 | 2017-18 | 2018-19 | 2019-20 | 2020-21 | 2021-22 | FUTURE | TOTAL |
|----------------------------|----------|------------|----------|----------|----------|----------|----------|----------|------------|
| Capital Outlay Reserve | 0 | 200 | 0 | 0 | 0 | 0 | 0 | 0 | 200 |
| TOTAL REVENUES: | 0 | 200 | 0 | 0 | 0 | 0 | 0 | 0 | 200 |
| EXPENDITURE SCHEDULE: | PRIOR | 2016-17 | 2017-18 | 2018-19 | 2019-20 | 2020-21 | 2021-22 | FUTURE | TOTAL |
| Construction | 0 | 200 | 0 | 0 | 0 | 0 | 0 | 0 | 200 |
| TOTAL EXPENDITURES: | 0 | 200 | 0 | 0 | 0 | 0 | 0 | 0 | 200 |

ENVIRONMENTALLY ENDANGERED LANDS PROGRAM

PROJECT #: 5555621

DESCRIPTION: Acquire and manage environmentally sensitive and endangered lands
 LOCATION: Various Sites District Located: Countywide
 Various Sites District(s) Served: Countywide

| REVENUE SCHEDULE: | PRIOR | 2016-17 | 2017-18 | 2018-19 | 2019-20 | 2020-21 | 2021-22 | FUTURE | TOTAL |
|--|----------------|--------------|--------------|------------|--------------|--------------|--------------|--------------|----------------|
| BBC GOB Financing | 2,000 | 4,907 | 5,855 | 0 | 0 | 0 | 0 | 0 | 12,762 |
| BBC GOB Series 2005A | 19,129 | 0 | 0 | 0 | 0 | 0 | 0 | 0 | 19,129 |
| BBC GOB Series 2008B | 7,720 | 0 | 0 | 0 | 0 | 0 | 0 | 0 | 7,720 |
| BBC GOB Series 2008B-1 | 45 | 0 | 0 | 0 | 0 | 0 | 0 | 0 | 45 |
| BBC GOB Series 2014A | 344 | 0 | 0 | 0 | 0 | 0 | 0 | 0 | 344 |
| Endangered Lands Voted Millage | 64,246 | 0 | 0 | 0 | 0 | 0 | 0 | 0 | 64,246 |
| Florida Department of Environmental Protection | 13,763 | 200 | 200 | 200 | 200 | 200 | 200 | 1,000 | 15,963 |
| TOTAL REVENUES: | 107,247 | 5,107 | 6,055 | 200 | 200 | 200 | 200 | 1,000 | 120,209 |
| EXPENDITURE SCHEDULE: | PRIOR | 2016-17 | 2017-18 | 2018-19 | 2019-20 | 2020-21 | 2021-22 | FUTURE | TOTAL |
| Land Acquisition/Improvements | 102,947 | 5,407 | 6,355 | 500 | 1,000 | 1,000 | 1,000 | 2,000 | 120,209 |
| TOTAL EXPENDITURES: | 102,947 | 5,407 | 6,355 | 500 | 1,000 | 1,000 | 1,000 | 2,000 | 120,209 |

BISCAYNE BAY RESTORATION AND SHORELINE STABILIZATION

PROJECT #: 5555691

DESCRIPTION: Restore, enhance, and stabilize wetlands, shoreline, and islands in and adjacent to Biscayne Bay and its tributaries
 LOCATION: Biscayne Bay and Tributaries District Located: 4, 5, 7, 8
 Various Sites District(s) Served: 5, 7, 8

| REVENUE SCHEDULE: | PRIOR | 2016-17 | 2017-18 | 2018-19 | 2019-20 | 2020-21 | 2021-22 | FUTURE | TOTAL |
|--------------------------------------|--------------|--------------|----------|----------|----------|----------|----------|----------|--------------|
| Biscayne Bay Envir. Trust Fund | 1,050 | 1,250 | 0 | 0 | 0 | 0 | 0 | 0 | 2,300 |
| Florida Inland Navigational District | 100 | 200 | 0 | 0 | 0 | 0 | 0 | 0 | 300 |
| TOTAL REVENUES: | 1,150 | 1,450 | 0 | 0 | 0 | 0 | 0 | 0 | 2,600 |
| EXPENDITURE SCHEDULE: | PRIOR | 2016-17 | 2017-18 | 2018-19 | 2019-20 | 2020-21 | 2021-22 | FUTURE | TOTAL |
| Construction | 1,150 | 1,450 | 0 | 0 | 0 | 0 | 0 | 0 | 2,600 |
| TOTAL EXPENDITURES: | 1,150 | 1,450 | 0 | 0 | 0 | 0 | 0 | 0 | 2,600 |

FY 2016 - 17 Adopted Budget and Multi-Year Capital Plan

UNSAFE STRUCTURES DEMOLITION

PROJECT #: 10022210

DESCRIPTION: Demolish abandoned buildings that create physical and health threats to the community
 LOCATION: Unincorporated Miami-Dade County District Located: Unincorporated Municipal Service Area
 Unincorporated Miami-Dade County District(s) Served: Unincorporated Municipal Service Area

| REVENUE SCHEDULE: | PRIOR | 2016-17 | 2017-18 | 2018-19 | 2019-20 | 2020-21 | 2021-22 | FUTURE | TOTAL |
|----------------------------|----------|------------|----------|----------|----------|----------|----------|----------|------------|
| Capital Outlay Reserve | 0 | 500 | 0 | 0 | 0 | 0 | 0 | 0 | 500 |
| TOTAL REVENUES: | 0 | 500 | 0 | 0 | 0 | 0 | 0 | 0 | 500 |
| EXPENDITURE SCHEDULE: | PRIOR | 2016-17 | 2017-18 | 2018-19 | 2019-20 | 2020-21 | 2021-22 | FUTURE | TOTAL |
| Construction | 0 | 500 | 0 | 0 | 0 | 0 | 0 | 0 | 500 |
| TOTAL EXPENDITURES: | 0 | 500 | 0 | 0 | 0 | 0 | 0 | 0 | 500 |

BEACH EROSION MITIGATION AND RENOURISHMENT

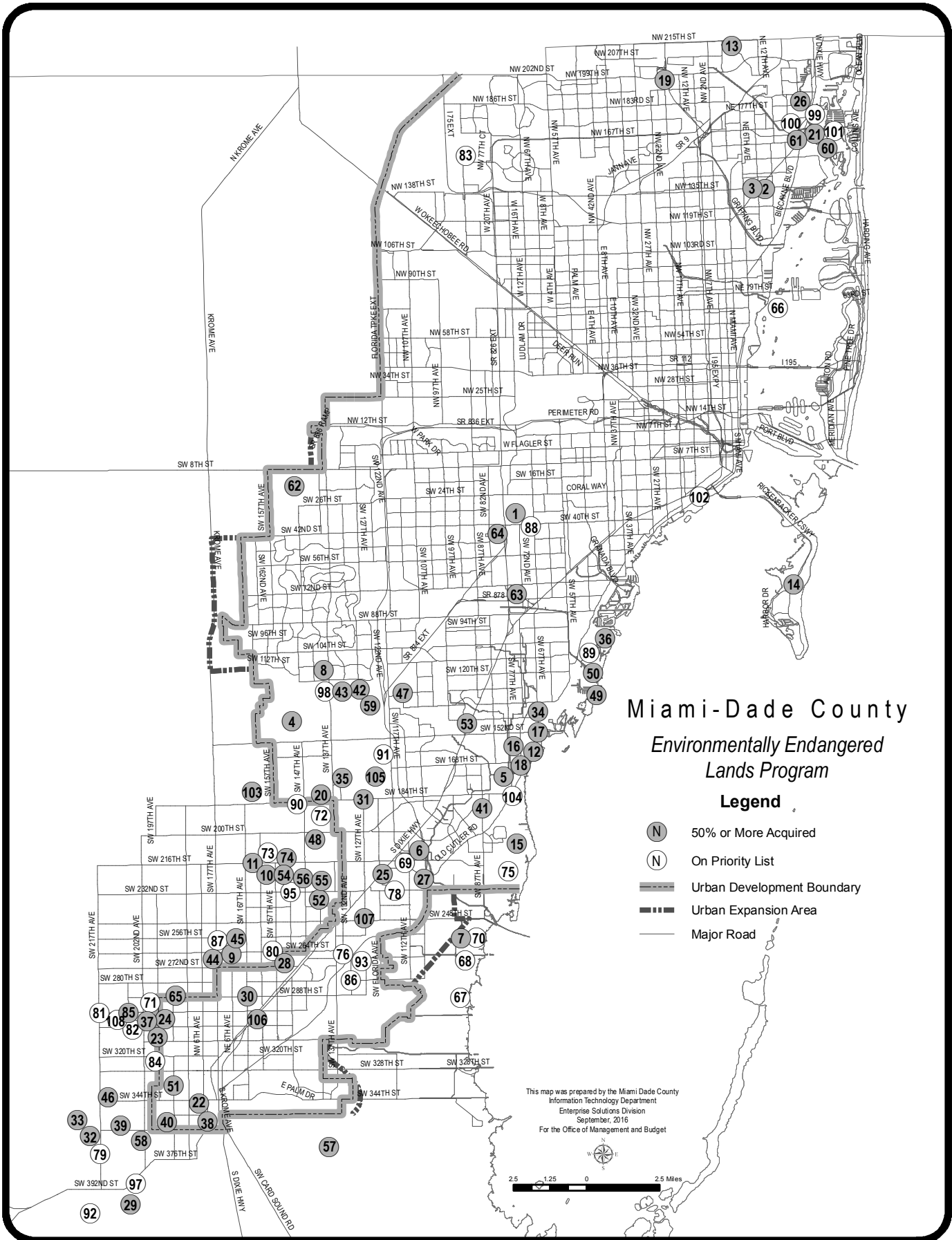
PROJECT #: 200000344

DESCRIPTION: Complete beach renourishment projects for eroded portions of Miami-Dade County beaches in cooperation with the U.S. Army Corps of Engineers
 LOCATION: Miami-Dade County Beaches District Located: 4, 5
 Various Sites District(s) Served: Countywide

| REVENUE SCHEDULE: | PRIOR | 2016-17 | 2017-18 | 2018-19 | 2019-20 | 2020-21 | 2021-22 | FUTURE | TOTAL |
|--|---------------|---------------|--------------|--------------|----------|----------|----------|----------|---------------|
| Army Corps of Engineers | 10,000 | 6,400 | 2,500 | 0 | 0 | 0 | 0 | 0 | 18,900 |
| BBC GOB Financing | 5,200 | 2,400 | 1,300 | 1,100 | 0 | 0 | 0 | 0 | 10,000 |
| Florida Department of Environmental Protection | 4,800 | 2,200 | 1,200 | 1,000 | 0 | 0 | 0 | 0 | 9,200 |
| TOTAL REVENUES: | 20,000 | 11,000 | 5,000 | 2,100 | 0 | 0 | 0 | 0 | 38,100 |
| EXPENDITURE SCHEDULE: | PRIOR | 2016-17 | 2017-18 | 2018-19 | 2019-20 | 2020-21 | 2021-22 | FUTURE | TOTAL |
| Construction | 20,000 | 11,000 | 5,000 | 2,100 | 0 | 0 | 0 | 0 | 38,100 |
| TOTAL EXPENDITURES: | 20,000 | 11,000 | 5,000 | 2,100 | 0 | 0 | 0 | 0 | 38,100 |

UNFUNDED CAPITAL PROJECTS

| PROJECT NAME | LOCATION | (dollars in thousands) ESTIMATED PROJECT COST |
|---------------------------------|---------------------------|--|
| BEACH EROSION AND RENOURISHMENT | Miami-Dade County Beaches | 20,800 |
| UNFUNDED TOTAL | | 20,800 |



FY 2016-17 Adopted Budget and Multi-Year Capital Plan

Acquisition Projects: Environmentally Endangered Lands Program

| Acquired Projects | | | | | | Unacquired Projects | | | | | |
|-------------------|---------------------------------------|---------------------------|---------------------|-------|----------|----------------------------|--|---------------------------|---------------------|--------|----------|
| No | Site Name | Location | Type | Acres | Priority | No | Site Name | Location | Type | Acres | Priority |
| 1 | A. D. Barnes Park | 3775 SW 74 Ave | Natural Areas | 24 | ♦ | 55 | Silver Palm Groves | SW 232 St & SW 142 Ave | Rockridge Pinelands | 20.4 | ♦ |
| 2 | Arch Creek Addition | NE 135 St & US 1 | Buffer | 1.2 | ♦ | 56 | Silver Palm Hammock | SW 228 St & SW 149 Ave | Tropical Hammocks | 10 | ♦ |
| 3 | Arch Creek Park | NE 135 St & US-1 | Natural Areas | 8.5 | ♦ | 57 | South Dade Wetlands | South Dade County | Wetlands | 20,368 | ♦ |
| 4 | Big George & Little George | SW 150 St & SW 152 Ave | Tropical Hammocks | 20.1 | ♦ | 58 | Sunny Palms (Navy Wells #42) | SW 368 St & SW 202 Ave | Rockridge Pinelands | 40.8 | ♦ |
| 5 | Bill Sadowski Park | 17555 SW 79 Ave | Natural Areas | 23 | ♦ | 59 | Tamiami Complex Addition | SW 134 St & SW 122 Ave | Rockridge Pinelands | 25.6 | ♦ |
| 6 | Black Creek Forest | SW 214 St & SW 112 Ave | Pineland | 7 | ♦ | 60 | Terama Tract in Oleta Preserve | Oleta Preserve | Coastal Wetlands | 29.7 | ♦ |
| 7 | Black Point Wetlands | SW 248 St & SW 112 Ave | Coastal Wetlands | 78.9 | ♦ | 61 | Oleta Tract C | NE 163 St & US-1 | Coastal Wetlands | 2.5 | ♦ |
| 8 | (Boystown) Camp Matecumbe | SW 112 St & SW 137 Ave | Rockridge Pinelands | 76.7 | ♦ | 62 | Tree Island Park | SW 10 St & SW 147 Ave | Wetlands | 120 | ♦ |
| 9 | Camp Owaissa Bauer | SW 264 St & SW 170 Ave | Natural Areas | 80 | ♦ | 63 | Trinity | SW 76 St & SW 74 Ave | Rockridge Pinelands | 10 | ♦ |
| 10 | Castellow Additions | SW 226 St & SW 157 Ave | Tropical Hammocks | 34.9 | ♦ | 64 | Tropical Park | 7900 Bird Rd | Natural Areas | 5 | ♦ |
| 11 | Castellow Hammock Park | 22301 SW 162 Ave | Natural Areas | 55 | ♦ | 65 | West Biscayne | SW 288 St & SW 190 Ave | Rockridge Pinelands | 15.1 | ♦ |
| 12 | Charles Deering Estate | 16701 SW 72 Ave | Natural Areas | 332 | ♦ | 74 | Chernoff Hammock | SW 218 St & SW 154 Ave | Tropical Hammocks | 4.5 | ♦ |
| 13 | County Line Scrub | NE 215 St & NE 4 Ave | Xeric Coastal Scrub | 15 | ♦ | 85 | Northrop Pineland | SW 296 St & SW 207th Ave | Rockridge Pinelands | 12.8 | ♦ |
| 14 | Crandon Park | 7200 Crandon Blvd | Natural Areas | 444 | ♦ | 103 | Wilkins Pierson | SW 184 St & SW 164 Ave | Rockridge Pinelands | 10 | ♦ |
| 15 | Cutler Wetlands & Addition | SW 210 St & SW 85 Ave | Coastal Wetlands | 454.1 | ♦ | 105 | Metrozoo Pinelands | 12400 SW 152 St | Rockridge Pinelands | 142.4 | ♦ |
| 16 | Deering Glade Parcel | SW 158 St & Old Cutler Rd | Buffer | 9.7 | ♦ | 106 | Seminole Wayside Park Addition | SW 300 St & US-1 | Rockridge Pinelands | 4.3 | ♦ |
| 17 | Deering North Addition | SW 152 St & SW 67 Ave | Coastal Wetlands | 40.7 | ♦ | 107 | Andrew Dodge New Pines Preserve | SW 248 St & SW 127 Ave | Rockridge Pinelands | 3.5 | ♦ |
| 18 | Deering South Addition | SW 168 St & SW 72 Ave | Pineland | 32 | ♦ | Unacquired Projects | | | | | |
| 19 | Dolphin Center Addition | NW 196 St & NW 17 Ave | Xeric Coastal Scrub | 3.9 | ♦ | No | Site Name | Location | Type | Acres | Priority |
| 20 | Eachus Pineland | SW 184 St & SW 142 Ave | Rockridge Pinelands | 17.2 | ♦ | 57 | South Dade Wetlands | South Dade County | Wetlands | 14,630 | A |
| 21 | East & East East Greynolds Park | 17530 W Dixie Hwy | Natural Areas | 33 | ♦ | 66 | Bird Key | NW 79 St & Biscayne Bay | Mangrove | 37.5 | A |
| 22 | Florida City | SW 344 St & SW 185 Ave | Rockridge Pinelands | 23.5 | ♦ | 67 | Biscayne Wetlands | SW 280 St & SW 107 Ave | Coastal Wetlands | 864.1 | A |
| 23 | Fuchs Hammock | SW 304 St & SW 198 Ave | Natural Areas | 24 | ♦ | 68 | Biscayne Wetlands North Addition | SW 270 St & SW 107 Ave | Coastal Wetlands | 300 | B |
| 24 | Fuchs Hammock Addition | SW 304 St & SW 198 Ave | Rockridge Pinelands | 14.8 | ♦ | 69 | Black Creek Forest | SW 216 St & SW 112 Ave | Pineland | 45.5 | A |
| 25 | Goulds | SW 224 St & SW 120 Ave | Rockridge Pinelands | 40.5 | ♦ | 70 | Black Point Wetlands | SW 248 St & SW 97 Ave | Coastal Wetlands | 191.8 | A |
| 26 | Greynolds Park | 17530 W Dixie Hwy | Natural Areas | 53 | ♦ | 71 | Bowers Pineland | SW 296 St & SW 197 Ave | Rockridge Pinelands | 9.8 | A |
| 27 | Harden Hammock | SW 226 St & SW 107 Ave | Tropical Hammocks | 12.4 | ♦ | 72 | Calderon Pineland | SW 192 St & SW 140 Ave | Rockridge Pinelands | 15.2 | A |
| 28 | Hattie Bauer Hammock | SW 267 St & SW 157 Ave | Tropical Hammocks | 14 | ♦ | 73 | Castellow #31 | SW 218 St & SW 157 Ave | Tropical Hammocks | 14.1 | A |
| 29 | Holiday Hammock | SW 400 St & SW 207 Ave | Tropical Hammocks | 29.8 | ♦ | 75 | Cutler Wetlands | SW 196 St & SW 232 St | Coastal Wetlands | 794.4 | A |
| 30 | Ingram | SW 288 St & SW 167 Ave | Rockridge Pinelands | 9.9 | ♦ | 76 | Dixie Heights Pineland | SW 268 St & SW 132 Ave | Rockridge Pinelands | 29 | B |
| 31 | Larry & Penny Thompson Park | SW 184 St & SW 127 Ave | Natural Areas | 193 | ♦ | 78 | Goulds Addition | SW 232 St & SW 117 Ave | Rockridge Pinelands | 35.8 | A |
| 32 | Loveland Hammock | SW 360 St & SW 222 Ave | Tropical Hammocks | 15.1 | ♦ | 79 | Hammock Island | SW 360 St & SW 217 Ave | Tropical Hammocks | 64.7 | B |
| 33 | Lucille Hammock | SW 352 St & SW 222 Ave | Tropical Hammocks | 20.8 | ♦ | 80 | Hattie Bauer Pineland | SW 266 St & SW 157 Ave | Rockridge Pinelands | 5 | A |
| 34 | Ludlam | SW 143 St & SW 67 Ave | Rockridge Pinelands | 10.2 | ♦ | 81 | Homestead General Airport Hammock | SW 296 St & SW 217 Ave | Tropical Hammocks | 4 | A |
| 35 | Martinez (Richmond Complex) | SW 152 St & SW 130 Ave | Rockridge Pinelands | 142 | ♦ | 82 | Kings Highway | SW 304 St & SW 202 Ave | Rockridge Pinelands | 31.1 | B |
| 36 | Matheson Hammock Park | SW 96 St & Old Cutler Rd | Natural Areas | 381 | ♦ | 83 | Maddens Hammock | NW 164 St & SW 87 Ave | Tropical Hammocks | 15.6 | B |
| 37 | Meissner Hammock | SW 302 St & SW 212 Ave | Tropical Hammocks | 10.3 | ♦ | 84 | Navy Wells #2 | SW 328 St & SW 197 Ave | Rockridge Pinelands | 20 | A |
| 38 | Navy Wells #23 | SW 352 St & SW 182 Ave | Rockridge Pinelands | 19.9 | ♦ | 86 | Notre Dame Pineland | SW 280 St & SW 132 Ave | Rockridge Pinelands | 46.8 | B |
| 39 | Navy Wells #39 | SW 360 St & SW 210 Ave | Rockridge Pinelands | 13.1 | ♦ | 87 | Owaissa Bauer Addition #2 | SW 264 St & SW 175 Ave | Rockridge Pinelands | 10 | A |
| 40 | Navy Wells Preserve | SW 356 St & SW 192 Ave | Natural Areas | 239 | ♦ | 88 | Pino Pineland | SW 39 St & SW 69 Ave | Rockridge Pinelands | 3.8 | A |
| 41 | Ned Glenn Preserve (Whispering Pines) | SW 188 St & SW 87 Ave | Rockridge Pinelands | 20 | ♦ | 89 | R. Hardy Matheson Addition | Old Cutler Rd & SW 108 St | Coastal Wetlands | 21.5 | A |
| 42 | Nixon Smiley Addition (Tamiami #8) | SW 128 St & SW 127 Ave | Rockridge Pinelands | 63 | ♦ | 90 | Railroad Pineland | SW 184 St & SW 147 Ave | Rockridge Pinelands | 18.2 | B |
| 43 | Nixon Smiley Pineland | SW 128 St & SW 133 Ave | Natural Areas | 59 | ♦ | 91 | Richmond Complex | SW 152 St & SW 130 Ave | Rockridge Pinelands | 210.8 | A |
| 44 | Owaissa Bauer Addition #1 | SW 264 St & SW 177 Ave | Rockridge Pinelands | 9.4 | ♦ | 92 | Round Hammock | SW 408 St & SW 220 Ave | Tropical Hammocks | 31.1 | A |
| 45 | Owaissa Bauer Addition #3 | SW 262 St & SW 170 Ave | Tropical Hammocks | 1.2 | ♦ | 93 | School Board | SW 268 St & SW 129 Ave | Rockridge Pinelands | 18.7 | A |
| 46 | Palm Drive | SW 344 St & SW 212 Ave | Rockridge Pinelands | 20 | ♦ | 95 | Silver Palm Addition | SW 232 St & SW 152 Ave | Rockridge Pinelands | 20 | A |
| 47 | Pineshore Park | SW 128 St & SW 112 Ave | Natural Areas | 7.8 | ♦ | 97 | SW Island Hammock | SW 392 St & SW 207 Ave | Tropical Hammocks | 12.4 | A |
| 48 | Quail Roost | SW 200 St & SW 144 Ave | Rockridge Pinelands | 48.5 | ♦ | 98 | Tamiami #15 | SW 124 St & SW 137 Ave | Rockridge Pinelands | 35 | B |
| 49 | R. Hardy Matheson Addition | Old Cutler Rd & SW 108 St | Coastal Wetlands | 19.9 | ♦ | 99 | Oleta Tract A | NE 171 St & US-1 | Coastal Wetlands | 2.1 | A |
| 50 | R. Hardy Matheson Preserve | SW 112 St & Old Cutler Rd | Natural Areas | 692 | ♦ | 100 | Oleta Tract B | NE 165 St & US-1 | Coastal Wetlands | 3.5 | A |
| 51 | Rock Pit #39 | SW 336 St & SW 192 Ave | Rockridge Pinelands | 8.7 | ♦ | 101 | Oleta Tract D | NE 191 St & NE 24 Ave | Coastal Wetlands | 7.4 | A |
| 52 | Rock Pit #46 | SW 232 St & SW 142 Ave | Rockridge Pinelands | 5 | ♦ | 102 | Vizcaya Hammock Addition | 3300 South Miami Ave | Tropical Hammocks | 2 | A |
| 53 | Rockdale & Addition | SW 144 St & US-1 | Rockridge Pinelands | 37.1 | ♦ | 104 | Cutler Wetlands North Addition Hammock | SW 184 St & Old Cutler Rd | Tropical Hammocks | 37 | B |
| 54 | Ross Hammock | SW 223 St & SW 157 Ave | Tropical Hammocks | 19.2 | ♦ | 108 | Pine Ridge Sanctuary | SW 300 St & SW 211 Ave | Rockridge Pinelands | 14 | A |

