



**MIAMI-DADE COUNTY**  
**BUILDING CODE COMPLIANCE OFFICE (BCCO)**  
**PRODUCT CONTROL DIVISION**

**MIAMI-DADE COUNTY, FLORIDA**  
**METRO-DADE FLAGLER BUILDING**  
**140 WEST FLAGLER STREET, SUITE 1603**  
**MIAMI, FLORIDA 33130-1563**  
**(305) 375-2901 FAX (305) 372-6339**

## **NOTICE OF ACCEPTANCE (NOA)**

**[www.maimidade.gov/buildingcode](http://www.maimidade.gov/buildingcode)**

**J.B. Garage Doors, Inc.**  
**12195 NW 98<sup>th</sup> Avenue**  
**Hialeah Gardens, FL 33018**

### **SCOPE:**

This NOA is being issued under the applicable rules and regulations governing the use of construction materials. The documentation submitted has been reviewed by Miami-Dade County Product Control Division and accepted by the Board of Rules and Appeals (BORA) to be used in Miami Dade County and other areas where allowed by the Authority Having Jurisdiction (AHJ).

This NOA shall not be valid after the expiration date stated below. The Miami-Dade County Product Control Division (In Miami Dade County) and/or the AHJ (in areas other than Miami Dade County) reserve the right to have this product or material tested for quality assurance purposes. If this product or material fails to perform in the accepted manner, the manufacturer will incur the expense of such testing and the AHJ may immediately revoke, modify, or suspend the use of such product or material within their jurisdiction. BORA reserves the right to revoke this acceptance, if it is determined by Miami-Dade County Product Control Division that this product or material fails to meet the requirements of the applicable building code.

This product is approved as described herein, and has been designed to comply with the Florida Building Code, including the High Velocity Hurricane Zone.

### **DESCRIPTION: Models 720/724 10'-4" wide Steel Sectional Garage Door**

**APPROVAL DOCUMENT:** Drawing No. **08-07**, titled "Steel Overhead Garage Door", dated 06/12/08, with revision A dated 11/24/08, sheets 1 through 4 of 4, prepared by Al-Farooq Corporation, signed and sealed by Humayoun Farooq, P.E., bearing the Miami-Dade County Product Control Approval stamp with the Notice of Acceptance number and approval date by the Miami-Dade County Product Control Division.

### **MISSILE IMPACT RATING: Large and Small Missile Impact Resistant**

**LABELING:** Each unit shall bear a permanent label with the manufacturer's name or logo, city, state and following statement: "Miami-Dade County Product Control Approved", unless otherwise noted herein.

**RENEWAL** of this NOA shall be considered after a renewal application has been filed and there has been no change in the applicable building code negatively affecting the performance of this product.

**TERMINATION** of this NOA will occur after the expiration date or if there has been a revision or change in the materials, use, and/or manufacture of the product or process. Misuse of this NOA as an endorsement of any product, for sales, advertising or any other purposes shall automatically terminate this NOA. Failure to comply with any section of this NOA shall be cause for termination and removal of NOA.

**ADVERTISEMENT:** The NOA number preceded by the words Miami-Dade County, Florida, and followed by the expiration date may be displayed in advertising literature. If any portion of the NOA is displayed, then it shall be done in its entirety.

**INSPECTION:** A copy of this entire NOA shall be provided to the user by the manufacturer or its distributors and shall be available for inspection at the job site at the request of the Building Official. This NOA consists of this page 1 and evidence pages E-1 and E-2, as well as approval document mentioned above.

The submitted documentation was reviewed by **Carlos M. Utrera, P.E.**



*Signature*  
12/12/08

**NOA No. 08-1107.01**  
**Expiration Date: December 31, 2013**  
**Approval Date: December 31, 2008**  
**Page 1**

**NOTICE OF ACCEPTANCE: EVIDENCE SUBMITTED**

**A. DRAWINGS**

1. Drawing No. **08-07**, titled "Steel Overhead Garage Door", dated 06/12/08, with revision A dated 11/24/08, sheets 1 through 4 of 4, prepared by Al-Farooq Corporation, signed and sealed by Humayoun Farooq, P.E.

**B. TESTS**

1. Test reports on 1) Uniform Static Air Pressure Test, Loading per FBC TAS 202-94  
2) Forced Entry Test, per FBC 2411 3.2.1, TAS 202-94  
along with marked-up drawings and installation diagram of a Series 724 24 GA Steel Sectional Commercial Garage Door, prepared by Hurricane Engineering & Testing, Inc, Test Reports No. **HETI-08-2148A**, dated 06/10/08, signed and sealed by Candido F. Font, P.E.
2. Test reports on 1) Large Missile Impact Test per FBC, TAS 201-94  
2) Cyclic Wind Pressure Loading per FBC, TAS 203-94  
along with marked-up drawings and installation diagram of Series 724 24 GA Steel Sectional Commercial Garage Doors, prepared by Hurricane Engineering & Testing, Inc, Test Reports No. **HETI-08-2148B**, dated 05/28/08, signed and sealed by Candido F. Font, P.E.
3. Test report on Tensile Test per ASTM E 8 of the above sectional garage door's skin, prepared by Hurricane Engineering & Testing, Inc, Test Report No. **HETI-08-T133**, dated 06/10/08, signed and sealed by Candido F. Font, P.E.
4. Test report on Salt Spray (Corrosion) Test per ASTM B 117 of a painted G-40 steel panels, prepared by Celotex Corporation, Test Report No. **258592**, dated 08/17/98, signed by W. A. Jackson, P.E.  
*"Submitted under NOA # 08-1106.05"*

**C. CALCULATIONS**

1. Anchor verification calculations and structural analysis prepared by Al-Farooq Corporation, complying with F.B.C 2004/2007, dated 09/30/08, signed and sealed by Humayoun Farooq, P.E.



12/12/08

Carlos M. Utrera, P.E.

Product Control Examiner

NOA No. 08-1107.01

Expiration Date: December 31, 2013

Approval Date: December 31, 2008

**NOTICE OF ACCEPTANCE: EVIDENCE SUBMITTED**

**D. QUALITY ASSURANCE**

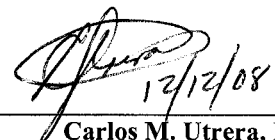
1. Miami Dade Building Code Compliance Office (BCCO)

**E. MATERIAL CERTIFICATIONS**

1. Notice of Acceptance No. **07-1016.07**, issued to Insulfoam, LLC, for their Insulfoam Expanded Polystyrene Insulation, approved on 11/29/07 and expiring on 11/29/12.
2. Notice of Acceptance No. **07-1107.08**, issued to Dyplast Products, LLC, for their Expanded Polystyrene Block Type Insulation, approved on 04/26/07 and expiring on 08/27/08.

**F. STATEMENTS**

1. Statement letter of code conformance issued by Al-Farooq Corporation, dated 09/30/08, signed and sealed by Humayoun Farooq, P.E.
2. Statement letter of no financial interest issued by Al-Farooq Corporation, dated 09/30/08, signed and sealed by Humayoun Farooq, P.E.
3. Laboratory code compliance statements issued by Hurricane Engineering & Testing, Inc, for Test Reports No. **HETI-08-2148A** and **B**, dated 06/10/08 and 06/28/08 respectively, both signed and sealed by Candido F. Font, P.E.



Carlos M. Utrera, P.E.  
Product Control Examiner  
NOA No. 08-1107.01

Expiration Date: December 31, 2013  
Approval Date: December 31, 2008

7-1/2" X 3" X .120"  
GALV. STEEL  
END ROLLER HINGES

1/4" X 3/4" SELF DRILLING SCREWS  
4 PER HINGE

1/4" X 5/8" HEX BOLTS  
WITH LOCK NUTS  
4 PER HINGE

COTTER PIN

INTERMEDIATE STILES FASTENED TO  
DOOR SKIN W/ (6) 3/16" ALUM POP RIVETS  
AND TO TOP & BOTTOM RAIL W/ (4) 3/16" ALUM POP RIVETS

(2) TOP ROLLER BRACKETS  
SEE SHEET 3 FOR DETAIL

1/4" X 5/8" HEX BOLTS  
WITH LOCK NUTS  
4 PER HINGE

ALTERNATE LOCK  
2/ DOOR

SPRING LOADED SLIDE BOLT LOCK (BOTH SIDES)  
FASTENED W/ (4) #14 X 5/8" S.M.S.  
5/8" MIN. LOCK ENGAGEMENT CONFORMS TO  
FBC 1012 REGARDING GARAGE DOORS

3/4" W X 3/16" THK.  
LATCH

16 GA. GALV. STEEL MOUNTING  
PLATE FASTENED W/ FOUR  
# 10-24 X 1/2" CARRIAGE BOLT  
& LOCK NUT.

3/4" W X 3/16 THK. GALV.  
STEEL LOCK BARS

5 PIN  
CYLINDER LOCK

DIE CAST  
TEEHANDLE

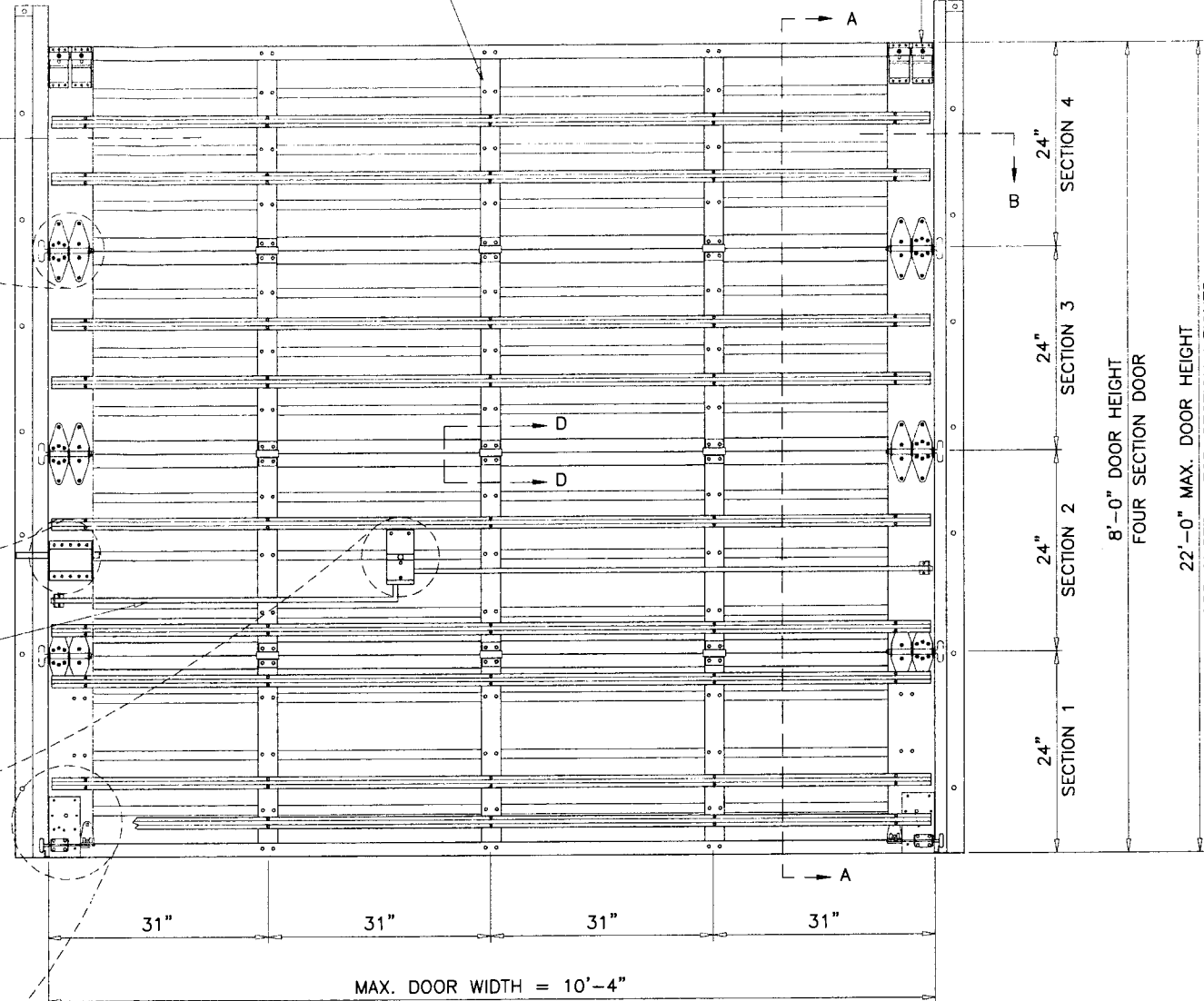
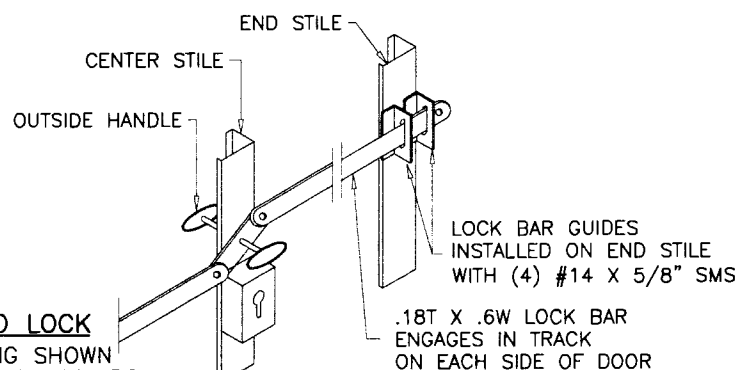
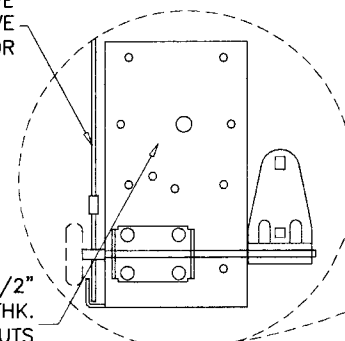
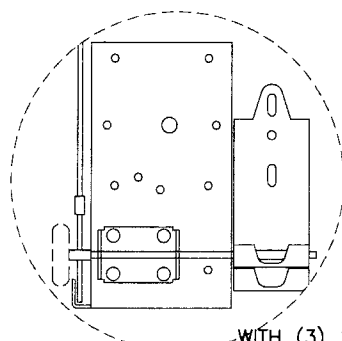
INSIDE SPRING LATCH  
FASTENED W/ FOUR  
# 10 X 1/2" S.M.S.

.128 DIA. GALV. AIRCRAFT TYPE  
CABLE & NICO-PRESS SLEEVE  
W/ MIN. 5 TO 1 SAFETY FACTOR

8-1/4" X 4-1/2" X 1-1/2"  
STEEL PLATE .0115" THK.  
WITH (3) 1/4" X 5/8" BOLTS W/ LOCK NUTS  
AND (3) #14 X 5/8" SMS

**BOTTOM BRACKET**  
FOR 2" TRACK

**BOTTOM BRACKET**  
FOR 3" TRACK



J.B. DOOR MODELS: 10'-4"W X 22'H MAX	
MODEL	DESCRIPTION
724	24 GA. ROLL FORMED STEEL DOOR
720	20 GA. ROLL FORMED STEEL DOOR

NOTE: MODEL 724 TESTED.

MAXIMUM DESIGN LOAD RATING = + 90.0 PSF  
(FOR SIZES SHOWN OR SMALLER) - 100.0 PSF

### GENERAL NOTES

- THIS PRODUCT HAS BEEN DESIGNED AND TESTED TO COMPLY WITH THE REQUIREMENTS OF THE FLORIDA BUILDING CODE 2004/2007 EDITION INCLUDING HIGH VELOCITY HURRICANE ZONE (HVHZ).
- ANCHORS SHALL BE AS LISTED, SPACED AS SHOWN ON DETAILS. ANCHOR EMBEDMENT TO BASE MATERIAL SHALL BE BEYOND WALL DRESSING OR STUCCO.
- ALL BOLTS, NUTS AND WASHERS SHALL BE ZINC PLATED CARBON STEEL.
- ANCHORING OR LOADING CONDITIONS OTHER THAN THOSE SHOWN IN THESE DETAILS ARE NOT PART OF THIS APPROVAL.

Engr: DR. HUMAYOON FAROOQ  
STRUCTURES  
FLA. P.E. # 16557  
C.A.N. 3538

DEC 04 2008

Approved as complying with the  
Florida Building Code  
Date: 12/31/2008  
MO: 08-1107.21  
Initial Date Product Control  
By: [Signature]

**AL-FAROOQ CORPORATION**  
ENGINEERS & PRODUCT DEVELOPMENT  
1235 S.W. 87 AVE  
MIAMI, FLORIDA 33174  
TEL. (305) 264-8100 FAX. (305) 262-6978  
GARAGE\08-07JB

**J.B. GARAGE DOORS INC.**  
12195 N.W. 98 TH. AVE.  
HIALEAH GARDENS, FL. 33016  
TEL. (305) 558 - 1658

revisions:	no	date	description
	A	11.24.08	REV. PER BCCO COMMENTS

date: 06-12-08  
scale: NONE  
dr. by: HAMID  
chk. by:

drawing no.  
**08-07**  
sheet 1 of 4

1-3/8" X 6-3/16" X 2" X 18 GA. STEEL  
FORMED END STILE  
RIVETED TO DOOR SKIN  
WITH (8) 3/16" ALUM POP RIVETS  
AND TO TOP AND BOTTOM RAILS  
WITH (4) ALUM POP RIVETS

2-3/4" W X 20 GA. STEEL  
FORMED CENTER STILE  
RIVETED TO DOOR SKIN  
WITH (6) 3/16" ALUM POP RIVETS  
AND TO TOP AND BOTTOM RAILS  
WITH (4) ALUM POP RIVETS

16 GA. GALV. STEEL  
CENTER HINGE FASTENED WITH  
(4) #14 X 5/8" HH SELF DRILLING SCREWS

# SECTION B-B

STEEL TRACK  
14 GA. X 2-1/8" X 1-1/2" (STANDARD)  
12 GA. X 3-5/16" X 1-1/2" (OPTIONAL)  
FASTENED TO TRACK PLATES  
W/ (2) 1/4-20 X 5/8"  
CARRIAGE BOLT & LOCK NUT

DOUBLE ROLLER HINGES

COTTER PIN  
INSTALLED ON ROLLER SHAFT

STOP MOULDING  
AS REQD.

STEEL STRUCTURE BY OTHERS  
MUST SUPPORT THE LOADS IMPOSED  
BY DOOR SYSTEM

1-1/4" X 2-5/8" X 14 GA  
CONT. STEEL ANGLE

12 GA GALV. STEEL FLAT  
BRACKET ± 3" LONG @ 6" O.C.  
CONNECTED TO CONT. ANGLE  
W/ (3) 1/4" Ø SPOT WELDS

STEEL ROLLERS  
1.82" DIA. X .50" STANDARD  
W/ .44 DIA. X 10-5/8" STEM

# SECTION D-D

2-3/4" W X 20 GA. STEEL  
FORMED CENTER STILE  
RIVETED TO DOOR SKIN  
WITH (6) 3/16" ALUM POP RIVETS  
AND TO TOP AND BOTTOM RAILS  
WITH (4) ALUM POP RIVETS

16 GA. GALV. STEEL  
CENTER HINGE FASTENED WITH  
(4) #14 X 5/8" HH SELF DRILLING SCREWS

Engr: DR. HUMAYOUN FAROOQ  
STRUCTURES  
FLA. PE # 16557  
C.A.N. 3538

DEC 04 2008

Approved in complying with the  
Florida Building Code  
Date 12/31/2008  
NOA 08-1167.01  
Miami Dade Product Control  
Division  
By

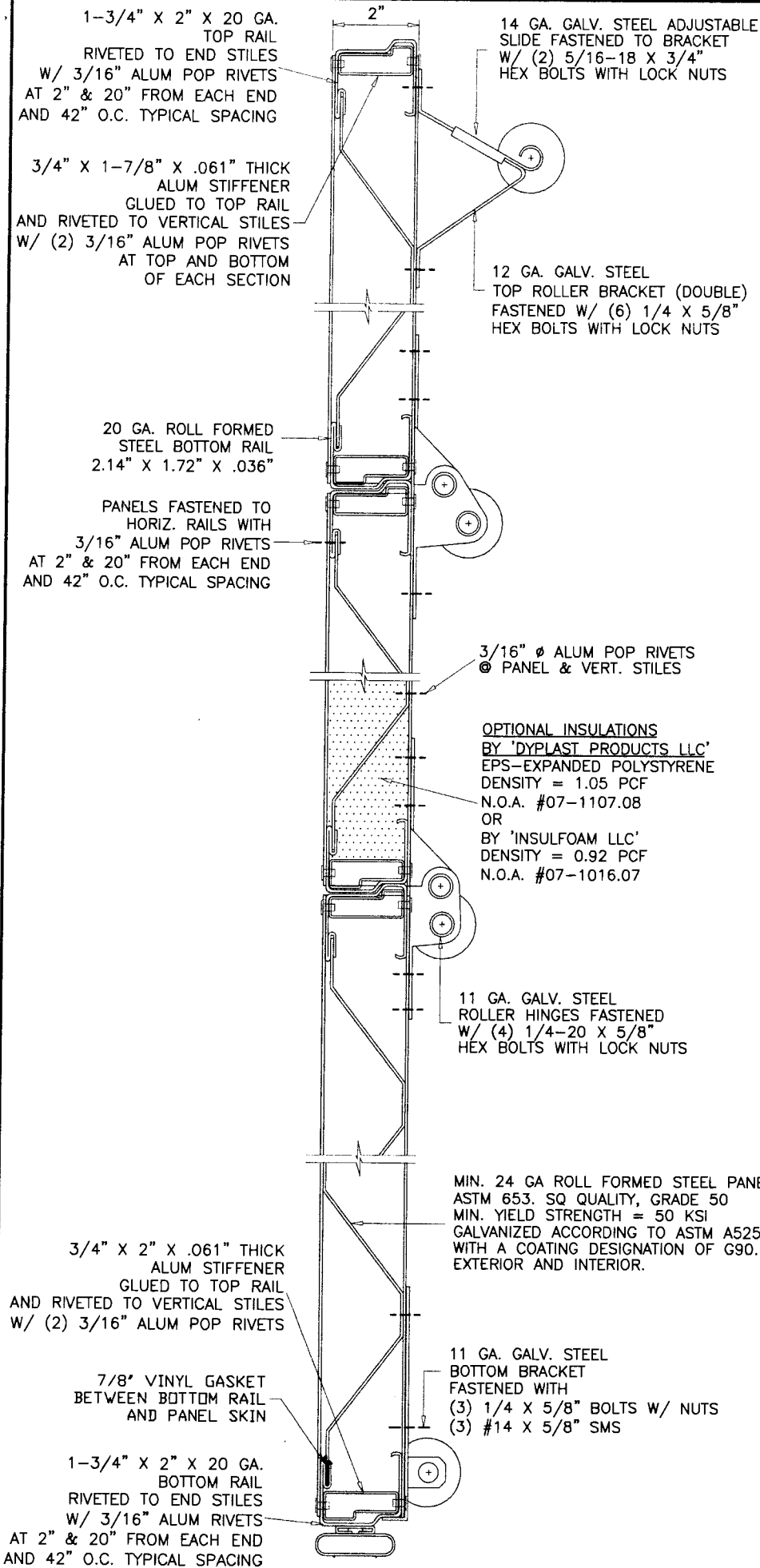
**AL-FAROOQ CORPORATION**  
ENGINEERS & PRODUCT DEVELOPMENT  
1235 S.W. 87 AVE  
MIAMI, FLORIDA 33174  
TEL. (305) 264-8100 FAX (305) 262-6978  
GARAGE\08-07JB

STEEL OVERHEAD GARAGE DOOR  
**J.B. GARAGE DOORS INC.**  
12195 N.W. 98 TH. AVE.  
HIALEAH GARDENS, FL. 33016  
TEL. (305) 558 - 1658

no	date	by	description
A	11.24.08		REV. PER BCCO COMMENTS

date: 06-12-08  
scale: NONE  
dr. by: HAMID  
chk. by:

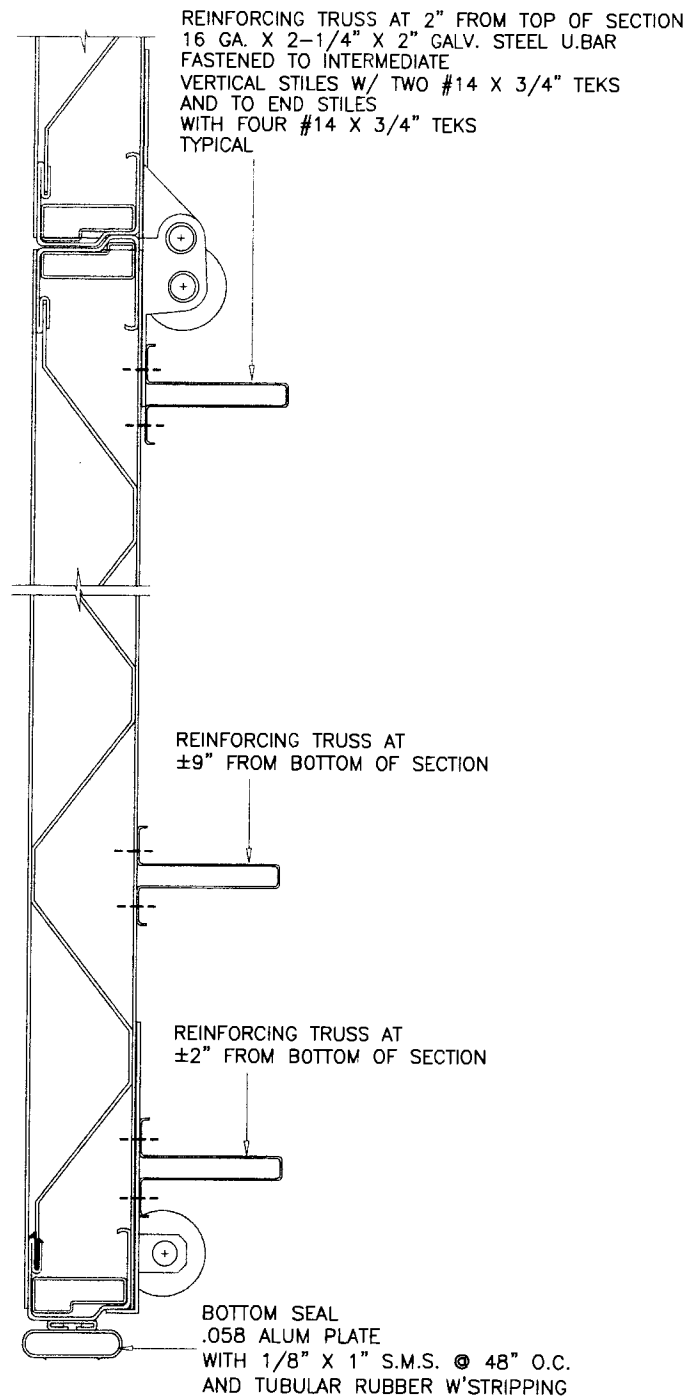
drawing no.  
**08-07**  
sheet 2 of 4



SECTION A-A

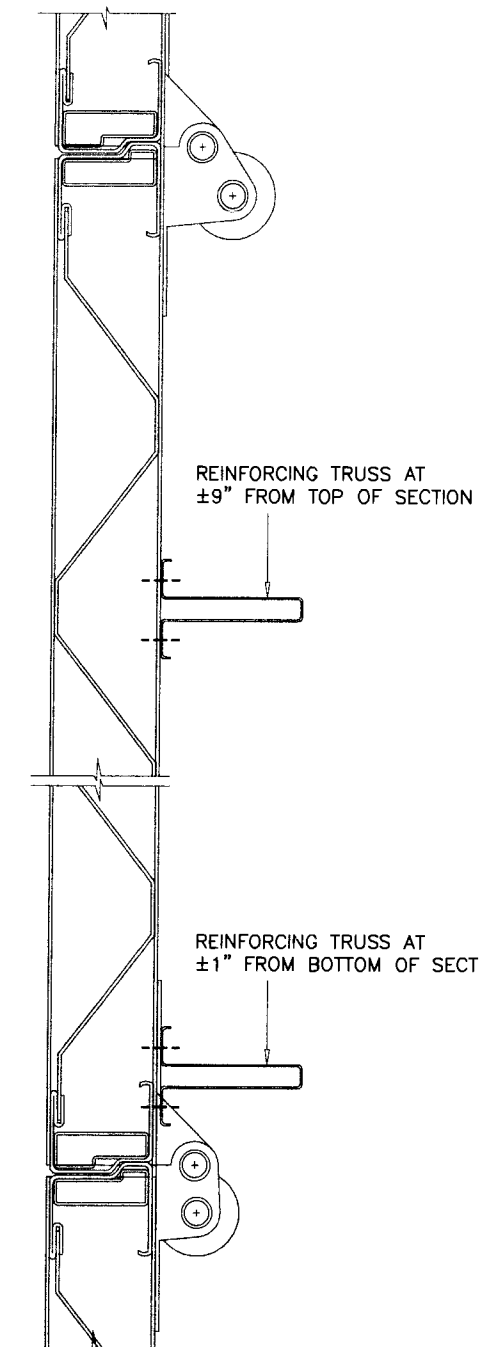
SEE SECTIONS AT RIGHT FOR LOCATION OF REINFORCING TRUSSES

TWO (2) REINFORCING TRUSSES PER SECTION  
EXCEPT  
THREE (3) ON THE BOTTOM SECTION



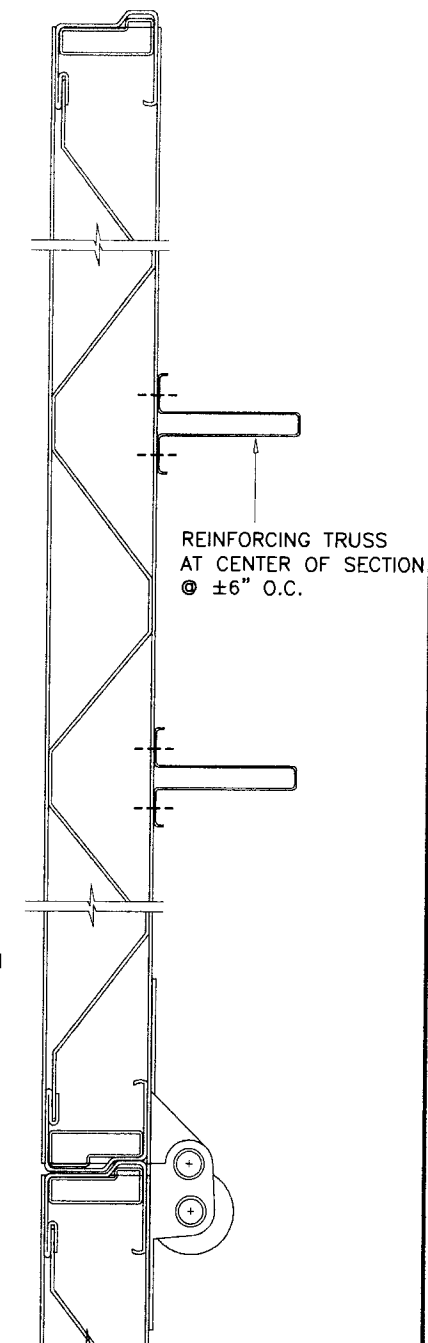
1ST SECTION (BOTTOM)

REINFORCING



2ND SECTION (BOTTOM)

REINFORCING



TOP SECTION AND  
ALL INTERMEDIATE SECTIONS

REINFORCING

Engr: DR. HJIMAYOUN FAROOQ  
STRUCTURES  
FLA. PE # 16557  
C.A.N. 3538

DEC 04 2008

Approved as complying with the  
Florida Building Code  
Date 12/31/2008  
NOA# 07-1107.01  
Miami Data Product Control  
By

**AL-FAROOQ CORPORATION**  
ENGINEERS & PRODUCT DEVELOPMENT  
1235 S.W. 87 AVE  
MIAMI, FLORIDA 33174  
TEL. (305) 264-8100 FAX. (305) 262-6978

STEEL OVERHEAD GARAGE DOOR  
**J.B. GARAGE DOORS INC.**  
12195 N.W. 98 TH. AVE.  
HIALEAH GARDENS, FL. 33016  
TEL. (305) 558 - 1658

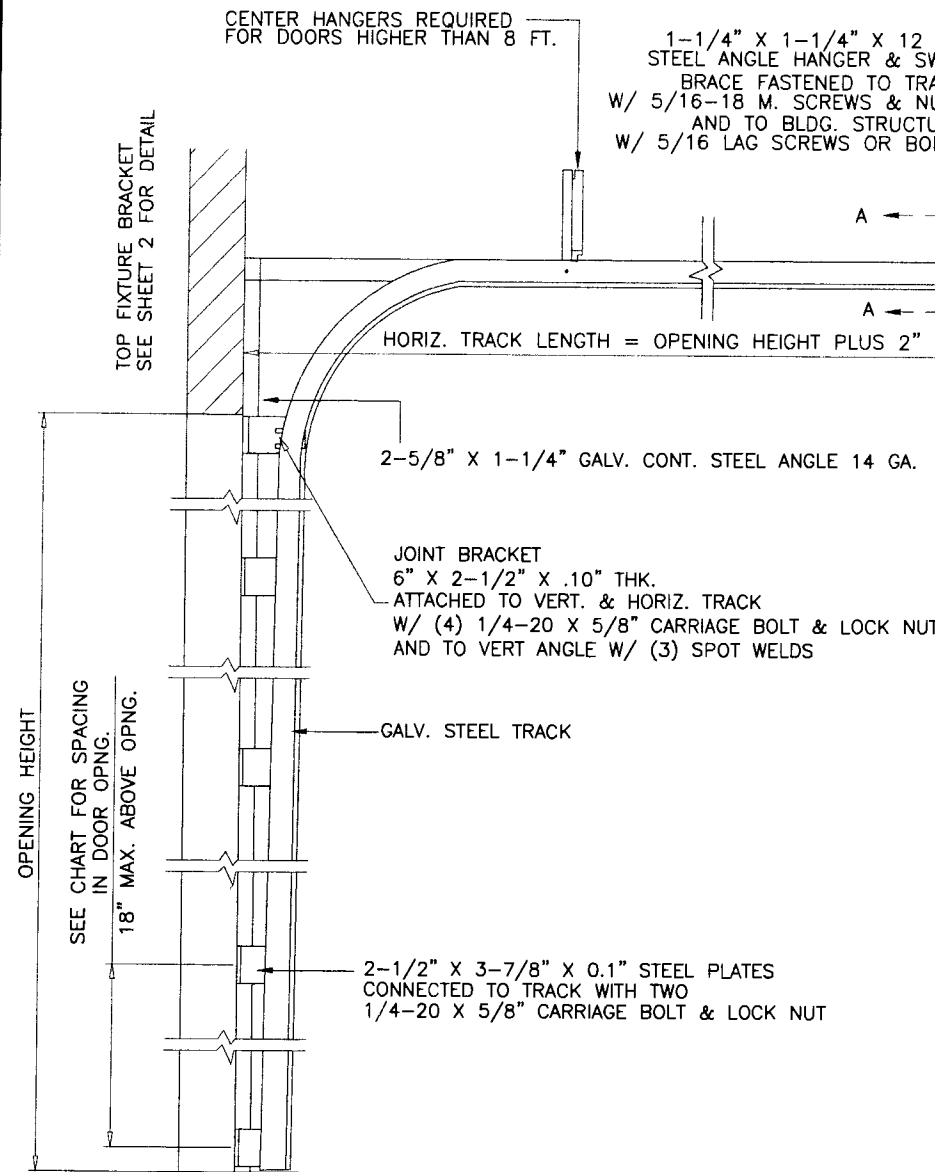
revisions:	no	date	by	description
	A	11.24.08	REV. PER BCOO	COMMENTS

date:	06-12-08
scale:	NONE
dr. by:	HAMID
chk. by:	

drawing no.  
**08-07**

sheet 3 of 4

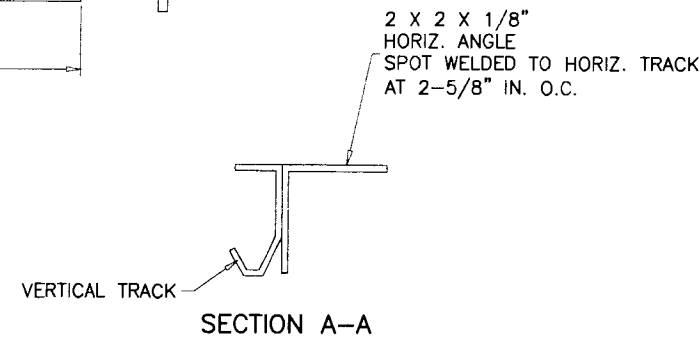
GARAGE\08-07JB



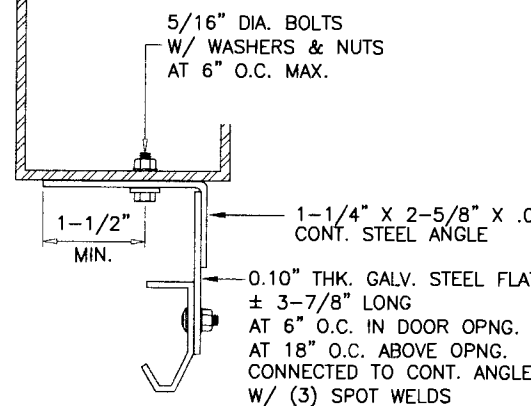
DOOR TRACK AS VIEWED  
FROM CENTER OF OPENING

DOOR HEIGHT	NO. OF TRUSSES	SECTION HEIGHTS *										
		1ST	2ND	3RD	4TH	5TH	6TH	7TH	8TH	9TH	10TH	11TH
7'-0"	9	21"	21"	21"	21"	N/A	N/A	N/A	N/A	N/A	N/A	N/A
8'-0"	9	24"	24"	24"	24"	N/A	N/A	N/A	N/A	N/A	N/A	N/A
9'-0"	11	24"	21"	21"	21"	21"	N/A	N/A	N/A	N/A	N/A	N/A
10'-0"	11	24"	24"	24"	24"	24"	N/A	N/A	N/A	N/A	N/A	N/A
11'-0"	13	24"	24"	21"	21"	21"	21"	N/A	N/A	N/A	N/A	N/A
12'-0"	13	24"	24"	24"	24"	24"	24"	N/A	N/A	N/A	N/A	N/A
13'-0"	15	24"	24"	24"	21"	21"	21"	21"	N/A	N/A	N/A	N/A
14'-0"	15	24"	24"	24"	24"	24"	24"	24"	N/A	N/A	N/A	N/A
15'-0"	17	24"	24"	24"	24"	21"	21"	21"	21"	N/A	N/A	N/A
16'-0"	17	24"	24"	24"	24"	24"	24"	24"	24"	N/A	N/A	N/A
17'-0"	19	24"	24"	24"	24"	24"	21"	21"	21"	21"	N/A	N/A
18'-0"	19	24"	24"	24"	24"	24"	24"	24"	24"	24"	N/A	N/A
19'-0"	21	24"	24"	24"	24"	24"	24"	21"	21"	21"	21"	N/A
20'-0"	21	24"	24"	24"	24"	24"	24"	24"	24"	24"	24"	N/A
21'-0"	23	24"	24"	24"	24"	24"	24"	24"	21"	21"	21"	21"
22'-0"	23	24"	24"	24"	24"	24"	24"	24"	24"	24"	24"	24"

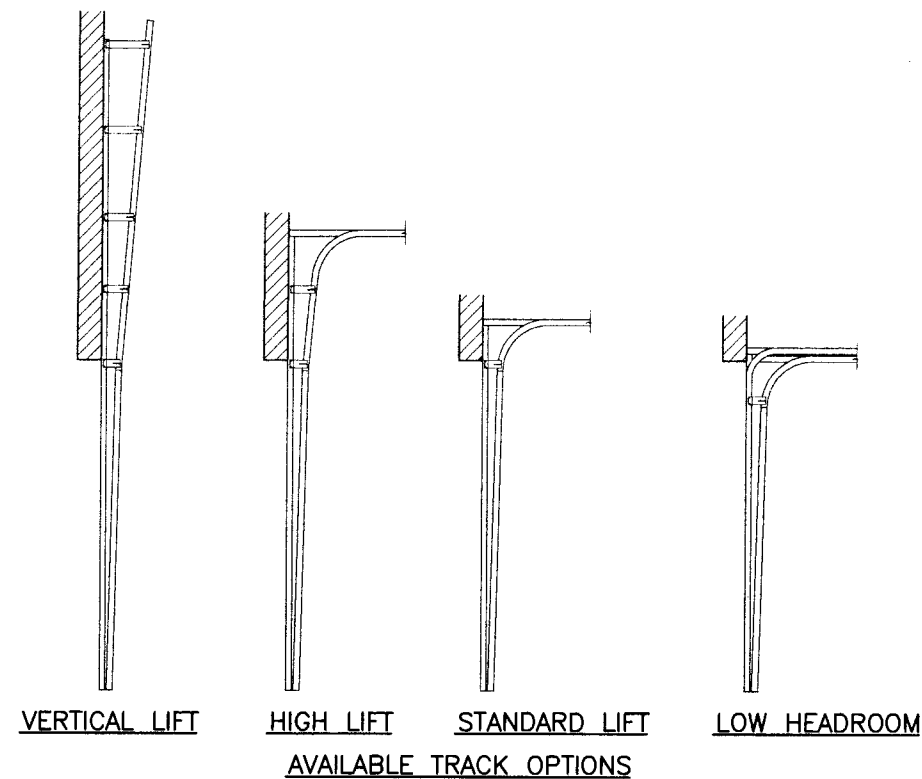
\*-SECTIONS ARE NUMBERED STARTING AT THE BOTTOM



STEEL STRUCTURE BY OTHERS  
MUST SUPPORT THE LOADS IMPOSED  
BY DOOR SYSTEM



TRACK INSTALLATION



ANCHOR SPACING				
ANCHORS	STRUCTURE	EMBED	SPACING	EDGE DIST.
3/8" HLC SLEEVE BY 'HILTI'	CONC.	1-1/4"	6"	2-1/2"
1/2" HLC SLEEVE BY 'HILTI'	FILLED BLOCK	1-1/2"	8"	4"
3/8" DYNABOLT BY 'ITW'	CONC.	1-1/2"	6"	3-3/4"
1/2" DYNABOLT BY 'ITW'	FILLED BLOCK	1-7/8"	6"	3"
3/8" POWER-BOLT BY 'POWERS'	CONC.	2"	6"	2-1/2"
3/8" SLEEVE-ALL BY 'SIMPSON'S'	CONC.	1-1/2"	6"	3"

CONCRETE f'c = 3000 PSI MIN.  
MASONRY f'm = 1500 PSI MIN.

Engr: DR. HUMAYOUN FAROOQ  
STRUCTURES  
FLA. PE # 16557  
C.A.N. 3538

DEC 04 2008

Approved as complying with the  
Florida Building Code  
Date: 12/31/2008  
NOW 08-1107.01  
Miami Dade Product Control  
Division By: [Signature]

**AL-FAROOQ CORPORATION**  
ENGINEERS & PRODUCT DEVELOPMENT  
1235 S.W. 87 AVE  
MIAMI, FLORIDA 33174  
TEL. (305) 264-8100 FAX. (305) 262-6978  
GARAGE\08-07JB

STEEL OVERHEAD GARAGE DOOR  
**J.B. GARAGE DOORS INC.**  
12195 N.W. 98 TH. AVE.  
HIALEAH GARDENS, FL. 33016  
TEL. (305) 558 - 1658

Revisions:		by description		NO CHANGE THIS SHEET	
no	date	no	date	no	date
1	11.24.08	A	11.24.08		

date: 06-12-08  
scale: NONE  
dr. by: HAMID  
chk. by:

drawing no.  
**08-07**  
sheet 4 of 4