



BUILDING CODE COMPLIANCE OFFICE (BCCO)
PRODUCT CONTROL DIVISION

MIAMI-DADE COUNTY, FLORIDA
METRO-DADE FLAGLER BUILDING
140 WEST FLAGLER STREET, SUITE 1107
MIAMI, FLORIDA 33130-1563
(305) 375-2902 FAX (305) 372-6339

NOTICE OF ACCEPTANCE (NOA)

www.miamidade.gov/buildingcode

Hartman Windows and Doors, LLC.
531 Southern Boulevard
West Palm Beach, FL 33405

SCOPE:

This NOA is being issued under the applicable rules and regulations governing the use of construction materials. The documentation submitted has been reviewed by Miami-Dade County Product Control Division and accepted by the Board of Rules and Appeals (BORA) to be used in Miami-Dade County and other areas where allowed by the Authority Having Jurisdiction (AHJ).

This NOA shall not be valid after the expiration date stated below. The Miami-Dade County Product Control Division (In Miami-Dade County) and/or the AHJ (in areas other than Miami-Dade County) reserve the right to have this product or material tested for quality assurance purposes. If this product or material fails to perform in the accepted manner, the manufacturer will incur the expense of such testing and the AHJ may immediately revoke, modify, or suspend the use of such product or material within their jurisdiction. BORA reserves the right to revoke this acceptance, if it is determined by Miami-Dade County Product Control Division that this product or material fails to meet the requirements of the applicable building code.

This product is approved as described herein, and has been designed to comply with the Florida Building Code, including the High Velocity Hurricane Zone.

DESCRIPTION: Series "European" 10'0" W/E Outswing Glazed Wood French Door- L.M.I

APPROVAL DOCUMENT: Drawing No. **W07-16**, titled "Series European Outswing Wood Patio Door (L.M.I.)", sheets 1 through 9 of 9, dated March 03, 2007 with revision "C" dated August 18, 2009, prepared by Al-Farooq Corporation, dated September 18, 2009, signed and sealed by Arshad Viqar, P. E., bearing the Miami-Dade County Product Control Revision stamp with the Notice of Acceptance number and expiration date by the Miami-Dade County Product Control Division.

MISSILE IMPACT RATING: Large Missile and Small Missile Impact

LABELING: Each unit shall bear a permanent label with the manufacturer's name or logo, city, state and following statement: "Miami-Dade County Product Control Approved", unless otherwise noted herein.

RENEWAL of this NOA shall be considered after a renewal application has been filed and there has been no change in the applicable building code negatively affecting the performance of this product.

TERMINATION of this NOA will occur after the expiration date or if there has been a revision or change in the materials, use, and/or manufacture of the product or process. Misuse of this NOA as an endorsement of any product, for sales, advertising or any other purposes shall automatically terminate this NOA. Failure to comply with any section of this NOA shall be cause for termination and removal of NOA.

ADVERTISEMENT: The NOA number preceded by the words Miami-Dade County, Florida, and followed by the expiration date may be displayed in advertising literature. If any portion of the NOA is displayed, then it shall be done in its entirety.

INSPECTION: A copy of this entire NOA shall be provided to the user by the manufacturer or its distributors and shall be available for inspection at the job site at the request of the Building Official.

This NOA **revises** NOA No. **07-0522.05** and consists of this page 1 and evidence pages E-1, E-2 and E-3, as well as approval document mentioned above.

The submitted documentation was reviewed by **Jaime D. Gascon, P. E.**



J. Gascon
10/22/09

NOA No. 09-0518.01
Expiration Date: October 04, 2012
Approval Date: November 11, 2009
Page 1

Hartman Windows and Doors, LLC.

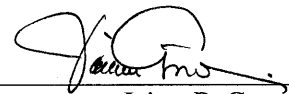
NOTICE OF ACCEPTANCE: EVIDENCE SUBMITTED

A. DRAWINGS

1. Manufacturer's die drawings and sections.
2. Drawing No. **W07-16**, titled "Series European Outswing Wood Patio Door (L.M.I.)", sheets 1 through 9 of 9, dated March 03, 2007 with revision "C" dated August 18, 2009, prepared by Al-Farooq Corporation, dated September 18, 2009, signed and sealed by Arshad Viqar, P. E.

B. TESTS

1. Test reports on: 1) Air Infiltration Test, per FBC, TAS 202-94
2) Uniform Static Air Pressure Test, Loading per FBC TAS 202-94
3) Water Resistance Test, per FBC, TAS 202-94
4) Large Missile Impact Test per FBC, TAS 201-94
5) Cyclic Wind Pressure Loading per FBC, TAS 203-94
6) Forced Entry Test, per FBC 2411 3.2.1, TAS 202-94
along with marked-up drawings and installation diagram, prepared by Fenestration Testing Laboratory, Inc., Test Report No. **FTL-5191**, dated February 19, 2007, signed and sealed by Michael Wenzel, P. E.
(Submitted under previous NOA No. 07-0522.05)
2. Test reports on: 1) Air Infiltration Test, per FBC, TAS 202-94
2) Uniform Static Air Pressure Test, Loading per FBC TAS 202-94
3) Water Resistance Test, per FBC, TAS 202-94
4) Large Missile Impact Test per FBC, TAS 201-94
5) Cyclic Wind Pressure Loading per FBC, TAS 203-94
6) Forced Entry Test, per FBC 2411 3.2.1, TAS 202-94
along with marked-up drawings and installation diagram, prepared by Fenestration Testing Laboratory, Inc., Test Report No. **FTL-4941**, dated December 11, 2006, signed and sealed by Edmundo Largaespada, P. E.
(Submitted under previous NOA No. 07-0522.05)
3. Test reports on: 1) Air Infiltration Test, per FBC, TAS 202-94
2) Uniform Static Air Pressure Test, Loading per FBC TAS 202-94
3) Water Resistance Test, per FBC, TAS 202-94
4) Large Missile Impact Test per FBC, TAS 201-94
5) Cyclic Wind Pressure Loading per FBC, TAS 203-94
6) Forced Entry Test, per FBC 2411 3.2.1, TAS 202-94
along with marked-up drawings and installation diagram, prepared by Fenestration Testing Laboratory, Inc., Test Report No. **FTL-4944**, dated November 14, 2006, signed and sealed by Edmundo Largaespada, P. E.
(Submitted under previous NOA No. 07-0522.05)



Jaime D. Gascon, P. E.
Chief, Product Control Division
NOA No. 09-0518.01
Expiration Date: October 04, 2012
Approval Date: November 11, 2009

Hartman Windows and Doors, LLC.

NOTICE OF ACCEPTANCE: EVIDENCE SUBMITTED

B. TESTS (CONTINUED)

4. Test reports on: 1) Air Infiltration Test, per FBC, TAS 202-94
2) Uniform Static Air Pressure Test, Loading per FBC TAS 202-94
3) Water Resistance Test, per FBC, TAS 202-94
4) Large Missile Impact Test per FBC, TAS 201-94
5) Forced Entry Test, per FBC 2411 3.2.1, TAS 202-94
along with marked-up drawings and installation diagram, prepared by Fenestration Testing Laboratory, Inc., Test Report No. **FTL-4969**, dated August 21, 2006, signed and sealed by Edmundo Largaespada, P. E.
(Submitted under previous NOA No. 07-0522.05)

C. CALCULATIONS

1. Anchor verification calculations and structural analysis, complying with FBC-2007, prepared by Al-Farooq Corporation, dated September 18, 2009, signed and sealed by Arshad Viqar, P. E.
Complies with ASTM E1300-04

D. QUALITY ASSURANCE

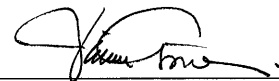
1. Miami-Dade Building Code Compliance Office (BCCO).

E. MATERIAL CERTIFICATIONS

1. Notice of Acceptance No. **09-0312.03** issued to E.I. DuPont DeNemours & Co., Inc. for their "**DuPont Sentry Glass® Interlayer**" dated 05/13/09, expiring on 01/14/12.
2. Notice of Acceptance No. **08-0520.08** issued to Solutia Inc. for their "**Vanceva Composites Glass Interlayer**" dated 7/17/08, expiring on 12/11/13.
3. Notice of Acceptance No. **09-0312.02** issued to E.I. DuPont DeNemours & Co., Inc. for their "**DuPont Butacite® PVB, Interlayer**" dated 05/13/09, expiring on 12/11/10.

F. STATEMENTS

1. Statement letter of compliance, dated March 24, 2009, signed and sealed by Arshad Viqar, P. E.
2. Statement letter of no financial interest, dated March 24, 2009, signed and sealed by Arshad Viqar, P. E.
3. Laboratory compliance letter for Test Report No. **FTL-5191**, issued by Fenestration Testing Laboratory, Inc., dated February 19, 2007, signed and sealed by Michael Wenzel, P. E.
(Submitted under previous NOA No. 07-0522.05)



Jaime D. Gascon, P. E.
Chief, Product Control Division
NOA No. 09-0518.01

Expiration Date: October 04, 2012
Approval Date: November 11, 2009

Hartman Windows and Doors, LLC.

NOTICE OF ACCEPTANCE: EVIDENCE SUBMITTED

F. STATEMENTS (CONTINUED)

4. Laboratory compliance letter for Test Report No.'s **FTL-4944** and **FTL-4969** issued by Fenestration Testing Laboratory, Inc., dated November 14 and August 21, 2006, signed and sealed by Edmundo Largaespada, P. E.
(Submitted under previous NOA No. 07-0522.05)
5. Proposal issued by BCCO, dated July 03, 2006, signed by Jaime D. Gascon, P. E.
(Submitted under previous NOA No. 07-0522.05)

G. OTHERS

1. Notice of Acceptance No. **07-0522.05**, issued to Hartman Windows and Doors, LLC. for their Series "**European 10'0"** W/E **Outswing Glazed Wood French Door-L.M.I**", approved on 10/04/07 and expiring on 10/04/12.



Jaime D. Gascon, P. E.
Chief, Product Control Division
NOA No. 09-0518.01
Expiration Date: October 04, 2012
Approval Date: November 11, 2009

FOR DESCRIPTION AND LOCATION OF LOCKS AND HINGES SEE SHEET 4.

NUMBER OF ANCHORS AT MTG. STILE HEAD ENDS				
MAX. HEIGHT	MAX. WIDTH	THRU DOOR	THRU FRAME STRAP CLIP	THRU CONT. ANGLE
10 FT	6 FT	6	8	10
	8 FT	9	12	12

FALSE MUNTINS MAY BE USED

THESE DOORS ARE RATED FOR LARGE & SMALL MISSILE IMPACT. SHUTTERS ARE NOT REQUIRED.

EUROPEAN OUTSWING WOOD PATIO DOOR

SEE SHEET 2 FOR DESIGN LOAD RATINGS.

APPROVAL APPLIES TO SINGLE (X) AND DOUBLE (XX) LEAF DOORS. ALSO SINGLE AND DOUBLE DOORS IN COMBINATION WITH SIDELITES USING MIAMI-DADE COUNTY APPROVED MULLIONS IN BETWEEN. ALSO SINGLE AND DOUBLE DOORS WITH OR WITHOUT SIDELITES IN COMBINATION WITH TRANSOMS USING MIAMI-DADE COUNTY APPROVED MULLION IN BETWEEN.

LOWER DESIGN PRESSURES FROM DOOR, SIDELITE OR MULLION APPROVAL WILL APPLY TO ENTIRE SYSTEM.

USE THRESHOLD (B) FOR INSTALLATIONS WHERE WATER INFILTRATION RESISTANCE IS REQUIRED.

THRESHOLD (B1) MAY BE USED FOR INSTALLATIONS WHERE WATER INFILTRATION RESISTANCE IS NOT REQUIRED.

THIS PRODUCT HAS BEEN DESIGNED AND TESTED TO COMPLY WITH THE REQUIREMENTS OF THE FLORIDA BUILDING CODE 2007 EDITION INCLUDING HIGH VELOCITY HURRICANE ZONE (HVHZ).

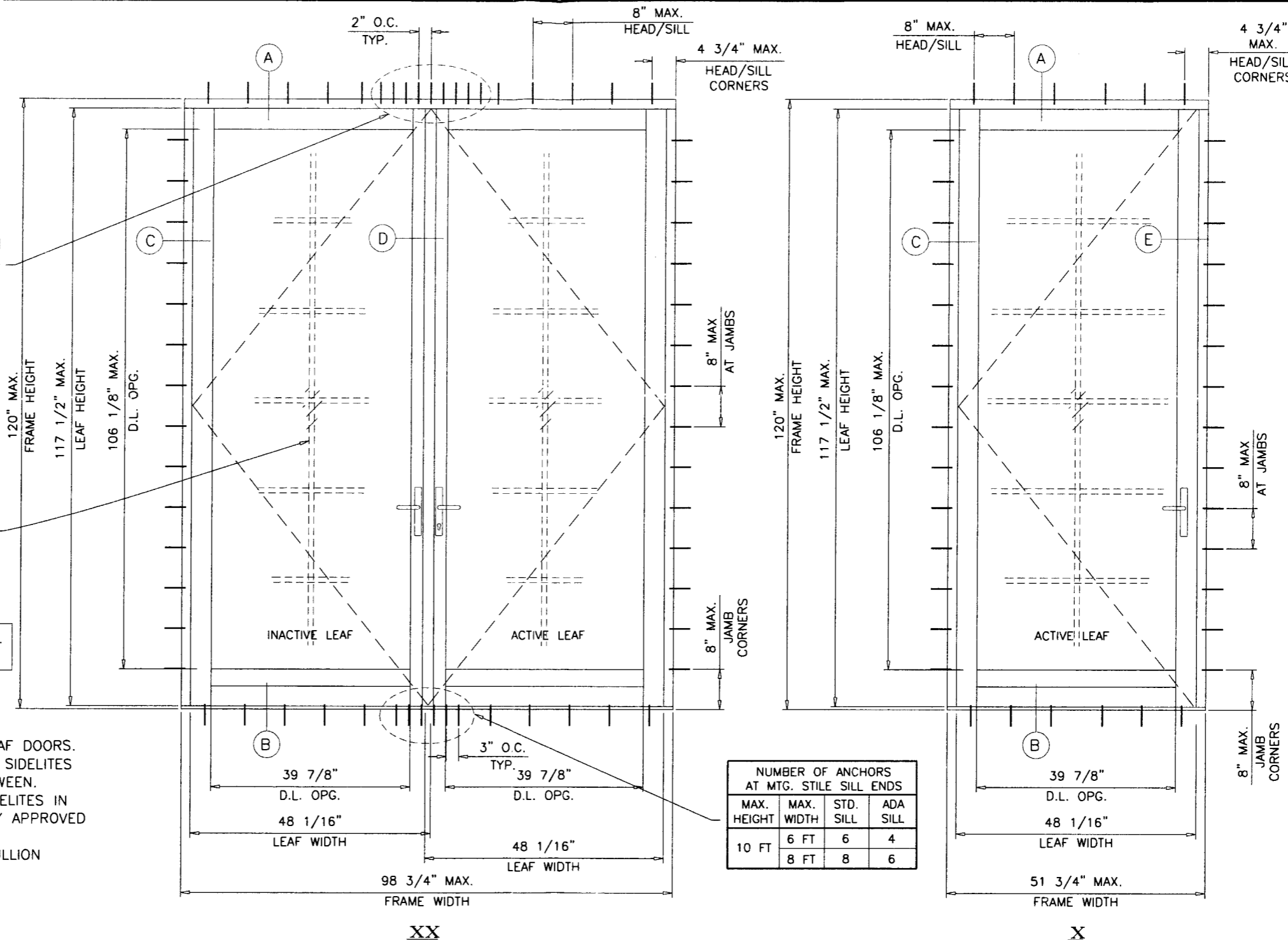
1BY OR 2BY WOOD BUCKS BY OTHERS, MUST BE ANCHORED PROPERLY TO TRANSFER LOADS TO THE STRUCTURE.

ANCHORS SHALL BE AS LISTED, SPACED AS SHOWN ON DETAILS, ANCHORS EMBEDMENT TO BASE MATERIAL SHALL BE BEYOND WALL DRESSING OR STUCCO.

ANCHORING OR LOADING CONDITIONS NOT SHOWN IN THESE DETAILS ARE NOT PART OF THIS APPROVAL.

A LOAD DURATION INCREASE IS USED IN DESIGN OF ANCHORS INTO WOOD ONLY.

MATERIALS INCLUDING BUT NOT LIMITED TO STEEL/METAL SCREWS, THAT COME INTO CONTACT WITH OTHER DISSIMILAR MATERIALS SHALL MEET THE REQUIREMENTS OF 2007 FLORIDA BLDG. CODE SECTION 2003.8.4.



NUMBER OF ANCHORS AT MTG. STILE SILL ENDS				
MAX. HEIGHT	MAX. WIDTH	STD. SILL	ADA SILL	
10 FT	6 FT	6	4	
	8 FT	8	6	

TYPICAL ELEVATIONS

DOORS CAN BE INSTALLED WITH ANY OF THE FOLLOWING OPTIONS

- OPTION 1: BY USING FASTENERS THRU DOOR FRAME INTO STRUCTURE AT 8" FROM CORNERS AND 8" O.C. MAX.
 - OPTION 2: BY USING FASTENERS THRU STRAP CLIPS AT 8" FROM CORNERS AND 8" O.C. MAX.
 - OPTION 3: BY USING FASTENERS THRU CONT. ALUM ANGLE AT 8" FROM CORNERS AND 8" O.C. MAX.
- ADDL. ANCHORS REQD. AT DOUBLE DOORS MTG. STILE LOCATIONS, SEE ELEVATION ABOVE.
- SEE SHEETS 4 THRU 7 FOR DETAILS.

THE APPROVED PRODUCTS NOTED HEREIN ARE EXEMPT FROM PRESERVATIVE TREATMENT PER 2326.2.1 OF THE FLORIDA BUILDING CODE WHICH EXEMPTS WOOD SPECIES LISTED AS 'DURABLE'. THE SPECIFIC PRODUCTS HEREIN ARE EXEMPTED HONDURAN MAHOGANY-SWIETENIA MACROPHYLLA OR EQUIVALENT SPECIES BASED ON USDA LISTING AND MUST HAVE A SPECIFIC GRAVITY EQUAL TO OR HIGHER THAT THE REFERENCED SPECIES.

Engr. ARSHAD VIQAR
CIVIL
FLA. PE # 39863
C.A.N. 3538
Ar
SEP 18 2009

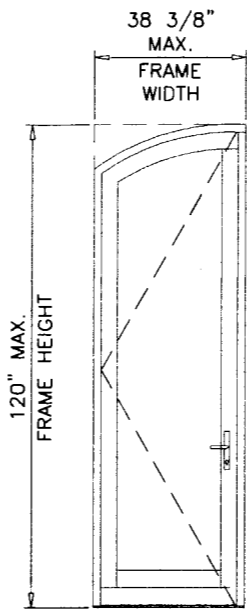
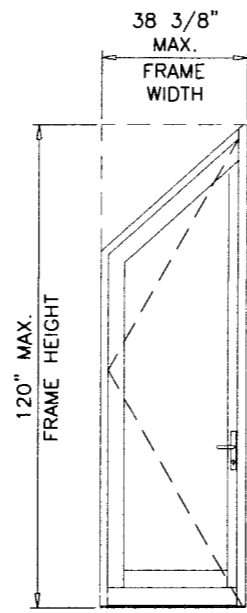
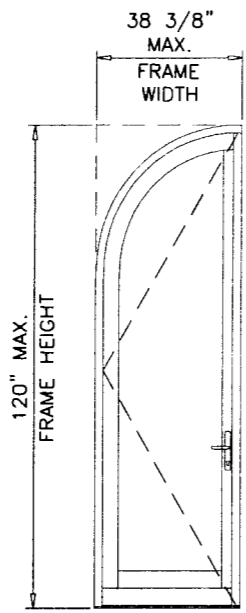
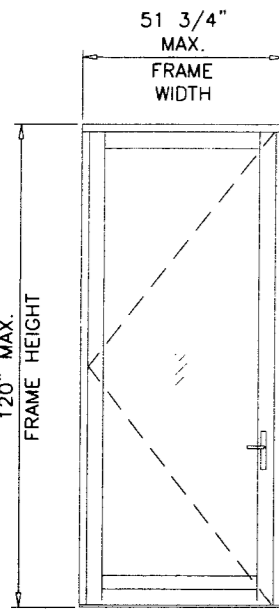
PRODUCT REVISED
as complying with the Florida
Building Code
Acceptance No. 09-0518.01
Expiration Date October 04, 2012
By *[Signature]*
Miami Dade Product Control
Division

af c
AL-FAROOQ CORPORATION
ENGINEERS & PRODUCT DEVELOPMENT
1235 S.W. 87 AVE
MIAMI, FLORIDA 33174
TEL. (305) 264-8100 FAX. (305) 262-6978
COMP-ANL\W07-16HWD

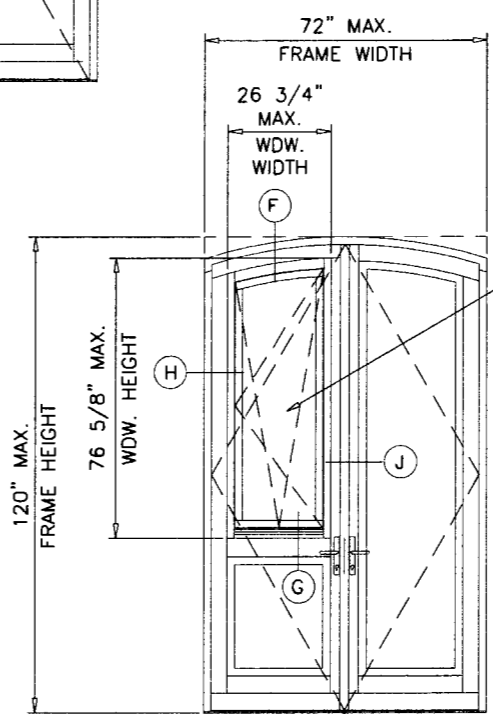
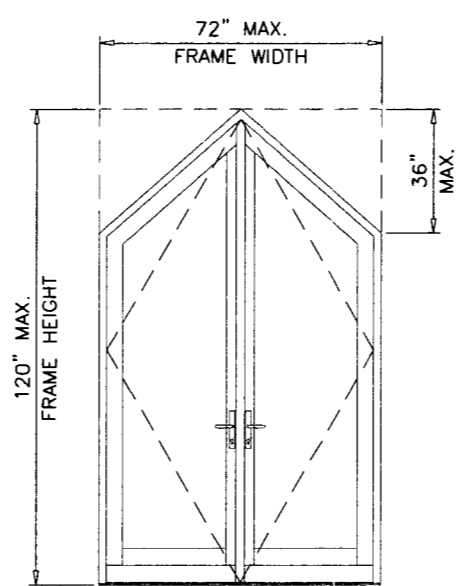
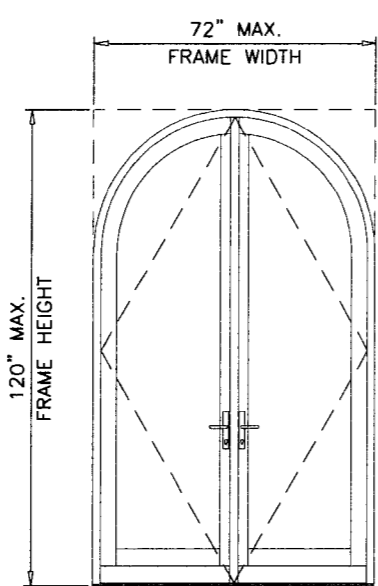
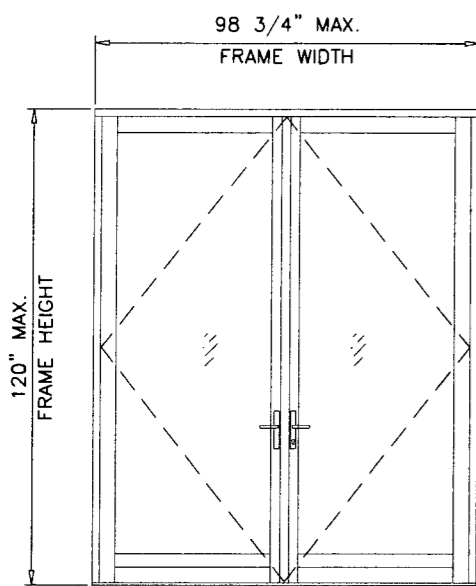
EUROPEAN OUTSWING WOOD PATIO DOOR (L.M.I.)
HARTMAN WINDOWS & DOORS, LLC
531 SOUTHERN BLVD.
WEST PALM BEACH, FL 33405
TEL. (561) 296-9600 FAX. (561) 296-9601

no	date	by	description
A	09.04.07		REV. PER BCCO COMMENTS
B	04.13.09		UPDATED FOR 2007 FBC
C	08.18.09		REV. PER BCCO COMMENTS

revisions:
date: 03-03-07
scale: 1/2" = 1'-0"
dr. by: HAMID
chk. by:
drawing no. **W07-16**
sheet 1 of 9



SEE SHEET 1 FOR ANCHOR SPACING



DOOR LEAF WITH HARTMAN TILT & TURN CASEMENT WINDOW SEE SEPARATE NOA FOR WINDOW CAPACITY LOWER RATING OF CASEMENT WINDOW OR OUTSWING DOOR WILL CONTROL.

GLAZING TYPES 'F' & 'G' ONLY

GLAZING TYPES 'A' 'B' 'C' 'D' 'E' 'F' 'G' 'H' & 'I'

ALLOWABLE LOADS FOR ALTERNATE SHAPES AS SHOWN ABOVE OR SIMILAR CAN BE VERIFIED BY INSCRIBING DOOR SHAPE WITHIN RECTANGLE AS SHOWN IN DOTTED LINES AND OBTAINING ALLOWABLE LOADS FROM THOSE SHAPES.

APPROVED CONFIGURATIONS

MAXIMUM DESIGN LOAD RATING = + 70.0 PSF
(FOR SIZES SHOWN ABOVE OR SMALLER) - 70.0 PSF
AS ALLOWED BY FBC

FOR DESCRIPTION AND LOCATION OF LOCKS AND HINGES SEE SHEET 4.

NOTE:
GLASS CAPACITIES ON THIS SHEET ARE BASED ON ASTM E1300-02/04 (3 SEC. GUSTS) AND FLORIDA BUILDING COMMISSION DECLARATORY STATEMENT DCA05-DEC-219

Engr: ARSHAD VIQAR
CIVIL
FLA. PE # 38863
C.A.N. 3538
Ar
SEP 18 2009

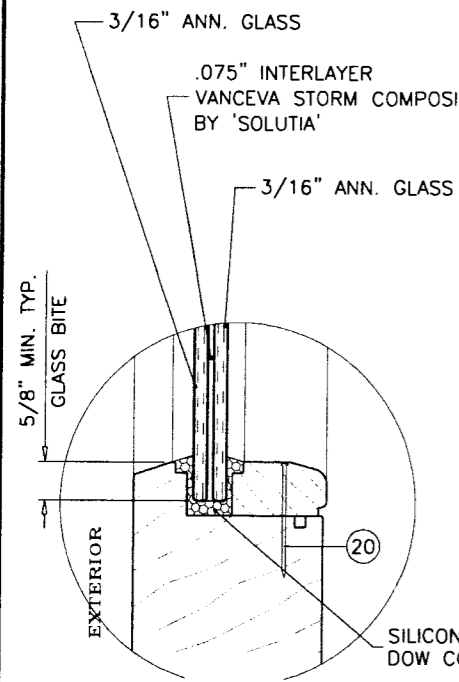
PRODUCT REVISED
as complying with the Florida
Building Code
Acceptance No. 09-0518.01
Expiration Date October 04, 2012
By *[Signature]*
Miami Dade Product Control
Division

afc
AL-FAROOQ CORPORATION
ENGINEERS & PRODUCT DEVELOPMENT
1235 S.W. 87 AVE
MIAMI, FLORIDA 33174
TEL. (305) 264-8100 FAX. (305) 262-6978
COMP-ANL\W07-16HWD

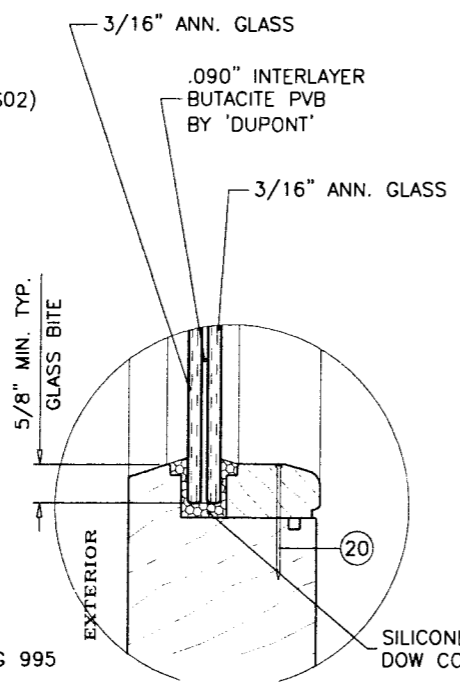
EUROPEAN OUTSWING WOOD PATIO DOOR (L.M.I.)
HARTMAN WINDOWS & DOORS, LLC
531 SOUTHERN BLVD.
WEST PALM BEACH, FL 33405
TEL. (561) 296-9600 FAX. (561) 296-9601

no	date	by	description
A	09.04.07		REV. PER BCCO COMMENTS
B	04.13.09		UPDATED FOR 2007 FBC
C	08.18.09		REV. PER BCCO COMMENTS

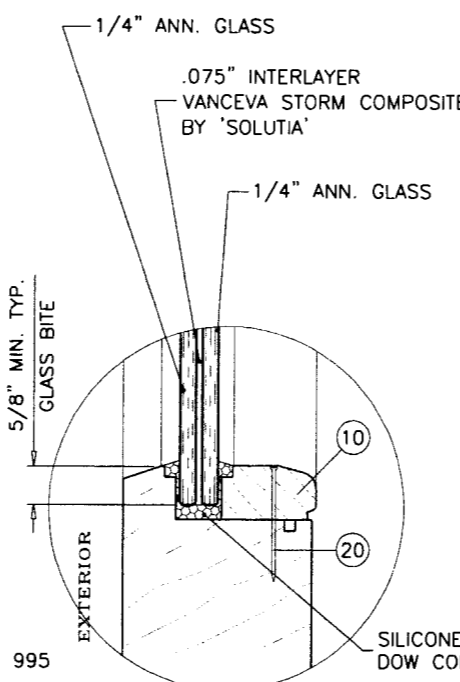
revisions:
date: 03-03-07
scale: 1/4" = 1'-0"
dr. by: HAMID
chk. by:
drawing no.
W07-16
sheet 2 of 9



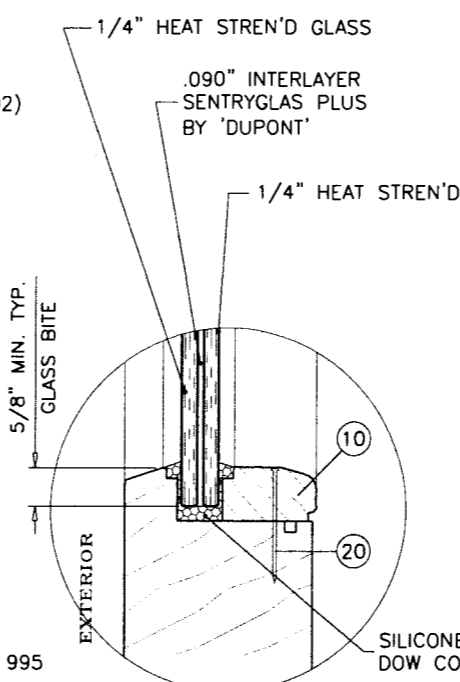
GLAZING TYPE 'A'



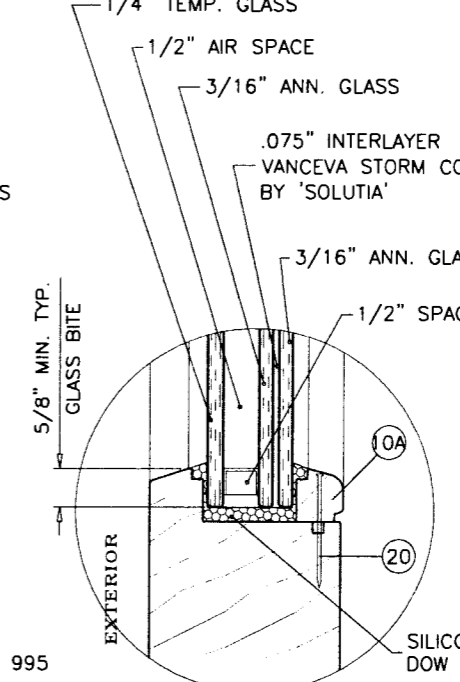
GLAZING TYPE 'B'



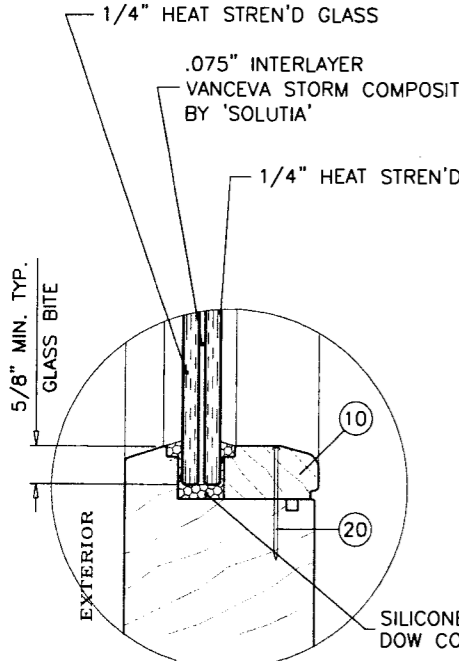
GLAZING TYPE 'C'



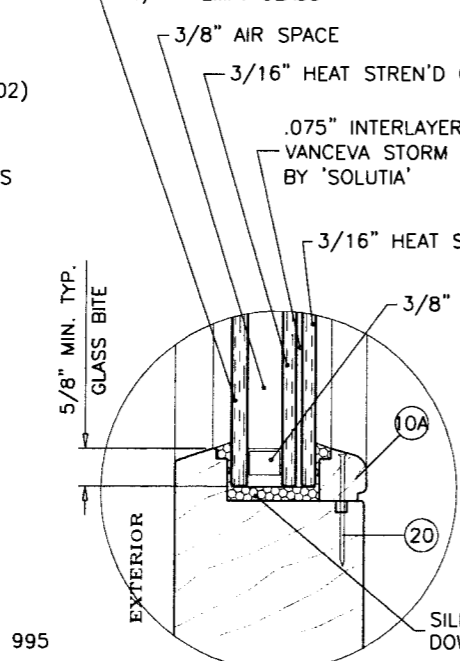
GLAZING TYPE 'D'



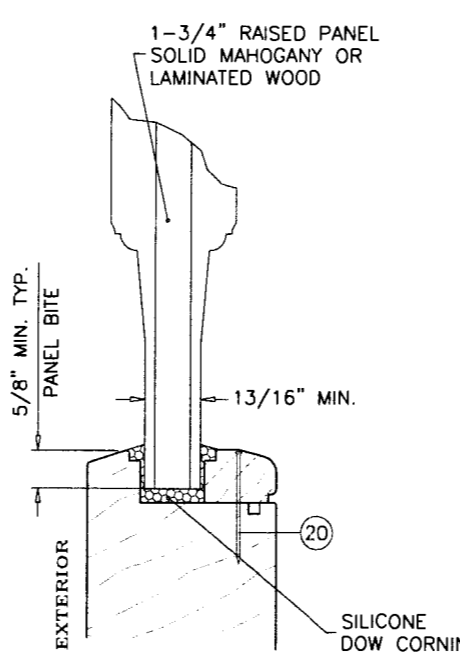
GLAZING TYPE 'E'



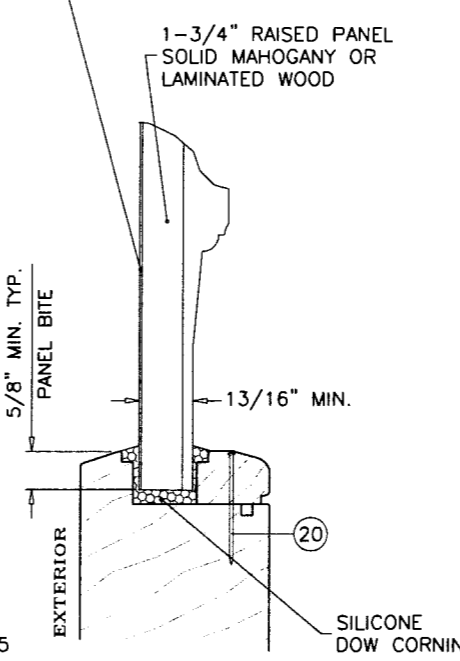
GLAZING TYPE 'F'



GLAZING TYPE 'G'



GLAZING TYPE 'H'



GLAZING TYPE 'I'

GLAZING OPTIONS

Engr: ARSHAD VIGAR
 CIVIL
 FLA. PE # 38863
 C.A.N. 3538
 SEP 18 2009

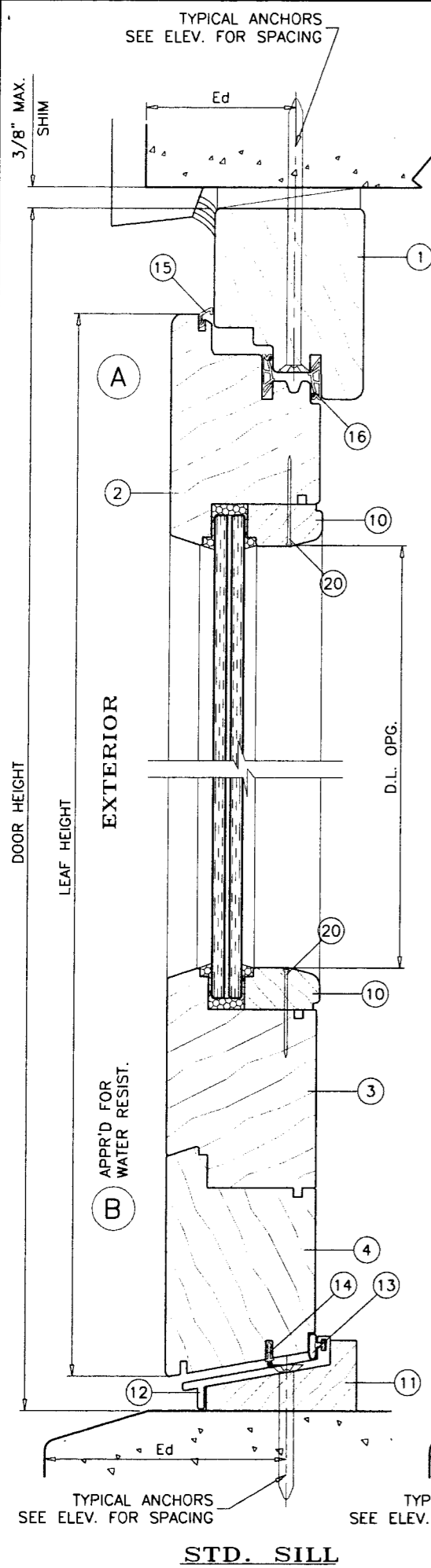
PRODUCT REVISED
 as complying with the Florida
 Building Code
 Acceptance No. 09-0518.01
 Expiration Date October 04, 2012
 By: [Signature]
 Miami Dade Product Control
 Division

afc
AL-FAROOQ CORPORATION
 ENGINEERS & PRODUCT DEVELOPMENT
 1235 S.W. 87 AVE
 MIAMI, FLORIDA 33174
 TEL. (305) 264-8100 FAX. (305) 262-6978
 COMP-ANL\W07-16HWD

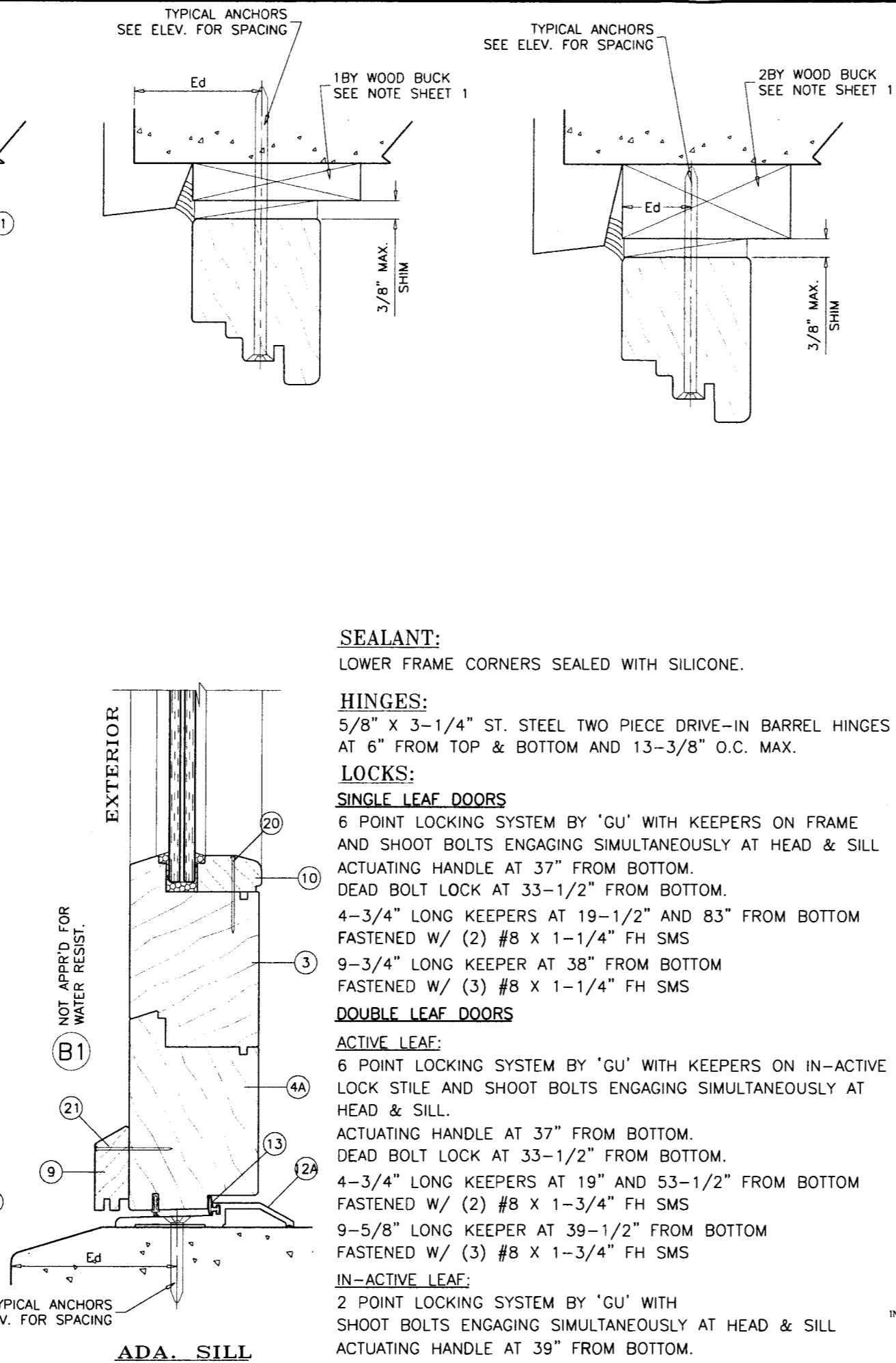
EUROPEAN OUTSWING WOOD PATIO DOOR (L.M.I.)
HARTMAN WINDOWS & DOORS, LLC
 531 SOUTHERN BLVD.
 WEST PALM BEACH, FL 33405
 TEL. (561) 296-9600 FAX. (561) 296-9601

no.	date	by	description
A	09.04.07	REV. PER BCCO COMMENTS	
B	04.13.09	NO CHANGE THIS SHEET	
C	08.18.09	REV. PER BCCO COMMENTS	

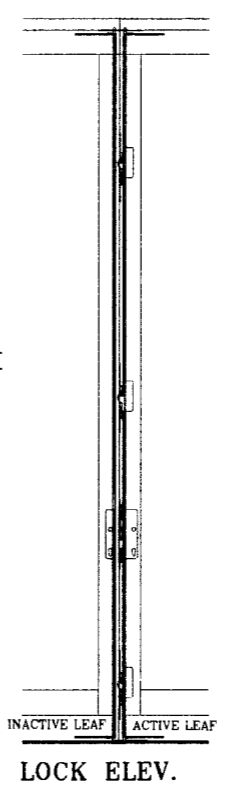
date: 03-03-07
 scale: 3/8" = 1"
 dr. by: HAMID
 chk. by:
 drawing no.
W07-16
 sheet 3 of 9



STD. SILL



ADA. SILL



LOCK ELEV.

WOOD BUCKS NOT BY HARTMAN WINDOWS, MUST SUSTAIN LOADS IMPOSED BY GLAZING SYSTEM AND TRANSFER THEM TO THE BUILDING STRUCTURE.

TYPICAL ANCHORS

ANCHORS THRU DOOR FRAME

- 1/4" DIA. TAPCON BY 'ITW' (Fu=120 KSI, Fy=92 KSI)
- 1/4" DIA. ULTRACON BY 'ELCO' (Fu=177 KSI, Fy=155 KSI)

INTO 2BY WOOD BUCKS OR WOOD STRUCTURE
1-3/8" MIN. PENETRATION INTO WOOD

THRU WOOD BUCKS INTO MASONRY OR DIRECTLY INTO MASONRY
1-1/4" MIN. EMBED INTO CONC. OR MASONRY

Ed = ANCHOR EDGE DISTANCES

INTO CONCRETE AND MASONRY = 2-1/2" MIN.
INTO WOOD STRUCTURE = 3/4" MIN.

ANCHORS CL TO CL DISTANCE

INTO CONCRETE AND MASONRY = 2" MIN.
INTO WOOD STRUCTURE = 3/4" MIN. (UNLESS SPECIFIED)

CONCRETE f'c = 3000 PSI MIN.
C-90 HOLLOW/FILLED BLOCK f'm = 2000 PSI MIN.

STRAP CLIP AND CONT. ALUM ANGLE INSTALLATION OPTIONS.
SEE SHEET 7 FOR DETAILS.

SEALANT:

LOWER FRAME CORNERS SEALED WITH SILICONE.

HINGES:

5/8" X 3-1/4" ST. STEEL TWO PIECE DRIVE-IN BARREL HINGES
AT 6" FROM TOP & BOTTOM AND 13-3/8" O.C. MAX.

LOCKS:

SINGLE LEAF DOORS

6 POINT LOCKING SYSTEM BY 'GU' WITH KEEPERS ON FRAME
AND SHOOT BOLTS ENGAGING SIMULTANEOUSLY AT HEAD & SILL
ACTUATING HANDLE AT 37" FROM BOTTOM.
DEAD BOLT LOCK AT 33-1/2" FROM BOTTOM.

4-3/4" LONG KEEPERS AT 19-1/2" AND 83" FROM BOTTOM
FASTENED W/ (2) #8 X 1-1/4" FH SMS

9-3/4" LONG KEEPER AT 38" FROM BOTTOM
FASTENED W/ (3) #8 X 1-1/4" FH SMS

DOUBLE LEAF DOORS

ACTIVE LEAF:

6 POINT LOCKING SYSTEM BY 'GU' WITH KEEPERS ON IN-ACTIVE
LOCK STILE AND SHOOT BOLTS ENGAGING SIMULTANEOUSLY AT
HEAD & SILL.
ACTUATING HANDLE AT 37" FROM BOTTOM.
DEAD BOLT LOCK AT 33-1/2" FROM BOTTOM.

4-3/4" LONG KEEPERS AT 19" AND 53-1/2" FROM BOTTOM
FASTENED W/ (2) #8 X 1-3/4" FH SMS

9-5/8" LONG KEEPER AT 39-1/2" FROM BOTTOM
FASTENED W/ (3) #8 X 1-3/4" FH SMS

IN-ACTIVE LEAF:

2 POINT LOCKING SYSTEM BY 'GU' WITH
SHOOT BOLTS ENGAGING SIMULTANEOUSLY AT HEAD & SILL

ACTUATING HANDLE AT 39" FROM BOTTOM.

Engr: ARSHAD VIQAR
CIVIL
FLA. PE # 38863
C.A.N. 3538

SEP 18 2009

PRODUCT REVISED
as complying with the Florida
Building Code
Acceptance No. 09-0518.01
Expiration Date October 04, 2012

By: *[Signature]*
Miami Date Product Control
Division

af c
AL-FAROOQ CORPORATION
ENGINEERS & PRODUCT DEVELOPMENT
1235 S.W. 87 AVE
MIAMI, FLORIDA 33174
TEL. (305) 264-8100 FAX. (305) 262-6978
COMP-ANL\W07-16HWD

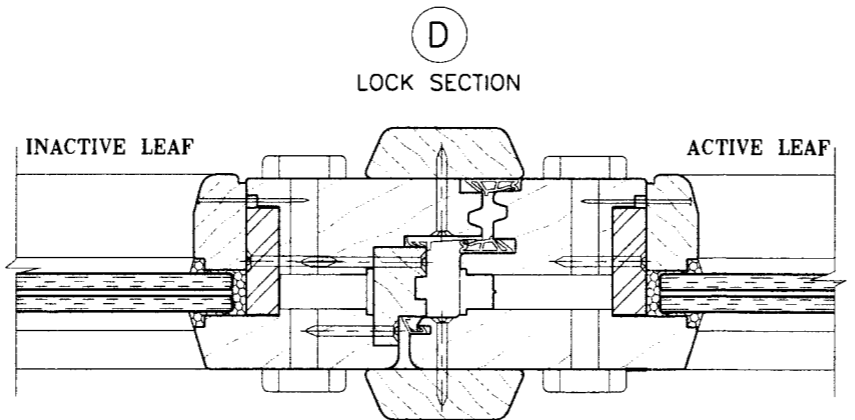
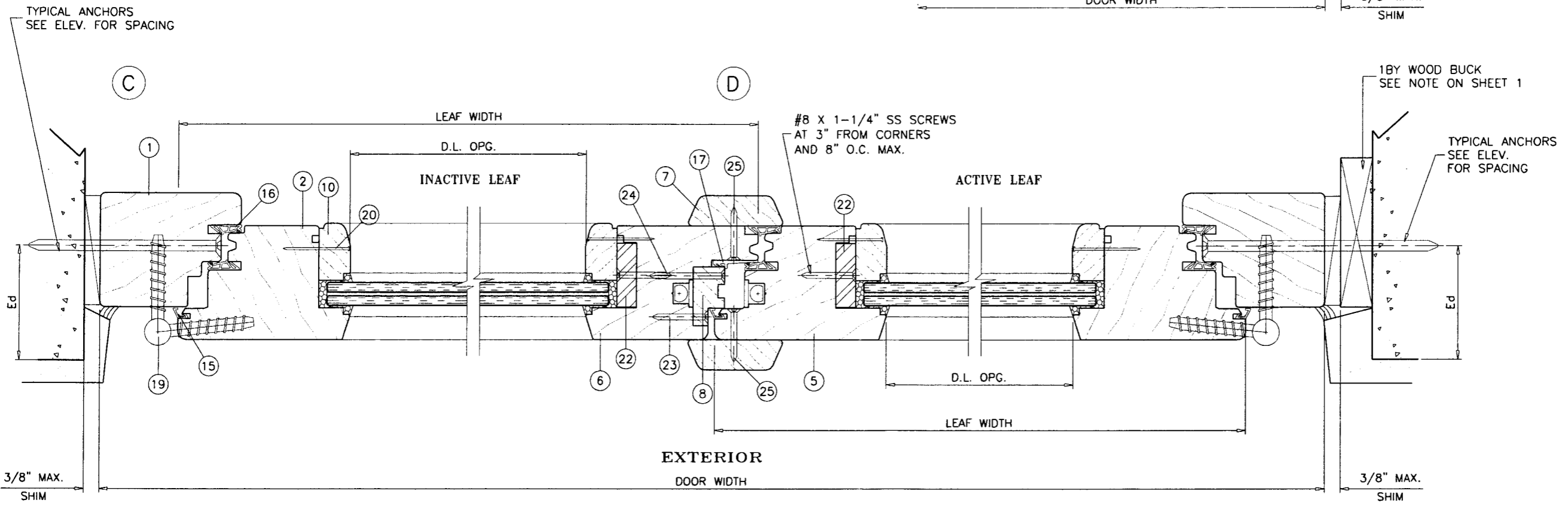
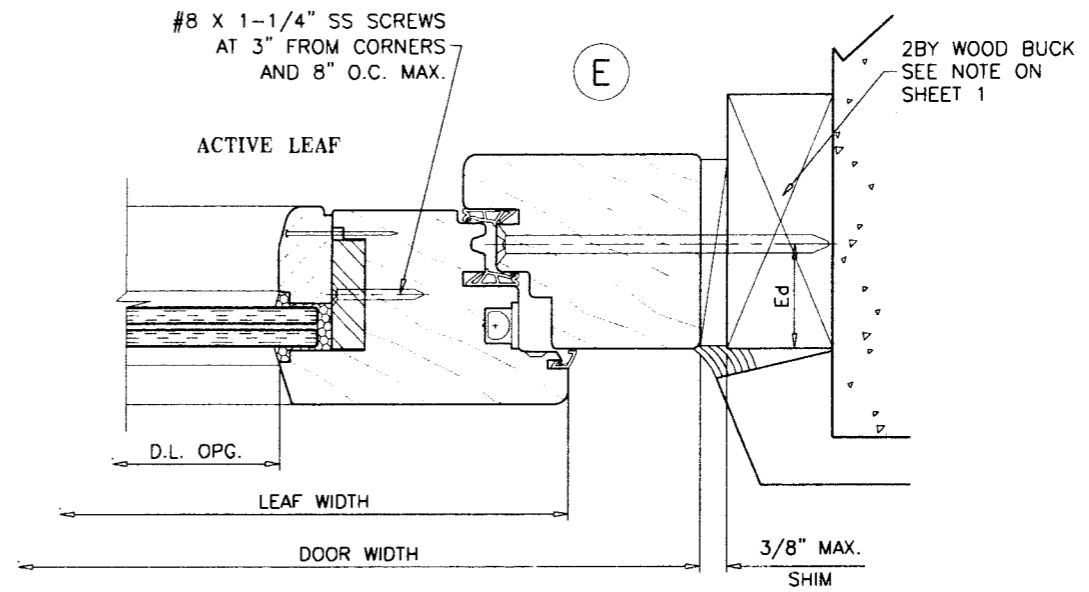
EUROPEAN OUTSWING WOOD PATIO DOOR (L.M.I.)
HARTMAN WINDOWS & DOORS, LLC
531 SOUTHERN BLVD.
WEST PALM BEACH, FL 33405
TEL. (561) 296-9600 FAX. (561) 296-9601

no	date	description
A	09.04.07	REV. PER BCCO COMMENTS
B	04.13.09	UPDATED FOR 2007 FBC
C	08.18.09	REV. PER BCCO COMMENTS

date: 03-03-07
scale: 3/8" = 1"
dr. by: HAMID
chk. by:

drawing no. **W07-16**
sheet 4 of 9

FOR DOOR FRAME INSTALLATION WITH STRAP CLIPS OR CONT. ALUM ANGLE SEE SHEET 7 FOR DETAILS.



SEE SHEET 4 FOR LOCK DESCRIPTION.

Engr: ARSHAD VIQAR
 CIVIL
 FLA. PE # 38863
 C.A.N. 3538
 SEP 18 2009

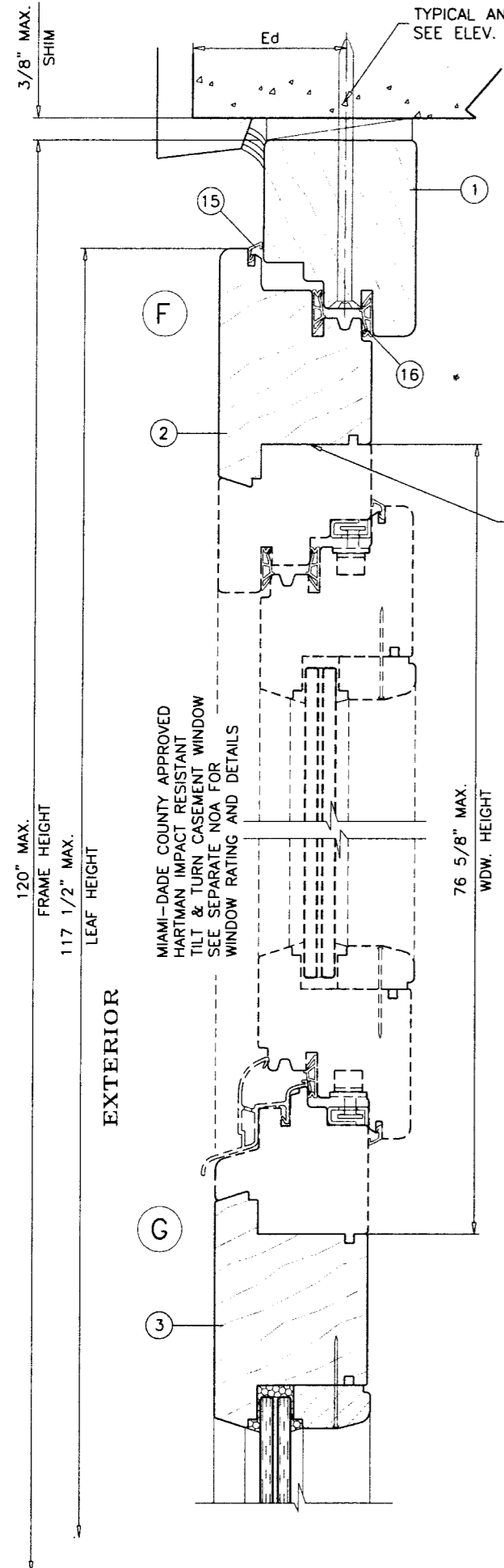
PRODUCT REVISED
 as complying with the Florida
 Building Code
 Acceptance No. 09-0518.01
 Expiration Date October 04 2012
 By: *[Signature]*
 Miami Dade Product Control
 Division

af c
AL-FAROOQ CORPORATION
 ENGINEERS & PRODUCT DEVELOPMENT
 12335 S.W. 87 AVE
 MIAMI, FLORIDA 33174
 TEL. (305) 264-8100 FAX. (305) 262-6978
 COMP - ANL\W07 - 16HWD

EUROPEAN OUTSWING WOOD PATIO DOOR (L.M.I.)
HARTMAN WINDOWS & DOORS, LLC
 531 SOUTHERN BLVD.
 WEST PALM BEACH, FL 33405
 TEL. (561) 296-9600 FAX. (561) 296-9601

no.	date	by	description
A	09.04.07		REV. PER BCCO COMMENTS
B	04.13.09		NO. CHANGE THIS SHEET
C	06.18.09		REV. PER BCCO COMMENTS

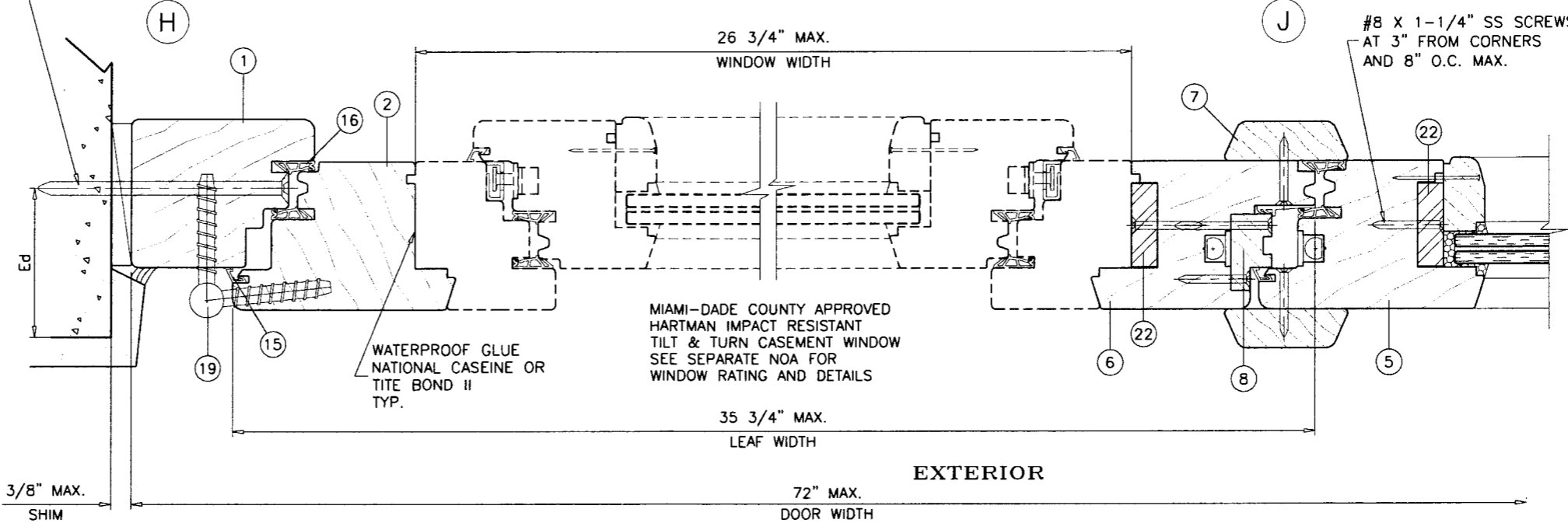
revisions:
 date: 03-03-07
 scale: 3/8" = 1"
 dr. by: HAMID
 chk. by:
 drawing no. W07-16
 sheet 5 of 9



TYPICAL ANCHORS
SEE ELEV. FOR SPACING

WATERPROOF GLUE
NATIONAL CASEINE OR
TITE BOND II
TYP.

TYPICAL ANCHORS
SEE ELEV. FOR SPACING



MIAMI-DADE COUNTY APPROVED
HARTMAN IMPACT RESISTANT
TILT & TURN CASEMENT WINDOW
SEE SEPARATE NOA FOR
WINDOW RATING AND DETAILS

#8 X 1-1/4" SS SCREWS
AT 3" FROM CORNERS
AND 8" O.C. MAX.

EXTERIOR

EXTERIOR

Engr: ARSHAD VIQAR
CIVIL
FLA. PE # 38863
C.A.N. 3538
Ar
SEP 18 2009

PRODUCT REVISED
as complying with the Florida
Building Code
Acceptance No. 09-0518.01
Expiration Date October 04, 2012
By *Shahid*
Miami Dade Product Control
Division

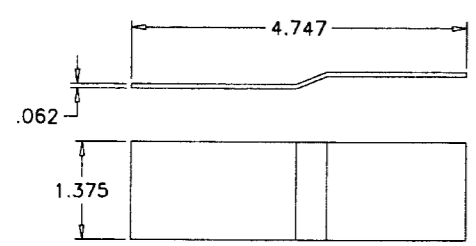
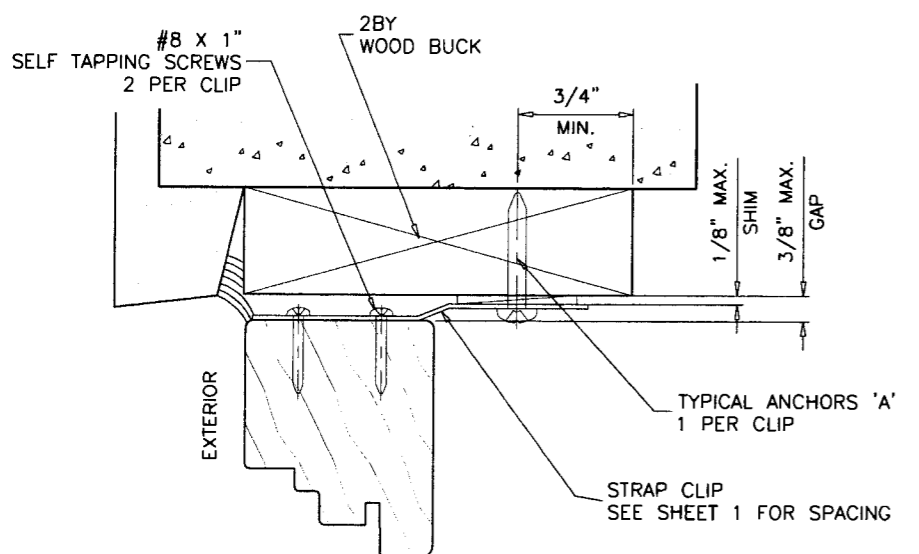
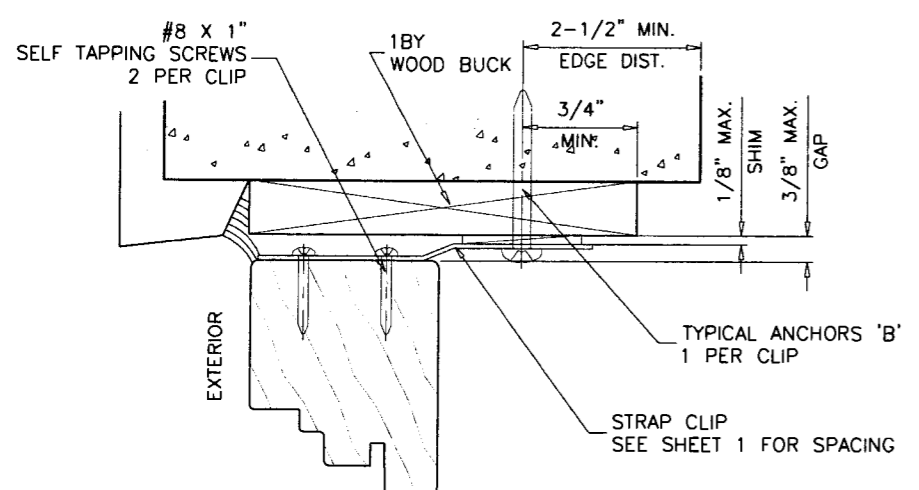
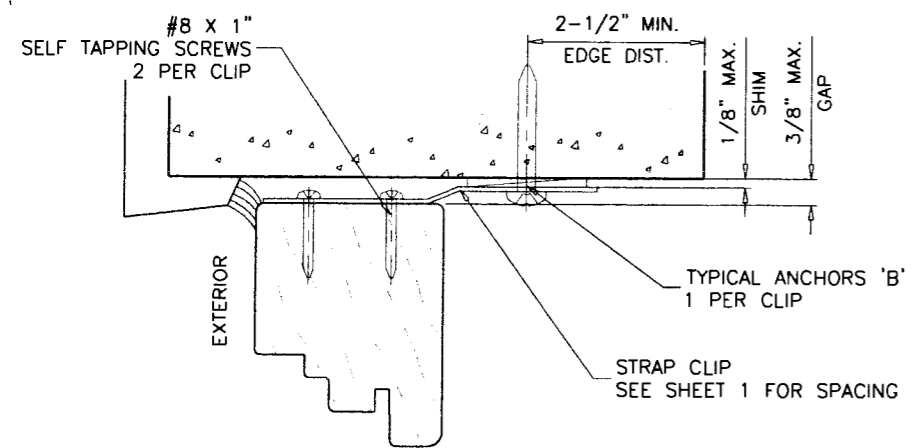
af c
AL-FAROOQ CORPORATION
ENGINEERS & PRODUCT DEVELOPMENT
1235 S.W. 87 AVE
MIAMI, FLORIDA 33174
TEL. (305) 264-8100 FAX. (305) 262-6978
COMP-ANL\W07-16HWD

EUROPEAN OUTSWING WOOD PATIO DOOR (L.M.I.)
HARTMAN WINDOWS & DOORS, LLC
531 SOUTHERN BLVD.
WEST PALM BEACH, FL 33405
TEL. (561) 296-9600 FAX. (561) 296-9601

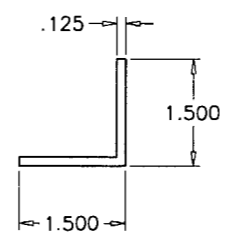
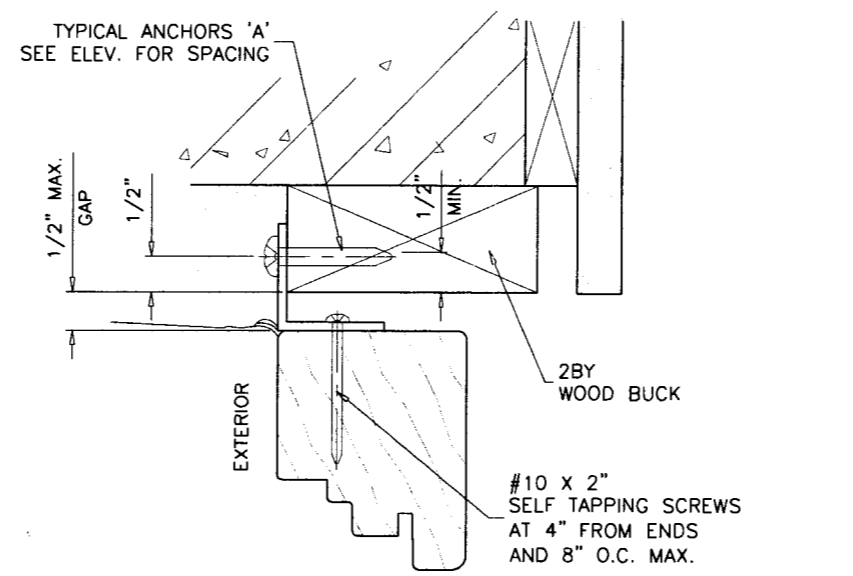
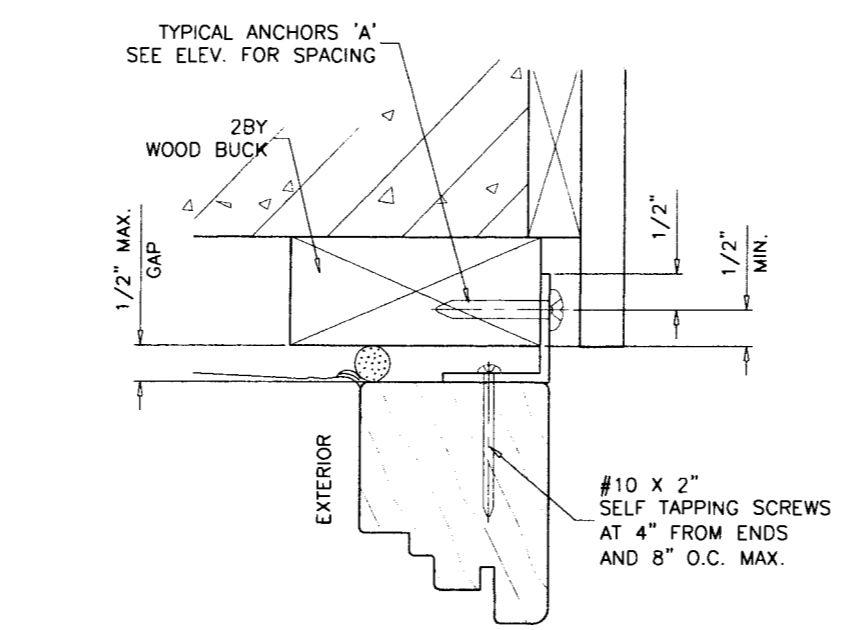
no	date	by	description
A	09.04.07		REV. PER BCCO COMMENTS
B	04.13.09		NO CHANGE THIS SHEET
C	08.18.09		REV. PER BCCO COMMENTS

date: 03-03-07
scale: 3/8" = 1"
dr. by: HAMID
chk. by:

drawing no.
W07-16
sheet 6 of 9



STRAP CLIP
 Fy = 36 KSI
 Fu = 58 KSI
 Fes = 73.7 KSI



ALUMINUM ANGLE CONT.
(6063-T5)

TYPICAL ANCHORS

ANCHORS THRU STRAP CLIPS & ALUM ANGLE

- A: #10 SMS**
 INTO 2BY WOOD BUCKS OR WOOD STRUCTURE
 1-1/2" MIN. PENETRATION INTO WOOD
- B: 3/16" DIA. TAPCON BY 'ITW'** (Fu=120 KSI, Fy=92 KSI)
3/16" DIA. ULTRACON BY 'ELCO' (Fu=177 KSI, Fy=155 KSI)
 INTO 2BY WOOD BUCKS OR WOOD STRUCTURE
 1-3/8" MIN. PENETRATION INTO WOOD
- THRU WOOD BUCKS INTO MASONRY OR DIRECTLY INTO MASONRY
 1-1/4" MIN. EMBED INTO CONC. OR MASONRY
- ANCHORS CL TO CL DISTANCE**
 INTO CONCRETE AND MASONRY = 2" MIN.
 INTO WOOD STRUCTURE = 3/4" MIN. (UNLESS SPECIFIED)
- CONCRETE f'c = 3000 PSI MIN.
 C-90 HOLLOW/FILLED BLOCK f'm = 2000 PSI MIN.

Engr: ARSHAD VIQAR
 CIVIL
 FLA. PE # 38863
 C.A.N. 3538
 SEP 18 2009

PRODUCT REVISED
 as complying with the Florida
 Building Code
 Acceptance No. 09-0518.01
 Expiration Date October 04, 2012
 By: *[Signature]*
 Miami Dade Product Control
 Division

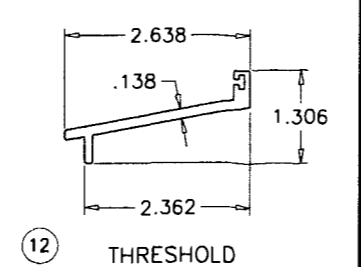
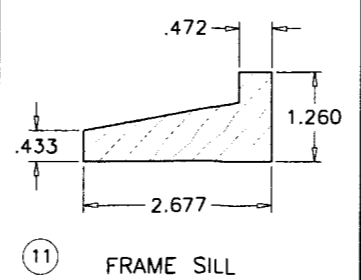
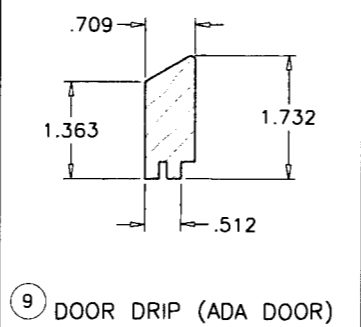
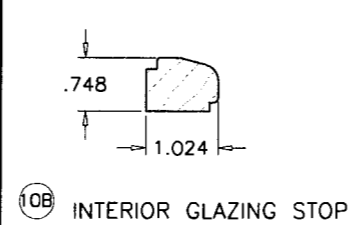
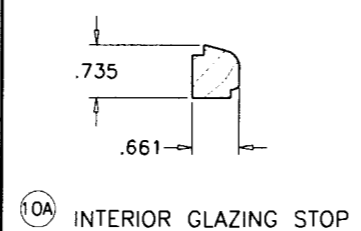
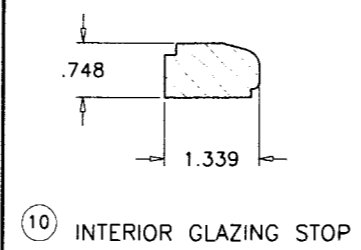
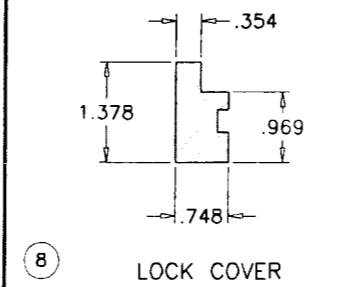
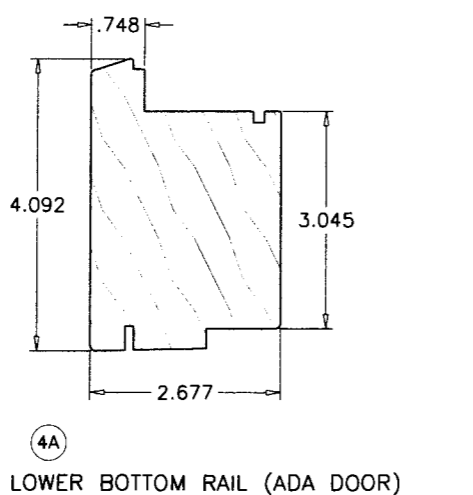
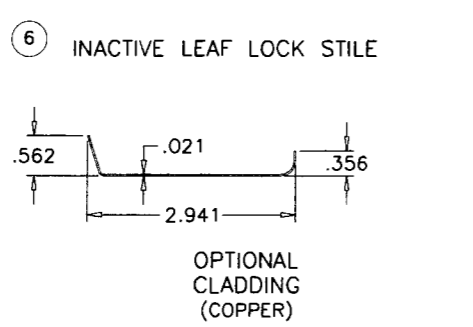
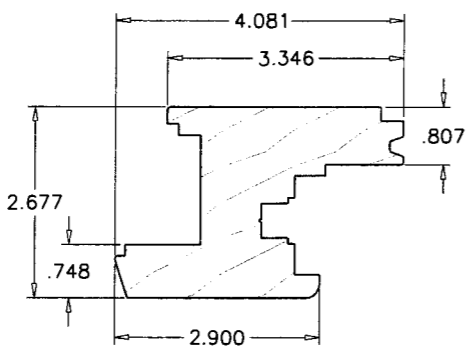
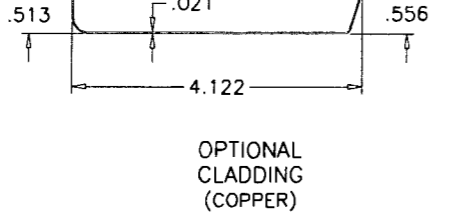
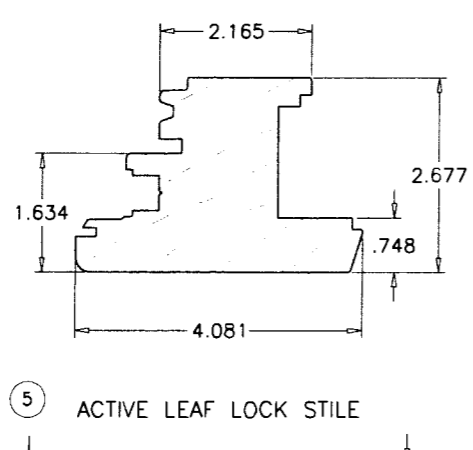
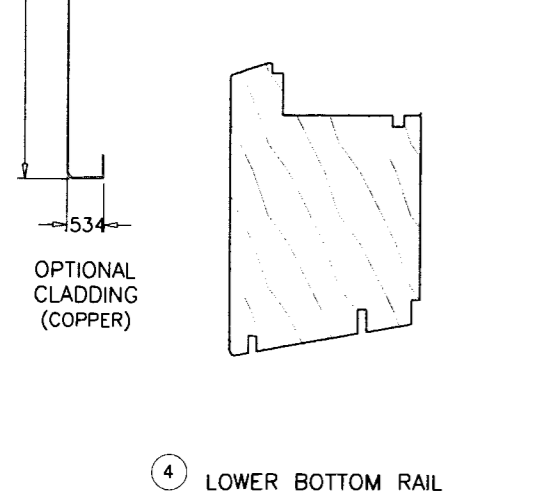
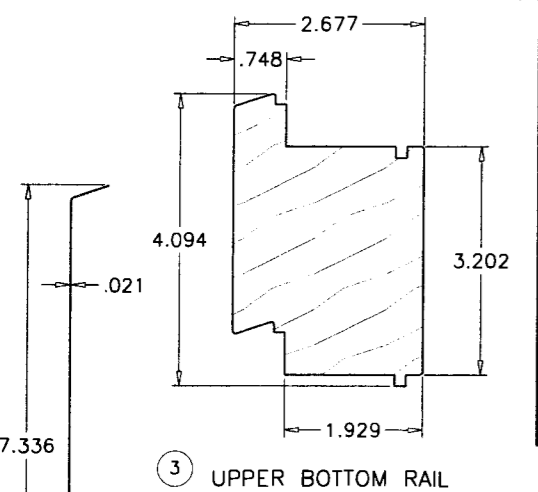
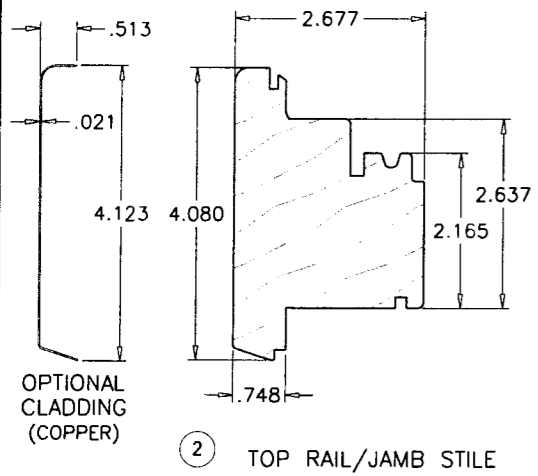
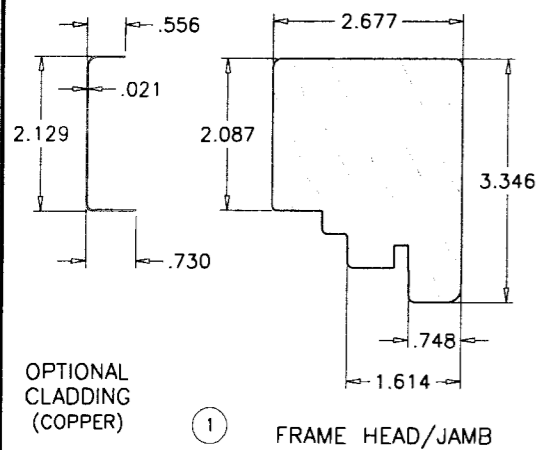
afc
AL-FAROOQ CORPORATION
 ENGINEERS & PRODUCT DEVELOPMENT
 1235 S.W. 87 AVE
 MIAMI, FLORIDA 33174
 TEL. (305) 264-8100 FAX. (305) 262-6978
 COMP-ANL\W07-16HWD

EUROPEAN OUTSWING WOOD PATIO DOOR (L.M.I.)
HARTMAN WINDOWS & DOORS, LLC
 531 SOUTHERN BLVD.
 WEST PALM BEACH, FL 33405
 TEL. (561) 296-9600 FAX. (561) 296-9601

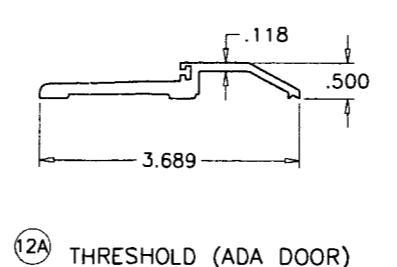
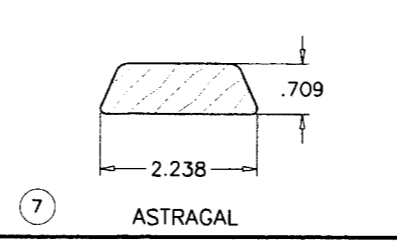
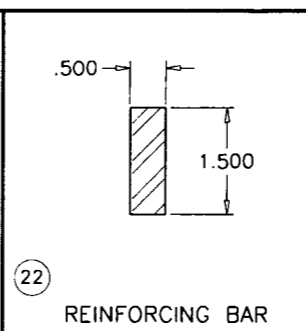
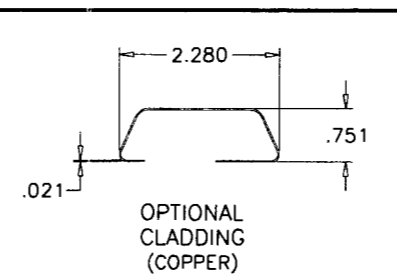
revisions:	no	date	by	description
	A	09.04.07	REV. PER BCCO COMMENTS	
	B	04.13.09	UPDATED FOR 2007 FBC	
	C	08.18.09	REV. PER BCCO COMMENTS	

date: 03-03-07
 scale: 3/8" = 1"
 dr. by: HAMID
 chk. by:

drawing no.
W07-16
 sheet 7 of 9



ITEM #	PART #	REQD.	DESCRIPTION	MATERIAL	MANF./SUPPLIER/REMARKS
1	-	3/	DOOR FRAME HEAD/JAMB	WOOD	MAHOGANY
2	-	2/	LEAF TOP RAIL/JAMB STILE	WOOD	MAHOGANY
3	-	1/	LEAF UPPER BOTTOM RAIL	WOOD	MAHOGANY
4	-	1/	LEAF LOWER BOTTOM RAIL	WOOD	MAHOGANY
4A	-	1/	LEAF LOWER BOTTOM RAIL (ADA DOOR)	WOOD	MAHOGANY
5	-	1/	LEAF ACTIVE LEAF LOCK STILE	WOOD	MAHOGANY
6	-	1/	LEAF INACTIVE LEAF LOCK STILE	WOOD	MAHOGANY
7	-	AS REQD.	ASTRAGAL	WOOD	MAHOGANY
8	-	AS REQD.	LOCK COVER	WOOD	MAHOGANY
9	-	1	LEAF DOOR DRIP	WOOD	MAHOGANY
10	-	4/	LEAF GLAZING STOP (LAM. GLASS)	WOOD	MAHOGANY
10A	-	4/	LEAF GLAZING STOP (INSUL. LAM. GLASS)	WOOD	MAHOGANY
10B	-	4/	LEAF GLAZING STOP (WOOD PANEL)	WOOD	MAHOGANY
11	-	1	FRAME SILL	WOOD	MAHOGANY
12	-	1	THRESHOLD	BRASS	-
12A	-	1	THRESHOLD	ALUMINUM	-
13	-	AS REQD.	THERMOPLASTIC BULB GASKET	VINYL	OLIMPIA
14	-	AS REQD.	BRUSH WEATHERSTRIPPING	-	SCHLEGEL
15	1500450	AS REQD.	THERMOPLASTIC GASKET	VINYL	OLIMPIA
16	1500430	AS REQD.	THERMOPLASTIC GASKET	VINYL	OLIMPIA
17	1500512	AS REQD.	THERMOPLASTIC GASKET	-	OLIMPIA
18	V992	AS REQD.	NORTON NORSEAL TAPE	-	TOTAL PLASTICS
19	-	6/	LEAF 5/8" X 3-1/4" ADJUSTABLE BARREL HINGE	ST. STEEL	-
20	-	AS REQD.	18 GA. X 1-1/2" BRAD NAILS	-	3" FROM ENDS & 8" O.C.
21	-	AS REQD.	18 GA. X 1-1/2" BRAD NAILS	-	3" FROM ENDS & 12" O.C.
22	-	-	REINFORCING BAR, FULL LENGTH	STEEL A36	-
23	-	AS REQD.	#8 X 1-1/4" SCREWS	-	2" FROM ENDS & 8" O.C.
24	-	AS REQD.	#8 X 1-3/4" SCREWS	-	2" FROM ENDS & 8" O.C.
25	-	AS REQD.	#8 X 1-1/4" SCREWS	-	6" FROM ENDS & 13-1/2" O.C.



TYPICAL WOOD-HONDURES MAHOGANY LUMBER
 SPECIFIC GRAVITY = 0.45 MIN.
 GRADE = 2 MIN.
 MOISTURE CONTENT = 19% MAX.

Engr: ARSHAD VIQAR
 CIVIL
 FLA. PE # 38863
 C.A.N. 3538
 Aug
 SEP 18 2009

PRODUCT REVISED
 as complying with the Florida
 Building Code
 Acceptance No. 09-0518.01
 Expiration Date October 04, 2012
 By: [Signature]
 Miami Dade Product Control
 Division

af c
AL-FAROOQ CORPORATION
 ENGINEERS & PRODUCT DEVELOPMENT
 1235 S.W. 87 AVE
 MIAMI, FLORIDA 33174
 TEL. (305) 264-8100 FAX. (305) 262-6978
 COMP-ANL\W07-16HWD

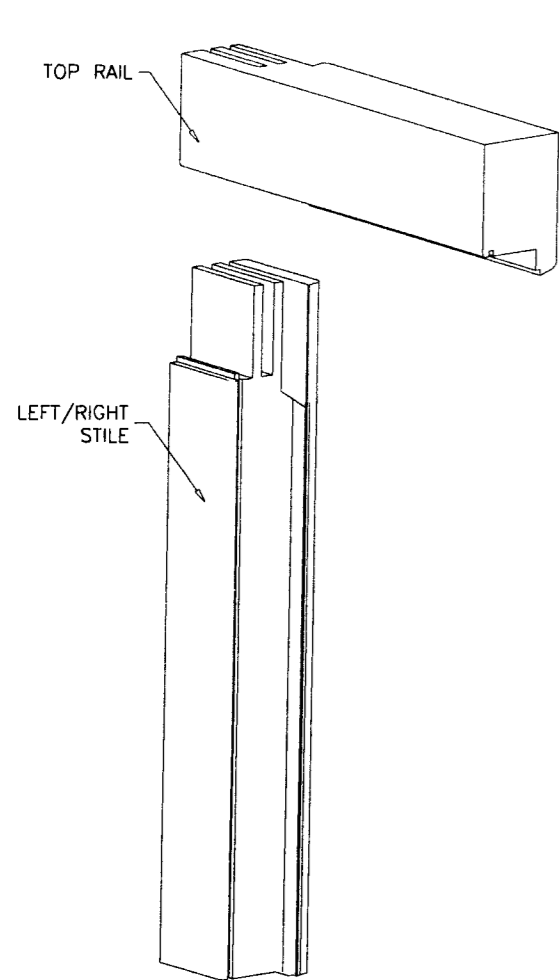
EUROPEAN OUTSWING WOOD PATIO DOOR (L.M.I.)
HARTMAN WINDOWS & DOORS, LLC
 531 SOUTHERN BLVD.
 WEST PALM BEACH, FL 33405
 TEL. (561) 296-9600 FAX. (561) 296-9601

no	date	description
A	09.04.07	NO CHANGE THIS SHEET
B	04.13.09	UPDATED FOR 2007 FBC
C	08.18.09	REV. PER BCCO COMMENTS

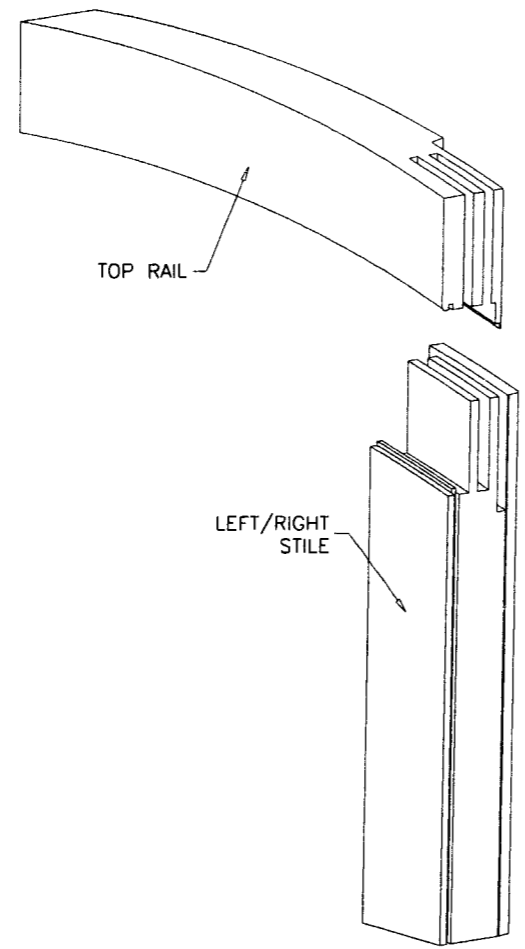
revisions:

date: 03-03-07
 scale: 3/8" = 1"
 dr. by: HAMID
 chk. by:

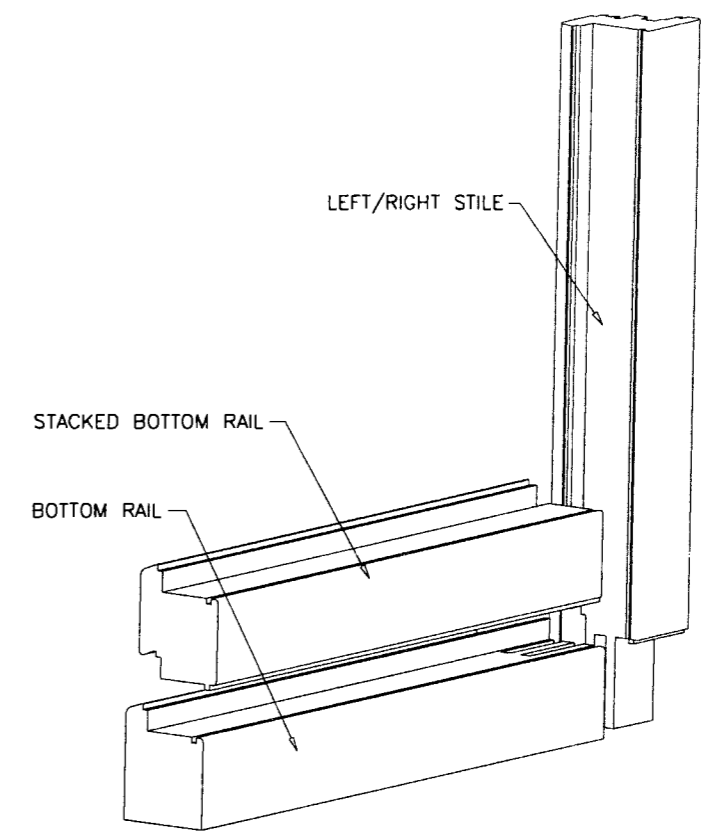
drawing no. **W07-16**
 sheet 8 of 9



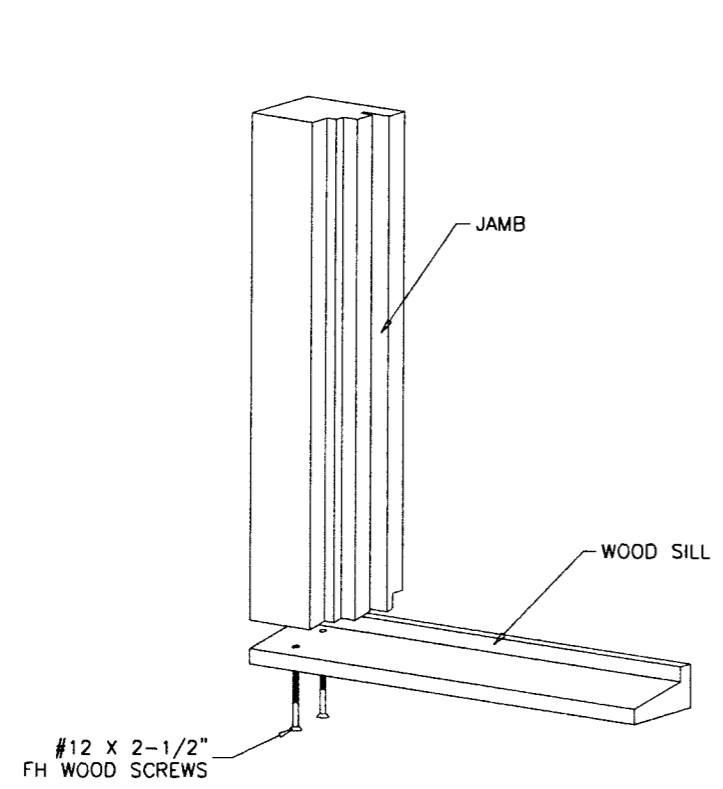
JAMB TOP CORNER



JAMB TOP CORNER CURVED

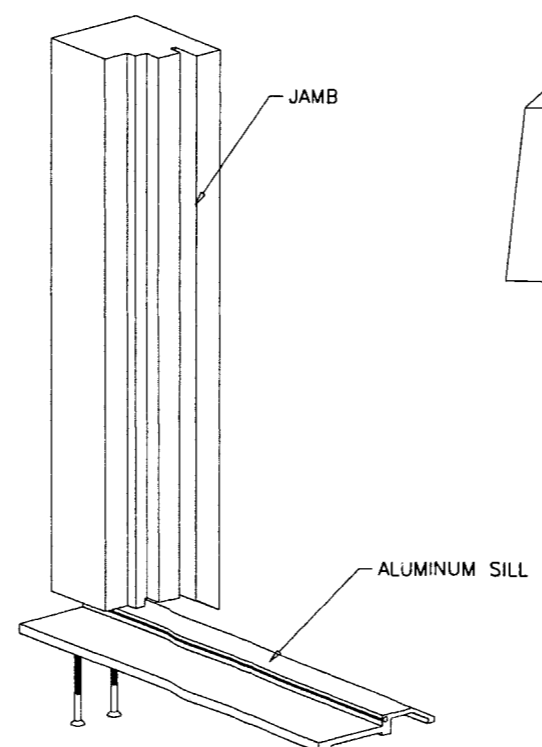


SASH: MULTI-FORK MORTISE AND TENON JOINERY SECURED WITH NATIONAL CASEINE OR TITE BOND II WATERPROOF GLUE

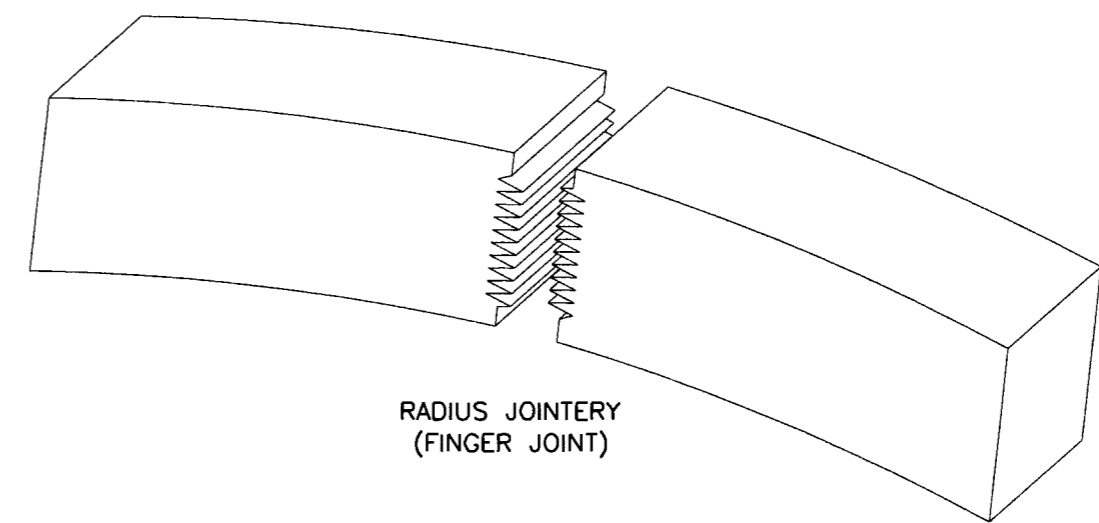


#12 X 2-1/2" FH WOOD SCREWS

JAMB BOTTOM: HALF LAP SECURED WITH #12X2-1/2 s.s. SCREWS NP-1 GLUE



ALUMINUM SILL



RADIUS JOINTERY (FINGER JOINT)

Engr: ARSHAD VIQAR
 CIVIL
 FLA. PE # 38863
 C.A.N. 3538
Arq
 SEP 18 2009

PRODUCT REVISED
 as complying with the Florida
 Building Code
 Acceptance No 09-0518.01
 Expiration Date October 04, 2012
 By *[Signature]*
 Miami Dade Product Control
 Division

afc
AL-FAROOQ CORPORATION
 ENGINEERS & PRODUCT DEVELOPMENT
 1235 S.W. 87 AVE
 MIAMI, FLORIDA 33174
 TEL. (305) 264-8100 FAX. (305) 262-6978
 COMP -ANL\W07-16HWD

EUROPEAN OUTSWING WOOD PATIO DOOR (L.M.I.)
HARTMAN WINDOWS & DOORS, LLC
 531 SOUTHERN BLVD.
 WEST PALM BEACH, FL 33405
 TEL. (561) 296-9600 FAX. (561) 296-9601

revisions:	no	date	by	description
	A	09.04.07		NO CHANGE THIS SHEET
	B	04.13.09		NO CHANGE THIS SHEET
	C	08.18.09		REV. PER BCCO COMMENTS

date: 03-03-07
 scale: 3/8" = 1"
 dr. by: HAMID
 chk. by:

drawing no.
W07-16
 sheet 9 of 9