



DEPARTMENT OF REGULATORY AND ECONOMIC RESOURCES (RER)
BOARD AND CODE ADMINISTRATION DIVISION

MIAMI-DADE COUNTY
PRODUCT CONTROL SECTION
11805 SW 26 Street, Room 208
Miami, Florida 33175-2474
T (786) 315-2590 F (786) 315-2599

www.miamidade.gov/economy

NOTICE OF ACCEPTANCE (NOA)

Easy Awning Systems, Inc.
9501 NW 80th Ave.
Hialeah Gardens, Florida 33016

SCOPE:

This NOA is being issued under the applicable rules and regulations governing the use of construction materials. The documentation submitted has been reviewed and accepted by Miami-Dade County RER- Product Control Section to be used in Miami Dade County and other areas where allowed by the Authority Having Jurisdiction (AHJ).

This NOA shall not be valid after the expiration date stated below. The Miami-Dade County Product Control Section (In Miami Dade County) and/or the AHJ (in areas other than Miami Dade County) reserve the right to have this product or material tested for quality assurance purposes. If this product or material fails to perform in the accepted manner, the manufacturer will incur the expense of such testing and the AHJ may immediately revoke, modify, or suspend the use of such product or material within their jurisdiction. RER reserves the right to revoke this acceptance, if it is determined by Miami-Dade County Product Control Section that this product or material fails to meet the requirements of the applicable building code.

This product is approved as described herein, and has been designed to comply with the High Velocity Hurricane Zone of the Florida Building Code.

DESCRIPTION: Aluminum and Canvas Awning

APPROVAL DOCUMENT: Drawing No. EA-01, titled "Layze Shade – Series 001 ", prepared by Eastern Engineering Group, last revision #4, dated August 24, 2018, signed and sealed by Gonzalo A. Paz, P.E., on August 28, 2018, bearing the Miami-Dade County Product Control Revision stamp with the Notice of Acceptance number and the expiration date by the Miami-Dade County Product Control Section.

MISSILE IMPACT RATING: None

LABELING: Each awning shall bear a permanent label with the manufacturer's name or logo, city, state and the following statement: "Miami-Dade County Product Control Approved", unless otherwise noted herein.

RENEWAL of this NOA shall be considered after a renewal application has been filed and there has been no change in the applicable building code negatively affecting the performance of this product.

TERMINATION of this NOA will occur after the expiration date or if there has been a revision or change in the materials, use, and/or manufacture of the product or process. Misuse of this NOA as an endorsement of any product, for sales, advertising or any other purposes shall automatically terminate this NOA. Failure to comply with any section of this NOA shall be cause for termination and removal of NOA.

ADVERTISEMENT: The NOA number preceded by the words Miami-Dade County, Florida, and followed by the expiration date may be displayed in advertising literature. If any portion of the NOA is displayed, then it shall be done in its entirety.

INSPECTION: A copy of this entire NOA shall be provided to the user by the manufacturer or its distributors and shall be available for inspection at the job site at the request of the Building Official.

This NOA revises NOA #16-1208.02 and consists of this page 1, evidence submitted pages E-1 & E-2 as well as approval document mentioned above.

The submitted documentation was reviewed by **Helmy A. Makar, P.E., M.S.**



Helmy A. Makar
10/25/2018

NOA No. 18-0924.04
Expiration Date: 12/15/2021
Approval Date: 10/25/2018
Page 1

NOTICE OF ACCEPTANCE: EVIDENCE SUBMITTED

1. EVIDENCE SUBMITTED UNDER PREVIOUS APPROVAL # 11-0822.10

A. DRAWINGS

1. *Drawing No. EA-01, titled " Layze Shade – Series 001 ", prepared by Eastern Engineering Group, last revision #1, dated December 06, 2011, signed and sealed by Raissa R. Lopez, P.E., on December 06, 2011.*

B. TESTS

1. *None.*

C. CALCULATIONS

1. *Calculations titled "Layze Shade Series 001 Awning Aluminum frame", prepared by eastern Engineering Group, dated August 17, 2011, 75 sheets, signed and sealed by Gonzalo A. Paz, P.E.*

D. QUALITY ASSURANCE

1. *By Miami-Dade County Department of Permitting, Environment, and Regulatory Affairs (PERA).*

E. MATERIAL CERTIFICATIONS

1. *None.*

2. EVIDENCE SUBMITTED UNDER PREVIOUS APPROVAL # 13-0422.14

A. DRAWINGS

1. *Drawing No. EA-01, titled " Layze Shade – Series 001 ", prepared by Eastern Engineering Group, last revision #2, dated April 10, 2013, signed and sealed by Raissa R. Lopez, P.E.*

B. TESTS

1. *None.*

C. CALCULATIONS

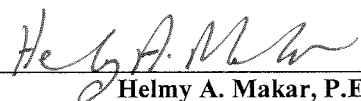
1. *Calculations titled "Layze Shade Series 001 Awning Aluminum frame", prepared by eastern Engineering Group, dated April 01, 2013, 3 sheets, signed and sealed by Raissa Lopez, P.E.*

D. QUALITY ASSURANCE

1. *By Miami-Dade County Department of Regulatory and Economic Resources (RER).*

E. MATERIAL CERTIFICATIONS

1. *None.*



Helmy A. Makar, P.E., M.S.
Product Control Section Supervisor

NOA No. 18-0924.04

Expiration Date: 12/15/2021

Approval Date: 10/25/2018

NOTICE OF ACCEPTANCE: EVIDENCE SUBMITTED

3. EVIDENCE SUBMITTED UNDER PREVIOUS APPROVAL # 16-1208.02

A. DRAWINGS

1. *Drawing No. EA-01, titled " Layze Shade – Series 001 ", prepared by Eastern Engineering Group, last revision #3, dated January 20, 2016, signed and sealed by Gonzalo A. Paz, P.E., on December 06, 2016.*

B. TESTS

1. *None.*

C. CALCULATIONS

1. *None.*

D. QUALITY ASSURANCE

1. *By Miami-Dade County Department of Regulatory and Economic Resources (RER).*

E. MATERIAL CERTIFICATIONS

1. *None.*

4. NEW EVIDENCE SUBMITTED

A. DRAWINGS

1. *Drawing No. EA-01, titled " Layze Shade – Series 001 ", prepared by Eastern Engineering Group, last revision #4, dated August 24, 2018, signed and sealed by Gonzalo A. Paz, P.E., on August 28, 2018.*

B. TESTS

1. *None.*

C. CALCULATIONS

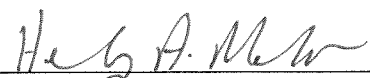
1. *None.*

D. QUALITY ASSURANCE

1. *By Miami-Dade County Department of Regulatory and Economic Resources (RER).*

E. MATERIAL CERTIFICATIONS

1. *None.*



Helmy A. Makar, P.E., M.S.
Product Control Section Supervisor
NOA No. 18-0924.04
Expiration Date: 12/15/2021
Approval Date: 10/25/2018

LAYZE SHADE - SERIES 001

ALUMINUM AND FABRIC AWNING

TABLE OF CONTENTS

SHEET	REVISION	SHEET DESCRIPTION
EA-01		GENERAL NOTES, INSTALLATION NOTES, TABLE OF CONTENTS, BILL OF MATERIALS AND COMPONENTS
EA-02		ISOMETRICS
EA-03		ISOMETRICS
EA-04		ELEVATIONS
EA-05		ELEMENTS 001 AND 002
EA-06		ELEMENTS 003 AND 005
EA-07		ELEMENTS 006 AND 007
EA-08		ELEMENTS 008 AND 009
EA-09		ELEMENTS 010 TO 012

NOTE:

1- THIS PRODUCT HAS BEEN DESIGNED TO COMPLY WITH THE REQUIREMENTS OF THE FLORIDA BUILDING CODE (2011) EDITION, UNDER THE FOLLOWING CONDITIONS:

- BASIC WIND SPEED OF 105 MPH AS PER FBC(2011) SECTION 3105.4.3. (FOR WIND EVENTS GREATER THAN 105 MPH, FABRIC CANVAS SHALL BE REMOVED).
- GUST FACTOR=0.85
- EXPOSURE CATEGORY="C".
- DIRECTIONALITY FACTOR=0.85.
- TOPOGRAPHIC FACTOR=1.0

(MAXIMUM STRUCTURE HEIGHT WHERE AWNING IS ATTACHED SHALL BE 60 FEET)

- ANCHORS SHALL BE AS LISTED ON BILL OF MATERIALS. QUANTITIES AS SHOWN ON DETAILS. EMBEDMENT TO BASE MATERIAL SHALL BE BEYOND WALL COVERING (STUCCO, TILE ETC.).

- ANCHORING CONDITIONS OTHER THAN THOSE SHOWN ON THESE DETAILS ARE NOT PART OF THIS APPROVAL.

- MATERIALS INCLUDING BUT NOT LIMITED TO STEEL/METAL SCREWS, THAT COME INTO CONTACT WITH OTHER DISSIMILAR MATERIALS SHALL BE PAINTED WITH ALKALI-RESISTANT COATINGS.

BILL OF MATERIALS

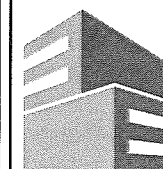
NO	DESCRIPTION	NOTES	QUANTITY
001	WALL MOUNT	ALUMINUM ALLOY 6061-T6	1
002	MOUNT MALE	ALUMINUM ALLOY 6061-T6	3
003	MOUNT FEMALE	ALUMINUM ALLOY 6061-T6	3
004	1/4 MACHINE SCREW	BOLT WITH NUT - ALUMINUM ALLOY 7075-T73 28 UNF	14
005	AWNING MAIN EXTRUSION	ALUMINUM ALLOY 6061-T6	3
006	PLASTIC CLIP	ALUMINUM ALLOY 6061-T6	6
007	PIPE SUPPORT	ALUMINUM ALLOY 6061-T6	3
008	CROSS BAR	ALUMINUM ALLOY 6061-T6	1
009	PIPE BRACER EYES END	ALUMINUM ALLOY 6061-T6	4
010	PIPE BRACER EYES END	ALUMINUM ALLOY 6061-T6	4
011	PIPE BRACER	ALUMINUM ALLOY 6061-T6	2
012	PIPE BRACER DECK MOUNT	ALUMINUM ALLOY 6061-T6	2
013	1/4" WALL ANCHORS	AGGRE-GATOR FASTENERS 300 SERIES STAINLESS STEEL ANCHORS BY ELCO	22
014	SCREWS	10-16 S.S KWIK-FLEX SCREWS by HILTI or APPROVED EQUAL	9

MAX. DESIGN PRESSURE RATING

+50/-50 PSF SHORT TERM

5 PSF DEAD LOAD

PRODUCT REVISED
as complying with the Florida
Building Code
Acceptance No 18-0924.04
Expiration Date 12/15/2021
By *Heidi A. M...*
Miami Design Product Control



Eastern
Engineering Group

3401 NW 82nd Avenue
Suite 370
Miami, FL 33122

(305) 599-8133

info@easterneg.com

www.easterneg.com

REVISIONS	DATE
1	12/29/11
2	4/20/13
3	11/29/16
4	9/24/18

JOB No. & NAME:	DESIGNED & DRAWN:	SCALE:
11 205	Mario Morales	AS SHOWN

LAYZE SHADE - SERIES 001

EASY AWNINGS

Address : 3480 NW 21 AVENUE, MIAMI FL 33142

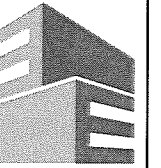
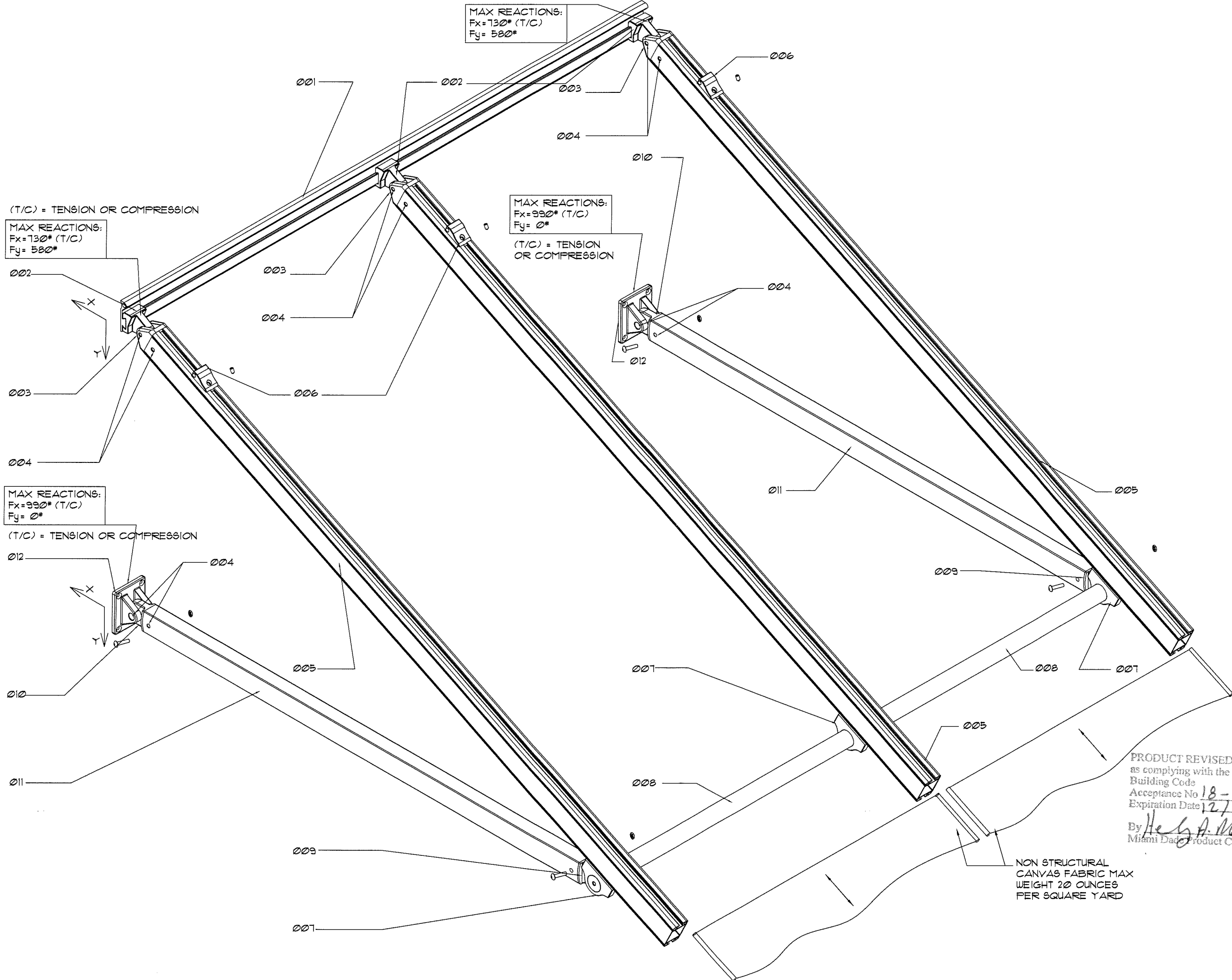
Ph : 786-256-4564

BRASSA R. LOPEZ, PE (Lic No- 93399)
GONZALO A. PALZ, PE (Lic No- 60734)
CERT. OF AUTHORIZATION No. 26555
I, the undersigned, hereby certify that the above-named engineer or architect is duly licensed and qualified to perform the services required by this contract, and that he or she is not under any suspension or debarment from practicing his or her profession in the State of Florida.
GONZALO A. PALZ, PE
Professional Engineer
No. 60734
State of Florida
Professional Engineer
Exp. 12/15/2021

Aug 28 2018

EA-01

SHEET 1 OF 9



Eastern
Engineering Group

3401 NW 82nd Avenue
Suite 370
Miami, FL 33122

(305) 599-8133

info@easterneg.com

www.easterneg.com

NO.	DESCRIPTION	DATE
1	BIDD COM. 12/6/21	
2	CODE CHANGE 4/10/23	

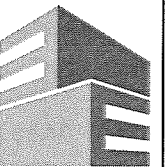
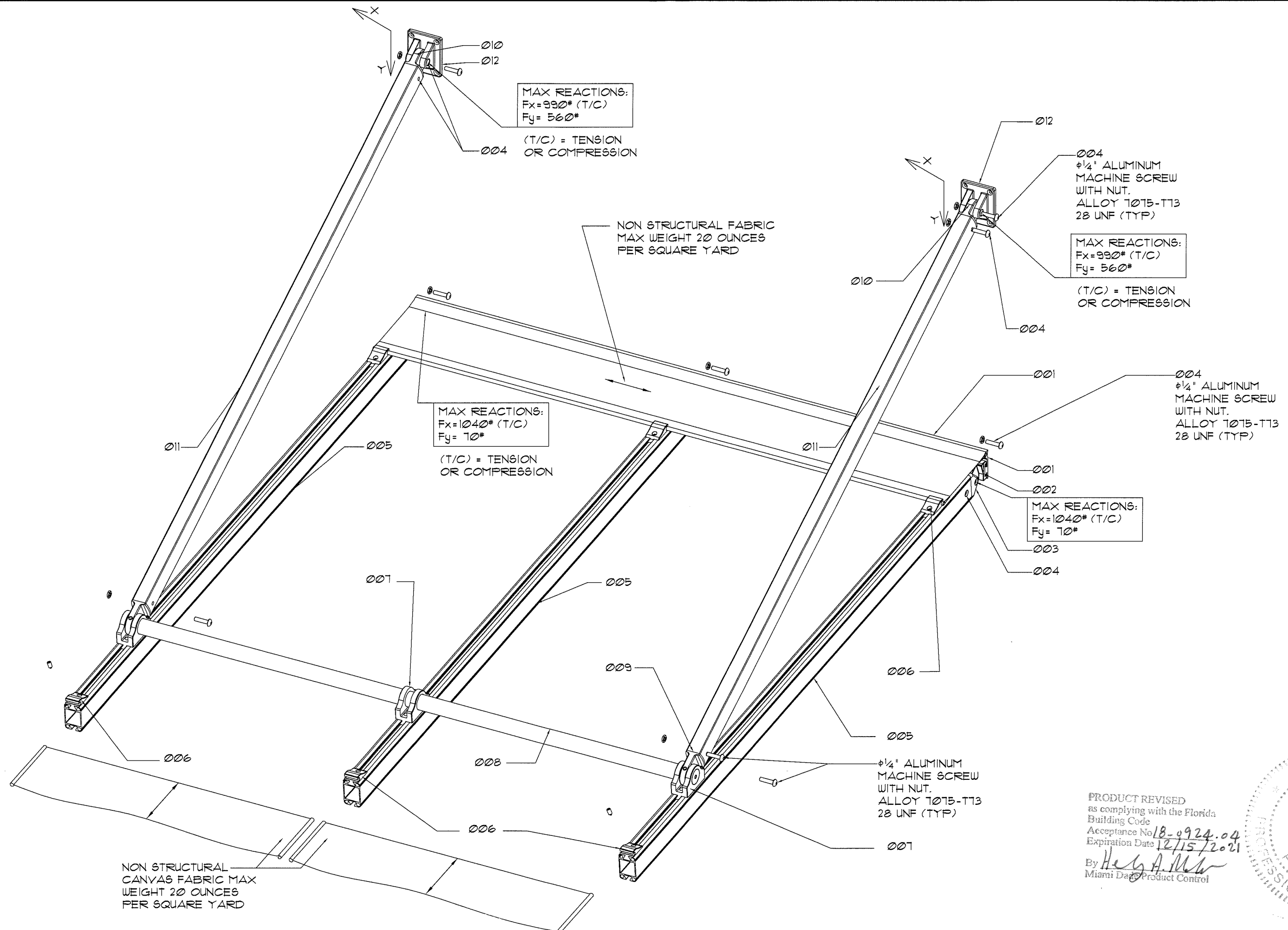
JOB No. & NAME:	11 205
DESIGNED & DRAWN:	Mario Morales
SCALE:	AS SHOWN

LAYZE SHADE - SERIES 001	
EASY AWNINGS	
Address:	3480 NW 21 AVENUE, MIAMI FL 33142
Ph:	786-256-4564

CRISTINA R. LOPEZ, PE (Lic No: 58399)
EUGENIO A. PAL, PE (Lic No: 60734)
CERT. OF AUTHORIZATION No. 26655
DO NOT SCALE THE DRAWING. ANY ERRORS OR OMISSIONS ARE THE RESPONSIBILITY OF THE ENGINEER. THE ENGINEER'S SEAL AND SIGNATURE ARE REQUIRED FOR ALL DIMENSIONS. THE ENGINEER'S SEAL AND SIGNATURE ARE REQUIRED FOR ALL DIMENSIONS. THE ENGINEER'S SEAL AND SIGNATURE ARE REQUIRED FOR ALL DIMENSIONS.

PROFESSIONAL ENGINEER
No. 60734
AUG 28 2018
STATE OF FLORIDA

EA-02
SHEET 2 OF 9



Eastern
 Engineering Group

3401 NW 82nd Avenue
 Suite 370
 Miami, FL 33122

(305) 599-8133

info@easterneng.com

www.easterneng.com

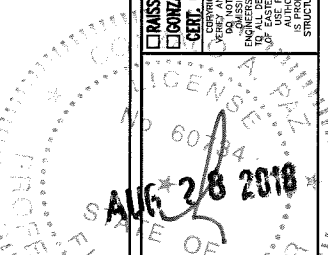
REVISIONS	DATE
1	12/6/01
2	CODE CHANGE 4/10/13

JOB No. & NAME:	11 205
DESIGNED & DRAWN:	Marlo Morales
SCALE:	AS SHOWN

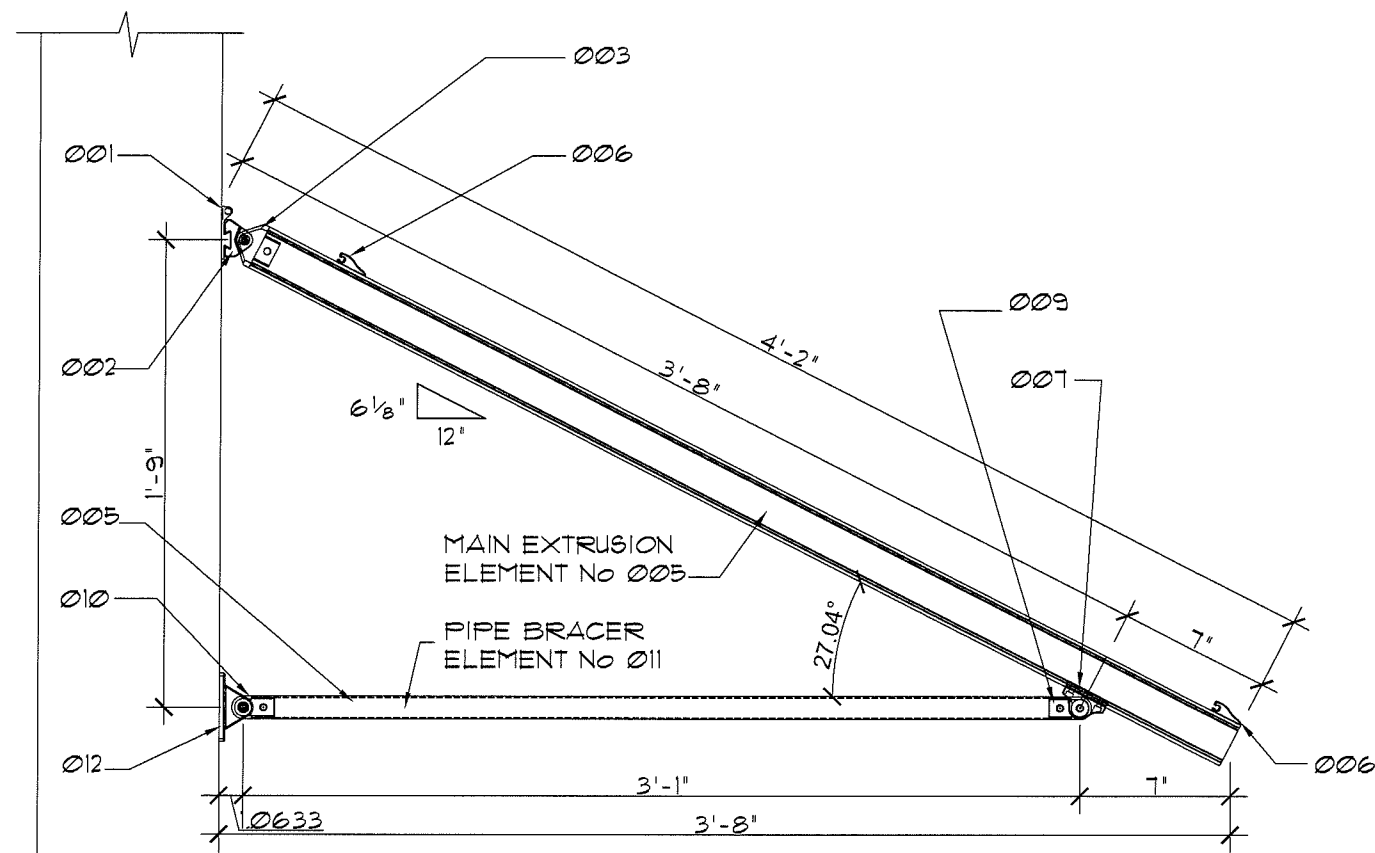
LAYZE SHADE - SERIES 001	Address: 3480 NW 21 AVENUE, MIAMI FL 33142
EASY AWNINGS	Ph: 786-256-4564

CRISTINA R. LOPEZ, PE (Lic No. 58398)
 GEORGE A. PALZ, PE (Lic No. 80734)
 CERT. OF AUTHORIZATION No. 26655
 I, the undersigned, being a duly Licensed Professional Engineer in the State of Florida, do hereby certify that the above is a true and correct copy of the original design and specifications for the project described herein, and that I am a duly Licensed Professional Engineer in the State of Florida.

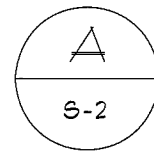
PRODUCT REVISED
 as complying with the Florida
 Building Code
 Acceptance No. 18-0924.04
 Expiration Date 12/15/2021
 By *Heidi A. M...*
 Miami Dade Product Control



EA-03

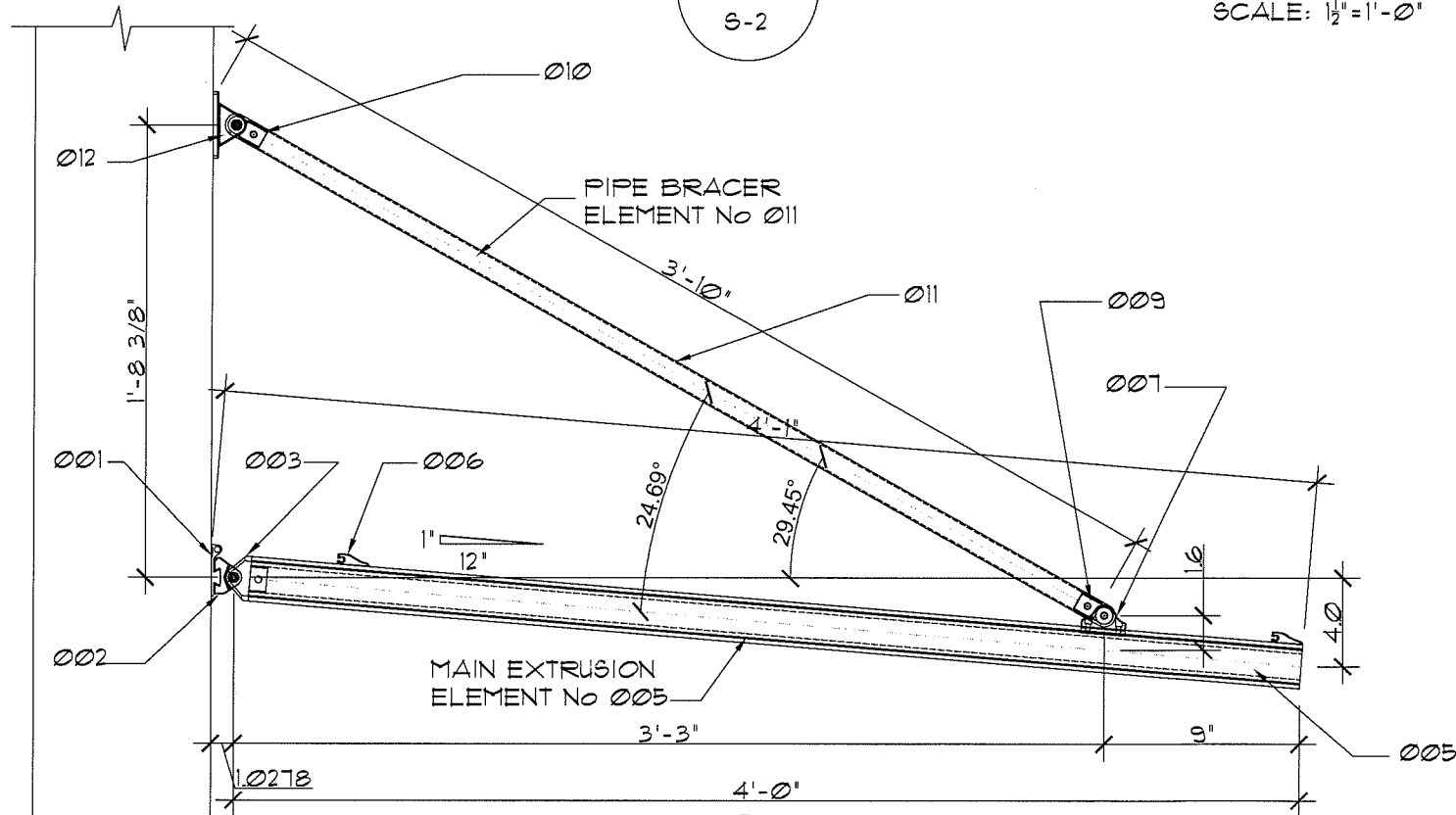


SIDE ELEVATION

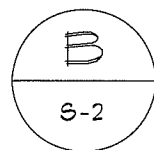


MOUNTED OPTION No 1

SCALE: 1/2" = 1'-0"

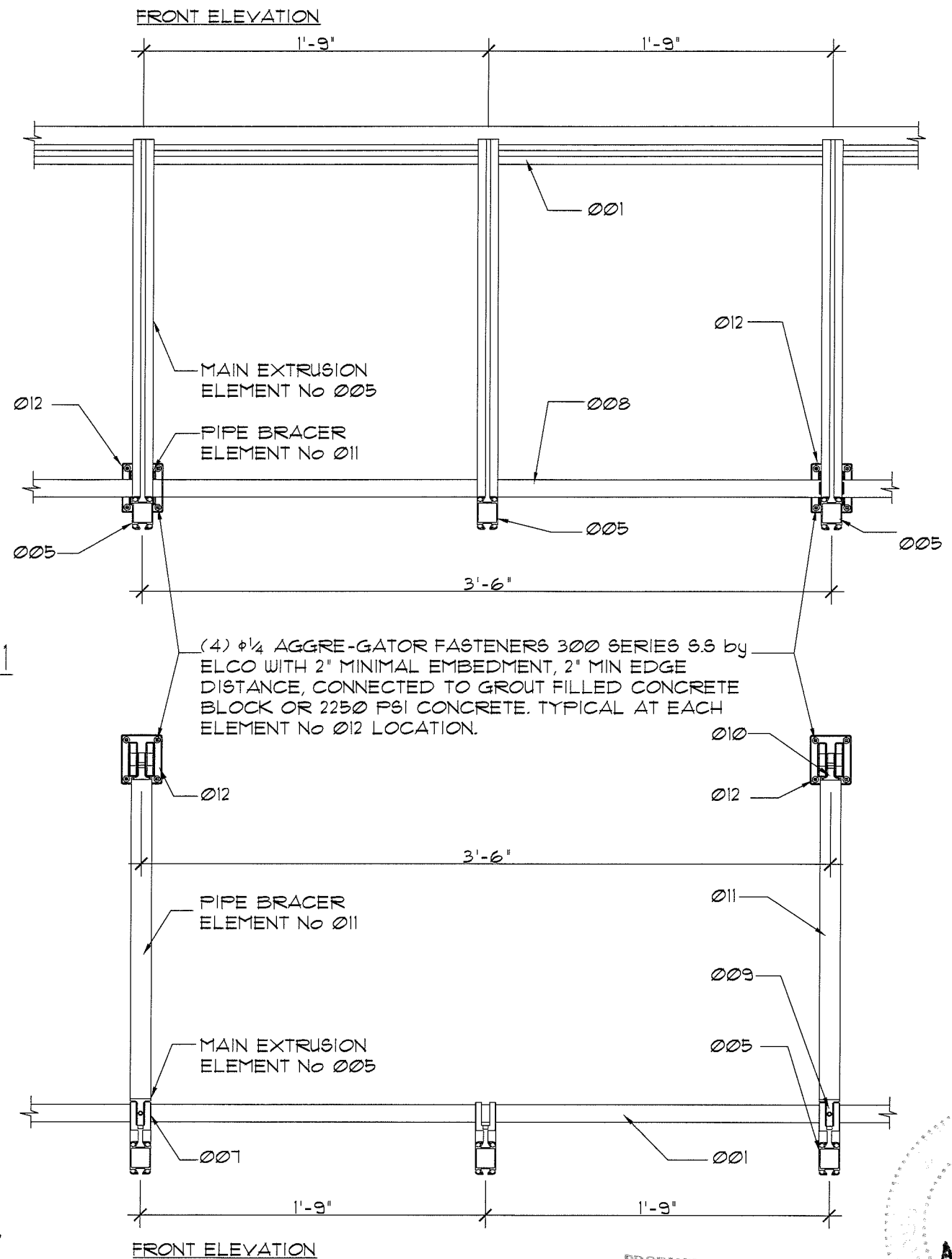


SIDE ELEVATION



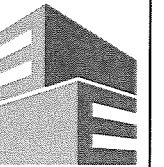
MOUNTED OPTION No 2

SCALE: 1/2" = 1'-0"



FRONT ELEVATION

PRODUCT REVISED
as complying with the Florida
Building Code
Acceptance No 18-0924.04
Expiration Date 12/15/2021
By *Heidi A. Nish*
Miami Dade Product Control!



Eastern
Engineering Group

3401 NW 82nd Avenue
Suite 370
Miami, FL 33122

(305) 599-8133

info@easterneg.com

www.easterneg.com

REVISIONS	DATE
1	12/6/21
2	4/10/23

JOB No. & NAME:	11 205
DESIGNED & DRAWN:	Marie Morales
SCALE:	AS SHOWN

LAYZE SHADE - SERIES 001

EASY AWNINGS

Address: 3480 NW 21 AVENUE, MIAMI FL 33142

Ph: 786-256-4564

DAVID R. LOPEZ, PE (Lic No 58399)
GONZALO A. PAL, PE (Lic No 60734)
GEN. OF AUTHORIZATION No. 26655
I, the undersigned, being a duly Licensed Professional Engineer in the State of Florida, do hereby certify that I am the Designer of the above project and that I am a duly Licensed Professional Engineer in the State of Florida.
I am not responsible for any errors or omissions in this drawing or for any consequences arising therefrom, except as may be noted on this drawing.
THIS DRAWING IS THE PROPERTY OF EASTERN ENGINEERING GROUP. IT IS TO BE USED ONLY FOR THE PROJECT AND LOCATION SPECIFICALLY IDENTIFIED HEREON. IT IS NOT TO BE REPRODUCED, COPIED, OR TRANSMITTED IN ANY FORM OR BY ANY MEANS, ELECTRONIC OR MECHANICAL, INCLUDING PHOTOCOPYING, RECORDING, OR BY ANY INFORMATION STORAGE AND RETRIEVAL SYSTEM, WITHOUT THE WRITTEN PERMISSION OF EASTERN ENGINEERING GROUP.
IS PROHIBITED. SHIP DRAWINGS CHECKED FOR ACCURACY AND COMPLIANCE WITH ALL DIMENSIONS.
PROFESSIONAL ENGINEER ONLY CAN PRINT THIS

No 60734

AUG 28 2018

EA-04

SHEET 4 OF 9

No.	DESCRIPTION	DATE
1	BOCO COMM. 12/8/1	
2	CODE CHANGE 4/10/15	

JOB NO. & NAME:	11 205	DESIGNED & DRAWN: Mario Morales	SCALE : AS SHOWN
-----------------	--------	------------------------------------	------------------

LAYZE SHADE - SERIES 001
EASY AWNINGS
Address : 3480 NW 21 AVENUE, MIAMI FL 33142
Ph : 786-256-4564

☐ GONZALO A. PAZ, PE (Lic No-60734)
CERT. OF AUTHORIZATION No. 26655

*COPYRIGHT RESERVED FOR THE CONTRACTOR SHALL VERIFY AND BE RESPONSIBLE FOR ALL DIMENSIONS. JOBS SHALL BE REPORTED TO EASTERN ENGINEERS GROUP WITHOUT DELAY. THE COPYRIGHTS TO ALL DESIGNS AND DRAWINGS ARE THE PROPERTY OF EASTERN ENGINEERS GROUP. REPRODUCTION OR USE FOR ANY PURPOSE OTHER THAN THAT AUTHORIZED BY EASTERN ENGINEERS GROUP IS PROHIBITED. SHOP DRAWINGS CHECKED FOR STRUCTURAL REQUIREMENTS ONLY CAN # 26655

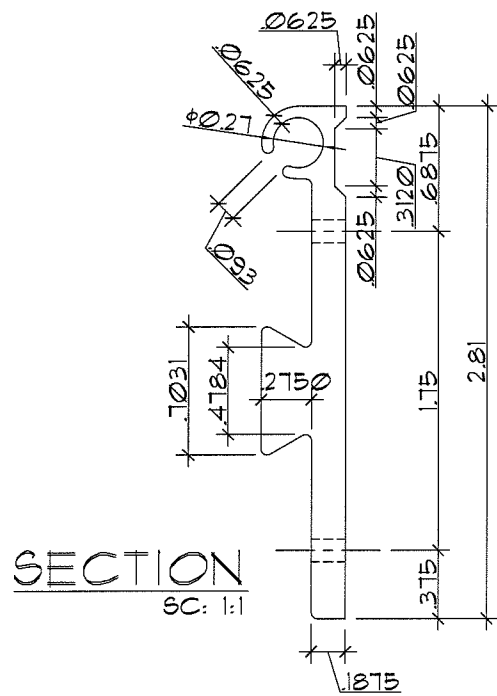
0784

OF

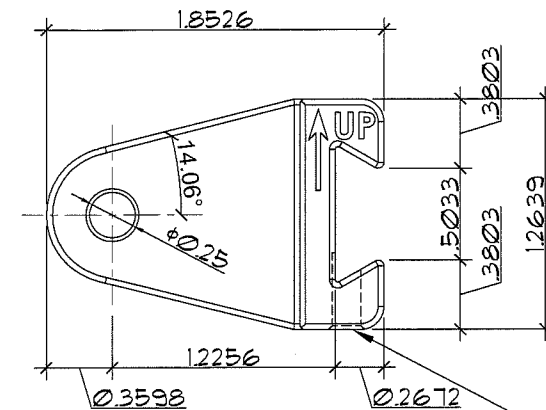
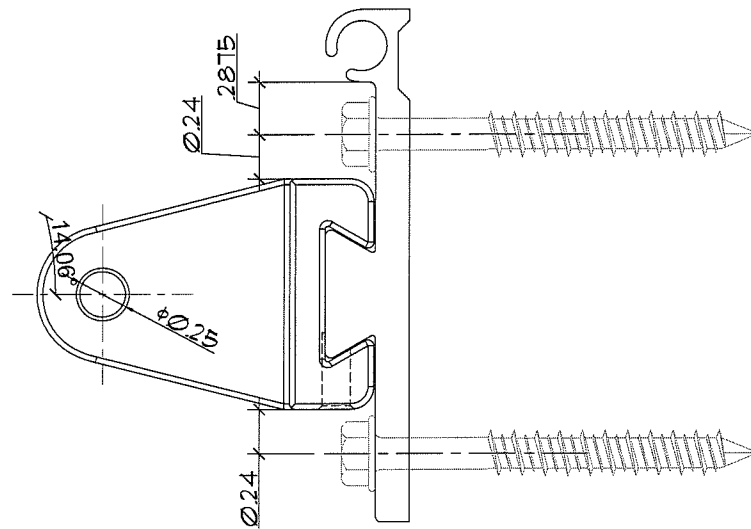
AUG 28 2011

EA-05

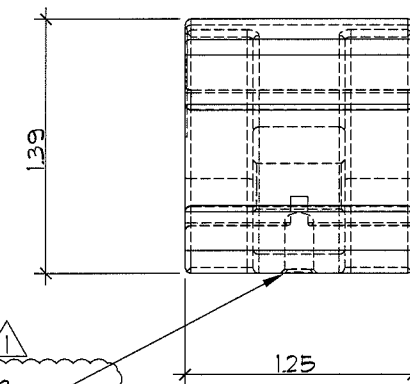
SHEET 5 OF 9



SECTION
SC: 1:1



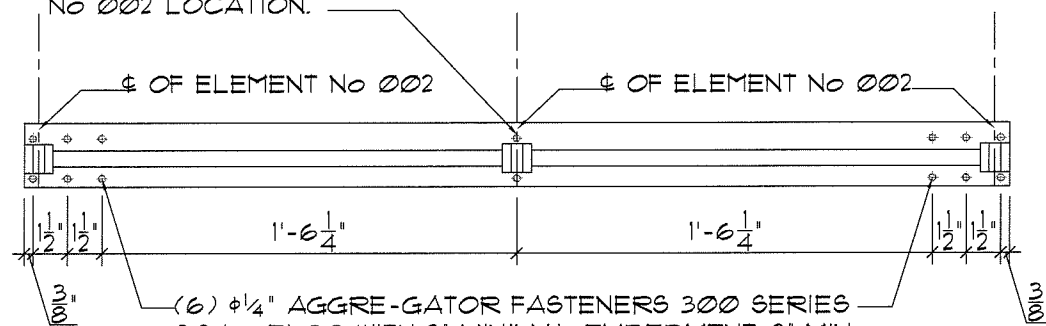
(1) S.S. —
SOCKET SET
SCREW $\frac{1}{4}$ "-20
CONE POINT



FRONT VIEW

SC: 1:1

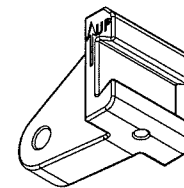
(2) $\phi 1/4"$ AGGRE-GATOR FASTENERS
300 SERIES S.S by ELCO WITH 2"
MINIMAL EMBEDMENT, 2" MIN EDGE
DISTANCE AND $1\frac{1}{2}"$ MIN SPACING,
CONNECTED TO GROUT FILLED
CONCRETE BLOCK OR 2250 PSI
CONCRETE. TYPICAL AT EACH
INTERMEDIATE ELEMENT
No 002 LOCATION. _____



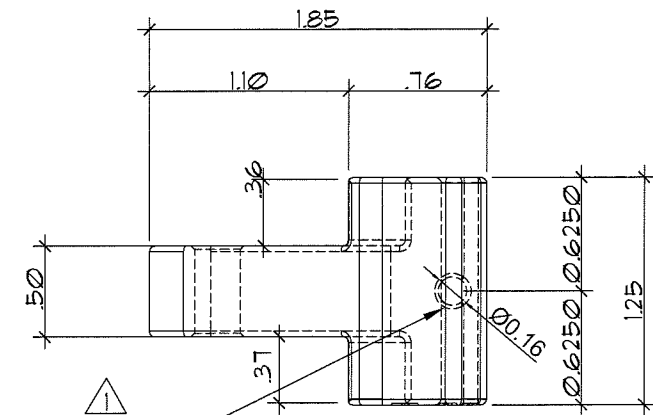
ELEVATION
SC: 1½:1

~~-(6) #1/4" AGGRE-GATOR FASTENERS 300 SERIES~~
~~SS by ELCO WITH 2" MINIMAL EMBEDMENT, 2" MIN~~
~~EDGE DISTANCE AND 1 1/2" MIN SPACING,~~
~~CONNECTED TO GROUT FILLED CONCRETE~~
~~BLOCK OR 2250 PSI CONCRETE. TYPICAL AT~~
~~EACH END ELEMENT No 002 LOCATION.~~

SIDE VIEW
SC: 1:1



ISOMETRIC VIEW
N.T.S



(1) S.S. _____
SOCKET SET
SCREW $\frac{1}{4}$ "-20
CONE POINT

TOP VIEW
SC: 1:1

001 MOUNT

002 MOUNT MALE

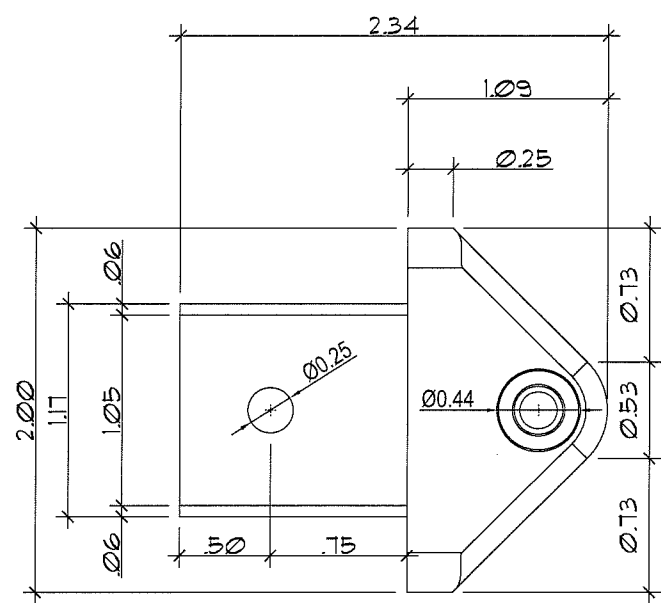
ALL DIMENSIONS ARE IN INCHES

PRODUCT REVISED
as complying with the Florida
Building Code
Acceptance No 18-0924.04
Expiration Date 12/15/2021
By H. G. J. Mohr
Miami Dade Product Control

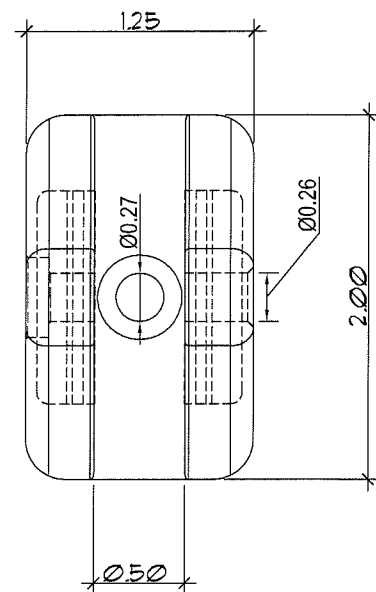
EA-05

SHEET 5 OF 9

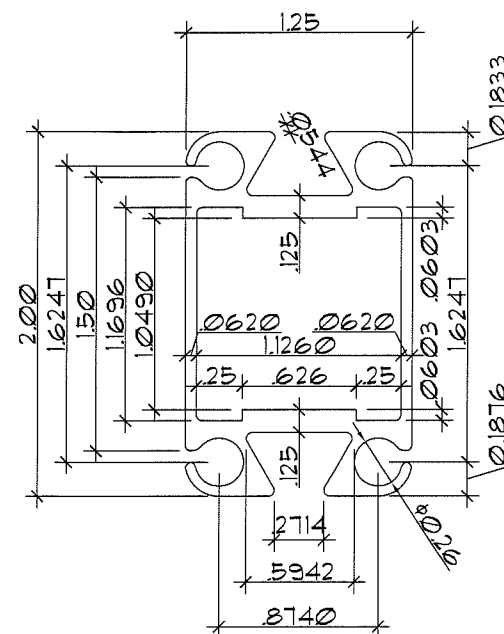
ALL DIMESIONS ARE IN INCHES



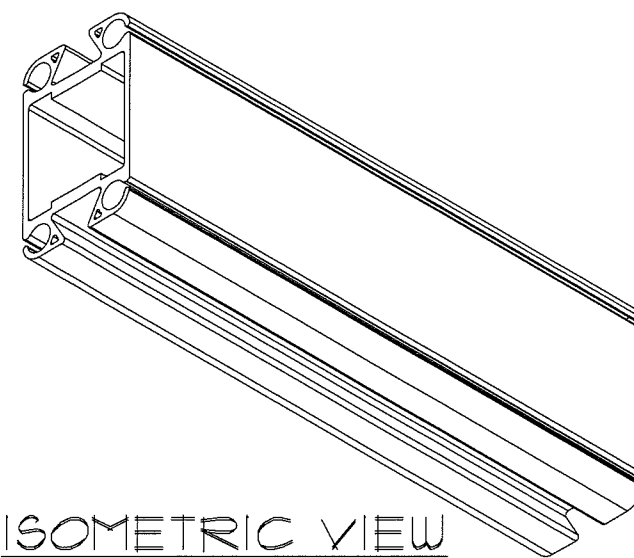
SIDE VIEW
SC: 1:1



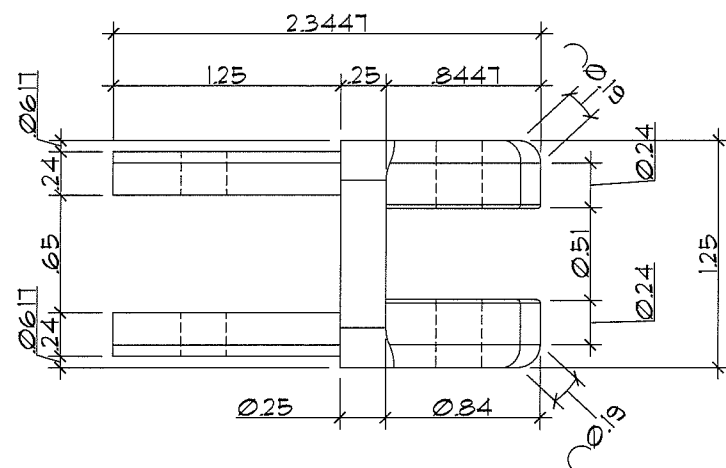
FRONT VIEW
SC: 1:1



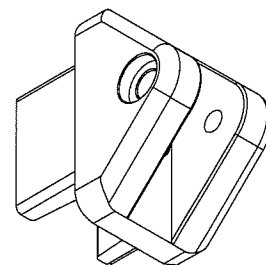
SECTION
SC: 1:1



005 AWNING MAIN
EXTRUSION

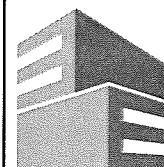


TOP VIEW
SC: 1:1



ISOMETRIC VIEW
N.T.S

003 MOUNT FEMALE



Eastern
Engineering Group

3401 NW 82nd Avenue
Suite 370
Miami, FL 33122

(305) 599-8133

info@easterneg.com

www.easterneg.com

REVISIONS	DATE
1. DESCRIPTION	12/2/1
2. CODE CHANGE	4/7/07

JOB No. & NAME:	DESIGNED & DRAWN:	SCALE:
11 205	Mario Morales	AS SHOWN

LAYZE SHADE - SERIES 001

EASY AWNINGS

Address : 3480 NW 21 AVENUE, MIAMI FL 33142

Ph : 786-256-4564

CRASSA R. LOPEZ, PE (Lic No-38399)
GONZALO A. PALZ, PE (Lic No-60734)
CERT. OF AUTHORIZATION No. 26655
I, the undersigned, being a duly Licensed Professional Engineer in the State of Florida, do hereby certify that the above is a true and correct copy of the original drawing as submitted to me for review and approval. I am not providing this certification for any purpose other than that for which it is intended. I am not responsible for any errors or omissions in this drawing or for any consequences arising therefrom. I am not responsible for any structural requirements not shown on this drawing. I am not responsible for any structural requirements not shown on this drawing. I am not responsible for any structural requirements not shown on this drawing.

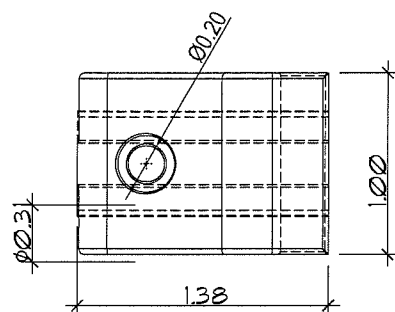
PRODUCT REVISED
as complying with the Florida
Building Code
Acceptance No 18-0924-04
Expiration Date 12/15/2021
By *He G. A. M. M.*
Miami Dade Product Control

AUG 28 2018

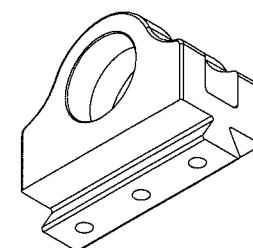
EA-06

SHEET 6 OF 9

ØØ6 PLASTIC CLIP

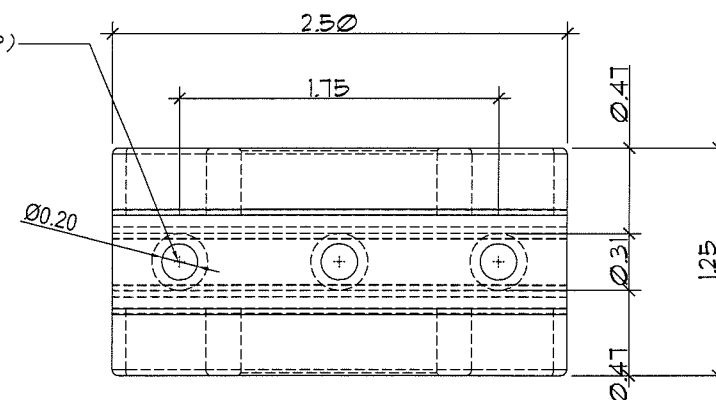


FRONT VIEW
SC: 1:1



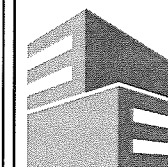
ISOMETRIC VIEW
N.T.S

007 PIPE SUPPORT



TOP VIEW
SC: 1:1

PRODUCT REVISED
as complying with the Florida
Building Code
Acceptance No 18-0924.04
Expiration Date 12/15/2021
By H. J. Miller
Miami Dade Product Control



Eastern
Engineering Group

3401 NW 82nd Avenue
Suite 370
Miami, FL 33122

(305) 599-8133

info@easterneg.com

www.easterneg.com

REVISIONS		
No.	DESCRIPTION	DATE
1	BCCO COMM. 12/2/11	
2	CODE CHANGE 4/10/13	

JOB No. & NAME:	11 205
DESIGNED & DRAWN:	Marlo Morales

LAYZE SHADE - SERIES 001

EASY AWNINGS

Address : 3480 NW 21 AVENUE, MIAMI FL 33142

Ph: 786-256-4564

☐ RAISSA, R. LOPEZ, PE (Lic No-59399)
☐ GONZALO A. PAZ, PE (Lic No-60734)
CERT. OF AUTHORIZATION No. 26865
 COPYRIGHT RESERVED THE CONTRACTOR SHALL
 VERIFY AND BE RESPONSIBLE FOR ALL DIMENSIONS.
 DO NOT SCALE THE DRAWING. ANY ERRORS OR
 OMISSIONS ARE THE SOLE RESPONSIBILITY OF THE
 ENGINEER. NO PART OF THIS DRAWING OR ANY
 INFORMATION HEREON SHALL BE REPRODUCED OR
 TRANSMITTED IN ANY FORM OR BY ANY MEANS
 WITHOUT THE WRITTEN PERMISSION OF THE
 ENGINEER. THIS DRAWING IS THE PROPERTY OF
 ALL DESIGN ENGINEERS GROUP. REPRODUCTION OR
 USE FOR ANY PURPOSE OTHER THAN THAT
 AUTHORIZED HEREON IS PROHIBITED. ANY VIOLATION
 OF THESE TERMS WILL BE PROSECUTED TO THE
 FULL EXTENT OF THE LAW.

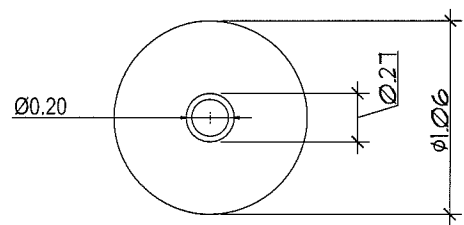
60734

28/2018

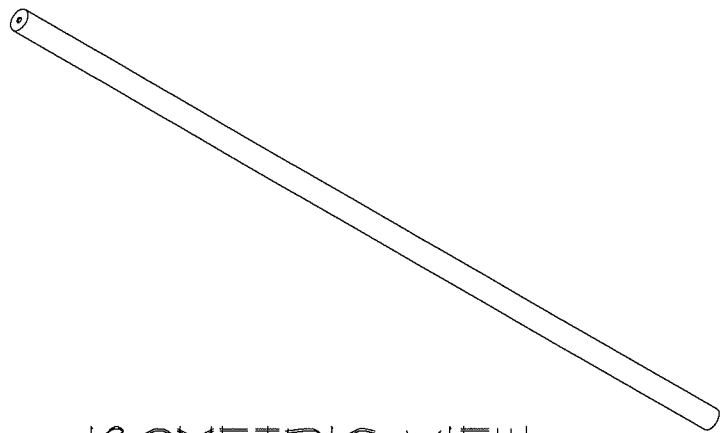
EA-07

SHEET 7 OF 9

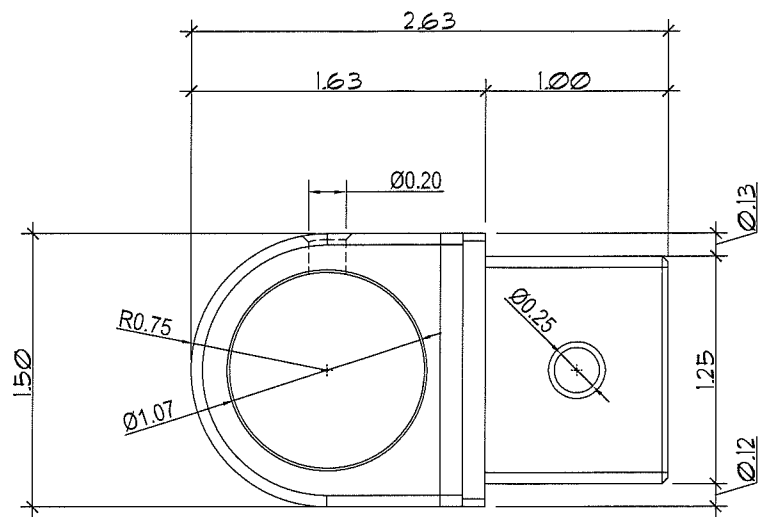
ALL DIMENSIONS ARE IN INCHES



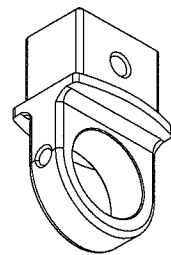
SECTION
SC: 1:1



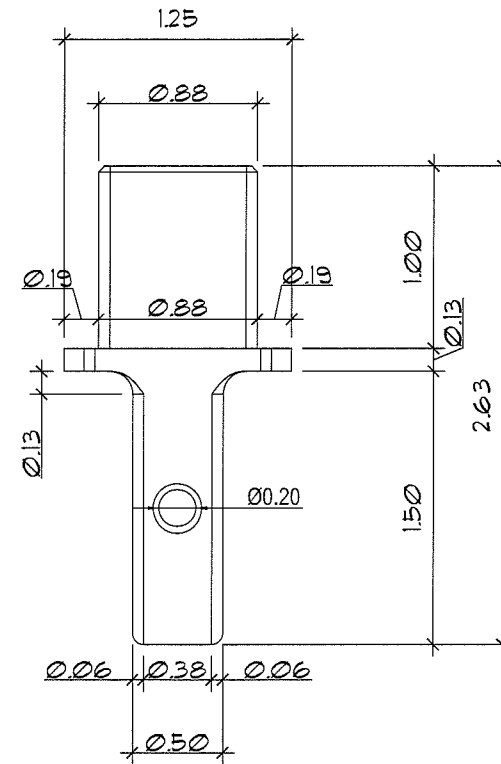
ISOMETRIC VIEW
N.T.S



SIDE SECTION
SC: 1:1

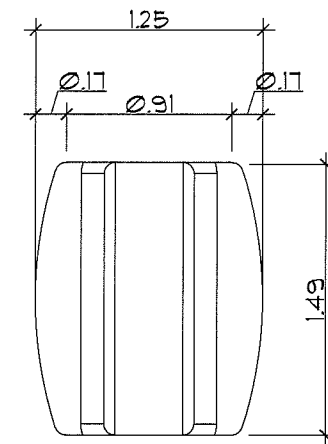


ISOMETRIC VIEW
N.T.S



TOP VIEW

SC: 1:1

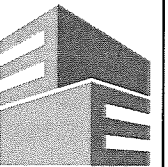


BOTTOM VIEW
SC: 1:1

ØØ8 CROSS BAR

009 PIPE BRACER EYES END

PRODUCT REVISED
as complying with the Florida
Building Code
Acceptance No 18-0924.04
Expiration Date 12/15/2021
By *H. A. Miller*
Miami Dade Product Control



Eastern
Engineering Group

3401 NW 82nd Avenue
Suite 370
Miami, FL 33122

(305) 599-8133

info@easterneg.com

www.easterneg.com

No.	DESCRIPTION	DATE
1	BCCO COMM. 12/2/11	
2	CODE CHANGE. 4/10/13	

11 205	DESIGNED & DRAWN: Mario Morales	SCALE : AS SHOWN
--------	------------------------------------	------------------

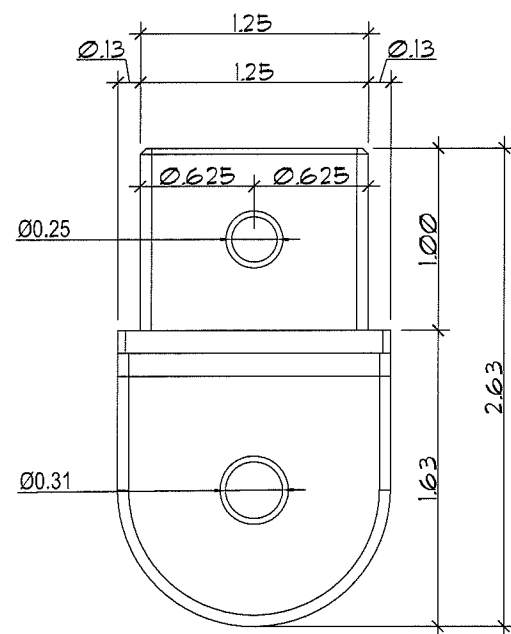
LAYZE SHADE - SERIES 001
EASY AWNINGS
Address : 3480 NW 21 AVENUE, MIAMI FL 33142
Ph : 786-256-4564

GONZALEZ A. PAZ, PE (Lic No-60734)
CENT. OF AUTHORIZATION No. 28655
 COPYRIGHT RESERVED: THE CONTRACTOR SHALL
 BE RESPONSIBLE FOR ALL DRAWINGS, SPECIFICATIONS,
 AND NOT BE RESPONSIBLE FOR ANY ERRORS OR
 OMISSIONS SHALL BE REPORTED TO EASTERN
 ENGINEERS GROUP WITHOUT DELAY. THE COPYRIGHTS
 OF ALL DESIGNS AND DRAWINGS ARE THE PROPERTY
 OF EASTERN ENGINEERS GROUP. REPRODUCTION OR
 TRANSMISSION OF ANY INFORMATION CONTAINED
 HEREIN BY EASTERN ENGINEERS GROUP
 IS PROHIBITED. SHOP DRAWINGS CHECKED FOR
 STRUCTURAL REQUIREMENTS ONLY CAN # 28655

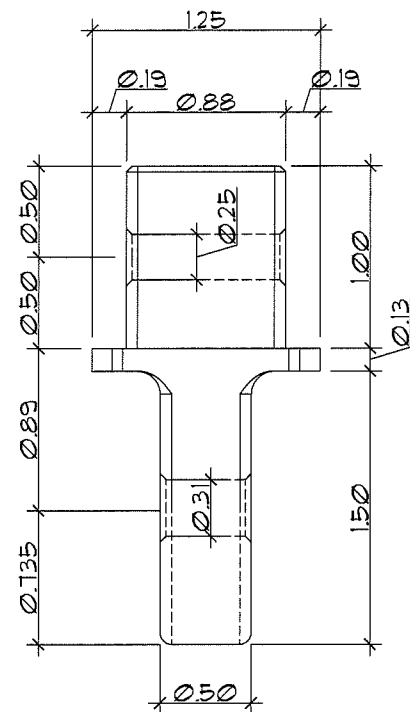
28 2018

EA-08

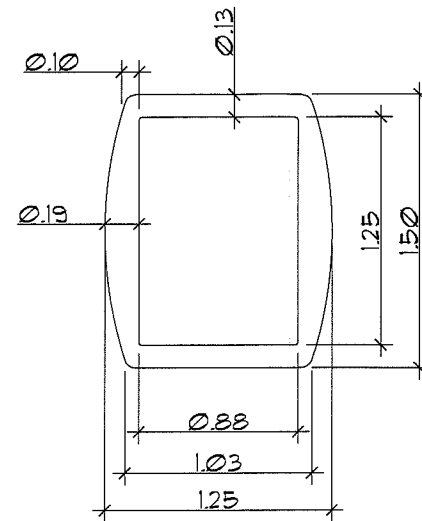
SHEET 8 OF 9



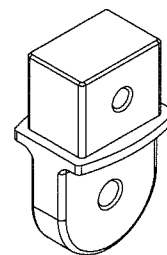
SIDE VIEW
SC: 1:1



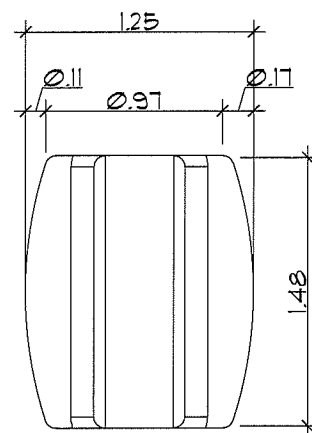
TOP VIEW
SC: 1:1



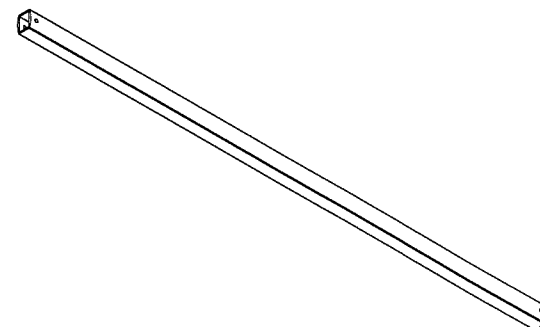
SECTION
SC: 1:1



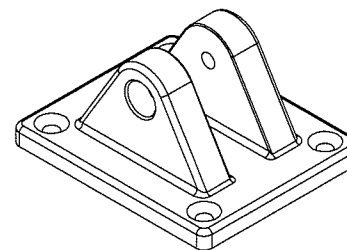
ISOMETRIC VIEW
N.T.S



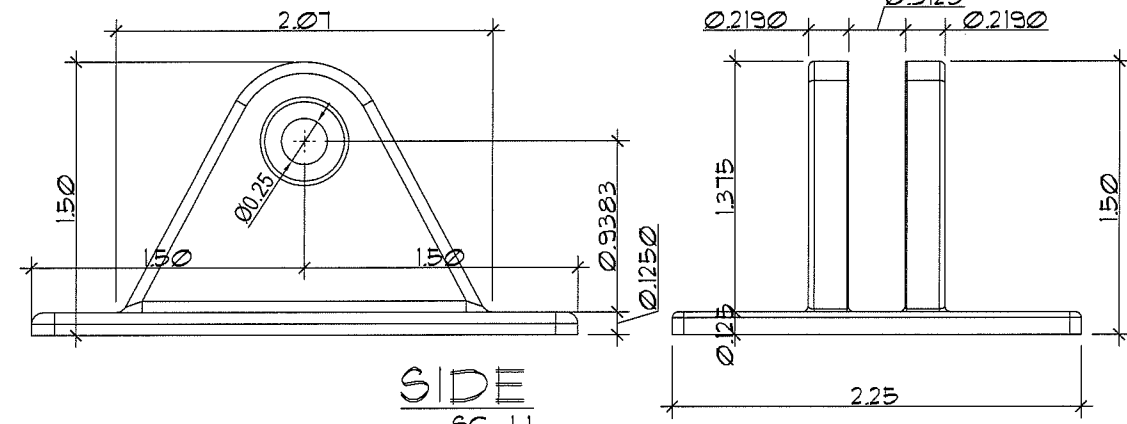
TOP VIEW
SC: 1:1



ISOMETRIC VIEW
N.T.S



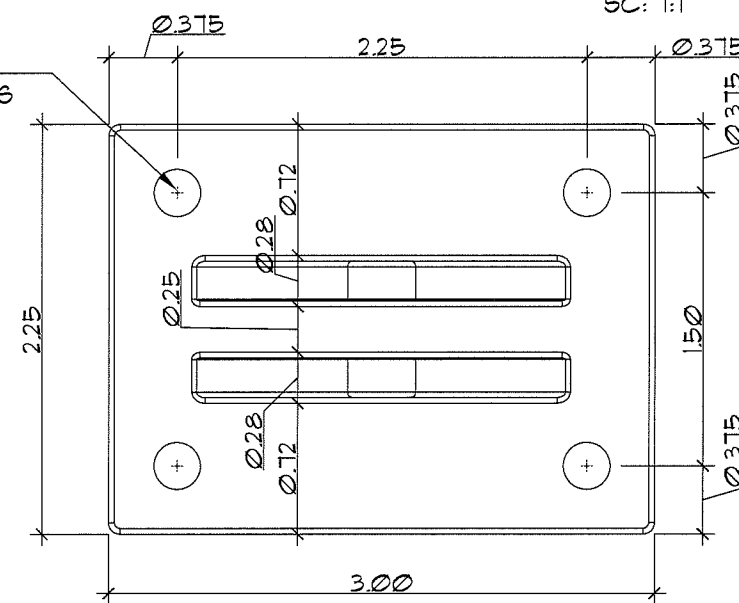
ISOMETRIC VIEW
N.T.S



SIDE
SC: 1:1

FRONT VIEW
SC: 1:1

(4) $\phi 1/4$ AGGRE-GATOR FASTENERS 300 SERIES S.S by ELCO WITH 2" MINIMAL EMBEDMENT, 2" MIN EDGE DISTANCE, CONNECTED TO GROUT FILLED CONCRETE BLOCK OR 2250 PSI CONCRETE. TYPICAL AT EACH ELEMENT No 012 LOCATION.



TOP VIEW
SC: 1:1

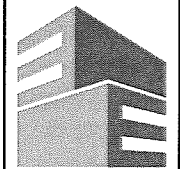
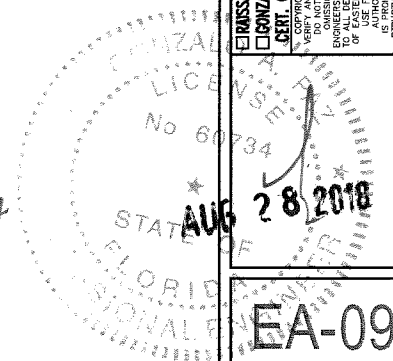
012 PIPE BRACER DECK MOUNT

010 PIPE BRACER EYES END

011 PIPE BRACER

ALL DIMESIONS ARE IN INCHES

PRODUCT REVISED
as complying with the Florida
Building Code
Acceptance No. 18-0924.04
Expiration Date 12/15/2021
By *H. A. M.*
Miami Dade Product Control



Eastern
Engineering Group

3401 NW 82nd Avenue
Suite 370
Miami, FL 33122

(305) 599-8133

info@easterneg.com

www.easterneg.com

REVISIONS	DATE
1	12/2/21
2	CODE CHANGE 4/7/23

JOB No. & NAME:	DESIGNED & DRAWN:	SCALE:
11 205	Mario Morales	AS SHOWN

LAYZE SHADE - SERIES 001	Address: 3480 NW 21 AVENUE, MIAMI FL 33142
EASY AWNINGS	Ph: 786-256-4564

ENRISSA R. LOPEZ, PE (Lic No-98399)
GONZALO A. PAZ, PE (Lic No-60734)
CERT. OF AUTHORIZATION No. 26655
COPYRIGHT RESERVED THE CONTRACTOR SHALL
DO NOT SCALE THE DRAWING ANY ERRORS OR
OMISSIONS ARE THE PROPERTY OF THE
ENGINEER GROUP WITHOUT DELAY. THE COPYRIGHTS
OF ALL DESIGN AND DRAWINGS ARE RESERVED THAT
IS PROHIBITED. SHOP DRAWINGS CHECKED FOR
STRUCTURAL REQUIREMENTS ONLY CAN # 26655

AUG 28 2018

EA-09

SHEET 9 OF 9