



DEPARTMENT OF REGULATORY AND ECONOMIC RESOURCES (RER)
BOARD AND CODE ADMINISTRATION DIVISION

MIAMI-DADE COUNTY
PRODUCT CONTROL SECTION
11805 SW 26 Street, Room 208
Miami, Florida 33175-2474
T (786) 315-2590 F (786) 315-2599

www.miamidade.gov/economy

NOTICE OF ACCEPTANCE (NOA)

Q-Railing USA
14321 Franklin Avenue Suit A
Tustin, CA 92780

SCOPE:

This NOA is being issued under the applicable rules and regulations governing the use of construction materials. The documentation submitted has been reviewed and accepted by Miami-Dade County RER- Product Control Section to be used in Miami Dade County and other areas where allowed by the Authority Having Jurisdiction (AHJ).

This NOA shall not be valid after the expiration date stated below. The Miami-Dade County Product Control Section (In Miami Dade County) and/or the AHJ (in areas other than Miami Dade County) reserve the right to have this product or material tested for quality assurance purposes. If this product or material fails to perform in the accepted manner, the manufacturer will incur the expense of such testing and the AHJ may immediately revoke, modify, or suspend the use of such product or material within their jurisdiction. RER reserves the right to revoke this acceptance if it is determined by Miami-Dade County Product Control Section that this product or material fails to meet the requirements of the applicable building code.

This product is approved as described herein and has been designed to comply with the High Velocity Hurricane Zone of the Florida Building Code.

DESCRIPTION: **Stainless Steel Glazed Railing**

APPROVAL DOCUMENT: Drawing No. 16-5089, titled " 1.9" Double Tube Post Glass Clamp Model 24 Railing System ", sheets 1 through 3 of 3, prepared by Eastern Engineering Group, signed and sealed by Gonzalo A. Paz, P.E., on February 24, 2020, bearing Miami-Dade County Product Control Approval stamp with the Notice of Acceptance number and the approval date by the Miami-Dade County Product Control Section.

MISSILE IMPACT RATING: **Large and Small Missile Impact Resistant**

LABELING: Each unit shall bear a permanent label with the manufacturer's name or logo, city, state and the following statement: "Miami-Dade County Product Control Approved", unless otherwise noted herein.

RENEWAL of this NOA shall be considered after a renewal application has been filed and there has been no change in the applicable building code negatively affecting the performance of this product.

TERMINATION of this NOA will occur after the expiration date or if there has been a revision or change in the materials, use, and/or manufacture of the product or process. Misuse of this NOA as an endorsement of any product, for sales, advertising or any other purposes shall automatically terminate this NOA. Failure to comply with any section of this NOA shall be cause for termination and removal of NOA.

ADVERTISEMENT: The NOA number preceded by the words Miami-Dade County, Florida, and followed by the expiration date may be displayed in advertising literature. If any portion of the NOA is displayed, then it shall be done in its entirety.

INSPECTION: A copy of this entire NOA shall be provided to the user by the manufacturer or its distributors and shall be available for inspection at the job site at the request of the Building Official. The structural adequacy of the supporting structures is not part of this approval & shall be reviewed by the corresponding Building Dept.

This NOA consists of this page 1, evidence submitted page E-1 as well as approval document mentioned above.

The submitted documentation was reviewed by **Helmy A. Makar, P.E., M.S.**



Helmy A. Makar
04/30/2020

NOA No. 19-0731.01
Expiration Date: 04/30/2025
Approval Date: 04/30/2020

Q-Railing USA

NOTICE OF ACCEPTANCE: EVIDENCE SUBMITTED

A. DRAWINGS

1. *Drawing No. 16-5089, titled " 1.9" Double Tube Post Glass Clamp Model 24 Railing System ", sheets 1 through 3 of 3, prepared by Eastern Engineering Group, signed and sealed by Gonzalo A. Paz, P.E., on February 24, 2020.*

B. TESTS

1. *Test Report No. HETI-16-5089, by Hurricane Engineering & Testing, Inc., dated May 02, 2017, signed and sealed by Rafael E. Droz-Seda, P.E.*

C. CALCULATIONS

1. *Calculation titled "Q-Railings Job No. 17-166", sheets 1 through 26 of 26, dated February 24, 2020, prepared by Eastern Engineering Group, signed and sealed by Gonzalo A. Paz, P.E., on February 24, 2020.*

D. QUALITY ASSURANCE

1. *By Miami-Dade County Department of Regulatory and Economic Resources.*

E. MATERIAL CERTIFICATIONS

1. *None.*

F. OTHERS

1. *Florida Building Code, 2017 Edition, compliance letter, dated August 08, 2019, prepared by Eastern Engineering Group, signed and sealed by Gonzalo A. Paz, P.E., on February 24, 2020.*



Helmy A. Makar, P.E., M.S.

Product Control Section Supervisor

NOA No. 19-0731.01

Expiration Date: 04/30/2025

Approval Date: 04/30/2020

| ITEM | PART NUMBER | DESCRIPTION | MATERIAL | MANUFACTURER/SUPPLIER/REMARKS |
|------|----------------|---|----------------------------------|---|
| C3 | 14.0917.448.12 | POST | 316 STAINLESS STEEL Fy = 58 ksi | |
| C3 | 14.0917.448.12 | POST LINER | 2205 STAINLESS STEEL Fy = 90 ksi | Q-RAILING |
| C2 | 14.0900.038.12 | TUBE / "TOP RAIL" | 316 STAINLESS STEEL Fy = 30 ksi | Q-RAILING |
| C1 | 14.0711.238.12 | SADDLE / "TOP RAIL BRACKET" | 316 STAINLESS STEEL Fy = 58 ksi | Q-RAILING |
| C4 | 13.2400.000.12 | GLASS CLAMP MODEL 24 | 304 STAINLESS STEEL Fy = 30 ksi | Q-RAILING |
| C5 | 19.5007.013.00 | RUBBER INLAY | RUBBER (EDPM) 80° A | Q-RAILING |
| A1 | 94.0680.820.14 | SCREW M8 x 20 mm | 316 STAINLESS STEEL | Q-RAILING |
| A2 | 19.4311.125.15 | MASONRY CONCRETE ANCHOR 1/2" x 5" (HEX HEAD-ELCO) | ALLOY STEEL - ZINC PLATED | MFG FOR Q-RAILING (TEST REPORT NUMBER: HETI-17-A1005) |
| | EPCON A7 | SCREW EPOXY | ACRYLIC ADHESIVE | RED HEAD |

| ISSUE DATES | |
|----------------|------------|
| 27 APRIL 2017 | FOR REVIEW |
| 30 AUGUST 2018 | FOR REVIEW |
| 17 AUGUST 2018 | FOR REVIEW |
| 28 AUGUST 2019 | FOR REVIEW |

GENERAL NOTES

- THIS GUARDRAIL ASSEMBLY IS IN COMPLIANCE WITH THE 2017 FLORIDA BUILDING CODE SECTION 1670.7.1 AND SECTION 2407. ACCORDINGLY IT WILL RESIST A LOAD OF MIN 50 LB/FT APPLIED IN ANY DIRECTION AT THE TOP RAIL, IT WILL RESIST A SINGLE CONCENTRATED LOAD OF 200 LBS APPLIED IN ANY DIRECTION AT ANY POINT ALONG THE TOP, AND THE IN-FILL PANELS WILL WITHSTAND A HORIZONTALLY APPLIED NORMAL LOAD OF 50 LBS APPLIED OVER 1 SQUARE FOOT. A SAFETY FACTOR OF FOUR SHALL BE USED.
- THIS PRODUCT HAS BEEN DESIGNED AND TESTED TO COMPLY WITH THE REQUIREMENTS OF THE F.B.C FOR HIGH VELOCITY HURRICANE ZONE (HVHZ).
- ALL CONCRETE NEED TO HAVE AT LEAST 4000 PSI OF COMPRESSIVE STRENGTH.
- THE ABILITY OF THE EXISTING HOST STRUCTURE TO SAFELY SUPPORT THE RAILING SYSTEM IMPOSED LOADS SHALL DETERMINED BY A DESIGN PROFESSIONAL.
- NO WIND LOAD INCREASE WAS USED IN THE RAILING DESIGN.
- ANCHORING OR LOADING CONDITIONS OTHER THAN THOSE SHOWN IN THESE DETAILS ARE NOT PART OF THIS APPROVAL.
- MATERIAL INCLUDING BUT NOT LIMITED TO STEEL /METAL SCREWS THAT COME INTO CONTACT WITH OTHER DISSIMILAR MATERIALS SHALL MEET THE REQUIREMENT OF 2017 FLORIDA BUILDING CODE SECTION 2003.8.4
- MECHANICAL FASTENERS TO BE TYPE 304,316 OR 410 STAINLESS STEEL UNLESS OTHERWISE NOTED.
- DELIVER AND STORE RAILING IN A DRY AND SAFE LOCATION PROVIDED BY THE GENERAL CONTRACTOR OR OWNER, HANDLE WITH EXTREME CARE TO AVOID MARRING THE FINISHED PRODUCT.
- IT SHOULD BE NOTED THAT ALTHOUGH ALL FIELD SPLICES WILL BE DONE IN A WORKMAN LIKE MANNER THESE JOINTS WILL BE VISIBLE UPON COMPLETION AND WILL REQUIRED A MIN GAP OF 1/8 PER TWENTY FOOT SECTION OF TOP, TO ALLOW FOR EXPANSION AND CONTRACTION OF RAILINGS AND OR STRUCTURE.
- THIS N.O.A. DOES NOT COVER ANY ERRORS IN INSTALLATION.
- OVER TIGHTENING OF SCREWS MAY LEAD TO STRIPPING OF THE TAPPED HOLE.
- ALL GLASS WILL BE SAFETY GLASS ACCORDING TO FBC-17 RESIDENTIAL, R4410.2.6.4 & R4410.2.4
- FULLY TEMPERED GLASS SHALL COMPLY WITH CATEGORY II OF CPSC 16 CFR 1201 OR CLASS A ON ANSI Z97.1, LISTED IN CHAPTER 35 ANSI Z97.1

STAINLESS STEEL

- STEEL SHALL CONFORM TO THE FOLLOWING ASTM SPECIFICATION:
ALL ROLLED SHAPES: STIFFENER, PLATES, CHANNELS ANGLES, PLATES AND BARS, ASTM A176-85a, ASTM A240-86, ASTM A276-85a, ASTM A666-84.

TUBE AND ROUND BAR: (1/2 HARD)
STAINLESS STEEL 304 OR 316.....Fy=58 ksi, (YIELD STRENGTH)

EASY GLASS RAILING SYSTEM NOTES:

- USE RED HEAD EPCON A7 WITH EACH CONCRETE ANCHOR ACCORDING TO MANUFACTURER'S INSTRUCTIONS

Approved as complying with the
Florida Building Code
Date 04/30/2020
NOA# 19-0731.01
Miami Dade Product Control
By _____



SHOP DRAWINGS CHECKED FOR
STRUCTURAL REQUIREMENTS ONLY
FEB 24 2020
 RAISSA R. LOPEZ, PE (Lic No-59399)
 GONZALO A. PAZ, PE (Lic No-60734)
CERT. OF AUTHORIZATION No. 26655

1.9" DOUBLE TUBE POST
GLASS CLAMP MODEL 24
1/4" T | 0.060PVB | 1/4" T

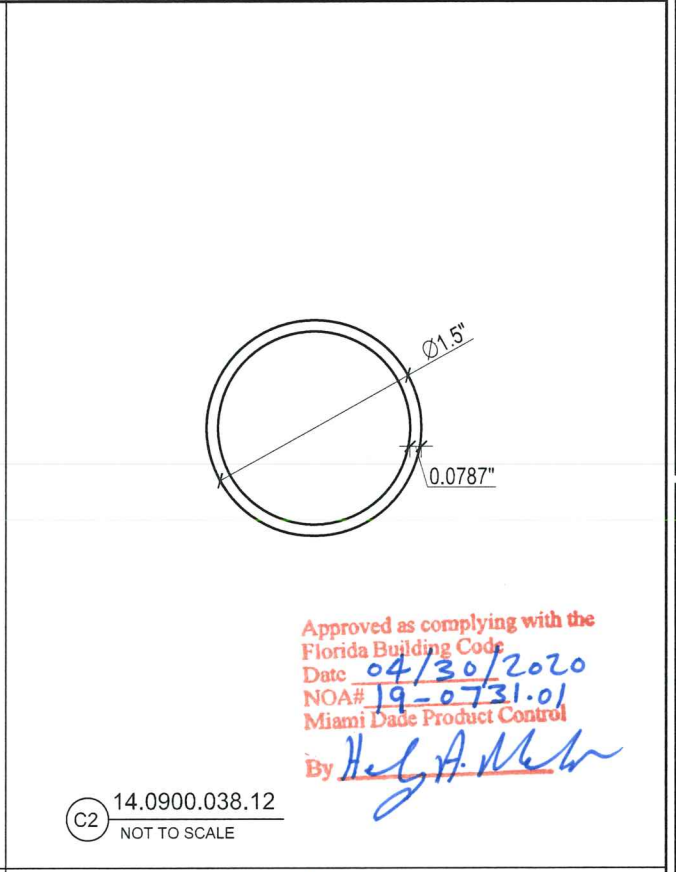
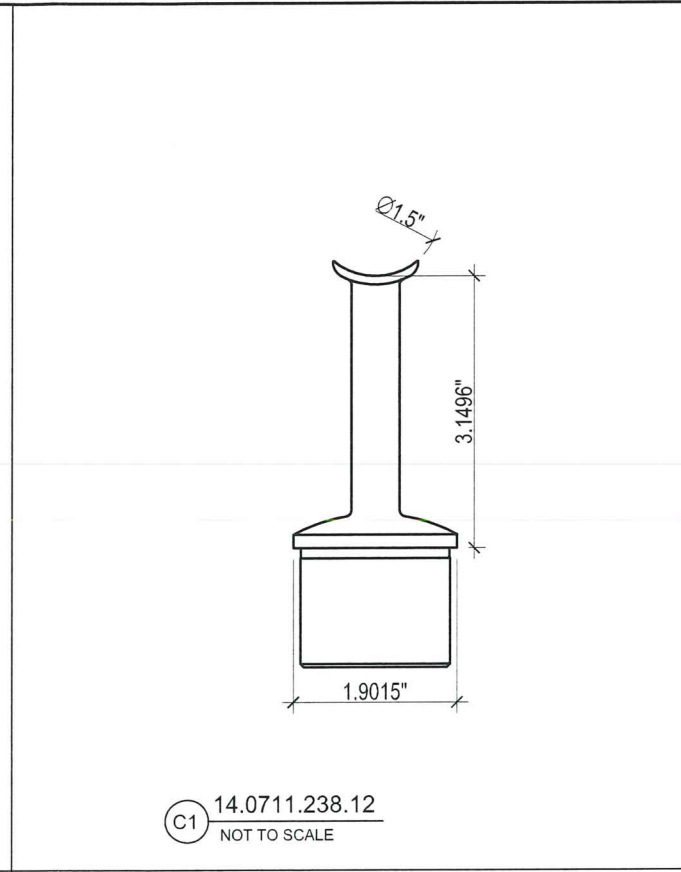
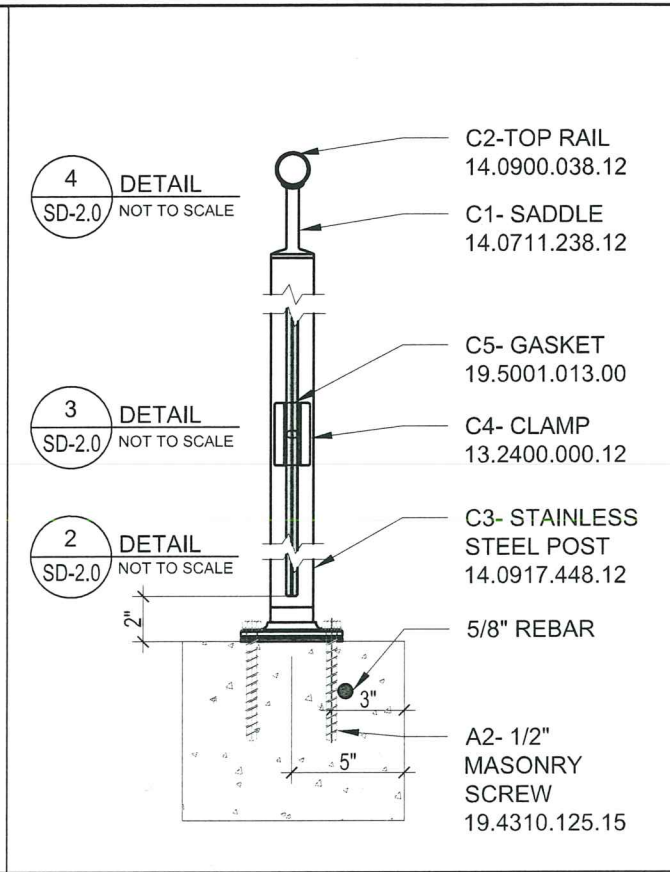
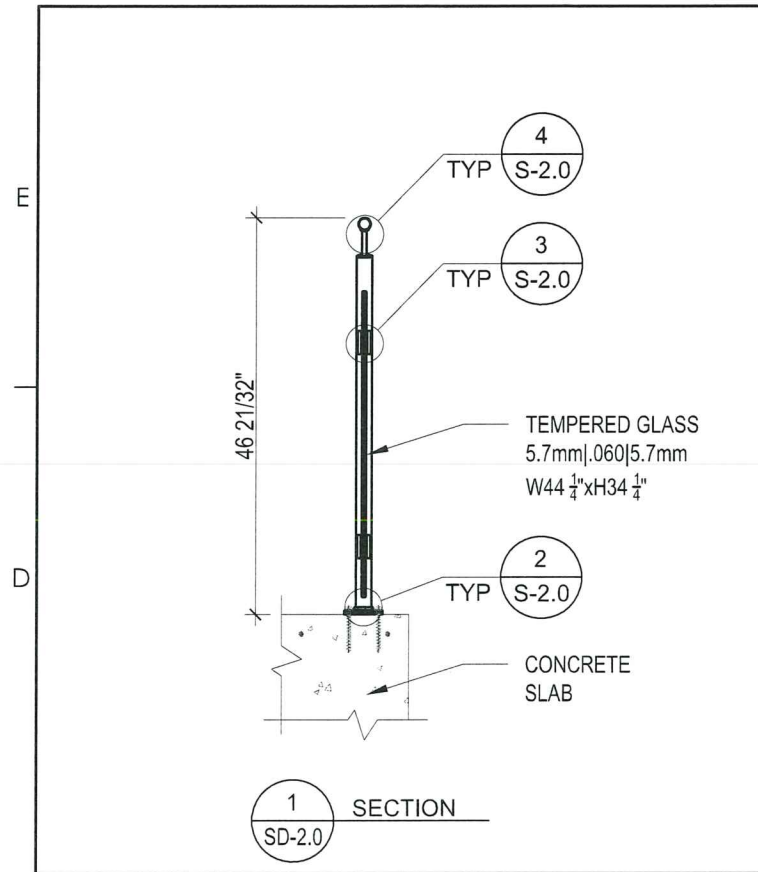


MARIE CURIE STRAÙE 8-14
D-46446
EMERICH am RHEIN
GERMANY
+49(0)2822-91569-0
q-railling.de

DATE: 08-28-2016
SCALE: AS NOTED
DRAWN BY: MPS
CHECKED BY: N/A
JOB NO.: N/A

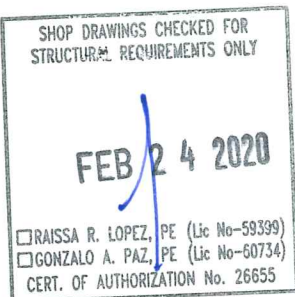
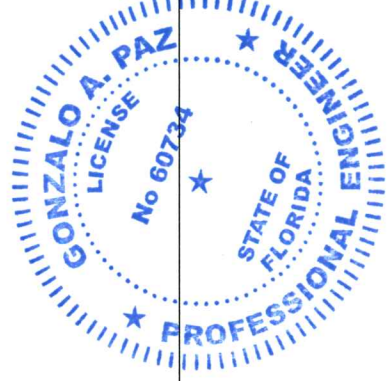
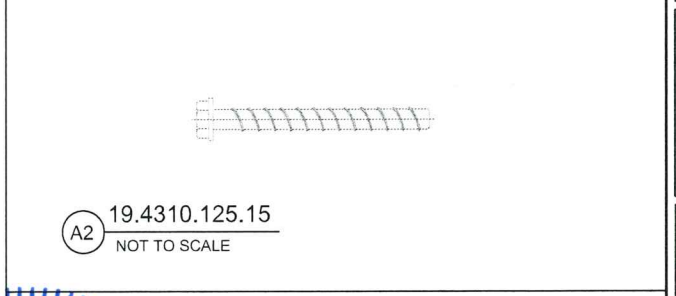
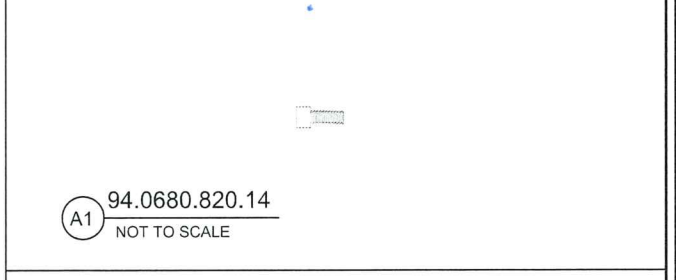
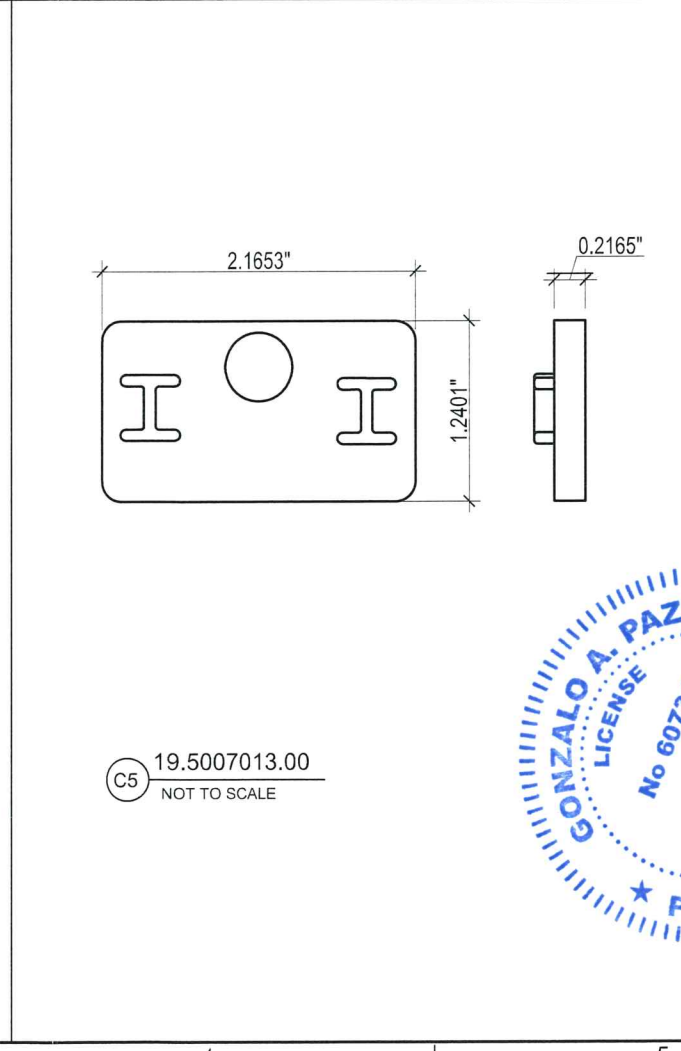
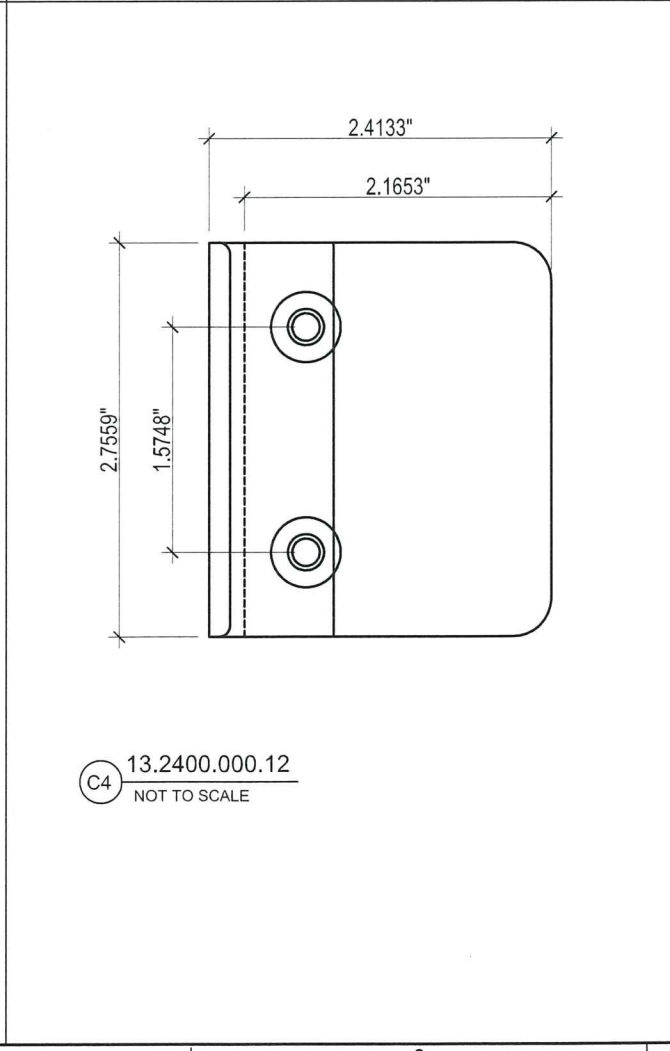
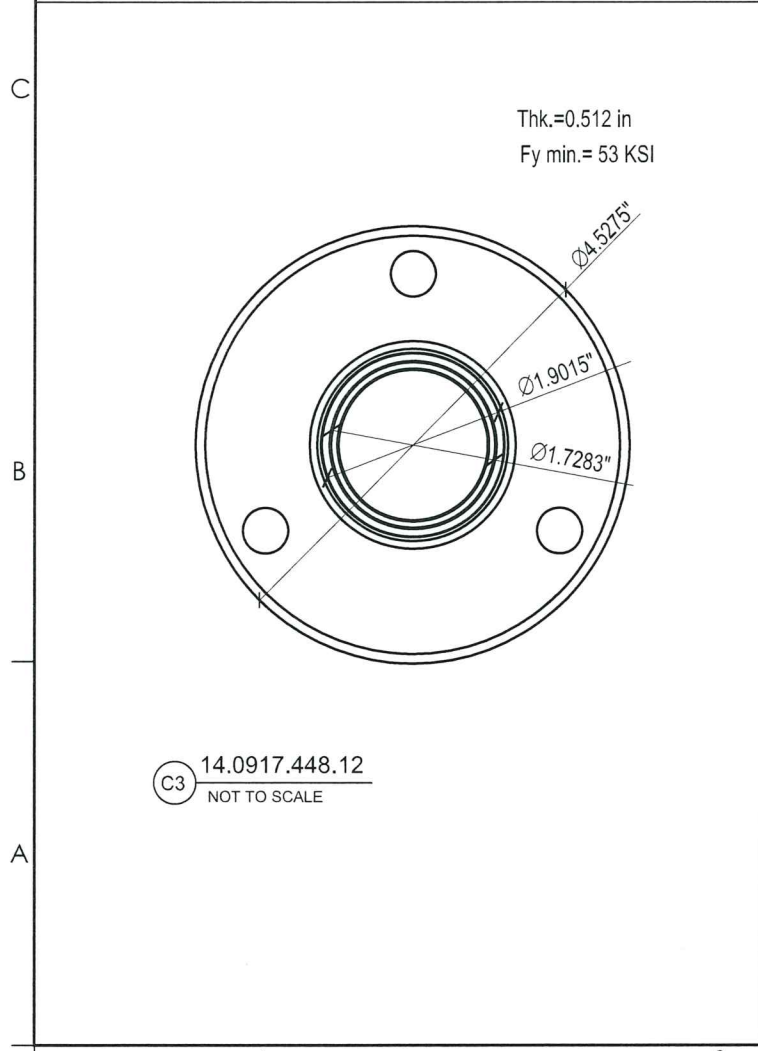
DRAWING NUMBER
16-5089

SHEET NUMBER
SD-3.0



| ISSUE DATES | |
|----------------|------------|
| 27 APRIL 2017 | FOR REVIEW |
| 30 AUGUST 2018 | FOR REVIEW |
| 17 AUGUST 2018 | FOR REVIEW |
| 08 AUGUST 2016 | |

1.9" DOUBLE TUBE POST
GLASS CLAMP MODEL 24
1/4" T | 0.060PVB | 1/4" T



Q-railing

MARIE CURIE STRAÙE 8-14
D-46446
EMERICH am RHEIN
GERMANY
+49(0)2822-91569-0
q-railing.de

| | |
|-------------|------------|
| DATE: | 08-08-2016 |
| SCALE: | AS NOTED |
| DRAWN BY: | MPS |
| CHECKED BY: | N/A |
| JOB NO.: | N/A |

DRAWING NUMBER
16-5089

SHEET NUMBER
SD-2.0