



MIAMI-DADE COUNTY  
PRODUCT CONTROL SECTION

11805 SW 26 Street, Room 208  
Miami, FL 33175  
T (786) 315-2590 F (786) 315-2599

DEPARTMENT OF REGULATORY AND ECONOMIC RESOURCES (RER)  
BOARD AND CODE ADMINISTRATION DIVISION

[www.miamidade.gov/economy](http://www.miamidade.gov/economy)

**NOTICE OF ACCEPTANCE (NOA)**

WinDoor, Inc.  
104 Triple Diamond Blvd.  
North Venice, FL 34275

**SCOPE:**

This NOA is being issued under the applicable rules and regulations governing the use of construction materials. The documentation submitted has been reviewed and accepted by Miami-Dade County RER - Product Control Section to be used in Miami Dade County and other areas where allowed by the Authority Having Jurisdiction (AHJ).

This NOA shall not be valid after the expiration date stated below. The Miami-Dade County Product Control Section (In Miami-Dade County) and/or the AHJ (in areas other than Miami-Dade County) reserve the right to have this product or material tested for quality assurance purposes. If this product or material fails to perform in the accepted manner, the manufacturer will incur the expense of such testing and the AHJ may immediately revoke, modify, or suspend the use of such product or material within their jurisdiction. RER reserves the right to revoke this acceptance, if it is determined by Miami-Dade County Product Control Section that this product or material fails to meet the requirements of the applicable building code.

This product is approved as described herein and has been designed to comply with the Florida Building Code, including the High Velocity Hurricane Zone.

**DESCRIPTION: Series "238" Aluminum Awning Window - L.M.I.**

**APPROVAL DOCUMENT:** Drawing No. AW238NOA-1, titled "238 Aluminum Awning Window-LMI", sheets 1 through 9 of 9, dated 05/15/20, prepared, signed and sealed by Anthony Lynn Miller, P.E., bearing the Miami-Dade County Product Control Revision stamp with the Notice of Acceptance number and expiration date by the Miami-Dade County Product Control Section.

**MISSILE IMPACT RATING: Large and Small Missile Impact Resistant**

**LABELING:** Each unit shall bear a permanent label with the manufacturer's name or logo, city, state, model/series, and following statement: "Miami-Dade County Product Control Approved", unless otherwise noted herein.

**RENEWAL** of this NOA shall be considered after a renewal application has been filed and there has been no change in the applicable building code negatively affecting the performance of this product.

**TERMINATION** of this NOA will occur after the expiration date or if there has been a revision or change in the materials, use, and/or manufacture of the product or process. Misuse of this NOA as an endorsement of any product, for sales, advertising or any other purposes shall automatically terminate this NOA. Failure to comply with any section of this NOA shall be cause for termination and removal of NOA.

**ADVERTISEMENT:** The NOA number preceded by the words Miami-Dade County, Florida, and followed by the expiration date may be displayed in advertising literature. If any portion of the NOA is displayed, then it shall be done in its entirety.

**INSPECTION:** A copy of this entire NOA shall be provided to the user by the manufacturer or its distributors and shall be available for inspection at the job site at the request of the Building Official.

This NOA **revises NOA#18-1001.14** and consists of this page 1 and evidence pages E-1 and E-2, as well as approval document mentioned above.

The submitted documentation was reviewed by **Sifang Zhao, P.E.**



S.Z.  
11/26/2020

NOA No. 20-0528.07  
Expiration Date: October 31, 2023  
Approval Date: November 26, 2020  
Page 1

**NOTICE OF ACCEPTANCE: EVIDENCE SUBMITTED**

**A. DRAWINGS**

1. Manufacturer's die drawings and sections
2. Drawing No. AW238NOA-1, titled "238 Aluminum Awning Window-LMI", sheets 1 through 9 of 9, dated 05/15/20, prepared, signed and sealed by Anthony Lynn Miller, P.E.,

**B. TESTS TESTS**

1. Test reports on: 1) Air Infiltration Test, per FBC, TAS 202-94  
2) Uniform Static Air Pressure Test, Loading per FBC, TAS 202-94  
3) Water Resistance Test, per FBC, TAS 202-94  
4) Large Missile Impact Test per FBC, TAS 201-94  
5) Cyclic Wind Pressure Loading per FBC, TAS 203-94

along with marked-up drawings and installation diagram of all CGI Windows and Doors, Inc. and PGT Industries, Inc., representative units listed below and tested to qualify **Dowsil 791** and **Dowsil 983** silicones, per Proposal #**19-1155TP**, prepared by Fenestration Testing Laboratory, Inc., Test Reports No.:

**CGI Windows and Doors Inc. test specimens:**

**FTL-20-2108.1**, CGI SH360 Aluminum Single Hung Window (unit 1 in proposal)  
**FTL-20-2108.2**, CGI CA238 Alum. Outswing Casement Window (unit 2 in proposal)  
**FTL-20-2108.3**, CGI SGD560 Aluminum Sliding Glass Door (unit 3 in proposal)  
**FTL-20-2108.4**, CGI PW410 Aluminum Fixed Window (unit 4 in proposal) and  
**FTL-20-2108.5**, CGI SH360 Aluminum Single Hung Window (unit 5 in proposal)all dated 08/24/20 and signed and sealed by Idalmis Ortega, P.E.

**C. CALCULATIONS**

1. Anchor verification calculations and structural analysis, complying with **FBC 7<sup>th</sup> Edition (2020)**, dated 05/22/20, prepared by manufacturer, signed and sealed by Anthony Lynn Miller, P.E.
2. Glazing complies with **ASTM E1300-04, -09, -12 and -16**.

**D. QUALITY ASSURANCE**


1. Miami Dade Department of Regulatory and Economic Resources (RER).

**E. MATERIAL CERTIFICATIONS**

1. Notice of Acceptance No. **17-0808.02** issued to **Kuraray America, Inc.** for their "**SentryGlas® (Clear and White) Glass Interlayers**", expiring on 07/04/23.

**F. STATEMENTS**

1. Statement letters of conformance to FBC 2020 (**7<sup>th</sup> Edition**), dated 04/20/20, prepared, signed & sealed by Lynn Miller, P. E.
2. Notification of Successor Engineer per the Florida Administrative Code Section 61G15-27.001, notifying original engineer that the successor engineer is assuming full professional and legal responsibility for all engineering documents pertaining to this NOA, dated 06/12/20, signed and sealed by A. Lynn Miller, P.E.

  
\_\_\_\_\_  
**Sifang Zhao, P.E.**  
**Product Control Examiner**  
**NOA No. 20-0528.08**  
**Expiration Date: October 26, 2023**  
**Approval Date: November 26, 2020**

WinDoor, Inc.

NOTICE OF ACCEPTANCE: EVIDENCE SUBMITTED

**G. OTHERS**

1. Private labeling agreement between WinDoor, Inc. and CGI Windows and Doors, Inc. document in conformance of RER guideline dated 09/12/2018.  
*(Submitted under NOA #18-1001.14)*
2. Notice of Acceptance No. **18-1001.14**, issued to Windoor, Inc. for their Series “238” Aluminum Project Out Window - L.M.I., approved on 12/13/2018 and expiring on 10/31/23.
3. Notice of Acceptance No. **20-0528.03**, issued to CGI Windows and Doors, Inc. for their Series “238” Aluminum Project Out Window - L.M.I., approved on 11/12/2020 and expiring on 10/31/23.



---

Sifang Zhao, P.E.  
Product Control Examiner  
NOA No. 20-0528.07  
Expiration Date: October 31, 2023  
Approval Date: November 26, 2020

THESE WINDOWS ARE RATED FOR LARGE & SMALL MISSILE IMPACT. SHUTTERS ARE NOT REQUIRED.

**NOTES:**

THIS PRODUCT HAS BEEN DESIGNED AND TESTED TO COMPLY WITH THE REQUIREMENTS OF THE 2017 (6TH EDITION)/2020 (7TH EDITION) FLORIDA BUILDING CODE INCLUDING HIGH VELOCITY HURRICANE ZONE (HVHZ).

1BY OR 2BY WOOD BUCKS & BUCK FASTENERS BY OTHERS, MUST BE DESIGNED AND INSTALLED ADEQUATELY TO TRANSFER APPLIED PRODUCT LOADS TO THE BUILDING STRUCTURE.

ANCHORS SHALL BE CORROSION RESISTANT, SPACED AS SHOWN ON DETAILS AND INSTALLED PER MANUF'S INSTRUCTIONS. SPECIFIED EMBEDMENT TO BASE MATERIAL SHALL BE BEYOND WALL DRESSING OR STUCCO.

A LOAD DURATION INCREASE IS USED IN DESIGN OF ANCHORS INTO WOOD ONLY.

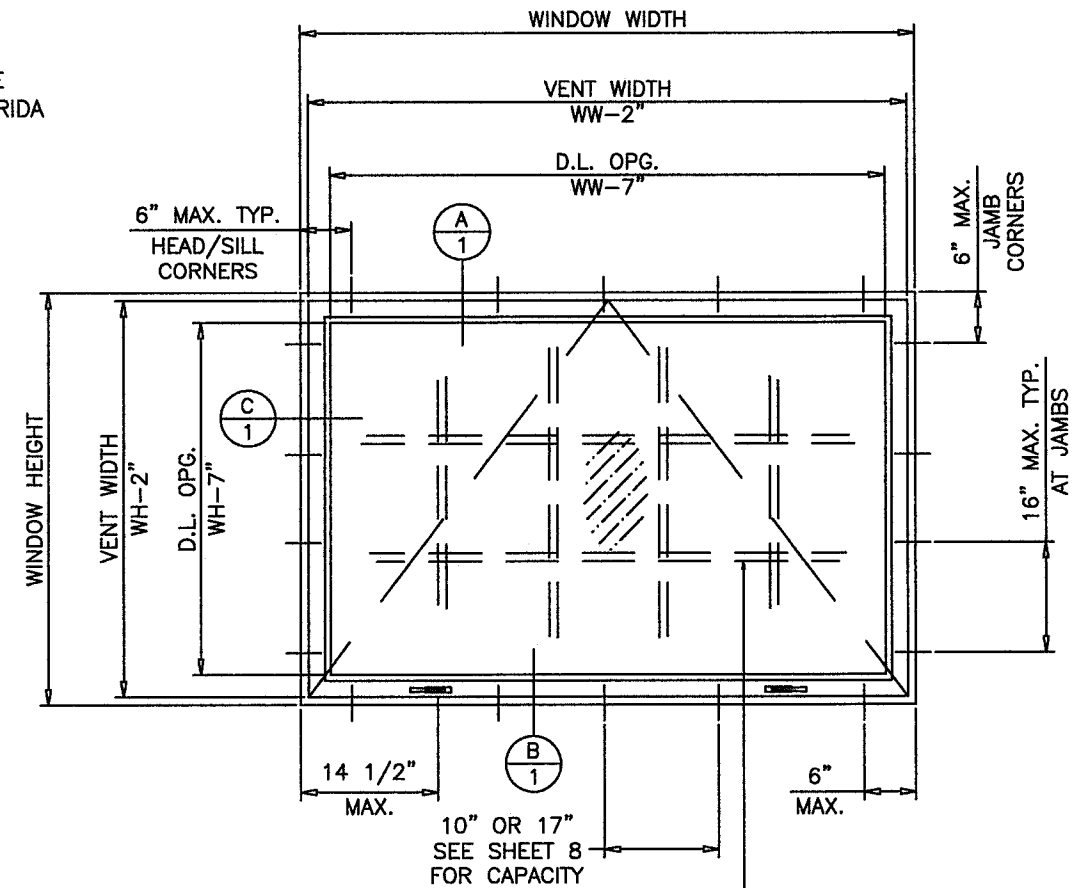
ALL SHIMS TO BE HIGH IMPACT, NON-METALLIC AND NON-COMPRESSIBLE.

MATERIALS INCLUDING BUT NOT LIMITED TO STEEL/METAL SCREWS, THAT COME INTO CONTACT WITH OTHER DISSIMILAR MATERIALS SHALL MEET THE REQUIREMENTS OF THE 2017/2020 FLORIDA BUILDING CODE & ADOPTED STANDARDS.

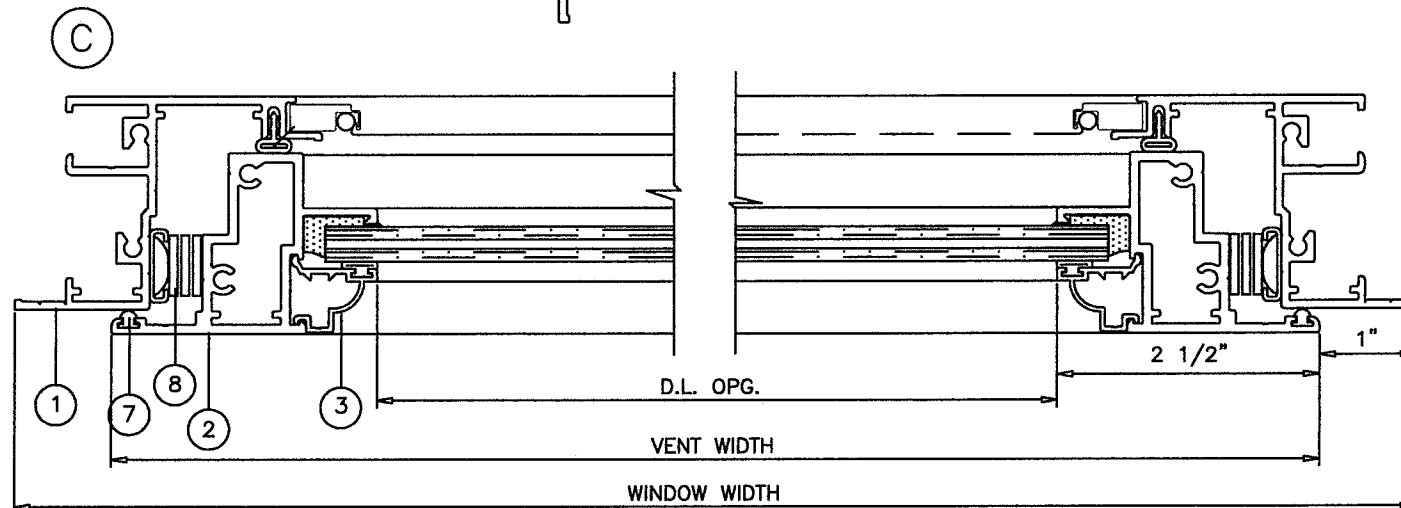
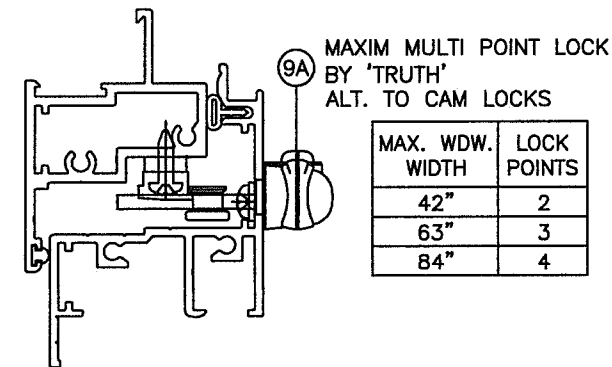
THIS PRODUCT APPROVAL IS GENERIC AND DOES NOT PROVIDE INFORMATION FOR A SITE SPECIFIC PROJECT, i.e. LIFE SAFETY OF THIS PRODUCT, ADEQUACY OF STRUCTURE RECEIVING THIS PRODUCT AND SEALING AROUND OPENING FOR WATER INFILTRATION RESISTANCE ETC. CONDITIONS NOT SHOWN IN THIS DRAWING ARE TO BE ANALYZED SEPARATELY, AND TO BE REVIEWED BY BUILDING OFFICIAL.

**INSTRUCTIONS: USE CHARTS AS FOLLOWS.**

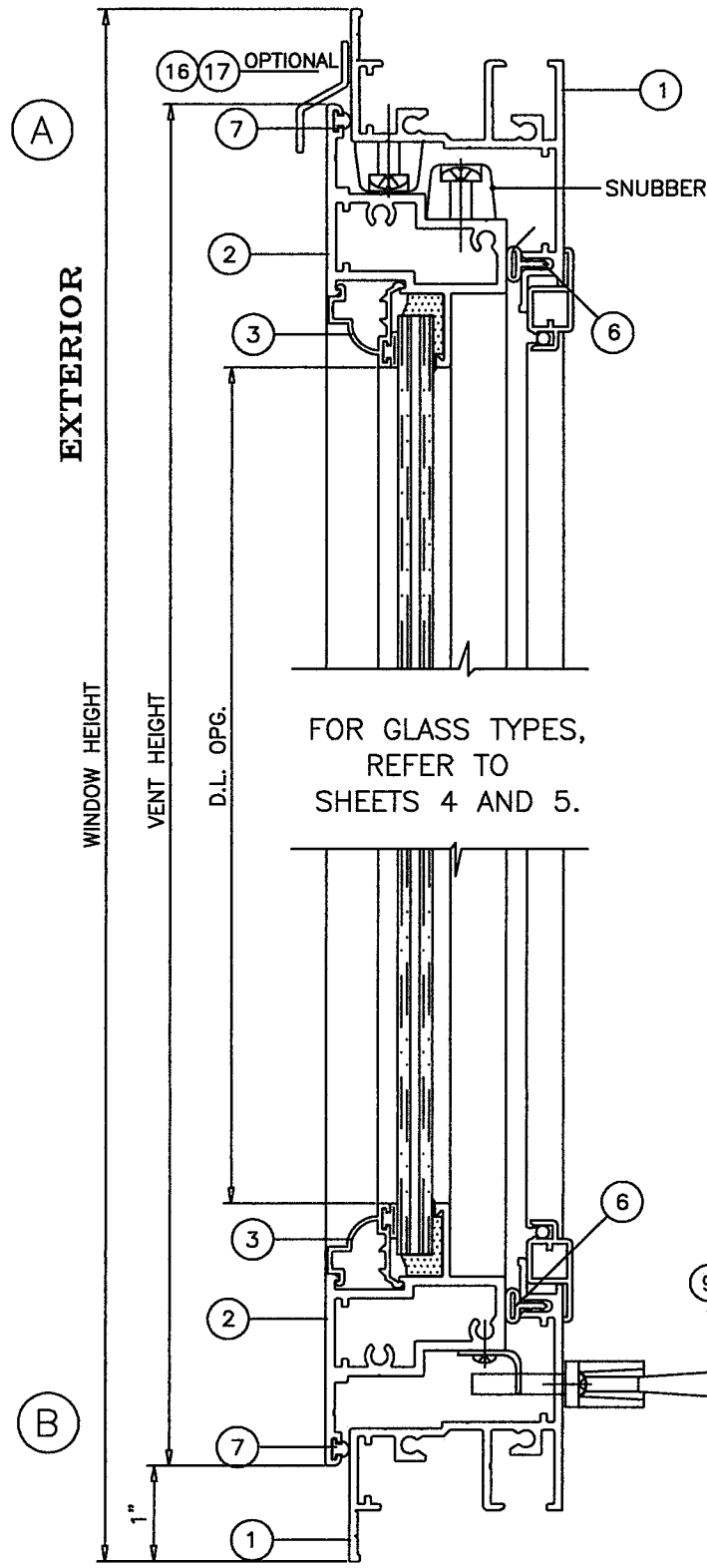
- STEP 1** DETERMINE DESIGN WIND LOAD REQUIREMENT BASED ON WIND VELOCITY, BLDG. HEIGHT, WIND ZONE USING APPLICABLE ASCE 7 STANDARD.
- STEP 2** SEE CHARTS ON SHEETS 4 AND 5 FOR DESIGN LOAD CAPACITY OF DESIRED GLASS SIZE/TYPE.
- STEP 3** USING CHART ON SHEET 8 SELECT ANCHOR OPTION WITH DESIGN RATING MORE THAN DESIGN LOAD SPECIFIED IN STEP 1 ABOVE.
- STEP 4** IF ALUMINUM BUCK SYSTEM IS USED USE CHART ON SHEET 9 TO DETERMINE CAPACITY.
- STEP 5** THE LOWEST VALUE RESULTING FROM STEPS 2, 3 AND 4 SHALL APPLY TO ENTIRE SYSTEM.



**TYPICAL ELEVATION (FLANGE FRAME)**



**EXTERIOR**



FOR GLASS TYPES, REFER TO SHEETS 4 AND 5.

CAM LOCKS  
2 LOCK POINTS  
ALL SIZES

FOR MULLION/  
MULTIPLE UNITS,  
REFER TO  
SEPARATE WINDOOR  
MULLION NOA.

**GENERAL WINDOW SECTIONS  
FLANGE FRAME**

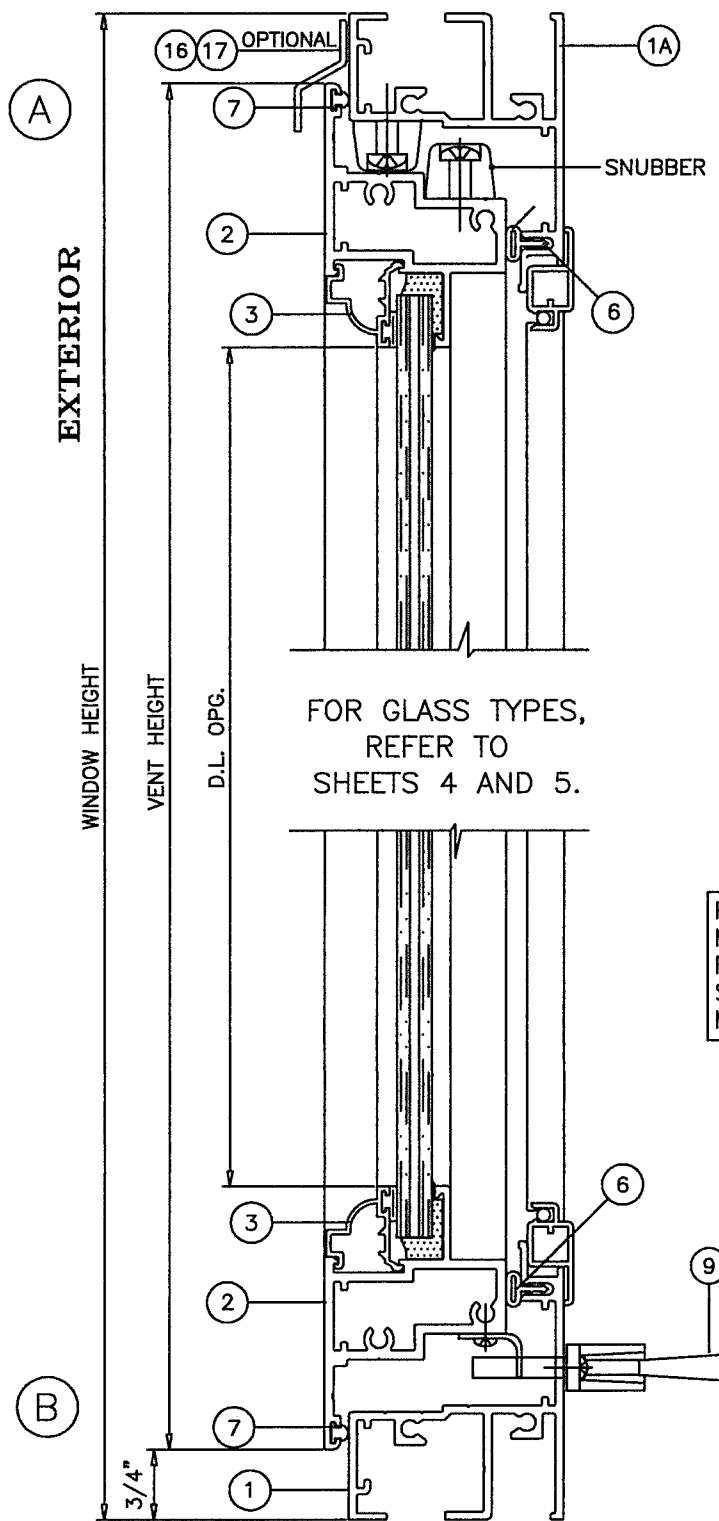
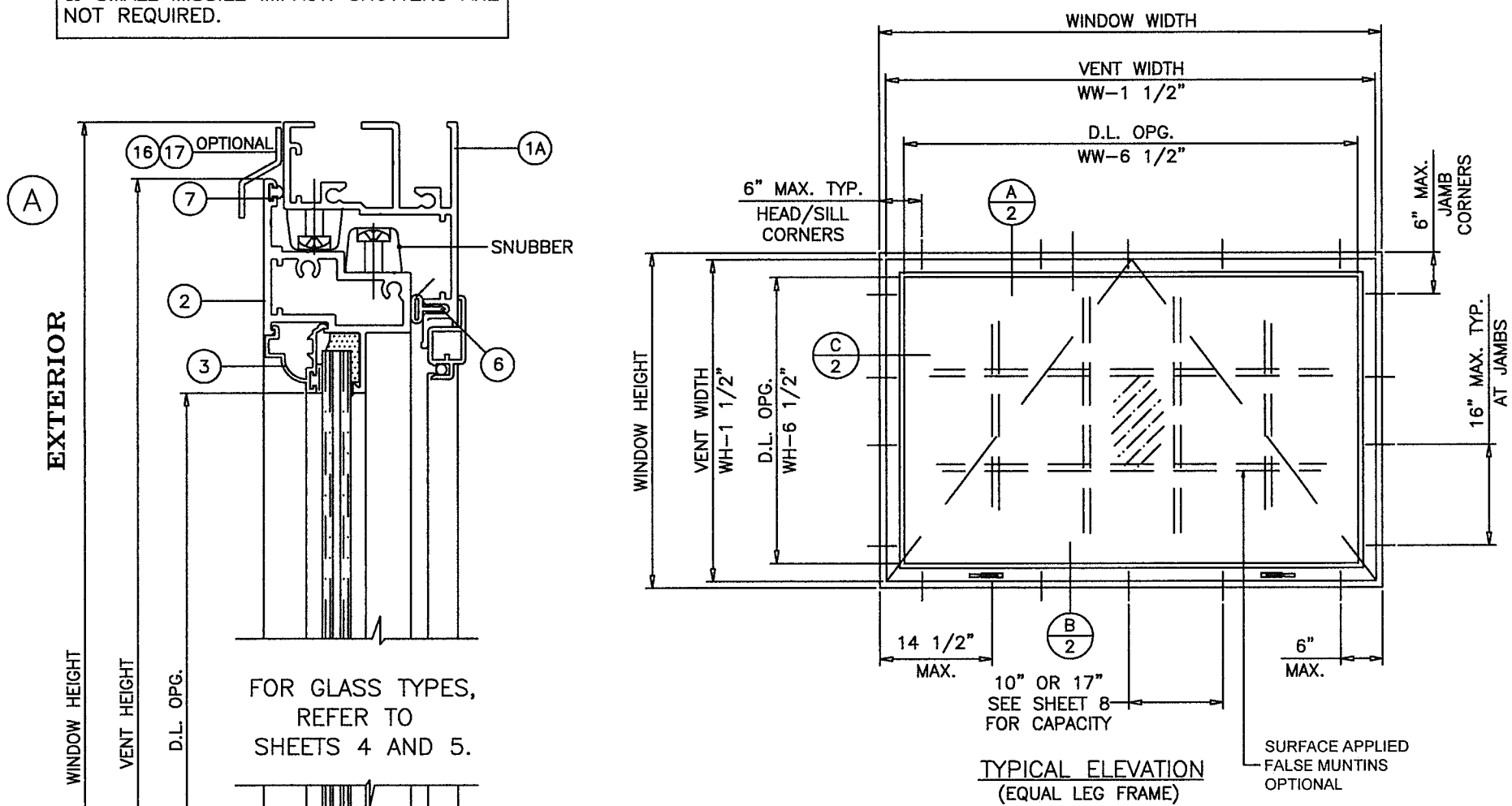
**PRODUCT REVISED**  
as complying with the Florida Building Code  
NOA-No. 20-0528.07  
Expiration Date 10/31/2023  
By Miami-Dade Product Control

REVISION: REVISED FOR 2020 FBC, ADDED ANCHOR TYPE & REFORMATTED. - JR - 5/15/20

<b>WINDOOR®</b> INCORPORATED 104 TRIPLE DIAMOND BLVD. N. VENICE, FL 34275 (407) 481-8400	PREPARED BY A. LYNN MILLER 1070 TECHNOLOGY DRIVE N. VENICE, FL 34275 (941) 480-1600	REGISTRATION #29296 Date 05/15/20	By J ROSOWSKI Drawn J ROSOWSKI	Title AW238NOA-1
	SERIES 238 AWNING WINDOW - LMI	GEN. NOTES, ELEV. & FL. X-SECTIONS	Scale 1 OF 9	Sheet NTS

ANTHONY LYNN MILLER  
LICENSE  
No. 58705  
5/22/20  
STATE OF FLORIDA  
PROFESSIONAL ENGINEER  
A. LYNN MILLER, P.E.  
P.E.# 58705

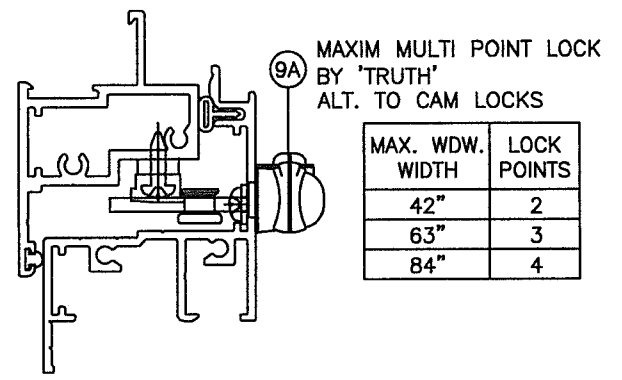
THESE WINDOWS ARE RATED FOR LARGE & SMALL MISSILE IMPACT. SHUTTERS ARE NOT REQUIRED.



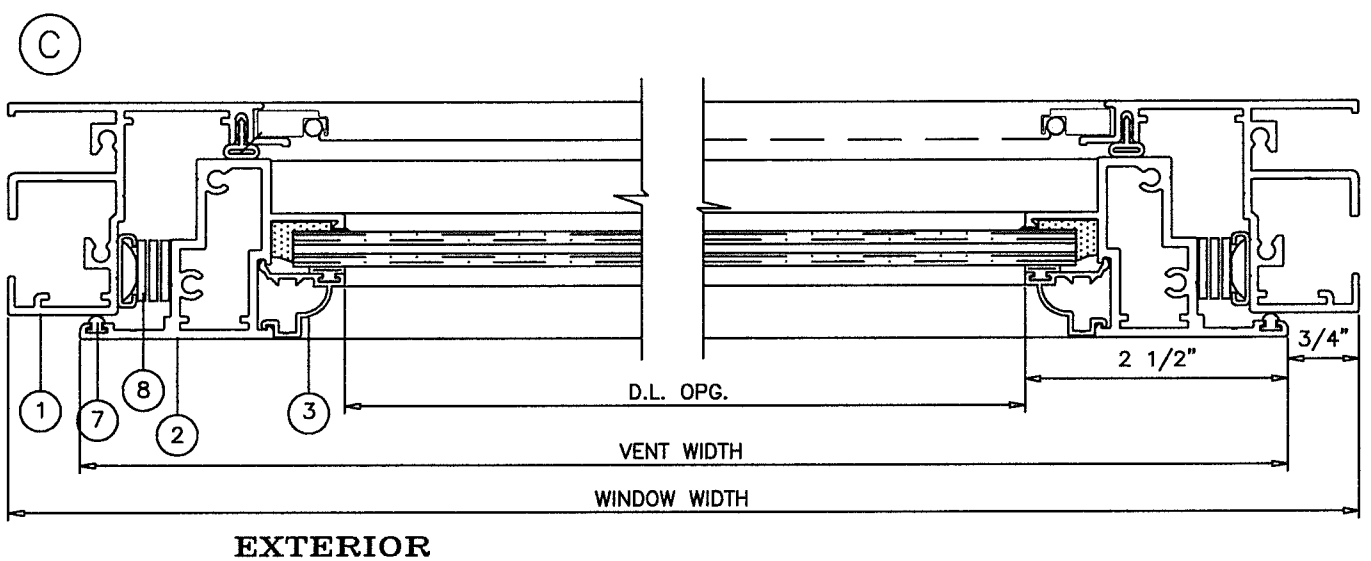
FOR GLASS TYPES, REFER TO SHEETS 4 AND 5.

FOR MULLION/MULTIPLE UNITS, REFER TO SEPARATE WINDOOR MULLION NOA.

CAM LOCKS  
2 LOCK POINTS  
ALL SIZES



MAX. WDW. WIDTH	LOCK POINTS
42"	2
63"	3
84"	4

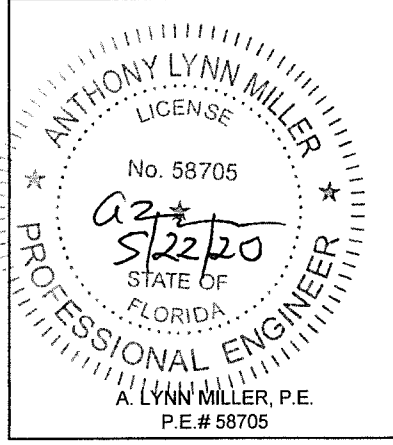


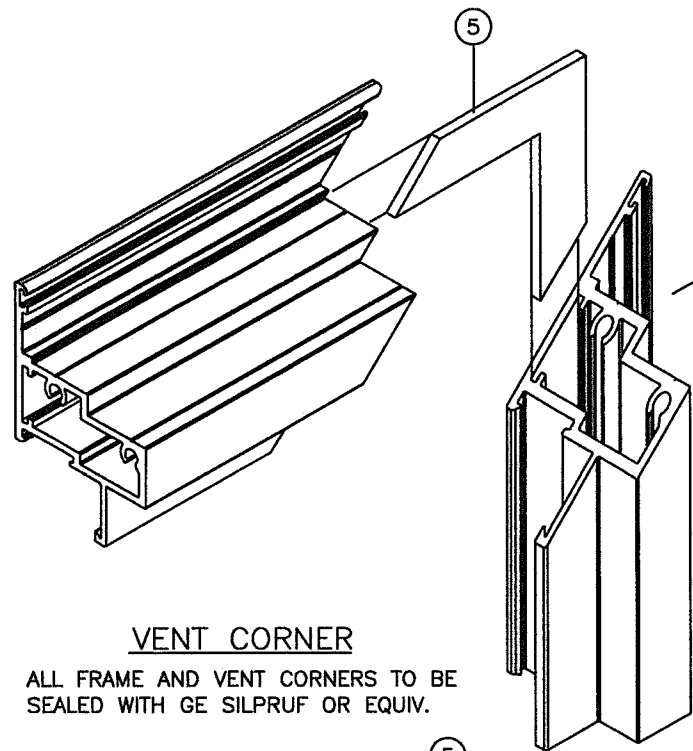
**GENERAL WINDOW SECTIONS  
EQUAL LEG FRAME**

**PRODUCT REVISED**  
as complying with the Florida Building Code  
NOA-No. 20-0528.07  
Expiration Date 10/31/2023  
By *[Signature]*  
Miami-Dade Product Control

Revision: REFORMATED & ADDED ANCHOR TYPE

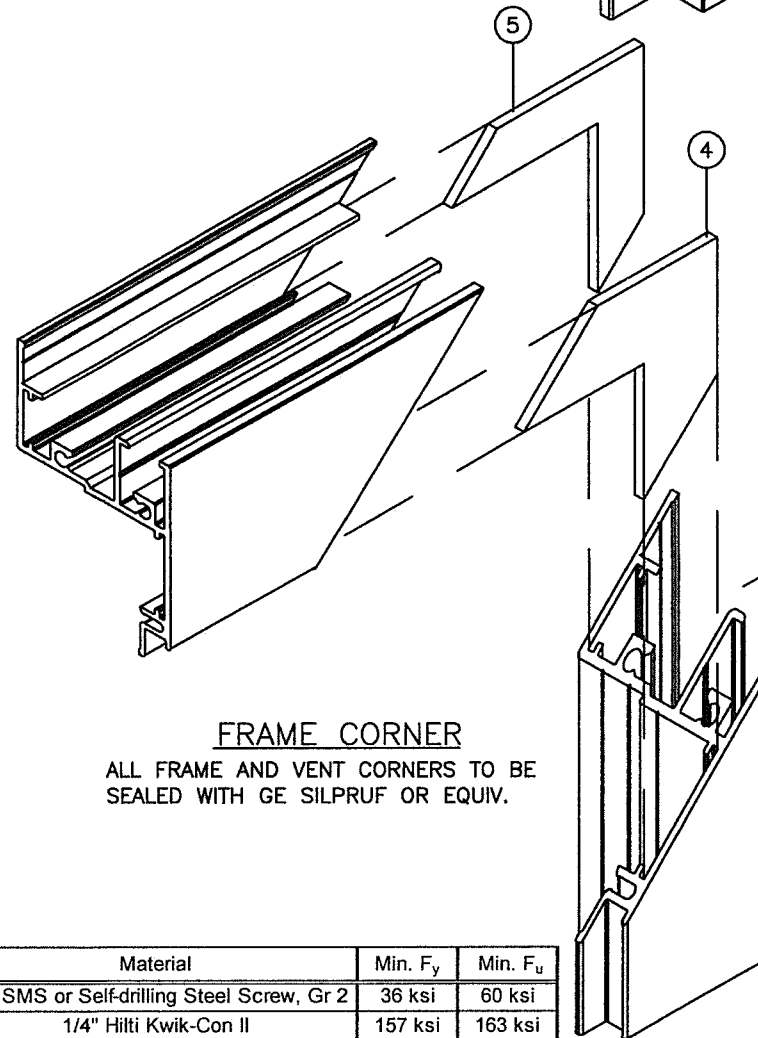
PREPARED BY A. LYNN MILLER 1070 TECHNOLOGY DRIVE N. VENICE, FL 34275 (941) 480-1600	REGISTRATION #29296	Date 05/15/20	Rev. A
	SERIES 238 AWNING WINDOW - LMI	Drawn By J ROSOWSKI	No. AW238NOA-1
<b>WINDOOR</b> INCORPORATED 104 TRIPLE DIAMOND BLVD. N. VENICE, FL 34275 (407) 481-8400	SHEET 2 OF 9	Scale NTS	DWG No.
ELEV. & EL. X-SECTIONS	AW238	Title	Series Desc.





**VENT CORNER**

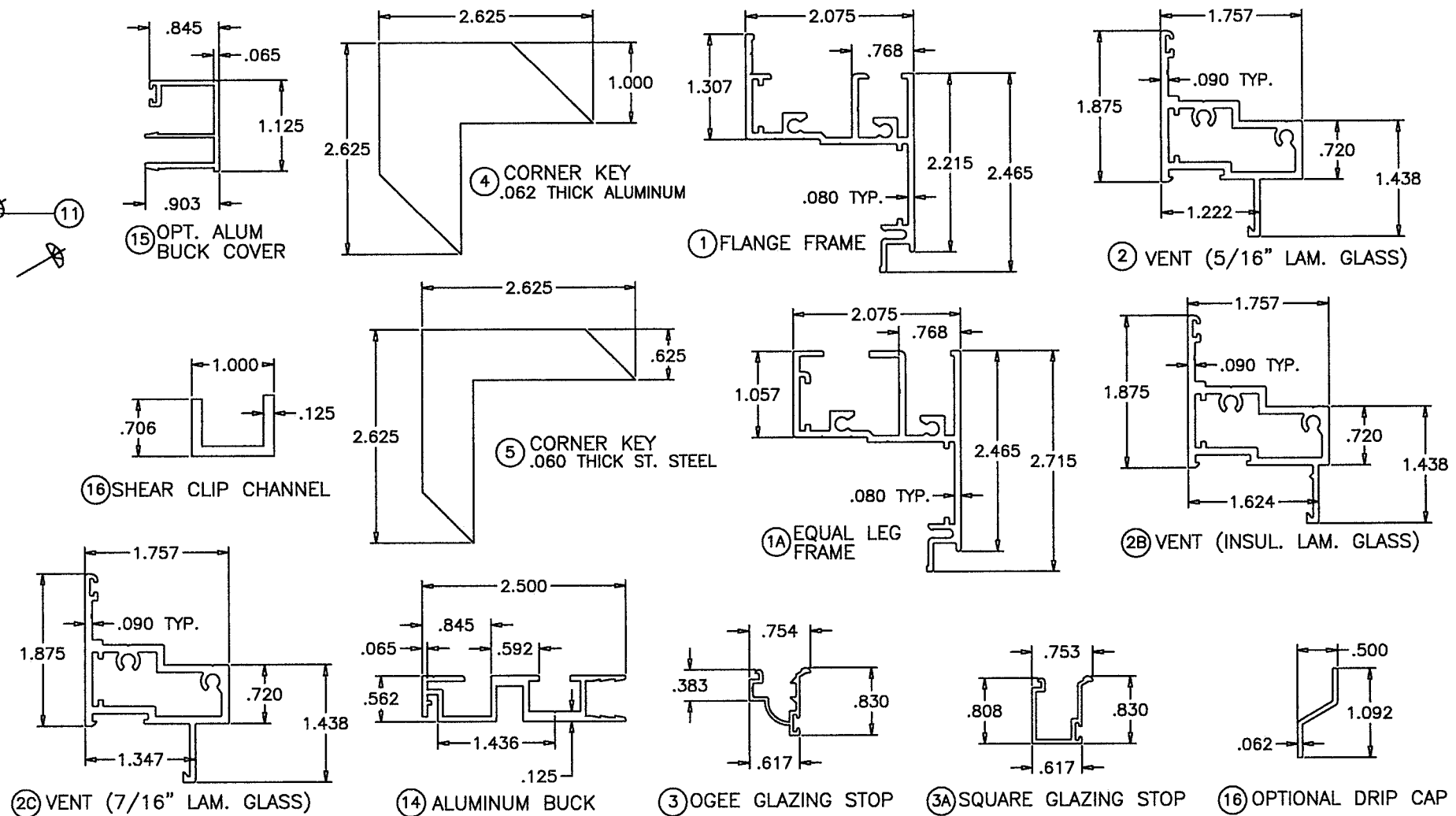
ALL FRAME AND VENT CORNERS TO BE SEALED WITH GE SILPRUF OR EQUIV.



**FRAME CORNER**

ALL FRAME AND VENT CORNERS TO BE SEALED WITH GE SILPRUF OR EQUIV.

Material	Min. F <sub>y</sub>	Min. F <sub>u</sub>
#14 SMS or Self-drilling Steel Screw, Gr 2	36 ksi	60 ksi
1/4" Hilti Kwik-Con II	157 ksi	163 ksi
1/4" Elco UltraCon	155 ksi	177 ksi
1/4" DeWalt UltraCon+	148 ksi	164 ksi
6063-T5 Aluminum	16 ksi	22 ksi
A36 Steel	36 ksi	58 ksi
Gr. 33 Steel Stud	33 ksi	45 ksi



ITEM	PART #	QUANTITY	DESCRIPTION	MATERIAL	MANF./SUPPLIER/REMARKS
1	CGI-373	4	FLANGE FRAME	6063-T6	INDALEX OR EQUIV.
1A	CGI-397	4	EQUAL LEG FRAME	6063-T6	INDALEX OR EQUIV.
2	CGI-378	4	VENT (5/16" LAM. GLASS)	6063-T6	INDALEX OR EQUIV.
2B	CGI-381	4	VENT (INSUL. LAM. GLASS)	6063-T6	INDALEX OR EQUIV.
2C	CGI-385	4	VENT (7/16" LAM. GLASS)	6063-T6	INDALEX OR EQUIV.
3	CGI-375	4	Ogee GLAZING BEAD	6063-T5	INDALEX OR EQUIV.
3A	CGI-396	4	SQUARE GLAZING BEAD	6063-T5	INDALEX OR EQUIV.
4	-	4	.060 THICK CORNER KEY	ALUMINUM	-
5	-	8	.060 THICK CORNER KEY	ST. STEEL	-
6	AP-425	AS REQD.	FRAME WEATHERSTRIPPING	-	SCHLEGEL APTUS
7	Q200 X190	AS REQD.	VENT WEATHERSTRIPPING	-	SCHLEGEL Q-LON
8	35-10-00-101	2/ VENT	4 BAR HINGE, AT JAMBS	STEEL	TRUTH, ATTACHED W/ (6) #8 X 3/8" SS SMS
9	24-13-00-202	2/ VENT	FACE MOUNT LOCK	STEEL	TRUTH, ATTACHED W/ (2) #8 X 3/8" SMS
9A	-	2/ VENT	MULTI POINT LOCK	-	-
10	-	2/ VENT	.110 THICK LOCK KEEPER, AT FRAME JAMB FACING LOCK	STEEL	CGI, ATTACHED W/ (2) #10 X 3/8" SS SMS
11	-	2/ CORNER	FRAME AND VENT ASSEMBLY SCREWS	-	#10 X 1-1/4" SS SMS
12	-	2/ LITE	SETTING BLOCKS	EPDM	DUROMETER 80±5 SHORE A
14	-	-	ALUMINUM BUCK	6063-T6	INDALEX OR EQUIV.
15	-	-	OPTIONAL ALUMINUM BUCK COVER	6063-T6	INDALEX OR EQUIV.
16	AL-1225	-	OPTIONAL DRIP CAP	6063-T6	INDALEX OR EQUIV.
17	-	-	DOUBLE-SIDED FOAM TAPE FOR OPTIONAL DRIP CAP	-	-

**PRODUCT REVISED**  
 as complying with the Florida  
 Building Code  
 NOA-No. 20-0528.07  
 Expiration Date 10/31/2023  
 By *[Signature]*  
 Miami-Dade Product Control

Revision:

PREPARED BY A. LYNN MILLER  
 1070 TECHNOLOGY DRIVE  
 N. VENICE, FL 34275  
 (941) 480-1600

REGISTRATION #29296

DATE 05/15/20

BY J ROSOWSKI

DRAWN BY J ROSOWSKI

AW238NOA-1

REV. A

NO. 9

DWG. 3 OF 9

SHEET NTS

SCALE

AW238

SERIES 238 AWNING WINDOW - LMI

BOM & EXTRUSIONS

WINDOOR®  
 INCORPORATED  
 104 TRIPLE DIAMOND BLVD.  
 N. VENICE, FL 34275  
 (407) 481-8400

ANTHONY LYNN MILLER  
 LICENSE  
 No. 58705  
 05/22/20  
 STATE OF  
 FLORIDA  
 PROFESSIONAL ENGINEER  
 A. LYNN MILLER, P.E.  
 P.E.# 58705

**PERFORMANCE VALUES OF IMPACT RESISTANT WINDOWS**  
NO SHUTTERS REQUIRED  
REFER TO SHEETS 6 THRU 9 FOR INSTALLATION DETAILS

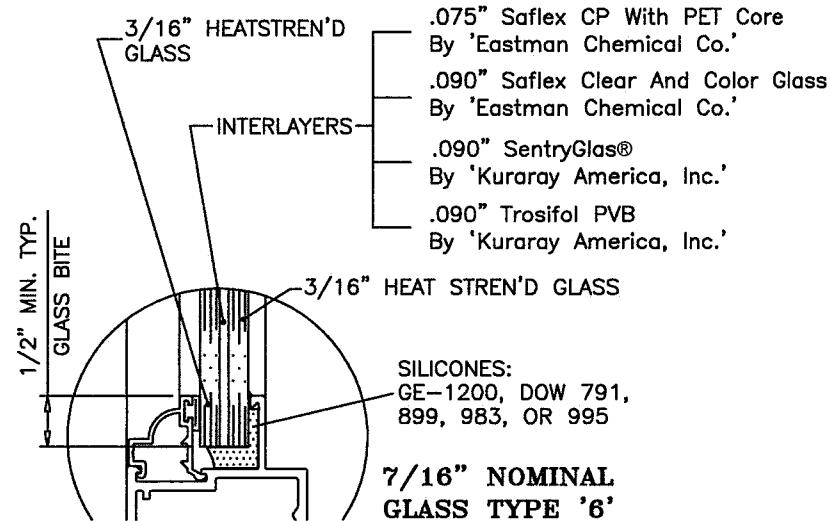
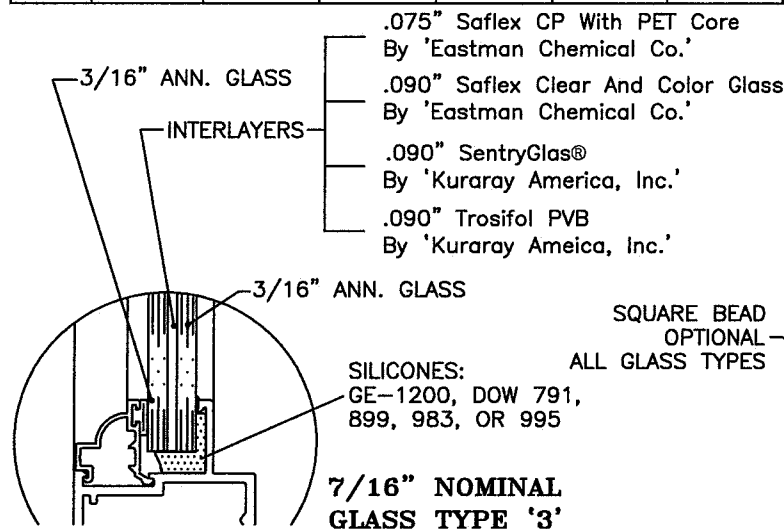
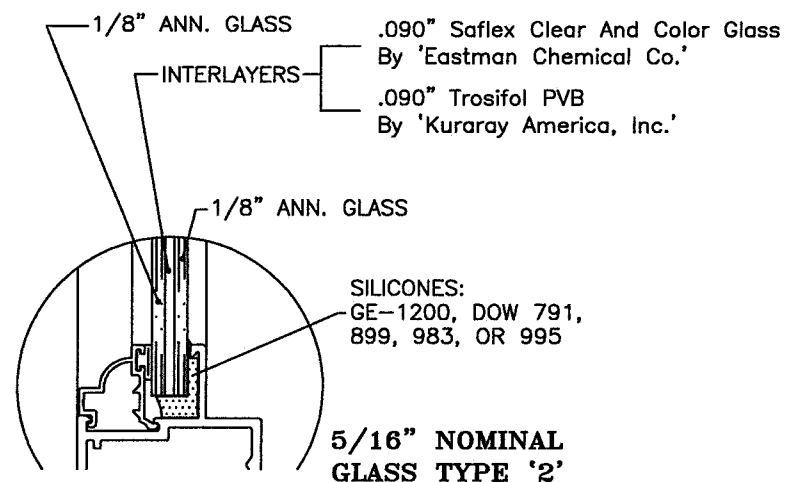
WINDOW DIMS.		GLASS TYPE '2'		GLASS TYPE '3'		GLASS TYPE '6'	
WIDTH	HEIGHT	EXT. (+)	1NT. (-)	EXT. (+)	1NT. (-)	EXT. (+)	1NT. (-)
24"	24"	110.0	195.0	110.0	195.0	110.0	195.0
	28"	110.0	195.0	110.0	195.0	110.0	195.0
	30"	110.0	194.3	110.0	195.0	110.0	195.0
	36"	110.0	161.9	110.0	195.0	110.0	195.0
	42"	110.0	138.8	110.0	195.0	110.0	195.0
	48"	110.0	121.4	110.0	195.0	110.0	195.0
	54"	107.9	107.9	110.0	195.0	110.0	195.0
	60"	95.4	95.4	110.0	195.0	110.0	120.0
	66"	73.4	73.4	110.0	120.0	110.0	120.0
	72"	56.1	56.1	110.0	120.0	110.0	120.0
30"	24"	110.0	194.3	110.0	195.0	110.0	195.0
	28"	110.0	166.5	110.0	195.0	110.0	195.0
	30"	110.0	155.4	110.0	195.0	110.0	195.0
	36"	110.0	129.5	110.0	195.0	110.0	195.0
	42"	110.0	111.0	110.0	195.0	110.0	195.0
	48"	97.1	97.1	110.0	195.0	110.0	120.0
	54"	86.3	86.3	110.0	120.0	110.0	120.0
	60"	77.7	77.7	110.0	120.0	110.0	120.0
	66"	60.6	60.6	110.0	120.0	110.0	120.0
	72"	46.0	46.0	110.0	120.0	110.0	120.0
36"	24"	110.0	161.9	110.0	195.0	110.0	195.0
	28"	110.0	138.8	110.0	195.0	110.0	195.0
	30"	110.0	129.5	110.0	195.0	110.0	195.0
	36"	107.9	107.9	110.0	195.0	110.0	195.0
	42"	92.5	92.5	110.0	120.0	110.0	120.0
	48"	80.9	80.9	110.0	120.0	110.0	120.0
	54"	71.9	71.9	110.0	120.0	110.0	120.0
	60"	64.8	64.8	110.0	120.0	110.0	120.0

**PERFORMANCE VALUES OF IMPACT RESISTANT WINDOWS**  
NO SHUTTERS REQUIRED  
REFER TO SHEETS 6 THRU 9 FOR INSTALLATION DETAILS

WINDOW DIMS.		GLASS TYPE '2'		GLASS TYPE '3'		GLASS TYPE '6'			
WIDTH	HEIGHT	EXT. (+)	1NT. (-)	EXT. (+)	1NT. (-)	EXT. (+)	1NT. (-)		
42"	24"	110.0	138.8	110.0	195.0	110.0	195.0		
	28"	110.0	118.9	110.0	195.0	110.0	195.0		
	30"	110.0	111.0	110.0	195.0	110.0	195.0		
	36"	92.5	92.5	110.0	120.0	110.0	120.0		
	42"	79.3	79.3	110.0	120.0	110.0	120.0		
	48"	69.4	69.4	110.0	120.0	110.0	120.0		
	54"	61.7	61.7	110.0	120.0	110.0	120.0		
	48"	24"	110.0	121.4	110.0	195.0	110.0	195.0	
		28"	104.1	104.1	110.0	195.0	110.0	120.0	
		30"	97.1	97.1	110.0	195.0	110.0	120.0	
36"		80.9	80.9	110.0	120.0	110.0	120.0		
42"		69.4	69.4	110.0	120.0	110.0	120.0		
48"		60.7	60.7	110.0	120.0	110.0	120.0		
54"		24"	107.9	107.9	110.0	195.0	110.0	195.0	
		28"	92.5	92.5	110.0	120.0	110.0	120.0	
		30"	86.3	86.3	110.0	120.0	110.0	120.0	
		36"	71.9	71.9	110.0	120.0	110.0	120.0	
	42"	61.7	61.7	110.0	120.0	110.0	120.0		
	60"	24"	95.4	95.4	110.0	195.0	110.0	120.0	
		28"	83.3	83.3	110.0	120.0	110.0	120.0	
		30"	77.7	77.7	110.0	120.0	110.0	120.0	
		36"	64.8	64.8	110.0	120.0	110.0	120.0	
		66"	24"	73.4	73.4	110.0	120.0	110.0	120.0
28"			64.2	64.2	110.0	120.0	110.0	120.0	
30"			60.6	60.6	110.0	120.0	110.0	120.0	
72"			24"	56.1	56.1	110.0	120.0	110.0	120.0
			28"	48.9	48.9	110.0	120.0	110.0	120.0
			30"	46.0	46.0	110.0	120.0	110.0	120.0
	78"		24"	43.8	43.8	110.0	120.0	110.0	120.0
			28"	38.1	38.1	110.0	120.0	110.0	120.0
			30"	-	-	110.0	120.0	-	-
			84"	24"	34.9	34.9	110.0	120.0	110.0
		28"		-	-	110.0	120.0	-	-

**PERFORMANCE VALUES OF IMPACT RESISTANT WINDOWS**  
NO SHUTTERS REQUIRED  
REFER TO SHEETS 6 THRU 9 FOR INSTALLATION DETAILS

WINDOW DIMS.		GLASS TYPE '2'		GLASS TYPE '3'		GLASS TYPE '6'		
WIDTH	HEIGHT	EXT. (+)	1NT. (-)	EXT. (+)	1NT. (-)	EXT. (+)	1NT. (-)	
19-1/8"	26"	110.0	195.0	110.0	195.0	110.0	195.0	
	38-3/8"	110.0	190.6	110.0	195.0	110.0	195.0	
	50-5/8"	110.0	144.5	110.0	195.0	110.0	195.0	
	63"	104.2	104.2	110.0	195.0	110.0	195.0	
	74-1/4"	63.0	63.0	110.0	195.0	110.0	120.0	
26-1/2"	26"	110.0	195.0	110.0	195.0	110.0	195.0	
	38-3/8"	110.0	137.5	110.0	195.0	110.0	195.0	
	50-5/8"	104.3	104.3	110.0	195.0	110.0	195.0	
	63"	77.9	77.9	110.0	120.0	110.0	120.0	
	74-1/4"	46.6	46.6	110.0	120.0	110.0	120.0	
37"	26"	110.0	145.4	110.0	195.0	110.0	195.0	
	38-3/8"	98.5	98.5	110.0	194.5	110.0	120.0	
	50-5/8"	74.7	74.7	110.0	120.0	110.0	120.0	
	63"	60.0	60.0	110.0	120.0	110.0	120.0	
	42"	26"	110.0	128.1	110.0	195.0	110.0	195.0
38-3/8"		86.8	86.8	110.0	120.0	110.0	120.0	
50-5/8"		65.8	65.8	110.0	120.0	110.0	120.0	
53-1/8"		26"	101.3	101.3	110.0	195.0	110.0	120.0
		38-3/8"	68.6	68.6	110.0	120.0	110.0	120.0



**NOTES:**  
GLASS CAPACITIES ON THIS SHEET ARE BASED ON ASTM E1300-09 (3 SEC. GUSTS) AND FLORIDA BUILDING COMMISSION DECLARATORY STATEMENT DCA05-DEC-219  
LOAD/AREA LIMITS  
FOR +110.0, -120.0 PSF = 16.34 SQ. FT.  
FOR +110.0, -195.0 PSF = 10.00 SQ. FT.  
\*LIMIT MAX. LOADS TO 171.0 PSF WHEN MULTI POINT LOCK BY 'INTERLOCK' (9B) IS USED.  
\*\*SIZE 37" X 77" APPLICABLE TO FLANGE FRAMES ONLY SEE SHEET 1.

**PRODUCT REVISED**  
as complying with the Florida Building Code  
NOA-No. 20-0528.07  
Expiration Date 10/31/2023  
By *[Signature]*  
Miami-Dade Product Control

REFORMATED & ADDED BACKBEDDING - JR - 5/15/20

PREPARED BY A. LYNN MILLER 1070 TECHNOLOGY DRIVE N. VENICE, FL 34275 (941) 480-1600	REGISTRATION #29296	Date	05/15/20	Drawn By	J ROSOWSKI	Rev.	A
	SERIES 238 AWNING WINDOW - LMI	GLASS & WINDOW DP 1	Sheet	4 OF 9	DWG No.	AW238NOA-1	
<b>WINDOOR</b> INCORPORATED 104 TRIPLE DIAMOND BLVD. N. VENICE, FL 34275 (407) 481-8400	Scale	NTS					
	Series	Desc.	NTS				

ANTHONY LYNN MILLER  
LICENSE  
No. 58705  
5/22/20  
STATE OF FLORIDA  
PROFESSIONAL ENGINEER  
A. LYNN MILLER, P.E.  
P.E.# 58705



**PERFORMANCE VALUES OF IMPACT RESISTANT WINDOWS**  
NO SHUTTERS REQUIRED  
REFER TO SHEETS 6 THRU 9 FOR INSTALLATION DETAILS

WINDOW DIMS.		GLASS TYPE '2A'		GLASS TYPE '3A'	
WIDTH	HEIGHT	EXT. (+)	1NT. (-)	EXT. (+)	1NT. (-)
24"	24"	110.0	195.0	110.0	195.0
	28"	110.0	195.0	110.0	195.0
	30"	110.0	194.3	110.0	195.0
	36"	110.0	161.9	110.0	195.0
	42"	110.0	138.8	110.0	195.0
	48"	110.0	121.4	110.0	195.0
	54"	107.9	107.9	110.0	195.0
	60"	95.4	95.4	110.0	120.0
	66"	73.4	73.4	110.0	120.0
	72"	56.1	56.1	109.3	109.3
30"	24"	110.0	194.3	110.0	195.0
	28"	110.0	166.5	110.0	195.0
	30"	110.0	155.4	110.0	195.0
	36"	110.0	129.5	110.0	195.0
	42"	110.0	111.0	110.0	195.0
	48"	97.1	97.1	110.0	120.0
	54"	86.3	86.3	110.0	120.0
	60"	77.7	77.7	110.0	120.0
	66"	60.6	60.6	110.0	118.2
	72"	46.0	46.0	89.8	89.8
36"	24"	110.0	161.9	110.0	195.0
	28"	110.0	138.8	110.0	195.0
	30"	110.0	129.5	110.0	195.0
	36"	107.9	107.9	110.0	195.0
	42"	92.5	92.5	110.0	120.0
	48"	80.9	80.9	110.0	120.0
	54"	71.9	71.9	110.0	120.0
	60"	64.8	64.8	110.0	120.0

**PERFORMANCE VALUES OF IMPACT RESISTANT WINDOWS**  
NO SHUTTERS REQUIRED  
REFER TO SHEETS 6 THRU 9 FOR INSTALLATION DETAILS

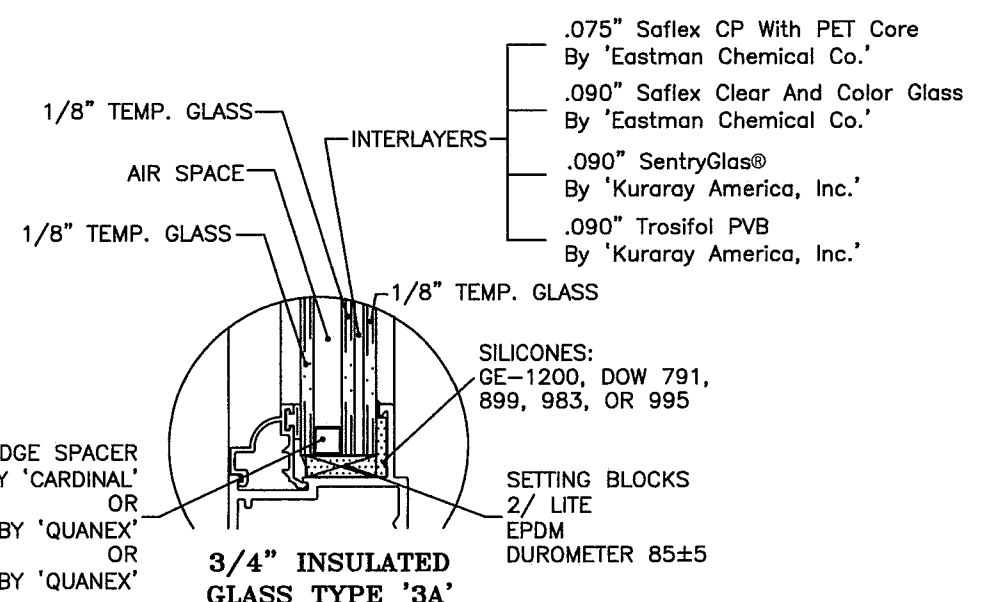
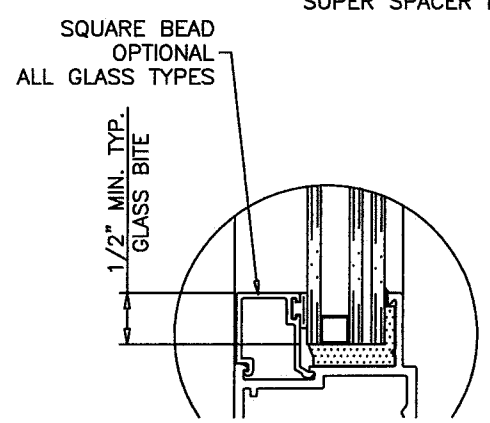
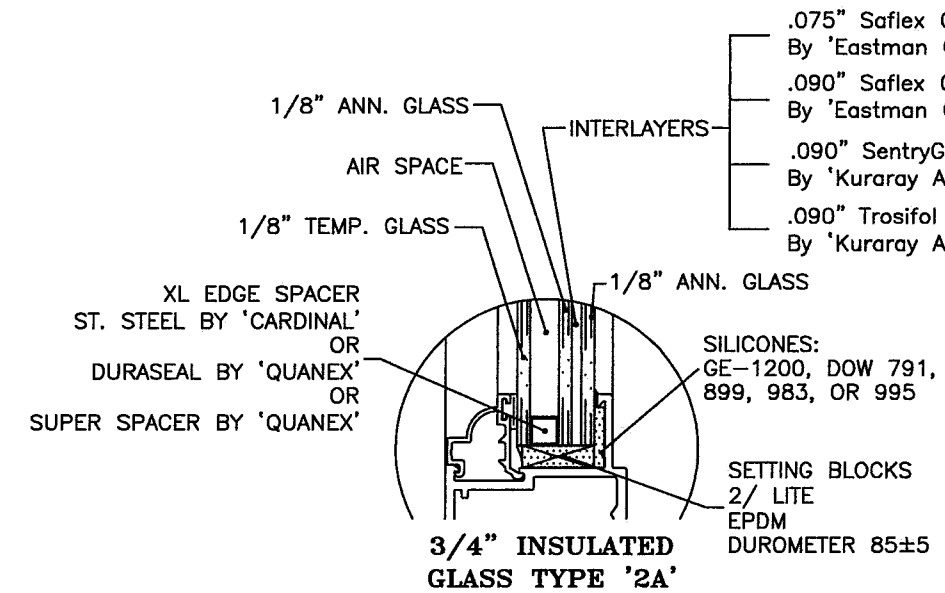
WINDOW DIMS.		GLASS TYPE '2A'		GLASS TYPE '3A'			
WIDTH	HEIGHT	EXT. (+)	1NT. (-)	EXT. (+)	1NT. (-)		
42"	24"	110.0	138.8	110.0	195.0		
	28"	110.0	118.9	110.0	195.0		
	30"	110.0	111.0	110.0	195.0		
	36"	92.5	92.5	110.0	120.0		
	42"	79.3	79.3	110.0	120.0		
	48"	69.4	69.4	110.0	120.0		
	54"	61.7	61.7	110.0	120.0		
	48"	24"	110.0	121.4	110.0	195.0	
		28"	104.1	104.1	110.0	120.0	
		30"	97.1	97.1	110.0	120.0	
36"		80.9	80.9	110.0	120.0		
42"		69.4	69.4	110.0	120.0		
48"		60.7	60.7	110.0	118.4		
54"		24"	107.9	107.9	110.0	195.0	
		28"	92.5	92.5	110.0	120.0	
		30"	86.3	86.3	110.0	120.0	
		36"	71.9	71.9	110.0	120.0	
	42"	61.7	61.7	110.0	120.0		
	60"	24"	95.4	95.4	110.0	120.0	
		28"	83.3	83.3	110.0	120.0	
		30"	77.7	77.7	110.0	120.0	
		36"	64.8	64.8	110.0	120.0	
		66"	24"	73.4	73.4	110.0	120.0
28"			64.2	64.2	110.0	120.0	
30"			60.6	60.6	110.0	118.2	
72"			24"	56.1	56.1	109.3	109.3
			28"	48.9	48.9	95.3	95.3
			30"	46.0	46.0	89.8	89.8
	78"		24"	43.8	43.8	85.4	85.4
			28"	38.1	38.1	74.3	74.3
	84"		24"	34.9	34.9	68.0	68.0

**PERFORMANCE VALUES OF IMPACT RESISTANT WINDOWS**  
NO SHUTTERS REQUIRED  
REFER TO SHEETS 6 THRU 9 FOR INSTALLATION DETAILS

WINDOW DIMS.		GLASS TYPE '2A'		GLASS TYPE '3A'	
WIDTH	HEIGHT	EXT. (+)	1NT. (-)	EXT. (+)	1NT. (-)
19-1/8"	26"	110.0	195.0	110.0	195.0
	38-3/8"	110.0	190.6	110.0	195.0
	50-5/8"	110.0	144.5	110.0	195.0
	63"	104.2	104.2	110.0	195.0
	74-1/4"	63.0	63.0	110.0	120.0
26-1/2"	26"	110.0	195.0	110.0	195.0
	38-3/8"	110.0	137.5	110.0	195.0
	50-5/8"	104.3	104.3	110.0	195.0
	63"	77.9	77.9	110.0	120.0
37"	26"	110.0	145.4	110.0	195.0
	38-3/8"	98.5	98.5	110.0	120.0
	50-5/8"	74.7	74.7	110.0	120.0
42"	26"	110.0	128.1	110.0	195.0
	38-3/8"	86.8	86.8	110.0	120.0
	50-5/8"	65.8	65.8	110.0	120.0
53-1/8"	26"	101.3	101.3	110.0	120.0
	38-3/8"	68.6	68.6	110.0	120.0

\*LIMIT MAX. LOADS TO 171.0 PSF WHEN MULTI POINT LOCK BY 'INTERLOCK' (9B) IS USED.

\*\*SIZE 37" X 77" APPLICABLE TO FLANGE FRAMES ONLY SEE SHEET 1.



**NOTES:**  
GLASS CAPACITIES ON THIS SHEET ARE BASED ON ASTM E1300-09 (3 SEC. GUSTS) AND FLORIDA BUILDING COMMISSION DECLARATORY STATEMENT DCA05-DEC-219

**LOAD/AREA LIMITS**  
FOR +110.0, -120.0 PSF = 16.34 SQ. FT.  
FOR +110.0, -195.0 PSF = 10.00 SQ. FT.

**PRODUCT REVISED**  
as complying with the Florida Building Code  
NOA-No. 20-0528.07  
Expiration Date 10/31/2023  
By *[Signature]*  
Miami-Dade Product Control

Revision: REFORMATED & ADDED BACKBEDDING - JR - 5/15/20

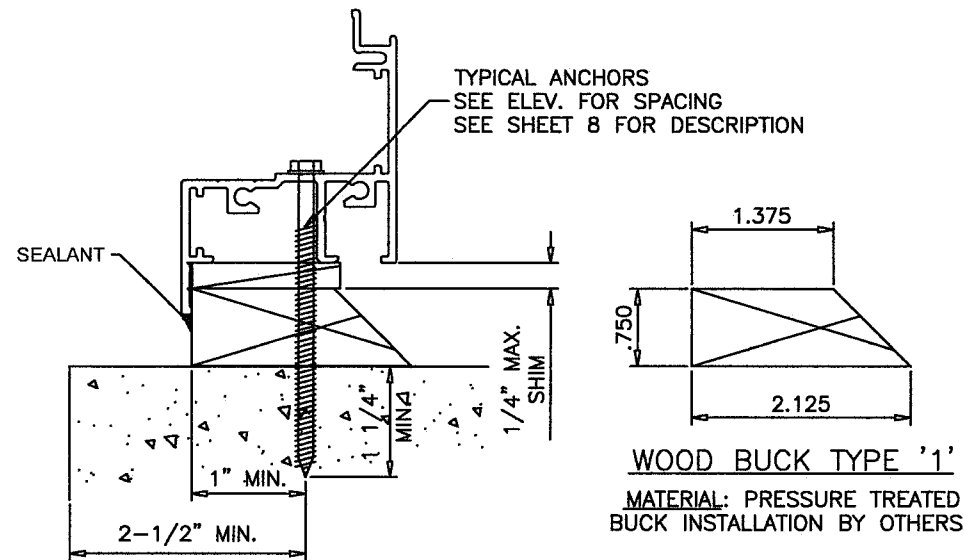
PREPARED BY A. LYNN MILLER 1070 TECHNOLOGY DRIVE N. VENICE, FL 34275 (941) 480-1600	REGISTRATION #29296	Date	05/15/20	Rev.	A
	SERIES 238 AWNING WINDOW - LMI GLASS & WINDOW DP 2	DRAWN BY J J ROSOWSKI	No.	DWG	5 OF 9
Scale					
WINDOOR INCORPORATED 104 TRIPLE DIAMOND BLVD. N. VENICE, FL 34275 (407) 481-8400		Series Desc. Title			

ANTHONY LYNN MILLER  
LICENSE  
No. 58705  
STATE OF FLORIDA  
PROFESSIONAL ENGINEER  
A. LYNN MILLER, P.E.  
P.E.# 58705



**INSTALLATION CONDITIONS FLANGE FRAME (APPLIES TO ALL FOUR SIDES)**

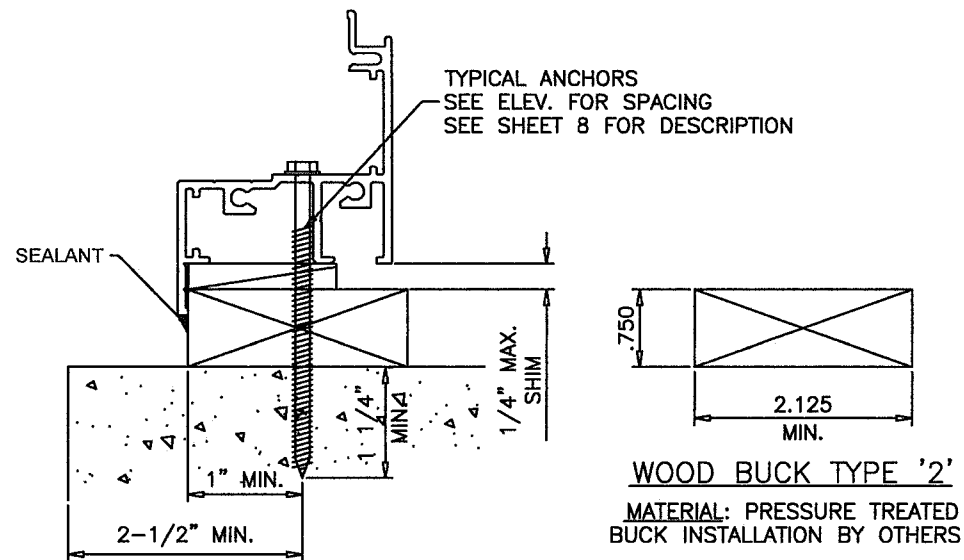
FOR ANCHOR PERFORMANCE VALUES SEE SHEET 8



**WOOD BUCK TYPE '1'**

MATERIAL: PRESSURE TREATED  
BUCK INSTALLATION BY OTHERS

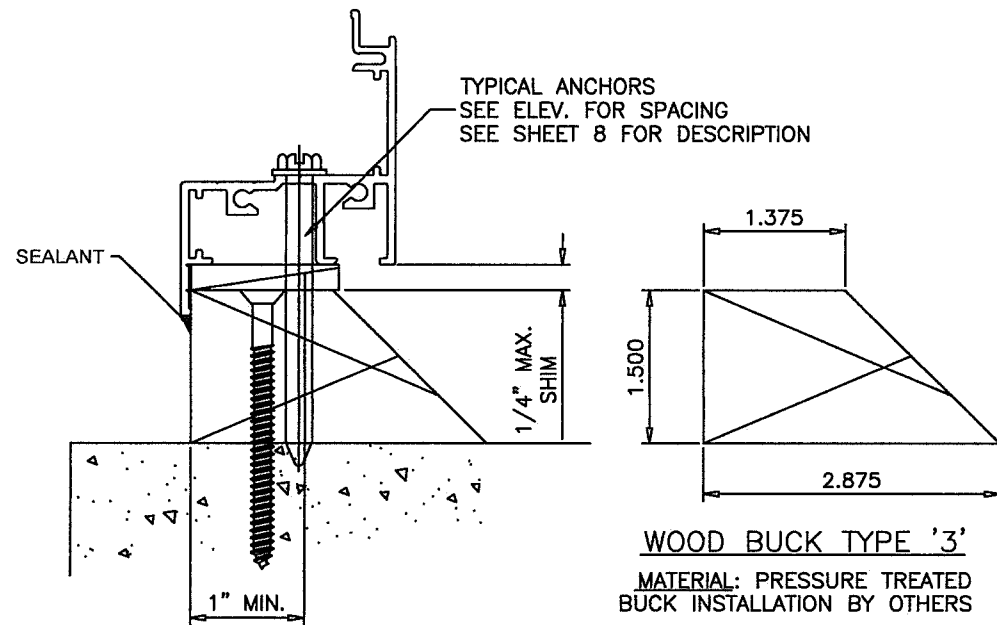
**INSTALLATION TYPE '1'**  
TYPICAL INSTALLATION DETAIL  
ON ALL FOUR SIDES/USING WOOD



**WOOD BUCK TYPE '2'**

MATERIAL: PRESSURE TREATED  
BUCK INSTALLATION BY OTHERS

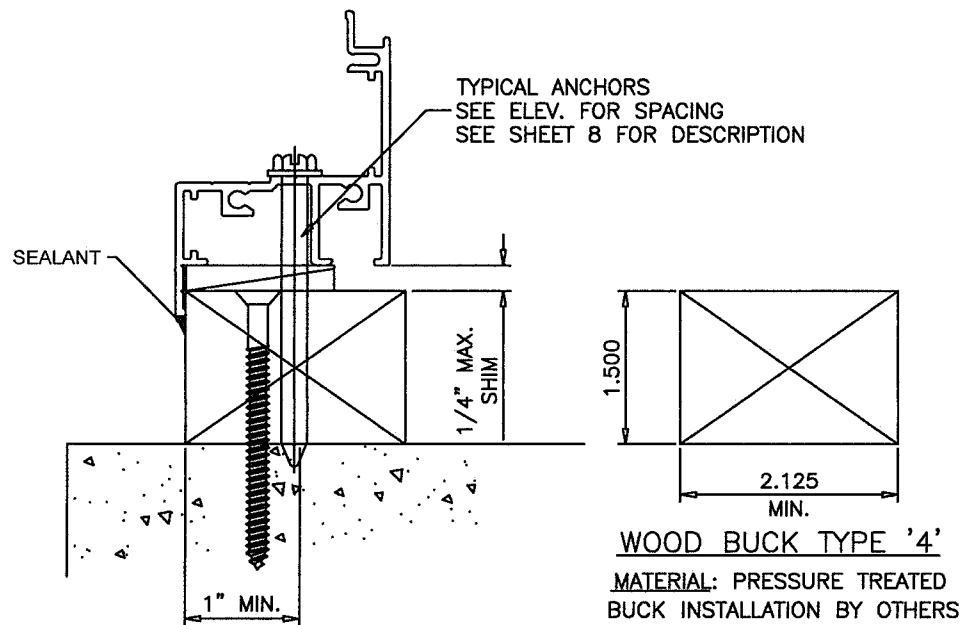
**INSTALLATION TYPE '2'**  
TYPICAL INSTALLATION DETAIL  
ON ALL FOUR SIDES/USING WOOD



**WOOD BUCK TYPE '3'**

MATERIAL: PRESSURE TREATED  
BUCK INSTALLATION BY OTHERS

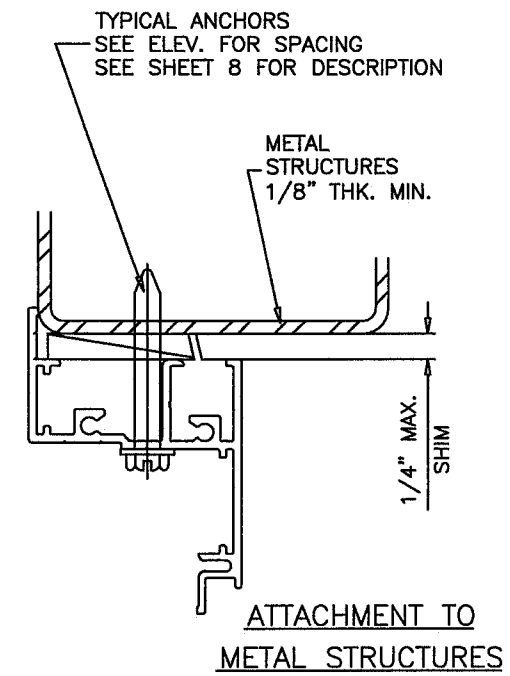
**INSTALLATION TYPE '3'**  
TYPICAL INSTALLATION DETAIL  
ON ALL FOUR SIDES/USING WOOD



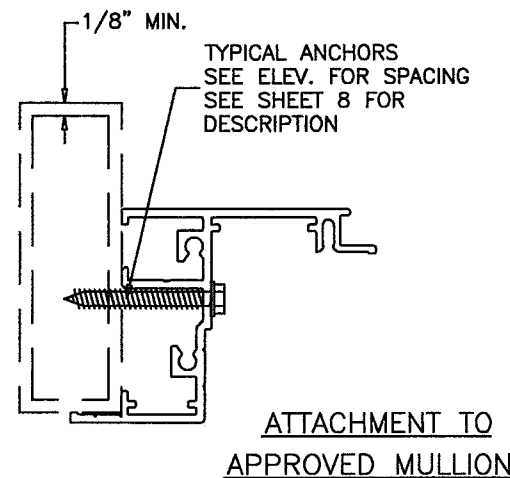
**WOOD BUCK TYPE '4'**

MATERIAL: PRESSURE TREATED  
BUCK INSTALLATION BY OTHERS

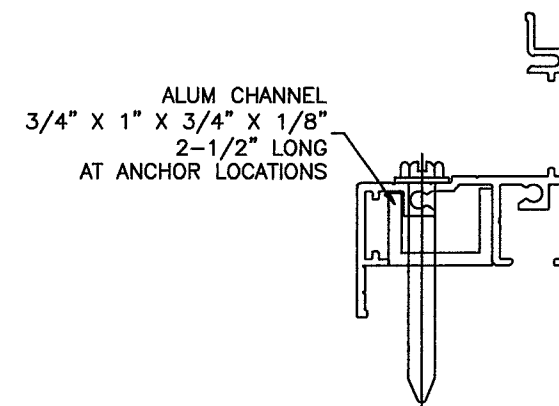
**INSTALLATION TYPE '4'**  
TYPICAL INSTALLATION DETAIL  
ON ALL FOUR SIDES/USING WOOD



**ATTACHMENT TO  
METAL STRUCTURES**



**ATTACHMENT TO  
APPROVED MULLIONS**



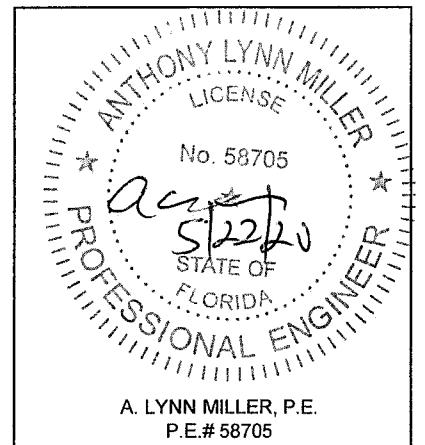
**ALT. ANCHOR LOCATION  
WITH SHEAR CLIP**

WOOD BUCKS NOT BY WINDOOR, MUST SUSTAIN LOADS IMPOSED BY GLAZING SYSTEM AND TRANSFER THEM TO THE BUILDING STRUCTURE.

**PRODUCT REVISED**  
as complying with the Florida  
Building Code  
NOA-No. 20-0528.07  
Expiration Date 10/31/2023  
By *[Signature]*  
Miami-Dade Product Control

Revision:

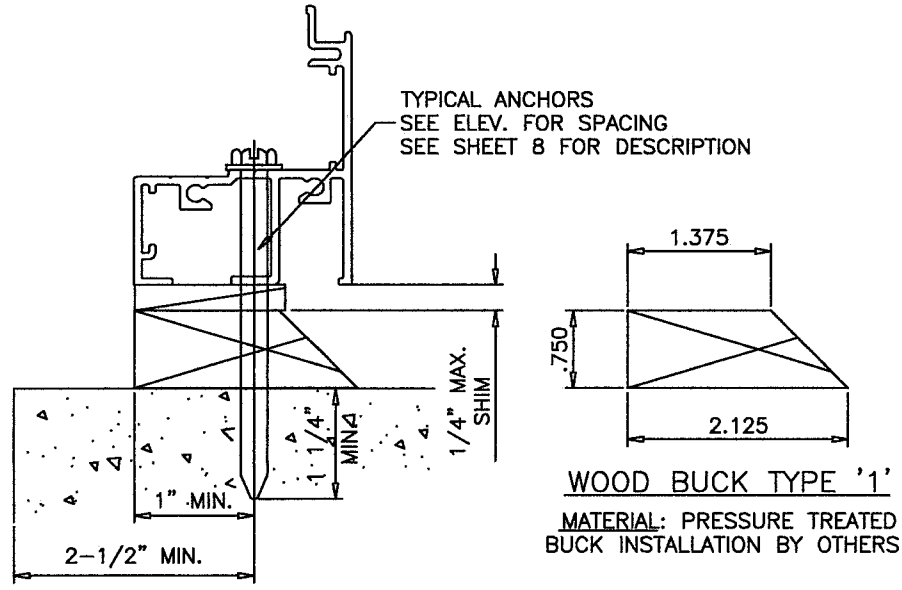
PREPARED BY A. LYNN MILLER 1070 TECHNOLOGY DRIVE N. VENICE, FL 34275 (941) 480-1600	REGISTRATION #29296	DATE 05/15/20	BY J ROSOWSKI	REV. A
	SERIES 238 AWNING WINDOW - LMI			
<b>WINDOOR</b> INCORPORATED 104 TRIPLE DIAMOND BLVD. N. VENICE, FL 34275 (407) 481-8400	INSTALLATION CONDITIONS, FL.			
	AW238	NTS	6 OF 9	AW238NOA-1



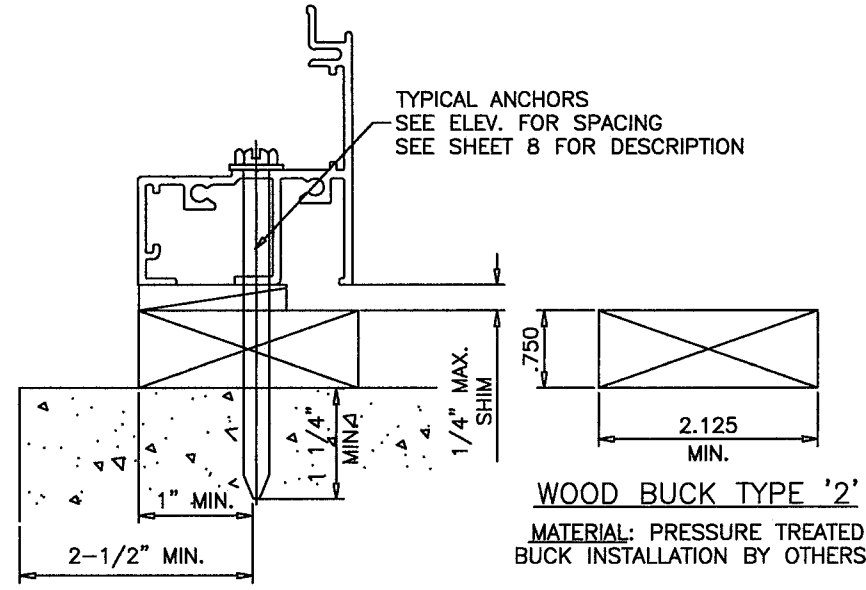
A. LYNN MILLER, P.E.  
P.E.# 58705

**INSTALLATION CONDITIONS EQUAL LEG FRAME (APPLIES TO ALL FOUR SIDES)**

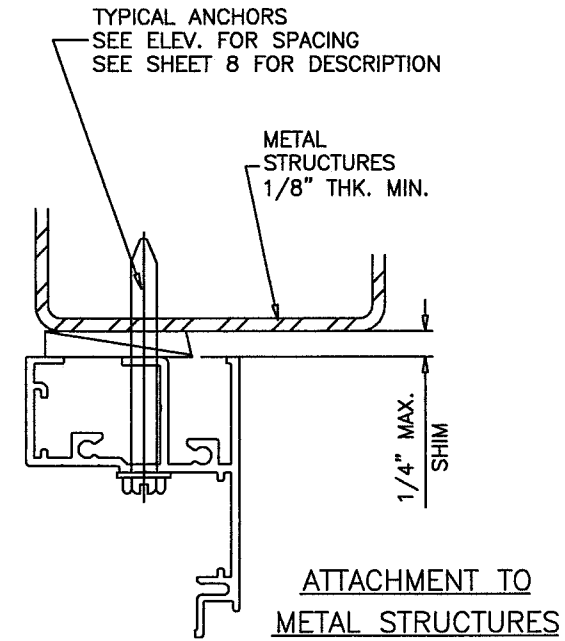
FOR ANCHOR PERFORMANCE VALUES SEE SHEET 8



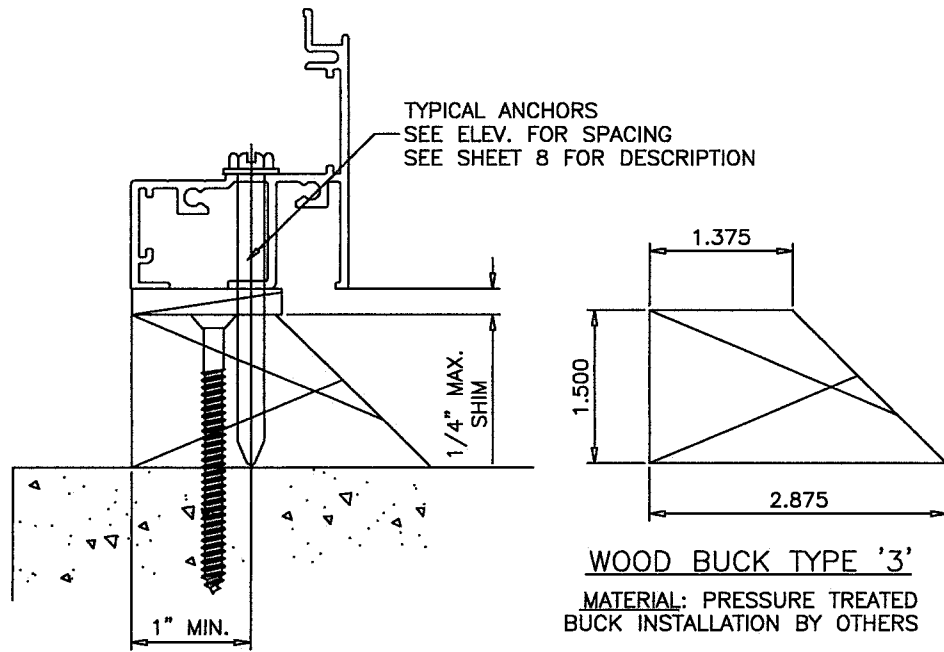
**INSTALLATION TYPE '1'**  
TYPICAL INSTALLATION DETAIL  
ON ALL FOUR SIDES/USING WOOD



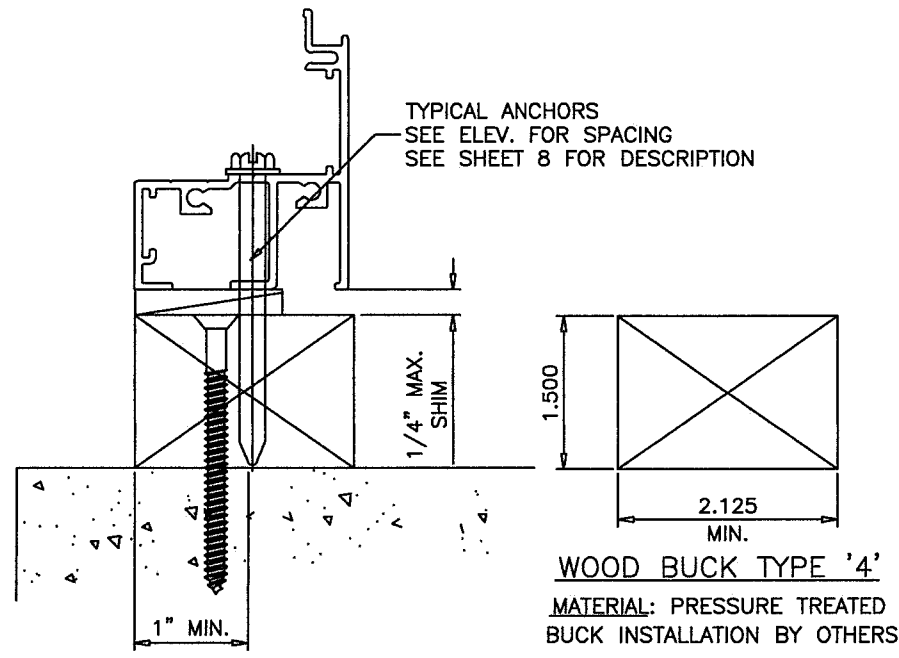
**INSTALLATION TYPE '2'**  
TYPICAL INSTALLATION DETAIL  
ON ALL FOUR SIDES/USING WOOD



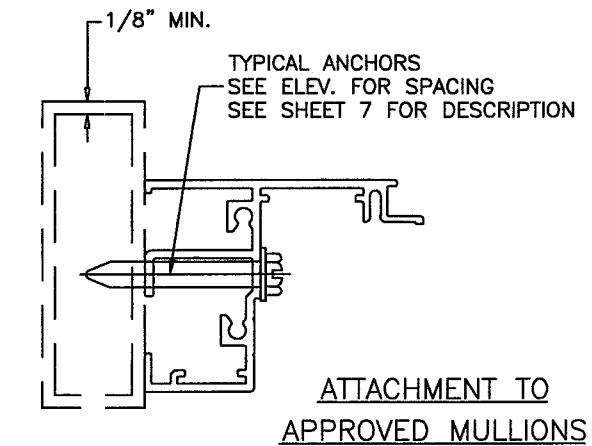
ATTACHMENT TO  
METAL STRUCTURES



**INSTALLATION TYPE '3'**  
TYPICAL INSTALLATION DETAIL  
ON ALL FOUR SIDES/USING WOOD



**INSTALLATION TYPE '4'**  
TYPICAL INSTALLATION DETAIL  
ON ALL FOUR SIDES/USING WOOD



ATTACHMENT TO  
APPROVED MULLIONS

WOOD BUCKS NOT BY WINDOOR, MUST SUSTAIN LOADS IMPOSED BY GLAZING SYSTEM AND TRANSFER THEM TO THE BUILDING STRUCTURE.

**PRODUCT REVISED**  
as complying with the Florida Building Code  
NOA-No. 20-0528.07  
Expiration Date 10/31/2023  
By *[Signature]*  
Miami-Dade Product Control

Revision:

PREPARED BY A. LYNN MILLER 1070 TECHNOLOGY DRIVE N. VENICE, FL 34275 (941) 480-1600	REGISTRATION #29296	DATE 05/15/20	DRW J ROSOWSKI	REV. A
	SERIES 238 AWNING WINDOW - LMI	TITLE INSTALLATION CONDITIONS, EL.	DWG No. AW238NOA-1	7 OF 9
<b>WINDOOR</b> INCORPORATED 104 TRIPLE DIAMOND BLVD. N. VENICE, FL 34275 (407) 481-8400			Scale NTS	Sheet
			AW238	

ANTHONY LYNN MILLER  
LICENSE  
No. 58705  
5/22/20  
STATE OF FLORIDA  
PROFESSIONAL ENGINEER  
A. LYNN MILLER, P.E.  
P.E.# 58705

**PERFORMANCE VALUES OF INSTALLATION ANCHORS**  
REFER TO SHEETS 6 & 7 FOR DETAILS

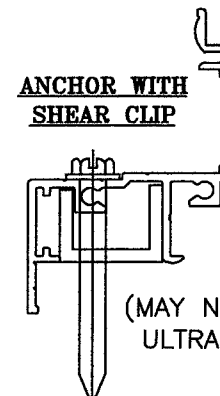
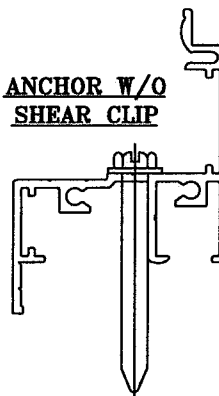
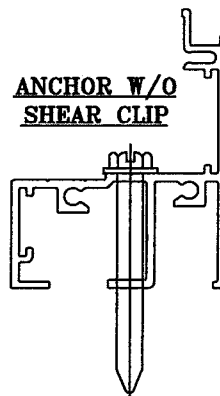
WINDOW DIMS.		ANCHORS TYPE 'A' & 'C'				ANCHORS TYPE 'B'		
		W/O SHEAR CLIP		WITH SHEAR CLIP		WITH OR W/O SHEAR CLIP		
WIDTH	HEIGHT	AT 17" O.C.	AT 10" O.C.	AT 17" O.C.	AT 10" O.C.	AT 17" O.C.	AT 10" O.C.	
24"	24"	195.0	195.0	129.0	193.5	195.0	195.0	
	28"	195.0	195.0	110.6	165.9	195.0	195.0	
	30"	195.0	195.0	154.8	154.8	195.0	195.0	
	36"	195.0	195.0	129.0	172.0	195.0	195.0	
	42"	195.0	195.0	110.6	147.4	195.0	195.0	
	48"	195.0	195.0	129.0	161.3	195.0	195.0	
	54"	195.0	195.0	114.7	172.0	195.0	195.0	
	60"	193.6	195.0	103.2	154.8	195.0	195.0	
	66"	195.0	195.0	117.3	164.2	195.0	195.0	
	72"	195.0	195.0	107.5	150.5	195.0	195.0	
	78"	186.2	195.0	99.2	158.8	195.0	195.0	
	84"	195.0	195.0	110.6	165.9	195.0	195.0	
30"	24"	195.0	195.0	154.8	154.8	195.0	195.0	
	28"	195.0	195.0	132.7	132.7	195.0	195.0	
	30"	195.0	195.0	123.8	123.8	195.0	195.0	
	36"	193.6	195.0	103.2	137.6	195.0	195.0	
	42"	165.9	195.0	88.5	117.9	195.0	195.0	
	48"	193.6	195.0	103.2	129.0	195.0	195.0	
	54"	172.1	195.0	91.7	137.6	195.0	195.0	
	60"	154.9	195.0	82.6	123.8	195.0	195.0	
	66"	176.0	195.0	93.8	131.3	195.0	195.0	
	72"	161.3	195.0	86.0	120.4	195.0	195.0	
	78"	148.9	195.0	79.4	127.0	195.0	195.0	
	36"	24"	195.0	195.0	129.0	172.0	195.0	195.0
28"		195.0	195.0	110.6	147.4	195.0	195.0	
30"		193.6	195.0	103.2	137.6	195.0	195.0	
36"		161.3	195.0	86.0	114.7	195.0	195.0	
42"		138.3	184.4	73.7	98.3	195.0	195.0	
48"		161.3	195.0	86.0	107.5	195.0	195.0	
54"		143.4	195.0	76.4	114.7	195.0	195.0	
60"		129.1	193.6	68.8	103.2	195.0	195.0	
42"		24"	195.0	195.0	110.6	147.4	195.0	195.0
		28"	177.8	195.0	94.8	126.4	195.0	195.0
		30"	165.9	195.0	88.5	117.9	195.0	195.0
		36"	138.3	184.4	73.7	98.3	195.0	195.0
	42"	118.5	158.0	63.2	84.2	179.8	195.0	
	48"	138.3	172.9	73.7	92.1	195.0	195.0	
	54"	122.9	184.4	65.5	98.3	186.4	195.0	
	48"	24"	195.0	195.0	129.0	161.3	195.0	195.0
		28"	195.0	195.0	110.6	138.2	195.0	195.0
		30"	193.6	195.0	103.2	129.0	195.0	195.0
		36"	161.3	195.0	86.0	107.5	195.0	195.0
		42"	138.3	172.9	73.7	92.1	195.0	195.0
48"		121.0	151.3	64.5	80.6	183.5	195.0	
54"		24"	195.0	195.0	114.7	172.0	195.0	195.0
		28"	184.4	195.0	98.3	147.4	195.0	195.0
		30"	172.1	195.0	91.7	137.6	195.0	195.0
		36"	143.4	195.0	76.4	114.7	195.0	195.0
42"		122.9	184.4	65.5	98.3	186.4	195.0	

**PERFORMANCE VALUES OF INSTALLATION ANCHORS**  
REFER TO SHEETS 6 & 7 FOR DETAILS

WINDOW DIMS.		ANCHORS TYPE 'A' & 'C'				ANCHORS TYPE 'B'	
		W/O SHEAR CLIP		WITH SHEAR CLIP		WITH OR W/O SHEAR CLIP	
WIDTH	HEIGHT	AT 17" O.C.	AT 10" O.C.	AT 17" O.C.	AT 10" O.C.	AT 17" O.C.	AT 10" O.C.
60"	24"	193.6	195.0	103.2	154.8	195.0	195.0
	28"	165.9	195.0	88.5	132.7	195.0	195.0
	30"	154.9	195.0	82.6	123.8	195.0	195.0
	36"	129.1	193.6	68.8	103.2	195.0	195.0
66"	24"	195.0	195.0	117.3	164.2	195.0	195.0
	28"	188.6	195.0	100.5	14.7	195.0	195.0
72"	24"	195.0	195.0	107.5	150.5	195.0	195.0
	28"	172.9	195.0	92.1	129.0	195.0	195.0
78"	24"	186.2	195.0	99.2	158.8	195.0	195.0
	28"	159.6	195.0	85.1	136.1	195.0	195.0
84"	24"	195.0	195.0	110.6	165.9	195.0	195.0
	28"	177.8	195.0	94.8	142.2	195.0	195.0

**PERFORMANCE VALUES OF INSTALLATION ANCHORS**  
REFER TO SHEETS 6 & 7 FOR DETAILS

WINDOW DIMS.		ANCHORS TYPE 'A' & 'C'				ANCHORS TYPE 'B'	
		W/O SHEAR CLIP		WITH SHEAR CLIP		WITH OR W/O SHEAR CLIP	
WIDTH	HEIGHT	AT 17" O.C.	AT 10" O.C.	AT 17" O.C.	AT 10" O.C.	AT 17" O.C.	AT 10" O.C.
19-1/8"	26"	195.0	195.0	149.4	195.0	195.0	195.0
	38-3/8"	195.0	195.0	151.9	195.0	195.0	195.0
	50-5/8"	195.0	195.0	153.5	191.9	195.0	195.0
	63"	195.0	195.0	123.3	195.0	195.0	195.0
26-1/2"	74-1/4"	195.0	195.0	130.8	195.0	195.0	195.0
	26"	195.0	195.0	107.8	161.8	195.0	195.0
	38-3/8"	195.0	195.0	109.6	146.1	195.0	195.0
	50-5/8"	195.0	195.0	110.8	138.5	195.0	195.0
37"	63"	167.0	195.0	89.0	155.8	195.0	195.0
	74-1/4"	177.1	195.0	94.4	151.1	195.0	195.0
	26"	195.0	195.0	115.9	154.5	195.0	195.0
	38-3/8"	147.3	195.0	78.5	104.7	195.0	195.0
42"	50-5/8"	148.8	186.0	79.3	99.2	195.0	195.0
	63"	119.6	195.0	63.8	111.6	181.4	195.0
	26"	191.5	195.0	102.1	136.1	195.0	195.0
53-1/8"	38-3/8"	129.7	173.0	69.2	92.2	195.0	195.0
	50-5/8"	131.1	163.9	69.9	87.4	195.0	195.0
53-1/8"	26"	195.0	195.0	107.6	161.4	195.0	195.0
	38-3/8"	136.7	195.0	72.9	109.3	195.0	195.0



(MAY NOT BE USED WITH ULTRACON+ ANCHORS)

**TYPICAL ANCHORS:** SEE ELEV. FOR SPACING

TYPE 'A'—

1/4" DIA. KWIK-CON II BY 'HILTI'  
(Fu=163 KSI, Fy=157 KSI)

1/4" DIA. ULTRACON BY 'ELCO'  
(Fu=177 KSI, Fy=155 KSI)

1/4" DIA. ULTRACON+ BY 'DEWALT'  
(Fu=164 KSI, Fy=148 KSI)

INTO 2BY WOOD BUCKS OR WOOD STRUCTURES  
1-1/2" MIN. PENETRATION INTO WOOD

THRU 1BY BUCKS INTO CONC. OR MASONRY  
1-1/4" MIN. EMBED INTO CONC. OR MASONRY

(ULTRACON+ ANCHORS MAY NOT BE USED WITH THE SHEAR CLIP)

TYPE 'B'—

1/4" DIA. KWIK-CON II BY 'HILTI'  
(Fu=163 KSI, Fy=157 KSI)

1/4" DIA. ULTRACON BY 'ELCO'  
(Fu=177 KSI, Fy=155 KSI)

1/4" DIA. ULTRACON+ BY 'DEWALT'  
(Fu=164 KSI, Fy=148 KSI)

DIRECTLY INTO CONCRETE  
1-3/4" MIN. EMBED INTO CONCRETE

(ULTRACON+ ANCHORS MAY NOT BE USED WITH THE SHEAR CLIP)

TYPE 'C'—

#14 SMS OR SELF DRILLING SCREWS (GRADE 2 CRS)

INTO MIAMI-DADE COUNTY APPROVED MULLIONS OR

INTO METAL STRUCTURES (HEAD/SILL/JAMBS)

(3) THREADS MIN. BEYOND METAL THICKNESS

ALUMINUM: 1/8" THK. MIN. (6063-T5 MIN.)

STEEL: 1/8" THK. MIN. (Fy = 36 KSI MIN.)

(STEEL IN CONTACT WITH ALUMINUM TO BE PLATED OR PAINTED)

**TYPICAL EDGE DISTANCE**

INTO CONCRETE AND MASONRY = 2-1/2" MIN.

INTO WOOD STRUCTURE = 1" MIN.

INTO METAL STRUCTURE = 3/4" MIN.

WOOD AT HEAD, SILL OR JAMBS SG = 0.55 MIN.

CONCRETE AT HEAD, SILL OR JAMBS f'c = 3000 PSI MIN.

C-90 HOLLOW/FILLED NORMAL WEIGHT

BLOCK AT JAMBS f'm = 2000 PSI MIN.

**PRODUCT REVISED**  
as complying with the Florida Building Code

NOA-No. 20-0528.07

Expiration Date 10/31/2023

By Miami-Dade Product Control

REFORMATED & ADDED ANCHOR TYPE - JR - 5/15/20

PREPARED BY A. LYNN MILLER 1070 TECHNOLOGY DRIVE N. VENICE, FL 34275 (941) 480-1600	REGISTRATION #29296	Date	05/15/20	J ROSOWSKI	Rev.	A
		By			Drawn	AW238NOA-1
WINDOOR® INCORPORATED 104 TRIPLE DIAMOND BLVD. N. VENICE, FL 34275 (407) 481-8400	SERIES 238 AWNING WINDOW - LMI	ANCHORS & DP	AW238	NTS	Sheet	8 OF 9
					Scale	
Series Desc.		Title				

ANTHONY LYNN MILLER  
LICENSE  
No. 58705  
STATE OF FLORIDA  
PROFESSIONAL ENGINEER  
A. LYNN MILLER, P.E.  
P.E.# 58705

**PERFORMANCE VALUES OF ALUMINUM BUCK INSTALLATION ANCHORS**

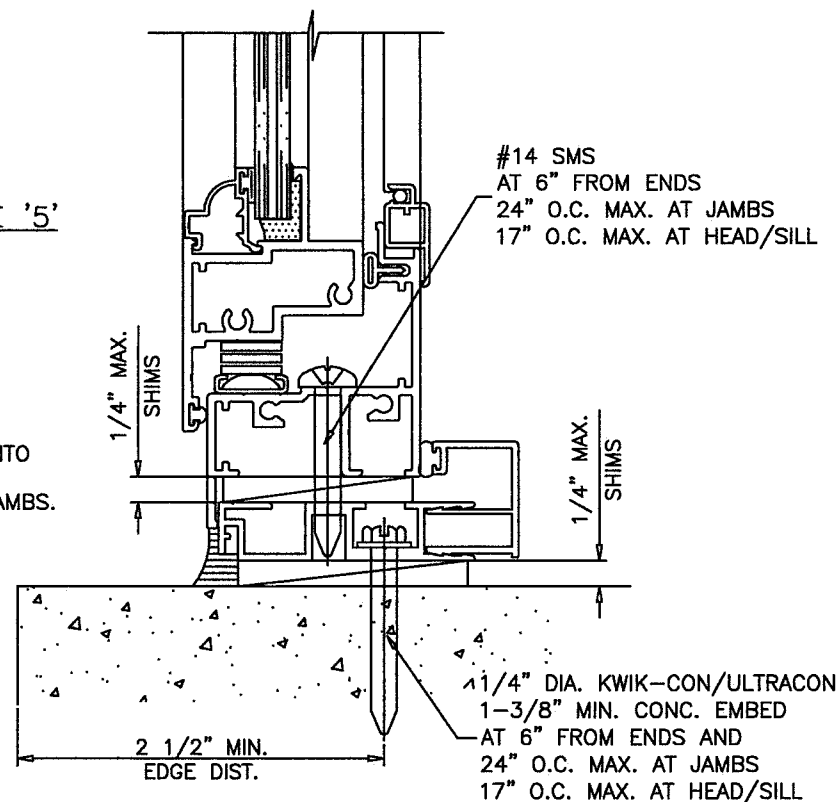
WINDOW DIMS.		1/4" ANCHORS INTO MASONRY	#14 ANCHORS INTO WOOD
WIDTH	HEIGHT	EXT.(+)/INT.(-)	EXT.(+)/INT.(-)
24"	24"	195.0	195.0
	28"	195.0	195.0
	30"	195.0	195.0
	36"	195.0	195.0
	42"	195.0	169.1
	48"	195.0	148.0
	54"	195.0	131.6
	60"	177.6	118.4
	66"	161.5	107.6
	72"	148.0	98.7
28"	24"	195.0	195.0
	28"	195.0	195.0
	30"	195.0	195.0
	36"	195.0	169.1
	42"	195.0	145.0
	48"	190.3	126.9
	54"	169.1	112.8
	60"	152.2	101.5
	66"	138.4	92.3
	72"	126.9	84.6
30"	24"	195.0	195.0
	28"	195.0	195.0
	30"	195.0	189.4
	36"	195.0	157.9
	42"	195.0	135.3
	48"	195.0	118.4
	54"	195.0	105.2
	60"	177.6	94.7
	66"	161.5	86.1
	72"	148.0	78.9
36"	24"	195.0	195.0
	28"	195.0	169.1
	30"	195.0	157.9
	36"	195.0	131.6
	42"	195.0	112.8
	48"	185.0	98.7

**PERFORMANCE VALUES OF ALUMINUM BUCK INSTALLATION ANCHORS**

WINDOW DIMS.		1/4" ANCHORS INTO MASONRY	#14 ANCHORS INTO WOOD			
WIDTH	HEIGHT	EXT.(+)/INT.(-)	EXT.(+)/INT.(-)			
42"	24"	190.3	169.1			
	28"	163.1	145.0			
	30"	152.2	135.3			
	36"	126.9	112.8			
	42"	108.7	96.7			
	48"	95.1	84.6			
	54"	84.6	75.2			
	48"	24"	195.0	148.0		
		28"	190.3	126.9		
		30"	177.6	118.4		
36"		148.0	98.7			
42"		126.9	84.6			
48"		111.0	74.0			
54"		24"	195.0	131.6		
		28"	169.1	112.8		
		30"	157.9	105.2		
		36"	131.6	87.7		
	42"	112.8	75.2			
	60"	24"	177.6	118.4		
		28"	152.2	101.5		
		30"	142.1	94.7		
		36"	118.4	78.9		
		66"	24"	195.0	134.5	
28"			173.0	115.3		
30"			161.5	107.6		
72"			24"	185.0	123.3	
			28"	158.6	105.7	
			30"	148.0	98.7	
	78"		24"	170.8	113.8	
			28"	146.4	97.6	
			30"	136.6	91.1	
			84"	24"	190.3	126.9
		28"		163.1	108.7	
		19-1/8"		26"	195.0	195.0
				38-3/8"	195.0	195.0
50-5/8"				195.0	176.1	
26-1/2"		63"		195.0	141.5	
		74-1/4"		180.1	120.1	
	37"	26"		195.0	195.0	
38-3/8"		195.0		167.7		
50-5/8"		190.6		127.1		
53-1/8"	63"	153.2	102.1			
	74-1/4"	130.0	86.7			
	37"	26"	195.0	177.2		
37"	38-3/8"	135.1	120.1			
	50-5/8"	102.4	91.0			
	63"	82.3	73.1			
53-1/8"	26"	185.2	123.4			
	38-3/8"	125.4	83.6			

**ALUMINUM BUCK FRAMING DETAILS**  
REFER TO SHEETS 4 THRU 8 FOR WINDOW CAPACITIES. USE LOWER APPLICABLE VALUES.

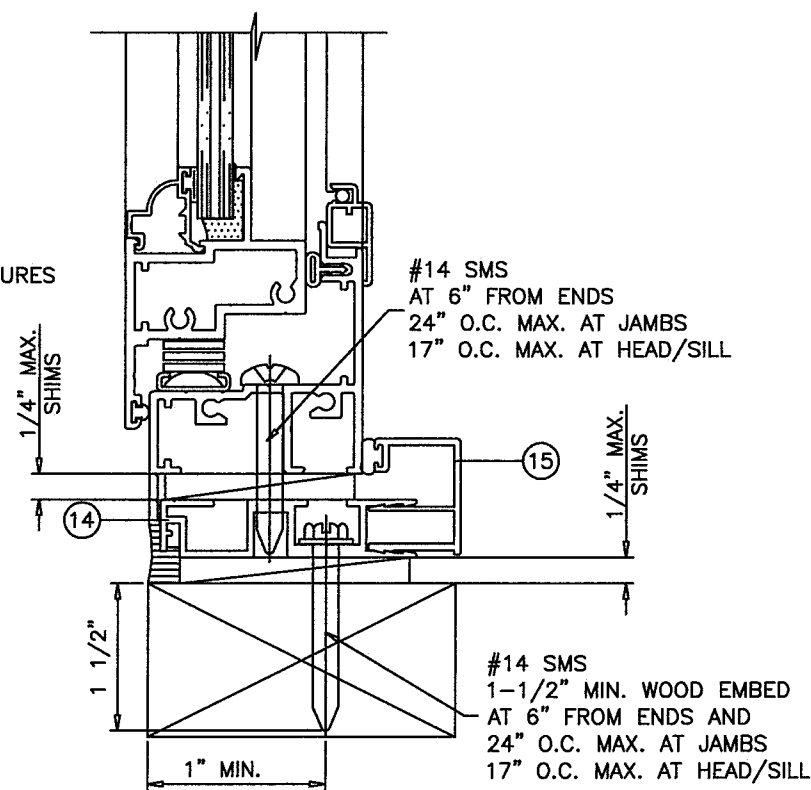
**INSTALLATION TYPE '5'**  
INTO MASONRY



NOTE:  
ALUM BUCK ANCHORS TO BE INTO CONCRETE AT HEAD & SILL.  
MAY BE INTO FILLED CMU AT JAMBS.

TYPICAL INSTALLATION  
DETAIL ON ALL FOUR  
SIDES USING  
ALUMINUM BUCK  
SYSTEM

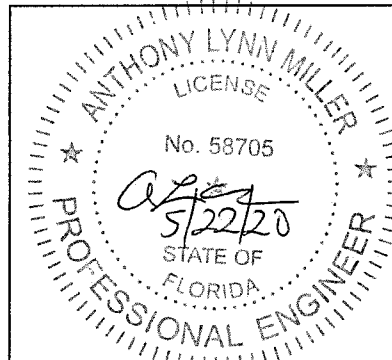
**INSTALLATION TYPE '6'**  
2BY WOOD BUCK OR WOOD STRUCTURES



**PRODUCT REVISED**  
as complying with the Florida  
Building Code  
NOA-No. 20-0528.07  
Expiration Date 10/31/2023  
By *[Signature]*  
Miami-Dade Product Control

Revision: REFORMATED & ADDED  
ANCHOR TYPE - JR -  
5/15/20

PREPARED BY A. LYNN MILLER 1070 TECHNOLOGY DRIVE N. VENICE, FL 34275 (941) 480-1600	REGISTRATION #29296	Date	05/15/20
	SERIES 238 AWNING WINDOW - LMI	Drawn By	J ROSOWSKI
<b>WINDOOR</b> INCORPORATED 104 TRIPLE DIAMOND BLVD. N. VENICE, FL 34275 (407) 481-8400	ANCHORS & DP, ALUM. BUCK INSTALL.	No.	AW238NOA-1
		Sheet	9 OF 9
		Scale	NTS
		Series	AW238



A. LYNN MILLER, P.E.  
P.E.# 58705