



DEPARTMENT OF REGULATORY AND ECONOMIC RESOURCES (RER)
BOARD AND CODE ADMINISTRATION DIVISION

NOTICE OF ACCEPTANCE (NOA)

MIAMI-DADE COUNTY
PRODUCT CONTROL SECTION

11805 SW 26 Street, Room 208
T (786) 315-2590 F (786) 315-2599

www.miamidade.gov/economy

CGI Windows and Doors, Inc.

**3780 W 104th Street,
Hialeah FL 33018**

SCOPE:

This NOA is being issued under the applicable rules and regulations governing the use of construction materials. The documentation submitted has been reviewed and accepted by Miami-Dade County RER - Product Control Section to be used in Miami Dade County and other areas where allowed by the Authority Having Jurisdiction (AHJ).

This NOA shall not be valid after the expiration date stated below. The Miami-Dade County Product Control Section (In Miami Dade County) and/or the AHJ (in areas other than Miami Dade County) reserve the right to have this product or material tested for quality assurance purposes. If this product or material fails to perform in the accepted manner, the manufacturer will incur the expense of such testing and the AHJ may immediately revoke, modify, or suspend the use of such product or material within their jurisdiction. RER reserves the right to revoke this acceptance, if it is determined by Miami-Dade County Product Control Section that this product or material fails to meet the requirements of the applicable building code.

This product is approved as described herein and has been designed to comply with the Florida Building Code, including the High Velocity Hurricane Zone.

DESCRIPTION: Series "HR375-ESTATE" Aluminum Horizontal Rolling Window – S.M.I.

APPROVAL DOCUMENT: Drawing No. 375SMNOA-1 Rev A (former W09-13 Rev F), titled "Series-HR-375 Alum. Horizontal Rolling Wdw", sheets 1 through 15 of 15, dated 06/03/20, , prepared by manufacturer, signed and sealed by Lynn Miller, P.E., bearing the Miami-Dade County Product Control Revision stamp with the Notice of Acceptance number and expiration date by the Miami-Dade County Product Control Section.

MISSILE IMPACT RATING: Small Missile Impact Resistant.

LABELING: Each unit shall bear a permanent label with the manufacturer's name or logo, city, state, model/series, and following statement: "Miami-Dade County Product Control Approved", unless otherwise noted herein.

RENEWAL of this NOA shall be considered after a renewal application has been filed and there has been no change in the applicable building code negatively affecting the performance of this product.

TERMINATION of this NOA will occur after the expiration date or if there has been a revision or change in the materials, use, and/or manufacture of the product or process. Misuse of this NOA as an endorsement of any product, for sales, advertising or any other purposes shall automatically terminate this NOA. Failure to comply with any section of this NOA shall be cause for termination and removal of NOA.

ADVERTISEMENT: The NOA number preceded by the words Miami-Dade County, Florida, and followed by the expiration date may be displayed in advertising literature. If any portion of the NOA is displayed, then it shall be done in its entirety.

INSPECTION: A copy of this entire NOA shall be provided to the user by the manufacturer or its distributors and shall be available for inspection at the job site at the request of the Building Official.

This NOA **revises NOA# 18-1001.06** and consists of this page 1 and evidence pages E-1, E-2, E-3 and E-4, as well as approval document mentioned above.

The submitted documentation was reviewed by **Ishaq I. Chanda, P.E.**



Ishaq I. Chanda

NOA No. 20-0610.06
Expiration Date: June 10, 2024
Approval Date: Oct 22, 2020
Page 1

NOTICE OF ACCEPTANCE: EVIDENCE SUBMITTED

1. EVIDENCE SUBMITTED UNDER PREVIOUS NOA's

A. DRAWINGS

1. Manufacturer's die drawings and sections. *(Submitted under NOA No. 09-0505.03)*
2. Drawing No. **W09-13**, titled "Series-375 Alum. Horiz. Rolling Wdw. (S.M.I.)", sheets 1 through 15 of 15, dated 04/10/09, with revision **F** dated 12/19/17, prepared by Al-Farooq Corporation, signed and sealed by Javad Ahmad, P.E.

B. TESTS

1. Test reports on: 1) Uniform Static Air Pressure Test, Loading per FBC TAS 202-94
2) Large Missile Impact Test per FBC, TAS 201-94
3) Cyclic Wind Pressure Loading per FBC, TAS 203-94
along with marked-up drawings and installation diagram of a series 7500 PVC fixed window, to qualify DuPont "Butacite" PVB interlayer, Duraseal® and Super Spacer® insulating glass spacer, prepared by Certified Test Laboratories, Test Report No. **CTLA-3056 WA**, dated 03/03/15, signed and sealed by Ramesh C. Patel, P.E.
(Submitted under NOA No.15-0512.02)
2. Test reports on: 1) Uniform **15-0512.02** Air Pressure Test, Loading per FBC TAS 202-94
2) Large Missile Impact Test per FBC, TAS 201-94
3) Cyclic Wind Pressure Loading per FBC, TAS 203-94
along with marked-up drawings and installation diagram of a series 7400 PVC project out window, to qualify DuPont "Butacite" PVB interlayer, Duraseal® and Super Spacer® insulating glass spacer, prepared by Certified Test Laboratories, Test Report No. **CTLA-3056 WB**, dated 03/03/15, signed and sealed by Ramesh C. Patel, P.E.
(Submitted under NOA No. 15-0512.02)
3. Test reports on: 1) Uniform Static Air Pressure Test, Loading per FBC TAS 202-94
2) Large Missile Impact Test per FBC, TAS 201-94
3) Cyclic Wind Pressure Loading per FBC, TAS 203-94
along with marked-up drawings and installation diagram of a series 238 aluminum fixed window, to qualify DuPont "Butacite" PVB interlayer, Duraseal® and Super Spacer® insulating glass spacer, prepared by Certified Test Laboratories, Test Report No. **CTLA-3056 WC**, dated 04/16/15, signed and sealed by Ramesh C. Patel, P.E.
(Submitted under NOA No. 15-0512.02)
4. Test reports on: 1) Air Infiltration Test, per FBC, TAS 202-94
2) Uniform Static Air Pressure Test, Loading per FBC TAS 202-94
3) Water Resistance Test, per FBC, TAS 202-94
4) Large Missile Impact Test per FBC, TAS 201-94
5) Small Missile Impact Test per FBC, TAS 201-94
6) Cyclic Wind Pressure Loading per FBC, TAS 203-94
7) Forced Entry Test, per FBC 2411.3.2.1, TAS

Ishaq I. Chanda

Ishaq I. Chanda, P.E.
Product Control Unit Supervisor
NOA No. 20-0610.06
Expiration Date: June 10, 2024
Approval Date: October 22, 2020

NOTICE OF ACCEPTANCE: EVIDENCE SUBMITTED

B. TESTS (CONTINUED)

4. Test reports (CONTINUED)
along with marked-up drawings and installation diagram of an aluminum horizontal sliding window, prepared by Hurricane Test Laboratory, LLC, Test Report No. **HTL-0080-0907-08**, dated 12/18/08, signed and sealed by Vinu J. Abraham, P.E. *(Submitted under NOA No. 09-0505.03)*

C. CALCULATIONS

1. Anchor verification calculations and structural analysis, complying with **FBC 6th Edition (2017)**, dated 08/31/17, prepared by Al-Farooq Corporation, signed and sealed by Javad Ahmad, P.E. *(Submitted under NOA No.17-1018.03)*
2. Glazing complies with **ASTM E1300-09**

D. QUALITY ASSURANCE

1. Miami-Dade Department of Regulatory and Economic Resources (RER).

E. MATERIAL CERTIFICATIONS

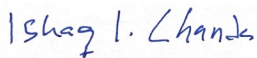
1. Notice of Acceptance No. **16-1117.01** issued to **Kuraray America, Inc.** for their “**Trosifol® Ultraclear, Clear and Color PVB Glass Interlayers**” dated 01/19/17, expiring on 07/08/19.
2. Notice of Acceptance No. **17-0712.05** issued to **Eastman Chemical Company (MA)** for their “**Saflex Clear and Color Glass Interlayers**” dated 09/07/17, expiring on 05/21/21.

F. STATEMENTS

1. Statement letter of conformance, complying with **FBC 5th Edition (2014)**, with **FBC 6th Edition (2017)**, and of no financial interest, dated August 31, 2017, issued by Al-Farooq Corporation, signed and sealed by Javad Ahmad, P.E. *(Submitted under NOA No. 17-1018.03)*
2. Laboratory compliance letters for Test Reports No. **CTLA-3056 WA**, dated 03/03/15, **CTLA-3056 WB**, dated 03/03/15 and **CTLA-3056 WC**, dated 04/16/15, all issued by Certified Test Laboratories, all signed and sealed by Ramesh C. Patel, P.E. *(Submitted under NOA No. 15-0512.02)*
3. Testing Proposal issued by the Product Control Section, dated 12/16/14, signed by Jaime Gascon, P.E., Section Supervisor. *(Submitted under NOA No. 15-0512.02)*
4. Laboratory compliance letters for Test Report No. **HTL-0080-0907-08**, issued by Hurricane Test Laboratory, LLC, dated 12/18/08, signed and sealed by Vinu J. Abraham, P.E. *(Submitted under NOA No. 09-0505.03)*

G. OTHERS

1. Notice of Acceptance No. **15-0512.02**, issued to CGI Windows & Doors for their Series “375” Aluminum Horizontal Rolling Window – L.M.I.. expiring on 07/01/19.



Ishaq I. Chanda, P.E.
Product Control Unit Supervisor
NOA No. 20-0610.06
Expiration Date: June 10, 2024
Approval Date: October 22, 2020

CGI Windows and Doors, Inc.

NOTICE OF ACCEPTANCE: EVIDENCE SUBMITTED

2. EVIDENCE SUBMITTED UNDER PREVIOUS NOA(s)

A. DRAWINGS

1. None

B. TESTS

1. None

C. CALCULATIONS

1. None

D. QUALITY ASSURANCE

1. Miami-Dade Department of Regulatory and Economic Resources (RER)

E. MATERIAL CERTIFICATIONS

1. Notice of Acceptance No. **17-1114.14** issued to **Kuraray America, Inc.** for their “**Trosifol® Ultraclear, Clear and Color PVB Glass Interlayers**” dated 01/18/18, expiring on 07/08/19.
2. Notice of Acceptance No. **17-0712.05** issued to **Eastman Chemical Company (MA)** for their “**Saflex Clear and Color Glass Interlayers**” dated 09/07/17, expiring on 05/21/21.

F. STATEMENTS

1. None

G. OTHERS

1. Notice of Acceptance No. **15-0512.02**, issued to CGI Windows and Doors, Inc. for their Series “375” Aluminum Horizontal Rolling Window - S.M.I., approved on expiring on 06/10/19.

3. NEW EVIDENCE SUBMITTED

A. DRAWINGS

1. Drawing No. **375SMNOA-1 Rev A** (former **W09-13 Rev F**), titled “Series-HR-375 Alum. Horizontal Rolling Window”, sheets 1 through 15 of 15, dated 06/03/20, prepared by manufacturer, signed and sealed by Lynn Miller, P.E.

B. TESTS

1. Test reports on: 1) Air Infiltration Test, per FBC, TAS 202-94
2) Uniform Static Air Pressure Test, Loading per FBC, TAS 202-94
3) Water Resistance Test, per FBC, TAS 202-94
4) Large Missile Impact Test per FBC, TAS 201-94
5) Cyclic Wind Pressure Loading per FBC, TAS 203-94

along with marked-up drawings and installation diagram of all PGT Industries, Inc. CGI Windows and Doors, Inc., representative units listed below and tested to qualify **Dowsil 791** and **Dowsil 983** silicones, per Proposal **#19-1155TP**, prepared by Fenestration Testing Laboratory, Inc., Test Reports No.

Ishaq I. Chanda, P.E.
Product Control Unit Supervisor
NOA No. 20-0610.06
Expiration Date: June 10, 2024
Approval Date: October 22, 2020

NOTICE OF ACCEPTANCE: EVIDENCE SUBMITTED

B. TESTS (CONTINUED)

PGT Industries, Inc. test specimens:

FTL-7897, PGT PW5520 PVC Fixed Window (unit 6 in proposal), dated 09/03/14

FTL-20-2107.1, PGT SGD780 Aluminum Sliding Glass Door (unit 7 in proposal) **FTL-20-**

2107.2, PGT CA740 Alum. Outswing Casement Window (unit 8 in proposal) **FTL-20-**

2107.3, PGT PW7620A Aluminum Fixed Window (unit 9 in proposal) and **FTL-20-2107.4**,

PGT PW7620A Aluminum Fixed Window (unit 10 in proposal)

all dated 07/13/20 and signed and sealed by Idalmis Ortega, P.E.

CGI Windows and Doors Inc. test specimens:

FTL-20-2108.1, CGI SH360 Aluminum Single Hung Window (unit 1 in proposal) **FTL-20-**

2108.2, CGI CA238 Alum. Outswing Casement Window (unit 2 in proposal) **FTL-20-2108.3**,

CGI SGD560 Aluminum Sliding Glass Door (unit 3 in proposal) **FTL-20-2108.4**, CGI

PW410 Aluminum Fixed Window (unit 4 in proposal) and **FTL-20-2108.5**, CGI SH360

Aluminum Single Hung Window (unit 5 in proposal)

all dated 08/24/20 and signed and sealed by Idalmis Ortega, P.E.

C. CALCULATIONS

1. Anchor verification calculations and structural analysis, complying with **FBC 7th Edition (2020)**, dated 03/26/20, prepared by manufacturer, signed and sealed by Anthony Lynn Miller, P.E.

2. Glazing complies with **ASTM E1300-04, -09, -12 and -16**.

D. QUALITY ASSURANCE

1. Miami Dade Department of Regulatory and Economic Resources (RER).

E. MATERIAL CERTIFICATIONS

1. Notice of Acceptance No. **19-0305.02** issued to **Kuraray America, Inc.** for their

“**Trosifol® Ultraclear, Clear and Color PVB Glass Interlayers**”, expiring on 07/08/24.

2. Notice of Acceptance No. **17-0712.05** issued to **Eastman Chemical Company (MA)** for their “**Saflex Clear and Color Glass Interlayers**”, expiring on 05/21/21.

F. STATEMENTS

1. Statement letters of conformance to FBC 2020(7th Edition), dated 03/26/20, prepared, signed & sealed by Lynn Miller, P. E.

2. Notification of Successor Engineer per the Florida Administrative Code Section 61G15-27.001, notifying original engineer that the successor engineer is assuming full professional and legal responsibility for all engineering documents pertaining to this NOA, dated 03/26/20, signed and sealed by A. Lynn Miller, P.E

G. OTHER

1. This NOA revises **NOA No. # 18-1001.07**, updates to FBC 2020, expiring 06/10/24.

2. RER Test proposals **#19-1155** dated 01/10/20 approved by Ishaq I. Chanda, P.E.

Ishaq I. Chanda

Ishaq I. Chanda, P.E.

Product Control Unit Supervisor

NOA No. 20-0610.06

Expiration Date: June 10, 2024

Approval Date: October 22, 2020

SERIES 375 'ESTATE' ALUMINUM HORIZONTAL ROLLER WINDOW
SMALL MISSILE

NOTES:

THIS PRODUCT HAS BEEN DESIGNED AND TESTED TO COMPLY WITH THE REQUIREMENTS OF THE 2017 (6TH EDITION)/2020 (7TH EDITION) FLORIDA BUILDING CODE INCLUDING HIGH VELOCITY HURRICANE ZONE (HVHZ).
1BY OR 2BY WOOD BUCKS & BUCK FASTENERS BY OTHERS, MUST BE DESIGNED AND INSTALLED ADEQUATELY TO TRANSFER APPLIED PRODUCT LOADS TO THE BUILDING STRUCTURE.

ANCHORS SHALL BE CORROSION RESISTANT, SPACED AS SHOWN ON DETAILS AND INSTALLED PER MANUF'S INSTRUCTIONS. SPECIFIED EMBEDMENT TO BASE MATERIAL SHALL BE BEYOND WALL DRESSING OR STUCCO.

A LOAD DURATION INCREASE IS USED IN DESIGN OF ANCHORS INTO WOOD ONLY.

ALL SHIMS TO BE HIGH IMPACT, NON-METALLIC AND NON-COMPRESSIBLE.

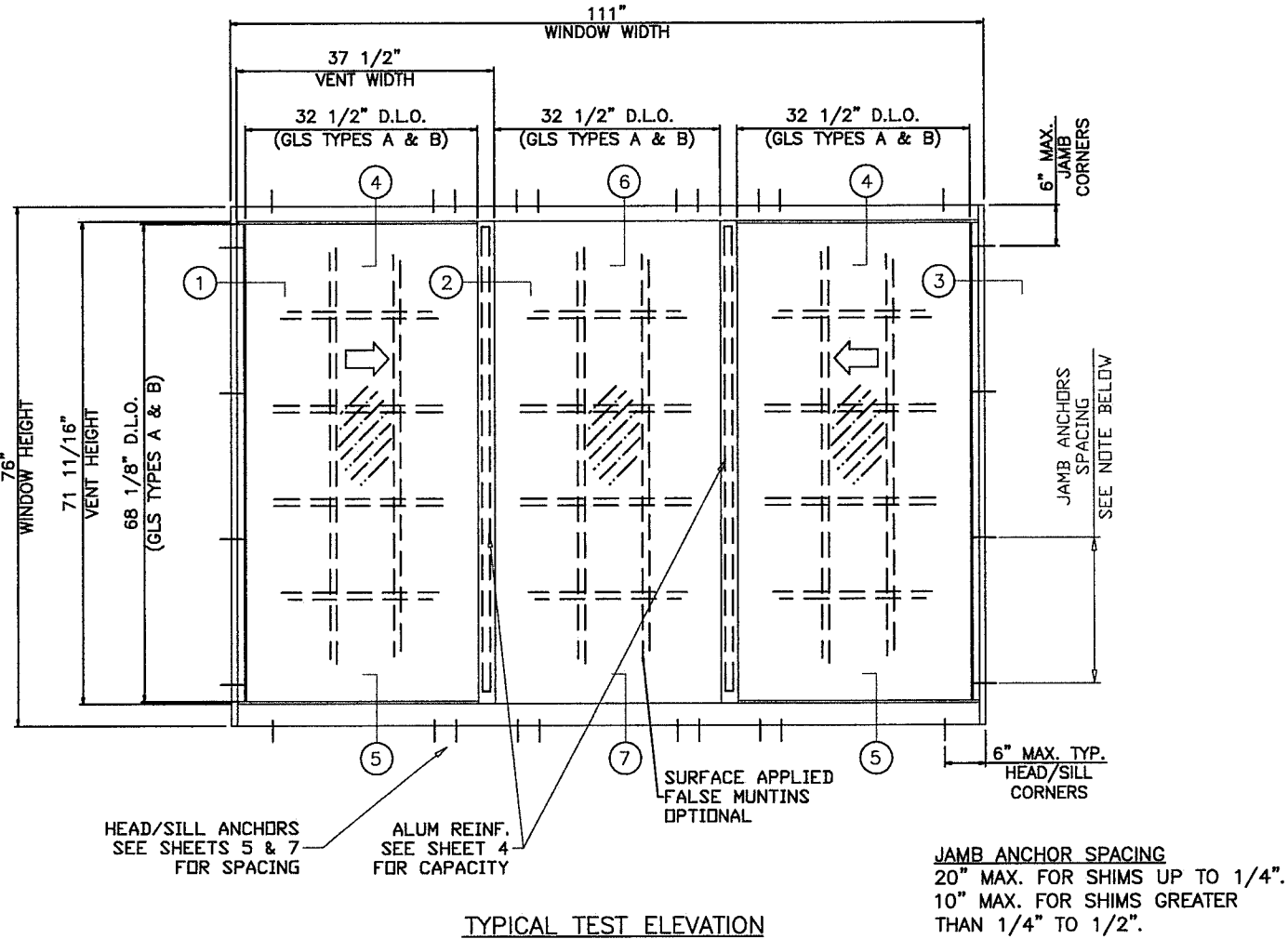
MATERIALS INCLUDING BUT NOT LIMITED TO STEEL/METAL SCREWS, THAT COME INTO CONTACT WITH OTHER DISSIMILAR MATERIALS SHALL MEET THE REQUIREMENTS OF THE 2017/2020 FLORIDA BUILDING CODE & ADOPTED STANDARDS.

THIS PRODUCT APPROVAL IS GENERIC AND DOES NOT PROVIDE INFORMATION FOR A SITE SPECIFIC PROJECT, i.e. LIFE SAFETY OF THIS PRODUCT, ADEQUACY OF STRUCTURE RECEIVING THIS PRODUCT AND SEALING AROUND OPENING FOR WATER INFILTRATION RESISTANCE ETC. CONDITIONS NOT SHOWN IN THIS DRAWING ARE TO BE ANALYZED SEPARATELY, AND TO BE REVIEWED BY BUILDING OFFICIAL.

INSTRUCTIONS FOR USING CAPACITY CHARTS:

- STEP 1** DETERMINE THE REQUIRED DESIGN PRESSURES FOR A GIVEN WINDOW OPENING.
- STEP 2** DETERMINE THE CAPACITY OF THE WINDOW SIZE/CONFIGURATION/GLASS TYPE FROM CHARTS ON SHEETS 4 AND 6.
FOR INSTALLATION ANCHOR SPACING AND CAPACITY AT HEAD/SILL AND JAMBS SEE SHEETS 5 & 7.
- STEP 3** IF ALUMINUM BUCKS ARE USED, VERIFY THE BUCK INSTALLATION CAPACITY FROM SHEETS 13 & 14.
- STEP 4** FOR UNCLIPPED MULLED WINDOWS DETERMINE MULLION CAPACITY FOR 1X4 TUBE FROM CHARTS ON SHEET 11.
- STEP 5** FOR MULLION ANCHOR CAPACITY SEE CHART ON SHEET 12.
- THE LOWEST SELECTED VALUE APPLY TO THE INSTALLATION AND MUST EQUAL OR EXCEED THE REQUIRED DESIGN PRESSURES OBTAINED FROM STEP 1.

THESE WINDOWS ARE RATED FOR SMALL MISSILE IMPACT.
MIAMI-DADE COUNTY APPROVED IMPACT RESISTANT SHUTTERS REQUIRED FOR INSTALLATIONS UP TO 30 FT. OF GRADE.
SHUTTERS NOT REQD. FOR INSTALLATIONS ABOVE 30 FT. OF GRADE.



PRODUCT REVISED
as complying with the Florida
Building Code
NOA-No. 20-0610.06
Expiration Date: 06/10/2024
By: 1. Chandra
Miami-Dade Product Control

REVISION:
REVISED FOR 2020 FBC,
ADDED ANCHOR & BACK-
BEDDING TYPE & REFOR-
MATTED - JR - 5/29/20

PREPARED BY A. LYNN MILLER
1070 TECHNOLOGY DRIVE
N. VENICE, FL 34275
(941) 480-1600

REGISTRATION #29296

Impact Resistant
Windows & Doors
WERE STRONGER™
CGI WINDOWS AND DOORS, INC.
3780 W 104TH STREET
HIALEAH, FL 33018
(305) 593-6590

Date 05/29/20

Drawn By J ROSOWSKI

Rev. 375SMNOA-1

No. 1 OF 15

Sheet NTS

Scale

Series Desc

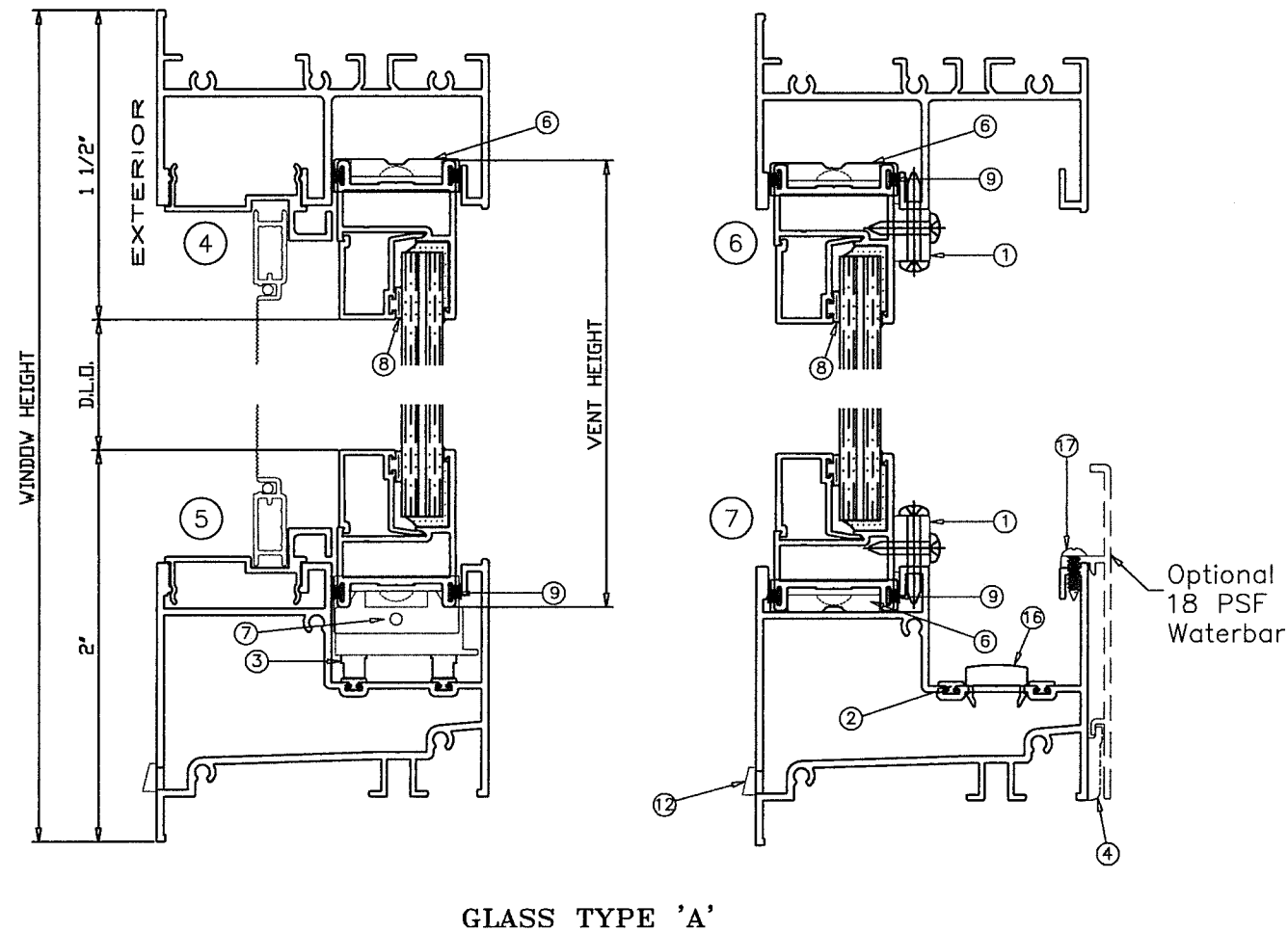
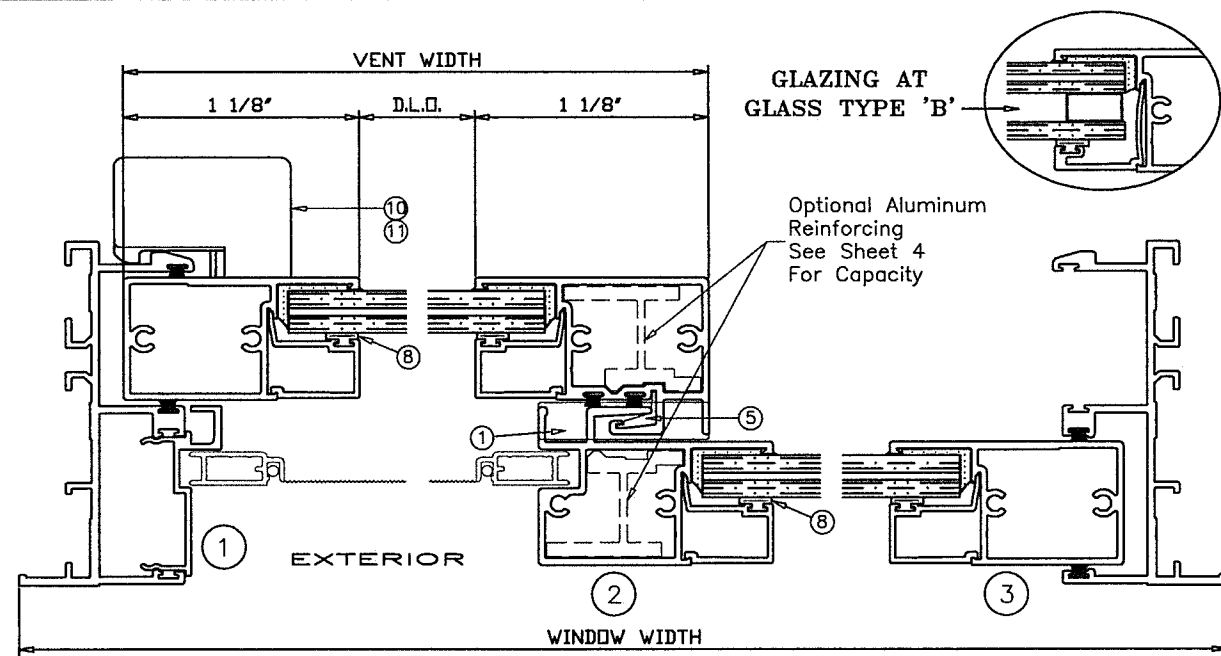
Title

375 ALUM. HORIZONTAL ROLLER WDW. - SMI

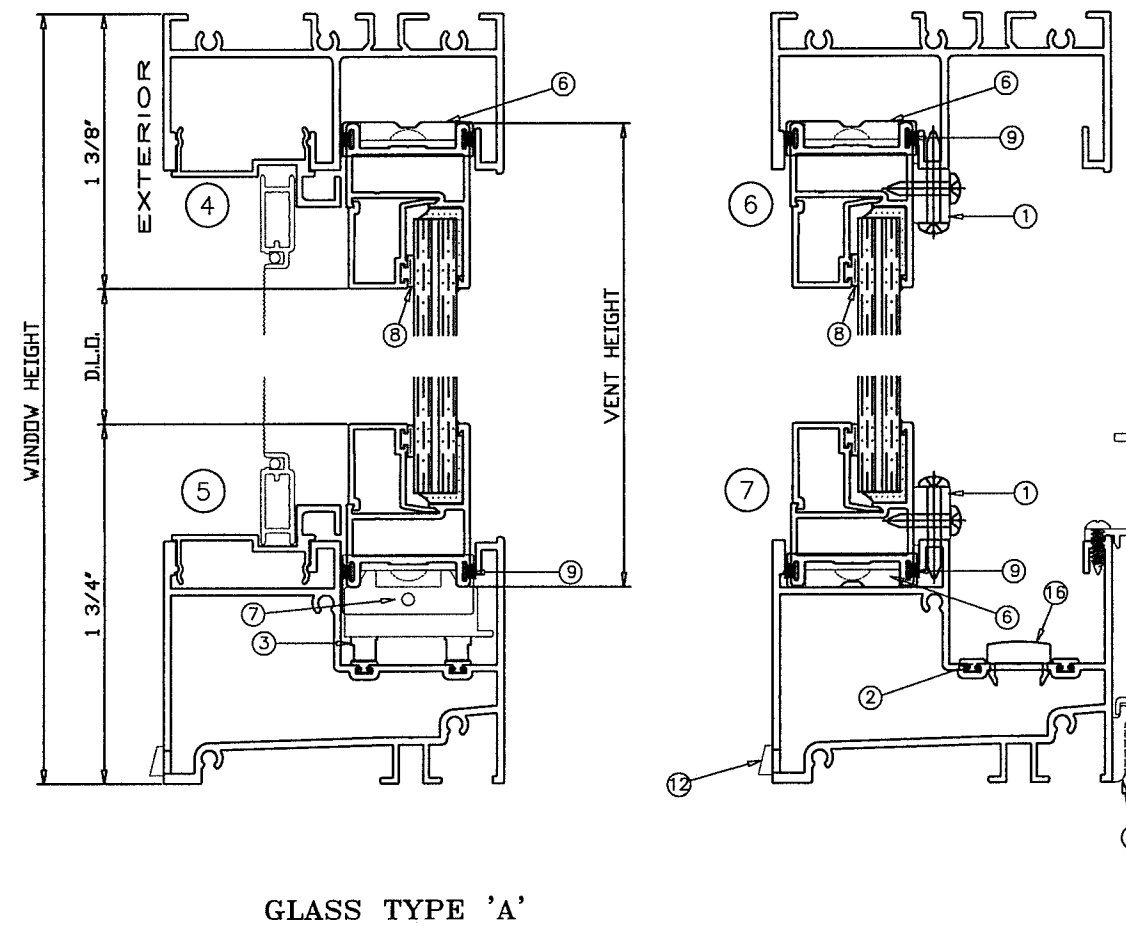
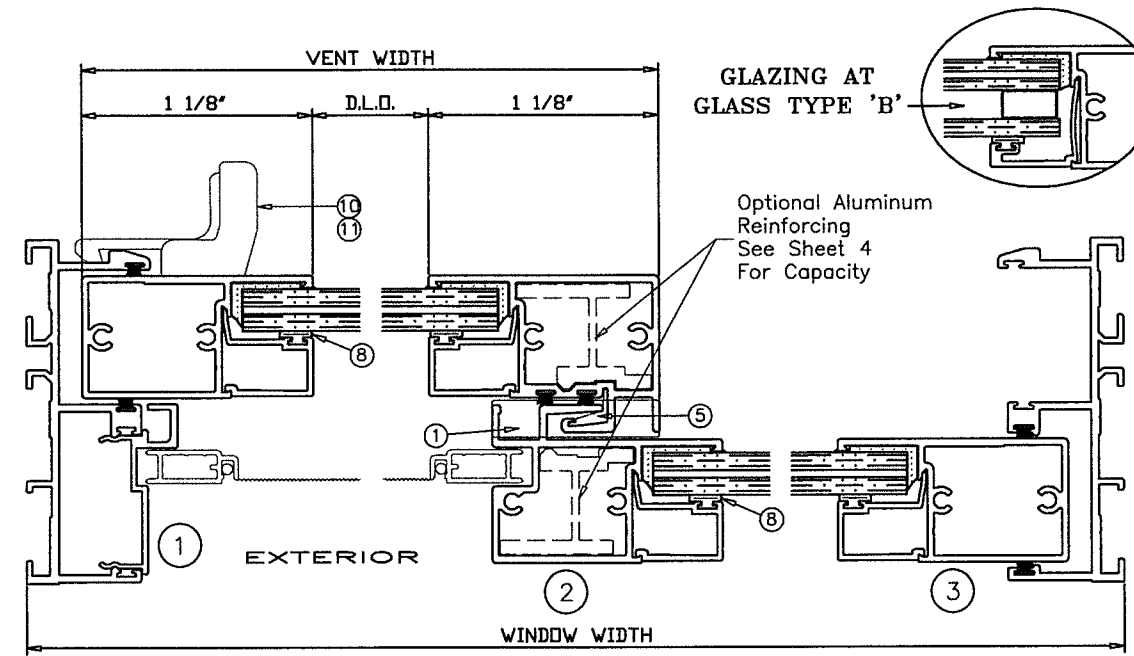
GEN. NOTES AND ELEVATIONS

HR375 'ESTATE'

ANTHONY LYNN MILLER
LICENSE
No. 58705
6/3/20
STATE OF
FLORIDA
PROFESSIONAL ENGINEER
A. LYNN MILLER, P.E.
P.E.# 58705



GENERAL WINDOW SECTIONS FLANGE FRAME



GENERAL WINDOW SECTIONS EQUAL LEG FRAME

PRODUCT REVISED
as complying with the Florida
Building Code
NOA-No. 20-0610.06
Expiration Date: 06/10/2024
By: Isaac L. Chan
Miami-Dade Product Control

Revision:

PREPARED BY A. LYNN MILLER
1070 TECHNOLOGY DRIVE
N. VENICE, FL 34275
(941) 480-1600

 **Impact Resistant
Windows & Doors**
WERE STRONGER™

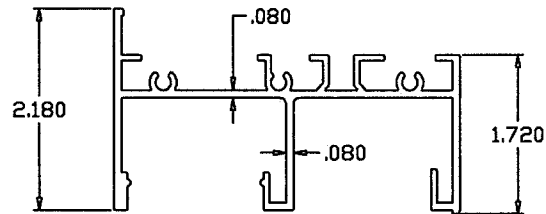
CGI WINDOWS AND DOORS, INC.
3780 W 104TH STREET
HIALEAH, FL 33018
(305) 593-6590

REGISTRATION #29296

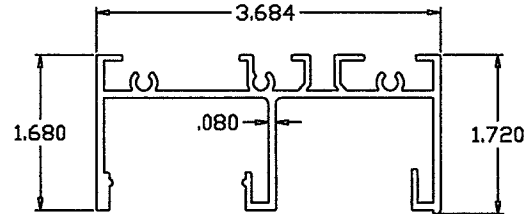
375 ALUM. HORIZONTAL ROLLER WDW. - SMI	Date	05/29/20
CROSS SECTIONS, FLANGE FRAMES	Drawn By	J ROSOWSKI
HR375 "ESTATE"	Scale	Sheet
	NTS	2 OF 15
	DWG No.	375SSMNOA-1
	Rev.	A

CROSS SECTIONS, FLANGE FRAMES

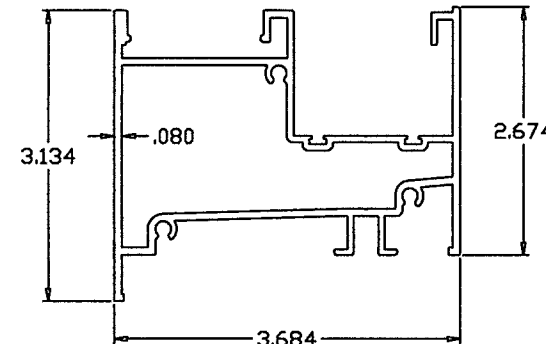
HP375 "ESTATE"



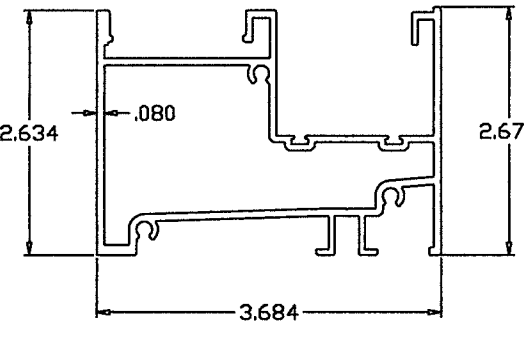
CGI-650
FLANGE FRAME HEAD
6063-T6



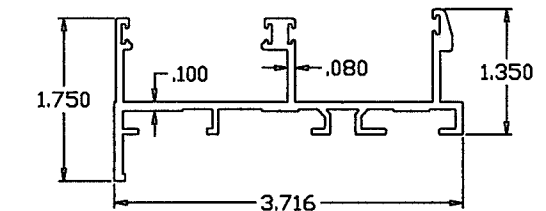
CGI-656
EQUAL LEG FRAME HEAD
6063-T6



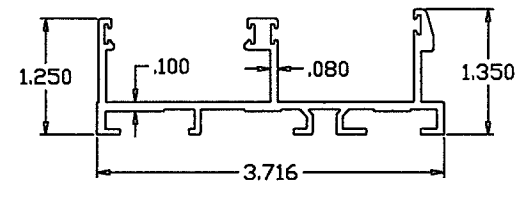
CGI-651
FLANGE FRAME SILL
6063-T6



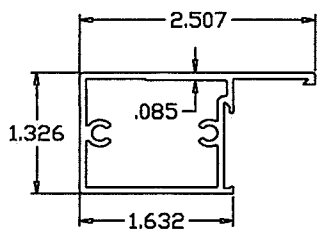
CGI-657
EQUAL LEG FRAME SILL
6063-T6



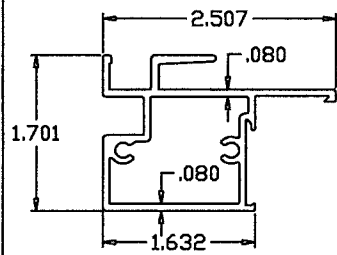
CGI-652
FLANGE FRAME JAMB
6063-T6



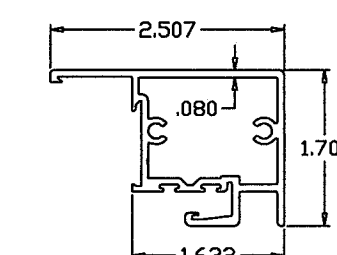
CGI-658
EQUAL LEG FRAME JAMB
6063-T6



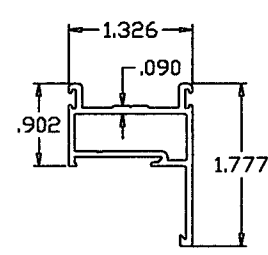
CGI-625
SQUARE LOCK STILE
6063-T6



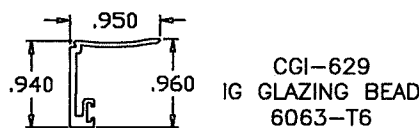
CGI-626
SQUARE FIXED INTERLOCK
6063-T6



CGI-627
SQUARE OPERABLE INTERLOCK
6063-T6

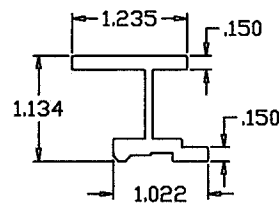


CGI-628
SQUARE TOP/BOTTOM RAIL
6063-T6

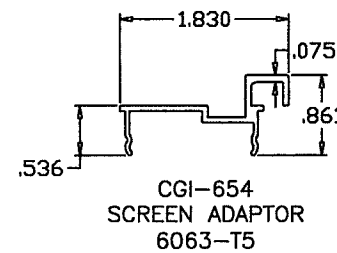


CGI-629
IG GLAZING BEAD
6063-T6

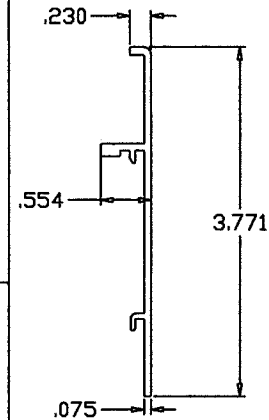
ITEM	PART #	QUANTITY	DESCRIPTION	MATERIAL	MANF./SUPPLIER	REMARKS
1	CGI-614C	2	TIE DOWN BLOCK	ZINC	CUSTOM CASTING	w/ (2) #10 x 3/4" FH SMS into vent & (3) #8 x 1" FH SMS into frame
2	CGI-684	2	ROLLER TRACK INSERT	PVC	CGI EXTRUSION	Continuous at frame sill
3	CGI-680	AS REQD.	QUAD ROLLER	NYLON	CUSTOM CASTING	Attached to CGI-685 (vent bottom clip) w/ (1) #6 x 1/2" FH SMS
4	CGI-683	3	WATERBAR CLIP	NYLON	CUSTOM CASTING	w/ (1) #10 x 3/4" FH SMS
5	CGI-612P	1/ INTRLK	INTERLOCK SNUBBER	PVC	CGI EXTRUSION	Continuous at interlock
6	CGI-681	2/ OPER 4/ FXD	VENT END CLIP	NYLON	CUSTOM CASTING	Attached w/ vent assembly screws
7	CGI-685	2	OPERABLE VENT BOTTOM CLIP	NYLON	CUSTOM CASTING	Attached w/ vent assembly screws
8	CGI-382V	AS REQD.	VINYL BULB	PVC	CGI EXTRUSION	
9	W2301NG	AS REQD.	WOOL PILE WITH CENTER SOFT FIN (GRAY)	PILE	ULTRAFAB/SCHLEGEL	
10	CGI-615C & 618C	1	EGRESS LOCK AND PULL	ZINC	CUSTOM CASTING	w/ (2) #8 x 5/8" FH SMS
11	CGI-682	1	SELF CLOSING LOCK	ZINC	CUSTOM CASTING	w/ (2) #8 x 5/8" FH SMS
12	HI-FLO WEEPER	3 OR 4	WEEP HOLE COVER	NYLON	PEP	
13	-	3/ CORNER	FRAME ASSEMBLY SCREWS	S/S	VARIES	#10 x 1 1/4" PH SMS
14	-	2/ CORNER	VENT ASSEMBLY SCREWS	S/S	VARIES	#10 x 1 1/4" PH SMS
15	GE-2000	AS REQD.	LOW MODULUS SEALANT	SILICONE	GENERAL ELECTRIC	AT FRAME JOINTS
16	CGI-686	AS REQD.	ACCESS HOLE COVER (w/DRAIN PROVISION)	NYLON	CUSTOM CASTING	Minimum 1 at each Sill install. screw
17	-	AS REQD.	WATERBAR SCREWS AT 25" O.C. MAX.	S/S	VARIES	#6 X 1/4" PH SMS
18	-	2/ LITE	SETTING BLOCK	EPDM	VARIES	DUROMETER 85±5 SHORE A



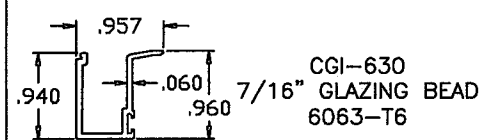
CGI-655
REINFORCEMENT
6063-T6



CGI-654
SCREEN ADAPTOR
6063-T5



CGI-653
WATERBAR
6063-T5



CGI-630
7/16" GLAZING BEAD
6063-T6

Material	Min. F _y	Min. F _u
1/4" Tek or Self-drilling Steel Screw, Gr 5	81 ksi	105 ksi
1/4" Hilti Kwik-Con II	157 ksi	163 ksi
1/4" Elco UltraCon	155 ksi	177 ksi
1/4" DeWalt UltraCon+	148 ksi	164 ksi
6063-T5 Aluminum	16 ksi	22 ksi
A36 Steel	36 ksi	58 ksi
Gr. 33 Steel Stud	33 ksi	45 ksi

PRODUCT REVISED
as complying with the Florida
Building Code
NOA-No. **20-0610.06**
Expiration Date: **06/10/2024**
By: Isaac I. Chanda
Miami-Dade Product Control

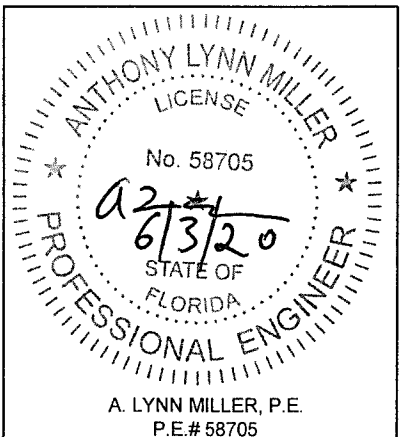
Revision:

PREPARED BY A. LYNN MILLER
1070 TECHNOLOGY DRIVE
N. VENICE, FL 34275
(941) 480-1600

REGISTRATION #29296

Impact Resistant
Windows & Doors
WERE STRONGER™
CGI WINDOWS AND DOORS, INC.
3780 W 104TH STREET
HIALEAH, FL 33018
(305) 593-6590

Rev.	Date	By	DWG	Sheet	Scale	Series
A	05/29/20	J ROSOWSKI	375SMNOA-1	3 OF 15	NTS	HR375 "ESTATE"

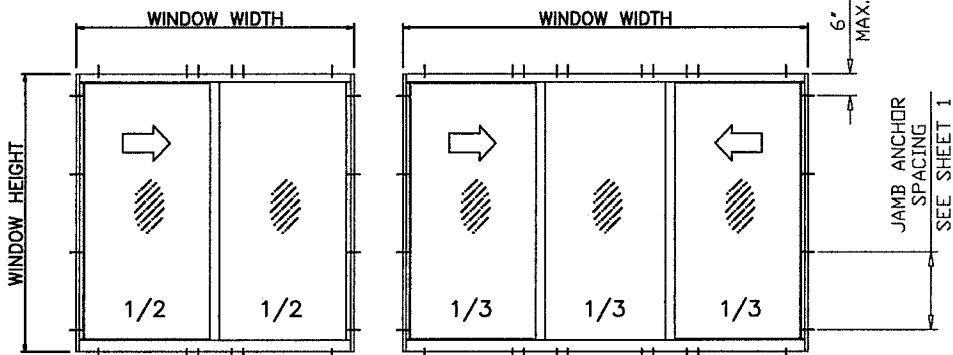


WINDOW DIMS.			1/4" SHIM SPACE		3/8" SHIM SPACE		1/2" SHIM SPACE	
			ANCHORS TYPE 'B'	ANCHORS TYPE 'C'	ANCHORS TYPE 'B'	ANCHORS TYPE 'C'	ANCHORS TYPE 'B'	ANCHORS TYPE 'C'
			EXT.(+) INT.(-)	EXT.(+) INT.(-)	EXT.(+) INT.(-)	EXT.(+) INT.(-)	EXT.(+) INT.(-)	EXT.(+) INT.(-)
WIDTH		HEIGHT						
2 PANEL	3 PANEL							
36"	54"	36"	210.0	210.0	210.0	210.0	210.0	210.0
42"	63"		210.0	210.0	210.0	210.0	210.0	210.0
48"	72"		210.0	210.0	210.0	210.0	208.0	210.0
54"	81"		210.0	210.0	210.0	210.0	184.9	210.0
60"	90"		210.0	210.0	210.0	210.0	166.4	208.0
66"	99"		210.0	210.0	194.9	210.0	151.3	189.1
72"	108"		210.0	210.0	178.7	210.0	138.7	173.3
78"	117"		198.6	210.0	164.9	206.2	128.0	160.0
84"	126"		184.4	210.0	153.1	191.4	118.9	148.6
36"	54"	42"	210.0	210.0	210.0	210.0	210.0	210.0
42"	63"		210.0	210.0	210.0	210.0	203.8	210.0
48"	72"		210.0	210.0	210.0	210.0	178.3	210.0
54"	81"		210.0	210.0	204.2	210.0	158.5	198.1
60"	90"		210.0	210.0	183.8	210.0	142.6	178.3
66"	99"		201.1	210.0	167.1	208.8	129.7	162.1
72"	108"		184.4	210.0	153.1	191.4	118.9	148.6
78"	117"		170.2	210.0	141.4	176.7	109.7	137.1
84"	126"		158.0	197.6	131.3	164.1	101.9	127.3
36"	54"	48"	210.0	210.0	210.0	210.0	208.0	210.0
42"	63"		210.0	210.0	210.0	210.0	178.3	210.0
48"	72"		210.0	210.0	201.0	210.0	156.0	195.0
54"	81"		210.0	210.0	178.7	210.0	138.7	173.3
60"	90"		193.6	210.0	160.8	201.0	124.8	156.0
66"	99"		176.0	210.0	146.2	182.7	113.5	141.8
72"	108"		161.3	201.7	134.0	167.5	104.0	130.0
78"	117"		148.9	186.2	123.7	154.6	96.0	120.0
84"	126"		138.3	172.9	114.9	143.6	89.1	111.4
36"	54"	54"	210.0	210.0	210.0	210.0	184.9	210.0
42"	63"		210.0	210.0	204.2	210.0	158.5	198.1
48"	72"		210.0	210.0	178.7	210.0	138.7	173.3
54"	81"		191.2	210.0	158.8	198.5	123.3	154.1
60"	90"		172.1	210.0	142.9	178.7	110.9	138.7
66"	99"		156.4	195.6	129.9	162.4	100.8	126.1
72"	108"		143.4	179.3	119.1	148.9	92.4	115.6
78"	117"		132.4	165.5	109.9	137.4	85.3	106.7
84"	126"		122.9	153.7	102.1	127.6	79.2	99.0
36"	54"	60"	210.0	210.0	210.0	210.0	166.4	208.0
42"	63"		210.0	210.0	183.8	210.0	142.6	178.3
48"	72"		193.6	210.0	160.8	201.0	124.8	156.0
54"	81"		172.1	210.0	142.9	178.7	110.9	138.7
60"	90"		154.9	193.6	128.6	160.8	99.8	124.8
66"	99"		140.8	176.0	116.9	146.2	90.8	113.5
72"	108"		129.1	161.3	107.2	134.0	83.2	104.0
78"	117"		119.1	148.9	99.0	123.7	76.8	96.0
84"	126"		110.6	138.3	91.9	114.9	71.3	89.1
36"	54"	66"	210.0	210.0	194.9	210.0	151.3	189.1
42"	63"		201.1	210.0	167.1	208.8	129.7	162.1
48"	72"		176.0	210.0	146.2	182.7	113.5	141.8
54"	81"		156.4	195.6	129.9	162.4	100.8	126.1
60"	90"		140.8	176.0	116.9	146.2	90.8	113.5
66"	99"		128.0	160.0	106.3	132.9	82.5	103.1
72"	108"		117.3	146.7	97.5	121.8	75.6	94.5
78"	117"		108.3	135.4	90.0	112.4	69.8	87.3

All values shown are Design PSF (Pounds per Square Foot)

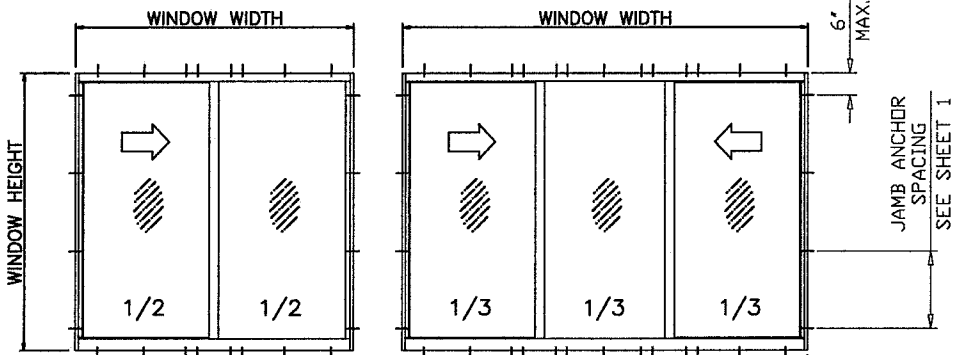
WINDOW DIMS.			1/4" SHIM SPACE		3/8" SHIM SPACE		1/2" SHIM SPACE	
			ANCHORS TYPE 'B'	ANCHORS TYPE 'C'	ANCHORS TYPE 'B'	ANCHORS TYPE 'C'	ANCHORS TYPE 'B'	ANCHORS TYPE 'C'
			EXT.(+) INT.(-)	EXT.(+) INT.(-)	EXT.(+) INT.(-)	EXT.(+) INT.(-)	EXT.(+) INT.(-)	EXT.(+) INT.(-)
WIDTH		HEIGHT						
2 PANEL	3 PANEL							
36"	54"	72"	210.0	210.0	178.7	210.0	138.7	173.3
42"	63"		184.4	210.0	153.1	191.4	118.9	148.6
48"	72"		161.3	201.7	134.0	167.5	104.0	130.0
54"	81"		143.4	179.3	119.1	148.9	92.4	115.6
60"	90"		129.1	161.3	107.2	134.0	83.2	104.0
66"	99"		117.3	146.7	97.5	121.8	75.6	94.5
72"	108"		107.6	134.4	89.3	111.7	69.3	86.7
36"	54"	76"	203.8	210.0	169.3	210.0	131.4	164.2
42"	63"		174.7	210.0	145.1	181.4	112.6	140.8
48"	72"		152.8	191.1	126.9	158.7	98.5	123.2
54"	81"		135.9	169.8	112.8	141.1	87.6	109.5
60"	90"		122.3	152.8	101.6	126.9	78.8	98.5
66"	99"		111.2	138.9	92.3	115.4	71.7	89.6
72"	108"		101.9	127.4	84.6	105.8	65.7	82.1

WINDOW DIMS.			1/4" SHIM SPACE		3/8" SHIM SPACE		1/2" SHIM SPACE	
			ANCHORS TYPE 'B'	ANCHORS TYPE 'C'	ANCHORS TYPE 'B'	ANCHORS TYPE 'C'	ANCHORS TYPE 'B'	ANCHORS TYPE 'C'
			EXT. (+) INT. (-)	EXT. (+) INT. (-)	EXT. (+) INT. (-)	EXT. (+) INT. (-)	EXT. (+) INT. (-)	EXT. (+) INT. (-)
WIDTH		HEIGHT						
2 PANEL	3 PANEL							
26-1/2"	39-3/4"	38-3/8"	210.0	210.0	210.0	210.0	210.0	210.0
37"	55-1/2"		210.0	210.0	210.0	210.0	210.0	210.0
53-1/8"	79-11/16"		210.0	210.0	210.0	210.0	176.3	210.0
74"	111"		196.3	210.0	163.1	203.8	126.6	158.2
79-1/2"	119-1/4"		182.8	210.0	151.8	189.7	117.8	147.3
106-1/4"	159-3/8"		136.7	170.9	113.6	142.0	88.2	110.2
26-1/2"	39-3/4"	50-5/8"	210.0	210.0	210.0	210.0	210.0	210.0
37"	55-1/2"		210.0	210.0	210.0	210.0	191.9	210.0
53-1/8"	79-11/16"		207.3	210.0	172.2	210.0	133.6	167.1
74"	111"		148.8	186.0	123.6	154.5	95.9	119.9
79-1/2"	119-1/4"		138.5	173.2	115.1	143.8	89.3	111.6
106-1/4"	159-3/8"		103.7	129.6	86.1	107.6	66.8	83.5
26-1/2"	39-3/4"	63"	210.0	210.0	210.0	210.0	210.0	210.0
37"	55-1/2"		210.0	210.0	198.7	210.0	154.2	192.7
53-1/8"	79-11/16"		166.6	208.2	138.4	173.0	107.4	134.2
74"	111"		119.6	149.5	99.3	124.2	77.1	96.4
79-1/2"	119-1/4"		111.3	139.2	92.5	115.6	71.8	89.7
26-1/2"	39-3/4"	72"	210.0	210.0	210.0	210.0	188.4	210.0
37"	55-1/2"		209.3	210.0	173.8	210.0	134.9	168.6
53-1/8"	79-11/16"		145.8	182.2	121.1	151.3	94.0	117.5
74"	111"		104.6	130.8	86.9	108.6	67.5	84.3
26-1/2"	39-3/4"	76"	210.0	210.0	210.0	210.0	178.5	210.0
37"	55-1/2"		198.3	210.0	164.7	205.9	127.8	159.8
53-1/8"	79-11/16"		138.1	172.6	114.7	143.4	89.0	111.3



ANCHORS TYPE 'B'

4 ANCHORS AT MTG. STILE ENDS
24" MAX. SPACING BETWEEN ANCHORS



ANCHORS TYPE 'C'

4 ANCHORS AT MTG. STILE ENDS
12" MAX. SPACING BETWEEN ANCHORS

PRODUCT REVISED
as complying with the Florida
Building Code
NOA-No. 20-0610.06
Expiration Date: **06/10/2024**
By: Ismael I. Chan
Miami-Dade Product Control

JAMB ANCHOR SPACING
20" MAX. FOR SHIMS UP TO 1/4".
10" MAX. FOR SHIMS GREATER
THAN 1/4" TO 1/2".

ALL VALUES SHOWN ARE DESIGN PSF
VALUES FOR EXT.(+) LOADS SHOWN ARE FOR
SILL WITH WATERBAR ADAPTER.
FOR WINDOWS WITHOUT WATERBAR ADAPTER
LIMIT EXT.(+) LOADS TO 80.0 PSF

**ANCHOR CAPACITY
EQUAL PANELS**

Revision:

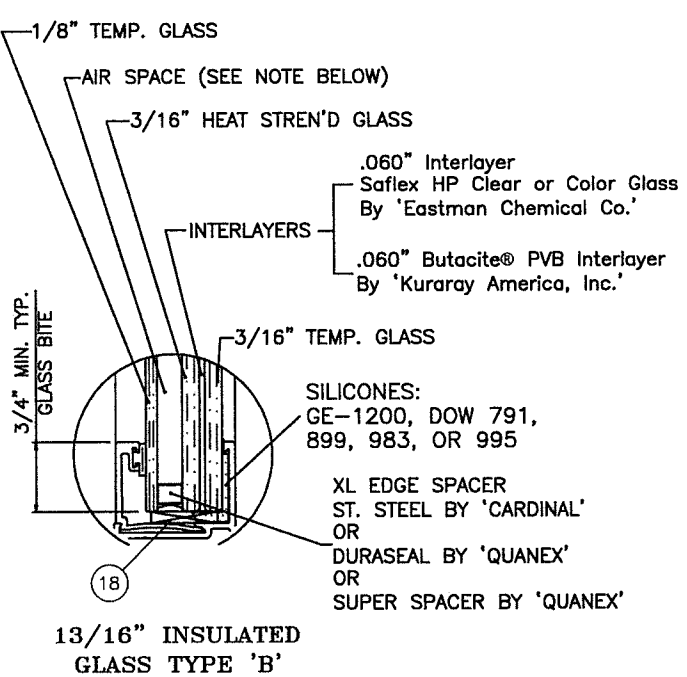
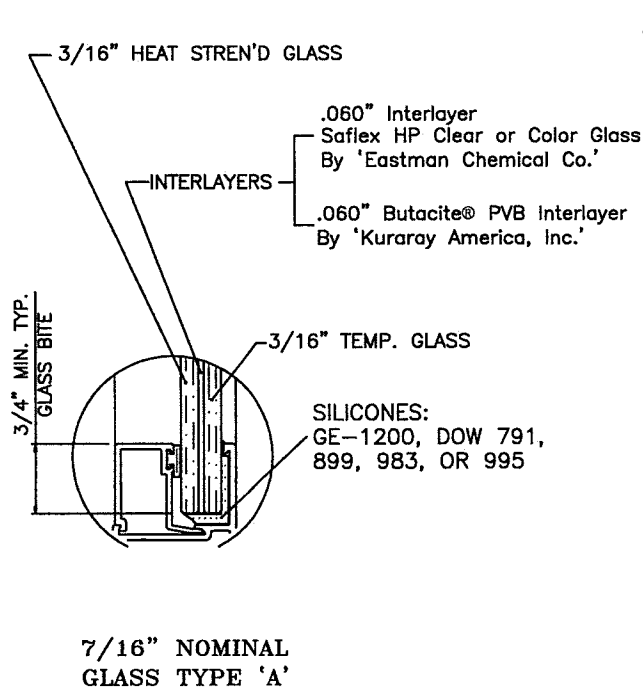
PREPARED BY A. LYNN MILLER 1070 TECHNOLOGY DRIVE N. VENICE, FL 34275 (941) 480-1600	REGISTRATION #29296	Date	05/29/20	By	J ROSOWSKI	Drawn	375SMNOA-1	Rev.	A
Impact Resistant Windows & Doors WERE STRONGER™	CGI WINDOWS AND DOORS, INC. 3780 W 104TH STREET HIALEAH, FL 33018 (305) 593-6590	375 ALUM. HORIZONTAL ROLLER WDW. - SMI	DESIGN PRESSURE 2	5 OF 15	NTS	Scale	HR375 "ESTATE"	Series	HR375 "ESTATE"

ANTHONY LYNN MILLER
LICENSE
No. 58705
6/3/20
STATE OF
FLORIDA
PROFESSIONAL ENGINEER
A. LYNN MILLER, P.E.
P.E.# 58705

WINDOW DIMS.			GLASS TYPES A & B			
			INTERLOCKS W/O REINF.		INTERLOCKS W/ REINF.	
			EXT.(+)	INT.(-)	EXT.(+)	INT.(-)
2 PANEL	3 PANEL	HEIGHT				
36"	48"	36"	120.0	150.0	120.0	210.0
42"	56"		120.0	150.0	120.0	210.0
48"	64"		120.0	150.0	120.0	210.0
54"	72"		120.0	150.0	120.0	210.0
60"	80"		120.0	150.0	120.0	210.0
66"	88"		120.0	150.0	120.0	210.0
72"	96"		120.0	150.0	120.0	210.0
78"	104"		100.0	100.0	120.0	210.0
84"	112"		100.0	100.0	120.0	210.0
108"	144"		100.0	100.0	120.0	210.0
36"	48"	48"	120.0	150.0	120.0	210.0
42"	56"		120.0	150.0	120.0	210.0
48"	64"		120.0	150.0	120.0	210.0
54"	72"		120.0	150.0	120.0	210.0
60"	80"		100.0	100.0	120.0	210.0
66"	88"		100.0	100.0	120.0	210.0
72"	96"		100.0	100.0	120.0	210.0
78"	104"		100.0	100.0	120.0	210.0
84"	112"		100.0	100.0	120.0	210.0
36"	48"	54"	120.0	150.0	120.0	210.0
42"	56"		120.0	150.0	120.0	210.0
48"	64"		120.0	150.0	120.0	210.0
54"	72"		100.0	100.0	120.0	210.0
60"	80"		100.0	100.0	120.0	210.0
66"	88"		100.0	100.0	120.0	210.0
72"	96"		100.0	100.0	120.0	210.0
78"	104"		100.0	100.0	120.0	210.0
36"	48"	60"	120.0	150.0	120.0	210.0
42"	56"		120.0	150.0	120.0	210.0
48"	64"		100.0	100.0	120.0	210.0
54"	72"		100.0	100.0	120.0	210.0
60"	80"		100.0	100.0	120.0	210.0
66"	88"	66"	100.0	100.0	120.0	205.8
36"	48"		120.0	150.0	120.0	210.0
42"	56"		100.0	100.0	120.0	210.0
48"	64"		100.0	100.0	120.0	210.0
54"	72"		100.0	100.0	120.0	205.5
60"	80"		100.0	100.0	120.0	191.2
36"	48"	72"	120.0	143.0	120.0	210.0
42"	56"		100.0	100.0	120.0	210.0
48"	64"		100.0	100.0	120.0	198.6
54"	72"		100.0	100.0	120.0	183.9
36"	48"	76"	100.0	100.0	120.0	210.0
42"	56"		100.0	100.0	120.0	209.4
48"	64"		100.0	100.0	120.0	185.9
54"	72"		96.9	96.9	120.0	171.8

WINDOW DIMS.			GLASS TYPES A & B			
			INTERLOCKS W/O REINF.		INTERLOCKS W/ REINF.	
			EXT.(+)	INT.(-)	EXT.(+)	INT.(-)
2 PANEL	3 PANEL	HEIGHT				
26-1/2"	35-5/16"	38-3/8"	120.0	150.0	120.0	210.0
37"	49-5/16"		120.0	150.0	120.0	210.0
53-1/8"	71"		120.0	150.0	120.0	210.0
74"	99"		100.0	100.0	120.0	210.0
79-1/2"	106"		100.0	100.0	120.0	210.0
106-1/4"	142"	50-5/8"	100.0	100.0	120.0	210.0
26-1/2"	35-5/16"		120.0	150.0	120.0	210.0
37"	49-5/16"		120.0	150.0	120.0	210.0
53-1/8"	71"		120.0	150.0	120.0	210.0
74"	99"		100.0	100.0	120.0	210.0
79-1/2"	106"	63"	100.0	100.0	120.0	210.0
26-1/2"	35-5/16"		120.0	150.0	120.0	210.0
37"	49-5/16"		120.0	150.0	120.0	210.0
53-1/8"	71"		100.0	100.0	120.0	210.0
79-1/2"	106"		100.0	100.0	120.0	210.0
26-1/2"	35-5/16"	72"	120.0	150.0	120.0	210.0
37"	49-5/16"		120.0	139.7	120.0	210.0
53-1/8"	71"		100.0	100.0	120.0	185.8
79-1/2"	106"		100.0	100.0	120.0	185.8
106-1/4"	142"		100.0	100.0	120.0	185.8
26-1/2"	35-5/16"	76"	120.0	150.0	120.0	210.0
37"	49-5/16"		100.0	100.0	120.0	210.0
53-1/8"	71"		97.9	97.9	120.0	173.6
79-1/2"	106"		97.9	97.9	120.0	173.6
106-1/4"	142"		97.9	97.9	120.0	173.6

All values shown are Design PSF (Pounds per Square Foot)

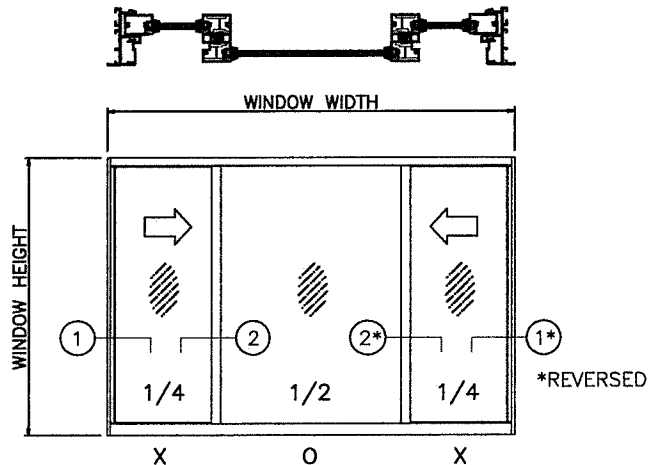
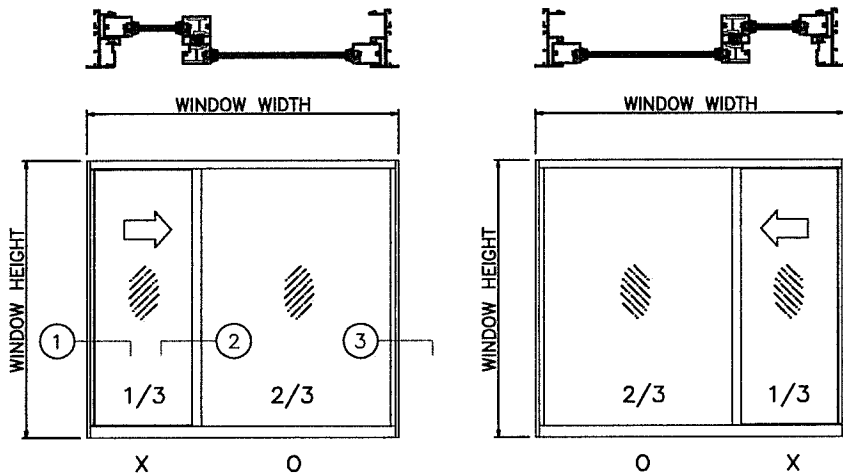


GLASS TYPES

AIR SPACE CONSISTING OF:
SPACER:
METAL SPACER AROUND
THE PERIMETER OF THE GLASS.

PRODUCT REVISED
as complying with the Florida
Building Code
NOA-No. **20-0610.06**
Expiration Date: **06/10/2024**

By: Ismael L. Chanda
Miami-Dade Product Control



**GLAZING/REINFORCEMENT
PERFORMANCE VALUES
UNEQUAL PANELS**

NOTE:
GLASS CAPACITIES ON THIS SHEET ARE
BASED ON ASTM E1300-09 (3 SEC. GUSTS)
AND FLORIDA BUILDING COMMISSION
DECLARATORY STATEMENT DCA05-DEC-219

VALUES FOR EXTERIOR LOADS(+) SHOWN ARE
FOR SILL WITH WATERBAR ADAPTER
FOR WINDOWS WITHOUT WATERBAR ADAPTER
LIMIT EXTERIOR(+) LOADS TO 80.0 PSF

MAXIMUM VENT SIZE IS 18.7 SQ. FT.
AND MAXIMUM VENT HEIGHT IS 71 11/16"

ADDED BACKBEDDING
TYPE - JR - 5/29/20

PREPARED BY A. LYNN MILLER
1070 TECHNOLOGY DRIVE
N. VENICE, FL 34275
(941) 480-1600

Impact Resistant
Windows & Doors
WE'RE STRONGER™
CGI WINDOWS AND DOORS, INC.
3780 W 104TH STREET
HIALEAH, FL 33018
(305) 593-6590

REGISTRATION #29296

Date 05/29/20

By J ROSOWSKI

DWG No. 375SMNOA-1

6 OF 15

Sheet

Scale

NTS

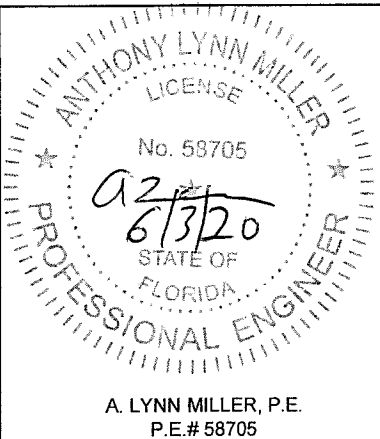
DESIGN PRESSURE 3

HR375 "ESTATE"

Series

Desc.

Title



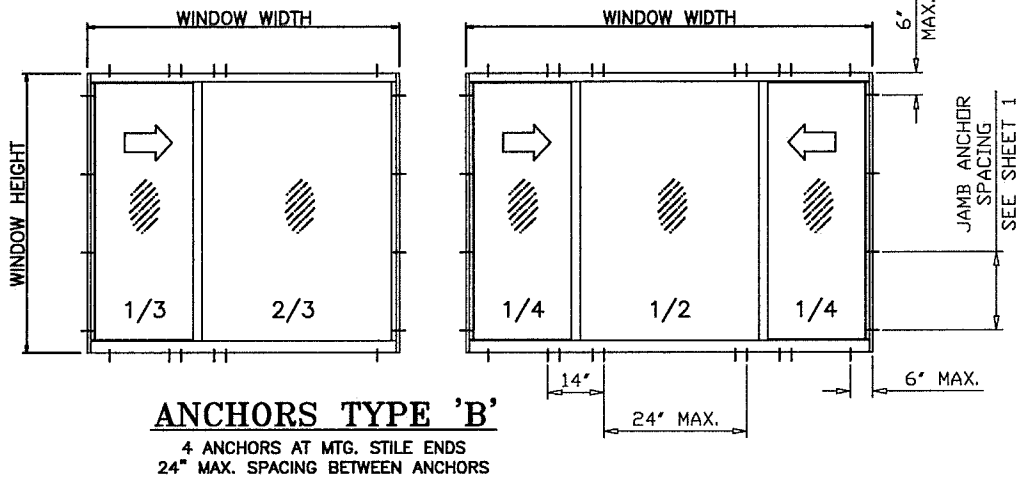
WINDOW DIMS.			1/4" SHIM SPACE		3/8" SHIM SPACE		1/2" SHIM SPACE	
			ANCHORS TYPE 'B'	ANCHORS TYPE 'C'	ANCHORS TYPE 'B'	ANCHORS TYPE 'C'	ANCHORS TYPE 'B'	ANCHORS TYPE 'C'
			EXT.(+) INT.(-)	EXT.(+) INT.(-)	EXT.(+) INT.(-)	EXT.(+) INT.(-)	EXT.(+) INT.(-)	EXT.(+) INT.(-)
WIDTH		HEIGHT	2 PANEL	3 PANEL				
36"	48"	36"			210.0	210.0	210.0	210.0
42"	56"				210.0	210.0	210.0	210.0
48"	64"				210.0	210.0	210.0	208.0
54"	72"				210.0	210.0	210.0	184.9
60"	80"				210.0	210.0	210.0	166.4
66"	88"				210.0	210.0	194.9	151.3
72"	96"				210.0	210.0	178.7	138.7
78"	104"				198.6	210.0	164.9	128.0
84"	112"				184.4	210.0	153.1	118.9
96"	128"				161.3	201.7	134.0	104.0
108"	144"				143.4	179.3	119.1	92.4
36"	48"	48"			210.0	210.0	210.0	208.0
42"	56"				210.0	210.0	210.0	178.3
48"	64"				210.0	210.0	201.0	156.0
54"	72"				210.0	210.0	178.7	138.7
60"	80"				193.6	210.0	160.8	124.8
66"	88"				176.0	210.0	146.2	113.5
72"	96"				161.3	201.7	134.0	104.0
78"	104"				148.9	186.2	123.7	96.0
84"	112"				138.3	172.9	114.9	89.1
36"	48"	54"			210.0	210.0	210.0	184.9
42"	56"				210.0	210.0	204.2	158.5
48"	64"				210.0	210.0	178.7	138.7
54"	72"				191.2	210.0	158.8	123.3
60"	80"				172.1	210.0	142.9	110.9
66"	88"				156.4	195.6	129.9	100.8
72"	96"				143.4	179.3	119.1	92.4
36"	48"	60"			210.0	210.0	210.0	166.4
42"	56"				210.0	210.0	183.8	142.6
48"	64"				193.6	210.0	160.8	124.8
54"	72"				172.1	210.0	142.9	110.9
60"	80"				154.9	193.6	128.6	99.8
66"	88"				140.8	176.0	116.9	90.8
36"	48"	66"			210.0	210.0	194.9	151.3
42"	56"				201.1	210.0	167.1	129.7
48"	64"				176.0	210.0	146.2	113.5
54"	72"				156.4	195.6	129.9	100.8
60"	80"				140.8	176.0	116.9	90.8
36"	48"	72"			210.0	210.0	178.7	138.7
42"	56"				184.4	210.0	153.1	118.9
48"	64"				161.3	201.7	134.0	104.0
54"	72"				143.4	179.3	119.1	92.4
36"	48"	76"			203.8	210.0	169.3	131.4
42"	56"				174.7	210.0	145.1	112.6
48"	64"				152.8	191.1	126.9	98.5
54"	72"				135.9	169.8	112.8	87.6

All values shown are Design PSF (Pounds per Square Foot)

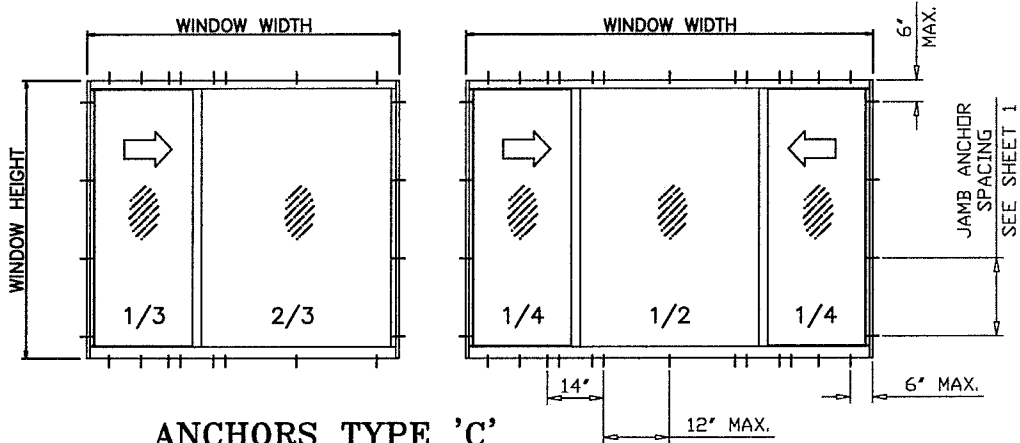
JAMB ANCHOR SPACING
20" MAX. FOR SHIMS UP TO 1/4".
10" MAX. FOR SHIMS GREATER
THAN 1/4" TO 1/2".

ALL VALUES SHOWN ARE DESIGN PSF
VALUES FOR EXT.(+) LOADS SHOWN ARE FOR
SILL WITH WATERBAR ADAPTER.
FOR WINDOWS WITHOUT WATERBAR ADAPTER
LIMIT EXT.(+) LOADS TO 80.0 PSF

WINDOW DIMS.			1/4" SHIM SPACE		3/8" SHIM SPACE		1/2" SHIM SPACE	
			ANCHORS TYPE 'B'	ANCHORS TYPE 'C'	ANCHORS TYPE 'B'	ANCHORS TYPE 'C'	ANCHORS TYPE 'B'	ANCHORS TYPE 'C'
			EXT. (+) INT. (-)	EXT. (+) INT. (-)	EXT. (+) INT. (-)	EXT. (+) INT. (-)	EXT. (+) INT. (-)	EXT. (+) INT. (-)
WIDTH		HEIGHT	2 PANEL	3 PANEL				
26-1/2"	35-5/16"	38-3/8"			210.0	210.0	210.0	210.0
37"	49-5/16"				210.0	210.0	210.0	210.0
53-1/8"	71"				210.0	210.0	210.0	175.9
74"	99"				195.7	210.0	162.5	126.1
79-1/2"	106"				182.8	210.0	151.8	117.8
106-1/4"	142"				136.4	170.5	113.3	87.9
26-1/2"	35-5/16"	50-5/8"			210.0	210.0	210.0	210.0
37"	49-5/16"				210.0	210.0	210.0	191.9
53-1/8"	71"				206.8	210.0	171.8	133.3
74"	99"				148.3	185.4	123.2	95.6
79-1/2"	106"				138.5	173.2	115.1	89.3
26-1/2"	35-5/16"	63"			210.0	210.0	210.0	210.0
37"	49-5/16"				210.0	210.0	198.7	154.2
53-1/8"	71"				166.2	207.8	138.0	107.1
26-1/2"	35-5/16"	72"			210.0	210.0	210.0	188.4
37"	49-5/16"				209.3	210.0	173.8	134.9
53-1/8"	71"				145.4	181.8	120.8	93.7
26-1/2"	35-5/16"	76"			210.0	210.0	210.0	178.5
37"	49-5/16"				198.3	210.0	164.7	127.8
53-1/8"	71"				137.8	172.2	114.4	88.8



ANCHORS TYPE 'B'
4 ANCHORS AT MTG. STILE ENDS
24" MAX. SPACING BETWEEN ANCHORS



ANCHORS TYPE 'C'
4 ANCHORS AT MTG. STILE ENDS
12" MAX. SPACING BETWEEN ANCHORS

PRODUCT REVISED
as complying with the Florida
Building Code
NOA-No. **20-0610.06**
Expiration Date: **06/10/2024**
By: Ismael I. Chan
Miami-Dade Product Control

ANCHOR CAPACITY
UNEQUAL PANELS

Revision:

PREPARED BY A. LYNN MILLER
1070 TECHNOLOGY DRIVE
N. VENICE, FL 34275
(941) 480-1600
REGISTRATION #29296

CGI
Impact Resistant
Windows & Doors
WE'RE STRONGER™
CGI WINDOWS AND DOORS, INC.
3780 W 104TH STREET
HIALEAH, FL 33018
(305) 593-6590

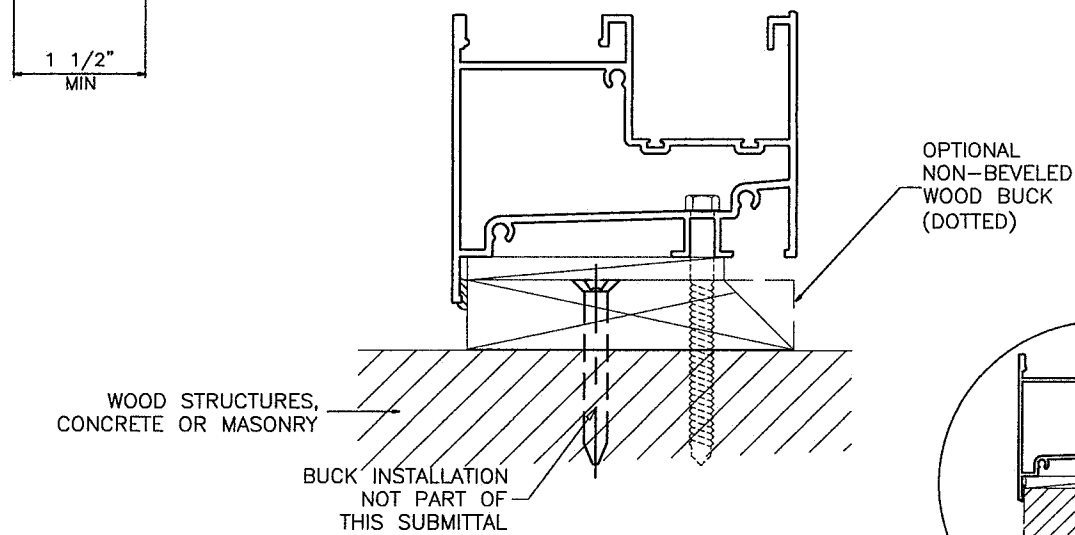
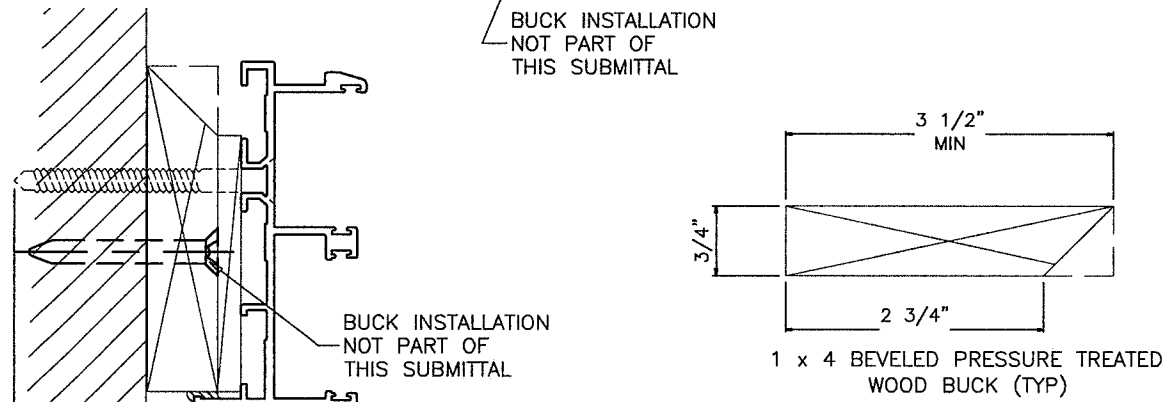
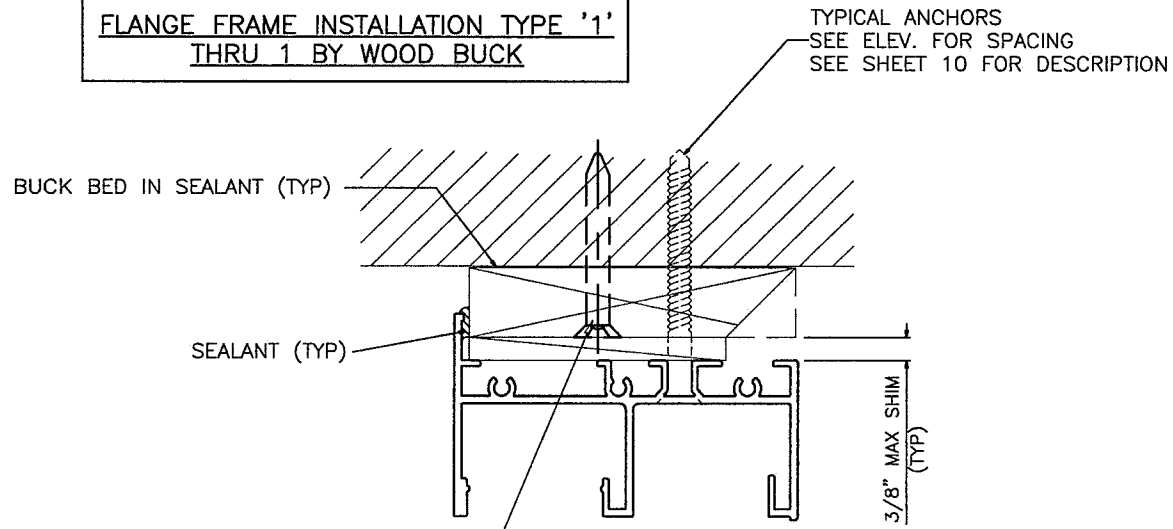
375 ALUM. HORIZONTAL ROLLER WDW. - SMI
J ROSOWSKI
DESIGN PRESSURE 4
HR375 "ESTATE"

05/29/20
Date
375SMNOA-1
Rev
7 OF 15
Sheet
Scale
Series

ANTHONY LYNN MILLER
LICENSE
No. 58705
6/3/20
STATE OF
FLORIDA
PROFESSIONAL ENGINEER
A. LYNN MILLER, P.E.
P.E.# 58705

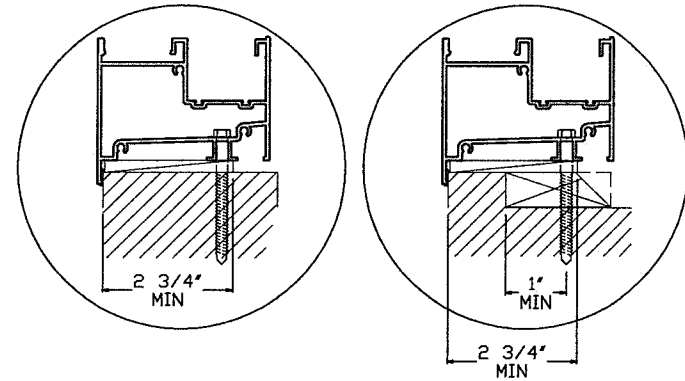
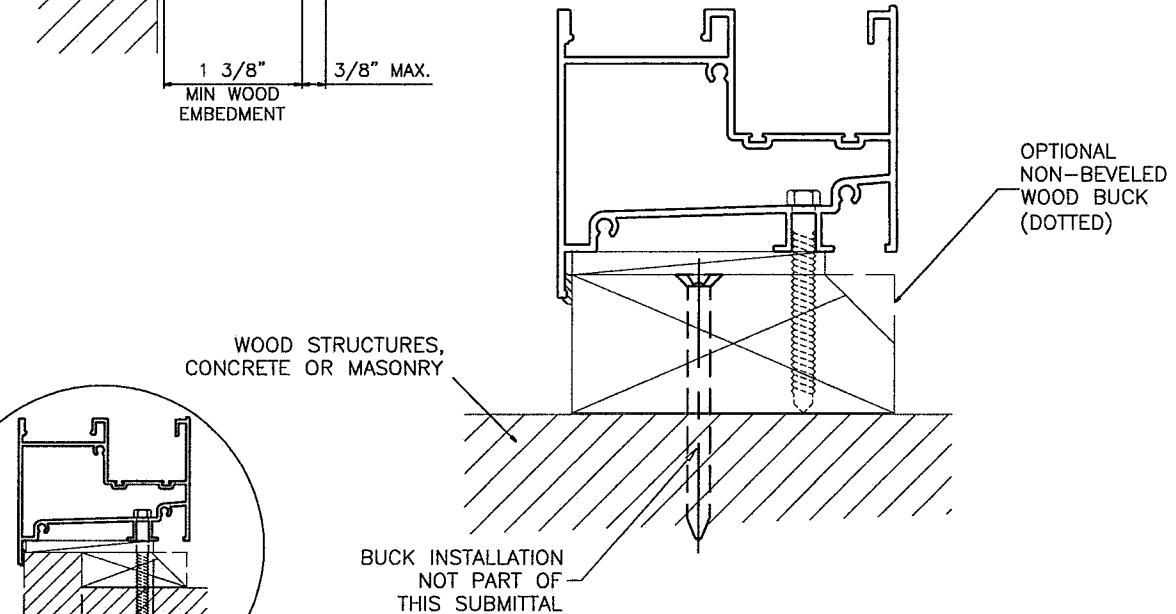
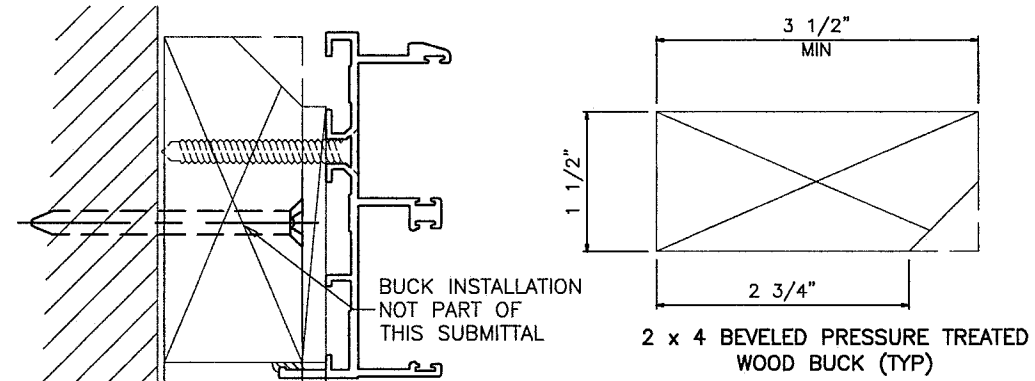
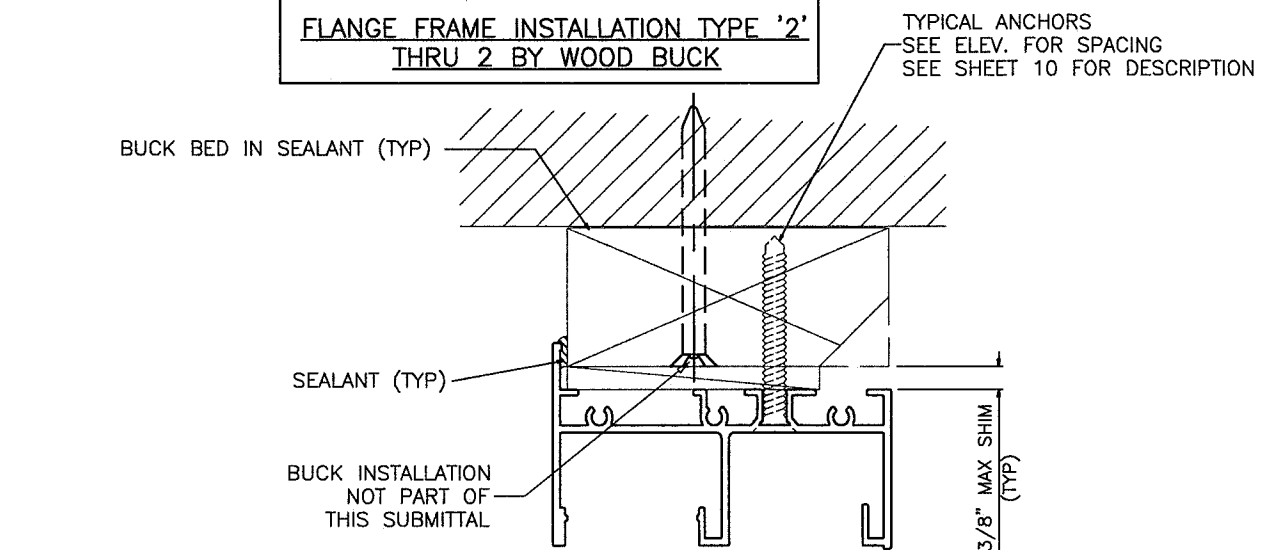
INSTALLATION CONDITIONS FLANGE FRAME

FLANGE FRAME INSTALLATION TYPE '1'
THRU 1 BY WOOD BUCK



WOOD BUCKS NOT BY CGI CORP., MUST SUSTAIN LOADS IMPOSED BY GLAZING SYSTEM AND TRANSFER THEM TO THE BUILDING STRUCTURE.

FLANGE FRAME INSTALLATION TYPE '2'
THRU 2 BY WOOD BUCK

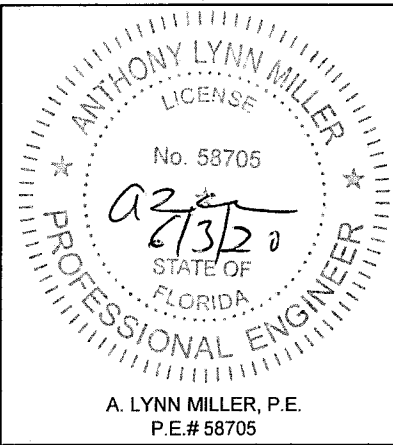


Optional Pre-Cast Sill

PRODUCT REVISED
as complying with the Florida
Building Code
NOA-No. **20-0610.06**
Expiration Date: **06/10/2024**
By: Ismael L. Chandra
Miami-Dade Product Control

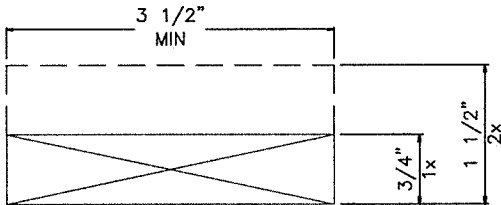
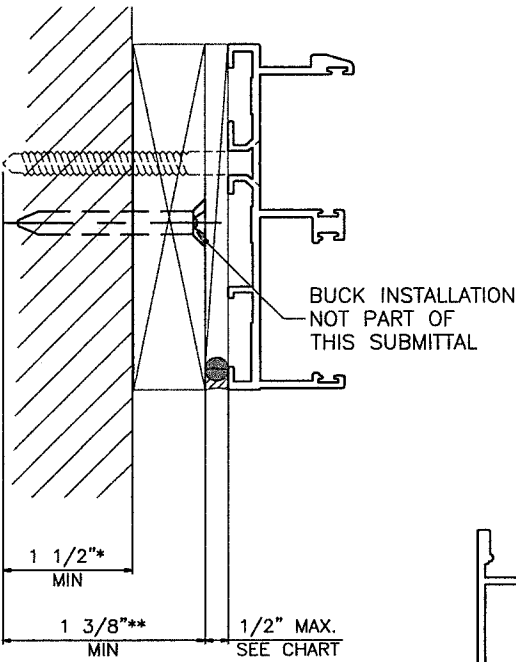
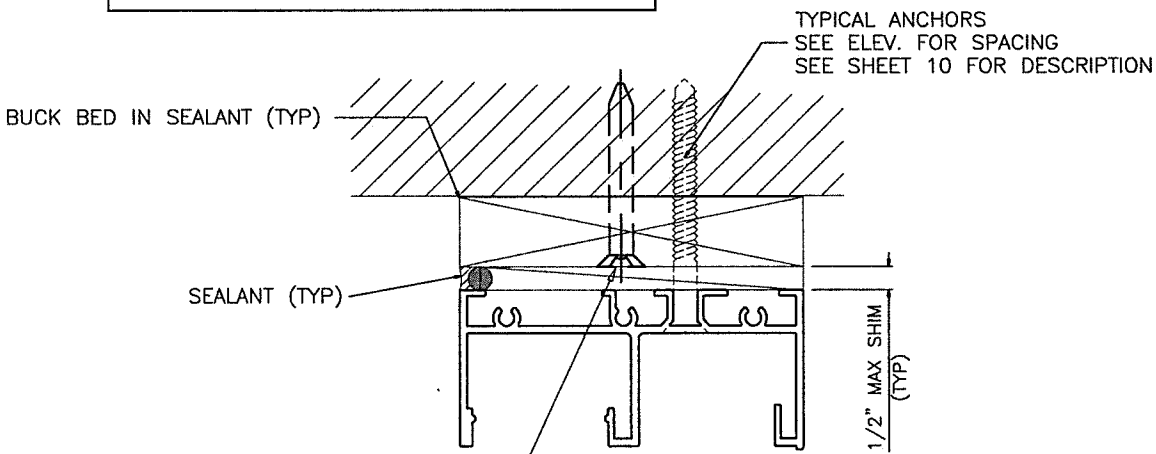
Revision:

PREPARED BY A. LYNN MILLER 1070 TECHNOLOGY DRIVE N. VENICE, FL 34275 (941) 480-1600	REGISTRATION #29296	Date	05/29/20	By	J ROSOWSKI	DWG No.	375SMNOA-1	Rev.	A
		Drawn							
		Scale							
		Sheet							
Impact Resistant Windows & Doors WE'RE STRONGER™ CGI WINDOWS AND DOORS, INC. 3780 W 104TH STREET HIALEAH, FL 33018 (305) 593-6590	375 ALUM. HORIZONTAL ROLLER WDW. - SMI	FLANGE INSTALLATION		NTS		8 OF 15		HR375 "ESTATE"	
		FLANGE INSTALLATION		NTS		8 OF 15		HR375 "ESTATE"	
		FLANGE INSTALLATION		NTS		8 OF 15		HR375 "ESTATE"	
		FLANGE INSTALLATION		NTS		8 OF 15		HR375 "ESTATE"	

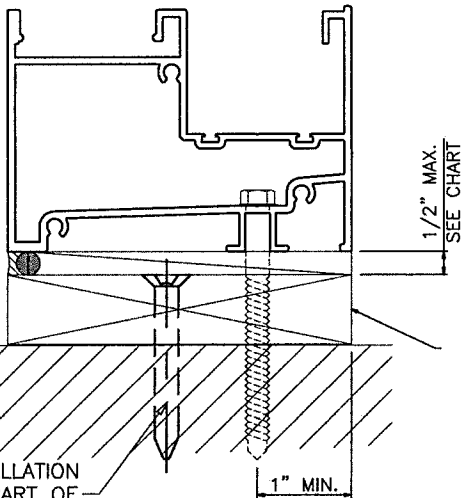


INSTALLATION CONDITIONS EQUAL LEG FRAME

EQUAL LEG INSTALLATION TYPE '1'
THRU 1 OR 2 BY WOOD BUCK



1 x 4 (OR 2 x 4) PRESSURE TREATED
WOOD BUCK (TYP)

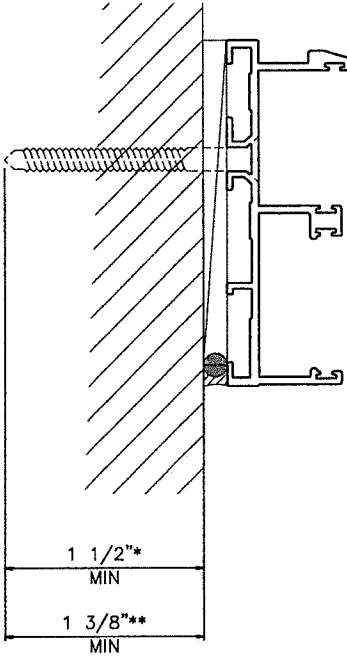
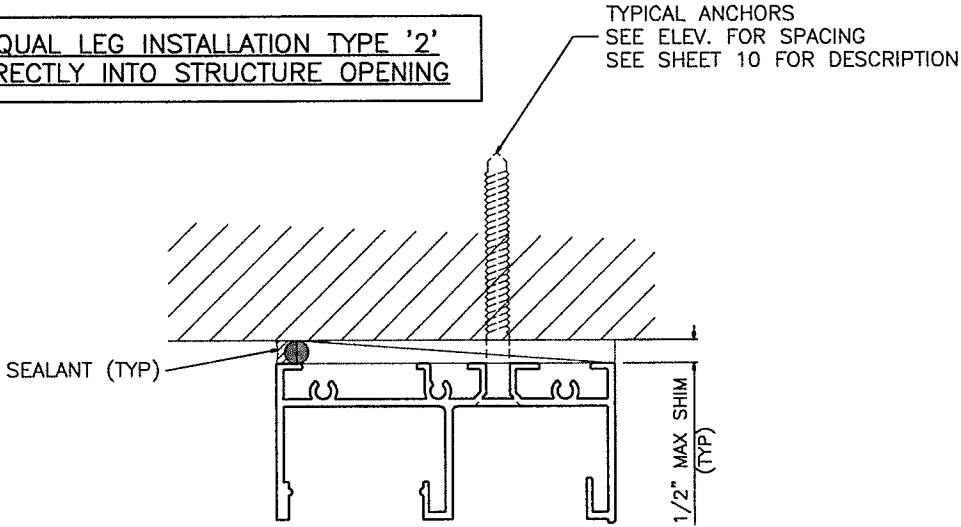


1 BY WOOD BUCK
OR 2 BY WOOD BUCK

*1 1/2" EMBEDMENT IN CONCRETE OR MASONRY
**1 3/8" EMBEDMENT INTO WOOD

WOOD BUCKS NOT BY CGI CORP., MUST SUSTAIN
LOADS IMPOSED BY GLAZING SYSTEM AND TRANSFER
THEM TO THE BUILDING STRUCTURE.

EQUAL LEG INSTALLATION TYPE '2'
DIRECTLY INTO STRUCTURE OPENING



*1 1/2" EMBEDMENT IN CONCRETE OR MASONRY
**1 3/8" EMBEDMENT INTO WOOD

WOOD STRUCTURES,
CONCRETE OR MASONRY

PRODUCT REVISED
as complying with the Florida
Building Code
NOA-No. **20-0610.06**
Expiration Date: **06/10/2024**
By: Isaac I. Chan
Miami-Dade Product Control

Revision:

PREPARED BY A. LYNN MILLER
1070 TECHNOLOGY DRIVE
N. VENICE, FL 34275
(941) 480-1600

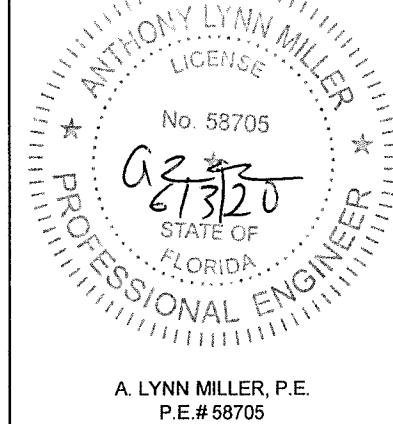
REGISTRATION #29296

**Impact Resistant
Windows & Doors**
WE'RE STRONGER™
CGI WINDOWS AND DOORS, INC.
3780 W 104TH STREET
HIALEAH, FL 33018
(305) 593-6590

375 ALUM. HORIZONTAL ROLLER VDW. - SMI

EQUAL LEG INSTALLATION

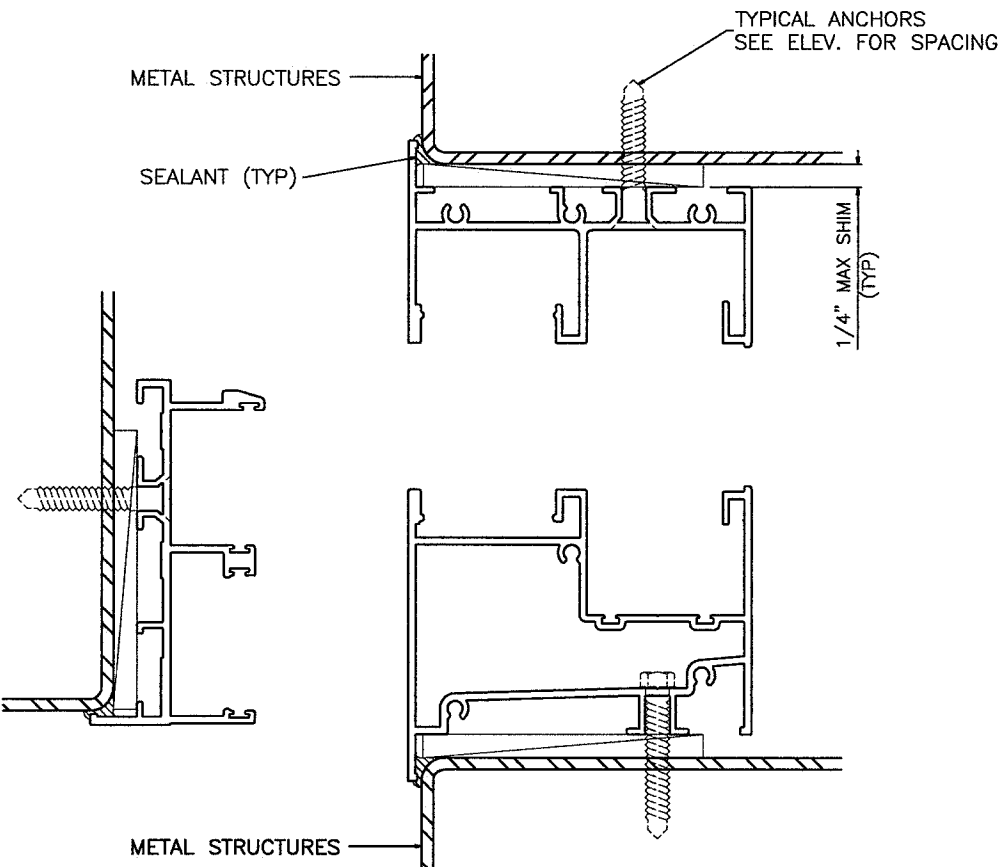
HR375 "ESTATE"



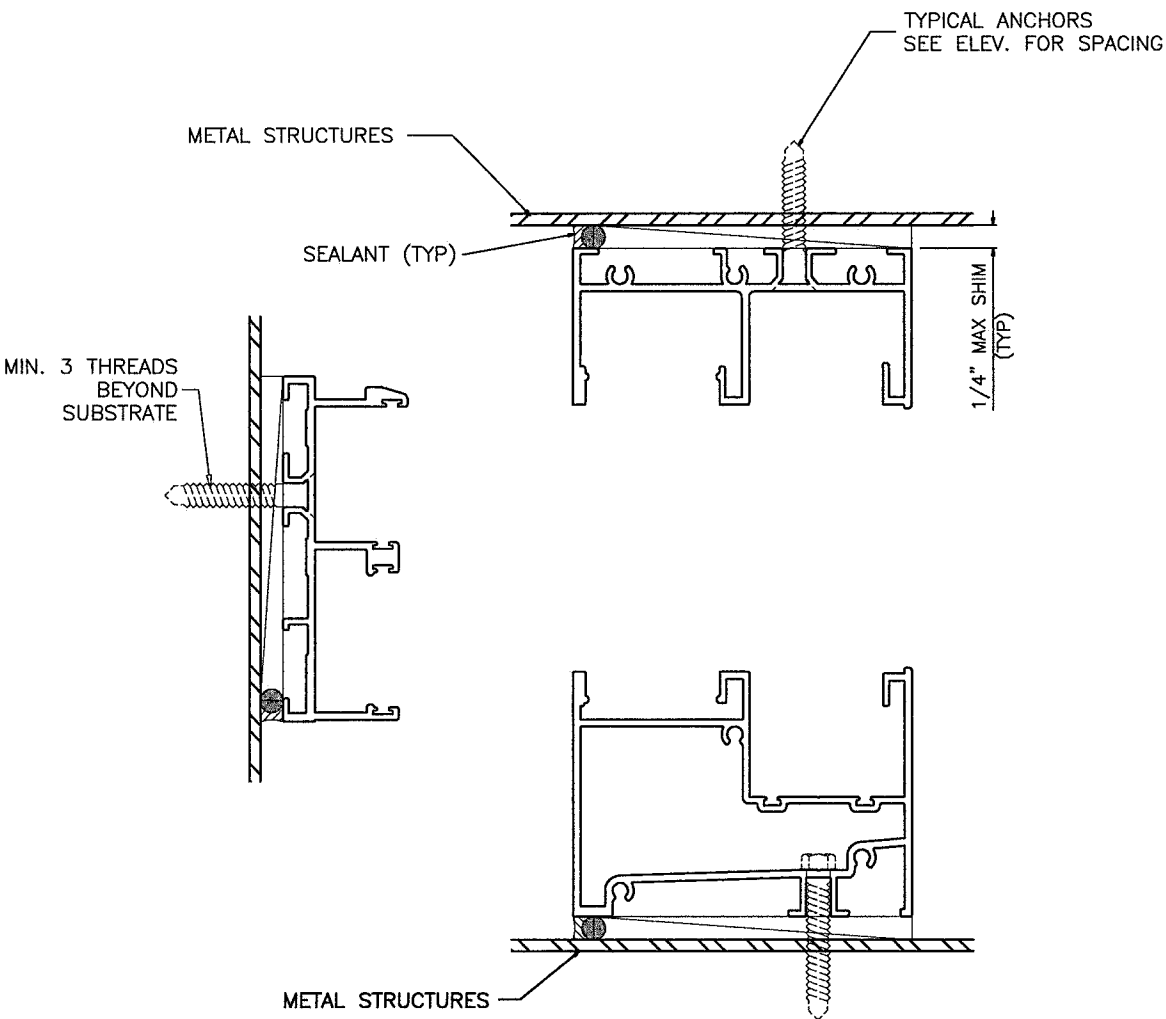
A. LYNN MILLER, P.E.
P.E.# 58705

INSTALLATION CONDITIONS METAL STRUCTURES

FLANGE FRAME INSTALLATION



EQUAL LEG FRAME INSTALLATION



TYPICAL ANCHORS: SEE ELEV. FOR SPACING

1/4" DIA. ULTRACON BY 'ELCO' (Fu=177 KSI, Fy=155 KSI)

1/4" DIA. HILTI KWIK-CON II (Fu=163 KSI, Fy=157 KSI)

INTO 2BY WOOD BUCKS OR WOOD STRUCTURES

1-1/2" MIN. PENETRATION INTO WOOD

THRU 1BY BUCKS INTO CONC. OR MASONRY

1-1/4" MIN. EMBED INTO CONCRETE (HEAD/SILL)

1-1/4" MIN. EMBED INTO CONC. OR MASONRY (JAMBS)

DIRECTLY INTO CONC. OR MASONRY

1-1/2" MIN. EMBED INTO CONCRETE (HEAD/SILL)

1-1/2" MIN. EMBED INTO CONC. OR MASONRY (JAMBS)

1/4" DIA. TEKS OR SELF DRILLING SCREWS (GRADE 5 CRS)

INTO MIAMI-DADE COUNTY APPROVED MULLIONS (MIN. THK. = .090")

INTO METAL STRUCTURES

STEEL : 12 GA. MIN. (Fy = 36 KSI MIN.)

ALUMINUM : 1/8" THK. MIN. (6063-T5 MIN.)

(STEEL IN CONTACT WITH ALUMINUM TO BE PLATED OR PAINTED)

1/4" DIA. ULTRACON+ BY 'DEWALT' (Fu=164 KSI, Fy=148 KSI)

(NOT APPLICABLE FOR SHIM THICKNESSES OVER 1/4".)

INTO 2BY WOOD BUCKS OR WOOD STRUCTURES

1-3/8" MIN. PENETRATION INTO WOOD

THRU 1BY BUCKS INTO CONC. OR MASONRY

1" MIN. EMBED INTO CONCRETE (HEAD/SILL)

1-1/4" MIN. EMBED INTO CONC. OR MASONRY (JAMBS)

DIRECTLY INTO CONC. OR MASONRY

1" MIN. EMBED INTO CONCRETE (HEAD/SILL)

1-1/4" MIN. EMBED INTO CONC. OR MASONRY (JAMBS)

TYPICAL EDGE DISTANCE

INTO CONCRETE AND MASONRY = 2-1/2" MIN.

INTO WOOD STRUCTURE = 1" MIN.

INTO METAL STRUCTURE = 3/4" MIN.

WOOD AT HEAD, SILL OR JAMBS SG = 0.55 MIN.

CONCRETE AT HEAD, SILL OR JAMBS f'c = 3000 PSI MIN.

C-90 FILLED BLOCK AT JAMBS f'm = 2000 PSI MIN.

PRODUCT REVISED
as complying with the Florida
Building Code
NOA-No. **20-0610.06**
Expiration Date: **06/10/2024**

By: Ishaq I. Chandra
Miami-Dade Product Control

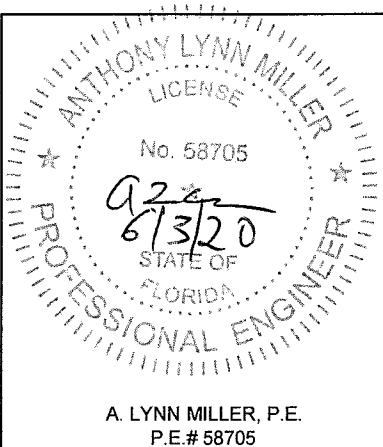
Revision: ADDED ANCHOR TYPE -
JR - 5/29/20

PREPARED BY A. LYNN MILLER
1070 TECHNOLOGY DRIVE
N. VENICE, FL 34275
(941) 480-1600

REGISTRATION #29296

Impact Resistant
Windows & Doors
WE'RE STRONGER™
CGI WINDOWS AND DOORS, INC.
3780 W 104TH STREET
HIALEAH, FL 33018
(305) 593-6590

Date	By	Dwg. No.	Sheet	Scale	Series
05/29/20	J ROSOWSKI	375SMNOA-1	10 OF 15	NTS	HR375 "ESTATE"
INSTALLATION INTO METAL					

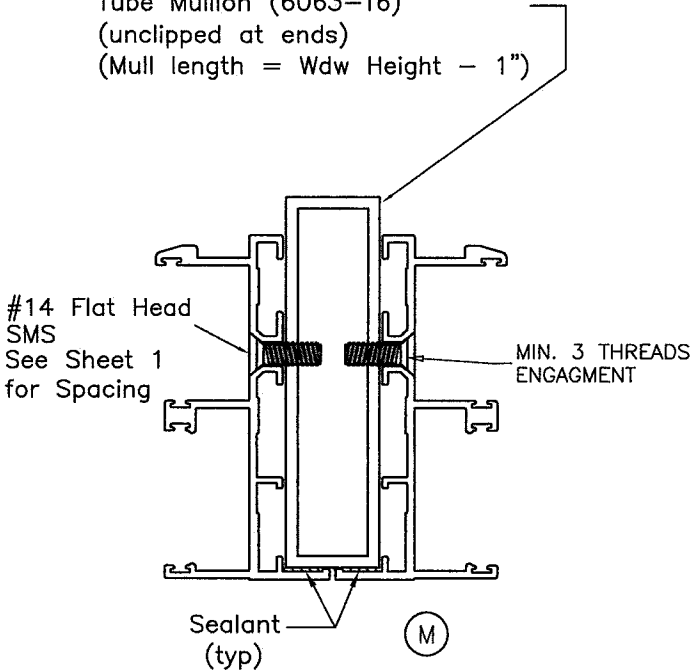


A. LYNN MILLER, P.E.
P.E.# 58705

MULLION PERFORMANCE

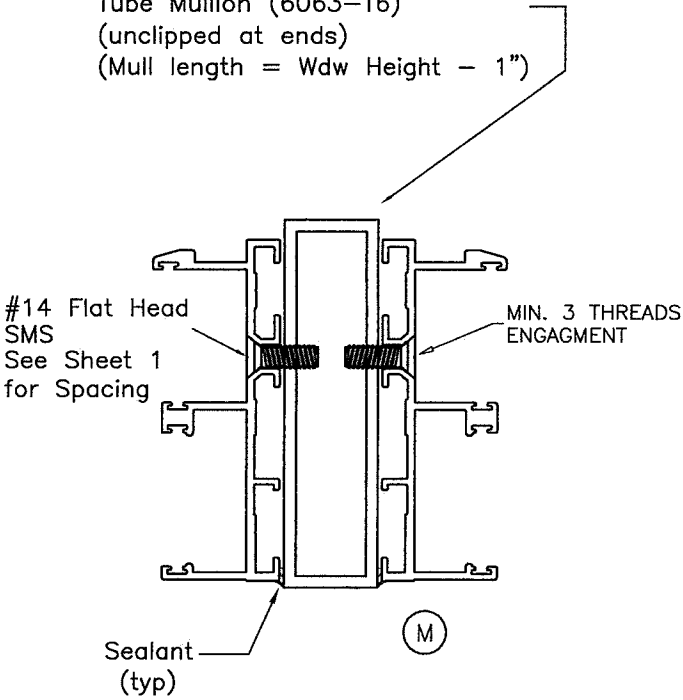
MULLION AT FLANGE WINDOWS

1" x 4" x 1/8" thk. Aluminum
Tube Mullion (6063-T6)
(unclipped at ends)
(Mull length = Wdw Height - 1")

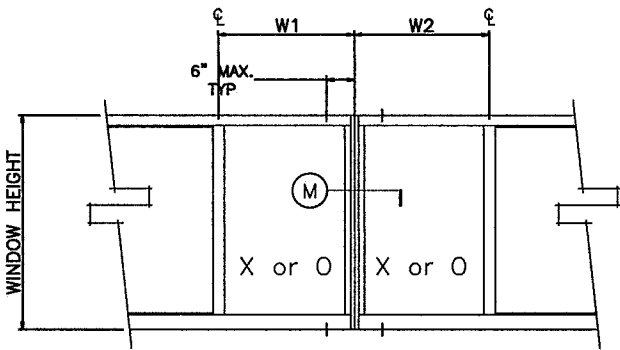


MULLION AT FLANGE WINDOWS

1" x 4" x 1/8" thk. Aluminum
Tube Mullion (6063-T6)
(unclipped at ends)
(Mull length = Wdw Height - 1")

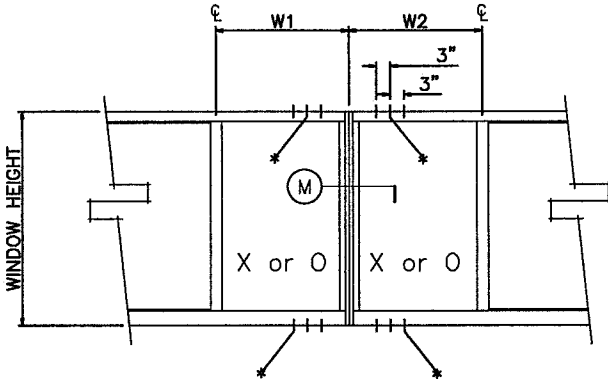


STANDARD INSTALLATION



MULTIPLE OPENING
(2 OR MORE WINDOWS)
w/ 1 SCREW ON EACH SIDE OF MULLION

HIGH LOAD INSTALLATION



MULTIPLE OPENING
(2 OR MORE WINDOWS)
w/ 2 OR 3 SCREWS ON EACH SIDE OF MULLION
(* = ADDITIONAL HOLES TO BE DRILLED BY
INSTALLER)

TRIBUTARY WIDTH = $\frac{W1 + W2}{2}$

MULLION DESIGN LOAD CAPACITY - PSF		
TRIBUTARY WIDTH	WINDOW HEIGHT	EXT.(+) INT.(-)
24"	54"	210.0
28"		210.0
30"		210.0
32"		210.0
36"		210.0
39"		210.0
40"		210.0
42"		210.0
44"		210.0
46"		210.0
48"		210.0
52"		210.0
24"	60"	210.0
28"		210.0
30"		210.0
32"		210.0
36"		210.0
39"		210.0
40"		210.0
42"		210.0
44"		210.0
46"		210.0
47"		210.0
24"	66"	210.0
28"		210.0
30"		210.0
32"		210.0
36"		210.0
39"		210.0
40"		210.0
42"		210.0

MULLION DESIGN LOAD CAPACITY - PSF		
TRIBUTARY WIDTH	WINDOW HEIGHT	EXT.(+) INT.(-)
24"	72"	210.0
28"		210.0
30"		210.0
32"		210.0
36"		210.0
39"		208.3
24"	76"	210.0
28"		210.0
30"		210.0
32"		206.8
36"		187.5
37"		183.4

All values shown are Design PSF
(Pounds per Square Foot)

MULLION DESIGN LOAD CAPACITY - PSF		
TRIBUTARY WIDTH	WINDOW HEIGHT	EXT.(+) INT.(-)
18"	38-3/8"	210.0
26-1/2"		210.0
37"		210.0
44"		210.0
56"		210.0
71"		210.0
18"	50-5/8"	210.0
26-1/2"		210.0
37"		210.0
44"		210.0
55"		210.0
18"	63"	210.0
26-1/2"		210.0
37"		210.0
44"		210.0
18"	72"	210.0
26-1/2"		210.0
37"		210.0
39"		208.3
18"	76"	210.0
26-1/2"		210.0
37"		183.4

NOTE:
VALUES FROM CHARTS MAY
BE INTERPOLATED BETWEEN SIZES

ALL VALUES SHOWN ARE DESIGN PSF
VALUES FOR EXT.(+) LOADS SHOWN ARE FOR
SILL WITH WATERBAR ADAPTER.
FOR WINDOWS WITHOUT WATERBAR ADAPTER
LIMIT EXT.(+) LOADS TO 80.0 PSF

PRODUCT REVISED
as complying with the Florida
Building Code
NOA-No. **20-0610.06**
Expiration Date: **06/10/2024**
By: Isaac I. Chanda
Miami-Dade Product Control

Revision:

PREPARED BY A. LYNN MILLER
1070 TECHNOLOGY DRIVE
N. VENICE, FL 34275
(941) 480-1600

REGISTRATION #29296

Impact Resistant
Windows & Doors
WE'RE STRONGER™
CGI WINDOWS AND DOORS, INC.
3780 W 104TH STREET
HALEAH, FL 33018
(305) 593-6590

Date 05/29/20

By J ROSOWSKI

No. 375SMNOA-1

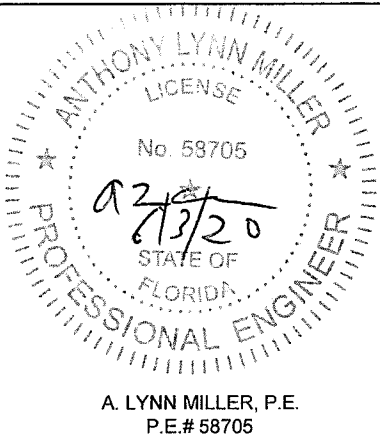
DWG 11 OF 15

Sheet

NTS

Scale

MULLION DP 1
HR375 "ESTATE"



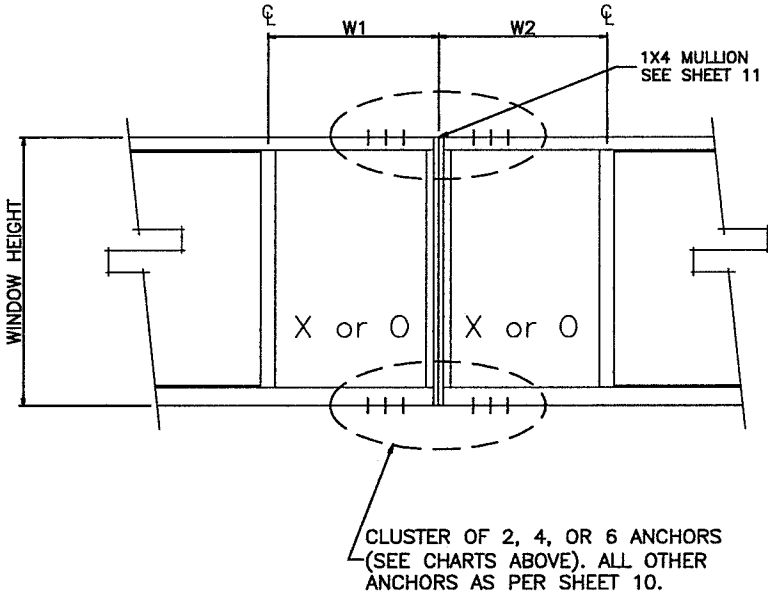
A. LYNN MILLER, P.E.
P.E.# 58705

PERFORMANCE VALUES OF UNCLIPPED MULLION ANCHORS EXT.(+) & INT.(-)										
TRIBUTARY WIDTH	WINDOW HEIGHT	1/4" MAX. SHIM SPACE			3/8" MAX. SHIM SPACE			1/2" MAX. SHIM SPACE		
		CLUSTER OF 2	CLUSTER OF 4	CLUSTER OF 6	CLUSTER OF 2	CLUSTER OF 4	CLUSTER OF 6	CLUSTER OF 2	CLUSTER OF 4	CLUSTER OF 6
24"	54"	107.6	210.0	210.0	89.3	178.7	210.0	69.3	138.7	208.0
28"		92.2	184.4	210.0	76.6	153.1	210.0	59.4	118.9	178.3
30"		86.0	172.1	210.0	71.5	142.9	210.0	55.5	110.9	166.4
32"		80.7	161.3	210.0	67.0	134.0	201.0	52.0	104.0	156.0
36"		71.7	143.4	210.0	59.6	119.1	178.7	46.2	92.4	138.7
48"		53.8	107.6	161.3	44.7	89.3	134.0	34.7	69.3	104.0
24"	60"	96.8	193.6	210.0	80.4	160.8	210.0	62.4	124.8	187.2
28"		83.0	165.9	210.0	68.9	137.8	206.7	53.5	107.0	160.5
30"		77.4	154.9	210.0	64.3	128.6	193.0	49.9	99.8	149.8
32"		72.6	145.2	210.0	60.3	120.6	180.9	46.8	93.6	140.4
36"		64.5	129.1	193.6	53.6	107.2	160.8	41.6	83.2	124.8
24"	66"	88.0	176.0	210.0	73.1	146.2	210.0	56.7	113.5	170.2
28"		75.4	150.9	210.0	62.6	125.3	187.9	48.6	97.2	145.9
30"		70.4	140.8	210.0	58.5	116.9	175.4	45.4	90.8	136.1
32"		66.0	132.0	198.0	54.8	109.6	164.5	42.5	85.1	127.6
36"		58.7	117.3	176.0	48.7	97.5	146.2	37.8	75.6	113.5
24"	72"	80.7	161.3	210.0	67.0	134.0	201.0	52.0	104.0	156.0
28"		69.1	138.3	207.4	57.4	114.9	172.3	44.6	89.1	133.7
30"		64.5	129.1	193.6	53.6	107.2	160.8	41.6	83.2	124.8
32"		60.5	121.0	181.5	50.3	100.5	150.8	39.0	78.0	117.0
36"		53.8	107.6	161.3	44.7	89.3	134.0	34.7	69.3	104.0
24"	76"	76.4	152.8	210.0	63.5	126.9	190.4	49.3	98.5	147.8
28"		65.5	131.0	196.5	54.4	108.8	163.2	42.2	84.5	126.7
30"		61.1	122.3	183.4	50.8	101.6	152.3	39.4	78.8	118.2
32"		57.3	114.6	171.9	47.6	95.2	142.8	36.9	73.9	110.8
36"		50.9	101.9	152.8	42.3	84.6	126.9	32.8	65.7	98.5

All values shown are Design PSF (Pounds per Square Foot)

PERFORMANCE VALUES OF UNCLIPPED MULLION ANCHORS EXT.(+) & INT.(-)										
TRIBUTARY WIDTH	WINDOW HEIGHT	1/4" MAX. SHIM SPACE			3/8" MAX. SHIM SPACE			1/2" MAX. SHIM SPACE		
		CLUSTER OF 2	CLUSTER OF 4	CLUSTER OF 6	CLUSTER OF 2	CLUSTER OF 4	CLUSTER OF 6	CLUSTER OF 2	CLUSTER OF 4	CLUSTER OF 6
18"	38-3/8"	201.8	210.0	210.0	167.6	210.0	210.0	130.1	210.0	210.0
26-1/2'		137.1	210.0	210.0	113.8	210.0	210.0	88.4	176.7	210.0
37"		98.2	196.3	210.0	81.5	163.1	210.0	63.3	126.6	189.9
44"		82.6	165.1	210.0	68.6	137.1	205.7	53.2	106.4	159.6
56"		64.9	129.7	194.6	53.9	107.7	161.6	41.8	83.6	125.4
71"		51.2	102.3	153.5	42.5	85.0	127.5	33.0	66.0	98.9
18"	50-5/8"	153.0	210.0	210.0	127.1	210.0	210.0	98.6	197.2	210.0
26-1/2'		103.9	207.8	210.0	86.3	172.6	210.0	67.0	134.0	200.9
37"		74.4	148.8	210.0	61.8	123.6	185.4	48.0	95.9	143.9
44"		62.6	125.2	187.7	52.0	104.0	155.9	40.3	80.7	121.0
18"	63"	122.9	210.0	210.0	102.1	204.2	210.0	79.2	158.5	210.0
26-1/2'		83.5	167.0	210.0	69.3	138.7	208.0	53.8	107.6	161.5
37"		59.8	119.6	179.4	49.7	99.3	149.0	38.5	77.1	115.6
44"		50.3	100.6	150.9	41.8	83.5	125.3	32.4	64.8	97.2
18"	72"	107.6	210.0	210.0	89.3	178.7	210.0	69.3	138.7	208.0
26-1/2'		73.1	146.1	210.0	60.7	121.4	182.0	47.1	94.2	141.3
37"		52.3	104.6	157.0	43.5	86.9	130.4	33.7	67.5	101.2
18"	76"	101.9	203.8	210.0	84.6	169.3	210.0	65.7	131.4	197.1
26-1/2'		69.2	138.4	207.6	57.5	115.0	172.5	44.6	89.2	133.8
37"		49.6	99.1	148.7	41.2	82.3	123.5	32.0	63.9	95.9

TRIBUTARY WIDTH = $\frac{W1 + W2}{2}$



NOTE:
VALUES FROM CHARTS MAY
BE INTERPOLATED BETWEEN SIZES

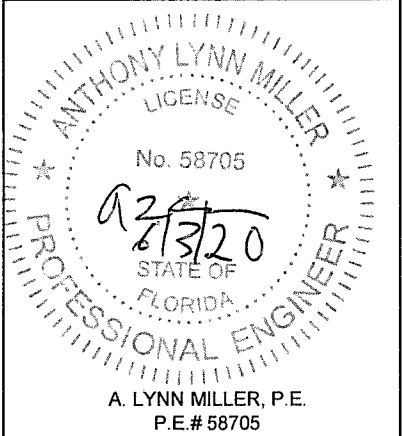
ALL VALUES SHOWN ARE DESIGN PSF
VALUES FOR EXT.(+) LOADS SHOWN ARE FOR
SILL WITH WATERBAR ADAPTER.
FOR WINDOWS WITHOUT WATERBAR ADAPTER
LIMIT EXT.(+) LOADS TO 80.0 PSF

PRODUCT REVISED
as complying with the Florida
Building Code
NOA-No. **20-0610.06**
Expiration Date: **06/10/2024**
By: Ishag I. Chank
Miami-Dade Product Control

**MULLION ANCHORS
ADJACENT TO MULLIONS AT HEAD & SILL
ALL OTHER WINDOW ANCHORS
AS PER SHEETS 8 THRU 11**

Revision:

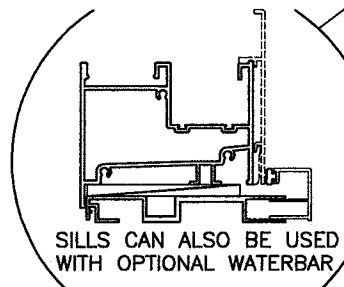
PREPARED BY A. LYNN MILLER 1070 TECHNOLOGY DRIVE N. VENICE, FL 34275 (941) 480-1600	REGISTRATION #29296		J ROSOWSKI	375SMNOA-1	A		
	05/29/20						
Impact Resistant Windows & Doors WERE STRONGER™ CGI WINDOWS AND DOORS, INC. 3780 W 104TH STREET HIALEAH, FL 33018 (305) 593-6590	375 ALUM. HORIZONTAL ROLLER WDW. - SMI		MULLION DP 2	12 OF 15	NTS		
	Date						
CGI			HR375 "ESTATE"				
CGI			Scale				
CGI			Series				



PERFORMANCE VALUES OF ALUMINUM BUCK INSTALLATION ANCHORS EXT.(+) & INT.(-)							
WINDOW DIMS.		ANCHORS AT 16" O.C.			ANCHORS AT 8" O.C.		
WIDTH	HEIGHT	BLOCK	CONC.	WOOD	BLOCK	CONC.	WOOD
36"	36"	160.0	210.0	200.0	210.0	210.0	210.0
48"		128.0	210.0	160.0	192.0	210.0	210.0
56"		101.1	176.8	126.3	176.8	210.0	210.0
60"		91.4	160.0	114.3	160.0	210.0	200.0
64"		104.3	182.6	130.4	167.0	210.0	208.7
72"		88.9	155.6	111.1	160.0	210.0	200.0
80"		92.9	162.6	116.1	154.8	210.0	193.5
84"		87.3	152.7	109.1	145.5	210.0	181.8
88"		82.3	144.0	102.9	150.9	210.0	188.6
96"		86.2	150.8	107.7	147.7	210.0	184.6
108"		74.7	130.7	93.3	138.7	210.0	173.3
112"		81.7	143.0	102.1	143.0	210.0	178.7
117"		77.6	135.8	97.0	145.5	210.0	181.8
126"		80.0	140.0	100.0	142.2	210.0	177.8
144"		76.2	133.3	95.2	137.1	210.0	171.4
36"	48"	128.0	210.0	160.0	192.0	210.0	210.0
48"		120.0	210.0	150.0	180.0	210.0	210.0
56"		90.0	157.5	112.5	157.5	210.0	196.9
60"		80.0	140.0	100.0	140.0	210.0	175.0
64"		90.0	157.5	112.5	144.0	210.0	180.0
72"		75.0	131.3	93.8	135.0	210.0	168.8
80"		77.1	135.0	96.4	128.6	210.0	160.7
84"		72.0	126.0	90.0	120.0	210.0	150.0
88"		67.5	118.1	84.4	123.8	210.0	154.7
96"		70.0	122.5	87.5	120.0	210.0	150.0
108"		60.0	105.0	75.0	111.4	195.0	139.3
112"		65.5	114.5	81.8	114.5	200.5	143.2
117"		61.9	108.4	77.4	116.1	203.2	145.2
126"		63.5	111.2	79.4	112.9	197.6	141.2
144"		60.0	105.0	75.0	108.0	189.0	135.0
36"	54"	106.7	186.7	133.3	186.7	210.0	210.0
48"		96.0	168.0	120.0	168.0	210.0	210.0
56"		88.3	154.5	110.3	154.5	210.0	193.1
60"		77.6	135.8	97.0	135.8	210.0	169.7
64"		86.5	151.4	108.1	138.4	210.0	173.0
72"		71.1	124.4	88.9	128.0	210.0	160.0
80"		72.5	126.8	90.6	120.8	210.0	150.9
84"		67.4	117.9	84.2	112.3	196.5	140.4
88"		63.0	110.2	78.7	115.4	202.0	144.3
96"		64.9	113.6	81.2	111.3	194.8	139.1
108"		55.3	96.8	69.1	102.7	179.8	128.4
112"		60.2	105.4	75.3	105.4	184.5	131.8
117"		56.9	99.6	71.1	106.7	186.7	133.3
126"		58.2	101.8	72.7	103.4	181.0	129.3
144"		54.7	95.7	68.4	98.5	172.3	123.1
36"	60"	91.4	160.0	114.3	160.0	210.0	200.0
48"		80.0	140.0	100.0	140.0	210.0	175.0
56"		77.1	135.0	96.4	135.0	210.0	168.8
60"		76.8	134.4	96.0	134.4	210.0	168.0
64"		76.8	134.4	96.0	134.4	210.0	168.0
72"		68.6	120.0	85.7	123.4	210.0	154.3
80"		69.1	121.0	86.4	115.2	201.6	144.0
84"		64.0	112.0	80.0	106.7	186.7	133.3
88"		59.6	104.3	74.5	109.2	191.2	136.6
96"		61.1	106.9	76.4	104.7	183.3	130.9
108"		51.7	90.5	64.6	96.0	168.0	120.0
112"		56.2	98.3	70.2	98.3	172.1	122.9
117"		53.0	92.7	66.2	99.3	173.8	124.1
126"		54.0	94.5	67.5	96.0	168.0	120.0

PERFORMANCE VALUES OF ALUMINUM BUCK INSTALLATION ANCHORS EXT.(+) & INT.(-)							
WINDOW DIMS.		ANCHORS AT 16" O.C.			ANCHORS AT 8" O.C.		
WIDTH	HEIGHT	BLOCK	CONC.	WOOD	BLOCK	CONC.	WOOD
36"	66"	100.0	175.0	125.0	160.0	210.0	200.0
48"		85.7	150.0	107.1	137.1	210.0	171.4
56"		81.2	142.1	101.5	129.9	210.0	162.4
60"		76.8	134.4	96.0	128.0	210.0	160.0
64"		79.4	139.0	99.3	127.1	210.0	158.8
72"		67.1	117.5	83.9	120.8	210.0	151.0
80"		66.8	117.0	83.6	111.4	195.0	139.3
84"		61.6	107.8	77.0	102.7	179.7	128.3
88"		57.1	100.0	71.4	104.7	183.3	130.9
96"		58.2	101.8	72.7	99.7	174.5	124.7
108"		48.9	85.5	61.1	90.8	158.8	113.5
112"		53.0	92.8	66.3	92.8	162.4	116.0
117"		49.9	87.3	62.3	93.5	163.6	116.9
36"	72"	88.9	155.6	111.1	160.0	210.0	200.0
48"		75.0	131.3	93.8	135.0	210.0	168.8
56"		70.1	122.7	87.7	126.2	210.0	157.8
60"		68.6	120.0	85.7	123.4	210.0	154.3
64"		67.5	118.1	84.4	121.5	210.0	151.9
72"		66.7	116.7	83.3	120.0	210.0	150.0
80"		65.5	114.5	81.8	109.1	190.9	136.4
84"		60.0	105.0	75.0	100.0	175.0	125.0
88"		55.4	96.9	69.2	101.5	177.7	126.9
96"		56.0	98.0	70.0	96.0	168.0	120.0
108"		46.7	81.7	58.3	86.7	151.7	108.3
112"		50.5	88.4	63.2	88.4	154.7	110.5
36"	76"	82.8	144.8	103.4	149.0	210.0	186.2
48"		69.2	121.2	86.5	124.6	210.0	155.8
56"		64.3	112.5	80.4	115.7	202.5	144.6
60"		62.6	109.6	78.3	112.7	197.2	140.9
64"		61.4	107.4	76.7	110.5	193.3	138.1
72"		60.0	105.0	75.0	108.0	189.0	135.0
80"		59.8	104.7	74.8	107.7	188.5	134.6
84"		59.3	103.8	74.1	98.9	173.0	123.6
88"		54.6	95.5	68.2	100.0	175.1	125.1
96"		54.9	96.0	68.6	94.1	164.6	117.6
108"		45.5	79.6	56.8	84.5	147.8	105.6

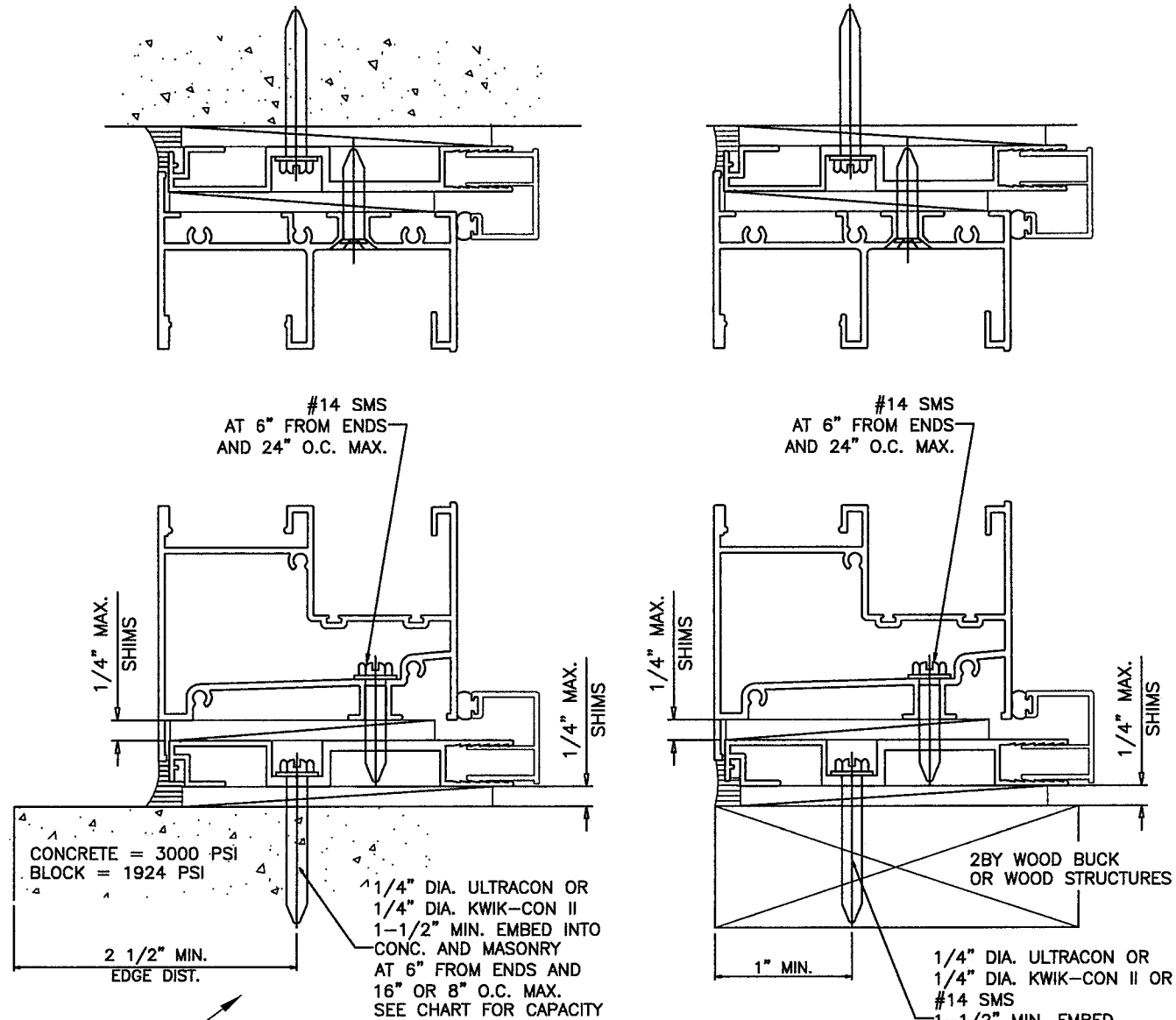
NOTE:
VALUES FROM CHARTS MAY
BE INTERPOLATED BETWEEN SIZES
ALL VALUES SHOWN ARE DESIGN PSF
VALUES FOR EXT.(+) LOADS SHOWN ARE FOR
SILL WITH WATERBAR ADAPTER.
FOR WINDOWS WITHOUT WATERBAR ADAPTER
LIMIT EXT.(+) LOADS TO 80.0 PSF



SILLS CAN ALSO BE USED
WITH OPTIONAL WATERBAR

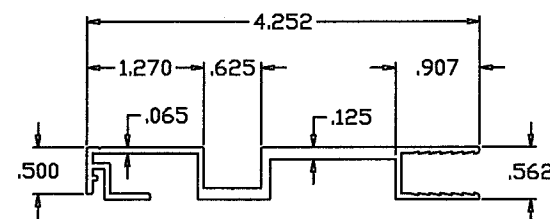
ALUMINUM BUCK FRAMING DETAILS

REFER TO SHEETS 4 & 6 FOR WINDOW CAPACITIES
USE LOWER APPLICABLE VALUES.

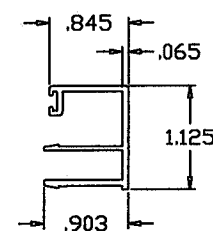


TYPICAL INSTALLATION DETAIL
ON ALL FOUR SIDES/USING ALUMINUM BUCK SYSTEM

PRODUCT REVISED
as complying with the Florida
Building Code
NOA-No. **20-0610.06**
Expiration Date: **06/10/2024**
By: Isahay I. Chandra
Miami-Dade Product Control



ALUMINUM BUCK
6063-T6

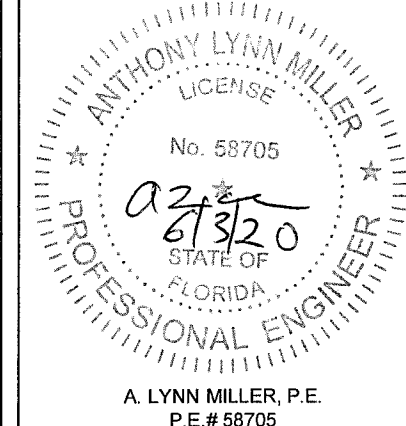


OPTIONAL COVER
6063-T6

Revision:

PREPARED BY A. LYNN MILLER
1070 TECHNOLOGY DRIVE
N. VENICE, FL 34275
(941) 480-1600

Impact Resistant
Windows & Doors
WE'RE STRONGER™
CGI WINDOWS AND DOORS, INC.
3780 W 104TH STREET
HALEAH, FL 33018
(305) 593-6590



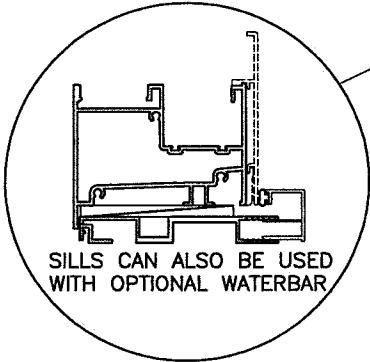
05/29/20	J ROSOWSKI	375SMNOA-1	A
Date	By	No.	Rev.
REGISTRATION #29296	ALUM BUCK DP 1	DWG	
375 ALUM. HORIZONTAL ROLLER WDW. - SMI		13 OF 15	
		Sheet	
		NTS	
		Scale	
		HR375 "ESTATE"	
		Series	

PERFORMANCE VALUES OF ALUMINUM BUCK INSTALLATION ANCHORS EXT.(+) & INT.(-)							
WINDOW DIMS.		ANCHORS AT 16" O.C.			ANCHORS AT 8" O.C.		
WIDTH	HEIGHT	BLOCK	CONC.	WOOD	BLOCK	CONC.	WOOD
26-1/2"	38-3/8"	155.7	210.0	194.6	210.0	210.0	210.0
53-1/8"		106.1	185.8	132.7	185.8	210.0	210.0
79-11/16"		89.3	156.3	111.6	148.9	210.0	186.1
106-1/4"		72.4	126.7	90.5	134.5	210.0	168.1
111"		78.5	137.3	98.1	137.3	210.0	171.7
119-1/4"	50-5/8"	72.0	126.0	90.0	135.0	210.0	168.8
159-3/8"		70.7	123.7	88.3	128.5	210.0	160.6
26-1/2"		139.6	210.0	174.5	209.4	210.0	210.0
53-1/8"		98.2	171.8	122.7	161.8	210.0	202.3
79-11/16"		75.3	131.8	94.2	125.5	210.0	156.9
106-1/4"	63"	59.0	103.3	73.8	109.6	191.9	137.1
111"		63.7	111.5	79.7	111.5	195.2	139.4
119-1/4"		58.1	101.7	72.7	109.0	190.8	136.3
159-3/8"		56.0	98.0	70.0	101.8	178.2	127.3
26-1/2"		131.1	210.0	163.8	209.7	210.0	210.0
53-1/8"	72"	89.3	156.2	111.6	142.8	210.0	178.5
79-11/16"		68.3	119.5	85.4	113.8	199.2	142.3
106-1/4"		51.4	89.9	64.2	95.4	167.0	119.3
111"		55.2	96.6	69.0	96.6	169.1	120.8
119-1/4"		50.0	87.5	62.5	93.8	164.1	117.2
26-1/2"	76"	111.0	194.2	138.7	199.8	210.0	210.0
53-1/8"		71.6	125.3	89.5	128.9	210.0	161.1
79-11/16"		65.9	115.4	82.4	109.9	192.3	137.3
106-1/4"		47.8	83.7	59.8	88.8	155.4	111.0
111"		51.2	89.6	64.0	89.6	156.8	112.0
26-1/2"		103.9	181.9	129.9	187.0	210.0	210.0
53-1/8"		65.8	115.1	82.2	118.4	207.3	148.0
79-11/16"		59.8	104.7	74.8	107.7	188.5	134.6
106-1/4"		46.6	81.6	58.3	86.6	151.6	108.3
111"		49.8	87.2	62.3	87.2	152.6	109.0

All values shown are Design PSF (Pounds per Square Foot)

NOTE:
VALUES FROM CHARTS MAY
BE INTERPOLATED BETWEEN SIZES

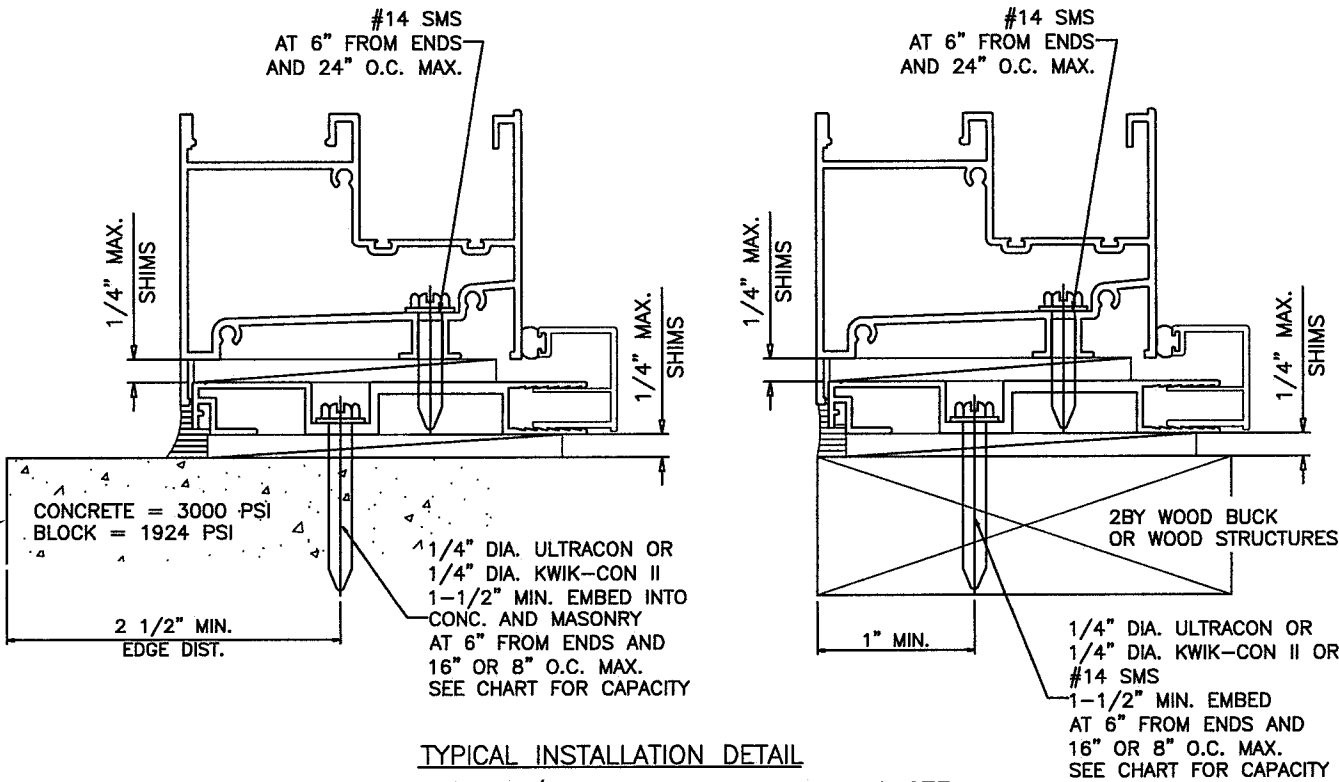
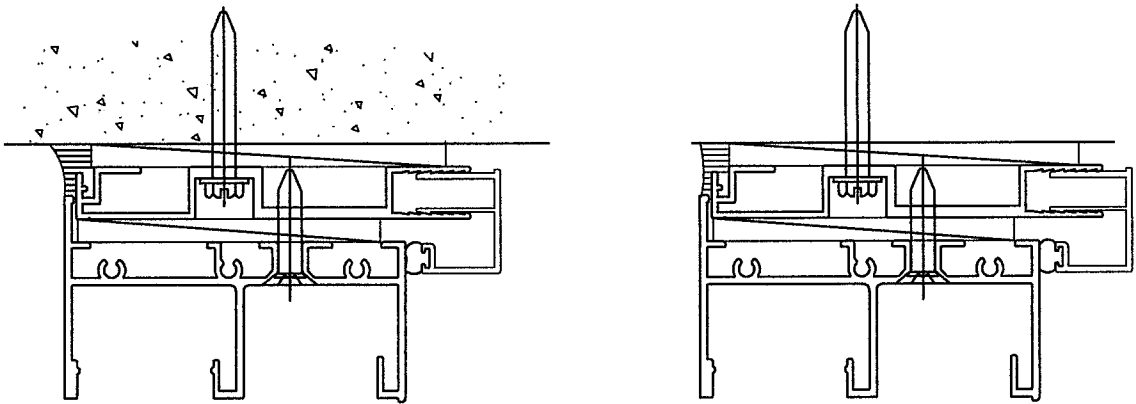
ALL VALUES SHOWN ARE DESIGN PSF
VALUES FOR EXT.(+) LOADS SHOWN ARE FOR
SILL WITH WATERBAR ADAPTER.
FOR WINDOWS WITHOUT WATERBAR ADAPTER
LIMIT EXT.(+) LOADS TO 80.0 PSF



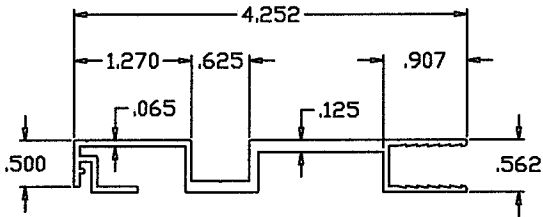
PRODUCT REVISED
as complying with the Florida
Building Code
NOA-No. **20-0610.06**
Expiration Date: **06/10/2024**
By: Ismael I. Chande
Miami-Dade Product Control

ALUMINUM BUCK FRAMING DETAILS

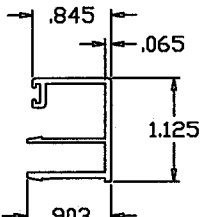
REFER TO SHEETS 4 & 6 FOR WINDOW CAPACITIES
USE LOWER APPLICABLE VALUES.



TYPICAL INSTALLATION DETAIL
ON ALL FOUR SIDES/USING ALUMINUM BUCK SYSTEM



ALUMINUM BUCK
6063-T6



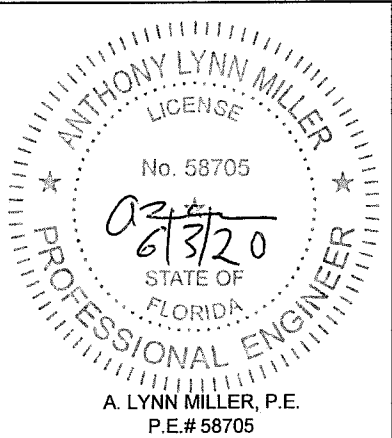
OPTIONAL COVER
6063-T6

Revision:

PREPARED BY A. LYNN MILLER
1070 TECHNOLOGY DRIVE
N. VENICE, FL 34275
(941) 480-1600

Impact Resistant
Windows & Doors
WE'RE STRONGER™
CGI WINDOWS AND DOORS, INC.
3780 W 104TH STREET
HIALEAH, FL 33018
(305) 593-6590

REGISTRATION #29296					
(305) 593-6590					
375 ALUM. HORIZONTAL ROLLER WDW. - SMI		Date	05/29/20		
ALUM BUCK DP 2		Drawn By	J ROSOWSKI		
Series	HR375 "ESTATE"	Scale	NTS	Sheet	14 OF 15
DWG	No	375SMNOA-1		Rev.	A



PERFORMANCE VALUES OF ALUMINUM BUCK ANCHORS AT MULLION JOINTS EXT.(+) & INT.(-)										
TRIBUTARY WIDTH	WINDOW HEIGHT	ANCHORS INTO BLOCK			ANCHORS INTO CONCRETE			ANCHORS INTO WOOD		
		CLUSTER OF 2	CLUSTER OF 4	CLUSTER OF 6	CLUSTER OF 2	CLUSTER OF 4	CLUSTER OF 6	CLUSTER OF 2	CLUSTER OF 4	CLUSTER OF 6
24"	54"	53.3	106.7	160.0	93.3	186.7	210.0	66.7	133.3	200.0
28"		45.7	91.4	137.1	80.0	160.0	210.0	57.1	114.3	171.4
32"		40.0	80.0	120.0	70.0	140.0	210.0	50.0	100.0	150.0
36"		35.6	71.1	106.7	62.2	124.4	186.7	44.4	88.9	133.3
39"		32.8	65.6	98.5	57.4	114.9	172.3	41.0	82.1	123.1
40"		32.0	64.0	96.0	56.0	112.0	168.0	40.0	80.0	120.0
42"		30.5	61.0	91.4	53.3	106.7	160.0	38.1	76.2	114.3
44"		29.1	58.2	87.3	50.9	101.8	152.7	36.4	72.7	109.1
46"		27.8	55.7	83.5	48.7	97.4	146.1	34.8	69.6	104.3
48"		26.7	53.3	80.0	46.7	93.3	140.0	33.3	66.7	100.0
52"		24.6	49.2	73.8	43.1	86.2	129.2	30.8	61.5	92.3
24"	60"	48.0	96.0	144.0	84.0	168.0	210.0	60.0	120.0	180.0
28"		41.1	82.3	123.4	72.0	144.0	210.0	51.4	102.9	154.3
32"		36.0	72.0	108.0	63.0	126.0	189.0	45.0	90.0	135.0
36"		32.0	64.0	96.0	56.0	112.0	168.0	40.0	80.0	120.0
39"		29.5	59.1	88.6	51.7	103.4	155.1	36.9	73.8	110.8
40"		28.8	57.6	86.4	50.4	100.8	151.2	36.0	72.0	108.0
42"		27.4	54.9	82.3	48.0	96.0	144.0	34.3	68.6	102.9
44"		26.2	52.4	78.5	45.8	91.6	137.5	32.7	65.5	98.2
46"		25.0	50.1	75.1	43.8	87.7	131.5	31.3	62.6	93.9
24"	66"	43.6	87.3	130.9	76.4	152.7	210.0	54.5	109.1	163.6
28"		37.4	74.8	112.2	65.5	130.9	196.4	46.8	93.5	140.3
32"		32.7	65.5	98.2	57.3	114.5	171.8	40.9	81.8	122.7
36"		29.1	58.2	87.3	50.9	101.8	152.7	36.4	72.7	109.1
39"		26.9	53.7	80.6	47.0	94.0	141.0	33.6	67.1	100.7
40"		26.2	52.4	78.5	45.8	91.6	137.5	32.7	65.5	98.2
24"	72"	40.0	80.0	120.0	70.0	140.0	210.0	50.0	100.0	150.0
28"		34.3	68.6	102.9	60.0	120.0	180.0	42.9	85.7	128.6
32"		30.0	60.0	90.0	52.5	105.0	157.5	37.5	75.0	112.5
36"		26.7	53.3	80.0	46.7	93.3	140.0	33.3	66.7	100.0
39"		24.6	49.2	73.8	43.1	86.2	129.2	30.8	61.5	92.3
24"	76"	37.9	75.8	113.7	66.3	132.6	198.9	47.4	94.7	142.1
28"		32.5	65.0	97.4	56.8	113.7	170.5	40.6	81.2	121.8
32"		28.4	56.8	85.3	49.7	99.5	149.2	35.5	71.1	106.6
36"		25.3	50.5	75.8	44.2	88.4	132.6	31.6	63.2	94.7

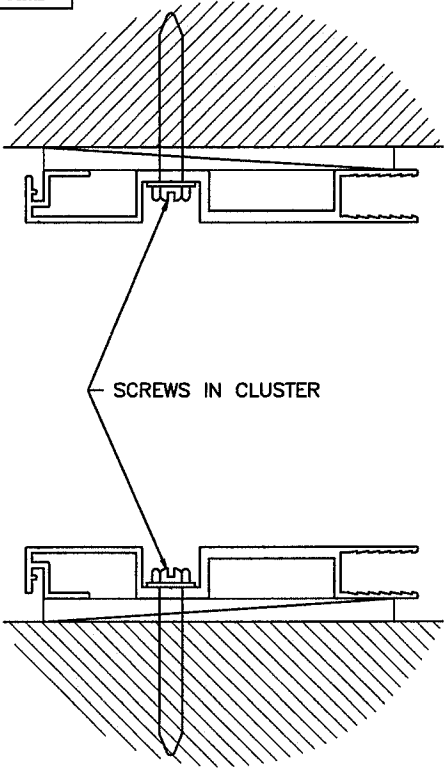
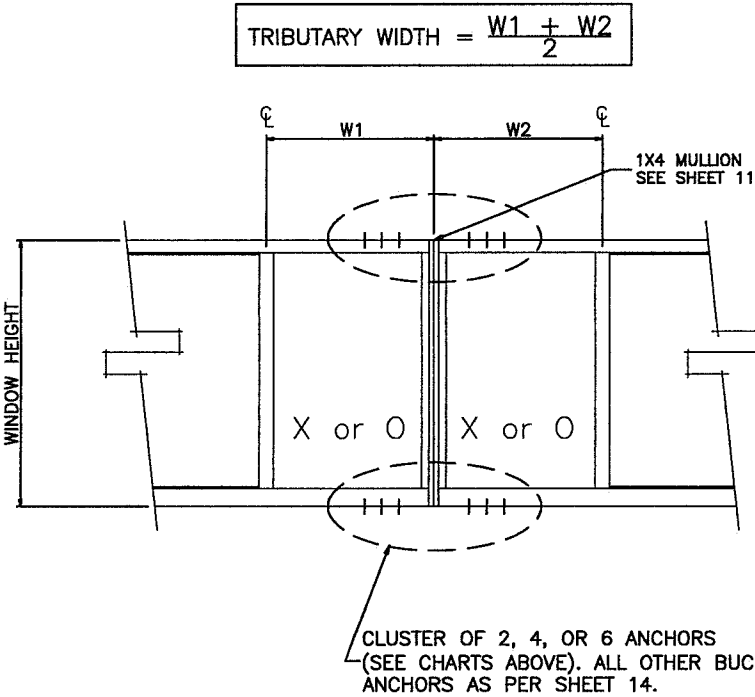
All values shown are Design PSF (Pounds per Square Foot)

NOTE:
ALUMINUM BUCKS ARE SUPPLIED WITH
CLUSTER OF 2 (1 SCREW HOLE PER SIDE) STANDARD.
EXTRA HOLES MUST BE FIELD DRILLED IF REQUIRED.

ALL VALUES SHOWN ARE DESIGN PSF
VALUES FOR EXT.(+) LOADS SHOWN ARE FOR
SILL WITH WATERBAR ADAPTER.
FOR WINDOWS WITHOUT WATERBAR ADAPTER
LIMIT EXT.(+) LOADS TO 80.0 PSF

VALUES FROM CHARTS MAY
BE INTERPOLATED BETWEEN SIZES

PERFORMANCE VALUES OF ALUMINUM BUCK ANCHORS AT MULLION JOINTS EXT.(+) & INT.(-)										
TRIBUTARY WIDTH	WINDOW HEIGHT	ANCHORS INTO BLOCK			ANCHORS INTO CONCRETE			ANCHORS INTO WOOD		
		CLUSTER OF 2	CLUSTER OF 4	CLUSTER OF 6	CLUSTER OF 2	CLUSTER OF 4	CLUSTER OF 6	CLUSTER OF 2	CLUSTER OF 4	CLUSTER OF 6
18"	38-3/8"	100.1	200.1	210.0	175.1	210.0	210.0	125.1	210.0	210.0
26-1/2'		68.0	135.9	203.9	118.9	210.0	210.0	85.0	169.9	210.0
37"		48.7	97.4	146.0	85.2	170.4	210.0	60.9	121.7	182.6
44"		40.9	81.9	122.8	71.6	143.3	210.0	51.2	102.3	153.5
56"		32.2	64.3	96.5	56.3	112.6	168.9	40.2	80.4	120.6
71"		25.4	50.7	76.1	44.4	88.8	133.2	31.7	63.4	95.1
18"	50-5/8"	75.9	151.7	210.0	132.7	210.0	210.0	94.8	189.6	210.0
26-1/2'		51.5	103.0	154.6	90.2	180.3	210.0	64.4	128.8	193.2
37"		36.9	73.8	110.7	64.6	129.2	193.7	46.1	92.3	138.4
44"		31.0	62.1	93.1	54.3	108.6	162.9	38.8	77.6	116.4
18"	63"	61.0	121.9	182.9	106.7	210.0	210.0	76.2	152.4	210.0
26-1/2'		41.4	82.8	124.2	72.5	144.9	210.0	51.8	103.5	155.3
37"		29.7	59.3	89.0	51.9	103.8	155.7	37.1	74.1	111.2
44"		24.9	49.9	74.8	43.6	87.3	130.9	31.2	62.3	93.5
18"	72"	53.3	106.7	160.0	93.3	186.7	210.0	66.7	133.3	200.0
26-1/2'		36.2	72.5	108.7	63.4	126.8	190.2	45.3	90.6	135.8
37"		25.9	51.9	77.8	45.4	90.8	136.2	32.4	64.9	97.3
18"	76"	50.5	101.1	151.6	88.4	176.8	210.0	63.2	126.3	189.5
26-1/2'		34.3	68.6	103.0	60.1	120.1	180.2	42.9	85.8	128.7
37"		24.6	49.2	73.7	43.0	86.0	129.0	30.9	61.5	92.2



**ALUMINUM BUCK ANCHORS
ADJACENT TO MULLIONS AT HEAD & SILL
ALL OTHER ALUMINUM BUCK ANCHORS
AS PER SHEET 13**

PRODUCT REVISED
as complying with the Florida
Building Code
NOA-No. 20-0610.06
Expiration Date: 06/10/2024
By: Ishay I. Chandra
Miami-Dade Product Control

Revision:	

PREPARED BY A. LYNN MILLER 1070 TECHNOLOGY DRIVE N. VENICE, FL 34275 (941) 480-1600	REGISTRATION #29296	Date 05/29/20	Drawn By J ROSOWSKI	Rev. A
Impact Resistant Windows & Doors WE'RE STRONGER™ CGI WINDOWS AND DOORS, INC. 3780 W 104TH STREET HIALEAH, FL 33018 (305) 593-6590	375 ALUM. HORIZONTAL ROLLER WDW. - SMI	15 OF 15	Sheet NTS	Scale
ALUM BUCK DP 3	HR375 "ESTATE"			

Professional Engineer Seal for Anthony Lynn Miller, License No. 58705, State of Florida.

A. LYNN MILLER, P.E.
P.E.# 58705