



DEPARTMENT OF REGULATORY AND ECONOMIC RESOURCES (RER)
BOARD AND CODE ADMINISTRATION DIVISION

NOTICE OF ACCEPTANCE (NOA)

MIAMI-DADE COUNTY
PRODUCT CONTROL SECTION

11805 SW 26 Street, Room 208
Miami, Florida 33175-2474
T (786) 315-2590 F (786) 315-2599

www.miamidade.gov/economy

Arrow United Industries a division of Mestek, Inc.
450 Riverside Drive
Wyalusing, PA 18853

SCOPE: This NOA is being issued under the applicable rules and regulations governing the use of construction materials. The documentation submitted has been reviewed and accepted by Miami-Dade County RER-Product Control Section to be used in Miami Dade County and other areas where allowed by the Authority Having Jurisdiction (AHJ).

This NOA shall not be valid after the expiration date stated below. The Miami-Dade County Product Control Section (In Miami Dade County) and/or the AHJ (in areas other than Miami Dade County) reserve the right to have this product or material tested for quality assurance purposes. If this product or material fails to perform in the accepted manner, the manufacturer will incur the expense of such testing and the AHJ may immediately revoke, modify, or suspend the use of such product or material within their jurisdiction. RER reserves the right to revoke this acceptance if it is determined by Miami-Dade County Product Control Section that this product or material fails to meet the requirements of the applicable building code.

This product is approved as described herein and has been designed to comply with the Florida Building Code, including the High Velocity Hurricane Zone.

DESCRIPTION: Model EAV-66 6" Aluminum Louver System

APPROVAL DOCUMENT: Drawing No. **1504**, titled "EAV-66 Vertical Louver System", sheets 1 through 9 of 9, dated 10/18/2006, with last revision C dated 08/01/2016, prepared by W. W. Schaefer Engineering and consulting, P.A., signed and sealed, by Warren W. Schaefer, P.E., bearing the Miami-Dade County Product Control revision stamp with the Notice of Acceptance number and expiration date by the Miami-Dade County Product Control Section.

MISSILE IMPACT RATING: Large and Small Missile Impact Resistant

LABELING: Each unit shall bear a permanent label with the manufacturer's name or logo, city, state, model/series, and following statement: "Miami-Dade County Product Control Approved", unless otherwise noted herein.

RENEWAL of this NOA shall be considered after a renewal application has been filed and there has been no change in the applicable building code negatively affecting the performance of this product.

TERMINATION of this NOA will occur after the expiration date or if there has been a revision or change in the materials, use, and/or manufacture of the product or process. Misuse of this NOA as an endorsement of any product, for sales, advertising or any other purposes shall automatically terminate this NOA. Failure to comply with any section of this NOA shall be cause for termination and removal of NOA.

ADVERTISEMENT: The NOA number preceded by the words Miami-Dade County, Florida, and followed by the expiration date may be displayed in advertising literature. If any portion of the NOA is displayed, then it shall be done in its entirety.

INSPECTION: A copy of this entire NOA shall be provided to the user by the manufacturer or its distributors and shall be available for inspection at the job site at the request of the Building Official.

This NOA **revises NOA # 17-0713.06** and consists of this page 1 and evidence pages E-1 and E-2, as well as approval document mentioned above.

The submitted documentation was reviewed by **Carlos M. Utrera, P.E.**



NOA No. 20-0622.12
Expiration Date: March 15, 2022
Approval Date: August 20, 2020
Page 1

NOTICE OF ACCEPTANCE: EVIDENCE SUBMITTED

1. EVIDENCE SUBMITTED UNDER PREVIOUS NOAs

A. DRAWINGS “Submitted under NOA #16-0808.13”

1. Drawing No. **1504**, titled “EAV-66 Vertical Louver System”, sheets 1 through 9 of 9, dated 10/18/2006, with last revision C dated 08/01/2016, prepared by W. W. Schaefer Engineering and consulting, P.A., signed and sealed, by Warren W. Schaefer, P.E.

B. TESTS “Submitted under NOA # 08-0904.01”

1. Test report on Large Missile Test (Level E) and on Cyclic Load Test per ASTM 1886/1996 of an **EAV-66 Aluminum Louver System**, prepared by Hurricane Test Laboratories LLC., Test Report No. **0198-0109-07**, dated 03/08/2007, signed and sealed by Vinu J. Abraham, P.E.
2. Test report on Wind Driven Rain Test per TAS 100(A) of an EAV-66 Aluminum Louver with AFD-20 Damper, prepared by PRI Construction Materials Technologies, LLC, Test Report No. **AWV-006-02-01**, dated 02/07/2008, signed and sealed by Duc T. Nguyen, P.E.
3. Test report on Wind Driven Rain Test per TAS 100(A) of an EAV-66 Aluminum Louver with AC-525, prepared by PRI Construction Materials Technologies, LLC, Test Report No. **AWV/AUI-006-02-01**, dated 02/14/2008, signed and sealed by Duc T. Nguyen, P.E.

“Submitted under NOA # 06-1211.03”

4. Test report on Large Missile Impact Test per FBC, TAS 201, Cyclic Wind Pressure Test per FBC, TAS 203 and Uniform Static Air Pressure Test per FBC, TAS 202 of an EAV-66 Aluminum Louver System, prepared by Hurricane Test Laboratories, LLC, Report No. **0198-0712-06**, dated 11/07/2006, signed and sealed by Vinu J. Abraham, P.E.

C. CALCULATIONS “Submitted under NOA #16-0808.13”

1. Anchor calculations prepared by W.W. Schaefer Engineering and Consulting P.A., dated 08/01/2016, signed and sealed by Warren W. Schaefer, P.E.

“Submitted under NOA # 11-1115. 02”

2. Anchor calculations prepared by W.W. Schaefer Engineering and Consulting P.A., dated 11/07/2011, signed and sealed by Warren W. Schaefer, P.E.

“Submitted under NOA # 08-0904.01”

3. Anchorage, stress and deflection calculations of the Louver System with AFD-20 Dampers, sheets 1 through 4 of 4 and with AC-525/526 Dampers, sheets 1 and 2 of 2, both dated 07/22/2008, prepared by W.W. Schaefer Engineering and Consulting P.A., signed and sealed by Warren W. Schaefer, P.E.

“Submitted under NOA # 06-1211.03”

4. Anchorage calculations, 13 pages for Arrow United Industries, **Model EAV-66** Vertical Louver, prepared by W.W. Schaefer Engineering and Consulting P.A., signed and sealed on 11/07/2006 by Warren W. Schaefer, P.E.

D. QUALITY ASSURANCE

1. Miami-Dade Department of Regulatory and Economic Resources (RER)



Carlos M. Utrera, P.E.

Product Control Examiner

NOA No. 20-0622.12

Expiration Date: March 15, 2022

Approval Date: August 20, 2020

NOTICE OF ACCEPTANCE: EVIDENCE SUBMITTED

E. MATERIAL CERTIFICATIONS

1. None.

F. STATEMENTS “Submitted under NOA #16-0808.13”

1. Statement letter of code conformance to the 5th edition (2014) FBC issued by W.W. Schaefer Engineering and Consulting P.A., dated 08/01/2016, signed and sealed by Warren W. Schaefer, P.E.
2. Statement letter of no financial interest issued by W.W. Schaefer Engineering and Consulting P.A., dated 08/01/2016, signed and sealed by Warren W. Schaefer, P.E.

2. NEW EVIDENCE SUBMITTED

A. DRAWINGS

1. None.

B. TESTS

1. None.

C. CALCULATIONS

1. None.

D. QUALITY ASSURANCE

1. None.

E. MATERIAL CERTIFICATIONS

1. None.

F. STATEMENTS

1. Statement letter of code conformance to the 6th Edition (2017) and 7th Edition (2020) FBC issued by W. W. Schaefer Engineering & Consulting, P.A., dated 06/03/2020, signed and sealed by Warren W. Schaefer, P.E.



Carlos M. Utrera, P.E.
Product Control Examiner
NOA No. 20-0622.12
Expiration Date: March 15, 2022
Approval Date: August 20, 2020

GENERAL NOTES:

1. THIS PRODUCT HAS BEEN TESTED, ANALYZED & APPROVED FOR DESIGN PRESSURES NOT TO EXCEED THOSE SHOWN IN THE "ALLOWABLE DESIGN PRESSURE TABLE(S)".
2. OPENINGS, BUCKING & BUCKING FASTENERS MUST BE PROPERLY DESIGNED & INSTALLED TO TRANSFER WIND LOADS TO THE STRUCTURE.
3. ALL HARDWARE & FASTENERS SHALL BE IN ACCORDANCE WITH THESE DRAWINGS & SHALL NOT VARY UNLESS SPECIFICALLY MENTIONED ON THE DRAWINGS. SPECIFIED ANCHOR EMBED TO BASE MATERIAL SHALL BE BEYOND WALL FINISH OR STUCCO.
4. THE DETAILS & SPECIFICATIONS SHOWN HEREIN REPRESENT THE PRODUCTS TESTED & PROPOSED FOR CONFORMANCE WITH THE FLORIDA BUILDING CODE PROTOCOLS TAS-201, 202 & 203 FOR LARGE MISSILE IMPACT PRODUCTS.
5. THIS PRODUCT HAS BEEN DESIGNED IN ACCORDANCE WITH AND MEETS THE REQUIREMENTS OF THE FLORIDA BUILDING CODE (FBC) INCLUDING HIGH VELOCITY HURRICANE ZONES (HVHZ).
6. IMPACT SHUTTERS ARE NOT REQUIRED WITH THIS PRODUCT.
7. ALL ANCHORS SECURING PRODUCT FRAMES TO PRESSURE TREATED BUCKS OR WOOD FRAMING SHALL BE CAPABLE OF RESISTING CORROSION CAUSED BY THE PRESSURE TREATING CHEMICALS IN THE WOOD.
8. DETERMINE THE POSITIVE & NEGATIVE DESIGN LOADS TO USE WHEN REFERENCING THESE DOCUMENTS IN ACCORDANCE WITH THE GOVERNING CODE AND GOVERNING WIND VELOCITY. FOR WIND LOAD CALCULATIONS IN ACCORDANCE WITH THE FLORIDA BUILDING CODE, A DIRECTIONALITY FACTOR OF $K_d = 0.85$ MAY BE APPLIED PER THE ASCE-7 STANDARD.
9. NO INCREASE IN ALLOWABLE STRESS HAS BEEN USED IN THE CERTIFICATION OF THIS PRODUCT. WIND LOAD DURATION FACTOR $C_d = 1.6$ WAS USED FOR WOOD SCREW ANALYSIS ONLY.
10. MATERIALS, INCLUDING BUT NOT LIMITED TO STEEL SCREWS, THAT COME INTO CONTACT WITH OTHER DISSIMILAR MATERIALS SHALL MEET THE REQUIREMENTS OF FLORIDA BUILDING CODE.
11. EACH LOUVER ASSEMBLY SHALL BE PERMANENTLY LABELED AS FOLLOWS: "ARROW UNITED INDUSTRIES, WYALUSING, PA, MIAMI-DADE COUNTY PRODUCT CONTROL APPROVED".
12. ALL CONCRETE SUBSTRATE SHALL BE MIN. 3000 PSI.
13. ALL WOOD SUBSTRATE SHALL BE MIN. 6 = 0.55 DENSITY.
14. ALL METAL STUD SUBSTRATE SHALL BE MIN. 16 GA. 50 KSI STUDS.
15. ALL STRUCTURAL STEEL SUBSTRATE SHALL BE MIN. 12 GAGE $F_y = 36$ KSI.
16. INDIVIDUAL PANEL WIDTHS ARE UNLIMITED IN DIMENSION. PANEL HEIGHTS ARE LIMITED BY THE DIMENSIONS SHOWN IN THE ELEVATIONS.
17. INDIVIDUAL PANELS MAY BE STACKED HORIZONTALLY IN AN UNLIMITED QUANTITY. IT IS THE RESPONSIBILITY OF THE SUPPORTING STRUCTURES DESIGN ENGINEER/ARCHITECT TO INSURE THE SUPPORTING STRUCTURE WILL SUPPORT ALL DESIGN LOADS TRANSFERRED BY THE LOUVERS.
18. THESE LOUVERS HAVE PASSED TESTING IN ACCORDANCE WITH ASTM E1886 & E1996 FOR ESSENTIAL FACILITIES LEVEL "E" 80 FT/S LARGE MISSILE IMPACT SPEED. THEREFORE, THESE LOUVER SYSTEMS ARE APPROVED FOR USE WITH ESSENTIAL FACILITIES.
19. THIS SYSTEM HAS BEEN TESTED FOR WATER INFILTRATION RESISTANCE AND IS A WATER RESISTANT SYSTEM WHEN AN AFD-20 OR ACS25/526 DAMPER IS INSTALLED WITH THE LOUVER PANEL.
20. UNLESS THE AFD-20 OR ACS25/526 DAMPER IS ATTACHED TO THE LOUVER, THE LOUVER IS TO BE INSTALLED IN A LOCATION WHERE THE ROOM BEHIND THE LOUVER IS DESIGNED TO DRAIN WATER PENETRATING INTO THE ROOM, AND THE ROOM WILL HOUSE WATER RESISTANT/WATER PROOF EQUIPMENT, COMPONENTS OR SUPPLIES.

CORNER & BLADE END CONSTRUCTION

BLADE TO HEAD & SILL:
BLADE END IS SQUARE CUT, BUTTED AND JOINED TO HEAD AND SILL WITH TWO NO. 8 X 1" S.S. SMS SCREWS PER BLADE END.
HEAD & SILL TO JAMB:
SIDE JAMB IS SQUARE CUT, BUTTED AND JOINED TO HEAD AND SILL WITH TWO 1/4" X 1" SELF TAPPING SCREWS.

FASTENER SCHEDULE

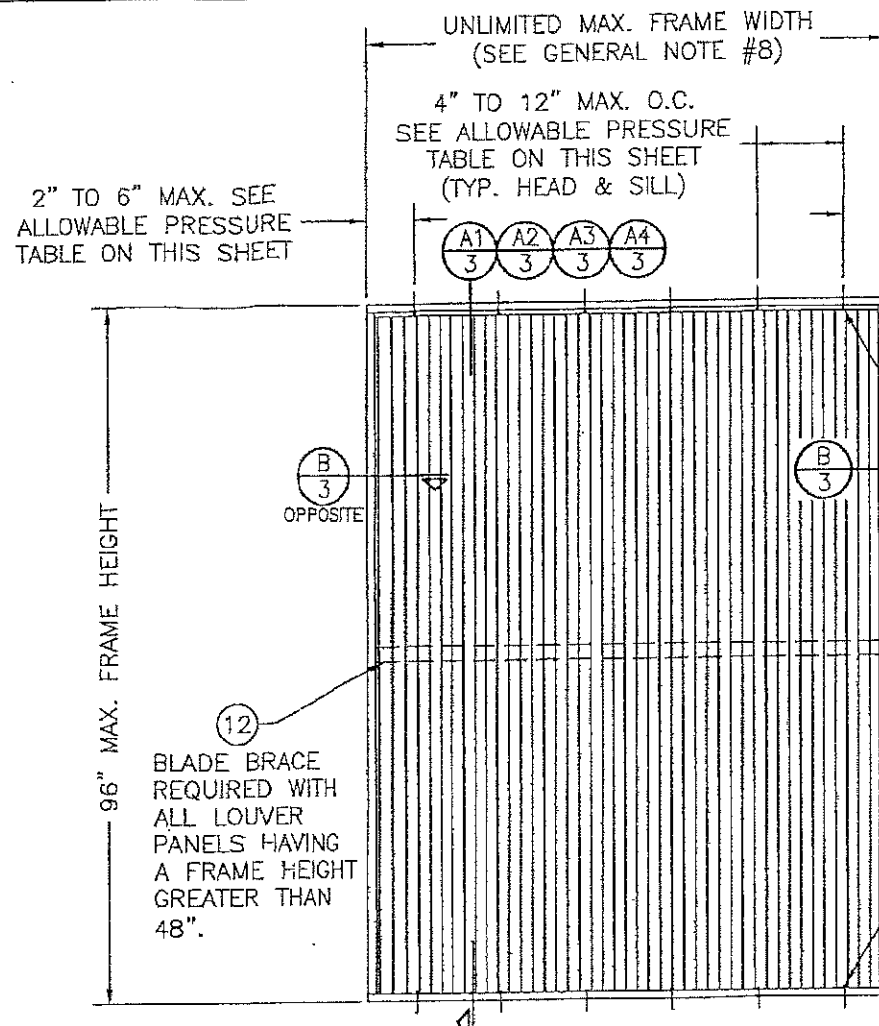
ANCHOR TYPE	(4) SUBSTRATE	MINIMUM EMBEDMENT	MINIMUM EDGE DIST.
(3) NO. 10 S.S. SCREW	WOOD	1 1/4"	3/4"
(5) NO. 10-16 SELF TAPPING/DRILLING SCREW	METAL STUD	FULL	3/4"
(1) 1/4" CONCRETE SCREW	CONCRETE	1 1/2"	2"
(2) 1/4" BOLT	STEEL OR METAL STUD	FULL	3/4"
(5) 1/4-20 OR 1/4-14 SELF TAPPING/DRILLING SCREW	STEEL	FULL	3/4"

- (1) CONCRETE SCREWS SHALL BE ELCO ULTRACONS, ELCO CRETE-FLEX, ITW RAMSET/RED HEAD TAPCONS OR HILTI KWIK-CON II (HARDENED STEEL OR S.S.).
- (2) BOLT SHALL BE MIN. A307 GALVANIZED OR 304 S.S. ($F_y = 10,000$ PSI MIN.)
- (3) SMS WOOD SCREWS SHALL HAVE MIN. YIELD STRENGTH OF $F_y = 80,000$ PSI
- (4) SEE GENERAL NOTES FOR SUBSTRATE REQUIREMENTS.
- (5) SELF TAPPING SCREWS SHALL BE CORROSION RESISTANT MIN. SAE GRADE 2 STEEL OR MIN. ALLOY GROUP 1, 2 & 3 CONDITION "A" STAINLESS STEEL.

(2) ALLOWABLE DESIGN PRESSURE & ANCHOR SPACING REQUIREMENTS (LOUVER PANELS)

(1) MAX. ANCHOR SPACING	(1) MAX. ANCHOR END DISTANCE	ALLOWABLE PRESSURE
4"	2"	+/-150 PSF
8"	4"	+/-75 PSF
12"	6"	+/-50 PSF

- (1) WHEN LOUVERS ARE USED TO PROTECT ESSENTIAL FACILITIES, MAX. ANCHOR SPACING SHALL NOT EXCEED 4" & MAX. ANCHOR END DISTANCE SHALL NOT EXCEED 2" REGARDLESS OF PRESSURE REQUIRED.
- (2) FOR ALLOWABLE PRESSURE ON DAMPERS, SEE SHEET 5 OR 7.



EXTERIOR ELEVATION
SINGLE LOUVER PANEL
(ARCHITECTURAL & NON-ARCHITECTURAL)
SCALE: 1/2" = 1'-0"

THESE DRAWINGS ARE APPLICABLE ONLY TO THE PRODUCT SPECIFIED. THEY MAY NOT BE USED FOR THE ASSEMBLY AND/OR INSTALLATION OF ANY OTHER PRODUCT NOR MAY THEY BE USED FOR RATIONAL AND/OR LOCAL APPROVAL OF ANY PRODUCT NOT PRODUCED BY THE MANUFACTURER STATED ON THESE DRAWINGS.

2" TO 6" MAX. SEE ALLOWABLE PRESSURE TABLE ON THIS SHEET

FRAME/CLIP ANCHORS PER FASTENER SCHEDULE ON THIS SHEET (HEAD & SILL ONLY)

PRODUCT REVISED
as complying with the Florida Building Code
NOA-No. 20-0722.12

Expiration Date 03/15/2022

By *[Signature]*
Miami-Dade Product Control

PRODUCT REVISED
as complying with the Florida Building Code
NOA-No. 17-0713.06

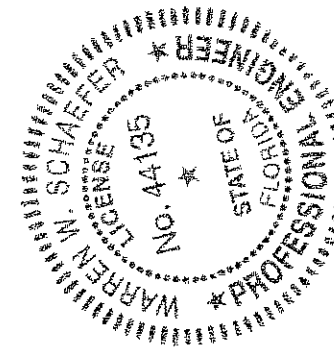
Expiration Date 03/15/2022

By *[Signature]*
Miami-Dade Product Control

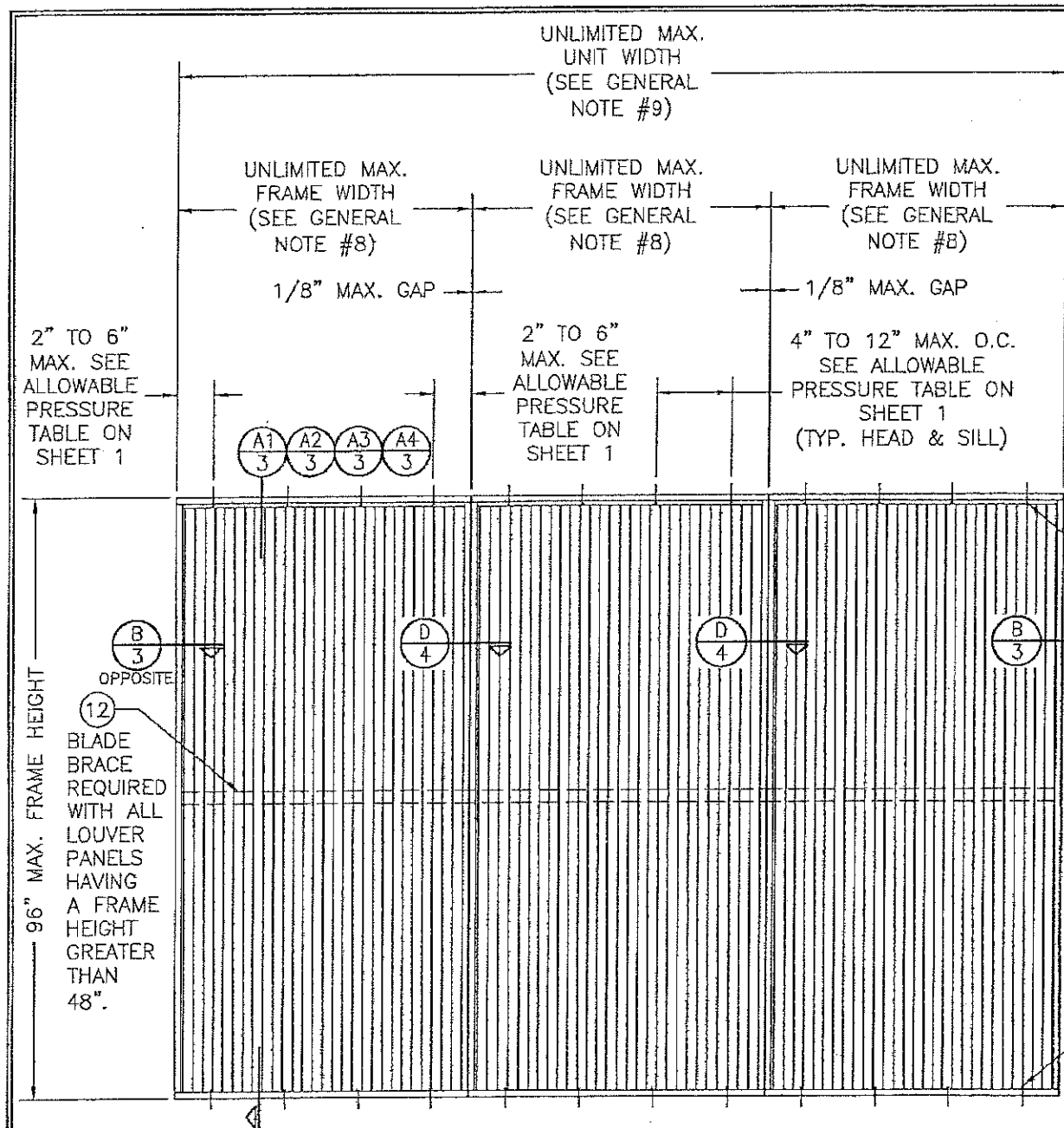
PRODUCT RENEWED
as complying with the Florida Building Code
NOA-No. 16-0808.13

Expiration Date 03/15/2022

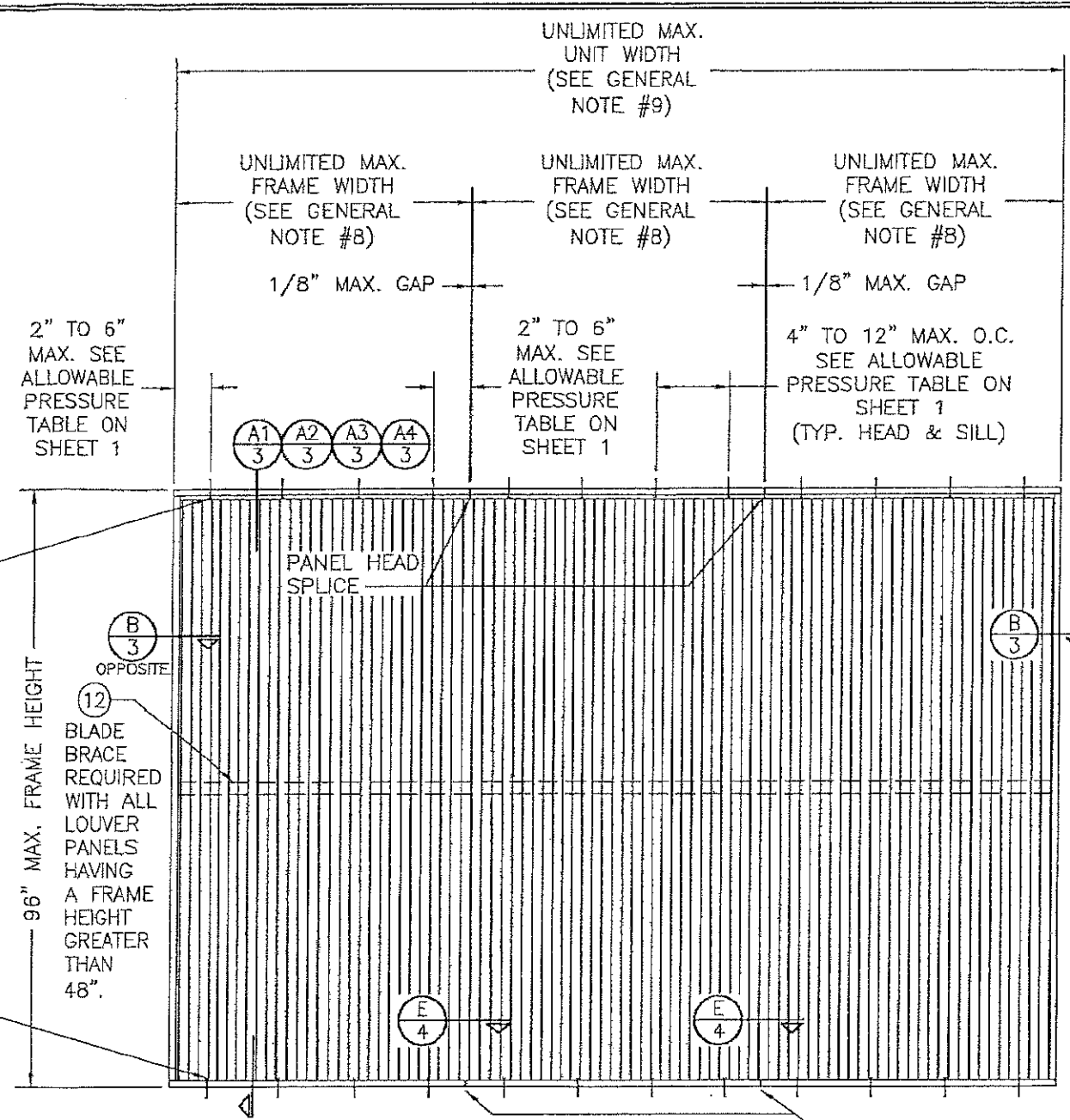
By *[Signature]*
Miami-Dade Product Control



DRAWING BY: W.R.M.		CHECKED BY: W.N.S.	
PLOT: 1-24		DATE: 10/18/05	
DATE	BY	REVISION DESCRIPTION	NO.
07/14/06	W.R.M.	UPDATE TO PRESENT STANDARDS	A1
07/14/06	W.N.S.	ADDED DAMPER CONDITIONS	A2
07/14/06	W.N.S.	ADDED ESSENTIAL FACILITIES USE	A3
11/08/11	W.R.M.	UPDATE TO CURRENT STANDARDS	B
08/01/16	W.N.S.	UPDATE TO CURRENT STANDARDS	C
DRAWING TITLE: EAV-66 VERTICAL LOUVER SYSTEM			
MANUFACTURER: ARROW UNITED INDUSTRIES, INC.		A DIVISION OF MESTEK, INC.	
450 RIVERSIDE DRIVE		WYALUSING, PA 18853	
570-746-1888			
CONSULTANTS: W. W. SCHAEFER ENGINEERING & CONSULTING, P.A. (CA 6809)		7480 150TH COURT NORTH, PALM BEACH GARDENS, FL 33418	
PHONE: 561-744-3424			
CERTIFICATION: AUG 01 2016		WARREN W. SCHAEFER, P.E.	
DRAWING NO. 1504		REV. C	
SHEET NO. 1 OF 9			



EXTERIOR ELEVATION
MULTIPLE LOUVER PANELS
(NON-ARCHITECTURAL)
SCALE: 1/2" = 1'-0"



EXTERIOR ELEVATION
MULTIPLE LOUVER PANELS
(ARCHITECTURAL)
SCALE: 1/2" = 1'-0"

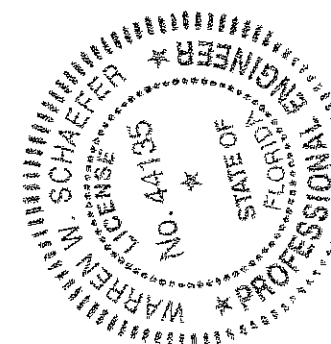
FRAME/CLIP ANCHORS PER
FASTENER SCHEDULE ON SHEET 1
(HEAD & SILL ONLY)

PANEL SILL SPLICE

PRODUCT REVISED
as complying with the Florida
Building Code
NOA-No. 20-0722.12
Expiration Date 03/15/2022
By *[Signature]*
Miami-Dade Product Control

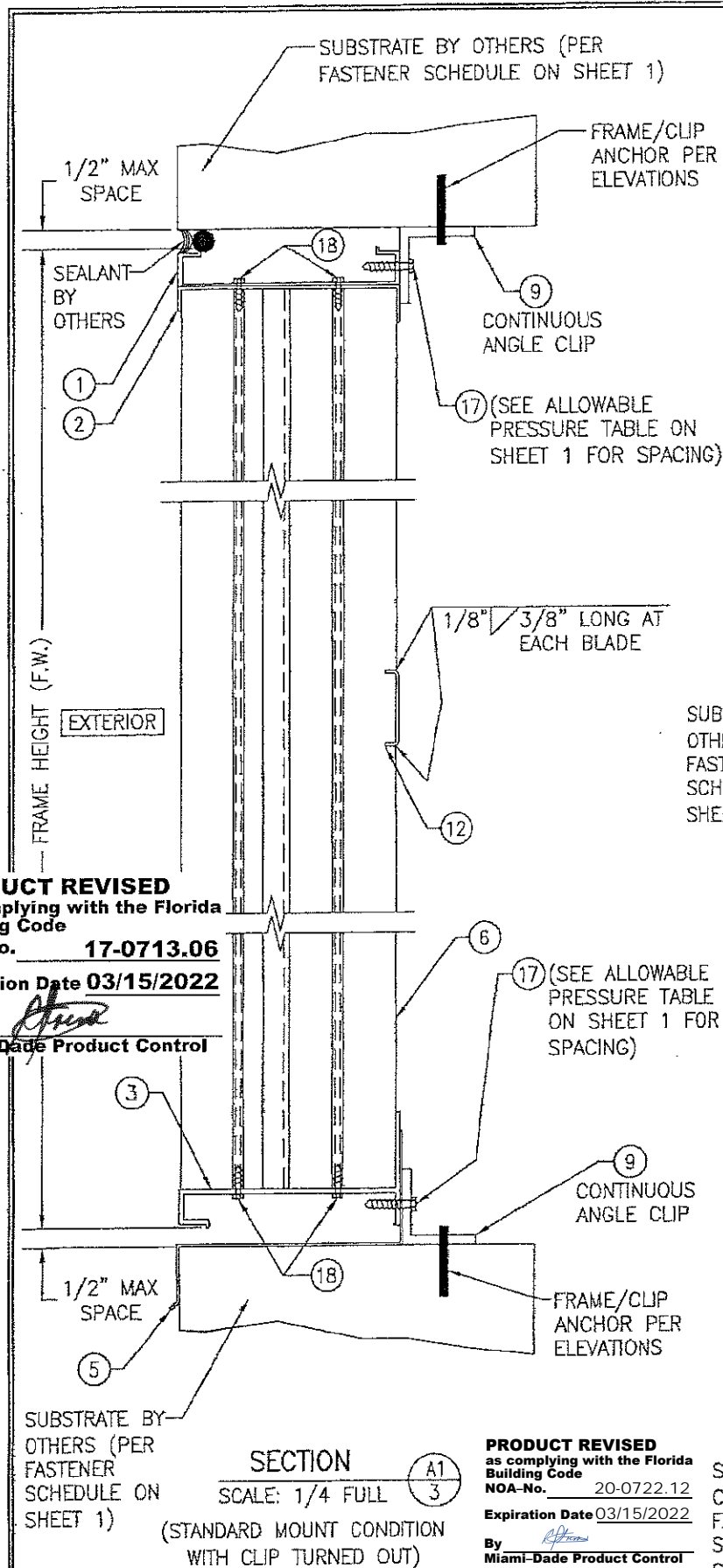
PRODUCT REVISED
as complying with the Florida
Building Code
NOA-No. 17-0713.06
Expiration Date 03/15/2022
By *[Signature]*
Miami-Dade Product Control

PRODUCT RENEWED
as complying with the Florida
Building Code
NOA-No. 16-0808.13
Expiration Date 03/15/2022
By *[Signature]*
Miami-Dade Product Control

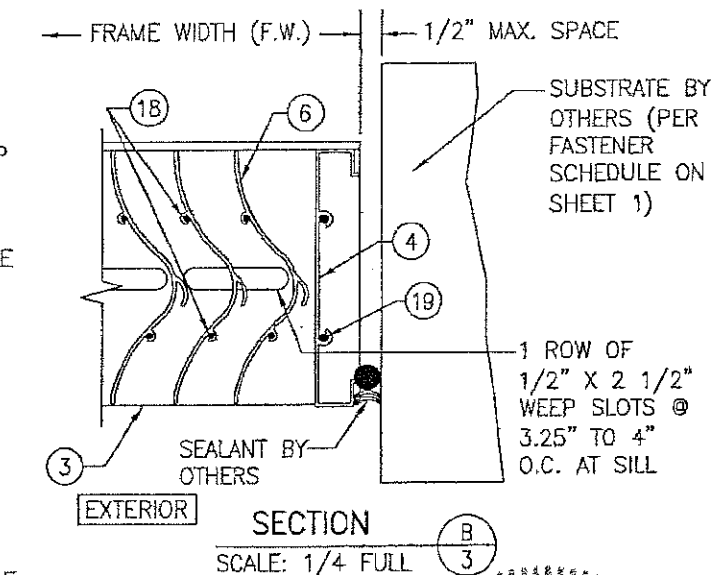
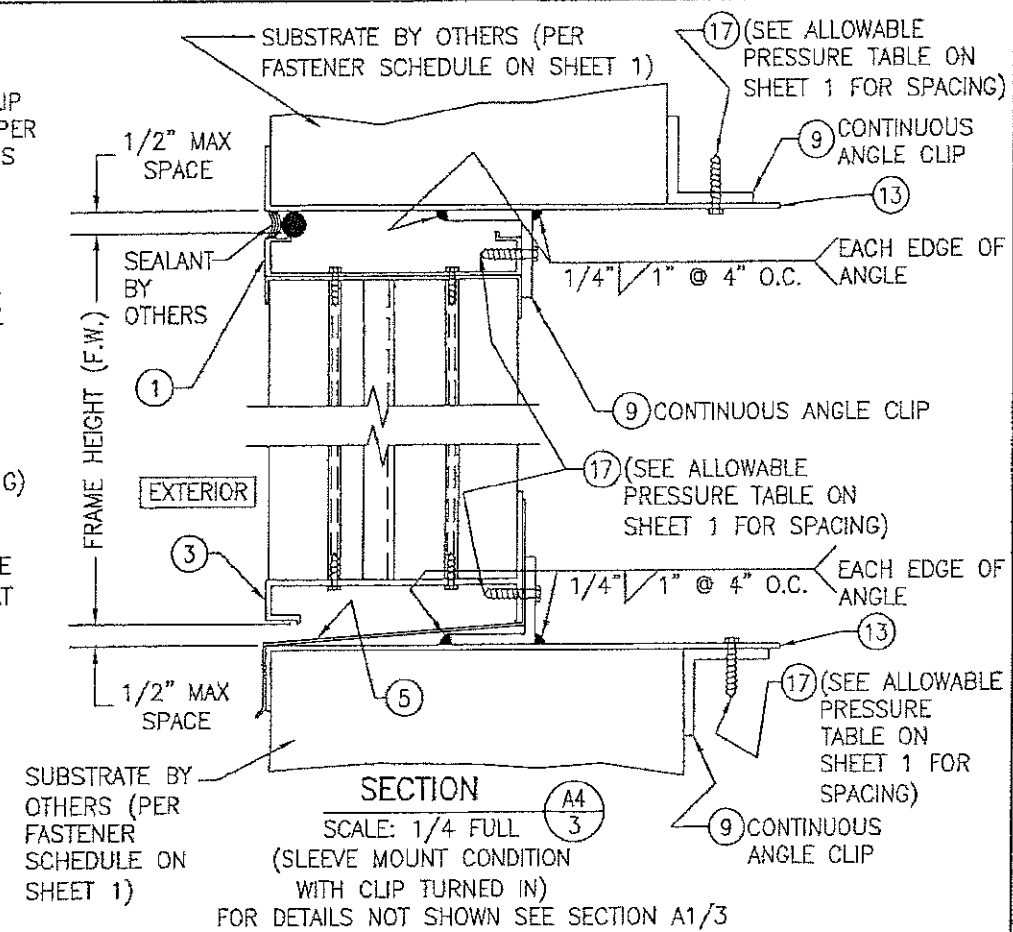
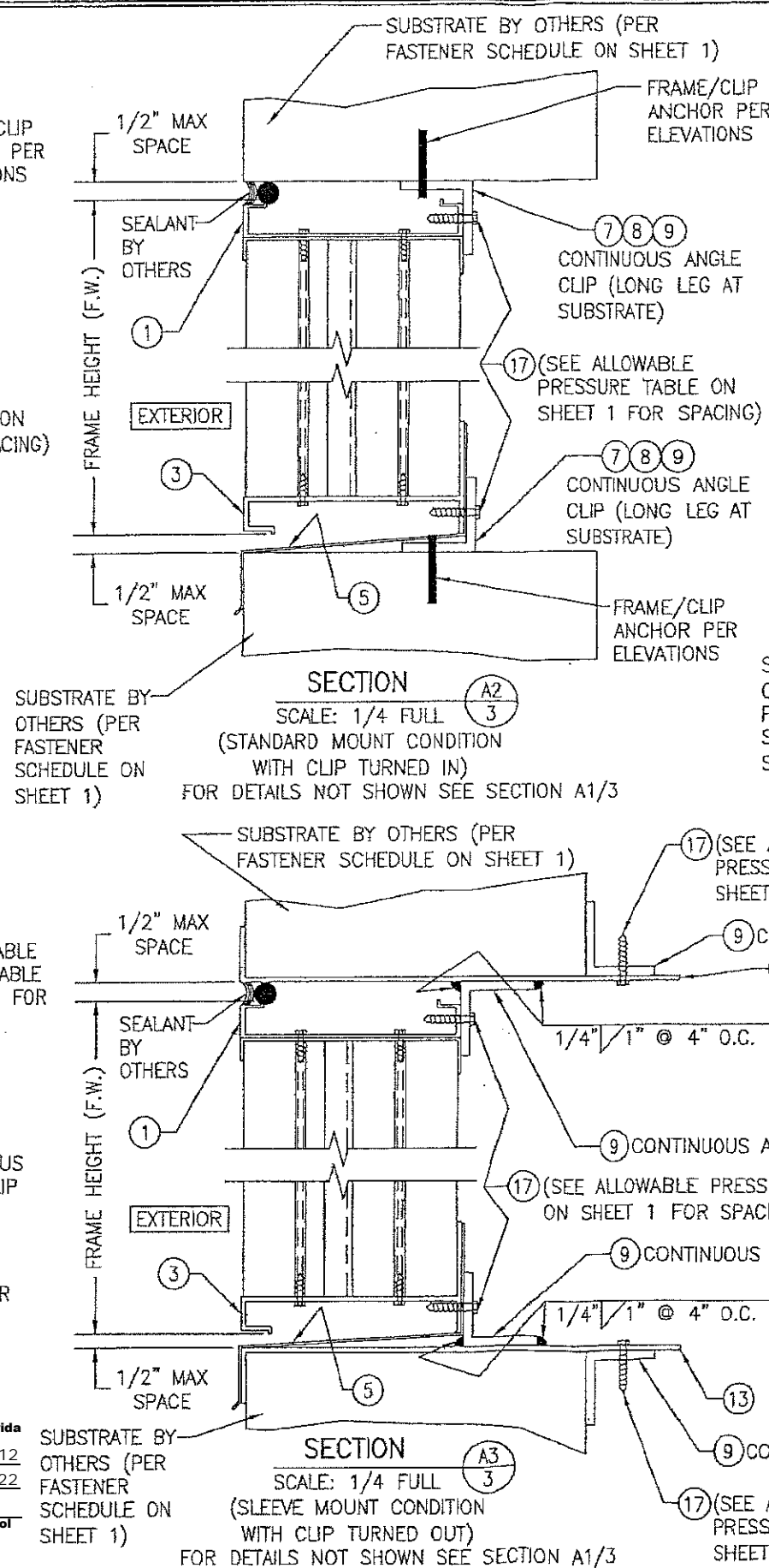


DRAWN BY: W.R.M.		CHECKED BY: W.W.S.	
PLOT: 1=24		DATE: 10/18/08	
NO.	REVISION	DESCRIPTION	DATE
DRAWING TITLE EAV-66 VERTICAL LOUVER SYSTEM			
MANUFACTURER ARROW UNITED INDUSTRIES; A DIVISION OF MESTEK, INC. 450 RIVERSIDE DRIVE WYALUSING, PA 18853 570-746-1888			
CONSULTANTS W. W. SCHAEFER ENGINEERING & CONSULTING, P.A. (CA 6809) 7480 150TH COURT NORTH PALM BEACH GARDENS, FL 33418 PHONE 561-744-3424			
CERTIFICATION AUG 01 2016 WARREN W. SCHAEFER, P.E. P.E. NO. 44135			
DRAWING NO. 1504		REV. C	
SHEET NO. 2 OF 9			

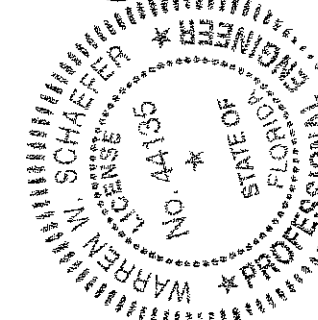
PRODUCT REVISED
as complying with the Florida
Building Code
NOA-No. **17-0713.06**
Expiration Date **03/15/2022**
By *[Signature]*
Miami-Dade Product Control



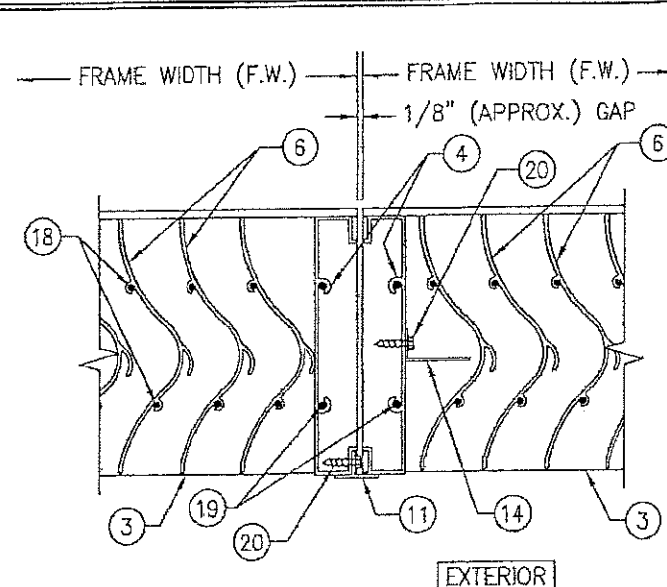
PRODUCT REVISED
as complying with the Florida
Building Code
NOA-No. **20-0722.12**
Expiration Date **03/15/2022**
By *[Signature]*
Miami-Dade Product Control



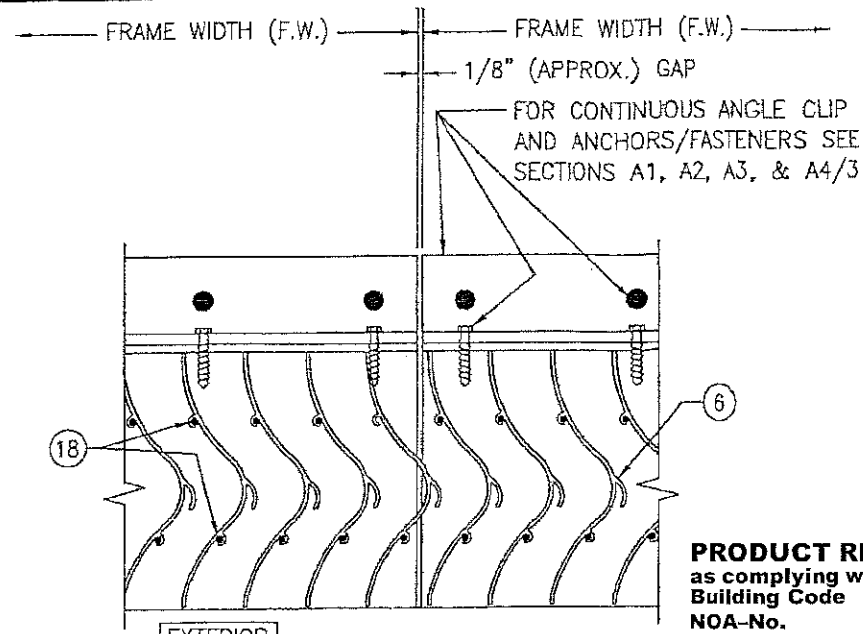
PRODUCT RENEWED
as complying with the Florida
Building Code
NOA-No. **16-0808.13**
Expiration Date **03/15/2022**
By *[Signature]*
Miami-Dade Product Control



DRAWN BY: W.R.M.	CHECKED BY: W.W.S.
PLOT: 7-4	DATE: 10/18/08
DATE	BY
REVISION DESCRIPTION	NO.
DRAWING TITLE EAV-66 VERTICAL LOUVER SYSTEM	
MANUFACTURER ARROW UNITED INDUSTRIES, INC. A DIVISION OF MESTEK, INC. 450 RIVERSIDE DRIVE WYALUSING, PA 18853 570-746-1888	
CONSULTANTS W. W. SCHAEFER ENGINEERING & CONSULTING, P.A. (CA 6809) 7480 150TH COURT NORTH PALM BEACH GARDENS, FL 33418 PHONE 561-744-3424	
CERTIFICATION	<div> <div> AUG 01 2018 </div> <div> WARREN W. SCHAEFER, P.E. P.E. NO. 44135 </div> </div>
DRAWING NO. 1504	REV. C
SHEET NO. 3	OF 9



SECTION D
SCALE: 1/4 FULL



SECTION E
SCALE: 1/4 FULL

PRODUCT REVISED
as complying with the Florida
Building Code
NOA-No. 17-0713.06

Expiration Date 03/15/2022

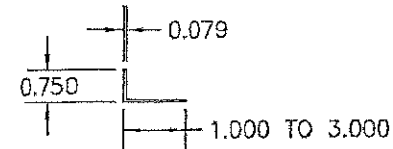
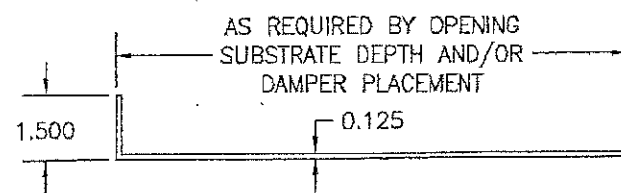
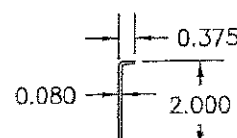
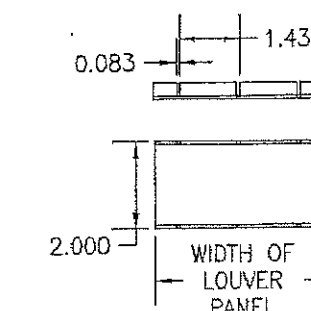
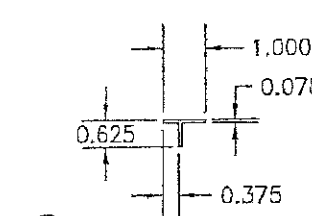
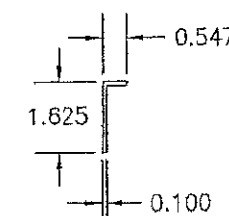
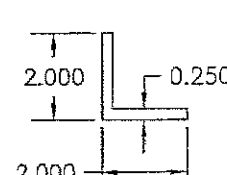
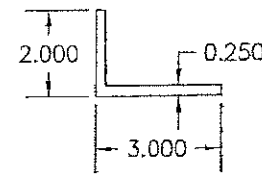
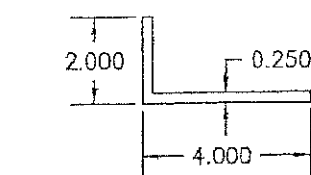
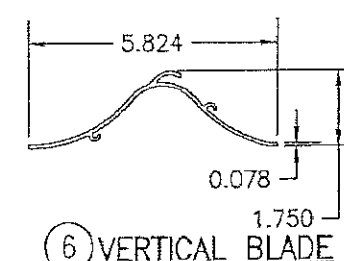
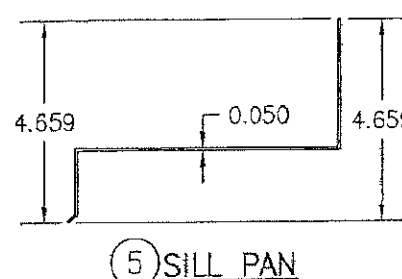
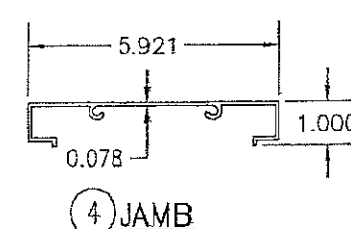
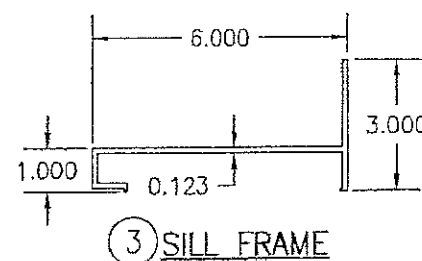
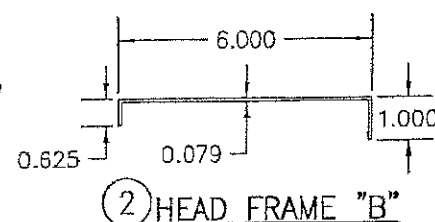
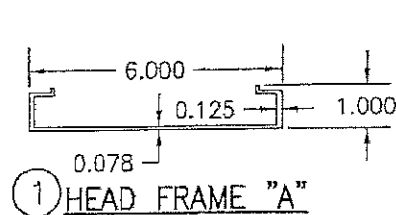
By *[Signature]*
Miami-Dade Product Control

PRODUCT REVISED
as complying with the Florida
Building Code
NOA-No. 20-0722.12

Expiration Date 03/15/2022

By *[Signature]*
Miami-Dade Product Control

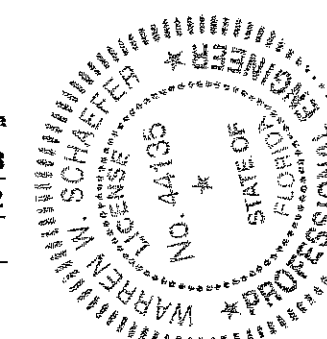
ITEM #	ITEM DESCRIPTION	MANUFACTURER/NOTES
PARTS		
1	HEAD FRAME "A"	6063-T6 ALUMINUM
2	HEAD FRAME "B"	6063-T5 ALUMINUM
3	SILL FRAME	6063-T6 ALUMINUM
4	JAMB	6063-T6 ALUMINUM
5	SILL PAN	5052-H32 ALUMINUM
6	VERTICAL BLADE	6063-T6 ALUMINUM
7	CONTINUOUS MOUNTING CLIP	6063-T5 ALUMINUM
8	CONTINUOUS MOUNTING CLIP	6063-T5 ALUMINUM
9	CONTINUOUS MOUNTING CLIP	6063-T5 ALUMINUM
10	OPTIONAL FRAME FLANGE	6063-T52/T6 ALUMINUM
11	MULLION COVER	6063-T52/T6 ALUMINUM
12	BLADE RETAINER CHANNEL	5052-H32 ALUMINUM
13	MOUNTING SLEEVE	5052-H32 ALUMINUM
14	SIGHT-PROOF ANGLE	6063-T5 ALUMINUM
MISC. FASTENERS		
17	NO. 14 X 1 1/4" 410 SS TEK SCREW	FOR SPACING REQUIREMENTS SEE ALLOWABLE PRESSURE TABLE ON SHEET 1
18	NO. 8 X 1" 18-8 SS SMS SCREW	2 PER BLADE END
19	1/4" X 1" 410 S.S. SELF TAPPING SCREW	2 PER FRAME CORNER
20	NO. 8 X 3/4" 18-8 SS SMS SCREW	2" FROM ENDS & 15" O.C.



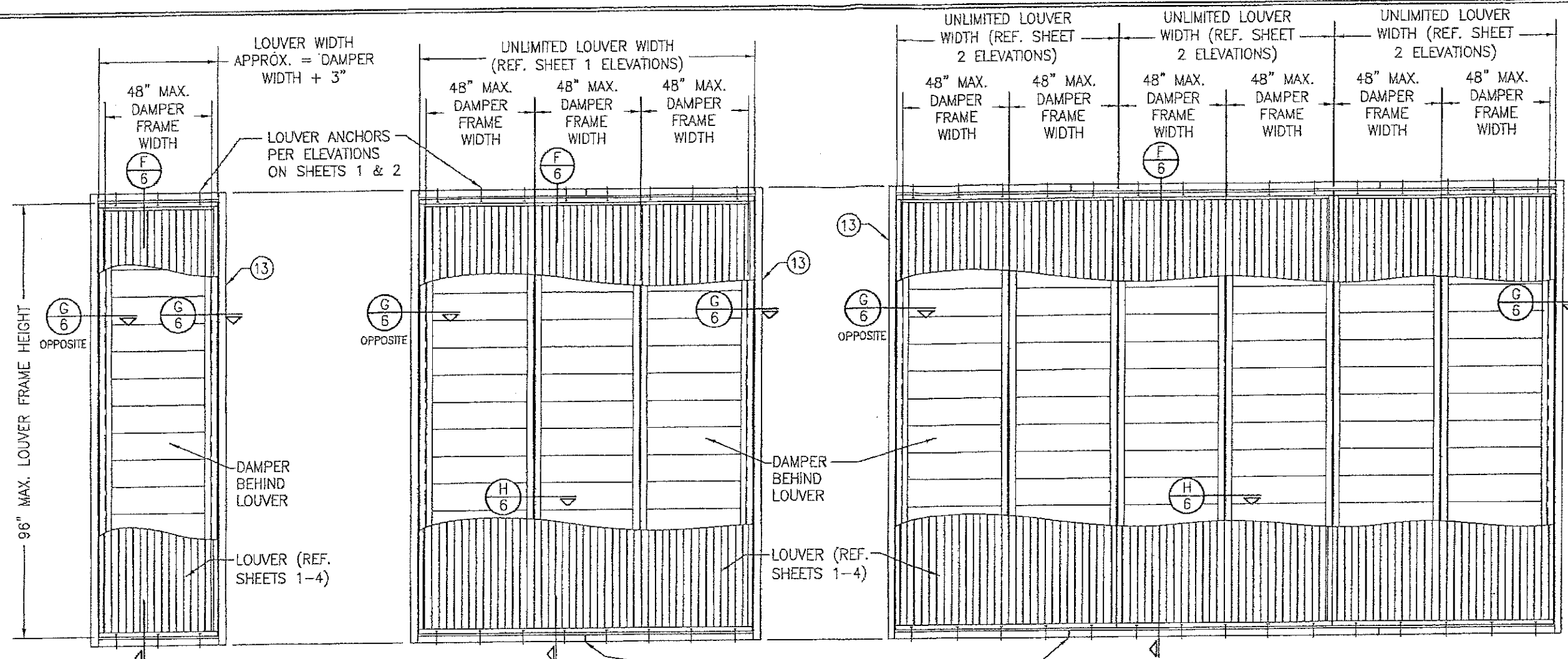
PRODUCT RENEWED
as complying with the Florida
Building Code
NOA-No. 16-0808.13

Expiration Date 03/15/2022

By *[Signature]*
Miami-Dade Product Control



DRAWN BY: W.R.M.		CHECKED BY: W.W.S.	
PLOT: 1-4		DATE: 10/18/06	
DATE	BY	REVISION DESCRIPTION	NO.
DRAWING TITLE: EAV-66 VERTICAL LOUVER SYSTEM MANUFACTURER: ARROW UNITED INDUSTRIES; A DIVISION OF MESTEK, INC. 450 RIVERSIDE DRIVE WYALUSING, PA 18853 570-746-1888 CONSULTANTS: W. W. SCHAEFER ENGINEERING & CONSULTING, P.A. (CA 6809) 7480 150TH COURT NORTH, 33418 PALM BEACH GARDENS, FL 33418 PHONE: 561-744-3424 CERTIFICATION: AUG 01 2016 WARREN W. SCHAEFER, P.E. P.E. NO. 44135 DRAWING NO. 1504 SHEET NO. 4 OF 9 REV. C			



EXTERIOR ELEVATION:
SINGLE LOUVER PANEL WITH A
SINGLE AFD-20 DAMPER

SCALE: 1/2" = 1'-0"

EXTERIOR ELEVATION:
SINGLE LOUVER PANEL WITH
MULTIPLE AFD-20 DAMPERS

SCALE: 1/2" = 1'-0"

- 1) NUMBER OF DAMPERS BEHIND A LOUVER PANEL IS UNLIMITED.
- 2) EACH INDIVIDUAL DAMPER PANEL IS LIMITED TO A 48" FRAME WIDTH.

SUPPORT SLEEVE SPLICE MAY OCCUR MID-WAY BETWEEN ANCHORS AT ANY LOCATION PROVIDING NO SLEEVE SECTION LENGTH IS LESS THAN THE DAMPER PANEL FRAME WIDTHS. SPLICING OF SLEEVES SHALL BE DONE IN A MANNER THAT DOES NOT ALLOW WATER LEAKAGE THROUGH THE SPLICE.

EXTERIOR ELEVATION:
MULTIPLE LOUVER PANELS WITH
MULTIPLE AFD-20 DAMPERS

SCALE: 1/2" = 1'-0"

- 1) NON-ARCHITECTURAL LOUVERS SHOWN. ARCHITECTURAL LOUVERS ALSO APPLY.
- 2) MORE THAN 1 DAMPER MAY BE PLACED BEHIND EACH LOUVER PANEL.
- 3) DAMPER MULLIONS/SEAMS DO NOT HAVE TO ALIGN WITH LOUVER PANEL SEAMS.
- 4) EACH INDIVIDUAL DAMPER PANEL IS LIMITED TO A 48" FRAME WIDTH.

ALLOWABLE DESIGN PRESSURE (AFD-20 DAMPERS)

MAX. DAMPER FRAME HEIGHT (IN.)	MAX. DAMPER FRAME WIDTH (1) (IN.)	ALLOWABLE PRESSURE (+/- PSF)	MAX. DAMPER FRAME HEIGHT (IN.)	MAX. DAMPER FRAME WIDTH (1) (IN.)	ALLOWABLE PRESSURE (+/- PSF)
90.5	48	90.1	72.5	48	122.3
	42	103.0		42	139.8
	36	120.1		38	150.0
	30	144.2	66.5	48	133.4
	28	150.0		42	150.0
84.5	48	104.2	60.5	48	146.6
	42	119.0		46	150.0
	36	138.9	(1) DAMPER FRAME HEIGHT IS APPROXIMATELY 5.5" LESS THAN THE LOUVER FRAME HEIGHT.		
	33	150.0			
78.5	48	113.0			
	42	129.1			
	36	150.0			

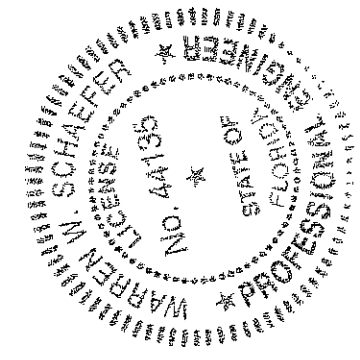
DAMPER CORNER CONSTRUCTION (AFD-20): HEAD AND SILL ARE BUTTED TO THE SIDE JAMBS, SECURED WITH 4 NO. 7 X 1" SELF TAPPING 410 S.S. SCREWS AND SEALED WITH SEALANT.

SLEEVE CORNER CONSTRUCTION: SIDE MEMBERS ARE JOINED & FULLY WELDED TO HEAD & SILL MEMBERS

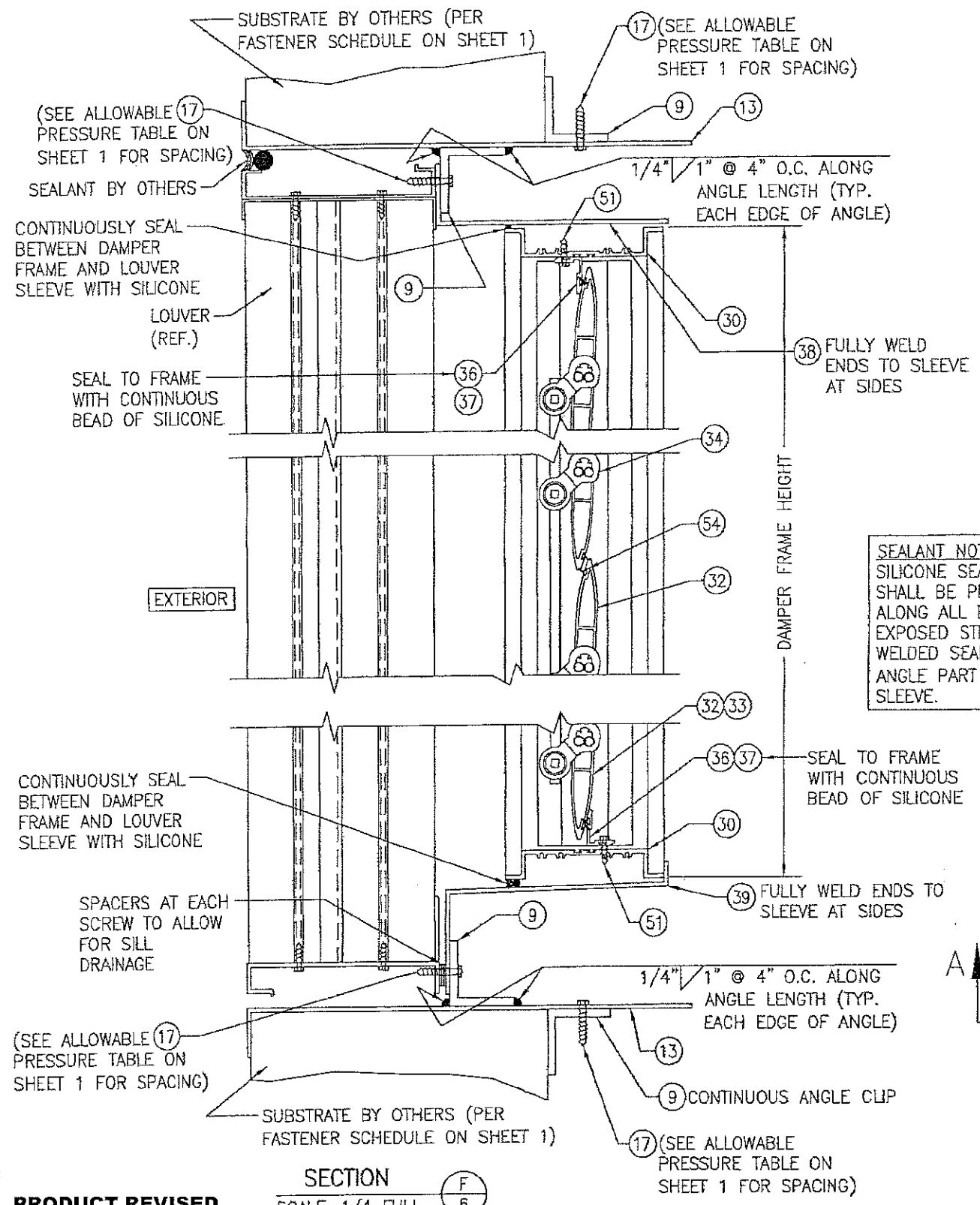
PRODUCT REVISED
as complying with the Florida Building Code
NOA-No. 20-0722.12
Expiration Date 03/15/2022
By *[Signature]*
Miami-Dade Product Control

PRODUCT REVISED
as complying with the Florida Building Code
NOA-No. 17-0713.06
Expiration Date 03/15/2022
By *[Signature]*
Miami-Dade Product Control

PRODUCT RENEWED
as complying with the Florida Building Code
NOA-No. 16-0808.13
Expiration Date 03/15/2022
By *[Signature]*
Miami-Dade Product Control



DRAWN BY: W.R.M.		CHECKED BY: W.W.S.	
PLOT: 1-24		DATE: 10/18/06	
DATE	BY	REVISION DESCRIPTION	NO.
DRAWING TITLE: EAV-66 VERTICAL LOUVER SYSTEM			
MANUFACTURER: ARROW UNITED INDUSTRIES; A DIVISION OF MESTEK, INC.			
CONSULTANTS: W. W. SCHAEFER ENGINEERING & CONSULTING, P.A. (CA 6809)			
7480 150TH COURT NORTH, 33418 PALM BEACH GARDENS, FL			
PHONE: 561-744-3424			
CERTIFICATION: AUG 01 2016			
WARREN W. SCHAEFER, P.E. P.E. NO. 44138			
DRAWING NO. 1504		REV. C	
SHEET NO. 5		OF 9	



PRODUCT REVISED
as complying with the Florida
Building Code
NOA-No. **17-0713.06**
Expiration Date **03/15/2022**
By *[Signature]*
Miami-Dade Product Control

SECTION **F**
SCALE: 1/4 FULL **6**

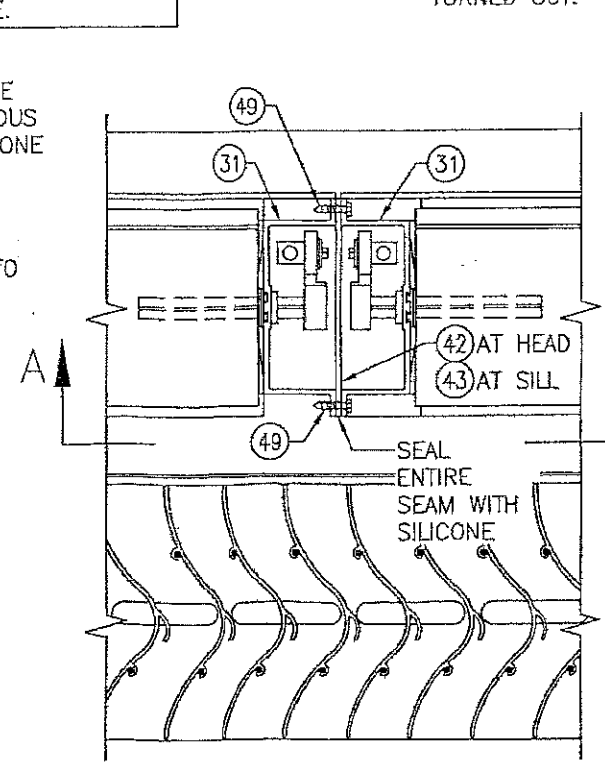
PRODUCT REVISED
as complying with the Florida
Building Code
NOA-No. **20-0722.12**
Expiration Date **03/15/2022**
By *[Signature]*
Miami-Dade Product Control

PRODUCT RENEWED
as complying with the Florida
Building Code
NOA-No. **16-0808.13**
Expiration Date **03/15/2022**
By *[Signature]*
Miami-Dade Product Control

STITCH WELD ANGLE TO JAMB
WITH 1/8" X 1" WELDS
WITHIN 6" OF CORNERS &
MAX. 12" O.C. THEN SEAL
SEAM WITH SILICONE.

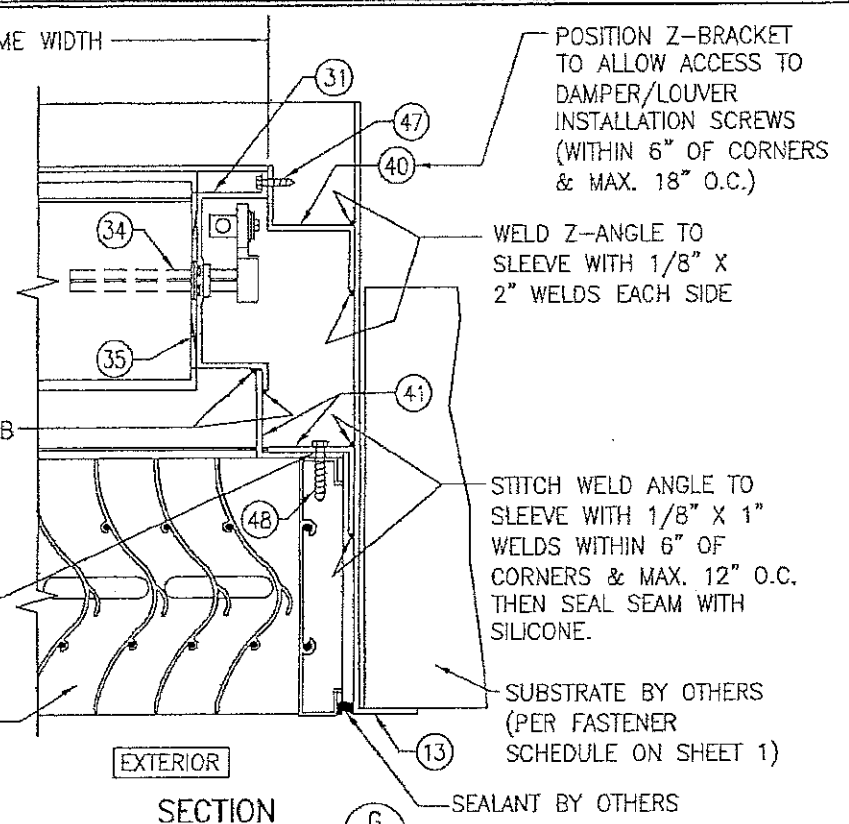
PLACE 1/4" BEAD OF
SILICONE BETWEEN
ANGLES PRIOR TO
JOINING

SEALANT NOTE:
SILICONE SEALANT
SHALL BE PLACED
ALONG ALL EXTERIOR
EXPOSED STITCH
WELDED SEAMS JOINING
ANGLE PART #9 TO
SLEEVE.



SECTION **H**
SCALE: 1/4 FULL **6**

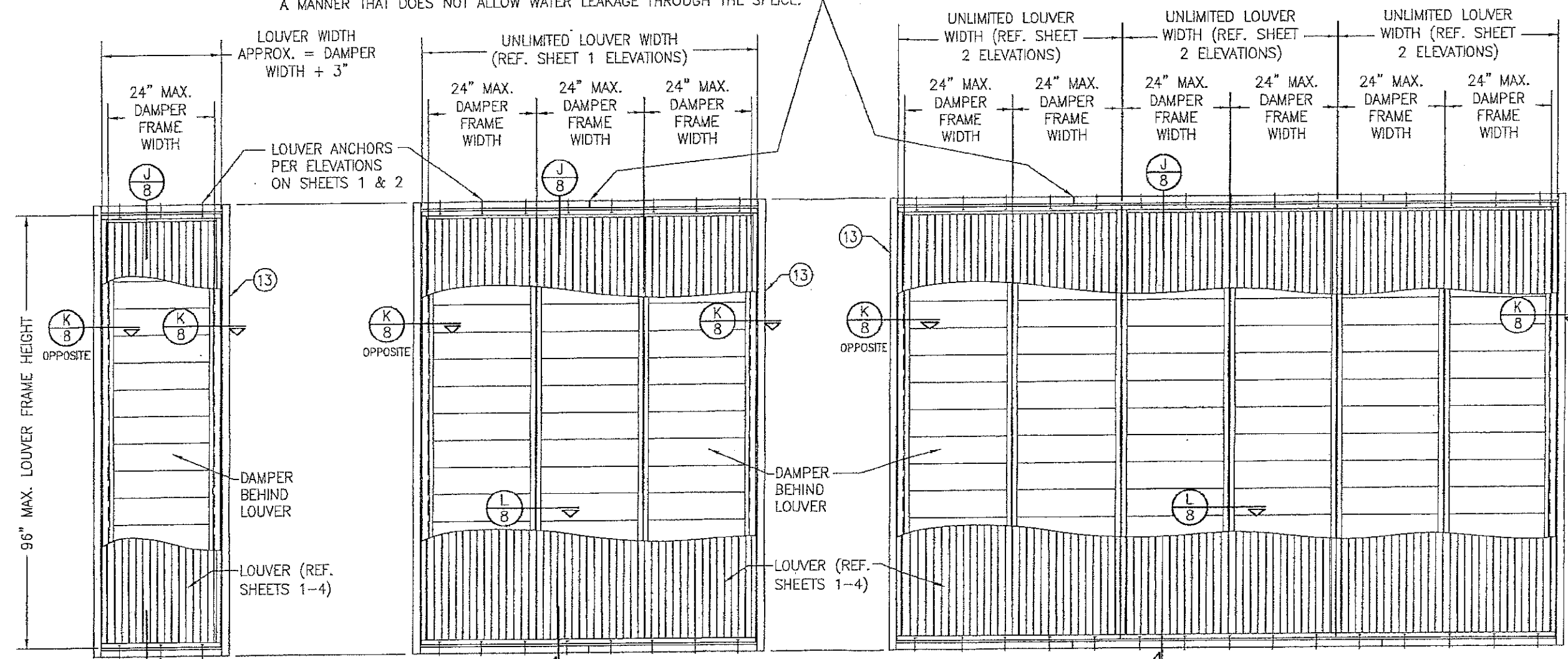
NOTE: Z-BRACKET PART #40 AND DAMPER SUPPORT
ANGLE PART #41 MAY BE TURNED IN AS SHOWN OR
TURNED OUT.



(SILL SECTION SHOWN, HEAD IS SIMILAR)

DRAWN BY: W.R.N.	CHECKED BY: W.R.S.
DATE: 10/15/08	DATE: 10/15/08
REVISION DESCRIPTION	NO.
MANUFACTURER ARROW UNITED INDUSTRIES; A DIVISION OF MESTEK, INC. 450 RIVERSIDE DRIVE WYALUSING, PA 18853 570-746-1888	
CONSULTANTS W. W. SCHAEFER ENGINEERING & CONSULTING, P.A. (CA 6809) 7480 160TH COURT NORTH PALM BEACH GARDENS, FL 33418 PHONE: 561-744-3424	
DRAWING TITLE EAV-66 VERTICAL LOUVER SYSTEM	
CERTIFICATION W. W. SCHAEFER LICENSE NO. 44135 EXPIRATION DATE 03/15/2016 PROFESSIONAL	
DRAWING NO. 1504	REV. C
SHEET NO. 6 OF 9	

SUPPORT SLEEVE SPLICE MAY OCCUR MID-WAY BETWEEN ANCHORS AT ANY LOCATION PROVIDING NO SLEEVE SECTION LENGTH IS LESS THAN THE DAMPER PANEL FRAME WIDTHS. SPLICING OF SLEEVES SHALL BE DONE IN A MANNER THAT DOES NOT ALLOW WATER LEAKAGE THROUGH THE SPLICE.



EXTERIOR ELEVATION:
SINGLE LOUVER PANEL WITH A
SINGLE AC-525/526 DAMPER
SCALE: 1/2" = 1'-0"

EXTERIOR ELEVATION:
SINGLE LOUVER PANEL WITH
MULTIPLE AC-525/526 DAMPERS
SCALE: 1/2" = 1'-0"

EXTERIOR ELEVATION:
MULTIPLE LOUVER PANELS WITH
MULTIPLE AC-525/526 DAMPERS
SCALE: 1/2" = 1'-0"

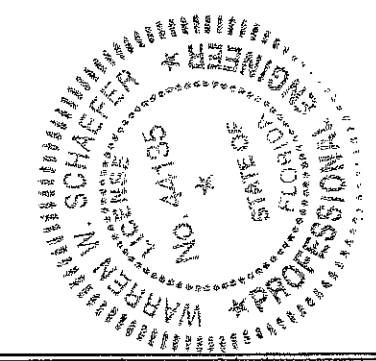
PRODUCT REVISED
as complying with the Florida
Building Code
NOA-No. **17-0713.06**
Expiration Date **03/15/2022**
By *[Signature]*
Miami-Dade Product Control

PRODUCT REVISED
as complying with the Florida
Building Code
NOA-No. **20-0722.12**
Expiration Date **03/15/2022**
By *[Signature]*
Miami-Dade Product Control

- 1) NON-ARCHITECTURAL LOUVERS SHOWN. ARCHITECTURAL LOUVERS ALSO APPLY.
- 2) MORE THAN 1 DAMPER MAY BE PLACED BEHIND EACH LOUVER PANEL.
- 3) DAMPER MULLIONS/SEAMS DO NOT HAVE TO ALIGN WITH LOUVER PANEL SEAMS.
- 4) EACH INDIVIDUAL DAMPER PANEL IS LIMITED TO A 24" FRAME WIDTH.

ALLOWABLE DESIGN PRESSURE
(AC-525/526 DAMPERS)
+150/-150 PSF

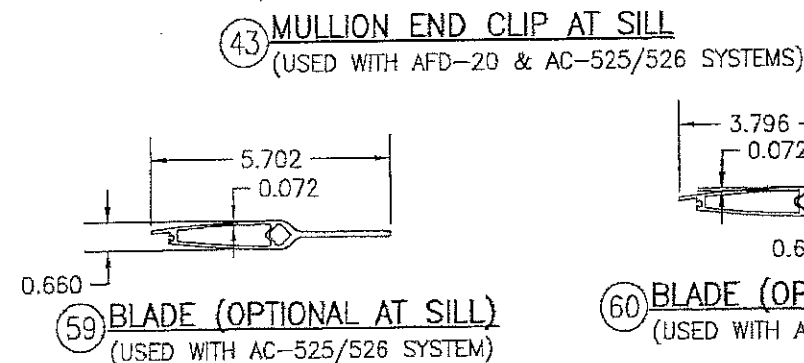
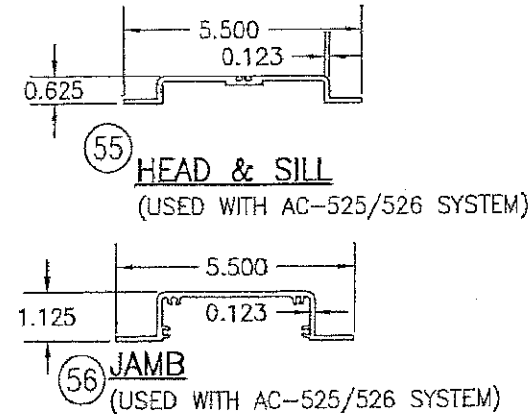
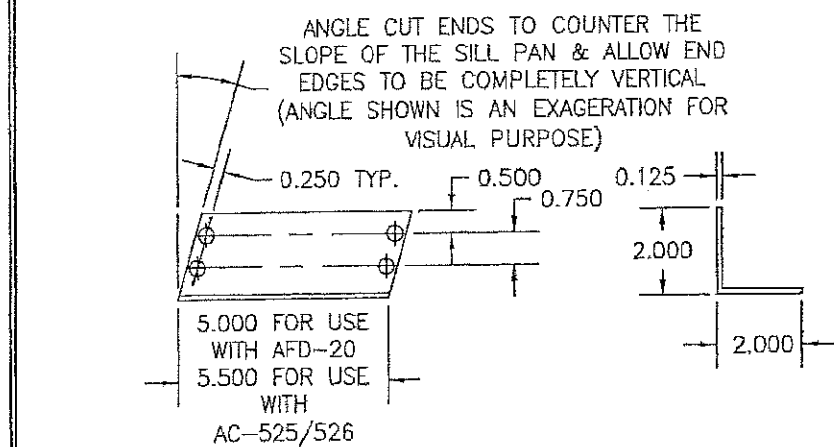
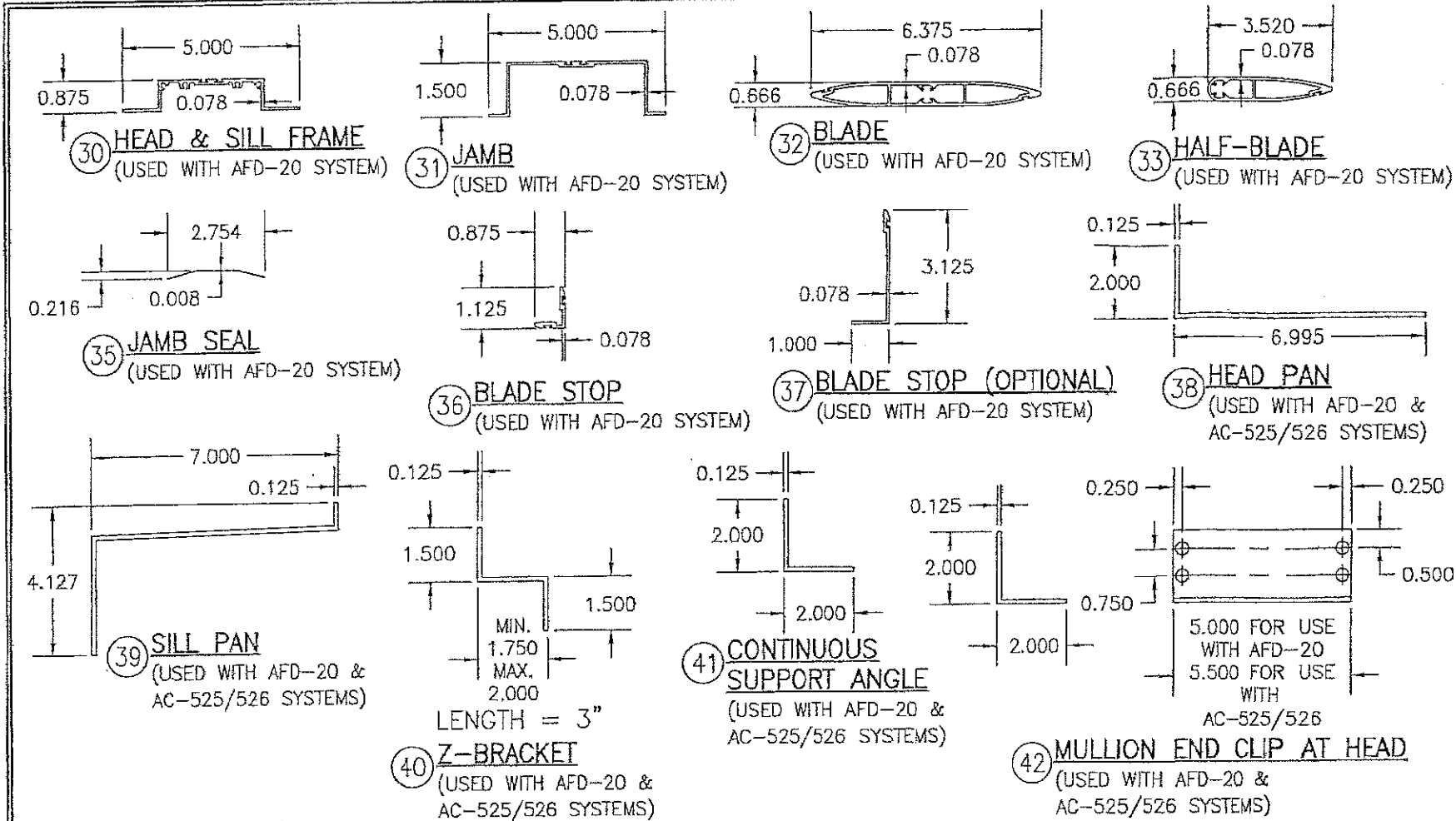
PRODUCT RENEWED
as complying with the Florida
Building Code
NOA-No. **16-0808.13**
Expiration Date **03/15/2022**
By *[Signature]*
Miami-Dade Product Control



DAMPER CORNER CONSTRUCTION (AC-525/526): HEAD AND SILL ARE BUTTED TO THE SIDE JAMBS, SECURED WITH 4 NO. 8 X 3/4" 410 S.S. SHEET METAL SCREWS AND SEALED WITH SEALANT.

SLEEVE CORNER CONSTRUCTION: SIDE MEMBERS ARE JOINED & FULLY WELDED TO HEAD & SILL MEMBERS

DRAWN BY: W.R.N.		CHECKED BY: W.W.S.	
PLOT: 7-24		DATE: 10/18/06	
DATE	BY	REVISION DESCRIPTION	NO.
DRAWING TITLE: EAV-66 VERTICAL LOUVER SYSTEM			
CONSULTANTS: W. W. SCHAEFER ENGINEERING & CONSULTING, P.A. (CA 6809)		MANUFACTURER: ARROW UNITED INDUSTRIES; A DIVISION OF MESTEK, INC.	
7480 130TH COURT NORTH, J3418 PALM BEACH GARDENS, FL 33418 PHONE: 561-744-3424		450 RIVERSIDE DRIVE WYALUSING, PA 18853 570-746-1888	
CERTIFICATION: AUG 01 2016		P.E. WARREN W. SCHAEFER P.E. NO. 44143	
DRAWING NO. 1504		REV. C	
SHEET NO. 7		OF 9	



AFD-20 DAMPER (ALL PARTS BY ARROW UNITED INDUSTRIES)

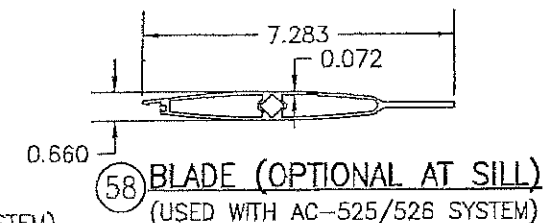
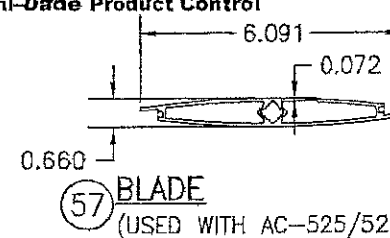
ITEM #	ITEM DESCRIPTION	MANUFACTURER/NOTES
PARTS		
30	HEAD & SILL FRAME	6063-T5 ALUMINUM
31	JAMB	6063-T6 ALUMINUM
32	BLADE	6063-T5 ALUMINUM
33	HALF-BLADE	6063-T5 ALUMINUM
34	BLADE LINKAGE ASSEMBLY	BY AWV
35	JAMB SEAL	304 STAINLESS STEEL
36	BLADE STOP	6063-T5 ALUMINUM
37	BLADE STOP (OPTIONAL)	6063-T5 ALUMINUM
38	HEAD PAN	5052-H32 ALUMINUM
39	SILL PAN	5052-H32 ALUMINUM
40	Z-BRACKET	5052-H32 ALUMINUM
41	CONTINUOUS SUPPORT ANGLE	6063-T5 ALUMINUM
42	MULLION END CLIP AT HEAD	6063-T5 ALUMINUM
43	MULLION END CLIP AT SILL	6063-T5 ALUMINUM
MISC. FASTENERS		
47	NO. 8 X 3/4" 18-8 SS SMS SCREW	2 PER Z-BRACKET
48	1/4" X 1" 410 S.S. SELF TAPPING SCREW	WITHIN 6" OF ENDS & MAX. 12" O.C.
49	NO. 8 X 3/4" 18-8 SS SMS SCREW	WITHIN 6" OF ENDS & MAX. 12" O.C.
50	1/4" X 1" 410 S.S. SELF TAPPING SCREW	4 PER MULLION END CLIP
51	NO. 8 X 3/4" 18-8 SS SMS SCREW	WITHIN 2" OF CORNERS & MAX. 12" O.C.
SEALS & SEALANTS		
54	BLADE SEAL	SOLID SILICONE

AC-525/526 DAMPER (ALL PARTS BY AIR BALANCE, INC.)

ITEM #	ITEM DESCRIPTION	MANUFACTURER/NOTES
PARTS		
55	HEAD & SILL FRAME	6063-T5 ALUMINUM
56	JAMB	6063-T6 ALUMINUM
57	BLADE	6063-T5 ALUMINUM
58	BLADE (OPTIONAL AT SILL)	6063-T5 ALUMINUM
59	BLADE (OPTIONAL AT SILL)	6063-T5 ALUMINUM
60	BLADE (OPTIONAL AT SILL)	6063-T5 ALUMINUM
61	BLADE LINKAGE ASSEMBLY	BY AWV
62	JAMB SEAL	304 STAINLESS STEEL
63	BLADE STOP	6063-T5 ALUMINUM
SEALS & SEALANTS		
65	BLADE SEAL	SANTOPRENE
67	BULB SEAL	VINYL

PRODUCT RENEWED
as complying with the Florida Building Code
NOA-No. 16-0808.13
Expiration Date 03/15/2022

By *[Signature]*
Miami-Dade Product Control

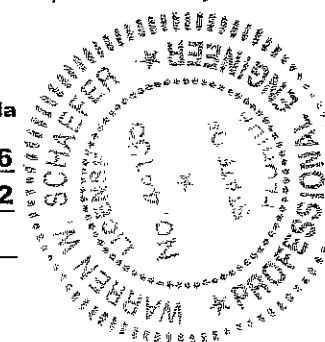


PRODUCT REVISED
as complying with the Florida Building Code
NOA-No. 20-0722.12
Expiration Date 03/15/2022

By *[Signature]*
Miami-Dade Product Control

PRODUCT REVISED
as complying with the Florida Building Code
NOA-No. 17-0713.06
Expiration Date 03/15/2022

By *[Signature]*
Miami-Dade Product Control



DRAWING NO. 1504		REV. C
SHEET NO. 9		OF 9

DRAWING TITLE
EAV-66 VERTICAL LOUVER SYSTEM

MANUFACTURER
ARROW UNITED INDUSTRIES;
A DIVISION OF MESTEK, INC.
450 RIVERSIDE DRIVE
WYALUSING, PA 18853
570-746-1888

CONSULTANTS
W. W. SCHAEFER ENGINEERING & CONSULTING, P.A. (CA 6809)
7480 150TH COURT NORTH
PALM BEACH GARDENS, FL 33418
PHONE: 561-744-3424

CERTIFICATION
AUG 01 2016
WARREN W. SCHAEFER, P.E.
P.E. NO. 44135