



DEPARTMENT OF REGULATORY AND ECONOMIC RESOURCES (RER)  
BOARD AND CODE ADMINISTRATION DIVISION

MIAMI-DADE COUNTY  
PRODUCT CONTROL SECTION  
11805 SW 26 Street, Room 208  
Miami, Florida 33175-2474  
T (786) 315-2590 F (786) 315-2599

[www.miamidade.gov/economy](http://www.miamidade.gov/economy)

## NOTICE OF ACCEPTANCE (NOA)

**Innova STR**  
2520 Coral Way, Ste. 2-396  
Miami, Florida 33145

### SCOPE:

This NOA is being issued under the applicable rules and regulations governing the use of construction materials. The documentation submitted has been reviewed and accepted by Miami-Dade County RER- Product Control Section to be used in Miami Dade County and other areas where allowed by the Authority Having Jurisdiction (AHJ).

This NOA shall not be valid after the expiration date stated below. The Miami-Dade County Product Control Section (In Miami Dade County) and/or the AHJ (in areas other than Miami Dade County) reserve the right to have this product or material tested for quality assurance purposes. If this product or material fails to perform in the accepted manner, the manufacturer will incur the expense of such testing and the AHJ may immediately revoke, modify, or suspend the use of such product or material within their jurisdiction. RER reserves the right to revoke this acceptance if it is determined by Miami-Dade County Product Control Section that this product or material fails to meet the requirements of the applicable building code.

This product is approved as described herein and has been designed to comply with the High Velocity Hurricane Zone of the Florida Building Code.

### DESCRIPTION: Innova STR Pergolas

**APPROVAL DOCUMENT:** Drawing #LMD-01-2019, titled "Aluminum Louver System", prepared by Innova STR, last revised on August 20, 2019, sheet 1 of 1, signed and sealed by Masood Hajali, P.E., on February 17, 2021, bearing the Miami-Dade County Product Control Approval stamp with the Notice of Acceptance number and the approval date by the Miami-Dade County Product Control Section.

### MISSILE IMPACT RATING: NONE

**LABELING:** A permanent label with the manufacturer's name or logo, Opa Locka, Florida and the following statement: "Miami-Dade County Product Control Approved", unless otherwise noted herein.

**RENEWAL** of this NOA shall be considered after a renewal application has been filed and there has been no change in the applicable building code negatively affecting the performance of this product.

**TERMINATION** of this NOA will occur after the expiration date or if there has been a revision or change in the materials, use, and/or manufacture of the product or process. Misuse of this NOA as an endorsement of any product, for sales, advertising or any other purposes shall automatically terminate this NOA. Failure to comply with any section of this NOA shall be cause for termination and removal of NOA.

**ADVERTISEMENT:** The NOA number preceded by the words Miami-Dade County, Florida, and followed by the expiration date may be displayed in advertising literature. If any portion of the NOA is displayed, then it shall be done in its entirety.

**INSPECTION:** A copy of this entire NOA shall be provided to the user by the manufacturer or its distributors and shall be available for inspection at the job site at the request of the Building Official.

This NOA consists of this page 1, evidence submitted page E-1 as well as approval document mentioned above. The submitted documentation was reviewed by **Helmy A. Makar, P.E., M.S.**



*Helmy A. Makar*  
03/04/2021

NOA No. 20-0708.01  
Expiration Date: 03/04/2026  
Approval Date: 03/04/2021

**Innova STR**

**NOTICE OF ACCEPTANCE: EVIDENCE SUBMITTED**

**A. DRAWINGS**

1. *Drawing #LMD-01-2019, titled "Aluminum Louver System", prepared by Innova STR, last revised on August 20, 2019, sheet 1 of 1, signed and sealed by Masood Hajali, P.E., on February 17, 2021.*

**B. TESTS**

1. *Test report on Wind and Wind Driven Rain Resistance Test of a Louver System per TAS 100-95, prepared by FTL, Report No. 10985, dated April 10, 2020, signed and sealed by Idalmis Ortega, P.E.*

**C. CALCULATIONS**

1. *Calculation prepared by Masood Hajali, P.E., on September 05, 2019, 7 pages, signed and sealed by Masood Hajali, P.E.*

**D. QUALITY ASSURANCE**

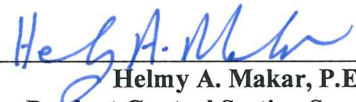
1. *By Miami-Dade County Department of regulatory and Economic Resources.*

**E. MATERIAL CERTIFICATIONS**

1. *None.*

**F. STATEMENTS**

1. *Letter prepared by Masood Hajali, P.E., dated 09/05/19, signed & sealed by Masood Hajali, P.E., stating that the product meets the requirements of the 2020 FBC.*

  
Helmy A. Makar, P.E., M.S.

Product Control Section Supervisor

NOA No. 20-0708.01

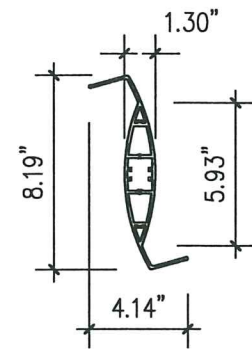
Expiration Date: 03/04/2026

Approval Date: 03/04/2021

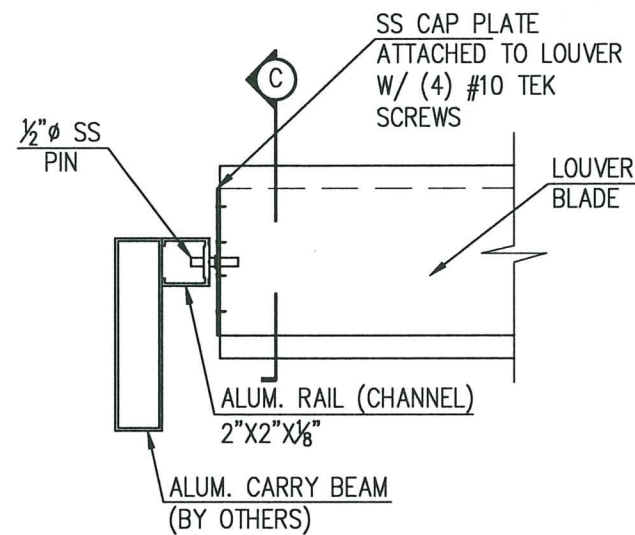


GENERAL NOTES:

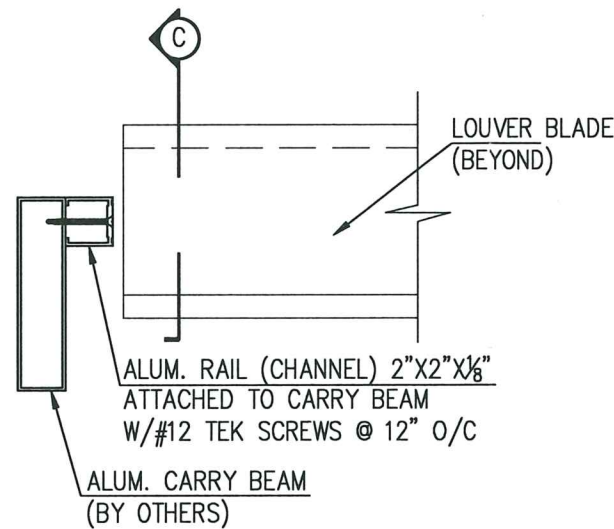
1. LOUVER SYSTEM HAS BEEN TESTED FOR COMPLIANCE TO FBC 2020 (7TH EDITION) HVHZ.
2. LOUVER SYSTEM ALUMINUM 6063-T6.
3. LOUVER BLADES SELF WEIGHT IS 1.97LB/LF.
3. SUPPORT FRAMES (CARRY BEAMS AND COLUMNS) AND FOUNDATIONS ARE NOT PART OF THIS APPROVAL AND SHALL BE DESIGNED BY A REGISTERED FLORIDA PROFESSIONAL ENGINEER.
4. THIS PRODUCT IS INTENDED FOR OUTDOOR SHADE STRUCTURES SUCH AS CANOPIES, CARPORTS, PATIO COVERS AND MARQUEES.
5. ALL SCREWS TO BE SS COMPLIANT TO FBC 2020 REQUIREMENTS.



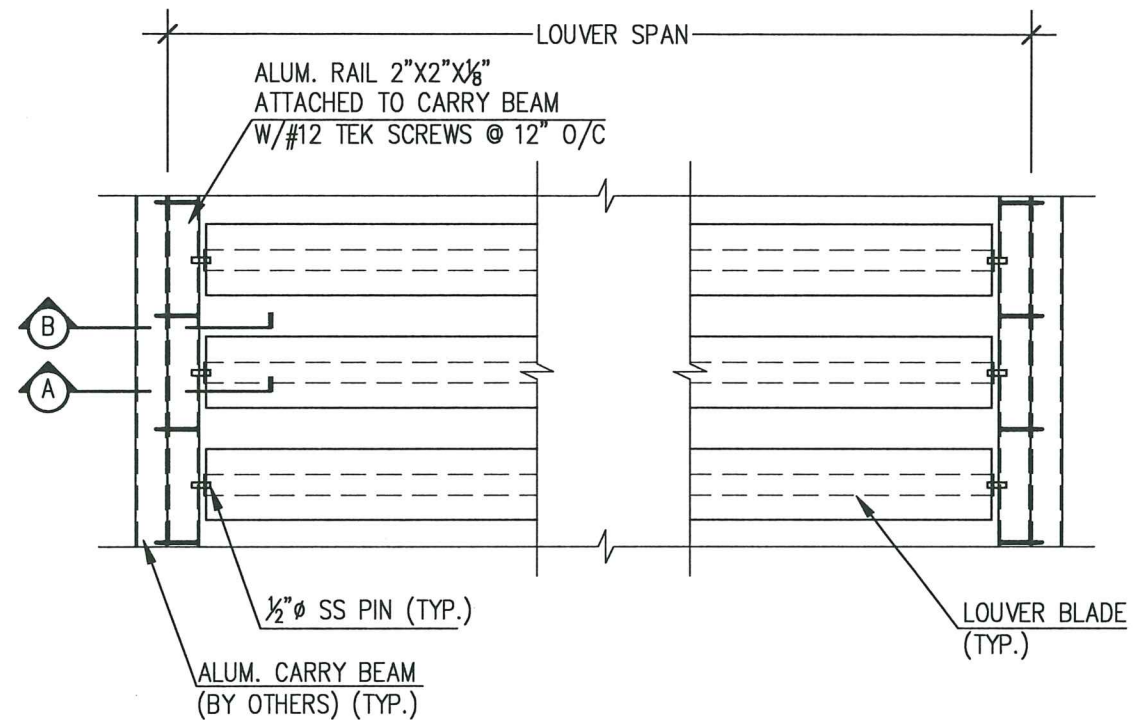
LOUVER BLADE DIMENSIONS



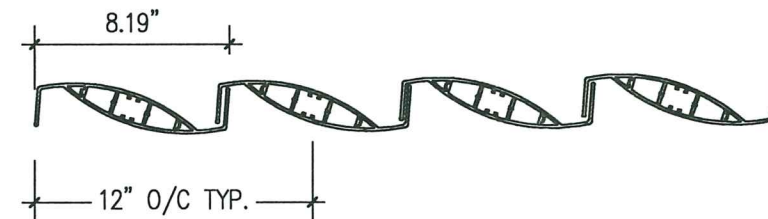
SECTION A



SECTION B



PLAN VIEW



LOUVER BLADES CLOSED POSITION

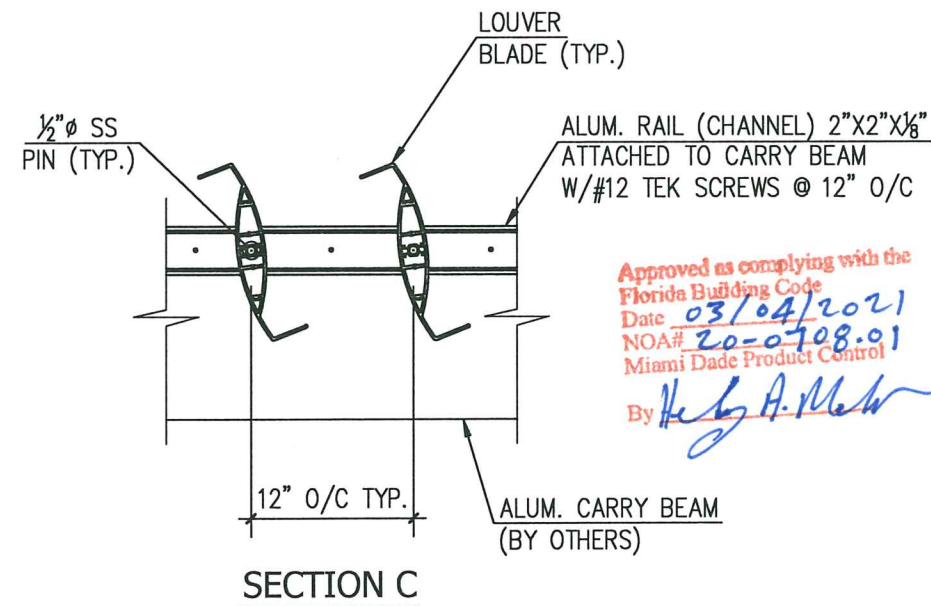
ALLOWABLE LOADS (psf) (ASD)		
Span (ft)	Deflection Limit	
	L/80	L/180
6	143.5	143.5
7	105.4	95.0
8	80.7	63.6
9	63.8	44.7
10	51.6	32.6
11	42.7	24.4
12	35.8	18.8
13	N/A	14.8
14	N/A	11.8
15	N/A	9.6

TABLE NOTES:

1. REFER TO PLAN VIEW FOR LOUVER SPAN.
2. L/80 DEFLECTION ONLY APPLIES TO R-3 OCCUPANCY (FBC 2020 1616.3.1.8).
3. FOR GRAVITY LOADS SUBSTRACT SELF WEIGHT FROM ALLOWABLE LOADS.
4. FOR LINEAR INTERPOLATION, FIND LOADING VALUE AND SUBSTRACT 3.0 PSF FROM INTERPOLATED VALUE.



Digitally signed  
by MASOOD  
HAJALI  
Date:  
2021.02.17  
07:28:43 -05'00'



SECTION C

Approved as complying with the  
Florida Building Code  
Date: 03/04/2021  
NOA# 20-0708-01  
Miami Dade Product Control  
By: H. A. Mohr

**INNOVA**  
1-888-695-5369  
WWW.INNOVA5TR.COM

CALC ENGINEERING  
www.calceng.com  
3901 NW 79 AVE Unit 216  
DORAL FL 33166  
Phone: (305) 896-9995  
ENGINEERING BUSINESS  
CA CERTIFICATION: 32566

SHEET: 1 OF 1  
DATE: 8/20/2019  
DWG NUMBER: LMD-01-2019  
DESCRIPTION: ALUM. LOUVER SYSTEM  
SCALE: NTS  
DRAWN BY: M.H.