



DEPARTMENT OF REGULATORY AND ECONOMIC RESOURCES (RER)
BOARD AND CODE ADMINISTRATION DIVISION

NOTICE OF ACCEPTANCE (NOA)

MIAMI-DADE COUNTY
PRODUCT CONTROL SECTION

11805 SW 26 Street, Room 208
Miami, Florida 33175-2474
T (786) 315-2590 F (786) 315-2599

www.miamidade.gov/economy

TORMAX USA Inc.
12859 Wetmore Road
San Antonio, TX 78247

SCOPE:

This NOA is being issued under the applicable rules and regulations governing the use of construction materials. The documentation submitted has been reviewed and accepted by Miami-Dade County RER -Product Control Section to be used in Miami Dade County and other areas where allowed by the Authority Having Jurisdiction (AHJ).

This NOA shall not be valid after the expiration date stated below. The Miami-Dade County Product Control Section (In Miami Dade County) and/or the AHJ (in areas other than Miami Dade County) reserve the right to have this product or material tested for quality assurance purposes. If this product or material fails to perform in the accepted manner, the manufacturer will incur the expense of such testing and the AHJ may immediately revoke, modify, or suspend the use of such product or material within their jurisdiction. RER reserves the right to revoke this acceptance, if it is determined by Miami-Dade County Product Control Section that this product or material fails to meet the requirements of the applicable building code.

This product is approved as described herein and has been designed to comply with the Florida Building Code, including the High Velocity Hurricane Zone.

DESCRIPTION: Series 9300 Automatic Aluminum Sliding Glass Door w/ Reinforcements- N.I.

APPROVAL DOCUMENT: Drawing No. **20-048** (Former #17-477), "Series 9300 Non-Impact" Sheets 1 through 4 of 4, prepared by EngCo. Inc., dated Jun 19, 2020, signed and sealed by Pedro De Figueiredo, P. E. bearing the Miami-Dade County Product Control Revision stamp with the Notice of Acceptance number and expiration date by the Miami-Dade County Product Control Section.

MISSILE IMPACT RATING: None. Approved Hurricane Protection device complying w/ FBC (HVHZ) is required

Limitations:

1. See Unit sizes Vs Design Pressure ratings, in sheet **1**.

LABELING: Each unit shall bear a permanent label with the manufacturer's name or logo, city, state and series and following statement: "Miami-Dade County Product Control Approved", noted herein.

RENEWAL of this NOA shall be considered after a renewal application has been filed and there has been no change in the applicable building code negatively affecting the performance of this product.

TERMINATION of this NOA will occur after the expiration date or if there has been a revision or change in the materials, use, and/or manufacture of the product or process. Misuse of this NOA as an endorsement of any product, for sales, advertising or any other purposes shall automatically terminate this NOA. Failure to comply with any section of this NOA shall be cause for termination and removal of NOA.

ADVERTISEMENT: The NOA number preceded by the words Miami-Dade County, Florida, and followed by the expiration date may be displayed in advertising literature. If any portion of the NOA is displayed, then it shall be done in its entirety.

INSPECTION: A copy of this entire NOA shall be provided to the user by the manufacturer or its distributors and shall be available for inspection at the job site at the request of the Building Official.

This NOA **revises & renews** NOA #17-1218.27 and consists of this page 1 and evidence pages E-1, E-2 and E-3, as well as approval document mentioned above.

The submitted documentation was reviewed by **Ishaq I. Chanda, P.E.**



NOA No. 20-0720.05
Expiration Date: June 22, 2025
Approval Date: September 17, 2020
Page 1

8
9/17/20

NOTICE OF ACCEPTANCE: EVIDENCE SUBMITTED

1. Evidence submitted in previous files

A. DRAWINGS

1. Manufacturer's die drawings and sections (Submitted under files below)
2. Drawing No. **14-104** (Former **#12-175**), "Series 9300 Non-Impact" Sheets 1 through 4 of 4, prepared by EngCo. Inc., 08-24-2014 and last revised on OCT 06, 2015, signed and sealed by Pedro De Figueiredo, P.E.

B. TESTS (Submitted under files **#15-0427.09/#12-1107.02/ 11-0502.06/ #06-0202.03**)

1. Test reports on
 - 1) Air Infiltration Test, per FBC, TAS 202-94
 - 2) Uniform Static Air Pressure Test, Loading per FBC TAS 202-94
 - 3) Water Resistant Test per FBC, TAS 202-94 (Not Performed)
 - 4) Forced Entry Test, per FBC 2411 3.2.1, TAS 202-94

along with marked-up drawings and installation diagram of an Automatic Entrance door, prepared by Hurricane Testing Laboratory, LLC, Test Report No **HTL 0368-0807-05 & HTL 0368-0808-05**, both dated 11/28/05, signed and sealed by Vinu J. Abraham, P. E.

C. CALCULATIONS (submitted under file **#15-0427.09**)

1. Anchor Calculations and structural analysis, complying with FBC-2014(5th Edition), prepared by Engco, Inc., dated 01/02/15, signed and sealed by Pedro De Figueiredo, P.E.
2. Glazing complies w/ ASTM E-1300-02, -04 & -09.

D. QUALITY ASSURANCE

1. Miami Dade Department of Regulatory and Economic Resources (RER).

E. MATERIAL CERTIFICATIONS


1. None.

F. STATEMENTS (submitted under file **#15-0427.09**)

1. Statement letter of conformance to FBC 2014 (5th Edition) and letter of no financial interest, prepared by Engco, Inc, dated 01/02/2015, signed and sealed by Pedro De Figueiredo, P.E.
2. Lab compliance as part of the above referenced test report.

G. OTHER

1. This NOA **renews** NOA **#15-0427.09**, expiring on June 22, 2021.
2. State of Delaware Certificate of amendment of "Tormax Technologies Inc." name change to "TORMAX USA Inc., dated 04-23-15, signed by Jeffery W. Bullock, Secretary of State (submitted under file **#15-0427.09**).



Ishaq I. Chanda, P.E.
Product Control Unit Supervisor
NOA No. 20-0720.05
Expiration Date: June 22, 2025
Approval Date: September 17, 2020

NOTICE OF ACCEPTANCE: EVIDENCE SUBMITTED

2. Evidence submitted in previous files.

A. DRAWINGS

1. Drawing No. **17-477** (Former **#14-104**), "Series 9300 Non-Impact" Sheets 1 through 4 of 4, prepared by EngCo. Inc., dated AUG 15, 2017, signed and sealed by Pedro De Figueiredo, P. E.

Note: This revision consists of editorial changes of FBC 17 (6th Edition) code compliance.

B. Test

1. None.

C. CALCULATIONS

1. None

D. QUALITY ASSURANCE

1. Miami Dade Department of Regulatory and Economic Resources (RER).

E. MATERIAL CERTIFICATIONS

1. None.

F. STATEMENTS

1. Statement letter of conformance to FBC 2017 (6th Edition), dated 08/15/17, prepared by EngCo. Inc., signed and sealed by Pedro De Figueiredo, P. E.
2. Statement letter of extent of drawing editorial revision, dated 01/30/18, prepared by EngCo., signed and sealed by Pedro De Figueiredo, P. E

G. OTHER

1. This NOA revises # 16-0202.13, expiring 06/22/21.

3. New Evidence submitted.

A. DRAWINGS

1. Drawing No. **20-048** (Former **#17-477**), "Series 9300 Non-Impact" Sheets 1 through 4 of 4, prepared by EngCo. Inc., dated Jun 19, 2020, signed and sealed by Pedro De Figueiredo, P. E.

B. Test

1. None.

C. CALCULATIONS

1. None

D. QUALITY ASSURANCE

1. Miami Dade Department of Regulatory and Economic Resources (RER).



Ishaq I. Chanda, P.E.

Product Control Unit Supervisor

NOA No. 20-0720.05

Expiration Date: June 22, 2025

Approval Date: September 17, 2020

TORMAX USA Inc.

NOTICE OF ACCEPTANCE: EVIDENCE SUBMITTED

E. MATERIAL CERTIFICATIONS


1. None.

F. STATEMENTS

1. Statement letter of conformance to FBC 2020 (7th Edition), dated 06/15/20, prepared by EngCo. Inc., signed and sealed by Pedro De Figueiredo, P. E.
2. Statement letter of extent of drawing editorial revision, inclusive code change notes, dated 06/15/20, prepared by EngCo., signed and sealed by Pedro De Figueiredo, P. E.

G. OTHER

1. This NOA revises & renews # 17-1218.27 and FBC 2020 updates, expiring 06/22/25.



Ishaq I. Chanda, P.E.
Product Control Unit Supervisor
NOA No. 20-0720.05
Expiration Date: June 22, 2025
Approval Date: September 17, 2020

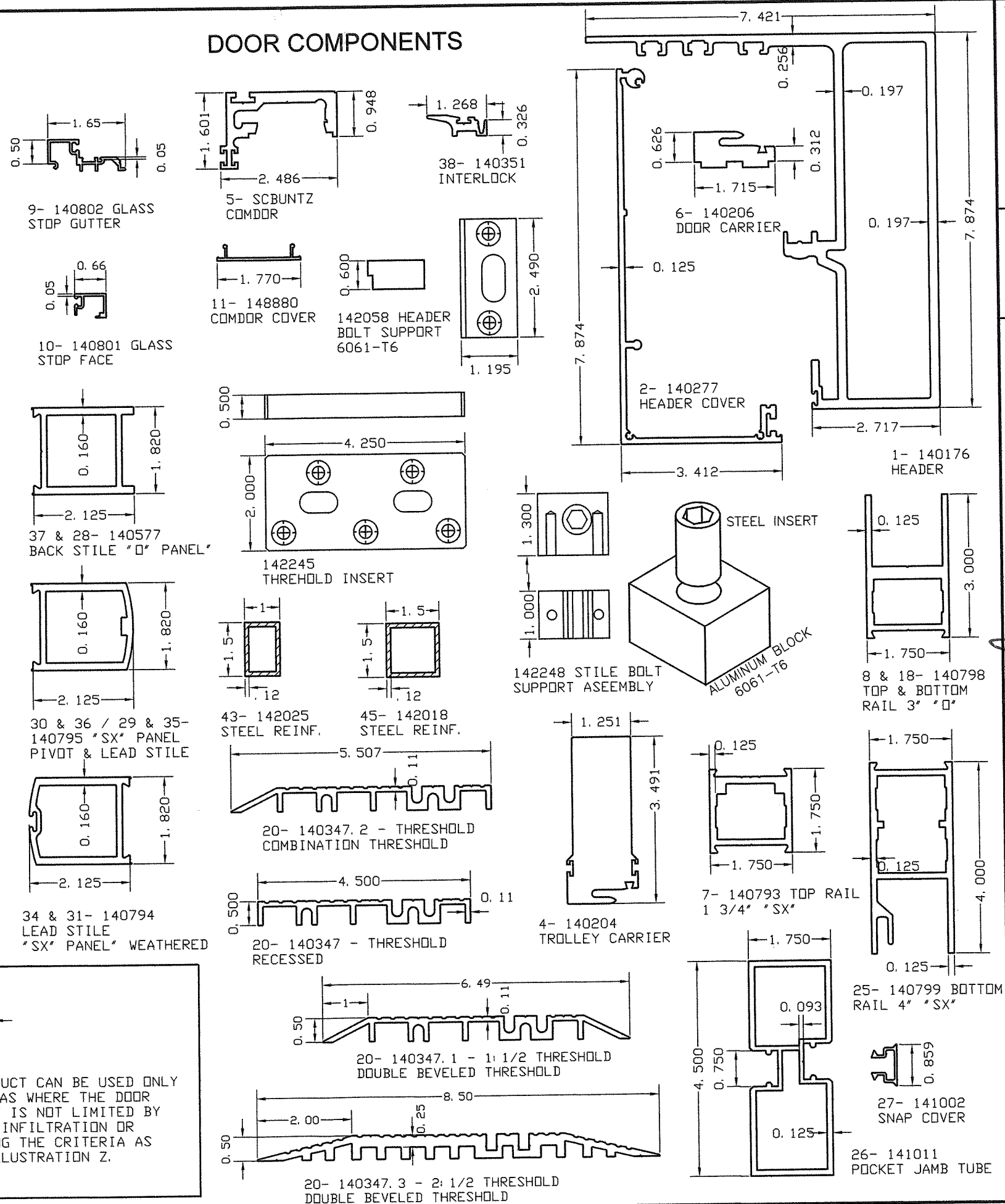
INDEX:

SHEET 1 of 4 - GENERAL NOTES, DESIGN RATING AND DOOR COMPONENTS
SHEET 2 of 4 - TYPICAL DOOR ELEVATION, FRAMING ANCHORAGE
SHEET 3 of 4 - SECTION 1 DETAIL & BILL OF MATERIALS
SHEET 4 of 4 - SECTION 2 & 3 DETAILS & GLAZING DETAIL

GENERAL NOTES:

- 1- CODE: THIS PRODUCT HAS BEEN TESTED AND DESIGNED IN ACCORDANCE WITH THE FLORIDA BUILDING CODE 2020 - 7th EDITION., INCLUDING THE HIGH VELOCITY HURRICANE ZONES (HVHZ).
- 2- DEFINITION: THIS PRODUCT IS AN ALUMINUM NON IMPACT RESISTANT AUTOMATIC SLIDING GLASS DOOR. IN ORDER TO MEET IMPACT RESISTANCE CRITERIA, THIS PRODUCT MUST BE INSTALLED WITH AN APPROVED HURRICANE SHUTTER.
- 3- POSTING: "9300 SERIES - NON IMPACT ALUMINUM AUTOMATIC SLIDING GLASS DOORS TORMAX USA, Inc. SAN ANTONIO, TEXAS DADE COUNTY PRODUCT CONTROL APPROVED"
- 4- LOADS: DESIGNED LOAD CALCULATED BASED ON THE ASCE 7-16 AND PROVIDED BY A PROFESSIONAL ARCHITECT OR ENGINEER FOR EACH SPECIFIC PROJECT. THE CALCULATED DESIGNED PRESSURE MUST NOT EXCEED THE ALLOWABLE PRESSURES HEREIN SPECIFIED. THE DESIGN PRESSURES, AS DETERMINED FROM ASCE 7-16, ARE TO BE MULTIPLE BY 0.6
- 5- MATERIAL: ALL ALUMINUM PARTS TO BE 6063-T5 ALLOY OR AS NOTED AND GLAZING TO BE 1/4" TEMPERED GLASS AS PER SHEET 4 of 4 AS SPECIFIED ON THIS APPROVAL.
- 6- FASTENERS: ASSEMBLY SCREWS AND ANCHORS SHALL BE AS SPECIFIED IN THE CURRENT SET OF DRAWINGS. INSTALLATION AND LOADS AS PER THIS APPROVAL. ANCHOR SPACING AND LOADS MUST NOT EXCEED THE MAXIMUM LIMITS SPECIFIED BY THIS APPROVAL.
- 7- USE: IT SHALL BE THE RESPONSIBILITY OF THE CONTRACTOR, ARCHITECT OR ENGINEER OF RECORD TO VERIFY THE FOLLOWING:
 - 7.1- THE STABILITY OF THE STRUCTURE WHERE THE PRODUCT IS TO BE ATTACHED INSURING PROPER ANCHORAGE.
 - 7.2- THE SITE SPECIFIC PROJECT CRITERIA, SUCH AS BUT NOT LIMITED TO, LOCAL CODE REQUIREMENTS, DESIGNED PRESSURES ETC.
 - 7.3- THAT THIS APPROVAL IS ADEQUATE TO THE SPECIFIC PROJECT.
- 8- 33 1/3% INCREASE IN ALLOWABLE LOADS HAVE NOT BEEN USED IN THE DESIGN OF THE ANCHORS FOR THIS PRODUCT APPROVAL, HOWEVER, WOOD SCREWS WITH 1.6 INCREASE FOR WIND LOAD DURATION HAVE BEEN USED.
- 9- THIS SYSTEM COMPLIES W/ ASTM E1300-04e01, 07e01, 09e, 12Ae1 or 16
- 10- DISSIMILAR MATERIALS: WHERE ALUMINUM IS IN CONTACT OR FASTENED TO DISSIMILAR MATERIALS, INCLUDING BUT NOT LIMITED TO STEEL, INSTALLATION SHALL MEET THE REQUIREMENTS OF CHAPTER M.7 OF THE ALUMINUM DESIGN MANUAL 2015.

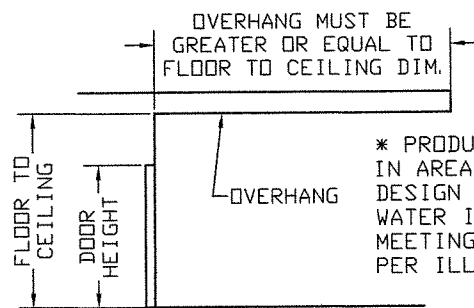
DOOR COMPONENTS



DOOR ALLOWABLE DESIGNED PRESSURES NON IMPACT

| NOMINAL SIZE | ALLOWABLE PRESSURE (PSF) |
|--------------|--------------------------|
| 184" x 104" | +55*, -55 |
| 93" x 104" | +55*, -55 |
| 184" x 92" | +62*, -62 |
| 93" x 92" | +62*, -62 |

ILLUSTRATION "Z"



* PRODUCT CAN BE USED ONLY IN AREAS WHERE THE DOOR DESIGN IS NOT LIMITED BY WATER INFILTRATION OR MEETING THE CRITERIA AS PER ILLUSTRATION Z.

MANUFACTURER:

★★★★★
TORMAX
AUTOMATIC

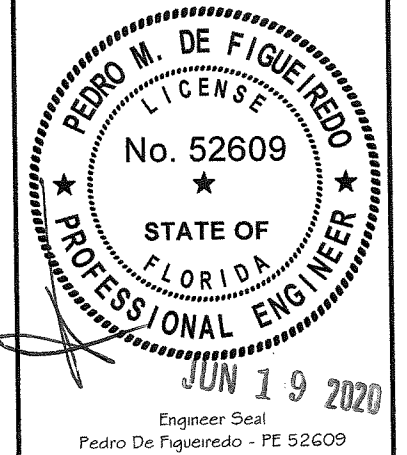
TORMAX USA Inc.
12859 WETMORE ROAD
SAN ANTONIO, TX 78247
PH: (210) 494-3551
FAX: (210) 494-5930

PRODUCT:

SERIES 9300 NI
AUTOMATIC SLIDING GLASS DOOR
NON IMPACT RESISTANT

ENGINEERING:

ENGCO INC. CA 8116
9175 WEST BROWARD BLVD.
PLANTATION, FLORIDA, 33324
Tel.: (954) 632-4060
ENGCO@AOL.COM



MIAMI-DADE BCCO:

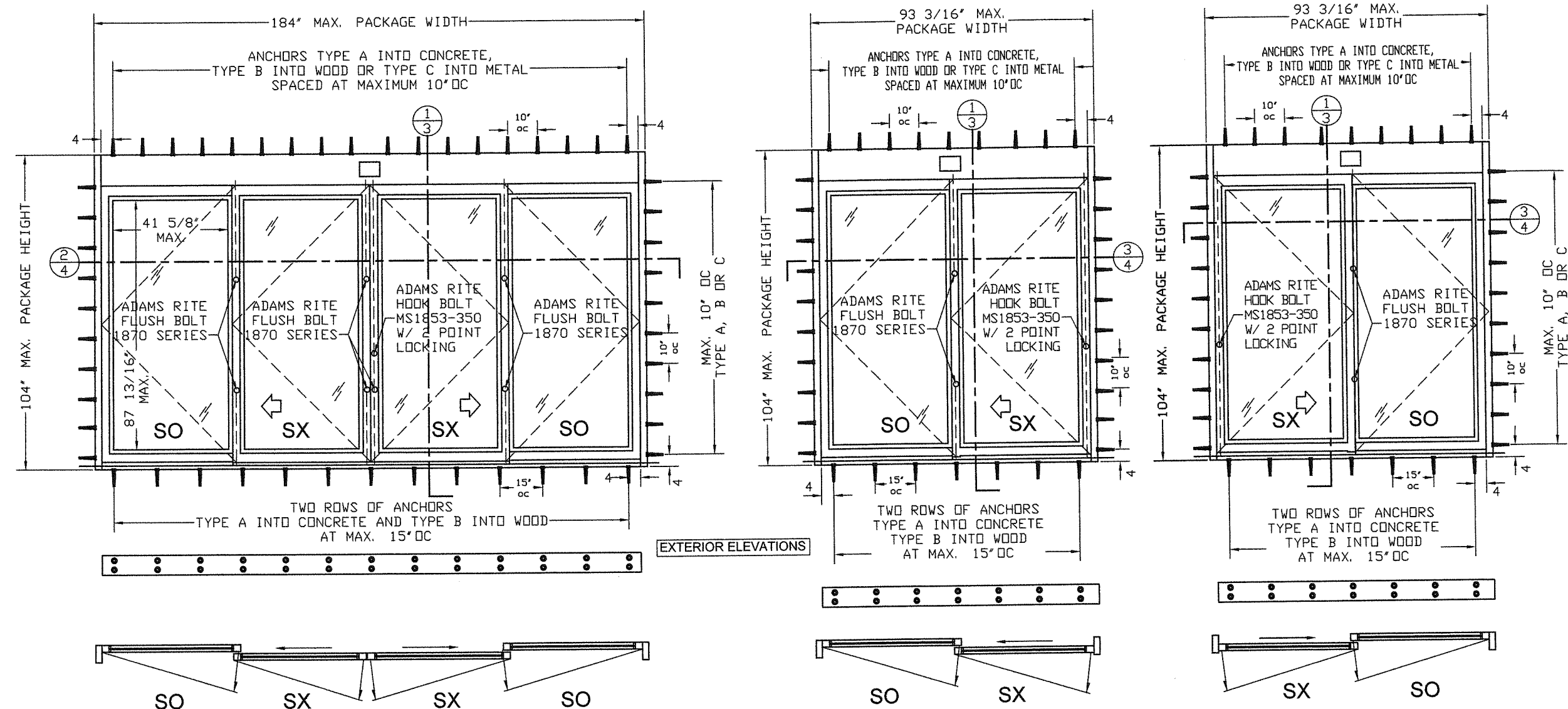
PRODUCT REVISED
as complying with the Florida
Building Code
Acceptance No. 20-0720-05
Expiration Date: JUN 22, 2025
Pedro M. De Figueiredo
Professional Engineer

DATE: 06/15/2020
SCALE: NA
DESIGN BY: PPMF

SHEET
1 OF 4

DRAWING
NUMBER
20-048

TYPICAL ELEVATION AND ANCHORAGE SPACING



HARDWARE NOTE:
LOCK AND FLUSH BOLT HAVE
3/8\"

ANCHOR DATA

| MK | DESCRIPTION | BASE MATERIAL | PENETRATION | EDGE DIST. |
|----|-------------------------------|-------------------|-------------|------------|
| A | 1/4\" | 3000 PSI CONCRETE | 1 1/2\" | 2 1/2\" |
| B | 1/4\" | WOOD (SG) = .55 | 1 1/2\" | 3/4\" |
| C | 1/4-14 HH SMS GRADE 5 GENERIC | 1/8\" | 1/8\" | 3/4\" |
| | 1/4-14 HH SMS GRADE 5 GENERIC | 1/8\" | 1/8\" | 3/4\" |

ANCHOR NOTES:
1- SEE SECTION DETAILS FOR ANCHOR SPACING.
2- MINIMUM PENETRATION IS BEYOND WALL DRESSING.
3- TYPICAL 2 ROWS OF ANCHORS FOR THRESHOLD INSTALLATION
4- BASE MATERIAL DESIGNED BY OTHERS TO WITHSTAND IMPOSED LOAD.

PACKAGE HEIGHT INFORMATION

| PACKAGE HEIGHT | MASONRY OPENING W/ SHIM |
|----------------|-------------------------|
| 8' - 8\" | 8' - 8 1/4\" |

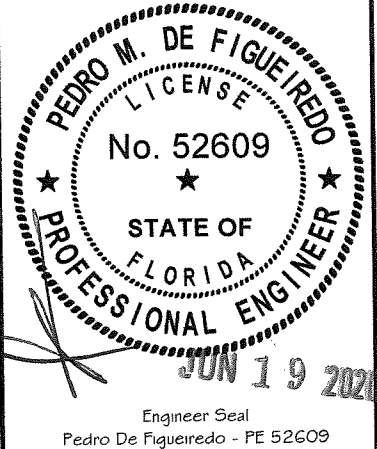
PACKAGE WIDTH INFORMATION

| PKG WIDTH | NOMINAL CLEAR DOOR OPENING | SLIDING DOOR PANEL NOM. WIDTH | EMERGENCY BREAKOUT NOM. WIDTH |
|---------------|----------------------------|-------------------------------|-------------------------------|
| 15' - 4\" | 78 7/8\" | 46 11/32\" | 167 1/2\" |
| 7' - 9 3/16\" | 40\" | 46 11/32\" | 85 1/2\" |

MANUFACTURER:
TORMAX
AUTOMATIC
TORMAX USA Inc.
12859 WETMORE ROAD
SAN ANTONIO, TX 78247
PH: (210) 494-3551
FAX: (210) 494-5930

PRODUCT:
SERIES 9300 NI
AUTOMATIC SLIDING GLASS DOOR
NON IMPACT RESISTANT

ENGINEERING:
ENGCO INC. CA 8116
9175 WEST BROWARD BLVD.
PLANTATION, FLORIDA, 33324
Tel.: (954) 632-4060
ENGCO@AOL.COM

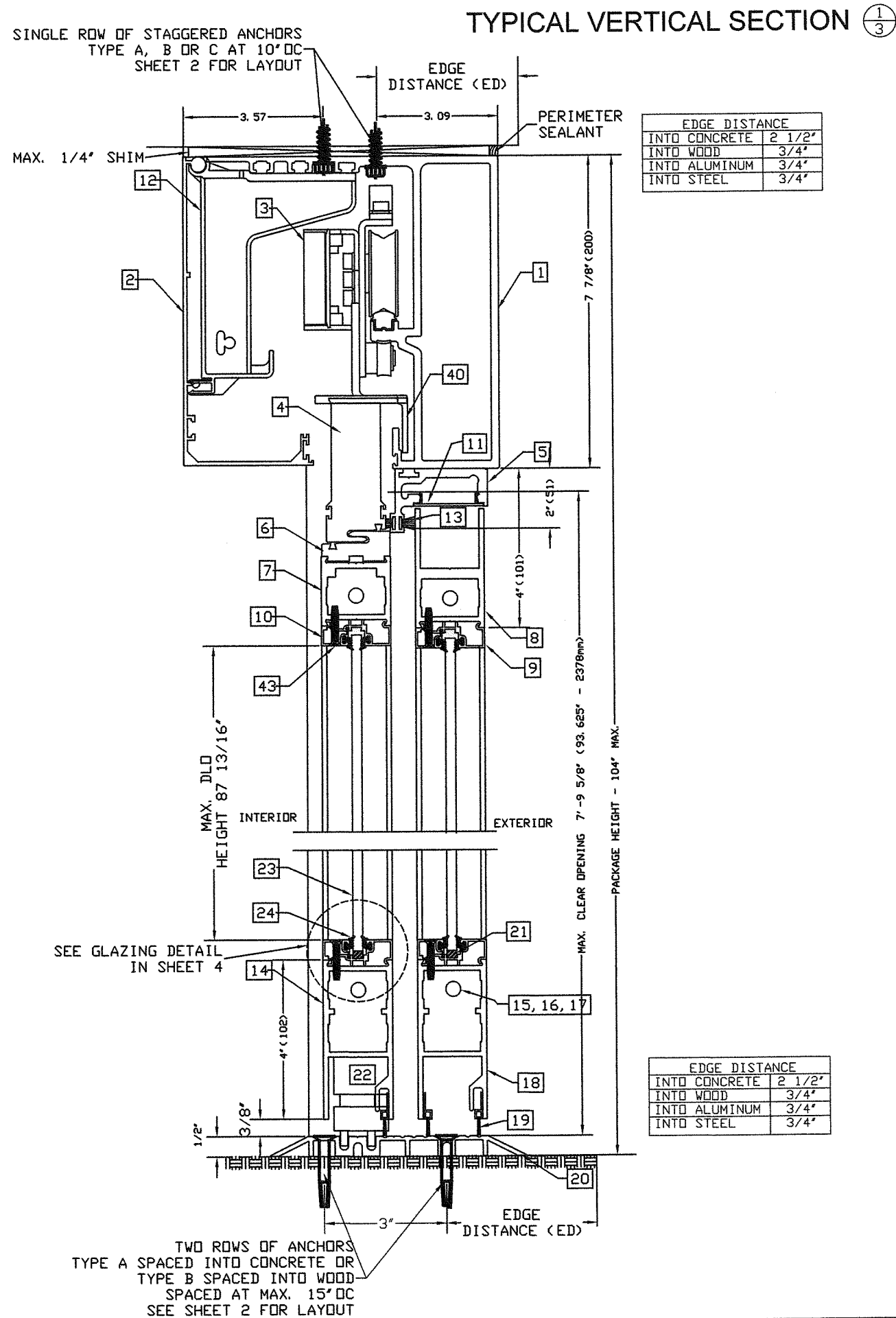


MIAMI-DADE BCCO:

PRODUCT REVISED
as complying with the Florida
Building Code
Acceptance No. 20-0720-05
Expiration Date 6/22/25
By: [Signature]
Miami Dade Product Control

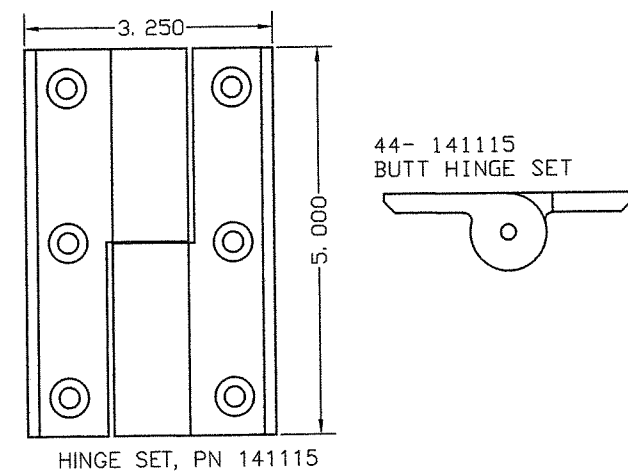
DATE: 06/15/2020
SCALE: NA
DESIGN BY: PPMF

SHEET
2 OF 4
DRAWING
NUMBER
20-048



MATERIAL LIST

| ITEM # | QTY | DESCRIPTION | PART NUMBER |
|--------|-----|---------------------------------------|-------------|
| 1 | 1 | HEADER | 140176 |
| 2 | 1 | COVER, HEADER | 140277 |
| 3 | 4 | TROLLEY ROLLER ASSEMBLY | 110445 |
| 4 | 2 | TROLLEY CARRIER | 140204 |
| 5 | 1 | COMDOR | SCB. UNTZ |
| 6 | 2 | DOOR CARRIER | 140206 |
| 7 | 2 | 1-3/4" TOP RAIL, "SX" | 140793 |
| 8 | 2 | 3" TOP RAIL, "SD" | 140798 |
| 9 | 16 | 1/2" GUTTER, GLASS STOP | 140802 |
| 10 | 16 | 1/2" FACE, GLASS STOP | 140801 |
| 11 | 3 | COMDOR COVER | 14. 8880 |
| 12 | 4 | BRACKET, HEADER COVER | 140219 |
| 13 | 1 | PILE-FIN W. STRIP, HEADR & INTERLOCKS | 141148 |
| 14 | 2 | 4" BOTTOM RAIL, "SX" | 140799 |
| 15 | 8 | 3/8" DIA ALL THREAD, THRU ROD | 140167 |
| 16 | 16 | RAIL CLIP, UNIVERSAL | 140928 |
| 17 | 16 | NUT, SERRATED FLANGE | 140421-08 |
| 18 | 2 | 4" BOTTOM RAIL, "SD" | 140799 |
| 19 | 4 | FLOOR SWEEPER | 140492 |
| 20 | 1 | THRESHOLD, DOUBLE BEVELED | 140349 |
| 21 | AN | 1/4" RUBBER SETTING BLOCK | |
| 22 | 2 | POP-UP GUIDE, NON-HANDED | 142249 |
| 23 | 4 | 1/4" TEMPERED GLASS | |
| 24 | 16 | VINYL, GLASS STOPS | 140132 |
| 25 | 2 | SNAP COVER, JAMB TUBES | 141002 |
| 26 | 2 | JAMB TUBE, POCKET | 141011 |
| 27 | 1 | REAR STILE, "SD" PANEL | 140577 |
| 28 | 1 | LEAD STILE, "SD" PANEL | 140795 |
| 29 | 1 | PIVOT STILE, "SX" | 140795 |
| 30 | 1 | LEAD STILE, WEATHERED, "SX" PANEL | 140794 |
| 31 | 8 | KEY OPERATED LOCK CYLINDER | |
| 32 | 8 | THUMBTURN LOCK CYLINDER | |
| 33 | 1 | LEAD STILE, WEATHERED, "SX" | 140794 |
| 34 | 1 | LEAD STILE, "SD" PANEL | 140795 |
| 35 | 1 | PIVOT STILE, "SX" | 140795 |
| 36 | 1 | REAR STILE, "SD" PANEL | 140577 |
| 37 | 4 | INTERLOCKS | 140351 |
| 38 | 4 | GASKET, INTERLOCKS | 030. 8877 |
| 39 | 1 | PILE-FIN WEATHER STRIP, STILE | 141147 |
| 40 | 2 | DE-RAILER CLIP, SS | 142185 |
| 41 | 4 | PILE-FIN W. STRIP, HEADR & INTERLOCKS | 141148 |
| 42 | 2 | STEEL TUBE, 1" X 1.5" X 0.120" | 142025 |
| 43 | 64 | 8-32 X 7/8" LG, FL HD PH SSMS | US800009 |
| 44 | 6 | BUTT HINGES | 141115 |
| 45 | 4 | STEEL TUBE, 1.5" X 1.5" X 0.120" | 142018 |
| 46 | 2 | TYPE P, SPONGE RUBBER, BLACK, W. SEAL | 142026 |
| 47 | 2 | INTERLOCK ADAM RITE FLUSH BOLTS | 1870 |
| 48 | 3 | LOCK STILE ADAM RITE FLUSH BOLTS | 1870 |
| 49 | 1 | LOCK STILE ADAM RITE 2 POINTS | MS1853-350 |



MANUFACTURER:

★★★★★
TORMAX

AUTOMATIC

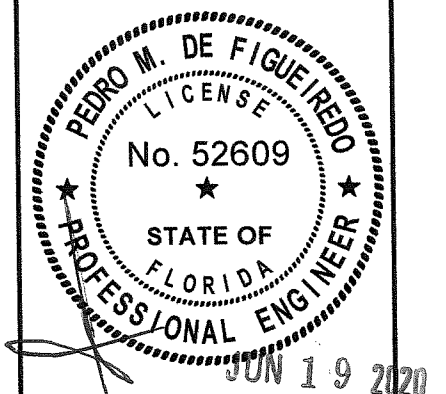
TORMAX USA Inc.
12859 WETMORE ROAD
SAN ANTONIO, TX 78247
PH: (210) 494-3551
FAX: (210) 494-5930

PRODUCT:

SERIES 9300 NI
AUTOMATIC SLIDING GLASS DOOR
NON IMPACT RESISTANT

ENGINEERING:

ENGCO INC. CA 8116
9175 WEST BROWARD BLVD.
PLANTATION, FLORIDA, 33324
Tel.: (954) 632-4060
ENGCO@AOL.COM



Engineer Seal
Pedro De Figueiredo - PE 52609

MIAMI-DADE BCCO:

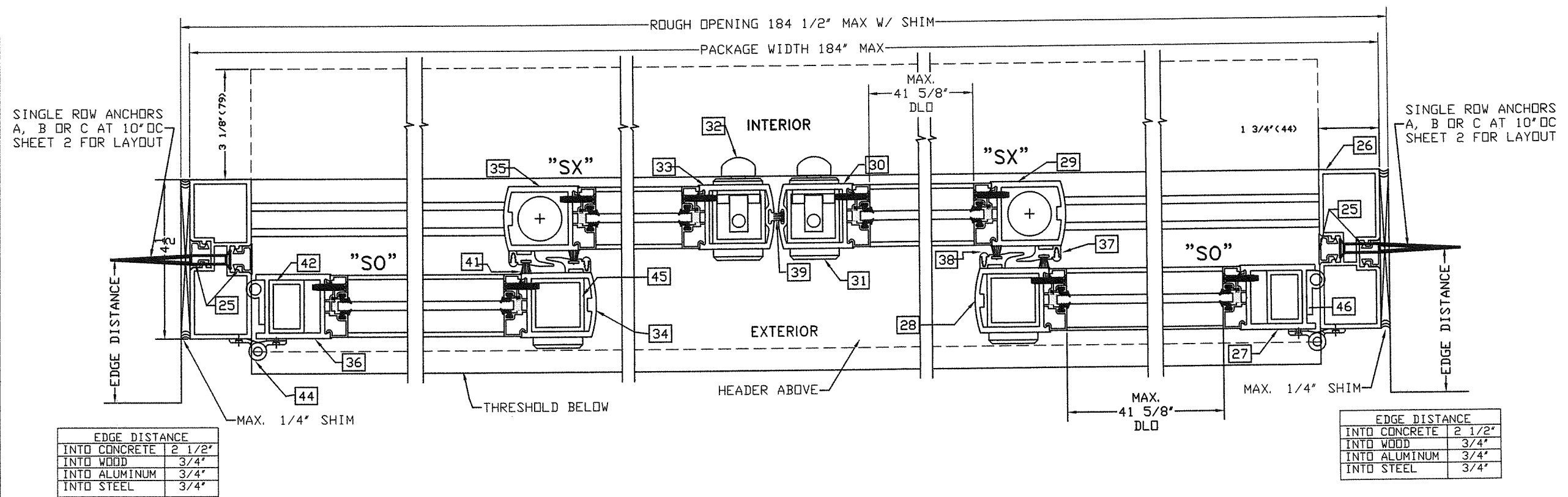
PRODUCT REVIEWED
as complying with the Florida
Building Code
Acceptance No 28-0720-05
Expiration Date 6/22/25
By: [Signature]
Miami-DADE Product Control

DATE: 06/15/2020
SCALE: NA
DESIGN BY: PPMF

SHEET
3 OF 4

DRAWING
NUMBER
20-048

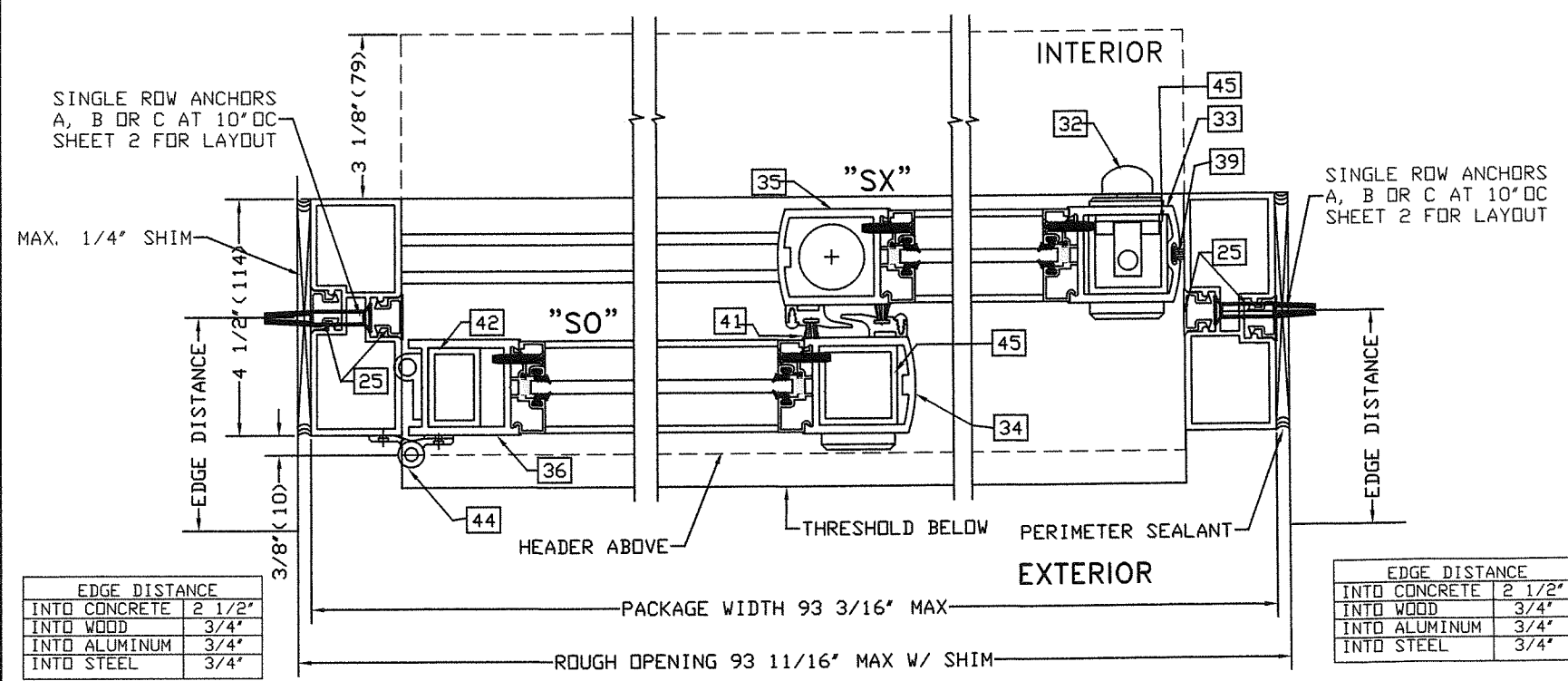
TYPICAL HORIZONTAL SECTION ②



| EDGE DISTANCE | |
|---------------|--------|
| INTO CONCRETE | 2 1/2" |
| INTO WOOD | 3/4" |
| INTO ALUMINUM | 3/4" |
| INTO STEEL | 3/4" |

| EDGE DISTANCE | |
|---------------|--------|
| INTO CONCRETE | 2 1/2" |
| INTO WOOD | 3/4" |
| INTO ALUMINUM | 3/4" |
| INTO STEEL | 3/4" |

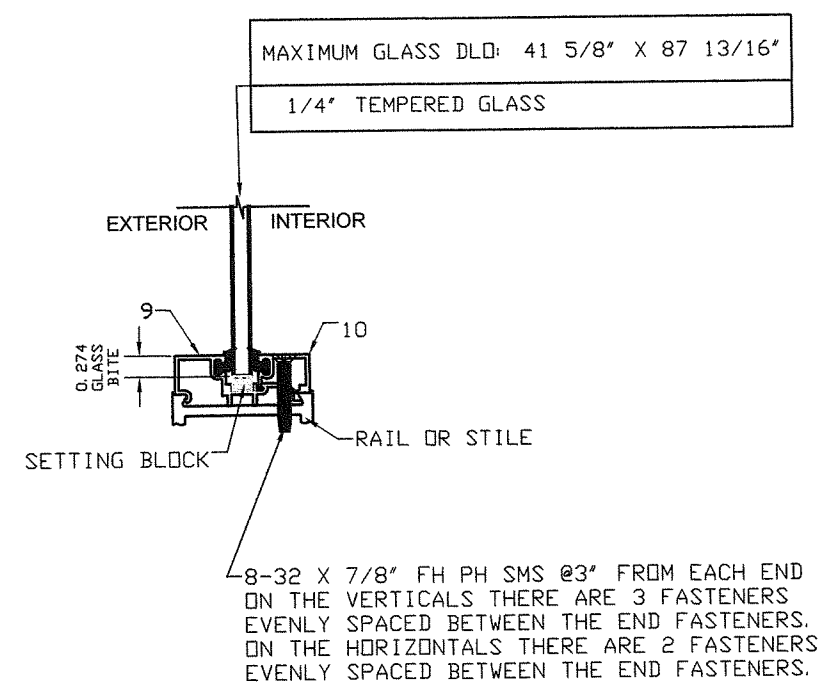
TYPICAL HORIZONTAL SECTION ③



| EDGE DISTANCE | |
|---------------|--------|
| INTO CONCRETE | 2 1/2" |
| INTO WOOD | 3/4" |
| INTO ALUMINUM | 3/4" |
| INTO STEEL | 3/4" |

| EDGE DISTANCE | |
|---------------|--------|
| INTO CONCRETE | 2 1/2" |
| INTO WOOD | 3/4" |
| INTO ALUMINUM | 3/4" |
| INTO STEEL | 3/4" |

TYPICAL GLAZING DETAIL ENTIRE PERIMETER ALL LITES



MANUFACTURER:

★★★★★

TORMAX

AUTOMATIC

TORMAX USA Inc.
12859 WETMORE ROAD
SAN ANTONIO, TX 78247
PH: (210) 494-3551
FAX: (210) 494-5930

PRODUCT:

SERIES 9300 NI

AUTOMATIC SLIDING GLASS DOOR

NON IMPACT RESISTANT

ENGINEERING:

ENGCO INC. CA 8116

9175 WEST BROWARD BLVD.
PLANTATION, FLORIDA, 33324
Tel.: (954) 632-4060
ENGCO@AOL.COM

Engineer Seal
Pedro De Figueiredo - PE 52609

MIAMI-DADE BCCO:

PRODUCT REVIEWED
as complying with the Florida
Building Code
Acceptance No. 20-0720-05
Expiration Date 6/22/25
By: [Signature]
Miami-DADE Product Control

DATE: 06/15/2020
SCALE: NA
DESIGN BY: PPMF

SHEET
4 OF 4

DRAWING
NUMBER
20-048