



DEPARTMENT OF REGULATORY AND ECONOMIC RESOURCES (RER)  
BOARD AND CODE ADMINISTRATION DIVISION

## NOTICE OF ACCEPTANCE (NOA)

MIAMI-DADE COUNTY  
PRODUCT CONTROL SECTION

11805 SW 26 Street, Room 208  
Miami, Florida 33175-2474  
T (786) 315-2590 F (786) 315-2599

[www.miamidade.gov/building](http://www.miamidade.gov/building)

**CGI Windows and Doors, Inc.**  
**3780 W 104<sup>th</sup> Street**  
**Hialeah, FL 33018**

### SCOPE:

This NOA is being issued under the applicable rules and regulations governing the use of construction materials. The documentation submitted has been reviewed and accepted by Miami-Dade County RER - Product Control Section to be used in Miami Dade County and other areas where allowed by the Authority Having Jurisdiction (AHJ).

This NOA shall not be valid after the expiration date stated below. The Miami-Dade County Product Control Section (In Miami Dade County) and/or the AHJ (in areas other than Miami Dade County) reserve the right to have this product or material tested for quality assurance purposes. If this product or material fails to perform in the accepted manner, the manufacturer will incur the expense of such testing and the AHJ may immediately revoke, modify, or suspend the use of such product or material within their jurisdiction. RER reserves the right to revoke this acceptance if it is determined by Miami-Dade County Product Control Section that this product or material fails to meet the requirements of the applicable building code.

This product is approved as described herein and has been designed to comply with the Florida Building Code, including the High Velocity Hurricane Zone.

**DESCRIPTION: Series "Targa 7100" White PVC Single Hung Window – L.M.I.**

**APPROVAL DOCUMENT:** Drawing No. **7100NOA-1**, titled "7100 PVC Single Hung Window - LMI", sheets 1 through 10 of 10, dated 07/06/20, with revision A dated 07/07/20, prepared by manufacturer, signed and sealed by Anthony Lynn Miller, P.E., bearing the Miami-Dade County Product Control Revision stamp with the Notice of Acceptance number and expiration date by the Miami-Dade County Product Control Section.

**MISSILE IMPACT RATING: Large and Small Missile Impact Resistant.**

**LABELING:** Each unit shall bear a permanent label with the manufacturer's name or logo, city, state, model/series, and following statement: "Miami-Dade County Product Control Approved", unless otherwise noted herein.

**RENEWAL** of this NOA shall be considered after a renewal application has been filed and there has been no change in the applicable building code negatively affecting the performance of this product.

**TERMINATION** of this NOA will occur after the expiration date or if there has been a revision or change in the materials, use, and/or manufacture of the product or process. Misuse of this NOA as an endorsement of any product, for sales, advertising or any other purposes shall automatically terminate this NOA. Failure to comply with any section of this NOA shall be cause for termination and removal of NOA.

**ADVERTISEMENT:** The NOA number preceded by the words Miami-Dade County, Florida, and followed by the expiration date may be displayed in advertising literature. If any portion of the NOA is displayed, then it shall be done in its entirety.

**INSPECTION:** A copy of this entire NOA shall be provided to the user by the manufacturer or its distributors and shall be available for inspection at the job site at the request of the Building Official.

This NOA **revises NOA# 19-0102.06** and consists of this page 1 and evidence pages E-1, E-2, E-3, E-4 and E-5, as well as approval document mentioned above.

The submitted documentation was reviewed by **Manuel Perez, P.E.**



  
9/29/20

NOA No. 20-0722.11  
Expiration Date: February 20, 2024  
Approval Date: October 08, 2020  
Page 1

**NOTICE OF ACCEPTANCE: EVIDENCE SUBMITTED**


**1. EVIDENCE SUBMITTED UNDER PREVIOUS NOA's**

**A. DRAWINGS**

1. Manufacturer's die drawings and sections.  
*(Submitted under NOA No. 13-1115.08)*
2. Drawing No. **W13-23**, titled "Series 'Targa 7100' PVC S.H. Wdw. (L.M.I./S.M.I.)", sheets 1 through 10 of 10, dated 05/15/13, with revision E dated 11/13/17, prepared by Al-Farooq Corporation, signed and sealed by Javad Ahmad, P.E.  
*(Submitted under NOA No.17-1011.10)*

**B. TESTS**

1. Test reports on: 1) Uniform Static Air Pressure Test, Loading per FBC TAS 202-94  
2) Large Missile Impact Test per FBC, TAS 201-94  
3) Cyclic Wind Pressure Loading per FBC, TAS 203-94  
along with marked-up drawings and installation diagram of a series 7500 PVC fixed window, to qualify DuPont "Butacite" PVB interlayer, Duraseal® and Super Spacer® insulating glass spacer, prepared by Certified Test Laboratories, Test Report No. **CTLA-3056 WA**, dated 03/03/15, signed and sealed by Ramesh C. Patel, P.E.  
*(Submitted under NOA No. 15-0512.06)*
2. Test reports on: 1) Uniform Static Air Pressure Test, Loading per FBC TAS 202-94  
2) Large Missile Impact Test per FBC, TAS 201-94  
3) Cyclic Wind Pressure Loading per FBC, TAS 203-94  
along with marked-up drawings and installation diagram of a series 7400 PVC project out window, to qualify DuPont "Butacite" PVB interlayer, Duraseal® and Super Spacer® insulating glass spacer, prepared by Certified Test Laboratories, Test Report No. **CTLA-3056 WB**, dated 03/03/15, signed and sealed by Ramesh C. Patel, P.E.  
*(Submitted under NOA No. 15-0512.06)*
3. Test reports on: 1) Uniform Static Air Pressure Test, Loading per FBC TAS 202-94  
2) Large Missile Impact Test per FBC, TAS 201-94  
3) Cyclic Wind Pressure Loading per FBC, TAS 203-94  
along with marked-up drawings and installation diagram of a series 238 aluminum fixed window, to qualify DuPont "Butacite" PVB interlayer, Duraseal® and Super Spacer® insulating glass spacer, prepared by Certified Test Laboratories, Test Report No. **CTLA-3056 WC**, dated 04/16/15, signed and sealed by Ramesh C. Patel, P.E.  
*(Submitted under NOA No. 15-0512.06)*

  
Manuel Perez, P.E.  
Product Control Examiner  
NOA No. 20-0722.11  
Expiration Date: February 20, 2024  
Approval Date: October 08, 2020

**NOTICE OF ACCEPTANCE: EVIDENCE SUBMITTED**

**1. EVIDENCE SUBMITTED UNDER PREVIOUS NOA's (CONTINUED)**

**B. TESTS (CONTINUED)**


4. Test reports on: 1) Air Infiltration Test, per FBC, TAS 202-94  
2) Uniform Static Air Pressure Test, Loading per FBC, TAS 202-94  
3) Water Resistance Test, per FBC, TAS 202-94  
4) Large Missile Impact Test per FBC, TAS 201-94  
5) Cyclic Wind Pressure Loading per FBC, TAS 203-94  
6) Forced Entry Test, per FBC 2411.3.2.1, and TAS 202-94  
along with marked-up drawings and installation diagram of extruded vinyl equal leg/fin/flange frame single hung windows, prepared by Certified Testing Laboratories, Test Report No. **CTLA-3032W** dated 10/17/14, signed and sealed by Ramesh C. Patel, P.E.  
*(Submitted under NOA No. 14-1222.03)*
5. Test reports on: 1) Air Infiltration Test, per FBC, TAS 202-94  
2) Uniform Static Air Pressure Test, Loading per FBC, TAS 202-94  
3) Water Resistance Test, per FBC, TAS 202-94  
4) Large Missile Impact Test per FBC, TAS 201-94  
5) Cyclic Wind Pressure Loading per FBC, TAS 203-94  
6) Forced Entry Test, per FBC 2411.3.2.1, and TAS 202-94  
along with marked-up drawings and installation diagram of extruded vinyl equal leg/fin/flange frame single hung windows, prepared by Element Materials Technology., Test Report No. **EMT-ESP014638P**, dated 09/28/13, signed and sealed by Ramesh C. Patel, P.E.  
*(Submitted under NOA No.17-1011.10)*

**C. CALCULATIONS**

1. Anchor verification calculations and structural analysis, complying with **FBC 6<sup>th</sup> Edition (2017)** dated 08/30/17, revised on 11/16/17, prepared by Al-Farooq Corporation, signed and sealed by Javad Ahmad, P.E.  
*(Submitted under NOA No. 19-0102.06)*
2. Glazing complies with **ASTM E1300-09**

**D. QUALITY ASSURANCE**

1. Miami-Dade Department of Regulatory and Economic Resources (RER).

  
Manuel Perez, P.E.  
Product Control Examiner  
NOA No. 20-0722.11  
Expiration Date: February 20, 2024  
Approval Date: October 08, 2020

**CGI Windows and Doors, Inc.**

**NOTICE OF ACCEPTANCE: EVIDENCE SUBMITTED**

**1. EVIDENCE SUBMITTED UNDER PREVIOUS NOA's (CONTINUED)**

**E. MATERIAL CERTIFICATIONS**


1. Notice of Acceptance No. **17-0808.02** issued to **Kuraray America, Inc.** for their "**SentryGlas® (Clear and White) Glass Interlayers**" dated 12/28/17, expiring on 07/04/23.
2. Notice of Acceptance No. **16-1117.01** issued to **Kuraray America, Inc.** for their "**Trosifol® Ultraclear, Clear and Color PVB Glass Interlayers**" dated 01/19/17, expiring on 07/08/19.
3. Notice of Acceptance No. **18-0301.06** issued to **Eastman Chemical Company (MA)** for their "**Saflex CP - Saflex and Saflex HP Composite Glass Interlayers with PET Core**" dated 05/17/18, expiring on 12/11/18.
4. Notice of Acceptance No. **17-0712.05** issued to **Eastman Chemical Company (MA)** for their "**Saflex Clear and Color Glass Interlayers**" dated 09/07/17, expiring on 05/21/21.
5. Notice of Acceptance No. **13-1203.02** issued to **Deceuninck North America, LLC** for their "**White Rigid PVC Exterior Extrusions for Windows and Doors**" dated 02/20/14, expiring on 02/19/19.

**F. STATEMENTS**

1. Statement letter of conformance, of complying with **FBC 5<sup>th</sup> Edition (2014)**, with **FBC 6<sup>th</sup> Edition (2017)** and of no financial interest, dated August 30, 2017, issued by Al-Farooq Corporation, signed and sealed by Javad Ahmad, P.E.  
*(Submitted under NOA No.17-1011.10)*
2. Test Proposal for the qualification of **Butacite®** PVB glass interlayer by DuPont as well as **Duraseal®** and **Super Spacer® Standard** warm-edge flexible insulating glass spacers, dated December 16, 2014, issued by RER, Product Control Section, signed by Jaime Gascon, P.E., Supervisor, Product Control Section.  
*(Submitted under NOA No. 14-1222.03)*

**G. OTHERS**

1. Notice of Acceptance No. **17-1011.10**, issued to CGI Windows and Doors, Inc. for their Series "Targa 7100" White PVC Single Hung Window - L.M.I., approved on 12/28/17 and expiring on 02/20/19.

  
Manuel Perez, P.E.  
Product Control Examiner  
NOA No. 20-0722.11  
Expiration Date: February 20, 2024  
Approval Date: October 08, 2020

**CGI Windows and Doors, Inc.**

**NOTICE OF ACCEPTANCE: EVIDENCE SUBMITTED**

**2. NEW EVIDENCE SUBMITTED**

**A. DRAWINGS**

1. Drawing No. **7100NOA-1**, titled “7100 PVC Single Hung Window - LMI”, sheets 1 through 10 of 10, dated 07/06/20, with revision A dated 07/07/20, prepared by manufacturer, signed and sealed by Anthony Lynn Miller, P.E.

**B. TESTS**

1. Test reports on: 1) Air Infiltration Test, per FBC, TAS 202-94  
2) Uniform Static Air Pressure Test, Loading per FBC, TAS 202-94  
3) Water Resistance Test, per FBC, TAS 202-94  
4) Large Missile Impact Test per FBC, TAS 201-94  
5) Cyclic Wind Pressure Loading per FBC, TAS 203-94  
6) Forced Entry Test, per ASTM F588 and TAS 202-94

along with marked-up drawings and installation diagram of all PGT Industries, Inc. CGI Windows and Doors, Inc., representative units listed below and tested to qualify **Dowsil 791** and **Dowsil 983** silicones, per Proposal #**19-1155TP**, prepared by Fenestration Testing Laboratory, Inc., Test Reports No.:

**PGT Industries, Inc. test specimens:**

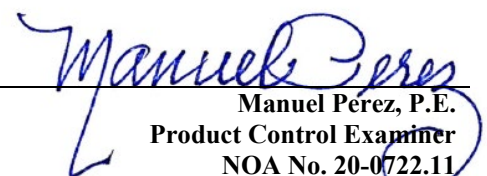
**FTL-7897**, PGT PW5520 PVC Fixed Window (unit 6 in proposal), dated 09/03/14  
**FTL-20-2107.1**, PGT SGD780 Aluminum Sliding Glass Door (unit 7 in proposal)  
**FTL-20-2107.2**, PGT CA740 Alum. Outswing Casement Window (unit 8 in proposal)  
**FTL-20-2107.3**, PGT PW7620A Aluminum Fixed Window (unit 9 in proposal) and  
**FTL-20-2107.4**, PGT PW7620A Aluminum Fixed Window (unit 10 in proposal)  
all dated 07/13/20 and signed and sealed by Idalmis Ortega, P.E.

**CGI Windows and Doors Inc. test specimens:**

**FTL-20-2108.1**, CGI SH360 Aluminum Single Hung Window (unit 1 in proposal)  
**FTL-20-2108.2**, CGI CA238 Alum. Outswing Casement Window (unit 2 in proposal)  
**FTL-20-2108.3**, CGI SGD560 Aluminum Sliding Glass Door (unit 3 in proposal)  
**FTL-20-2108.4**, CGI PW410 Aluminum Fixed Window (unit 4 in proposal) and  
**FTL-20-2108.5**, CGI SH360 Aluminum Single Hung Window (unit 5 in proposal)  
all dated 08/24/20 and signed and sealed by Idalmis Ortega, P.E.

**C. CALCULATIONS**

1. Anchor verification calculations and structural analysis, complying with **FBC 6<sup>th</sup> Edition (2017)**, dated 08/30/17, prepared by Al-Farooq Corporation, signed and sealed by Javad Ahmad, P.E., updated to comply with **FBC 7<sup>th</sup> Edition (2020)**, on 05/12/20 by manufacturer, signed and sealed by Anthony Lynn Miller, P.E.

  
Manuel Pérez, P.E.  
Product Control Examiner  
NOA No. 20-0722.11  
Expiration Date: February 20, 2024  
Approval Date: October 08, 2020

**CGI Windows and Doors, Inc.**

**NOTICE OF ACCEPTANCE: EVIDENCE SUBMITTED**

**2. NEW EVIDENCE SUBMITTED (CONTINUED)**

**D. QUALITY ASSURANCE**

1. Miami-Dade Department of Regulatory and Economic Resources (RER)

**E. MATERIAL CERTIFICATIONS**

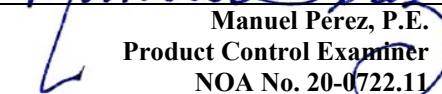
1. Notice of Acceptance No. **18-0725.11** issued to **Kuraray America, Inc.** for their “**Kuraray SentryGlas® Xtra™ (SGX™) Clear Glass Interlayer**” dated 05/23/19, expiring on 05/23/24.
2. Notice of Acceptance No. **19-0305.02** issued to **Kuraray America, Inc.** for their “**Trosifol® Ultraclear, Clear and Color PVB Glass Interlayers**” dated 05/09/19, expiring on 07/08/24.
3. Notice of Acceptance No. **20-0622.03** issued to **Eastman Chemical Company (MA)** for their “**Saflex Storm - Saflex and Saflex HP Composite Glass Interlayers with PET Core**” dated 08/06/20, expiring on 12/11/23.
4. Notice of Acceptance No. **20-0622.01** issued to **Eastman Chemical Company (MA)** for their “**Saflex PVB Clear and Color Glass Interlayers**” dated 08/06/20, expiring on 05/21/21.
5. Notice of Acceptance No. **19-0619.03** issued to **Deceuninck North America, LLC**, for their “**White Rigid PVC Exterior Extrusions for Windows and Doors**” dated 07/25/19, expiring on 02/19/24.

**F. STATEMENTS**

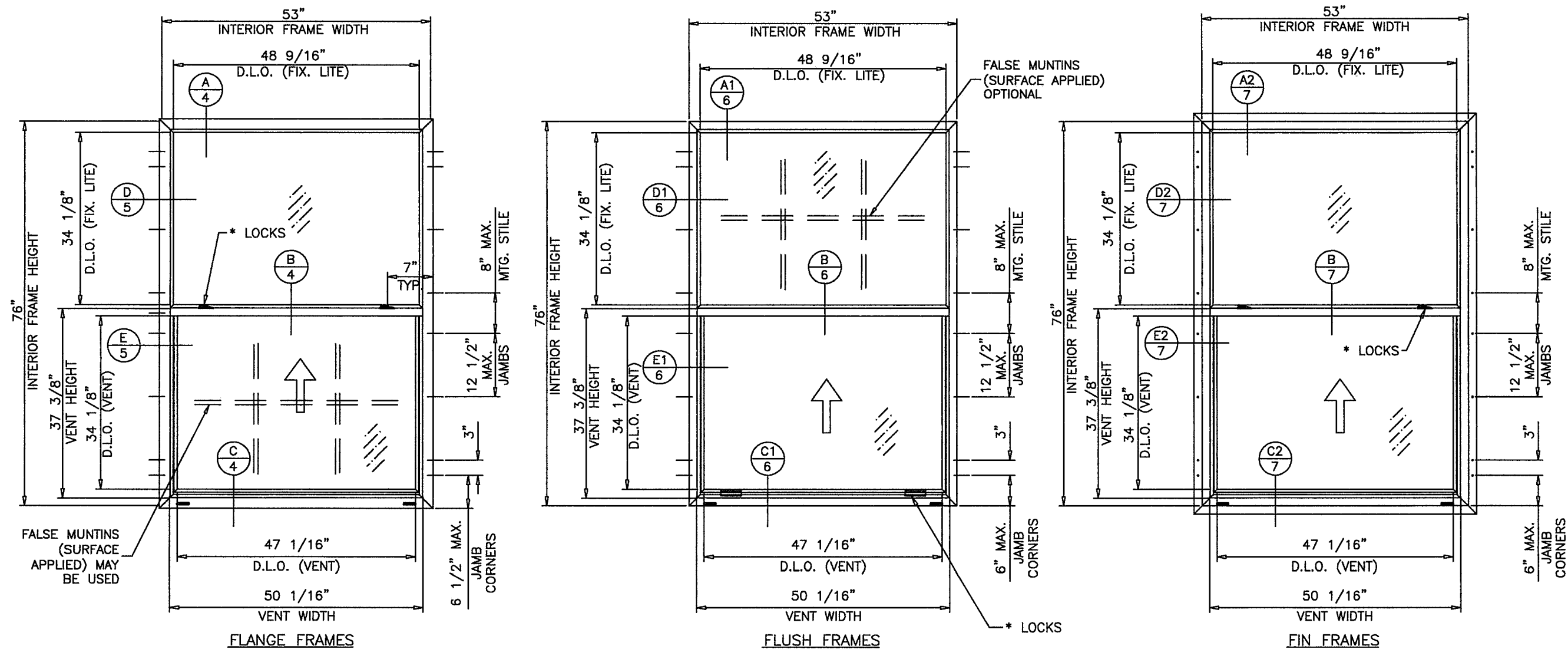
1. Statement letter of conformance, of complying with **FBC 6<sup>th</sup> Edition (2017)**, and **FBC 7<sup>th</sup> Edition (2020)** dated July 16, 2020, issued by manufacturer, signed and sealed by Anthony Lynn Miller, P.E.
2. Statement letter of no financial interest dated July 16, 2020, issued by manufacturer, signed and sealed by Anthony Lynn Miller, P.E.
3. Notification of Successor Engineer for manufacturer’s NOA document per **Section 61G15-27.001** of the **Florida Administrative Code**, notifying original engineer that the successor engineer is assuming full professional and legal responsibility for all engineering documents pertaining to this NOA, dated July 16, 2020, signed and sealed by Anthony Lynn Miller, P.E.
4. Proposal No. **19-1155 TP** issued by the Product Control Section, dated January 10, 2020, signed by Ishaq Chanda, P.E.

**G. OTHERS**

1. Notice of Acceptance No. **19-0102.06**, issued to CGI Windows and Doors, Inc. for their Series “Targa 7100” White PVC Single Hung Window - L.M.I., approved on 02/14/19 and expiring on 02/20/24.

  
Manuel Pérez, P.E.  
Product Control Examiner  
NOA No. 20-0722.11  
Expiration Date: February 20, 2024  
Approval Date: October 08, 2020





## SERIES 'TARGA 7100' WHITE PVC SINGLE HUNG WINDOW

DESIGN LOAD RATINGS FOR THESE WINDOWS TO BE AS PER CHARTS SHOWN ON SHEET 2.

APPROVAL APPLIES TO SINGLE UNITS OR SIDE BY SIDE COMBINATIONS OF SH/SH OR SH WITH OTHER WINDOW TYPES IN MODULES OF TWO OR MORE WINDOWS USING MIAMI-DADE COUNTY APPROVED CLIPPED MULLIONS IN BETWEEN. LOWER DESIGN PRESSURE FROM WINDOWS OR MULLION APPROVAL WILL APPLY TO ENTIRE SYSTEM.

THIS PRODUCT HAS BEEN DESIGNED AND TESTED TO COMPLY WITH THE REQUIREMENTS OF THE 2017 (6TH EDITION)/2020 (7TH EDITION) FLORIDA BUILDING CODE INCLUDING HIGH VELOCITY HURRICANE ZONE (HVHZ).

1BY OR 2BY WOOD BUCKS & BUCK FASTENERS BY OTHERS, MUST BE DESIGNED AND INSTALLED ADEQUATELY TO TRANSFER APPLIED PRODUCT LOADS TO THE BUILDING STRUCTURE.

ANCHORS SHALL BE CORROSION RESISTANT, SPACED AS SHOWN ON DETAILS AND INSTALLED PER MANUF'S INSTRUCTIONS. SPECIFIED EMBEDMENT TO BASE MATERIAL SHALL BE BEYOND WALL DRESSING OR STUCCO. ANCHORING OR LOADING CONDITIONS NOT SHOWN IN THESE DETAILS ARE NOT PART OF THIS APPROVAL.

A LOAD DURATION INCREASE IS USED IN DESIGN OF ANCHORS INTO WOOD ONLY.

ALL SHIMS TO BE HIGH IMPACT, NON-METALLIC AND NON-COMPRESSIBLE.

MATERIALS INCLUDING BUT NOT LIMITED TO STEEL/METAL SCREWS, THAT COME INTO CONTACT WITH OTHER DISSIMILAR MATERIALS SHALL MEET THE REQUIREMENTS OF THE 2017/2020 FLORIDA BUILDING CODE & ADOPTED STANDARDS.

THIS PRODUCT APPROVAL IS GENERIC AND DOES NOT PROVIDE INFORMATION FOR A SITE SPECIFIC PROJECT, i.e. LIFE SAFETY OF THIS PRODUCT, ADEQUACY OF STRUCTURE RECEIVING THIS PRODUCT AND SEALING AROUND OPENING FOR WATER INFILTRATION RESISTANCE ETC. CONDITIONS NOT SHOWN IN THIS DRAWING ARE TO BE ANALYZED SEPARATELY, AND TO BE REVIEWED BY BUILDING OFFICIAL.

### \* LOCKS

- (1) PER VENT FOR WDW. W. UPTO 25" AT MID WIDTH
- (2) PER VENT FOR WDW. W. ABOVE 25" AT 7" FROM EACH END

### DAYLITE OPENINGS:

DLO WIDTH = INTERIOR FRAME WIDTH - 4.4375 (FIX. LITE)

DLO WIDTH = VENT WIDTH - 3.0 (VENT)

DLO HEIGHT (EQUAL LITES) =  $\frac{\text{WINDOW HT} - 7.750}{2}$


THESE WINDOWS ARE RATED FOR LARGE & SMALL MISSILE IMPACT. SHUTTERS ARE NOT REQUIRED.

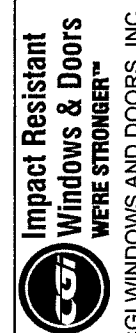
**LAMINATED GLASS**  
**INSULATING LAMINATED GLASS**  
**LARGE & SMALL MISSILE IMPACT**

INDEX OF DRAWING	
SHEET NO.	DESCRIPTION
1	GEN. NOTES, FRAME ELEV.
2	WINDOWS CAPACITY CHARTS
3	GLAZING DETAILS
4 & 5	FLANGE FRAME DETAILS
6	FLUSH FRAME DETAILS
7	FIN FRAME DETAILS
8	BILL OF MATERIALS
9	EXTRUSION DETAILS
10	CORNER DETAILS

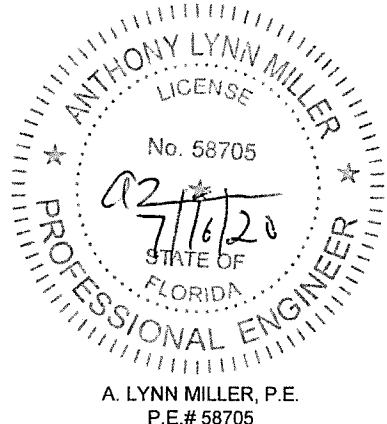
**PRODUCT REVISED**  
as complying with the Florida Building Code  
NOA-No. **20-0722.11**  
Expiration Date: **02/20/2024**  
By: *Manuel Perez*  
Miami-Dade Product Control

REVISION:  
REVISED FOR 2020 FBC,  
ADDED ANCHOR TYPE,  
BACKBEDDING &  
REFORMATTED - JR -  
07/07/20

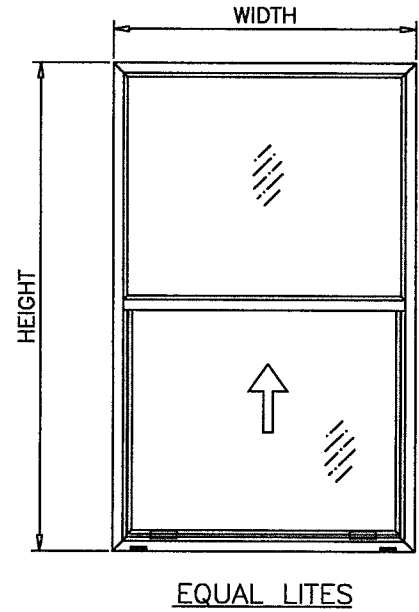
 <b>Impact Resistant Windows &amp; Doors</b> <b>WERE STRONGER™</b>	CGI WINDOWS AND DOORS, INC. 3780 W 104TH STREET HIALEAH, FL 33018 (305) 593-6590		REGISTRATION #29296		PREPARED BY A. LYNN MILLER 1070 TECHNOLOGY DRIVE N. VENICE, FL 34275 (941) 480-1600	
	7100 PVC SINGLE HUNG WINDOW - LMI		Date		07/06/20	
	ELEVATIONS		Drawn By		J ROSOWSKI	
	SH7100		Scale		1 OF 10	
	Series		Sheet		NTS	



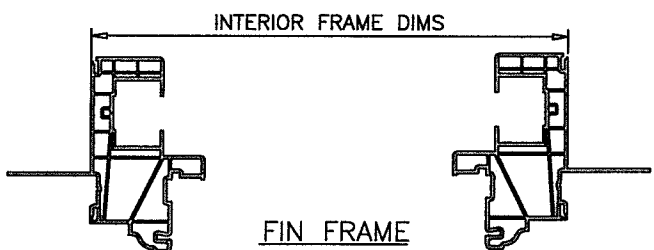
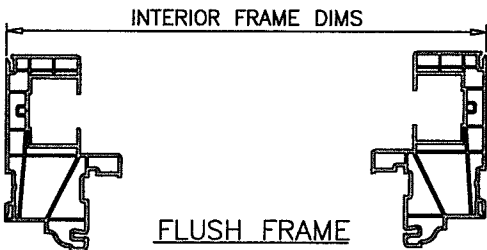
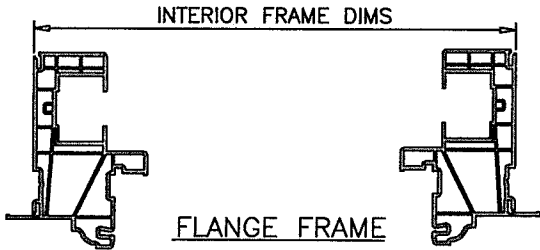
CGI WINDOWS AND DOORS, INC.  
3780 W 104TH STREET  
HIALEAH, FL 33018  
(305) 593-6590



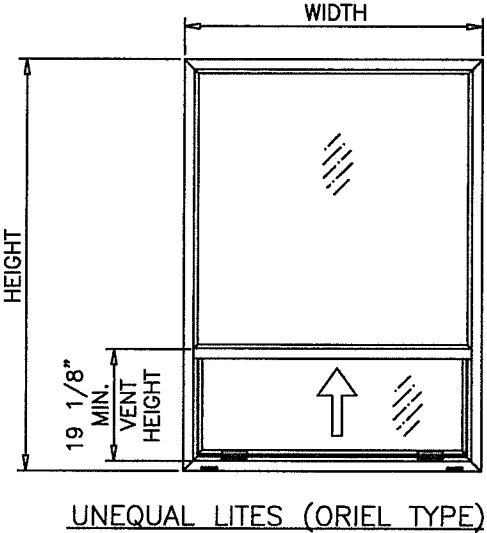
EQUAL LITES WINDOWS					
DESIGN LOAD CAPACITY - PSF					
INTERIOR FRAME DIMENSIONS		GLASS TYPES 'A', 'A1', 'B', 'B1'		GLASS TYPES 'C', 'C1'	
WIDTH	HEIGHT	EXT.(+)	INT.(-)	EXT.(+)	INT.(-)
18-1/8"	25"	60.0	60.0	70.0	75.0
25-1/2"		60.0	60.0	70.0	75.0
36"		60.0	60.0	70.0	75.0
41"		60.0	60.0	70.0	75.0
47"		60.0	60.0	70.0	75.0
52-1/8"		60.0	60.0	70.0	75.0
53"		60.0	60.0	70.0	75.0
18-1/8"	37-3/8"	60.0	60.0	70.0	75.0
25-1/2"		60.0	60.0	70.0	75.0
36"		60.0	60.0	70.0	75.0
41"		60.0	60.0	70.0	75.0
47"		60.0	60.0	70.0	75.0
52-1/8"		60.0	60.0	70.0	75.0
53"		60.0	60.0	70.0	75.0
18-1/8"	49-5/8"	60.0	60.0	70.0	75.0
25-1/2"		60.0	60.0	70.0	75.0
36"		60.0	60.0	70.0	75.0
41"		60.0	60.0	70.0	75.0
47"		60.0	60.0	70.0	75.0
52-1/8"		60.0	60.0	70.0	75.0
53"		60.0	60.0	70.0	75.0
18-1/8"	58"	60.0	60.0	70.0	75.0
25-1/2"		60.0	60.0	70.0	75.0
36"		60.0	60.0	70.0	75.0
41"		60.0	60.0	70.0	75.0
47"		60.0	60.0	70.0	75.0
52-1/8"		60.0	60.0	70.0	75.0
53"		60.0	60.0	70.0	75.0
18-1/8"	62"	60.0	60.0	70.0	75.0
25-1/2"		60.0	60.0	70.0	75.0
36"		60.0	60.0	70.0	75.0
41"		60.0	60.0	70.0	75.0
47"		60.0	60.0	70.0	75.0
52-1/8"		60.0	60.0	70.0	75.0
53"		60.0	60.0	70.0	75.0
18-1/8"	73-1/4"	60.0	60.0	70.0	75.0
25-1/2"		60.0	60.0	70.0	75.0
36"		60.0	60.0	70.0	75.0
41"		60.0	60.0	70.0	75.0
47"		60.0	60.0	70.0	75.0
52-1/8"		60.0	60.0	70.0	75.0
53"		60.0	60.0	70.0	75.0
18-1/8"	76"	60.0	60.0	70.0	75.0
25-1/2"		60.0	60.0	70.0	75.0
36"		60.0	60.0	70.0	75.0
41"		60.0	60.0	70.0	75.0
47"		60.0	60.0	70.0	75.0
52-1/8"		60.0	60.0	70.0	75.0
53"		60.0	60.0	70.0	75.0



NOTE:  
GLASS CAPACITIES ON THIS SHEET ARE  
BASED ON ASTM E1300-09 (3 SEC. GUSTS)  
AND FLORIDA BUILDING COMMISSION  
DECLARATORY STATEMENT DCA05-DEC-219

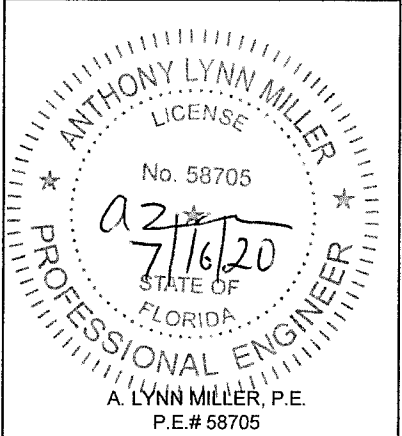


UNEQUAL LITES WINDOWS					
DESIGN LOAD CAPACITY - PSF					
INTERIOR FRAME DIMENSIONS		GLASS TYPES 'A', 'A1', 'B', 'B1'		GLASS TYPES 'C', 'C1'	
WIDTH	HEIGHT	EXT.(+)	INT.(-)	EXT.(+)	INT.(-)
18-1/8"	49-5/8"	60.0	60.0	70.0	75.0
25-1/2"		60.0	60.0	70.0	75.0
36"		60.0	60.0	70.0	75.0
41"		60.0	60.0	70.0	75.0
47"		60.0	60.0	70.0	75.0
52-1/8"		60.0	60.0	70.0	75.0
53"		60.0	60.0	70.0	75.0
18-1/8"	58"	60.0	60.0	70.0	75.0
25-1/2"		60.0	60.0	70.0	75.0
36"		60.0	60.0	70.0	75.0
41"		60.0	60.0	70.0	75.0
47"		60.0	60.0	70.0	75.0
18-1/8"	62"	60.0	60.0	70.0	75.0
25-1/2"		60.0	60.0	70.0	75.0
36"		60.0	60.0	70.0	75.0
41"		60.0	60.0	70.0	75.0
18-1/8"	73-1/4"	60.0	60.0	70.0	75.0
25-1/2"		60.0	60.0	70.0	75.0
36"		60.0	60.0	70.0	75.0
18-1/8"	76"	60.0	60.0	70.0	75.0
25-1/2"		60.0	60.0	70.0	75.0

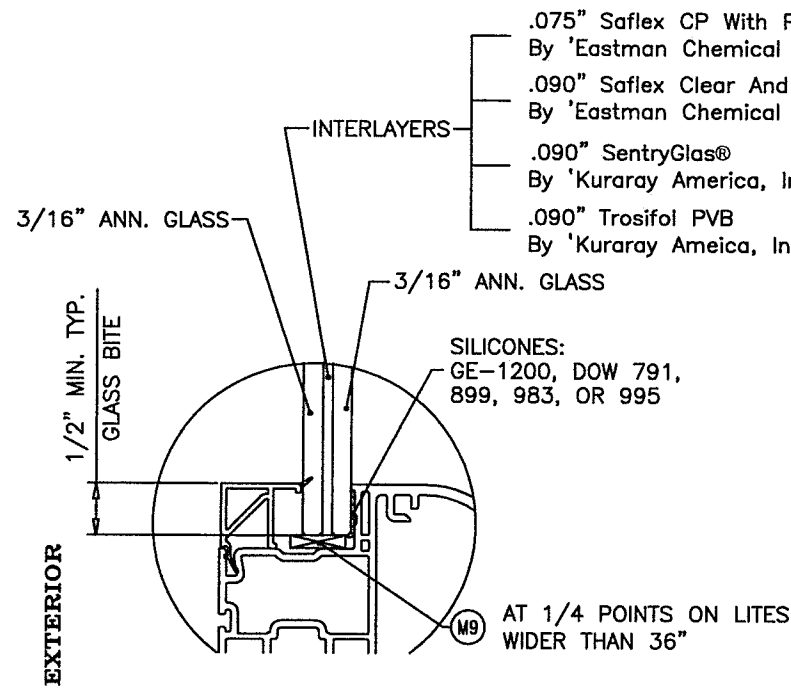


**PRODUCT REVISED**  
as complying with the Florida  
Building Code  
NOA-No. **20-0722.11**  
Expiration Date: **02/20/2024**  
By: *Manuel Perez*  
Miami-Dade Product Control

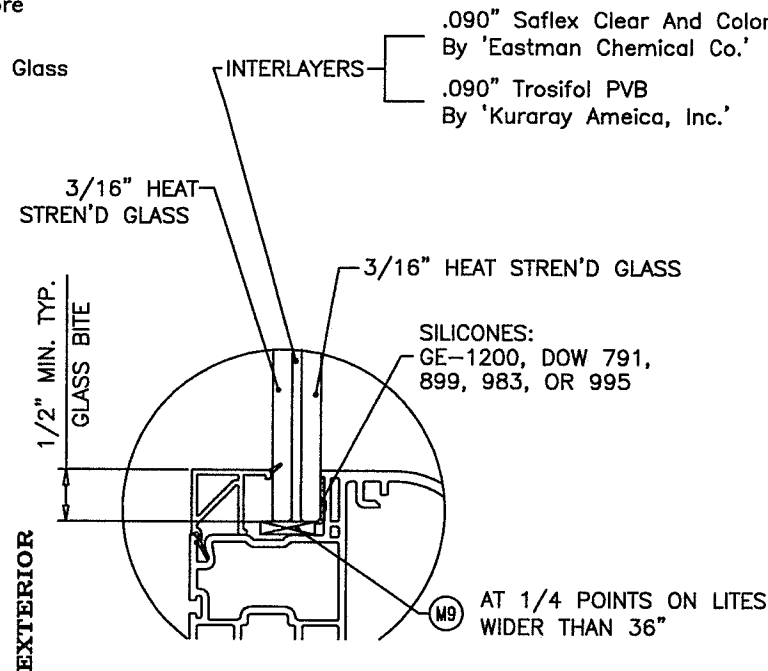
PREPARED BY A. LYNN MILLER 1070 TECHNOLOGY DRIVE N. VENICE, FL 34275 (941) 480-1600	REGISTRATION #29296	7100 PVC SINGLE HUNG WINDOW - LMI	J ROSOWSKI	7100NOA-1	A
Impact Resistant Windows & Doors WE'RE STRONGER™ CGI WINDOWS AND DOORS, INC. 3780 W 104TH STREET HIALEAH, FL 33018 (305) 593-6590	DESIGN PRESSURES	SH7100	NTS	2 OF 10	DWC



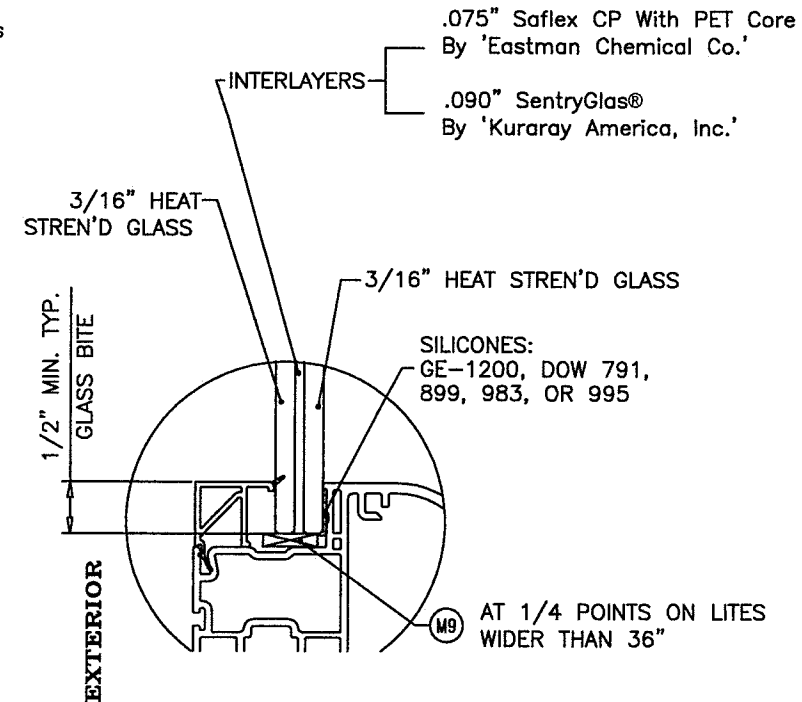




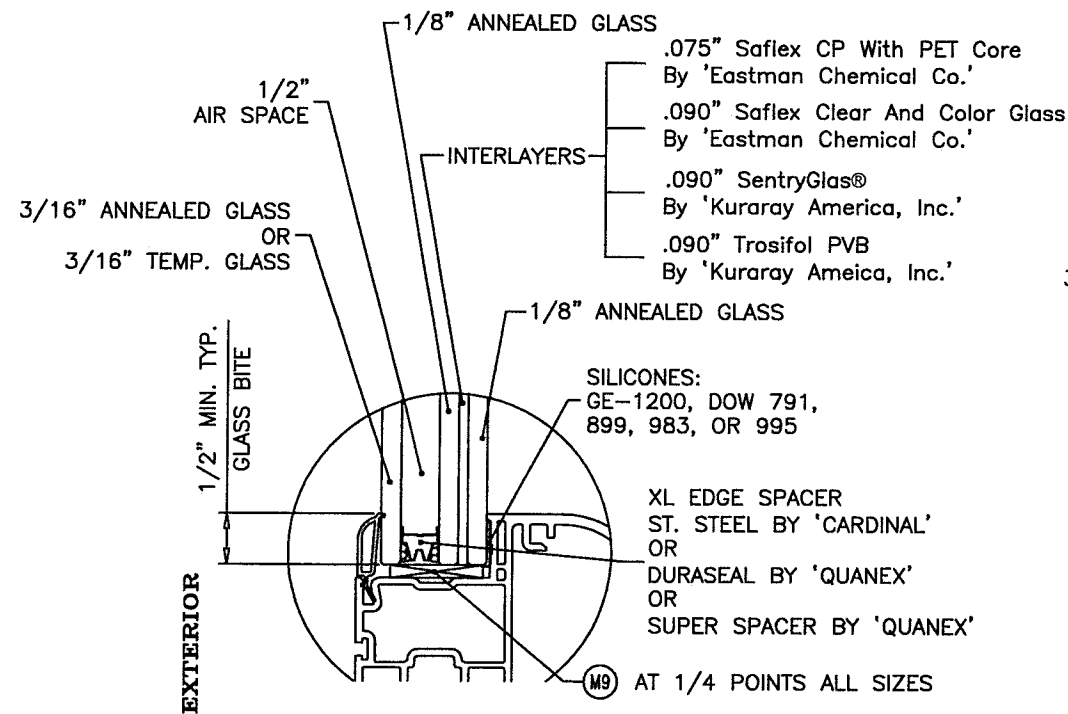
**GLASS TYPE 'A'**  
7/16" OVERALL LAM. GLASS  
(L.M.I & S.M.I.)



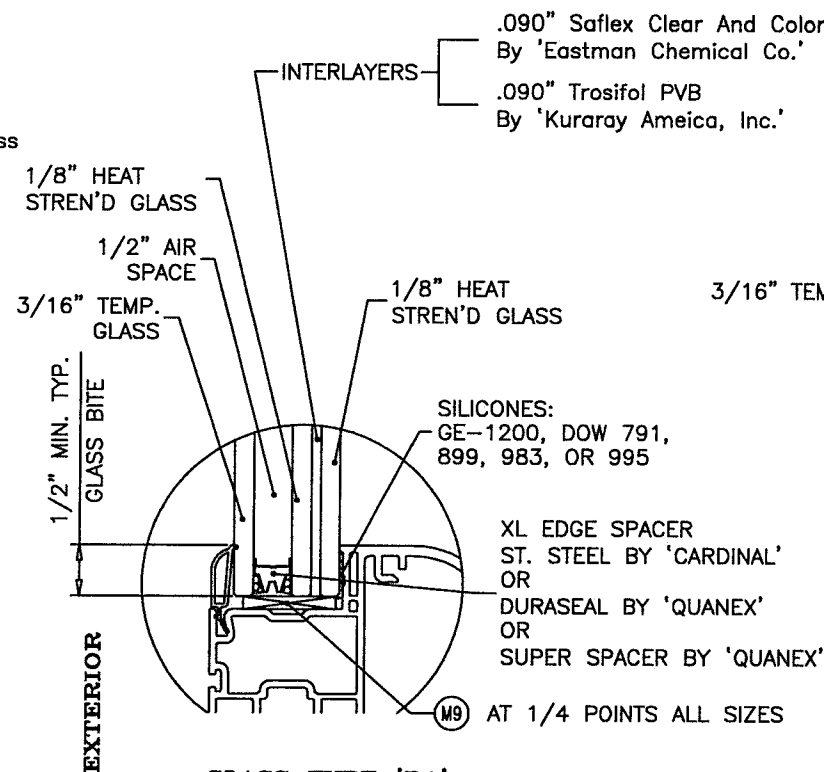
**GLASS TYPE 'B'**  
7/16" OVERALL LAM. GLASS  
(L.M.I & S.M.I.)



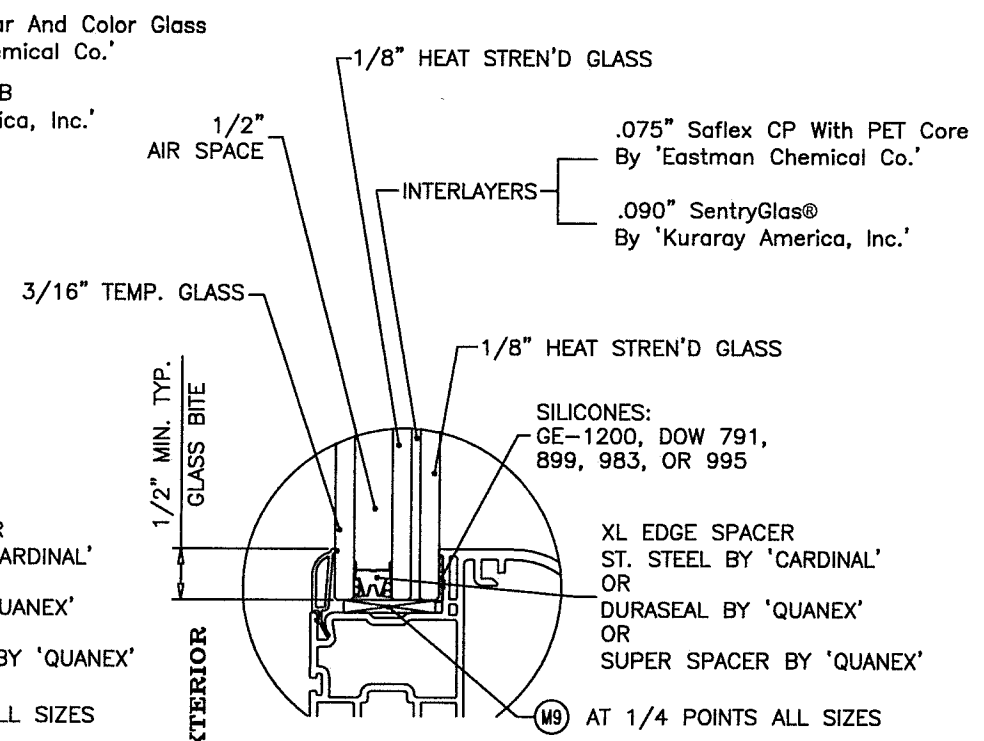
**GLASS TYPE 'C'**  
7/16" OVERALL LAM. GLASS  
(L.M.I & S.M.I.)



**GLASS TYPE 'A1'**  
1" OVERALL INSUL. LAM. GLASS  
(L.M.I & S.M.I.\*)



**GLASS TYPE 'B1'**  
1" OVERALL INSUL. LAM. GLASS  
(L.M.I & S.M.I.)



**GLASS TYPE 'C1'**  
1" OVERALL INSUL. LAM. GLASS  
(L.M.I & S.M.I.)

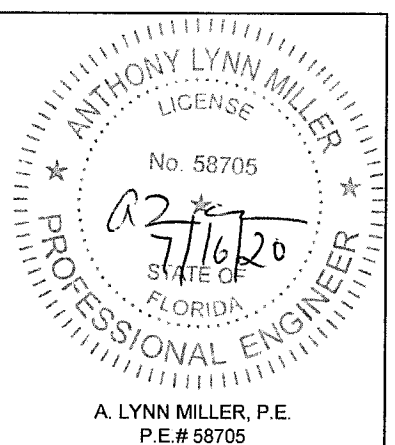
\* (S.M.I.)

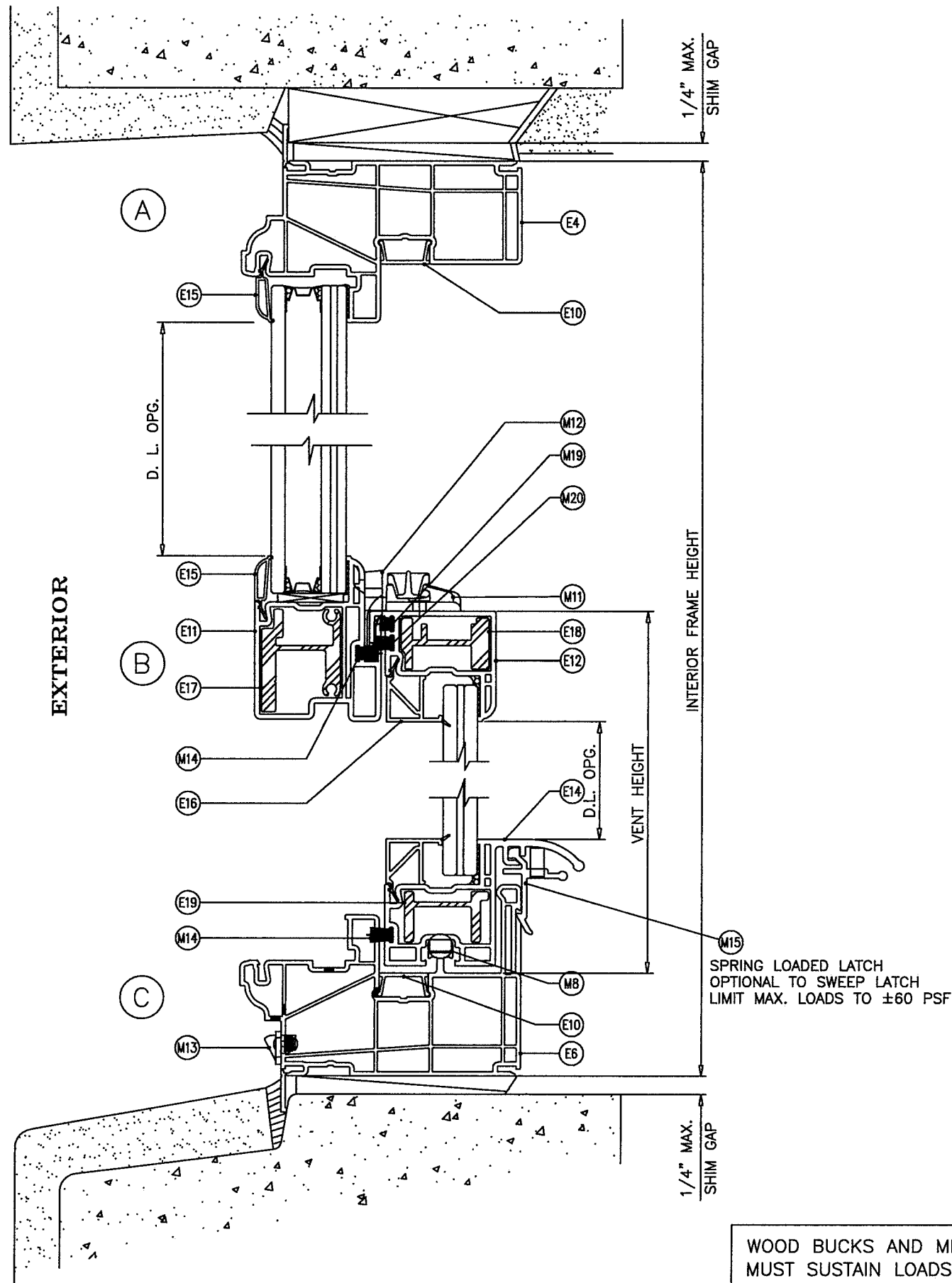
IN ORDER TO QUALIFY FOR SMALL MISSILE IMPACT RATING EXTERIOR PLY OF GLASS TYPE 'A1' MUST BE TEMPERED.

**PRODUCT REVISED**  
as complying with the Florida  
Building Code  
NOA-No. **20-0722.11**  
Expiration Date: **02/20/2024**  
By: *Manuel Fern*  
Miami-Dade Product Control

ADDED BACKBEDDING  
- JR - 07/07/20

PREPARED BY A. LYNN MILLER 1070 TECHNOLOGY DRIVE N. VENICE, FL 34275 (941) 480-1600	REGISTRATION #29296	7100 PVC SINGLE HUNG WINDOW - LMI	J ROSOWSKI	Rev.	A
				Date	07/06/20
				By	J ROSOWSKI
				No.	7100NOA-1
Impact Resistant Windows & Doors WERE STRONGER™ CGI WINDOWS AND DOORS, INC. 3780 W 104TH STREET HIALEAH, FL 33018 (305) 593-6590	7100 PVC SINGLE HUNG WINDOW - LMI	GLAZING DETAILS	SH7100	DWG	3 OF 10
				Sheet	NTS
				Scale	
				Series	





WOOD BUCKS AND METAL STRUCTURE NOT BY CGI WDW.  
MUST SUSTAIN LOADS IMPOSED BY GLAZING SYSTEM  
AND TRANSFER THEM TO THE BUILDING STRUCTURE.

#### TYPICAL ANCHORS: SEE ELEV. FOR SPACING

1/4" DIA. TAPCON BY 'ITW' (Fu=125 KSI, Fy=100 KSI)

1/4" DIA. ULTRACON BY 'ELCO' (Fu=177 KSI, Fy=155 KSI)

1/4" DIA. ULTRACON+ BY 'DEWALT' (Fu=164 KSI, Fy=148 KSI)

1/4" DIA. AGGRE-GATOR BY 'ELCO' (Fu=95 KSI, Fy=57 KSI)

INTO 2BY WOOD BUCKS OR WOOD STRUCTURES

1-1/2" MIN. PENETRATION INTO WOOD (JAMBS)

THRU 1BY BUCKS INTO CONC. OR MASONRY

1-1/4" MIN. EMBED INTO CONC. OR MASONRY (JAMBS)

DIRECTLY INTO CONC. OR MASONRY

1-1/4" MIN. EMBED INTO CONC. OR MASONRY (JAMBS)

#14 SMS OR SELF DRILLING SCREWS (GRADE 2 CRS)

INTO MIAMI-DADE COUNTY APPROVED MULLIONS (MIN. THK. = 1/8")

OR

INTO METAL STRUCTURES (HEAD/SILL/JAMB)

(3) THREADS MIN. PENETRATION BEYOND SUBSTRATE

ALUMINUM : 1/8" THK. MIN. (6063-T5 MIN.)

STEEL : 12 GA. MIN. (Fy = 36 KSI MIN.)

(STEEL IN CONTACT WITH ALUMINUM TO BE PLATED OR PAINTED)

#### TYPICAL EDGE DISTANCE

INTO CONCRETE AND MASONRY = 2-1/2" MIN.

INTO CONCRETE AND MASONRY (ONLY ULTRACON+ ANCHORS) = 1-1/2" MIN.

INTO WOOD STRUCTURE = 1" MIN.

INTO METAL STRUCTURE = 3/4" MIN.

WOOD AT HEAD, SILL OR JAMBS SG = 0.55 MIN.

CONCRETE AT HEAD, SILL OR JAMBS f'c = 3000 PSI MIN.

C-90 HOLLOW/FILLED BLOCK AT JAMBS f'm = 2000 PSI MIN.

#### WEEPHOLES:

W1 = 1/4" X 1-1/2" WEEP SLOT AT 4-1/8" FROM EACH  
END WITH PLASTIC COVER

W2 = 1/8" X 1/2" WEEP SLOT AT 3-1/4" FROM EACH END

W3 = 1/8" X 1/2" WEEP SLOT AT 3-1/4" FROM EACH END


#### SEALANTS:

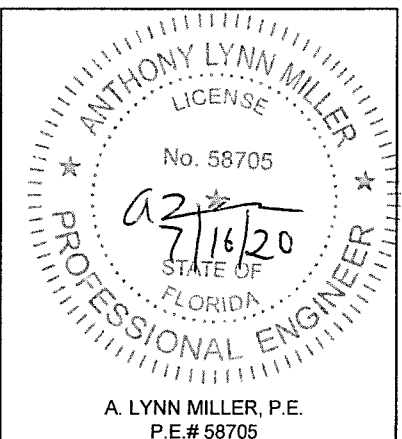
ALL JOINTS AND FRAME CONNECTIONS SEALED WITH  
SILICONE SEALANT.

FLANGE FRAMES

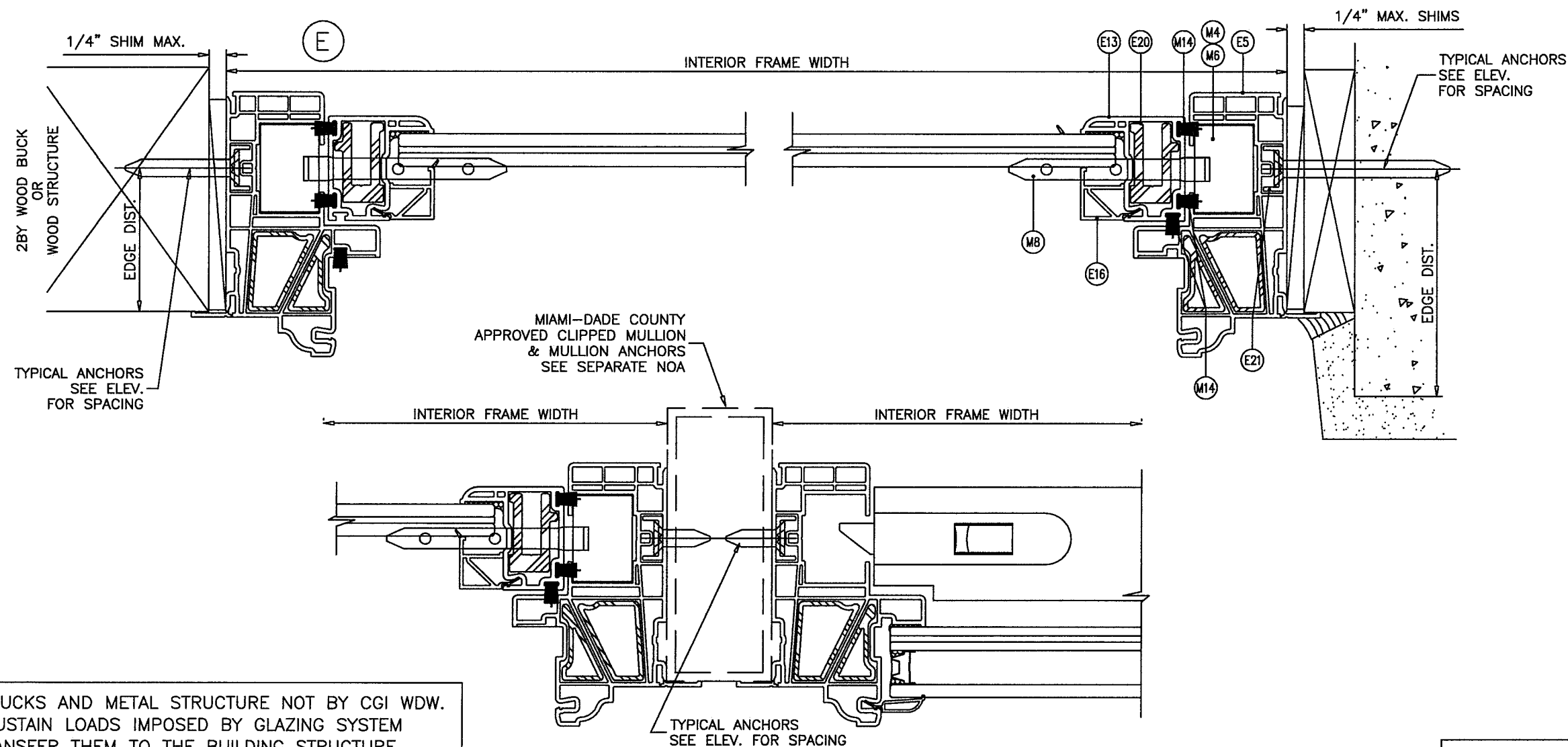
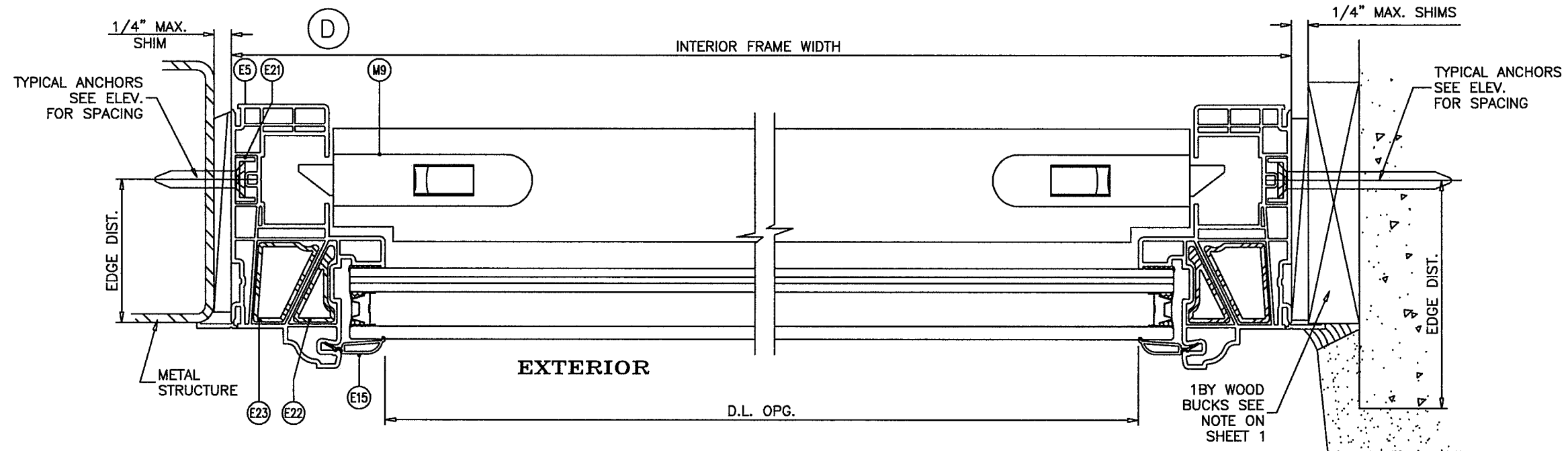
**PRODUCT REVISED**  
as complying with the Florida  
Building Code  
NOA-No. **20-0722.11**  
Expiration Date: **02/20/2024**  
By: *Manuel Perez*  
Miami-Dade Product Control

Revision:  
ADDED ANCHOR TYPE  
- JR - 07/07/20

 <b>Impact Resistant Windows &amp; Doors WERE STRONGER™</b>	PREPARED BY A. LYNN MILLER 1070 TECHNOLOGY DRIVE N. VENICE, FL 34275 (941) 480-1600			
	REGISTRATION #29296			
CGI WINDOWS AND DOORS, INC. 3780 W 104TH STREET HIALEAH, FL 33018 (305) 593-6590	7100 PVC SINGLE HUNG WINDOW - LMI		Date	07/06/20
	INSTALLATION DETAILS			
Series	SH7100	Scale	NTS	Sheet
4 OF 10		DWG	No.	7100NOA-1
J ROSOWSKI		Drawn By	Rev. A	



A. LYNN MILLER, P.E.  
P.E.# 58705




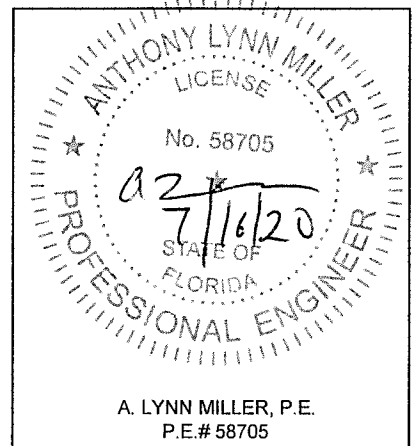
WOOD BUCKS AND METAL STRUCTURE NOT BY CGI WDW.  
MUST SUSTAIN LOADS IMPOSED BY GLAZING SYSTEM  
AND TRANSFER THEM TO THE BUILDING STRUCTURE.

# FLANGE FRAMES

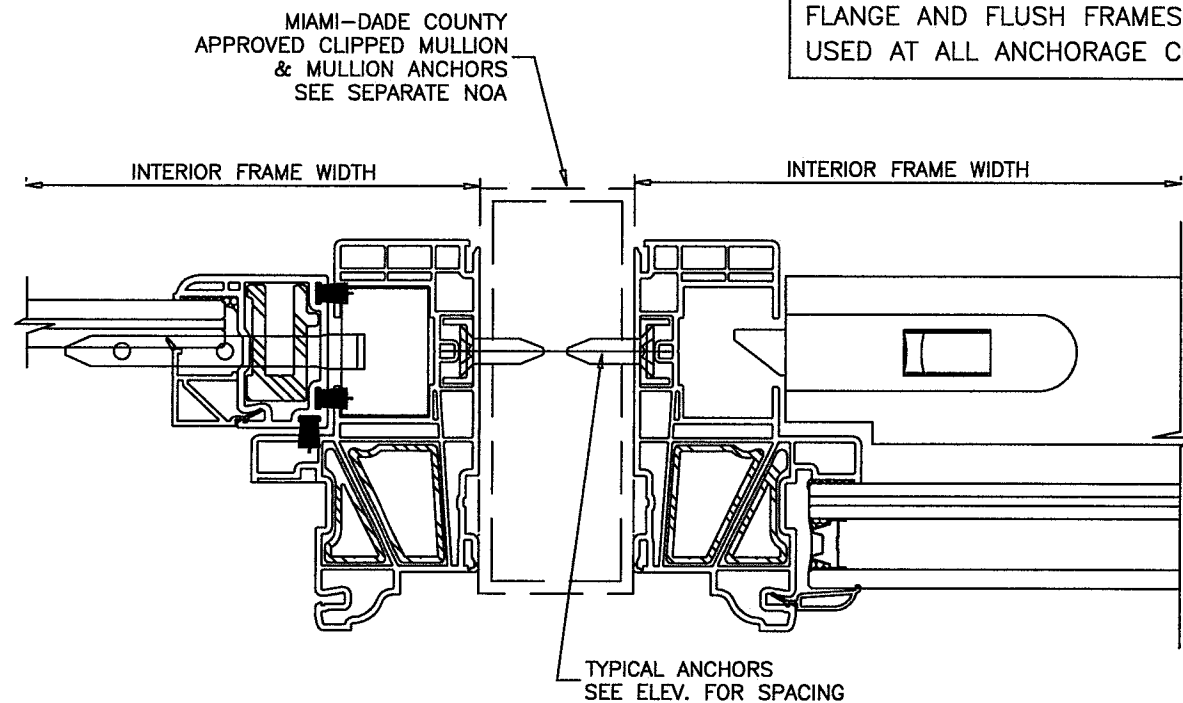
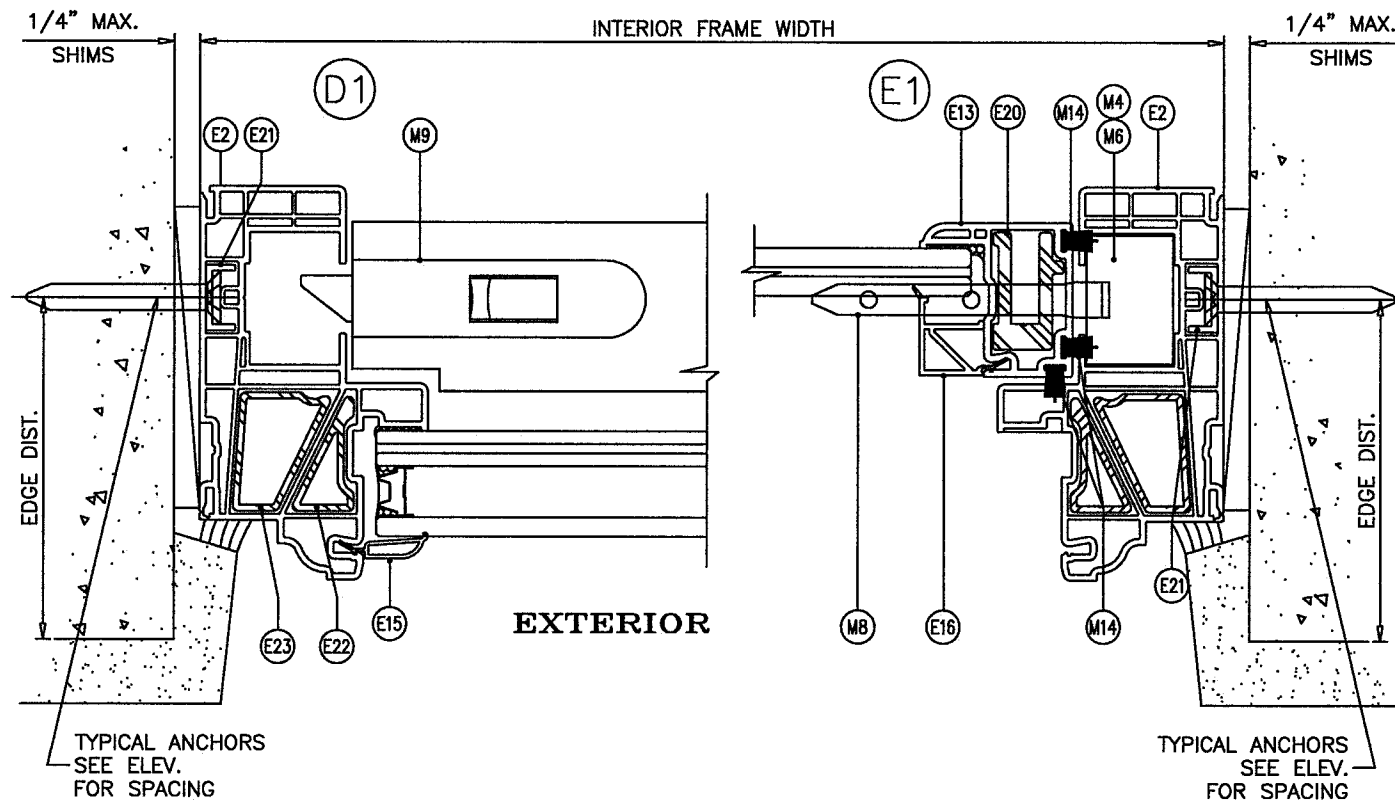
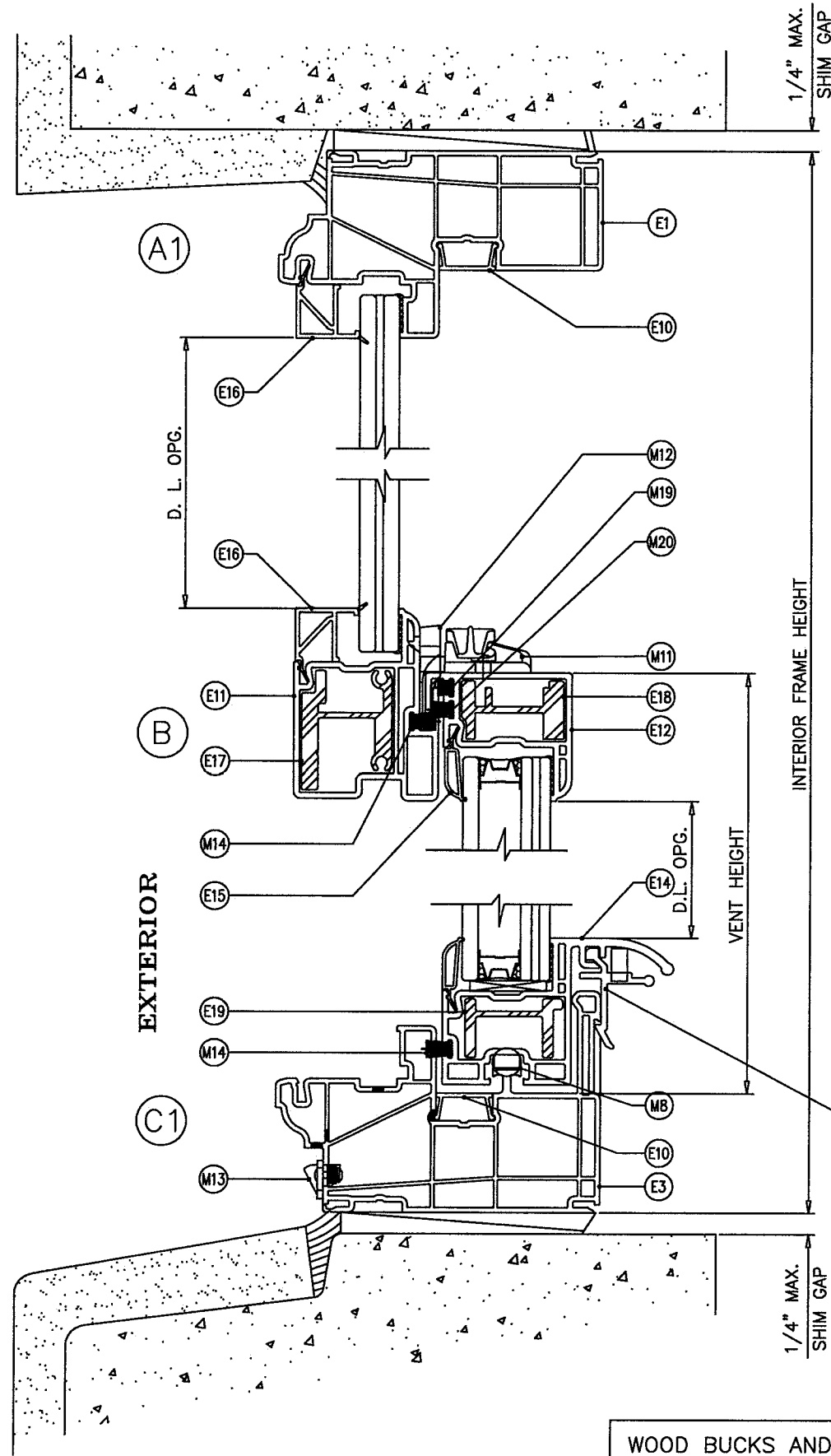
**PRODUCT REVISED**  
as complying with the Florida  
Building Code  
NOA-No. **20-0722.11**  
Expiration Date: **02/20/2024**  
By: *Manuel Perez*  
Miami-Dade Product Control

Revision:

 <b>Impact Resistant Windows &amp; Doors WERE STRONGER™</b>	CGI WINDOWS AND DOORS, INC. 3780 W 104TH STREET HIALEAH, FL 33018 (305) 593-6590		7100 PVC SINGLE HUNG WINDOW - LMI		REGISTRATION #29296		PREPARED BY A. LYNN MILLER 1070 TECHNOLOGY DRIVE N. VENICE, FL 34275 (941) 480-1600														
	Title		Date		07/06/20																
Series Desc.		SH7100		Scale		NTS		Sheet		5 OF 10		DWG No.		7100NOA-1		Rev.		A			
INSTALLATION DETAILS										Drawn By		J ROSOWSKI									






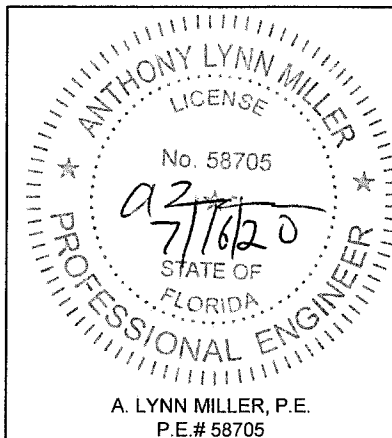


WOOD BUCKS AND METAL STRUCTURE NOT BY CGI WDW.  
MUST SUSTAIN LOADS IMPOSED BY GLAZING SYSTEM  
AND TRANSFER THEM TO THE BUILDING STRUCTURE.

FLUSH FRAMES

**PRODUCT REVISED**  
as complying with the Florida  
Building Code  
NOA-No. **20-0722.11**  
Expiration Date: **02/20/2024**  
By: *Manuel Perez*  
Miami-Dade Product Control

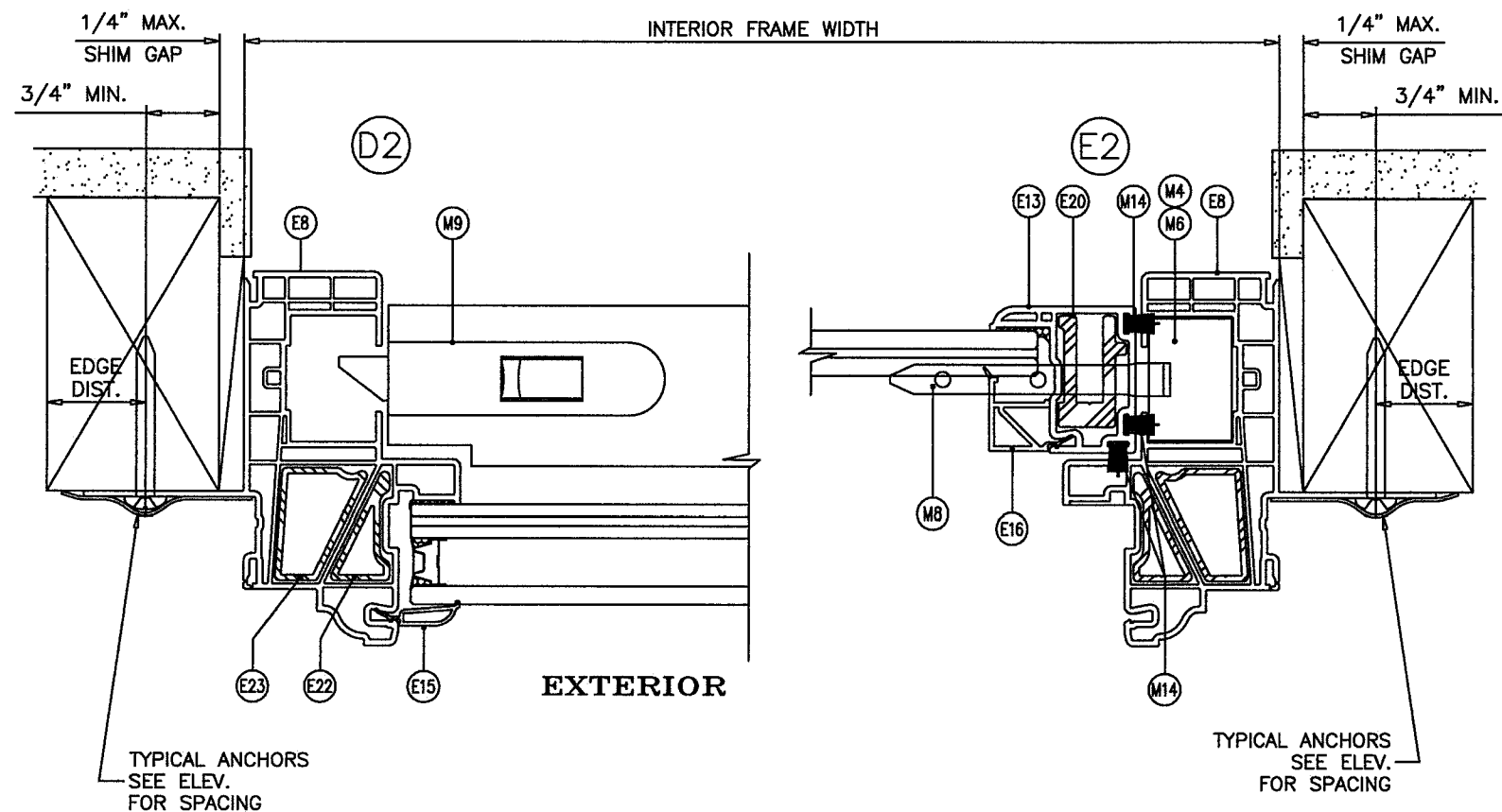
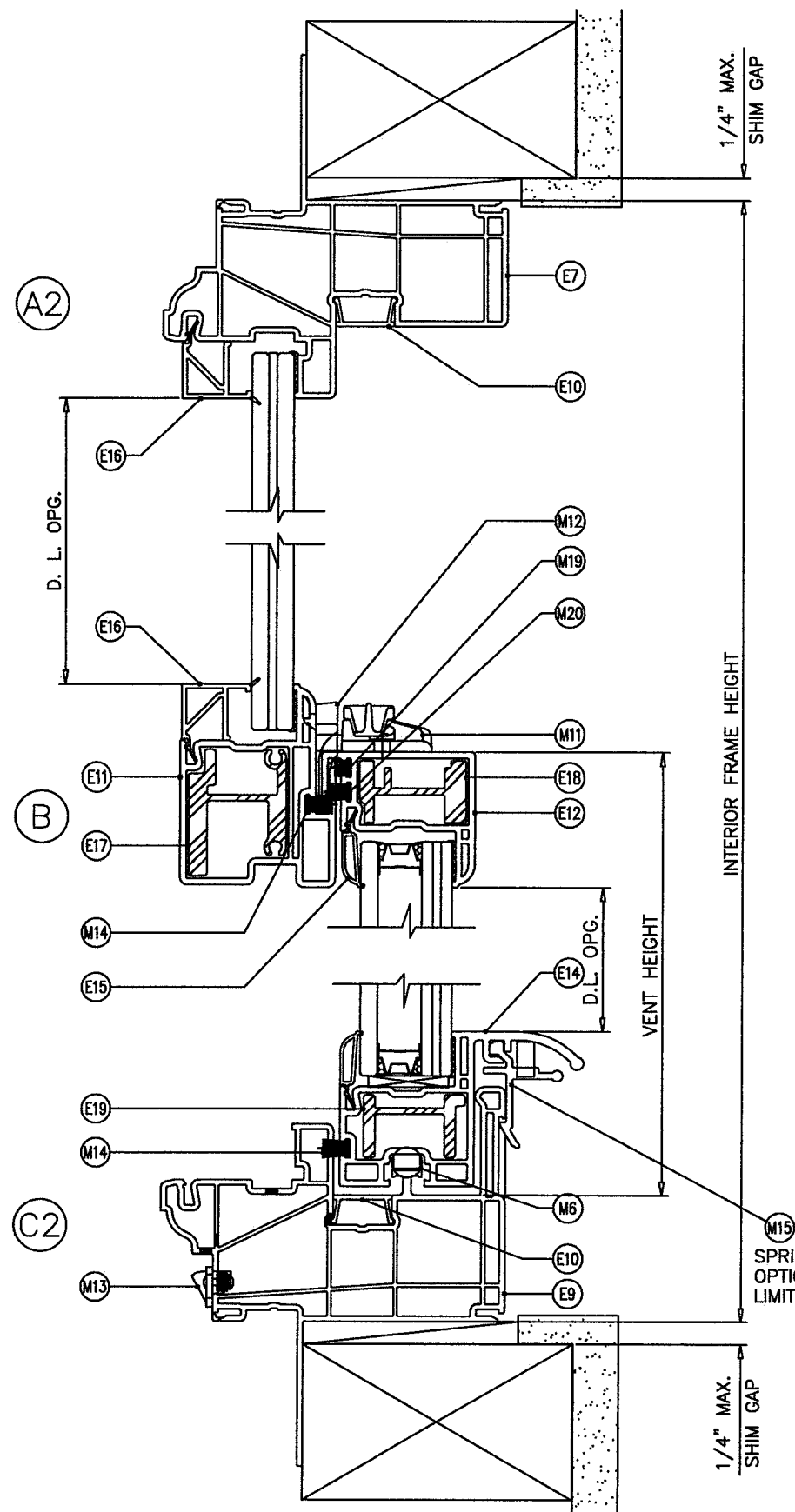
			PREPARED BY A. LYNN MILLER 1070 TECHNOLOGY DRIVE N. VENICE, FL 34275 (941) 480-1600		
Impact Resistant Windows & Doors WE'RE STRONGER™			REGISTRATION #29296		
CGI WINDOWS AND DOORS, INC. 3780 W 104TH STREET HIALEAH, FL 33018 (305) 593-6590			7100 PVC SINGLE HUNG WINDOW - LMI		07/06/20
			Date		
INSTALLATION DETAILS			Drawn By		J ROSOWSKI
Series		SH7100	DWG No.		7100NOA-1
Scale		NTS	Sheet		6 OF 10
Desc.		J ROSOWSKI			
Title		A			



A. LYNN MILLER, P.E.  
P.E.# 58705



EXTERIOR




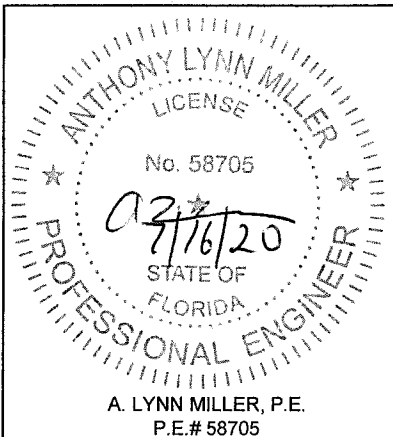
**TYPICAL ANCHORS:**  
**FIN FRAMES:** SEE ELEV. FOR SPACING  
 #8 SMS/WOOD SCREWS (GRADE 2 CRS)  
 INTO 2BY WOOD BUCKS OR WOOD STRUCTURES  
 1-1/4" MIN. PENETRATION INTO WOOD  
 3/4" MIN. EDGE DISTANCE

WOOD BUCKS AND METAL STRUCTURE NOT BY CGI WDW.  
 MUST SUSTAIN LOADS IMPOSED BY GLAZING SYSTEM  
 AND TRANSFER THEM TO THE BUILDING STRUCTURE.

FIN FRAMES

**PRODUCT REVISED**  
 as complying with the Florida  
 Building Code  
 NOA-No. **20-0722.11**  
 Expiration Date: **02/20/2024**  
 By: *Manuel Ferrer*  
 Miami-Dade Product Control

 <b>Impact Resistant Windows &amp; Doors</b> <b>WE'RE STRONGER™</b>				PREPARED BY A. LYNN MILLER 1070 TECHNOLOGY DRIVE N. VENICE, FL 34275 (941) 480-1600			
CGI WINDOWS AND DOORS, INC. 3780 W 104TH STREET HIALEAH, FL 33018 (305) 593-6590				REGISTRATION #29296			
Title		7100 PVC SINGLE HUNG WINDOW - LMI		Date		07/06/20	
INSTALLATION DETAILS				Drawn By		J ROSOWSKI	
Series		SH7100		Scale		NTS	
		Sheet		7 OF 10		DWG No.	
				7100NOA-1		Rev.	
						A	



CODE	PART No.	DESCRIPTION	MATERIAL	MANUF.	REMARKS
E1	CGI-1000	EQUAL LEG FRAME HEAD	PVC	DECEUNINCK NORTH AMERICA LLC.	
E2	CGI-1001	EQUAL LEG FRAME JAMB	PVC	DECEUNINCK NORTH AMERICA LLC.	
E3	CGI-1002	EQUAL LEG FRAME SILL	PVC	DECEUNINCK NORTH AMERICA LLC.	
E4	CGI-1013	FLANGE FRAME HEAD	PVC	DECEUNINCK NORTH AMERICA LLC.	
E5	CGI-1014	FLANGE FRAME JAMB	PVC	DECEUNINCK NORTH AMERICA LLC.	
E6	CGI-1015	FLANGE FRAME SILL	PVC	DECEUNINCK NORTH AMERICA LLC.	
E7	CGI-1018	FIN FRAME HEAD	PVC	DECEUNINCK NORTH AMERICA LLC.	
E8	CGI-1019	FIN FRAME JAMB	PVC	DECEUNINCK NORTH AMERICA LLC.	
E9	CGI-1020	FIN FRAME SILL	PVC	DECEUNINCK NORTH AMERICA LLC.	
E10	CGI-1003	SCREW COVER	PVC	DECEUNINCK NORTH AMERICA LLC.	
E11	CGI-1004	FIXED MEETING RAIL	PVC	DECEUNINCK NORTH AMERICA LLC.	
E12	CGI-1005	LOCK RAIL	PVC	DECEUNINCK NORTH AMERICA LLC.	
E13	CGI-1006	SIDE RAIL	PVC	DECEUNINCK NORTH AMERICA LLC.	
E14	CGI-1007	LIFT RAIL	PVC	DECEUNINCK NORTH AMERICA LLC.	
E15	CGI-1008	IG GLAZING BEAD	PVC	DECEUNINCK NORTH AMERICA LLC.	
E16	CGI-1025	7/16" MONOLITHIC GLAZING BEAD	PVC	DECEUNINCK NORTH AMERICA LLC.	
E17	CGI-802	MEETING RAIL REINFORCEMENT	6005A-T5	CGI EXTRUDER	
E18	CGI-807	LOCK RAIL REINFORCEMENT	6005A-T5	CGI EXTRUDER	
E19	CGI-800	LIFT RAIL REINFORCEMENT	6005A-T5	CGI EXTRUDER	
E20	CGI-801	SIDE RAIL REINFORCEMENT	6005A-T5	CGI EXTRUDER	
E21	CGI-1023	JAMB ANCHOR REINFORCEMENT	6005A-T5	CGI EXTRUDER	
E22	CGI-1026	FRAME REINFORCEMENT SMALL	6005A-T5	CGI EXTRUDER	6" LONG AT MTG. RAIL
E23	CGI-1027	FRAME REINFORCEMENT LARGE	6005A-T5	CGI EXTRUDER	6" LONG AT MTG. RAIL
M1	SCS 1200	GLAZING SILICONE (1/2" X 3/16" BEAD)	SILICONE	GENERAL ELECTIC	
M2	DOW 995	GLAZING SILICONE (1/2" X 3/16" BEAD)	SILICONE	DOW CORNING	
M3	DOW 899	GLAZING SILICONE (1/2" X 3/16" BEAD)	SILICONE	DOW CORNING	
M4	Ultralift	SPIRAL BALANCE		CALDWELL OR EQUIV	ATTACHED WITH (1) #8 X 1-1/8" FH SMS
M5	21B137	BALANCE SHOE (FOR SPIRAL BALANCE)		CALDWELL OR EQUIV	
M6	Roller Tilt Elite	CONSTANT FORCE BALANCE		CALDWELL OR EQUIV	ATTACHED WITH(1) #8 X 5/8" FH SMS
M7	RT880	BALANCE SHOE (FOR CONSTANT FORCE BALANCE)		CALDWELL OR EQUIV	
M8	16Y513	PIVOT BAR		CALDWELL OR EQUIV	ATTACHED WITH (2) #8 X 3/4" PH SMS
M9	46.13.32.101(102)	TILT LATCH		TRUTH OR EQUIV	ATTACHED WITH (1) #6-1/2" FH SMS
M10	-	SETTING BLOCK, 2 PER LITE	EPDM	-	DUROMETER 85±5
M11	70-10044	SWEEP LOCK		CGI CUSTOM	ATTACHED WITH (2) #6 X 3/4" FH SMS
M12	70-10045	KEEPER		CGI CUSTOM	ATTACHED WITH (2) #6 X 3/4" FH SMS
M13	146-1A	WEEP HOLE COVERS	PVC	CGI-CUSTOM	
M14	W43291NW	.187 x .290 WEATHERSTRIP PILE W/ CENTER FIN	WOOL	ULTRAFAB	
M15	70-10002	SPRING LOADED LOCK, 4" LONG	6063-T5	CGI CUSTOM	-
M16		PROTECTO WRAP WATERPROOFING OR EQUIV.			AT FIN FRAME
M17	W2315NW	.187 x .150 WEATHERSTRIP PILE W/ CENTER FIN	WOOL	ULTRAFAB	
M18	W23221NG	.187 x .220 WEATHERSTRIP PILE W/ CENTER FIN	WOOL	ULTRAFAB	
S3		# 8 X 3" TRUSS HEAD SMS - MEETING RAIL ATTACHEMENT			4 PER MTG RAIL
S4		# 8 X 5/8" FLAT HEAD SMS - CONSTANT FORCE BALANCE			
S5		# 8 X 3/4" PAN HEAD SMS - PIVOT BAR			
S7		# 8 X 1-1/8" FLAT HEAD SMS - SPIRAL BALANCE			
S8		# 6 X 1/2" FLAT HEAD SMS - TILT LATCH			

WHITE PVC EXTRUSIONS BY 'DECEUNINCK NORTH AMERICA LLC'

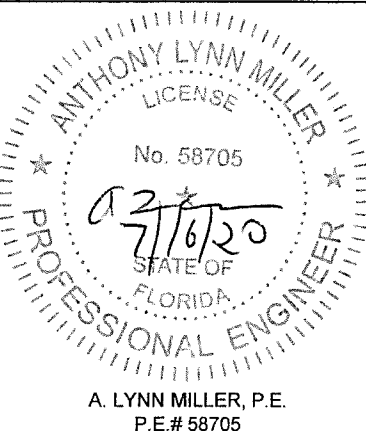
MAX. Fy = 5.2 KSI  
MAX. Fu = 6.5 KSI

TO BE LABELED WITH AAMA EXTRUDER CODE, EXTRUDER NAME, CITY, STATE AND 'MDCA'.

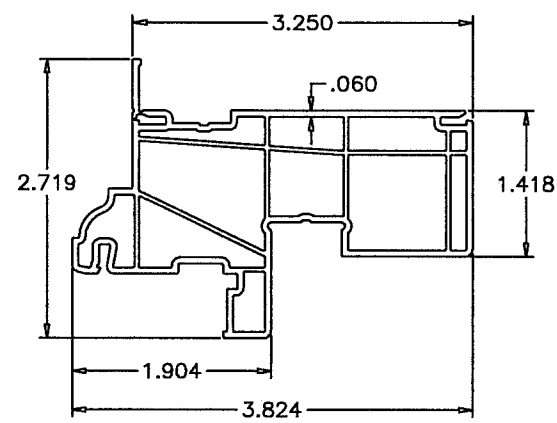
**PRODUCT REVISED**  
as complying with the Florida Building Code  
NOA-No. **20-0722.11**  
Expiration Date: **02/20/2024**  
By: *Manuel Perez*  
Miami-Dade Product Control

Revision:

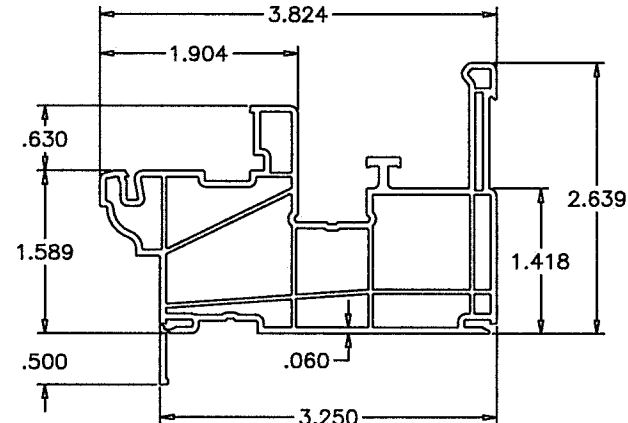
PREPARED BY A. LYNN MILLER 1070 TECHNOLOGY DRIVE N. VENICE, FL 34275 (941) 480-1600	REGISTRATION #29296	J ROSOWSKI	Rev.	A
			Date	07/06/20
			By	
			Drawn	
Impact Resistant Windows & Doors WE'RE STRONGER™ CGI WINDOWS AND DOORS, INC. 3780 W 104TH STREET HIALEAH, FL 33018 (305) 593-6590	7100 PVC SINGLE HUNG WINDOW - LMI	BILL OF MATERIALS	DWG No.	7100NOA-1
			Sheet	8 OF 10
			Scale	NTS
			Series	SH7100



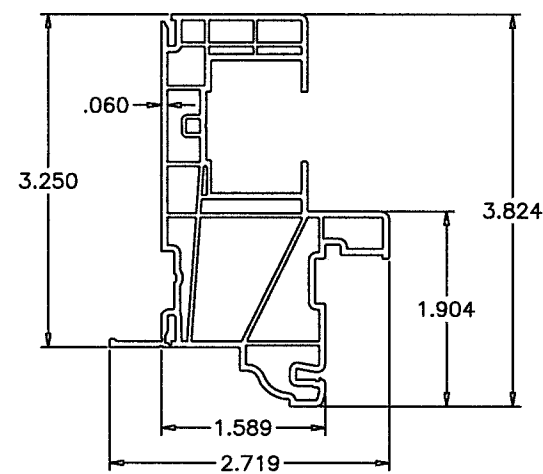
A. LYNN MILLER, P.E.  
P.E.# 58705



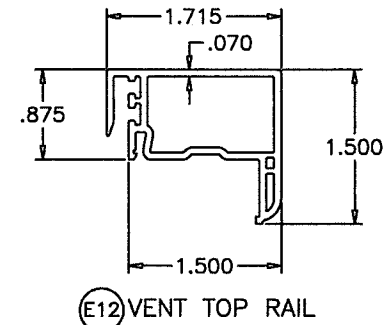
(E4) FLANGE FRAME HEAD



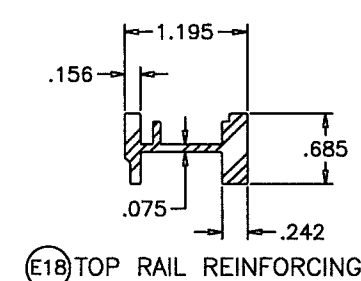
(E6) FLANGE FRAME SILL



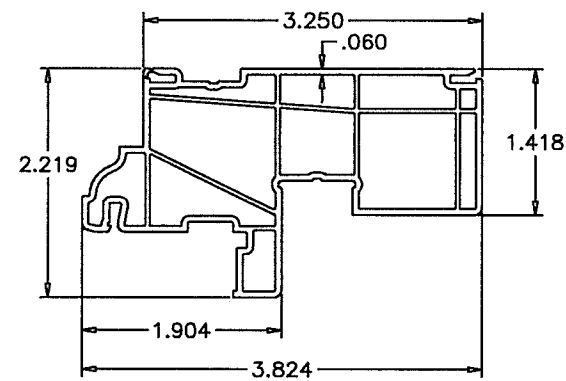
(E5) FLANGE FRAME JAMB



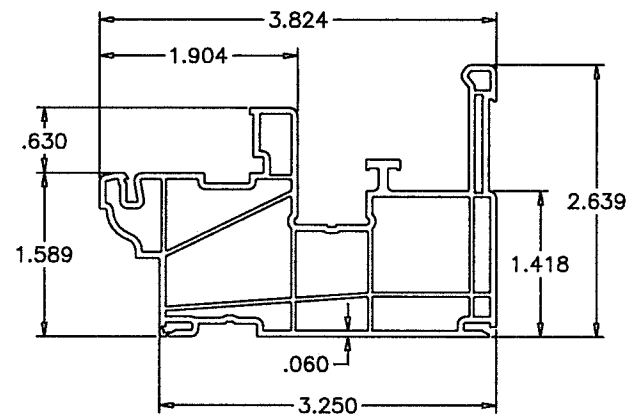
(E12) VENT TOP RAIL



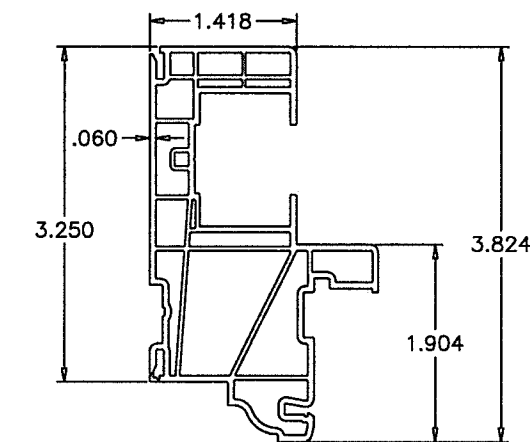
(E18) TOP RAIL REINFORCING



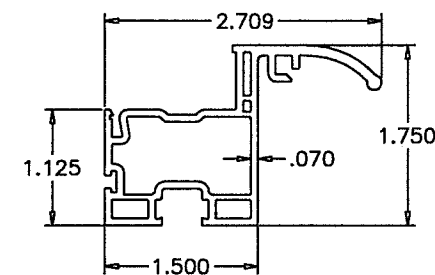
(E1) FLUSH FRAME HEAD



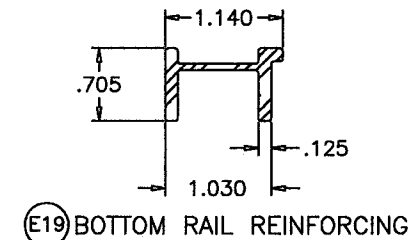
(E3) FLUSH FRAME SILL



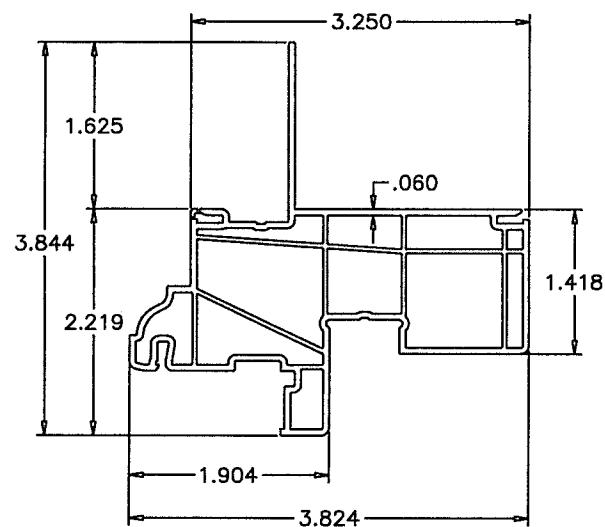
(E2) FLUSH FRAME JAMB



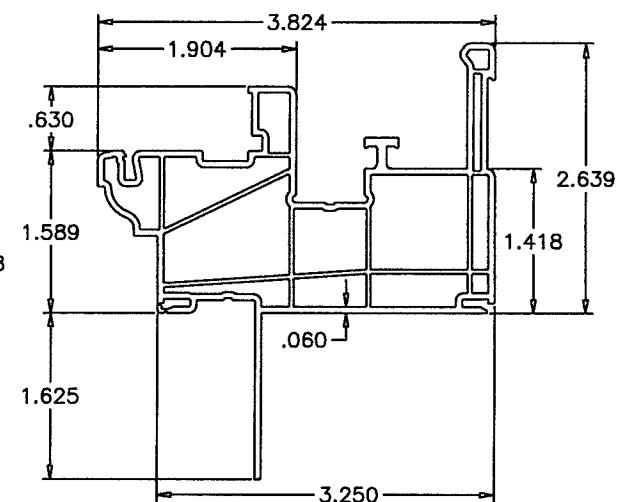
(E14) VENT BOTTOM RAIL



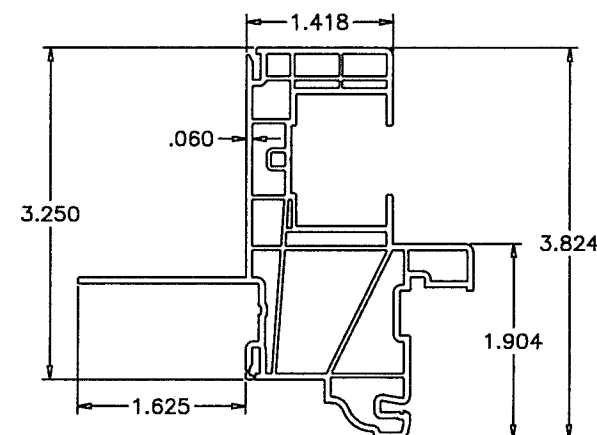
(E19) BOTTOM RAIL REINFORCING



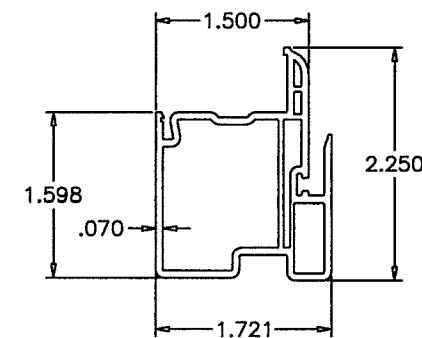
(E7) FIN FRAME HEAD



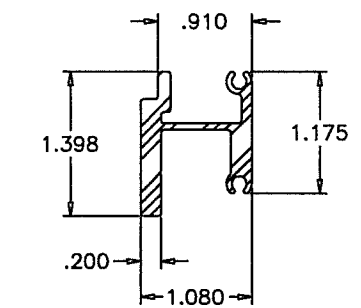
(E9) FIN FRAME SILL



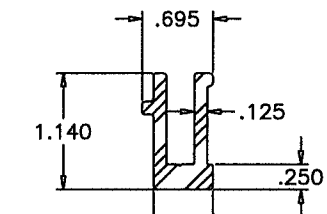
(E8) FIN FRAME JAMB



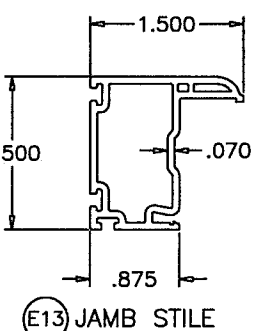
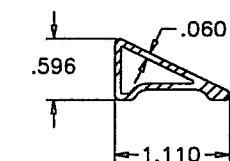
(E11) FIXED RAIL



(E17) FIXED RAIL REINFORCING

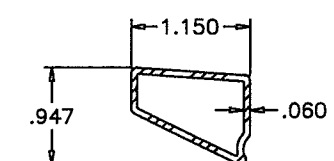


(E20) JAMB STILE REINFORCING

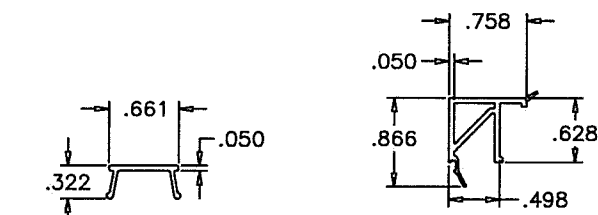


(E13) JAMB STILE

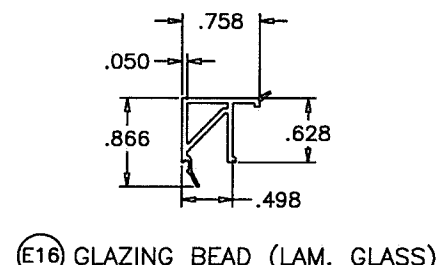
(E22) FRAME REINF. SMALL



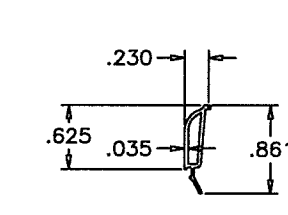
(E23) FRAME REINF. LARGE



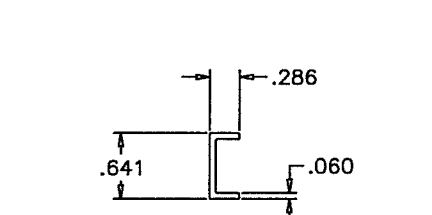
(E10) SCREW COVER



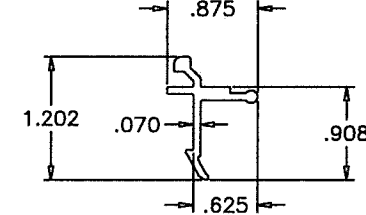
(E16) GLAZING BEAD (LAM. GLASS)



(E15) GLAZING BEAD (INSUL. LAM. GLASS)




(E21) JAMB ANCHOR REINFORCING

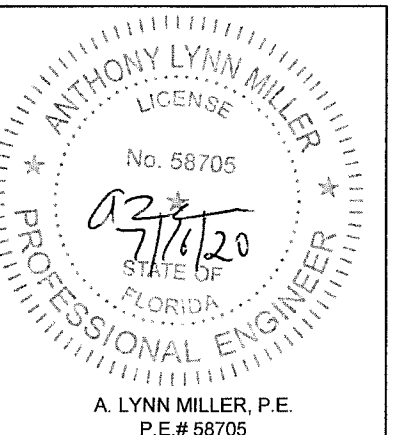


(M15) SPRING LOADED LATCH

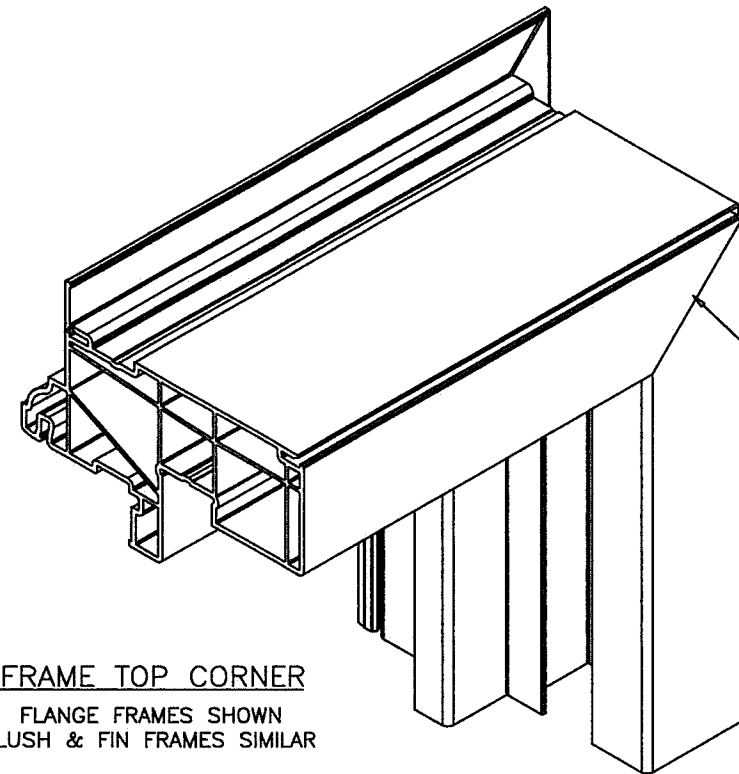
**PRODUCT REVISED**  
as complying with the Florida  
Building Code  
NOA-No. **20-0722.11**  
Expiration Date: **02/20/2024**  
By: *Manuel Perez*  
Miami-Dade Product Control

Revision:

 <b>Impact Resistant Windows &amp; Doors</b> <b>WE'RE STRONGER™</b>	CGI WINDOWS AND DOORS, INC. 3780 W 104TH STREET HIALEAH, FL 33018 (305) 593-6590		PREPARED BY A. LYNN MILLER 1070 TECHNOLOGY DRIVE N. VENICE, FL 34275 (941) 480-1600	
	REGISTRATION #29296			
7100 PVC SINGLE HUNG WINDOW - LMI		Date	07/06/20	
EXTRUSIONS		Drawn By	J ROSOWSKI	
Sheet	NTS	Scale	9 OF 10	DWG No. 7100NOA-1
SH7100	Rev. A			

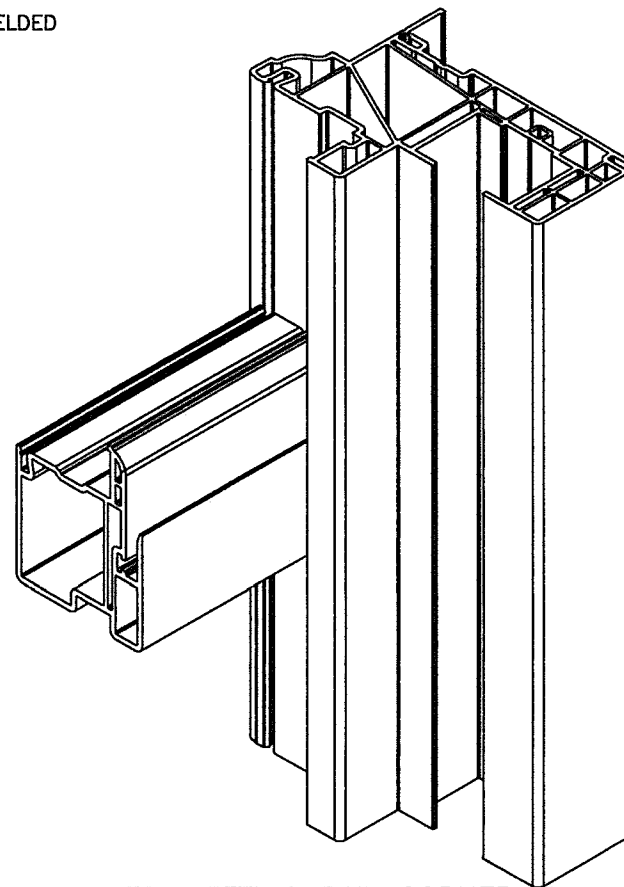




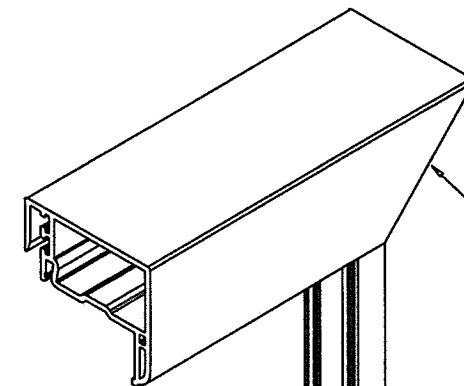


FRAME TOP CORNER  
FLANGE FRAMES SHOWN  
FLUSH & FIN FRAMES SIMILAR

MITERED WELDED  
CORNERS

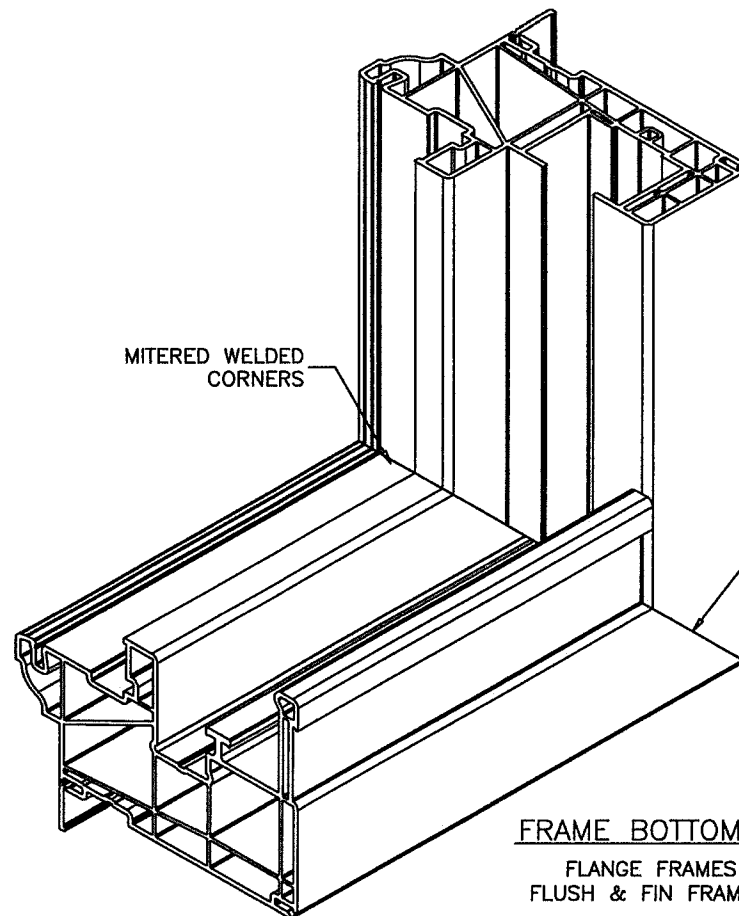


FIXED MEETING RAIL CORNER  
FLANGE FRAMES SHOWN  
FLUSH & FIN FRAMES SIMILAR



VENT TOP CORNER

MITERED WELDED  
CORNERS

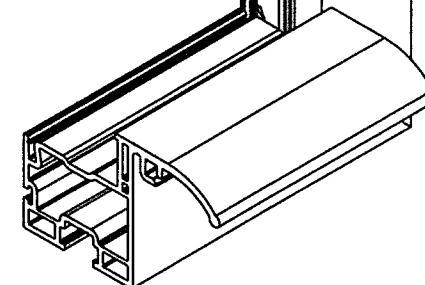


FRAME BOTTOM CORNER  
FLANGE FRAMES SHOWN  
FLUSH & FIN FRAMES SIMILAR

MITERED WELDED  
CORNERS

MITERED WELDED  
CORNERS


MITERED WELDED  
CORNERS

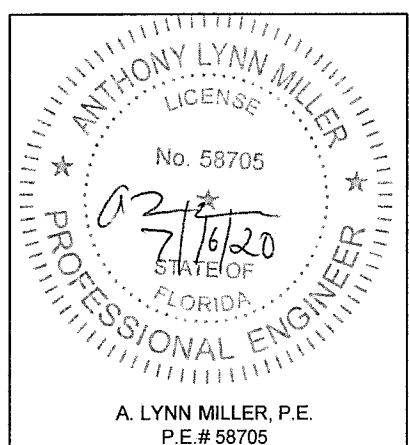


VENT BOTTOM CORNER

**PRODUCT REVISED**  
as complying with the Florida  
Building Code  
NOA-No. **20-0722.11**  
Expiration Date: **02/20/2024**  
By: *Manuel Perez*  
Miami-Dade Product Control

Revision:

 <b>Impact Resistant Windows &amp; Doors</b> <b>WE'RE STRONGER™</b> CGI WINDOWS AND DOORS, INC. 3780 W 104TH STREET HIALEAH, FL 33018 (305) 593-6590	7100 PVC SINGLE HUNG WINDOW - LMI		REGISTRATION #29296		PREPARED BY A. LYNN MILLER 1070 TECHNOLOGY DRIVE N. VENICE, FL 34275 (941) 480-1600			
	Title		Date					
CORNER DETAILS		Drawn		J ROSOWSKI				
SH7100	Scale	NTS	Sheet	10 OF 10	DWG No.	7100NOA-1	Rev.	A
Series		Desc.		Title				



A. LYNN MILLER, P.E.  
P.E.# 58705