



DEPARTMENT OF REGULATORY AND ECONOMIC RESOURCES (RER)
BOARD AND CODE ADMINISTRATION DIVISION
NOTICE OF ACCEPTANCE (NOA)

CGI Windows & Doors, Inc.
3780 W. 103rd Street
Hialeah, FL 33018

SCOPE:

This NOA is being issued under the applicable rules and regulations governing the use of construction materials. The documentation submitted has been reviewed and accepted by Miami-Dade County RER -Product Control Section to be used in Miami Dade County and other areas where allowed by the Authority Having Jurisdiction (AHJ).

This NOA shall not be valid after the expiration date stated below. The Miami-Dade County Product Control Section (In Miami Dade County) and/or the AHJ (in areas other than Miami Dade County) reserve the right to have this product or material tested for quality assurance purposes. If this product or material fails to perform in the accepted manner, the manufacturer will incur the expense of such testing and the AHJ may immediately revoke, modify, or suspend the use of such product or material within their jurisdiction. RER reserves the right to revoke this acceptance, if it is determined by Miami-Dade County Product Control Section that this product or material fails to meet the requirements of the applicable building code.

This product is approved as described herein and has been designed to comply with the Florida Building Code, including the High Velocity Hurricane Zone.

DESCRIPTION: Series "160 Sentinel" Aluminum Outswing Glazed Doors w/wo Sidelites - LMI

APPROVAL DOCUMENT: Drawing No. **MD-160FD Rev A** (former **W13-01 Rev F**), titled "Series Sentinel 160 Alum Outswing Door", sheets 1 thru of 14 of 14, , prepared by manufacture, dated 07/14/20, signed and sealed by Lynn A. Miller, P.E., bearing the Miami-Dade County Product Control Revision stamp with the Notice of Acceptance number and expiration date by the Miami-Dade County Product Control Section.

MISSILE IMPACT RATING: Large and Small Missile Impact

Limitations:

1. See Design Pressure ratings single and double doors in sheet **3**, single sidelite in sheet **4** and door mullion in sheet **5**. For mulled unit lower design of door or sidelite or mullion shall apply to the entire assembly.
2. See glazing option in sheets **1** and **2** and locking hardware options in sheet **10**.

LABELING: Each unit shall bear a permanent label with the manufacturer's name or logo, city, state and series and following statement: "Miami-Dade County Product Control Approved", noted herein.

RENEWAL of this NOA shall be considered after a renewal application has been filed and there has been no change in the applicable building code negatively affecting the performance of this product.

TERMINATION of this NOA will occur after the expiration date or if there has been a revision or change in the materials, use, and/or manufacture of the product or process. Misuse of this NOA as an endorsement of any product, for sales, advertising or any other purposes shall automatically terminate this NOA. Failure to comply with any section of this NOA shall be cause for termination and removal of NOA.

ADVERTISEMENT: The NOA number preceded by the words Miami-Dade County, Florida, and followed by the expiration date may be displayed in advertising literature. If any portion of the NOA is displayed, then it shall be done in its entirety.

INSPECTION: A copy of this entire NOA shall be provided to the user by the manufacturer or its distributors and shall be available for inspection at the job site at the request of the Building Official.

This NOA **revises** # **17-1222.16** and consists of this page 1 and evidence pages E-1, E-2, E-3 & E-4, as well as approval document mentioned above.

The submitted documentation was reviewed by **Ishaq I. Chanda, P.E.**



Ishaq I. Chanda

NOA No. 20-0722.16
Expiration Date: August 08, 2023
Approval Date: November 05, 2020
Page 1

NOTICE OF ACCEPTANCE: EVIDENCE SUBMITTED

1. EVIDENCE SUBMITTED UNDER PREVIOUS NOA'S

A. DRAWINGS

1. Manufacturer's die drawings and sections (submitted under files below)
2. Drawing No. **W13-01 Rev D**, titled "Series 160 Sentinel Outswing Doors", sheets 1 thru of 11 of 11, inclusive sheet 9.1, prepared by Al-Farooq Corporation, dated 01-03-13 and last revised on AUG 05, 2015, signed and sealed by Javad Ahmad, P.E.

B. TESTS (submitted under file #13-0226.06)

1. Test reports on: 1) Air Infiltration Test, per FBC, TAS 202-94
2) Uniform Static Air Pressure Test, Loading per FBC TAS 202-94
3) Water Resistance Test, per FBC, TAS 202-94(+50.0 PSF, sill S-I only)
4) Large Missile Impact Test per FBC, TAS 201-94
5) Cyclic Wind Pressure Loading per FBC, TAS 203-94
6) Forced Entry Test, per FBC 2411 3.2.1, TAS 202-94

Along with manufacturer's parts and section drawing marked-up drawings of aluminum out w/ sidelites, by American test Lab of South Florida, Inc., Test Report No. **ATLSF-1218.01-12** dated 02/11/2013, signed and sealed by Henry Hatem, P.E.

2. Test reports on: 1) Uniform Static Air Pressure Test, Loading per FBC TAS 202-94
2) Large Missile Impact Test per FBC, TAS 201-94
3) Cyclic Wind Pressure Loading per FBC, TAS 203-94

Along with manufacturer's parts and section drawing marked-up drawings of aluminum sidelites, issued by Certified Testing Lab., Test Report No. **CTLA 3056WC** (sample #3) dated 04/16/2015, signed and sealed by Ramesh Patel, P.E

C. CALCULATIONS

1. Anchor verification calculations and structural analysis, complying with FBC-2014 (**5th Edition**), prepared by Al Farooq Corporation, dated 10/06/2014, 05/19/15 and last revised on AUG 04, 2015, signed and sealed by Javad Ahmad, P.E.
2. Glazing complies w/ ASTM E-1300-02, -04 and -2009.

D. QUALITY ASSURANCE

1. Miami Dade Department of Regulatory and Economic Resources (RER).

E. MATERIAL CERTIFICATIONS

1. Notice of Acceptance No. **11-0624.02** issued to E.I. DuPont DeNemours & Co., Inc. for their "**DuPont Sentry Glass ® Interlayer**", expiring on 01/14/17.
2. Notice of Acceptance No. **12-1231.10** issued to Eastman Chemical Company (MA) former Solutia Inc. for "Saflex clear & color glass interlayer ", expiring on 05/21/16.
3. Notice of Acceptance No. **12-1231.08** issued to Eastman Chemical Company (MA) former Solutia Inc. for "Saflex CP-Saflex & Saflex HP composite interlayer w/ PET core ", expiring on 12/11/18.

Ishaq I. Chanda

Ishaq I. Chanda, P.E.
Product Control Unit Supervisor
NOA No 20-0722.16
Expiration Date: August 08, 2023
Approval Date: November 05, 2020

NOTICE OF ACCEPTANCE: EVIDENCE SUBMITTED

F. STATEMENTS

1. Statement letter of conformance to FBC 2014 (5th Edition) and letter of no financial interest, prepared by Al Farooq Corporation, dated 09/23/14, signed and sealed by Javad Ahmad, P.E.
2. Lab compliance and addendum letters, as part of the above referenced test reports.

G. OTHER

1. This file NOA revises # **13-0226.06**, expiring 08/08/18.
2. Test proposals approved dated 12/16/14 & # **12-0553**, dated 04/25/12 approved by RER.

2. EVIDENCE SUBMITTED UNDER PREVIOUS NOA(s)

A. DRAWINGS

1. Drawing No. **W13-01 Rev F**, titled “Series Sentinel 160 Alum Outswing Door (L.M.I./S.M.I.)”, sheets 1 thru of 13 of 13, inclusive sheet 1.1, prepared by Al-Farooq Corporation, dated 01/03/13 and last revised on 02/13/18, signed and sealed by Javad Ahmad, P.E.

B. TESTS

1. Test reports on: 1) Air Infiltration Test, per FBC, TAS 202-94
2) Uniform Static Air Pressure Test, Loading per FBC TAS 202-94
3) Water Resistance Test, per FBC, TAS 202-94
4) Large Missile Impact Test per FBC, TAS 201-94
5) Cyclic Wind Pressure Loading per FBC, TAS 203-94

Along with manufacturer’s parts and section drawing marked-up drawings of aluminum out w/ sidelites, by Fenestration Testing Laboratory, Inc., Test Report No. **FTL 17102** dated 05/19/17, signed and sealed by Idalmis Ortega, P.E.

C. CALCULATIONS

1. Anchor verification calculations and structural analysis, complying with **FBC 6th Edition (2017)**, prepared by Al Farooq Corporation, dated 11/13/17, signed and sealed by Javad Ahmad, P.E.
2. Glazing complies w/ ASTM E-1300-09.

D. QUALITY ASSURANCE

1. Miami Dade Department of Regulatory and Economic Resources (RER).

E. MATERIAL CERTIFICATIONS

1. Notice of Acceptance No. **17-0808.02** issued to Kuraray America., Inc. for their “**Sentry Glas® (Clear and White) Interlayer**”, expiring on 07/04/23.
2. Notice of Acceptance No. **17-0712.05** issued to Eastman Chemical Company (MA) for their “**Saflex Clear & Color glass Interlayers**“, expiring on 05/21/21.

Ishaq I. Chanda

Ishaq I. Chanda, P.E.
Product Control Unit Supervisor
NOA No 20-0722.16
Expiration Date: August 08, 2023
Approval Date: November 05, 2020

NOTICE OF ACCEPTANCE: EVIDENCE SUBMITTED

E. MATERIAL CERTIFICATIONS (continue)

3. Notice of Acceptance No. **17-0712.03** issued to Eastman Chemical Company (MA) for their “Saflex CP-Saflex & Saflex HP Composite Glass Interlayers w/ PET Core “, expiring on 12/11/18.
4. Notice of Acceptance No. **17-1114.14** issued to Kuraray America., Inc. for their “Trosifol® Ultraclear, Clear, and Color PVB Glass Interlayers”, expiring on 07/08/19.

F. STATEMENTS

1. Statement letter of conformance to **FBC 6th Edition (2017)** and of no financial interest prepared by Al Farooq Corporation, dated 11/13/17, signed and sealed by Javad Ahmad, P.E.

G. OTHER

1. This NOA revises NOA #14-1015.04, expiring on 08/08/18.
2. Test proposal #**16-0947**, dated 07/26/16, approved by RER.

3. New Evidence submitted

A. DRAWINGS

1. Drawing No. **MD-160FD Rev A** (former **W13-01 Rev F**), titled “Series Sentinel 160 Alum Outswing Door”, sheets 1 thru of 14 of 14, , prepared by manufacture, dated 07/14/20, signed and sealed by Lynn A. Miller, P.E.

B. TESTS

1. Test reports on:
 - 1) Air Infiltration Test, per FBC, TAS 202–94
 - 2) Uniform Static Air Pressure Test, Loading per FBC, TAS 202–94
 - 3) Water Resistance Test, per FBC, TAS 202–94
 - 4) Large Missile Impact Test per FBC, TAS 201–94
 - 5) Cyclic Wind Pressure Loading per FBC, TAS 203–94

along with marked-up drawings and installation diagram of all CGI Windows and Doors, Inc. and PGT Industries, Inc., representative units listed below and tested to qualify **Dowsil 791** and **Dowsil 983** silicones, per Proposal #**19-1155TP**, prepared by Fenestration Testing Laboratory, Inc., Test Reports No.:

CGI Windows and Doors Inc. test specimens:

FTL-20-2108.1, CGI SH360 Aluminum Single Hung Window (unit 1 in proposal) **FTL-20-2108.2**, CGI CA238 Alum. Outswing Casement Window (unit 2 in proposal) **FTL-20-2108.3**, CGI SGD560 Aluminum Sliding Glass Door (unit 3 in proposal) **FTL-20-2108.4**, CGI PW410 Aluminum Fixed Window (unit 4 in proposal) and **FTL-20-2108.5**, CGI SH360 Aluminum Single Hung Window (unit 5 in proposal)all dated 08/24/20 and signed and sealed by Idalmis Ortega, P.E.

Ishaq I. Chanda

Ishaq I. Chanda, P.E.
Product Control Unit Supervisor
NOA No 20-0722.16
Expiration Date: August 08, 2023
Approval Date: November 05, 2020

NOTICE OF ACCEPTANCE: EVIDENCE SUBMITTED

B. TESTS (continue):

PGT Industries, Inc. test specimens:

FTL-7897, PGT PW5520 PVC Fixed Window (unit 6 in proposal), dated 09/03/14
FTL-20-2107.1, PGT SGD780 Aluminum Sliding Glass Door (unit 7 in proposal) **FTL-20-2107.2**, PGT CA740 Alum. Outswing Casement Window (unit 8 in proposal) **FTL-20-2107.3**, PGT PW7620A Aluminum Fixed Window (unit 9 in proposal) and **FTL-20-2107.4**, PGT PW7620A Aluminum Fixed Window (unit 10 in proposal) all dated 07/13/20 and signed and sealed by Idalmis Ortega, P.E.

C. CALCULATIONS

1. Anchor verification calculations and structural analysis, complying with **FBC 2020, 7th Edition**, prepared by manufacturer, dated 07/14/20, signed and sealed by A. Lynn Miller, P. E.
2. Glazing complies with ASTM E1300-04, -09, -12 and -16.

D. QUALITY ASSURANCE

1. Miami Dade Department of Regulatory and Economic Resources (RER).

E. MATERIAL CERTIFICATIONS

1. Notice of Acceptance No. **17-0808.02** issued to Kuraray America, Inc. (former E.I. DuPont DE Nemours & Co., Inc.) for the “**Sentry Glass ® Interlayer**”, expiring on 07/4/23.
2. Notice of Acceptance No. **19-0305.02** issued to **Kuraray America, Inc.** (Former E.I. DuPont DE Nemours & Co., Inc. for the “Kuraray Trofossil Ultra clear and color PVB Interlayer (Former Kuraray **Butacite ® PVB interlayer**)”, expiring on 07/08/24.
3. Notice of Acceptance No. **18-0301.06** issued to Eastman Chemical Company (MA) (Former Solutia, Inc.) for the “**Saflex CP - Saflex and Saflex HP Composite Glass Interlayers w/ PET Core**”, expiring on 12/11/23.

F. STATEMENTS

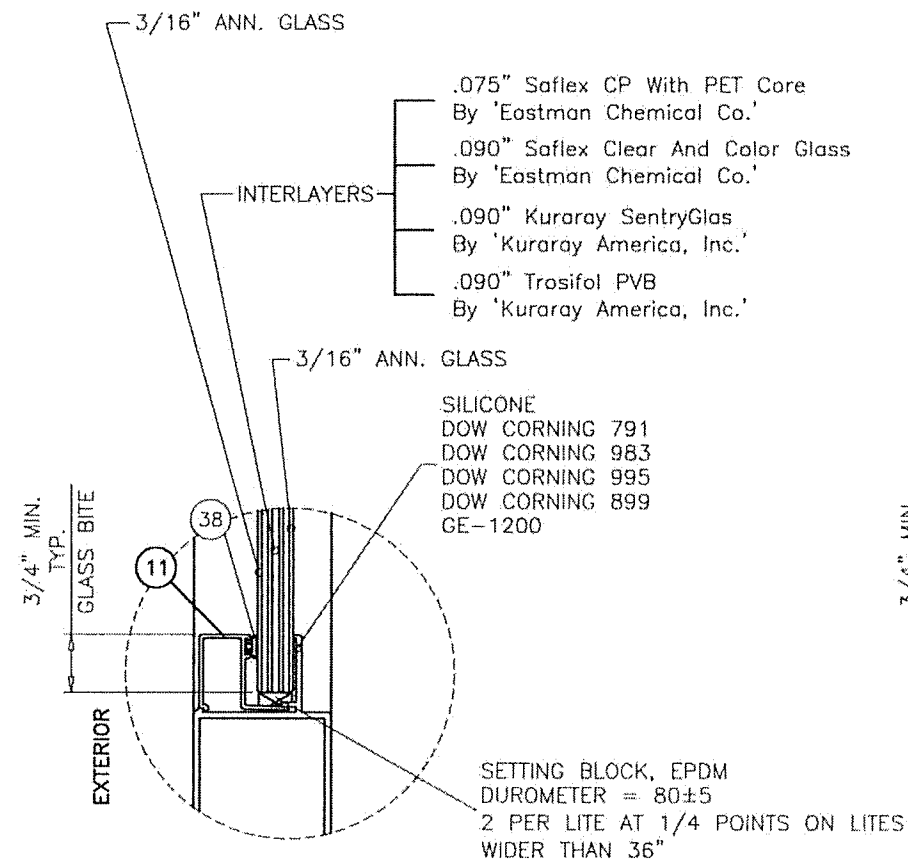
1. Statement letter of conformance to FBC 2020 (7th Edition), issued by manufacturer, dated 07/14/20, signed and sealed by Lynn Miller, P. E.
2. Notification of Successor Engineer per the Florida Administrative Code Section 61G15-27.001, notifying original engineer that the successor engineer is assuming full professional and legal responsibility for all engineering documents pertaining to this NOA, dated 07/20/20, signed and sealed by A. Lynn Miller, P.E.

G. OTHER

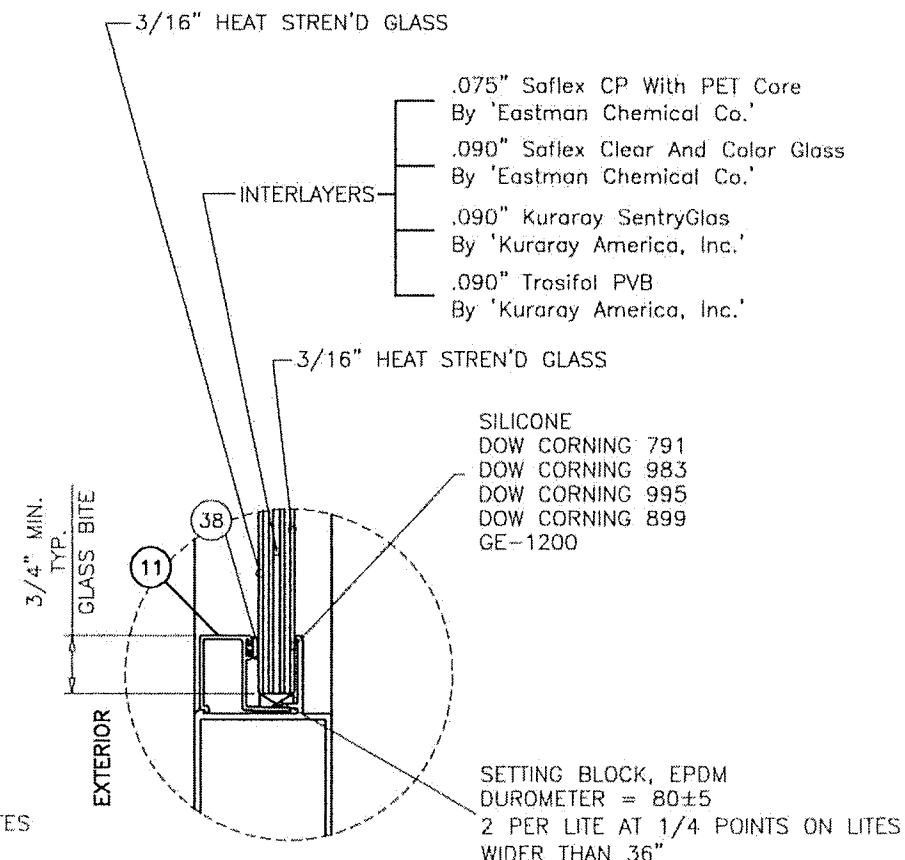
1. This NOA **revises 17-0227.05** expiring 08/08/23 for FBC 2020 updates.
2. RER Test proposals **#19-1155** dated 01/10/20 approved by Ishaq I. Chanda, P.E.

Ishaq I. Chanda

Ishaq I. Chanda, P.E.
Product Control Unit Supervisor
NOA No 20-0722.16
Expiration Date: August 08, 2023
Approval Date: November 05, 2020



GLASS TYPE 'A'
7/16" OVERALL LAM. GLASS



GLASS TYPE 'B'
7/16" OVERALL LAM. GLASS

GLAZING OPTIONS

SERIES SENTINEL 160

ALUMINUM OUTSWING DOOR W/ SIDELITES

APPROVAL APPLIES TO SINGLE (X) AND DOUBLE (XX) LEAF DOORS WITH OR WITHOUT SIDELITES. SIDELITES CAN BE ON ONE OR BOTH SIDES OF DOOR.

DOORS WITH STANDARD THRESHOLD APPROVED FOR INSTALLATIONS WHERE WATER INFILTRATION RESISTANCE IS REQUIRED. DOORS WITH SADDLE (ADA) THRESHOLD NOT APPROVED FOR WATER INFILTRATION RESISTANCE.

THIS PRODUCT HAS BEEN DESIGNED AND TESTED TO COMPLY WITH THE REQUIREMENTS OF THE 2017 (6TH EDITION)/2020 (7TH EDITION) FLORIDA BUILDING CODE INCLUDING HIGH VELOCITY HURRICANE ZONE (HVHZ).

1BY OR 2BY WOOD BUCKS & BUCK FASTENERS BY OTHERS, MUST BE DESIGNED AND INSTALLED ADEQUATELY TO TRANSFER APPLIED PRODUCT LOADS TO THE BUILDING STRUCTURE.

ANCHORS SHALL BE CORROSION RESISTANT, SPACED AS SHOWN ON DETAILS AND INSTALLED PER MANUF'S INSTRUCTIONS. SPECIFIED EMBEDMENT TO BASE MATERIAL SHALL BE BEYOND WALL DRESSING OR STUCCO.

A LOAD DURATION INCREASE IS USED IN DESIGN OF ANCHORS INTO WOOD ONLY.

ALL SHIMS TO BE HIGH IMPACT, NON-METALLIC AND NON-COMPRESSIBLE.

MATERIALS INCLUDING BUT NOT LIMITED TO STEEL/METAL SCREWS, THAT COME INTO CONTACT WITH OTHER DISSIMILAR MATERIALS SHALL MEET THE REQUIREMENTS OF THE 2017/2020 FLORIDA BLDG. CODE & ADOPTED STANDARDS.

THIS PRODUCT APPROVAL IS GENERIC AND DOES NOT PROVIDE INFORMATION FOR A SITE SPECIFIC PROJECT, I.E. LIFE SAFETY OF THIS PRODUCT, ADEQUACY OF STRUCTURE RECEIVING THIS PRODUCT AND SEALING AROUND OPENING FOR WATER INFILTRATION RESISTANCE ETC. CONDITIONS NOT SHOWN IN THIS DRAWING ARE TO BE ANALYZED SEPARATELY, AND TO BE REVIEWED BY BUILDING OFFICIAL.

INSTRUCTIONS:

USE CHARTS AS FOLLOWS.

- STEP 1** DETERMINE DESIGN WIND LOAD REQUIREMENT BASED ON WIND VELOCITY, BLDG. HEIGHT, WIND ZONE USING APPLICABLE ASCE 7 STANDARD.
- STEP 2** FOR SINGLE (X) AND DOUBLE (XX) DOOR CAPACITIES SEE SHEET 3
- STEP 3** FOR SIDELITE PANEL (O) CAPACITY SEE SHEET 4.
- STEP 4** FOR SIDELITE COMBINATION WITH DOOR SEE MULLION CAPACITY CHART ON SHEET 5.
- STEP 5** THE LOWEST VALUE RESULTING FROM STEPS 2, 3 AND 4 SHALL APPLY TO ENTIRE SYSTEM.


DOORS/SIDELITES ARE RATED FOR LARGE AND SMALL MISSILE IMPACT. SHUTTERS ARE NOT REQUIRED.

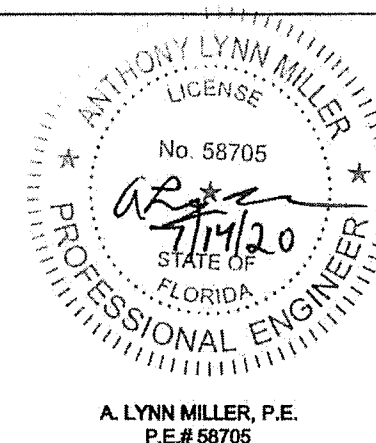
PRODUCT REVISED
as complying with the Florida
Building Code
NOA-No. **20-0722.16**

Expiration Date **08/23/2023**

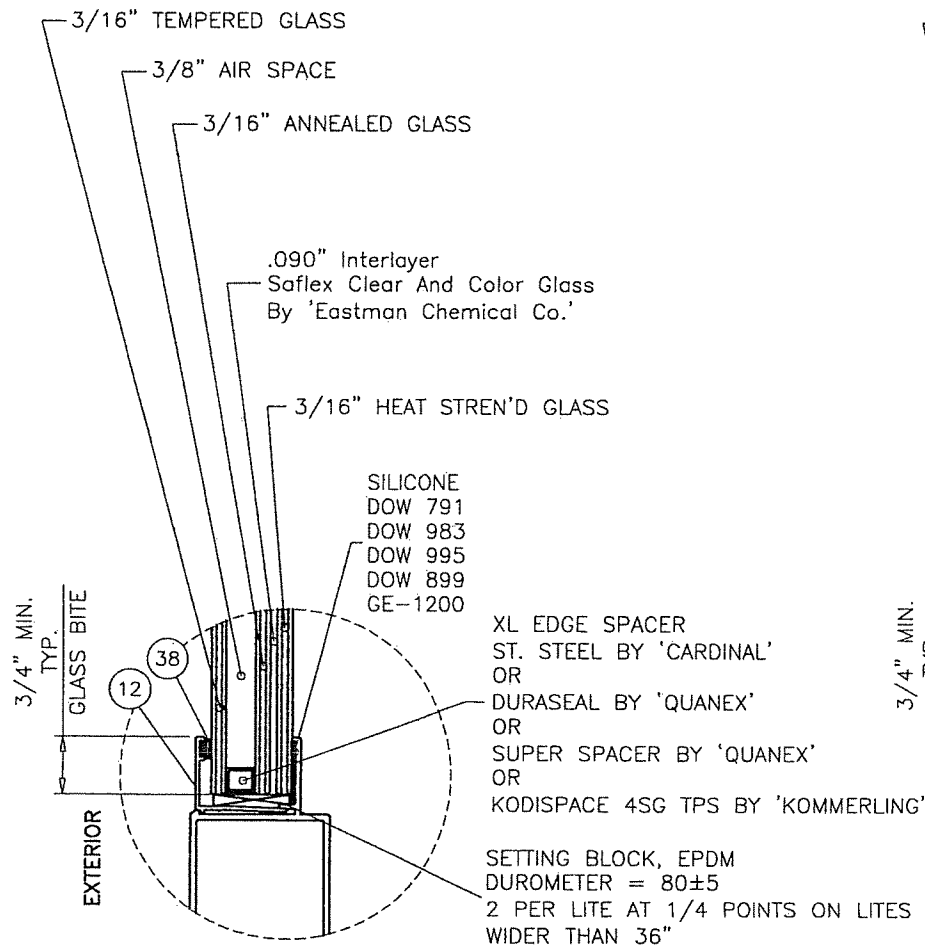
By *Ismael L. Chandra*
Miami-Dade Product Control

Revision:
A) UPDATED TO FBC 2020.
AK - 06/17/20

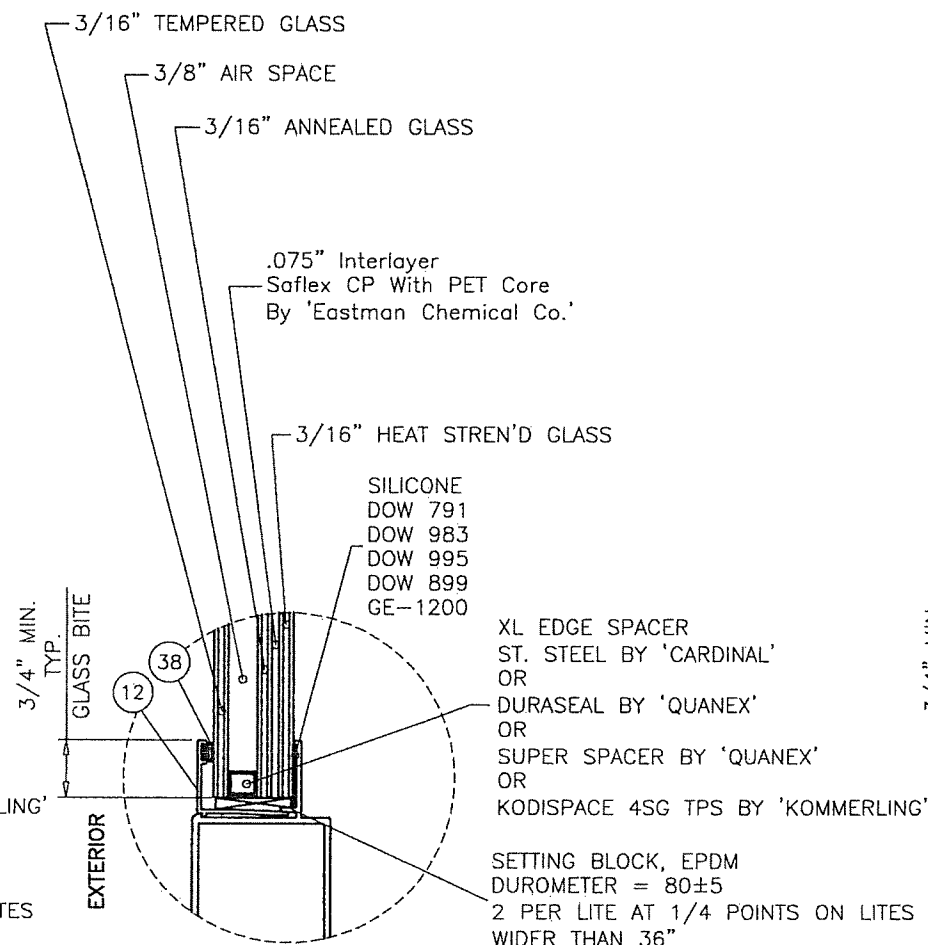
 Impact Resistant Windows & Doors WE'RE STRONGER™ CGI DOORS AND WINDOWS, INC. 3780 W 104TH STREET HIALEAH, FL 33018 (305) 593-6590	INSTRUCTIONS, NOTES, GLASS			REGISTRATION #29296		
	160FD		NTS	1 OF 14	MD-160FD	A
	Scale		Sheet	Rev.		
	Title		By		Date	
Desc.		SENTINEL 160 OUTSWING DOOR		AGK		06/17/20



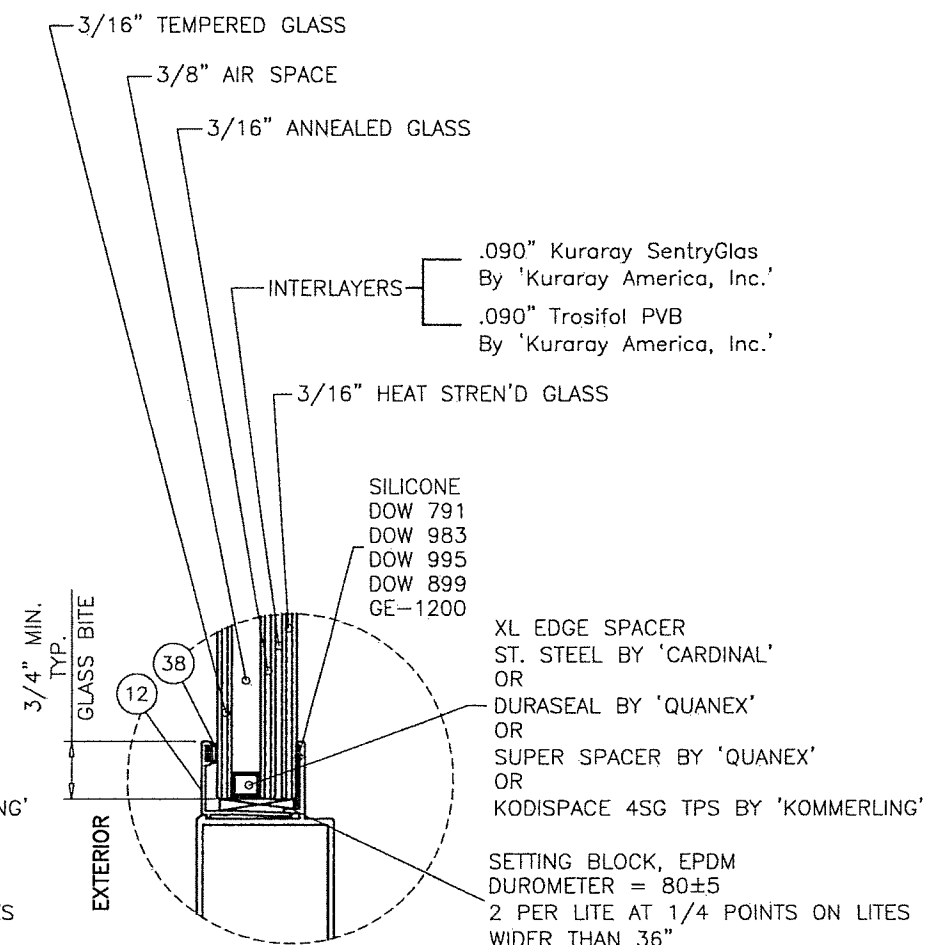
A. LYNN MILLER, P.E.
P.E.# 58705



GLASS TYPE 'C1'
1" OVERALL INSUL. LAM. GLASS



GLASS TYPE 'C2'
1" OVERALL INSUL. LAM. GLASS

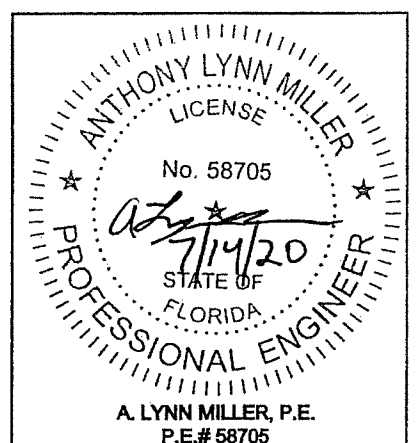


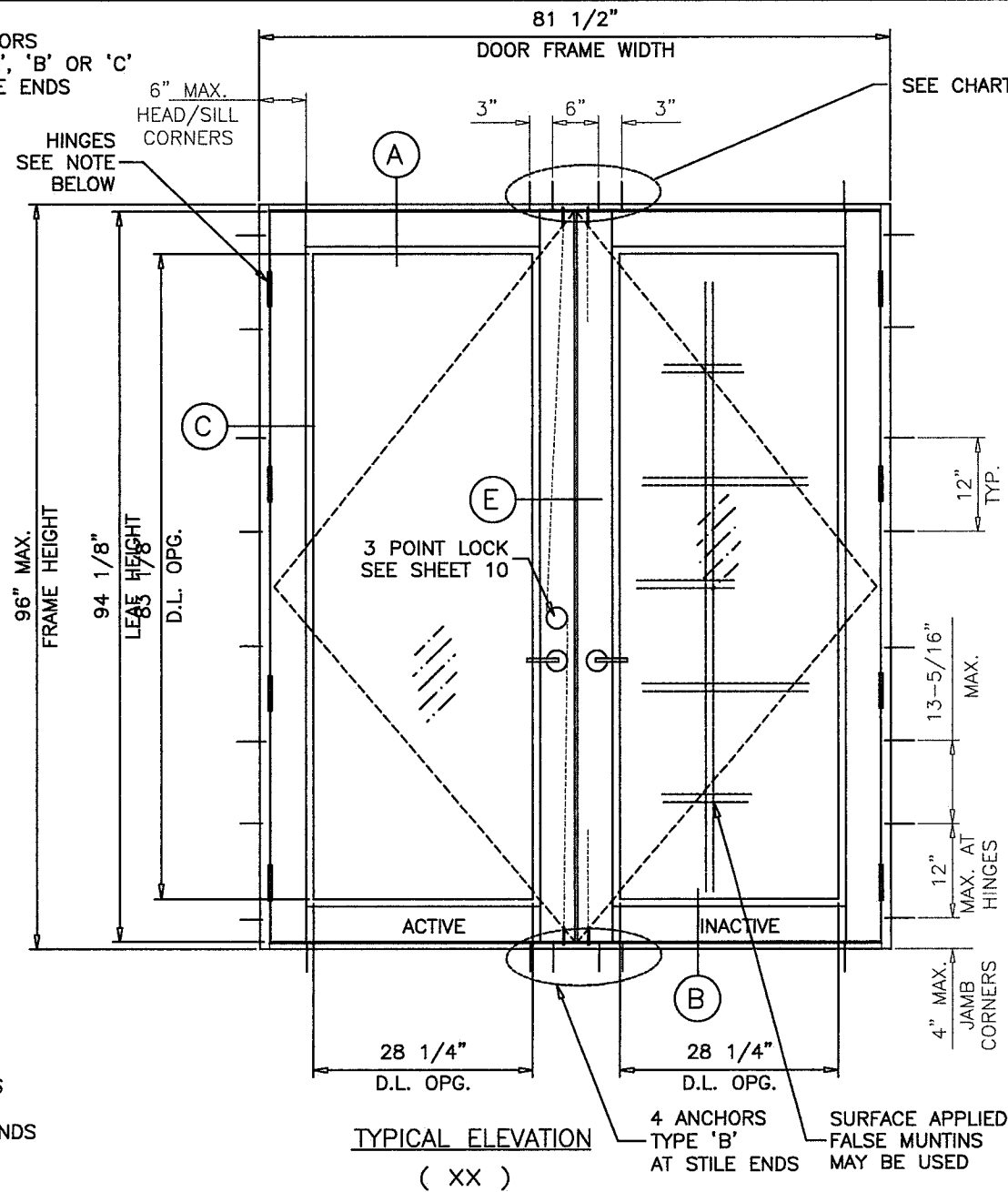
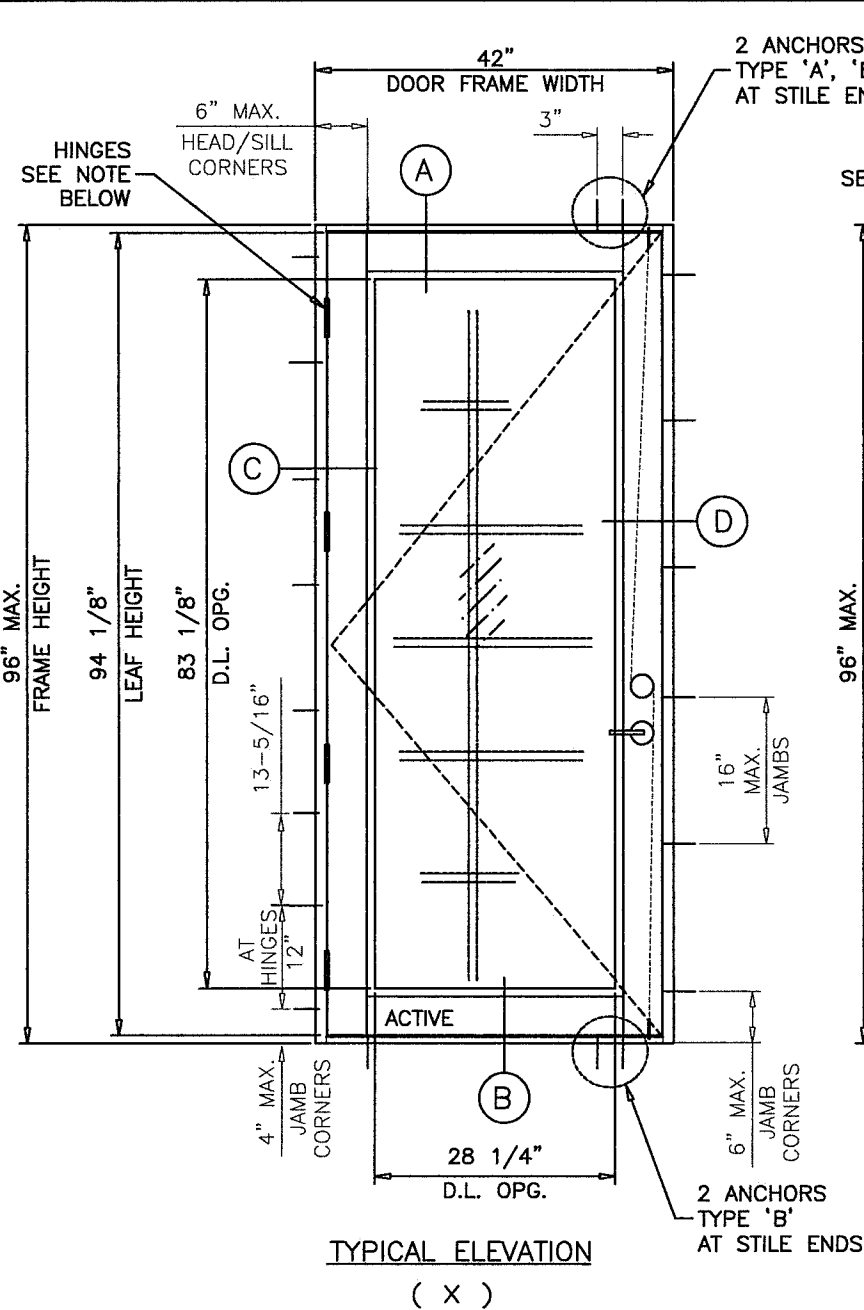
GLASS TYPE 'C3'
1" OVERALL INSUL. LAM. GLASS

PRODUCT REVISED
as complying with the Florida
Building Code
NOA-No. **20-0722.16**
Expiration Date **08/23/2023**
By *Isaac I. Chank*
Miami-Dade Product Control

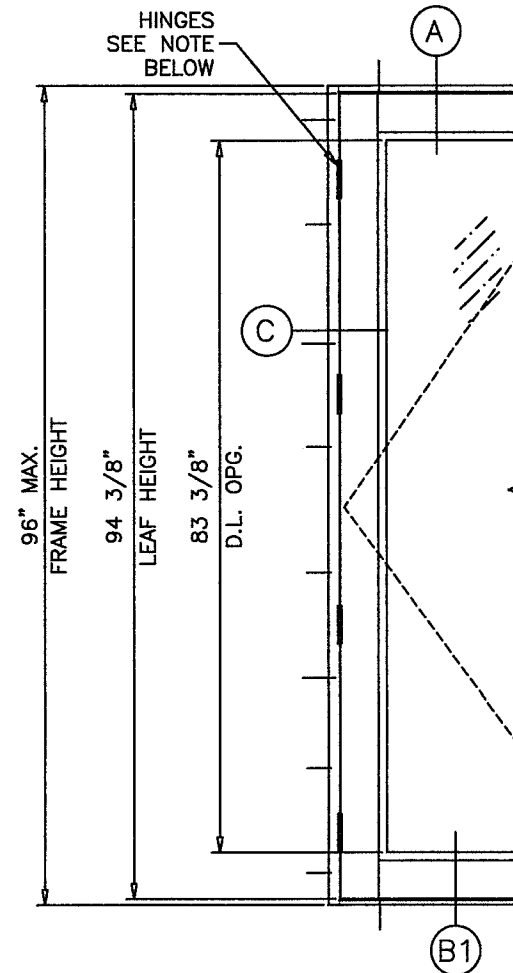
Revision: **A) ADDED BACKBEDDING.**
AK - 06/17/20

Impact Resistant Windows & Doors WE'RE STRONGER™ CGI DOORS AND WINDOWS, INC. 3780 W 104TH STREET HALEAH, FL 33018 (305) 593-6590	GLASS TYPES SENTINEL 160 OUTSWING DOOR 160FD	REGISTRATION #29296 06/17/20 AGK	2 OF 14 NTS 160FD	MD-160FD A





HEAD ANCHORS AT STILE ENDS QUANTITY CHART			
ANCHOR TYPE			
SHIM	'A'	'B'	'C'
1/4"	4	4	4
3/8"	6	6	6
1/2"	7	7	-



SINGLE OR DOUBLE DOORS
WITH SADDLE (ADA) SILL

DOOR OPTIONS

SINGLE (X) OR DOUBLE (XX) DOORS LOAD CAPACITY - ± PSF											
GLASS TYPES 'A', 'B', 'C1', 'C2' & 'C3'											
FRAME			LEAF WIDTH	THRESHOLD TYPES		LOCK SETS			INSUL. GLASS SPACERS		
WIDTH (X)	WIDTH (XX)	HEIGHT		STD.	ADA	SCH	CC	BLDW	CXL	KOD	QUAN
37-1/4"	72"	96"	35"	80.0	70.0	80.0	80.0	80.0	80.0	80.0	80.0
42"	81-1/2"	96"	39-3/4"	80.0	70.0	80.0	80.0	70.0	70.0	80.0	-

NOTE:
VERIFY COMPLIANCE WITH EGRESS LIMITATIONS WHERE REQUIRED.

NOTE:
FLUSH BOLTS AND LOCKS MUST BE
ENGAGED TO HEAD AND SILL DURING
PERIODS OF HURRICANE WARNING.

NOTE:
GLASS CAPACITIES ON THIS SHEET ARE
BASED ON ASTM E1300-09 (3 SEC. GUSTS)
AND FLORIDA BUILDING COMMISSION
DECLARATORY STATEMENT DCA05-DEC-219

LOCK SETS:
SCH = SCHLAGE
CC = COPPER CREEK
BLDW = BALDWIN

GLASS INSULATORS:
CXL = CARDINAL XL
KOD = KODISPACE
QUAN = QUANEX DURASEAL
QUANEX SUPERSPACER

DOOR D.L.O. DIMS.

D.L.O. HEIGHT = FRAME HEIGHT - 12.875"
D.L.O. WIDTH (X DOORS) = FRAME WIDTH - 13.75"
D.L.O. WIDTH (XX DOORS) = (FRAME WIDTH - 25)/2

HINGES:

4" X 4-1/2" BUTT HINGES
TOP AND BOTTOM HINGES AT 6-7/8" FROM EACH END
INTERMEDIATE HINGES EQUALLY SPACED
(3) HINGES PER LEAD UP TO 35" LEAD WIDTHS (STD. THRESHOLD ONLY)
(4) HINGES PER LEAF ABOVE 35" LEAD WIDTHS (STD. THRESHOLD)
(4) HINGES PER LEAD ALL WIDTHS (SADDLE THRESHOLD)

PRODUCT REVISED
as complying with the Florida
Building Code
NOA-No. 20-0722.16

Expiration Date 08/23/2023

By Ismael L. Chanda
Miami-Dade Product Control

Revision: A) NO CHANGES THIS SHEET.
AK - 06/17/20

PREPARED BY A. LYNN MILLER
1070 TECHNOLOGY DRIVE
N. VENICE, FL 34275
(941) 480-1600

Impact Resistant
Windows & Doors
WERE STRONGER™
CGI DOORS AND WINDOWS, INC.
3780 W 104TH STREET
HIALEAH, FL 33018
(305) 593-6590

REGISTRATION #29296

THRESHOLD/LOCK/SPACER CAPACITY

SENTINEL 160 OUTSWING DOOR

AGK

MD-160FD

3 OF 14

NTS

Scale

160FD

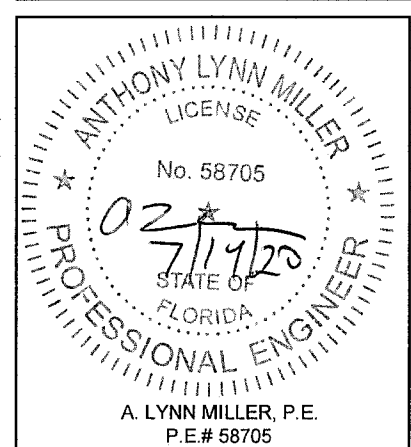
Series

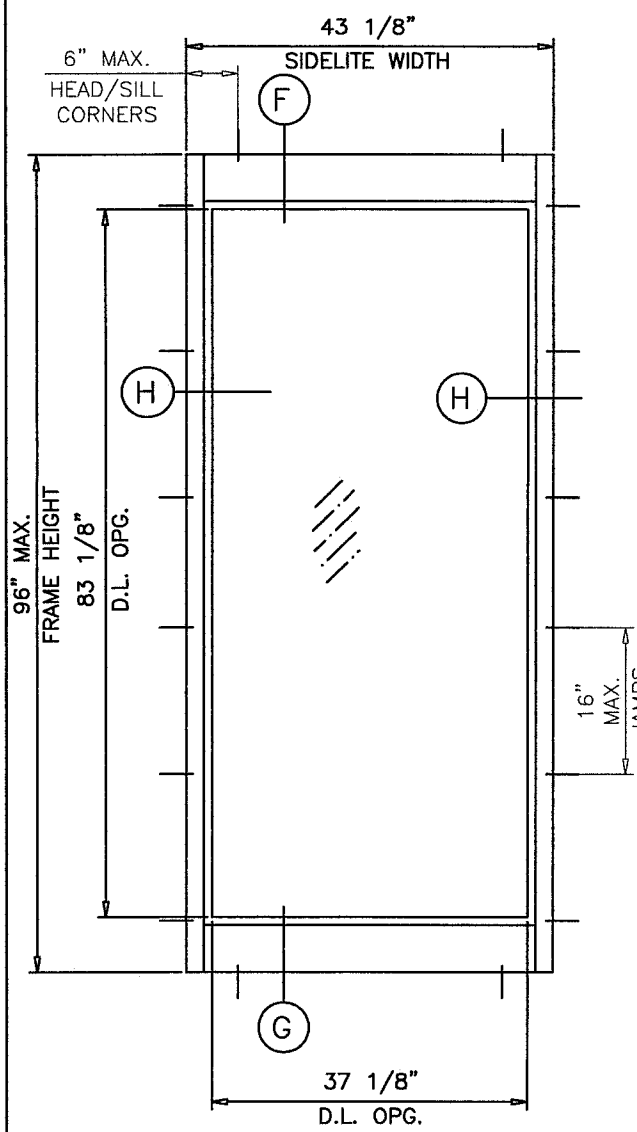
Title

Desc.

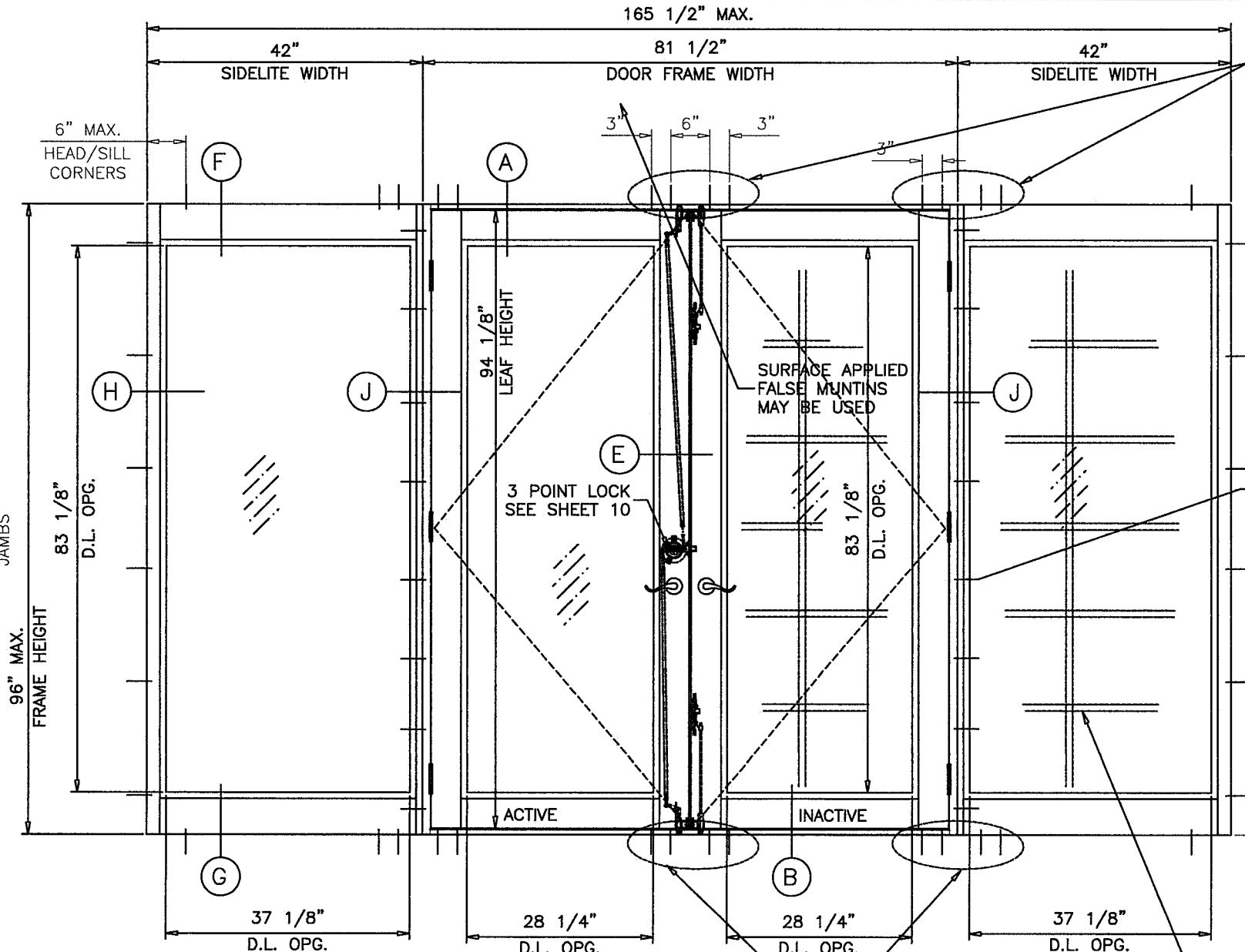
Rev.

A





TYPICAL ELEVATION
(O)



TYPICAL ELEVATION
(OXXO)

SEE CHART FOR QUANTITY

HEAD ANCHORS AT STILE & MULLION ENDS QUANTITY CHART			
	ANCHOR TYPE		
SHIM	'A'	'B'	'C'
1/4"	4	4	4
3/8"	6	6	6
1/2"	7	7	-

SIDELITE LOAD CAPACITY - PSF OR STAND ALONE STATIONARY PANEL (0)							
FRAME		GLASS TYPES 'A', 'B', 'C1'		GLASS TYPE 'C2'		GLASS TYPE 'C3'	
WIDTH	HEIGHT	EXT.(+)	INT.(-)	EXT.(+)	INT.(-)	EXT.(+)	INT.(-)
30"	84"	80.0	80.0	80.0	80.0	80.0	80.0
33"		80.0	80.0	80.0	80.0	80.0	80.0
36"		80.0	80.0	80.0	80.0	80.0	80.0
37-1/8"		80.0	80.0	80.0	80.0	80.0	80.0
39"		80.0	80.0	80.0	80.0	80.0	80.0
42"		80.0	80.0	80.0	80.0	80.0	80.0
30"	90"	80.0	80.0	80.0	80.0	80.0	80.0
33"		80.0	80.0	80.0	80.0	80.0	80.0
36"		80.0	80.0	80.0	80.0	80.0	80.0
37-1/8"		80.0	80.0	80.0	80.0	80.0	80.0
39"		80.0	80.0	80.0	80.0	80.0	80.0
42"		-	-	70.0	70.0	80.0	80.0
30"	96"	80.0	80.0	80.0	80.0	80.0	80.0
33"		80.0	80.0	80.0	80.0	80.0	80.0
36"		80.0	80.0	80.0	80.0	80.0	80.0
37-1/8"		80.0	80.0	80.0	80.0	80.0	80.0
39"		-	-	70.0	70.0	80.0	80.0
42"		-	-	70.0	70.0	80.0	80.0

SIDELITE OPTIONS

GLASS INSULATOR LIMITATIONS FOR SIDELITES
WIDER THAN 37-1/8" ONLY.
90" & 96" HEIGHTS
FOR GLASS TYPES 'C2' & 'C3'
QUANEX DURASEAL & SUPERSPACER NOT ALLOWED
FOR GLASS TYPE 'C3'
CARDINAL XL (LIMIT MAX. LOADS TO ±70.0 PSF)

SIDELITE D.L.O. DIMS.

D.L.O. HEIGHT = FRAME HEIGHT - 12.875"
D.L.O. WIDTH = SIDELITE WIDTH - 6" STAND ALONE SIDELITE ONLY
D.L.O. WIDTH = SIDELITE WIDTH - 4.875 SIDELITE TO DOOR ONLY

PRODUCT REVISED
as complying with the Florida
Building Code
NOA-No. 20-0722.16
Expiration Date 08/23/2023
By Ismael L. Chanda
Miami-Dade Product Control

NOTE:
THE FRAME AREA OF ALTERNATE SIZE MUST NOT
EXCEED TESTED FRAME AREA - 100.3 SQ. FT.

Revision: A) NO CHANGES THIS SHEET. AK - 06/17/20

PREPARED BY A. LYNN MILLER
1070 TECHNOLOGY DRIVE
N. VENICE, FL 34275
(941) 480-1600

REGISTRATION #29296

DATE 06/17/20

By AGK

DWG No. MD-160FD

4 OF 14

Scale NTS

Series 160FD

Impact Resistant Windows & Doors
WE'RE STRONGER™

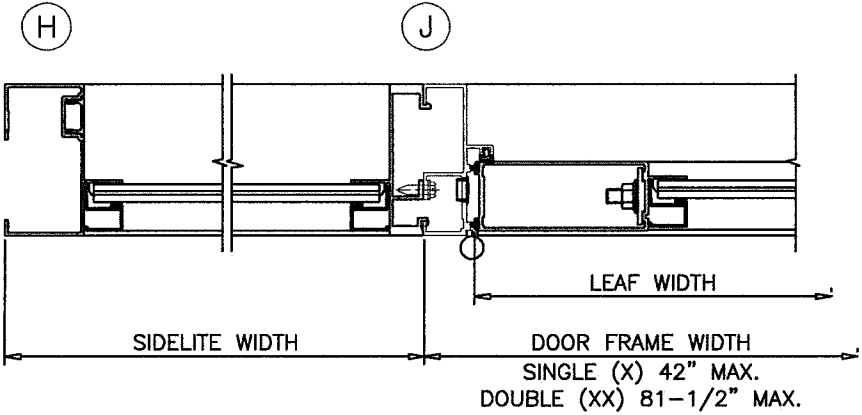
CGI DOORS AND WINDOWS, INC.
3780 W 104TH STREET
HIALEAH, FL 33018
(305) 593-6590

ELEVATION, SIDELITE CAPACITY

SENTINEL 160 OUTSWING DOOR

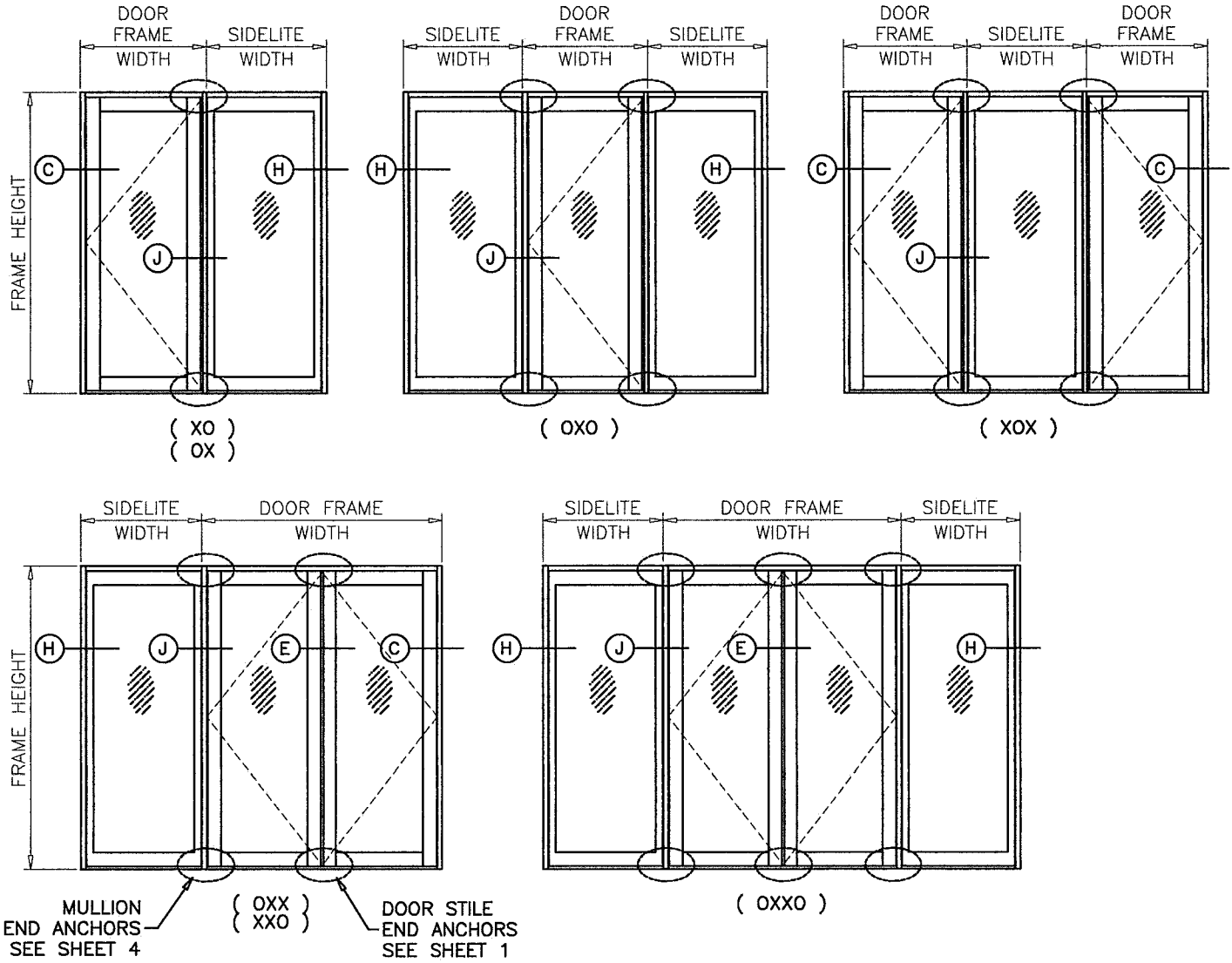
ANTHONY LYNN MILLER
LICENSE
No. 58705
7/19/20
STATE OF FLORIDA
PROFESSIONAL ENGINEER
A. LYNN MILLER, P.E.
P.E.# 58705

DESIGN LOAD CAPACITY - PSF				
SIDELITE WIDTH INCHES	DOOR LEAF WIDTH INCHES	SIDEUTE FRAME HEIGHT INCHES	SIDELITE TO DOOR MULLION (SEE NOTE BELOW)	
			EXT. (+)	INT. (-)
24	39-3/4	84	80.0	80.0
30			80.0	80.0
33			80.0	80.0
36			80.0	80.0
37-1/8			80.0	80.0
39			80.0	80.0
42			80.0	80.0
24	39- 3/ 4	90	80.0	80.0
30			80.0	80.0
33			80.0	80.0
36			80.0	80.0
37-1/8			80.0	80.0
39			80.0	80.0
42			80.0	80.0
24	39-3/4	96	80.0	80.0
30			80.0	80.0
33			80.0	80.0
36			78.3	78.3
37-1/8			77.2	77.2
39			75.4	75.4
42			72.6	72.6



SIDELITE TO DOOR

NOTE:
FOR DOORS CAPACITY SEE SHEET 3.
FOR SIDELITE CAPACITIES SEE SHEET 4.
FOR SIDELITE MULLION CAPACITY SEE CHART ABOVE.
LOWER VALUES FROM DOORS, SIDELITE, DOOR/SIDELITE
OR DOOR/DOOR MULLION CHART WILL APPLY TO ENTIRE SYSTEM.



PRODUCT REVISED
as complying with the Florida
Building Code
NOA-No. 20-0722.16

Expiration Date 08/23/2023

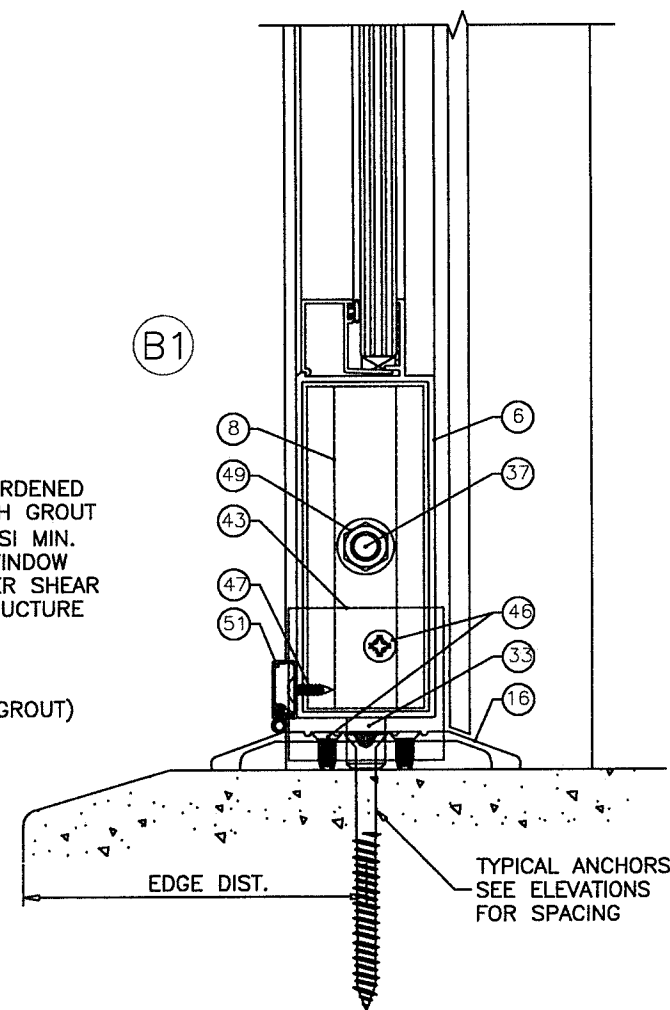
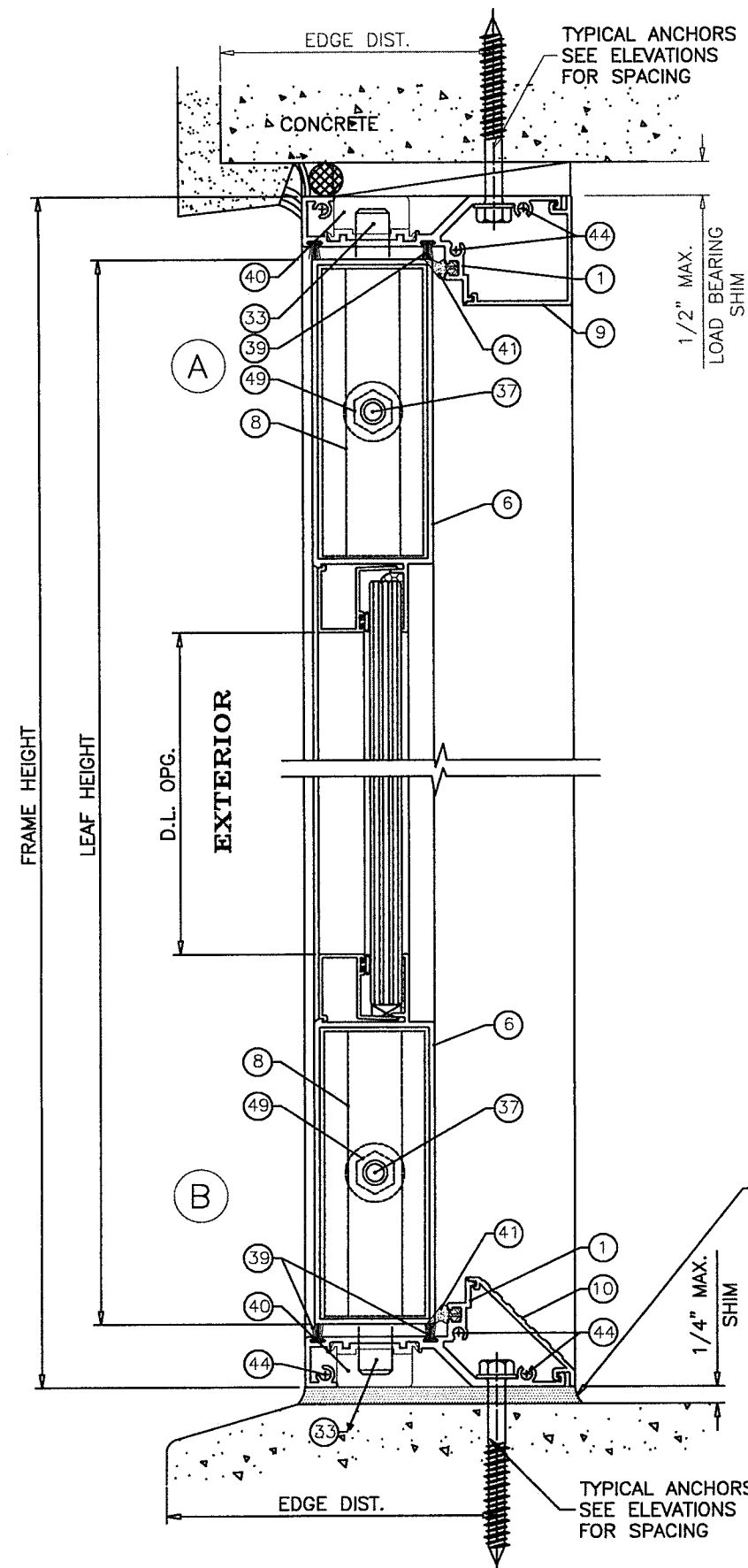
By Ishaq I. Chande
Miami-Dade Product Control

NOTE:
GLASS CAPACITIES ON THIS SHEET ARE
BASED ON ASTM E1300-09 (3 SEC. GUSTS)
AND FLORIDA BUILDING COMMISSION
DECLARATORY STATEMENT DCA05-DEC-219

Revision:	A) NO CHANGES THIS SHEET. AK - 06/17/20
-----------	--

PREPARED BY A. LYNN MILLER 1070 TECHNOLOGY DRIVE N. VENICE, FL 34275 (941) 480-1600	REGISTRATION #29296		SENTINEL 160 OUTSWING DOOR	AGK	MD-160FD	A				
	Date	06/17/20								
	By									
	No.									
Impact Resistant Windows & Doors WERE STRONGER™ CGI DOORS AND WINDOWS, INC. 3780 W 104TH STREET HIALEAH, FL 33018 (305) 593-6590	MULLION CAPACITY, CONFIGURATIONS		160FD	NTS	5 OF 14					

ANTHONY LYNN MILLER LICENSE No. 58705 7/19/20 STATE OF FLORIDA PROFESSIONAL ENGINEER	
A. LYNN MILLER, P.E. P.E.# 58705	



STANDARD THRESHOLD
APPROVED FOR WATER INFILTRATION RESISTANCE

SADDLE (ADA) THRESHOLD
NOT APPROVED FOR WATER INFILTRATION RESISTANCE
LIMIT MAX. DESIGN LOADS TO ± 70.0 PSF


PRODUCT REVISED
as complying with the Florida
Building Code
NOA-No. 20-0722.16

Expiration Date08/23/2023

By Ishaq I. Chande
Miami-Dade Product Control

DOOR DETAILS

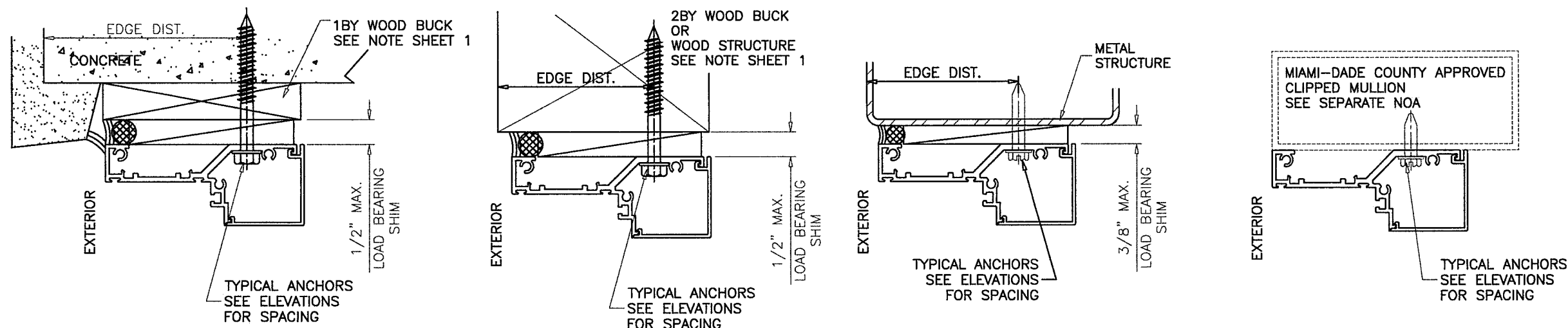
Revision: A) NO CHANGES THIS SHEET.
AK - 06/17/20

 Impact Resistant Windows & Doors WERE STRONGER™		PREPARED BY A. LYNN MILLER 1070 TECHNOLOGY DRIVE N. VENICE, FL 34275 (941) 480-1600	
CGI DOORS AND WINDOWS, INC. 3780 W 104TH STREET HIALEAH, FL 33018 (305) 593-6590		REGISTRATION #29296	
VERTICAL SECTIONS		Date	06/17/20
SENTINEL 160 OUTSWING DOOR		By Drown	AGK
Series 160FD	Scale NTS	Sheet 6 OF 14	DWG No. MD-160FD
Rev.			A

ANTHONY LYNN MILLER
LICENSE
No. 58705
7/1/20
STATE OF FLORIDA
PROFESSIONAL ENGINEER

A. LYNN MILLER, P.E.
P.E.# 58705

DOOR DETAILS



TYPICAL ANCHORS: SEE ELEV. FOR SPACING

- TYPE 'A' - 1/4" DIA. ULTRACON BY 'ELCO' (Fu=177 KSI, Fy=155 KSI)
 1/4" DIA. ULTRACON+ BY 'DEWALT' (Fu=164 KSI, Fy=148 KSI), 1/4" MAX. SHIM SPACE
 1/4" DIA. KWIK CON II+ BY 'HILTI' (Fu=184 KSI, Fy=157 KSI)
 MIN. LENGTH = 2-3/4"
 INTO 2BY WOOD BUCKS OR WOOD STRUCTURES
 1-1/2" MIN. PENETRATION INTO WOOD (HEAD/JAMBS/SILL)
 THRU 1BY BUCKS INTO CONC. OR BLOCKS
 1-3/4" MIN. EMBED INTO CONCRETE (HEAD/SILL)
 1-1/4" MIN. EMBED INTO CONC. OR BLOCKS (JAMBS)
- TYPE 'B' - 1/4" DIA. ULTRACON BY 'ELCO' (Fu=177 KSI, Fy=155 KSI)
 1/4" DIA. ULTRACON+ BY 'DEWALT' (Fu=164 KSI, Fy=148 KSI), 1/4" MAX. SHIM SPACE
 1/4" DIA. KWIK CON II+ BY 'HILTI' (Fu=184 KSI, Fy=157 KSI)
 MIN. LENGTH = 2-3/4"
 DIRECTLY INTO CONC. OR BLOCKS
 1-3/4" MIN. EMBED INTO CONCRETE (HEAD/SILL)
 1-1/4" MIN. EMBED INTO CONC. OR BLOCKS (JAMBS)

PRODUCT REVISED
 as complying with the Florida
 Building Code
 NOA-No. 20-0722.16

Expiration Date 08/23/2023

By Ishag I. Chande
 Miami-Dade Product Control

- TYPE 'C' - 1/4" DIA. TEKS OR SELF DRILLING SCREWS (GRADE 5 CRS)
 INTO MIAMI-DADE COUNTY APPROVED MULLIONS
 OR
 INTO METAL STRUCTURES (HEAD/JAMBS)
 (3) THREADS MIN. TO EXTEND BEYOND METAL THICKNESS
- ALUMINUM : 1/8" THK. MIN. (6063-T5 MIN.)
 STEEL : 1/8" THK. MIN. (Fy = 36 KSI MIN.)
 (STEEL IN CONTACT WITH ALUMINUM TO BE PLATED OR PAINTED)

TYPICAL EDGE DISTANCE

- INTO CONCRETE AND MASONRY = 2-1/2" MIN.
 INTO WOOD STRUCTURE = 1" MIN.
 INTO METAL STRUCTURE = 3/4" MIN.

WOOD AT HEAD, JAMBS OR SILL SG = 0.55 MIN.
 CONCRETE AT HEAD, SILL OR JAMBS f'c = 3000 PSI MIN.
 C-90 HOLLOW/FILLED BLOCK AT JAMBS f'm = 2000 PSI MIN.

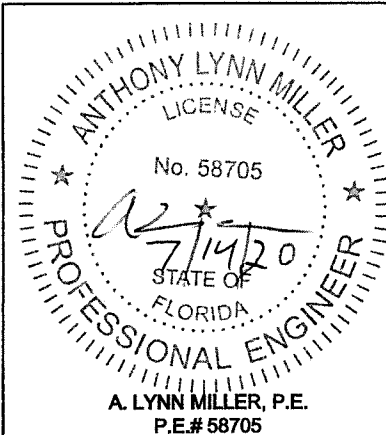
NOTES:
 ANCHORS MAY BE HEX OR FLAT HEAD.

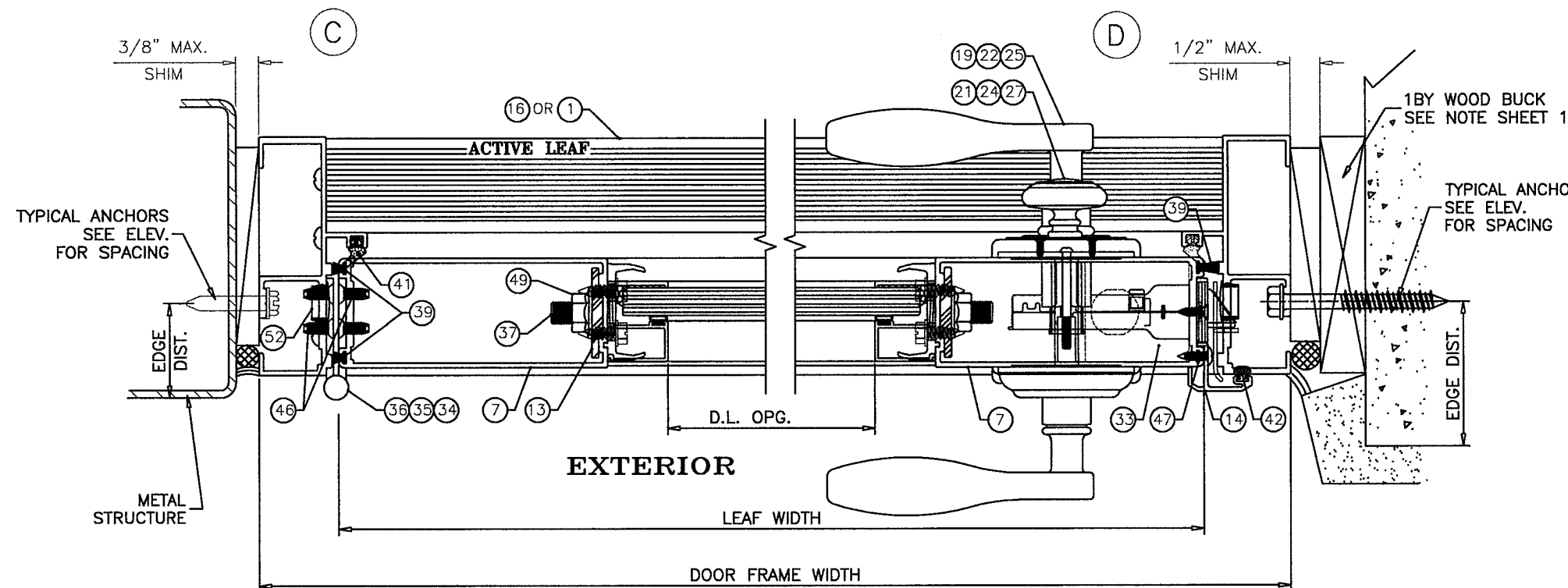
1/4" ULTRACON+ ANCHORS BY 'DEWALT' ARE LIMITED TO A
 MAXIMUM 1/4" SHIM SPACE. ALL OTHER ANCHORS MAY USE
 1/4", 3/8" OR 1/2" SHIM SPACE.

WOOD BUCKS AND METAL STRUCTURE NOT BY CGI WINDOWS
 MUST SUSTAIN LOADS IMPOSED BY GLAZING SYSTEM
 AND TRANSFER THEM TO THE BUILDING STRUCTURE.

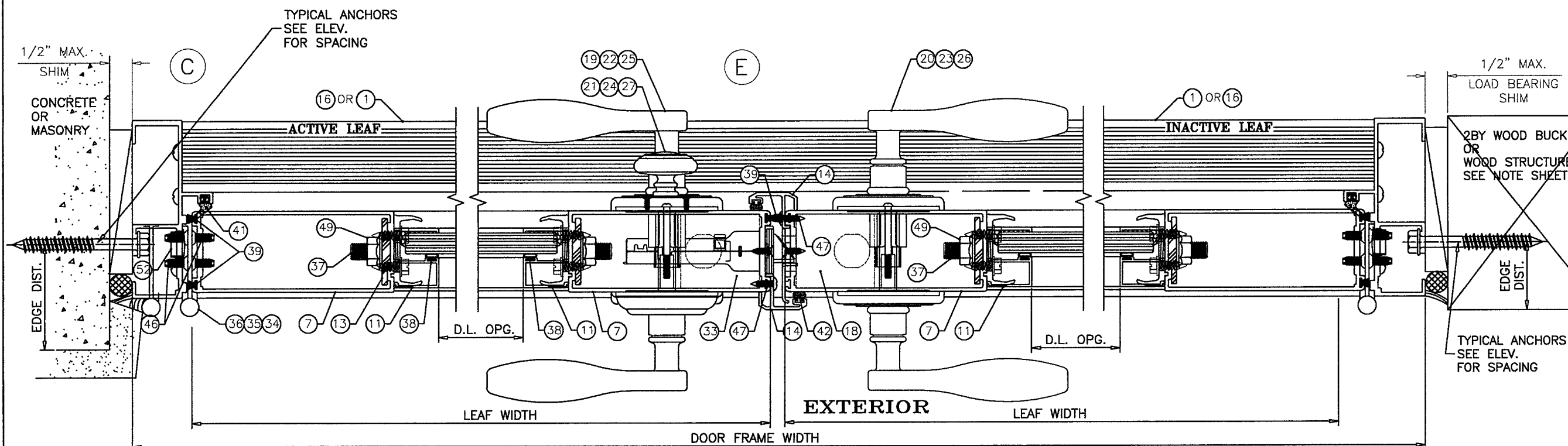
Revision: A) ADDED ULTRACON+ & KWIK
 CON II+ ANCHORS.
 AK - 06/17/20

PREPARED BY A. LYNN MILLER 1070 TECHNOLOGY DRIVE N. VENICE, FL 34275 (941) 480-1600	REGISTRATION #29296	06/17/20	AGK	MD-160FD	Rev.	A
					Drawn	
					No.	
					DWG	
Impact Resistant Windows & Doors WE'RE STRONGER™ CGI DOORS AND WINDOWS, INC. 3780 W 104TH STREET HIALEAH, FL 33018 (305) 593-6590	MULLION LOAD CHARTS	SENTINEL 160 OUTSWING DOOR	160FD	7 OF 14	Sheet	
					Scale	
					NTS	
					Series	






PRODUCT REVISED
 as complying with the Florida
 Building Code
 NOA-No. 20-0722.16
 Expiration Date 08/23/2023
 By *Ishag I. Chande*
 Miami-Dade Product Control



Revision:	A) NO CHANGES THIS SHEET. AK - 06/17/20
-----------	--

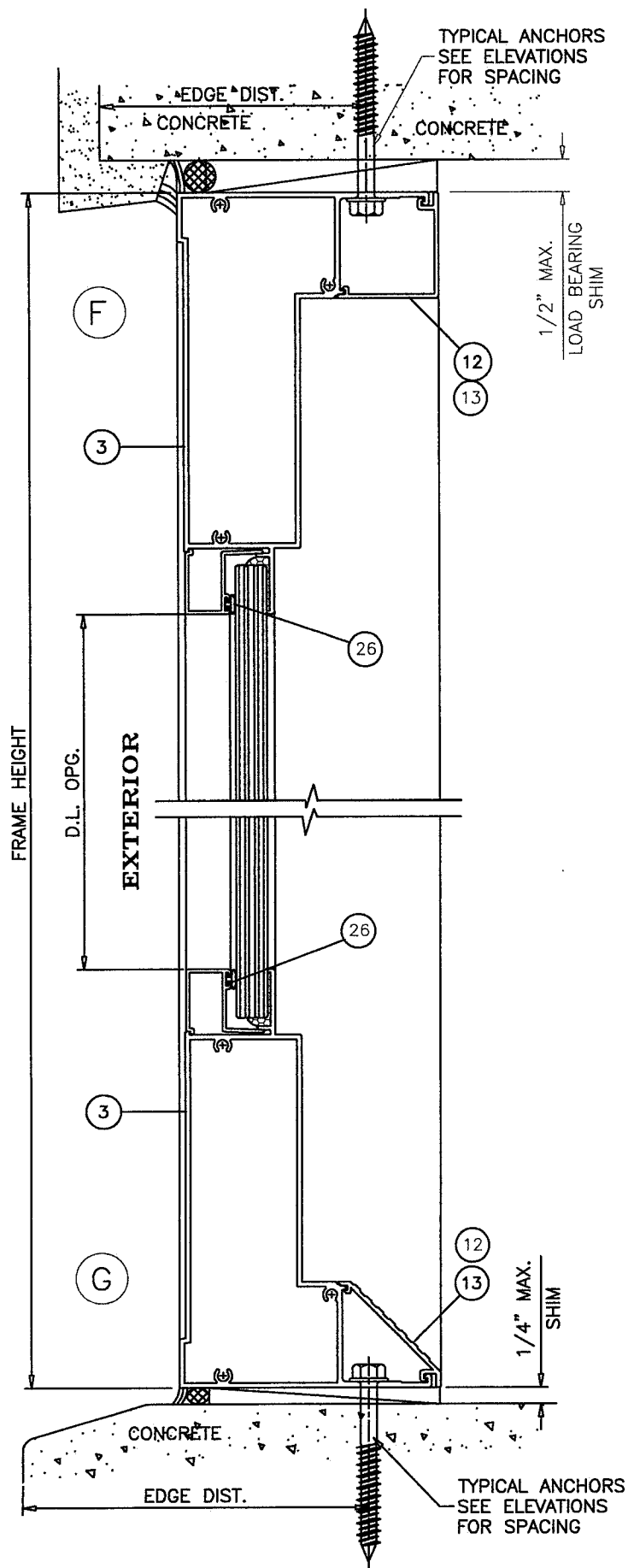
 Impact Resistant Windows & Doors WE'RE STRONGER™	CGI DOORS AND WINDOWS, INC. 3780 W 104TH STREET HIALEAH, FL 33018 (305) 593-6590			PREPARED BY A. LYNN MILLER 1070 TECHNOLOGY DRIVE N. VENICE, FL 34275 (941) 480-1600							
	MULLION LOAD CHARTS			REGISTRATION #29296							
				Date							
				06/17/20							
Des.		Title		By		Drawn		AGK			
160FD		Scale		NTS		Sheet		8 OF 14		DWG No.	
										MD-160FD	
										Rev.	
										A	

Impact Resistant Windows & Doors
WE'RE STRONGER™

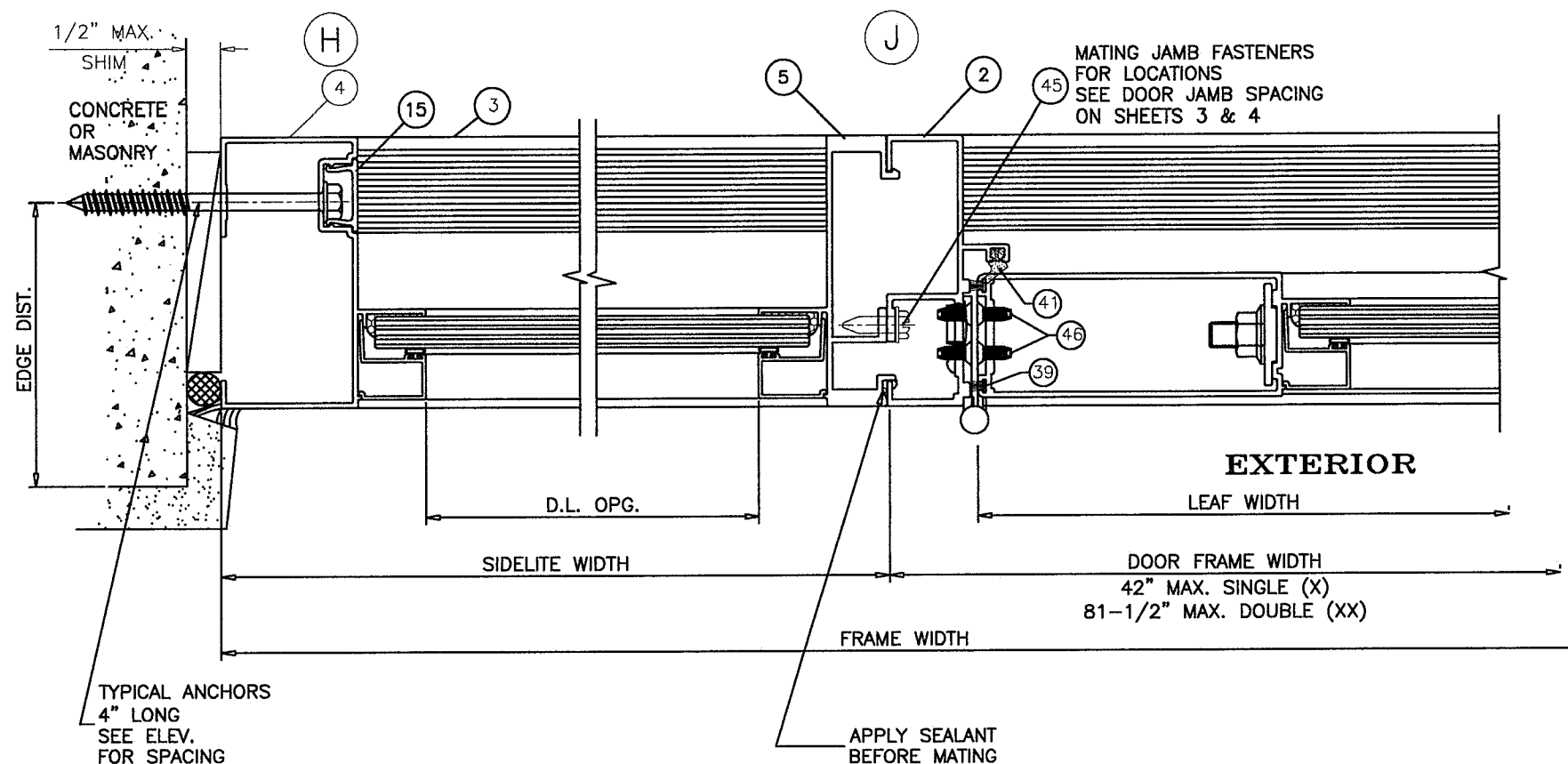
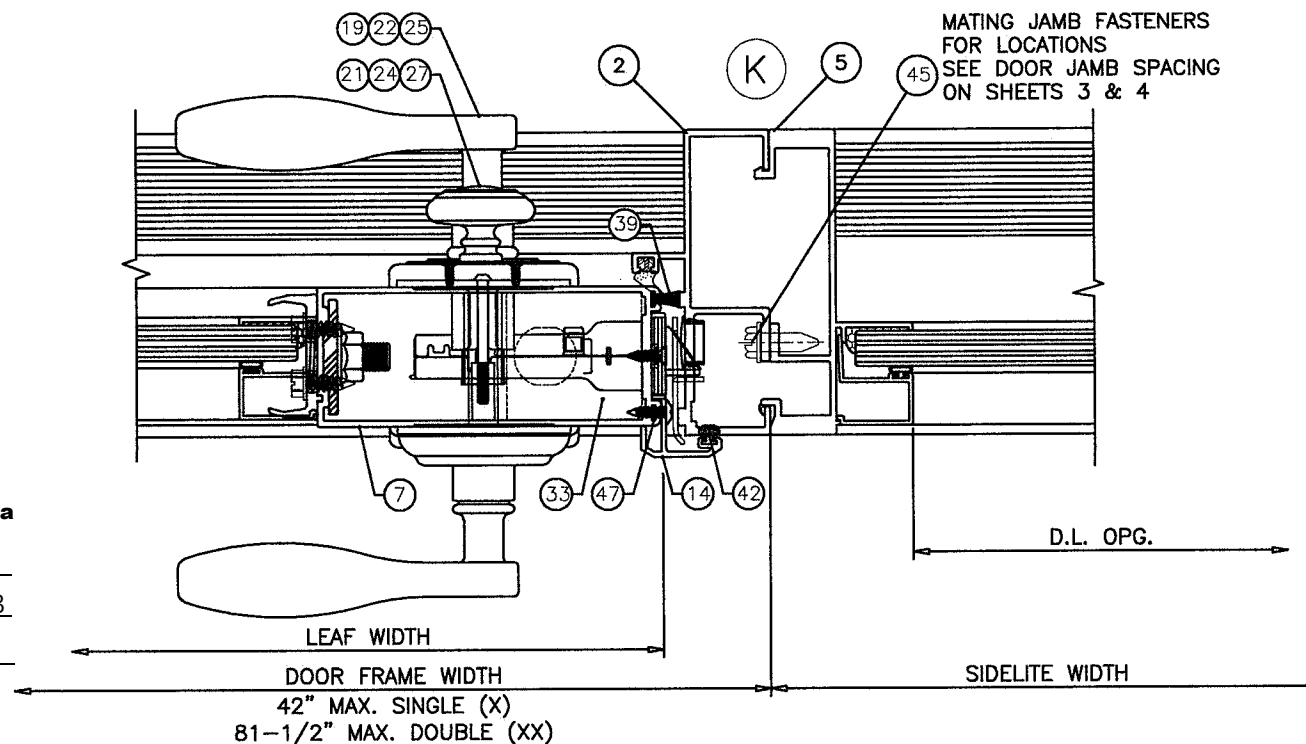
CGI DOORS AND WINDOWS, INC.
 3780 W 104TH STREET
 HIALEAH, FL 33018
 (305) 593-6590

ANTHONY LYNN MILLER
 LICENSE
 No. 58705
 7/14/20
 STATE OF FLORIDA
 PROFESSIONAL ENGINEER

A. LYNN MILLER, P.E.
 P.E.# 58705




PRODUCT REVISED
 as complying with the Florida
 Building Code
 NOA-No. 20-0722.16
 Expiration Date 08/23/2023
 By *Ishag I. Chank*
 Miami-Dade Product Control

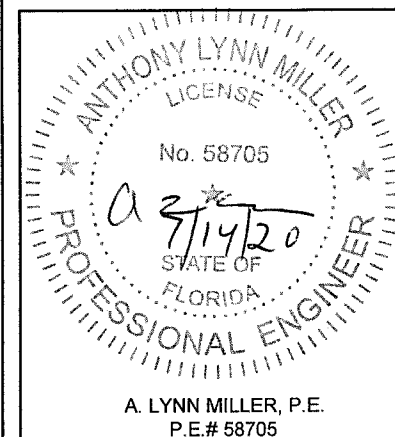


NOTE: LIMIT SHIM TO METAL STRUCTURE AT JAMBS TO 3/8"

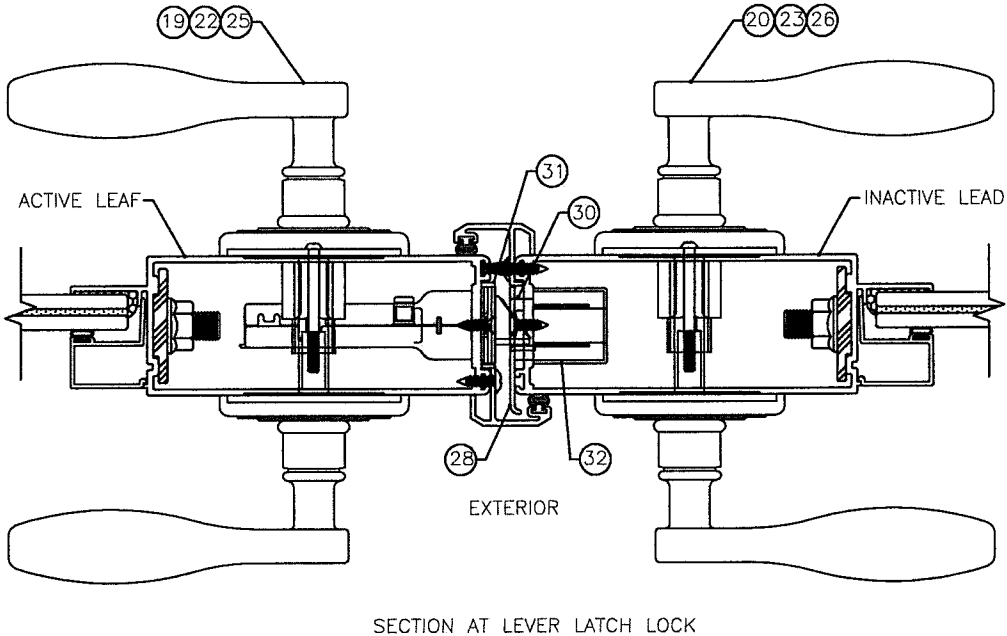
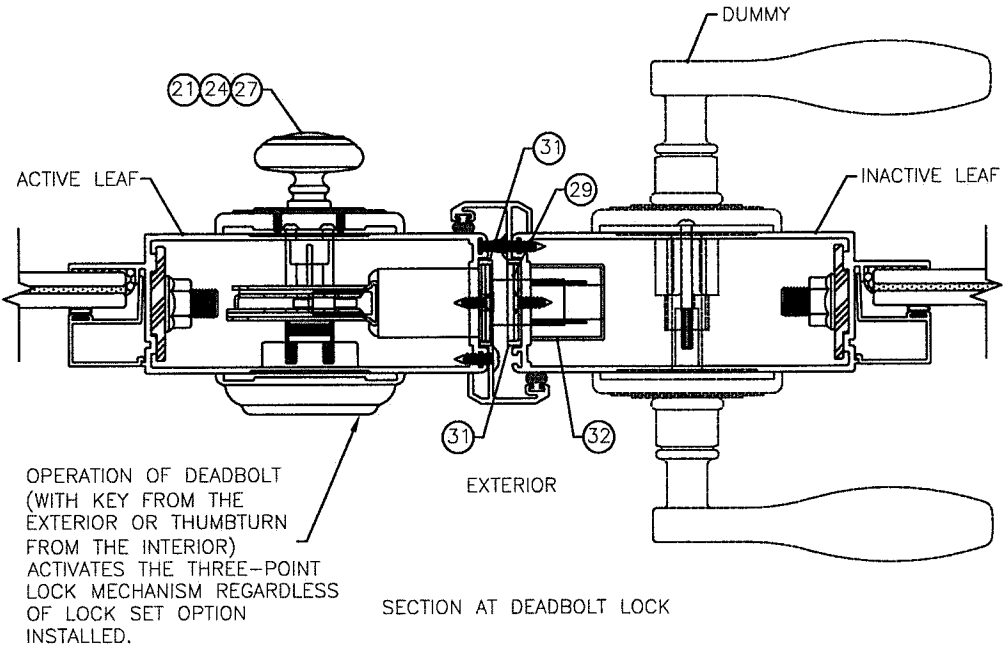
SIDELITE DETAILS

Revision: A) NO CHANGES THIS SHEET.
 AK - 06/17/20

 Impact Resistant Windows & Doors WE'RE STRONGER™				PREPARED BY A. LYNN MILLER 1070 TECHNOLOGY DRIVE N. VENICE, FL 34275 (941) 480-1600			
CGI DOORS AND WINDOWS, INC. 3780 W 104TH STREET HIALEAH, FL 33018 (305) 593-6590				REGISTRATION #29296			
INSTALLATION DETAILS, ANCHORS				Date		06/17/20	
SENTINEL 160 OUTSWING DOOR				By		AGK	
160FD		NTS		9 OF 14		DWG No.	
160FD		NTS		9 OF 14		MD-160FD	
160FD		NTS		9 OF 14		Rev.	
160FD		NTS		9 OF 14		A	



BILL OF MATERIALS					
ITEM	PART No.	QUANTITY	DESCRIPTION	MATERIAL	MFG. / REMARKS
1	AL-189	AS REQD.	FRAME HEAD & SILL	ALUM. 6063-T6	KEYMARK / SAPA
2	AL-190	AS REQD.	FRAME JAMB	ALUM. 6063-T6	KEYMARK / SAPA
3	AL-196	AS REQD.	SIDELITE HEAD & SILL	ALUM. 6063-T6	KEYMARK / SAPA
4	AL-197	AS REQD.	FREE STANDING SIDELITE JAMB	ALUM. 6063-T6	KEYMARK / SAPA
5	AL-198	AS REQD.	MATING SIDELITE JAMB	ALUM. 6063-T6	KEYMARK / SAPA
6	AL-193	AS REQD.	PANEL TOP & BOTTOM	ALUM. 6063-T6	KEYMARK / SAPA
7	AL-194	AS REQD.	PANEL VERTICAL STILE	ALUM. 6063-T6	KEYMARK / SAPA
8	AL-199	AS REQD.	SHEAR BLOCK	ALUM. 6063-T6	KEYMARK / SAPA
9	AL-191	AS REQD.	FRAME HEAD & SILL SCREW COVER	ALUM. 6063-T5	KEYMARK / SAPA
10	AL-192	AS REQD.	FRAME HEAD & SILL SLANTED SCREW COVER	ALUM. 6063-T5	KEYMARK / SAPA
11	AL-121	AS REQD.	GLAZING BEAD (7/16" LAM)	ALUM. 6063-T5	KEYMARK / SAPA
12	AL-123	AS REQD.	GLAZING BEAD (1.000" INSUL.-LAM)	ALUM. 6063-T5	KEYMARK / SAPA
13	AL-200	AS REQD.	SHEAR PLATE	ALUM. 6063-T6	KEYMARK / SAPA
14	AL-195	AS REQD.	ASTRAGAL	ALUM. 6063-T5	KEYMARK / SAPA
15	AL-508	AS REQD.	FREE STAND JAMB SCREW COVER	ALUM. 6063-T5	KEYMARK / SAPA
16	AL-540	AS REQD.	SADDLE THRESHOLD (ADA COMPLIANT)	ALUM. 6063-T6	KEYMARK / SAPA
17	HD-4503PL	AS REQD.	THREE POINT LOCK ASSY. (AT ACTIVE PANEL, USED BY ALL OPTIONS)	METAL	CGI PROPRIETARY
18	HD-1204	AS REQD.	FLUSHBOLT ASSEMBLY (AT INACTIVE PANEL, USED BY ALL OPTIONS)	ALLOY, STEEL	CGI PROPRIETARY
19	HD-5455 PASS	AS REQD.	LEVER LATCH LOCK, AT ACTIVE PANEL	LOCK SET OPTION 1	BRASS
20	HD-5455	AS REQD.	DUMMY LEVER, AT INACTIVE PANEL		
21	HD-8231	AS REQD.	DEADBOLT (THUMBTURN), AT ACTIVE PANEL		
22	J10 TDR605	AS REQD.	LEVER LATCH LOCK, AT ACTIVE PANEL	LOCK SET OPTION 2	BRASS
23	J10 TDR605	AS REQD.	DUMMY LEVER, AT INACTIVE PANEL		
24	JD60	AS REQD.	DEADBOLT (THUMBTURN), AT ACTIVE PANEL		
25	HD-34-10116	AS REQD.	LEVER LATCH LOCK, AT ACTIVE PANEL	LOCK SET OPTION 3	BRASS, STEEL
26	HD-34-10116	AS REQD.	DUMMY LEVER, AT INACTIVE PANEL		
27	HD- DB2410	AS REQD.	DEADBOLT (THUMBTURN), AT ACTIVE PANEL		
28	HD-537	AS REQD.	LATCH LOCK STRIKE PLATE, SECURED W/(2) #8 x 3/4" PHP. FH. SMS.	S.STEEL	-
29	HD-538	AS REQD.	DEADBOLT STRIKE PLATE, SECURED W/(2) #8 x 3/4" PHP. FH. SMS.	S.STEEL	-
30	HD-536N	AS REQD.	LATCH LOCK STRIKE PLATE SHIM	NYLON	CGI
31	HD-390P	AS REQD.	LATCH LOCK & DEADBOLT STRIKE PLATE TRIM	NYLON	CGI
32	HD-STRIKE BOX	AS REQD.	LATCH LOCK & DEADBOLT PROTECTIVE DUST BOX	NYLON	CGI
33	HD-525-9-REV	2 /LOCK MECH.	BOLT LOCK ASSEMBLY	S.STEEL	CGI
33A	HD-533C	1 /FLUSHBOLT	FLUSH BOLT GUIDE (TOP & BOTTOM)	CAST (ZINC)	CGI
34	HD-CH-108	4 /LEAF	4-1/12" x 4" HINGE	ALUMINUM	CGI PROPRIETARY
35	HD-AB800-US32D	4 /LEAF	4-1/12" x 4" HINGE	BRASS	HAGER
36	HD-AB800-US	4 /LEAF	4-1/12" x 4" HINGE	S.STEEL	HAGER
37	#3/8"-16 ROD	2 /LEAF	#3/8"-16 FULLY THREADED ROD (ZINC PLATED)	STEEL	-
38	WS-382V	AS REQD.	GLAZING BULB (DIAPHRAGM 75/80)	PVC	PROTOTYPE
39	WS-W33321	AS REQD.	.187" x 320" ULTRA SOFT FIN WEATHERSTRIP	-	ULTRAFAB
40	HD-203	2/LEAF	SHOOT BOLT PROTECTOR, AT DOOR FRAME HEAD & SILL	PVC	-
41	HD-12-10042	AS REQD.	.350" REACH POCKET SEAL (FRAME PERIMETER GASKET)	-	AMESBURY
42	WS-32011	AS REQD.	FOAM-TITE CLOSED CELL FOAM COMPRESSION SEAL	-	AMESBURY
43	HD-CLIP ANGLE	2/EACH	2 x 2 x 1/4" CLIP ANGLE (ADA THRESHOLD TO JAMB ATTACHMENT)	ALUMINUM	-
44	-	3/CORNER	#10 x 1-1/4" PHP. PH. SMS. (PANEL & FRAME ASSEMBLY)	S. STEEL	-
45	-	SEE ELEV.	#14 x 3/4" HH. TEK (MULLION ATTACHMENT)	S. STEEL	-
46	-	8/HINGE , 4/CLIP	#12-24 x 1/2" PHP. FH. UC. THREAD FORMING	S. STEEL	-
47	-	2/EACH	#6 x 1/2" PHP. TH. SMS. (ASTRAGAL ATTACHMENT)	S. STEEL	-
48	-	1/EACH	#10 x 3/4" PHP. PH. SMS. (BOLT LOCK / FLUSHBOLT GUIDE ASSY.)	S. STEEL	-
49	#3/8"-16 NUT	4/LEAF	#3/8"-16 SERRATED-FLANGE NUT (ZINC PLATED)	STEEL	-
50	-	2/FLUSHBOLT	#8-32 x 1/2" PHP. PH. MS. (FLUSHBOLT ASSEMBLY)	S.STEEL	-
51	HD-DOOR SWEEP	1/EACH	DOOR SWEEP (OPTIONAL), SECURED W/ #6 x 1/2" PHP. PH. SMS.	ALUMINUM	SCREEN TECH
52	HD-34-10003	1/SCREW HOLE	INSTALLATION SCREW HOLE PLUG (AT DOOR FRAME JAMBS ONLY)	NYLON	-
53	-	4/BLOCK	#12 x 5/8" HH. SMS. (SHEAR BLOCK ASSY.)	S. STEEL	-



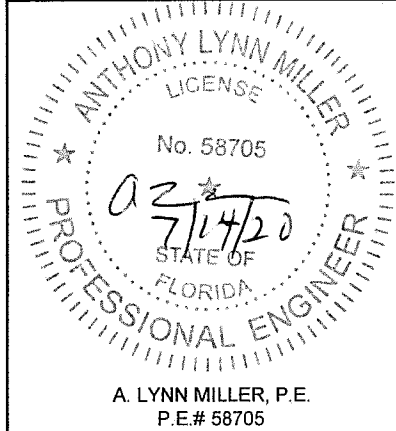
SEALANTS:

ALL JOINTS AND FRAME CONNECTIONS SEALED WITH GE SCS2000 SILICONE SEALANT

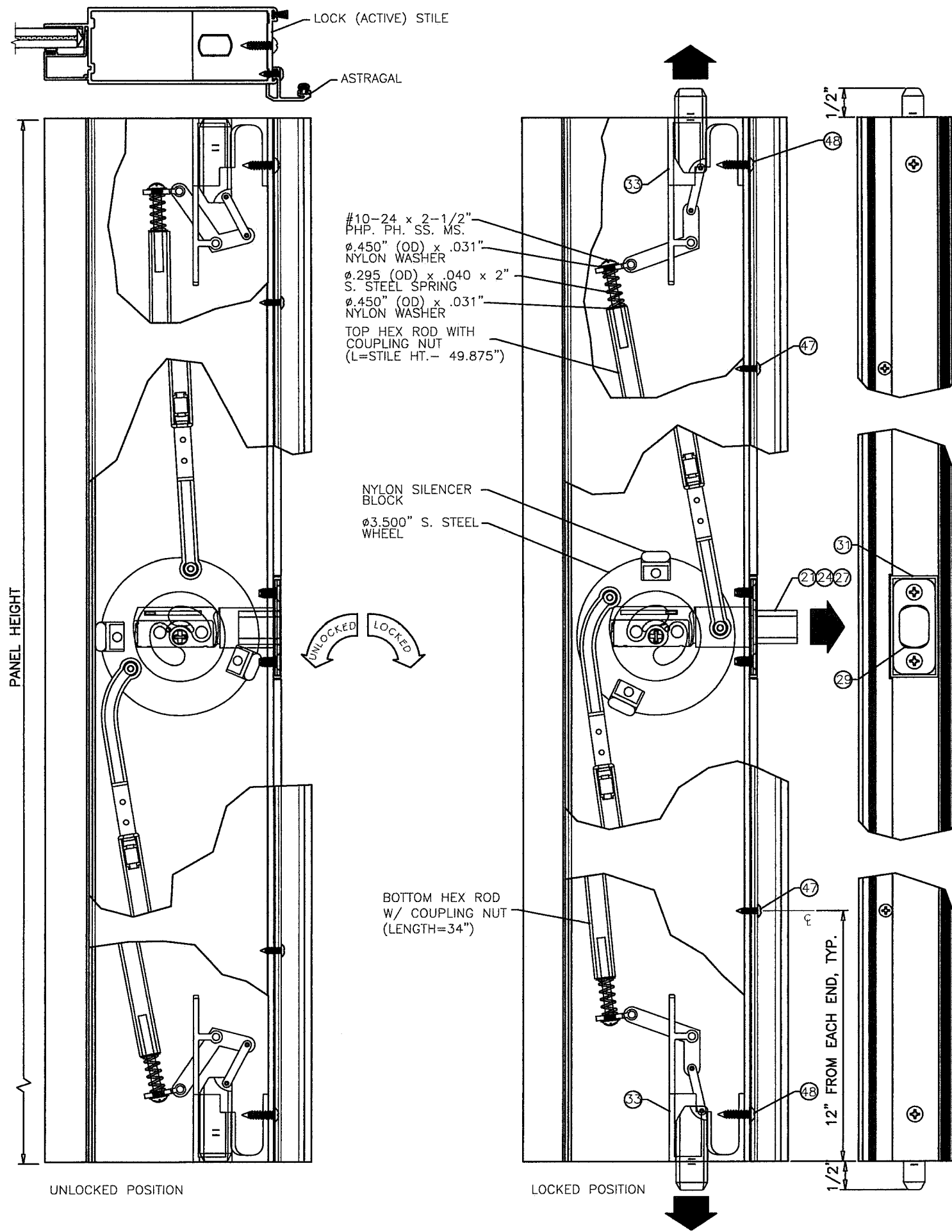
PRODUCT REVISED
as complying with the Florida Building Code
NOA-No. 20-0722.16
Expiration Date 08/23/2023
By Ishag I. Chank
Miami-Dade Product Control

Revision: A) NO CHANGES THIS SHEET.
AK - 06/17/20

PREPARED BY A. LYNN MILLER 1070 TECHNOLOGY DRIVE N. VENICE, FL 34275 (941) 480-1600	REGISTRATION #29296	06/17/20	AGK	MD-160FD	A
Impact Resistant Windows & Doors WE'RE STRONGER™ CGI DOORS AND WINDOWS, INC. 3780 W 104TH STREET HIALEAH, FL 33018 (305) 593-6590	MULLION LOAD CHARTS	10 OF 14	SENTINEL 160 OUTSWING DOOR	160FD	10 OF 14

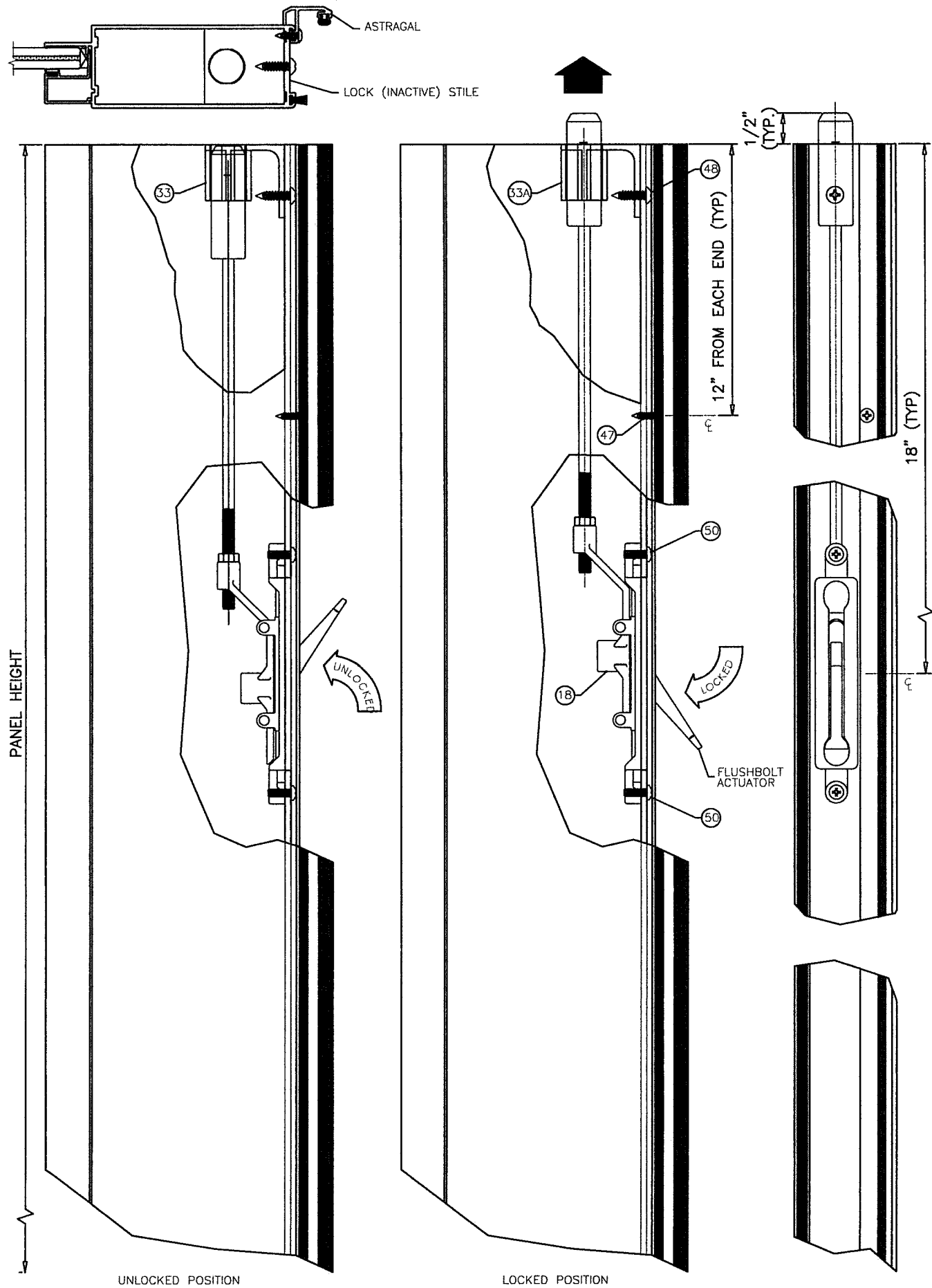


A. LYNN MILLER, P.E.
P.E.# 58705



PRODUCT REVISED
as complying with the Florida
Building Code
NOA-No. 20-0722.16
Expiration Date 08/23/2023
By Ishaq I. Chandra
Miami-Dade Product Control

Revision:		A) NO CHANGES THIS SHEET. AK - 06/17/20	
Impact Resistant Windows & Doors WERE STRONGER™ CGI DOORS AND WINDOWS, INC. 3780 W 104TH STREET HIALEAH, FL 33018 (305) 593-6590		PREPARED BY A. LYNN MILLER 1070 TECHNOLOGY DRIVE N. VENICE, FL 34275 (941) 480-1600	
MULLION LOAD CHARTS SENTINEL 160 OUTSWING DOOR 160FD		REGISTRATION #29296 06/17/20 AGK MD-160FD A	
11 OF 14 NTS Scale Sheet		11 OF 14 NTS Scale Sheet	
Anthony Lynn Miller Professional Engineer No. 58705 7/14/20 STATE OF FLORIDA		A. LYNN MILLER, P.E. P.E.# 58705	

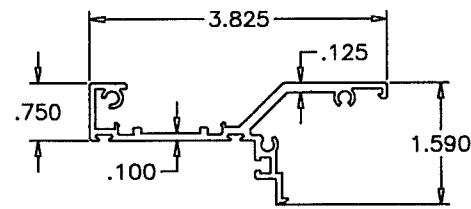


PRODUCT REVISED
as complying with the Florida
Building Code
NOA-No. 20-0722.16
Expiration Date 08/23/2023
By Ishag I. Chande
Miami-Dade Product Control

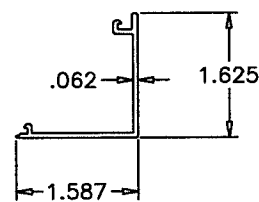
NOTE: FLUSH BOLT AT INACTIVE STILE (PARTIAL TOP END SECTION SHOWN, BOTTOM END SIMILAR)

Revision:		A) NO CHANGES THIS SHEET. AK - 06/17/20	
Impact Resistant Windows & Doors WE'RE STRONGER™ CGI DOORS AND WINDOWS, INC. 3780 W 104TH STREET HIALEAH, FL 33018 (305) 593-6590		PREPARED BY A. LYNN MILLER 1070 TECHNOLOGY DRIVE N. VENICE, FL 34275 (941) 480-1600 REGISTRATION #29296	
INSTALLATION DETAILS, ANCHORS SENTINEL 160 OUTSWING DOOR		Date 06/17/20	By AGK
Scale 160FD	Sheet 12 OF 14	Dwg No. MD-160FD	Rev. A

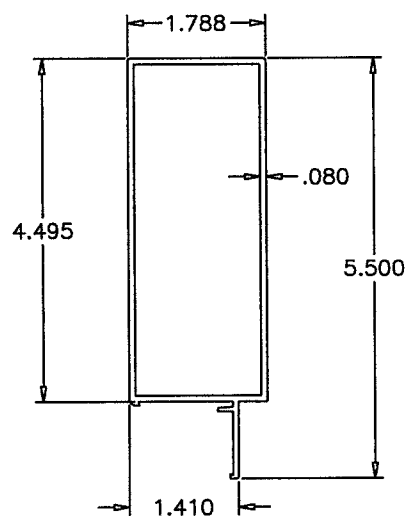
ANTHONY LYNN MILLER
LICENSE
No. 58705
7/14/20
STATE OF FLORIDA
PROFESSIONAL ENGINEER
A. LYNN MILLER, P.E.
P.E.# 58705



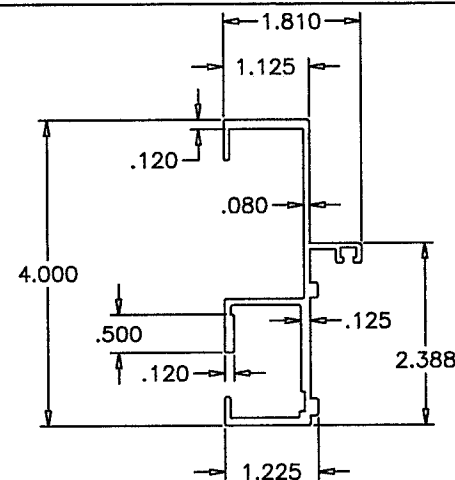
1 DOOR FRAME HEAD/SILL



9 FRAME COVER

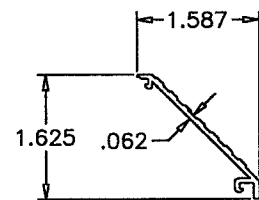


6 TOP & BOTTOM RAIL

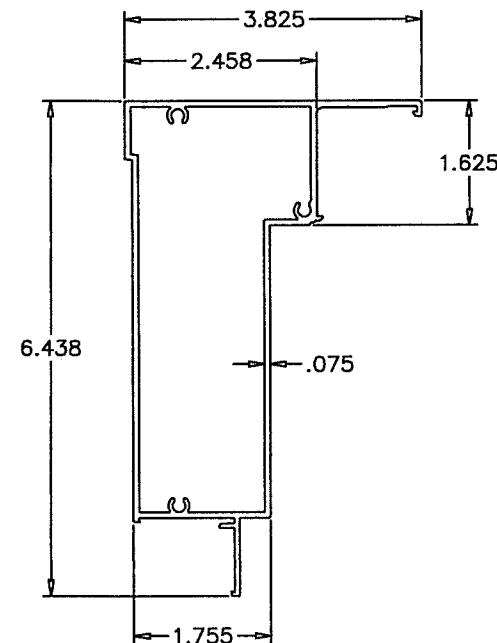


2 DOOR FRAME JAMB

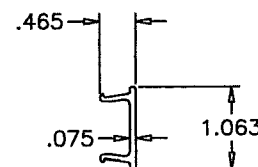
PRODUCT REVISED
as complying with the Florida
Building Code
NOA-No. 20-0722.16
Expiration Date 08/23/2023
By Ishag I. Chank
Miami-Dade Product Control



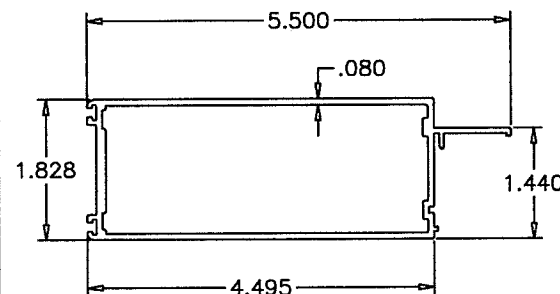
13 SILL COVER



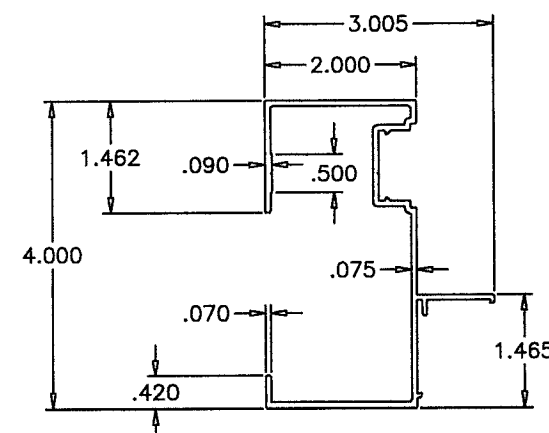
3 SIDELITE TOP & BOTTOM FRAME



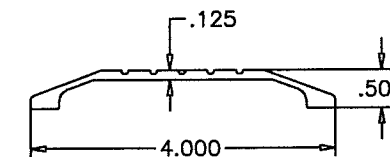
15 SIDELITE JAMB COVER



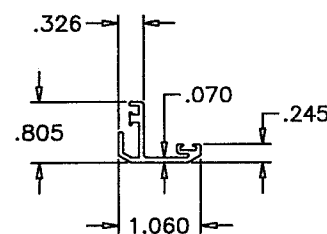
7 HINGE & LOCK STILE



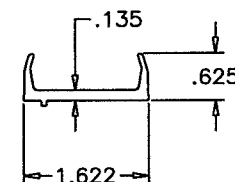
4 SIDELITE FRAME JAMB



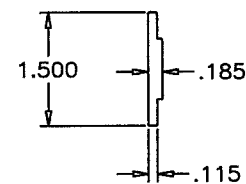
16 SADDLE THRESHOLD



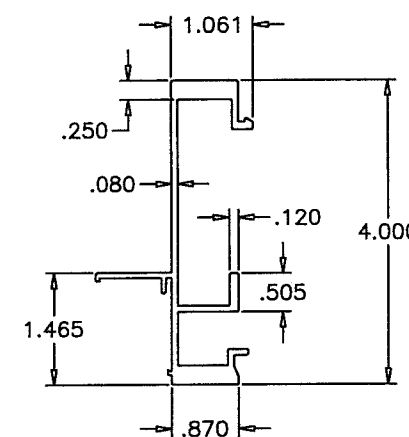
14 ASTRAGAL ADAPTER



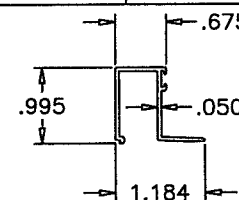
8 SHEAR BLOCK



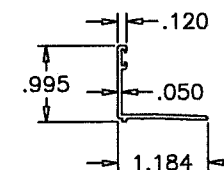
13 SHEAR BLOCK PLATE



5 SIDELITE MATING JAMB




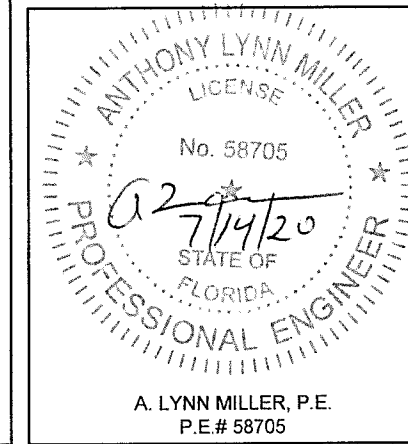
11 GLASS STOP (LAM. GLASS)

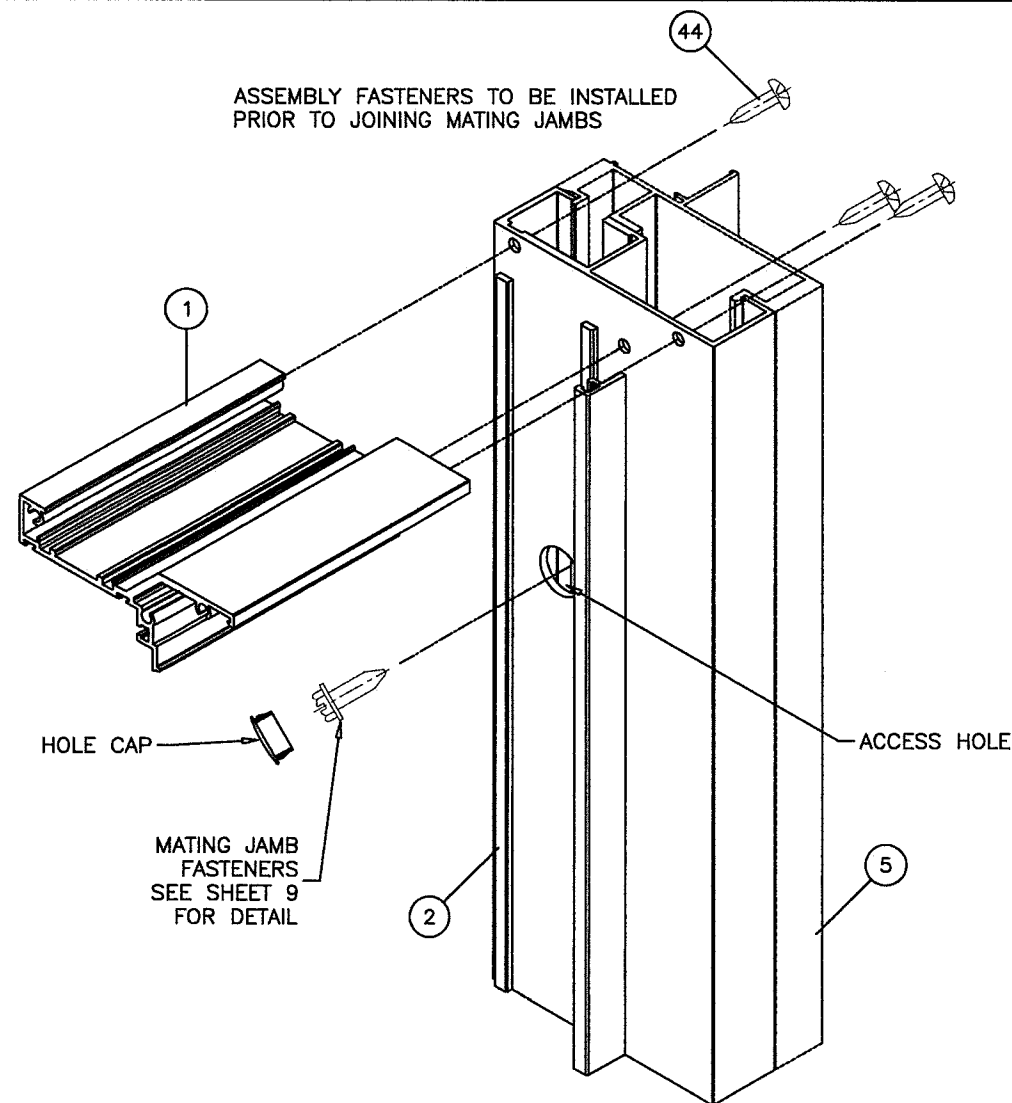


12 GLASS STOP (INSUL. LAM. GLASS)

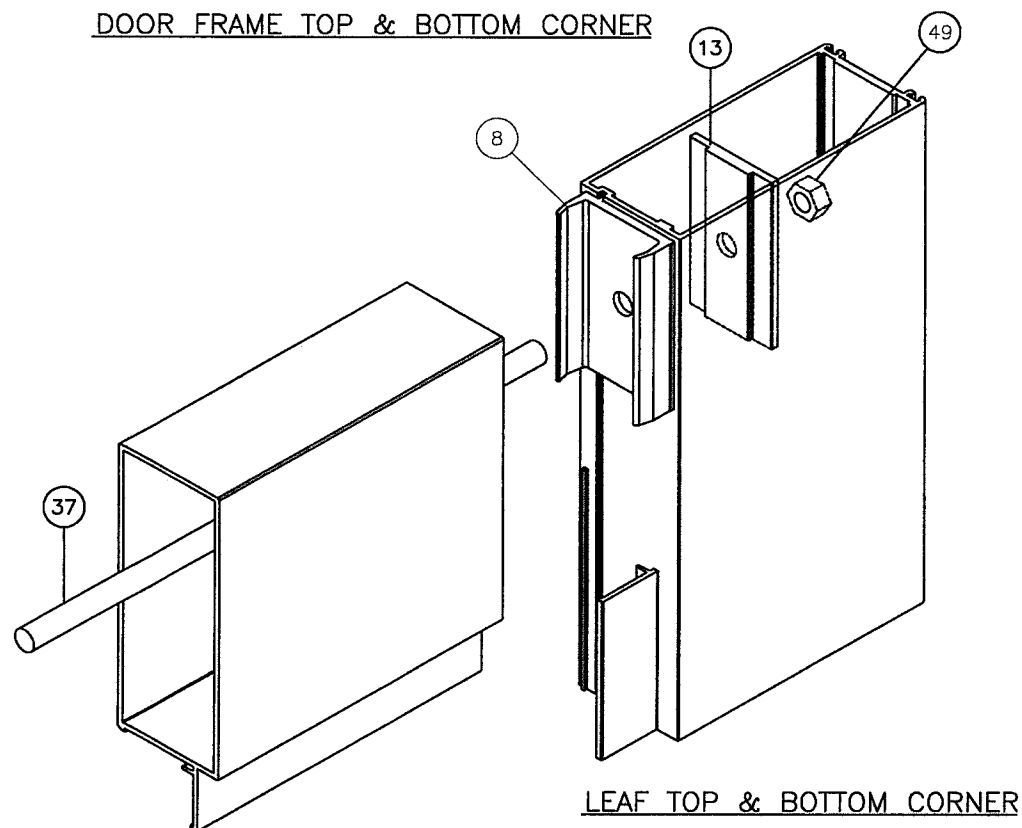
Revision: A) NO CHANGES THIS SHEET.
AK - 06/17/20

 Impact Resistant Windows & Doors WE'RE STRONGER™ CGI DOORS AND WINDOWS, INC. 3780 W 104TH STREET HIALEAH, FL 33018 (305) 593-6590	PREPARED BY A. LYNN MILLER 1070 TECHNOLOGY DRIVE N. VENICE, FL 34275 (941) 480-1600			REGISTRATION #29296				
	MULLION LOAD CHARTS			06/17/20				
	SENTINEL 160 OUTSWING DOOR			AGK				
	160FD			MD-160FD				
160FD			13 OF 14			DWC No.		
NTS			Sheet			Rev.		
Scale			A					

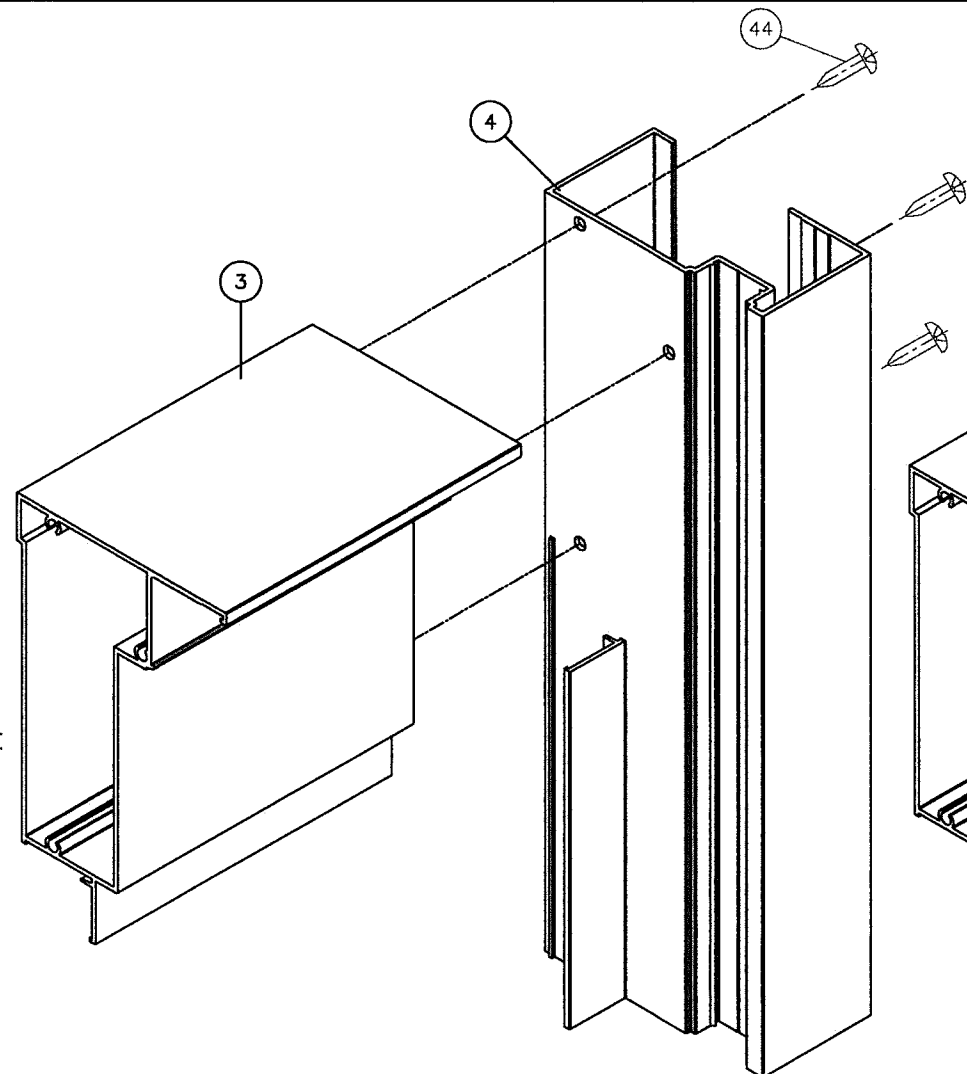




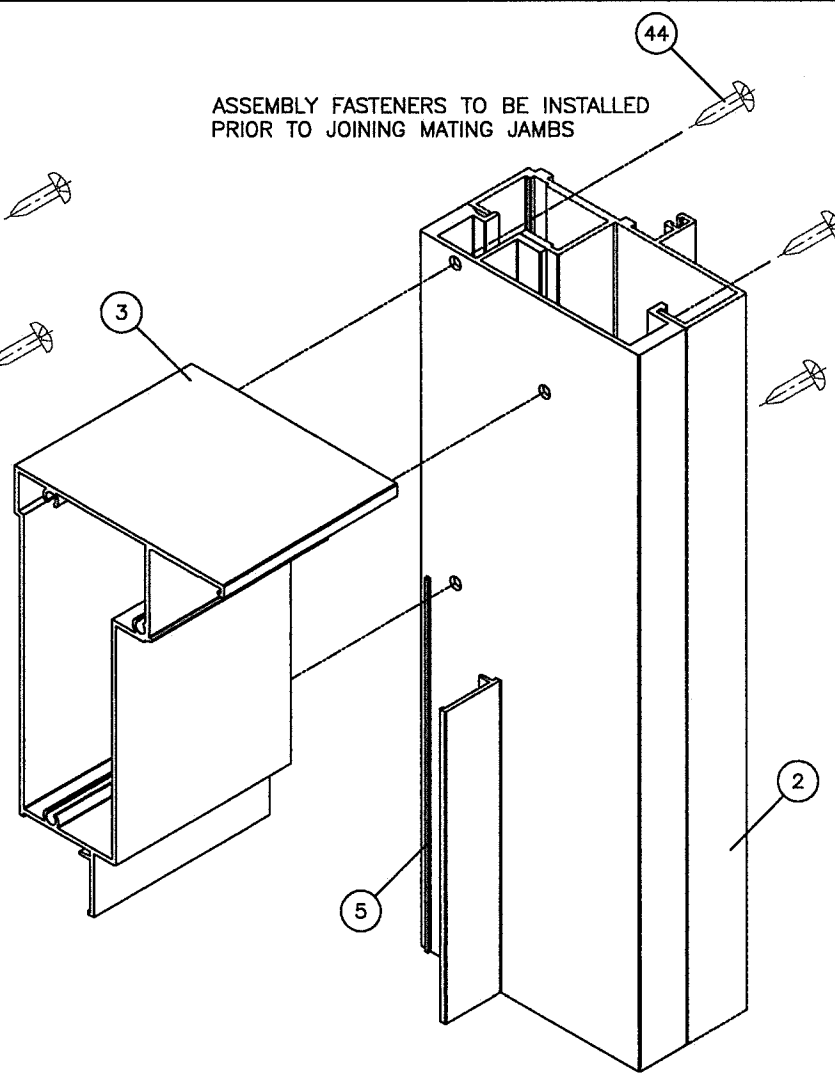
DOOR FRAME TOP & BOTTOM CORNER



LEAF TOP & BOTTOM CORNER

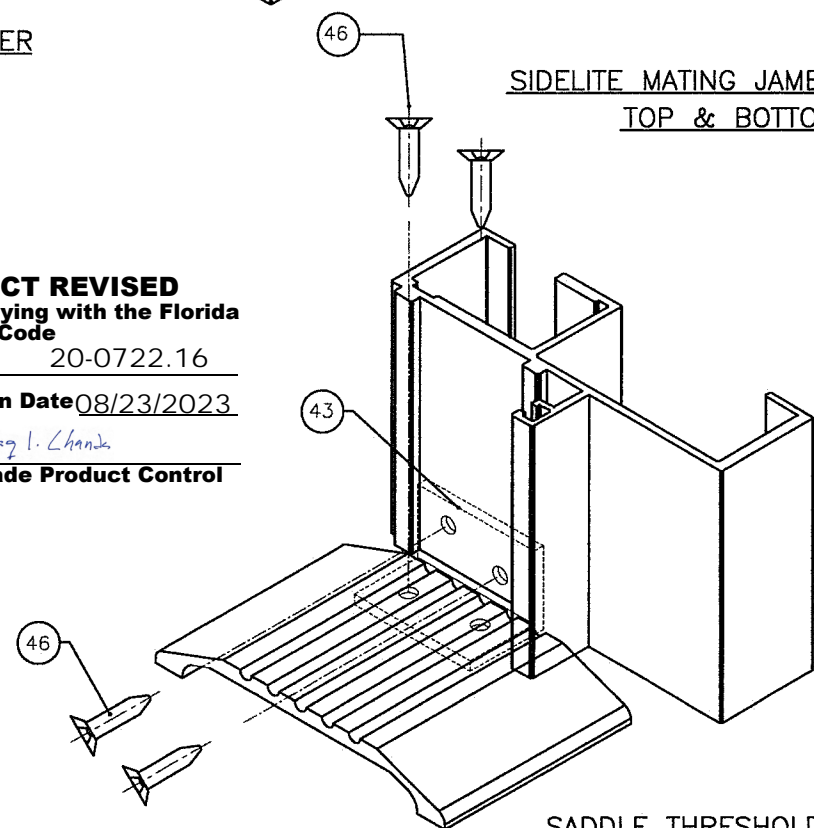


SIDELITE JAMB CORNER
TOP & BOTTOM



SIDELITE MATING JAMB CORNER
TOP & BOTTOM

PRODUCT REVISED
as complying with the Florida
Building Code
NOA-No. 20-0722.16
Expiration Date 08/23/2023
By *Ishag I. Chande*
Miami-Dade Product Control



SADDLE THRESHOLD CORNER

Revision: A) NO CHANGES THIS SHEET.
AK - 06/17/20

PREPARED BY A. LYNN MILLER
1070 TECHNOLOGY DRIVE
N. VENICE, FL 34275
(941) 480-1600

REGISTRATION #29296

Date 06/17/20

By AGK

DWG No. MD-160FD

Rev. A

**Impact Resistant
Windows & Doors**
WE'RE STRONGER™
CGI DOORS AND WINDOWS, INC.
3780 W 104TH STREET
HIALEAH, FL 33018
(305) 593-6590

MULLION LOAD CHARTS

SENTINEL 160 OUTSWING DOOR

14 OF 14

Sheet NTS

Scale 160FD

