



DEPARTMENT OF REGULATORY AND ECONOMIC RESOURCES (RER)  
BOARD AND CODE ADMINISTRATION DIVISION

## NOTICE OF ACCEPTANCE (NOA)

MIAMI-DADE COUNTY  
PRODUCT CONTROL SECTION

11805 SW 26 Street, Room 208  
Miami, Florida 33175-2474  
T (786) 315-2590 F (786) 315-2599

[www.miamidade.gov/economy](http://www.miamidade.gov/economy)

**Raynor Garage Doors**  
**1101 East River Road, P.O. Box 448**  
**Dixon, IL 61021**

### SCOPE:

This NOA is being issued under the applicable rules and regulations governing the use of construction materials. The documentation submitted has been reviewed and accepted by Miami-Dade County RER-Product Control Section to be used in Miami Dade County and other areas where allowed by the Authority Having Jurisdiction (AHJ).

This NOA shall not be valid after the expiration date stated below. The Miami-Dade County Product Control Section (In Miami Dade County) and/or the AHJ (in areas other than Miami Dade County) reserve the right to have this product or material tested for quality assurance purposes. If this product or material fails to perform in the accepted manner, the manufacturer will incur the expense of such testing and the AHJ may immediately revoke, modify, or suspend the use of such product or material within their jurisdiction. RER reserves the right to revoke this acceptance if it is determined by Miami-Dade County Product Control Section that this product or material fails to meet the requirements of the applicable building code.

This product is approved as described herein and has been designed to comply with the Florida Building Code, including the High Velocity Hurricane Zone.

### DESCRIPTION: TradeMark Steel Sectional Garage Door up to 16'-0" Wide

**APPROVAL DOCUMENT:** Drawing No. **P-3307**, titled "Spec, Wind Load TradeMark", sheets 1 through 3 of 3, dated 10/23/2009, with revision B dated 06/16/2010, with revision D dated 07/20/2020, prepared by Raynor Garage Doors, signed and sealed by Scott A. Brown, P.E., S.E., bearing the Miami-Dade County Product Control revision stamp with the Notice of Acceptance number and the expiration date by the Miami-Dade County Product Control Section.

### MISSILE IMPACT RATING: Large and Small Missile Impact Resistant

**LABELING:** A permanent label with the manufacturer's name or logo, manufacturing address, model number, the positive and negative design pressure rating, indicate impact rated if applicable, installation instruction drawing reference number, approval number (NOA), the applicable test standards, and the statement reading 'Miami-Dade County Product Control Approved' is to be located on the door's side track, bottom angle, or inner surface of a panel.

**RENEWAL** of this NOA shall be considered after a renewal application has been filed and there has been no change in the applicable building code negatively affecting the performance of this product.

**TERMINATION** of this NOA will occur after the expiration date or if there has been a revision or change in the materials, use, and/or manufacture of the product or process. Misuse of this NOA as an endorsement of any product, for sales, advertising or any other purposes shall automatically terminate this NOA. Failure to comply with any section of this NOA shall be cause for termination and removal of NOA.

**ADVERTISEMENT:** The NOA number preceded by the words Miami-Dade County, Florida, and followed by the expiration date may be displayed in advertising literature. If any portion of the NOA is displayed, then it shall be done in its entirety.

**INSPECTION:** A copy of this entire NOA shall be provided to the user by the manufacturer or its distributors and shall be available for inspection at the job site at the request of the Building Official.

This NOA **renews** and **revises** NOA # **17-1026.16** and consists of this page 1 and evidence pages E-1, E-2 and E-3, as well as approval document mentioned above.

The submitted documentation was reviewed by **Carlos M. Utrera, P.E.**



NOA No. 20-0811.04  
Expiration Date: October 20, 2025  
Approval Date: October 8, 2020  
Page 1

**NOTICE OF ACCEPTANCE: EVIDENCE SUBMITTED**

**1. Evidence submitted under previous NOA's**

**A. DRAWINGS “Submitted under NOA # 10-0420.03”**

1. Drawing No. **P-3307**, titled “Spec, Wind Load TradeMark”, sheets 1 through 3 of 3, dated 10/23/2009, with revision B dated 06/16/2010, prepared by the manufacturer, signed and sealed by Richard A. Baumann, P.E.

**B. TESTS “Submitted under NOA # 10-0420.03”**

1. Test reports on 1) Uniform Static Air Pressure Test, Loading per FBC TAS 202-94  
2) Large Missile Impact Test per FBC, TAS 201-94  
3) Cyclic Wind Pressure Loading per FBC, TAS 203-94  
Along with marked-up drawings and installation diagram of 16'x 7' TradeMark Sectional Steel Garage Doors, prepared by Hurricane Test Laboratory, LLC, Test Report No. **G493-1101-09**, dated 02/03/2010, signed and sealed by Vinu J. Abraham, P.E.
2. Test reports on 1) Uniform Static Air Pressure Test, Loading per FBC TAS 202-94  
2) Large Missile Impact Test per FBC, TAS 201-94  
3) Cyclic Wind Pressure Loading per FBC, TAS 203-94  
Along with marked-up drawings and installation diagram of a 12'x 7' TradeMark Sectional Steel Garage Door, prepared by Hurricane Test Laboratory, LLC, Test Report No. **G493-1201-09**, dated 02/03/2010, signed and sealed by Vinu J. Abraham, P.E.
3. Test reports on 1) Uniform Static Air Pressure Test, Loading per FBC TAS 202-94  
2) Large Missile Impact Test per FBC, TAS 201-94  
3) Cyclic Wind Pressure Loading per FBC, TAS 203-94  
Along with marked-up drawings and installation diagram of 9'x 7' TradeMark Sectional Steel Garage Doors, prepared by Hurricane Test Laboratory, LLC, Test Report No. **G493-1101-09**, dated 02/03/2010, signed and sealed by Vinu J. Abraham, P.E.
4. Test report on Forced Entry Resistance Test, per FBC 2411 3.2.1, TAS 202-94 of two (one TradeMark and one Showcase) 16'x 7' Sectional Garage Doors, prepared by Hurricane Test Laboratory, LLC, Test Report No. **G493-0706-10**, dated 08/10/2010, signed and sealed by Vinu J. Abraham, P.E.
5. Test report on Tensile Test per ASTM E8, of steel sheet, prepared by Certified Testing Laboratories, Test Report No. **0037T**, dated 01/20/2010, signed and sealed by Ramesh Patel, P.E.
6. Test report on Salt Spray per ASTM B117 of painted G40 galvanized painted steel, prepared by Wendler Engineering Services, Inc., dated 04/12/2010, signed and sealed by Richard A. Baumann, P.E.



**Carlos M. Utrera, P.E.**  
**Product Control Examiner**  
**NOA No. 20-0811.04**

**Expiration Date: October 20, 2025**  
**Approval Date: October 8, 2020**

**NOTICE OF ACCEPTANCE: EVIDENCE SUBMITTED**

**C. CALCULATIONS “Submitted under NOA # 10-0420.03”**

1. Jamb attachment verification calculations, prepared by Wendler Engineering Services, Inc., dated 04/13/2010, signed and sealed by Richard A. Baumann, P.E.

**D. QUALITY ASSURANCE**

1. Miami-Dade Department of Regulatory and Economic Resources (RER)

**E. MATERIAL CERTIFICATIONS**

1. None.

**F. STATEMENTS “Submitted under NOA # 15-0721.07”**

1. Statement letter of code conformance to the 5<sup>th</sup> edition (2014) FBC and of no financial interest issued by Wendler Engineering Services, Inc., dated 07/01/2015, signed and sealed by Richard A. Baumann, P.E.

**“Submitted under NOA # 12-0517.15”**

2. Statement letter of code conformance to 2010 FBC, issued by Wendler Engineering Services, Inc., dated 05/14/2012, signed and sealed by Richard A. Baumann, P.E.

**“Submitted under NOA # 10-0420.03”**

3. Statement letter of code conformance with FBC 2007, issued by Wendler Engineering Services, Inc., dated 04/12/2010, signed and sealed by Richard A. Baumann, P.E.
4. Statement letter of no financial interest issued by Wendler Engineering Services, Inc., dated 04/12/2010, signed and sealed by Richard A. Baumann, P.E.



---

Carlos M. Utrera, P.E.  
Product Control Examiner  
NOA No. 20-0811.04  
Expiration Date: October 20, 2025  
Approval Date: October 8, 2020

**NOTICE OF ACCEPTANCE: EVIDENCE SUBMITTED**

**2. New evidence submitted**

**A. DRAWINGS**

1. Drawing No. **P-3307**, titled “Spec, Wind Load TradeMark”, sheets 1 through 3 of 3, dated 10/23/2009, with revision B dated 06/16/2010, with revision D dated 07/20/2020, prepared by Raynor Garage Doors, signed and sealed by Scott A. Brown, P.E., S.E.

**B. TESTS**

1. None.

**C. CALCULATIONS**

1. None.

**D. QUALITY ASSURANCE**

1. By Miami-Dade County Department of Regulatory and Economic Resources (RER).

**E. MATERIAL CERTIFICATIONS**

1. None.

**F. STATEMENTS**

1. Statement letter of code conformance to the 7<sup>th</sup> Edition (2020) FBC and of no financial interest issued by Wendler Engineering Services, Inc., dated 09/30/2020, signed and sealed by Scott A. Brown, P.E., S.E.

*“Submitted under NOA # 17-1026.16”*

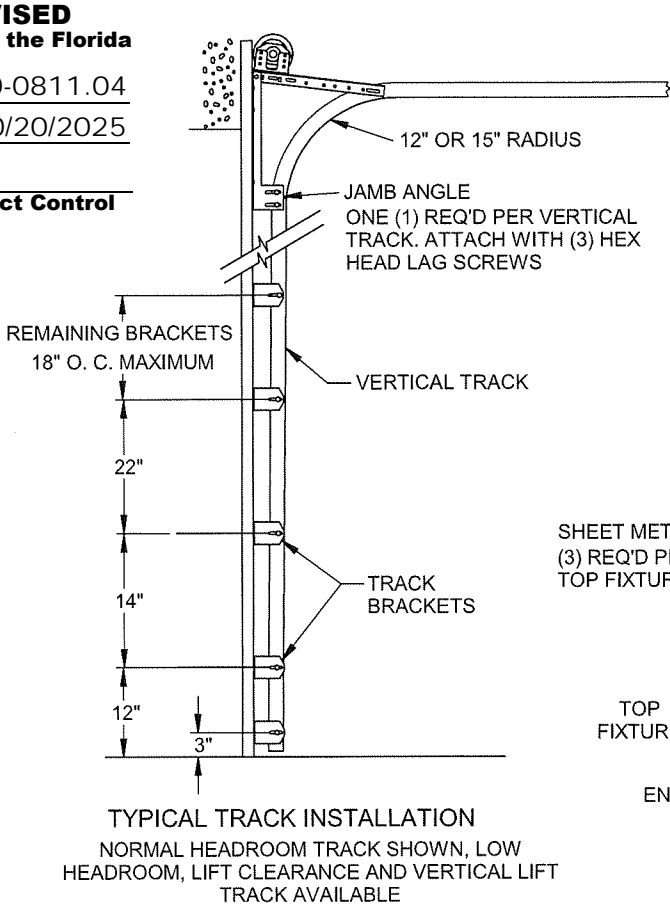
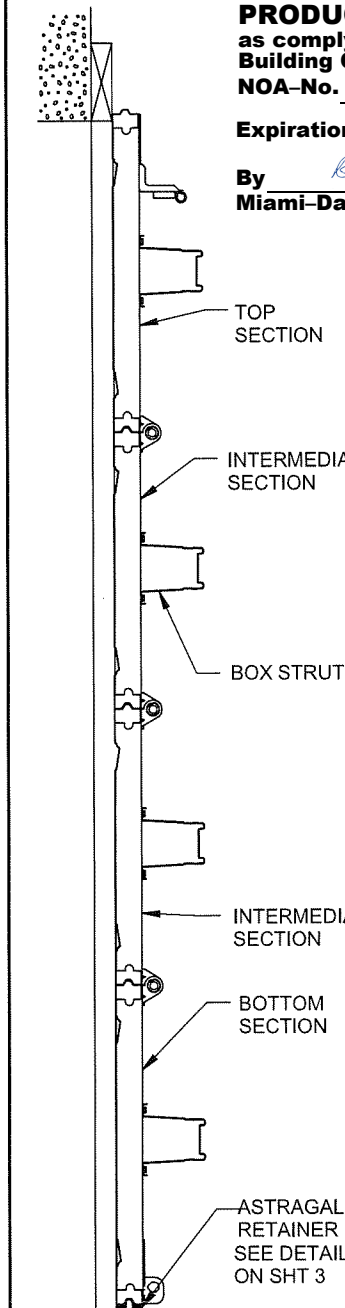
2. Statement letter of code conformance to the 6<sup>th</sup> edition (2017) FBC issued by Wendler Engineering Services, Inc., dated 10/24/2017, signed and sealed by Richard A. Baumann, P.E.



---

**Carlos M. Utrera, P.E.**  
**Product Control Examiner**  
**NOA No. 20-0811.04**  
**Expiration Date: October 20, 2025**  
**Approval Date: October 8, 2020**

**PRODUCT REVISED**  
as complying with the Florida  
Building Code  
NOA-No. 20-0811.04  
Expiration Date 10/20/2025  
By *Scott A. Brown*  
Miami-Dade Product Control



STEEL SECTION  
TRADEMARK .023 THICK G-40 GALVANIZED STEEL WITH AN EPOXY PRIMER AND BAKED ON POLYESTER FINISH WHICH IS ROLL-FORMED WITH WOOD GRAIN TEXTURE AND STAMPED WITH EMBOSSED OR FLUSH PANELS. MINIMUM YIELD STRENGTH = 36140 PSI

CENTER STILE TOX LOCKED AND GLUED TO PANEL SEE DETAIL ON SHT 3

BLOCKING 2-1/8" X 1-1/2" TYPICAL EACH END OF EACH SECTION  
END STILE TOX LOCKED TO SECTION SEE DETAIL ON SHT 3

PERIMETER SEAL NAILED 8" O.C. WITH 4d STEEL NAILS

JAMBS 2X6 #2 DOUGLAS FIR OR BETTER WOOD JAMB SEE SHT 2 FOR ATTACHMENT  
HEX HEAD LAG SCREW (2) PER BRACKET, SEE DETAIL ON SHT 3  
TRACK BRACKET SHOWN, FULL ANGLE OPTIONAL SEE DETAIL ON SHT 3  
TRACK BOLT / WHIZ LOCK NUT SEE DETAIL ON SHT 3  
TRACK ROLLER SEE DETAIL ON SHT 3  
TRACK, 2" SHOWN, 3" OPTIONAL SEE DETAIL ON SHT 3

CENTER HINGE SEE DETAIL ON SHT 3

RETAINING NUT 7/16" PUSH ON RETAINING NUT (1) REQUIRED PER ROLLER SEE DETAIL ON SHT 3

DOUBLE EDGE HINGE SEE DETAIL ON SHT 3  
STEEL BOX STRUT SEE DETAIL ON SHT 3

SHEET METALSCREW (3) REQ'D PER TOP FIXTURE

TOP FIXTURE  
END STILE

TOP FIXTURE DETAIL

SECTION B-B

SPRING COUNTERBALANCE SPRING WIRE INDIVIDUALLY CALCULATED TO COUNTERBALANCE DOOR. QUANTITY AND SIZE OF SPRING WILL VARY BASED ON DOOR SIZE.

SHEET METALSCREW (6) REQ'D PER HINGE

EDGE HINGE  
EDGE HINGE DETAIL

DOORS TESTED PER TAS 202 FOR STATIC AIR PRESSURE TESTED PER TAS 201 AND TAS 203 FOR LARGE MISSILE IMPACT AND CYCLIC WIND PRESSURE

DOOR WIDTH	DESIGN LOAD
9' - 0"	+ 65.0 - 75.0
10' - 0"	+ 56.4 - 65.1
11' - 0"	+ 56.4 - 65.1
12' - 0"	+ 56.4 - 65.1
13' - 0"	+ 45.0 - 52.0
14' - 0"	+ 45.0 - 52.0
15' - 0"	+ 45.0 - 52.0
16' - 0"	+ 45.0 - 52.0

LARGE MISSILE IMPACT RESISTANT

DOOR HEIGHT 7'- 0" HIGH SHOWN OTHER DOOR HEIGHTS AVAILABLE UP TO 16'-0" USING 18" OR 21" HIGH SECTIONS

STEEL REINFORCEMENT ONE (1) BOX STRUT PER SECTION, FASTENED TO ALL CENTER AND END STILES USING (2) SHEET METAL SCREWS AT EACH STILE

INTERIOR LOCK TWO (2) REQ'D PER DOOR. LOCATE OPPOSITE EACH OTHER TO ENGAGE EACH TRACK 5/8" MIN. SEE DETAIL ON SHT 3

ROLLER CARRIER SEE DETAIL ON SHT 3

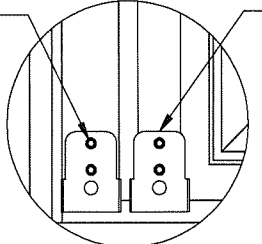
VENTS (OPTIONAL) VENT OPENINGS MAY BE LOCATED IN BOTTOM SECTION AS REQUIRED, 120 SQ. IN. MAX

SHEET METAL SCREW (2) REQ'D PER ROLLER CARRIER

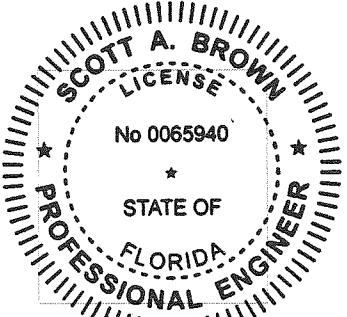
ROLLER CARRIER

DOOR WIDTH - 16' WIDE SHOWN SEE SHEET 2 FOR OTHER DOOR WIDTHS

INTERIOR ELEVATION



ROLLER CARRIER DETAIL



Scott A. Brown, P.E. Lic. No. 65940  
Wendler Engineering Services, Inc.  
698 Timber Creek Road, Dixon, IL 61021  
FBPE CA Lic. No. 31544  
Structural Adequacy for Wind Load

*Scott Brown 7/28/2020*

Rev.	Description	ECO	Date
D	Allowable tension load for concrete was 691 on sheet 2.	8462.01	07/20/20
C	Updated jamb attachments.	7804.01	10/13/17
B	Released for production.	5807.01	06/16/10

Scale: None
Drawn by: G. Wedekind
Checked by: G. Wedekind
Date: 10/23/09
ECO: 5807.01

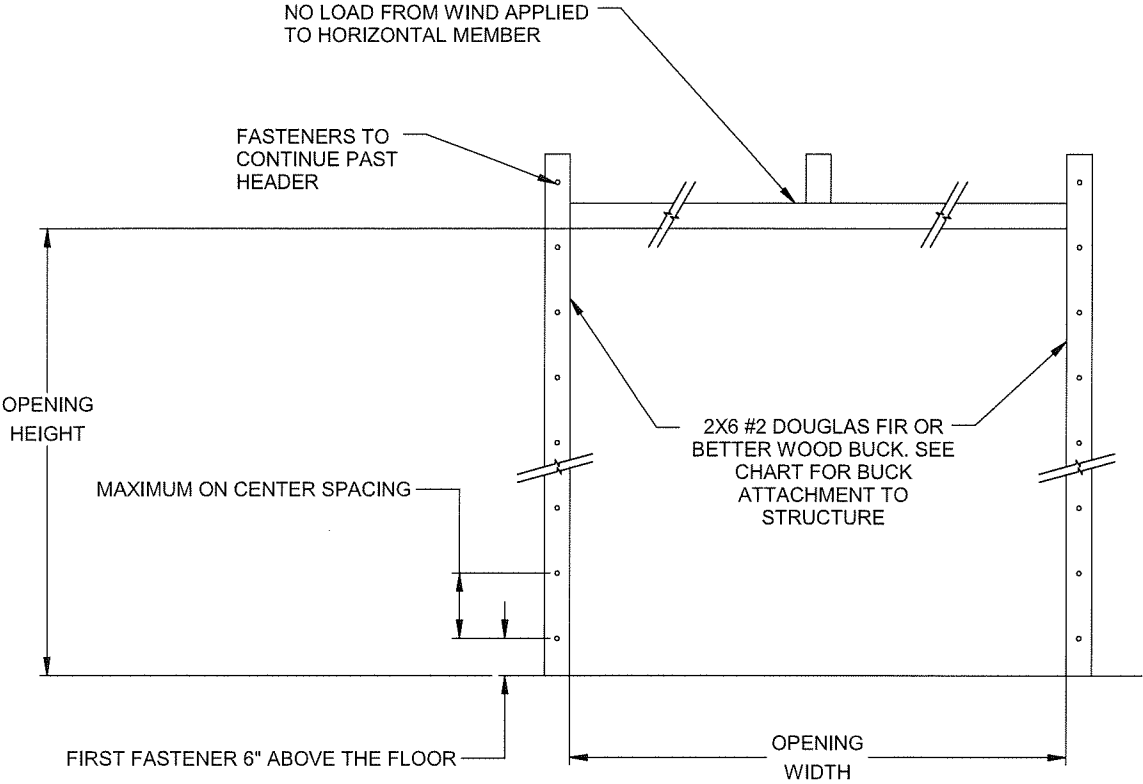
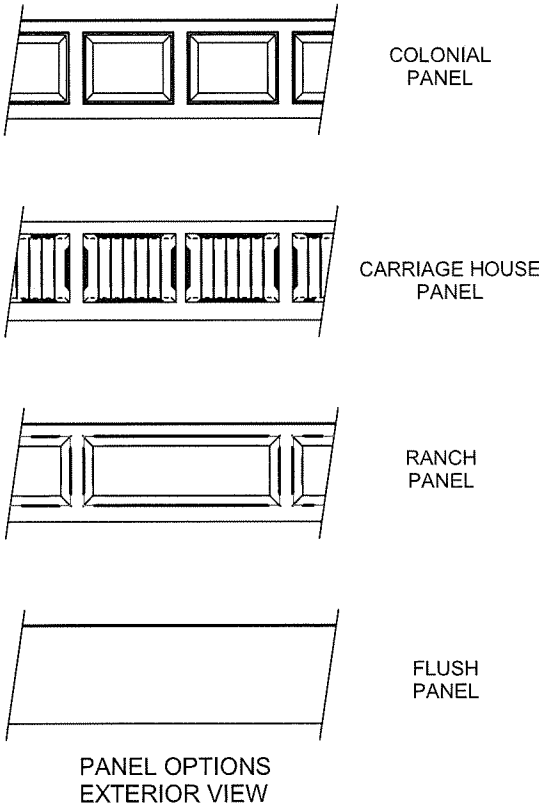
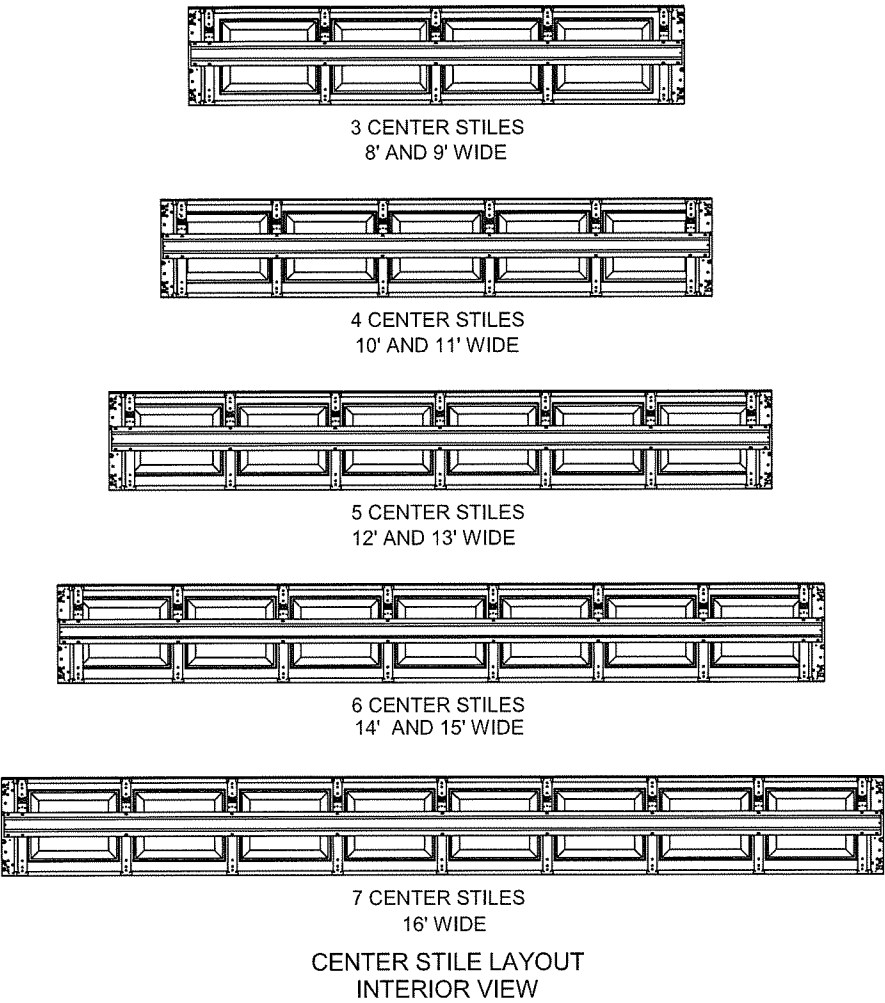


1101 East River Road  
Dixon, IL 61021

Title: Spec, Wind Load TradeMark		
No. P-3307	Sheet 1 of 3	Rev D

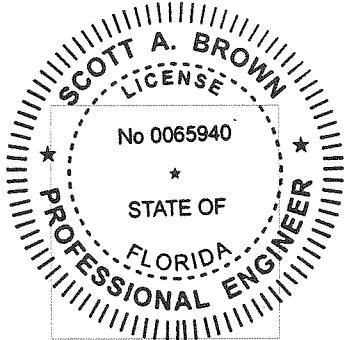
Printed copies of this document are not considered signed and sealed and the SHA authentication code must be verified on any electronic copies.





- JAMB ATTACHMENT NOTES:
1. MAXIMUM POSITIVE LOAD PER JAMB =  $(16'-0" \times 45.0 \text{ PSF}) / 2 = 360 \text{ LBS PER FOOT}$
  2. MAXIMUM NEGATIVE LOAD PER JAMB =  $(16'-0" \times -52.0 \text{ PSF}) / 2 = -416 \text{ LBS PER FOOT}$
  3. DESIGN OF THE SUPPORTING STRUCTURE SHALL BE THE SOLE RESPONSIBILITY OF THE BUILDING DESIGNER AND SHALL BE DESIGNED FOR THE JAMB LOADS LISTED IN NOTES 1 AND 2.
  4. ALTERNATE JAMB ATTACHMENTS MAY BE USED IF APPROVED BY A REGISTERED PROFESSIONAL ENGINEER.
  5. DASMA TECHNICAL DATA SHEET TDS-161 MAY BE USED FOR ALTERNATE JAMB ATTACHMENTS.
  6. 3/8" DIAMETER LAG SCREWS REQUIRED 1/16" PILOT HOLE AND 1-1/2" MINIMUM EDGE DISTANCE.

2X6 ATTACHMENT TO STRUCTURE						
STRUCTURE TYPE	FASTENER TYPE	MINIMUM EMBEDMENT	MINIMUM EDGE DISTANCE	MINIMUM ON CENTER SPACING	DIMENSION A (MAXIMUM ON CENTER SPACING)	ALLOWABLE TENSION LOAD
2500 PSI MIN. CONCRETE	1/4" TAPCON+ (PLUS) WITH 1-1/8" OD WASHER	2"	2.5	6"	16"	526
SOUTHERN PINE	3/8" X 3" LAG WITH 1-1/8" OD WASHER	1.50"	1.50"	1.50"	21"	655
SPRUCE PINE FIR	3/8" X 3" LAG WITH 1-1/8" OD WASHER	1.50"	1.50"	1.50"	16"	482



Scott A. Brown, P.E. Lic. No. 65940  
Wendler Engineering Services, Inc.  
698 Timber Creek Road, Dixon, IL 61021  
FBPE CA Lic. No. 31544  
Structural Adequacy for Wind Load

*Scott A. Brown* 7/28/2020

**PRODUCT REVISED**  
as complying with the Florida  
Building Code  
NOA-No. 20-0811.04

Expiration Date 10/20/2025

By *[Signature]*  
Miami-Dade Product Control

Scale: None
Drawn by: G. Wedekind
Checked by: G. Wedekind
Date: 10/23/09
ECO: 5807.01



1101 East River Road  
Dixon, IL 61021

Title: Spec, Wind Load  
TradeMark

No. P-3307	Sheet 2	Rev D
------------	---------	-------

