



DEPARTMENT OF REGULATORY AND ECONOMIC RESOURCES (RER)
BOARD AND CODE ADMINISTRATION DIVISION

NOTICE OF ACCEPTANCE (NOA)

MIAMI-DADE COUNTY
PRODUCT CONTROL SECTION

11805 SW 26 Street, Room 208
Miami, Florida 33175-2474
T (786) 315-2590 F (786) 315-2599

www.miamidade.gov/building

Titan Glass & Aluminum, LLC
450 West 27th Street
Hialeah, FL 33010

SCOPE:

This NOA is being issued under the applicable rules and regulations governing the use of construction materials. The documentation submitted has been reviewed and accepted by Miami-Dade County RER - Product Control Section to be used in Miami Dade County and other areas where allowed by the Authority Having Jurisdiction (AHJ).

This NOA shall not be valid after the expiration date stated below. The Miami-Dade County Product Control Section (In Miami-Dade County) and/or the AHJ (in areas other than Miami-Dade County) reserve the right to have this product or material tested for quality assurance purposes. If this product or material fails to perform in the accepted manner, the manufacturer will incur the expense of such testing and the AHJ may immediately revoke, modify, or suspend the use of such product or material within their jurisdiction. RER reserves the right to revoke this acceptance if it is determined by Miami-Dade County Product Control Section that this product or material fails to meet the requirements of the applicable building code.

This product is approved as described herein, and has been designed to comply with the Florida Building Code, including the High Velocity Hurricane Zone.

DESCRIPTION: Series "TFX-2750" Aluminum Fixed Window – L.M.I.

APPROVAL DOCUMENT: Drawing No. **20-066**, titled "Titan Series TFX-2750 Aluminum Fixed Window - Large & Small Impact Rated", sheets 1 through 5 of 5, dated 06/20/20, prepared by PPMF Inc., signed and sealed by Pedro M. De Figueiredo, P.E., bearing the Miami-Dade County Product Control Revision stamp with the Notice of Acceptance number and expiration date by the Miami-Dade County Product Control Section.

MISSILE IMPACT RATING: Large and Small Missile Impact Resistant

LABELING: Each unit shall bear a permanent label with the manufacturer's name or logo, city, state, model/series, and following statement: "Miami-Dade County Product Control Approved", unless otherwise noted herein.

RENEWAL of this NOA shall be considered after a renewal application has been filed and there has been no change in the applicable building code negatively affecting the performance of this product.

TERMINATION of this NOA will occur after the expiration date or if there has been a revision or change in the materials, use, and/or manufacture of the product or process. Misuse of this NOA as an endorsement of any product, for sales, advertising or any other purposes shall automatically terminate this NOA. Failure to comply with any section of this NOA shall be cause for termination and removal of NOA.

ADVERTISEMENT: The NOA number preceded by the words Miami-Dade County, Florida, and followed by the expiration date may be displayed in advertising literature. If any portion of the NOA is displayed, then it shall be done in its entirety.

INSPECTION: A copy of this entire NOA shall be provided to the user by the manufacturer or its distributors and shall be available for inspection at the job site at the request of the Building Official.

This NOA **revises NOA No. 18-0629.02** and consists of this page 1 and evidence pages E-1, E-2 and E-3, as well as approval document mentioned above.

The submitted documentation was reviewed by **Manuel Perez, P.E.**




10/08/20

NOA No. 20-0814.11
Expiration Date: March 11, 2024
Approval Date: October 15, 2020
Page 1

Titan Glass & Aluminum, LLC

NOTICE OF ACCEPTANCE: EVIDENCE SUBMITTED


1. EVIDENCE SUBMITTED UNDER PREVIOUS NOA's

A. DRAWINGS

1. Manufacturer's die drawings and sections.
(Submitted under NOA No. 08-0919.02)
2. Drawing No **18-380**, titled "Titan Series TFX-2750 Aluminum Fixed Window - Large & Small Impact Rated", sheets 1 through 5 of 5, dated 06/20/18, prepared by PPMF Inc., signed and sealed by Pedro M. De Figueiredo, P.E.
(Submitted under NOA No. 18-0629.02)

B. TESTS

1. Test reports on: 1) Air Infiltration Test, per FBC, TAS 202-94
2) Uniform Static Air Pressure Test, Loading per FBC TAS 202-94
3) Water Resistance Test, per FBC, TAS 202-94
4) Large Missile Impact Test per FBC, TAS 201-94
5) Cyclic Wind Pressure Loading per FBC, TAS 203-94
6) Forced Entry Test, per FBC 2411 3.2.1, TAS 202-94
7) Drop Load Test, per FBC and per ANSI Z 97.1
along with marked-up drawings and installation diagram of series TFX-2750 aluminum fixed window with insulated glass, prepared by Fenestration Testing Laboratory, Inc., Test Report No. **FTL 7701**, dated 03/14/14, signed and sealed by Idalmis Ortega, P.E.
(Submitted under NOA No. 15-0902.04)
2. Test reports on: 1) Uniform Static Air Pressure Test, Loading per FBC TAS 202-94
2) Small Missile Impact Test per FBC, TAS 201-94
3) Cyclic Wind Pressure Loading per FBC, TAS 203-94
along with marked-up drawings and installation diagram of series 2009-80 aluminum fixed window, prepared by Fenestration Testing Laboratory, Inc., Test Report No. **FTL-6233**, dated 05/11/10, signed and sealed by Jorge A. Causo, P.E.
(Submitted under NOA No. 10-0719.13)
3. Test reports on: 1) Air Infiltration Test, per FBC, TAS 202-94
2) Uniform Static Air Pressure Test, Loading per FBC TAS 202-94
3) Water Resistance Test, per FBC, TAS 202-94
4) Large Missile Impact Test per FBC, TAS 201-94
5) Cyclic Wind Pressure Loading per FBC, TAS 203-94
6) Forced Entry Test, per FBC 2411 3.2.1, TAS 202-94
along with marked-up drawings and installation diagram of series 2007 aluminum picture window, prepared by Fenestration Testing Laboratory, Inc., Test Report No. **FTL 5282**, dated 07/23/07, signed and sealed by Carlos S. Rionda, P.E.
(Submitted under NOA No. 08-0919.02)


Manuel Pérez, P.E.
Product Control Examiner
NOA No. 20-0814.11
Expiration Date: March 11, 2024
Approval Date: October 15, 2020

Titan Glass & Aluminum, LLC

NOTICE OF ACCEPTANCE: EVIDENCE SUBMITTED

1. EVIDENCE SUBMITTED UNDER PREVIOUS NOA's (CONTINUED)

B. TESTS (CONTINUED)

4. Test report on: 1) Drop Load Test, per FBC and per ANSI Z 97.1, along with marked-up drawings and installation diagram of series 2007 aluminum picture window, prepared by Fenestration Testing Laboratory, Inc., Test Report No. **FTL 5635**, dated 08/06/08, signed and sealed by Carlos S. Rionda P.E.
(Submitted under NOA No. 08-0919.02)

C. CALCULATIONS

1. Anchor verification calculations and structural analysis, complying with **FBC 5th Edition (2014)**, dated 08/25/15 and 12/15/15, prepared by ENGCO Inc., signed and sealed by Pedro M. De Figueiredo, P.E.
(Submitted under NOA No. 15-0902.04)
2. Glazing complies with **ASTM E1300-09**.

D. QUALITY ASSURANCE


1. Miami-Dade Department of Regulatory and Economic Resources (RER).

E. MATERIAL CERTIFICATIONS

1. Notice of Acceptance No. **17-1114.14** issued to **Kuraray America, Inc.** for their "Trosifol® Ultraclear, Clear and Color PVB Glass Interlayers" dated 01/18/18, expiring on 07/08/19.
2. Notice of Acceptance No. **17-0808.02** issued to **Kuraray America, Inc.** for their "SentryGlas® (Clear and White) Glass Interlayers" dated 12/28/17, expiring on 07/04/23.

F. STATEMENTS

1. Statement letter of conformance, complying with **FBC 6th Edition (2017)**, and of no financial interest, dated June 20, 2018, issued by ENGCO Inc., signed and sealed by Pedro M. De Figueiredo, P.E.
(Submitted under NOA No. 18-0629.02)
2. Laboratory compliance letter for Test Report No. **FTL-5282**, issued by Fenestration Testing Laboratory, Inc., dated August 10, 2007, signed and sealed by Carlos S. Rionda, P.E.
(Submitted under NOA No. 08-0919.02)
3. Proposal No. **13-0332** issued by the Product Control Section, dated May 16, 2013, signed by Manuel Perez, P.E.
(Submitted under NOA No. 14-0107.09)


Manuel Pérez, P.E.
Product Control Examiner
NOA No. 20-0814.11
Expiration Date: March 11, 2024
Approval Date: October 15, 2020

Titan Glass & Aluminum, LLC

NOTICE OF ACCEPTANCE: EVIDENCE SUBMITTED

1. EVIDENCE SUBMITTED UNDER PREVIOUS NOA's (CONTINUED)

G. OTHERS

1. Notice of Acceptance No. **15-0902.04**, issued to Titan Glass & Aluminum, LLC for their Series "TFX-2750" Aluminum Fixed Window - L.M.I., approved on 01/28/16 and expiring on 03/11/19.

2. NEW EVIDENCE SUBMITTED

A. DRAWINGS

1. Drawing No **20-066**, titled "Titan Series TFX-2750 Aluminum Fixed Window - Large & Small Impact Rated", sheets 1 through 5 of 5, dated 06/20/20, prepared by PPMF Inc., signed and sealed by Pedro M. De Figueiredo, P.E.

B. TESTS

1. None

C. CALCULATIONS

1. None

D. QUALITY ASSURANCE

1. Miami-Dade Department of Regulatory and Economic Resources (RER)

E. MATERIAL CERTIFICATIONS

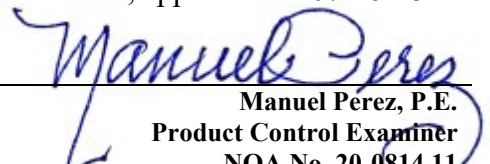
1. Notice of Acceptance No. **19-0305.02** issued to **Kuraray America, Inc.** for their "Trosifol® Ultraclear, Clear and Color PVB Glass Interlayers" dated 05/09/19, expiring on 07/08/24.
2. Notice of Acceptance No. **18-0725.11** issued to **Kuraray America, Inc.** for their "Kuraray SentryGlas® Xtra™ (SGX™) Clear Glass Interlayer" dated 05/23/19, expiring on 05/23/24.

F. STATEMENTS

1. Statement letter of conformance, complying with **FBC 7th Edition (2020)**, and of no financial interest, dated June 20, 2020, issued by PPMF, Inc., signed and sealed by Pedro De Figueiredo, P.E.

G. OTHERS

1. Notice of Acceptance No. **18-0629.02**, issued to Titan Glass & Aluminum, LLC for their Series "TFX-2750" Aluminum Fixed Window - L.M.I., approved on 07/26/18 and expiring on 03/11/24.


Manuel Perez, P.E.
Product Control Examiner
NOA No. 20-0814.11
Expiration Date: March 11, 2024
Approval Date: October 15, 2020

TITAN SERIES TFX-2750

ALUMINUM FIXED WINDOW LARGE AND SMALL IMPACT RESISTANT

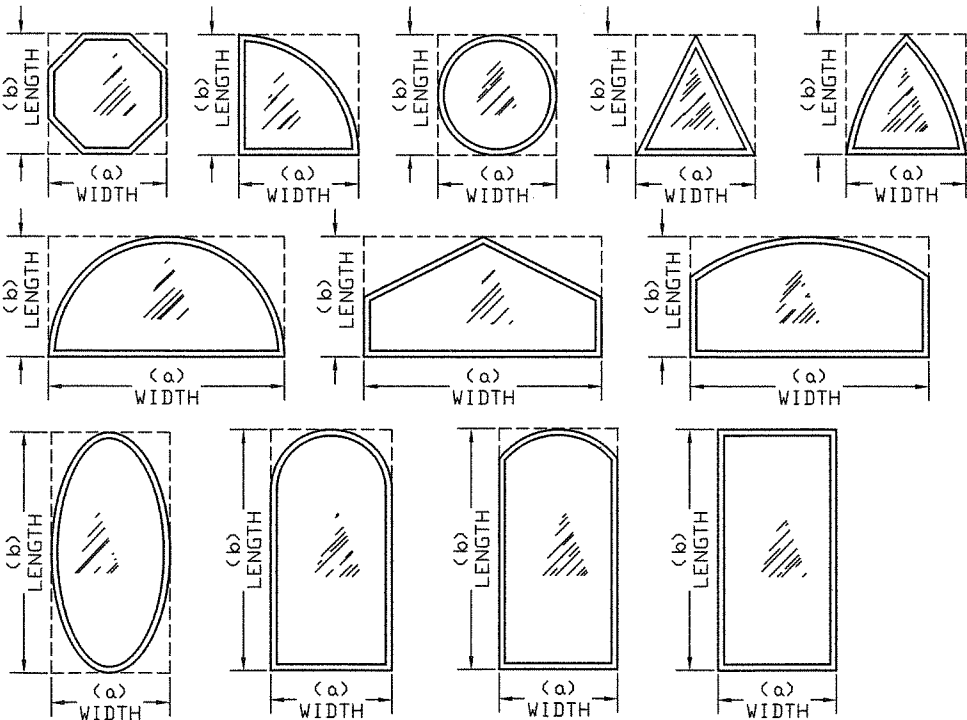
GENERAL NOTES:
FLORIDA BUILDING CODE 2020 - 7TH EDITION HVHZ
LARGE & SMALL MISSILE IMPACT RATED

- 1- CODE: THIS PRODUCT HAS BEEN TESTED AND DESIGNED IN ACCORDANCE WITH THE FBC INCLUDING THE HIGH VELOCITY HURRICANE ZONE (HVHZ).
- 2- DEFINITION: THIS PRODUCT IS AN ALUMINUM FIXED WINDOW DESIGNED, CONSTRUCTED AND TESTED PROVIDING PROTECTION FROM HURRICANE FORCE WINDS AND WIND BORNE DEBRIS (LARGE & SMALL MISSILE) WITHIN THE ALLOWABLE DESIGNED PRESSURES AND LIMITATIONS STATED IN THIS APPROVAL. INSTALLATION OF HURRICANE PROTECTION DEVICES IS NOT REQUIRED.
- 3- POSTING: PRODUCT SHALL BE LABELED AS PER FBC. THE PERMANENT LABEL, MARKING OR ETCHING SHALL PROVIDE TRACTABILITY TO THE MANUFACTURER AND PRODUCT. THE FOLLOWING SHALL ALSO BE REQUIRED EITHER ON THE PERMANENT LABEL OR ON A TEMPORARY SUPPLEMENTAL LABEL APPLIED BY THE MANUFACTURER: INFORMATION IDENTIFYING THE MANUFACTURER, THE PRODUCT MODEL/SERIES NUMBER, POSITIVE AND NEGATIVE DESIGN PRESSURE RATING, PRODUCT MAXIMUM SIZE, GLAZING THICKNESS, IMPACT-RESISTANCE RATING IF APPLICABLE, THE FLORIDA PRODUCT APPROVAL NUMBER, APPLICABLE TEST STANDARD(S), AND MIAMI DADE NOA NUMBER, THE TEMPORARY SUPPLEMENTAL LABEL SHALL REMAIN ON THE WINDOW UNTIL FINAL APPROVAL BY THE BUILDING OFFICIAL. SAMPLE LABEL:
- "TITAN SERIES TFX-2750 FIXED WINDOW
TITAN GLASS & ALUMINUM, LLC - MIAMI - FLORIDA
LARGE & SMALL MISSILE IMPACT RATED
MIAMI-DADE PRODUCT CONTROL APPROVED
- 4- LOADS: DESIGNED LOAD CALCULATED BASED ON THE ASCE 7-16 AND TO BE PROVIDED BY A PROFESSIONAL ARCHITECT OR ENGINEER FOR EACH SPECIFIC PROJECT. THE CALCULATED DESIGNED PRESSURE MUST NOT EXCEED THE ALLOWABLE PRESSURES HEREIN SPECIFIED. THE DESIGN PRESSURES, AS DETERMINED FROM ASCE 7-16, ARE TO BE MULTIPLIED BY 0.6
- 5- MATERIAL: ALL ALUMINUM PARTS TO BE 6063-T6 ALLOY OR AS NOTED AND GLAZING TO BE LAMINATED IMPACT GLASS AS SPECIFIED ON THIS APPROVAL.
- 6- FASTENERS: ASSEMBLY SCREWS AND ANCHORS SHALL BE AS SPECIFIED IN THE CURRENT SET OF DRAWINGS. INSTALLATION AND LOADS AS PER THIS APPROVAL. ANCHOR SPACING AND LOADS MUST NOT EXCEED THE MAXIMUM LIMITS SPECIFIED BY THIS APPROVAL.
- 7- USE: IT SHALL BE THE RESPONSIBILITY OF THE CONTRACTOR, ARCHITECT OR ENGINEER OF RECORD TO VERIFY THE FOLLOWING:
- 7.1- THE STABILITY OF THE STRUCTURE WHERE THE PRODUCT IS TO BE ATTACHED INSURING PROPER ANCHORAGE.
- 7.2- THE SITE SPECIFIC PROJECT CRITERIA, SUCH AS BUT NOT LIMITED TO, LOCAL CODE REQUIREMENTS, DESIGNED PRESSURES ETC.
- 7.3- THAT THIS APPROVAL IS ADEQUATE TO THE SPECIFIC PROJECT.
- 8- DISSIMILAR MATERIALS: WHERE ALUMINUM IS IN CONTACT OR FASTENED TO DISSIMILAR MATERIALS, INCLUDING BUT NOT LIMITED TO STEEL, INSTALLATION SHALL MEET THE REQUIREMENTS OF CHAPTER M.7 OF THE ALUMINUM DESIGN MANUAL 2015.

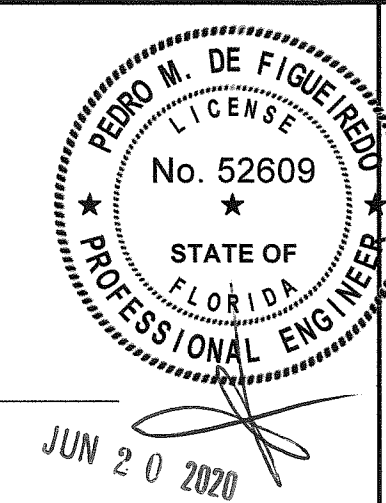
TABLE OF CONTENTS:

SHEET	CONTENTS
1 OF 5	TABLE OF CONTENTS, GENERAL NOTES, APPROVED ALTERNATE WINDOW SHAPES
2 OF 5	PRODUCT PRESSURE RATINGS AND GLAZING TYPES
3 OF 5	TYPICAL ELEVATIONS AND PERIMETER SECTIONS
4 OF 5	TYPICAL FRAME ANCHORAGE
5 OF 5	BILL OF MATERIALS, WINDOW COMPONENTS AND CORNER ASSEMBLY

APPROVED ALTERNATE WINDOW SHAPES



* MAXIMUM DESIGN PRESSURE RATING (psf) FOR ALTERNATE SHAPES AS SHOWN ABOVE OR SIMILAR CAN BE DETERMINED BY INSCRIBING PICTURE WINDOW SHAPE WITHIN SQUARE (a x b) OR RECTANGLE (a x b) AS SHOWN IN DOTTED LINES AND OBTAINING MAXIMUM DESIGN PRESSURE RATING (psf) FOR THOSE ALTERNATE SHAPES FROM TABLES ON SHEET 2.



PPMF Inc.
ENGINEERING SERVICES - CA 32459
9715 W. BROWARD BLVD.
PLANTATION, FL 33324
PPMF@AOL.COM

PRODUCT:
TITAN SERIES TFX-2750
ALUMINUM FIXED WINDOW
LARGE & SMALL IMPACT RATED

TITAN
GLASS & ALUMINUM, LLC

MANUFACTURER:
450 WEST 27TH STREET
HIALEAH, FLORIDA, 33010
PH: (305) 888-0911
FAX: (305) 671-3840

MIAMI-DADE BCCO:
PRODUCT REVISED
as complying with the Florida
Building Code
NOA-No. **20-0814.11**
Expiration Date: **03/11/2024**
By: *Manuel Fern*
Miami-Dade Product Control

SCALE:
NA
DATE:
06/20/2020
DRAWING #
20-066
SHEET
1 OF 5

TABLE 1
DESIGNED PRESSURES FOR
WINDOWS WITH GLASS TYPE A

(a) in	(b) in	Pd (psf)	
		POS	NEG
36	108	114	150
	114	114	149
	120	114	147
	126	114	146
	132	114	114
	138	114	114
	144	114	114
	150	114	114
	156	114	114
	162	114	114
42	78	114	136
	84	114	136
	90	114	136
	96	114	136
	102	114	135
	108	114	133
	114	114	114
	143	114	114
	72	114	124
	78	114	124
46	84	114	124
	90	114	124
	96	114	124
	102	114	114
	130	114	114
	66	114	119
	72	114	119
	78	114	119
	84	114	119
	90	114	119
48	96	114	114
	125	114	114
50	66	114	114
	72	114	114
	78	114	114
	84	114	114
	90	114	114
	96	114	114
	120	114	114
	60	106	106
	66	106	106
	72	106	106
54	78	106	106
	84	106	106
	90	106	106
	96	106	106
	102	106	106
	108	106	106
	111	106	106
	60	95	95
	66	95	95
	72	95	95
60	78	95	95
	84	95	95
	90	95	95
	96	95	95
	100	95	95
	66	86	86
	72	86	86
	78	86	86
	84	86	86
	90	86	86
66	72	79	79
	78	79	79
	83	79	79
72	66	86	86
	72	86	86
	78	86	86
	84	86	86
	90	86	86
	72	79	79
	78	79	79
	83	79	79
	66	86	86
	72	86	86

TABLE 2
DESIGNED PRESSURES FOR
WINDOWS WITH GLASS TYPE B

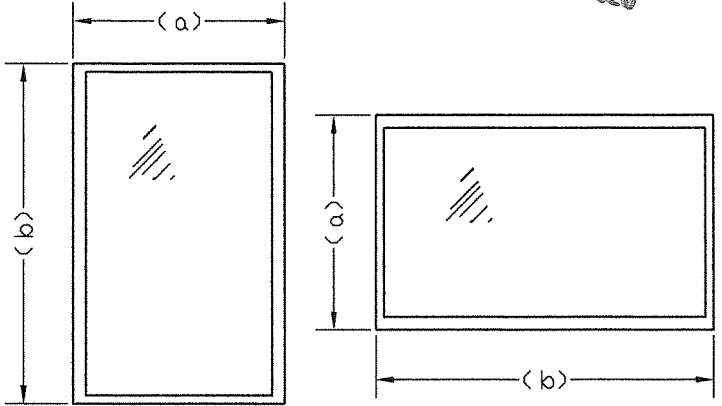
(a) in	(b) in	Pd (psf)	
		POS	NEG
36	60	80	80
	72	80	80
	78	80	80
	84	80	80
	90	80	80
	96	80	80
	60	80	80
	72	80	80
	78	80	80
	82	80	80
42	60	80	80
	72	80	80
	78	80	80
	82	80	80
	60	80	80
	66	80	80
	72	80	80
	75	80	80
	60	80	80
	66	80	80
46	66	80	80
	72	80	80
	75	80	80
	60	80	80
	66	80	80
	72	80	80
	60	80	80
	66	80	80
	69	80	80
	60	80	80
50	60	80	80
	64	80	80
54	60	80	80
	64	80	80

TABLE 3
DESIGNED PRESSURES FOR
WINDOWS WITH GLASS TYPE C

(a) in	(b) in	Pd (psf)	
		POS	NEG
36	60	90	120
	72	90	120
	78	90	120
	84	90	119
	90	90	111
	96	90	104
	102	90	98
	108	90	93
	111	90	90
	60	90	120
42	72	90	119
	78	90	110
	84	90	102
	90	90	95
	95	90	90
	60	90	120
	72	90	109
	78	90	100
	84	90	93
	87	90	90
46	60	90	119
	72	90	104
	78	90	96
	83	90	90
	60	90	114
	72	90	100
	78	90	92
	80	90	90
	60	90	106
	72	90	93
50	74	90	90
	66	90	91

WINDOW NOTES:

- 1- GLAZING TYPE A, B AND C
COMPLIES WITH REQUIREMENTS
OF ANSI Z97.1
- 2- FRAME WIDTH (a) AND HEIGHT (b)
CAN BE ROTATED



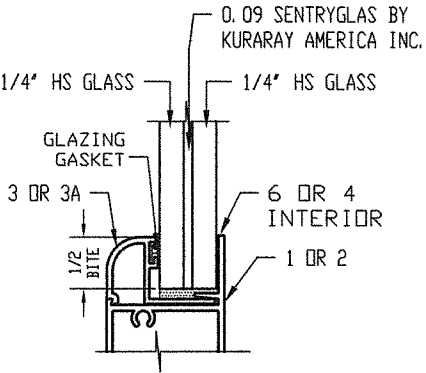
AIR INFILTRATION ASTM E283
6.24 PSF -- 0.01 cfm/sq.ft

WATER RESISTANCE ASTM E331
13.5 PSF - 15 min
17.1 PSF - 15 mm GLASS TYPE A

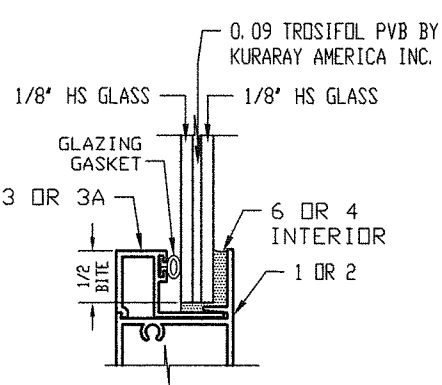
FORCE ENTRY ASTM F588
TYPE D WINDOW GRADE 10

GLAZING OPTIONS

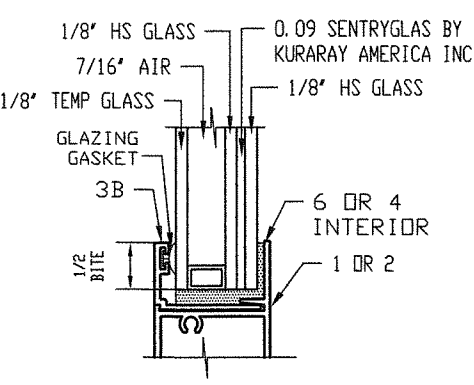
GLASS TYPE A



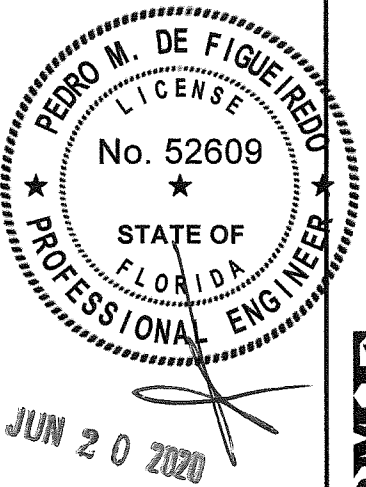
GLASS TYPE B



GLASS TYPE C



GLAZING TYPE A, B AND C COMPLIES WITH THE REQUIREMENTS OF ASTM E1300 AND ANSI Z97.1
SETTING BLOCKS ARE REQUIRED FOR WINDOW SILL OVER 36" WIDE



PPMF Inc.
ENGINEERING SERVICES - CA 32459
9715 W. BROWARD BLVD.
PLANTATION, FL 33324
PPMF@AOL.COM

PRODUCT:
TITAN
TITAN SERIES TFX-2750
ALUMINUM FIXED WINDOW
LARGE # SMALL IMPACT RATED

TITAN
GLASS & ALUMINUM, LLC

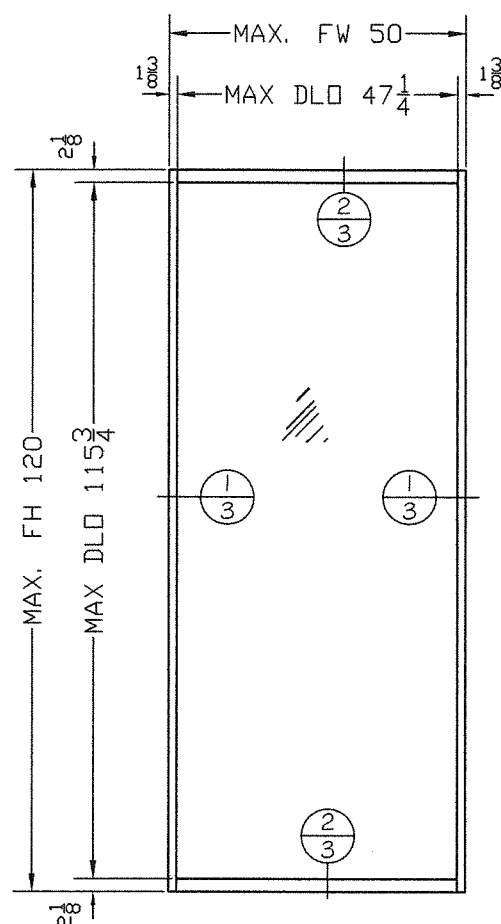
MANUFACTURER:

450 WEST 27TH STREET
HIALEAH, FLORIDA, 33010
PH: (305) 888-0911
FAX: (305) 671-3840

MIAMI-DADE BCCO:

PRODUCT REVISED
as complying with the Florida
Building Code
NOA-No. **20-0814.11**
Expiration Date: **03/11/2024**
By: *Manuel Perez*
Miami-Dade Product Control

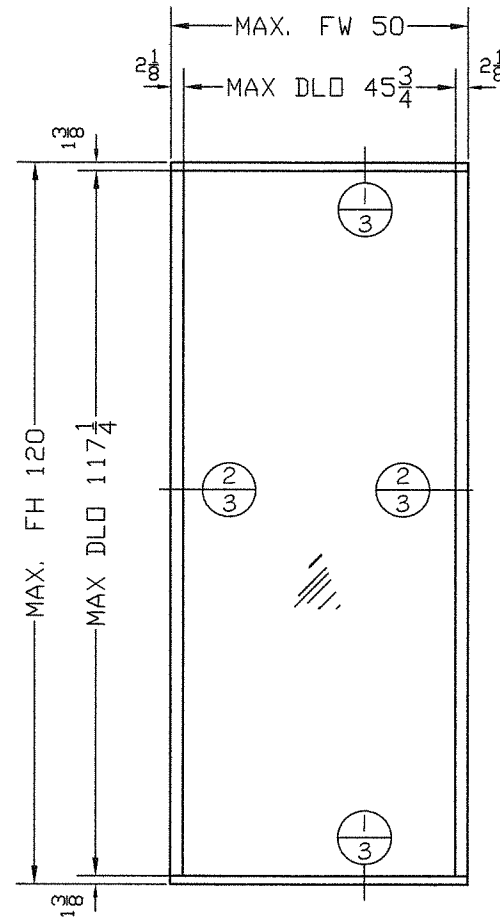
SCALE:
NA
DATE:
06/20/2020
DRAWING #
20-066
SHEET
2 OF 5



TYPICAL ELEVATION WITH:
1 3/8" JAMB FRAMING
2 1/8" HEADER/SILL FRAMING

$$FH = DLO + 4 \frac{1}{4}"$$

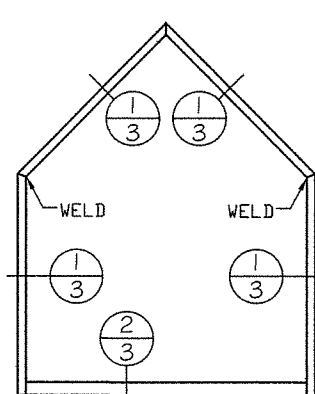
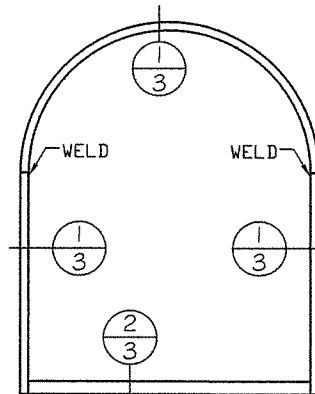
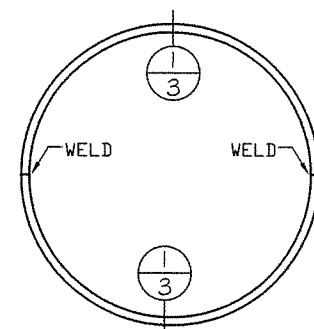
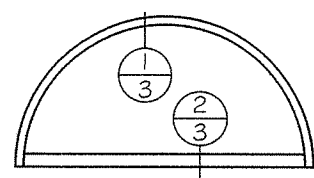
$$FW = DLO + 2 \frac{3}{4}"$$



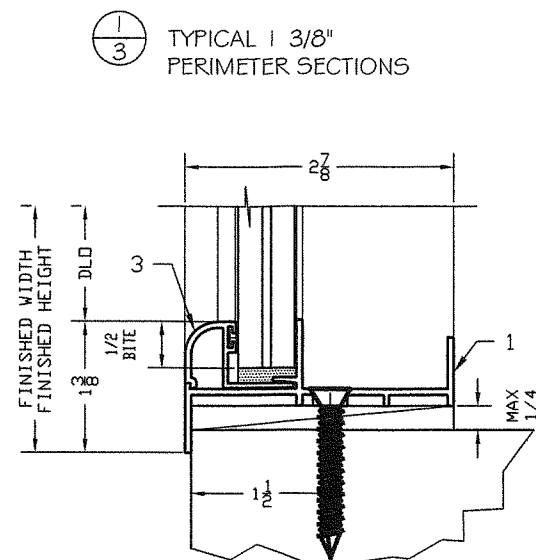
TYPICAL ELEVATION WITH:
2 1/8" JAMB FRAMING
1 3/8" HEADER/SILL FRAMING

$$FH = DLO + 2 \frac{3}{4}"$$

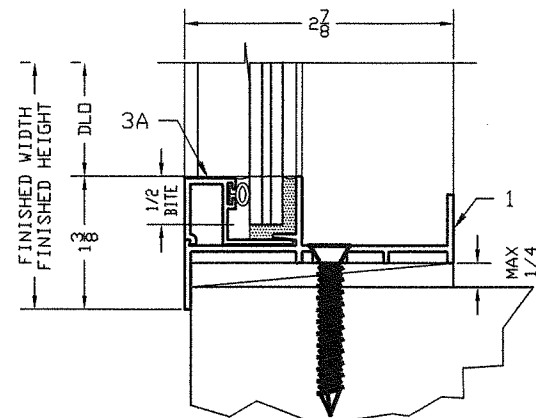
$$FW = DLO + 4 \frac{1}{4}"$$



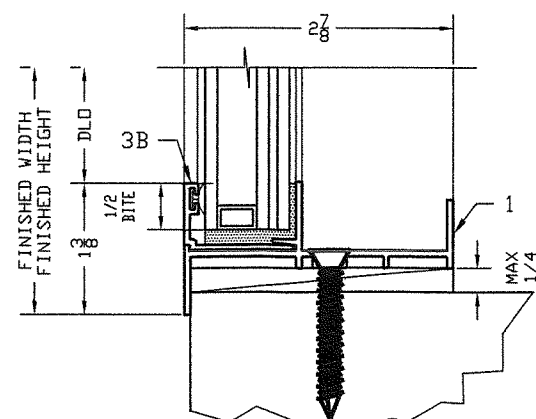
TYPICAL SHAPED WINDOWS ELEVATION WITH:
1 3/8" MAIN FRAME MITER AND WELDED
2 1/8" FRAMING USED FOR 90° CORNERS
FRAME = DLO + 1 3/8 + 2 1/8"
FRAME = DLO + 1 3/8 + 1 3/8"



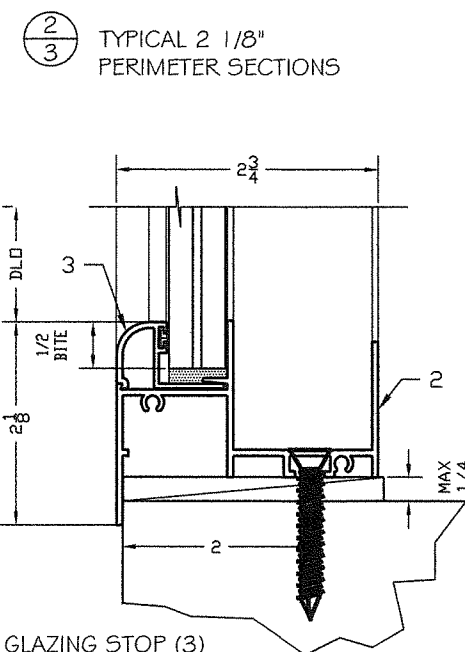
ROUND GLAZING STOP (3)
GLASS TYPE A OR B



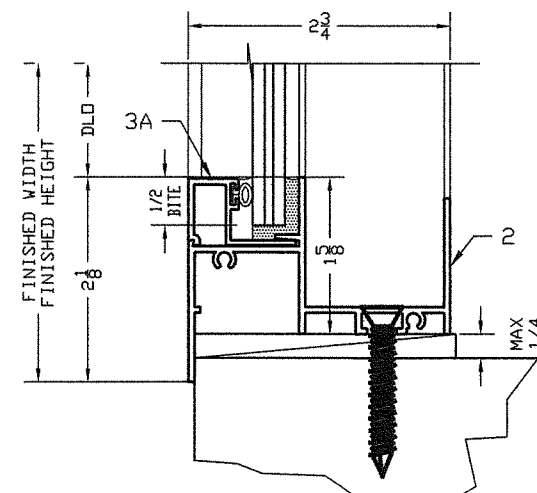
SQUARE GLAZING STOP (3A)
GLASS TYPE A OR B



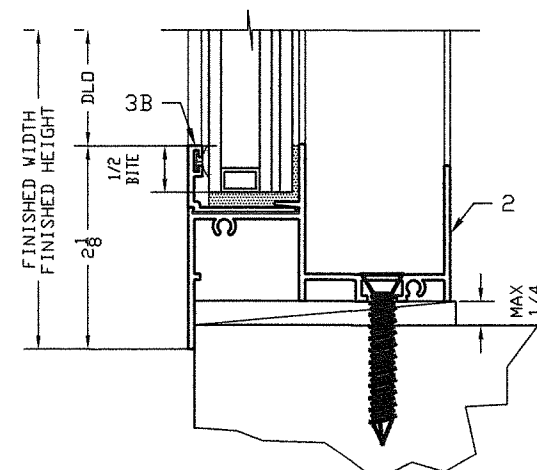
GLAZING STOP (3B)
INSULATED GLASS TYPE C



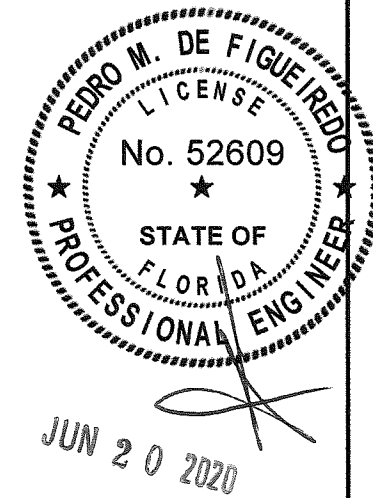
ROUND GLAZING STOP (3)
GLASS TYPE A OR B



SQUARE GLAZING STOP (3A)
GLASS TYPE A OR B



GLAZING STOP (3B)
INSULATED GLASS TYPE C



PPMF Inc.
ENGINEERING SERVICES - CA 32459
9715 W. BROWARD BLVD.
PLANTATION, FL 33324
PPMF@AOL.COM

PRODUCT:
TITAN SERIES TFX-2750
ALUMINUM FIXED WINDOW
LARGE & SMALL IMPACT RATED

TITAN
GLASS & ALUMINUM, LLC

MANUFACTURER:
450 WEST 27TH STREET
HIALEAH, FLORIDA, 33010
PH: (305) 888-0911
FAX: (305) 671-3840

MIAMI-DADE BCCO:

PRODUCT REVISED
as complying with the Florida
Building Code

NOA-No. **20-0814.11**

Expiration Date: **03/11/2024**

By: *Manuel Fern*
Miami-Dade Product Control

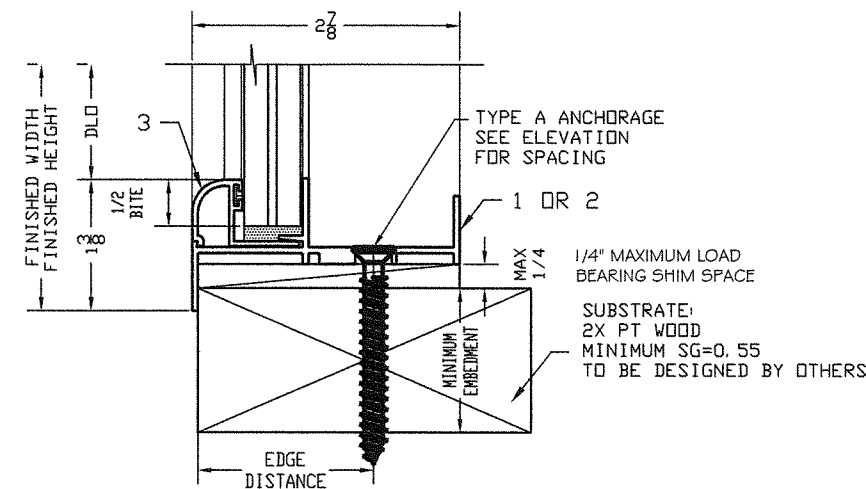
SCALE:
NA

DATE:
06/20/2020

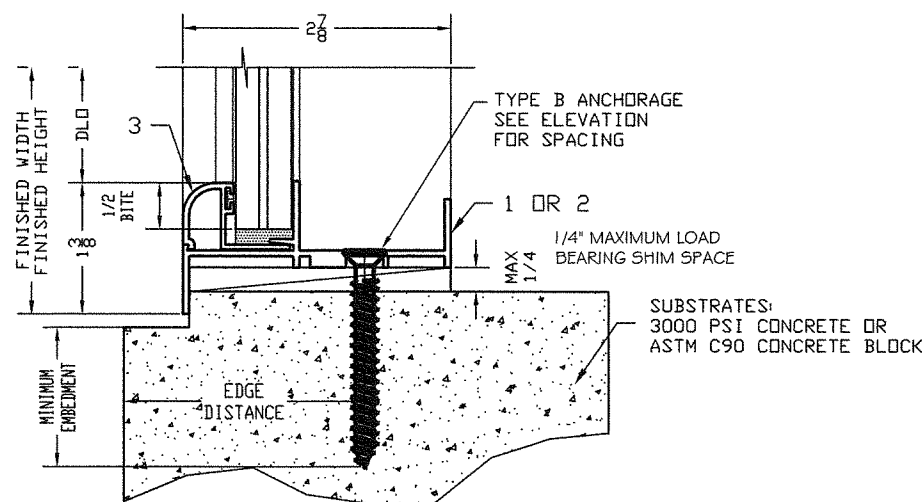
DRAWING #
20-066

SHEET
3 OF 5

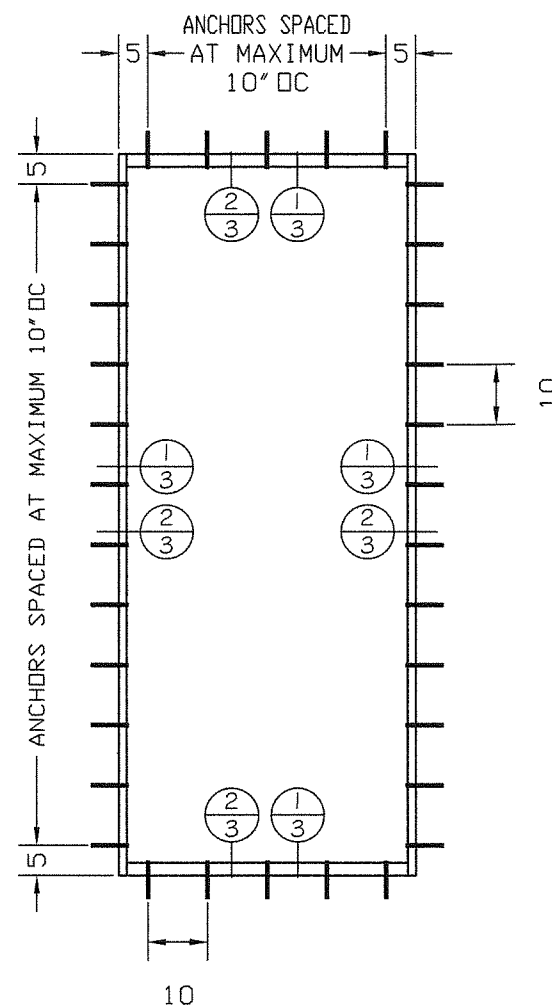
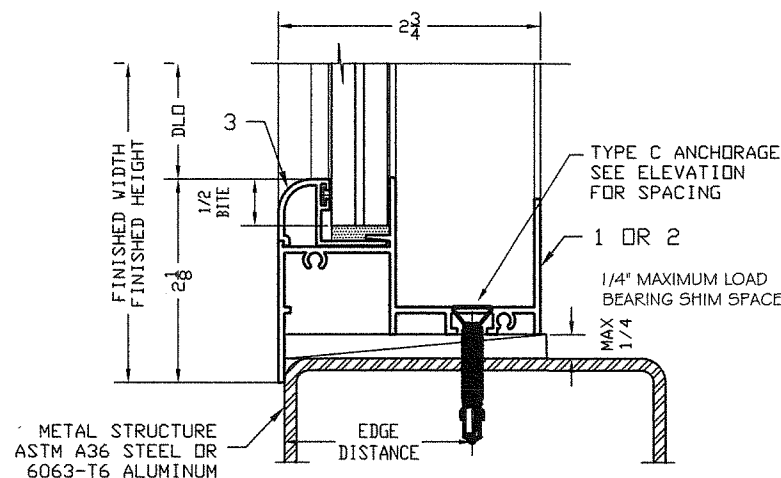
TYPE A ANCHORAGE
ANCHOR INTO 2X WOOD BUCK OR WOOD STRUCTURE



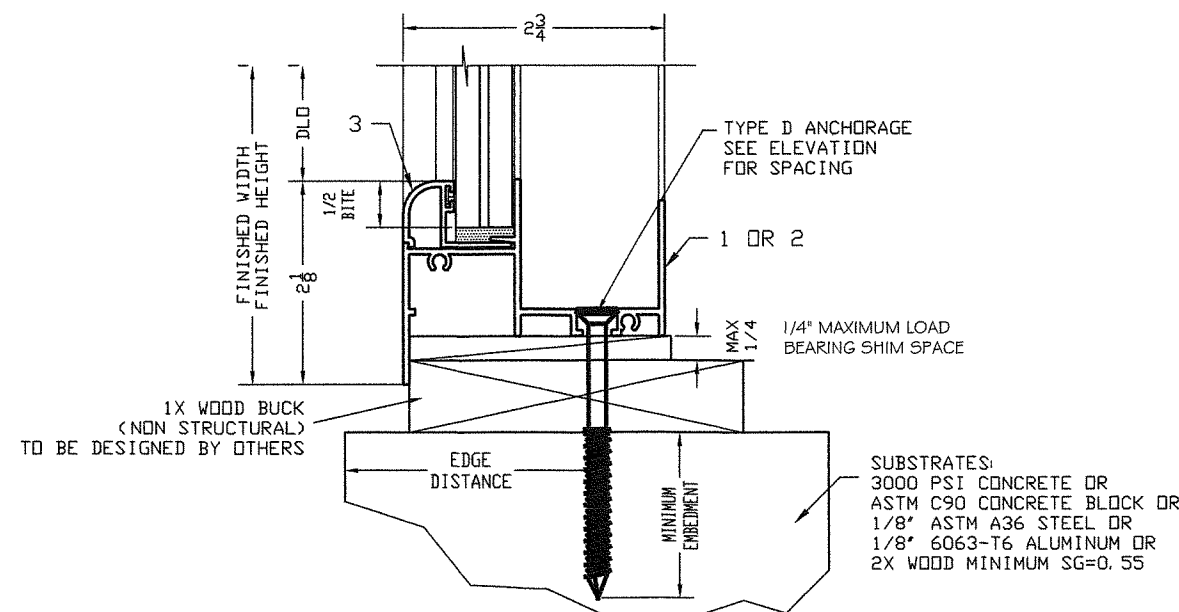
TYPE B ANCHORAGE
ANCHOR INTO CONCRETE OR MASONRY



TYPE C ANCHORAGE
ANCHOR INTO METAL STRUCTURES



TYPE D ANCHORAGE
ANCHORS THRU 1X WOOD BUCK INTO SUBSTRATE



TYPICAL ANCHORS: (SEE ELEVATIONS FOR SPACE)

TYPE A - ANCHORS INTO 2X PT STRUCTURAL BUCK

MINIMUM EMBEDMENT: 1 1/2"
EDGE DISTANCE: 1"
ANCHORS: 1/4" ULTRACONS BY ELCO
1/4" TAPCONS BY ITW BUILDEX
#14 SS SHEET METAL SCREWS

2X BUCK TO BE DESIGNED BY OTHERS FOR IMPOSED LOADS

TYPE B - ANCHORS INTO CONCRETE ($f_c \geq 3000$ PSI) OR ASTM C90 CONCRETE BLOCK

MINIMUM EMBEDMENT: 1 1/4"
EDGE DISTANCE: 2 1/2"
ANCHORS: 1/4" ULTRACONS BY ELCO
1/4" TAPCONS BY ITW BUILDEX

TYPE C - ANCHORS INTO METAL STRUCTURES

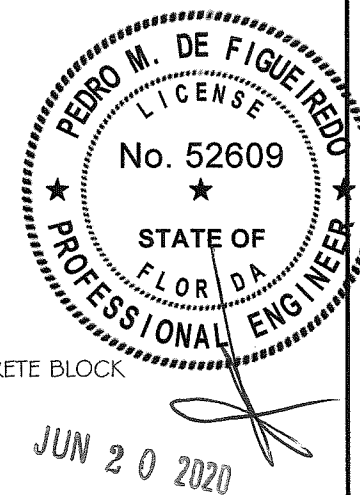
METAL MINIMUM THICKNESS: 1/8"
MATERIAL: ALUMINUM 6063-T6 OR STEEL ASTM A36
EDGE DISTANCE: 3/4"
ANCHORS: 1/4"-14 SELF DRILLING SCREWS (GR 5)

(STEEL IN CONTACT WITH WINDOW FRAMING TO BE PLATED OR PAINTED)

TYPE D - THRU 1X BUCKS INTO SUBSTRATE

ALL ANCHORS ABOVE
(1X BUCK NON STRUCTURAL TO BE DESIGNED BY OTHERS)

ALL ANCHORAGE OPTIONS ARE APPLICABLE TO HEADER, SILL AND/OR JAMB LOCATIONS
ANCHORS SHALL BE AS LISTED, SPACED AS SHOWN ON DETAILS.
ANCHORS EMBEDMENT TO BASE MATERIAL SHALL BE BEYOND WALL DRESSING OR STUCCO
WOOD BUCKS BY OTHERS MUST BE SOUTHERN PINE ($G \geq 0.55$) AND MUST BE ANCHORED PROPERLY TO TRANSFER LOADS TO THE STRUCTURE.
ANCHORING OR LOADING CONDITIONS NOT SHOWN IN THESE DETAILS ARE NOT PART OF THIS APPROVAL.
ANCHORS INTO WOOD WERE DESIGNED USING A LOAD DURATION OF 1.6 IN ACCORDANCE WITH NDS STANDARD



PPMF Inc.
ENGINEERING SERVICES - CA 32459
9715 W. BROWARD BLVD.
PLANTATION, FL 33324
PPMF@AOL.COM

PRODUCT:
TITAN SERIES TFX-2750
ALUMINUM FIXED WINDOW
LARGE & SMALL IMPACT RATED

TITAN
GLASS & ALUMINUM, LLC

MANUFACTURER:
450 WEST 27TH STREET
HIALEAH, FLORIDA, 33010
PH: (305) 888-0911
FAX: (305) 671-3840

MIAMI-DADE BCCO:

PRODUCT REVISED
as complying with the Florida
Building Code

NOA-No. **20-0814.11**

Expiration Date: **03/11/2024**

By: *Manuel Ferraz*

Miami-Dade Product Control

SCALE:

NA

DATE:

06/20/2020

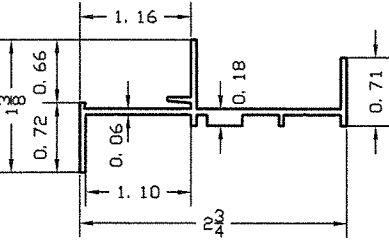
DRAWING #

20-066

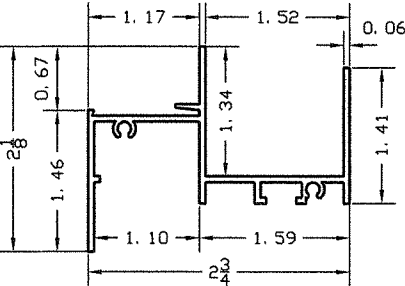
SHEET

4 OF 5

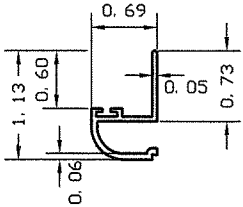
PRODUCT COMPONENTS



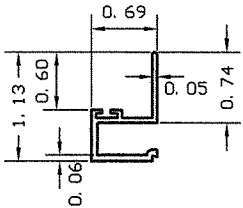
1- FSP 014 - 1 3/8 PERIMETER FRAMING
HEADER, SILL AND JAMBS
6063-T6 ALUMINUM ALLOY



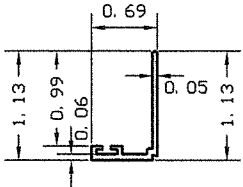
2- FSP 015 - 2 1/8 PERIMETER FRAMING
HEADER, SILL AND JAMBS
6063-T6 ALUMINUM ALLOY



3- FSP 017 - ROUND GLAZING STOP
6063-T6 ALUMINUM ALLOY



3A- FSP 017A - SQR GLAZING STOP
6063-T6 ALUMINUM ALLOY

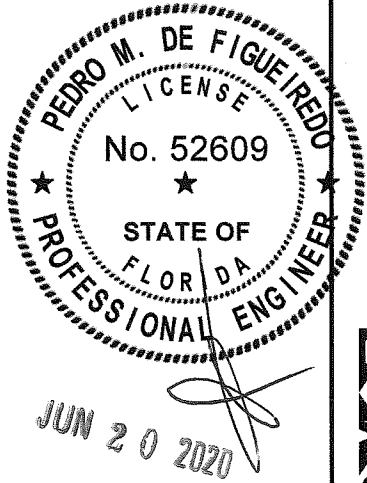
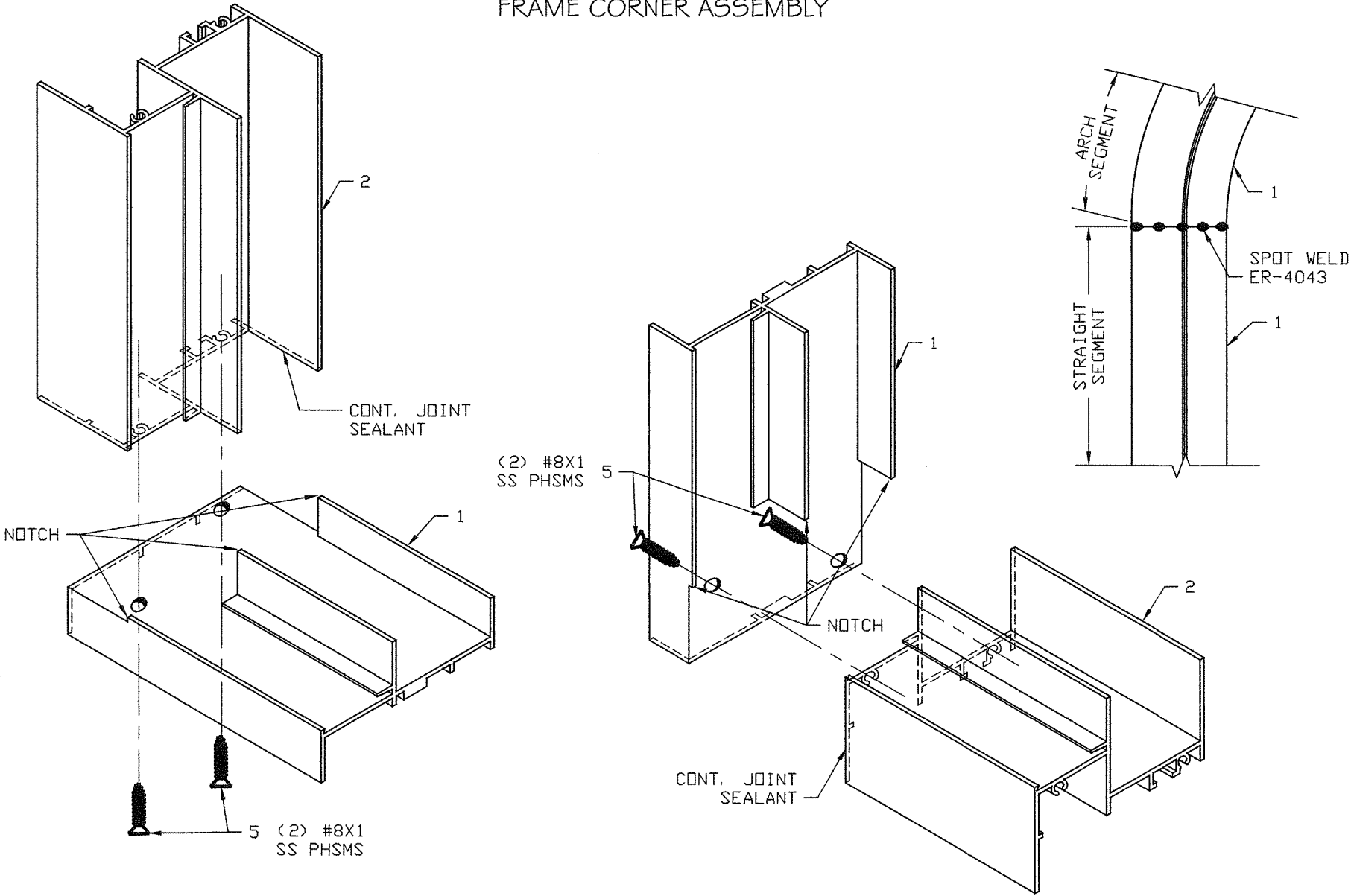


3B- FSP 017B - IG GLAZING STOP
6063-T6 ALUMINUM ALLOY

BILL OF MATERIALS:

ITEM	PART #	DESCRIPTION	MATERIAL	REMARKS
1	FSP 014	1-3/8" PERIMETER FRAME	ALUM. 6063-T6	
2	FSP 015	2-1/8" PERIMETER FRAMING	ALUM. 6063-T6	
3	FSP 017	ROUND GLAZING STOP	ALUM. 6063-T6	
3A	FSP 017A	SQUARE GLAZING STOP	ALUM. 6063-T6	
3B	FSP 017B	INSULATED GLASS GLAZING STOP	ALUM. 6063-T6	
4	SEAL 01.1	DOW 995 SILICONE	SILICONE	DOW CORNING
5		#8X1 PH SMS	STEEL	
6	SEAL 01.2	PECORA 896	SILICONE	PECORA
7	SEAL 01.3	DOW 899 SILICONE	SILICONE	DOW CORNING
8	GLASS	9/16" IMPACT LAMINATED GLASS	GLASS	LARGE MISSILE
8A	GLASS	5/16" IMPACT LAMINATED GLASS	GLASS	LARGE MISSILE
8B	GLASS	7/8" IG IMPACT LAMINATED GLASS	GLASS	LARGE MISSILE

FRAME CORNER ASSEMBLY



PPMF Inc.
ENGINEERING SERVICES - CA 32459
9715 W. BROWARD BLVD.
PLANTATION, FL 33324
PPMF@AOL.COM

PRODUCT:
TITAN SERIES TFX-2750
ALUMINUM FIXED WINDOW
LARGE & SMALL IMPACT RATED

TITAN
GLASS & ALUMINUM, LLC

MANUFACTURER:
450 WEST 27TH STREET
HIALEAH, FLORIDA, 33010
PH: (305) 888-0911
FAX: (305) 671-3840

MIAMI-DADE BCCO:
PRODUCT REVISED
as complying with the Florida
Building Code
NOA-No. **20-0814.11**
Expiration Date: **03/11/2024**
By: *Manuel Perez*
Miami-Dade Product Control

SCALE:
NA
DATE:
06/20/2020
DRAWING #
20-066
SHEET
5 OF 5