



DEPARTMENT OF REGULATORY AND ECONOMIC RESOURCES (RER)  
 BOARD AND CODE ADMINISTRATION DIVISION  
**NOTICE OF ACCEPTANCE (NOA)**

**Horton Automatics Division of Overhead Door**  
**4242 Baldwin Boulevard**  
**Corpus Christi, TX 78405**

**SCOPE:**

This NOA is being issued under the applicable rules and regulations governing the use of construction materials. The documentation submitted has been reviewed and accepted by Miami-Dade County RER -Product Control Section to be used in Miami Dade County and other areas where allowed by the Authority Having Jurisdiction (AHJ).

This NOA shall not be valid after the expiration date stated below. The Miami-Dade County Product Control Section (In Miami Dade County) and/or the AHJ (in areas other than Miami Dade County) reserve the right to have this product or material tested for quality assurance purposes. If this product or material fails to perform in the accepted manner, the manufacturer will incur the expense of such testing and the AHJ may immediately revoke, modify, or suspend the use of such product or material within their jurisdiction. RER reserves the right to revoke this acceptance, if it is determined by Miami-Dade County Product Control Section that this product or material fails to meet the requirements of the applicable building code.

This product is approved as described herein and has been designed to comply with the Florida Building Code, including the High Velocity Hurricane Zone.

**DESCRIPTION: Series "110" (O-Sx-Sx-O) Aluminum Automatic Sliding Door w/ Breakout-NI.**

**APPROVAL DOCUMENT:** Drawing No. **110906 Rev 11**, titled "Series 2001/1 10 Non-Impact Slide", sheets 1 through 5, of 5 prepared by manufacturer, dated 11/07/06 and last revised on 10-08-18, signed and sealed by John E. Scates, P.E., bearing the Miami-Dade County Product Control Revision stamp with the Notice of Acceptance number and expiration date by the Miami-Dade County Product Control Section.

**MISSILE IMPACT RATING: None**

**Limitations:**

1. Approved Hurricane protection Devices complying w/ FBC are required.
2. Not approved where water infiltration is required.
3. See sheet 3 for anchor and substrates options. Applicable edge distance to be measured from screw center line to the outer face of the substrate.
4. See glazing details in sheet 2. See Max DLO in sheet 1 and max DLO for optional Muntins in sheet 3.
5. Electrical/ Electronic functions are not part of this approval and to be reviewed by appropriate Bldg. official.

**LABELING:** Each unit shall bear a permanent label with the manufacturer's name or logo, city, state and series and following statement: "Miami-Dade County Product Control Approved", noted herein.

**RENEWAL** of this NOA shall be considered after a renewal application has been filed and there has been no change in the applicable building code negatively affecting the performance of this product.

**TERMINATION** of this NOA will occur after the expiration date or if there has been a revision or change in the materials, use, and/or manufacture of the product or process. Misuse of this NOA as an endorsement of any product, for sales, advertising or any other purposes shall automatically terminate this NOA. Failure to comply with any section of this NOA shall be cause for termination and removal of NOA.

**ADVERTISEMENT:** The NOA number preceded by the words Miami-Dade County, Florida, and followed by the expiration date may be displayed in advertising literature. If any portion of the NOA is displayed, then it shall be done in its entirety.

**INSPECTION:** A copy of this entire NOA shall be provided to the user by the manufacturer or its distributors and shall be available for inspection at the job site at the request of the Building Official.

This NOA **revises NOA #18-1025.08** and consists of this page 1 and evidence pages E-1, E-2 & E-3, as well as approval document mentioned above.

The submitted documentation was reviewed by **Ishaq I. Chanda, P.E.**



*Ishaq I. Chanda*

**Horton Automatics Division of Overhead Door**

**NOTICE OF ACCEPTANCE: EVIDENCE SUBMITTED**

**1. Evidence submitted under previous approvals**

**A. DRAWINGS**

1. Manufacturer's die drawings and sections (see files below)
2. Drawing No. **110906**, titled "Series 2001/110 Non-Impact Slide", sheets 1 through 5, of 5 prepared by manufacturer, dated 11/07/06 and last revised on 10-02-13, signed and sealed by John E. Scates, P.E.

**B. TESTS (submitted under file #15-0922.09/#13-0530.13/#12-0801.05/ #08-0528.01)**

1. Test reports on: 1) Air Infiltration Test, per FBC, TAS 202-94  
2) Uniform Static Air Pressure Test, Loading per FBC TAS 202-94  
3) Water Resistance Test, per FBC, TAS 202-94 (Not conducted)  
4) Forced Entry Test, per FBC 2411 3.2.1, TAS 202-94  
along with installation diagram of an aluminum automatic sliding glass doors, prepared by Hurricane Testing Laboratories, Test Report No. **HTL-0322-1103-07**, dated 03/14/08 and revised on 06/12/08 by an addendum letter, signed and sealed by Vinu Abraham, P.E.

**C. CALCULATIONS**

1. Anchor verification calculations and structural analysis complying w/ FBC 2014 (5<sup>th</sup> Edition), dated 09/11/15, prepared, signed and sealed by John E. Scates, P.E.
2. Glazing complies w/ ASTM E-1300-02, -04 & -09.

**D. QUALITY ASSURANCE**

1. Miami Dade Department of Regulatory and Economic Resources (RER).

**E. MATERIAL CERTIFICATIONS**

1. None.

**F. STATEMENTS**

1. Statement letter of conformance to FBC 2014(5<sup>th</sup> Edition) & "No financial interest", dated 09/11/15, signed & sealed by John E. Scates, P.E.
2. Addendum letter dated 06-12-08, issued by Hurricane Testing lab, signed and sealed by Vinu Abraham, P. E. (submitted under files **#12-0801.05/ #08-0528.05**)
3. Lab compliance as part of the above referenced test report.

**G. OTHER**

1. This NOA **revises & renews** NOA # **13-0530.13**, expiring on October 09, 2023.

*Ishaq I. Chanda*

---

**Ishaq I. Chanda, P.E.**  
**Product Control Unit Supervisor**  
**NOA No. 20-0915.04**  
**Expiration Date: October 09, 2023**  
**Approval Date: December 23, 2020**

**Horton Automatics Division of Overhead Door**

**NOTICE OF ACCEPTANCE: EVIDENCE SUBMITTED**

- 2. **Evidence submitted under previous approvals (#17-0828.02)**
  - A. **DRAWINGS**
    - 1. None.
  - B. **TESTS**
    - 1. None
  - C. **CALCULATIONS**
    - 1. None
  - D. **QUALITY ASSURANCE**
    - 1. Miami Dade Department of Regulatory and Economic Resources (RER).
  - E. **MATERIAL CERTIFICATIONS**
    - 1. None.
  - F. **STATEMENTS**
    - 1. Statement letters of conformance to FBC 2017(6th Edition) & FBC 2014 (5th Edition) dated 11/02/17, prepared, signed and sealed by John E. Scates, P.E.
  - G. **OTHER**
    - 1. This NOA revises NOA # 15-0922.09, expiring 10/09/2023.
- 1. **New Evidence submitted**
  - A. **DRAWINGS**
    - 1. Drawing No. **110906 Rev 11**, titled “Series 2001/110 Non-Impact Slide”, sheets 1 through 5, of 5 prepared by manufacturer, dated 11/07/06 and last revised on 10-08-18, signed and sealed by John E. Scates, P.E.  
(Note: This revision consists of updating setting block at glazing detail)
  - B. **TESTS**
    - 1. None
  - C. **CALCULATIONS**
    - 1. None
  - D. **QUALITY ASSURANCE**
    - 1. Miami Dade Department of Regulatory and Economic Resources (RER).
  - E. **MATERIAL CERTIFICATIONS**
    - 1. None.
  - F. **STATEMENTS** (submitted under #17-0828.02)
    - 1. Statement letters of conformance to FBC 2017(6th Edition) & FBC 2014 (5th Edition) dated 11/02/17, prepared, signed and sealed by John E. Scates, P.E.
  - G. **OTHER**
    - 1. This NOA revises NOA # 17-0828.02, expiring 10/09/2023.

*Ishaq I. Chanda*

---

**Ishaq I. Chanda, P.E.**  
**Product Control Unit Supervisor**  
**NOA No. 20-0915.04**  
**Expiration Date: October 09, 2023**  
**Approval Date: December 23, 2020**

**Horton Automatics Division of Overhead Door**

**NOTICE OF ACCEPTANCE: EVIDENCE SUBMITTED**

**2. New Evidence submitted**

**A. DRAWINGS**

1. Drawing No. **110906 Rev 11**, titled “Series 2001/110 Non-Impact Slide”, sheets 1 through 5, of 5 prepared by manufacturer, dated 11/07/06 and last revised on 10-08-18, signed and sealed by John E. Scates, P.E.

**B. TESTS**

1. None

**C. CALCULATIONS**

1. None

**D. QUALITY ASSURANCE**

1. Miami Dade Department of Regulatory and Economic Resources (RER).

**E. MATERIAL CERTIFICATIONS**

1. None.

**F. STATEMENTS**

1. Statement letters of conformance to FBC 2020 (**7th** Edition) & “No financial interest” dated 08/28/20, prepared, signed and sealed by John E. Scates, P.E.

**G. OTHER**

1. This NOA revises NOA # **18-1025.08**, expiring 10/091/2023.

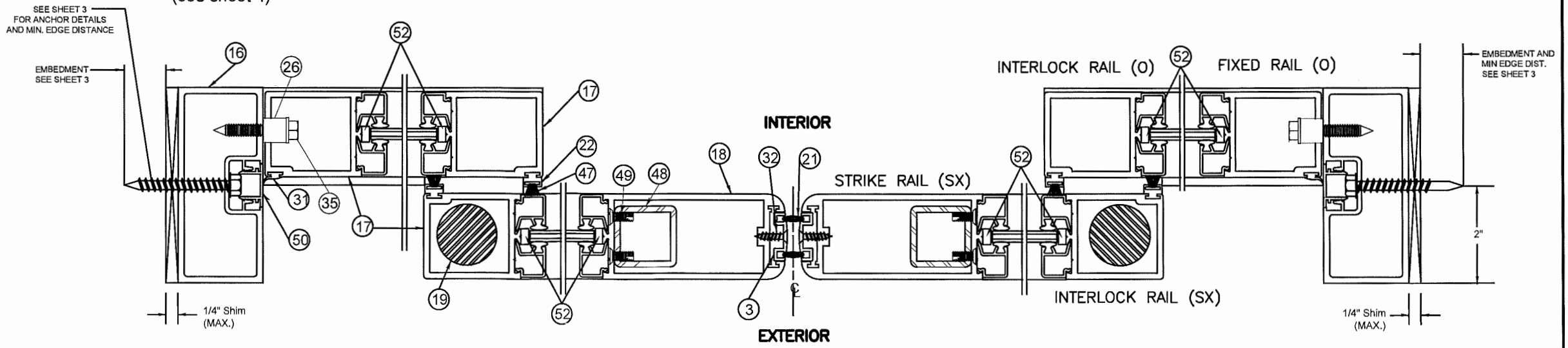
*Ishaq I. Chanda*

---

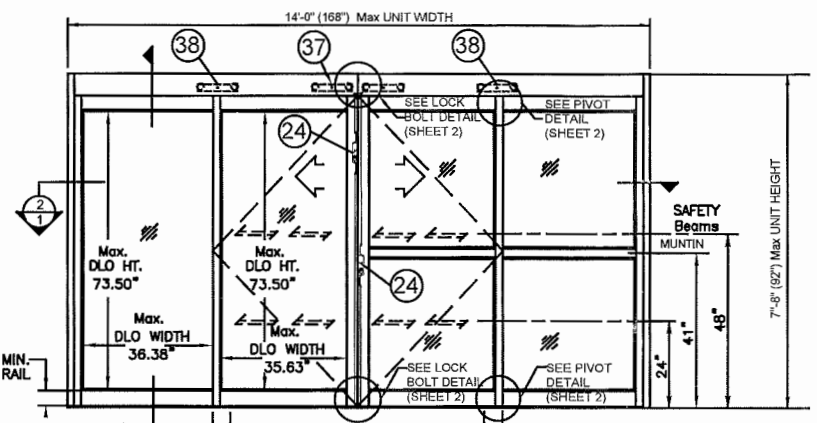
**Ishaq I. Chanda, P.E.**  
**Product Control Unit Supervisor**  
**NOA No. 20-0915.04**  
**Expiration Date: October 09, 2023**  
**Approval Date: December 23, 2020**

NOTE:  
For fastener location and type see sheets 3  
The 1.6 wind load allowance was used  
in the wood anchor calculations.

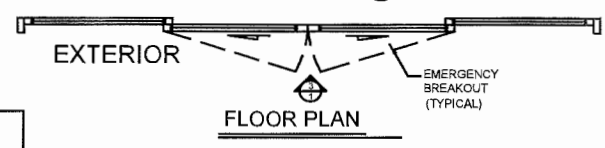
Locking Mechanism : 3point Locking Device Standard (24)(25)(27)  
(see sheet 4)



HORIZONTAL SECTION 2/1



EXTERIOR ELEVATION 3/1



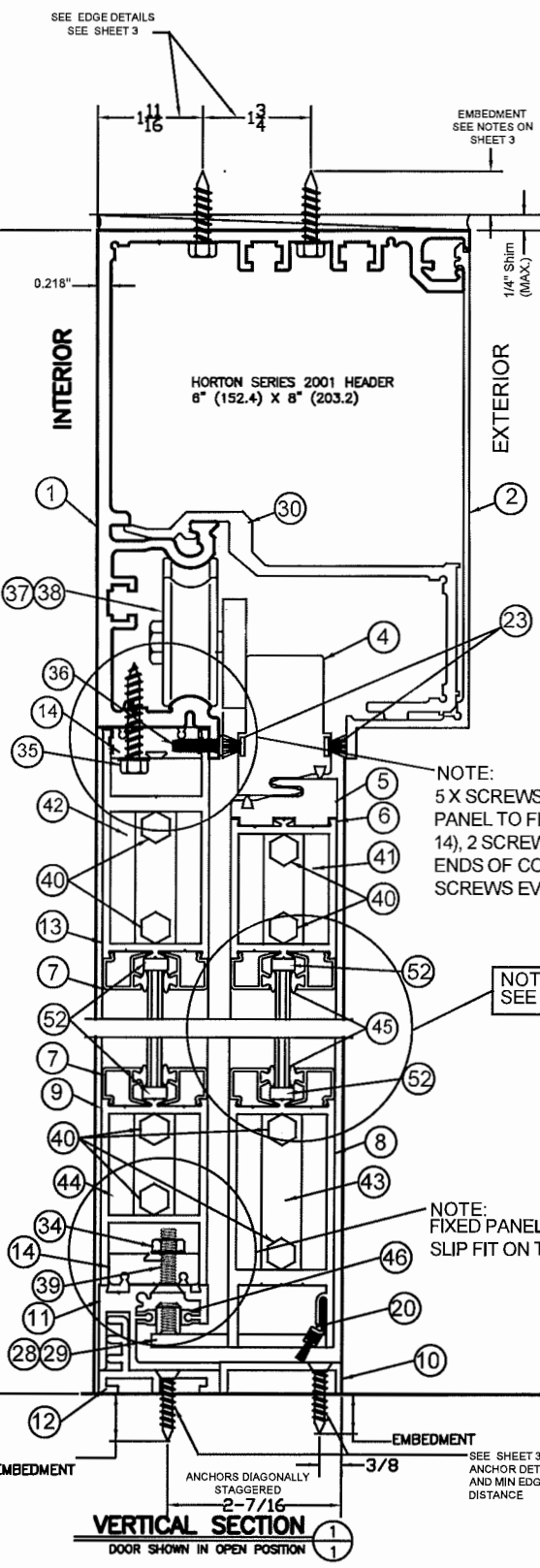
FLOOR PLAN 4/1

Available Unit Sizes:	Panel Width nom. door	Net Slide opening
14'-0\"/>		

**PRODUCT REVISED**  
as complying with the Florida  
Building Code  
NOA-No. 20-0915.04  
Expiration Date 10/09/2023  
By *Ishag I. Chank*  
Miami-Dade Product Control

- NOTES:
1. This product has been designed and tested to comply with the current Florida Building Code, including High Velocity Hurricane Zone (HVHZ).
  2. Approved hurricane protection devices complying with FBC are required, as applicable.
  3. Electrical/Electronic functions are not part of this approval and must be reviewed by appropriate building official.
  4. See anchor installation details concerning types, substrate, edge distance, spacing and embedment on sheet 3.
  5. 1x or 2x wood bucks by others must be secured properly to transfer loads using appropriate fasteners and quantities. Fasteners to secure wood buck must penetrate concrete or grouted CMU jamb substrate minimum 2.0" at head and sill.
  6. Permit holder shall verify the adequacy of the existing structure to withstand additional imposed loads.
  7. 1/4" max shim allowed. Type of shim to comply with Florida Building Code and be capable of resisting frame rotation.
  8. All structural extrusions are 6063-T5 Aluminum with typical thickness of 1/8", unless otherwise specified.
  9. Item 52, glazing block, snap-in nylon 6-6, min hardness Rockwell M85 (Total 4-blocks per glass panel)

Bi - Parting Slide Doors	
Where Water Infiltration Requirement is needed	Where Water Infiltration Requirement is NOT needed
Not Approved	± 80 PSF

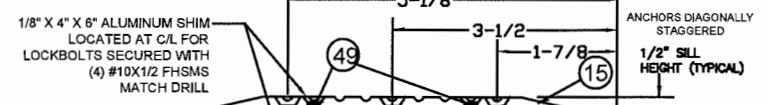


VERTICAL SECTION 1/1

NOTE:  
5 X SCREWS (ITEM 36) TO FASTEN FIXED PANEL TO FIXED CORNERBLOCK (ITEM 14), 2 SCREWS MOUNTED 1.00" FROM ENDS OF CORNER BLOCK WITH OTHER 3 SCREWS EVENLY SPACED

NOTE:  
SEE GLAZING DETAIL SEE SHEET 2

NOTE:  
FIXED PANEL'S BOTTOM RAIL (ITEM 9) TO BE SLIP FIT ON TO CORNER BLOCK (ITEM 14)



THRESHOLD DETAIL

3 - Point Lock  
( See Sheet 4)  
Series 110 Non-Impact Slide  
Slide Dwg. No. 110906

NO.	REVISIONS DESCRIPTION	DATE	ARCHITECT:
4	ADDED ITEMS 51 & 52	03/14/08	CONTRACTOR:
5	ADDED +/- BOFSF RATING	03/20/08	SERIES: 110
6	REVISED PER METRO DADE ENGR.	05/27/08	TYPE: "0-SX-SX-0"
7	REVISED PER METRO DADE ENGR.	07/15/08	STYLE: NARROW
8	REVISED SEALANT DETAILS	04/23/09	FINISH:
9	REVISED FOR NOA RENEWAL	08/13/13	ACTUATION:
10	REVISED FOR NOA	08/09/15	2001/110 Non-Impact
11	UPDATED GLAZING DETAIL	08/07/18	Slide Dwg. No. 110906

LOCATION:	2001/110 Non-Impact
DISTRIBUTOR:	Slide Dwg. No. 110906
CHK: JLAJREY	DATE: 11/07/06

JOHN E. SCATES  
2560 King Arthur Blvd., Ste 124-54  
Lewisville, TX 75056  
FL PE 51737

*John E. Scates 10/9/18*

**PRODUCT REVISED**  
as complying with the Florida  
Building Code  
Acceptance No. 18-1025-08  
Expiration Date: OCT 09, 2023  
*Ishag I. Chank*  
Miami-Dade Product Control

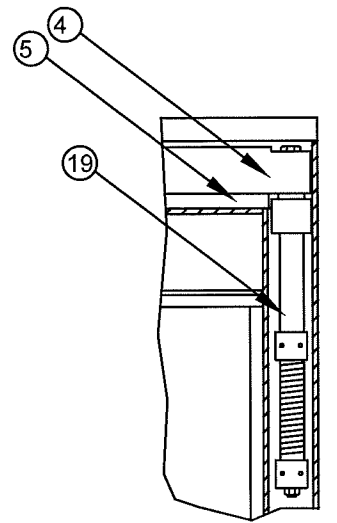
A DIVISION OF OVERHEAD DOOR CORP.  
4242 BALDWIN BOULEVARD  
CORPUS CHRISTI, TEXAS 78405-3399  
361-888-5591 1-800-531-3111  
FAX: 361-888-6510, 1-800-531-3108

**Horton**  
A DIVISION OF OVERHEAD DOOR CORP.

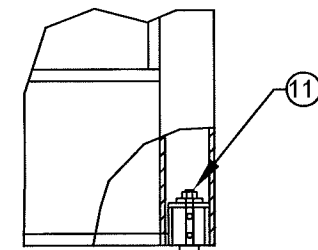
JOB: METRO-DADE

DATE: 11/07/06

REVISION: 11

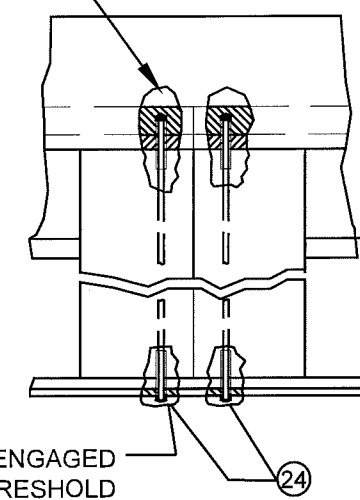


"SX" PANEL  
TOP PIVOT



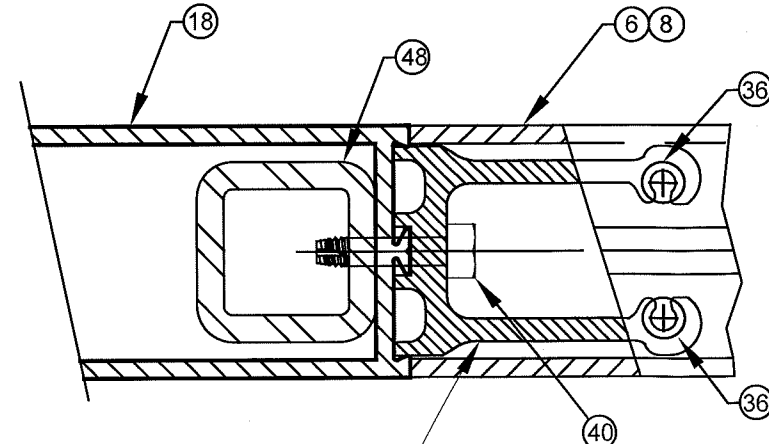
"SX" PANEL  
BTM. PIVOT

24 LOCK BOLT ENGAGED  
IN TOP BREAKAWAY  
BARS AT HEADER



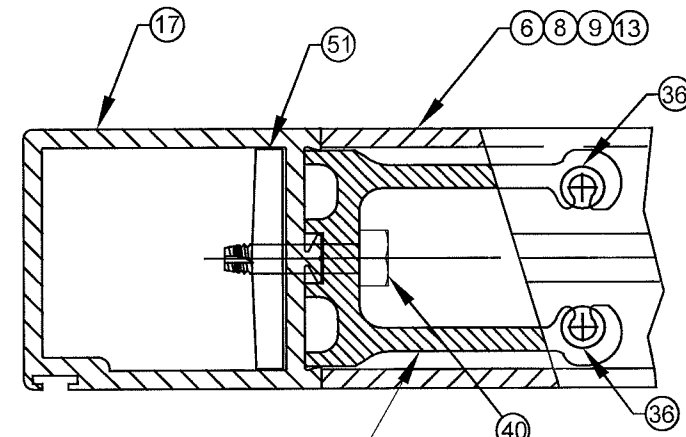
LOCK BOLT ENGAGED  
IN THRESHOLD

LOCK BOLT DETAIL  
3-POINT LOCK



CONNECTION BLOCK  
WITH REINFORCEMENT

STRIKE RAIL (SX)



CONNECTION BLOCK

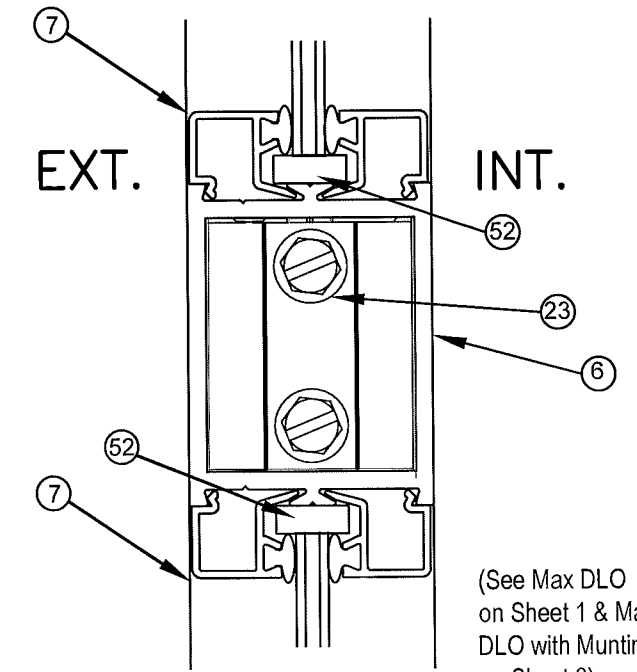
INTERLOCK RAIL (SX)  
INTERLOCK RAIL (O)  
FIXED RAIL (O)

WEATHERSEALS:  
C350 NOSING SEAL  
C524-FL SIDE PANEL BOTTOM SEAL  
C293 WEATHER SEAL

HARDWARE:  
C883 THRESHOLD/HEADER BOLT  
ADAMS-RITE #4015

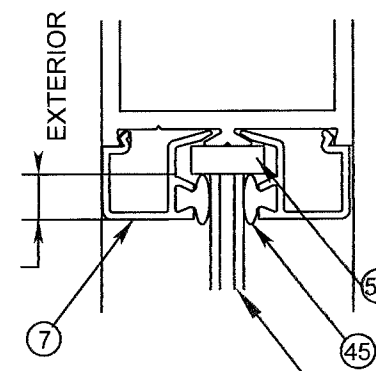
SCHLEGEL CORP. SKIRTING SEAL #1104-5101  
FELTON NYLON BRISTLE #490621  
SCHLEGEL CORP. #8430-5016-7

**PRODUCT REVISED**  
as complying with the Florida  
Building Code  
NOA-No. 20-0915.04  
Expiration Date 10/09/2023  
By Shay L. Chan  
Miami-Dade Product Control



(See Max DLO  
on Sheet 1 & Max  
DLO with Muntin  
on Sheet 3)

MUNTIN OPTION



5/16 min  
glass bite

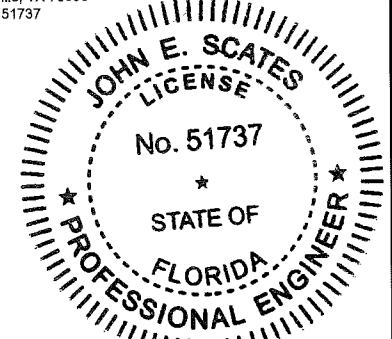
See note 9 on pg 1 (Item 52)

1/4" Thick(nominal)  
Tempered glass

GLAZING DETAIL

Series 110 Non-Impact Slide

JOHN E. SCATES  
2560 King Arthur Blvd., Ste 124-54  
Lewisville, TX 75056  
FL PE 51737



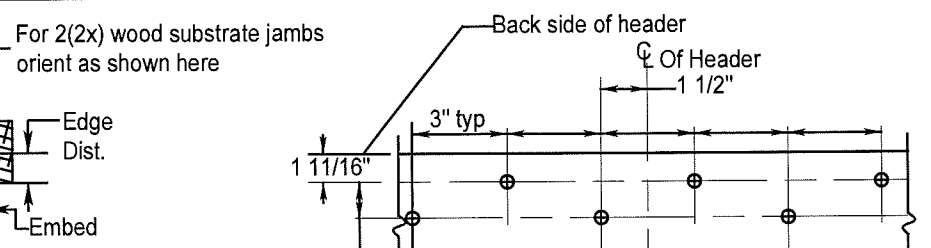
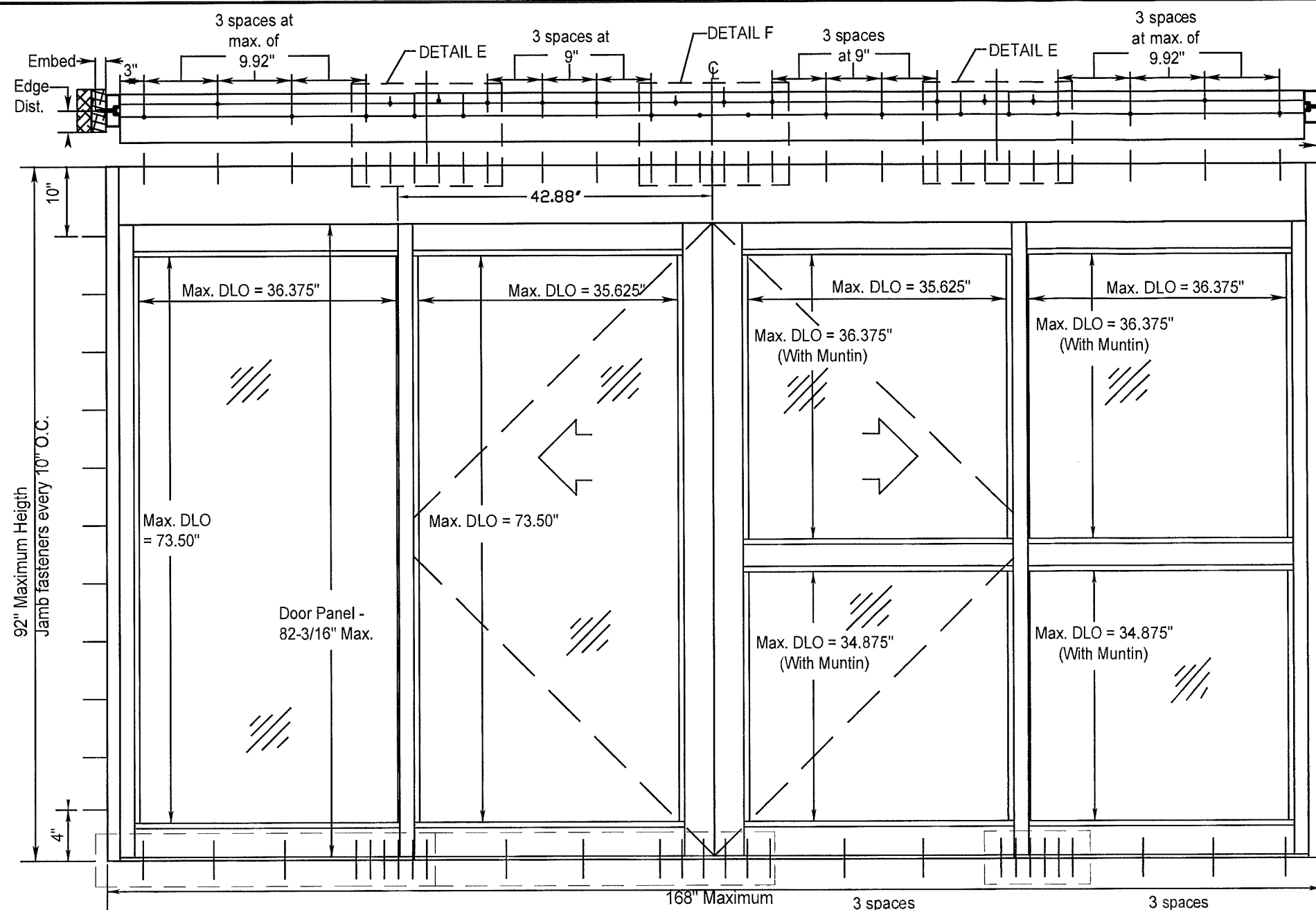
*John E. Scates 10/8/18*

**PRODUCT REVISED**  
as complying with the Florida  
Building Code  
Acceptance No. 18-1025-08  
Expiration Date 10/09/23  
By Shay L. Chan  
Miami-Dade Product Control

NO.	REVISIONS DESCRIPTION	DATE	ARCHITECT:
4	ADDED ITEMS 51 & 52	03-14-08	
5	ADDED +/- 80 PSF WIND	03-20-08	
6	REVISED PER MIRO DADO ENGR	05-27-08	
7	REVISED PER MIRO DADO ENGR	07-15-08	
8	REVISED SEALANT DETAILS	04-23-09	
9	REVISED FOR NOA RENEWAL	08-13-13	
10	REVISED FOR NOA	09-09-15	
11	UPDATED GLAZING DETAIL	09-07-18	

CONTRACTOR:	4242 BALDWIN BOULEVARD CORPUS CHRISTI, TEXAS 78405-3399
SERIES:	110
STYLE:	NARROW
FINISH:	
ACTUATION:	
LOCATION:	
DISTRIBUTOR:	
OWN:	L Rod
CHK:	J LACKY
P.O. #	
DATE	11/07/06
REVISION	11

A DIVISION OF OVERHEAD DOOR CORP.  
 4242 BALDWIN BOULEVARD  
 CORPUS CHRISTI, TEXAS 78405-3399  
 361-888-5591 1-800-531-3111  
 361-888-6510, 1-800-531-3108  
**JOB METRO-DADE**  
**Misc. Details**  
**Dwg. No. 110906**



**TYPE 110 Header**

The frame must be shimmed with a type of shim complying with the Florida Building Code and is capable of resisting the frame's rotation-1/4" thk. Max

The 1.6 wind load allowance was used in the wood anchor calculations.

**HEADER**

**Steel (0.125" Thick, Fy=36 KSI) - INTERCORP #14**  
Steel HWH Self-Drilling Screw (Grade 5), 0.625" Min. Edge Distance from substrate (Full Thread Engagement)

**Aluminum (0.125" Thick Min./6063-T5) - 1/4"-14**  
HWH Sheetmetal Screw (Grade 5), 1" Min. Edge Distance from substrate (Full Thread Engagement)

**JAMBS**

**Steel (0.125" Thick, Fy=36 KSI) - ITW TEKS SCREW**  
(Grade 5) #14-20, HWH Self-Drilling Screw 0.625" Minimum Edge Distance from substrate (Full Thread Engagement)

**Concrete (3350 PSI) - Crete-Flex SS4 1/4"**  
HWH Concrete Screw/Anchor, 1.75" Embed, 2.5" Min. Edge Distance from substrate

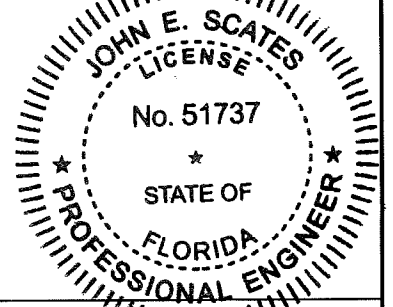
**Masonry (Solid CMU ASTM C-90 Block) -**  
Crete-Flex SS4 1/4" HWH Concrete Screw/Anchor, 1.25" Embed, 2.5" Min. Edge Distance from substrate

**Aluminum (0.125" Thick Minimum/6063-T5) -**  
1/4"-14 HWH Sheetmetal Screw (Grade 5), 1" Min. Edge Distance from substrate (Full Thread Engagement)

**Wood (#2 SYP) - 1/4" x 4" Long Lag Bolt -**  
Grade 5, 2.75" Minimum Penetration, 1" Minimum Edge Distance from substrate Minimum Buck (2) 2X8 W/Min G = .55.

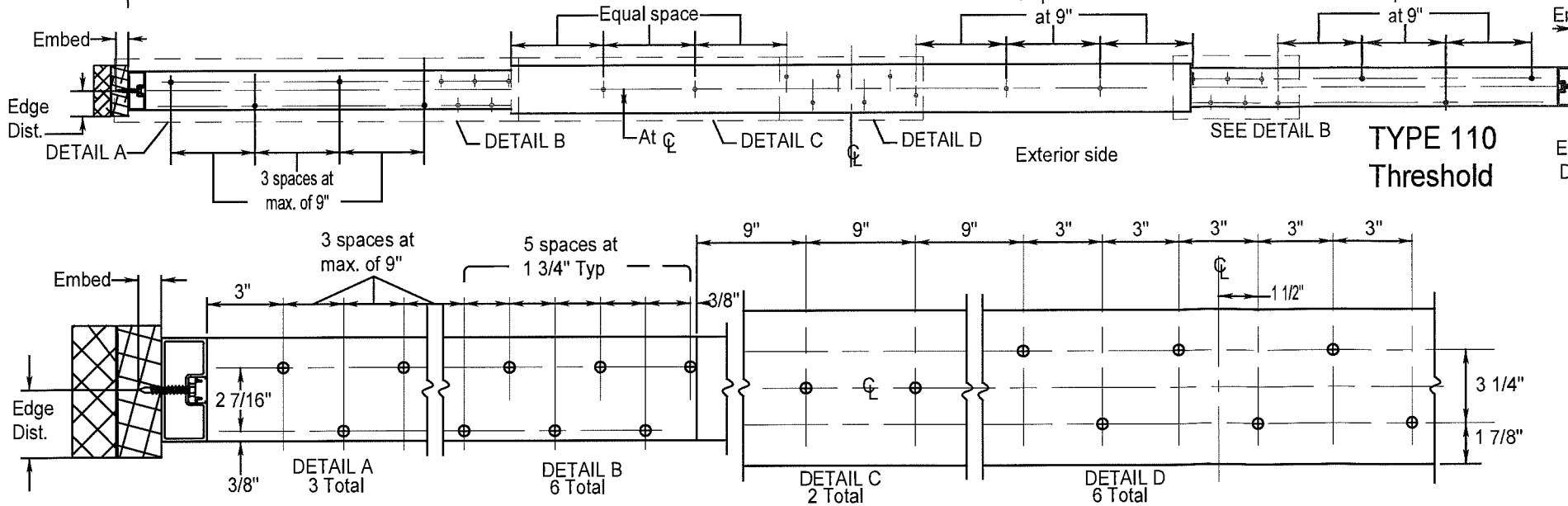
**PRODUCT REVISED as complying with the Florida Building Code**  
NOA-No. 20-0915.04  
Expiration Date 10/09/2023  
By *Ishag I. Chanda*  
Miami-Dade Product Control

JOHN E. SCATES  
2560 King Arthur Blvd., Ste 124-54  
Lewisville, TX 75056  
FL PE 51737



*John E. Scates 10/3/18*

**PRODUCT REVISED as complying with the Florida Building Code**  
Acceptance No 18-1025.08  
Expiration Date 10/09/23  
By *Ishag I. Chanda*  
Miami-Dade Product Control



**THRESHOLD**

**Steel (0.125" Thick, Fy=36 KSI) - ITW TEKS SCREW**  
#14-20 PFH w/Wings Self-Drilling Screw (Grade 5), 0.625" Minimum Edge Distance from substrate (Full Thread Engagement)

**Concrete (3350 PSI) - Crete-Flex SS4 FH 1/4"**  
Concrete Screw 1.75" Embed, 2.5" Minimum Edge Distance from substrate

**Aluminum (0.125" Thick Minimum/6063-T5) -**  
1/4"-14 FH Sheetmetal Screw (Grade 5), 1" Minimum Edge Distance from substrate (Full Thread Engagement)

**Series 110 Non-Impact Slide Anchor Locations**

NO.	REVISIONS DESCRIPTION	DATE	ARCHITECT:
1	ADDED ITEMS S1 & S2	03/14/08	CONTRACTOR:
2	ADDED +/- 80 PSF RATING	03/20/08	SERIES: 110
3	REVISED PER METRO DADE ENGR.	05/27/08	STYLE: NARROW
4	REVISED PER METRO DADE ENGR.	07/15/08	FINISH:
5	REVISED SEALANT DETAILS	04/23/09	ACTUATION:
6	REVISED FOR NOA RENEWAL	08/13/13	
9	REVISED FOR NOA	06/06/15	
11	UPDATED GLAZING DETAIL	09/07/18	

Anchor Locations  
Dwg. No. 110906

**Horton**  
A DIVISION OF OVERHEAD DOOR CORP.  
4242 BALDWIN BOULEVARD  
CORPUS CHRISTI, TEXAS 78405-3399  
361-888-5591 1-800-531-3111  
FAX: 361-888-6510, 1-800-531-3108

**JOB METRO-DADE**

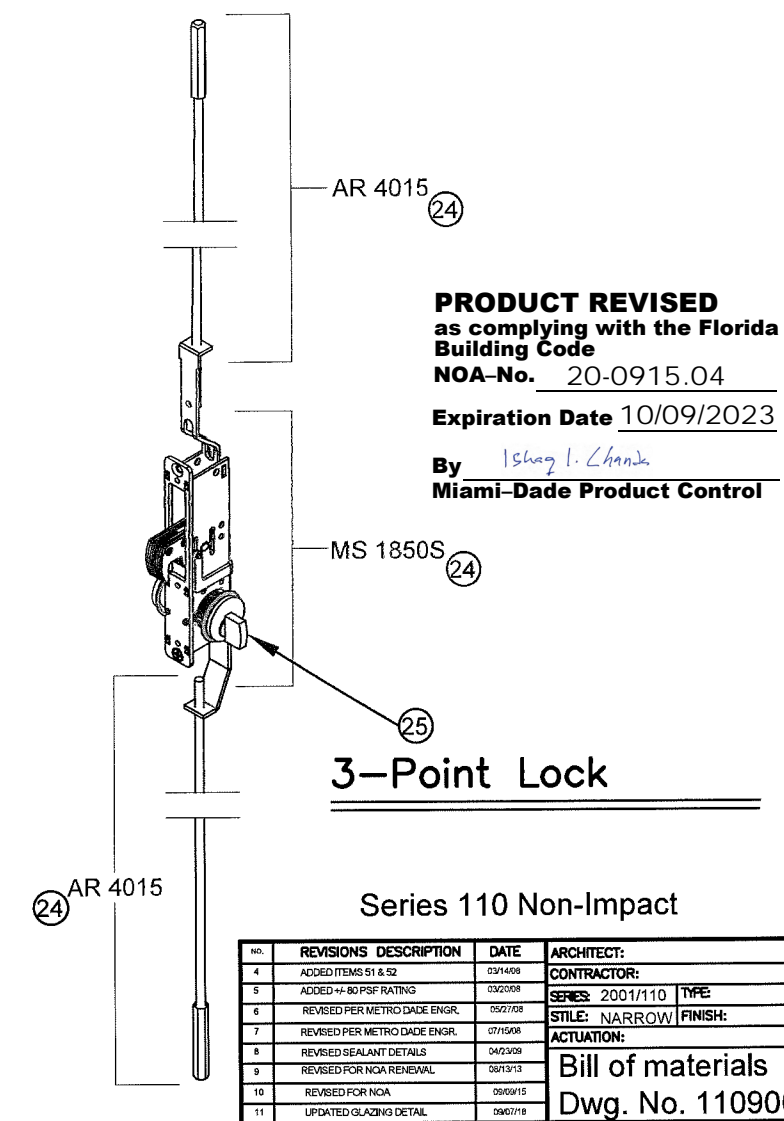
LOCATION:

DISTRIBUTOR:

DWN: Lrad    P.O. #    SHEET 3 OF 5  
CHK: JLLACKREY    DATE: 11/07/08    REVISION 11

ITEM #	HORTON PART NUMBER	DESCRIPTION
1	C03600.005AB	ALUMINUM EXTRUSION: HEADER
2	C03601.002AB	ALUMINUM EXTRUSION: HEADER FACEPLATE
3	C00358.000R	ALUMINUM EXTRUSION: ASTRAGAL
4	C00314.0000	ALUMINUM EXTRUSION: INTERLOCK TOP
5	C00327.0000AB	ALUMINUM EXTRUSION: INTERLOCK LOWER
6	C00337.000R	ALUMINUM EXTRUSION: TOP RAIL (SX) & MUNTIN (SX/O)
7	C00338.000R	ALUMINUM EXTRUSION: GLASS STOP
8	C00336.0001	ALUMINUM EXTRUSION: BOTTOM RAIL (SX)
9	C00325.0002	ALUMINUM EXTRUSION: BOTTOM RAIL (O)
10	C00315.0000	ALUMINUM EXTRUSION: TRACK FILLER
11	C00330.0001	ALUMINUM EXTRUSION: BOTTOM GUIDE
12	C00386.0001	ALUMINUM EXTRUSION: ADAPTOR
13	C02801.0000	ALUMINUM EXTRUSION: TOP RAIL (O)
14	C02899.0002	ALUMINUM EXTRUSION: CORNER BLOCK (USED AS REINFORCEMENT)
15	C00390.0000	ALUMINUM EXTRUSION: THRESHOLD 7"
16	C00351.0000	ALUMINUM EXTRUSION: JAMB TUBE 4" X 1-3/4 W/ POCKET
17	C00335.000R	ALUMINUM EXTRUSION: VERTICAL RAIL (SX/O INTERLOCK) (O FIXED)
18	C00363.0000	ALUMINUM EXTRUSION: VERTICAL RAIL (SX STRIKE)
19	C00818.000R	BAR TORSION
20	C00524.00FL	WEATHERSEAL BRUSH (FELTON #490621)
21	C00350.0000	NOSING SEAL SCHLEGEL #1104-5101
22	C00397.0000	ADAPTER FOR C00389.01FL
23	C00293.0000	WEATHER SEAL BRUSH SCHLEGEL #8430-5016-7
24	C00454.0000	LOCK, ADAMS RITE MS1850S W/ ADAMS RITE 4015 HEADER/THRESHOLD BOLT
25	C00463.0000	THUMBTURN ADAMS RITE 4066
26	C02098.0000	SECURITY POST; 1/2" O.D. X 3/4" LG X .083" WALL ALUM. TUBE
27	C00883.0000	3/8 HEXT BOLT ADAMS RITE 4015 EXTENDING INTO HEAD AND SILL 1/2"
28	C00843.01FL	BOTTOM GUIDE DOOR MOUNTED
29	C00844.01FL	BOTTOM GUIDE DOOR MOUNTED
30	C03638.0000	HEADER & FACEPLATE SUPPORT
31	C00371.000R	WEATHERSTRIP; PANEL TO JAMB
32	C00664.0001	#8 X 3/4 FHSMS
33	C09653.0000	#10 X 3/4 FHSMS
34	C00404.0000	1/4-20 LOCK NUT
35	C00417.0000	#14 X 1-1/2 HWSMS
36	C00449.0000	#10-24 X 1 FHMS
37	C03682.0006	DRIVE WHEEL ASSEMBLY
38	C03681.0001	IDLER WHEEL ASSEMBLY
39	C08151.0000	1/4-20 X 1 FHMS
40	C08150.0000	1/4-20 X 3/4 HHMB

ITEM #	HORTON PART NUMBER	DESCRIPTION
41	C00537.000R	CORNER BLOCK (SX TOP) (SX/O MUNTIN)
42	C09490.0001	CORNER BLOCK (O TOP)
43	C00536.0001	CORNER BLOCK (SX BOTTOM)
44	C09582.0002	CORNER BLOCK (O BOTTOM)
45	C00341.0001	VINYL GLAZING BULB - EXONMOBIL CHEMICAL SANTOPRENE EXTRUDED BY CENTRAL CHEMICAL INC.
46	C00289.0000	TRACK CAP
47	C00389.01FL	INTERLOCK SEAL SCHLEGEL #7595-6011-0
48	C01905.0000	STEEL TUBE (1-1/4" X 1-1/4" X 3/16" X 80.50") A-36
49	C00437.000AB	#10-24 X 1/2 FHSMS
50	C00353.0000	COVER; RECESS - JAMB
51	C00538.000R	BACKUP PLATE; CRS
52	C00552.0003	GLAZING BLOCK, SNAP-IN NYLON 6-6 MIN HARDNESS ROCKWELL M85



NO.	REVISIONS DESCRIPTION	DATE	ARCHITECT:
4	ADDED ITEMS 51 & 52	03/14/09	
5	ADDED +/- 80 PSF RATING	03/20/08	
6	REVISED PER METRO DADE ENGR.	05/27/08	
7	REVISED PER METRO DADE ENGR.	07/15/08	
8	REVISED SEALANT DETAILS	04/23/09	
9	REVISED FOR NOA RENEWAL	08/13/13	
10	REVISED FOR NOA	09/09/15	
11	UPDATED GLAZING DETAIL	09/07/16	

CONTRACTOR: Bill of materials  
Dwg. No. 110906

JOHN E. SCATES  
2560 King Arthur Blvd., Ste 124-54  
Lewisville, TX 75056  
FL PE 51737

**JOHN E. SCATES**  
LICENSE  
No. 51737  
STATE OF  
FLORIDA  
PROFESSIONAL ENGINEER

*John E. Scates 10/8/18*

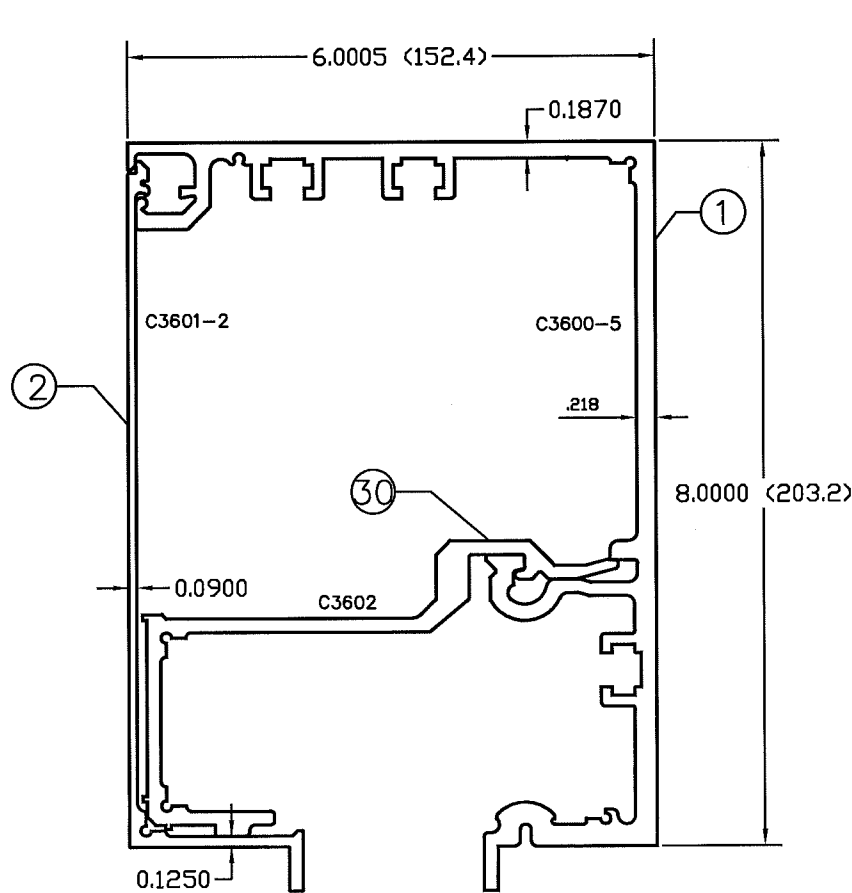
**PRODUCT REVISED**  
as complying with the Florida  
Building Code  
NOA-No. 20-0915.04  
Expiration Date 10/09/2023  
By Ismael I. Chanis  
Miami-Dade Product Control

**PRODUCT REVISED**  
as complying with the Florida  
Building Code  
Acceptance No. 18-1025-08  
Expiration Date 10/09/23  
*Ismael I. Chanis*  
Miami-Dade Product Control

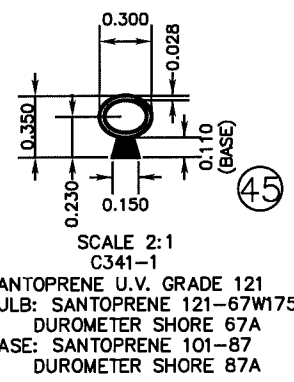
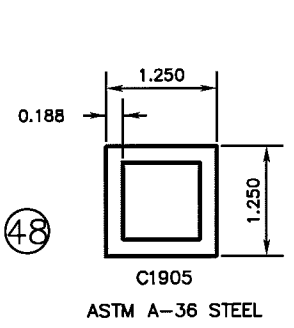
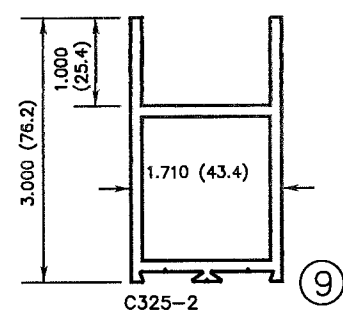
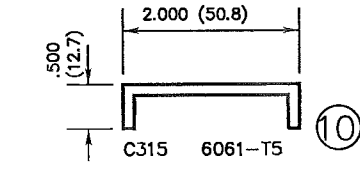
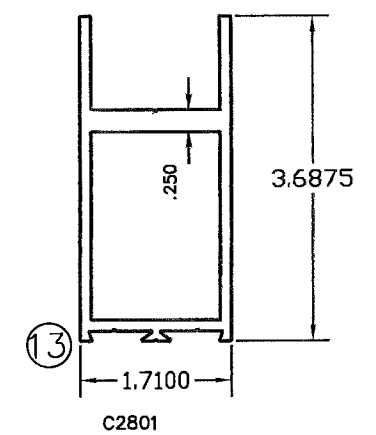
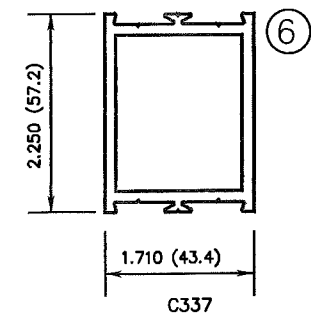
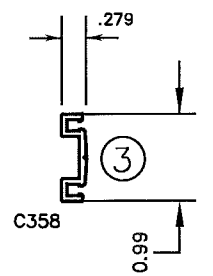
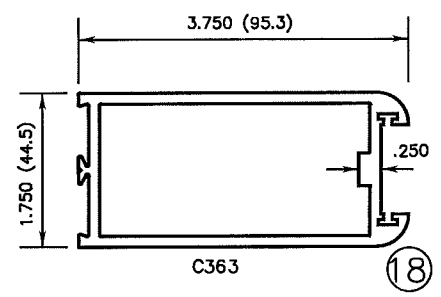
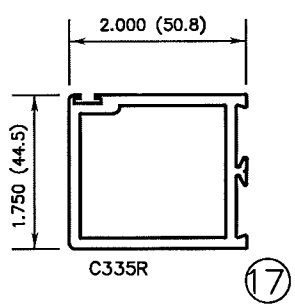
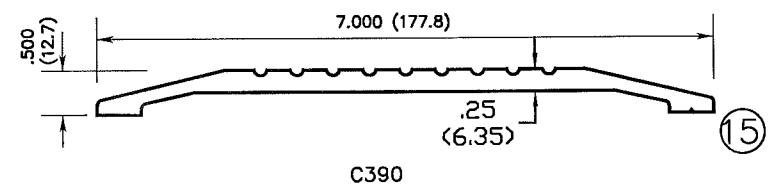
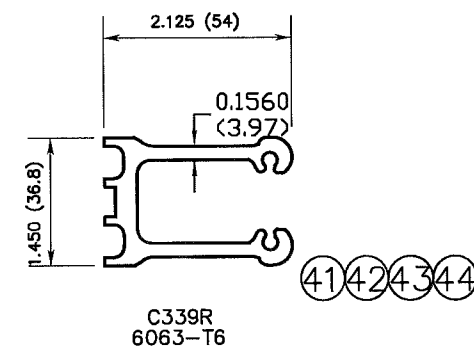
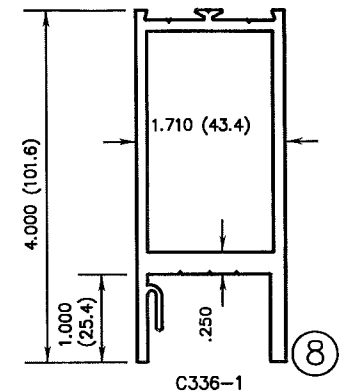
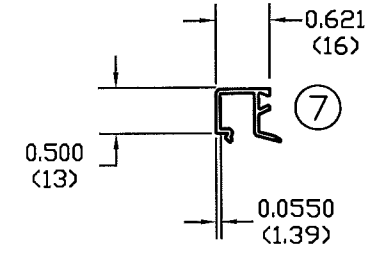
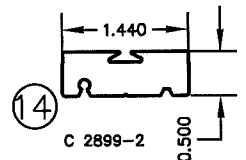
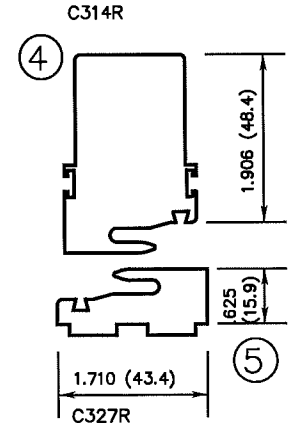
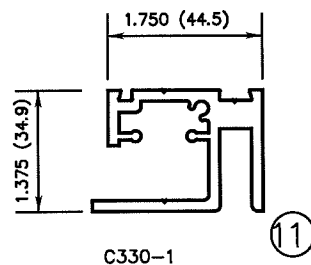
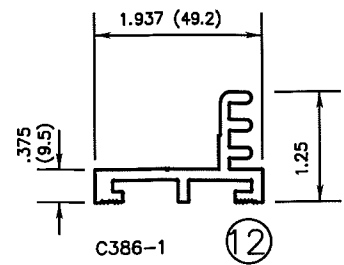
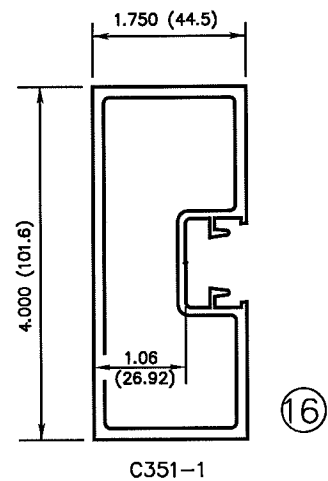
A DIVISION OF OVERHEAD DOOR CORP.  
4242 BALDWIN BOULEVARD  
CORPUS CHRISTI, TEXAS 78405-3399  
361-888-5591 1-800-531-3111  
FAX: 361-888-6510, 1-800-531-3108

**Horton**  
METRO-DADE  
JOB METRO-DADE  
LOCATION:  
DISTRIBUTOR:  
DWN: L.Rod P.O. # SHEET 4 of 5  
CHK: J.LACKY DATE 11-07-08 REVISION 11





6" X 8"  
(152.4) (203.2)  
ASSEMBLED



SANTOPRENE U.V. GRADE 121  
BULB: SANTOPRENE 121-67W175  
DUROMETER SHORE 67A  
BASE: SANTOPRENE 101-87  
DUROMETER SHORE 87A

**ALL EXTRUSIONS ARE 6063-T5 UNLESS OTHERWISE NOTED & t min=1/8"**

**PRODUCT REVISED**  
as complying with the Florida  
Building Code  
NOA-No. 20-0915.04  
Expiration Date 10/09/2023  
By Ishtaq I. Chaudh  
Miami-Dade Product Control

JOHN E. SCATES  
2560 King Arthur Blvd, Ste 124-54  
Lewisville, TX 75056  
FL PE 51737

*John E. Scates 10/8/18*

**PRODUCT REVISED**  
as complying with the Florida  
Building Code  
Acceptance No. 18-1025-08  
Expiration Date 10/09/23  
Ishtaq I. Chaudh  
Miami-Dade Product Control

Series 110 Non-Impact Slide

NO.	REVISIONS DESCRIPTION	DATE	ARCHITECT:
4	ADDED ITEMS 51 & 52	03/14/08	CONTRACTOR:
5	ADDED W-80 PSF RATING	03/20/08	SERIES: 110 TYPE: "O-SX-SX-O"
6	REVISED PER METRO DADE ENGR.	05/27/08	STYLE: NARROW FINISH:
7	REVISED PER METRO DADE ENGR.	07/15/08	ACTUATION:
8	REVISED SEALANT DETAILS	04/23/09	
9	REVISED FOR NOA RENEWAL	06/13/13	
10	REVISED FOR NOA	06/08/15	
11	UPDATED GLAZING DETAIL	09/07/18	

Extrusion chart  
Dwg. No. 110906

A DIVISION OF OVERHEAD DOOR CORP.  
4242 BALDWIN BOULEVARD  
CORPUS CHRISTI, TEXAS 78405-3399  
361-888-5591 1-800-531-3111  
FAX: 361-888-6510, 1-800-531-3108

**Horton**  
A DIVISION OF OVERHEAD DOOR CORP.

JOB: METRO-DADE  
LOCATION:  
DISTRIBUTOR:  
OWNER: Rod P.O. # SHEET 5 of 5  
CHK: J. LACKEY DATE 11/07/06 REVISION 11