



DEPARTMENT OF REGULATORY AND ECONOMIC RESOURCES (RER)
BOARD AND CODE ADMINISTRATION DIVISION

NOTICE OF ACCEPTANCE (NOA)

MIAMI-DADE COUNTY
PRODUCT CONTROL SECTION
11805 SW 26 Street, Room 208
Miami, Florida 33175-2474
T (786) 315-2590 F (786) 315-2599
www.miamidade.gov/economy

Vision Hollow Metal Limited
400 Zenway Blvd., Unit 1
Woodbridge, Ontario L4H 0S7

SCOPE:

This NOA is being issued under the applicable rules and regulations governing the use of construction materials. The documentation submitted has been reviewed and accepted by Miami-Dade County RER - Product Control Section to be used in Miami Dade County and other areas where allowed by the Authority Having Jurisdiction (AHJ).

This NOA shall not be valid after the expiration date stated below. The Miami-Dade County Product Control Section (In Miami Dade County) and/or the AHJ (in areas other than Miami Dade County) reserve the right to have this product or material tested for quality assurance purposes. If this product or material fails to perform in the accepted manner, the manufacturer will incur the expense of such testing and the AHJ may immediately revoke, modify, or suspend the use of such product or material within their jurisdiction. RER reserves the right to revoke this acceptance, if it is determined by Miami-Dade County Product Control Section that this product or material fails to meet the requirements of the applicable building code.

This product is approved as described herein and has been designed to comply with the Florida Building Code, including the High Velocity Hurricane Zone.

DESCRIPTION: Series LS2075 Single Outswing Steel Doors

APPROVAL DOCUMENT: Drawing No "AD10-10 Rev #5", titled "Series LS2075 Single Outswing Steel Door", sheets 1 through 5 of 5, prepared by MCY Engineering, Inc., dated 09-24-20, signed and sealed by Yiping Wang, P.E., bearing the Miami-Dade County Product Control Revision stamp with the Notice of Acceptance number and expiration date by the Miami-Dade County Product Control Section.

MISSILE IMPACT RATING: Large and Small Missile Impact Resistant

LABELING: Each unit shall bear a permanent label with the manufacturer's name or logo, **Woodbridge, Ontario, Canada**, series/model and following statement: "Miami-Dade County Product Control Approved", unless otherwise noted herein.

RENEWAL of this NOA shall be considered after a renewal application has been filed and there has been no change in the applicable building code negatively affecting the performance of this product.

TERMINATION of this NOA will occur after the expiration date or if there has been a revision or change in the materials, use, and/or manufacture of the product or process. Misuse of this NOA as an endorsement of any product, for sales, advertising or any other purposes shall automatically terminate this NOA. Failure to comply with any section of this NOA shall be cause for termination and removal of NOA.

ADVERTISEMENT: The NOA number preceded by the words Miami-Dade County, Florida, and followed by the expiration date may be displayed in advertising literature. If any portion of the NOA is displayed, then it shall be done in its entirety.

INSPECTION: A copy of this entire NOA shall be provided to the user by the manufacturer or its distributors and shall be available for inspection at the job site at the request of the Building Official.

This NOA **revises** NOA #20-0602.07 and consists of this page 1 and evidence pages E-1, E-2 & E-3, as well as approval document mentioned above.

The submitted documentation was reviewed by **Ishaq I. Chanda, P.E.**



Ishaq I. Chanda

NOA No. 20-1005.10
Expiration Date: July 14, 2025
Approval Date: January 07, 2021
Page 1

NOTICE OF ACCEPTANCE: EVIDENCE SUBMITTED

1. Evidence submitted under previous approvals

A. DRAWINGS

1. Manufacturer's die drawings and sections (Submitted under file # **see below**).
2. Drawing No "AD10-10", titled "Series LS2075 Single Outswing Steel Door", sheets 1 through 5 of 5, prepared by MCY Engineering, Inc., dated MAY 27, 2015, signed and sealed by Yiping Wang, P. E.

B. TESTS

1. Test reports on:
 - 1) Air Infiltration Test, per FBC, TAS 202-94
 - 2) Uniform Static Air Pressure Test, Loading per FBC TAS 202-94
 - 3) Water Resistance Test, per FBC, TAS 202-94
 - 4) Large Missile Impact Test per FBC, TAS 201-94
 - 5) Cyclic Wind Pressure Loading per FBC, TAS 203-94
 - 6) Forced Entry Test, per FBC 2411 3.2.1, TAS 202-94

Along with manufacturer's parts and section drawings of Single outswing steel doors, marked by Fenestration Test Lab, Test Report No. **FTL 8260**, dated 04/10/15, signed and sealed by Idalmis Ortega, P. E.

Along with manufacturer's parts and section drawings of flush outswing steel doors, marked by Hurricane Test Lab, Test Report No. **HTL 0549-0706-09**, dated 03/12/10, signed and sealed by Vinu J. Abraham, P. E. (Submitted under files #12-0223.29/#10-0420.04).

C. CALCULATIONS

1. Anchor verification calculations and structural analysis, complying with FBC2014 (5th Edition), prepared by MCY Engineering, Inc., dated 03/12/15 and last revised on APR 21, 2015, signed and sealed by Yiping Wang, P. E.

D. QUALITY ASSURANCE

1. Miami Dade Department of Department of Regulatory and Economic Resources (RER).

E. MATERIAL CERTIFICATIONS (Submitted under files #12-0223.29/#10-0623.02)

1. Tensile test report # 10CM-392, dated 04/06/10 prepared by QC Metallurgical, Inc., sheet and frame samples, signed & sealed by Frank Grate, P.E.
2. Tensile test report # 10CM-204, dated 03/02/10 prepared by QC Metallurgical, Inc., sheet samples, signed & sealed by Frank Grate, P.E.

F. STATEMENTS

1. Letter of conformance to FBC 2014 (5th edition) and No Financial interest dated APR 21, 2015, prepared by MCY Engineering, Inc., signed and sealed by Yiping Wang, P.E.
2. Lab compliance as part of the above referenced test report.

G. OTHER

1. This **revises & renews** NOA #12-0223.29, expiring on 07/14/20.
2. Distributor Agreement between Vision Hollow Metal Ltd., Ontario Canada and Precision Building Products, Florida USA, dated 04/13/15, signed by Nick Siragusa and Jacques Rousseau, respectively, on behalf of their companies.

Ishaq I. Chanda

Ishaq I. Chanda, P.E.
Product Control Unit Supervisor
NOA No. 20-105.10
Expiration Date: July 14, 2025
Approval Date: January 07, 2021

NOTICE OF ACCEPTANCE: EVIDENCE SUBMITTED

2. Evidence under previous submitted.

A. DRAWINGS

1. Drawing No “AD10-10 Rev #4”, titled “Series LS2075 Single Outswing Steel Door”, sheets 1 through 5 of 5, prepared by MCY Engineering, Inc., dated FEB 08, 2018, signed and sealed by Yiping Wang, P.E.

Note: This revision 4, consist of FBC code update note on sheet 1, only.

B. TESTS

1. None.

C. CALCULATIONS

1. None.

D. QUALITY ASSURANCE

1. Miami Dade Department of Regulatory and Economic Resources (RER).

E. MATERIAL CERTIFICATIONS

1. None.

F. STATEMENTS

1. Letter of conformance to FBC 2017 (6th edition) and No Financial interest dated February 08, 2018, prepared by MCY Engineering, Inc., signed and sealed by Yiping Wang, P.E.

G. OTHER

1. This NOA revises NOA # 14-0513.03, expiring 07/14/2020.

3. New Evidence submitted.

A. DRAWINGS

1. Drawing No “AD10-10 Rev #4”, titled “Series LS2075 Single Outswing Steel Door”, sheets 1 through 5 of 5, prepared by MCY Engineering, Inc., dated May 14, 2020, signed and sealed by Yiping Wang, P.E.

B. TESTS

1. None.

C. CALCULATIONS

1. None.

D. QUALITY ASSURANCE

1. Miami Dade Department of Regulatory and Economic Resources (RER).

E. MATERIAL CERTIFICATIONS

1. None.

F. STATEMENTS

2. Letter of conformance to FBC 2017 (6th edition) and No Financial interest dated May 14, 2020, prepared by MCY Engineering, Inc., signed and sealed by Yiping Wang, P.E.

G. OTHER

1. This NOA revises NOA # 18-0212.11, expiring 07/14/2025.

Ishaq I. Chanda

Ishaq I. Chanda, P.E.
Product Control Unit Supervisor
NOA No. 20-105.10
Expiration Date: July 14, 2025
Approval Date: January 07, 2021

NOTICE OF ACCEPTANCE: EVIDENCE SUBMITTED

4. New Evidence submitted.

C. DRAWINGS

1. Drawing No “**AD10-10 Rev #5**”, titled “Series LS2075 Single Outswing Steel Door”, sheets 1 through 5 of 5, prepared by MCY Engineering, Inc., dated 09-24-2020, signed and sealed by Yiping Wang, P.E.

D. TESTS

1. None.

C. CALCULATIONS

1. None.

D. QUALITY ASSURANCE

1. Miami Dade Department of Regulatory and Economic Resources (RER).

E. MATERIAL CERTIFICATIONS

1. None.

F. STATEMENTS

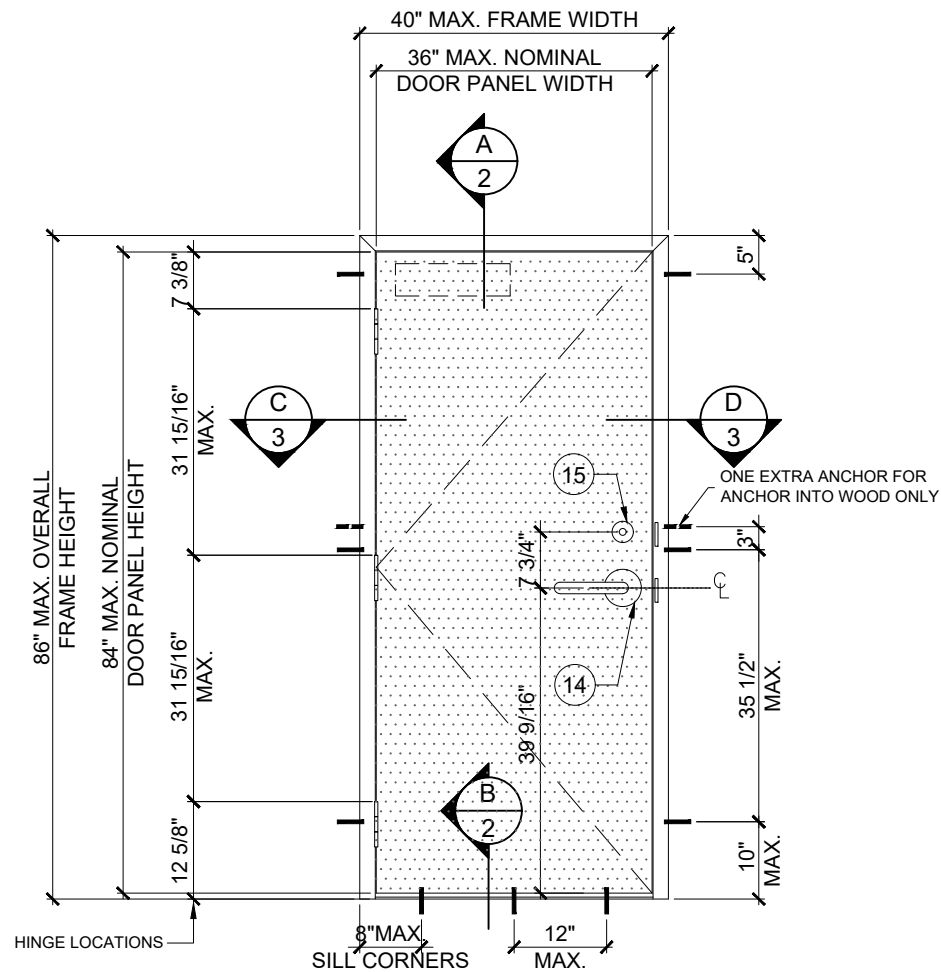
1. Letter of conformance to FBC 2020 (7th edition) and No Financial interest dated 09-24-20, prepared by MCY Engineering, Inc., signed and sealed by Yiping Wang, P.E.

G. OTHER

1. This NOA revises NOA # 20-0602.07, expiring 07/14/2025.

Ishaq I. Chanda

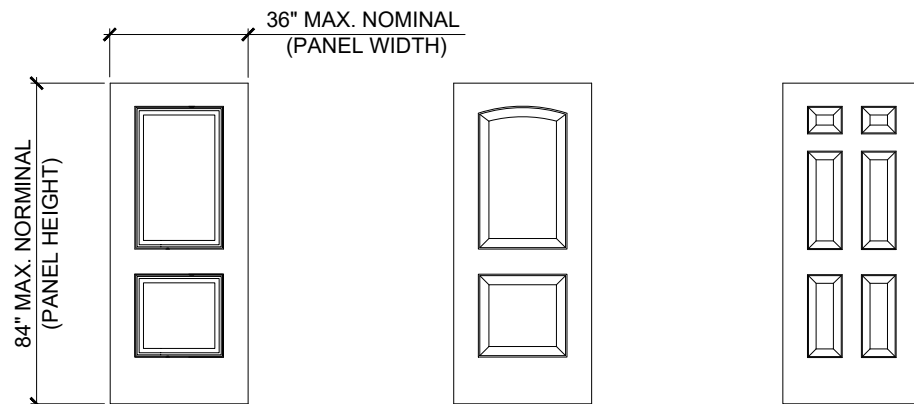
Ishaq I. Chanda, P.E.
Product Control Unit Supervisor
NOA No. 20-105.10
Expiration Date: July 14, 2025
Approval Date: January 07, 2021



(X)

TYPICAL ELEVATION
(LOCKING OPTION 2, SHOWN
SEE SHEET 4 FOR OPTION 1)

MAX. ALLOWABLE DESIGN LOAD
(FOR SIZES SHOWN ABOVE OR SMALLER
AS PERMITTED BY FBC)
+75.0 PSF
-75.0 PSF



OPTIONAL EMBOSSED DOOR LEAF PATTERNS

SERIES LS2075 SINGLE OUTSWING STEEL DOOR (LMI)

- THIS PRODUCT HAS BEEN DESIGNED AND TESTED TO COMPLY WITH THE REQUIREMENTS OF THE 2017 FLORIDA BUILDING CODE 6TH EDITION/2020 FLORIDA BUILDING CODE 7TH EDITION INCLUDING HIGH VELOCITY HURRICANE ZONE (HVHZ).
- DOORS RATED FOR LARGE MISSILE IMPACT AND DO NOT REQUIRE SHUTTERS.
- DOORS APPROVED FOR INSTALLATIONS WHERE WATER INFILTRATION RESISTANCE IS REQUIRED.
- ANCHORS SHALL BE AS LISTED, SPACED AS SHOWN ON DETAILS. ANCHORS EMBEDMENT TO BASE MATERIAL SHALL BE BEYOND WALL DRESSING OR STUCCO.
- ANCHORING OR LOADING CONDITIONS NOT SHOWN IN THESE DETAILS ARE NOT PART OF THIS APPROVAL.
- MATERIALS INCLUDING BUT NOT LIMITED TO STEEL/METAL SCREWS THAT COME INTO CONTACT WITH OTHER DISSIMILAR MATERIALS SHALL MEET THE REQUIREMENTS OF 2017 FLORIDA BLDG. CODE SECTION AS APPLICABLE.
- METAL STRUCTURES NOT BY VISION HOLLOW METAL LIMITED MUST SUPPORT LOADS IMPOSED BY DOOR SYSTEM AND TRANSFER THEM TO THE BUILDING STRUCTURE.
- 2X WOOD BUCKS BY OTHERS MUST BE ANCHORED PROPERLY TO TRANSFER LOADS TO THE STRUCTURE.
- A LOAD DURATION FACTOR IN ALLOWABLE STRESS IS USED IN DESIGN OF ANCHORS INTO WOOD ONLY.
- DOOR PANEL: MIN. 20 GA.(0.032") STEEL Fy = 50.5 KSI MIN, Fu = 56.2 KSI MIN.
DOOR FRAME: MIN. 18 GA.(0.042") STEEL Fy = 50.5 KSI MIN, Fu = 56.2 KSI MIN.
- DOOR PANEL OPTION: STAINLESS STEEL A316 OR A304 MIN. 20 GA.(0.032")
Fy=50.5 KSI, Fu = 56.2 KSI MIN.
- DOOR FRAME OPTION: STAINLESS STEEL A316 OR A304 MIN. 18 GA.(0.042")
Fy=50.5 KSI, Fu = 56.2 KSI MIN.
- ULTIMATE DESIGN LOAD OBTAINED FROM ASCE7-10/ASCE7-16, MULTIPLY BY 0.6 SHALL BE LESS THAN OR EQUAL TO MAX. DESIGN LOAD IN THIS DOCUMENT.

NOTES:
EGRESS REQUIREMENTS TO BE REVIEWED
BY BUILDING OFFICIAL.

PRODUCT REVISED
as complying with the Florida
Building Code
NOA-No. 20-1005.10
Expiration Date 07/14/2025
By Ishag I. Chande
Miami-Dade Product Control

MIAMI DADE COUNTY

September 24, 2020

REVISIONS	
NO.	DESCRIPTION
1	06-18-10 AS PER BCD COMMENTS
2	02-16-12 UPDATE TO 2010 FBC
3	03-03-15 UPDATE TO 2014 FBC
4	02-09-17 UPDATE TO 2017 FBC
5	09-24-20 UPDATE TO 2020 FBC

MCY

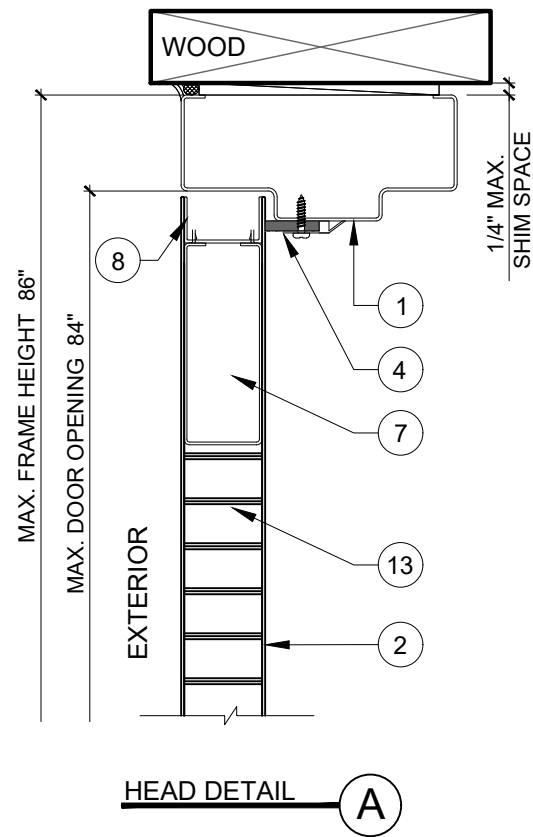
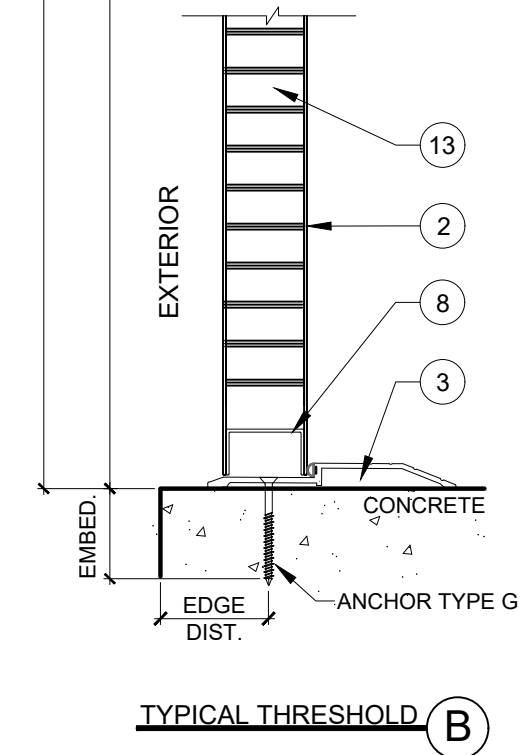
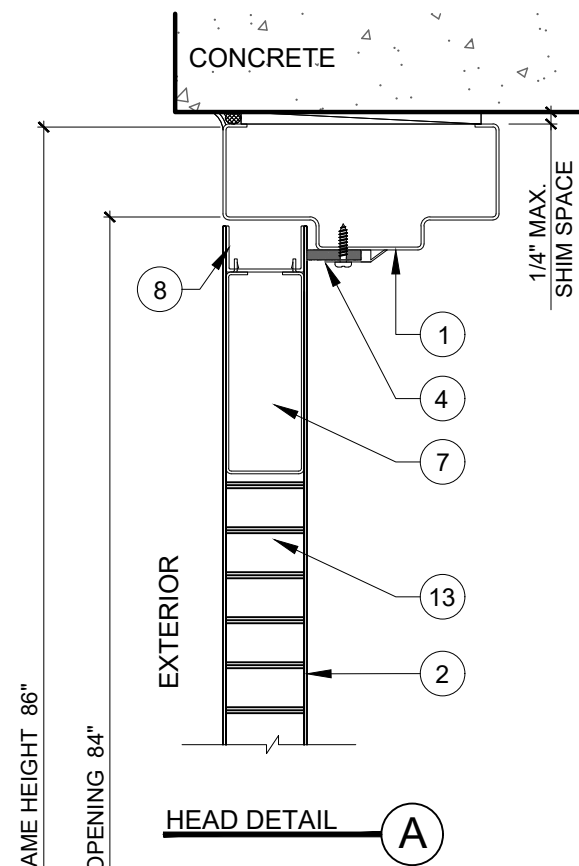
MCY ENGINEERING, INC.
GLAZING CONSULTANTS
12781 MIRAMAR PKWY. STE. 301 P: 305.271.0117
MIRAMAR, FL. 33027 F: 786.573.5063
www.MCYEngineering.com MCY.Engineering@att.net

SERIES LS2075 SINGLE OUTSWING STEEL DOOR (LMI)
VISION HOLLOW METAL LIMITED
400 ZENWAY BLVD., UNIT #1
WOODBIDGE, ON L4H0S7



DATE	09-24-2020
SCALE	N.T.S
DRAWN	J.S
PROJECT	10-03

DRAWING NO.
AD10-10



TYPICAL ANCHORS @ HEADER:

NONE

TYPICAL ANCHORS @ SIDE JAMB:

(SEE ELEV. FOR SPACING)
(SEE DETAILS ON SHEET 3)

TYPE A. 5/16" DIA. ULTRACONS BY 'ELCO' Fy=155 KSI Fu = 177 KSI (THRU EMA)
DIRECTLY INTO 2BY WOOD BUCK
DIRECTLY INTO fc'=3000 PSI CONCRETE
1-1/2" MIN. EMBED
2-1/2" MIN. EDGE DISTANCE

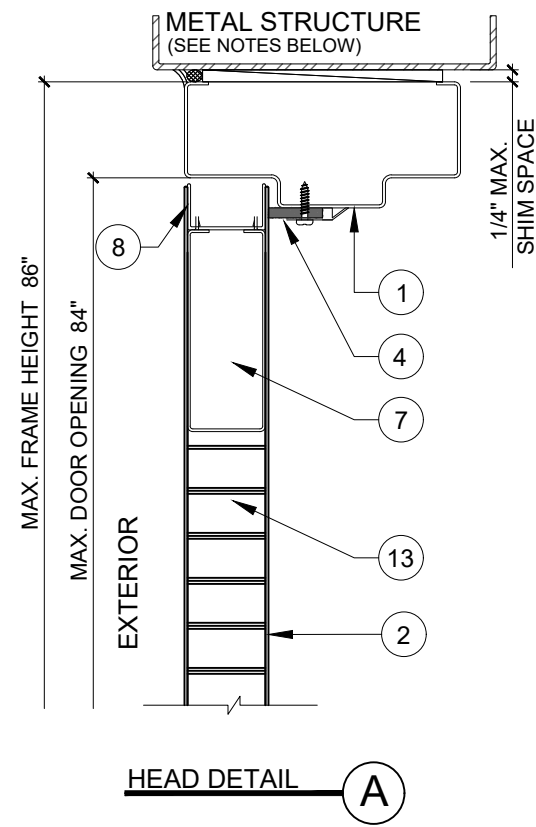
TYPE B. 3/8" DIA. HLC SLEEVE ANCHOR BY 'HILTI' (THRU EMA)
DIRECTLY INTO fc'=3000 PSI CONCRETE, 3" MIN. EDGE DIST.
DIRECTLY INTO fc'=2000 PSI CONCRETE BLOCK, 3-1/2" MIN. EDGE DIST.
1-1/4" MIN. EMBED

TYPE C. 3/8" DIA. SLEEVE ANCHOR BY 'WEJ-IT' (THRU EMA)
DIRECTLY INTO fc'=4000 PSI CONCRETE, 2-3/8" MIN. EMBED
DIRECTLY INTO fc'=2000 PSI CONCRETE BLOCK, 1-1/4" MIN. EMBED
3-1/2" MIN. EDGE DISTANCE

TYPE D. 3/8" DIA. POWER BOLT BY 'POWERS' (THRU EMA)
DIRECTLY INTO fc'=3000 PSI CONCRETE
2-1/2" MIN. EMBED
3" MIN. EDGE DISTANCE

TYPE E. 5/16" DIA. SMS OR MACHINE BOLTS (MIN. GRADE 2 CRS) OR STAINLESS STEEL (THRU EMA)
INTO METAL STRUCTURES (STEEL OR ALUMINUM 1/8" MIN. THICK.)
STEEL : Fy = 36 KSI MIN.
ALUMINUM : 6063-T6 MIN.
(STEEL IN CONTACT WITH ALUMINUM TO BE PLATED OR PAINTED)

TYPE F. WIRE ANCHOR (Fy=60 KSI MIN.)
0.173" DIA. STEEL WIRE ANCHORS EMBED. INTO CONCRETE
FILLED BLOCK WITH 8.75" EMBED.



TYPICAL ANCHORS @ THRESHOLD:

(SEE ELEV. FOR SPACING)

TYPE G. 1/4" OR 5/16" DIA. ULTRACONS BY 'ELCO' Fy = 155 KSI Fu = 177 KSI
DIRECTLY INTO fc'=3000 PSI MIN. CONCRETE
1-1/2" MIN. EMBED
2-1/2" MIN. EDGE DISTANCE

1/4" TAPCON BY ITW Fy = 90 KSI Fu = 120 KSI
DIRECTLY INTO fc'=3000 PSI MIN. CONCRETE
1-1/2" MIN. EMBED
2-1/2" MIN. EDGE DISTANCE

SEALANT:

ALL FRAME JOINTS AND CORNERS TO BE SEALED
WITH SILICONE AT PERIMETER

METAL STRUCTURES NOT BY VISION HOLLOW METAL LIMITED
MUST SUPPORT LOADS IMPOSED BY DOOR SYSTEM AND
TRANSFER THEM TO THE BUILDING STRUCTURE.

PRODUCT REVISED
as complying with the Florida
Building Code
NOA-No. 20-1005.10

Expiration Date 07/14/2025

By Isaac I. Chandra
Miami-Dade Product Control

NO.	DATE	DESCRIPTION
1	06-18-10	AS PER BCD COMMENTS
2	02-16-12	UPDATE TO 2010 FBC
3	03-03-15	UPDATE TO 2014 FBC
4	02-09-17	UPDATE TO 2017 FBC
5	09-24-20	UPDATE TO 2020 FBC

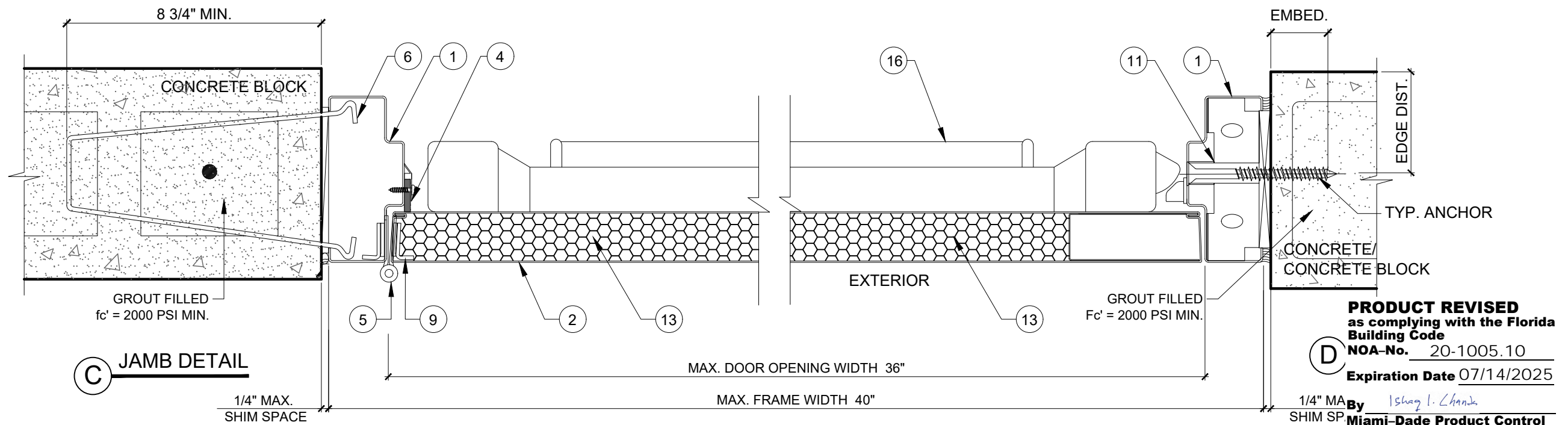
MCY ENGINEERING, INC. GLAZING CONSULTANTS		MCY
12781 MIRAMAR PKWY. STE. 301 P: 305.271.0117 MIRAMAR, FL. 33027 F: 786.573.5063	www.MCYEngineering.com	MCY.Engineering@att.net

SERIES LS2075 SINGLE OUTSWING STEEL DOOR (LMI)	VISION HOLLOW METAL LIMITED
400 ZENWAY BLVD., UNIT #1 WOODBIDGE, ON L4H0S7	



DATE	09-24-2020
SCALE	N.T.S
DRAWN	J.S
PROJECT	10-03

DRAWING NO.	AD10-10
-------------	---------



PRODUCT REVISED
as complying with the Florida
Building Code
NOA-No. 20-1005.10
Expiration Date 07/14/2025
By Ishag I. Chank
Miami-Dade Product Control

REVISIONS	
NO.	DATE
1	06-18-10
2	02-16-12
3	03-03-15
4	02-09-17
5	09-24-20
DESCRIPTION	
AS PER BCD COMMENTS	
UPDATE TO 2010 FBC	
UPDATE TO 2014 FBC	
UPDATE TO 2017 FBC	
UPDATE TO 2020 FBC	

MCY ENGINEERING, INC.
GLAZING CONSULTANTS

MCY

12781 MIRAMAR PKWY. STE. 301 P. 305.271.0117
MIRAMAR, FL. 33027 F. 786.573.5063

www.MCYEngineering.com MCY.Engineering@att.net

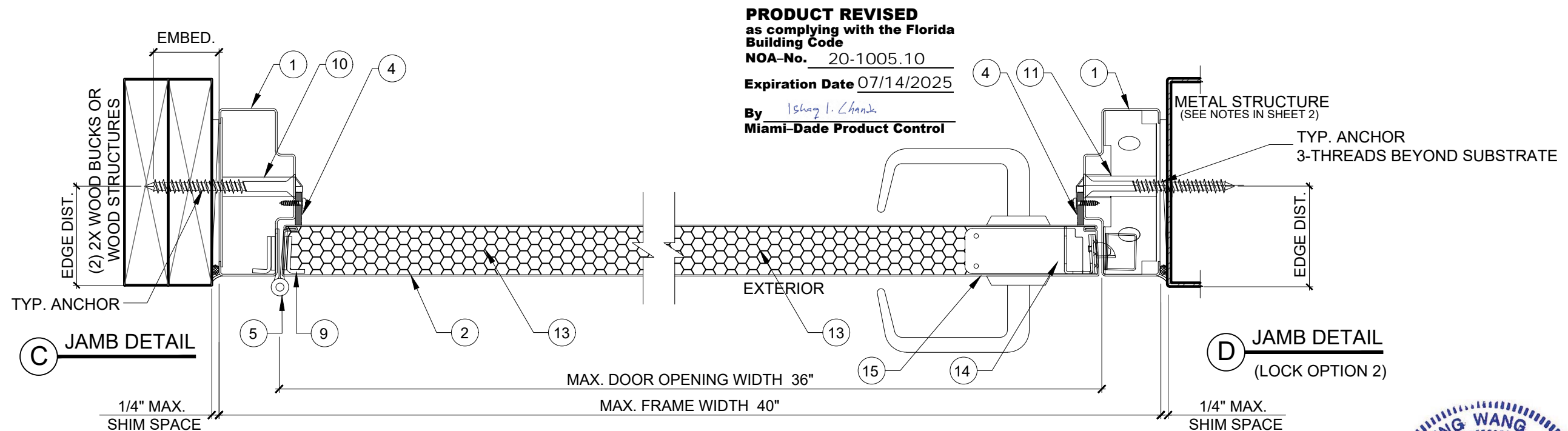
SERIES LS2075 SINGLE OUTSWING STEEL DOOR (LMI)

VISION HOLLOW METAL LIMITED

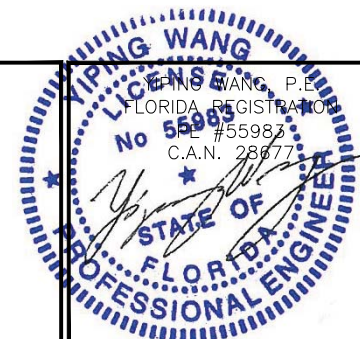
400 ZENWAY BLVD., UNIT #1
WOODBIDGE, ON L4H0S7



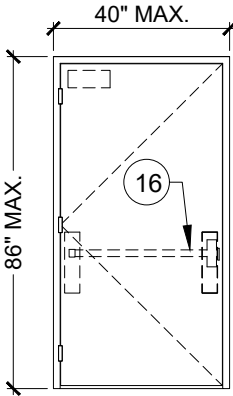
DATE	09-24-2020
SCALE	N.T.S
DRAWN	J.S
PROJECT	10-03
DRAWING NO.	AD10-10
3 OF 5	



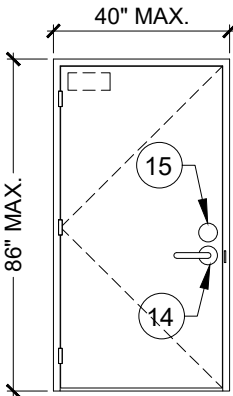
PRODUCT REVISED
as complying with the Florida
Building Code
NOA-No. 20-1005.10
Expiration Date 07/14/2025
By Ishag I. Chank
Miami-Dade Product Control



MIAMI DADE COUNTY September 24, 2020



OPTION 1
"2000 SERIES RIM PANIC" DESIGN HARDWARE
LOCATED AT 39 9/16" UP FROM THE BOTTOM EDGE OF
THE OPERABLE PANEL.



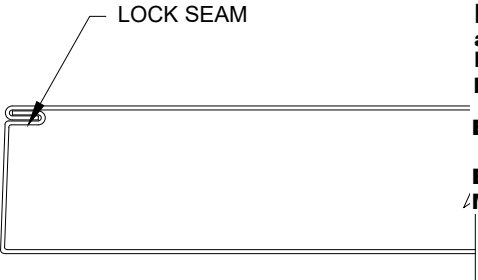
OPTION 2
"SCHLAGE AL53PD"
CYLINDRICAL LOCK LOCATED AT 39 9/16" UP
FROM THE BOTTOM EDGE OF THE OPERABLE
PANEL, WITH "SCHLAGE B660P" DEAD BOLT.
CENTERLINE OF DEAD BOLT TO BE AT 7 3/4" UP
FROM CENTERLINE OF DOOR KNOB. "SCHLAGE 10-025"
STRIKE PLATE LOCATED ON FRAME IN LINE WITH LOCK.

HINGES

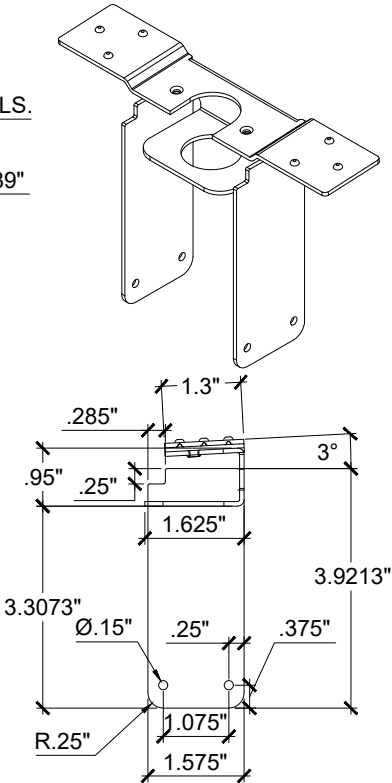
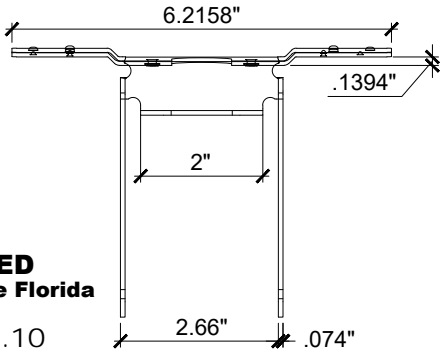
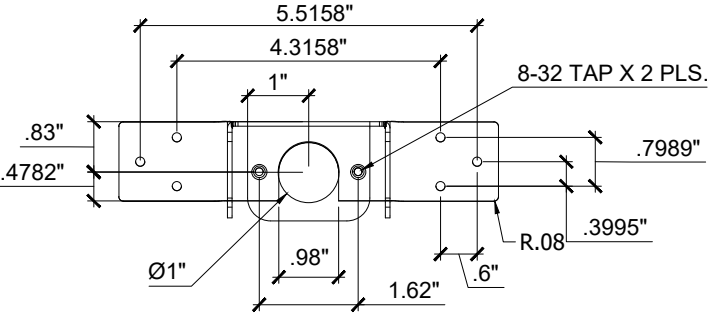
"HAGAR 1279 HINGES" OR "HAGAR 1279 NRP HINGES"

TOTAL (3) HINGES.
7 3/8" FROM TOP CORNER, 12 5/8" FROM BOTTOM CORNER &
(1) AT CENTER.

DOOR EDGE CONSTRUCTION

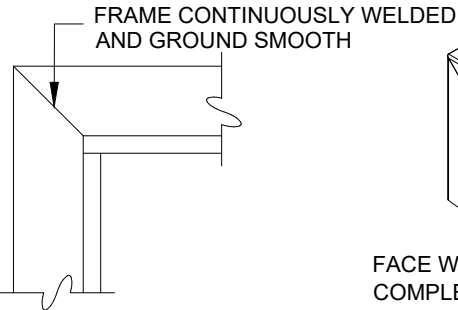


PRODUCT REVISED
as complying with the Florida
Building Code
NOA-No. 20-1005.10
Expiration Date 07/14/2025
By Ishag I. Chande
Miami-Dade Product Control



12 CYLINDRICAL LOCK REINFORCING

PRODUCT REVISED
as complying with the Florida
Building Code
NOA-No. 20-1005.10
Expiration Date 07/14/2025
By Ishag I. Chande
Miami-Dade Product Control



FRAME CORNERS

BILL OF MATERIALS					
ITEM NO.	PART NO.	MATERIAL	QUANTITY	DESCRIPTION	MANF./SUPPLIER/REMARKS
①	-	STEEL	AS REQD.	FRAME HEAD/JAMB (2" x 5 3/4")	18 GA.(0.042" MIN.) GALVANNEAL STEEL (Fy = 50.5 KSI)
②	-	STEEL	AS REQD.	DOOR FACE SHEETS (36" x 84" x 0.032")	20 GA.(0.032" MIN.) GALVANNEAL STEEL (Fy = 50.5 KSI)
③	477S	ALUMINUM	1	BUMPER TRESHOLD (5" x 1 1/2" x 0.094")	HAGER 6063-T5
④	875S	-	AS REQD.	WEATHERSTRIPPING	HAGER
⑤	1279	STEEL	3 PER LEAF	HAGER 1279 HINGES	HAGER
⑥	-	STEEL	AS REQD.	MASONRY WIRE ANCHOR	0.173 DIA. Fy = 60 KSI
⑦	-	STEEL	AS REQD.	CLOSER BOX (1 9/16" x 4 3/16" x 0.053")	16 GA. GALVANNEAL STEEL
⑧	-	STEEL	AS REQD.	END CHANNEL (1 5/8" x 1 3/16" x 0.053") FULL LENGTH	16 GA. GALVANNEAL STEEL
⑨	-	STEEL	AS REQD.	HINGE REINFORCEMENT	10 GA. GALVANNEAL STEEL
⑩	-	STEEL	AS REQD.	18 GA STEEL EMA ANCHOR	VISION HOLLOW METAL
⑪	-	STEEL	AS REQD.	18 GA STEEL EMA ANCHOR OPTION	VISION HOLLOW METAL
⑫	-	STEEL	AS REQD.	CYLINDRAL LOCK REINFORCING	-
⑬	-	-	AS REQD.	HONEY COMB 1" CELL OR CORE	-
⑭	AL53PD	STEEL	1	CYLINDRAL LOCK W/ STRIKE PLATE (MIN. 1/2" THK.)	SCHLAGE
⑮	B660P	STEEL	1	DEAD BOLT W/ STRIKE PLATE (MIN. 1/2" THK.)	SCHLAGE
⑯	2000	STEEL	1	SERIES 2000 RIM PANIC EXIT DEVICE W/ STRIKE PLATE	DESIGN HARDWARE

MIAMI DADE COUNTY

September 24, 2020

ZIPING WANG, P.E.
FLORIDA REGISTRATION
No. 55983
C.A.N. 28677

MCY ENGINEERING, INC.
GLAZING CONSULTANTS

www.MCYEngineering.com
MCY.Engineering@att.net

NO.	DATE	DESCRIPTION
1	06-18-10	AS PER BCD COMMENTS
2	02-16-12	UPDATE TO 2010 FBC
3	03-03-15	UPDATE TO 2014 FBC
4	02-09-17	UPDATE TO 2017 FBC
5	09-24-20	UPDATE TO 2020 FBC

SERIES LS2075 SINGLE OUTSWING STEEL DOOR (LMI)

VISION HOLLOW METAL LIMITED

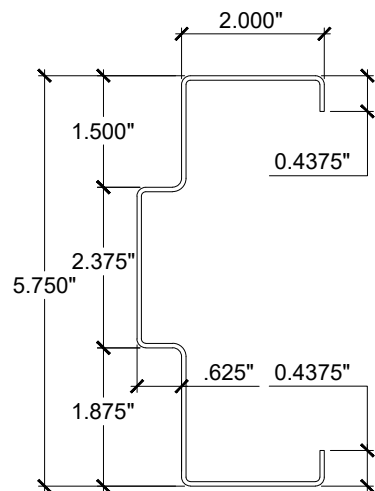
400 ZENWAY BLVD., UNIT #1
WOODBIDGE, ON L4H0S7

VISION
HOLLOW METAL LIMITED

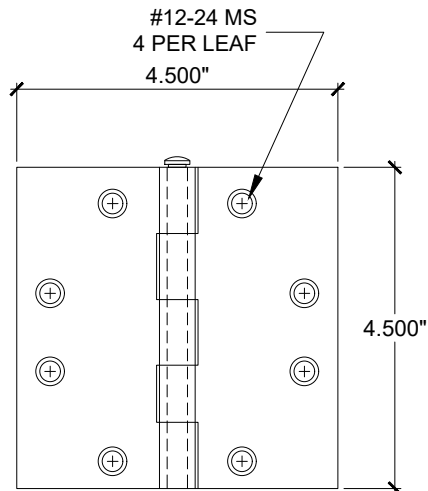
DATE	09-24-2020
SCALE	N.T.S
DRAWN	J.S
PROJECT	10-03

DRAWING NO.
AD10-10

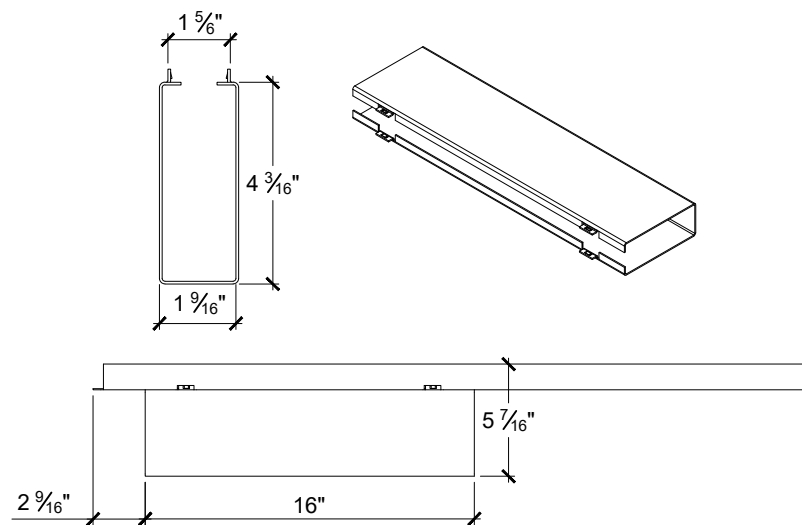
4 OF 5



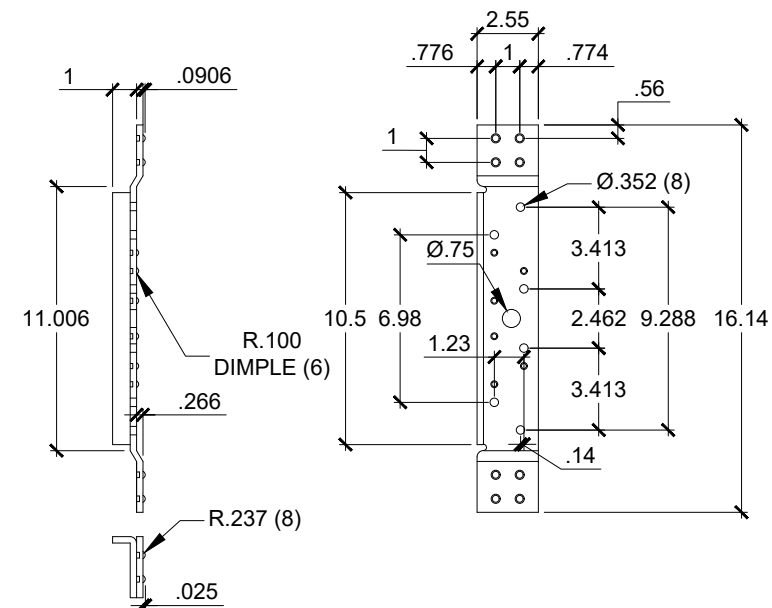
1 **FRAME HEAD/JAMB**
18 GA STEEL



5 **STEEL HINGE**



7 **CLOSER BOX**
16 GA STEEL

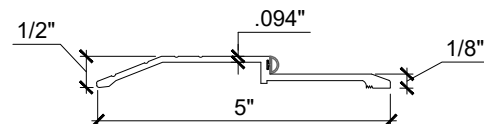


9 **HINGE REINFORCEMENT**
10 GA STEEL

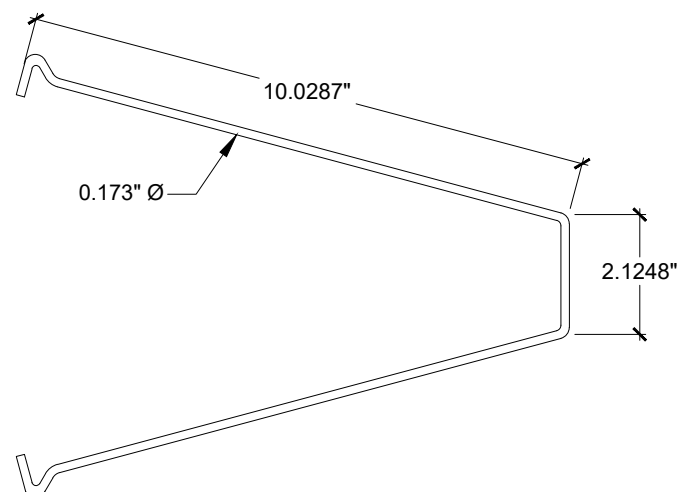
PRODUCT REVISED
as complying with the Florida
Building Code
NOA-No. 20-1005.10

Expiration Date 07/14/2025

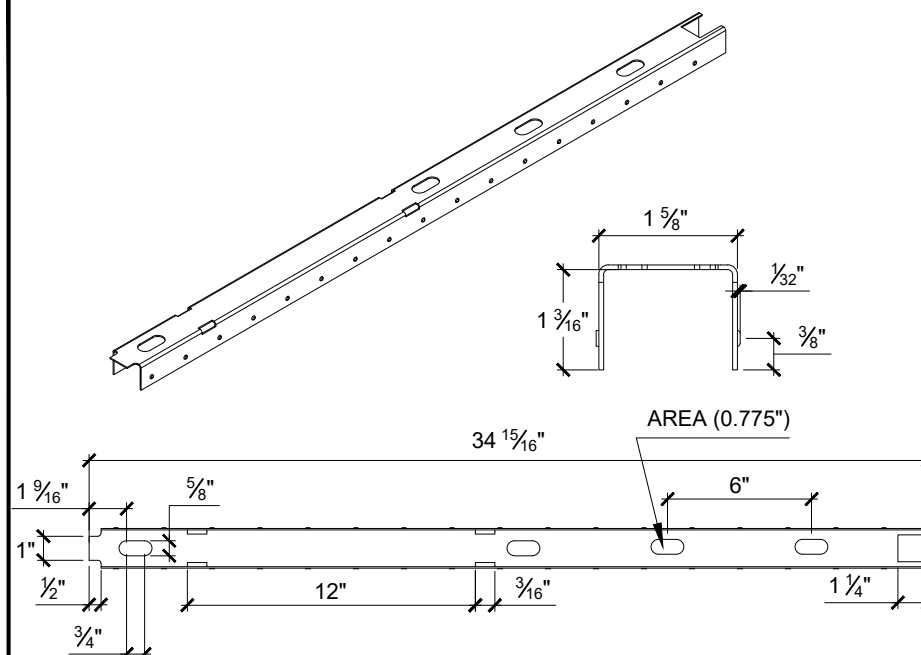
By *Ishag I. Chank*
Miami-Dade Product Control



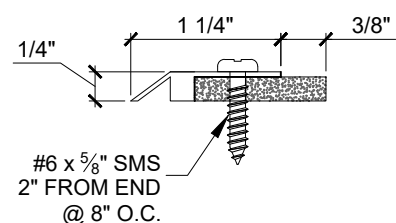
3 **TRESHOLD**



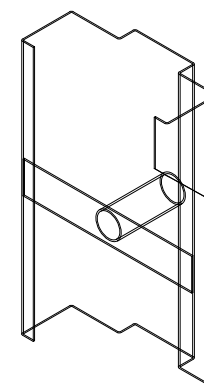
6 **MASONRY WIRE ANCHOR**
Fy = 60 KSI
Fu = 90 KSI



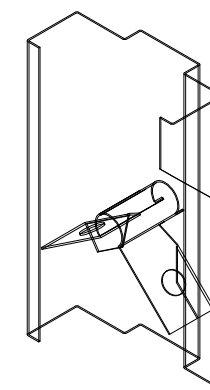
8 **END CHANNEL**
16 GA STEEL



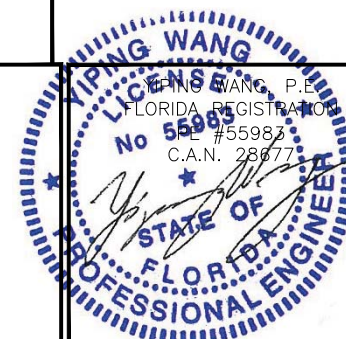
4 **WEATHER STRIPPING**



10 **EMA ANCHOR**
18 GA STEEL



11 **EMA BUTTERFLY ANCHOR**
18 GA STEEL



MIAMI DADE COUNTY

September 24, 2020

NO.	DATE	DESCRIPTION
1	06-18-10	AS PER BCD COMMENTS
2	02-16-12	UPDATE TO 2010 FBC
3	03-03-15	UPDATE TO 2014 FBC
4	02-09-17	UPDATE TO 2017 FBC
5	09-24-20	UPDATE TO 2020 FBC

MCY ENGINEERING, INC.
GLAZING CONSULTANTS

MCY

12781 MIRAMAR PKWY. STE. 301 P: 305.271.0117
MIRAMAR, FL. 33027 F: 786.573.5063

www.MCYEngineering.com MCY.Engineering@att.net

SERIES LS2075 SINGLE OUTSWING STEEL DOOR (LMI)

VISION HOLLOW METAL LIMITED

400 ZENWAY BLVD., UNIT #1
WOODBIDGE, ON L4H0S7



DATE	09-24-2020
SCALE	N.T.S
DRAWN	J.S
PROJECT	10-03

DRAWING NO.
AD10-10

5 OF 5