



DEPARTMENT OF REGULATORY AND ECONOMIC RESOURCES (RER)  
BOARD AND CODE ADMINISTRATION DIVISION  
**NOTICE OF ACCEPTANCE (NOA)**

MIAMI-DADE COUNTY  
PRODUCT CONTROL SECTION  
11805 SW 26 Street, Room 208  
Miami, Florida 33175-2474  
T (786) 315-2590 F (786) 315-2599  
[www.miamidade.gov/economy](http://www.miamidade.gov/economy)

**Schlage Lock Company**  
**11819 N. Pennsylvania Street**  
**Carmel, IN 46032**

**SCOPE:**

This NOA is being issued under the applicable rules and regulations governing the use of construction materials. The documentation submitted has been reviewed and accepted by Miami-Dade County RER -Product Control Section to be used in Miami Dade County and other areas where allowed by the Authority Having Jurisdiction (AHJ).

This NOA shall not be valid after the expiration date stated below. The Miami-Dade County Product Control Section (In Miami Dade County) and/or the AHJ (in areas other than Miami Dade County) reserve the right to have this product or material tested for quality assurance purposes. If this product or material fails to perform in the accepted manner, the manufacturer will incur the expense of such testing and the AHJ may immediately revoke, modify, or suspend the use of such product or material within their jurisdiction. RER reserves the right to revoke this acceptance, if it is determined by Miami-Dade County Product Control Section that this product or material fails to meet the requirements of the applicable building code.

This product is approved as described herein and has been designed to comply with the Florida Building Code, including the High Velocity Hurricane Zone.

**DESCRIPTION: SteelCraft Series H16-4 FL 8080 Double Outswing Commercial Steel Louvered Doors-LMI**

**APPROVAL DOCUMENT:** Drawing No **882W-2 Rev K**, titled "Steelcraft H Series Single and Double Louvered Doors", sheets 1 through 12 of 12, prepared by the manufacturer, dated 08/12/02 and last revised on 01/29/2020, signed and sealed by Hermes F. Norero, P.E., bearing the Miami-Dade County Product Control Revision stamp with the Notice of Acceptance number and expiration date by the Miami-Dade County Product Control Section.

**MISSILE IMPACT RATING: Large Missile Impact Resistant**

**Limitations:**

1. See Design Pressure in sheet **1**. Air infiltration, water resistance and fire ratings are **not** part of this approval.
2. See sheets **5** and **6** for installation, sheet **8** for threshold, sheet **9** for lock and sheet **10** for hinges options.
3. Door opening is limited to max. 48"W x 96"H for single doors.
4. Electrical/Electronic function is not part of this approval, such functions to be reviewed and approved by AHJ.

**LABELING:** Each unit shall bear a permanent label with the manufacturer's name or logo, Cincinnati, Ohio and Series and following statement: "Miami-Dade County Product Control Approved", unless otherwise noted herein.

**RENEWAL** of this NOA shall be considered after a renewal application has been filed and there has been no change in the applicable building code negatively affecting the performance of this product.

**TERMINATION** of this NOA will occur after the expiration date or if there has been a revision or change in the materials, use, and/or manufacture of the product or process. Misuse of this NOA as an endorsement of any product, for sales, advertising or any other purposes shall automatically terminate this NOA. Failure to comply with any section of this NOA shall be cause for termination and removal of NOA.

**ADVERTISEMENT:** The NOA number preceded by the words Miami-Dade County, Florida, and followed by the expiration date may be displayed in advertising literature. If any portion of the NOA is displayed, then it shall be done in its entirety.

**INSPECTION:** A copy of this entire NOA shall be provided to the user by the manufacturer or its distributors and shall be available for inspection at the job site at the request of the Building Official.

This NOA **revises NOA #20-0310.05** and consists of this page 1 and evidence pages E-1, E-2, E-3, E-4 & E-5, as well as approval document mentioned above.

The submitted documentation was reviewed by **Ishaq I. Chanda, P.E.**



*Ishaq I. Chanda*

**NOA No. 20-1005.15**  
**Expiration Date: November 13, 2023**  
**Approval Date: February 11, 2021**  
Page 1

**NOTICE OF ACCEPTANCE: EVIDENCE SUBMITTED**

**1. EVIDENCE SUBMITTED UNDER PREVIOUS NOA'S**

**A. DRAWINGS**

1. Manufacturer's parts and sections drawings (Submitted under files listed below).
2. Drawing No **882W-2 Rev H**, titled "Steelcraft H16-4 FL 8080 Double Doors (outswing)", sheets 1 through 12 of 12, prepared by the manufacturer, dated 08-12-02 and last revised on 09/07/15, signed and sealed by Thomas Gordon, signed and sealed by Thomas Gordon, P.E.

**B. TESTS (Submitted under files #13-1205.06/ 13-1007.06/ #12-0305.09)**

1. Test report on

- 1) Air Infiltration Test, per TAS 202-94
- 2) Uniform Static Air Pressure Test, Loading per TAS 202-94
- 3) Large Missile Impact Test per FBC, TAS 201-94
- 4) Cyclic Wind Pressure Loading per FBC, TAS 203-94
- 5) Forced Entry Test, per PA 202-94

Along with manufacturer's parts and section drawings of Single Steel doors w/ Stainless steel continuous Hinges & modified Hat stiffeners, marked by Certified Testing Lab, Test Reports No(s). **CTLA-3045W** dated February 16, 2015, signed and sealed by Ramesh Patel, P.E. (#14-0827.04)

2. Test report on

- 1) Air Infiltration Test, per TAS 202-94(Not conducted)
- 2) Water Resistance Test per FBC TAS 202-94(Not conducted)
- 3) Uniform Static Air Pressure Test, Loading per TAS 202-94
- 4) Large Missile Impact Test per FBC, TAS 201-94
- 5) Cyclic Wind Pressure Loading per FBC, TAS 203-94
- 6) Forced Entry Test, per FBC, TAS 202-94

Along with manufacturer's parts and section drawings of double outswing Louvered steel doors w/Anemostat Louver (PLSL) and National Guard Louver (L-VRSG-2) kit, marked by Element Material Technology Inc., Test Reports No. **ESP01330P-2** dated April 16, 2013 and Single steel louvered door w/ Air Louver (1500-A), Test Reports No. **ESP01330P-1** dated April 16, 2013, both signed & sealed by Ramesh Patel, P.E.

Note: The above test reports have an addendum letter, issued by test lab, dated July 11, 2014, signed and sealed by Ramesh Patel, P.E.

3. Test report on

- 1) Air Infiltration Test, per TAS 202-94(Not conducted)
- 2) Water Resistance Test per FBC TAS 202-94(Not conducted)
- 3) Uniform Static Air Pressure Test, Loading per TAS 202-94
- 4) Large Missile Impact Test per FBC, TAS 201-94
- 5) Cyclic Wind Pressure Loading per FBC, TAS 203-94
- 6) Forced Entry Test, per PA 202-94

along with marked-up drawings and installation diagram of a louvered commercial steel door system w/*Air Louver, Inc.-1500A* steel louver, *National Guard Products L-VRSG-2 Air Louver*

*Ishaq I. Chanda*

**Ishaq I. Chanda, P.E.**  
**Product Control Unit Supervisor NOA**  
**No. 20-1005.15**  
**Expiration Date: November 13, 2023**  
**Approval Date: February 11, 2021**

**NOTICE OF ACCEPTANCE: EVIDENCE SUBMITTED**

**B. TESTS (continued)**

steel louver blades, and *Anemostat PLSL* fixed blades louver insert, all prepared by Certified Testing Laboratories, Test Reports No. **CTLA-882W-2**, dated August 29, 2002 and **CTLA-1107W-2**, dated September 5, 2003 for *Anemostat FLDL-UL-SGI* fusible link louver insert, both signed and sealed by Ramesh Patel, P.E. (submitted under NOA # 08-0908.20/#03-0327.02). Reference test reports CTLA 776W-1 and CTLA 1035W-2 for anchor qualifications.

**C. CALCULATIONS**

1. Anchor verification calculation and analysis dated 09/26/15, prepared, signed & sealed by Thomas Gordon, P.E.
2. Hinge Load Evaluation report dated 01/04/04, prepared, signed & sealed by Thomas Gordon, P.E. (submitted under #09-0929.04)

**D. QUALITY ASSURANCE**

1. Miami Dade Department of Regulatory and Economic Resources (RER).

**E. MATERIAL CERTIFICATIONS (#14-0827.04/#13-1205.06/#11-0921.12)**

1. Tensile test report # CTLA-0244W, dated 04/12/13 prepared by CTL Architectural Division, steel sheet samples, tested per ASTM E8, signed & sealed by Ramesh Patel, P.E.
2. Test Report No. **3094867SAT-001**, April 13, 2006, issued by Intertek for "Surface Burning Characteristics of Building material" per ASTM E84 and self-Ignition per ASTM 1929D for "EPS", issued to Falcon Foam, a Div. of Atlas Roofing, re-named as "ATLAS EPS".
3. Tensile Test report No. A103W1-Test 1, 2 & 3 dated 23 APR 03 per ASTM E-8 for steel face sheet, prepared by Certified Testing laboratory, signed and sealed by Ramesh Patel, P.E.
4. Test Report No. **16206-122543 (1015P200(3))**, dated November 29, 2004 for "Surface Burning Characteristics of Building material" per ASTM E84 and self-Ignition per ASTM 1929D for "Polyisocyanurate" issued by Omega Point Lab, Inc. to Elliot Company, Indianapolis, IN.
5. Material Safety Data Sheet for "Pyrophoric core PSL P250-C60" manufactured by Pyrophobic System LTD, Canada.
6. Material Safety Data sheet for "Calcium Silicate Mineral Block" manufactured by Marshfield Door System Inc., Wisconsin.

**F. STATEMENTS** Except items #1, all the balanced other items submitted under files listed above.

1. Letter of conformance to FBC 2014 (5<sup>th</sup> Edition), dated 03/18/15, prepared, signed and sealed by Gordon Thomas, P.E.
2. Letter of conformance to FBC 2010, dated 08/03/14, prepared, signed and sealed by Gordon Thomas, P.E.
3. Ingersoll-Rand press release, dated 12/10/12, integrating the brands of Ingersoll-Rand and Schlage among others.

*Ishaq I. Chanda*

---

**Ishaq I. Chanda, P.E.**  
**Product Control Unit Supervisor NOA**  
**No. 20-1005.15**  
**Expiration Date: November 13, 2023**  
**Approval Date: February 11, 2021**

**NOTICE OF ACCEPTANCE: EVIDENCE SUBMITTED**

**F. STATEMENTS (continued)**

4. Department of State Certification of Reinstatement for **SCHLAGE LOCK COMPANY, LLC** as a limited liability company, active and organized under the laws of the State of Florida, dated 03/17/06 and filed with the Secretary of State
5. Certification of Formation dated 12-08-2003 of Schlage Lock Company, LLC, issued by Secretary of State of Delaware.
6. Statement letter dated Nov. 26, 2013 issued by Ingersoll-Rand for name change, signed by Jim Donlan, Compliance Engineer.
7. Letter of conformance to FBC 2007 & 2010 "No financial interest" dated 09/30/11, signed and sealed by Gordon Thomas, P.E.
8. Laboratory Statement of compliance, part of the above referenced test reports.
9. Addendum letter dated July 11, 2014, issued by Element Material Technology, signed and sealed by Ramesh Patel, P.E
10. Addendum letter dated Jan 20, 2011, issued by Certified Testing Lab confirming testing of Alum continuous hinges w/ marked-up drawings, signed and sealed by Ramesh Patel, P.E.
11. Addendum letter dated DEC 19, 2011, issued by Certified Testing Lab verifying wire anchors, strength of grout, stud anchor, Strike plate and MA series Mortise Lock, supplemented w/ marked-up drawings, signed and sealed by Ramesh Patel, P.E.

**G. OTHER (Except items #1, all other items submitted under files listed above)**

1. This NOA revises NOA #13-1205.06, expiring on 11/13/18.
2. Test proposals #12-0913-R, #14-1086 and #14-0252-R and Test proposal # 14-1086 dated AUG 29, 2014 approved by RER.
3. Test proposal dated 12/03/09 for continuous hinges & SS strike plate, approved by BCCO.
4. Additional marked-up drawings provided as part of addendum letters by Element Material Technology, Inc
5. Additional marked-up drawings provided as part of addendum letters by Certified Testing laboratory, Inc.
6. Photo of Stainless-Steel Strike plate supplied by Ingersoll-Rand.
7. Schlage & Falcon Mortise Locks brochures / catalogs supplied by Ingersoll-Rand.
8. Technical brochures of butt Hinges & continuous Hinges supplied by Ingersoll-Rand.

**2. EVIDENCE SUBMITTED UNDER PREVIOUS NOA**

**A. DRAWINGS**

1. Drawing No **882W-2 Rev J**, titled "Steelcraft H Series Single and Double Louvered Doors", sheets 1 through 12 of 12, prepared by the manufacturer, dated 08/12/02 and last revised on 03/04/2020, signed and sealed by Hermes F. Norero, P.E.

**B. TESTS**

1. None.

*Ishaq I. Chanda*

---

**Ishaq I. Chanda, P.E.**  
**Product Control Unit Supervisor NOA**  
**No. 20-1005.15**  
**Expiration Date: November 13, 2023**  
**Approval Date: February 11, 2021**

**Schlage Lock Company**

**NOTICE OF ACCEPTANCE: EVIDENCE SUBMITTED**

**C. CALCULATIONS**

1. Anchor verification calculation and analysis dated 10/8/17 and revised on 02/12/18, prepared, signed & sealed by Hermes F. Norero, P.E.

**D. QUALITY ASSURANCE**

1. Miami Dade Department of Regulatory and Economic Resources (RER).

**E. MATERIAL CERTIFICATIONS**

1. None.

**F. STATEMENTS**

1. Statement letter of conformance to **FBC 6<sup>th</sup> Edition (2017)** and of no financial interest, dated 10/09/17, issued by Building Drops, Inc., signed and sealed by Hermes F. Norero, P.E.
2. Letter indicating Change of Engineer of Record indicating that the successor engineer is assuming full professional and legal responsibility for all engineering documents pertaining to this NOA, dated 10/09/17, signed and sealed by Hermes F. Norero, P.E.

**G. OTHER**

1. This NOA **revises and renews NOA #15-0427.03**, expiring on 11/13/18.

**3. EVIDENCE SUBMITTED previous approval**

**A. DRAWINGS**

1. Drawing No **882W-2 Rev I**, titled "Steelcraft H Series Single and Double Louvered Doors", sheets 1 through 12 of 12, prepared by the manufacturer, dated 08/12/02 and last revised on 10/12/17, signed and sealed by Hermes F. Norero, P.E.  
(Note: This revision consists of address change only).

**B. TESTS**

1. None.

**C. CALCULATIONS (submitted under NOA # 17-1206.02)**

1. None.

**D. QUALITY ASSURANCE**

1. Miami Dade Department of Regulatory and Economic Resources (RER).

**E. MATERIAL CERTIFICATIONS**

1. None.

**F. STATEMENTS**

1. Statement letter of conformance to **FBC 6<sup>th</sup> Edition (2017)** and of no financial interest, dated 10/09/17, issued by Building Drops, Inc., signed and sealed by Hermes F. Norero, P.E.
2. Application request of address change only by Schlage Lock company, signed by Donlan James.

**G. OTHER**

1. his NOA **revises NOA #17-1206.02**, expiring on 11/13/23.

*Ishaq I. Chanda*

---

**Ishaq I. Chanda, P.E.**  
**Product Control Unit Supervisor NOA**  
**No. 20-10105.15**  
**Expiration Date: November 13, 2023**  
**Approval Date: February 11, 2021**

**Schlage Lock Company**

**NOTICE OF ACCEPTANCE: EVIDENCE SUBMITTED**

**4. NEW EVIDENCE SUBMITTED**

**A. DRAWINGS**

2. Drawing No **882W-2 Rev K**, titled “Steelcraft H Series Single and Double Louvered Doors”, sheets 1 through 12 of 12, prepared by the manufacturer, dated 08/12/02 and last revised on 01/29/2020, signed and sealed by Hermes F. Norero, P.E.

**B. TESTS**

1. None.

**C. CALCULATIONS**

1. None.

**D. QUALITY ASSURANCE**

1. Miami Dade Department of Regulatory and Economic Resources (RER).

**E. MATERIAL CERTIFICATIONS**

1. None.

**F. STATEMENTS**

1. Statement letter of conformance to **FBC 7<sup>th</sup> Edition (2020)** and of no financial interest, dated 09/02/20, issued by Building Drops, Inc., signed and sealed by Hermes F. Norero, P.E.
2. Statement letter dated 09/02/20 issued by Allegion in reference to DWG. revision changes, signed by Donlan James, code compliance Engineer.

**G. OTHER**

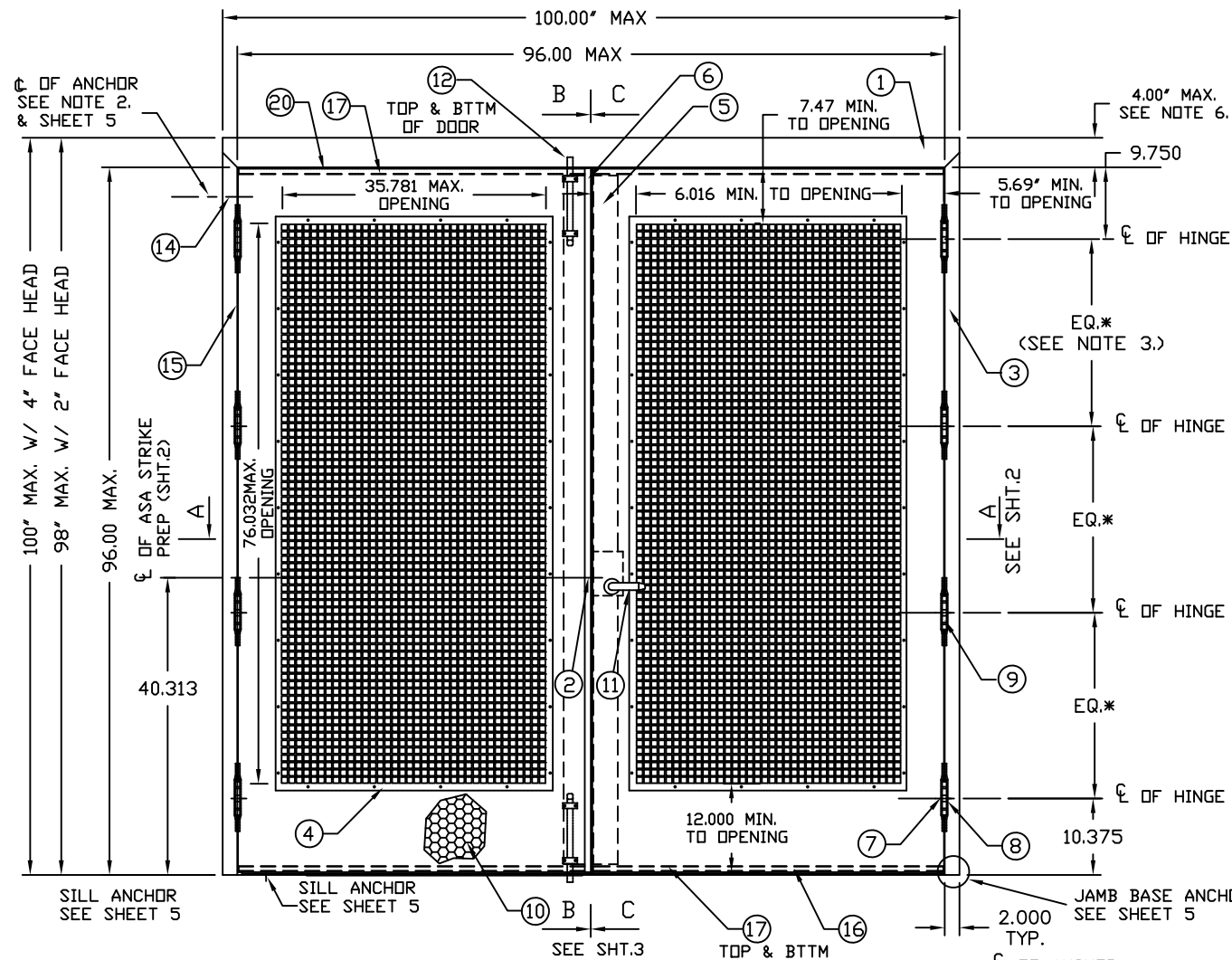
1. This NOA revises NOA #20-0310.05, expiring on 11/13/23.

*Ishaq I. Chanda*

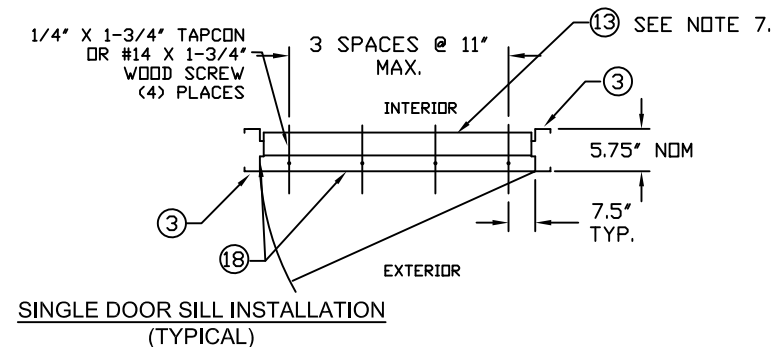
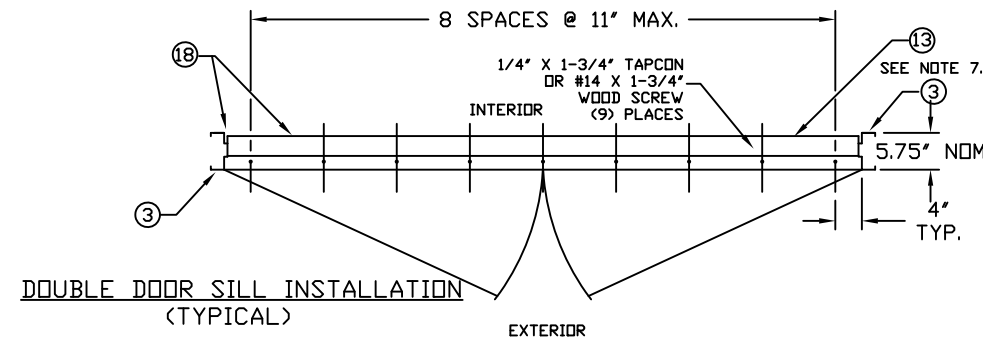
---

**Ishaq I. Chanda, P.E.**  
**Product Control Unit Supervisor NOA**  
**No. 20-1005.15**  
**Expiration Date: November 13, 2023**  
**Approval Date: February 11, 2021**

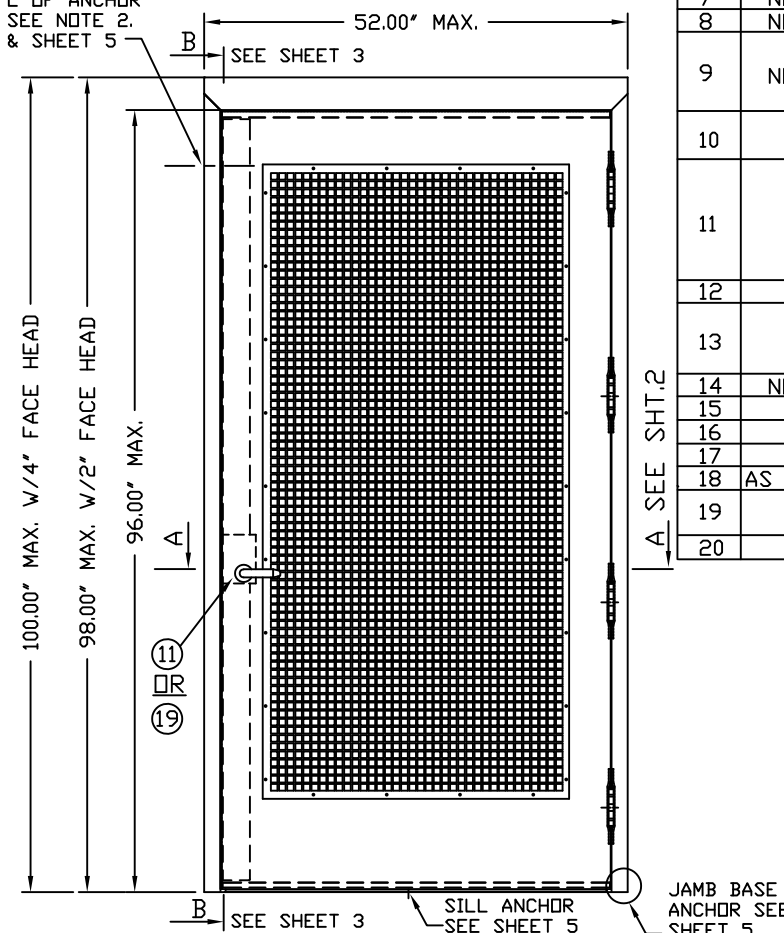




OUTSWING DOORS (INTERIOR VIEW)



GENERAL NOTES:  
 1. THESE PRODUCTS HAVE BEEN TESTED TO HVHZ PROTOCOLS TAS201, 202, & 203-94 AND COMPLY WITH THE 7TH EDITION (2020) FLORIDA BUILDING CODE.  
 2. THE DOORS ARE LARGE MISSILE IMPACTED - 50 FEET PER SECOND  
 3. DISSIMILAR MATERIAL IN CONTACT SHALL MEET FBC REQUIREMENTS.



DESIGN PRESSURE RATING		IMPACT RATING	
	WHERE WATER AND AIR INFILTRATION REQUIREMENTS ARE NEEDED	WHERE WATER AND AIR INFILTRATION REQUIREMENTS ARE NOT NEEDED	LARGE AND SMALL MISSILE IMPACT (LMI - 50 FPS)
POSITIVE	NOT APPROVED	+ 60 PSF	
NEGATIVE	NOT APPROVED	- 60 PSF	

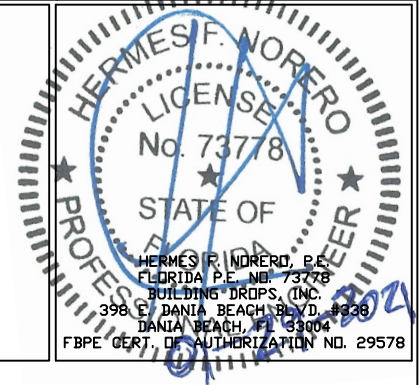
NOTES:  
 1. TWO ROWS OF PS074 WEATHERSTRIPPING PER JAMB AND HEAD. INSTALL PER SHT.7  
 2. ANCHOR REQUIREMENTS:  
 SEE SHT 5 & 6 FOR APPROVED ANCHORS AND INSTALLATION.  
 3. HINGE REQUIREMENTS:  
 FOR DOOR OPENING UP TO 7'6\"/>

R E V I S I O N S			
LTR	DESCRIPTION	DATE	APPROVED
A	APPROVAL DWG	02/26/03	
G	REVISED	02/01/15	
H	REVISED	05/05/15	
I	EDR CHANGE	10/12/17	
J	ADDRESS UPDATE	02/27/20	
K	2020 FBC UPDATE	07/05/20	

**PRODUCT REVISED**  
 as complying with the Florida  
 Building Code  
 NOA-No. 20-1005.15

Expiration Date 11/13/2023

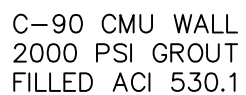
By Ishaq I. Chandra  
 Miami-Dade Product Control



ITEM	QUANTITY	DESCRIPTION	MATERIAL	SIZE
1	1	HEAD SEE SHT 4 & 7 ASTM A366 MIN. Fy= 46 KSI, Fu=52 KSI, SEE SHEET 4	.053" MIN. STL	MAX. 100"
2	1	ASA STRIKE		
3	2	HINGE OR LOCK JAMB SEE SHT 4&7 ASTM A366 MIN. Fy= 46 KSI, Fu=52 KSI, SEE SHEET 4	.053" MIN. STL	MAX. 100"
4	1	FIXED DOOR LOUVER:	SEE SHT 12	37.8125' X 78" MAX.
		1) NATIONAL GUARD PRODUCTS - L-VRSG-2		
		2) AIR LOUVERS, INC. - 1500-A		
		3) ANEMOSTAT - PLSL		
		FUSIBLE LINK (FIRE RATED) DOOR LOUVER:		
		4) ANEMOSTAT - FLDL-UL-SG1 OR SG2	SEE SHT 12	24" X 24" MAX.
5	2	LOCK SIDE REINFORCEMENT CHANNEL	.099" MIN. STL	3.5" X 93.44" MAX.
6	1	Z-ASTRAGAL	.067" MIN. STL	MAX. 95.5"
7	NOTE 3.	HINGE REINFORCEMENT DOOR ASTM A621	.171" MIN. STL	1.23" X 9.19"
8	NOTE 3.	HINGE REINFORCEMENT FRAME ASTM A621	.171" MIN. STL	1.28" X 9.187" MAX.
9	NOTE 3.	IVES 5BB1 OR CB1, HAGER BB1279 OR STANLEY FBB179/1900 HINGES	X .134	4.50"X4.50" MIN. (12-24 MS)
		OPTIONAL CONTINUOUS HINGES (SEE SHEET 10)	.075"MINSTL/.11 ALUM	4 SCREWS PER HINGE LEAF 96" MAX.
10	1	CORE MATERIAL - (A,D) POLYSTYRENE (C) HONEYCOMB (B,E) POLYURETHANE	SEE SHEET 11	VARIES
11	1	LOCKING HARDWARE - LOCKSET	SEE SHEET 9	SINGLE OR DOUBLE DOORS
		1) SCHLAGE 9000 SERIES MORTISE LOCK		
		2) FALCON MA-SERIES MORTISE LOCK (W/O D/BOLT)		
		3) SCHLAGE D/ND-SERIES CYLINDRICAL LOCK		
		4) FALCON T-SERIES CYLINDRICAL LOCK		
12	2	IVES 360 12" SURFACE BOLT		
13	1	THRESHOLD SILL W/BUMPER GASKET	.125" ALUM. 6063-T5	5.5" X 0.5" X 96" MAX. PR
		2) PEMKO 2005AS 3) ZERO 566A OR 65A		
		1) NAT'L GUARD 950A		
14	NOTE 2.	JAMB ANCHOR ASTM A924	.078" ALUM. 6063 T5	5.5" X 0.5" X 48" MAX. SGL
15	6	PSQ74 WEATHER STRIPPING	SEE SHT 5 & 6	
16	2	FAS-SEAL DOOR SWEEP	TPE	MAX. 24'
17	4	END CHANNEL ASTM A924	TPE	MAX. 47.66"
18	AS NEEDED	BUTYL RUBBER OR 100% SILICONE	.070" MIN. STL	.69" X 1.66" X 47.66" MAX.
19	1	1) SCHLAGE B600/700/800 Series Deadlock	SINGLE DOOR APPLICATION ONLY	
20	2	2) FALCON D100 Series Deadlock		
		TOP CAP GALV ASTM 924 (24 GAGE)	.020" MIN. STL	.5" X 1.76" X 48" MAX.

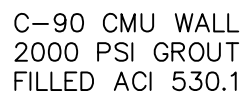
BEND RADIUS	
THIRD ANGLE PROJECTION	
DRAWN	DATE
YMF	08/12/02
CHECKED	
APPROVED	
ENG. APPVL	

SCHLAGE LOCK COMPANY, LLC 11819 N. PENNSYLVANIA STREET CARMEL, IN 46032		MANUFACTURING LOCATION: STEELCRAFT 9017 BLUE ASH ROAD CINCINNATI, OH 45242	
TITLE		STEELCRAFT H SERIES SINGLE AND DOUBLE LOUVERED DOORS H16 - 4 FL 8080 DOUBLE DOORS (OUTSWING) WITH FULL LOUVER SINGLE AND DOUBLE DOORS WITH COMMERCIAL LOCK HARDWARE	
SIZE	FLAT	DWG NO.	REV
		882W-2	K
SCALE:	NTS	AUTOCAD	SHEET 1 OF 12

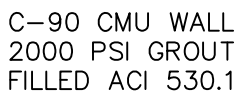


**Expiration Date** 11/13/2023

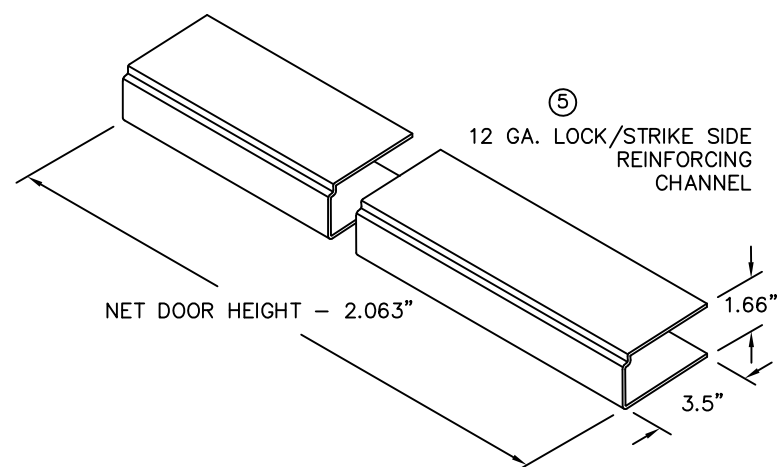
SECTION A-A  
MORTISE LOCKSET: SCHLAGE L9000 SERIES WITH OR WITHOUT DEADBOLT  
FALCON MA-SERIES WITH OR WITHOUT DEADBOLT



SECTION A-A  
CYLINDRICAL LOCKSET: ALL CYL. LOCKS WITH 3/4" THROW LATCH  
SCHLAGE D/ND - SERIES  
FALCON T - SERIES

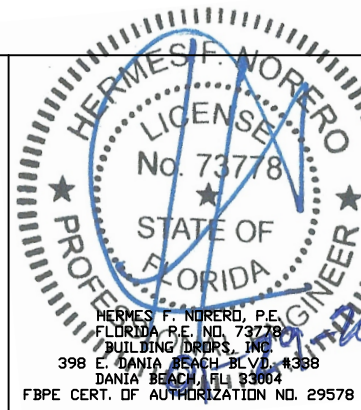


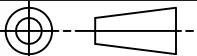
SECTION A-A (SINGLE DOOR ONLY)  
DEADLOCK: W/ MINIMUM 1" THROW  
SCHLAGE B600/700/800 SERIE  
FALCON D100 SERIES



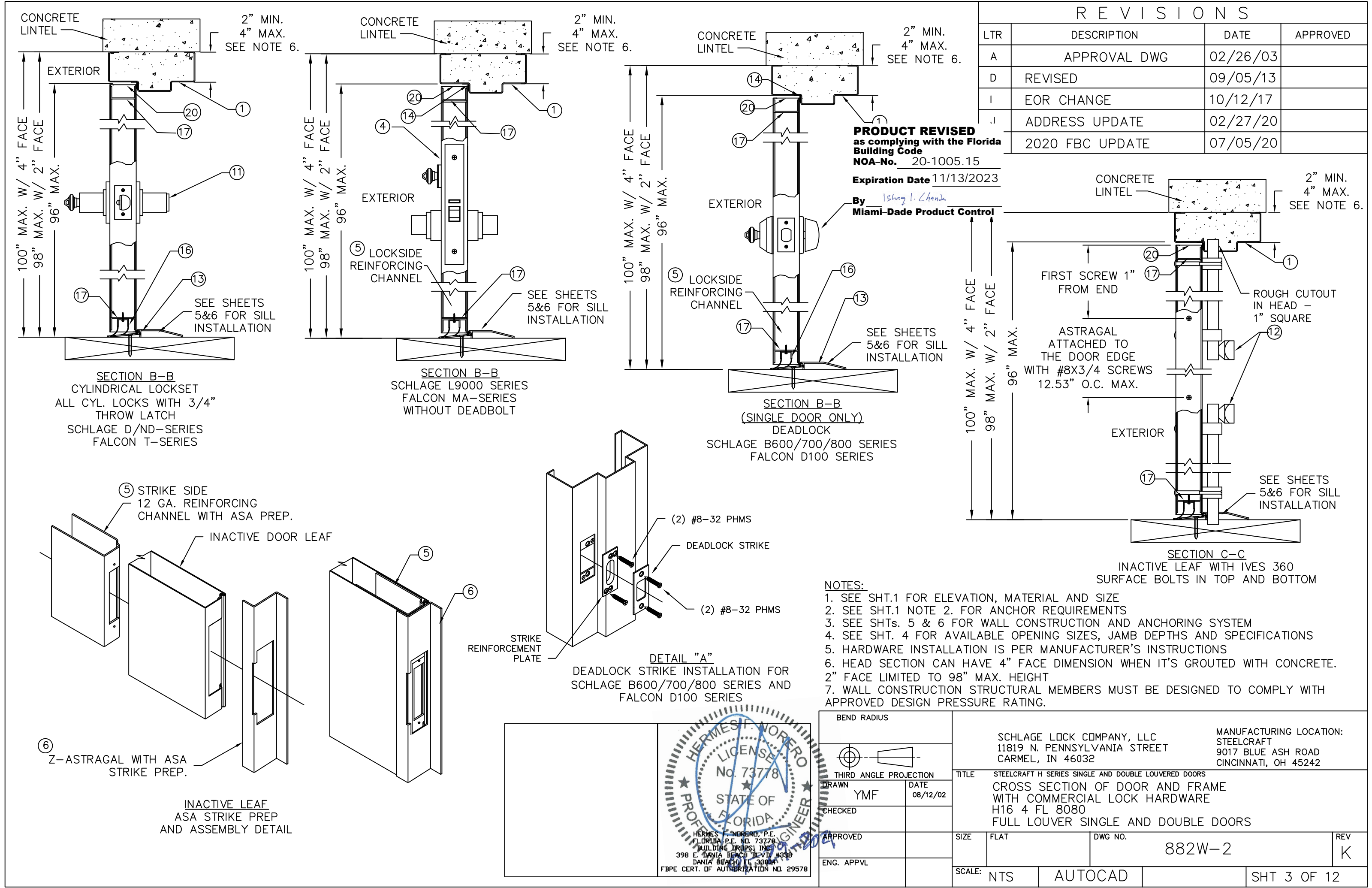
LTR	DESCRIPTION	DATE	APPROVED
A	APPROVAL DWG	02/26/03	
B	MODIFIED PER DC BCCO	09/23/03	
D	MODIFIED PER DC BCCO	10/08/03	
E	REVISED	09/05/13	
I	EOR CHANGE	10/12/17	
J	ADDRESS UPDATE	02/27/20	
K	2020 FBC UPDATE	07/05/20	

1. SEE SHT.1 FOR ELEVATION, MATERIAL AND SIZE
2. SEE SHT.1 NOTE 2. AND SHTS. 5 & 6 FOR ANCHOR REQUIREMENTS
3. SEE SHTS. 5 & 6 FOR WALL CONSTRUCTION AND ANCHORING SYSTEM OPTIONS AND INSTALLATION
4. SEE SHT.4 FOR AVAILABLE OPENING SIZES, JAMB DEPTHS AND SPECIFICATIONS
5. APPROVED HARDWARE AND LOUVER INSTALLATION AS PER MANUFACTURER'S INSTRUCTIONS



BEND RADIUS					SCHLAGE LOCK COMPANY, LLC 11819 N. PENNSYLVANIA STREET CARMEL, IN 46032			MANUFACTURING LOCATION: STEELCRAFT 9017 BLUE ASH ROAD CINCINNATI, OH 45242		
THIRD ANGLE PROJECTION					TITLE: STEELCRAFT H SERIES SINGLE AND DOUBLE LOUVERED DOORS					
DRAWN	DATE	CROSS SECTION OF DOOR AND FRAME WITH COMMERCIAL LOCK HARDWARE H16 4 FL 8080 FULL LOUVER SINGLE AND DOUBLE DOORS								
YMF	08/12/02									
CHECKED										
APPROVED		SIZE	FLAT	DWG NO.	882W-2			REV	K	
ENG. APPVL		SCALE: NTS		AUTOCAD			SHEET 2 OF 12			



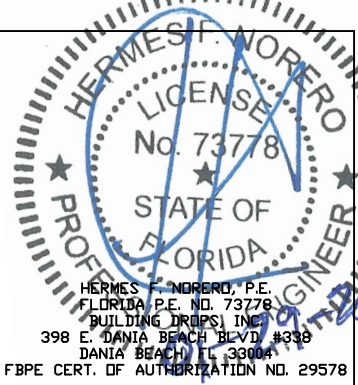


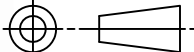
R E V I S I O N S			
LTR	DESCRIPTION	DATE	APPROVED
A	APPROVAL DWG	02/26/03	
D	REVISED	09/05/13	
I	EOR CHANGE	10/12/17	
.I	ADDRESS UPDATE	02/27/20	
	2020 FBC UPDATE	07/05/20	

**PRODUCT REVISED**  
as complying with the Florida  
Building Code  
NOA-No. 20-1005.15  
Expiration Date 11/13/2023

By *Ishag I. Chande*  
**Miami-Dade Product Control**

- NOTES:
1. SEE SHT.1 FOR ELEVATION, MATERIAL AND SIZE
  2. SEE SHT.1 NOTE 2. FOR ANCHOR REQUIREMENTS
  3. SEE SHTs. 5 & 6 FOR WALL CONSTRUCTION AND ANCHORING SYSTEM
  4. SEE SHT. 4 FOR AVAILABLE OPENING SIZES, JAMB DEPTHS AND SPECIFICATIONS
  5. HARDWARE INSTALLATION IS PER MANUFACTURER'S INSTRUCTIONS
  6. HEAD SECTION CAN HAVE 4" FACE DIMENSION WHEN IT'S GROUTED WITH CONCRETE. 2" FACE LIMITED TO 98" MAX. HEIGHT
  7. WALL CONSTRUCTION STRUCTURAL MEMBERS MUST BE DESIGNED TO COMPLY WITH APPROVED DESIGN PRESSURE RATING.



BEND RADIUS		<div>SCHLAGE LOCK COMPANY, LLC 11819 N. PENNSYLVANIA STREET CARMEL, IN 46032</div> <div>MANUFACTURING LOCATION: STEELCRAFT 9017 BLUE ASH ROAD CINCINNATI, OH 45242</div>					
<div></div> <div>THIRD ANGLE PROJECTION</div>							
DRAWN	YMF	DATE	08/12/02	<div>TITLE</div> <div>STEELCRAFT H SERIES SINGLE AND DOUBLE LOUVERED DOORS</div> <div>CROSS SECTION OF DOOR AND FRAME WITH COMMERCIAL LOCK HARDWARE H16 4 FL 8080 FULL LOUVER SINGLE AND DOUBLE DOORS</div>			
CHECKED							
APPROVED		SIZE	FLAT	DWG NO.	882W-2	REV	K
ENG. APPVL		SCALE: NTS		AUTOCAD		SHT 3 OF 12	

AVAILABLE STEELCRAFT DOOR CONFIGURATIONS  
TABLE 1. (SEE NOTE 1.)

STEELCRAFT H SERIES DOOR CORE MATERIAL PER SHT.11	MAXIMUM OPENING SIZE		SKIN MATERIAL	
	WIDTH	HEIGHT	DESCR.	GA./MIN. THK
HONEYCOMB POLYSTYRENE POLYURETHANE	8'0"	8'0"	CRS GALV	16/.053" 14/.067"
HONEYCOMB POLYSTYRENE POLYURETHANE	8'0"	8'0"	STAINLESS STEEL	16/.053"

MINIMUM YIELD STRENGTH = 46,000 PSI  
MINIMUM TENSILE STRENGTH = 52,000 PSI

AVAILABLE STEELCRAFT FRAME CONFIGURATIONS  
TABLE 2. (SEE NOTE 2.)

STEELCRAFT FRAME SERIES	JAMB DEPTH	MAXIMUM OPENING SIZE		MATERIAL	
		WIDTH	HEIGHT	DESCR.	GA./MIN. THK
F	5.75" NOM.	8'0"	8'0"	CRS/HRS GALV	16/.053" 14/.067" 12/.099"
				STAINLESS STEEL	16/.053"
MU	5.75" NOM.	8'0"	8'0"	CRS/HRS GALV	16/.053" 14/.067"

MINIMUM YIELD STRENGTH = 46,000 PSI  
MINIMUM TENSILE STRENGTH = 52,000 PSI

TABLE 3. SEE MIN. STRENGTH

CRS ASTM A366
HRS ASTM A1011
GALV: A60 ASTM A653 ASTM A924
STAINLESS STL: 304,316 ASTM A240

R E V I S I O N S			
LTR	DESCRIPTION	DATE	APPROVED
A	APPROVAL DWG	02/26/03	
B	MODIFIED PER DC BCCO	09/23/03	
C	MODIFIED PER DC BCCO	10/08/03	
D	MODIFIED	12/06/12	
E	REVISED	09/05/13	
F	REVISED	02/01/15	
I	EOR CHANGE	10/12/17	
J	ADDRESS UPDATE	02/27/20	
K	2020 FBC UPDATE	07/05/20	

**PRODUCT REVISED**  
**as complying with the Florida**  
**Building Code**  
**NOA-No.** 20-1005.15  
**Expiration Date** 11/13/2023  
**By** Ishag I. Chande  
**Miami-Dade Product Control**

- NOTES:
- 1. DOOR CONSTRUCTION (SEE TABLE 1 & 3)
    - 1.1. NOMINAL DOOR THICKNESS – 1 3/4"
    - 1.2. LOUVER OPENING SIZE TESTED (SEE SHEET 1 & 12) IS MAX SIZE AVAILABLE FOR 8'0" X 8'0" OPENING. ALL SMALLER SIZES ARE ACCEPTABLE. .
    - 1.3. MAXIMUM LOUVER OPENING SIZE WILL CHANGE IN PROPORTION WITH DOOR SIZE, KEEPING THE SAME STILE AND RAIL MINIMUM DIMENSIONS SPECIFIED IN ELEVATION ON SHEET 1 & 12.
  - 2. FRAME CONSTRUCTION (SEE TABLE 2 & 3)
    - 2.1. NOMINAL JAMB DEPTH – 5 3/4", STOP HEIGHT – 5/8"
    - 2.2. FRAMES AVAILABLE AS FLUSH (F–SERIES) AND MULT–USE (MU–SERIES) (SEE TABLE.2 & 3)
  - 3. FOR MATERIAL SPECIFICATIONS REFERENCE SEE TABLE 3.

HERMES F. NORERO  
LICENSE  
No. 73778  
STATE OF  
FLORIDA  
PROFESSIONAL ENGINEER  
08/08/2024  
HERMES F. NORERO, P.E.  
FLORIDA P.E. NO. 73778  
BUILDING DROPS, INC.  
398 E. DANIA BEACH BLVD. #338  
DANIA BEACH, FL 33004  
FBPE CERT. OF AUTHORIZATION NO. 29578

BEND RADIUS

THIRD ANGLE PROJECTION

DRAWN YMF

CHECKED

APPROVED

ENG. APPVL

SCHLAGE LOCK COMPANY, LLC  
11819 N. PENNSYLVANIA STREET  
CARMEL, IN 46032

MANUFACTURING LOCATION:  
STEELCRAFT  
9017 BLUE ASH ROAD  
CINCINNATI, OH 45242

TITLE: STEELCRAFT H SERIES SINGLE AND DOUBLE LOUVERED DOORS  
DOOR AND FRAME  
CONFIGURATIONS  
AND MATERIAL SPECS.

SIZE FLAT

DWG NO. 882W-2

REV K

SCALE: NTS

AUTOCAD

SHT 4 OF 12



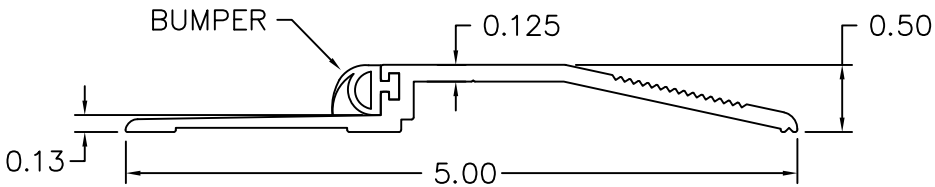




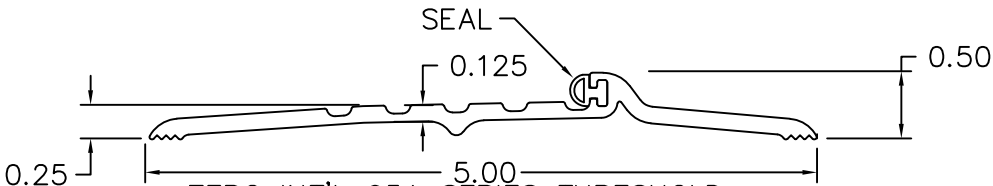




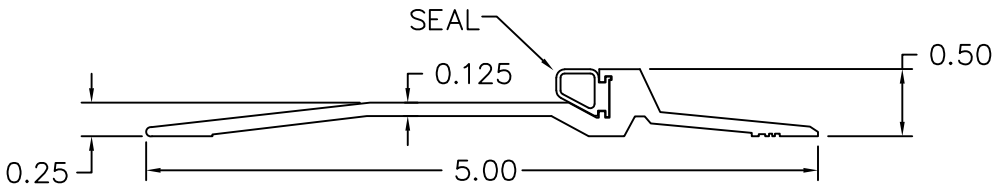
⑬ THRESHOLD OPTIONS



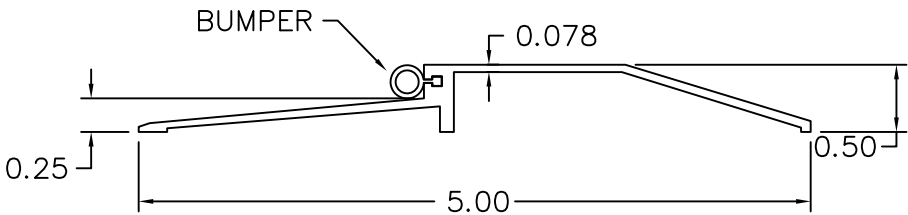
ZERO INT'L 566 SERIES THRESHOLD  
WITH NEOPRENE BUMPER  
6063-T5 ALUMINUM



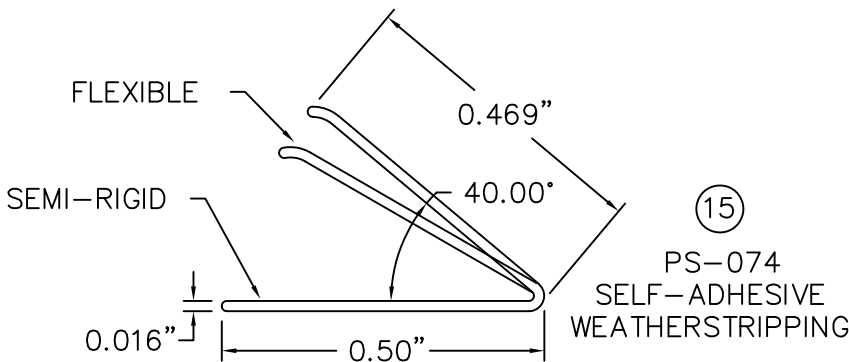
ZERO INT'L 65A SERIES THRESHOLD  
WITH NEOPRENE BUMPER  
6063-T5 ALUMINUM



PEMKO 2005 SERIES THRESHOLD  
WITH SILICONE, VINYL  
OR PILE SEAL  
6063-T6 ALUMINUM



NATIONAL GUARD 950 SERIES THRESHOLD  
WITH SILICONE, VINYL  
OR NEOPRENE BUMPER  
6063-T5 ALUMINUM



⑮

PS-074  
SELF-ADHESIVE  
WEATHERSTRIPPING

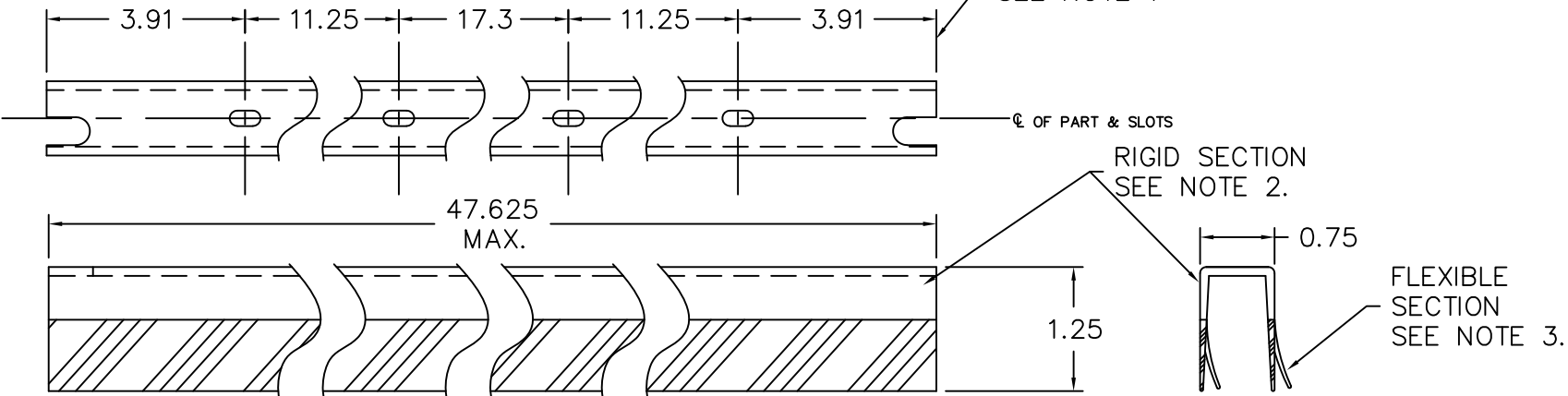
REVISIONS

LTR	DESCRIPTION	DATE	APPROVED
A	APPROVAL DWG	09/05/13	
B	REVISED	05/05/15	
I	EOR CHANGE	10/12/17	
J	ADDRESS UPDATE	02/27/20	
K	2020 FBC UPDATE	07/05/20	

**PRODUCT REVISED**  
as complying with the Florida  
Building Code  
NOA-No. 20-1005.15

Expiration Date 11/13/2023

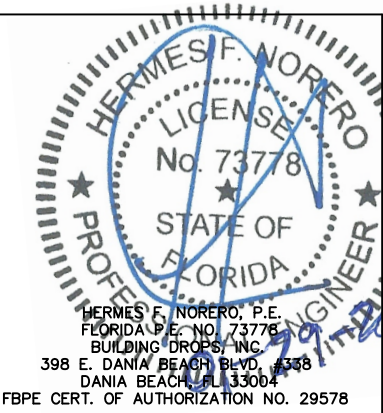
By Ishaq I. Chandra  
Miami-Dade Product Control



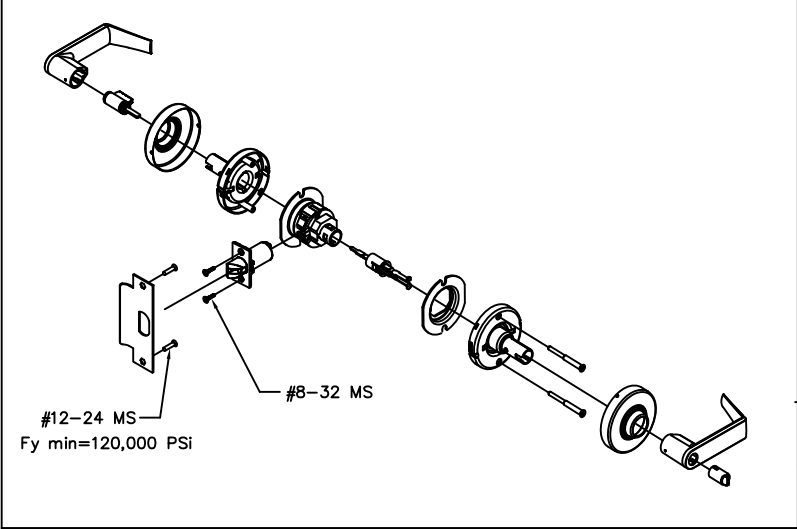
⑯ FAS-SEAL DOOR SWEEP

NOTES:

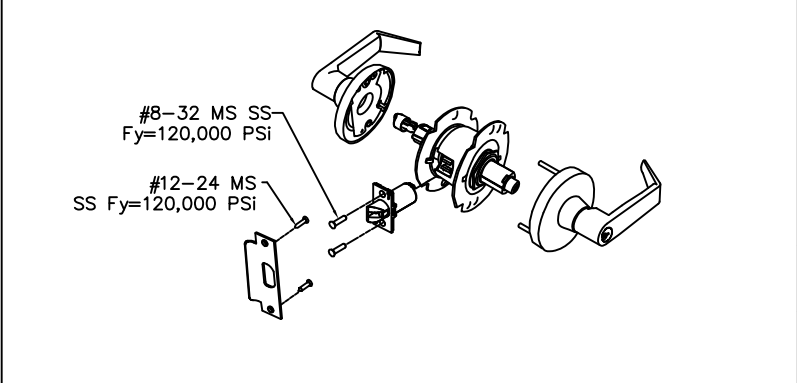
1. SLOT LOCATIONS MAY VARY WITH DIFFERENT DOOR WIDTH.
2. DOOR SWEEP RIGID SECTION IS MADE OF PRO-FAX #PD-199 POLYPROPYLENE HOMOPOLYMER
3. DOOR SWEEP FLEXIBLE SECTION IS MADE OF SANTOPRENE #101-73 73 DUROMETER - SHORE A SCALE



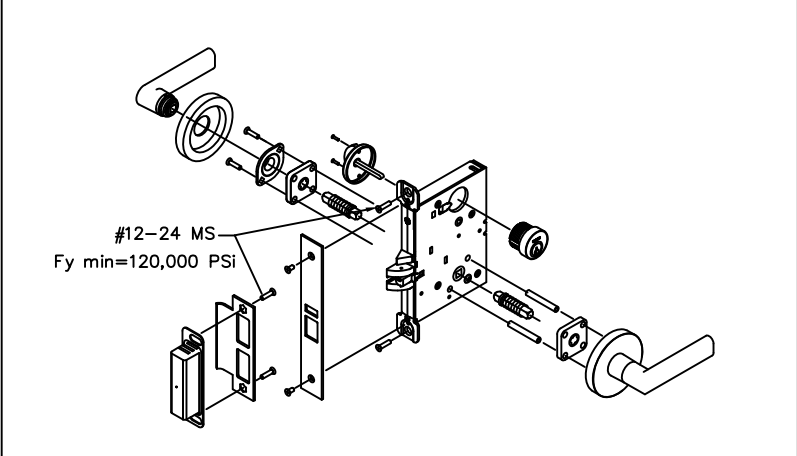
BEND RADIUS		SCHLAGE LOCK COMPANY, LLC 11819 N. PENNSYLVANIA STREET CARMEL, IN 46032		MANUFACTURING LOCATION: STEELCRAFT 9017 BLUE ASH ROAD CINCINNATI, OH 45242	
THIRD ANGLE PROJECTION DRAWN JPD CHECKED APPROVED ENG. APPVL		DATE 09/05/13		TITLE: STEELCRAFT H SERIES SINGLE AND DOUBLE LOUVERED DOORS SINGLE AND DOUBLE DOOR ACCESSORIES BOTTOM SWEEP, THRESHOLDS, AND WEATHERSTRIPPING	
SIZE		FLAT		DWG NO. 882W-2	
SCALE:		NTS		AUTOCAD	
				SHT 8 OF 12	
				REV K	



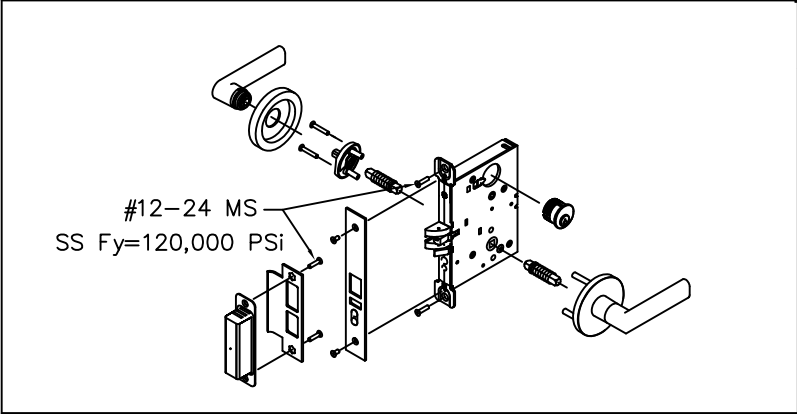
SCHLAGE D/ND-SERIES CYLINDRICAL LOCKSET WITH 3/4" THROW LATCH



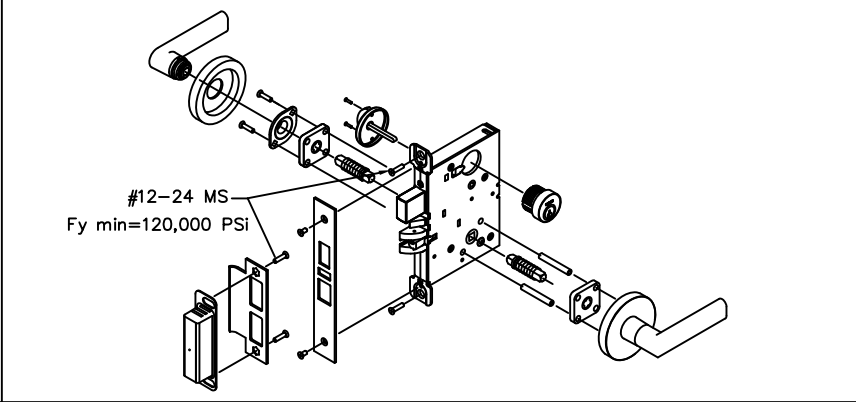
FALCON T-SERIES CYLINDRICAL LOCKSET WITH 3/4" THROW LATCH



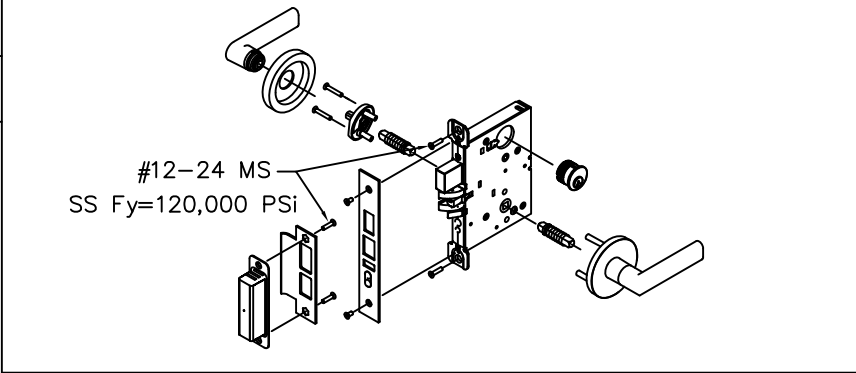
SCHLAGE L/LV 9000-SERIES MORTISE LOCKSET WITHOUT DEADBOLT WITH 3/4" THROW LATCH



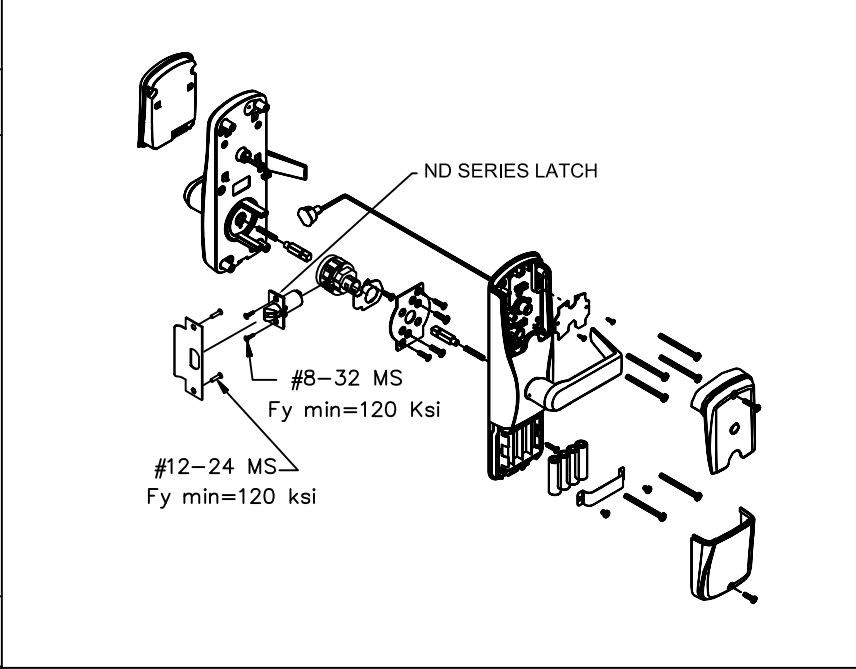
FALCON MA-SERIES MORTISE LOCKSET WITHOUT DEADBOLT WITH 3/4" THROW LATCH



SCHLAGE L/LV 9400-SERIES MORTISE LOCKSET WITH DEADBOLT AND 3/4" THROW LATCH



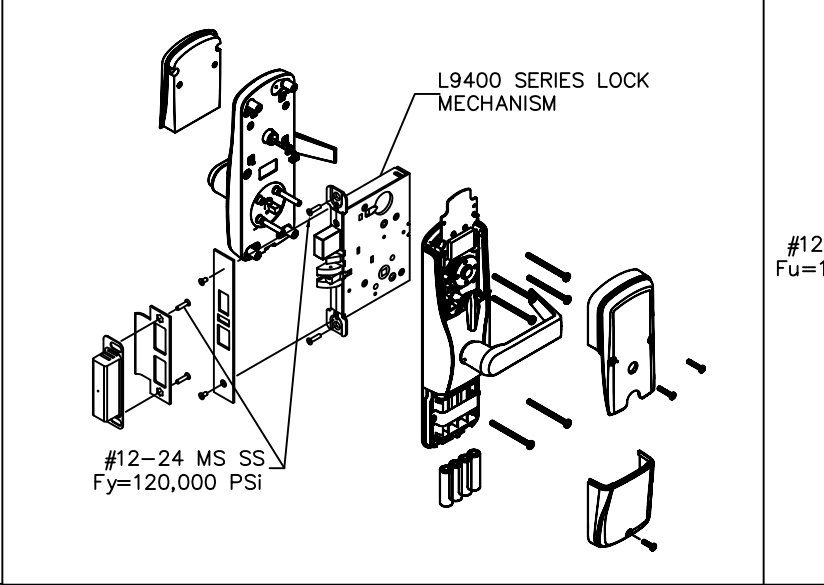
FALCON MA-SERIES MORTISE LOCKSET WITH DEADBOLT AND 3/4" THROW LATCH



SCHLAGE AD/CO-SERIES CYLINDRICAL LOCKSET WITH 3/4" THROW LATCH



SCHLAGE B600, 700, 800 AND FALCON D100 SERIES CYLINDRICAL DEADLOCK WITH 1" BOLT THROW WITH FIXED BACKSET (SINGLE DOOR APPLICATIONS ONLY)

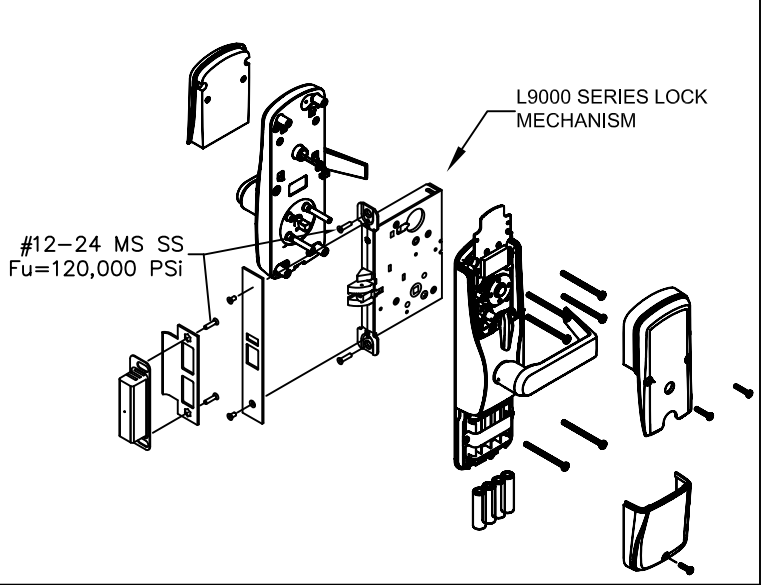


SCHLAGE AD/CO MORTISE LOCK MD-SERIES WITH DEADBOLT AND 3/4" THROW LATCH

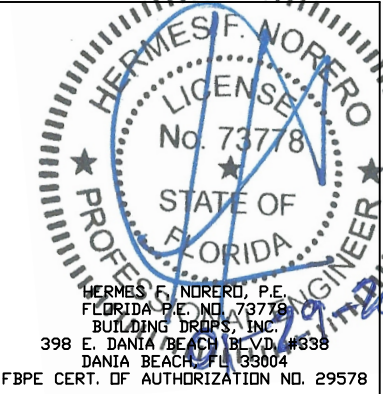
R E V I S I O N S				
LTR	DESCRIPTION		DATE	APPROVED
A	APPROVAL DWG	JPD	09/05/13	
B	REVISED DWG	JPD	02/01/15	
I	EOR CHANGE	SM	10/12/17	
J	ADDRESS UPDATE	SM	02/27/20	
K	2020 FBC UPDATE	NUS	07/05/20	

**PRODUCT REVISED**  
as complying with the Florida  
Building Code  
NOA-No. 20-1005.15  
Expiration Date 11/13/2023  
By Ishaq I. Chande  
Miami-Dade Product Control

NOTES:  
1. FIRE RATING IS NOT PART OF THIS APPROVAL.  
2. ELECTRIC INSTALLATION IS NOT PART OF THIS APPROVAL AND TO BE REVIEWED BY THE BUILDING OFFICIAL.



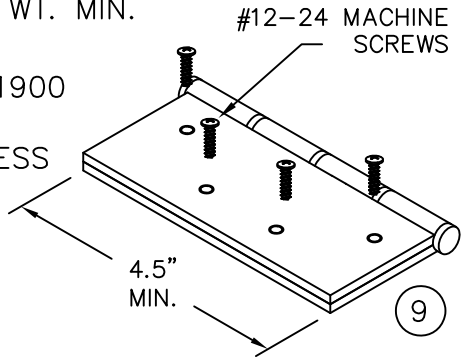
SCHLAGE AD/CO MORTISE LOCK MS-SERIES WITHOUT DEADBOLT AND WITH 3/4" THROW LATCH



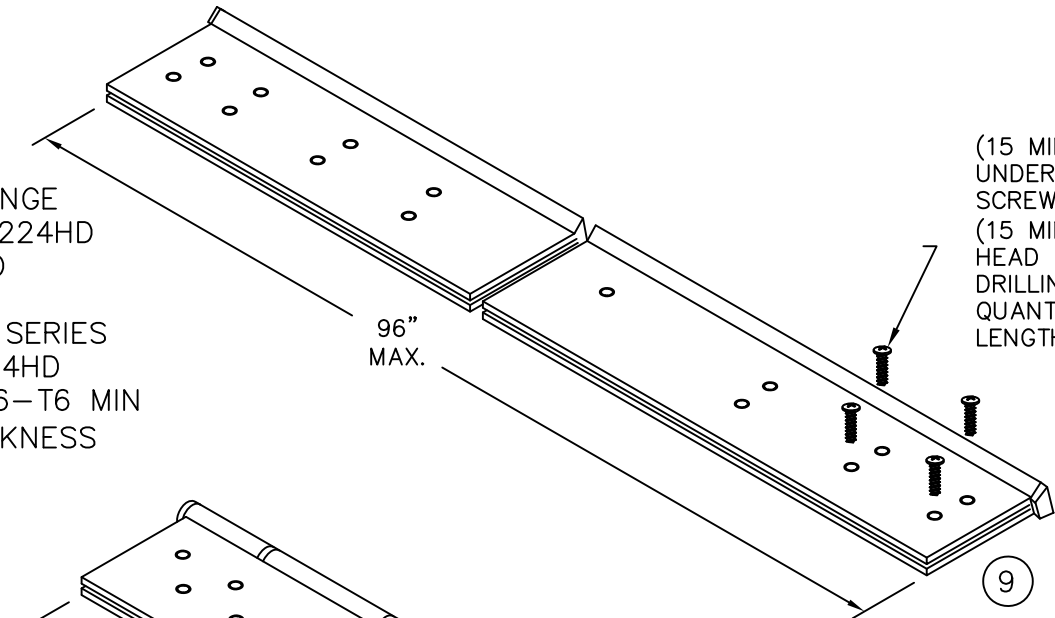
BEND RADIUS	
THIRD ANGLE PROJECTION	
DRAWN JPD	DATE 09/05/13
CHECKED	
APPROVED	
ENG. APPVL X	

SCHLAGE LOCK COMPANY, LLC 11819 N. PENNSYLVANIA STREET CARMEL, IN 46032		MANUFACTURING LOCATION: STEELCRAFT 9017 BLUE ASH ROAD CINCINNATI, OH 45242	
TITLE: STEELCRAFT H SERIES SINGLE AND DOUBLE LOUVERED DOORS			
LOCKING HARDWARE OPTIONS			
SIZE	FLAT	DWG NO.	882W-2
SCALE:	NTS	AUTOCAD	SHEET 9 of 12
			REV K

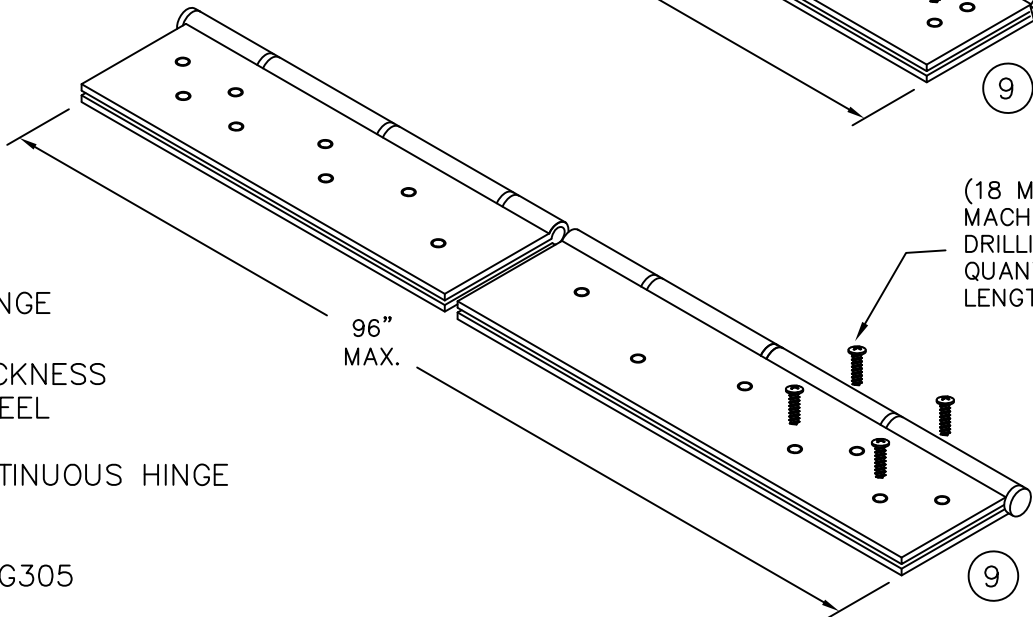
STEEL BUTT HINGE  
4.5" X 4.5" STD. WT. MIN.  
IVES 5BB1/3CB1  
STANLEY FBB179/1900  
HAGER BB1279  
.134" MIN. THICKNESS  
Fy MIN. = 36ksi



CONTINUOUS HINGE  
IVES 112HD & 224HD  
STANLEY 661HD  
SELECT SL11HD  
PEMCO FM\_HD SERIES  
HAGER 780-224HD  
ALUMINUM 6036-T6 MIN  
.110" MIN. THICKNESS



STEEL CONTINUOUS HINGE  
IVES 600  
.075 (14GA.) MIN. THICKNESS  
1012 COLD ROLLED STEEL  
Fy MIN. 45ksi  
STAINLESS STEEL CONTINUOUS HINGE  
IVES 700, 700CS  
HAGER 790-900  
MARKAR FM-300 & HG305  
ABH A-500  
.075" (14GA.) MIN. THICKNESS  
304 STAINLESS STEEL  
Fy MIN. 31ksi

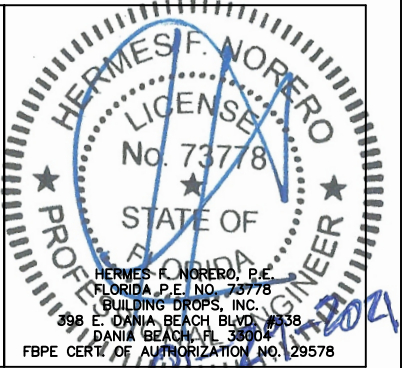


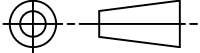
- CONTINUOUS HINGE NOTES:
1. QUANTITY OF SCREWS VARIES PER HINGE LENGTH, MANUFACTURER AND MODEL NUMBER
  2. SCREW SPACING VARIES PER HINGE LENGTH, MANUFACTURER AND MODEL NUMBER
  3. INSTALL HINGES PER THE MANUFACTURERS INSTALLATION INSTRUCTIONS

REVISIONS

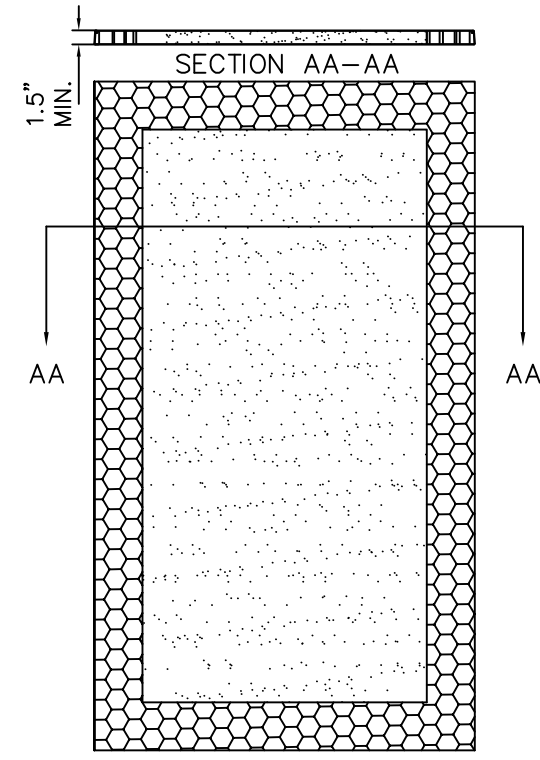
LTR	DESCRIPTION	DATE	APPROVED
A	APPROVAL DWGS.	09/05/13	
B	APPROVAL DWGS.	02/01/15	
I	EOR CHANGE	10/12/17	
J	ADDRESS UPDATE	02/27/20	
K	2020 FBC UPDATE	07/05/20	

**PRODUCT REVISED**  
as complying with the Florida  
Building Code  
NOA-No. 20-1005.15  
Expiration Date 11/13/2023  
By Ishag I. Chande  
Miami-Dade Product Control

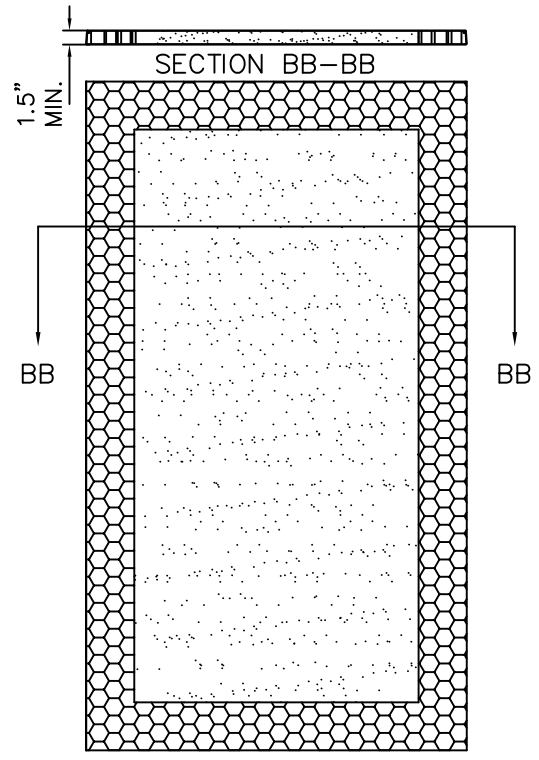


BEND RADIUS		SCHLAGE LOCK COMPANY, LLC 11819 N. PENNSYLVANIA STREET CARMEL, IN 46032			MANUFACTURING LOCATION: STEELCRAFT 9017 BLUE ASH ROAD CINCINNATI, OH 45242	
						
THIRD ANGLE PROJECTION		TITLE: STEELCRAFT H SERIES SINGLE AND DOUBLE LOUVERED DOORS				
DRAWN JPD	DATE 09/05/13	HINGE OPTIONS				
CHECKED						
APPROVED		SIZE	FLAT	DWG NO. 882W-2	REV K	
ENG. APPVL		SCALE: NTS	AUTOCAD		SHT 10 OF 12	

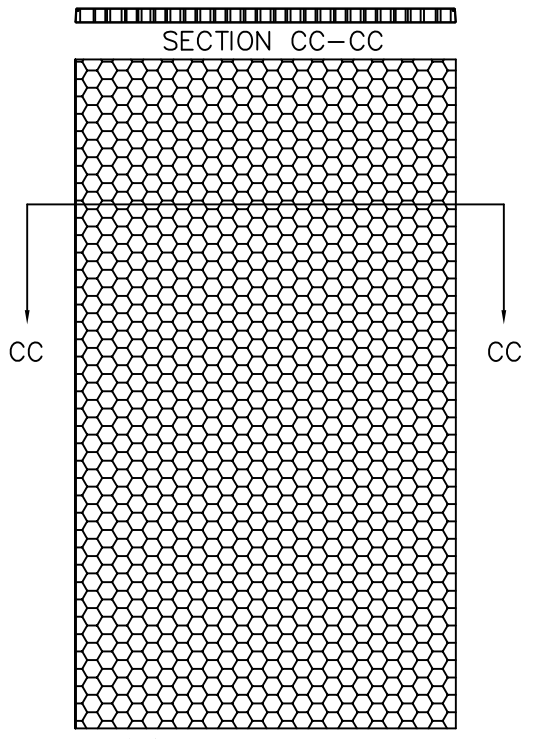




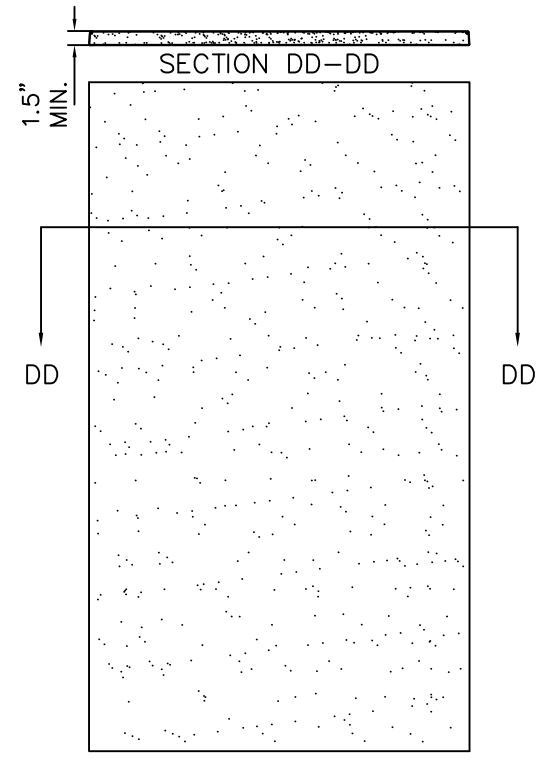
(A) EXPANDED POLYSTYRENE FOAM  
BY ATLAS EPS  
DENSITY: 1.0 LBS/FT<sup>3</sup>



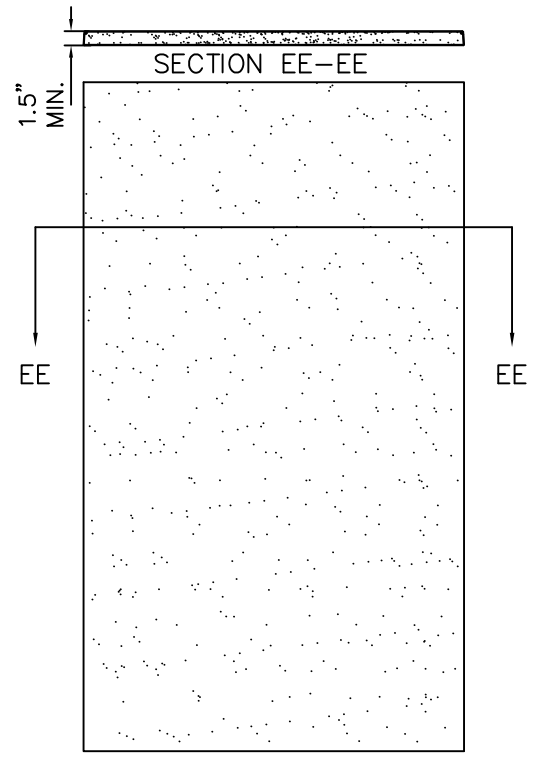
(B) POLYISOCYANURATE  
(POLYURETHANE)  
BY ELLIOT CO. OF INDIANAPOLIS, IN  
DENSITY: 2 LBS/FT<sup>3</sup>



(C) HONEYCOMB  
KRAFT PAPER.



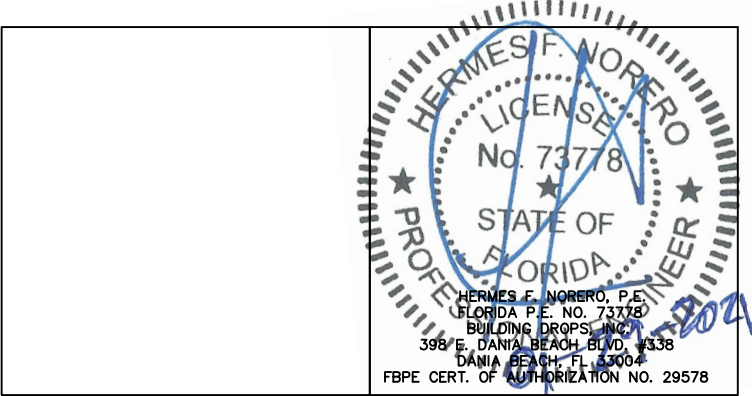
(D) EXPANDED POLYSTYRENE FOAM  
BY ATLAS EPS, DENSITY:1.0 LB/FT<sup>3</sup>



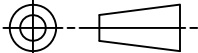
(E) POLYISOCYANURATE  
(POLYURETHANE)  
BY ELLIOT CO. OF INDIANAPOLIS, IN.  
DENSITY: 2 LBS/FT<sup>3</sup>

R E V I S I O N S			
LTR	DESCRIPTION	DATE	APPROVED
A	APPROVAL DWGS	09/05/13	
B	REVISED	05/05/15	
I	EOR CHANGE	10/12/17	
J	ADDRESS UPDATE	02/27/20	
K	2020 FBC UPDATE	07/05/20	

**PRODUCT REVISED**  
as complying with the Florida  
Building Code  
NOA-No. 20-1005.15  
Expiration Date 11/13/2023  
By Ishaq I. Chandra  
Miami-Dade Product Control

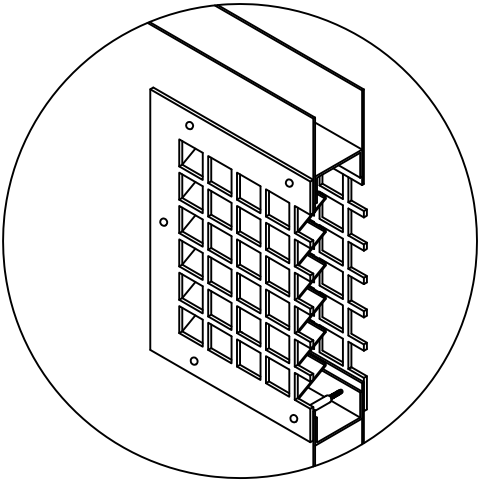
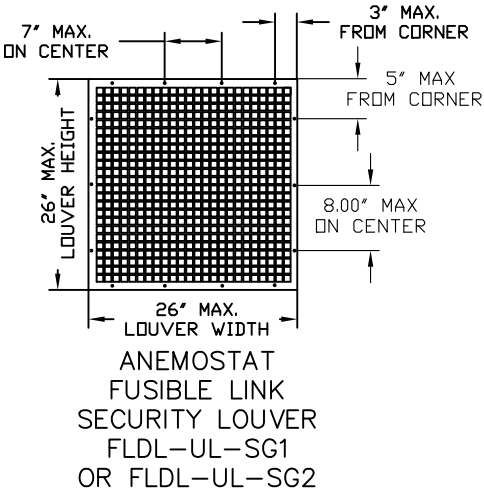


NOTES:  
1. CORE MATERIAL SHOWN WITHOUT LOUVER CUTOUTS AND REINFORCEMENTS.

BEND RADIUS		SCHLAGE LOCK COMPANY, LLC 11819 N. PENNSYLVANIA STREET CARMEL, IN 46032			MANUFACTURING LOCATION: STEELCRAFT 9017 BLUE ASH ROAD CINCINNATI, OH 45242	
						
THIRD ANGLE PROJECTION		TITLE: STEELCRAFT H SERIES SINGLE AND DOUBLE LOUVERED DOORS				
DRAWN	DATE	DOOR CORE MATERIAL OPTIONS				
JPD	09/05/13					
CHECKED						
APPROVED		SIZE	FLAT	DWG NO.	REV	
ENG. APPVL				882W-2	K	
		SCALE:	NTS	AUTOCAD		SHT 11 OF 12

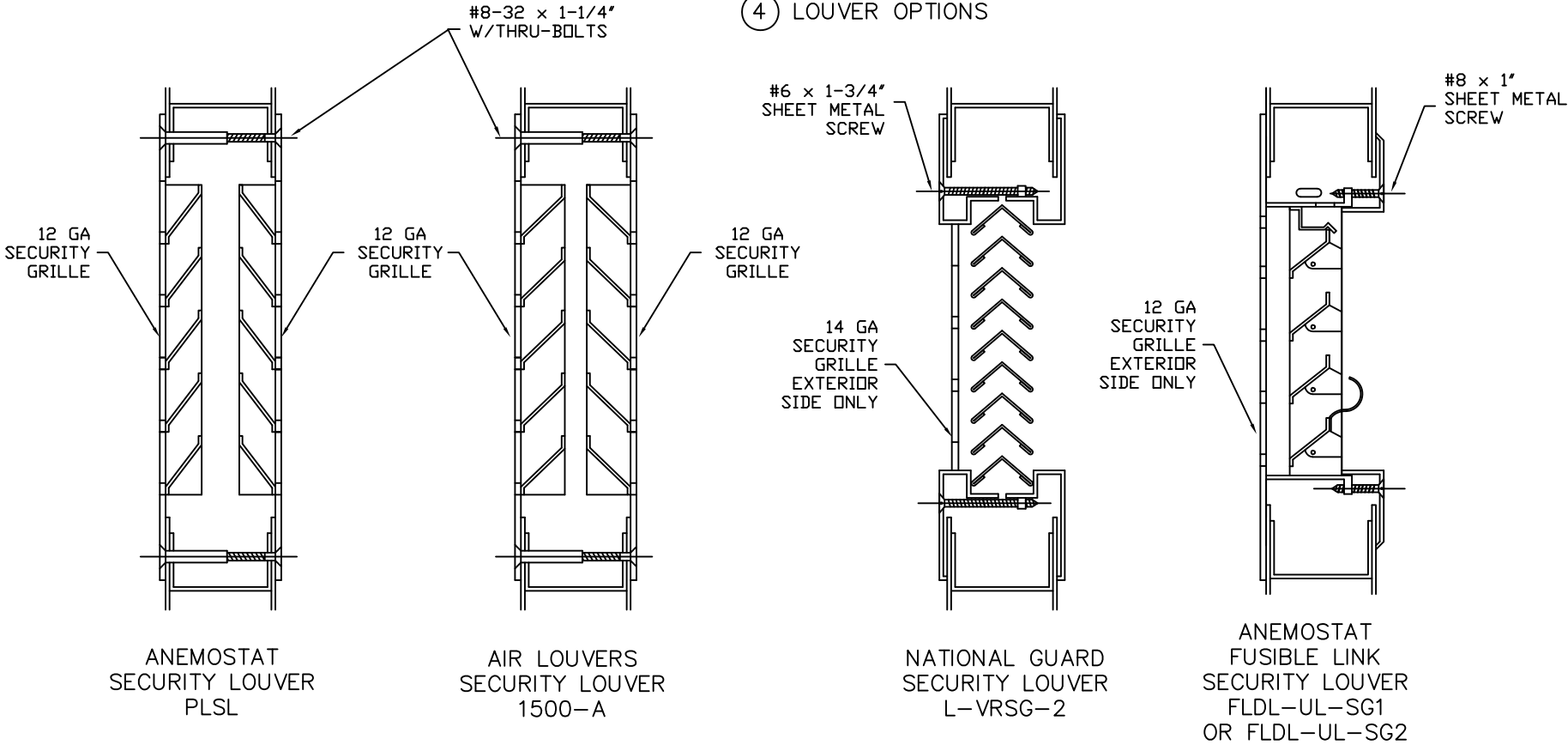
R E V I S I O N S			
LTR	DESCRIPTION	DATE	APPROVED
A	APPROVAL DWG	09/05/13	
I	EDR CHANGE	10/12/17	
J	ADDRESS UPDATE	02/27/20	
K	2020 FBC UPDATE	07/05/20	

**PRODUCT REVISED**  
as complying with the Florida  
Building Code  
**NOA-No.** 20-1005.15  
**Expiration Date** 11/13/2023  
**By** Ishaq I. Chande  
**Miami-Dade Product Control**

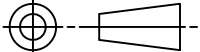


SECURITY LOUVER DETAIL  
LOUVERS: NATIONAL GUARD L-VRSG-2  
AIR LOUVERS 1500-A  
ANEMOSTAT PLSL  
ANEMOSTAT FLDL-UL-SG1 OR SG2

4 LOUVER OPTIONS



NOTES:  
1. SCREW SPACING MAY VARY WITH LOUVER HEIGHT AND WIDTH.

BEND RADIUS		SCHLAGE LOCK COMPANY, LLC 11819 N. PENNSYLVANIA STREET CARMEL, IN 46032			MANUFACTURING LOCATION: STEELCRAFT 9017 BLUE ASH ROAD CINCINNATI, OH 45242	
						
THIRD ANGLE PROJECTION		TITLE				
DRAWN JPD		DATE 09/05/13				
CHECKED		STEELCRAFT H SERIES SINGLE AND DOUBLE LOUVERED DOORS			LOUVER OPTIONS	
APPROVED		SIZE	FLAT	DWG NO.	882W-2	REV K
ENG. APPVL		SCALE:	NTS	AUTOCAD	SHEET	12 OF 12