



MIAMI-DADE COUNTY
PRODUCT CONTROL SECTION
11805 SW 26 Street, Room 208
Miami, FL 33175
T (786) 315-2590 F (786) 315-2599
www.miamidade.gov/economy

DEPARTMENT OF REGULATORY AND ECONOMIC RESOURCES (RER)
BOARD AND CODE ADMINISTRATION DIVISION

NOTICE OF ACCEPTANCE (NOA)

Roatan Mahogany USA, Inc.
4004C Aurora Street
Coral Gables, FL 33146

SCOPE:

This NOA is being issued under the applicable rules and regulations governing the use of construction materials. The documentation submitted has been reviewed and accepted by Miami-Dade County RER - Product Control Section to be used in Miami Dade County and other areas where allowed by the Authority Having Jurisdiction (AHJ).

This NOA shall not be valid after the expiration date stated below. The Miami-Dade County Product Control Section (In Miami Dade County) and/or the AHJ (in areas other than Miami Dade County) reserve the right to have this product or material tested for quality assurance purposes. If this product or material fails to perform in the accepted manner, the manufacturer will incur the expense of such testing and the AHJ may immediately revoke, modify, or suspend the use of such product or material within their jurisdiction. RER reserves the right to revoke this acceptance, if it is determined by Miami-Dade County Product Control Section that this product or material fails to meet the requirements of the applicable building code.

This product is approved as described herein, and has been designed to comply with the Florida Building Code, including the High Velocity Hurricane Zone.

DESCRIPTION: Series "Roatan Euro Profile" Outswing Wood Doors - L.M.I.

APPROVAL DOCUMENT: Drawing No. **20-150 DR**, titled "Roatan Euro Profile Outswing Doors", sheets 1 through 9 of 9, dated 09/10/2020 prepared by PPMF Inc., signed and sealed by Pedro M. De Figueiredo, P.E., bearing the Miami-Dade County Product Control bearing the Miami-Dade County Product Control Revision stamp with the Notice of Acceptance number and expiration date by the Miami-Dade County Product Control Division.

MISSILE IMPACT RATING: Large and Small Missile Impact Resistant

LABELING: Each unit shall bear a permanent label with the manufacturer's name or logo, city, state, model/series, and following statement: "Miami-Dade County Product Control Approved", unless otherwise noted herein.

RENEWAL of this NOA shall be considered after a renewal application has been filed and there has been no change in the applicable building code negatively affecting the performance of this product.

TERMINATION of this NOA will occur after the expiration date or if there has been a revision or change in the materials, use, and/or manufacture of the product or process. Misuse of this NOA as an endorsement of any product, for sales, advertising or any other purposes shall automatically terminate this NOA. Failure to comply with any section of this NOA shall be cause for termination and removal of NOA.

ADVERTISEMENT: The NOA number preceded by the words Miami-Dade County, Florida, and followed by the expiration date may be displayed in advertising literature. If any portion of the NOA is displayed, then it shall be done in its entirety.

INSPECTION: A copy of this entire NOA shall be provided to the user by the manufacturer or its distributors and shall be available for inspection at the job site at the request of the Building Official.

This NOA **revises NOA#18-0206.06** and consists of this page 1, and evidence pages E-1 and E-2, as well as approval document mentioned above.

The submitted documentation was reviewed by **Sifang Zhao, P.E.**



S.Z.
01/07/2021

NOA No. 20-1013.14
Expiration Date: July 19, 2023
Approval Date: January 07, 2021
Page 1

Roatan Mahogany USA, Inc.

NOTICE OF ACCEPTANCE: EVIDENCE SUBMITTED

1. EVIDENCE SUBMITTED UNDER PREVIOUS NOA's

A. DRAWINGS

1. Manufacturer's die drawings and sections. (*Submitted under NOA No. 18-0206.06*)
2. Drawing No. **18-015 DR**, titled "Roatan Euro Profile Outswing Doors", sheets 1 through 9 of 9, dated 01/12/18, prepared by PPMF, Inc., signed and sealed by Pedro M. De Figueiredo, P.E.

B. TESTS

1. Test reports on: 1) Air Infiltration Test, per FBC TAS 202-94
2) Uniform Static Air Pressure Test, Loading per FBC TAS 202-94
3) Water Resistance Test, per FBC TAS 202-94
4) Large Missile Impact Test per FBC, TAS 201-94
5) Cyclic Wind Pressure Loading per FBC, TAS 203-94
6) Forced Entry Test, per FBC 2411 3.2.1, TAS 202-94
7) Drop Load Test, per FBC 1618.4.6
along with marked-up drawings and installation diagram of an outswing wood casement window, prepared by Fenestration Testing Laboratory, Inc., Test Report No. **FTL-16-6910**, dated 08/09/17, signed and sealed by Idalmis Ortega, P.E.
(*Submitted under NOA No. 18-0206.06*)

C. CALCULATIONS

1. Anchor verification calculations and structural analysis, complying with **FBC 6th Edition (2017)**, prepared by PPMF, Inc., dated 02/04/18 with revised on 05/16/18, signed and sealed by Pedro M. De Figueiredo, P.E.
(*Submitted under NOA No. 18-0206.06*)
2. Glazing complies with **ASTM E1300-09/12**.

D. QUALITY ASSURANCE

1. Miami-Dade Department of Regulatory and Economic Resources (RER)

E. MATERIAL CERTIFICATIONS

1. Notice of Acceptance No. **16-0208.12** issued to Polymer Extrusion Technology, Inc. dba Glasslam for their "**Glasslam Safety-Plus II Glass Interlayer**" dated 06/16/16, expiring on 08/07/18.

F. STATEMENTS

1. Statement letter of conformance, complying with **FBC 6th Edition (2017)**, and of no financial interest, dated February 02, 2018, issued by PPMF Inc., signed and sealed by Pedro M. De Figueiredo, P.E.

G. OTHER

1. None.



Sifang Zhao, P.E.
Product Control Examiner
NOA No. 20-1013.14
Expiration Date: July 19, 2023
Approval Date: January 07, 2021

Roatan Mahogany USA, Inc.

NOTICE OF ACCEPTANCE: EVIDENCE SUBMITTED

2. NEW EVIDENCE SUBMITTED

A. DRAWINGS

1. Drawing No. **20-150 DR**, titled “Roatan Euro Profile Outswing Doors”, sheets 1 through 9 of 9, dated 09/10/20, prepared by PPMF Inc., signed and sealed by Pedro M. De Figueiredo, P.E.

B. TESTS

1. None.

C. CALCULATIONS

1. None.

D. QUALITY ASSURANCE

1. Miami–Dade Department of Regulatory and Economic Resources (RER).

E. MATERIAL CERTIFICATIONS

1. None.

F. STATEMENTS

1. Statement letter of conformance, complying with **FBC 7th Edition (2020)**, and of no financial interest, dated 09/10/2020, issued by PPMF Inc., signed and sealed by Pedro M. De Figueiredo, P.E.

G. OTHERS

1. This NOA revises NOA #18-0206.06, expiring on 07/19/2023.



Sifang Zhao, P.E.
Product Control Examiner
NOA No. 20-1013.14
Expiration Date: July 19, 2023
Approval Date: January 07, 2021

ROATAN EURO PROFILE

ROATAN SWIETENIA SERIES - EUROPEAN SMALL PROFILE

OUTSWING DOORS

GENERAL NOTES:

FLORIDA BUILDING CODE 2020 - 7th EDITION
HIGH VELOCITY HURRICANE ZONES - HVHZ
LARGE & SMALL MISSILE IMPACT RATED

- 1- DEFINITION: THIS PRODUCT IS AN OUTSWING MAHOGANY DOOR; DESIGNED, CONTRUCTED AND ERECTED TO ENCLOSE AN AREA, PROVIDING PROTECTION FROM HURRICANE FORCE WINDS WITHIN THE ALLOWABLE DESIGNED PRESSURES AND LIMITATIONS STATED IN THIS APPROVAL.
- 2- CODE: THIS PRODUCT HAS BEEN TESTED AND DESIGNED IN ACCORDANCE WITH THE FBC 2020 - 7th, HIGH VELOCITY HURRICANE ZONES (HVHZ).
- 3- POSTING: A PERMANENT LEGIBLE DECAL SHALL BE PLACED AT A READILY VISIBLE LOCATION STATING THE FOLLOWING:

"ROATAN MAHOGANY USA, INC.- MIAMI - FLORIDA
LARGE MISSILE IMPACT RESISTANT
ROATAN EURO PROFILE SERIES OUTSWING DOOR
MIAMI-DADE COUNTY PRODUCT APPROVED"
- 4- LOADS: DESIGNED LOAD CALCULATED BASED ON THE ASCE 7-16 AND PROVIDED BY A PROFESSIONAL ARCHITECT OR ENGINEER FOR EACH SPECIFIC PROJECT. THE CALCULATED DESIGNED PRESSURE MUST NOT EXCEED THE ALLOWABLE PRESSURES HERE IN SPECIFIED. THE DESIGN PRESSURES, AS DETERMINED FROM ASCE 7-16, ARE TO BE MULTIPLE BY 0.6.
- 5- MATERIAL: ALL WOOD MATERIAL TO BE FABRICATED FROM KILN DRIED MAHOGANY.
- 6- FASTENERS: ASSEMBLY SCREWS AND ANCHORS SHALL BE AS SPECIFIED IN THE CURRENT SET OF DRAWINGS. INSTALLATION AND LOADS AS PER THIS APPROVAL.
- 7- USE: IT SHALL BE THE RESPONSIBILITY OF THE CONTRACTOR, ARCHITECT OR ENGINEER OF RECORD TO VERIFY THE FOLLOWING:
 - 7.1- THE STABILITY OF THE STRUCTURE WHERE THE DOOR IS TO BE ATTACHED INSURING PROPER ANCHORAGE.
 - 7.2- THE SITE SPECIFIC PROJECT CRITERIA,SUCH AS BUT NOT LIMITED TO,WINDLOADS, LOCAL CODE REQUIREMENTS, DESIGNED PRESSURES ETC.
 - 7.3- THAT THIS APPROVAL IS ADEQUATE TO THE SPECIFIC PROJECT.

TABLE OF CONTENTS:

SHEET	CONTENTS
1 OF 9	GENERAL NOTES, TABLE OF CONTENTS
2 OF 9	MODEL A1 - TYPICAL ELEVATION AND ANCHORAGE
3 OF 9	MODEL B1 & C1 - TYPICAL ELEVATION AND ANCHORAGE
4 OF 9	MODEL D1 - TYPICAL ELEVATION AND ANCHORAGE
5 OF 9	ANCHORAGE DETAILS AND ANCHORS SPECIFICATIONS
6 OF 9	TYPICAL CROSS SECTIONS
7 OF 9	MODEL OPTIONS & ASSEMBLY DETAILS
8 OF 9	BILL OF MATERIALS AND GLAZING OPTIONS
9 OF 9	PRODUCT COMPONENTS

TEST REPORT: 16-6910 GENERAL NOTES:
LABORATORY: FENESTRATION TESTING LABORATORY, INC

SAMPLE A1: 164 3/4" X 98 1/8",
CONFIGURATION: O-XX-O
35 3/4" X 96" INACTIVE PANEL
36 1/2" X 96" ACTIVE PANEL
ASTM E283, WATER RESISTANCE: 10.5 PSF
FORCED ENTRY
TAS 202 - (+70,-60 PSF)
TAS 201 - LMI
TAS 203 - (+70,-60 PSF)

SAMPLE C1: 75 7/8" X 98 3/4",
CONFIGURATION: XX
37" X 96" INACTIVE PANEL
36" X 96" ACTIVE PANEL
ASTM E283, WATER RESISTANCE: 10.5 PSF
FORCED ENTRY
TAS 202 - (+70,-60 PSF)
TAS 201 - LMI
TAS 203 - (+70,-70 PSF)

SAMPLE B1: 75 5/8" X 97 5/8",
CONFIGURATION: XX
37" X 96" INACTIVE PANEL
34 1/4" X 96" ACTIVE PANEL
ASTM E283 - FORCED ENTRY
TAS 202 - (+75,-70 PSF)
TAS 201 - LMI
TAS 203 - (+75,-70 PSF)

SAMPLE D1: 134" X 98 1/2",
CONFIGURATION: XOX
37" X 96" INACTIVE PANEL
42" X 96" ACTIVE PANEL
ASTM E283, WATER RESISTANCE: 11.25 PSF
FORCED ENTRY
TAS 202 - (+75,-75 PSF)
TAS 201 - LMI
TAS 203 - (+75,-75 PSF)

DESIGNED PRESSURE RATING

$P_d = +70, -60$ PSF

MAXIMUM FRAME SIZES:
SEE ELEVATIONS ON SHEETS 2, 3 AND 4

MAXIMUM CLADDING SIZES:
SEE ELEVATIONS ON SHEETS 2, 3 AND 4

LEGEND

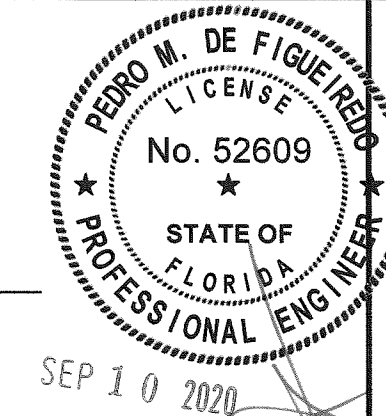
FH - FRAME HEIGHT
FW - FRAME WIDTH
COW - CLEAR OPENING WIDTH
COH - CLEAR OPENING HEIGHT
DLOW- DAY LIGHT OPENING WIDTH
DLOH- DAY LIGHT OPENING HEIGHT
PNLH - SLAB PANEL HEIGHT
PNLW - SLAB PANEL WIDTH

WOOD TYPE:

VERNACULAR NAME: TRUE MAHOGANY OR SIMILAR
SCIENTIFIC NAME: SWIETENIA MACROPHYLLA G. KING
FAMILY: MELIACEAE
MINIMUM SPECIFIC GRAVITY: SG= 0.45

GLASS TYPE:

9/16" AND 1 1/16" IG LAMINATED IMPACT GLASS
SAFETY-PLUS II INTERLAYER AS PER CURRENT NOA
SEE SHEET 8 FOR MORE DETAILS



ENGINEERING SERVICES - CA 32459
9715 W. BROWARD BLVD.
PLANTATION, FL 33324
PPMF@AOL.COM
ENGINEER SEAL
PEDRO DE FIGUEIREDO
PE 52609



PRODUCT CATEGORY: OUTSWING DOORS
PRODUCT MATERIAL: WOOD / GLASS
IMPACT RATING: LARGE & SMALL MISSILE

ROATAN EURO PROFILE
OUTSWING DOORS

MANUFACTURER:
ROATAN
MAHOGANY USA INC.
4004C AURORA STREET
CORAL GABLES FLORIDA

MIAMI-DADE BCCO:

PRODUCT REVISED
as complying with the Florida
Building Code
NOA-No. 20-1013.14

Expiration Date 07/19/2023

By 
Miami-Dade Product Control

SCALE:

NA

DATE:

09/10/2020

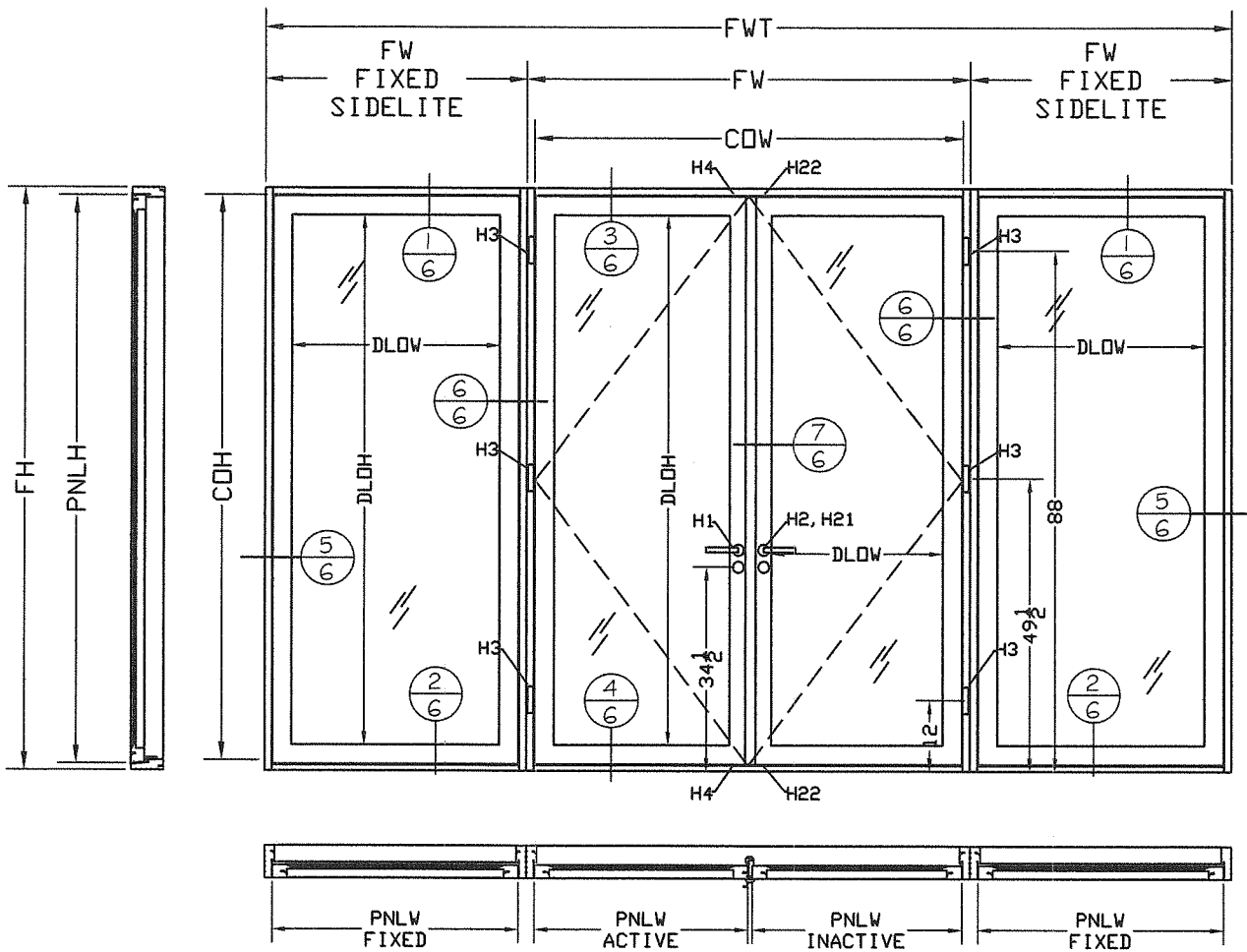
DRAWING #

20-150 DR

SHEET

1 OF 9

MODEL A1 - TYPICAL ELEVATIONS AND ANCHORAGE LAY-OUT

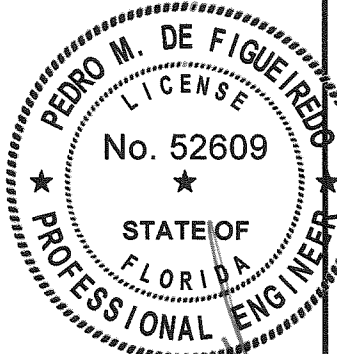
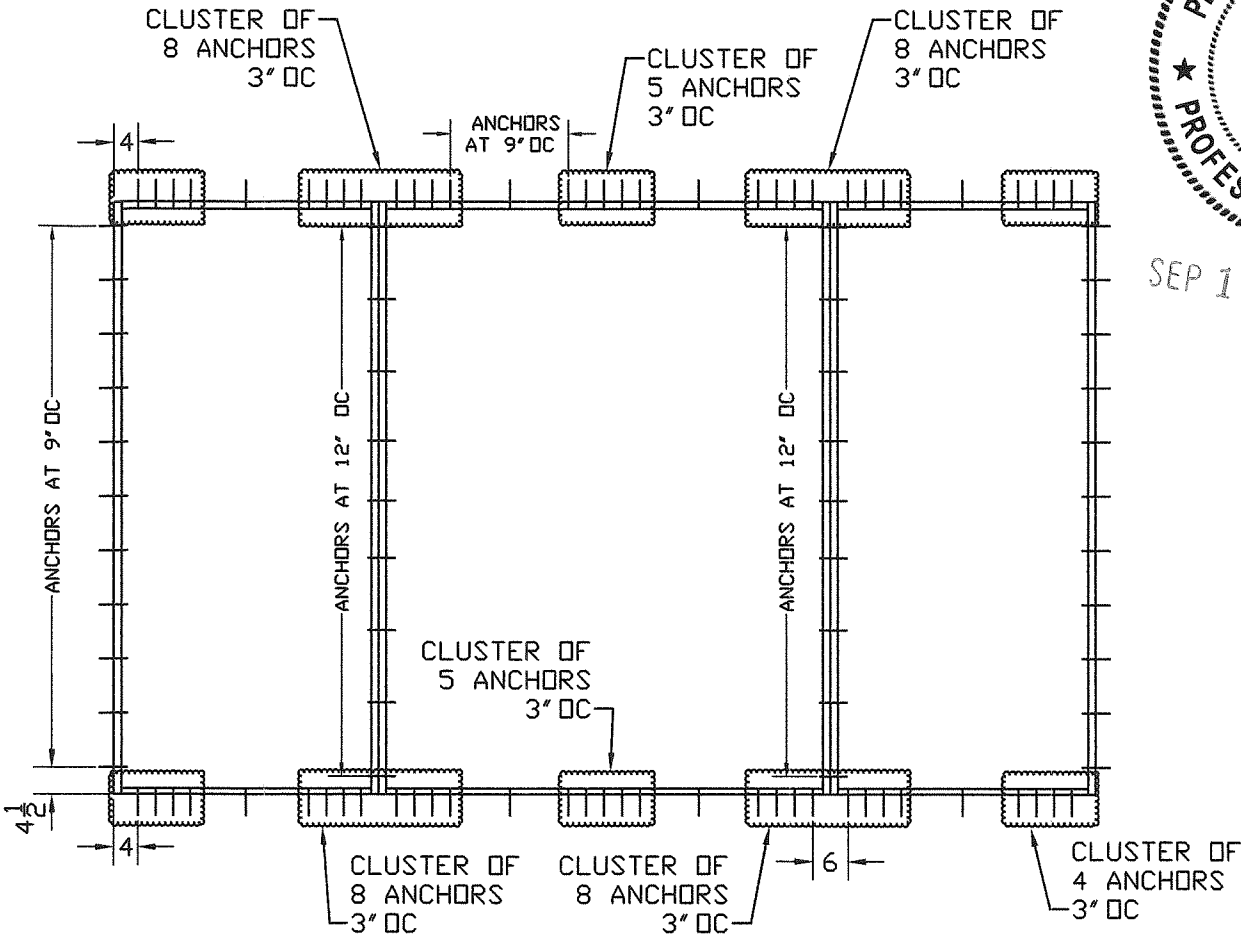


LOCK WITH MINIMUM 7/16"
ENGAGEMENT TO HEADER & SILL

FRAME & SLAB MAXIMUM SIZES:	MAXIMUM GLAZING DLO
FWT X FH = 164 3/4" X 98 1/8"	
FW SIDELITE = 44 5/8"	
FW OPERABLE = 75 1/2"	
PNLW X PNLH = 42" X 96" FIXED	
PNLW X PNLH = 36" X 96" ACTIVE	
PNLW X PNLH = 36" X 96" INACTIVE	
COW X COH = 71 1/2" X 93 7/8"	
	FIXED PANELS:
	1 1/16" IG GLAZING: 35 1/2" X 89 1/2"
	9/16" GLAZING: 35 1/2" X 89 1/2"
	OPERABLE PANELS:
	1 1/16" IG GLAZING: 29 3/8" X 89 1/2"
	9/16" GLAZING: 29 3/8" X 89 1/2"

LEGEND

FWT - FRAME TOTAL WIDTH, FH - FRAME HEIGHT, FW - FRAME WIDTH
COW - CLEAR OPENING WIDTH, COH - CLEAR OPENING HEIGHT
DLOW - DAY LIGHT OPENING WIDTH, DLOH - DAY LIGHT OPENING HEIGHT
PNLH - SLAB PANEL HEIGHT, PNLW - SLAB PANEL WIDTH



SEP 10 2020

PRODUCT CATEGORY: OUTSWING DOORS
PRODUCT MATERIAL: WOOD / GLASS
IMPACT RATING: LARGE & SMALL MISSILE



ROATAN EURO PROFILE
OUTSWING DOORS

MANUFACTURER:
ROATAN
MAHOGANY USA INC.
4004C AURORA STREET
CORAL GABLES FLORIDA

MIAMI-DADE BCCO:

PRODUCT REVISED
as complying with the Florida
Building Code
NOA-No. 20-1013.14
Expiration Date 07/19/2023
By
Miami-Dade Product Control

SCALE:
NA
DATE:
09/10/2020
DRAWING #
20-150 DR
SHEET
2 OF 9

PEDRO M. DE FIGUEIREDO
 LICENSE
 No. 52609
 STATE OF
 FLORIDA
 PROFESSIONAL ENGINEER
 SEP 10 2020

ENGINEERING SERVICES - CA 32459
9715 W. BROWARD BLVD.
PLANTATION, FL 33324
PPMF@AOL.COM
ENGINEER SEAL
PEDRO DE FIGUEIREDO
PE 52609

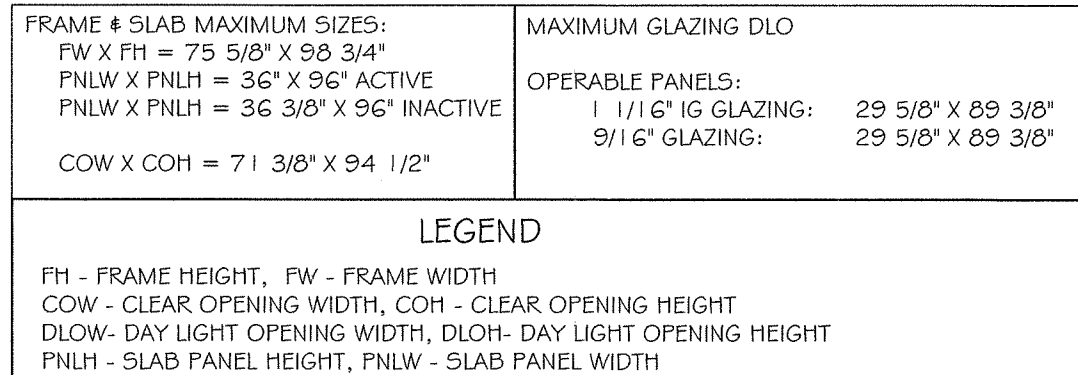
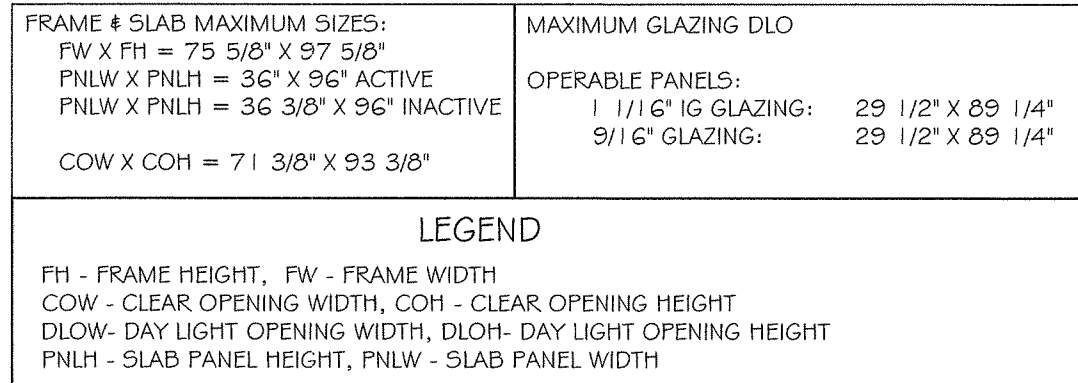


PRODUCT CATEGORY: OUTSWING DOORS
PRODUCT MATERIAL: WOOD / GLASS
IMPACT RATING: LARGE & SMALL MISSILE

ROATAN EURO PROFILE
OUTSWING DOORS

MANUFACTURER:
ROATAN
MAHOGANY USA INC.
4004C AURORA STREET
CORAL GABLES FLORIDA

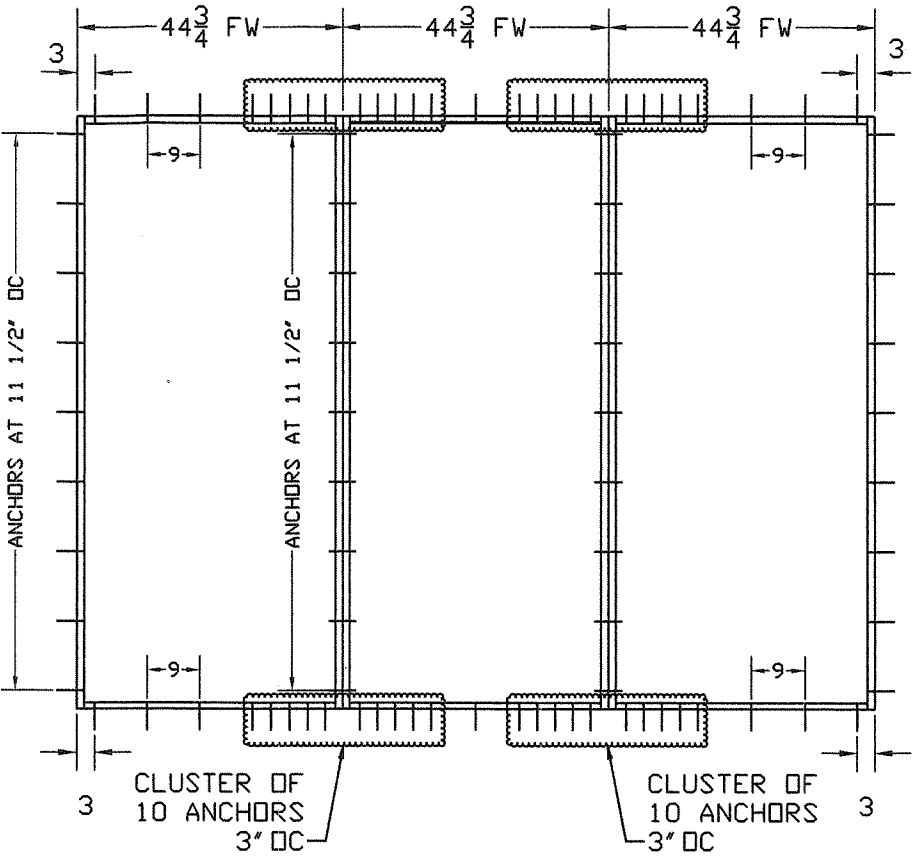
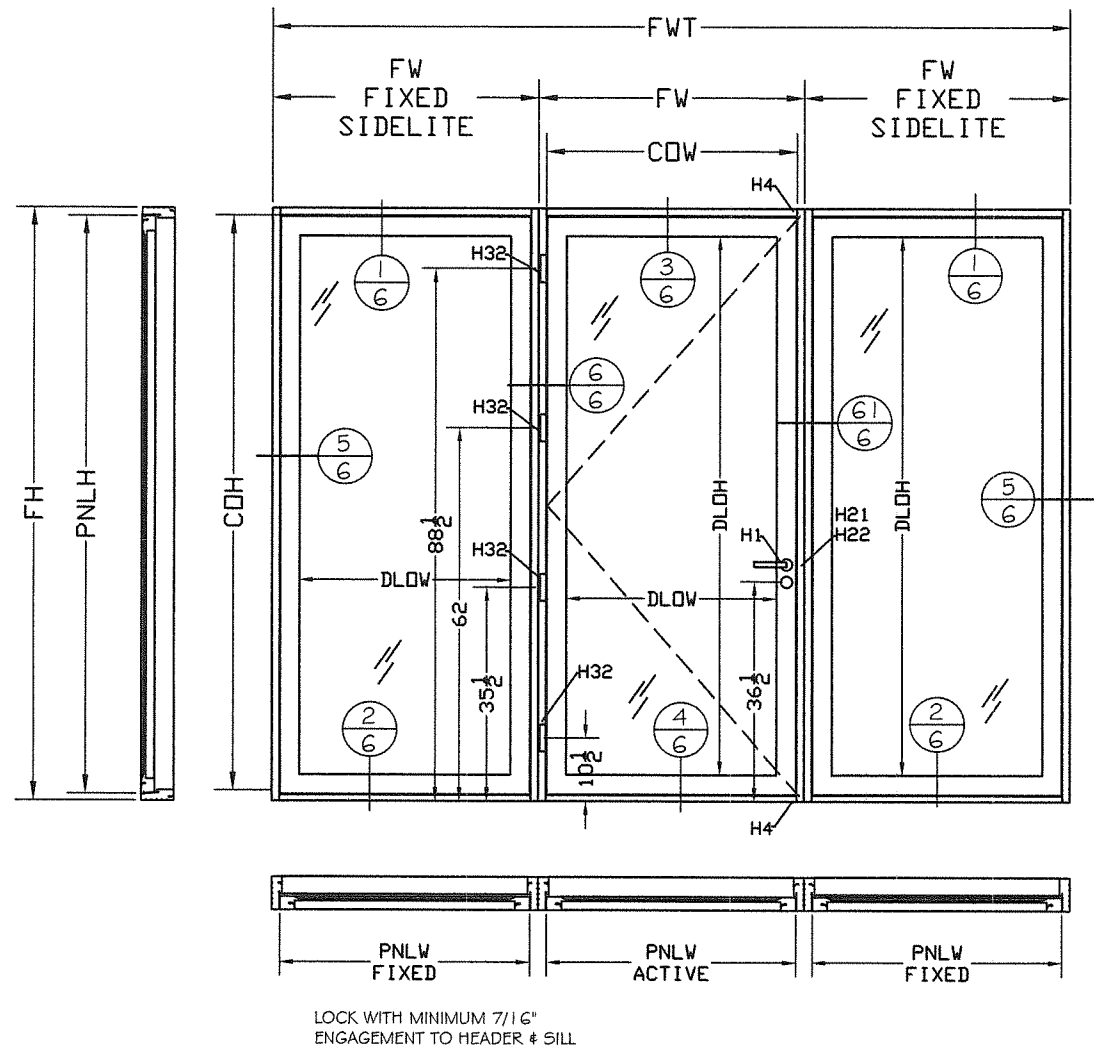
SCALE:	NA
DATE:	0/2020
DRAWING #	150 DR
SHEET	OF 9



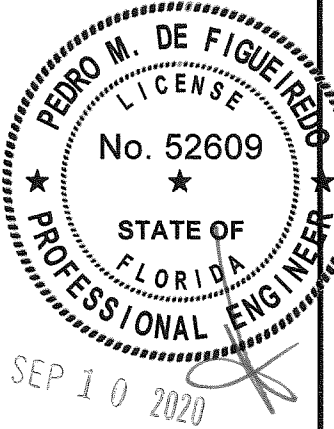
MIAMI-DADE BCCO:

PRODUCT REVISED
as complying with the Florida
Building Code
NOA-No. 20-1013.14
Expiration Date 07/19/2023
By CS
Miami-Dade Product Control

MODEL D1 - TYPICAL ELEVATIONS AND ANCHORAGE LAY-OUT



FRAME & SLAB MAXIMUM SIZES: FWT X FH = 134" X 98 1/2" FW SIDELITE= 44 5/8" FW OPERABLE= 44 5/8" PNLW X PNLH = 42" X 96" FIXED PNLW X PNLH = 42" X 96" ACTIVE COW X COH = 40 3/8" X 94 1/4"	MAXIMUM GLAZING DLO
	FIXED AND OPERABLE PANELS: 1 1/16" IG GLAZING: 35 1/2" X 89 5/8" 9/16" GLAZING 35 1/2" X 89 5/8"
LEGEND FWT - FRAME TOTAL WIDTH, FH - FRAME HEIGHT, FW - FRAME WIDTH COW - CLEAR OPENING WIDTH, COH - CLEAR OPENING HEIGHT DLOW- DAY LIGHT OPENING WIDTH, DLOH- DAY LIGHT OPENING HEIGHT PNLH - SLAB PANEL HEIGHT, PNLW - SLAB PANEL WIDTH	



PRODUCT CATEGORY: OUTSWING DOORS
PRODUCT MATERIAL: WOOD / GLASS
IMPACT RATING: LARGE & SMALL MISSILE

ROATAN EURO PROFILE
OUTSWING DOORS

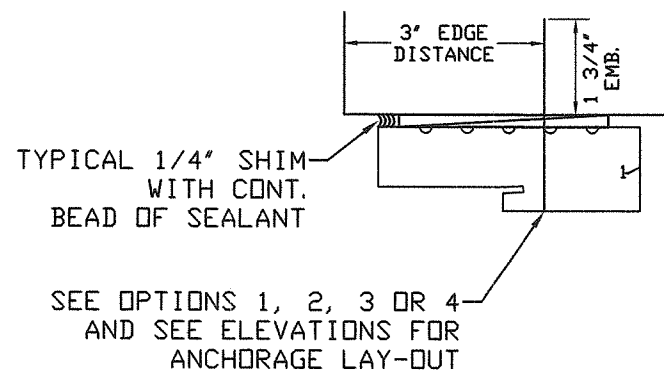
MANUFACTURER:
ROATAN
MAHOGANY USA INC.
4004C AURORA STREET
CORAL GABLES FLORIDA

MIAMI-DADE BCCO:

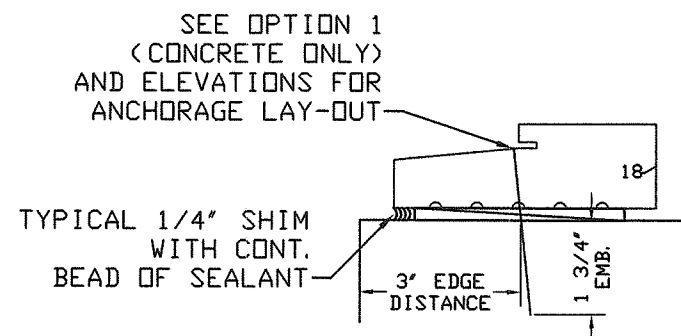
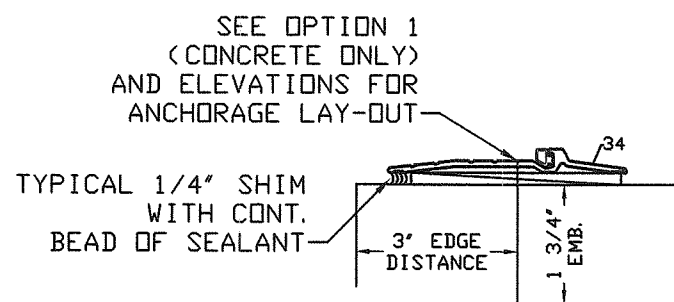
PRODUCT REVISED
as complying with the Florida
Building Code
NOA-No. 20-1013.14
Expiration Date 07/19/2023
By *[Signature]*
Miami-Dade Product Control

SCALE:
NA
DATE:
09/10/2020
DRAWING #
20-150 DR
SHEET
4 OF 9

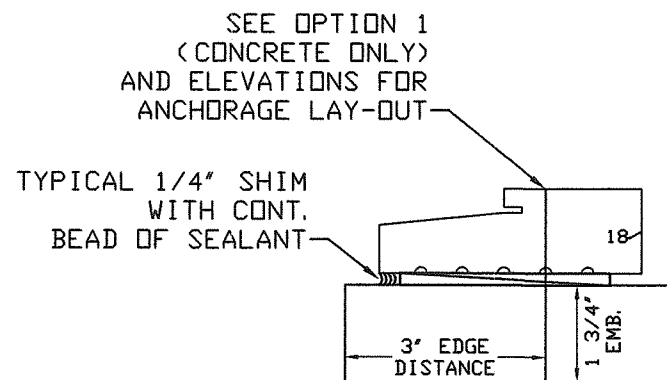
TYPICAL HEADER AND JAMB ANCHORAGE



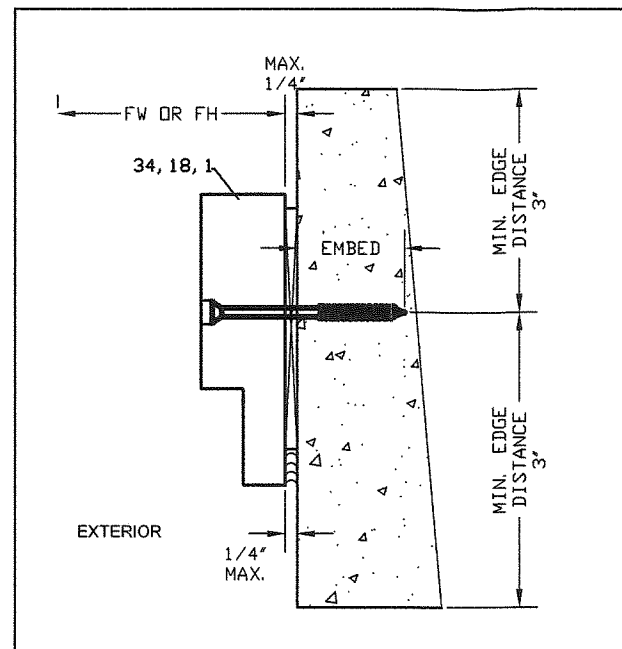
TYPICAL SILL ANCHORAGE (EXTERIOR ANCHOR)



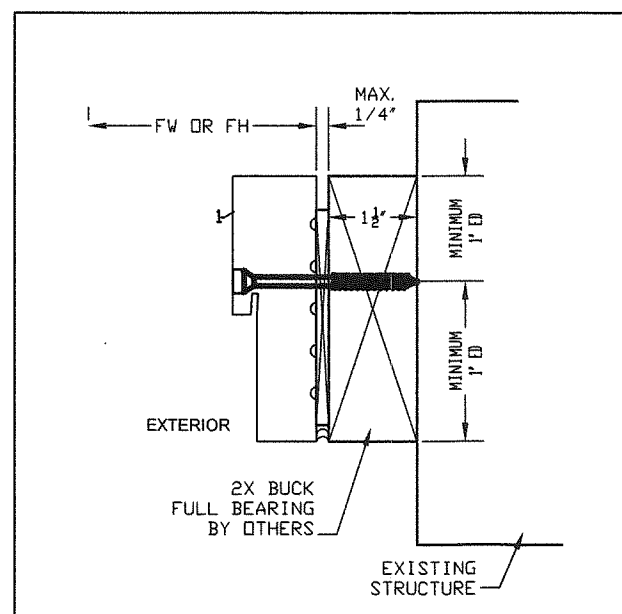
TYPICAL SILL ANCHORAGE (INTERIOR ANCHOR)



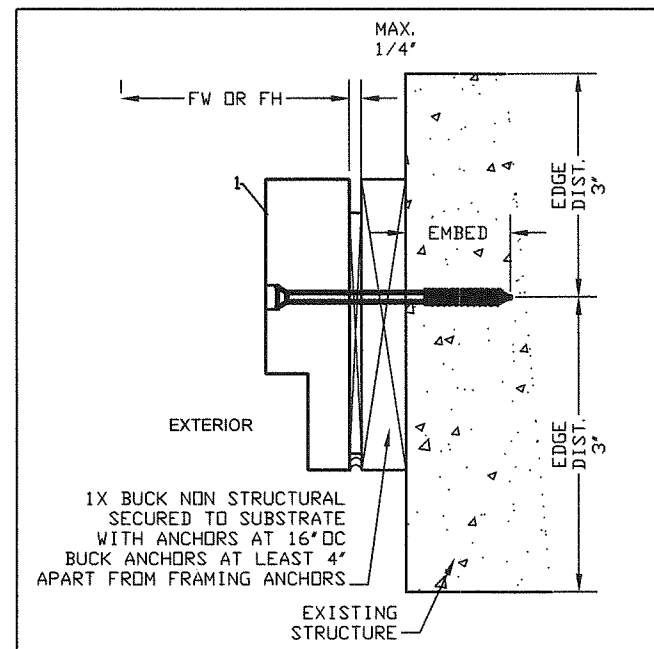
TYPICAL FRAME ANCHORAGE



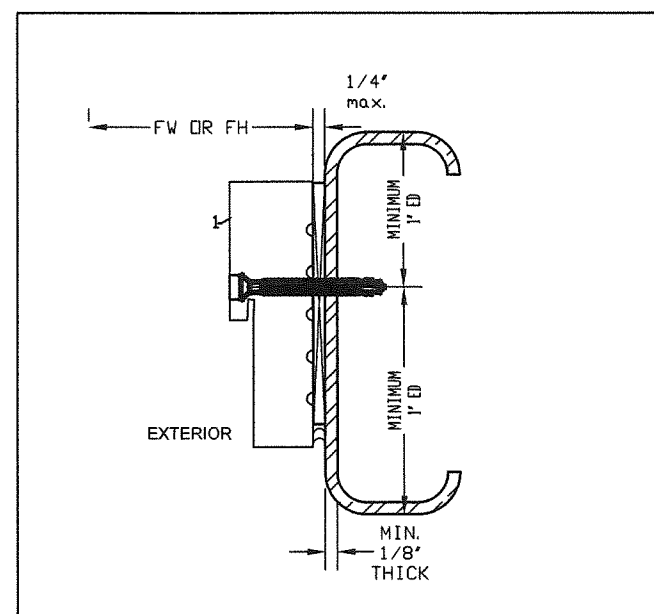
OPTION 1
FRAME MOUNTED DIRECTLY INTO SUBSTRATE WITH MAXIMUM 1/4" SHIM AND 1/4" TAPCONS BY ITW BUILDDEX WITH 1 1/4" MIN. EMBEDMENT INTO MASONRY CONFORMING WITH ASTM C90 (JAMBS) OR 1 3/4" INTO 3000 PSI CONCRETE (REFER TO ELEVATIONS FOR ANCHORS QTY. AND LAY-OUT)



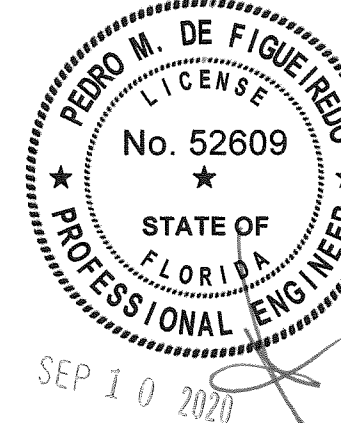
OPTION 3
FRAME MOUNTED DIRECTLY INTO 2X PT WOOD BUCK (SG>=0.55) W/ MAX. 1/4" SHIM AND SECURED BY #14 SS WOOD SCREWS OR 1/4" TAPCONS W/ 1 1/2" MIN. EMBEDMENT. (REFER TO ELEVATIONS FOR ANCHORS QTY. AND LAY-OUT)
2X BUCK TO BE PROPERLY DESIGNED BY OTHERS.



OPTION 2
FRAME MOUNTED WITH MAXIMUM 1/4" SHIM AND MAXIMUM 1X PT CONTINUOUS WOOD SPACER SECURED BY 1/4" TAPCONS BY ITW BUILDDEX WITH 1 1/4" MIN. EMBEDMENT INTO MASONRY CONFORMING WITH ASTM C90 (JAMBS) OR 1 3/4" INTO 3000 PSI CONCRETE. FOR INSTALLATION INTO METAL STRUCTURES USE 1/4"-20 HWH GRADE 5 SDS (REFER TO ELEVATIONS FOR ANCHORS QTY. AND LAY-OUT)



OPTION 4
FRAME MOUNTED DIRECTLY INTO METAL STRUCTURES W/ MAX. 1/4" SHIM. 1/4"-20 PFH SDS GR 5 INTO MIN. 1/8" A36 STEEL OR 6063-T6 ALUMINUM. (REFER TO ELEVATIONS FOR ANCHORS QTY. AND LAY-OUT) MIN. 3 TREADS PENETRATION



PRODUCT CATEGORY: OUTSWING DOORS

PRODUCT MATERIAL: WOOD / GLASS
IMPACT RATING: LARGE & SMALL MISSILE

ROATAN EURO PROFILE
OUTSWING DOORS

MANUFACTURER:

ROATAN
MAHOGANY USA INC.
4004C AURORA STREET
CORAL GABLES FLORIDA

SCALE:
NA

DATE:
09/10/2020

DRAWING #
20-150 DR.

SHEET
5 OF 9

MIAMI-DADE BCCO:

PRODUCT REVISED
as complying with the Florida
Building Code
NOA-No. 20-1013.14

Expiration Date 07/19/2023

By
Miami-Dade Product Control

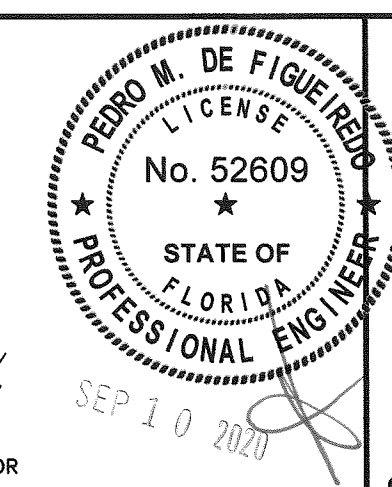
WOOD BUCK NOTE:
2X AND 2X WOOD BUCK
TO BE PROPERLY DESIGN TO
TRANSFER LOAD TO THE MAIN
STRUCTURE AND TO BE PROVIDED
BY OTHERS.



PRODUCT CATEGORY: OUTSWING DOORS
PRODUCT MATERIAL: WOOD / GLASS
IMPACT RATING: LARGE & SMALL MISSILE

MANUFACTURER:
ROATAN
MAHOGANY USA INC.
4004C AURORA STREET
CORAL GABLES FLORIDA

SCALE: NA
DATE: 09/10/2020
DRAWING # 20-150 DR
SHEET 6 OF 9

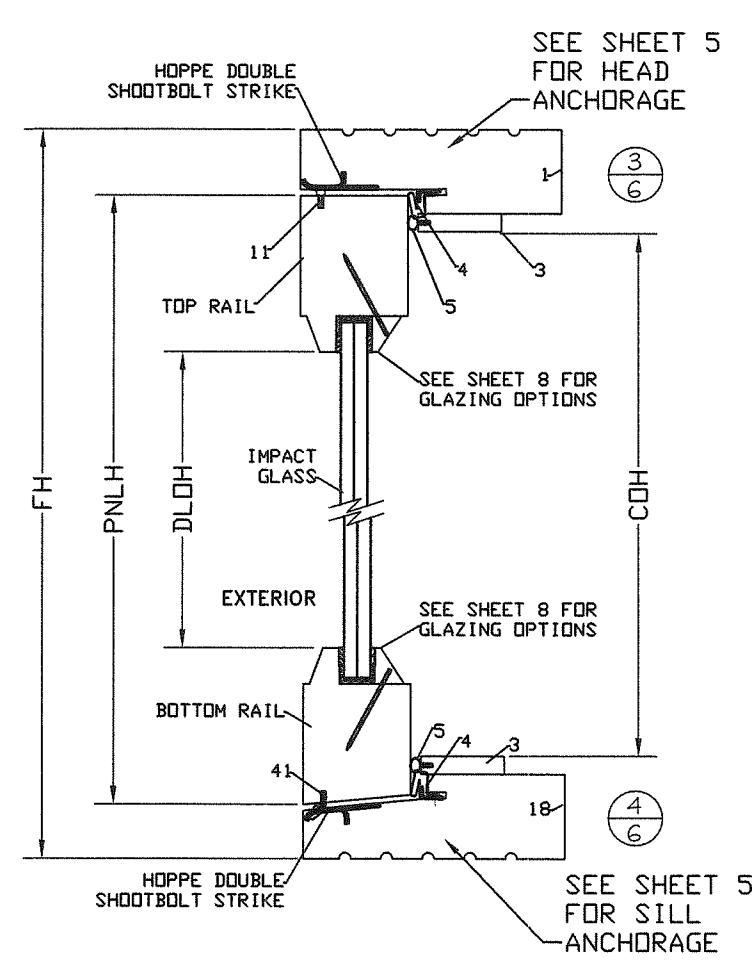


ENGINEERING SERVICES - CA 32459
9715 W. BROWARD BLVD.
PLANTATION, FL 33324
PPMF@AOL.COM
ENGINEER SEAL
PEDRO DE FIGUEIREDO
PE 52609

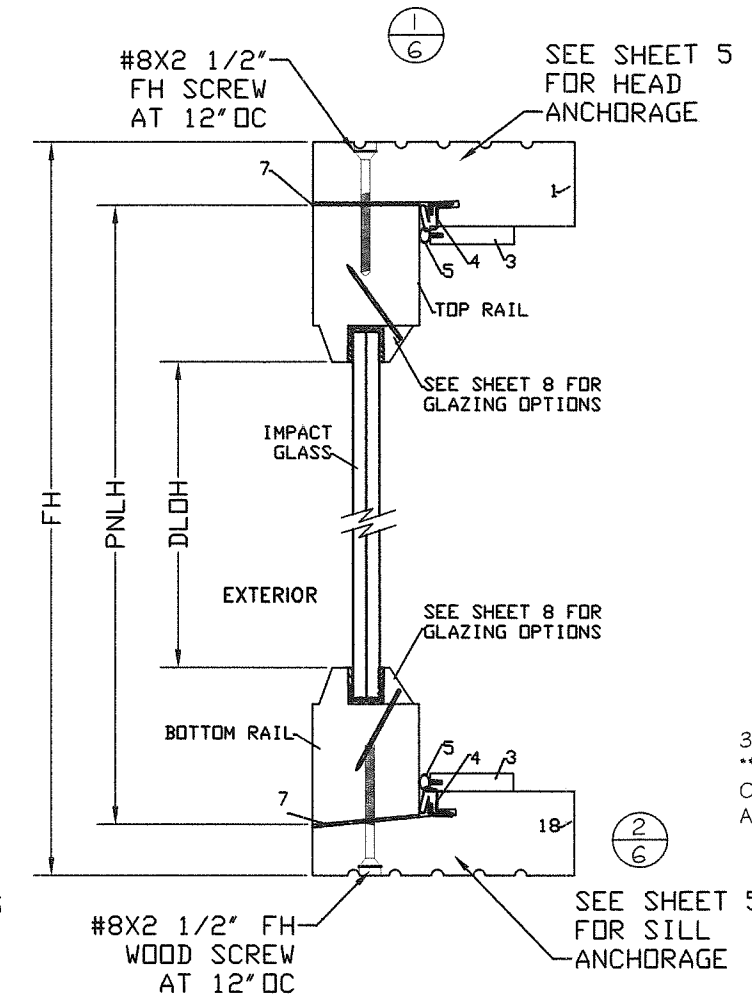
ROATAN EURO PROFILE

OUTSWING DOORS

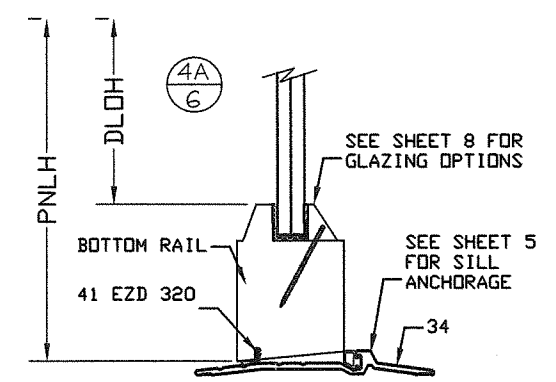
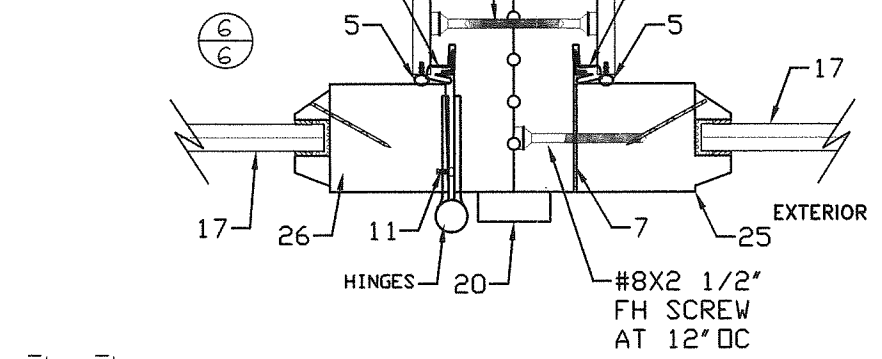
TYPICAL VERTICAL DOOR SECTION



TYPICAL VERTICAL SECTION SIDELITE WINDOW

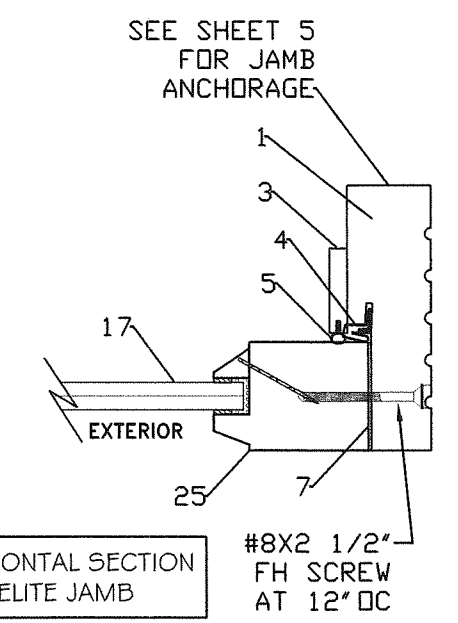


TYPICAL HORIZONTAL SECTION DOOR / SIDELITE MULLION

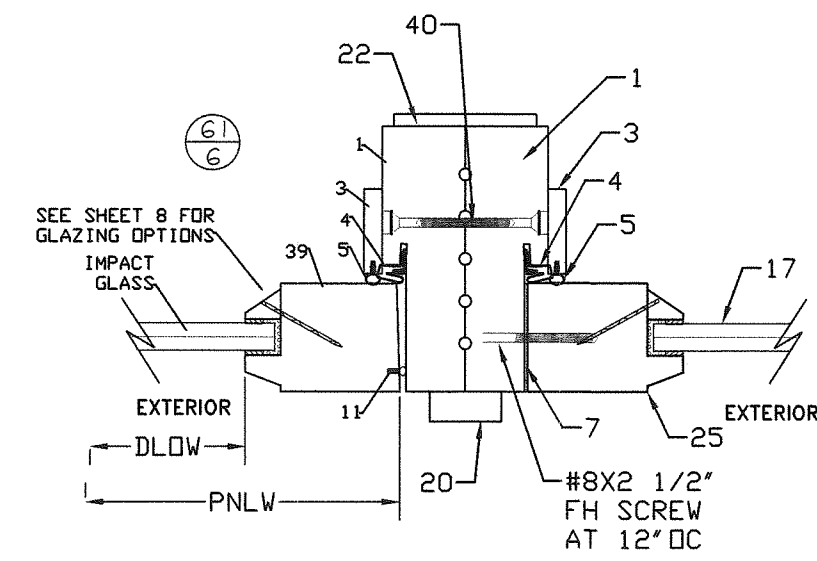


34- ALUMINUM THRESHOLD
** DOES NOT MEET WATER INFILTRATION
OPENING TO BE INSTALLED WITH OVERHANG
AS PER FBC SECTION 2411.3.2.1

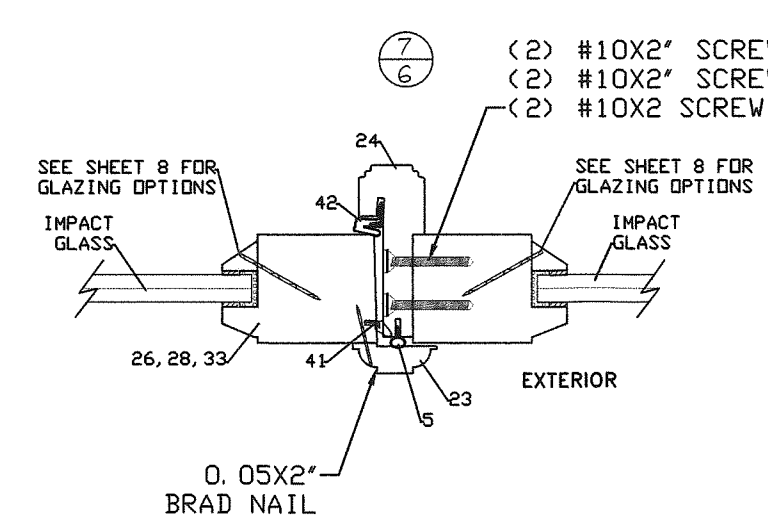
TYPICAL HORIZONTAL SECTION FIXED SIDELITE JAMB



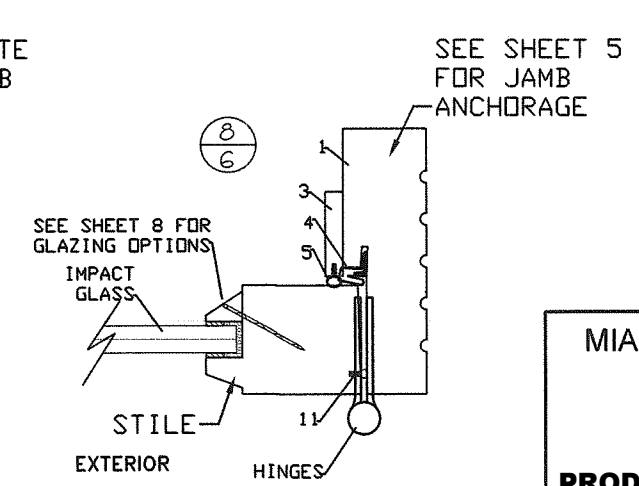
TYPICAL HORIZONTAL SECTION DOOR JAMB - LOCK



TYPICAL HORIZONTAL SECTION DOOR MEETING STILES



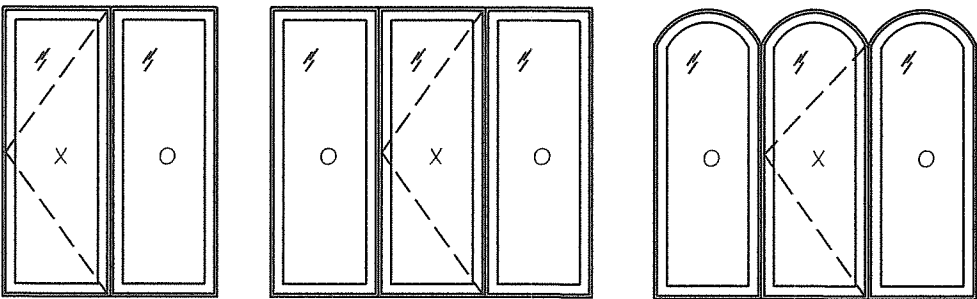
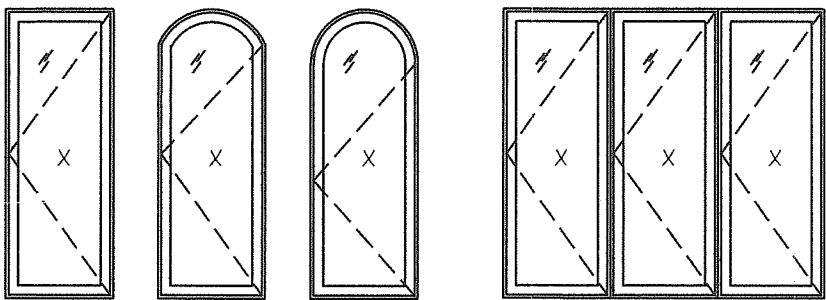
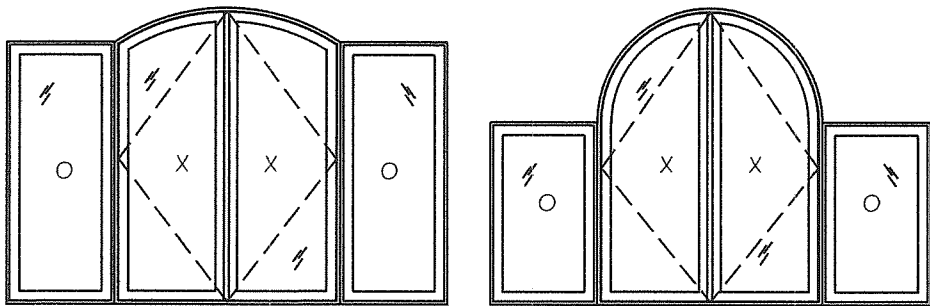
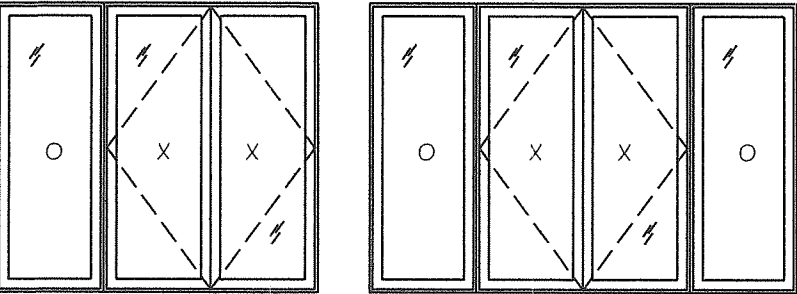
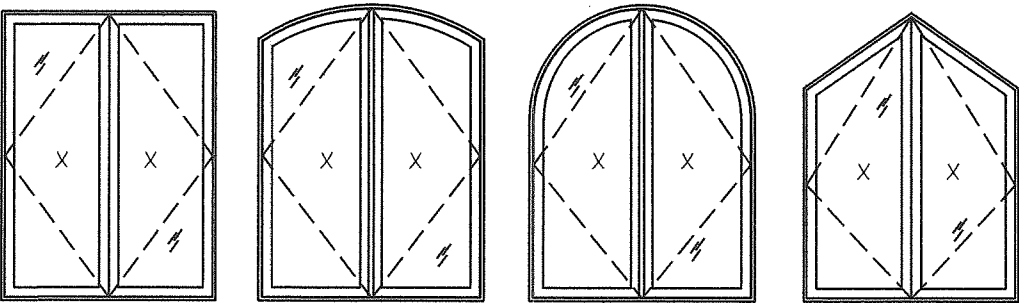
TYPICAL HORIZONTAL SECTION DOOR JAMB - HINGE



MIAMI-DADE BCCO:

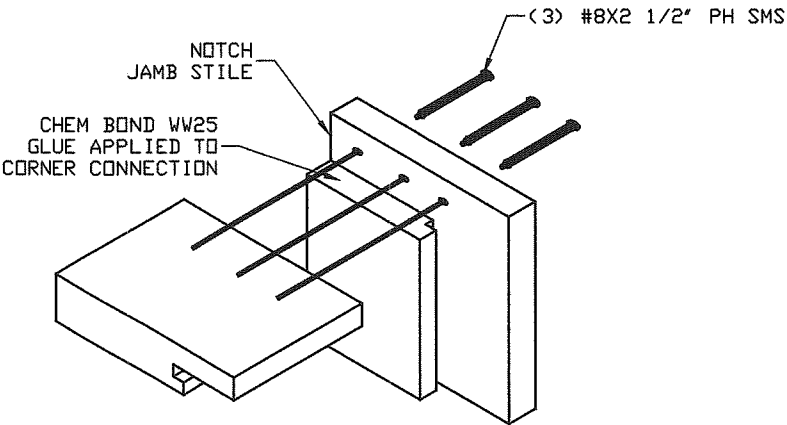
PRODUCT REVISED
as complying with the Florida Building Code
NOA-No. 20-1013.14
Expiration Date 07/19/2023
By Miami-Dade Product Control

MODELS EXAMPLES QUALIFICATIONS



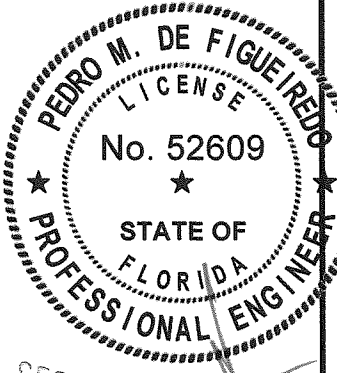
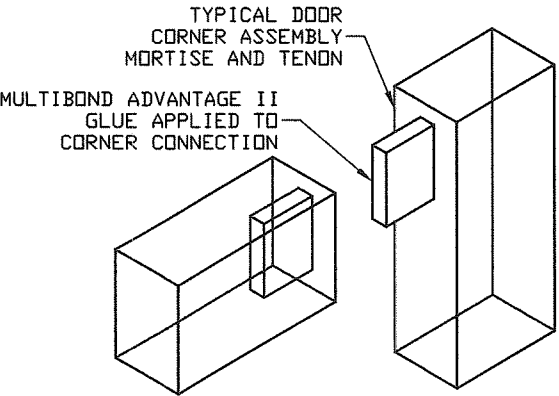
FRAME AND DOOR ASSEMBLY

TYPICAL CORNER FRAMING CONSTRUCTION



NOTE: AFTER FRAMING ASSEMBLAGE ALL JOINTS ARE TO BE SEALED WITH DOW 995 SILICONE.

TYPICAL DOOR CORNER CONSTRUCTION



PRODUCT CATEGORY: OUTSWING DOORS
PRODUCT MATERIAL: WOOD / GLASS
IMPACT RATING: LARGE & SMALL MISSILE
ROATAN EURO PROFILE
OUTSWING DOORS

MANUFACTURER:
ROATAN
MAHOGANY USA INC.
4004C AURORA STREET
CORAL GABLES FLORIDA

MIAMI-DADE BCCO:

PRODUCT REVISED
as complying with the Florida
Building Code
NOA-No. 20-1013.14

Expiration Date 07/19/2023

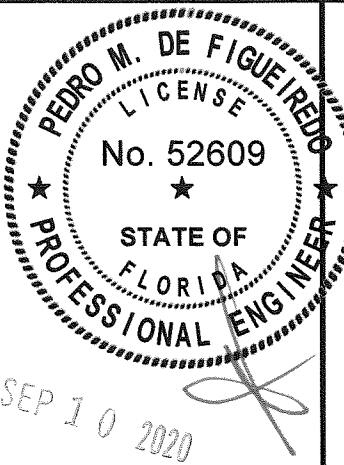
By *[Signature]*
Miami-Dade Product Control

SCALE: NA
DATE: 09/10/2020
DRAWING # 20-150 DR
SHEET 7 OF 9

PARTS REFERENCE LIST

ITEM	DESCRIPTION	LOCATION	MATERIAL/ MANUFACTURER/ NOTES	TESTED MODELS			
				A1	B1	C1	D1
1	SIDE/ HEADER/ JAMB	FRAMING	MAHOGANY/ ROATAN	X	X	X	
2							
3	WEATHERSTOP	FRAMING	MAHOGANY/ ROATAN	X	X	X	X
4	COMPRESSURE SEALER QE2D 650 BRONZE	WEATHER GASKETS, SEALER ETC	SCHLEGEL	X	X	X	X
5	COMPRESSURE SEALER AP412 BLACK	WEATHER GASKETS, SEALER ETC	SCHLEGEL	X	X	X	X
6	IG FIXED STILE	SLAB	MAHOGANY/ ROATAN	X			X
7	995 SILICONE	WEATHER GASKETS, SEALER ETC	DOW CORNING	X	X	X	X
8	1 1/16" IG INSULATED GLAZING - LMI	SLAB	GLASS/ ROATAN	X	X	X	X
9	18GA X 2" NAIL SPACED AT 3' OC	SLAB	GALV. STEEL/ ROATAN	X	X	X	X
10	IG GLASS STOP	SLAB	MAHOGANY/ ROATAN	X	X	X	X
11	COMPRESSURE SEALER AP425 BLACK	WEATHER GASKETS, SEALER ETC	SCHLEGEL	X	X	X	X
12	1/8 X 3/8" GLAZING TAPE	WEATHER GASKETS, SEALER ETC	ROATAN	X	X	X	X
13	9/16" BOTTOM RAIL	SLAB	MAHOGANY/ ROATAN	X	X	X	
14	9/16" GLASS STOP	SLAB	MAHOGANY/ ROATAN	X	X	X	X
15	9/16" TOP RAIL	SLAB	MAHOGANY/ ROATAN			X	
16	6" FLUSH BOLT	HARDWARE	ROATAN			X	
17	9/16" LAMINATED GLAZING - LMI	SLAB	GLASS/ ROATAN	X	X	X	X
18	THRESHOLD	FRAMING	MAHOGANY/ ROATAN	X	X	X	X
19	9/16" FIXED BOTTOM RAIL	SLAB	MAHOGANY/ ROATAN				X
20	EXTERIOR MULL COVERS	FRAMING	MAHOGANY/ ROATAN	X			X
21	5X5 HINGES	HARDWARE	SS/ EMTEK	X			
22	INTERIOR MULL COVERS	FRAMING	MAHOGANY/ ROATAN	X			X
23	ASTRAGAL CAP	SLAB	MAHOGANY/ ROATAN	X	X	X	
24	"T" ASTRAGAL	SLAB	MAHOGANY/ ROATAN	X	X	X	
25	9/16" FIXED SIDE/ TOP RAIL	SLAB	MAHOGANY/ ROATAN	X	X	X	X
26	9/16" ACTIVE STILE RAIL	SLAB	MAHOGANY/ ROATAN	X	X		
27	5X5 HINGES	HARDWARE	DELTANA		X		
28	9/16" ACTIVE STILE	SLAB	MAHOGANY/ ROATAN	X		X	
29	1 1/16" IG FIXED BOTTOM RAIL	SLAB	MAHOGANY/ ROATAN	X			X
30	9/16" ACTIVE BOTTOM RAIL	SLAB	MAHOGANY/ ROATAN	X			
31	4X4 HINGES	HARDWARE	SS/ HAGER	X		X	
32	9/16" FIXED BOTTOM RAIL	SLAB	MAHOGANY/ ROATAN	X			
33	1 1/16" ACTIVE STILE RAIL	SLAB	MAHOGANY/ ROATAN		X	X	X
34	THRESHOLD	FRAMING	ALUMINUM/ PEMKO		X		
35	9/16" ACTIVE TOP/ BOTTOM RAIL	SLAB	MAHOGANY/ ROATAN	X			
36	1 1/16" ACTIVE STILE RAIL	SLAB	MAHOGANY/ ROATAN		X	X	
37	1 1/16" ACTIVE STILE RAIL	SLAB	MAHOGANY/ ROATAN		X	X	
38	CONCEALED HINGES	HARDWARE	SSSS				X
39	1 1/16" ACTIVE STILE	SLAB	MAHOGANY/ ROATAN				X
40	9/16" ACTIVE STILE	SLAB	MAHOGANY/ ROATAN				
41	COMPRESSURE SEALER QE2D 320 BRONZE	WEATHER GASKETS, SEALER ETC	SCHLEGEL	X		X	
42	COMPRESSURE SEALER QE2D 730 BRONZE	WEATHER GASKETS, SEALER ETC	SCHLEGEL	X		X	

ALL PARTS LISTED HERE IN CAN
BE INSTALLED INTERCHANGABLE IN
ANY MODEL.



PRODUCT CATEGORY: OUTSWING DOORS
PRODUCT MATERIAL: WOOD / GLASS
IMPACT RATING: LARGE & SMALL MISSILE

ROATAN EURO PROFILE
OUTSWING DOORS

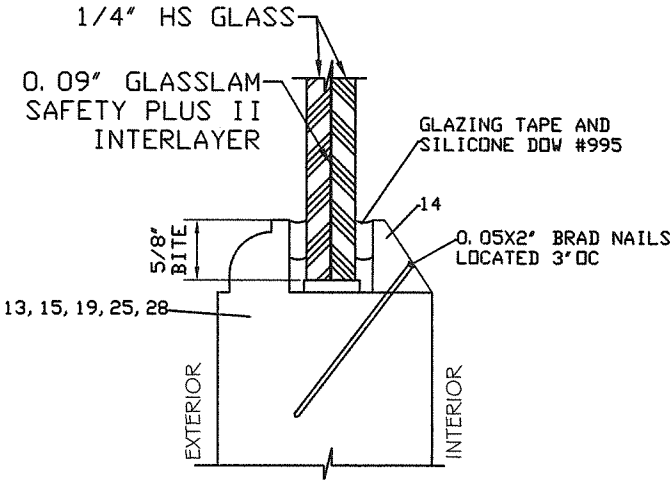
MANUFACTURER:
ROATAN
MAHOGANY USA INC.
4004C AURORA STREET
CORAL GABLES FLORIDA

MIAMI-DADE BCCO:

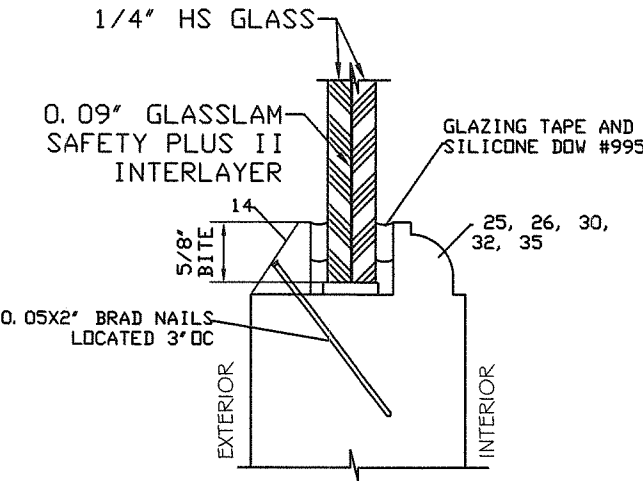
PRODUCT REVISED
as complying with the Florida
Building Code
NOA-No. 20-1013.14
Expiration Date 07/19/2023
By *CS*
Miami-Dade Product Control

SCALE:
NA
DATE:
09/10/2020
DRAWING #
20-150 DR
SHEET
8 OF 9

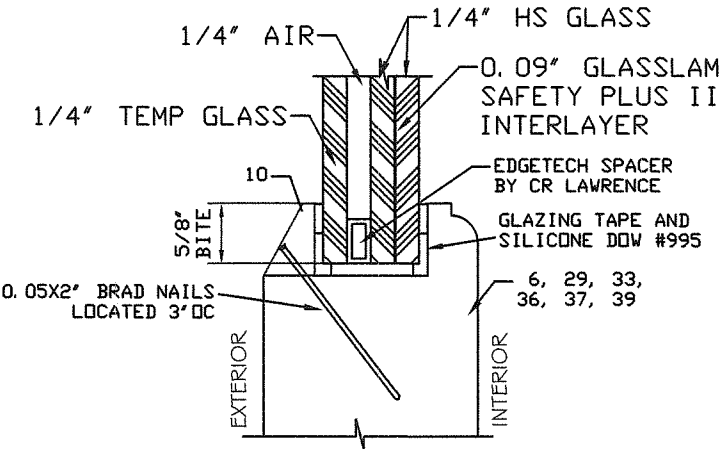
TYPICAL GLAZING OPTIONS



A- 9/16" HS LAMINATED
LARGE MISSILE IMPACT GLASS
INTERIOR GLAZED

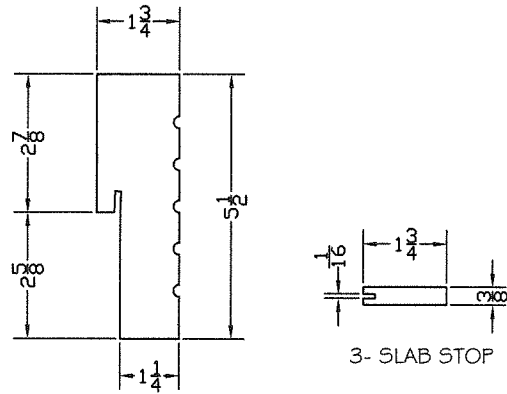


A1- 9/16" HS LAMINATED
LARGE MISSILE IMPACT GLASS
EXTERIOR GLAZED

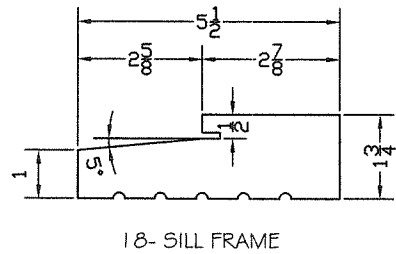


B- 1 1/16" HS IG LAMINATED
LARGE MISSILE IMPACT GLASS
EXTERIOR GLAZED

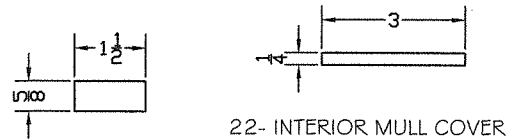
FRAME



1- JAMB, MULL & HEADER FRAME

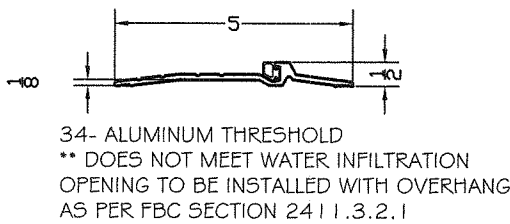


18- SILL FRAME



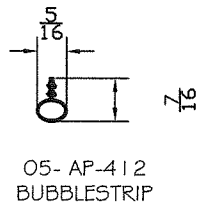
22- INTERIOR MULL COVER

20- EXTERIOR MULL COVER



34- ALUMINUM THRESHOLD
** DOES NOT MEET WATER INFILTRATION
OPENING TO BE INSTALLED WITH OVERHANG
AS PER FBC SECTION 2411.3.2.1

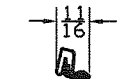
WEATHER STRIPPING



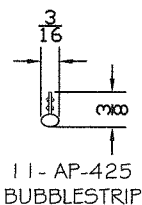
05- AP-412
BUBBLESTRIP



42- QDZD 730
WEATHERSTRIP

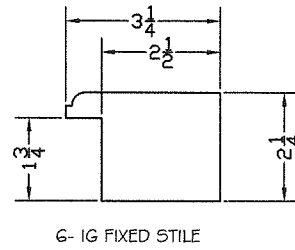


4- WEATHER STRIP

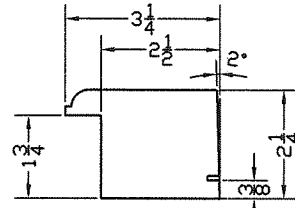


11- AP-425
BUBBLESTRIP

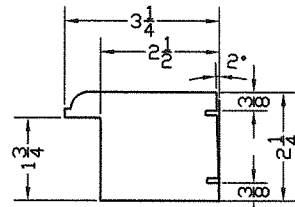
IG RAILS & STILES EXTERIOR GLAZED



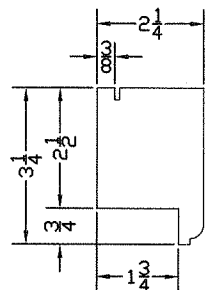
6- IG FIXED STILE



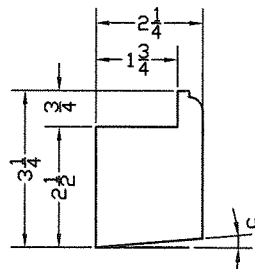
33- IG STILE



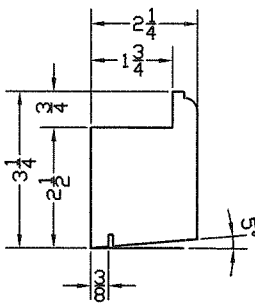
39- IG ACTIVE STILE



36- IG TOP RAIL



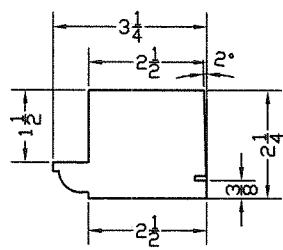
29- IG BOTTOM RAIL



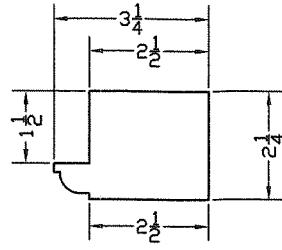
37- IG BOTTOM RAIL

SLAB

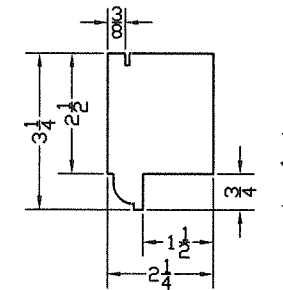
9/16\"/>



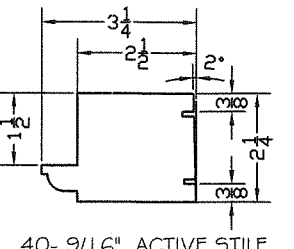
28- 9/16\"/>



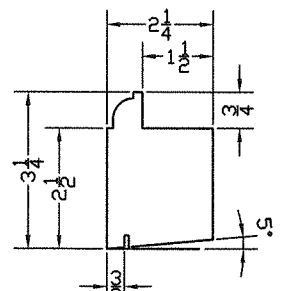
25- 9/16\"/>



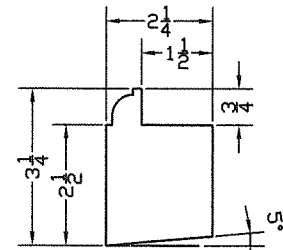
15- 9/16\"/>



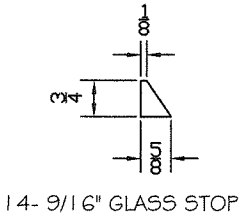
40- 9/16\"/>



13- 9/16\"/>

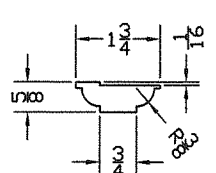


19- 9/16\"/>

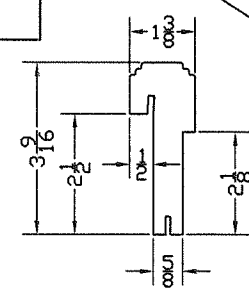


14- 9/16\"/>

MEETING STILES ASTRAGALS

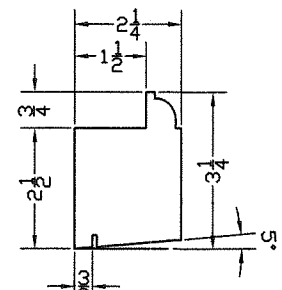


23- ASTRAGAL CAP

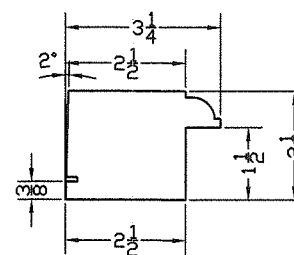


24- ASTRAGAL

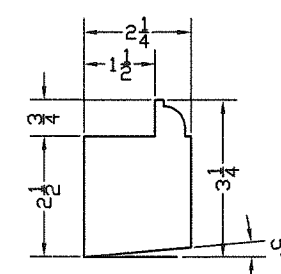
9/16\"/>



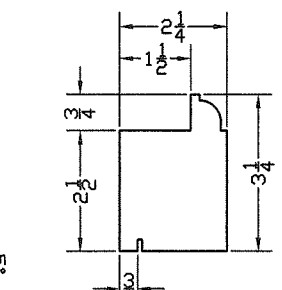
30- 9/16\"/>



26- 9/16\"/>



32- 9/16\"/>

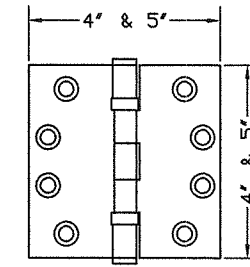


35- 9/16\"/>

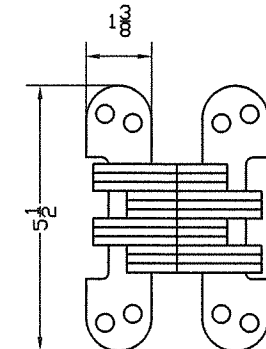
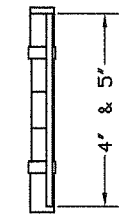
HARDWARE:

H1	ONE SURFACE MOUNT HOPPE METALLIC 5 POINT LOCK SYSTEM WITH ACTIVATING LEVER TYPE HANDLE ON THE INTERIOR AND EXTERIOR WITH KEY OPERATOR ON THE EXTERIOR AND THUMB TURN ON THE INTERIOR WITH CONCEALED RODS. LOCATED 34 1/2\"
H2	ONE SURFACE MOUNT METALLIC 2 POINT LOCK SYSTEM WITH LEVER TYPE HANDLE ON THE INTERIOR AND EXTERIOR WITH THUMB TURN ON THE INTERIOR AND CONCEALED RODS. LOCATED 35\"
H21	ONE SURFACE MOUNT METALLIC STRIKE PLATE LOCATED 35 1/2\"
H22	TWO SURFACE MOUNT METALLIC STRIKE KEEPERS LOCATED 11 3/4\"
H23	FLUSH MOUNT METALLIC CONCEALED MANUALLY OPERATED FLUSH BOLTS AT EACH END OF THE INACTIVE PANEL SECURED WITH (2) #10X2\"
H24	ONE SURFACE MOUNT METALLIC LEVER TYPE HANDLE ON THE INTERIOR OF THE INACTIVE PANEL
H3	4 3/4\"
H31	4\"
H32	INVISIBLE METALLIC SOSS HINGE SECURED TO JAMBS AND PANELS WITH (8) #12X1 1/2\"
H4	SURFACE MOUNT METALLIC KEEPERS MOUNTED TO FRAME HEADER AND/OR THRESHOLD WITH (2) #10 X 1 1/2\"

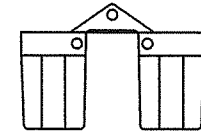
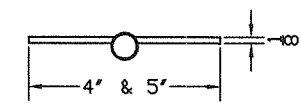
HARDWARE



21- 5X5 HINGES BY EMTEK
27- 5X5 HINGES BY DELTANA
31- 4X4 HINGES BY HAGER



38- SOSS CONCEALED HINGES



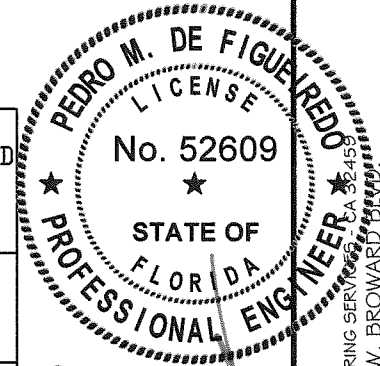
MIAMI-DADE BCCO:

PRODUCT REVISED
as complying with the Florida
Building Code

NOA-No. 20-1013.14

Expiration Date 07/19/2023

By 
Miami-Dade Product Control



SEP 10 2020



PRODUCT CATEGORY: OUTSWING DOORS
PRODUCT MATERIAL: WOOD / GLASS
IMPACT RATING: LARGE & SMALL MISSILE

ROATAN EURO PROFILE
OUTSWING DOORS

MANUFACTURER:
ROATAN
MAHOGANY USA INC.
4004C AURORA STREET
CORAL GABLES FLORIDA

SCALE:
NA

DATE:
09/10/2020

DRAWING #
20-150 DR

SHEET
9 OF 9