



DEPARTMENT OF REGULATORY AND ECONOMIC RESOURCES (RER)
BOARD AND CODE ADMINISTRATION DIVISION
NOTICE OF ACCEPTANCE (NOA)

MIAMI-DADE COUNTY
PRODUCT CONTROL SECTION
11805 SW 26 Street, Room 208
Miami, Florida 33175-2474
T (786) 315-2590 F (786) 315-2599
www.miamidade.gov/building

Amarr Garage Doors dba Entrematic
165 Carriage Court
Winston Salem, NC 27105

SCOPE: This NOA is being issued under the applicable rules and regulations governing the use of construction materials. The documentation submitted has been reviewed and accepted by Miami-Dade County RER-Product Control Section to be used in MiamiDade County and other areas where allowed by the Authority Having Jurisdiction (AHJ).

This NOA shall not be valid after the expiration date stated below. The Miami-Dade County Product Control Section (In Miami Dade County) and/or the AHJ (in areas other than MiamiDade County) reserve the right to have this product or material tested for quality assurance purposes. If this product or material fails to perform in the accepted manner, the manufacturer will incur the expense of such testing and the AHJ may immediately revoke, modify, or suspend the use of such product or material within their jurisdiction. RER reserves the right to revoke this acceptance, if it is determined by Miami-Dade County Product Control Section that this product or material fails to meet the requirements of the applicable building code.

This product is approved as described herein and has been designed to comply with the Florida Building Code, including the High Velocity Hurricane Zone.

DESCRIPTION: Model 950 Heritage & 655 Oak Summit 1000, 2000 Steel Sectional Garage Door up to 16'-0" Wide with Optional Impact Resistant Windows – L.M.I.

APPROVAL DOCUMENT: Drawing No. **IRC-9516-175-26-I**, titled "Model 950 Heritage and Model 655 Oak Summit (24ga) 1000, 2000 Short, Long, Flush and Oak Summit Panels", sheets 1 through 3 of 3, dated 02/28/07, with revision E dated 12/02/11, prepared by manufacturer, signed and sealed by Thomas L. Shelmerdine, P.E., bearing the Miami-Dade County Product Control Revision stamp with the Notice of Acceptance number and expiration date by the Miami-Dade County Product Control Section.

MISSILE IMPACT RATING: Large and Small Missile Impact Resistant

LABELING: Each unit shall bear a permanent label with the manufacturer's name or logo, manufacturing address, model number, the positive and negative design pressure rating, indicate impact rated if applicable, installation instruction drawing reference number, approval number (NOA), the applicable test standards, and the statement reading 'Miami-Dade County Product Control Approved' is to be located on the door's side track, bottom angle, or inner surface of a panel.

RENEWAL of this NOA shall be considered after a renewal application has been filed and there has been no change in the applicable building code negatively affecting the performance of this product.

TERMINATION of this NOA will occur after the expiration date or if there has been a revision or change in the materials, use, and/or manufacture of the product or process. Misuse of this NOA as an endorsement of any product, for sales, advertising or any other purposes shall automatically terminate this NOA. Failure to comply with any section of this NOA shall be cause for termination and removal of NOA.

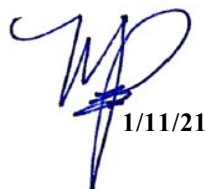
ADVERTISEMENT: The NOA number preceded by the words Miami-Dade County, Florida, and followed by the expiration date may be displayed in advertising literature. If any portion of the NOA is displayed, then it shall be done in its entirety.

INSPECTION: A copy of this entire NOA shall be provided to the user by the manufacturer or its distributors and shall be available for inspection at the job site at the request of the Building Official.

This NOA **revises NOA No. 17-1010.25** and consists of this page 1 and evidence page E-1, E-2 and E-3, as well as approval document mentioned above.

The submitted documentation was reviewed by **Manuel Perez, P.E.**




1/11/21

NOA No. 20-1015.19
Expiration Date: September 06, 2022
Approval Date: January 21, 2021
Page 1

NOTICE OF ACCEPTANCE: EVIDENCE SUBMITTED

1. EVIDENCE SUBMITTED UNDER PREVIOUS NOA's

A. DRAWINGS

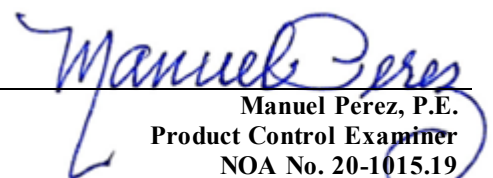
1. Manufacturer's die drawings and sections.
(Submitted under NOA No. 12-0228.06)
2. Drawing No. **IRC-9516-175-26-I**, titled "Model 950 Heritage and Model 655 Oak Summit (24ga) 1000, 2000 Short, Long, Flush and Oak Summit Panels", sheets 1 through 3 of 3, dated 02/28/07, with revision E dated 12/02/11, prepared by manufacturer, signed and sealed by Thomas L. Shelmerdine, P.E.
(Submitted under NOA No. 12-0228.06)

B. TESTS

1. Test report on Evaluation of Painted or Coated Specimens Subjected to Corrosive Environments per ASTM D1654 & ASTM B117, prepared by Architectural Testing, Inc., Test Report No. **A7420.01-106-18**, dated 04/12/11, signed and sealed by Joseph A. Reed, P.E.
(Submitted under NOA No. 12-0228.06)
2. Test reports on: 1) Uniform Static Air Pressure Test, Loading per FBC TAS 202-94
2) Forced Entry Test per FBC, TAS 202-94,
along with marked-up drawings and installation diagram of a 9' x 7' Sectional Steel Garage Door, prepared by American Test Lab, Inc., Test Report No. **ATLNC 0912.01-11**, dated 10/13/11, signed and sealed by David W. Johnson, P.E.
(Submitted under NOA No. 12-0228.09)
3. Test reports on: 1) Uniform Static Air Pressure Test, Loading per FBC TAS 202-94
2) Large Missile Impact Test per FBC, TAS 201-94
3) Cyclic Wind Pressure Loading per FBC, TAS 203-94
along with marked-up drawings and installation diagram of a 16' x 7' Sectional Steel Garage Door, prepared by American Test Lab, Inc., Report No. **ATLNC-0328.01-07**, dated 05/08/07, signed and sealed by David W. Johnson, P.E.
(Submitted under NOA No. 07-0928.10)
4. Test report on Tensile Test for 3 Samples per ASTM E 8, prepared by Hurricane Engineering & Testing Inc., Test Report No. **HETI-07-T681**, dated 04/19/07, signed and sealed by Candido F. Font, P.E.
(Submitted under NOA No. 07-0928.10)

C. CALCULATIONS

1. Anchor calculations prepared by Structural Solutions, P.A., dated 01/25/12, signed and sealed by Thomas L. Shelmerdine, P.E.
(Submitted under NOA No. 12-0228.06)


Manuel Pérez, P.E.
Product Control Examiner
NOA No. 20-1015.19
Expiration Date: September 06, 2022
Approval Date: January 21, 2021

NOTICE OF ACCEPTANCE: EVIDENCE SUBMITTED

1. EVIDENCE SUBMITTED UNDER PREVIOUS NOA's (CONTINUED)

D. QUALITY ASSURANCE

1. Miami-Dade Department of Regulatory and Economic Resources (RER)

E. MATERIAL CERTIFICATIONS

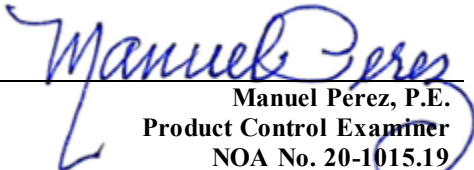
1. Notice of Acceptance No. **16-1117.01** issued to **Kuraray America, Inc.** for their "Trosifol® Ultraclear, Clear and Color PVB Glass Interlayers" dated 01/19/17, expiring on 07/08/19.

F. STATEMENTS

1. Statement letter of conformance, complying with **FBC 6th Edition (2017)** and of no financial interest, dated 09/11/17, issued by Structural Solutions, PA., signed and sealed by Tomas L. Shelmerdine, P.E.
(Submitted under NOA No. 17-1010.25)

G. OTHERS

1. Notice of Acceptance No. **17-0517.08**, issued to Amarr Garage Doors for their Model 950 Heritage & 655 Oak Summit 1000, 2000 Steel Sectional Garage Door up to 16'-0" Wide with Optional Impact Resistant Windows (DP +47.5, -52.0 PSF), approved on 07/13/17 and expiring on 09/06/22.


Manuel Pérez, P.E.
Product Control Examiner
NOA No. 20-1015.19
Expiration Date: September 06, 2022
Approval Date: January 21, 2021

NOTICE OF ACCEPTANCE: EVIDENCE SUBMITTED

2. NEW EVIDENCE SUBMITTED

A. DRAWINGS

1. None.

B. TESTS

1. None.

C. CALCULATIONS

1. None.

D. QUALITY ASSURANCE

1. Miami-Dade Department of Regulatory and Economic Resources (RER)

E. MATERIAL CERTIFICATIONS

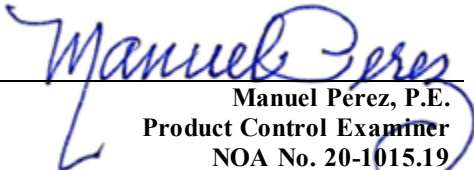
1. Notice of Acceptance No. **19-0305.02** issued to **Kuraray America, Inc.** for their “**Trosifol® Ultraclear, Clear and Color PVB Glass Interlayers**” dated 05/09/19, expiring on 07/08/24.

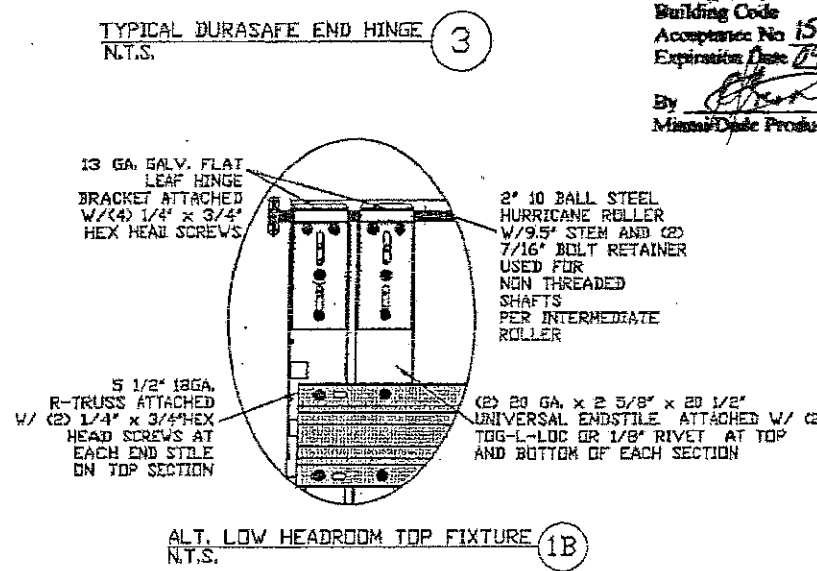
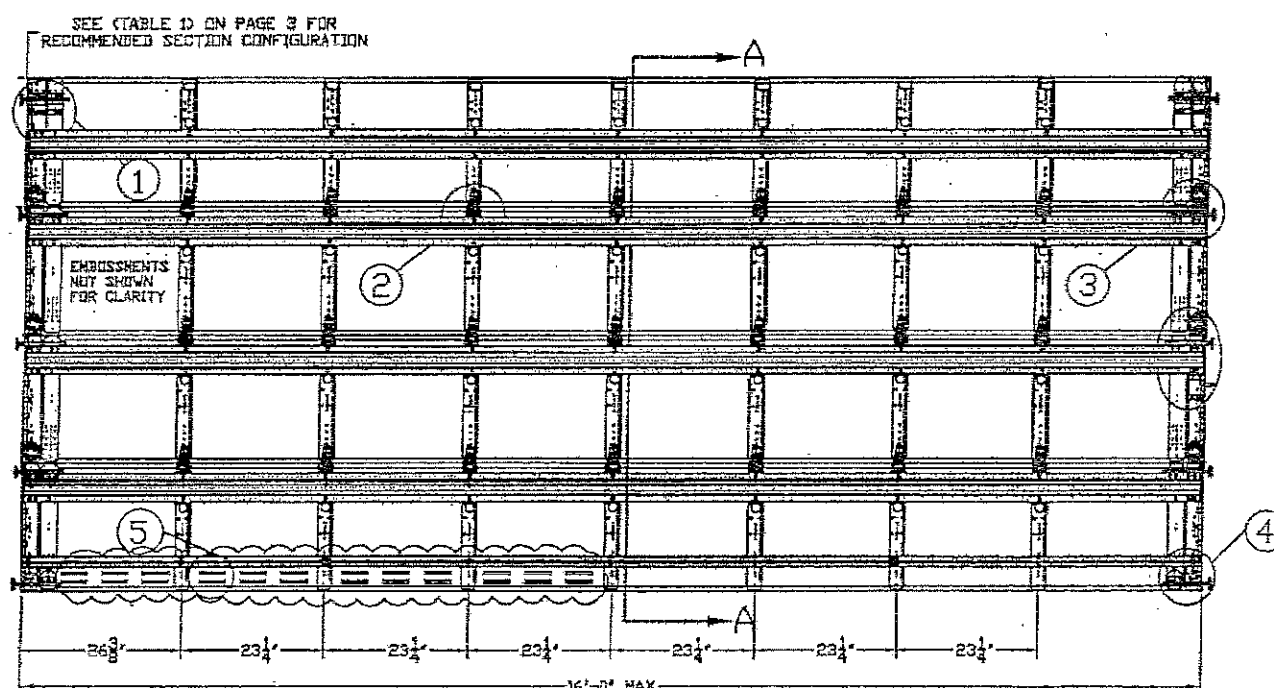
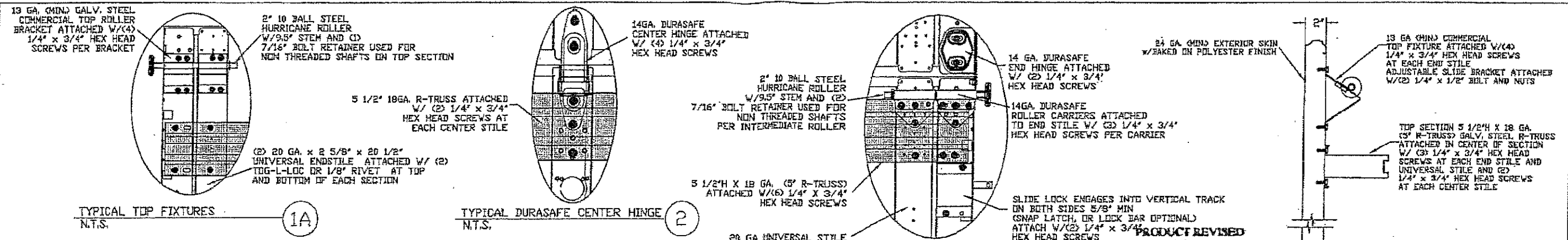
F. STATEMENTS

1. Statement letter of conformance, complying with **FBC 7th Edition (2020)** and of no financial interest, dated August 27, 2020, issued by Structural Solutions, P.A., signed and sealed by Thomas L. Shelmerdine, P.E.

G. OTHERS

1. Notice of Acceptance No. **17-1010.25**, issued to Amarr Garage Doors for their Model 950 Heritage & 655 Oak Summit 1000, 2000 Steel Sectional Garage Door up to 16'-0" Wide with Optional Impact Resistant Windows (DP +47.5, -52.0 PSF), approved on 12/28/17 and expiring on 09/06/22.


Manuel Pérez, P.E.
Product Control Examiner
NOA No. 20-1015.19
Expiration Date: September 06, 2022
Approval Date: January 21, 2021



SECTION A-A (SIDE VIEW) N.T.S.

REV	DESCRIPTION OF REVISIONS	DATE	BY
B	ADDED TITLE BLOCK TO PAGE 2	7/5/07	BHG
C	CORRECTED WOOD BLOCK NOTE	9/13/07	BHG
D	REVISED NOTE 5	12/15/08	CBT
E	UPDATED TO FBC 2010	12/2/11	RLR

MAX SIZE 16' x 14'

DESIGN LOADS +47.5 PSF -52.0 PSF

LARGE MISSILE IMPACT RESISTANCE

THOMAS L. SHELMERDINE LICENSE No. 0048578 STATE OF FLORIDA PROFESSIONAL ENGINEER

165 CARRIAGE COURT WINSTON-SALEM, N.C. 27105 WWW.AMARR.COM

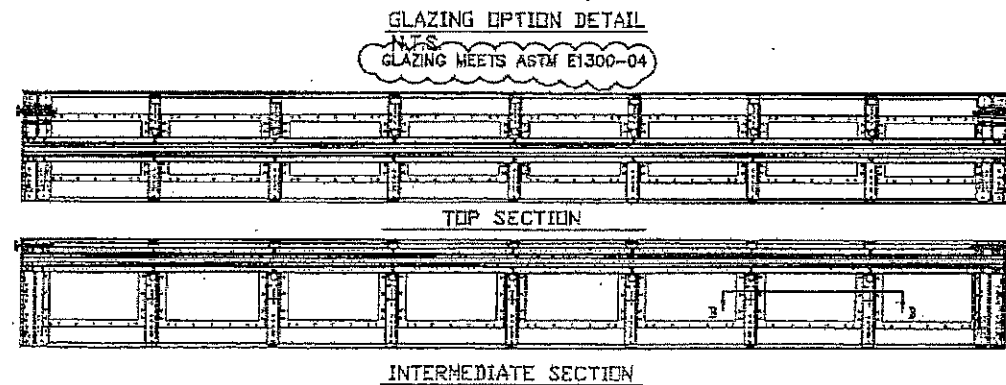
MODEL 950 HERITAGE 1000, 2000 MODEL 655 OAK SUMMIT (24g) 1000, 2000 SHORT, LONG, FLUSH, & OAK SUMMIT PANELS

SIZE	DRAWN BY	SKW	DATE	02/28/07	DRAWING NUMBER
B	CHECKED BY	BHG	DATE	07/07	IRC-9516-175-26-1

ENGINEER: THOMAS L. SHELMERDINE P.E. Lic. No. 0048579 SHEET 1 OF 3

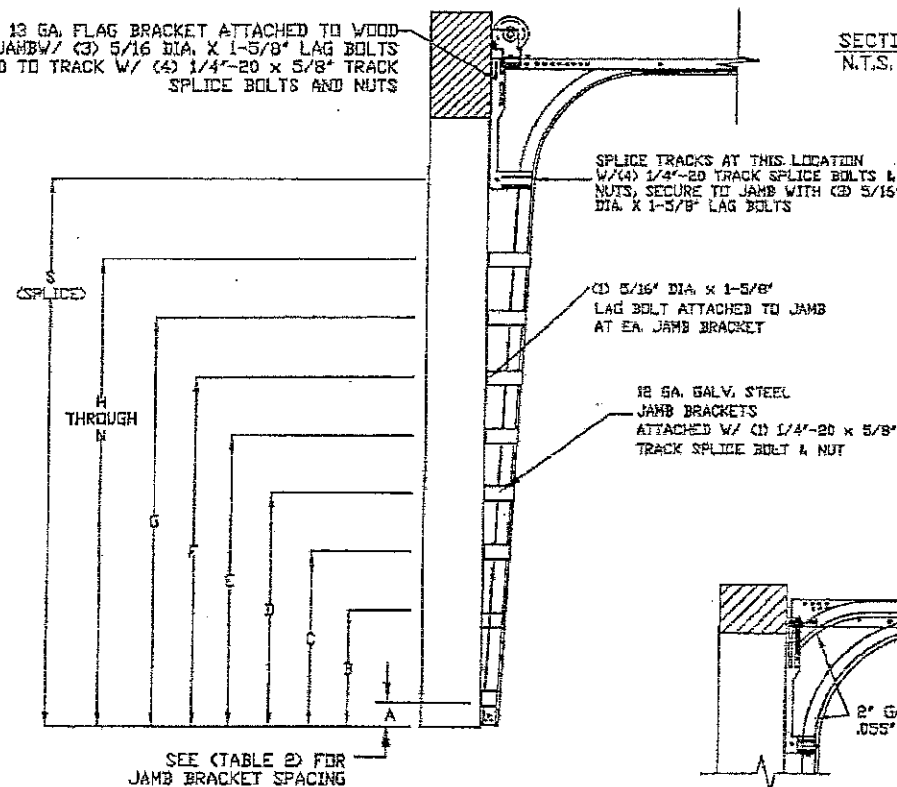
LARGE MISSILE IMPACT RESISTANT

TRACK MOUNTING DETAIL N.T.S.



PRODUCT REVISED
as complying with the Florida
Building Code
NOA-No. **20-1015.19**
Expiration Date: **09/06/2022**
By: *Manuel Torres*
Miami-Dade Product Control

13 GA. FLAG BRACKET ATTACHED TO WOOD
JAMB W/ (3) 5/16 DIA. X 1-5/8" LAG BOLTS
AND TO TRACK W/ (4) 1/4"-20 X 5/8" TRACK
SPlice BOLTS AND NUTS



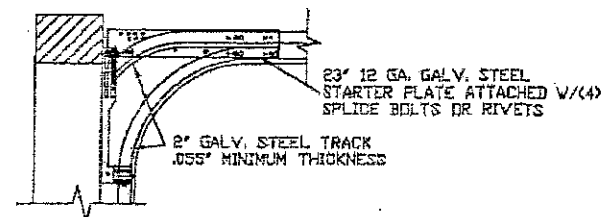
STANDARD TRACK CONFIGURATION FOR 6'6" UP TO 14' TALL DOORS
N.T.S.

LOW HEADROOM TRACK OPTION
N.T.S.

SECTION B-B IMPACT WINDOW DETAIL
N.T.S.

PRODUCT REVISED
as complying with the Florida
Building Code
Acceptance No. **17-1010.25**
Expiration Date **9/6/22**
By: *Isaac J. Chant*
Miami-Dade Product Control

PRODUCT RENEWED
as complying with the Florida
Building Code
NOA-No. **17-0517.08**
Expiration Date **09/06/2022**
By: *Manuel Torres*
Miami-Dade Product Control



WOOD JAMB ATTACHMENT TO STRUCTURE

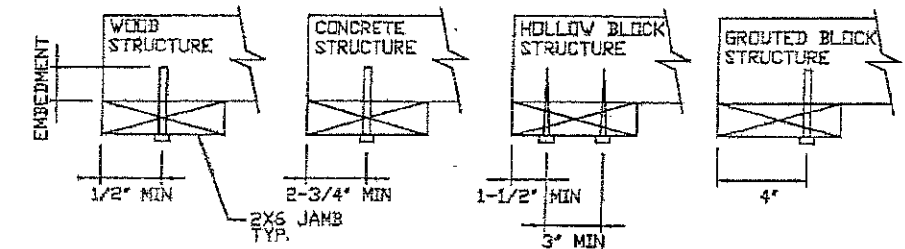
2 X 6 VERTICAL JAMB ATTACHMENT TO WOOD FRAME STRUCTURE
5/16" X 3" LAG SCREWS STARTING 6" FROM ENDS THEN 12" O.C. (1 1/2" EMBEDMENT)

2 X 6 VERTICAL JAMB ATTACHMENT TO 2,000 PSI CONCRETE
HILTI KWIK BOLT 3/8" X 4" STARTING 6" FROM ENDS THEN 24" O.C. (2 1/2" EMBEDMENT)
HILTI SLEEVE ANCHOR 3/8" X 2-3/4" STARTING 6" FROM ENDS THEN 10" O.C. (1 1/4" EMBEDMENT)
ITW/RAMSET REDHEAD (TRU-BOLT) 3/8" X 4" STARTING 6" FROM ENDS THEN 20" O.C. (2 1/2" EMBEDMENT)

2 X 6 VERTICAL JAMB ATTACHMENT TO HOLLOW C-90 BLOCK
SIMPSON 1/4" X 3" TITEN SCREWS STARTING 6" FROM ENDS, USE PAIRS OF FASTENERS
(3" APART) AT 8" O.C. (1 1/2" EMBEDMENT)
HILTI 1/4" X 2-3/4" KWIK-CON II+ SCREWS STARTING 6" FROM ENDS, USE PAIRS OF
FASTENERS (3" APART) AT 8" O.C. (1 1/4" EMBEDMENT)

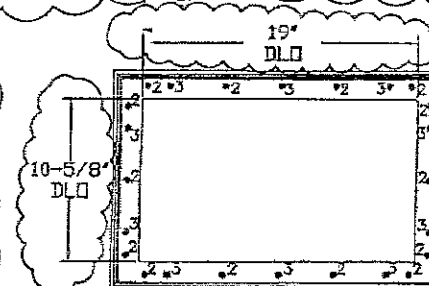
2 X 6 VERTICAL JAMB ATTACHMENT TO GROUTED C-90 BLOCK (2,000 PSI GROUT)
HILTI SLEEVE ANCHOR 3/8" X 2-3/4" STARTING 6" FROM ENDS THEN 12" O.C. (1 1/4"
EMBEDMENT) (OR, USE FASTENERS FOR HOLLOW C-90 BLOCK)

*LAGS AND BOLTS CAN BE COUNTERSUNK TO PROVIDE A FLUSH MOUNTING SURFACE.
*PREPARATION OF WOOD JAMBS BY OTHERS

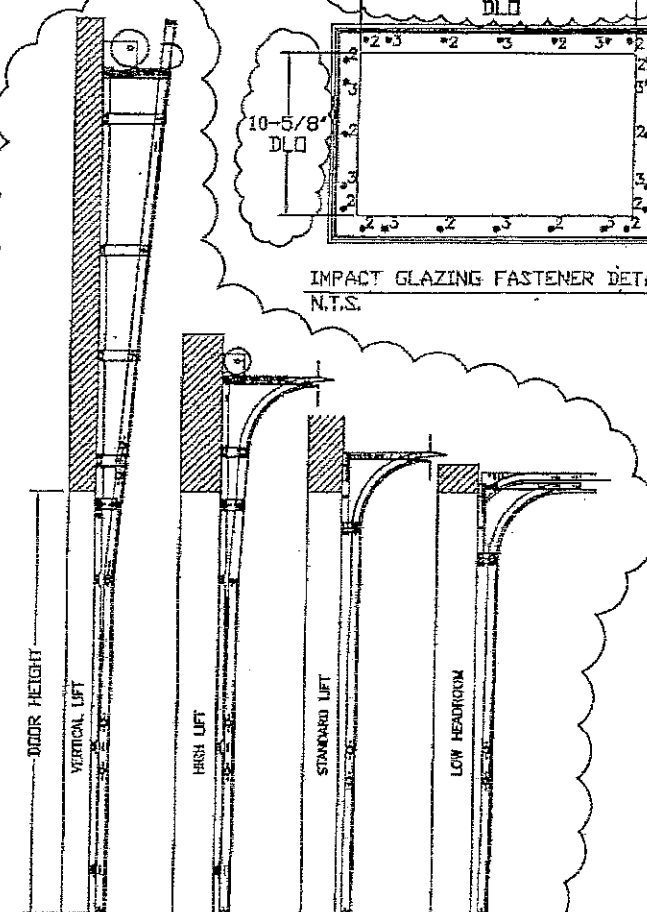


PRODUCT REVISED
as complying with the Florida
Building Code
Acceptance No. **15-0505.06**
Expiration Date **09/06/2017**
By: *Manuel Torres*
Miami-Dade Product Control

PRODUCT REVISED
as complying with the Florida
Building Code
Acceptance No. **12-0728.06**
Expiration Date **09/06/2017**
By: *Manuel Torres*
Miami-Dade Product Control



IMPACT GLAZING FASTENER DETAIL
N.T.S.

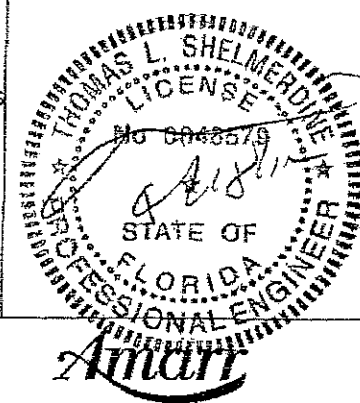


AVAILABLE TRACK CONFIGURATIONS
N.T.S.

REV	DESCRIPTION OF REVISIONS	DATE	BY
B	ADDED TITLE BLOCK TO PAGE 2	7/3/07	BHG
C	CORRECTED WOOD BLOCK NOTE	9/13/07	BHG
D	REVISED NOTE 8	12/15/08	CBT
E	UPDATED TO FBC 2010	12/2/11	RLR

MAX SIZE
16' x 14'
DESIGN LOADS
+47.5 PSF
-52.0 PSF

LARGE MISSILE
IMPACT
RESISTANCE



165 CARRIAGE COURT WINSTON-SALEM, NC 27105 WWW.AMARR.COM

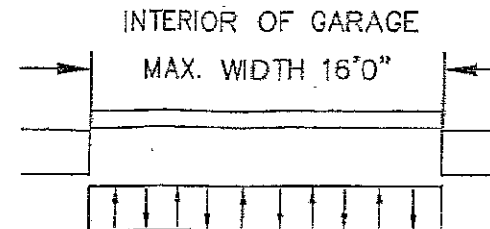
MODEL 950 HERITAGE 1000, 2000
MODEL 855 OAK SUMMIT (24g) 1000, 2000
SHORT, LONG, FLUSH, & OAK SUMMIT PANELS

SIZE	DRAWN BY	SKW	DATE	02/28/07	DRAWING NUMBER
B	CHECKED BY	BHG	DATE	9/1/07	IRC-9516-175-26-1
ENGINEER	THOMAS L. SHELMERDINE P.E. LIC. No. 0048579				SHEET 2 OF 3

TABLE 1

DOOR HEIGHT	SECTION HEIGHTS							
	Btm	#2	#3	#4	#5	#6	#7	#8
14' 6"	21"	21"	21"	21"	21"	21"	21"	21"
13' 6"	21"	21"	21"	21"	21"	18"	18"	21"
13' 0"	21"	21"	21"	18"	18"	18"	18"	21"
12' 6"	21"	18"	18"	18"	18"	18"	18"	21"
12' 0"	21"	21"	21"	21"	21"	18"	18"	21"
11' 6"	21"	21"	21"	18"	18"	18"	18"	21"
11' 0"	21"	18"	18"	18"	18"	18"	18"	21"
10' 6"	21"	21"	21"	21"	21"	21"	21"	
10' 0"	21"	21"	21"	18"	18"	21"		
9' 6"	21"	18"	18"	18"	18"	21"		
9' 0"	18"	18"	18"	18"	18"	18"		
8' 6"	21"	21"	21"	18"	21"			
8' 0"	21"	18"	18"	18"	21"			
7' 6"	18"	18"	18"	18"	18"			
7' 0"	21"	21"	21"	21"				
6' 6"	21"	18"	18"	21"				

VERTICAL JAMB
DESIGN LOADS
+380.0 LBS/FT
-416.0 LBS/FT



SEE NOTE 2

SPECIFICATIONS AND NOTES

1. ALL THE LOAD FROM THE DOOR IS TRANSFERRED TO THE VERTICAL TRACK, FROM THE TRACK THE LOAD IS TRANSFERRED TO THE VERTICAL JAMBS. THE HORIZONTAL JAMB OR HEADER RECEIVES NO PORTION OF THE LOAD TRANSFERRED FROM THE DOOR.
2. EACH VERTICAL JAMBS RECEIVES MAXIMUM DESIGN LOADS OF: +380.0 LBS/FT & -416.0 LBS/FT
3. DOOR AND HARDWARE WILL BE DESIGNED, MANUFACTURED AND INSTALLED WITH STANDARDS AS SET FORTH BY DASHA.
4. DOOR SECTIONS SHALL BE 24 GA. (.0216) MIN. EXTERIOR SKIN ROLLED FORMED, W/ BAKED ON POLYESTER FINISH
5. DOORS UP TO 7'0" HIGH CONSIST OF (4) SECTIONS AS SHOWN. USE (1) 5.5" R-TRUSS PER SECTION AND (1) 3" 20 GA. STRUT ON BOTTOM SECTION
6. DOORS OVER (4) SECTIONS REFER TO TABLE 1
7. SUPPORTING STRUCTURAL ELEMENTS SHALL BE DESIGNED BY A REGISTERED PROFESSIONAL ENGINEER FOR WIND LOADS INDICATED ON THIS DRAWING IN ADDITION TO OTHER LOADINGS.
8. THIS APPROVAL REQUIRES THE MANUFACTURER TO DO TESTING OF ALL COILS USED TO FABRICATE DOOR PANELS UNDER THIS NOTICE OF ACCEPTANCE. A MINIMUM OF 2 SPECIMENS SHALL BE CUT FROM EACH COIL AND TENSILE TESTED ACCORDING TO ASTM E-8 BY A DADE COUNTY APPROVED LAB SELECTED AND PAID BY THE MANUFACTURER. EVERY 3 MONTHS, 4 TIMES A YEAR, THE MANUFACTURER SHALL MAIL TO THIS OFFICE: A COPY OF THE TEST REPORTS WITH CONFIRMATION THAT THE SPECIMENS WERE SELECTED FROM COILS AT THE MANUFACTURER PRODUCTION FACILITIES. AND A NOTARIZED STATEMENT FROM THE MANUFACTURER THAT ONLY COILS WITH YIELD STRENGTH OF 34,600 PSI OR MORE SHALL BE USED TO MAKE DOOR PANELS FOR DADE COUNTY UNDER THIS NOTICE OF ACCEPTANCE.

PRODUCT REVISED

as complying with the Florida
Building Code

Acceptance No. 17-1010-25
Expiration Date 9/6/22

By: Ishag L. Charles
Miami-Dade Product Control

PRODUCT REVISED

as complying with the Florida
Building Code

NOA-No. 20-1015.19

Expiration Date: 09/06/2022

By: Manuel Fern
Miami-Dade Product Control

PRODUCT RENEWED

as complying with the Florida
Building Code

NOA-No. 17-0517.08

Expiration Date: 09/06/2022

By: [Signature]
Miami-Dade Product Control

PRODUCT REVISED

as complying with the Florida
Building Code

Acceptance No. 15-0505.04
Expiration Date 09/06/2017

By: [Signature]
Miami-Dade Product Control

PRODUCT REVISED

as complying with the Florida
Building Code

Acceptance No. 12-0228.06
Expiration Date 09/06/2017

By: [Signature]
Miami-Dade Product Control

TABLE 2

DOOR HEIGHT	TRACK ATTACHMENT														SPLICE
	A	B	C	D	E	F	G	H	I	J	K	L	M	N	
6' 6"	3"	14"	27"	38"	46"	56"	64"								70"
7'	3"	14"	27"	38"	46"	56"	68"								76"
7' 6"	3"	14"	27"	38"	46"	56"	68"	78"							82"
8'	3"	14"	27"	38"	46"	56"	68"	78"							88"
8' 6"	3"	14"	27"	38"	46"	56"	68"	78"	88"						94"
9'	3"	14"	27"	38"	46"	56"	68"	78"	88"						100"
9' 6"	3"	14"	27"	38"	46"	56"	68"	78"	88"	98"					106"
10'	3"	14"	27"	38"	46"	56"	68"	78"	88"	100"					112"
10' 6"	3"	14"	27"	38"	46"	56"	68"	78"	88"	100"	110"				118"
11'	3"	14"	27"	38"	46"	56"	68"	78"	88"	100"	110"				124"
11' 6"	3"	14"	27"	38"	46"	56"	68"	78"	88"	100"	110"	120"			130"
12'	3"	14"	27"	38"	46"	56"	68"	78"	88"	100"	110"	122"			136"
12' 6"	3"	14"	27"	38"	46"	56"	68"	78"	88"	100"	109"	122"	132"		142"
13'	3"	14"	27"	38"	46"	56"	68"	78"	88"	100"	114"	122"	134"		148"
13' 6"	3"	14"	27"	38"	46"	56"	68"	78"	88"	100"	109"	122"	134"	144"	154"
14'	3"	14"	27"	38"	46"	56"	68"	78"	88"	100"	114"	122"	134"	146"	160"

ALL TRACK ATTACHMENT SPACING +/-2" ALLOWED WITH SYP NO. 2 OR BETTER ONLY

REV	DESCRIPTION OF REVISIONS	DATE	BY
B	ADDED TITLE BLOCK TO PAGE 2	7/3/07	BHG
C	CORRECTED WOOD BLOCK NOTE	9/13/07	BHG
D	REVISED NOTE 3	12/15/08	CET
E	UPDATED TO FEB 2010	12/2/11	RLR

MAX SIZE 16' x 14'	
DESIGN LOADS +47.5 PSF -52.0 PSF	
LARGE MISSILE IMPACT RESISTANCE	

Amarr

165 CARRIAGE COURT WINSTON-SALEM, NC. 27105 WWW.AMARR.COM

MODEL 950 HERITAGE 1000, 2000
MODEL 855 OAK SUMMIT (24g) 1000, 2000
SHORT, LONG, FLUSH, & OAK SUMMIT PANELS

SIZE	DRAWN BY	SKW	DATE	02/28/07	DRAWING NUMBER
B	CHECKED BY	BHG	DATE	01/07	IRC-9516-175-26-1

ENGINEER: THOMAS L. SHELMEERDINE P.E. LIC. No. 0048579 SHEET 3 OF 3