



DEPARTMENT OF REGULATORY AND ECONOMIC RESOURCES (RER)
BOARD AND CODE ADMINISTRATION DIVISION

NOTICE OF ACCEPTANCE (NOA)

MIAMI-DADE COUNTY
PRODUCT CONTROL SECTION
11805 SW 26 Street, Room 208
Miami, Florida 33175-2474
T (786) 315-2590 F (786) 315-2599
www.miamidade.gov/building

Amarr Garage Doors dba Entrematic
165 Carriage Court
Winston Salem, NC 27105

SCOPE: This NOA is being issued under the applicable rules and regulations governing the use of construction materials. The documentation submitted has been reviewed and accepted by Miami-Dade County RER-Product Control Section to be used in Miami Dade County and other areas where allowed by the Authority Having Jurisdiction (AHJ).

This NOA shall not be valid after the expiration date stated below. The Miami-Dade County Product Control Section (In Miami Dade County) and/or the AHJ (in areas other than Miami Dade County) reserve the right to have this product or material tested for quality assurance purposes. If this product or material fails to perform in the accepted manner, the manufacturer will incur the expense of such testing and the AHJ may immediately revoke, modify, or suspend the use of such product or material within their jurisdiction. RER reserves the right to revoke this acceptance, if it is determined by Miami-Dade County Product Control Section that this product or material fails to meet the requirements of the applicable building code.

This product is approved as described herein and has been designed to comply with the Florida Building Code, including the High Velocity Hurricane Zone.

DESCRIPTION: Models 2400 (I/S) & 2000 (I/S) Steel Sectional Garage Doors up to 9'-2" Wide – L.M.I.

APPROVAL DOCUMENT: Drawing No. **IRC-2409-177-21-I**, titled "Commercial Models 2400 (I/S) (24 GA), 2000 (I/S) (20 GA), Flush and Ribbed Panels", sheets 1 through 3 of 3, dated 07/29/08, with revision A dated 11/29/11, prepared by manufacturer, signed and sealed by Thomas L. Shelmerdine, P.E., bearing the Miami-Dade County Product Control Revision stamp with the Notice of Acceptance number and expiration date by the Miami-Dade County Product Control Section.

MISSILE IMPACT RATING: Large and Small Missile Impact Resistant

LABELING: Each unit shall bear a permanent label with the manufacturer's name or logo, manufacturing address, model number, the positive and negative design pressure rating, indicate impact rated if applicable, installation instruction drawing reference number, approval number (NOA), the applicable test standards, and the statement reading 'Miami-Dade County Product Control Approved' is to be located on the door's side track, bottom angle, or inner surface of a panel.

RENEWAL of this NOA shall be considered after a renewal application has been filed and there has been no change in the applicable building code negatively affecting the performance of this product.

TERMINATION of this NOA will occur after the expiration date or if there has been a revision or change in the materials, use, and/or manufacture of the product or process. Misuse of this NOA as an endorsement of any product, for sales, advertising or any other purposes shall automatically terminate this NOA. Failure to comply with any section of this NOA shall be cause for termination and removal of NOA.

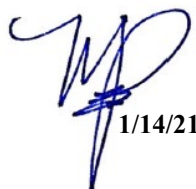
ADVERTISEMENT: The NOA number preceded by the words Miami-Dade County, Florida, and followed by the expiration date may be displayed in advertising literature. If any portion of the NOA is displayed, then it shall be done in its entirety.

INSPECTION: A copy of this entire NOA shall be provided to the user by the manufacturer or its distributors and shall be available for inspection at the job site at the request of the Building Official.

This NOA **revises NOA No. 18-0725.01** and consists of this page 1 and evidence page E-1, E-2 and E-3, as well as approval document mentioned above.

The submitted documentation was reviewed by **Manuel Perez, P.E.**




1/14/21

NOA No. 20-1015.30
Expiration Date: November 20, 2023
Approval Date: January 21, 2021
Page 1

Amarr Garage Doors dba Entrematic

NOTICE OF ACCEPTANCE: EVIDENCE SUBMITTED

1. EVIDENCE SUBMITTED UNDER PREVIOUS NOA's

A. DRAWINGS

1. Manufacturer's die drawings and sections.
(Submitted under NOA No. 08-1003.08)
2. Drawing No. **IRC-2409-177-21-I**, titled "Commercial Models 2400 (I/S) (24 GA), 2000 (I/S) (20 GA), Flush and Ribbed Panels", sheets 1 through 3 of 3, dated 07/29/08, with revision A dated 11/29/11, prepared by manufacturer, signed and sealed by Thomas L. Shelmerdine, P.E.
(Submitted under NOA No. 12-0228.10)

B. TESTS

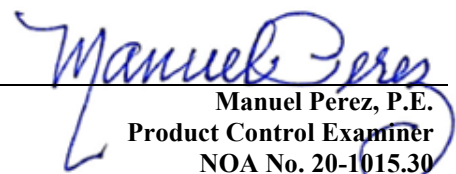
1. Test report on Evaluation of Painted or Coated Specimens Subjected to Corrosive Environments per ASTM D1654 & ASTM B117, prepared by Architectural Testing, Inc., Test Report No. **A7420.01-106-18**, dated 04/12/11, signed and sealed by Joseph A. Reed, P.E.
(Submitted under NOA No. 12-0228.10)
2. Test reports on: 1) Uniform Static Air Pressure Test, Loading per FBC, TAS 202-94
2) Large Missile Impact Test per FBC, TAS 201-94
3) Cyclic Wind Pressure Loading per FBC, TAS 203-94
4) Forced Entry Test per FBC, TAS 202-94
5) Tensile Test per ASTM E8
along with marked-up drawings and installation diagram of Amarr 9'-2"x 8' 24 ga steel garage door Model 2400, prepared by American Test Lab, Inc, Test Report No. **ATLNC 0721.01-08**, dated 08/06/08, signed and sealed by David W. Johnson, P.E.
(Submitted under NOA No. 08-1003.08)

C. CALCULATIONS

1. Anchor calculations prepared by Structural Solutions, P.A., dated 02/09/12, signed and sealed by Thomas L. Shelmerdine, P.E.
(Submitted under NOA No. 12-0228.10)

D. QUALITY ASSURANCE

1. Miami-Dade Department of Regulatory and Economic Resources (RER)


Manuel Perez, P.E.
Product Control Examiner
NOA No. 20-1015.30
Expiration Date: November 20, 2023
Approval Date: January 21, 2021

Amarr Garage Doors dba Entrematic

NOTICE OF ACCEPTANCE: EVIDENCE SUBMITTED

1. EVIDENCE SUBMITTED UNDER PREVIOUS NOA's (CONTINUED)

E. MATERIAL CERTIFICATIONS

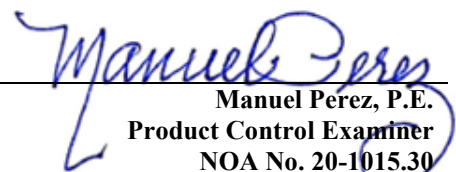
1. Test report on Surface Burning Characteristics on the expanded polystyrene UL file # R11812.

F. STATEMENTS

1. Statement letter of conformance, complying with **FBC 6th Edition (2017)** and of no financial interest, dated 09/11/17, issued by Structural Solutions, PA., signed and sealed by Tomas L. Shelmerdine, P.E.
(Submitted under NOA No. 18-0725.01)

G. OTHERS

1. Notice of Acceptance No. **17-1010.06**, issued to Amarr Garage Doors for their Model 2400 (I/S) & 2000 (I/S) Steel Sectional Garage Doors up to 9'-2" Wide (DP +50.0, - 62.0 PSF), approved on 12/14/17 and expiring on 10/20/18.


Manuel Perez, P.E.
Product Control Examiner
NOA No. 20-1015.30
Expiration Date: November 20, 2023
Approval Date: January 21, 2021

Amarr Garage Doors dba Entrematic

NOTICE OF ACCEPTANCE: EVIDENCE SUBMITTED

2. NEW EVIDENCE SUBMITTED

A. DRAWINGS

1. None.

B. TESTS

1. None.

C. CALCULATIONS

1. None.

D. QUALITY ASSURANCE

1. Miami-Dade Department of Regulatory and Economic Resources (RER)

E. MATERIAL CERTIFICATIONS

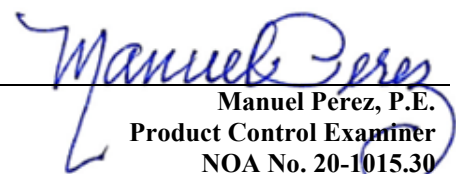
1. Test report on Surface Burning Characteristics on the expanded polystyrene UL file # R11812.

F. STATEMENTS

1. Statement letter of conformance, complying with **FBC 7th Edition (2020)** and of no financial interest, dated August 27, 2020, issued by Structural Solutions, P.A., signed and sealed by Thomas L. Shelmerdine, P.E.

G. OTHERS

1. Notice of Acceptance No. **18-0725.01**, issued to Amarr Garage Doors dba Entrematic for their Model 2400 (I/S) & 2000 (I/S) Steel Sectional Garage Doors up to 9'-2" Wide (DP +50.0, -62.0 PSF), approved on 08/30/18 and expiring on 10/20/23.


Manuel Perez, P.E.
Product Control Examiner
NOA No. 20-1015.30
Expiration Date: November 20, 2023
Approval Date: January 21, 2021

13 GA. (MIN) GALV. COMMERCIAL TOP ROLLER BRACKET ATTACHED W/ (4) 1/4" x 3/4" HEX HEAD SCREWS PER BRACKET

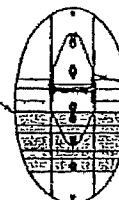
2" 10 BALL STEEL ROLLER W/ 5/8" STEM (MIN) W/ BOLT RETAINER USED FOR NON THREADED SHAFT

3 5/8" X 22 GA. (3.5" R-TRUSS) GALV. STEEL R-TRUSS ATTACHED W/ (4) 1/4" x 3/4" HEX HEAD SCREWS AT EACH END STILE ON TOP SECTION

TYPICAL TOP FIXTURE
N.T.S.

1

3 5/8" X 22 GA. (3.5" R-TRUSS) GALV. STEEL R-TRUSS ATTACHED W/ (2) 1/4" x 3/4" HEX HEAD SCREWS AT EACH CENTER STILE



TYPICAL CENTER HINGE
N.T.S.

2

14GA. (MIN) CENTER HINGE ATTACHED W/ A TOTAL OF (5) 1/4" x 3/4" HEX HEAD SCREWS
(2) SCREWS IN THE TOP LEAF
(2) SCREWS IN THE BOTTOM LEAF
(1) SCREW IN THE BOTTOM LEAF THRU R-TRUSS

24 GA. (22" MIN) OR 20 GA W/ BAKED ON POLYESTER FINISH
OPTIONAL POLYSTYRENE INSULATION WITH HAIRCELL OR STEEL BACKER (I AND S MODELS)

2" THICK

13 GA. (MIN) GALV. COMMERCIAL TOP ROLLER BRACKET ATTACHED WITH (4) 1/4" x 3/4" HEX HEAD UNIV. SCREWS PER BRACKET. ADJUSTABLE SLIDE BRACKET IS ASSEMBLED WITH (2) 5/16" x 3/4" BOLT & NUT PER BRACKET.

3 5/8" X 22 GA. (3.5" R-TRUSS) GALV. STEEL R-TRUSS ATTACHED W/ (4) 1/4" x 3/4" HEX HEAD SCREWS AT EACH END STILE AND (2) 1/4" x 3/4" HEX HEAD SCREWS AT EACH CENTER STILE ON TOP SECTION

14 GA. (MIN) GALV. STEEL ROLLER HINGE ATTACHED WITH (5) 1/4" x 3/4" HEX HEAD UNIV. SCREWS

3 5/8" X 22 GA. (3.5" R-TRUSS) GALV. STEEL R-TRUSS ATTACHED W/ (3) 1/4" x 3/4" HEX HEAD SCREWS AT EACH END STILE AND (2) 1/4" x 3/4" HEX HEAD SCREWS AT EACH CENTER STILE ON BTH AND INT SECTIONS

(1) 8" X 20GA STRUT ON BOTTOM PANEL ATTACHED W/ (2) 1/4" x 3/4" HEX HEAD SCREWS AT EACH END STILE AND (2) 1/4" x 3/4" HEX HEAD SCREWS AT EACH CENTER STILE

13 GA. (MIN) GALV. STEEL BOTTOM BRACKET ATTACHED W/ (3) 1/4" x 3/4" HEX HEAD UNIV. SCREWS

CONT. ALUM. EXTRUSION WITH CONT. VINYL ASTRAGAL

PRODUCT REVISED
as complying with the Florida
Building Code
Acceptance No 17-1010-06
Expiration Date 11/20/2018
By *Shay L. Chaudhary*
Miami-Dade Product Control

LARGE MISSILE IMPACT RESISTANCE

PRODUCT RENEWED
as complying with the Florida
Building Code
NOA-No. 18-0725.01
Expiration Date 11/20/2023
By *[Signature]*
Miami-Dade Product Control

SLIDE LOCK ENGAGES VERTICAL TRACK ON EACH SIDE (SNAP LATCH, OR LOCK BAR OPTIONAL) ATTACH W/ (2) 1/4" x 3/4" HEX HEAD SCREWS

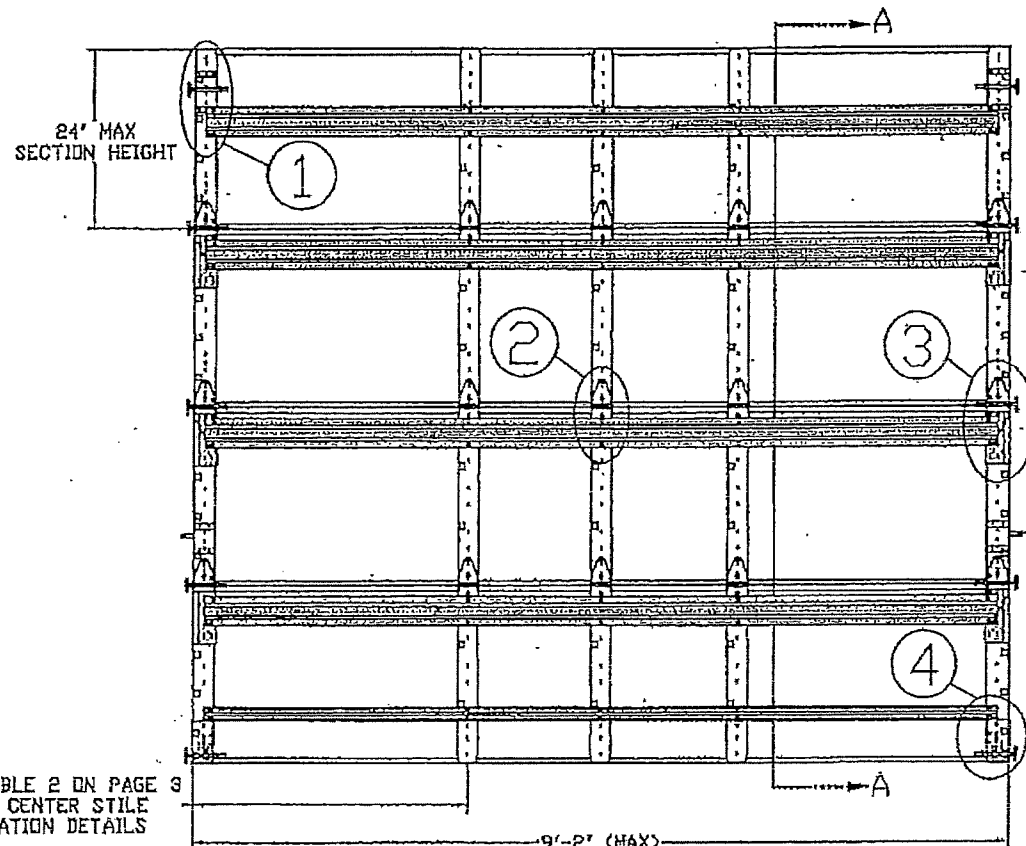
PRODUCT REVISED
as complying with the Florida
Building Code
Acceptance No 15-0505.14
Expiration Date 11/20/2018
By *[Signature]*
Miami-Dade Product Control

SECTION A-A (SIDE VIEW)

PRODUCT RENEWED
as complying with the Florida
Building Code
Acceptance No 13-0813.20
Expiration Date 11/20/2018
By *[Signature]*
Miami-Dade Product Control

PRODUCT REVISED
as complying with the Florida
Building Code
Acceptance No 12-0228.10
Expiration Date 11/20/2013
By *[Signature]*
Miami-Dade Product Control

SEE TABLE 2 ON PAGE 3 FOR CENTER STILE LOCATION DETAILS



INSIDE ELEVATION
N.T.S.

PRODUCT REVISED
as complying with the Florida
Building Code
NOA-No. 20-1015.30
Expiration Date: 11/20/2023
By *Manuel Perez*
Miami-Dade Product Control

18 GA. GALV. STEEL END STILE ATTACHED WITH (7) CLINCHED JOINTS TO DOORS SKIN AND (2) AT THE TOP AND BOTTOM RAIL

(1) 1/4"-20 X 5/8" TRACK SPLICE BOLT AND NUT PER JAMB BRACKET

2" GALV. STEEL TRACK THICKNESS .083" (MIN.)

JAMB SEAL OPTIONAL

(3) 18 GA. CENTER STILES ATTACHED WITH (8) CLINCHED JOINTS OR RIVETS AT THE TOP AND BOTTOM RAIL AND (2) TO INTERIOR FACE AT MAJOR RIBS

INTERMEDIATE HINGES 14GA (MIN.)

3 5/8" X 22 GA. (3.5" R-TRUSS)

5/16" x 1 5/8" LAG SCREW (1) PER JAMB BRACKET

2" 10 BALL STEEL ROLLER W/ 5/8" STEM (MIN) W/ BOLT RETAINER USED FOR NON THREADED SHAFT

7" x 16 GA. ENDCAP ATTACHED WITH FASTENERS USED FOR HARDWARE AND R-TRUSS, USED UNDER END HINGES ON BOTTOM AND INTERMEDIATE SECTIONS ONLY

TRACK MOUNTING DETAIL
N.T.S.

2" 10 BALL STEEL ROLLER W/ 5/8" STEM (MIN) W/ BOLT RETAINER USED FOR NON THREADED SHAFT

3 5/8" X 22 GA. (3.5" R-TRUSS) GALV. STEEL R-TRUSS ATTACHED W/ (3) 1/4" x 3/4" HEX HEAD SCREWS AT EACH END STILE ON BTH AND INT SECTIONS

TYPICAL END HINGE
N.T.S.

14 GA. (MIN) END HINGE ROLLER CARRIERS ATTACHED W/ (5) TOTAL 1/4" x 3/4" HEX HEAD SCREWS
(3) SCREWS UPPER LEAF
(2) SCREWS LOWER LEAF

7" x 16 GA. ENDCAP ATTACHED WITH FASTENERS USED FOR HARDWARE AND R-TRUSS, USED UNDER END HINGES ON BOTTOM AND INTERMEDIATE SECTIONS ONLY

2" 10 BALL STEEL ROLLER W/ 5/8" STEM (MIN) W/ BOLT RETAINER USED FOR NON THREADED SHAFTS

2" 20GA. STRUT ATTACHED W/ (2) 1/4" x 3/4" HEX HEAD SCREWS AT EACH END AND CENTER STILES

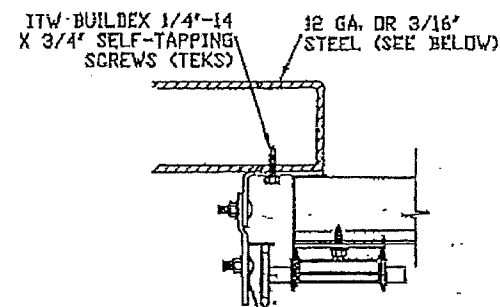
BOTTOM BRACKET 13 GA. (MIN) ATTACHED W/ (3) 1/4" x 3/4" HEX HEAD SCREWS

TYPICAL BOTTOM BRACKET
N.T.S.

4

REV	DESCRIPTION OF REVISIONS	DATE	BY
A	UPDATED TO FEB 2010	11/29/11	SLR
<p>MAX. SIZE WIDTH 8'2" HEIGHT 24'1"</p> <p>DESIGN LOADS +50.0 PSF -62.0 PSF</p> <p>LARGE MISSILE IMPACT RESISTANCE</p>			
<p>Amarr</p> <p>165 CARRIAGE COURT WINSTON-SALEM, NC 27105 WWW.AMARR.COM</p> <p>COMMERCIAL MODEL 2400, 2400I, 2400S (24 GA) COMMERCIAL MODEL 2000, 2000I, 2000S (20 GA) FLUSH AND RIBBED PANELS</p> <p>SIZE DRAWN BY SKW DATE 07/29/08 DRAWING NUMBER B CHECKED BY SKW DATE 07/29/08 IRC-2409-177-21-I</p> <p>ENGINEER: THOMAS L. SHELMEIDINE P.E. LIC. No. 0048579 SHEET 1 OF 3</p>			

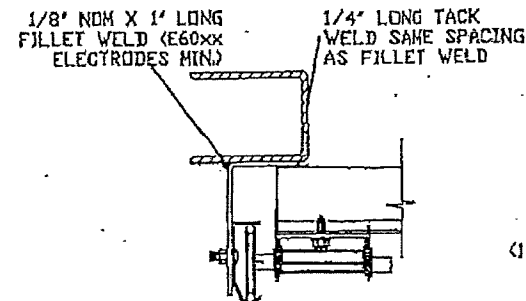
TRACK CONNECTION DIRECTLY TO STRUCTURE OPTIONS



CLIP STYLE REVERSE ANGLE MOUNT SHOWN
BRACKET, CONTINUOUS AND TAPERED ANGLE
MOUNT AVAILABLE

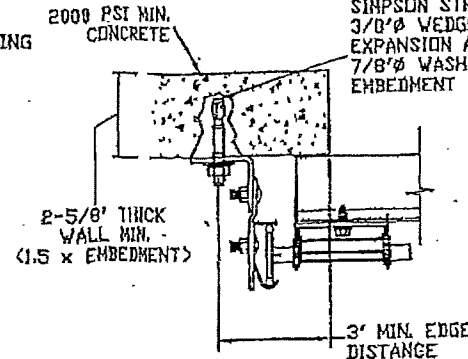
12 GA. STEEL FRAMING
232 LBS./SCREW ALLOWABLE LOAD - 3'
FROM ENDS AND 12' O.C.
REFER TO NOTES 1, 2 AND 5

3/16\"/>



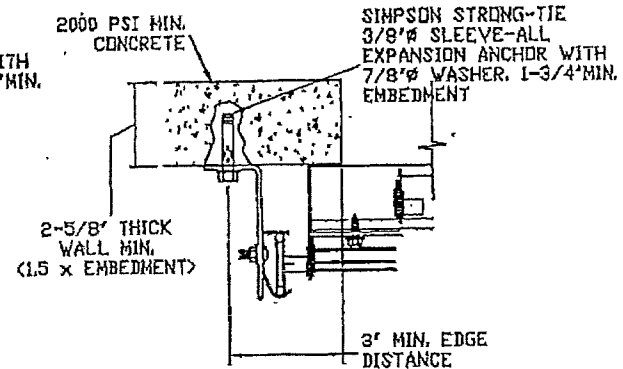
REVERSE ANGLE MOUNT SHOWN
BRACKET, CONTINUOUS AND
TAPERED ANGLE MOUNT AVAILABLE

STEEL FRAMING 12GA OR BETTER
1590 LBS./IN. ALLOWABLE LOAD -
6' FROM ENDS AND 24' O.C.
REFER TO NOTES 1, 2, 5, 6, 7, 8
AND 9



CLIP STYLE CONTINUOUS ANGLE MOUNT SHOWN
BRACKET, REVERSE AND TAPERED ANGLE MOUNT
AVAILABLE

2000 PSI CONCRETE OR GREATER
351 LBS./EXPANSION ANCHOR ALLOWABLE LOAD -
6' FROM ENDS AND 18' O.C.
REFER TO NOTES 1, 2, 3, 4 AND 5



CONTINUOUS ANGLE MOUNT SHOWN
BRACKET, CONTINUOUS AND TAPERED ANGLE
MOUNT AVAILABLE

2000 PSI CONCRETE OR GREATER
336 LBS./EXPANSION ANCHOR ALLOWABLE
LOAD - 6' FROM ENDS AND 16' O.C.
REFER TO NOTES 1, 2, 3, 4 AND 5

PRODUCT REVISED
as complying with the Florida
Building Code
Acceptance No. 17-1010-06
Expiration Date 11/20/18
By: [Signature]
Miami-Dade Product Control

PRODUCT REVISED
as complying with the Florida
Building Code
NOA-No. 20-1015.30
Expiration Date: 11/20/2023
By: [Signature]
Miami-Dade Product Control

PRODUCT RENEWED
as complying with the Florida
Building Code
NOA-No. 18-0725.01
Expiration Date 11/20/2023
By: [Signature]
Miami-Dade Product Control

- NOTES:
1. ANCHORS TO BE EVENLY SPACED BETWEEN THE HEADER AND FLOOR.
 2. FIRST (BOTTOM) ANCHOR STARTING AT NO MORE THAN HALF OF THE MAXIMUM ON-CENTER DISTANCE. HIGHEST ANCHOR INSTALLED AT LEAST AS HIGH AS THE DOOR OPENING.
 3. MIN. EDGE DISTANCE OF 3\"/>

PRODUCT REVISED
as complying with the Florida
Building Code
Acceptance No. 15-0505.14
Expiration Date 11/20/2018
By: [Signature]
Miami-Dade Product Control

PRODUCT RENEWED
as complying with the Florida
Building Code
Acceptance No. 13-0813.20
Expiration Date 11/20/2018
By: [Signature]
Miami-Dade Product Control

PRODUCT REVISED
as complying with the Florida
Building Code
Acceptance No. 12-0228.10
Expiration Date 11/20/2013
By: [Signature]
Miami-Dade Product Control

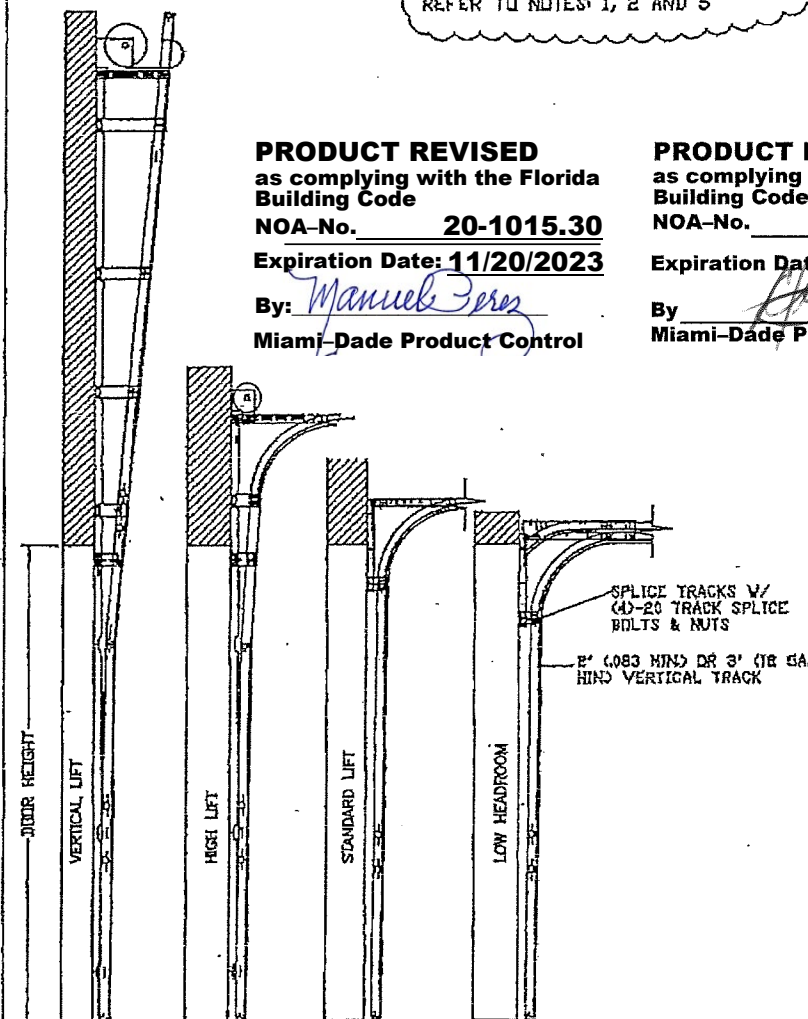


TABLE 1:

DOOR HEIGHT	TRACK ATTACHMENT																			SPlice
	A	B	C	D	E	F	G	H	I	J	K	L	M	N	O	P	Q	R	S	
7'	3.5"	10"	22"	34"	46"	58"														70"
8'	3.5"	10"	22"	34"	46"	58"	70"													88"
9'	3.5"	10"	22"	34"	46"	58"	70"	82"												100"
10'	3.5"	10"	22"	34"	46"	58"	70"	82"	94"											112"
11'	3.5"	10"	22"	34"	46"	58"	70"	82"	94"	106"										124"
12'	3.5"	10"	22"	34"	46"	58"	70"	82"	94"	106"	118"									136"
13'	3.5"	10"	22"	34"	46"	58"	70"	82"	94"	106"	118"	130"								148"
14'	3.5"	10"	22"	34"	46"	58"	70"	82"	94"	106"	118"	130"	142"							160"
15'	3.5"	10"	22"	34"	46"	58"	70"	82"	94"	106"	118"	130"	142"	154"						172"
16'	3.5"	10"	22"	34"	46"	58"	70"	82"	94"	106"	118"	130"	142"	154"	166"					184"
17'	3.5"	10"	22"	34"	46"	58"	70"	82"	94"	106"	118"	130"	142"	154"	166"	178"				196"
18'	3.5"	10"	22"	34"	46"	58"	70"	82"	94"	106"	118"	130"	142"	154"	166"	178"	190"			208"
19'	3.5"	10"	22"	34"	46"	58"	70"	82"	94"	106"	118"	130"	142"	154"	166"	178"	190"	202"		220"
20'	3.5"	10"	22"	34"	46"	58"	70"	82"	94"	106"	118"	130"	142"	154"	166"	178"	190"	202"	214"	232"
21'	3.5"	10"	22"	34"	46"	58"	70"	82"	94"	106"	118"	130"	142"	154"	166"	178"	190"	202"	214"	226"
22'	3.5"	10"	22"	34"	46"	58"	70"	82"	94"	106"	118"	130"	142"	154"	166"	178"	190"	202"	214"	228"
23'	3.5"	10"	22"	34"	46"	58"	70"	82"	94"	106"	118"	130"	142"	154"	166"	178"	190"	202"	214"	230"
24'	3.5"	10"	22"	34"	46"	58"	70"	82"	94"	106"	118"	130"	142"	154"	166"	178"	190"	202"	214"	232"

REV	DESCRIPTION OF REVISIONS	DATE	BY
A	UPDATED TO IRC 2010	11/29/11	RLR

MAX. SIZE
WIDTH 8'2"
HEIGHT 24'1"

DESIGN LOADS
+50.0 PSF
-62.0 PSF

LARGE MISSILE
IMPACT
RESISTANCE

THOMAS L. SHELTERDINE
LICENSE
No. 0048579
STATE OF FLORIDA
PROFESSIONAL ENGINEER

Amarr

165 CARRIAGE COURT WINSTON-SALEM, NC. 27103 WWW.AMARR.COM

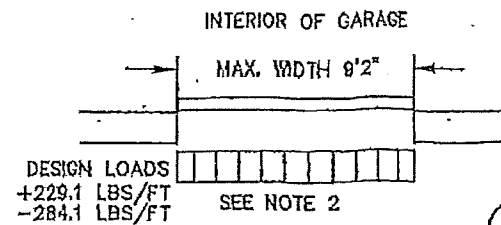
COMMERCIAL MODEL 2400, 2400I, 2400S (24 GA)
COMMERCIAL MODEL 2000, 2000I, 2000S (20 GA)
FLUSH AND RIBBED PANELS

SITE	DRAWN BY	SKW	DATE	01/29/08	DRAWING NUMBER
B	CHECKED BY	SKW	DATE	01/29/08	IRC-2409-177-21-I

ENGINEER: THOMAS L. SHELTERDINE P.E. LIC. NO. 0048579 SHEET 2 OF 3

SPECIFICATIONS AND NOTES.

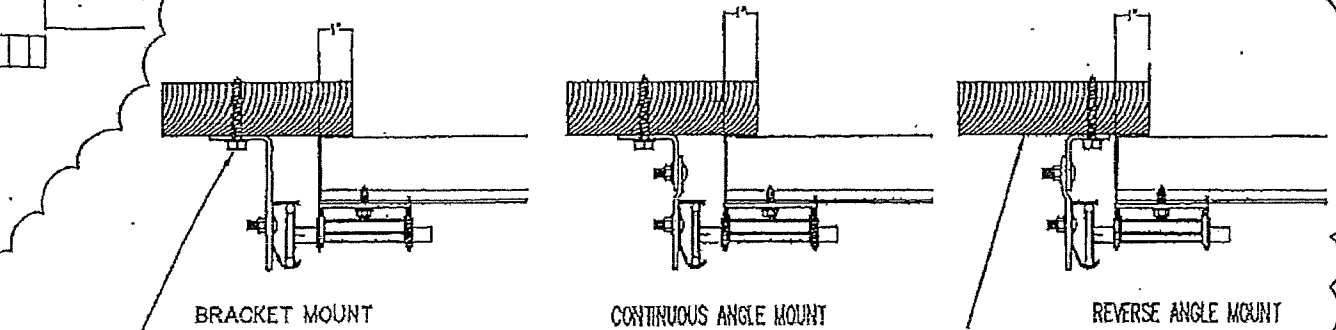
1. ALL THE LOAD FROM THE DOOR IS TRANSFERRED TO THE VERTICAL TRACK, FROM THE TRACK THE LOAD IS TRANSFERRED TO THE VERTICAL JAMBS. THE HORIZONTAL JAMB OR HEADER RECEIVES NO PORTION OF THE LOAD TRANSFERRED FROM THE DOOR.
2. EACH VERTICAL JAMBS RECEIVES MAXIMUM DESIGN LOADS OF: +229.1 LBS/FT & -284.1 LBS/FT
3. DOOR AND HARDWARE WILL BE DESIGNED, MANUFACTURED AND INSTALLED WITH STANDARDS AS SET FORTH BY DASMA.
4. DOOR SECTIONS SHALL BE 24 GA. (.022) MIN. EXTERIOR SKIN ROLLED FORMED, W/ BAKED ON POLYESTER FINISH
5. DOORS UP TO 24'0" HIGH USE (1) 3 5/8" R-TRUSS PER SECTION AND (1) 2" 20GA STRUT ON BOTTOM SECTION
6. SUPPORTING STRUCTURAL ELEMENTS SHALL BE DESIGNED BY A REGISTERED PROFESSIONAL ENGINEER FOR WIND LOADS INDICATED ON THIS DRAWING IN ADDITION TO OTHER LOADINGS.
8. THIS APPROVAL REQUIRES THE MANUFACTURER TO DO TESTING OF ALL COILS USED TO FABRICATE DOOR PANELS UNDER THIS NOTICE OF ACCEPTANCE. A MINIMUM OF 2 SPECIMENS SHALL BE CUT FROM EACH COIL AND TENSILE TESTED ACCORDING TO ASTM E-8 BY A DADE COUNTY APPROVED LAB SELECTED AND PAID BY THE MANUFACTURER. EVERY 3 MONTHS, 4 TIMES A YEAR, THE MANUFACTURER SHALL MAIL TO THIS OFFICE: A COPY OF THE TEST REPORTS WITH CONFIRMATION THAT THE SPECIMENS WERE SELECTED FROM COILS AT THE MANUFACTURER PRODUCTION FACILITIES. AND A NOTARIZED STATEMENT FROM THE MANUFACTURER THAT ONLY COILS WITH YIELD STRENGTH OF 34,600 PSI OR MORE SHALL BE USED TO MAKE DOOR PANELS FOR DADE COUNTY UNDER THIS NOTICE OF ACCEPTANCE.



PRODUCT RENEWED
as complying with the Florida
Building Code
NOA-No. **18-0725.01**
Expiration Date **11/20/2023**
By *[Signature]*
Miami-Dade Product Control

TRACK CONNECTION TO WOOD JAMB OPTIONS

FOR LAG SCREWS & BRACKET SPACING SEE TABLE 1



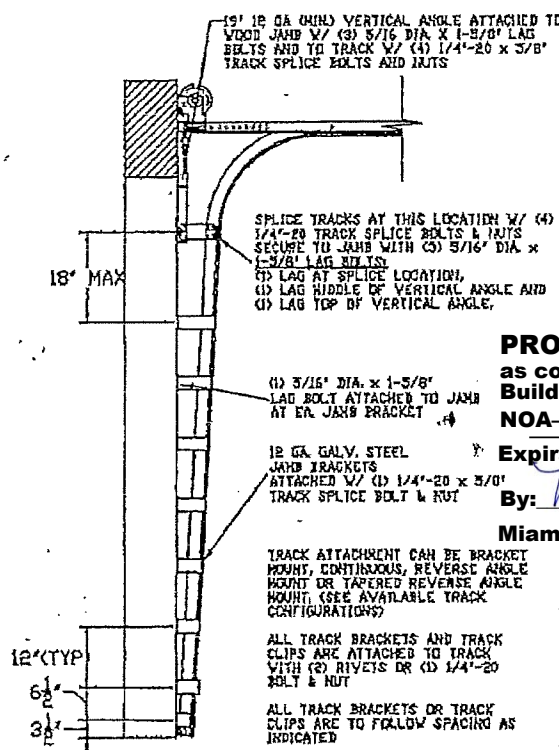
5/16" x 1 5/8" LAG SCREW (1)
PER JAMB BRACKET (1-1/2")
EMBEDMENT MINIMUM (TYP.)

2x6 WOOD JAMB SYP
(NO.2) OR BETTER (TYP.)

PRODUCT RENEWED
as complying with the Florida
Building Code
Acceptance No. **17-1010.06**
Expiration Date **NOV 20, 2018**
By *[Signature]*
Miami-Dade Product Control

PRODUCT RENEWED
as complying with the Florida
Building Code
Acceptance No. **17-0913.20**
Expiration Date **11/20/2018**
By *[Signature]*
Miami-Dade Product Control

PRODUCT REVISED
as complying with the Florida
Building Code
Acceptance No. **12-1228-10**
Expiration Date **11/20/2013**
By *[Signature]*
Miami-Dade Product Control



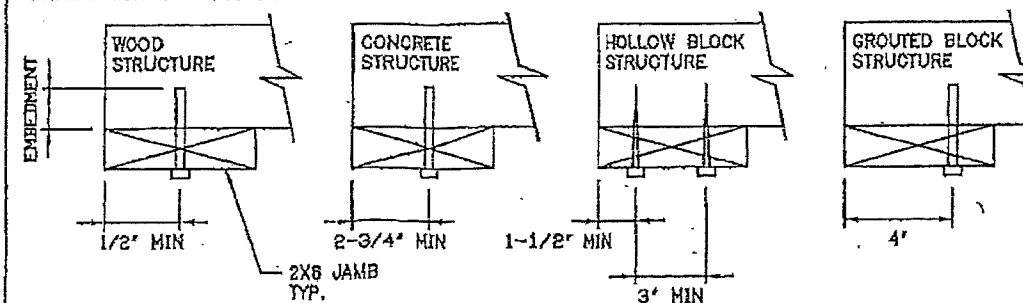
PRODUCT REVISED
as complying with the Florida
Building Code
NOA-No. **20-1015.30**
Expiration Date: **11/20/2023**
By *[Signature]*
Miami-Dade Product Control

PRODUCT REVISED
as complying with the Florida
Building Code
Acceptance No. **15-0505.14**
Expiration Date **11/20/2018**
By *[Signature]*
Miami-Dade Product Control

WOOD JAMB ATTACHMENT TO STRUCTURE (OPTIONAL)

- 2 X 6 VERTICAL JAMB ATTACHMENT TO WOOD FRAME STRUCTURE**
5/16" x 3" LAG SCREWS STARTING 6" FROM ENDS THEN 20" O.C. (1 1/2" EMBEDMENT)
- 2 X 6 VERTICAL JAMB ATTACHMENT TO 2,000 PSI CONCRETE**
HILTI KWIK BOLT 3/8" x 4" STARTING 6" FROM ENDS THEN 24" O.C. (2 1/2" EMBEDMENT)
HILTI SLEEVE ANCHOR 3/8" x 2-3/4" STARTING 6" FROM ENDS THEN 18" O.C. (1 1/4" EMBEDMENT)
ITW/RAHSET REDHEAD (TRU-BOLT) 3/8" x 4" STARTING 6" FROM ENDS THEN 24" O.C. (2 1/2" EMBEDMENT)
- 2 X 6 VERTICAL JAMB ATTACHMENT TO HOLLOW C-90 BLOCK**
SIMPSON 1/4" x 3" TITEN SCREWS STARTING 6" FROM ENDS, USE PAIRS OF FASTENERS (3" APART)
AT 8" O.C. (1 1/2" EMBEDMENT)
HILTI 1/4" x 2-3/4" KWIK-CON II+ SCREWS STARTING 6" FROM ENDS, USE PAIRS OF FASTENERS (3" APART)
AT 8" O.C. (1 1/4" EMBEDMENT)
- 2 X 6 VERTICAL JAMB ATTACHMENT TO GROUTED C-90 BLOCK (2000 PSI GROUT)**
HILTI SLEEVE ANCHOR 3/8" x 2-3/4" STARTING 6" FROM ENDS THEN 22" O.C. (1 1/4" EMBEDMENT)
(OR, USE FASTENERS FOR HOLLOW C-90 BLOCK)

- *LAGS AND BOLTS CAN BE COUNTERSUNK TO PROVIDE A FLUSH MOUNTING SURFACE.
- *PREPARATION OF WOOD JAMBS BY OTHERS



REV	DESCRIPTION OF REVISIONS	DATE	BY
A	UPDATED TO IBC 2010	11/29/11	RLR

MAX. SIZE WIDTH 9'2" HEIGHT 24'1"	
DESIGN LOADS +50.0 PSF -82.0 PSF	
LARGE MISSILE IMPACT RESISTANCE	

165 CARRIAGE COURT WINSTON-SALEM, N.C. 27103 WWW.AMARR.COM	
COMMERCIAL MODEL 2400, 2400I, 2400S (24 GA)	
COMMERCIAL MODEL 2000, 2000I, 2000S (20 GA)	
FLUSH AND RIBBED PANELS	
SIZE	DRAWN BY SKW DATE 07/29/08
B	CHECKED BY SKW DATE 07/29/08
ENGINEER: THOMAS L. SHELMERDINE P.E. No. 0048570	DRAWING NUMBER: IRC-2409-177-21-I
SHEET 3 OF 3	