



DEPARTMENT OF REGULATORY AND ECONOMIC RESOURCES (RER)
BOARD AND CODE ADMINISTRATION DIVISION

NOTICE OF ACCEPTANCE (NOA)

MIAMI-DADE COUNTY
PRODUCT CONTROL SECTION

11805 SW 26 Street, Room 208
Miami, Florida 33175-2474
T (786) 315-2590 F (786) 315-2599

www.miamidade.gov/building

Amarr Garage Doors dba Entrematic
165 Carriage Court
Winston Salem, NC 27105

SCOPE: This NOA is being issued under the applicable rules and regulations governing the use of construction materials. The documentation submitted has been reviewed and accepted by Miami-Dade County RER-Product Control Section to be used in MiamiDade County and other areas where allowed by the Authority Having Jurisdiction (AHJ).

This NOA shall not be valid after the expiration date stated below. The Miami-Dade County Product Control Section (In Miami Dade County) and/or the AHJ (in areas other than MiamiDade County) reserve the right to have this product or material tested for quality assurance purposes. If this product or material fails to perform in the accepted manner, the manufacturer will incur the expense of such testing and the AHJ may immediately revoke, modify, or suspend the use of such product or material within their jurisdiction. RER reserves the right to revoke this acceptance, if it is determined by Miami-Dade County Product Control Section that this product or material fails to meet the requirements of the applicable building code.

This product is approved as described herein and has been designed to comply with the Florida Building Code, including the High Velocity Hurricane Zone.

DESCRIPTION: Model 2400 & 2000 Steel Sectional Garage Doors up to 16'-2" Wide – L.M.I.

APPROVAL DOCUMENT: Drawing No. **IBC-2416-180-26-I**, titled "Model 2400 (24 GA), Model 2000 (20 GA)", sheets 1 through 3 of 3, dated 05/30/13, prepared by manufacturer, signed and sealed by Tomas L. Shelmerdine, P.E., bearing the Miami-Dade County Product Control Revision stamp with the Notice of Acceptance number and expiration date by the Miami-Dade County Product Control Section.

MISSILE IMPACT RATING: Large and Small Missile Impact Resistant

LABELING: Each unit shall bear a permanent label with the manufacturer's name or logo, manufacturing address, model number, the positive and negative design pressure rating, indicate impact rated if applicable, installation instruction drawing reference number, approval number (NOA), the applicable test standards, and the statement reading 'Miami-Dade County Product Control Approved' is to be located on the door's side track, bottom angle, or inner surface of a panel.

RENEWAL of this NOA shall be considered after a renewal application has been filed and there has been no change in the applicable building code negatively affecting the performance of this product.

TERMINATION of this NOA will occur after the expiration date or if there has been a revision or change in the materials, use, and/or manufacture of the product or process. Misuse of this NOA as an endorsement of any product, for sales, advertising or any other purposes shall automatically terminate this NOA. Failure to comply with any section of this NOA shall be cause for termination and removal of NOA.

ADVERTISEMENT: The NOA number preceded by the words Miami-Dade County, Florida, and followed by the expiration date may be displayed in advertising literature. If any portion of the NOA is displayed, then it shall be done in its entirety.

INSPECTION: A copy of this entire NOA shall be provided to the user by the manufacturer or its distributors and shall be available for inspection at the job site at the request of the Building Official.

This NOA revises **NOA No. 18-1128.06** and consists of this page 1 and evidence page E-1 and E-2, as well as approval document mentioned above.

The submitted documentation was reviewed by **Manuel Perez, P.E.**




1/20/21

NOA No. 20-1015.34
Expiration Date: February 13, 2024
Approval Date: January 28, 2021
Page 1

Amarr Garage Doors dba Entrematic

NOTICE OF ACCEPTANCE: EVIDENCE SUBMITTED

1. EVIDENCE SUBMITTED UNDER PREVIOUS NOA's

A. DRAWINGS

1. Manufacturer's die drawings and sections.
(Submitted under NOA No. 13-1113.02)
2. Drawing No. **IBC-2416-180-26-I**, titled "Model 2400 (24 GA), Model 2000 (20 GA)", sheets 1 through 3 of 3, dated 05/30/13, prepared by manufacturer, signed and sealed by Thomas L. Shelmerdine, P.E.
(Submitted under NOA No. 13-1113.02)

B. TESTS

1. Test reports on: 1) Uniform Static Air Pressure Test, Loading per FBC TAS 202-94
2) Large Missile Impact Test per FBC, TAS 201-94
3) Cyclic Wind Pressure Loading per FBC, TAS 203-94
4) Tensile Test per ASTM E8
5) Forced Entry Resistance Test per FBC, TAS 202-94
along with marked-up drawings and installation diagram of 16'-2"x 8' 24 ga. steel garage door Model 2400, prepared by American Test Lab, Inc., Test Report No. **ATLNC 0618.01-13**, dated 07/10/13, and addendum letter dated 08/19/13, both signed and sealed by David W. Johnson, P.E.
(Submitted under NOA No. 13-1113.02)
2. Test report on Evaluation of Painted or Coated Specimens Subjected to Corrosive Environments per ASTM D1654-08 & ASTM B117-11, prepared by Intertek/ATI, Test Report No. **C5463.01-106-18**, dated 04/03/13, signed and sealed by Joseph A. Reed, P.E.
(Submitted under NOA No. 13-0503.06)

C. CALCULATIONS

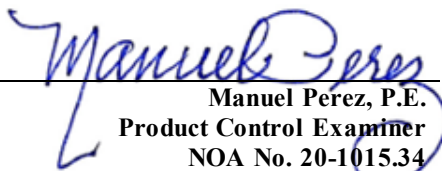
1. Anchor calculations prepared by Structural Solutions, P.A., dated 08/20/13, signed and sealed by Thomas L. Shelmerdine, P.E.
(Submitted under NOA No. 13-1113.02)

D. QUALITY ASSURANCE

1. Miami-Dade Department of Regulatory and Economic Resources (RER)

E. MATERIAL CERTIFICATIONS

1. None.


Manuel Perez, P.E.
Product Control Examiner
NOA No. 20-1015.34
Expiration Date: February 13, 2024
Approval Date: January 28, 2021

Amarr Garage Doors dba Entrematic

NOTICE OF ACCEPTANCE: EVIDENCE SUBMITTED

1. EVIDENCE SUBMITTED UNDER PREVIOUS NOA's (CONTINUED)

F. STATEMENTS

1. Statement letter of conformance, complying with **FBC 6th Edition (2017)** and of no financial interest, dated 09/11/17, issued by Structural Solutions, P.A., signed and sealed by Thomas L. Shelmerdine, P.E.
(Submitted under NOA No. 18-1128.06)

G. OTHERS

1. Notice of Acceptance No. **17-1010.10**, issued to Amarr Garage Doors for their Model 2400 & 2000 Steel Sectional Garage Doors up to 16'-2" Wide, approved on 12/27/17 and expiring on 02/13/19.

2. NEW EVIDENCE SUBMITTED

A. DRAWINGS

1. None.

B. TESTS

1. None.

C. CALCULATIONS

1. None.

D. QUALITY ASSURANCE

1. Miami-Dade Department of Regulatory and Economic Resources (RER)

E. MATERIAL CERTIFICATIONS

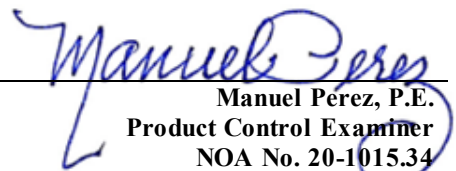
1. None.

F. STATEMENTS

1. Statement letter of conformance, complying with **FBC 7th Edition (2020)** and of no financial interest, dated August 27, 2020, issued by Structural Solutions, P.A., signed and sealed by Thomas L. Shelmerdine, P.E.

G. OTHERS

1. Notice of Acceptance No. **18-1128.06**, issued to Amarr Garage Doors dba Entrematic for their Model 2400 & 2000 Steel Sectional Garage Doors up to 16'-2" Wide – L.M.I., approved on 12/27/18 and expiring on 02/13/24.


Manuel Pérez, P.E.
Product Control Examiner
NOA No. 20-1015.34
Expiration Date: February 13, 2024
Approval Date: January 28, 2021

LARGE MISSILE IMPACT RESISTANT

Approved as complying
Florida Building Code
Date 02/13/2018
NOA 13-1113.02
Miami-Dade Product Control By

By

PRODUCT REVISED
as complying with the Florida
Building Code
Acceptance No 15-0505.18
Expiration Date 02/13/2019
By
Miami-Dade Product Control

PRODUCT REVISED
as complying with the Florida
Building Code
Acceptance No 17-1010.10
Expiration Date 02/13/2019
By
Miami-Dade Product Control

PRODUCT REVISED
as complying with the Florida
Building Code
Acceptance No 20-1015.34
Expiration Date 02/13/2024
By
Miami-Dade Product Control

PRODUCT REVISED
as complying with the Florida
Building Code
Acceptance No 17-1010.10
Expiration Date 02/13/2019
By
Miami-Dade Product Control

REV	DESCRIPTION OF REVISIONS	DATE	BY

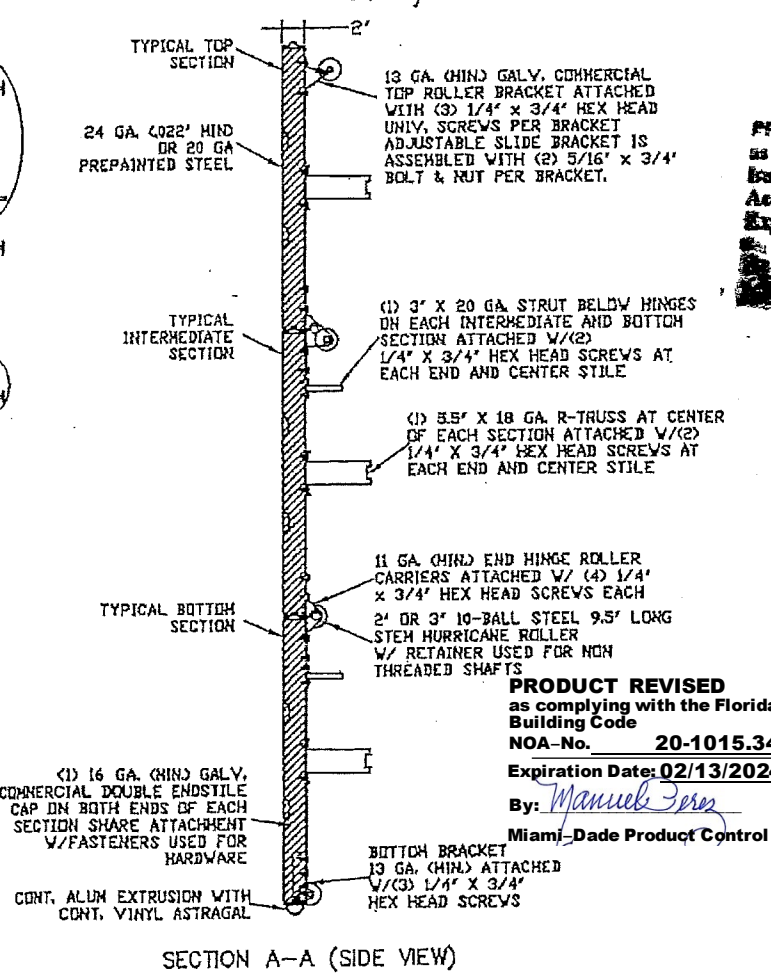
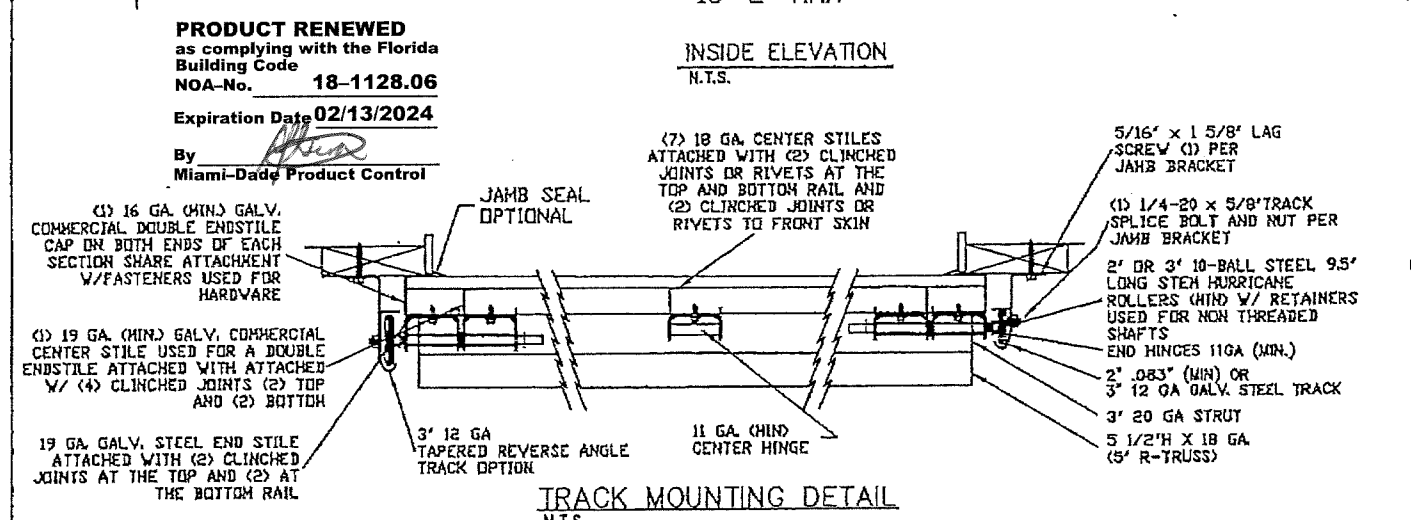
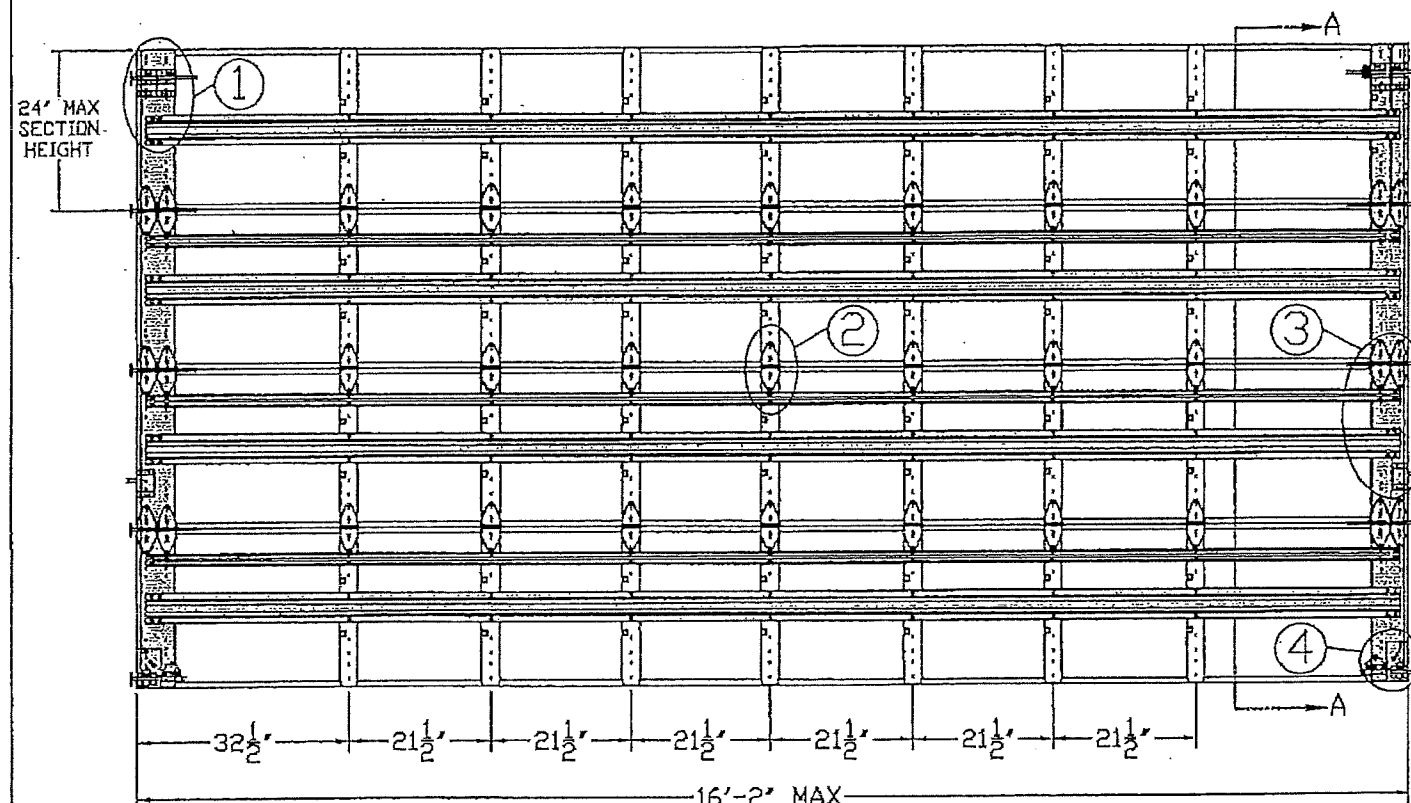
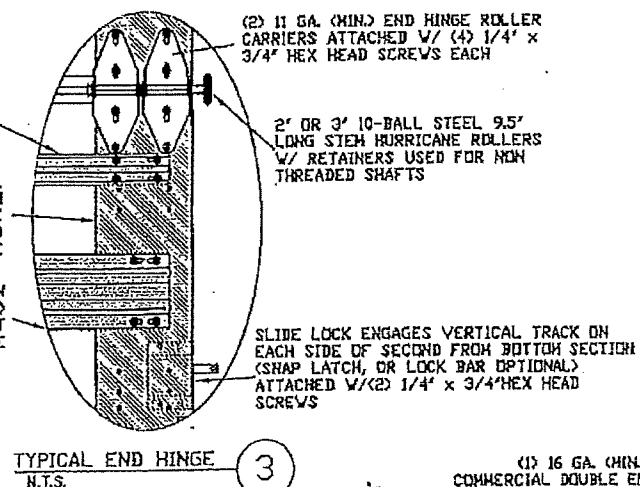
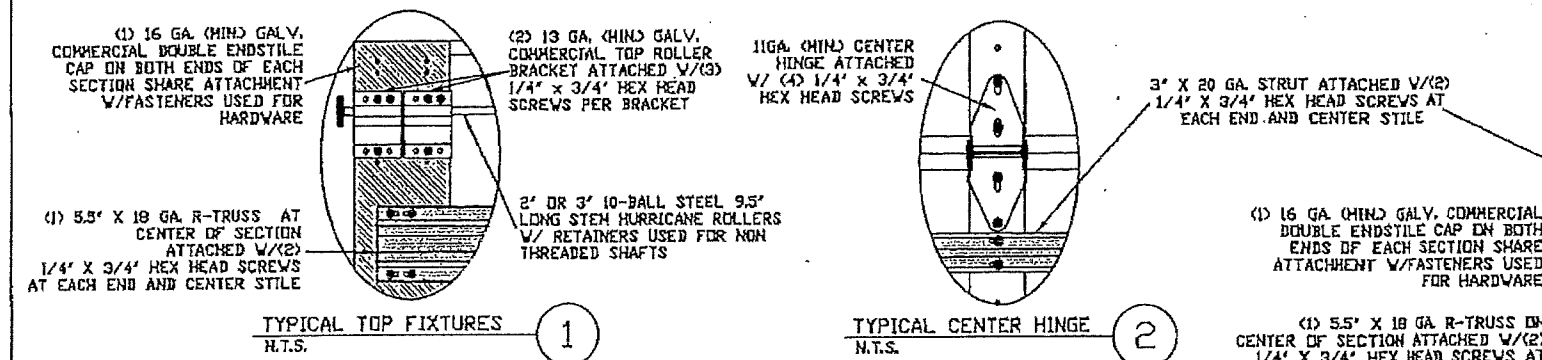
MAX. SIZE WIDTH 16'-2" HEIGHT 24'	DESIGN LOADS +45.0 PSF -52.0 PSF	LARGE MISSILE IMPACT RESISTANCE
---	--	---------------------------------------

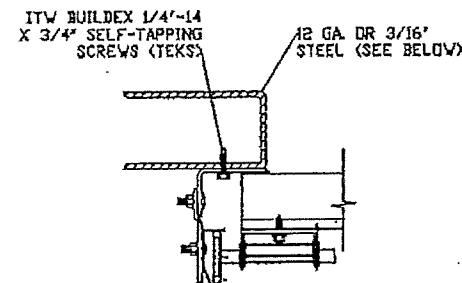
Amarr
163 CARRIAGE COURT WINSTON-SALEM, NC. 27103 WWW.AMARR.COM

MODEL 2400 (24 GA)
MODEL 2000 (20 GA)

SIZE B	DRAWN BY RJR	DATE 5/30/13	DRAWING NUMBER IEC-2416-180-26-I
	CHECKED BY RJR	DATE 5/30/13	

SHEET 1 OF 3





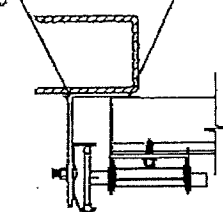
REVERSE ANGLE MOUNT SHOWN
BRACKET, CONTINUOUS AND TAPERED
ANGLE MOUNT AVAILABLE

12 GA STEEL FRAMING
232 LBS/SCREW ALLOWABLE LOAD - 6' FROM ENDS AND 6' O.C.
REFER TO NOTES 1, 2 AND 5

3/16\"/>

1/8\"/>

1/4\"/>



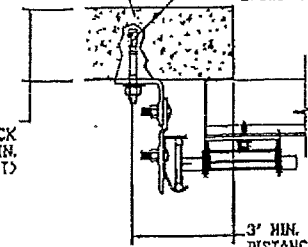
TAPERED REVERSE ANGLE MOUNT SHOWN
BRACKET, CONTINUOUS AND REVERSE
ANGLE MOUNT AVAILABLE

STEEL FRAMING 12GA OR GREATER
1590 LBS/IN ALLOWABLE LOAD - 6' FROM ENDS AND 24' O.C.
REFER TO NOTES 1, 2, 5, 6, 7, 8 AND 9

2-5/8\"/>

2000 PSI MIN.
CONCRETE

SIMPSON STRONG-TIE
3/8\"/>



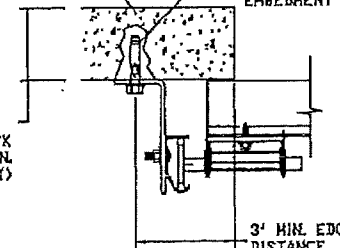
CONTINUOUS ANGLE MOUNT SHOWN
BRACKET MOUNT AVAILABLE

2000 PSI CONCRETE OR GREATER
336 LBS/EXPANSION ANCHOR ALLOWABLE LOAD - 6' FROM ENDS AND 10' O.C.
REFER TO NOTES 1, 2, 3, 4 AND 5

2000 PSI MIN.
CONCRETE

SIMPSON STRONG-TIE
3/8\"/>

2-5/8\"/>



BRACKET MOUNT SHOWN
CONTINUOUS MOUNT AVAILABLE

2000 PSI CONCRETE OR GREATER
336 LBS/SLEEVE ANCHOR ALLOWABLE LOAD - 6' FROM ENDS AND 10' O.C.
REFER TO NOTES 1, 2, 3, 4 AND 5

PRODUCT REVISED
as complying with the Florida
Building Code
Acceptance No. 17-1010-10
Expiration Date 2/13/19
By *Manuel J. Cruz*
Miami-Dade Product Control

PRODUCT REVISED
as complying with the Florida
Building Code

NOA-No. 20-1015.34

Expiration Date: 02/13/2024

By: *Manuel J. Cruz*

Miami-Dade Product Control

PRODUCT RENEWED
as complying with the Florida
Building Code

NOA-No. 18-1128.06

Expiration Date: 02/13/2024

By: *Manuel J. Cruz*

Miami-Dade Product Control

ALTERNATIVE ATTACHMENT NOTES

1. ANCHORS TO BE EVENLY SPACED BETWEEN THE HEADER AND FLOOR.
2. FIRST (BOTTOM) ANCHOR STARTING AT NO MORE THAN HALF OF THE MAXIMUM ON-CENTER DISTANCE. HIGHEST ANCHOR INSTALLED AT LEAST AS HIGH AS THE DOOR OPENING.
3. MIN. EDGE DISTANCE OF 3" REQUIRED.
4. USE WASHERS PROVIDED BY THE ANCHOR MANUFACTURER.
5. SUPPORTING STRUCTURAL ELEMENTS SHALL BE DESIGNED BY A REGISTERED PROFESSIONAL ENGINEER FOR WIND LOADS IN ADDITION TO OTHER LOADS.
6. MOST GARAGE DOOR TRACK IS GALVANIZED STEEL. USE ALL NECESSARY PRECAUTIONS WHEN WELDING GALVANIZED STEEL.
7. ALL WELDS SHOULD BE PERFORMED BY A CERTIFIED WELDER OR INSPECTED BY A CERTIFIED WELDING INSPECTOR TO VERIFY THE INTEGRITY OF THE WELD.
8. FILLET WELDS TO HAVE A STRAIGHT OR CONVEX FACE SURFACE.
9. TACK WELD TOE OF ANGLE AT SAME SPACING TO PREVENT ROTATION OF TRACK ANGLE.

WOOD JAMB ATTACHMENT TO STRUCTURE (OPTIONAL)

2 X 6 VERTICAL JAMB ATTACHMENT TO WOOD FRAME STRUCTURE

5/16\"/>

2 X 6 VERTICAL JAMB ATTACHMENT TO 2,000 PSI CONCRETE

HILTI KWIK BOLT 3/8\"/>

THEN 24\"/>

HILTI SLEEVE ANCHOR 3/8\"/>

THEN 12\"/>

ITW/RAMSET REDHEAD (TRU-BOLT) 3/8\"/>

2 X 6 VERTICAL JAMB ATTACHMENT TO HOLLOW C-90 BLOCK

SIMPSON 1/4\"/>

USE PAIRS OF FASTENERS (3\"/>

AT 8\"/>

HILTI 1/4\"/>

2 X 6 VERTICAL JAMB ATTACHMENT TO GROUTED C-90 BLOCK (2000 PSI GROUT)

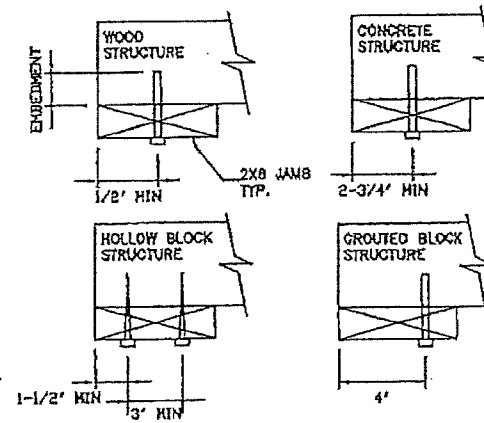
HILTI SLEEVE ANCHOR 3/8\"/>

THEN 14\"/>

(OR, USE FASTENERS FOR HOLLOW C-90 BLOCK)

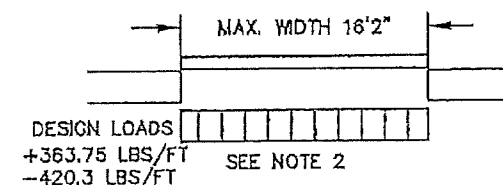
*LAGS AND BOLTS CAN BE COUNTERSUNK TO PROVIDE A FLUSH MOUNTING SURFACE.

*PREPARATION OF WOOD JAMBS BY OTHERS



1. ALL THE LOAD FROM THE DOOR IS TRANSFERRED TO THE VERTICAL TRACK. FROM THE TRACK THE LOAD IS TRANSFERRED TO THE VERTICAL JAMBS. THE HORIZONTAL JAMB OR HEADER RECEIVES NO PORTION OF THE LOAD TRANSFERRED FROM THE DOOR.
2. EACH VERTICAL JAMB RECEIVES MAXIMUM DESIGN LOADS OF:
+363.75 LBS/FT AND -420.3 LBS/FT
3. DOOR AND HARDWARE WILL BE DESIGNED, MANUFACTURED AND INSTALLED WITH STANDARDS AS SET FORTH BY DASHA.
4. DOOR SECTIONS SHALL BE 24 GA. (.022) MIN. EXTERIOR SKIN ROLLED FORMED, GALVANIZED W/ BAKED ON POLYESTER FINISH
5. DOORS UP TO 24' HIGH USE (1) 5 1/2\"/>
6. SUPPORTING STRUCTURAL ELEMENTS SHALL BE DESIGNED BY A REGISTERED PROFESSIONAL ENGINEER FOR WIND LOADS INDICATED ON THIS DRAWING IN ADDITION TO OTHER LOADINGS.
7. MIAMI-DADE CTY APPROVAL REQUIRES THE MANUFACTURER TO DO TESTING OF ALL COILS USED TO FABRICATE DOOR PANELS UNDER THIS NOTICE OF ACCEPTANCE. A MINIMUM OF 2 SPECIMENS SHALL BE CUT FROM EACH COIL AND TENSILE TESTED ACCORDING TO ASTM E-8 BY A DADE COUNTY APPROVED LAB SELECTED AND PAID BY THE MANUFACTURER. EVERY 3 MONTHS, 4 TIMES A YEAR, THE MANUFACTURER SHALL MAIL TO THIS OFFICE: A COPY OF THE TEST REPORTS WITH CONFIRMATION THAT THE SPECIMENS WERE SELECTED FROM COILS AT THE MANUFACTURER PRODUCTION FACILITIES. AND A NOTARIZED STATEMENT FROM THE MANUFACTURER THAT ONLY COILS WITH YIELD STRENGTH OF 30,500 PSI OR MORE SHALL BE USED TO MAKE DOOR PANELS FOR DADE COUNTY UNDER THIS NOTICE OF ACCEPTANCE.

INTERIOR OF GARAGE



PRODUCT REVISED

as complying with the Florida

Building Code

Acceptance No. 15-0505-18

Expiration Date 02/13/2019

By: *Manuel J. Cruz*

Miami-Dade Product Control

Approved as complying with the

Florida Building Code

Date: 02/13/2019

NOA# 13-1113.02

Miami-Dade Product Control

By: *Manuel J. Cruz*

REV	DESCRIPTION OF REVISIONS	DATE	BY

MAX SIZES
WIDTH 16'-2"
HEIGHT 24'

DESIGN LOADS
+45.0 PSF
-52.0 PSF

LARGE MISSILE
IMPACT
RESISTANCE

Thomas L. Shelmerdine, P.E. (FL PE #0048579)
Structural Solutions, PA (FL Firm #29412)

LICENSE
No. 0048579

STATE OF
FLORIDA
PROFESSIONAL ENGINEER
FL

Thomas L. Shelmerdine, P.E. (FL PE #0048579)
Structural Solutions, PA (FL Firm #29412)
5921-G W. Friendly Ave., Greensboro, NC 27410

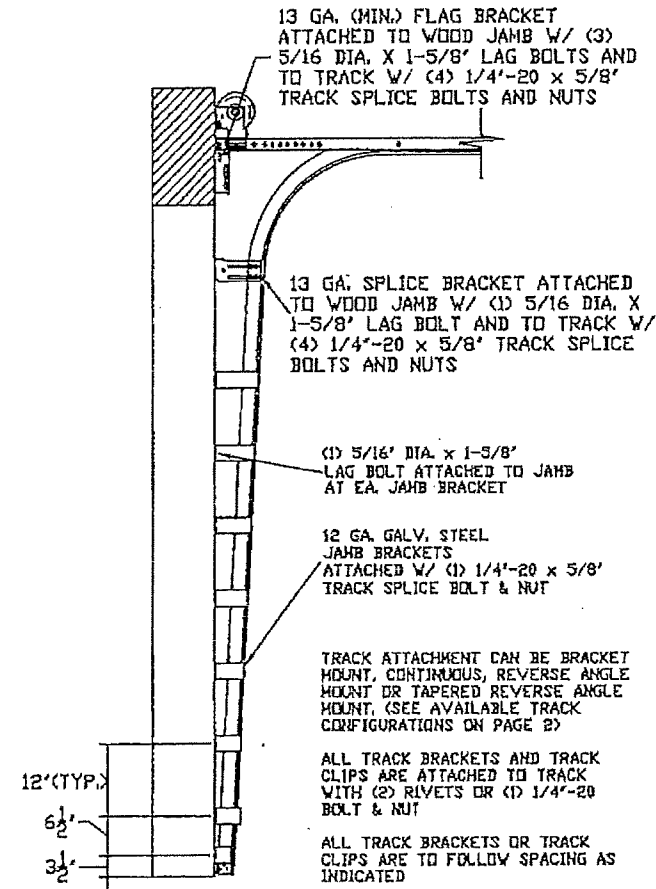
Amarr

165 CARRIAGE COURT WINSTON-SALEM, NC. 27103 WWW.AMARR.COM

MODEL 2400 (24 GA)

MODEL 2000 (20 GA)

SIZE	DRAWN BY	RLR	DATE	5/30/13	DRAWING NUMBER
B	CHECKED BY	RLR	DATE	5/30/13	IEC-2416-180-26-I
					SHEET 2 OF 3



TRACK CONFIGURATION FOR UP TO 24' TALL DOORS
SEE TABLE 1 ON PAGE 3

TABLE 1

DOOR HEIGHT	TRACK ATTACHMENT																				TYPICAL SPLICE
	A	B	C	D	E	F	G	H	I	J	K	L	M	N	O	P	Q	R	S	T	
7' 0"	3.5"	10"	22"	34"	46"	58"	70"														76"
7' 6"	3.5"	10"	22"	34"	46"	58"	70"														82"
8' 0"	3.5"	10"	22"	34"	46"	58"	70"	82"													88"
8' 6"	3.5"	10"	22"	34"	46"	58"	70"	82"	94"												94"
9' 0"	3.5"	10"	22"	34"	46"	58"	70"	82"	94"												100"
9' 6"	3.5"	10"	22"	34"	46"	58"	70"	82"	94"												106"
10' 0"	3.5"	10"	22"	34"	46"	58"	70"	82"	94"	106"											112"
11' 0"	3.5"	10"	22"	34"	46"	58"	70"	82"	94"	106"	118"										124"
12' 0"	3.5"	10"	22"	34"	46"	58"	70"	82"	94"	106"	118"	130"									136"
13' 0"	3.5"	10"	22"	34"	46"	58"	70"	82"	94"	106"	118"	130"	142"								148"
14' 0"	3.5"	10"	22"	34"	46"	58"	70"	82"	94"	106"	118"	130"	142"	154"							160"
15' 0"	3.5"	10"	22"	34"	46"	58"	70"	82"	94"	106"	118"	130"	142"	154"	166"						172"
16' 0"	3.5"	10"	22"	34"	46"	58"	70"	82"	94"	106"	118"	130"	142"	154"	166"	178"					184"
17' 0"	3.5"	10"	22"	34"	46"	58"	70"	82"	94"	106"	118"	130"	142"	154"	166"	178"	190"				196"
18' 0"	3.5"	10"	22"	34"	46"	58"	70"	82"	94"	106"	118"	130"	142"	154"	166"	178"	190"	202"			208"
19' 0"	3.5"	10"	22"	34"	46"	58"	70"	82"	94"	106"	118"	130"	142"	154"	166"	178"	190"	202"	214"		220"
20' 0"	3.5"	10"	22"	34"	46"	58"	70"	82"	94"	106"	118"	130"	142"	154"	166"	178"	190"	202"	214"	226"	232"
21' 0"	3.5"	10"	22"	34"	46"	58"	70"	82"	94"	106"	118"	130"	142"	154"	166"	178"	190"	202"	214"	226"	238"
22' 0"	3.5"	10"	22"	34"	46"	58"	70"	82"	94"	106"	118"	130"	142"	154"	166"	178"	190"	202"	214"	226"	238"
23' 0"	3.5"	10"	22"	34"	46"	58"	70"	82"	94"	106"	118"	130"	142"	154"	166"	178"	190"	202"	214"	226"	238"
24' 0"	3.5"	10"	22"	34"	46"	58"	70"	82"	94"	106"	118"	130"	142"	154"	166"	178"	190"	202"	214"	226"	238"

PRODUCT REVISED
as complying with the Florida
Building Code
NOA-No. **20-1015.34**
Expiration Date: **02/13/2024**

By: Manuel Perez
Miami-Dade Product Control

PRODUCT RENEWED
as complying with the Florida
Building Code
NOA-No. **18-1128.06**
Expiration Date **02/13/2024**

By: [Signature]
Miami-Dade Product Control

PRODUCT REVISED
as complying with the Florida
Building Code
Acceptance No **15-0505.18**
Expiration Date **02/13/2019**
By: [Signature]
Miami-Dade Product Control

Approved as complying with the
Florida Building Code
Date **02/13/2019**
NOA **13-1113.02**
Miami-Dade Product Control
By: [Signature]

PRODUCT REVISED
as complying with the Florida
Building Code
Acceptance No **17-1010.10**
Expiration Date **2/13/19**
By: [Signature]
Miami-Dade Product Control

REV	DESCRIPTION OF REVISIONS	DATE	BY

MAX SIZES
WIDTH 16'-2
HEIGHT 24'

DESIGN LOADS
+45.0 PSF
-52.0 PSF

LARGE MISSILE
IMPACT
RESISTANCE

Thomas L. Shelmerdine, PE (FL PE #0048579)
Structural Solutions of North Carolina, Inc.
5921-G W. Friendly Ave., Greensboro, NC 27410

STATE OF FLORIDA
PROFESSIONAL ENGINEER
FL

Thomas L. Shelmerdine, PE (FL PE #0048579)
Structural Solutions of North Carolina, Inc.
5921-G W. Friendly Ave., Greensboro, NC 27410

Amarr

163 CARRIAGE COURT WINSTON-SALEM, NC 27103 WWW.AMARR.COM

MODEL 2400 (24 GA)
MODEL 2000 (20 GA)

SIZE	DRAWN BY	RLR	DATE 5/30/13	DRAWING NUMBER
B	CHECKED BY	RLR	DATE 5/30/13	IEC-2416-180-26-1

SHEET 3 OF 3