



**MIAMI-DADE COUNTY
PRODUCT CONTROL SECTION**

11805 SW 26 Street, Room 208
Miami, Florida 33175-2474
T (786) 315-2590 F (786) 315-2599

**DEPARTMENT OF REGULATORY AND ECONOMIC RESOURCES (RER)
BOARD AND CODE ADMINISTRATION DIVISION**

NOTICE OF ACCEPTANCE (NOA)

www.miamidade.gov/building

**Amarr Garage Doors dba Entrematic
165 Carriage Court
Winston Salem, NC 27105**

SCOPE: This NOA is being issued under the applicable rules and regulations governing the use of construction materials. The documentation submitted has been reviewed and accepted by Miami-Dade County RER-Product Control Section to be used in MiamiDade County and other areas where allowed by the Authority Having Jurisdiction (AHJ).

This NOA shall not be valid after the expiration date stated below. The Miami-Dade County Product Control Section (In Miami Dade County) and/or the AHJ (in areas other than Miami Dade County) reserve the right to have this product or material tested for quality assurance purposes. If this product or material fails to perform in the accepted manner, the manufacturer will incur the expense of such testing and the AHJ may immediately revoke, modify, or suspend the use of such product or material within their jurisdiction. RER reserves the right to revoke this acceptance, if it is determined by Miami-Dade County Product Control Section that this product or material fails to meet the requirements of the applicable building code.

This product is approved as described herein and has been designed to comply with the Florida Building Code, including the High Velocity Hurricane Zone.

DESCRIPTION: Model 650 Oak Summit, 600 Stratford & 950 Heritage Series 1000 & 2000 Steel Sectional Garage Door up to 16'-0" Wide w/ Impact Resistant Windows – L.M.I.

APPROVAL DOCUMENT: Drawing No. **IRC-6016-156-26-I**, titled "Model #650 Oak Summit, #600 Stratford and #950 Heritage Series 1000 & 2000", sheets 1 through 3 of 3, dated 02/05/14, prepared by manufacturer, signed and sealed by Thomas L. Shelmerdine, P.E., bearing the Miami-Dade County Product Control Revision stamp with the Notice of Acceptance number and expiration date by the Miami-Dade County Product Control Section.

MISSILE IMPACT RATING: Large and Small Missile Impact Resistant

LABELING: Each unit shall bear a permanent label with the manufacturer's name or logo, manufacturing address, model number, the positive and negative design pressure rating, indicate impact rated if applicable, installation instruction drawing reference number, approval number (NOA), the applicable test standards, and the statement reading 'Miami-Dade County Product Control Approved' is to be located on the door's side track, bottom angle, or inner surface of a panel.

RENEWAL of this NOA shall be considered after a renewal application has been filed and there has been no change in the applicable building code negatively affecting the performance of this product.

TERMINATION of this NOA will occur after the expiration date or if there has been a revision or change in the materials, use, and/or manufacture of the product or process. Misuse of this NOA as an endorsement of any product, for sales, advertising or any other purposes shall automatically terminate this NOA. Failure to comply with any section of this NOA shall be cause for termination and removal of NOA.

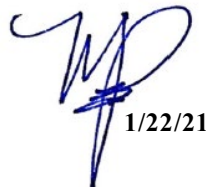
ADVERTISEMENT: The NOA number preceded by the words Miami-Dade County, Florida, and followed by the expiration date may be displayed in advertising literature. If any portion of the NOA is displayed, then it shall be done in its entirety.

INSPECTION: A copy of this entire NOA shall be provided to the user by the manufacturer or its distributors and shall be available for inspection at the job site at the request of the Building Official.

This NOA revises **NOA No. 19-0911.04** and consists of this page 1 and evidence page E-1, E-2 and E-3, as well as approval document mentioned above.

The submitted documentation was reviewed by **Manuel Perez, P.E.**




1/22/21

NOA No. 20-1015.40
Expiration Date: September 25, 2024
Approval Date: January 28, 2021
Page 1

Amarr Garage Doors dba Entrematic

NOTICE OF ACCEPTANCE: EVIDENCE SUBMITTED

1. EVIDENCE SUBMITTED UNDER PREVIOUS NOA's

A. DRAWINGS

1. Manufacturer's die drawings and sections.
(Submitted under NOA No. 14-0421.01)
2. Drawing No. **IRC-6016-156-26-I**, titled "Model #650 Oak Summit, #600 Stratford and # 950 Heritage Series 1000 & 2000", sheets 1 through 3 of 3, dated 02/05/14, prepared by manufacturer, signed and sealed by Thomas L. Shelmerdine, P.E.
(Submitted under NOA No. 14-0421.01)

B. TESTS

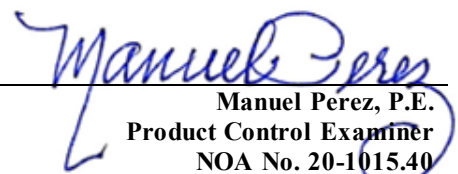
1. Test reports on: 1) Uniform Static Air Pressure Test, Loading per FBC TAS 202-94
2) Large Missile Impact Test per FBC, TAS 201-94
3) Cyclic Wind Pressure Loading per FBC, TAS 203-94
4) Tensile Test per ASTM E8
5) Forced Entry Resistance Test per FBC, TAS 202-94
along with marked-up drawings and installation diagram of 16'x 7' 24 ga (0.021") steel garage door Model #600, prepared by American Test Lab, Inc., Test Report No. **ATLNC 0211.01-14**, dated 04/02/14, signed and sealed by David W. Johnson, P.E.
(Submitted under NOA No. 14-0421.01)
2. Test report on Evaluation of Painted or Coated Specimens Subjected to Corrosive Environments per ASTM D1654 & ASTM B117, prepared by Architectural Testing, Inc., Test Report No. **C5463.01-106-18**, dated 04/03/13, signed and sealed by Gary T. Hartman, P.E.
(Submitted under NOA No. 13-0503.08)

C. CALCULATIONS

1. Anchor calculations prepared by Structural Solutions, P.A., dated 04/03/14, signed and sealed by Thomas L. Shelmerdine, P.E.
(Submitted under NOA No. 14-0421.01)

D. QUALITY ASSURANCE

1. Miami-Dade Department of Regulatory and Economic Resources (RER)


Manuel Perez, P.E.
Product Control Examiner
NOA No. 20-1015.40
Expiration Date: September 25, 2024
Approval Date: January 28, 2021

Amarr Garage Doors dba Entrematic

NOTICE OF ACCEPTANCE: EVIDENCE SUBMITTED

1. EVIDENCE SUBMITTED UNDER PREVIOUS NOA's (CONTINUED)

E. MATERIAL CERTIFICATIONS

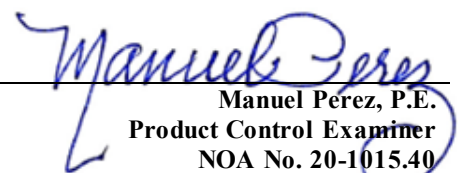
1. Notice of Acceptance No. **19-0305.02** issued to **Kuraray America, Inc.** for their "Trosifol® Ultraclear, Clear and Color PVB Glass Interlayers" dated 05/09/19, expiring on 07/08/24.

F. STATEMENTS

1. Statement letter of conformance, complying with **FBC 6th Edition (2017)** and of no financial interest, dated 09/11/17, issued by Structural Solutions, PA., signed and sealed by Thomas L. Shelmerdine, P.E.
(Submitted under NOA No. 17-1010.12)

G. OTHERS

1. Notice of Acceptance No. **17-1010.12**, issued to Amarr Garage Doors dba Entrematic for their Model 650 Oak Summit, 600 Stratford & 950 Heritage Series 1000 & 2000 Steel Sectional Garage Door up to 16'-0" Wide w/ Impact Resistant Windows, approved on 12/21/17 and expiring on 09/25/19.


Manuel Pérez, P.E.
Product Control Examiner
NOA No. 20-1015.40
Expiration Date: September 25, 2024
Approval Date: January 28, 2021

Amarr Garage Doors dba Entrematic

NOTICE OF ACCEPTANCE: EVIDENCE SUBMITTED

2. NEW EVIDENCE SUBMITTED

A. DRAWINGS

1. None.

B. TESTS

1. None.

C. CALCULATIONS

1. None.

D. QUALITY ASSURANCE

1. Miami-Dade Department of Regulatory and Economic Resources (RER)

E. MATERIAL CERTIFICATIONS

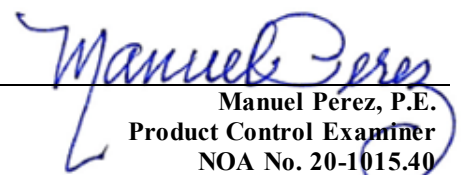
1. Notice of Acceptance No. **19-0305.02** issued to **Kuraray America, Inc.** for their “**Trosifol® Ultraclear, Clear and Color PVB Glass Interlayers**” dated 05/09/19, expiring on 07/08/24.

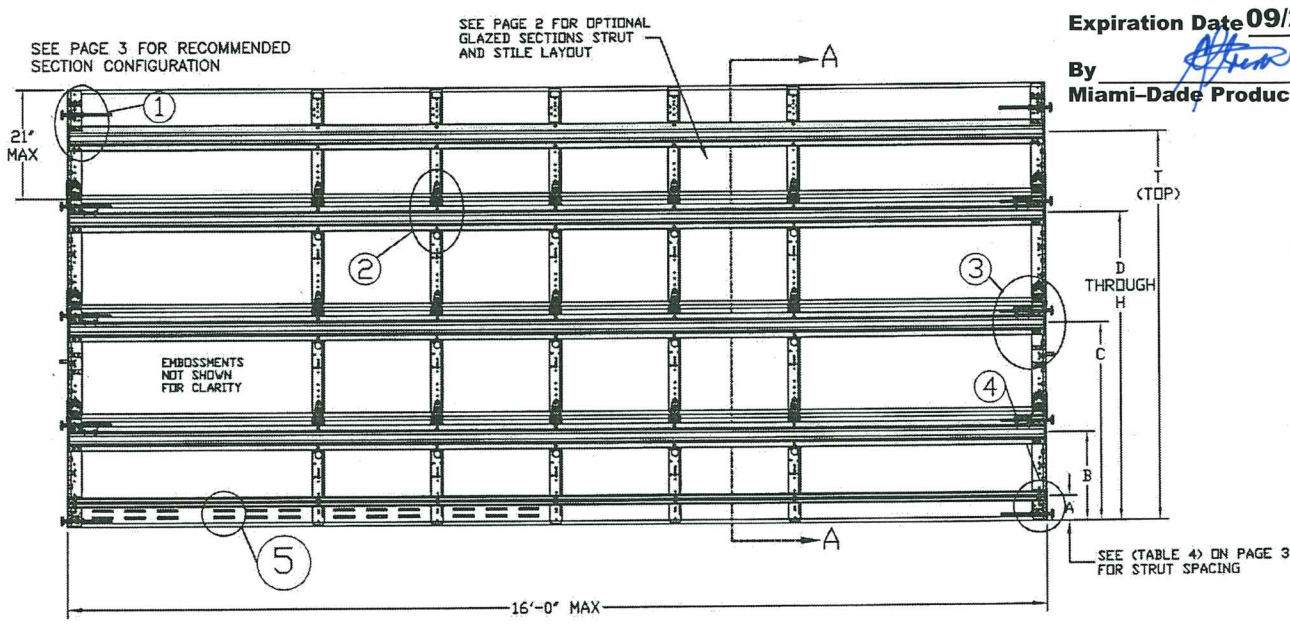
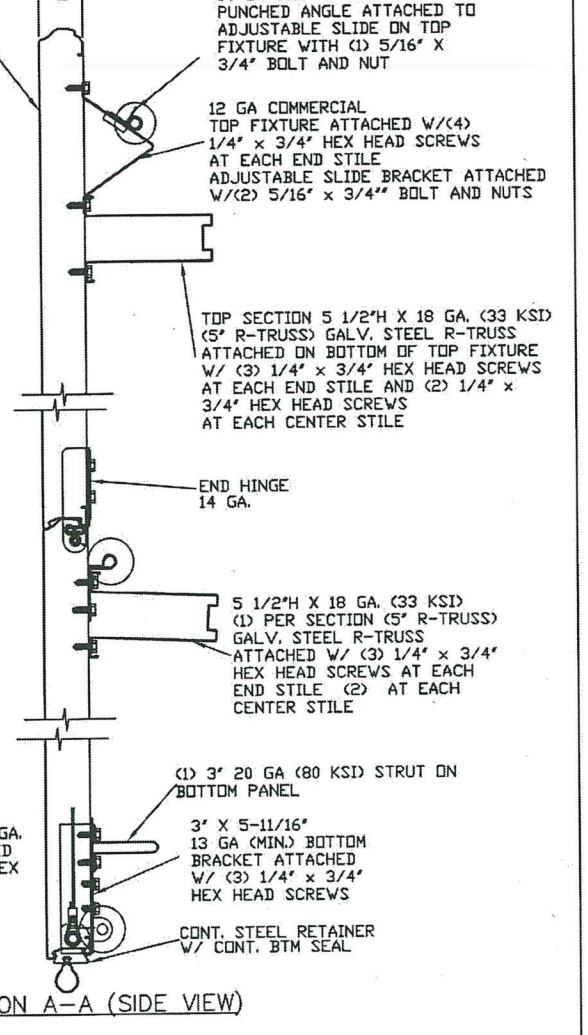
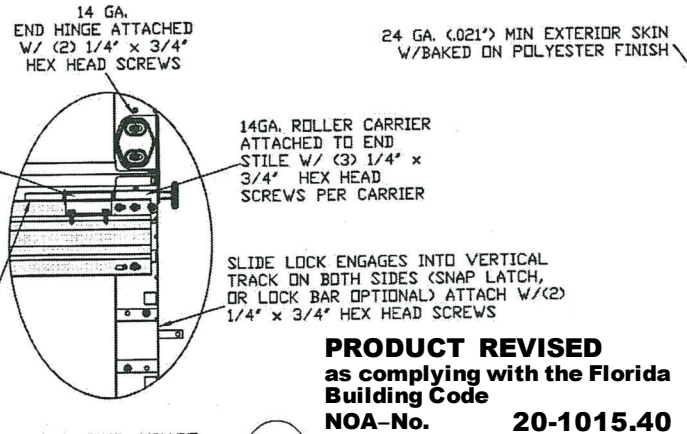
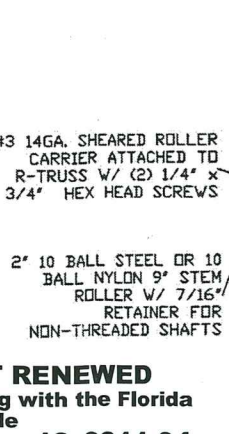
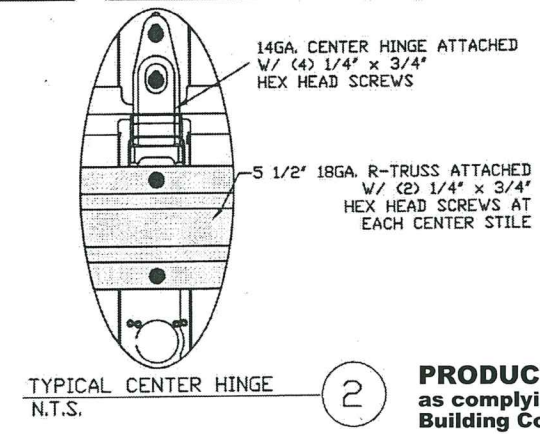
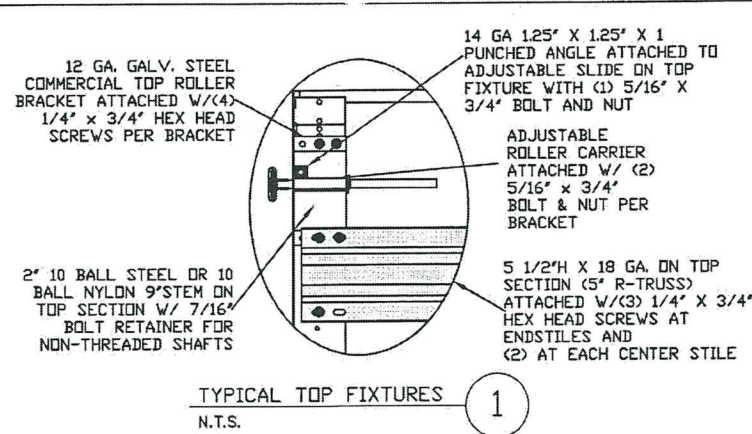
F. STATEMENTS

1. Statement letter of conformance, complying with **FBC 7th Edition (2020)** and of no financial interest, dated August 27, 2020, issued by Structural Solutions, P.A., signed and sealed by Thomas L. Shelmerdine, P.E.

G. OTHERS

1. Notice of Acceptance No. **19-0911.04**, issued to Amarr Garage Doors dba Entrematic for their Model 650 Oak Summit, 600 Stratford & 950 Heritage Series 1000 & 2000 Steel Sectional Garage Door up to 16’-0” Wide w/ Impact Resistant Windows, approved on 10/03/19 and expiring on 09/25/24.

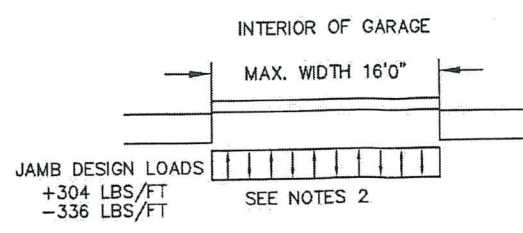
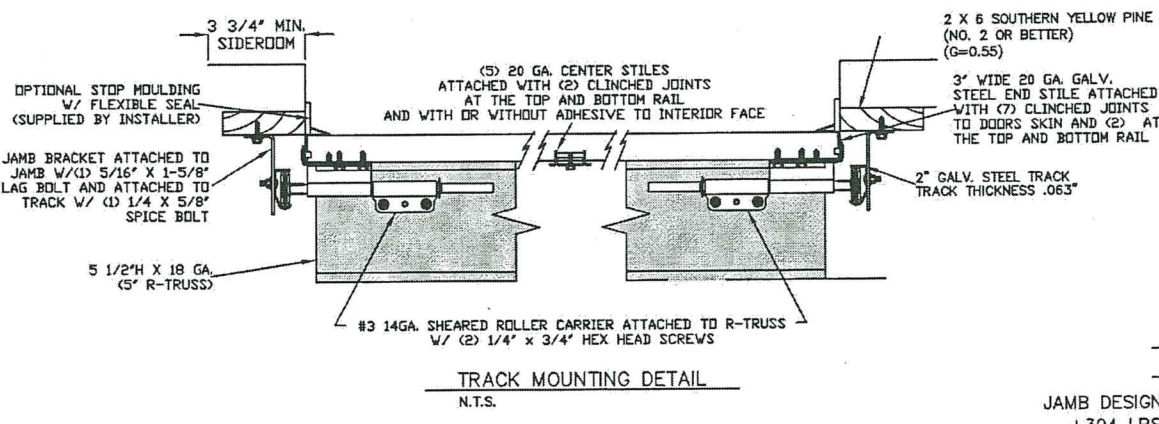
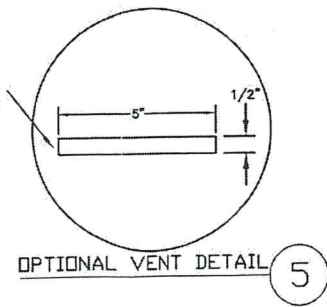

Manuel Pérez, P.E.
Product Control Examiner
NOA No. 20-1015.40
Expiration Date: September 25, 2024
Approval Date: January 28, 2021



PRODUCT RENEWED
as complying with the Florida Building Code
NOA-No. **19-0911.04**
Expiration Date **09/25/2024**
By *Manuel Perera*
Miami-Dade Product Control

PRODUCT REVISED
as complying with the Florida Building Code
NOA-No. **20-1015.40**
Expiration Date: **09/25/2024**
By: *Manuel Perera*
Miami-Dade Product Control

LARGE MISSILE IMPACT RESISTANT



- SPECIFICATIONS AND NOTES**
- ALL THE LOAD FROM THE DOOR IS TRANSFERRED TO THE VERTICAL TRACK. FROM THE TRACK THE LOAD IS TRANSFERRED TO THE VERTICAL JAMBS. THE HORIZONTAL JAMB OR HEADER RECEIVES NO PORTION OF THE LOAD TRANSFERRED FROM THE DOOR.
 - EACH VERTICAL JAMB RECEIVES MAXIMUM DESIGN LOADS OF: +304 LBS/FT & -336 LBS/FT
 - DOORS AND HARDWARE WILL BE DESIGNED, MANUFACTURED AND INSTALLED WITH STANDARDS AS SET FORTH BY DASHA.
 - DOOR SECTIONS SHALL BE 24 GA. MIN. (.021") ROLLED FORMED LIGHT COMMERCIAL QUALITY
 - SUPPORTING STRUCTURAL ELEMENTS SHALL BE DESIGNED BY A REGISTERED PROFESSIONAL ENGINEER FOR WIND LOADS INDICATED ON THIS DRAWING IN ADDITION TO OTHER LOADINGS.
 - AMARR MANUFACTURES AND DISTRIBUTES GARAGE DOORS UNDER MANY BRAND LABELS. PLEASE SEE AMARR-MANUFACTURED PRIVATE LABEL CHART FOR REFERENCE OF EQUIVALENT PRODUCTS FOR WINDLOAD APPROVAL
 - REFER TO TABLES ON THE PAGE 3 FOR ADDITIONAL DOOR WIDTHS AND THEIR DESIGN PRESSURES
 - PANEL STAMP DOES NOT EFFECT WINDLOAD CAPABILITIES.
 - THIS APPROVAL REQUIRES THE MANUFACTURER TO DO TESTING OF ALL COILS USED TO FABRICATE DOOR PANELS UNDER THIS NOTICE OF ACCEPTANCE. A MINIMUM OF 2 SPECIMENS SHALL BE CUT FROM EACH COIL AND TENSILE TESTED ACCORDING TO ASTM E-8 BY A DADE COUNTY APPROVED LAB SELECTED AND PAID BY THE MANUFACTURER. EVERY 3 MONTHS, 4 TIMES A YEAR, THE MANUFACTURER SHALL MAIL TO THIS OFFICE: A COPY OF THE TEST REPORTS WITH CONFIRMATION THAT THE SPECIMENS WERE SELECTED FROM COILS AT THE MANUFACTURER PRODUCTION FACILITIES. AND A NOTARIZED STATEMENT FROM THE MANUFACTURER THAT ONLY COILS WITH YIELD STRENGTH OF 40,000 PSI OR MORE SHALL BE USED TO MAKE DOOR PANELS FOR DADE COUNTY UNDER THIS NOTICE OF ACCEPTANCE.

REV	DESCRIPTION OF REVISIONS	DATE	BY

MAX SIZE
WIDTH 16'
HEIGHT 14'

DESIGN LOADS
+38.0 PSF
-42.0 PSF

TEST LOADS
+57.0 PSF
-63.0 PSF

LARGE
MISSILE
IMPACT
RESISTANT

Thomas L. Shelmerdine, PE (FL PE #00048579)
Structural Solutions, PA (FL Firm #29412)

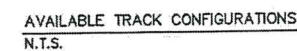
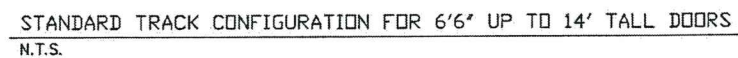
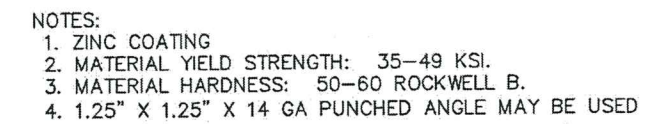
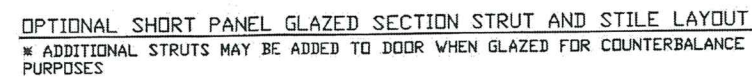
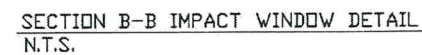
THOMAS L. SHELMERDINE
LICENSE
No. 48579
STATE OF
FLORIDA
PROFESSIONAL ENGINEER
FL

dba Structural Solutions of North Carolina, Inc.
5921-G W. Friendly Ave., Greensboro, NC 27410

Amarr

MODEL #650 OAK SUMMIT SERIES 1000 & 2000
MODEL #600 STRATFORD SERIES 1000 & 2000
MODEL #950 HERITAGE SERIES 1000 & 2000

SIZE B	DRAWN BY RLR	DATE 2/5/14	DRAWING NUMBER IRC-6016-156-26-1
	CHECKED BY	DATE	
ENTREMATICS 165 CARRIAGE COURT WINSTON-SALEM, N.C. 27105			SHEET 1 OF 3



REV	DESCRIPTION OF REVISIONS	DATE	BY
<p><u>MAX. SIZE</u> WIDTH 16' HEIGHT 14'</p> <p>DESIGN LOADS +38.0 PSF -42.0 PSF</p> <p>TEST LOADS +57.0 PSF -63.0 PSF</p> <p>LARGE MISSILE IMPACT RESISTANT</p>		<p>Thomas L. Shelmerdine, PE (FL PE #0048579) Structural Solutions, PA (FL Firm #29412)</p> <p>FL</p>	
<p><i>Amarr</i></p>			
<p>MODEL #650 OAK SUMMIT SERIES 1000 & 2000 MODEL #600 STRATFORD SERIES 1000 & 2000 MODEL #950 HERITAGE SERIES 1000 & 2000</p>			
SIZE	DRAWN BY	RLR	DATE 2/5/14
B	CHECKED BY		DATE
<p>ENTREMATIC 165 CARRIAGE COURT WINSTON-SALEM, N.C. 27105</p>			<p>DRAWING NUMBER IRC-6016-156-26-1</p>
<p>SHEET 2 OF 3</p>			

TABLE 1

DOOR HEIGHT	TRACK ATTACHMENT											SPLICE
	A	B	C	D	E	F	G	H	I	J	K	
6' 6"	3.5"	21"	34"	44"	57"							70"
7'	3.5"	21"	37"	47"	63"							76"
7' 6"	3.5"	18"	31"	41"	54"	72"						82"
8'	3.5"	21"	34"	44"	57"	75"						88"
8' 6"	3.5"	21"	37"	47"	63"	81"						94"
9'	3.5"	18"	31"	41"	54"	72"	85"					100"
9' 6"	3.5"	21"	34"	44"	57"	75"	88"					106"
10'	3.5"	21"	37"	47"	63"	81"	94"					112"
10' 6"	3.5"	21"	37"	47"	63"	79"	89"	105"				118"
11'	3.5"	21"	34"	44"	57"	75"	88"	98"	111"			124"
11' 6"	3.5"	21"	37"	47"	63"	81"	94"	104"	117"			130"
12'	3.5"	21"	37"	47"	63"	79"	89"	105"	118"			136"
12' 6"	3.5"	21"	34"	44"	57"	75"	88"	98"	111"	129"		142"
13'	3.5"	21"	37"	47"	63"	81"	94"	104"	117"	135"		148"
13' 6"	3.5"	21"	37"	47"	63"	79"	89"	105"	118"	141"		154"
14'	3.5"	21"	37"	47"	63"	79"	89"	105"	121"	131"	147"	160"

ALL TRACK ATTACHMENT SPACING +/-1" WITH SYP NO. 2 OR BETTER ONLY

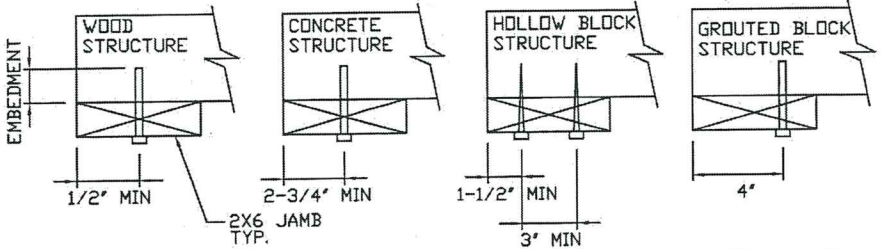
TABLE 2

Section Width (ft)	Panel Type	Center Stile Locations (Measured from Left Edge)				
		1st (in)	2nd (in)	3rd (in)	4th (in)	5th (in)
10' 0"	Short	48.41	71.59			
10' 0"	Long	30.00	60.00	90.00		
10' 0"	Oak Summit	30.63	60.00	89.38		
12' 0"	Short	48.81	72.00	95.19		
12' 0"	Long	49.63	72.00	94.38		
12' 0"	Oak Summit	48.31	72.00	95.69		
12' 2"	Short	49.64	73.00	96.36		
12' 2"	Long	50.08	73.00	95.92		
12' 2"	Oak Summit	49.06	73.00	96.94		
12' 4"	Short	50.64	74.00	97.36		
12' 4"	Long	51.08	74.00	96.92		
12' 4"	Oak Summit	49.81	74.00	98.19		
12' 6"	Short	50.67	75.00	99.33		
12' 6"	Long	51.17	75.00	98.83		
12' 6"	Oak Summit	50.56	75.00	99.44		
12' 8"	Short	51.67	76.00	100.33		
12' 8"	Long	52.10	76.00	99.90		
12' 8"	Oak Summit	51.31	76.00	100.69		
12' 10"	Short	52.25	77.00	101.75		
12' 10"	Long	53.10	77.00	100.90		
12' 10"	Oak Summit	52.06	77.00	101.94		
13' 0"	Short	53.00	78.00	103.00		
13' 0"	Long	54.10	78.00	101.90		
13' 0"	Oak Summit	52.81	78.00	103.19		
13' 2"	Short	54.00	79.00	104.00		
13' 2"	Long	55.10	79.00	102.90		
13' 2"	Oak Summit	53.56	79.00	104.44		
13' 4"	Short	54.40	80.00	105.60		
13' 4"	Long	54.90	80.00	105.10		
13' 4"	Oak Summit	54.31	80.00	105.69		
13' 6"	Short	55.40	81.00	106.60		
13' 6"	Long	55.90	81.00	106.10		
13' 6"	Oak Summit	55.06	81.00	106.94		
13' 8"	Short	56.40	82.00	107.60		
13' 8"	Long	56.63	82.00	107.38		
13' 8"	Oak Summit	55.81	82.00	108.19		
13' 10"	Short	57.16	83.00	108.71		
13' 10"	Long	57.17	83.00	108.83		
13' 10"	Oak Summit	56.56	83.00	109.44		
14' 0"	Short	57.76	84.00	110.11		
14' 0"	Long	58.63	84.00	109.38		
14' 0"	Oak Summit	57.31	84.00	110.69		
14' 2"	Short	58.85	85.00	111.41		
14' 2"	Long	59.17	85.00	110.83		
14' 2"	Oak Summit	58.06	85.00	111.94		
14' 4"	Short	59.16	86.00	112.71		
14' 4"	Long	60.17	86.00	111.83		
14' 4"	Oak Summit	58.81	86.00	113.19		
14' 6"	Short	59.86	87.00	114.01		
14' 6"	Long	61.17	87.00	112.83		
14' 6"	Oak Summit	59.56	87.00	114.44		
14' 8"	Short	60.56	88.00	115.31		
14' 8"	Long	61.81	88.00	114.59	131.19	
14' 8"	Oak Summit	60.31	88.00	115.69		
14' 10"	Short	61.26	89.00	116.61		
14' 10"	Long	62.60	89.00	115.70	132.40	
14' 10"	Oak Summit	61.06	89.00	116.94		
15' 0"	Short	61.94	90.00	117.97	133.40	
15' 0"	Long	63.63	90.00	116.19	134.38	
15' 0"	Oak Summit	62.66	90.00	117.11	134.40	
15' 2"	Short	62.66	91.00	118.11	135.40	
15' 2"	Long	64.60	91.00	117.70	136.40	
15' 2"	Oak Summit	63.13	91.00	118.44	137.88	
15' 4"	Short	65.60	92.00	119.40	138.40	
15' 4"	Long	67.25	92.00	118.38	139.75	
15' 4"	Oak Summit	66.31	92.00	119.69	140.38	
15' 6"	Short	66.62	93.00	119.19	139.38	
15' 6"	Long	68.60	93.00	118.70	140.40	
15' 6"	Oak Summit	67.21	93.00	119.79	141.58	
15' 8"	Short	67.62	94.00	119.19	140.38	
15' 8"	Long	69.60	94.00	118.70	141.40	
15' 8"	Oak Summit	68.02	94.00	119.99	142.38	
15' 10"	Short	68.62	95.00	119.19	141.38	
15' 10"	Long	70.17	95.00	118.72	142.83	
15' 10"	Oak Summit	69.62	95.00	119.19	143.38	
16' 0"	Short	69.62	96.00	119.19	142.38	
16' 0"	Long	71.60	96.00	118.70	143.40	
16' 0"	Oak Summit	70.21	96.00	119.79	144.58	

WOOD JAMB ATTACHMENT TO STRUCTURE

2 X 6 VERTICAL JAMB ATTACHMENT TO WOOD FRAME STRUCTURE
 5/16" X 3" LAG SCREWS STARTING 6" FROM ENDS THEN 16" O.C. (1 1/2" EMBEDMENT)
 2 X 6 VERTICAL JAMB ATTACHMENT TO 2,000 PSI CONCRETE
 HILTI KWIK BOLT 3/8" X 4" STARTING 6" FROM ENDS THEN 24" O.C. (2 1/2" EMBEDMENT)
 HILTI SLEEVE ANCHOR 3/8" X 2-3/4" STARTING 6" FROM ENDS THEN 14" O.C. (1 1/4" EMBEDMENT)
 ITW/RAMSET REDHEAD (TRU-BOLT) 3/8" X 4" STARTING 6" FROM ENDS THEN 24" O.C. (2 1/2" EMBEDMENT)
 2 X 6 VERTICAL JAMB ATTACHMENT TO HOLLOW C-90 BLOCK
 SIMPSON 1/4" X 3" TITEN SCREWS STARTING 6" FROM ENDS, USE PAIRS OF FASTENERS
 (3" APART) AT 8" O.C. (1 1/2" EMBEDMENT)
 HILTI 1/4" X 2-3/4" KWIK-CON II+ SCREWS STARTING 6" FROM ENDS, USE PAIRS OF
 FASTENERS (3" APART) AT 8" O.C. (1 1/4" EMBEDMENT)
 2 X 6 VERTICAL JAMB ATTACHMENT TO GROUTED C-90 BLOCK (2000 PSI GROUT)
 HILTI SLEEVE ANCHOR 3/8" X 2-3/4" STARTING 6" FROM ENDS THEN 16" O.C. (1 1/4"
 EMBEDMENT) (OR, USE FASTENERS FOR HOLLOW C-90 BLOCK)

*LAGS AND BOLTS CAN BE COUNTERSUNK TO PROVIDE A FLUSH MOUNTING SURFACE.
 *PREPARATION OF WOOD JAMBS BY OTHERS



PRODUCT REVISED
 as complying with the Florida
 Building Code
 NOA-No. **20-1015.40**
 Expiration Date: **09/25/2024**
 By: *Manuel Perez*
 Miami-Dade Product Control

PRODUCT RENEWED
 as complying with the Florida
 Building Code
 NOA-No. **19-0911.04**
 Expiration Date: **09/25/2024**
 By: *[Signature]*
 Miami-Dade Product Control

TABLE 3

DOOR HEIGHT	SECTION HEIGHTS							
	Btm	#2	#3	#4	#5	#6	#7	#8
6' 0"	18"	18"	18"	18"				
6' 6"	21"	18"	18"	21"				
7' 0"	21"	21"	21"	21"				
7' 6"	18"	18"	18"	18"	18"			
8' 0"	21"	18"	18"	18"	21"			
8' 6"	21"	21"	21"	18"	21"			
9' 0"	18"	18"	18"	18"	18"	18"		
9' 6"	21"	18"	18"	18"	18"	21"		
10' 0"	21"	21"	21"	18"	18"	21"		
10' 6"	21"	21"	21"	21"	21"	21"		
11' 0"	21"	18"	18"	18"	18"	18"	21"	
11' 6"	21"	21"	21"	18"	18"	18"	21"	
12' 0"	21"	21"	21"	21"	21"	18"	21"	
12' 6"	21"	18"	18"	18"	18"	18"	18"	21"
13' 0"	21"	21"	21"	18"	18"	18"	18"	21"
13' 6"	21"	21"	21"	21"	21"	18"	18"	21"
14' 0"	21"	21"	21"	21"	21"	21"	21"	21"

TABLE 4

DOOR HEIGHT	STRUT SPACING (BASED ON RECOMMENDED SECTION CONFIGURATION)								TOP
	A	B	C	D	E	F	G	H	
6' 6"	5 1/2"	16"	34"	52"					70 1/2"
7'	5 1/2"	16"	37"	58"					76 1/2"
7' 6"	5 1/2"	13"	31"	49"	67"				82 1/2"
8'	5 1/2"	16"	34"	52"	70"				88 1/2"
8' 6"	5 1/2"	16"	37"	58"	76"				94 1/2"
9'	5 1/2"	13"	31"	49"	67"	85"			100 1/2"
9' 6"	5 1/2"	16"	34"	52"	70"	88"			106 1/2"
10'	5 1/2"	16"	37"	58"	76"	94"			112 1/2"
10' 6"	5 1/2"	16"	37"	58"	79"	100"			118 1/2"
11'	5 1/2"	16"	34"	52"	70"	88"	106"		124 1/2"
11' 6"	5 1/2"	16"	37"	58"	76"	94"	112"		130 1/2"
12'	5 1/2"	16"	37"	58"	79"	100"	118"		136 1/2"
12' 6"	5 1/2"	16"	34"	52"	70"	88"	106"	124"	142 1/2"
13'	5 1/2"	16"	37"	58"	76"	94"	112"	130"	148 1/2"
13' 6"	5 1/2"	16"	37"	58"	79"	100"	118"	136"	154 1/2"
14'	5 1/2"	16"	37"	58"	79"	100"	121"	142"	160 1/2"

* ADDITIONAL STRUTS MAY BE ADDED TO DOOR WHEN GLAZED FOR
 COUNTERBALANCE PURPOSES

REV	DESCRIPTION OF REVISIONS	DATE	BY

MAX. SIZE
WIDTH 16"
HEIGHT 14"

DESIGN LOADS
+38.0 PSF
-42.0 PSF

TEST LOADS
+57.0 PSF
-63.0 PSF

LARGE
MISSILE
IMPACT
RESISTANT

FL

Thomas L. Shelmerdine, PE (FL PE #0048579)
 Structural Solutions, PA (FL Firm #29412)

dba Structural Solutions of North Carolina, Inc.
 5921-G W. Friendly Ave., Greensboro, NC 27410

MODEL #650 OAK SUMMIT SERIES 1000 & 2000
 MODEL #600 STRATFORD SERIES 1000 & 2000
 MODEL #950 HERITAGE SERIES 1000 & 2000

SIZE B	DRAWN BY RLR	DATE 2/5/14	DRAWING NUMBER IRC-6016-156-26-1
CHECKED BY	DATE	SHEET 3 OF 3	

ENTREMATIC
165 CARRIAGE COURT WINSTON-SALEM, N.C. 27105