



MIAMI-DADE COUNTY
PRODUCT CONTROL SECTION
11805 SW 26 Street, Room 208
Miami, Florida 33175-2474
T (786) 315-2590 F (786) 315-2599
www.miamidade.gov/economy

DEPARTMENT OF REGULATORY AND ECONOMIC RESOURCES (RER)
BOARD AND CODE ADMINISTRATION DIVISION
NOTICE OF ACCEPTANCE (NOA)

Regency Plus, Inc.
2000 Locust Gap Highway
Mt. Carmel, PA 17851

SCOPE:

This NOA is being issued under the applicable rules and regulations governing the use of construction materials. The documentation submitted has been reviewed and accepted by Miami-Dade County RER -Product Control Section to be used in Miami Dade County and other areas where allowed by the Authority Having Jurisdiction (AHJ).

This NOA shall not be valid after the expiration date stated below. The Miami-Dade County Product Control Section (In Miami Dade County) and/or the AHJ (in areas other than Miami Dade County) reserve the right to have this product or material tested for quality assurance purposes. If this product or material fails to perform in the accepted manner, the manufacturer will incur the expense of such testing and the AHJ may immediately revoke, modify, or suspend the use of such product or material within their jurisdiction. RER reserves the right to revoke this acceptance, if it is determined by Miami-Dade County Product Control Section that this product or material fails to meet the requirements of the applicable building code.

This product is approved as described herein, and has been designed to comply with the Florida Building Code, including the High Velocity Hurricane Zone.

DESCRIPTION: Series "TECH-5605" Vinyl Awning Windows (project-out) – LMI

APPROVAL DOCUMENT: Drawing No. **RPLS0080**, titled "Series TECH-5605 Vinyl Awning Window (LMI)", sheets 1 through 7 of 7 dated 02/14/19, with revision "A" dated 10/20/2020, prepared by PTC, Product Design Group LLC, signed and sealed by Robert J. Amoruso, P.E., bearing the Miami-Dade County Product Control Revision stamp with the Notice of Acceptance number and expiration date by the Miami-Dade County Product Control Section.

MISSILE IMPACT RATING: Large and Small Missile Impact Resistant

LABELING: Each unit shall bear a permanent label with the manufacturer's name or logo, city, state and series and following statement: "Miami-Dade County Product Control Approved", noted herein.

RENEWAL of this NOA shall be considered after a renewal application has been filed and there has been no change in the applicable building code negatively affecting the performance of this product.

TERMINATION of this NOA will occur after the expiration date or if there has been a revision or change in the materials, use, and/or manufacture of the product or process. Misuse of this NOA as an endorsement of any product, for sales, advertising or any other purposes shall automatically terminate this NOA. Failure to comply with any section of this NOA shall be cause for termination and removal of NOA.

ADVERTISEMENT: The NOA number preceded by the words Miami-Dade County, Florida, and followed by the expiration date may be displayed in advertising literature. If any portion of the NOA is displayed, then it shall be done in its entirety.

INSPECTION: A copy of this entire NOA shall be provided to the user by the manufacturer or its distributors and shall be available for inspection at the job site at the request of the Building Official.

This NOA **revises NOA# 19-0411.02** and consists of this page 1 and evidence pages E-1 and E-2, as well as approval document mentioned above.

The submitted documentation was reviewed by **Sifang Zhao, P.E.**



S.Z.
01/21/2021

NOA No. 20-1103.05
Expiration Date: May 30, 2024
Approval Date: January 21, 2021
Page 1

NOTICE OF ACCEPTANCE: EVIDENCE SUBMITTED

1. EVIDENCE SUBMITTED UNDER PREVIOUS NOA's

A. DRAWINGS

1. Manufacturer's die drawings and sections. (*Submitted under NOA# 19-0411.02*)
2. Drawing No. **RPLS0080**, titled "Series TECH-5605 Vinyl Awning Window (LMI)", sheets 1 through 7 of 7 dated 02/14/19, prepared by PTC, Product Design Group LLC, signed and sealed by Robert J. Amoruso, P.E.

B. TESTS

1. Test reports on: 1) Air Infiltration Test, per FBC, TAS 202-94
2) Uniform Static Air Pressure Test, Loading per FBC, TAS 202-94
3) Water Resistance Test, per FBC, TAS 202-94
4) Large Missile Impact Test per FBC, TAS 201-94
5) Cyclic Wind Pressure Loading per FBC, TAS 203-94
6) Forced Entry Test, per FBC 2411.3.2.1, and TAS 202-94

Along with marked-up drawings and installation diagram of series "tech 5605" Vinyl Awning windows (project out), prepared by National Certified Testing Laboratory, Inc., Test Report No. **NCTL-10-21629-1**, dated 01/23/2019, signed and sealed by Harold Rupp, P.E. (*Submitted under NOA# 19-0411.02*)

C. CALCULATIONS

1. Anchor verification calculations and structural analysis dated 04/11/19, complying with FBC-2017 (6th Edition), prepared by PTC, Product Design Group LLC, signed and sealed by Robert J. Amoruso, P.E. (*Submitted under NOA# 19-0411.02*)
2. Glazing complies w/ ASTM E-1300-02, 04 & -09.

D. QUALITY ASSURANCE

1. Miami Dade Department of Regulatory and Economic Resources (RER).

E. MATERIAL CERTIFICATIONS

1. NOA No. **17-1114.14** issued to **Kuraray America, Inc.** (Former E.I. DuPont DeNemours & Co.) for the "**Trofosil® Ultra Clear PVB Glass Interlayer**", expiring on 09/08/19.
2. NOA No. **18-0122.02** issued to ENERGI Fenestration Solutions USA for their "**White Rigid PVC Exterior Extrusions for Windows and Doors**", expiring on 02/28/23.

F. STATEMENTS

1. Statement letter of conformance to FBC 2017 (6th edition) and letter of no financial interest, dated 03/25/19, prepared by PTC Product Design Group LLC, signed and sealed by Robert J. Amoruso, P.E. (*Submitted under NOA# 19-0411.02*)
2. Lab compliance as part of the above referenced test report.

G. OTHER

1. None.



Sifang Zhao, P.E.
Product Control Examiner
NOA No. 20-1103.05
Expiration Date: May 30, 2024
Approval Date: January 21, 2021

Regency Plus, Inc.

NOTICE OF ACCEPTANCE: EVIDENCE SUBMITTED

2. NEW EVIDENCE SUBMITTED

A. DRAWINGS

1. Drawing No. **RPLS0080**, titled “Series TECH-5605 Vinyl Awning Window (LMI)”, sheets 1 through 7 of 7 dated 02/14/19, with revision “A” dated 10/20/2020, prepared by PTC Product Design Group, LLC, signed and sealed by Robert James Amoruso, P.E.

B. TESTS

1. None.

C. CALCULATIONS

1. None.

D. QUALITY ASSURANCE

1. Miami-Dade Department of Regulatory and Economic Resources (RER).

E. MATERIAL CERTIFICATIONS

1. NOA No. **17-1114.14** issued to **Kuraray America, Inc.** (Former E.I. DuPont DeNemours & Co.) for the “**Trofosil® Ultra Clear PVB Glass Interlayer**”, expiring on 09/08/19.
2. NOA No. **18-0122.02** issued to ENERGI Fenestration Solutions USA for their “**White Rigid PVC Exterior Extrusions for Windows and Doors**”, expiring on 02/28/23.

F. STATEMENTS

1. Statement letter of conformance, complying with **FBC-7th Edition (2020)**, and of no financial interest, dated 10/20/2020, issued by PTC Product Design Group, LLC, signed and sealed by Robert James Amoruso, P.E.

G. OTHERS

1. Notice of Acceptance No. **19-0411.02**, issued to Regency Plus, Inc. for their Series “TECH-5605” Vinyl Awning Windows (project-out) – LMI., approved on 07/03/19 and expiring on 07/03/24.



Sifang Zhao, P.E.
Product Control Examiner
NOA No. 20-1103.05
Expiration Date: May 30, 2024
Approval Date: January 21, 2021

REGENCY PLUS, INC.

SERIES TECH 5605 VINYL AWNING (PROJECT-OUT BOTTOM) WINDOW

LARGE MISSILE IMPACT

INSTALLATION ANCHORAGE DETAILS

NOTES:

1. THE PRODUCT SHOWN HEREIN IS DESIGNED AND MANUFACTURED TO COMPLY WITH REQUIREMENTS OF THE 7th EDITION (2020) FLORIDA BUILDING CODE INCLUDING THE HIGH VELOCITY HURRICANE ZONE (HVHZ).

2. 2X WOOD FRAMING, 1X OR 2X WOOD BUCK, METAL FRAMING AND CONCRETE/MASONRY OPENING TO BE DESIGNED AND ANCHORED TO PROPERLY TRANSFER ALL LOADS TO STRUCTURE. FRAMING AND CONCRETE/MASONRY OPENING IS THE RESPONSIBILITY OF THE ARCHITECT OR ENGINEER OF RECORD.

3. 1X BUCK OVER CONCRETE/MASONRY IS OPTIONAL. WHEN 1X BUCK IS USED, INSTALLATION ANCHORS WILL PASS THROUGH WINDOW FRAME AND 1X BUCK INTO CONCRETE/MASONRY SUBSTRATE. WHEN USED, 1X BUCKS SHALL BE DESIGNED AND ANCHORED TO PROPERLY TRANSFER ALL LOADS TO STRUCTURE AND IS THE RESPONSIBILITY OF THE ARCHITECT OR ENGINEER OF RECORD. DISSIMILAR MATERIALS MUST BE SEPARATED WITH APPROVED COATING OR MEMBRANE. SELECTION OF COATING OR MEMBRANE IS THE RESPONSIBILITY OF THE ARCHITECT OR ENGINEER OF RECORD.

4. THE PRODUCT SHOWN HEREIN HAS BEEN TESTED TO TAS 201, TAS 202 AND TAS 203. SEE TEST REPORT NO. NCTL-110-21629-1, DATED 12/14/18 BY NATIONAL CERTIFIED TESTING LABORATORIES, YORK, PA, SIGNED AND SEALED BY HAROLD E. RUPP, FLORIDA P.E.

5. MATERIAL:

5.1. FRAME: EXTRUDED RIGID PVC BY ENERGI FENESTRATION SOLUTIONS USA, INC. PER CURRENT MIAMI-DADE NOA.

5.2. REINFORCEMENT:

5.2.1. GALVANIZED STEEL TUBE (0.935" X 0.73" X 0.050" THICK, Fy = 30-50 ksi & Fu = 37.5-68.7 ksi) - SASH PERIMETER

5.2.2. CONTOURED-SHAPED RIGID VINYL, ITEM NO. 3 GLAZING BEAD USED TO REINFORCE FRAME - FRAME PERIMETER

5.3. LAMINATE GLASS INTERLAYER: TROSIFOL INTERLAYER BY KURARAY AMERICA, INC. PER CURRENT MIAMI-DADE NOA.

6. GLAZING:

6.1. GLAZING DETAIL AS TESTED:

6.1.1. OVERALL: 7/8" NOMINAL INSULATING LAMINATED GLASS.

6.1.2. GLASS THICKNESS: (1) LITE OF 1/8" NOMINAL TEMPERED GLASS TO THE INTERIOR AND (1) LITE OF LAMINATED GLASS TO THE EXTERIOR.

6.1.3. LAMINATED LITE: (2) LITES OF 1/8" NOMINAL ANNEALED GLASS SEPARATED BY A 0.090" TROSIFOL INTERLAYER BY KURARAY AMERICA, INC.

6.1.4. SPACER TYPE/SIZE: 7/16" NOMINAL CARDINAL XL EDGE STAINLESS STEEL SPACER (TYPE SS-D).

6.1.5. GLAZING SYSTEM: INTERIOR GLAZED WITH (2)-LEAF DUAL DUROMETER AND SIKA FLEX "552" BACKBEDDING WITH A SNAP-IN (2)-LEAF DUAL DUROMETER RIGID VINYL GLAZING BEAD.

6.2. ALL SETTING BLOCKS AND GASKET MATERIALS SHALL BE IN COMPLIANCE WITH THE CURRENT EDITION OF THE FLORIDA BUILDING CODE. SETTING BLOCKS SHALL BE NEOPRENE WITH A 70 TO 90 SHORE A DUROMETER. GASKET MATERIALS SHALL BE EDPM WITH A MINIMUM 60 SHORE A DUROMETER.

6.3. AS TESTED GLAZING MEETS ASTM E1300-09a FOR THE DESIGN CONDITIONS SHOWN IN THIS PRODUCT APPROVAL DOCUMENT.

7. APPROVED IMPACT PROTECTIVE SYSTEM IS NOT REQUIRED FOR THIS PRODUCT IN WIND BORNE DEBRIS REGIONS INCLUDING THE HVHZ.

8. SHIM AS REQUIRED AT EACH INSTALLATION ANCHOR WITH LOAD BEARING SHIM. SHIM WHERE SPACE OF 1/16" OR GREATER OCCURS. MAXIMUM ALLOWABLE SHIM STACK TO BE 1/4".

9. FOR ANCHORING INTO CONCRETE/MASONRY USE 1/4" HEX HEAD TAPCONS WITH SUFFICIENT LENGTH TO ACHIEVE A 1 1/2" MINIMUM EMBEDMENT INTO CONCRETE WITH 1 1/2" MINIMUM EDGE DISTANCE AND 1" MINIMUM EMBEDMENT INTO MASONRY WITH 2" MINIMUM EDGE DISTANCE. LOCATE ANCHORS AS SHOWN IN ELEVATIONS AND INSTALLATION DETAILS. 4" MINIMUM SPACING BETWEEN ADJACENT ANCHORS REQUIRED. ANCHOR LOCATIONS HAVE +/- 1" TOLERANCE.

10. FOR ANCHORING INTO WOOD FRAMING OR 2X BUCK USE ONE OF THE FOLLOWING:

10.1. #12 PAN HEAD WOOD SCREWS (WS) WITH SUFFICIENT LENGTH TO ACHIEVE A 1 3/8" MINIMUM EMBEDMENT INTO SUBSTRATE WITH 7/8" MINIMUM EDGE DISTANCE AND MINIMUM ANCHOR-TO-ANCHOR SPACING OF 2" ON CENTER. LOCATE ANCHORS AS SHOWN IN ELEVATIONS AND INSTALLATION DETAILS. ANCHOR LOCATIONS HAVE +/- 1" TOLERANCE.

10.2. #14 PAN HEAD WOOD SCREWS (WS) WITH SUFFICIENT LENGTH TO ACHIEVE A 1 1/2" MINIMUM EMBEDMENT INTO SUBSTRATE WITH 1" MINIMUM EDGE DISTANCE AND MINIMUM ANCHOR-TO-ANCHOR SPACING OF 2" ON CENTER. LOCATE ANCHORS AS SHOWN IN ELEVATIONS AND INSTALLATION DETAILS. ANCHOR LOCATIONS HAVE +/- 1" TOLERANCE.

11. FOR ANCHORING INTO METAL STRUCTURE USE #14 PAN OR HEX HEAD SHEET METAL OR SELF DRILLING SCREWS WITH SUFFICIENT LENGTH TO ACHIEVE 3 THREADS MINIMUM BEYOND STRUCTURE INTERIOR WALL WITH 3/4" MINIMUM EDGE DISTANCE AND MINIMUM ANCHOR-TO-ANCHOR SPACING OF 2" ON CENTER. LOCATE ANCHORS AS SHOWN IN ELEVATIONS AND INSTALLATION DETAILS. ANCHOR LOCATIONS HAVE +/- 1" TOLERANCE.

12. ALL FASTENERS TO BE CORROSION RESISTANT OR HAVE A CORROSION RESISTANT COATING

13. INSTALLATION ANCHORS SHALL BE INSTALLED IN ACCORDANCE WITH ANCHOR MANUFACTURER'S INSTALLATION INSTRUCTIONS AND ANCHORS SHALL NOT BE USED IN SUBSTRATES WITH STRENGTHS LESS THAN THE MINIMUM STRENGTH SPECIFIED BELOW:

13.1. WOOD - MINIMUM SPECIFIC GRAVITY OF (G) 0.42 (NON-HVHZ) AND 0.55 (HVHZ)

13.2. CONCRETE - MINIMUM COMPRESSIVE STRENGTH OF 2500 PSI

13.3. MASONRY - STRENGTH CONFORMANCE TO ASTM C-90, MEDIUM WEIGHT WITH DENSITY > 117 PCF

13.4. METAL SUBSTRATE: STEEL 18GA (0.0428"), Fy = 33KSI / Fu = 45 KSI OR ALUMINUM 6063-T5 0.048" THICK MINIMUM.

13.4.1. STEEL SUBSTRATE TO MEET MINIMUM FBC HVHZ CODE REQUIREMENTS.

PROJECT #420-0810

REGENCY PLUS, INC.

2000 LOCUST GAP HIGHWAY

MT. CARMEL, PA 17851

TITLE: SERIES TECH 5605 VINYL AWNING WINDOW - LMI

NOTES

DRAWN BY: RJA

DATE: 2/14/19

SCALE: N.T.S.

DRAWING NO.: RPLS0080

REV: A

SHEET: 1 OF 7

PTC Product Design Group, LLC

PO Box 520775, Longwood, FL 32752-0775

321-690-1788 info@ptc-corp.com

FBPE Cert. of Auth. No. 25935

Robert J. Amoruso, P.E.

Florida P.E. No. 49752

PRODUCT REVISED

as complying with the Florida

Building Code

NOA-No. 20-1103.05

Expiration Date 05/30/2024

By

Miami-Dade Product Control

TABLE OF CONTENTS

SHEET

DESCRIPTION

1

NOTES

2

ELEVATION & ANCHOR LOCATION

3

VERTICAL SECTIONS - CONCRETE & WOOD SUBSTRATES

4

VERTICAL SECTIONS - METAL SUBSTRATES

5

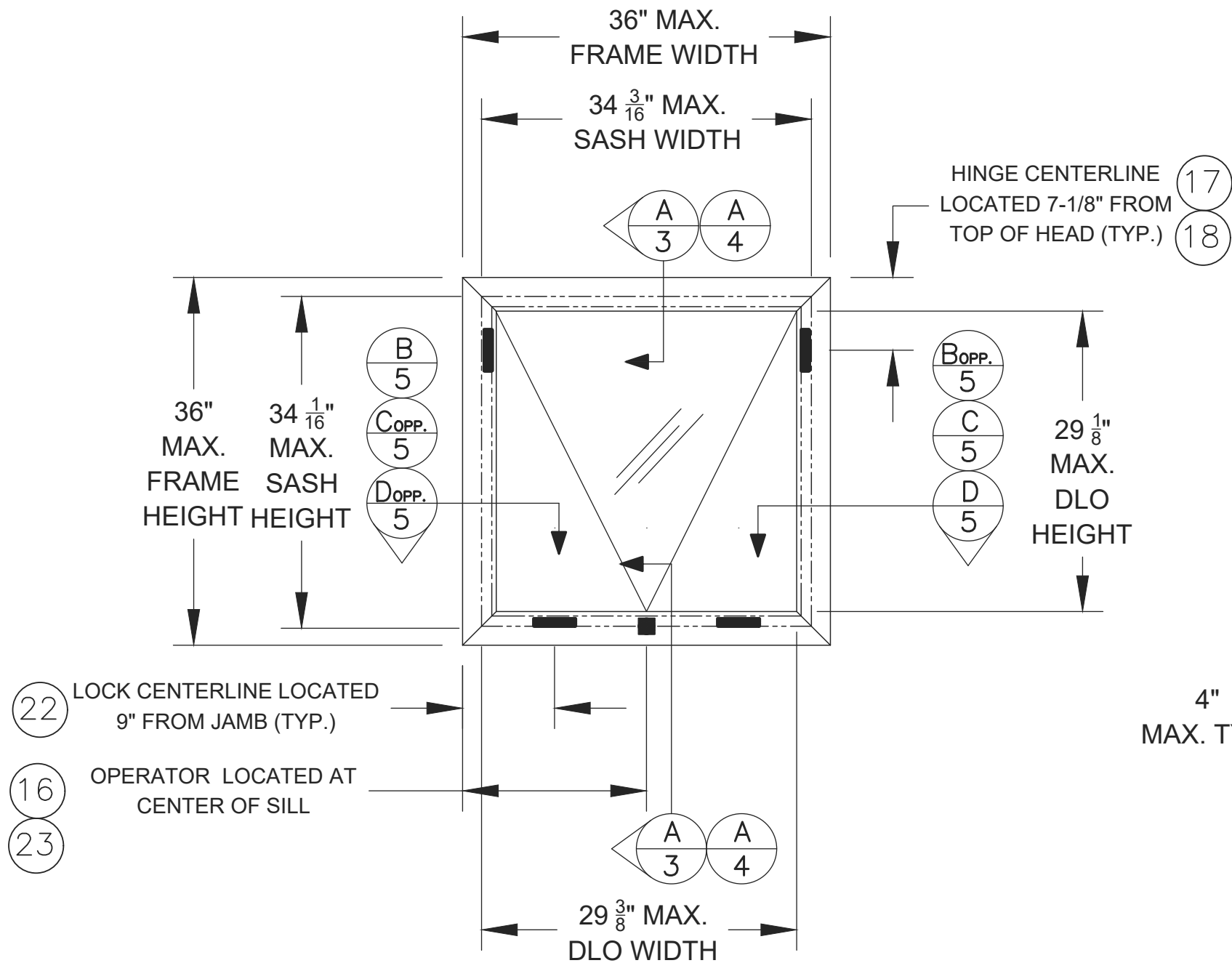
HORIZONTAL SECTIONS - CONCRETE/MASONRY, WOOD & METAL SUBSTRATES

6

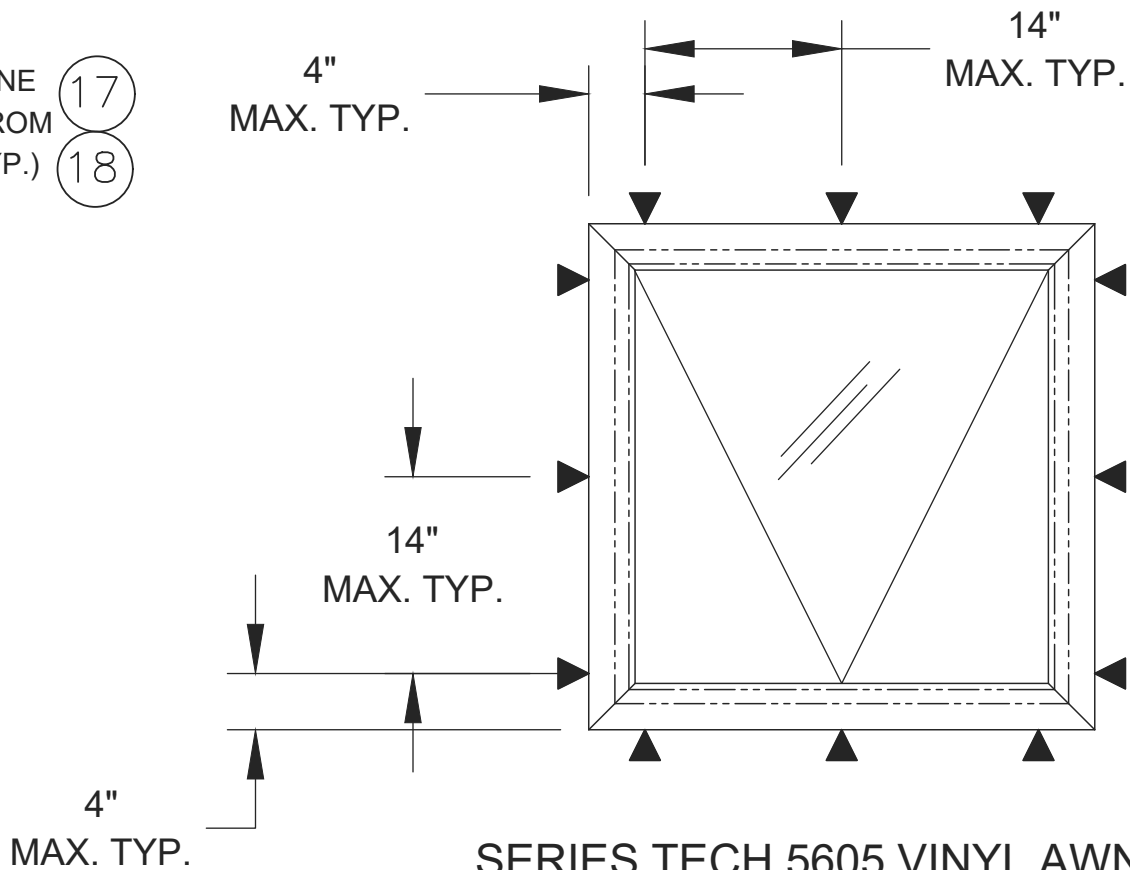
COMPONENTS AND FRAME CONSTRUCTION

7

BILL OF MATERIALS



**SERIES TECH 5605 VINYL AWNING
(PROJECT-OUT BOTTOM) WINDOW
EXTERIOR VIEW**




**SERIES TECH 5605 VINYL AWNING
(PROJECT-OUT BOTTOM) WINDOW
EXTERIOR VIEW - ANCHORAGE**

- INSTALLATION NOTES:
1. HEAD AND SILL ANCHORAGE THE SAME.
 2. JAMB ANCHORAGE SAME.
 3. +/- 1" TOLERANCE ON ANCHOR LOCATION.
 - 3.1. TAPCON MINIMUM SPACING IS 4" OC.
 - 3.2. WOOD AND TAPPING SCREW MINIMUM SPACING IS 2" OC.

| DESIGN PRESSURE RATING (PSF) | IMPACT RATING |
|------------------------------|----------------------|
| +55.0/-55.0 | LARGE MISSILE IMPACT |


- NOTES:
1. MAXIMUM ACTIVE PANEL (SASH) SIZE: 34.19" X 34.06" (34-3/16" X 34-1/16")
 2. DAYLIGHT OPENING (DLO) SIZE: 29.38" X 29.12" (29-3/8" X 29-1/8")
 3. NO WEEP HOLES EMPLOYED

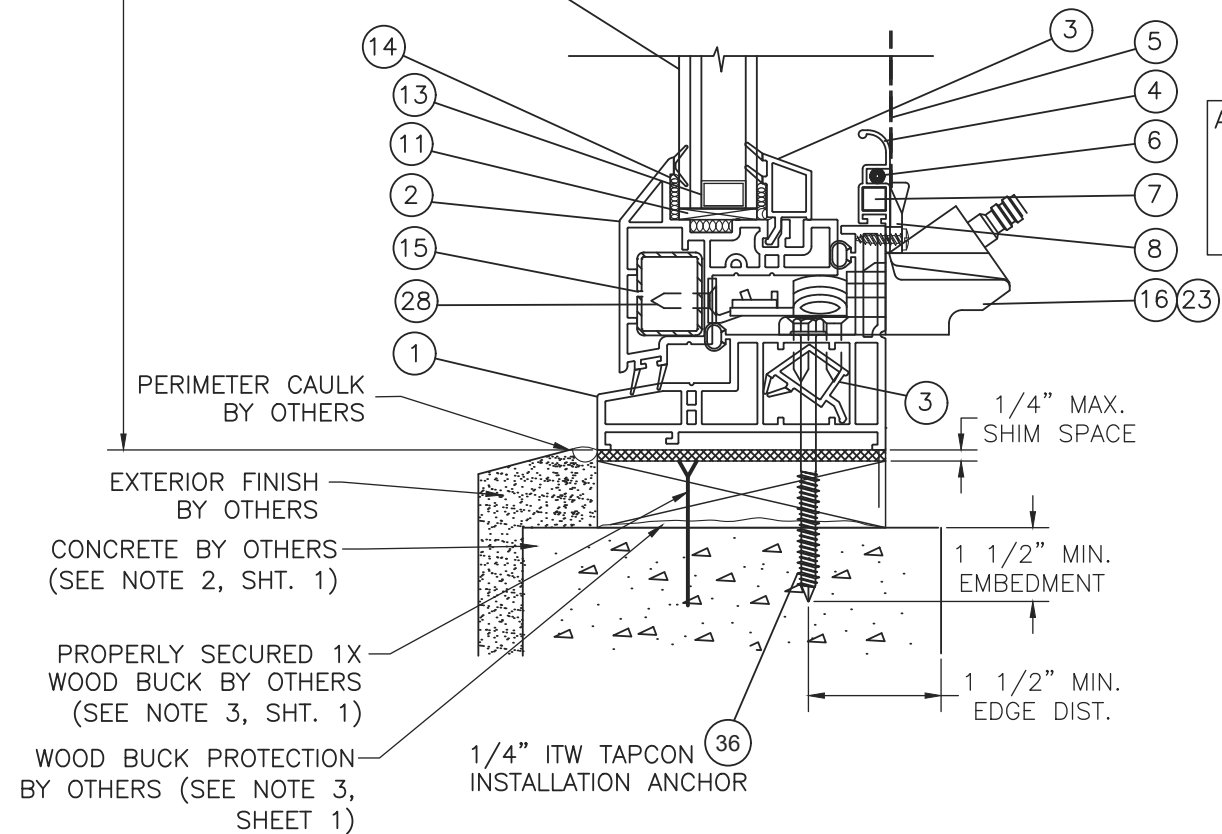
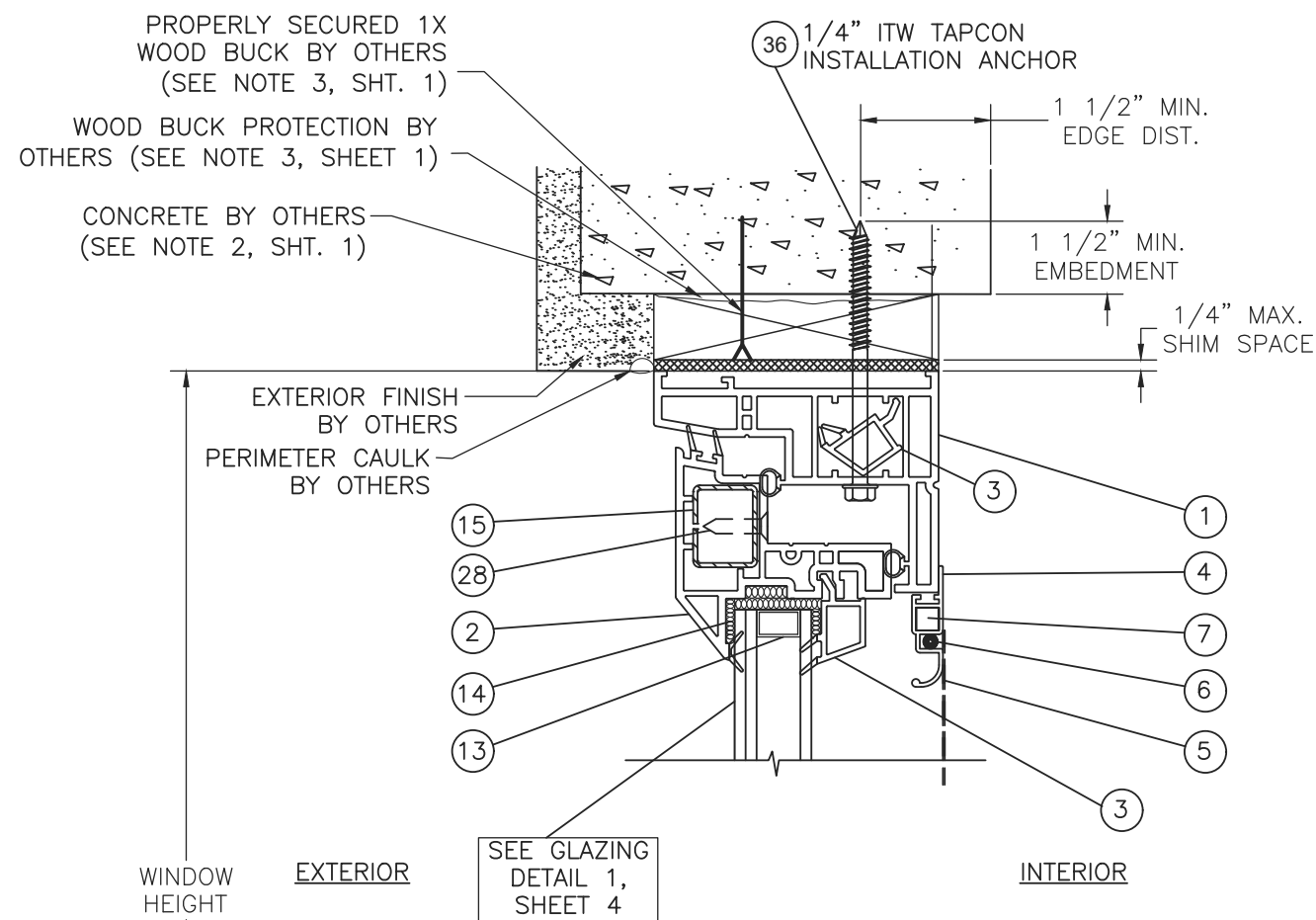
| | | | | | |
|-------------------|--|--|----------------------------------|-------------|----------|
| PROJECT #420-0810 | | | | | |
| | | | | | |
| | | | | | |
| | | | UPDATE TO 7TH EDITION (2020) FBC | DESCRIPTION | DATE |
| | | | A | REV | 10/20/20 |
| | | | | | RJA |
| | | | | | BY |

| | |
|---|----------------------|
| REGENCY PLUS, INC. 2000 LOCUST GAP HIGHWAY MT. CARMEL, PA 17851 | |
| TITLE: SERIES TECH 5605 VINYL AWNING WINDOW - LMI ELEVATION AND ANCHOR LAYOUT | |
| DRAWN BY: RJA | DATE: 2/14/19 |
| SCALE: N.T.S. | DRAWING NO: RPLS0080 |
| REV: A | SHEET: 2 OF 7 |
| <div><p>PTC Product Design Group, LLC PO Box 520775, Longwood, FL 32752-0775 321-690-1788 info@ptc-corp.com FBPE Cert. of Auth. No. 25935</p></div> | |

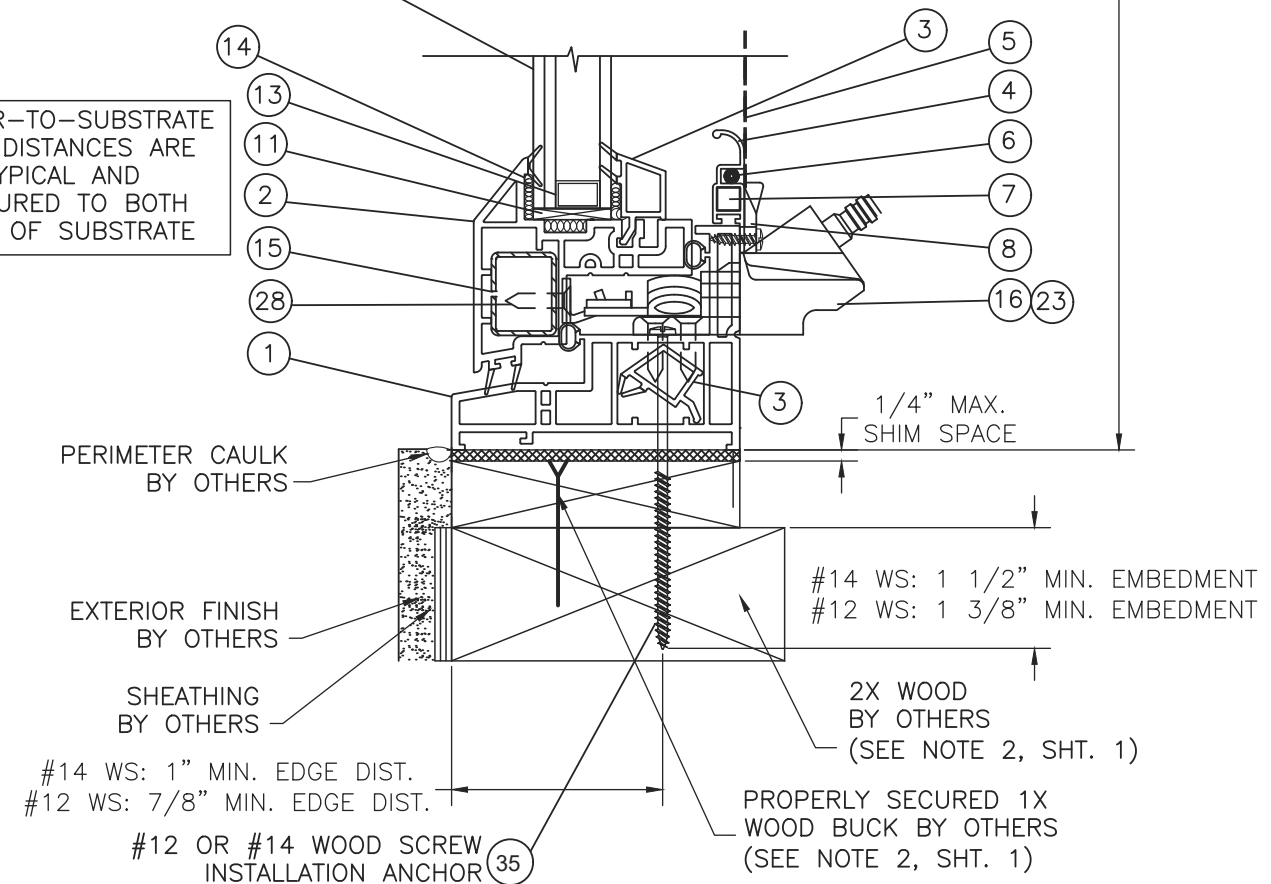
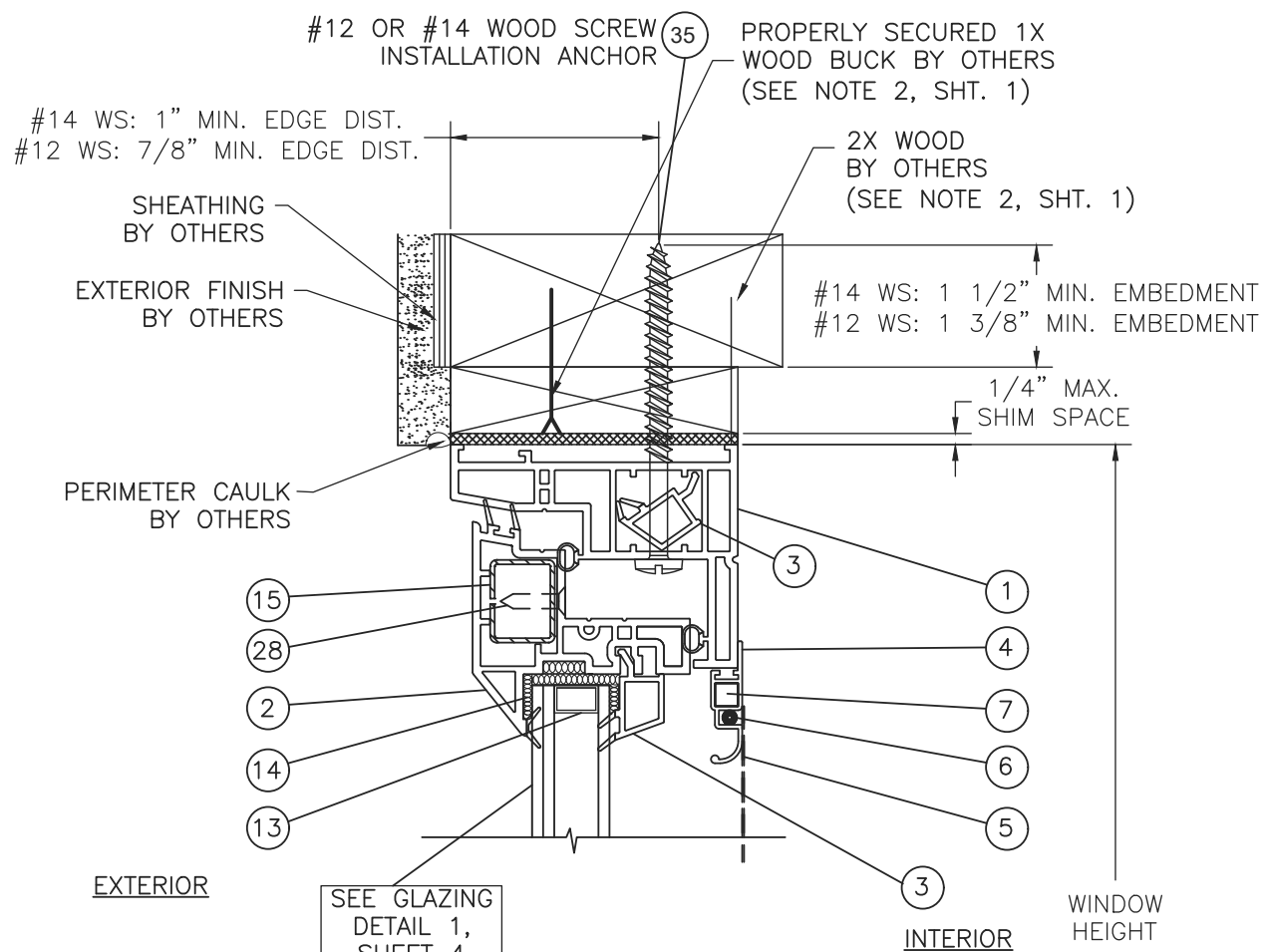
Robert J. Amoruso, P.E.
Florida P.E. No. 49752



PRODUCT REVISED
as complying with the Florida Building Code
NOA-No. 20-1103.05
Expiration Date 05/30/2024
By 
Miami-Dade Product Control



A VERTICAL SECTION
CONCRETE SUBSTRATE



A VERTICAL SECTION
WOOD SUBSTRATE

ANCHOR-TO-SUBSTRATE
EDGE DISTANCES ARE
TYPICAL AND
MEASURED TO BOTH
SIDES OF SUBSTRATE

PROJECT #420-0810

REGENCY PLUS, INC.
2000 LOCUST GAP HIGHWAY
MT. CARMEL, PA 17851

TITLE: SERIES TECH 5605 VINYL AWNING WINDOW - LMI
VERTICAL SECTION - CONCRETE & WOOD SUBSTRATES

DRAWN BY: RJA DATE: 2/14/19
SCALE: N.T.S. DRAWING NO: RPLS0080
REV: A SHEET: 3 OF 7

PTC Product Design Group, LLC
PO Box 520775, Longwood, FL 32752-0775
321-690-1788 info@ptc-corp.com
FBPE Cert. of Auth. No. 28935

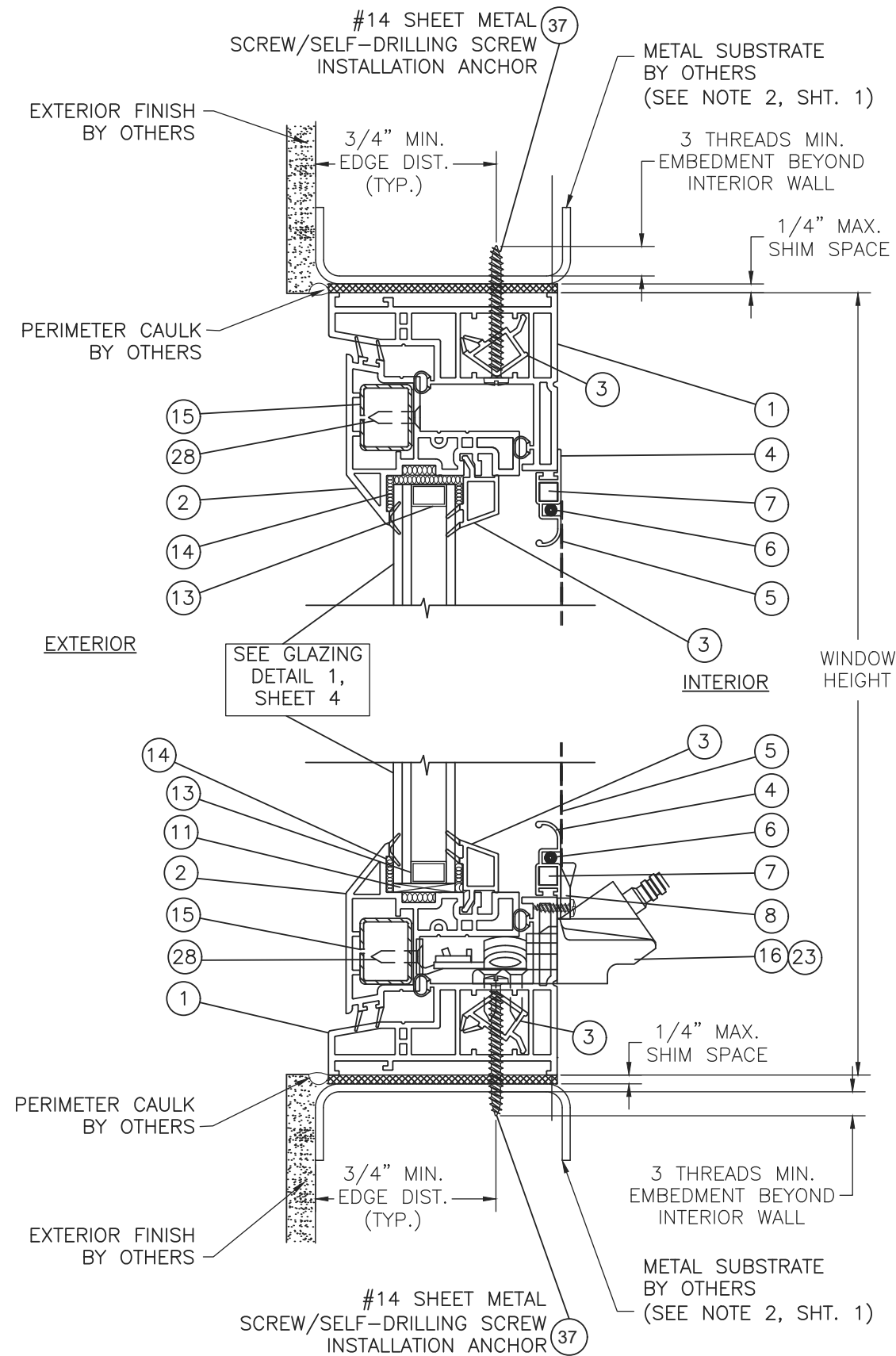
Robert J. Amoroso, P.E.
Florida P.E. No. 49752



PRODUCT REVISED
as complying with the Florida
Building Code
NOA-No. 20-1103.05

Expiration Date 05/30/2024

By 
Miami-Dade Product Control



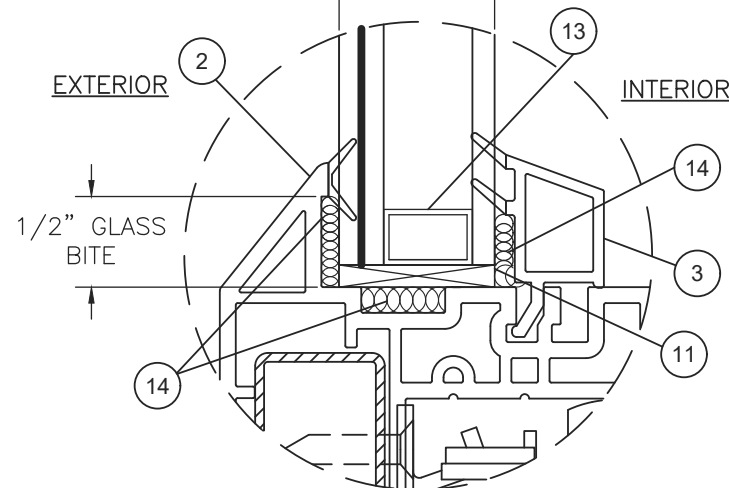
A VERTICAL SECTION
METAL SUBSTRATE

INSTALLATION NOTES:

- APPROVED INSTALLATION SUBSTRATES INCLUDE THE FOLLOWING:
 - WOOD FRAMING,
 - STEEL STUD FRAMING,
 - ALUMINUM FRAMING, AND
 - CONCRETE AND/OR MASONRY.
- 2X WOOD FRAMING, 1X OR 2X WOOD BUCK, METAL FRAMING AND CONCRETE/MASONRY OPENING TO BE DESIGNED AND ANCHORED TO PROPERLY TRANSFER ALL LOADS TO STRUCTURE. FRAMING AND CONCRETE/MASONRY OPENING IS THE RESPONSIBILITY OF THE ARCHITECT OR ENGINEER OF RECORD.
- 1X BUCK OVER CONCRETE/MASONRY IS OPTIONAL. WHEN 1X BUCK IS USED, INSTALLATION ANCHORS WILL PASS THROUGH WINDOW FRAME AND 1X BUCK INTO CONCRETE/MASONRY SUBSTRATE. WHEN USED, 1X BUCKS SHALL BE DESIGNED AND ANCHORED TO PROPERLY TRANSFER ALL LOADS TO STRUCTURE AND IS THE RESPONSIBILITY OF THE ARCHITECT OR ENGINEER OF RECORD. DISSIMILAR MATERIALS MUST BE SEPARATED WITH APPROVED COATING OR MEMBRANE. SELECTION OF COATING OR MEMBRANE IS THE RESPONSIBILITY OF THE ARCHITECT OR ENGINEER OF RECORD.
- SHIM AS REQUIRED AT EACH INSTALLATION ANCHOR WITH LOAD BEARING SHIM. SHIM WHERE SPACE OF 1/16" OR GREATER OCCURS. MAXIMUM ALLOWABLE SHIM STACK TO BE 1/4".
- FOR ANCHORING INTO CONCRETE/MASONRY USE 1/4" HEX HEAD TAPCONS WITH SUFFICIENT LENGTH TO ACHIEVE A 1 1/2" MINIMUM EMBEDMENT INTO CONCRETE WITH 1 1/2" MINIMUM EDGE DISTANCE AND 1" MINIMUM EMBEDMENT INTO MASONRY WITH 2" MINIMUM EDGE DISTANCE. LOCATE ANCHORS AS SHOWN IN ELEVATIONS AND INSTALLATION DETAILS. 4" MINIMUM SPACING BETWEEN ADJACENT ANCHORS REQUIRED. ANCHOR LOCATIONS HAVE +/- 1" TOLERANCE.
- FOR ANCHORING INTO WOOD FRAMING OR 2X BUCK USE ONE OF THE FOLLOWING:
 - #12 PAN HEAD WOOD SCREWS (WS) WITH SUFFICIENT LENGTH TO ACHIEVE A 1 3/8" MINIMUM EMBEDMENT INTO SUBSTRATE WITH 7/8" MINIMUM EDGE DISTANCE AND MINIMUM ANCHOR-TO-ANCHOR SPACING OF 2" ON CENTER. LOCATE ANCHORS AS SHOWN IN ELEVATIONS AND INSTALLATION DETAILS. ANCHOR LOCATIONS HAVE +/- 1" TOLERANCE.
 - #14 PAN HEAD WOOD SCREWS (WS) WITH SUFFICIENT LENGTH TO ACHIEVE A 1 1/2" MINIMUM EMBEDMENT INTO SUBSTRATE WITH 1" MINIMUM EDGE DISTANCE AND MINIMUM ANCHOR-TO-ANCHOR SPACING OF 2" ON CENTER. LOCATE ANCHORS AS SHOWN IN ELEVATIONS AND INSTALLATION DETAILS. ANCHOR LOCATIONS HAVE +/- 1" TOLERANCE.
- FOR ANCHORING INTO METAL STRUCTURE USE #14 PAN OR HEX HEAD SHEET METAL OR SELF DRILLING SCREWS WITH SUFFICIENT LENGTH TO ACHIEVE 3 THREADS MINIMUM BEYOND STRUCTURE INTERIOR WALL WITH 3/4" MINIMUM EDGE DISTANCE AND MINIMUM ANCHOR-TO-ANCHOR SPACING OF 2" ON CENTER. LOCATE ANCHORS AS SHOWN IN ELEVATIONS AND INSTALLATION DETAILS. ANCHOR LOCATIONS HAVE +/- 1" TOLERANCE.
- INTERIOR AND EXTERIOR FINISHES BY OTHERS. NOT SHOWN FOR CLARITY.
- PERIMETER AND JOINT SEALANT BY OTHERS TO BE DESIGNED AND/OR SPECIFIED IN ACCORDANCE WITH ASTM E2112.

ANCHOR-TO-SUBSTRATE
EDGE DISTANCES ARE
TYPICAL AND
MEASURED TO BOTH
SIDES OF SUBSTRATE

7/8" O.A. LAMINATED GLASS CONSISTING
OF: EXTERIOR LAMINATED GLASS - (2)
NOMINAL 1/8" ANNEALED GLASS W/
0.090" KURARAY AMERICA INC. TROSIFOL
INTERLAYER, 7/16" AIRSPACE W/
STAINLESS STEEL SPACER (TYPE SS-D),
INTERIOR 1/8" TEMPERED GLASS



GLAZING DETAIL 1

PROJECT #420-0810

REGENCY PLUS, INC.

2000 LOCUST GAP HIGHWAY

MT. CARMEL, PA 17851

TITLE: SERIES TECH 5605 VINYL AWNING WINDOW - LMI
VERTICAL SECTIONS - METAL SUBSTRATES

DATE: 2/14/19

DRAWING NO: RPLS0080

SCALE: N.T.S.

REV: A

SHEET: 4 OF 7

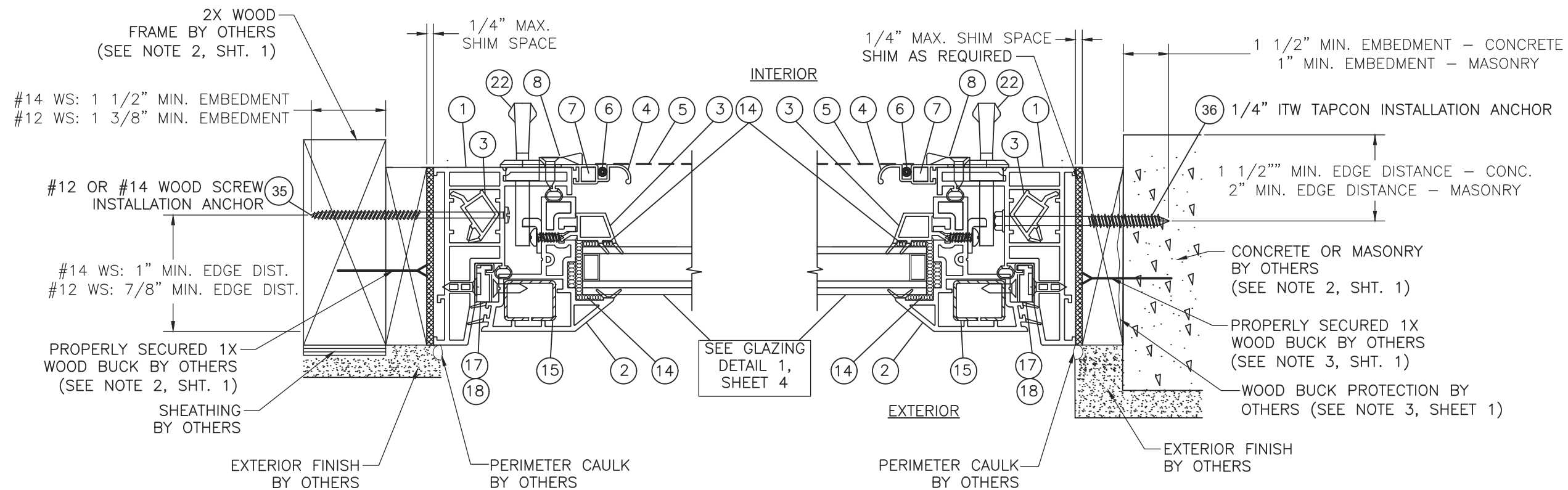
Robert J. Amoruso, P.E.
Florida P.E. No. 49752



PRODUCT REVISED
as complying with the Florida
Building Code
NOA-No. 20-1103.05

Expiration Date 05/30/2024

By 
Miami-Dade Product Control

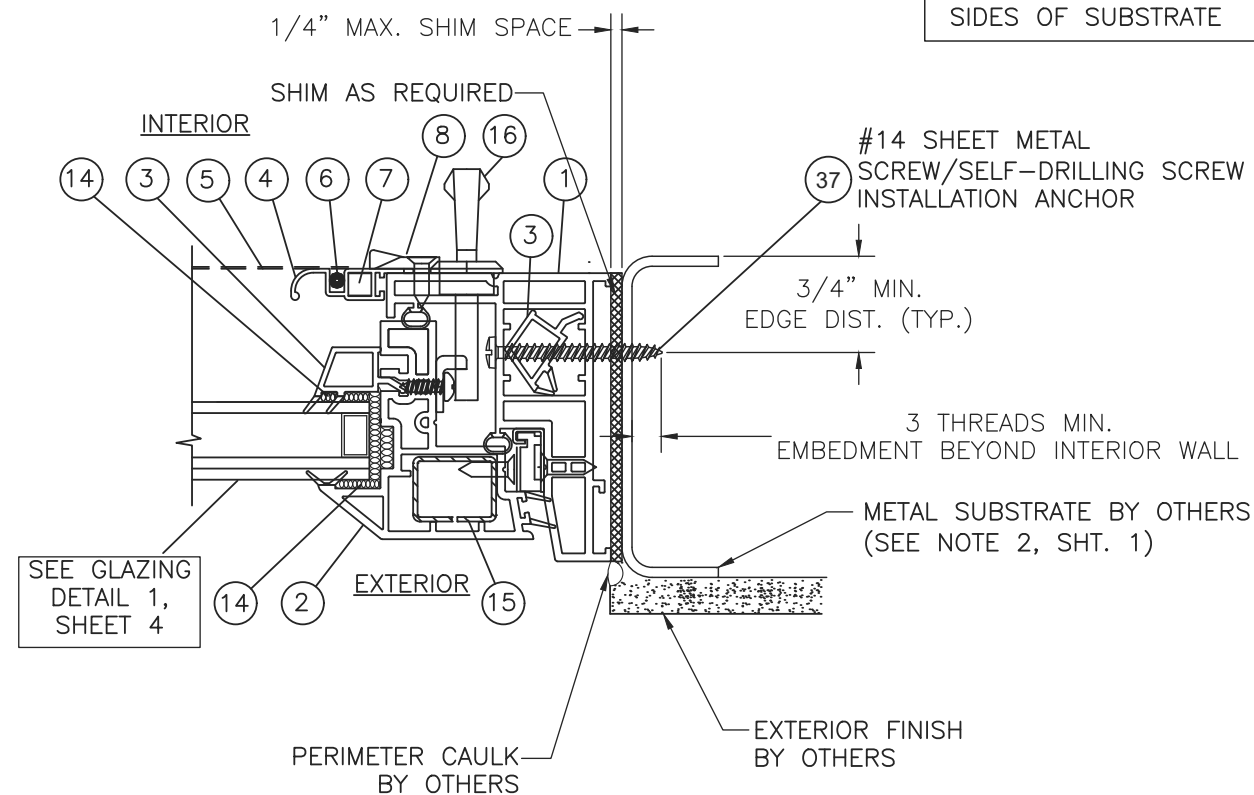


B HORIZONTAL SECTION

WOOD FRAME SUBSTRATE

C HORIZONTAL SECTION CONCRETE / MASONRY SUBSTRATE

ANCHOR-TO-SUBSTRATE
EDGE DISTANCES ARE
TYPICAL AND
MEASURED TO BOTH
SIDES OF SUBSTRATE



D HORIZONTAL SECTION
METAL SUBSTRATE

PROJECT #420-0810

REGENCY PLUS, INC.

REGENCY PLUS, INC.
2000 LOCUST GAP HIGHWAY

TITLE: SERIES TECH 5605 VINYL AWNING WINDOW - LMI
 HORZ. SECT: - CONCRETE/MASONRY, WOOD & METAL SUBSTRATES
 MT. CARMEL, PA 17851

DRAWN BY: _____ DATE: _____

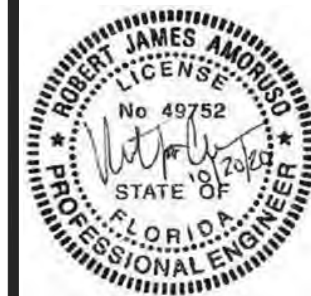
| | | |
|-------------|-----|---------|
| SCALE | RJA | 2/14/19 |
| DRAWING NO. | | |

SCALE: N.T.S.
DRAWING NO: RPLS0080

| | | | |
|------|---|--------|--------|
| REV: | A | SHEET: | 5 OF 7 |
|------|---|--------|--------|

| | | | | | | | | | | | | | | | | | | | | | | | | | | | | | | | | | | | | | | | | | | | | | | | | | | | | | | | | | | | | | | | | | | | | | | | | | | | | | | | | | | | | | | | | | | | | | | | | | | | | | | | | | | | | | | | | | | | | | | | | | | | | | | | | | | | | | | | | | | | | | | | | | | | | | | | | | | | | | | | | | | | | | | | | | | | | | | | | | | | | | | | | | | | | | | | | | | | | | | | | | | | | | | | | | | | | | | | | | | | | | | | | | | | | | | | | | | | | | | | | | | | | | | | | | | | | | | | | | | | | | | | | | | | | | | | | | | | | | | | | | | | | | | | | | | | | | | | | | | | | | | | | | | | | | | | | | | | | | | | | | | | | | | | | | | | | | | | | | | | | | | | | | | | | | | | | | | | | | | | | | | | | | | | | | | | | | | | | | | | | | | | | | | | | | | | | | | | | | | | | | | | | | | | | | | | | | | | | | | | | | | | | | | | | | | | | | | | | | | | | | | | | | | | | | | | | | | | | | | | | | | | | | |
|---|---|---|---|---|---|---|---|---|----|----|----|----|----|----|----|----|----|----|----|----|----|----|----|----|----|----|----|----|----|----|----|----|----|----|----|----|----|----|----|----|----|----|----|----|----|----|----|----|----|----|----|----|----|----|----|----|----|----|----|----|----|----|----|----|----|----|----|----|----|----|----|----|----|----|----|----|----|----|----|----|----|----|----|----|----|----|----|----|----|----|----|----|----|----|----|----|----|----|-----|-----|-----|-----|-----|-----|-----|-----|-----|-----|-----|-----|-----|-----|-----|-----|-----|-----|-----|-----|-----|-----|-----|-----|-----|-----|-----|-----|-----|-----|-----|-----|-----|-----|-----|-----|-----|-----|-----|-----|-----|-----|-----|-----|-----|-----|-----|-----|-----|-----|-----|-----|-----|-----|-----|-----|-----|-----|-----|-----|-----|-----|-----|-----|-----|-----|-----|-----|-----|-----|-----|-----|-----|-----|-----|-----|-----|-----|-----|-----|-----|-----|-----|-----|-----|-----|-----|-----|-----|-----|-----|-----|-----|-----|-----|-----|-----|-----|-----|-----|-----|-----|-----|-----|-----|-----|-----|-----|-----|-----|-----|-----|-----|-----|-----|-----|-----|-----|-----|-----|-----|-----|-----|-----|-----|-----|-----|-----|-----|-----|-----|-----|-----|-----|-----|-----|-----|-----|-----|-----|-----|-----|-----|-----|-----|-----|-----|-----|-----|-----|-----|-----|-----|-----|-----|-----|-----|-----|-----|-----|-----|-----|-----|-----|-----|-----|-----|-----|-----|-----|-----|-----|-----|-----|-----|-----|-----|-----|-----|-----|-----|-----|-----|-----|-----|-----|-----|-----|-----|-----|-----|-----|-----|-----|-----|-----|-----|-----|-----|-----|-----|-----|-----|-----|-----|-----|-----|-----|-----|-----|-----|-----|-----|-----|-----|-----|-----|-----|-----|-----|-----|-----|-----|-----|-----|-----|-----|-----|-----|-----|-----|-----|-----|-----|-----|-----|-----|-----|-----|-----|-----|-----|-----|-----|-----|-----|-----|-----|-----|-----|-----|-----|-----|-----|-----|-----|-----|-----|-----|-----|-----|-----|-----|-----|-----|-----|-----|-----|-----|-----|-----|-----|-----|-----|-----|-----|-----|-----|-----|-----|-----|-----|-----|-----|-----|-----|-----|-----|-----|-----|-----|-----|-----|-----|-----|-----|-----|-----|-----|-----|-----|-----|-----|-----|-----|-----|-----|-----|-----|-----|-----|-----|-----|-----|-----|-----|-----|-----|-----|-----|-----|-----|-----|-----|-----|-----|-----|-----|-----|-----|-----|-----|-----|-----|-----|-----|-----|-----|-----|-----|-----|-----|-----|-----|-----|-----|-----|-----|-----|-----|-----|-----|-----|-----|-----|-----|-----|-----|-----|-----|-----|-----|-----|-----|-----|-----|-----|
| 1 | 2 | 3 | 4 | 5 | 6 | 7 | 8 | 9 | 10 | 11 | 12 | 13 | 14 | 15 | 16 | 17 | 18 | 19 | 20 | 21 | 22 | 23 | 24 | 25 | 26 | 27 | 28 | 29 | 30 | 31 | 32 | 33 | 34 | 35 | 36 | 37 | 38 | 39 | 40 | 41 | 42 | 43 | 44 | 45 | 46 | 47 | 48 | 49 | 50 | 51 | 52 | 53 | 54 | 55 | 56 | 57 | 58 | 59 | 60 | 61 | 62 | 63 | 64 | 65 | 66 | 67 | 68 | 69 | 70 | 71 | 72 | 73 | 74 | 75 | 76 | 77 | 78 | 79 | 80 | 81 | 82 | 83 | 84 | 85 | 86 | 87 | 88 | 89 | 90 | 91 | 92 | 93 | 94 | 95 | 96 | 97 | 98 | 99 | 100 | 101 | 102 | 103 | 104 | 105 | 106 | 107 | 108 | 109 | 110 | 111 | 112 | 113 | 114 | 115 | 116 | 117 | 118 | 119 | 120 | 121 | 122 | 123 | 124 | 125 | 126 | 127 | 128 | 129 | 130 | 131 | 132 | 133 | 134 | 135 | 136 | 137 | 138 | 139 | 140 | 141 | 142 | 143 | 144 | 145 | 146 | 147 | 148 | 149 | 150 | 151 | 152 | 153 | 154 | 155 | 156 | 157 | 158 | 159 | 160 | 161 | 162 | 163 | 164 | 165 | 166 | 167 | 168 | 169 | 170 | 171 | 172 | 173 | 174 | 175 | 176 | 177 | 178 | 179 | 180 | 181 | 182 | 183 | 184 | 185 | 186 | 187 | 188 | 189 | 190 | 191 | 192 | 193 | 194 | 195 | 196 | 197 | 198 | 199 | 200 | 201 | 202 | 203 | 204 | 205 | 206 | 207 | 208 | 209 | 210 | 211 | 212 | 213 | 214 | 215 | 216 | 217 | 218 | 219 | 220 | 221 | 222 | 223 | 224 | 225 | 226 | 227 | 228 | 229 | 230 | 231 | 232 | 233 | 234 | 235 | 236 | 237 | 238 | 239 | 240 | 241 | 242 | 243 | 244 | 245 | 246 | 247 | 248 | 249 | 250 | 251 | 252 | 253 | 254 | 255 | 256 | 257 | 258 | 259 | 260 | 261 | 262 | 263 | 264 | 265 | 266 | 267 | 268 | 269 | 270 | 271 | 272 | 273 | 274 | 275 | 276 | 277 | 278 | 279 | 280 | 281 | 282 | 283 | 284 | 285 | 286 | 287 | 288 | 289 | 290 | 291 | 292 | 293 | 294 | 295 | 296 | 297 | 298 | 299 | 300 | 301 | 302 | 303 | 304 | 305 | 306 | 307 | 308 | 309 | 310 | 311 | 312 | 313 | 314 | 315 | 316 | 317 | 318 | 319 | 320 | 321 | 322 | 323 | 324 | 325 | 326 | 327 | 328 | 329 | 330 | 331 | 332 | 333 | 334 | 335 | 336 | 337 | 338 | 339 | 340 | 341 | 342 | 343 | 344 | 345 | 346 | 347 | 348 | 349 | 350 | 351 | 352 | 353 | 354 | 355 | 356 | 357 | 358 | 359 | 360 | 361 | 362 | 363 | 364 | 365 | 366 | 367 | 368 | 369 | 370 | 371 | 372 | 373 | 374 | 375 | 376 | 377 | 378 | 379 | 380 | 381 | 382 | 383 | 384 | 385 | 386 | 387 | 388 | 389 | 390 | 391 | 392 | 393 | 394 | 395 | 396 | 397 | 398 | 399 | 400 | 401 | 402 | 403 | 404 | 405 | 406 | 407 | 408 | 409 | 410 | 411 | 412 | 413 | 414 | 415 | 416 | 417 | 418 | 419 | 420 | 421 | 422 | 423 | 424 | 425 | 426 | 427 | 428 | 429 | 430 | 431 | 432 | 433 | 434 | 435 | 436 | 437 | 438 | 439 | 440 | 441 | 442 | 443 | 444 | 445 | 446 | 447 | 448 | 449 | 450 | 451 | 452 | 453 | 454 | 455 | 456 | 457 | 458 | 459 | 460 | 461 | 462 | 463 | 464 | 465 | 466 |
|---|---|---|---|---|---|---|---|---|----|----|----|----|----|----|----|----|----|----|----|----|----|----|----|----|----|----|----|----|----|----|----|----|----|----|----|----|----|----|----|----|----|----|----|----|----|----|----|----|----|----|----|----|----|----|----|----|----|----|----|----|----|----|----|----|----|----|----|----|----|----|----|----|----|----|----|----|----|----|----|----|----|----|----|----|----|----|----|----|----|----|----|----|----|----|----|----|----|----|-----|-----|-----|-----|-----|-----|-----|-----|-----|-----|-----|-----|-----|-----|-----|-----|-----|-----|-----|-----|-----|-----|-----|-----|-----|-----|-----|-----|-----|-----|-----|-----|-----|-----|-----|-----|-----|-----|-----|-----|-----|-----|-----|-----|-----|-----|-----|-----|-----|-----|-----|-----|-----|-----|-----|-----|-----|-----|-----|-----|-----|-----|-----|-----|-----|-----|-----|-----|-----|-----|-----|-----|-----|-----|-----|-----|-----|-----|-----|-----|-----|-----|-----|-----|-----|-----|-----|-----|-----|-----|-----|-----|-----|-----|-----|-----|-----|-----|-----|-----|-----|-----|-----|-----|-----|-----|-----|-----|-----|-----|-----|-----|-----|-----|-----|-----|-----|-----|-----|-----|-----|-----|-----|-----|-----|-----|-----|-----|-----|-----|-----|-----|-----|-----|-----|-----|-----|-----|-----|-----|-----|-----|-----|-----|-----|-----|-----|-----|-----|-----|-----|-----|-----|-----|-----|-----|-----|-----|-----|-----|-----|-----|-----|-----|-----|-----|-----|-----|-----|-----|-----|-----|-----|-----|-----|-----|-----|-----|-----|-----|-----|-----|-----|-----|-----|-----|-----|-----|-----|-----|-----|-----|-----|-----|-----|-----|-----|-----|-----|-----|-----|-----|-----|-----|-----|-----|-----|-----|-----|-----|-----|-----|-----|-----|-----|-----|-----|-----|-----|-----|-----|-----|-----|-----|-----|-----|-----|-----|-----|-----|-----|-----|-----|-----|-----|-----|-----|-----|-----|-----|-----|-----|-----|-----|-----|-----|-----|-----|-----|-----|-----|-----|-----|-----|-----|-----|-----|-----|-----|-----|-----|-----|-----|-----|-----|-----|-----|-----|-----|-----|-----|-----|-----|-----|-----|-----|-----|-----|-----|-----|-----|-----|-----|-----|-----|-----|-----|-----|-----|-----|-----|-----|-----|-----|-----|-----|-----|-----|-----|-----|-----|-----|-----|-----|-----|-----|-----|-----|-----|-----|-----|-----|-----|-----|-----|-----|-----|-----|-----|-----|-----|-----|-----|-----|-----|-----|-----|-----|-----|-----|-----|-----|-----|-----|-----|-----|-----|-----|-----|-----|-----|-----|-----|-----|-----|-----|-----|-----|-----|-----|-----|-----|-----|-----|-----|-----|-----|-----|-----|-----|-----|-----|-----|-----|-----|-----|-----|

Robert J. Amoruso, P.E.
Florida P.E. No. 49752

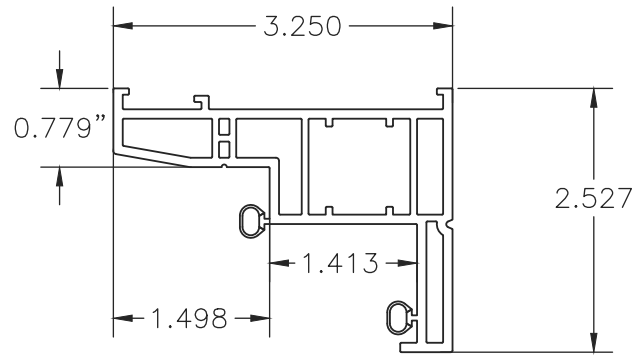


PRODUCT REVISED
as complying with the Florida
Building Code
NOA-No. 20-1103 05

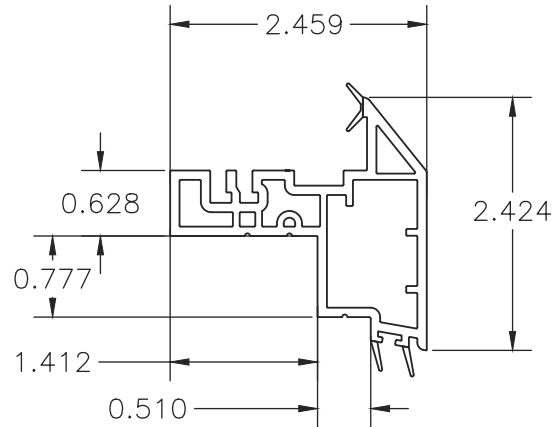
Expiration Date 05/30/2024

By _____
Miami-Dade Product Control

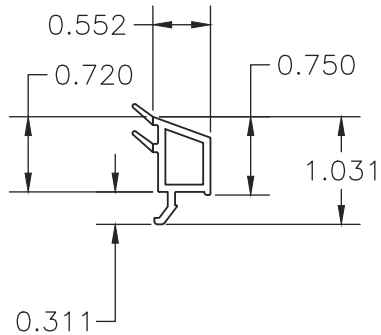
① MAIN FRAME
0.085" TYP. WALL THICKNESS



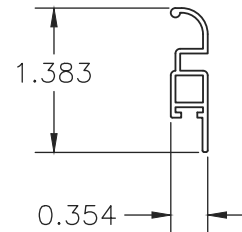
② SASH FRAME
0.080" TYP. WALL THICKNESS



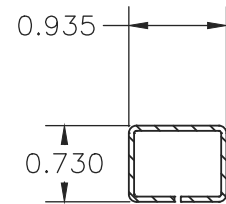
③ GLAZING BEAD
0.070" TYP.
WALL THICKNESS



④ SCREEN FRAME
0.045" TYP.
WALL THICKNESS

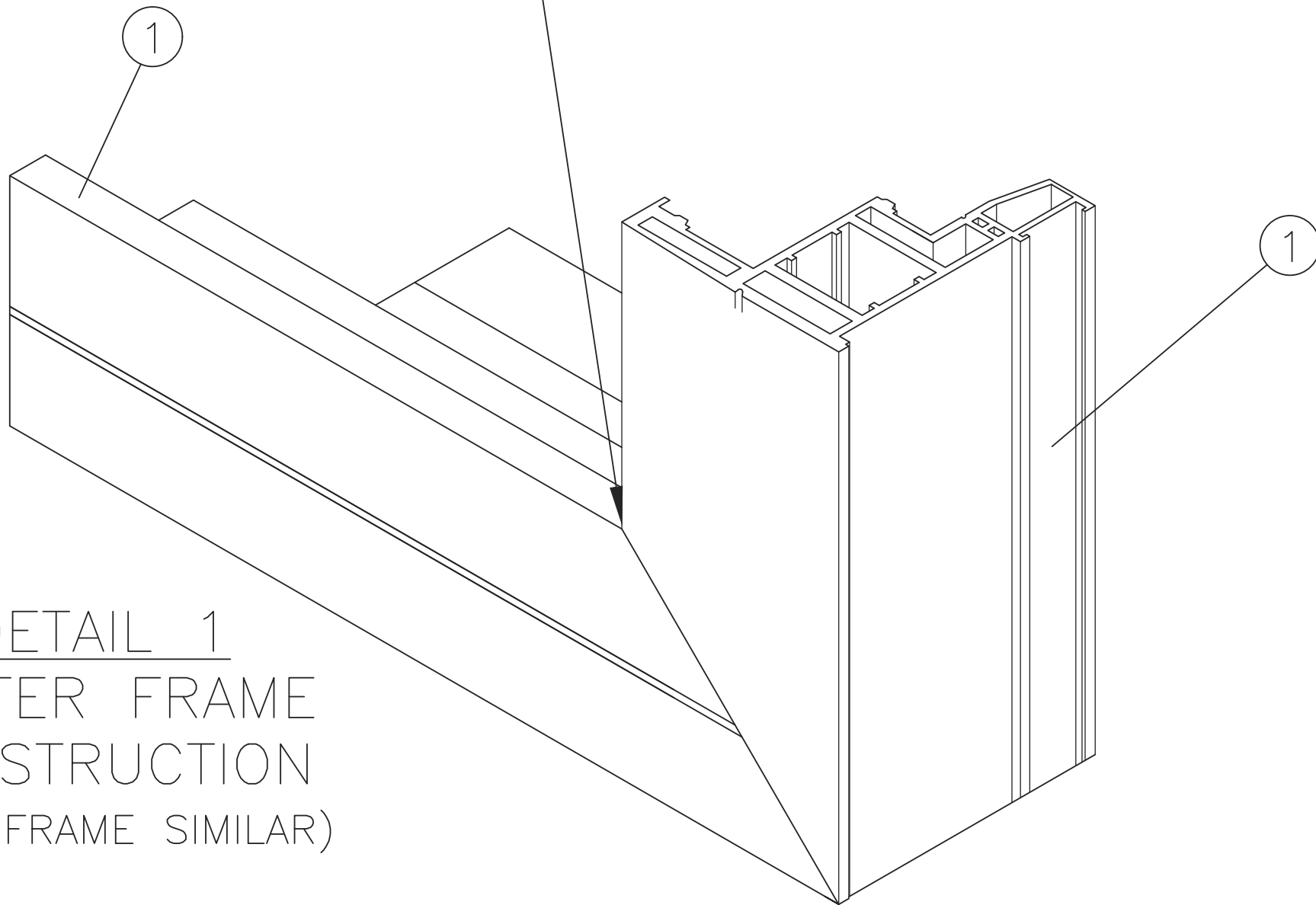


⑮ SASH REINFORCEMENT
0.05" TYP. WALL THICKNESS
GALVANIZED



WELDED MITERED
CORNER CONSTRUCTION

DETAIL 1
MASTER FRAME
CONSTRUCTION
(SASH FRAME SIMILAR)



PROJECT #420-0810

REGENCY PLUS, INC.

2000 LOCUST GAP HIGHWAY

MT. CARMEL, PA 17851

SERIES TECH 5605 VINYL AWNING WINDOW - LMI
COMPONENTS AND FRAME CONSTRUCTION

DATE:

2/14/19

DRAWING NO:

RPLS0080

SHEET:

6 OF 7

DRAWN BY:

RJA

SCALE:

N.T.S.

REV:

A

PTC Product Design Group, LLC

PO Box 520775, Longwood, FL 32752-0775

321-690-1788 info@ptc-corp.com

FBPE Cert. of Auth. No. 28935

Robert J. Amoruso, P.E.
Florida P.E. No. 49752



PRODUCT REVISED
as complying with the Florida
Building Code

NOA-No. 20-1103.05

Expiration Date 05/30/2024

By 
Miami-Dade Product Control

