



DEPARTMENT OF REGULATORY AND ECONOMIC RESOURCES (RER)
BOARD AND CODE ADMINISTRATION DIVISION
NOTICE OF ACCEPTANCE (NOA)

MIAMI-DADE COUNTY
PRODUCT CONTROL SECTION

11805 SW 26 Street, Room 208
Miami, Florida 33175-2474
T (786) 315-2590 F (786) 315-2599
www.miamidade.gov/economy

Raynor Garage Doors
1101 East River Road, P.O. Box 448
Dixon, IL 61021

SCOPE:

This NOA is being issued under the applicable rules and regulations governing the use of construction materials. The documentation submitted has been reviewed and accepted by Miami-Dade County RER-Product Control Section to be used in Miami Dade County and other areas, where allowed by the Authority Having Jurisdiction (AHJ).

This NOA shall not be valid after the expiration date stated below. The Miami-Dade County Product Control Section (In Miami Dade County) and/ or the AHJ (in areas other than Miami Dade County) reserve the right to have this product or material tested for quality assurance purposes. If this product or material fails to perform in the accepted manner, the manufacturer will incur the expense of such testing and the AHJ may immediately revoke, modify, or suspend the use of such product or material within their jurisdiction. RER reserves the right to revoke this acceptance if it is determined by Miami-Dade County Product Control Section that this product or material fails to meet the requirements of the applicable building code.

This product is approved as described herein and has been designed to comply with the Florida Building Code, including the High Velocity Hurricane Zone.

DESCRIPTION: SteelForm Sectional Garage Door up to 12ft.-2in. Wide

APPROVAL DOCUMENT: Drawing No. **P-3310**, titled "Spec. Wind Load SteelForm Standard 24-Gauge and 20-Gauge", sheets 1 through 3 of 3, dated 03/07/2008, with last revision **D** dated 10/18/2018, prepared by Raynor Garage Doors, signed and sealed by Scott A. Brown, P.E., bearing the Miami-Dade County Product Control revision stamp with the Notice of Acceptance number and expiration date by the Miami-Dade County Product Control Section.

MISSILE IMPACT RATING: Large and Small Missile Impact Resistant

LABELING: A permanent label with the manufacturer's name or logo, manufacturing address, model number, the positive and negative design pressure rating, indicate impact rated if applicable, installation instruction drawing reference number, approval number (NOA), the applicable test standards, and the statement reading 'Miami-Dade County Product Control Approved' is to be located on the door's sidetrack, bottom angle, or inner surface of a panel.

RENEWAL of this NOA shall be considered after a renewal application has been filed and there has been no change in the applicable building code negatively affecting the performance of this product.

TERMINATION of this NOA will occur after the expiration date or if there has been a revision or change in the materials, use, and/or manufacture of the product or process. Misuse of this NOA as an endorsement of any product, for sales, advertising or any other purposes shall automatically terminate this NOA. Failure to comply with any section of this NOA shall be cause for termination and removal of NOA.

ADVERTISEMENT: The NOA number preceded by the words Miami-Dade County, Florida, and followed by the expiration date may be displayed in advertising literature. If any portion of the NOA is displayed, then it shall be done in its entirety.

INSPECTION: A copy of this entire NOA shall be provided to the user by the manufacturer or its distributors and shall be available for inspection at the job site at the request of the Building Official.

This NOA revises NOA # **18-0821.10** and consists of this page 1 and evidence pages E-1, E-2 and E-3, as well as approval document mentioned above.

The submitted documentation was reviewed by **Carlos M. Utrera, P.E.**



NOA-No. 20-1104.15
Expiration Date: November 06, 2023
Approval Date: February 18, 2021
Page 1

NOTICE OF ACCEPTANCE: EVIDENCE SUBMITTED

1. EVIDENCE SUBMITTED UNDER PREVIOUS NOA's

A. DRAWINGS “Submitted under NOA #15-0714.06”

1. Drawing No. **P-3310**, titled “Spec. Wind Load SteelForm Standard 24- Gauge and 20- Gauge”, sheets 1 through 3 of 3, dated 03/07/2008, prepared by Raynor Garage Doors, signed and sealed by Richard A. Baumann, P.E.

B. TESTS “Submitted under NOA #10-0420.03”

1. Test report on Forced Entry Resistance Test, per FBC 2411 3.2.1, TAS 202-94 of two 16’x 7’ Sectional Garage Doors, prepared by Hurricane Test Laboratory, LLC, Test Report No. **G493-0706-10**, dated 08/10/2010, signed and sealed by Vinu J. Abraham, P.E.

“Submitted under NOA #08-0709.07”

2. Test reports on 1) Uniform Static Air Pressure Test, Loading per FBC TAS 202-94
2) Large Missile Impact Test per FBC, TAS 201-94
3) Cyclic Wind Pressure Loading per FBC, TAS 203-94
Along with marked-up drawings and installation diagram of a 12’x 8’SteelForm Sectional Garage Door, prepared by Hurricane Test Laboratory, LLC, Test Report No. **G493-0305-08**, dated 04/14/2008, signed and sealed by Vinu J. Abraham, P.E.
3. Test report on Tensile Test per ASTM E8, of steel sheet, prepared by Certified Testing Laboratories, Test Report No. **0313Q**, dated 04/25/2008, signed and sealed by Ramesh Patel, P.E.
4. Test report on Salt Spray per ASTM B117 of painted G40 galvanized painted steel, prepared by Wendler Engineering Services, Inc., dated 09/25/2008, signed and sealed by Richard A. Baumann, P.E.

C. CALCULATIONS “Submitted under NOA #08-0709.07”

1. Jamb attachment verification calculations, prepared by Wendler Engineering Services, Inc., dated 05/16/2008, signed and sealed by Richard A. Baumann, P.E.
2. Jamb attachment to steel angle calculations, prepared by Wendler Engineering Services, Inc., dated 09/26/2008, signed and sealed by Richard A. Baumann, P.E.

D. QUALITY ASSURANCE

1. Miami-Dade Department of Regulatory and Economic Resources (RER).



Carlos M. Utrera, P.E.
Product Control Examiner
NOA-No. 20-1104.15

Expiration Date: November 06, 2023
Approval Date: February 18, 2021

NOTICE OF ACCEPTANCE: EVIDENCE SUBMITTED

E. MATERIAL CERTIFICATIONS

1. Test report on Surface Burning Characteristics, per ASTM E84 of Type IX EPS, Report No. **3147467SAT-001**, prepared by Intertek Testing Services, NA, Inc., dated 04/10/2008, signed by Chris Bowness, P.E.
2. Test report on Self-Ignition Temperature per ASTM D1929 of Type IX EPS, prepared by Intertek Testing Services, NA, Test Report No. **3147467SAT-002**, dated 05/26/2006, signed by Chris Bowness, P.E.
3. Notice of Acceptance No. **11-0926.07**, issued to Dyplast Products LLC., for their EPS Block Type Insulation, approved on 11/10/2011, and expiring on 01/11/2017.

F. STATEMENTS “Submitted under NOA #10-0420.03”

1. Statement letter of code conformance to the **5th edition (2014) FBC** and of no financial interest issued by Wendler Engineering Services, Inc., dated 09/09/2015, signed and sealed by Richard A. Baumann, P.E.
“Submitted under NOA #13-0829.12”
2. Statement letter of code conformance to **2010 FBC**, issued by Wendler Engineering Services, Inc., dated 08/26/2013, signed and sealed by Richard A. Baumann, P.E.
“Submitted under NOA #08-0709.07”
3. Statement letter of no financial interest issued by Wendler Engineering Services, Inc., dated 05/19/2008, signed and sealed by Richard A. Baumann, P.E.

2. EVIDENCE SUBMITTED UNDER NOA # 17-1026.09

A. DRAWINGS

1. None.

B. TESTS

1. None.

C. CALCULATIONS

1. None.

D. QUALITY ASSURANCE

1. Miami-Dade County Department of Regulatory and Economic Resources (RER).

E. MATERIAL CERTIFICATIONS

1. None.

F. STATEMENTS

1. Statement letter of code conformance to the **6th edition (2017) FBC** issued by Wendler Engineering Services, Inc., dated 10/24/2017, signed and sealed by Richard A. Baumann, P.E.



Carlos M. Utrera, P.E.
Product Control Examiner
NOA-No. 20-1104.15

Expiration Date: November 06, 2023
Approval Date: February 18, 2021

NOTICE OF ACCEPTANCE: EVIDENCE SUBMITTED

3. EVIDENCE SUBMITTED UNDER NOA # 18-0821.10

A. DRAWINGS

1. Drawing No. **P-3310**, titled "Spec. Wind Load SteelForm Standard 24- Gauge and 20-Gauges", sheets 1 through 3 of 3, dated 03/07/2008, with last revision **D** dated 10/18/2018, prepared by Raynor Garage Doors, signed and sealed by Scott A. Brown, P.E.

B. TESTS

1. None.

C. CALCULATIONS

1. Jamb attachment verification calculations prepared by Wendler Engineering Services, Inc., dated 07/31/2018 and 10/30/2018, both signed and sealed by Scott A Brown, P.E.

D. QUALITY ASSURANCE

1. Miami-Dade County Department of Regulatory and Economic Resources (RER).

E. MATERIAL CERTIFICATIONS

1. None.

F. STATEMENTS

1. Statement letter of code conformance to the **6th edition (2017) FBC** issued by Wendler Engineering Services, Inc., dated 10/24/2018, signed and sealed by Scott A. Brown, P.E.
2. Statement letter of no financial interest issued by Wendler Engineering Services, Inc., dated 08/01/2018, signed by Scott A. Brown, P.E.

4. NEW EVIDENCE SUBMITTED

A. DRAWINGS

1. None.

B. TESTS

1. None.

C. CALCULATIONS

1. None.

D. QUALITY ASSURANCE

1. Miami-Dade Department of Regulatory and Economic Resources (RER).

E. MATERIAL CERTIFICATIONS

1. Notice of Acceptance No. **17-1207.05**, issued to Dyplast Products, LLC., for their E and R Board Expanded Polystyrene Rigid Foam Insulations, approved on 02/01/2018, and expiring on 01/11/2022.

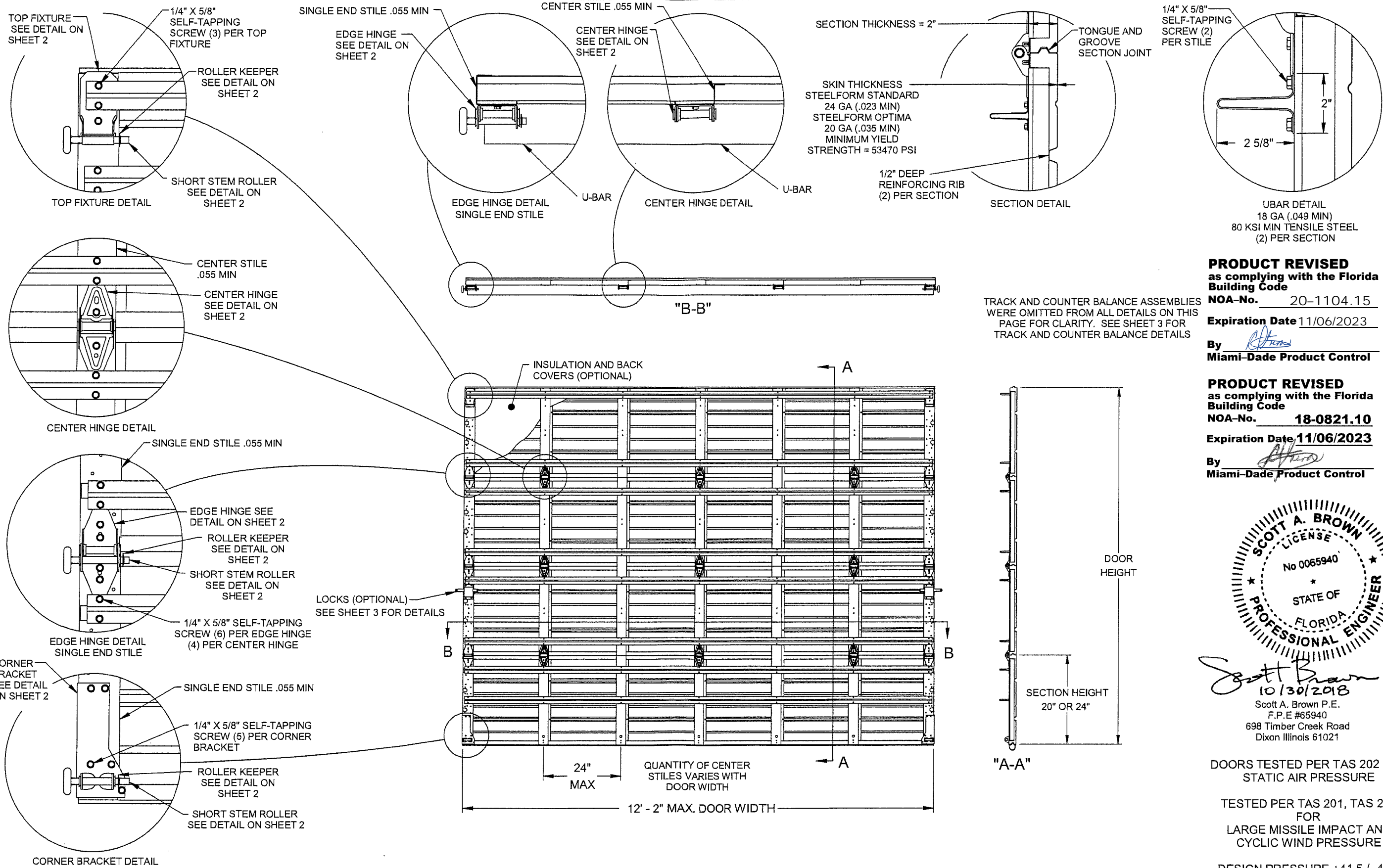
F. STATEMENTS

1. Statement letter of code conformance to **7th Edition (2020) FBC** and no financial interest, issued by Wendler Engineering Services, Inc., dated 09/30/2020, signed and sealed by Scott A. Brown, P.E.



Carlos M. Utrera, P.E.
Product Control Examiner
NOA No. 20-1104.15

Expiration Date: November 06, 2023
Approval Date: February 18, 2021



TRACK AND COUNTER BALANCE ASSEMBLIES WERE OMITTED FROM ALL DETAILS ON THIS PAGE FOR CLARITY. SEE SHEET 3 FOR TRACK AND COUNTER BALANCE DETAILS

PRODUCT REVISED
 as complying with the Florida Building Code

NOA-No. 20-1104.15

Expiration Date 11/06/2023

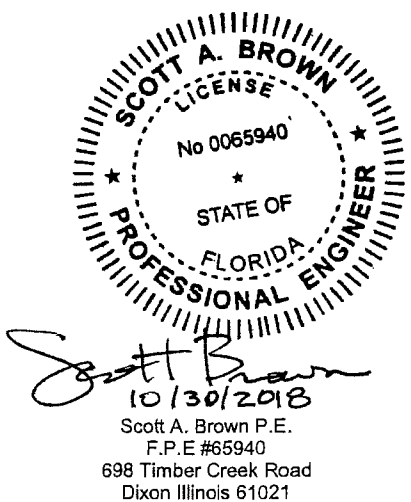
By *[Signature]*
 Miami-Dade Product Control

PRODUCT REVISED
 as complying with the Florida Building Code

NOA-No. 18-0821.10

Expiration Date 11/06/2023

By *[Signature]*
 Miami-Dade Product Control



DOORS TESTED PER TAS 202 FOR STATIC AIR PRESSURE

TESTED PER TAS 201, TAS 203 FOR LARGE MISSILE IMPACT AND CYCLIC WIND PRESSURE

DESIGN PRESSURE +41.5 / -47.0

D	1) ADDED STEEL TYPE AND MIN. EDGE DISTANCE, 2) CHANGED TO 5/16" LAG SCREWS, 3) REMOVED SECTION C-C	8019.02	10/18/18	SCALE: NONE	
C	UPDATED FASTENER VALUES	8019.01	07/02/18	DRAWN BY: G.WEDEKIND	
B	UPDATED JAMB ATTACHMENTS	7904.01	10/13/17	CHECKED BY: GW	
A	RELEASED FOR PRODUCTION	5319.001	03/07/08	DATE: 03/08/08	
REV.	DESCRIPTION	ECN. NO.	DATE	ECN. NO.: 5319.001	

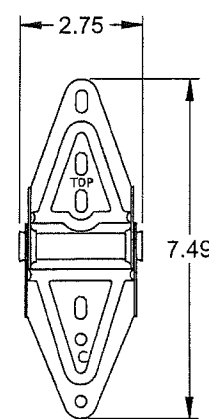
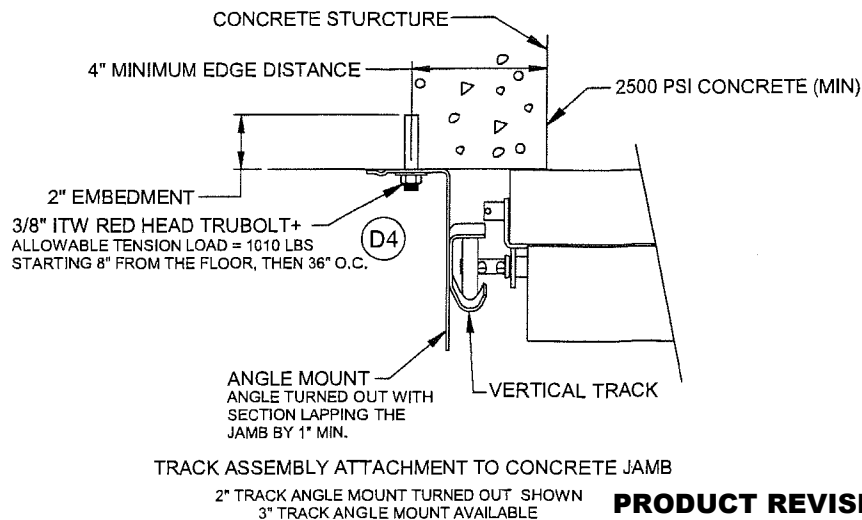
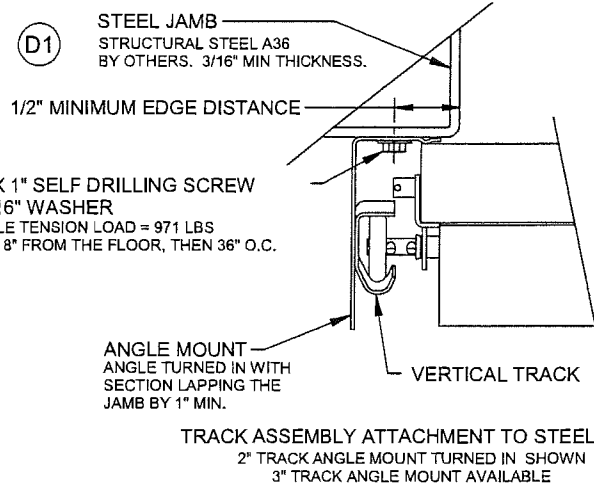
RAYNOR
 GARAGE DOORS
 BOX 448, EAST RIVER ROAD
 DIXON, ILL. 61021

TITLE: SPEC, WIND LOAD
 STEELFORM STANDARD
 24 GAUGE AND 20 GAUGE

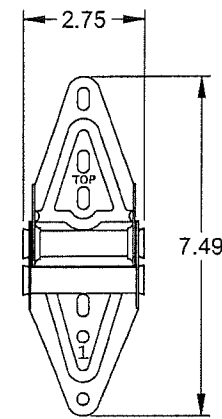
NO. P-3310

SHEET 1 of 3

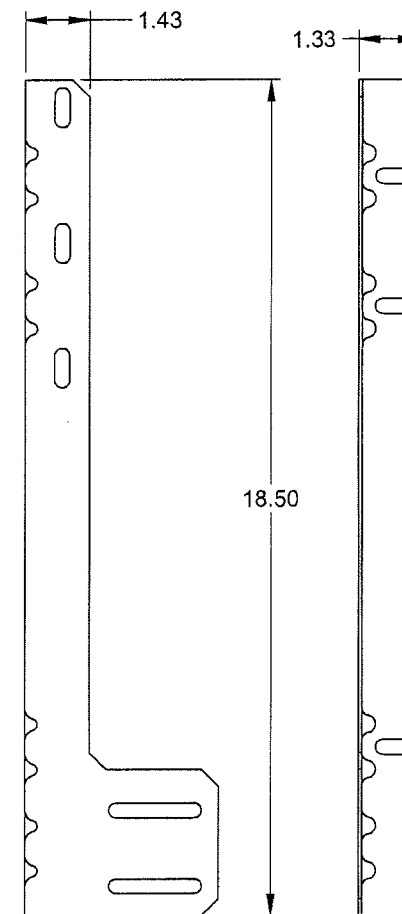
REV D



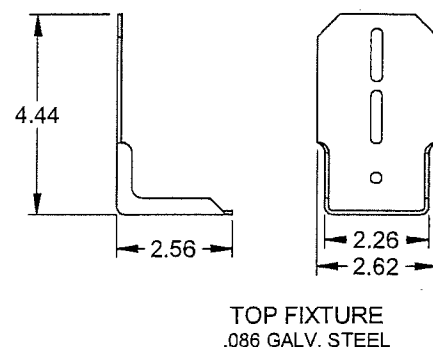
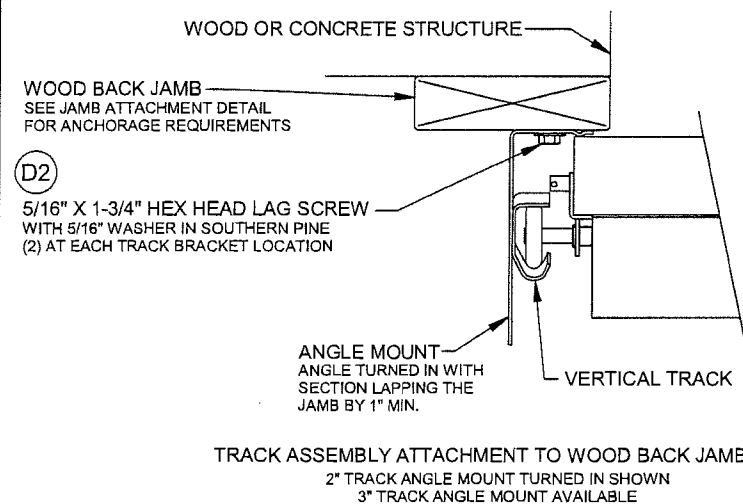
SCALE: 1:2
CENTER HINGE
.045 GALV. STEEL



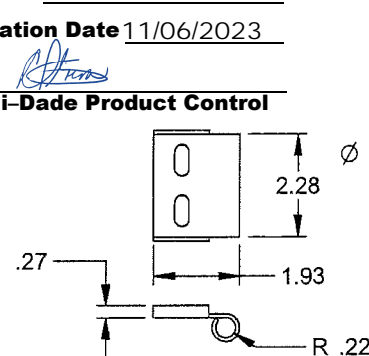
SCALE 1:2
EDGE HINGE
.086 GALV. STEEL



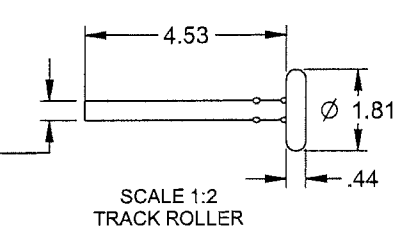
SCALE 1:2
JAMB ANGLE
.078 GALV. STEEL



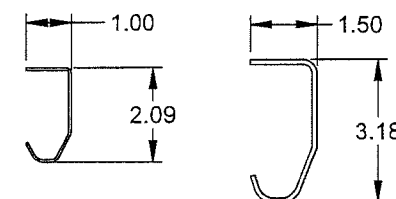
TOP FIXTURE
.086 GALV. STEEL



ROLLER CARRIER
.086 GALV. STEEL
ATTACHED TO TOP FIXTURE WITH
(2) TRACK BOLTS AND WHIZ NUTS

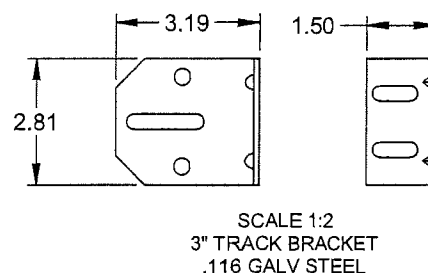
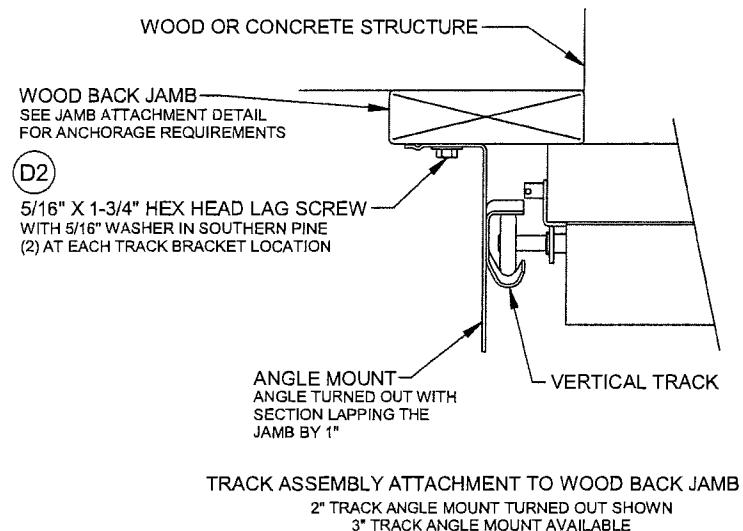


SCALE 1:2
TRACK ROLLER

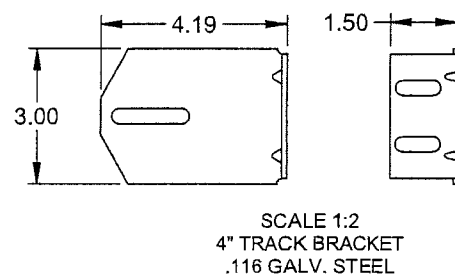


SCALE: 1:2
2" TRACK
.086 GALV. STEEL

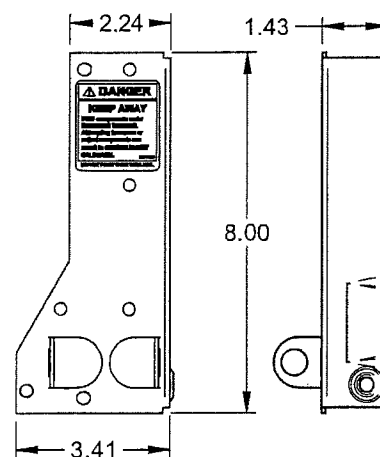
SCALE: 1:2
3" TRACK (OPTIONAL)
.105 GALV. STEEL



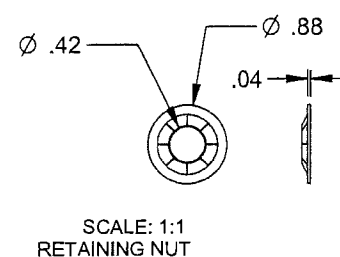
SCALE 1:2
3" TRACK BRACKET
.116 GALV. STEEL



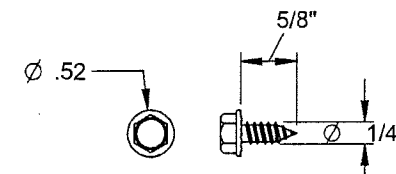
SCALE 1:2
4" TRACK BRACKET
.116 GALV. STEEL



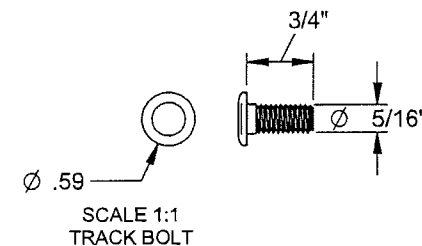
SCALE 1:2
CORNER BRACKET
.086 GALV. STEEL



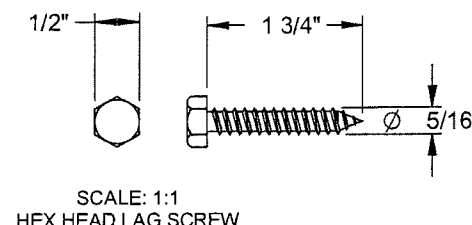
SCALE: 1:1
RETAINING NUT



SCALE: 1:1
SHEET METAL SCREW



SCALE 1:1
TRACK BOLT



SCALE: 1:1
HEX HEAD LAG SCREW

PRODUCT REVISED
as complying with the Florida
Building Code
NOA-No. 20-1104.15

Expiration Date 11/06/2023

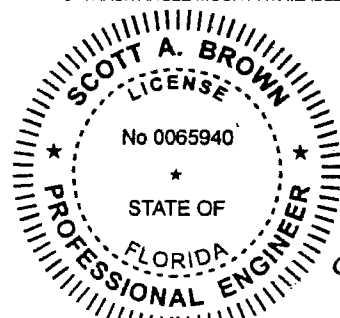
By *[Signature]*
Miami-Dade Product Control

PRODUCT REVISED
as complying with the Florida
Building Code
NOA-No. 18-0821.10

Expiration Date 11/06/2023

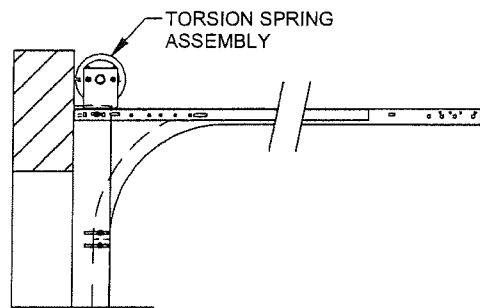
By *[Signature]*
Miami-Dade Product Control

Scott A. Brown P.E.
F.P.E. #65940
698 Timber Creek Road
Dixon Illinois 61021

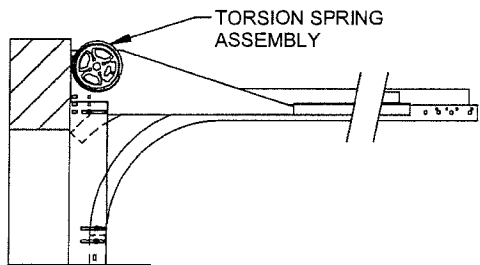


Scott A. Brown
10-30-2018

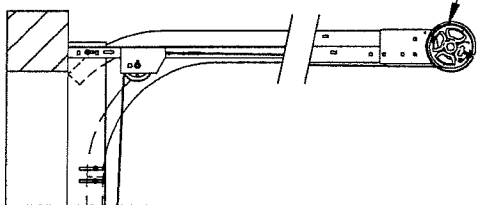
SCALE: NONE	RAYNOR GARAGE DOORS BOX 448, EAST RIVER ROAD DIXON, ILL. 61021	TITLE: SPEC, WIND LOAD STEELFORM STANDARD 24 GAUGE AND 20 GAUGE NO. P-3310	SHEET 2 OF 3	REV D
DRAWN BY: G.WEDEKIND				
CHECKED BY: GW				
DATE: 03/6/08				
ECN. NO.: 5319.001				



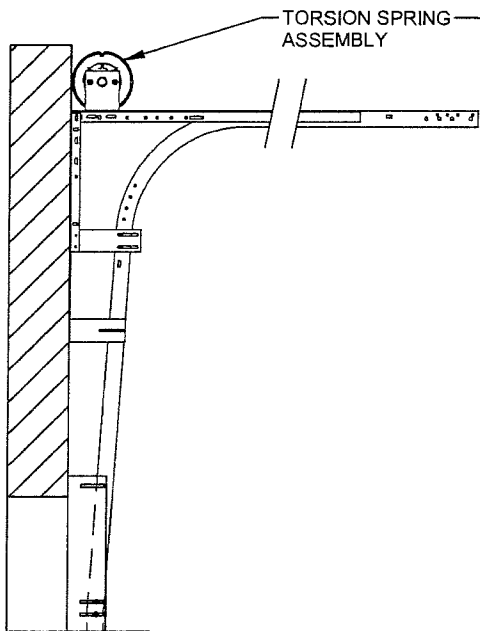
NORMAL HEADROOM TRACK
2" TRACK ANGLE MOUNT SHOWN
3" TRACK ANGLE MOUNT AVAILABLE



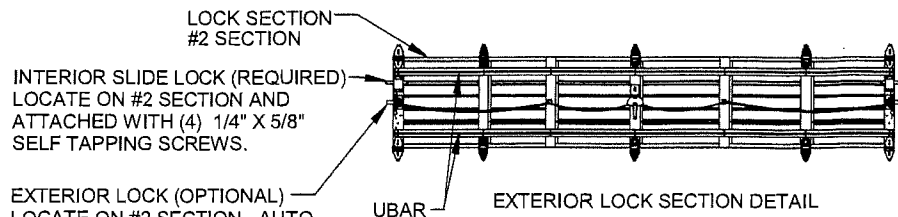
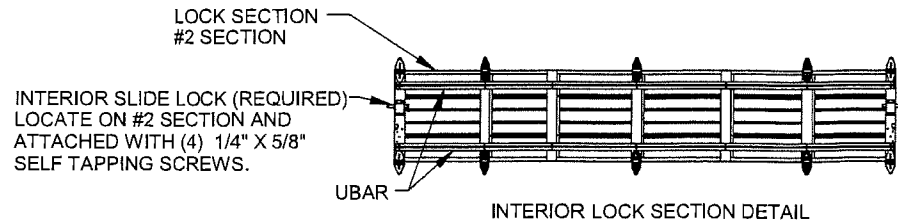
FRONT MOUNT LOW HEADROOM TRACK
2" TRACK ANGLE MOUNT SHOWN
3" TRACK ANGLE MOUNT AVAILABLE



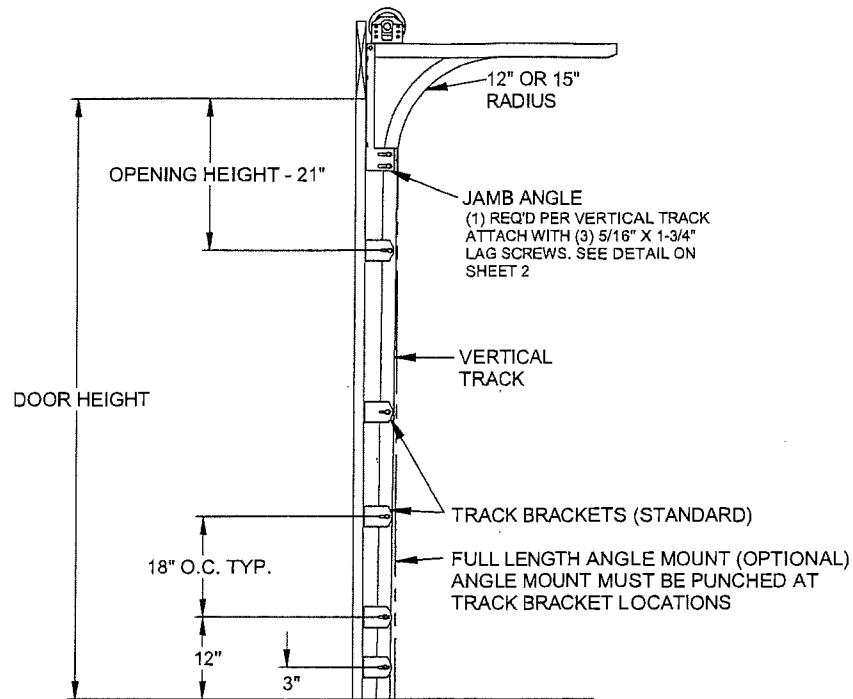
REAR MOUNT LOW HEADROOM TRACK
2" TRACK ANGLE MOUNT SHOWN
3" TRACK ANGLE MOUNT AVAILABLE



LIFT CLEARANCE TRACK
2" TRACK ANGLE MOUNT SHOWN
3" TRACK ANGLE MOUNT AVAILABLE

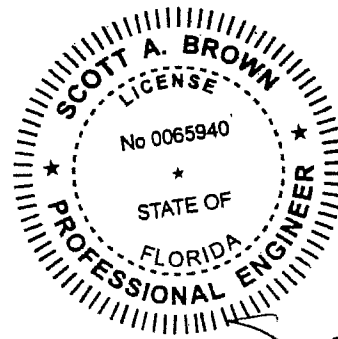


EXTERIOR LOCK (OPTIONAL)
LOCATE ON #2 SECTION. AUTO
LATCH STYLE SHOWN, LOCK
BARS AVAILABLE



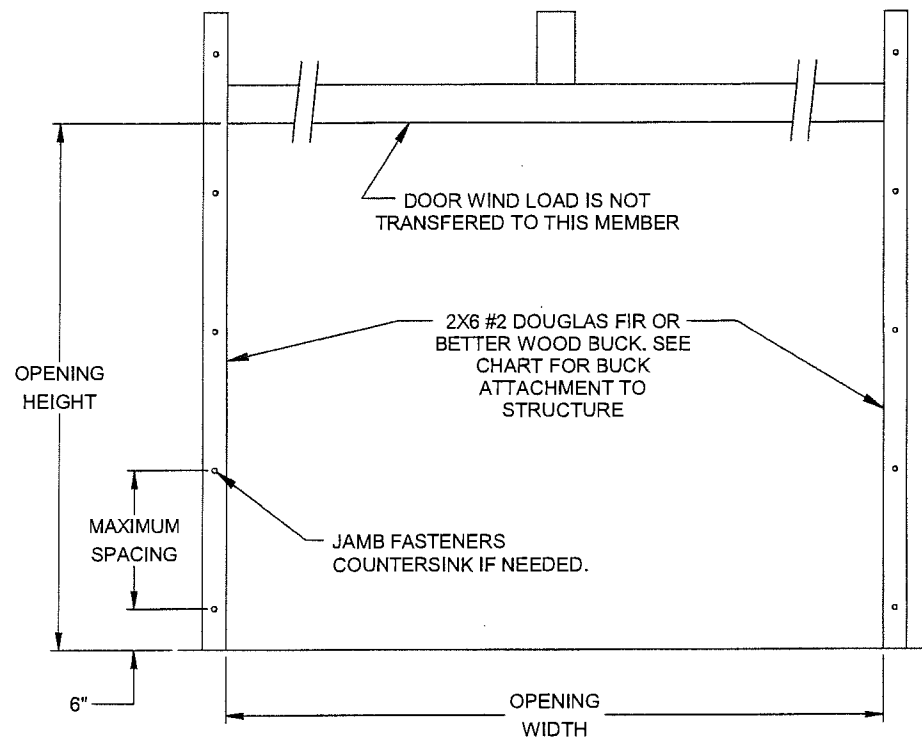
TYPICAL TRACK INSTALLATION

PRODUCT REVISED
as complying with the Florida
Building Code
NOA-No. **18-0821.10**
Expiration Date **11/06/2023**
By *[Signature]*
Miami-Dade Product Control



Scott A. Brown P.E.
F.P.E #65940
698 Timber Creek Road
Dixon Illinois 61021

Scott Brown
10/30/2018



JAMB ATTACHMENT

JAMB ATTACHMENT NOTES

1. MAXIMUM POSITIVE LOAD PER JAMB = $(12'-2" \times 41.5 \text{ PSF}) / 2 = 253 \text{ LBS PER FOOT}$
2. MAXIMUM NEGATIVE LOAD PER JAMB = $(12'-2" \times -47.0 \text{ PSF}) / 2 = 286 \text{ LBS PER FOOT}$
3. DESIGN OF THE SUPPORTING STRUCTURE SHALL BE THE SOLE RESPONSIBILITY OF THE BUILDING DESIGNER AND SHALL BE DESIGNED FOR THE JAMB LOADS LISTED IN NOTES 1 AND 2.
4. ALTERNATE JAMB ATTACHMENTS MAY BE USED IF APPROVED BY A REGISTERED PROFESSIONAL ENGINEER.
5. 2 X 6 MOUNTED TO THE WALL MUST BE SOUTHER PINE GRADE 2 OR BETTER.

2X6 ATTACHMENT TO STRUCTURE						
STRUCTURE TYPE	FASTENER TYPE	MINIMUM EMBEDMENT	MINIMUM EDGE DISTANCE	MINIMUM ON CENTER SPACING	DIMENSION A (MAXIMUM ON CENTER SPACING)	ALLOWABLE TENSION LOAD
2000 PSI MIN. CONCRETE	1/4" TAPCON WITH 1" OD WASHER	1 3/4"	2 1/2"	4"	21"	443 LBS
SOUTHERN PINE (G = .55)	3/8" LAG WITH 1-1/8" OD WASHER	1 1/2"	1 1/2"	4"	24"	655 LBS
SPRUCE PINE FIR (G = .42)	3/8" X LAG WITH 1-1/8" OD WASHER	1 1/2"	2"	4"	22"	482 LBS

PRODUCT REVISED
as complying with the Florida
Building Code
NOA-No. **20-1104.15**
Expiration Date **11/06/2023**
By *[Signature]*
Miami-Dade Product Control

SCALE: NONE	RAYNOR GARAGE DOORS BOX 448, EAST RIVER ROAD DIXON, ILL. 61021	TITLE: SPEC, WIND LOAD STEELFORM STANDARD 24 GAUGE AND 20 GAUGE NO. P-3310	SHEET 3 OF 3	REV D
DRAWN BY: G.WEDEKIND				
CHECKED BY: GW				
DATE: 03/6/08				
EDN. NO.: 5319.001				