



**MIAMI-DADE COUNTY  
PRODUCT CONTROL SECTION**

11805 SW 26 Street, Room 208  
Miami, Florida 33175-2474  
T (786) 315-2590 F (786) 315-2599

**DEPARTMENT OF REGULATORY AND ECONOMIC RESOURCES (RER)  
BOARD AND CODE ADMINISTRATION DIVISION**

**NOTICE OF ACCEPTANCE (NOA)**

[www.miamidade.gov/economy](http://www.miamidade.gov/economy)

**Overhead Door Corporation  
2501 South State Highway 121, Suite 200  
Lewisville, TX 75067**

**SCOPE:**

This NOA is being issued under the applicable rules and regulations governing the use of construction materials. The documentation submitted has been reviewed and accepted by Miami-Dade County RER-Product Control Section to be used in Miami-Dade County and other areas, where allowed by the Authority Having Jurisdiction (AHJ).

This NOA shall not be valid after the expiration date stated below. The Miami-Dade County Product Control Section (In Miami-Dade County) and/ or the AHJ (in areas other than Miami-Dade County) reserve the right to have this product or material tested for quality assurance purposes. If this product or material fails to perform in the accepted manner, the manufacturer will incur the expense of such testing and the AHJ may immediately revoke, modify, or suspend the use of such product or material within their jurisdiction. RER reserves the right to revoke this acceptance if it is determined by Miami-Dade County Product Control Section that this product or material fails to meet the requirements of the applicable building code.

This product is approved as described herein and has been designed to comply with the Florida Building Code, including the High Velocity Hurricane Zone.

**DESCRIPTION: Models 421/423/427/429 Steel Sectional Garage Door up to 10ft.-2in. Wide with Optional EPS Insulation and Impact Resistant Glazing**

**APPROVAL DOCUMENT:** Drawing No. **411499**, titled "Windload Commercial Sectional Steel Door, 421/423/427/429, +50/-56PSF Dade County, 10'2" Max. Width", sheets 1 through 4 of 4, dated 04/04/2018, with revision **P00** dated 07/16/2018, prepared by Overhead Door Corporation, signed and sealed by Dwayne J. Kornish, P.E., bearing the Miami-Dade County Product Control Revision stamp with the NOA number and Expiration date by the Miami-Dade County Product Control Section.

**MISSILE IMPACT RATING: Large & Small Missile Impact Resistant**

**LABELING:** A permanent label with the manufacturer's name or logo, manufacturing address, model/series number, the positive and negative design pressure rating, indicate impact rated if applicable, installation instruction drawing reference number, approval number (NOA), the applicable test standards, and the statement reading 'Miami-Dade County Product Control Approved' is to be located on the door's sidetrack, bottom angle, or inner surface of a panel.

**RENEWAL** of this NOA shall be considered after a renewal application has been filed and there has been no change in the applicable building code negatively affecting the performance of this product.

**TERMINATION** of this NOA will occur after the expiration date or if there has been a revision or change in the materials, use, and/ or manufacture of the product or process. Misuse of this NOA as an endorsement of any product, for sales, advertising or any other purposes shall automatically terminate this NOA. Failure to comply with any section of this NOA shall be cause for termination and removal of NOA.

**ADVERTISEMENT:** The NOA number preceded by the words Miami-Dade County, Florida, and followed by the expiration date may be displayed in advertising literature. If any portion of the NOA is displayed, then it shall be done in its entirety.

**INSPECTION:** A copy of this entire NOA shall be provided to the user by the manufacturer or its distributors and shall be available for inspection at the job site at the request of the Building Official.

This NOA **revises NOA-No. 17-1207.08** and consists of this page 1, evidence pages E-1 and E-2, as well as approval document mentioned above.

The submitted documentation was reviewed by **Carlos M. Utrera, P.E.**



**NOA-No: 20-1106.07  
Expiration Date: November 1, 2023  
Approval Date: January 28, 2021  
Page 1**

**Overhead Door Corporation**

**NOTICE OF ACCEPTANCE: EVIDENCE SUBMITTED**

**1. EVIDENCE SUBMITTED UNDER PREVIOUS NOA-No. 17-1207.08**

**A. DRAWINGS**

1. Drawing No. **411499**, titled “Windload Commercial Sectional Steel Door, 421/423/427/429, +50/-56PSF Dade County, 10’2” Max. Width”, sheets 1 through 4 of 4, dated 04/04/2018, with revision **P00** dated 07/16/2018, prepared by Overhead Door Corporation, signed and sealed by Dwayne J. Kornish, P.E.

**B. TESTS**

1. Test reports on 1) Uniform Static Air Pressure Test, Loading per FBC TAS 202-94  
2) Large Missile Impact Test per FBC, TAS 201-94  
3) Cyclic Wind Pressure Loading per FBC, TAS 203-94  
4) Forced Entry Test, per FBC, TAS 202-94  
5) Tensile Test per ASTM E8  
along with marked-up drawings of a 10’-2” Wide Models 421/423/427/429 Steel Sectional Doors, prepared by Intertek, Test Report No. **G6343.05-801-18-R0**, dated 05/15/2018, with revision dated 07/20/2018, signed and sealed by Tyler Westerling, P.E.
2. Test report on salt spray exposure, per ASTM B117-16 on G40 and G90 coupons, prepared by Intertek, Report No. **I1314.02-106-18R0**, dated 05/11/2018, signed by Gary T. Hartman.

**C. CALCULATIONS**

1. Anchorage verification calculations prepared by Overhead Door Engineering, dated 07/13/2018, signed and sealed by Dwayne J. Kornish, P.E.

**D. MATERIAL CERTIFICATIONS**

1. Test report on the EPS Insulation, D.F. Self-Ignition Temperature per ASTM D1929-2016, Test Report # **103445527MID-002**, prepared by Intertek, dated 03/23/2017, signed by Bryan Bowman.
2. UL evaluation report on Styropek EPS insulations’ Surface Burning Characteristics (Flame Spread and Smoke Density Index) per ANSI/UL723 (ASTM E84), prepared by UL Inc., Test Report # **UL ER38219-01** and dated 04/08/2015.
3. Notice of Acceptance No. **17-0410.01**, issued to Covestro, LLC, for their Makrolon Polycarbonate Sheets, approved on 06/08/2017 and expiring on 08/27/2022.

**E. QUALITY ASSURANCE**

1. Miami-Dade Department of Regulatory and Economic Resources (RER).

**F. STATEMENTS**

1. Statement letter of code conformance to the **6<sup>th</sup> edition (2017) FBC** issued by Overhead Door Corporation, dated 09/12/2018, signed and sealed by Dwayne J. Kornish, P.E.
2. No financial interest letter issued by Overhead Door Corporation, dated 09/12/2018, signed and sealed by Dwayne J. Kornish, P.E.



**Carlos M. Utrera, P.E.**  
**Product Control Examiner**  
**NOA-No: 20-1106.07**

**Expiration Date: November 1, 2023**  
**Approval Date: January 28, 2021**

**Overhead Door Corporation**

**NOTICE OF ACCEPTANCE: EVIDENCE SUBMITTED**

**2. NEW EVIDENCE SUBMITTED**

**A. DRAWINGS**

1. None.

**B. TESTS**

1. None.

**C. CALCULATIONS**

1. None.

**D. MATERIAL CERTIFICATIONS**

1. Notice of Acceptance No. **18-0918.06**, issued to Plaskolite, LLC, for their TUFFAK Polycarbonate Sheets, approved on 11/15/2018 and expiring on 08/27/2022.

**E. QUALITY ASSURANCE**

1. Miami-Dade Department of Regulatory and Economic Resources (RER).

**F. STATEMENTS**

1. Statement letter of code conformance to the **FBC 7<sup>th</sup> Edition (2020)** issued by Overhead Door Corporation, dated 10/23/2020, signed and sealed by Dwayne J. Kornish, P.E.



---

**Carlos M. Utrera, P.E.**  
**Product Control Examiner**  
**NOA-No: 20-1106.07**

**Expiration Date: November 1, 2023**  
**Approval Date: January 28, 2021**

NOTES: (UNLESS OTHERWISE SPECIFIED)

1. RATED DESIGN LOAD +50/-56 PSF.
2. SECTION HEIGHTS MAY VARY TO CREATE VARIOUS DOOR HEIGHTS, 24" MAXIMUM SECTION HEIGHT.
3. MINIMUM 1" OVERLAP ON BOTH JAMBS REQUIRED TO MEET NEGATIVE DESIGN PRESSURES.
4. TESTED IN ACCORDANCE WITH DADE COUNTY PROTOCOLS TAS 201-94, TAS 202-94, & TAS 203-94.
5. DOOR SKIN MUST BE 50,000 PSI MIN. YIELD STRENGTH.
6. JAMB LOAD CALCULATIONS:  
 $(1/2 \text{ DOOR WIDTH})(1 \text{ FT OF HEIGHT})(\text{DESIGN PRESSURE})$   
 $(5.067)(1 \text{ FOOT})(50.00 \text{ AND } -56.00)(254.18/-284.68) \text{ LB}$
7. JAMB FASTENER REQUIREMENTS:  
 $F_x = (1/2 \text{ DOOR WIDTH})(1 \text{ FT OF HEIGHT})(\text{DESIGN PRESSURE})$   
 $F_x = 254 \text{ LBS.}$
8. DOOR SKIN MATERIAL SHALL BE GALVANIZED ACCORDING TO ASTM A-525 TO G40 MIN, WITH BAKED-ON PRIMER, AND BAKED-ON POLYESTER PAINT TOP COAT.
9. FOR ANCHORING INTO WOOD, USE ONE 5/16" LAG SCREW PER TRACK CLIP WITH 1-1/2" EMBEDMENT INTO SOUTHERN PINE (G=0.55) OR BETTER.
10. APPROVED NON-INSULATED: 427 (24 GA), 421 (20 GA). APPROVED INSULATED: 429 (24 GA), 423 (20 GA).
11. WELD SLOT ON ANGLE 3/32" X 1" LONG ON 12" CENTERS. "IF WELDING MOUNTING OPTION IS CHOSEN."
12. LIFT UP MECHANISM-MANUAL, CHAIN LIFT, OR OPERATOR IS NOT PART OF THIS APPROVAL.
13. STANDARD LIFT, HIGH LIFT, VERTICAL LIFT, AND LOW HEADROOM TRACK IS AVAILABLE. FOR LOW HEADROOM LIFT CONDITIONS TOP BRACKET SHALL BE 13 GA LHR 7/4 TOP BRACKET WITH A MIN OF (3) 1/4 - 14 X 7/8" SELF DRILLING CRIMPTITE SCREWS IN LIEU OF THE BRACKET SHOWN ON DRAWING. U-BAR ON TOP SECTION SHALL BE INSTALLED ON TOP OF LHR TOP BRACKETS.
14. ATTACH STRUTS WITH (4) 1/4-14x7/8" SELF DRILLING CRIMPTITE SCREWS AT ALL STILE LOCATIONS, TYP. +/- 3" FROM CENTER OF SECTION. STRUT ON BOTTOM SECTION, TO BE 6" FROM THE BOTTOM.
15. KEY LOCK, OR SLIDE LOCK REQUIRED.
16. EXHAUST PORTS- OPTIONAL UP TO 3 PER BOTTOM SECTION.
17. IMPACT RESISTANT GLAZING OPTION- IMPACT RESISTANT GLAZING SYSTEM MAY BE INSTALLED INTERMEDIATE SECTION ONLY. GLAZING SHALL BE 1/4" POLYCARBONATE. 13-3/4" X 20-1/8" MAXIMUM SIZE, FASTENED WITH # 8 X 1" SMS: 3X MAX ALONG THE HORIZONTAL AND 2X MAX ALONG THE VERTICAL. SEE DETAIL F-F ON SHEET 2 FOR ASSEMBLY DETAILS.
18. THE DESIGN OF THE SUPPORTING STRUCTURAL ELEMENTS SHALL BE THE RESPONSIBILITY OF THE PROFESSIONAL OF RECORD FOR THE BUILDING OR STRUCTURE AND IN ACCORDANCE WITH CURRENT BUILDING CODES FOR THE LOADS LISTED ON THIS DRAWING.

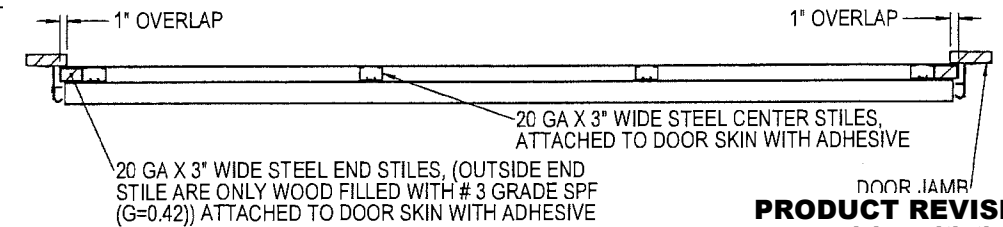
**PRODUCT APPROVED**  
as complying with the Florida  
Building Code

NOA-No. **17-1207.08**

Approval Date **11/01/2018**

By *[Signature]*  
**Miami-Dade Product Control**

REVISIONS				
ER	REV	DESCRIPTION	DATE	APVL
ER 31715	P00	NEW DRAWING	7/16/18	ESC



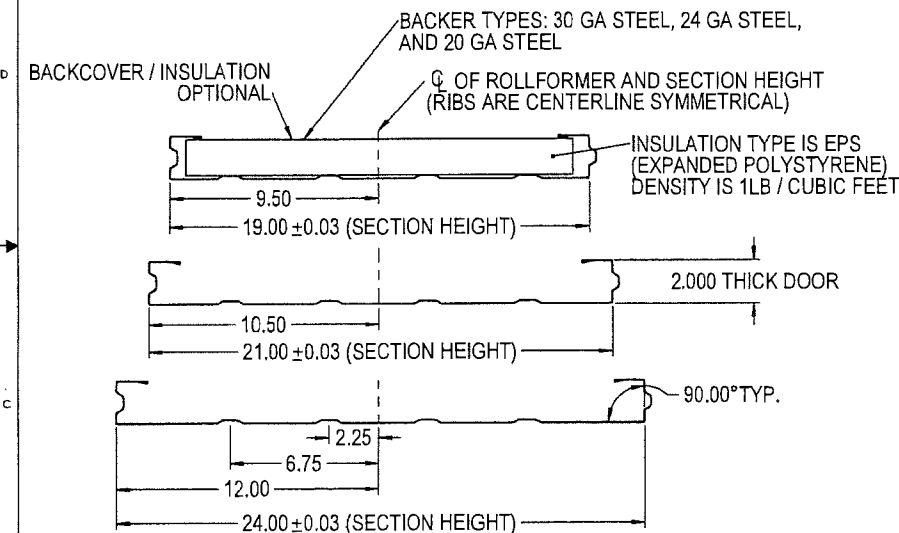
**SECTION B-B**  
SCALE 1 : 12

**PRODUCT REVISED**  
as complying with the Florida  
Building Code

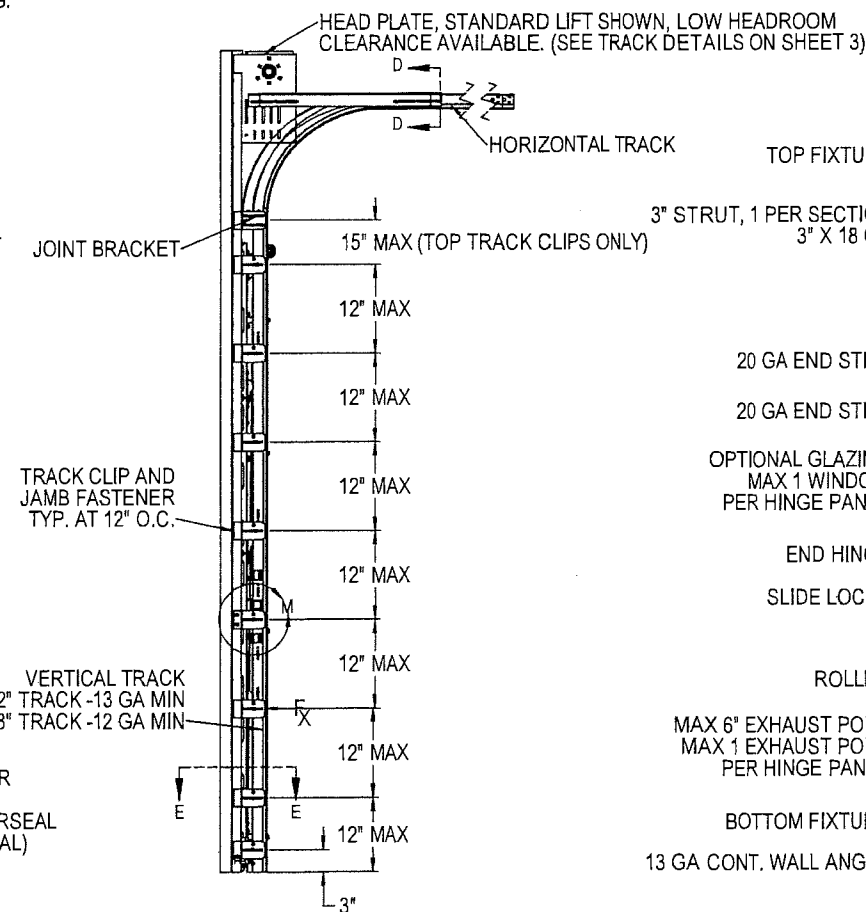
NOA-No. **20-1106.07**

Expiration Date **11/01/2023**

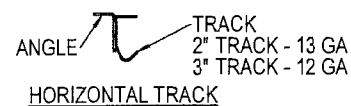
By *[Signature]*  
**Miami-Dade Product Control**



**SECTION A-A**  
SCALE 1 : 4

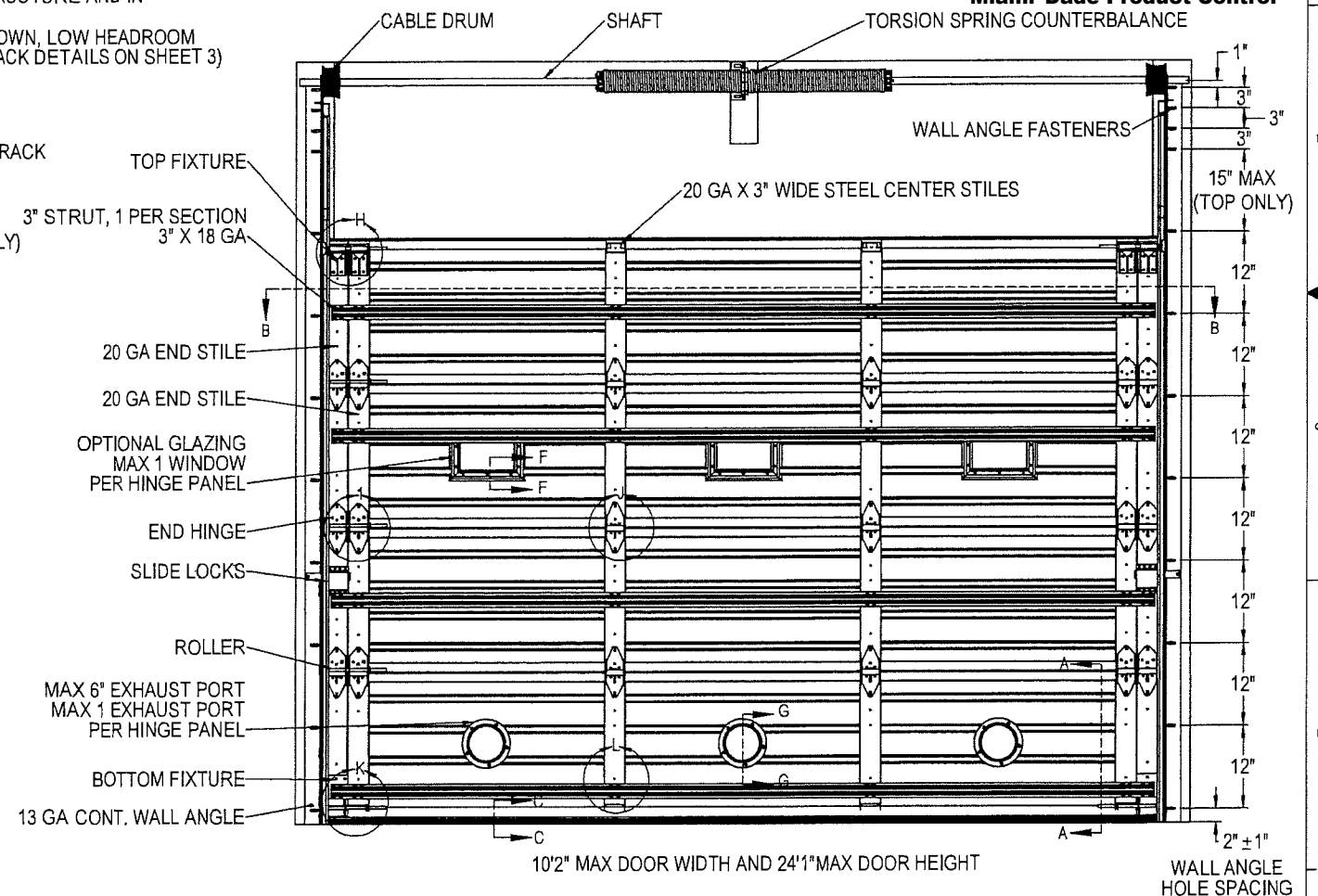


**SECTION C-C**  
SCALE 1 : 4



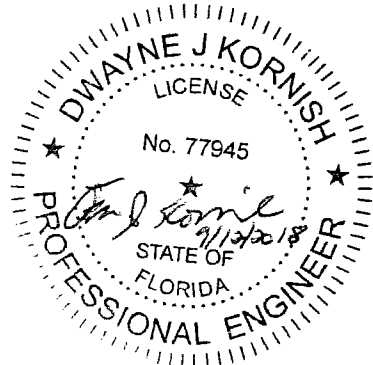
**SECTION D-D**  
SCALE 1 : 4

DOOR WIDTH	NUMBER OF CENTER STILES
8'-2" - 10'-2"	2



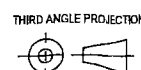
10'2" MAX DOOR WIDTH AND 24'1" MAX DOOR HEIGHT

WALL ANGLE HOLE SPACING



DWAYNE J. KORNISH, PE  
4576 COUNTY ROAD 160  
MOUNT HOPE, OHIO  
FL PE 77945 TX PE 117868

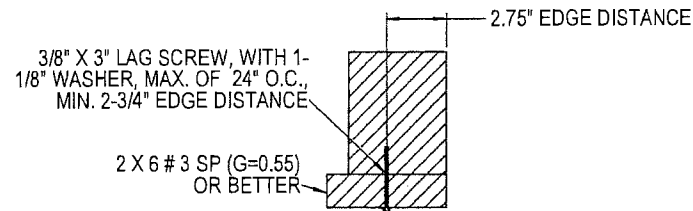
PROFESSIONAL ENGINEER'S SEAL PROVIDED ONLY FOR  
VERIFICATION OF WINDLOAD CONSTRUCTION DETAILS.



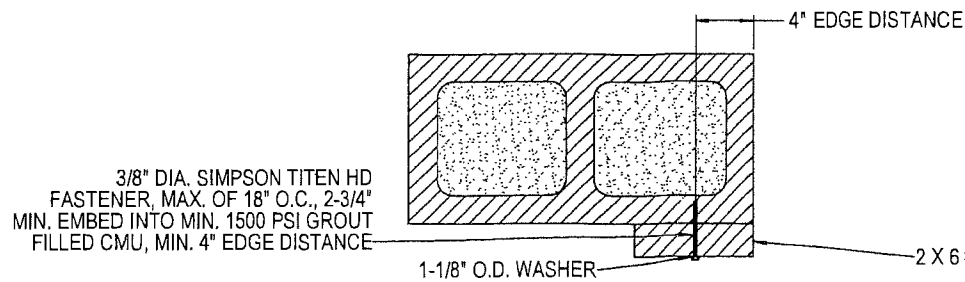
OVERHEAD DOOR CORP  
2501 S. STATE HWY 121  
SUITE 200  
LEWISVILLE, TEXAS 75067  
469-549-7100

UNLESS OTHERWISE SPECIFIED		APPROVALS		DATE
INTERPRET DIMS & TOLS PER ASME Y14.5M		DRAWN	E. CONRAD	4/4/18
ALL DIMS ARE IN INCHES		CHECKED	D. KORNISH	-
DO NOT SCALE		APPROVED	-	-
DIM CIRCLED WITH SYMBOL 'O' ARE CRITICAL TO QUALITY DESIGN		MATERIAL	-	-
FEATURES & MUST MEET APPLICABLE IN-PROCESS INSPECTION STANDARDS.		FINISH	-	-
TOLERANCES:		DESCRIPTION		
X = ± .1		WINDLOAD COMMERCIAL SECTIONAL		
XX = ± .03		STEEL DOOR, 421/423/427/429, +50/-56PSF		
XXX = ± .010		DADE COUNTY, 10'2" MAX WIDTH		
ANGULAR = ± .5°		SIZE DWG NO.		
HOLES:		D D-411499		
< Ø.251 = +.004/- .003		REV		
Ø.251-Ø.500 = +.006/- .003		P-00		
> Ø.500 = +.008/- .003		SCALE 1:12 UOM = EA SHEET 1 OF 4		
ALL GEOMETRY GOVERNED BY 3D CAD DATABASE: 411499				

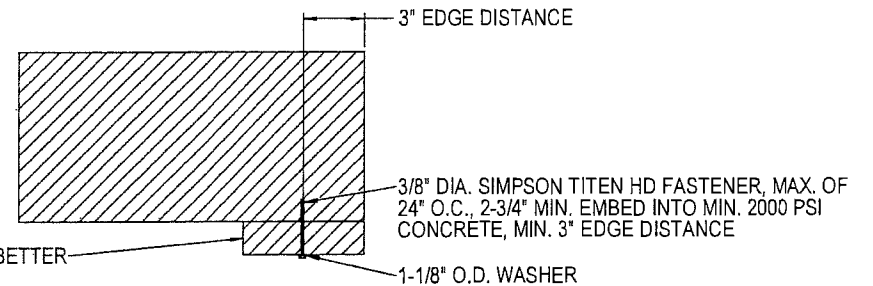




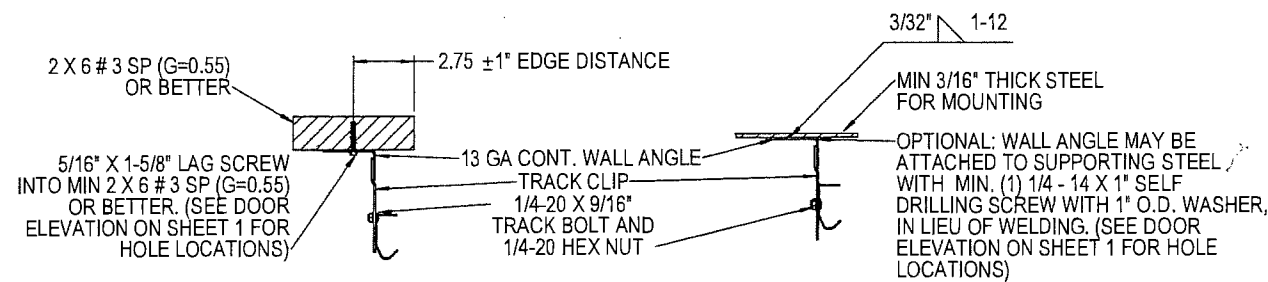
WOOD MOUNTED TO #3 SOUTHERN PINE SUBSTRATE



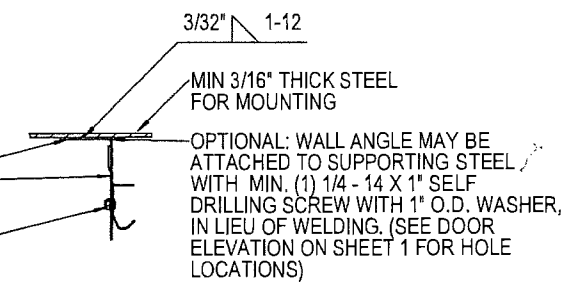
WOOD MOUNTED TO GROUT FILLED MASONRY BLOCK DETAIL



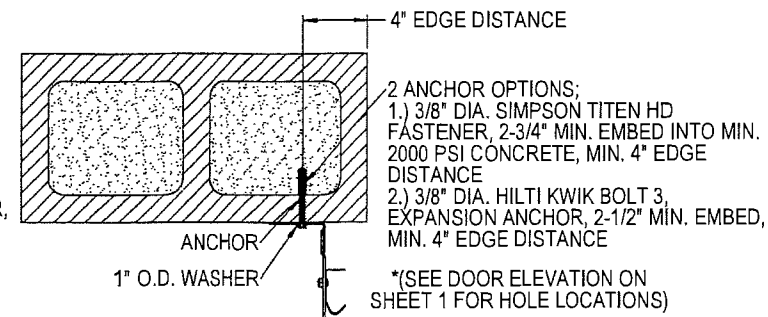
WOOD MOUNTED TO 2000 PSI CONCRETE DETAIL



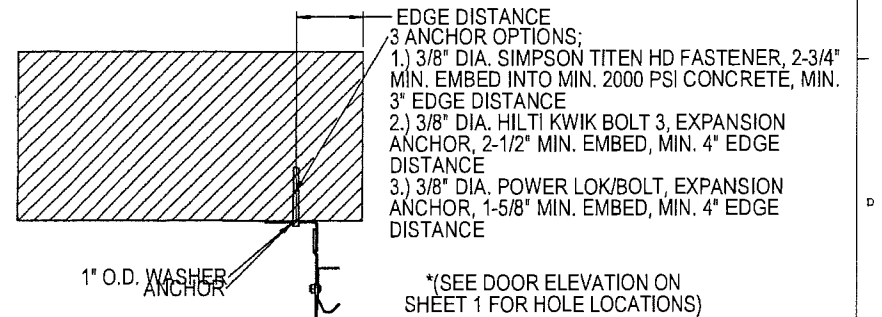
MOUNTING TO WOOD JAMB DETAIL



MOUNTING TO STEEL JAMB DETAIL

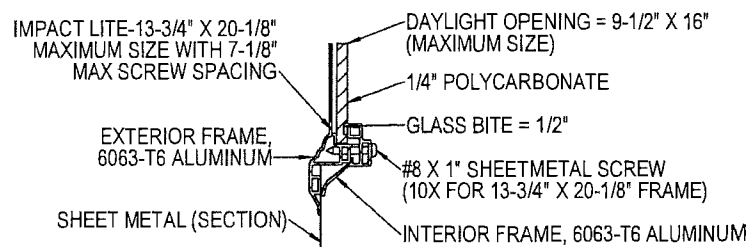


MOUNTING TO GROUT FILLED MASONRY BLOCK DETAIL

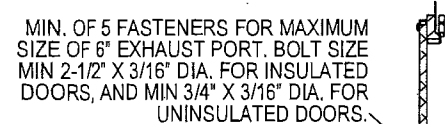


MOUNTING TO 2000 PSI CONCRETE DETAIL

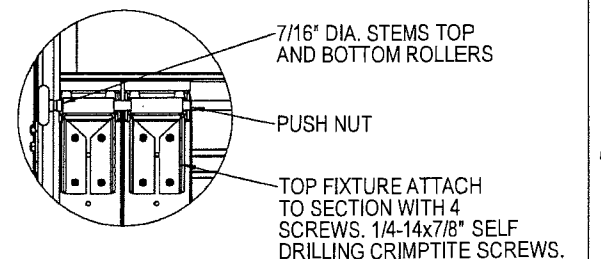
SECTION E-E  
SCALE 1:4



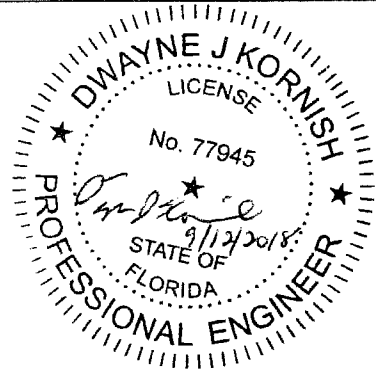
WINDOW DETAIL  
SECTION F-F  
SCALE 1:2



EXHAUST PORT DETAIL  
SECTION G-G  
SCALE 1:4



DETAIL H  
SCALE 1:4



DWAYNE J. KORNISH, PE  
4576 COUNTY ROAD 160  
MOUNT HOPE, OHIO  
FL PE 77945 TX PE 117868

PROFESSIONAL ENGINEER'S SEAL PROVIDED ONLY FOR  
VERIFICATION OF WINDLOAD CONSTRUCTION DETAILS.

**PRODUCT APPROVED**  
as complying with the Florida  
Building Code

NOA-No. 17-1207.08

Approval Date 11/01/2018

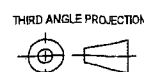
By *[Signature]*  
Miami-Dade Product Control

**PRODUCT REVISED**  
as complying with the Florida  
Building Code

NOA-No. 20-1106.07

Expiration Date 11/01/2023

By *[Signature]*  
Miami-Dade Product Control



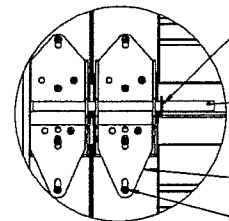
OVERHEAD DOOR CORP  
2501 S. STATE HWY 121  
SUITE 200  
LEWISVILLE, TEXAS 75067  
469-549-7100

UNLESS OTHERWISE SPECIFIED  
INTERPRET DIMS & TOLS  
PER ASME Y14.5M  
ALL DIMS ARE IN  
INCHES  
DO NOT SCALE  
DIMS CIRCLED WITH SYMBOL 'O'  
ARE CRITICAL TO QUALITY DESIGN  
FEATURES & MUST MEET APPLICABLE  
IN-PROCESS INSPECTION STANDARDS.

TOLERANCES:  
.X = ± .1  
.XX = ± .03  
.XXX = ± .010  
ANGULAR = ± .5°  
HOLES:  
< Ø.251 = +.004/- .003  
Ø.251-Ø.500 = +.006/- .003  
> Ø.500 = +.008/- .003  
ALL GEOMETRY GOVERNED BY 3D CAD DATABASE:  
411499

APPROVALS		DATE
DRAWN	E. CONRAD	4/4/18
CHECKED	D. KORNISH	-
APPROVED	-	-
MATERIAL	-	-
FINISH	-	-

The Genuine. The Original.		LEWISVILLE, TEXAS	
DESCRIPTION WINDLOAD COMMERCIAL SECTIONAL STEEL DOOR, 421/423/427/429, +50/-56PSF DADE COUNTY, 10'2" MAX WIDTH		SIZE DWG NO. D-411499	REV P-00
SCALE 1:12	UOM = EA	SHEET 2 OF 4	



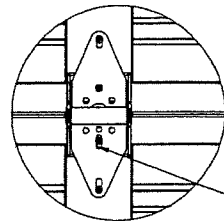
DETAIL I  
SCALE 1 : 4

PUSH NUT REQUIRED ONLY ON 2" ROLLERS WITH 7/16" DIA. PUSH NUT AT EACH ROLLER LOCATION. 1/4" MAX BETWEEN PUSH NUT AND BRACKET OR HINGE.

2" ROLLER WITH 7/16" DIA. 1144 WL OR 3" STEEL ROLLER WITH 5/8" DIA. (PUSH NUT NOT REQUIRED ON 5/8" DIA.)

12 GA WIDE BODY END HINGES

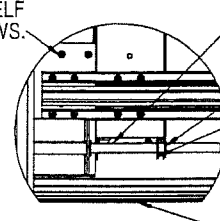
ATTACHED WITH (6) 1/4-14x7/8" SELF DRILLING CRIMPTITE SCREWS (2) OF WHICH ARE IN-BOARD



DETAIL J  
SCALE 1 : 4

14 GA WIDE BODY CENTER HINGE ATTACHED WITH (4) 1/4-14x7/8" SELF DRILLING CRIMPTITE SCREWS

BOTTOM FIXTURE ATTACHED TO SECTION WITH 4 SCREWS. 1/4-14x7/8" SELF DRILLING CRIMPTITE SCREWS.



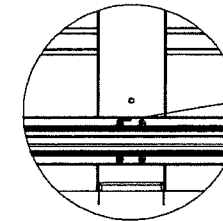
DETAIL K  
SCALE 1 : 4

7/16" DIA. STEMS TOP AND BOTTOM ROLLERS

PUSH NUT

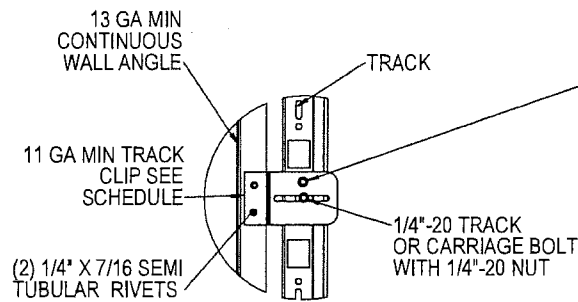
ROLLER HOLDER REQUIRED ON DOUBLE END STILES ONLY ATTACHED WITH (2) 1/4-14x7/8" SELF DRILLING CRIMPTITE SCREWS

WEATHERSEAL (ASTRAGAL)

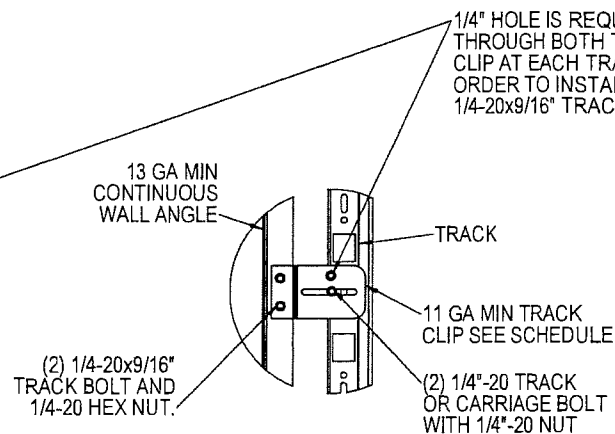


DETAIL L  
SCALE 1 : 4

(4) 1/4-14x7/8" SELF DRILLING CRIMPTITE SCREWS AT STILE LOCATION FOR EACH STRUT

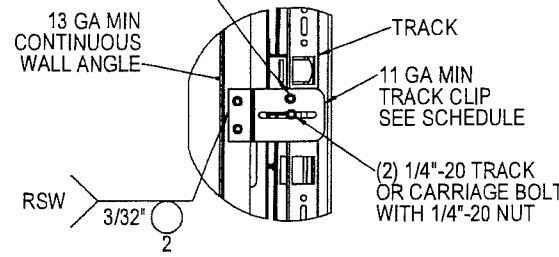


TYPICAL TRACK CLIP  
RIVETING DETAIL

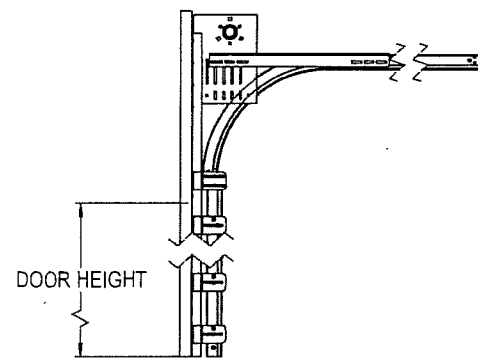


TYPICAL TRACK CLIP  
BOLTING DETAIL

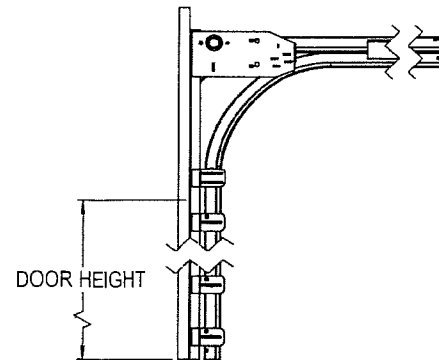
DETAIL M  
SCALE 1 : 4



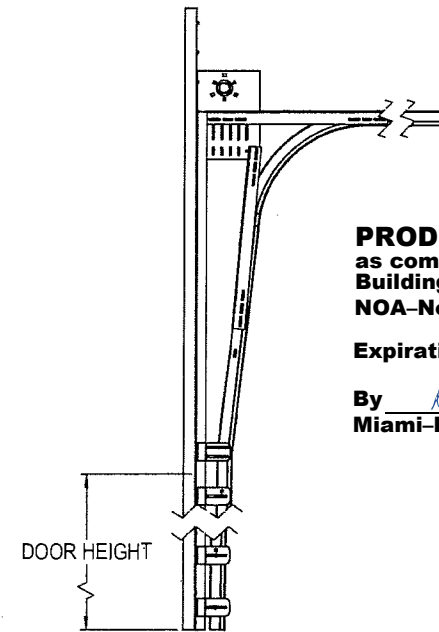
TYPICAL TRACK CLIP  
WELDING DETAIL



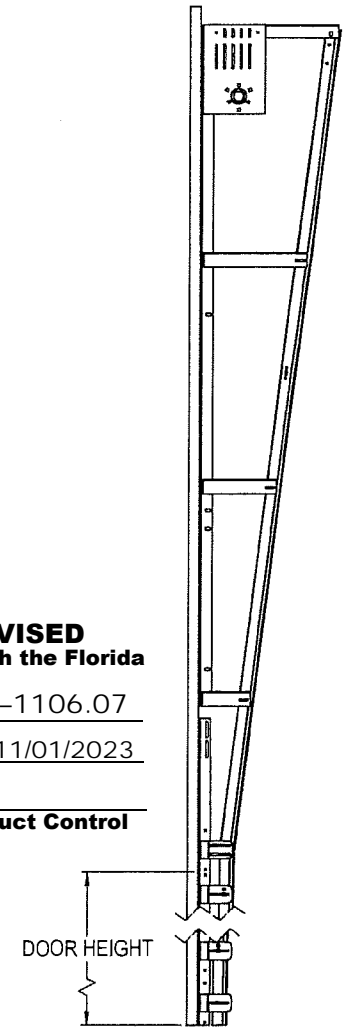
STANDARD LIFT  
TRACK DETAIL  
(OPTIONAL)



LOW HEADROOM  
TRACK DETAIL  
(OPTIONAL)

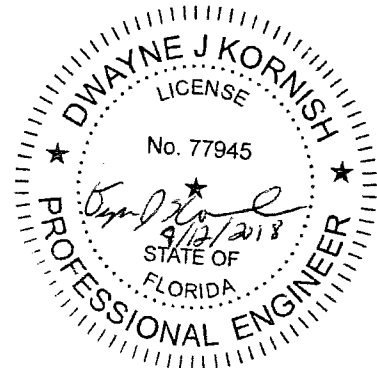


HIGH LIFT  
TRACK DETAIL  
(OPTIONAL)



VERTICAL LIFT  
TRACK DETAIL  
(OPTIONAL)

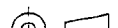

**PRODUCT REVISED**  
as complying with the Florida  
Building Code  
NOA-No. 20-1106.07  
Expiration Date 11/01/2023  
By *[Signature]*  
Miami-Dade Product Control



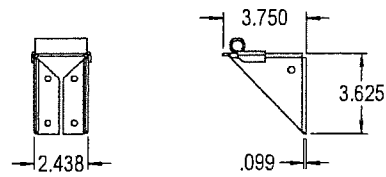
DWAYNE J. KORNISH, PE  
4576 COUNTY ROAD 160  
MOUNT HOPE, OHIO  
FL PE 77945 TX PE 117868

PROFESSIONAL ENGINEER'S SEAL PROVIDED ONLY FOR  
VERIFICATION OF WINDLOAD CONSTRUCTION DETAILS.

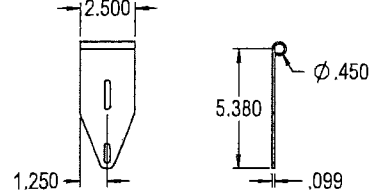
**PRODUCT APPROVED**  
as complying with the Florida  
Building Code  
NOA-No. 17-1207.08  
Approval Date 11/01/2018  
By *[Signature]*  
Miami-Dade Product Control

THIRD ANGLE PROJECTION 		UNLESS OTHERWISE SPECIFIED			APPROVALS DATE		The Genuine, The Original.		
		INTERPRET DIMS & TOLS PER ASME Y14.5M ALL DIMS ARE IN INCHES DO NOT SCALE		TOLERANCES: .X = ± .1 .XX = ± .03 .XXX = ± .010 ANGULAR = ± .5 ° HOLES: < Ø.251 = +.004/- .003 Ø.251-Ø.500 = +.006/- .003 > Ø.500 = +.008/- .003		DRAWN E. CONRAD 4/4/18 CHECKED D. KORNISH - APPROVED - - MATERIAL - - FINISH - -		 LEWISVILLE, TEXAS	
OVERHEAD DOOR CORP 2501 S. STATE HWY 121 SUITE 200 LEWISVILLE, TEXAS 75067 469-549-7100		DIM CIRCLED WITH SYMBOL 'Ø' ARE CRITICAL TO QUALITY DESIGN FEATURES & MUST MEET APPLICABLE IN-PROCESS INSPECTION STANDARDS.		ALL GEOMETRY GOVERNED BY 3D CAD DATABASE: 411499		DESCRIPTION		REV	
						WINDLOAD COMMERCIAL SECTIONAL STEEL DOOR, 421/423/427/429, +50/-56PSF DADE COUNTY, 10'2" MAX WIDTH		P-00	
						SIZE DWG NO.			
						D D-411499			
						SCALE 1:12		UOM = EA	
								SHEET 3 OF 4	

NOTES: (UNLESS OTHERWISE SPECIFIED)  
1.FOR DIMENSION AND NOTE REFERENCES, REFER TO INDIVIDUAL DRAWINGS.

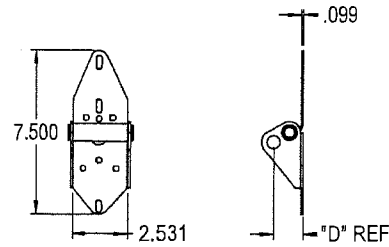


P/N 066590-0000, TOP FIXTURE  
STANDARD  
(ATTACH WITH (4) 1/4"-14 X 7/8" SELF DRILLING CRIMPTITE SCREWS)

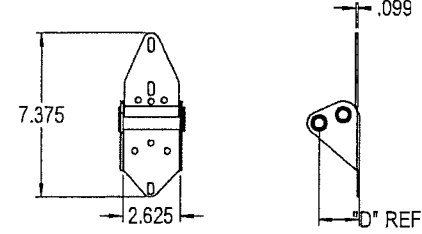


P/N 061371-0001 FIXTURE, TOP, 7/4  
(ATTACH WITH (4) 1/4"-14 X 7/8" SELF DRILLING CRIMPTITE SCREWS)

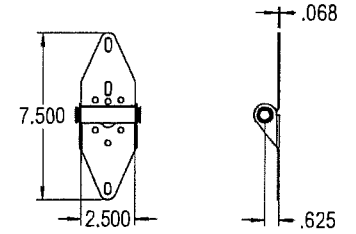
TOP FIXTURE DETAILS



P/N 400643-XXXX, END HINGE  
STANDARD  
(ATTACH WITH (6) 1/4"-14 X 7/8" SELF DRILLING CRIMPTITE SCREWS (2) OF WHICH IS IN-BOARD HOLES)

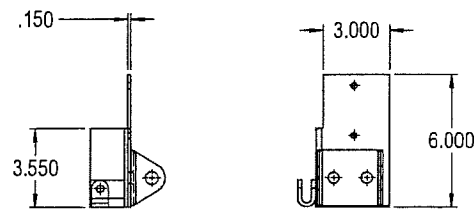


P/N 404043-XXXX, END HINGE  
HEAVY DUTY 5/8" STEM  
(ATTACH WITH (6) 1/4"-14 X 7/8" SELF DRILLING CRIMPTITE SCREWS (2) OF WHICH IS IN-BOARD HOLES)

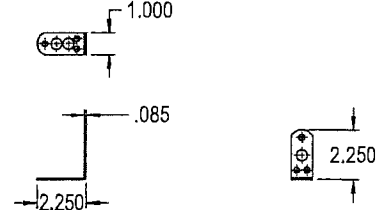


P/N 400735-XXXX, CENTER HINGE  
STANDARD  
(ATTACH WITH (4) 1/4"-14 X 7/8" SELF DRILLING CRIMPTITE SCREWS)

HINGE DETAILS

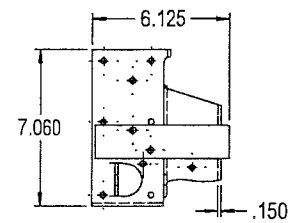


P/N 401124-XXXX, BOTTOM FIXTURE  
(ATTACH WITH (4) 1/4"-14 X 7/8" SELF DRILLING CRIMPTITE SCREWS)

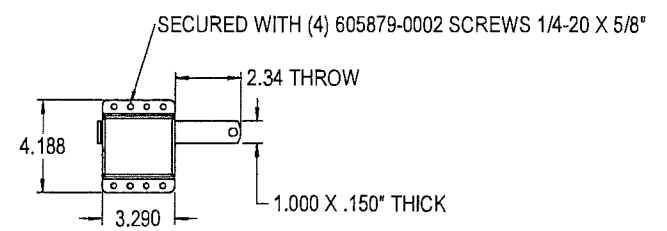


P/N 405742-0001, BRACKET ROLLER SHAFT  
(BRACKET ATTACHED)  
(ATTACH WITH (2) 1/4"-14 X 7/8" SELF DRILLING CRIMPTITE SCREWS)

BOTTOM FIXTURE DETAILS

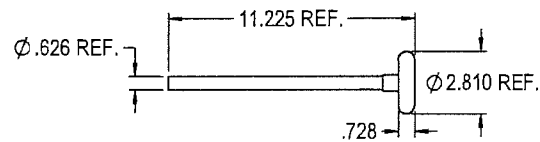


P/N 061537-XXXX, BOTTOM FIXTURE  
(ATTACH WITH (4) 1/4"-14 X 7/8" SELF DRILLING CRIMPTITE SCREWS)

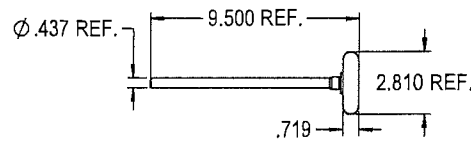


P/N 333871, SIDE LOCK ASSY

LOCK DETAILS

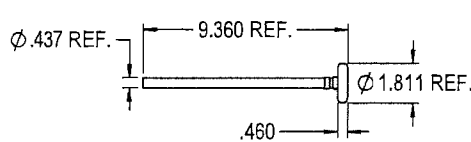


P/N 404046-0002, ROLLER ASSY.  
3" TR-7 5/8" STEM

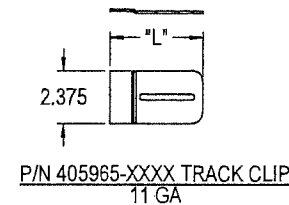


P/N 61337-0006, ROLLER ASSY.  
3" TR-7 7/16" STEM

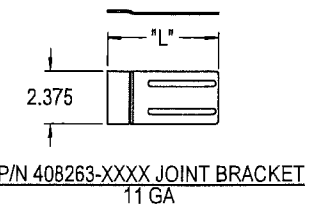
ROLLER STEM ASSY DETAILS



P/N 318700, ROLLER ASSY.  
2" WL 1144

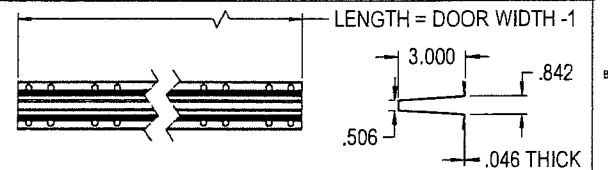


P/N 405965-XXXX, TRACK CLIP  
11 GA



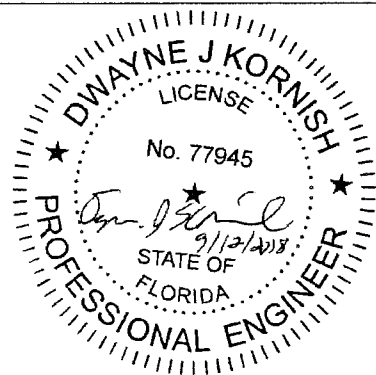
P/N 408263-XXXX, JOINT BRACKET  
11 GA

BRACKET DETAILS



P/N 3347262- STRUT, 3, OPEN WL (UBAR)  
80 KSI MIN. YIELD STRENGTH, 3" X 18 GA

STRUT DETAILS

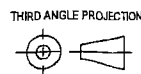


DWAYNE J. KORNISH, PE  
4576 COUNTY ROAD 160  
MOUNT HOPE, OHIO  
FL PE 77945 TX PE 117868  
PROFESSIONAL ENGINEER'S SEAL PROVIDED ONLY FOR  
VERIFICATION OF WINDLOAD CONSTRUCTION DETAILS.

PRODUCT APPROVED  
as complying with the Florida  
Building Code  
NOA-No. 17-1207.08

Approval Date 11/01/2018

By  
Miami-Dade Product Control



OVERHEAD DOOR CORP  
2501 S. STATE HWY 121  
SUITE 200  
LEWISVILLE, TEXAS 75067  
469-549-7100

UNLESS OTHERWISE SPECIFIED  
INTERPRET DIMS & TOLS  
PER ASME Y14.5M  
ALL DIMS ARE IN  
INCHES  
DO NOT SCALE  
DIM CIRCLED WITH SYMBOL 'D'  
ARE CRITICAL TO QUALITY DESIGN  
FEATURES & MUST MEET APPLICABLE  
IN-PROCESS INSPECTION STANDARDS.

TOLERANCES:  
X = ±  
XX = ±  
XXX = ±  
ANGULAR = ± °  
HOLES:  
< Ø.251 = ±  
Ø.251-Ø.500 = ±  
> Ø.500 = ±  
ALL GEOMETRY GOVERNED BY 3D CAD DATABASE:  
411499

APPROVALS DATE  
DRAWN E. CONRAD 4/4/18  
CHECKED D. KORNISH  
APPROVED  
MATERIAL  
FINISH

The Genuine. The Original.  
LEWISVILLE, TEXAS  
DESCRIPTION  
WINDLOAD COMMERCIAL SECTIONAL  
STEEL DOOR, 421/423/427/429, +50/-56PSF  
DADE COUNTY, 10'2" MAX WIDTH  
SIZE DWG NO.  
D D-411499  
REV  
P-00  
SCALE 1:12 UOM =EA SHEET 4 OF 4