



**MIAMI-DADE COUNTY
PRODUCT CONTROL SECTION**

11805 SW 26 Street, Room 208
Miami, Florida 33175-2474
T (786) 315-2590 F (786) 315-2599

**DEPARTMENT OF REGULATORY AND ECONOMIC RESOURCES (RER)
BOARD AND CODE ADMINISTRATION DIVISION**

NOTICE OF ACCEPTANCE (NOA)

www.miamidade.gov/economy

**Overhead Door Corporation
2501 South State Highway 121, Suite 200
Lewisville, TX 75067**

SCOPE:

This NOA is being issued under the applicable rules and regulations governing the use of construction materials. The documentation submitted has been reviewed and accepted by Miami-Dade County RER-Product Control Section to be used in Miami-Dade County and other areas where allowed by the Authority Having Jurisdiction (AHJ).

This NOA shall not be valid after the expiration date stated below. The Miami-Dade County Product Control Section (In Miami-Dade County) and/ or the AHJ (in areas other than Miami-Dade County) reserve the right to have this product or material tested for quality assurance purposes. If this product or material fails to perform in the accepted manner, the manufacturer will incur the expense of such testing and the AHJ may immediately revoke, modify, or suspend the use of such product or material within their jurisdiction. RER reserves the right to revoke this acceptance if it is determined by Miami-Dade County Product Control Section that this product or material fails to meet the requirements of the applicable building code.

This product is approved as described herein and has been designed to comply with the Florida Building Code, including the High Velocity Hurricane Zone.

DESCRIPTION: Models 421/423/427/429 Steel Sectional Garage Door up to 14ft.-2in. Wide with Optional EPS Insulation and Impact Resistant Glazing

APPROVAL DOCUMENT: Drawing No. **411500**, titled "Windload Commercial Sectional Steel Door, 421/423/427/429, +50/-56PSF Dade County, 14'2" Max. Width", sheets 1 through 4 of 4, dated 04/04/2018, with revision **P00** dated 07/16/2018, prepared by Overhead Door Corporation, signed and sealed by Dwayne J. Kornish, P.E., bearing the Miami-Dade County Product Control Revision stamp with the NOA number and Expiration date by the Miami-Dade County Product Control Section.

MISSILE IMPACT RATING: Large & Small Missile Impact Resistant

LABELING: A permanent label with the manufacturer's name or logo, manufacturing address, model/series number, the positive and negative design pressure rating, indicate impact rated if applicable, installation instruction drawing reference number, approval number (NOA), the applicable test standards, and the statement reading 'Miami-Dade County Product Control Approved' is to be located on the door's sidetrack, bottom angle, or inner surface of a panel.

RENEWAL of this NOA shall be considered after a renewal application has been filed and there has been no change in the applicable building code negatively affecting the performance of this product.

TERMINATION of this NOA will occur after the expiration date or if there has been a revision or change in the materials, use, and/ or manufacture of the product or process. Misuse of this NOA as an endorsement of any product, for sales, advertising or any other purposes shall automatically terminate this NOA. Failure to comply with any section of this NOA shall be cause for termination and removal of NOA.

ADVERTISEMENT: The NOA number preceded by the words Miami-Dade County, Florida, and followed by the expiration date may be displayed in advertising literature. If any portion of the NOA is displayed, then it shall be done in its entirety.

INSPECTION: A copy of this entire NOA shall be provided to the user by the manufacturer or its distributors and shall be available for inspection at the job site at the request of the Building Official.

This NOA **revises NOA #17-1207.09** and consists of this page 1, evidence pages E-1 and E-2, as well as approval document mentioned above.

The submitted documentation was reviewed by **Carlos M. Utrera, P.E.**



**NOA-No: 20-1106.08
Expiration Date: November 01, 2023
Approval Date: January 28, 2021**

Overhead Door Corporation

NOTICE OF ACCEPTANCE: EVIDENCE SUBMITTED

1. EVIDENCE SUBMITTED UNDER PREVIOUS NOA-No. 17-1207.09

A. DRAWINGS

1. Drawing No. **411500**, titled “Windload Commercial Sectional Steel Door, 421/423/427/429, +50/-56PSF Dade County, 14’2” Max. Width”, sheets 1 through 4 of 4, dated 04/04/2018, with revision **P00** dated 07/16/2018, prepared by Overhead Door Corporation, signed and sealed by Dwayne J. Kornish, P.E.

B. TESTS

1. Test reports on 1) Uniform Static Air Pressure Test, Loading per FBC TAS 202-94
2) Large Missile Impact Test per FBC, TAS 201-94
3) Cyclic Wind Pressure Loading per FBC, TAS 203-94
4) Forced Entry Test, per FBC, TAS 202-94
5) Tensile Test per ASTM E8
along with marked-up drawings of a 14’-2” Wide Models 421/423/427/429 Steel Sectional Doors, prepared by Intertek, Test Report No. **G6343.04-801-18-R1**, dated 05/14/2018, with revision dated 07/28/2018, signed and sealed by Tyler Westerling, P.E.
2. Test report on salt spray exposure, per ASTM B117-16 on G40 and G90 coupons, prepared by Intertek, Report No. **I1314.02-106-18R0**, dated 05/11/2018, signed by Gary T. Hartman.

C. CALCULATIONS

1. Anchorage verification calculations prepared by Overhead Door Engineering, dated 07/13/2018, signed and sealed by Dwayne J. Kornish, P.E.

D. MATERIAL CERTIFICATIONS

1. Test report on the EPS Insulation, D.F. Self-Ignition Temperature per ASTM D1929-2016, Test Report # **103445527MID-002**, prepared by Intertek, dated 03/23/2017, signed by Bryan Bowman.
2. UL evaluation report on Styropek EPS insulations’ Surface Burning Characteristics (Flame Spread and Smoke Density Index) per ANSI/UL723 (ASTM E84), prepared by UL Inc., Test Report # **UL ER38219-01** and dated 04/08/2015.
3. Notice of Acceptance No. **17-0410.01**, issued to Covestro, LLC, for their Makrolon Polycarbonate Sheets, approved on 06/08/2017 and expiring on 08/27/2022.

E. QUALITY ASSURANCE

1. Miami-Dade Department of Regulatory and Economic Resources (RER).

F. STATEMENTS

1. Statement letter of code conformance to the 6th edition (2017) FBC issued by Overhead Door Corporation, dated 09/12/2018, signed and sealed by Dwayne J. Kornish, P.E.
2. No financial interest letter issued by Overhead Door Corporation, dated 09/12/2018, signed and sealed by Dwayne J. Kornish, P.E.



Carlos M. Utrera, P.E.
Product Control Examiner
NOA-No: 20-1106.08

Expiration Date: November 01, 2023
Approval Date: January 28, 2021

Overhead Door Corporation

NOTICE OF ACCEPTANCE: EVIDENCE SUBMITTED

2. NEW EVIDENCE SUBMITTED

A. DRAWINGS

1. None.

B. TESTS

1. None.

C. CALCULATIONS

1. None.

D. MATERIAL CERTIFICATIONS

1. Notice of Acceptance No. **18-0918.06**, issued to Plaskolite, LLC, for their TUFFAK Polycarbonate Sheets, approved on 11/15/2018 and expiring on 08/27/2022.

E. QUALITY ASSURANCE

1. Miami-Dade Department of Regulatory and Economic Resources (RER).

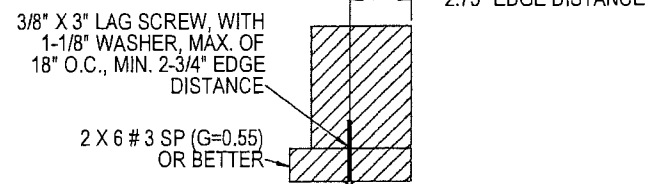
F. STATEMENTS

1. Statement letter of code conformance to the **FBC 7th Edition (2020)** issued by Overhead Door Corporation, dated 10/23/2020, signed and sealed by Dwayne J. Kornish, P.E.

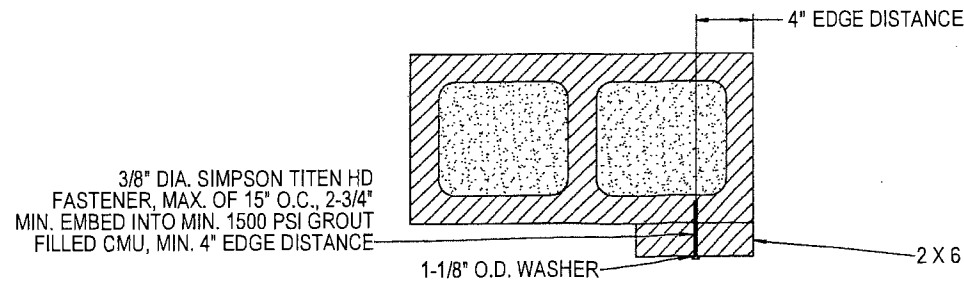


Carlos M. Utrera, P.E.
Product Control Examiner
NOA-No: 20-1106.08

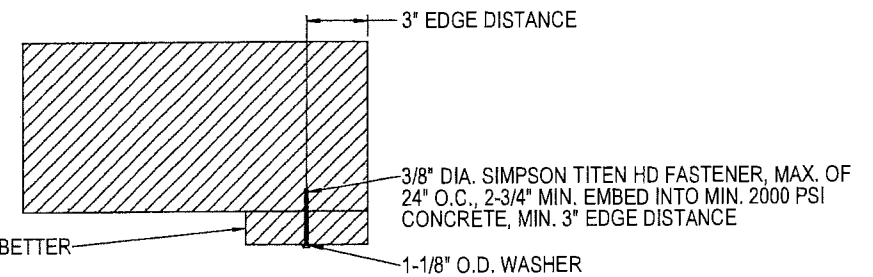
Expiration Date: November 01, 2023
Approval Date: January 28, 2021



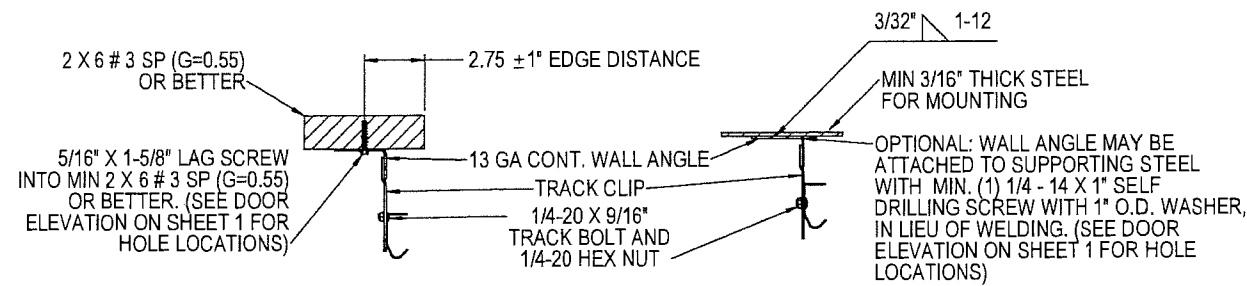
WOOD MOUNTED TO #3 SOUTHERN PINE SUBSTRATE



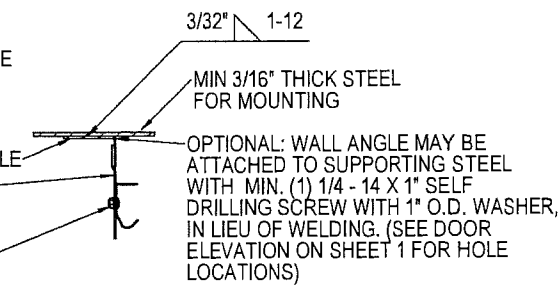
WOOD MOUNTED TO GROUT FILLED MASONRY BLOCK DETAIL



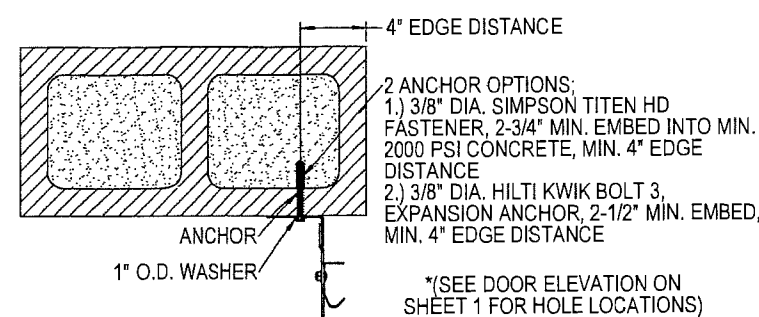
WOOD MOUNTED TO 2000 PSI CONCRETE DETAIL



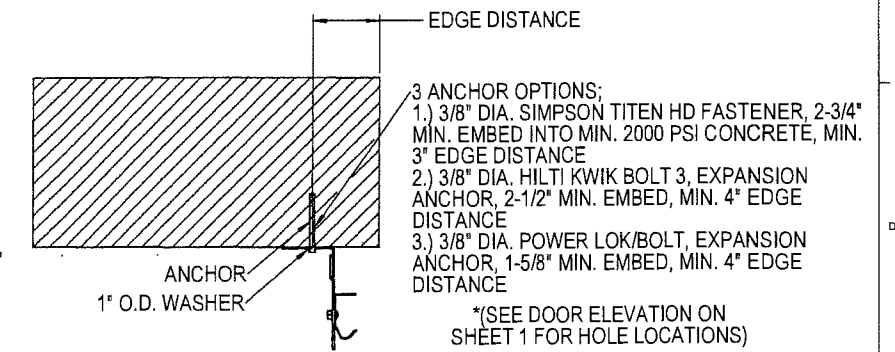
MOUNTING TO WOOD JAMB DETAIL



MOUNTING TO STEEL JAMB DETAIL



MOUNTING TO GROUT FILLED MASONRY BLOCK DETAIL



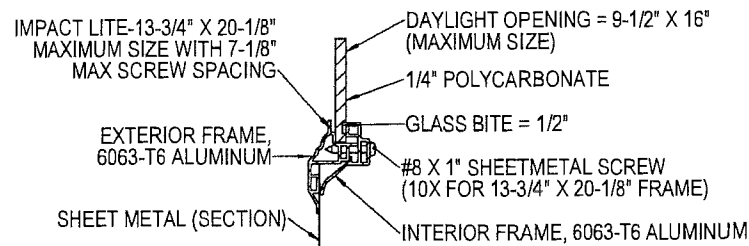
MOUNTING TO 2000 PSI CONCRETE DETAIL

SECTION E-E
SCALE 1:4

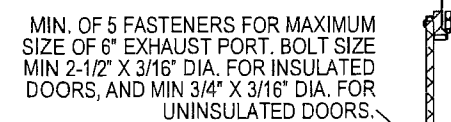
PRODUCT REVISED
as complying with the Florida
Building Code
NOA-No. 20-1106.08

Expiration Date 11/01/2023

By *[Signature]*
Miami-Dade Product Control

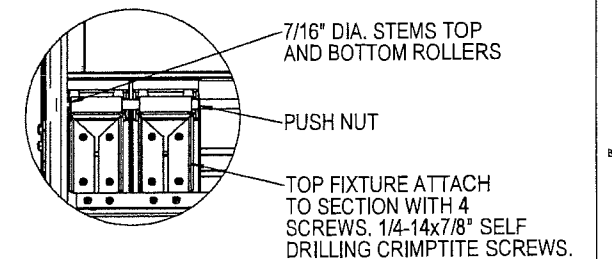


WINDOW DETAIL
SECTION F-F
SCALE 1:2

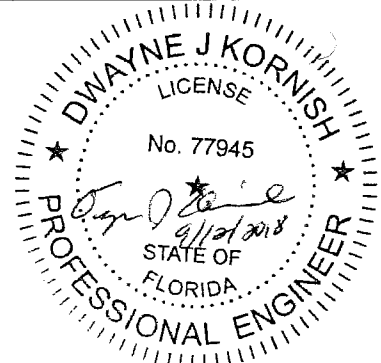


SHEET METAL (SECTION)

EXHAUST PORT DETAIL
SECTION G-G
SCALE 1:4



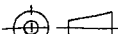

DETAIL H
SCALE 1:4

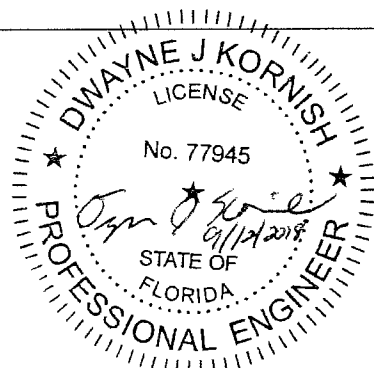
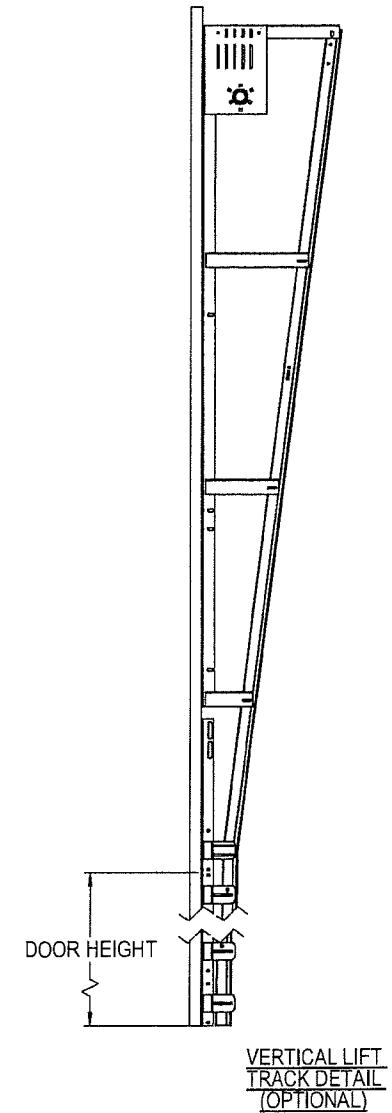
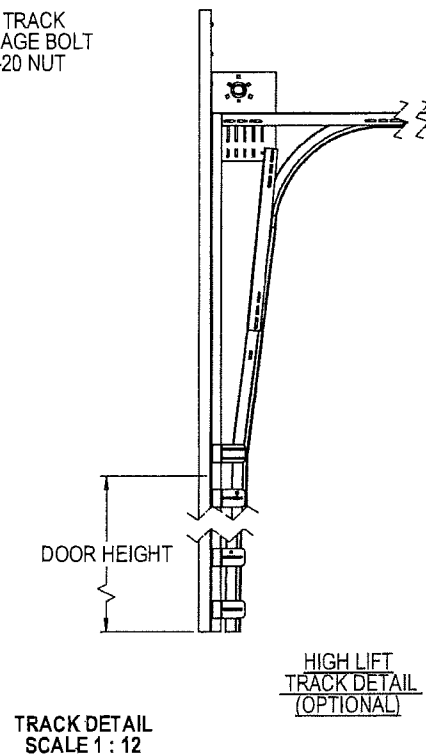
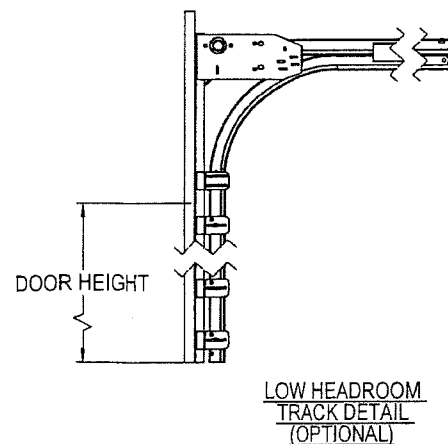
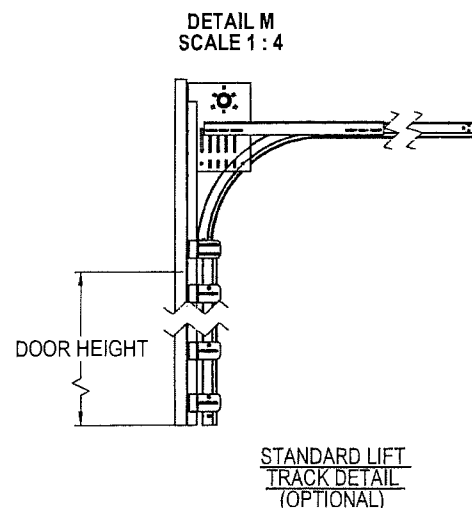
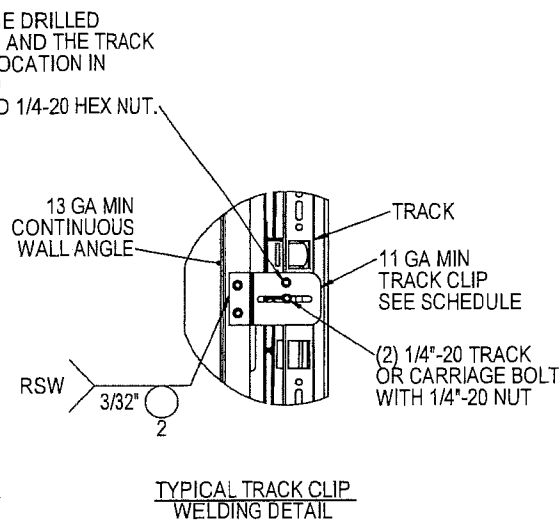
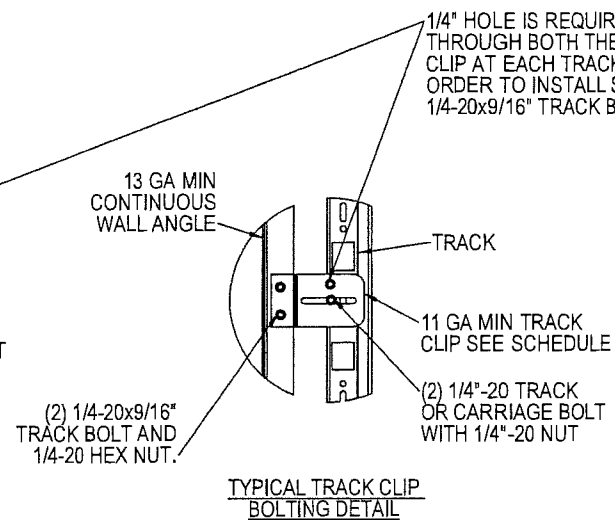
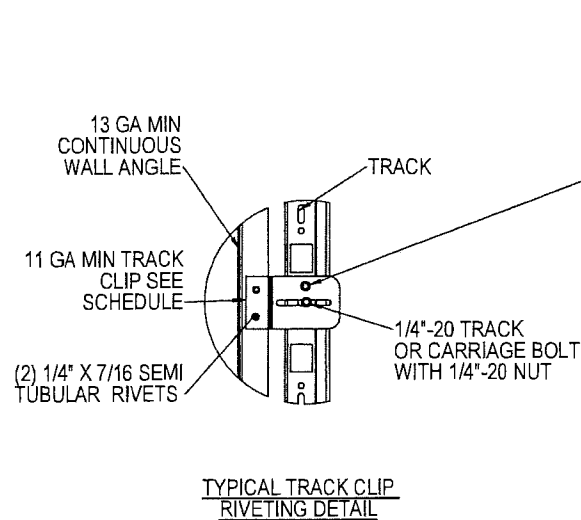
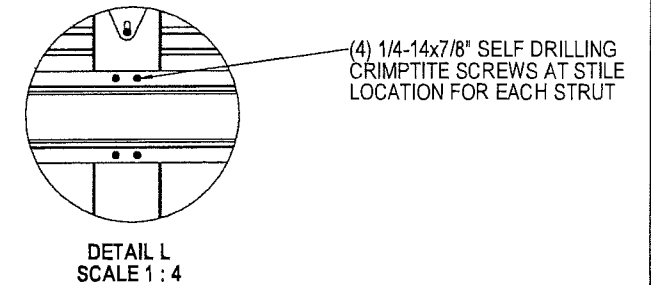
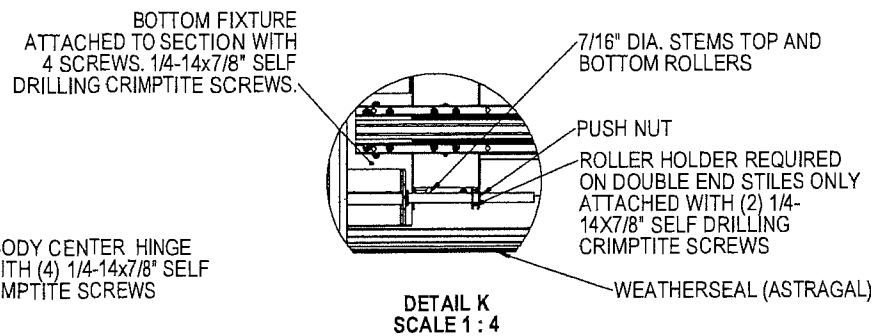
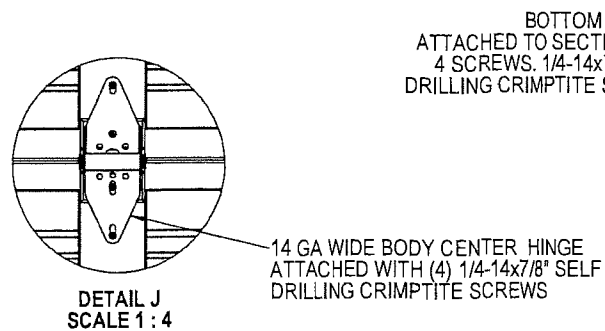
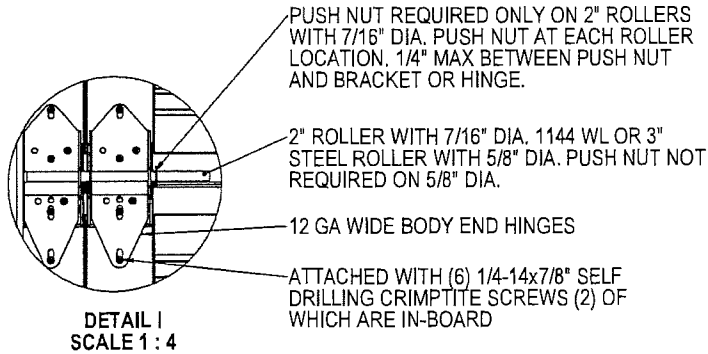


DWAYNE J. KORNISH, PE
4576 COUNTY ROAD 160
MOUNT HOPE, OHIO
FL PE 77945 TX PE 117868

PROFESSIONAL ENGINEER'S SEAL PROVIDED ONLY FOR
VERIFICATION OF WINDLOAD CONSTRUCTION DETAILS.

PRODUCT APPROVED
as complying with the Florida
Building Code
NOA-No. 17-1207.09
Approval Date 11/01/2018
By *[Signature]*
Miami-Dade Product Control

THIRD ANGLE PROJECTION 		UNLESS OTHERWISE SPECIFIED			APPROVALS DATE		The Genuine. The Original.  LEWISVILLE, TEXAS				
		INTERPRET DIMS & TOLS PER ASME Y14.5M ALL DIMS ARE IN INCHES DO NOT SCALE DIM CIRCLED WITH SYMBOL 'Ø' ARE CRITICAL TO QUALITY DESIGN FEATURES & MUST MEET APPLICABLE IN-PROCESS INSPECTION STANDARDS.		TOLERANCES:		DRAWN E. CONRAD 4/4/18	DESCRIPTION WINDLOAD COMMERCIAL SECTIONAL STEEL DOOR, 421/423/427/429, +50/-56PSF DADE COUNTY, 14'2" MAX WIDTH				
.X = ± .1 .XX = ± .03 .XXX = ± .010 ANGULAR = ± .5°				CHECKED D. KORNISH -							
OVERHEAD DOOR CORP 2501 S. STATE HWY 121 SUITE 200 LEWISVILLE, TEXAS 75067 469-549-7100		ALL GEOMETRY GOVERNED BY 3D CAD DATABASE: 411500		APPROVED -		SIZE DWG NO. D D-411500		REV P-00			
				MATERIAL -							
				FINISH -							
						SCALE 1:12		UOM = EA		SHEET 2 OF 4	



DWAYNE J. KORNISH, PE
4576 COUNTY ROAD 160
MOUNT HOPE, OHIO
FL PE 77945 TX PE 117868

PROFESSIONAL ENGINEER'S SEAL PROVIDED ONLY FOR
VERIFICATION OF WINDLOAD CONSTRUCTION DETAILS.

PRODUCT APPROVED
as complying with the Florida
Building Code

NOA-No. **17-1207.09**

Approval Date **11/01/2018**

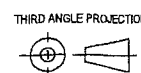
By *[Signature]*
Miami-Dade Product Control

PRODUCT REVISED
as complying with the Florida
Building Code

NOA-No. **20-1106.08**

Expiration Date **11/01/2023**

By *[Signature]*
Miami-Dade Product Control



OVERHEAD DOOR CORP
2501 S. STATE HWY 121
SUITE 200
LEWISVILLE, TEXAS 75067
469-549-7100

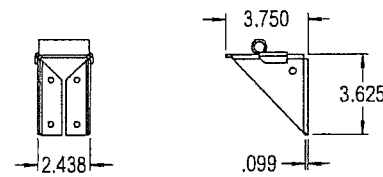
UNLESS OTHERWISE SPECIFIED
INTERPRET DIMS & TOLS
PER ASME Y14.5M
ALL DIMS ARE IN
INCHES
DO NOT SCALE
DIM CIRCLED WITH SYMBOL 'C'
ARE CRITICAL TO QUALITY DESIGN
FEATURES & MUST MEET APPLICABLE
IN-PROCESS INSPECTION STANDARDS.

TOLERANCES:
X = ± .1
XX = ± .03
XXX = ± .010
ANGULAR = ± .5°
HOLES:
< Ø.251 = +.004/- .003
Ø.251-Ø.500 = +.006/- .003
> Ø.500 = +.008/- .003
ALL GEOMETRY GOVERNED BY 3D CAD DATABASE:
411500

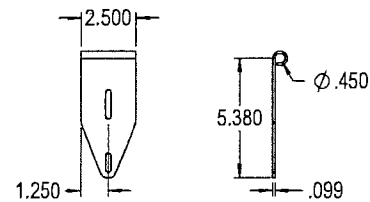
APPROVALS		DATE
DRAWN	E. CONRAD	4/4/18
CHECKED	D. KORNISH	-
APPROVED	-	-
MATERIAL	-	-
FINISH	-	-

The Genuine. The Original.	
LEWISVILLE, TEXAS	
DESCRIPTION WINDLOAD COMMERCIAL SECTIONAL STEEL DOOR, 421/423/427/429, +50/-56PSF DADE COUNTY, 14'2" MAX WIDTH	
SIZE DWG NO.	REV
D D-411500	P-00
SCALE 1:12	UOM = EA
SHEET 3 OF 4	

NOTES: (UNLESS OTHERWISE SPECIFIED)
1.FOR DIMENSION AND NOTE REFERENCES, REFER TO INDIVIDUAL DRAWINGS.

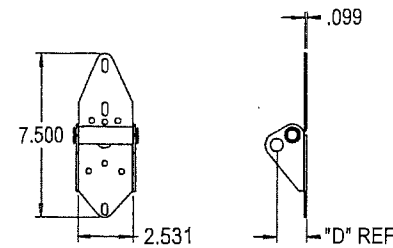


P/N 066590-0000, TOP FIXTURE
STANDARD
(ATTACH WITH (4) 1/4"-14 X 7/8" SELF DRILLING CRIMPTITE SCREWS)

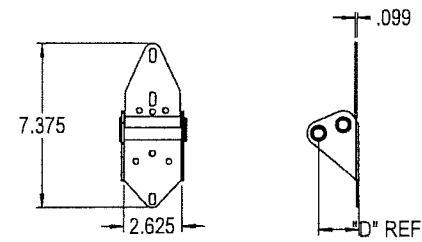


P/N 061371-0001 FIXTURE, TOP, 7/4
(ATTACH WITH (4) 1/4"-14 X 7/8" SELF DRILLING CRIMPTITE SCREWS)

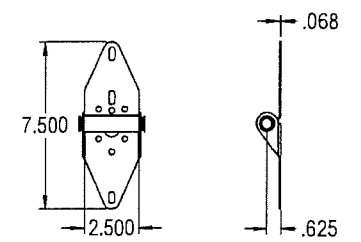
TOP FIXTURE DETAILS



P/N 400643-XXXX, END HINGE
STANDARD
(ATTACH WITH (6) 1/4"-14 X 7/8" SELF DRILLING CRIMPTITE SCREWS (2) OF WHICH IS IN-BOARD HOLES)

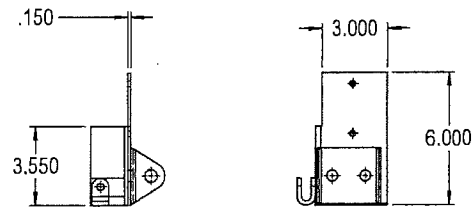


P/N 404043-XXXX, END HINGE
HEAVY DUTY 5/8" STEM
(ATTACH WITH (6) 1/4"-14 X 7/8" SELF DRILLING CRIMPTITE SCREWS (2) OF WHICH IS IN-BOARD HOLES)

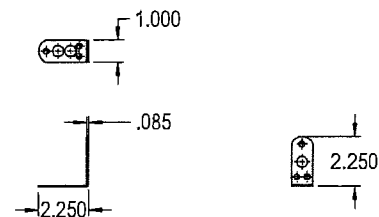


P/N 400735-XXXX, CENTER HINGE
STANDARD
(ATTACH WITH (4) 1/4"-14 X 7/8" SELF DRILLING CRIMPTITE SCREWS)

HINGE DETAILS

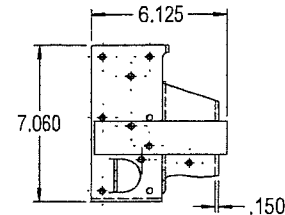


P/N 401124-XXXX, BOTTOM FIXTURE
(ATTACH WITH (4) 1/4"-14 X 7/8" SELF DRILLING CRIMPTITE SCREWS)

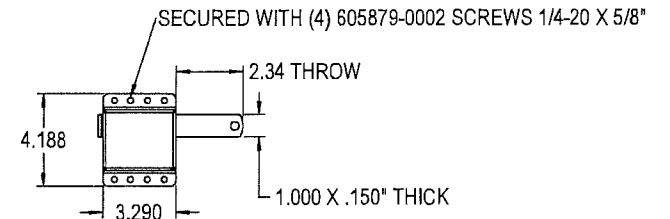


P/N 405742-0001, BRACKET ROLLER SHAFT
(BRACKET ATTACHED)
(ATTACH WITH (2) 1/4"-14 X 7/8" SELF DRILLING CRIMPTITE SCREWS)

BOTTOM FIXTURE DETAILS

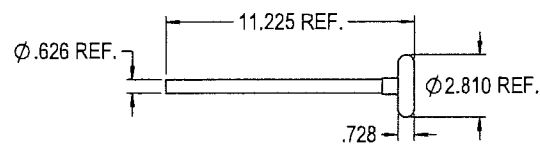


P/N 061537-XXXX, BOTTOM FIXTURE
(ATTACH WITH (4) 1/4"-14 X 7/8" SELF DRILLING CRIMPTITE SCREWS)

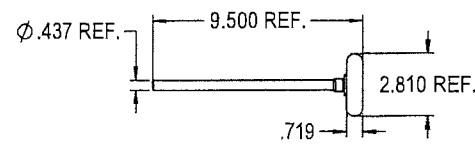


P/N 333871, SIDE LOCK ASSY

LOCK DETAILS

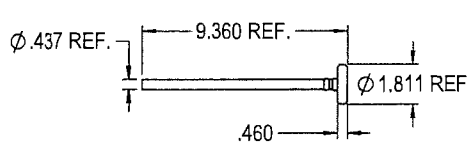


P/N 404046-0002, ROLLER ASSY.
3" TR-7 5/8" STEM

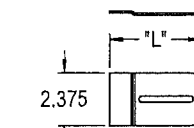


P/N 61337-0006, ROLLER ASSY.
3" TR-7 7/16" STEM

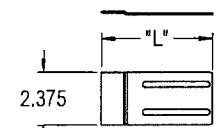
ROLLER STEM ASSY DETAILS



P/N 318700, ROLLER ASSY.
2" WL 1144

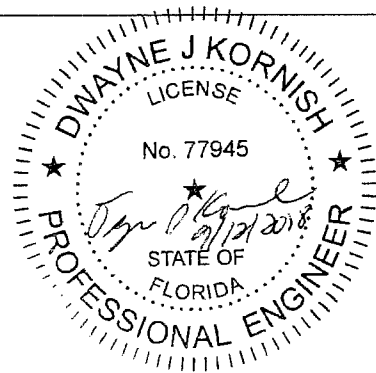


P/N 405965-XXXX TRACK CLIP
11 GA



P/N 408263-XXXX JOINT BRACKET
11 GA

BRACKET DETAILS



DWAYNE J. KORNISH, PE
4576 COUNTY ROAD 160
MOUNT HOPE, OHIO
FL PE 77945 TX PE 117868

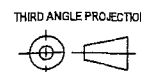
PROFESSIONAL ENGINEER'S SEAL PROVIDED ONLY FOR
VERIFICATION OF WINDLOAD CONSTRUCTION DETAILS.

PRODUCT APPROVED as complying with the Florida Building Code
NOA-No. 17-1207.09
Approval Date 11/01/2018

By *[Signature]*
Miami-Dade Product Control

PRODUCT REVISED as complying with the Florida Building Code
NOA-No. 20-1106.08
Expiration Date 11/01/2023

By *[Signature]*
Miami-Dade Product Control



OVERHEAD DOOR CORP
2501 S. STATE HWY 121
SUITE 200
LEWISVILLE, TEXAS 75067
469-549-7100

UNLESS OTHERWISE SPECIFIED
INTERPRET DIMS & TOLS
PER ASME Y14.5M
ALL DIMS ARE IN
INCHES
DO NOT SCALE
DIM CIRCLED WITH SYMBOL 'C'
ARE CRITICAL TO QUALITY DESIGN
FEATURES & MUST MEET APPLICABLE
IN-PROCESS INSPECTION STANDARDS.

TOLERANCES:
.X = ±
.XX = ±
.XXX = ±
ANGULAR = ± °
HOLES:
< Ø.251 = ±
Ø.251-Ø.500 = ±
> Ø.500 = ±
ALL GEOMETRY GOVERNED BY 3D CAD DATABASE:
411500

APPROVALS
DRAWN E. CONRAD
CHECKED D. KORNISH
APPROVED
MATERIAL
FINISH
SCALE 1:12

DATE 4/4/18
The Genuine. The Original.
LEWISVILLE, TEXAS
DESCRIPTION
WINDLOAD COMMERCIAL SECTIONAL
STEEL DOOR, 421/423/427/429, +50/-56PSF
DADE COUNTY, 14'2" MAX WIDTH
SIZE DWG NO.
D D-411500
REV
P-00
UOM = EA
SHEET 4 OF 4