



**MIAMI-DADE COUNTY
PRODUCT CONTROL SECTION**

11805 SW 26 Street, Room 208
Miami, Florida 33175-2474
T (786) 315-2590 F (786) 315-2599

**DEPARTMENT OF REGULATORY AND ECONOMIC RESOURCES (RER)
BOARD AND CODE ADMINISTRATION DIVISION**

NOTICE OF ACCEPTANCE (NOA)

www.miamidade.gov/economy

**Overhead Door Corporation
2501 South State Hwy. 121, Suite 200
Lewisville, Texas 75067**

SCOPE:

This NOA is being issued under the applicable rules and regulations governing the use of construction materials. The documentation submitted has been reviewed and accepted by Miami-Dade County RER-Product Control Section to be used in Miami-Dade County and other areas, where allowed by the Authority Having Jurisdiction (AHJ).

This NOA shall not be valid after the expiration date stated below. The Miami-Dade County Product Control Section (In Miami-Dade County) and/ or the AHJ (in areas other than Miami-Dade County) reserve the right to have this product or material tested for quality assurance purposes. If this product or material fails to perform in the accepted manner, the manufacturer will incur the expense of such testing and the AHJ may immediately revoke, modify, or suspend the use of such product or material within their jurisdiction. RER reserves the right to revoke this acceptance if it is determined by Miami-Dade County Product Control Section that this product or material fails to meet the requirements of the applicable building code.

This product is approved as described herein and has been designed to comply with the Florida Building Code, including the High Velocity Hurricane Zone.

DESCRIPTION: Models 5745 / 5765 / 7565 / 7655 / 515 / 525 Insulated Steel Sectional Garage Door up to 18ft.-2in. Wide with Optional Impact Resistant Glazing

APPROVAL DOCUMENT: Drawing No. **D-411531**, titled "Windload Models 5745 / 5765 / 7565 / 7655 / 515 / 525, +46/-52 PSF Dade County, 18'2" Max. Width", sheets 1 through 5 of 5, dated 08/28/2018, prepared by Overhead Door Corporation, signed and sealed by Dwayne J. Kornish, P.E. on 09/24/2019, bearing the Miami-Dade County Product Control revision stamp with the NOA number and expiration date by the Miami-Dade County Product Control Section.

MISSILE IMPACT RATING: Large & Small Missile Impact Resistant

LABELING: A permanent label with the manufacturer's name or logo, manufacturing address, model/ series number, the positive and negative design pressure rating, indicate impact rated if applicable, installation instruction drawing reference number, approval number (NOA), the applicable test standards, and the statement reading 'Miami-Dade County Product Control Approved' is to be located on the door's sidetrack, bottom angle, or inner surface of a panel.

RENEWAL of this NOA shall be considered after a renewal application has been filed and there has been no change in the applicable building code negatively affecting the performance of this product.

TERMINATION of this NOA will occur after the expiration date or if there has been a revision or change in the materials, use, and/ or manufacture of the product or process. Misuse of this NOA as an endorsement of any product, for sales, advertising or any other purposes shall automatically terminate this NOA. Failure to comply with any section of this NOA shall be cause for termination and removal of NOA.

ADVERTISEMENT: The NOA number preceded by the words Miami-Dade County, Florida, and followed by the expiration date may be displayed in advertising literature. If any portion of the NOA is displayed, then it shall be done in its entirety.

INSPECTION: A copy of this entire NOA shall be provided to the user by the manufacturer or its distributors and shall be available for inspection at the job site at the request of the Building Official.

This NOA **revises NOA # 19-0815.05** and consists of this page 1 and evidence pages E-1 and E-2, as well as approval document mentioned above.

The submitted documentation was reviewed by **Carlos M. Utrera, P.E.**



**NOA-No: 20-1106.14
Expiration Date: October 10, 2024
Approval Date: February 04, 2021**

NOTICE OF ACCEPTANCE: EVIDENCE SUBMITTED

1. EVIDENCE SUBMITTED UNDER NOA # 19-0815.05

A. DRAWINGS

1. Drawing No. **D-411531**, titled “Windload Models 5745 / 5765 / 7565 / 7655 / 515 / 525, +46/-52 PSF Dade County, 18’2” Max. Width”, sheets 1 through 5 of 5, dated 08/28/2018, prepared by Overhead Door Corporation, signed and sealed by Dwayne J. Kornish, P.E. on 09/24/2019.

B. TESTS

1. Test reports on 1) Uniform Static Air Pressure Test, Loading per FBC TAS 202-94
2) Large Missile Impact Test per FBC, TAS 201-94
3) Cyclic Wind Pressure Loading per FBC, TAS 203-94
4) Forced Entry Test, per FBC, TAS 202-94
5) Tensile Test per ASTM E8
along with marked-up drawings of a 18’-2” Wide, 5745 Series Sectional Garage Doors, prepared by Intertek, Test Report No. **J1626.03-801-18-R1**, dated 07/10/2019, with revision dated 07/18/2019, signed and sealed by Tyler Westerling, P.E.
2. Test report on Standard Test Method for Evaluation of Painted or Coated Specimens Subjected to Corrosive Environments per ASTM D1654-08(2016)-e1 and Standard Practice for Operating Salt Spray (Fog) Apparatus per ASTM B117-16 and on garage door exterior steel, prepared by Intertek, Report No. **J4650.02-106-18 R0**, dated 05/24/2019, signed by Gary T. Hartman, P.E.

C. CALCULATIONS

1. Anchorage verification calculations prepared by Overhead Door Corp., dated 06/07/2019, signed and sealed by Dwayne J. Kornish, P.E.

D. MATERIAL CERTIFICATIONS

1. Test report on Ignition Temperatures of Plastic per ASTM D1929-16 on BASF Corp. Elastopor P19670R polyurethane foam insulation, prepared by QAI Laboratories, Inc., Test Report No. **RJ6431F-1**, dated 09/28/2018, signed by Bryan Ortega.
2. Test report on Surface Burning Characteristics of Building Materials per ASTM E84-18b on BASF Corp. Elastopor P19670R polyurethane foam insulation, prepared by QAI Laboratories, Inc., Test Report No. **RJ6648F-4**, dated 12/12/2018, signed by Bryan Ortega.
3. Notice of Acceptance No. **18-0918.06**, issued to Plaskolite, LLC, for their TUFFAK Polycarbonate Sheets, approved on 11/15/2018 and expiring on 08/27/2022.

E. QUALITY ASSURANCE

1. Miami-Dade Department of Regulatory and Economic Resources (RER).

F. STATEMENTS

1. Statement letter of code conformance to the 6th edition (2017) FBC issued by Overhead Door Corporation, dated 05/24/2019, signed and sealed by Dwayne J. Kornish, P.E.
2. No financial interest letter issued by Overhead Door Corporation, dated 08/07/2019, signed and sealed by Dwayne J. Kornish, P.E.



Carlos M. Utrera, P.E.
Product Control Examiner

NOA-No: 20-1106.14
Expiration Date: October 10, 2024
Approval Date: February 04, 2021

Overhead Door Corporation

NOTICE OF ACCEPTANCE: EVIDENCE SUBMITTED

2. NEW EVIDENCE SUBMITTED

A. DRAWINGS

1. None.

B. TESTS

1. None.

C. CALCULATIONS

1. None.

D. QUALITY ASSURANCE

1. Miami-Dade Department of Regulatory and Economic Resources (RER).

E. MATERIAL CERTIFICATIONS

1. Test report on flame spread and smoke developed of BASF polyurethane foam per ASTM E84, Test Report # RJ7233F-1, dated 10/14/2019, prepared by QAI Laboratories, Inc. and signed by Brian Ortega.
2. Test report on ignition temperature of BASF polyurethane foam per ASTM D1929, Test Report # 10399361SAT-4, dated 10/14/2019, prepared by Intertek Building & Construction (B&C), signed by Servando Romo.

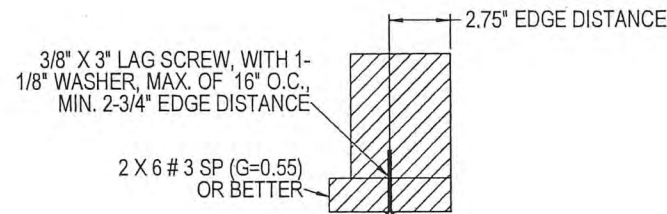
F. STATEMENTS

1. Statement letter of code conformance to the **7th edition (2020) FBC**, issued by Overhead Door Corporation, dated 11/03/2020, signed and sealed by Dwayne J. Kornish P.E.

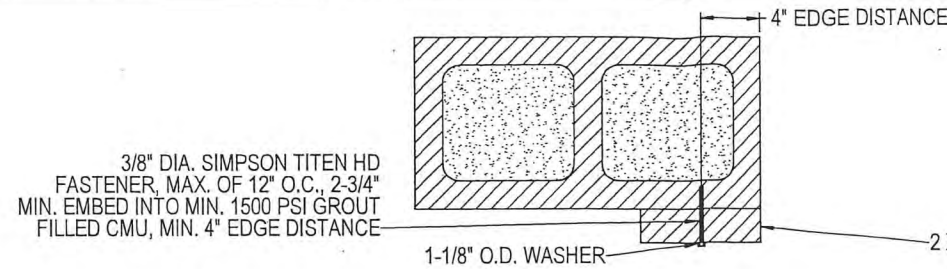


**Carlos M. Utrera, P.E.
Product Control Examiner**

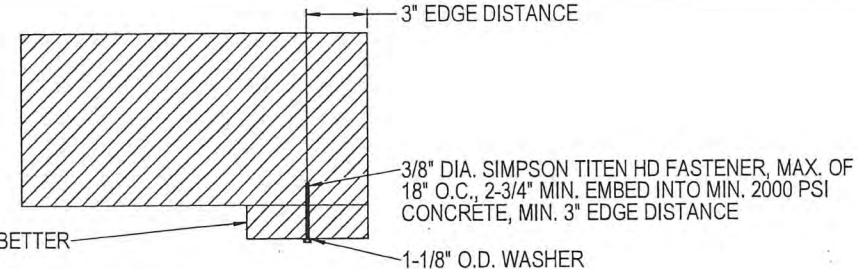
**NOA-No: 20-1106.14
Expiration Date: October 10, 2024
Approval Date: February 04, 2021**



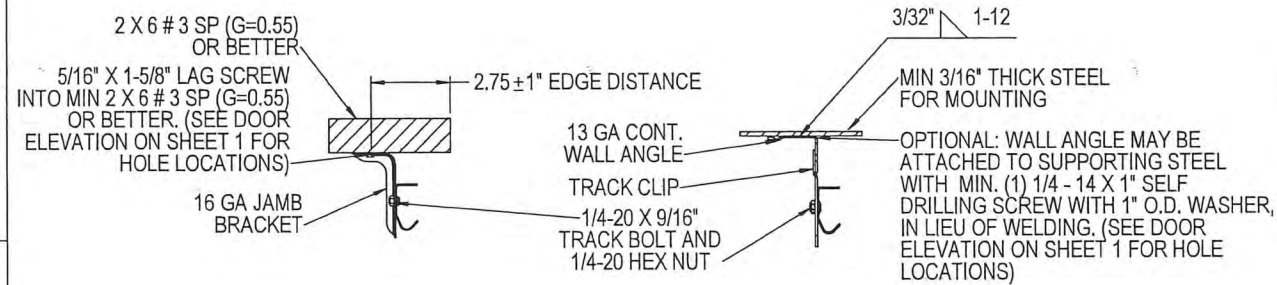
WOOD MOUNTED TO # 3 SOUTHERN PINE SUBSTRATE



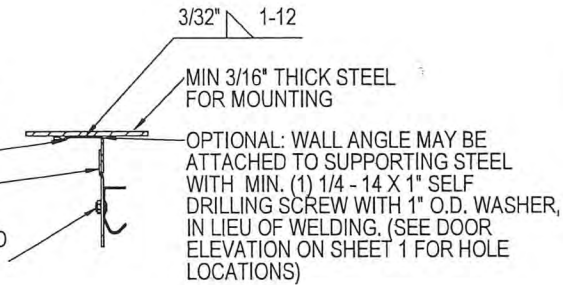
WOOD MOUNTED TO GROUT FILLED MASONRY BLOCK DETAIL



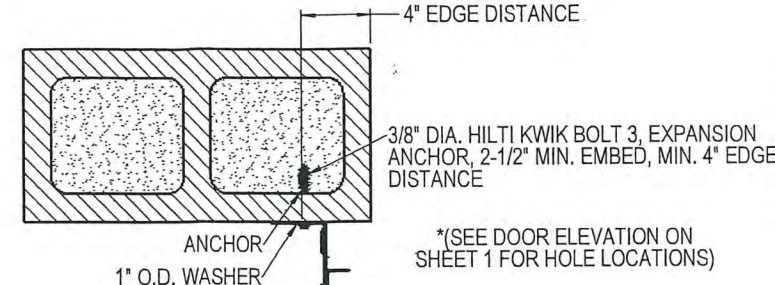
WOOD MOUNTED TO 2000 PSI CONCRETE DETAIL



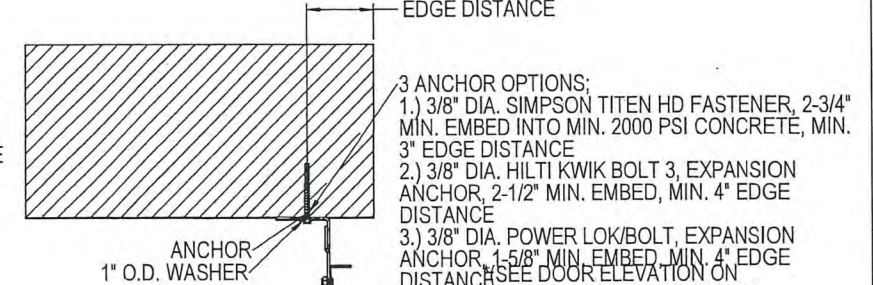
MOUNTING TO WOOD JAMB DETAIL



MOUNTING TO STEEL JAMB DETAIL

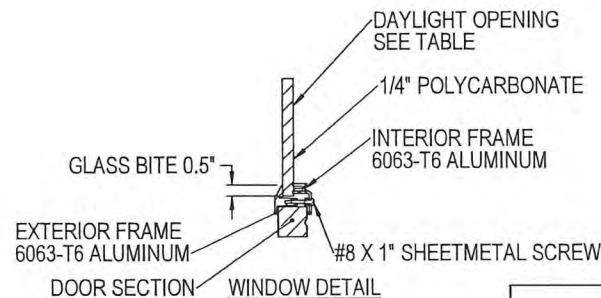


MOUNTING TO GROUT FILLED MASONRY BLOCK DETAIL



MOUNTING TO 2000 PSI CONCRETE DETAIL

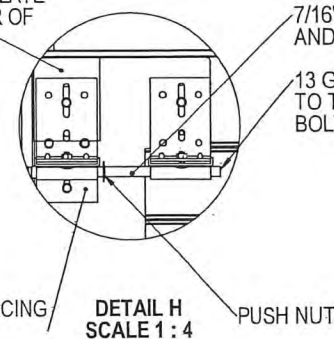
PRODUCT REVISED
as complying with the Florida Building Code
NOA-No. 20-1106.14
Expiration Date 10/10/2024
By *[Signature]*
Miami-Dade Product Control



SECTION F-F SCALE 1:4

Impact Frame Size	Daylight Opening (DLO)	Screw Qty
15-1/4 x 19-1/8	11-1/8 x 15	10
16-7/8 x 19-7/8	12-3/4 x 15-3/4	10
16-7/8 x 42-1/8	12-3/4 x 37-7/8	14
15-1/4 x 44-1/2	11-1/4 x 40-1/8	14
12-3/4 x 40	8-5/8 x 35-7/8	14
13 x 38	8-7/8 x 33-7/8	14

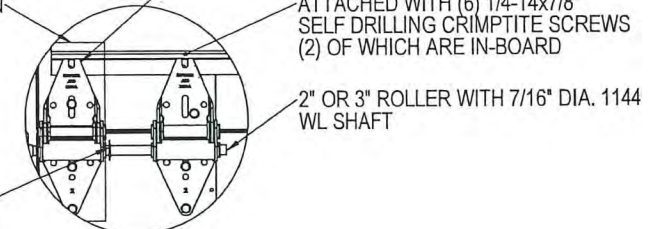
INTERNAL STEEL BACKER PLATE ADHERED TO THE INTERIOR OF THE SECTION BACKER SKIN



DETAIL H SCALE 1:4

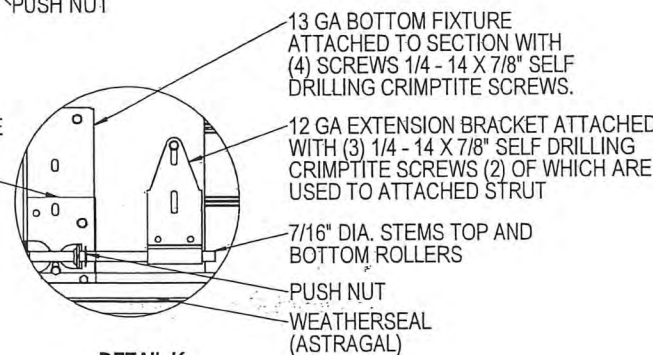
13 GA ROLLER SLIDE ATTACHED TO TOP FIXTURE WITH 5/16\"/>

INTERNAL STEEL BACKER PLATE ADHERED TO THE INTERIOR OF THE SECTION BACKER SKIN



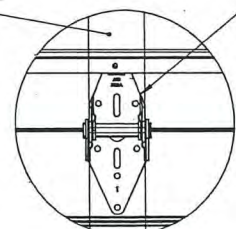
DETAIL I SCALE 1:4

PUSH NUT REQUIRED AT EACH ROLLER LOCATION. 1/4\"/>

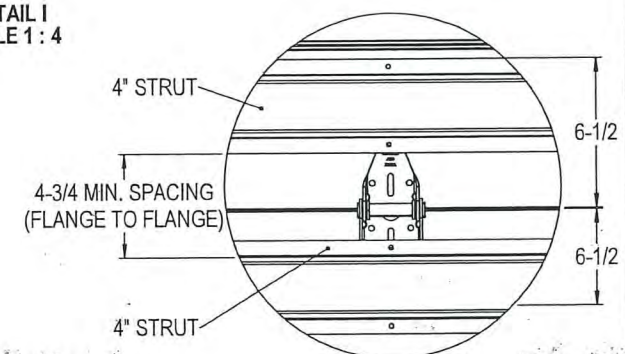


DETAIL K SCALE 1:4

INTERNAL STEEL BACKER PLATE ADHERED TO THE INTERIOR OF THE SECTION BACKER SKIN



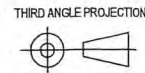
DETAIL J SCALE 1:4



DETAIL L SCALE 1:4

INTERNAL STEEL BACKER PLATE ADHERED TO THE INTERIOR OF THE SECTION BACKER SKIN

PRODUCT APPROVED
as complying with the Florida Building Code
NOA-No. 19-0815.05
Approval Date 10/10/2019
By *[Signature]*
Miami-Dade Product Control



A DIVISION OF OVERHEAD DOOR CORP
3395 ADDISON DRIVE
PENSACOLA, FLORIDA 32514
(850)-474-9890

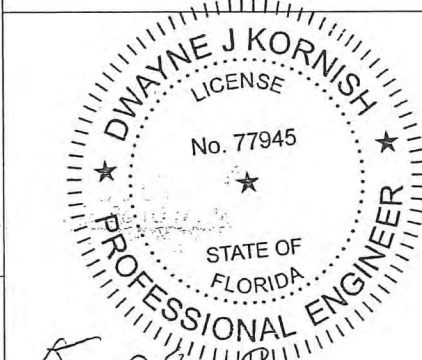
INTERPRET DIMS & TOLS PER ASME Y14.5M
ALL DIMS ARE IN INCHES
DO NOT SCALE

DIMS CIRCLED WITH SYMBOL 'C' ARE CRITICAL TO QUALITY DESIGN FEATURES & MUST MEET APPLICABLE IN-PROCESS INSPECTION STANDARDS.

UNLESS OTHERWISE SPECIFIED
TOLERANCES:
X = ± .1
XX = ± .03
XXX = ± .010
ANGULAR = ± .5°
HOLES:
< Ø.251 = +.004/- .003
Ø.251-Ø.500 = +.006/- .003
> Ø.500 = +.008/- .003
ALL GEOMETRY GOVERNED BY 3D CAD DATABASE:

APPROVALS DATE
DRAWN E. CONRAD 8/28/18
CHECKED D. KORNISH -
APPROVED -
MATERIAL -
FINISH -
WINDLOAD SPECIFICATION OPTION CODE 2351

The Genuine. The Original.
OVERHEAD DOOR LEWISVILLE, TEXAS
DESCRIPTION
WINDLOAD MODELS
5745/5765/7565/7655/515/525, +46/-52PSF
DADE COUNTY, 18'2\"/>



[Signature]
7/24/2019
DWAYNE J. KORNISH, PE
4576 COUNTY ROAD 160
MOUNT HOPE, OHIO
FL PE 77945 TX PE 117868

PROFESSIONAL ENGINEER'S SEAL PROVIDED ONLY FOR VERIFICATION OF WINDLOAD CONSTRUCTION DETAILS.

NOTES: (UNLESS OTHERWISE SPECIFIED)

PRODUCT REVISED
as complying with the Florida
Building Code
NOA-No. 20-1106.14

Expiration Date 10/10/2024

By *[Signature]*
Miami-Dade Product Control

(12) SECTION DOORS WITH
(23) 4" 16 GA 80 KSI U- BARS
(1) 3" 18 GA 80 KSI U- BARS
LOCATED AS SHOWN

(11) SECTION DOORS WITH
(21) 4" 16 GA 80 KSI U- BARS
(1) 3" 18 GA 80 KSI U- BARS
LOCATED AS SHOWN

(10) SECTION DOORS WITH
(19) 4" 16 GA 80 KSI U- BARS
(1) 3" 18 GA 80 KSI U- BARS
LOCATED AS SHOWN

(9) SECTION DOORS WITH
(17) 4" 16 GA 80 KSI U- BARS
(1) 3" 18 GA 80 KSI U- BARS
LOCATED AS SHOWN

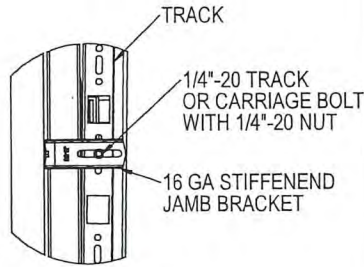
(8) SECTION DOORS WITH
(15) 4" 16 GA 80 KSI U- BARS
(1) 3" 18 GA 80 KSI U- BARS
LOCATED AS SHOWN

(7) SECTION DOORS WITH
(13) 4" 16 GA 80 KSI U- BARS
(1) 3" 18 GA 80 KSI U- BARS
LOCATED AS SHOWN

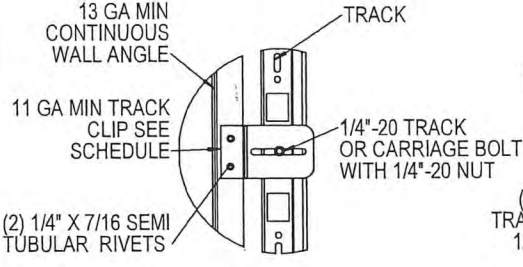
(6) SECTION DOORS WITH
(11) 4" 16 GA 80 KSI U- BARS
(1) 3" 18 GA 80 KSI U- BARS
LOCATED AS SHOWN

(5) SECTION DOORS WITH
(9) 4" 16 GA 80 KSI U- BARS
(1) 3" 18 GA 80 KSI U- BARS
LOCATED AS SHOWN

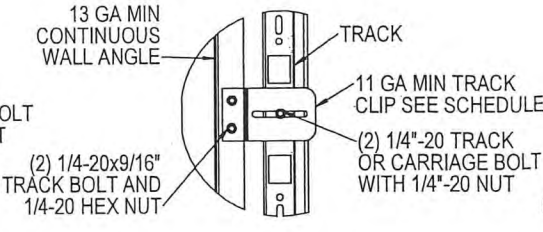
(4) SECTION DOORS WITH
(7) 4" 16 GA 80 KSI U- BARS
(1) 3" 18 GA 80 KSI U- BARS
LOCATED AS SHOWN



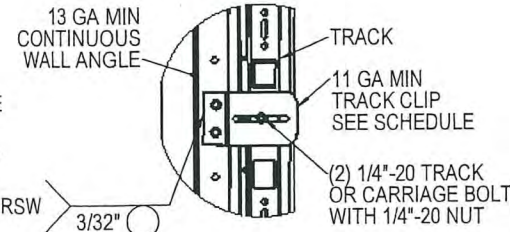
TYPICAL TRACK AND JAMB
FASTENERS DETAIL



TYPICAL TRACK CLIP
RIVETING DETAIL

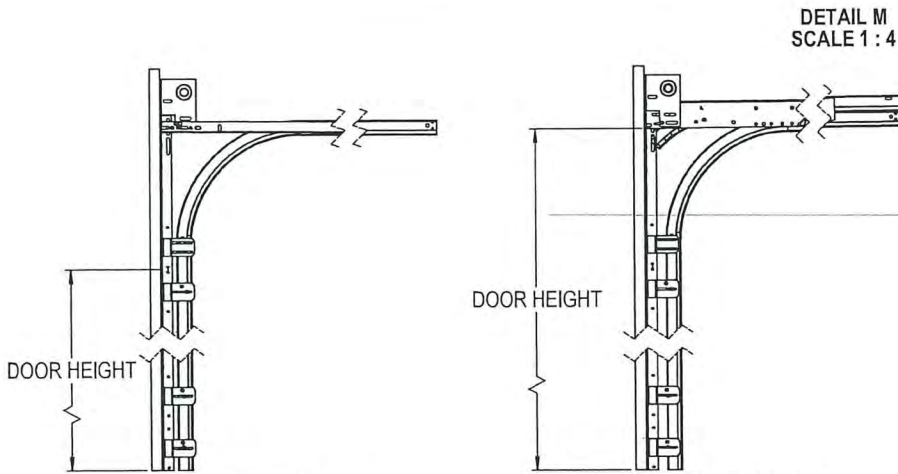


TYPICAL TRACK CLIP
BOLTING DETAIL



TYPICAL TRACK CLIP
WELDING DETAIL

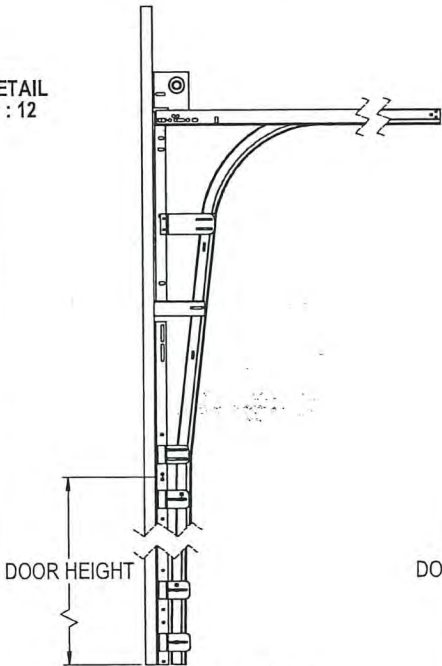
OPTIONAL WALL ANGLE TRACK



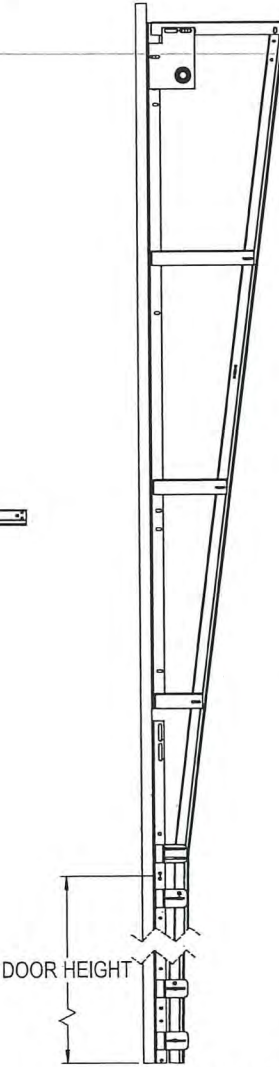
STANDARD LIFT
TRACK DETAIL

LOW HEADROOM
TRACK DETAIL

TRACK DETAIL
SCALE 1:12

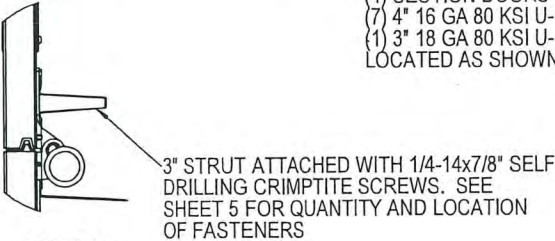


HIGH LIFT
TRACK DETAIL

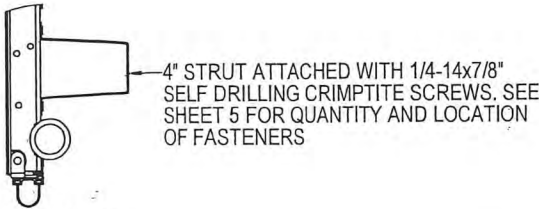


VERTICAL LIFT
TRACK DETAIL

PRODUCT APPROVED
as complying with the Florida
Building Code
NOA-No. 19-0815.05
Approval Date 10/10/2019
By *[Signature]*
Miami-Dade Product Control

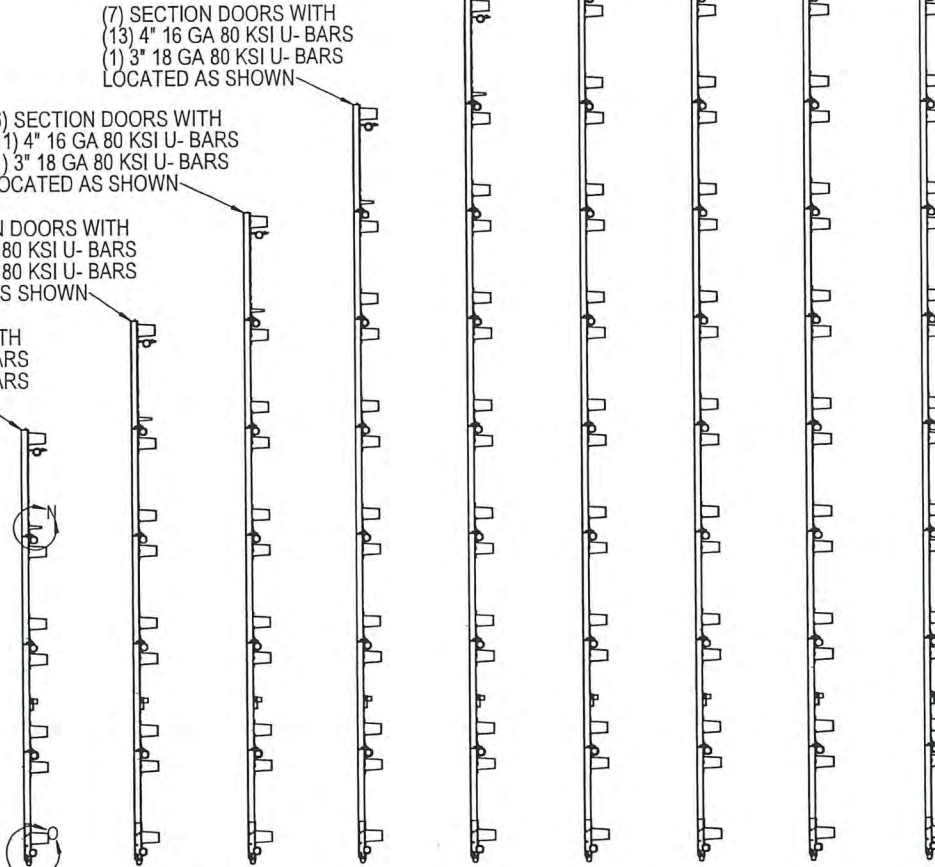


DETAIL N
SCALE 1:4



DETAIL O
SCALE 1:4



STRUT LOCATIONS
SCALE 1:20



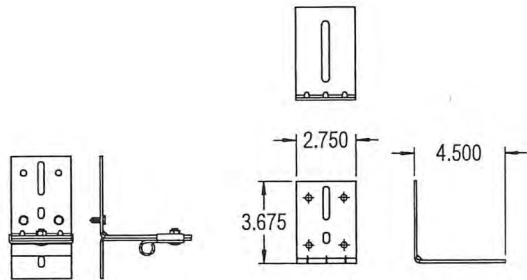
DWAYNE J KORNISH
LICENSE
No. 77945
STATE OF
FLORIDA
PROFESSIONAL ENGINEER

[Signature]
9/24/2019
DWAYNE J. KORNISH, PE
4576 COUNTY ROAD 160
MOUNT HOPE, OHIO
FL PE 77945 TX PE 117868

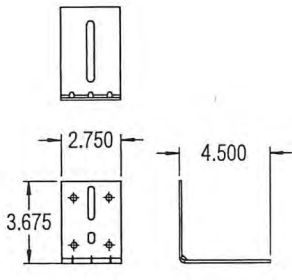
PROFESSIONAL ENGINEER'S SEAL PROVIDED ONLY FOR
VERIFICATION OF WINDLOAD CONSTRUCTION DETAILS.

<div>THIRD ANGLE PROJECTION</div> <div></div>		<div>UNLESS OTHERWISE SPECIFIED</div> <div>INTERPRET DIMS & TOLS PER ASME Y14.5M ALL DIMS ARE IN INCHES DO NOT SCALE</div> <div>DIMS CIRCLED WITH SYMBOL 'O' ARE CRITICAL TO QUALITY DESIGN FEATURES & MUST MEET APPLICABLE IN-PROCESS INSPECTION STANDARDS.</div>		<div>TOLERANCES:</div> <div>X = ± .1 .XX = ± .03 .XXX = ± .010 ANGULAR = ± .5°</div> <div>HOLES:</div> <div>< Ø.251 = +.004/- .003 Ø.251-Ø.500 = +.006/- .003 > Ø.500 = +.008/- .003</div> <div>ALL GEOMETRY GOVERNED BY 3D CAD DATABASE:</div>		APPROVALS		DATE	<div>The Genuine. The Original.</div> <div></div> <div>LEWISVILLE, TEXAS</div>			
						DRAWN		E. CONRAD			8/28/18	
						CHECKED		D. KORNISH			-	
						APPROVED		-			-	
						MATERIAL		-			-	
<div>A DIVISION OF OVERHEAD DOOR CORP 3395 ADDISON DRIVE PENSACOLA, FLORIDA 32514 (850)-474-9890</div>		<div>DO NOT SCALE</div>		<div>FINISH</div> <div>-</div>		DESCRIPTION		WINDLOAD MODELS				
						5745/5765/7565/7655/515/525, +46/-52PSF		DADE COUNTY, 18'2" MAX WIDTH				
						SIZE DWG NO.		REV				
				D		D-411531		P-00				
						SCALE 1:12		UOM = EA				
								SHEET 3 OF 5				

NOTES: (UNLESS OTHERWISE SPECIFIED)
1. FOR DIMENSIONS AND NOTE REFERENCES, REFER TO INDIVIDUAL DRAWINGS.

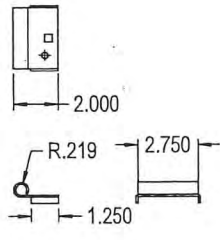


TOP FIXTURE ASSY.

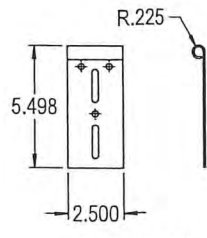


BASE, TOP FIXTURE
11 GA

"L" REINFORCING ANGLE BRACKET
11 GA

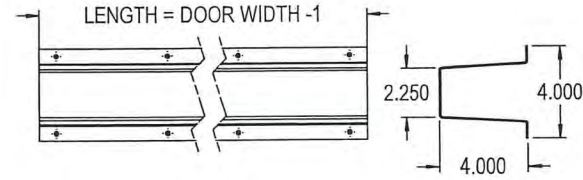


ROLLER CARRIER
13 GA

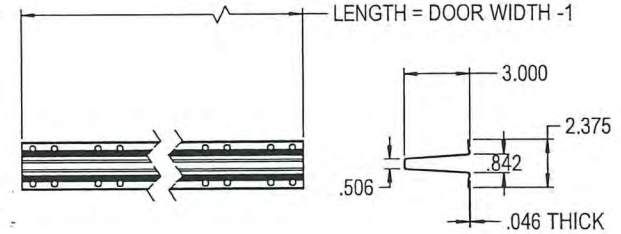


LHR (7-4)
13 GA

TOP FIXTURE DETAILS

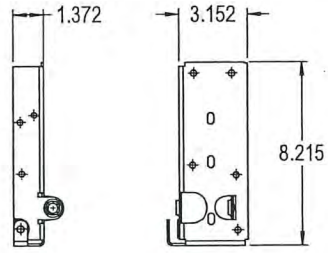


4\"/>

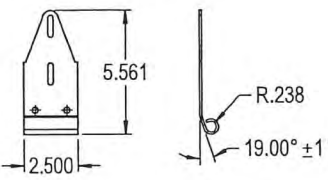


3\"/>

STRUT DETAILS

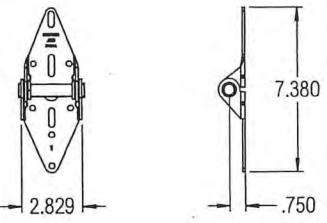


BOTTOM FIXTURE, BB-12
13 GA

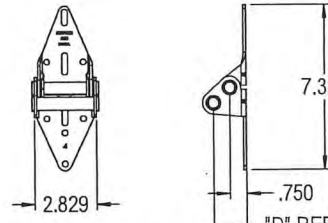


BRACKET, TOP RES, LHR
12 GA

BOTTOM FIXTURE DETAILS

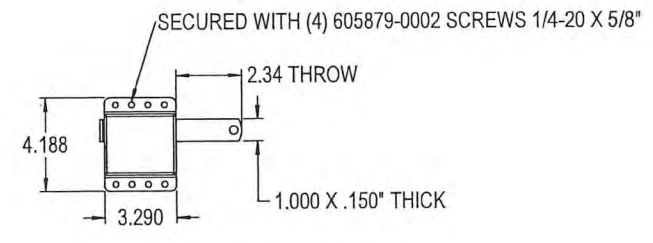


11 GA #1 END HINGE
14 GA CENTER HINGES



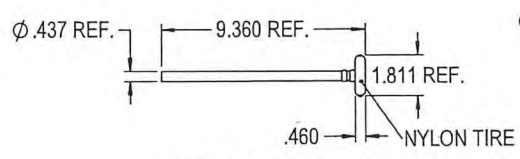
11 GA END HINGES

HINGE DETAILS

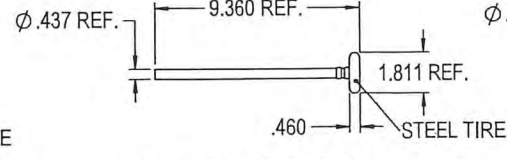


SIDE LOCK ASSY

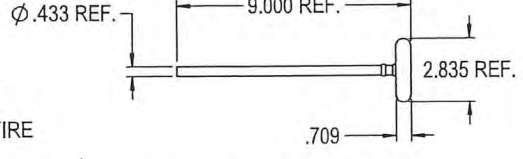
LOCK DETAILS



ROLLER ASSY, 2\"/>

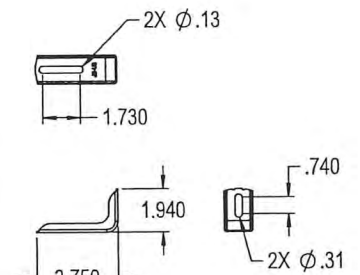


ROLLER ASSY, 2\"/>



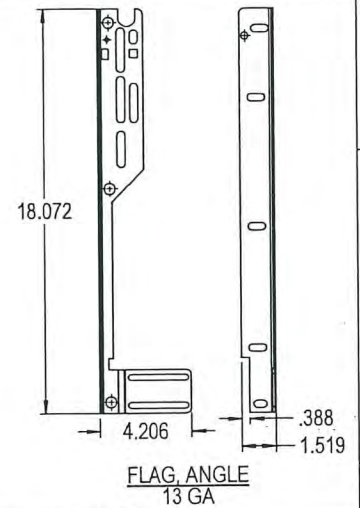
ROLLER ASSY, 3\"/>

ROLLER STEM ASSY DETAILS

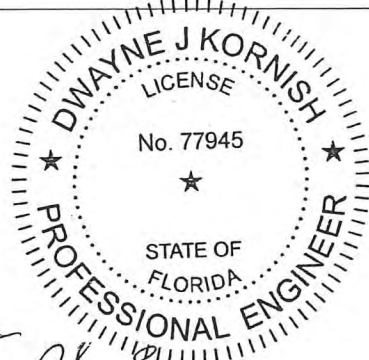


JAMB BRACKET
16 GA

BRACKET DETAILS



FLAG, ANGLE
13 GA



DWAYNE J. KORNISH, PE
4576 COUNTY ROAD 160
MOUNT HOPE, OHIO
FL PE 77945 TX PE 117868

PROFESSIONAL ENGINEER'S SEAL PROVIDED ONLY FOR
VERIFICATION OF WINDLOAD CONSTRUCTION DETAILS.

PRODUCT REVISED
as complying with the Florida
Building Code
NOA-No. 20-1106.14

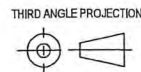
Expiration Date 10/10/2024

By *[Signature]*
Miami-Dade Product Control

PRODUCT APPROVED
as complying with the Florida
Building Code
NOA-No. 19-0815.05

Approval Date 10/10/2019

By *[Signature]*
Miami-Dade Product Control



A DIVISION OF OVERHEAD
DOOR CORP
3395 ADDISON DRIVE
PENSACOLA, FLORIDA 32514
(850)-474-9890

UNLESS OTHERWISE SPECIFIED
INTERPRET DIMS & TOLS
PER ASME Y14.5M
ALL DIMS ARE IN
INCHES
DO NOT SCALE
DIM CIRCLED WITH SYMBOL 'C'
ARE CRITICAL TO QUALITY DESIGN
FEATURES & MUST MEET APPLICABLE
IN-PROCESS INSPECTION STANDARDS.

TOLERANCES:
.X = ± .1
.XX = ± .03
.XXX = ± .010
ANGULAR = ± .5°
HOLES:
< Ø.251 = +.004/-0.003
Ø.251-Ø.500 = +.006/-0.003
> Ø.500 = +.008/-0.003
ALL GEOMETRY GOVERNED BY 3D CAD DATABASE.

APPROVALS DATE
DRAWN E. CONRAD 8/28/18
CHECKED D. KORNISH
APPROVED
MATERIAL
FINISH
WINDLOAD SPECIFICATION
OPTION CODE 2351

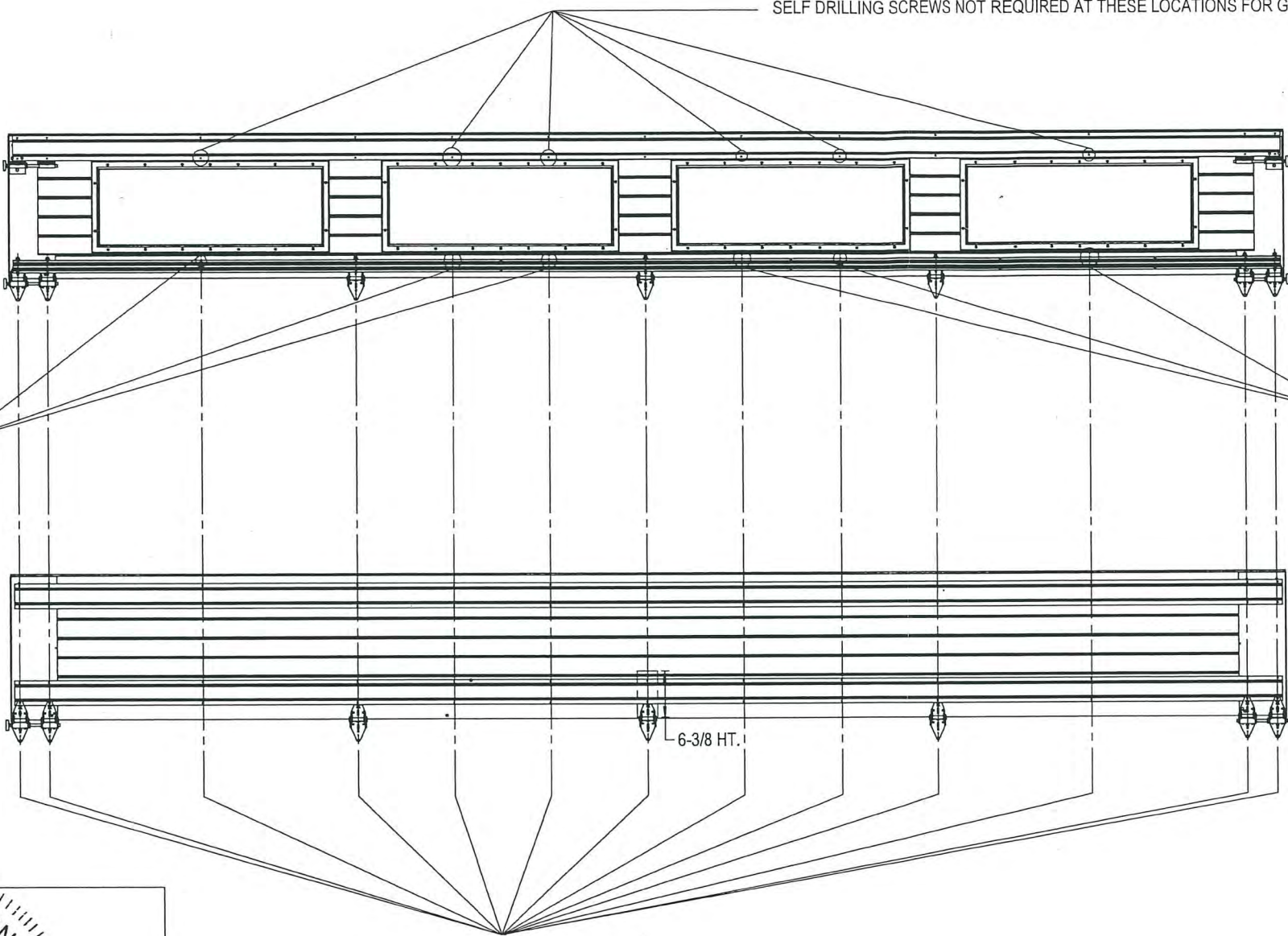
The Genuine. The Original.
LEWISVILLE, TEXAS
DESCRIPTION
WINDLOAD MODELS
5745/5765/7565/7655/515/525, +46/-52PSF
DADE COUNTY, 18'2" MAX WIDTH
SIZE DWG NO.
D D-411531
REV
P-00
SCALE 1:12 UOM = SHEET 4 OF 5

NOTES: (UNLESS OTHERWISE SPECIFIED)

STRUT FASTENER LOCATIONS

REVISIONS				
ER	REV	DESCRIPTION	DATE	APVL
ER	P00	NEW DRAWING	8/28/18	ESC

SELF DRILLING SCREWS NOT REQUIRED AT THESE LOCATIONS FOR GLAZED SECTIONS.



GLAZED SECTION

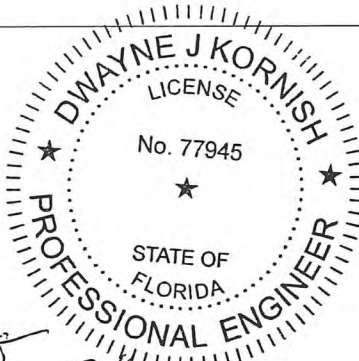
INTERMEDIATE OR
BOTTOM SECTION

SELF DRILLING SCREWS NOT
REQUIRED AT THESE LOCATIONS
FOR GLAZED SECTIONS.

SELF DRILLING SCREWS NOT
REQUIRED AT THESE LOCATIONS
FOR GLAZED SECTIONS.

6-3/8 HT.

STRUTS ATTACHED WITH (2) 1/4-14x7/8" SELF DRILLING
CRIMPTITE SCREWS AT EACH HINGE LOCATION AND AT EACH
ADDITIONAL LOCATION SHOWN ABOVE.

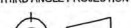



Dwayne J. Kornish
9/24/2019
DWAYNE J. KORNISH, PE
4576 COUNTY ROAD 160
MOUNT HOPE, OHIO
FL PE 77945 TX PE 117868

PROFESSIONAL ENGINEER'S SEAL PROVIDED ONLY FOR
VERIFICATION OF WINDLOAD CONSTRUCTION DETAILS.

PRODUCT REVISED
as complying with the Florida
Building Code
NOA-No. 20-1106.14
Expiration Date 10/10/2024
By *[Signature]*
Miami-Dade Product Control

PRODUCT APPROVED
as complying with the Florida
Building Code
NOA-No. 19-0815.05
Approval Date 10/10/2019
By *[Signature]*
Miami-Dade Product Control

<div>THIRD ANGLE PROJECTION</div> <div></div>		<div>UNLESS OTHERWISE SPECIFIED</div> <div>INTERPRET DIMS & TOLS PER ASME Y14.5M ALL DIMS ARE IN INCHES DO NOT SCALE DIMS CIRCLED WITH SYMBOL 'Ø' ARE CRITICAL TO QUALITY DESIGN FEATURES & MUST MEET APPLICABLE IN-PROCESS INSPECTION STANDARDS.</div>		<div>TOLERANCES:</div> <div>.X = ± .1 .XX = ± .03 .XXX = ± .010 ANGULAR = ± .5° <div>HOLES:</div><div>< Ø.251 = +.004/- .003 Ø.251-Ø.500 = +.006/- .003 > Ø.500 = +.008/- .003</div><div>ALL GEOMETRY GOVERNED BY 3D CAD DATABASE:</div></div>		<div>APPROVALS</div> <div>DATE</div>		<div>The Genuine. The Original.</div> <div> LEWISVILLE, TEXAS</div>	
						<div>DRAWN</div> <div>E. CONRAD</div> <div>8/28/18</div>			
<div>A DIVISION OF OVERHEAD DOOR CORP 3395 ADDISON DRIVE PENSACOLA, FLORIDA 32514 (850)-474-9890</div>						<div>CHECKED</div> <div>D. KORNISH</div> <div>-</div>		<div>DESCRIPTION</div> <div>WINDLOAD MODELS 5745/5765/7565/7655/515/525, +46/-52PSF DADE COUNTY, 18'2" MAX WIDTH</div>	
						<div>APPROVED</div> <div>-</div> <div>-</div>			
						<div>MATERIAL</div> <div>-</div>			
						<div>FINISH</div> <div>-</div>			
						<div>WINDLOAD SPECIFICATION</div> <div>OPTION CODE 2351</div>			
				<div>SIZE</div> <div>D</div>		<div>DWG NO.</div> <div>D-411531</div>		<div>REV</div> <div>P-00</div>	
						<div>SCALE 1:12</div>		<div>UOM = EA</div>	
								<div>SHEET 5 OF 5</div>	