



DEPARTMENT OF REGULATORY AND ECONOMIC RESOURCES (RER)
BOARD AND CODE ADMINISTRATION DIVISION
NOTICE OF ACCEPTANCE (NOA)

MIAMI-DADE COUNTY
PRODUCT CONTROL SECTION
11805 SW 26 Street, Room 208
Miami, Florida 33175-2474
T (786) 315-2590 F (786) 315-2599
www.miamidade.gov/economy

Quality Engineered Products Co., Inc.
4506 Quality Lane
Tampa, FL 33634

SCOPE:

This NOA is being issued under the applicable rules and regulations governing the use of construction materials. The documentation submitted has been reviewed and accepted by Miami-Dade County RER -Product Control Section to be used in Miami Dade County and other areas where allowed by the Authority Having Jurisdiction (AHJ).

This NOA shall not be valid after the expiration date stated below. The Miami-Dade County Product Control Section (In Miami Dade County) and/or the AHJ (in areas other than Miami Dade County) reserve the right to have this product or material tested for quality assurance purposes. If this product or material fails to perform in the accepted manner, the manufacturer will incur the expense of such testing and the AHJ may immediately revoke, modify, or suspend the use of such product or material within their jurisdiction. RER reserves the right to revoke this acceptance, if it is determined by Miami-Dade County Product Control Section that this product or material fails to meet the requirements of the applicable building code.

This product is approved as described herein and has been designed to comply with the Florida Building Code, including the High Velocity Hurricane Zone.

DESCRIPTION: Series "16GACOSD-1" Outswing 16 ga Flush Commercial Steel Doors w/wo Panic Exit Device-Impact

APPROVAL DOCUMENT: Drawing No. 16GACOSD-1 Rev #5, titled "16 GA Commercial Outswing Steel Door", sheets 1 through 10 of 10, prepared by manufacturer, dated 05/25/04 and last revised on 03-03-21, signed and sealed by Cody Davis, P. E., bearing the Miami-Dade County Product Control Revision stamp with the Notice of Acceptance number and expiration date by the Miami-Dade County Product Control Section.

MISSILE IMPACT RATING: Large and Small Missile Impact Resistant

Limitations:

1. See Design Pressure Ratings VS lock types of Vs configurations in sheets 1, 5 and 10.
2. Double Door w/HCF 9300 Rim with 1300 removable mullion (sheet 5) is rated at +80/-65 PSF.
3. Doors are 16 ga (min .063" thk) with min CS Tensile yield strength $F_y = 46.3$ ksi and Tensile ultimate strength $F_u = 52.1$ Ksi and SS Tensile yield strength $F_y = 50.5$ ksi and Tensile ultimate strength $F_u = 98.5$ Ks
4. EPS Polystyrene by Dyplast (former Apache Products), having current NOA.

LABELING: Each unit shall bear a permanent label with the manufacturer's name or logo, city, state and series and following statement: "Miami-Dade County Product Control Approved", noted herein.

RENEWAL of this NOA shall be considered after a renewal application has been filed and there has been no change in the applicable building code negatively affecting the performance of this product.

TERMINATION of this NOA will occur after the expiration date or if there has been a revision or change in the materials, use, and/or manufacture of the product or process. Misuse of this NOA as an endorsement of any product, for sales, advertising or any other purposes shall automatically terminate this NOA. Failure to comply with any section of this NOA shall be cause for termination and removal of NOA.

ADVERTISEMENT: The NOA number preceded by the words Miami-Dade County, Florida, and followed by the expiration date may be displayed in advertising literature. If any portion of the NOA is displayed, then it shall be done in its entirety.

INSPECTION: A copy of this entire NOA shall be provided to the user by the manufacturer or its distributors and shall be available for inspection at the job site at the request of the Building Official.

This NOA revises NOA # 19-0507.03 and consists of this page 1 and evidence pages E-1, E-2, E-3 & E-4, as well as approval document mentioned above.

The submitted documentation was reviewed by **Ishaq I. Chanda, P.E.**



Ishaq I. Chanda

NOA No. 20-1123.17
Expiration Date: January 30, 2024
Approval Date: April 01, 2021
Page 1

NOTICE OF ACCEPTANCE: EVIDENCE SUBMITTED

1. Evidence submitted under previous approvals

A. DRAWINGS

1. Manufacturer's die drawings and sections (Submitted under files below)
2. Drawing No. 16GACOSD-1, titled "16 GA Commercial Outswing Steel Door", sheets 1 through 10 of 10, prepared by manufacturer, dated 02/26/16, with Revision 4 dated 02/26/16, signed and sealed by Cody Davis, P. E.

B. TESTS (Submitted under file # 07-1017.09/04-0220.02)

1. Test reports on 1) Air Infiltration Test, per FBC TAS 202-94
 - 2) Uniform Static Air Pressure Test, Loading per FBC, TAS 202.
 - 3) Water Resistance Test per FBC, TAS 202-94.
 - 4) Large Missile Impact Test per FBC, TAS 201-94
 - 5) Cyclic Wind Pressure Loading per FBC, TAS 203-94

Along with marked-up drawings & installation diagram of Commercial Steel Doors w /Panic devices, prepared by Certified Testing Laboratories Inc., Test Report No. **CTLA 1276W**, dated Nov. 11, 2004, signed and sealed by Ramesh Patel, P. E. (Note: This test report has been revised under Test Report No. **CTLA 1276WR**, re-issued on Feb 01, 2005 by Certified Testing Laboratories, signed and sealed by Ramesh Patel, P. E.)

Note: Additional addendum letter dated OCT 10th, 2015 by Certified Testing Lab, issued to test report CTLA 1276W-R, signed by Ramesh Patel, P.E.

2. Test reports (Transferred from file # 04-0220.02)
 - 1) Air Infiltration Test, per FBC TAS 202-94
 - 2) Uniform Static Air Pressure Test, Loading per FBC, TAS 202.
 - 3) Water Resistance Test per FBC, TAS 202-94.
 - 4) Large Missile Impact Test per FBC, TAS 201-94
 - 5) Cyclic Wind Pressure Loading per FBC, TAS 203-94
 - 6) Forced Entry Test, per FBC and TAS 202-94

Along with marked-up drawings and installation diagram of Steel Commercial Steel Doors, prepared by Certified Testing Laboratories Inc., Test Report No. **CTLA 114W**, dated December 09, 2003, signed and sealed by Ramesh Patel, P. E.

(Note: This test report has been revised by addendum letter dated May 26, 2004 & June 30, 2005, issued by Certified Testing Laboratories Inc.).

Along with marked-up drawings and installation diagram of Steel Commercial Doors, prepared by Certified Testing Laboratories Inc., Test Report No. **CTLA 403W**, dated 07/25/00, signed and sealed by Ramesh Patel, P. E

3. Additional test report **HTL-0050-1012-97** tested per FBC, TAS 202-94, issued by Hurricane testing laboratories, Inc. dated 10-16-98, signed and sealed by Timothy S. Marshall, P. E. (Transferred from file # 04-0220.02)

C. CALCULATIONS

1. Anchor verification calculations, dated 10/20/15 and revised on 05/31/16, prepared, signed and sealed Cody Davis, P.E.

Ishaq I. Chanda

Ishaq I. Chanda, P.E.
Product Control Unit Supervisor
NOA No. 20-1123.17
Expiration Date: January 30, 2024
Approval Date: April 01, 2021

Quality Engineered Products Co, Inc.

NOTICE OF ACCEPTANCE: EVIDENCE SUBMITTED

D. QUALITY ASSURANCE

- 1 Miami Dade Department of Regulatory and Economic Resources (RER)

E. MATERIAL CERTIFICATIONS (Submitted under file # 07-1017.09/#04-0823.05)

1. Tensile test report prepared by Certified Testing Laboratories Inc., Test Report No. **CTL 1023J (CTLA114W)**, tested per ASTM E-A370-97, dated December 02,2003, signed and sealed by Ramesh Patel, P. E.
2. Notice of Acceptance No. **11-0926.07** issued to Dyplastic Products, LLC (former Apache Products Co) for “EPS-Expanded Polystyrene Insulation”, expiring on 01/11/2017.

F. STATEMENTS

1. Statement letter of conformance to FBC 2014 (5th Edition) and “no financial interest”, issued, prepared, signed, sealed and dated 05/31/16 by Cody Davis, P. E.
2. Statement letter dated 05/31/16 of successor engineer adopting as his own, another engineer’s work per FAC, Rule Chapter 61G15-27, issued by Master Consulting Engineers, Inc., both signed and sealed by Cody Davis, P. E
3. Statement letter of compliance, as a part of the above referenced test reports.

G. OTHER

1. This **revises NOA # 12-0921.12**, expiring January 30, 2018
2. Previous associated files with this NOA(s) are # **07-1017.09, 04-0220.02 & # 02-1011.05.**
3. Test Proposal by Q. E. P. dated September 19, 2002, approved by BCCO.

2. Evidence submitted under file #17-1102.02.

A. DRAWINGS

1. Drawing No. **16GACOSD-1**, titled “16 GA Commercial Outswing Steel Door”, sheets 1 through 10 of 10, prepared by manufacturer, dated 05/25/04 and last revised on 07/08/2016, signed and sealed by Cody Davis, P. E.

B. Test

1. None.

C. CALCULATIONS

1. None.

D. QUALITY ASSURANCE

1. Miami Dade Department of Regulatory and Economic Resources (RER).

E. MATERIAL CERTIFICATIONS

1. Notice of Acceptance No. **17-1207.05** issued to Dyplastic Products, LLC (former Apache Products Co) for “E& R-Board Expanded Polystyrene Rigid Foam Insulation”, expiring on 01/11/2022.

F. STATEMENTS

1. Statement letter of conformance to FBC 2017 (6th Edition), dated 12/01/17, prepared by Master Consulting Engineer Inc., signed and sealed by Cody Davis, P. E.
2. Statement later issued by Quality Engineered Prod., dated 02/02/18, requesting one year renewal, subjected to verification test completion per RER e-mail dated Jan 09, 2019, signed by A. Bernstein, V.P.

Ishaq I. Chanda

Ishaq I. Chanda, P.E.
Product Control Unit Supervisor
NOA No. 20-1123.17
Expiration Date: January 30, 2024
Approval Date: April 01, 2021

NOTICE OF ACCEPTANCE: EVIDENCE SUBMITTED

G. OTHER

1. This NOA conditionally **renews** for **one** year # **15-0422.03**, expiring 01/30/19, subjected verification test (glazing/hardware), as laid out per RER e-mail dated JAN 09, 2018.

3. Evidence submitted under previous submittal

A. DRAWINGS

1. Drawing No. **16GACOSD-1**, titled “16 GA Commercial Outswing Steel Door”, sheets 1 through 10 of 10, prepared by manufacturer, dated 05/25/04 and last revised on 04-30-19, signed and sealed by Cody Davis, P. E.

B. TESTS

1. Test reports on
 - 1) Uniform Static Air Pressure Test, Loading per FBC, TAS 202.
 - 2) Water Resistance Test per FBC, TAS 202-94.
 - 3) Large Missile Impact Test per FBC, TAS 201-94
 - 4) Cyclic Wind Pressure Loading per FBC, TAS 203-94

Along with marked-up drawings and installation diagram of glazed outswing Steel Commercial Steel Doors, prepared by Fenestration Testing Laboratories Inc., Test Report No. **FTLA 1435**, dated April 14, 2019, signed and sealed by Idalmis Ortega, P. E.

C. CALCULATIONS

1. None.

D. QUALITY ASSURANCE

1. Miami Dade Department of Regulatory and Economic Resources (RER).

E. MATERIAL CERTIFICATIONS

1. Notice of Acceptance No. **17-1207.05** issued to Dyplastic Products, LLC (former Apache Products Co) for “E& R-Board Expanded Polystyrene Rigid Foam Insulation”, expiring on 01/11/2022.

F. STATEMENTS (Submitted under file #17-1102.02)

1. Statement letter of conformance to FBC 2017 (6th Edition), dated 12/01/17, prepared by Master Consulting Engineer Inc., signed and sealed by Cody Davis, P. E.

G. OTHER

1. This NOA **revises & renews** NOA # **17-1102.02**, expiring 01/30/24.
2. RER e-mail test proposal dated Jan 09, 2018.

Ishaq I. Chanda

Ishaq I. Chanda, P.E.
Product Control Unit Supervisor
NOA No. 20-1123.17
Expiration Date: January 30, 2024
Approval Date: April 01, 2021

NOTICE OF ACCEPTANCE: EVIDENCE SUBMITTED

4. New Evidence submitted

A. DRAWINGS

1. Drawing No. **16GACOSD-1 Rev #5**, titled “16 GA Commercial Outswing Steel Door”, sheets 1 through 10 of 10, prepared by manufacturer, dated 05/25/04 and last revised on 03-03-21, signed and sealed by Cody Davis, P. E.

B. TESTS

1. None.

C. CALCULATIONS

1. None.

D. QUALITY ASSURANCE

1. Miami Dade Department of Regulatory and Economic Resources (RER).

E. MATERIAL CERTIFICATIONS

1. Notice of Acceptance No. **17-1207.05** issued to Dyplastic Products, LLC (former Apache Products Co) for “E& R-Board Expanded Polystyrene Rigid Foam Insulation”, expiring on 01/11/2022.

F. STATEMENTS

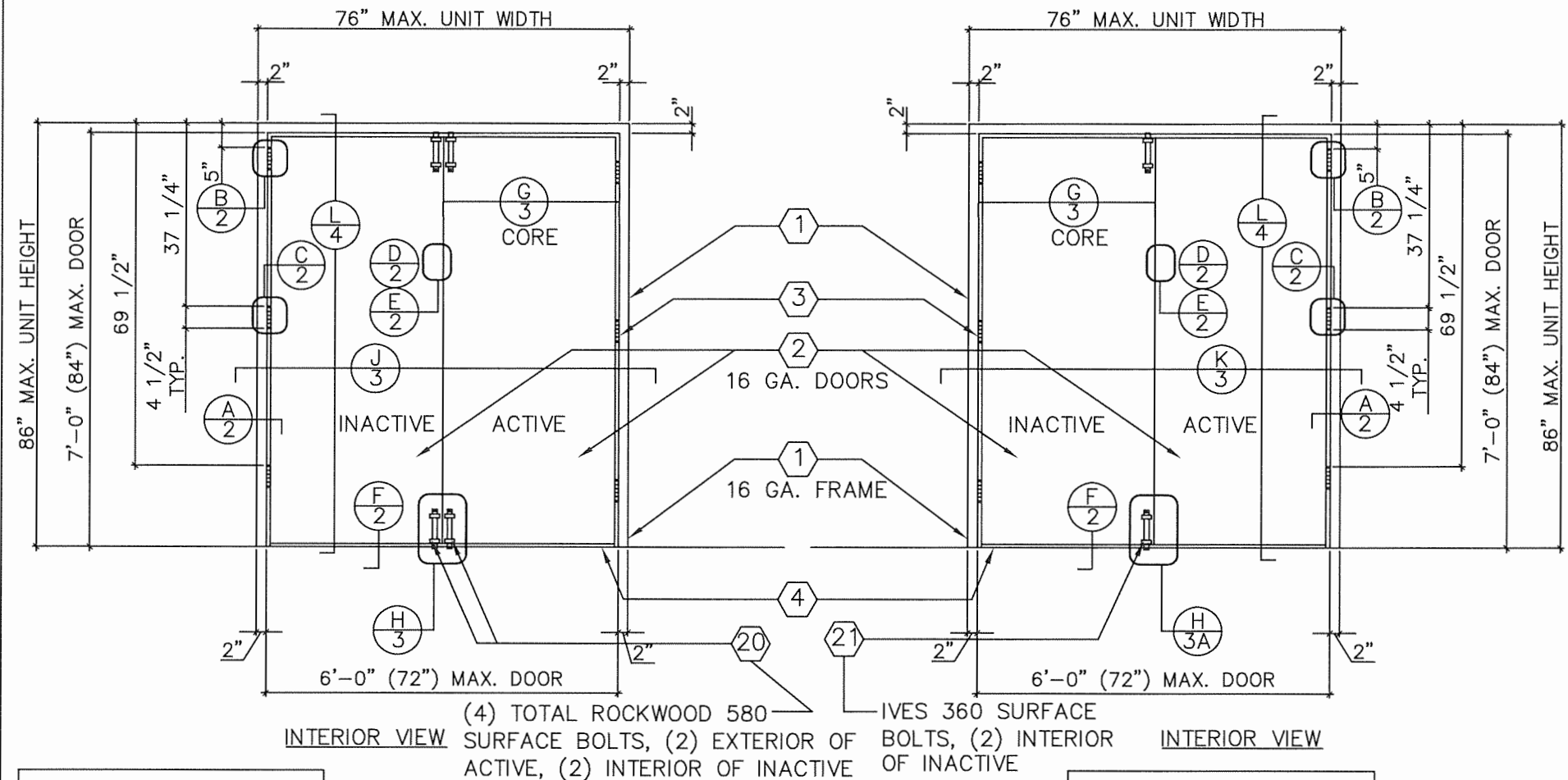
1. Statement letter of conformance to FBC 2020 (**7th** Edition), dated 03/03/21, prepared by Master Consulting Engineer Inc., signed and sealed by Cody Davis, P. E.

G. OTHER

1. This NOA **revises NOA # 19-0507.03**, expiring 01/30/24.

Ishaq I. Chanda

Ishaq I. Chanda, P.E.
Product Control Unit Supervisor
NOA No. 20-1123.17
Expiration Date: January 30, 2024
Approval Date: April 01, 2021



PRODUCT REVISED
as complying with the Florida
Building Code
NOA-No. 20-1123.17
Expiration Date 01/30/2024
By Ishag I. Chande
Miami-Dade Product Control

COMPLIANCE OF THESE UNITS TO FBC
EGRESS/ESCAPE REQUIREMENTS TO
BE REVIEWED BY BUILDING OFFICIAL
ON A CASE BY CASE BASIS

LOCK TESTED: ITEM #9

PDQ MORTISE LOCK MODEL MR117

DESIGN PRESSURE RATING (OUTSWING DOUBLE DOORS) w/(4) ROCKWOOD SURFACE BOLTS

	WHERE WATER INFILTRATION REQUIREMENT IS NEEDED *	WHERE WATER INFILTRATION REQUIREMENT IS NOT NEEDED OR PROTECTED BY OVERHANG*
POSITIVE	NOT APPROVED WITHOUT OVERHANG *	+90 PSF
NEGATIVE	NOT APPROVED WITHOUT OVERHANG *	-90 PSF

* UNIT SHALL BE INSTALLED AT LOCATION PROTECTED BY OVERHANG SUCH THAT
OVERHANG RATIO (OH) = OH LENGTH/OH HEIGHT IS GREATER THAN 1

LOCK TESTED: ITEM #22

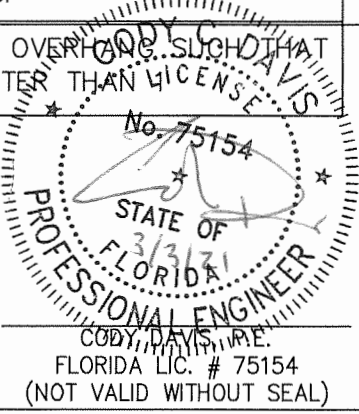
SCHLAGE MORTISE LOCK MODEL L9453P

SARGENT MORTISE LOCK MODEL 8225NL

DESIGN PRESSURE RATING (OUTSWING DOUBLE DOORS) w/(2) IVES SURFACE
BOLTS (INACTIVE DOOR LEAF)

	WHERE WATER INFILTRATION REQUIREMENT IS NEEDED *	WHERE WATER INFILTRATION REQUIREMENT IS NOT NEEDED OR PROTECTED BY OVERHANG*
POSITIVE	NOT APPROVED WITHOUT OVERHANG *	+70 PSF
NEGATIVE	NOT APPROVED WITHOUT OVERHANG *	-70 PSF

* UNIT SHALL BE INSTALLED AT LOCATION PROTECTED BY OVERHANG SUCH THAT
OVERHANG RATIO (OH) = OH LENGTH/OH HEIGHT IS GREATER THAN 1



16 GA. COMMERCIAL OUTSWING STEEL DOOR

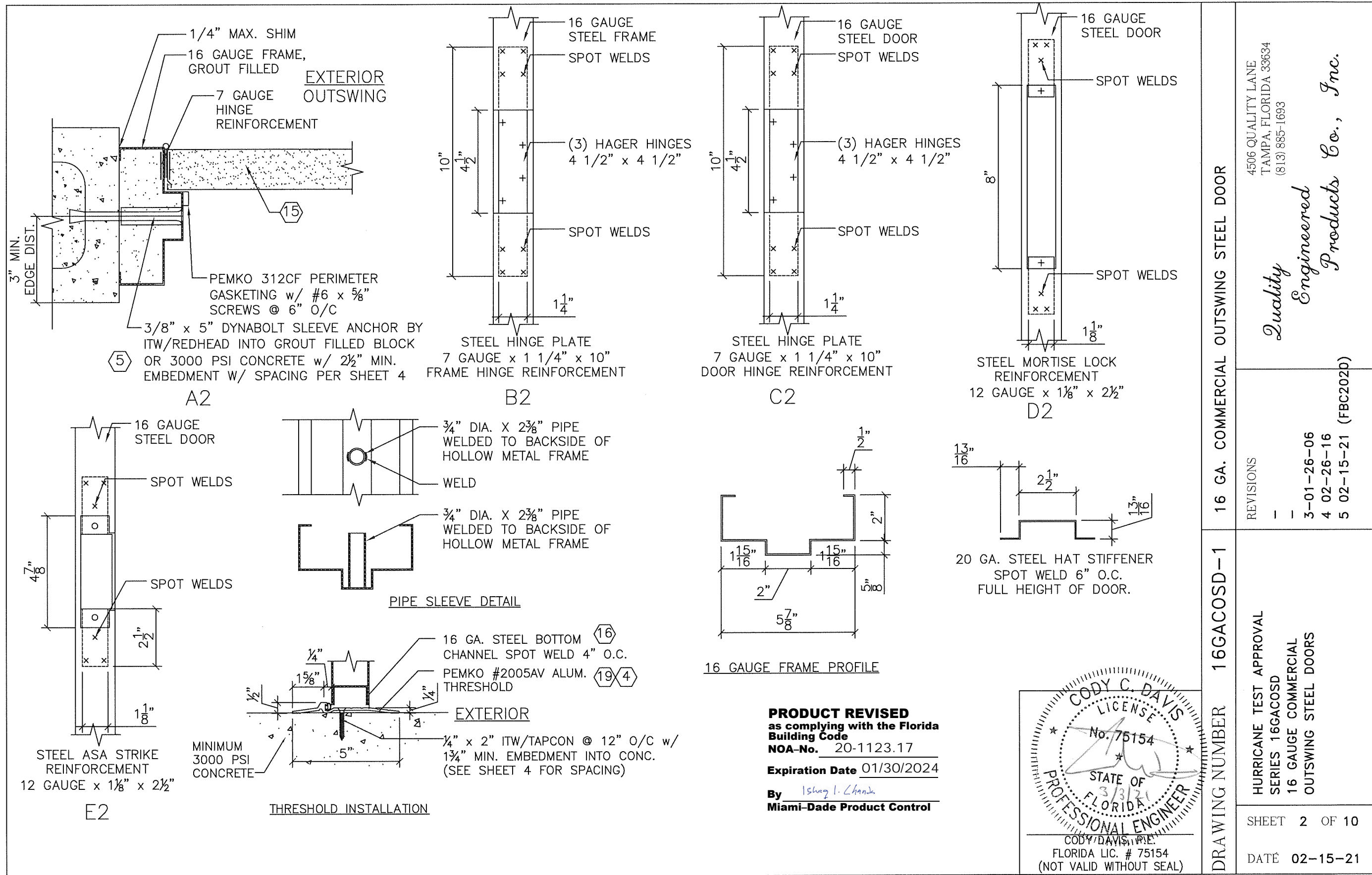
DRAWING NUMBER 16GACOSD-1

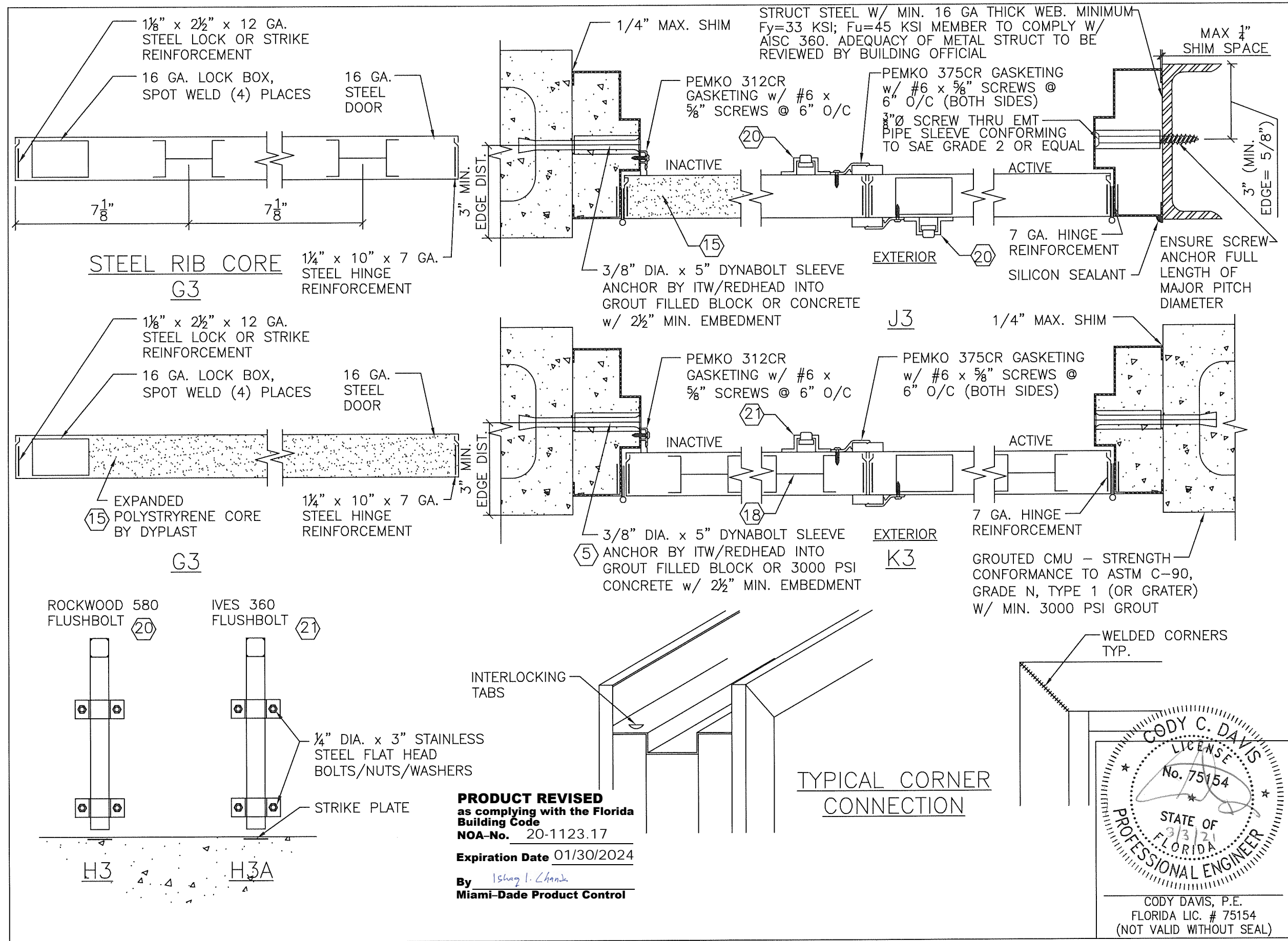
4506 QUALITY LANE
TAMPA, FLORIDA 33634
(813) 885-1693
Quality Engineered Products Co., Inc.

REVISIONS
1 05-25-04
2 07-06-04
3 01-26-06
4 02-26-16
5 02-15-21(FBC2020)

HURRICANE TEST APPROVAL
SERIES 16GACOSD
16 GAUGE COMMERCIAL
OUTSWING STEEL DOORS

SHEET 1 OF 10
DATE 02-15-21

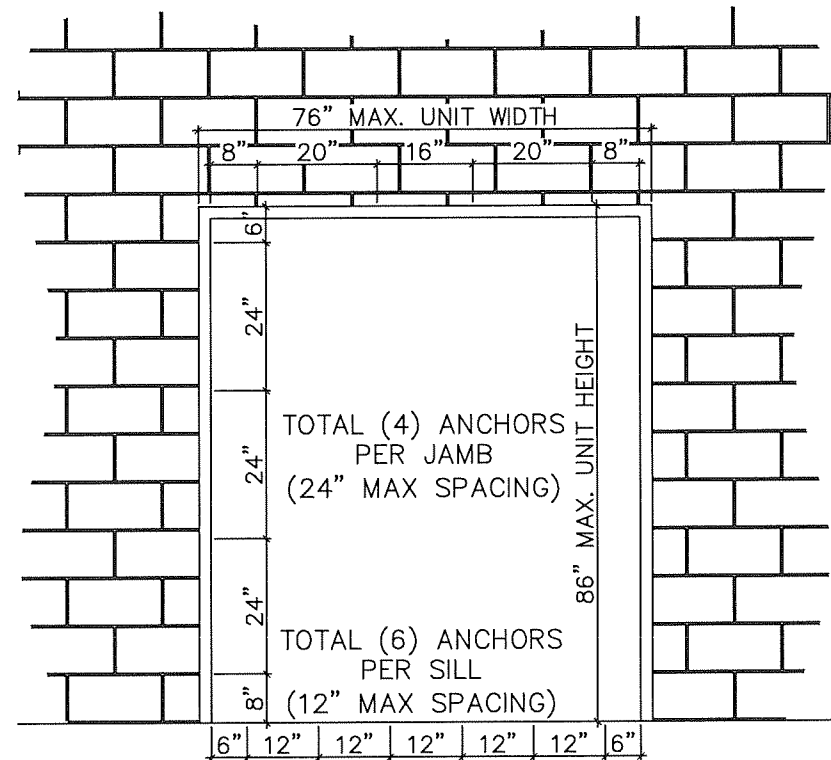
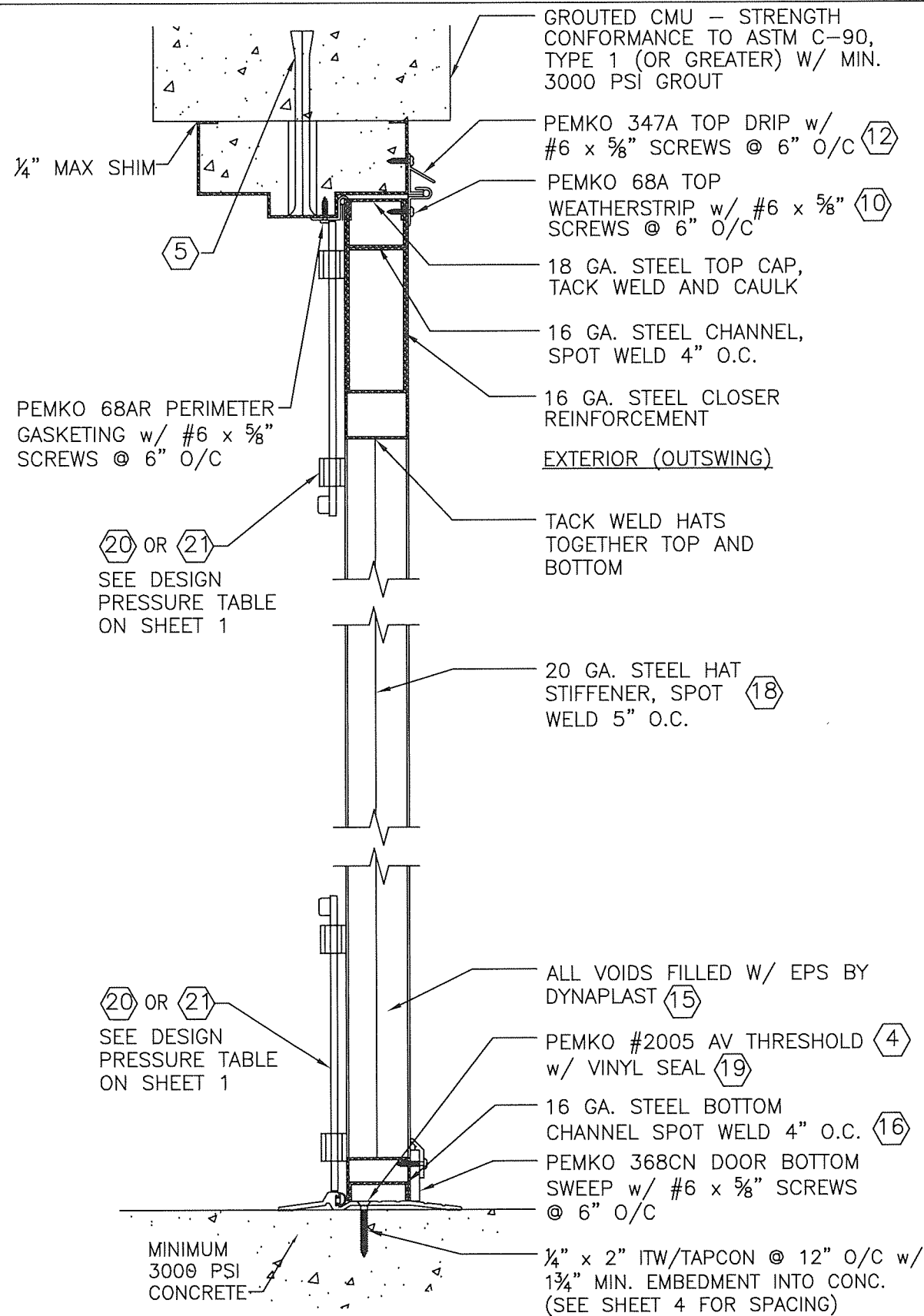




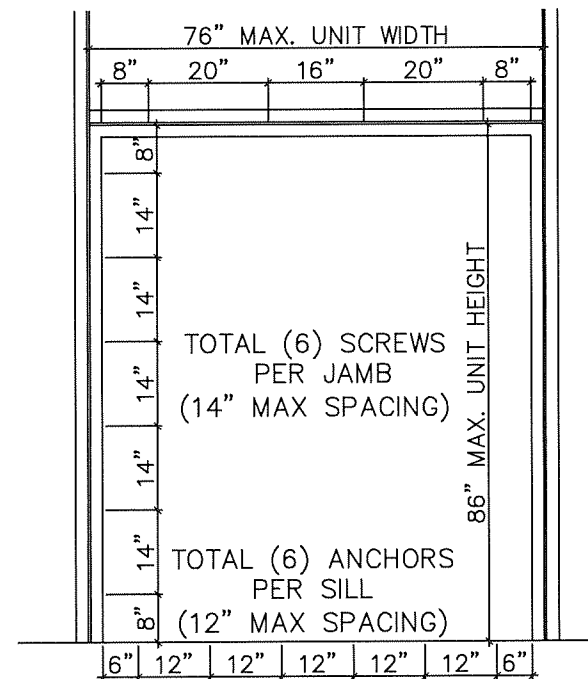
16 GA. COMMERCIAL OUTSWING STEEL DOOR		4506 QUALITY LANE TAMPA, FLORIDA 33634 (813) 885-1693 <i>Quality Engineered Products Co., Inc.</i>	
DRAWING NUMBER	16GACOSD-1	REVISIONS	1 01-26-06 2 02-26-16 3 02-15-21 (FBC2020)
		HURRICANE TEST APPROVAL SERIES 16GACOSD 16 GAUGE COMMERCIAL OUTSWING STEEL DOORS	SHEET 3 OF 10 DATE 02-15-21

CODY C. DAVIS
 LICENSE
 No. 75154
 STATE OF FLORIDA
 PROFESSIONAL ENGINEER
 3/3/21
 CODY DAVIS, P.E.
 FLORIDA LIC. # 75154
 (NOT VALID WITHOUT SEAL)

PRODUCT REVISED
 as complying with the Florida
 Building Code
 NOA-No. 20-1123.17
 Expiration Date 01/30/2024
 By *Ishag I. Chande*
 Miami-Dade Product Control



ANCHOR LOCATION INSTALLATION INTO NEW CONCRETE/
MASONRY (GROUT FILLED BLOCK)

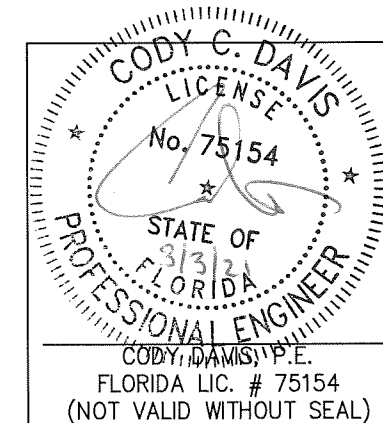


ANCHOR LOCATION INSTALLATION INTO STRUCTURAL STEEL

PRODUCT REVISED
as complying with the Florida
Building Code
NOA-No. 20-1123.17

Expiration Date 01/30/2024

By Ishaq I. Chande
Miami-Dade Product Control



16 GA. COMMERCIAL OUTSWING STEEL DOOR

DRAWING NUMBER 16GACOSD-1

4506 QUALITY LANE
TAMPA, FLORIDA 33634
(813) 885-1693

*Quality
Engineered
Products Co., Inc.*

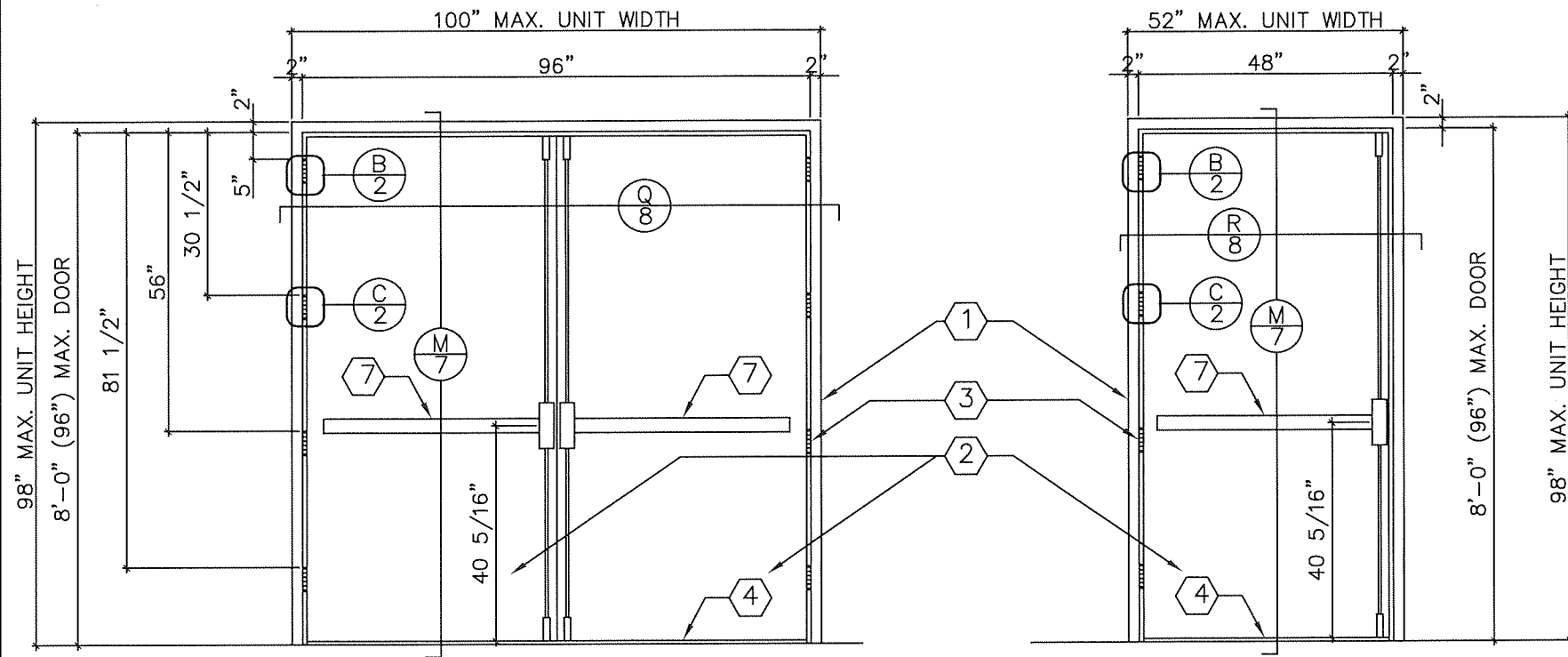
REVISIONS

1	3	01-26-06
4	02-26-16	
5	02-15-21 (FBC2020)	

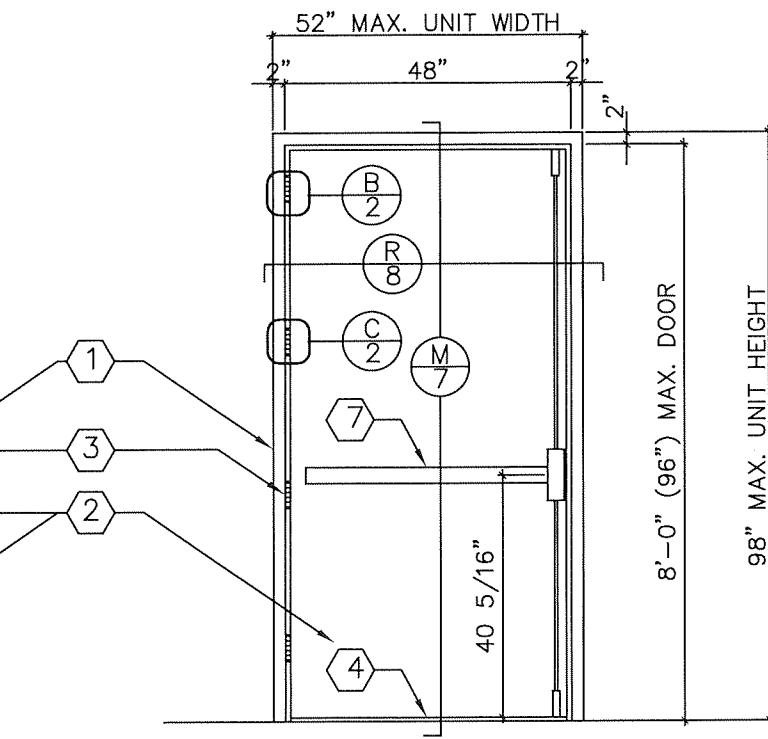
HURRICANE TEST APPROVAL
SERIES 16GACOSD
16 GAUGE COMMERCIAL
OUTSWING STEEL DOORS

SHEET 4 OF 10

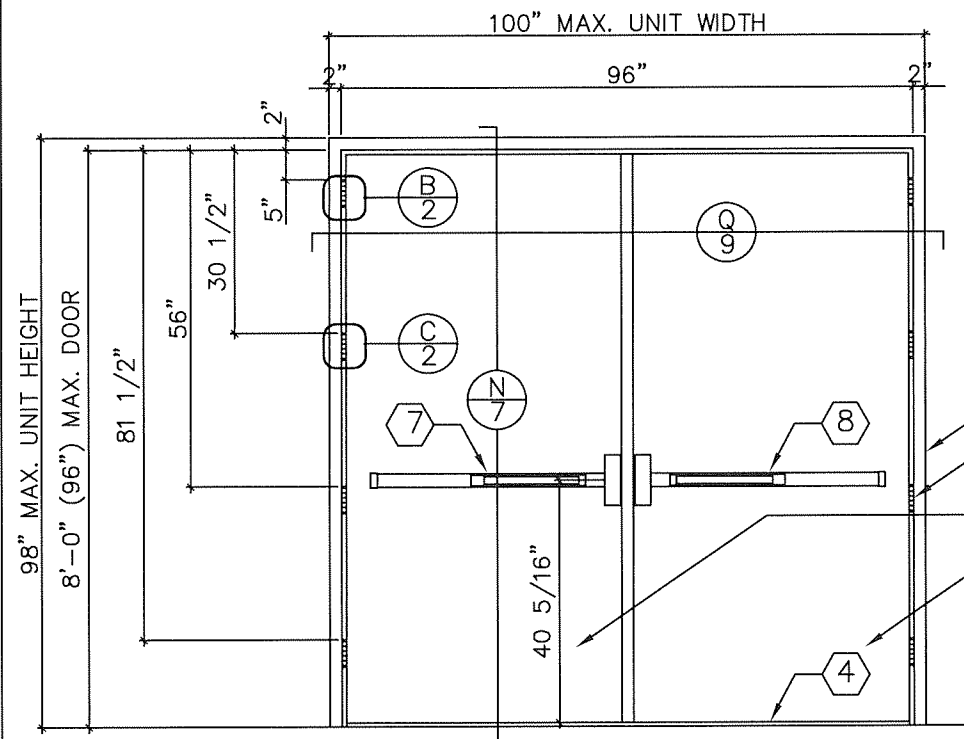
DATE 02-15-21



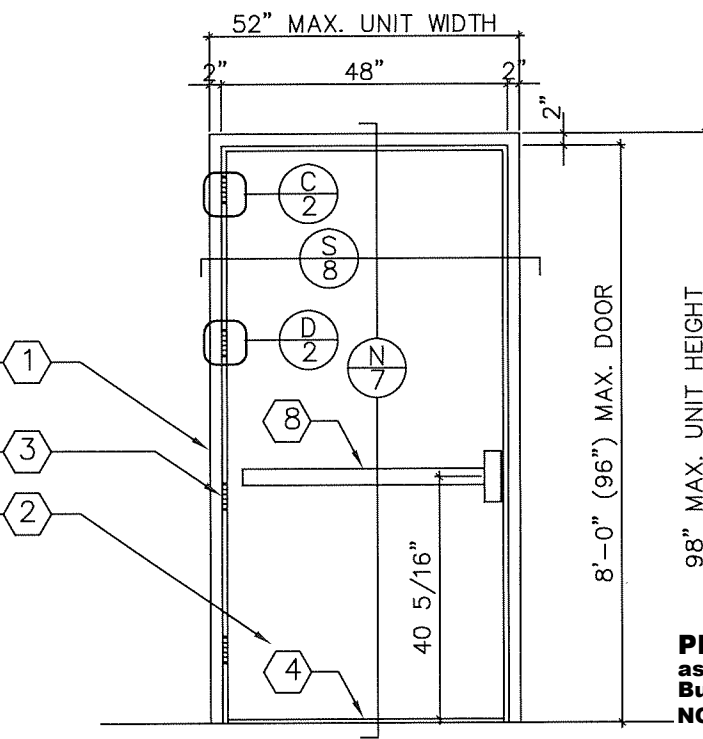
DOUBLE OUTSWING DOOR (INTERIOR VIEW)
w/ DORMA'S HCF 9400 VERTICAL ROD PANIC DEVICE



SINGLE OUTSWING DOOR (INTERIOR VIEW)
w/ DORMA'S HCF 9400 VERTICAL ROD PANIC DEVICE



DOUBLE OUTSWING DOOR (INTERIOR VIEW)
w/ DORMA'S HCF 9300 RIM EXIT DEVICE & 1300
REMOVABLE MULLION w/ 416 STRIKE PLATE



SINGLE OUTSWING DOOR (INTERIOR VIEW)
w/ DORMA'S HCF 9300 RIM EXIT DEVICE
w/ 416 STRIKE PLATE

FOR SINGLE DOOR WITH DORMA 9300 DEVICE
DESIGN PRESSURE RATING

	WHERE AIR & WATER INFILTRATION REQUIREMENT IS NEEDED	WHERE AIR & WATER INFILTRATION REQUIREMENT IS NOT NEEDED
POSITIVE	+80 PSF	+80 PSF
NEGATIVE	-80 PSF	-80 PSF

FOR DORMA VERTICAL ROD DEVICES
DESIGN PRESSURE RATING

	WHERE AIR & WATER INFILTRATION REQUIREMENT IS NEEDED	WHERE AIR & WATER INFILTRATION REQUIREMENT IS NOT NEEDED
POSITIVE	+80 PSF	+80 PSF
NEGATIVE	-80 PSF	-80 PSF

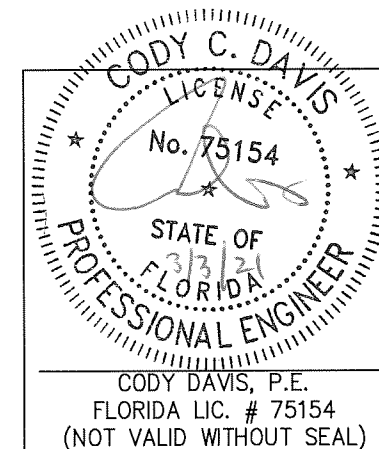
FOR DORMA RIM DEVICES WITH HC1300 MULLION
DESIGN PRESSURE RATING

	WHERE AIR & WATER INFILTRATION REQUIREMENT IS NEEDED	WHERE AIR & WATER INFILTRATION REQUIREMENT IS NOT NEEDED
POSITIVE	+80 PSF	+80 PSF
NEGATIVE	-65 PSF	-65 PSF

PRODUCT REVISED
as complying with the Florida
Building Code
NOA-No. 20-1123.17

Expiration Date 01/30/2024

By Ishaq I. Chandra
Miami-Dade Product Control



16 GA. COMMERCIAL OUTSWING STEEL DOOR

DRAWING NUMBER 16GACOSD-1

4506 QUALITY LANE
TAMPA, FLORIDA 33634
(813) 885-1693

*Quality
Engineered
Products Co., Inc.*

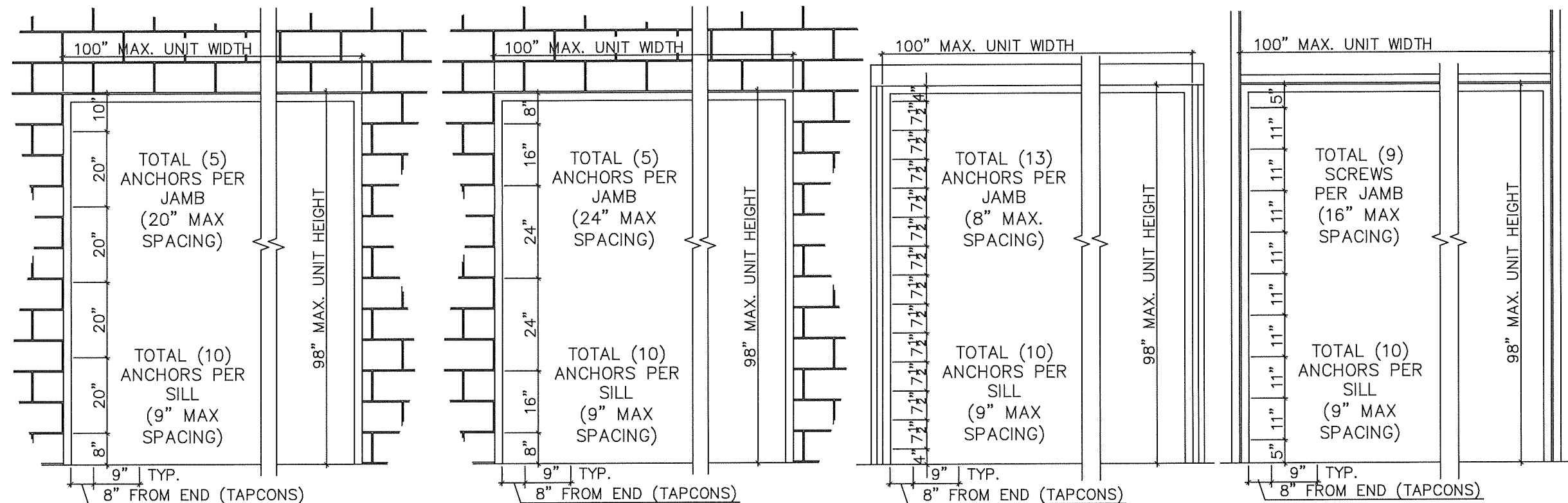
REVISIONS

1
2
3 01-26-06
4 02-26-16
5 02-15-21 (FBC2020)

HURRICANE TEST APPROVAL
SERIES 16GACOSD
16 GAUGE COMMERCIAL
OUTSWING STEEL DOORS

SHEET 5 OF 10

DATE 02-15-21



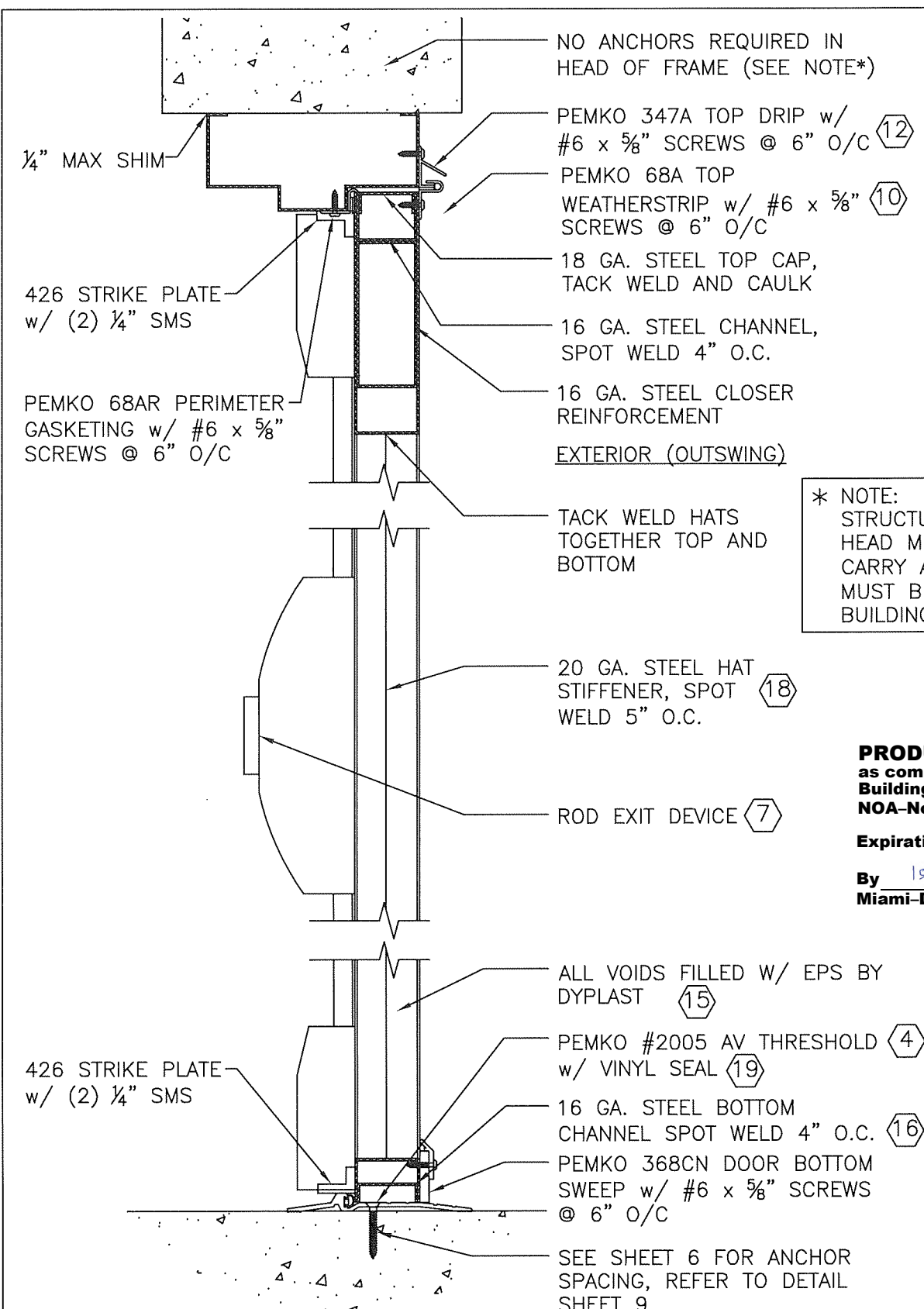
ITEM #	QUANTITY	BILL OF MATERIALS
1	1	16 GA. (.063") MIN. (14 GA. MAX.) STEEL HOLLOW METAL FRAME F _y MIN= 46.3 KSI; F _u MIN= 52.1 KSI (OR S.S. MEETING F _y MIN= 50.5 KSI; F _u MIN= 98.5 KSI)
2	2	16 GA. (.063") MIN. (14 GA. MAX.) GLAZED STEEL STORE F _y MIN= 46.3 KSI; F _u MIN= 52.1 KSI (OR S.S. MEETING F _y MIN= 50.5 KSI; F _u MIN= 98.5 KSI)
3	8	HAGAR HINGES BB1279 4½" x 4½" x 0.134" THICK
4	1	PEMCO 2005AV THRESHOLD
5	15	½"Ø DYNABOLT ITW/REDHEAD SLEEVE ANCHOR (¾"Ø BOLT) X 5" SLEEVE ANCHOR w/ ¾"Ø EMT WELDED PIPE SLEEVE w/ 2-1/2" MIN. EMBEDMENT & 3" MIN. EDGE DISTANCE INTO 3 KSI CONCRETE OR GROUT FILLED BLOCK
6	20	½" x 6" WOOD LAG SCREWS w/ ¾" EMT PIPE SLEEVE
7	2	DORMA EXIT DEVICE HCF9400 VERTICAL ROD EXIT DEVICE w/ STRIKEPLATES TOP AND BOTTOM
8	2	DORMA EXIT DEVICE HCF9300 RIM EXIT DEVICE w/ STRIKE PLATES (416)
9	1	PDQ MORTISE LOCK MR117
10	1	PEMCO 68A DOOR TOP WEATHERSTRIP w/ #6 x 5/8" SCREWS
11	AS REQ.	NATIONAL GAURD #130SA WEATHERSTRIP w/ #6 x 5/8" SCREWS
12	1	PEMCO 347A TOP DRIP
13	8	7 GA. STEEL DOOR HINGE REINFORCEMENT

PRODUCT REVISED
as complying with the Florida
Building Code
NOA-No. 20-1123.17
Expiration Date 01/30/2024
By Ishag I. Chande
Miami-Dade Product Control

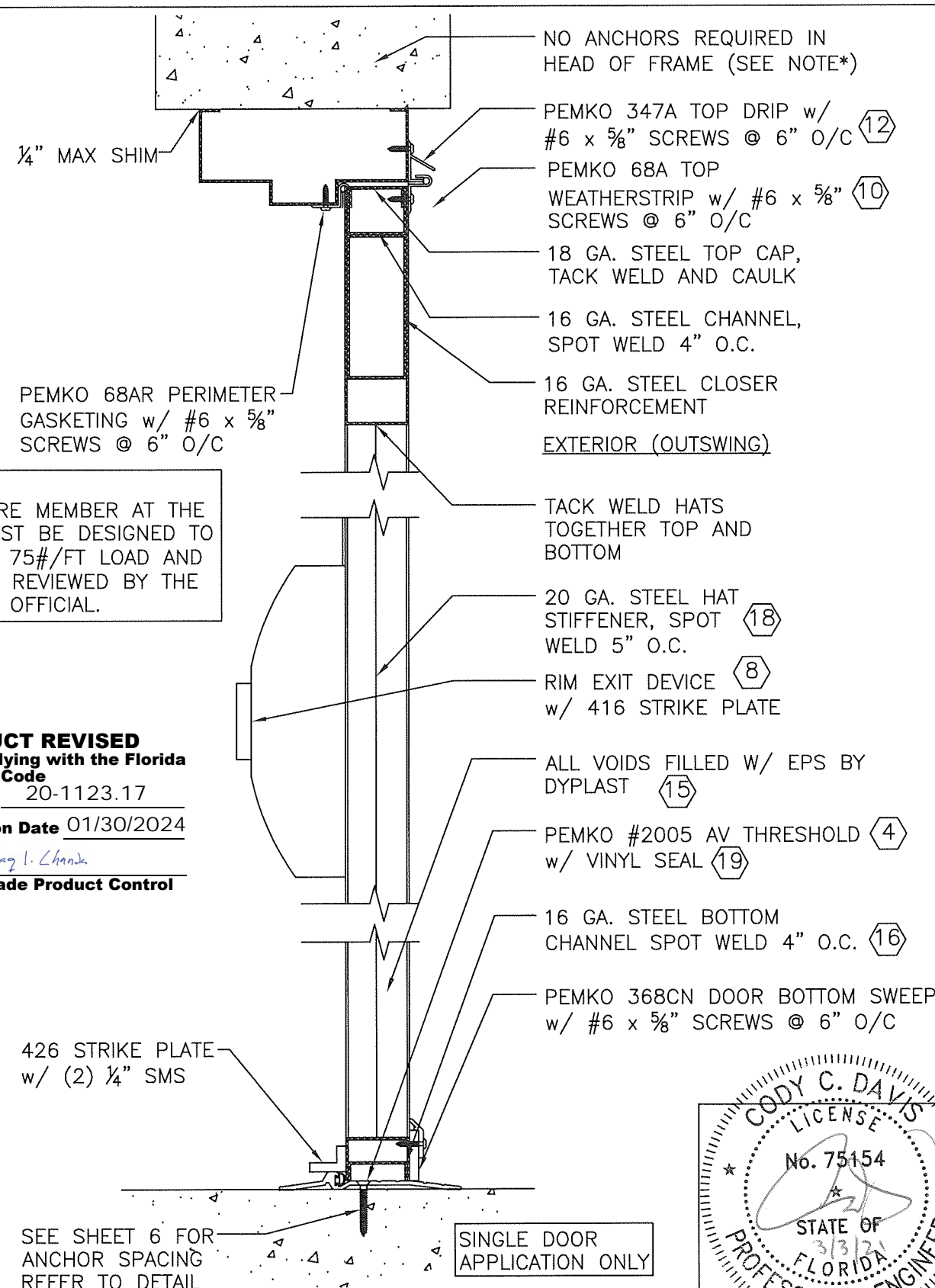
116 GA. COMMERCIAL OUTSWING STEEL DOOR

REVISIONS

4506 QUALITY LANE
TAMPA, FLORIDA 33634
(813) 885-1693



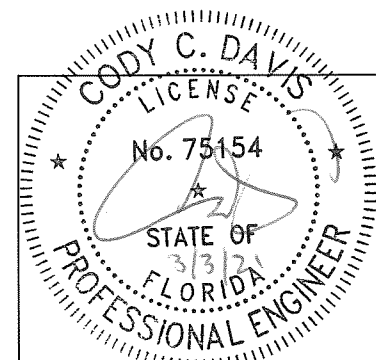
VERTICAL SECTION M7



VERTICAL SECTION N7

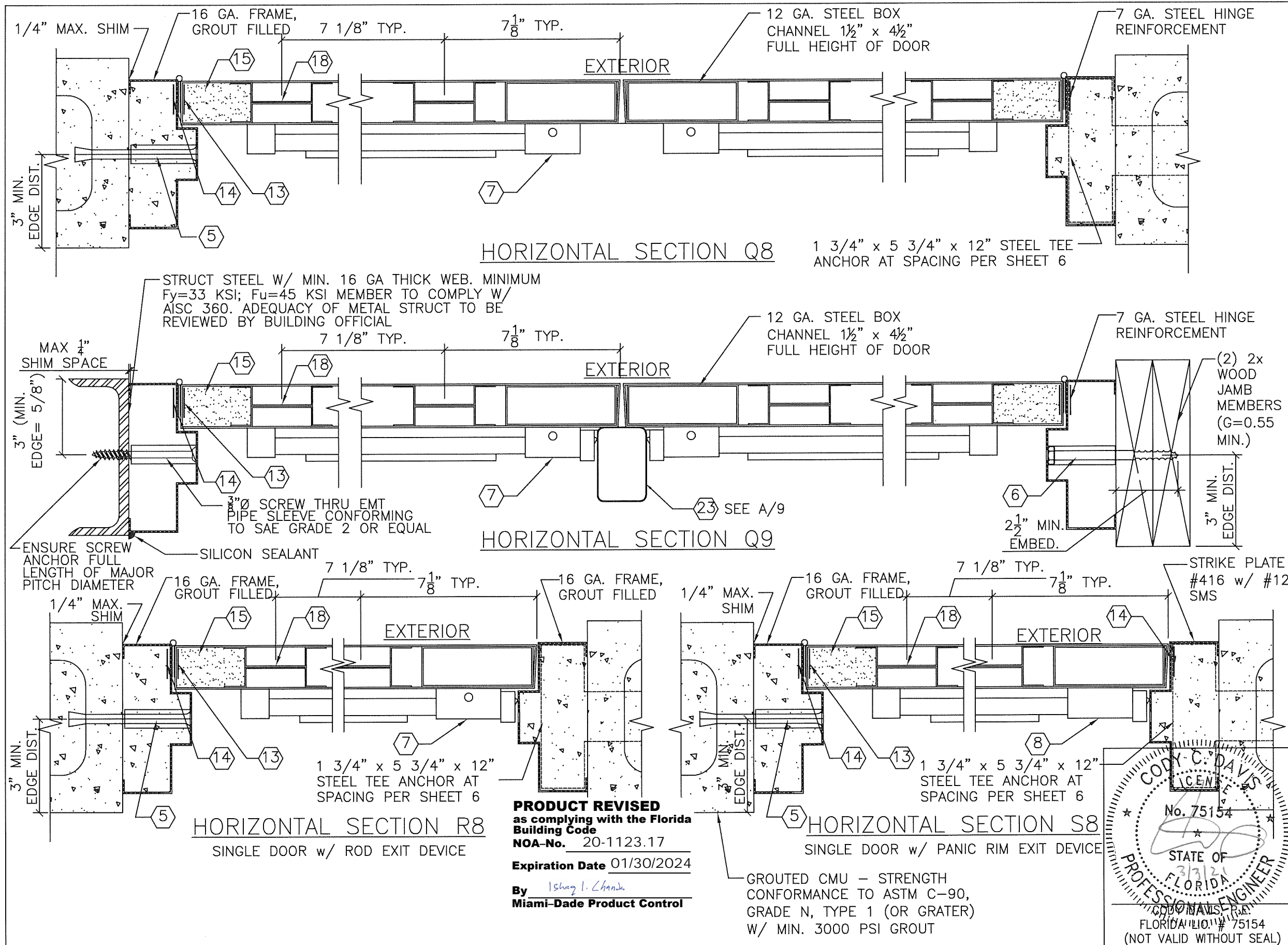
* NOTE:
STRUCTURE MEMBER AT THE
HEAD MUST BE DESIGNED TO
CARRY A 75#/FT LOAD AND
MUST BE REVIEWED BY THE
BUILDING OFFICIAL.

PRODUCT REVISED
as complying with the Florida
Building Code
NOA-No. 20-1123.17
Expiration Date 01/30/2024
By Ismael L. Chanda
Miami-Dade Product Control



CODY DAVIS, P.E.
FLORIDA LIC. # 75154
(NOT VALID WITHOUT SEAL)

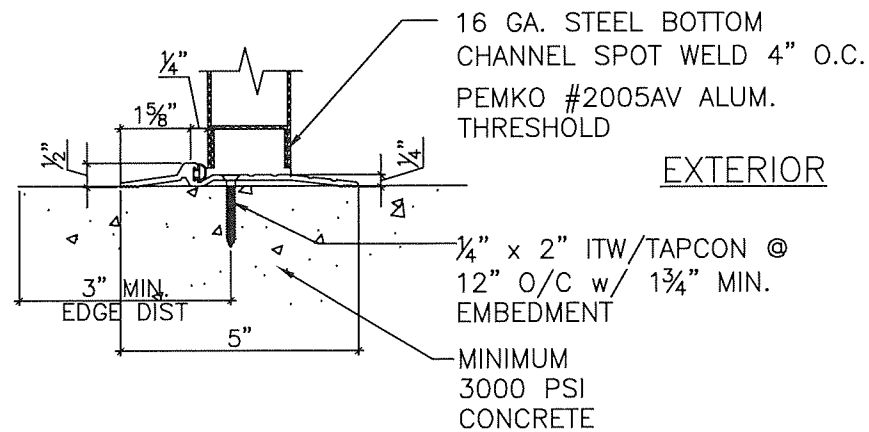
16 GA. COMMERCIAL OUTSWING STEEL DOOR		4506 QUALITY LANE TAMPA, FLORIDA 33634 (813) 885-1693 <i>Quality Engineered Products Co., Inc.</i>	
DRAWING NUMBER	16GACOSD-1	HURRICANE TEST APPROVAL SERIES 16GACOSD 16 GAUGE COMMERCIAL OUTSWING STEEL DOORS	
		SHEET 7 OF 10 DATE 02-15-21	
REVISIONS		1 01-26-06 2 02-26-16 3 02-15-21 (FBC2020)	



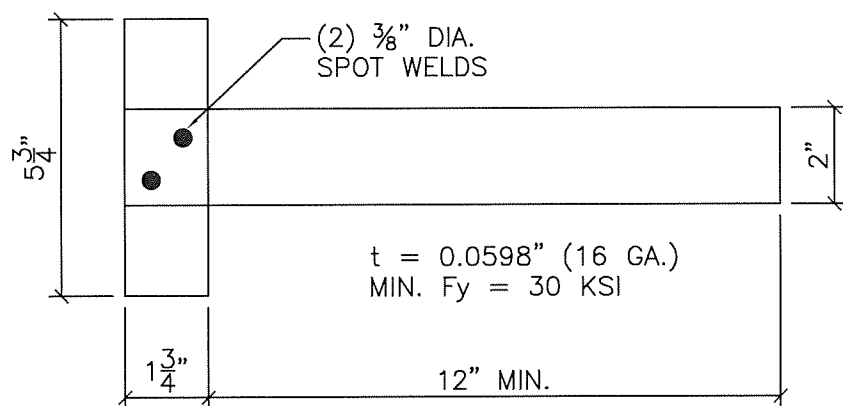
DRAWING NUMBER	16 GACOSD-1
16 GA. COMMERCIAL OUTSWING STEEL DOOR	HURRICANE TEST APPROVAL SERIES 16GACOSD 16 GAUGE COMMERCIAL OUTSWING STEEL DOORS
REVISIONS 1 3 01-26-06 4 02-26-16 5 02-15-21 (FBC2020)	SHEET 8 OF 10 DATE 02-15-21

4506 QUALITY LANE
 TAMPA, FLORIDA 33634
 (813) 885-1693

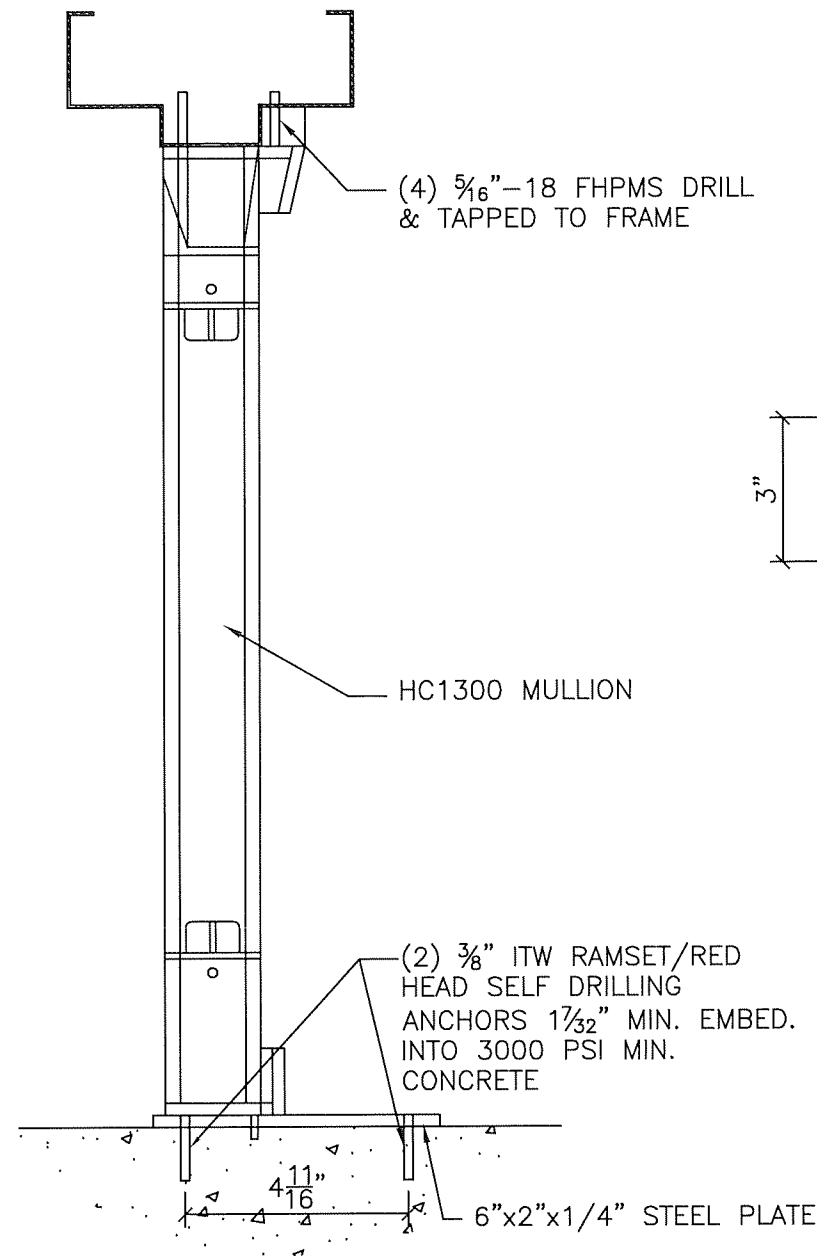
Quality Engineered Products Co., Inc.



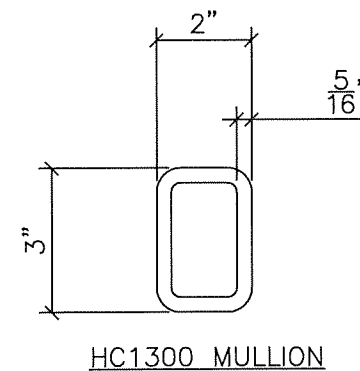
THRESHOLD INSTALLATION



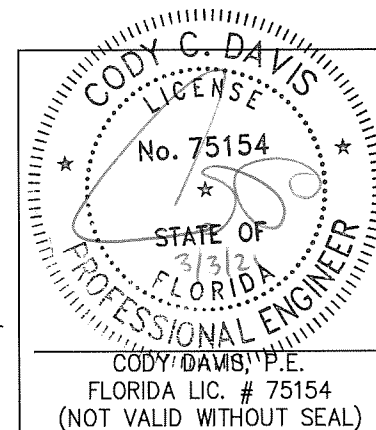
ALT T ANCHOR ATTACHMENT



DORMA HC-1300 REMOVABLE MULLION



PRODUCT REVISED
as complying with the Florida
Building Code
NOA-No. 20-1123.17
Expiration Date 01/30/2024
By Ishag I. Chande
Miami-Dade Product Control



16 GA. COMMERCIAL OUTSWING STEEL DOOR

REVISIONS

1	1
3	01-26-06
4	02-26-16
5	02-15-21 (FBC2020)

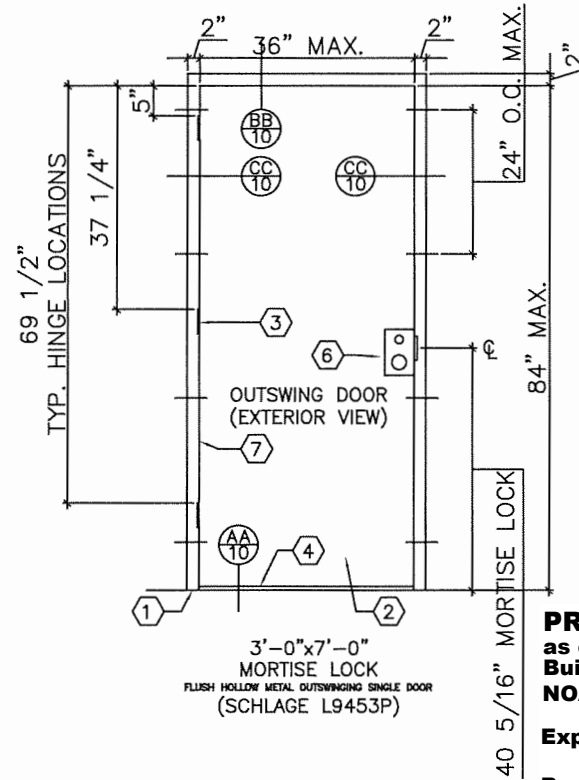
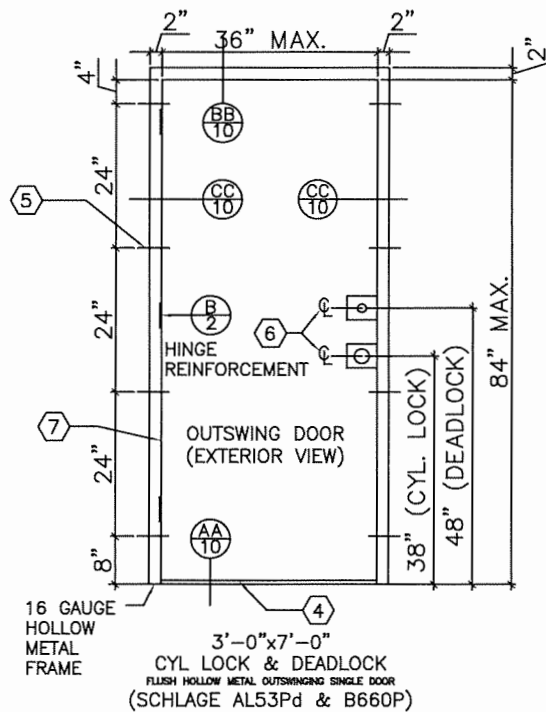
HURRICANE TEST APPROVAL
SERIES 16GACOSD
16 GAUGE COMMERCIAL
OUTSWING STEEL DOORS

SHEET 9 OF 10

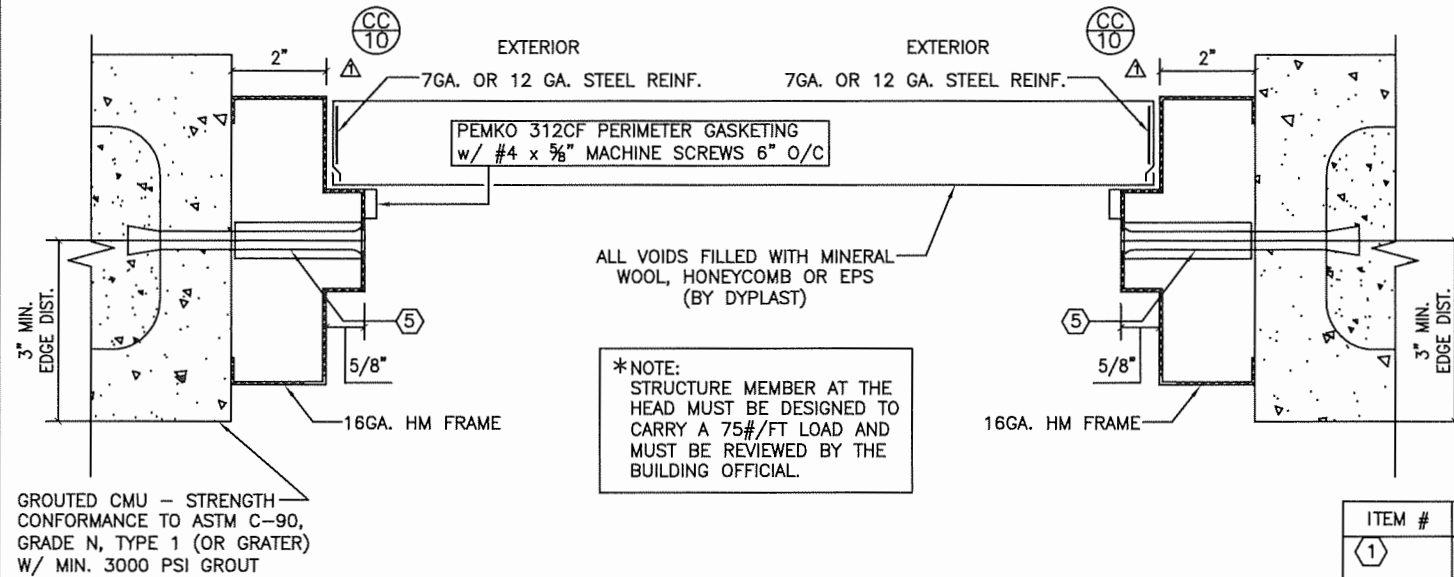
DATE 02-15-21

4506 QUALITY LANE
TAMPA, FLORIDA 33634
(813) 885-1693

*Quality
Engineered
Products Co., Inc.*

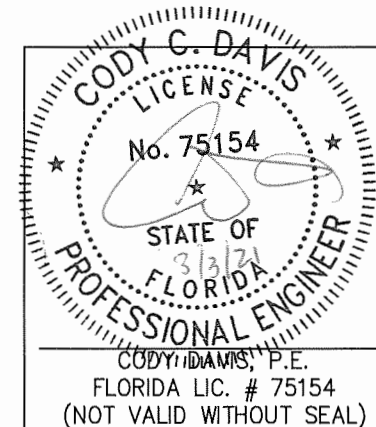
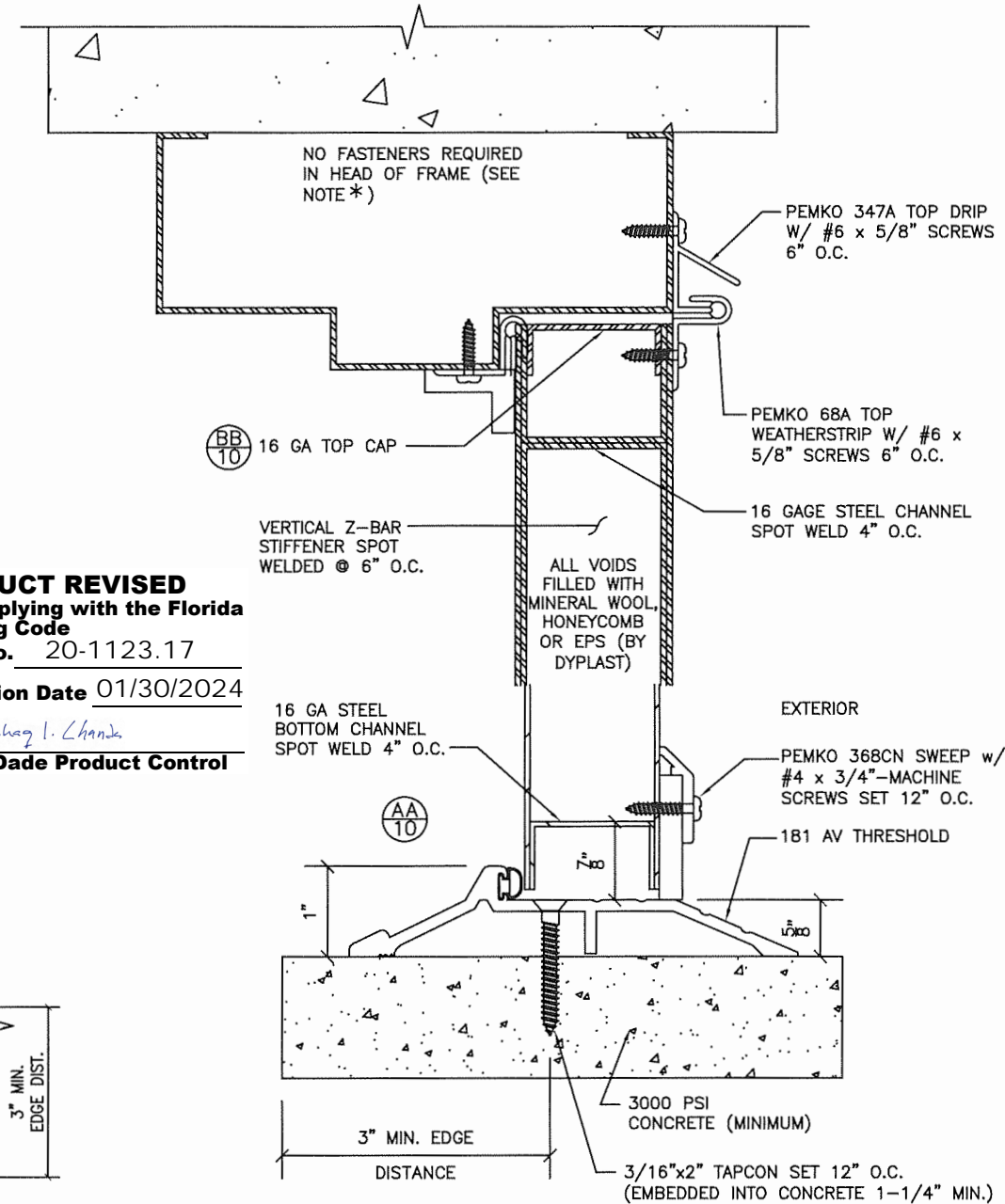


PRODUCT REVISED
as complying with the Florida
Building Code
NOA-No. 20-1123.17
Expiration Date 01/30/2024
By Shay L. Chanda
Miami-Dade Product Control



DESIGN PRESSURE RATING - OUTSWING SINGLE DOOR (7'-0" MAX.)			
	WHERE AIR & WATER INFILTRATION REQUIREMENT IS NEEDED		WHERE AIR & WATER INFILTRATION REQUIREMENT NOT IS NEEDED
POSITIVE	+90 PSF		+90 PSF
NEGATIVE	-90 PSF		-90 PSF

ITEM #	QUANTITY	BILL OF MATERIALS
1	1	16 GA. (.063") MIN. (14 GA. MAX.) STEEL HOLLOW METAL FRAME FyMIN= 46.3 KSI; FuMIN= 52.1 KSI (OR S.S. MEETING FyMIN= 50.5 KSI; FuMIN= 98.5 KSI)
2	1	18 GA. (.05") MIN. (14 GA. MAX.) STEEL FLUSH DOOR FyMIN= 46.3 KSI; FuMIN= 52.1 KSI (OR S.S. MEETING FyMIN= 50.5 KSI; FuMIN= 98.5 KSI)
3	3	HAGER HINGES BB1279 4 1/2" X 4 1/2" .134" THICK
4	1	PEMCO THRESHOLD 181AV OR 2005AV
5	8	1/2" DYNABOLT ITW/REDHEAD SLEEVE ANCHOR (3/8" BOLT) X 5" SLEEVE ANCHOR w/ 3/8" EMT WELDED PIPE SLEEVE w/ 2-1/2" MIN. EMBEDMENT & 3" MIN. EDGE DISTANCE INTO 3 KSI CONCRETE OR GROUT FILLED BLOCK
6	1	SCHLAGE LOCKSET AL53Pd w/ DEADLOCK B660 OR SCHLAGE MORTISE LOCKSET L9453Pd
7	AS REQ.	PEMCO 312CF PERIMETER GASKETING
8	1	PEMCO 368CN DOOR SWEEP
9	1	#347A X 68A TOP DRIP



16 GA. COMMERCIAL OUTSWING STEEL DOOR

DRAWING NUMBER 16GACOSD-1

4506 QUALITY LANE
TAMPA, FLORIDA 33634
(813) 885-1693

Quality
Engineered
Products Co., Inc.

REVISIONS

1
2
3 01-26-06
4 02-26-16
5 02-15-21(FBC2020)

HURRICANE TEST APPROVAL
SERIES 16GACOSD
16 GAUGE COMMERCIAL
OUTSWING STEEL DOORS

SHEET 10 OF 10

DATE 02-15-21