



DEPARTMENT OF REGULATORY AND ECONOMIC RESOURCES (RER)
BOARD AND CODE ADMINISTRATION DIVISION
NOTICE OF ACCEPTANCE (NOA)

MIAMI-DADE COUNTY
PRODUCT CONTROL SECTION
11805 SW 26 Street, Room 208
Miami, Florida 33175-2474
T (786) 315-2590 F (786) 315-2599
www.miamidade.gov/economy

Quality Engineered Products Co., Inc.

4506 Quality Lane
Tampa, FL 33634

SCOPE:

This NOA is being issued under the applicable rules and regulations governing the use of construction materials. The documentation submitted has been reviewed and accepted by Miami-Dade County RER -Product Control Section to be used in Miami Dade County and other areas where allowed by the Authority Having Jurisdiction (AHJ).

This NOA shall not be valid after the expiration date stated below. The Miami-Dade County Product Control Section (In Miami Dade County) and/or the AHJ (in areas other than Miami Dade County) reserve the right to have this product or material tested for quality assurance purposes. If this product or material fails to perform in the accepted manner, the manufacturer will incur the expense of such testing and the AHJ may immediately revoke, modify, or suspend the use of such product or material within their jurisdiction. RER reserves the right to revoke this acceptance, if it is determined by Miami-Dade County Product Control Section that this product or material fails to meet the requirements of the applicable building code.

This product is approved as described herein and has been designed to comply with the Florida Building Code, including the High Velocity Hurricane Zone.

DESCRIPTION: Series "QQ2" 16 ga. Outswing Glazed Commercial Steel Door w/Panic Device & Mortise Lock -LMI

APPROVAL DOCUMENT: Drawing No. **QQ2 REV 5**, titled "16 ga Out swinging Glazed Commercial Steel Door", sheets 1 through 13 of 13, prepared by manufacturer, dated 02/26/16 and last revised on 03/03/21, signed and sealed by Cody Davis, P. E., bearing the Miami-Dade County Product Control Revision stamp with the Notice of Acceptance number and expiration date by the Miami-Dade County Product Control Section.

MISSILE IMPACT RATING: Large and Small Missile Impact Resistant

Limitations:

1. See Design Pressure ratings (DP) VS lock types in sheet 1 thru 7. Max Single Door=+/- 90 PSF.
2. See anchor VS Door height VS DP in sheet 12.
3. Double Door w/HCF 9300 Rim with HC1300 removable mullion (sheet 7) is rated at +80/-65 PSF.
4. Doors are 16 ga (min .063" thk) with min CS Tensile yield strength $F_y = 46.3$ ksi and Tensile ultimate strength $F_u = 52.1$ Ksi and SS Tensile yield strength $F_y = 50.5$ ksi and Tensile ultimate strength $F_u = 98.5$ Ksi.
5. EPS Polystyrene by Dyplast (former Apache Products), having current NOA.

LABELING: Each unit shall bear a permanent label with the manufacturer's name or logo, city, state and series and following statement: "Miami-Dade County Product Control Approved", noted herein.

RENEWAL of this NOA shall be considered after a renewal application has been filed and there has been no change in the applicable building code negatively affecting the performance of this product.

TERMINATION of this NOA will occur after the expiration date or if there has been a revision or change in the materials, use, and/or manufacture of the product or process. Misuse of this NOA as an endorsement of any product, for sales, advertising or any other purposes shall automatically terminate this NOA. Failure to comply with any section of this NOA shall be cause for termination and removal of NOA.

ADVERTISEMENT: The NOA number preceded by the words Miami-Dade County, Florida, and followed by the expiration date may be displayed in advertising literature. If any portion of the NOA is displayed, then it shall be done in its entirety.

INSPECTION: A copy of this entire NOA shall be provided to the user by the manufacturer or its distributors and shall be available for inspection at the job site at the request of the Building Official.

This NOA **revises NOA # 19-0507.04** and consists of this page 1 and evidence pages E-1, E-2, E-3 & E-4, as well as approval document mentioned above.

The submitted documentation was reviewed by **Ishaq I. Chanda, P.E.**



Ishaq I. Chanda

NOA No. 20-1123.18
Expiration Date: January 30, 2024
Approval Date: April 01, 2021
Page 1

NOTICE OF ACCEPTANCE: EVIDENCE SUBMITTED

1. Evidence submitted under previous approvals

A. DRAWINGS

1. Manufacturer's die drawings and sections (Submitted under files below)
2. Drawing No. **QQ2**, titled "16 ga Out swinging Glazed Commercial Steel Door", sheets 1 through 13 of 13, prepared by manufacturer, dated 02/26/16, with Revision 4 dated 02/26/16 signed and sealed by Cody Davis, P. E.

B. TESTS (Submitted under file #12-1115.06/#07-1017.10/04-0823.04)

1. Test reports on
 - 1) Air Infiltration Test, per FBC TAS 202-94
 - 2) Uniform Static Air Pressure Test, Loading per FBC, TAS 202.
 - 3) Water Resistance Test per FBC, TAS 202-94.
 - 4) Large Missile Impact Test per FBC, TAS 201-94
 - 5) Cyclic Wind Pressure Loading per FBC, TAS 203-94

Along with marked-up drawings & installation diagram of Commercial Steel Doors w /Panic devices, prepared by Certified Testing Laboratories Inc., Test Report No. **CTLA 1276W**, dated Nov. 11, 2004, signed and sealed by Ramesh Patel, P. E.

(Note: This test report has been revised under Test Report No. **CTLA 1276WR**, re-issued on Feb 01, 2005 by Certified Testing Laboratories, signed and sealed by Ramesh Patel, P. E.)

2. Test reports
 - 1) Air Infiltration Test, per FBC TAS 202-94
 - 2) Uniform Static Air Pressure Test, Loading per FBC, TAS 202.
 - 3) Water Resistance Test per FBC, TAS 202-94.
 - 4) Large Missile Impact Test per FBC, TAS 201-94
 - 5) Cyclic Wind Pressure Loading per FBC, TAS 203-94
 - 6) Forced Entry Test, per FBC and TAS 202-94

Along with marked-up drawings and installation diagram of Single Commercial Steel Doors, prepared by Certified Testing Lab Inc., Test Report No. **CTLA 1238W**, dated **08/13/04**, signed and sealed by Ramesh Patel, P. E.

Along with marked-up drawings and installation diagram of Single Commercial Steel Doors, prepared by Certified Testing Lab Inc., Test Report No. **CTLA 1238WR**, dated **08/25/04** and revised on 02/25/05, signed and sealed by Ramesh Patel, P. E

3. Test report on
 - 1) Uniform Static Air Pressure Test, Loading per FBC, TAS 202.
 - 2) Large Missile Impact Test per FBC, TAS 201-94
 - 3) Cyclic Wind Pressure Loading per FBC, TAS 203-94

Along with marked-up drawings and installation diagram of Commercial Steel Doors w/ panic Devices, prepared by Certified Testing Lab Inc., Test Report No. **CTLA 976WA-2R**, dated 07/12/04, and revised on 02/25/05 signed and sealed by Ramesh Patel, P. E.

4. Additional Test reports **HTL-0050-4007-96** and **HTL-0050-0104-96** tested per SFBC PA 201, 202 & 203-94, issued by Hurricane Testing lab, dated 04-17-96 and 01/15/96 both signed and sealed by Timothy S. Marshall, P.E. (submitted under files 00-0726.01/03-0708.02)

C. CALCULATIONS

1. Anchor verification calculations complying w/ FBC 2014 (5th Edition), dated 07/11/16, prepared, signed and sealed by Cody Davis, P.E.
2. Glazing complies w/ASTME-1300-02, -04.

Ishaq I. Chanda

Ishaq I. Chanda, P.E.

Product Control Unit Supervisor

NOA No. 20-1123.18

Expiration Date: January 30, 2024

Approval Date: April 01, 2021

NOTICE OF ACCEPTANCE: EVIDENCE SUBMITTED

D. QUALITY ASSURANCE

- 1 Miami Dade Department of Regulatory and Economic Resources (RER)

E. MATERIAL CERTIFICATIONS (Submitted under file # 07-1017.10/#04-0823.05)

1. Tensile test report prepared by Certified Testing Laboratories Inc., Test Report No. **CTL 1023J (CTLA114W)**, tested per ASTM E-A370-97, dated December 02,2003, signed and sealed by Ramesh Patel, P. E.
2. Notice of Acceptance No. **11-0926.07** issued to Dyplastic Products, LLC (former Apache Products Co) for “EPS-Expanded Polystyrene Insulation”, expiring on 01/11/2017.
3. Notice of Acceptance No. **15-1201.11** issued to Eastman chemical Company (Former Solutia, Inc.) for their “Saflex clear & color Interlayer”, expiring on 05/21/2021.
4. Notice of Acceptance No.**14-0423.11** issued to Oldcastle Building Envelope, Inc. N.J. (Former Oldcastle, Inc.) for their “StormGlass Glass Interlayer”, expiring on 12/11/2018

F. STATEMENTS

1. Statement letter of conformance, complying with FBC-2014 (5th edition), issued, prepared, signed, sealed and dated 07/11/16 by Cody Davis, P. E.
2. Statement letter dated 07/29/16 of successor engineer adopting as his own, another engineer’s work per FAC, Rule Chapter 61G15-27, issued by Master Consulting Engineers, Inc., both signed and sealed by Cody Davis, P. E.
3. Statement letter of compliance, as a part of the above referenced test reports.

G. OTHER

1. This **renews NOA # 13-0606.04**, expiring 07/11/18.
2. Previous associated files with this NOA(s) are # **07-1017.10, 04-0823.05 & # 02-1011.05**.
3. Test Proposal by Q. E. P. dated September 19, 2002, approved by BCCO.

2. Evidence submitted under file #17-1102.03.

A. DRAWINGS

1. Drawing No. **QQ2 REV 4**, titled “16 ga Out swinging Glazed Commercial Steel Door”, sheets 1 through 13 of 13, prepared by manufacturer, dated 02/26/16 and last revised on 02/26/16, signed and sealed by Cody Davis, P. E.

B. Test

1. None.

C. CALCULATIONS

1. None.

D. QUALITY ASSURANCE

1. Miami Dade Department of Regulatory and Economic Resources (RER).

E. MATERIAL CERTIFICATIONS

1. Notice of Acceptance No. **17-1207.05** issued to Dyplastic Products, LLC (former Apache Products Co) for “E& R-Board Expanded Polystyrene Rigid Foam Insulation”, expiring on 01/11/2022.

Ishaq I. Chanda

Ishaq I. Chanda, P.E.
Product Control Unit Supervisor
NOA No. 20-1123.18
Expiration Date: January 30, 2024
Approval Date: April 01, 2021

NOTICE OF ACCEPTANCE: EVIDENCE SUBMITTED

F. STATEMENTS

1. Statement letter of conformance to FBC 2017 (6th Edition), dated 12/01/17, prepared by Master Consulting Engineer Inc., signed and sealed by Cody Davis, P. E.
2. Statement later issued by Quality Engineered Prod., dated 02/02/18, requesting one year renewal, subjected to verification test completion per RER e-mail dated Jan 09, 2019, signed by A. Bernstein, V.P.

G. OTHER

1. This NOA conditionally **renews** for **one** year # **15-0422.04**, expiring 01/30/19, subjected to verification test (glazing/hardware), as laid out per RER e-mail dated JAN 09, 2018.

3. Evidence submitted under previous approval

A. DRAWINGS

1. Drawing No. **QQ2 REV 4**, titled "16 ga Out swinging Glazed Commercial Steel Door", sheets 1 through 13 of 13, prepared by manufacturer, dated 02/26/16 and last revised on 04/30/19 signed and sealed by Cody Davis, P. E.

B. TESTS

1. Test reports on
 - 1) Uniform Static Air Pressure Test, Loading per FBC, TAS 202.
 - 2) Water Resistance Test per FBC, TAS 202-94.
 - 3) Large Missile Impact Test per FBC, TAS 201-94
 - 4) Cyclic Wind Pressure Loading per FBC, TAS 203-94

Along with marked-up drawings and installation diagram of glazed outswing Steel Commercial Steel Doors, prepared by Fenestration Testing Laboratories Inc., Test Report No. **FTLA 1435**, dated April 14, 2019, signed and sealed by Idalmis Ortega, P. E.

C. CALCULATIONS

1. None.

D. QUALITY ASSURANCE

1. Miami Dade Department of Regulatory and Economic Resources (RER).

E. MATERIAL CERTIFICATIONS

1. Notice of Acceptance No. **17-1207.05** issued to Dyplastic Products, LLC (former Apache Products Co) for "E& R-Board Expanded Polystyrene Rigid Foam Insulation", expiring on 01/11/2022.
2. Notice of Acceptance No. **15-1201.11** issued to Eastman chemical Company (Former Solutia, Inc.) for their "Saflex clear & color Interlayer", expiring on 05/21/2021.
3. Notice of Acceptance No. **18-0611.02** issued to Oldcastle Building Envelope, Inc. N.J. (Former Oldcastle, Inc.) for their "StormGlass Glass Interlayer", expiring on 11/11/2025.

F. STATEMENTS (Submitted under file #17-1102.03)

1. Statement letter of conformance to FBC 2017 (6th Edition), dated 12/01/17, prepared by Master Consulting Engineer Inc., signed and sealed by Cody Davis, P. E.

G. OTHER

1. This NOA **revises & renews** NOA # **17-1102.03**, expiring 01/30/24.
2. RER e-mail test proposal dated Jan 09, 2018.

Ishaq I. Chanda

Ishaq I. Chanda, P.E.

Product Control Unit Supervisor

NOA No. 20-1123.18

Expiration Date: January 30, 2024

Approval Date: April 01, 2021

NOTICE OF ACCEPTANCE: EVIDENCE SUBMITTED

4. New Evidence submitted

A. DRAWINGS

1. Drawing No. **QQ2 REV 5**, titled “16 ga Out swinging Glazed Commercial Steel Door”, sheets 1 through 13 of 13, prepared by manufacturer, dated 02/26/16 and last revised on 03/03/21, signed and sealed by Cody Davis, P. E.

B. TESTS

1. None.

C. CALCULATIONS

1. None.

D. QUALITY ASSURANCE

1. Miami Dade Department of Regulatory and Economic Resources (RER).

E. MATERIAL CERTIFICATIONS

1. Notice of Acceptance No. **17-1207.05** issued to Dyplastic Products, LLC (former Apache Products Co) for “E& R-Board Expanded Polystyrene Rigid Foam Insulation”, expiring on 01/11/2022.
4. Notice of Acceptance No. **15-1201.11** issued to Eastman chemical Company (Former Solutia, Inc.) for their “Saflex clear & color Interlayer”, expiring on 05/21/2021.
5. Notice of Acceptance No. **18-0611.02** issued to Oldcastle Building Envelope, Inc. N.J. (Former Oldcastle, Inc.) for their “StormGlass Glass Interlayer”, expiring on 11/11/2025.

F. STATEMENTS

1. Statement letter of conformance to FBC 2020 (7th Edition), dated 03/03/21, prepared by Master Consulting Engineer Inc., signed and sealed by Cody Davis, P. E.

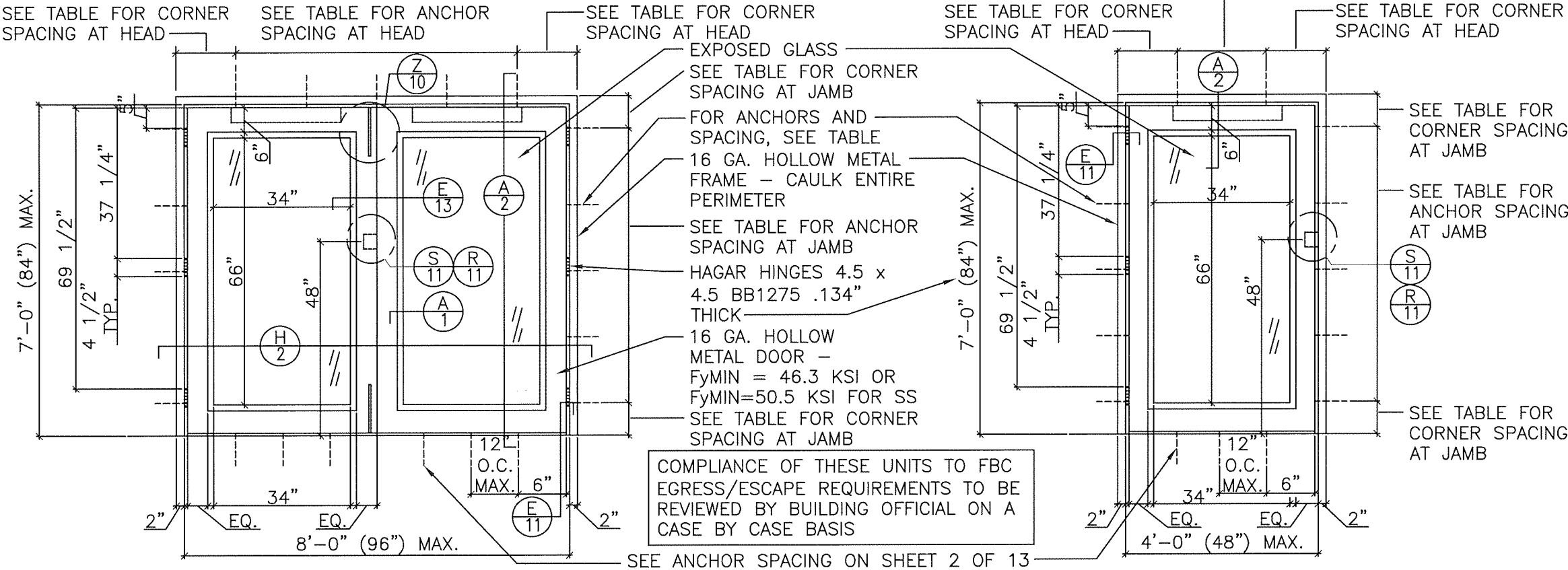
G. OTHER

1. This NOA **revises NOA # 19-0507.04**, expiring 01/30/24.

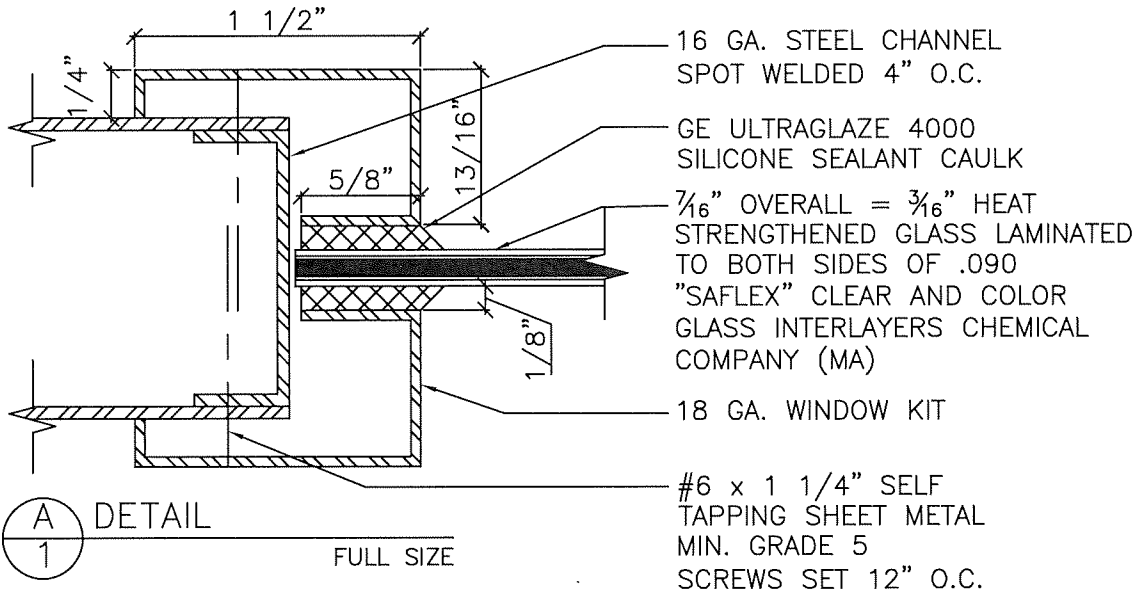
Ishaq I. Chanda

Ishaq I. Chanda, P.E.
Product Control Unit Supervisor
NOA No. 20-1123.18
Expiration Date: January 30, 2024
Approval Date: April 01, 2021

GLAZED STEEL DOOR WITH DEADLOCK



PRODUCT REVISED
as complying with the Florida
Building Code
NOA-No. 20-1123.18
Expiration Date 01/30/2024
By *Ishaq I. Chande*
Miami-Dade Product Control

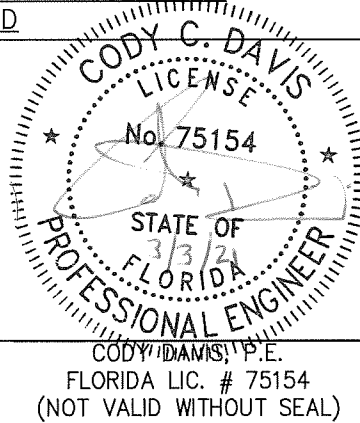


NOTE:
ALL DOORS AND FRAMES ARE
BONDERIZED AND GIVEN ONE COAT
OF RED RUST INHIBITIVE PRIMER.

LOCK FUNCTION TESTED:
ARROW SERIES
D-41 DEADBOLT

**DESIGN PRESSURE RATING
W/ DEADBOLT:**
+ 40 PSF / - 50 PSF

**HURRICANE PROTECTION SHUTTERS
ARE NOT REQUIRED**



INDEX OF DRAWINGS:

GLAZED STEEL DOOR WITH DEADLOCK	1 THRU 2
GLAZED STEEL DOOR WITH RIM EXIT DEVICE AND REMOVABLE MULLION	3 THRU 4
GLAZED DOOR WITH MORTISE LOCK (SINGLE DOOR ONLY)	5 THRU 6
GLAZED STEEL DOOR WITH "DORMA" RIM EXIT DEVICE AND REMOVABLE MULLION	7 THRU 8
DOOR CONSTRUCTION, DOOR AND FRAME REINFORCEMENTS, ANCHOR DETAILS, ANCHOR TABLES, AND COMMON DETAILS	9 THRU 13

SHEETS:

16 GA. OUTSWINGING GLAZED COMMERCIAL STEEL DOOR

QQ2

DRAWING NUMBER

4506 QUALITY LANE
TAMPA, FLORIDA 33634
(813) 885-1693

QUALITY

ENGINEERED

PRODUCTS

COMPANY, INC

REVISIONS

1	6-28-2000
2	2-23-2005
3	7-8-2008
4	04-26-2019
5	02-15-2021 (FBC 2020)

HURRICANE TEST APPROVAL
QQ2

SHEET 1 OF 13

DATE 02-15-21

(2) 2x6 WOOD BLOCKING
w/ 3/8" x 5" LAG SCREWS
IN 3/4" EMT PIPE SLEEVE.
SEE SHEET 12 FOR
ANCHOR SPACING

3" (MIN.
EDGE DIST)
2 1/2"
MIN. EMBEDMENT
G=0.55 MIN.

3/8" DIA. x 5"
DYNABOLT SLEEVE
ANCHOR BY
ITW/REDHEAD INTO
GROUT FILLED BLOCK
OR 3000 PSI
CONCRETE w/ 2 1/2"
MIN. EMBEDMENT

ALT. ATTACHMENT AT HEAD

3" (MIN.
EDGE DIST)
3000 PSI MIN.
GROUT

GROUT FILLED
CMU
1/4" MAX.
SHIM
ACTIVE
GROUT FILLED-
12.00" MIN.
EMBEDMENT

ALT. "T" ANCHOR ATTACHMENT

STRUCTURAL STEEL W/ MIN. 16 GA.
THICK WEB. MEMBER TO COMPLY
W/ AISC 360. MINIMUM Fy=33KSI;
Fu=45 KSI. ADEQUACY OF METAL
STRUCTURE TO BE REVIEWED BY
BUILDING OFFICIAL

3/8" Ø SCREW THRU
EMT PIPE SLEEVE
CONFORMING TO SAW
GRADE 2 OR EQUAL,
SEE SHEET 12 FOR
ANCHOR SPACING

MAX 1/4"
SHIM SPACE
ENSURE SCREW
ANCHOR EMBEDS
FULL LENGTH
OF MAJOR PITCH
DIAMETER
3" (MIN.
EDGE DIST.)

SILICON SEALANT
ALT. METAL FRAME ATTACHMENT

GROUTED CMU-
STRENGTH
CONFORMANCE
TO ASTM C-90
GRADE N, TYPE
1 (OR GREATER)
W/ MIN. 3000
PSI GROUT

PEMCO #312 CR WEATHERSTRIP
W/ #4 x 5/8" MACHINE SCREWS
SET @ 6" O.C.

ASTRAGAL

GE
ULTRAGLAZE
4000
SILICONE
SEALANT
CAULK

2 1/2"
MIN. EMBEDMENT

(2) 2x6 WOOD BLOCKING w/
3/8" x 5" LAG SCREWS IN 3/4"
EMT PIPE SLEEVE. SEE SHEET
12 FOR ANCHOR SPACING

(H) HORIZONTAL SECTION
2 3" = 1'-0"

3/8" DIA. x 5" DYNABOLT SLEEVE
ANCHOR BY ITW/REDHEAD INTO
GROUT FILLED BLOCK OR CONCRETE
w/ 2 1/2" MIN. EMBEDMENT

PEMCO #368 CN SWEEP
W/ #4 x 3/4" MACHINE
SCREWS SET @ 12" O.C.

DESIGN PRESSURE RATING
W/ DEADBOLT:
+ 40 PSF / - 50 PSF

PEMCO #191 AAV THRESHOLD

3/16" x 2" TAPCON SET AT 12" O.C.
(EMBED INTO CONCRETE W/ 1-1/4" MIN.
PENETRATION)

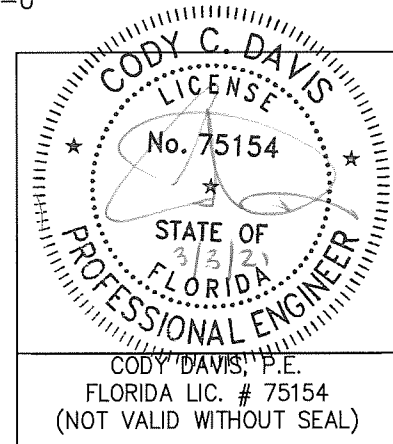
(A) VERTICAL SECTION
2 3" = 1'-0"

PRODUCT REVISED
as complying with the Florida
Building Code
NOA-No. 20-1123.18
Expiration Date 01/30/2024
By *Ishaq I. Chande*
Miami-Dade Product Control

16 GA. OUTSWINGING GLAZED COMMERCIAL STEEL DOOR

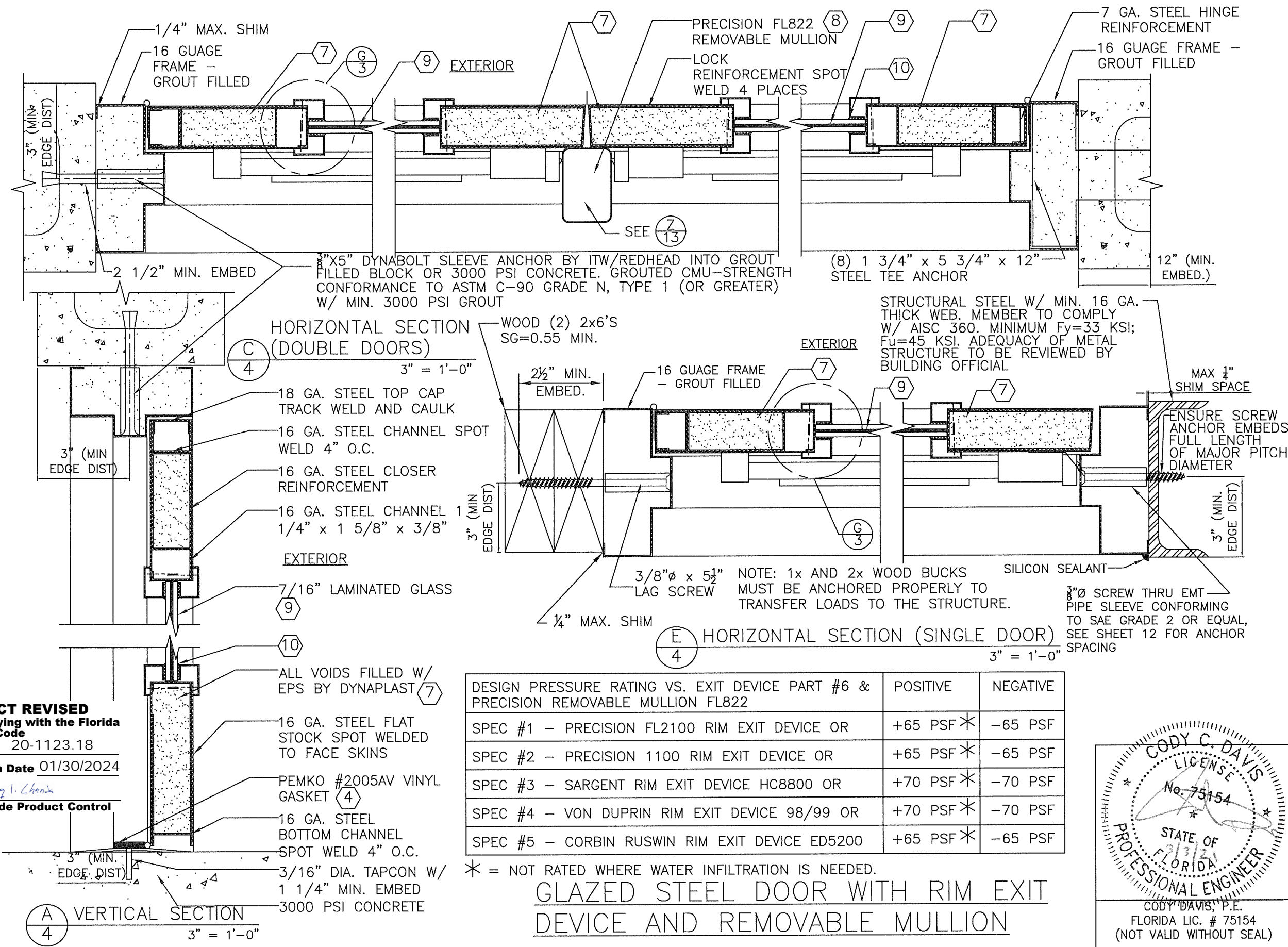
DRAWING NUMBER QQ2

QUALITY ENGINEERED PRODUCTS COMPANY, INC	4506 QUALITY LANE TAMPA, FLORIDA 33634 (813) 885-1693
REVISIONS 1 6-28-2000 2 2-23-2005 3 7-8-2008 4 04-26-2019 5 02-15-2021 (FBC 2020)	HURRICANE TEST APPROVAL QQ2
SHEET 2 OF 13 DATE 02-15-21	



GLAZED STEEL DOOR WITH DEADLOCK

COMPANY, INC



PRODUCT REVISED
as complying with the Florida
Building Code
NOA-No. 20-1123.18
Expiration Date 01/30/2024
By Ishag I. Chande
Miami-Dade Product Control

DESIGN PRESSURE RATING VS. EXIT DEVICE PART #6 & PRECISION REMOVABLE MULLION FL822	POSITIVE	NEGATIVE
SPEC #1 – PRECISION FL2100 RIM EXIT DEVICE OR	+65 PSF✱	–65 PSF
SPEC #2 – PRECISION 1100 RIM EXIT DEVICE OR	+65 PSF✱	–65 PSF
SPEC #3 – SARGENT RIM EXIT DEVICE HC8800 OR	+70 PSF✱	–70 PSF
SPEC #4 – VON DUPRIN RIM EXIT DEVICE 98/99 OR	+70 PSF✱	–70 PSF
SPEC #5 – CORBIN RUSWIN RIM EXIT DEVICE ED5200	+65 PSF✱	–65 PSF

* = NOT RATED WHERE WATER INFILTRATION IS NEEDED.

GLAZED STEEL DOOR WITH RIM EXIT
DEVICE AND REMOVABLE MULLION

CODY C. DAVIS
LICENSE
No. 75154
STATE OF
FLORIDA
PROFESSIONAL ENGINEER
CODY DAVIS, P.E.
FLORIDA LIC. # 75154
(NOT VALID WITHOUT SEAL)

DRAWING NUMBER QQ2 16 GA. OUTSWINGING GLAZED COMMERCIAL STEEL DOOR

QUALITY
ENGINEERED
PRODUCTS
COMPANY, INC

4506 QUALITY LANE
TAMPA, FLORIDA 33634
(813) 885-1693

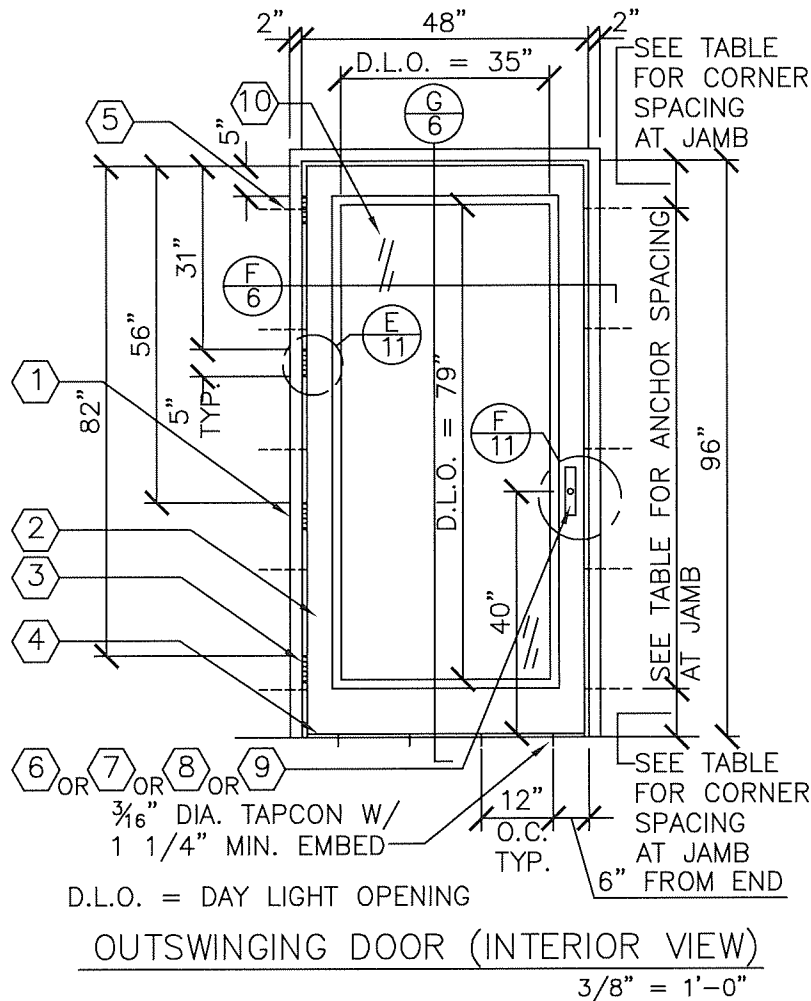
REVISIONS

1 6-28-2000
2 2-23-2005
3 7-8-2008
4 04-26-2019
5 02-15-2021 (FBC 2020)

HURRICANE TEST APPROVAL
QQ2

SHEET 4 OF 13
DATE 02-15-21

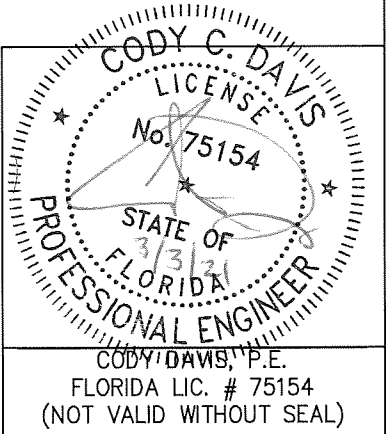
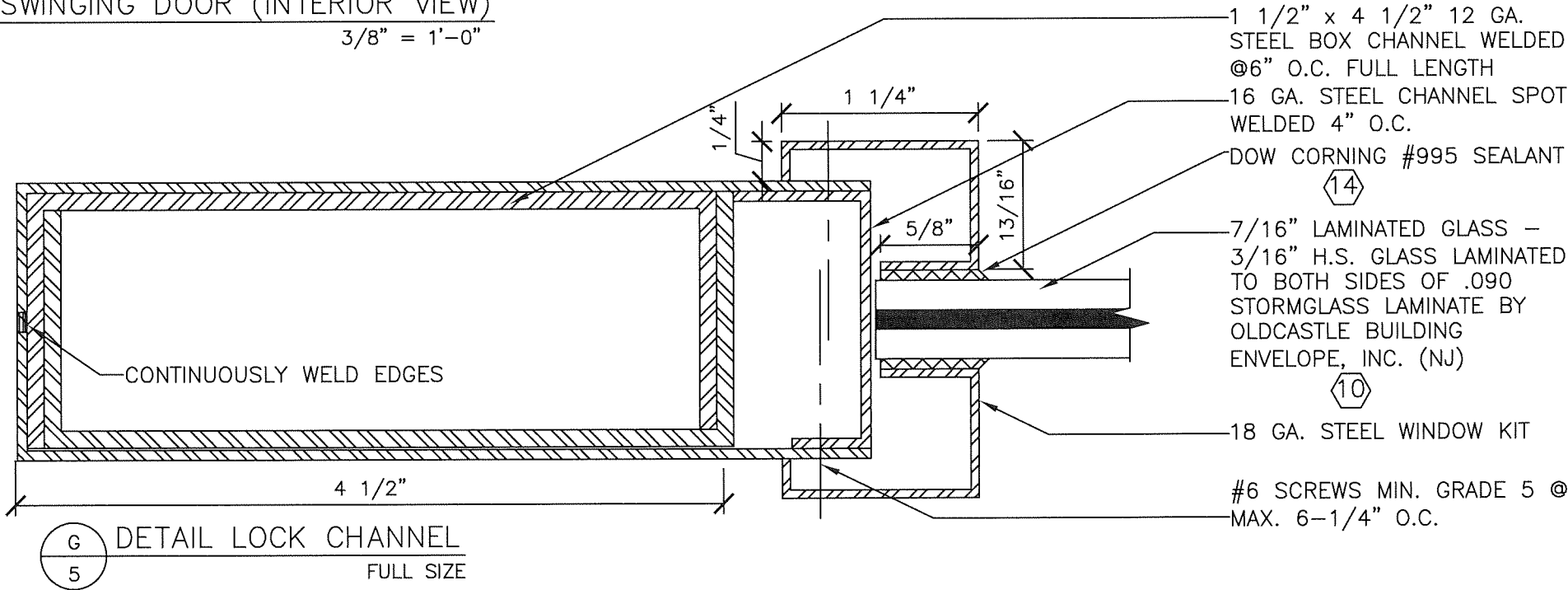
GLAZED STEEL DOOR WITH MORTISE LOCK



ITEM #	QUANTITY	BILL OF MATERIALS
1	1	16 GA. (.063") MIN. (14 GA. MAX.) STEEL HOLLOW METAL FRAME FyMIN= 46.3 KSI; FuMIN= 52.1 KSI (OR S.S. MEETING FyMIN= 50.5 KSI; FuMIN= 98.5 KSI)
2	1	16 GA. (.063") MIN. (14 GA. MAX.) GLAZED STEEL STORE FyMIN= 46.3 KSI; FuMIN= 52.1 KSI (OR S.S. MEETING FyMIN= 50.5 KSI; FuMIN= 98.5 KSI)
3	4	HAGAR HINGES BB1279 4.5 x 4.5 .134" THICK
4	1	PEMCO 2005AV THRESHOLD
5	SEE ANCHOR TABLE	3/8" X 5" DYNABOLT SLEEVE ANCHOR BY ITW/REDHEAD w/2-1/2" MIN. EMBED & 3" MIN. EDGE DIST. INTO 3 KSI CONCRETE OR GROUT FILLED BLOCK
6	1	CORBIN RUSWIN MI2200 MORTISE LOCK
7	1	DORMA ML9953 MORTISE LOCK
8	1	SCHLAGE L9456 MORTISE LOCK
9	1	SARGENT 8243 MORTISE LOCK
10	1	7/16" HS LAMINATED GLASS BY OLDCASTLE BUILDING ENVELOPE, INC. (NJ)
11	1	PEMCO 347A TOP DRIP
12	2	PEMCO 68A DOOR TOP WEATHERSTRIP
13	3	PEMCO 303AS WEATHERSTRIP
14	AS REQ'D	DOW CORNING #995 STRUCTURAL SILICONE SEALANT

DESIGN PRESSURE RATING SINGLE DOOR W/ MORTISE LOCK (ITEM #6, 7, 8, & 9)		
	WHERE AIR & WATER INFILTRATION REQUIREMENT IS NEEDED	WHERE AIR & WATER INFILTRATION REQUIREMENT IS <u>NOT</u> NEEDED
POSITIVE	+90 PSF	+90 PSF
NEGATIVE	-90 PSF	-90 PSF

PRODUCT REVISED
as complying with the Florida Building Code
NOA-No. 20-1123.18
Expiration Date 01/30/2024
By Ishaq I. Chande
Miami-Dade Product Control



DRAWING NUMBER 16 GA. OUTSWINGING GLAZED COMMERCIAL STEEL DOOR QQ2

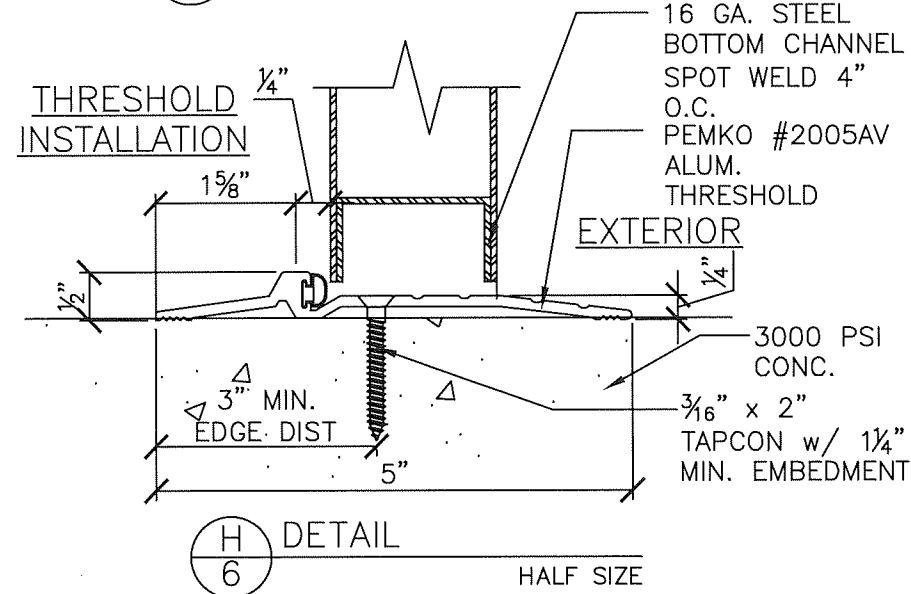
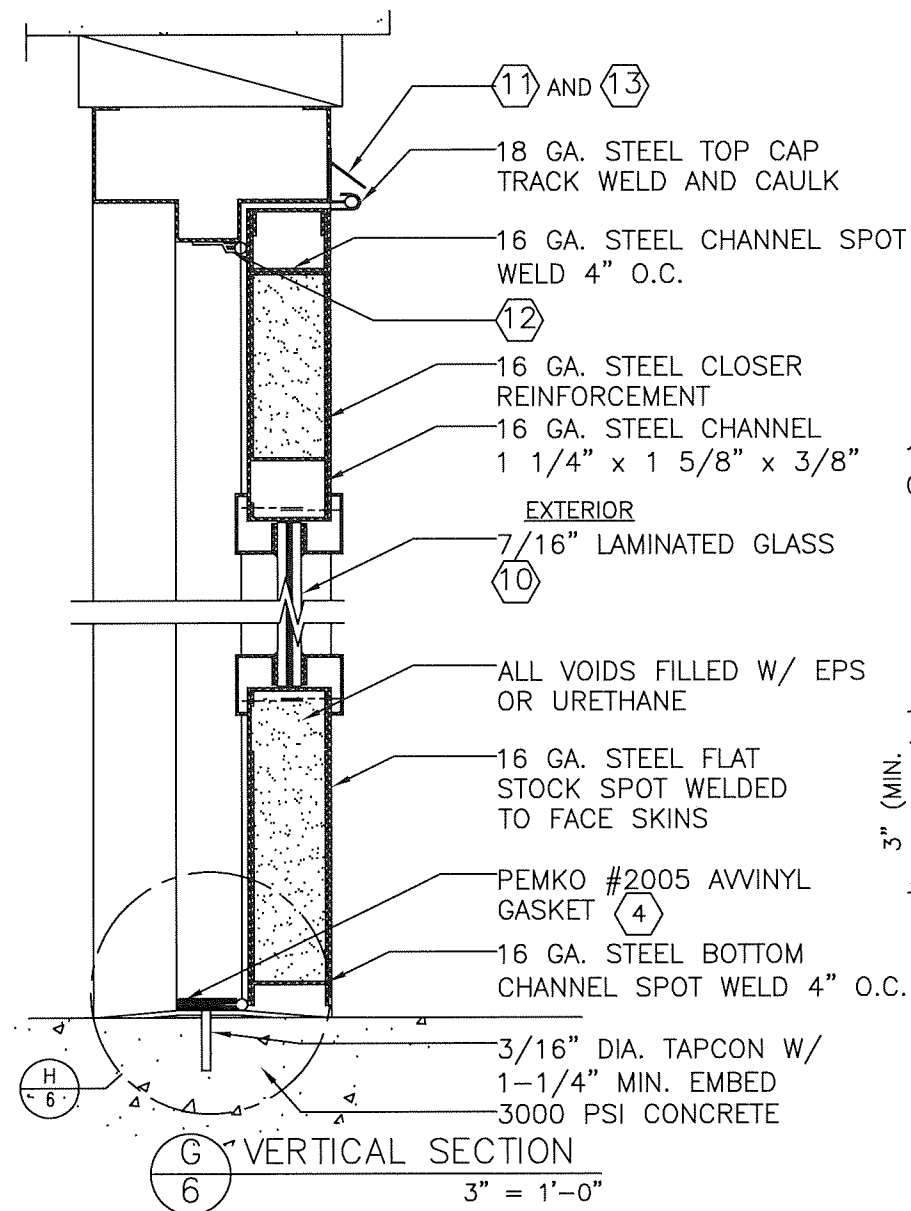
4506 QUALITY LANE
TAMPA, FLORIDA 33634
(813) 885-1693

QUALITY
ENGINEERED
PRODUCTS
COMPANY, INC

REVISIONS
1 6-28-2000
2 2-23-2005
3 7-8-2008
4 04-26-2019
5 02-15-2021 (FBC 2020)

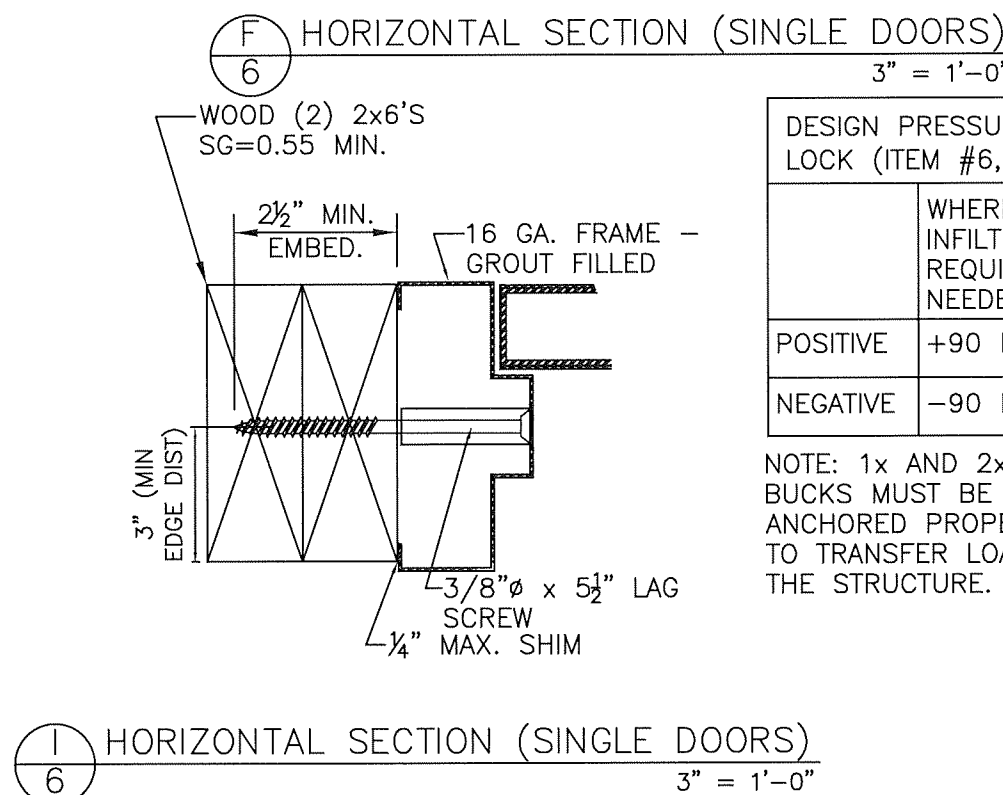
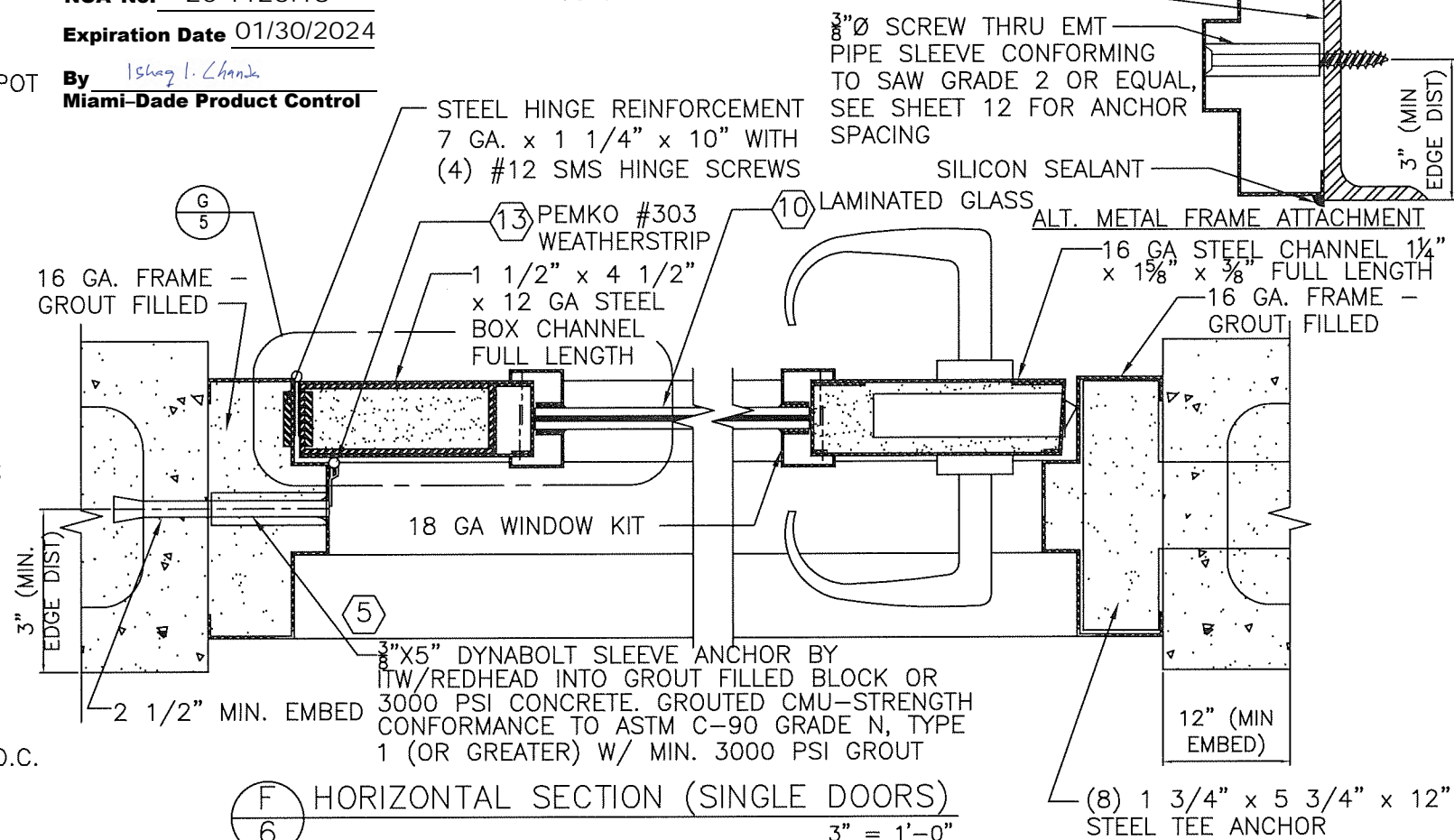
HURRICANE TEST APPROVAL
QQ2

SHEET 5 OF 13
DATE 02-15-21



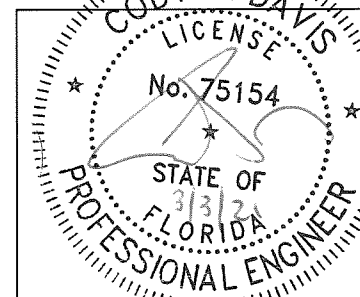
PRODUCT REVISED
as complying with the Florida
Building Code
NOA-No. 20-1123.18
Expiration Date 01/30/2024
By *Ishaq I. Chank*
Miami-Dade Product Control

STRUCTURAL STEEL W/ MIN. 16 GA. THICK WEB.
MEMBER TO COMPLY W/ AISC 360. MINIMUM $F_y=33$
KSI; $F_u=45$ KSI. ADEQUACY OF METAL STRUCTURE
TO BE REVIEWED BY BUILDING OFFICIAL



DESIGN PRESSURE RATING SINGLE DOOR W/ MORTISE LOCK (ITEM #6, 7, 8, & 9)		
	WHERE AIR & WATER INFILTRATION REQUIREMENT IS NEEDED	WHERE AIR & WATER INFILTRATION REQUIREMENT IS <u>NOT</u> NEEDED
POSITIVE	+90 PSF	+90 PSF
NEGATIVE	-90 PSF	-90 PSF

NOTE: 1x AND 2x WOOD BUCKS MUST BE ANCHORED PROPERLY TO TRANSFER LOADS TO THE STRUCTURE.



CODY DAVIS, P.E.
FLORIDA LIC. # 75154
(NOT VALID WITHOUT SEAL)

DRAWING NUMBER 16 GA. OUTSWINGING GLAZED COMMERCIAL STEEL DOOR

4506 QUALITY LANE
TAMPA, FLORIDA 33634
(813) 885-1693

QUALITY

ENGINEERED

PRODUCTS

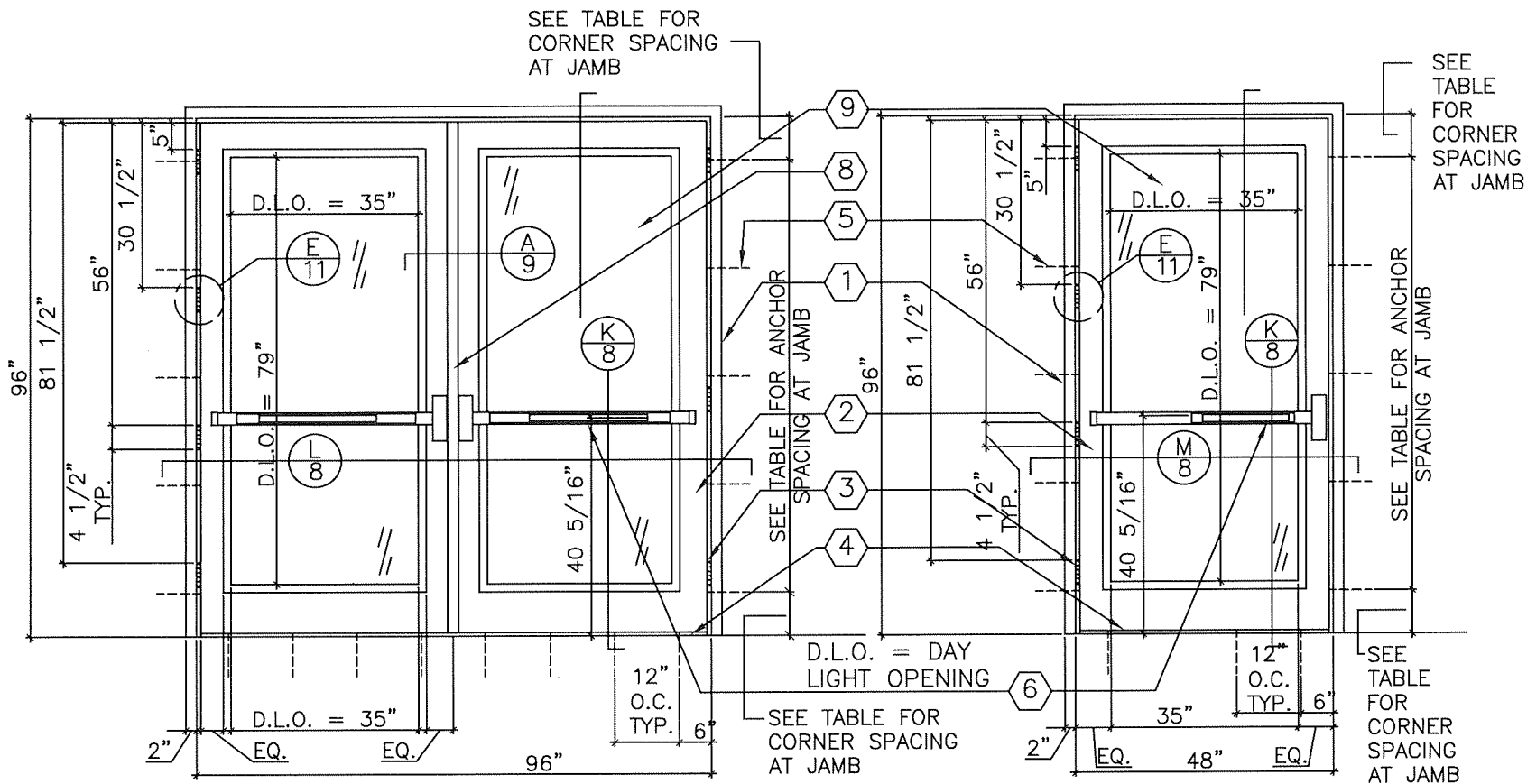
COMPANY, INC

REVISIONS
1 6-28-2000
2 2-23-2005
3 7-8-2008
4 04-26-2019
5 02-15-2021 (FBC 2020)

HURRICANE TEST APPROVAL
QQ2

SHEET 6 OF 13

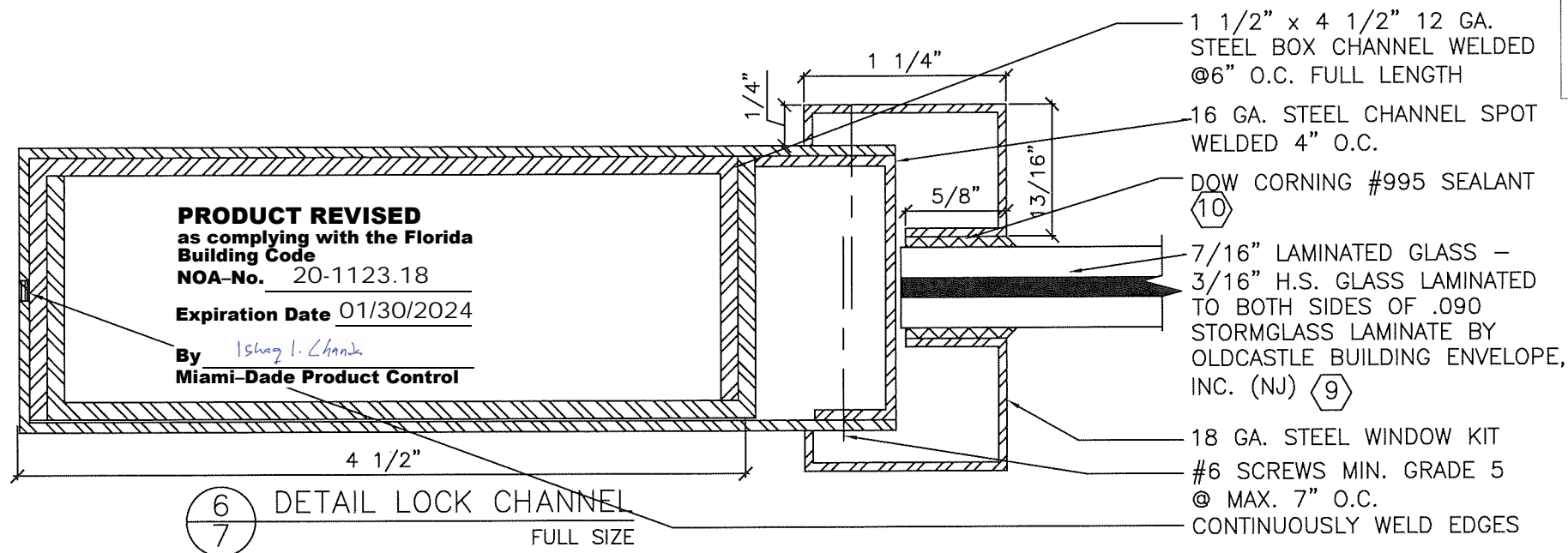
DATE 02-15-21



OUTSWINGING PAIR OF DOORS (INTERIOR VIEW)

OUTSWINGING SINGLE DOOR (INTERIOR VIEW)

DESIGN PRESSURE RATING DORMA RIM EXIT 9300 W/ REMOVABLE MULLION HC1300			DESIGN PRESSURE RATING DORMA HCF9400 VERTICLE ROD EXIT DEVICE			DESIGN PRESSURE RATING SINGLE DOOR WITH DORMA RIM EXIT 9300		
	WHERE AIR & WATER INFILTRATION REQUIREMENT IS NEEDED	WHERE AIR & WATER INFILTRATION REQUIREMENT IS <u>NOT</u> NEEDED		WHERE AIR & WATER INFILTRATION REQUIREMENT IS NEEDED	WHERE AIR & WATER INFILTRATION REQUIREMENT IS <u>NOT</u> NEEDED		WHERE AIR & WATER INFILTRATION REQUIREMENT IS NEEDED	WHERE AIR & WATER INFILTRATION REQUIREMENT IS <u>NOT</u> NEEDED
POSITIVE	+80 PSF	+80 PSF	POSITIVE	+80 PSF	+80 PSF	POSITIVE	+80 PSF	+80 PSF
NEGATIVE	-65 PSF	-65 PSF	NEGATIVE	-80 PSF	-80 PSF	NEGATIVE	-80 PSF	-80 PSF

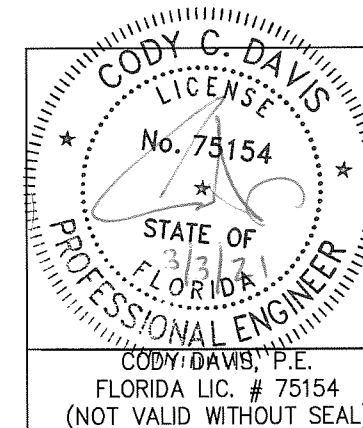


6
7
DETAIL LOCK CHANNEL
FULL SIZE

ITEM #	QUANTITY	BILL OF MATERIALS
1	1	16 GA. (.063") MIN. (14 GA. MAX.) STEEL HOLLOW METAL FRAME FyMIN= 46.3 KSI; FuMIN= 52.1 KSI (OR S.S. MEETING FyMIN= 50.5 KSI; FuMIN= 98.5 KSI)
2	2	16 GA. (.063") MIN. (14 GA. MAX.) GLAZED STEEL STORE FyMIN= 46.3 KSI; FuMIN= 52.1 KSI (OR S.S. MEETING FyMIN= 50.5 KSI; FuMIN= 98.5 KSI)
3	8	HAGAR HINGES 4.5 x 4.5
4	1	BB1279 .134" THICK
5	10	PEMCO 2005AV THRESHOLD
6	2	3/8" X 5" DYNABOLT SLEEVE
7	AS REQ'D	ANCHOR BY ITW/REDHEAD w/ 3/4" EMT WELDED PIPE SLEEVE w/ 2-1/2" MIN. EMBED & 3" MIN. EDGE DISTANCE CONCRETE OR GROUT FILLED BLOCK
8	1	DORMA VERTICAL ROD EXIT DEVICE HCF9400 OR HCF9300 X YR08
9	AS REQ'D	EPS POLYSTYRENE FOAM CORE BY DYNOPLAST OR 20 GA. STEEL RIB OR HONEYCOMB
10	AS REQ'D	DORMA HC1300 REMOVABLE MULLION (DOUBLE DOORS) (NOT REQ. FOR VERTICAL ROD)
11	2	7/16" LAMINATED GLASS (3/16" HS + .090" INTERLAYER BY OLDCASTLE BUILDING ENVELOPE, INC. (NJ)
12	3	DOW CORNING #995 STRUCTURAL SILICONE SEALANT
13	1	PEMCO 68A DOOR TOP WEATHERSTRIP

PAIR GLAZED STEEL DOORS
W/DORMA VERTICAL ROD EXIT DEVICES OR
RIM EXIT DEVICES W/REMOVABLE MULLION

SINGLE GLAZED DOOR
W/RIM EXIT DEVICE



DRAWING NUMBER 16 GA. OUTSWINGING GLAZED COMMERCIAL STEEL DOOR

QQ2

4506 QUALITY LANE
TAMPA, FLORIDA 33634
(813) 885-1693

QUALITY

ENGINEERED

PRODUCTS

COMPANY, INC

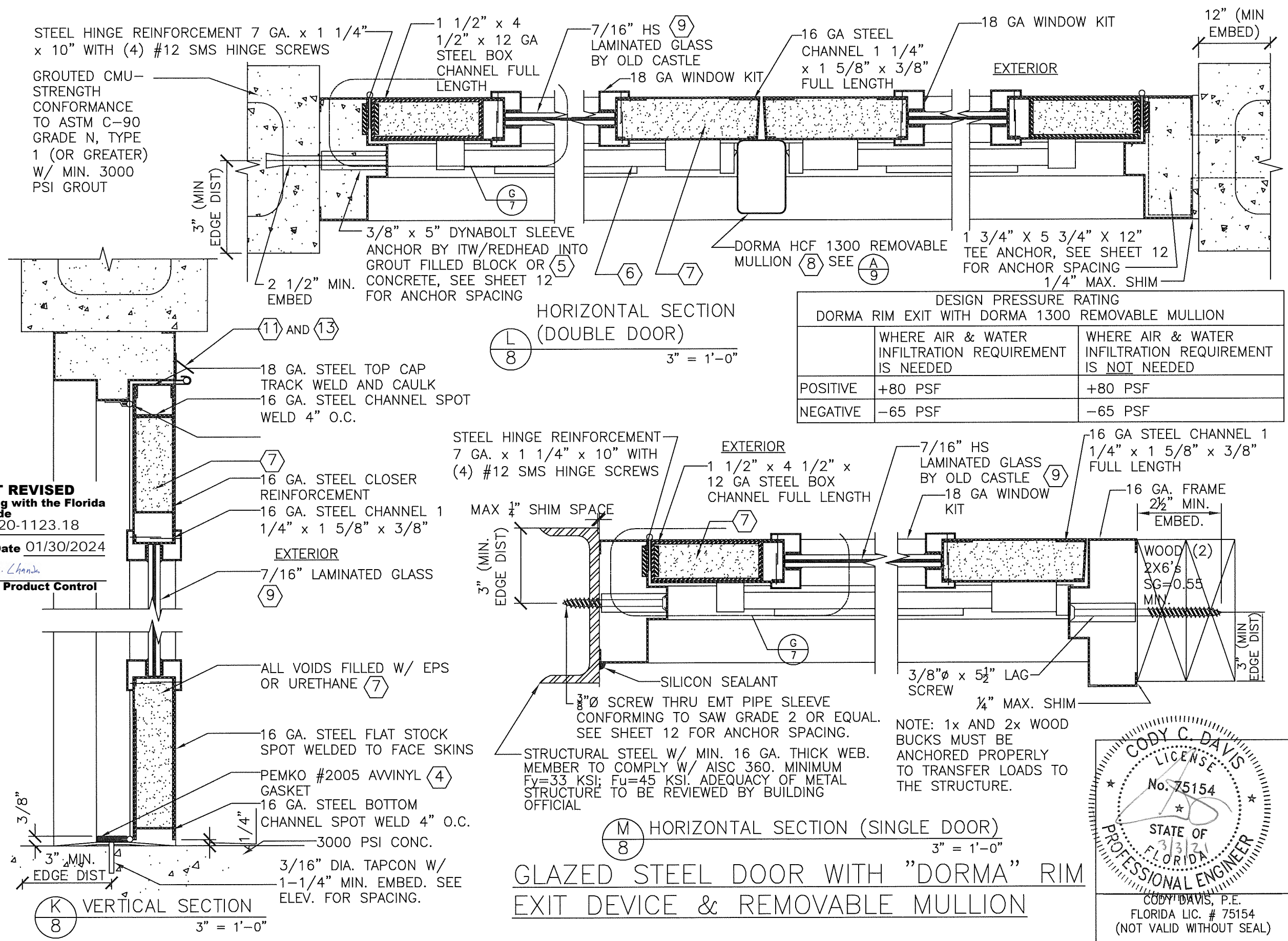
REVISIONS

- 1 6-28-2000
- 2 2-23-2005
- 3 7-8-2008
- 4 04-26-2019
- 5 02-15-2021 (FBC 2020)

HURRICANE TEST APPROVAL
QQ2

SHEET 7 OF 13

DATE 02-15-21



DESIGN PRESSURE RATING DORMA RIM EXIT WITH DORMA 1300 REMOVABLE MULLION		
	WHERE AIR & WATER INFILTRATION REQUIREMENT IS NEEDED	WHERE AIR & WATER INFILTRATION REQUIREMENT IS NOT NEEDED
POSITIVE	+80 PSF	+80 PSF
NEGATIVE	-65 PSF	-65 PSF

CODY C. DAVIS
LICENSE
No. 75154
STATE OF FLORIDA
PROFESSIONAL ENGINEER
3/3/21
CODY DAVIS, P.E.
FLORIDA LIC. # 75154
(NOT VALID WITHOUT SEAL)

DRAWING NUMBER QQ2 16 GA. OUTSWINGING GLAZED COMMERCIAL STEEL DOOR

4506 QUALITY LANE
TAMPA, FLORIDA 33634
(813) 885-1693

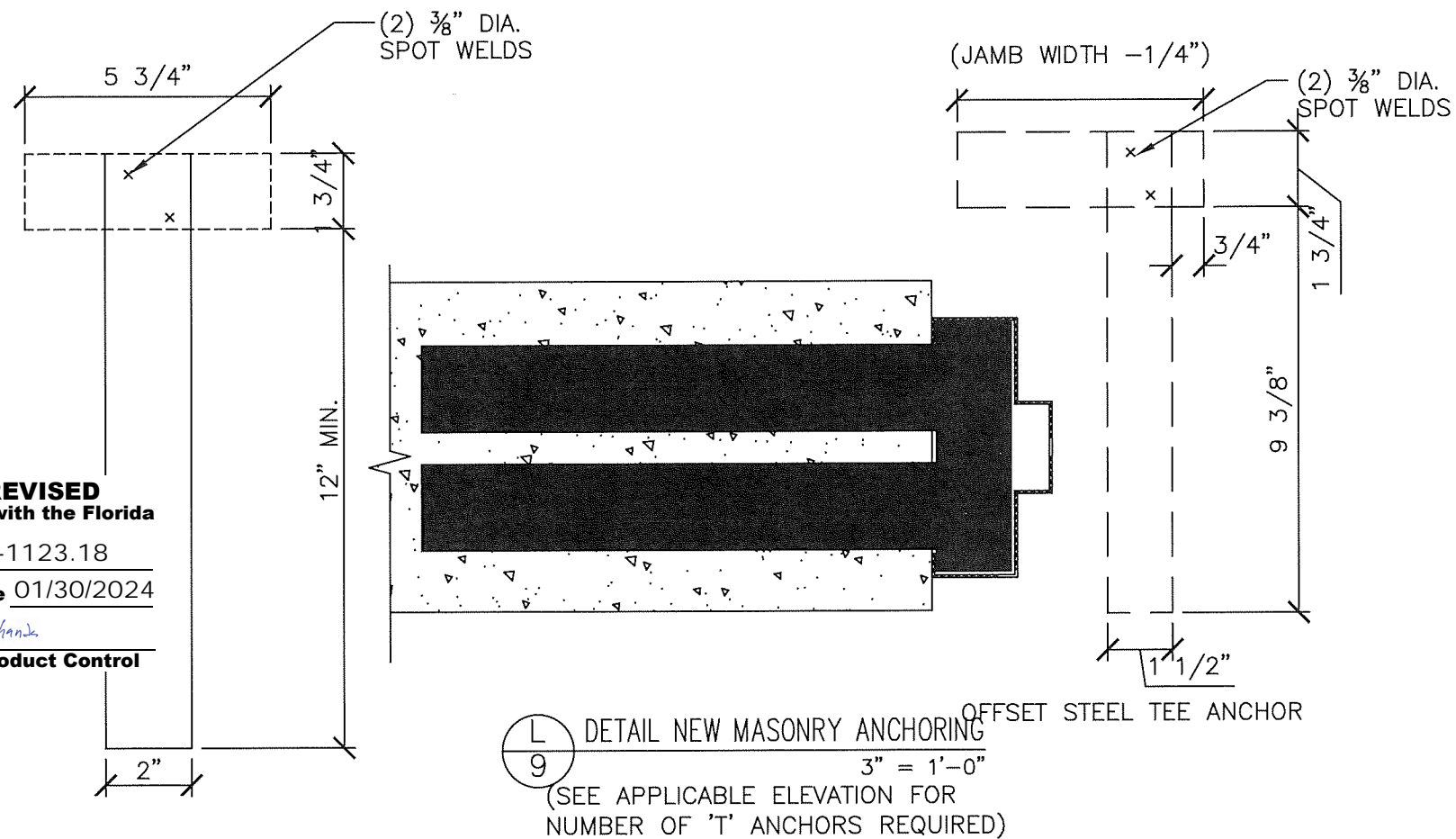
QUALITY
ENGINEERED
PRODUCTS
COMPANY, INC

REVISIONS
1 6-28-2000
2 2-23-2005
3 7-8-2008
4 04-26-2019
5 02-15-2021 (FBC 2020)

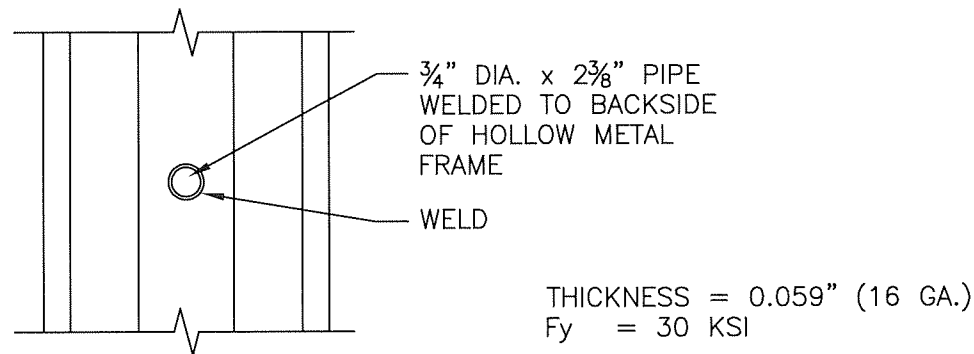
HURRICANE TEST APPROVAL
QQ2

SHEET 8 OF 13
DATE 02-15-21

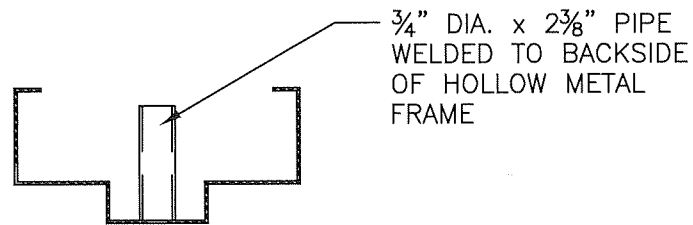
PRODUCT REVISED
as complying with the Florida
Building Code
NOA-No. 20-1123.18
Expiration Date 01/30/2024
By Ishag I. Chank
Miami-Dade Product Control



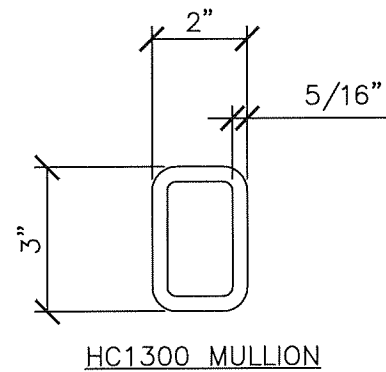
L 9
DETAIL NEW MASONRY ANCHORING
3" = 1'-0"
(SEE APPLICABLE ELEVATION FOR
NUMBER OF 'T' ANCHORS REQUIRED)



M 9
PIPE SLEEVE DETAIL
3" = 1'-0"

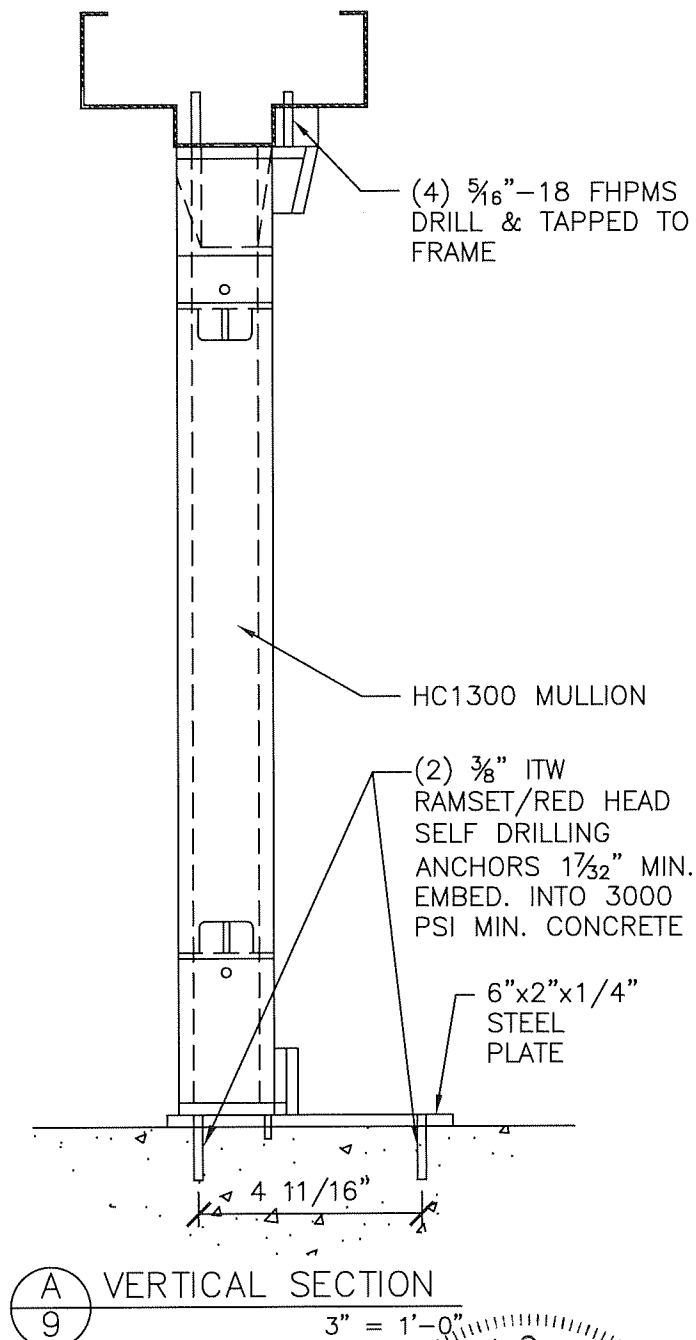


T' ANCHOR DETAILS

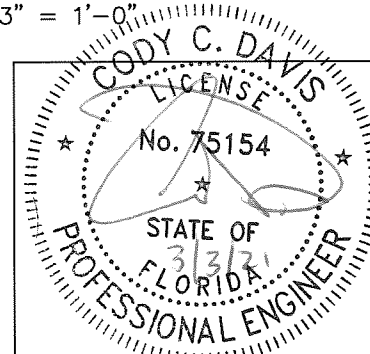


HC1300 MULLION

**DORMA HC-1300
REMOVABLE MULLION**



A 9
VERTICAL SECTION
3" = 1'-0"



CODY DAVIS, P.E.
FLORIDA LIC. # 75154
(NOT VALID WITHOUT SEAL)

DRAWING NUMBER **QQ2** 16 GA. OUTSWINGING GLAZED COMMERCIAL STEEL DOOR

REVISIONS

- | NO. | REVISION |
|-----|-----------------------|
| 1 | 6-28-2000 |
| 2 | 2-23-2005 |
| 3 | 7-8-2008 |
| 4 | 04-26-2019 |
| 5 | 02-15-2021 (FBC 2020) |

HURRICANE TEST APPROVAL
QQ2

SHEET 9 OF 13

DATE 02-15-21

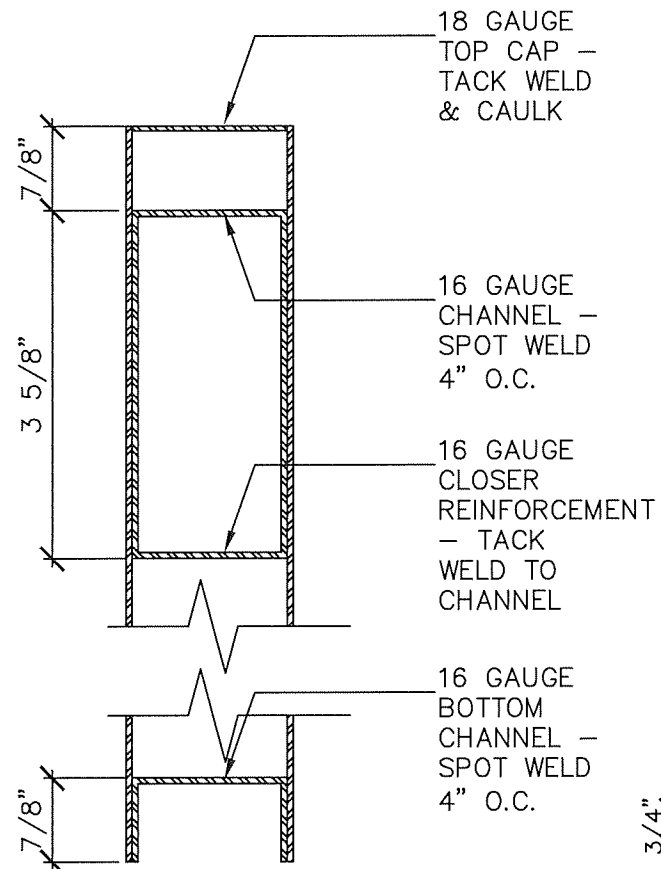
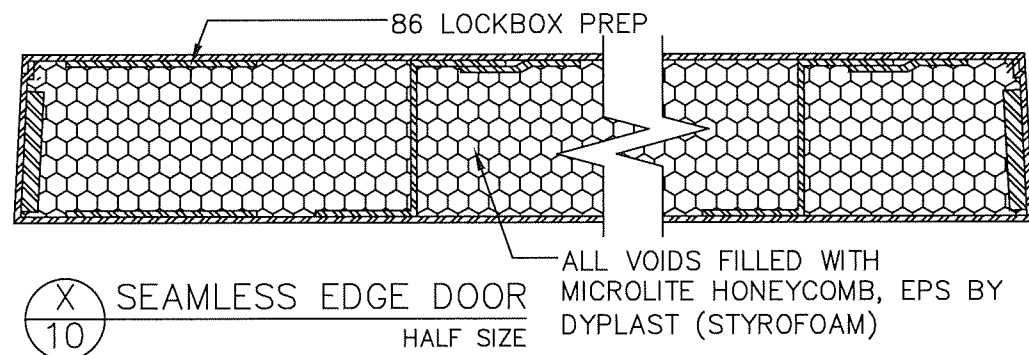
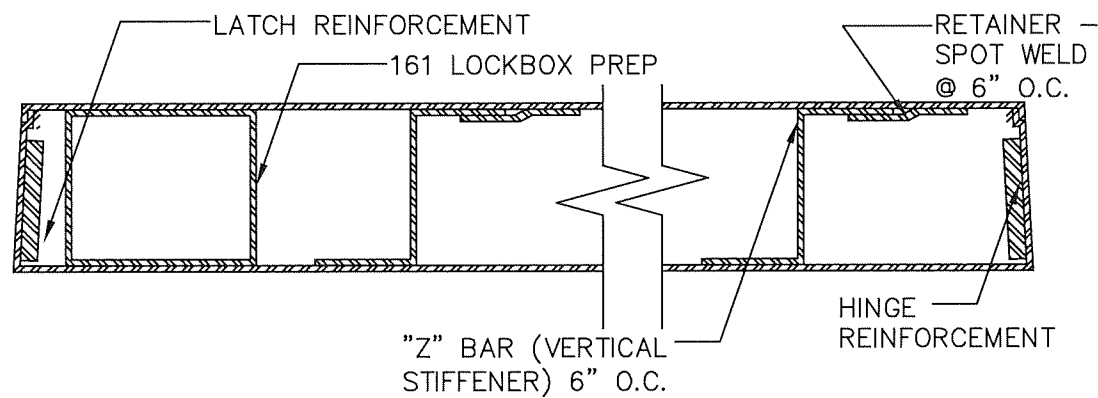
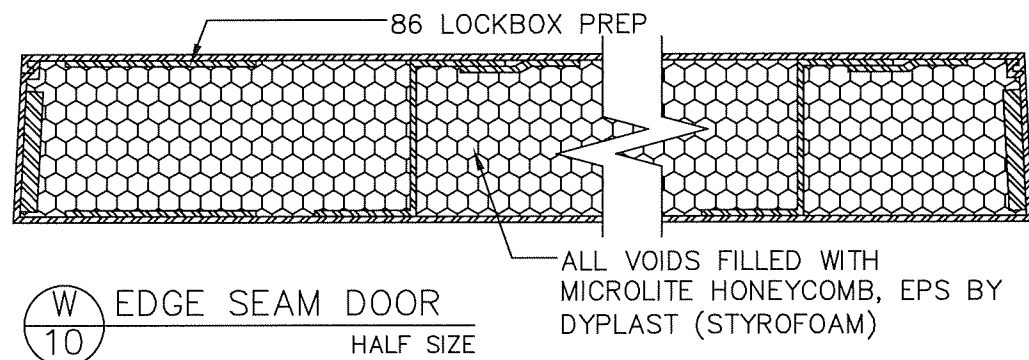
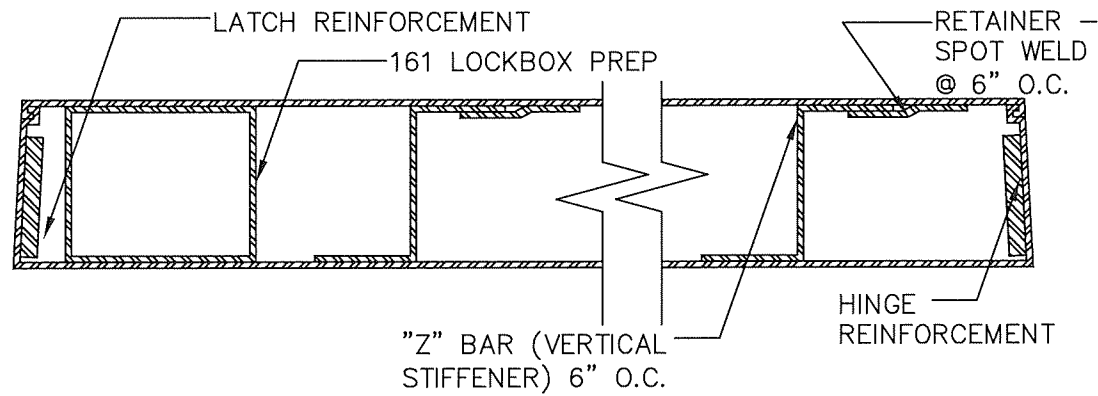
4506 QUALITY LANE
TAMPA, FLORIDA 33634
(813) 885-1693

QUALITY

ENGINEERED

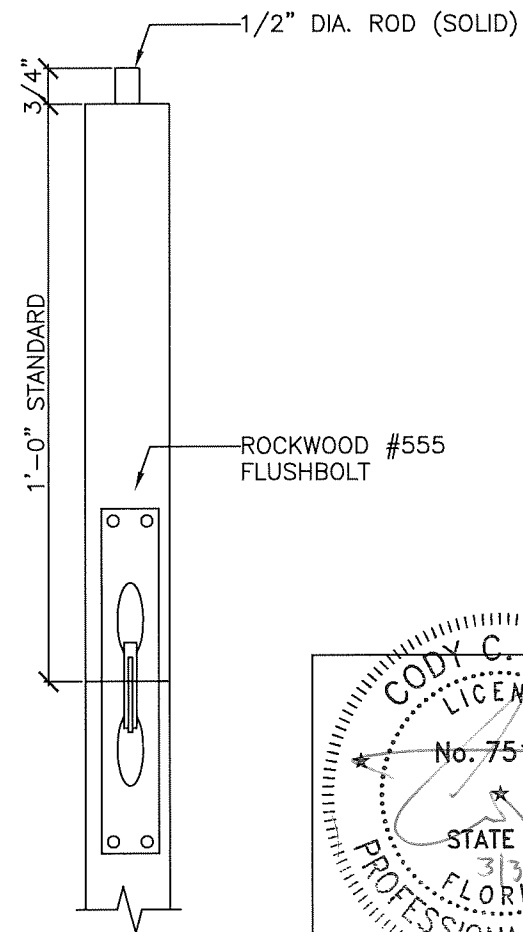
PRODUCTS

COMPANY, INC

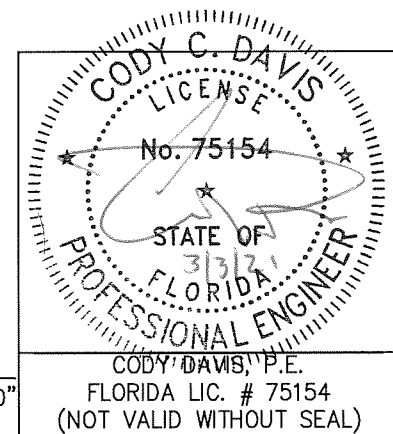


Y 10 VERTICAL DOOR SECTION
HALF SIZE

PRODUCT REVISED
as complying with the Florida
Building Code
NOA-No. 20-1123.18
Expiration Date 01/30/2024
By Ishaq I. Chande
Miami-Dade Product Control



Z 10 DETAIL
3" = 1'-0"



DOOR PANEL CONSTRUCTION DETAILS

DRAWING NUMBER QQ2 16 GA. OUTSWINGING GLAZED COMMERCIAL STEEL DOOR

4506 QUALITY LANE
TAMPA, FLORIDA 33634
(813) 885-1693

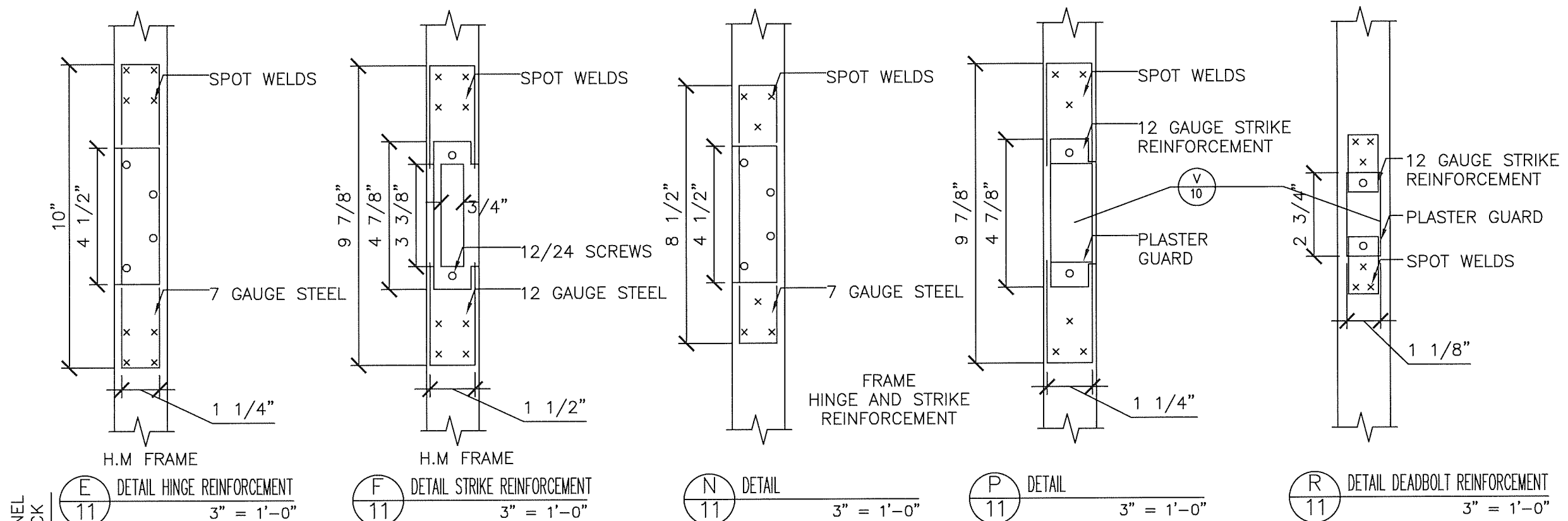
QUALITY
ENGINEERED
PRODUCTS
COMPANY, INC

REVISIONS	
1	6-28-2000
2	2-23-2005
3	7-8-2008
4	04-26-2019
5	02-15-2021 (FBC 2020)

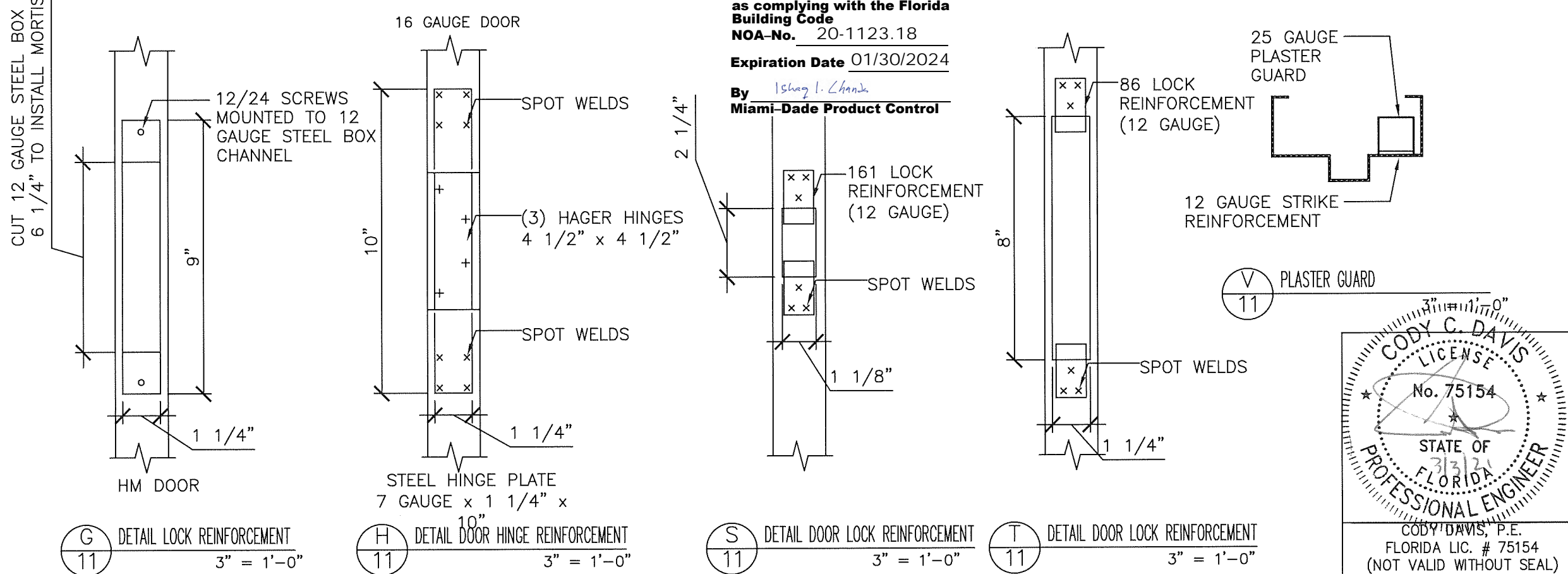
HURRICANE TEST APPROVAL
QQ2

SHEET 10 OF 13

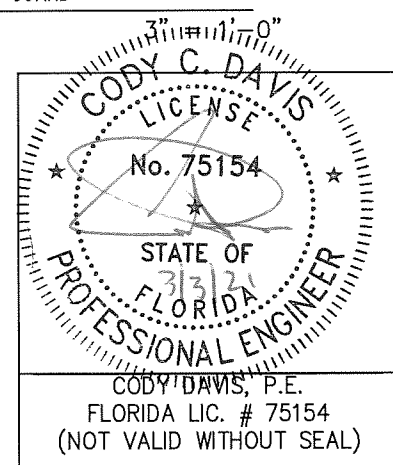
DATE 02-15-21



DOOR & FRAME REINFORCEMENTS



PRODUCT REVISED
as complying with the Florida
Building Code
NOA-No. 20-1123.18
Expiration Date 01/30/2024
By *Ishaq I. Chande*
Miami-Dade Product Control



DRAWING NUMBER	QQ2	16 GA. OUTSWINGING GLAZED COMMERCIAL STEEL DOOR 4506 QUALITY LANE TAMPA, FLORIDA 33634 (813) 885-1693 QUALITY ENGINEERED PRODUCTS COMPANY, INC	
HURRICANE TEST APPROVAL	QQ2	REVISIONS 1 6-28-2000 2 2-23-2005 3 7-8-2008 4 04-26-2019 5 02-15-2021 (FBC 2020)	
SHEET	11	OF 13 DATE 02-15-21	





7'-0" Height
Anchor and Spacing Table

See Sheet 1	GLAZED STEEL DOOR WITH DEADLOCK		ANCHOR	SUBSTRATE	MAX SPACING		JAMB		HEAD	
					JAMB	HEAD	NUMBER OF ANCHORS	MAX. CORNER SPACING	NUMBER OF ANCHORS	MAX. CORNER SPACING
	DOUBLE DOOR	3/8" DYNABOLT	CMU	24"	22"	4	8"	5	10"	
		1" T" ANCHOR	CMU	24"	—	4	8"	—	—	
		3/8" SCREW	STEEL	20"	20"	5	10"	5	10"	
		3/8" LAG	WOOD	10"	10"	9	5"	10	5"	
	SINGLE DOOR	3/8" DYNABOLT	CMU	24"	—	4	8"	2	10"	
		1" T" ANCHOR	CMU	24"	—	4	8"	—	—	
		3/8" SCREW	STEEL	24"	24"	4	12"	3	12"	
		3/8" LAG	WOOD	20"	20"	5	10"	3	10"	

7'-0" Height
Anchor and Spacing Table

See Sheet 3	GLAZED STEEL DOOR WITH RIM EXIT DEVICE AND REMOVABLE MULLION		ANCHOR	SUBSTRATE	MAX SPACING		JAMB		HEAD	
					JAMB	HEAD	NUMBER OF ANCHORS	MAX. CORNER SPACING	NUMBER OF ANCHORS	MAX. CORNER SPACING
	DOUBLE DOOR	3/8" DYNABOLT	CMU	24"	20"	4	8"	4	8"	
		"T" ANCHOR	CMU	24"	—	4	8"	—	—	
		3/8" SCREW	STEEL	20"	20"	5	8"	4	10"	
		3/8" LAG	WOOD	10"	10"	9	3"	8	5"	
	SINGLE DOOR	3/8" DYNABOLT	CMU	24"	—	4	8"	2	8"	
		"T" ANCHOR	CMU	24"	—	4	8"	—	—	
		3/8" SCREW	STEEL	24"	24"	4	9"	2	12"	
		3/8" LAG	WOOD	16"	16"	6	6"	3	8"	

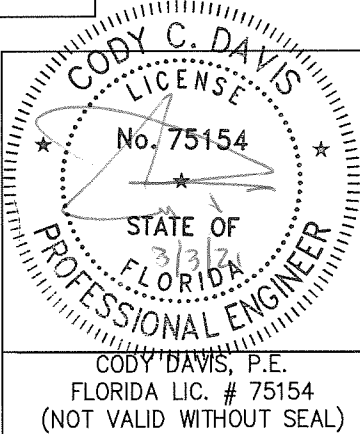
8'-0" Height
Anchor and Spacing Table

See Sheet 5	GLAZED STEEL DOOR WITH MORTISE LOCK	SINGLE DOOR	ANCHOR	SUBSTRATE	MAX SPACING	JAMB	
					JAMB	NUMBER OF ANCHORS	MAX. CORNER SPACING
			 3/8" DYNABOLT	CMU	20"	5	8"
 T" ANCHOR	CMU	24"	5	8"			
 3/8" SCREW	STEEL	20"	5	10"			
 3/8" LAG	WOOD	10"	10	5"			

8'-0" Height
Anchor and Spacing Table

See Sheet 7	GLAZED STEEL DOOR WITH "DORMA" RIM EXIT DEVICE AND REMOVABLE MULLION			ANCHOR	SUBSTRATE	MAX SPACING	JAMB	
						JAMB	NUMBER OF ANCHORS	MAX. CORNER SPACING
	DOUBLE DOOR	3/8" DYNABOLT	CMU	20"	5	8"		
		1" T" ANCHOR	CMU	24"	5	8"		
		3/8" SCREW	STEEL	12"	9	3"		
		3/8" LAG	WOOD	6"	17	1" TOP, 3" BOTTOM		
	SINGLE DOOR	3/8" DYNABOLT	CMU	20"	5	8"		
		1" T" ANCHOR	CMU	24"	5	8"		
		3/8" SCREW	STEEL	20"	8	8"		
		3/8" LAG	WOOD	12"	9	3"		

PRODUCT REVISED
as complying with the Florida
Building Code
NOA-No. 20-1123.18
Expiration Date 01/30/2024
By Ishaq I. Chank
Miami-Dade Product Control



ANCHOR AND SPACING TABLES

DRAWING NUMBER 16 GA. OUTSWINGING GLAZED COMMERCIAL STEEL DOOR QQ2

4506 QUALITY LANE
TAMPA, FLORIDA 33634
(813) 885-1693

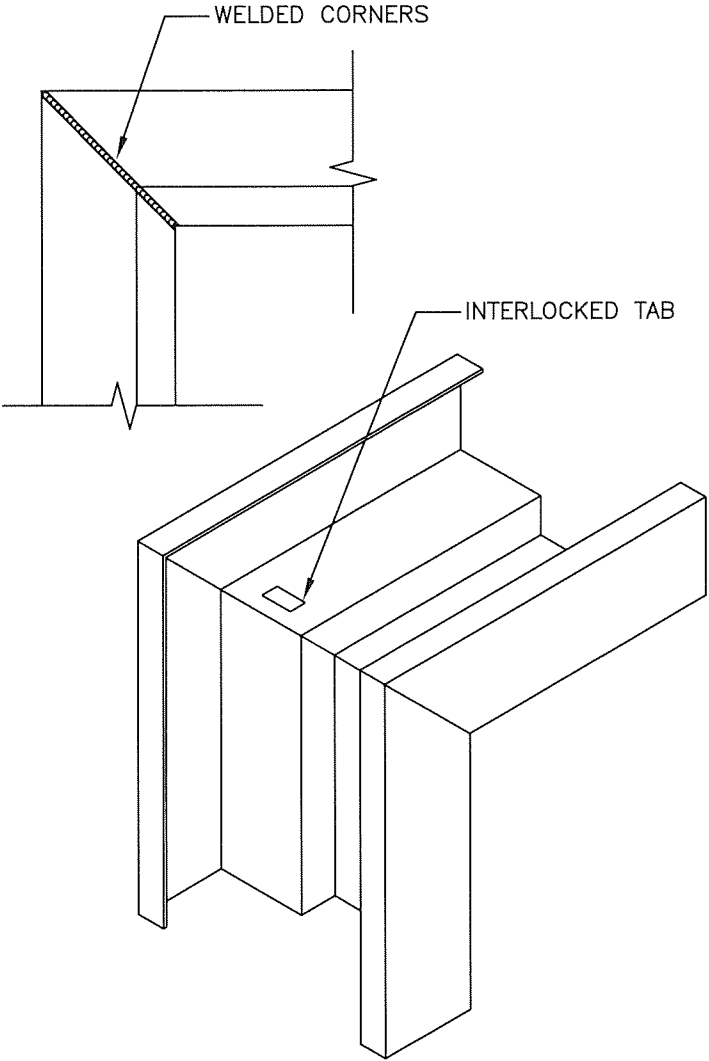
QUALITY
ENGINEERED
PRODUCTS
COMPANY, INC

REVISIONS
1 6-28-2000
2 2-23-2005
3 7-8-2008
4 04-26-2019
5 02-15-2021 (FBC 2020)

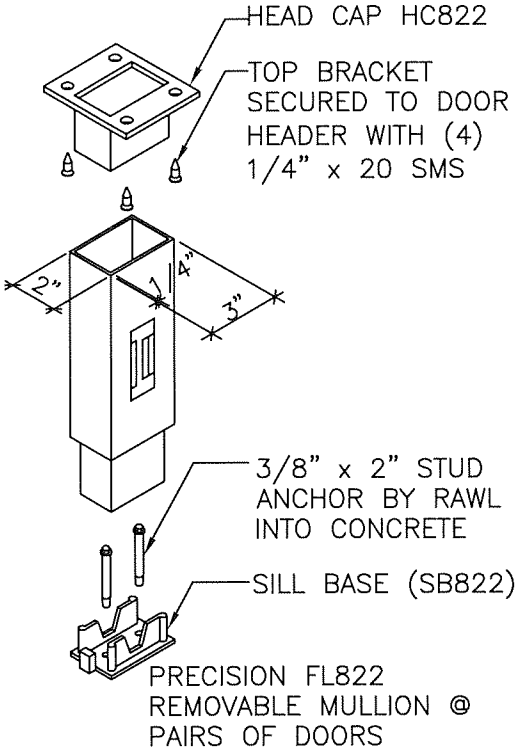
HURRICANE TEST APPROVAL
QQ2

SHEET 12 OF 13
DATE 02-15-21

PRODUCT REVISED
as complying with the Florida
Building Code
NOA-No. 20-1123.18
Expiration Date 01/30/2024
By Ishaq I. Chande
Miami-Dade Product Control

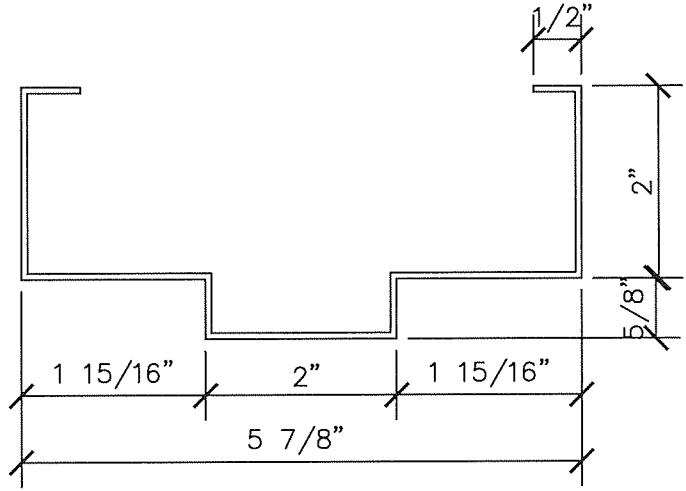


○ TYPICAL CORNER DETAIL
3" = 1'-0"

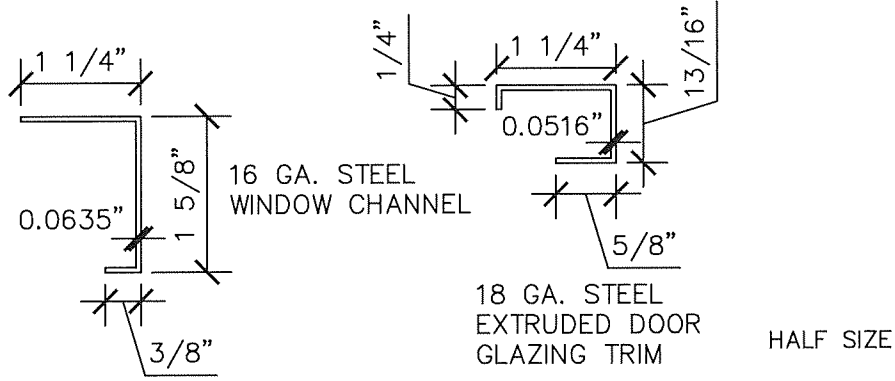


○ Z
13 DETAIL REMOVABLE MULLION
1 1/2" = 1'-0"

COMMON DETAILS

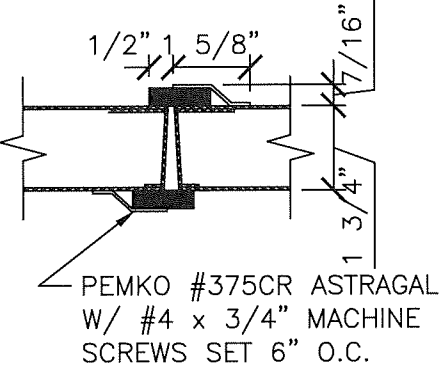


○ E
13 DETAIL 16 GA. FRAME PROFILE
HALF SIZE

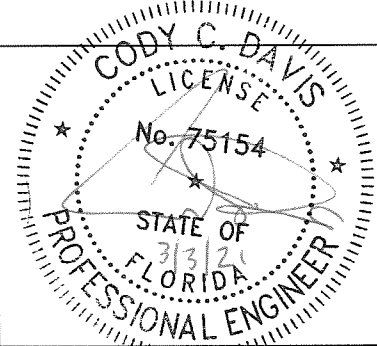


○ DETAIL
HALF SIZE

○ DETAIL 18 GA. WINDOW KIT
HALF SIZE



○ E
13 DETAIL ASTRAGAL
3" = 1'-0"



CODY DAVIS, P.E.
FLORIDA LIC. # 75154
(NOT VALID WITHOUT SEAL)

DRAWING NUMBER QQ2 16 GA. OUTSWINGING GLAZED COMMERCIAL STEEL DOOR

QUALITY ENGINEERED PRODUCTS COMPANY, INC	4506 QUALITY LANE TAMPA, FLORIDA 33634 (813) 885-1693
REVISIONS 1 6-28-2000 2 2-23-2005 3 7-8-2008 4 04-26-2019 5 02-15-2021 (FBC 2020)	HURRICANE TEST APPROVAL QQ2
SHEET 13 OF 13	DATE 02-15-21