



DEPARTMENT OF REGULATORY AND ECONOMIC RESOURCES (RER)
BOARD AND CODE ADMINISTRATION DIVISION

NOTICE OF ACCEPTANCE (NOA)

MIAMI-DADE COUNTY
PRODUCT CONTROL SECTION

11805 SW 26 Street, Room 208
Miami, Florida 33175-2474
T (786) 315-2590 F (786) 315-2599

www.miamidade.gov/economy

Overhead Door Corporation
2501 South State Hwy 121, Suite 200
Lewisville, TX 75067

SCOPE:

This NOA is being issued under the applicable rules and regulations governing the use of construction materials. The documentation submitted has been reviewed and accepted by Miami-Dade County RER-Product Control Section to be used in Miami Dade County and other areas where allowed by the Authority Having Jurisdiction (AHJ).

This NOA shall not be valid after the expiration date stated below. The Miami-Dade County Product Control Section (In Miami Dade County) and/or the AHJ (in areas other than Miami Dade County) reserve the right to have this product or material tested for quality assurance purposes. If this product or material fails to perform in the accepted manner, the manufacturer will incur the expense of such testing and the AHJ may immediately revoke, modify, or suspend the use of such product or material within their jurisdiction. RER reserves the right to revoke this acceptance, if it is determined by Miami-Dade County Product Control Section that this product or material fails to meet the requirements of the applicable building code.

This product is approved as described herein, and has been designed to comply with the Florida Building Code, including the High Velocity Hurricane Zone.

DESCRIPTION: Series 610/611/620/621 Steel Rolling Door up to 22'-0" Wide

APPROVAL DOCUMENT: Drawing No. **308133**, titled "Series 610/620 Rolling Service Door 22' Dade County", sheets 1 and 2 of 2, dated 09/05/2003 and 10/10/2003, with revision H dated 05/03/2013, prepared by Overhead Door Corporation, signed and sealed by Mark A. Sawicki, P.E. on 12/17/2015, bearing the Miami-Dade County Product Control revision stamp with the Notice of Acceptance number and expiration date by the Miami-Dade County Product Control Section.

MISSILE IMPACT RATING: Large and Small Missile Impact Resistant

LABELING: A permanent label with the manufacturer's name or logo, manufacturing address, model/series number, the positive and negative design pressure rating, indicate impact rated if applicable, installation instruction drawing reference number, approval number (NOA), the applicable test standards, and the statement reading 'Miami-Dade County Product Control Approved' is to be located on the door's side track, bottom angle, or inner surface of a panel.

RENEWAL of this NOA shall be considered after a renewal application has been filed and there has been no change in the applicable building code negatively affecting the performance of this product.

TERMINATION of this NOA will occur after the expiration date or if there has been a revision or change in the materials, use, and/or manufacture of the product or process. Misuse of this NOA as an endorsement of any product, for sales, advertising or any other purposes shall automatically terminate this NOA. Failure to comply with any section of this NOA shall be cause for termination and removal of NOA.

ADVERTISEMENT: The NOA number preceded by the words Miami-Dade County, Florida, and followed by the expiration date may be displayed in advertising literature. If any portion of the NOA is displayed, then it shall be done in its entirety.

INSPECTION: A copy of this entire NOA shall be provided to the user by the manufacturer or its distributors and shall be available for inspection at the job site at the request of the Building Official.

This NOA **revises NOA # 18-1217.06** and consists of this page 1 and evidence pages E-1 and E-2, as well as approval document mentioned above.

The submitted documentation was reviewed by **Sifang Zhao, P.E.**



S. Z.

01/28/2021

NOA No. 20-1130.06
Expiration Date: September 16, 2024
Approval Date: January 28, 2021
Page 1

NOTICE OF ACCEPTANCE: EVIDENCE SUBMITTED

1. Evidence submitted under previous NOA's

A. DRAWINGS “Submitted under NOA # 15-1228.06”

1. Drawing No. **308133**, titled “Series 610/620 Rolling Service Door 22’ Dade County”, sheets 1 and 2 of 2, dated 09/05/2003 and 10/10/2003, with revision H dated 05/03/2013, prepared by Overhead Door Corporation, signed and sealed by Mark A. Sawicki, P.E. on 12/17/2015.

B. TESTS “Submitted under NOA # 13-1121.07”

1. Test reports on 1) Uniform Static Air Pressure Test, Loading per FBC TAS 202-94
2) Large Missile Impact Test per FBC, TAS 201-94
3) Cyclic Wind Pressure Loading per FBC, TAS 203-94
4) Forced Entry Resistance Test per FBC, TAS 202-94
5) Tensile Test per ASTM E 8,
along with marked-up drawings and installation diagram of a Series 610 Series rolling garage door, prepared by Architectural Testing, Inc, Test Report No. **C8188.01-109-18**, dated 09/20/2013, signed and sealed by Michael D. Stremmel, P.E.
2. Test report on Salt Fog Spray Test per ASTM B-117 of G90 and G40 galvanized steel with prime coat samples, prepared by Environmental Testing Laboratory, Inc, Test Report No. **12732**, dated 06/22/2013 and signed by Brady Richard.
3. Test report on Salt Spray Fog Test per ASTM B-117 of G30, G40 & G90 samples, prepared by Environmental Testing Laboratory, Test Report No. **ETL-9100550287**, dated 03/13/2006 and signed by B. Richard. “Submitted under NOA # 05-1003.22”
4. Test report on Uniform Static Air Pressure Test per FBC, TAS 202, Large Missile Impact Test per FBC, TAS 201, Cyclic Wind Pressure Test per FBC, TAS 203 and Tensile Test per ASTM E8 of a 22’ x 10’ steel roll-up service door”, prepared by Architectural Testing, Inc., Test Report No. **ATI 01-43463.02**, dated 09/10/2003, signed and sealed by Steven M. Urlich, P.E. “Submitted under NOA # 03-1015.02”

C. CALCULATIONS “Submitted under NOA # 13-1121.07”

1. Wall fastener calculations prepared by Overhead Door Corporation, dated 10/31/2013, signed and sealed by Mark A. Sawicki, P.E.
2. Calculations for Dade County Product Approval of 20 & 18 Gauge Rolling Garage Door, prepared by Overhead Door Corporation on sheet 2 of 3, signed and sealed by LeRoy G. Krupke, P.E. on 09/16/2005. “Submitted under NOA # 05-1003.22”

D. QUALITY ASSURANCE

1. Miami-Dade Department of Regulatory and Economic Resources (RER)



Sifang Zhao, P.E.
Product Control Examiner
NOA No. 20-1130.06
Expiration Date: September 16, 2024
Approval Date: January 28, 2021

NOTICE OF ACCEPTANCE: EVIDENCE SUBMITTED

E. MATERIAL CERTIFICATIONS

1. None.

F. STATEMENTS “Submitted under NOA # 18-0801.08”

1. Statement letter of code conformance to the 6th edition (2017) FBC issued by Overhead Door Corporation, dated 07/23/2018, signed and sealed by Mark A. Sawicki, P.E.

“Submitted under NOA # 15-1228.06”

2. Statement letter of code conformance to the 5th edition (2014) FBC issued by Overhead Door Corporation, dated 12/15/2015, signed and sealed by Mark A. Sawicki, P.E.

“Submitted under NOA # 13-1121.07”

3. Statement letter of code conformance to FBC 2010 and no financial interest prepared by Overhead Door Corporation, dated 10/31/2013, signed and sealed by Mark A. Sawicki, P.E.

2. New evidence submitted

A. DRAWINGS

1. None.

B. TESTS

1. None.

C. CALCULATIONS

1. None.

D. QUALITY ASSURANCE

1. Miami-Dade Department of Regulatory and Economic Resources (RER)

E. MATERIAL CERTIFICATIONS

1. None.

F. STATEMENTS

1. Statement letter of code conformance to FBC 7th edition (2020),, and manufactures products remain unchanged from the existing NOA drawings, issued by Overhead Door Corporation, dated 11/10/2020, signed and sealed by David L. Monsour, P.E.



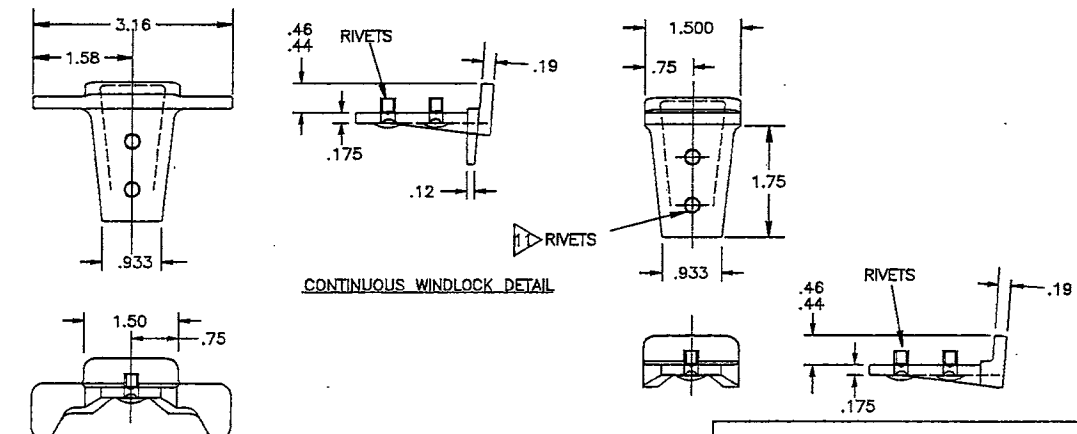
Sifang Zhao, P.E.
Product Control Examiner
NOA No. 20-1130.06
Expiration Date: September 16, 2024
Approval Date: January 28, 2021

- NOTES
1. (-W/L) = NEGATIVE WINDLOAD
(+W/L) = POSITIVE WINDLOAD
 2. WALL ANGLES MAY BE WELDED TO STEEL JAMB.
SEE SHEET 2 FOR WELDING DETAILS.
 3. RATED DESIGN LOAD ± 65 PSF.
 4. CURTAIN MATERIAL: ASTM A-653 CS TYPE B.
GUIDE MATERIAL: ASTM A-36
 5. ALTERNATE CURTAIN MATERIAL: AISI-304 SS.
MINIMUM YIELD 40,000 PSI.
 6. CURTAIN MATERIAL SHALL BE GALVANIZED ACCORDING
TO ASTM A-525 TO G40 MINIMUM.
 7. THE DOOR MUST BE INSTALLED WITH THE TENSION WHEEL
FACING THE INSIDE OF THE BUILDING.
 8. PINS MUST BE ENGAGED AND CHAIN MUST BE HOOKED WHEN
HURRICANE WINDS ARE ANNOUNCED.
 9. WIND LOCKS ARE REQUIRED ON EACH SLAT
 9. WINDLOCK MATERIAL: LOW CARBON CAST STEEL, GRADE 70-46
(485-250) PER ASTM A27. MIN TENSILE 70-KSI MIN YIELD
36-KSI. MIN ELONG 22%
 10. WINDLOCKS ATTACHED TO EACH SLAT (CONTINUOUS)
 11. RIVET SPECIFICATIONS:
1/4" DIAMETER RIVET, MINIMUM 1006 LOW-CARBON STEEL

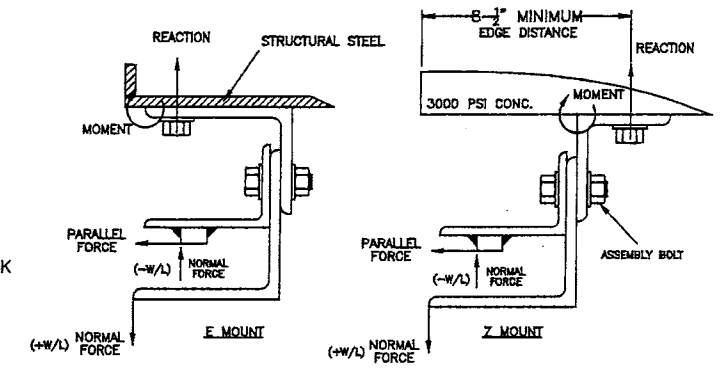
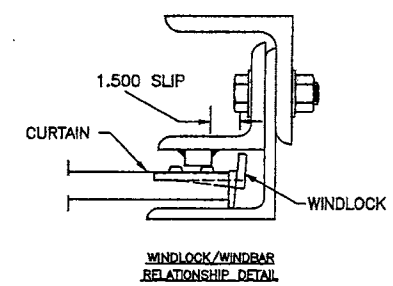
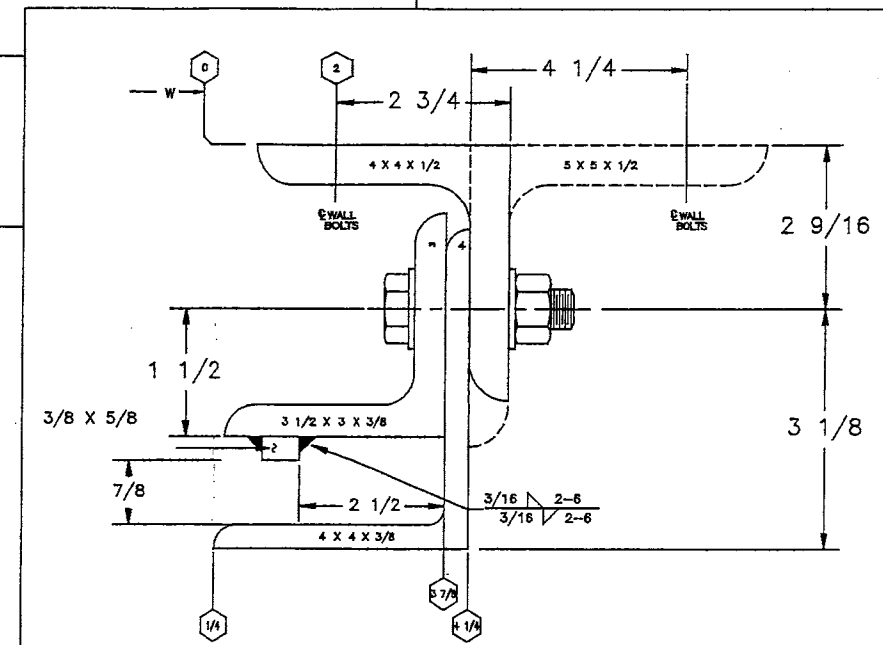
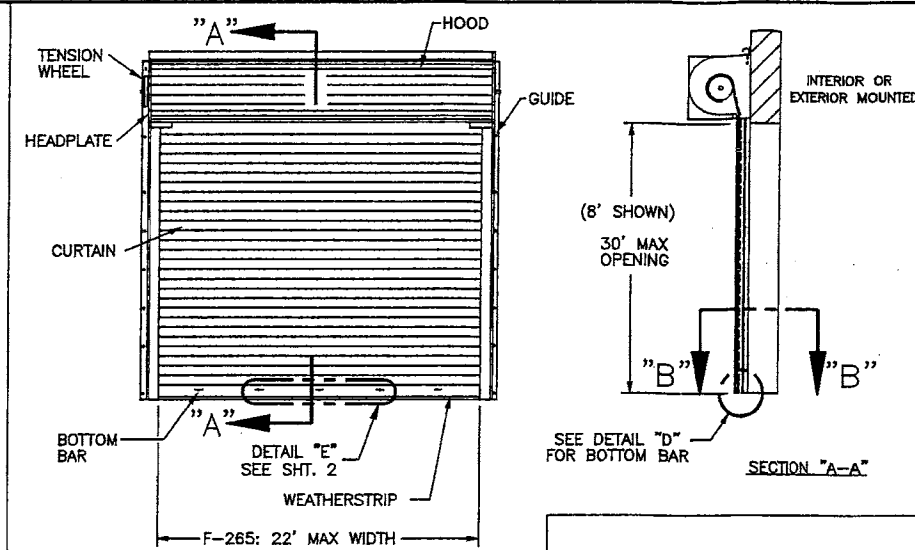
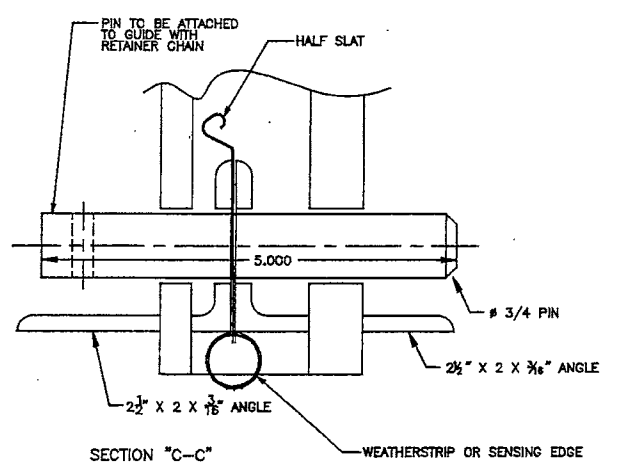
F-265 - DOOR SIZE REF. SUMMARY

LBS/FT DOOR HEIGHT	(E-MOUNT) LOADS *		(Z-MOUNT) LOADS *	
	20 GA **	18 GA	20 GA **	18 GA
REACTION	9051	8873	2191	2156
NORMAL	715	715	715	715
PARALLEL	2590	2542	2590	2542

* LOADS - PER FOOT OF HEIGHT



****PIN MUST BE ENGAGED FOR DOOR
TO WITHSTAND DESIGN LOADS****

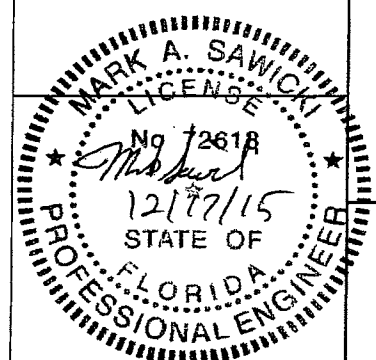


	ASSEMBLY BOLT	WALL BOLT STEEL JAMB	WALL ATTACHMENT CONCRETE JAMB
F-265	5/8" GRADE 5, 9" O.C.	5/8" GRADE 5, 12" O.C.	5/8", 5 1/2" EMB HILTI KWIK BOLT 3 OR POWERS WEDGE BOLT 8" O.C.

* 3000 PSI MINIMUM & 8-1/2" MINIMUM EDGE DISTANCE FOR ANCHOR
NOTE: FOR DETAILS ON WELDING GUIDES TO STEEL JAMBS SEE SHEET 2.

PRODUCT REVISED
as complying with the Florida
Building Code
NOA-No. 20-1130.06
Expiration Date 09/16/2024
By *[Signature]*
Miami-Dade Product Control

PRODUCT REVISED
as complying with the Florida
Building Code
Acceptance No 15-1228.06
Expiration Date 09/16/2024
By *[Signature]*
Miami-Dade Product Control



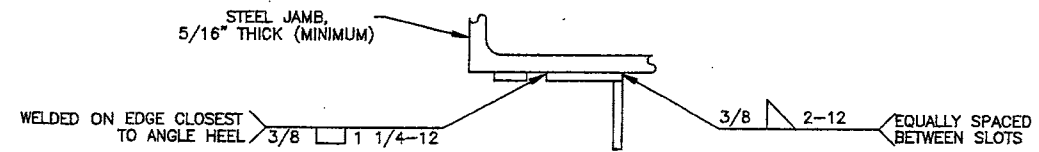
F-265 SLAT
GAUGE OPTIONS: 20**, 18
**TESTED IN ACCORDANCE WITH DADE COUNTY
PROTOCOLS TAS 201-94, TAS 202-94, AND TAS 203-94

SERIES 611/621 ARE
EQUIVALENT CONSTRUCTION

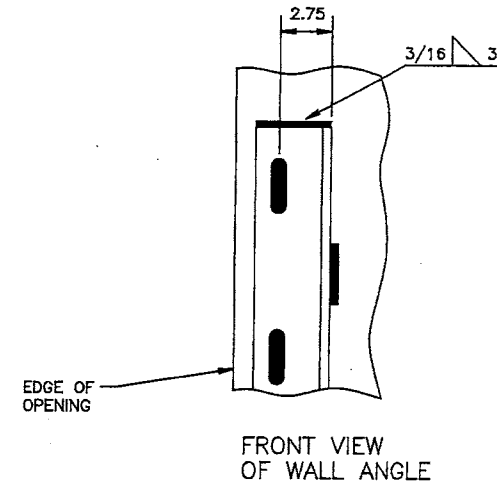
THE DRAWINGS AND ALL OTHER INFORMATION CONTAINED HEREIN ARE THE CONFIDENTIAL AND PROPRIETARY PROPERTY OF OVERHEAD DOOR CORPORATION AND ITS AFFILIATED COMPANIES. THIS DRAWING AND INFORMATION, IN WHOLE OR IN PART, MAY NOT BE COPIED IN ANY MANNER OR DISCLOSED TO ANYONE WITHOUT THE PRIOR WRITTEN CONSENT OF OVERHEAD DOOR CORPORATION. NO DISCLOSURE OF ANY OF THIS DRAWING OR INFORMATION IS INTENDED TO OPERATE AS A LICENSE OR AUTHORIZATION TO USE IT FOR ANY PURPOSE WITHOUT THE SPECIFIC WRITTEN CONSENT OF OVERHEAD DOOR CORPORATION.									
HOLE DIAMETER		WHOLE NUMBERS:		FINISH		DATE		DRAWING TITLE	
UNDER .251 +.004/- .003		± .25		5		8/8/03		SERIES 610/620,	
.251 TO .500 +.006/- .003		± .1		X		9/5/03		ROLLING SERVICE DOOR	
OVER .500 +.008/- .003		± .03		XX		9/5/03		22 FT. DADE COUNTY	
FRACTIONS		± .010		XXX		9/5/03		DRAWING NUMBER	
± 1/16		± .5		N/A		9/5/03		D- 308133	
REF DWG	USED ON	MATERIAL		UNIT OF MEASURE		APPROVED BY		SCALE	
		N/A		N/A		L KRUPKE		NONE	
								SHEET 1 OF 2	

NOTES

1. REFER TO DRAWING 308668.0001 FOR TAG DETAILS
2. FASTENER FOR TAG IS P/N 080276-1004(STEEL DRIVE SCREW). TAG WILL BE MOUNTED IN THE MIDDLE OF THE BOTTOM BAR.



TOP VIEW



DETAILS FOR WELDING "E" GUIDES TO STEEL JAMBS

PRODUCT REVISED
as complying with the Florida
Building Code

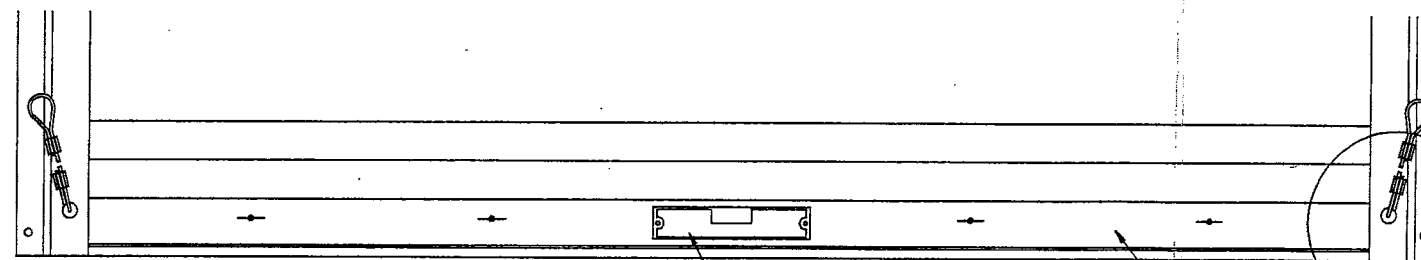
NOA-No. 20-1130.06

Expiration Date 09/16/2024

By *[Signature]*
Miami-Dade Product Control

PRODUCT REVISED
as complying with the Florida
Building Code
Acceptance No. 15-1228.06
Expiration Date 09/16/2019

By *[Signature]*
Miami-Dade Product Control

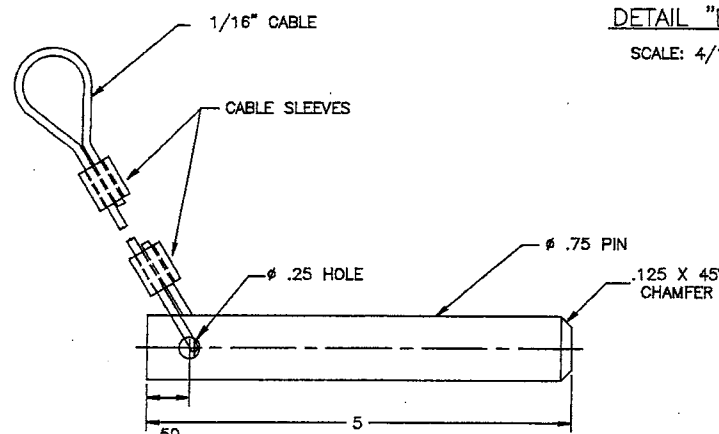


DETAIL "E" SCALE: 4/1

TAG

BOTTOM BAR

SEE DETAIL "F"



DETAIL "F"

THE DRAWINGS AND ALL OTHER INFORMATION CONTAINED HEREIN ARE THE CONFIDENTIAL AND PROPRIETARY PROPERTY OF OVERHEAD DOOR CORPORATION AND ITS AFFILIATED COMPANIES. THIS DRAWING AND INFORMATION, IN WHOLE OR IN PART, MAY NOT BE COPIED IN ANY MANNER OR DISCLOSED TO ANYONE WITHOUT THE PRIOR WRITTEN CONSENT OF OVERHEAD DOOR CORPORATION. NO DISCLOSURE OF ANY OF THIS DRAWING OR INFORMATION IS INTENDED TO OPERATE AS A LICENSE OR AUTHORIZATION TO USE IT FOR ANY PURPOSE WITHOUT THE SPECIFIC WRITTEN CONSENT OF OVERHEAD DOOR CORPORATION.									
HOLE DIAMETER		FINISH		MATERIAL		DATE		DRAWING TITLE	
UNDER .251 +.004/- .003		N/A		N/A		10/10/03		SERIES 610/620	
.251 TO .500 +.006/- .003		N/A		N/A		10/10/03		ROLLING SERVICE DOOR	
OVER .500 +.008/- .003		N/A		N/A		10/10/03		22 FT. DADE COUNTY	
FRACTIONS		N/A		N/A		10/10/03		D- 308133	
± 1/16		N/A		N/A		10/10/03		SCALE NOTED SHEET 2 OF 2	
REF DWG		USED ON		N/A		10/10/03		N/A	