



**DEPARTMENT OF REGULATORY AND ECONOMIC RESOURCES (RER)  
BOARD AND CODE ADMINISTRATION DIVISION  
NOTICE OF ACCEPTANCE (NOA)**

**MIAMI-DADE COUNTY  
PRODUCT CONTROL SECTION**  
11805 SW 26 Street, Room 208  
Miami, Florida 33175-2474  
T (786) 315-2590 F (786) 315-2599  
[www.miamidade.gov/economy](http://www.miamidade.gov/economy)

**Overhead Door Corporation  
2501 South State Hwy 121, Suite 200  
Lewisville, TX 75067**

**SCOPE:**

This NOA is being issued under the applicable rules and regulations governing the use of construction materials. The documentation submitted has been reviewed and accepted by Miami-Dade County RER-Product Control Section to be used in Miami Dade County and other areas where allowed by the Authority Having Jurisdiction (AHJ).

This NOA shall not be valid after the expiration date stated below. The Miami-Dade County Product Control Section (In Miami Dade County) and/or the AHJ (in areas other than Miami Dade County) reserve the right to have this product or material tested for quality assurance purposes. If this product or material fails to perform in the accepted manner, the manufacturer will incur the expense of such testing and the AHJ may immediately revoke, modify, or suspend the use of such product or material within their jurisdiction. RER reserves the right to revoke this acceptance, if it is determined by Miami-Dade County Product Control Section that this product or material fails to meet the requirements of the applicable building code.

This product is approved as described herein, and has been designed to comply with the Florida Building Code, including the High Velocity Hurricane Zone.

**DESCRIPTION: Series 630/631/634 Steel Rolling Door up to 14'-0" Wide**

**APPROVAL DOCUMENT:** Drawing No. **D-308231**, titled "Series 630/631/634 Rolling Fire Door 14' Dade County", sheets 1 and 2 of 2, dated 09/23/2009, with revision E dated 09/20/2013, prepared by Overhead Door Corporation, signed and sealed by Mark A. Sawicki, P.E., bearing the Miami-Dade County Product Control revision stamp with the Notice of Acceptance number and expiration date by the Miami-Dade County Product Control Section.

**MISSILE IMPACT RATING: Large and Small Missile Impact Resistant**

**LABELING:** A permanent label with the manufacturer's name or logo, manufacturing address, model/series number, the positive and negative design pressure rating, indicate impact rated if applicable, installation instruction drawing reference number, approval number (NOA), the applicable test standards, and the statement reading 'Miami-Dade County Product Control Approved' is to be located on the door's side track, bottom angle, or inner surface of a panel.

**LIMITATION: This door has not been tested for air infiltration.**

**RENEWAL** of this NOA shall be considered after a renewal application has been filed and there has been no change in the applicable building code negatively affecting the performance of this product.

**TERMINATION** of this NOA will occur after the expiration date or if there has been a revision or change in the materials, use, and/or manufacture of the product or process. Misuse of this NOA as an endorsement of any product, for sales, advertising or any other purposes shall automatically terminate this NOA. Failure to comply with any section of this NOA shall be cause for termination and removal of NOA.

**ADVERTISEMENT:** The NOA number preceded by the words Miami-Dade County, Florida, and followed by the expiration date may be displayed in advertising literature. If any portion of the NOA is displayed, then it shall be done in its entirety.

**INSPECTION:** A copy of this entire NOA shall be provided to the user by the manufacturer or its distributors and shall be available for inspection at the job site at the request of the Building Official.

This NOA **revises NOA # 18-1217.11** and consists of this page 1 and evidence pages E-1 and E-2, as well as approval document mentioned above.

The submitted documentation was reviewed by **Sifang Zhao, P.E.**



*S.Z.*

01/28/2021

**NOA No. 20-1130.11  
Expiration Date: December 02, 2024  
Approval Date: January 28, 2021  
Page 1**

**Overhead Door Corporation**

**NOTICE OF ACCEPTANCE: EVIDENCE SUBMITTED**

**1. Evidence submitted under previous NOA's**

**A. DRAWINGS “Submitted under NOA # 14-0822.05”**

1. Drawing No. **D-308231**, titled “Series 630/631/634 Rolling Fire Door 14’ Dade County”, Sheets 1 and 2 of 2, dated 09/23/2009, with revision E dated 09/20/2013, prepared by Overhead Door Corporation, signed and sealed by Mark A. Sawicki, P.E.

**B. TESTS “Submitted under NOA # 09-0826.05”**

1. Test reports on 1) Uniform Static Air Pressure Test, Loading per FBC, TAS 202-94  
2) Large Missile Impact Test per FBC, TAS 201-94  
3) Cyclic Wind Pressure Loading per FBC, TAS 203-94  
4) Forced Entry Test, per FBC, TAS 202-94  
5) Tensile Test per ASTM E8,

Along with marked-up drawings and installation diagram of Series/Model 630 Rolling Fire Doors, prepared by Architectural Testing, Inc., Test Report No. **89465.01-109-18**, dated 05/26/09, with Revision 1 dated 10/14/2009, signed and sealed by Michael D. Stremmel, P.E.

**“Submitted under NOA # 05-1003.19”**

2. Test Report No. **9100550287** on Salt Exposure Fog per ASTM B-117 on G30, G40 & G90 samples, prepared by Environmental Testing Laboratory dated 03/13/2006 and signed by B. Richard.

**C. CALCULATIONS “Submitted under NOA # 09-0826.05”**

1. Wall fastener calculations for Drawing D-308231-14’ wide 630/631/634 Series Rolling Doors for 65 psf, sheets 1 through 6 of 6, dated 08/21/2009, prepared by Overhead Door Corporation, signed and sealed by LeRoy G. Krupke, P.E.

**CI. QUALITY ASSURANCE**

1. Miami-Dade Department of Regulatory and Economic Resources (RER)

**CII. MATERIAL CERTIFICATIONS**

1. None.

**CIII. STATEMENTS “Submitted under NOA # 18-0801.13”**

1. Statement letter of code conformance to the 6<sup>th</sup> edition (2017) FBC issued by Overhead Door Corporation, dated 07/23/2018, signed and sealed by Mark A. Sawicki, P.E.

**“Submitted under NOA # 14-0822.05”**

2. Statement letter of code conformance to the 5<sup>th</sup> edition (2014) FBC issued by Overhead Door Corporation, dated 08/19/2014, signed and sealed by Mark A. Sawicki, P.E.

**“Submitted under NOA # 09-0826.05”**

3. Statement letter of code conformance to FBC 2007 and no financial interest, issued by Overhead Door Corporation, dated 08/21/2009, signed and sealed by LeRoy G. Krupke, P.E.



**Sifang Zhao, P.E.**

**Product Control Examiner**

**NOA No. 20-1130.11**

**Expiration Date: December 02, 2024**

**Approval Date: January 28, 2021**

**NOTICE OF ACCEPTANCE: EVIDENCE SUBMITTED**

**2. New evidence submitted**

**A. DRAWINGS**

1. None.

**B. TESTS**

1. None.

**C. CALCULATIONS**

1. None.

**D. QUALITY ASSURANCE**

1. Miami-Dade Department of Regulatory and Economic Resources (RER)

**E. MATERIAL CERTIFICATIONS**

1. None.

**F. STATEMENTS**

1. Statement letter of code conformance to the FBC 7<sup>th</sup> Edition (2020), and manufactures products remain unchanged from the existing NOA drawings, issued by Overhead Door Corporation, dated 11/10/2020, signed and sealed by David L. Monsour, P.E.

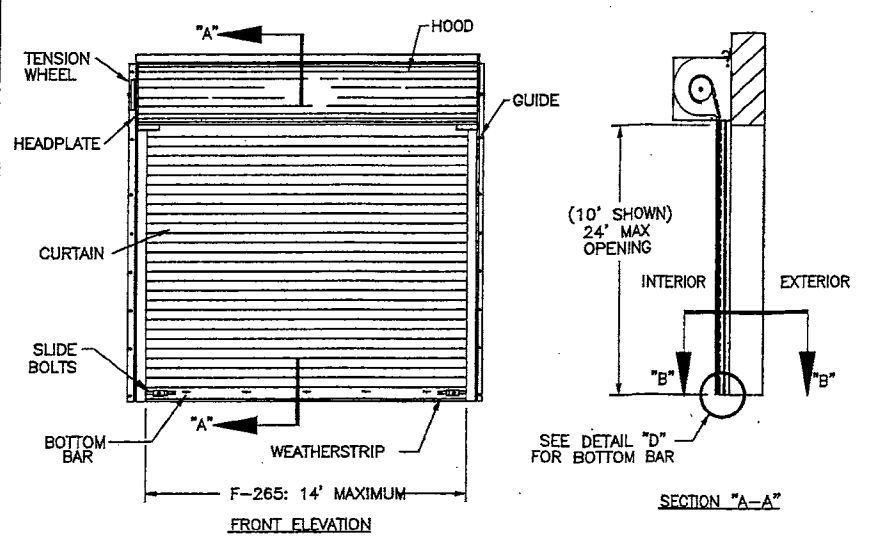


---

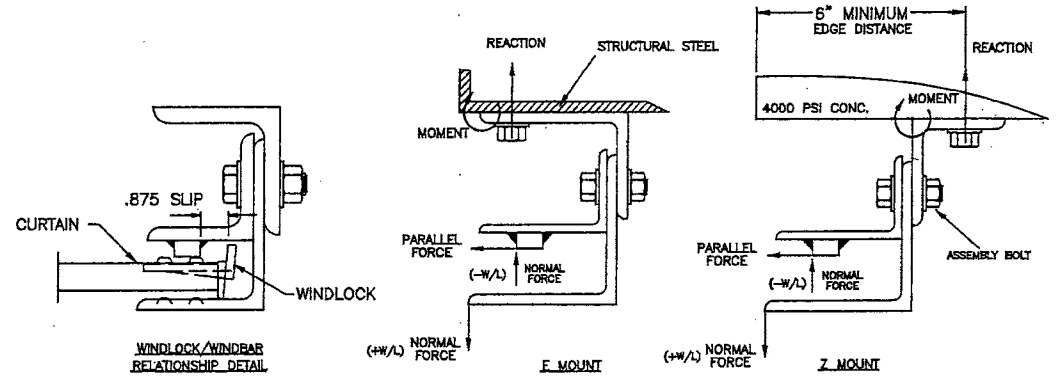
Sifang Zhao, P.E.  
Product Control Examiner  
NOA No. 20-1130.11  
Expiration Date: December 02, 2024  
Approval Date: January 28, 2021

NOTES

1. (-W/L) = NEGATIVE WINDLOAD  
(+W/L) = POSITIVE WINDLOAD
2. WALL ANGLES MAY BE WELDED TO STEEL JAMB.  
USE MIN 60XX ELECTRODE  
SEE SHEET 2 FOR WELD DETAIL
3. RATED DESIGN LOAD  $\pm 65$  PSF.
4. CURTAIN MATERIAL: ASTM A-653  
GUIDE MATERIAL: ASTM A-36
5. CURTAIN MATERIAL SHALL BE GALVANIZED ACCORDING  
TO ASTM A-525 TO G40 (MINIMUM).
6. THE DOOR MUST BE INSTALLED WITH THE TENSION WHEEL  
FACING THE INSIDE OF THE BUILDING.
7. SLIDE BOLTS MUST BE ENGAGED AND CHAIN MUST BE  
HOOKED WHEN HURRICANE WINDS ARE ANNOUNCED
8. WINDLOCK MATERIAL: LOW CARBON CAST STEEL, GRADE 70-46  
(485-250) PER ASTM A27. MIN TENSILE 70-KSI MIN YIELD  
36-KSI MIN ELONG 22%
9. WINDLOCKS ATTACHED TO EACH SLAT (CONTINUOUS)
10. RIVET SPECIFICATIONS:  
1/4" DIAMETER RIVET, MINIMUM 1006 LOW-CARBON STEEL
11. OPERATING (ROLL-UP) MECHANISM IS NOT INCLUDED IN THIS APPROVAL.  
IT MUST BE CERTIFIED BY AN INDEPENDANT TESTING AGENCY, IF REQUIRED.



HOT ROLLED ANGLES

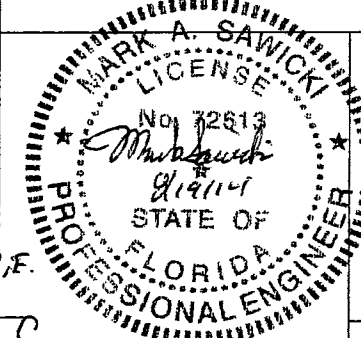


REVISIONS				
REV	DESCRIPTION	DATE	APPROVAL	
501635	C	REV PER ER	7/10/12	MS
502235	D	REV PER ER	7/18/13	MS
502222	E	REV PER ER	8/20/13	MS

JAMB LOAD SUMMARY TABLE		
LBS/FT DOOR HEIGHT	(E-MOUNT) LOADS	(Z-MOUNT) LOADS
REACTION	5271	6465
NORMAL	455	455
PARALLEL	1545	1545

FASTENER SUMMARY TABLE			
	ASSEMBLY BOLT	WALL BOLT STEEL JAMB	WALL BOLT * CONCRETE JAMB
F-265	5/8" GRADE 5, 18" O.C.	1/2" GRADE 5, 12" O.C.	5/8", 4" EMB POWERS WEDGE BOLT, OR 5/8" 4" EMB HILTI KWIK BOLT 3" O.C.

\* 4000 PSI MINIMUM AND 6" EDGE DISTANCE FOR ANCHORS  
NOTE: FOR DETAILS ON WELDING GUIDES TO STEEL JAMBS SEE SHEET 2.

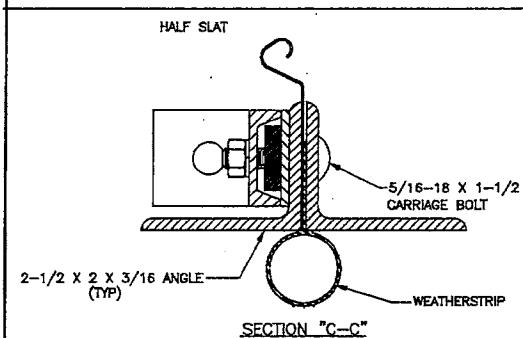
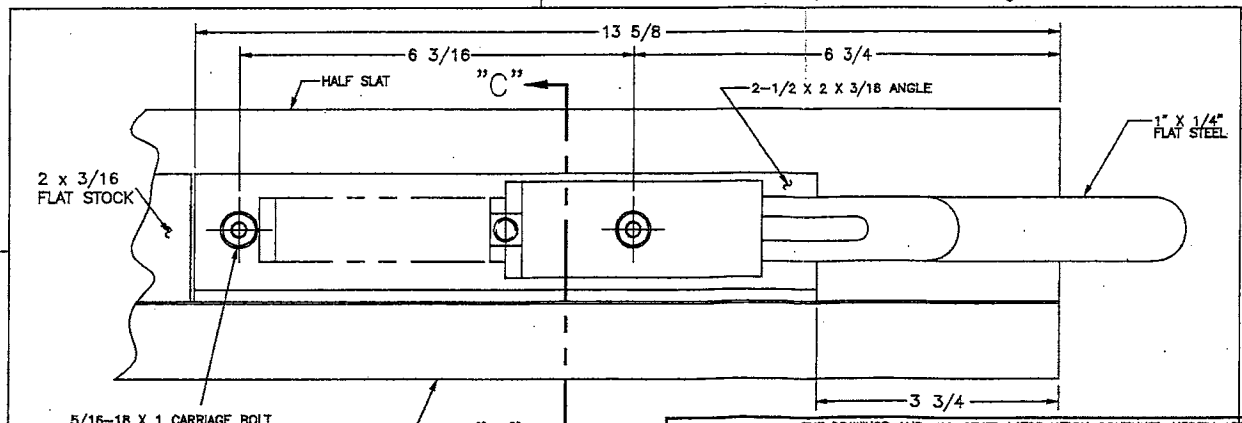
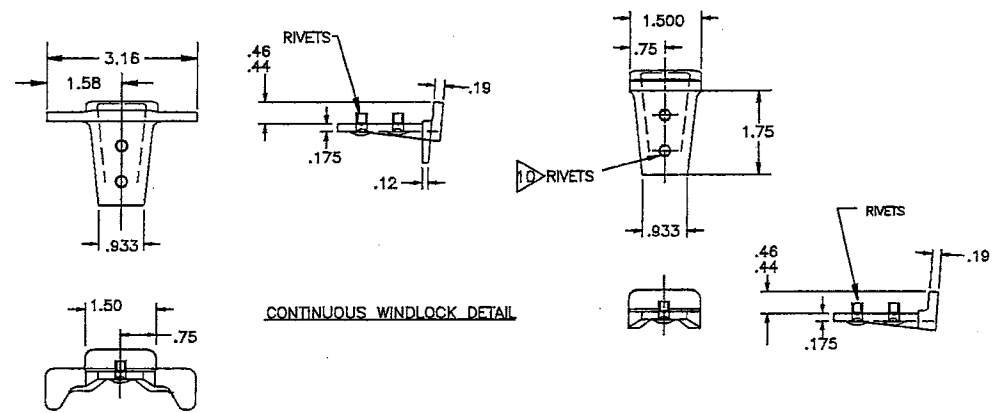
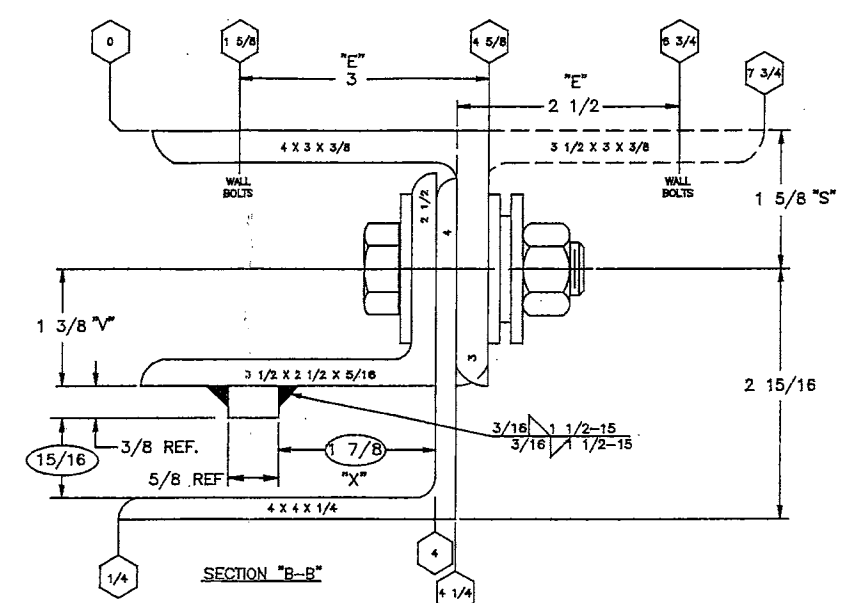


**PRODUCT REVISED**  
as complying with the Florida Building Code  
NOA-No. 20-1130.11  
Expiration Date 12/02/2024  
By *[Signature]*  
Miami-Dade Product Control

**PRODUCT RENEWED**  
as complying with the Florida Building Code  
Acceptance No 14-0822-05  
Expiration Date 12/02/2019  
By *[Signature]*  
Miami-Dade Product Control

OVERHEAD DOOR CORPORATION  
2501 SOUTH STATE HWY 121 BUSINESS  
LEWISVILLE, TX 75067  
LeROY G. KRUPKE, P.E. #36580

NAME	DATE	DRAWING TITLE
D. WARNER	2/26/09	SERIES 630/631/634, ROLLING FIRE DOOR 14' MIAMI-DADE COUNTY.
M. SAWICKI	8/24/09	
S. FOENG	9/23/09	



TOLERANCES UNLESS OTHERWISE SPECIFIED				
HOLE DIAMETER	WHOLE NUMBERS	± .25	FINISH	5
UNDER .251 +.004/-0.003	± .1		UNIT OF MEASURE	N/A
.251 TO .500 +.006/-0.003	XX ± .03			
OVER .500 +.008/-0.003	XXX ± .010			
FRACTIONS	ANGLES	± .5°		
± 1/16				

REF DWG USED ON

Mark A. Sawicki, P.E.  
FLPE 72613, P.E.

2 11/16

22 GA

21/32

F-265 SLAT

GAUGE OPTIONS: 22\*\*

\*\* TESTED IN ACCORDANCE WITH DADE COUNTY PROTOCOLS TAS 201-94, TAS 202-94, AND TAS 203-94

SERIES 630/631/634 ARE EQUIVALENT CONSTRUCTION

- 
- MARK A. SAWICKI  
LICENSE  
No. 72613  
8/19/14  
STATE OF  
FLORIDA  
PROFESSIONAL ENGINEER

Diagram illustrating the weld specifications for a steel jamb assembly:

- STEEL JAMB, 3/16" THICK (MINIMUM)**
- WELDED ON EDGE CLOSEST TO ANGLE HEEL**
- 5/16" 1-12**
- 5/16" 2-11**
- EQUALLY SPACED BETWEEN SLOTS**

3.00

EDGE OF OPENING

### DETAILS FOR WELDING "E" GUIDES TO STEEL JAMBS

By [Signature]  
Miami Dade Product Control

<p>THE DRAWINGS AND ALL OTHER INFORMATION CONTAINED HEREIN ARE THE CONFIDENTIAL AND PROPRIETARY PROPERTY OF OVERHEAD DOOR CORPORATION AND ITS AFFILIATED COMPANIES. THIS DRAWING IS INFORMATION IN WHICHPART MAY BE REPRODUCED OR TRANSMITTED IN ANY FORM OR BY ANY MEANS, ELECTRONIC OR MECHANICAL, WITHOUT THE WRITTEN CONSENT OF OVERHEAD DOOR CORPORATION. ANY USE OF THIS DRAWING OR INFORMATION IS INTENDED TO OPERATE AS A LICENSE OR AUTHORIZATION TO USE IT FOR ANY PURPOSE WITHOUT THE SPECIFIC WRITTEN CONSENT OF OVERHEAD DOOR CORPORATION.</p>							
		<p><b>HOLE DIAMETER</b></p> <p>UNDER .251 +.004/- .003          .251 TO .500 +.006/- .003          OVER .500 +.008/- .003</p>		<p><b>WHOLE NUMBERS:</b></p> <p>.25 ± .1          .X ± .1          .XX ± .03          .XXX ± .010</p>		<p><b>FINISH</b></p> <p>5</p>	
<p>NAME Y14-100 AND Y14-S APPLY, UNLESS OTHERWISE SPECIFIED DIMENSIONS ARE IN U.S. CUSTOMARY UNITS.</p>		<p><b>FRACTIONS</b></p> <p>± 1/16</p>		<p><b>UNIT OF MEASURE</b></p> <p>N/A</p>		<p>The Genuine The Original</p> <p><b>EXPERIENCE DOORS</b></p> <p>LEWISVILLE, TEXAS</p>	
<p>RFF DWG</p>		<p>USED ON</p>		<p><b>MATERIAL</b></p> <p>4</p>		<p><b>DRAWING TITLE</b></p> <p>SERIES 630/631/634,          ROLLING FIRE DOOR          14' MIAMI-DADE COUNTY</p>	
				<p><b>DRAWN BY:</b></p> <p>D WARNER</p>		<p><b>DATE</b></p> <p>2/26/09</p>	
				<p><b>CHECKED BY:</b></p> <p>M SAWICKI</p>		<p><b>DATE</b></p> <p>8/24/09</p>	
				<p><b>APPROVED BY:</b></p> <p>S FOENG</p>		<p><b>DATE</b></p> <p>9/23/09</p>	
				<p><b>DRAWING NUMBER</b></p> <p>D-308231</p>		<p><b>SCALE:</b> NONE</p>	
						<p><b>SHEET 2 OF 2</b></p>	