



DEPARTMENT OF REGULATORY AND ECONOMIC RESOURCES (RER)  
BOARD AND CODE ADMINISTRATION DIVISION

## NOTICE OF ACCEPTANCE (NOA)

**International Impact Building Products, LLC**

**5900 Australian avenue, suite # 300**

**West palm Beach, FL 33407**

### SCOPE:

This NOA is being issued under the applicable rules and regulations governing the use of construction materials. The documentation submitted has been reviewed and accepted by Miami-Dade County RER -Product Control Section to be used in Miami Dade County and other areas where allowed by the Authority Having Jurisdiction (AHJ).

This NOA shall not be valid after the expiration date stated below. The Miami-Dade County Product Control Section (In Miami Dade County) and/or the AHJ (in areas other than Miami Dade County) reserve the right to have this product or material tested for quality assurance purposes. If this product or material fails to perform in the accepted manner, the manufacturer will incur the expense of such testing and the AHJ may immediately revoke, modify, or suspend the use of such product or material within their jurisdiction. RER reserves the right to revoke this acceptance, if it is determined by Miami-Dade County Product Control Section that this product or material fails to meet the requirements of the applicable building code.

This product is approved as described herein and has been designed to comply with the Florida Building Code, including the High Velocity Hurricane Zone.

**DESCRIPTION: "Titan 50" Series Aluminum Sliding Glass Door (Reinforced) w/ 90- & 135-degree corners & pockets -NI**

**APPROVAL DOCUMENT:** Drawing No. **W15-24 Rev C**, titled "Series Titan-50 Alum SLD. Glass Door (N.I.)", sheets 1 through 10 of 10, prepared by AL-Farooq Corporation, dated 06/24/15 and last revised on 11/30/20, signed and sealed by Jalal Farooq, P.E., bearing the Miami-Dade County Product Control Revision stamp with the Notice of Acceptance number and expiration date by the Miami-Dade County Product Control Division.

**MISSILE IMPACT RATING: None. Approved Hurricane Protection Devices complying w/FBC is required.**

### Limitations:

1. See Design Pressure Vs door sizes in sheet **2**. See sheet **7** for reinforcement requirement for Deep **or** Shallow interlocks. See sheet **8** for 90°, 135° details and pocket installations.
2. See pair anchors at intermediate members and cluster pair of anchors required at interlock, astragal and corners in sheet **1**. See alternate anchors at pocket jambs in sheet **1** and pocket adapter installation detail in sheet **8**.
3. Pocket under separate approval and to be reviewed by AHJ.

**LABELING:** Each unit shall bear a permanent label with the manufacturer's name or logo, city, state and series and following statement: "Miami-Dade County Product Control Approved", noted herein.

**RENEWAL** of this NOA shall be considered after a renewal application has been filed and there has been no change in the applicable building code negatively affecting the performance of this product.

**TERMINATION** of this NOA will occur after the expiration date or if there has been a revision or change in the materials, use, and/or manufacture of the product or process. Misuse of this NOA as an endorsement of any product, for sales, advertising or any other purposes shall automatically terminate this NOA. Failure to comply with any section of this NOA shall be cause for termination and removal of NOA.

**ADVERTISEMENT:** The NOA number preceded by the words Miami-Dade County, Florida, and followed by the expiration date may be displayed in advertising literature. If any portion of the NOA is displayed, then it shall be done in its entirety.

**INSPECTION:** A copy of this entire NOA shall be provided to the user by the manufacturer or its distributors and shall be available for inspection at the job site at the request of the Building Official.

This NOA **revises NOA # 20-0427.09** and consists of this page 1 and evidence pages E-1, E-2, E-3 & E-4, as well as approval document mentioned above.

The submitted documentation was reviewed by **Ishaq I. Chanda, P.E.**



*Ishaq I. Chanda*

NOA No. 20-1202.14  
Expiration Date: July 07, 2025  
Approval Date: January 21, 2021  
Page 1

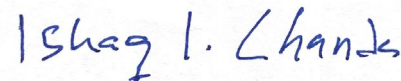
**NOTICE OF ACCEPTANCE: EVIDENCE SUBMITTED**

- 1. Evidence submitted under previous approvals**
- A. DRAWINGS**
  1. Manufacturer's die drawings and sections (Submitted under file # below)
  2. Drawing No. **W15-24**, titled "Series Titan-50 Alum SLD. Glass Door (N.I.)", sheets 1 through 10 of 10, prepared by AL-Farooq Corporation, dated 06/25/15 and last revised on DEC 03, 2015, signed and sealed by Javad Ahmad, P.E.
- B. TESTS (Submitted under file # 09-0219.14)**
  1. Test reports on:
    - 1) Air Infiltration Test, per FBC, TAS 202-94
    - 2) Uniform Static Air Pressure Test, Loading per FBC TAS 202-94
    - 3) Water Resistance Test, per FBC, TAS 202-94
    - 4) Large Missile Impact Test per FBC, TAS 201-94
    - 5) Cyclic Wind Pressure Loading per FBC, TAS 203-94
    - 6) Forced Entry Test, per FBC 2411 3.2.1, TAS 202-94

Along with marked-up drawings and installation diagram of an Aluminum Sliding Glass Door, prepared by Hurricane Testing Laboratory, Inc., Test Report No(s). **HTL-0171-0513-09** dated 09/23/09, signed and sealed by Vinu Abraham, P.E.

Note: This test report has been revised from originally issue to clarify impact locations, signed & sealed by Vinu Abraham, P.E.

  2. Test report No. **HTL-0171-0513-09 (sp #1)** per TAS 202-94, issued by Hurricane Testing Lab, signed & sealed by Vinu Abraham, P.E.
  3. Additional test report No(s) **HTL-0171-0713-07 (specimens #4 & #5)** dated 08/01/08, per TAS 202-94, 201/203-94 (LMI/SMI), issued by Hurricane Testing Lab, signed & sealed by Vinu Abraham, P.E.
- C. CALCULATIONS**
  1. Anchor verification calculations, comparative analysis and structural analysis, complying with FBC-2014 (5<sup>th</sup> Edition), prepared by Al Farooq Corporation, dated 08/12/15 and last revised on 12/03/15, signed and sealed by Javad Ahmad, P.E.
  2. Glazing complies w/ ASTM E-1300-02, -04 & -09.
- D. QUALITY ASSURANCE**
  1. Miami Dade Department of Regulatory and Economic Resources (RER).
- E. MATERIAL CERTIFICATIONS**
  1. Technical strength data of flexible vinyl (Apex 3174) gasket extruded by Melt plastic Int'l Inc.
- F. STATEMENTS (Except item #1, all other submitted under file # 09-0219.14).**
  1. Statement letter of conformance to FBC 2014(5<sup>th</sup> Edition) and letter of no financial interest, prepared by Al Farooq Corporation, dated 06/17/15, signed and sealed by Javad Ahmad, P.E.
  2. Lab compliance as part of the above referenced test report.
  3. Statement letter dated 04/09/09, issued by Plaza Doors of all assets sold to Impact Building Products, signed by Roy Elwell, president Plaza Door.
  4. Statement letter dated 04/09/09, issued by Impact Building Products of all assets purchased from Plaza Doors, signed by Michael Fry, Managing Partner, International Impact Building Products.



Ishaq I. Chanda, P.E.  
Product Control Unit Supervisor  
NOA No. 20-1202.14  
Expiration Date: July 07, 2025  
Approval Date: January 28, 2021

**NOTICE OF ACCEPTANCE: EVIDENCE SUBMITTED**

**F. STATEMENTS (Except item #1, all other submitted under file # 09-0219.14)**

5. Statement letter of conformance to FBC 2014(5<sup>th</sup> Edition) and letter of no financial interest, prepared by Al Farooq Corporation, dated 06/17/15, signed and sealed by Javad Ahmad, P.E.
6. Lab compliance as part of the above referenced test report.
7. Statement letter dated 04/09/09, issued by Plaza Doors of all assets sold to Impact Building Products, signed by Roy Elwell, president Plaza Door.
8. Statement letter dated 04/09/09, issued by Impact Building Products of all assets purchased from Plaza Doors, signed by Michael Fry, Managing Partner, International Impact Building Products.

**G. OTHER**

1. This NOA **revises & renews** NOA # **09-0219.14**, expiring on July 07, 2020.
2. Test proposal dated 04/14/09 approved by BCCO.

**2. Evidence submitted under previous submittal.**

**A. DRAWINGS**

1. Drawing No. **W15-24 Rev B**, titled "Series Titan-50 Alum SLD. Glass Door (N.I.)", sheets 1 through 10 of 10, prepared by AL-Farooq Corporation, dated 06/24/15 and last revised on MAR 27, 2018, signed and sealed by Javad Ahmad, P.E.

**B. TESTS**

1. None.

**C. CALCULATIONS**

1. Anchor verification calculations and structural analysis, complying with FBC-2017 (**6<sup>th</sup> Edition**), prepared by Al Farooq Corporation, dated MAR 27, 2018, signed and sealed by Javad Ahmad, P.E.

**D. QUALITY ASSURANCE**

1. Miami Dade Department of Regulatory and Economic Resources (RER).

**E. MATERIAL CERTIFICATIONS**

1. Technical strength data of flexible vinyl (Apex 3174) gasket extruded by Melt plastic Int'l Inc.

**F. STATEMENTS**

1. Statement letter of conformance to **FBC 6<sup>th</sup> Edition (2017)** and of no financial interest, prepared by Al Farooq Corporation, dated 01/09/18, signed and sealed by Javad Ahmad, P.E.
2. Statement of lab compliance, as part of test report.

**G. OTHER**

1. This NOA **revises** NOA # **NOA # 20-0427.09**, expiring 07/07/25.

*Ishaq I. Chanda*

---

Ishaq I. Chanda, P.E.  
Product Control Unit Supervisor  
NOA No. 20-1202.14  
Expiration Date: July 07, 2025  
Approval Date: January 28, 2021

**NOTICE OF ACCEPTANCE: EVIDENCE SUBMITTED**

**3. Evidence submitted under previous approval.**

**A. DRAWINGS**

1. Drawing No. **W15-24 Rev B**, titled "Series Titan-50 Alum SLD. Glass Door (N.I.)", sheets 1 through 10 of 10, prepared by AL-Farooq Corporation, dated 06/24/15 and last revised on MAR 27, 2018, signed and sealed by Javad Ahmad, P.E.

**B. TESTS**

1. None.

**C. CALCULATIONS (submitted under file #18-0412.03)**

1. Anchor verification calculations and structural analysis, complying with FBC-2017 (**6<sup>th</sup> Edition**), prepared by Al Farooq Corporation, dated MAR 27, 2018, signed and sealed by Javad Ahmad, P.E.

**D. QUALITY ASSURANCE**

1. Miami Dade Department of Regulatory and Economic Resources (RER).

**E. MATERIAL CERTIFICATIONS**

1. Technical strength data of flexible vinyl (Apex 3174) gasket extruded by Melt plastic Int'l Inc.

**F. STATEMENTS**

1. Statement letter of conformance to **FBC 6<sup>th</sup> Edition (2017)** and of no financial interest, prepared by Al Farooq Corporation, dated 04/20/2020, signed and sealed by Jalal Farooq, P.E.
2. Statement of lab compliance, as part of test report.

**G. OTHER**

1. This NOA **revises NOA # 18-0412.03**, expiring 07/07/25.

**4. New Evidence submitted**

**A. DRAWINGS**

1. Drawing No. **W15-24 Rev C**, titled "Series Titan-50 Alum SLD. Glass Door (N.I.)", sheets 1 through 10 of 10, prepared by AL-Farooq Corporation, dated 06/24/15 and last revised on 11/30/20, signed and sealed by Jalal Farooq, P.E.

**B. TESTS**

1. None.

**C. CALCULATIONS**

1. Anchor verification calculations and structural analysis, complying with FBC-2020 (**7<sup>th</sup> Edition**), prepared by Al Farooq Corporation, dated 11/25/20, signed and sealed by Javad Ahmad, P.E.

*Ishaq I. Chanda*

---

**Ishaq I. Chanda, P.E.**  
**Product Control Unit Supervisor**  
**NOA No. 20-1202.14**  
**Expiration Date: July 07, 2025**  
**Approval Date: May 21, 2020**

**NOTICE OF ACCEPTANCE: EVIDENCE SUBMITTED**

**4. New Evidence submitted (continue):**

**D. QUALITY ASSURANCE**

1. Miami Dade Department of Regulatory and Economic Resources (RER).

**E. MATERIAL CERTIFICATIONS**

1. Material properties data sheet of PolyOne Geon vinyl Flexible glazing gasket material extruded by Melt point Inc.

**F. STATEMENTS**

1. Statement letter of conformance to **FBC 7<sup>th</sup> Edition (2020)** and of no financial interest, prepared by Al Farooq Corporation, dated 11/25/20, signed and sealed by Jalal Farooq, P.E.
2. Statement of lab compliance, as part of test report.

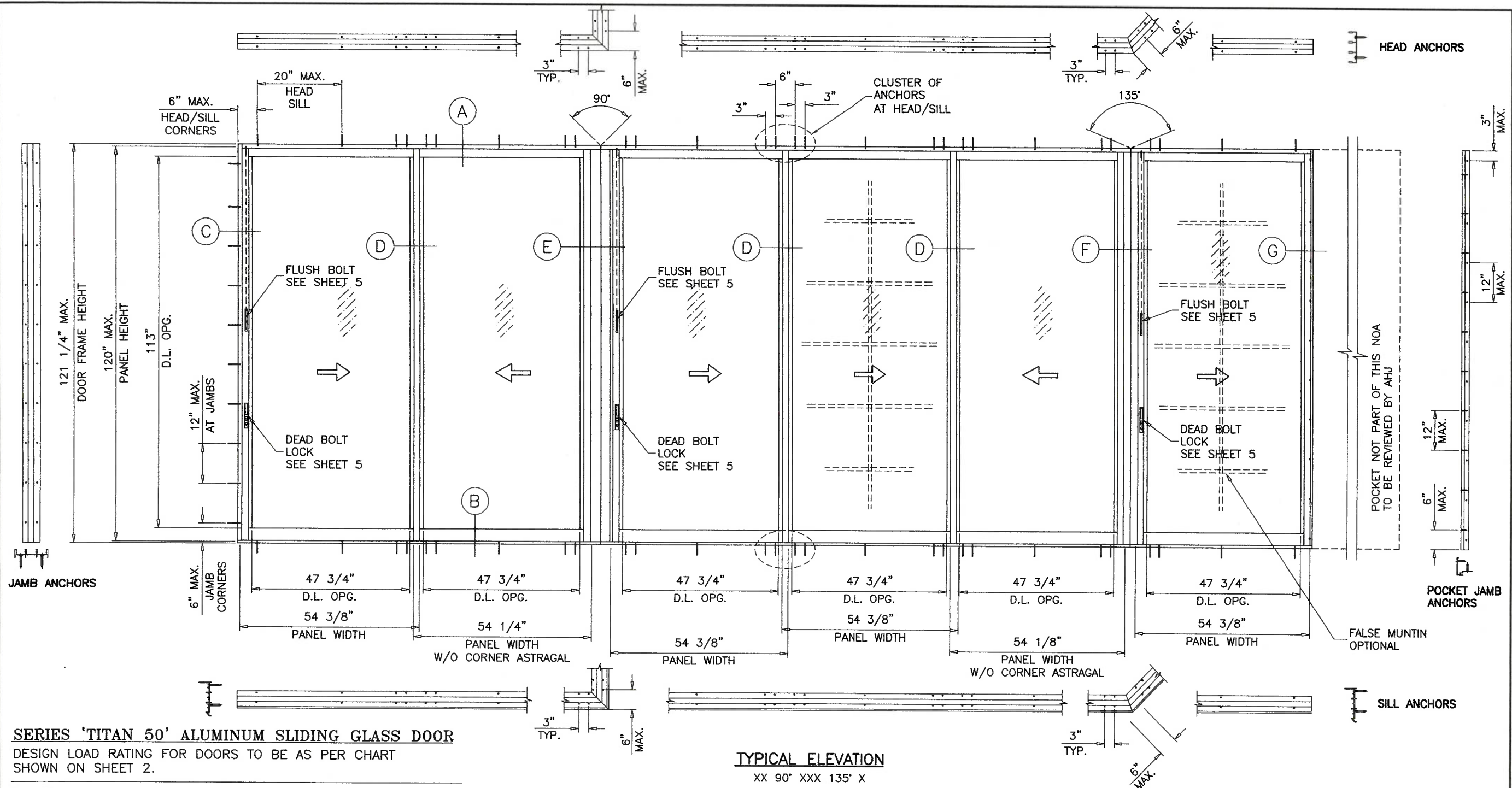
**G. OTHER**

1. This NOA revises **NOA # 20-0427.09**, expiring 07/07/25.

*Ishaq I. Chanda*

---

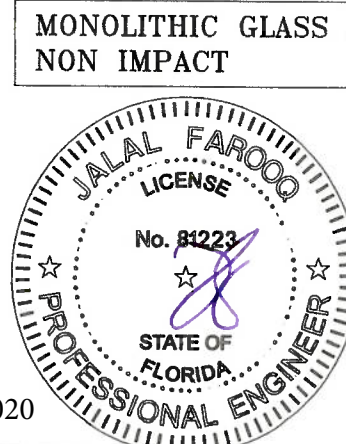
**Ishaq I. Chanda, P.E.**  
**Product Control Unit Supervisor**  
**NOA No. 20-1202.14**  
**Expiration Date: July 07, 2025**  
**Approval Date: May 21, 2020**



DAYLITE OPENINGS:  
 D.L.O. HEIGHT = PANEL HEIGHT - 7.000"  
 D.L.O. WIDTH = PANEL WIDTH - 6.625"  
 DOOR FRAME HEIGHT = PANEL HEIGHT + 1.250"

THESE DOORS ARE NOT RATED FOR IMPACT.  
 INSTALLATION OF THIS PRODUCT IN THE HVHZ AREA REQUIRES THE USE OF APPROVED SHUTTERS OR EXTERNAL PROTECTION DEVICES COMPLYING WITH HVHZ REQUIREMENTS.  
 INSTALLATION OF THIS SYSTEM OUTSIDE THE HVHZ AREA SHALL MEET THE APPLICABLE REQUIREMENTS FOR WIND BORNE DEBRIS PROTECTION.

**PRODUCT REVISED**  
 as complying with the Florida Building Code  
 NOA-No. 20-1202.14  
 Expiration Date 07/07/2025  
 By *Ishag I. Chank*  
 Miami-Dade Product Control



Sealed: 11/30/2020

**AL-FAROOQ CORPORATION**  
 ENGINEERS & PRODUCT DEVELOPMENT  
 9360 SUNSET DRIVE, SUITE 220  
 MIAMI, FLORIDA 33173  
 TEL. (305) 264-8100 FAX. (305) 262-6978  
 (C.A.N. 3538)  
 COMP-ANL W15-24PD

**SERIES 'TITAN 50' ALUM SLIDING GLASS DOOR (N.I.)**  
**INTERNATIONAL IMPACT BUILDING PRODUCTS, LLC**  
**d/b/a PLAZA DOOR**  
 5900 AUSTRALIAN AVE. SUITE #3  
 WEST PALM BEACH, FL 33407  
 TEL. (561) 578-5450 FAX. (561) 578-5460

no	date	description
A	12.02.15	REV. PER RER COMMENTS
B	01.24.18	UPDATED TO 2017 FBC
C	11.05.20	UPDATED TO 2020 FBC

revisions:

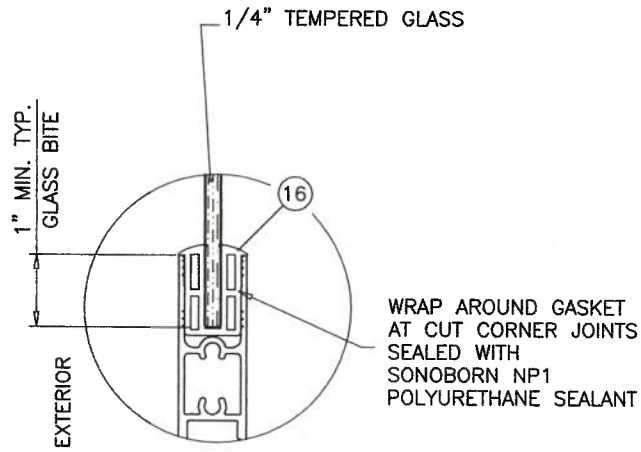
date: 06-24-15  
 scale: 3/8"=1'-0"  
 dr. by: TARIQ  
 chk. by:

drawing no. **W15-24**  
 sheet 1 of 10

DESIGN LOAD CAPACITY - PSF			
PANEL WIDTH INCHES	DOOR FRAME HEIGHT INCHES	1/4" TEMP. GLASS	
		EXT. (+)	INT. (-)
36	85-1/4	50.0	66.7
42		50.0	58.1
48		50.0	50.9
50-1/2		48.3	48.3
53		46.1	46.1
56		43.6	43.6
60		40.7	40.7
36	91-1/4	50.0	65.6
42		50.0	58.1
48		50.0	50.9
50-1/2		48.3	48.3
53		46.1	46.1
56		43.6	43.6
60		40.7	40.7
36	97-1/4	50.0	64.6
42		50.0	57.5
48		50.0	50.9
50-1/2		48.3	48.3
53		46.1	46.1
56		43.6	43.6
60		40.7	40.7
36	103-1/4	50.0	63.8
42		50.0	56.6
48		50.0	50.9
50-1/2		48.3	48.3
53		46.1	46.1
56		43.6	43.6
60		40.7	40.7
36	109-1/4	50.0	63.0
42		50.0	55.9
48		50.0	50.6
50-1/2		48.3	48.3
53		46.1	46.1
56		43.6	43.6
60		40.7	40.7
36	115-1/4	50.0	62.4
42		50.0	55.2
48		49.9	49.9
50-1/2		48.1	48.1
53		46.1	46.1
56		43.6	43.6
36	121-1/4	50.0	61.8
42		50.0	54.6
48		49.2	49.2
50-1/2		47.4	47.4
53		45.8	45.8

DOOR HEIGHT AND WIDTH SIZE MUST COMPLY  
EGRESS REQUIREMENTS PER FBC.

NOTE:  
SILL ADAPTER ITEM #15 IS INTEGRAL PART OF  
FRAME SILL ITEM #2.



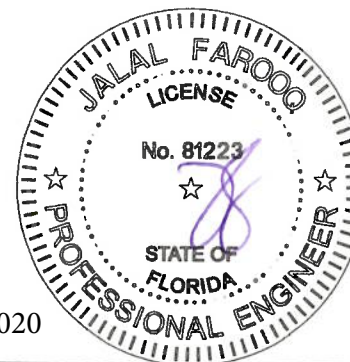
GLAZING DETAIL

NOTE:  
GLASS CAPACITIES ON THIS SHEET ARE  
BASED ON ASTM E1300-09 (3 SEC. GUSTS)  
AND FLORIDA BUILDING COMMISSION  
DECLARATORY STATEMENT DCA05-DEC-219

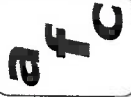
PRODUCT REVISED  
as complying with the Florida  
Building Code  
NOA-No. 20-1202.14

Expiration Date 07/07/2025

By Ishag I. Chande  
Miami-Dade Product Control



Sealed: 11/30/2020

**AL-FAROOQ CORPORATION**  
ENGINEERS & PRODUCT DEVELOPMENT  
9360 SUNSET DRIVE, SUITE 220  
MIAMI, FLORIDA 33173  
TEL. (305) 262-6978 FAX. (305) 262-6978

SERIES 'TITAN 50' ALUM SLIDING GLASS DOOR (N.I.)  
**INTERNATIONAL IMPACT BUILDING PRODUCTS, LLC**  
d/b/a PLAZA DOOR  
5900 AUSTRALIAN AVE. SUITE #3  
WEST PALM BEACH, FL 33407  
TEL. (561) 578-5450 FAX. (561) 578-5460

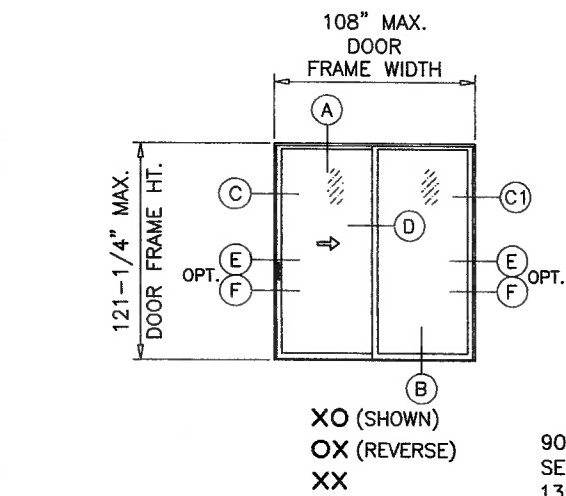
revisions:

no	date	by	description
A	12.02.15	REV. PER RER	COMMENTS
B	01.24.18		UPDATED TO 2017 FBC
C	11.05.20		UPDATED TO 2020 FBC

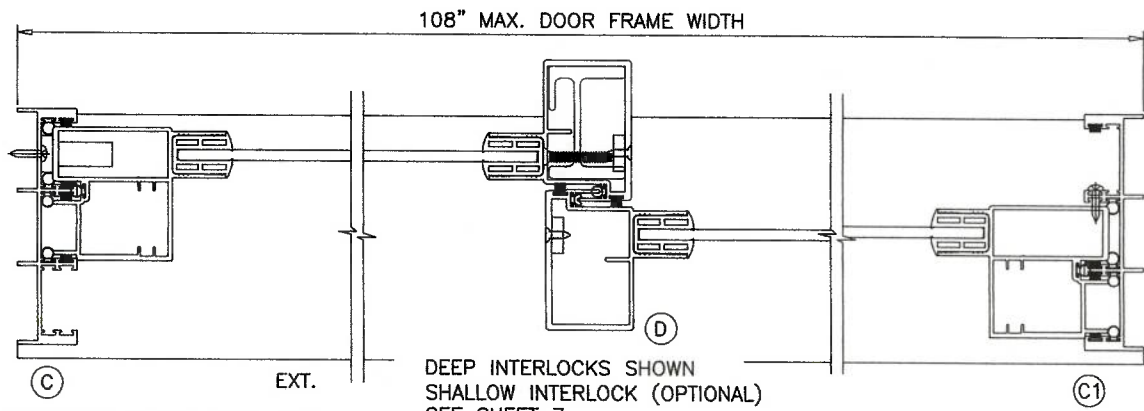
date: 06-24-15	scale: 3/8" = 1"	dr. by: TARIQ	chk. by:
----------------	------------------	---------------	----------

drawing no.	W15-24
sheet	2 of 10

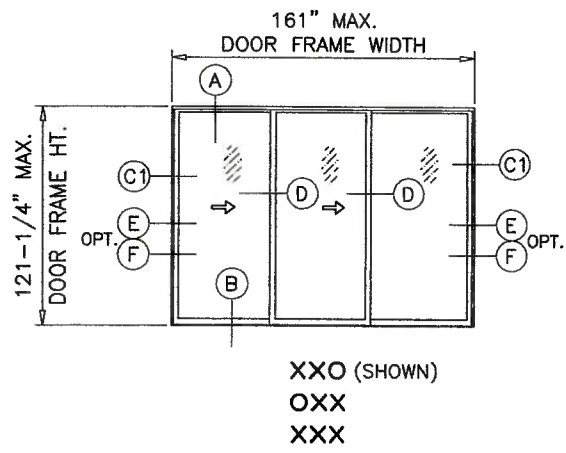
COMP-ANL W15-24PD



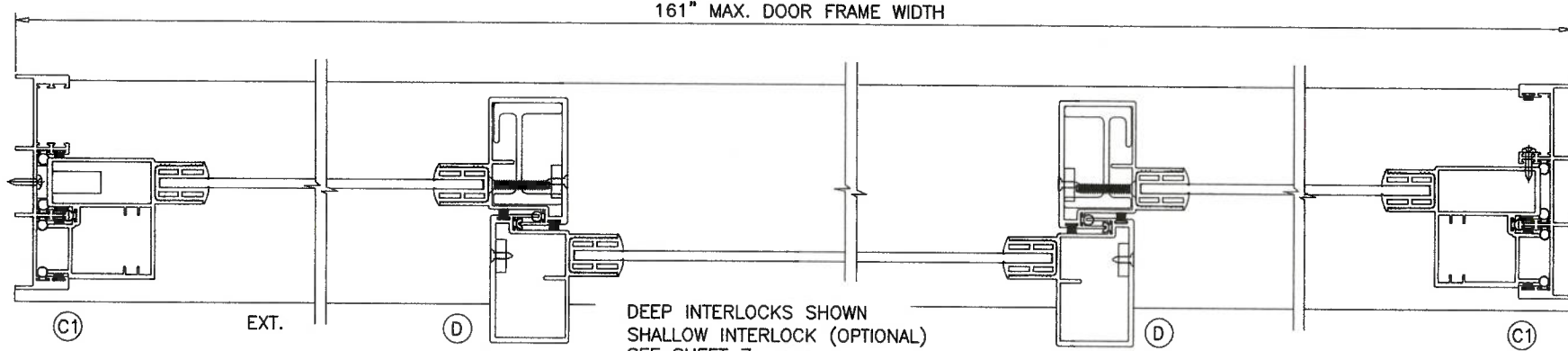
90° CORNER INTERLOCK (OPTIONAL)  
SEE SHEET 8 DETAIL 'E'  
135° CORNER INTERLOCK (OPTIONAL)  
SEE SHEET 8 DETAIL 'F'



90° CORNER INTERLOCK (OPTIONAL)  
SEE SHEET 8 DETAIL 'E'  
135° CORNER INTERLOCK (OPTIONAL)  
SEE SHEET 8 DETAIL 'F'



90° CORNER INTERLOCK (OPTIONAL)  
SEE SHEET 8 DETAIL 'E'  
135° CORNER INTERLOCK (OPTIONAL)  
SEE SHEET 8 DETAIL 'F'



90° CORNER INTERLOCK (OPTIONAL)  
SEE SHEET 8 DETAIL 'E'  
135° CORNER INTERLOCK (OPTIONAL)  
SEE SHEET 8 DETAIL 'F'

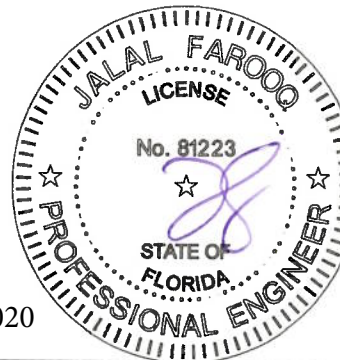
**APPROVED CONFIGURATIONS**  
**NON-POCKETED DOORS**

NOTE:  
CONFIGURATIONS SHOWN FOR ILLUSTRATION PURPOSE ONLY  
(SEE APPLICABLE ANCHOR INSTALLATIONS IN SHEETS 6 THRU 8)  
SEE ELEVATION FOR ANCHOR LOCATION.

THIS APPROVAL QUALIFIES DOORS W/ APPROVED CONFIGURATIONS SHOWN  
WITH 90° AND 135° CORNERS WHERE STILE CONFIGURATIONS SHOWN ON  
SHEET 8 ARE PRESENT  
PANELS WITH SHALLOW/DEEP INTERLOCKS NOT TO EXCEED TESTED PANEL SIZE.  
SEE SHEET 2 FOR APPLICABLE DESIGN PRESSURE RATING.

MAX. TESTED PANEL WIDTH = 54-3/8"  
MAX. TESTED PANEL HEIGHT = 120"

**PRODUCT REVISED**  
**as complying with the Florida**  
**Building Code**  
**NOA-No. 20-1202.14**  
**Expiration Date 07/07/2025**  
**By** *Ishag I. Chande*  
**Miami-Dade Product Control**



Sealed: 11/30/2020

**AL-FAROOQ CORPORATION**  
**ENGINEERS & PRODUCT DEVELOPMENT**  
**9360 SUNSET DRIVE, SUITE 220**  
**MIAMI, FLORIDA 33173**  
**TEL. (305) 264-8100**  
**FAX. (305) 262-6978**  
**COMP-ANL W15-24PD**

**SERIES 'TITAN 50' ALUM SLIDING GLASS DOOR (N.I.)**  
**INTERNATIONAL IMPACT BUILDING PRODUCTS, LLC**  
**d/b/a PLAZA DOOR**  
**5900 AUSTRALIAN AVE. SUITE #3**  
**WEST PALM BEACH, FL 33407**  
**TEL. (561) 578-5450**  
**FAX. (561) 578-5460**

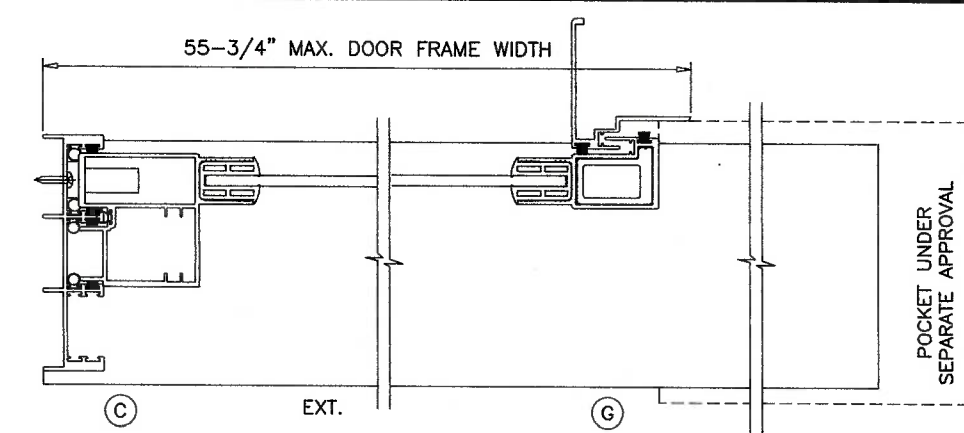
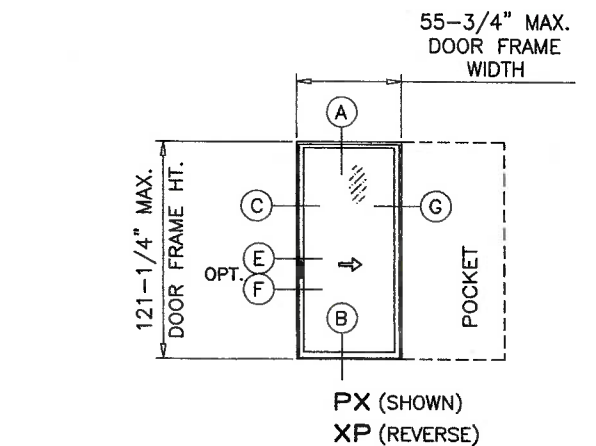
no	date	by	description
A	12.02.15	REV. PER RER	COMMENTS
B	01.24.18	UPDATED TO 2017 FBC	
C	11.05.20	UPDATED TO 2020 FBC	

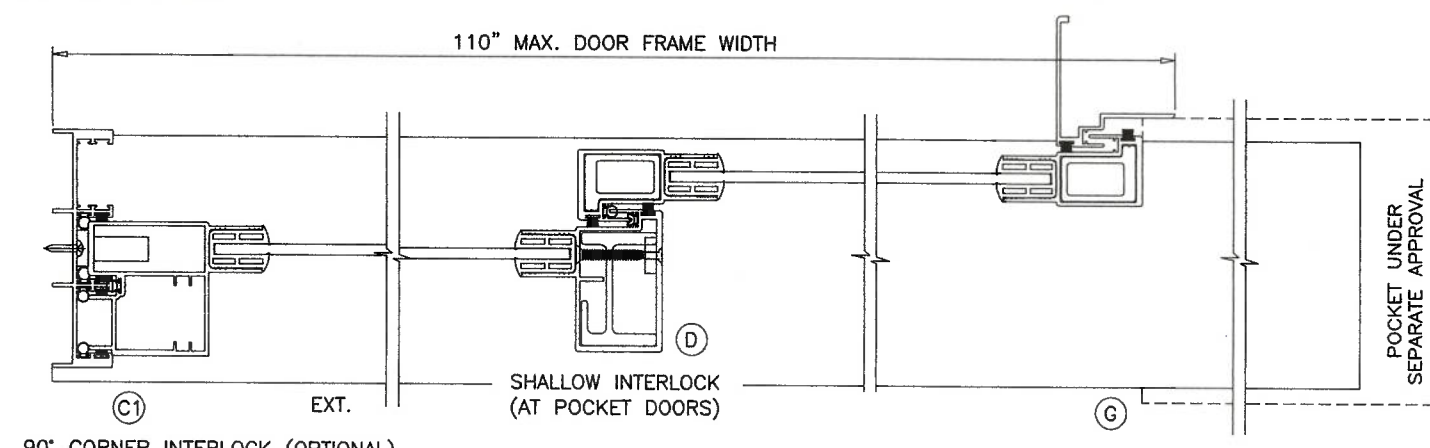
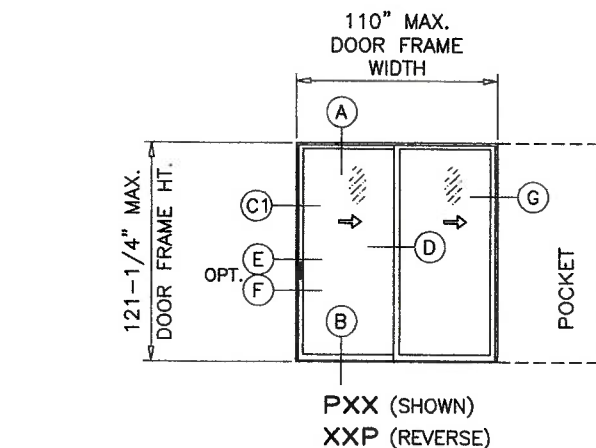
date:	06-24-15
scale:	-
dr. by:	TARIQ
chk. by:	

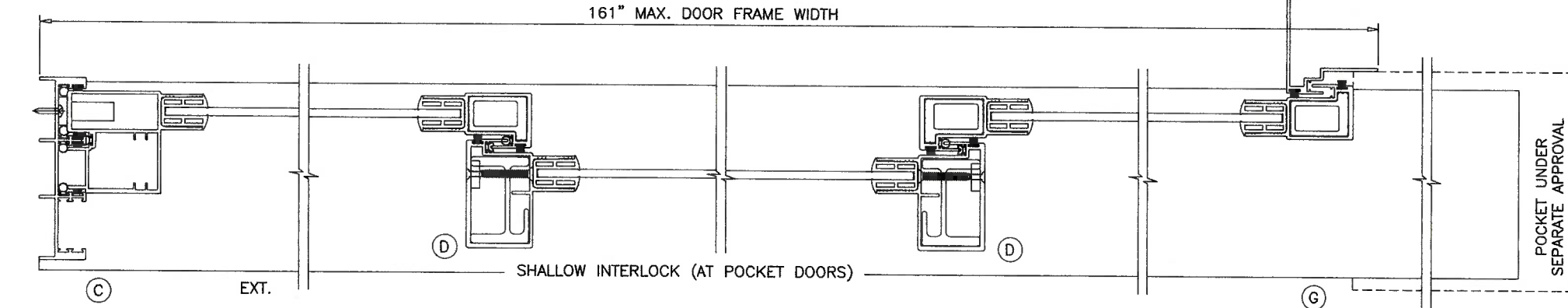
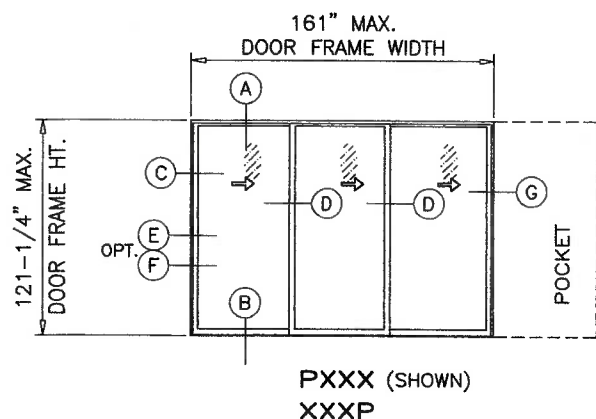
drawing no.	W15-24
sheet	3 of 10



90° CORNER INTERLOCK (OPTIONAL)  
SEE SHEET 8 DETAIL 'E'  
135° CORNER INTERLOCK (OPTIONAL)  
SEE SHEET 8 DETAIL 'F'



90° CORNER INTERLOCK (OPTIONAL)  
SEE SHEET 8 DETAIL 'E'  
135° CORNER INTERLOCK (OPTIONAL)  
SEE SHEET 8 DETAIL 'F'



90° CORNER INTERLOCK (OPTIONAL)  
SEE SHEET 8 DETAIL 'E'  
135° CORNER INTERLOCK (OPTIONAL)  
SEE SHEET 8 DETAIL 'F'

# **APPROVED CONFIGURATIONS** **POCKETED DOORS**

POCKETS ARE NOT PART OF THIS APPROVAL  
AND TO BE REVIEWED BY AHJ.

NOTE:  
CONFIGURATIONS SHOWN FOR ILLUSTRATION PURPOSE ONLY  
(SEE APPLICABLE ANCHOR INSTALLATIONS IN SHEETS 6 THRU 8)  
SEE ELEVATION FOR ANCHOR LOCATION.

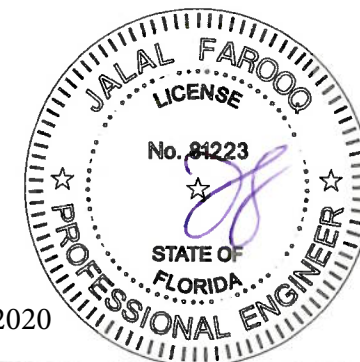
THIS APPROVAL QUALIFIES DOORS W/ APPROVED CONFIGURATIONS SHOWN  
WITH 90° AND 135° CORNERS WHERE STILE CONFIGURATIONS SHOWN ON  
SHEET 8 ARE PRESENT  
PANELS WITH SHALLOW/DEEP INTERLOCKS NOT TO EXCEED TESTED PANEL SIZE.  
SEE SHEET 2 FOR APPLICABLE DESIGN PRESSURE RATING.

MAX. TESTED PANEL WIDTH = 54-3/8"  
MAX. TESTED PANEL HEIGHT = 120"

**PRODUCT REVISED**  
**as complying with the Florida**  
**Building Code**  
**NOA-No. 20-1202.14**

Expiration Date 07/07/2025

By Ishag I. Chande  
Miami-Dade Product Control



Sealed: 11/30/2020

**af c**  
**AL-FAROOQ CORPORATION**  
ENGINEERS & PRODUCT DEVELOPMENT  
9360 SUNSET DRIVE, SUITE 220 (C.A.N. 3538)  
MIAMI, FLORIDA 33173  
TEL. (305) 264-8100 FAX. (305) 262-6978  
COMP-ANL W15-24PD

SERIES 'TITAN 50' ALUM SLIDING GLASS DOOR (N.I.)  
**INTERNATIONAL IMPACT BUILDING PRODUCTS, LLC**  
**d/b/a PLAZA DOOR**  
5900 AUSTRALIAN AVE., SUITE #3  
WEST PALM BEACH, FL 33407  
TEL. (561) 578-5450 FAX. (561) 578-5460

no	date	by	description
A	12.02.15		REV. PER RER COMMENTS
B	01.24.18		UPDATED TO 2017 FBC
C	11.05.20		UPDATED TO 2020 FBC

date:	06-24-15
scale:	-
dr. by:	TARIQ
chk. by:	

drawing no.  
**W15-24**  
sheet 4 of 10

ITEM	PART #	QUANTITY	DESCRIPTION	MATERIAL	MANF./SUPPLIER/REMARKS
1	PDC-009	1	FRAME HEAD	6063-T6	-
2	PDC-012	1	FRAME SILL	6063-T6	-
3	PDC-010	2	FRAME JAMB	6063-T6	-
4	PDC-058	1/ PANEL	PANEL TOP RAIL	6063-T6	-
5	PDC-059	1/ PANEL	PANEL BOTTOM RAIL	6063-T6	-
6	PDC-060	1/ PANEL	JAMB/LOCK STILE	6063-T6	-
7	PDC-061	1/ PANEL	DEEP INTERLOCK STILE	6063-T6	-
7A	PDC-097	1/ PANEL	SHALLOW INTERLOCK STILE	6063-T6	-
8	PDC-031	AS REQD.	90° CORNER COVER	6063-T6	-
9	PDC-030	AS REQD.	90° ASTRAGAL	6063-T6	-
10	PDC-101	AS REQD.	135° CORNER ASTRAGAL	6063-T6	-
11	PDC-100	AS REQD.	135° CORNER ADAPTER	6063-T6	-
12	PDC-062	1/ PANEL	DEEP INTERLOCK STILE REINFORCEMENT, LENGTH = PANEL HT. - 18"	6063-T6	-
12A	PDC-098	1/ PANEL	SHALLOW INTERLOCK STILE REINFORCEMENT, LENGTH = PANEL HT. - 18"	6063-T6	-
13	PDC-092	2/ PANEL	INTERLOCK REINFORCEMENT, 12" LONG	6063-T6	-
14	PDC-020	AS REQD.	POCKET INTERLOCK	6063-T6	-
15	PDC-085	1	HI-RISE ADAPTER	6063-T6	-
16	2-273-0	AS REQD.	GLAZING GASKET (X-1842) (9/16" GLASS)	FLEXIBLE PVC	MELTPPOINT PLASTICS
17	3-310-0	2/ MOV. PANEL	ADJUSTABLE ROLLER ASSEMBLY ALUMINUM HOUSING, DELRIN TIRE, ST. STEEL BEARING	-	IIBP
18	2-322-0	-	DEADLOCK #1847-02 SS	-	ADAMS RITE
19	2-351-0	-	LOCK ESCUTCHEON #4430	-	ADAMS RITE
20	3-001-0	-	LOCK KEEPER	-	IIBP
21	3-008-0	-	TRACK RAIN PAN	-	IIBP
22	3-009-0	-	H.P. WEATHER TAB	-	IIBP
23	2-405-0	AS REQD.	.270 WIDE POLY-BOND FINSEAL #PB-8425-2211-0	-	SCHLEGAL
24	2-402-0	AS REQD.	.270 WIDE POLY-BOND WOOLPILE #PB-7525-6011-6	-	SCHLEGEL
25	2-407-0	AS REQD.	.270 WIDE POLY-BOND FINSEAL #PB-7531-6011-2	-	SCHLEGAL
26	2-222-0	AS REQD.	BULB W'STRIPPING (EV-277)	-	ULTRAFAB
30	2-010-0	-	#12 X 1-1/4" PPH SS SMS	-	1 PER DOOR ROLLER
31	2-040-0	-	#8 X 1" FH SMS	-	2 PER 12" REINF. BAR
32	2-007-0	-	#14 X 1-1/4" PH SMS	-	2 PER DOOR PANEL CORNERS
33	2-019-0	-	#8 X 1/2" PH SMS	-	AT 3" FROM ENDS & 18" O.C.
36	2-042-0	2/ KEEPER	#8 X 3/4" PH SMS	-	-
37	-	-	#8 X 3/4" PH SMS	-	AT 1" FROM ENDS & 9" O.C.
38	-	1	#10 X 1-1/4" PPH SMS	-	AT 3-1/2" FROM ENDS & 9" O.C. MAX.
39	2-027-0	1	#10 X 1-1/4" MS TYPE F FH	-	(1) AT 9" FROM EACH END
40	-	AS REQD.	JAMB SHEAR CLIP, 3" LONG MIN. OR CONTINUOUS	6063-T6	-

ITEM #27, 28, 29, 34 & 35 ARE NOT USED IN THIS BILL OF MATERIAL

**LOCKS:**

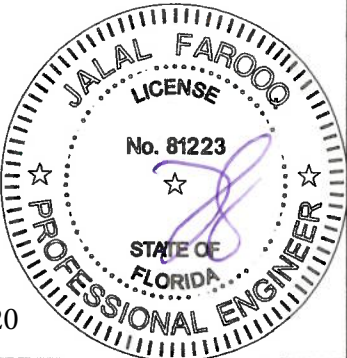
ADAMS RITE DEAD BOLT LOCK (PART #2-376-0)  
LOCATED AT 38-1/2" FROM BOTTOM  
FASTENED TO LOCK STILE WITH  
(2) #8-32 X 1-1/2" MACHINE SCREWS

FLUSH BOLT (PART #3917PLZ) BY 'TRIMCO'  
MANUALLY OPERATED LEVERS LOCATED AT 67-1/2"  
FROM BOTTOM ACTIVATES FLUSH BOLTS PROTRUDING  
INTO HEAD  
FASTENED TO LOCK STILE WITH  
(2) #8 X 3/4" PPH SMS

**PRODUCT REVISED**  
as complying with the Florida  
Building Code  
NOA-No. 20-1202.14

Expiration Date 07/07/2025

By Ishag I. Chande  
Miami-Dade Product Control



Sealed: 11/30/2020

**af c**

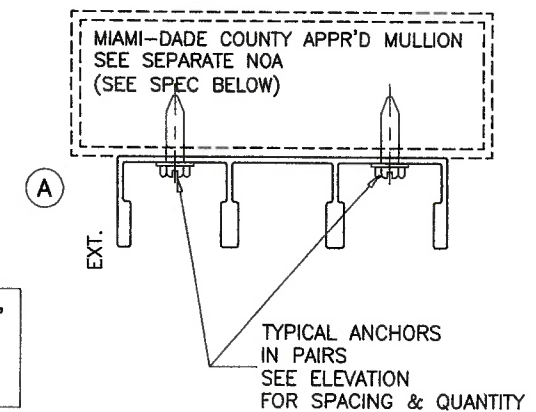
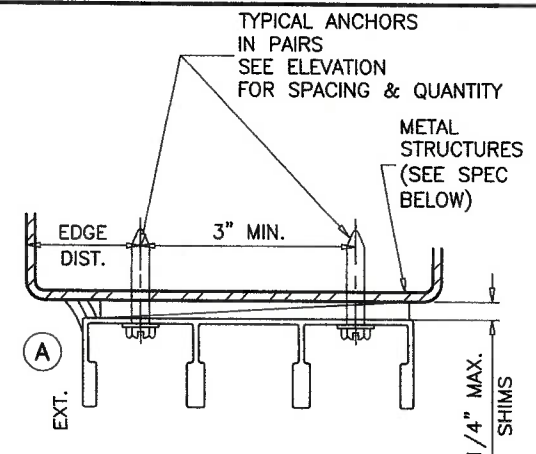
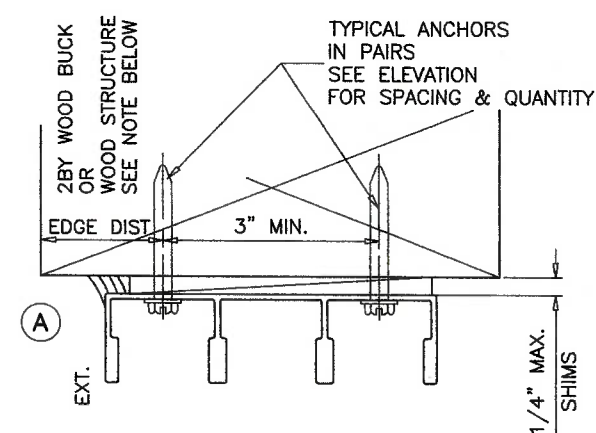
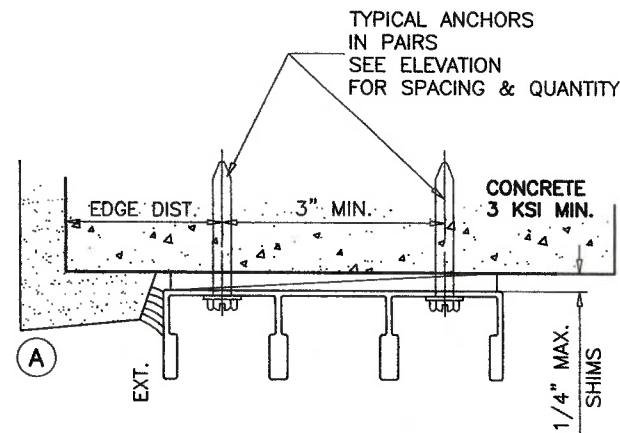
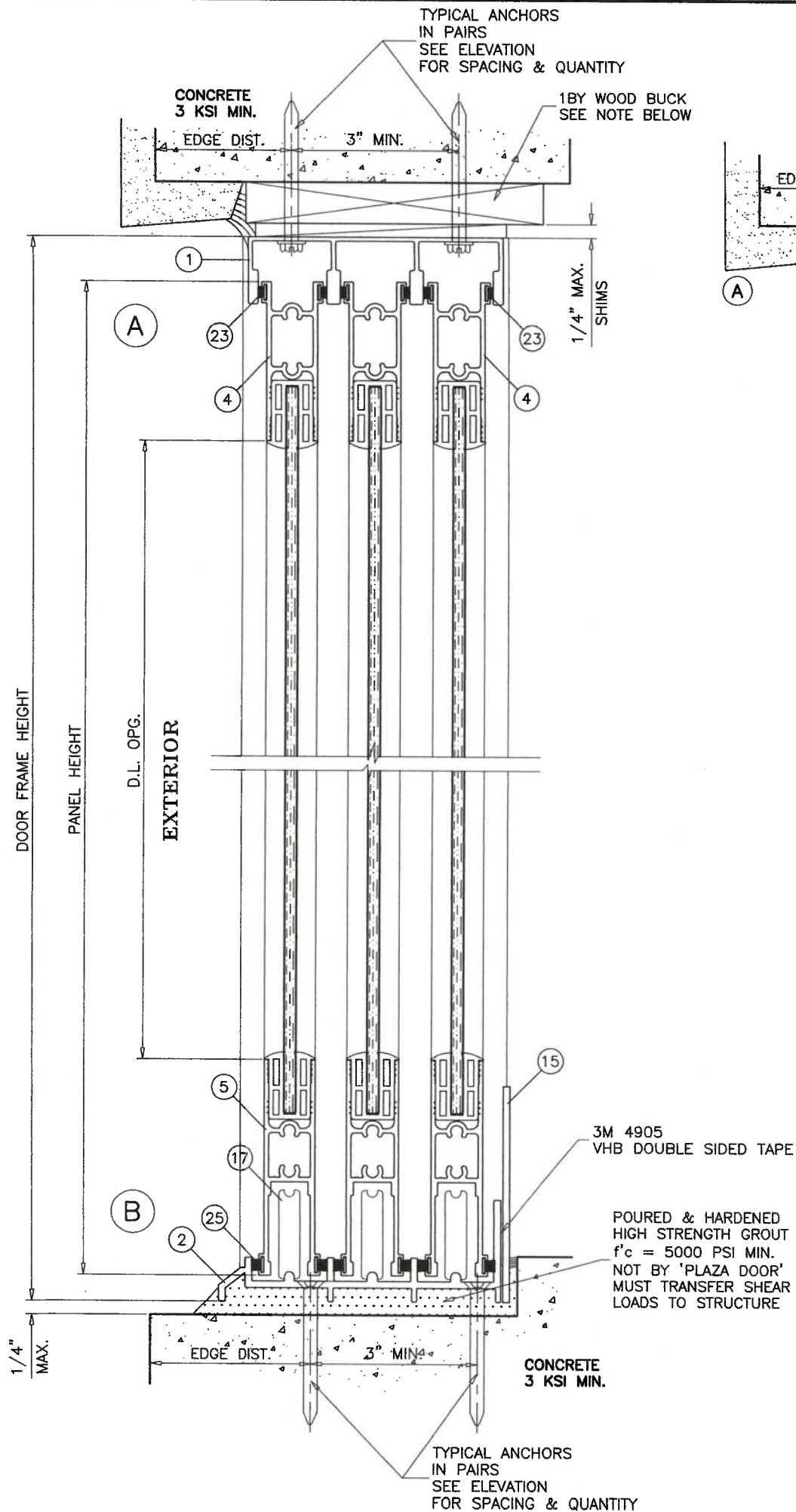
**AL-FAROOQ CORPORATION**  
ENGINEERS & PRODUCT DEVELOPMENT  
9360 SUNSET DRIVE, SUITE 220  
MIAMI, FLORIDA 33173 (C.A.N. 3538)  
TEL. (305) 264-8100 FAX. (305) 262-6978

SERIES "TITAN 50" ALUM SLIDING GLASS DOOR (N.I.)

**INTERNATIONAL IMPACT BUILDING PRODUCTS, LLC**  
d/b/a PLAZA DOOR  
5900 AUSTRALIAN AVE. SUITE #3  
WEST PALM BEACH, FL 33407  
TEL. (561) 578-5450 FAX. (561) 578-5460

revisions:		date		by description	
no	date	no	date	no	date
A	12.02.15	A	12.02.15	REV. PER	REV. PER
B	01.24.18	B	01.24.18	COMMENTS	COMMENTS
C	11.05.20	C	11.05.20	UPDATED TO 2017 FBC	UPDATED TO 2020 FBC
date: 06-24-15		scale: 3/8" = 1"		dr. by: TARIQ	
chk. by:		drawing no.		sheet 5 of 10	
		W15-24			

COMP-ANL W15-24PD



1BY OR 2BY WOOD BUCKS AND METAL STRUCTURE NOT BY 'PLAZA DOOR' MUST SUSTAIN LOADS IMPOSED BY GLAZING SYSTEM AND TRANSFER THEM TO THE BUILDING STRUCTURE.

**TYPICAL ANCHORS:** SEE ELEV. FOR SPACING

**TYPE 'A'—** 1/4" DIA. ULTRACON+ BY 'DEWALT' (Fu=164 KSI, Fy=148 KSI)  
INTO 2BY WOOD BUCKS OR WOOD STRUCTURES  
1-1/2" MIN. PENETRATION INTO WOOD (HEAD/JAMBS)

THRU 1BY BUCKS INTO CONC. OR BLOCKS  
1-1/4" MIN. EMBED INTO CONCRETE (HEAD/JAMBS)  
1-1/4" MIN. EMBED INTO BLOCKS (JAMBS)

**TYPE 'B'—** 1/4" DIA. ULTRACON+ BY 'DEWALT' (Fu=164 KSI, Fy=148 KSI)  
DIRECTLY INTO CONC. OR BLOCKS  
1-1/2" MIN. EMBED INTO CONCRETE (HEAD/SILL)  
1-1/4" MIN. EMBED INTO CONC. OR BLOCKS (JAMBS)

**TYPE 'C'—** 1/4" DIA. SELF DRILLING SCREWS (GRADE 5 CRS)  
INTO MIAMI-DADE COUNTY APPROVED MULLIONS OR  
INTO METAL STRUCTURES (HEAD/JAMBS)  
(3) THREADS MIN. TO EXTEND BEYOND METAL THICKNESS  
ALUMINUM: 1/8" THK. MIN. (6063-T5 MIN.)  
STEEL: 1/8" THK. MIN. (Fy = 36 KSI MIN.)  
(STEEL IN CONTACT WITH ALUMINUM TO BE PLATED OR PAINTED)

**TYPICAL EDGE DISTANCE**

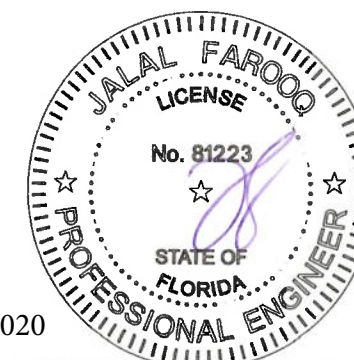
INTO CONCRETE AND BLOCKS = 2-1/2" MIN.  
INTO WOOD STRUCTURE = 1" MIN.  
INTO METAL STRUCTURE = 3/4" MIN.

WOOD AT HEAD OR JAMBS SG = 0.55 MIN.  
CONCRETE AT HEAD, SILL OR JAMBS f'c = 3000 PSI MIN.  
C-90 HOLLOW/FILLED BLOCK AT JAMBS f'm = 2000 PSI MIN.

**PRODUCT REVISED**  
as complying with the Florida  
Building Code  
NOA-No. 20-1202.14

Expiration Date 07/07/2025

By Ishtaq I. Chaudhry  
Miami-Dade Product Control



Sealed: 11/30/2020

**AL-FAROOQ CORPORATION**  
ENGINEERS & PRODUCT DEVELOPMENT  
9360 SUNSET DRIVE, SUITE 220  
MIAMI, FLORIDA 33173  
TEL. (305) 264-8100 FAX. (305) 262-6978  
COMP-ANL W15-24PD

SERIES 'TITAN 50' ALUM SLIDING GLASS DOOR (N.I.)  
**INTERNATIONAL IMPACT BUILDING PRODUCTS, LLC**  
d/b/a PLAZA DOOR  
5900 AUSTRALIAN AVE. SUITE #3  
WEST PALM BEACH, FL 33407  
TEL. (561) 578-5450 FAX. (561) 578-5460

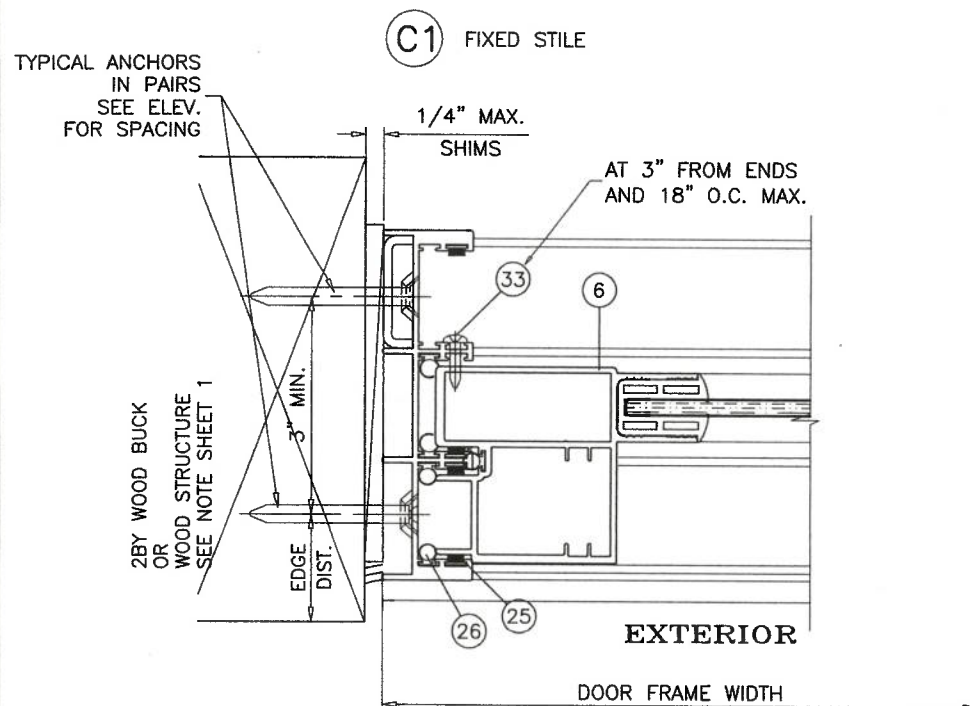
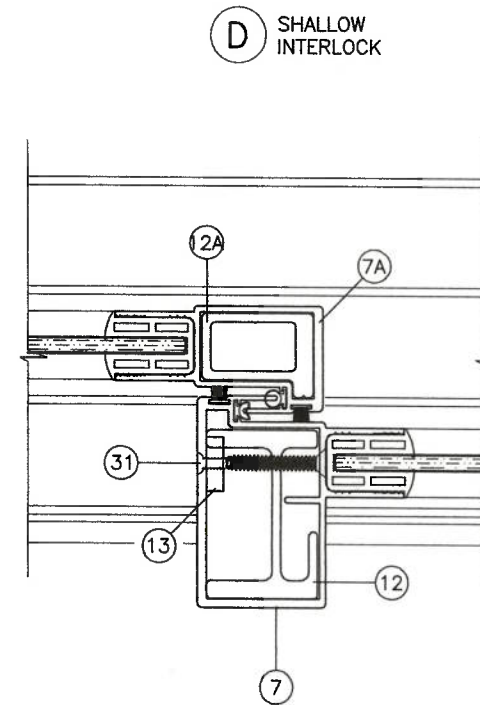
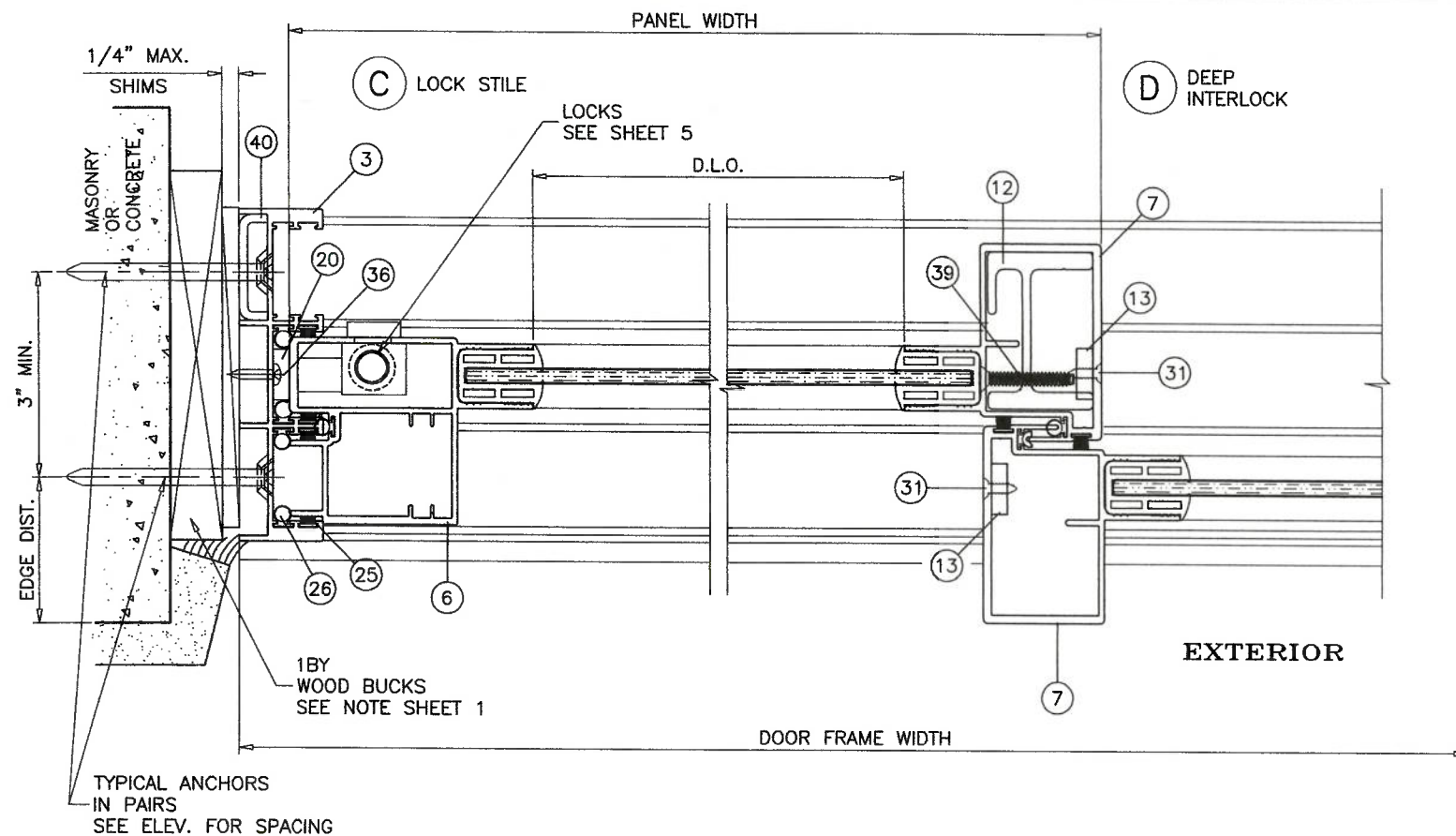
revisions:	no.	date	description	by
	A	12.02.15	REV. PER PER COMMENTS	
	B	01.24.18	UPDATED TO 2017 FBC	
	C	11.05.20	UPDATED TO 2020 FBC	

date:	06-24-15
scale:	3/8" = 1"
dr. by:	TARIQ
chk. by:	

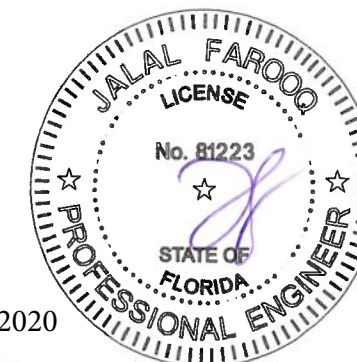
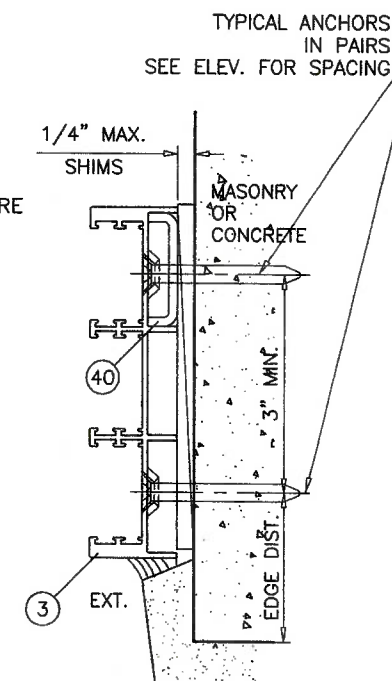
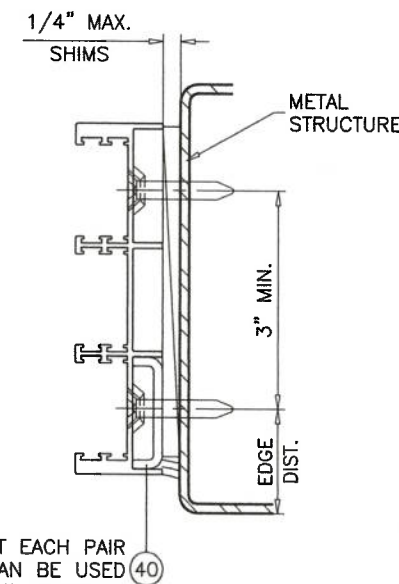
  

drawing no.	W15-24
sheet	6 of 10



**PRODUCT REVISED**  
as complying with the Florida  
Building Code  
NOA-No. 20-1202.14  
Expiration Date 07/07/2025  
By *Ishaq I. Chandra*  
Miami-Dade Product Control

(1) SHEAR CLIP REQD. AT EACH PAIR  
CAN BE USED  
AT EXT. OR INT. ANCHORS



Sealed: 11/30/2020

**AL-FAROOQ CORPORATION**  
ENGINEERS & PRODUCT DEVELOPMENT  
9360 SUNSET DRIVE, SUITE 220  
MIAMI, FLORIDA 33173  
TEL. (305) 264-8100 FAX. (305) 262-6978

COMP-ANL W15-24PD

---

SERIES 'TITAN 50' ALUM SLIDING GLASS DOOR (N.I.)  
INTERNATIONAL IMPACT BUILDING PRODUCTS, LLC  
d/b/a PLAZA DOOR  
5900 AUSTRALIAN AVE. SUITE #3  
WEST PALM BEACH, FL 33407  
TEL. (561) 578-5450 FAX. (561) 578-5460

REV. PER RER COMMENTS  
A 12.02.15  
B 01.24.18  
C 11.05.20

---

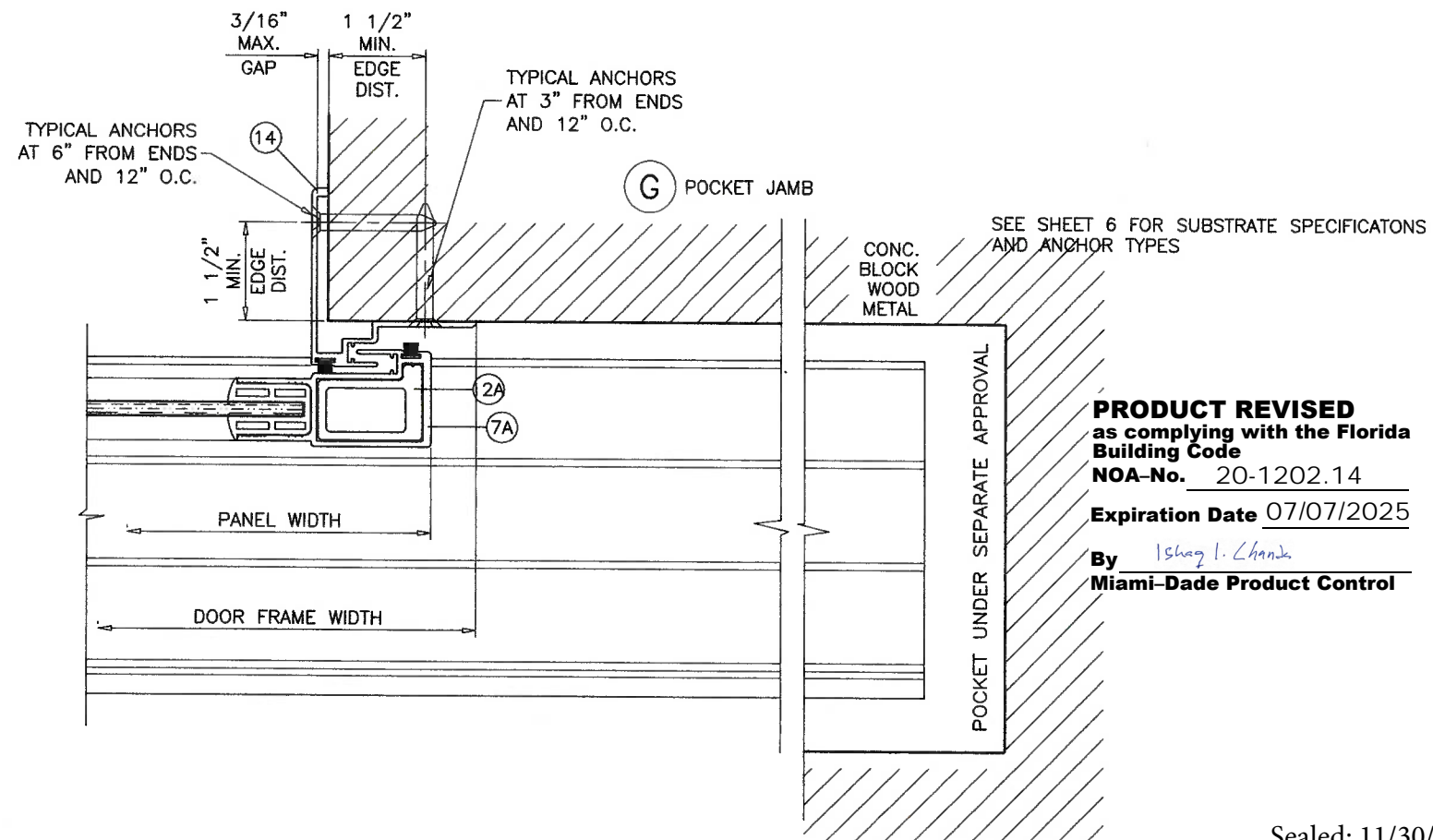
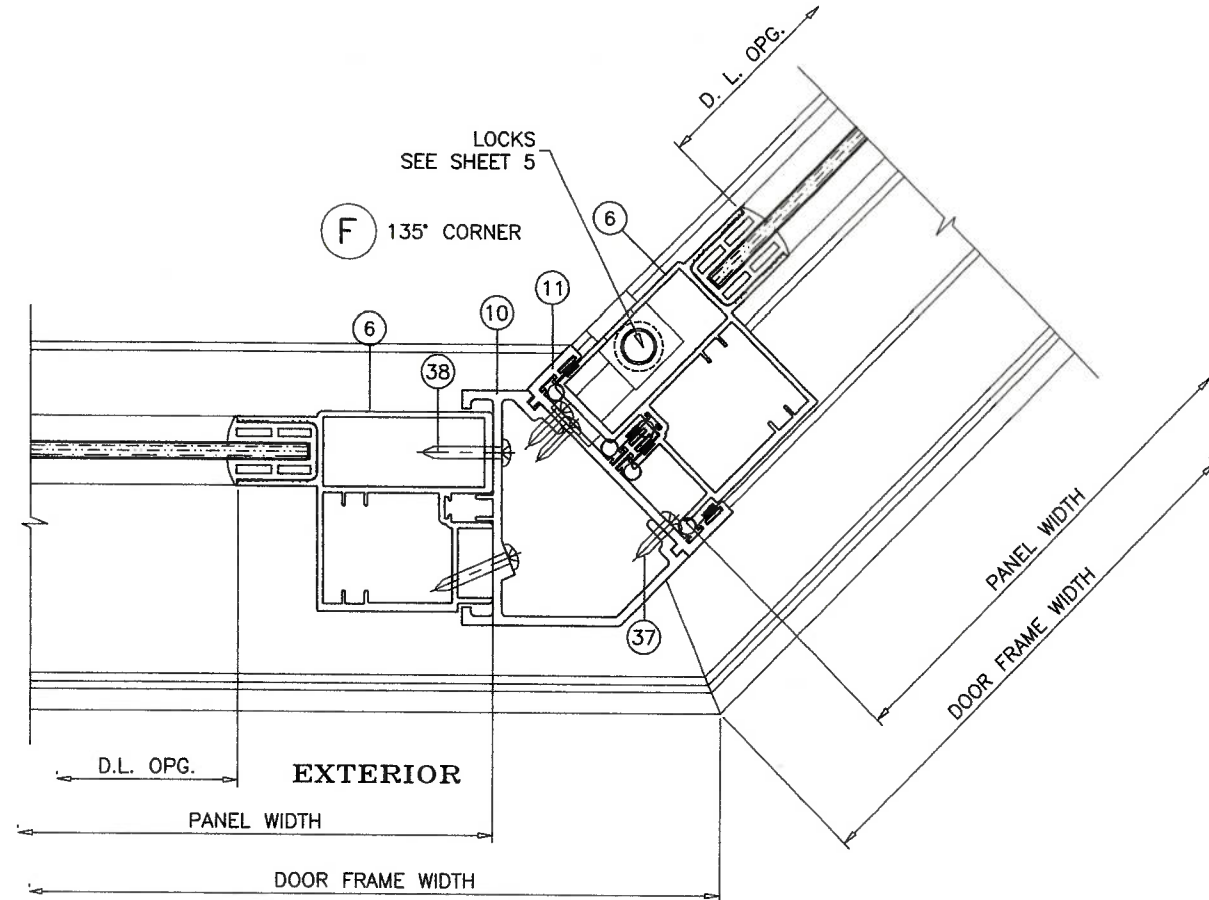
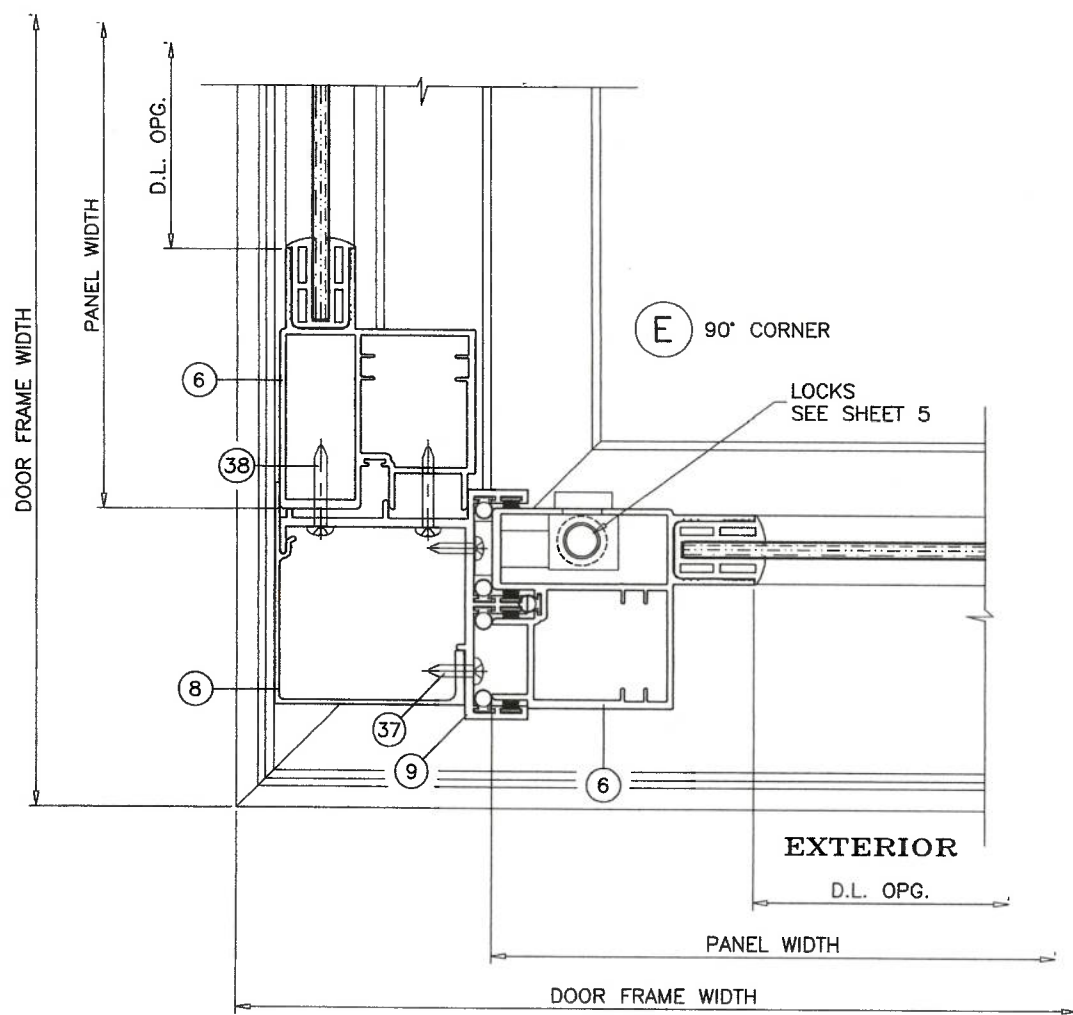
revisions:  
no date by description  
A 12.02.15 REV. PER RER COMMENTS  
B 01.24.18 UPDATED TO 2017 FBC  
C 11.05.20 UPDATED TO 2020 FBC

date: 06-24-15  
scale: 3/8" = 1"  
dr. by: TARIQ  
chk. by:

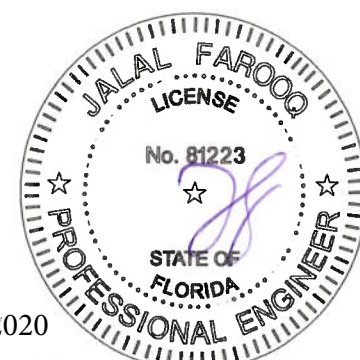
---

drawing no.  
**W15-24**

sheet 7 of 10



**PRODUCT REVISED**  
as complying with the Florida  
Building Code  
NOA-No. 20-1202.14  
Expiration Date 07/07/2025  
By *Ishag I. Chank*  
Miami-Dade Product Control



Sealed: 11/30/2020

**AL-FAROOQ CORPORATION**  
ENGINEERS & PRODUCT DEVELOPMENT  
9360 SUNSET DRIVE, SUITE 220  
MIAMI, FLORIDA 33173  
TEL. (305) 262-6978 FAX. (305) 262-6978

COMP-ANL W15-24PD

---

SERIES 'TITAN 50' ALUM SLIDING GLASS DOOR (N.I.)  
**INTERNATIONAL IMPACT BUILDING PRODUCTS, LLC**  
**d/b/a PLAZA DOOR**  
5900 AUSTRALIAN AVE. SUITE #3  
WEST PALM BEACH, FL 33407  
TEL. (561) 578-5450 FAX. (561) 578-5460

revisions:

no	date	by	description
A	12.02.15	REV.	PER RER COMMENTS
B	01.24.18	REV.	UPDATED TO 2017 FBC
C	11.05.20	REV.	UPDATED TO 2020 FBC

---

date: 06-24-15  
scale: 3/8" = 1"  
dr. by: TARIQ  
chk. by:

drawing no.  
**W15-24**  
sheet 8 of 10

① FRAME HEAD

④ PANEL TOP RAIL

⑤ PANEL BOTTOM RAIL

② FRAME SILL

③ FRAME JAMB

⑮ HI-RISE ADAPTER

④① SHEAR CLIP

⑦ DEEP INTERLOCK

⑫ DEEP INTERLOCK STIFFENER

⑧ 90° CORNER COVER

⑨ 90° ASTRAGAL

⑦A SHALLOW INTERLOCK

⑫A SHALLOW INTERLOCK STIFFENER

⑩ 135° CORNER ASTRAGAL

⑪ 135° CORNER ADAPTER

⑭ POCKET INTERLOCK

⑬ INTERLOCK REINFORCEMENT

⑥ JAMB/LOCK STILE

⑯ GLAZING GASKET  
SCALE 1:1

HARDNESS = 75 SHORE A  
TENSILE STRENGTH (100% STRAIN) = 800 PSI  
TENSILE STRENGTH (BREAK) = 1900 PSI  
ELONGATION AT BREAK = 380%  
TEAR STRENGTH = 250 LBF/IN  
SPECIFIC GRAVITY = 1.27

**PRODUCT REVISED**  
as complying with the Florida Building Code  
NOA-No. 20-1202.14  
Expiration Date 07/07/2025

By Ishaq I. Chande  
Miami-Dade Product Control

revisions:

no	date	by	description
A	12.02.15	REV. PER	REV. COMMENTS
B	01.24.18	UPDATED TO	2017 FBC
C	11.05.20	UPDATED TO	2020 FBC

date: 06-24-15  
scale: 3/8" = 1"  
dr. by: TARIQ  
chk. by:

drawing no.  
**W15-24**  
sheet 9 of 10

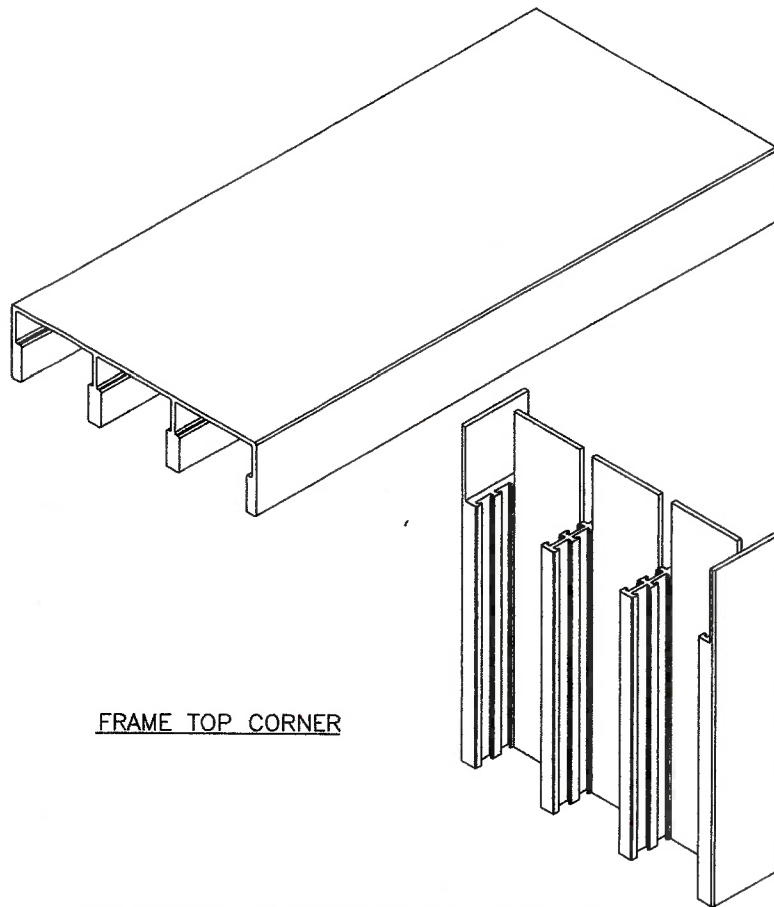
Sealed: 11/30/2020

**AL-FAROOQ CORPORATION**  
ENGINEERS & PRODUCT DEVELOPMENT  
9360 SUNSET DRIVE, SUITE 220  
MIAMI, FLORIDA 33173 (C.A.N. 3638)  
TEL. (305) 262-6978 FAX. (305) 264-8100

SERIES 'TITAN 50' ALUM SLIDING GLASS DOOR (N.I.)

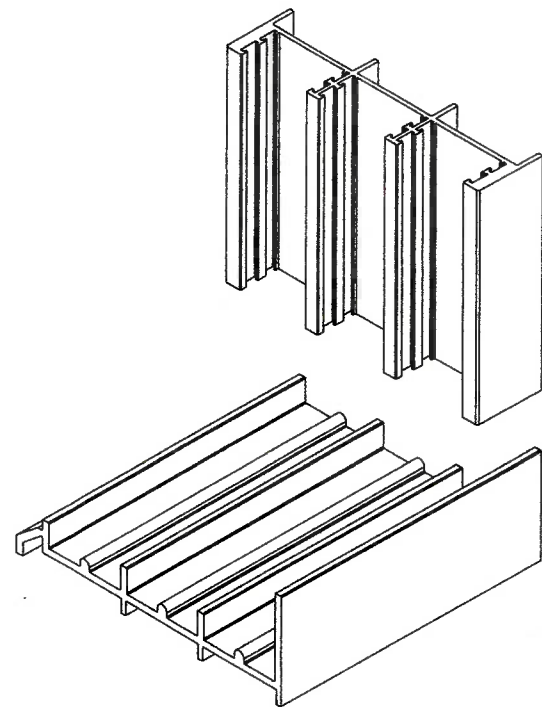
**INTERNATIONAL IMPACT BUILDING PRODUCTS, LLC**  
d/b/a PLAZA DOOR  
5900 AUSTRALIAN AVE. SUITE #3  
WEST PALM BEACH, FL 33407  
TEL. (561) 578-5450 FAX. (561) 578-5460

COMP-ANL W15-24PD

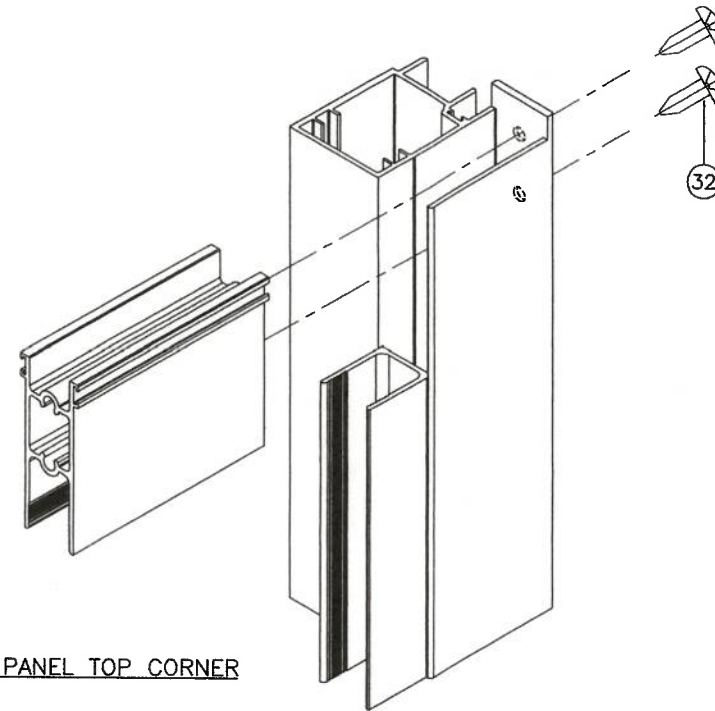


FRAME TOP CORNER

JAMB NOTCHED TO RECIEVE HEADER AND SILL RIBS  
APPLY BEAD OF SONNEBORN NP1 SEALANT  
AT TOP AND BOTTOM JOINTS

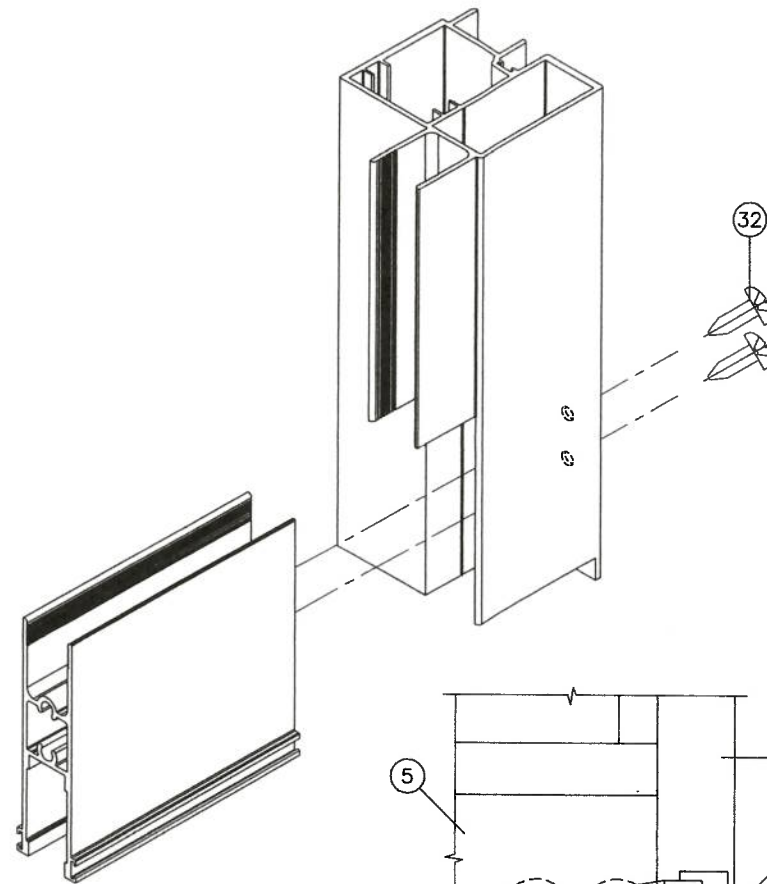


FRAME BOTTOM CORNER

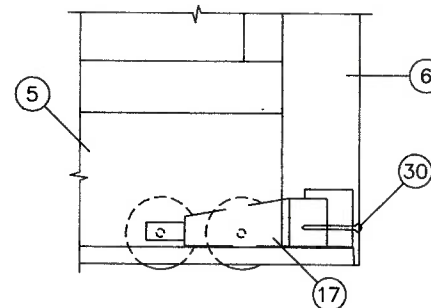


PANEL TOP CORNER

APPLY BEAD OF SONNEBORN NP1 SEALANT  
AT TOP AND BOTTOM JOINTS



PANEL BOTTOM CORNER



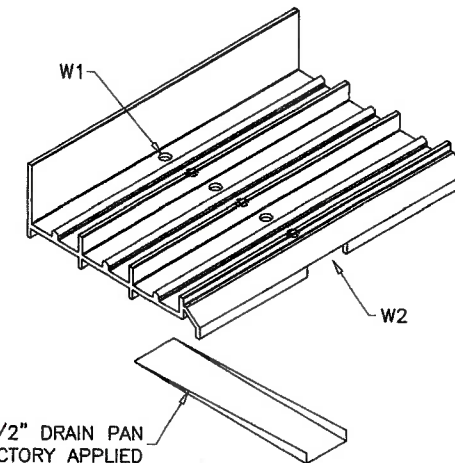
ROLLER FASTENER DETAIL

**PRODUCT REVISED**  
as complying with the Florida  
Building Code

NOA-No. 20-1202.14

Expiration Date 07/07/2025

By Ishag I. Chank  
Miami-Dade Product Control

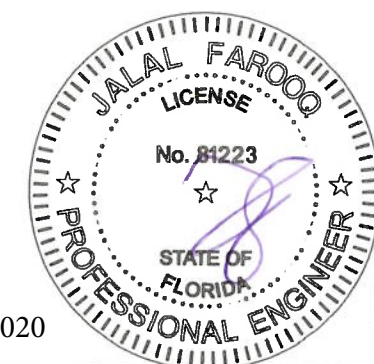


1/4" X 1-1/2" DRAIN PAN  
FACTORY APPLIED

**WEEPHOLES:**

W1 = CLUSTER OF SIX 3/8" WEEP HOLES AT 17" FROM  
EACH END AND 21" O.C.

W2 = 1/4" X 1-1/2" OPENING FOR DRAIN PAN AT 17" FROM  
EACH END AND 21" O.C.



Sealed: 11/30/2020

**AL-FAROOQ CORPORATION**  
ENGINEERS & PRODUCT DEVELOPMENT  
9360 SUNSET DRIVE, SUITE 220  
MIAMI, FLORIDA 33173 (C.A.N. 3538)  
TEL. (305) 264-8100 FAX. (305) 262-6978  
COMP-ANL W15-24PD

SERIES 'TITAN 50' ALUM SLIDING GLASS DOOR (N.I.)  
**INTERNATIONAL IMPACT BUILDING PRODUCTS, LLC**  
d/b/a PLAZA DOOR  
5900 AUSTRALIAN AVE. SUITE #3  
WEST PALM BEACH, FL 33407  
TEL. (561) 578-5450 FAX. (561) 578-5460

revisions:		no	date	by	description
date: 06-24-15	A	12.02.15			NO CHANGE THIS SHEET
	B	01.24.18			UPDATED TO 2017 FBC
	C	11.05.20			UPDATED TO 2020 FBC
scale: 3/8" = 1"	dr. by: TARIQ	chk. by:			

drawing no.  
**W15-24**  
sheet 10 of 10