



DEPARTMENT OF REGULATORY AND ECONOMIC RESOURCES (RER)
BOARD AND CODE ADMINISTRATION DIVISION

NOTICE OF ACCEPTANCE (NOA)

MIAMI-DADE COUNTY
PRODUCT CONTROL SECTION

11805 SW 26 Street, Room 208
Miami, FL 33175
T (786) 315-2590 F (786) 315-2599

www.miamidade.gov/economy

RC Home Showcase, Inc.
16115 NW 52nd Ave
Miami, FL 33014

SCOPE:

This NOA is being issued under the applicable rules and regulations governing the use of construction materials. The documentation submitted has been reviewed and accepted by Miami-Dade County RER - Product Control Section to be used in Miami Dade County and other areas where allowed by the Authority Having Jurisdiction (AHJ).

This NOA shall not be valid after the expiration date stated below. The Miami-Dade County Product Control Section (In Miami-Dade County) and/or the AHJ (in areas other than Miami-Dade County) reserve the right to have this product or material tested for quality assurance purposes. If this product or material fails to perform in the accepted manner, the manufacturer will incur the expense of such testing and the AHJ may immediately revoke, modify, or suspend the use of such product or material within their jurisdiction. RER reserves the right to revoke this acceptance, if it is determined by Miami-Dade County Product Control Section that this product or material fails to meet the requirements of the applicable building code.

This product is approved as described herein, and has been designed to comply with the Florida Building Code, including the High Velocity Hurricane Zone.

DESCRIPTION: Series "PRO075" Aluminum Project Out Window – L.M.I.

APPROVAL DOCUMENT: Drawing No. **W14-03**, titled "Series PR075 Alum Project Out Wdw. (L.M.I.)", sheets 1 through 12 of 12, dated 02/03/14, with revision **B** dated 11/30/20, prepared by Al-Farooq Corporation, signed and sealed by Jalal Farooq, P.E., bearing the Miami-Dade County Product Control Section Revision stamp with the Notice of Acceptance number and expiration date by the Miami-Dade County Product Control Section.

MISSILE IMPACT RATING: Large and Small Missile Impact Resistant

LABELING: Each unit shall bear a permanent label with the manufacturer's name or logo, city, state, model/series, and following statement: "Miami-Dade County Product Control Approved", unless otherwise noted herein.

RENEWAL of this NOA shall be considered after a renewal application has been filed and there has been no change in the applicable building code negatively affecting the performance of this product.

TERMINATION of this NOA will occur after the expiration date or if there has been a revision or change in the materials, use, and/or manufacture of the product or process. Misuse of this NOA as an endorsement of any product, for sales, advertising or any other purposes shall automatically terminate this NOA. Failure to comply with any section of this NOA shall be cause for termination and removal of NOA.

ADVERTISEMENT: The NOA number preceded by the words Miami-Dade County, Florida, and followed by the expiration date may be displayed in advertising literature. If any portion of the NOA is displayed, then it shall be done in its entirety.

INSPECTION: A copy of this entire NOA shall be provided to the user by the manufacturer or its distributors and shall be available for inspection at the job site at the request of the Building Official.

This NOA **revises NOA No. 18-0208.01** and consists of this page 1 and evidence pages E-1, E-2 and E-3, as well as approval document mentioned above.

The submitted documentation was reviewed by **Sifang Zhao, P.E.**



S.Z.

04/29/2021

NOA No. 20-1216.09
Expiration Date: June 06, 2023
Approval Date: April 29, 2021
Page 1

NOTICE OF ACCEPTANCE: EVIDENCE SUBMITTED

1. EVIDENCE SUBMITTED UNDER PREVIOUS NOA's

A. DRAWINGS

1. Manufacturer's die drawings and sections. *(Submitted under NOA# 12-1024.06)*
2. Drawing No. **W14-03**, titled "Series PR075 Alum Project Out Wdw. (L.M.I.)", sheets 1 through 12 of 12, dated 02/03/14, with revision **A** dated 02/01/18, prepared by Al-Farooq Corporation, signed and sealed by Javad Ahmad, P.E.

B. TESTS

1. Test reports on: 1) Air Infiltration Test, per FBC, TAS 202-94
2) Uniform Static Air Pressure Test, Loading per FBC, TAS 202-94
3) Water Resistance Test, per FBC, TAS 202-94
4) Drop Load Test, per CPCS 16 CFR 1201 (Cat 11)
5) Large Missile Impact Test per FBC, TAS 201-94
6) Cyclic Wind Pressure Loading per FBC, TAS 203-94
7) Forced Entry Test, per FBC 2411.3.2.1, and TAS 202-94
along with marked-up drawings and installation diagram of a Project out aluminum window, prepared by Fenestration Testing Laboratory, Inc., Test Report No. **FTL-6605**, dated 04/18/12, signed and sealed by Marlin D. Brinson, P.E.
(Submitted under NOA# 12-1024.06)

C. CALCULATIONS

1. Anchor verification calculations and structural analysis, complying with **FBC-2010**, dated 02/04/14, prepared by Al-Farooq Corporation, signed and sealed by Javad Ahmad, P.E.
2. Glazing complies with **ASTM E1300-09**

D. QUALITY ASSURANCE

1. Miami-Dade Department of Regulatory and Economic Resources (RER)

E. MATERIAL CERTIFICATIONS

1. NOA No. **17-1114.14** issued to **Kuraray America, Inc.** for their "**Trosifol® Ultraclear, Clear and Color PVB Glass Interlayers**", expiring on 07/08/19.

F. STATEMENTS

1. Statement letter of conformance, complying with **FBC 6th Edition (2017)**, and of no financial interest, dated January 31, 2018, issued by Al-Farooq Corporation, signed and sealed by Javad Ahmad, P.E.
2. Name changed to **RC HOME SHOWCASE, INC.** as registered in the Florida Department of State, Division of Corporation, Sunbiz document dated 10/11/13.
(Submitted under NOA# 13-1112.04)
3. Asset purchase agreement dated 10/01/13, signed by Mr. Manuel A. Kronfle-Kozhaya, Mr. Henry F. Kronfle-Kozhaya, Mr. Raul Casares, Mr. Eusebio Paredes and Ms. Nancy Vias. *(Submitted under NOA# 13-1112.04)*



Sifang Zhao, P.E.
Product Control Examiner
NOA No. 20-1216.09
Expiration Date: June 06, 2023
Approval Date: April 29, 2021

RC Home Showcase, Inc.

NOTICE OF ACCEPTANCE: EVIDENCE SUBMITTED

F. STATEMENTS (CONTINUED)

4. Statement letter of complying with the Sales of Assets issued by RC Aluminum Industries, Inc., dated 10/30/13, signed by Raul Casares, President.
(Submitted under NOA# 13-1112.04)
5. Department of State Certification of **RC HOME SHOWCASE, INC.** as a for profit corporation, active and organized under the laws of the State of Florida, dated 10/11/13 and signed by T. Carter, the Secretary of State.
(Submitted under NOA# 13-1112.04)
6. Department of State Certification of **MANUHEN ENTERPRISES, LLC** as a limited liability company, active and organized under the laws of the State of Florida, dated 08/22/13 and signed by N. Culligan, the Secretary of State.
(Submitted under NOA# 13-1112.04)
7. Laboratory compliance letter for Test Report No. **FTL-6605**, issued by Fenestration Testing Laboratory, Inc., dated 04/18/12, signed and sealed by Marlin D. Brinson, P.E.
(Submitted under NOA# 12-1024.06)
8. Proposal issued by Product Control Section, dated 09/30/11, with revision, dated 12/19/11, signed by Jaime D. Gascon, P.E. *(Submitted under NOA# 12-1024.06)*

G. OTHERS

1. NOA No. **14-0421.03**, issued to RC Home Showcase, Inc. for their Series “PR075” Aluminum Project Out Window – L.M.I., approved on 06/26/14 and expiring on 06/06/18.



Sifang Zhao, P.E.
Product Control Examiner
NOA No. 20-1216.09
Expiration Date: June 06, 2023
Approval Date: April 29, 2021

NOTICE OF ACCEPTANCE: EVIDENCE SUBMITTED

2. NEW EVIDENCE SUBMITTED

A. DRAWINGS

1. Drawing No. **W14-03**, titled “Series PR075 Alum Project Out Wdw. (L.M.I.)”, sheets 1 through 12 of 12, dated 02/03/14, with revision **B** dated 11/30/20, prepared by Al-Farooq Corporation, signed and sealed by Jalal Farooq, P.E.

B. TESTS

1. None

C. CALCULATIONS

1. Anchor verification, complying with **FBC 7th Edition (2020)**, dated 12/18/20, prepared by Al-Farooq Corporation, signed and sealed by Jalal Farooq, P.E.

D. QUALITY ASSURANCE

1. Miami-Dade Department of Regulatory and Economic Resources (RER)

E. MATERIAL CERTIFICATIONS

1. NOA No. **20-0915.22** issued to Kuraray America, Inc. for their “Trosifol® Ultraclear, Clear and Color PVB Glass Interlayers” dated 11/19/20, expiring on 07/08/24.

F. STATEMENTS

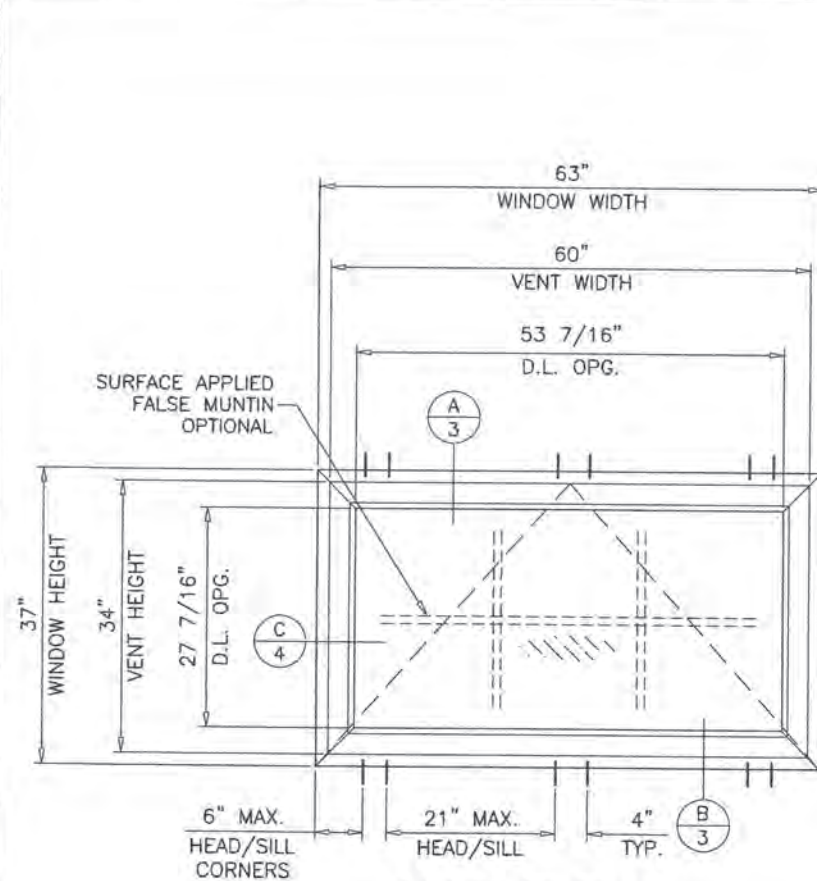
1. Statement letter of conformance, complying with **FBC 6th Edition (2017)** and **FBC 7th Edition (2020)**, and of no financial interest, dated December 18, 2020, issued by Al-Farooq Corporation, signed and sealed by Jalal Farooq, P.E.

G. OTHERS

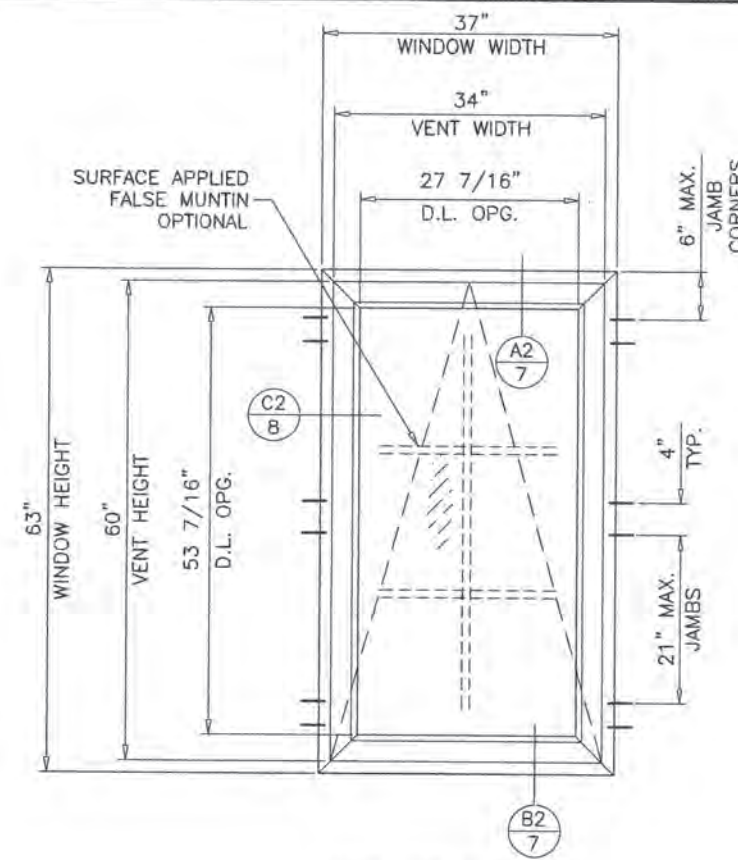
1. NOA No. **18-0208.01**, issued to RC Home Showcase, Inc. for their Series “PR075” Aluminum Project Out Window – L.M.I., approved on 04/12/18 and expiring on 06/06/23.



Sifang Zhao, P.E.
Product Control Examiner
NOA No. 20-1216.09
Expiration Date: June 06, 2023
Approval Date: April 29, 2021



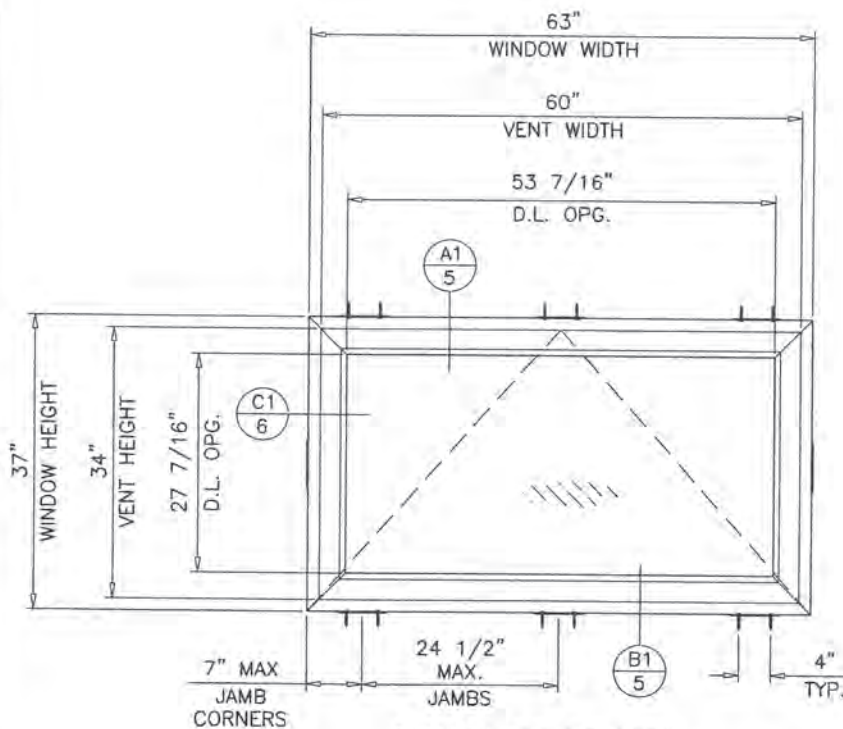
LANDSCAPE FRAMES



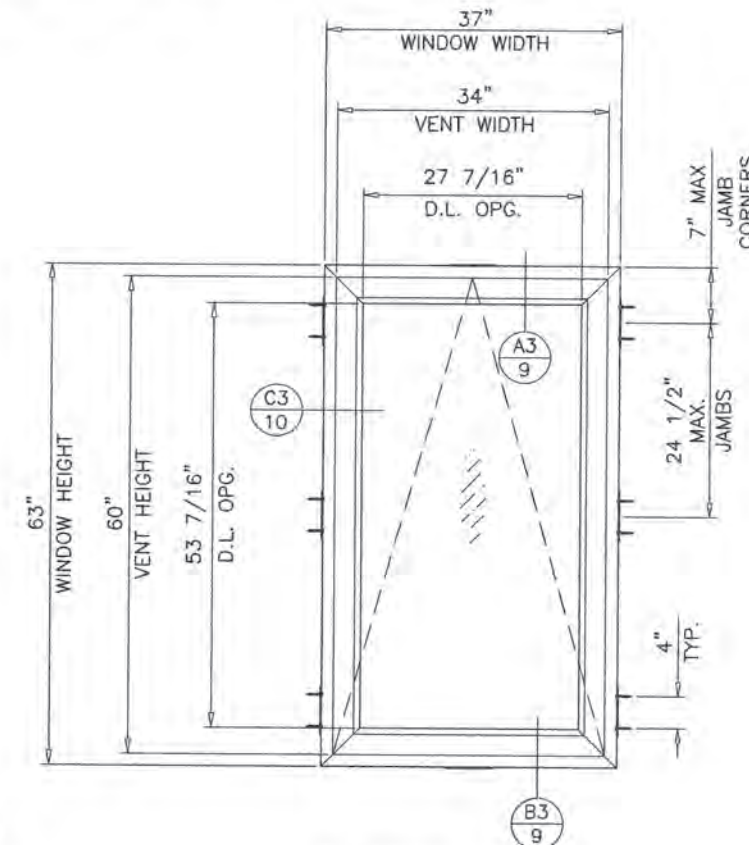
PORTRAIT FRAMES

TYPICAL ELEVATIONS

ANCHORS DIRECTLY THRU FRAME



LANDSCAPE FRAMES



PORTRAIT FRAMES

TYPICAL ELEVATIONS

ANCHORS THRU FRAME ADAPTERS

SERIES PR075 ALUMINUM PROJECT OUT WINDOW

DESIGN LOAD RATING FOR THESE WINDOWS TO BE AS PER CHARTS SHOWN ON SHEET 2.

APPROVAL APPLIES TO SINGLE UNITS OR SIDE BY SIDE COMBINATIONS OF P.O./P.O. OR PROJECT OUT WITH OTHER MIAMI-DADE COUNTY APPR'D WINDOWS USING MIAMI-DADE COUNTY APPROVED MULLIONS IN BETWEEN. LOWER DESIGN PRESSURE FROM WINDOWS OR MULLION APPROVAL WILL APPLY TO ENTIRE SYSTEM.

THIS PRODUCT HAS BEEN DESIGNED AND TESTED TO COMPLY WITH THE REQUIREMENTS OF THE 2017 (6TH EDITION)/2020 (7TH EDITION) FLORIDA BUILDING CODE INCLUDING HIGH VELOCITY HURRICANE ZONE (HVHZ).

1BY OR 2BY WOOD BUCKS & BUCK FASTENERS BY OTHERS, MUST BE DESIGNED AND INSTALLED ADEQUATELY TO TRANSFER APPLIED PRODUCT LOADS TO THE BUILDING STRUCTURE.

ANCHORS SHALL BE CORROSION RESISTANT, SPACED AS SHOWN ON DETAILS AND INSTALLED PER MANUF'S INSTRUCTIONS. SPECIFIED EMBEDMENT TO BASE MATERIAL SHALL BE BEYOND WALL DRESSING OR STUCCO.

A LOAD DURATION INCREASE IS USED IN DESIGN OF ANCHORS INTO WOOD ONLY. ALL SHIMS TO BE HIGH IMPACT, NON-METALLIC AND NON-COMPRESSIBLE.

MATERIALS INCLUDING BUT NOT LIMITED TO STEEL/METAL SCREWS, THAT COME INTO CONTACT WITH OTHER DISSIMILAR MATERIALS SHALL MEET THE REQUIREMENTS OF THE 2017/2020 FLORIDA BLDG. CODE & ADOPTED STANDARDS.

THIS PRODUCT APPROVAL IS GENERIC AND DOES NOT PROVIDE INFORMATION FOR A SITE SPECIFIC PROJECT, i.e. LIFE SAFETY OF THIS PRODUCT, ADEQUACY OF STRUCTURE RECEIVING THIS PRODUCT AND SEALING AROUND OPENING FOR WATER INFILTRATION RESISTANCE ETC.

CONDITIONS NOT SHOWN IN THIS DRAWING ARE TO BE ANALYZED SEPARATELY, AND TO BE REVIEWED BY BUILDING OFFICIAL.

DESIGN LOADS SHOWN ARE BASED ON 'ALLOWABLE STRESS DESIGN (ASD)'.

THESE WINDOWS ARE RATED FOR LARGE & SMALL MISSILE IMPACT. SHUTTERS ARE NOT REQUIRED.

PRODUCT REVISED
as complying with the Florida
Building Code

NOA-No. 20-1216.09

Expiration Date 06/06/2023

By
Miami-Dade Product Control

DEC 14 2020



afc

AL-FAROOQ CORPORATION
ENGINEERS & PRODUCT DEVELOPMENT
9360 SUNSET DRIVE, SUITE 220
MIAMI, FLORIDA 33173 (C.A.N. 3598)
TEL. (305) 264-8100 FAX. (305) 262-6978

COMP-ANL\W14-03RC

SERIES PR075 ALUM PROJECT OUT WDW. (L.M.I.)

RC Home Showcase, Inc.

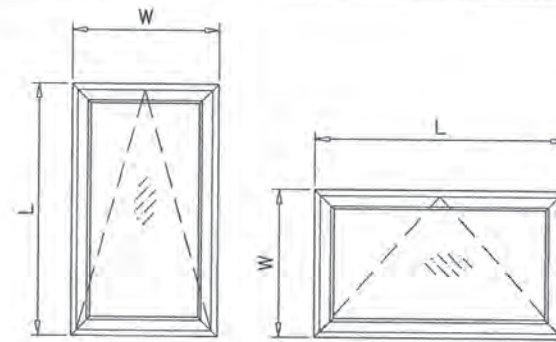
16115 N.W. 52nd Ave
Miami, Florida 33014

Tel. (305) 392-6214 Fax. (305) 260-6432

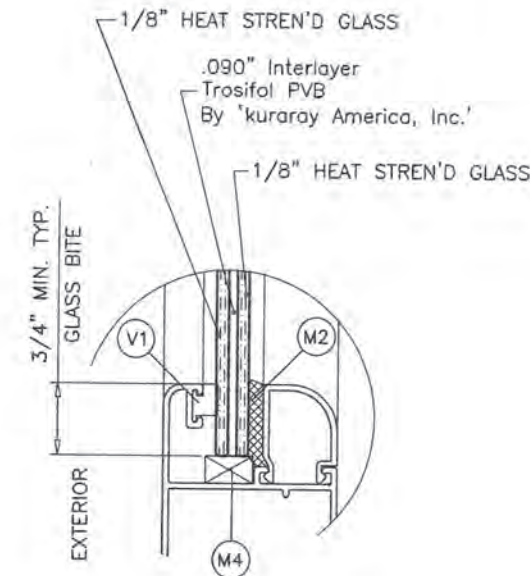
revisions:					
no	date	by	description		
A	02.01.18		UPDATED TO 2017 FBC		
B	11.30.20		UPDATED TO 2020 FBC		
date: 02-03-14					
scale: 1/2"=1'-0"					
dr. by: TARIQ					
chk. by:					
drawing no.					
W14-03					
sheet 1 of 12					

DESIGN LOAD CAPACITY - PSF			
WINDOW DIMS.		GLASS TYPES 'A' & 'B'	
WIDTH	LENGTH	EXT.(+)	INT.(-)
19-1/8"	24"	85.0	85.0
	30"	85.0	85.0
	37"	85.0	85.0
	38-3/8"	85.0	85.0
	42"	85.0	85.0
	48"	85.0	85.0
	50-5/8"	85.0	85.0
	54"	85.0	85.0
	60"	85.0	85.0
	63"	85.0	85.0
	74-1/4"	85.0	85.0
24"	24"	85.0	85.0
	30"	85.0	85.0
	37"	85.0	85.0
	38-3/8"	85.0	85.0
	42"	85.0	85.0
	48"	85.0	85.0
	50-5/8"	85.0	85.0
	54"	85.0	85.0
	60"	85.0	85.0
	63"	85.0	85.0
	74-1/4"	85.0	85.0
26-1/2"	24"	85.0	85.0
	30"	85.0	85.0
	37"	85.0	85.0
	38-3/8"	85.0	85.0
	42"	85.0	85.0
	48"	85.0	85.0
	50-5/8"	85.0	85.0
	54"	85.0	85.0
	60"	85.0	85.0
	63"	85.0	85.0
	74-1/4"	85.0	85.0
30"	24"	85.0	85.0
	30"	85.0	85.0
	37"	85.0	85.0
	38-3/8"	85.0	85.0
	42"	85.0	85.0
	48"	85.0	85.0
	50-5/8"	85.0	85.0
	54"	85.0	85.0
	60"	85.0	85.0
	63"	85.0	85.0
	74-1/4"	77.9	77.9

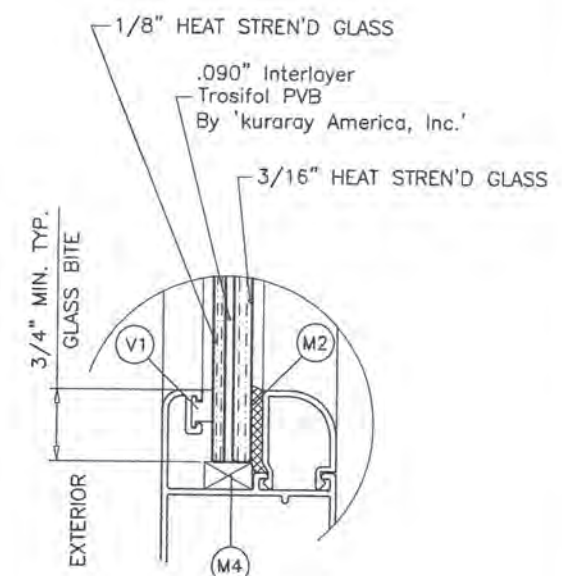
DESIGN LOAD CAPACITY - PSF			
WINDOW DIMS.		GLASS TYPES 'A' & 'B'	
WIDTH	LENGTH	EXT.(+)	INT.(-)
37"	24"	85.0	85.0
	30"	85.0	85.0
	37"	85.0	85.0
	38-3/8"	85.0	85.0
	42"	85.0	85.0
	48"	85.0	85.0
	50-5/8"	85.0	85.0
	54"	85.0	85.0
	60"	78.1	78.1
	63"	74.4	74.4
42"	24"	85.0	85.0
	30"	85.0	85.0
	37"	85.0	85.0
	38-3/8"	85.0	85.0
	42"	85.0	85.0
	48"	85.0	85.0
	50-5/8"	81.6	81.6
	54"	76.5	76.5
48"	24"	85.0	85.0
	30"	85.0	85.0
	37"	85.0	85.0
	38-3/8"	85.0	85.0
	42"	85.0	85.0
	48"	75.3	75.3
53-1/8"	24"	85.0	85.0
	30"	85.0	85.0
	37"	85.0	85.0
	38-3/8"	85.0	85.0
	42"	77.8	77.8
54"	24"	85.0	85.0
	30"	85.0	85.0
	37"	85.0	85.0
	38-3/8"	83.7	83.7
	42"	76.5	76.5
56"	24"	85.0	85.0
	30"	85.0	85.0
	37"	83.7	83.7
	38-3/8"	80.7	80.7
60"	24"	85.0	85.0
	30"	85.0	85.0
	37"	78.1	78.1
	38-3/8"	75.3	75.3
63"	24"	85.0	85.0
	30"	85.0	85.0
	37"	74.4	74.4



NOTE:
WIDTH AND LENGTH DIMENSIONS CAN BE ORIENTED
VERTICALLY OR HORIZONTALLY AS SHOWN ABOVE.



GLASS TYPE 'A'
5/16" NOM. OVERALL THK.



GLASS TYPE 'B'
3/8" NOM. OVERALL THK.

GLAZING OPTIONS

NOTE:
GLASS CAPACITIES ON THIS SHEET ARE
BASED ON ASTM E1300-09 (3 SEC. GUSTS)
AND FLORIDA BUILDING COMMISSION
DECLARATORY STATEMENT DCA05-DEC-219

PRODUCT REVISED
as complying with the Florida
Building Code
NOA-No. 20-1216.09

Expiration Date 06/06/2023

By 
Miami-Dade Product Control

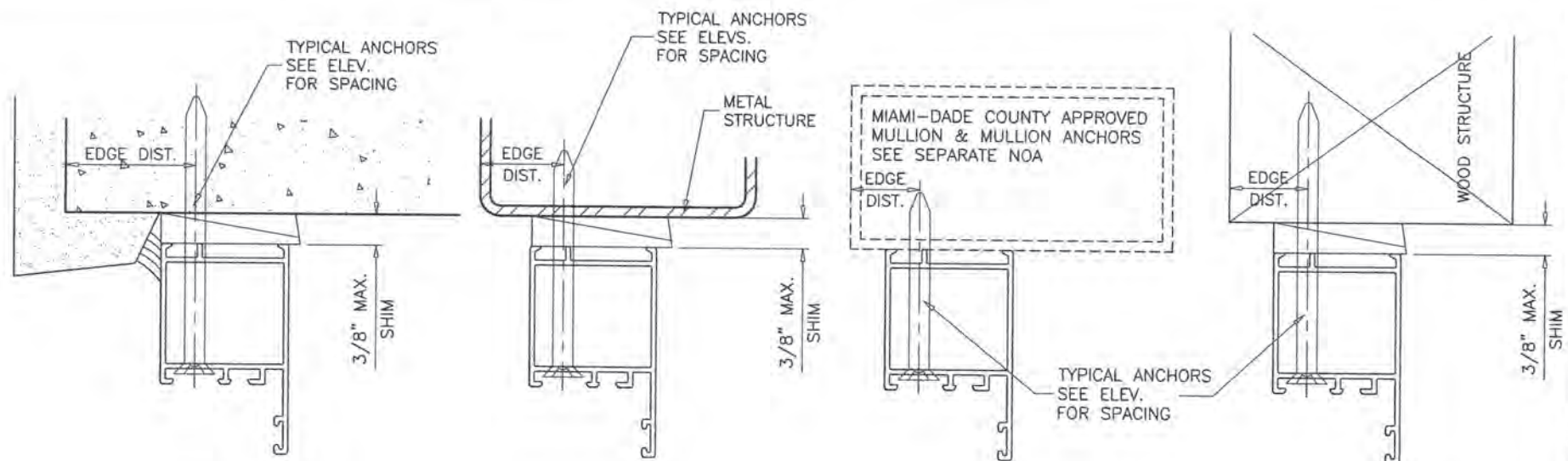
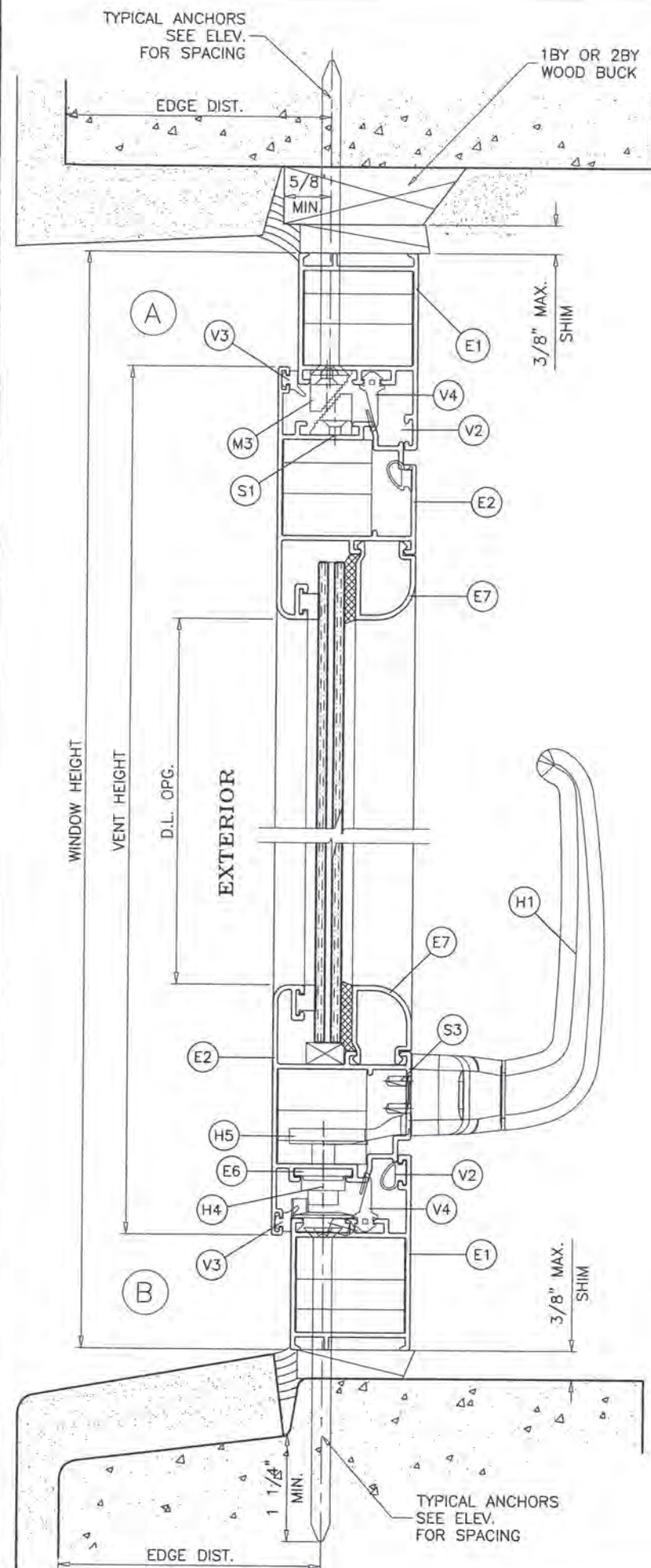
DEC 14 2020



AL-FAROOQ CORPORATION
ENGINEERS & PRODUCT DEVELOPMENT
9360 SUNSET DRIVE, SUITE 220
MIAMI, FLORIDA 33173 (C.A.N. 3538)
TEL. (305) 264-8100 FAX. (305) 262-6978
COMP-ANL W14-03RC

SERIES PR075 ALUM PROJECT OUT WDW. (L.M.I.)
RC Home Showcase, Inc.
16115 N.W. 52nd Ave
Miami, Florida 33014
Tel. (305) 392-6214 Fax. (305) 260-6432

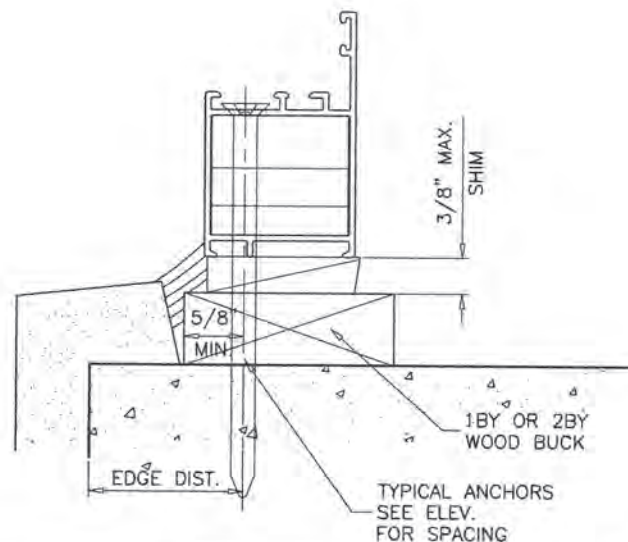
revisions:	no	date	by	description
	A	02.01.18		UPDATED TO 2017 FBC
	B	11.30.20		UPDATED TO 2020 FBC
date:	02-03-14			
scale:	1/2" = 1"			
dr. by:	TARIQ			
chk. by:				
drawing no.	W14-03			
sheet	2 of 12			



WOOD BUCKS AND METAL STRUCTURE NOT BY 'RC HOME SHOWCASE' MUST SUSTAIN LOADS IMPOSED BY GLAZING SYSTEM AND TRANSFER THEM TO THE BUILDING STRUCTURE.

SEALANTS:

ALL FRAME AND VENT CORNERS SEALED WITH SILICONE.



TYPICAL ANCHORS: SEE ELEV. FOR SPACING

1/4" DIA. KWIK-CON II+ BY 'HILTI' ($F_u=138$ KSI, $F_y=137$ KSI)

1/4" DIA. ULTRACON+ BY 'DEWALT' ($F_u=164$ KSI, $F_y=148$ KSI)

INTO WOOD STRUCTURES

2" MIN. PENETRATION INTO WOOD (HEAD/SILL/JAMBS)

THRU 1BY OR 2BY WOOD BUCKS INTO CONC. OR BLOCKS

1-1/4" MIN. EMBED INTO CONCRETE (HEAD/SILL/JAMBS)

1-1/4" MIN. EMBED INTO BLOCKS (JAMBS)

DIRECTLY INTO CONCRETE OR BLOCKS

2" MIN. EMBED INTO CONCRETE (HEAD/SILL/JAMBS)

2" MIN. EMBED INTO GROUT-FILLED BLOCKS (JAMBS)

1/4" DIA. TEKS OR SELF-DRILLING SCREWS (GRADE 5 CRS)

INTO MIAMI-DADE COUNTY APPROVED MULLIONS OR

INTO METAL STRUCTURES (HEAD/SILL/JAMBS)

(3) THREADS MIN. TO EXTEND BEYOND METAL THICKNESS
ALUMINUM: 1/8" THK. MIN. (6063-T5 MIN.)

STEEL: 1/8" THK. MIN. ($F_y = 36$ KSI MIN.)

(STEEL IN CONTACT WITH ALUMINUM TO BE PLATED OR PAINTED)

CRITICAL EDGE DISTANCE

INTO CONCRETE AND BLOCKS = 2-1/2" MIN.

INTO WOOD STRUCTURE = 5/8" MIN.

INTO METAL STRUCTURE = 3/4" MIN.

WOOD AT HEAD, SILL OR JAMBS SG = 0.55 MIN.

CONCRETE AT HEAD, SILL OR JAMBS $f'_c = 3000$ PSI MIN.

C-90 HOLLOW/FILLED BLOCK AT JAMBS $f'_m = 2000$ PSI MIN.

PRODUCT REVISED
as complying with the Florida
Building Code
NOA-No. 20-1216.09

Expiration Date 06/06/2023

By
Miami-Dade Product Control

DEC 14 2020



SERIES PR075 ALUM PROJECT OUT WDW. (L.M.I.)

RC Home Showcase, Inc.

16115 N.W. 52nd Ave

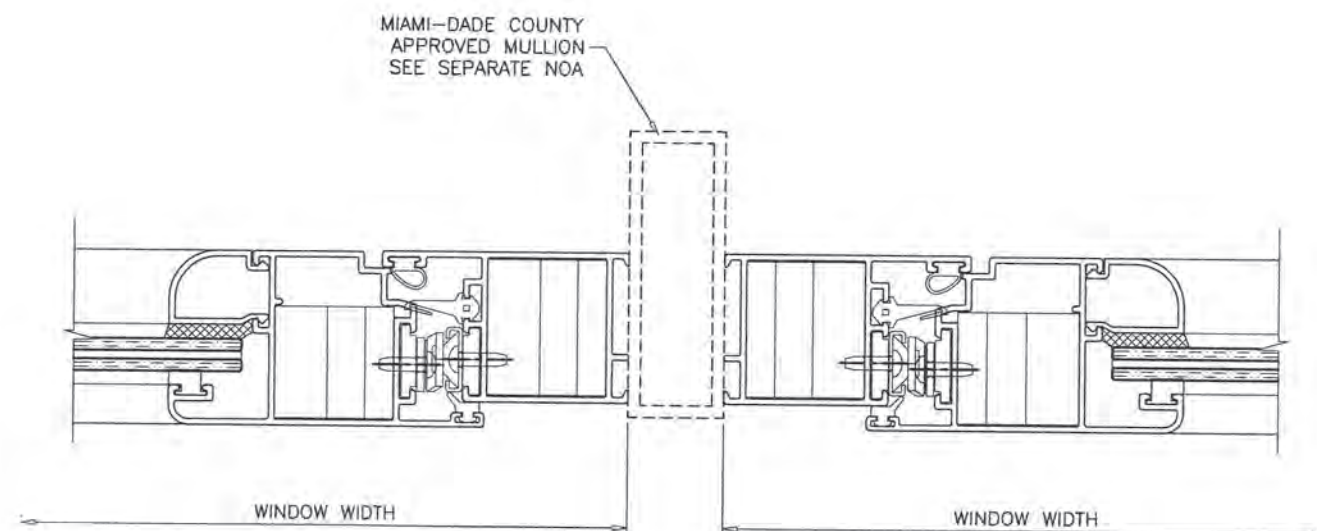
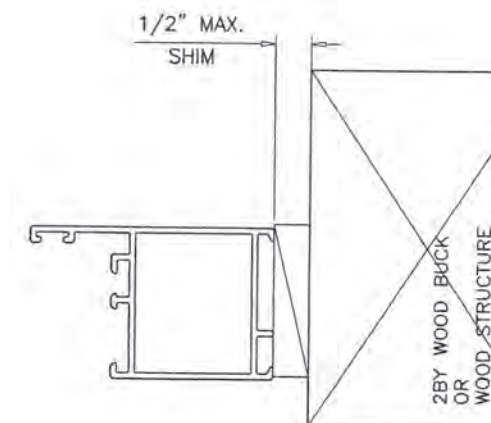
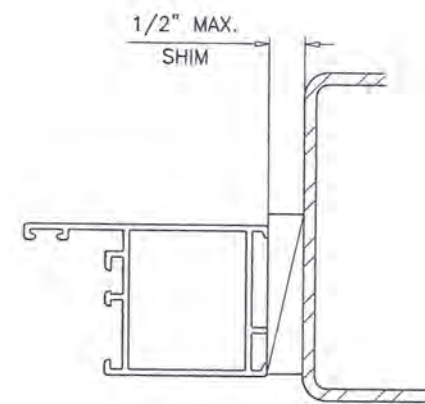
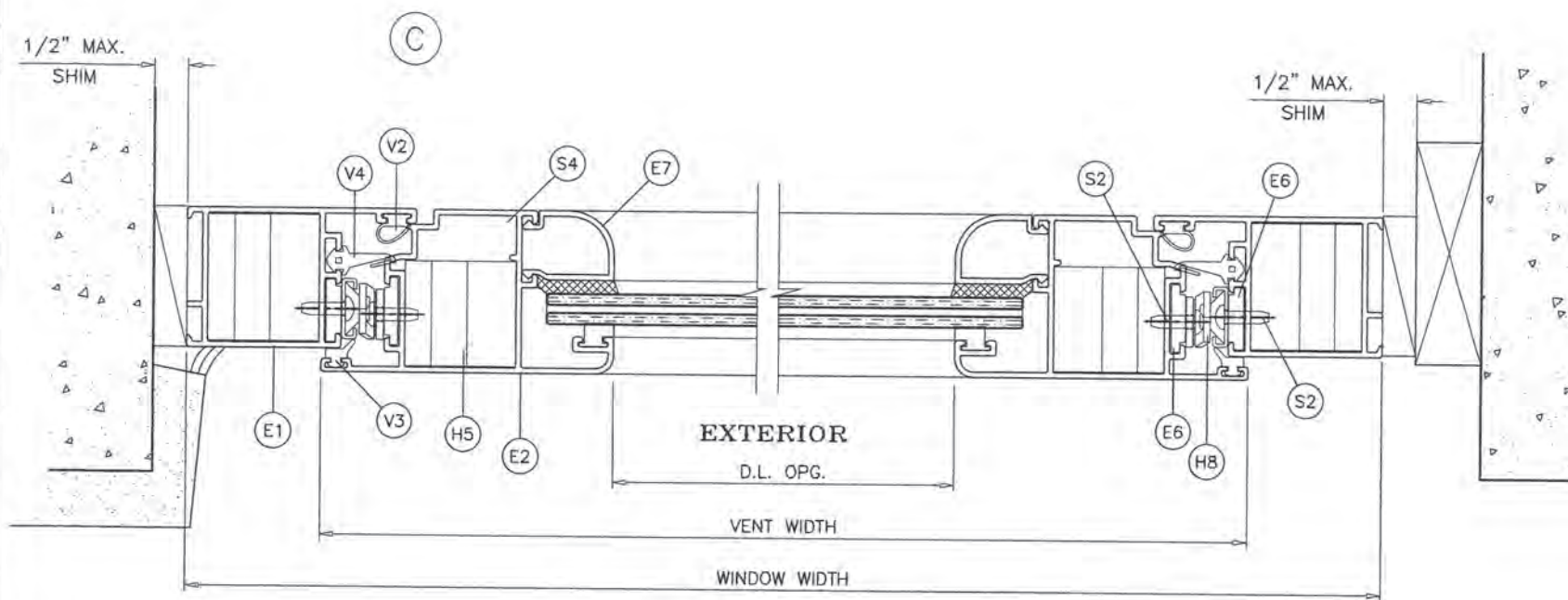
Miami, Florida 33014


Tel. (305) 392-6214 Fax. (305) 260-6432

af c
AL-FAROOQ CORPORATION
ENGINEERS & PRODUCT DEVELOPMENT
9360 SUNSET DRIVE, SUITE 220
MIAMI, FLORIDA 33173
TEL. (305) 264-8100 FAX. (305) 262-6978
(C.A.N. 3538)

COMP-ANL W14-03RC

revisions:		no	date	by	description
A	02-01-18	1	02-01-18	1	UPDATED TO 2017 FBC
	11-30-20	2	11-30-20	2	UPDATED TO 2020 FBC
date:	02-03-14	scale:	1/2" = 1"	dr. by:	TARIQ
chk. by:		drawing no.	W14-03	sheet	3 of 12



PRODUCT REVISED
as complying with the Florida
Building Code
NOA-No. 20-1216.09
Expiration Date 06/06/2023
By 
Miami-Dade Product Control

DEC 14 2020



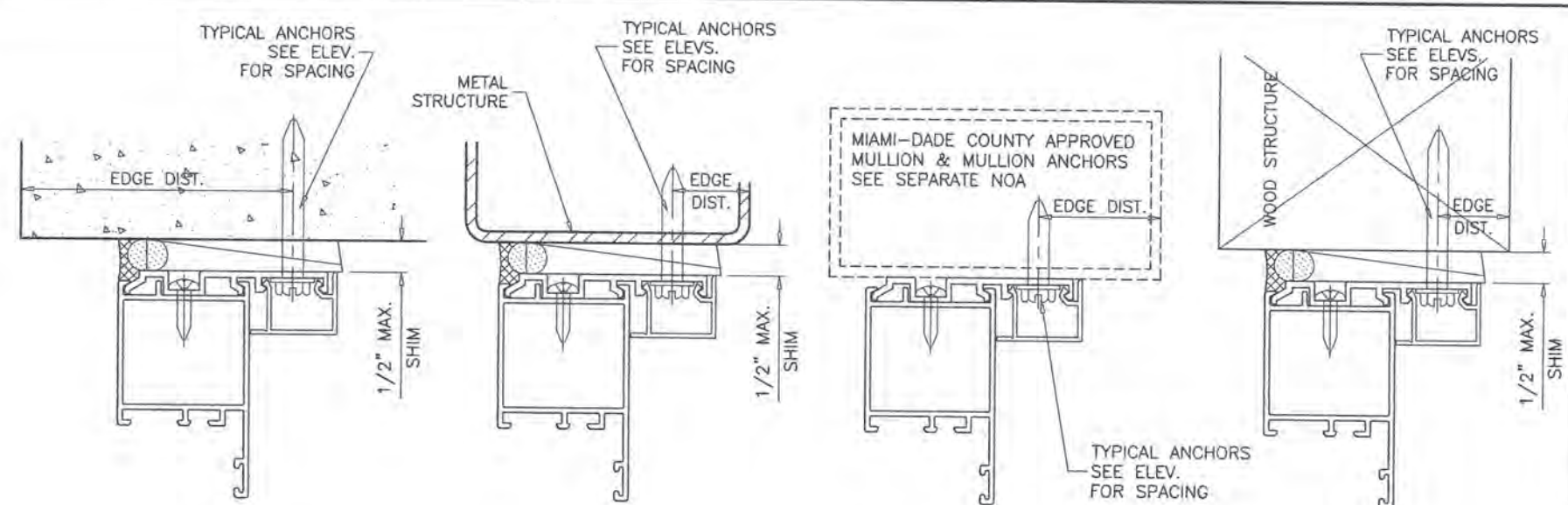
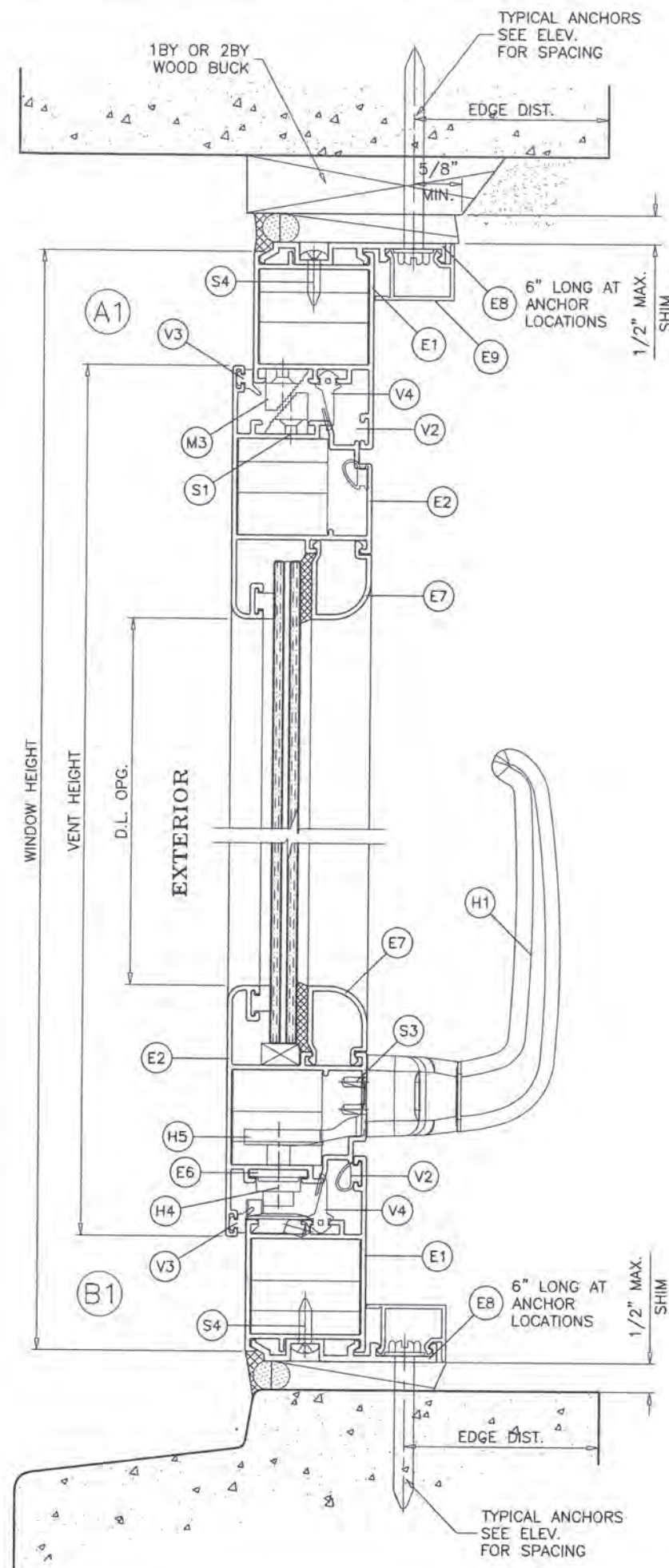
SERIES PR075 ALUM PROJECT OUT WDW. (L.M.I.)

AL-FAROOQ CORPORATION
ENGINEERS & PRODUCT DEVELOPMENT
9360 SUNSET DRIVE, SUITE 220
MIAMI, FLORIDA 33173
TEL. (305) 264-8100 FAX. (305) 262-6978
(C.A.N. 3538)

RC Home Showcase, Inc.
16115 N.W. 52nd Ave
Miami, Florida 33014
Tel. (305) 392-6214 Fax. (305) 260-6432

date: 02-03-14		revisions:	
scale: 1/2" = 1"		no	date by description
dr. by: TARIQ		A	02.01.18 UPDATED TO 2017 FBC
		B	11.30.20 UPDATED TO 2020 FBC
drawing no			
W14-03			
sheet 4 of 1			

COMP-ANL\W14-03RC



WOOD BUCKS AND METAL STRUCTURE NOT BY 'RC HOME SHOWCASE' MUST SUSTAIN LOADS IMPOSED BY GLAZING SYSTEM AND TRANSFER THEM TO THE BUILDING STRUCTURE.

SEALANTS:

ALL FRAME AND VENT CORNERS SEALED WITH SILICONE.

TYPICAL ANCHORS: SEE ELEV. FOR SPACING

1/4" DIA. KWIK-CON II+ BY 'HILTI' (Fu=138 KSI, Fy=137 KSI)

1/4" DIA. ULTRACON+ BY 'DEWALT' (Fu=164 KSI, Fy=148 KSI)

INTO WOOD STRUCTURES

2" MIN. PENETRATION INTO WOOD (HEAD/SILL/JAMBS)

THRU 18Y OR 28Y WOOD BUCKS INTO CONC. OR BLOCKS

1-1/4" MIN. EMBED INTO CONCRETE (HEAD/SILL/JAMBS)

1-1/4" MIN. EMBED INTO BLOCKS (JAMBS)

DIRECTLY INTO CONCRETE OR BLOCKS

2" MIN. EMBED INTO CONCRETE (HEAD/SILL/JAMBS)

2" MIN. EMBED INTO GROUT-FILLED BLOCKS (JAMBS)

1/4" DIA. TEKS OR SELF-DRILLING SCREWS (GRADE 5 CRS)

INTO MIAMI-DADE COUNTY APPROVED MULLIONS OR

INTO METAL STRUCTURES (HEAD/SILL/JAMBS)

(3) THREADS MIN. TO EXTEND BEYOND METAL THICKNESS

ALUMINUM: 1/8" THK. MIN. (6063-T5 MIN.)

STEEL: 1/8" THK. MIN. (Fy = 36 KSI MIN.)

(STEEL IN CONTACT WITH ALUMINUM TO BE PLATED OR PAINTED)

CRITICAL EDGE DISTANCE

INTO CONCRETE AND BLOCKS = 2-1/2" MIN.

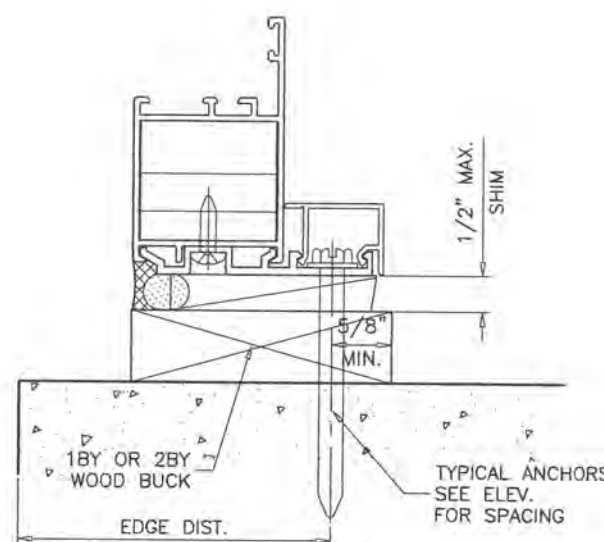
INTO WOOD STRUCTURE = 5/8" MIN.

INTO METAL STRUCTURE = 3/4" MIN.

WOOD AT HEAD, SILL OR JAMBS SG = 0.55 MIN.

CONCRETE AT HEAD, SILL OR JAMBS f'c = 3000 PSI MIN.

C-90 HOLLOW/FILLED BLOCK AT JAMBS f'm = 2000 PSI MIN.



PRODUCT REVISED
as complying with the Florida
Building Code

NOA-No. 20-1216.09

Expiration Date 06/06/2023

By
Miami-Dade Product Control

DEC 14 2020



SERIES PR075 ALUM PROJECT OUT WDW. (L.M.I.)

RC Home Showcase, Inc.

16115 N.W. 52nd Ave

Miami, Florida 33014

Tel. (305) 392-6214 Fax. (305) 260-6432

AL-FAROOQ CORPORATION
ENGINEERS & PRODUCT DEVELOPMENT
9360 SUNSET DRIVE, SUITE 220
MIAMI, FLORIDA 33173 (C.A.N. 3538)
TEL. (305) 264-8100 FAX. (305) 262-8978

COMP-ANL\W14-03RC

revisions:

date: 02-03-14

scale: 1/2" = 1"

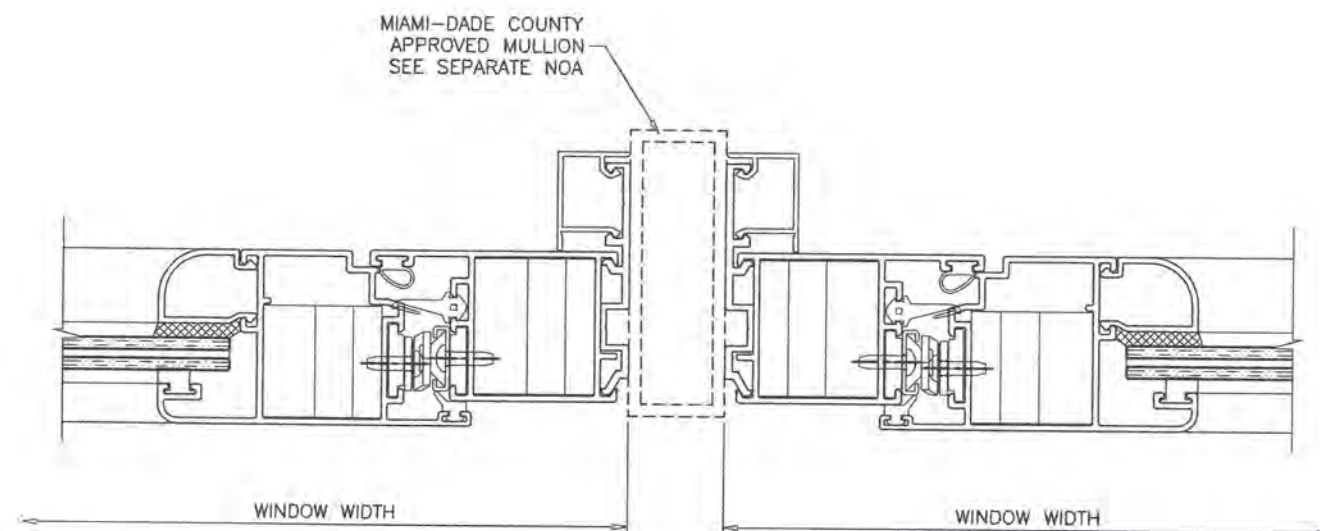
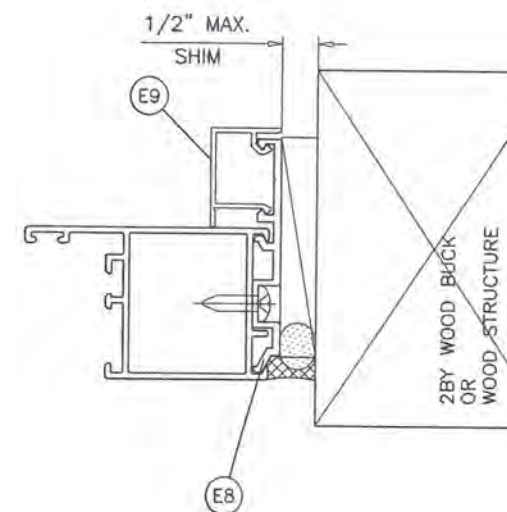
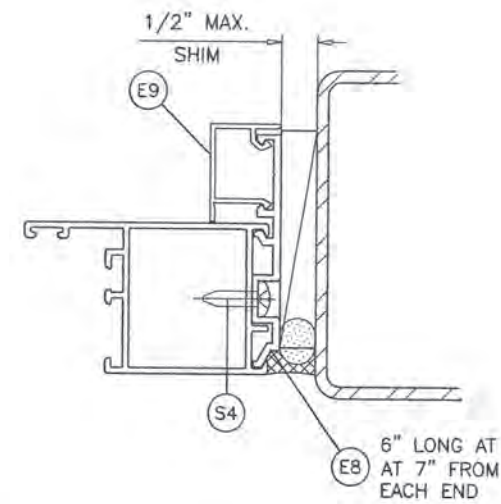
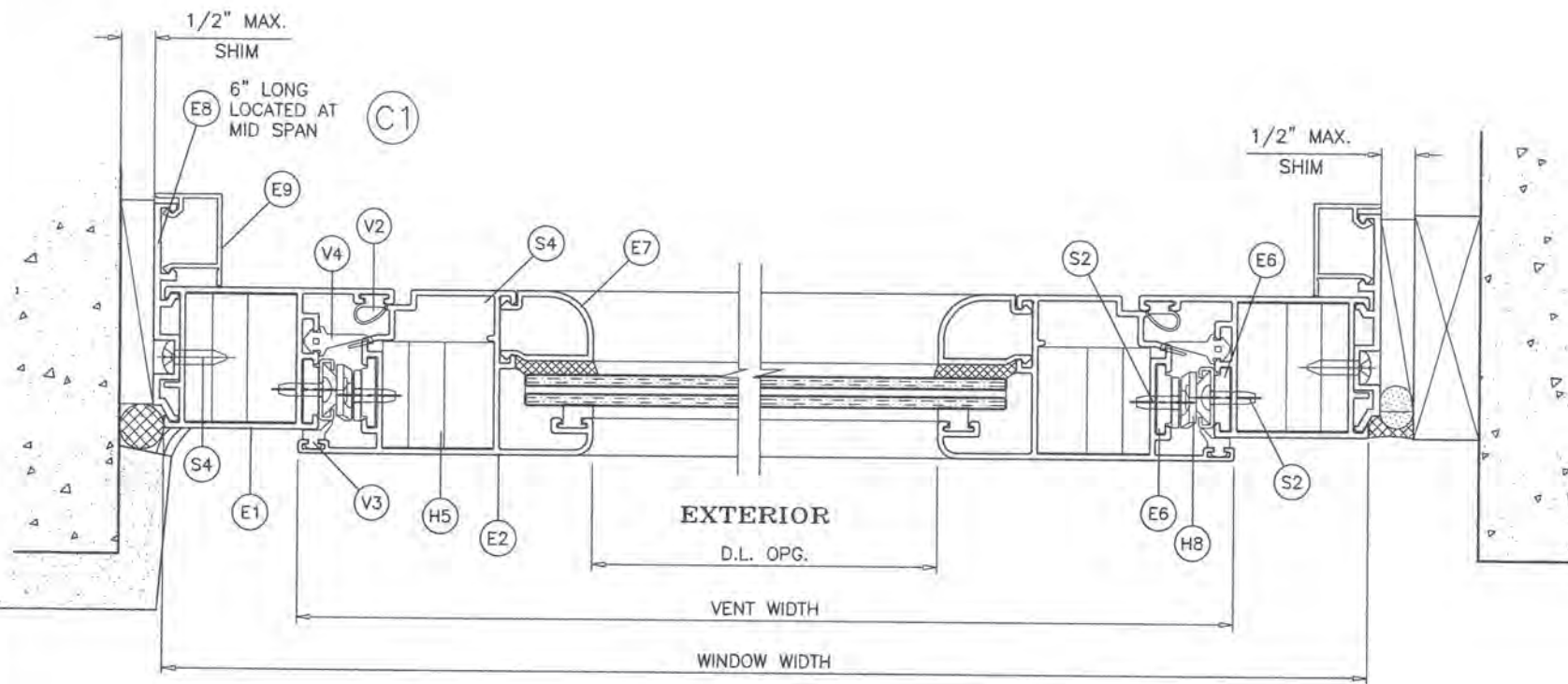
dr. by: TARIQ

chk. by:

drawing no.

W14-03

sheet 5 of 12



PRODUCT REVISED
as complying with the Florida
Building Code
NOA-No. 20-1216.09
Expiration Date 06/06/2023
By CS
Miami-Dade Product Control

DEC 14 2020



SERIES PR075 ALUM PROJECT OUT WDW. (L.M.I.)

RC Home Showcase, Inc.
16115 N.W. 52nd Ave
Miami, Florida 33014

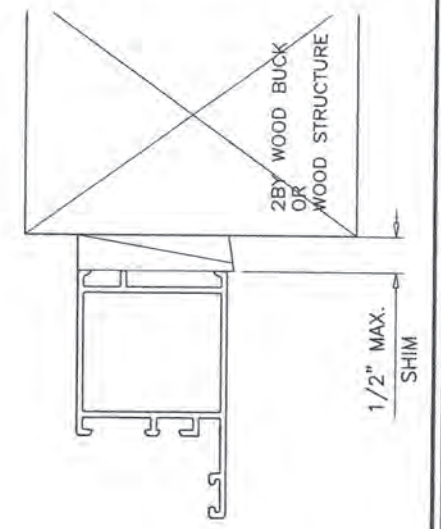
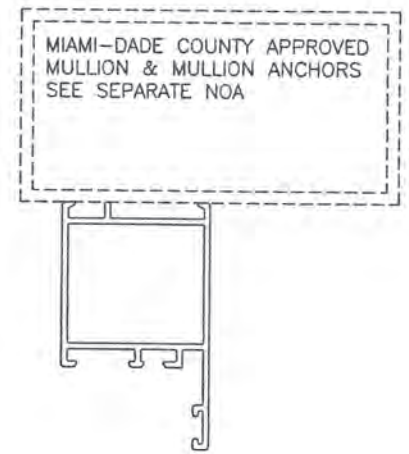
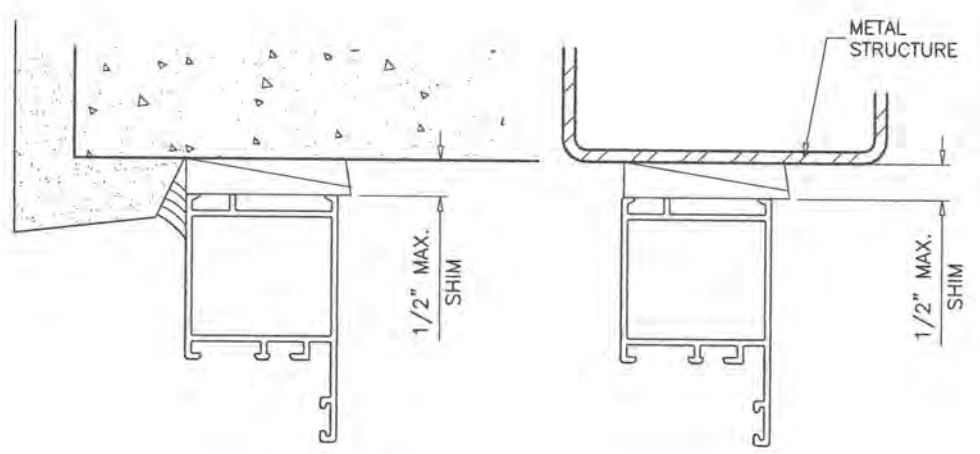
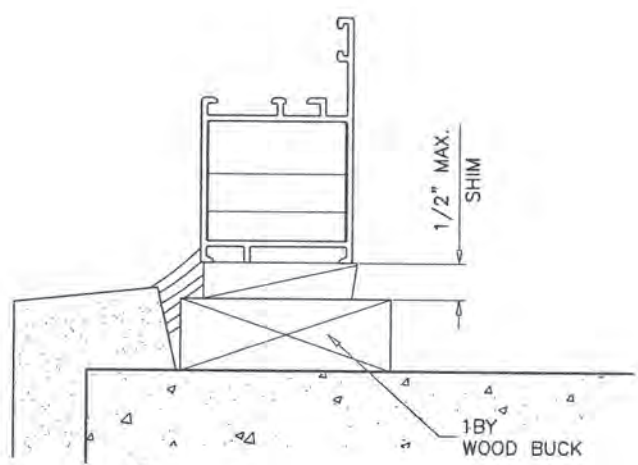
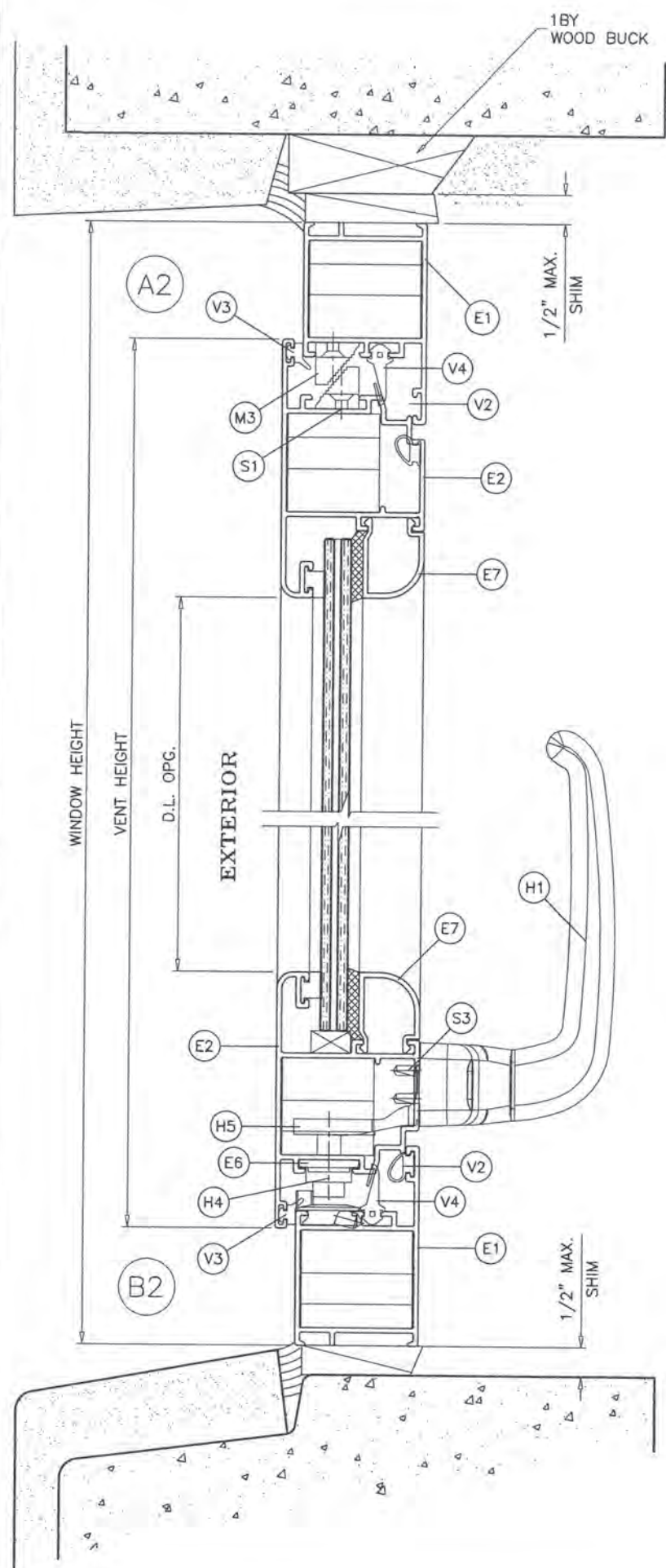
Tel. (305) 392-6214 Fax. (305) 260-6432

AL-FAROOQ CORPORATION
ENGINEERS & PRODUCT DEVELOPMENT
9360 SUNSET DRIVE, SUITE 220
MIAMI, FLORIDA 33173
TEL. (305) 264-8100 FAX. (305) 262-6978
(C.A.N. 3538)

COMP-ANL W14-03RC

no.	date	by	description
A	02.01.18		UPDATED TO 2017 FBC
B	11.30.20		UPDATED TO 2020 FBC

date: 02-03-14	scale: 1/2" = 1"	dr. by: TARIQ	chk. by:
drawing no. W14-03			
sheet 6 of 12			



PRODUCT REVISED
 as complying with the Florida
 Building Code
 NOA-No. 20-1216.09
 Expiration Date 06/06/2023
 By
 Miami-Dade Product Control

DEC 14 2020



AL-FAROOQ CORPORATION
 ENGINEERS & PRODUCT DEVELOPMENT
 9360 SUNSET DRIVE, SUITE 220
 MIAMI, FLORIDA 33173
 TEL. (305) 264-8100 FAX. (305) 262-6978

af c
 COMP-ANL\W14-03RC

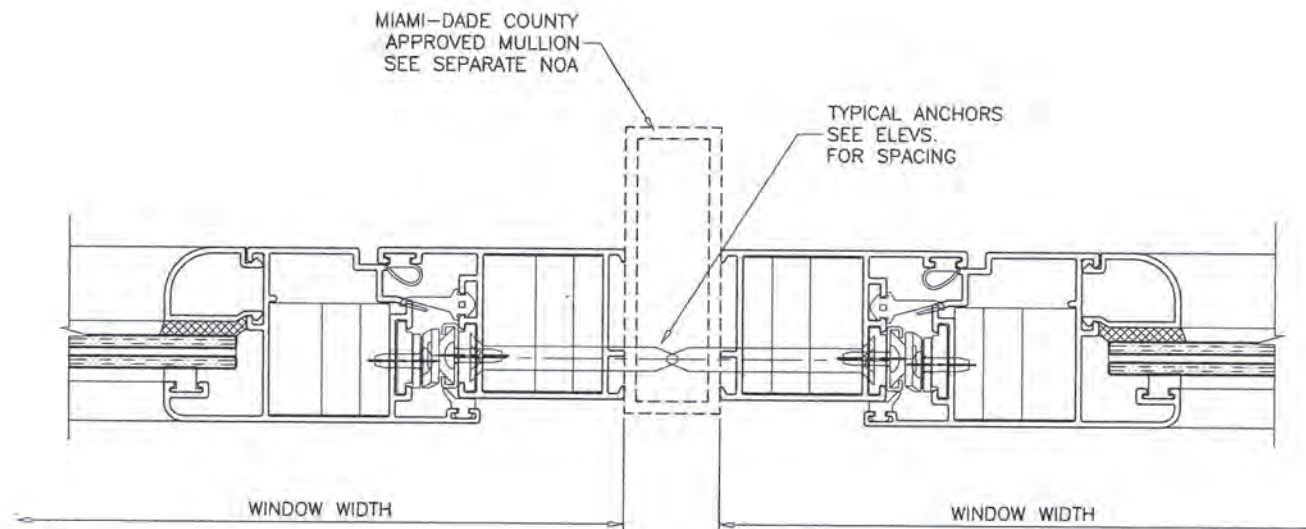
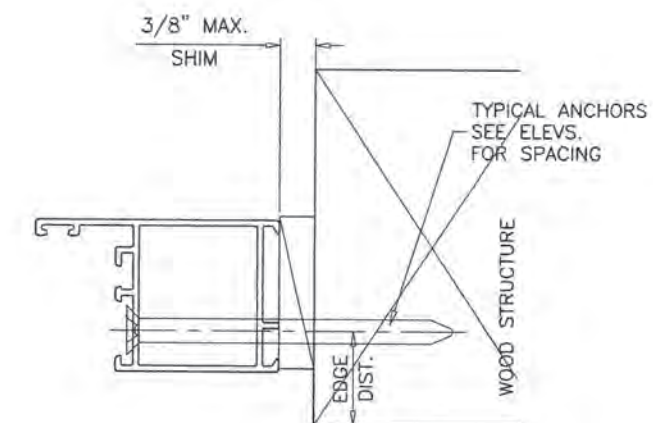
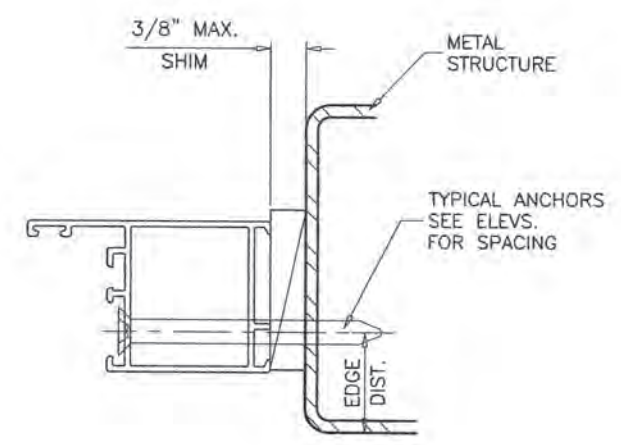
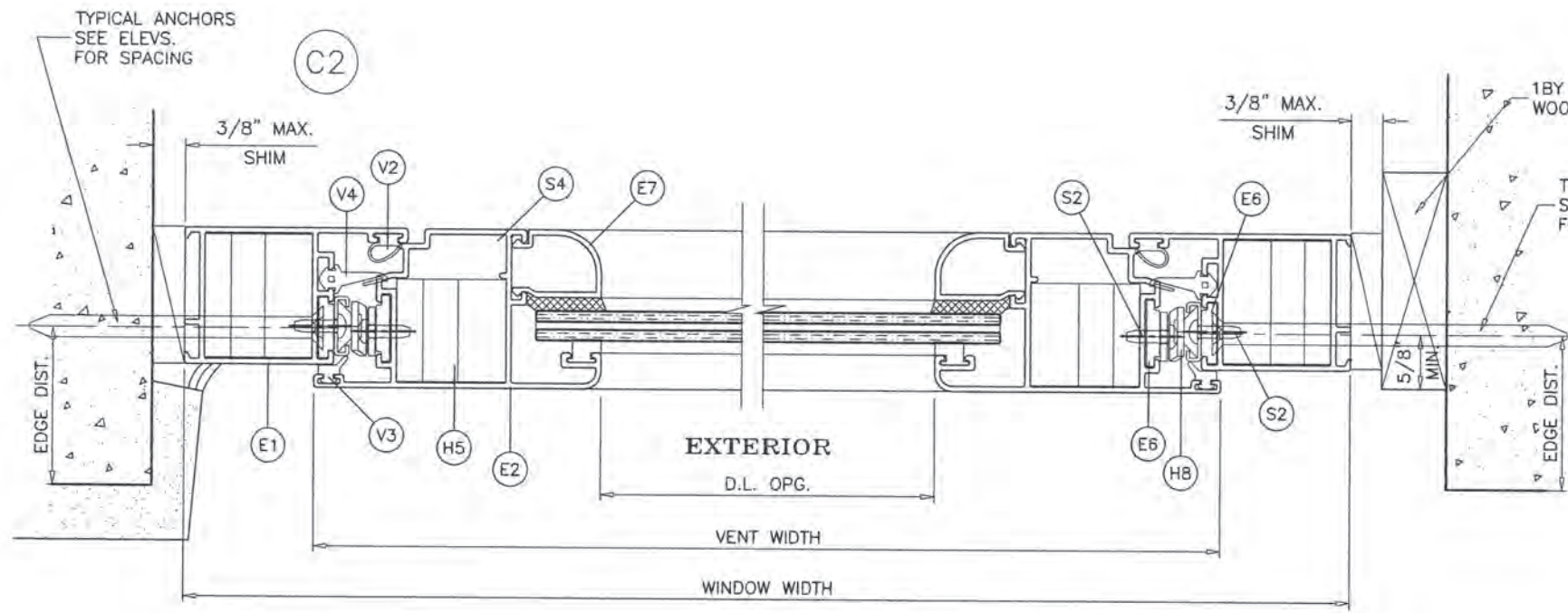
SERIES PR075 ALUM PROJECT OUT WDW. (L.M.I.)
RC Home Showcase, Inc.
 16115 N.W. 52nd Ave
 Miami, Florida 33014
 Tel. (305) 392-6214 Fax. (305) 260-6432

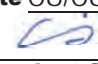
revisions:

no	date	by	description
A	02.01.18		UPDATED TO 2017 FBC
B	11.30.20		UPDATED TO 2020 FBC

date: 02-03-14
 scale: 1/2" = 1"
 dr. by: TARIQ
 chk. by:

drawing no.
W14-03
 sheet 7 of 12



PRODUCT REVISED
as complying with the Florida
Building Code
NOA-No. 20-1216.09
Expiration Date 06/06/2023
By 
Miami-Dade Product Control

DEC 14 2020



AL-FAROOQ CORPORATION
ENGINEERS & PRODUCT DEVELOPMENT
9360 SUNSET DRIVE, SUITE 220
MIAMI, FLORIDA 33173 (C.A.N. 3538)
TEL. (305) 264-8100 FAX. (305) 262-6978

COMP-ANL\W14-03RC

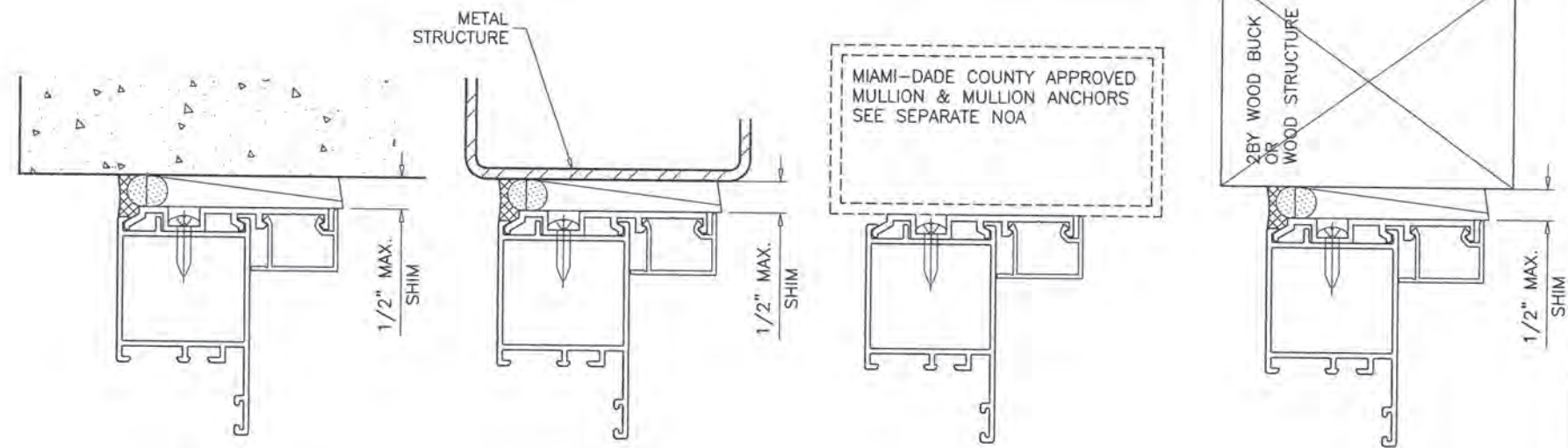
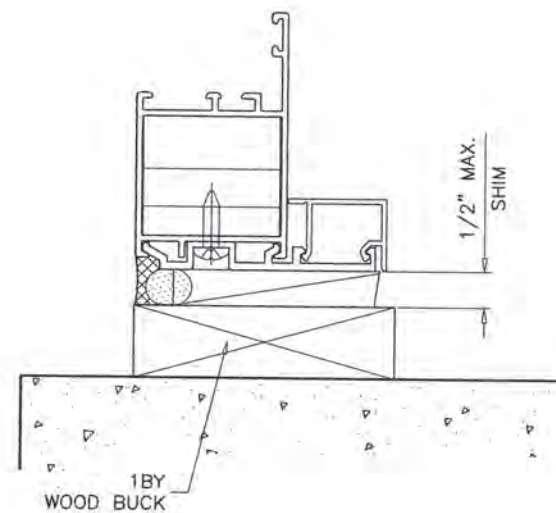
SERIES PR075 ALUM PROJECT OUT WDW. (L.M.I.)

RC Home Showcase, Inc.
16115 N.W. 52nd Ave
Miami, Florida 33014
Tel. (305) 392-6214 Fax. (305) 260-6432

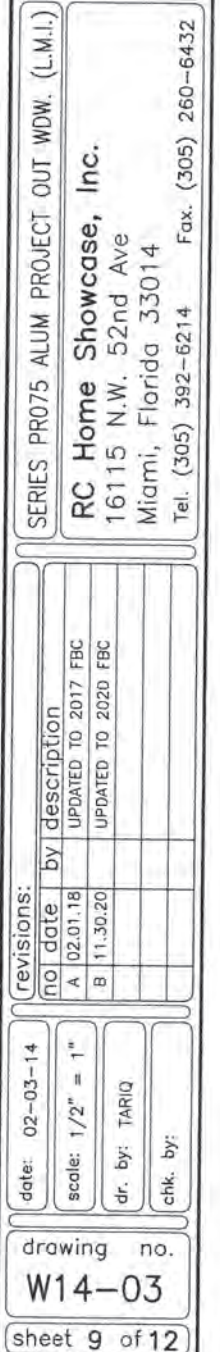
revisions:	
no	date by description
A	02.01.18 UPDATED TO 2017 FBC
B	11.30.20 UPDATED TO 2020 FBC

date: 02-03-14
scale: 1/2" = 1"
dr. by: TARIQ
chk. by:

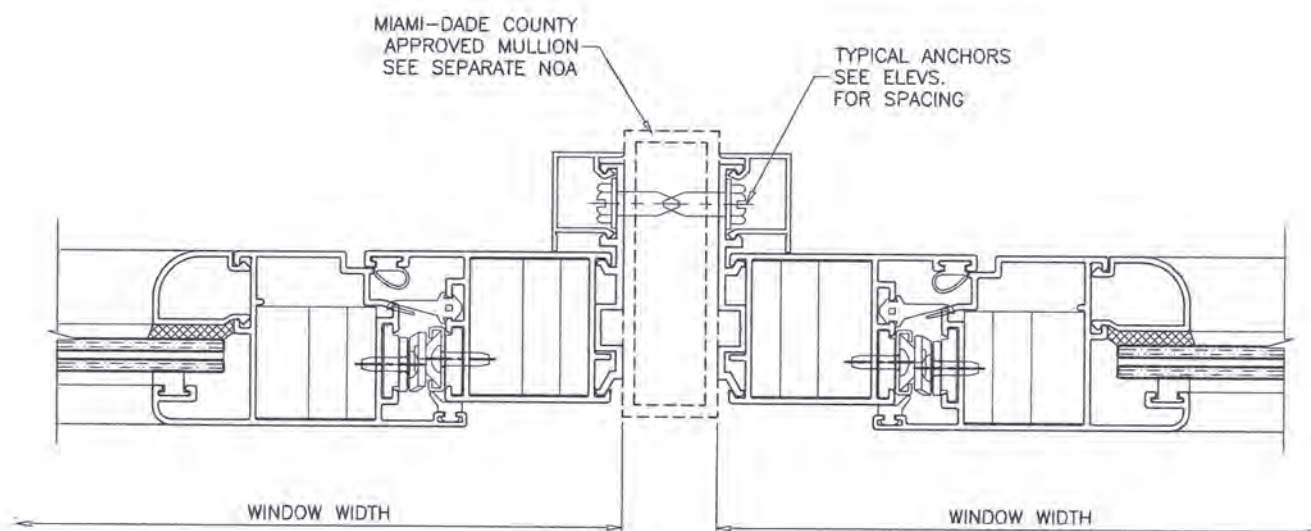
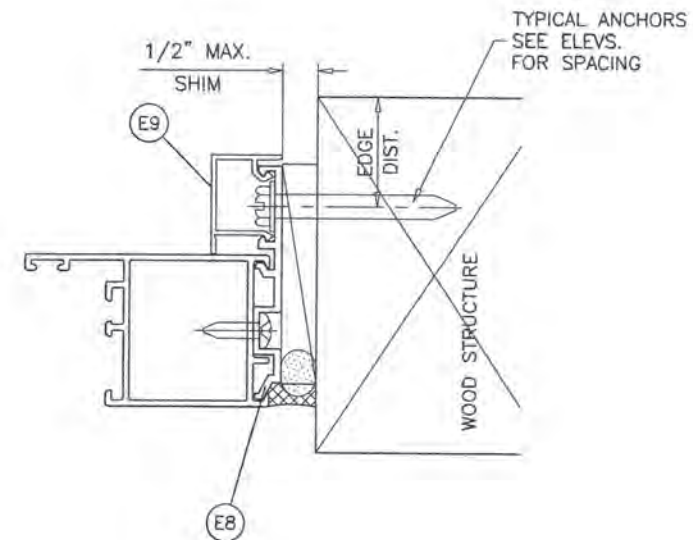
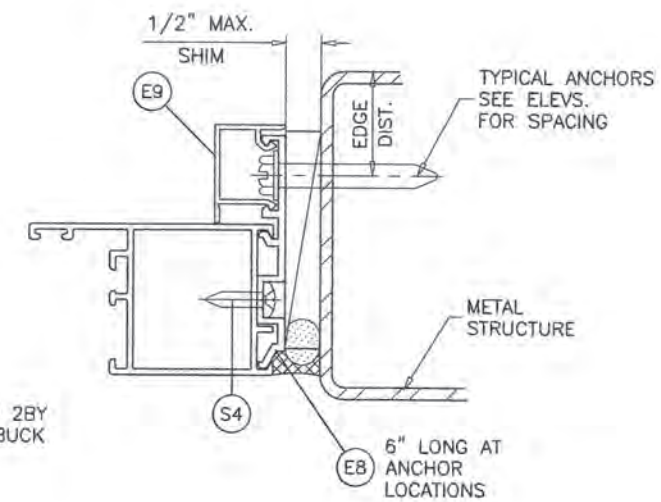
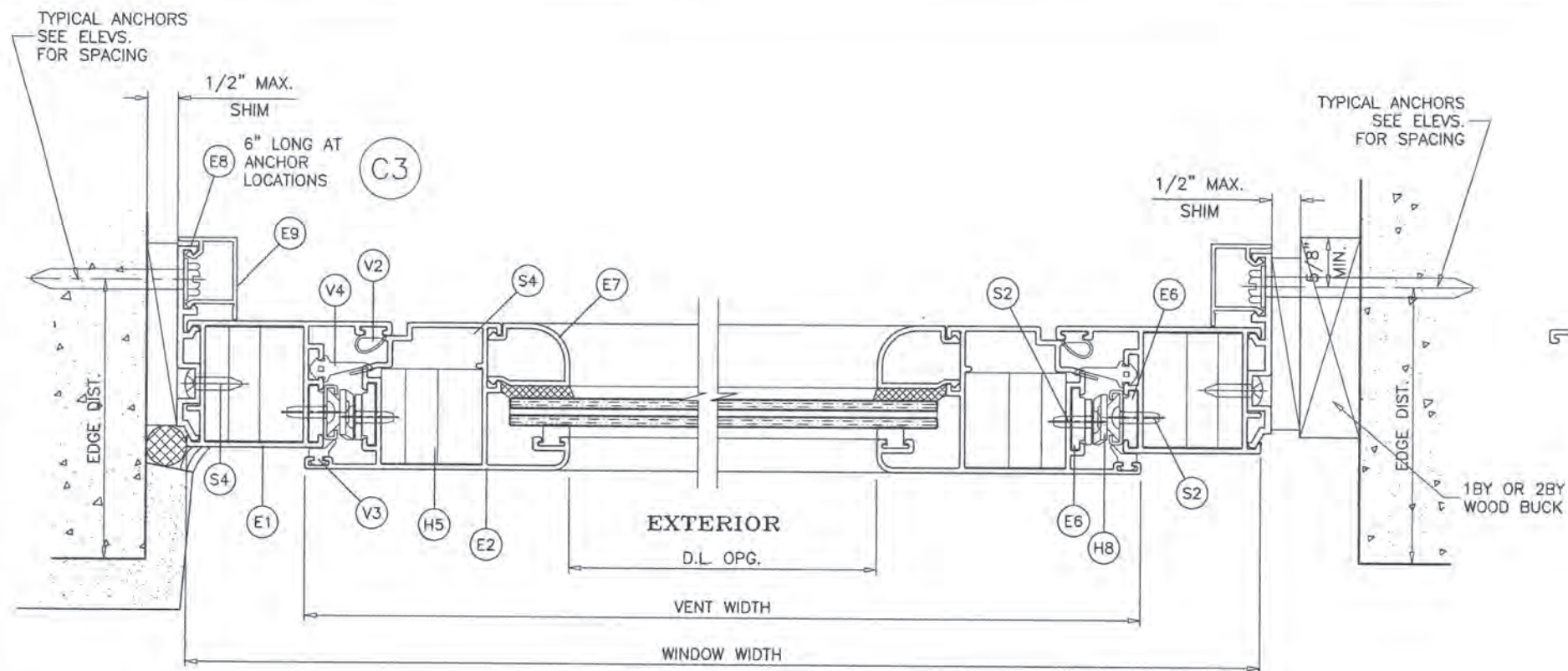
drawing no.
W14-03
sheet 8 of 12




DEC 14 2020



AL-FAROOQ CORPORATION
ENGINEERS & PRODUCT DEVELOPMENT
9360 SUNSET DRIVE, SUITE 220
MIAMI, FLORIDA 33173 (C.A.N. 3538)
TEL. (305) 264-8100 FAX. (305) 262-6978



PRODUCT REVISED
as complying with the Florida
Building Code
NOA-No. 20-1216.09
Expiration Date 06/06/2023
By 
Miami-Dade Product Control

DEC 14 2020



AL-FAROOQ CORPORATION
ENGINEERS & PRODUCT DEVELOPMENT
9360 SUNSET DRIVE, SUITE 220
MIAMI, FLORIDA 33173
TEL. (305) 264-8100 FAX. (305) 262-6978
(C.A.N. 3538)

COMP-ANL W14-03RC

SERIES PR075 ALUM PROJECT OUT WDW. (L.M.I.)

RC Home Showcase, Inc.
16115 N.W. 52nd Ave
Miami, Florida 33014
Tel. (305) 392-6214 Fax. (305) 260-6432

revisions:

no	date	by	description
A	02.01.18		UPDATED TO 2017 FBC
B	11.30.20		UPDATED TO 2020 FBC

date: 02-03-14
scale: 1/2" = 1"
dr. by: TARIQ
chk. by:

drawing no.
W14-03
sheet 10 of 12

ITEM	PART #	QUANTITY	DESCRIPTION	MATERIAL	MANF./SUPPLIER/REMARKS
E1	CM075-001	4	FRAME HEAD/ SILL/ JAMBS 3709 FISA	6063-T6	-
E2	CM075-002	4	VENT HEAD/ SILL/ JAMBS 3707 FISA	6063-T6	-
E3	CM075-007	AS REQD.	FRAME & VENT CORNER LOCK MALE 3550 FISA	6063-T6	-
E4	CM075-004	AS REQD.	FRAME & VENT CORNER LOCK 3551 FISA	6063-T6	-
E5	CM075-005	AS REQD.	FRAME & VENT CORNER LOCK ADAPTOR 1338	6063-T6	-
E6	CM075-006	AS REQD.	LOCK PLATE 3771 FISA	ALUMINUM	-
E7	FX075-003	4	GLAZING BEAD	6063-T6	-
E8	FX075-001	AS REQD.	INSTALLATION FRAME ADAPTER, 6" LONG	6063-T6	-
E9	500Y-010	AS REQD.	SNAP COVER	6063-T6	-
V1	V-101	AS REQD.	SQUARE VINYL TPE MELTPPOINT, DUROMETER 70±5	TPE	MELTPPOINT
V2	V-108	AS REQD.	TEAR VINYL INSIDE VENT, DUROMETER 65±5	EPDM	TREMCO
V3	V-060A	AS REQD.	FINGER GASKET	NEOPRENE	TREMCO
V4	V-104	AS REQD.	FRAME FLAPPY VINYL PART-C040621, DUROMETER 65±5	EPDM	TREMCO
M1	DOW- 791	AS REQD.	WHITE SILICONE FOR ASSEMBLY	-	-
M2	DOW- 791	AS REQD.	BLACK SILICONE FOR GLAZING	-	-
M3	12206	AS REQD.	SNUBBERS	-	-
M4		2/ LITE	1/4" X 1/2" X 4" LONG T.P.E. SETTING BLOCK	EPDM	DUROMETER 75±5 SHORE A
S1		2/ SNUBBER	#6 X 1/2" LG. FH. SMS.	ST/ST	-
S2		8/ HINGE	#10 X 1/2" LG. PH. THREAD CUTTING POINT "F"	ST/ST	AT 4 BAR HINGES
S3		-	#10-32 X 1/2" LG. FH. THREAD CUTTING MACHINE SCREWS	ST/ST	-
S4		2/ CLIP	#10 X 3/4" PH SMS	ST/ST	-
H1	CR0115-7D	AS REQD.	HANDLE EXTERIOR COLOR WHITE	-	-
H2	KT0006	AS REQD.	LOCK POINT NON CENTER	-	-
H3	851-117-8046	AS REQD.	16" OR 26" 4-BAR HINGE	-	-
H4	05100E03	AS REQD.	FORWARDING SQUARE W/ MUSHROOM HEAD	-	-
H5	-	AS REQD.	MULTI-POINT CONNECTION BARS	-	-

LOCKS:

SURFACE MOUNT METALLIC 10 POINT LOCK SYSTEM
WITH ACTIVATING LEVER TYPE HANDLE AT MIDPOINT OF FRAME SILL
FASTENED WITH (4) #10-24 X 3/4" OH MS

SURFACE MOUNT KEEPERS FACING LOCKING POINTS
FASTENED WITH
(1) #8 X 3/4" FH SELF DRILLING SCREW
(1) #12-28 X 1/4" OH THREAD CUTTING MS WITH NUT
(6) KEEPERS AT FRAME SILL AND (2) KEEPERS AT EACH JAMB
FOR LANDSCAPE FRAMES
(2) KEEPERS AT FRAME SILL AND (4) KEEPERS AT EACH JAMB
FOR PORTRATE FRAMES

HINGES:

SURFACE MOUNT METALLIC FOUR BAR HINGES
FASTENED TO FRAME WITH (2) #10-32 X 3/4" PH MS
FASTENED TO VENT WITH (2) #10-32 X 3/4" PH MS
LOCATED AT
27-1/4" FROM BOTTOM FOR LANDSCAPE FRAMES
44-1/2" FROM BOTTOM FOR PORTRATE FRAMES

SNUBBERS:

(6) SURFACE MOUNT PLASTIC ANTI BLOW OUT CLIPS AT
FRAME HEAD AND VENT TOP RAIL
FASTENED TO FRAME AND VENT WITH (2) #6 X 3/8" PH SMS
LOCATED AT
4" FROM EACH END FOR LANDSCPE FRAMES
7-1/4" FROM EACH END FOR PORTRATE FRAMES
AND AT MIDSPAN

PRODUCT REVISED
as complying with the Florida
Building Code
NOA-No. 20-1216.09
Expiration Date 06/06/2023
By 
Miami-Dade Product Control

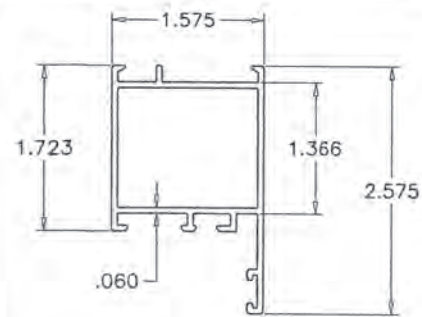
DEC 14 2020



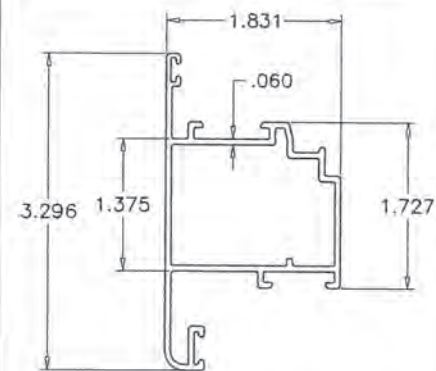
SERIES PR075 ALUM PROJECT OUT WDW. (L.M.I.)
RC Home Showcase, Inc.
16115 N.W. 52nd Ave
Miami, Florida 33014
Tel. (305) 392-6214 Fax. (305) 260-6432

AL-FAROOQ CORPORATION
ENGINEERS & PRODUCT DEVELOPMENT
9360 SUNSET DRIVE, SUITE 220
MIAMI, FLORIDA 33173 (C.A.N. 3538)
TEL. (305) 264-8100 FAX. (305) 262-6978
COMP-ANL\W14-03RC

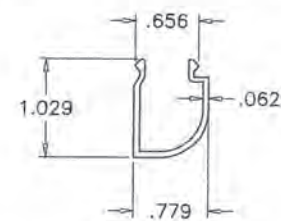
revisions:	no	date	by	description
	A	02.01.18		UPDATED TO 2017 FBC
	B	11.30.20		UPDATED TO 2020 FBC
date:	02-03-14			
scale:	1/2" = 1"			
dr. by:	TARIQ			
chk. by:				
drawing no.	W14-03			
sheet	11 of 12			



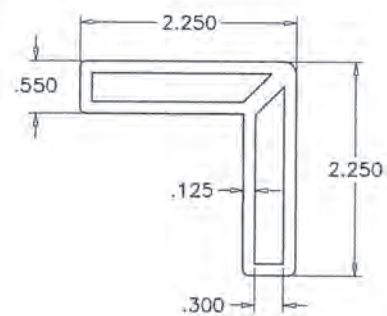
(E1) FRAME HEAD/SILL/JAMB



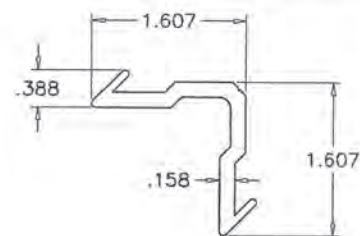
(E2) VENT HEAD/SILL/JAMB



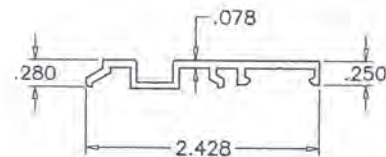
(E7) GLAZING BEAD



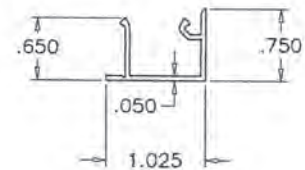
(E5) CORNER LOCK ADAPTER



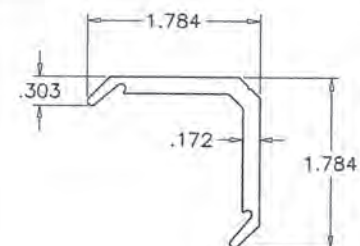
(E4) CORNER LOCK



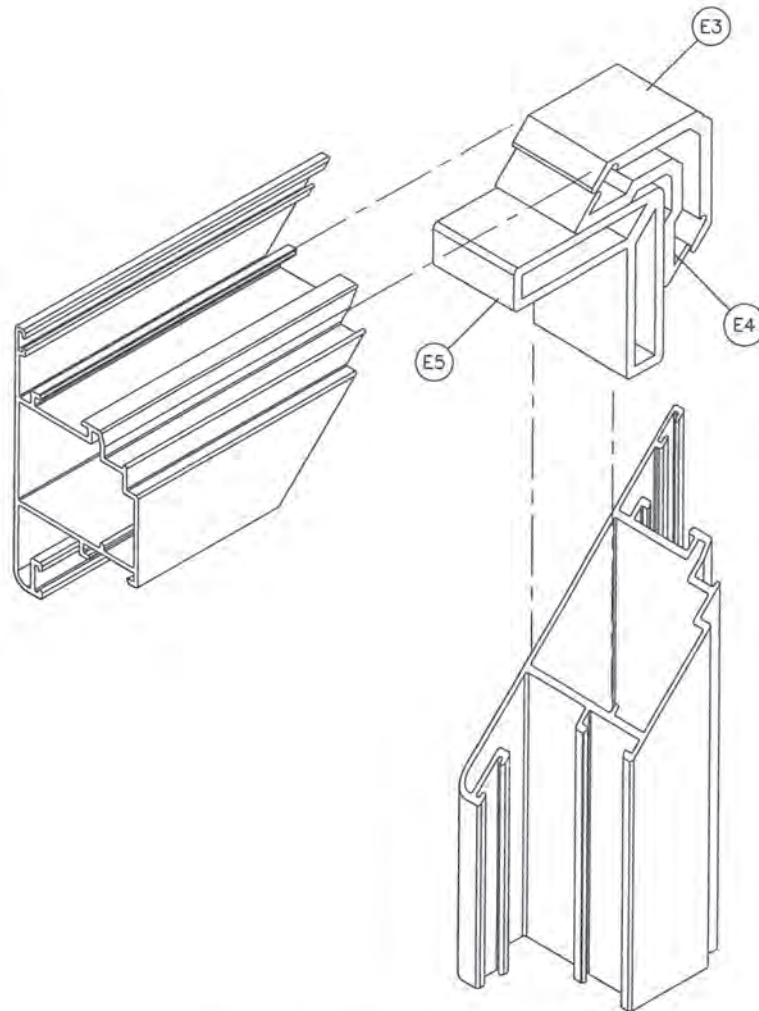
(E8) INSTALLATION FRAME ADAPTER



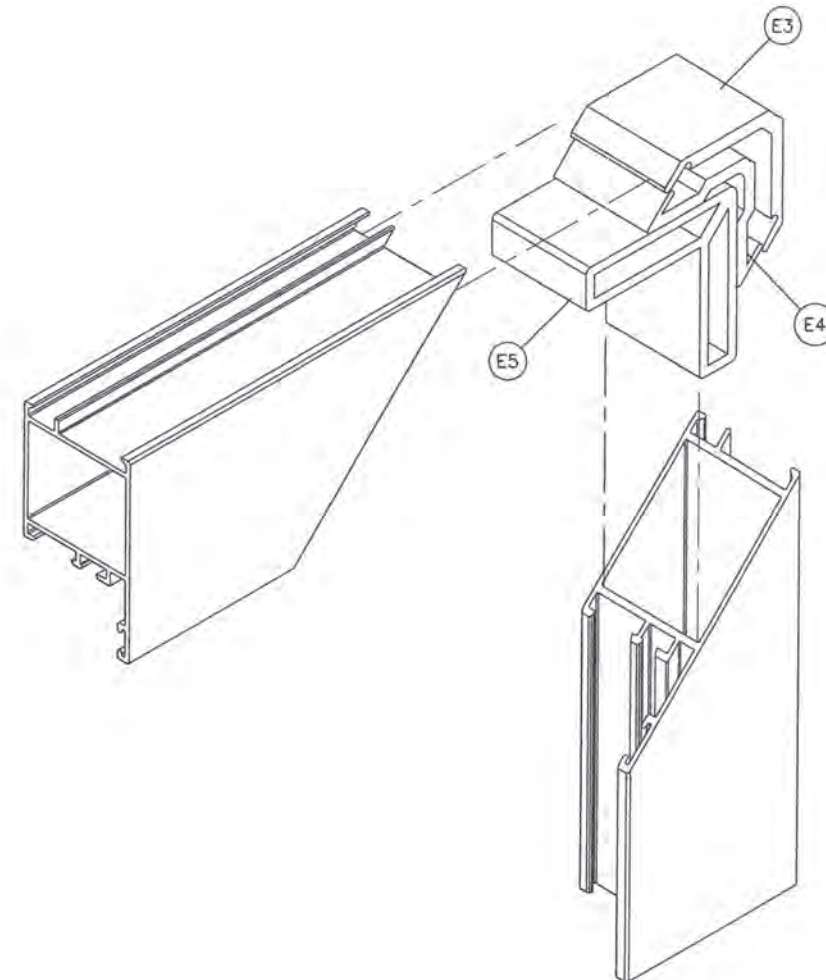
(E9) SNAP COVER




(E3) CORNER LOCK MALE



VENT CORNERS



FRAME CORNERS

PRODUCT REVISED
as complying with the Florida
Building Code
NOA-No. 20-1216.09
Expiration Date 06/06/2023
By 
Miami-Dade Product Control

DEC 14 2020



SERIES PR075 ALUM PROJECT OUT WDW. (L.M.I.)

RC Home Showcase, Inc.

16115 N.W. 52nd Ave
Miami, Florida 33014

Tel. (305) 392-6214 Fax. (305) 260-6432

AL-FAROOQ CORPORATION
ENGINEERS & PRODUCT DEVELOPMENT
9360 SUNSET DRIVE, SUITE 220
MIAMI, FLORIDA 33173 (C.A.N. 3538)
TEL. (305) 264-8100 FAX. (305) 262-6978

COMP-ANL W14-03RC

no	date	by	description
A	02.01.18		UPDATED TO 2017 FBC
B	11.30.20		UPDATED TO 2020 FBC

date:	02-03-14
scale:	1/2" = 1"
dr. by:	TARIQ
chk. by:	

drawing no.
W14-03

sheet 12 of 12